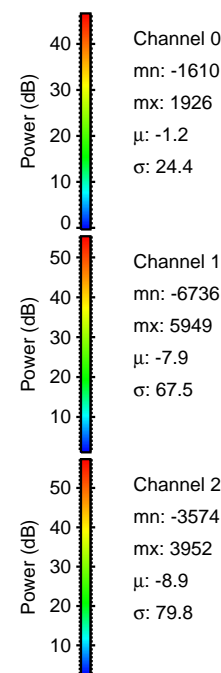
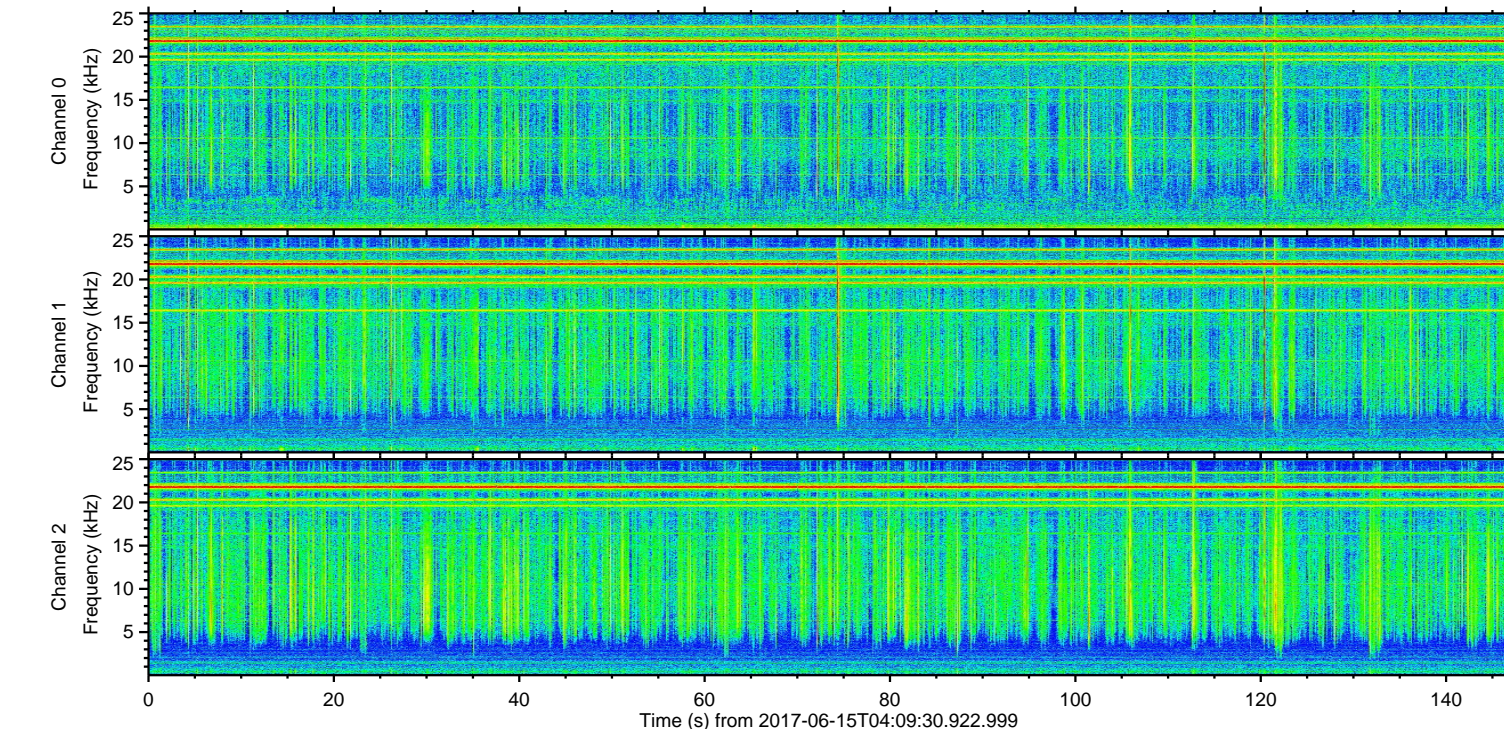
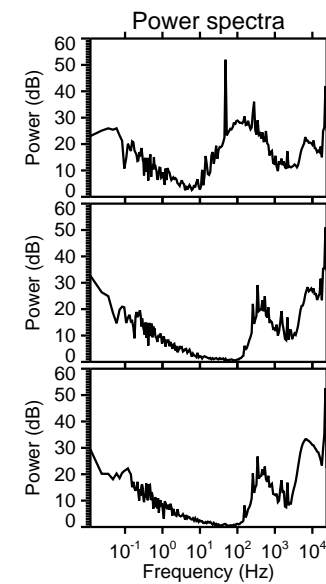
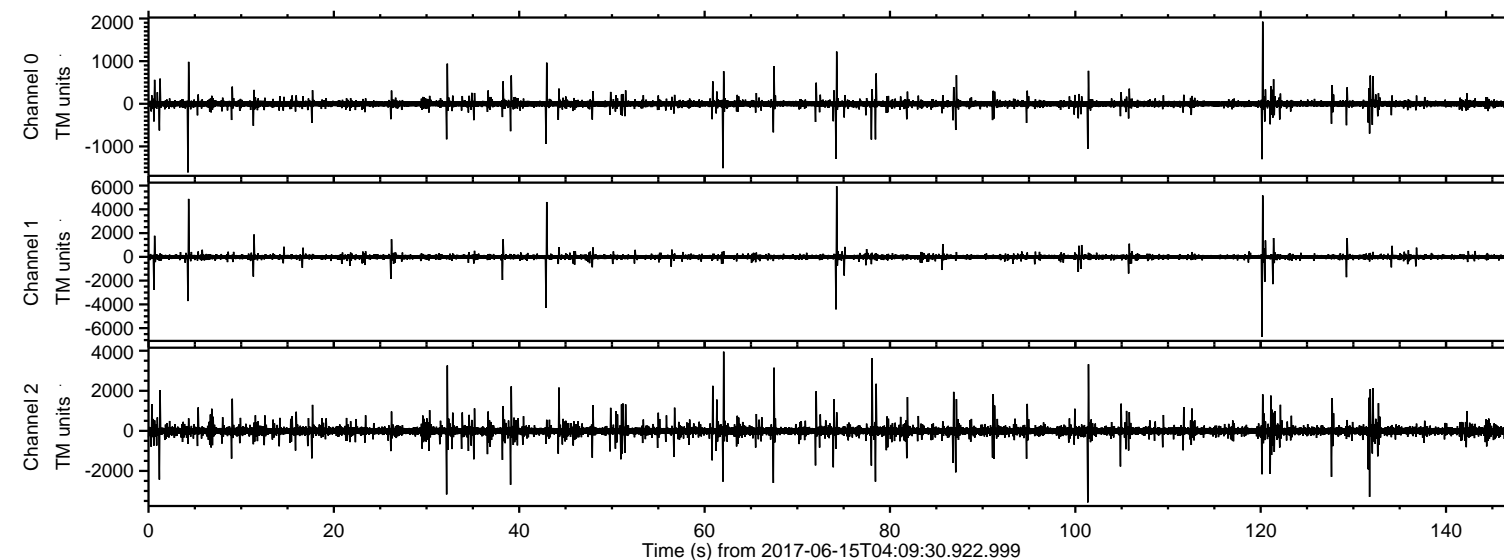


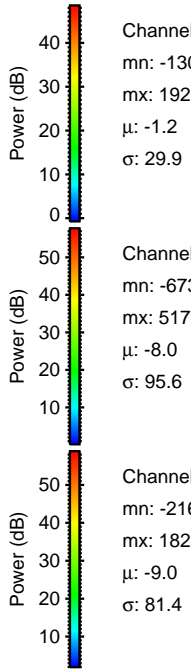
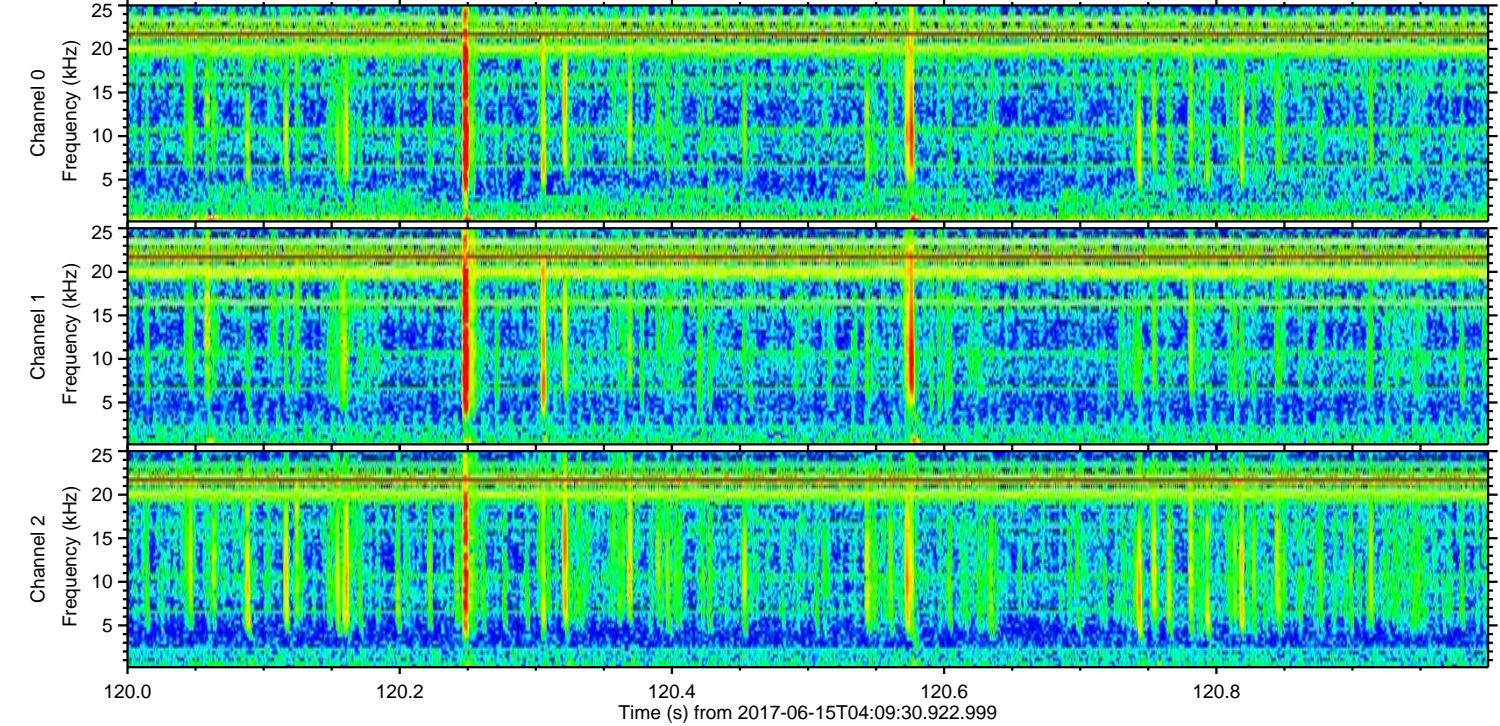
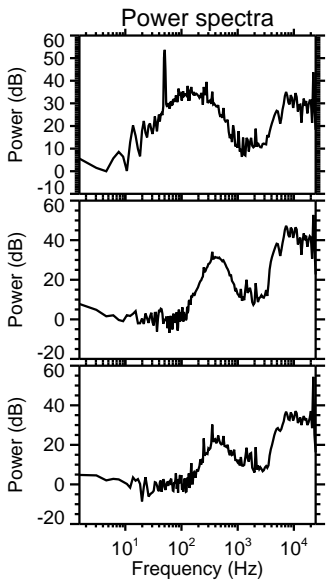
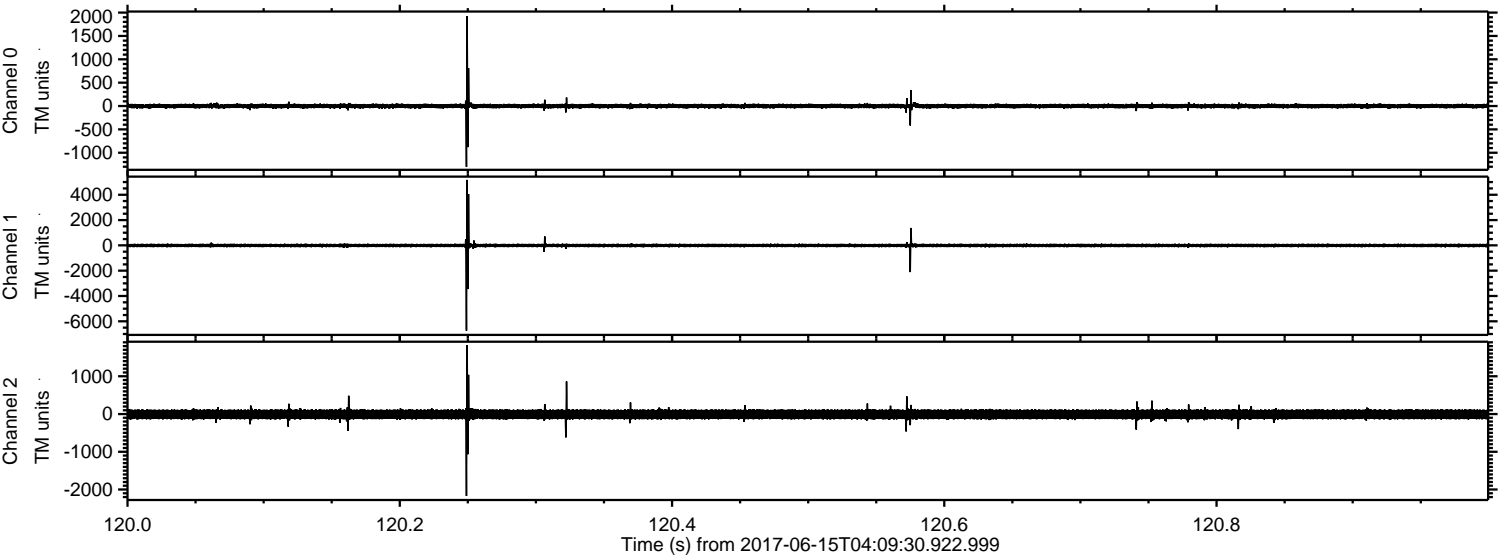
ELMAVAN 3D WAVEFORMS (Measured data sampled at 50 kHz) 51000 packets of 144 samples from 2017-06-15T04:09:30.922.999.

Processed Thu Jun 15 06:17:15 2017 by ELM ver.2012-10-06 from 001__elm20170615_040929__dat00.bin



ELMAVAN 3D WAVEFORMS (Measured data sampled at 50 kHz) 51000 packets of 144 samples from 2017-06-15T04:09:30.922.999. Part 121/147

Processed Thu Jun 15 06:17:20 2017 by ELM ver.2012-10-06 from 001__elm20170615_040929__dat00.bin

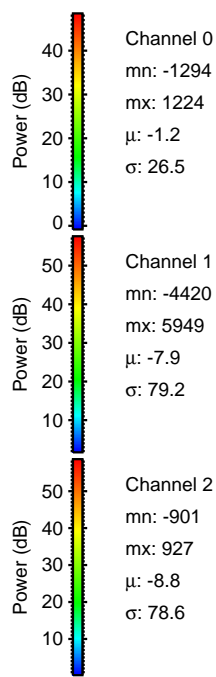
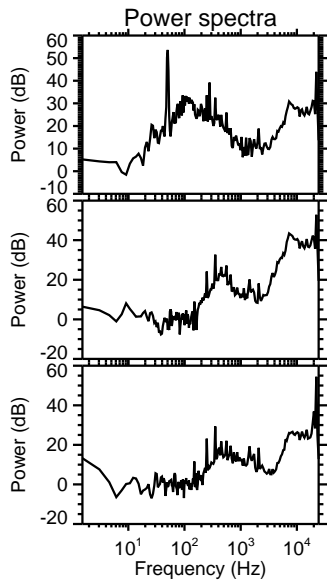
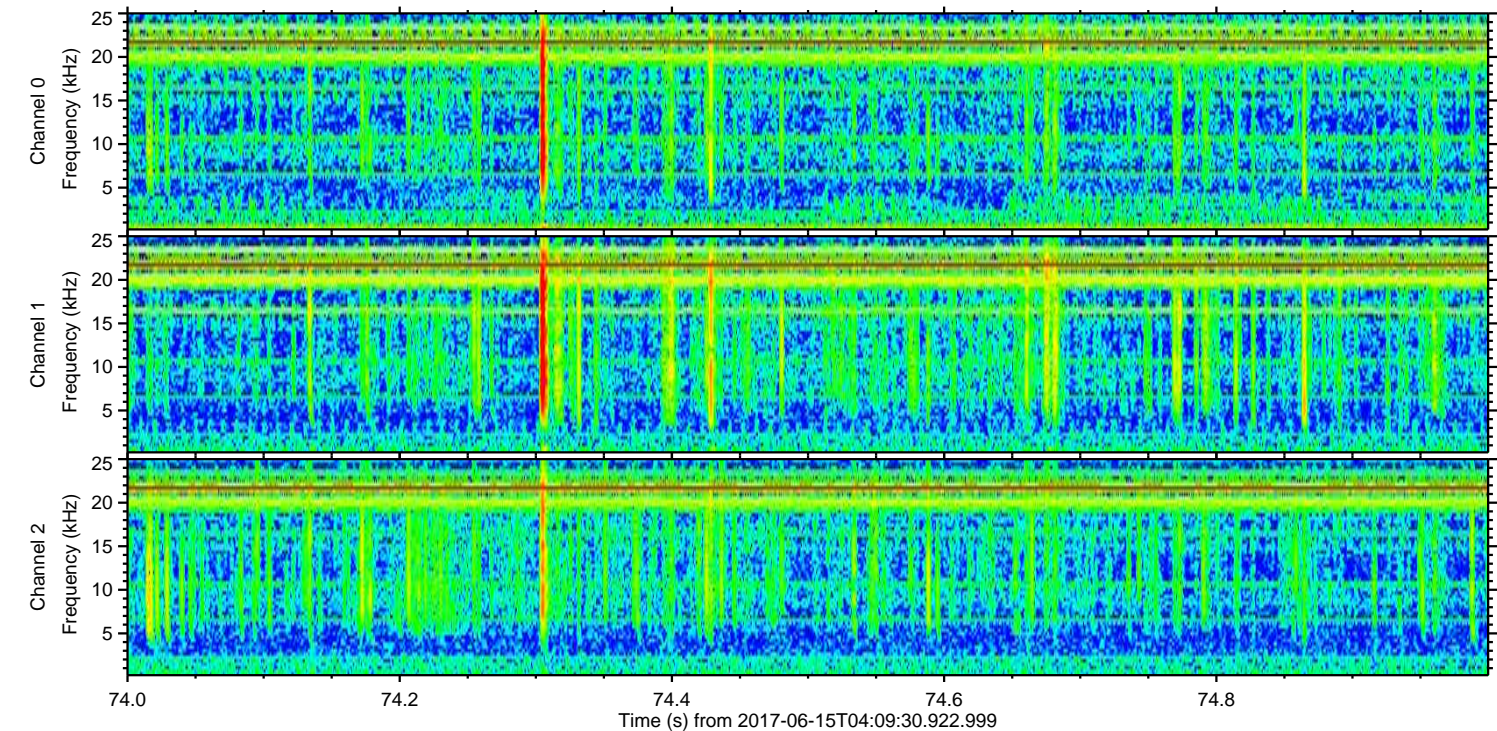
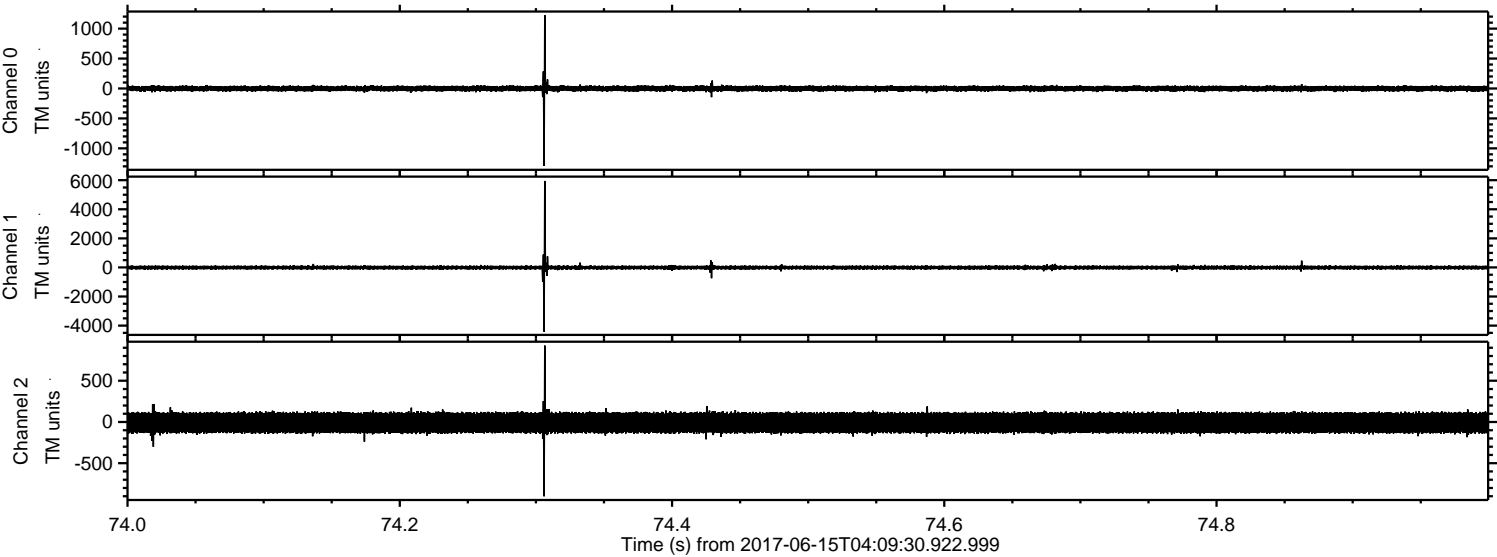


Channel 0
mn: -1301
mx: 1926
 μ : -1.2
 σ : 29.9

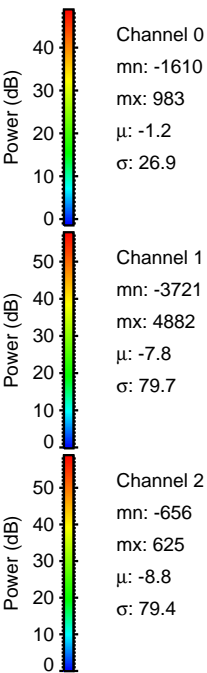
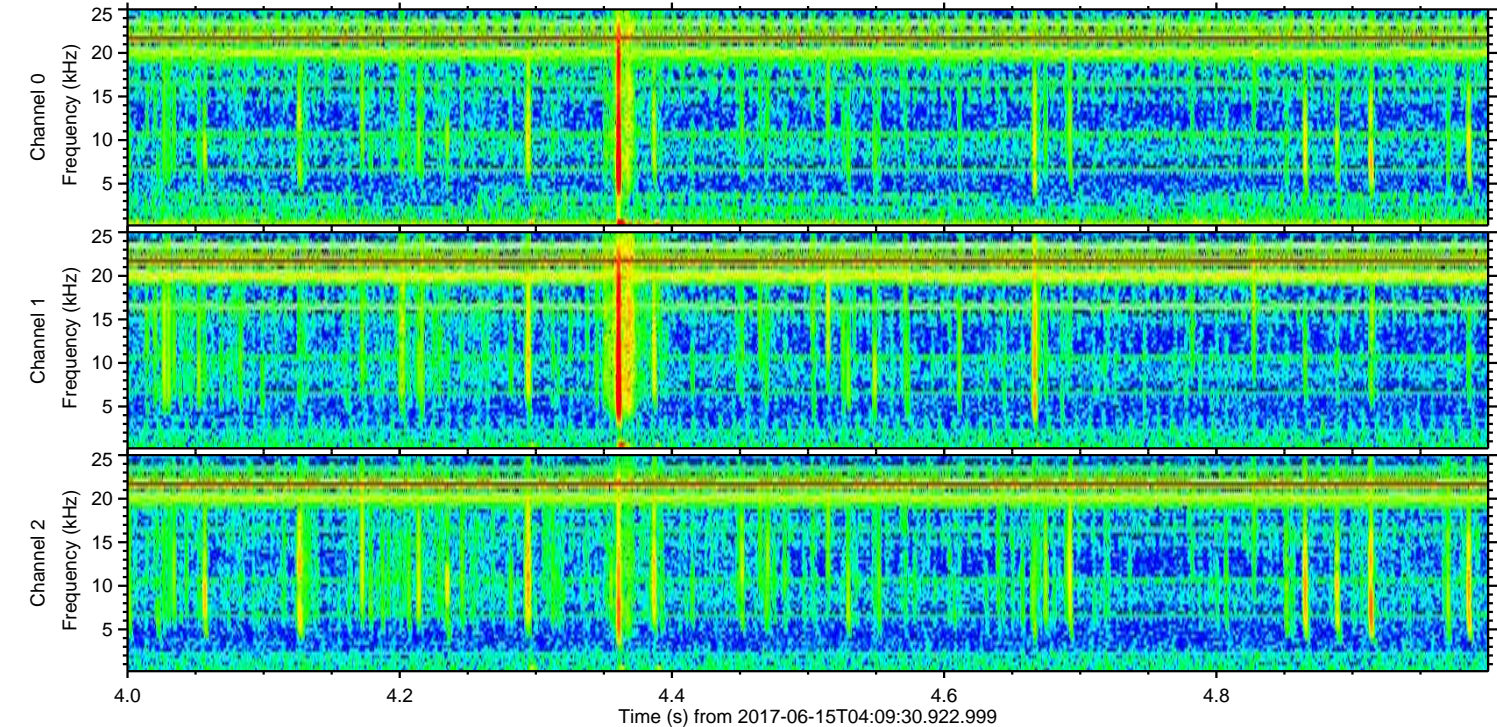
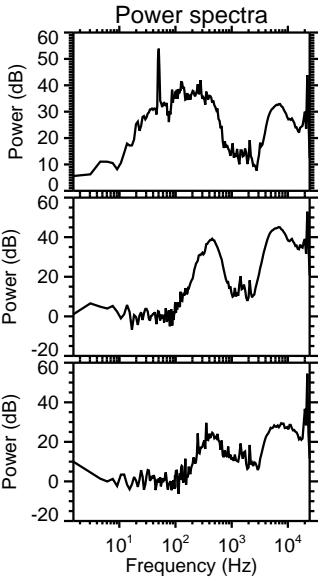
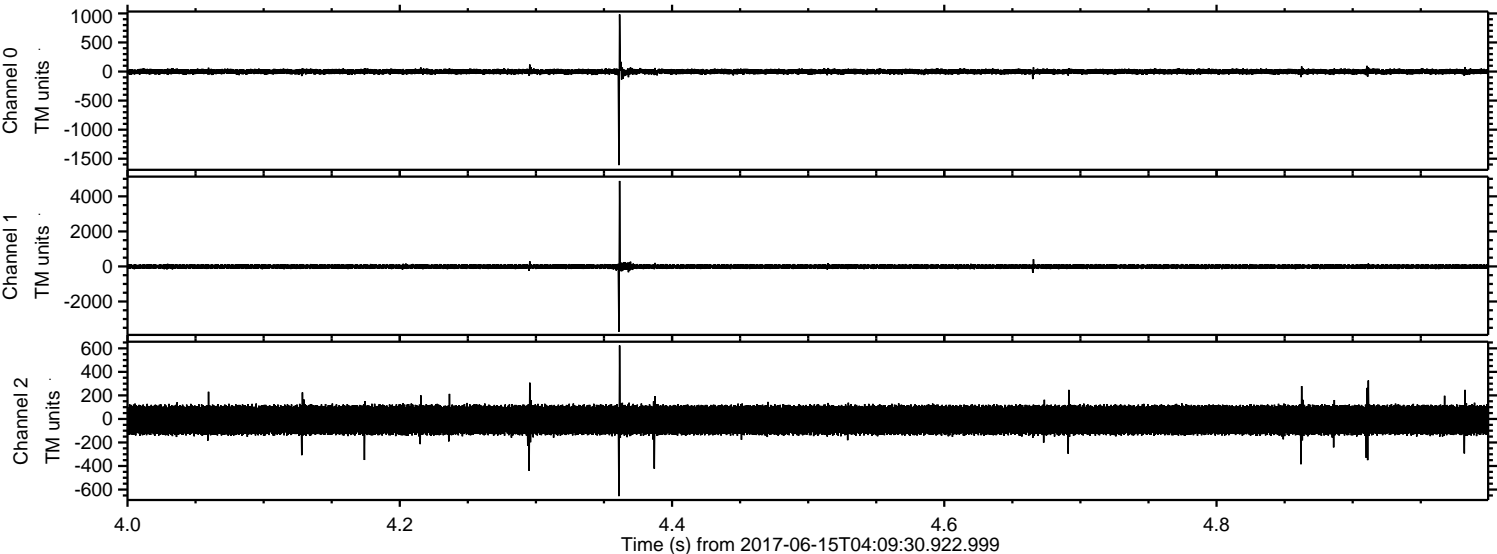
Channel 1
mn: -6736
mx: 5172
 μ : -8.0
 σ : 95.6

Channel 2
mn: -2169
mx: 1824
 μ : -9.0
 σ : 81.4

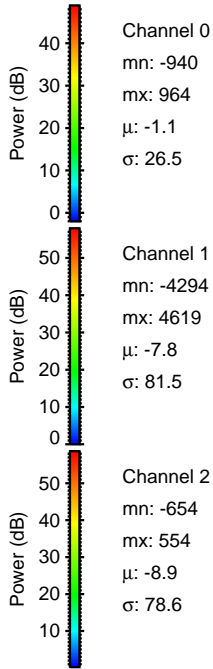
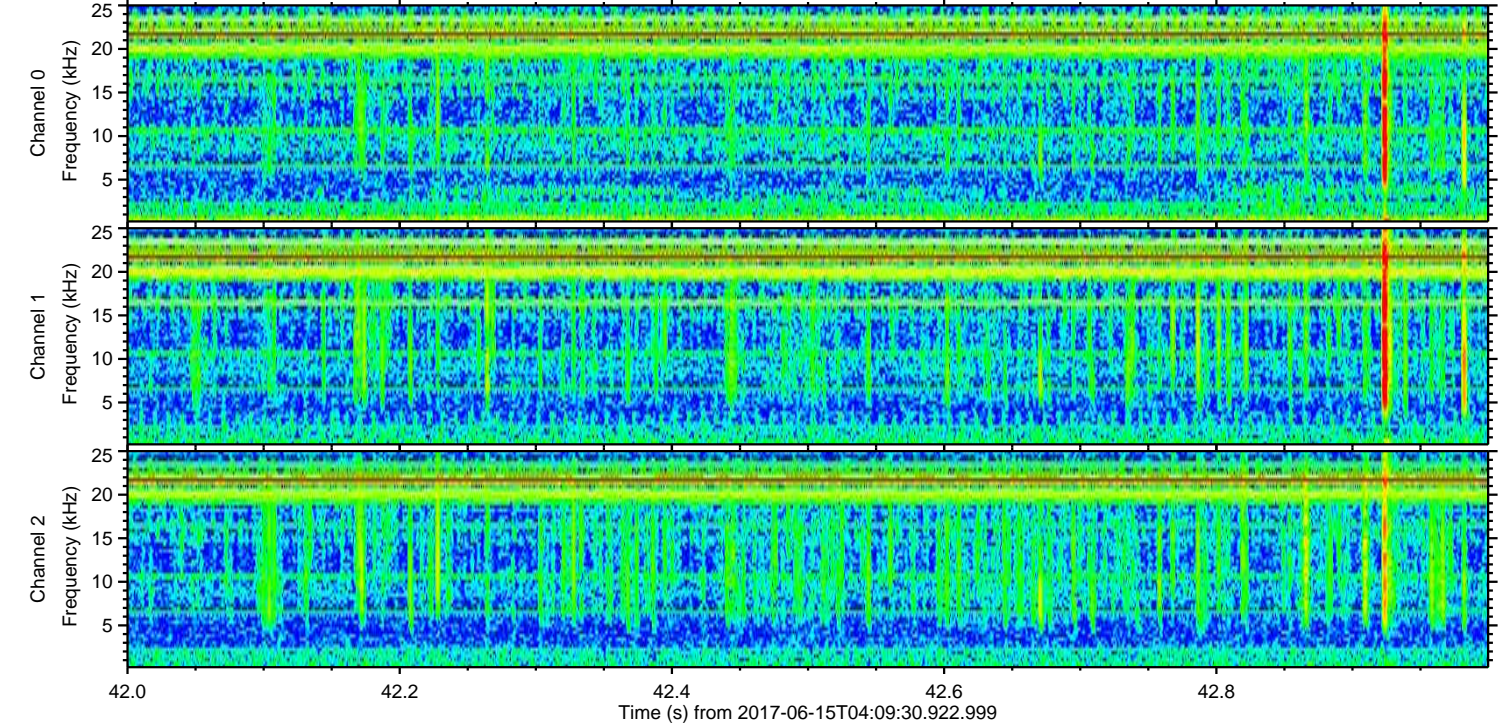
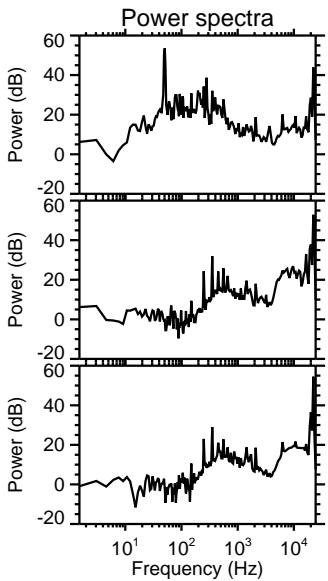
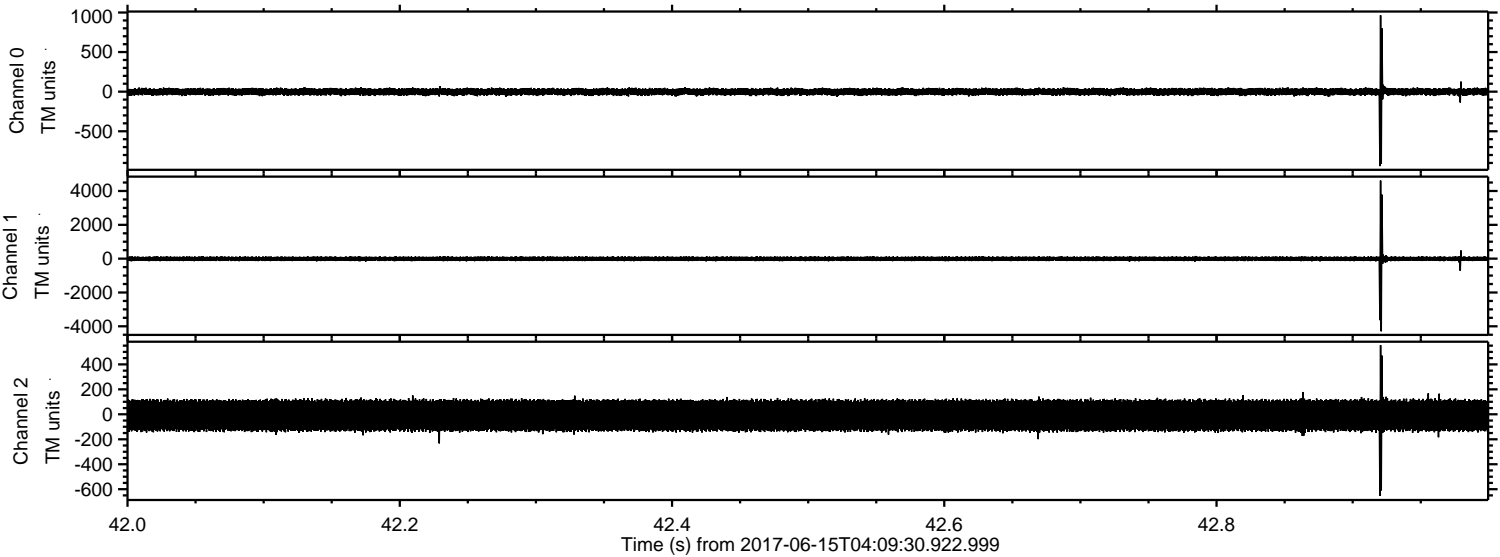
Processed Thu Jun 15 06:17:21 2017 by ELM ver.2012-10-06 from 001__elm20170615_040929__dat00.bin



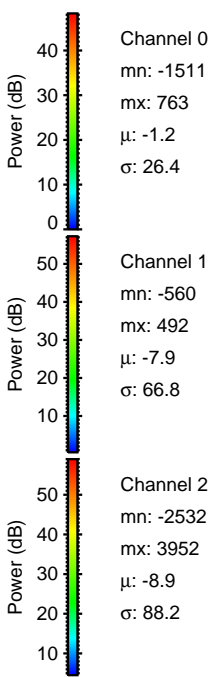
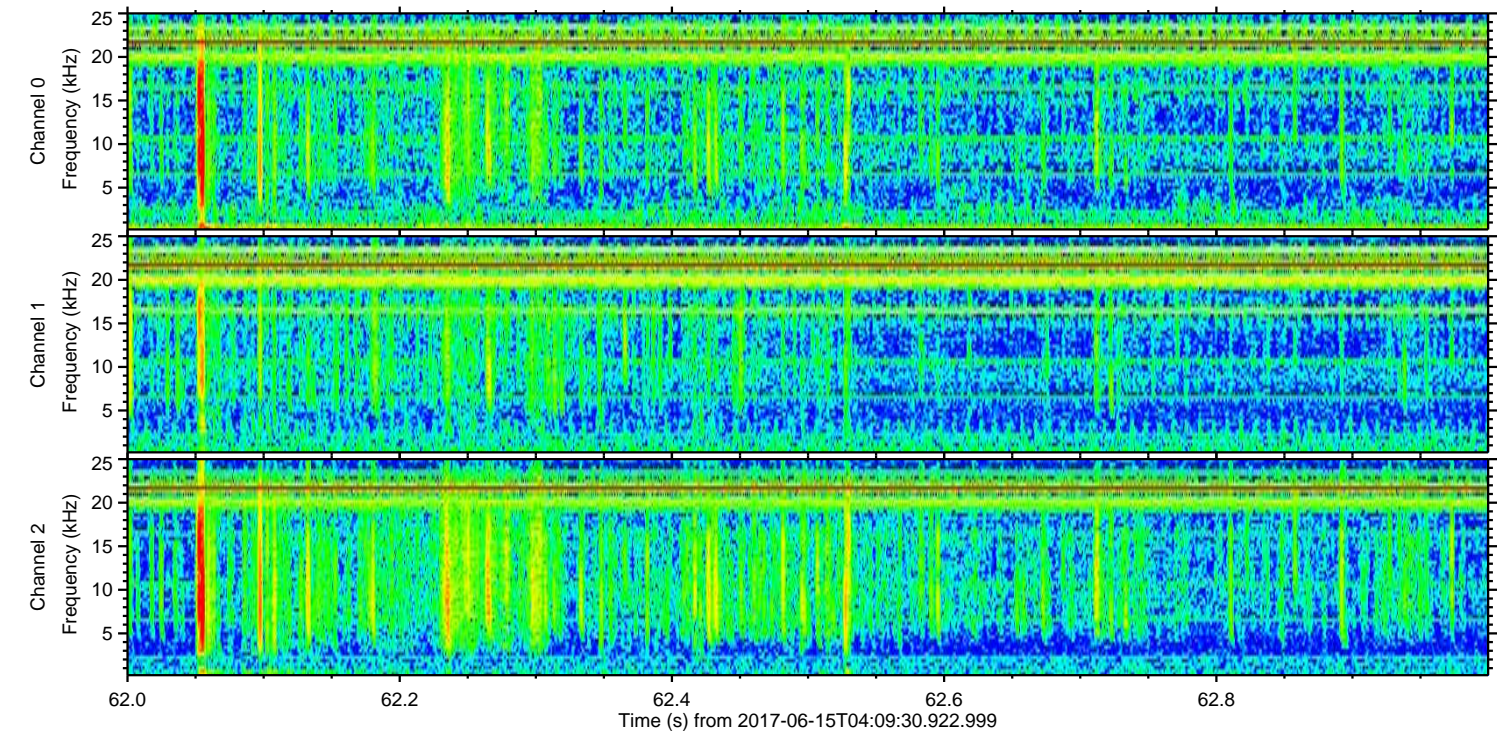
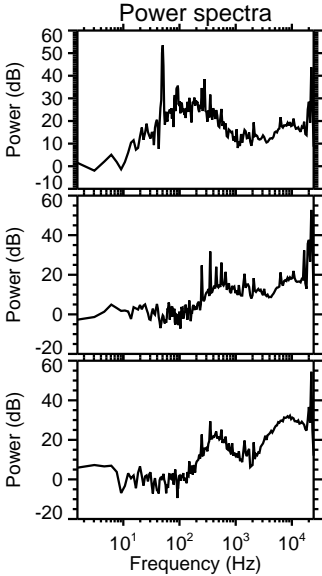
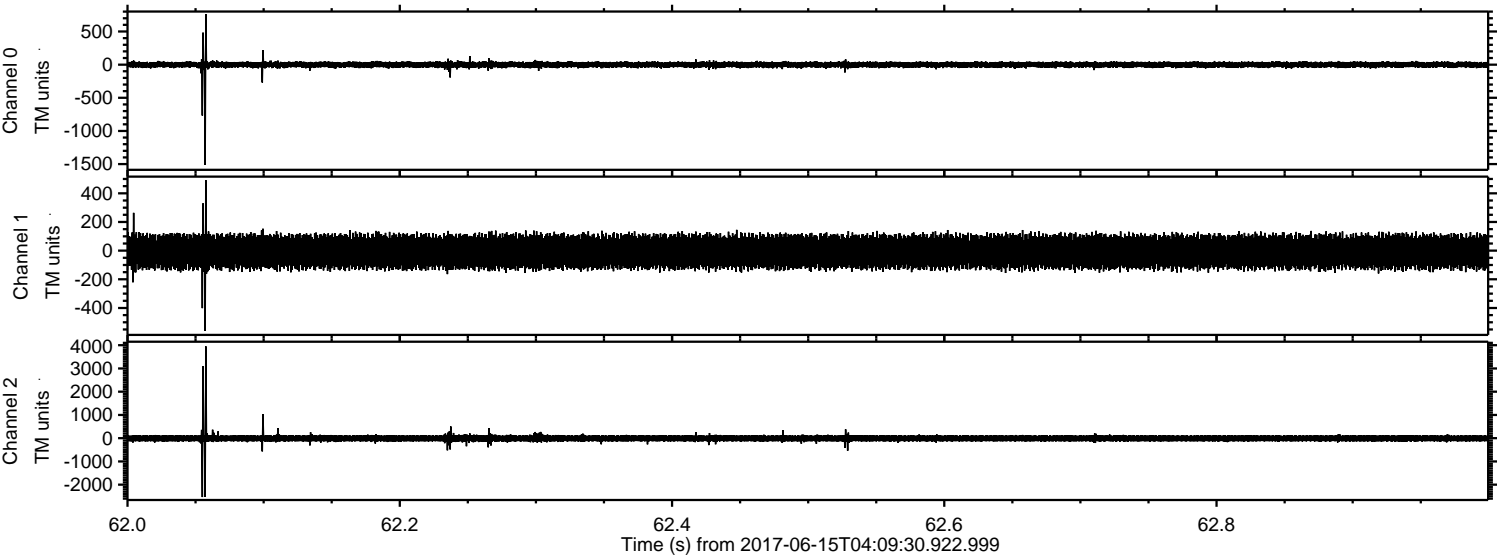
Processed Thu Jun 15 06:17:22 2017 by ELM ver.2012-10-06 from 001__elm20170615_040929__dat00.bin



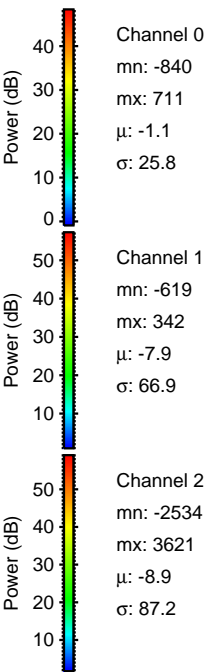
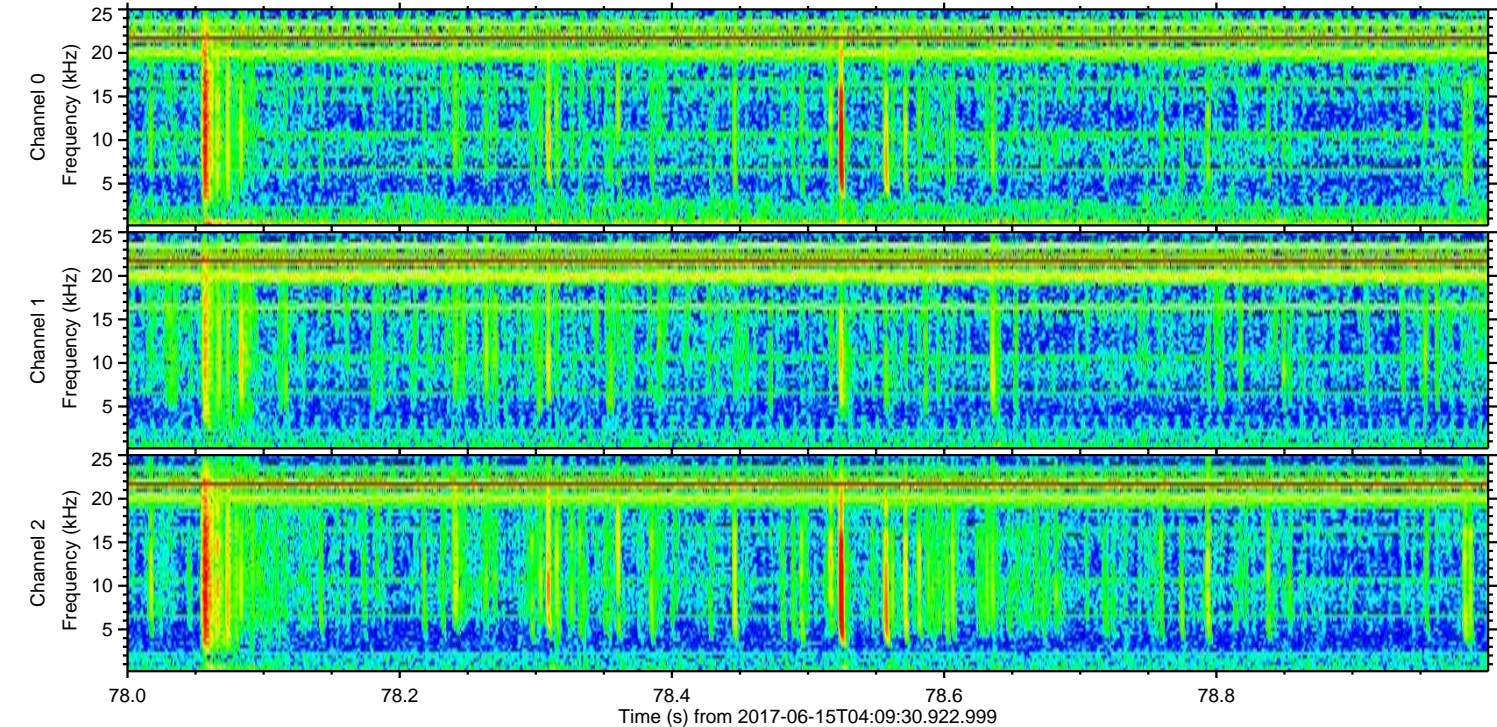
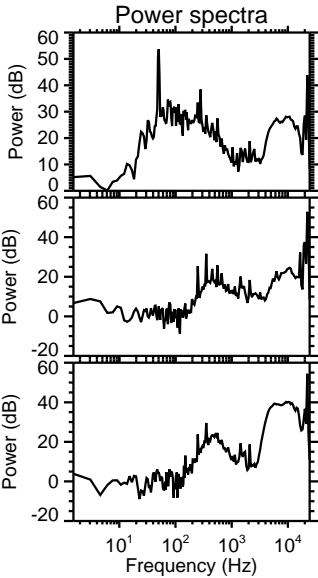
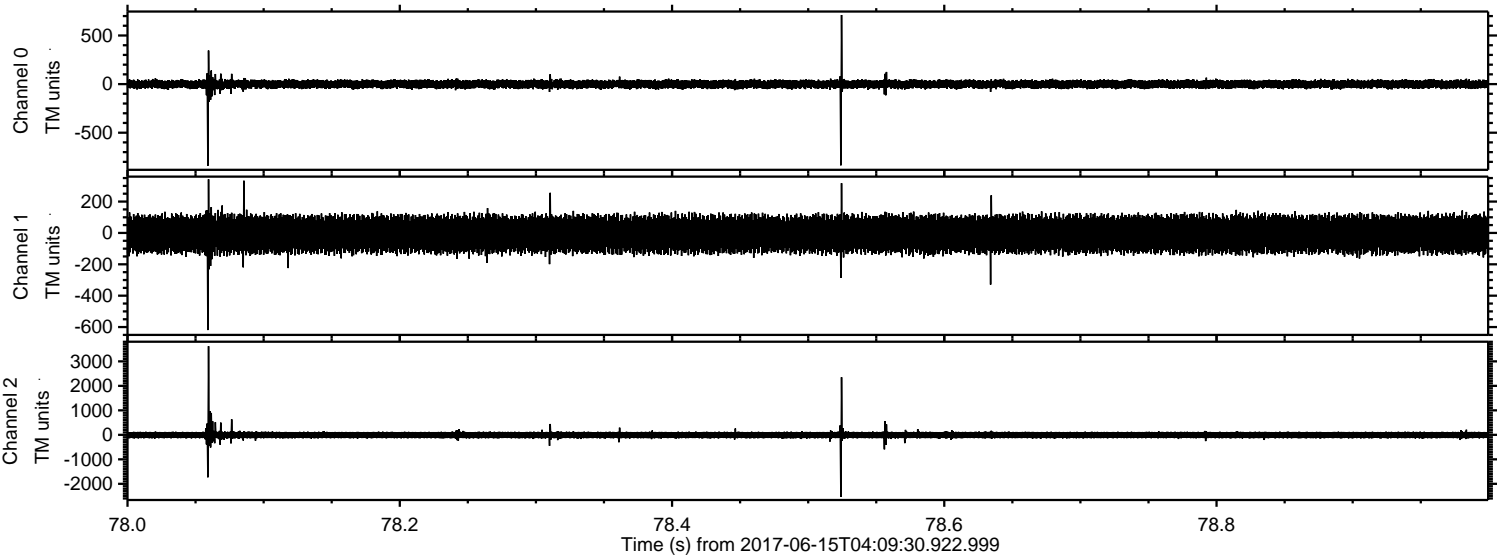
Processed Thu Jun 15 06:17:22 2017 by ELM ver.2012-10-06 from 001__elm20170615_040929__dat00.bin



Processed Thu Jun 15 06:17:23 2017 by ELM ver.2012-10-06 from 001__elm20170615_040929__dat00.bin

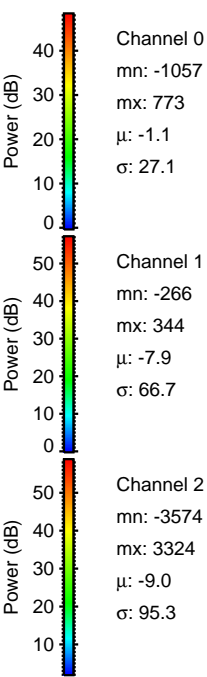
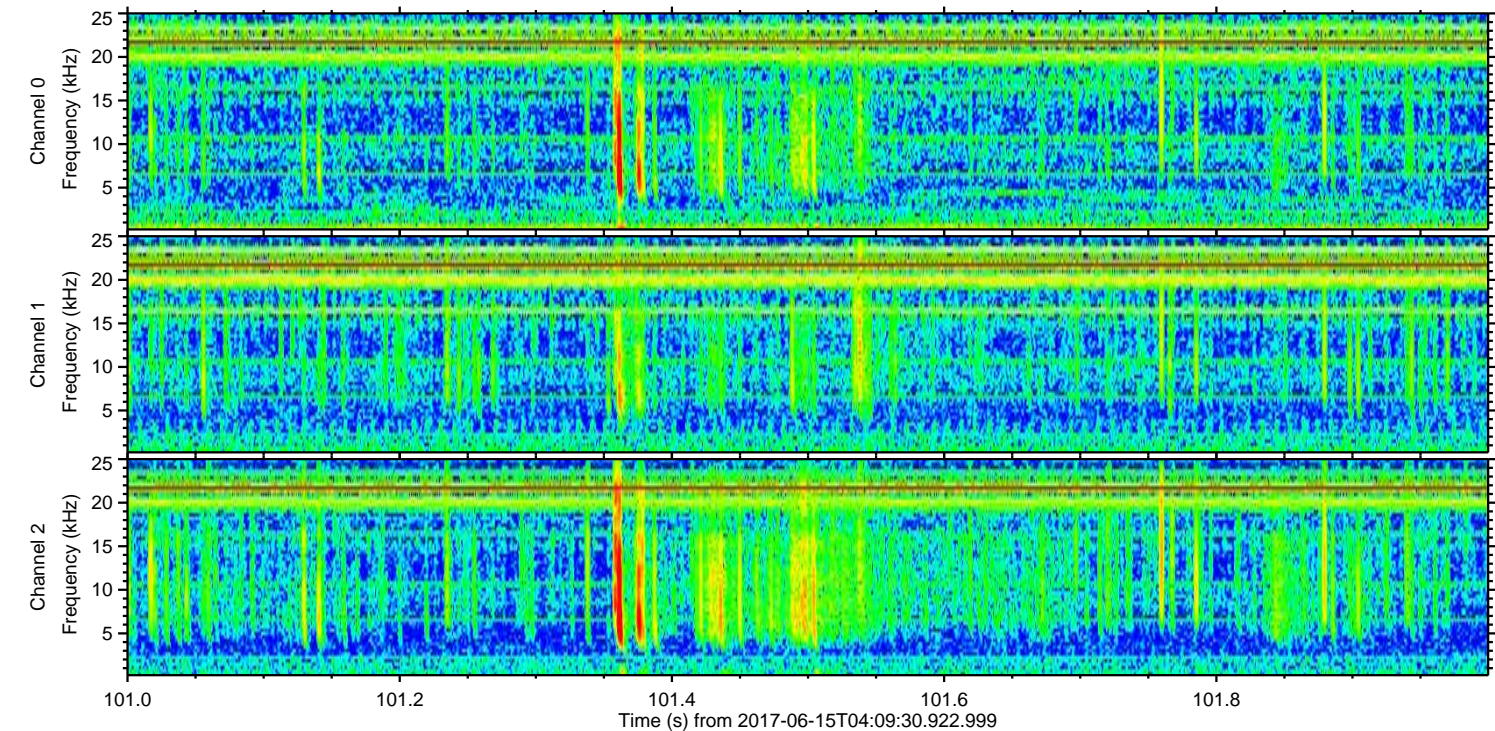
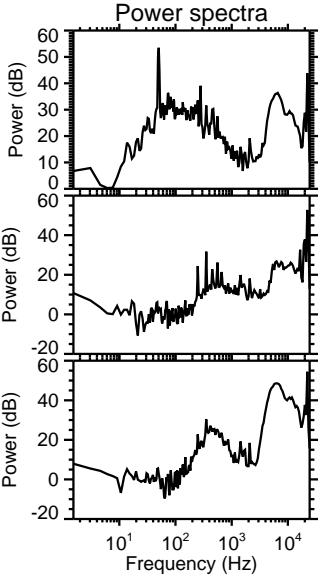
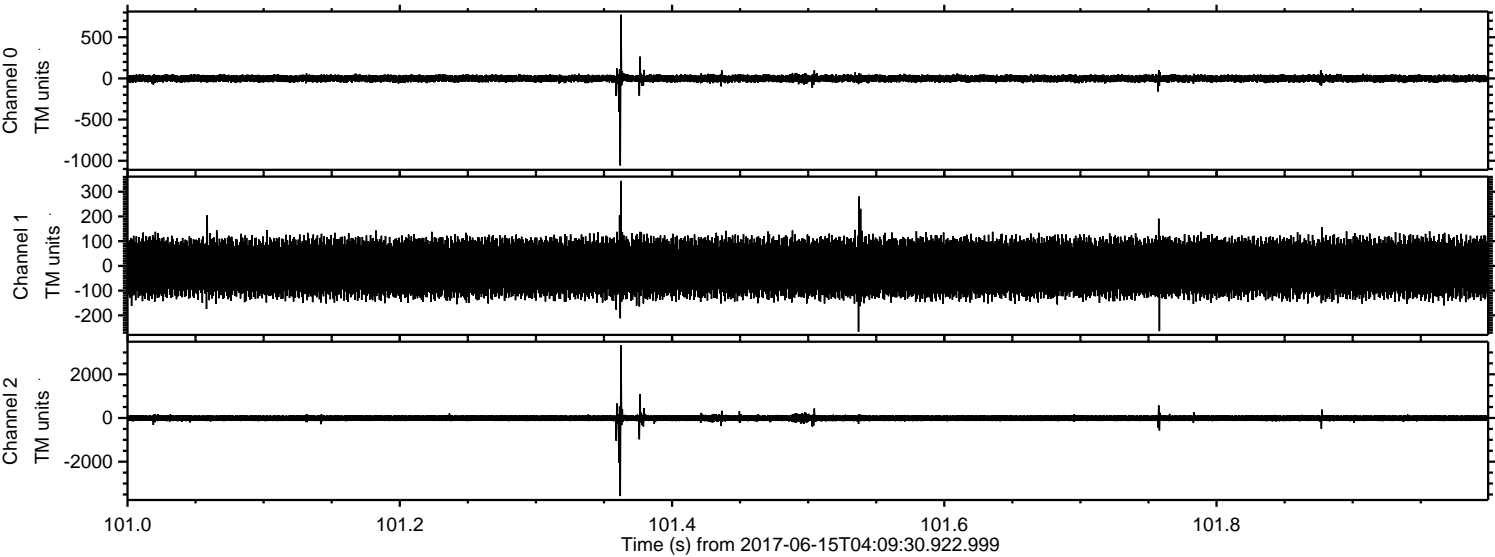


Processed Thu Jun 15 06:17:24 2017 by ELM ver.2012-10-06 from 001__elm20170615_040929__dat00.bin



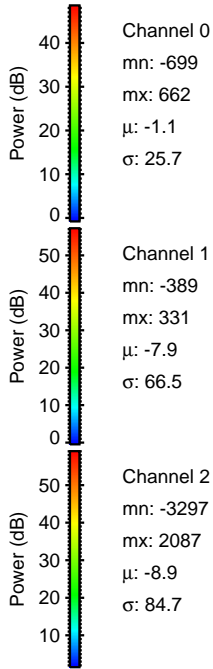
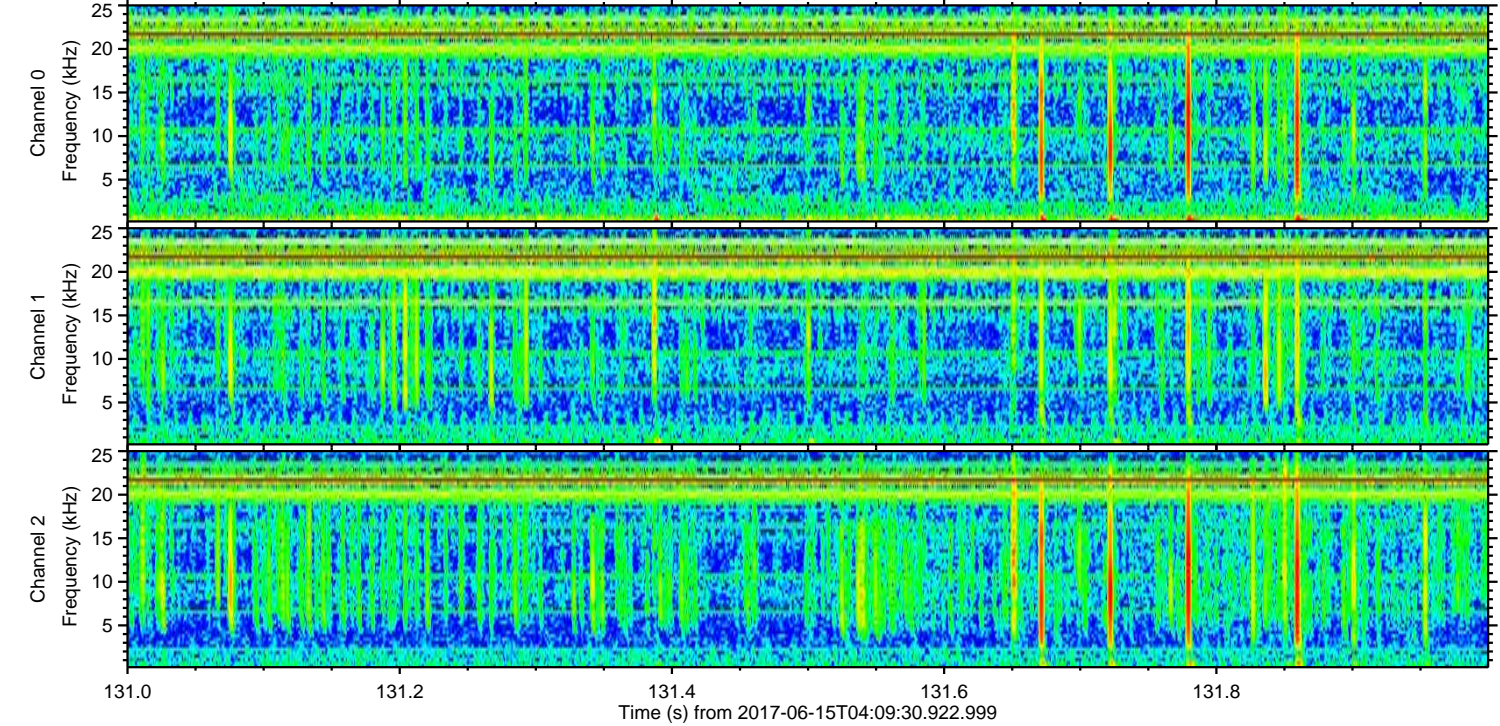
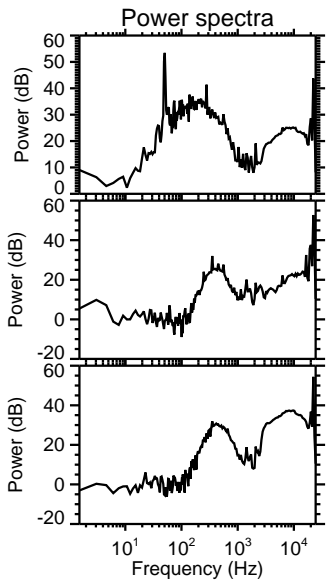
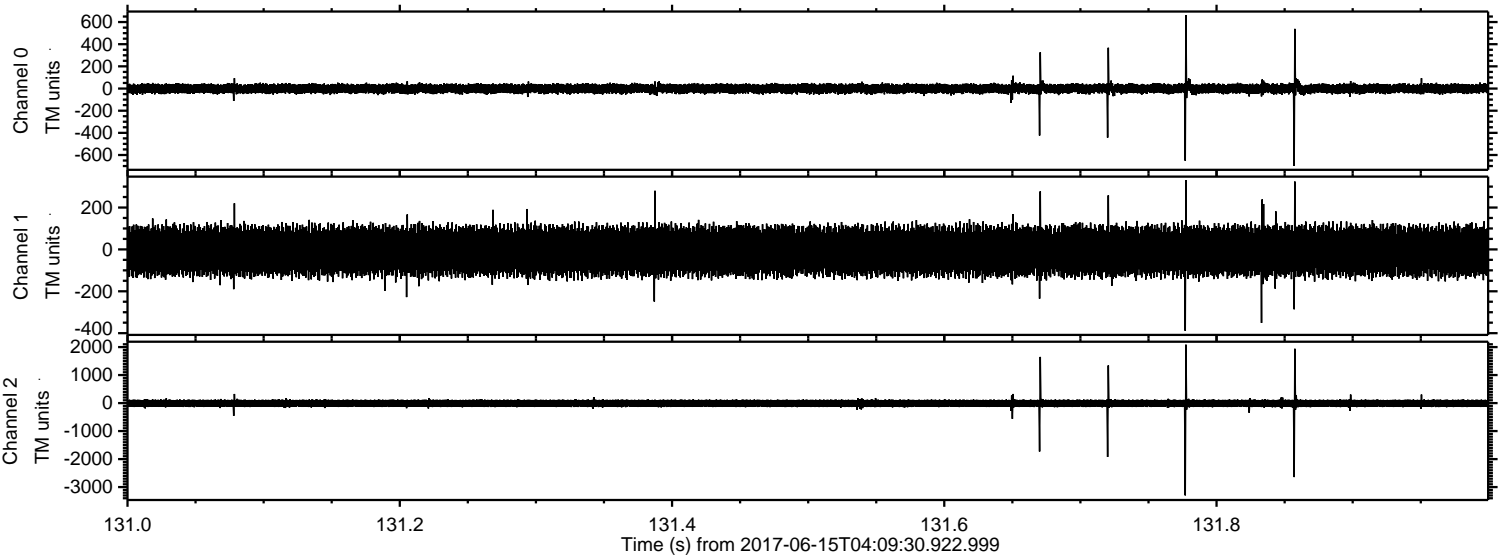
ELMAVAN 3D WAVEFORMS (Measured data sampled at 50 kHz) 51000 packets of 144 samples from 2017-06-15T04:09:30.922.999. Part 102/147

Processed Thu Jun 15 06:17:24 2017 by ELM ver.2012-10-06 from 001__elm20170615_040929__dat00.bin

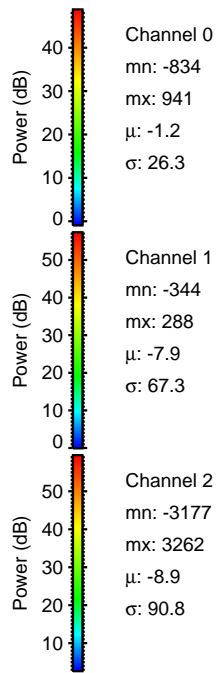
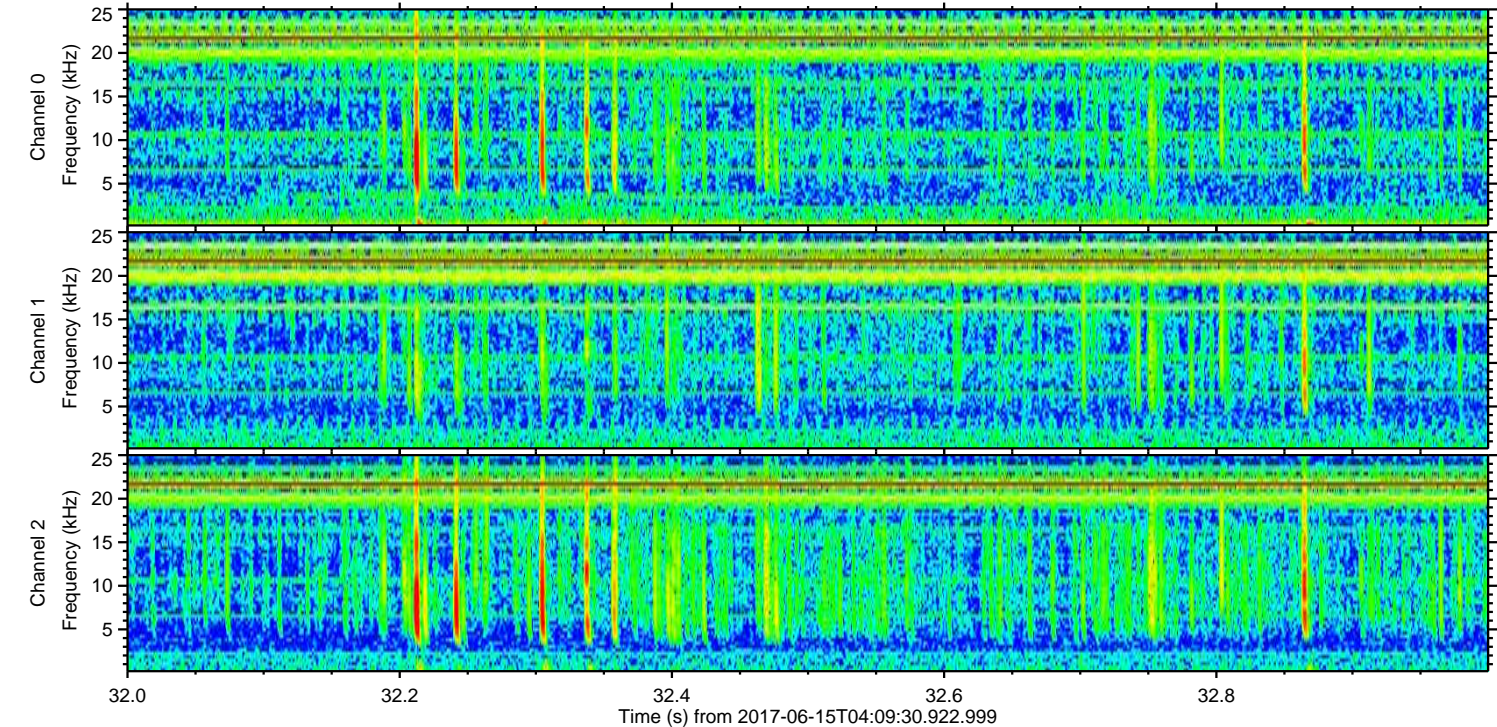
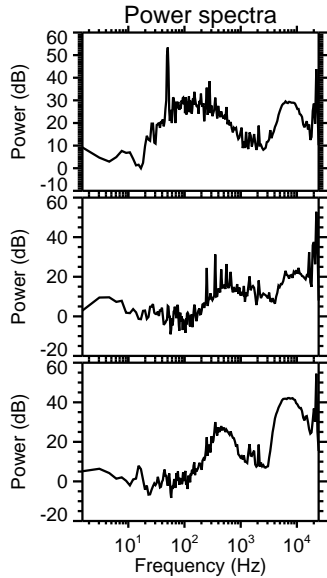
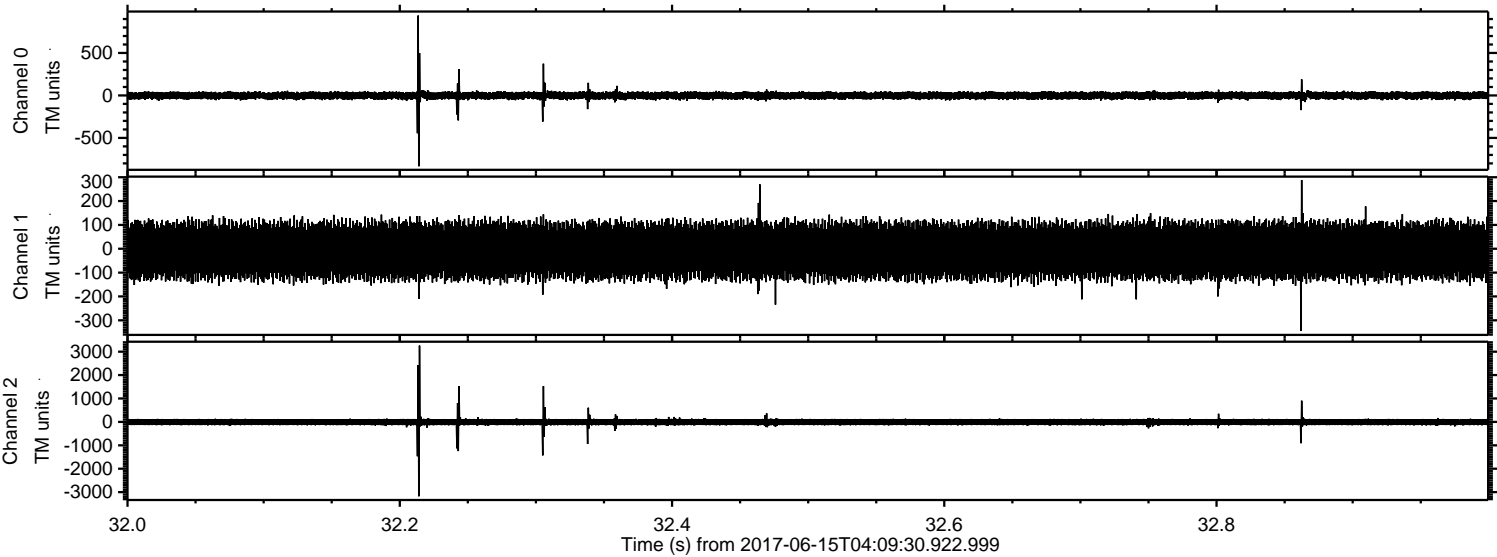


ELMAVAN 3D WAVEFORMS (Measured data sampled at 50 kHz) 51000 packets of 144 samples from 2017-06-15T04:09:30.922.999. Part 132/147

Processed Thu Jun 15 06:17:25 2017 by ELM ver.2012-10-06 from 001__elm20170615_040929__dat00.bin



Processed Thu Jun 15 06:17:25 2017 by ELM ver.2012-10-06 from 001__elm20170615_040929__dat00.bin



Channel 0
mn: -834
mx: 941
 μ : -1.2
 σ : 26.3

Channel 1
mn: -344
mx: 288
 μ : -7.9
 σ : 67.3

Channel 2
mn: -3177
mx: 3262
 μ : -8.9
 σ : 90.8

