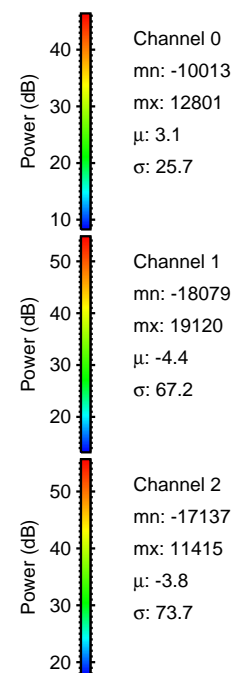
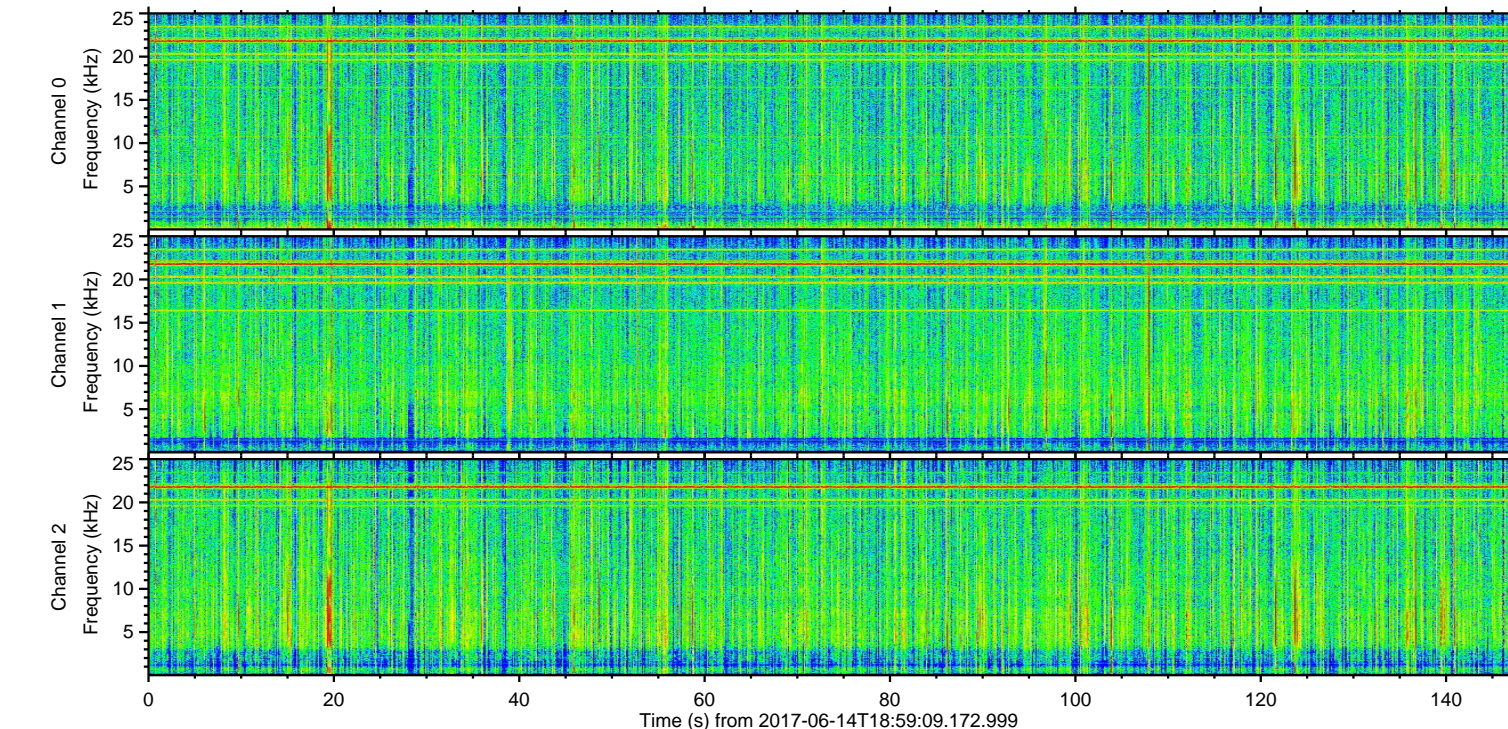
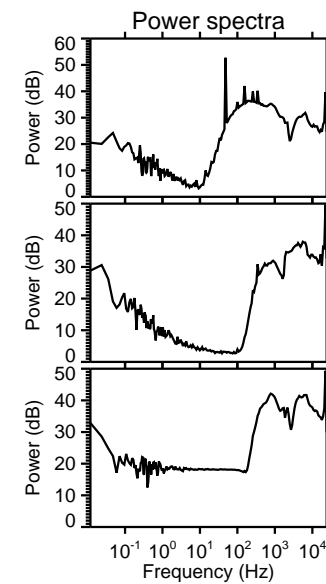
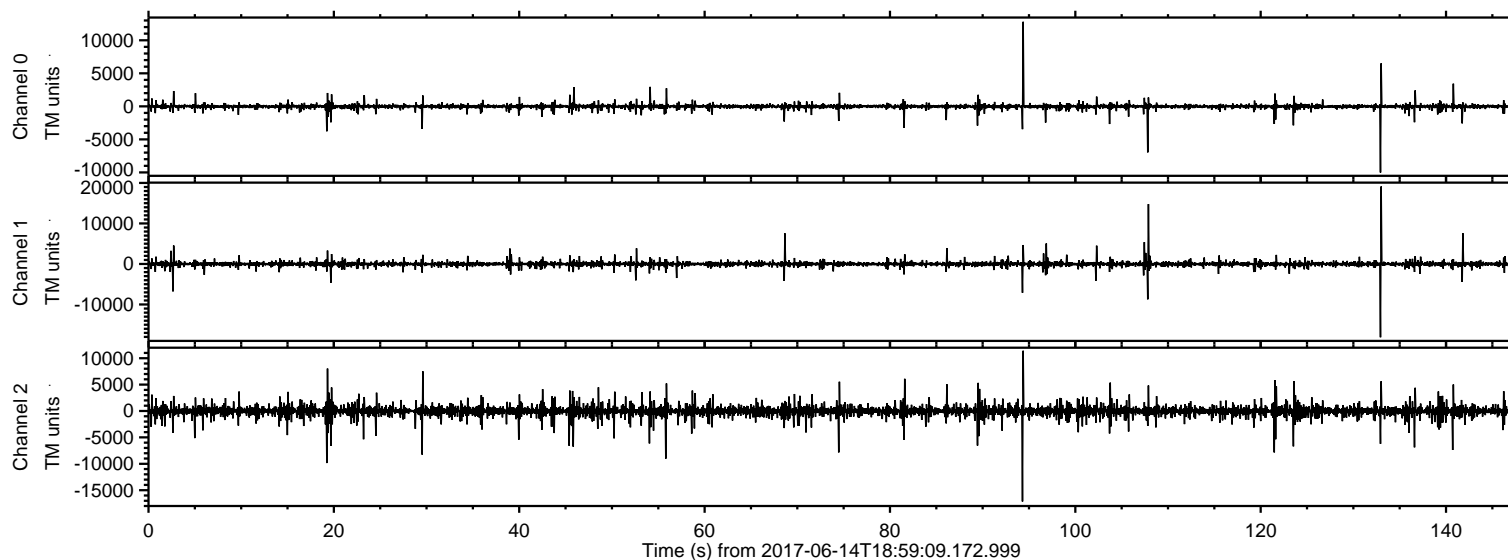


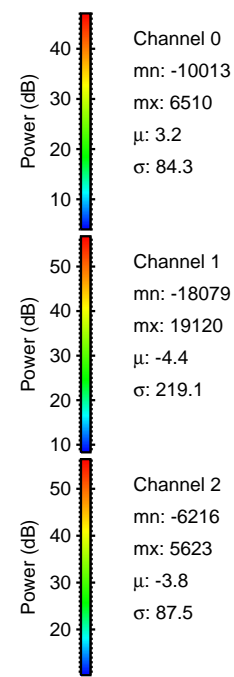
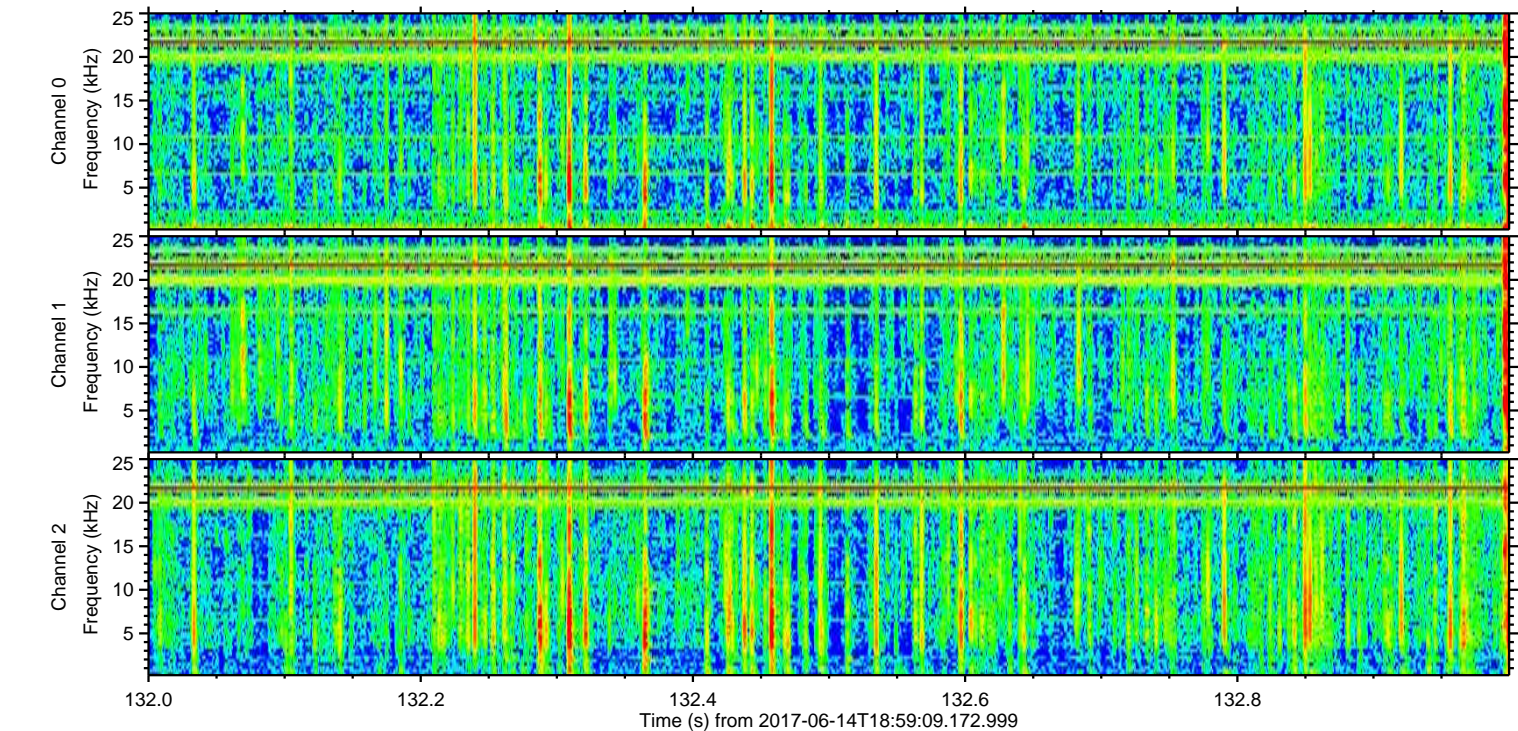
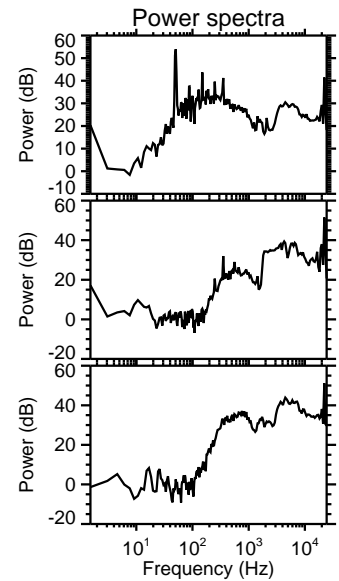
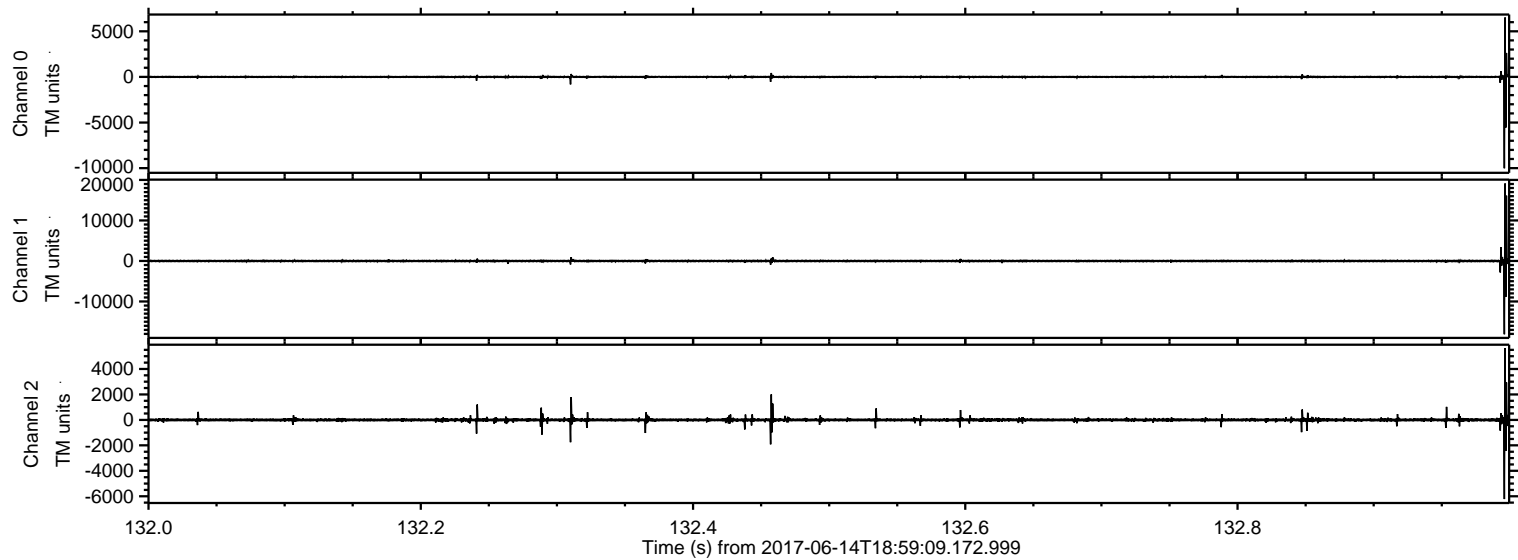
ELMAVAN 3D WAVEFORMS (Measured data sampled at 50 kHz) 51000 packets of 144 samples from 2017-06-14T18:59:09.172.999.

Processed Wed Jun 14 21:06:54 2017 by ELM ver.2012-10-06 from 001__elm20170614_185908__dat00.bin

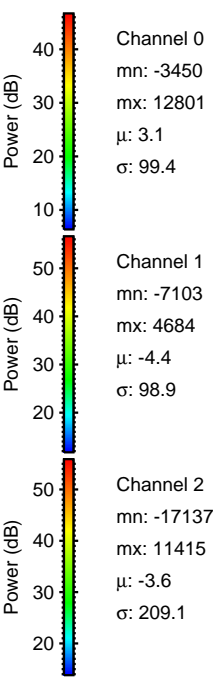
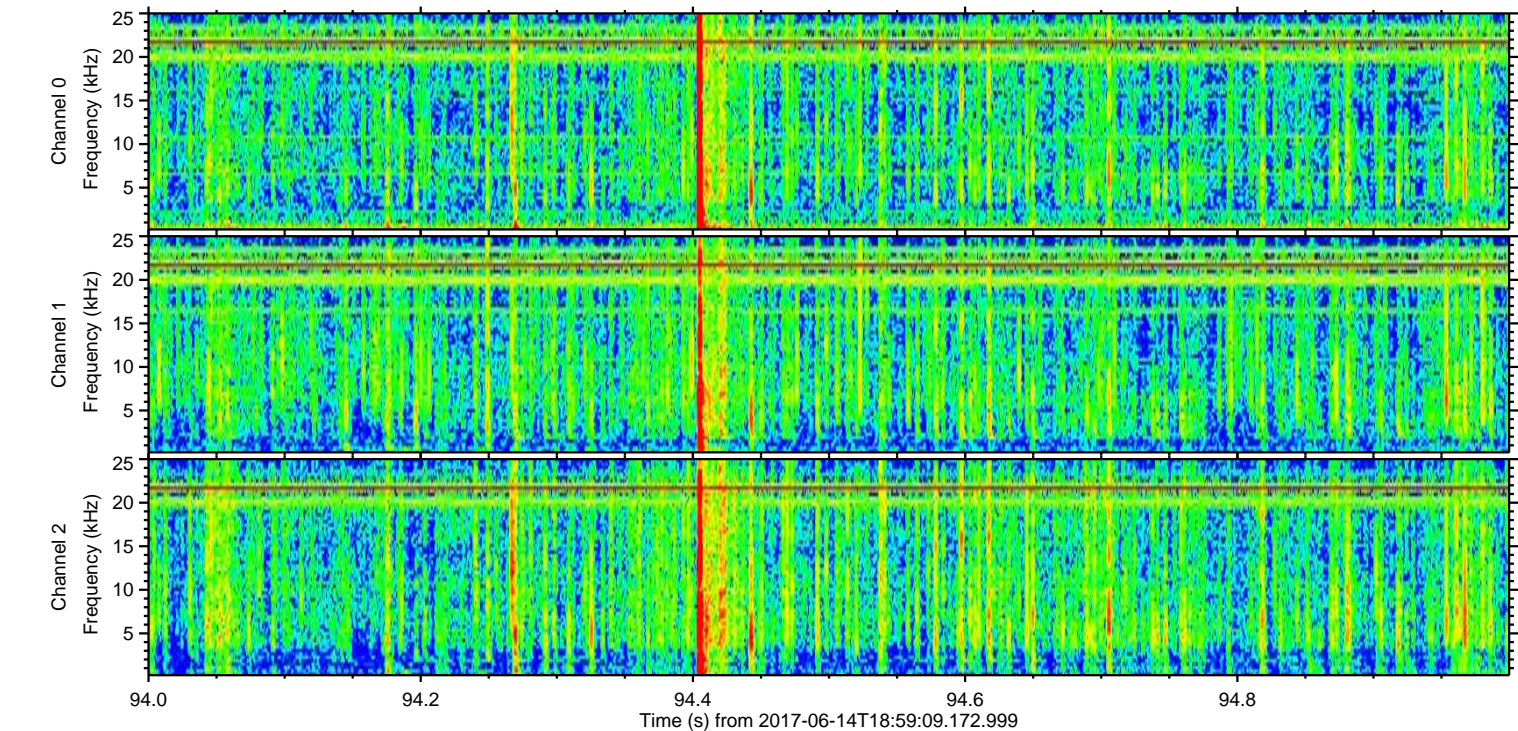
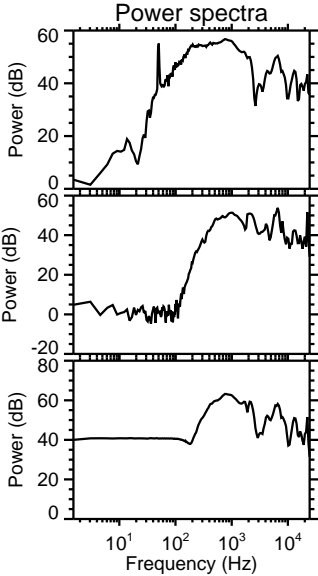
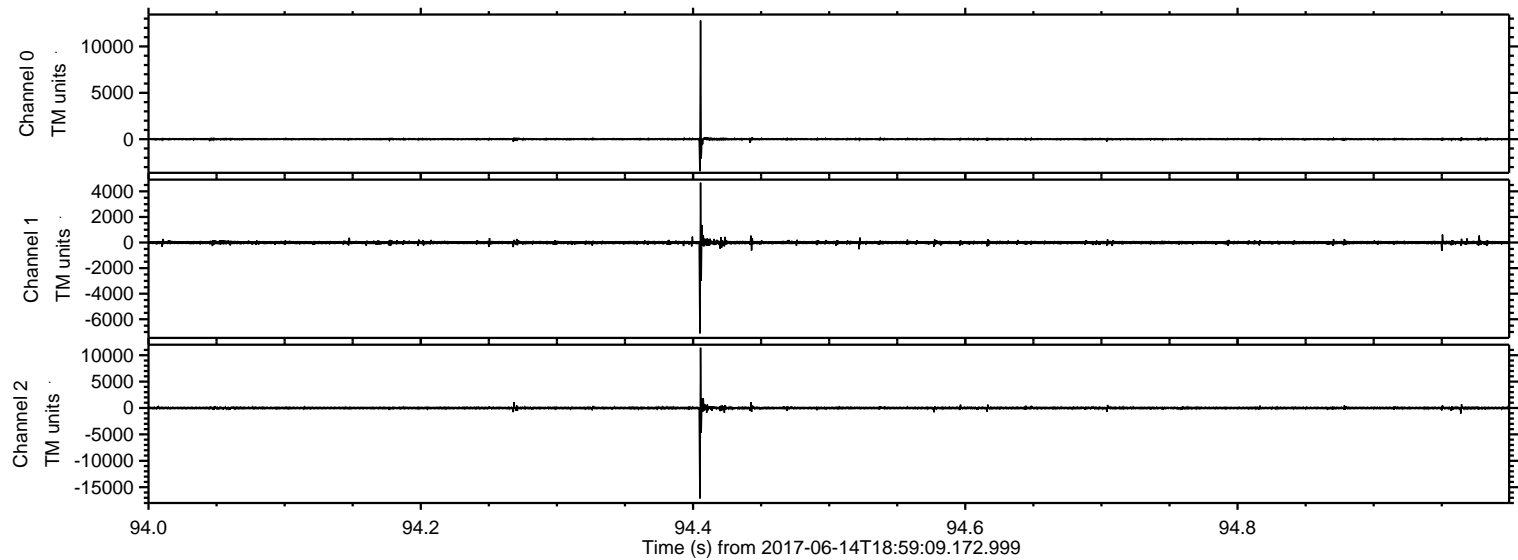


ELMAVAN 3D WAVEFORMS (Measured data sampled at 50 kHz) 51000 packets of 144 samples from 2017-06-14T18:59:09.172.999. Part 133/147

Processed Wed Jun 14 21:07:00 2017 by ELM ver.2012-10-06 from 001__elm20170614_185908__dat00.bin



Processed Wed Jun 14 21:07:00 2017 by ELM ver.2012-10-06 from 001__elm20170614_185908__dat00.bin



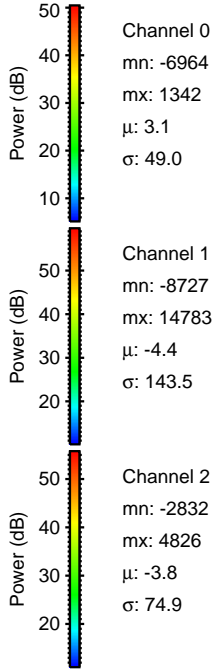
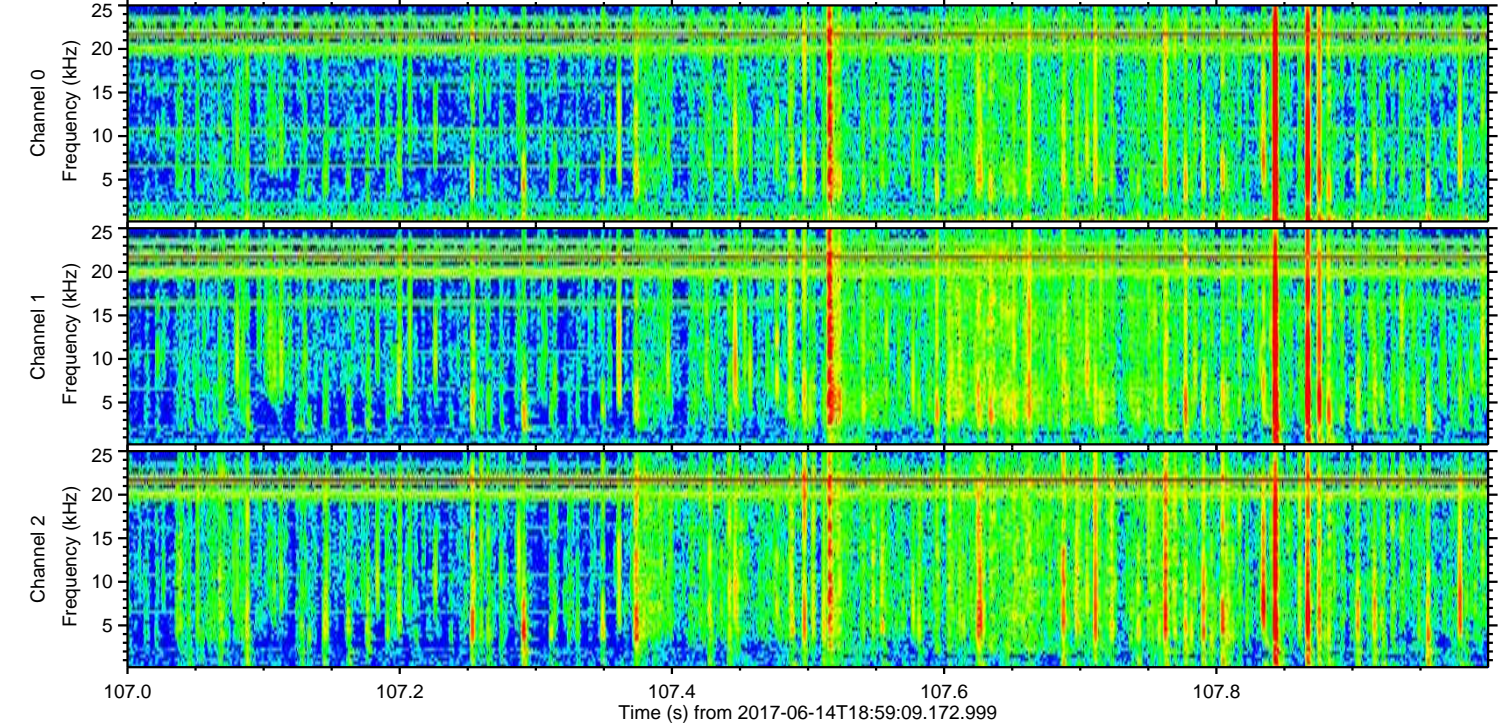
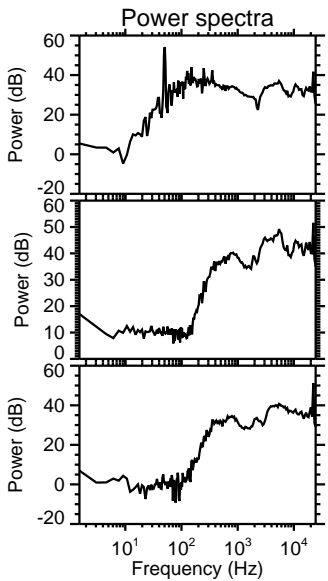
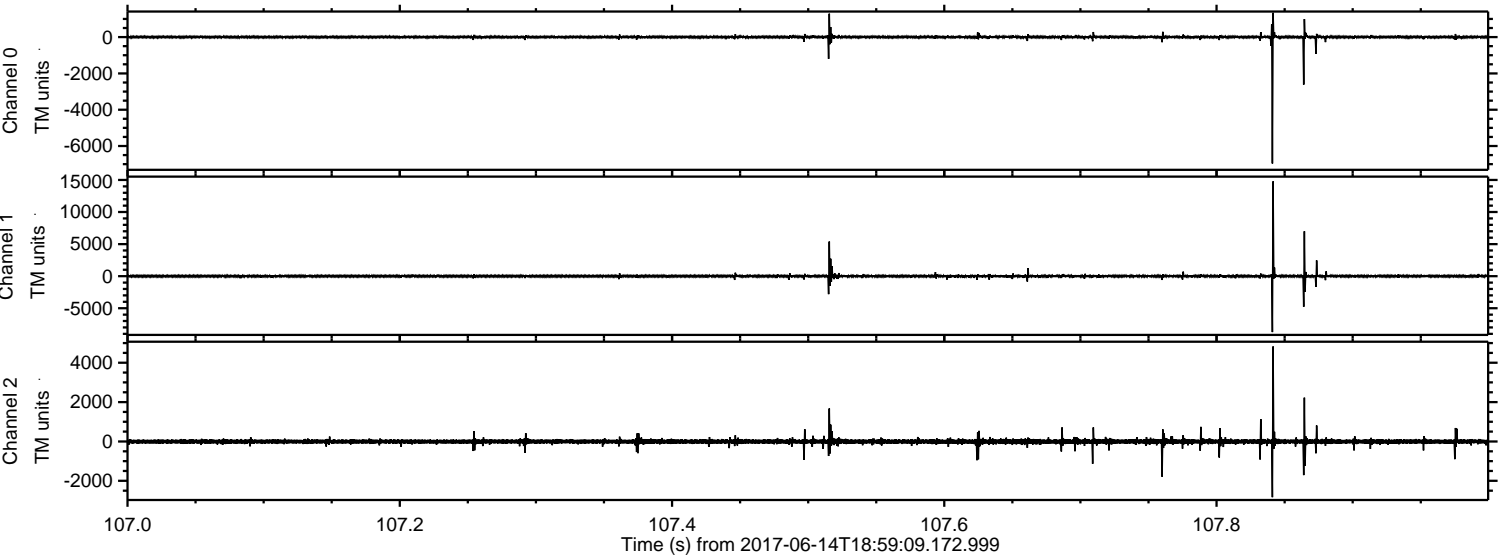
Channel 0
mn: -3450
mx: 12801
 μ : 3.1
 σ : 99.4

Channel 1
mn: -7103
mx: 4684
 μ : -4.4
 σ : 98.9

Channel 2
mn: -17137
mx: 11415
 μ : -3.6
 σ : 209.1

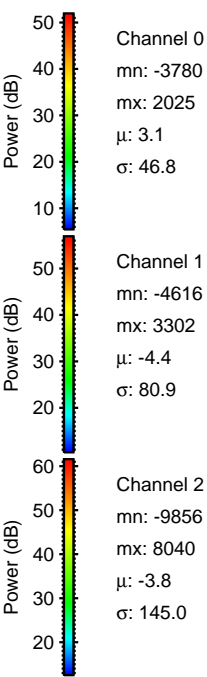
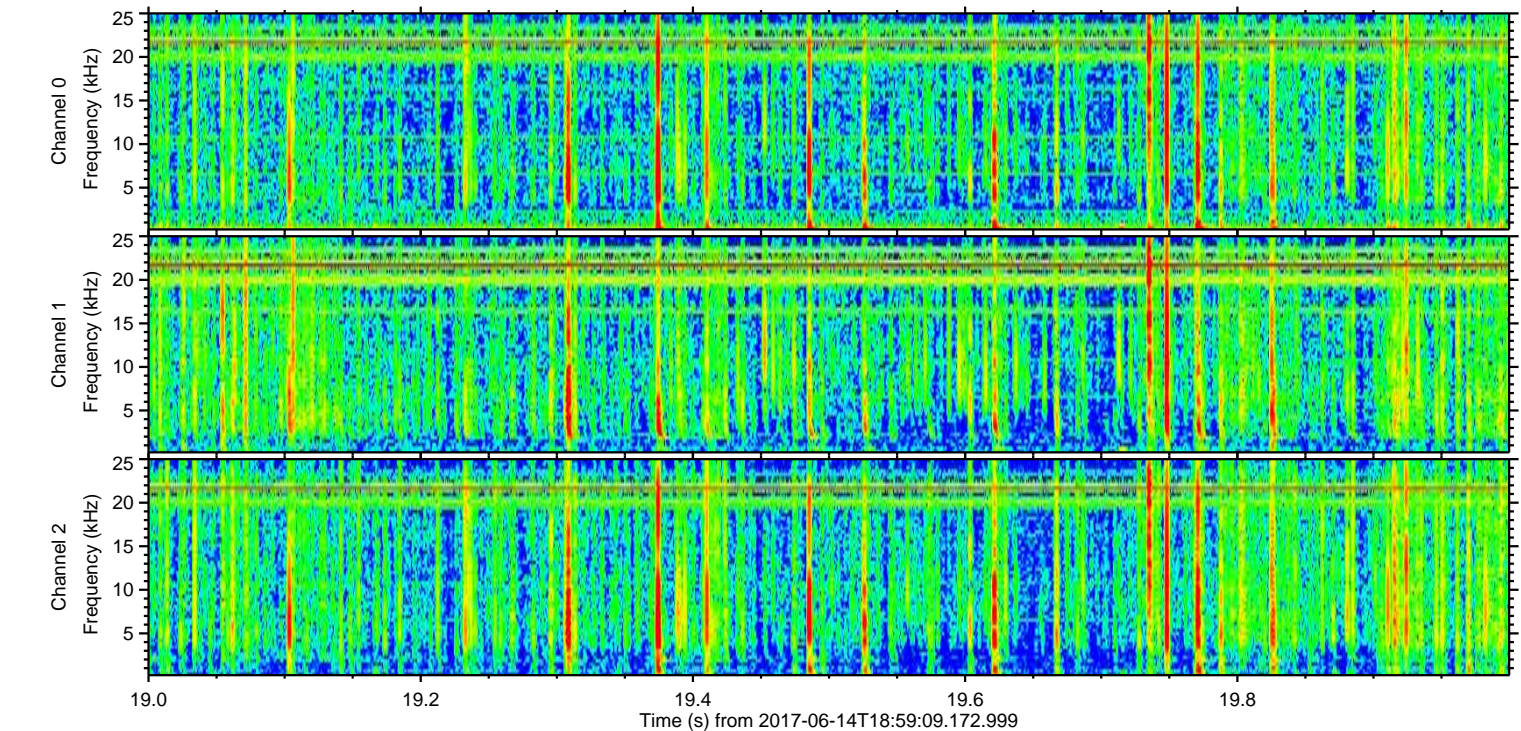
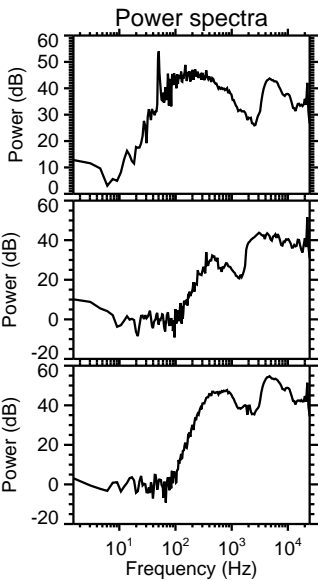
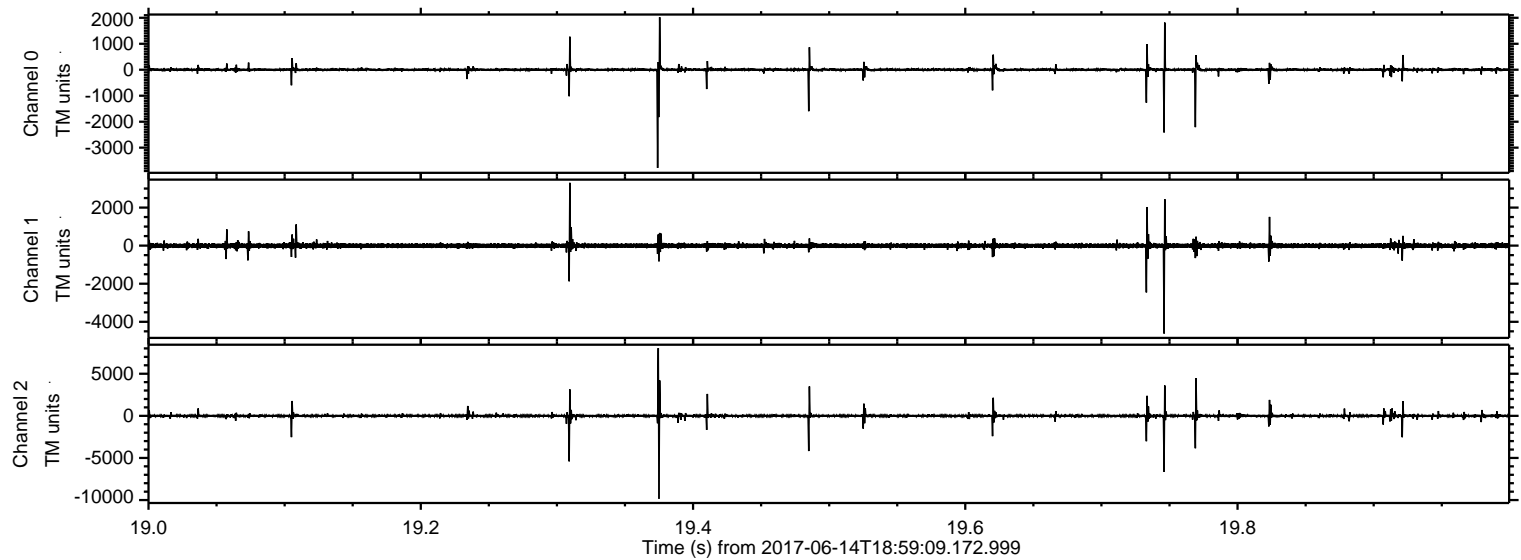
ELMAVAN 3D WAVEFORMS (Measured data sampled at 50 kHz) 51000 packets of 144 samples from 2017-06-14T18:59:09.172.999. Part 108/147

Processed Wed Jun 14 21:07:01 2017 by ELM ver.2012-10-06 from 001__elm20170614_185908__dat00.bin



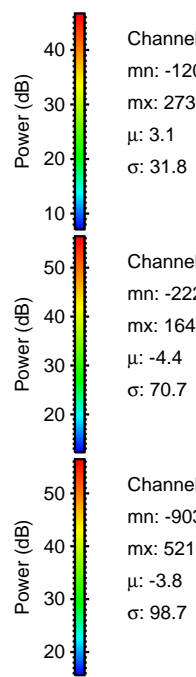
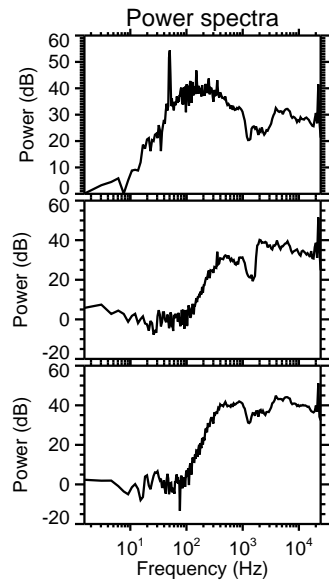
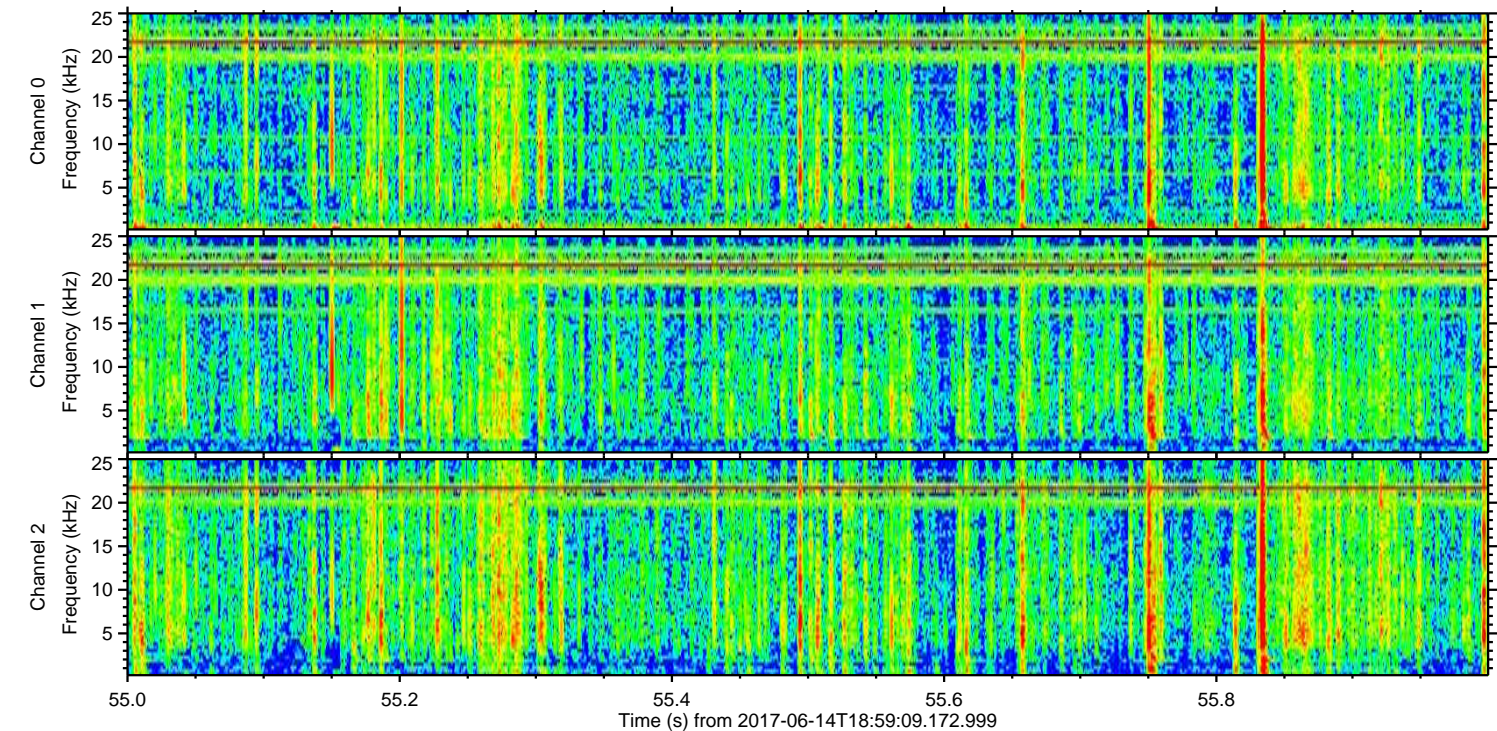
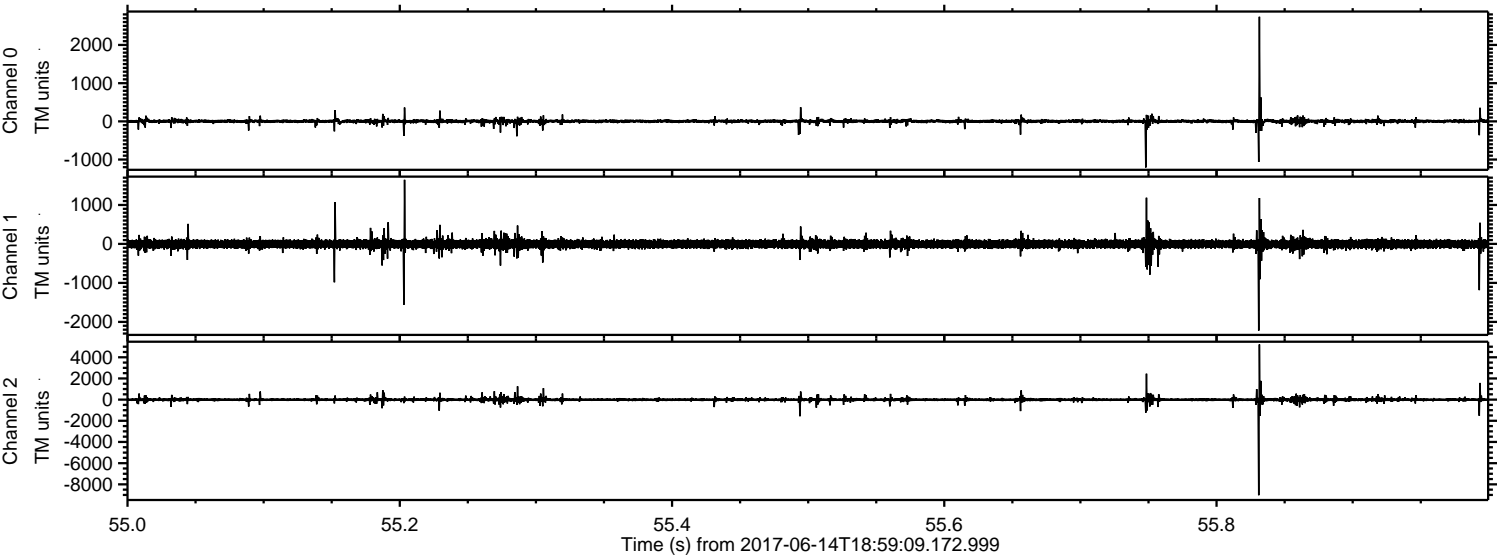
ELMAVAN 3D WAVEFORMS (Measured data sampled at 50 kHz) 51000 packets of 144 samples from 2017-06-14T18:59:09.172.999. Part 20/147

Processed Wed Jun 14 21:07:02 2017 by ELM ver.2012-10-06 from 001__elm20170614_185908__dat00.bin



ELMAVAN 3D WAVEFORMS (Measured data sampled at 50 kHz) 51000 packets of 144 samples from 2017-06-14T18:59:09.172.999. Part 56/147

Processed Wed Jun 14 21:07:02 2017 by ELM ver.2012-10-06 from 001__elm20170614_185908__dat00.bin

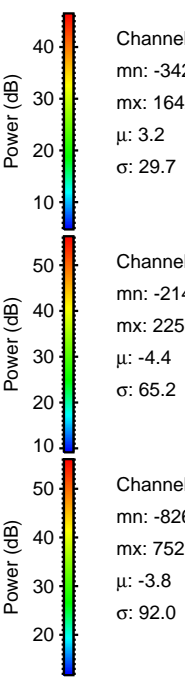
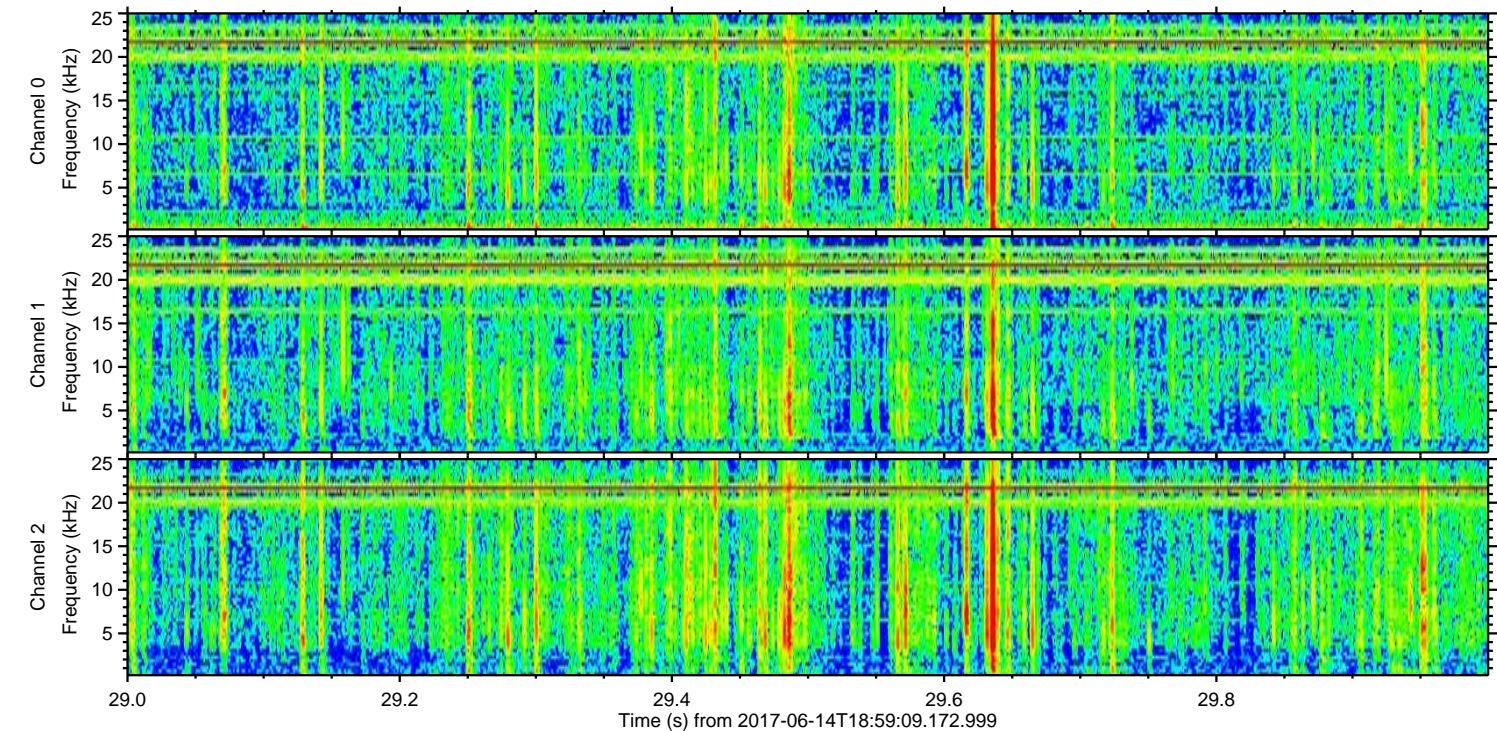
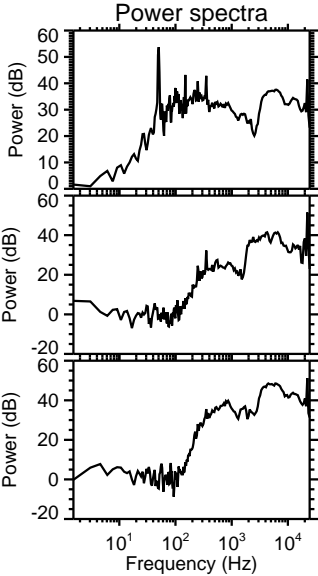
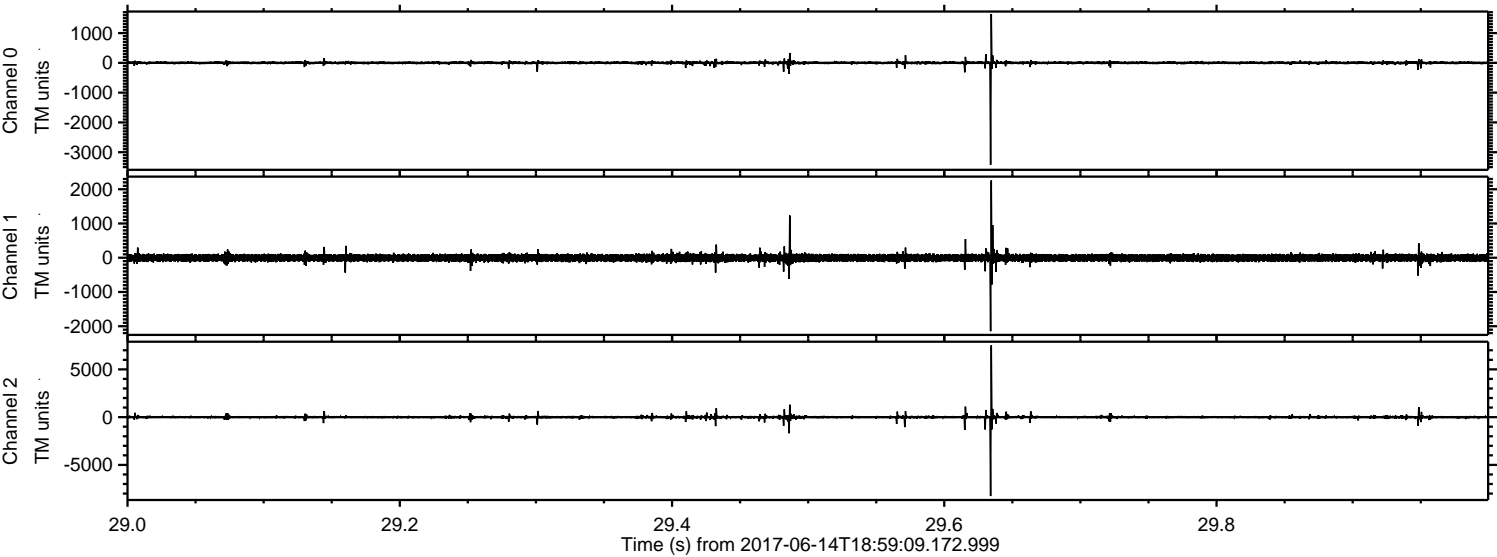


Channel 0
mn: -1209
mx: 2739
 μ : 3.1
 σ : 31.8

Channel 1
mn: -2223
mx: 1644
 μ : -4.4
 σ : 70.7

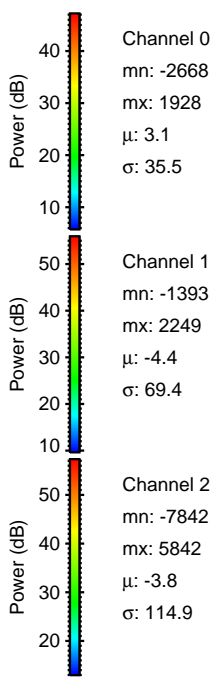
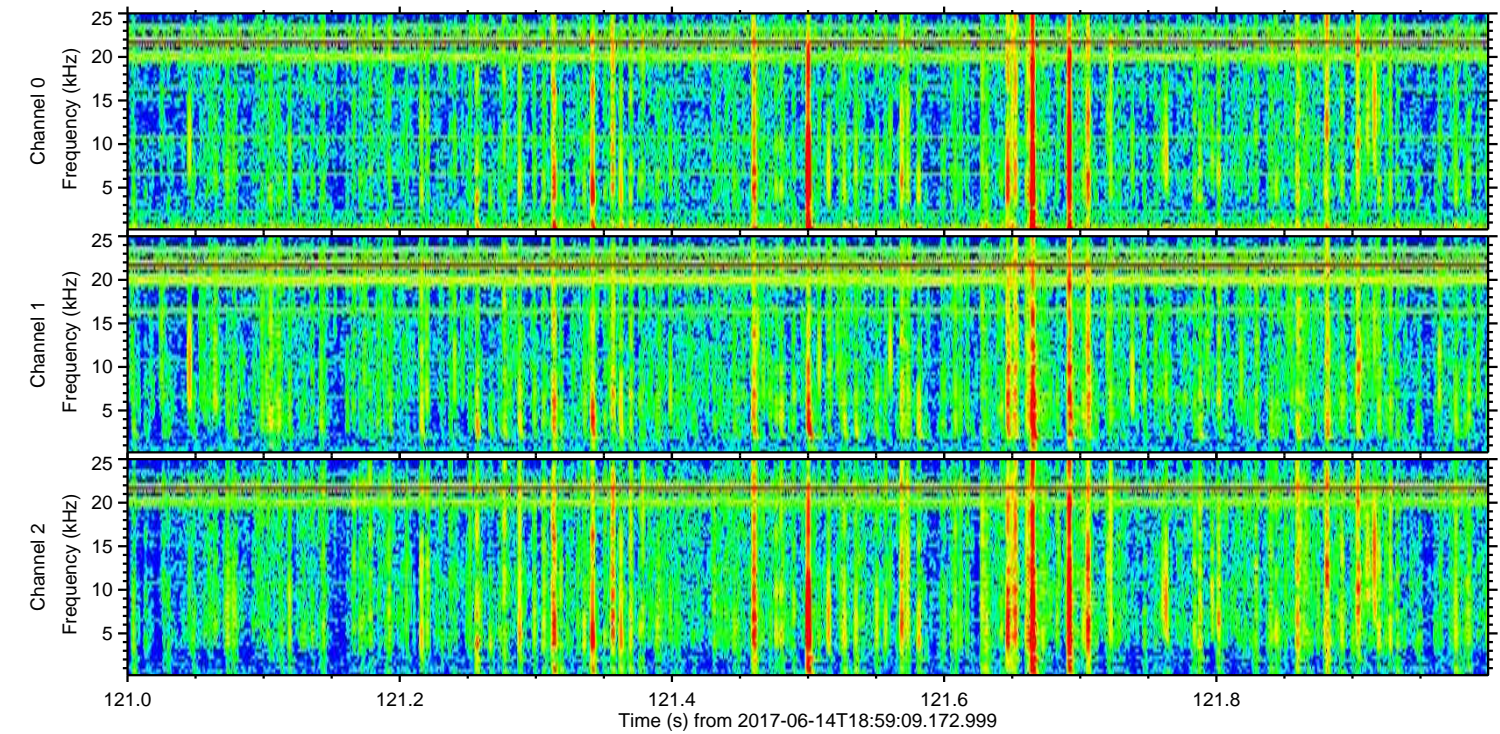
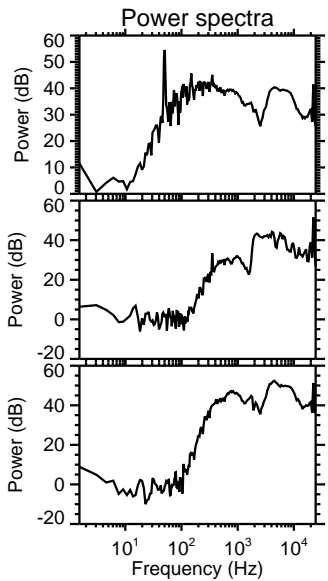
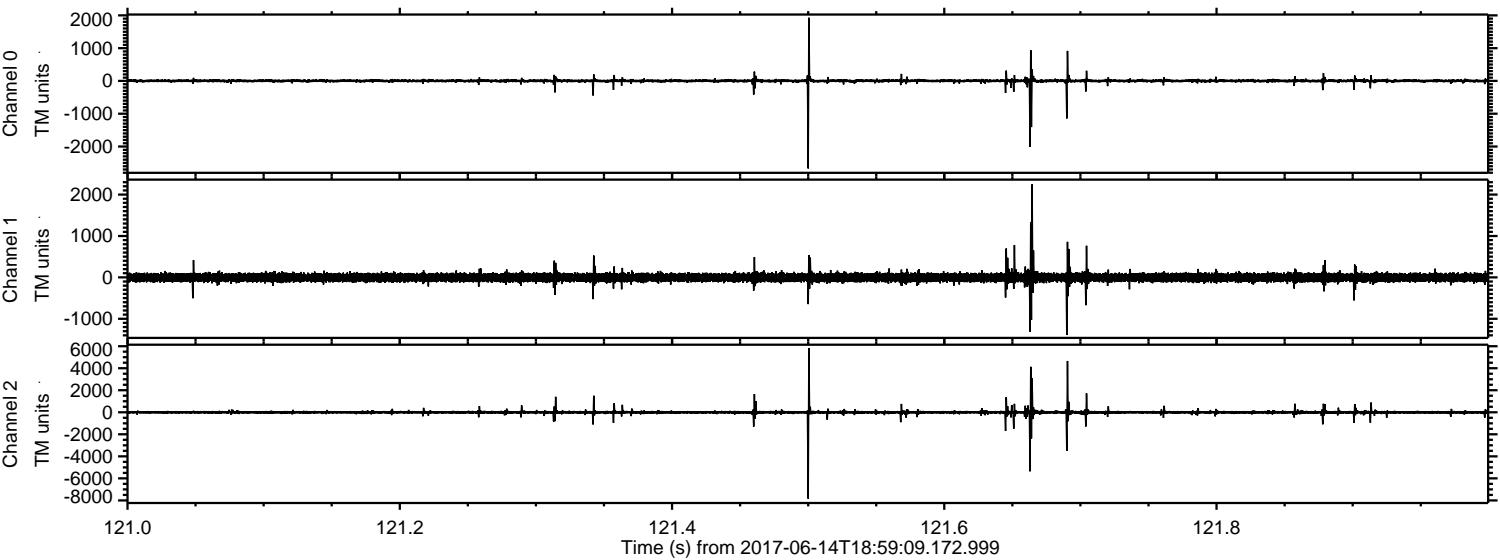
Channel 2
mn: -9030
mx: 5213
 μ : -3.8
 σ : 98.7

Processed Wed Jun 14 21:07:03 2017 by ELM ver.2012-10-06 from 001__elm20170614_185908__dat00.bin



ELMAVAN 3D WAVEFORMS (Measured data sampled at 50 kHz) 51000 packets of 144 samples from 2017-06-14T18:59:09.172.999. Part 122/147

Processed Wed Jun 14 21:07:03 2017 by ELM ver.2012-10-06 from 001__elm20170614_185908__dat00.bin

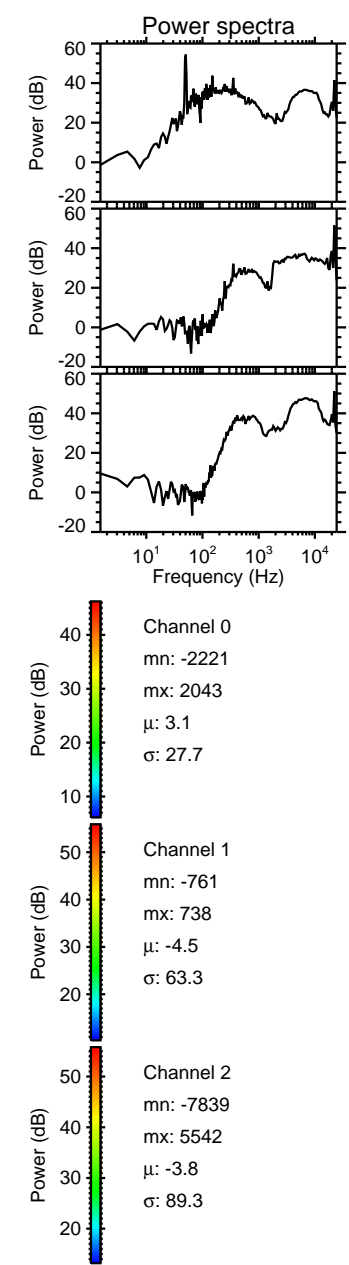
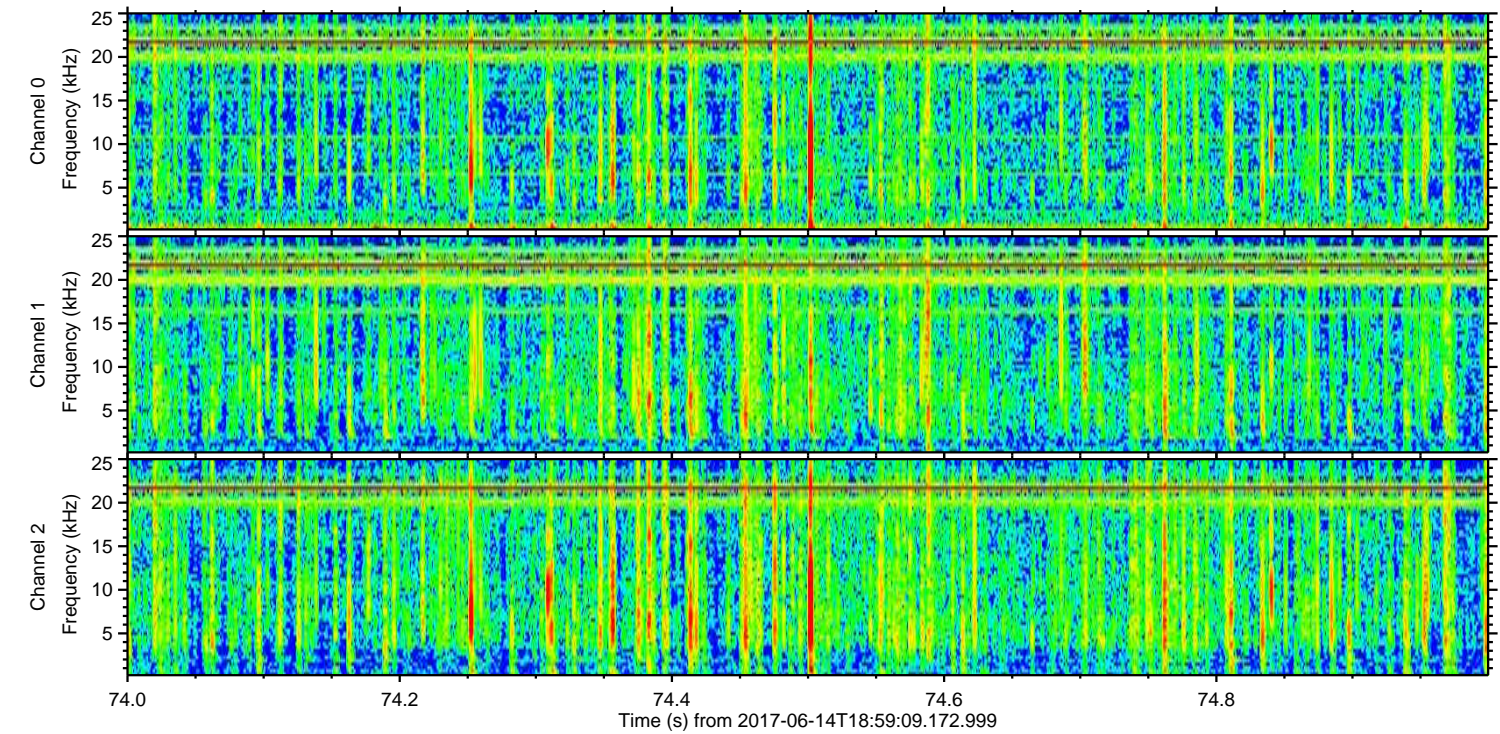
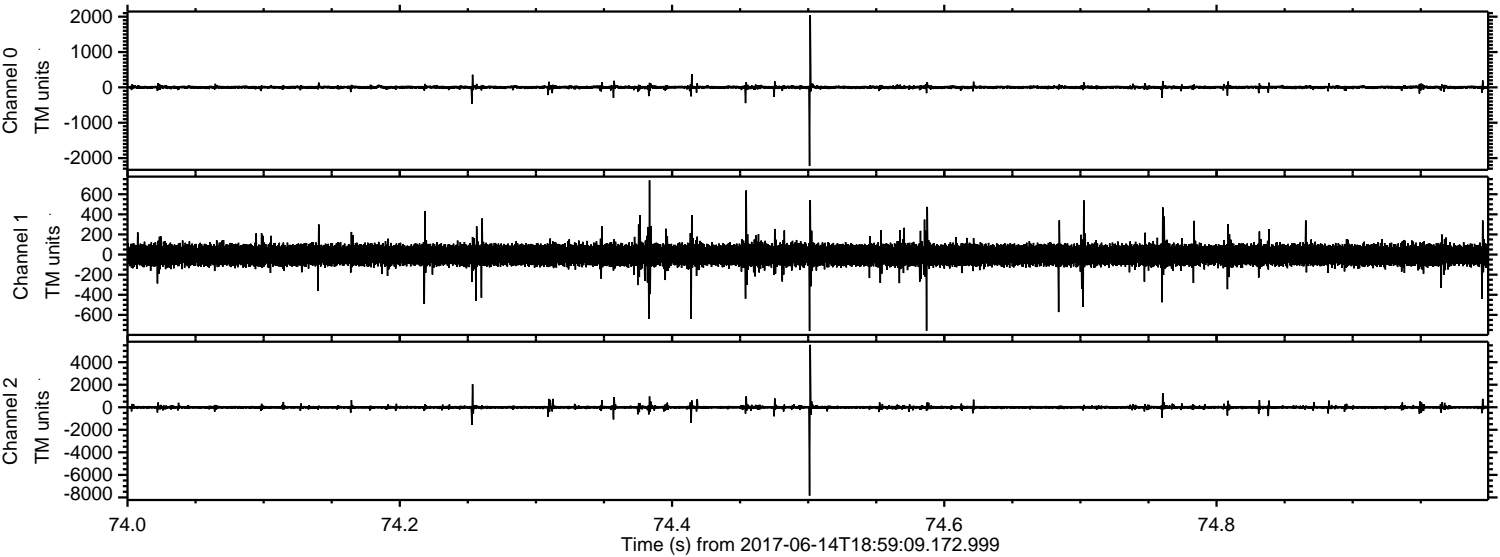


Channel 0
mn: -2668
mx: 1928
 μ : 3.1
 σ : 35.5

Channel 1
mn: -1393
mx: 2249
 μ : -4.4
 σ : 69.4

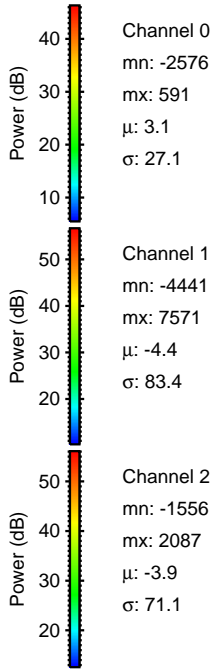
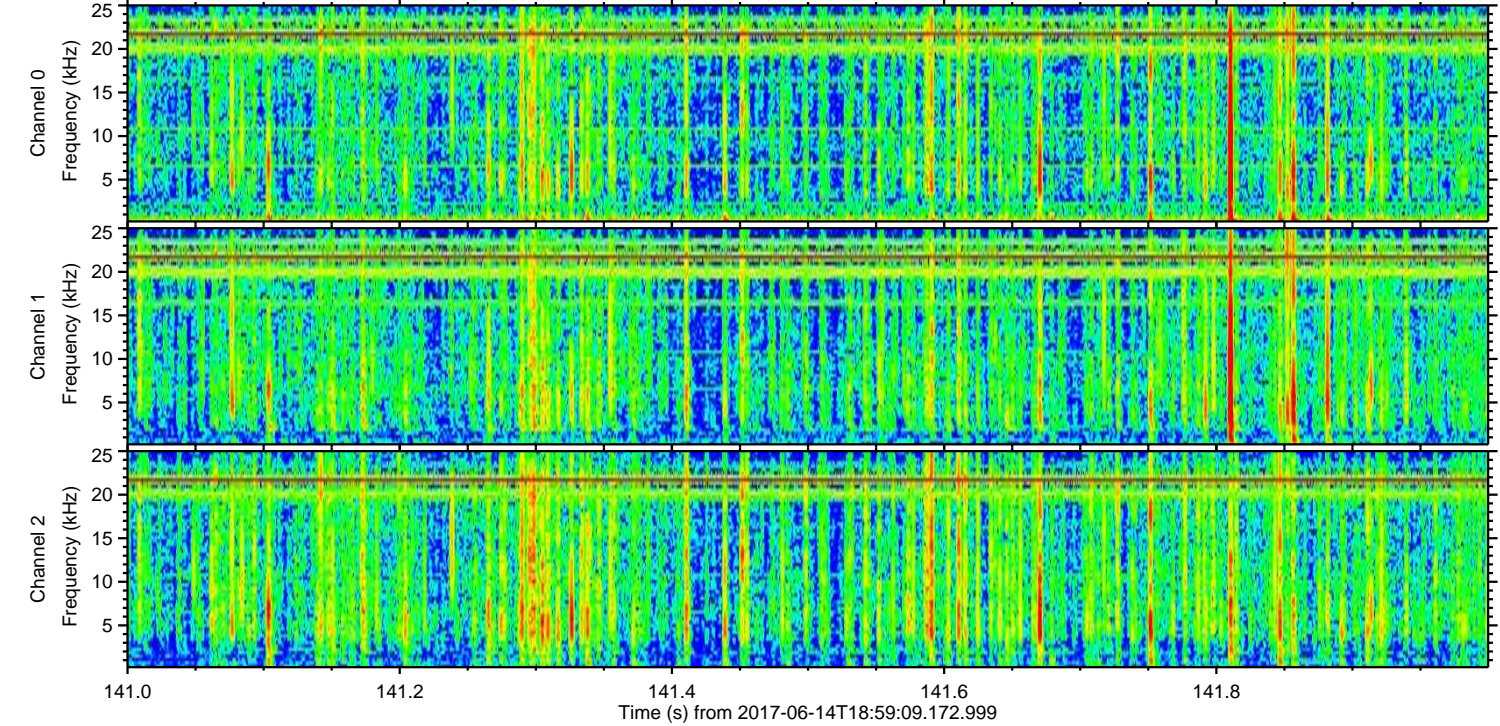
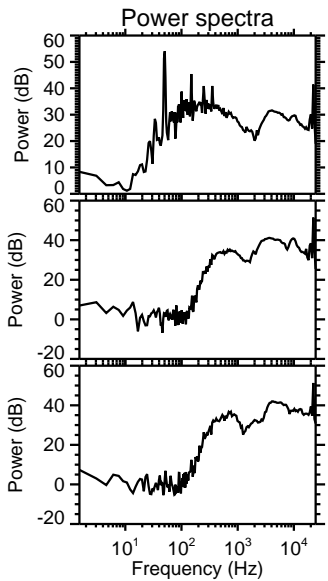
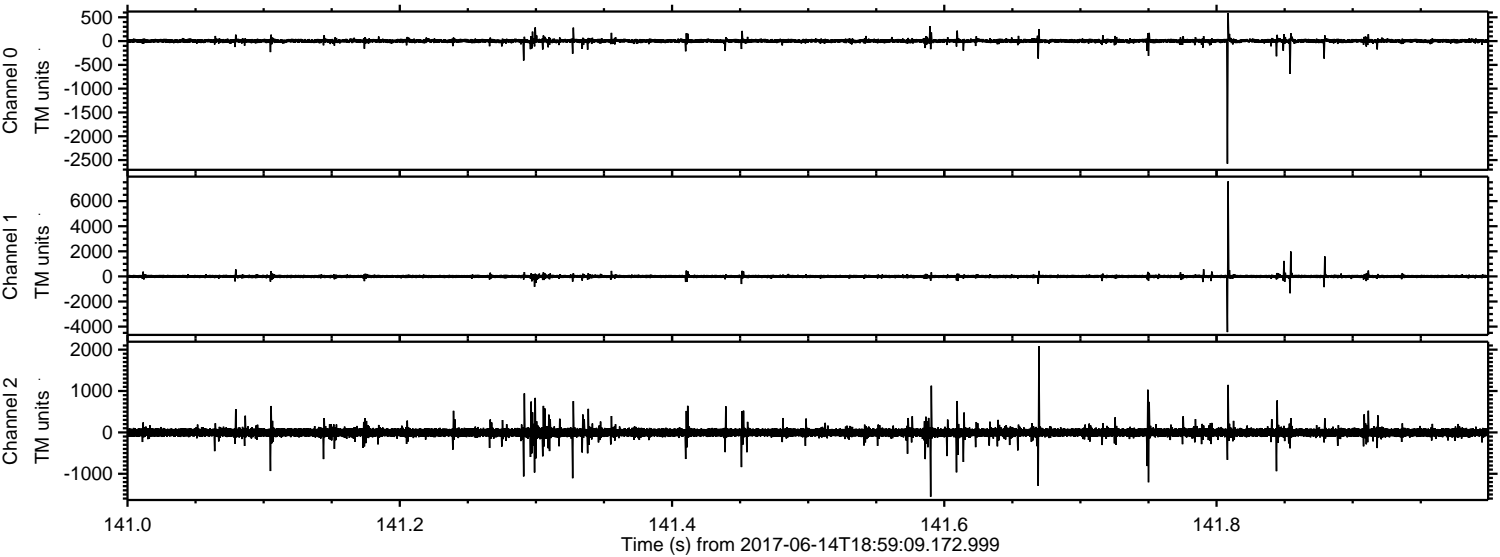
Channel 2
mn: -7842
mx: 5842
 μ : -3.8
 σ : 114.9

Processed Wed Jun 14 21:07:04 2017 by ELM ver.2012-10-06 from 001__elm20170614_185908__dat00.bin



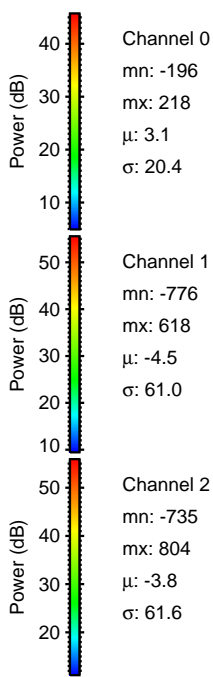
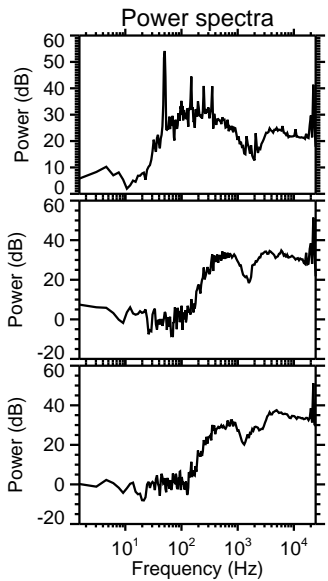
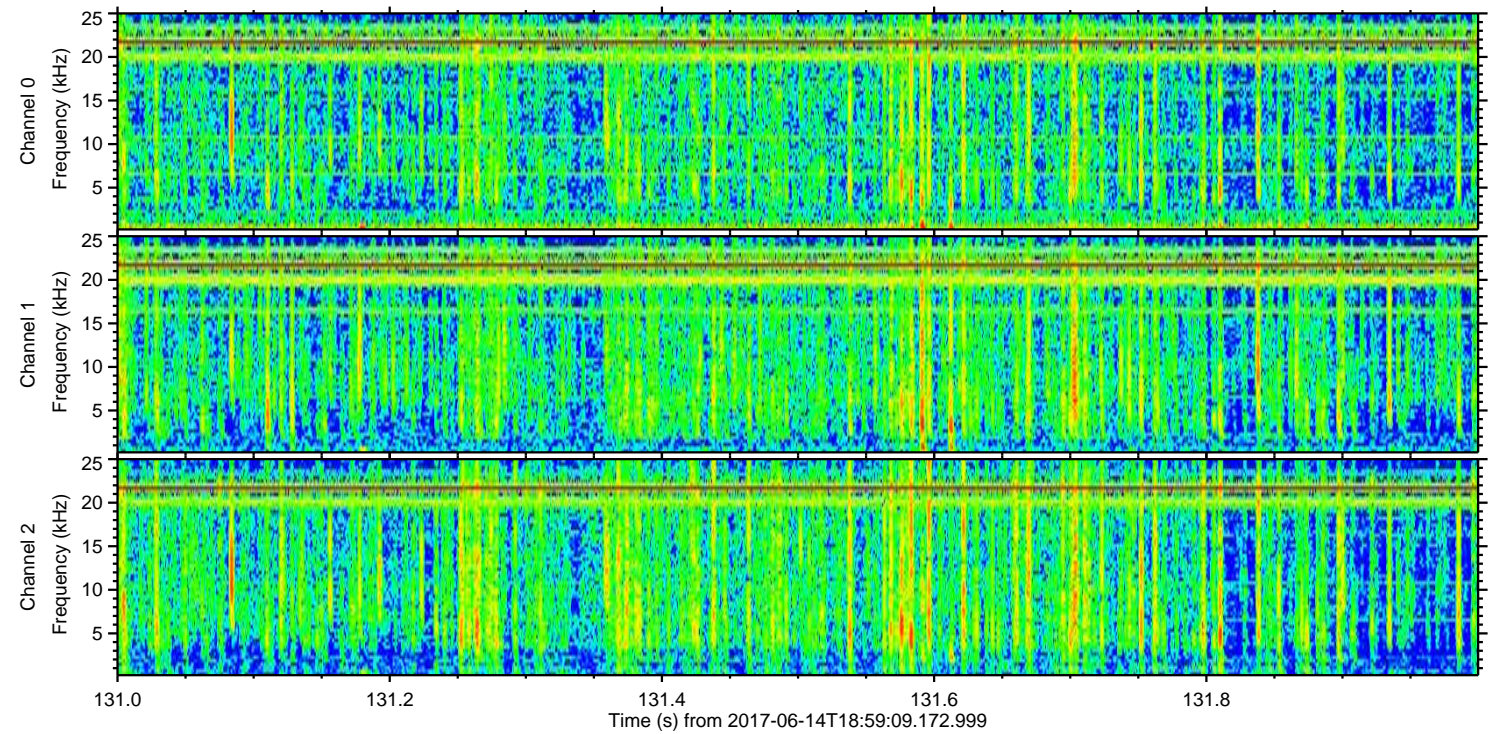
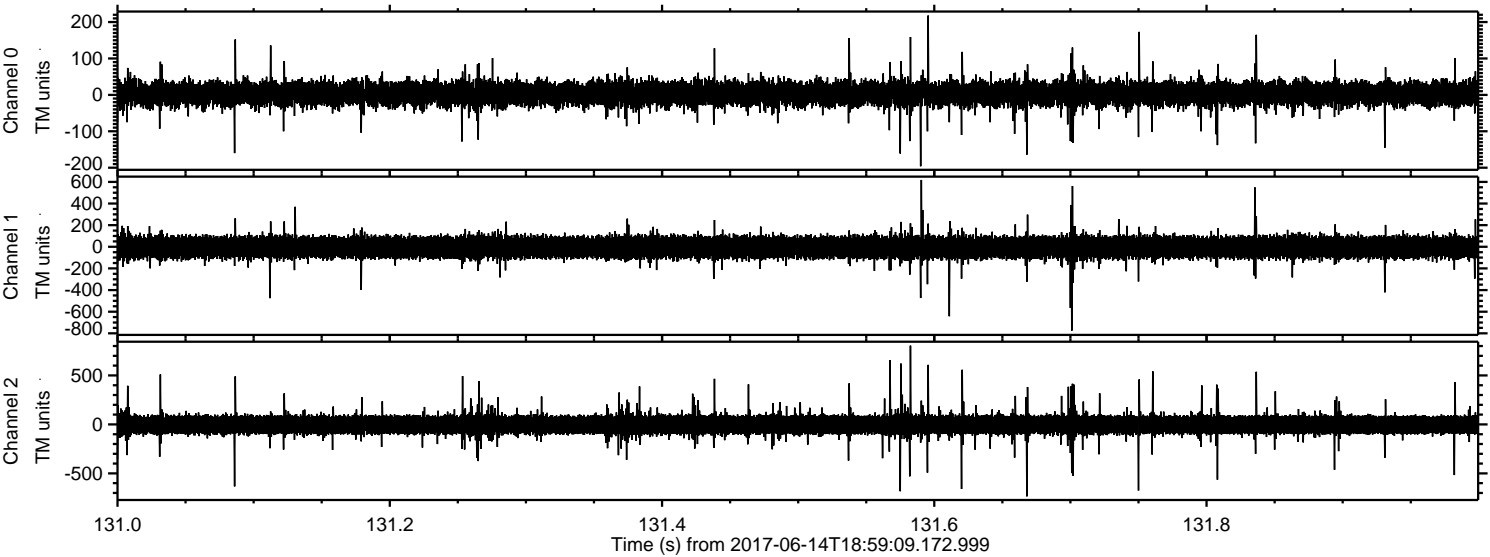
ELMAVAN 3D WAVEFORMS (Measured data sampled at 50 kHz) 51000 packets of 144 samples from 2017-06-14T18:59:09.172.999. Part 142/147

Processed Wed Jun 14 21:07:05 2017 by ELM ver.2012-10-06 from 001__elm20170614_185908__dat00.bin



ELMAVAN 3D WAVEFORMS (Measured data sampled at 50 kHz) 51000 packets of 144 samples from 2017-06-14T18:59:09.172.999. Part 132/147

Processed Wed Jun 14 21:07:05 2017 by ELM ver.2012-10-06 from 001__elm20170614_185908__dat00.bin



Channel 0
mn: -196
mx: 218
 μ : 3.1
 σ : 20.4

Channel 1
mn: -776
mx: 618
 μ : -4.5
 σ : 61.0

Channel 2
mn: -735
mx: 804
 μ : -3.8
 σ : 61.6