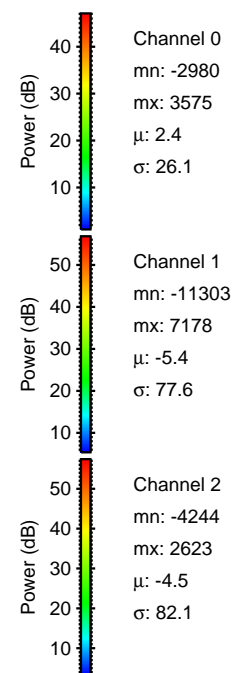
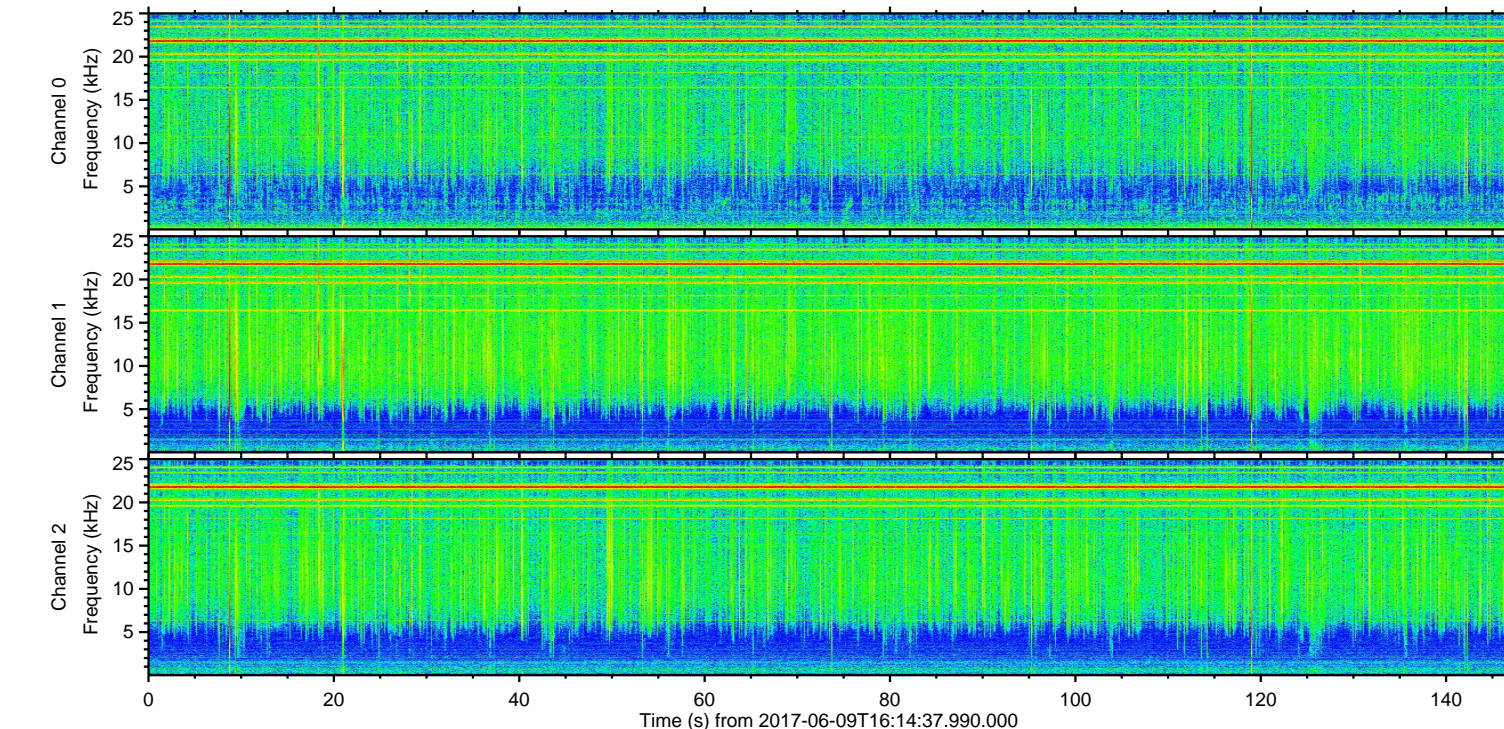
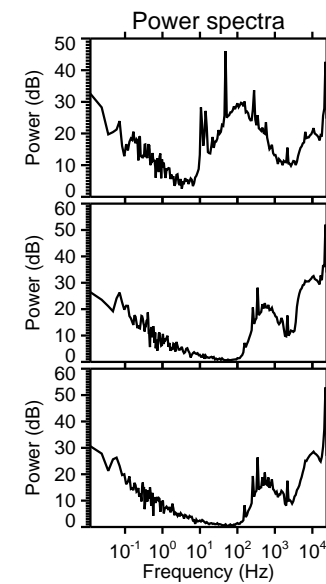
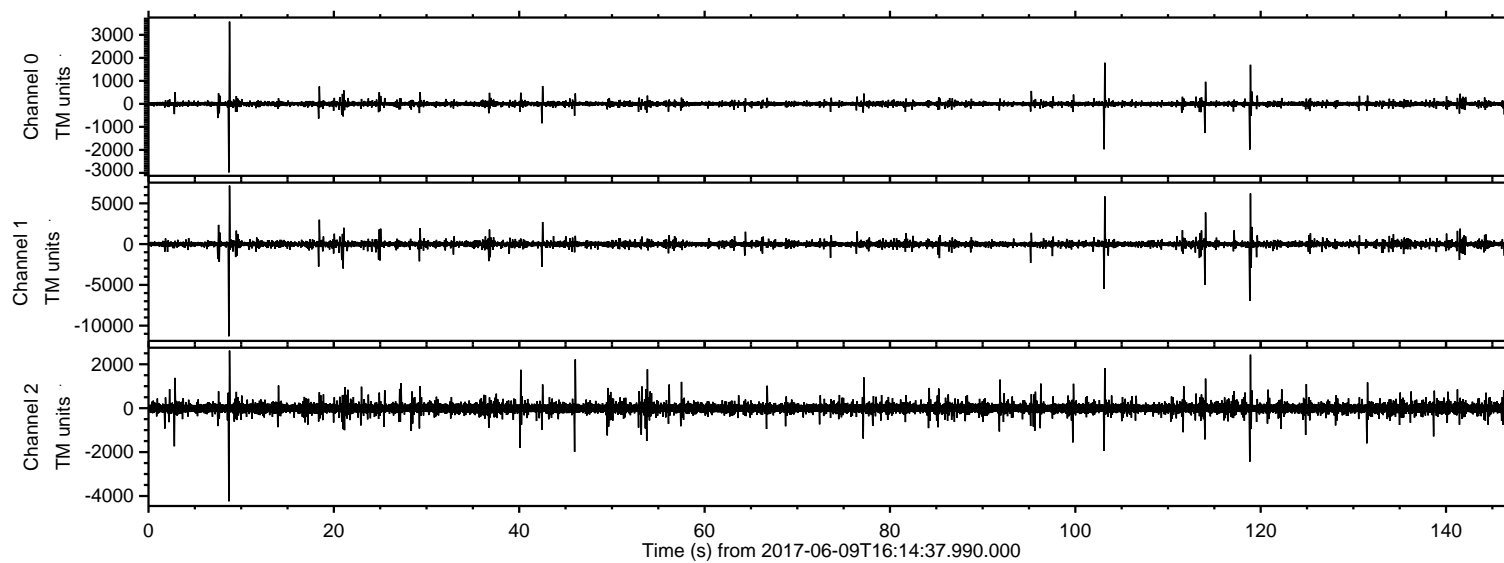
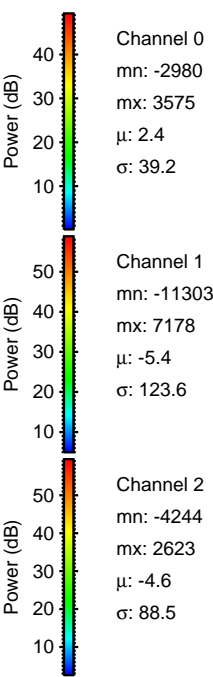
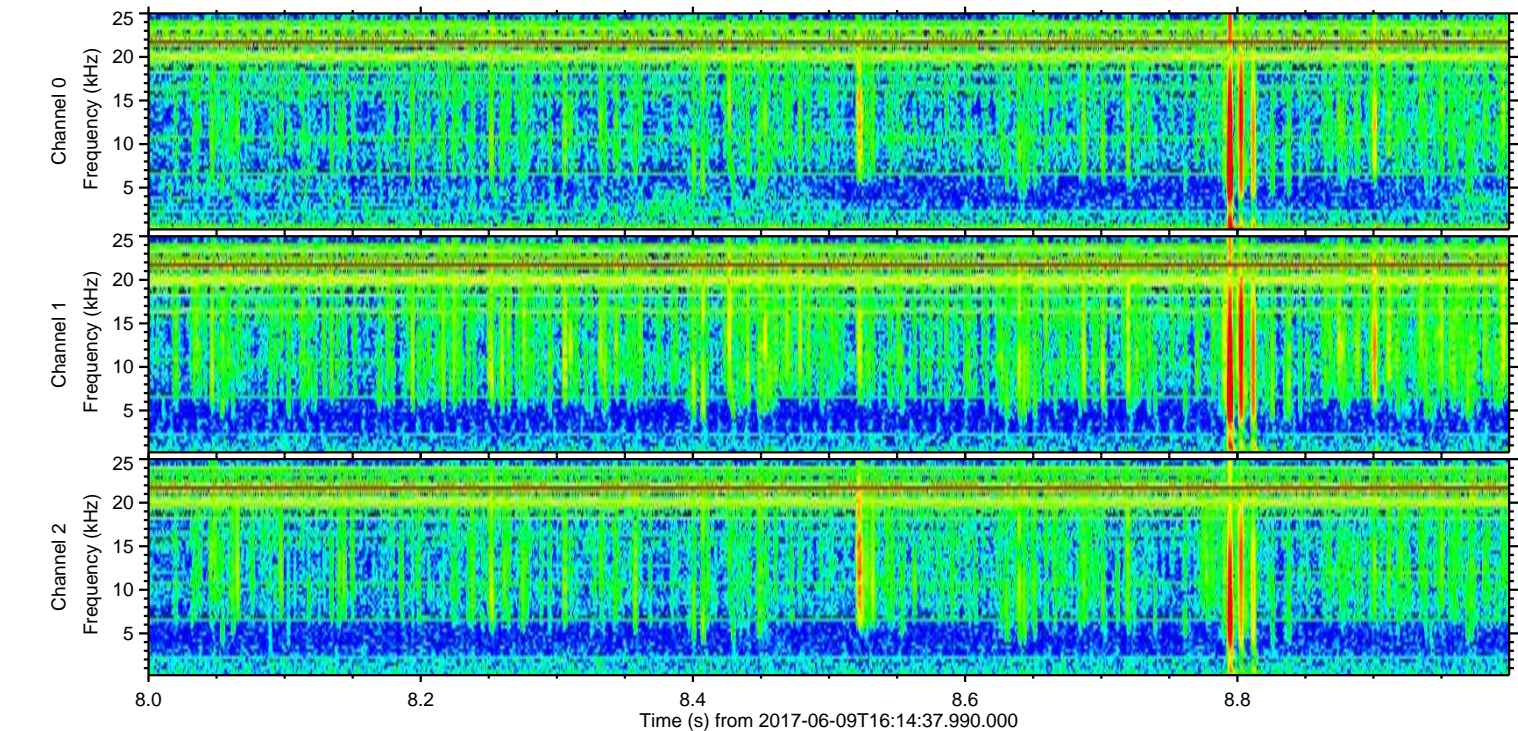
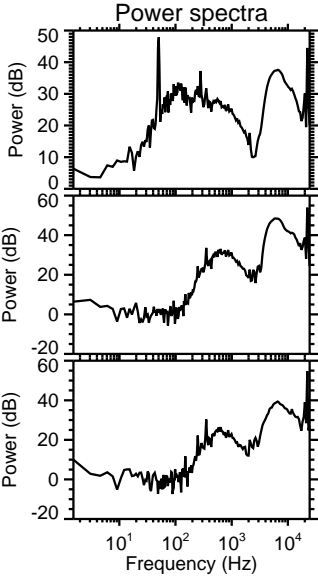
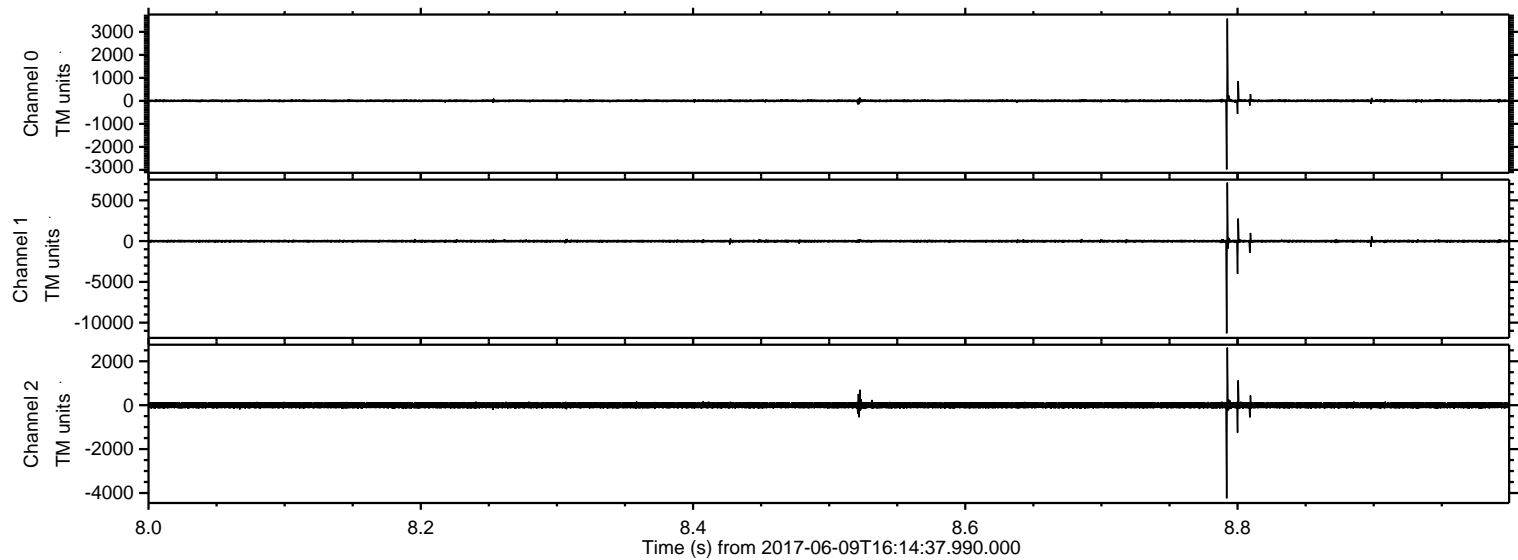


ELMAVAN 3D WAVEFORMS (Measured data sampled at 50 kHz) 51000 packets of 144 samples from 2017-06-09T16:14:37.990.000.

Processed Fri Jun 9 18:22:28 2017 by ELM ver.2012-10-06 from 001__elm20170609_161436__dat00.bin

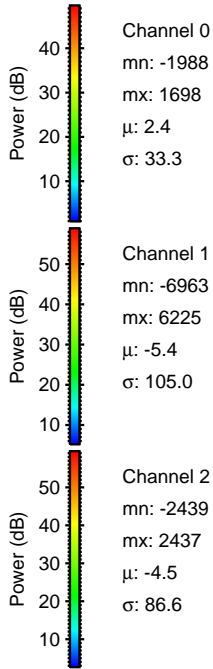
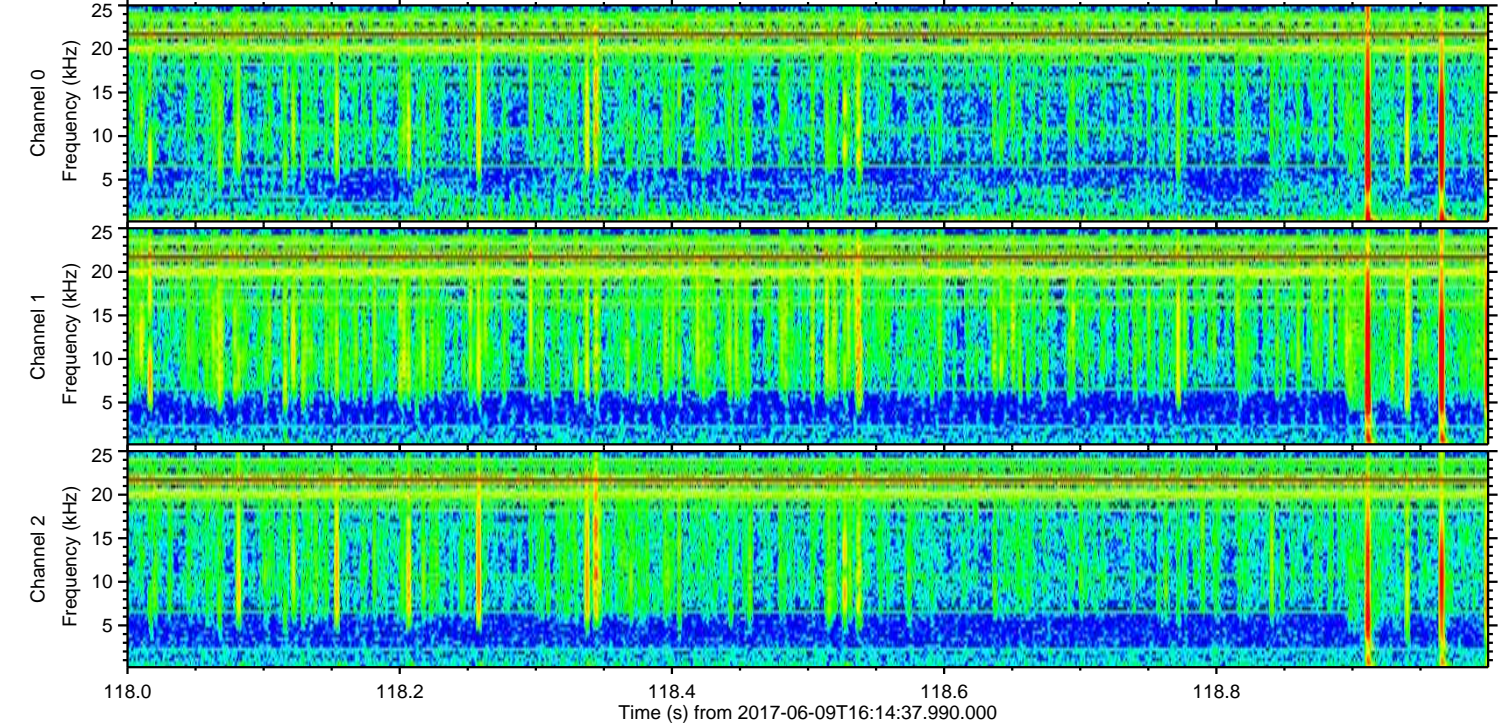
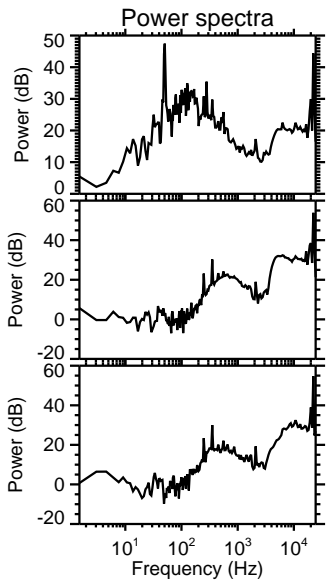
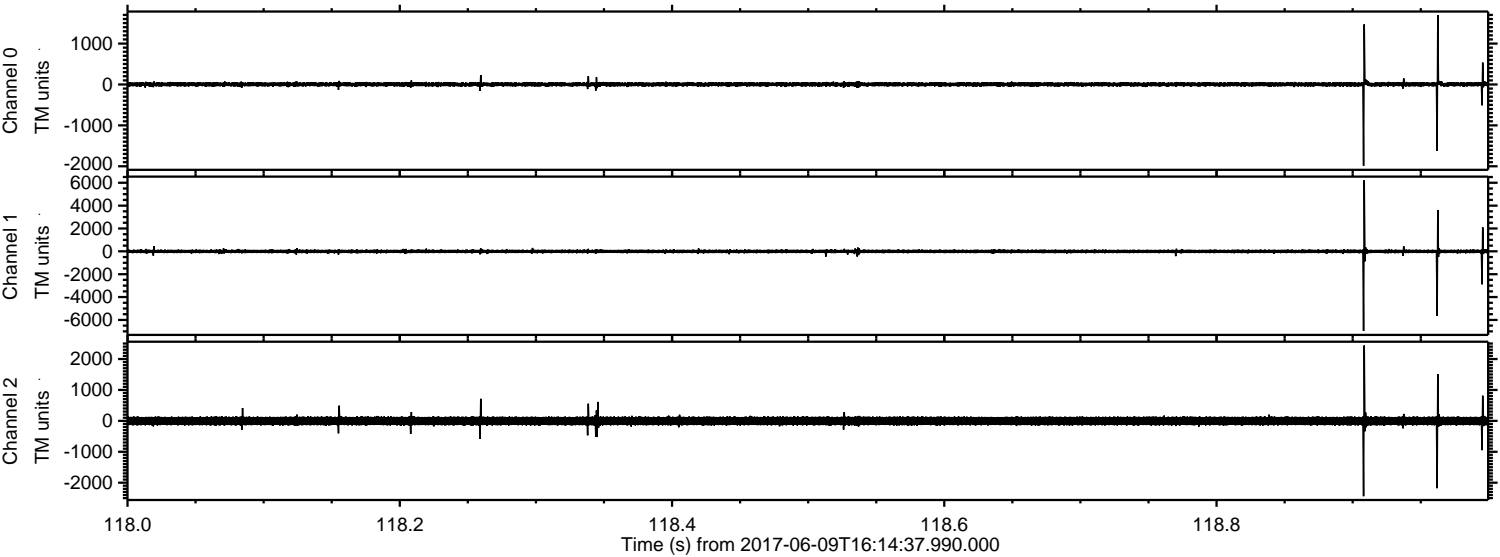


Processed Fri Jun 9 18:22:33 2017 by ELM ver.2012-10-06 from 001__elm20170609_161436__dat00.bin



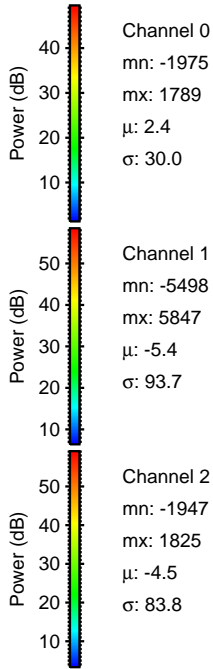
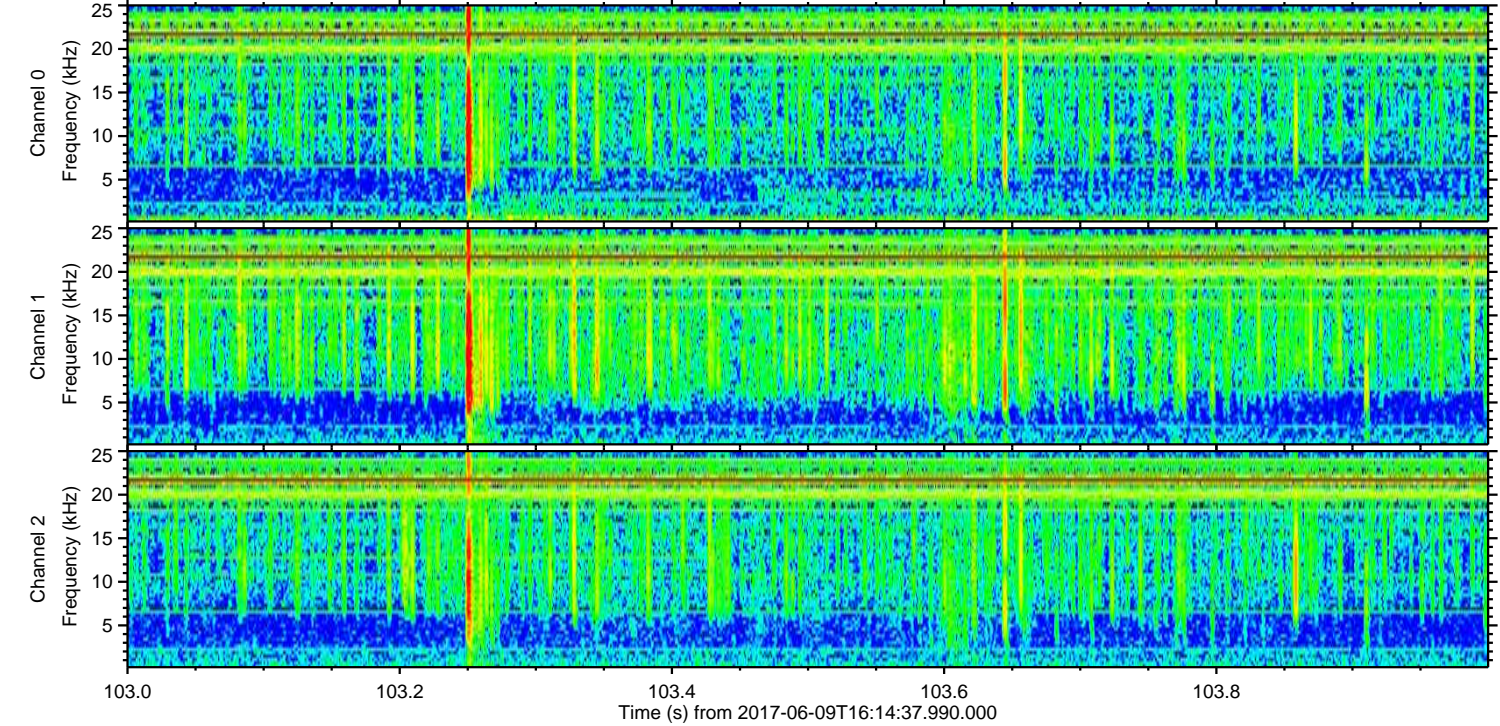
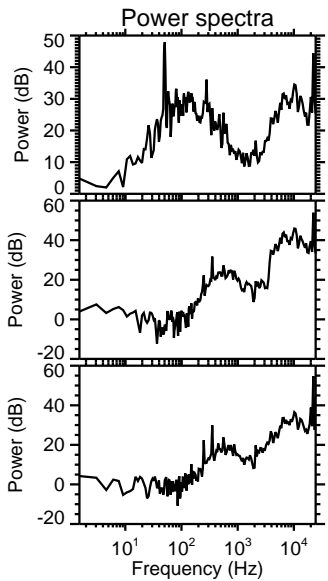
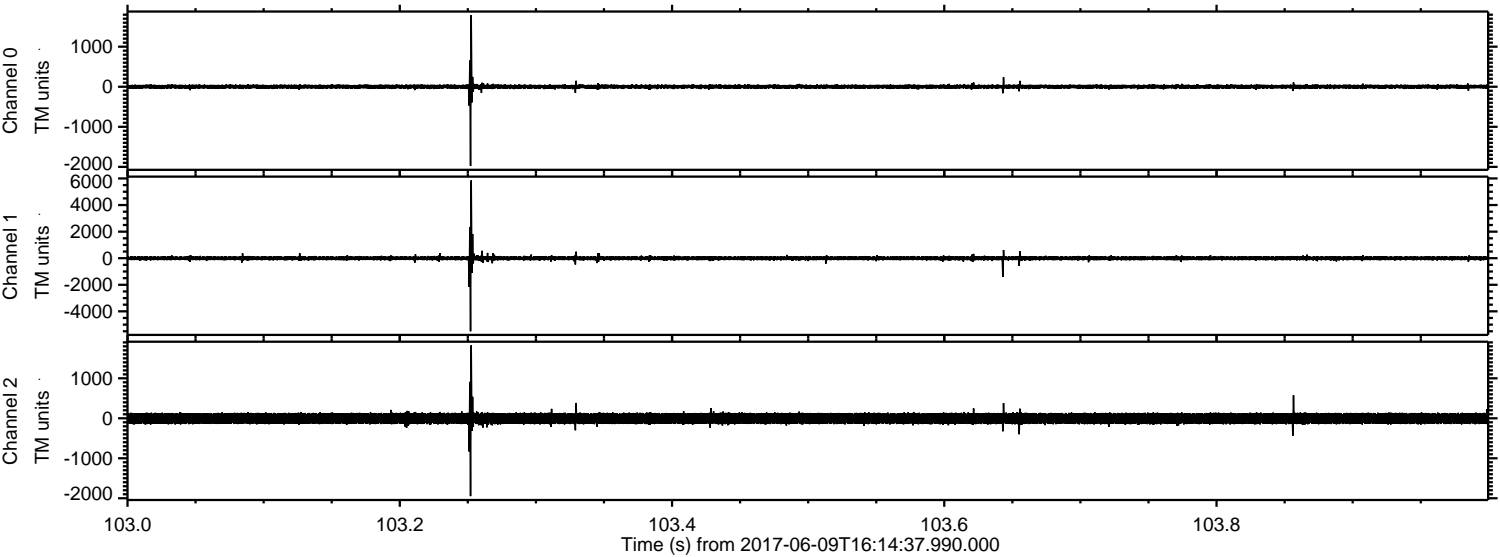
ELMAVAN 3D WAVEFORMS (Measured data sampled at 50 kHz) 51000 packets of 144 samples from 2017-06-09T16:14:37.990.000. Part 119/147

Processed Fri Jun 9 18:22:34 2017 by ELM ver.2012-10-06 from 001__elm20170609_161436__dat00.bin



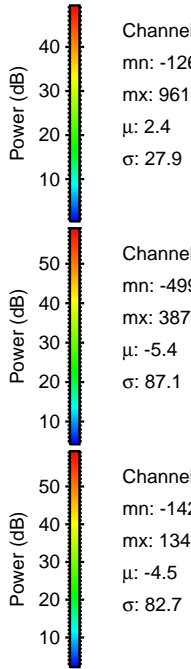
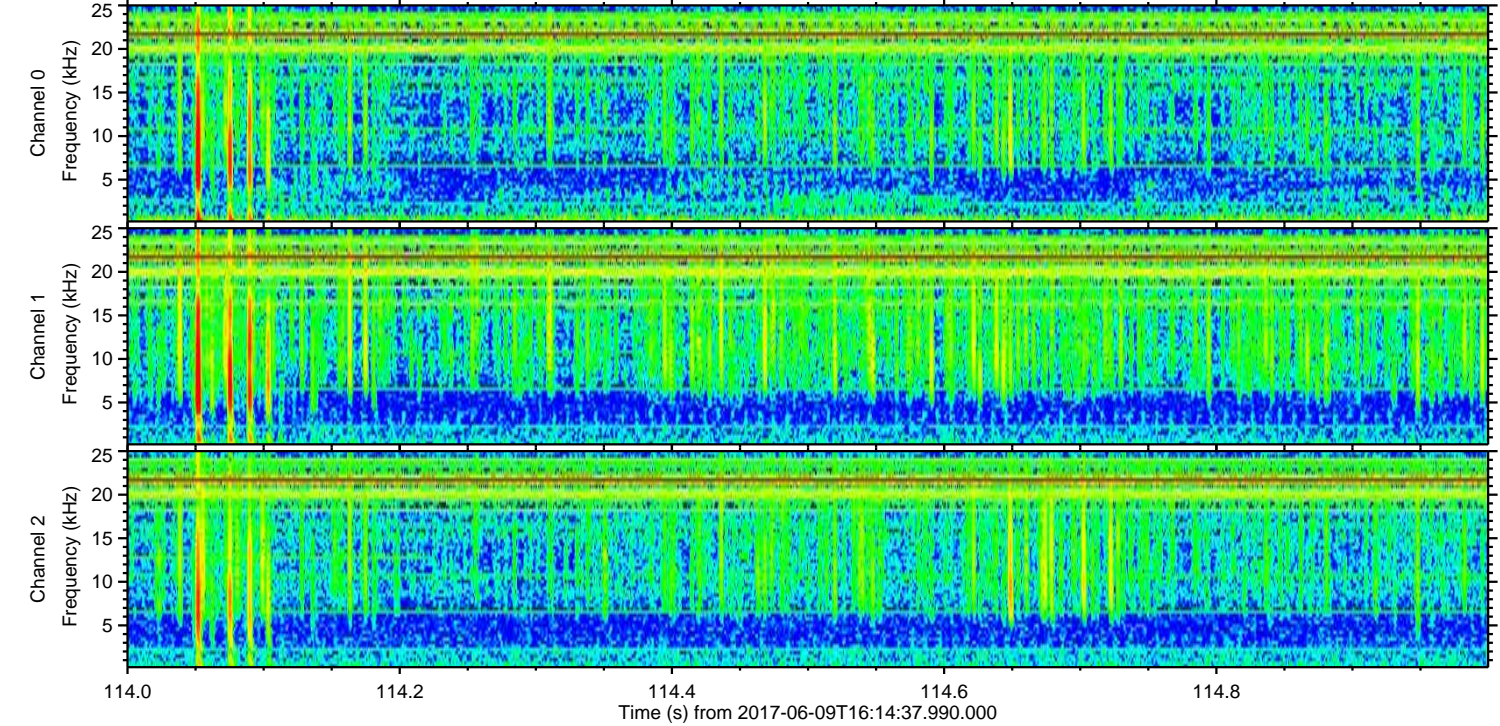
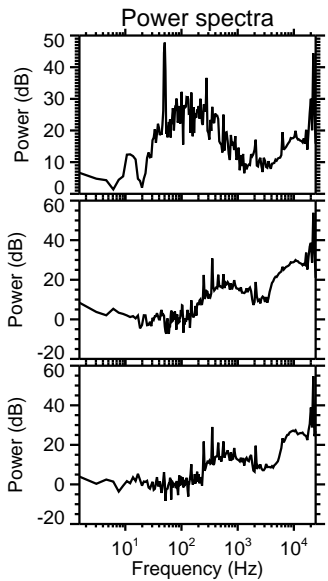
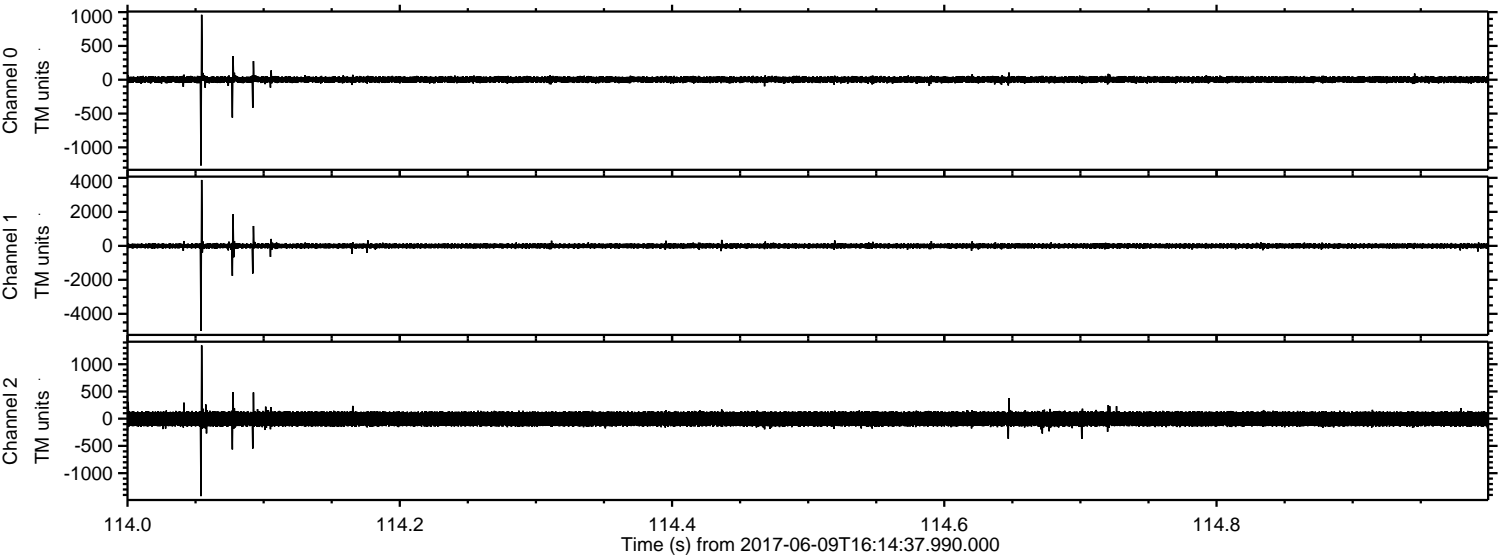
ELMAVAN 3D WAVEFORMS (Measured data sampled at 50 kHz) 51000 packets of 144 samples from 2017-06-09T16:14:37.990.000. Part 104/147

Processed Fri Jun 9 18:22:34 2017 by ELM ver.2012-10-06 from 001__elm20170609_161436__dat00.bin

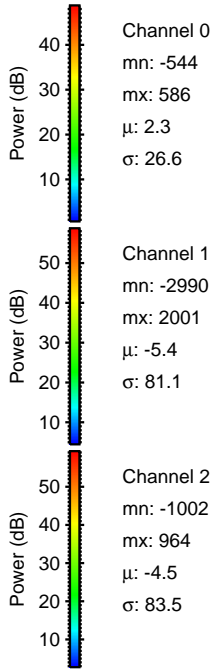
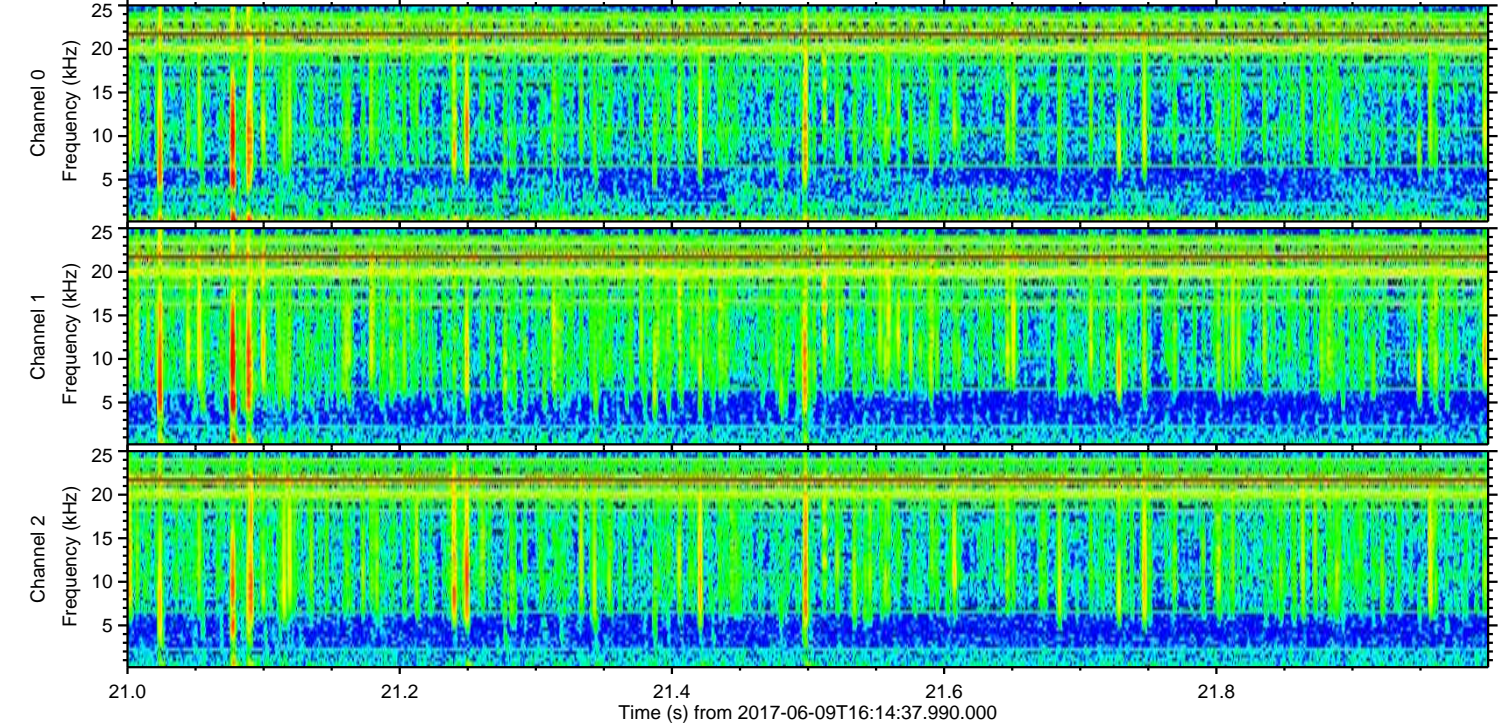
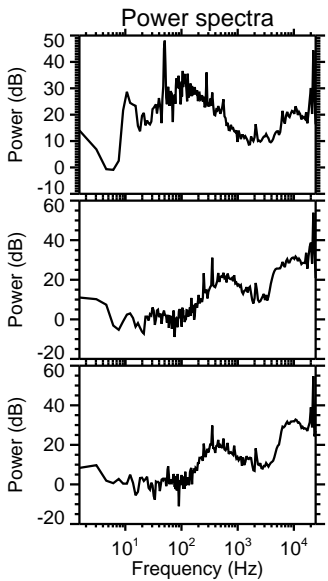
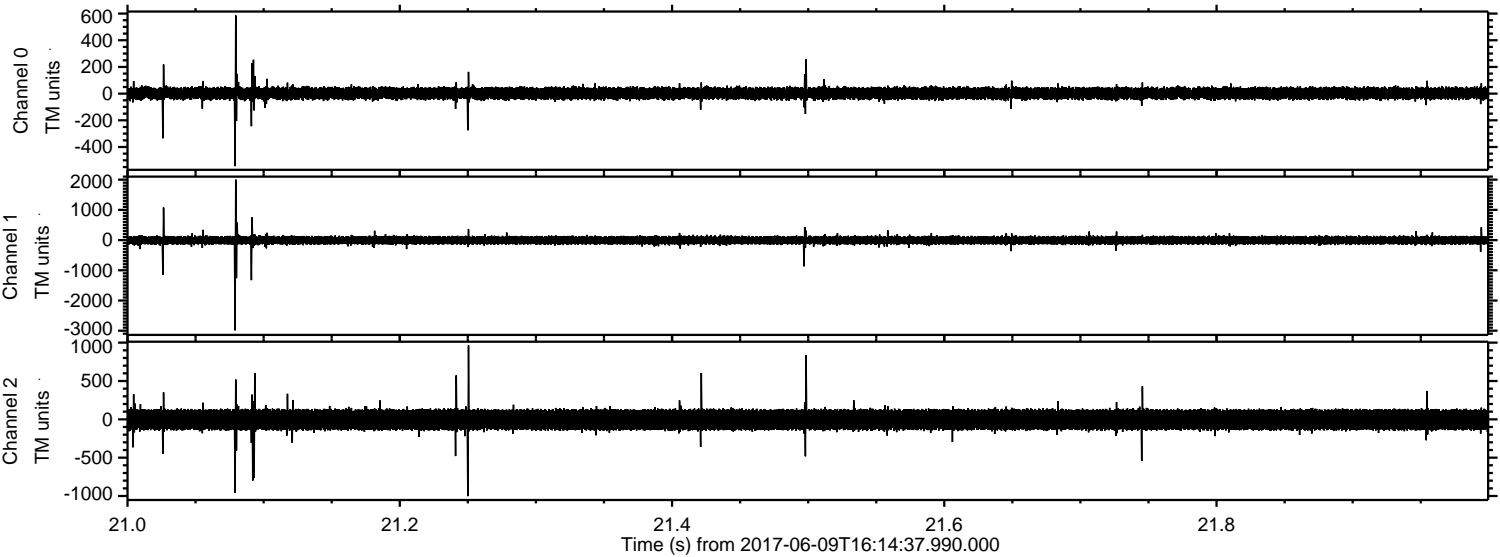


ELMAVAN 3D WAVEFORMS (Measured data sampled at 50 kHz) 51000 packets of 144 samples from 2017-06-09T16:14:37.990.000. Part 115/147

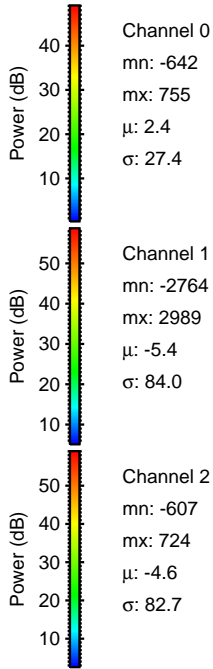
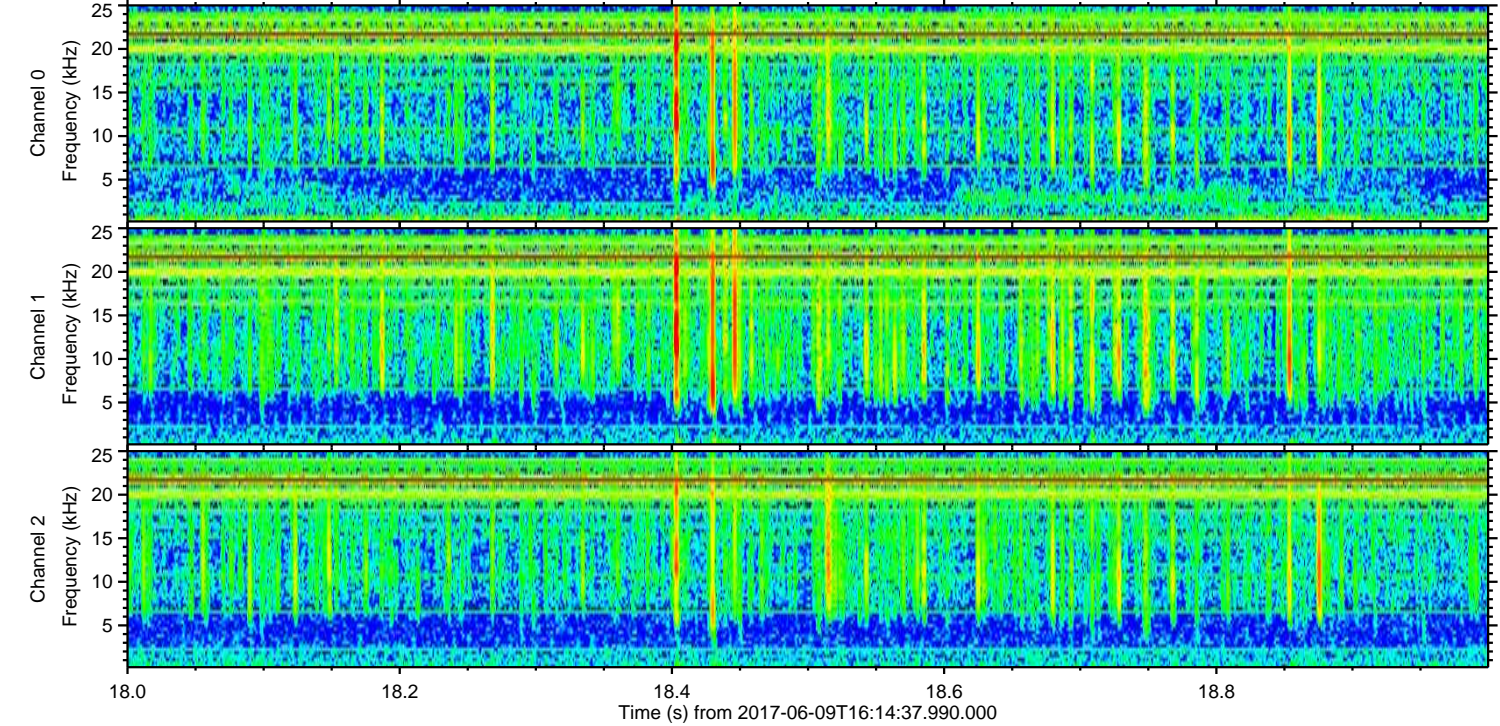
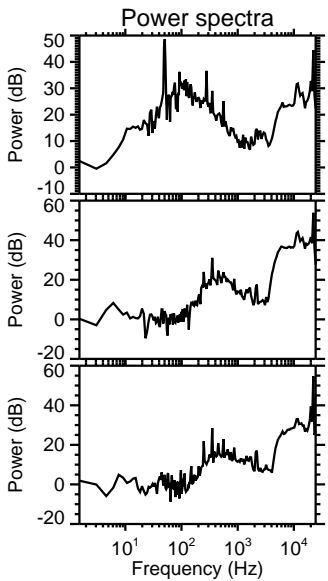
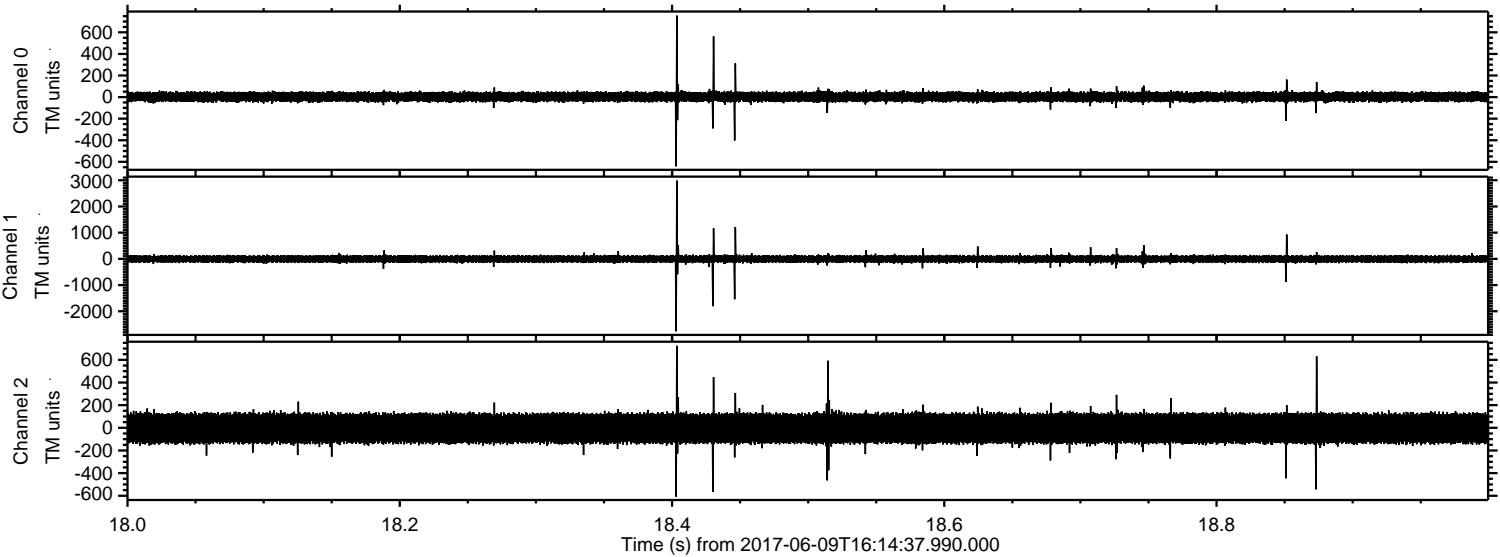
Processed Fri Jun 9 18:22:35 2017 by ELM ver.2012-10-06 from 001__elm20170609_161436__dat00.bin



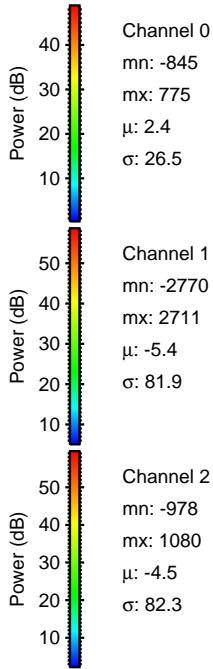
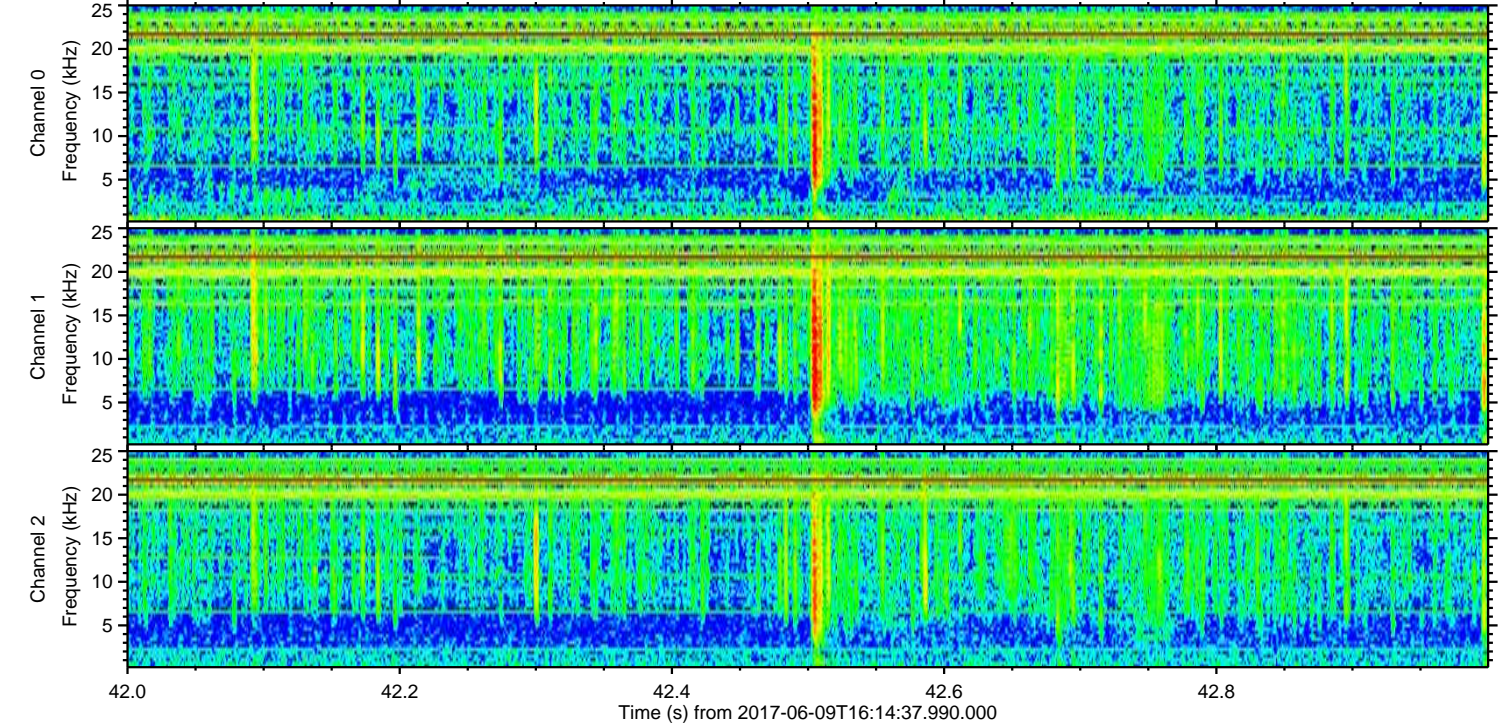
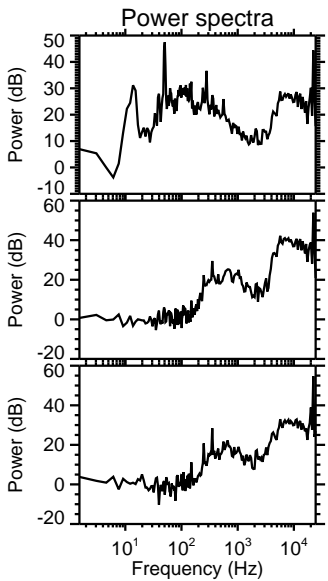
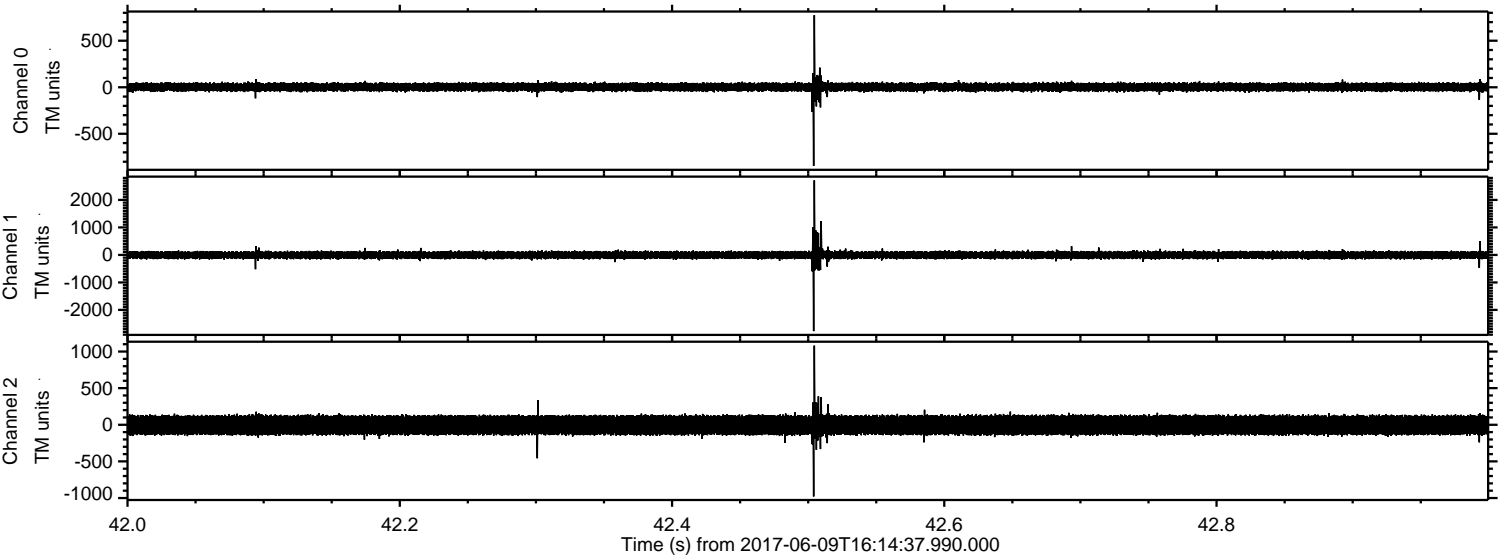
Processed Fri Jun 9 18:22:36 2017 by ELM ver.2012-10-06 from 001__elm20170609_161436__dat00.bin



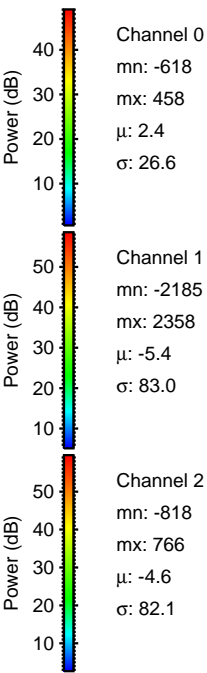
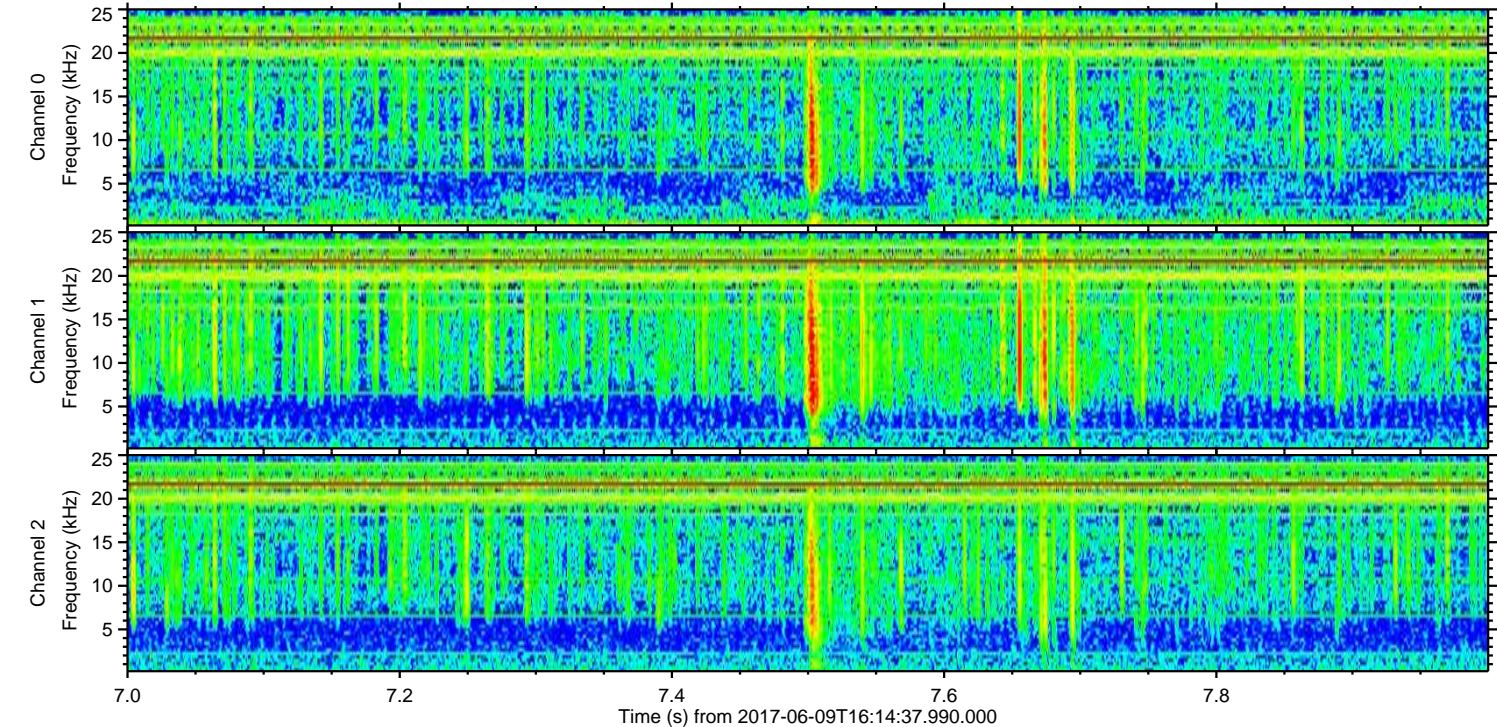
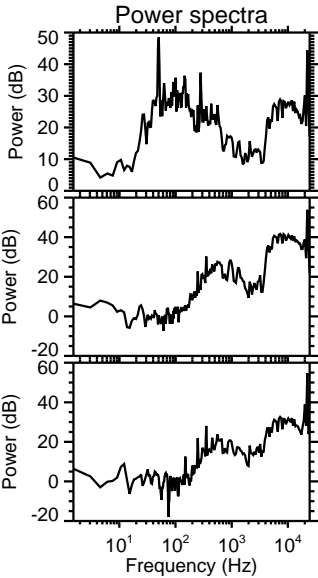
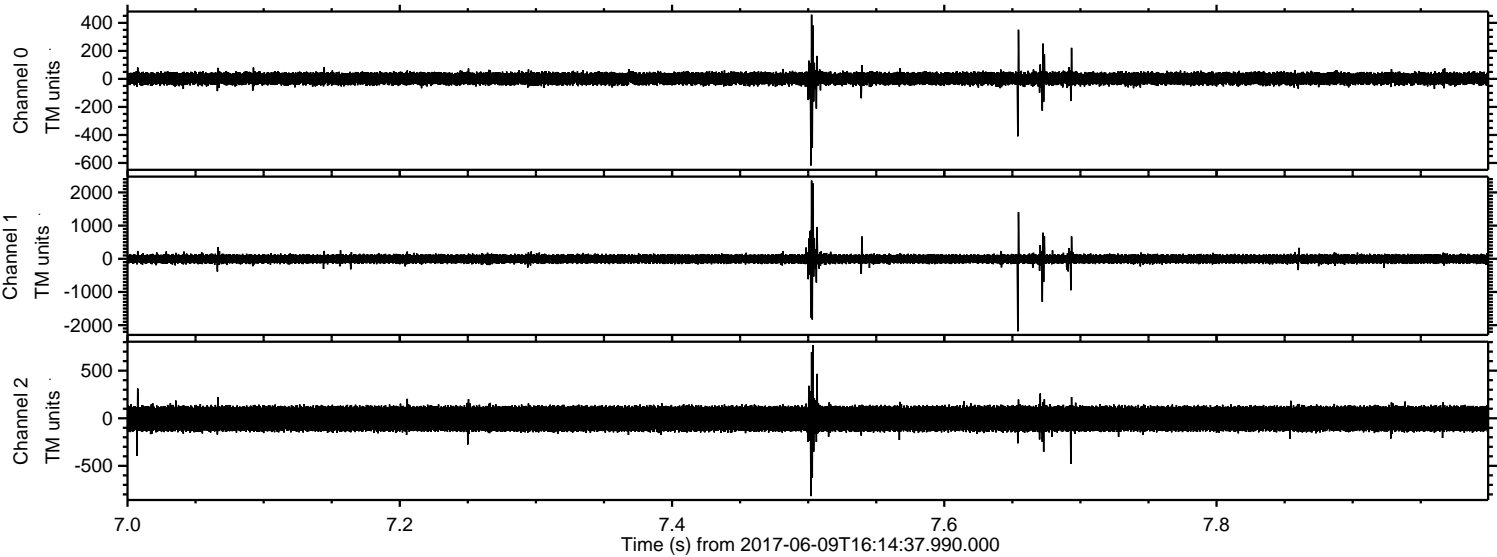
Processed Fri Jun 9 18:22:36 2017 by ELM ver.2012-10-06 from 001__elm20170609_161436__dat00.bin



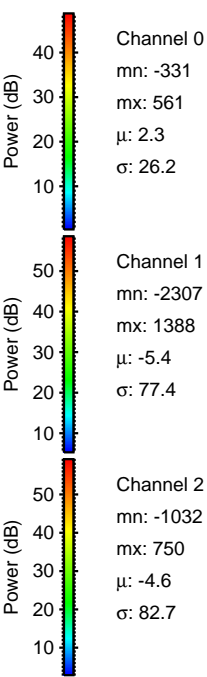
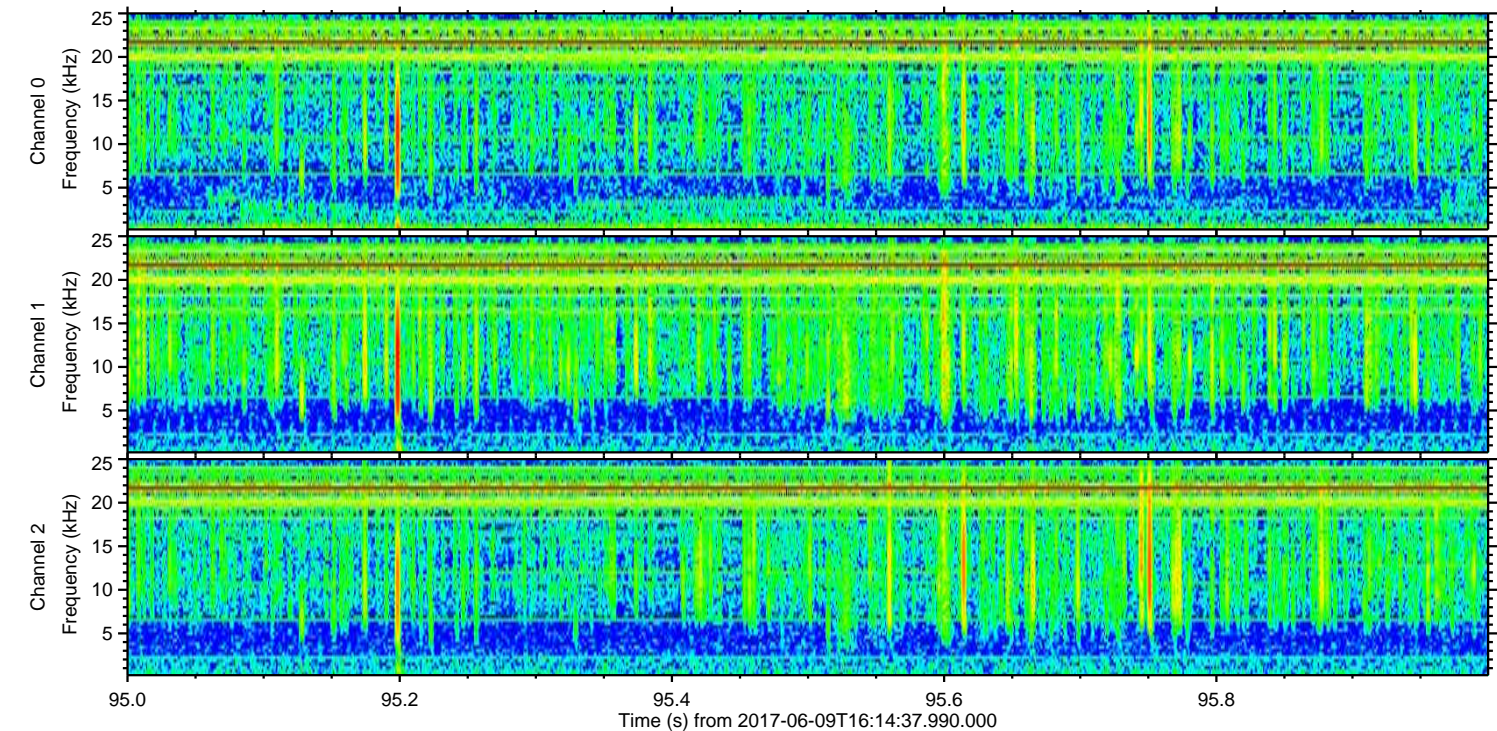
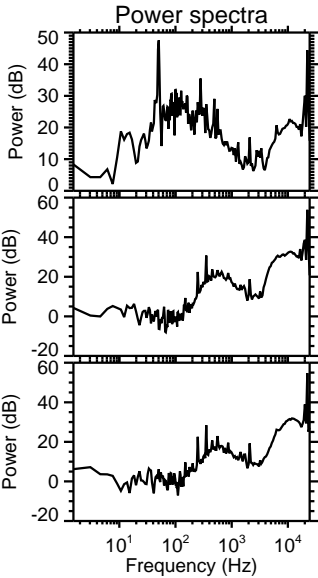
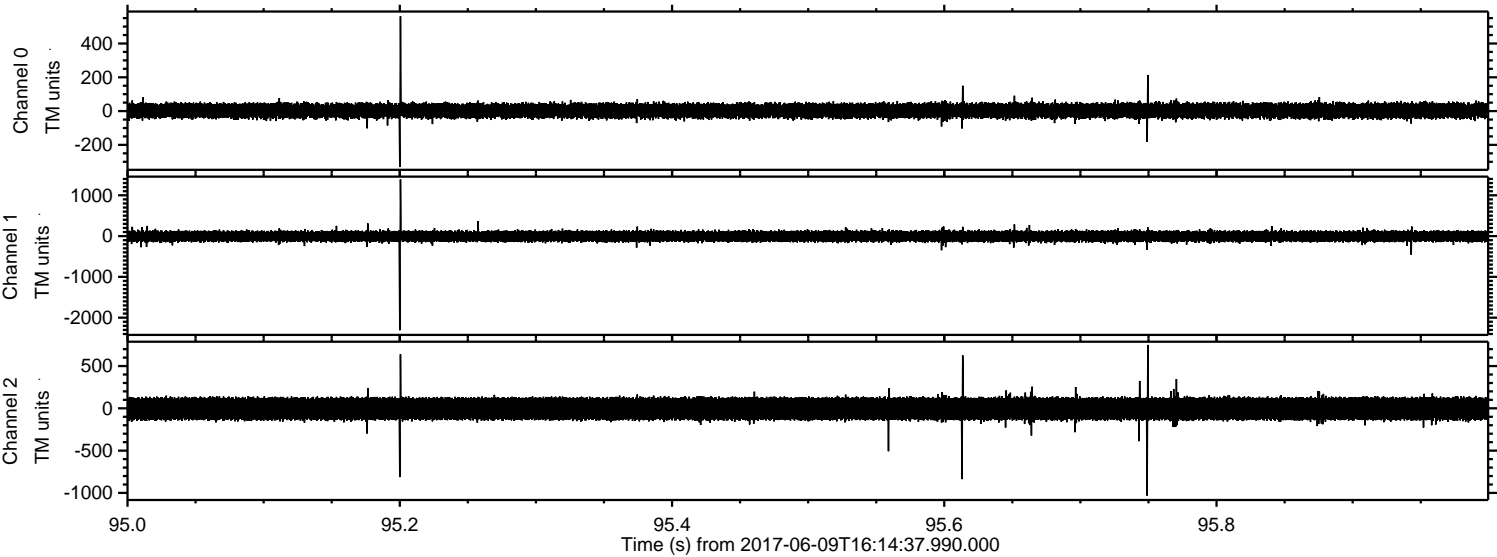
Processed Fri Jun 9 18:22:37 2017 by ELM ver.2012-10-06 from 001__elm20170609_161436__dat00.bin



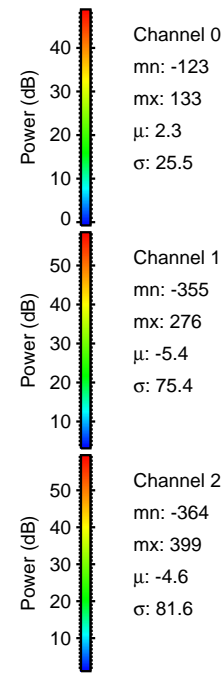
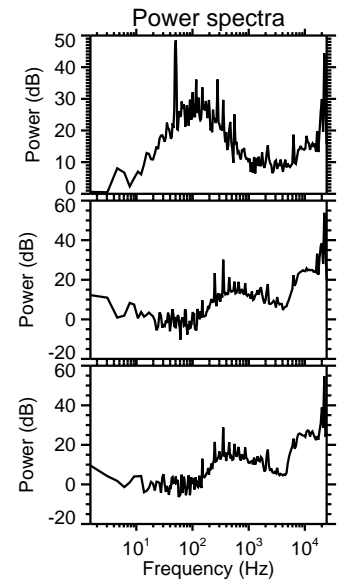
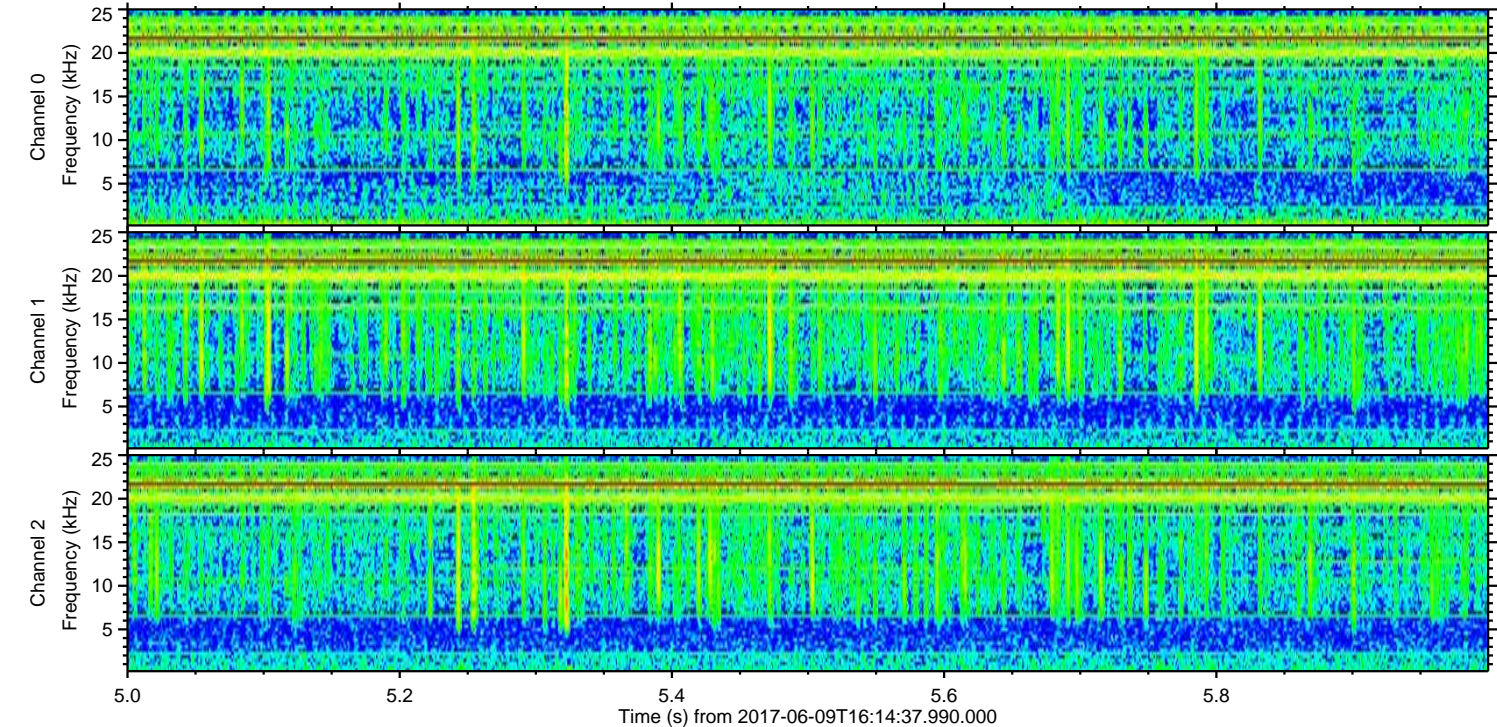
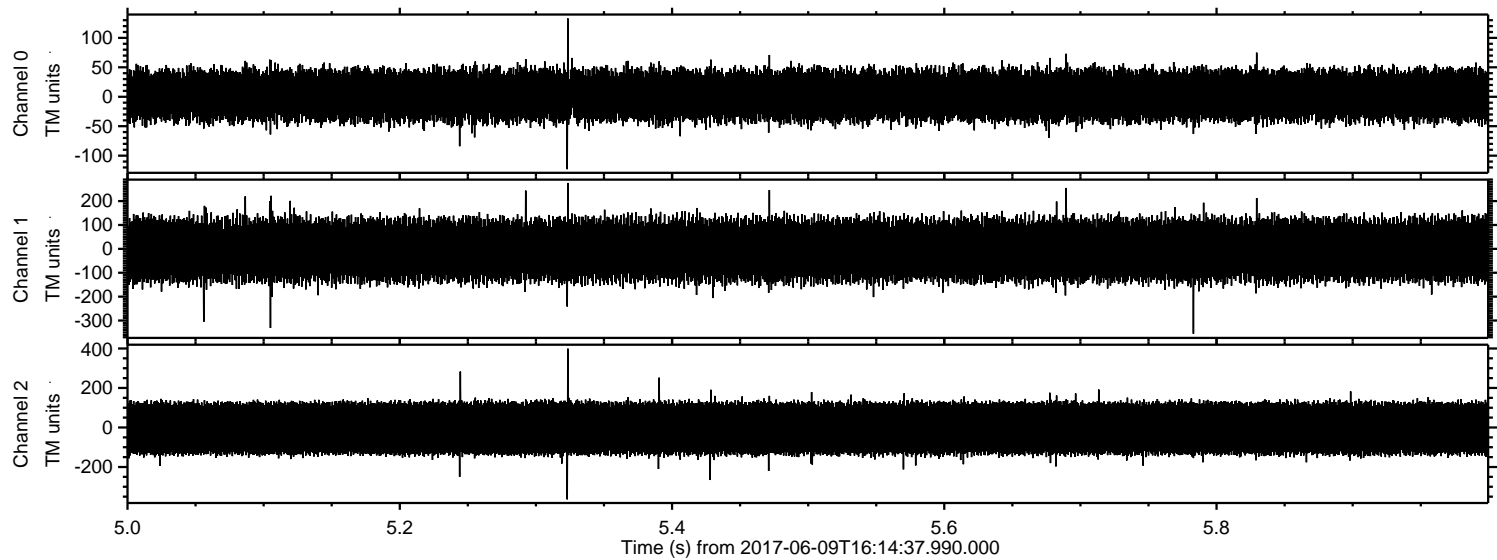
Processed Fri Jun 9 18:22:37 2017 by ELM ver.2012-10-06 from 001__elm20170609_161436__dat00.bin



Processed Fri Jun 9 18:22:38 2017 by ELM ver.2012-10-06 from 001__elm20170609_161436__dat00.bin



Processed Fri Jun 9 18:22:39 2017 by ELM ver.2012-10-06 from 001__elm20170609_161436__dat00.bin



Channel 0
mn: -123
mx: 133
 μ : 2.3
 σ : 25.5

Channel 1
mn: -355
mx: 276
 μ : -5.4
 σ : 75.4

Channel 2
mn: -364
mx: 399
 μ : -4.6
 σ : 81.6