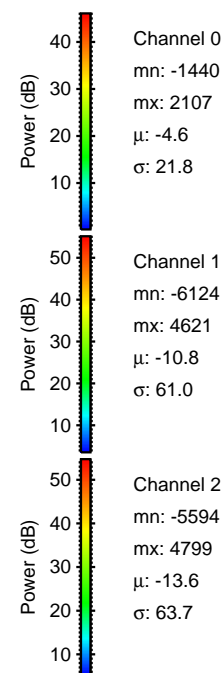
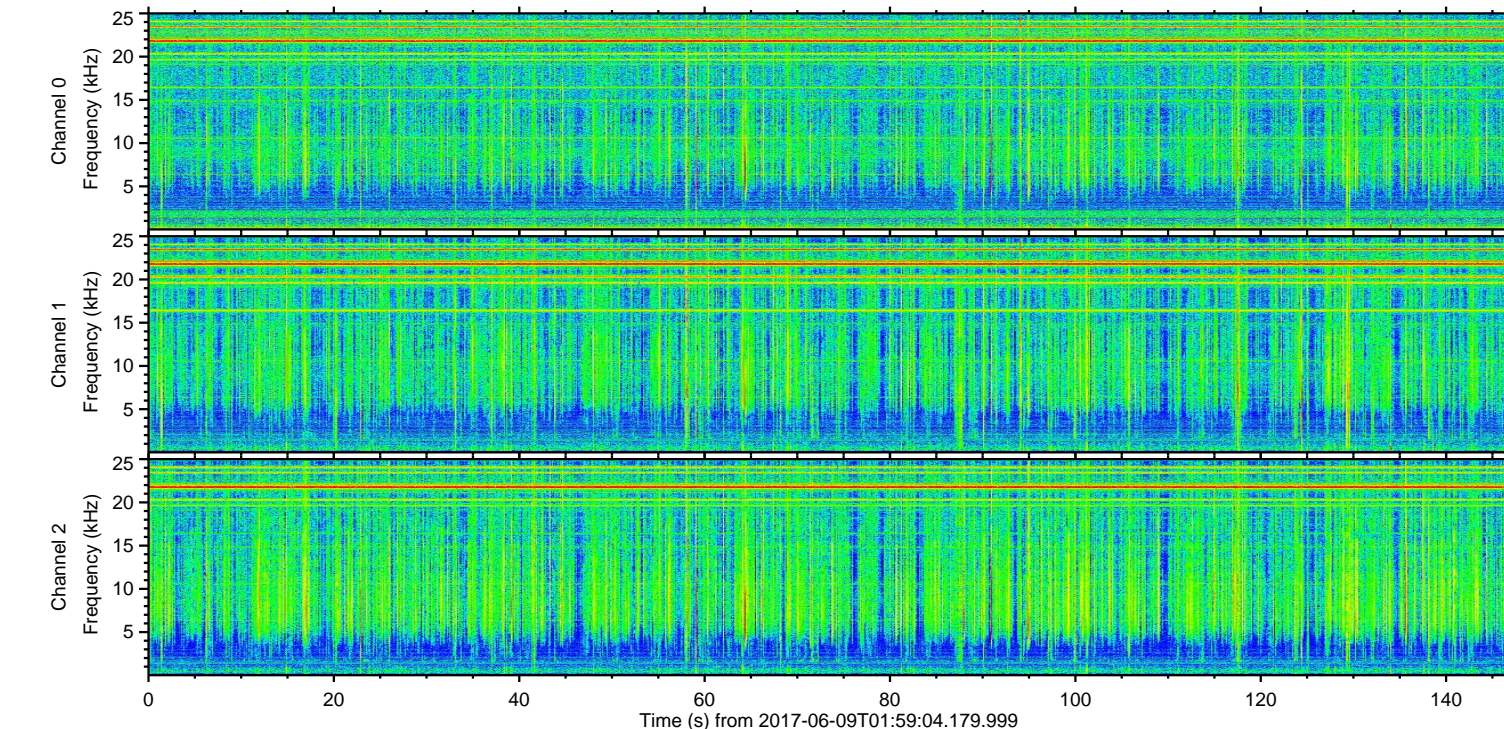
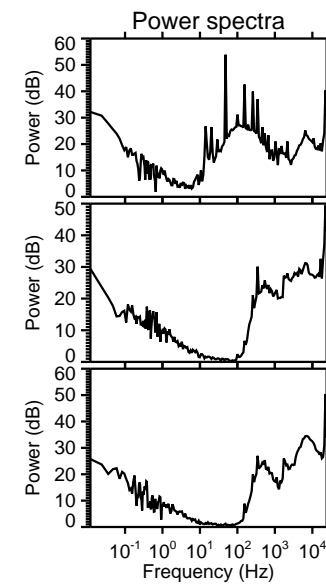
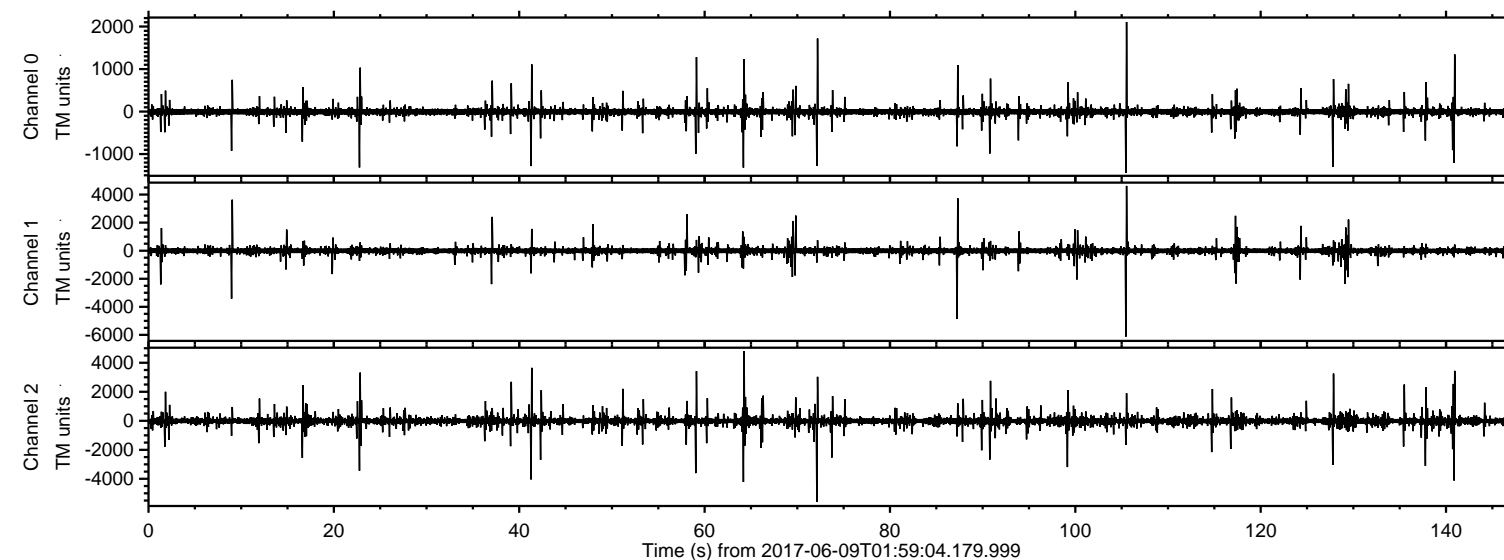


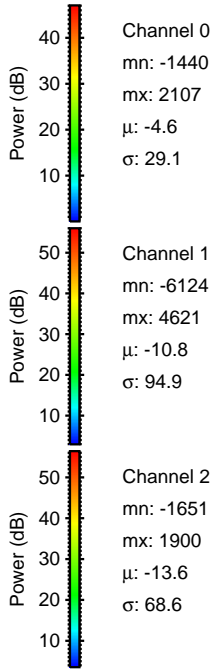
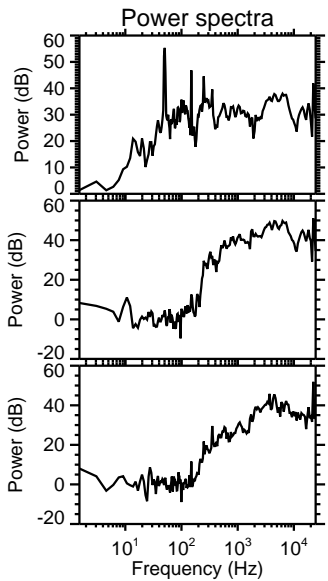
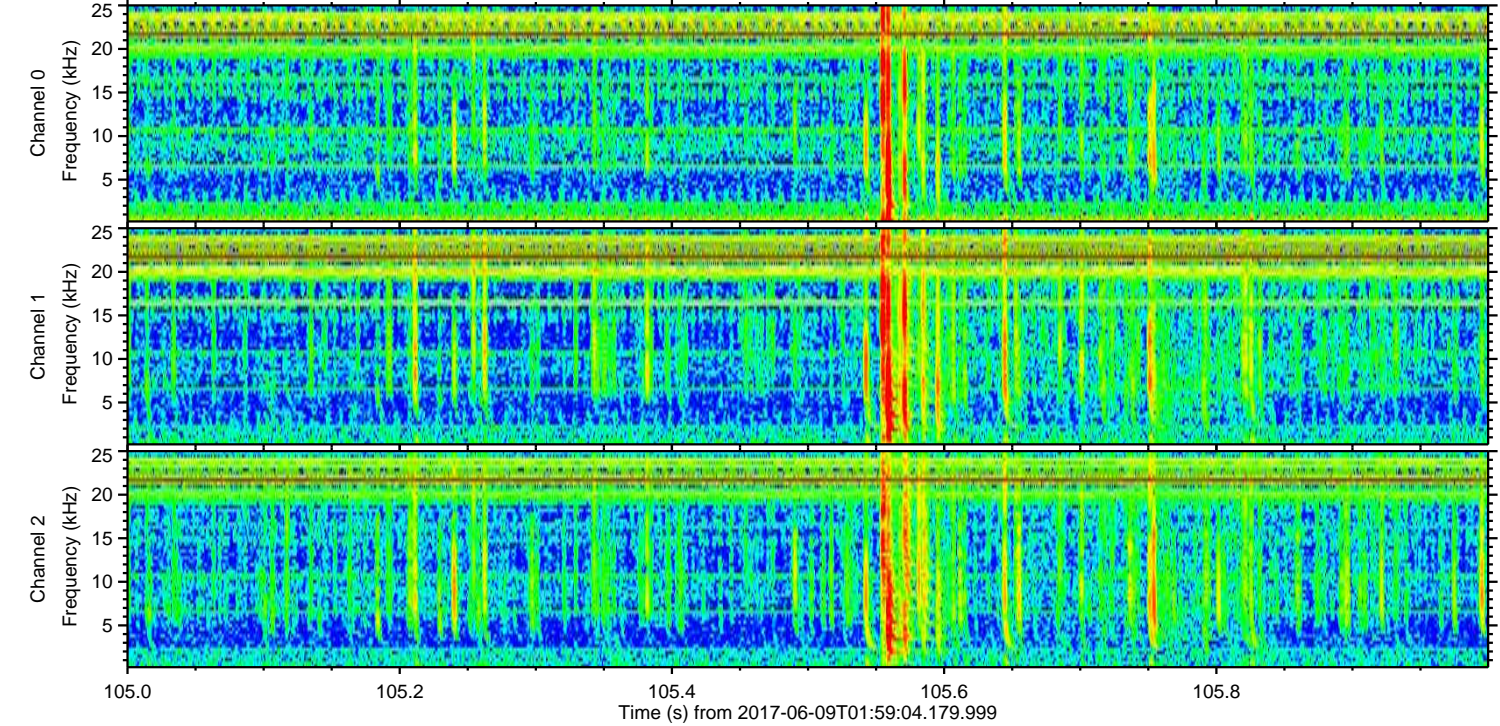
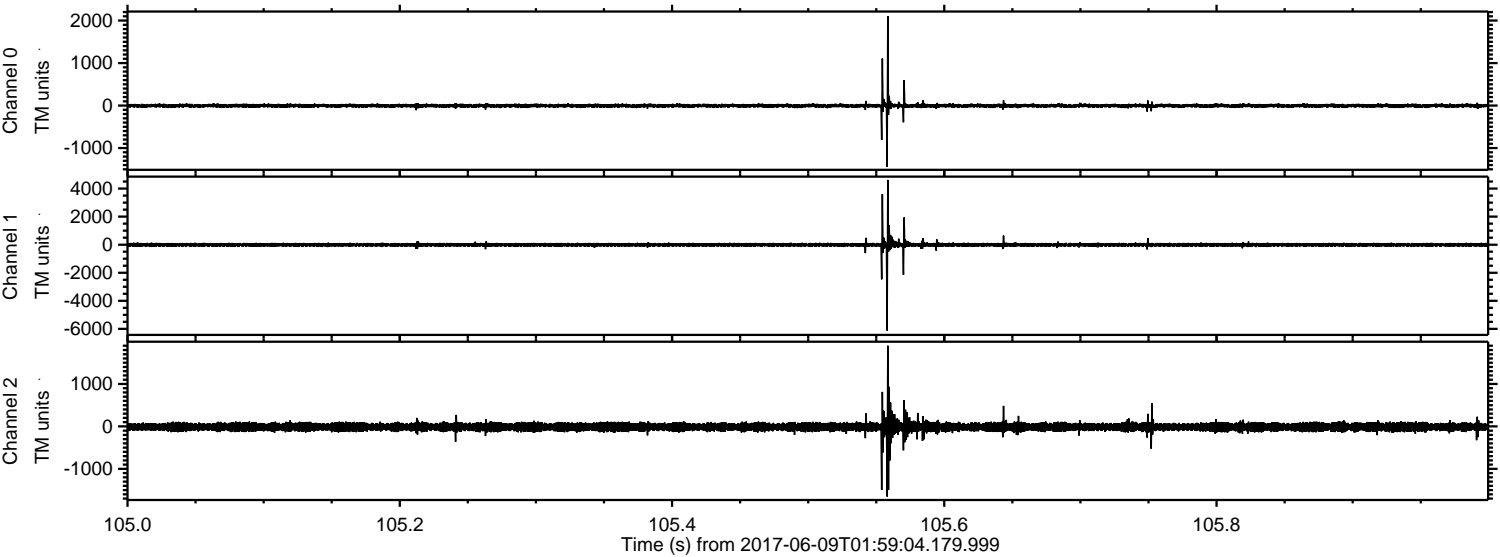
ELMAVAN 3D WAVEFORMS (Measured data sampled at 50 kHz) 51000 packets of 144 samples from 2017-06-09T01:59:04.179.999.

Processed Fri Jun 9 04:06:33 2017 by ELM ver.2012-10-06 from 001__elm20170609_015903__dat00.bin



ELMAVAN 3D WAVEFORMS (Measured data sampled at 50 kHz) 51000 packets of 144 samples from 2017-06-09T01:59:04.179.999. Part 106/147

Processed Fri Jun 9 04:06:39 2017 by ELM ver.2012-10-06 from 001__elm20170609_015903__dat00.bin



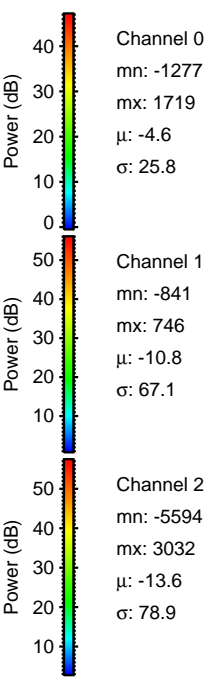
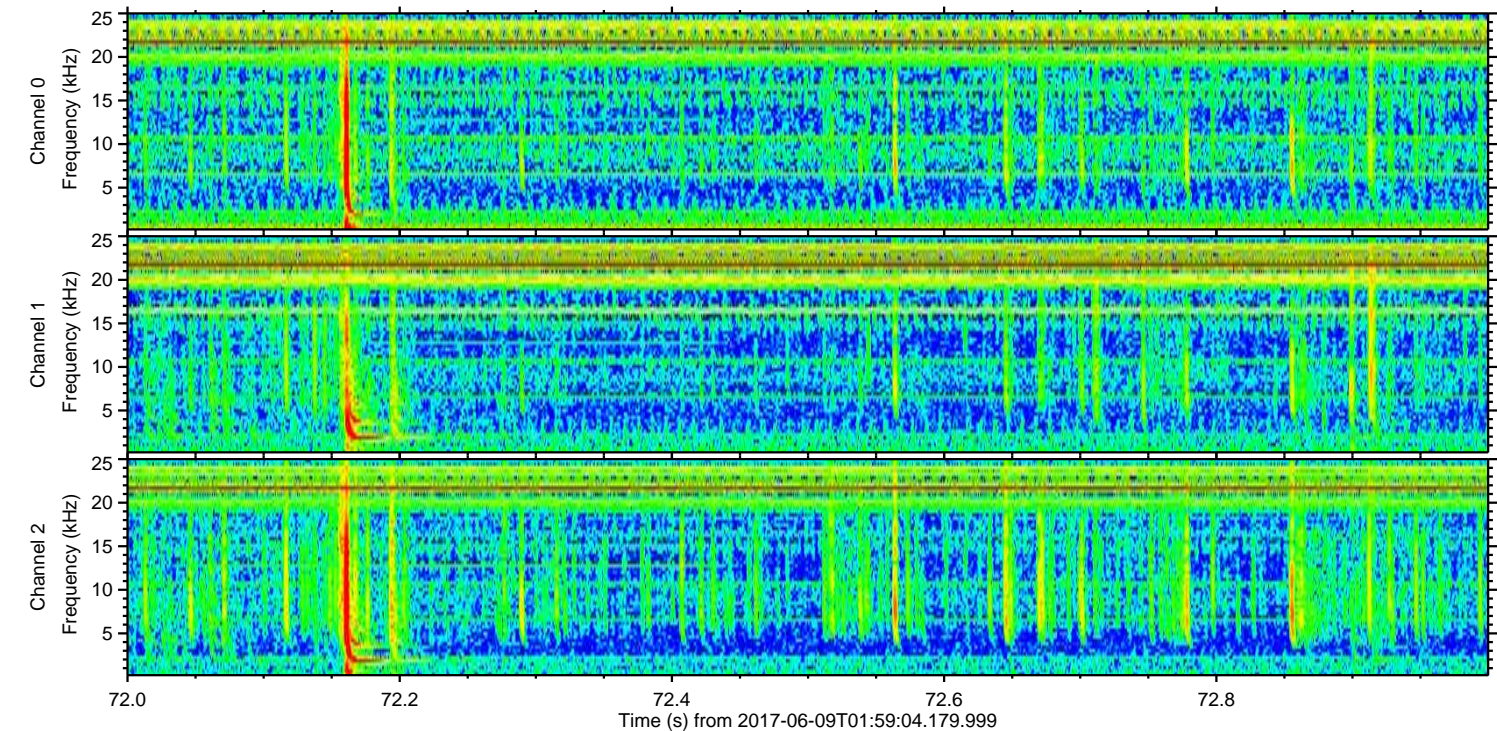
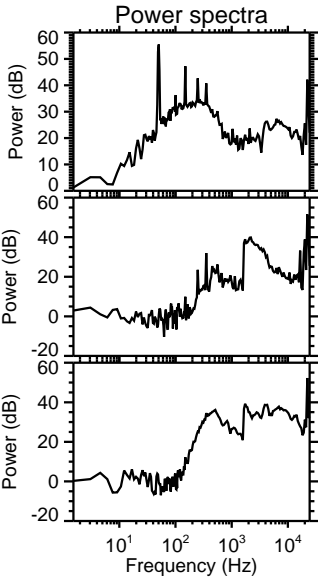
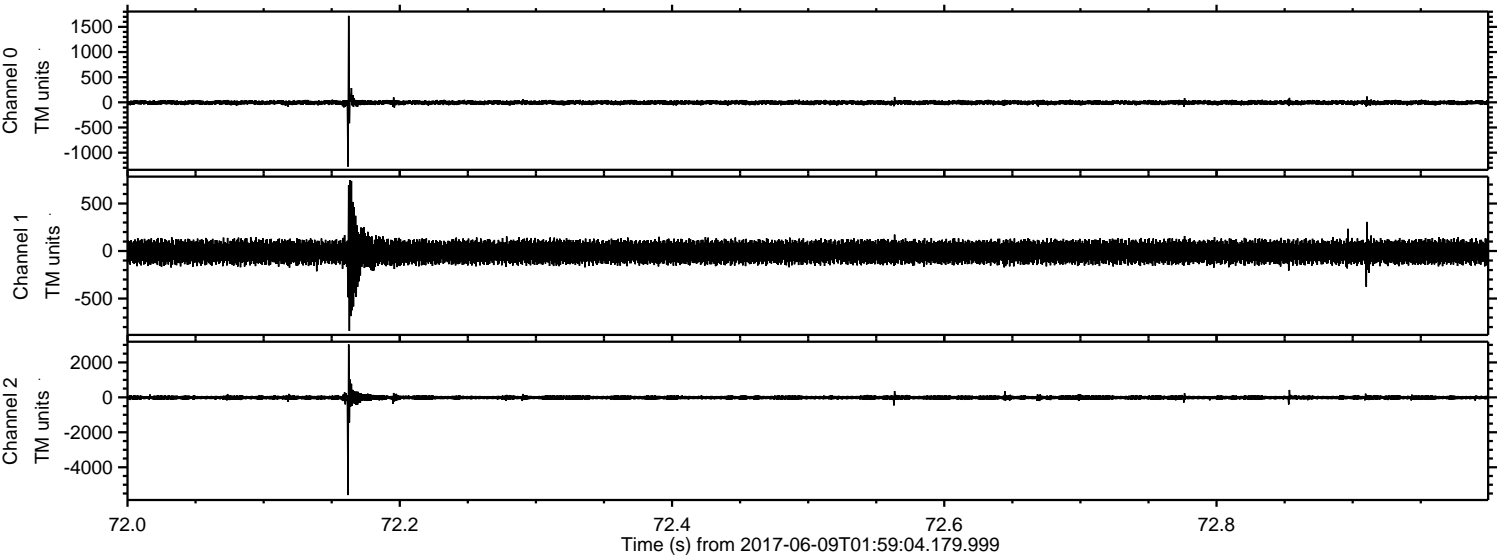
Channel 0
mn: -1440
mx: 2107
 μ : -4.6
 σ : 29.1

Channel 1
mn: -6124
mx: 4621
 μ : -10.8
 σ : 94.9

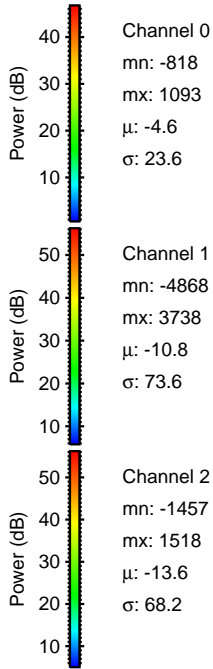
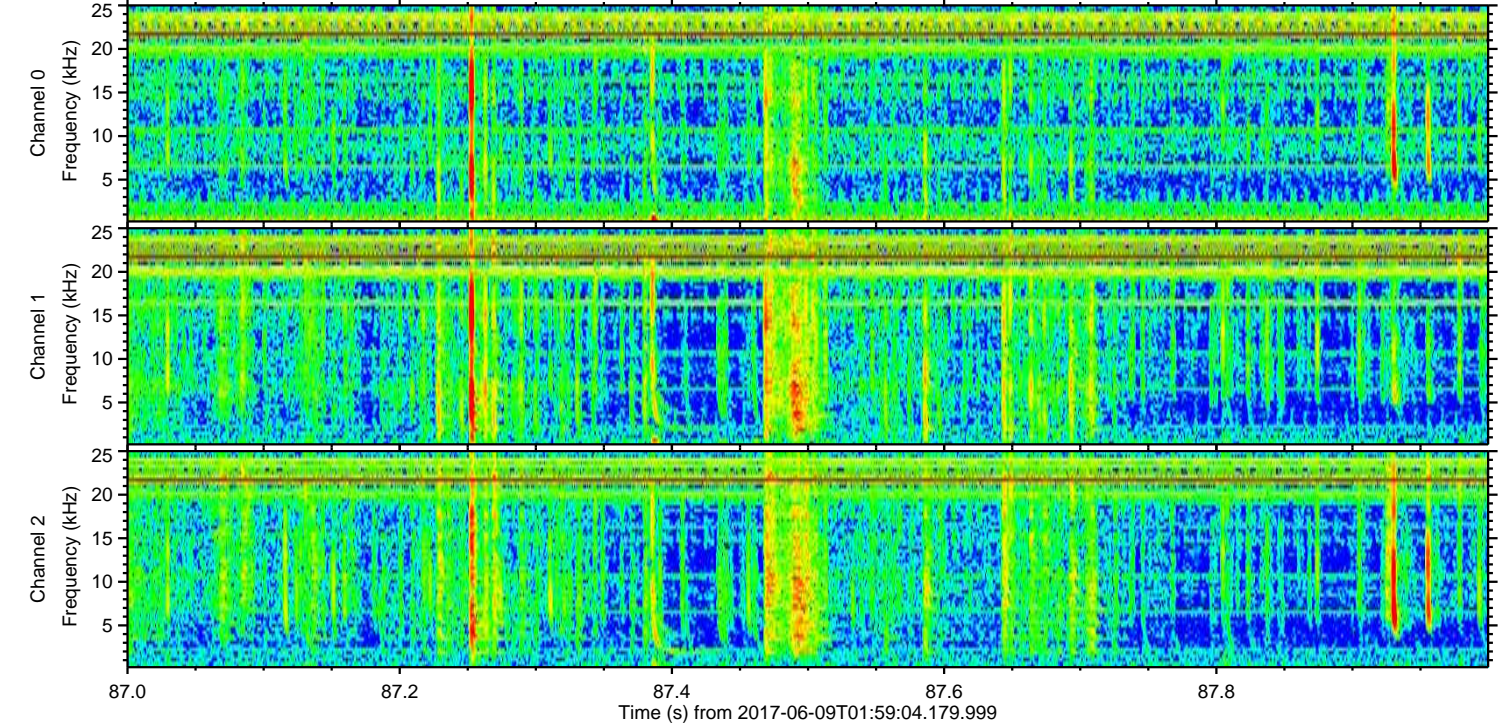
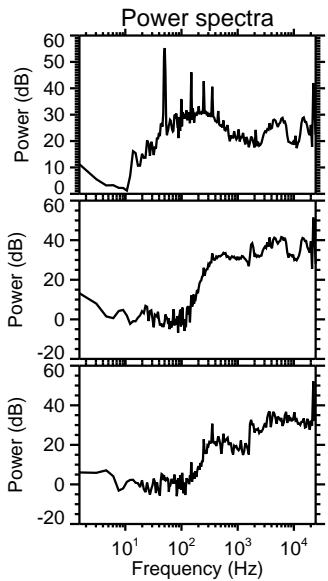
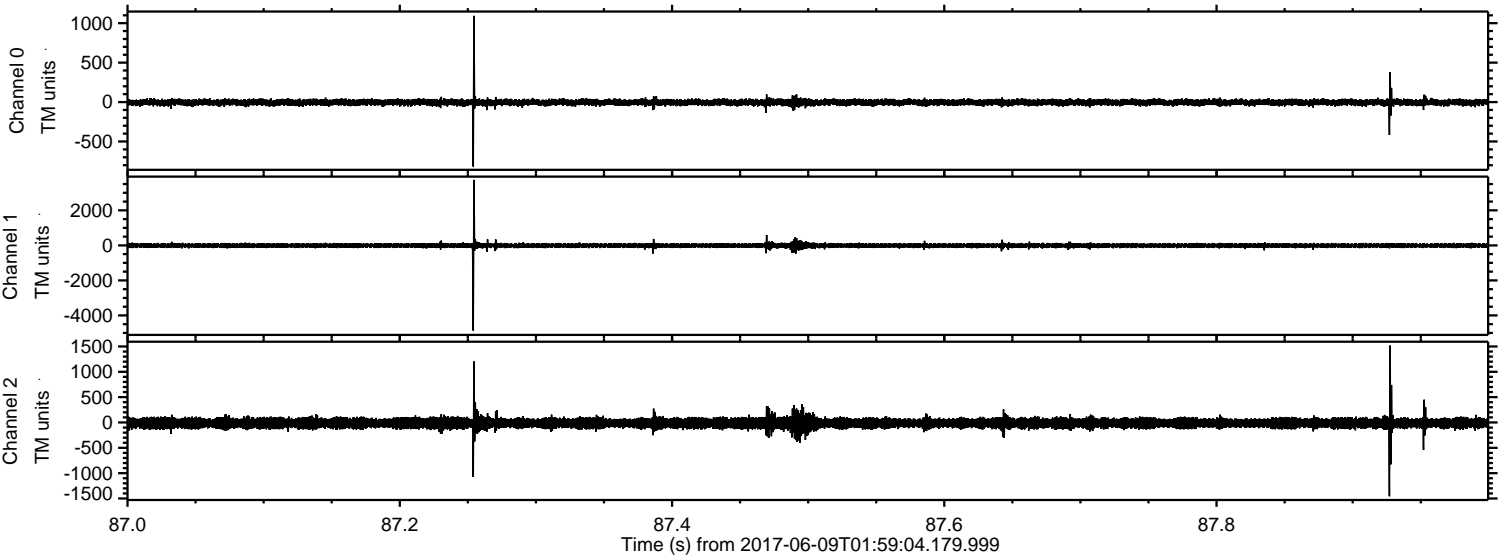
Channel 2
mn: -1651
mx: 1900
 μ : -13.6
 σ : 68.6

ELMAVAN 3D WAVEFORMS (Measured data sampled at 50 kHz) 51000 packets of 144 samples from 2017-06-09T01:59:04.179.999. Part 73/147

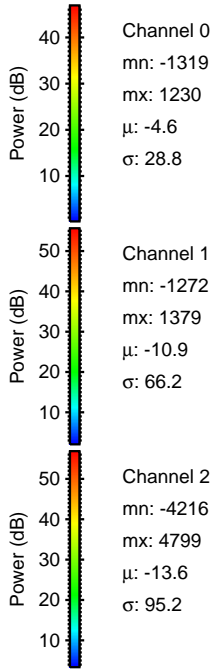
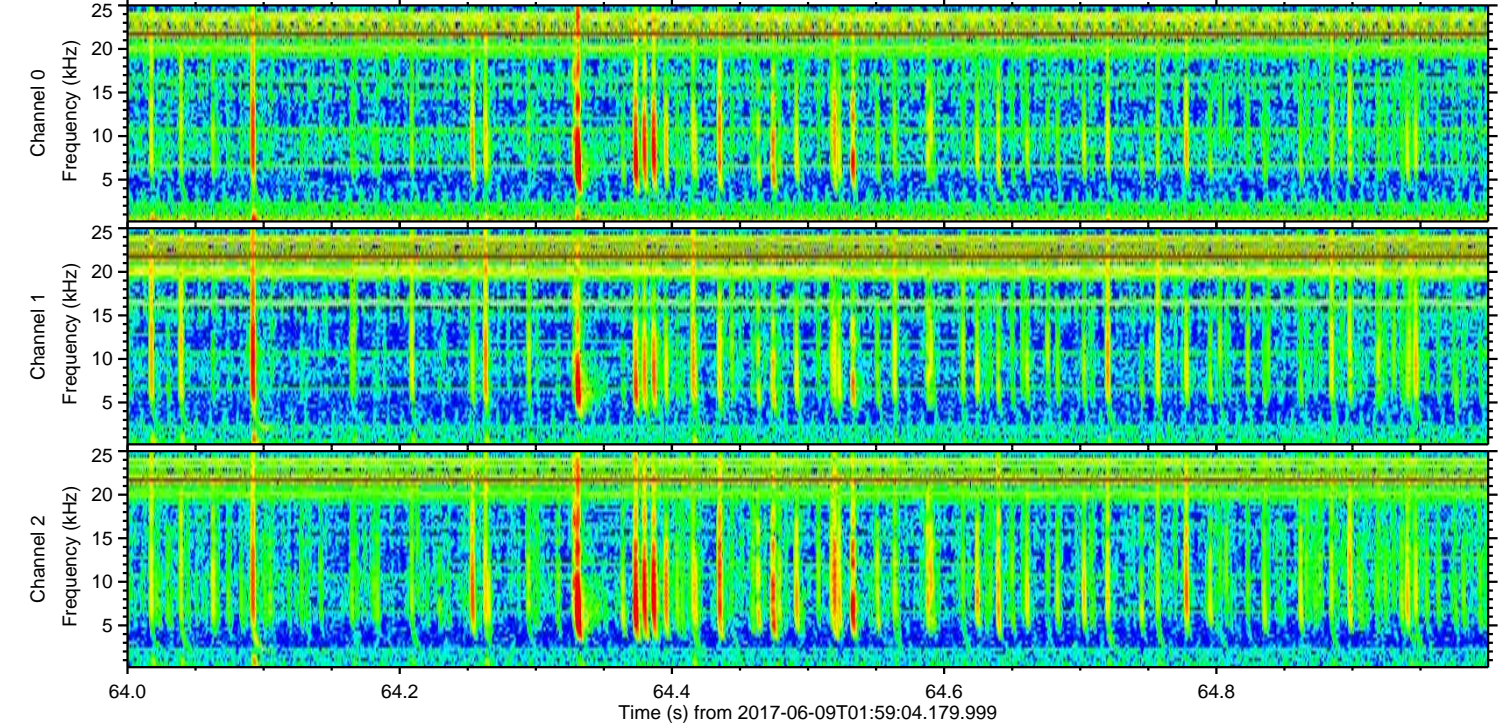
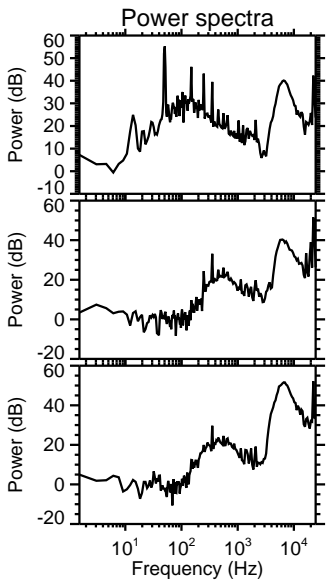
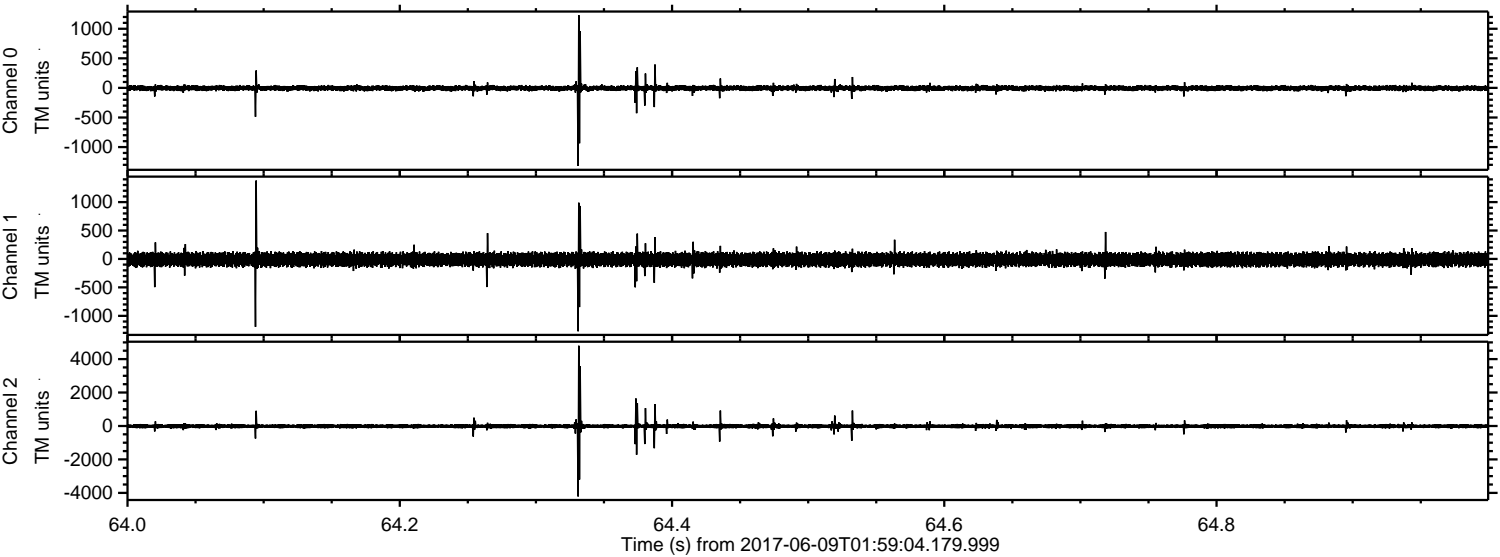
Processed Fri Jun 9 04:06:40 2017 by ELM ver.2012-10-06 from 001__elm20170609_015903__dat00.bin



Processed Fri Jun 9 04:06:41 2017 by ELM ver.2012-10-06 from 001__elm20170609_015903__dat00.bin



Processed Fri Jun 9 04:06:41 2017 by ELM ver.2012-10-06 from 001__elm20170609_015903__dat00.bin



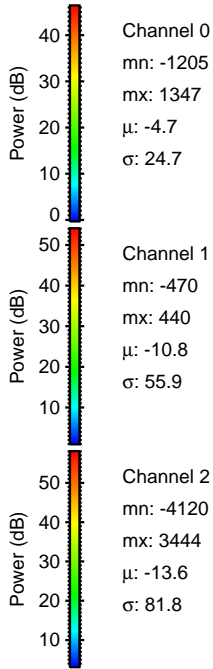
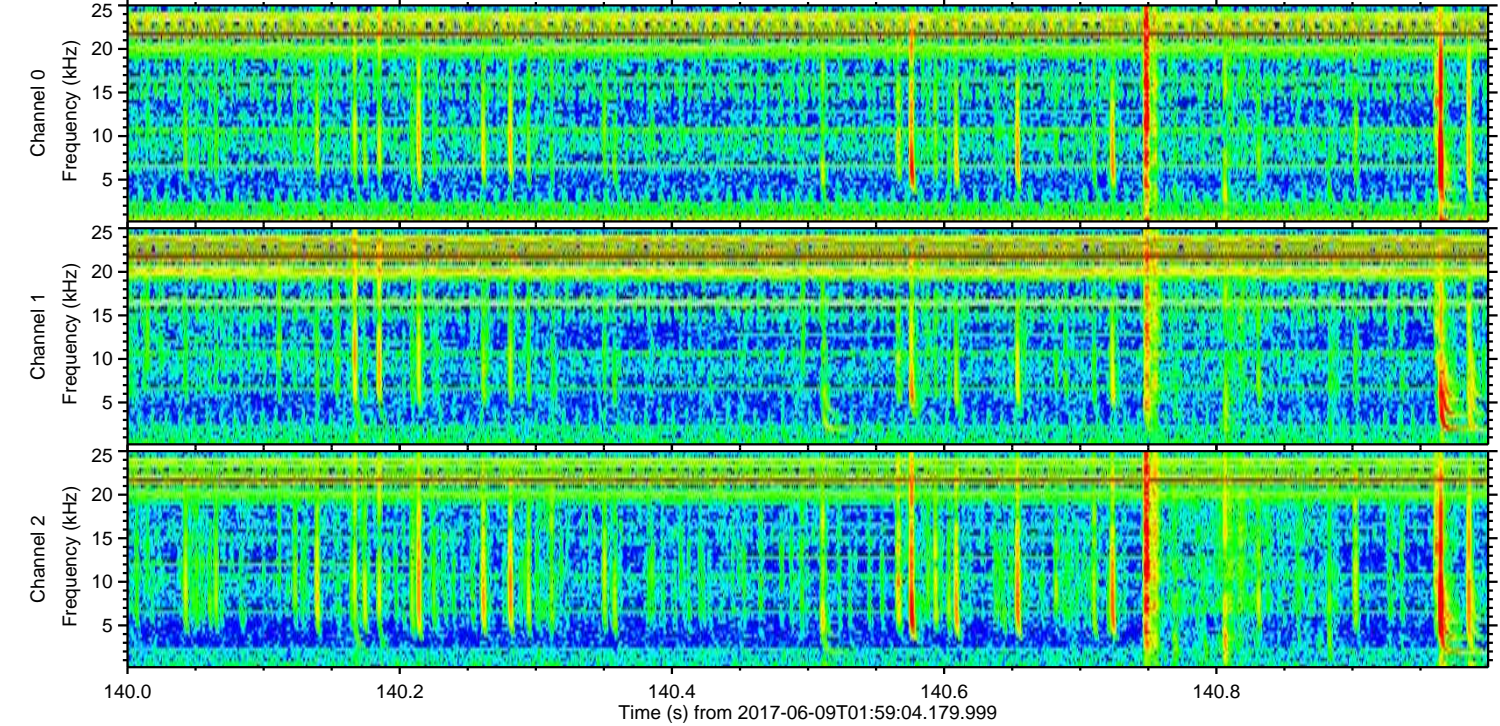
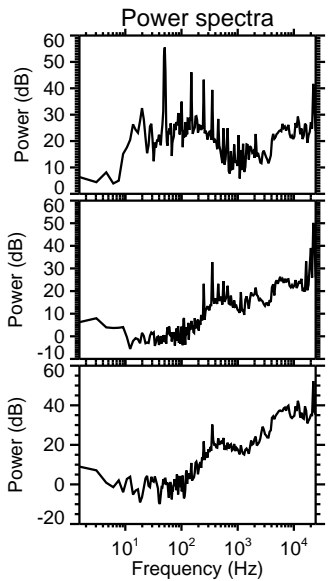
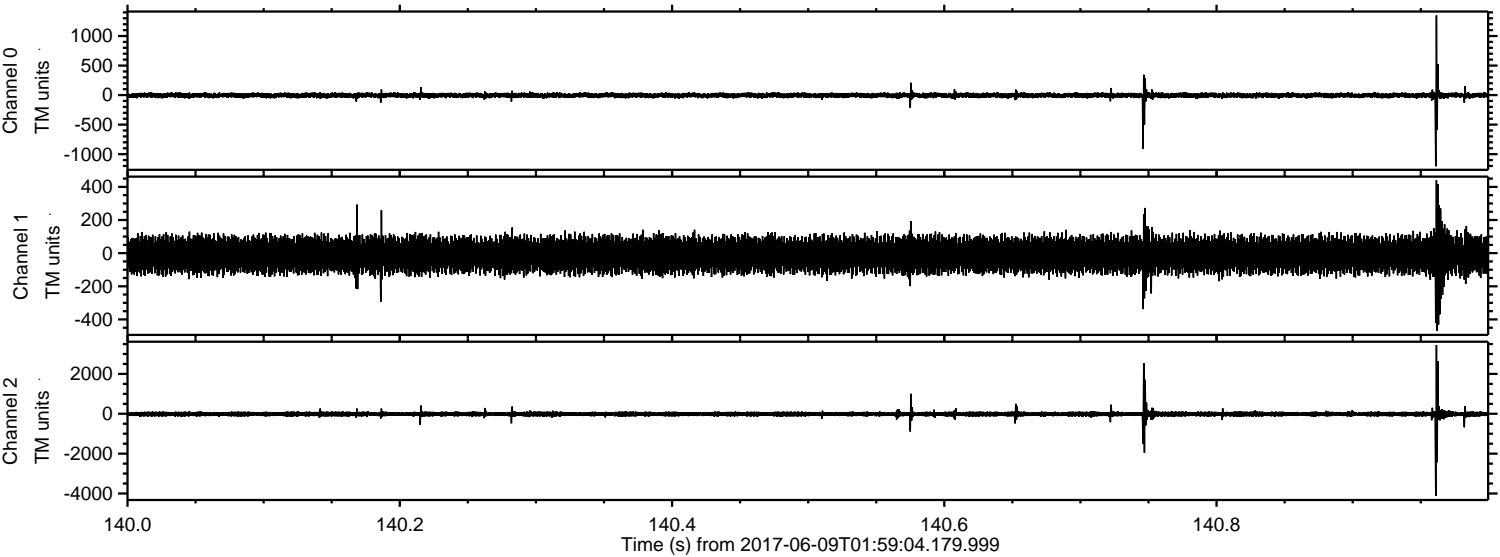
Channel 0
mn: -1319
mx: 1230
 μ : -4.6
 σ : 28.8

Channel 1
mn: -1272
mx: 1379
 μ : -10.9
 σ : 66.2

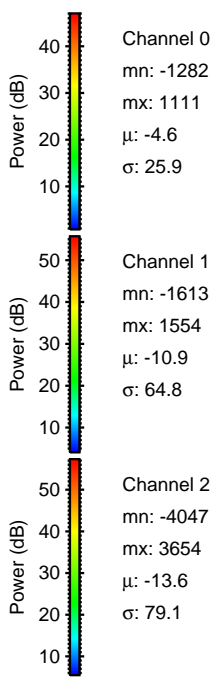
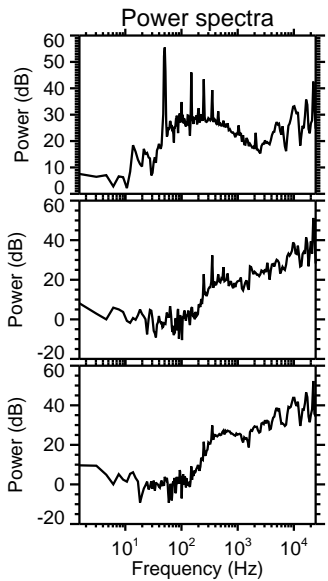
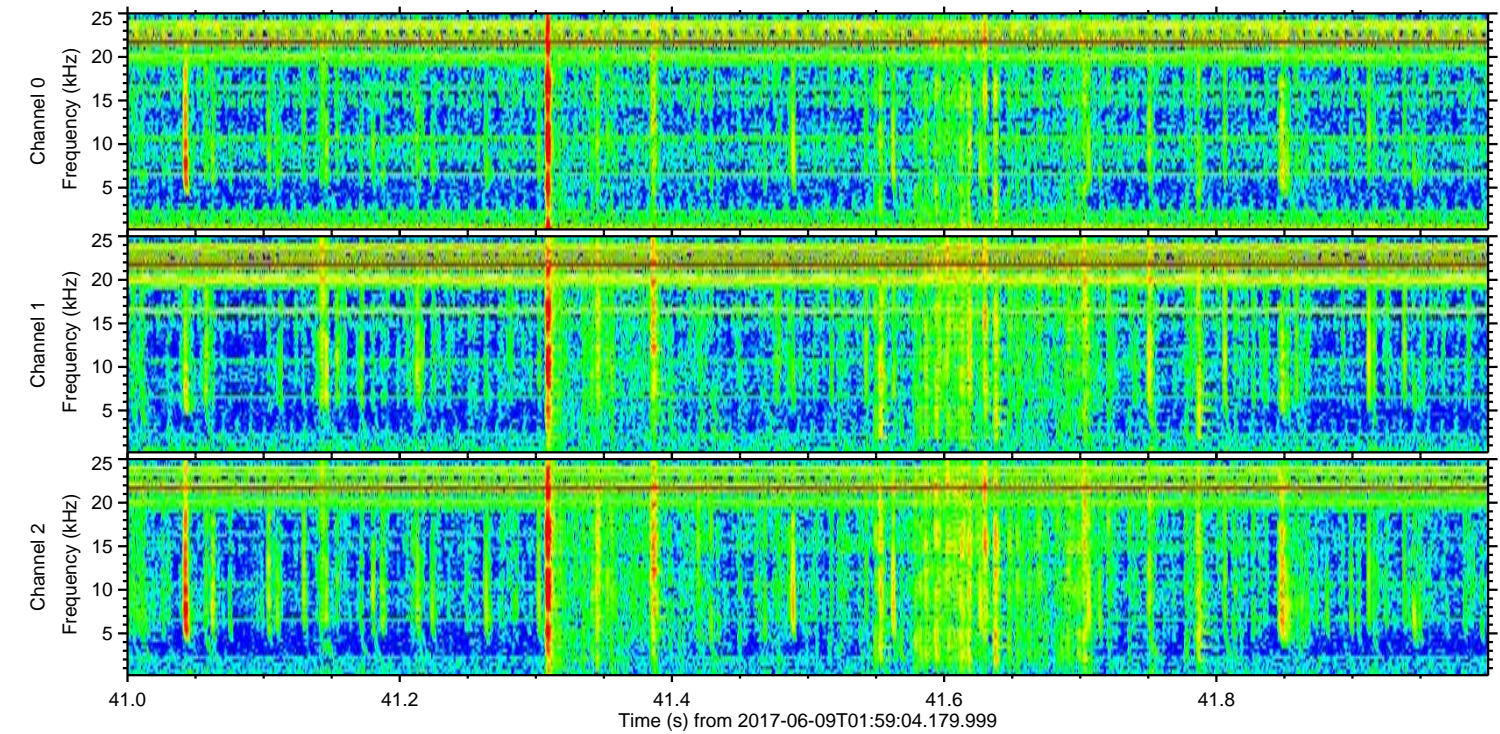
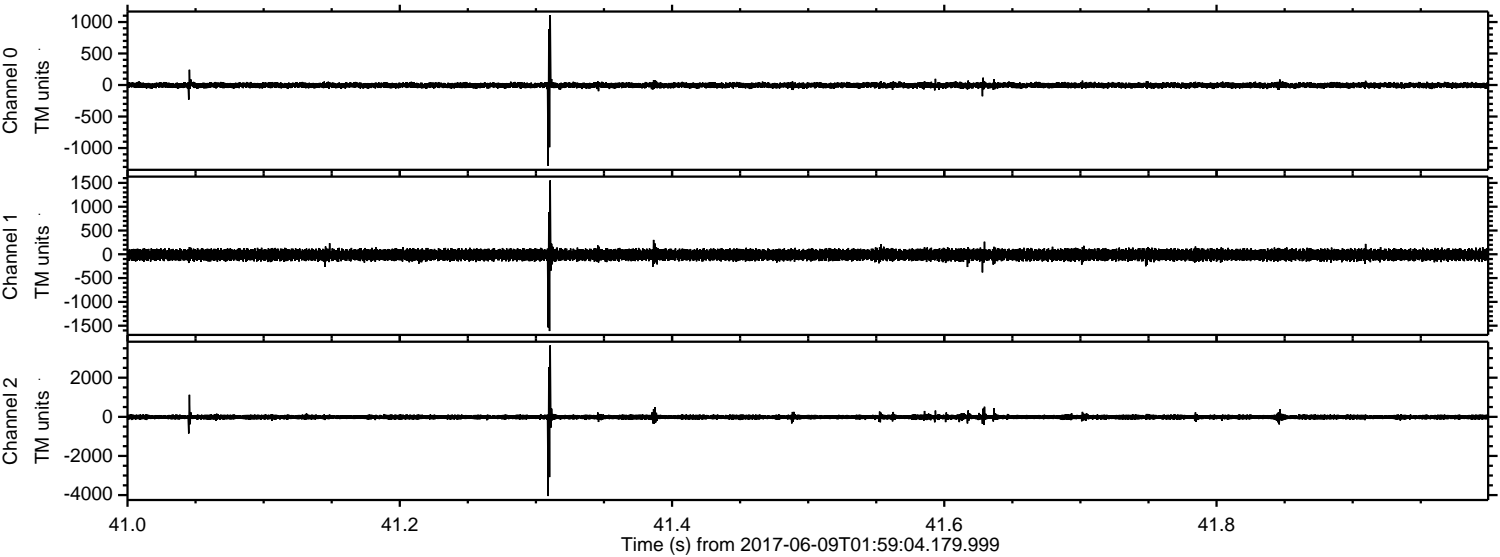
Channel 2
mn: -4216
mx: 4799
 μ : -13.6
 σ : 95.2

ELMAVAN 3D WAVEFORMS (Measured data sampled at 50 kHz) 51000 packets of 144 samples from 2017-06-09T01:59:04.179.999. Part 141/147

Processed Fri Jun 9 04:06:42 2017 by ELM ver.2012-10-06 from 001__elm20170609_015903__dat00.bin



Processed Fri Jun 9 04:06:43 2017 by ELM ver.2012-10-06 from 001__elm20170609_015903__dat00.bin

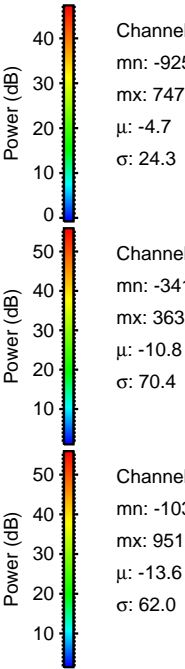
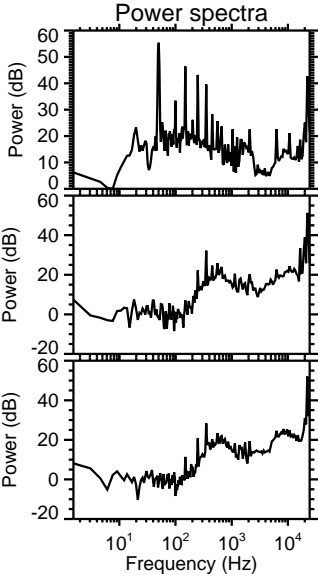
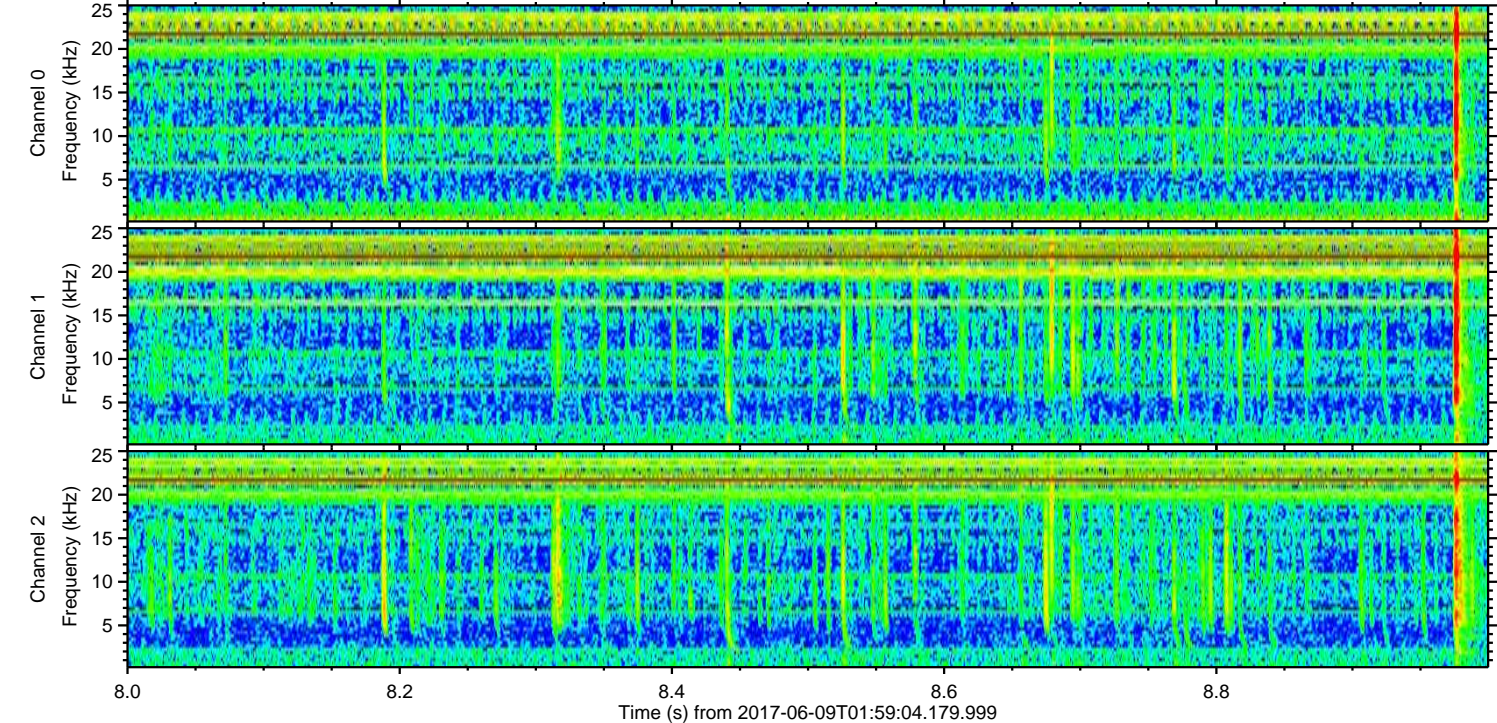
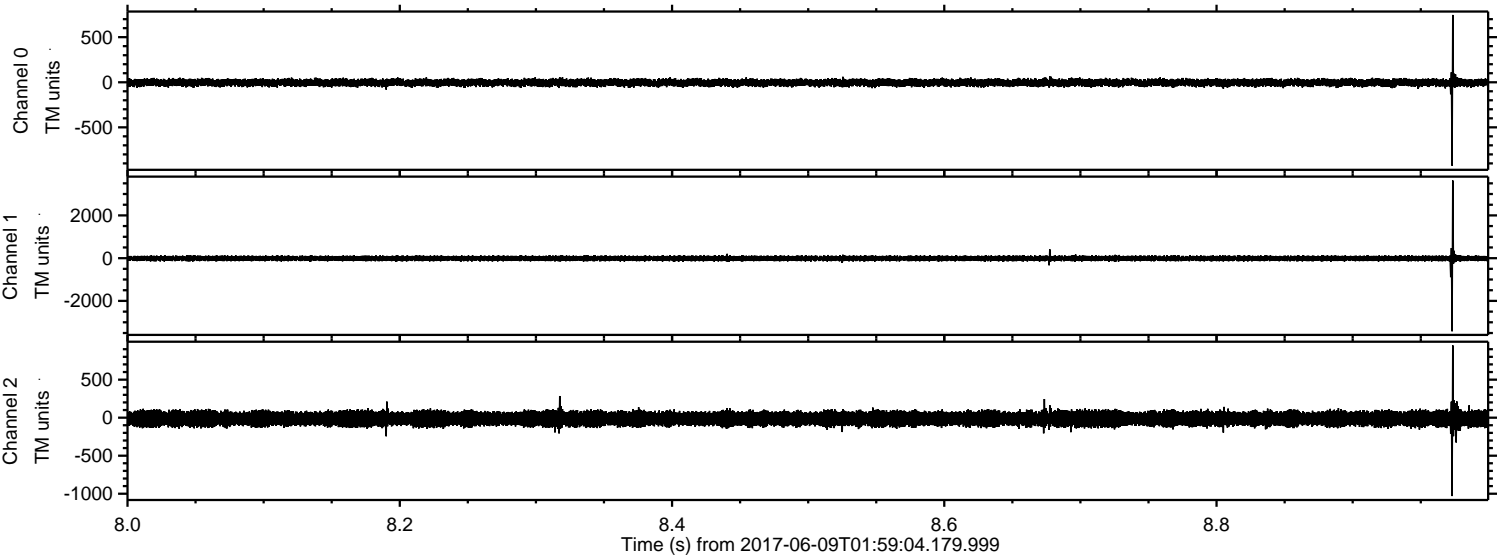


Channel 0
mn: -1282
mx: 1111
 μ : -4.6
 σ : 25.9

Channel 1
mn: -1613
mx: 1554
 μ : -10.9
 σ : 64.8

Channel 2
mn: -4047
mx: 3654
 μ : -13.6
 σ : 79.1

Processed Fri Jun 9 04:06:43 2017 by ELM ver.2012-10-06 from 001__elm20170609_015903__dat00.bin

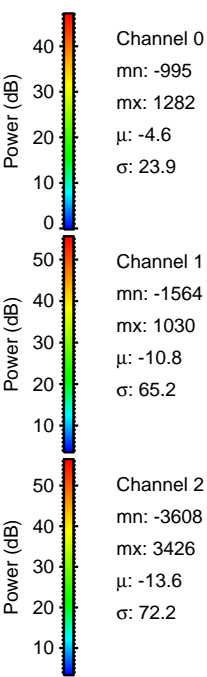
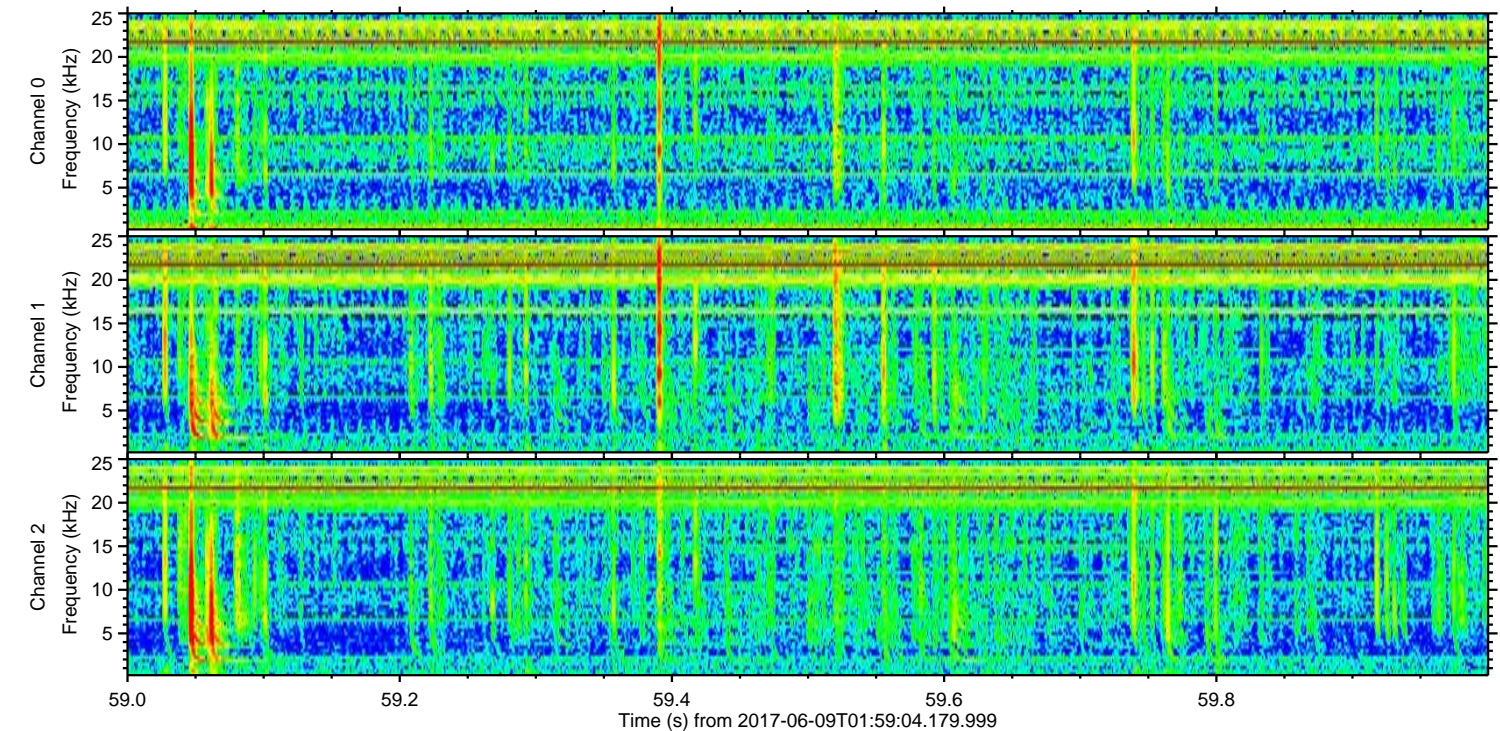
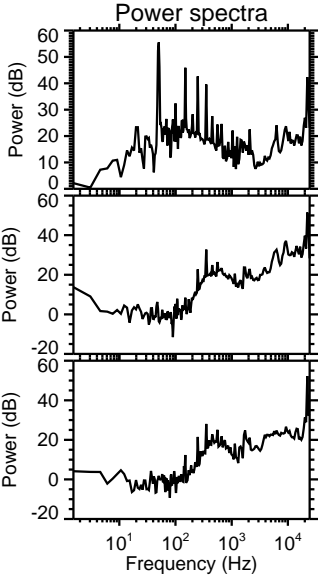
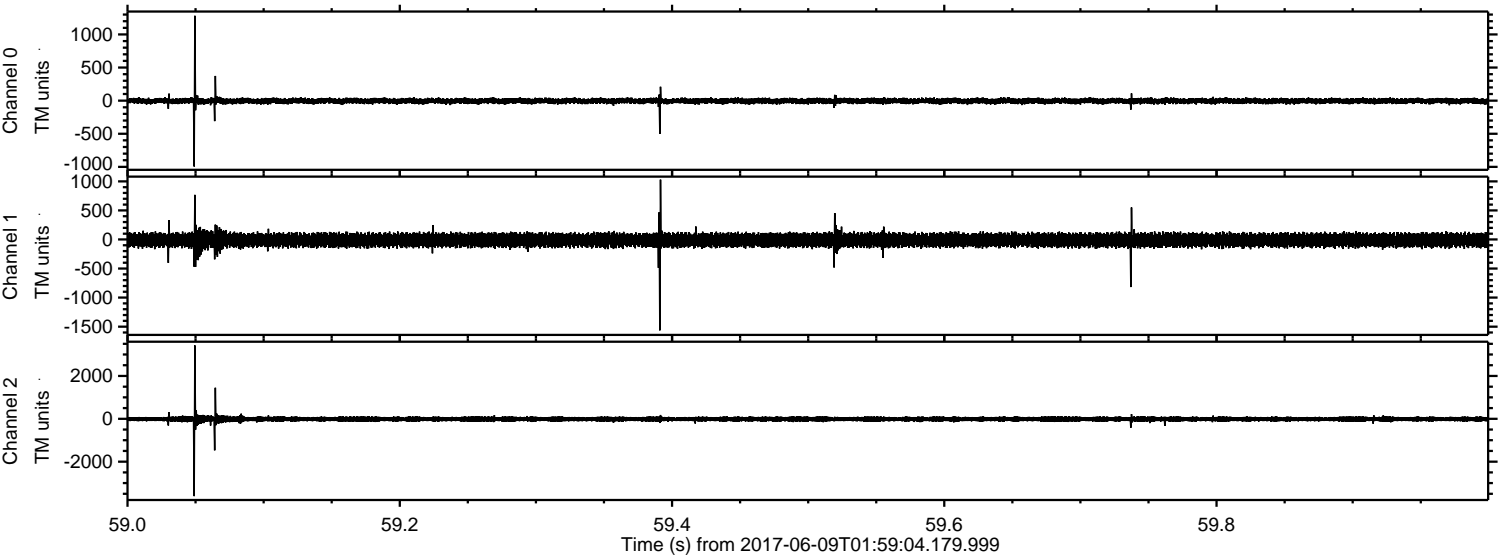


Channel 0
mn: -925
mx: 747
 μ : -4.7
 σ : 24.3

Channel 1
mn: -3419
mx: 3632
 μ : -10.8
 σ : 70.4

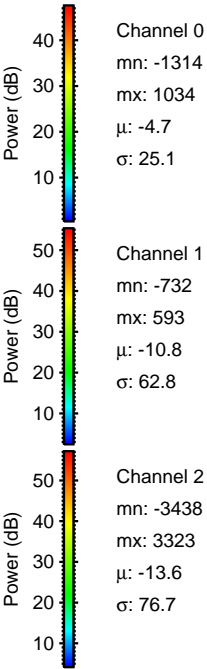
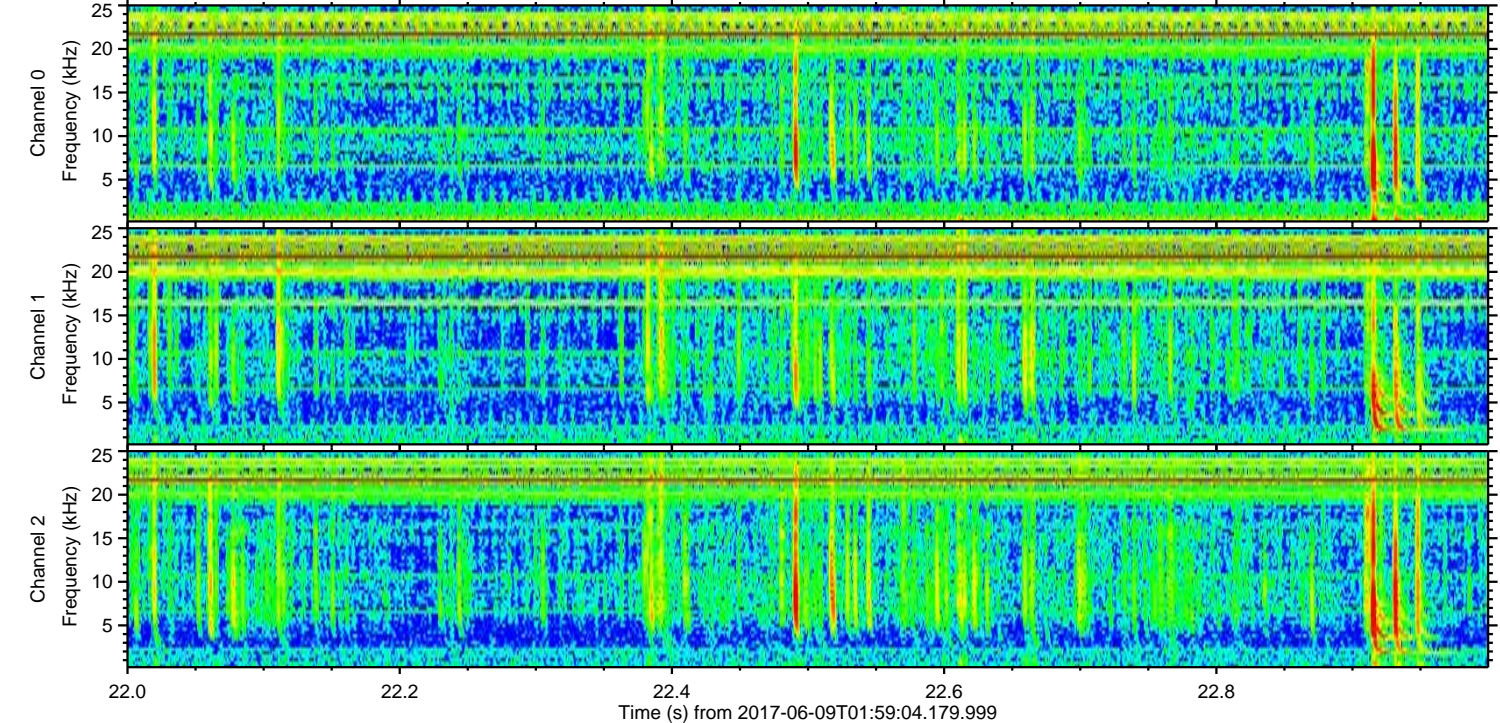
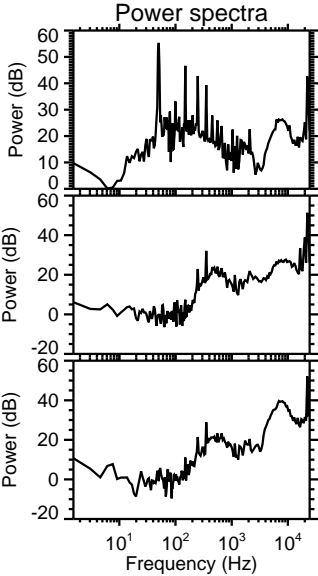
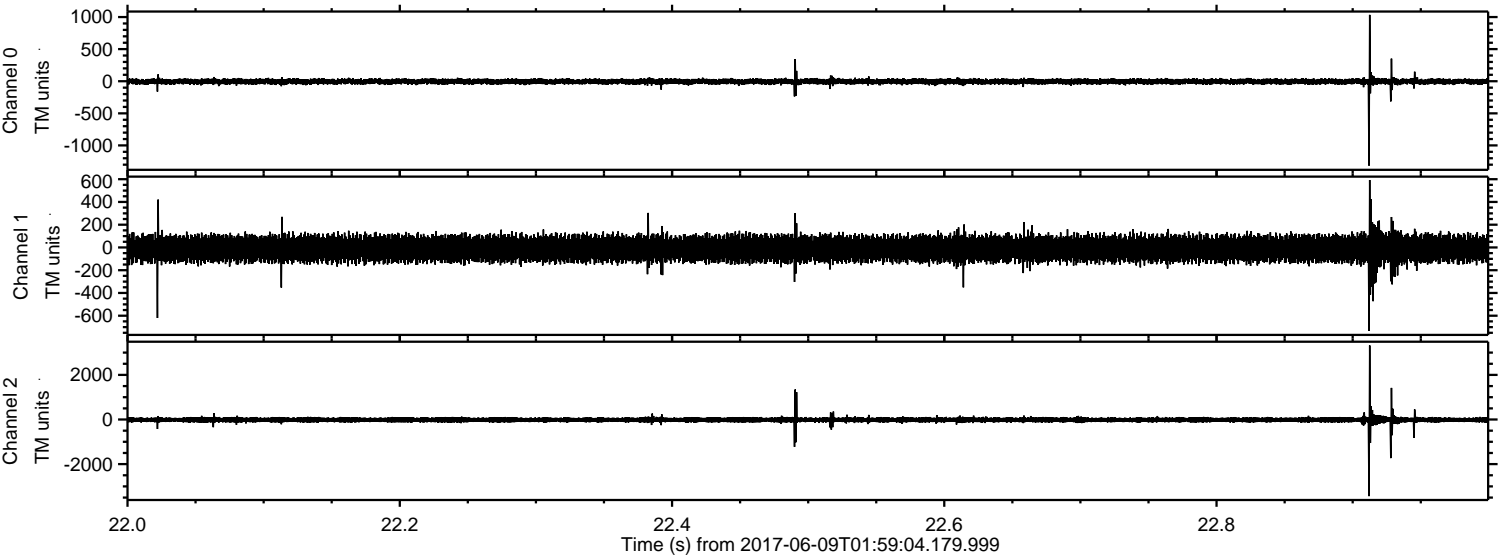
Channel 2
mn: -1031
mx: 951
 μ : -13.6
 σ : 62.0

Processed Fri Jun 9 04:06:44 2017 by ELM ver.2012-10-06 from 001__elm20170609_015903__dat00.bin



ELMAVAN 3D WAVEFORMS (Measured data sampled at 50 kHz) 51000 packets of 144 samples from 2017-06-09T01:59:04.179.999. Part 23/147

Processed Fri Jun 9 04:06:45 2017 by ELM ver.2012-10-06 from 001__elm20170609_015903__dat00.bin



ELMAVAN 3D WAVEFORMS (Measured data sampled at 50 kHz) 51000 packets of 144 samples from 2017-06-09T01:59:04.179.999. Part 110/147

