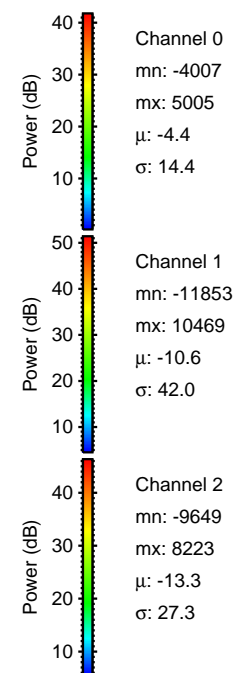
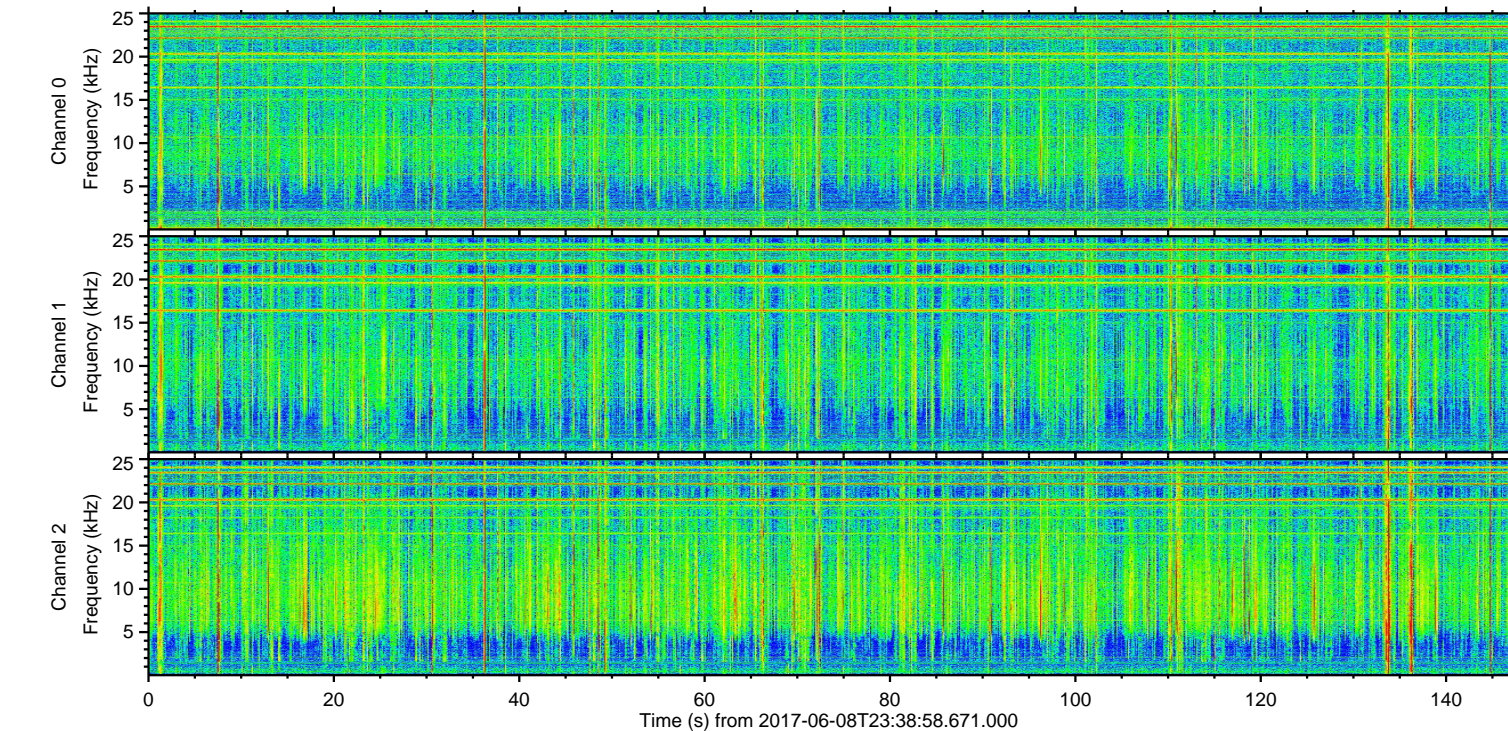
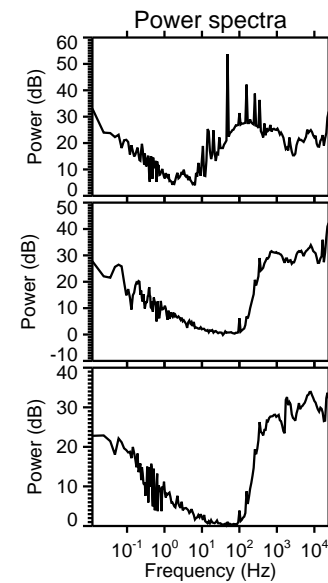
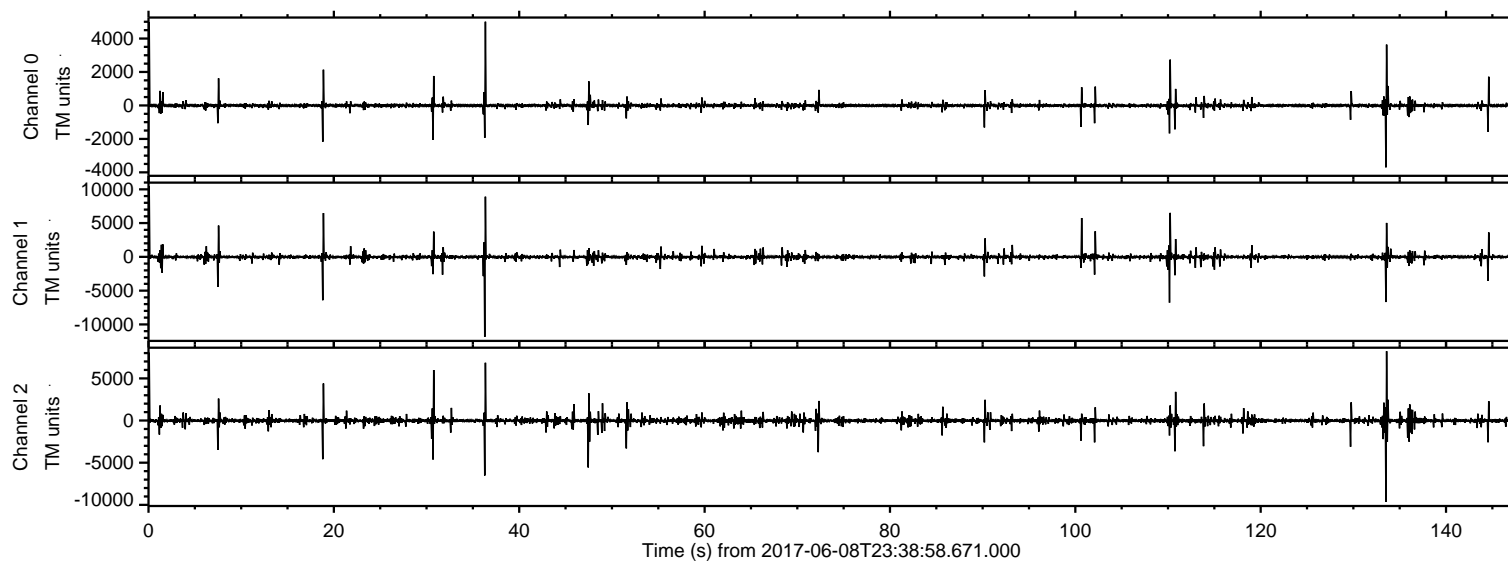
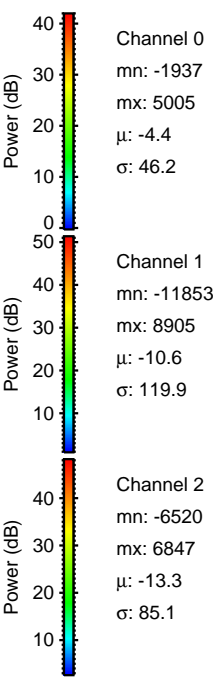
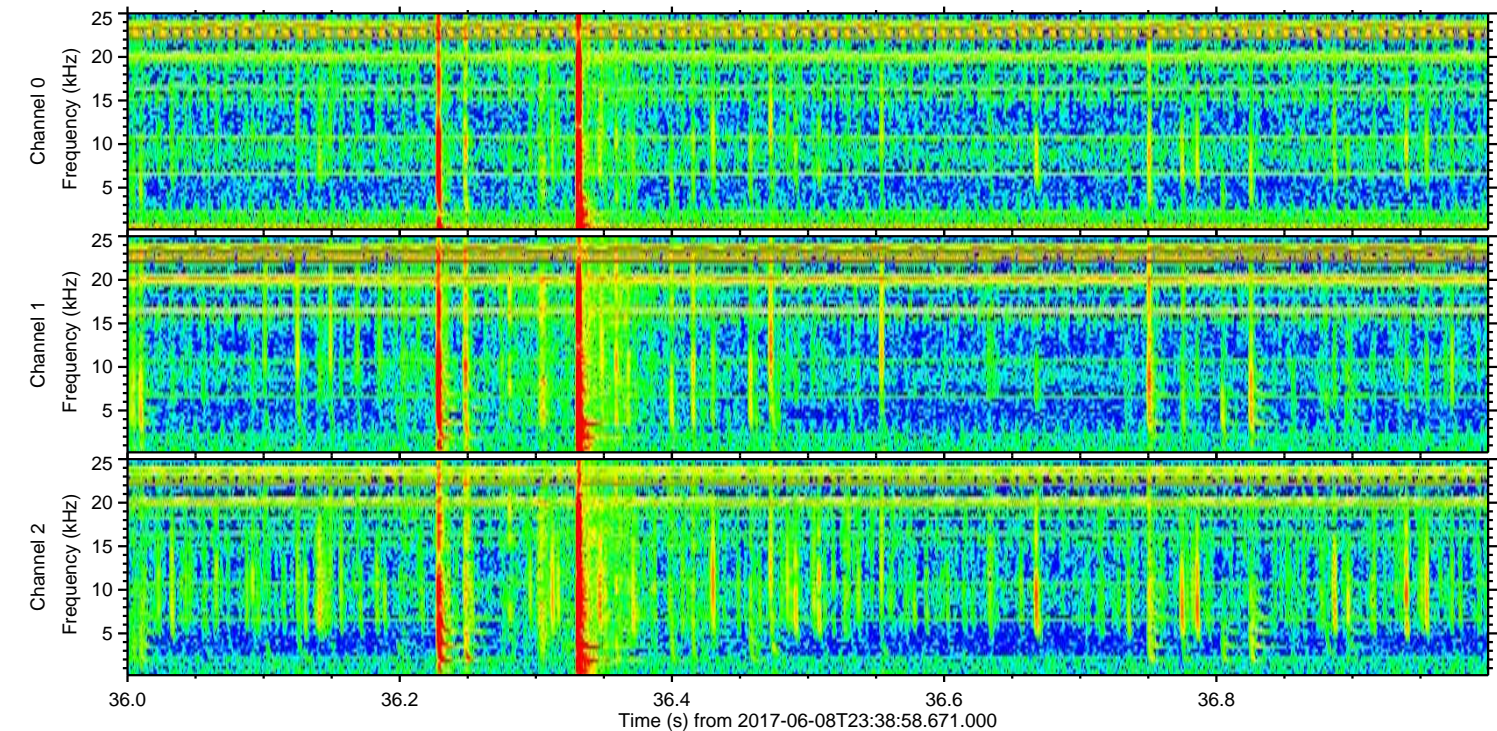
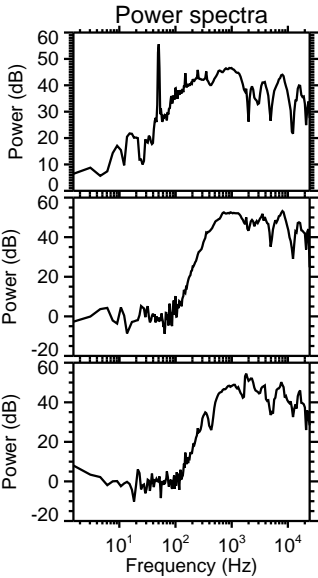
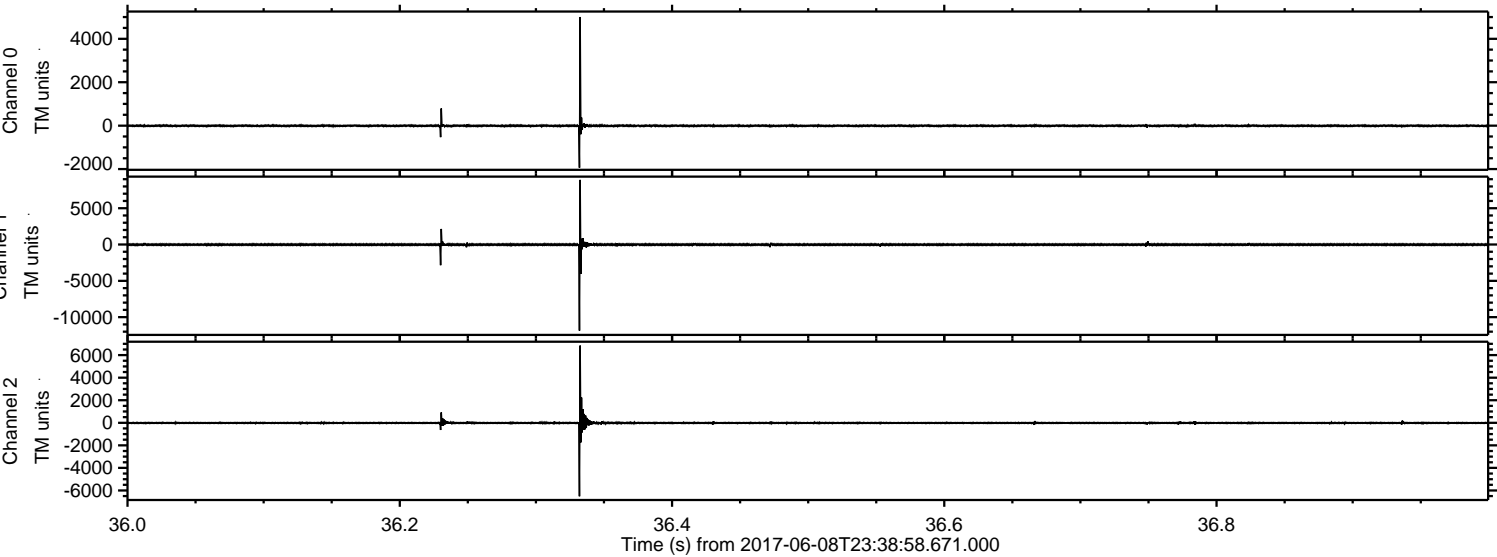


ELMAVAN 3D WAVEFORMS (Measured data sampled at 50 kHz) 51000 packets of 144 samples from 2017-06-08T23:38:58.671.000.

Processed Fri Jun 9 01:46:42 2017 by ELM ver.2012-10-06 from 001__elm20170608_233857__dat00.bin

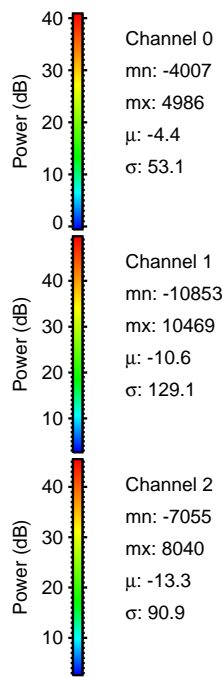
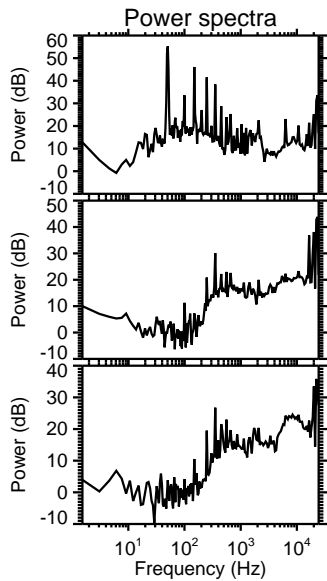
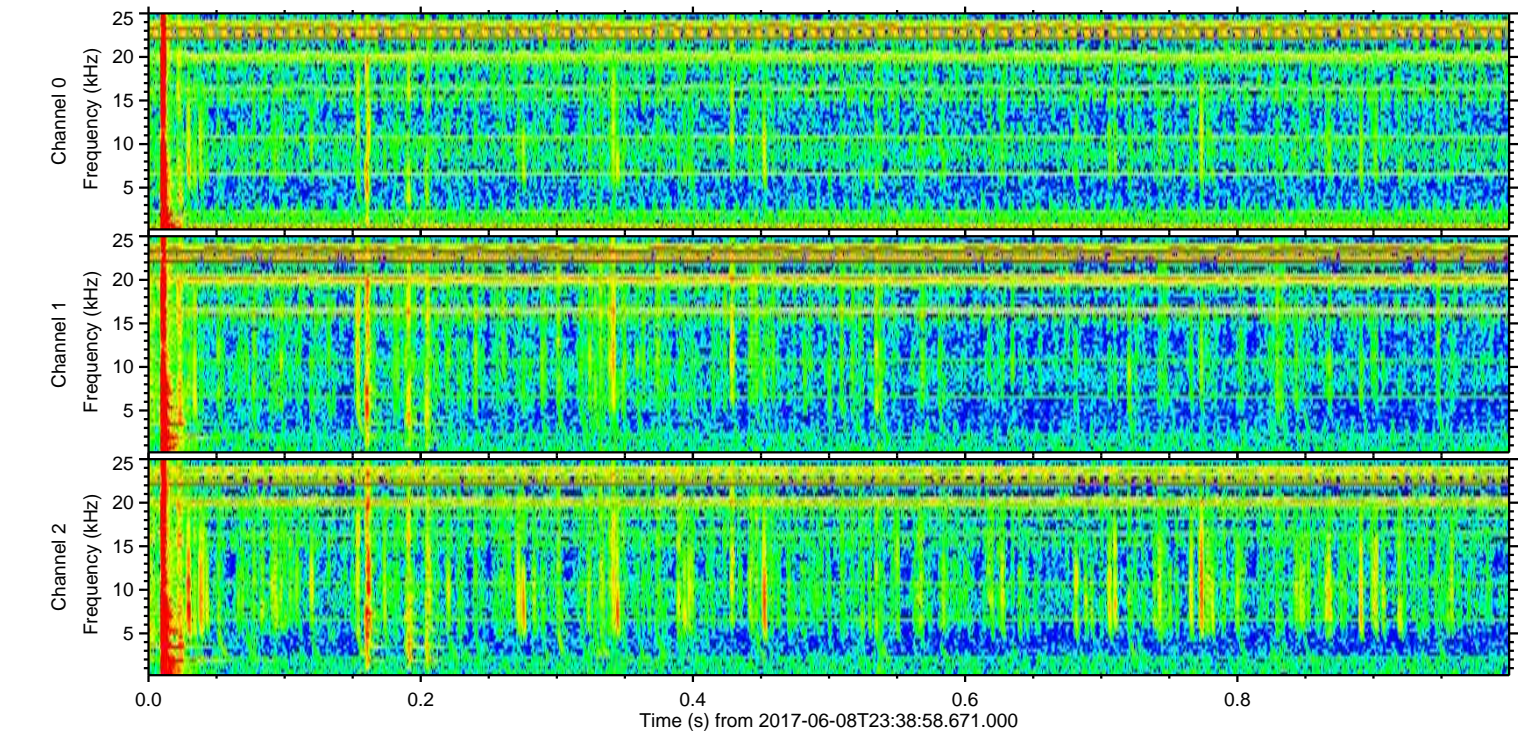
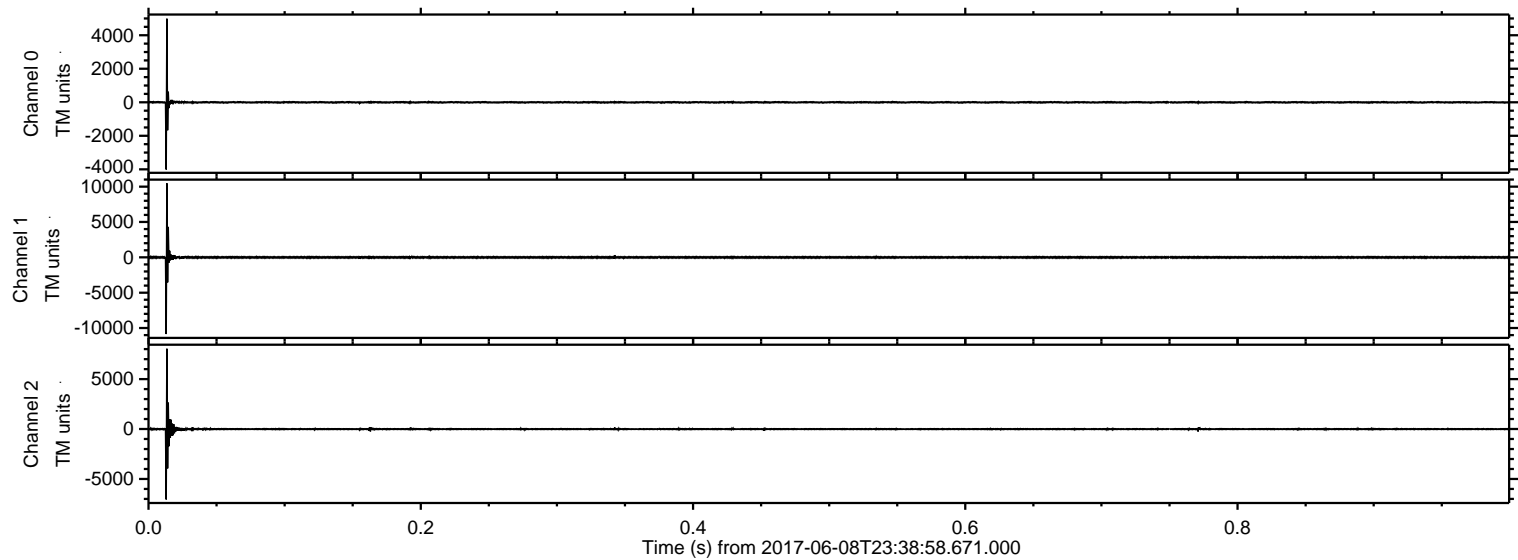


Processed Fri Jun 9 01:46:48 2017 by ELM ver.2012-10-06 from 001__elm20170608_233857__dat00.bin



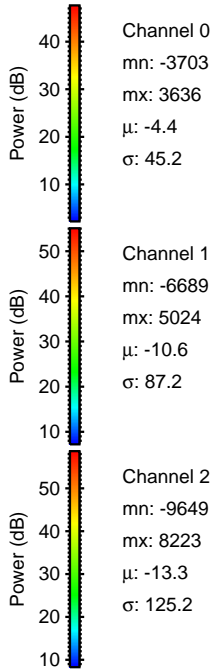
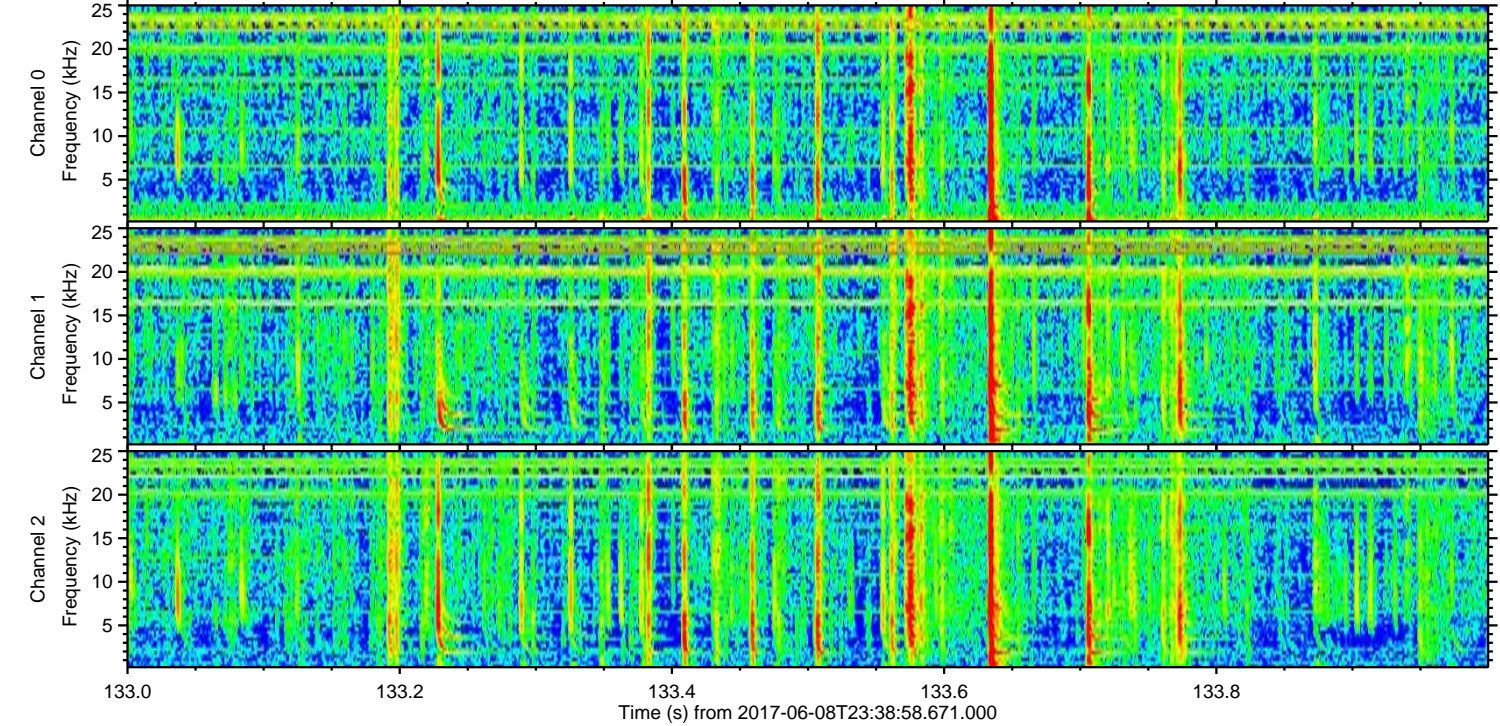
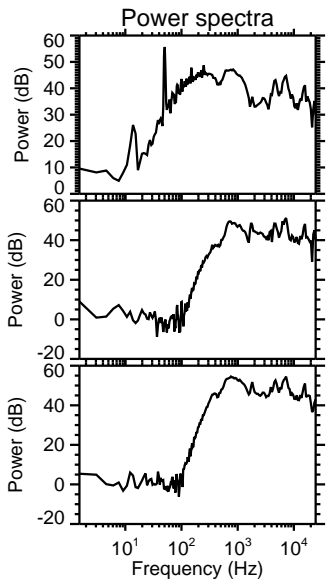
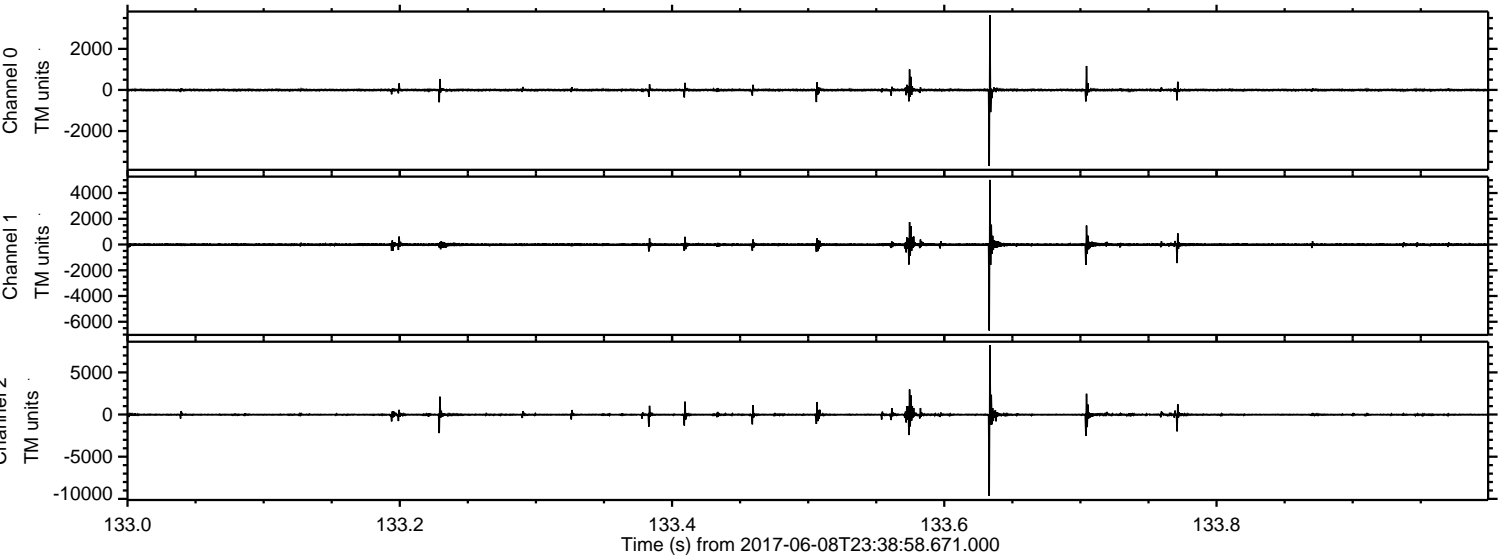
ELMAVAN 3D WAVEFORMS (Measured data sampled at 50 kHz) 51000 packets of 144 samples from 2017-06-08T23:38:58.671.000. Part 1/147

Processed Fri Jun 9 01:46:49 2017 by ELM ver.2012-10-06 from 001__elm20170608_233857__dat00.bin



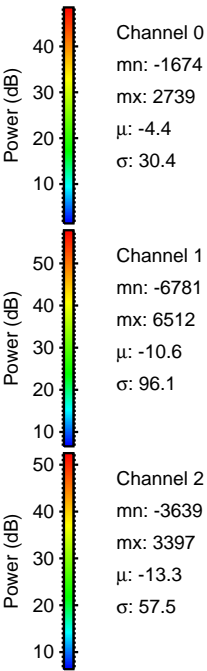
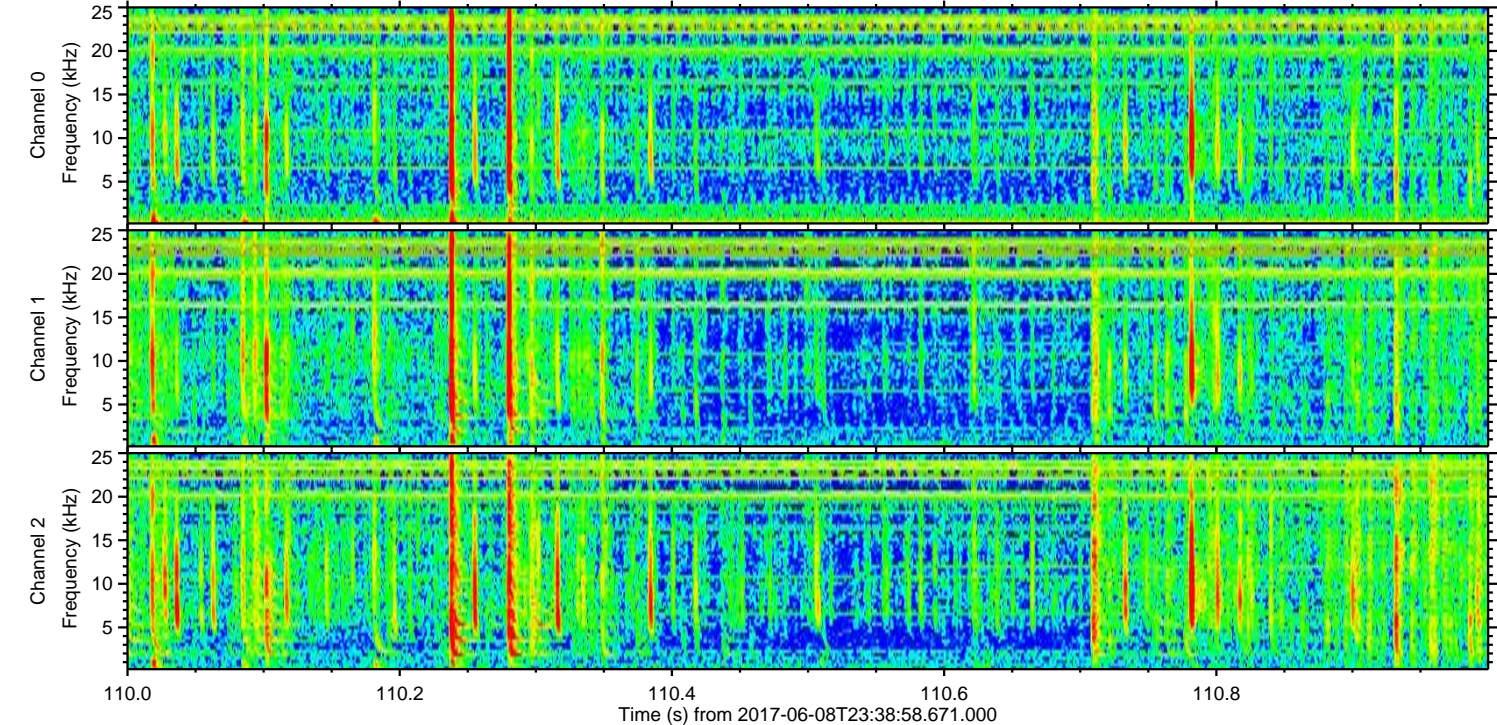
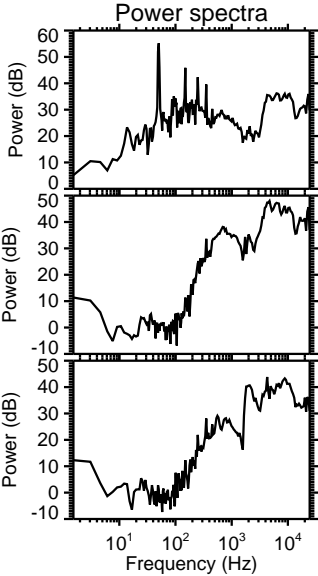
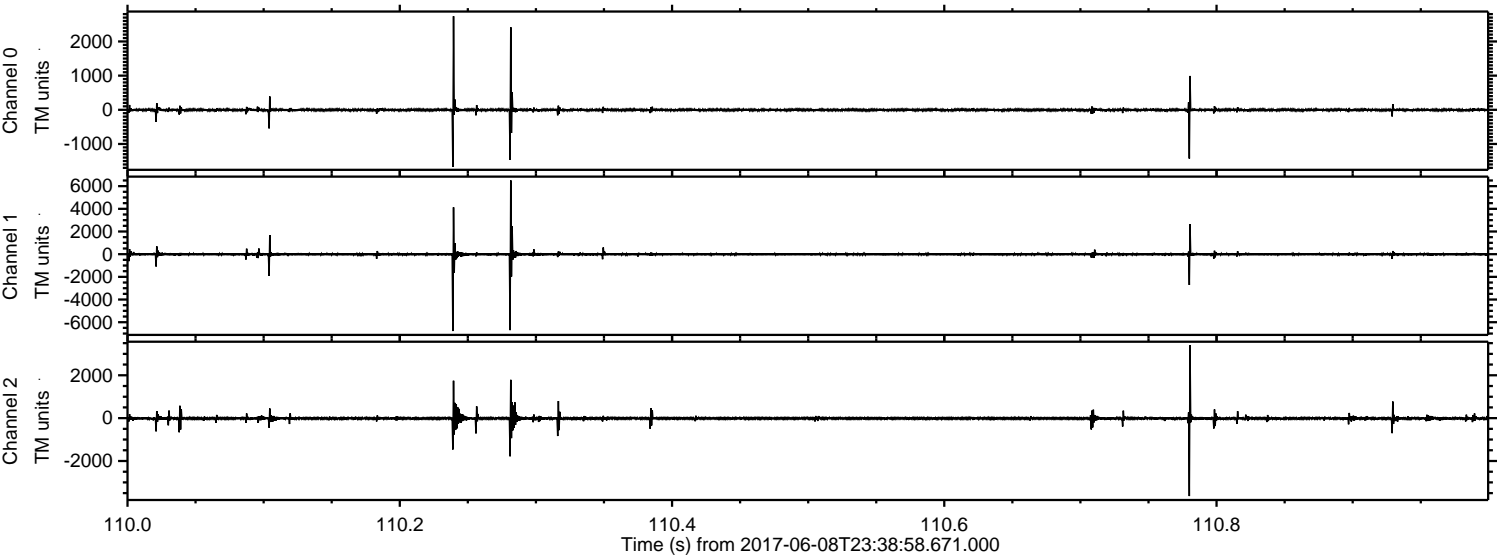
ELMAVAN 3D WAVEFORMS (Measured data sampled at 50 kHz) 51000 packets of 144 samples from 2017-06-08T23:38:58.671.000. Part 134/147

Processed Fri Jun 9 01:46:49 2017 by ELM ver.2012-10-06 from 001__elm20170608_233857__dat00.bin

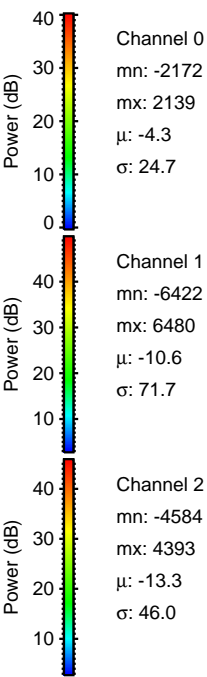
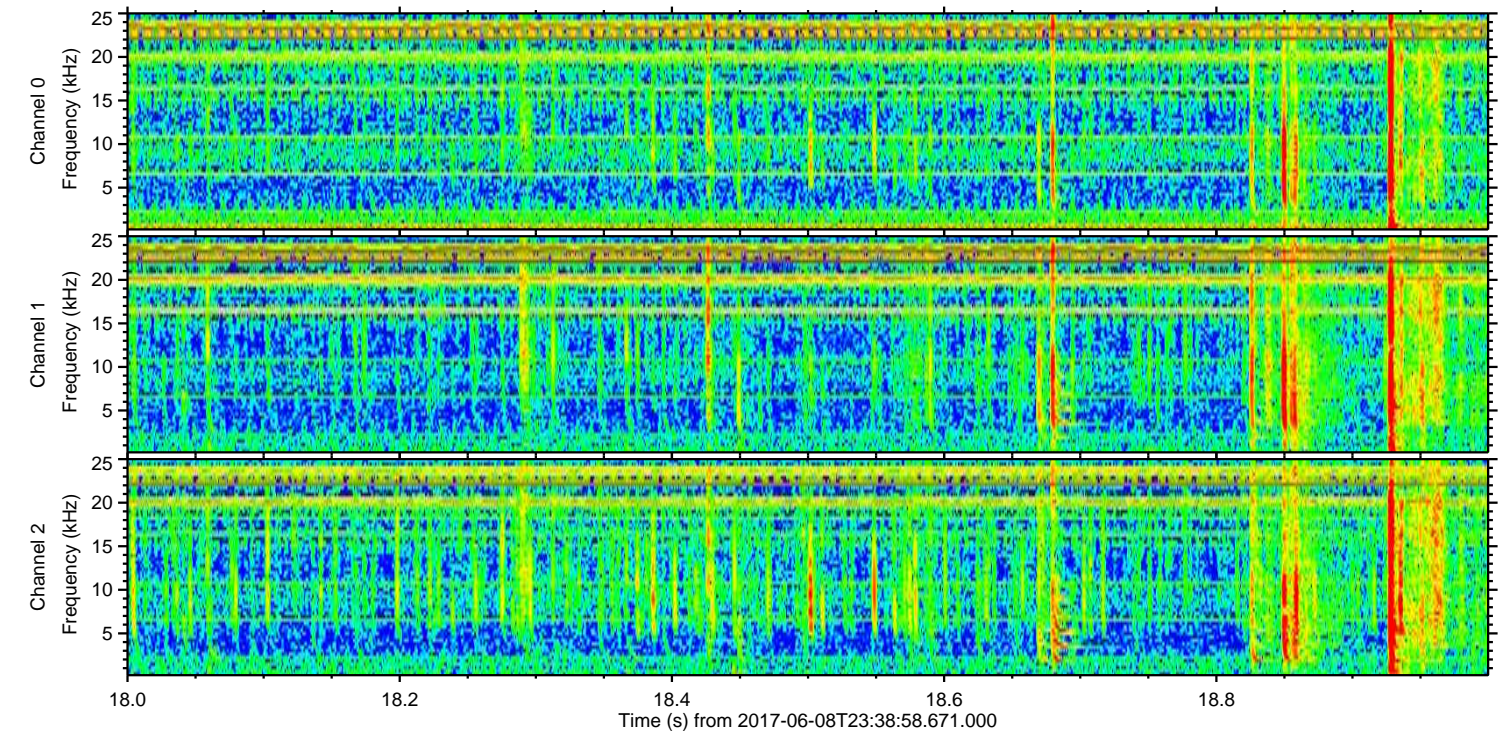
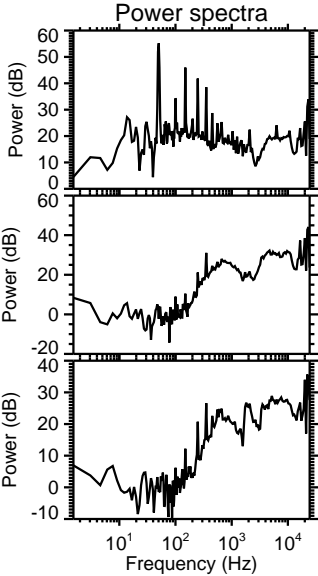
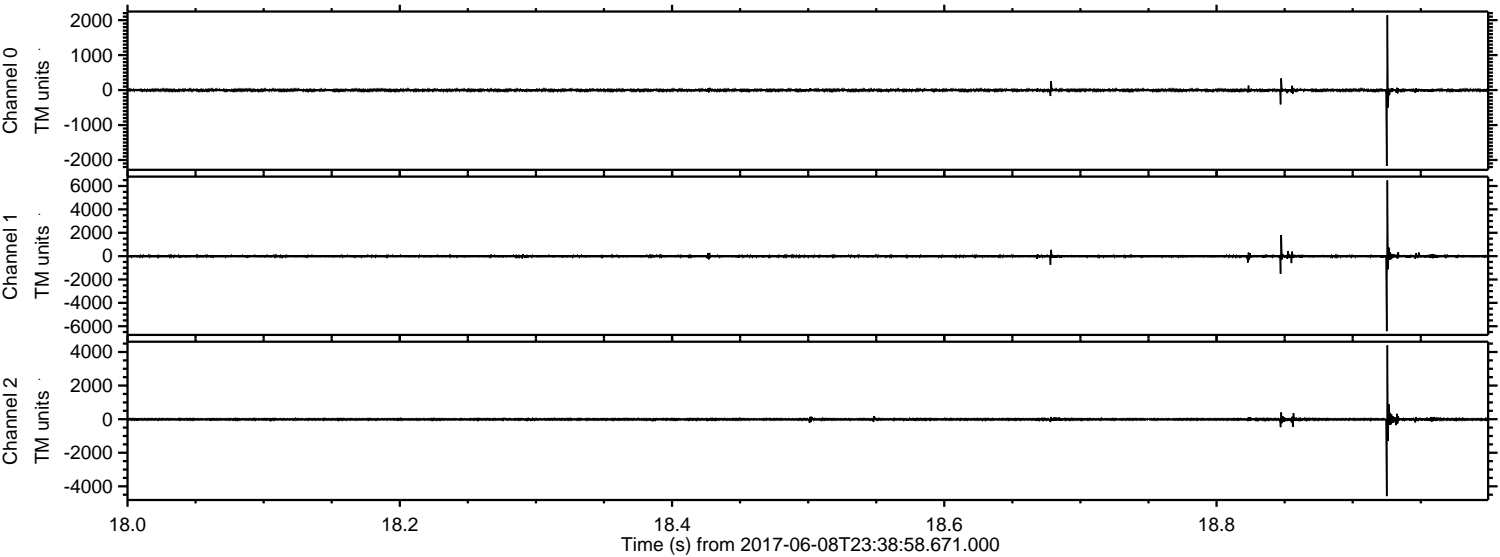


ELMAVAN 3D WAVEFORMS (Measured data sampled at 50 kHz) 51000 packets of 144 samples from 2017-06-08T23:38:58.671.000. Part 111/147

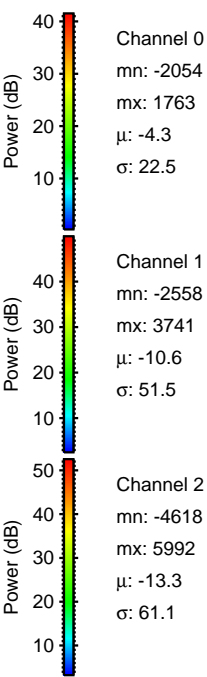
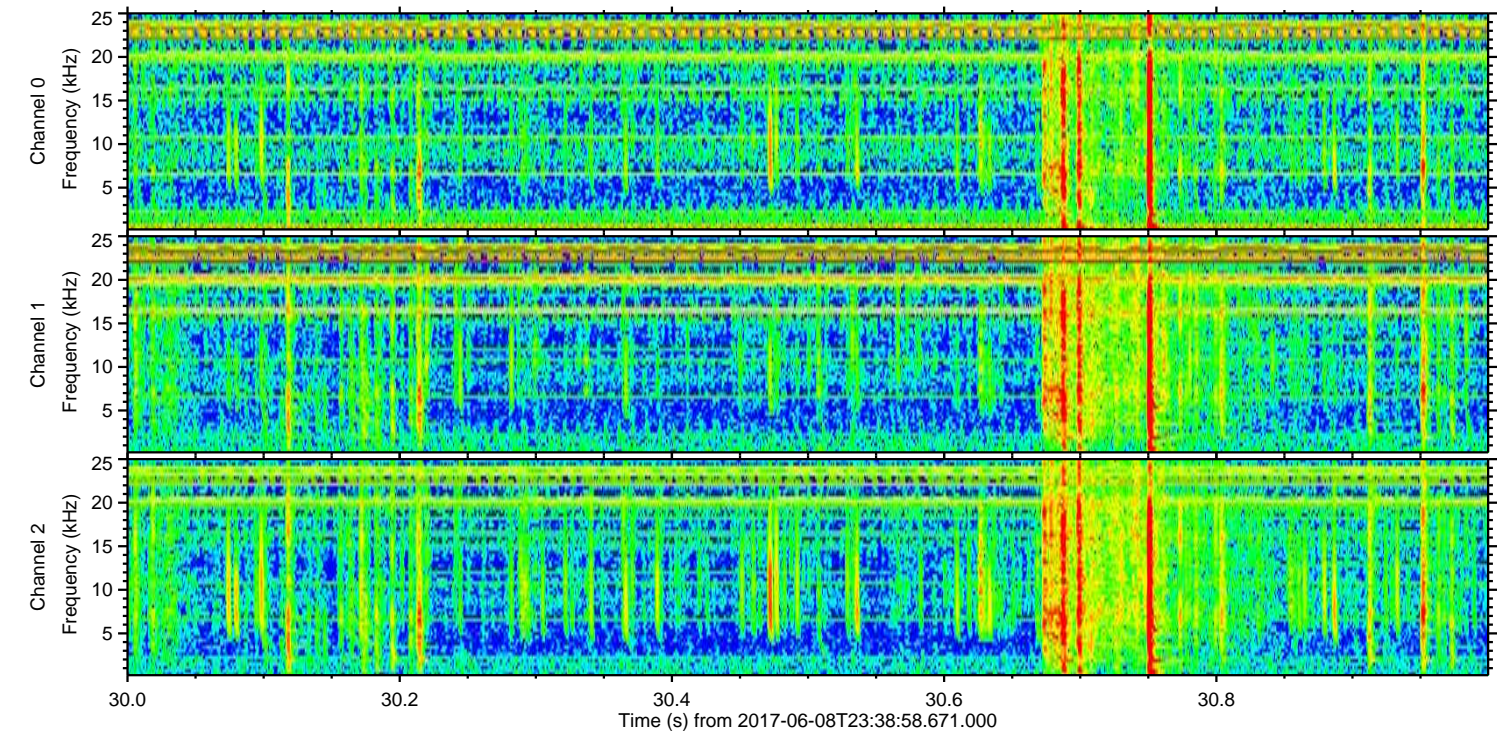
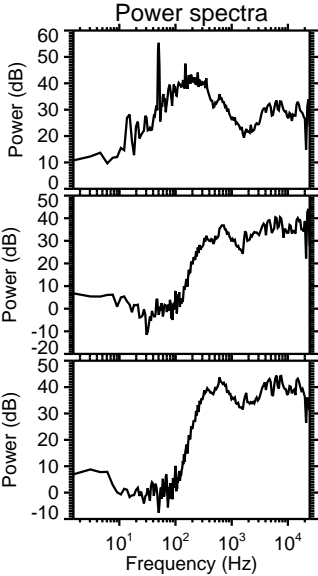
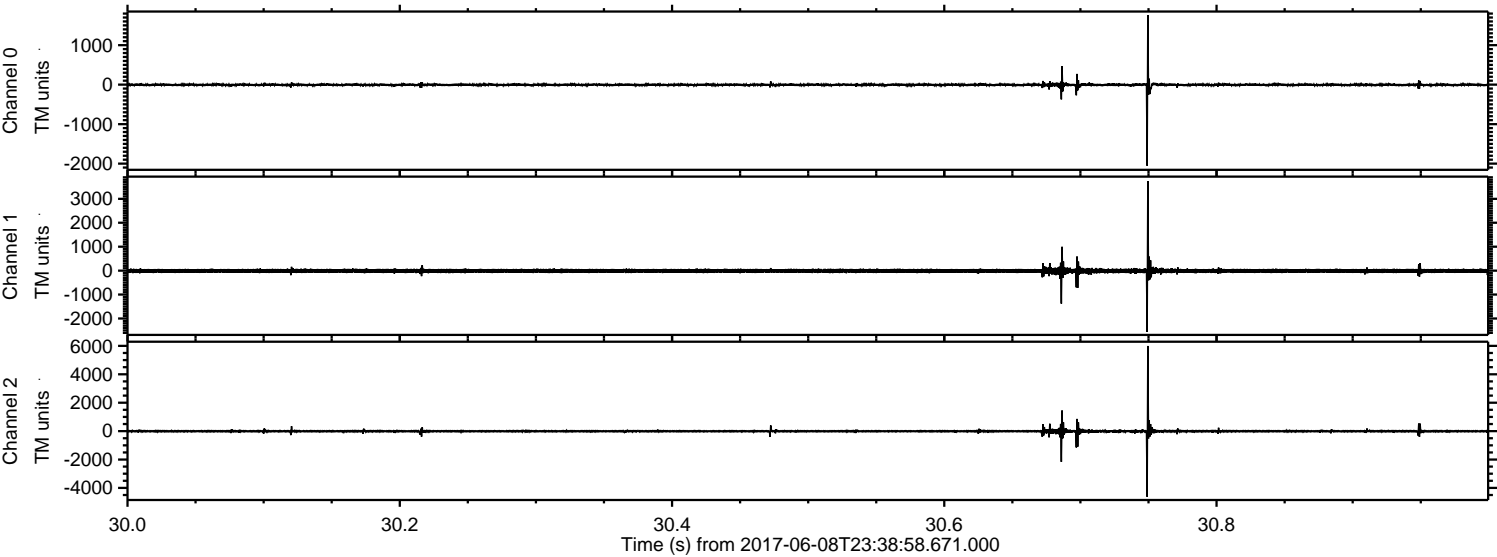
Processed Fri Jun 9 01:46:50 2017 by ELM ver.2012-10-06 from 001__elm20170608_233857__dat00.bin



Processed Fri Jun 9 01:46:51 2017 by ELM ver.2012-10-06 from 001__elm20170608_233857__dat00.bin

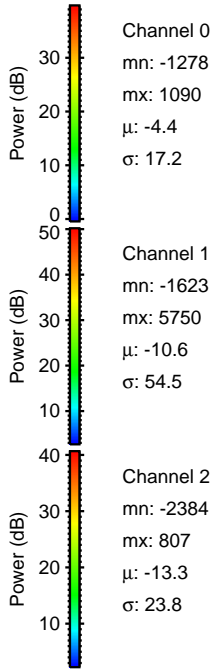
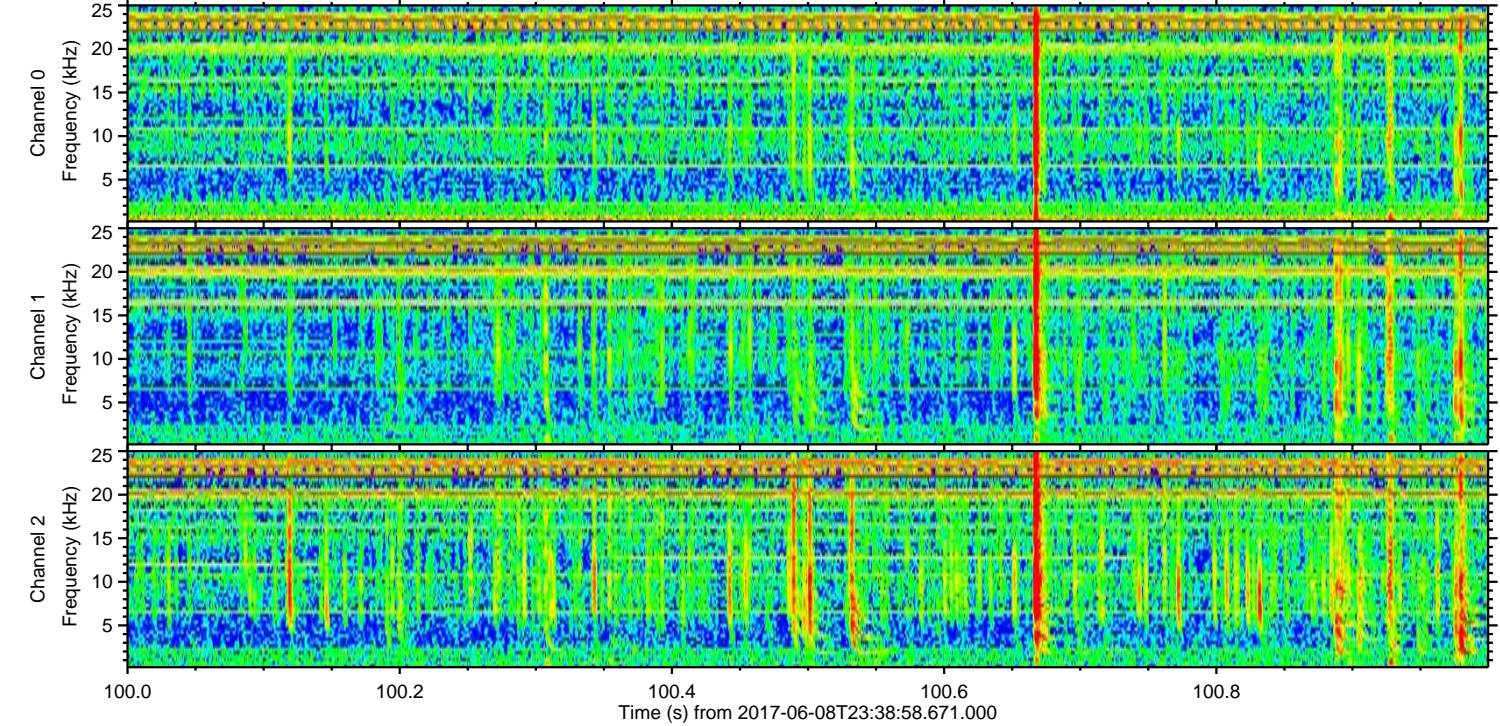
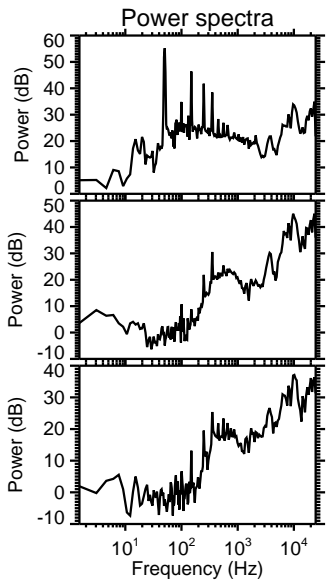
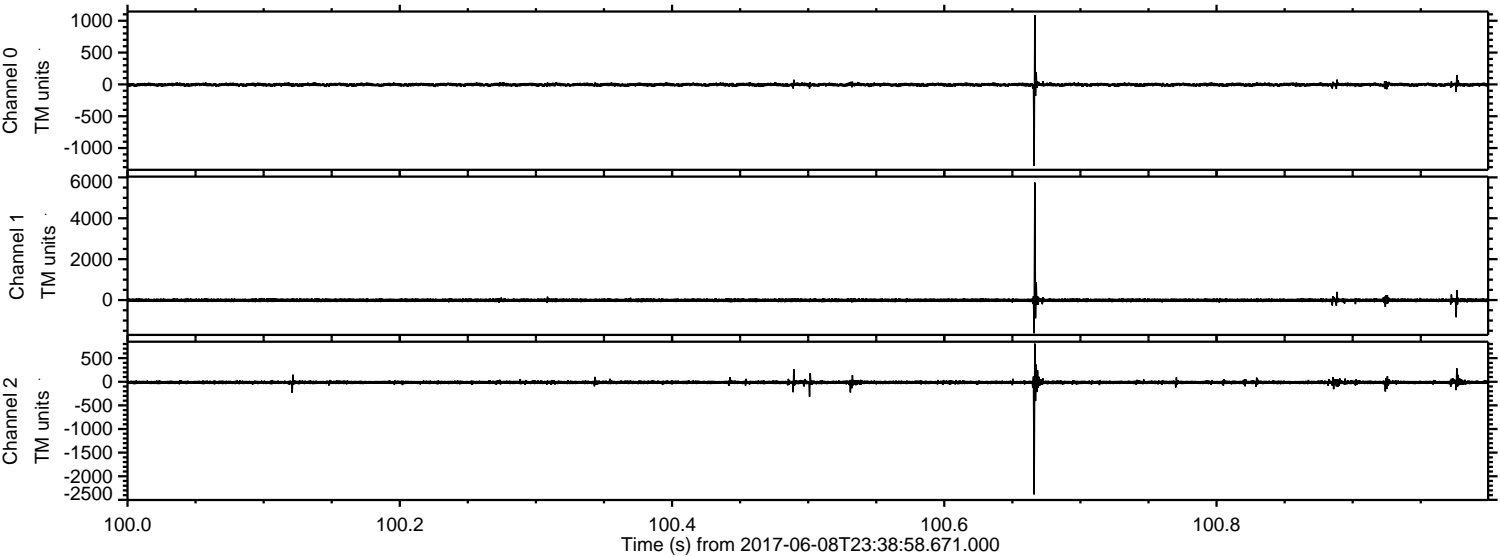


Processed Fri Jun 9 01:46:51 2017 by ELM ver.2012-10-06 from 001__elm20170608_233857__dat00.bin

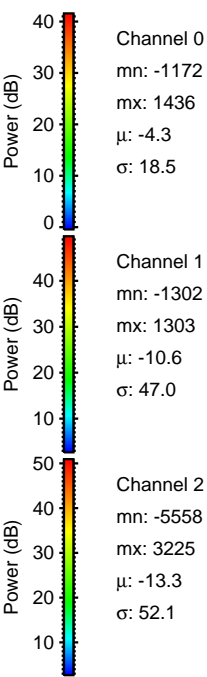
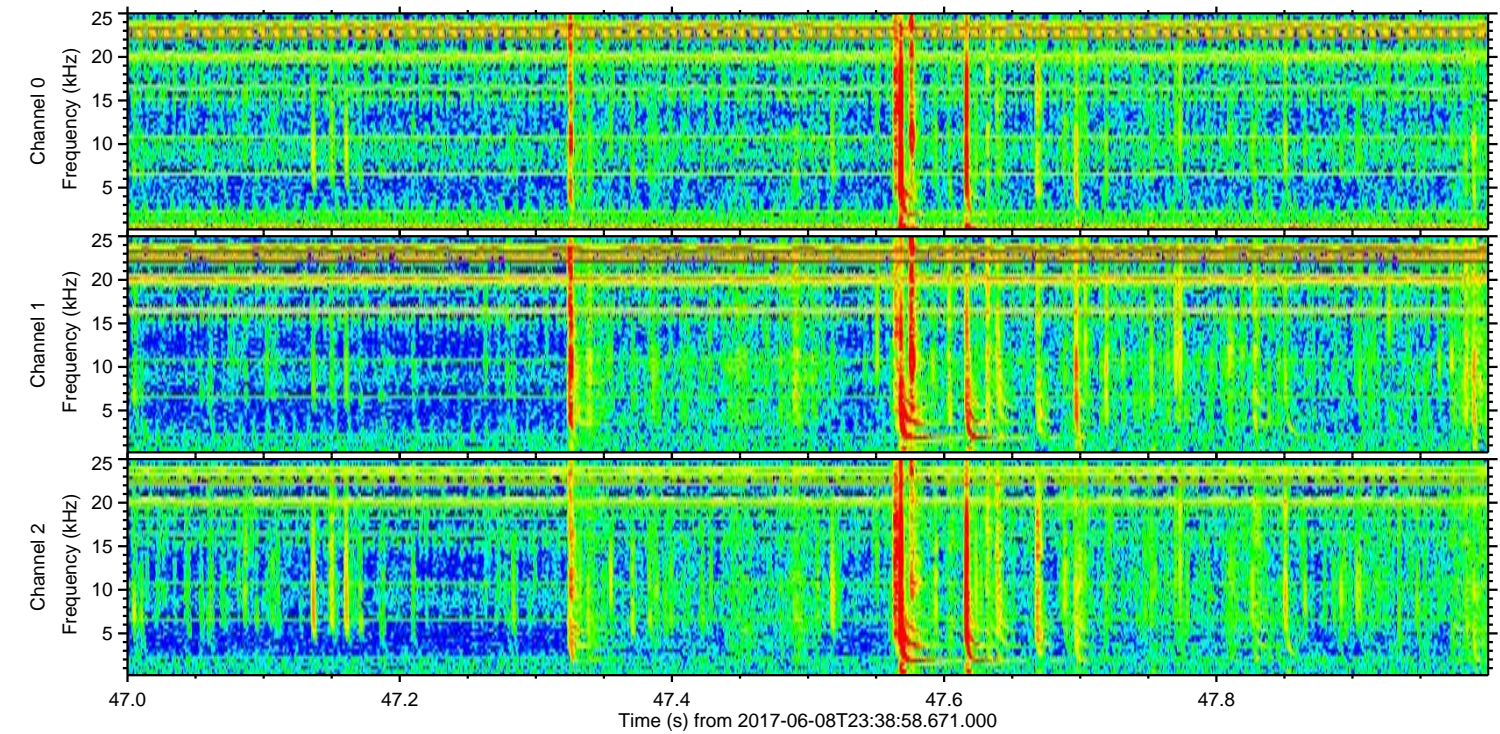
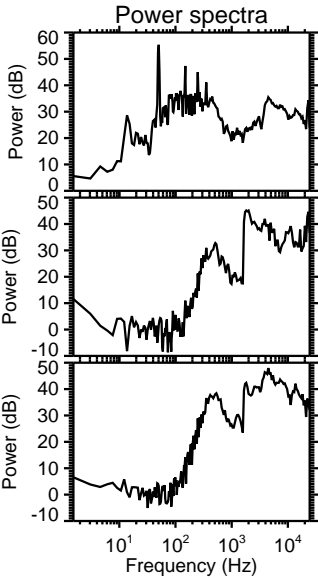
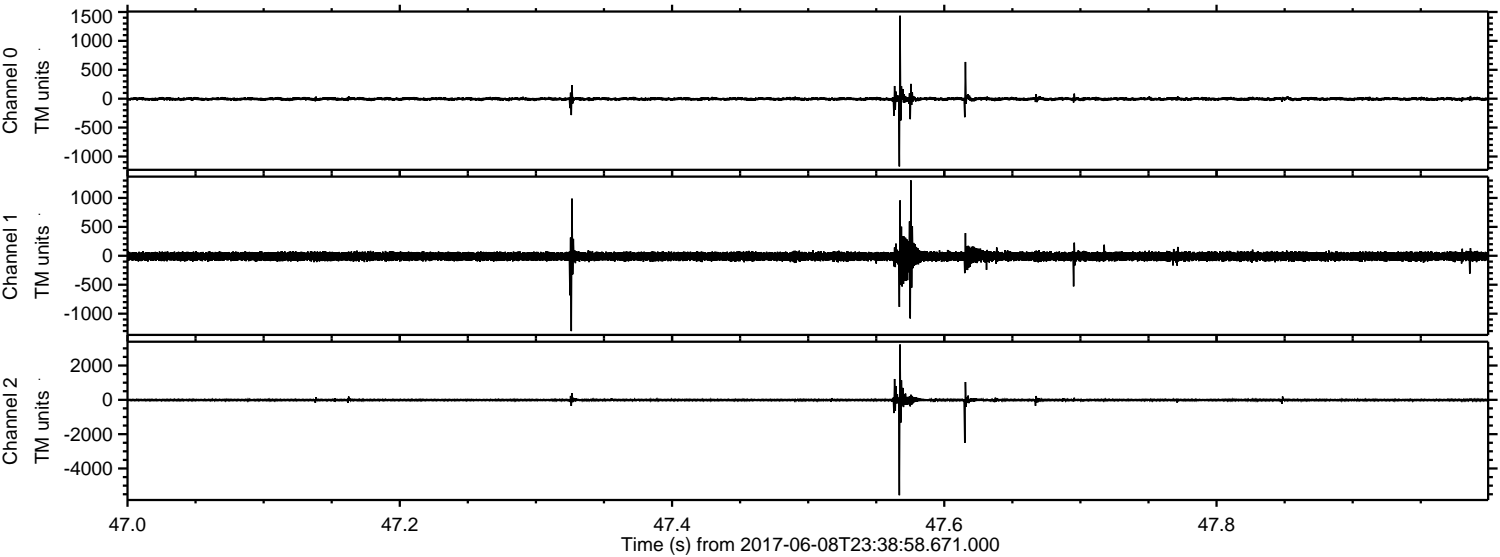


ELMAVAN 3D WAVEFORMS (Measured data sampled at 50 kHz) 51000 packets of 144 samples from 2017-06-08T23:38:58.671.000. Part 101/147

Processed Fri Jun 9 01:46:52 2017 by ELM ver.2012-10-06 from 001__elm20170608_233857__dat00.bin



Processed Fri Jun 9 01:46:53 2017 by ELM ver.2012-10-06 from 001__elm20170608_233857__dat00.bin



Channel 0
mn: -1172
mx: 1436
 μ : -4.3
 σ : 18.5

Channel 1
mn: -1302
mx: 1303
 μ : -10.6
 σ : 47.0

Channel 2
mn: -5558
mx: 3225
 μ : -13.3
 σ : 52.1

Processed Fri Jun 9 01:46:53 2017 by ELM ver.2012-10-06 from 001__elm20170608_233857__dat00.bin

