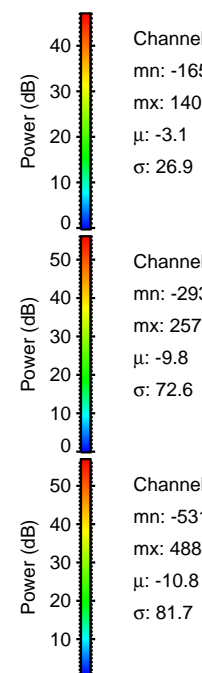
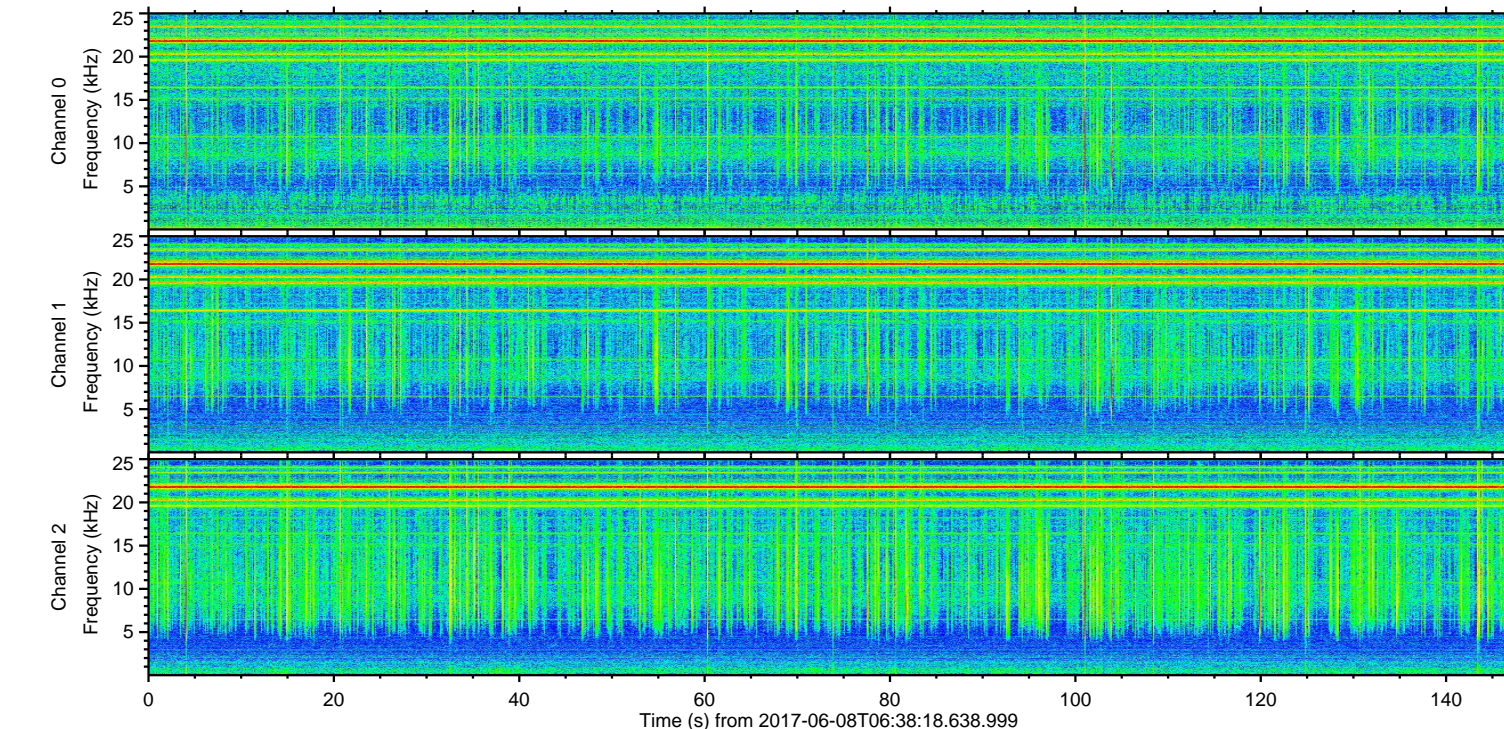
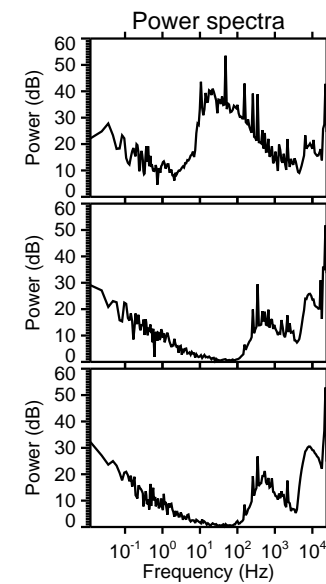
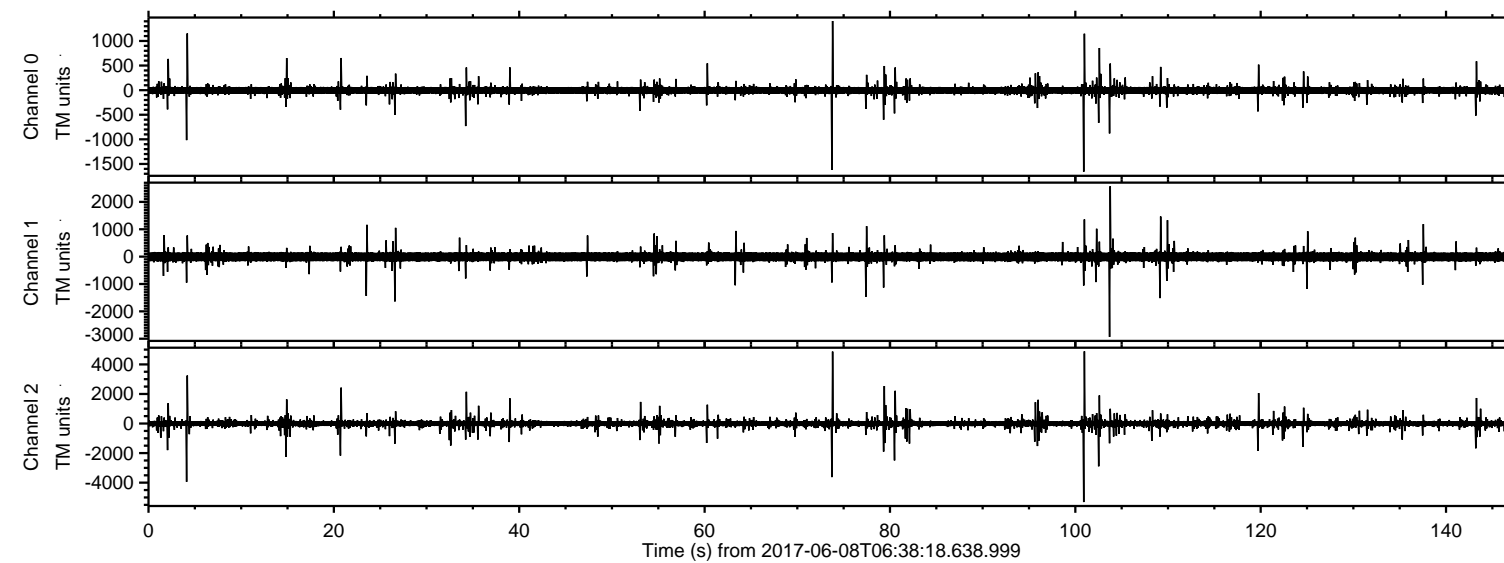


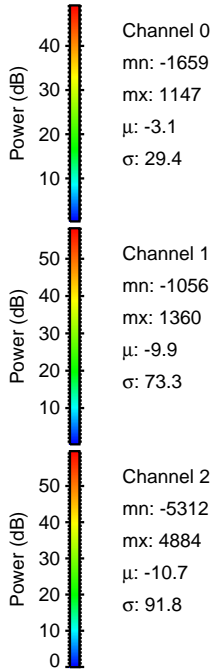
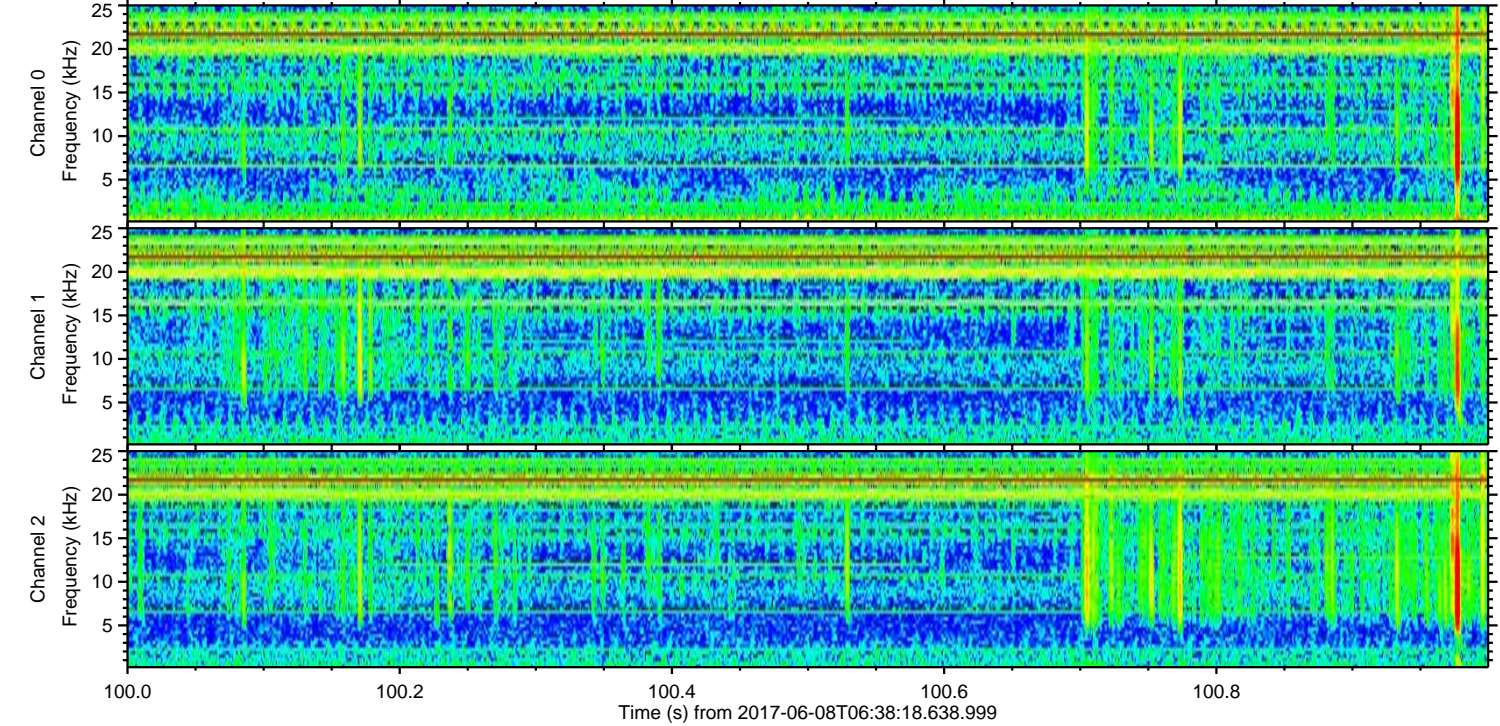
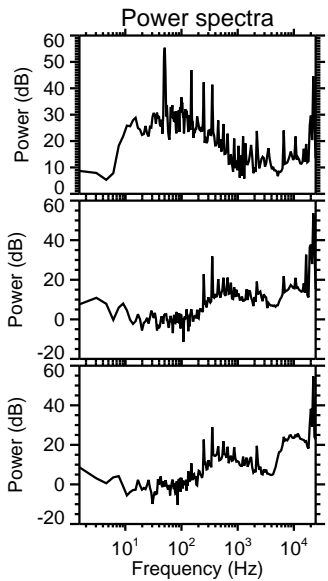
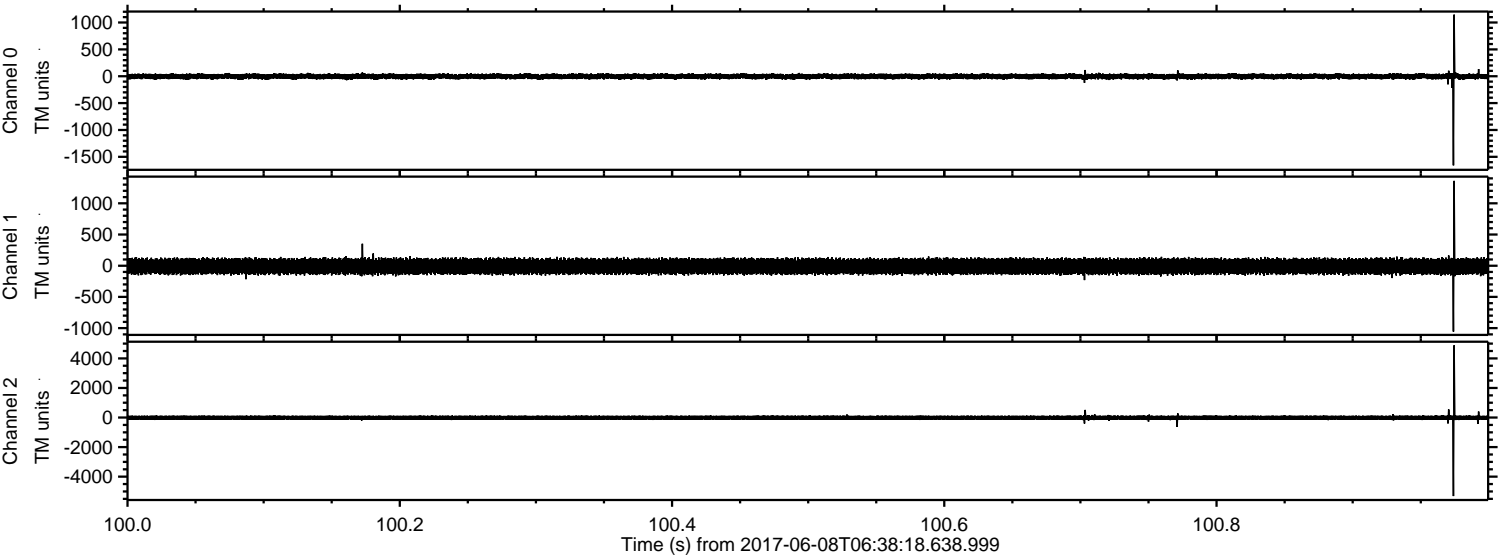
ELMAVAN 3D WAVEFORMS (Measured data sampled at 50 kHz) 51000 packets of 144 samples from 2017-06-08T06:38:18.638.999.

Processed Thu Jun 8 08:45:44 2017 by ELM ver.2012-10-06 from 001__elm20170608_063817__dat00.bin



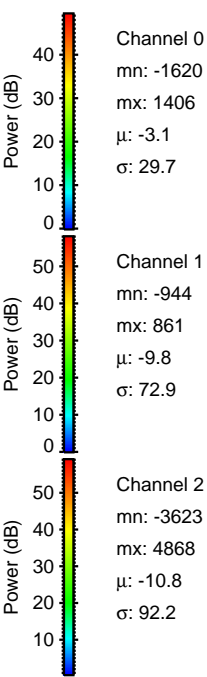
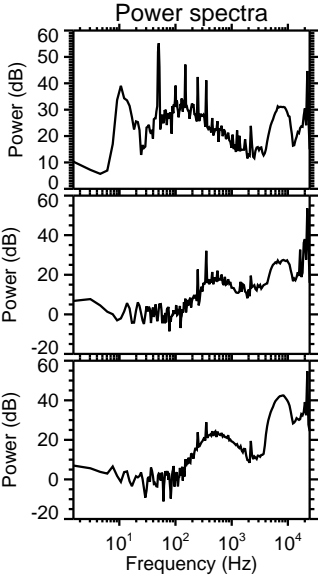
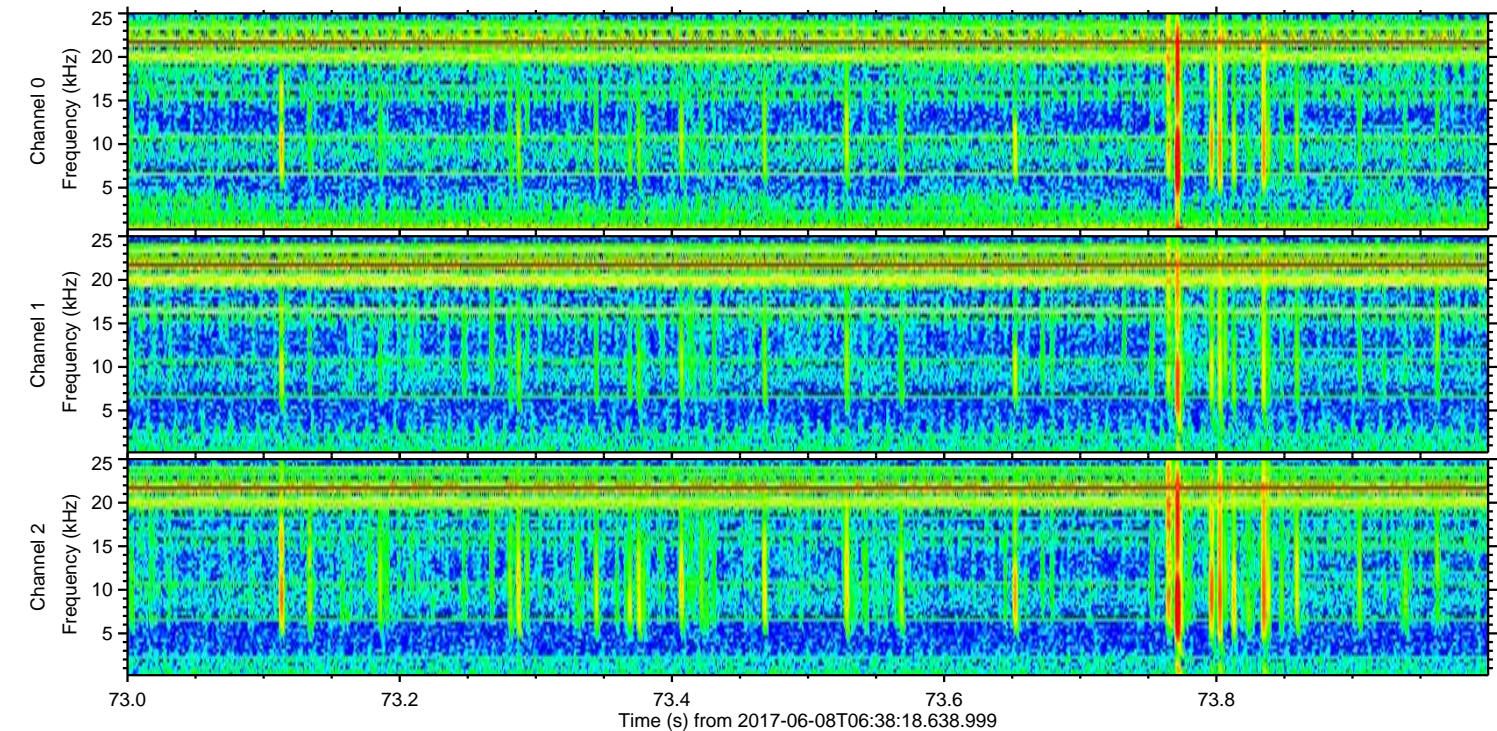
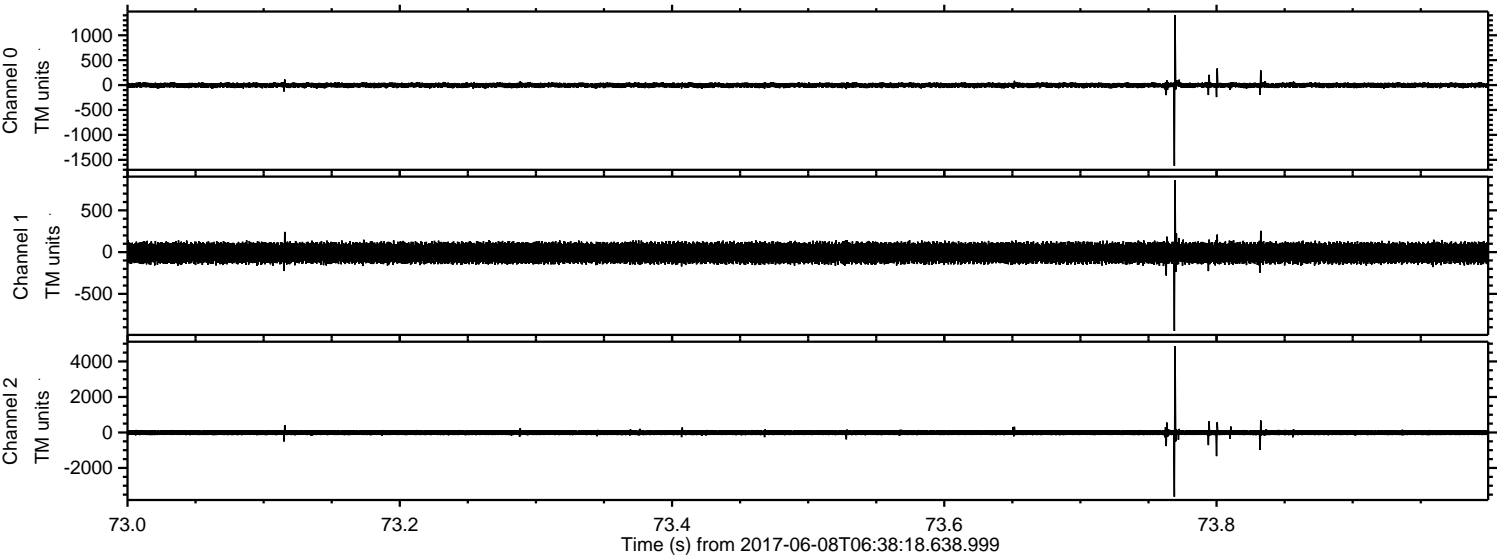
ELMAVAN 3D WAVEFORMS (Measured data sampled at 50 kHz) 51000 packets of 144 samples from 2017-06-08T06:38:18.638.999. Part 101/147

Processed Thu Jun 8 08:45:51 2017 by ELM ver.2012-10-06 from 001__elm20170608_063817__dat00.bin



ELMAVAN 3D WAVEFORMS (Measured data sampled at 50 kHz) 51000 packets of 144 samples from 2017-06-08T06:38:18.638.999. Part 74/147

Processed Thu Jun 8 08:45:52 2017 by ELM ver.2012-10-06 from 001__elm20170608_063817__dat00.bin

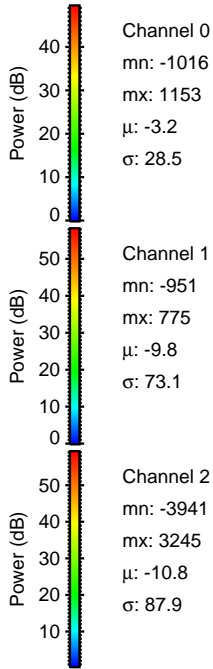
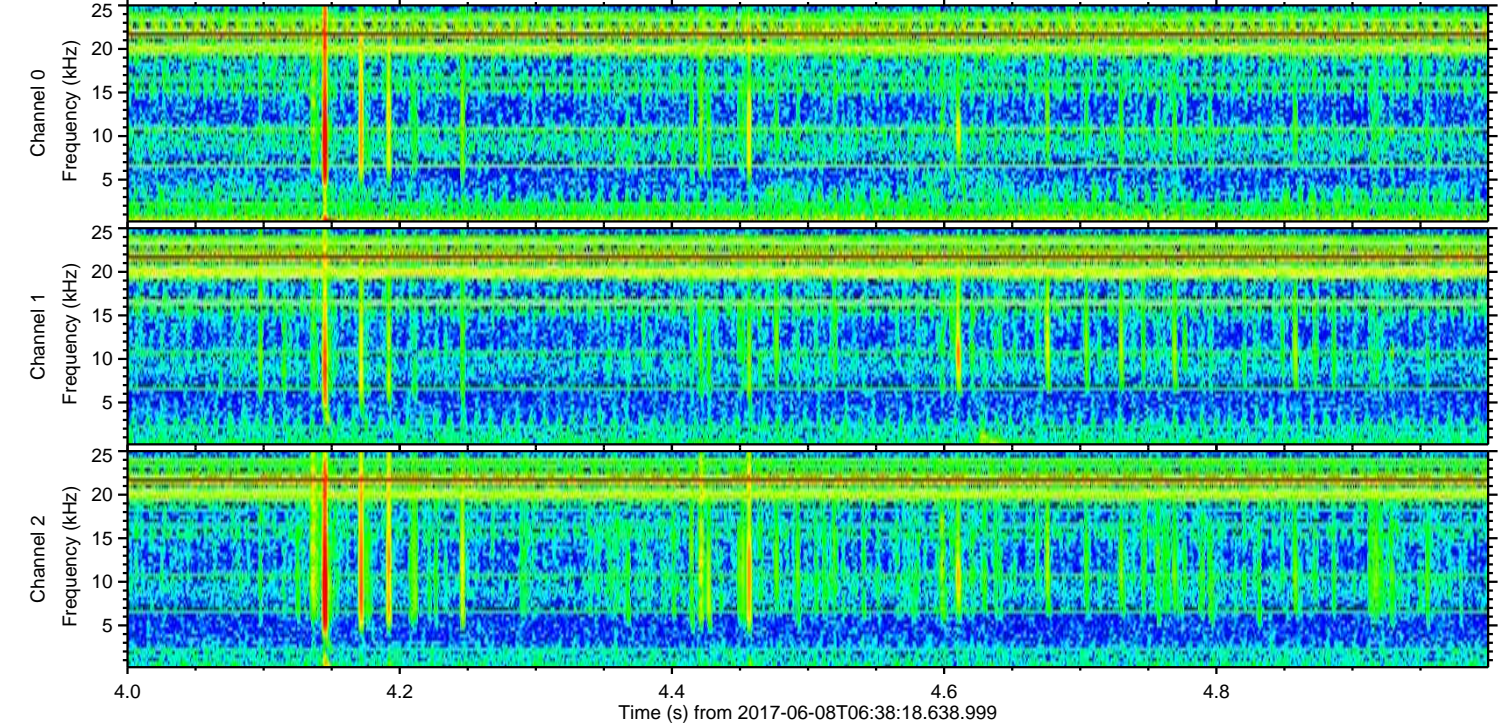
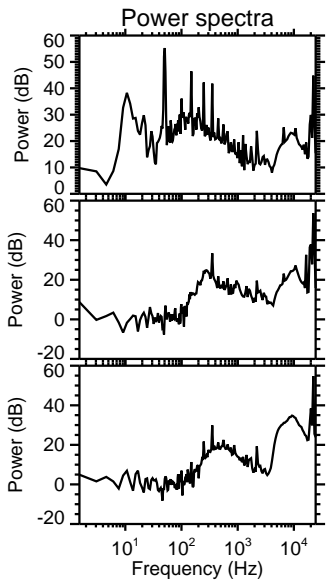
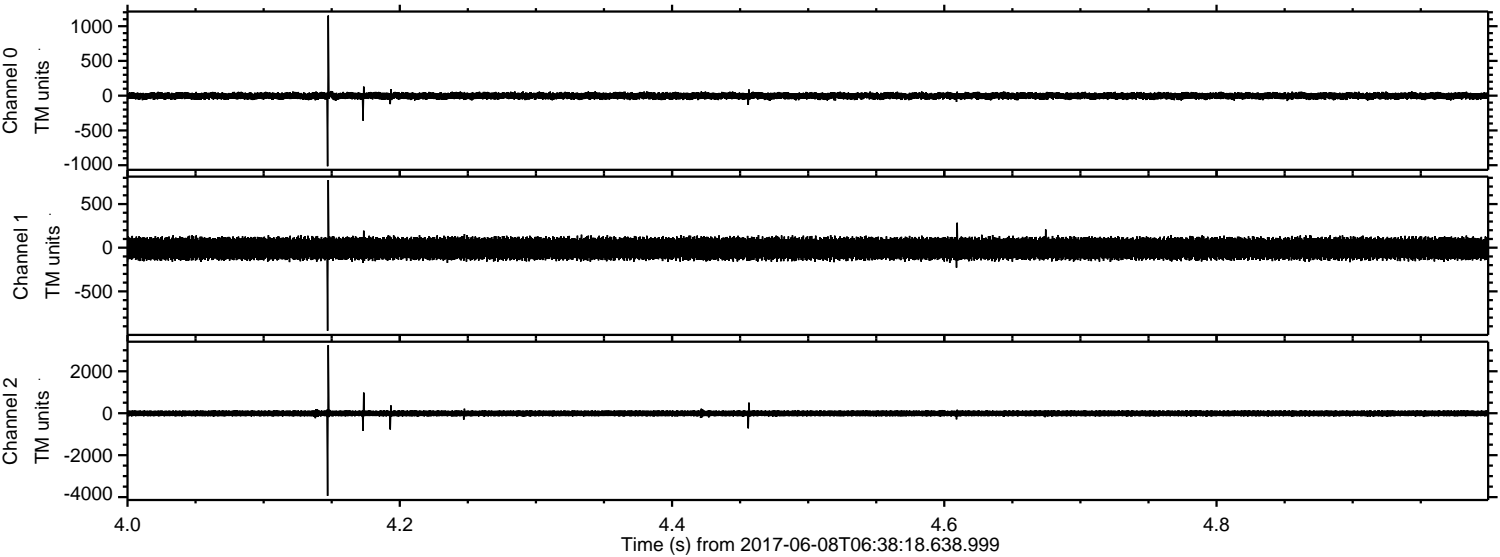


Channel 0
mn: -1620
mx: 1406
 μ : -3.1
 σ : 29.7

Channel 1
mn: -944
mx: 861
 μ : -9.8
 σ : 72.9

Channel 2
mn: -3623
mx: 4868
 μ : -10.8
 σ : 92.2

Processed Thu Jun 8 08:45:52 2017 by ELM ver.2012-10-06 from 001__elm20170608_063817__dat00.bin



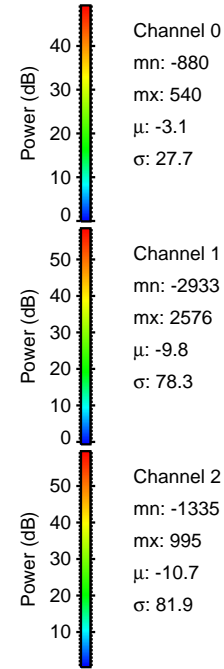
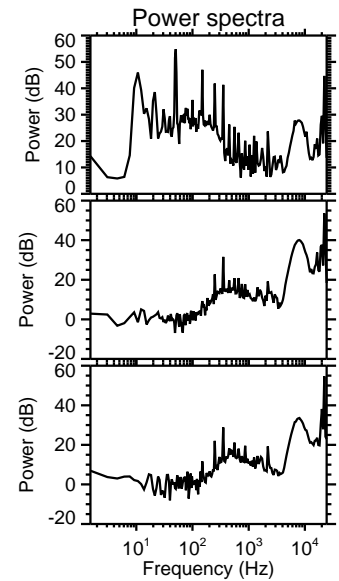
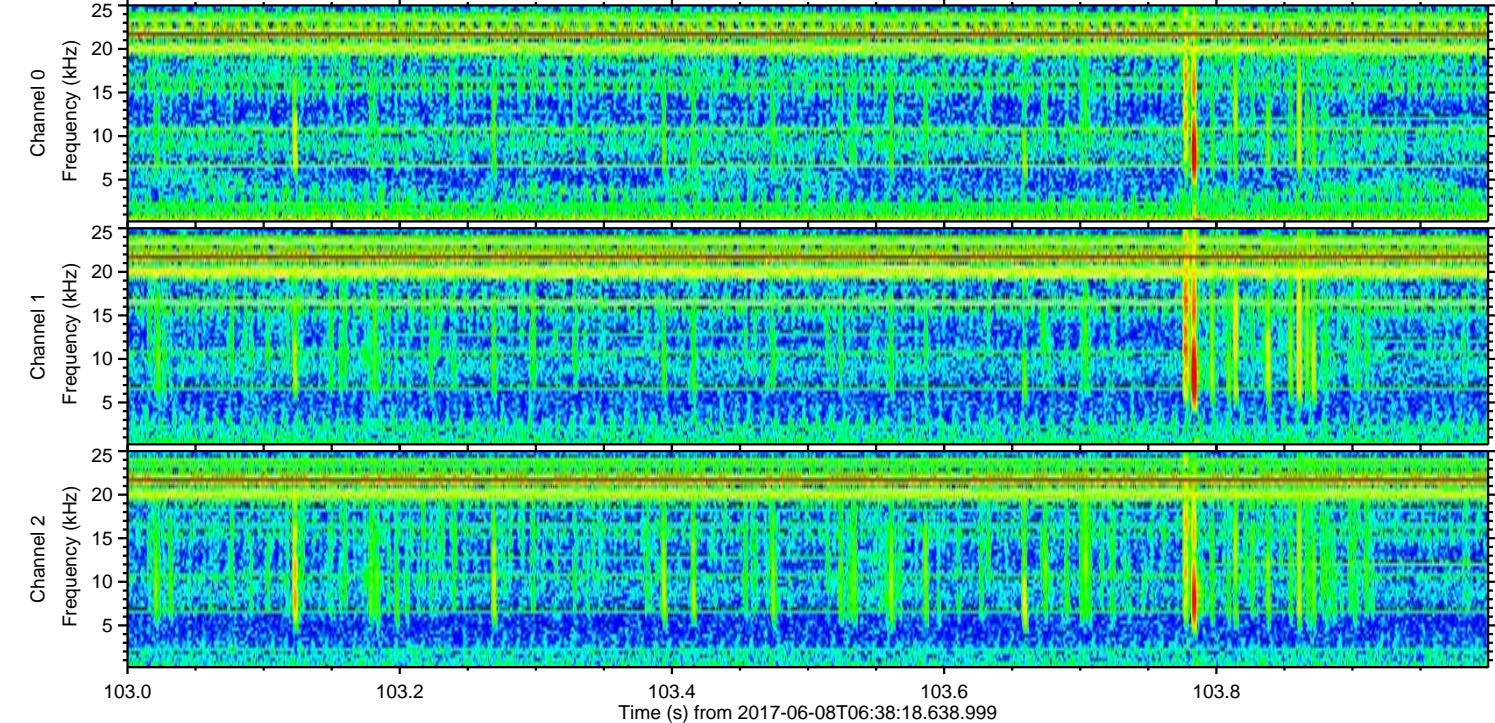
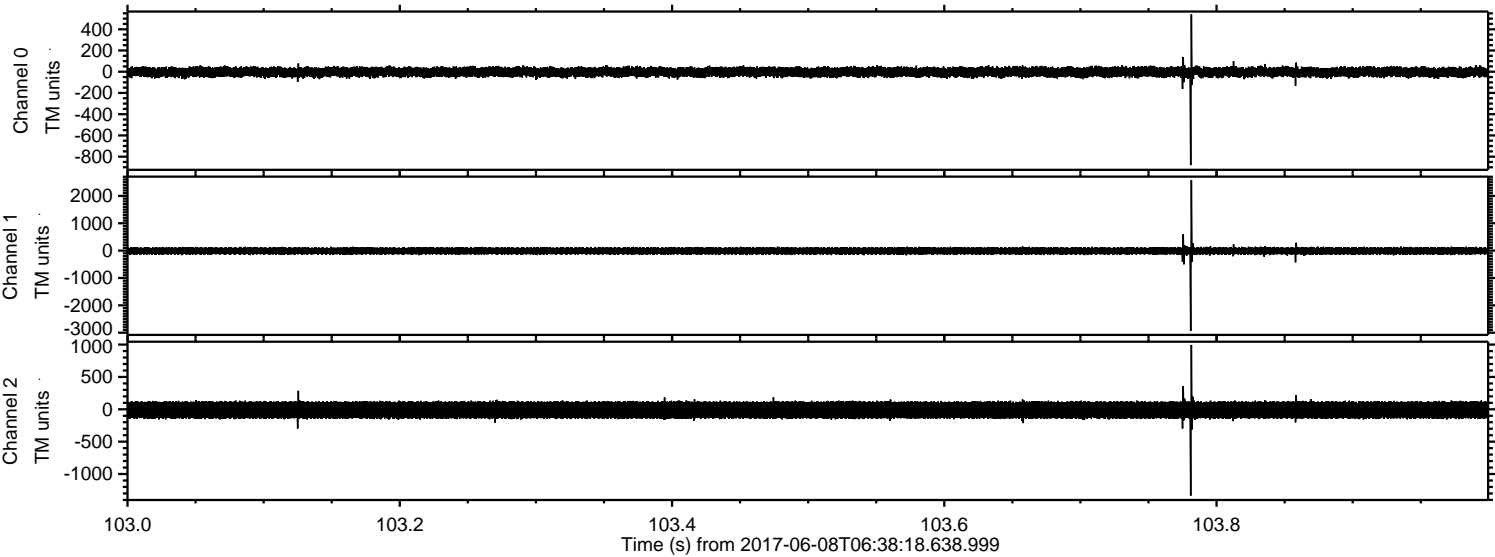
Channel 0
mn: -1016
mx: 1153
 μ : -3.2
 σ : 28.5

Channel 1
mn: -951
mx: 775
 μ : -9.8
 σ : 73.1

Channel 2
mn: -3941
mx: 3245
 μ : -10.8
 σ : 87.9

ELMAVAN 3D WAVEFORMS (Measured data sampled at 50 kHz) 51000 packets of 144 samples from 2017-06-08T06:38:18.638.999. Part 104/147

Processed Thu Jun 8 08:45:53 2017 by ELM ver.2012-10-06 from 001__elm20170608_063817__dat00.bin



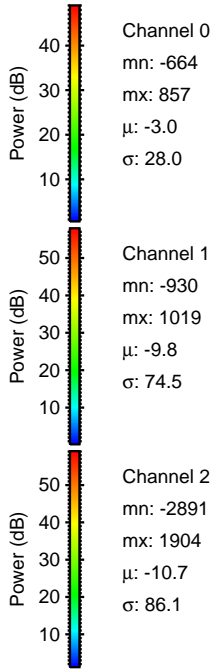
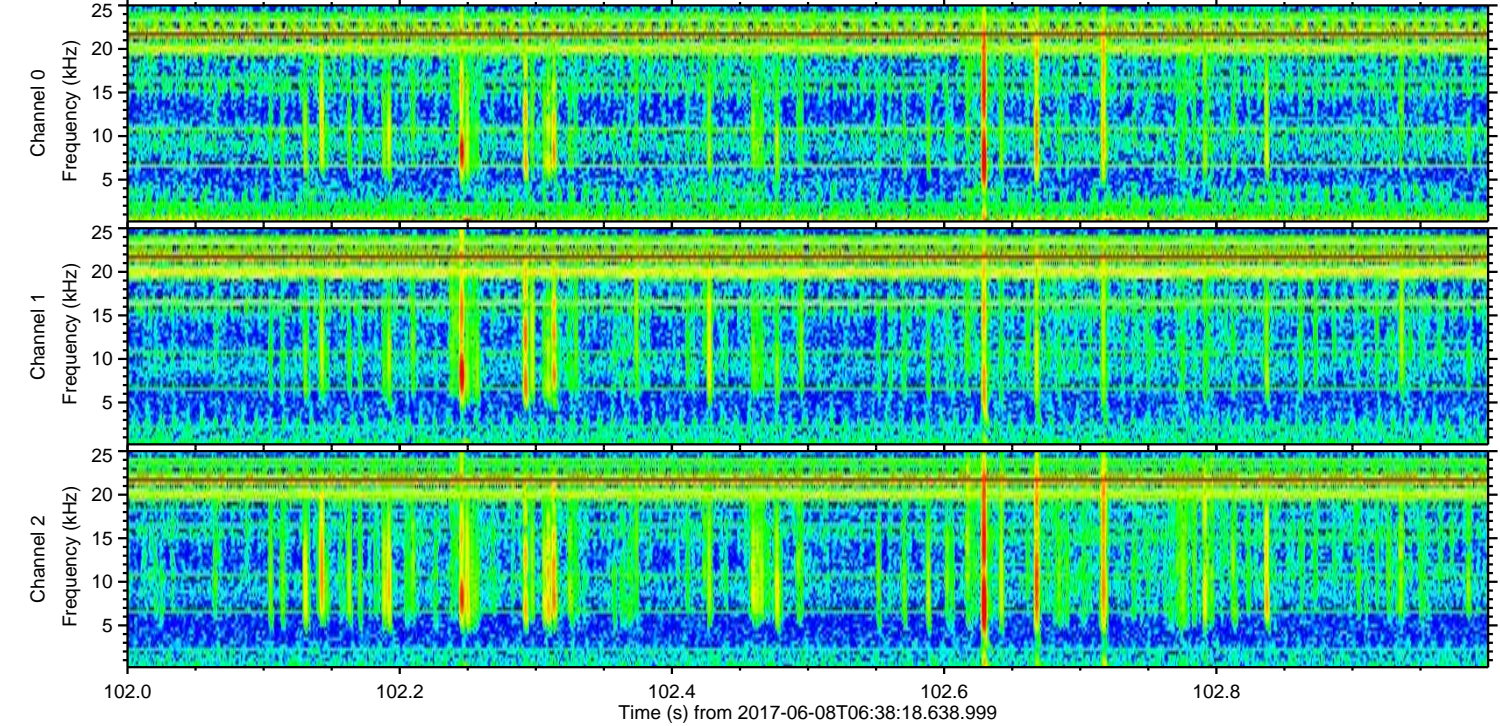
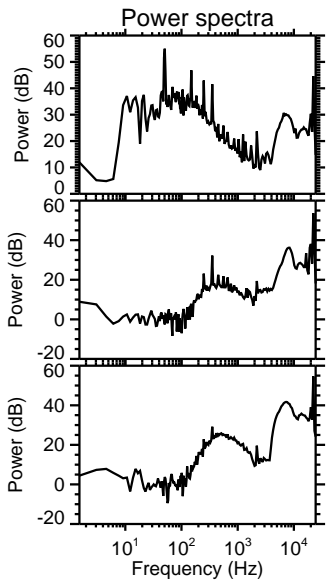
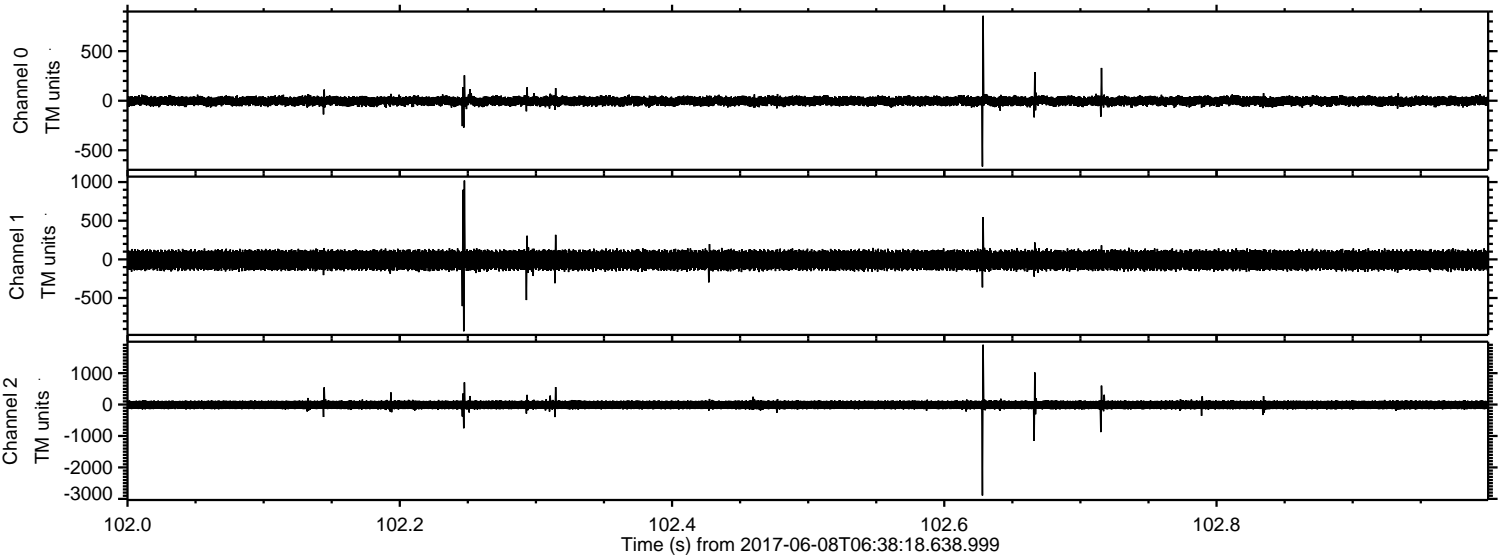
Channel 0
mn: -880
mx: 540
 μ : -3.1
 σ : 27.7

Channel 1
mn: -2933
mx: 2576
 μ : -9.8
 σ : 78.3

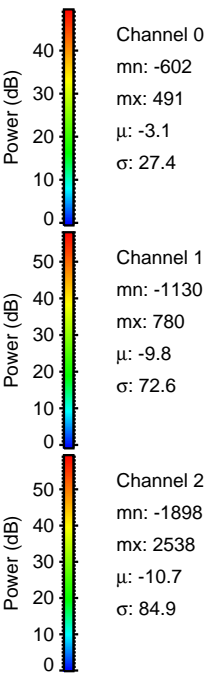
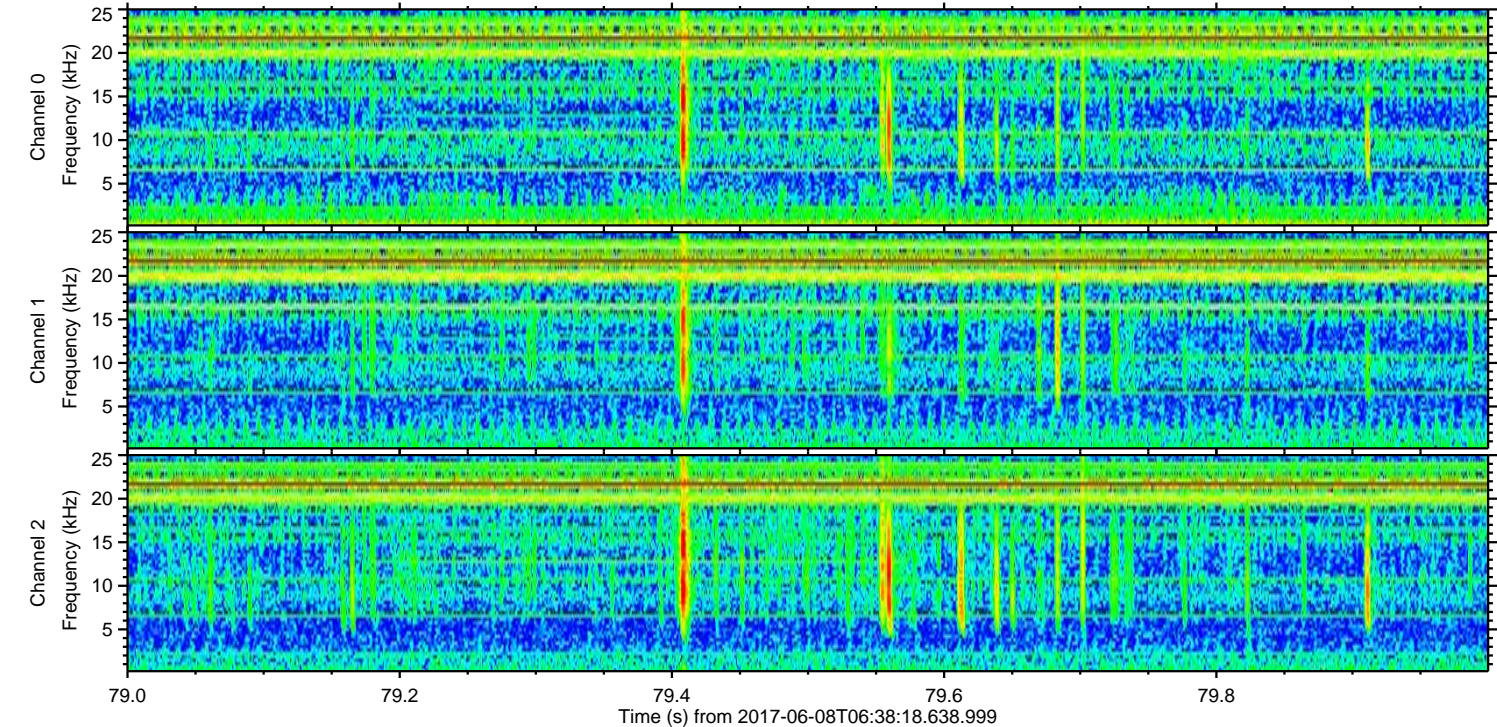
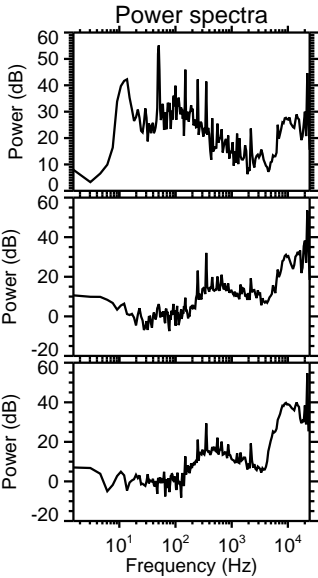
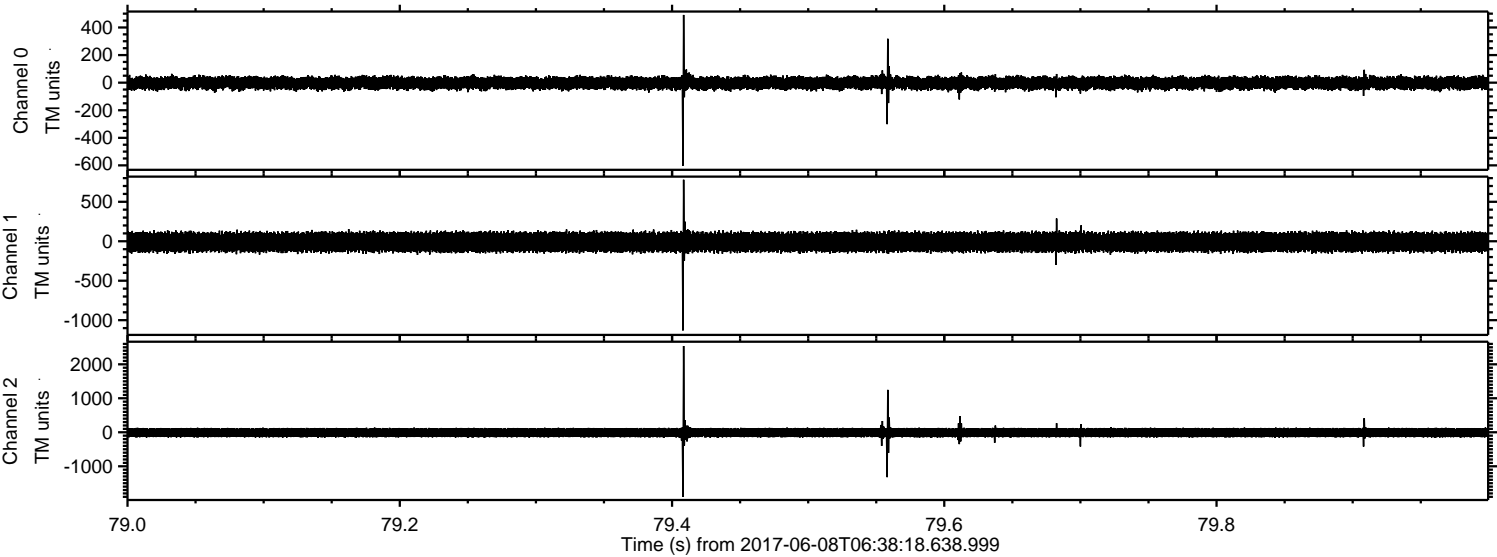
Channel 2
mn: -1335
mx: 995
 μ : -10.7
 σ : 81.9

ELMAVAN 3D WAVEFORMS (Measured data sampled at 50 kHz) 51000 packets of 144 samples from 2017-06-08T06:38:18.638.999. Part 103/147

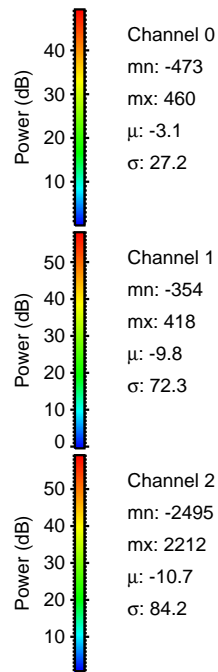
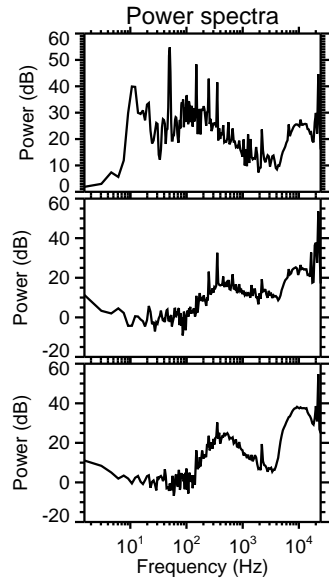
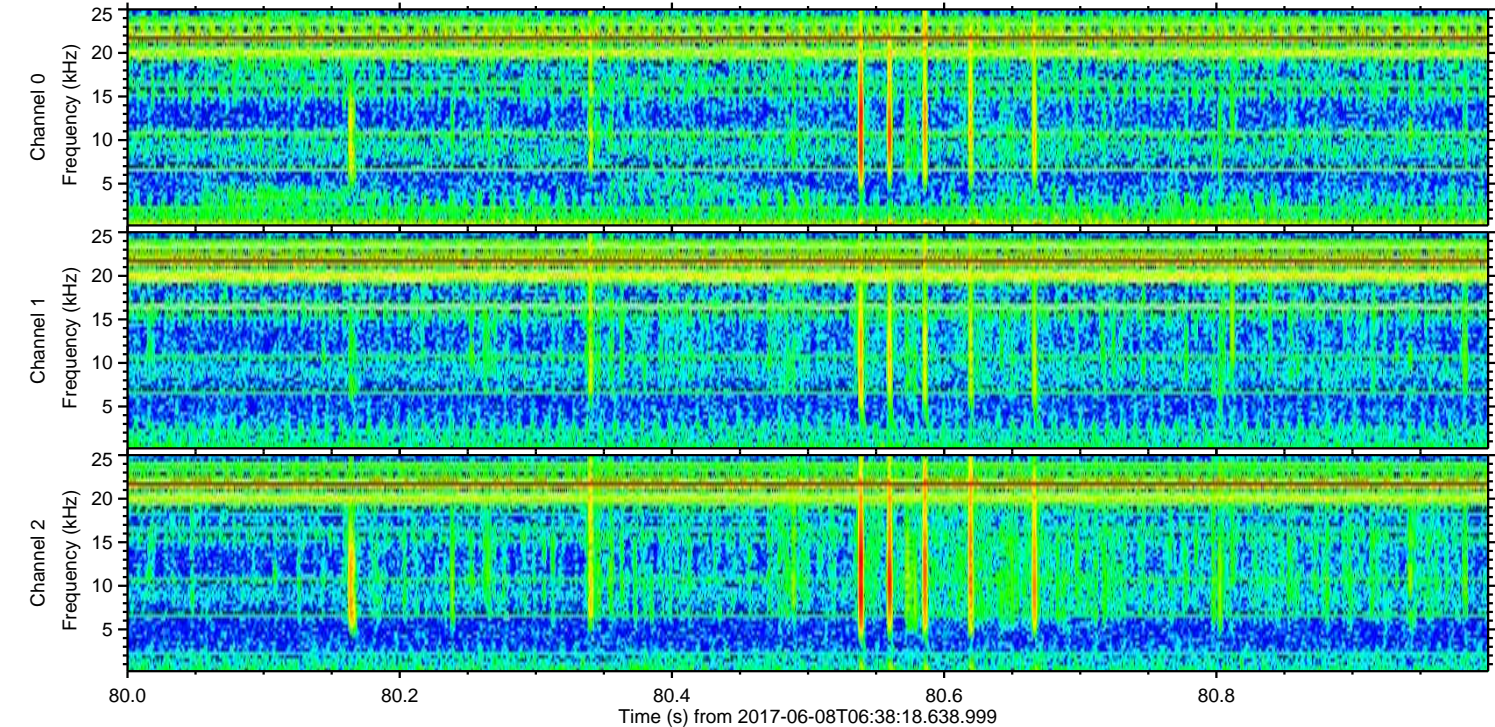
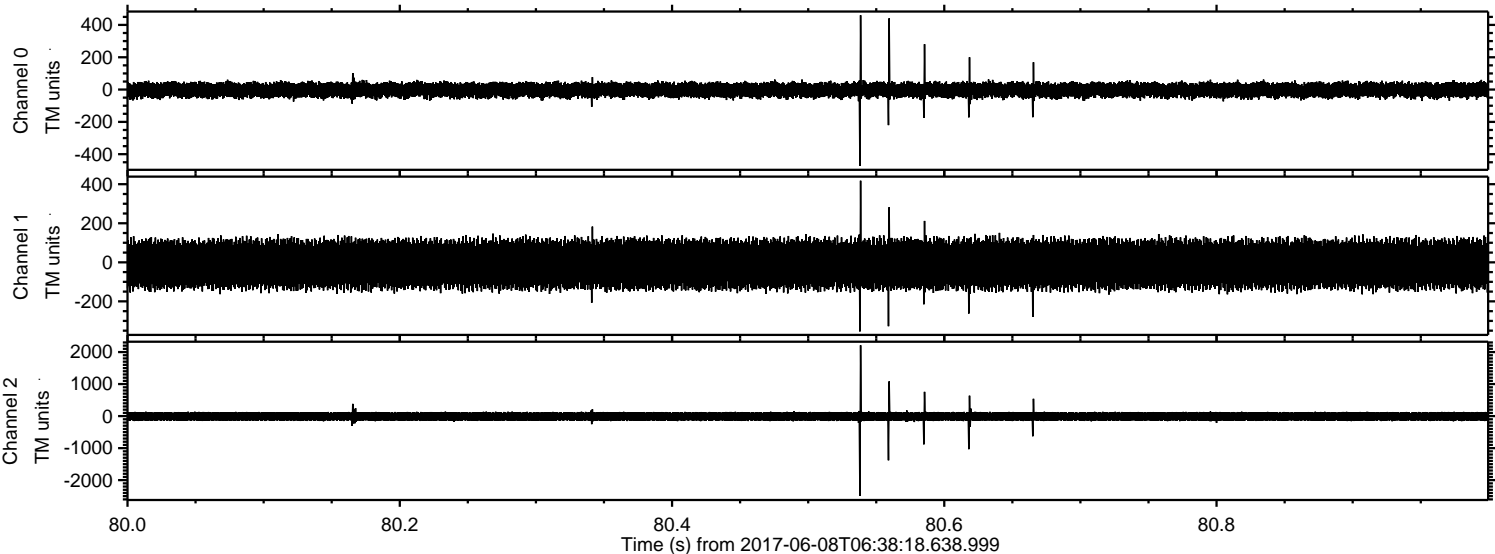
Processed Thu Jun 8 08:45:54 2017 by ELM ver.2012-10-06 from 001__elm20170608_063817__dat00.bin



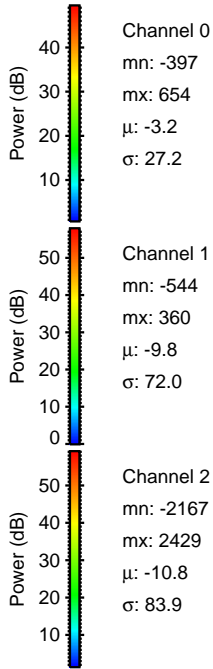
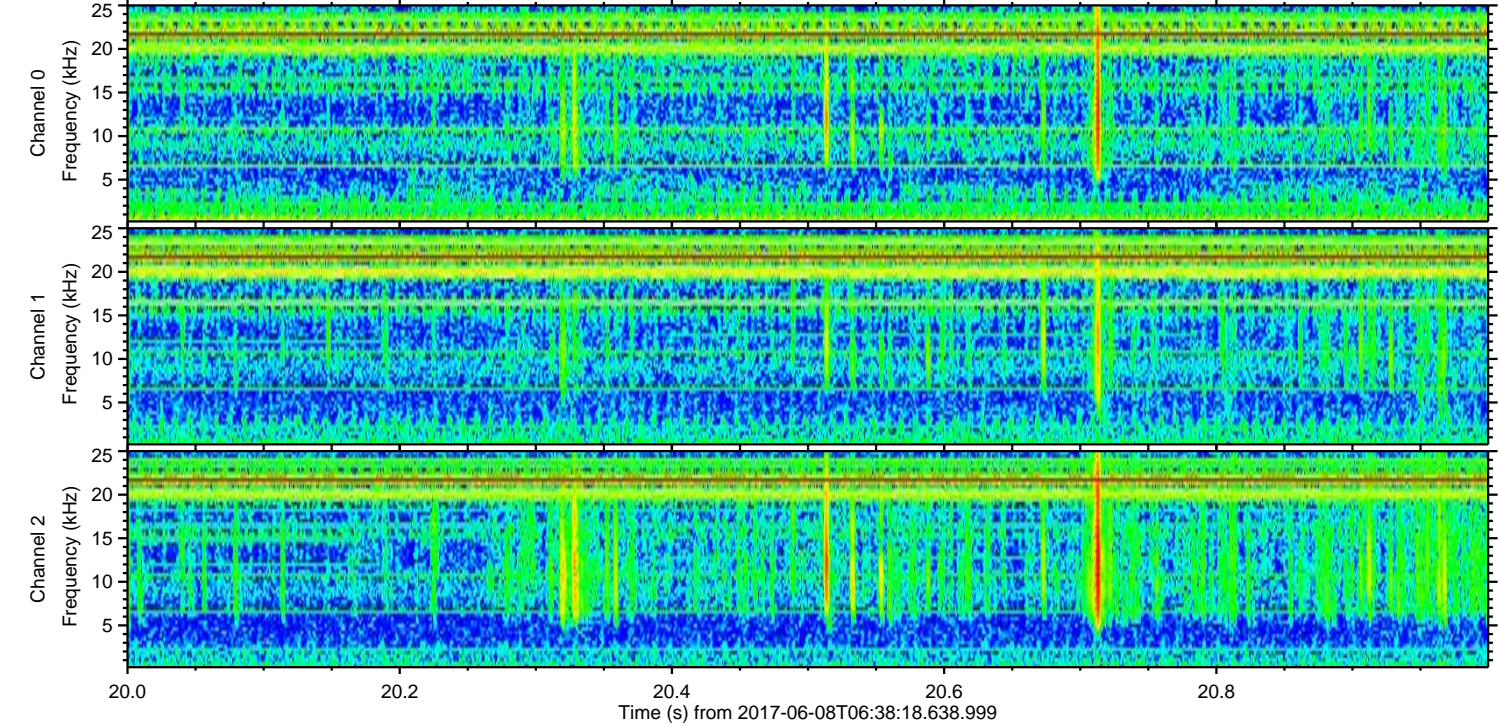
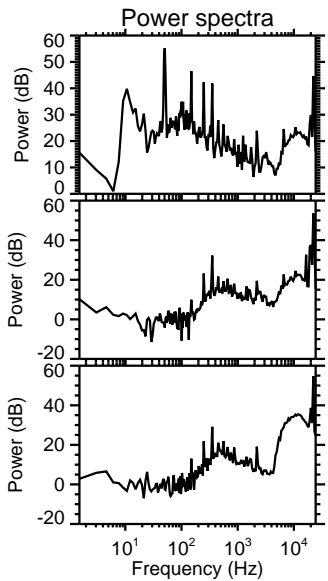
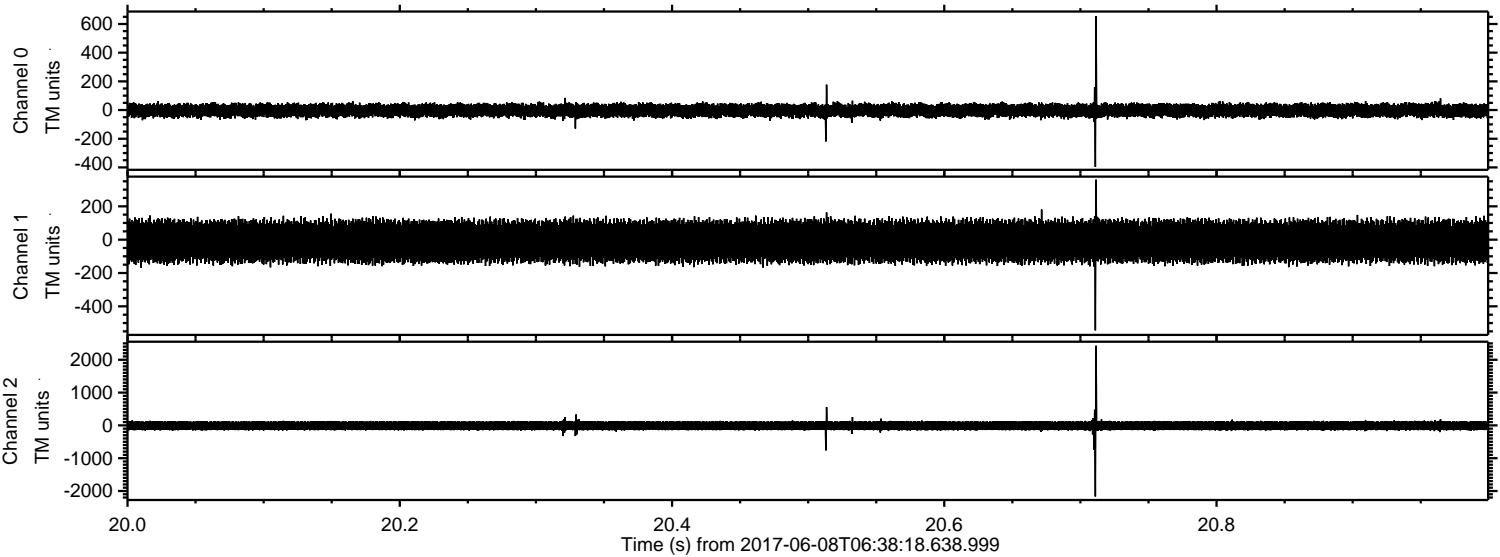
Processed Thu Jun 8 08:45:54 2017 by ELM ver.2012-10-06 from 001__elm20170608_063817__dat00.bin



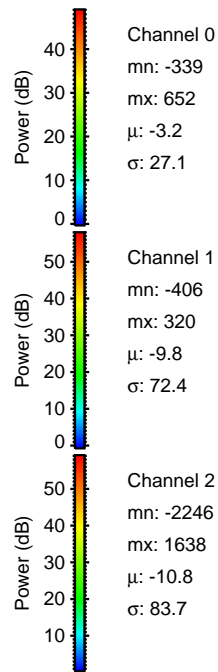
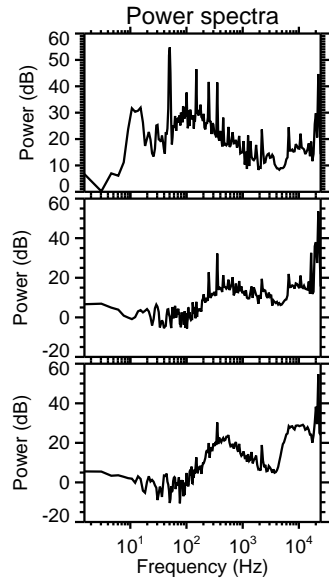
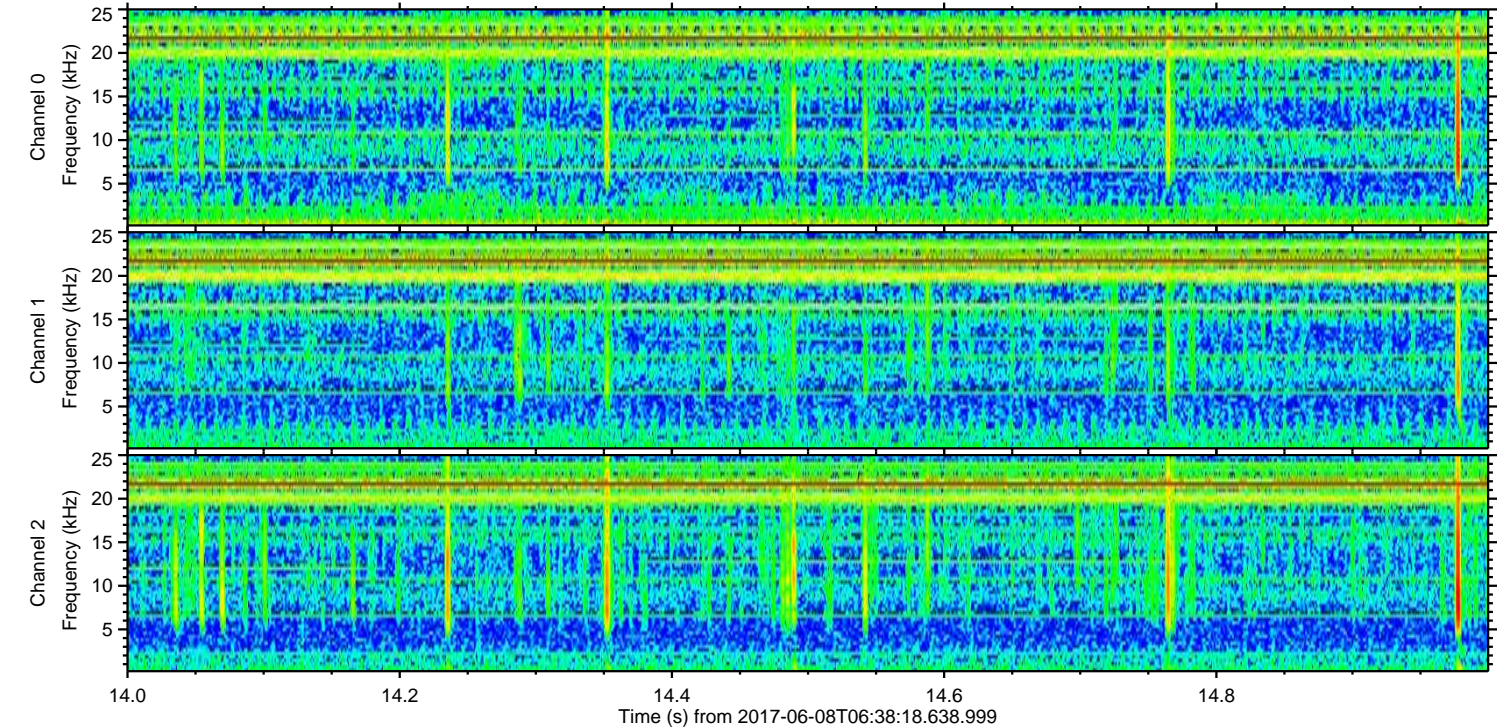
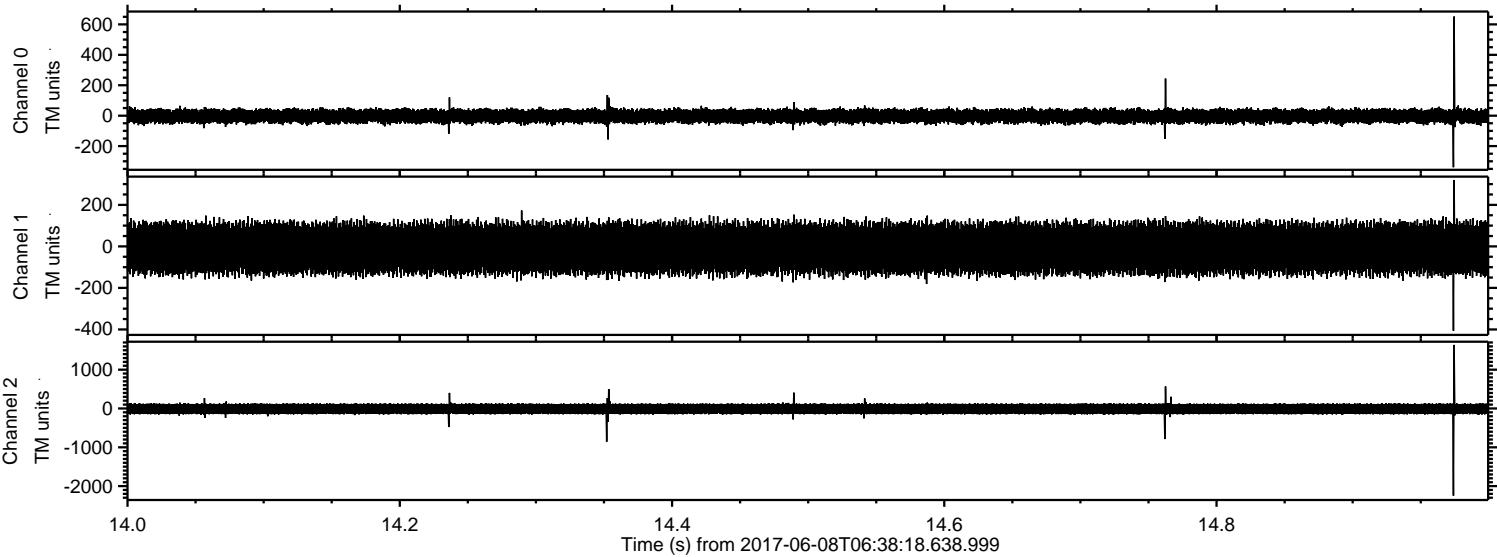
Processed Thu Jun 8 08:45:55 2017 by ELM ver.2012-10-06 from 001__elm20170608_063817__dat00.bin



Processed Thu Jun 8 08:45:56 2017 by ELM ver.2012-10-06 from 001__elm20170608_063817__dat00.bin



Processed Thu Jun 8 08:45:56 2017 by ELM ver.2012-10-06 from 001__elm20170608_063817__dat00.bin



Channel 0
mn: -339
mx: 652
 μ : -3.2
 σ : 27.1

Channel 1
mn: -406
mx: 320
 μ : -9.8
 σ : 72.4

Channel 2
mn: -2246
mx: 1638
 μ : -10.8
 σ : 83.7

Processed Thu Jun 8 08:45:57 2017 by ELM ver.2012-10-06 from 001__elm20170608_063817__dat00.bin

