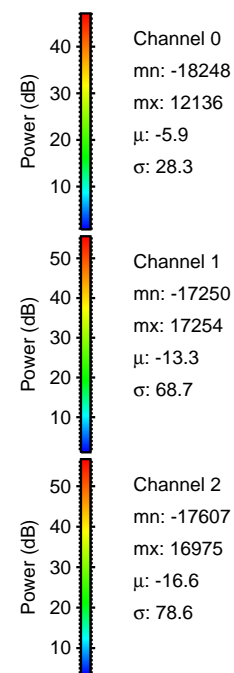
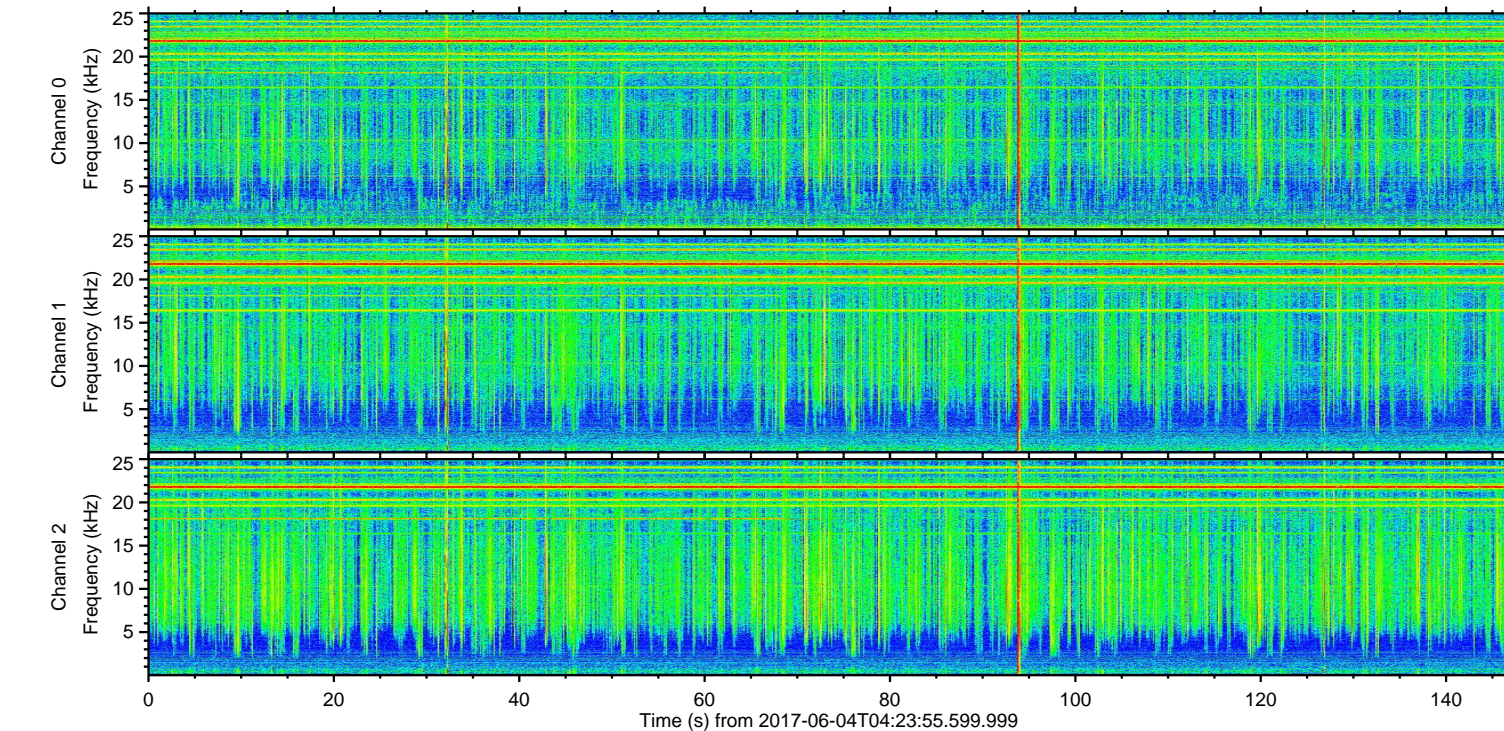
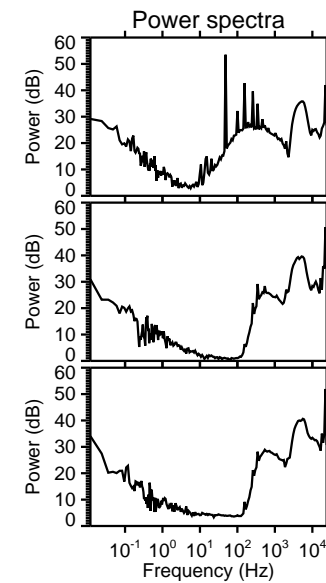
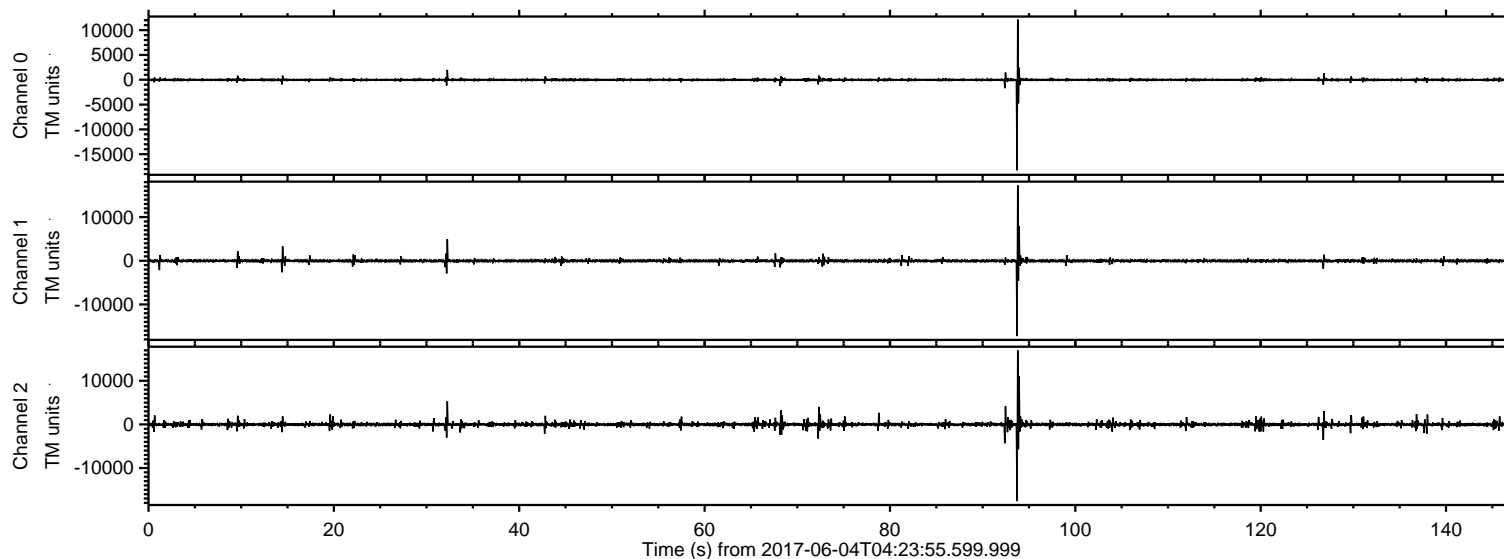
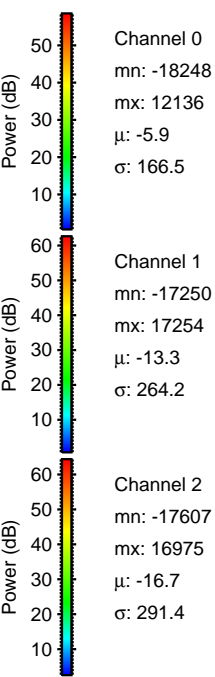
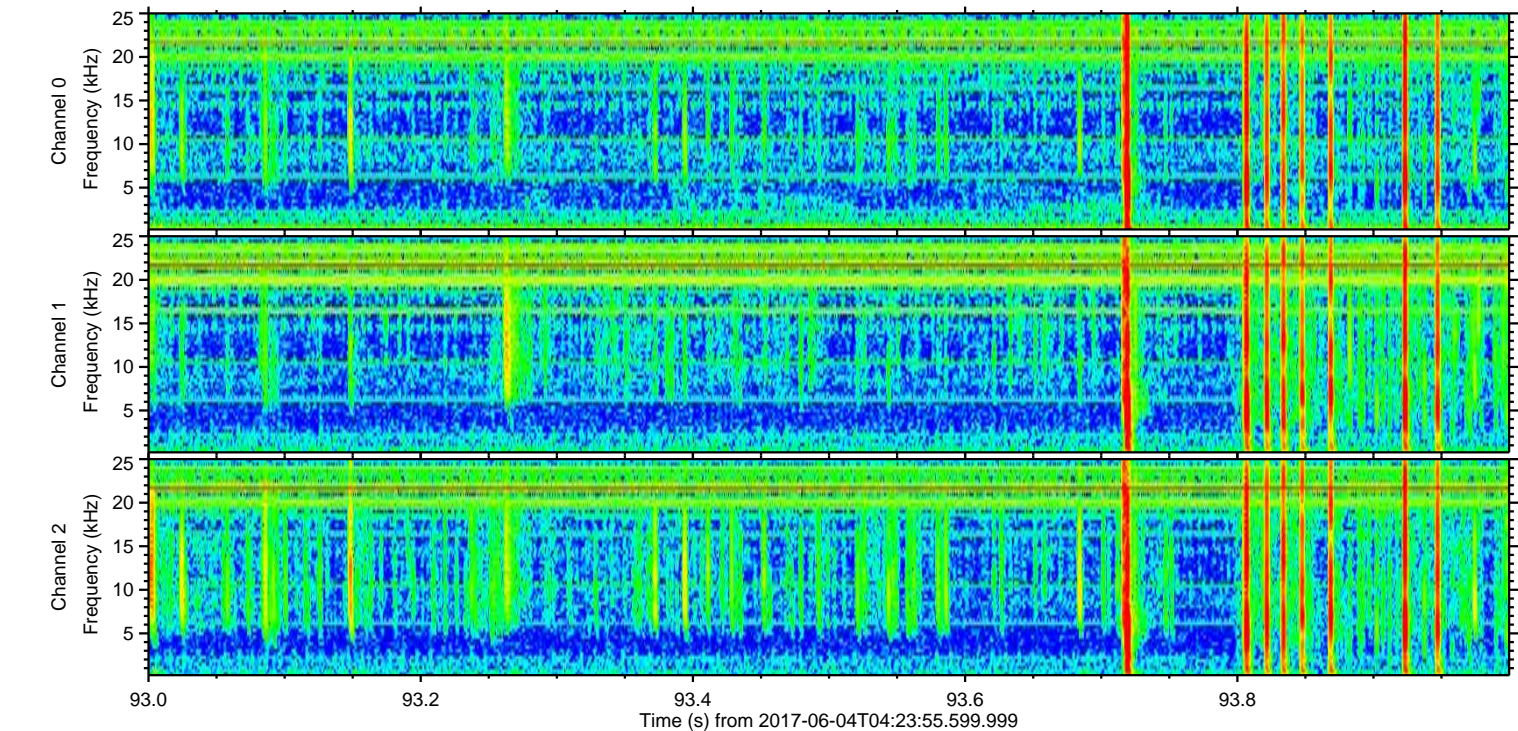
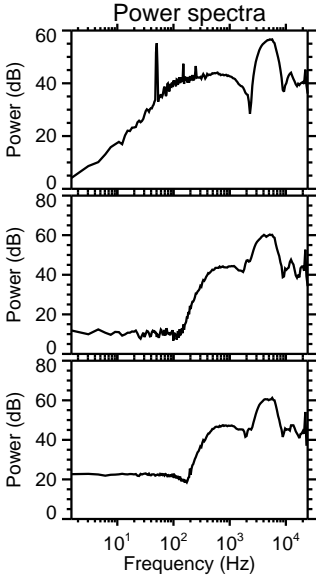
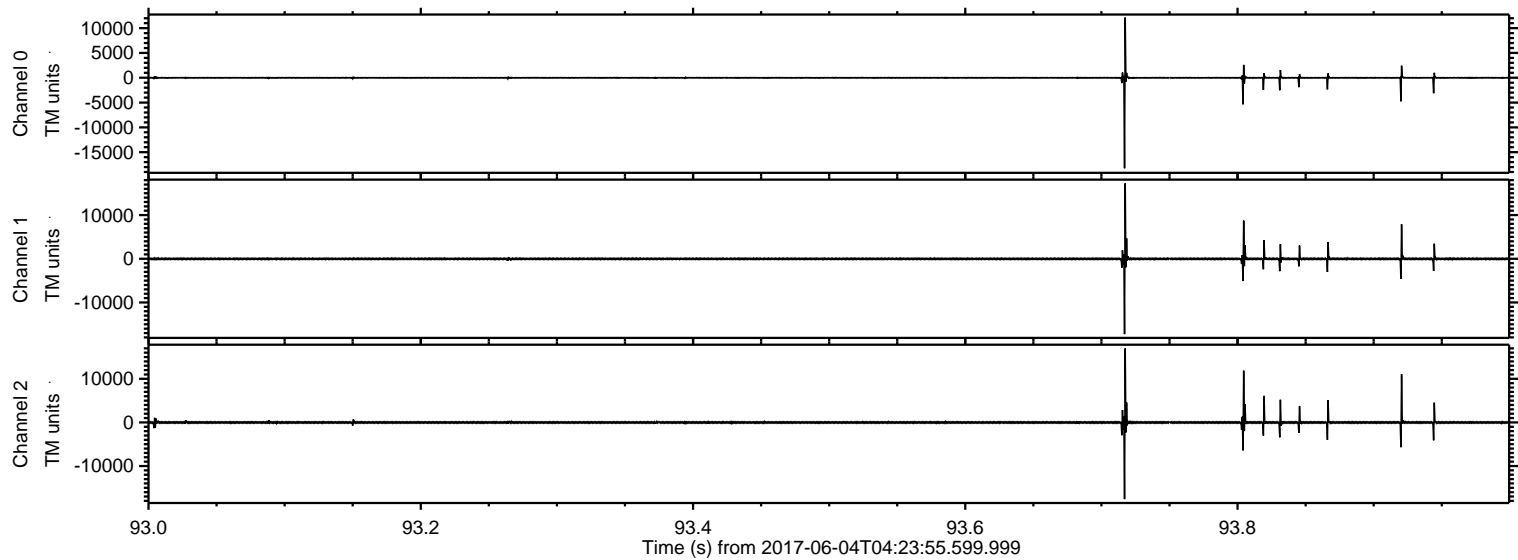


ELMAVAN 3D WAVEFORMS (Measured data sampled at 50 kHz) 51000 packets of 144 samples from 2017-06-04T04:23:55.599.999.

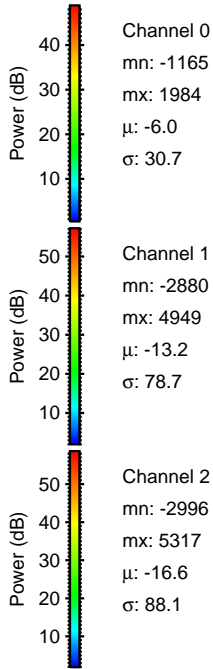
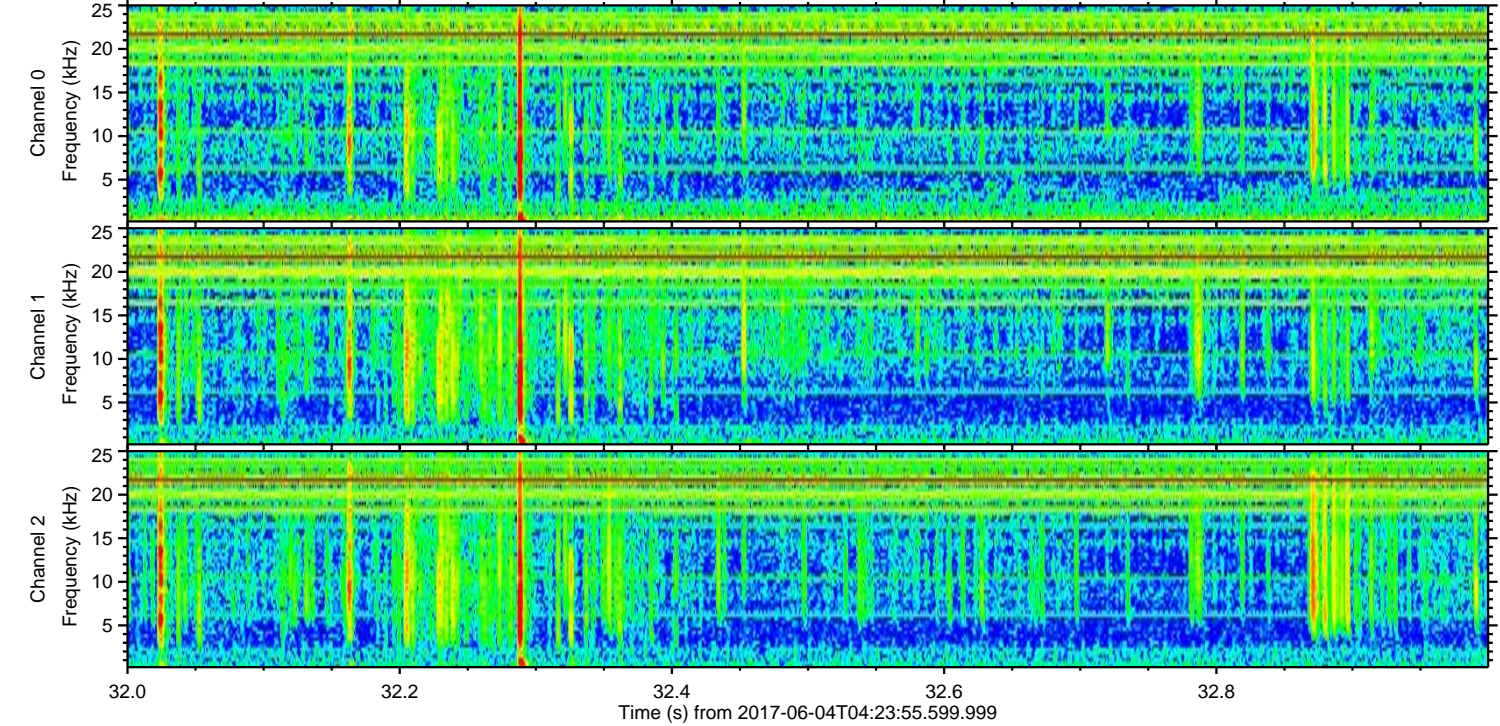
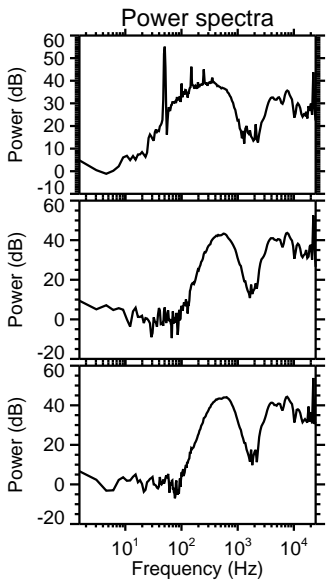
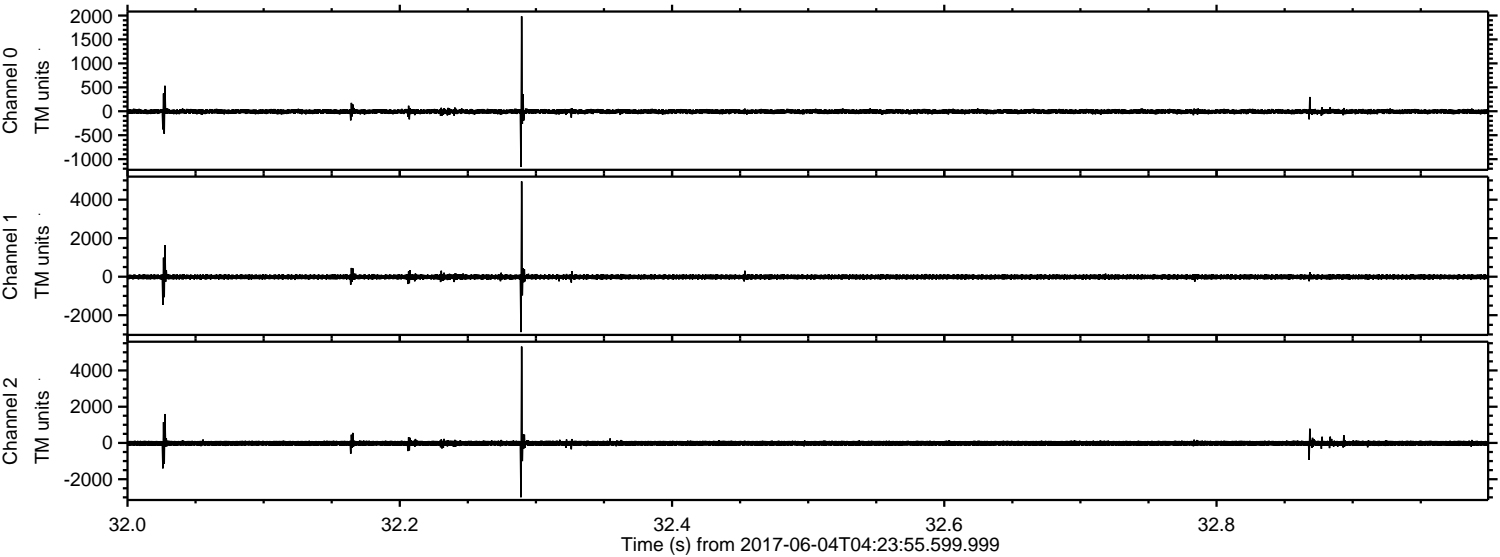
Processed Sun Jun 4 06:31:29 2017 by ELM ver.2012-10-06 from 001__elm20170604_042354__dat00.bin



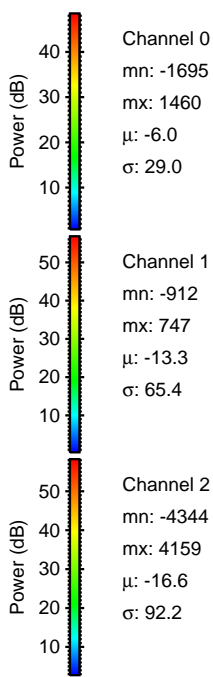
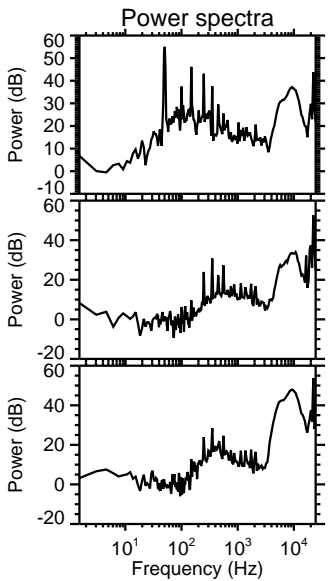
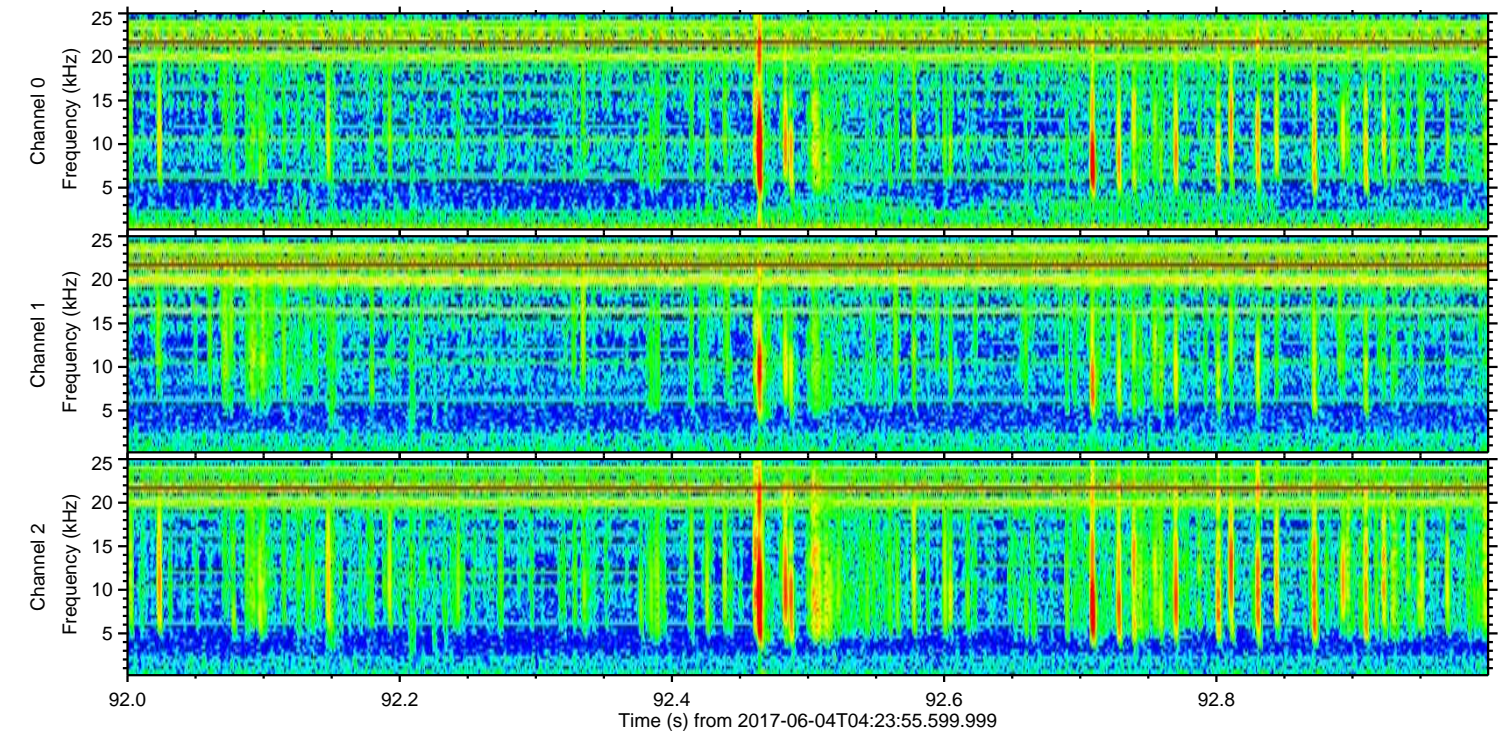
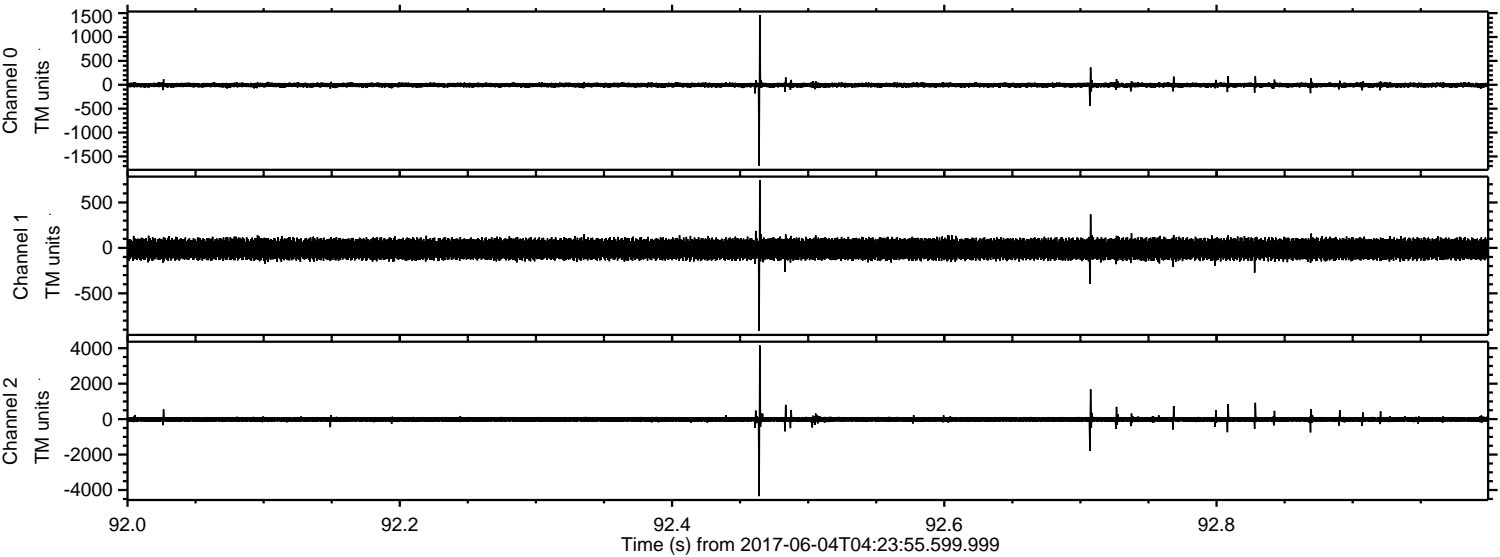
Processed Sun Jun 4 06:31:35 2017 by ELM ver.2012-10-06 from 001__elm20170604_042354__dat00.bin



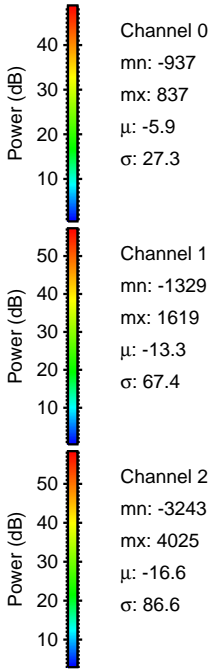
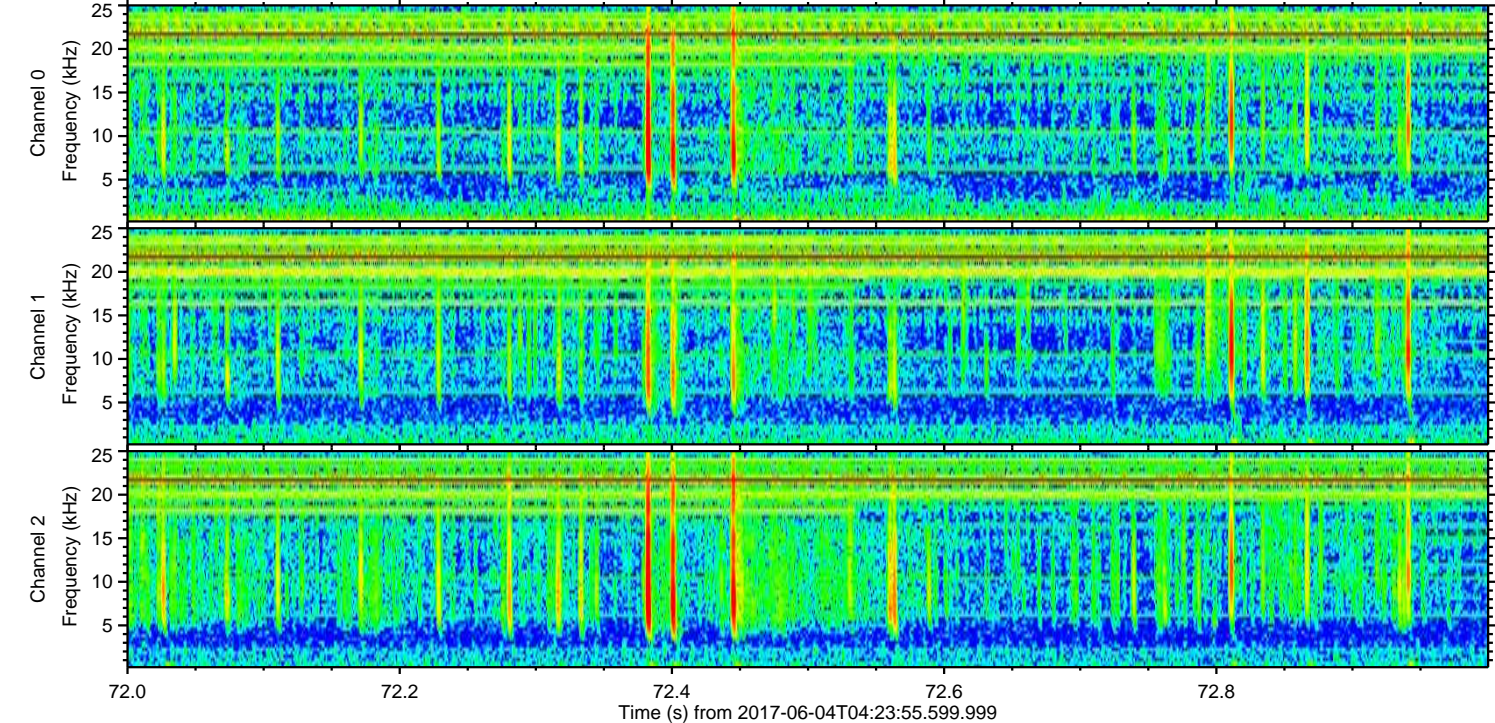
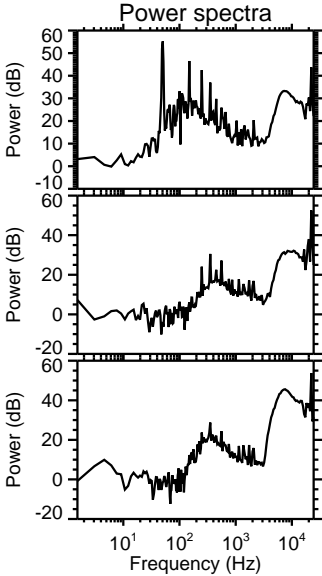
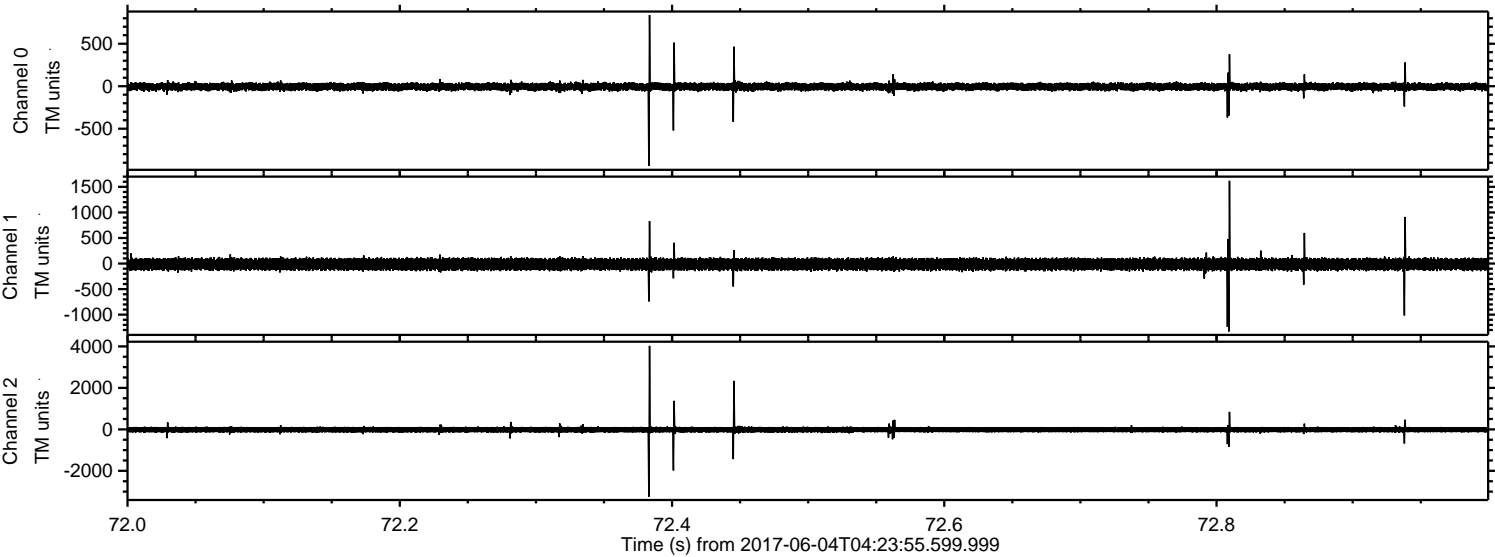
Processed Sun Jun 4 06:31:35 2017 by ELM ver.2012-10-06 from 001__elm20170604_042354__dat00.bin



Processed Sun Jun 4 06:31:36 2017 by ELM ver.2012-10-06 from 001__elm20170604_042354__dat00.bin

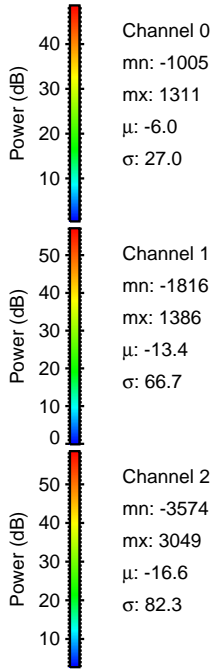
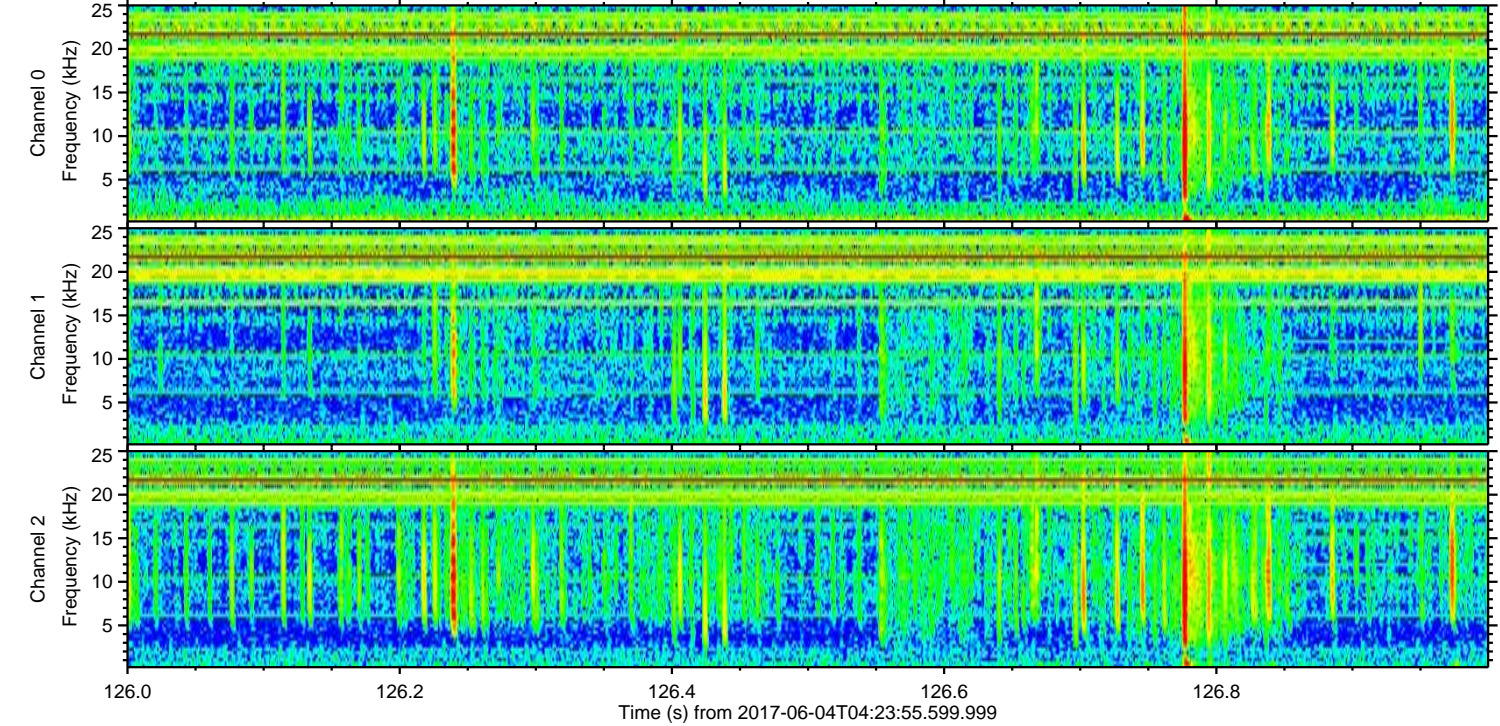
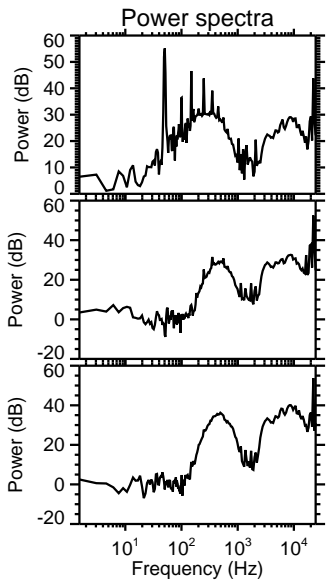
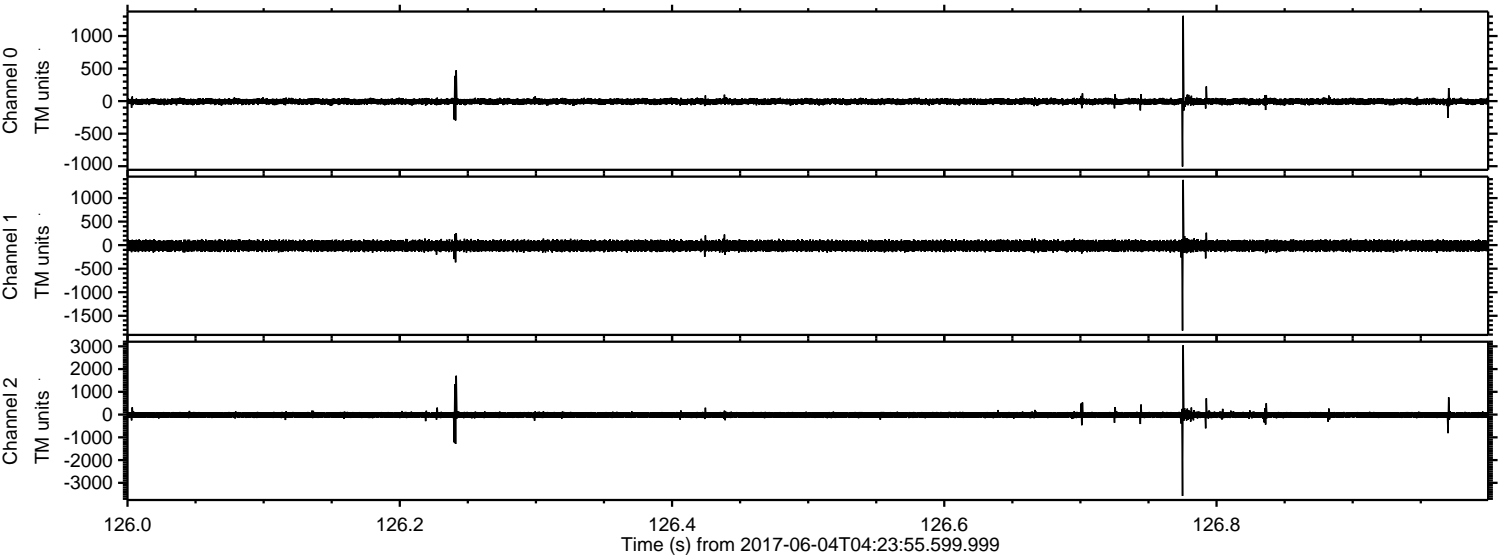


Processed Sun Jun 4 06:31:37 2017 by ELM ver.2012-10-06 from 001__elm20170604_042354__dat00.bin

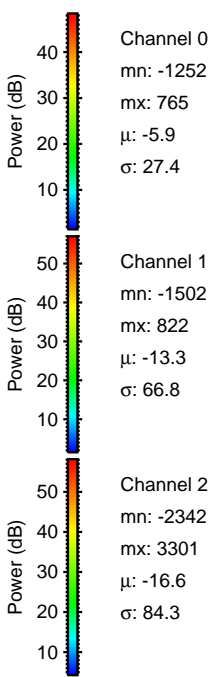
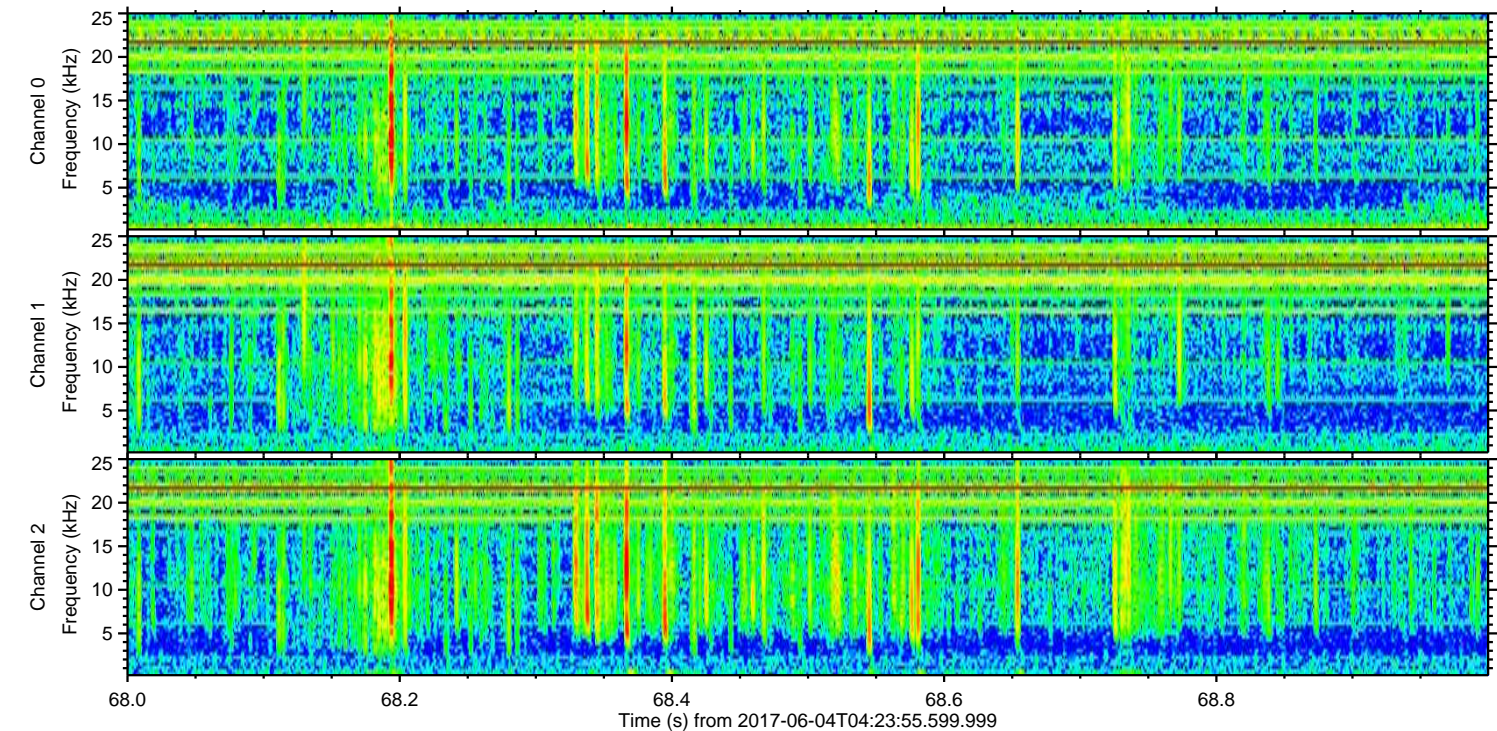
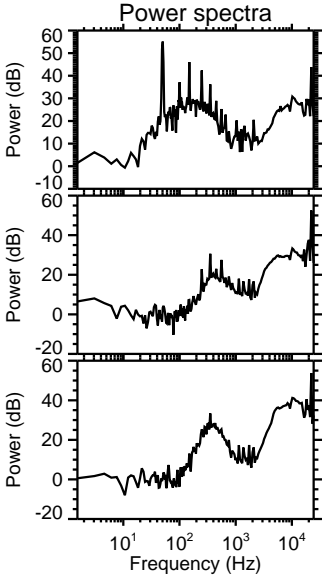
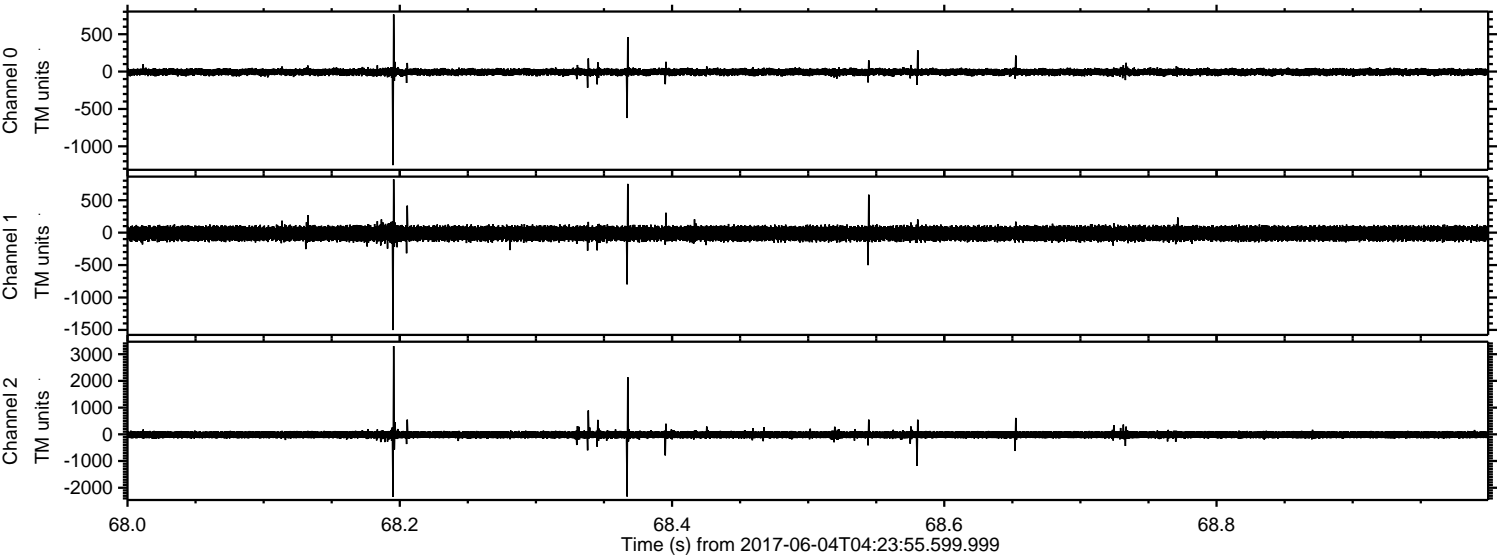


ELMAVAN 3D WAVEFORMS (Measured data sampled at 50 kHz) 51000 packets of 144 samples from 2017-06-04T04:23:55.599.999. Part 127/147

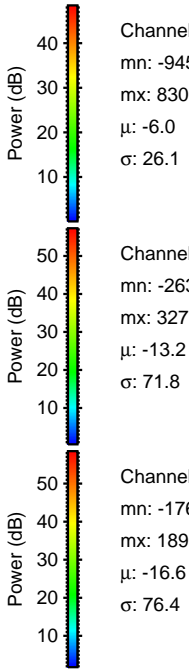
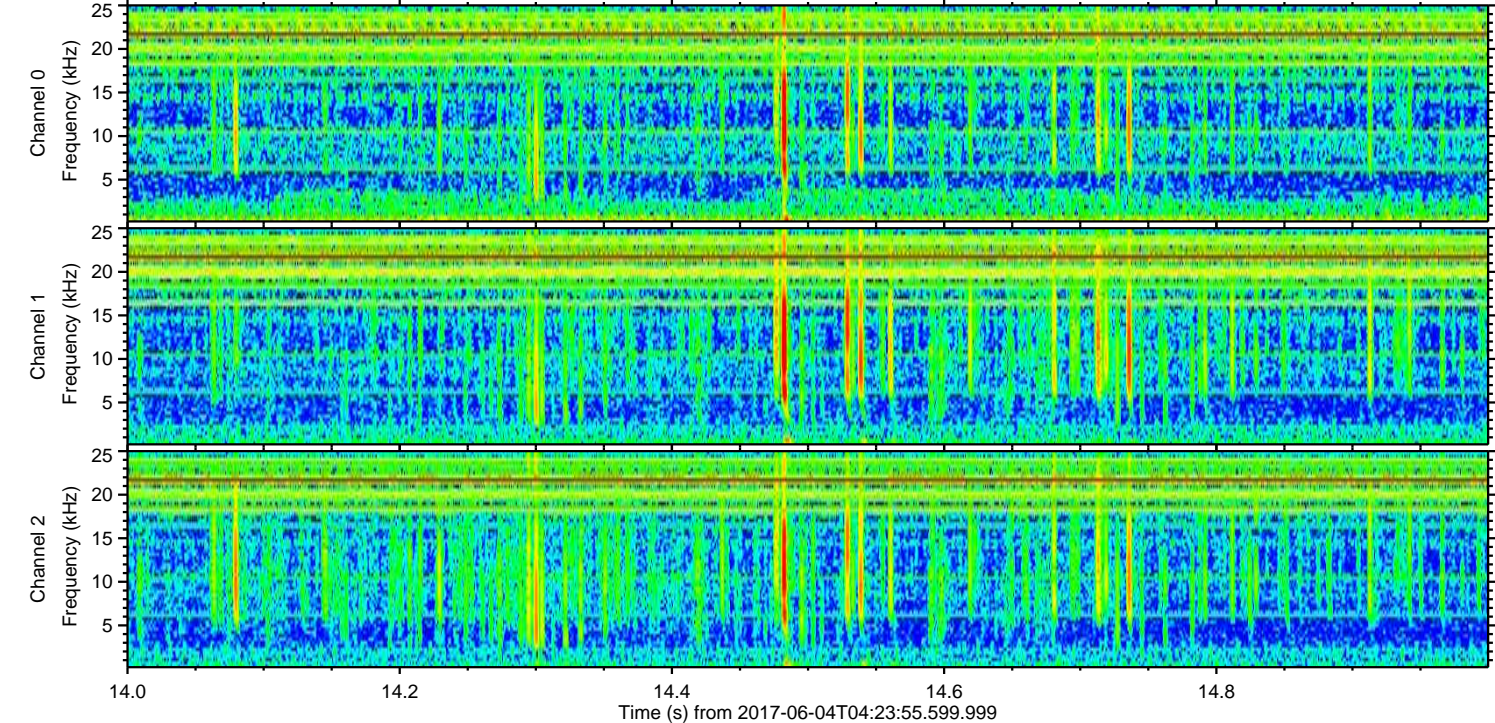
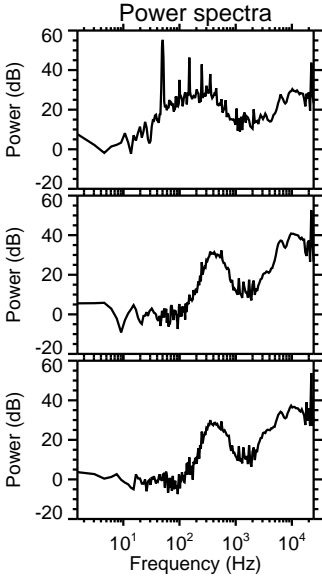
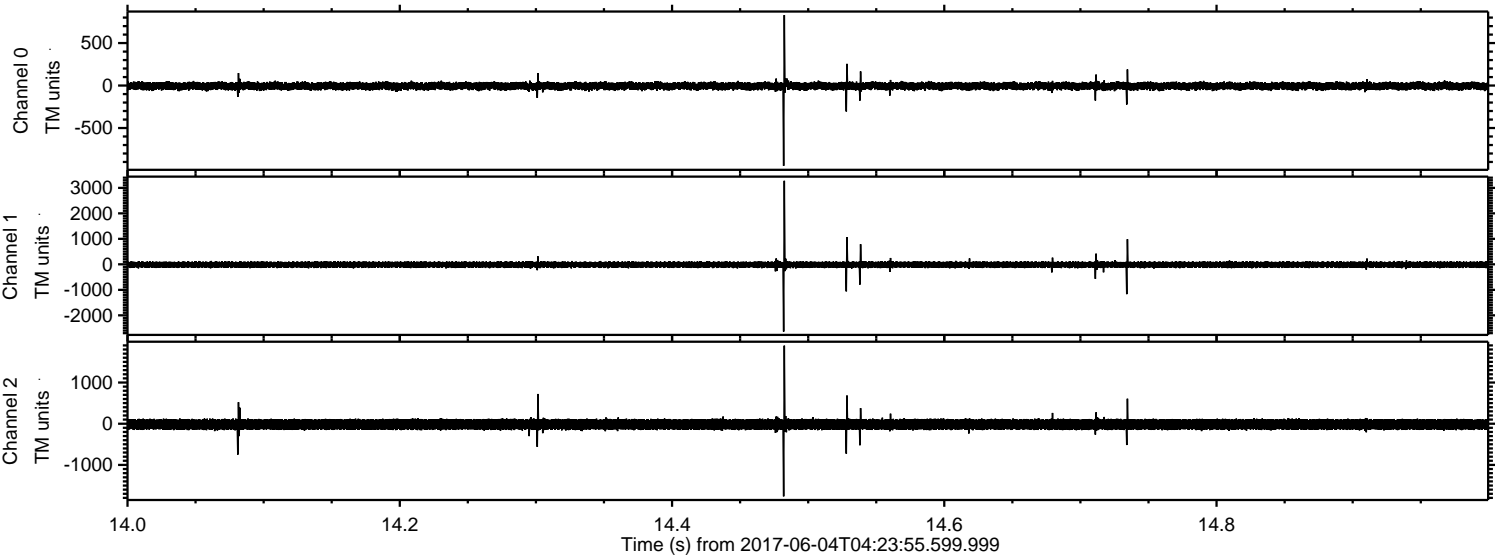
Processed Sun Jun 4 06:31:37 2017 by ELM ver.2012-10-06 from 001__elm20170604_042354__dat00.bin



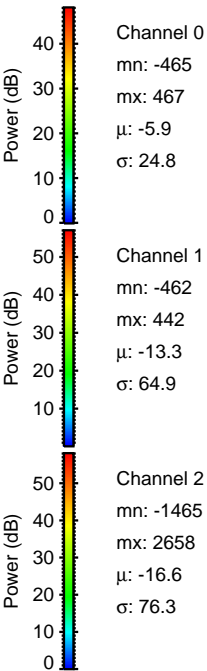
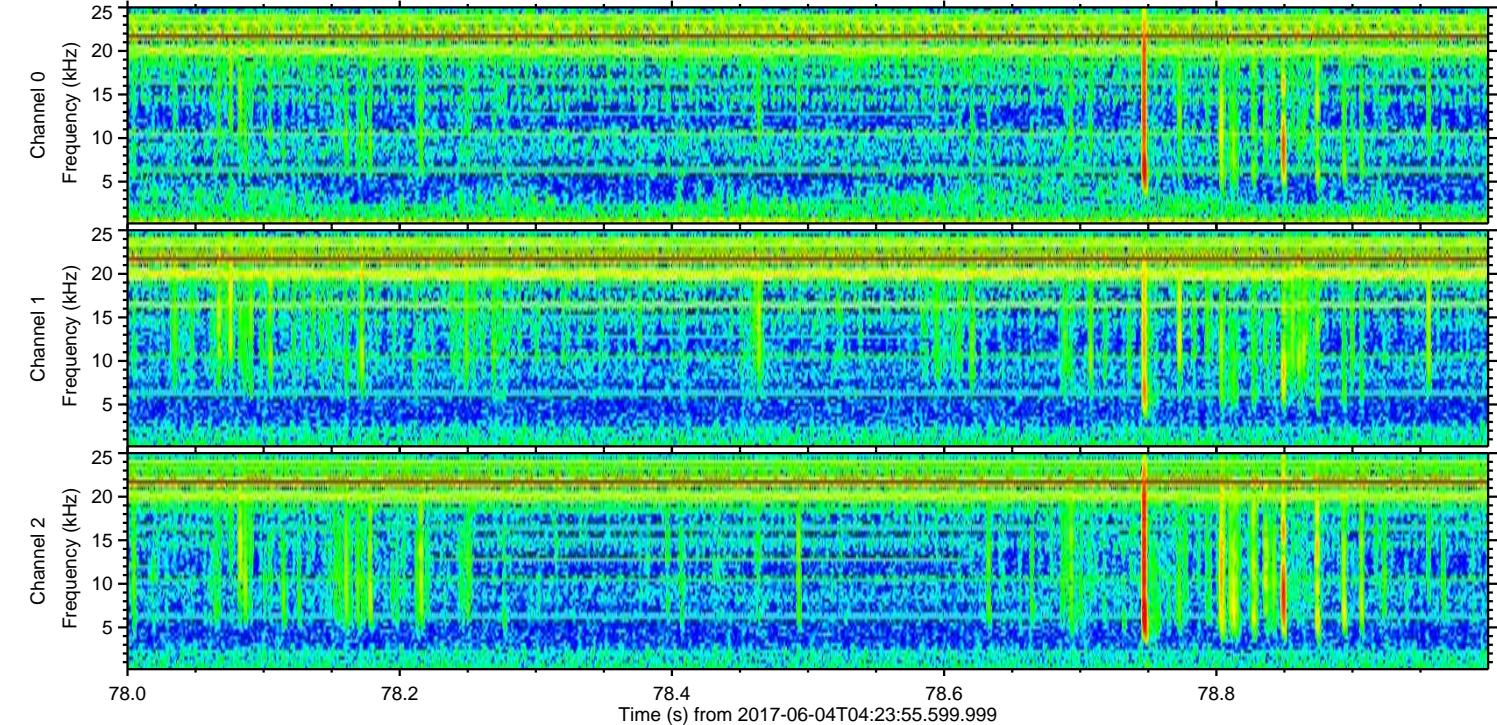
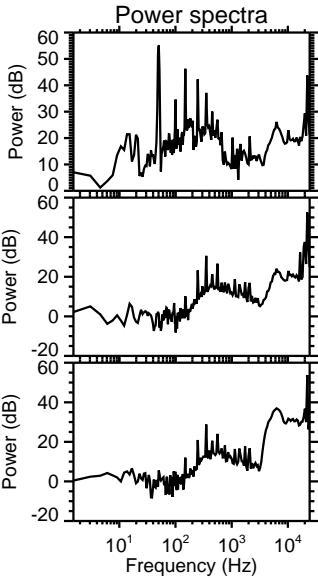
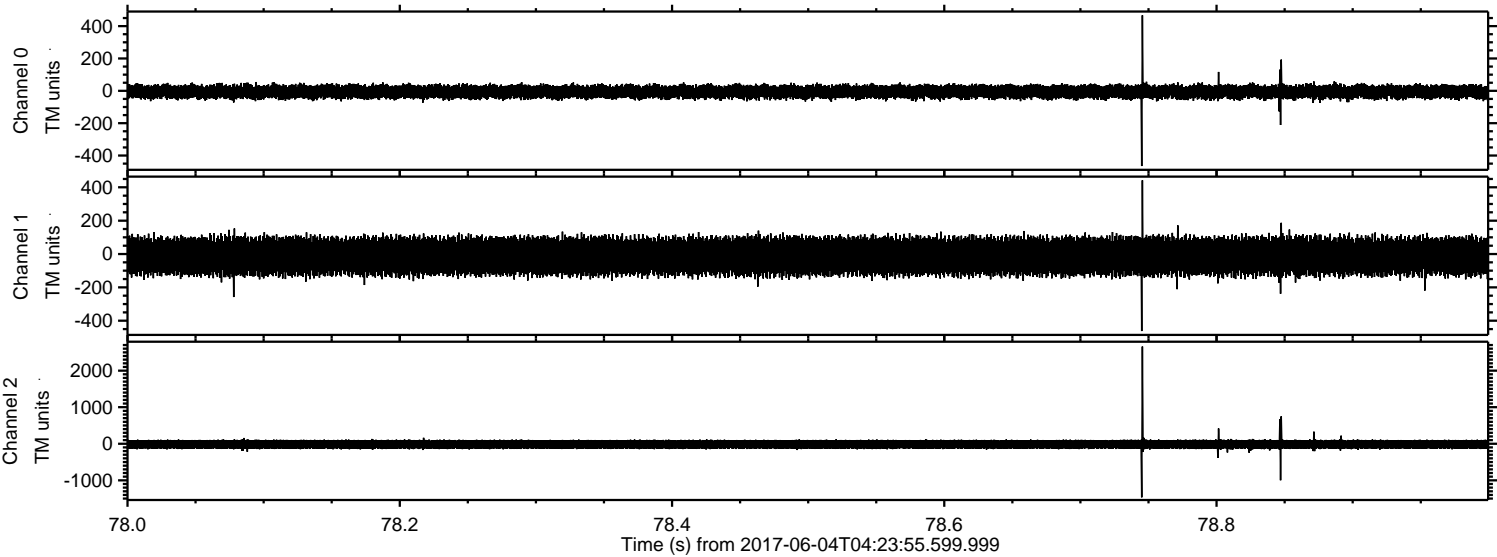
Processed Sun Jun 4 06:31:38 2017 by ELM ver.2012-10-06 from 001__elm20170604_042354__dat00.bin



Processed Sun Jun 4 06:31:39 2017 by ELM ver.2012-10-06 from 001__elm20170604_042354__dat00.bin

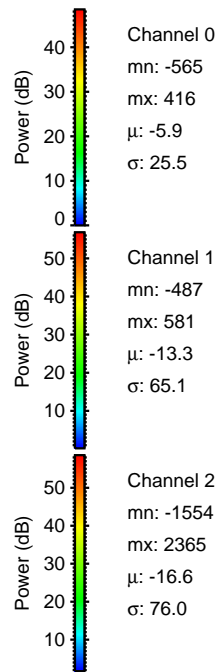
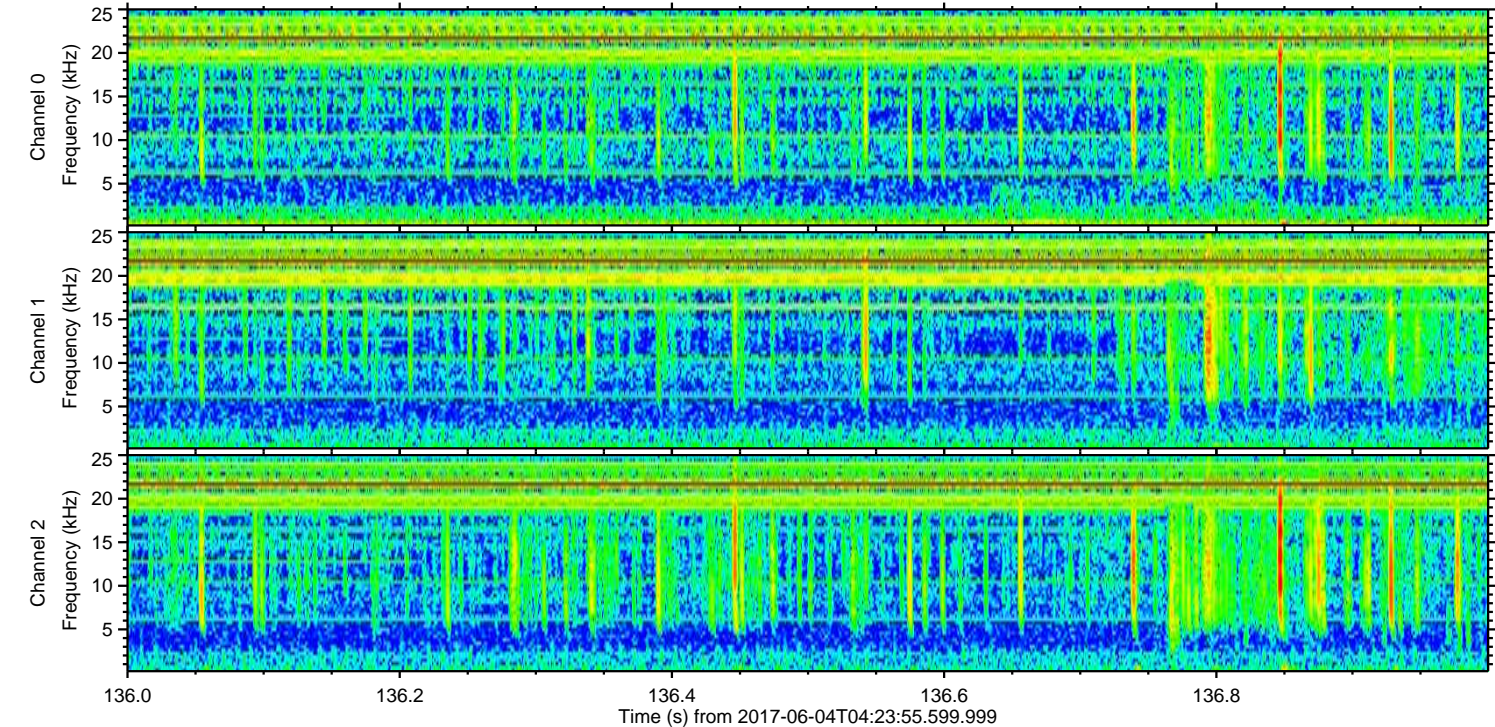
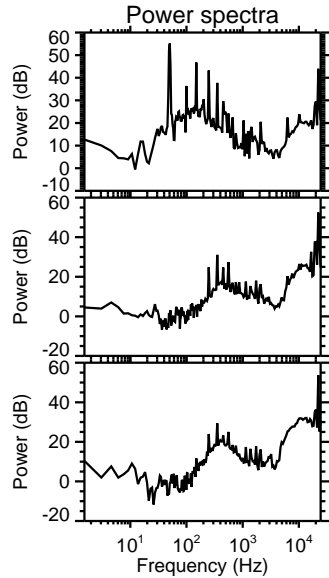
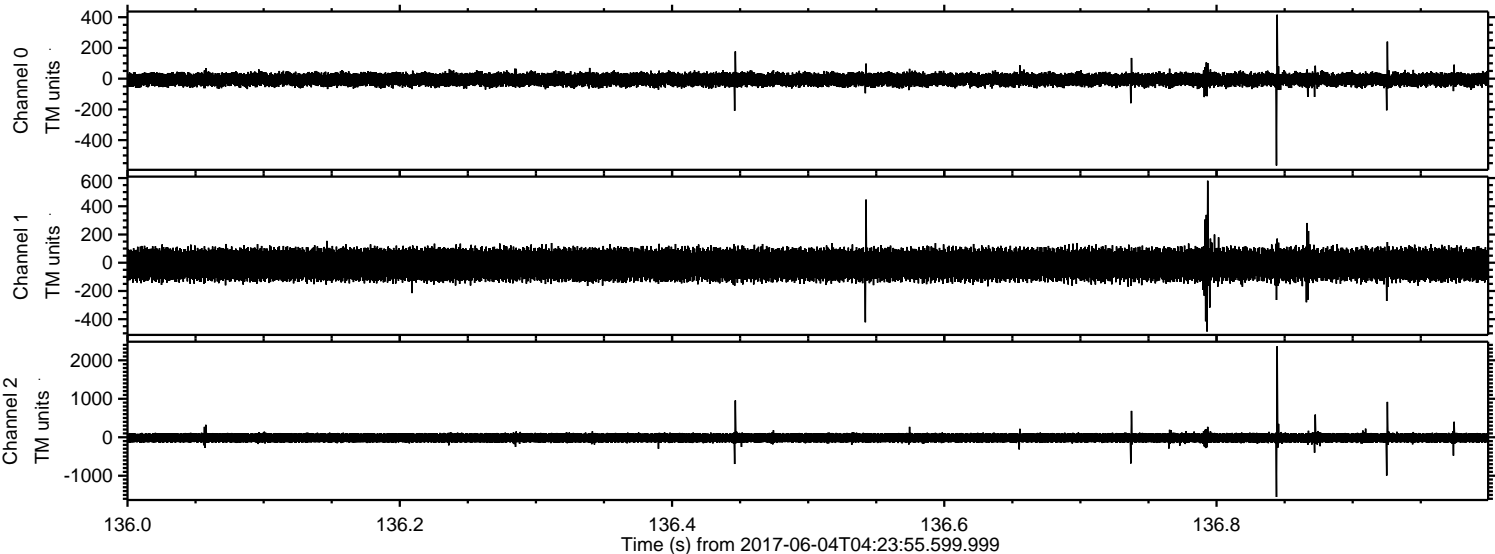


Processed Sun Jun 4 06:31:39 2017 by ELM ver.2012-10-06 from 001__elm20170604_042354__dat00.bin



ELMAVAN 3D WAVEFORMS (Measured data sampled at 50 kHz) 51000 packets of 144 samples from 2017-06-04T04:23:55.599.999. Part 137/147

Processed Sun Jun 4 06:31:40 2017 by ELM ver.2012-10-06 from 001__elm20170604_042354__dat00.bin



Channel 0
mn: -565
mx: 416
 μ : -5.9
 σ : 25.5

Channel 1
mn: -487
mx: 581
 μ : -13.3
 σ : 65.1

Channel 2
mn: -1554
mx: 2365
 μ : -16.6
 σ : 76.0

