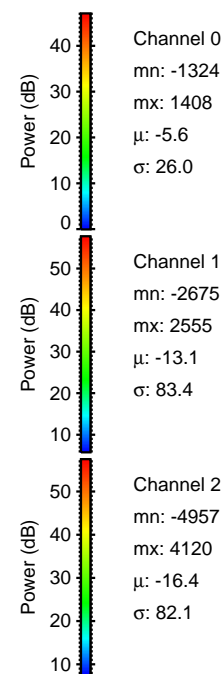
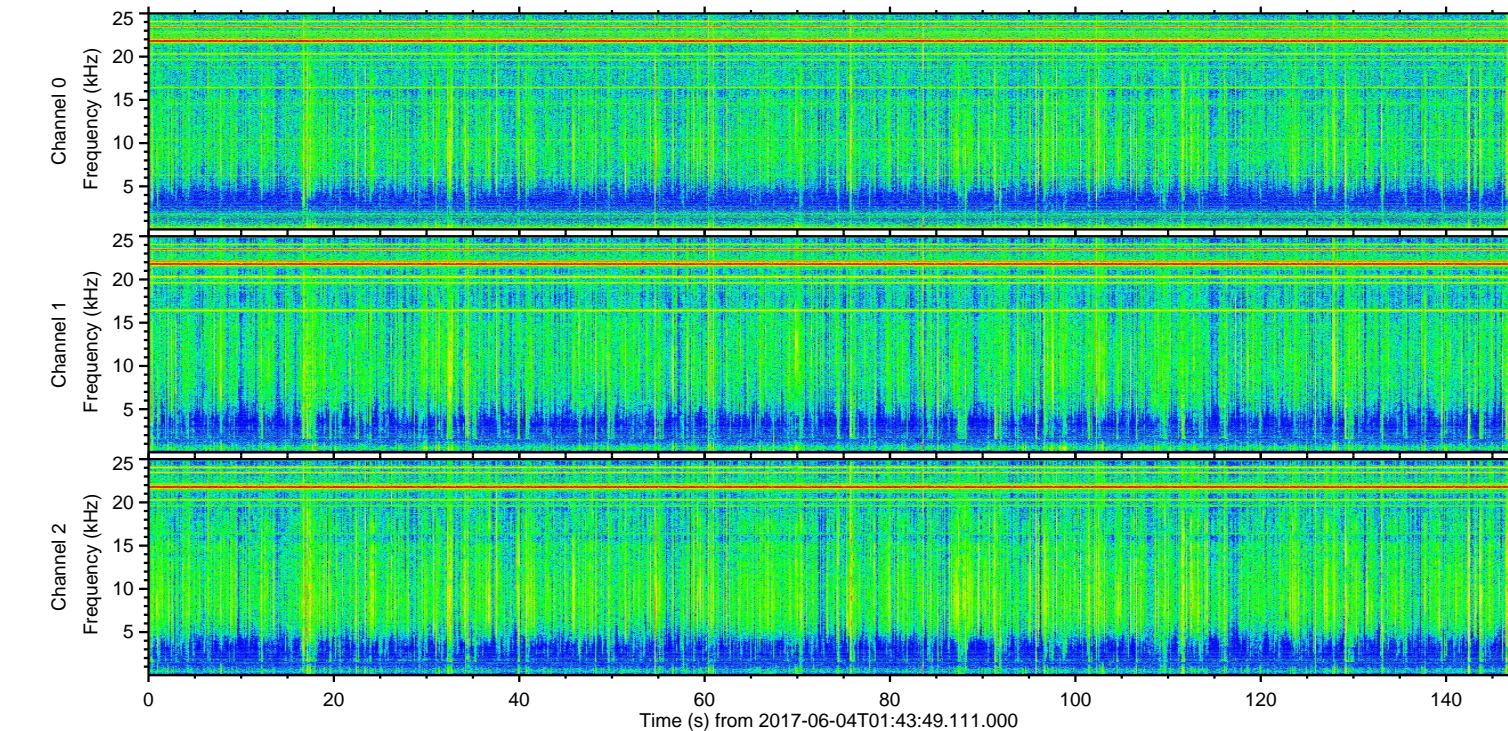
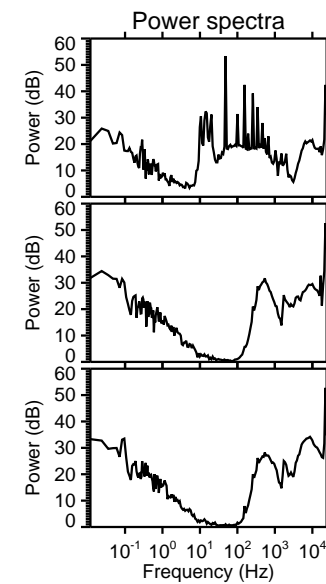
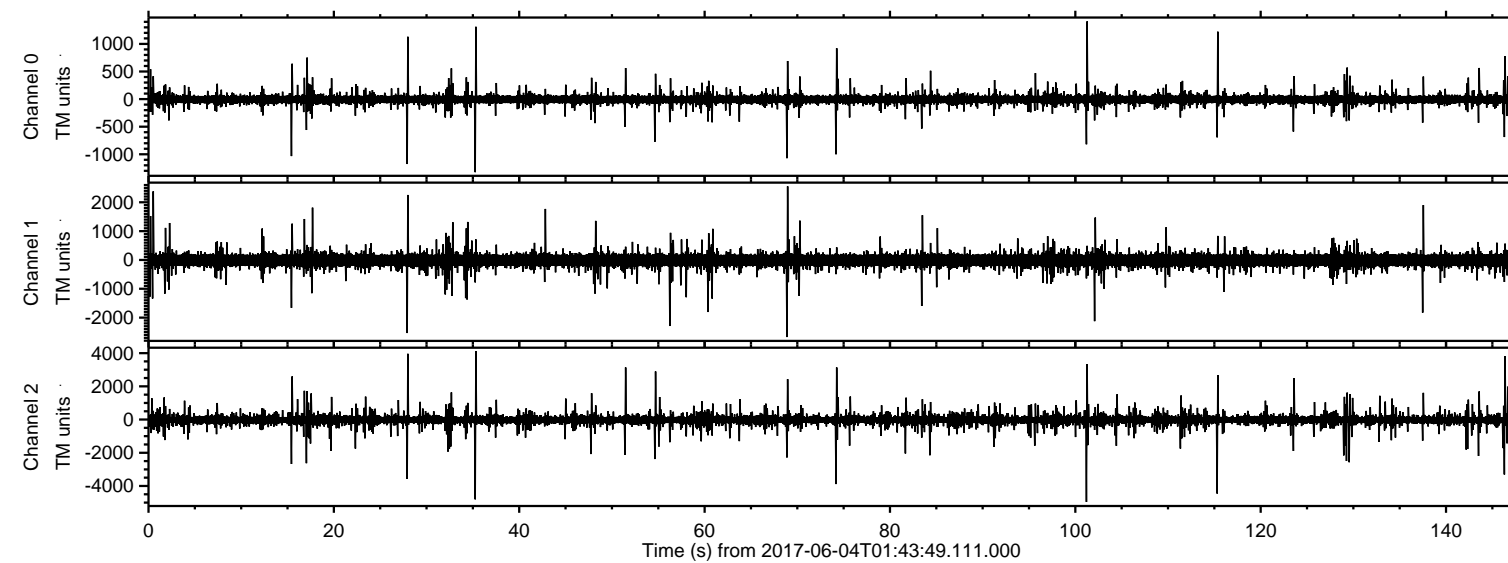


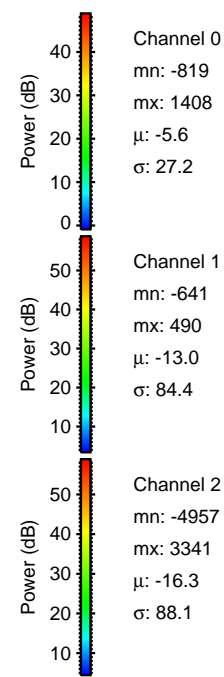
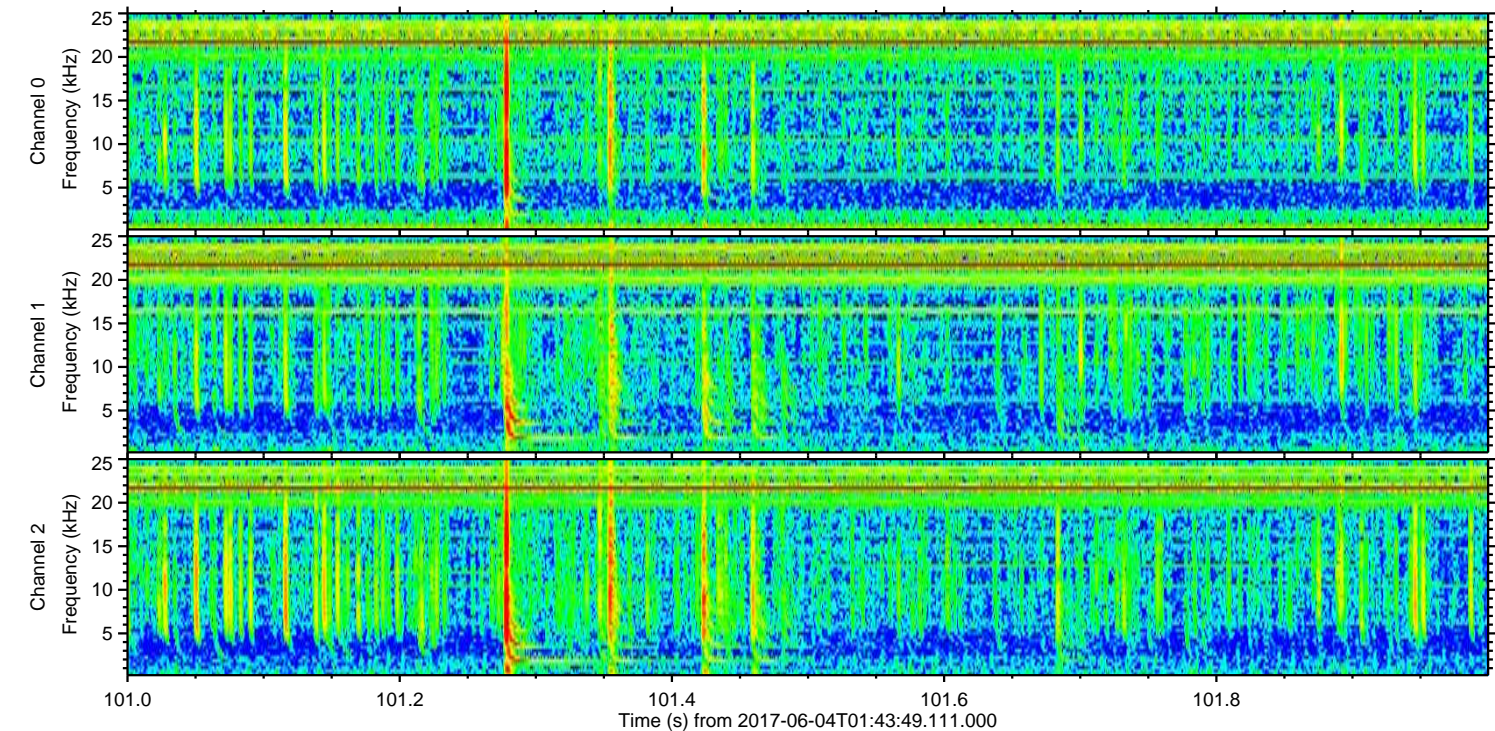
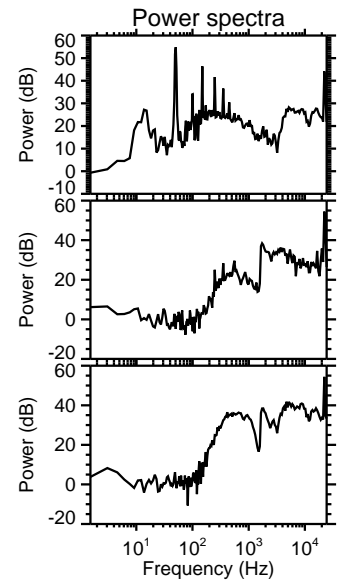
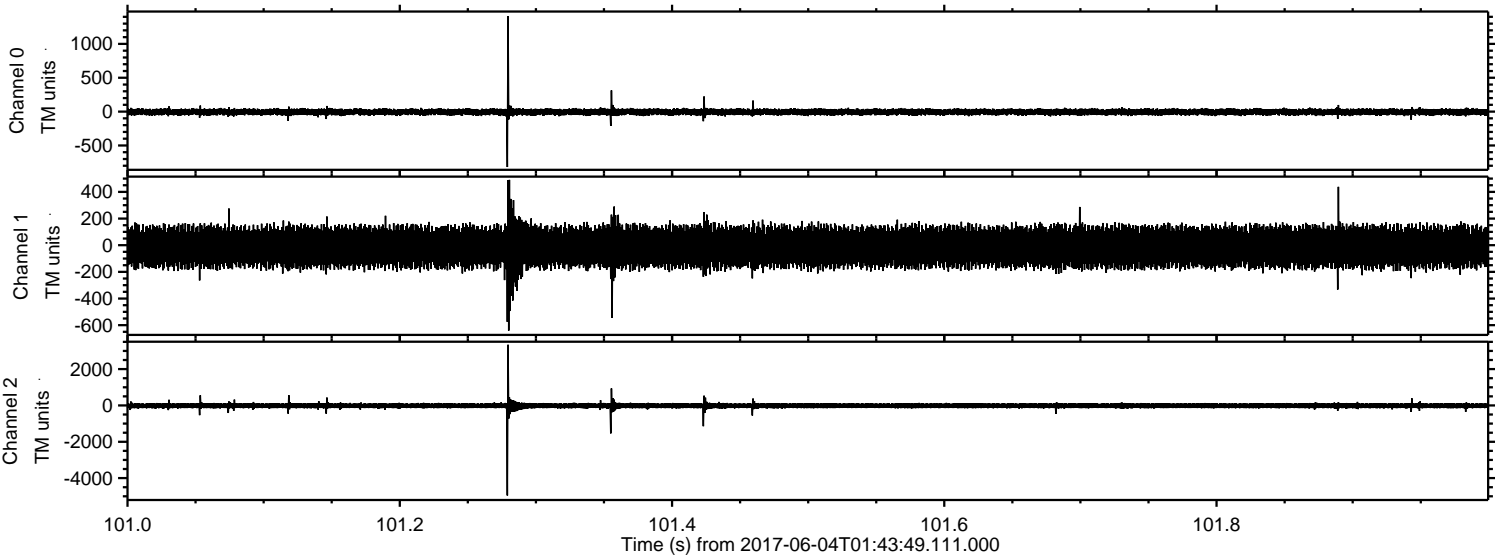
ELMAVAN 3D WAVEFORMS (Measured data sampled at 50 kHz) 51000 packets of 144 samples from 2017-06-04T01:43:49.111.000.

Processed Sun Jun 4 03:51:56 2017 by ELM ver.2012-10-06 from 001__elm20170604_014348__dat00.bin



ELMAVAN 3D WAVEFORMS (Measured data sampled at 50 kHz) 51000 packets of 144 samples from 2017-06-04T01:43:49.111.000. Part 102/147

Processed Sun Jun 4 03:52:06 2017 by ELM ver.2012-10-06 from 001__elm20170604_014348__dat00.bin

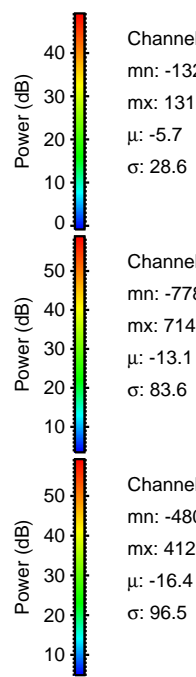
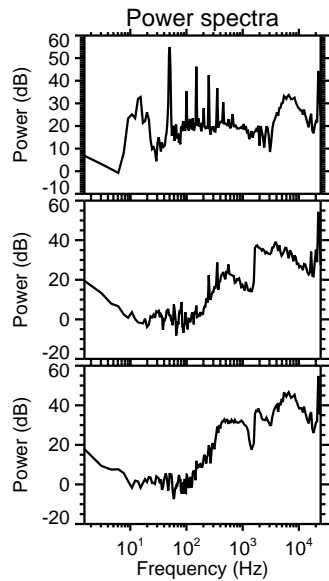
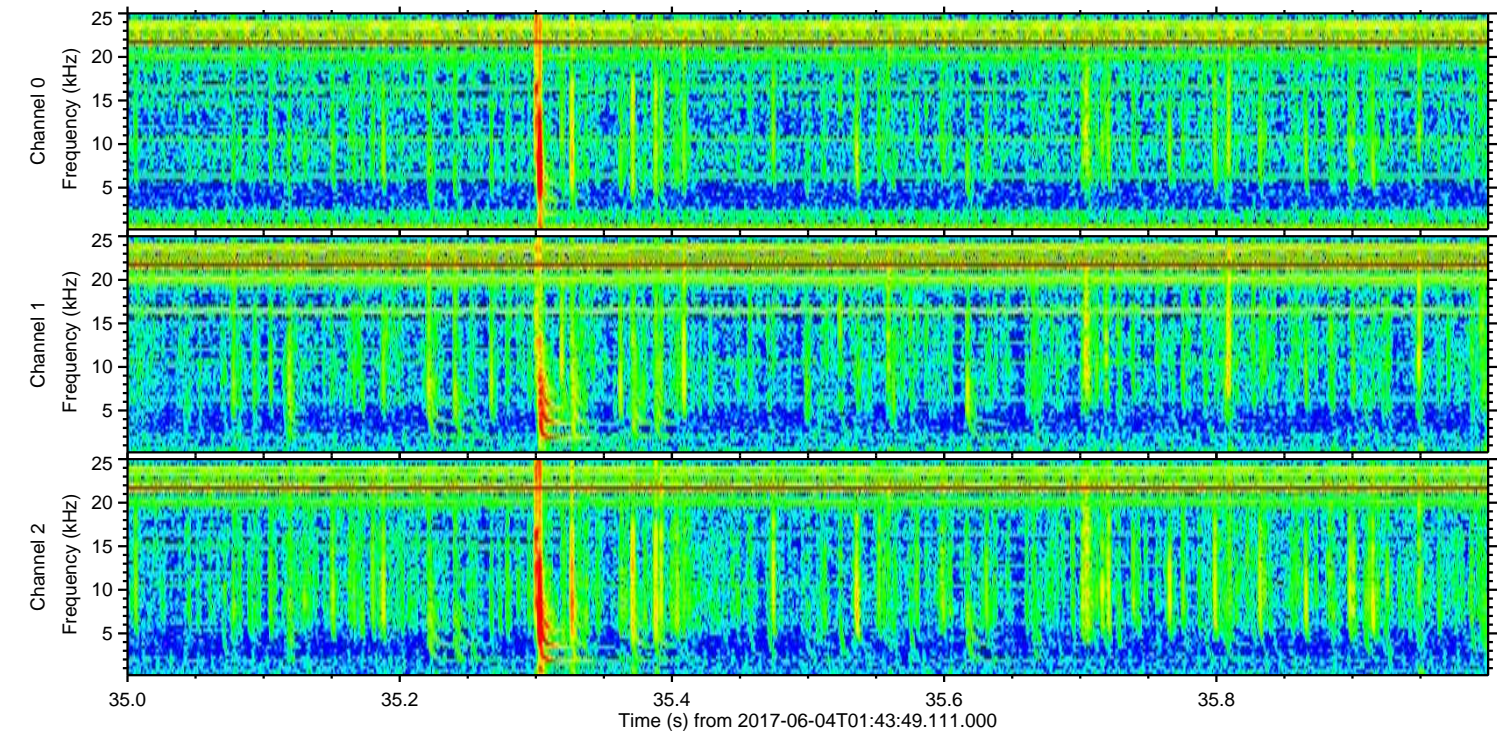
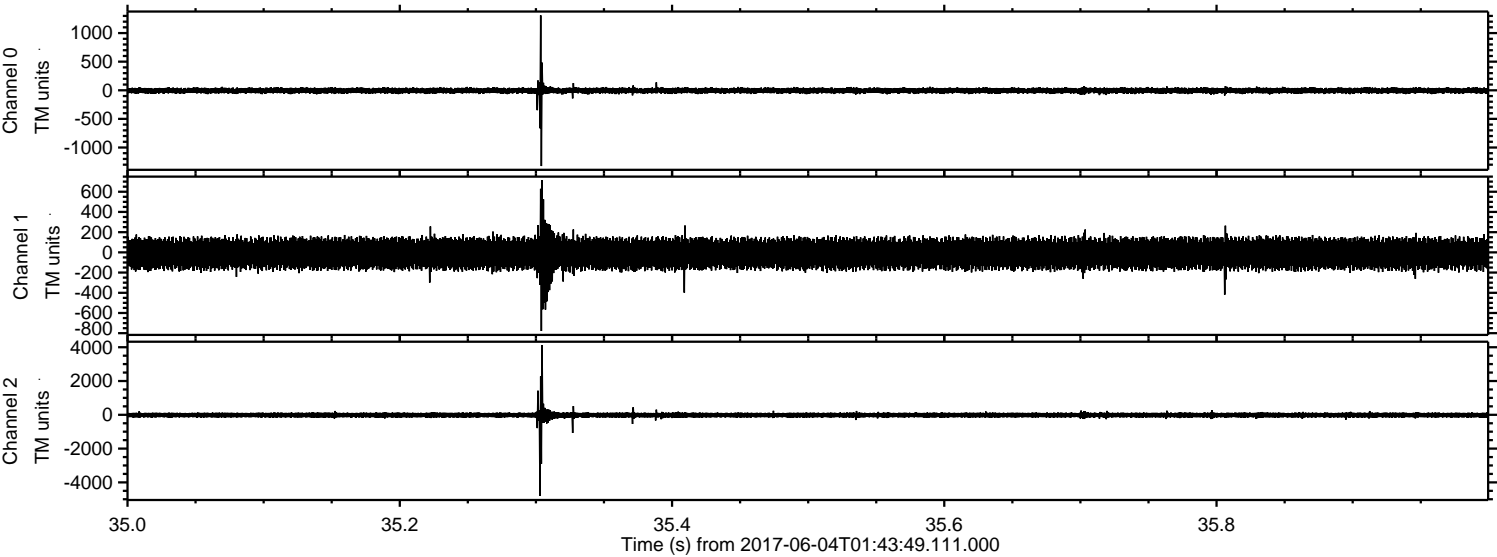


Channel 0
mn: -819
mx: 1408
 μ : -5.6
 σ : 27.2

Channel 1
mn: -641
mx: 490
 μ : -13.0
 σ : 84.4

Channel 2
mn: -4957
mx: 3341
 μ : -16.3
 σ : 88.1

Processed Sun Jun 4 03:52:07 2017 by ELM ver.2012-10-06 from 001__elm20170604_014348__dat00.bin



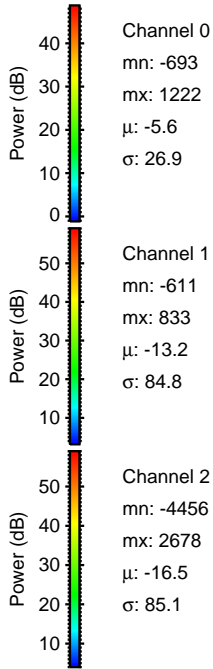
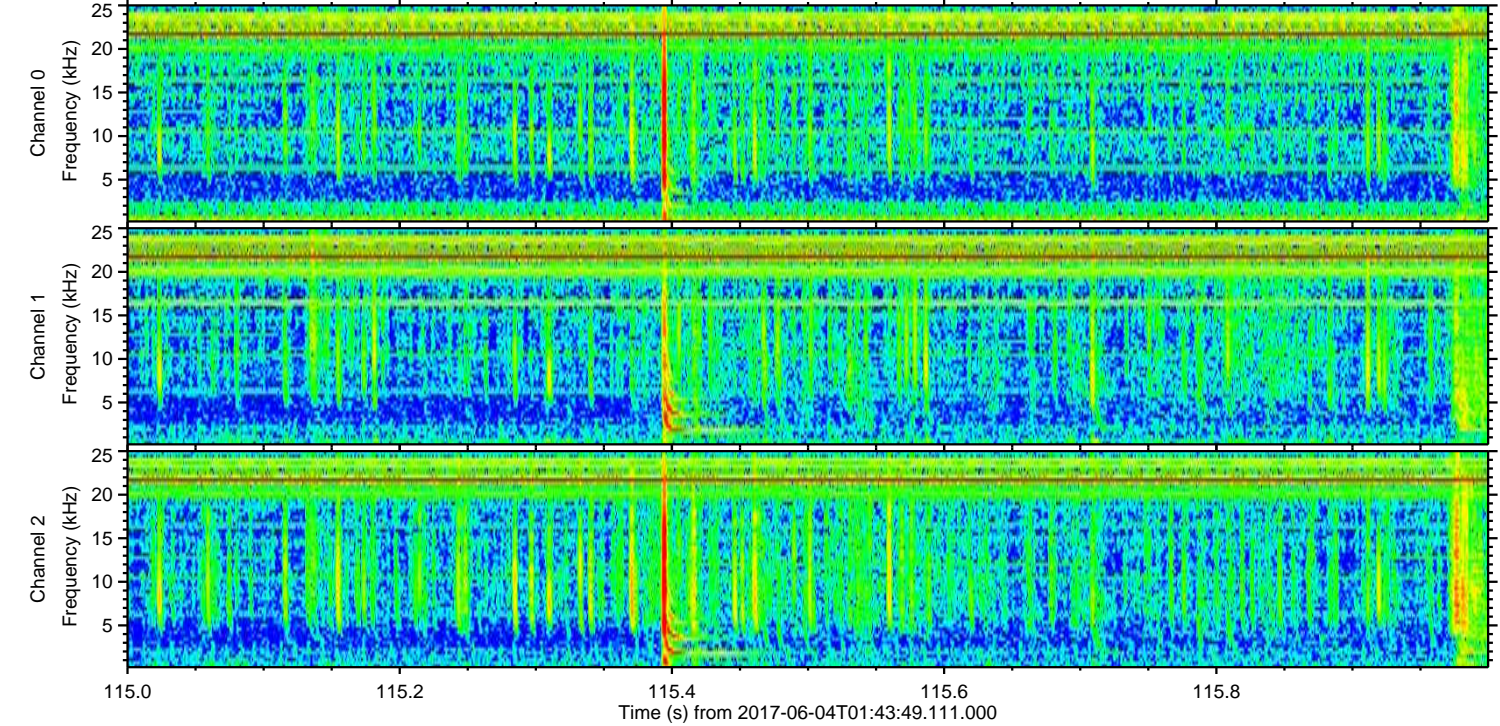
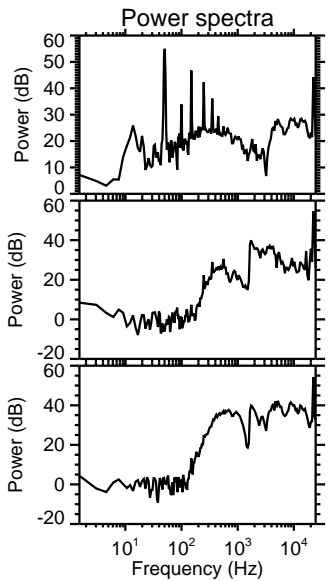
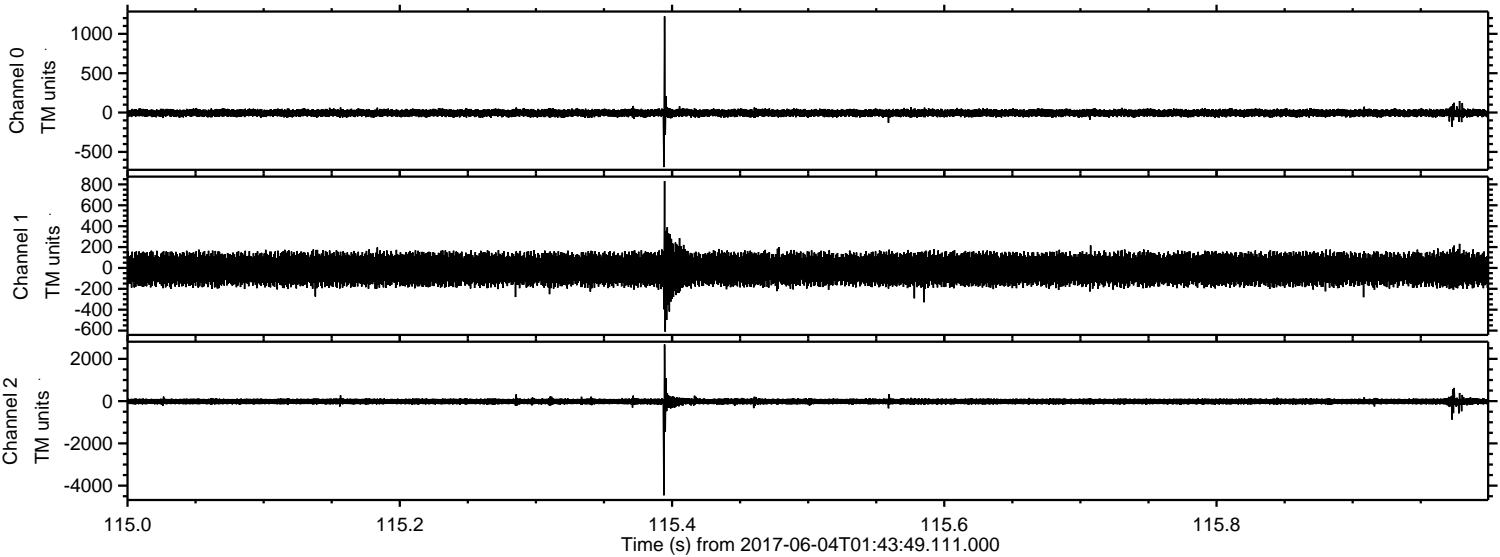
Channel 0
mn: -1324
mx: 1311
 μ : -5.7
 σ : 28.6

Channel 1
mn: -778
mx: 714
 μ : -13.1
 σ : 83.6

Channel 2
mn: -4803
mx: 4120
 μ : -16.4
 σ : 96.5

ELMAVAN 3D WAVEFORMS (Measured data sampled at 50 kHz) 51000 packets of 144 samples from 2017-06-04T01:43:49.111.000. Part 116/147

Processed Sun Jun 4 03:52:07 2017 by ELM ver.2012-10-06 from 001__elm20170604_014348__dat00.bin

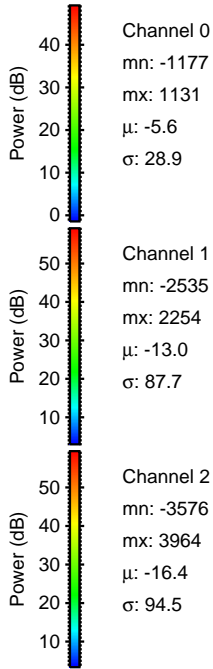
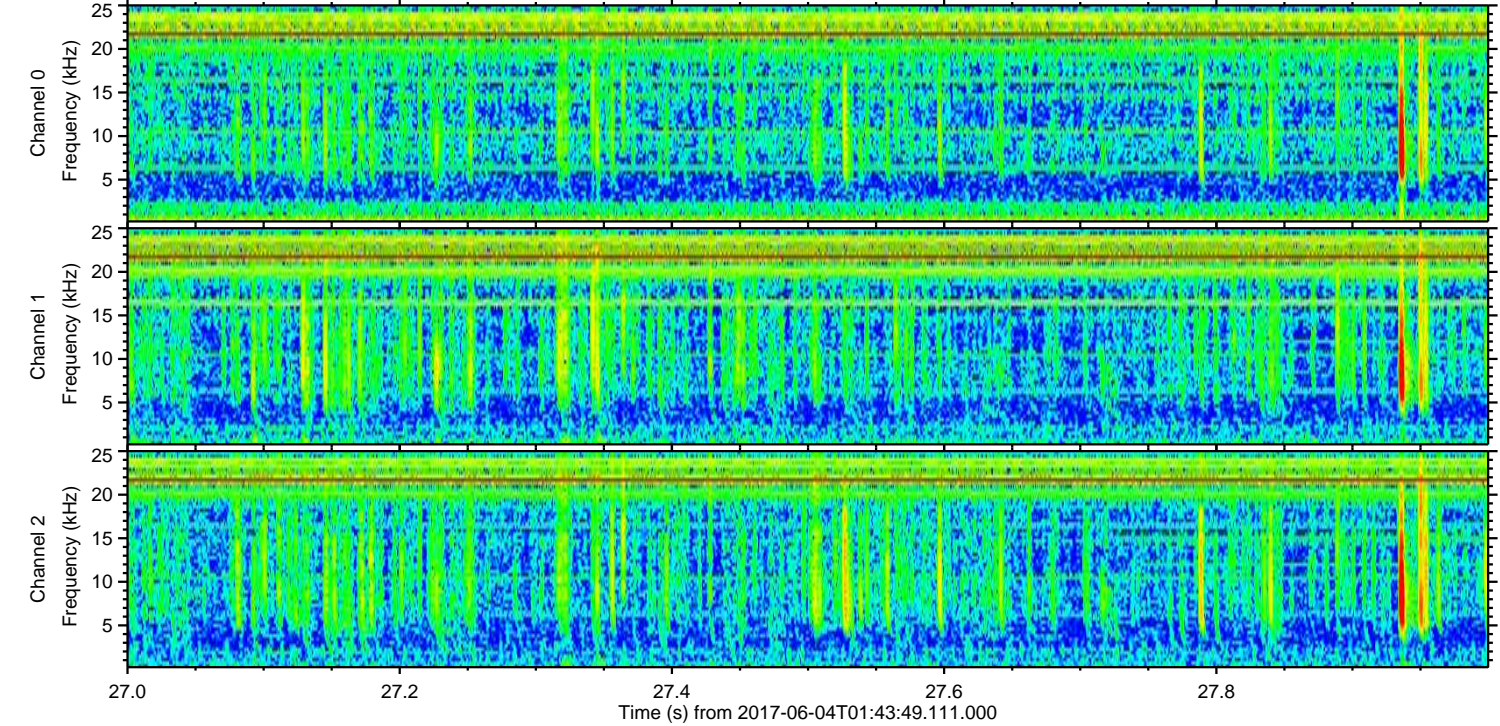
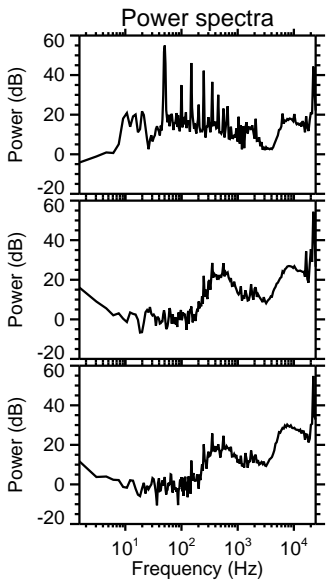
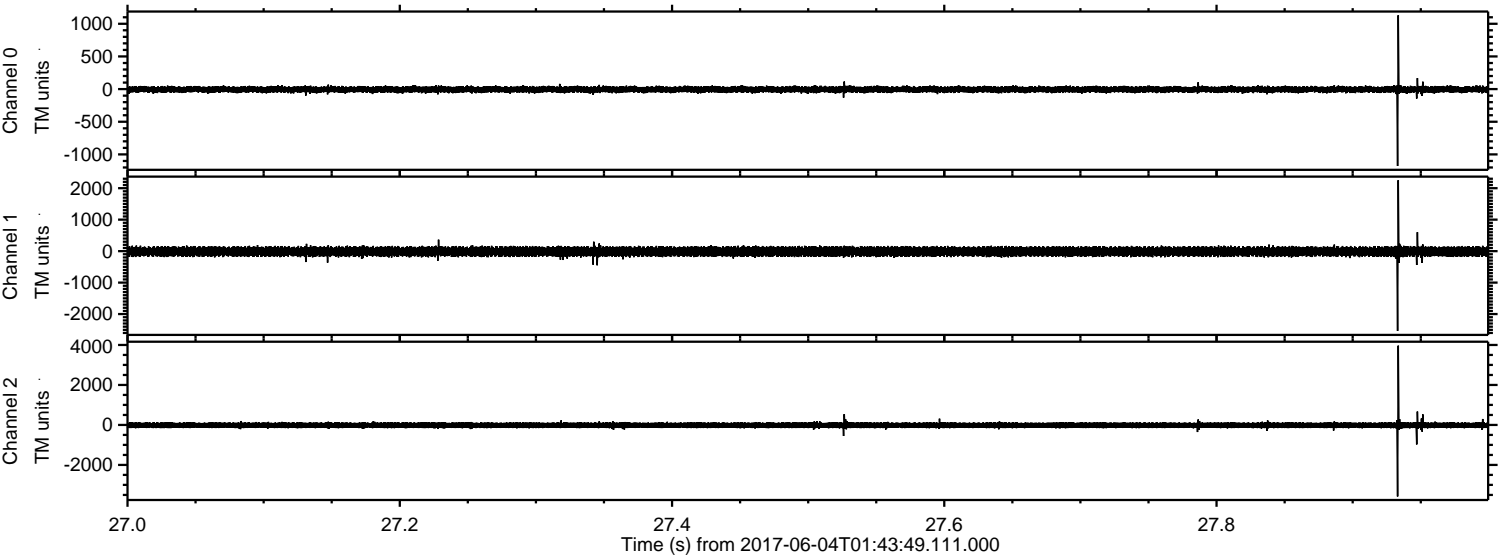


Channel 0
mn: -693
mx: 1222
 μ : -5.6
 σ : 26.9

Channel 1
mn: -611
mx: 833
 μ : -13.2
 σ : 84.8

Channel 2
mn: -4456
mx: 2678
 μ : -16.5
 σ : 85.1

Processed Sun Jun 4 03:52:08 2017 by ELM ver.2012-10-06 from 001__elm20170604_014348__dat00.bin

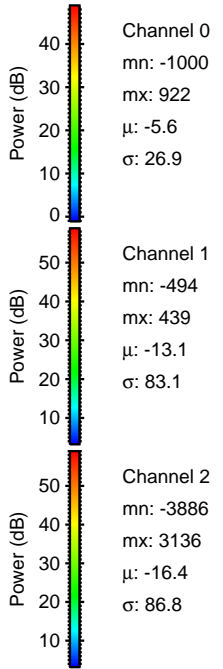
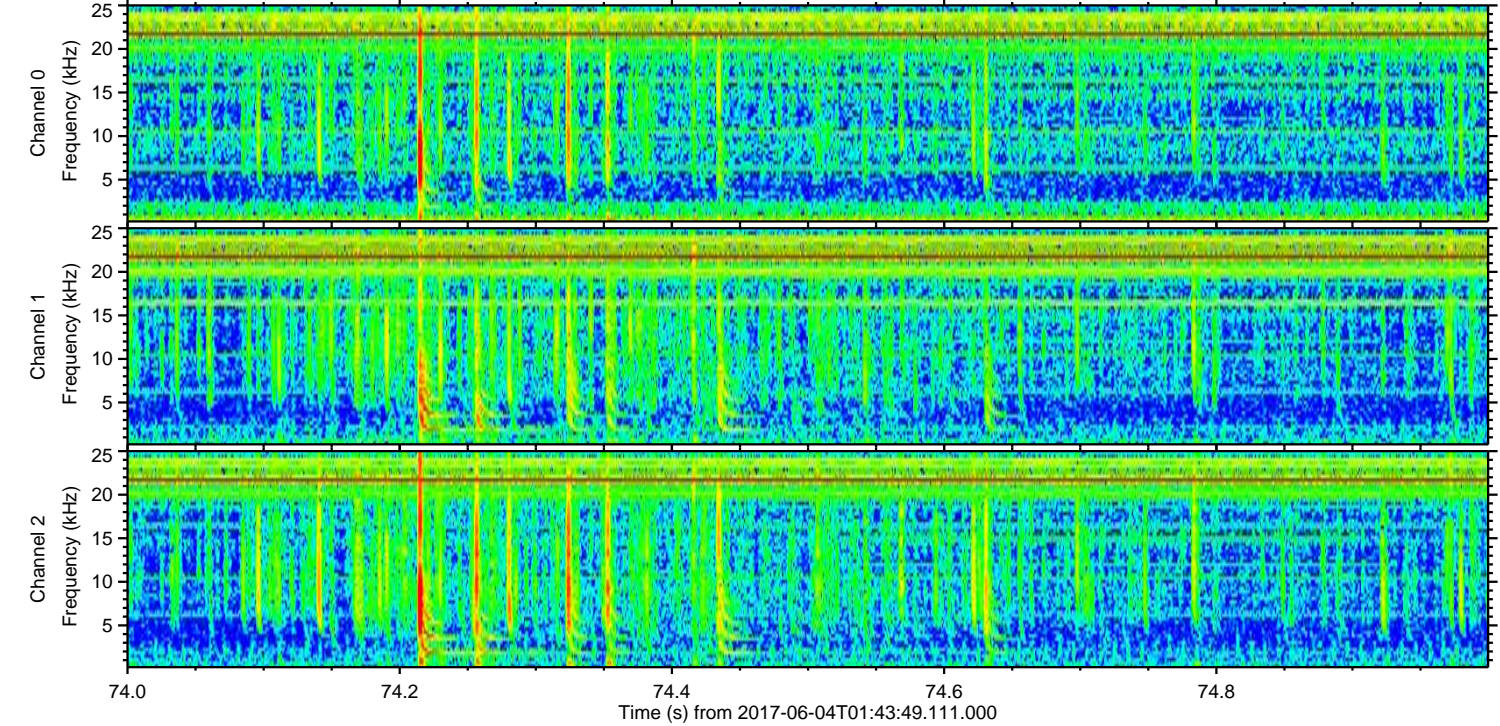
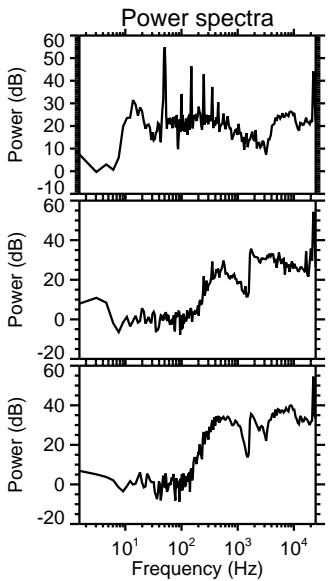
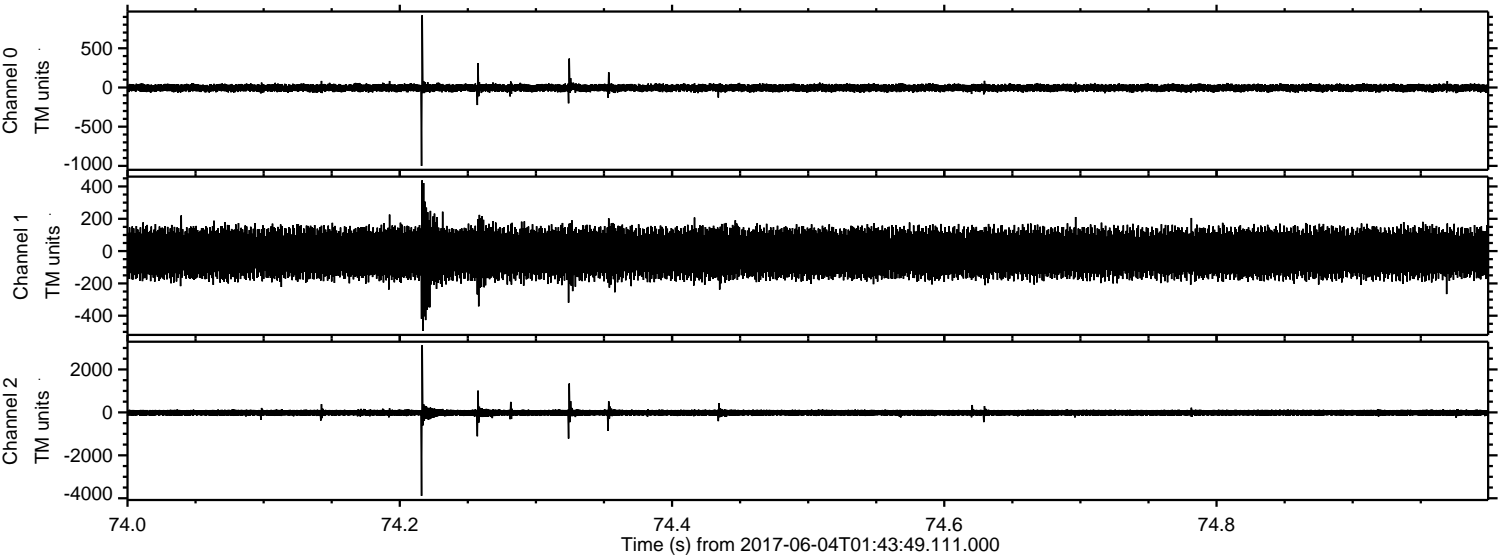


Channel 0
mn: -1177
mx: 1131
 μ : -5.6
 σ : 28.9

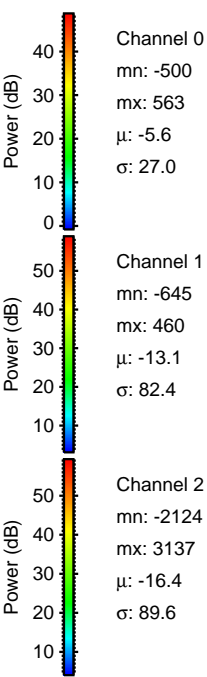
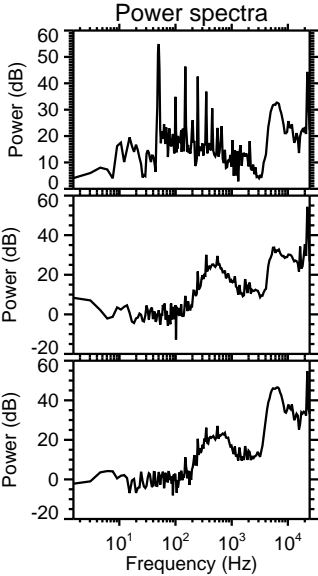
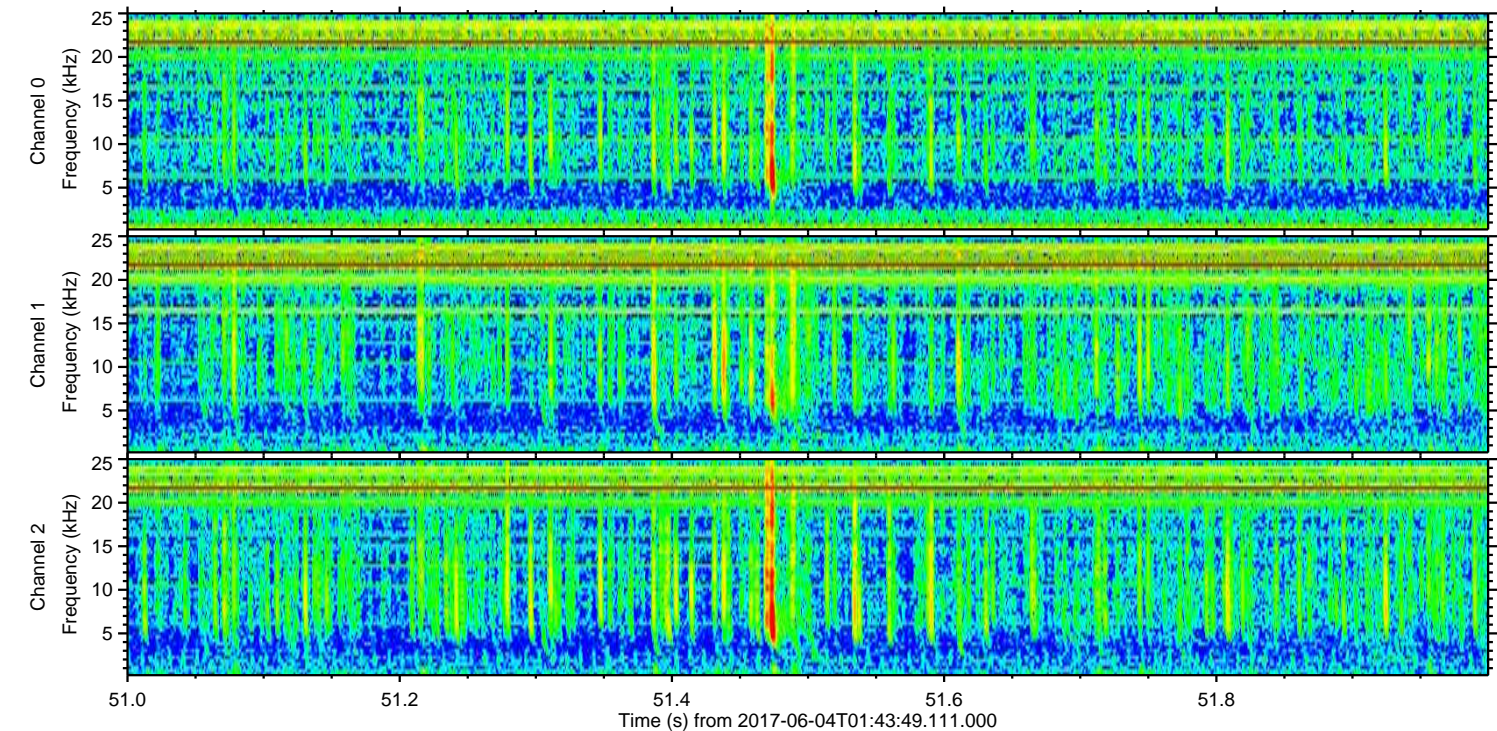
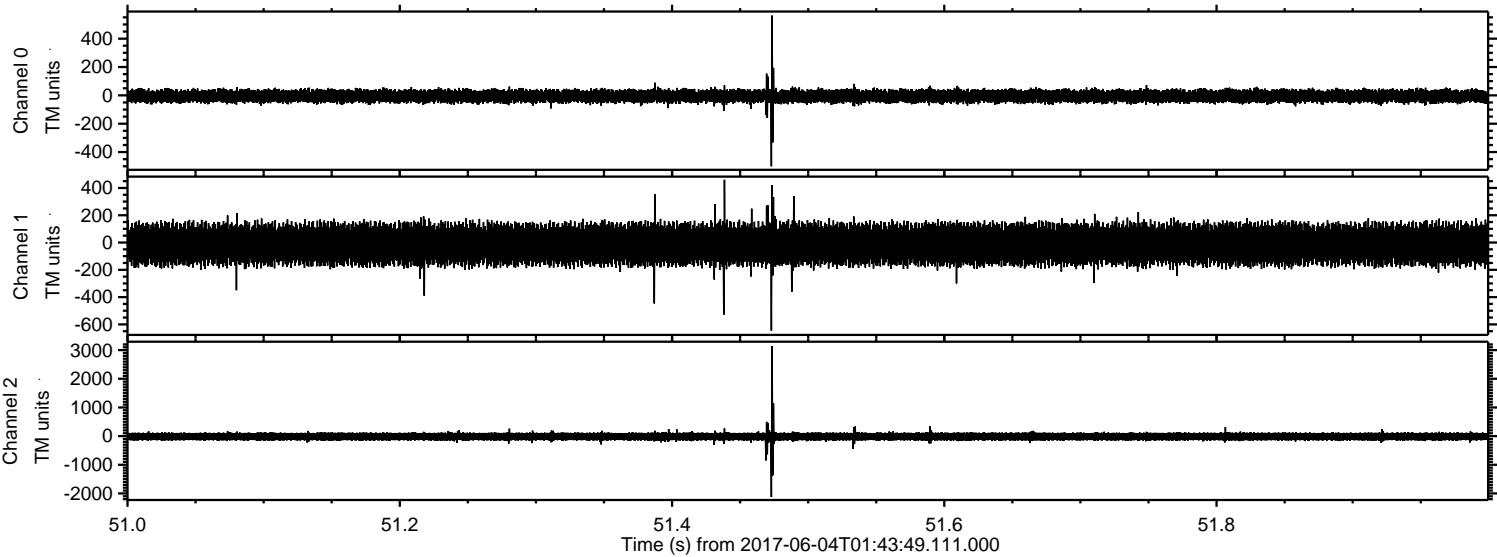
Channel 1
mn: -2535
mx: 2254
 μ : -13.0
 σ : 87.7

Channel 2
mn: -3576
mx: 3964
 μ : -16.4
 σ : 94.5

Processed Sun Jun 4 03:52:09 2017 by ELM ver.2012-10-06 from 001__elm20170604_014348__dat00.bin



Processed Sun Jun 4 03:52:10 2017 by ELM ver.2012-10-06 from 001__elm20170604_014348__dat00.bin

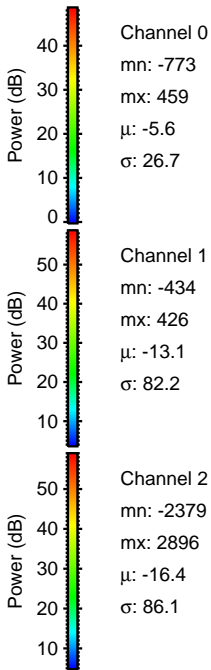
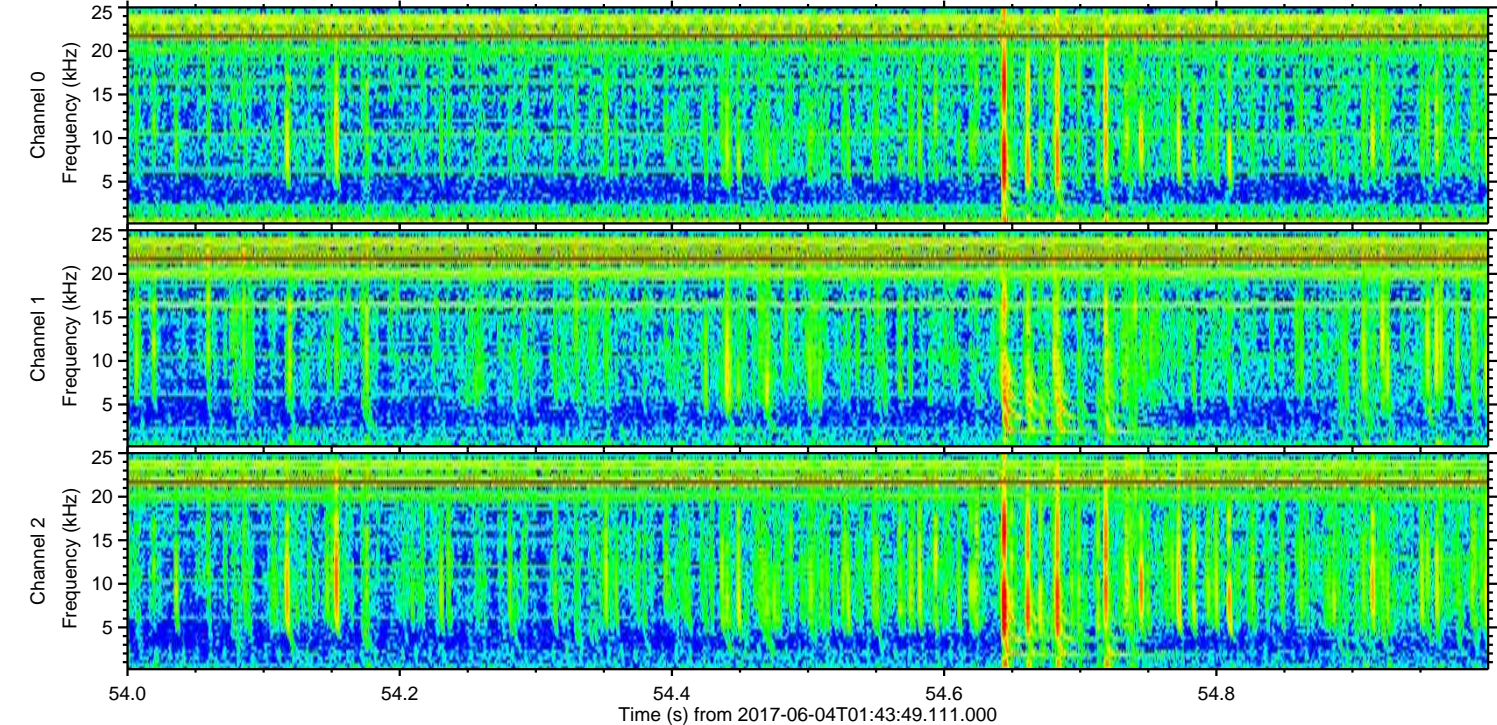
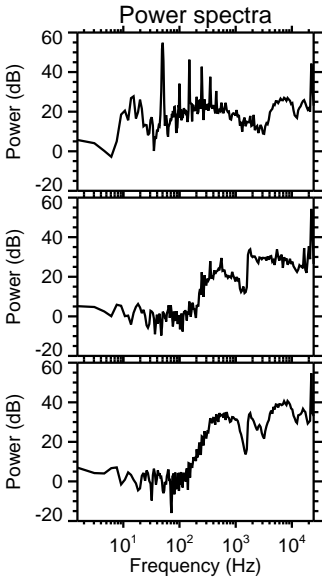
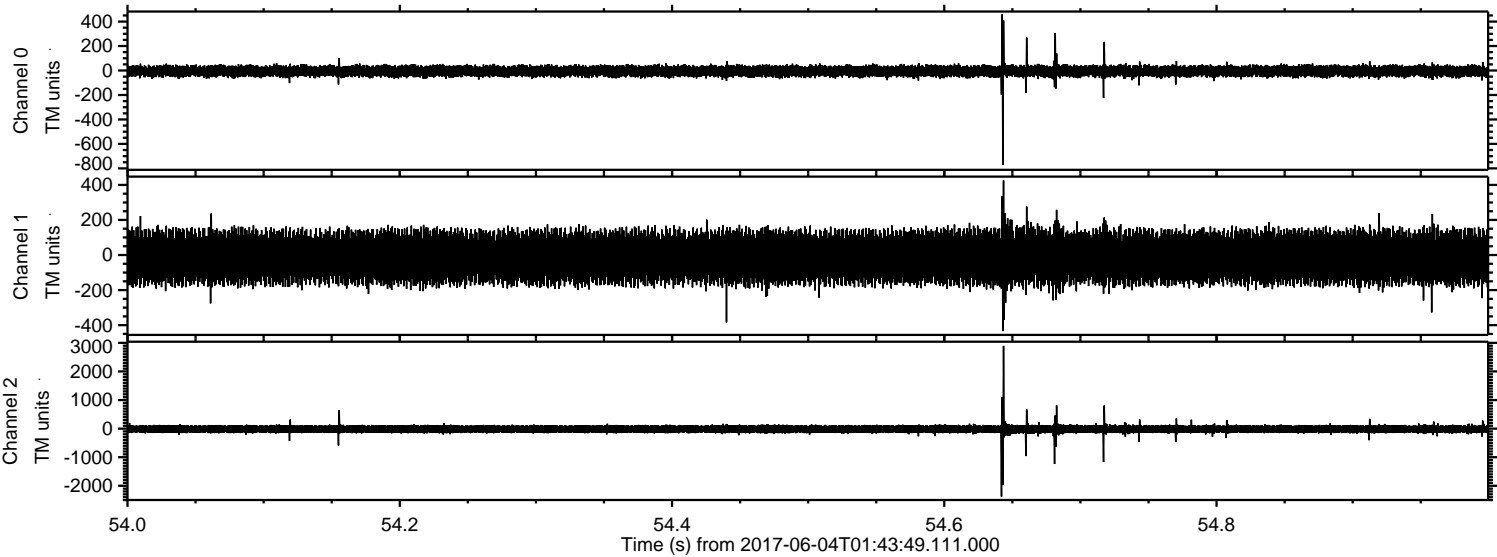


Channel 0
mn: -500
mx: 563
μ: -5.6
σ: 27.0

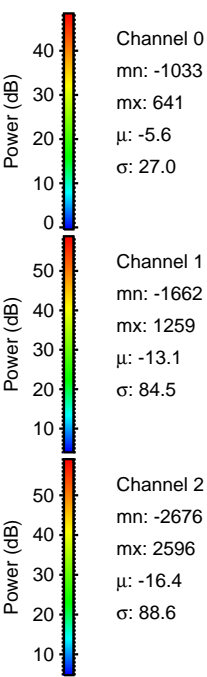
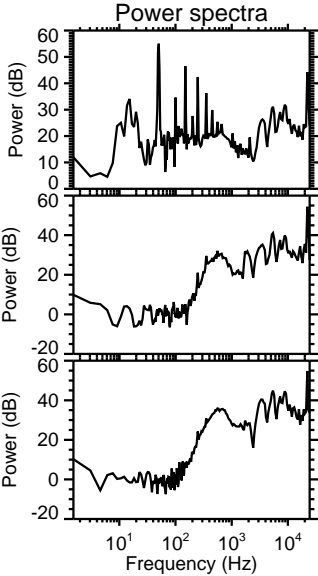
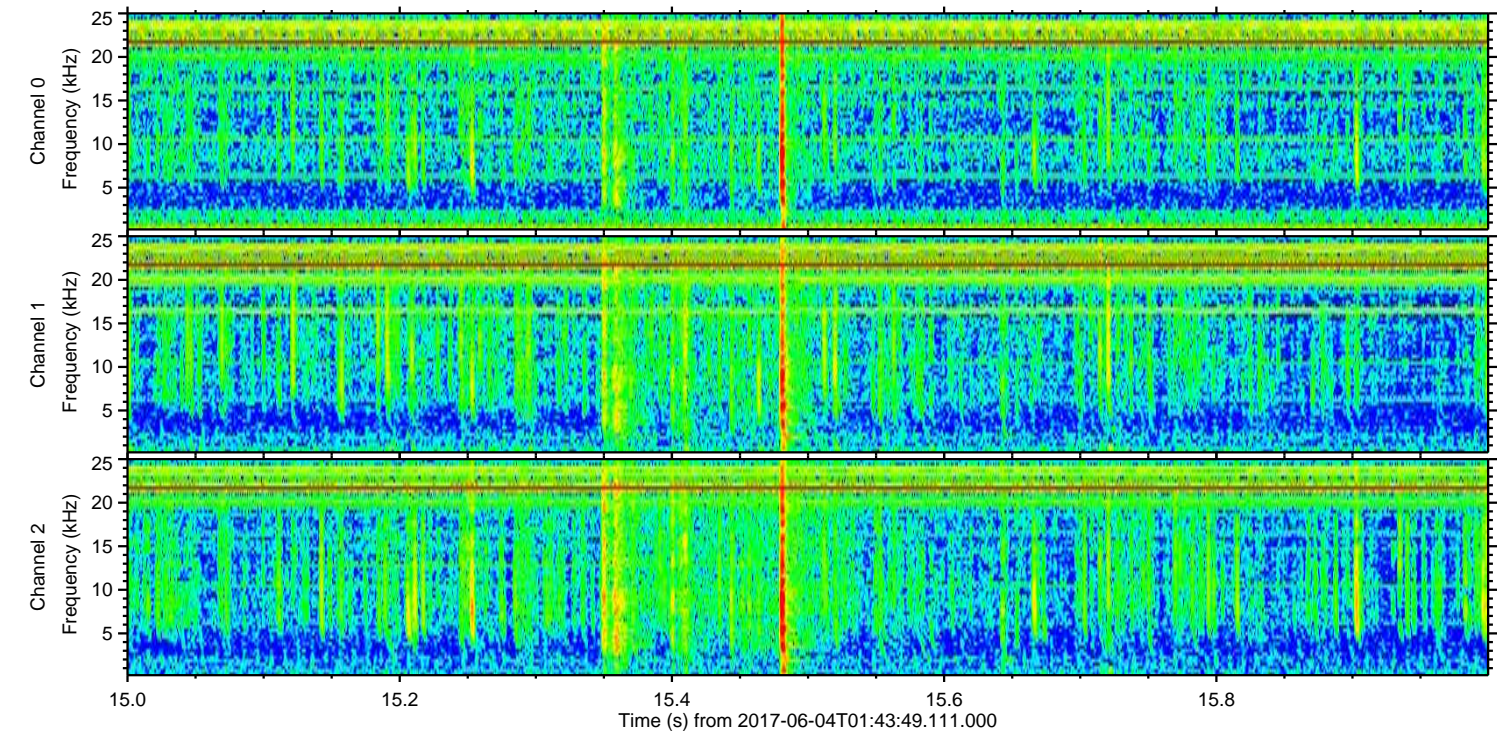
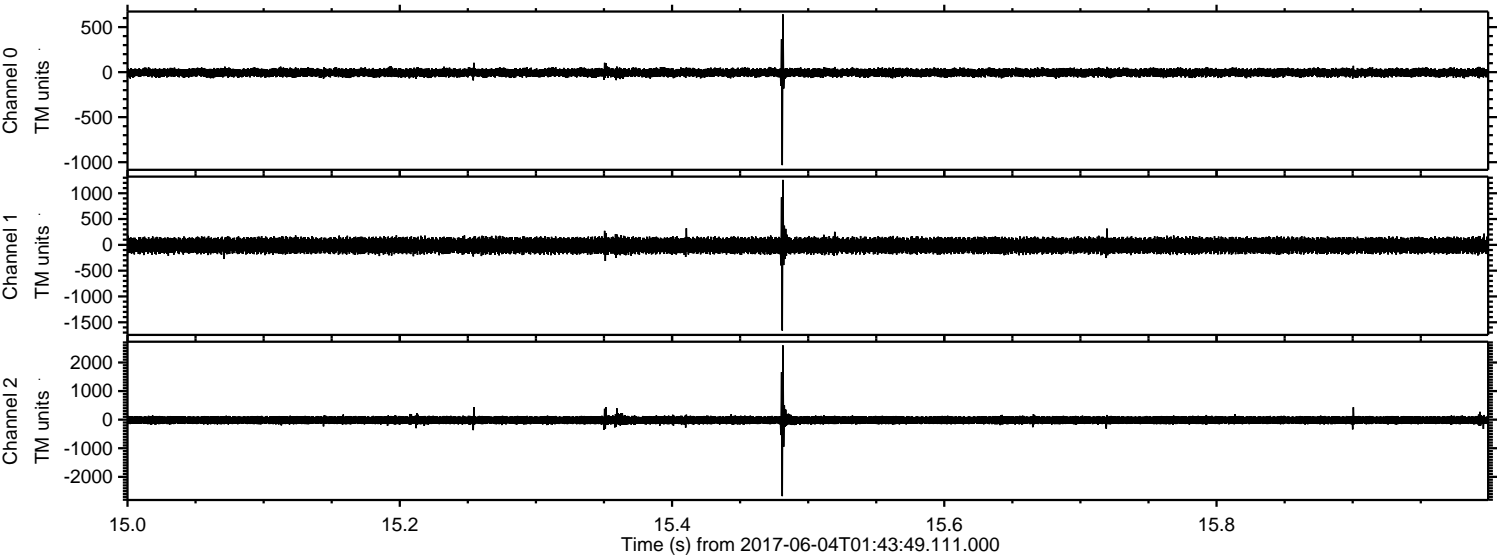
Channel 1
mn: -645
mx: 460
μ: -13.1
σ: 82.4

Channel 2
mn: -2124
mx: 3137
μ: -16.4
σ: 89.6

Processed Sun Jun 4 03:52:11 2017 by ELM ver.2012-10-06 from 001__elm20170604_014348__dat00.bin



Processed Sun Jun 4 03:52:12 2017 by ELM ver.2012-10-06 from 001__elm20170604_014348__dat00.bin

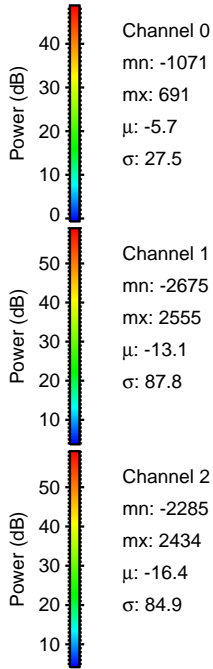
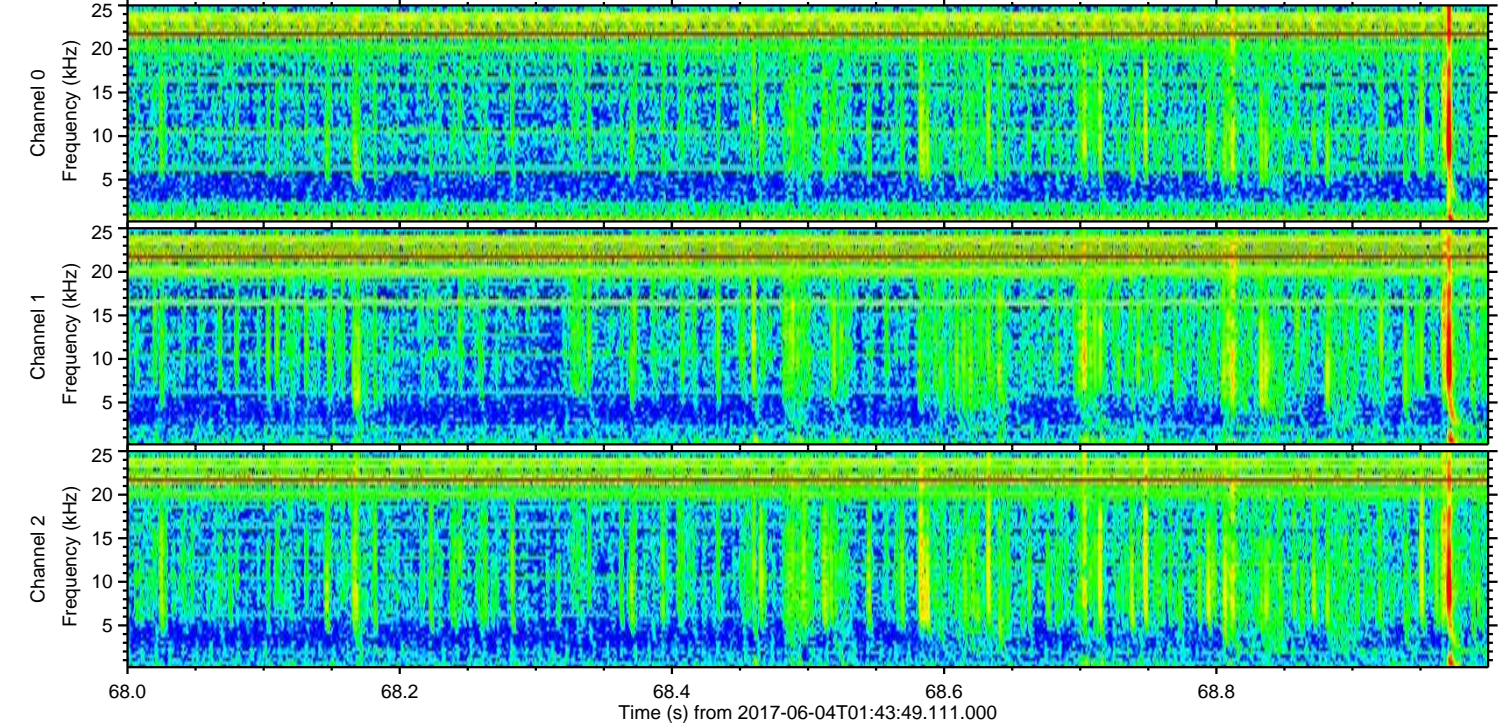
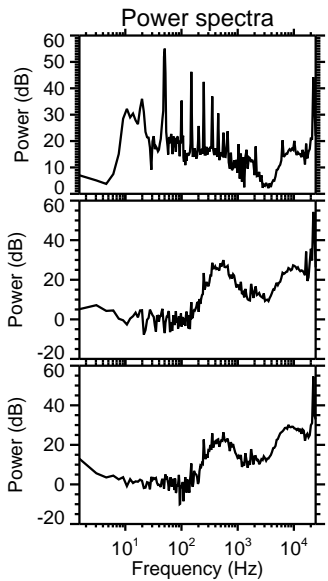
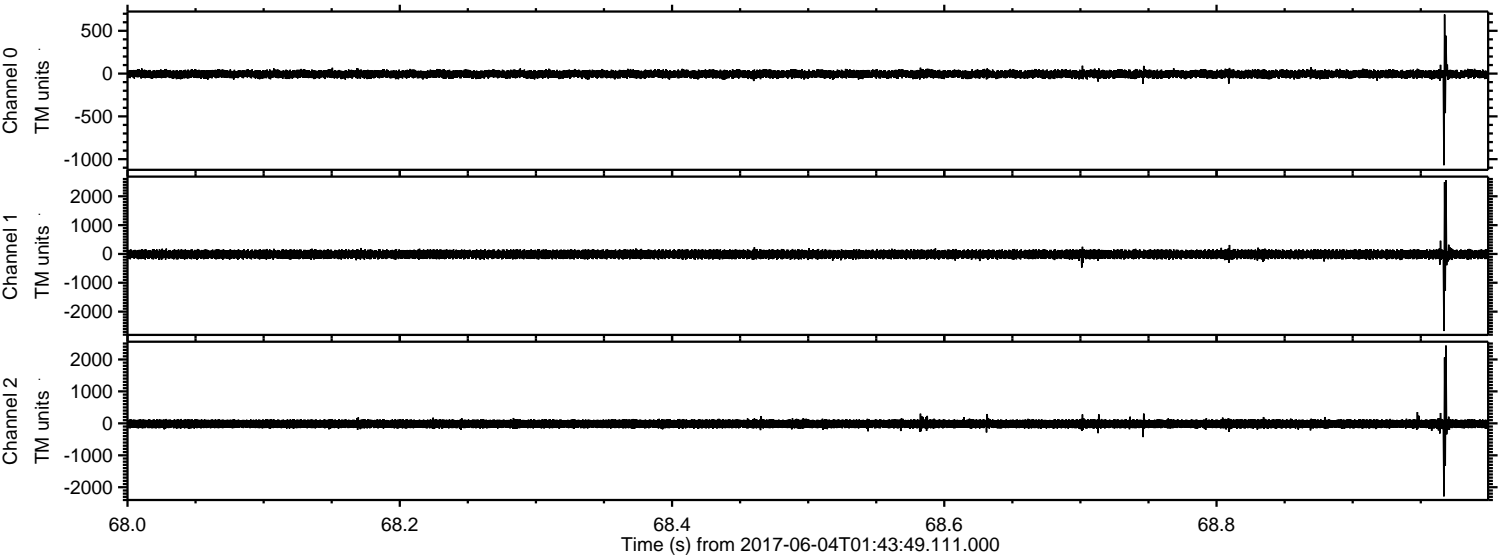


Channel 0
mn: -1033
mx: 641
 μ : -5.6
 σ : 27.0

Channel 1
mn: -1662
mx: 1259
 μ : -13.1
 σ : 84.5

Channel 2
mn: -2676
mx: 2596
 μ : -16.4
 σ : 88.6

Processed Sun Jun 4 03:52:13 2017 by ELM ver.2012-10-06 from 001__elm20170604_014348__dat00.bin



Processed Sun Jun 4 03:52:14 2017 by ELM ver.2012-10-06 from 001__elm20170604_014348__dat00.bin

