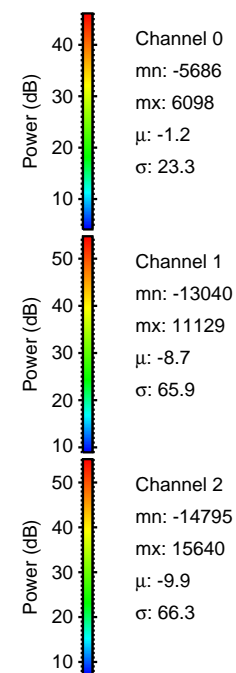
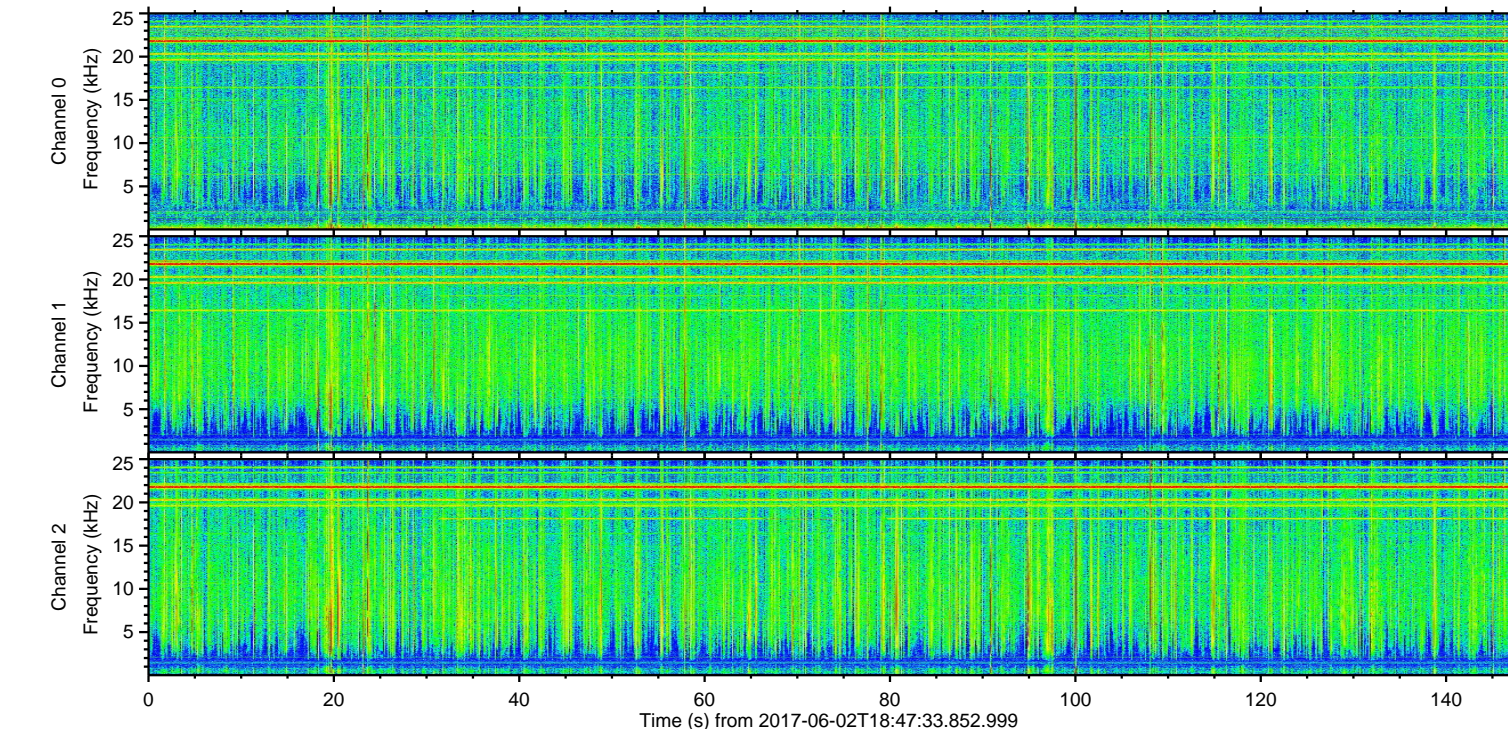
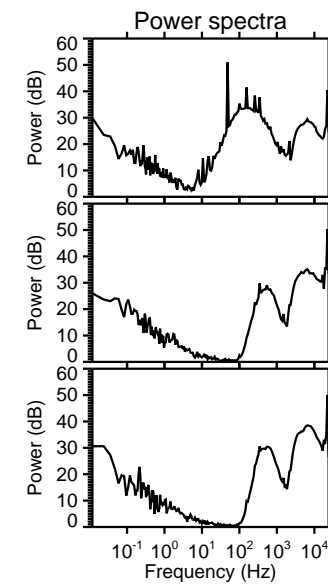
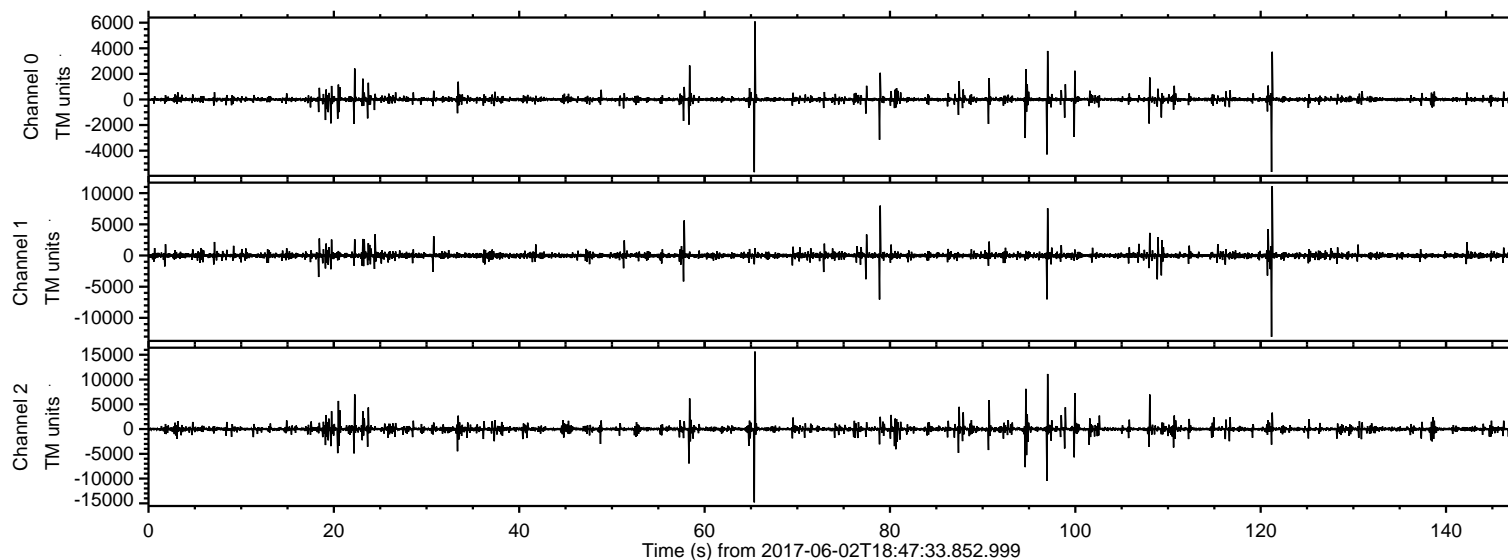
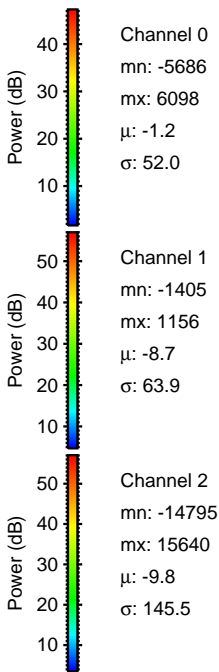
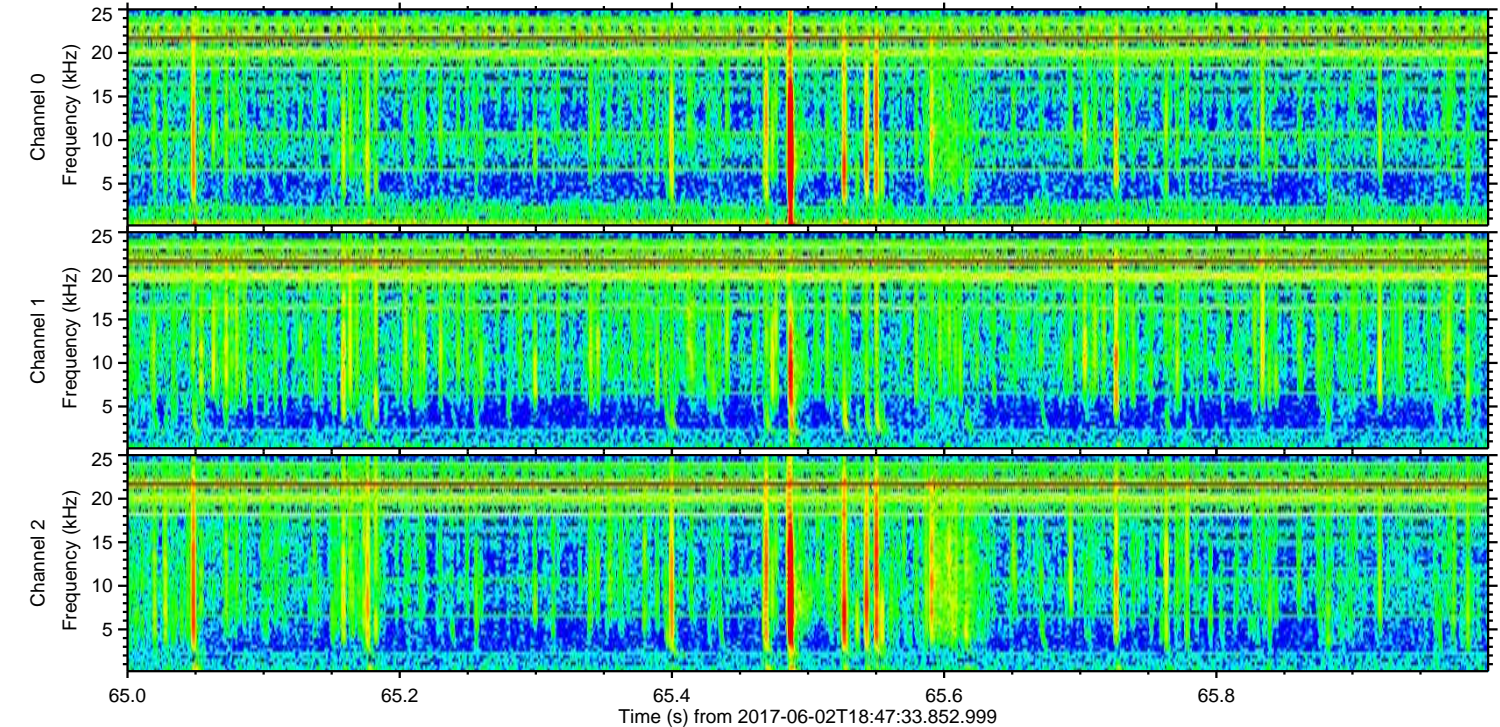
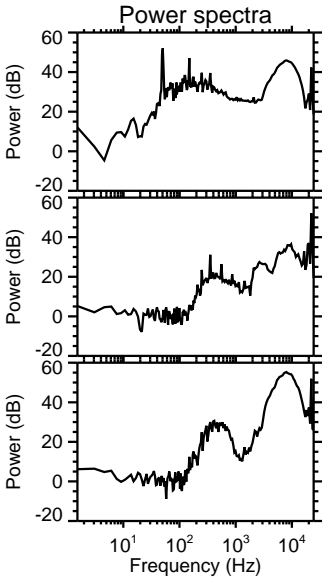
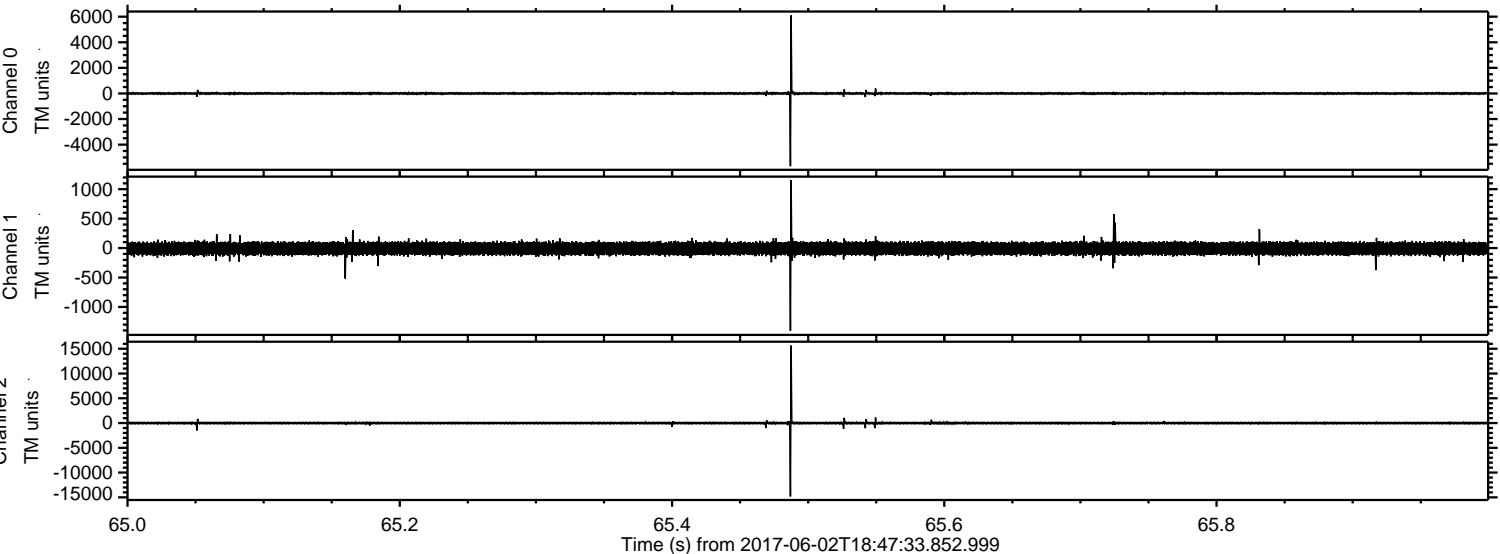


ELMAVAN 3D WAVEFORMS (Measured data sampled at 50 kHz) 51000 packets of 144 samples from 2017-06-02T18:47:33.852.999.

Processed Fri Jun 2 20:55:00 2017 by ELM ver.2012-10-06 from 001__elm20170602_184732__dat00.bin

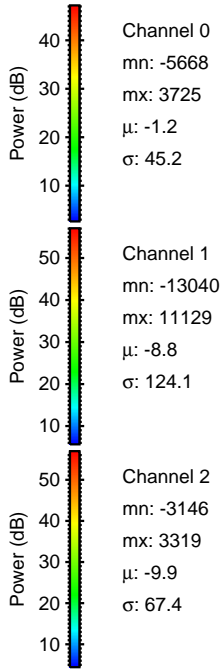
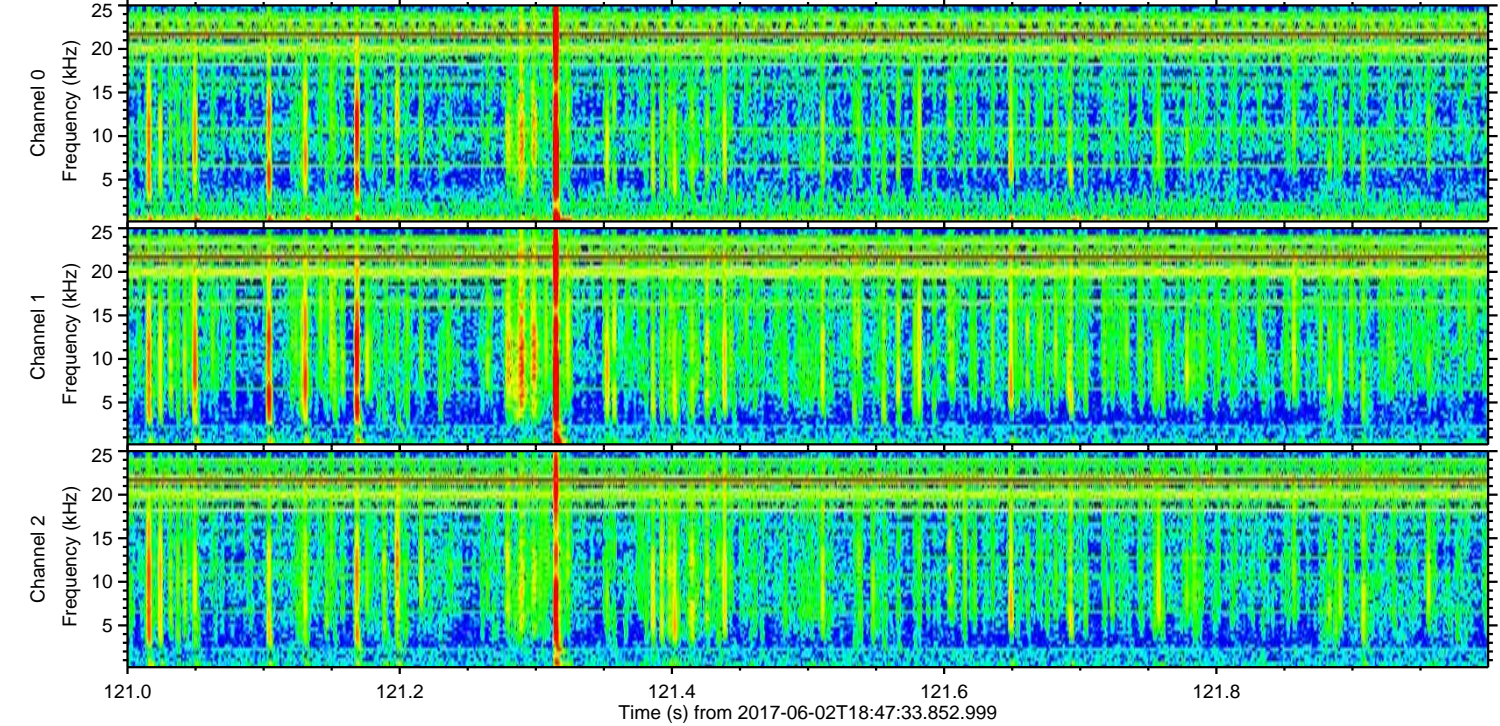
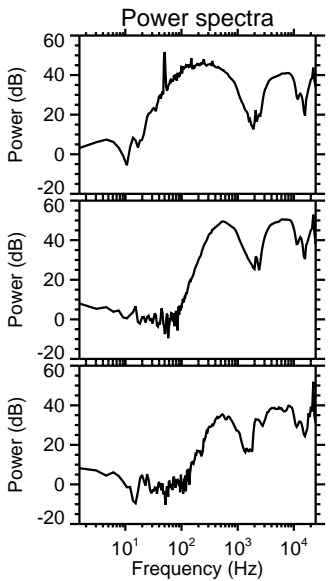
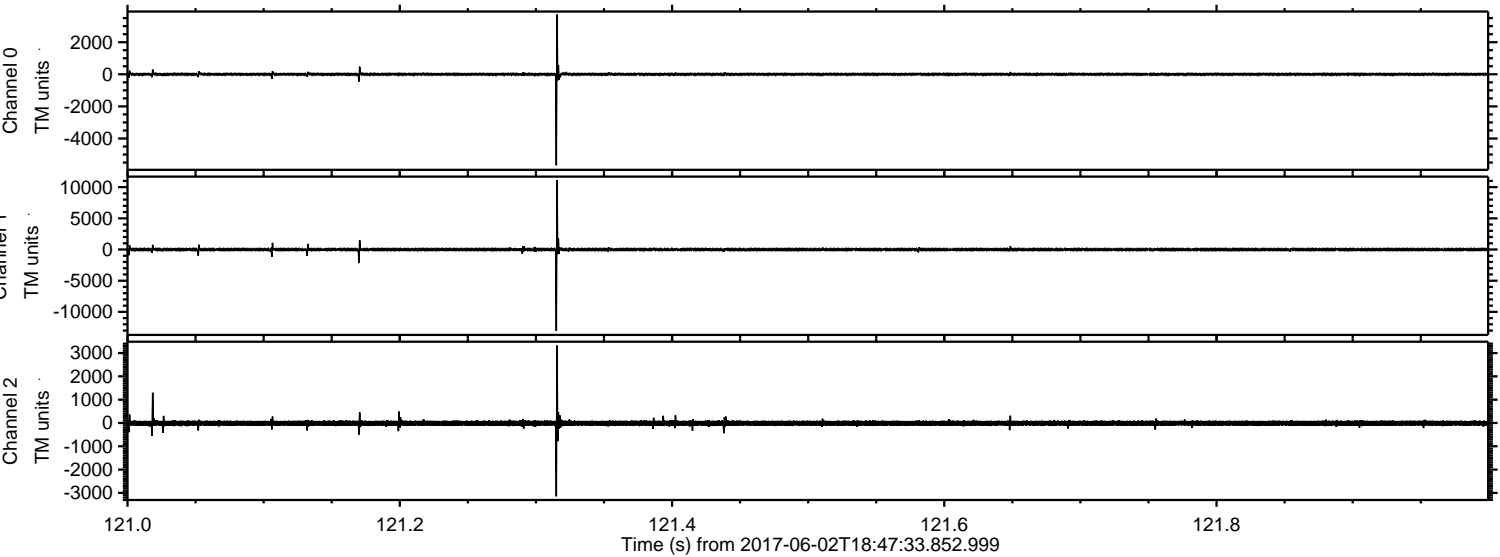


Processed Fri Jun 2 20:55:05 2017 by ELM ver.2012-10-06 from 001__elm20170602_184732__dat00.bin

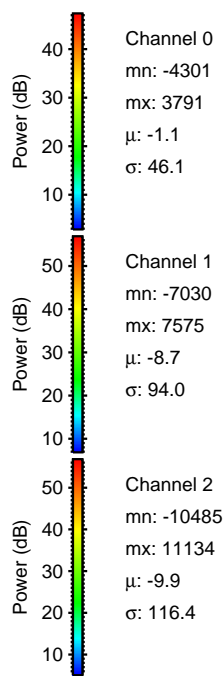
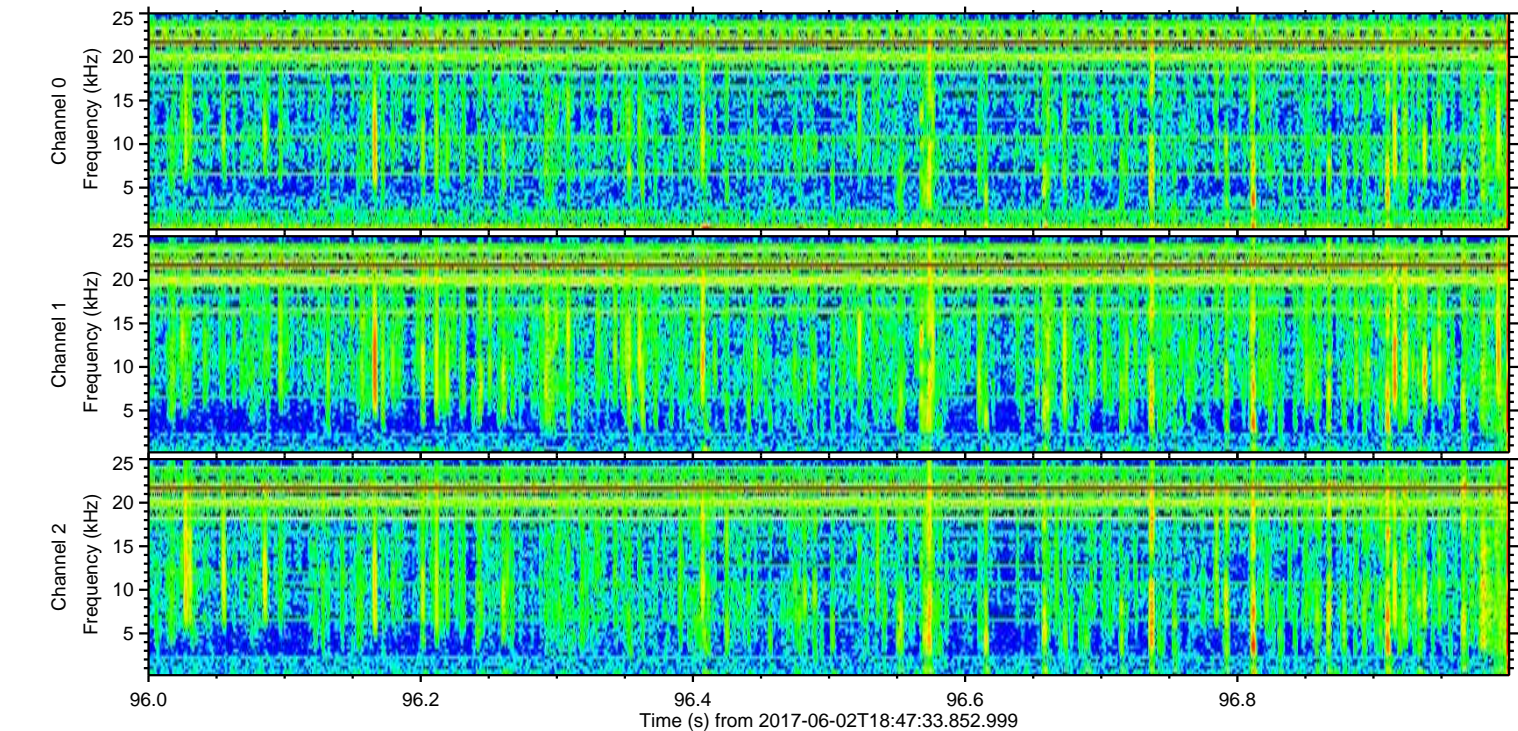
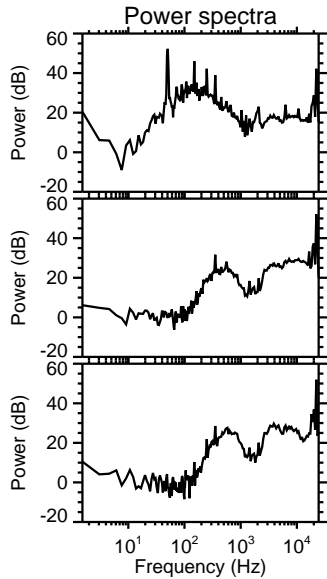
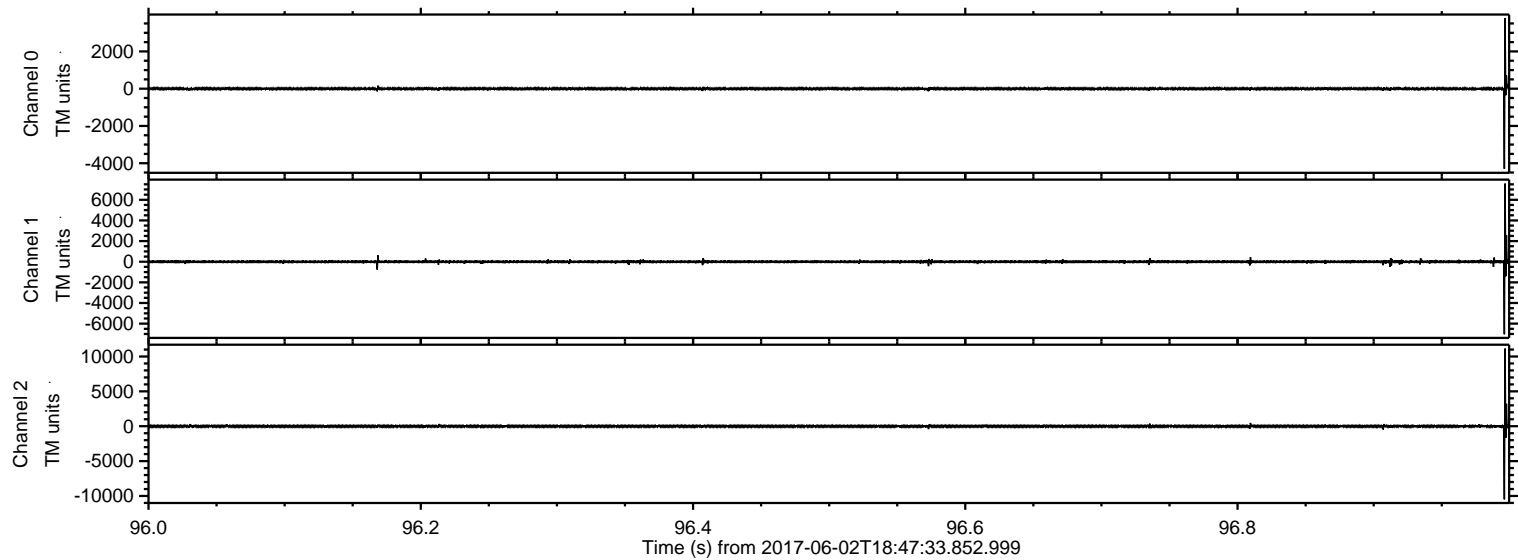


ELMAVAN 3D WAVEFORMS (Measured data sampled at 50 kHz) 51000 packets of 144 samples from 2017-06-02T18:47:33.852.999. Part 122/147

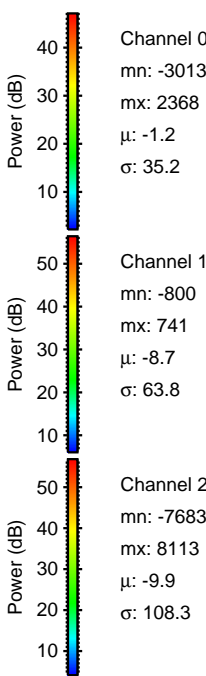
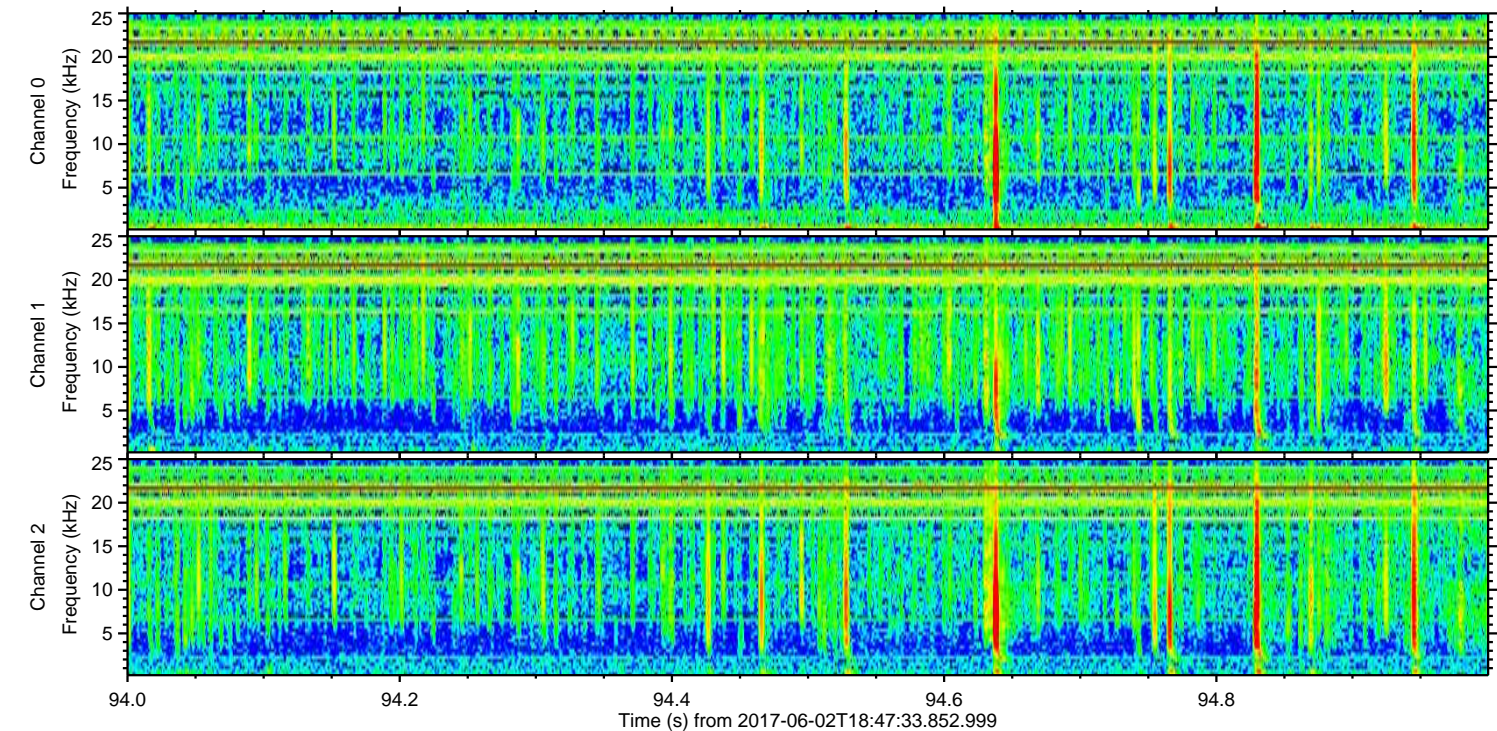
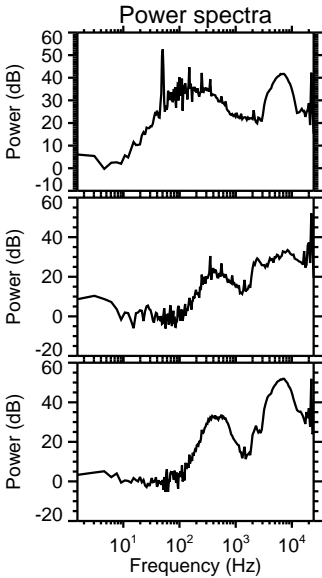
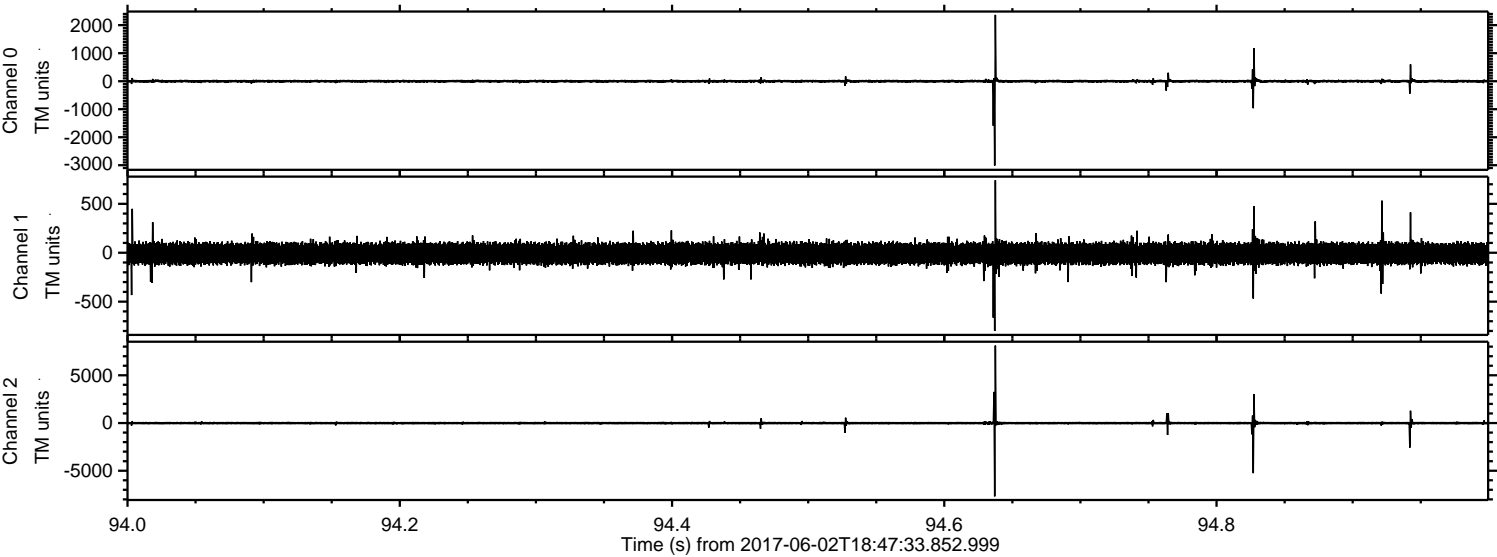
Processed Fri Jun 2 20:55:06 2017 by ELM ver.2012-10-06 from 001__elm20170602_184732__dat00.bin



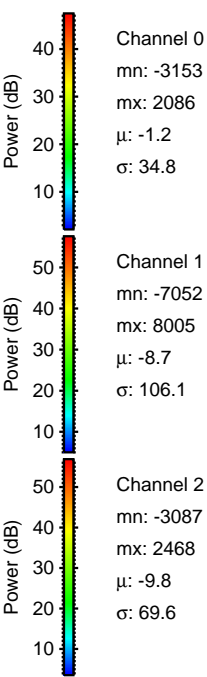
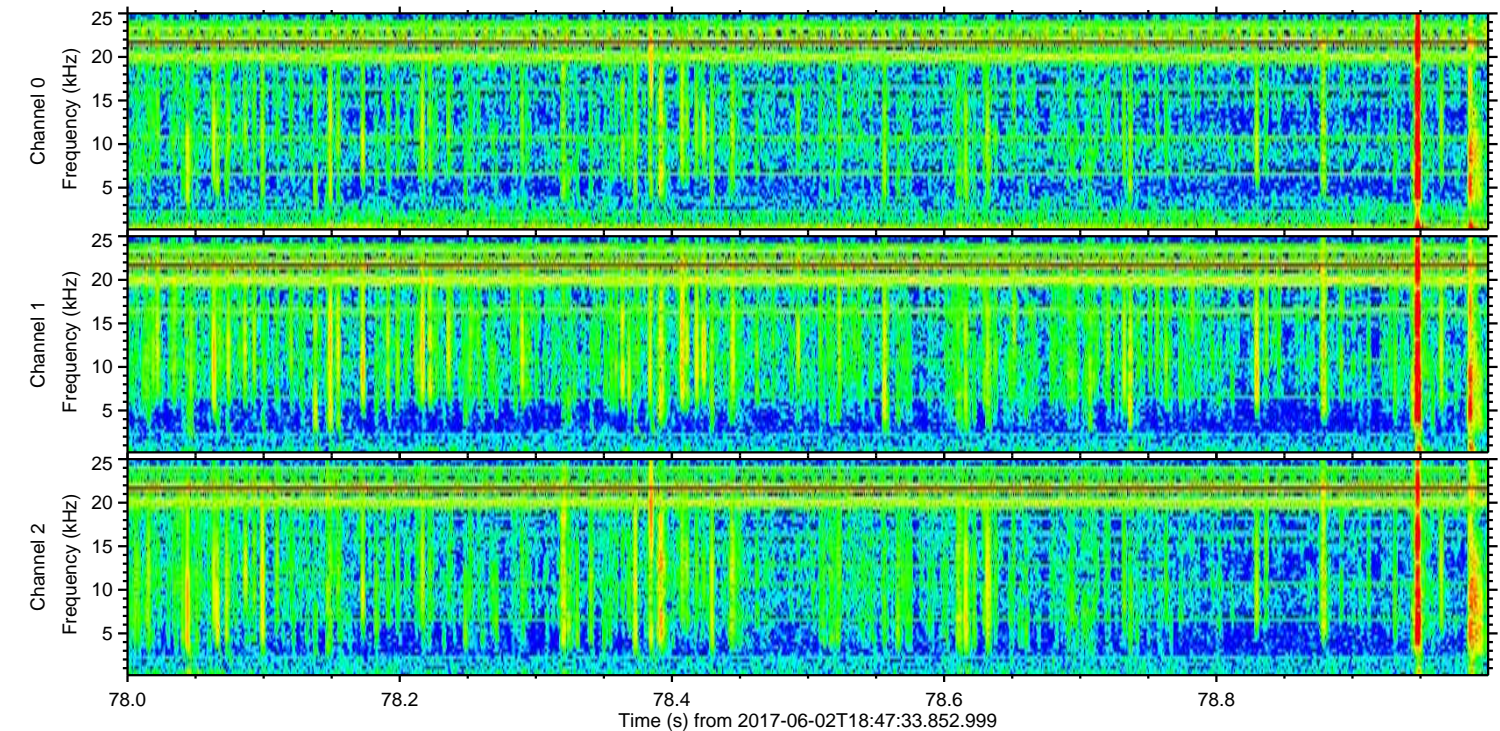
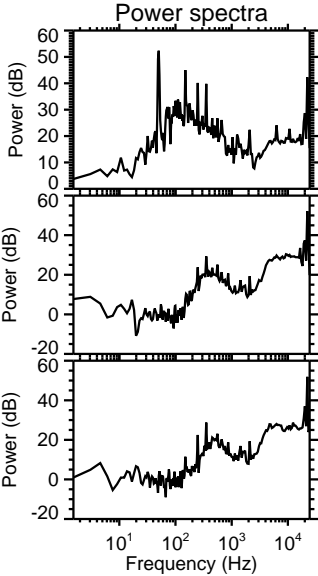
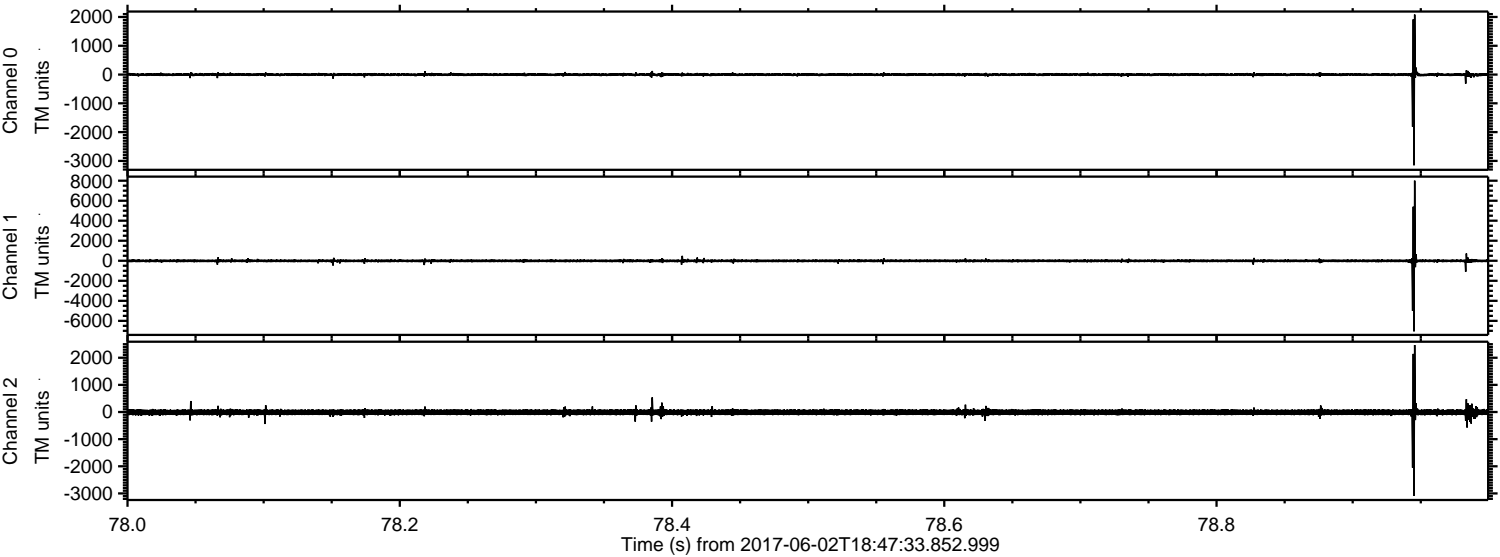
Processed Fri Jun 2 20:55:06 2017 by ELM ver.2012-10-06 from 001__elm20170602_184732__dat00.bin



Processed Fri Jun 2 20:55:07 2017 by ELM ver.2012-10-06 from 001__elm20170602_184732__dat00.bin

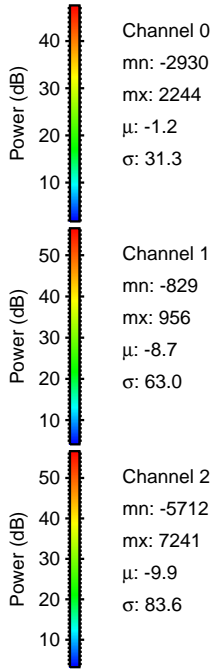
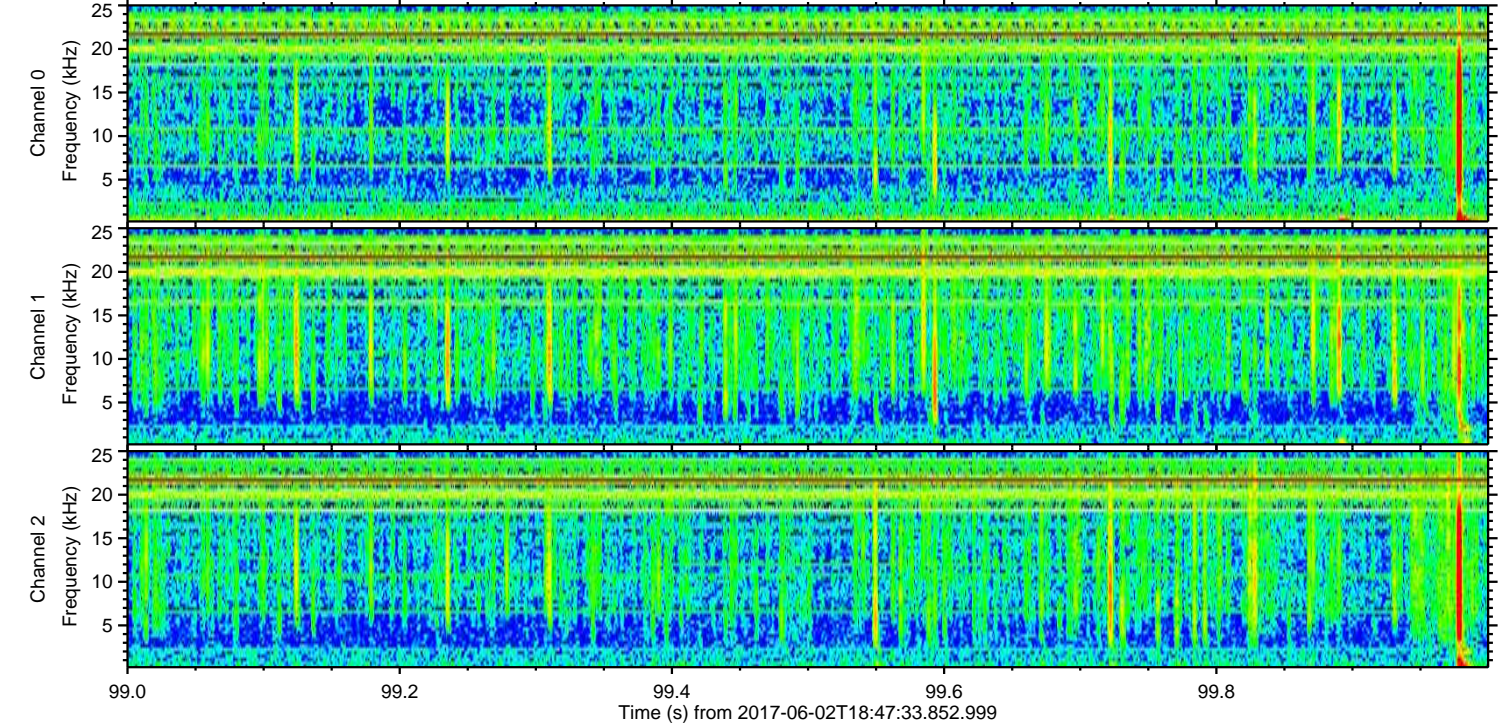
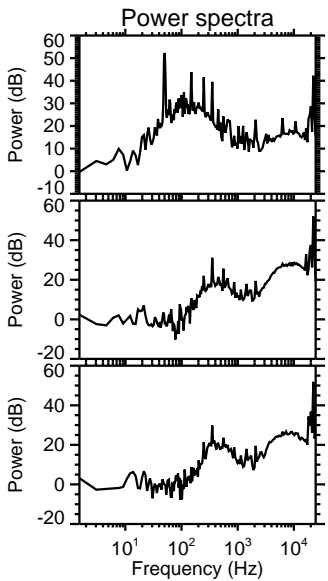
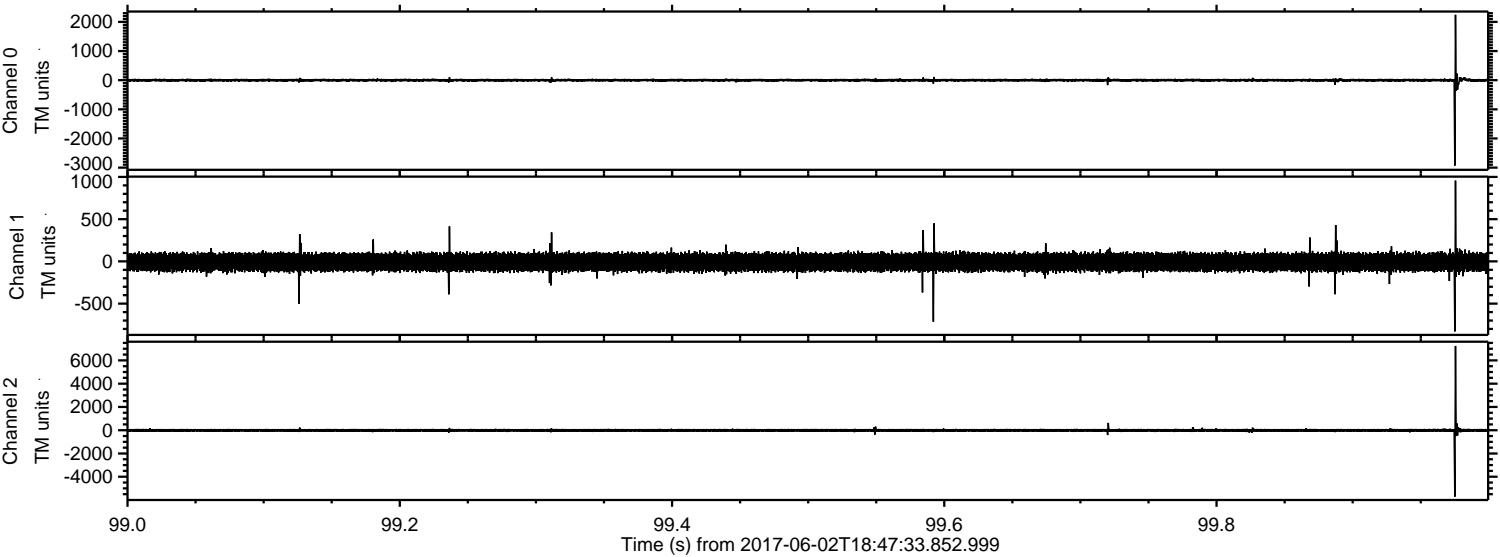


Processed Fri Jun 2 20:55:08 2017 by ELM ver.2012-10-06 from 001__elm20170602_184732__dat00.bin



ELMAVAN 3D WAVEFORMS (Measured data sampled at 50 kHz) 51000 packets of 144 samples from 2017-06-02T18:47:33.852.999. Part 100/147

Processed Fri Jun 2 20:55:08 2017 by ELM ver.2012-10-06 from 001__elm20170602_184732__dat00.bin

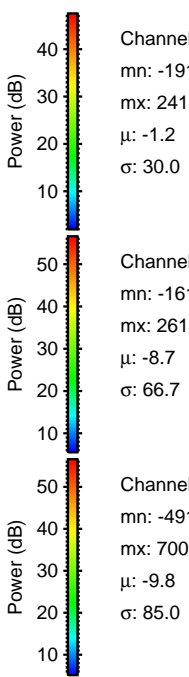
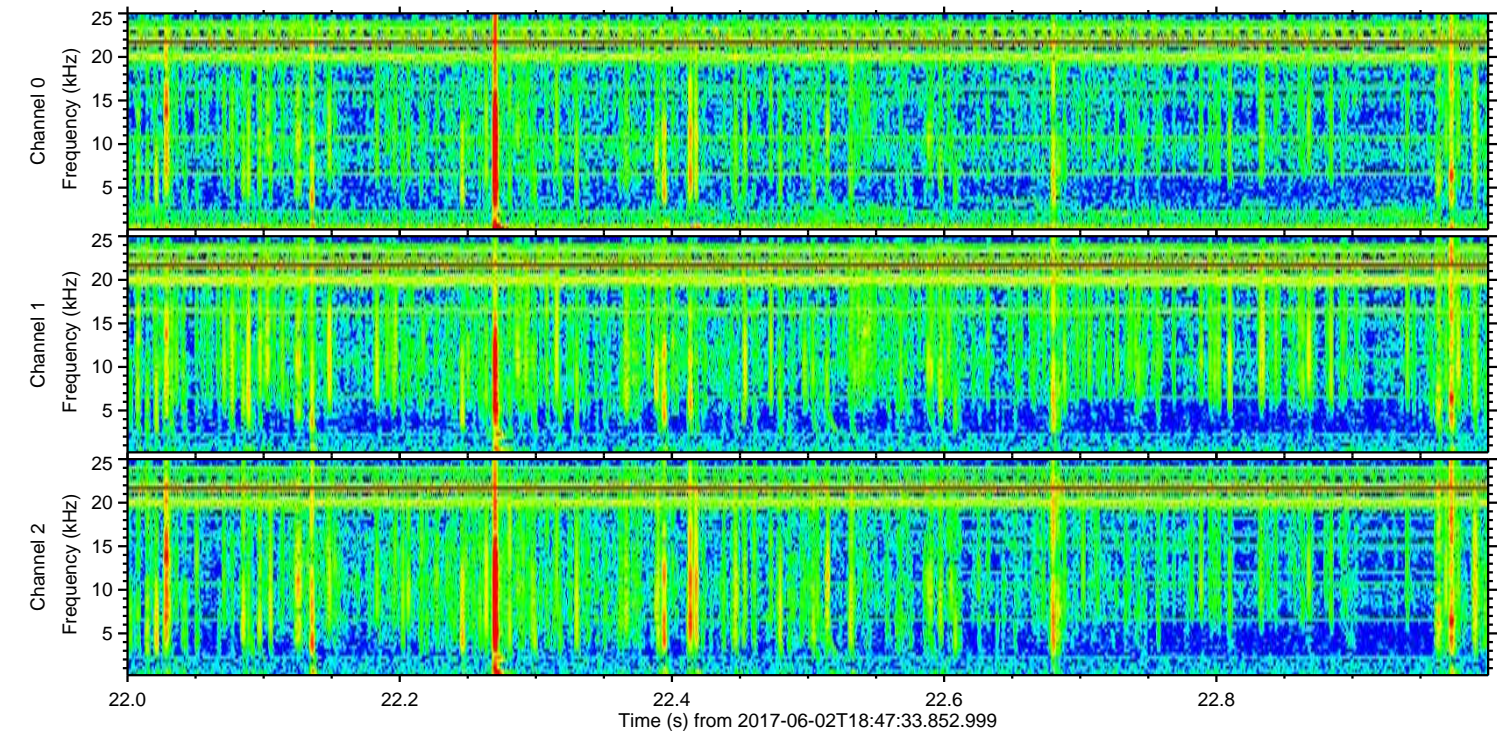
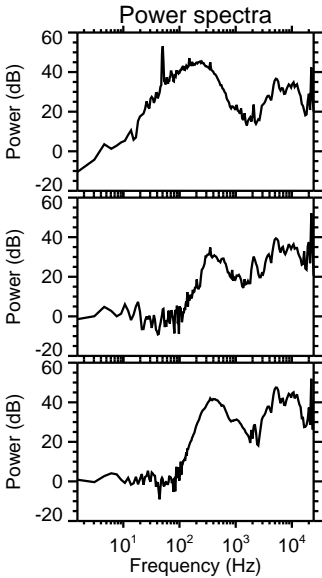
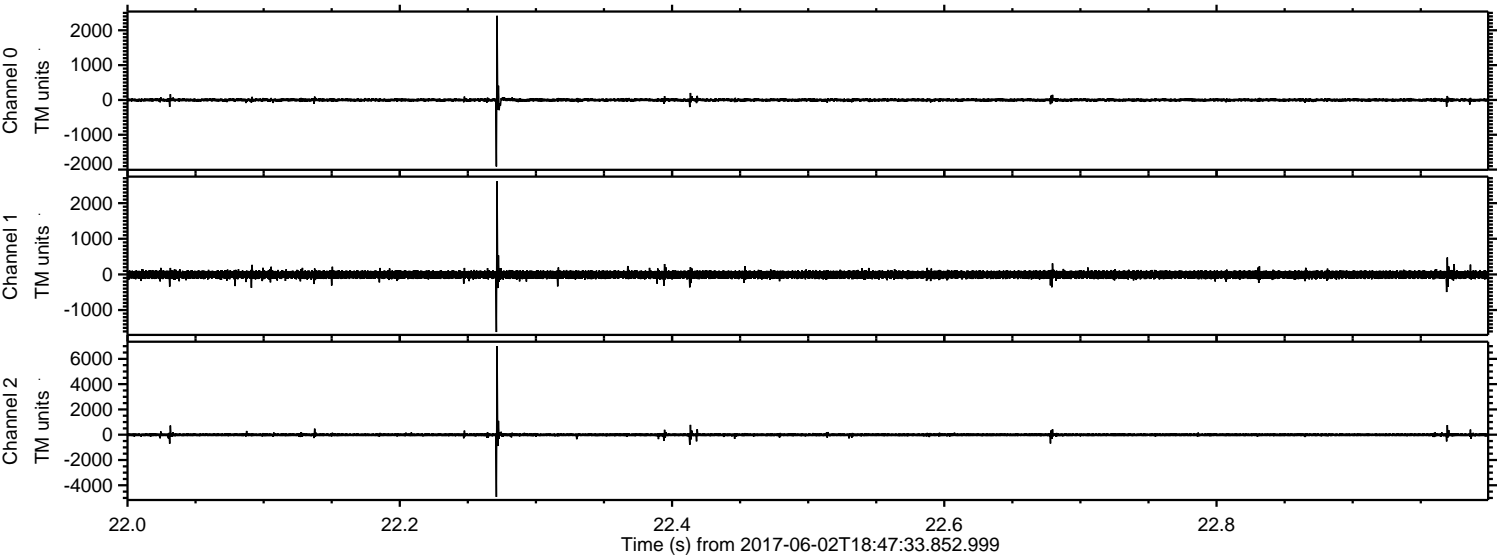


Channel 0
mn: -2930
mx: 2244
 μ : -1.2
 σ : 31.3

Channel 1
mn: -829
mx: 956
 μ : -8.7
 σ : 63.0

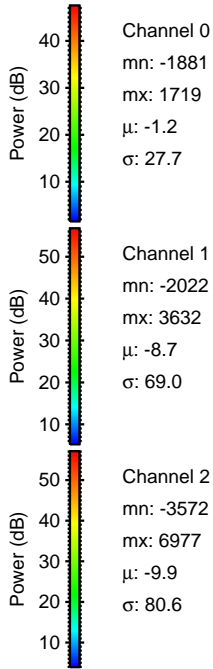
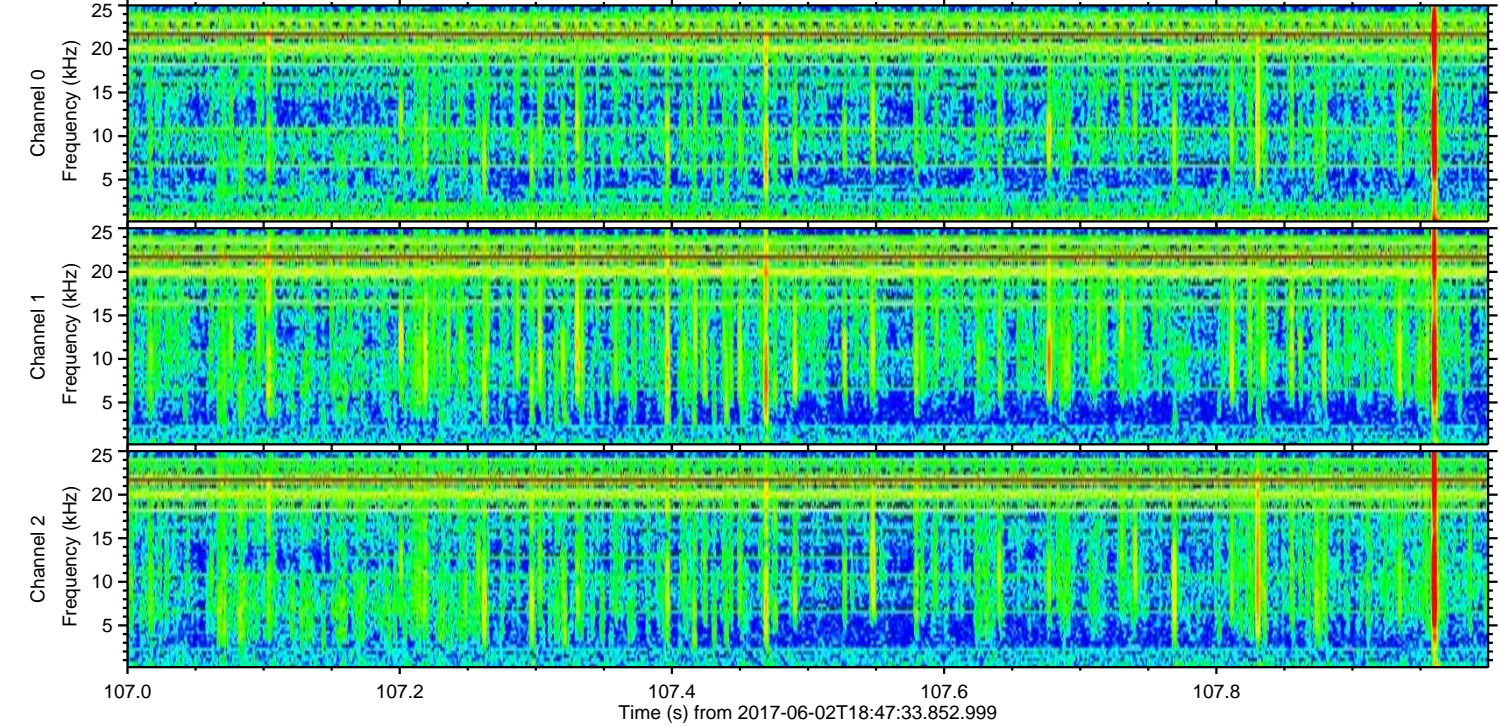
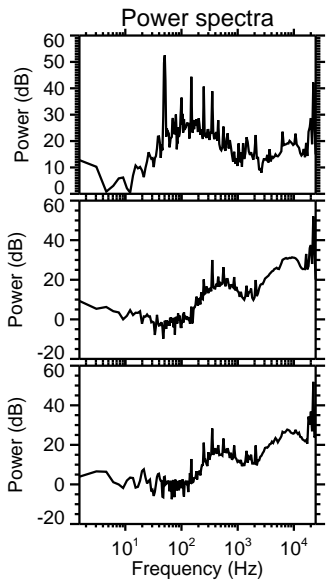
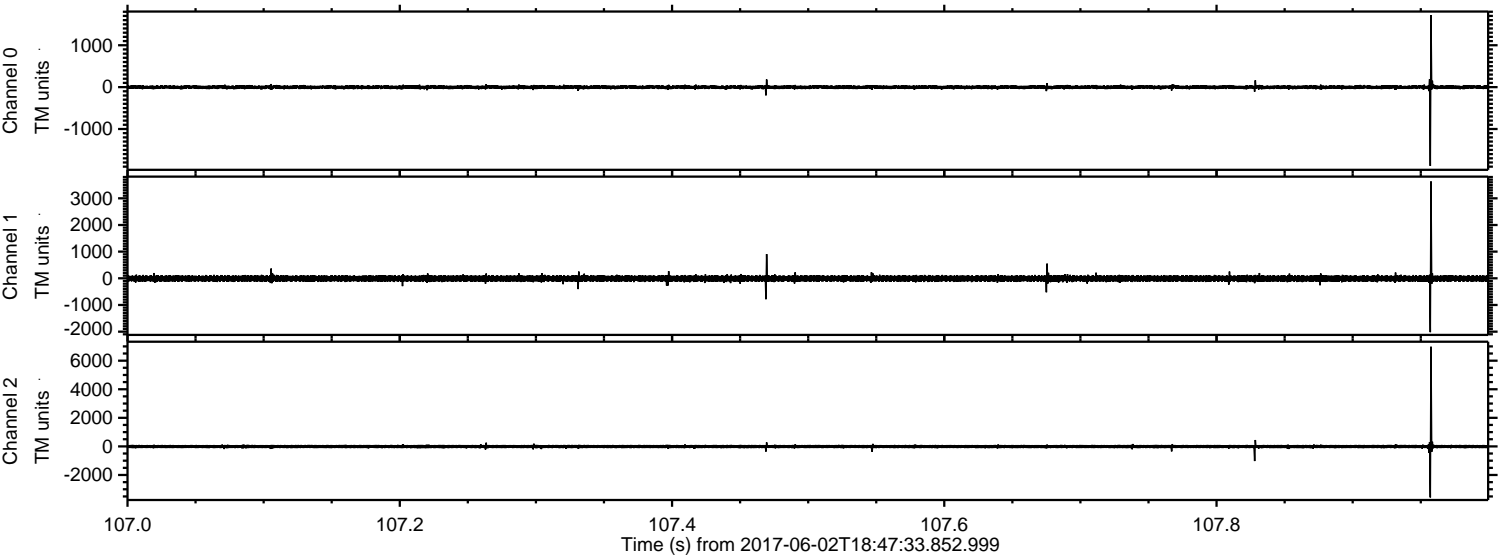
Channel 2
mn: -5712
mx: 7241
 μ : -9.9
 σ : 83.6

Processed Fri Jun 2 20:55:09 2017 by ELM ver.2012-10-06 from 001__elm20170602_184732__dat00.bin



ELMAVAN 3D WAVEFORMS (Measured data sampled at 50 kHz) 51000 packets of 144 samples from 2017-06-02T18:47:33.852.999. Part 108/147

Processed Fri Jun 2 20:55:10 2017 by ELM ver.2012-10-06 from 001__elm20170602_184732__dat00.bin



Channel 0
mn: -1881
mx: 1719
 μ : -1.2
 σ : 27.7

Channel 1
mn: -2022
mx: 3632
 μ : -8.7
 σ : 69.0

Channel 2
mn: -3572
mx: 6977
 μ : -9.9
 σ : 80.6

Processed Fri Jun 2 20:55:10 2017 by ELM ver.2012-10-06 from 001__elm20170602_184732__dat00.bin

