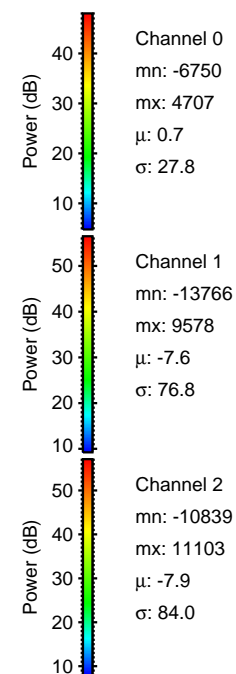
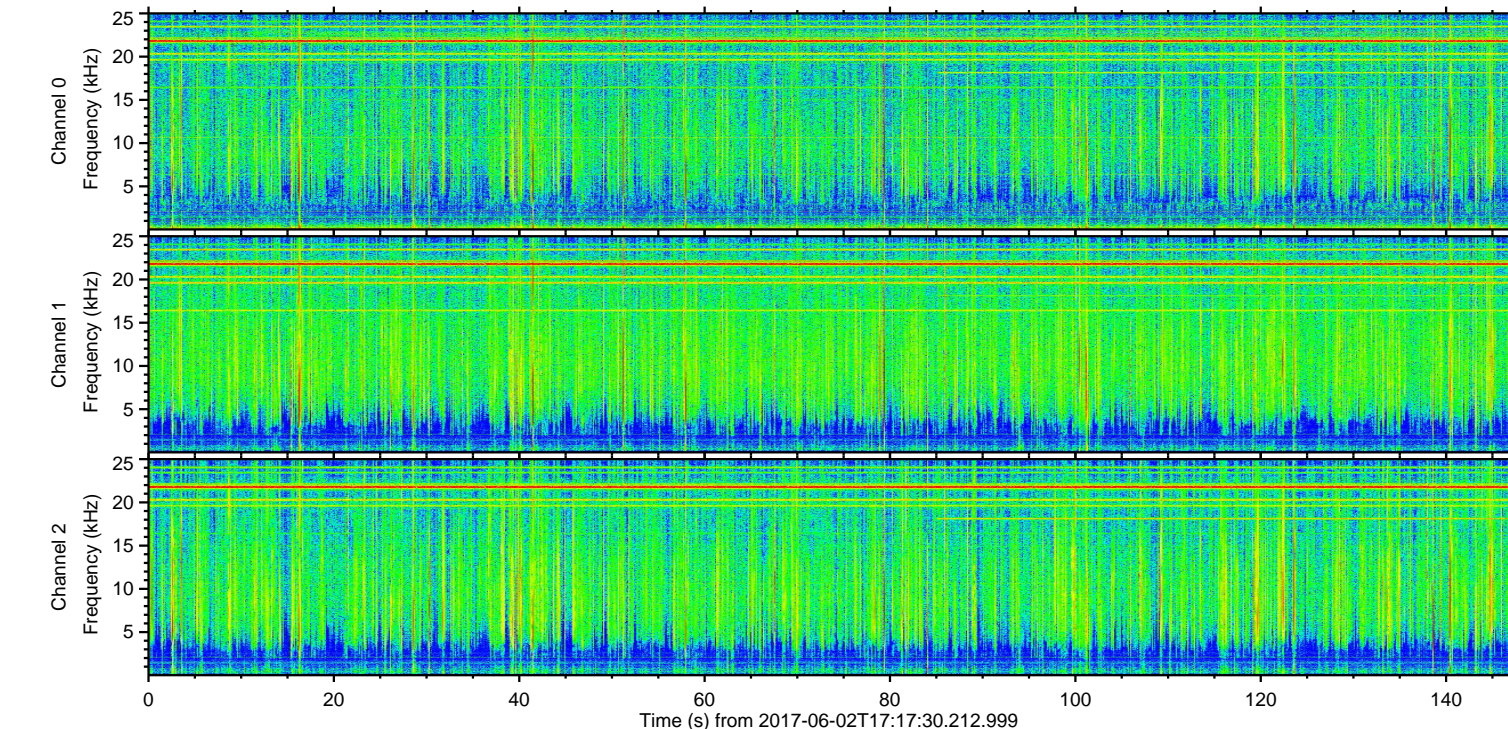
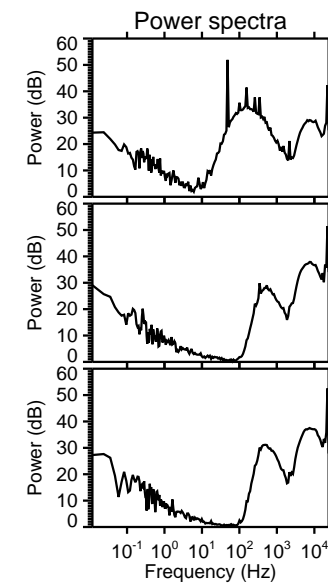
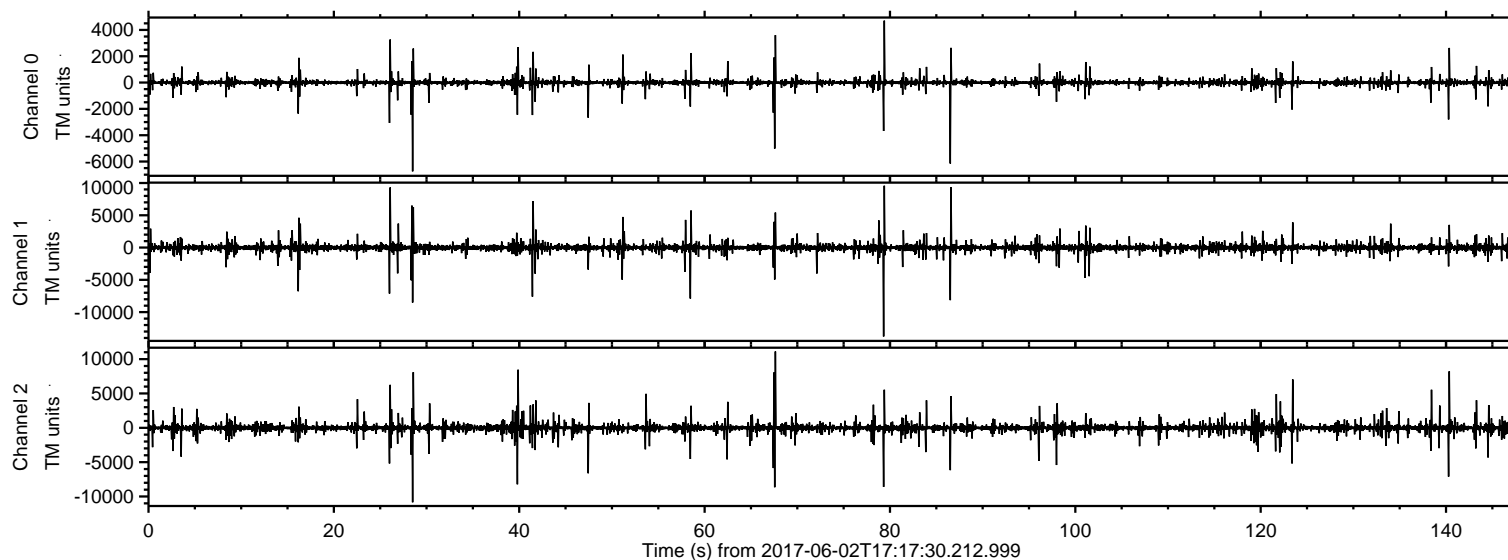
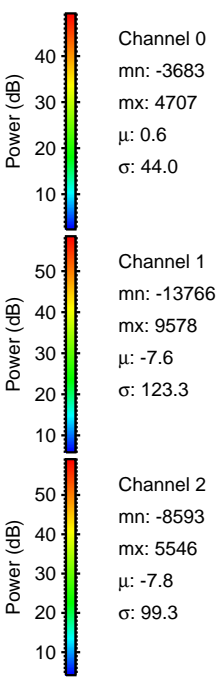
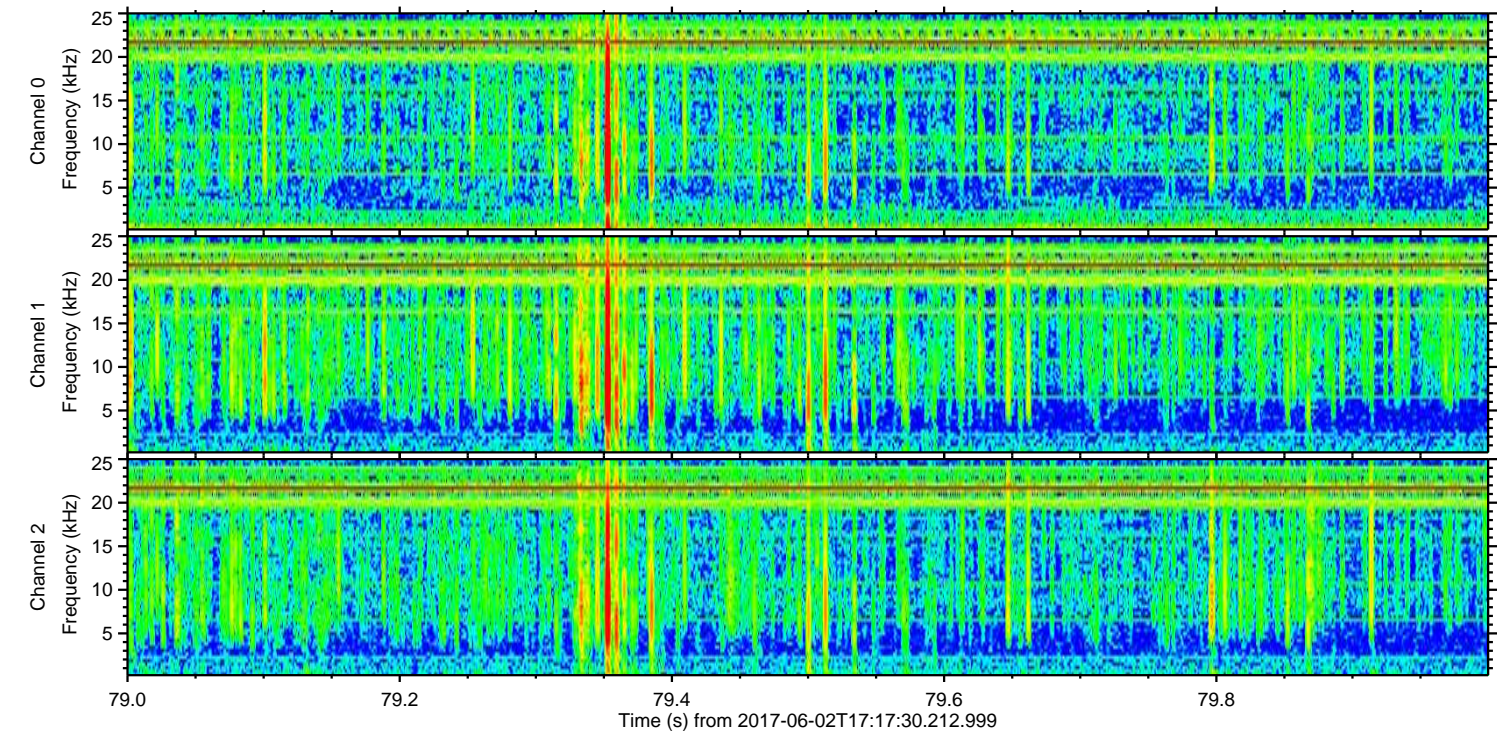
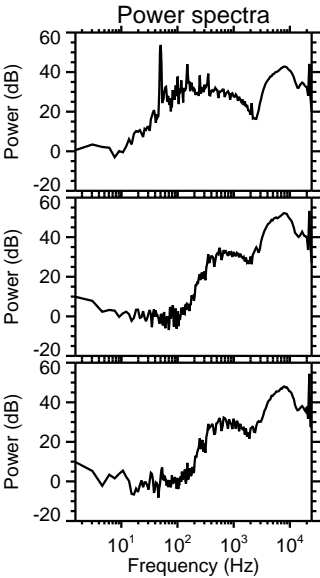
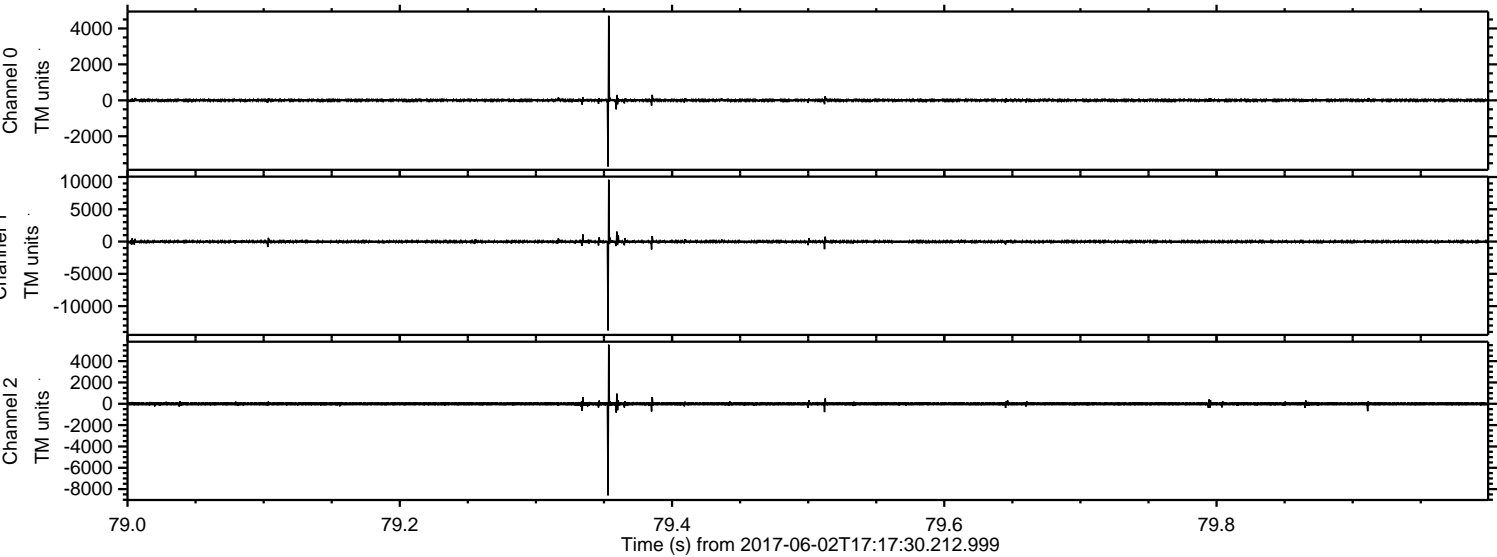


ELMAVAN 3D WAVEFORMS (Measured data sampled at 50 kHz) 51000 packets of 144 samples from 2017-06-02T17:17:30.212.999.

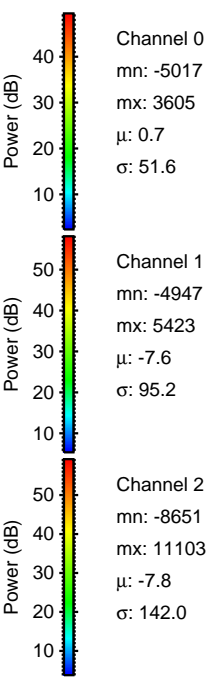
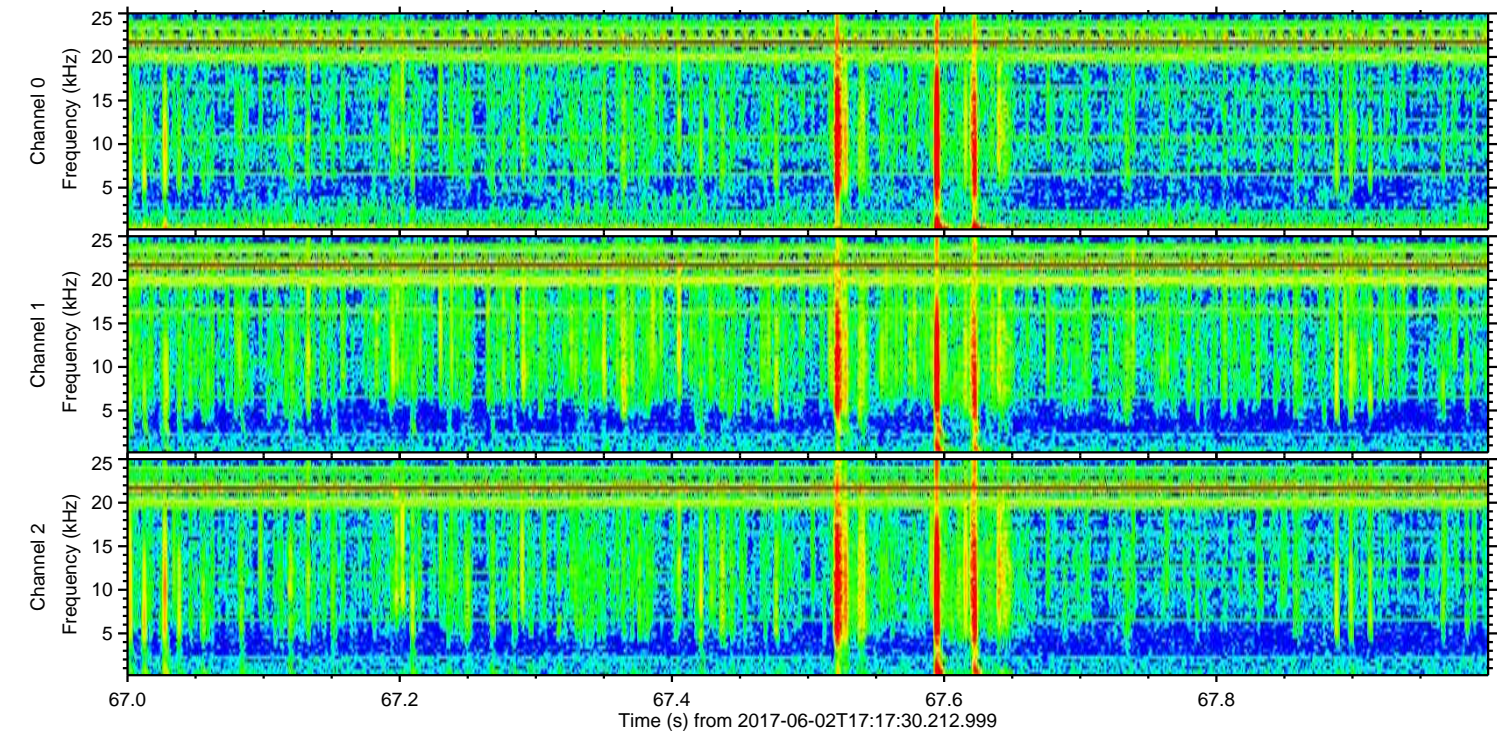
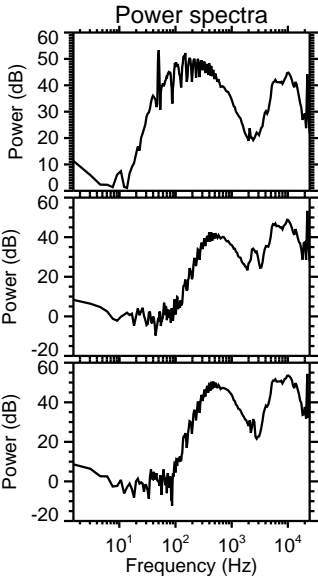
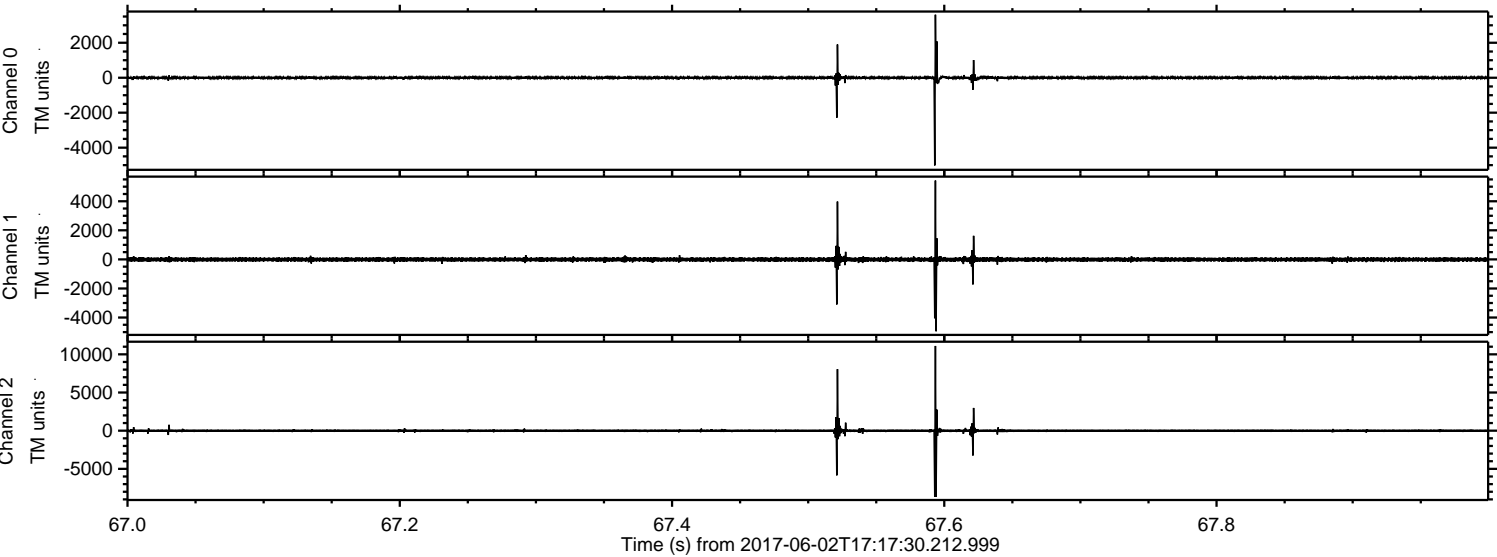
Processed Fri Jun 2 19:25:46 2017 by ELM ver.2012-10-06 from 001__elm20170602_171729__dat00.bin



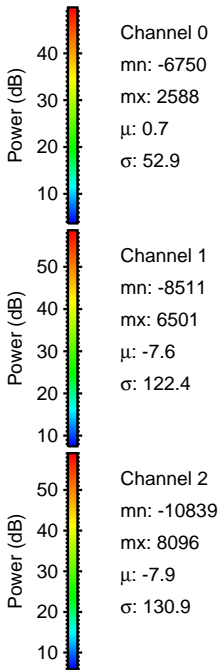
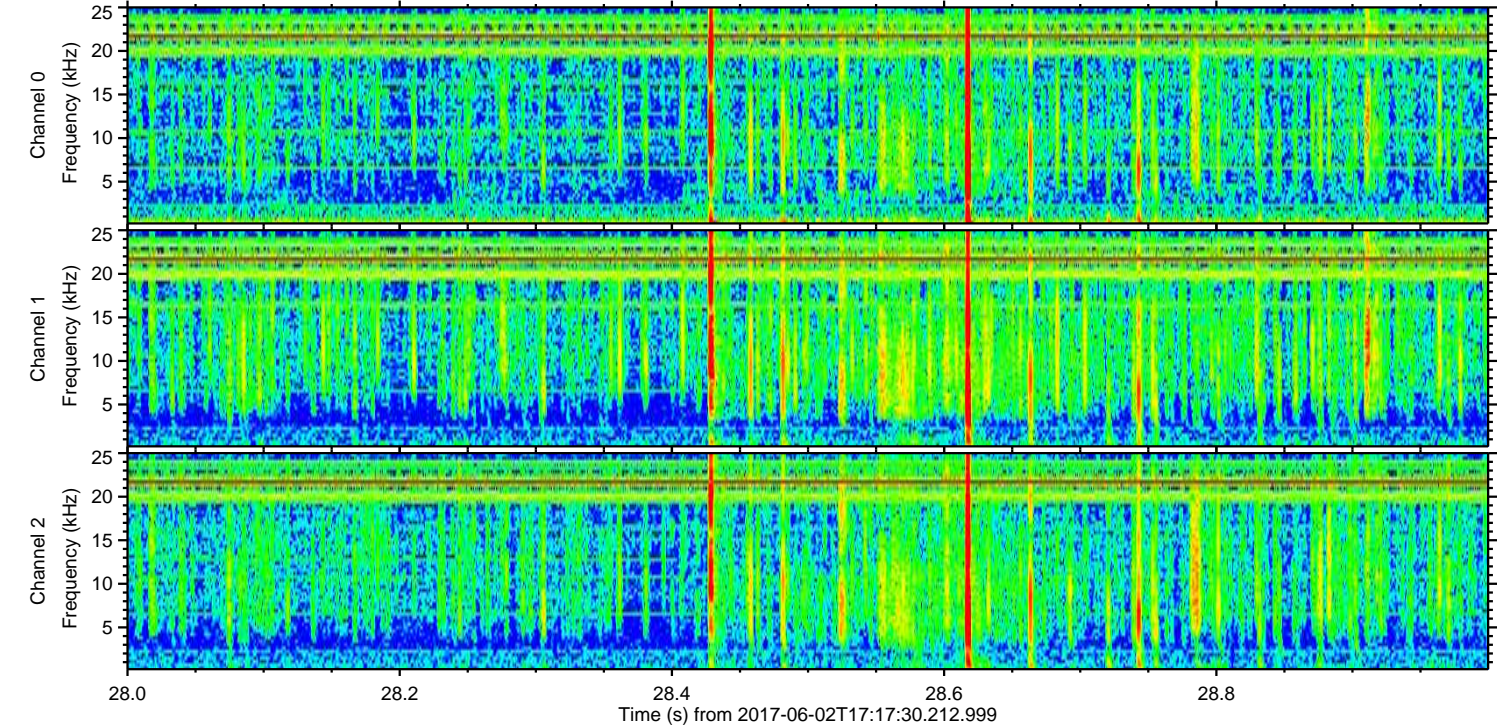
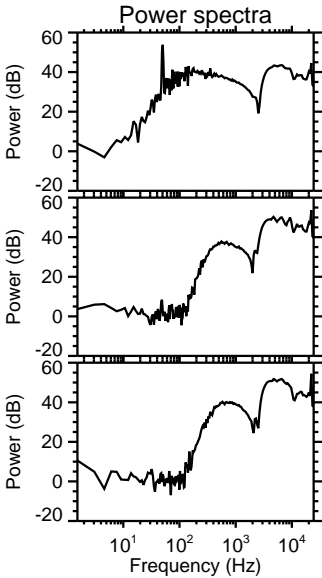
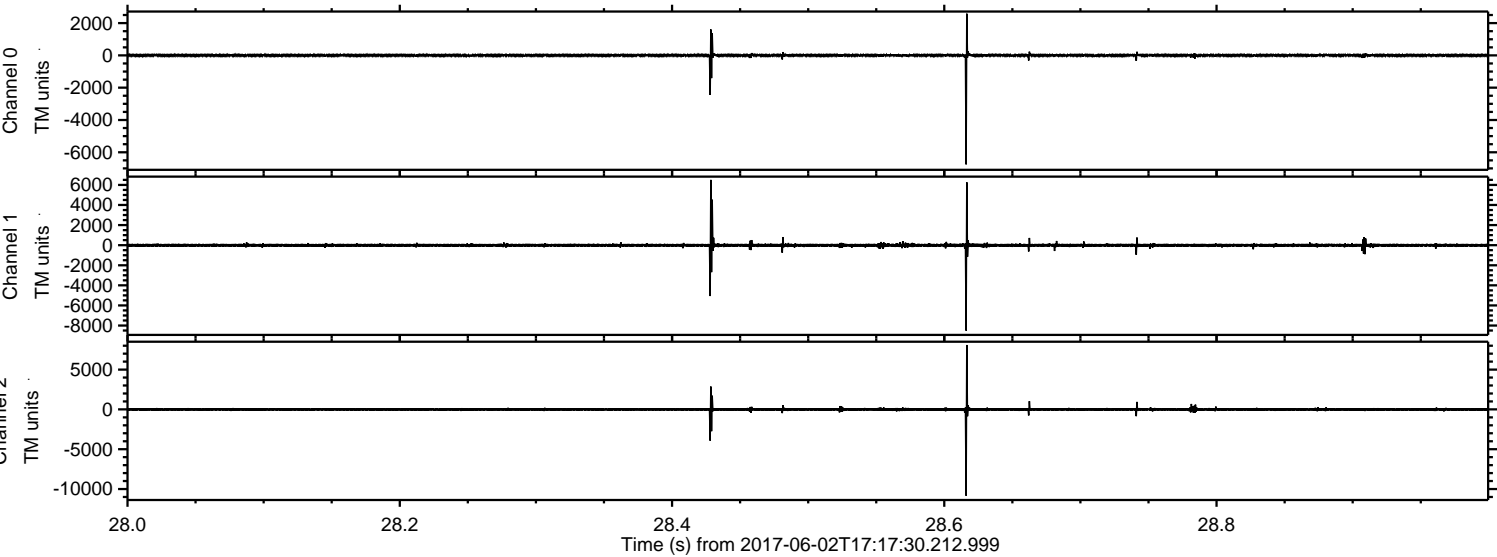
Processed Fri Jun 2 19:25:52 2017 by ELM ver.2012-10-06 from 001__elm20170602_171729__dat00.bin



Processed Fri Jun 2 19:25:54 2017 by ELM ver.2012-10-06 from 001__elm20170602_171729__dat00.bin

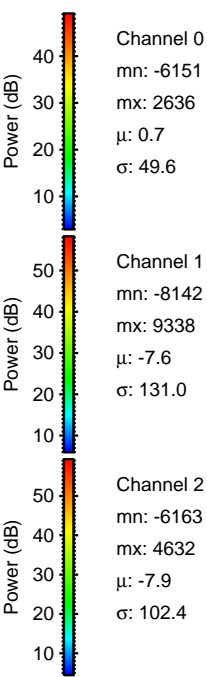
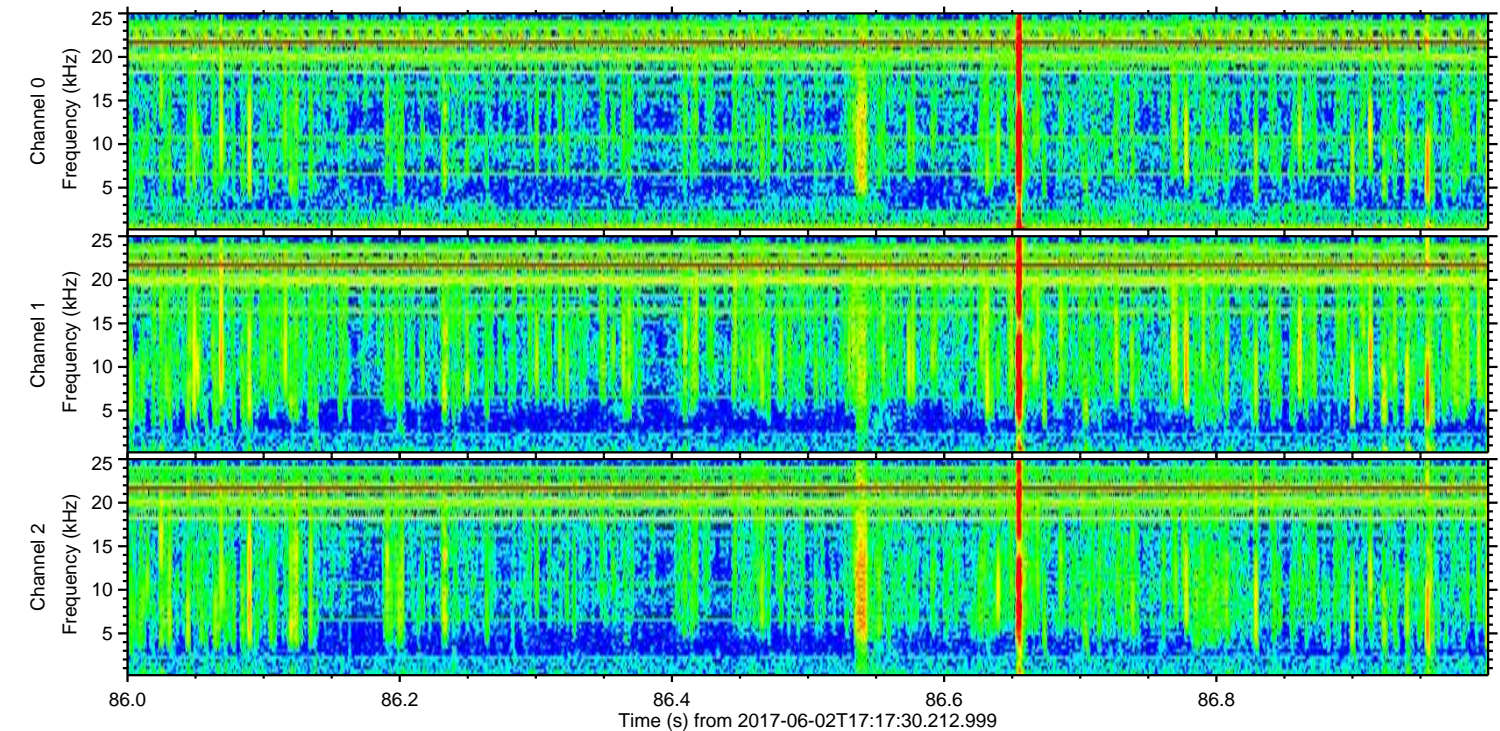
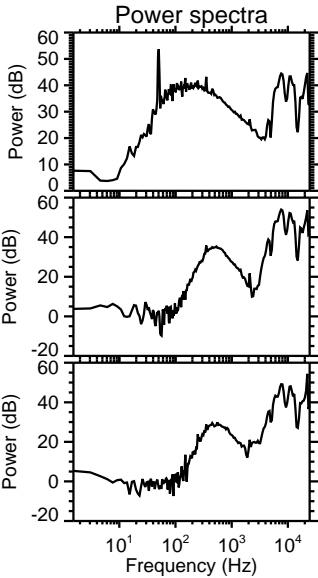
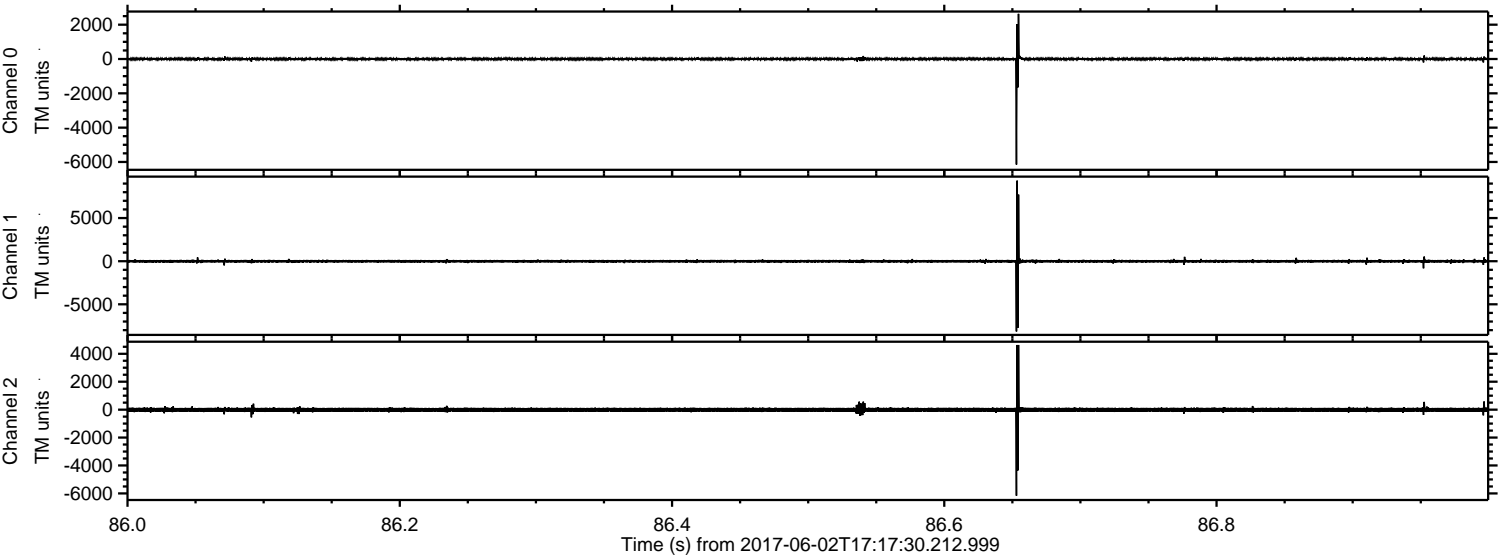


Processed Fri Jun 2 19:25:55 2017 by ELM ver.2012-10-06 from 001__elm20170602_171729__dat00.bin



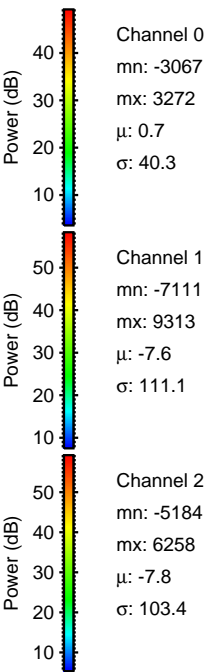
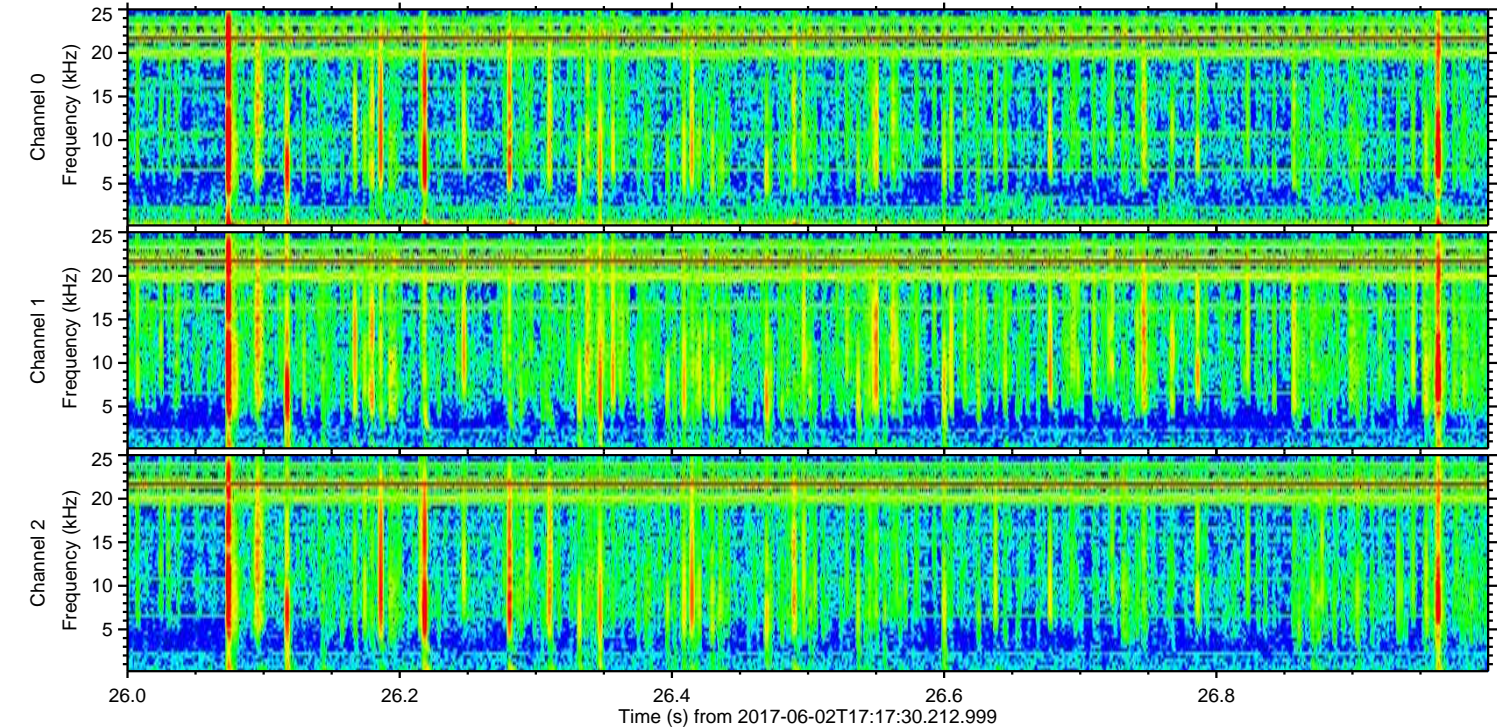
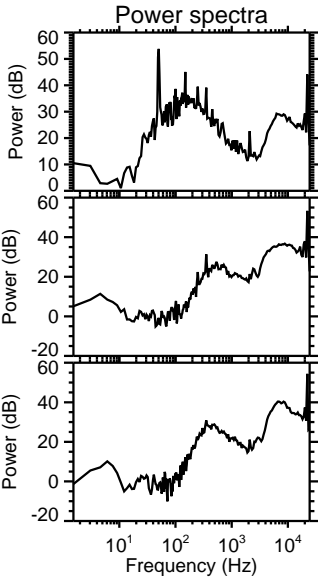
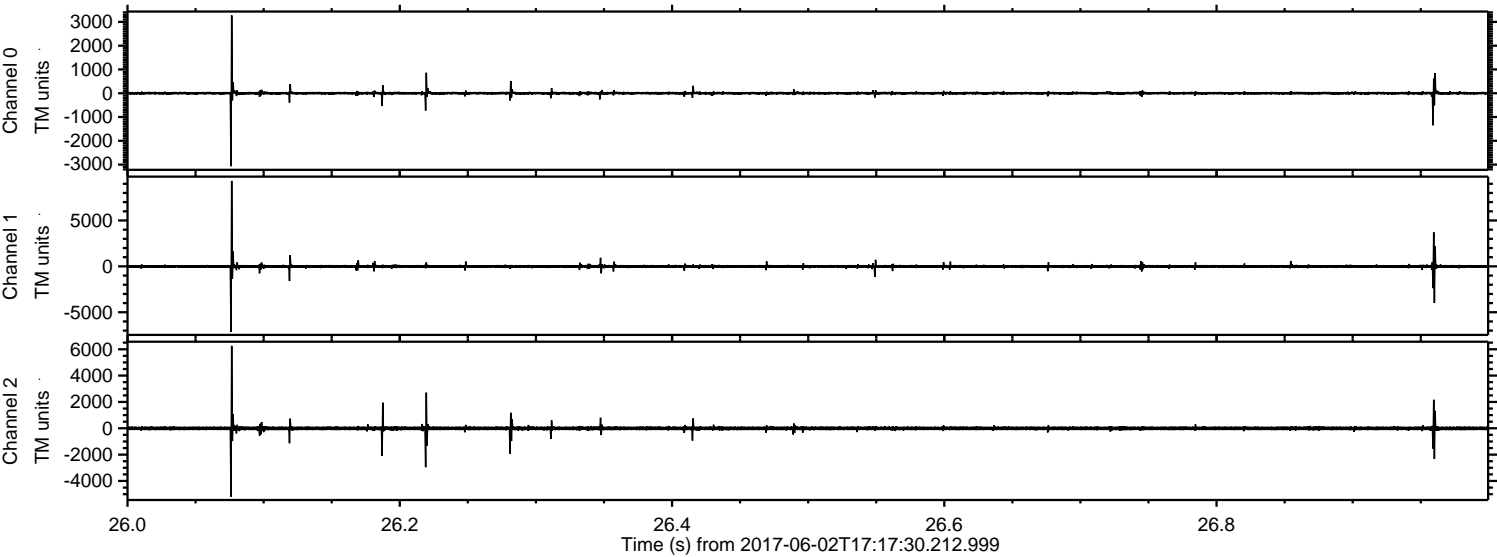
ELMAVAN 3D WAVEFORMS (Measured data sampled at 50 kHz) 51000 packets of 144 samples from 2017-06-02T17:17:30.212.999. Part 87/147

Processed Fri Jun 2 19:25:55 2017 by ELM ver.2012-10-06 from 001__elm20170602_171729__dat00.bin

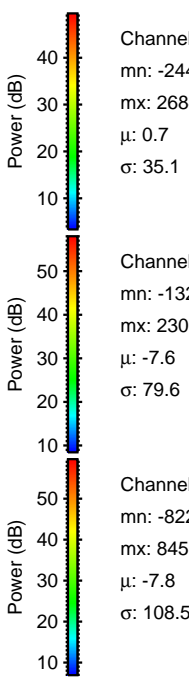
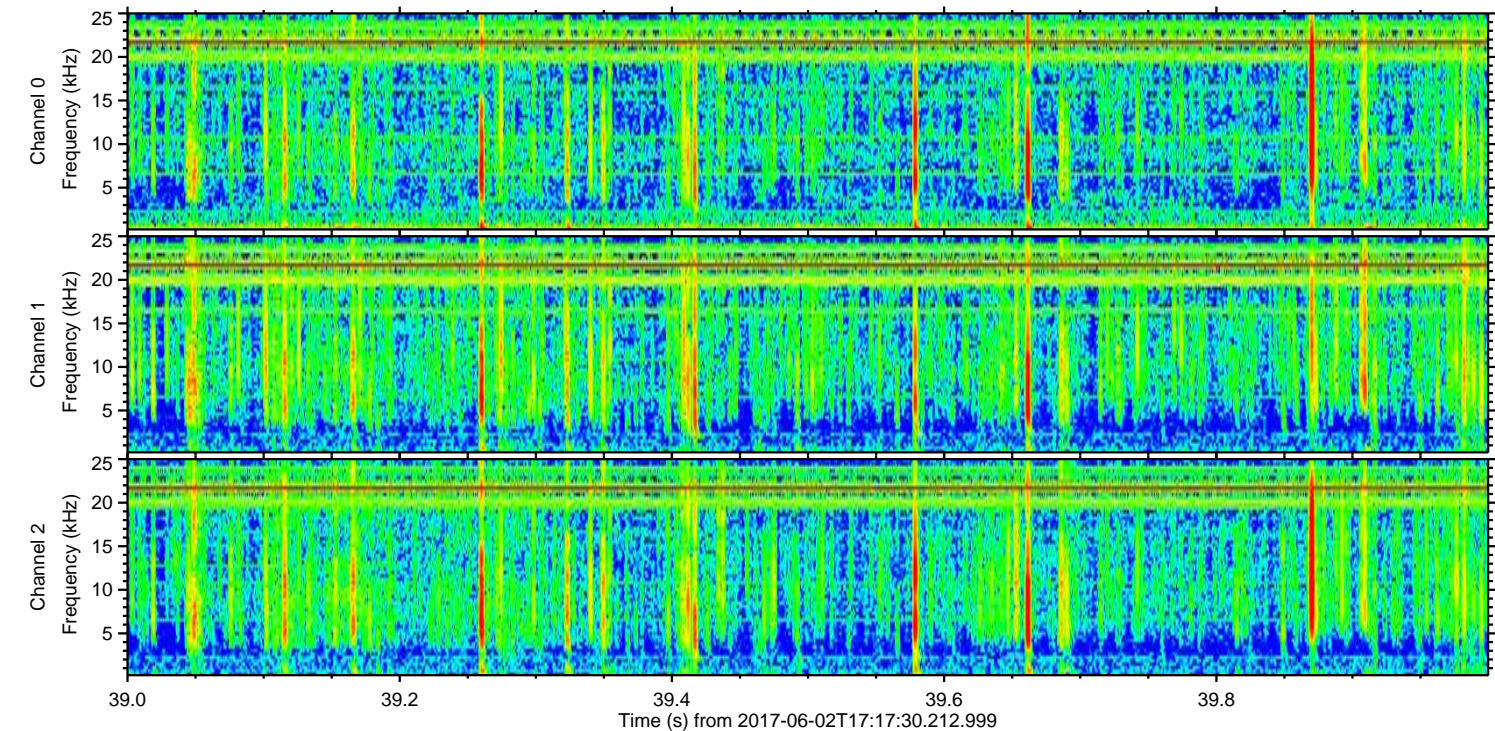
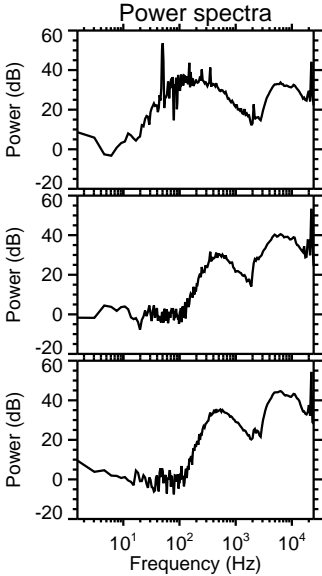
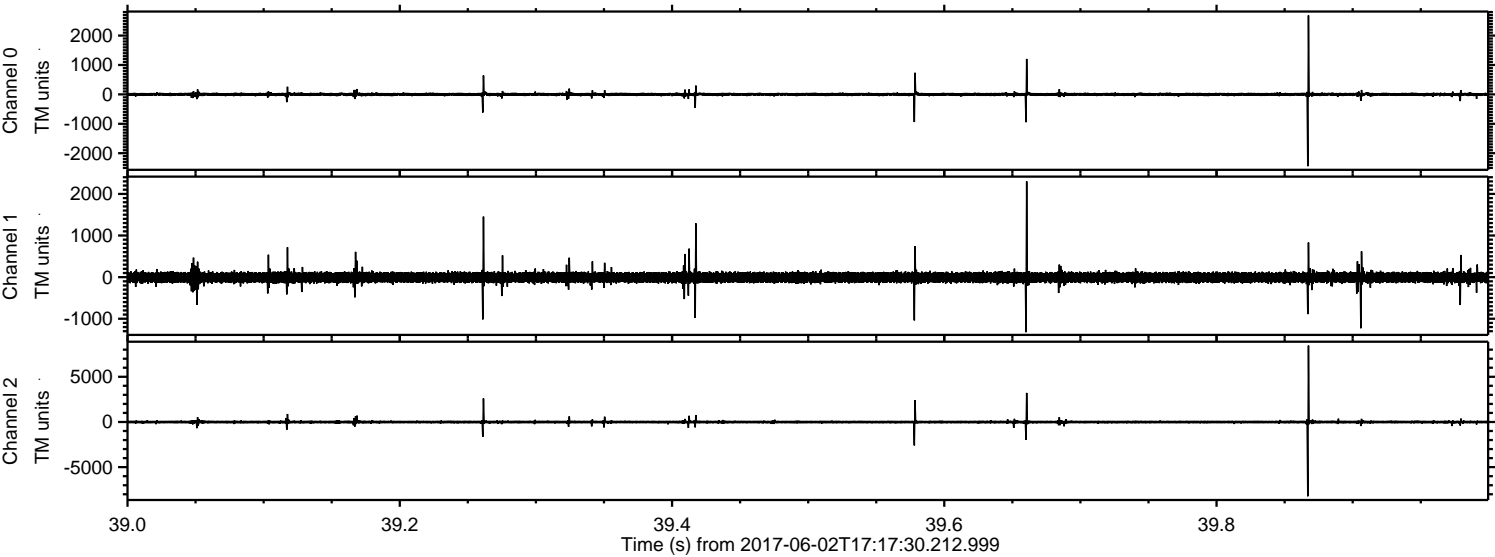


ELMAVAN 3D WAVEFORMS (Measured data sampled at 50 kHz) 51000 packets of 144 samples from 2017-06-02T17:17:30.212.999. Part 27/147

Processed Fri Jun 2 19:25:56 2017 by ELM ver.2012-10-06 from 001__elm20170602_171729__dat00.bin

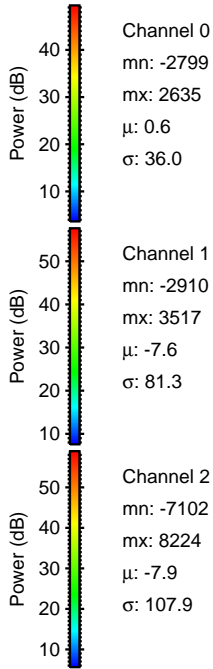
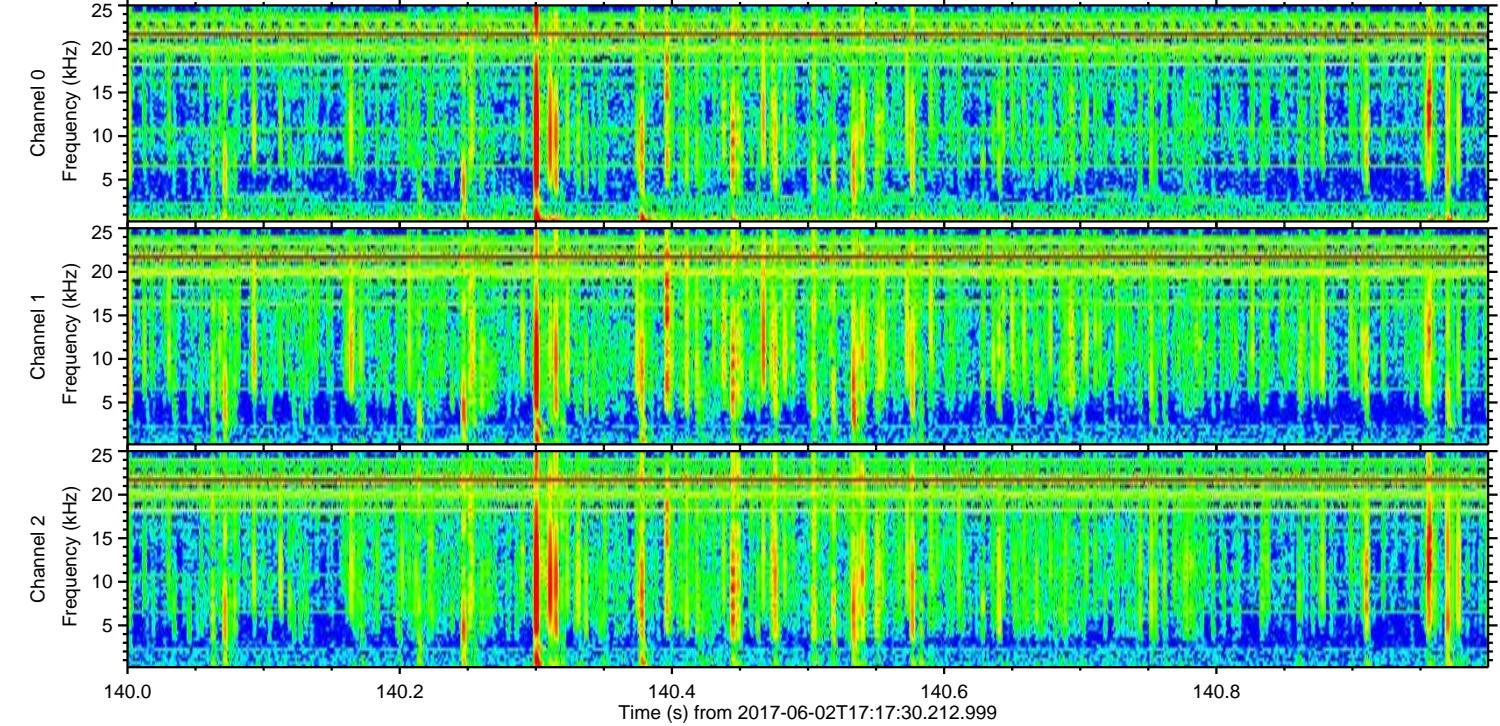
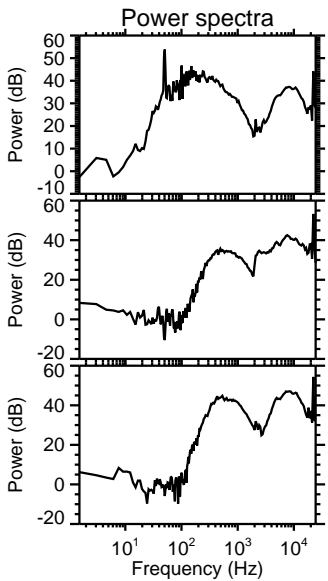
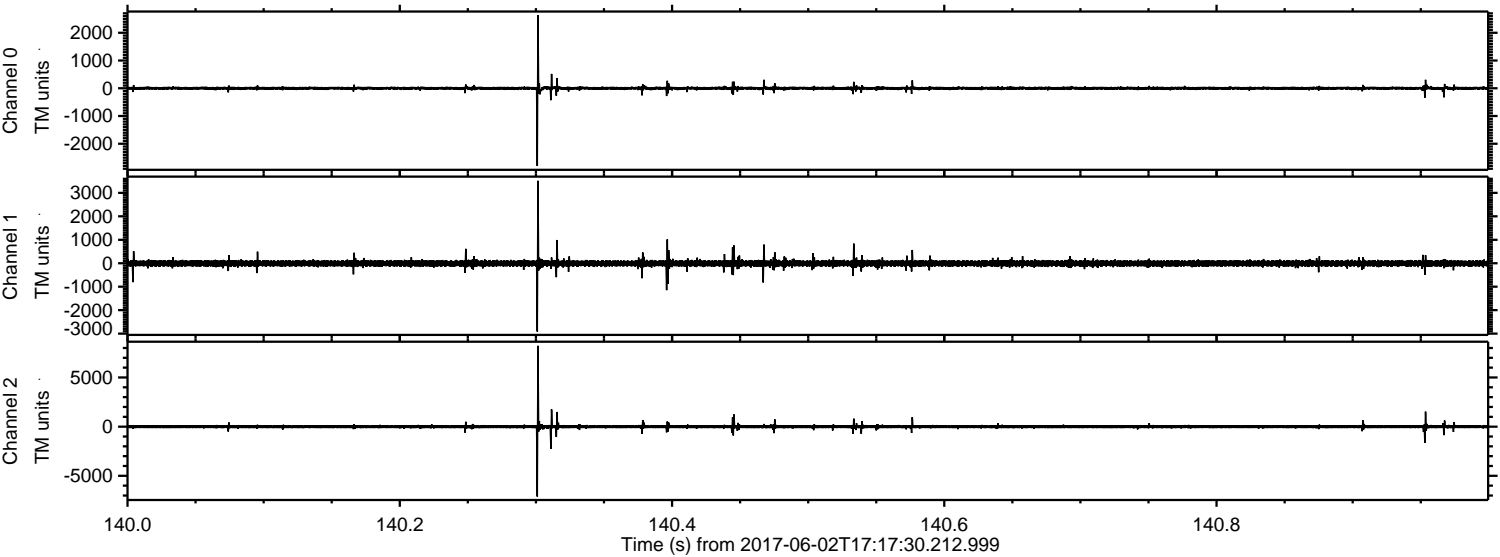


Processed Fri Jun 2 19:25:57 2017 by ELM ver.2012-10-06 from 001__elm20170602_171729__dat00.bin



ELMAVAN 3D WAVEFORMS (Measured data sampled at 50 kHz) 51000 packets of 144 samples from 2017-06-02T17:17:30.212.999. Part 141/147

Processed Fri Jun 2 19:25:57 2017 by ELM ver.2012-10-06 from 001__elm20170602_171729__dat00.bin

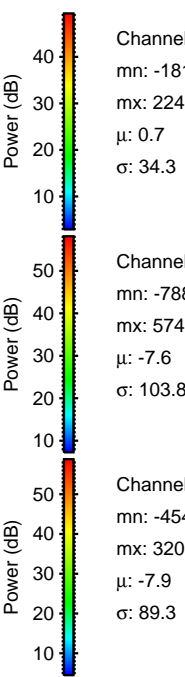
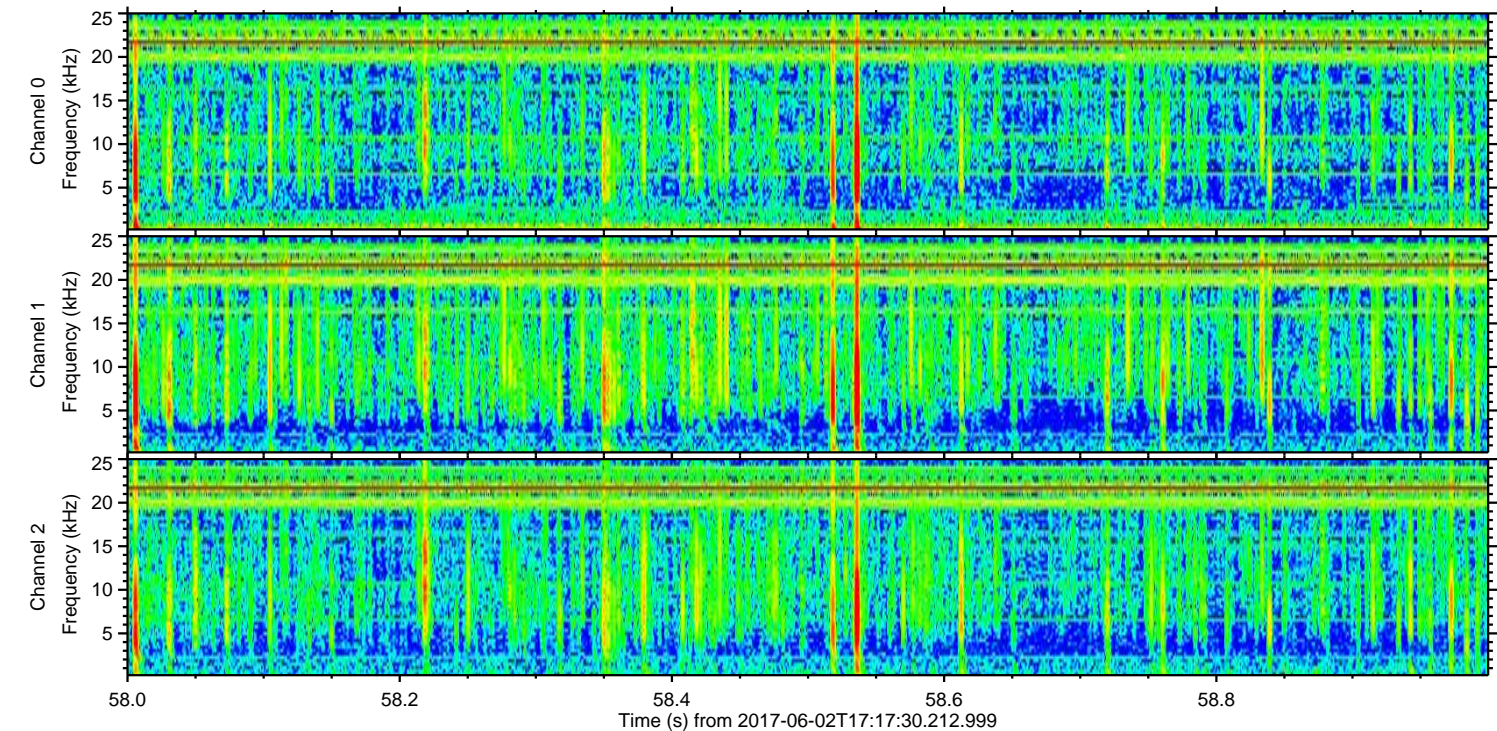
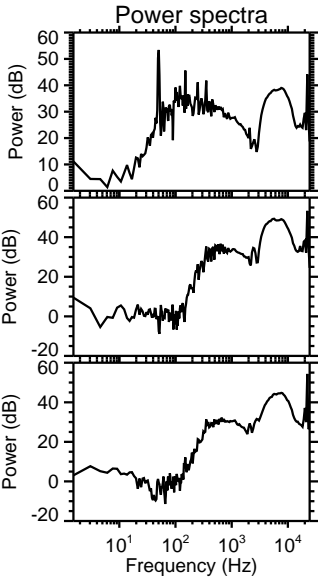
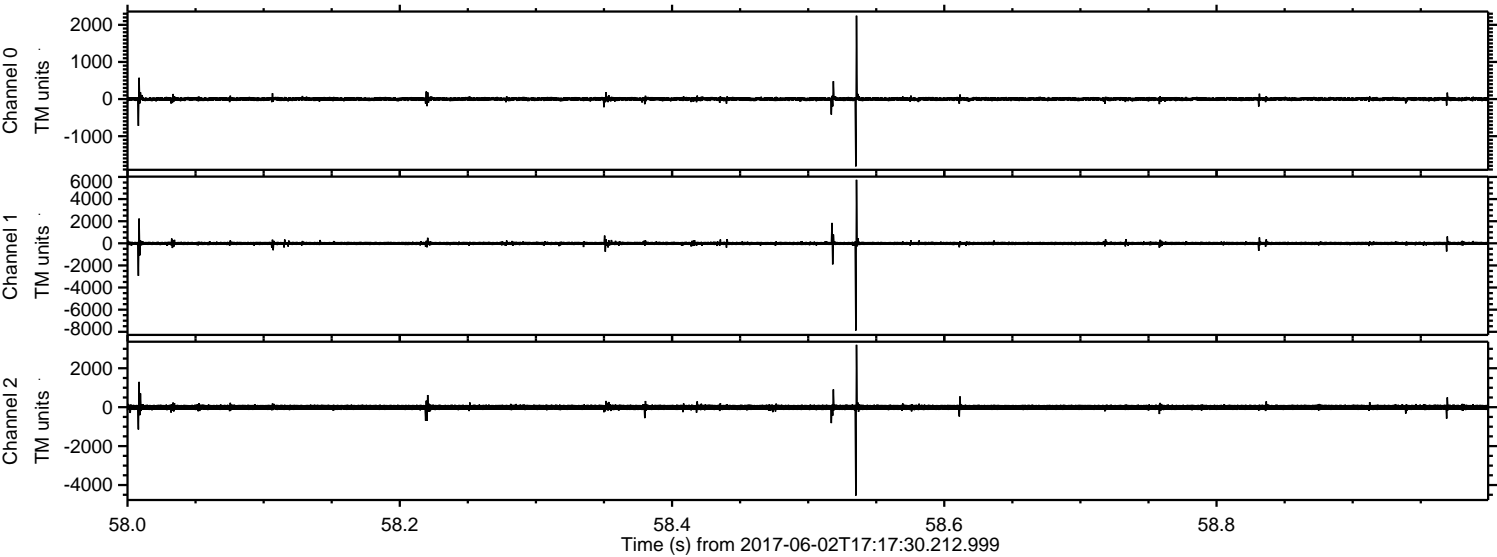


Channel 0
mn: -2799
mx: 2635
 μ : 0.6
 σ : 36.0

Channel 1
mn: -2910
mx: 3517
 μ : -7.6
 σ : 81.3

Channel 2
mn: -7102
mx: 8224
 μ : -7.9
 σ : 107.9

Processed Fri Jun 2 19:25:58 2017 by ELM ver.2012-10-06 from 001__elm20170602_171729__dat00.bin



Channel 0
mn: -1817
mx: 2247
 μ : 0.7
 σ : 34.3

Channel 1
mn: -7889
mx: 5743
 μ : -7.6
 σ : 103.8

Channel 2
mn: -4542
mx: 3205
 μ : -7.9
 σ : 89.3

Processed Fri Jun 2 19:25:59 2017 by ELM ver.2012-10-06 from 001__elm20170602_171729__dat00.bin

