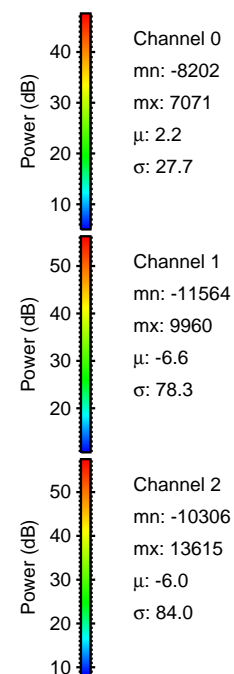
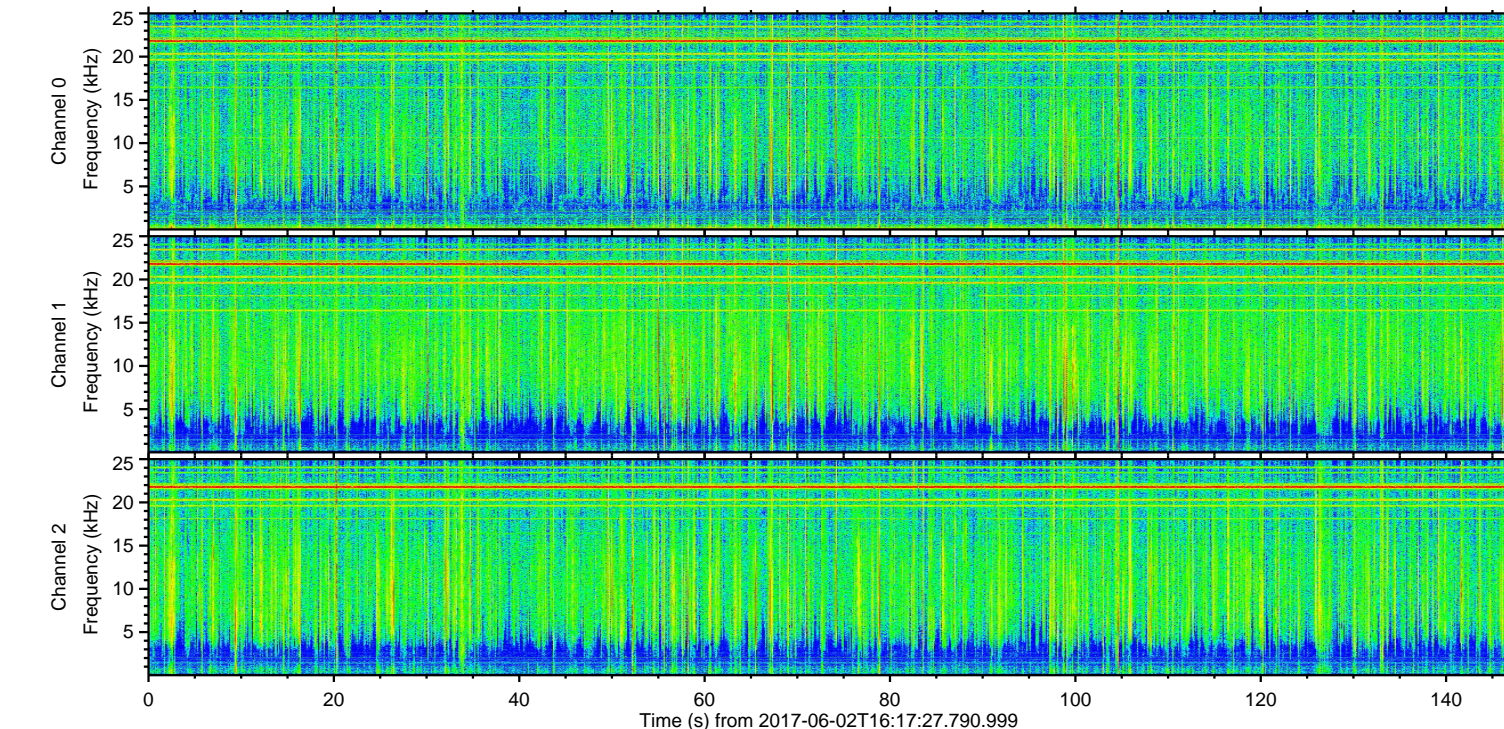
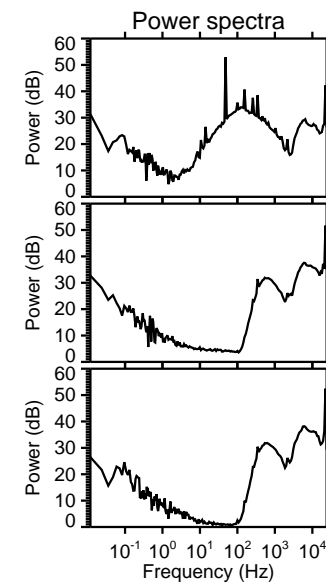
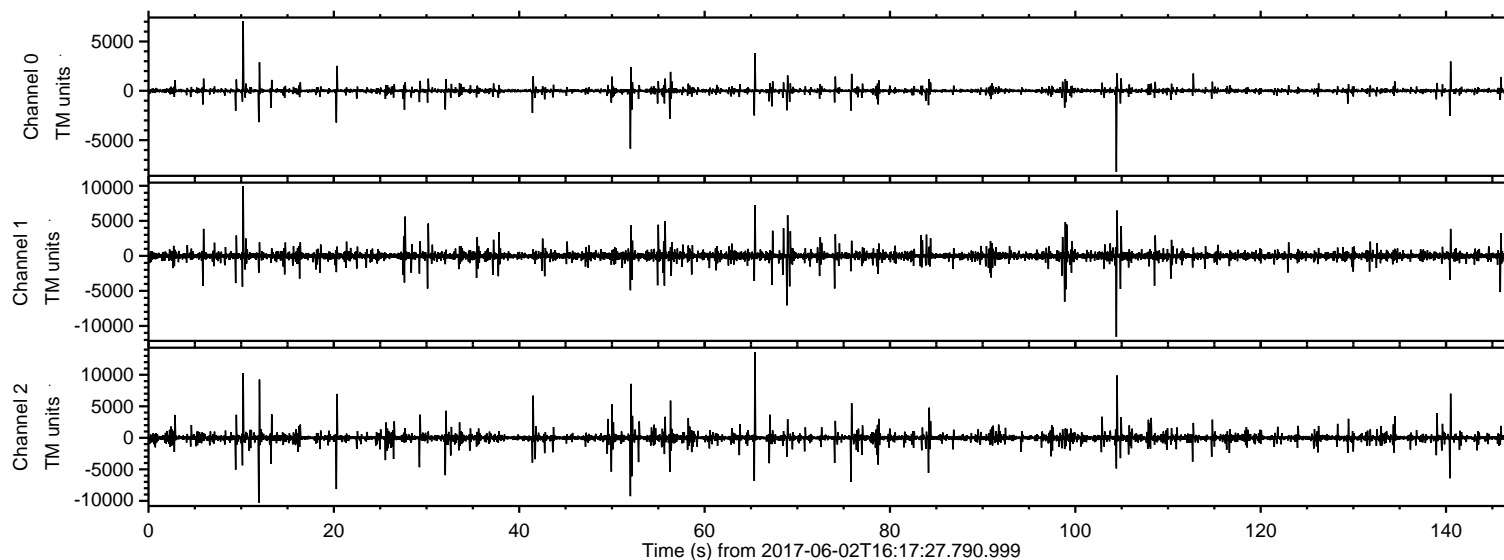


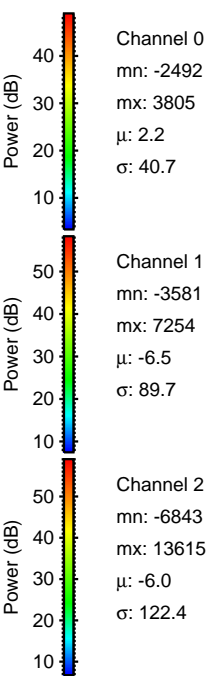
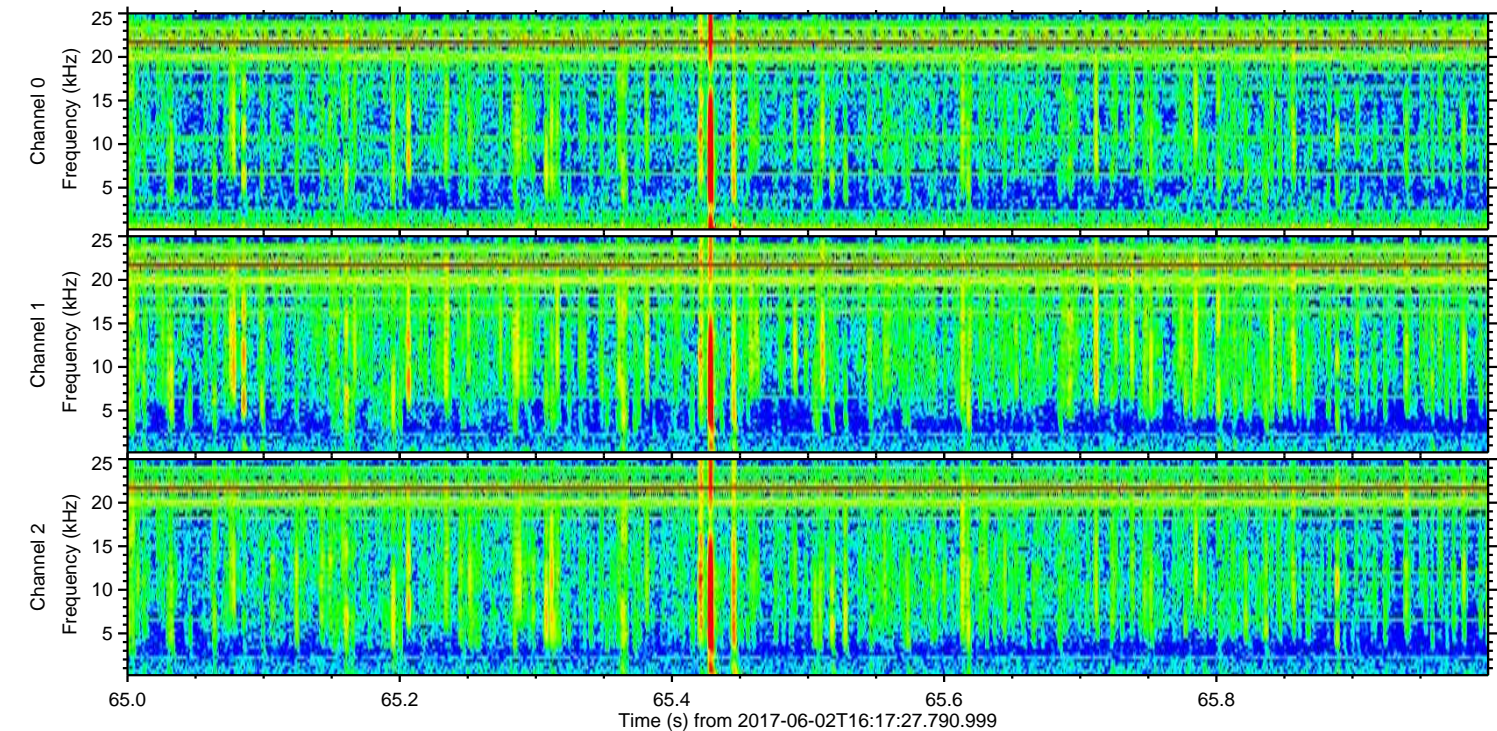
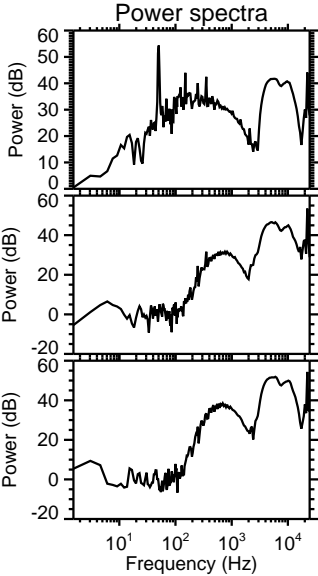
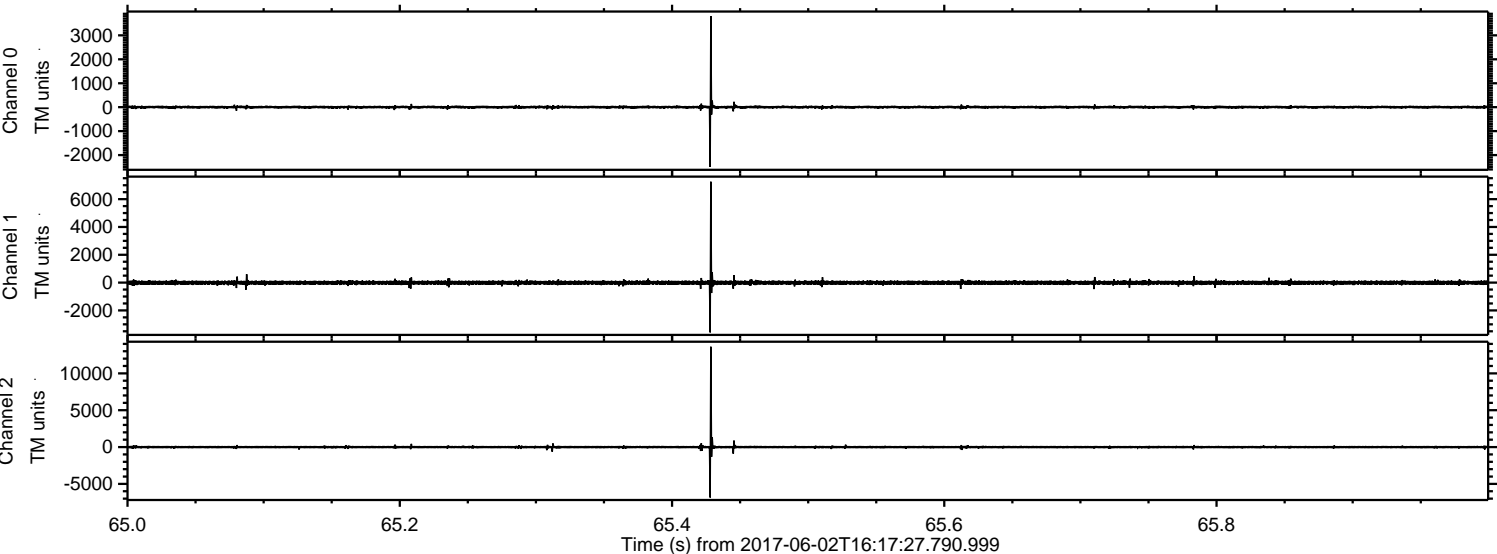
# ELMAVAN 3D WAVEFORMS (Measured data sampled at 50 kHz) 51000 packets of 144 samples from 2017-06-02T16:17:27.790.999.

Processed Fri Jun 2 18:25:05 2017 by ELM ver.2012-10-06 from 001\_\_elm20170602\_161726\_\_dat00.bin





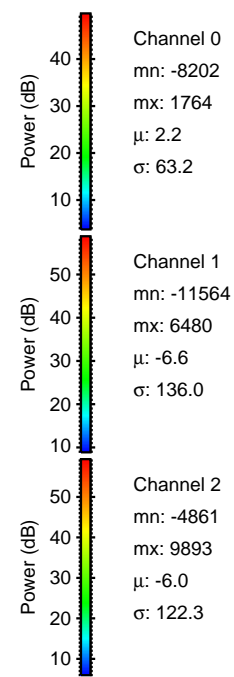
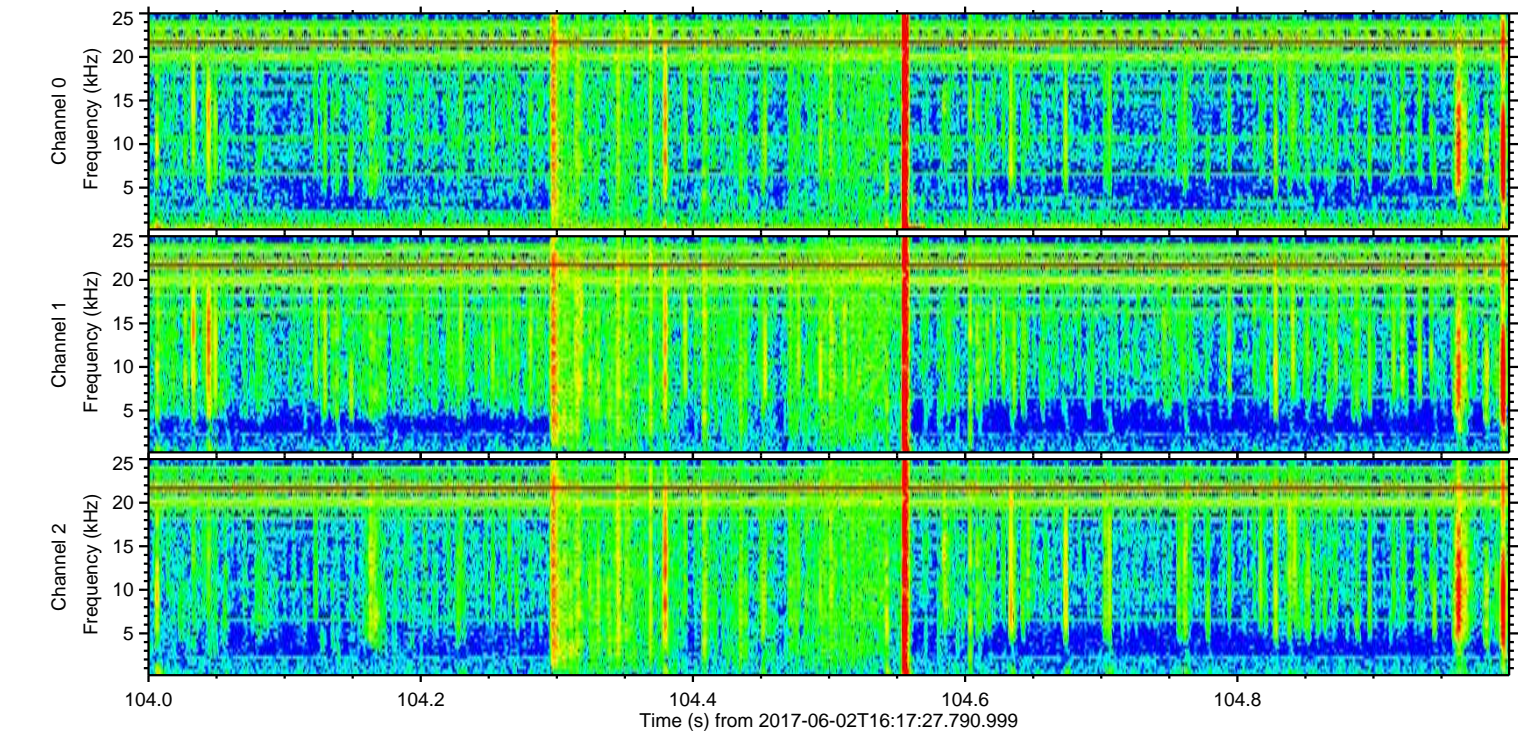
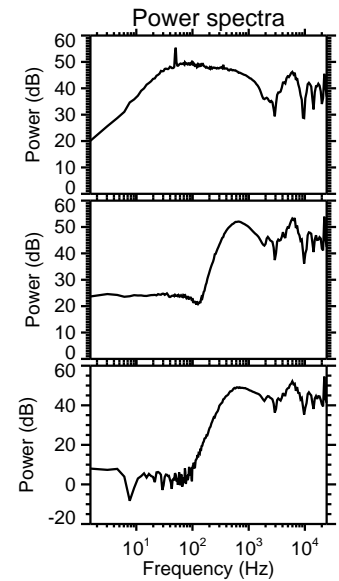
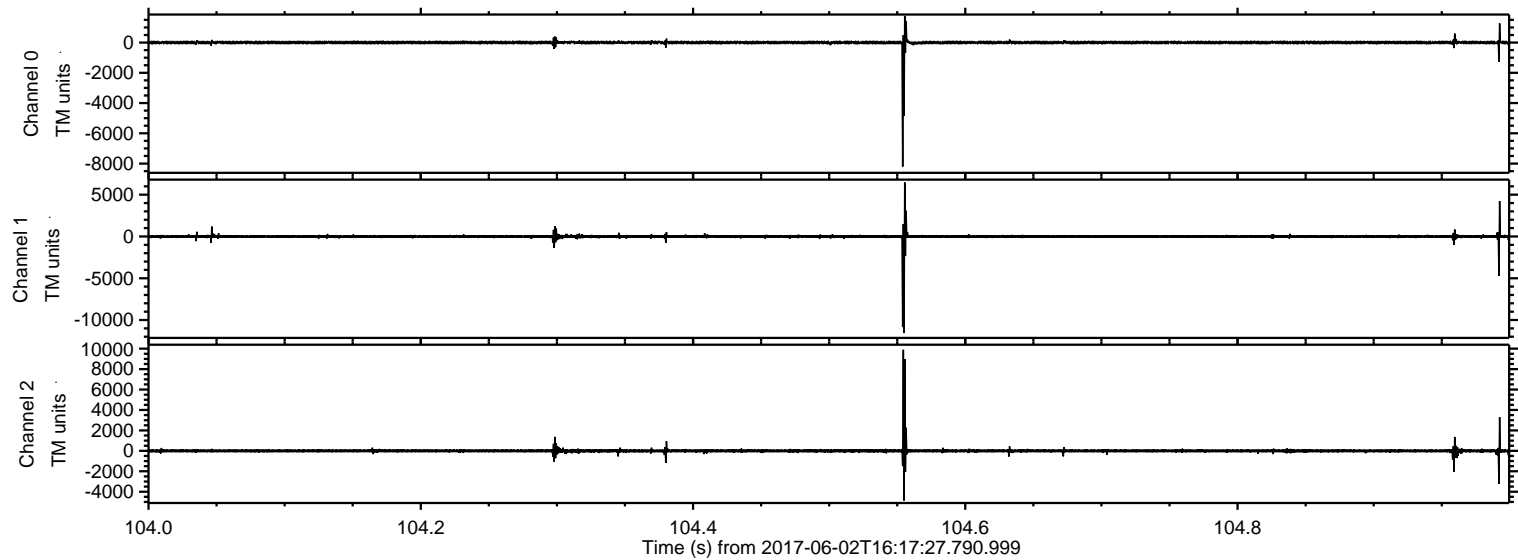
Processed Fri Jun 2 18:25:10 2017 by ELM ver.2012-10-06 from 001\_\_elm20170602\_161726\_\_dat00.bin





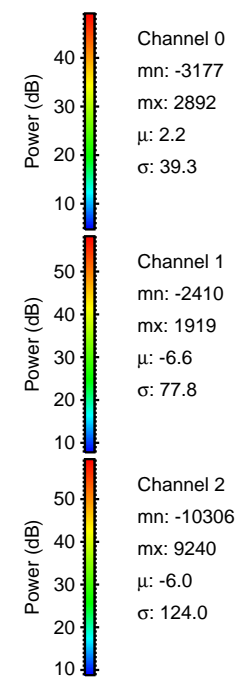
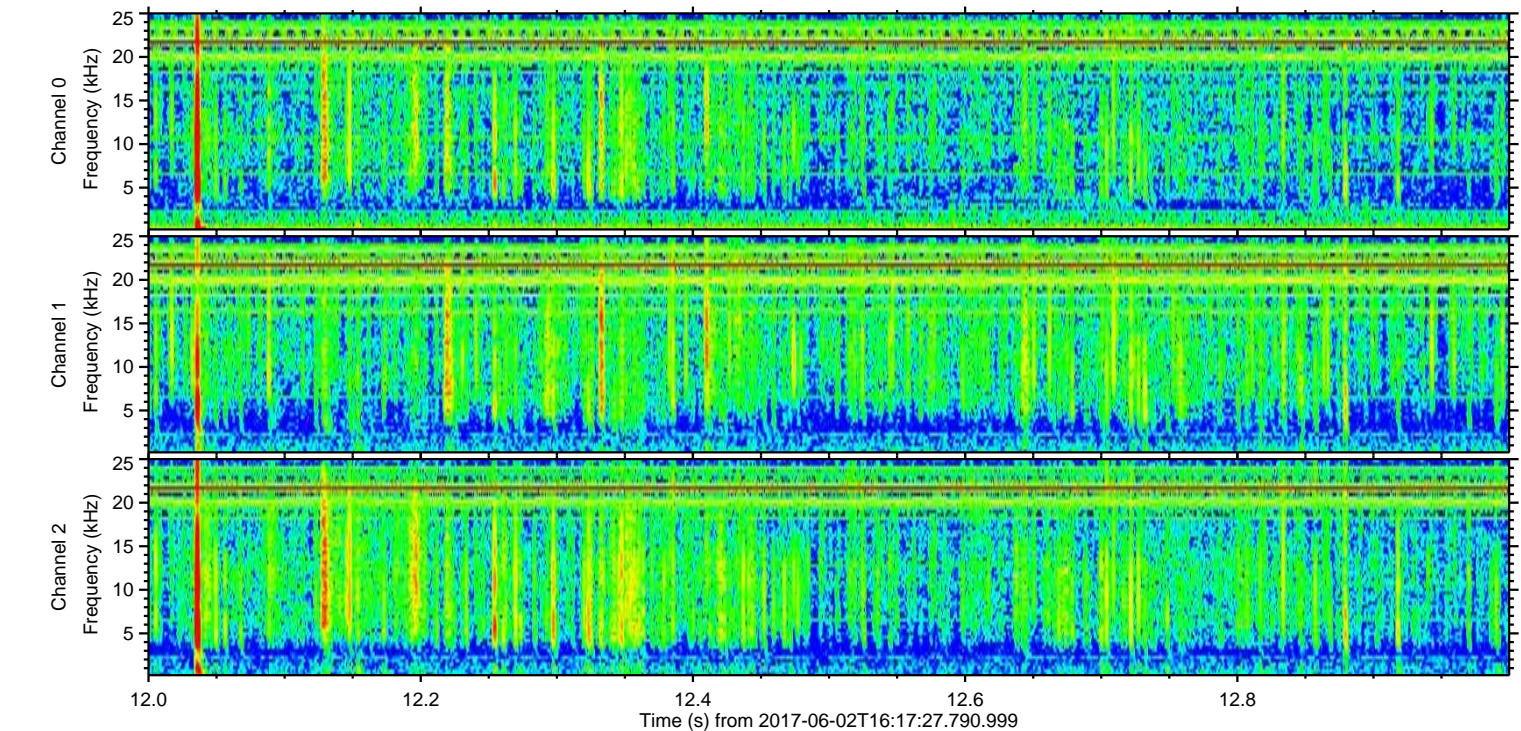
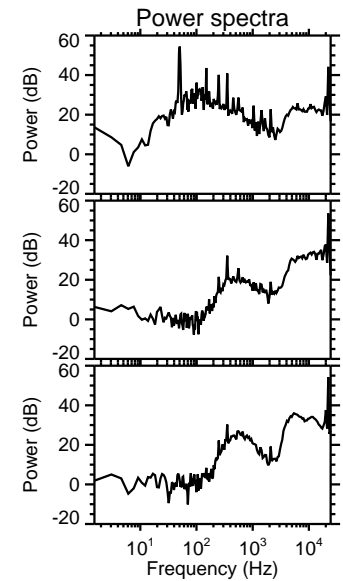
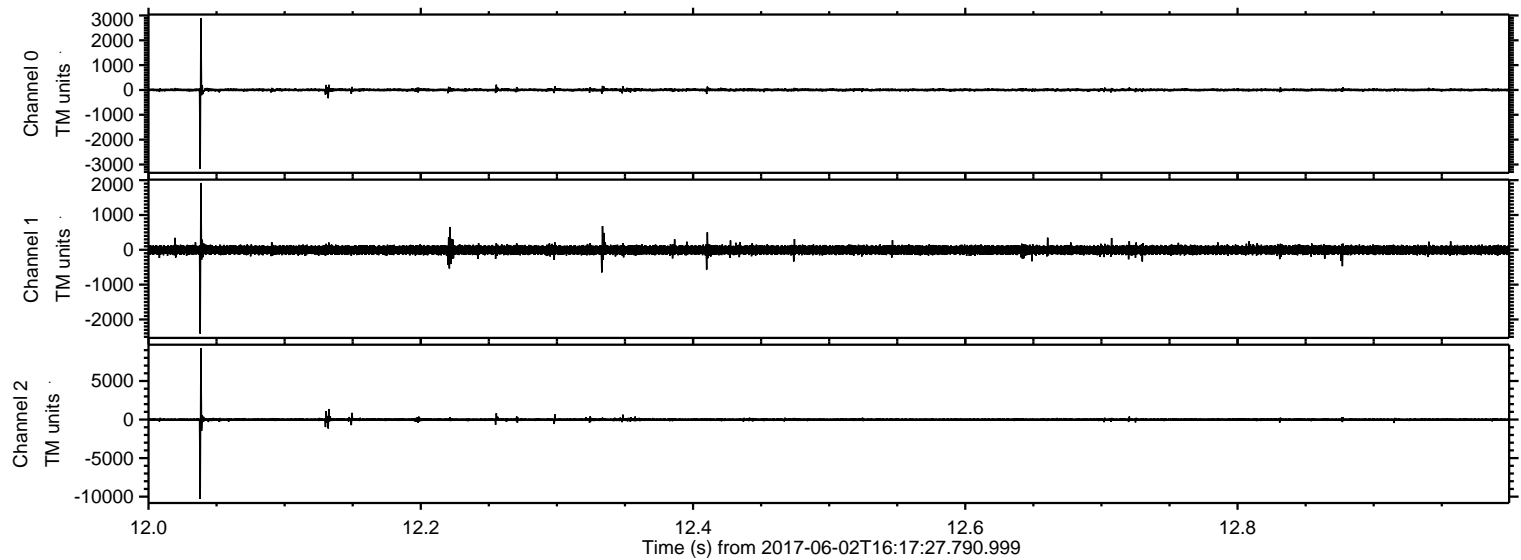
ELMAVAN 3D WAVEFORMS (Measured data sampled at 50 kHz) 51000 packets of 144 samples from 2017-06-02T16:17:27.790.999. Part 105/147

Processed Fri Jun 2 18:25:11 2017 by ELM ver.2012-10-06 from 001\_\_elm20170602\_161726\_\_dat00.bin



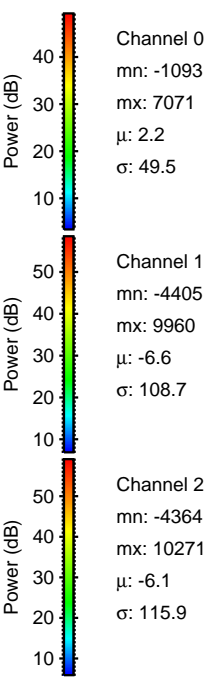
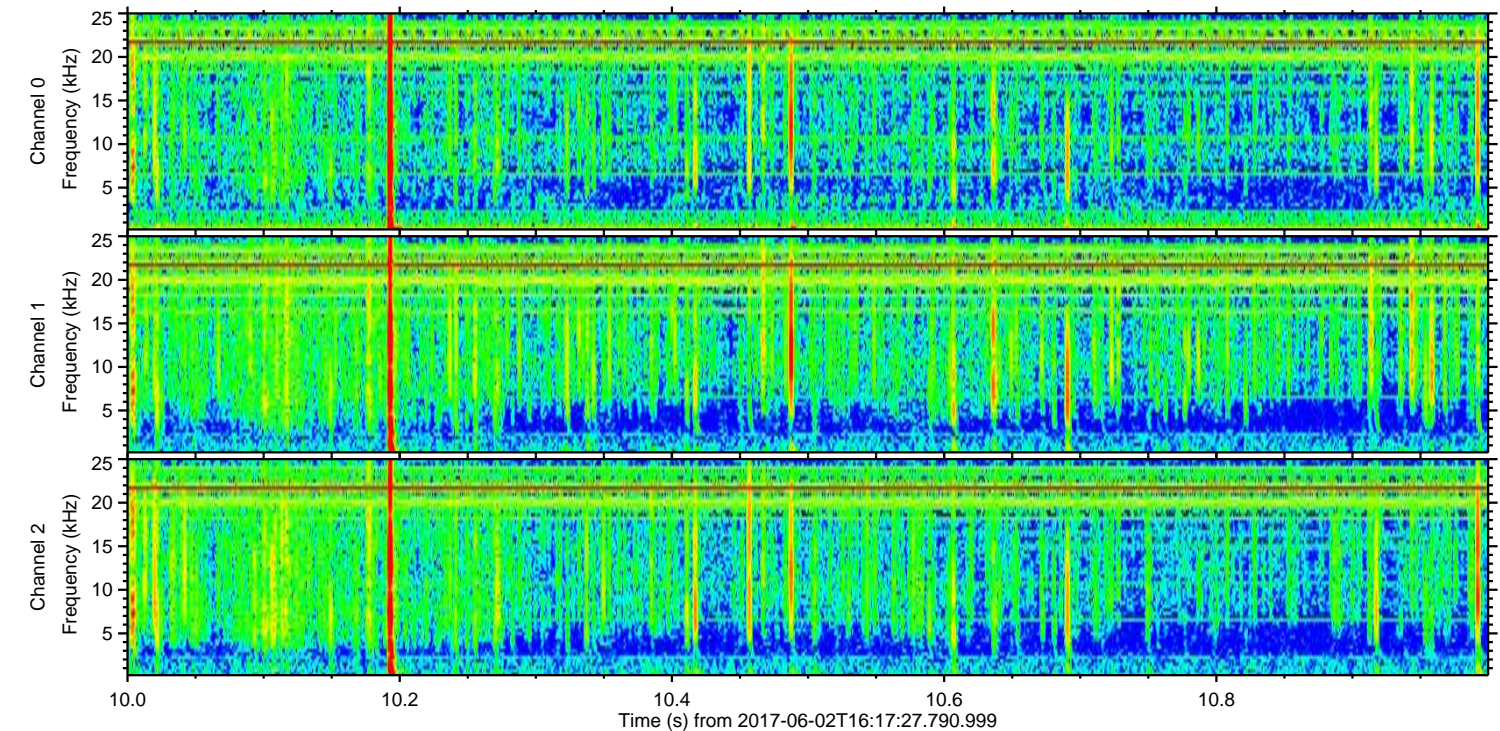
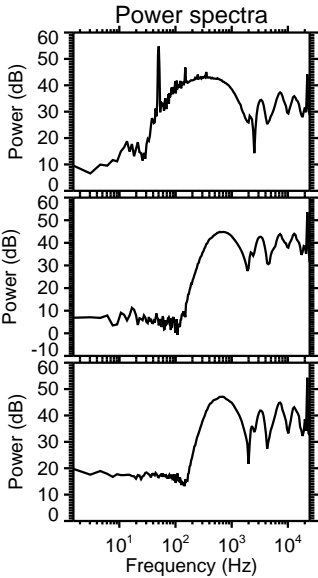
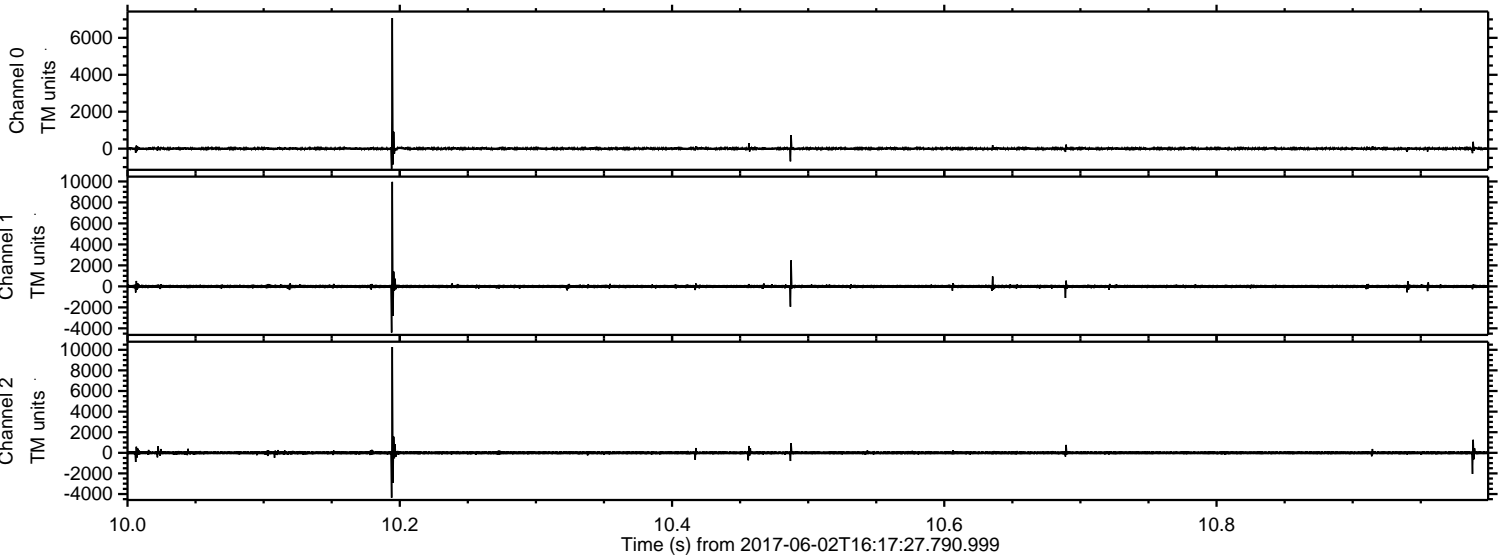


Processed Fri Jun 2 18:25:12 2017 by ELM ver.2012-10-06 from 001\_\_elm20170602\_161726\_\_dat00.bin



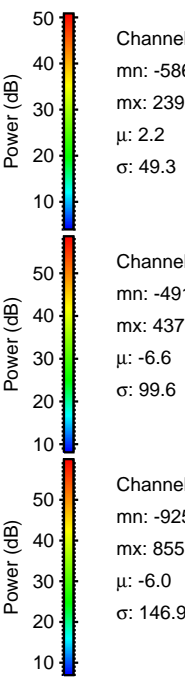
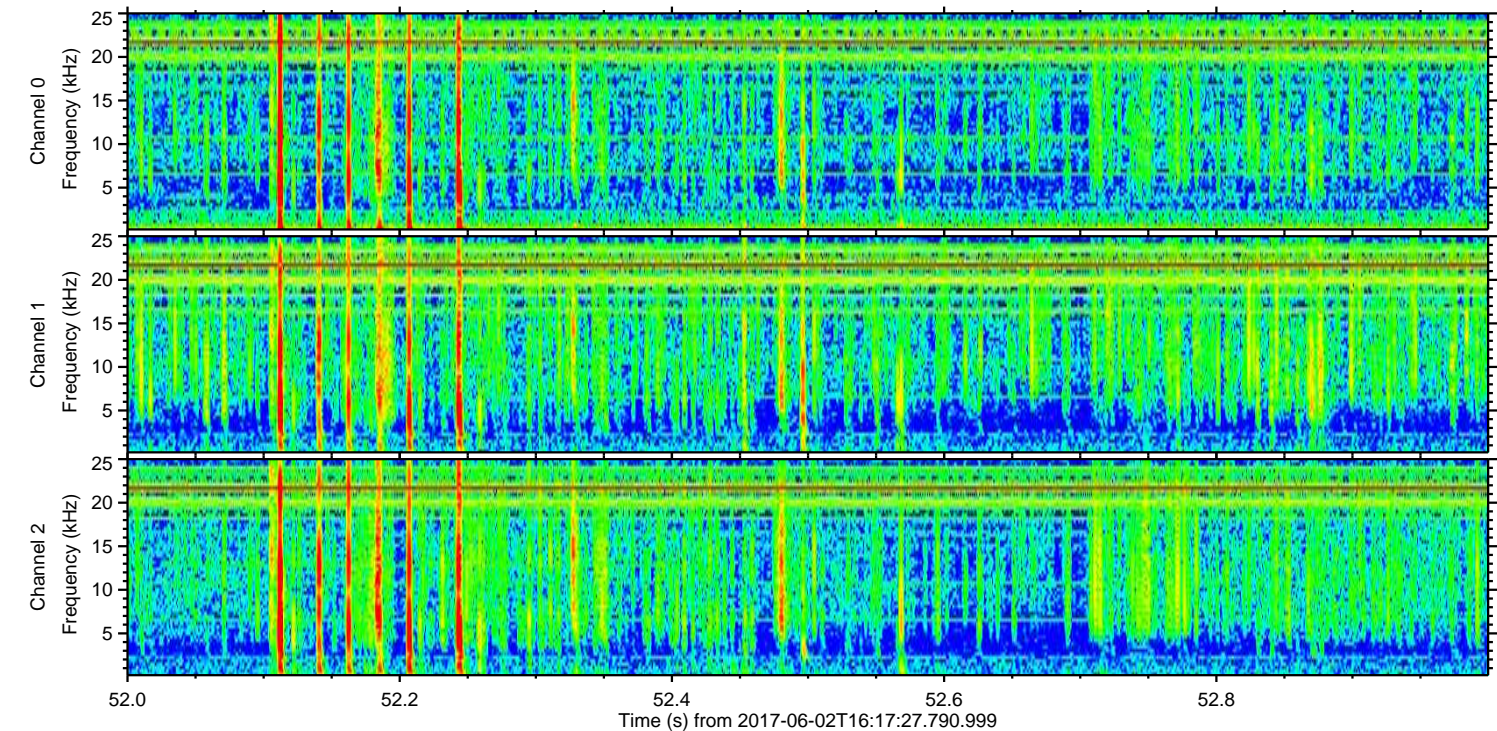
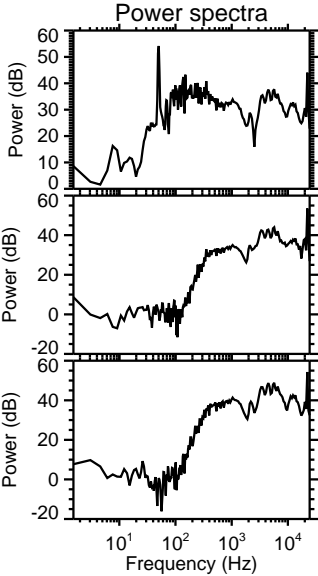
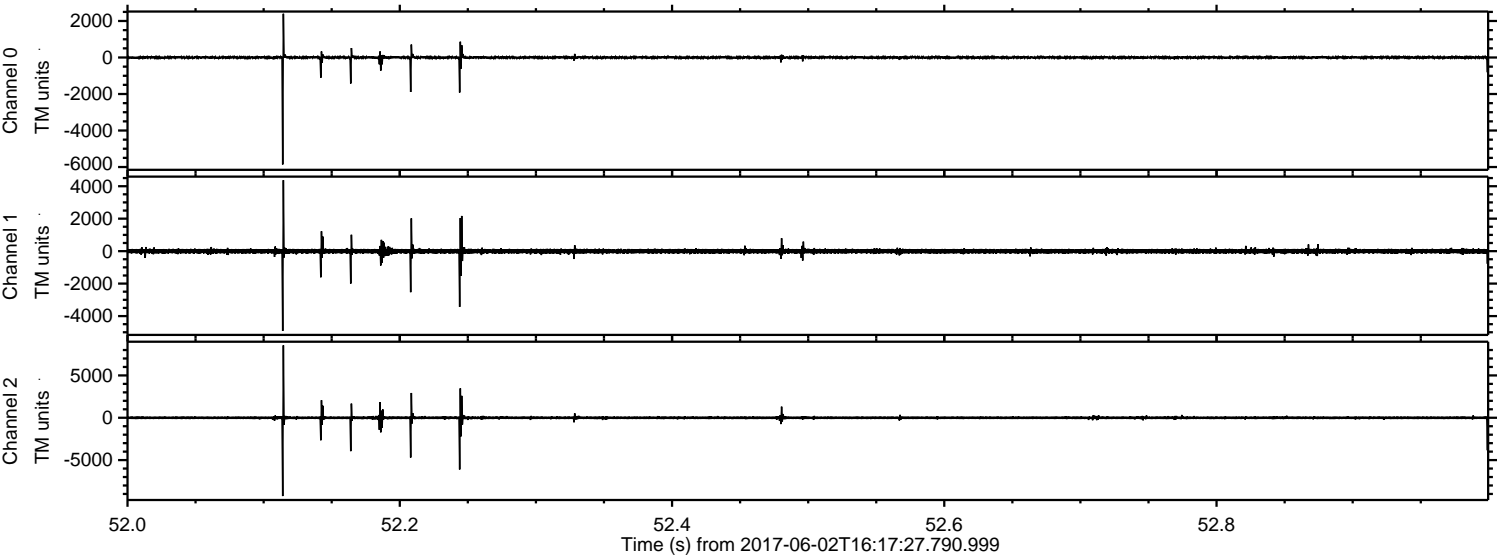


Processed Fri Jun 2 18:25:12 2017 by ELM ver.2012-10-06 from 001\_\_elm20170602\_161726\_\_dat00.bin



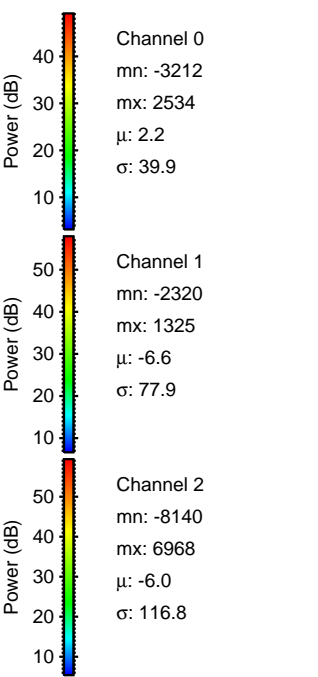
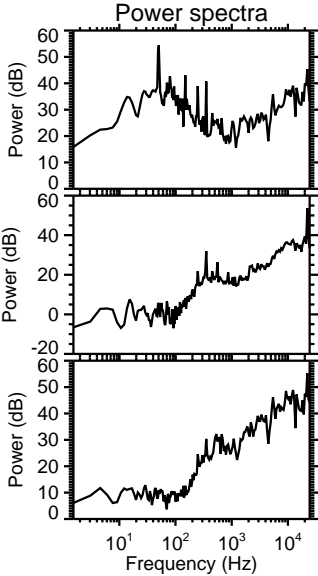
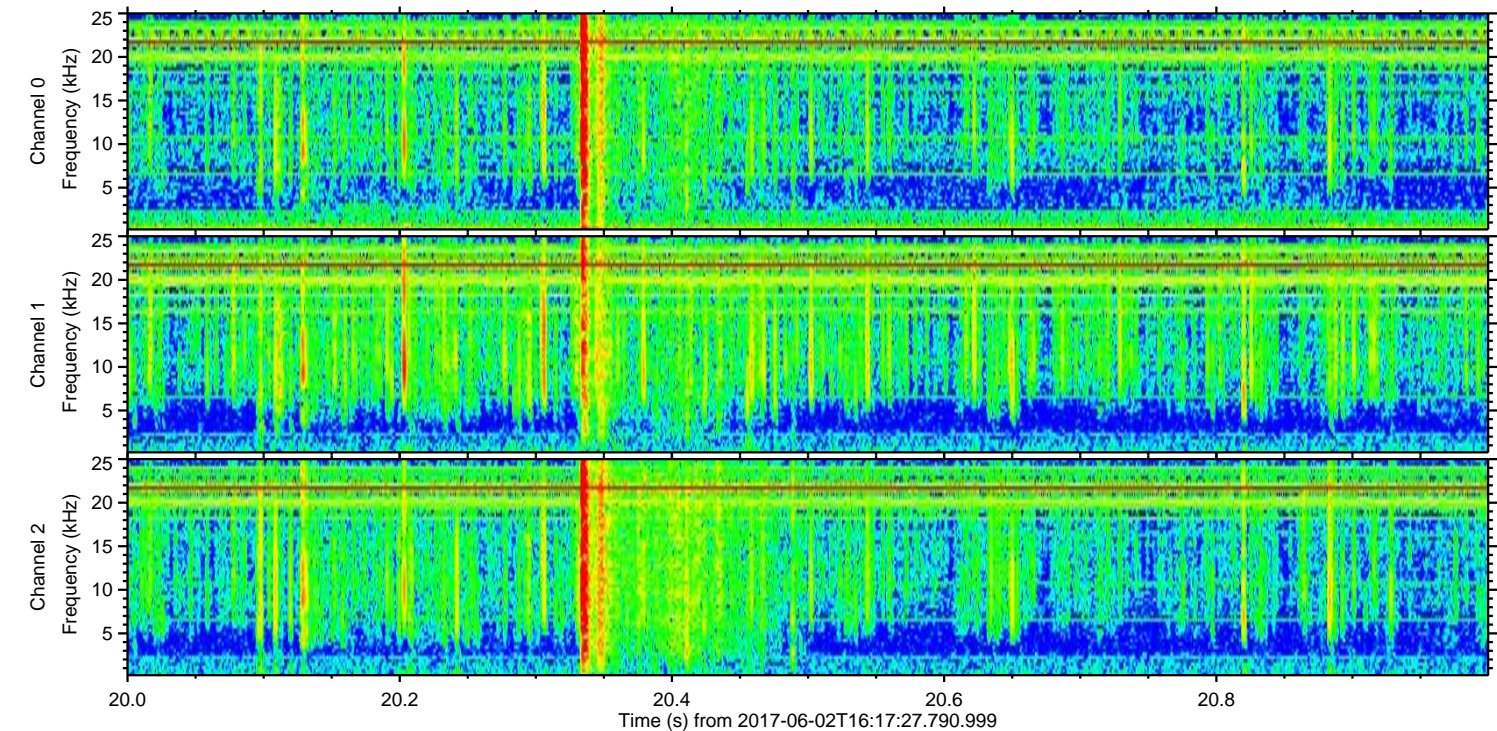
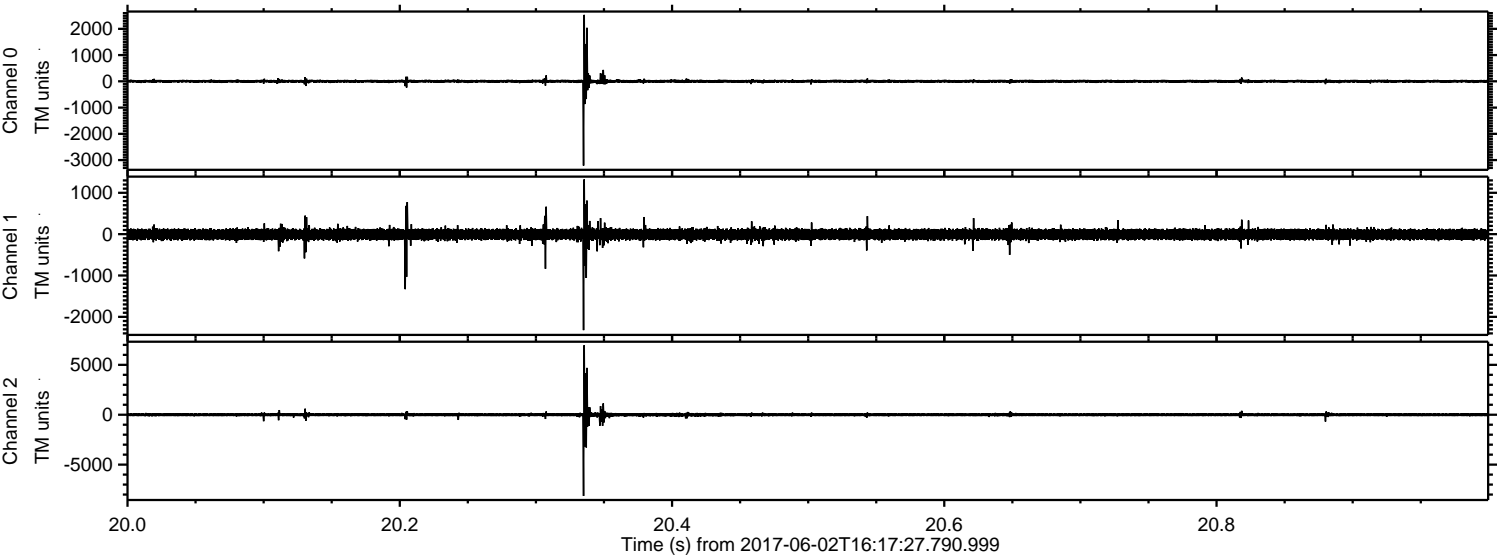


Processed Fri Jun 2 18:25:13 2017 by ELM ver.2012-10-06 from 001\_\_elm20170602\_161726\_\_dat00.bin

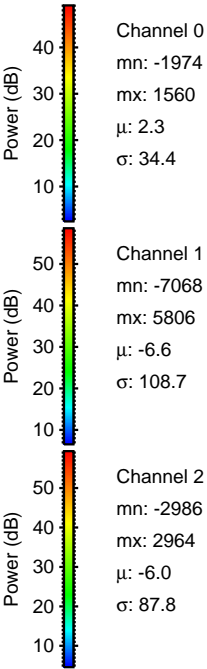
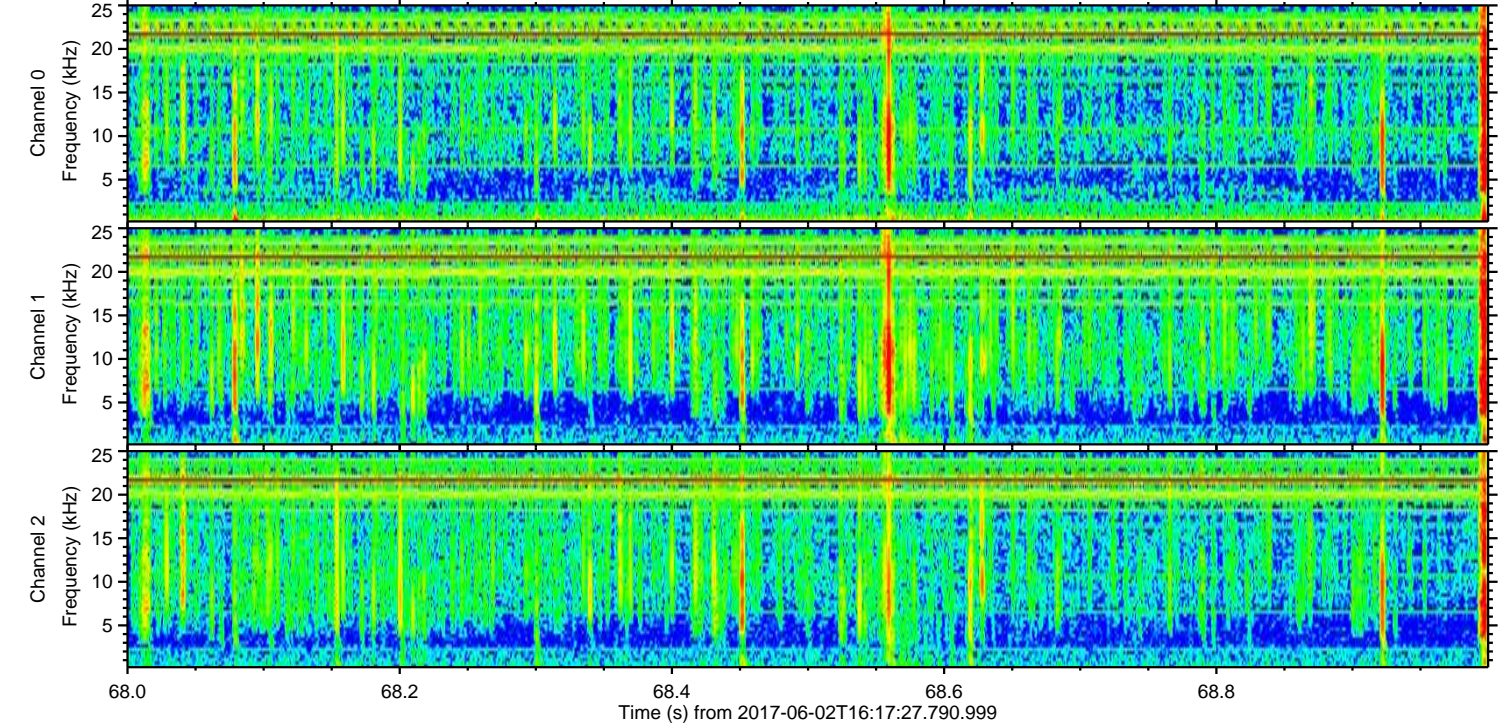
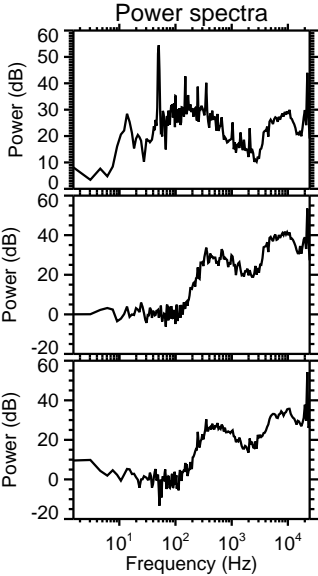
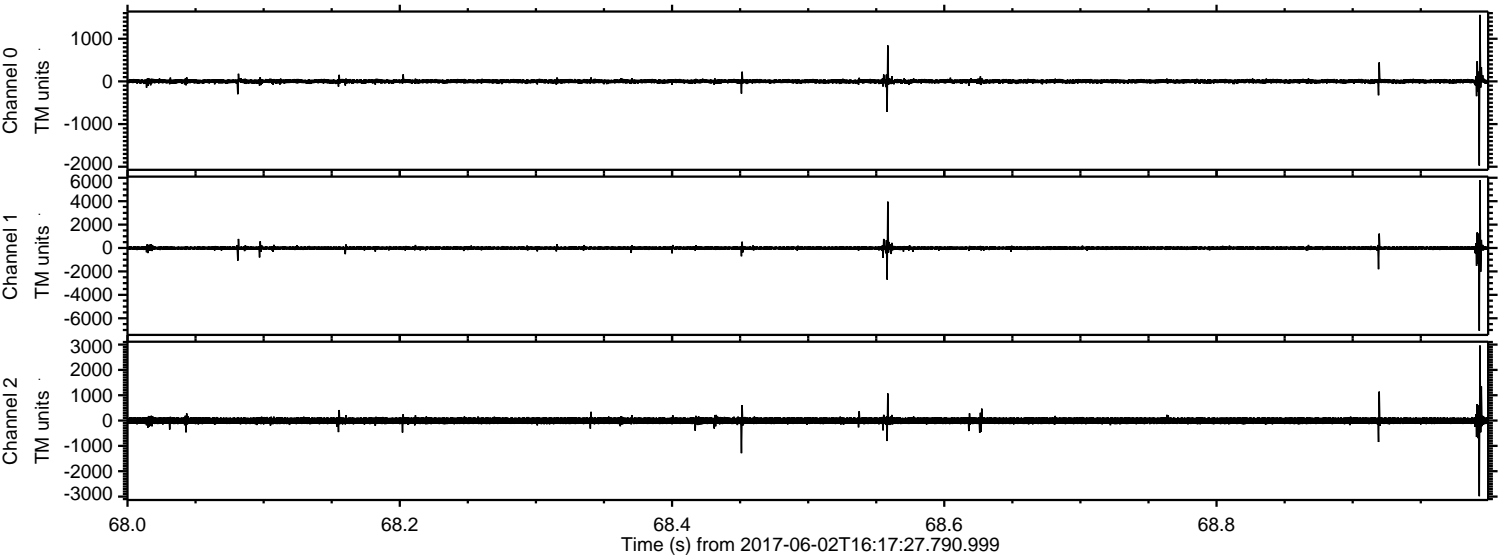




Processed Fri Jun 2 18:25:13 2017 by ELM ver.2012-10-06 from 001\_\_elm20170602\_161726\_\_dat00.bin



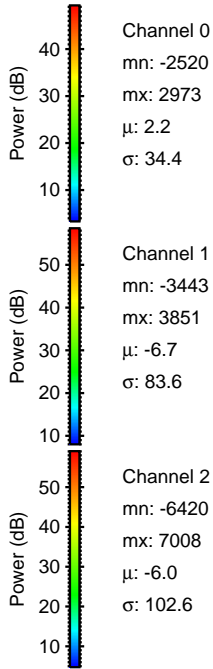
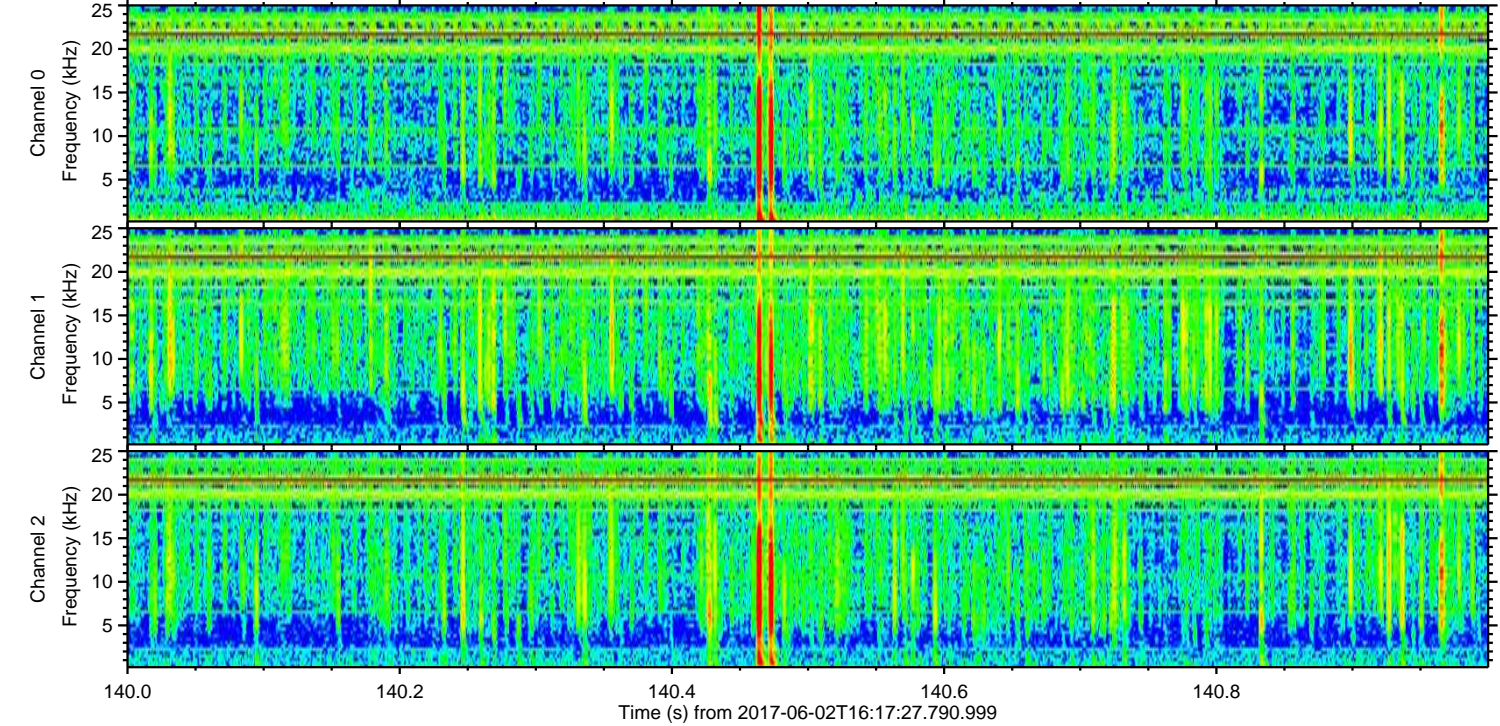
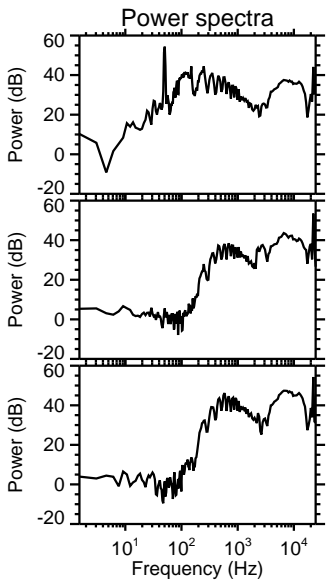
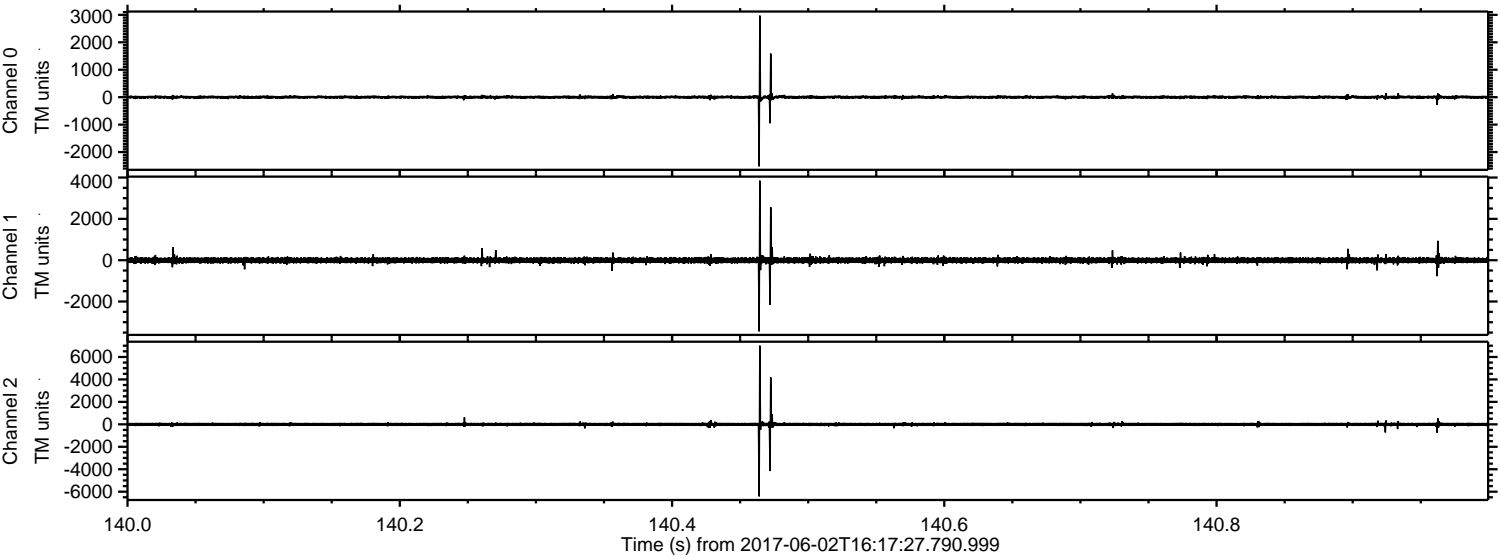
Processed Fri Jun 2 18:25:14 2017 by ELM ver.2012-10-06 from 001\_\_elm20170602\_161726\_\_dat00.bin





ELMAVAN 3D WAVEFORMS (Measured data sampled at 50 kHz) 51000 packets of 144 samples from 2017-06-02T16:17:27.790.999. Part 141/147

Processed Fri Jun 2 18:25:15 2017 by ELM ver.2012-10-06 from 001\_\_elm20170602\_161726\_\_dat00.bin





Processed Fri Jun 2 18:25:15 2017 by ELM ver.2012-10-06 from 001\_\_elm20170602\_161726\_\_dat00.bin

