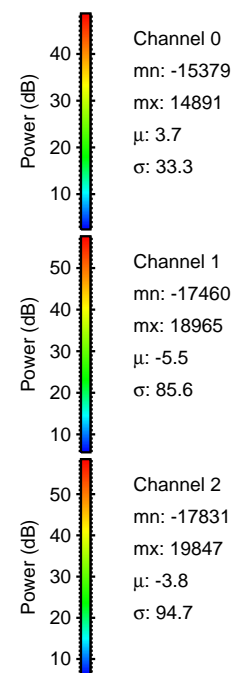
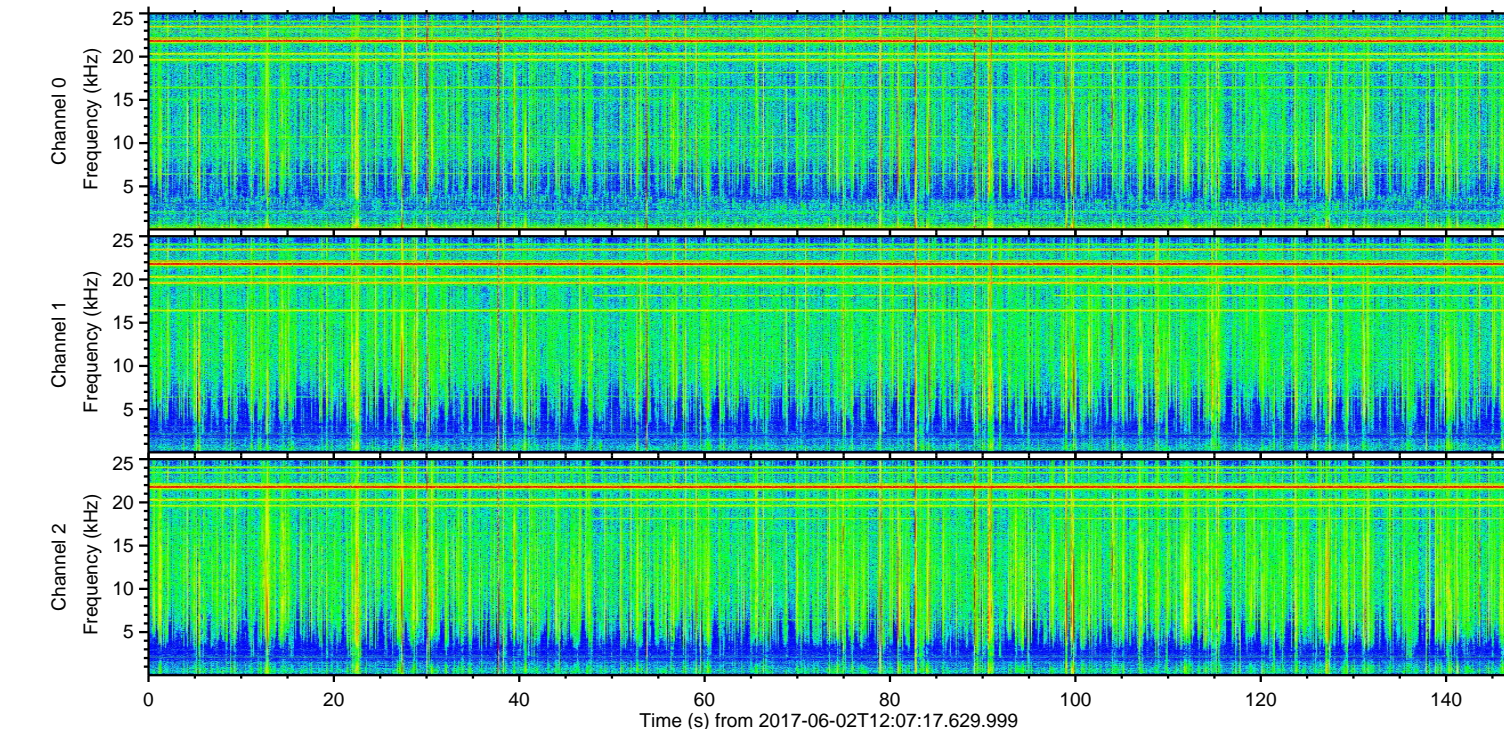
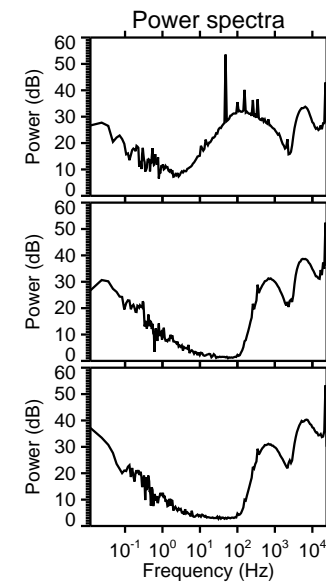
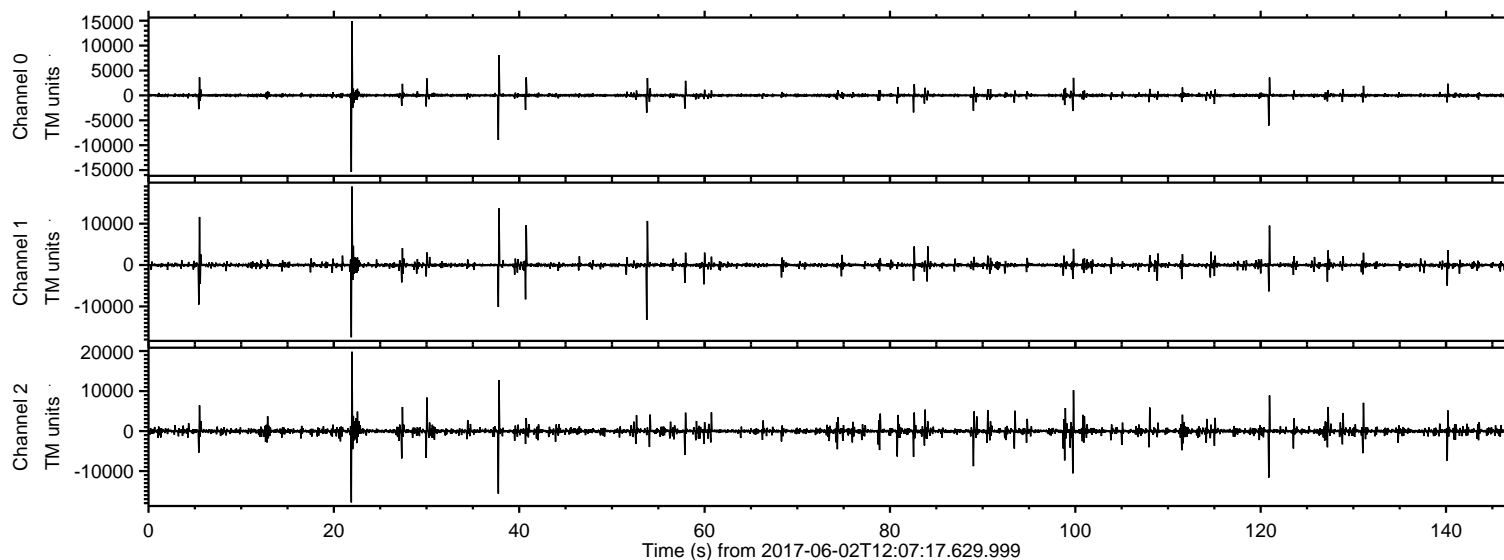
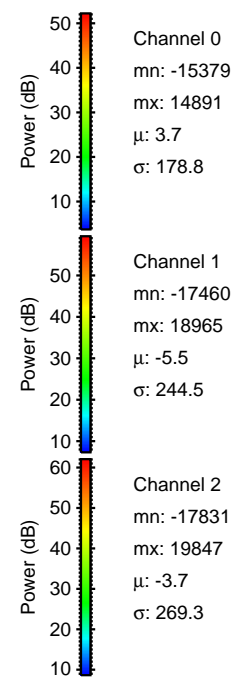
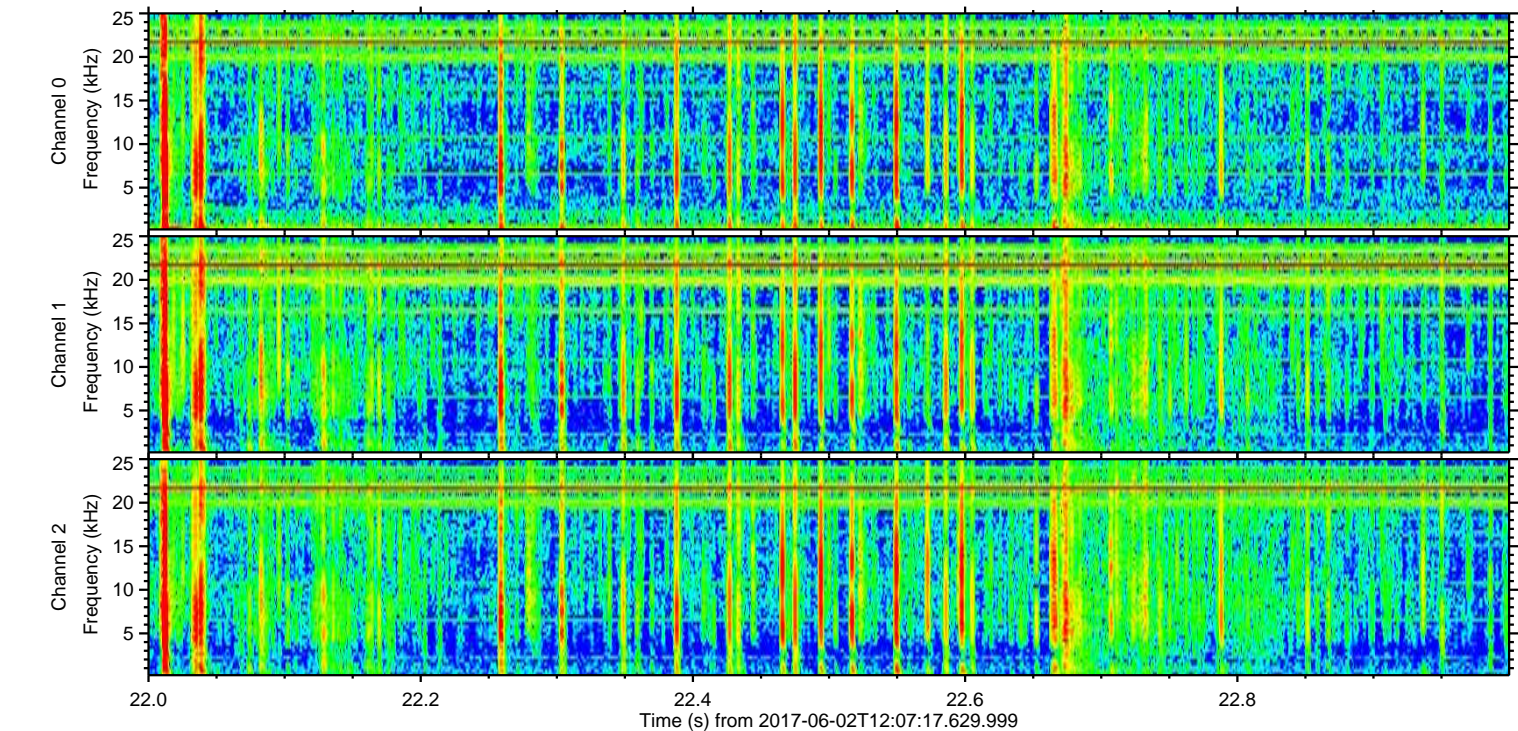
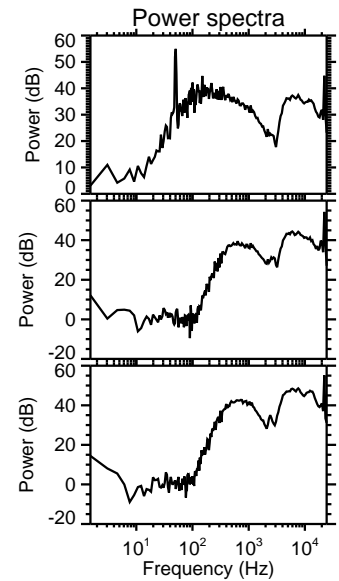
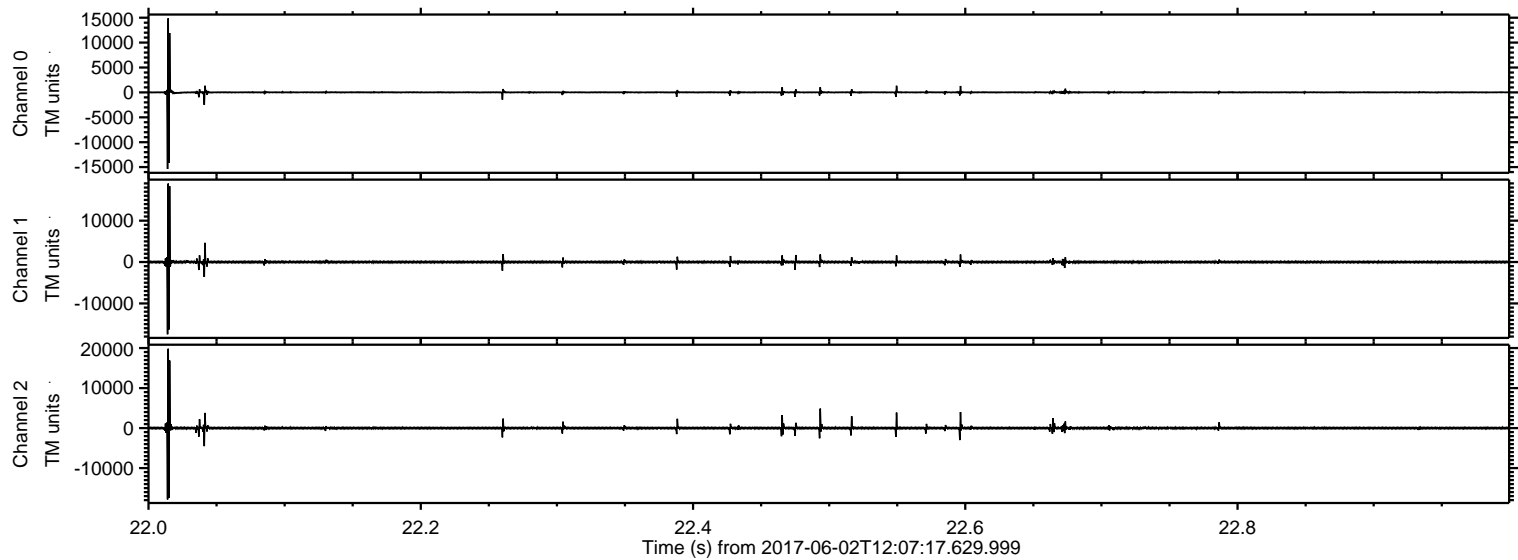


ELMAVAN 3D WAVEFORMS (Measured data sampled at 50 kHz) 51000 packets of 144 samples from 2017-06-02T12:07:17.629.999.

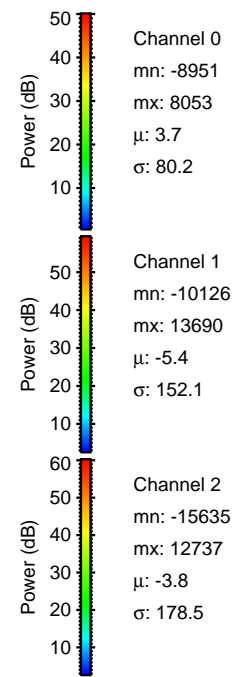
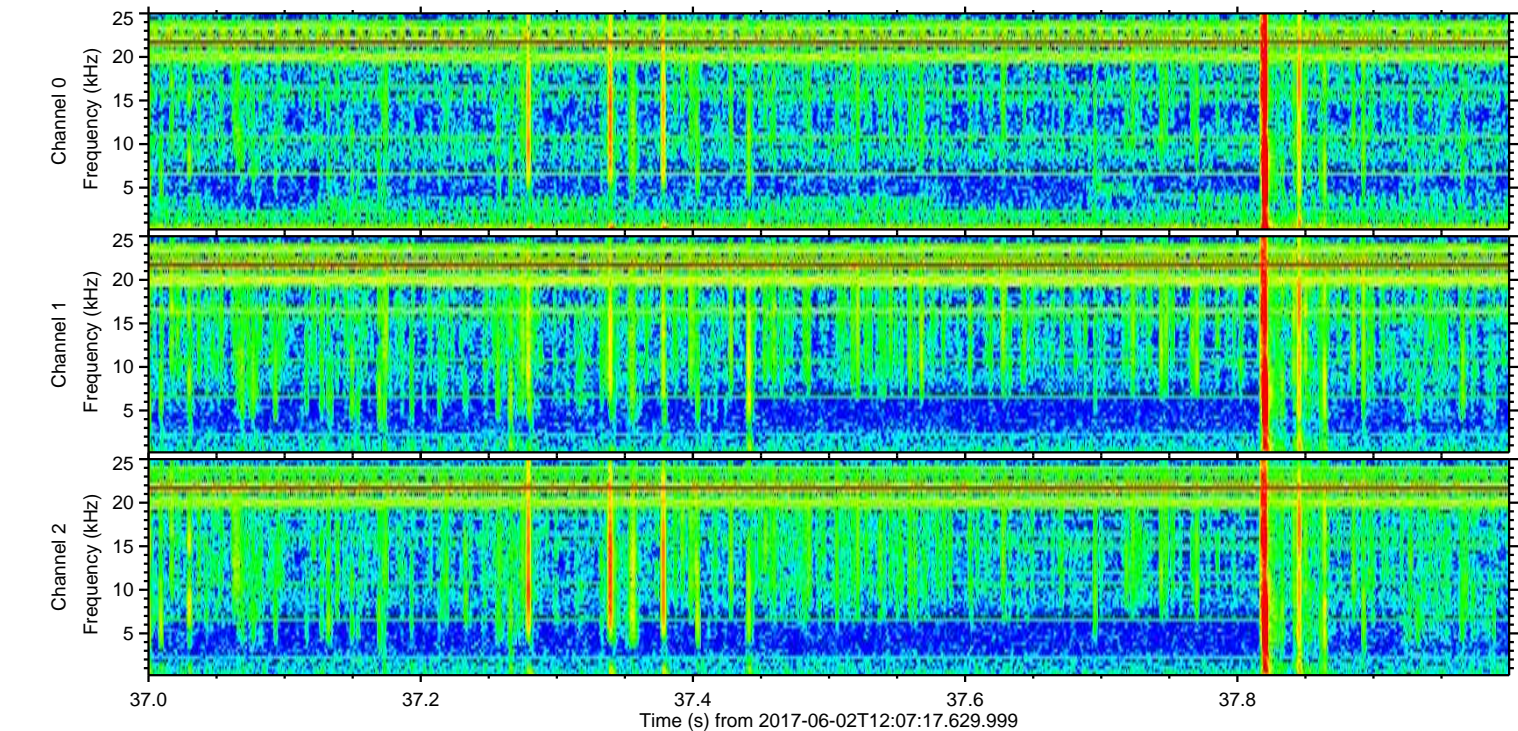
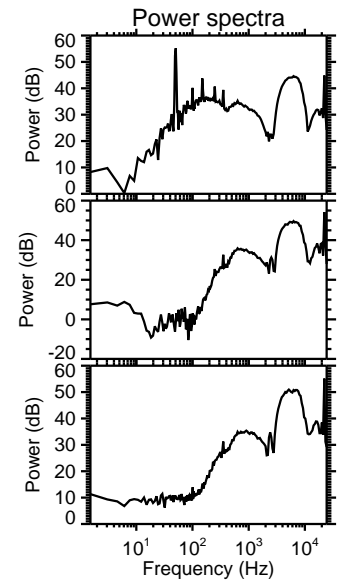
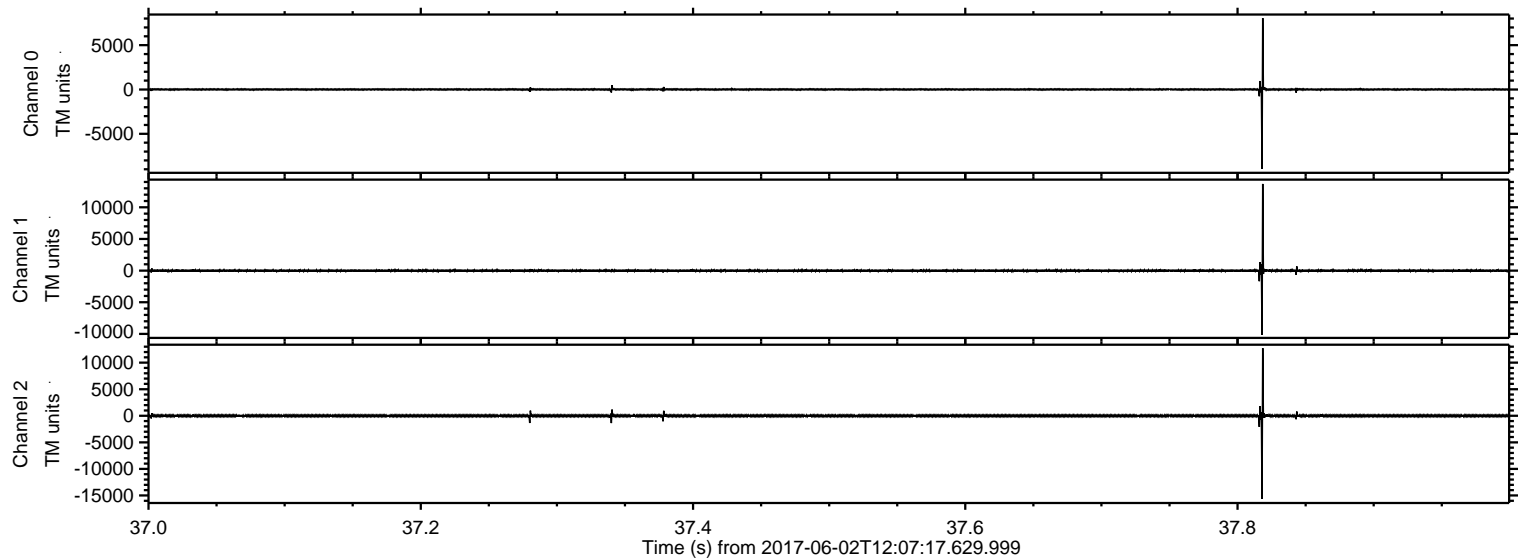
Processed Fri Jun 2 14:14:46 2017 by ELM ver.2012-10-06 from 001__elm20170602_120716__dat00.bin



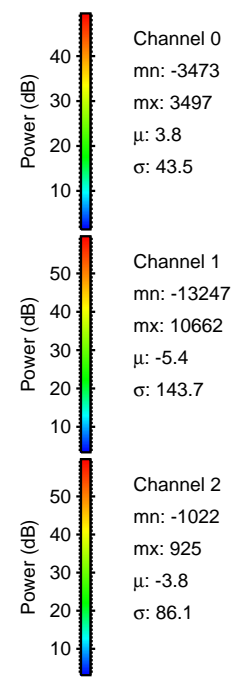
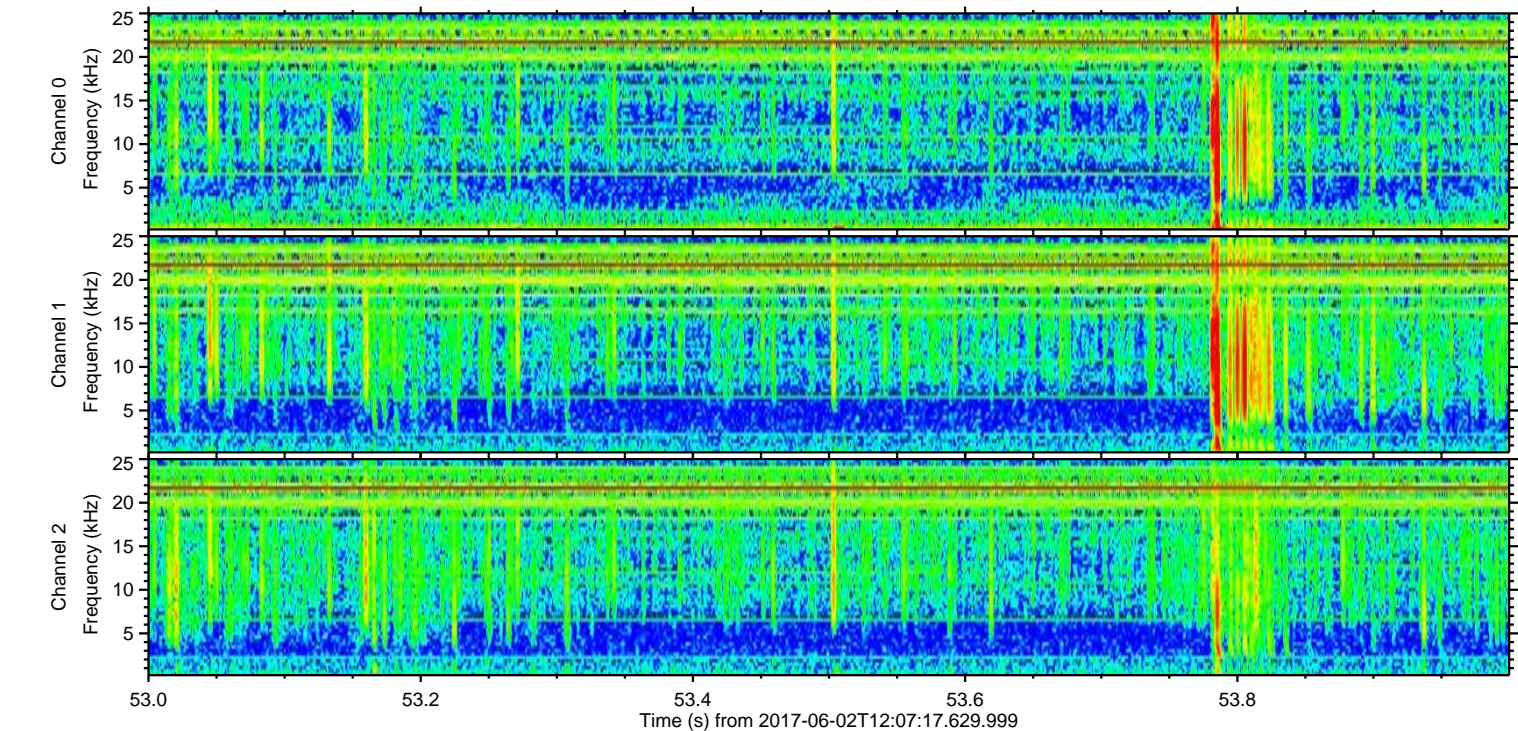
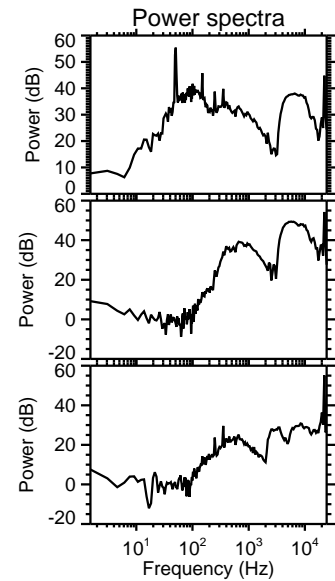
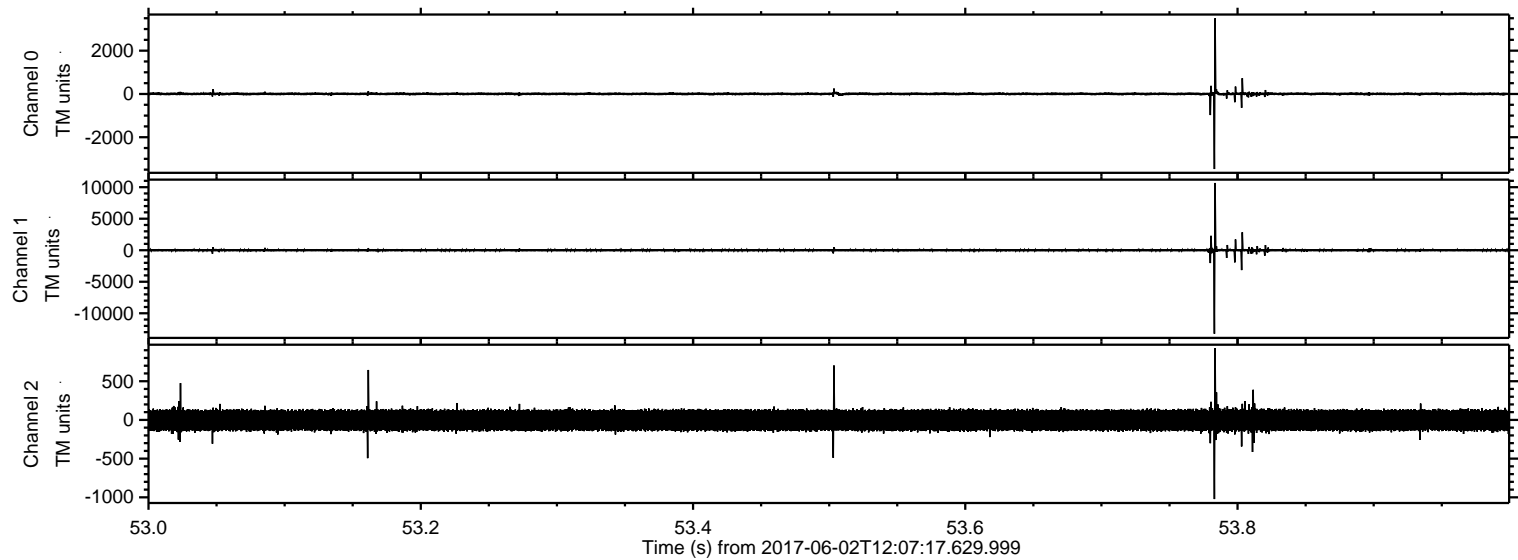
Processed Fri Jun 2 14:14:52 2017 by ELM ver.2012-10-06 from 001__elm20170602_120716__dat00.bin



Processed Fri Jun 2 14:14:53 2017 by ELM ver.2012-10-06 from 001__elm20170602_120716__dat00.bin

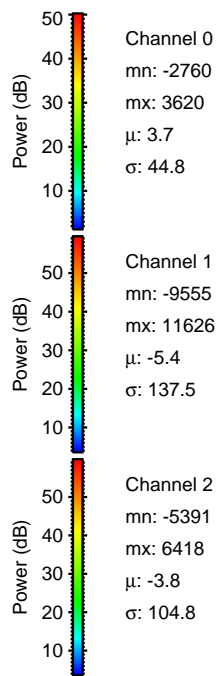
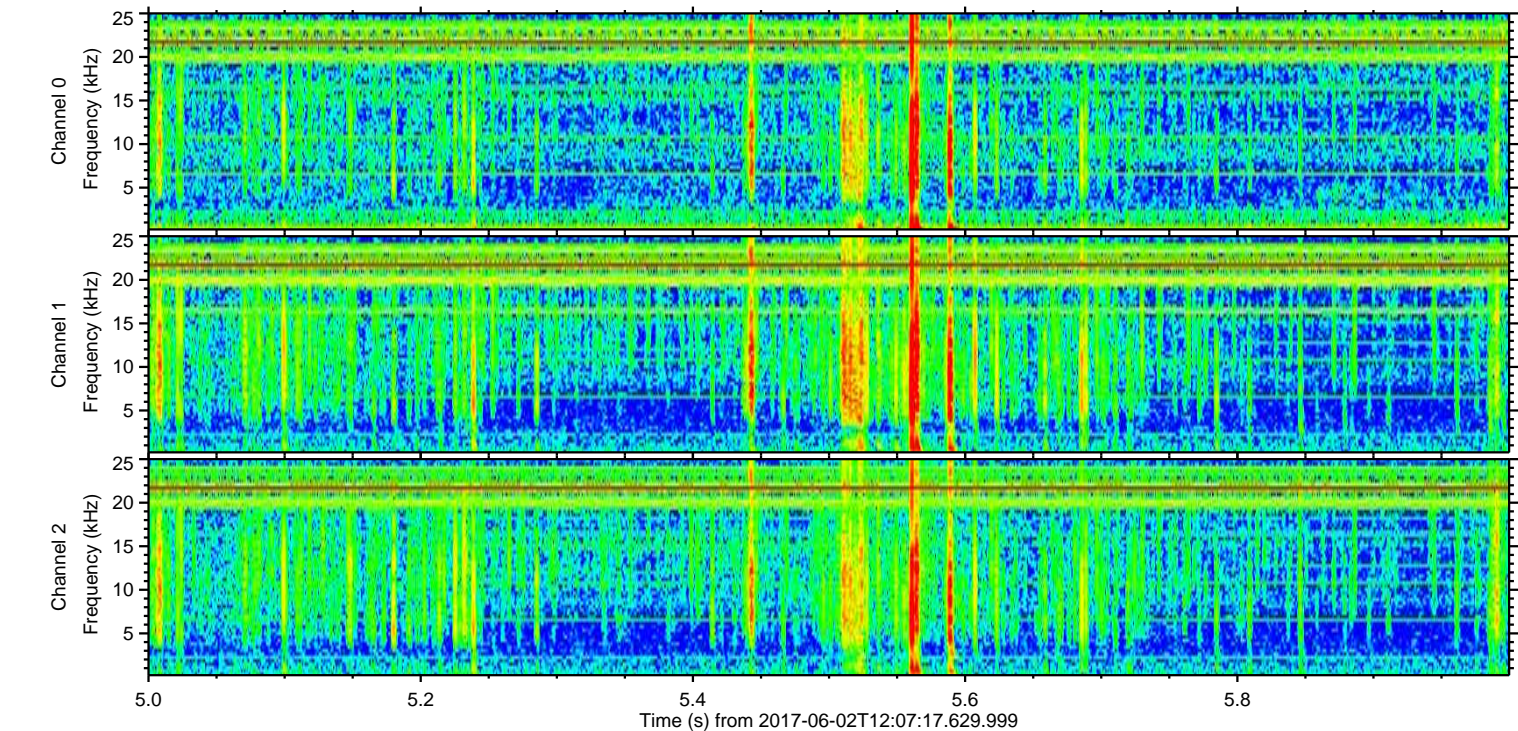
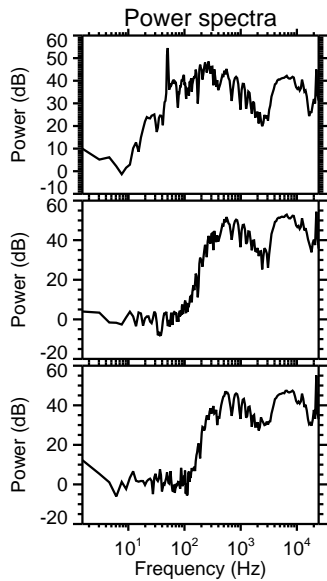
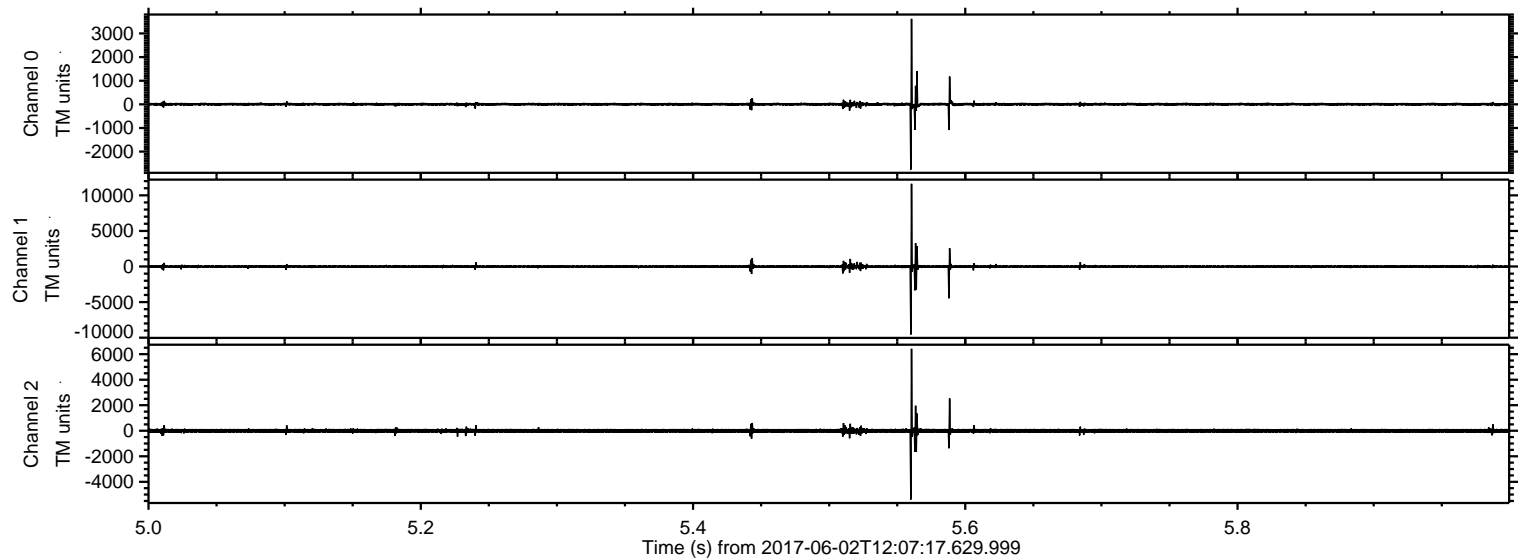


Processed Fri Jun 2 14:14:53 2017 by ELM ver.2012-10-06 from 001__elm20170602_120716__dat00.bin



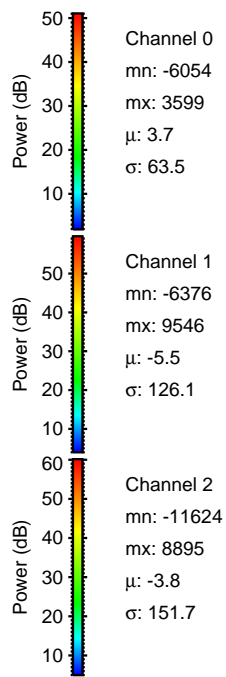
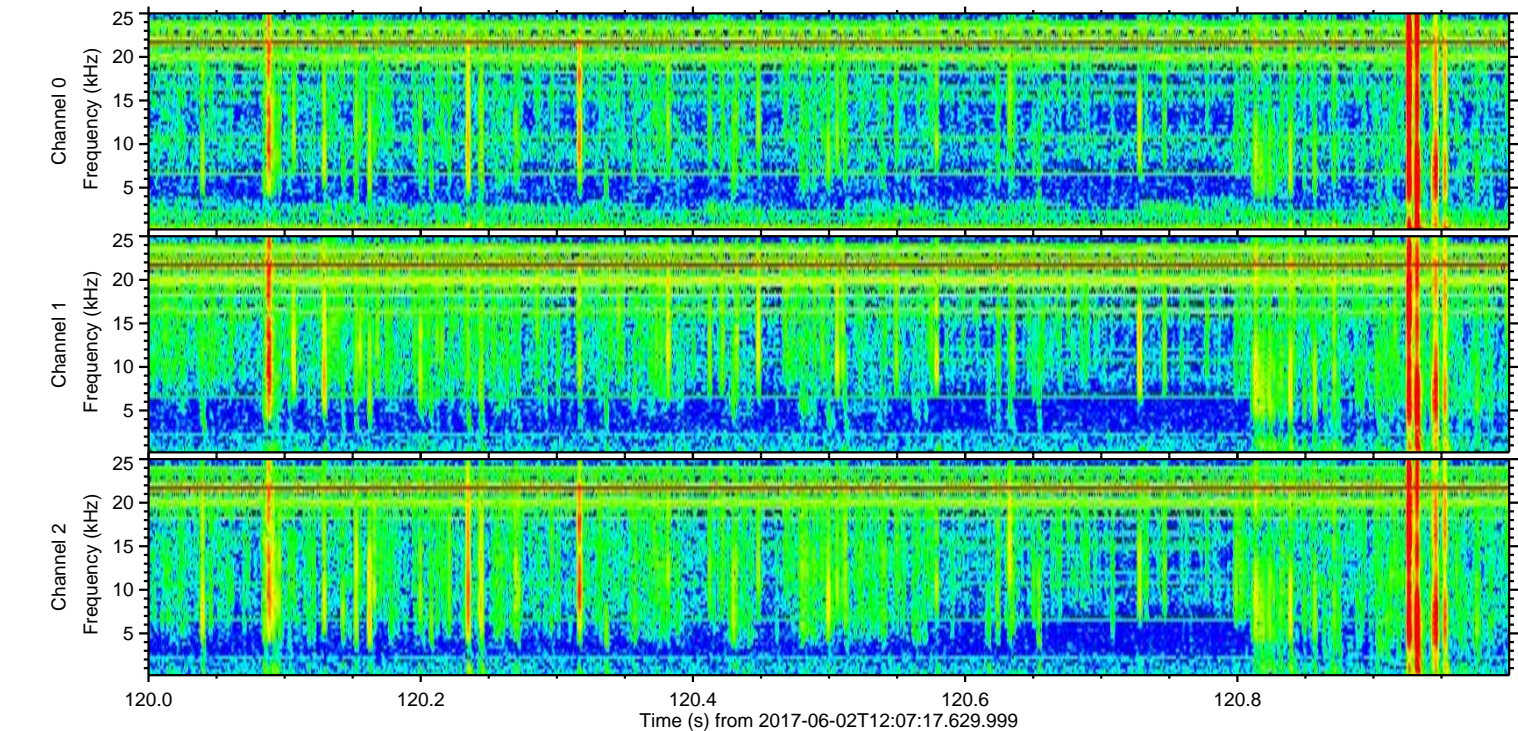
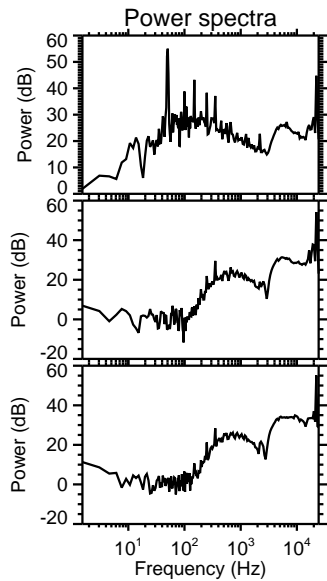
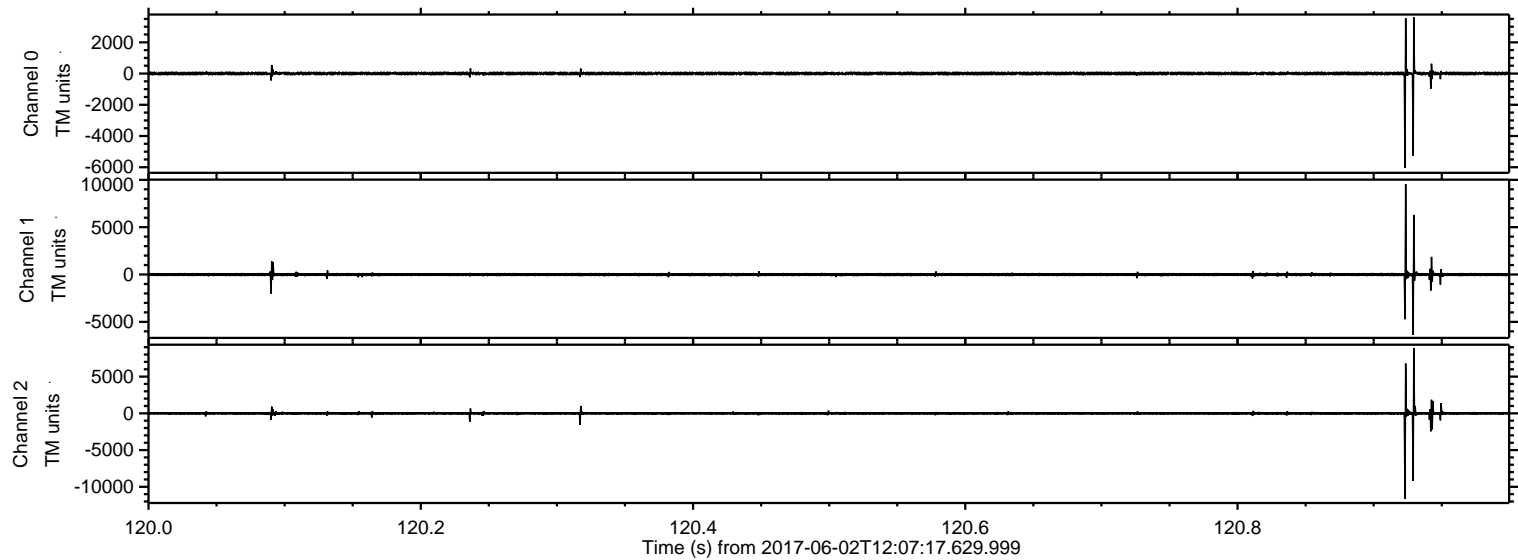
ELMAVAN 3D WAVEFORMS (Measured data sampled at 50 kHz) 51000 packets of 144 samples from 2017-06-02T12:07:17.629.999. Part 6/147

Processed Fri Jun 2 14:14:54 2017 by ELM ver.2012-10-06 from 001__elm20170602_120716__dat00.bin



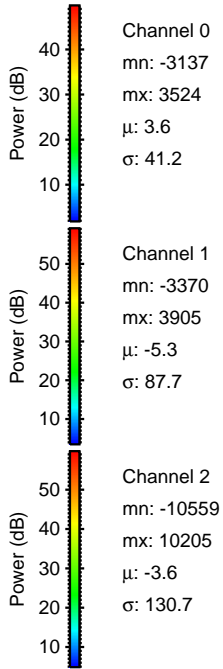
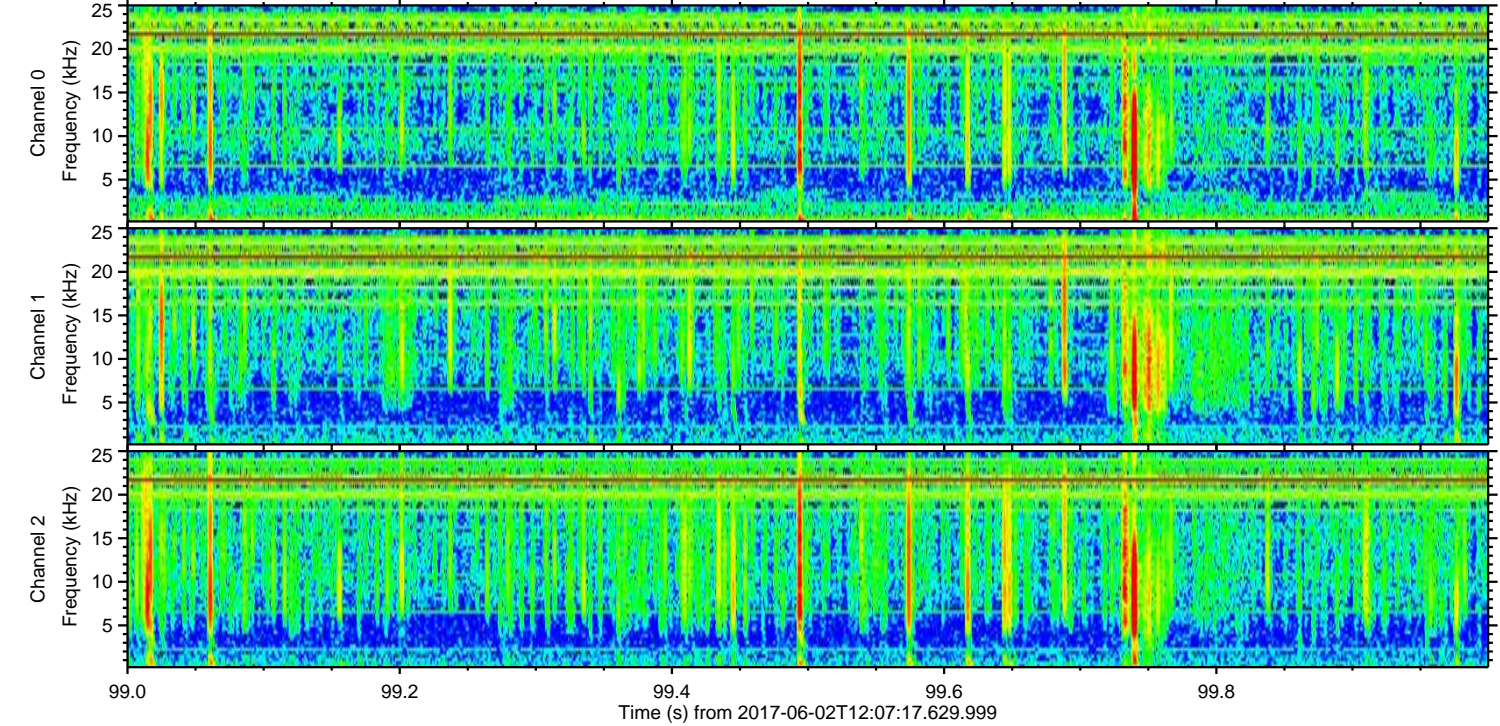
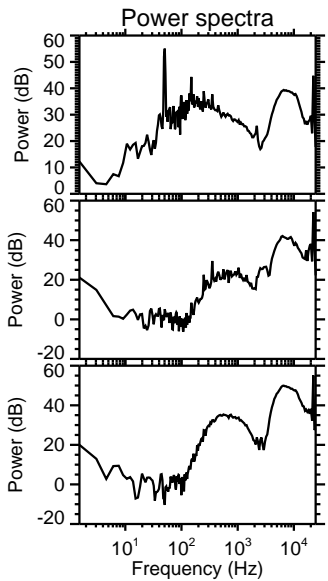
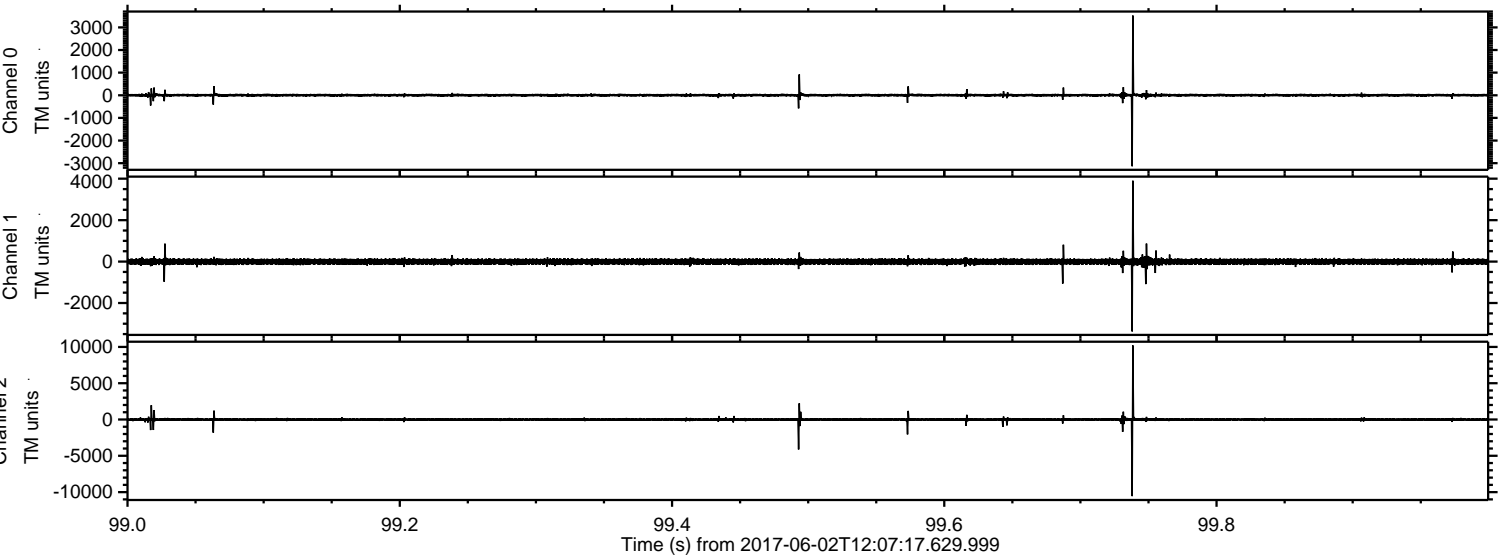
ELMAVAN 3D WAVEFORMS (Measured data sampled at 50 kHz) 51000 packets of 144 samples from 2017-06-02T12:07:17.629.999. Part 121/147

Processed Fri Jun 2 14:14:54 2017 by ELM ver.2012-10-06 from 001__elm20170602_120716__dat00.bin

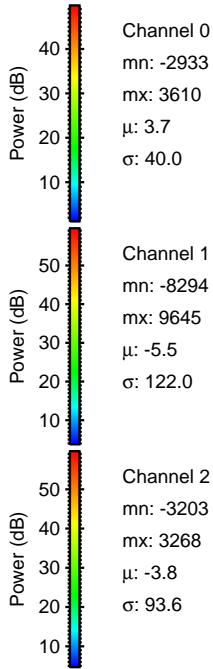
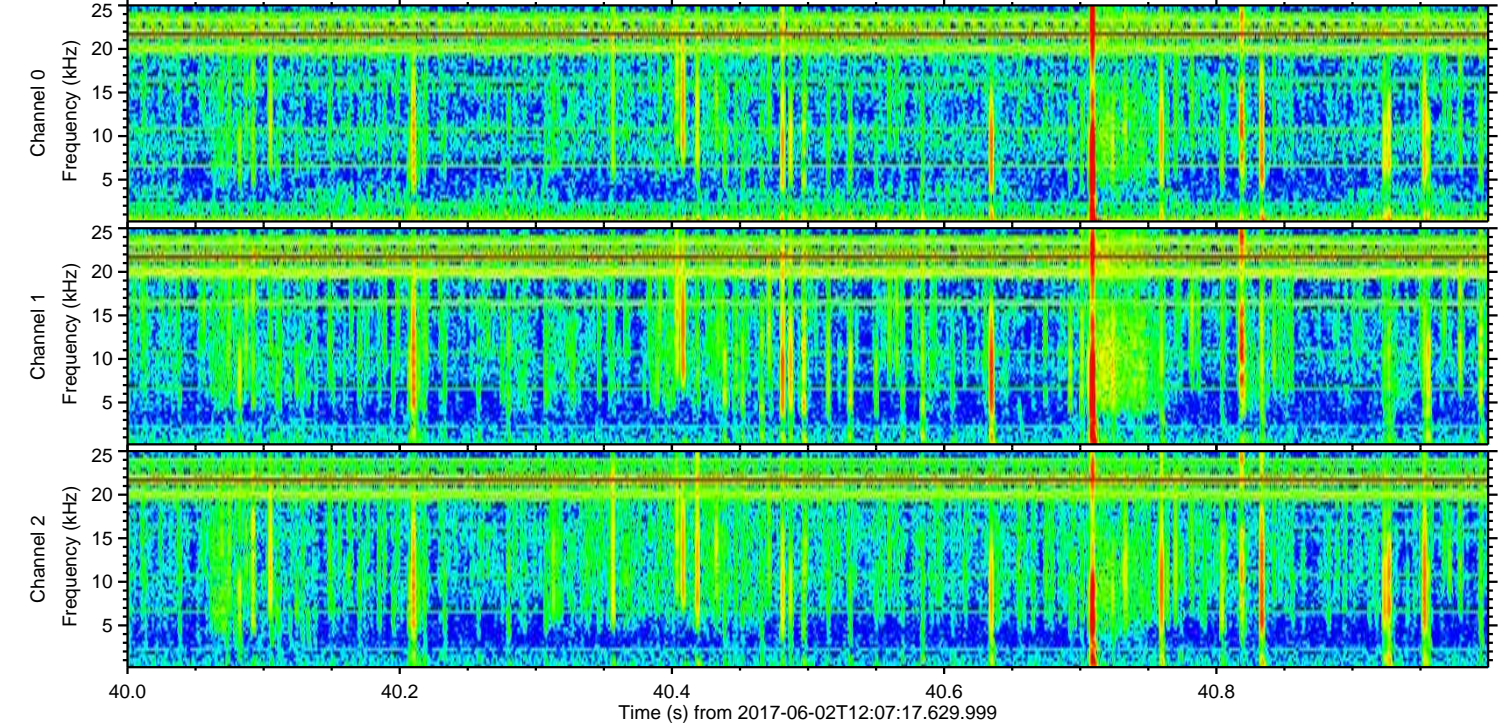
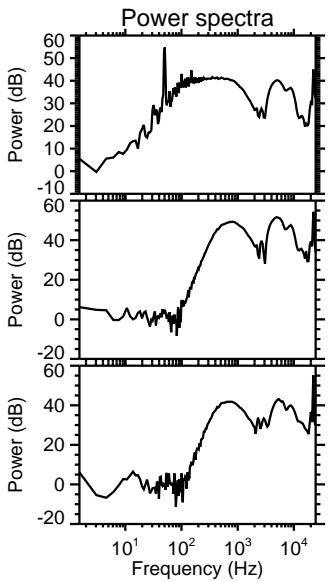
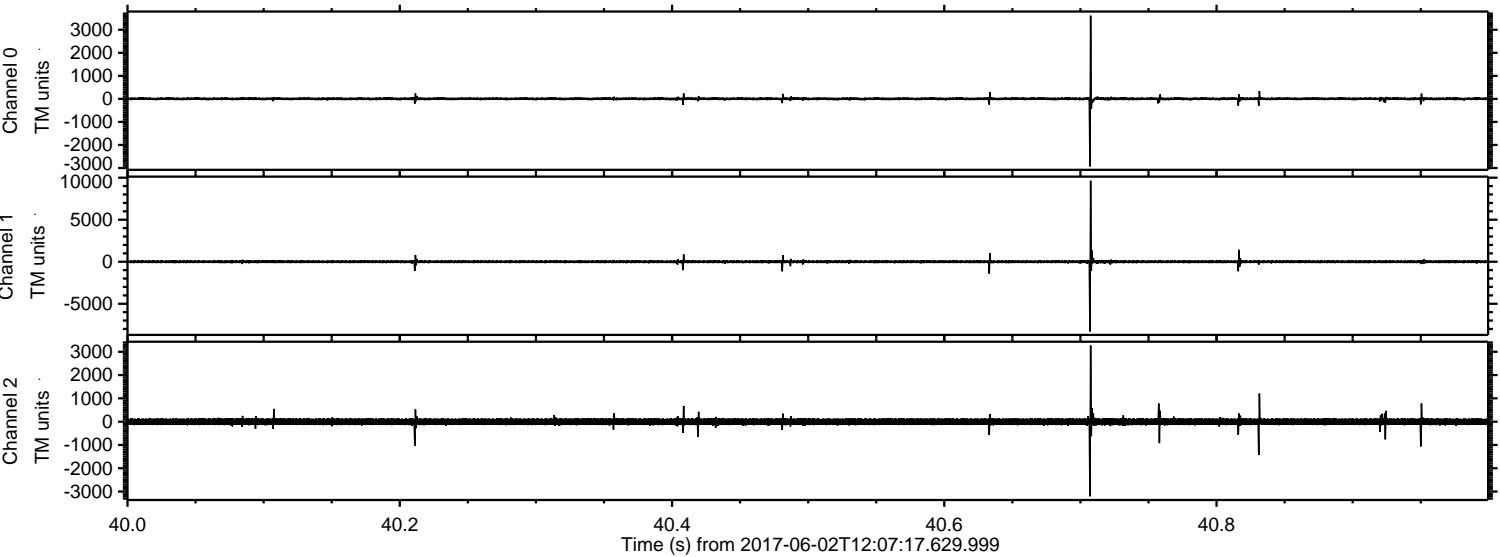


ELMAVAN 3D WAVEFORMS (Measured data sampled at 50 kHz) 51000 packets of 144 samples from 2017-06-02T12:07:17.629.999. Part 100/147

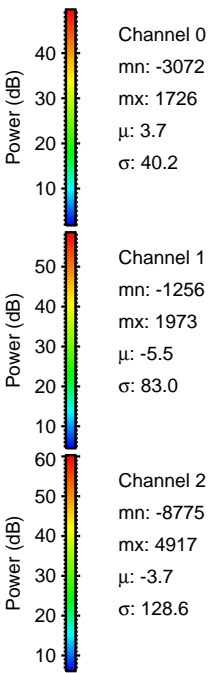
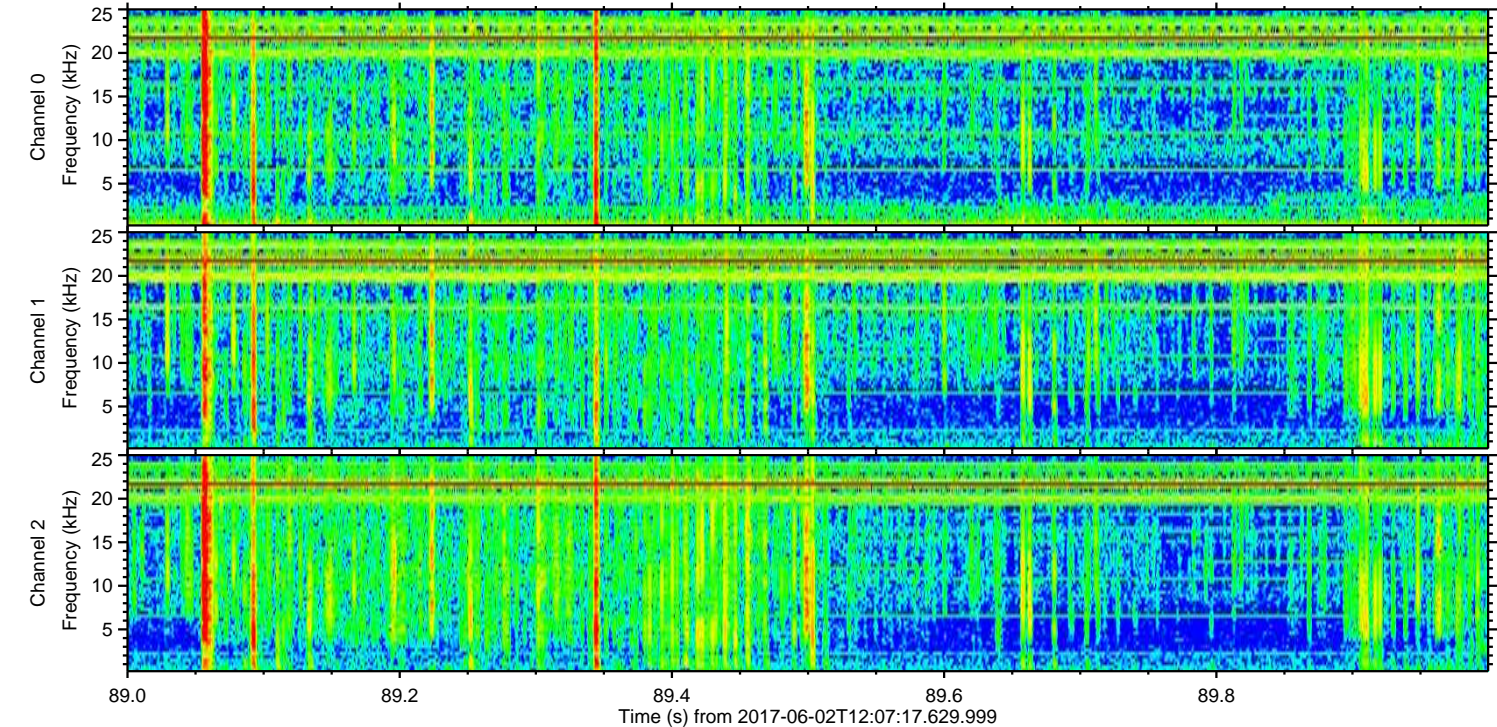
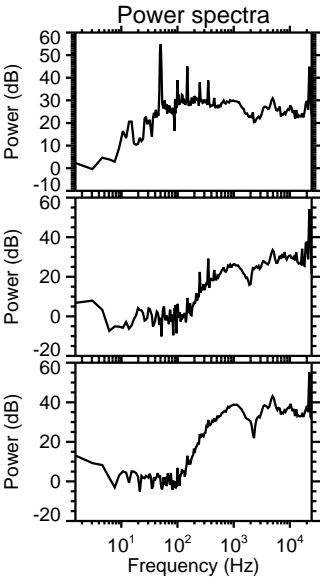
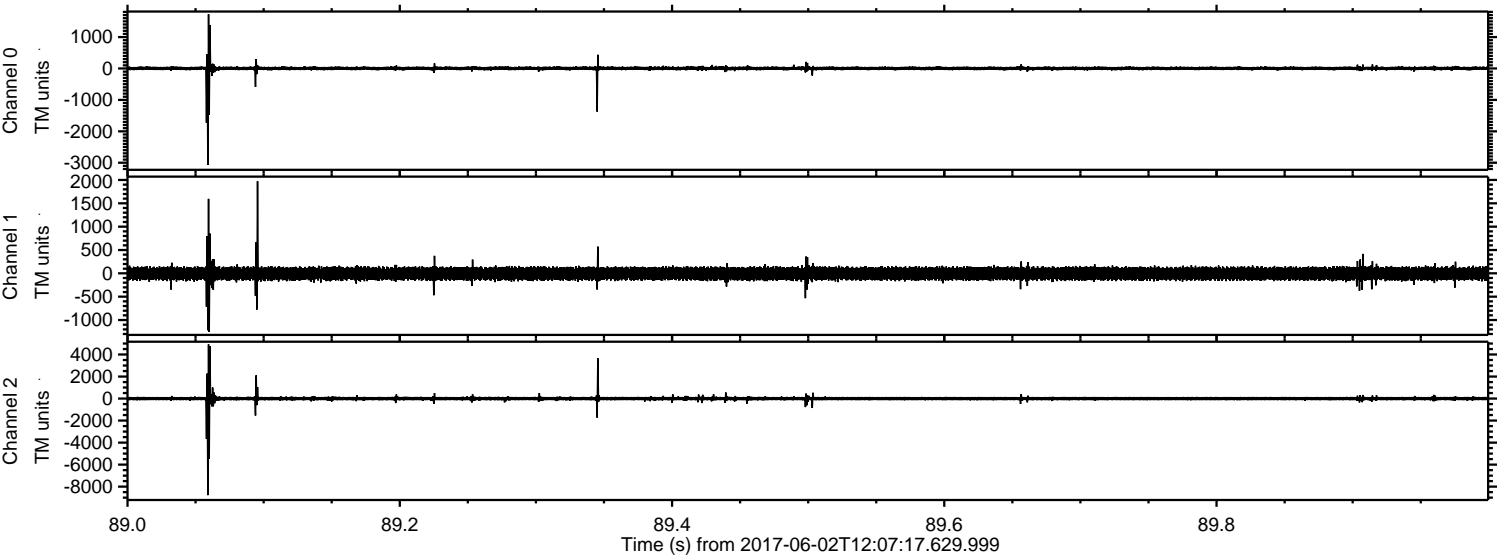
Processed Fri Jun 2 14:14:55 2017 by ELM ver.2012-10-06 from 001__elm20170602_120716__dat00.bin



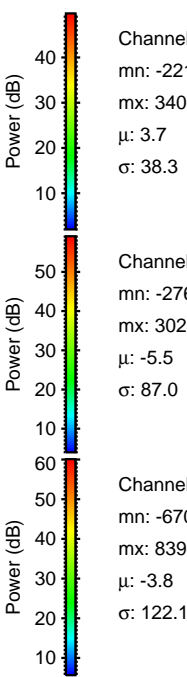
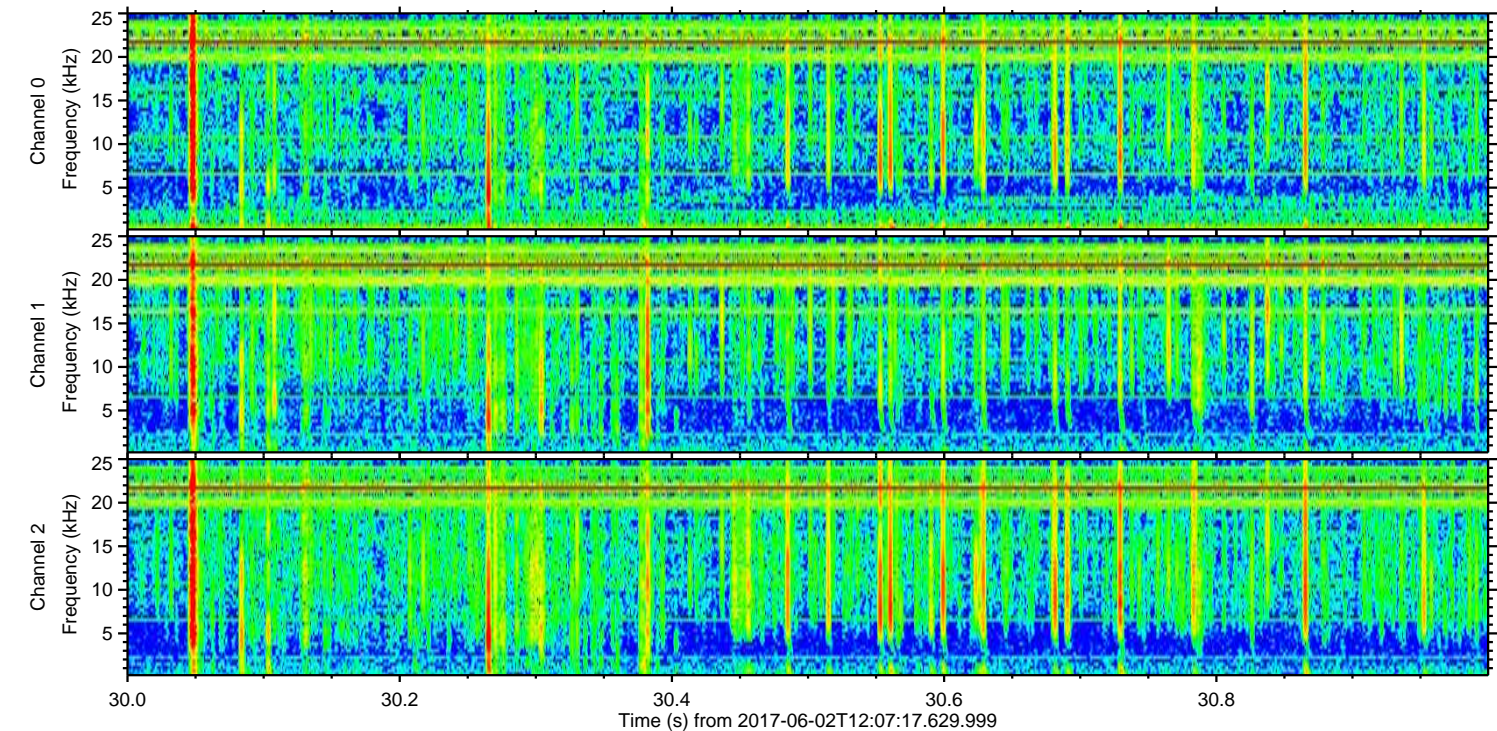
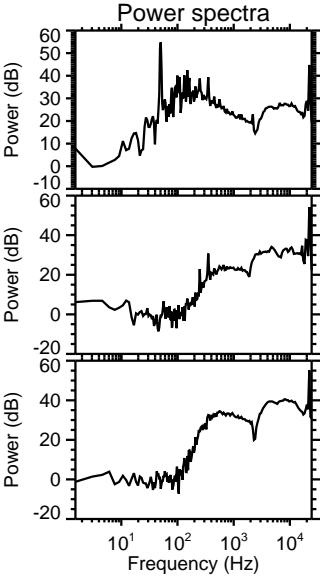
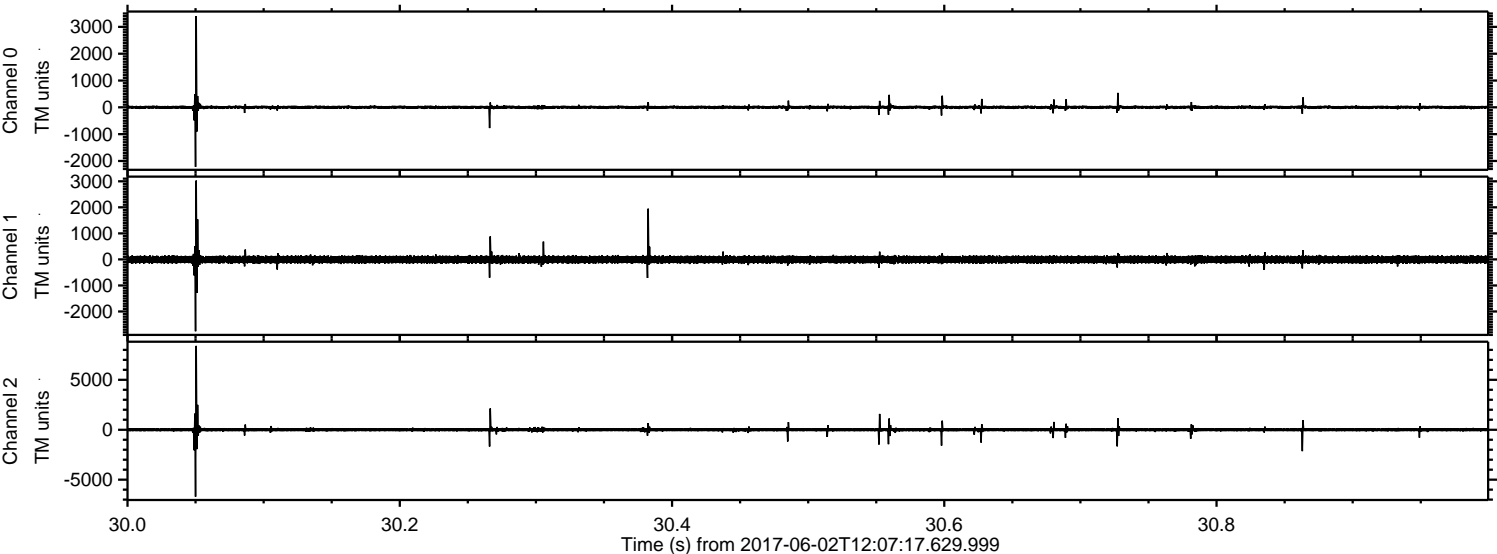
Processed Fri Jun 2 14:14:56 2017 by ELM ver.2012-10-06 from 001__elm20170602_120716__dat00.bin



Processed Fri Jun 2 14:14:56 2017 by ELM ver.2012-10-06 from 001__elm20170602_120716__dat00.bin



Processed Fri Jun 2 14:14:57 2017 by ELM ver.2012-10-06 from 001__elm20170602_120716__dat00.bin



Channel 0
mn: -2219
mx: 3403
 μ : 3.7
 σ : 38.3

Channel 1
mn: -2761
mx: 3028
 μ : -5.5
 σ : 87.0

Channel 2
mn: -6700
mx: 8394
 μ : -3.8
 σ : 122.1

