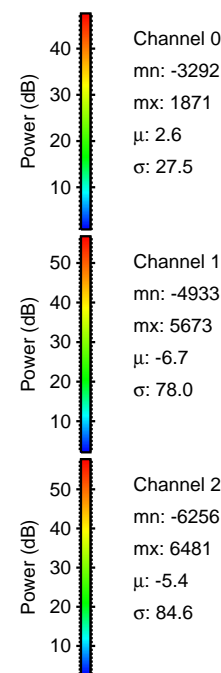
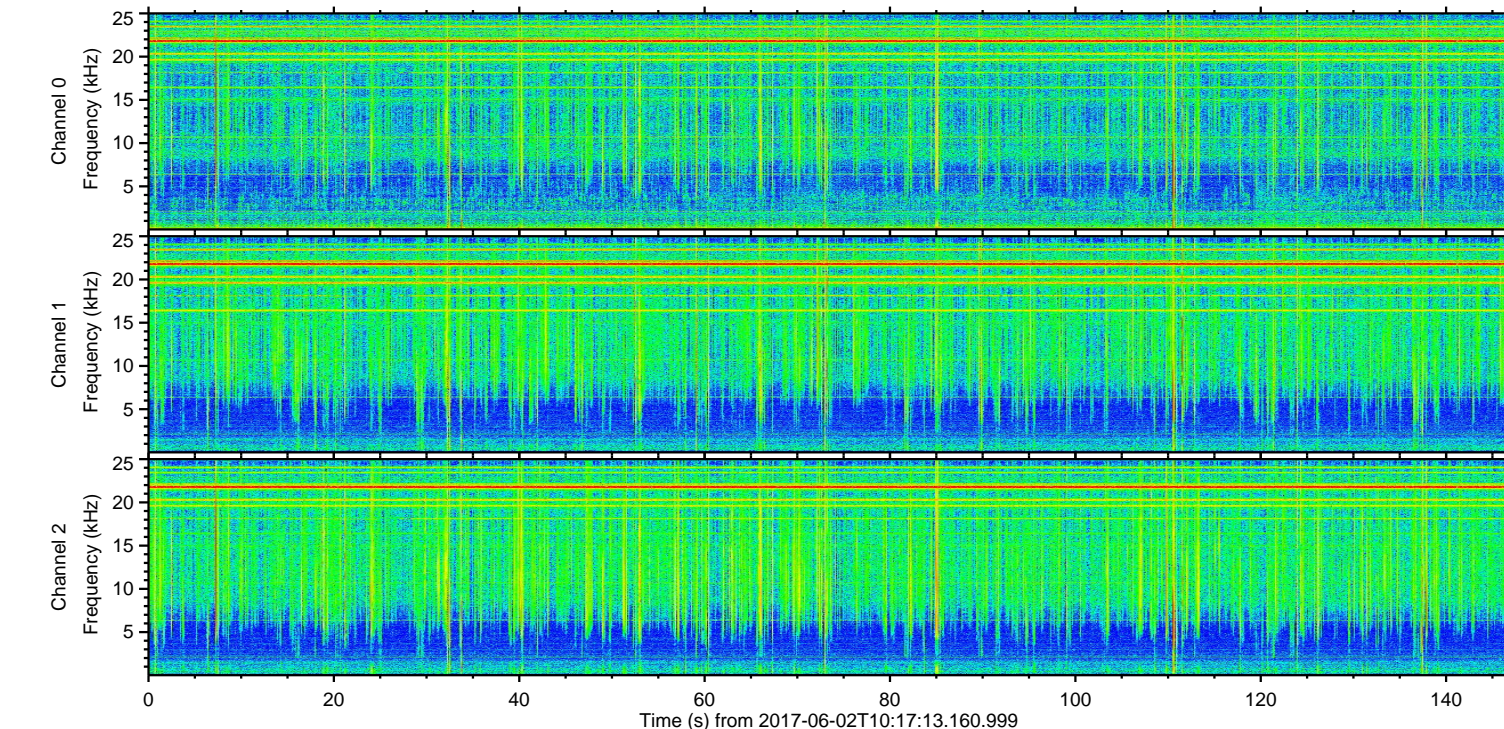
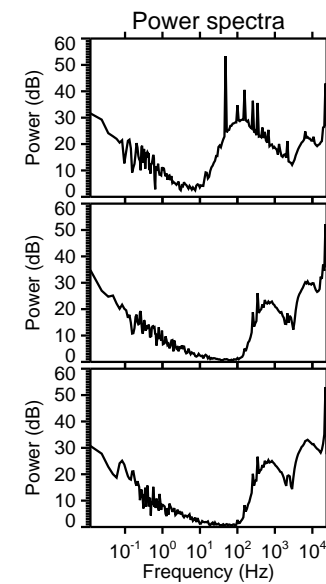
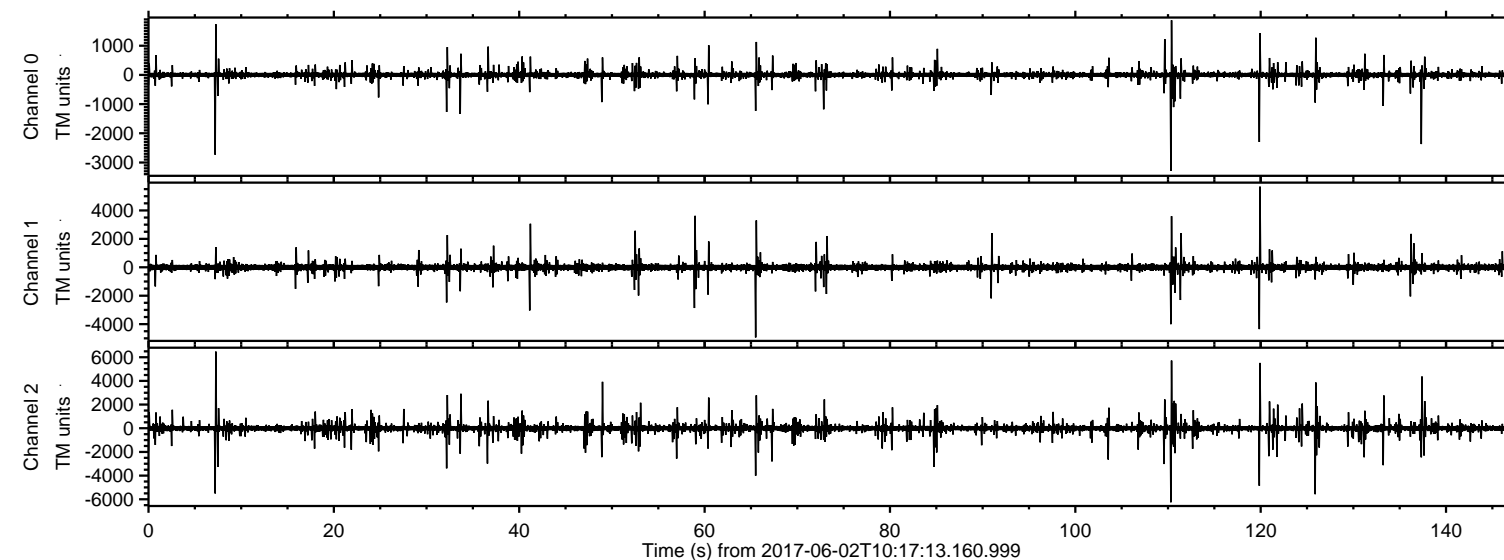


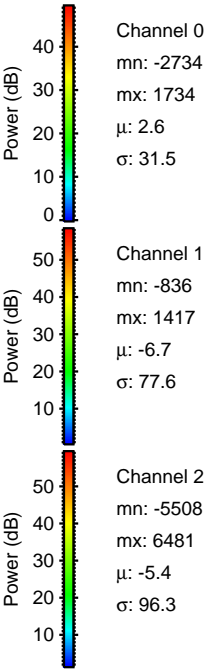
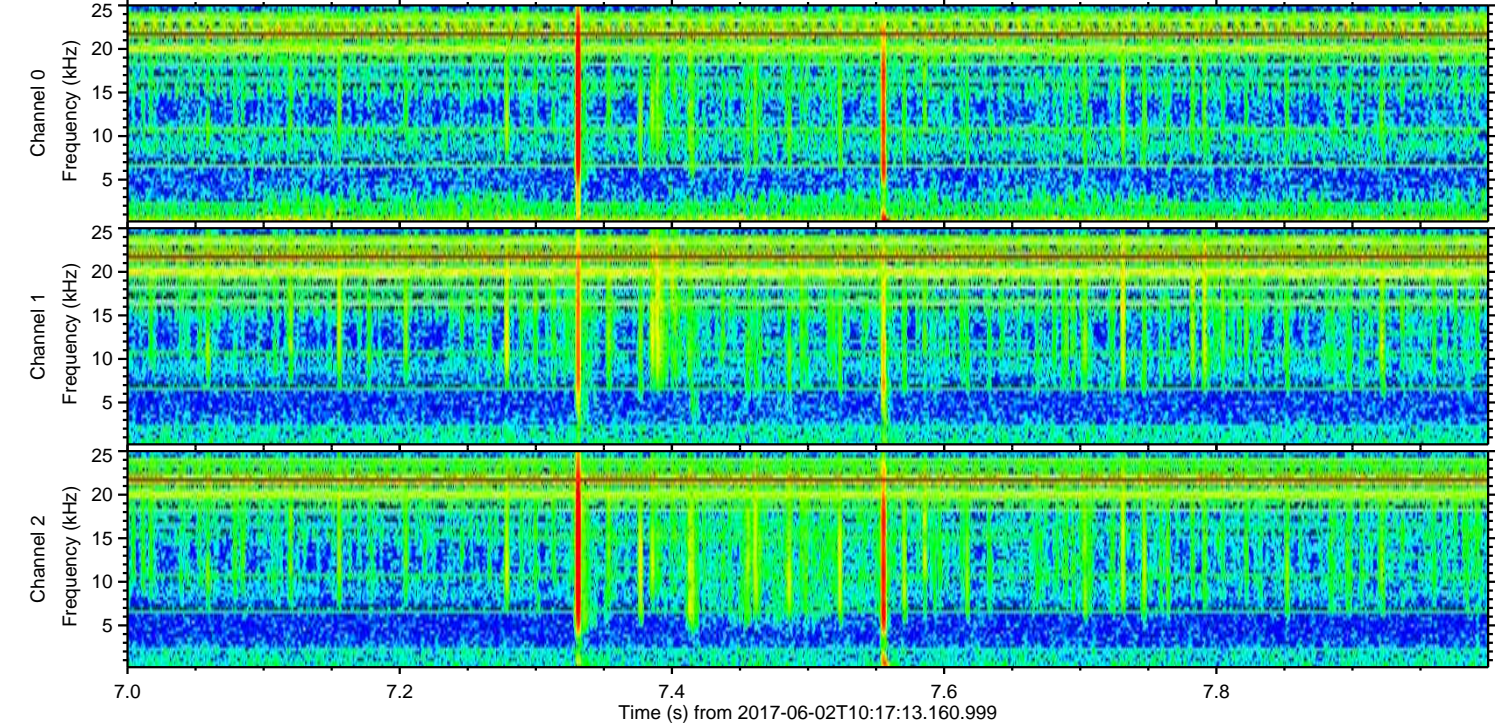
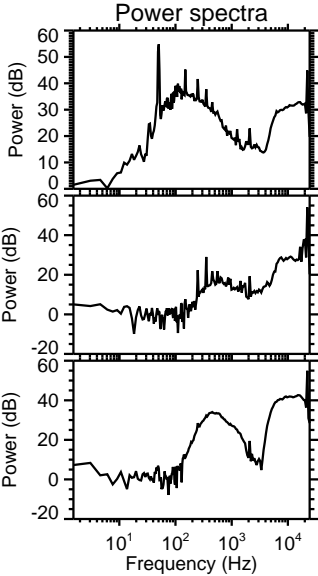
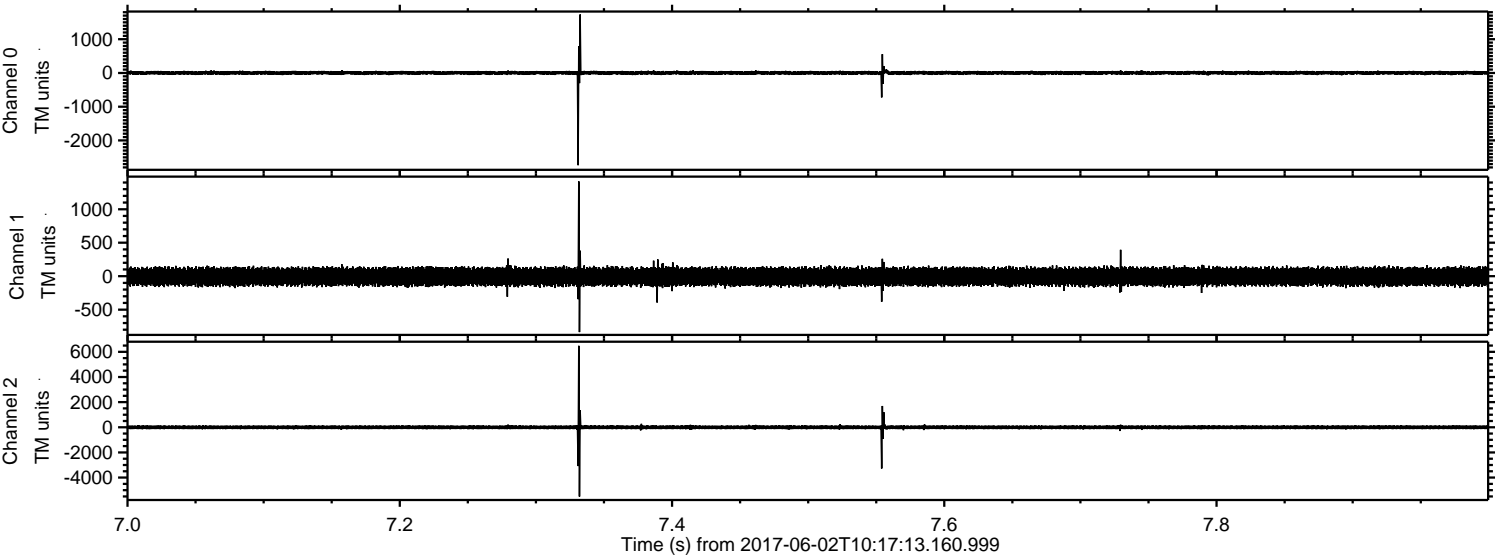
ELMAVAN 3D WAVEFORMS (Measured data sampled at 50 kHz) 51000 packets of 144 samples from 2017-06-02T10:17:13.160.999.

Processed Fri Jun 2 12:25:20 2017 by ELM ver.2012-10-06 from 001__elm20170602_101712__dat00.bin



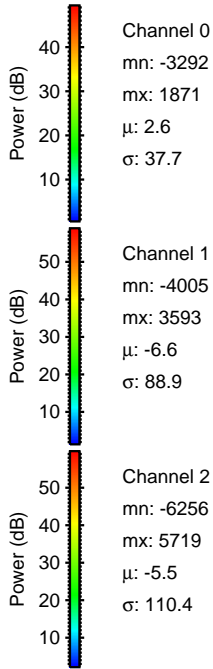
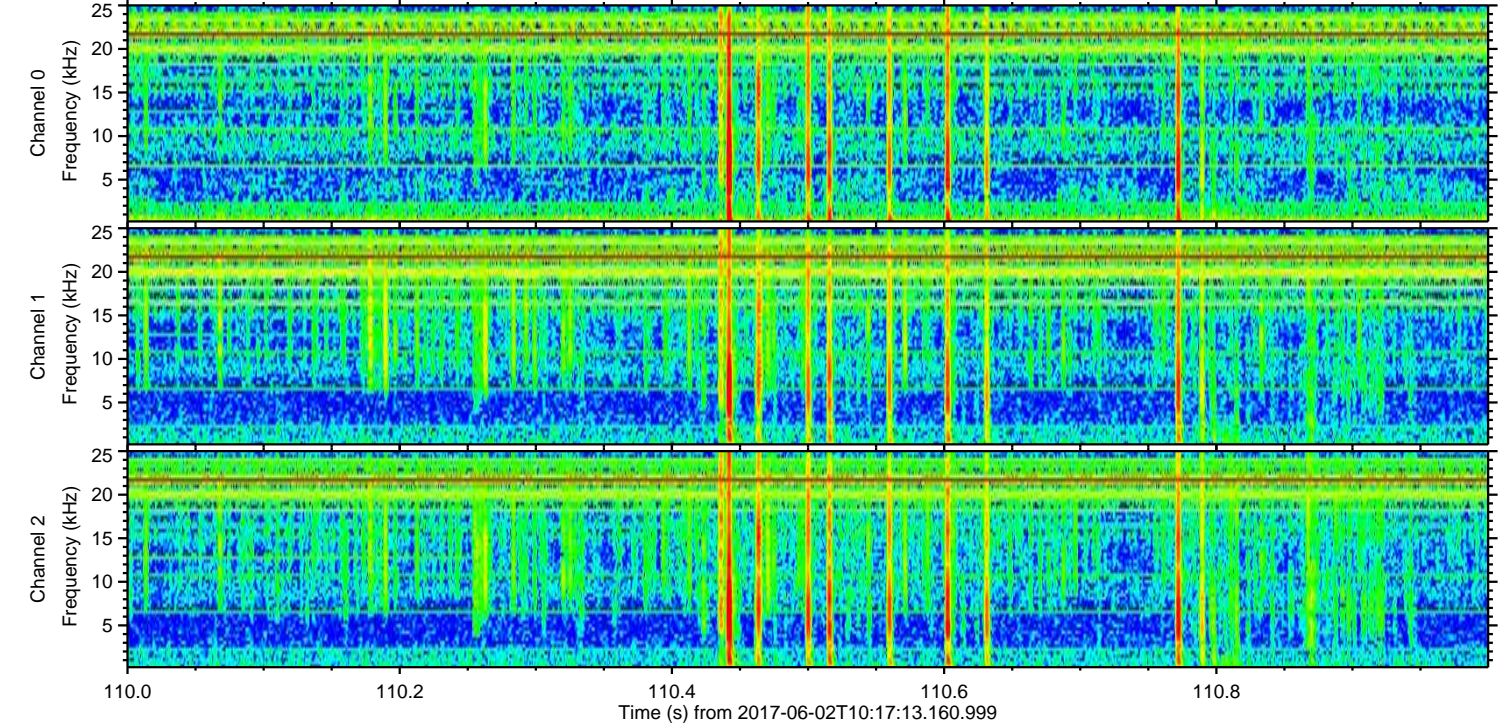
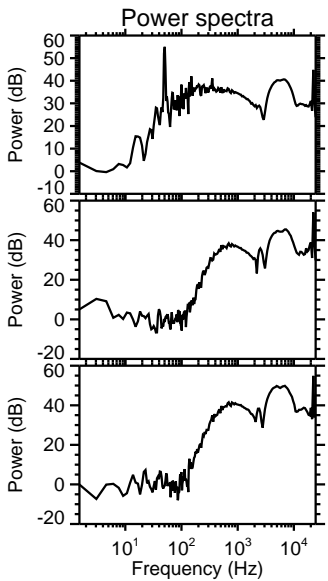
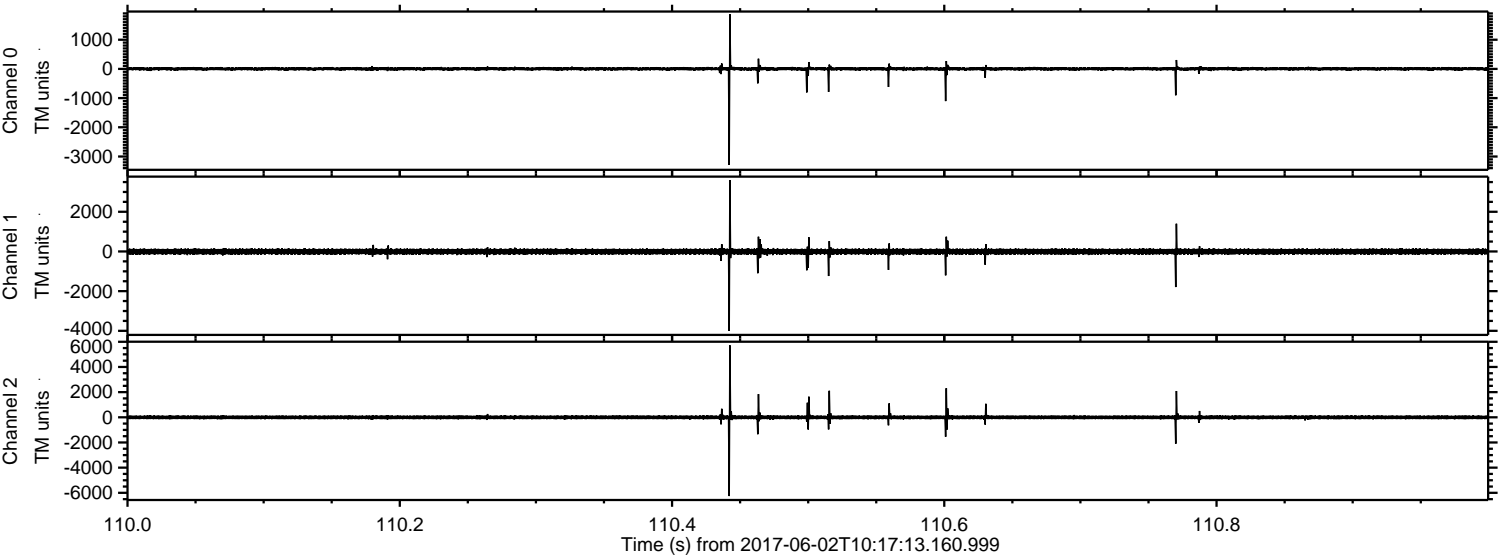
ELMAVAN 3D WAVEFORMS (Measured data sampled at 50 kHz) 51000 packets of 144 samples from 2017-06-02T10:17:13.160.999. Part 8/147

Processed Fri Jun 2 12:25:27 2017 by ELM ver.2012-10-06 from 001__elm20170602_101712__dat00.bin



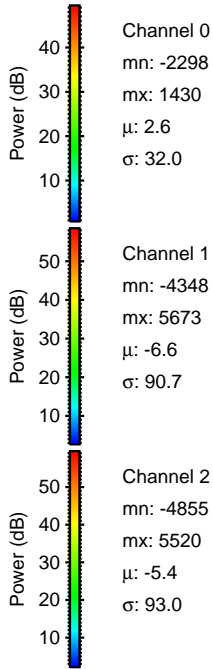
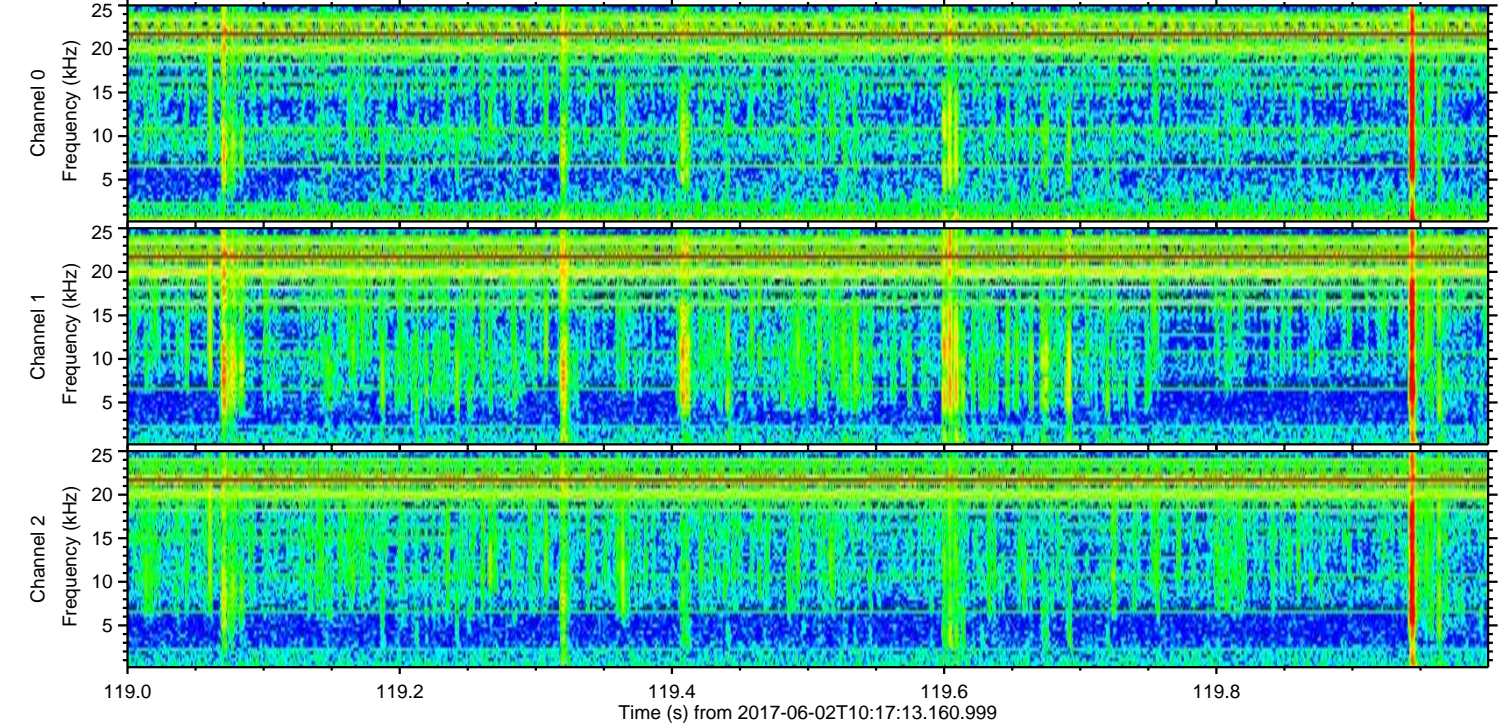
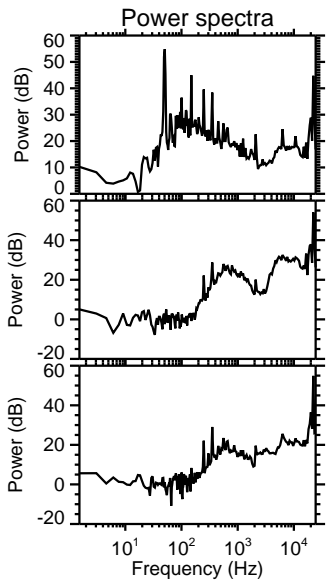
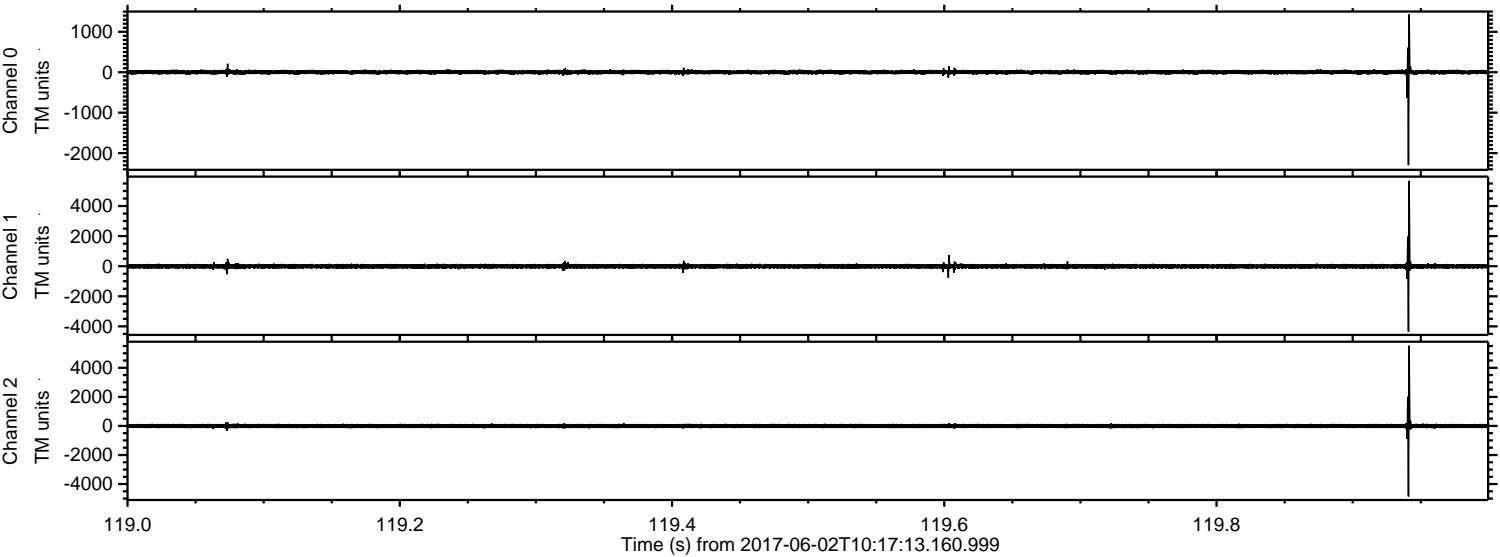
ELMAVAN 3D WAVEFORMS (Measured data sampled at 50 kHz) 51000 packets of 144 samples from 2017-06-02T10:17:13.160.999. Part 111/147

Processed Fri Jun 2 12:25:28 2017 by ELM ver.2012-10-06 from 001__elm20170602_101712__dat00.bin



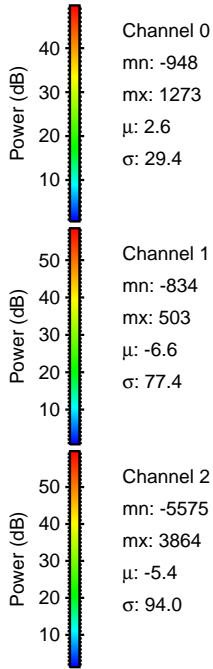
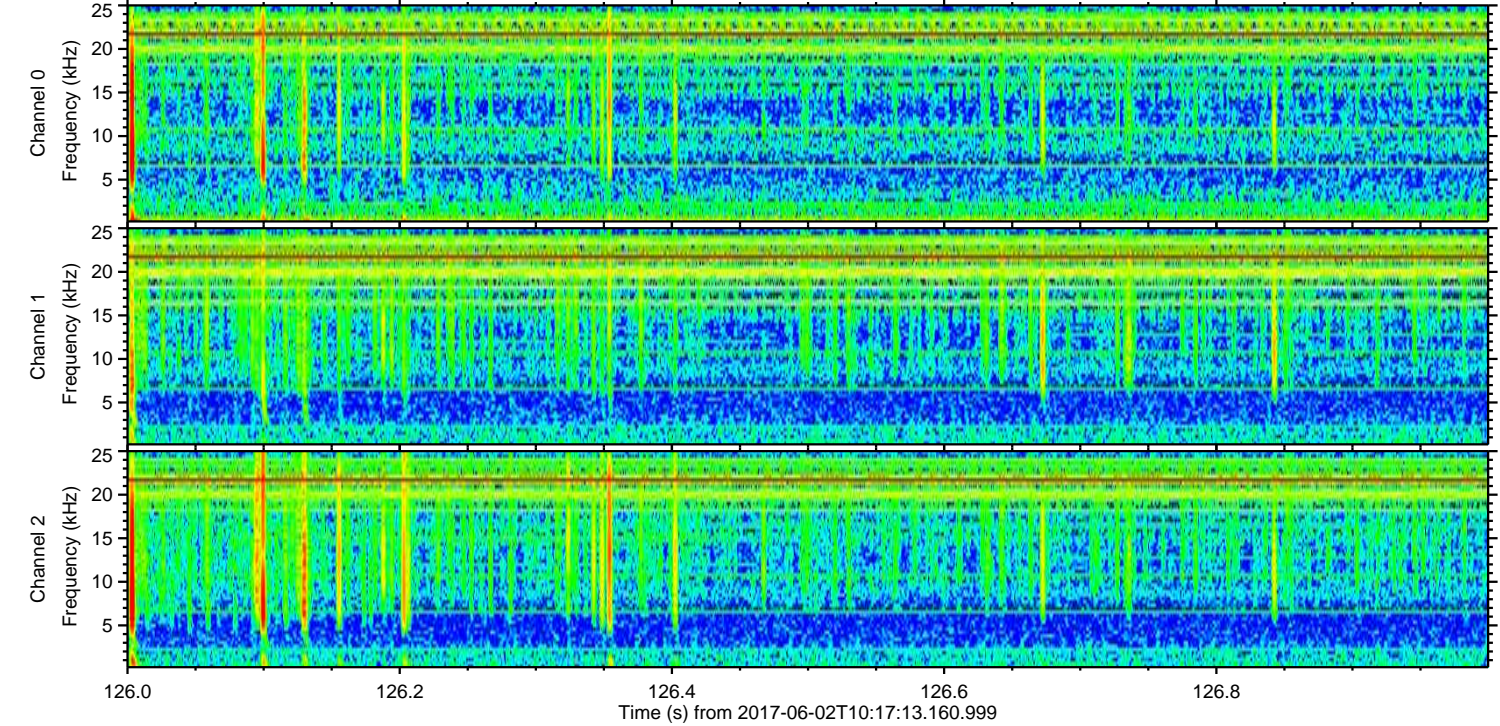
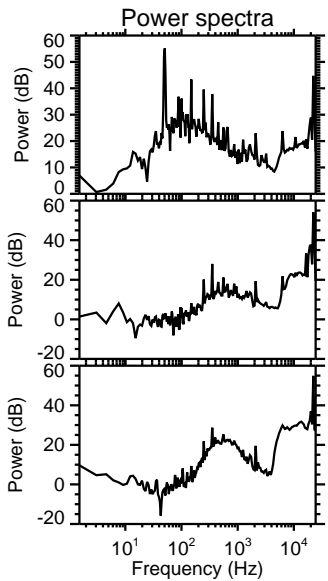
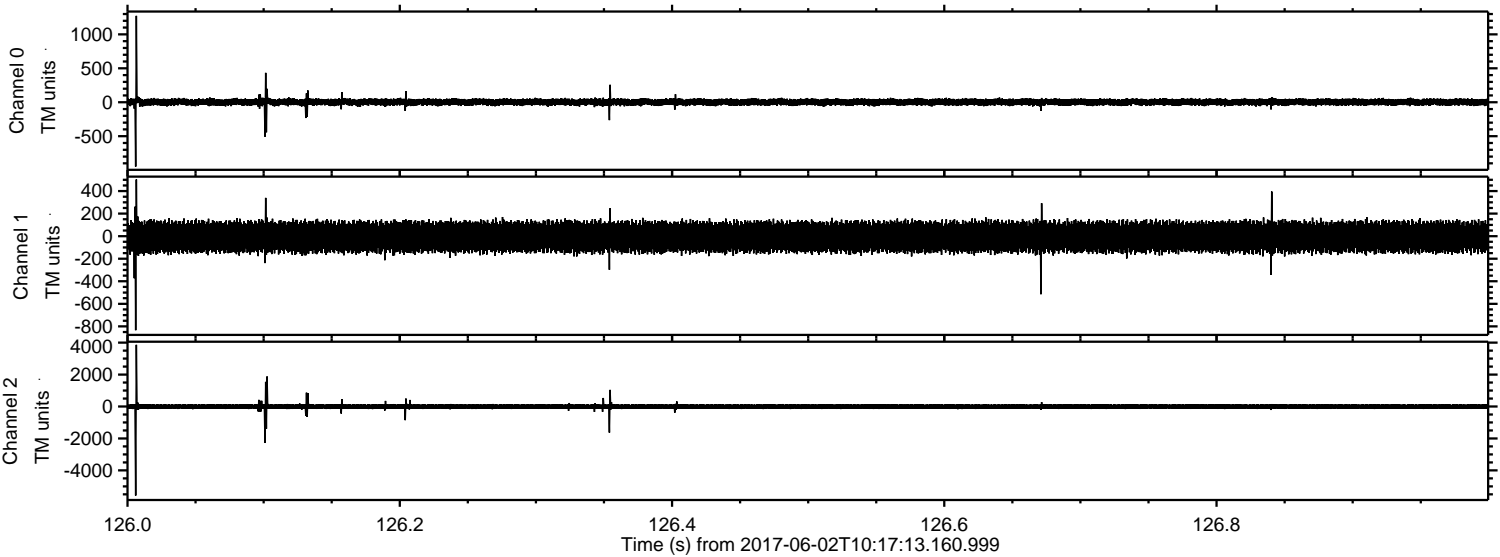
ELMAVAN 3D WAVEFORMS (Measured data sampled at 50 kHz) 51000 packets of 144 samples from 2017-06-02T10:17:13.160.999. Part 120/147

Processed Fri Jun 2 12:25:28 2017 by ELM ver.2012-10-06 from 001__elm20170602_101712__dat00.bin

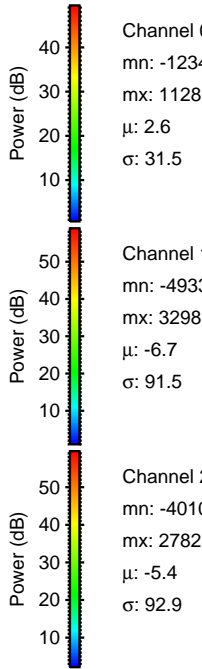
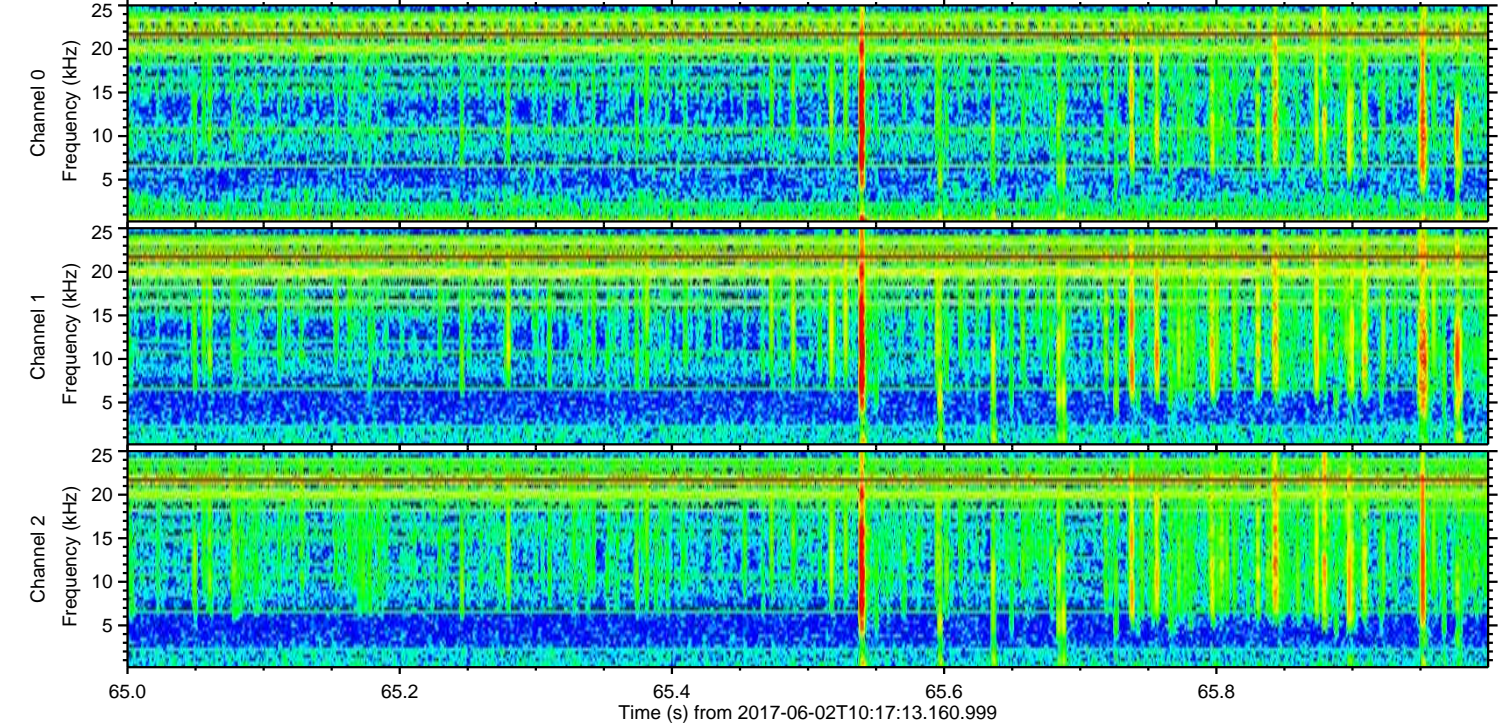
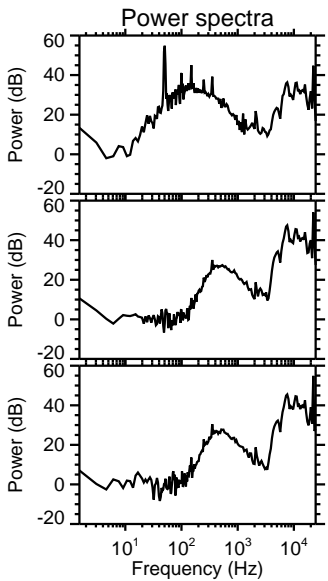
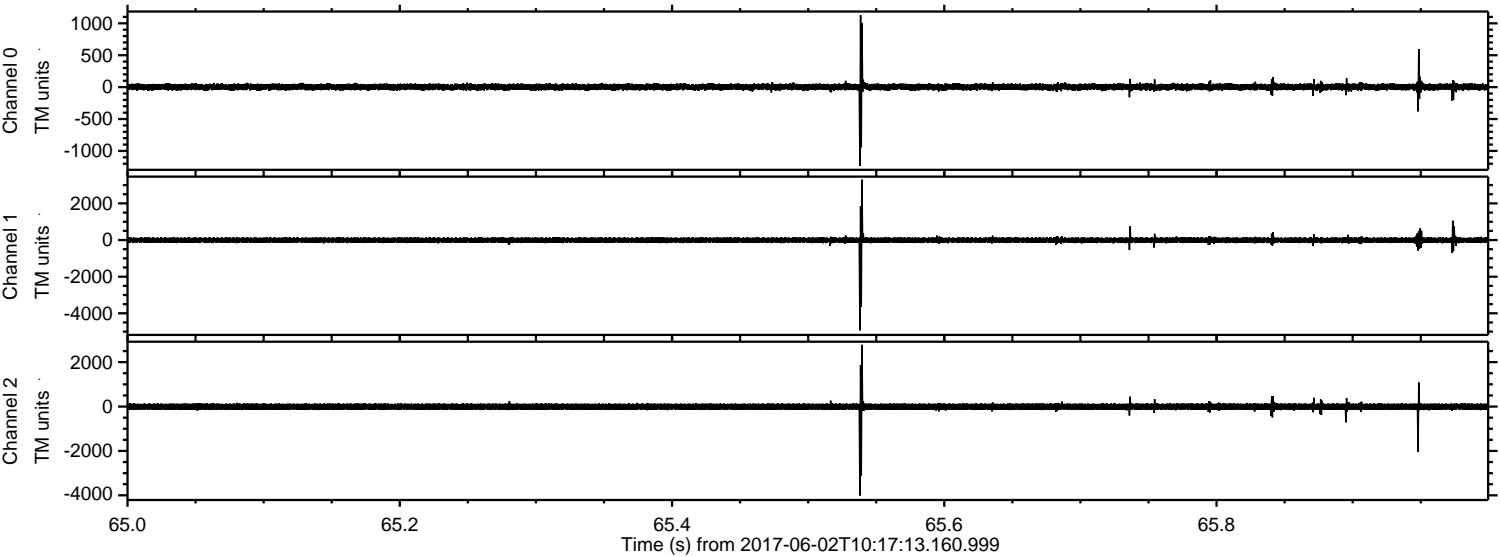


ELMAVAN 3D WAVEFORMS (Measured data sampled at 50 kHz) 51000 packets of 144 samples from 2017-06-02T10:17:13.160.999. Part 127/147

Processed Fri Jun 2 12:25:29 2017 by ELM ver.2012-10-06 from 001__elm20170602_101712__dat00.bin



Processed Fri Jun 2 12:25:30 2017 by ELM ver.2012-10-06 from 001__elm20170602_101712__dat00.bin



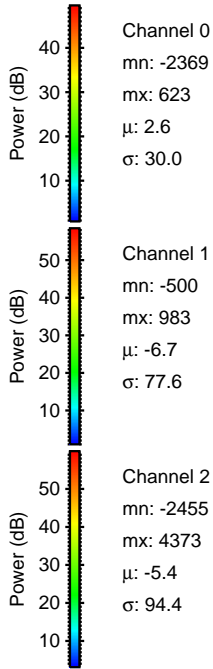
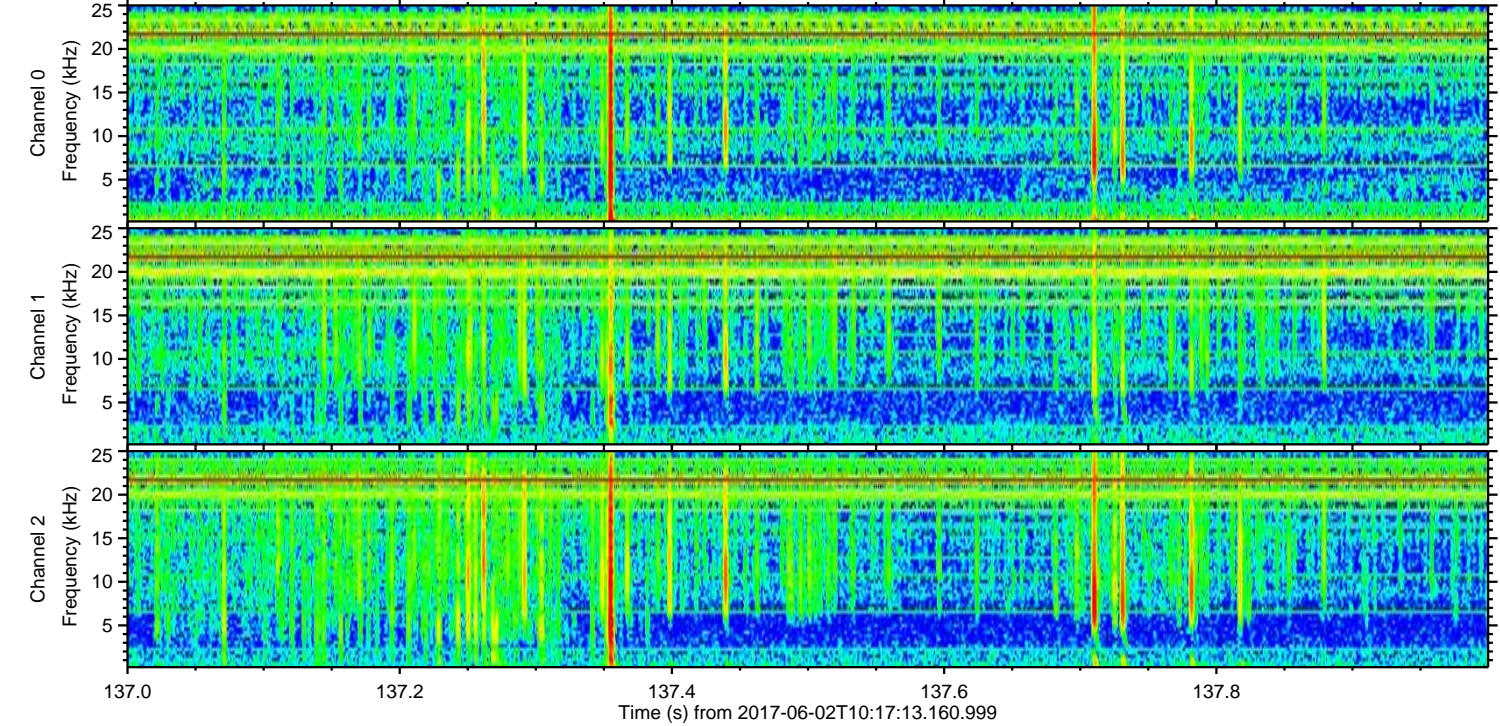
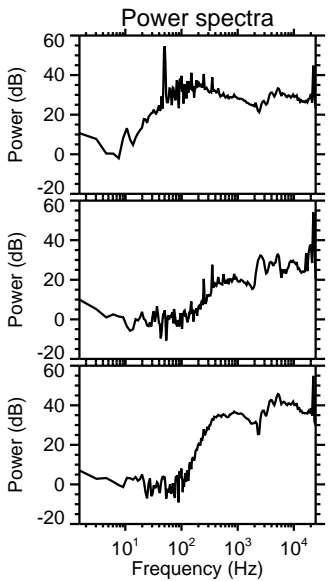
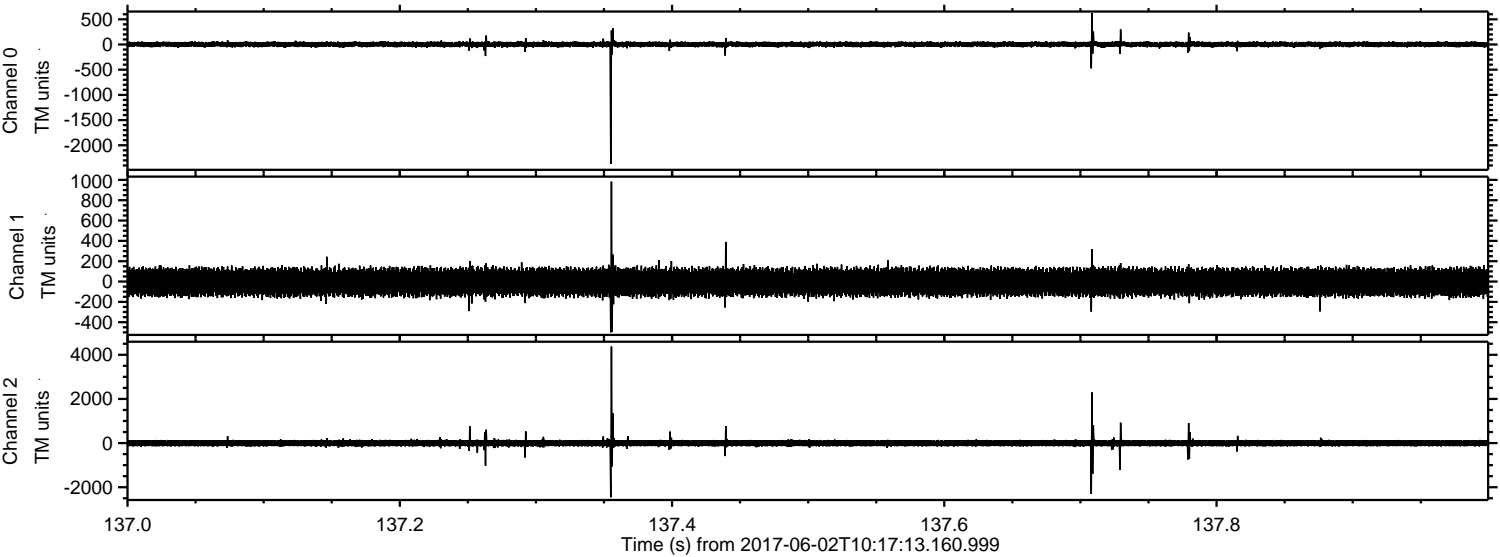
Channel 0
mn: -1234
mx: 1128
 μ : 2.6
 σ : 31.5

Channel 1
mn: -4933
mx: 3298
 μ : -6.7
 σ : 91.5

Channel 2
mn: -4010
mx: 2782
 μ : -5.4
 σ : 92.9

ELMAVAN 3D WAVEFORMS (Measured data sampled at 50 kHz) 51000 packets of 144 samples from 2017-06-02T10:17:13.160.999. Part 138/147

Processed Fri Jun 2 12:25:30 2017 by ELM ver.2012-10-06 from 001__elm20170602_101712__dat00.bin

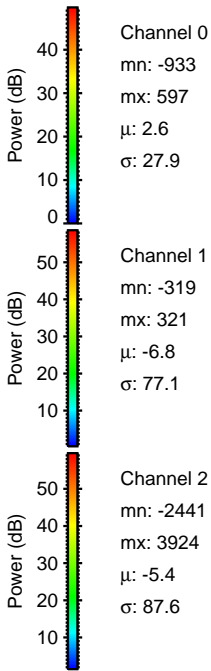
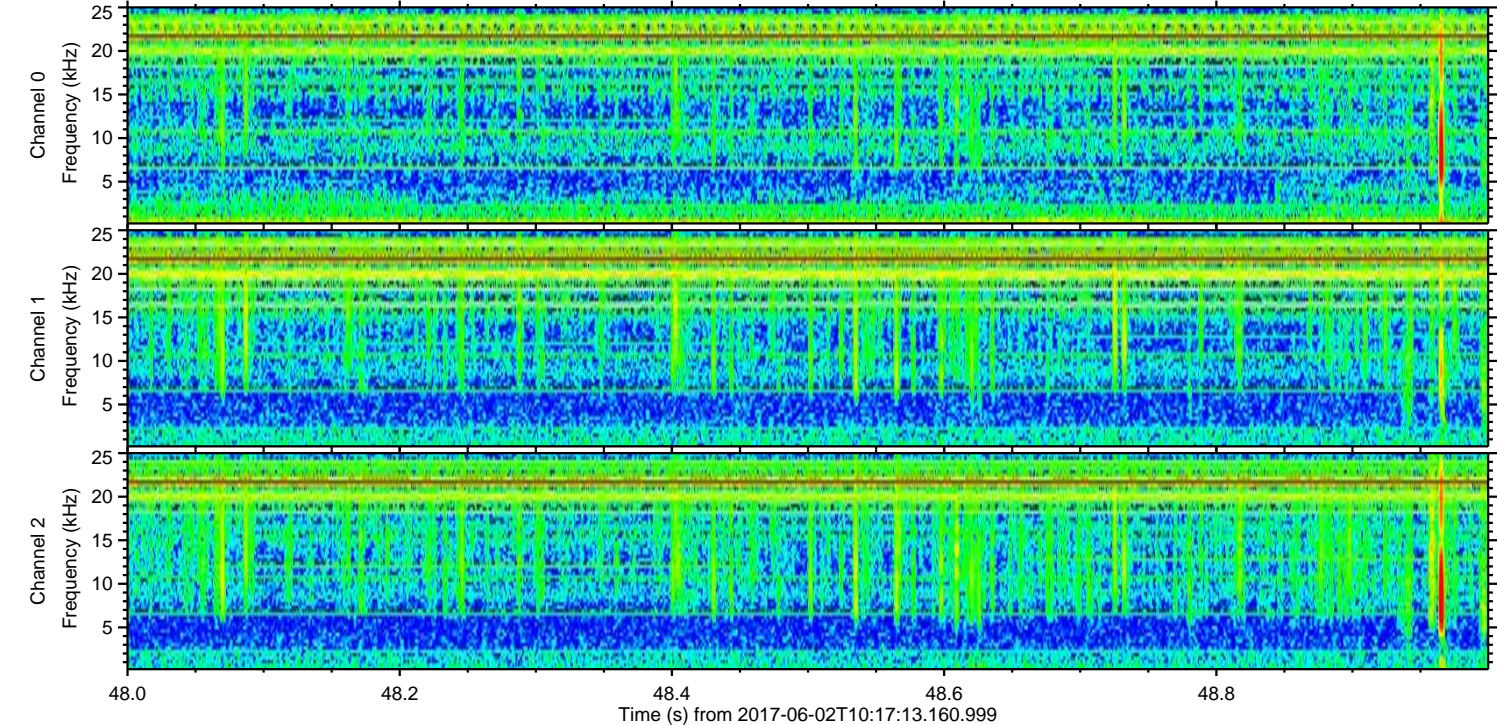
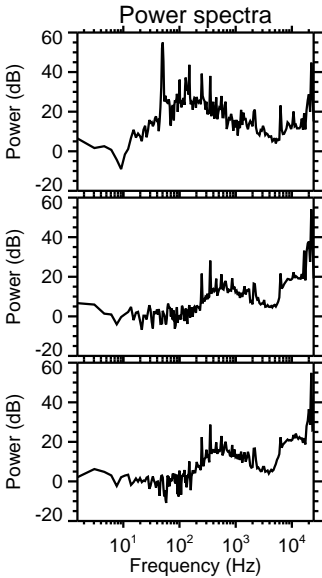
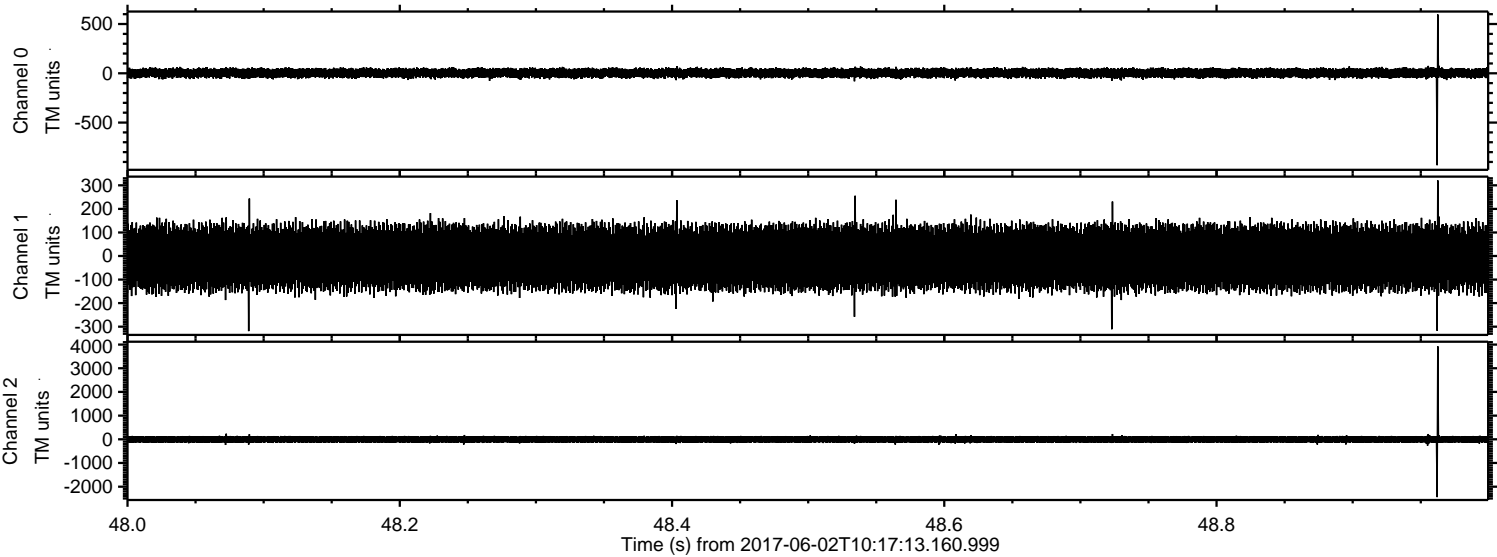


Channel 0
mn: -2369
mx: 623
 μ : 2.6
 σ : 30.0

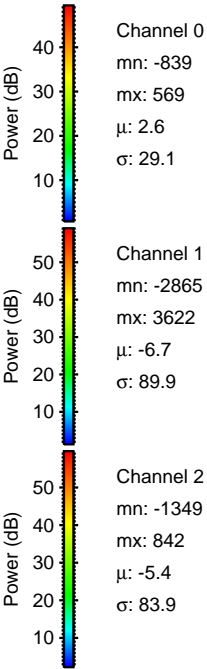
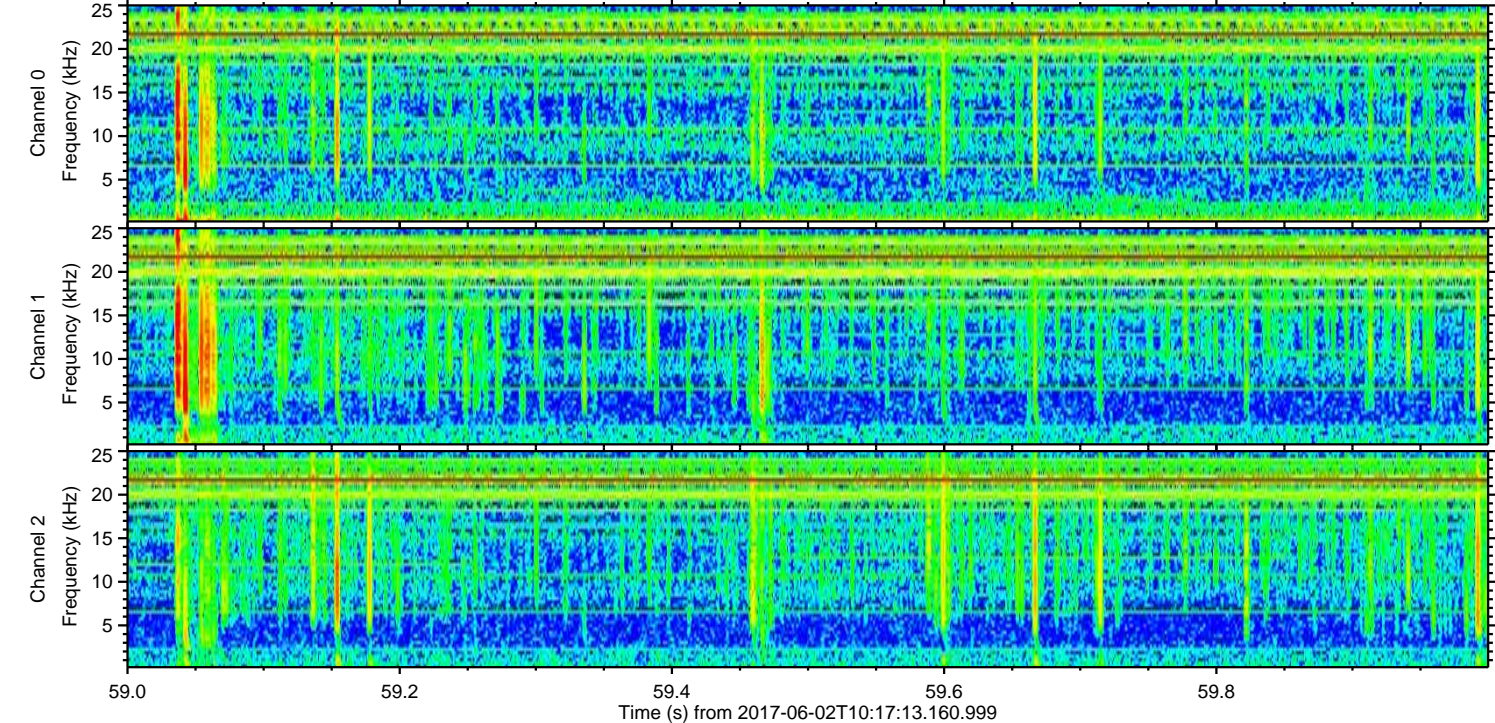
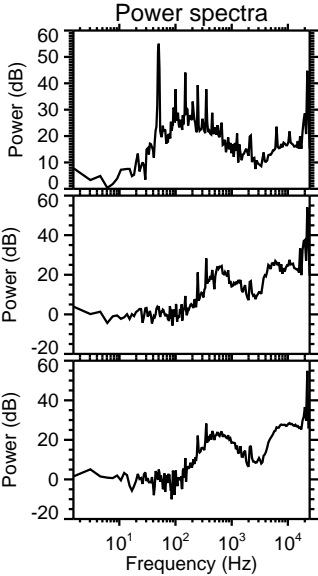
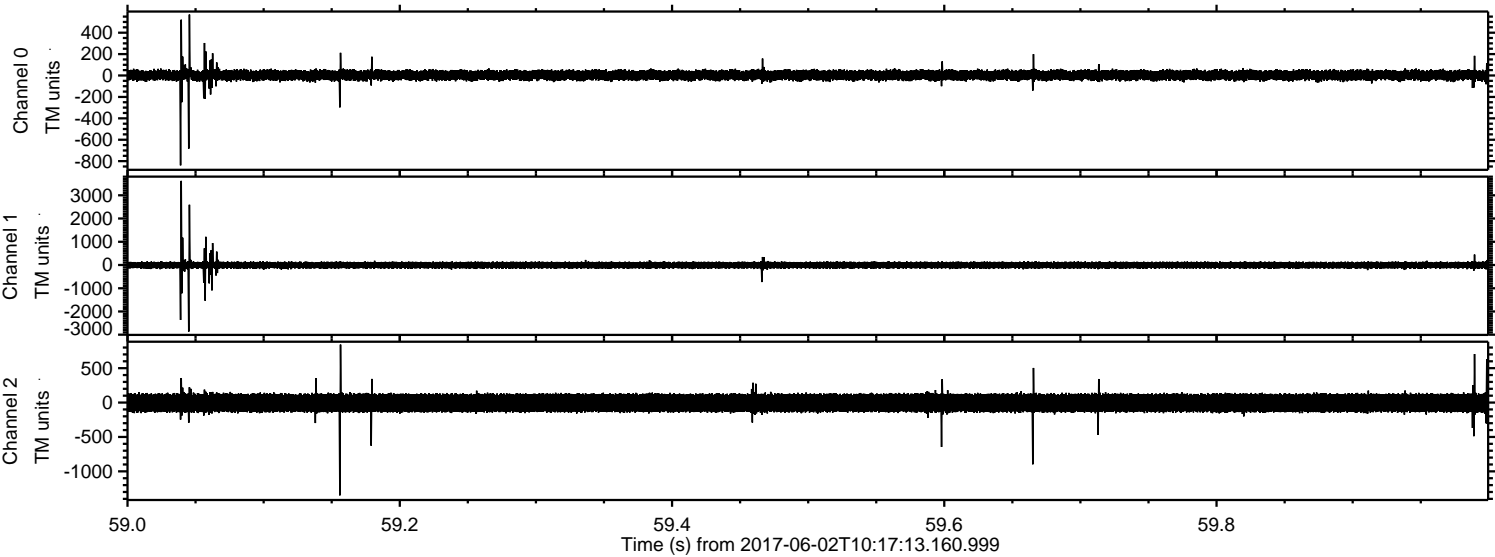
Channel 1
mn: -500
mx: 983
 μ : -6.7
 σ : 77.6

Channel 2
mn: -2455
mx: 4373
 μ : -5.4
 σ : 94.4

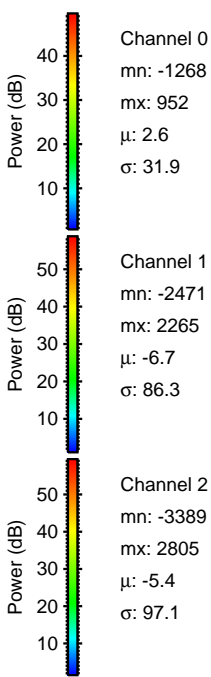
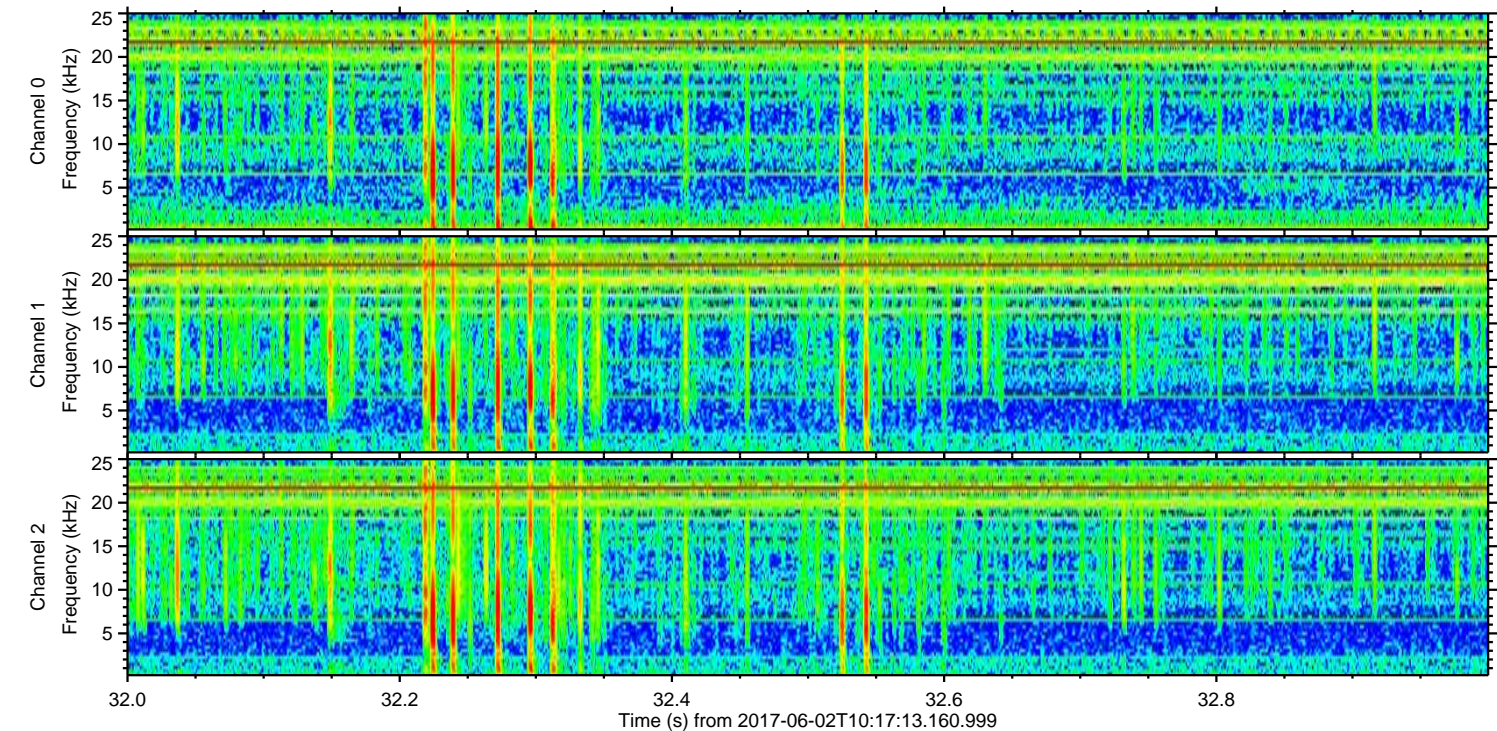
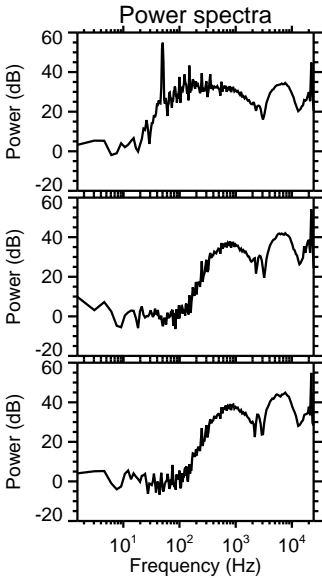
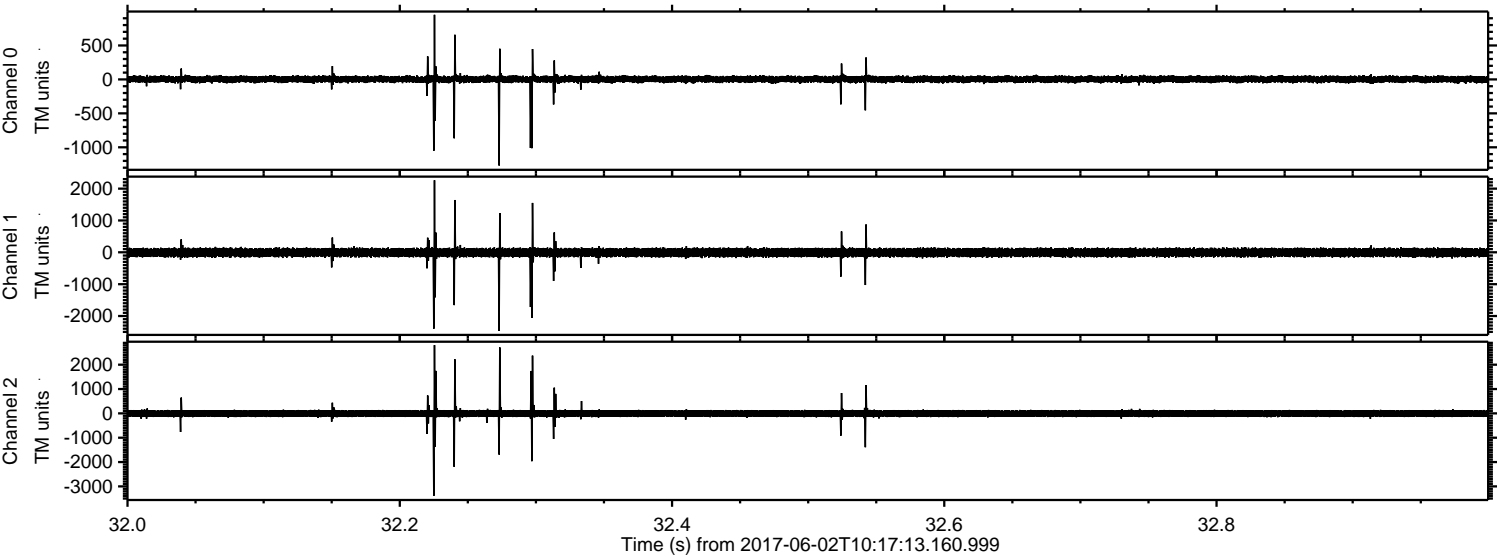
Processed Fri Jun 2 12:25:31 2017 by ELM ver.2012-10-06 from 001__elm20170602_101712__dat00.bin



Processed Fri Jun 2 12:25:32 2017 by ELM ver.2012-10-06 from 001__elm20170602_101712__dat00.bin



Processed Fri Jun 2 12:25:32 2017 by ELM ver.2012-10-06 from 001__elm20170602_101712__dat00.bin



Channel 0
mn: -1268
mx: 952
 μ : 2.6
 σ : 31.9

Channel 1
mn: -2471
mx: 2265
 μ : -6.7
 σ : 86.3

Channel 2
mn: -3389
mx: 2805
 μ : -5.4
 σ : 97.1

ELMAVAN 3D WAVEFORMS (Measured data sampled at 50 kHz) 51000 packets of 144 samples from 2017-06-02T10:17:13.160.999. Part 129/147

