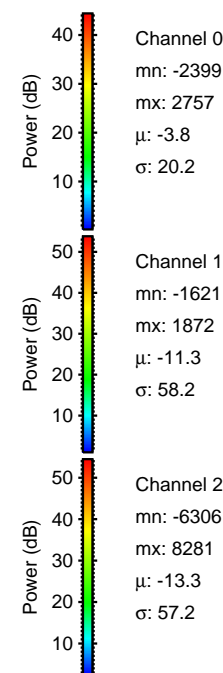
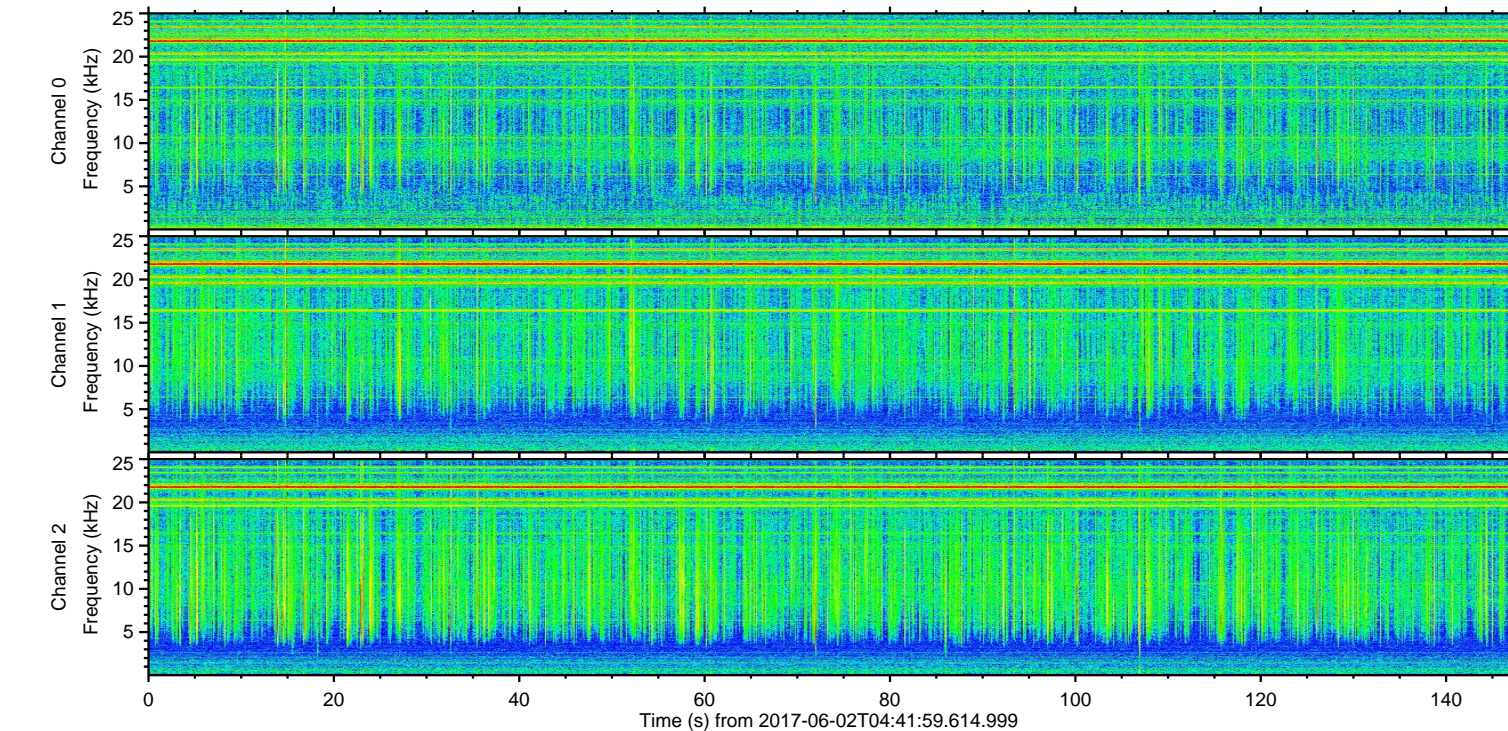
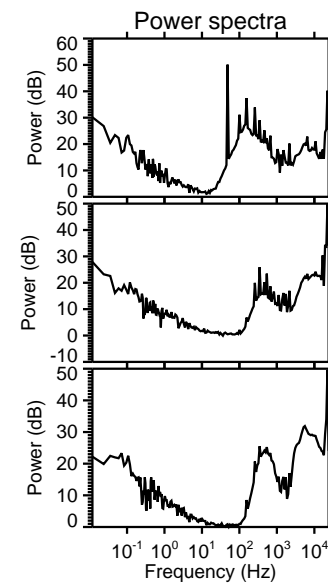
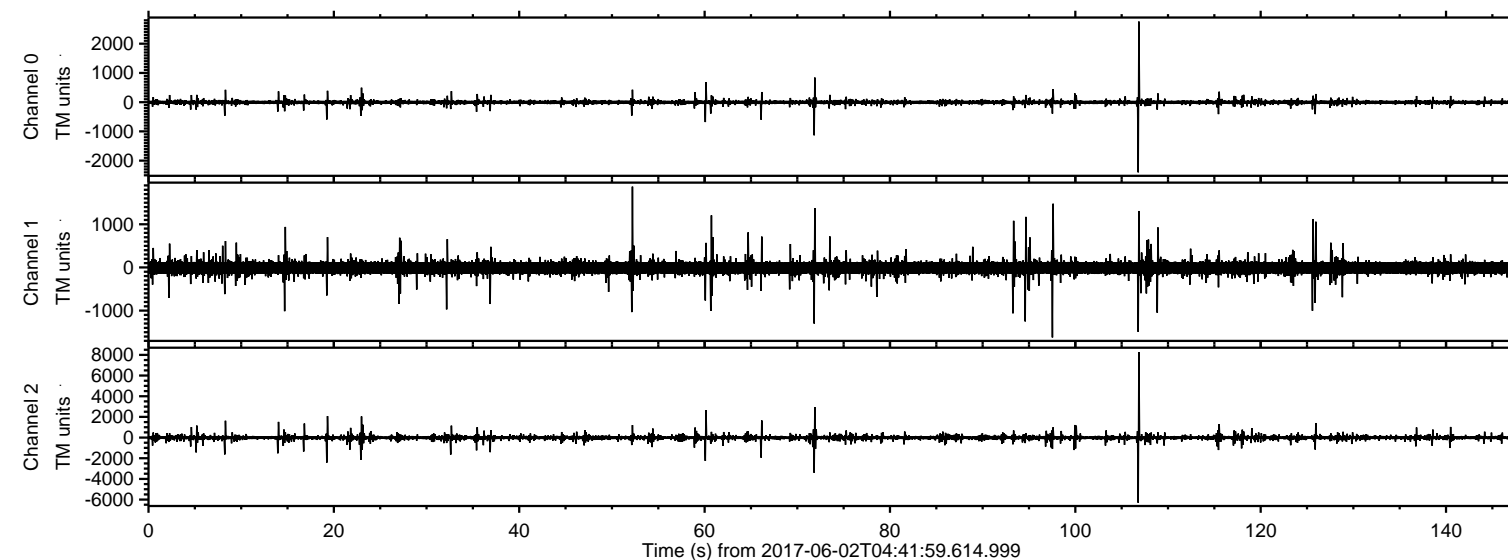


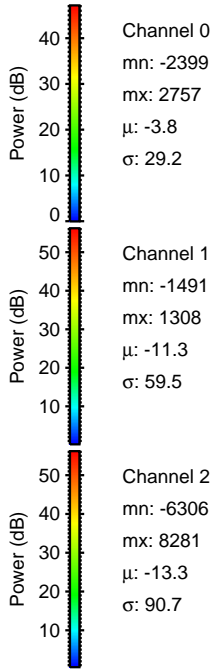
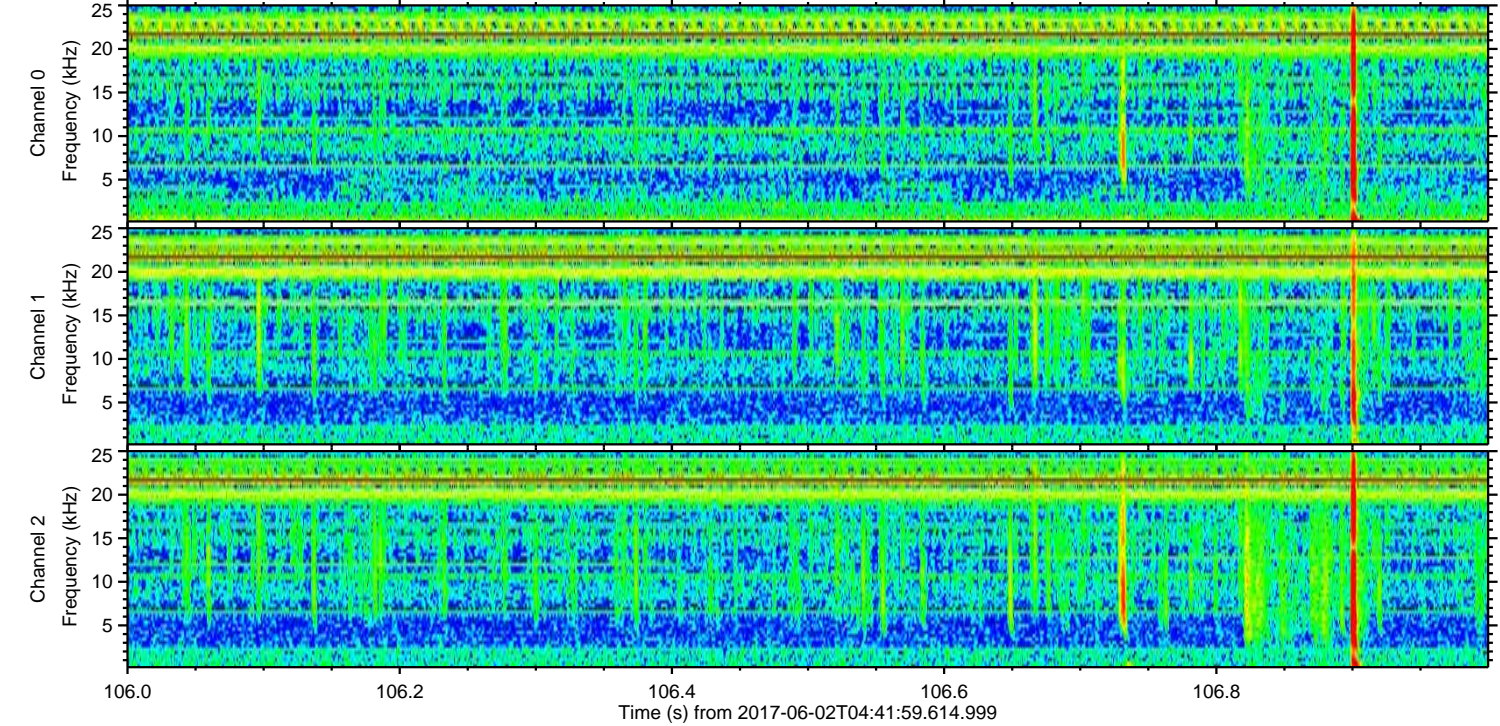
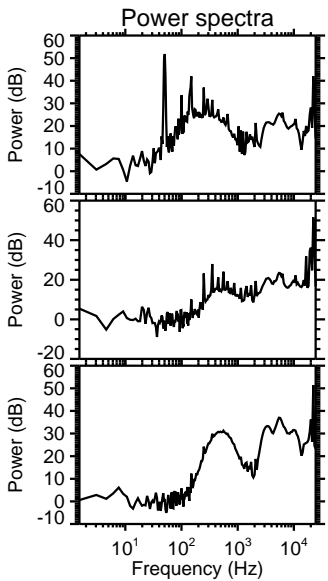
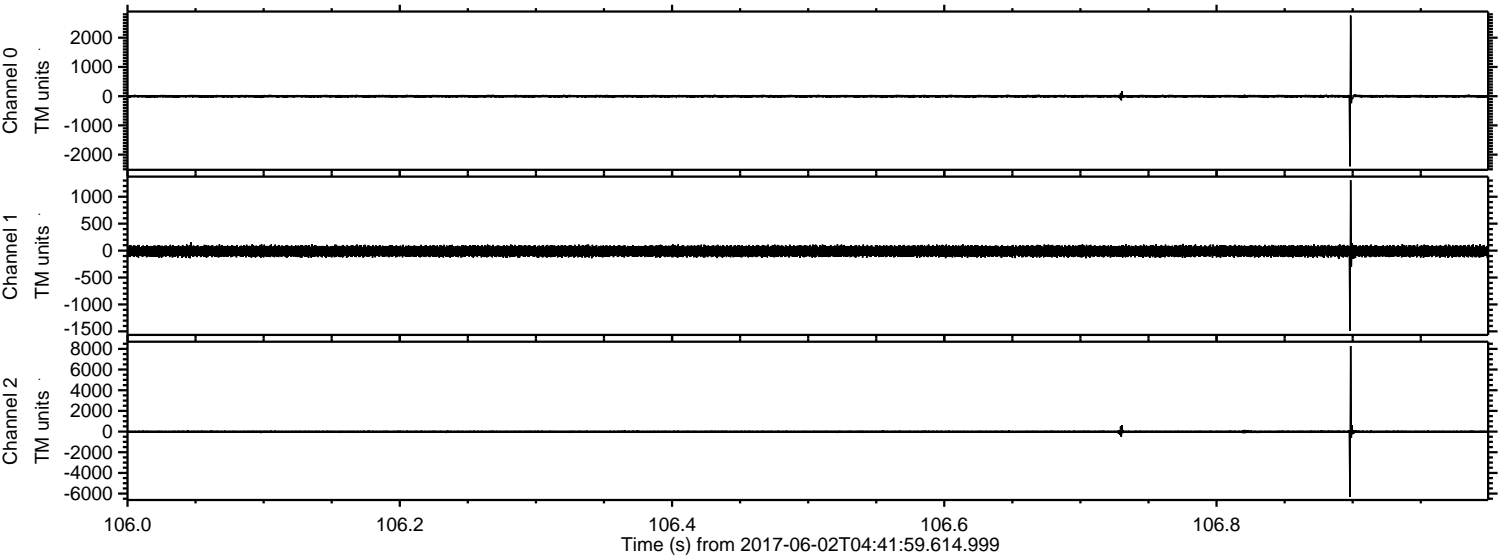
ELMAVAN 3D WAVEFORMS (Measured data sampled at 50 kHz) 51000 packets of 144 samples from 2017-06-02T04:41:59.614.999.

Processed Fri Jun 2 06:50:05 2017 by ELM ver.2012-10-06 from 001__elm20170602_044158__dat00.bin



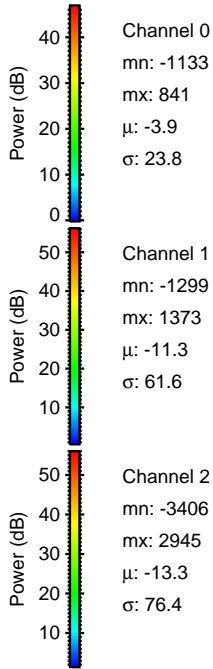
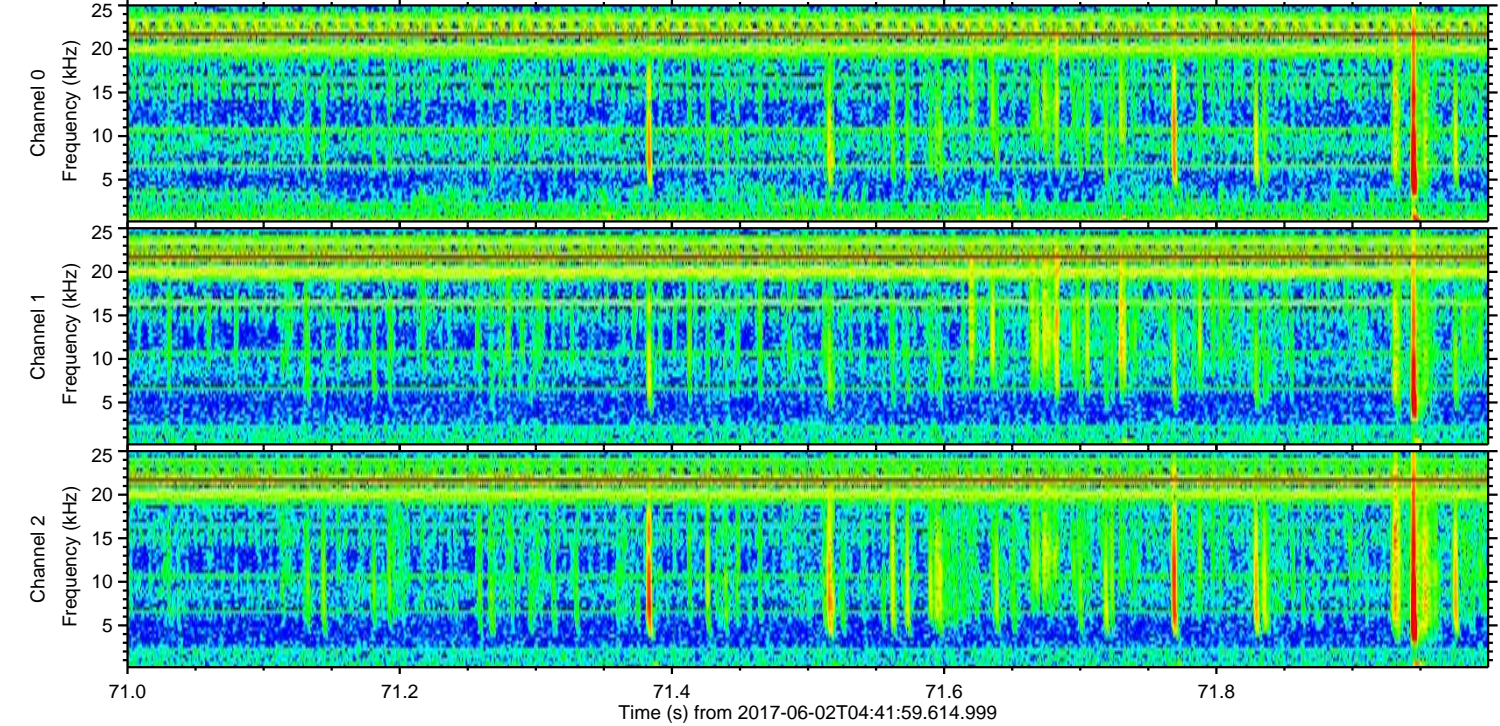
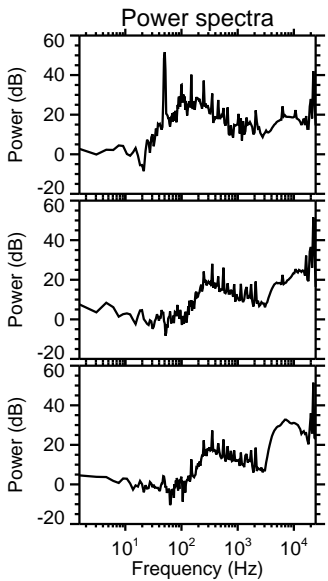
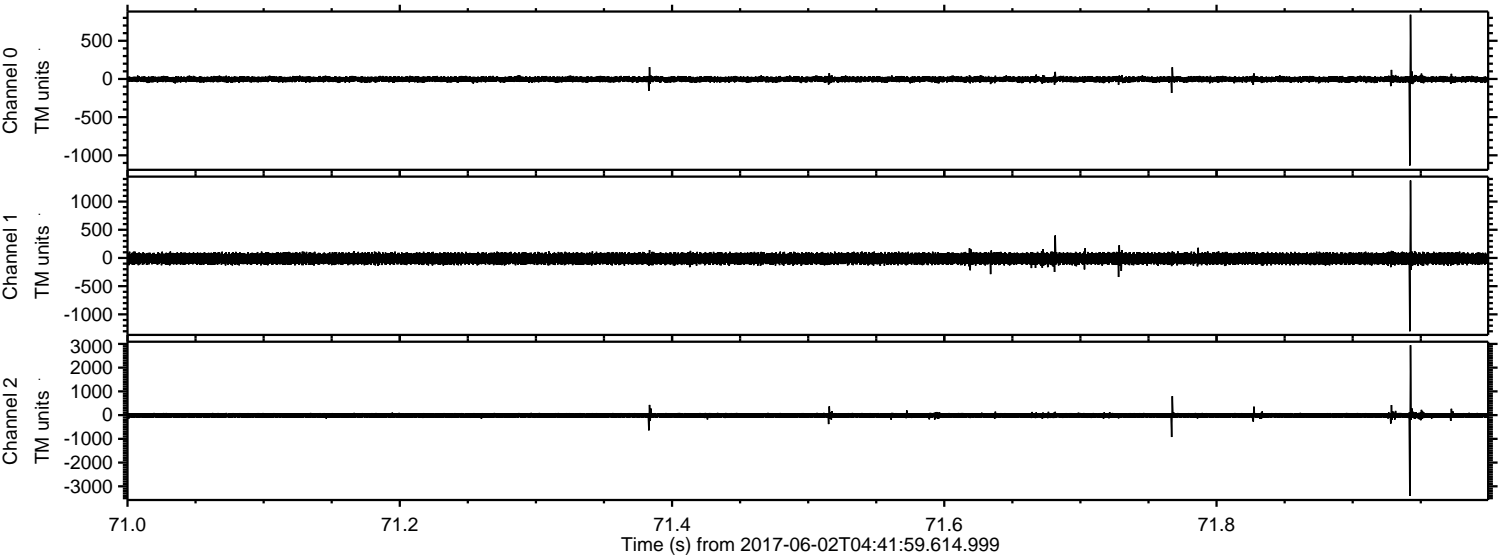
ELMAVAN 3D WAVEFORMS (Measured data sampled at 50 kHz) 51000 packets of 144 samples from 2017-06-02T04:41:59.614.999. Part 107/147

Processed Fri Jun 2 06:50:10 2017 by ELM ver.2012-10-06 from 001__elm20170602_044158__dat00.bin



ELMAVAN 3D WAVEFORMS (Measured data sampled at 50 kHz) 51000 packets of 144 samples from 2017-06-02T04:41:59.614.999. Part 72/147

Processed Fri Jun 2 06:50:11 2017 by ELM ver.2012-10-06 from 001__elm20170602_044158__dat00.bin

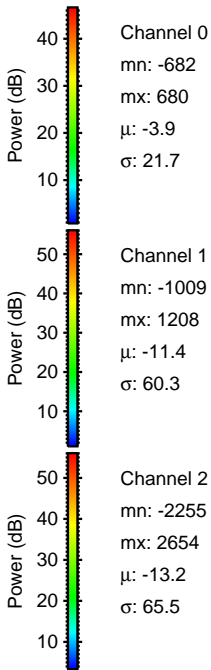
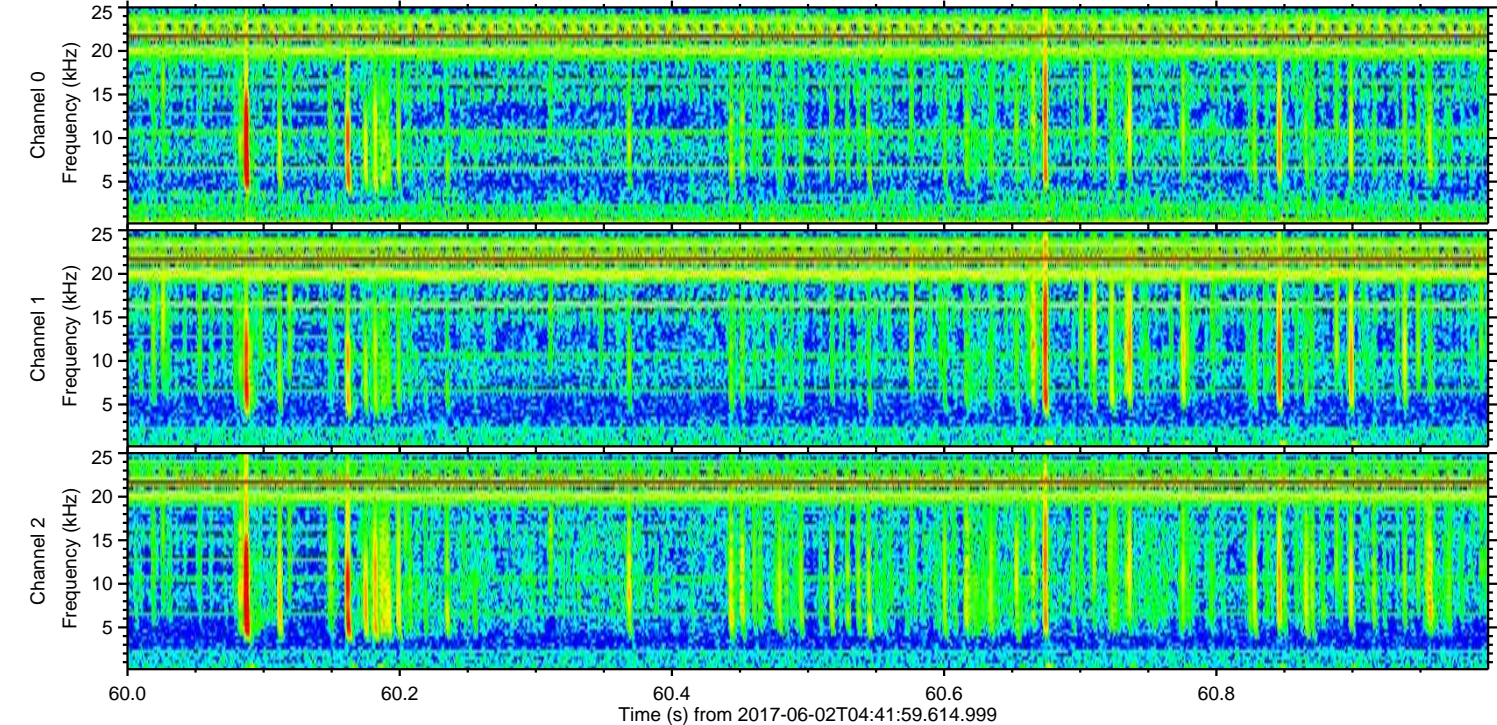
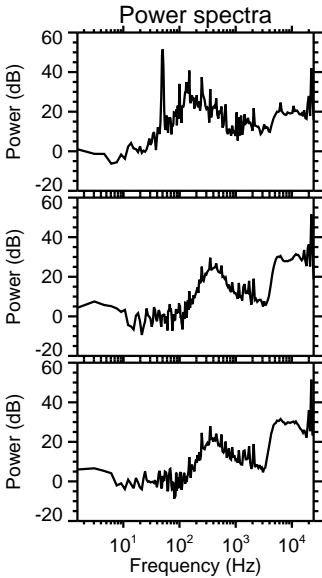
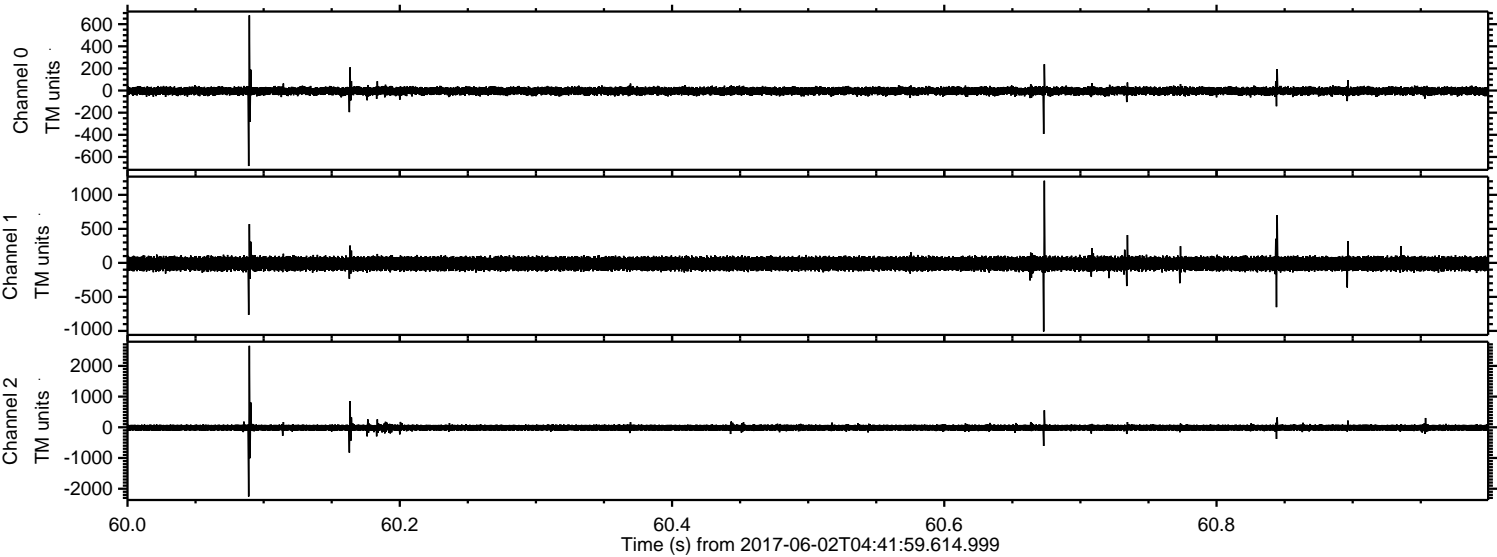


Channel 0
mn: -1133
mx: 841
 μ : -3.9
 σ : 23.8

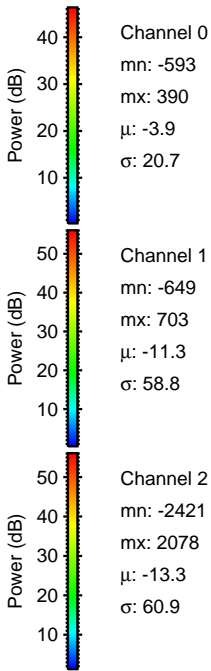
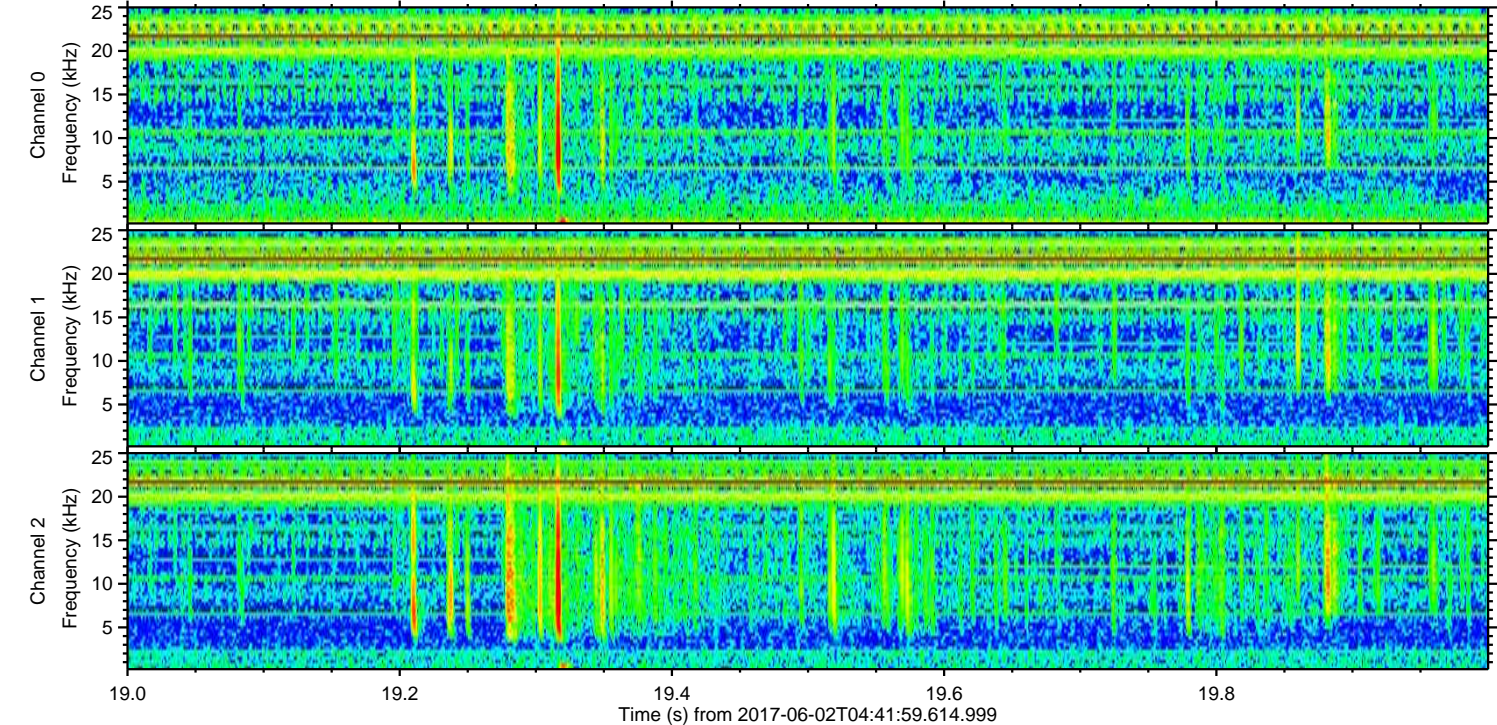
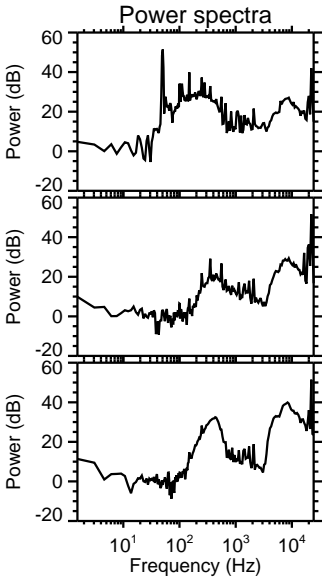
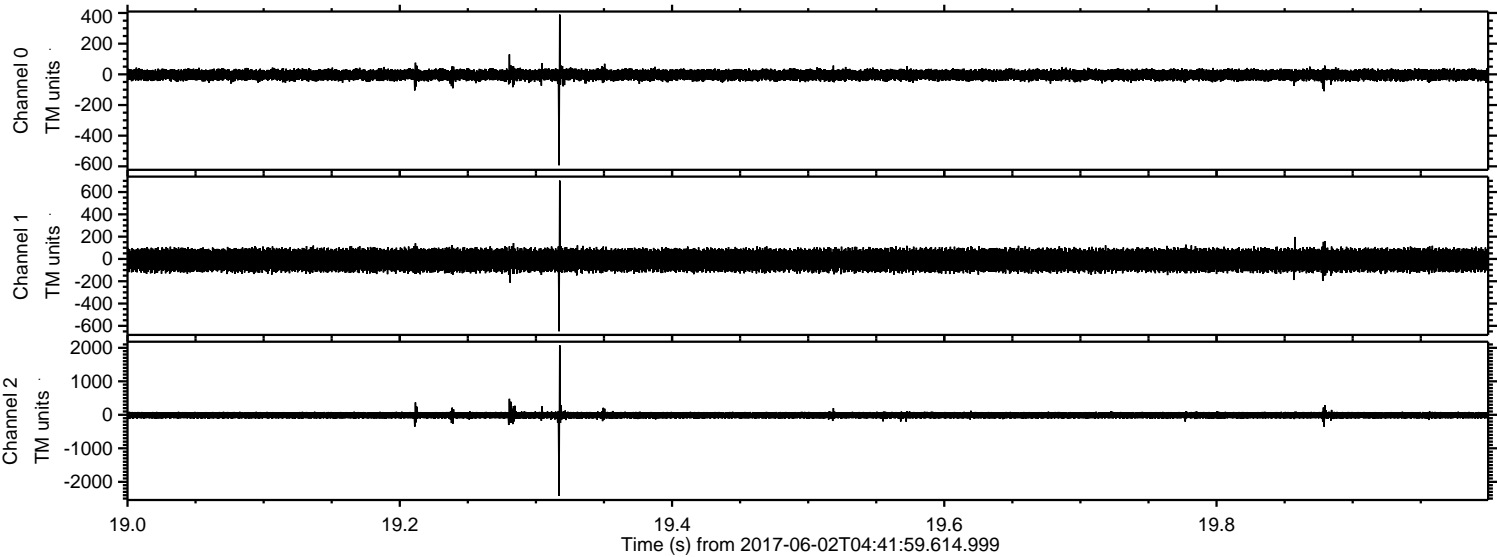
Channel 1
mn: -1299
mx: 1373
 μ : -11.3
 σ : 61.6

Channel 2
mn: -3406
mx: 2945
 μ : -13.3
 σ : 76.4

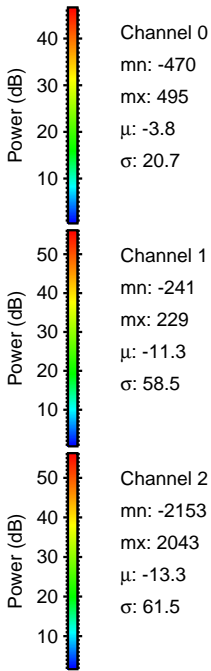
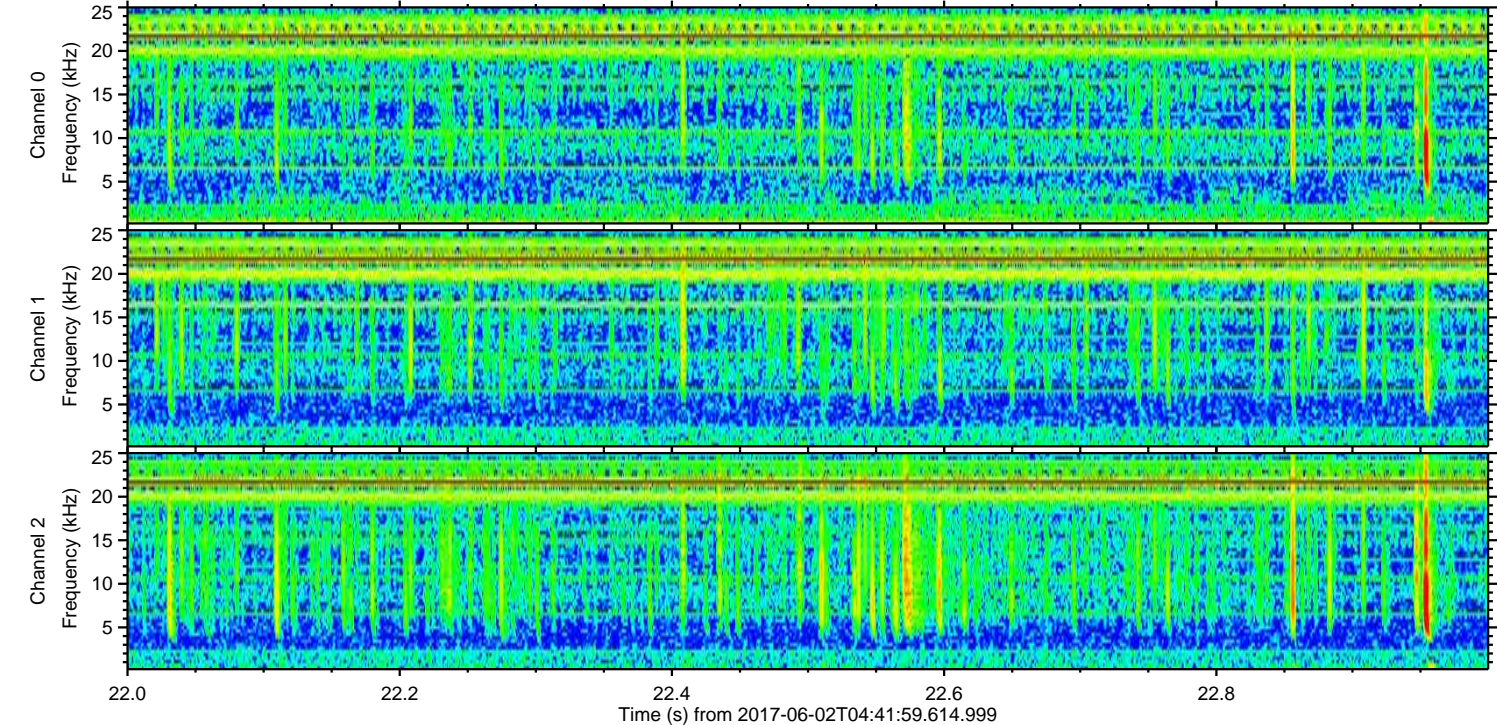
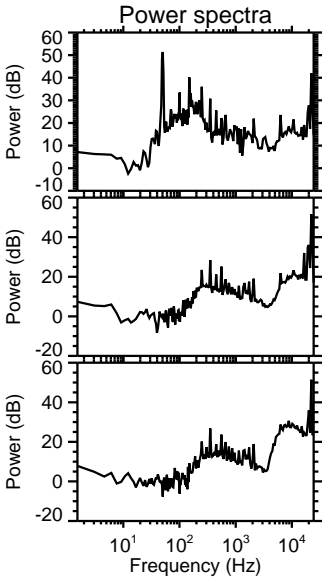
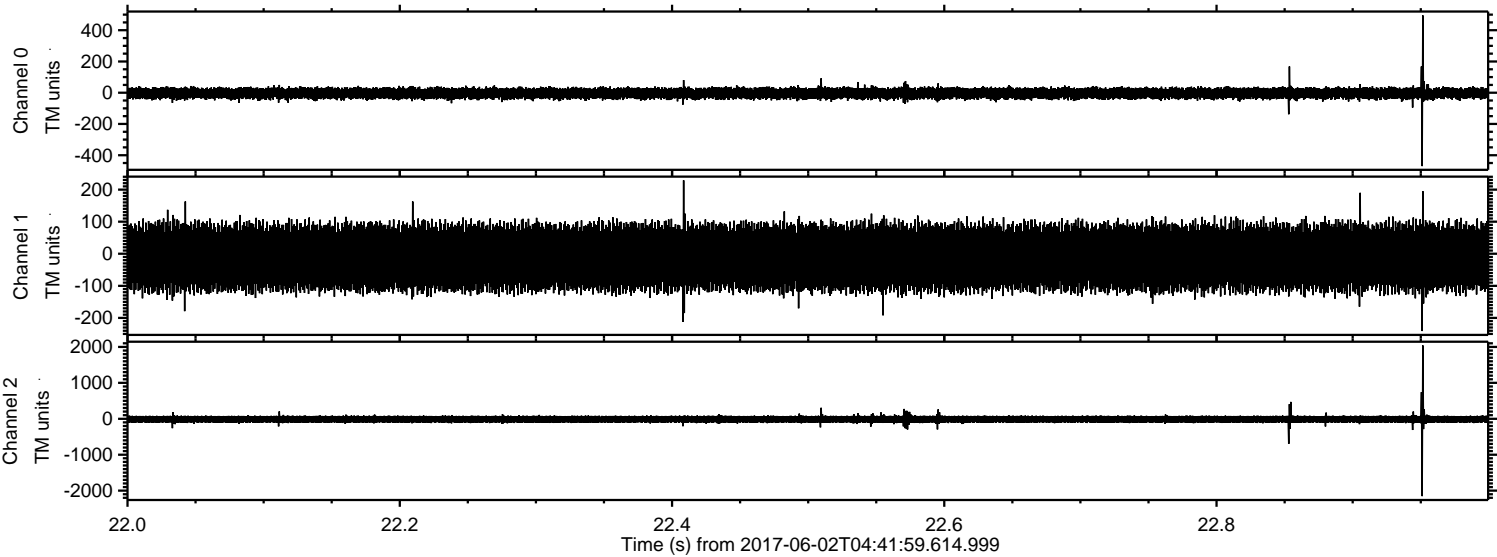
Processed Fri Jun 2 06:50:11 2017 by ELM ver.2012-10-06 from 001__elm20170602_044158__dat00.bin



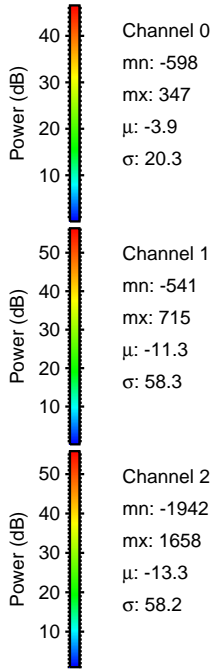
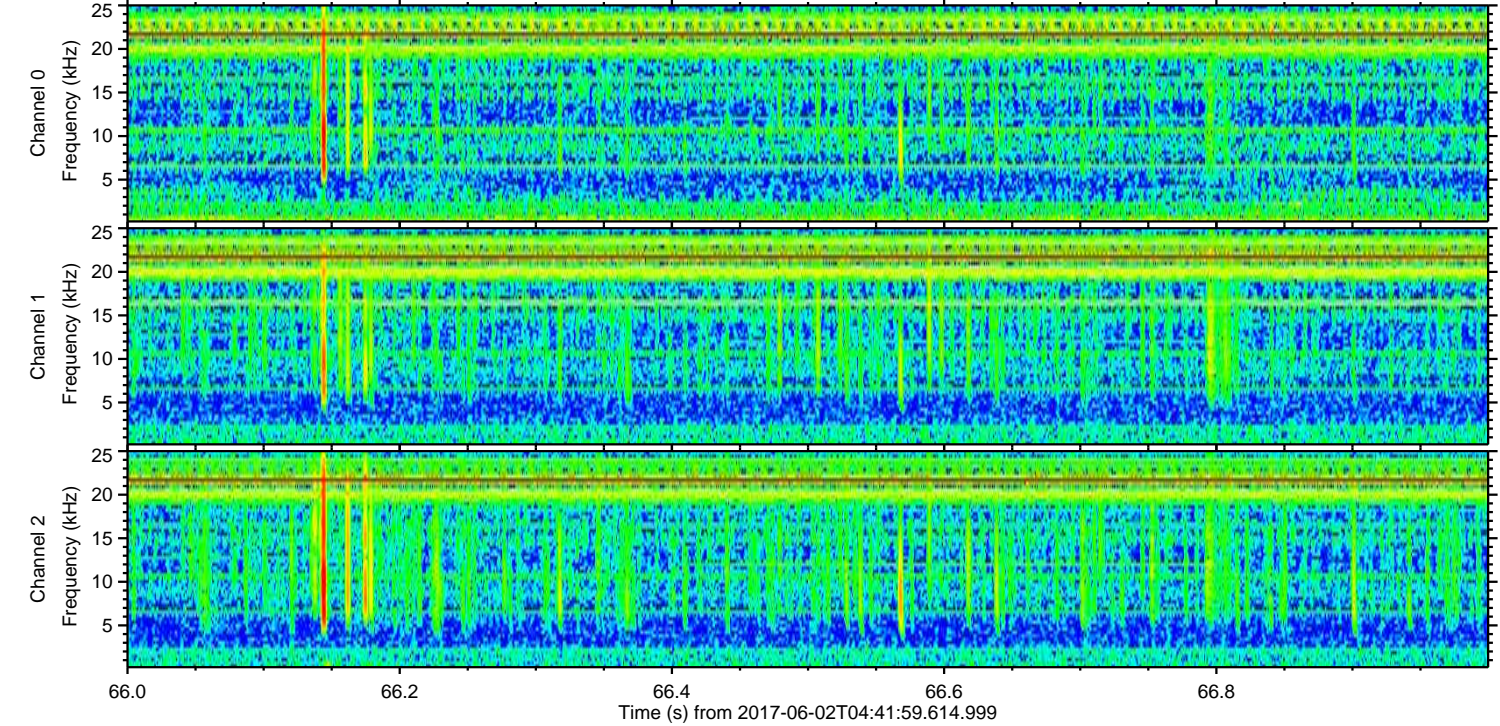
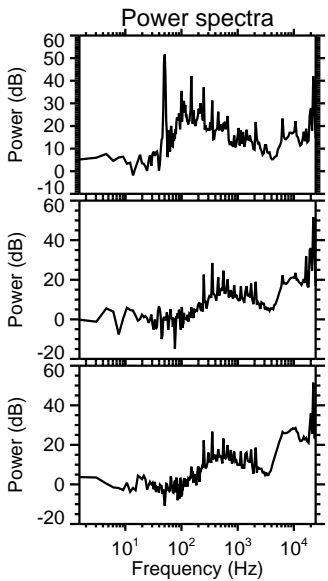
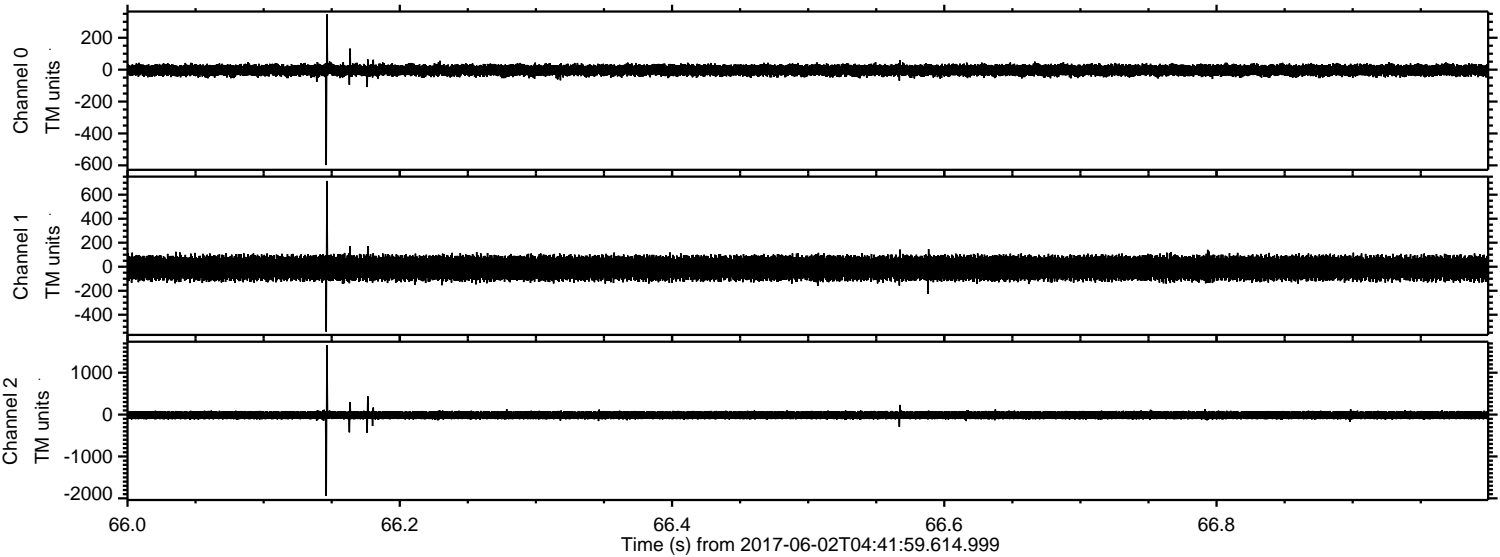
Processed Fri Jun 2 06:50:12 2017 by ELM ver.2012-10-06 from 001__elm20170602_044158__dat00.bin



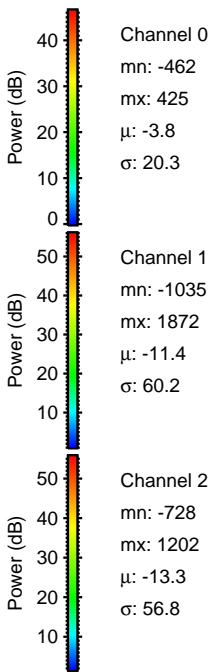
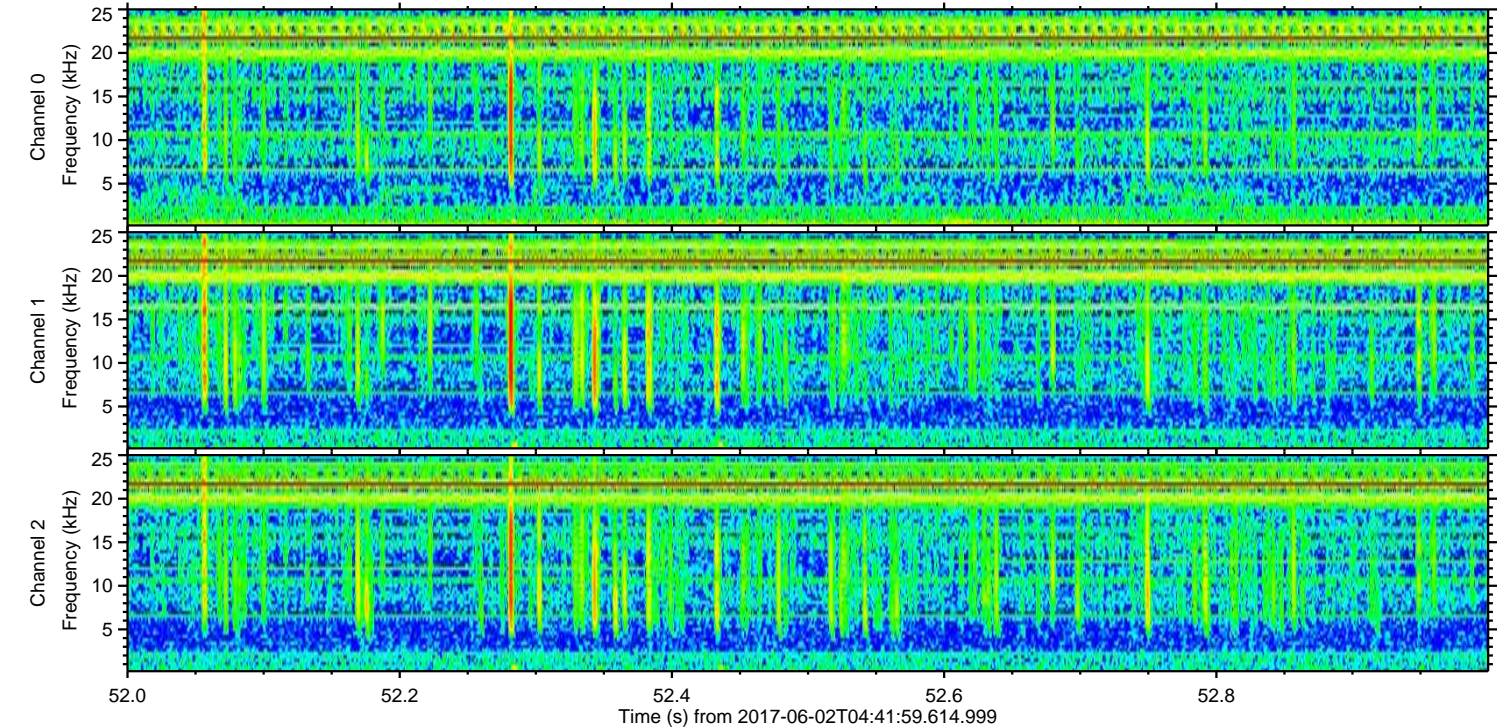
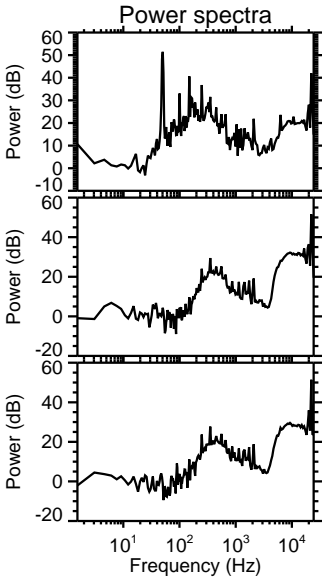
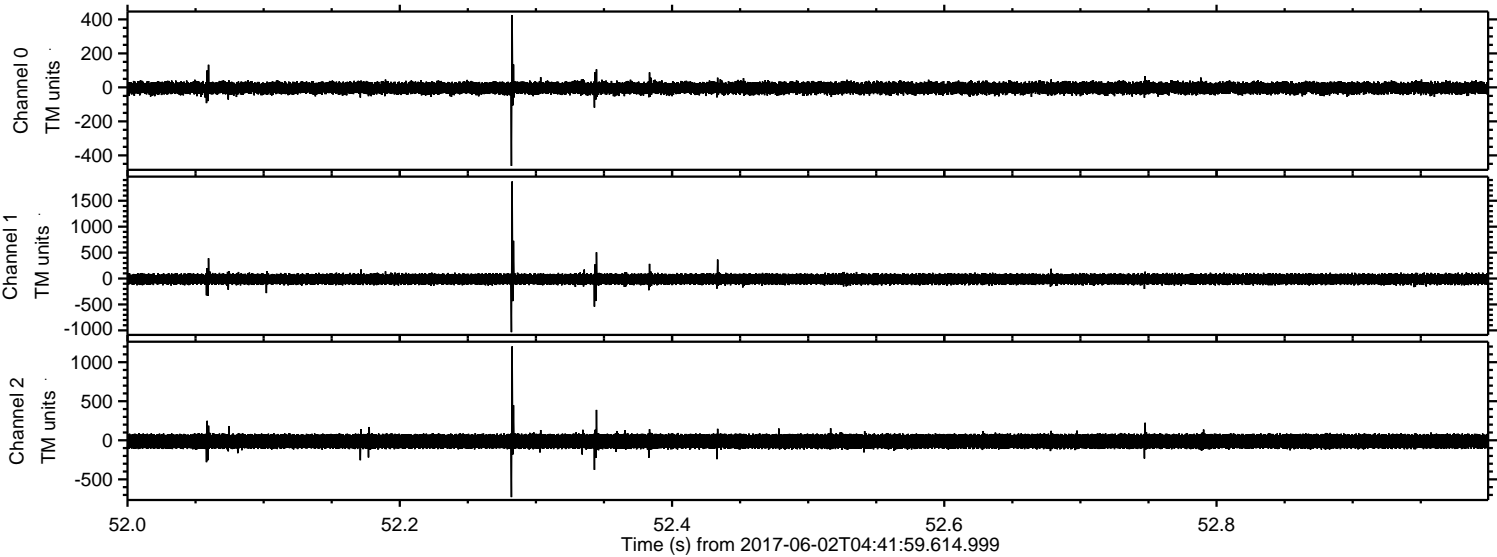
Processed Fri Jun 2 06:50:13 2017 by ELM ver.2012-10-06 from 001__elm20170602_044158__dat00.bin



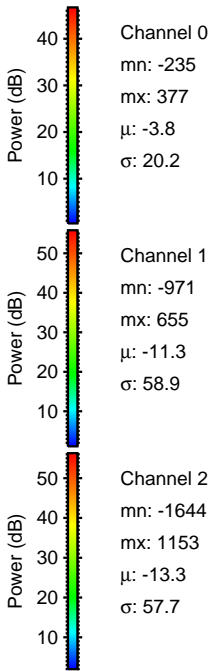
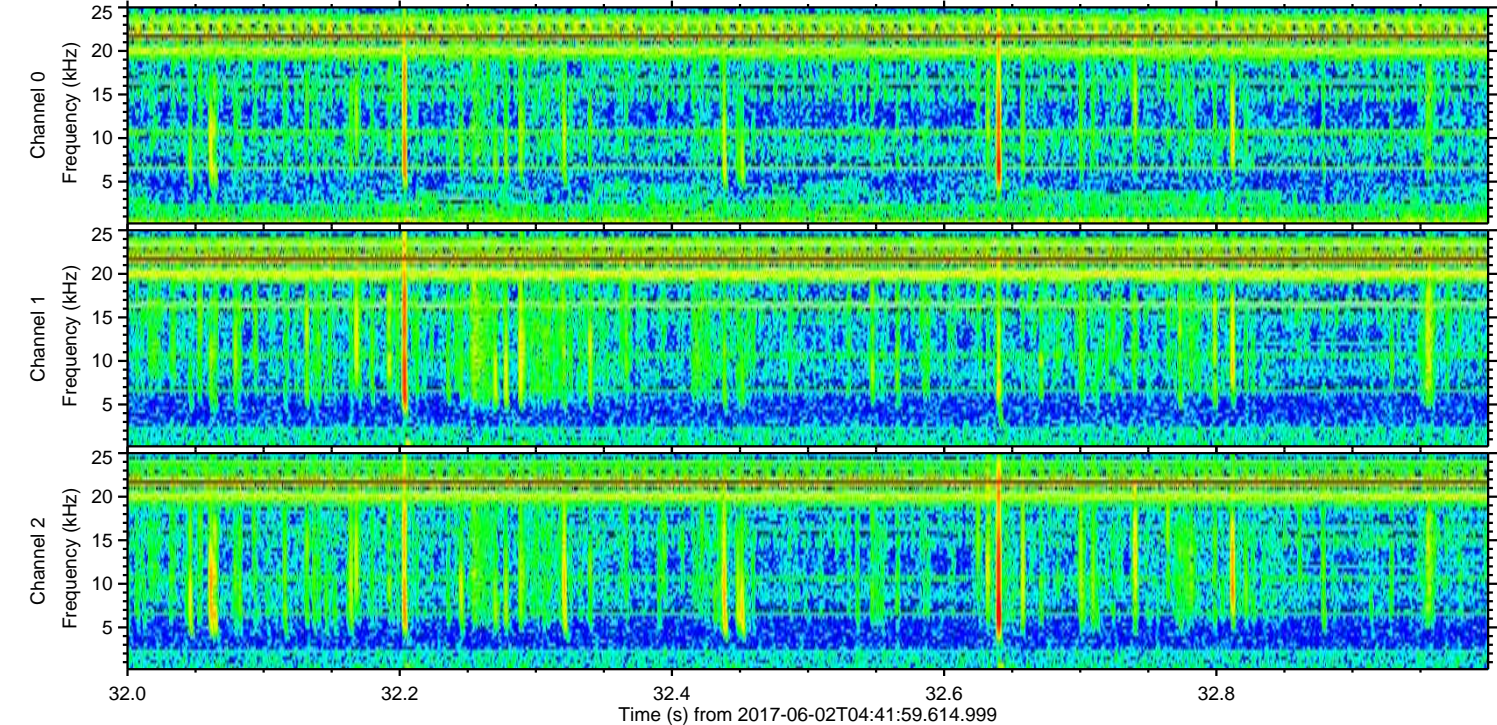
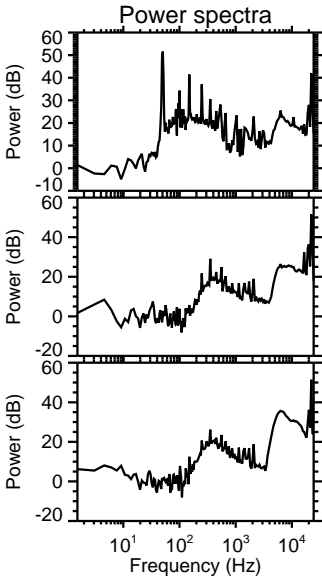
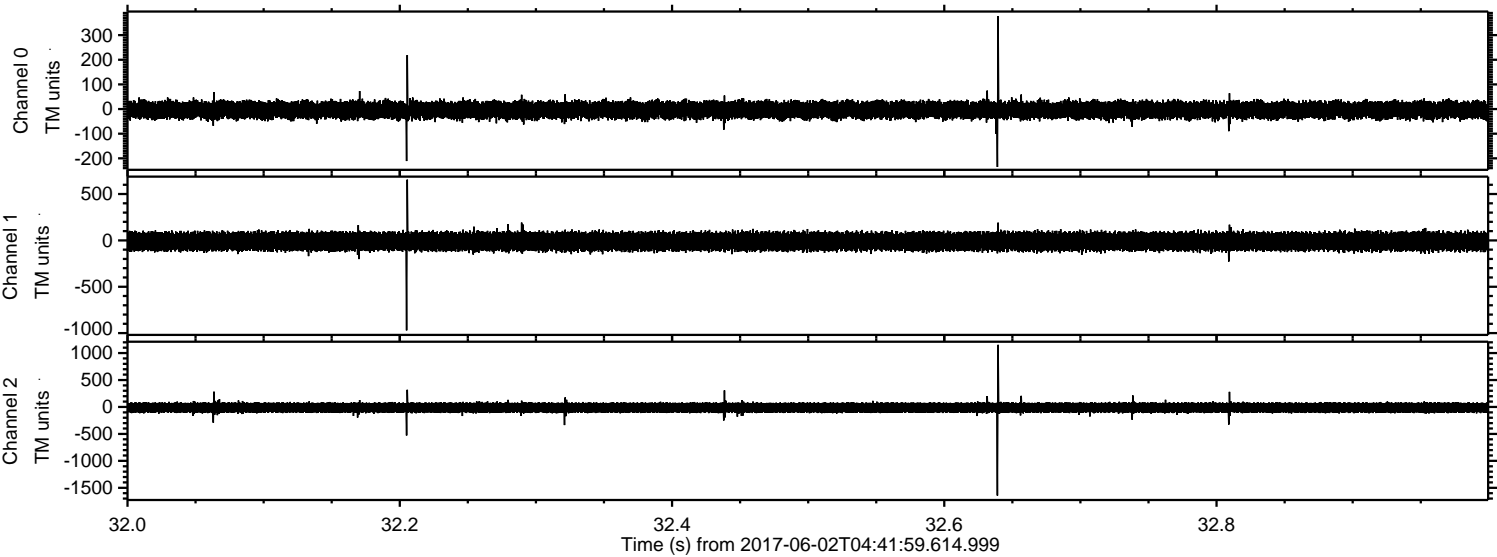
Processed Fri Jun 2 06:50:13 2017 by ELM ver.2012-10-06 from 001__elm20170602_044158__dat00.bin



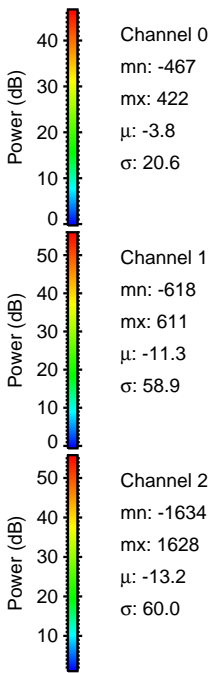
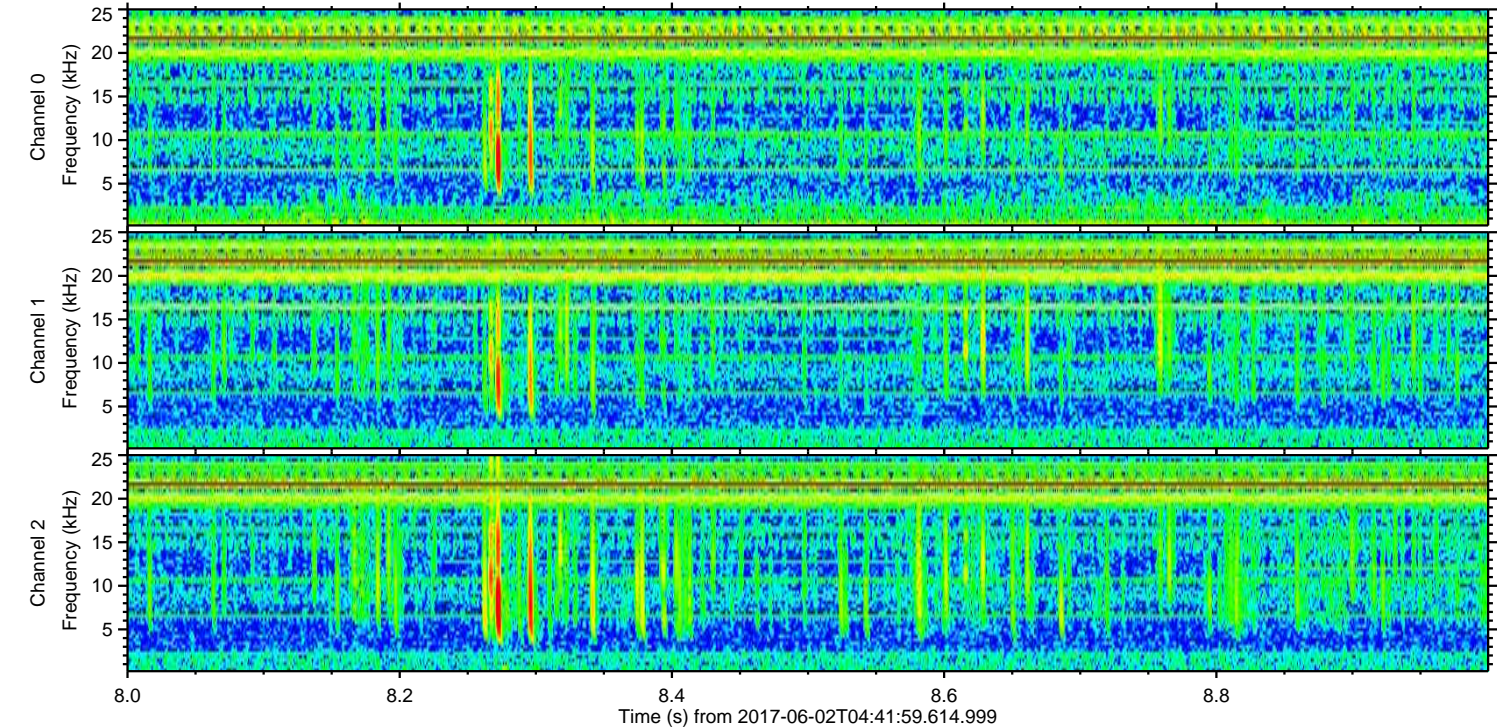
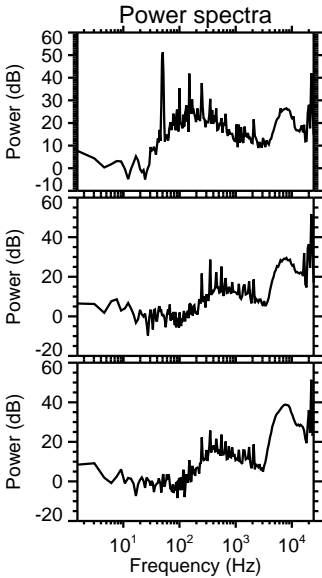
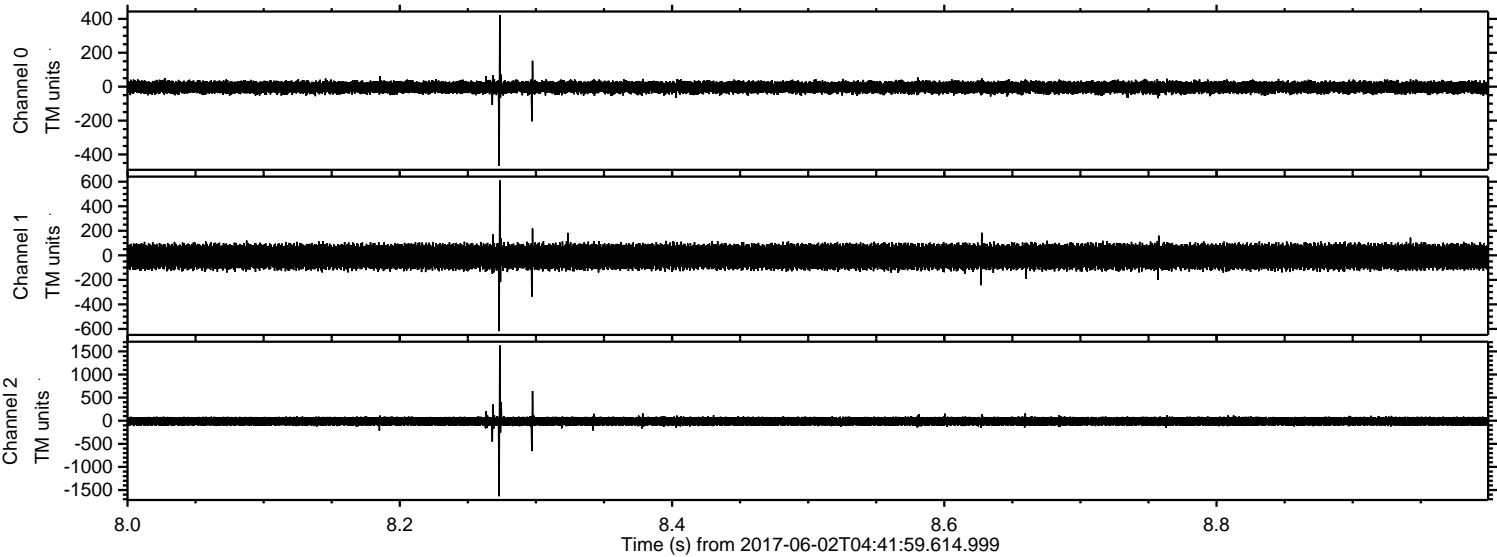
Processed Fri Jun 2 06:50:14 2017 by ELM ver.2012-10-06 from 001__elm20170602_044158__dat00.bin



Processed Fri Jun 2 06:50:15 2017 by ELM ver.2012-10-06 from 001__elm20170602_044158__dat00.bin



Processed Fri Jun 2 06:50:15 2017 by ELM ver.2012-10-06 from 001__elm20170602_044158__dat00.bin



Channel 0
mn: -467
mx: 422
 μ : -3.8
 σ : 20.6

Channel 1
mn: -618
mx: 611
 μ : -11.3
 σ : 58.9

Channel 2
mn: -1634
mx: 1628
 μ : -13.2
 σ : 60.0

