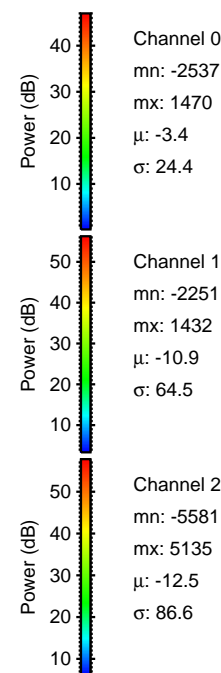
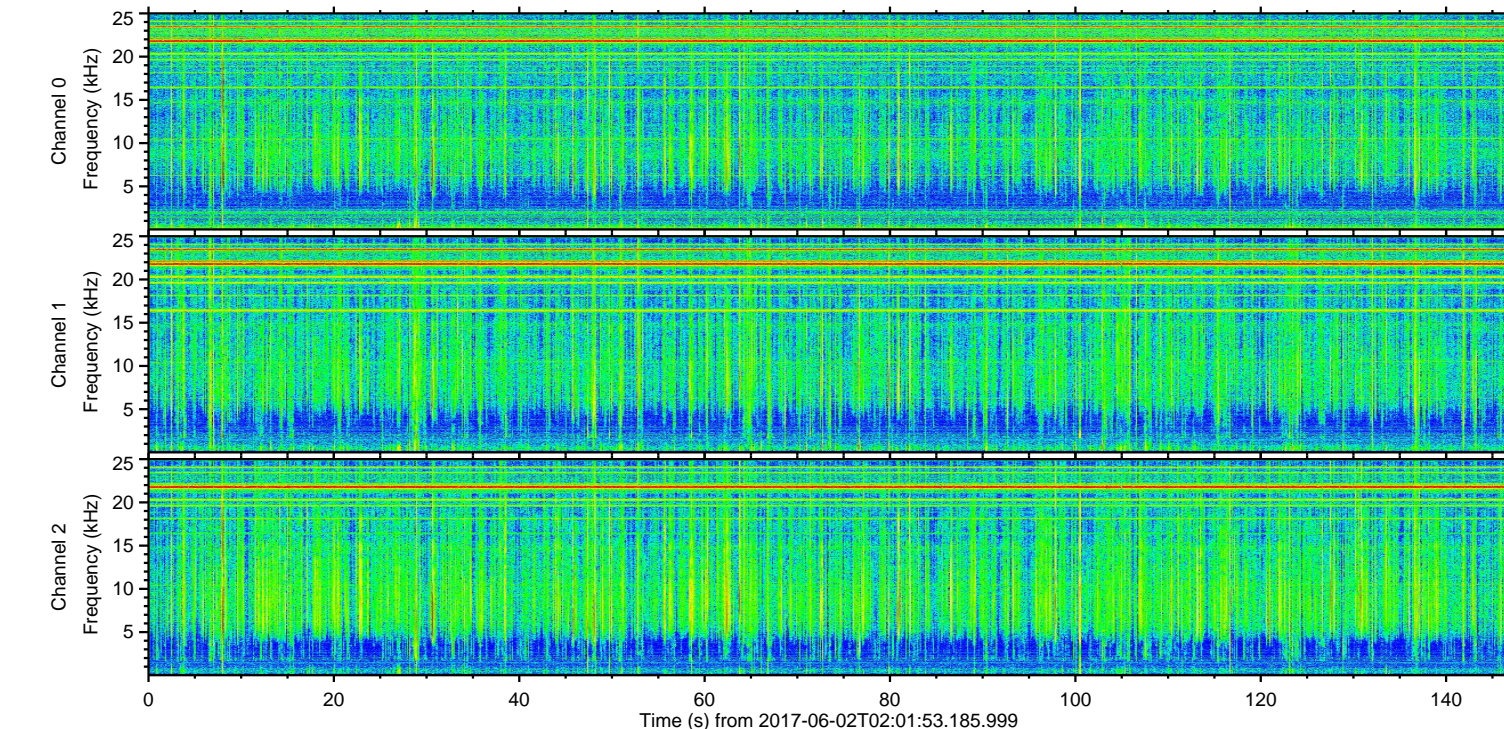
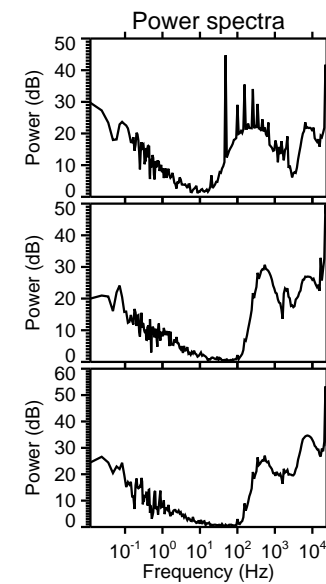
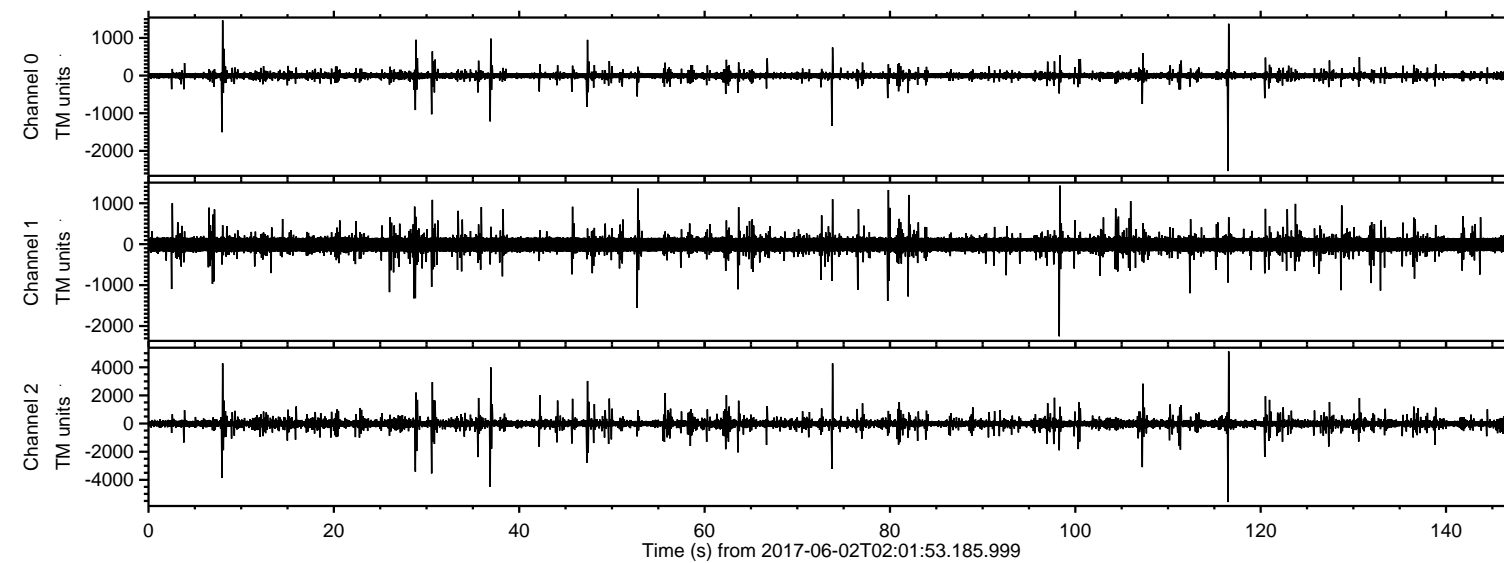


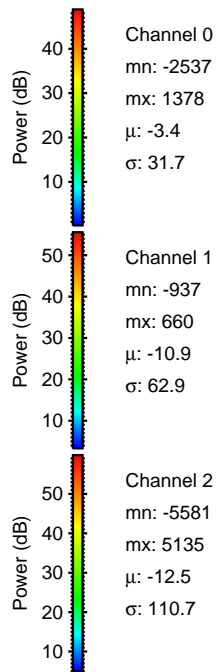
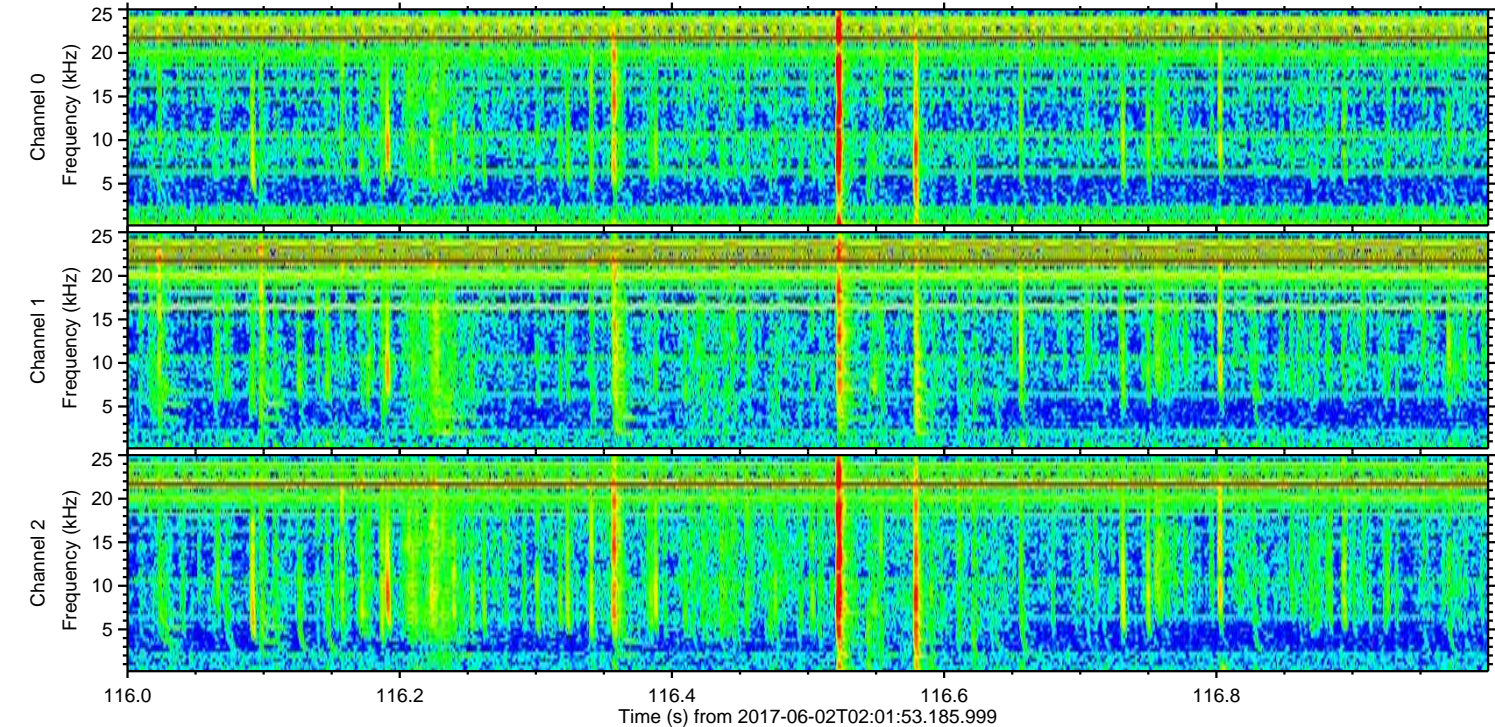
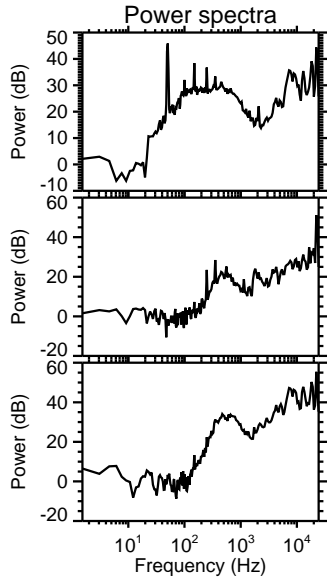
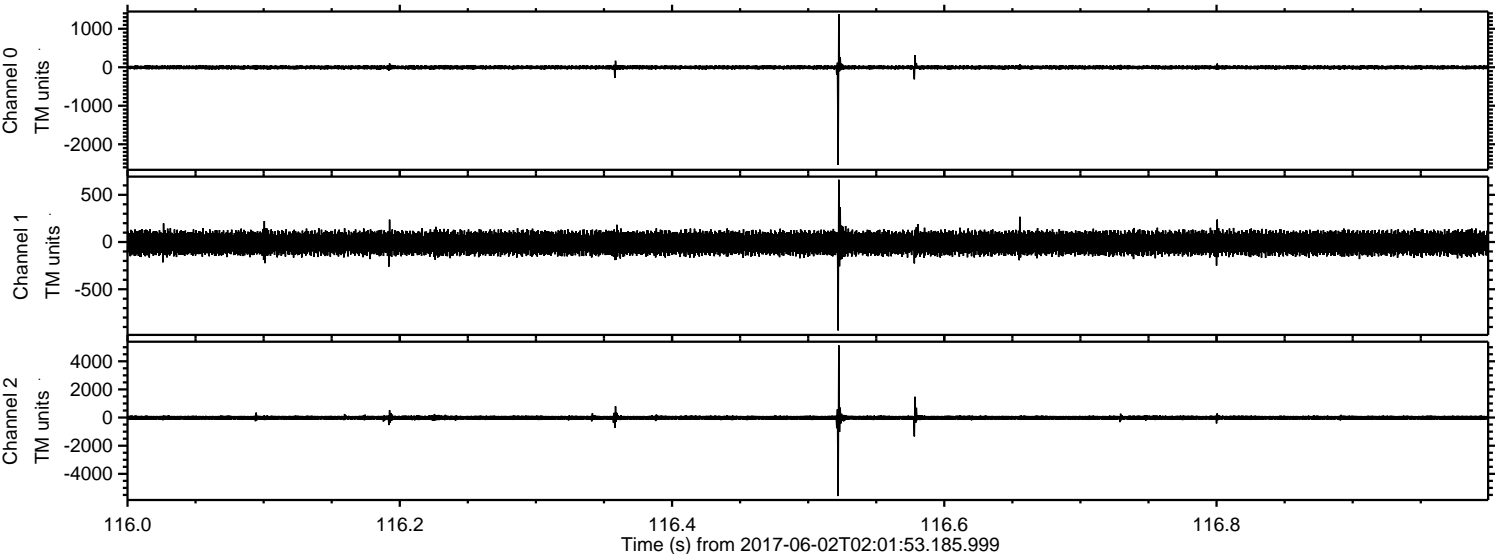
ELMAVAN 3D WAVEFORMS (Measured data sampled at 50 kHz) 51000 packets of 144 samples from 2017-06-02T02:01:53.185.999.

Processed Fri Jun 2 04:09:30 2017 by ELM ver.2012-10-06 from 001__elm20170602_020152__dat00.bin



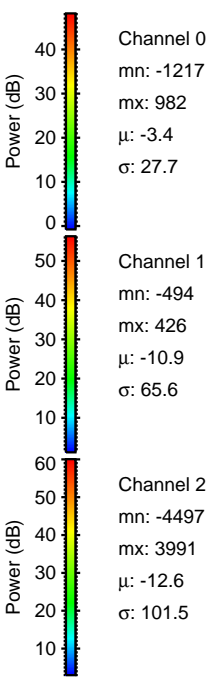
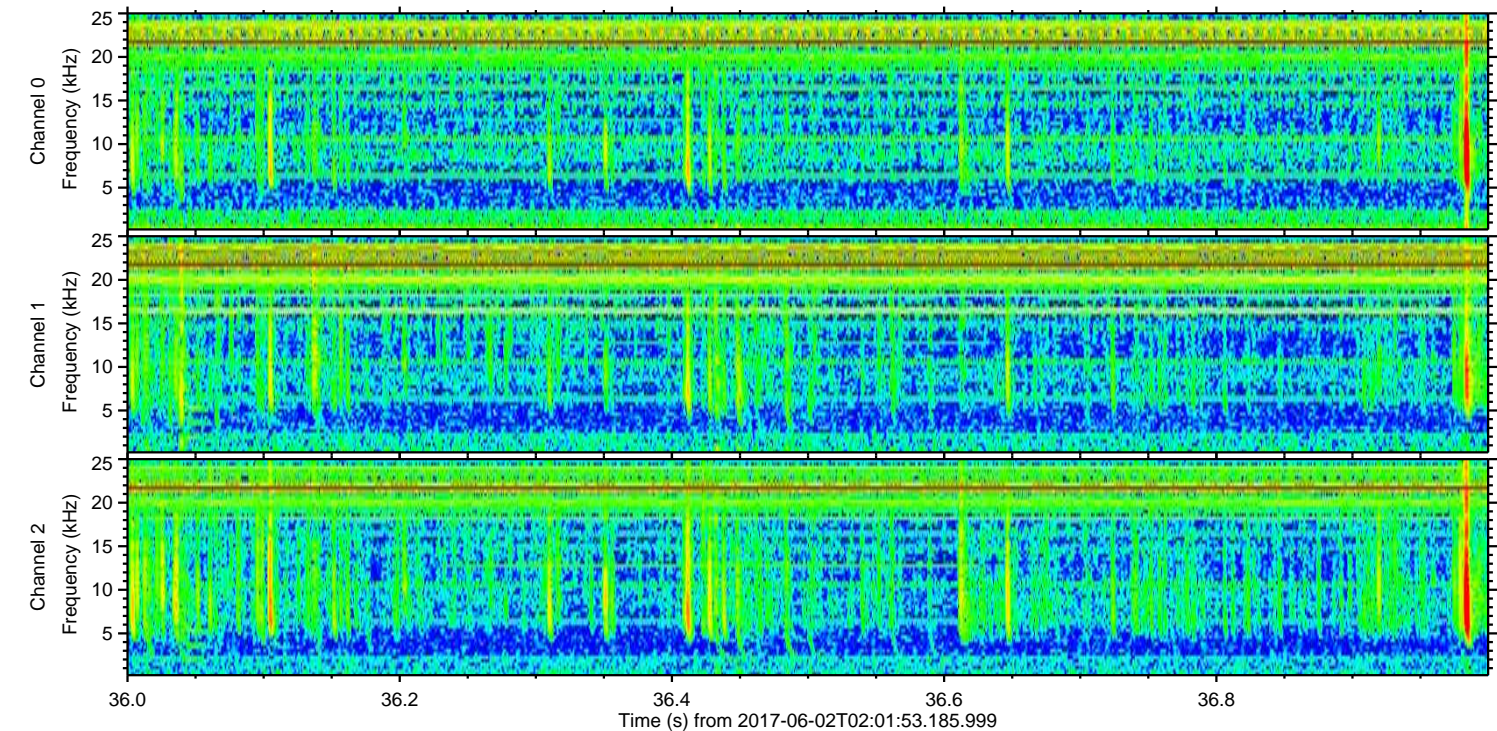
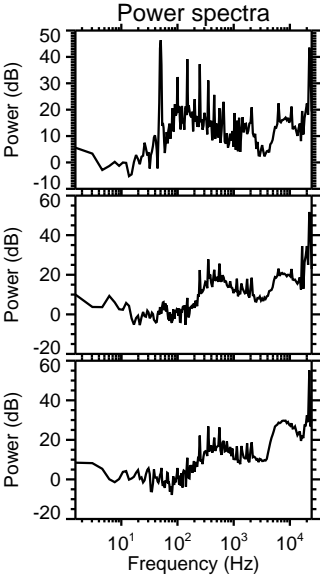
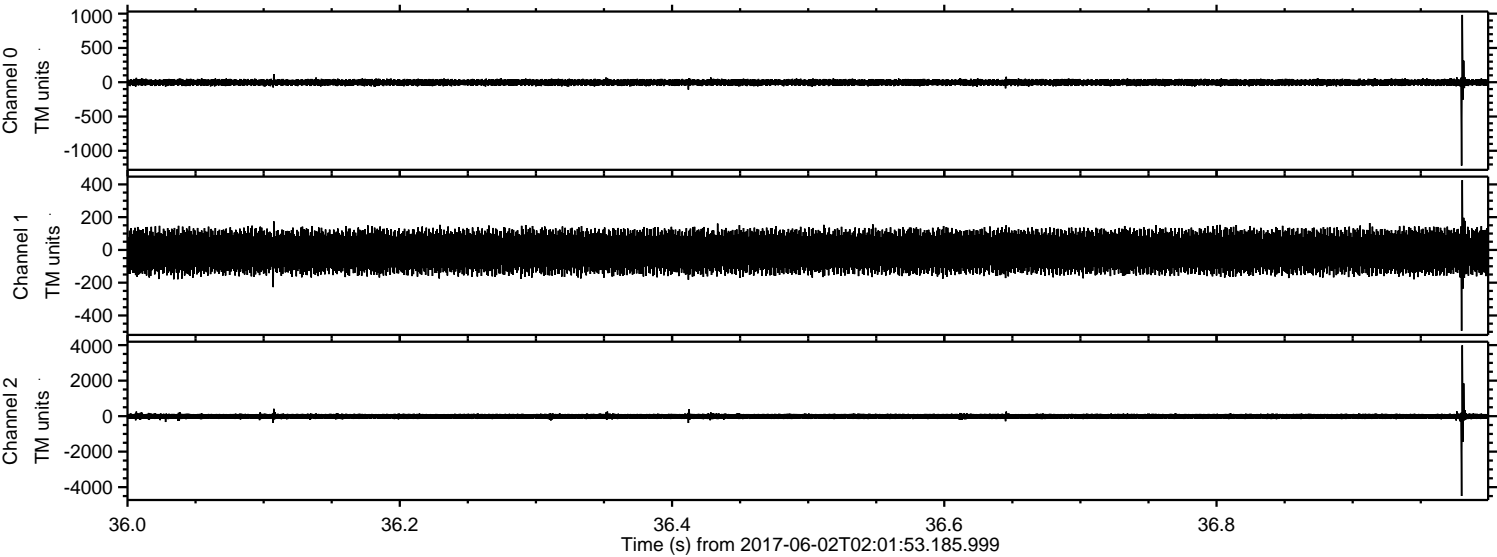
ELMAVAN 3D WAVEFORMS (Measured data sampled at 50 kHz) 51000 packets of 144 samples from 2017-06-02T02:01:53.185.999. Part 117/147

Processed Fri Jun 2 04:09:35 2017 by ELM ver.2012-10-06 from 001__elm20170602_020152__dat00.bin



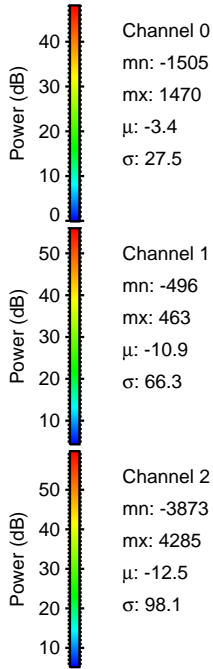
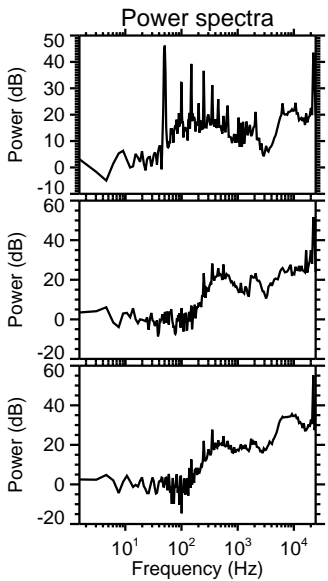
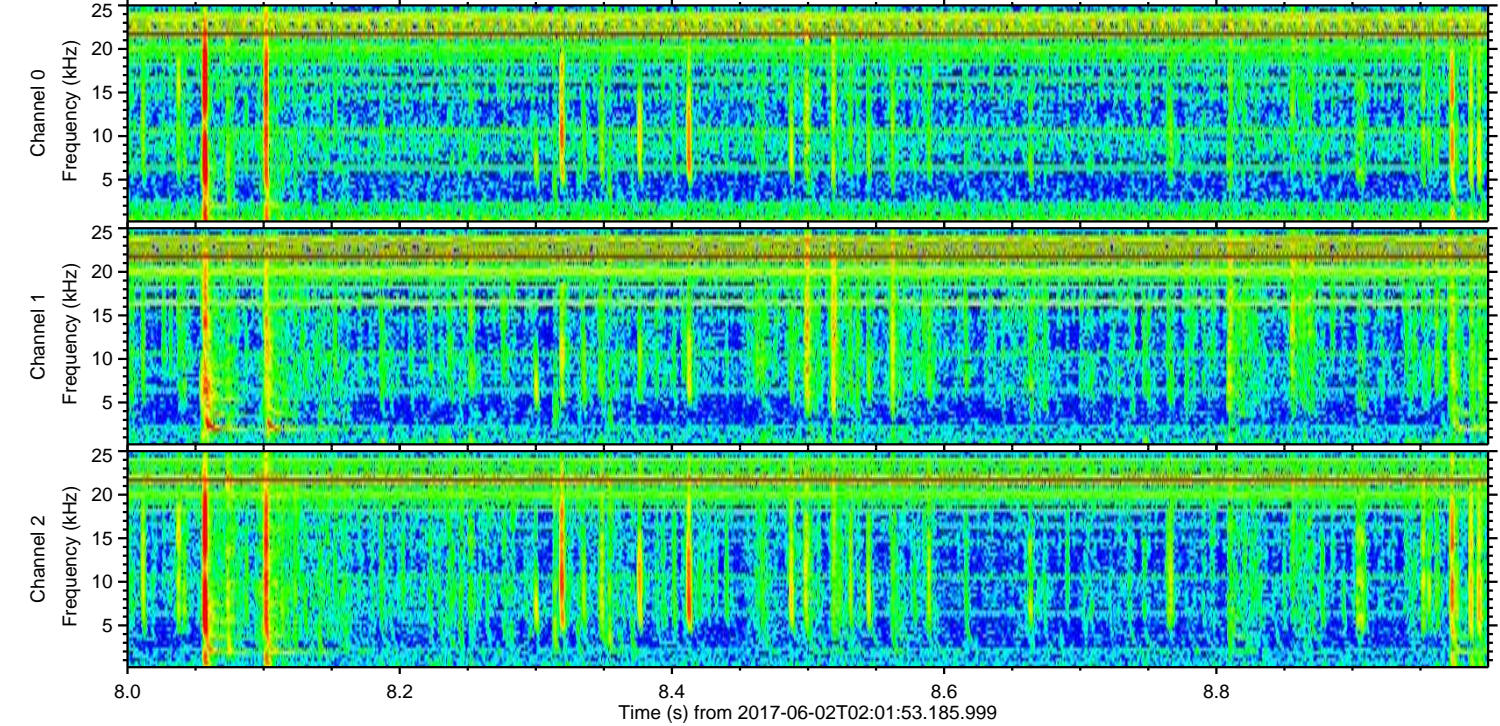
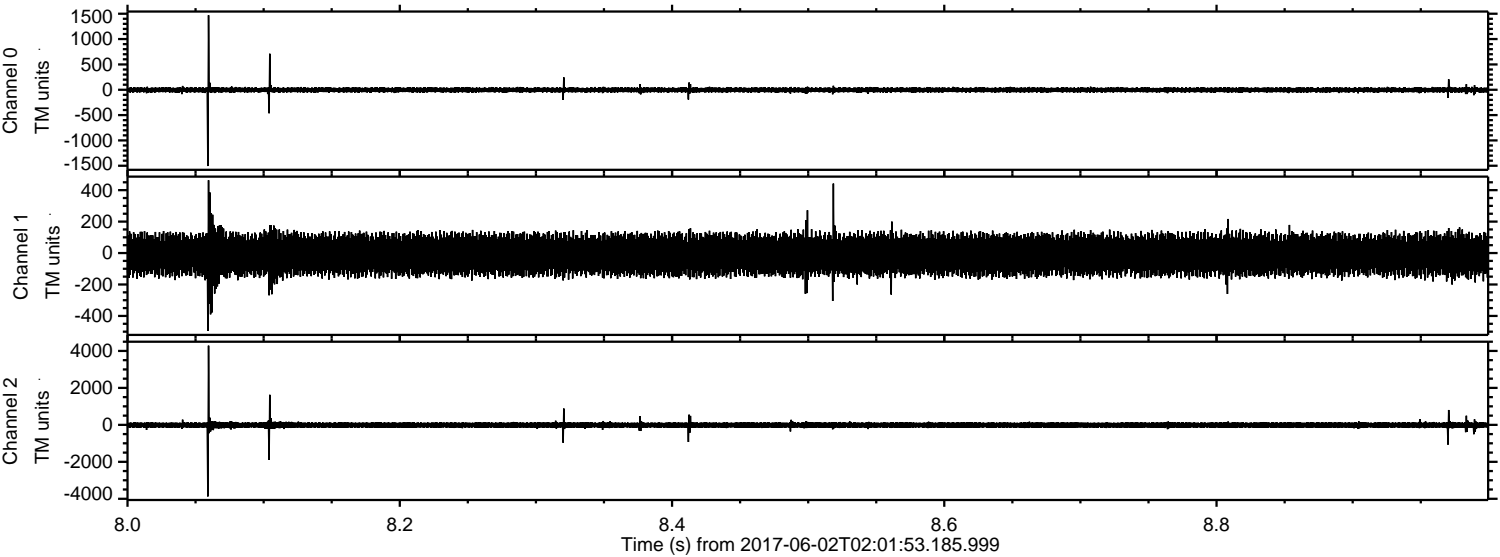
ELMAVAN 3D WAVEFORMS (Measured data sampled at 50 kHz) 51000 packets of 144 samples from 2017-06-02T02:01:53.185.999. Part 37/147

Processed Fri Jun 2 04:09:36 2017 by ELM ver.2012-10-06 from 001__elm20170602_020152__dat00.bin



ELMAVAN 3D WAVEFORMS (Measured data sampled at 50 kHz) 51000 packets of 144 samples from 2017-06-02T02:01:53.185.999. Part 9/147

Processed Fri Jun 2 04:09:37 2017 by ELM ver.2012-10-06 from 001__elm20170602_020152__dat00.bin

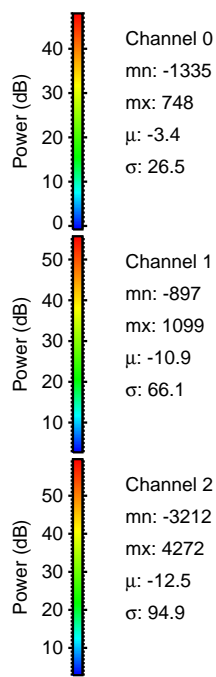
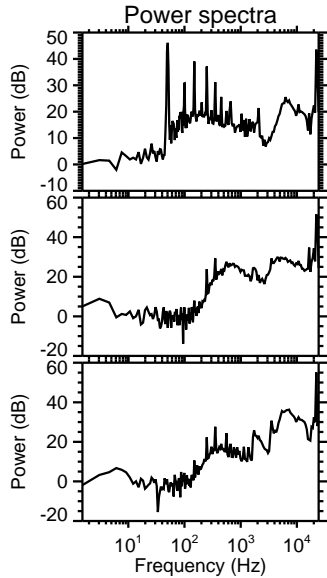
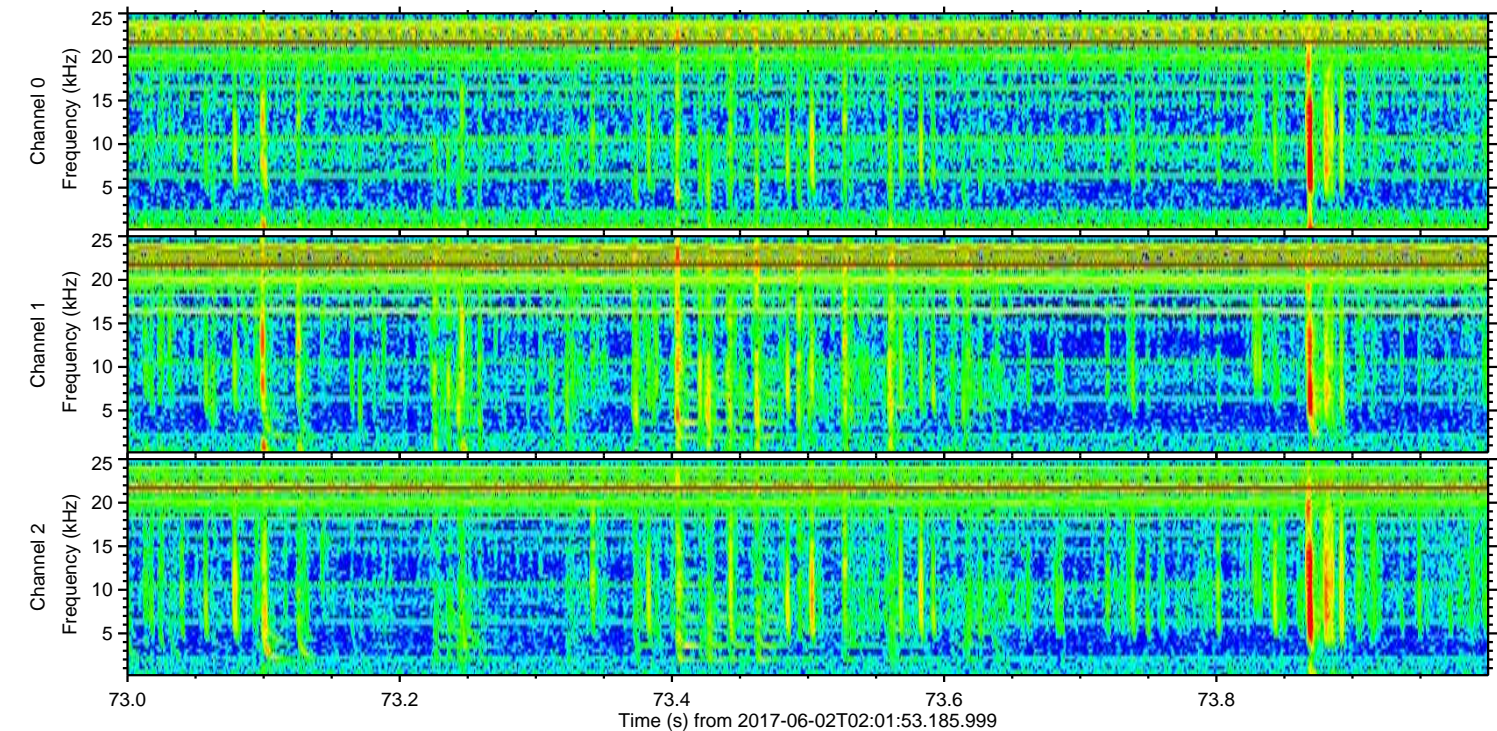
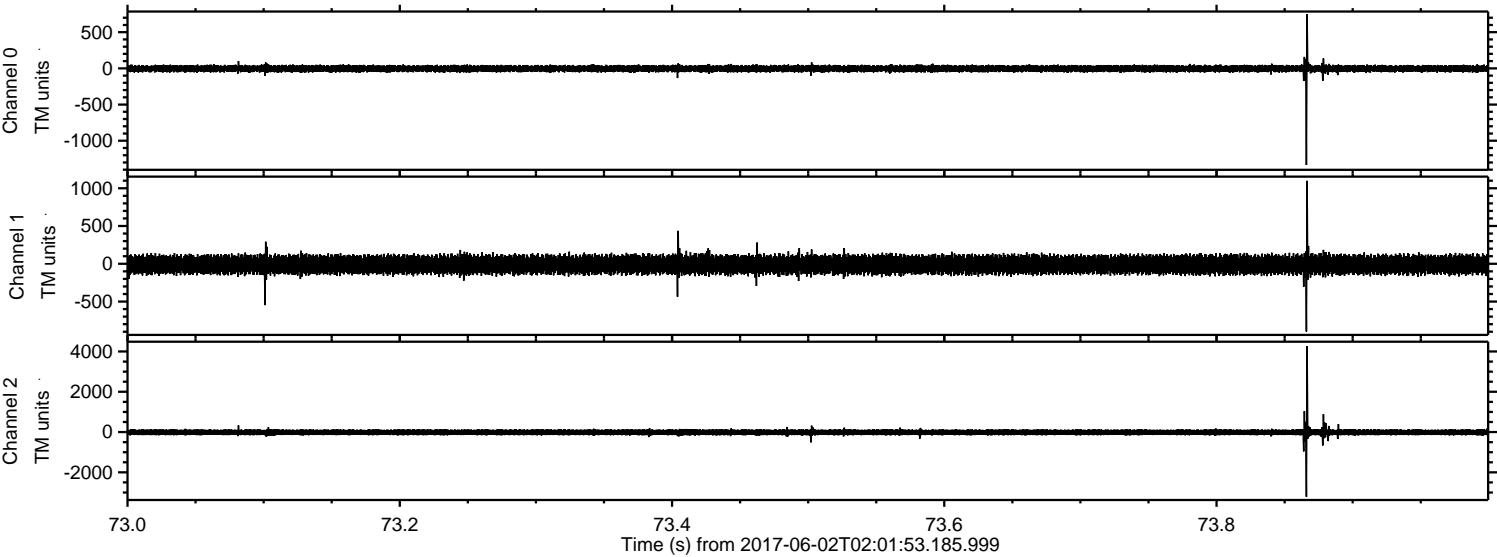


Channel 0
mn: -1505
mx: 1470
 μ : -3.4
 σ : 27.5

Channel 1
mn: -496
mx: 463
 μ : -10.9
 σ : 66.3

Channel 2
mn: -3873
mx: 4285
 μ : -12.5
 σ : 98.1

Processed Fri Jun 2 04:09:37 2017 by ELM ver.2012-10-06 from 001__elm20170602_020152__dat00.bin



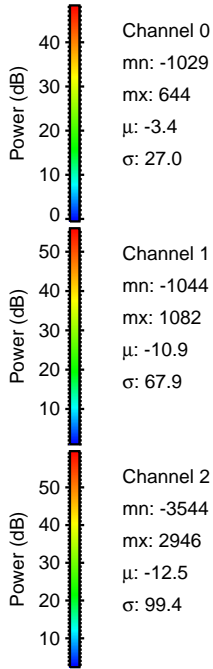
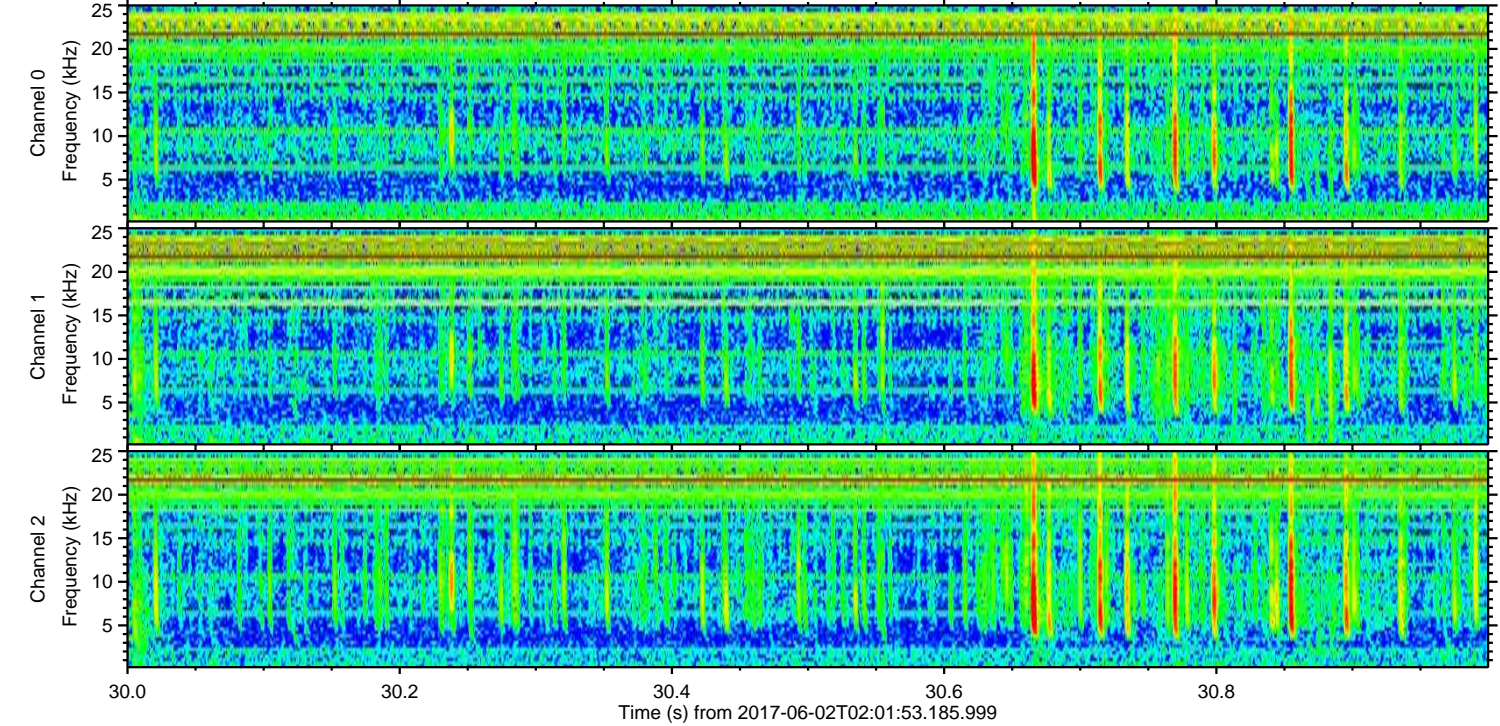
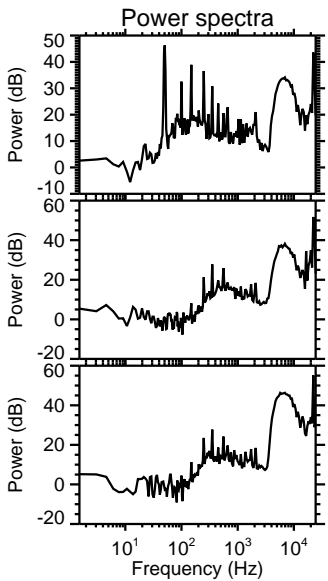
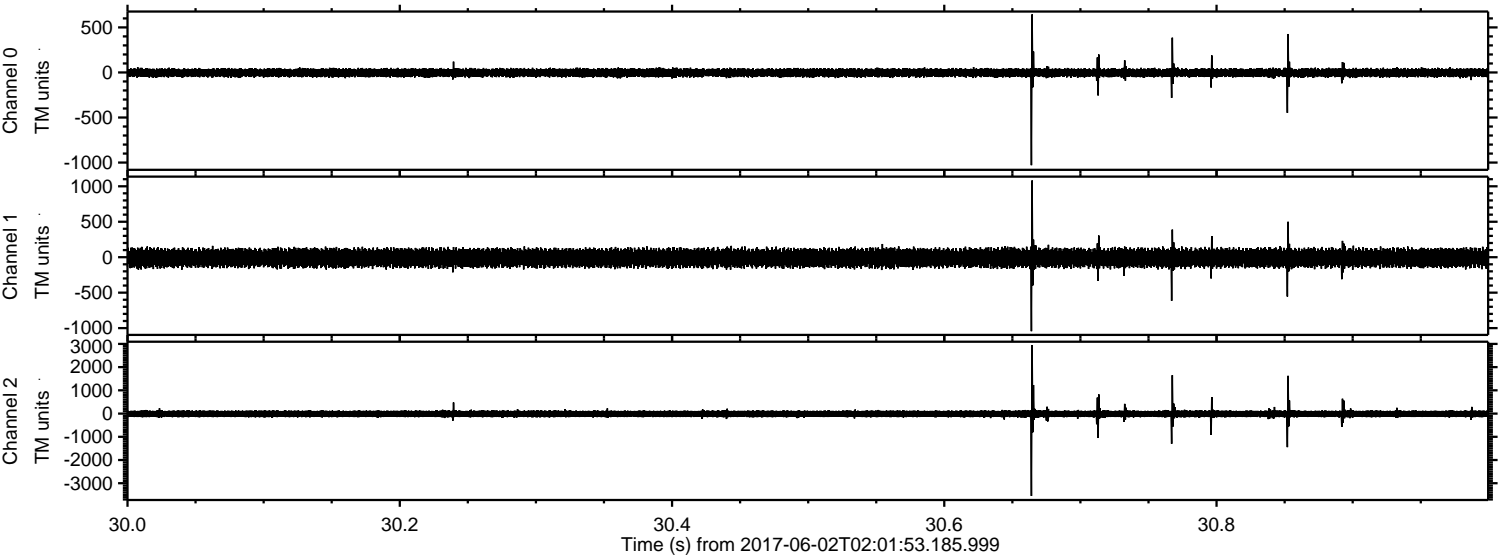
Channel 0
mn: -1335
mx: 748
 μ : -3.4
 σ : 26.5

Channel 1
mn: -897
mx: 1099
 μ : -10.9
 σ : 66.1

Channel 2
mn: -3212
mx: 4272
 μ : -12.5
 σ : 94.9

ELMAVAN 3D WAVEFORMS (Measured data sampled at 50 kHz) 51000 packets of 144 samples from 2017-06-02T02:01:53.185.999. Part 31/147

Processed Fri Jun 2 04:09:38 2017 by ELM ver.2012-10-06 from 001__elm20170602_020152__dat00.bin



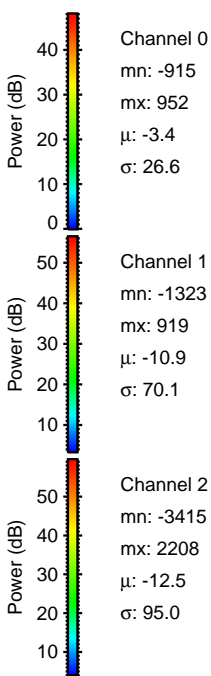
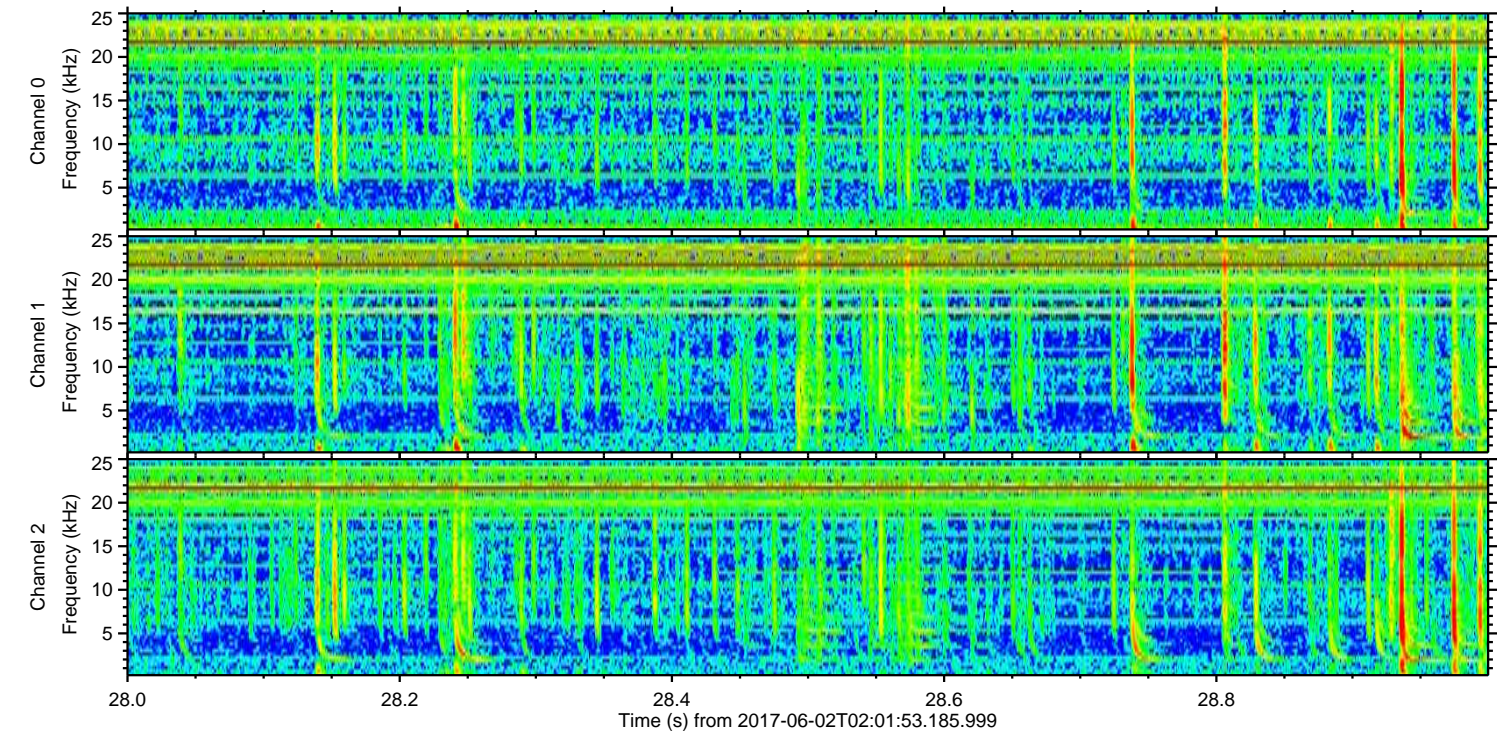
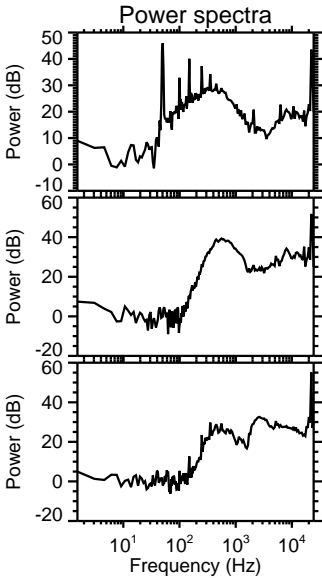
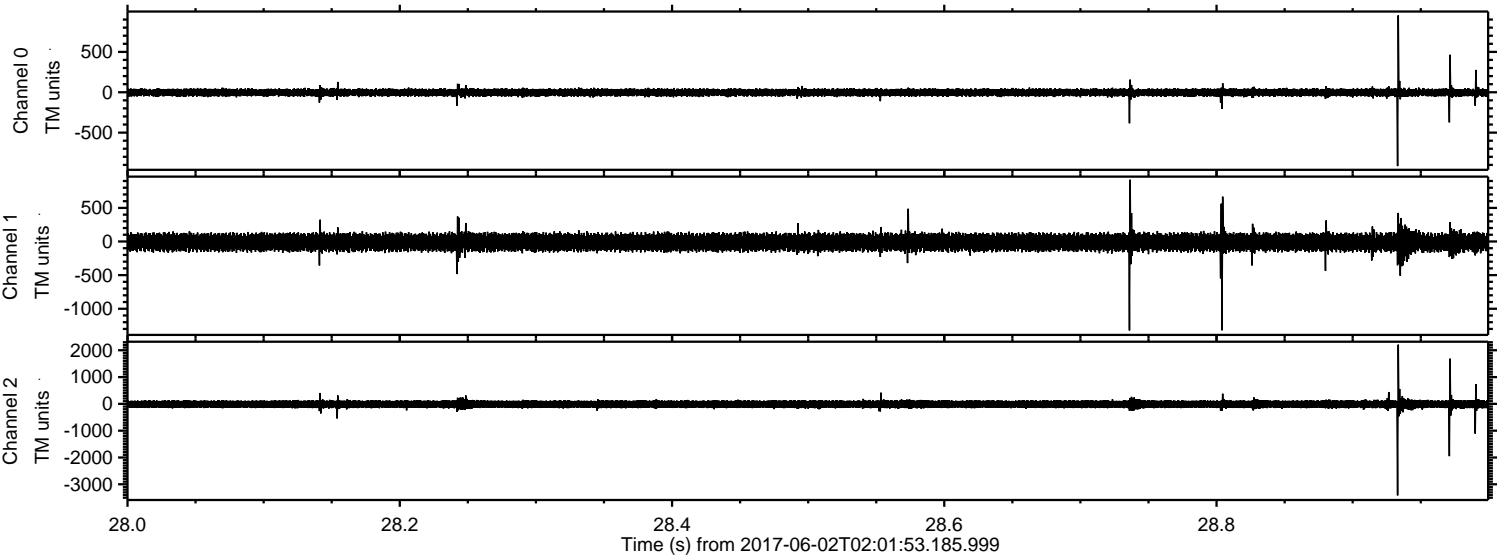
Channel 0
mn: -1029
mx: 644
 μ : -3.4
 σ : 27.0

Channel 1
mn: -1044
mx: 1082
 μ : -10.9
 σ : 67.9

Channel 2
mn: -3544
mx: 2946
 μ : -12.5
 σ : 99.4

ELMAVAN 3D WAVEFORMS (Measured data sampled at 50 kHz) 51000 packets of 144 samples from 2017-06-02T02:01:53.185.999. Part 29/147

Processed Fri Jun 2 04:09:38 2017 by ELM ver.2012-10-06 from 001__elm20170602_020152__dat00.bin

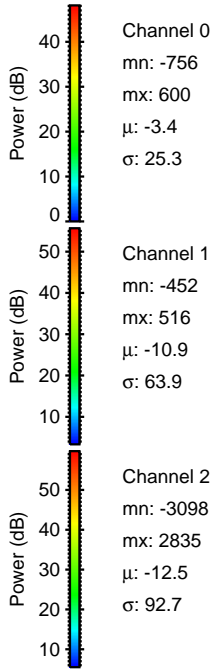
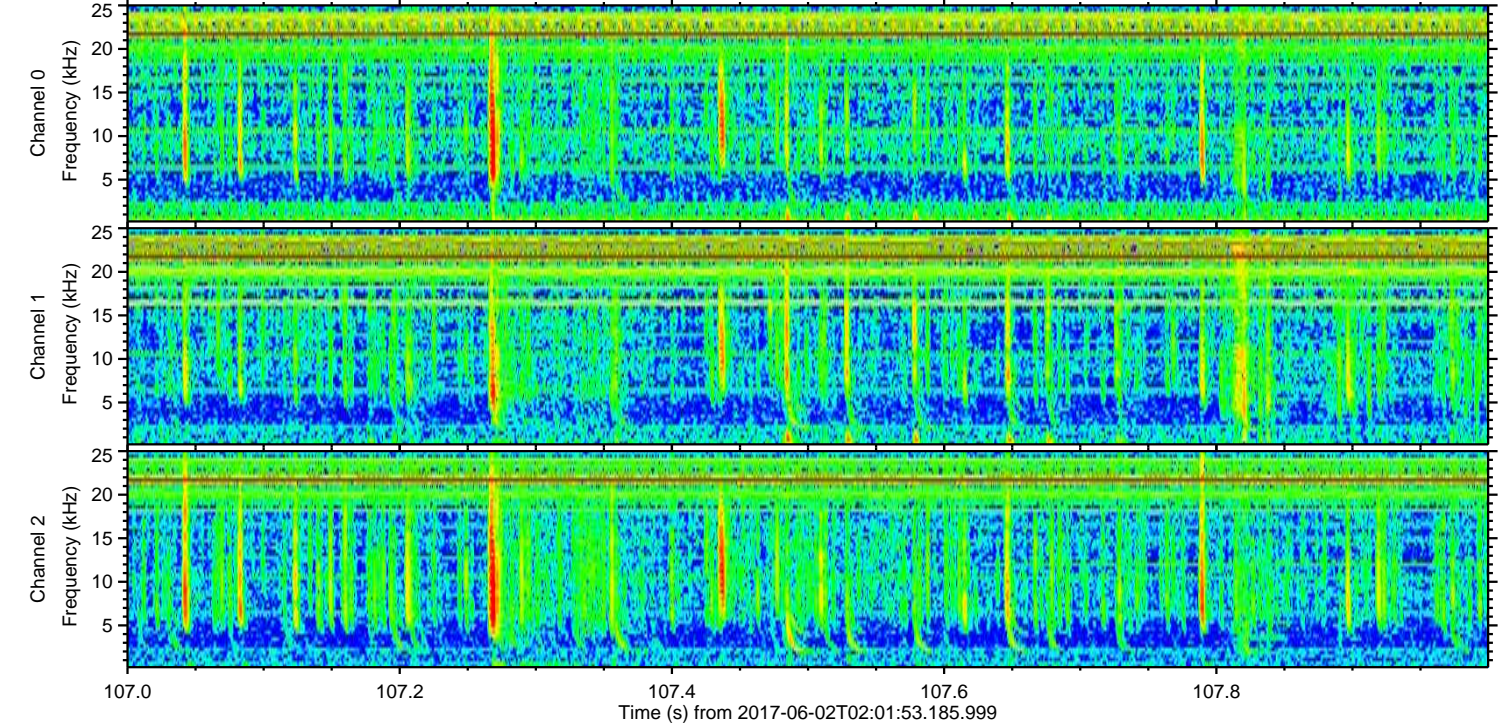
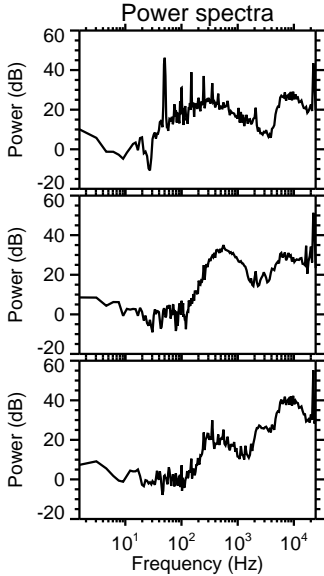
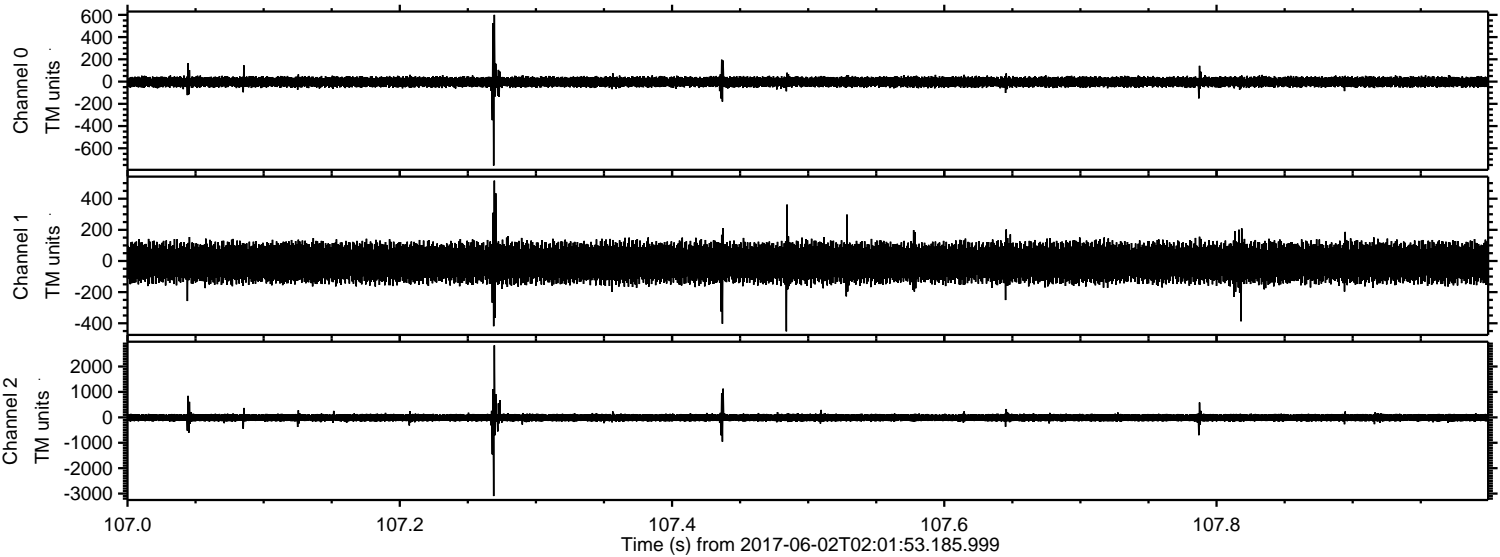


Channel 0
mn: -915
mx: 952
 μ : -3.4
 σ : 26.6

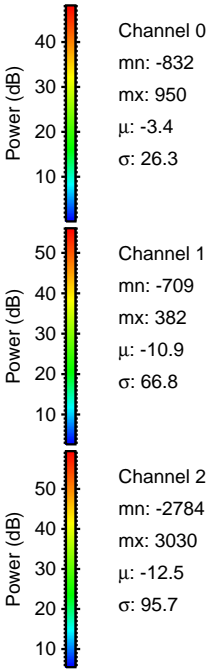
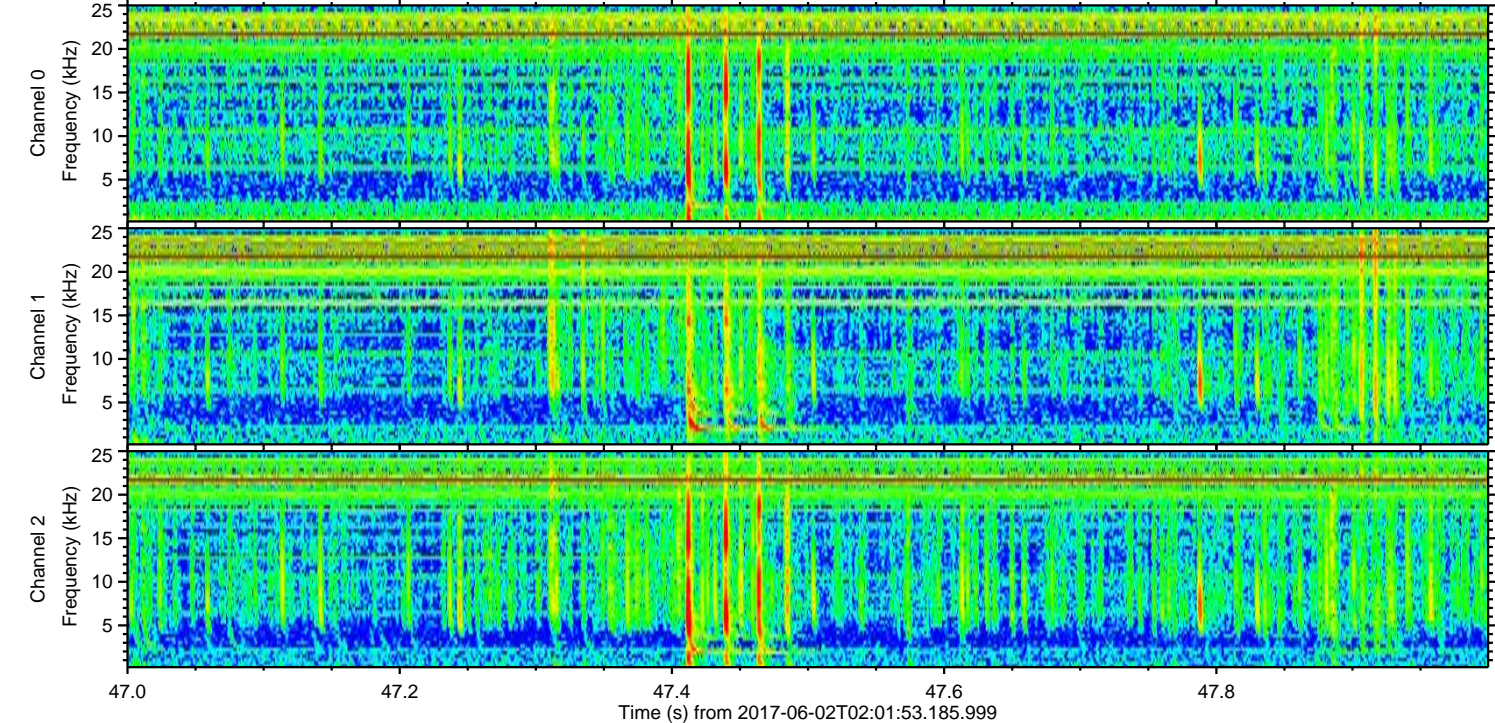
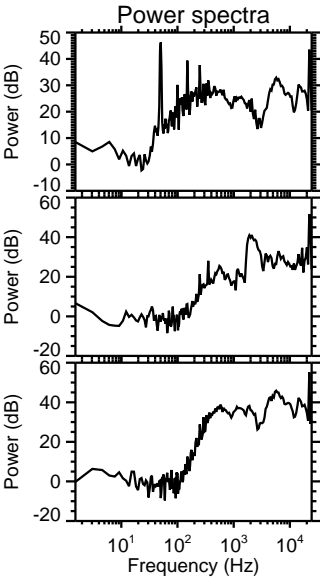
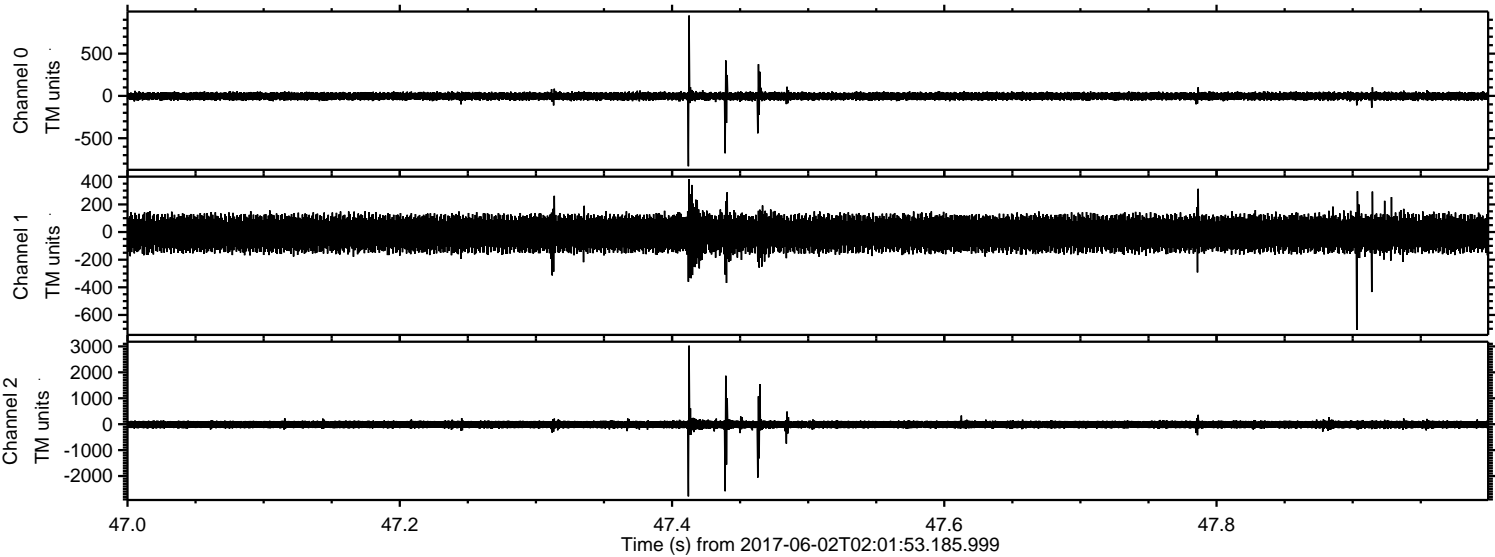
Channel 1
mn: -1323
mx: 919
 μ : -10.9
 σ : 70.1

Channel 2
mn: -3415
mx: 2208
 μ : -12.5
 σ : 95.0

Processed Fri Jun 2 04:09:39 2017 by ELM ver.2012-10-06 from 001__elm20170602_020152__dat00.bin

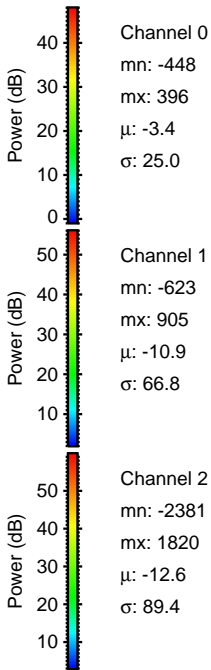
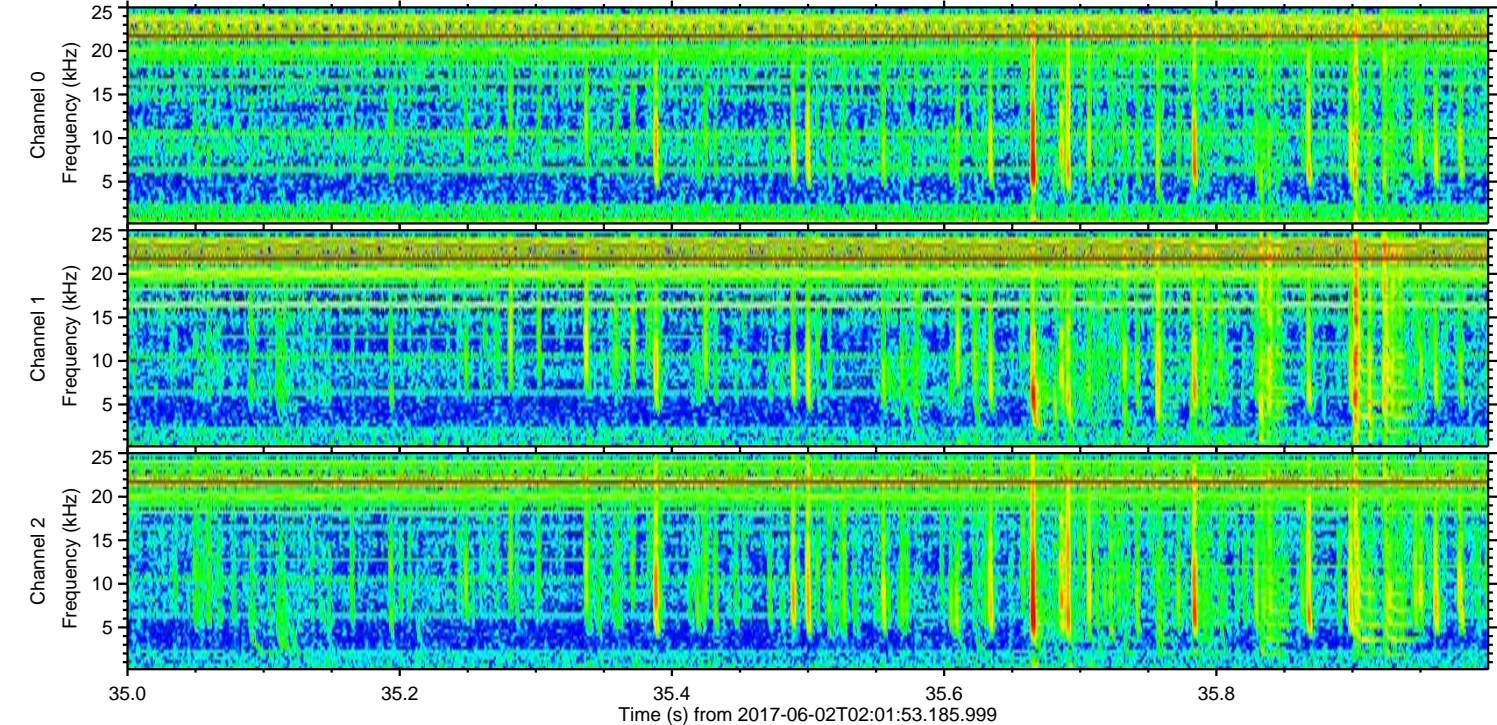
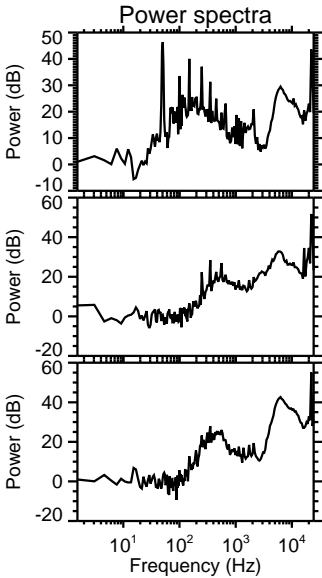
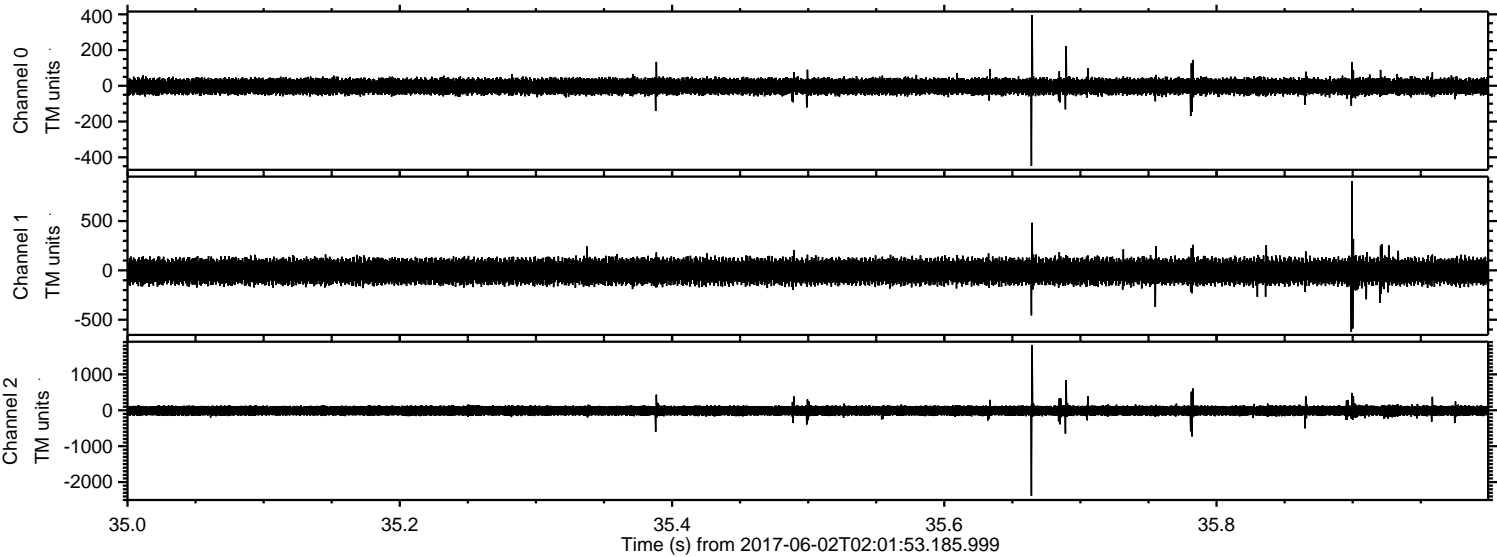


Processed Fri Jun 2 04:09:40 2017 by ELM ver.2012-10-06 from 001__elm20170602_020152__dat00.bin



ELMAVAN 3D WAVEFORMS (Measured data sampled at 50 kHz) 51000 packets of 144 samples from 2017-06-02T02:01:53.185.999. Part 36/147

Processed Fri Jun 2 04:09:40 2017 by ELM ver.2012-10-06 from 001__elm20170602_020152__dat00.bin



ELMAVAN 3D WAVEFORMS (Measured data sampled at 50 kHz) 51000 packets of 144 samples from 2017-06-02T02:01:53.185.999. Part 5/147

Processed Fri Jun 2 04:09:41 2017 by ELM ver.2012-10-06 from 001__elm20170602_020152__dat00.bin

