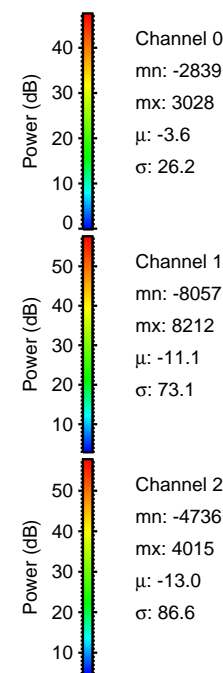
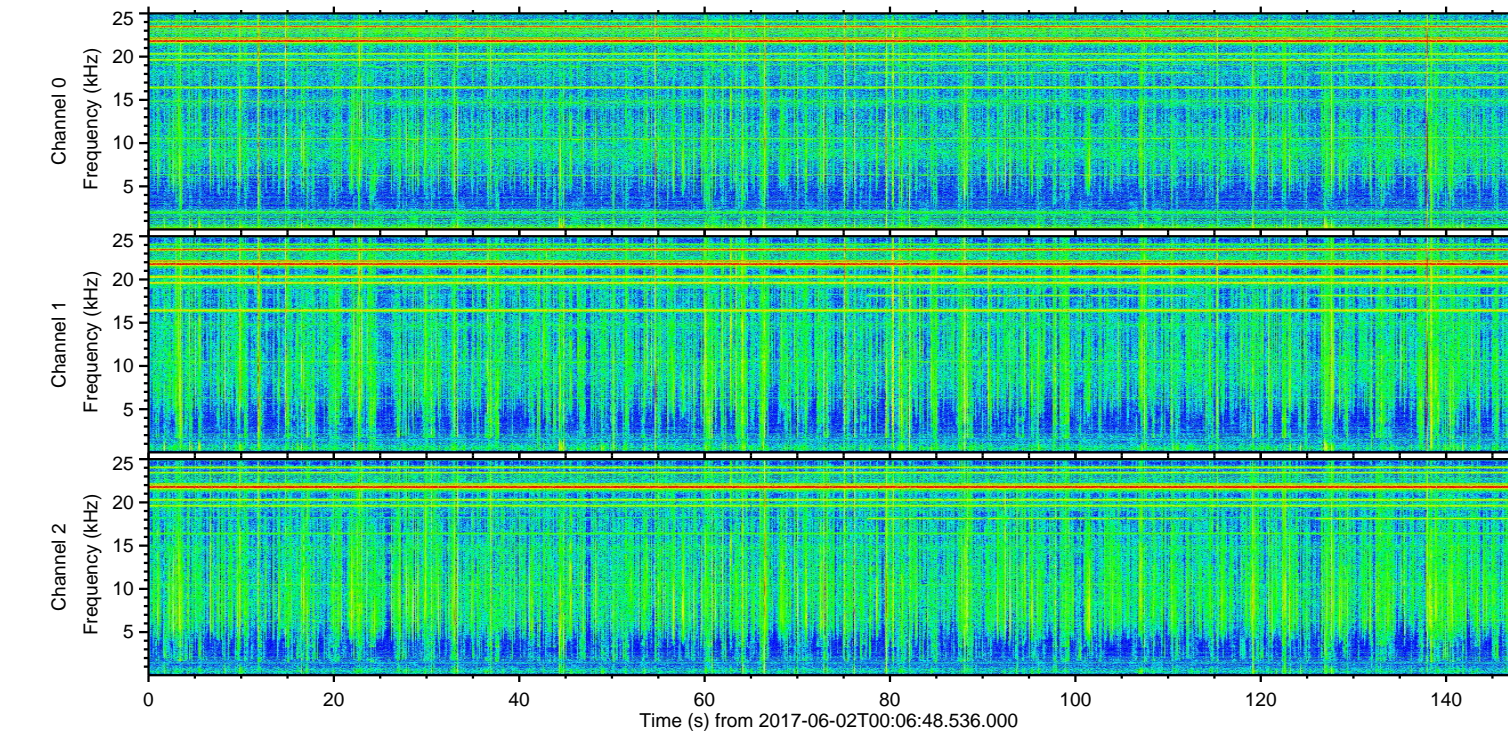
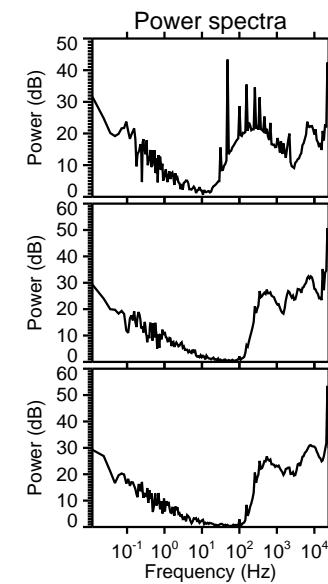
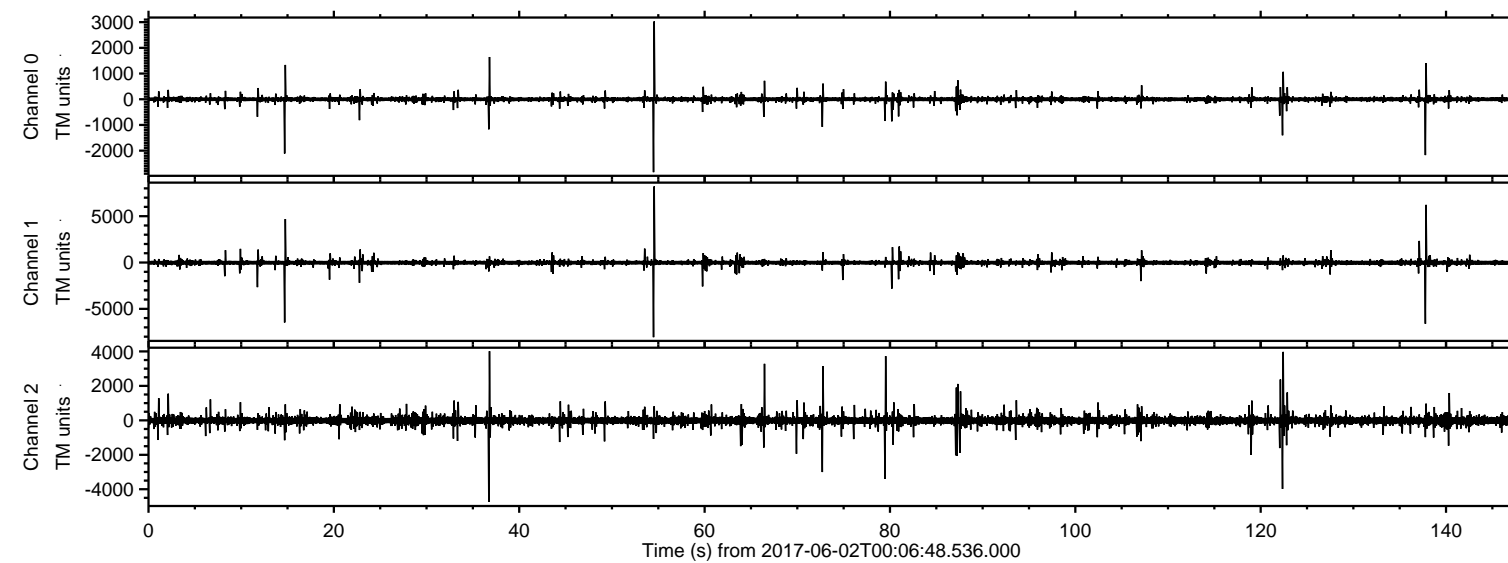
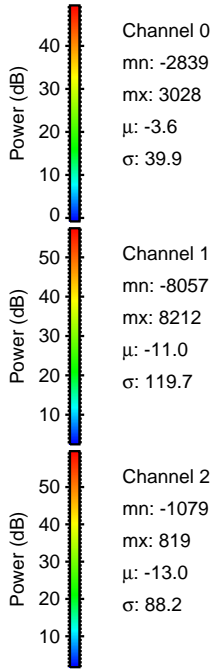
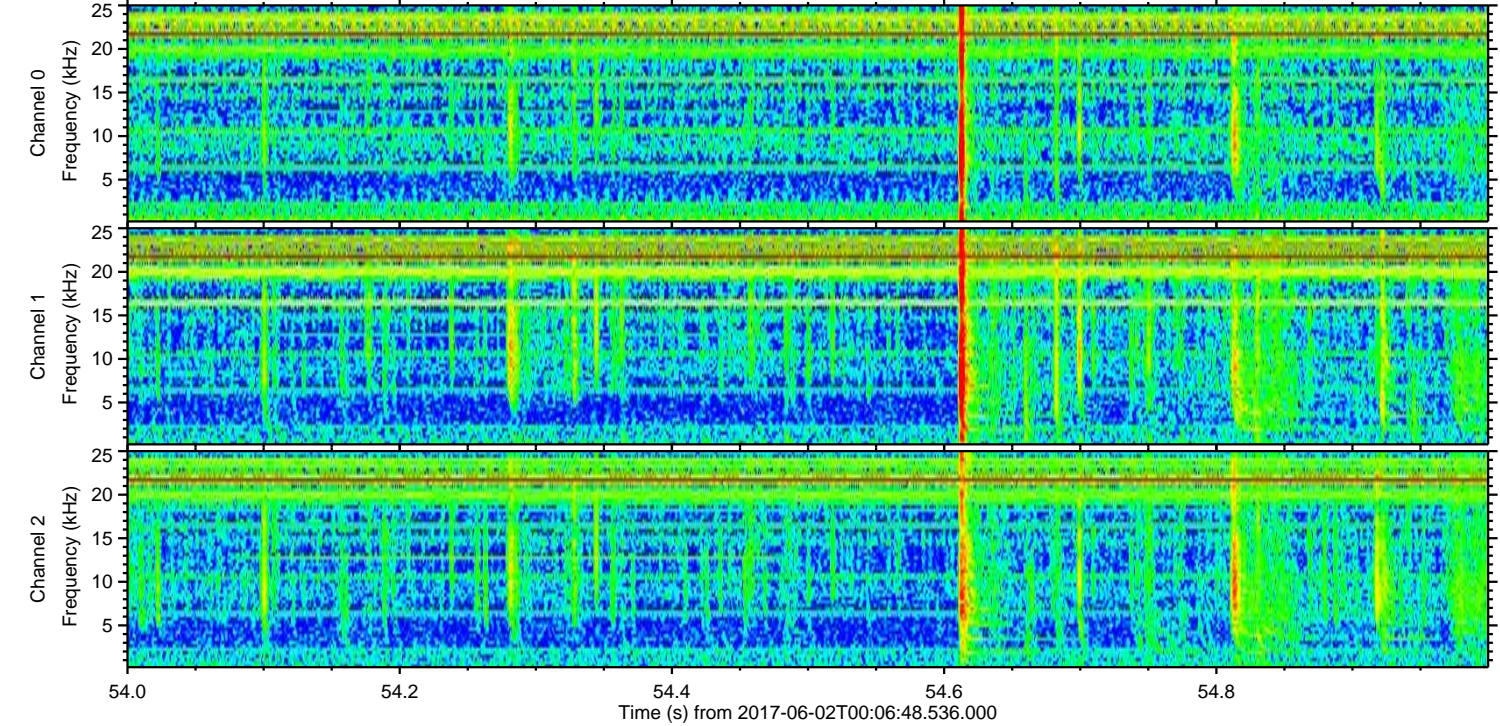
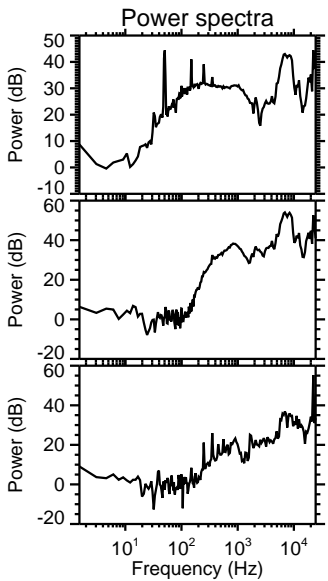
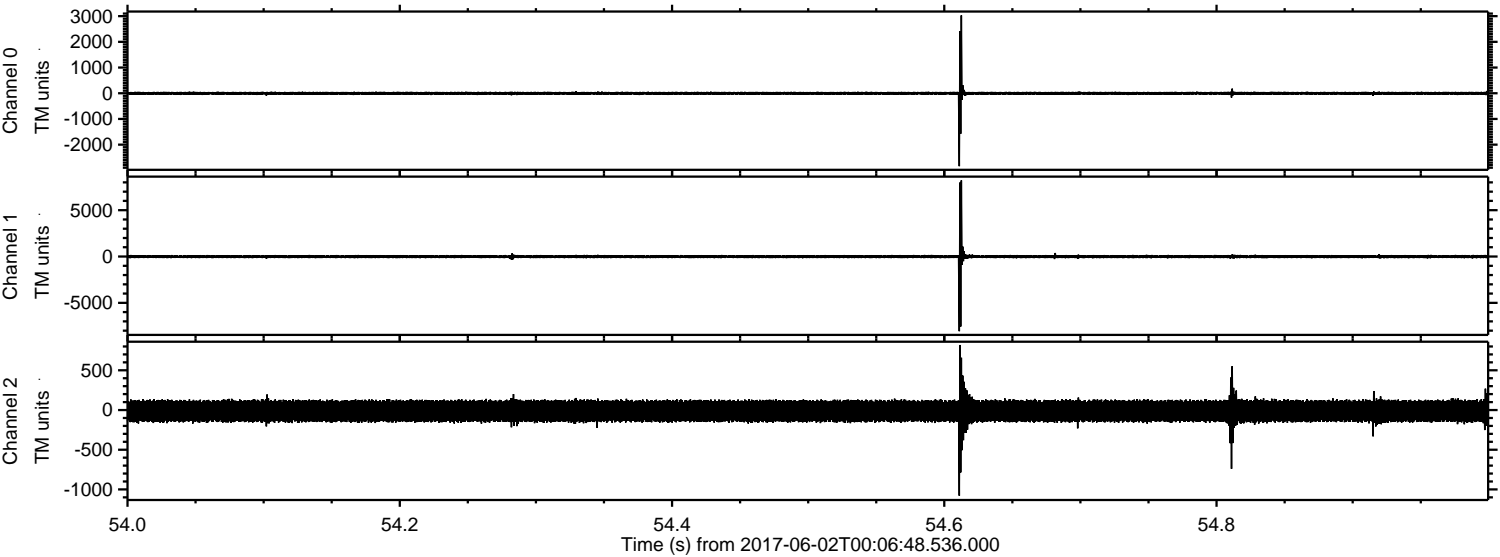


ELMAVAN 3D WAVEFORMS (Measured data sampled at 50 kHz) 51000 packets of 144 samples from 2017-06-02T00:06:48.536.000.

Processed Fri Jun 2 02:14:44 2017 by ELM ver.2012-10-06 from 001__elm20170602_000647__dat00.bin



Processed Fri Jun 2 02:14:52 2017 by ELM ver.2012-10-06 from 001__elm20170602_000647__dat00.bin



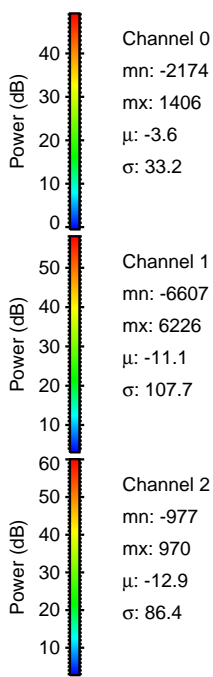
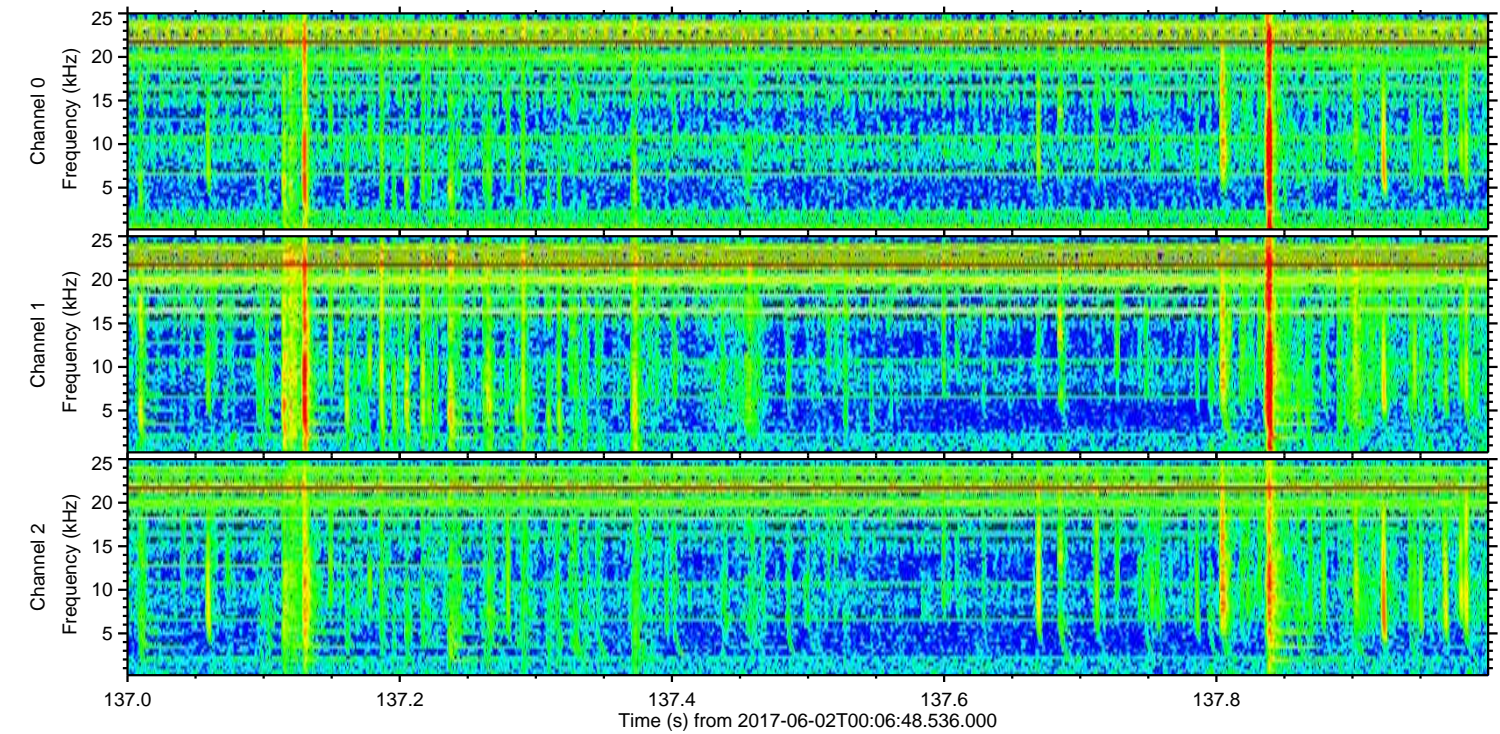
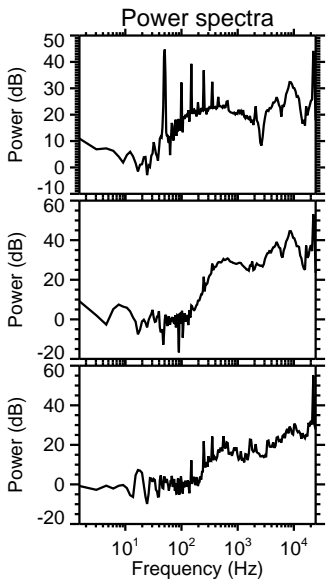
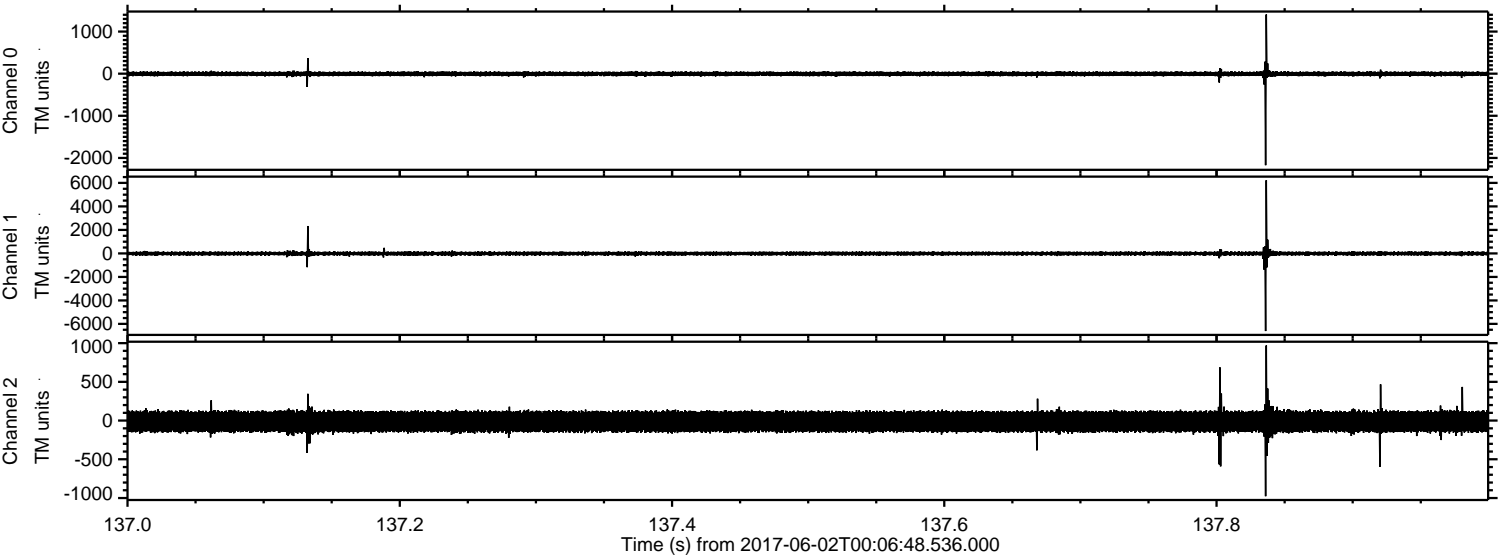
Channel 0
mn: -2839
mx: 3028
 μ : -3.6
 σ : 39.9

Channel 1
mn: -8057
mx: 8212
 μ : -11.0
 σ : 119.7

Channel 2
mn: -1079
mx: 819
 μ : -13.0
 σ : 88.2

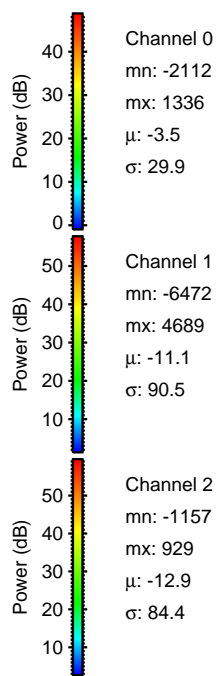
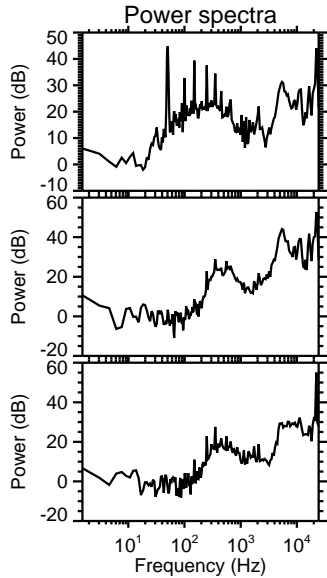
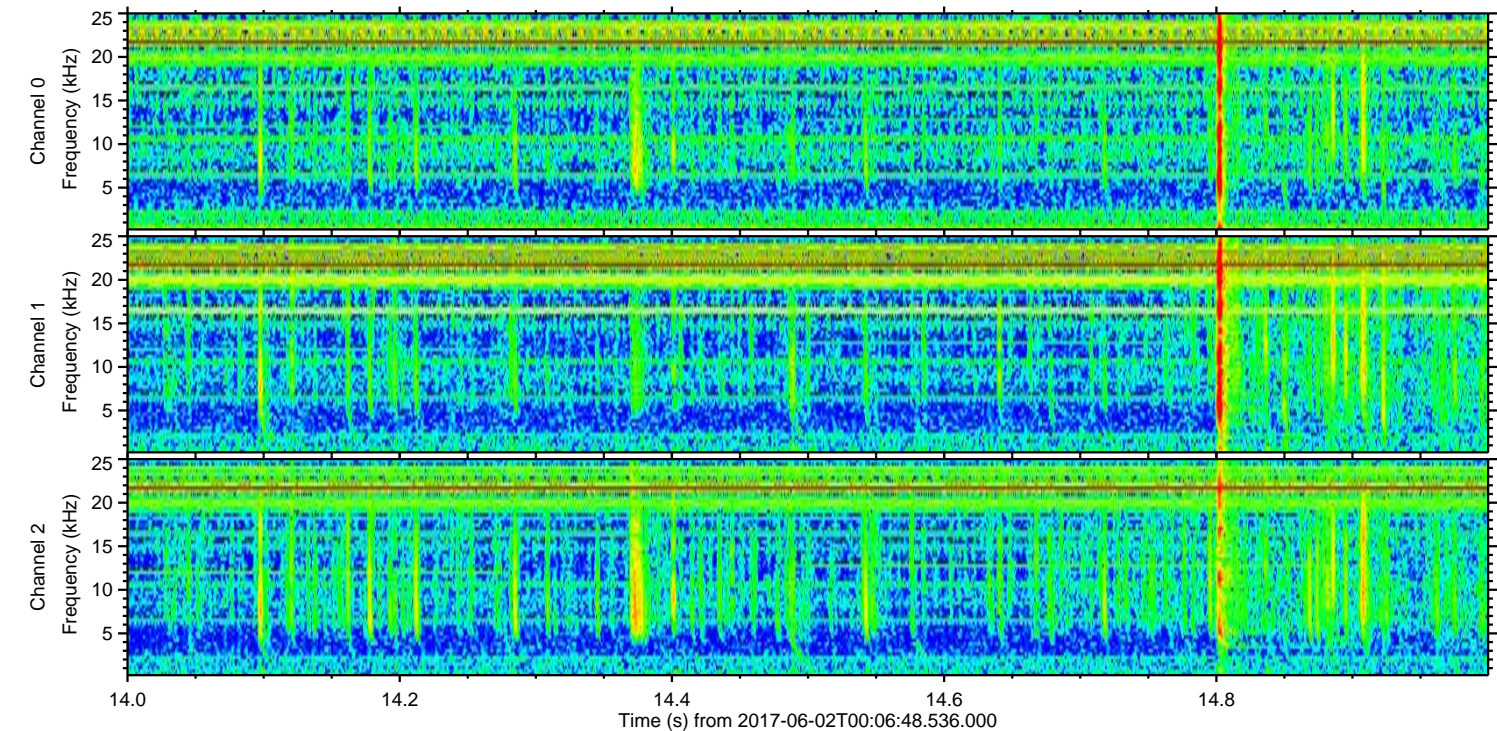
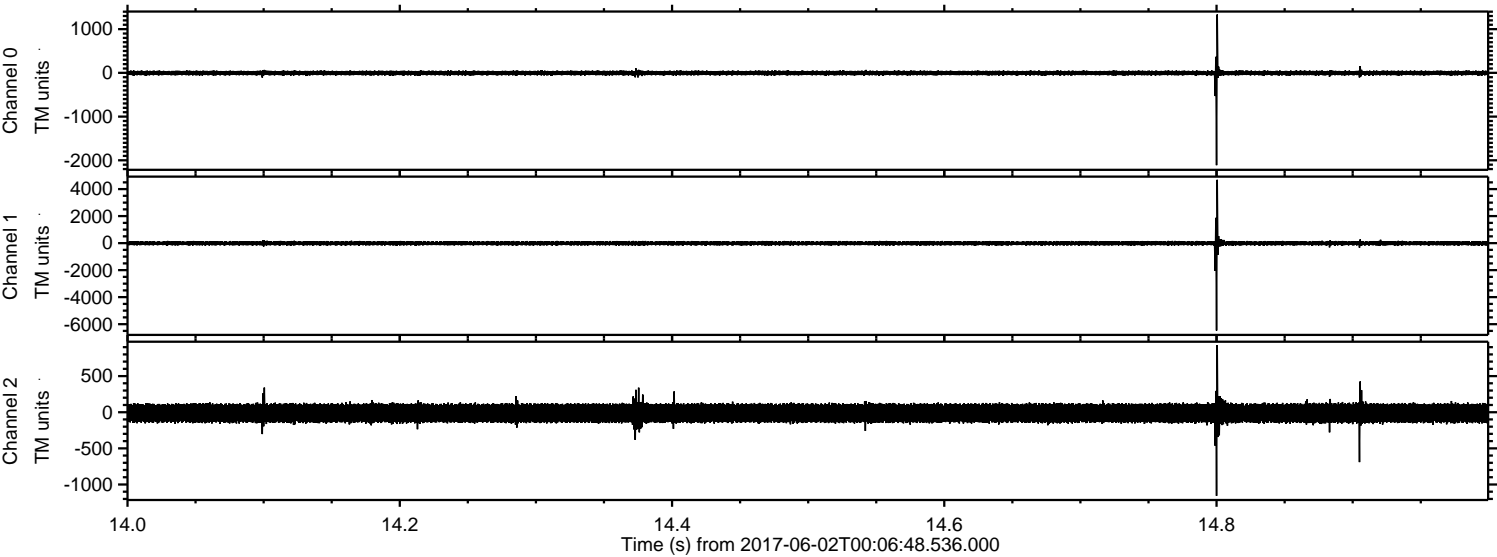
ELMAVAN 3D WAVEFORMS (Measured data sampled at 50 kHz) 51000 packets of 144 samples from 2017-06-02T00:06:48.536.000. Part 138/147

Processed Fri Jun 2 02:14:53 2017 by ELM ver.2012-10-06 from 001__elm20170602_000647__dat00.bin



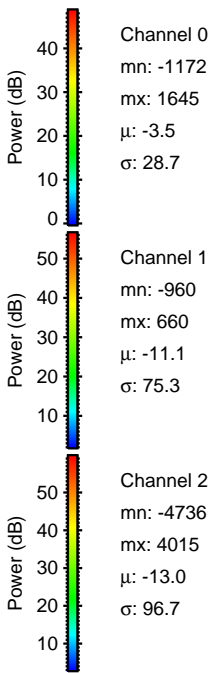
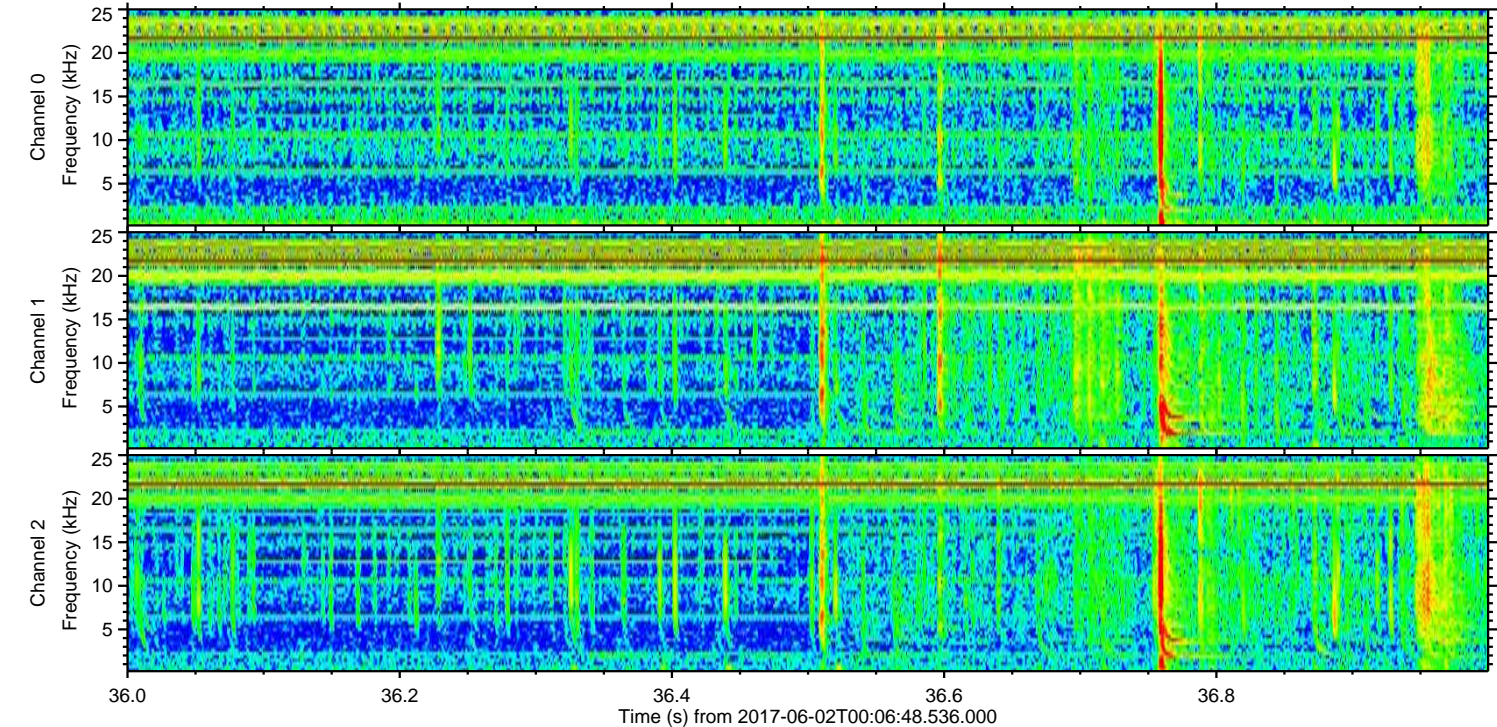
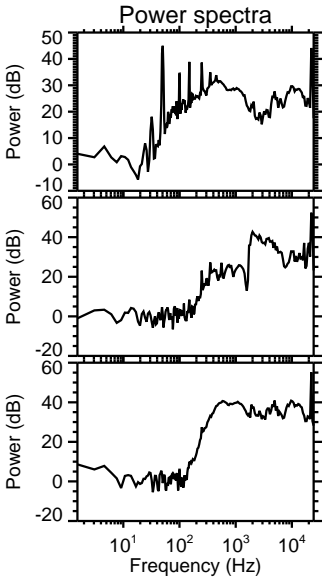
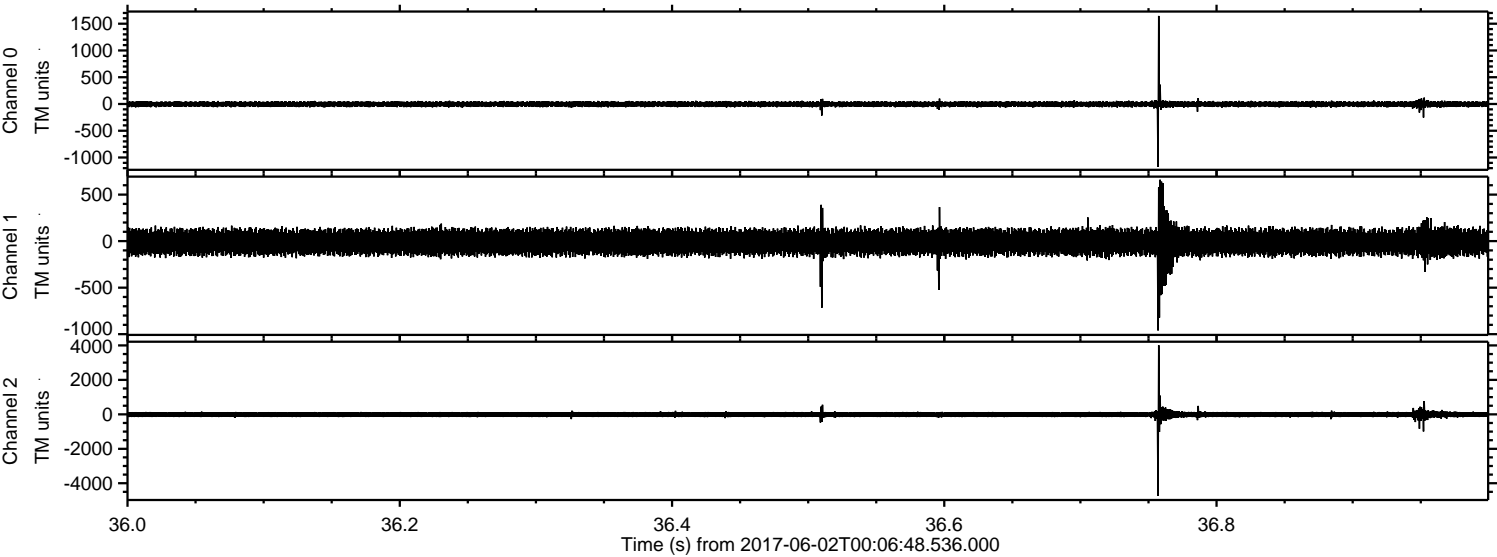
ELMAVAN 3D WAVEFORMS (Measured data sampled at 50 kHz) 51000 packets of 144 samples from 2017-06-02T00:06:48.536.000. Part 15/147

Processed Fri Jun 2 02:14:54 2017 by ELM ver.2012-10-06 from 001__elm20170602_000647__dat00.bin



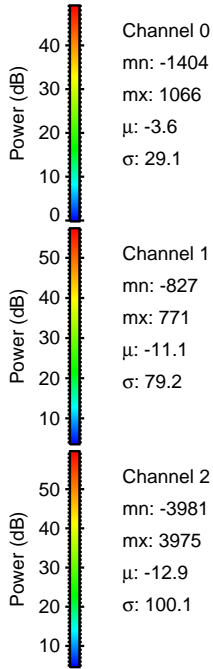
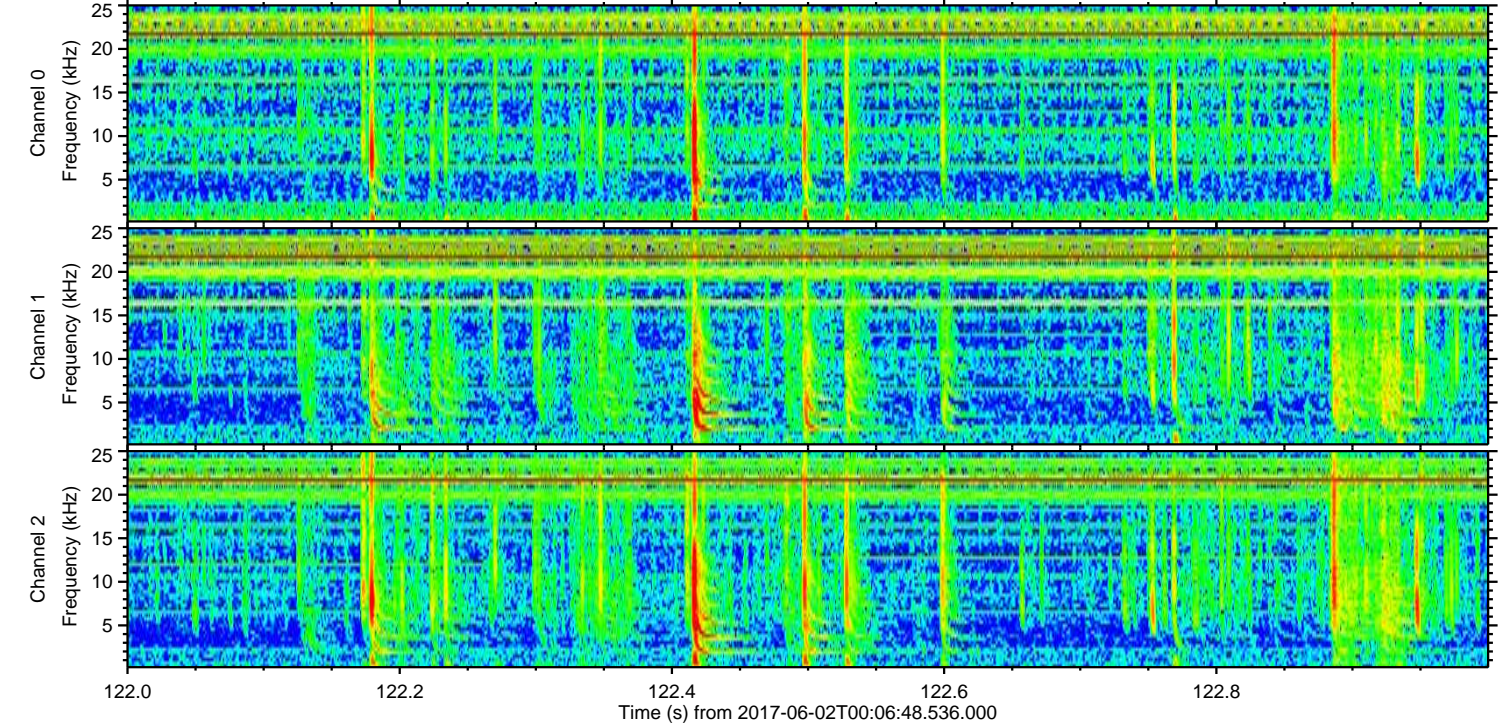
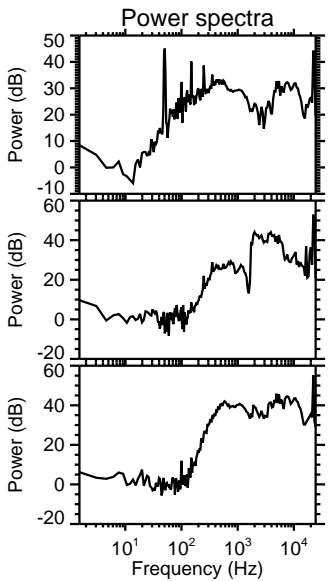
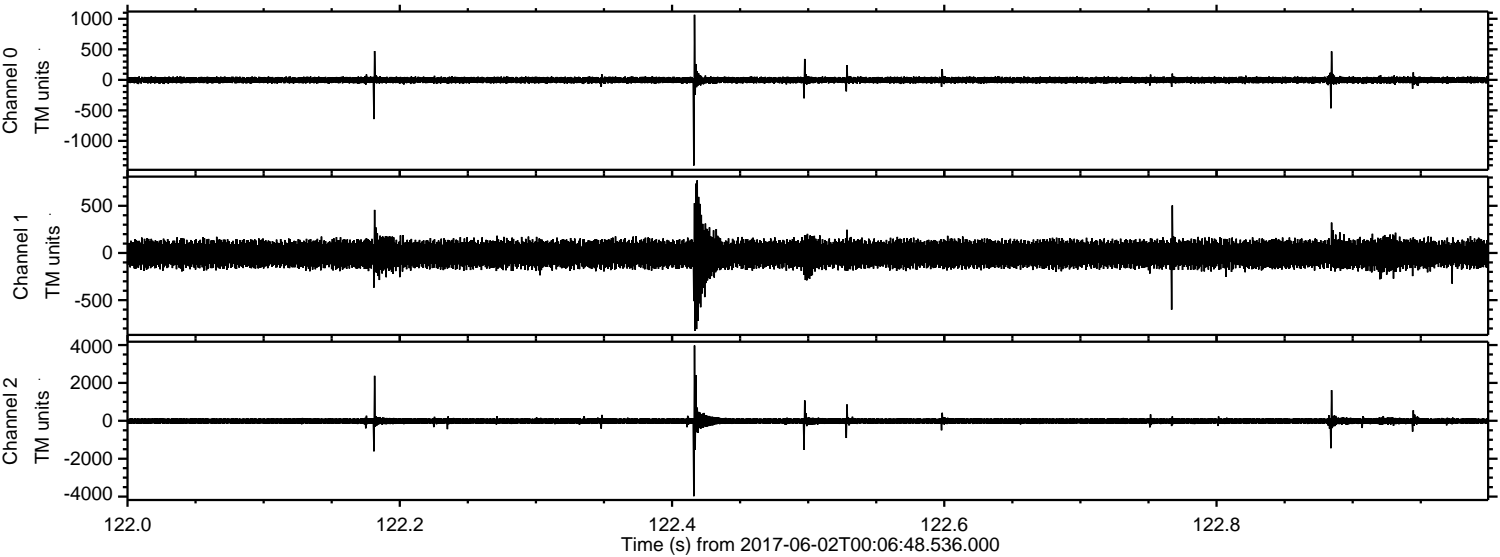
ELMAVAN 3D WAVEFORMS (Measured data sampled at 50 kHz) 51000 packets of 144 samples from 2017-06-02T00:06:48.536.000. Part 37/147

Processed Fri Jun 2 02:14:55 2017 by ELM ver.2012-10-06 from 001__elm20170602_000647__dat00.bin

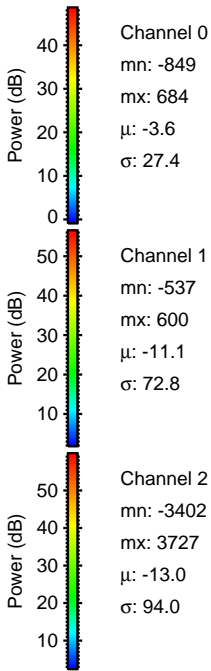
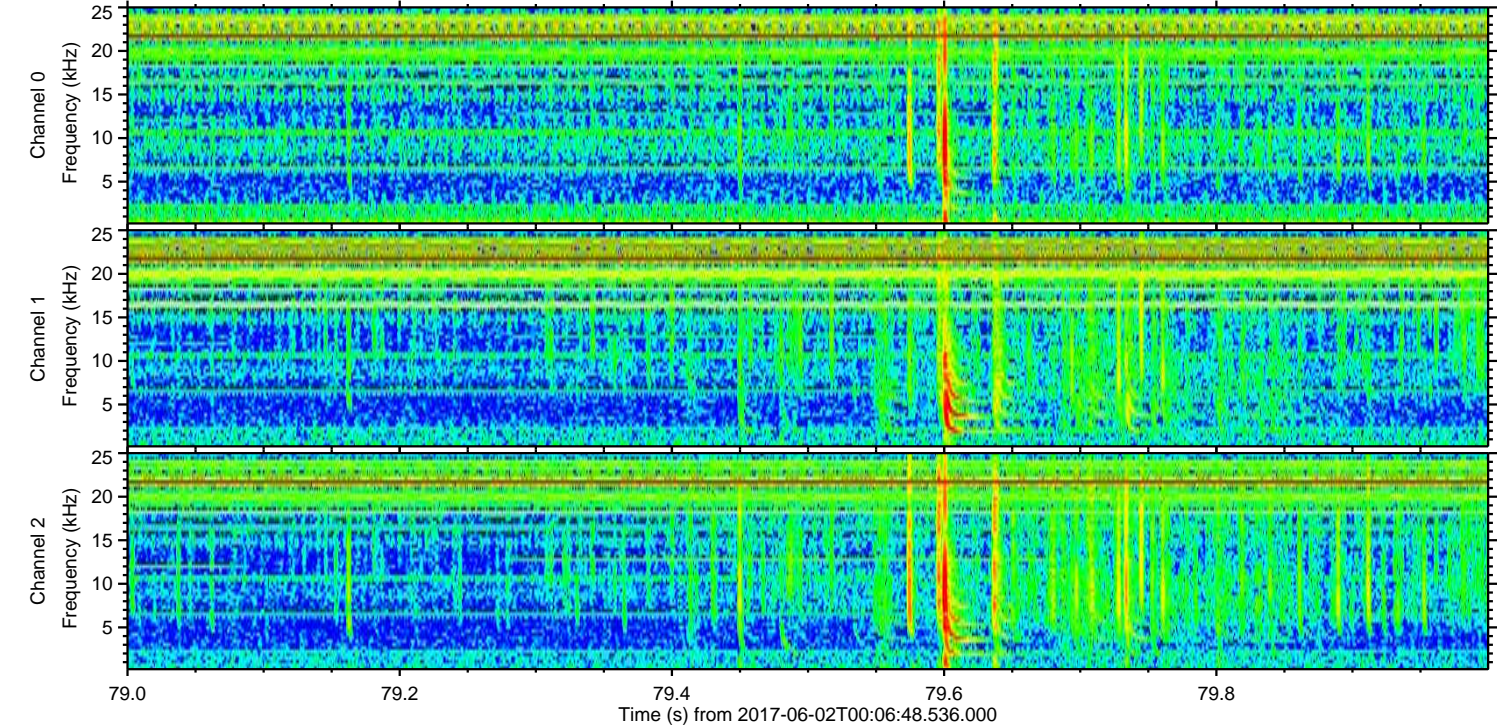
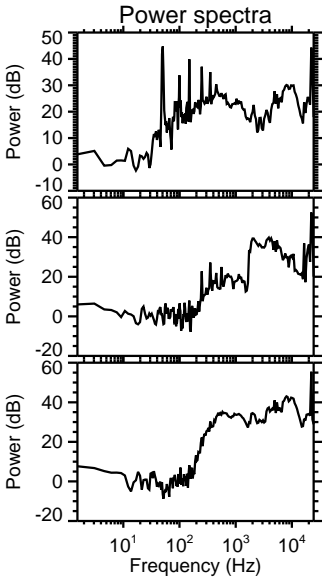
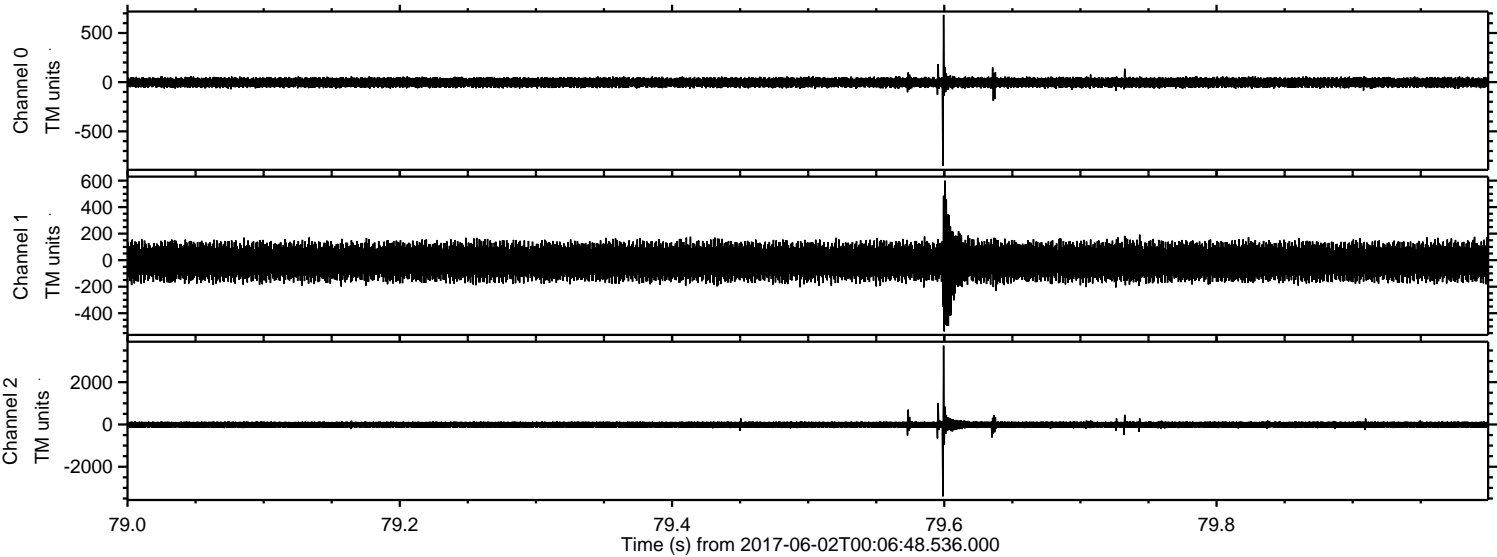


ELMAVAN 3D WAVEFORMS (Measured data sampled at 50 kHz) 51000 packets of 144 samples from 2017-06-02T00:06:48.536.000. Part 123/147

Processed Fri Jun 2 02:14:56 2017 by ELM ver.2012-10-06 from 001__elm20170602_000647__dat00.bin



Processed Fri Jun 2 02:14:57 2017 by ELM ver.2012-10-06 from 001__elm20170602_000647__dat00.bin

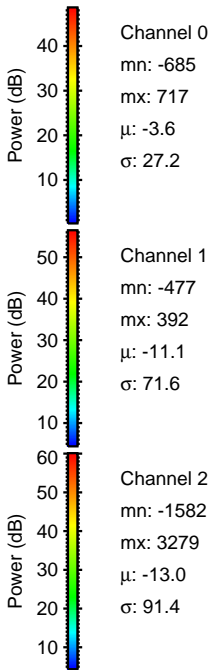
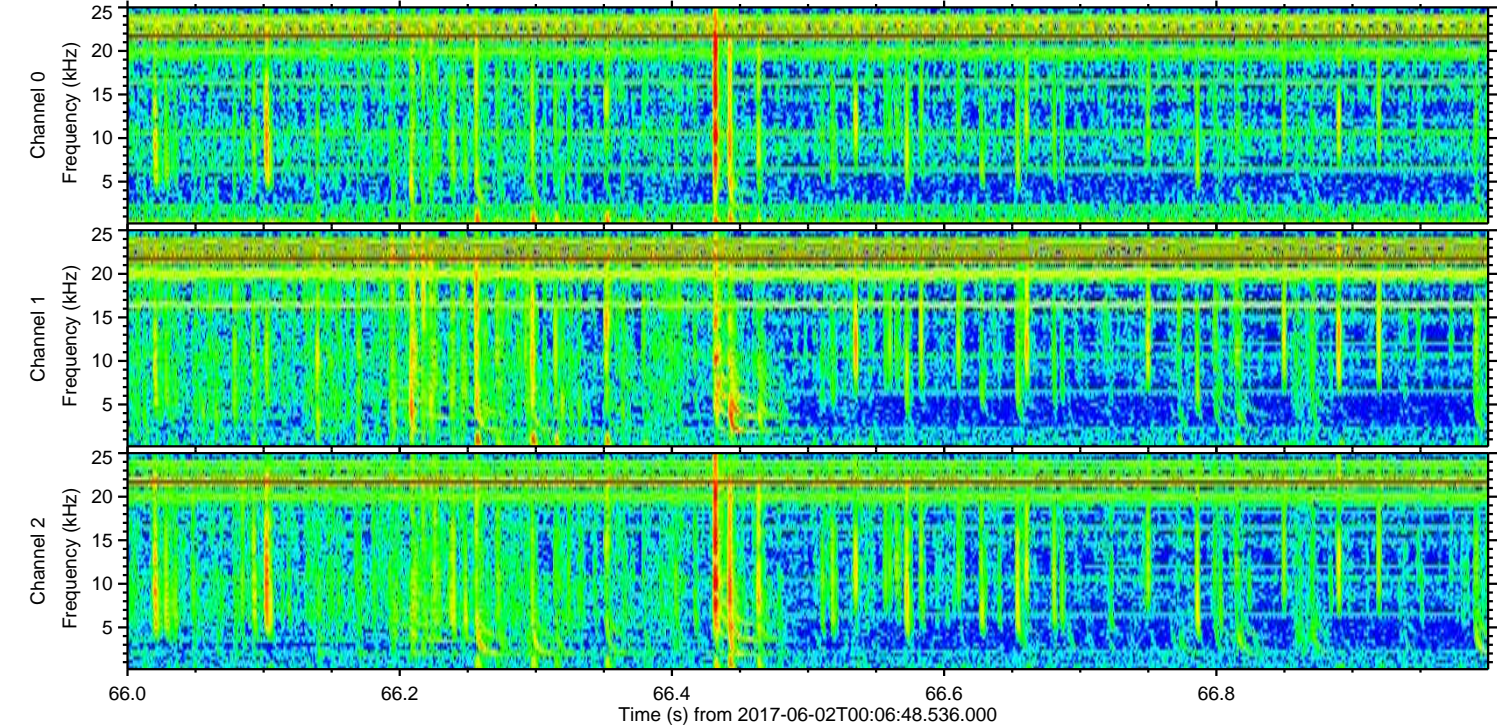
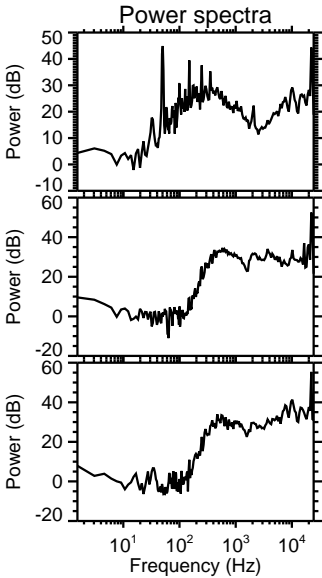
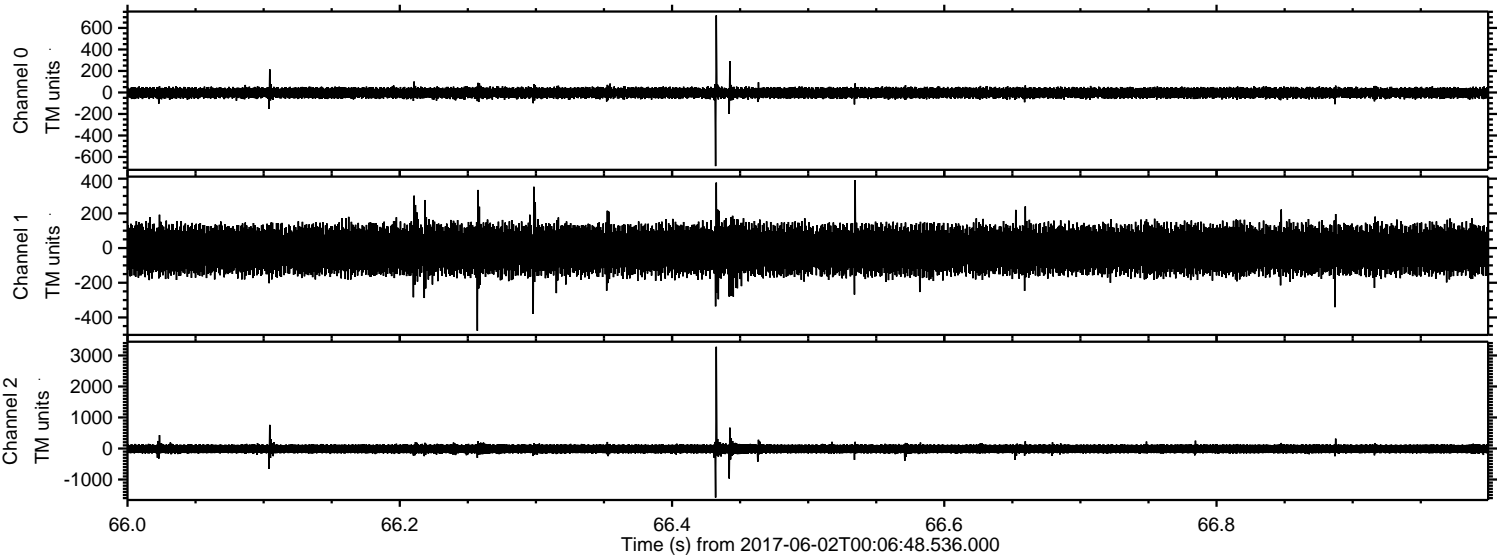


Channel 0
mn: -849
mx: 684
 μ : -3.6
 σ : 27.4

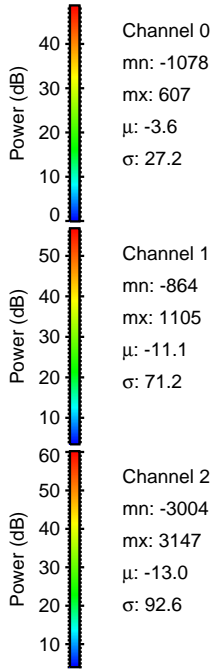
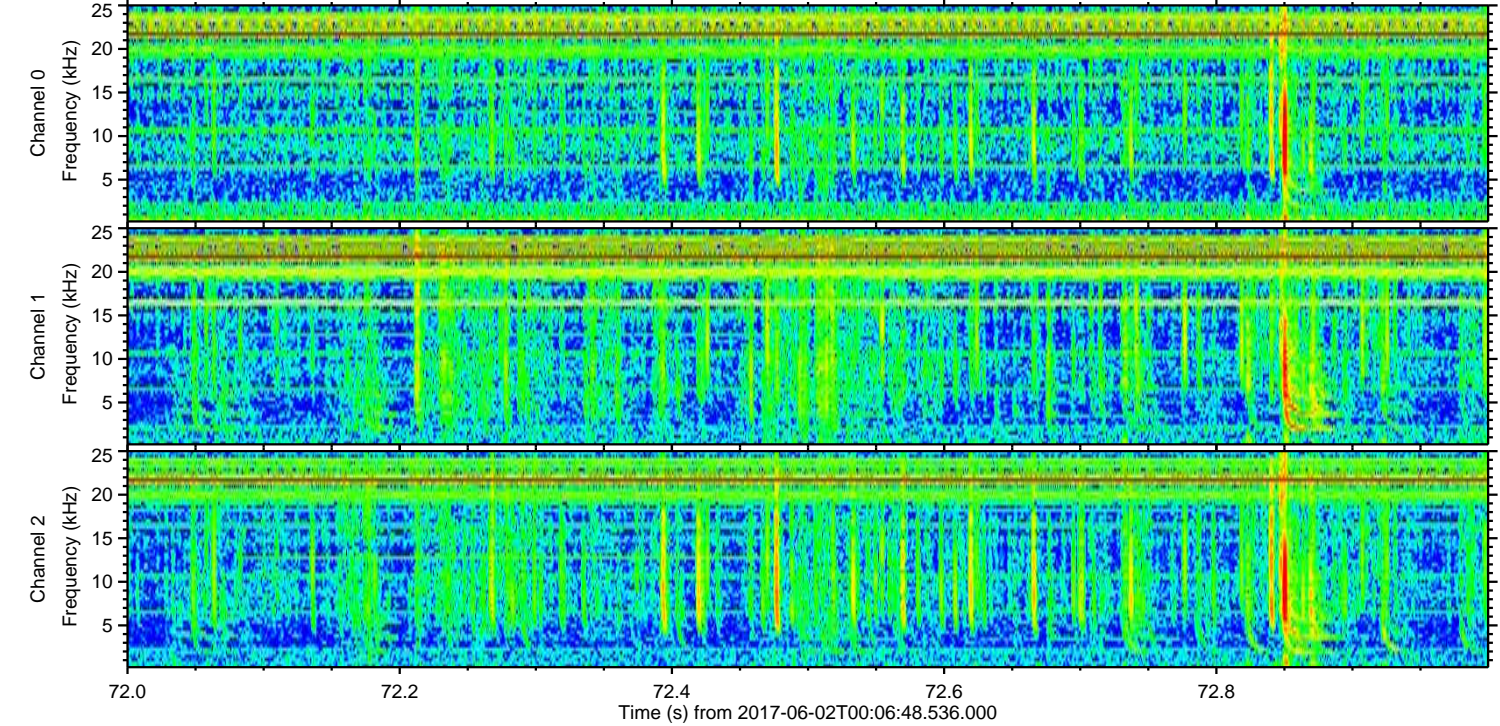
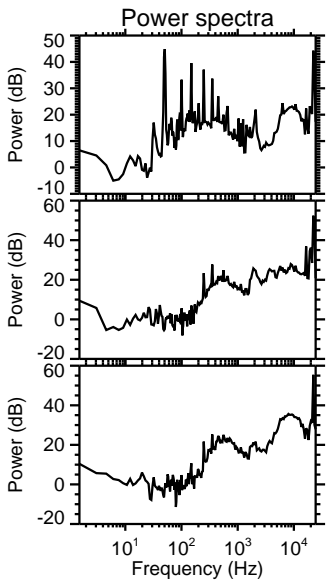
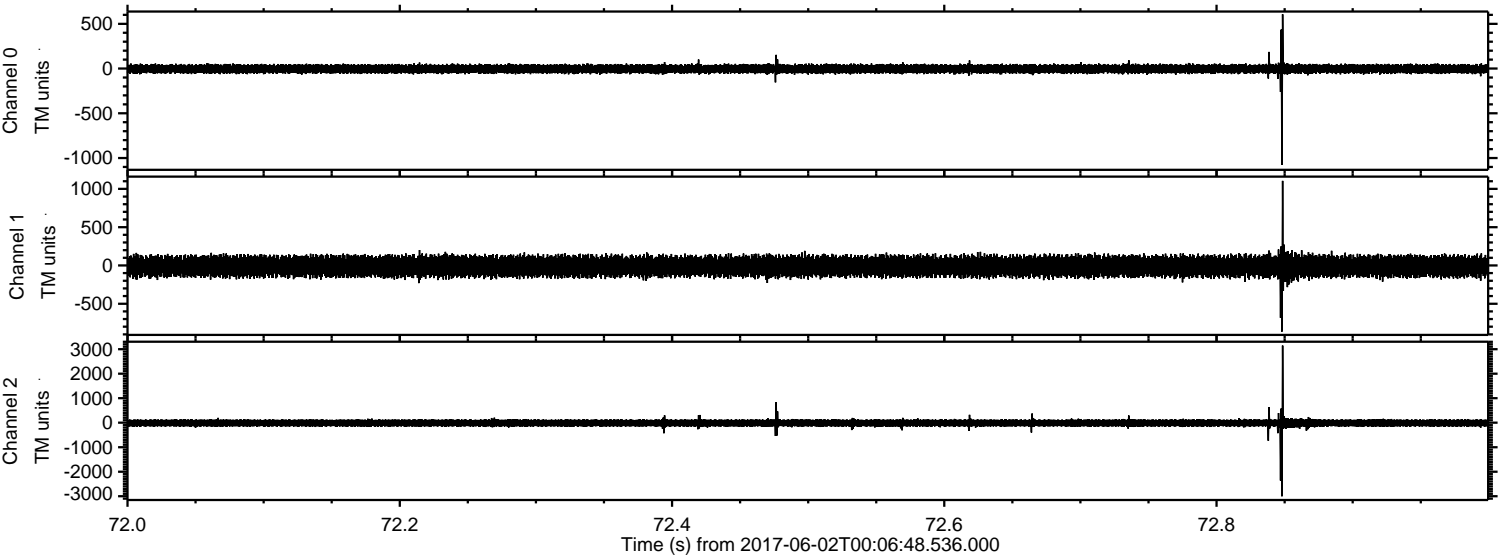
Channel 1
mn: -537
mx: 600
 μ : -11.1
 σ : 72.8

Channel 2
mn: -3402
mx: 3727
 μ : -13.0
 σ : 94.0

Processed Fri Jun 2 02:14:58 2017 by ELM ver.2012-10-06 from 001__elm20170602_000647__dat00.bin



Processed Fri Jun 2 02:14:59 2017 by ELM ver.2012-10-06 from 001__elm20170602_000647__dat00.bin



Power spectra

Channel 0

mn: -1078
mx: 607
 μ : -3.6
 σ : 27.2

Channel 1

mn: -864
mx: 1105
 μ : -11.1
 σ : 71.2

Channel 2

mn: -3004
mx: 3147
 μ : -13.0
 σ : 92.6

Processed Fri Jun 2 02:14:59 2017 by ELM ver.2012-10-06 from 001__elm20170602_000647__dat00.bin

