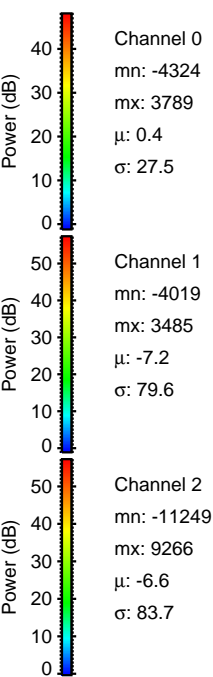
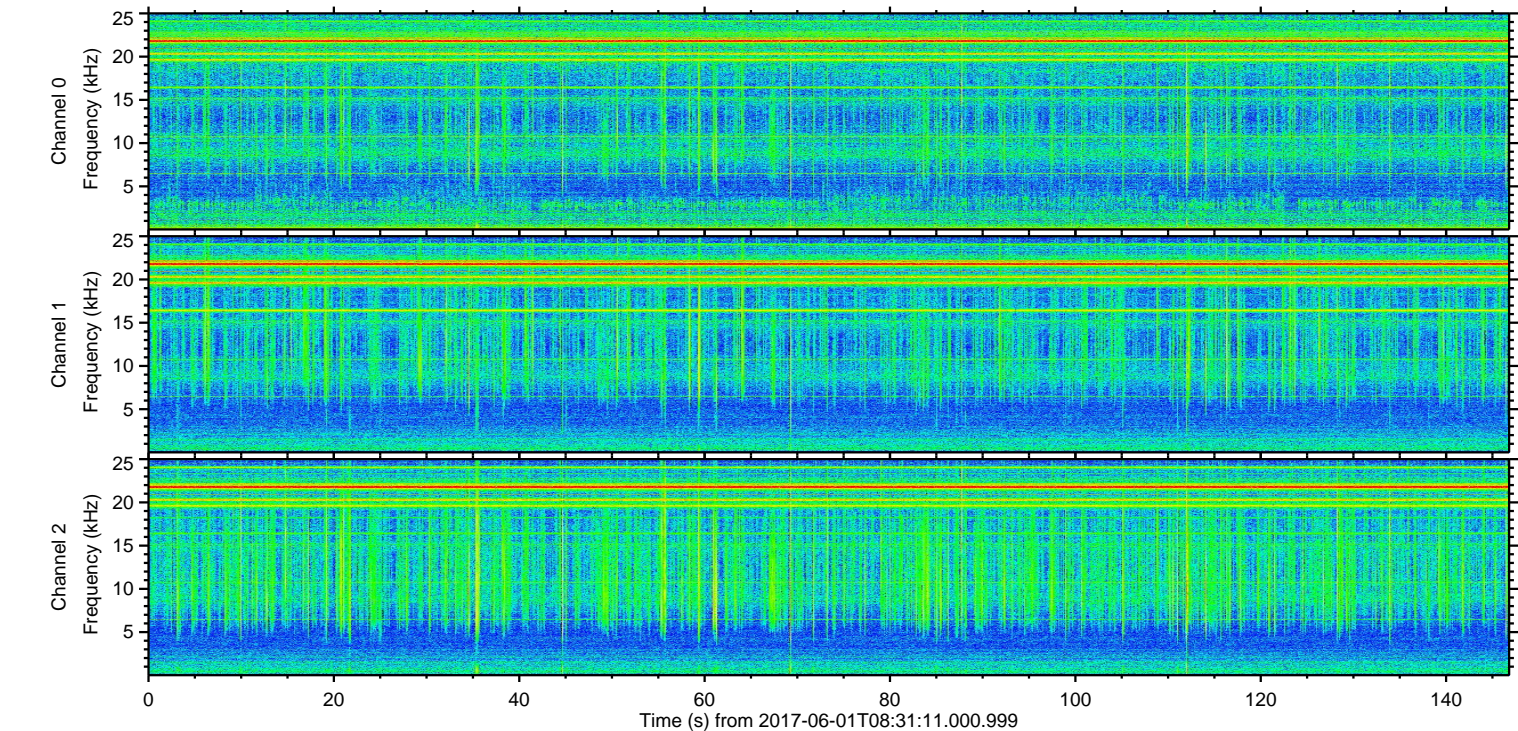
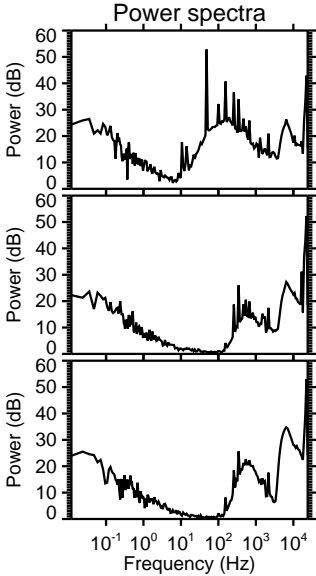
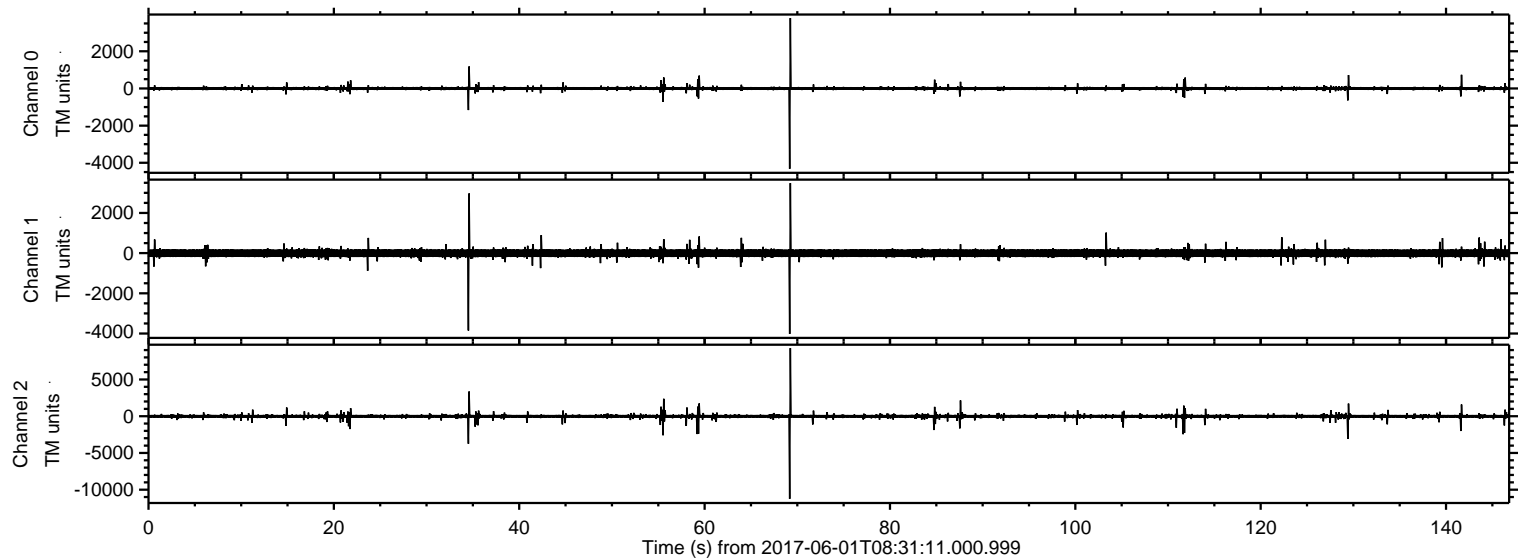
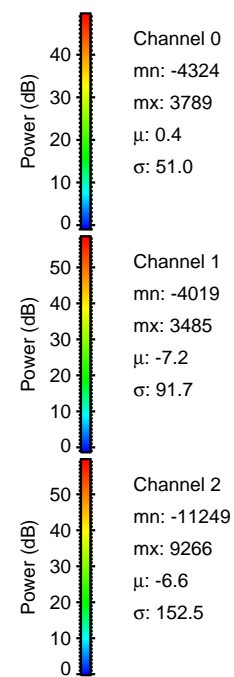
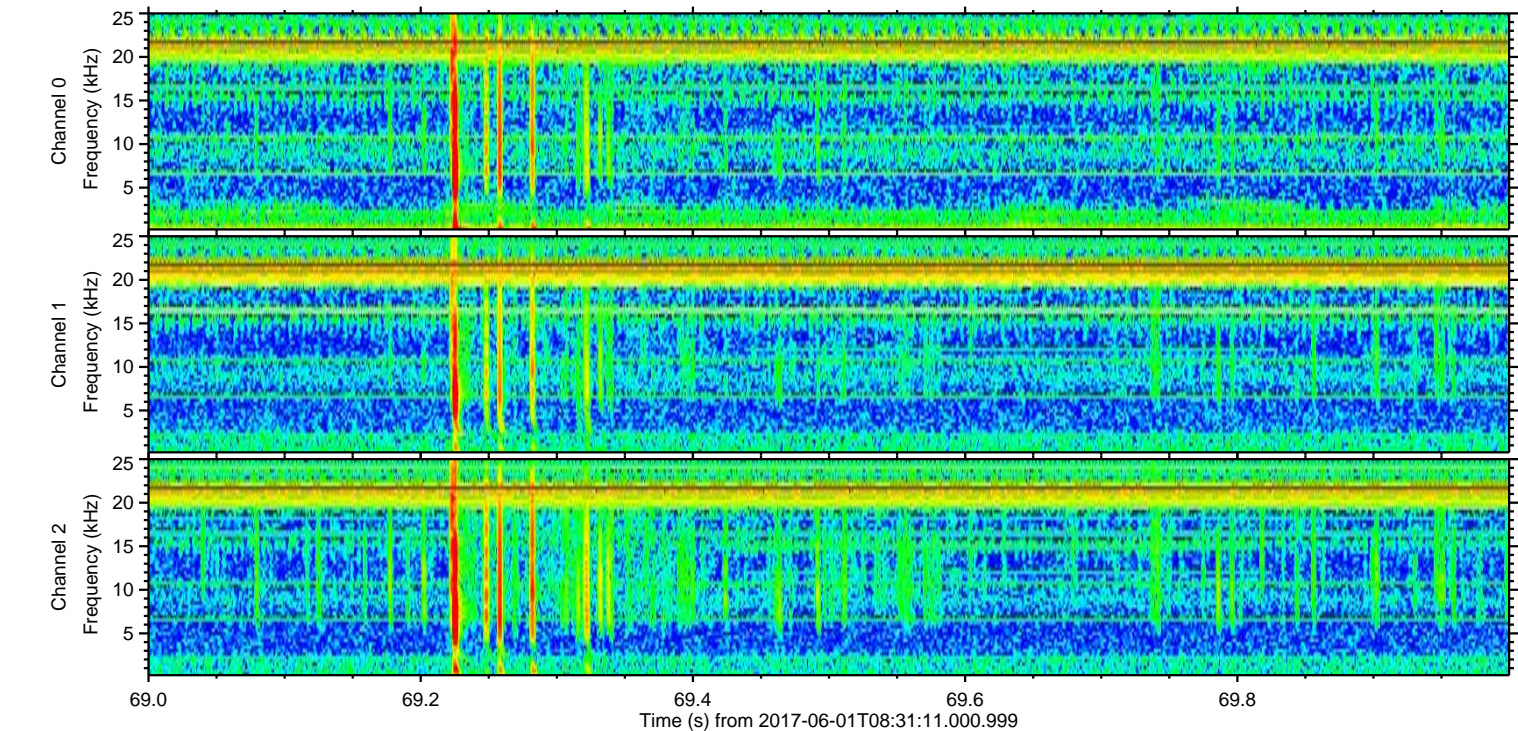
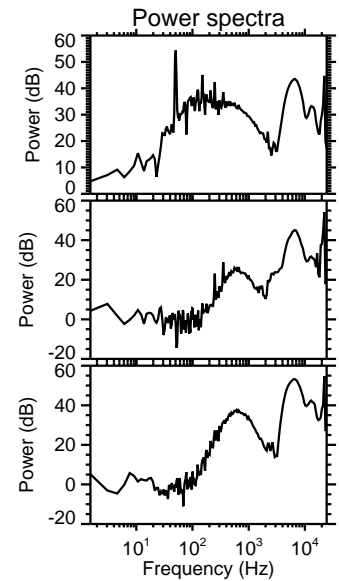
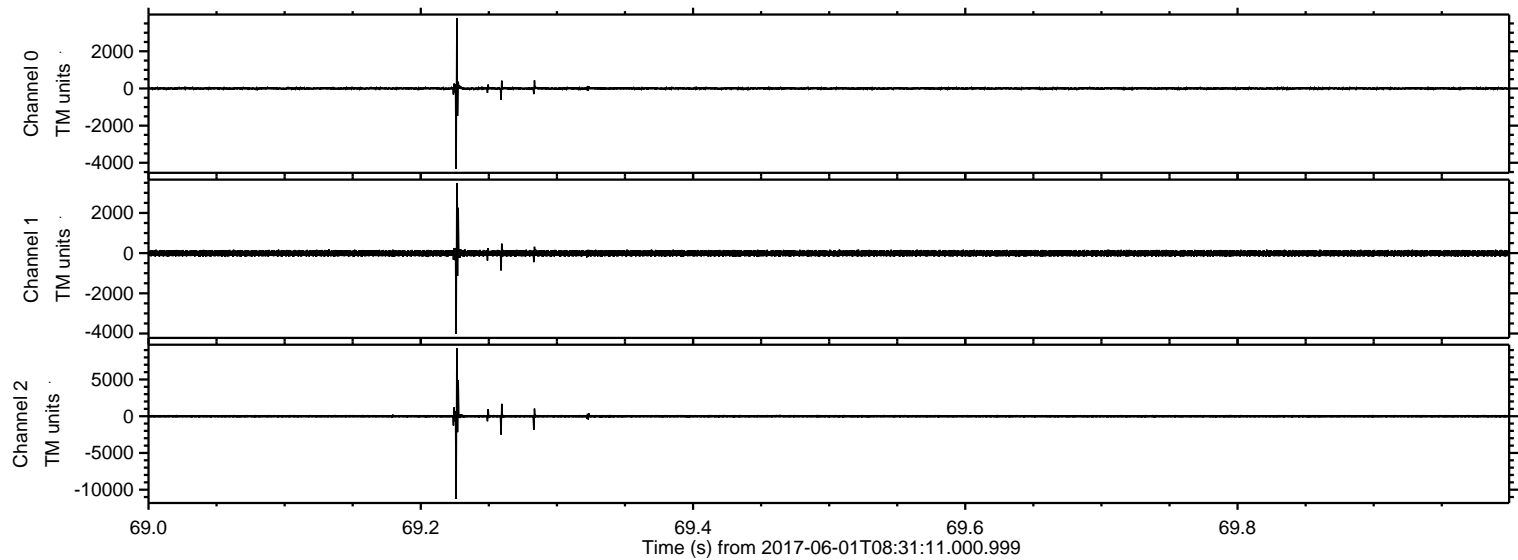


ELMAVAN 3D WAVEFORMS (Measured data sampled at 50 kHz) 51000 packets of 144 samples from 2017-06-01T08:31:11.000.999.

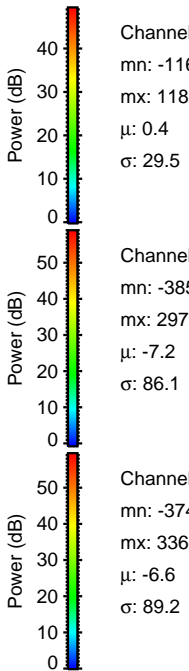
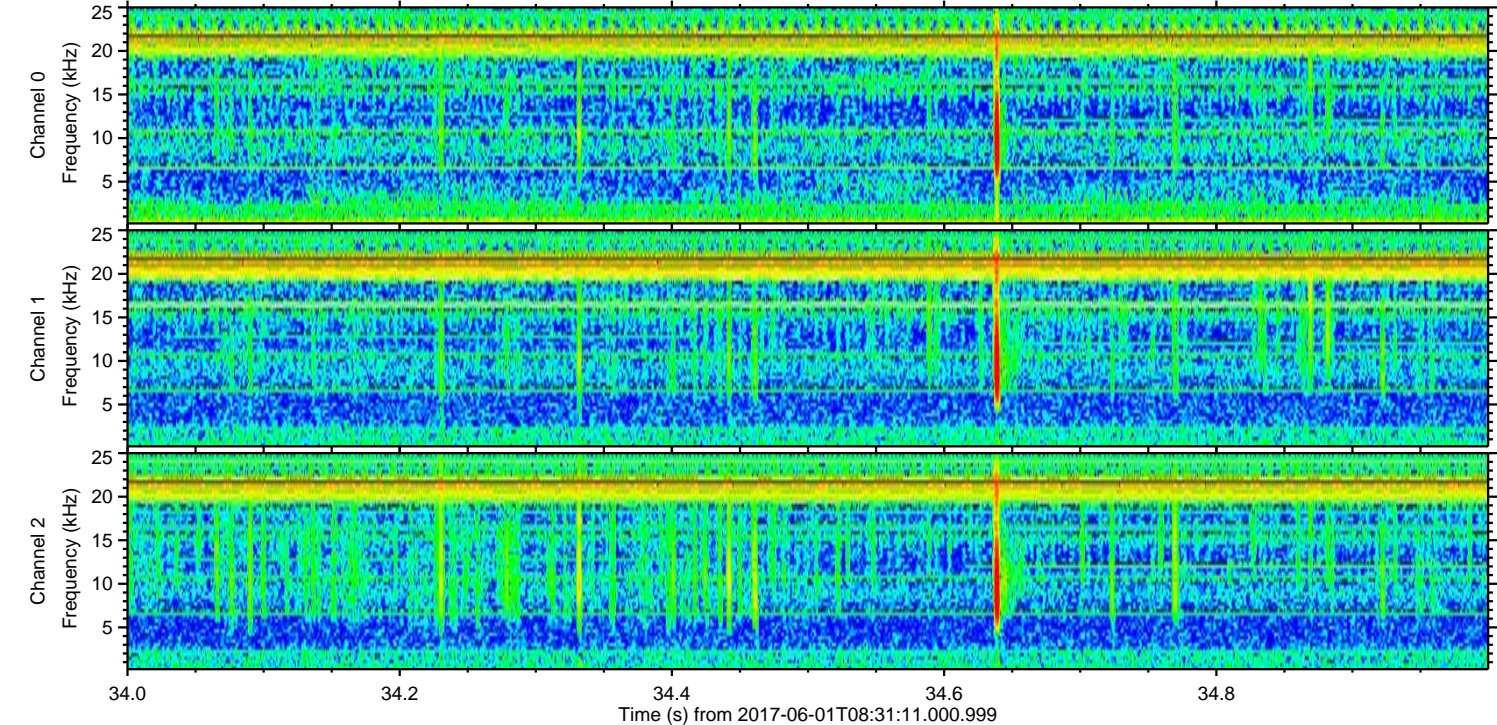
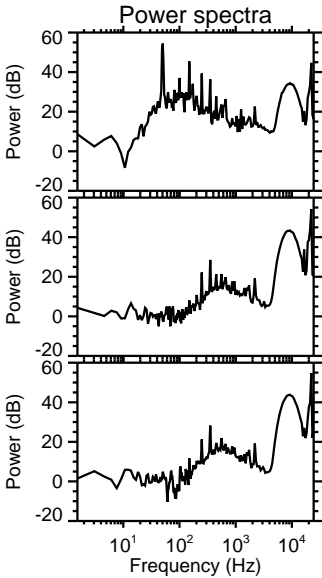
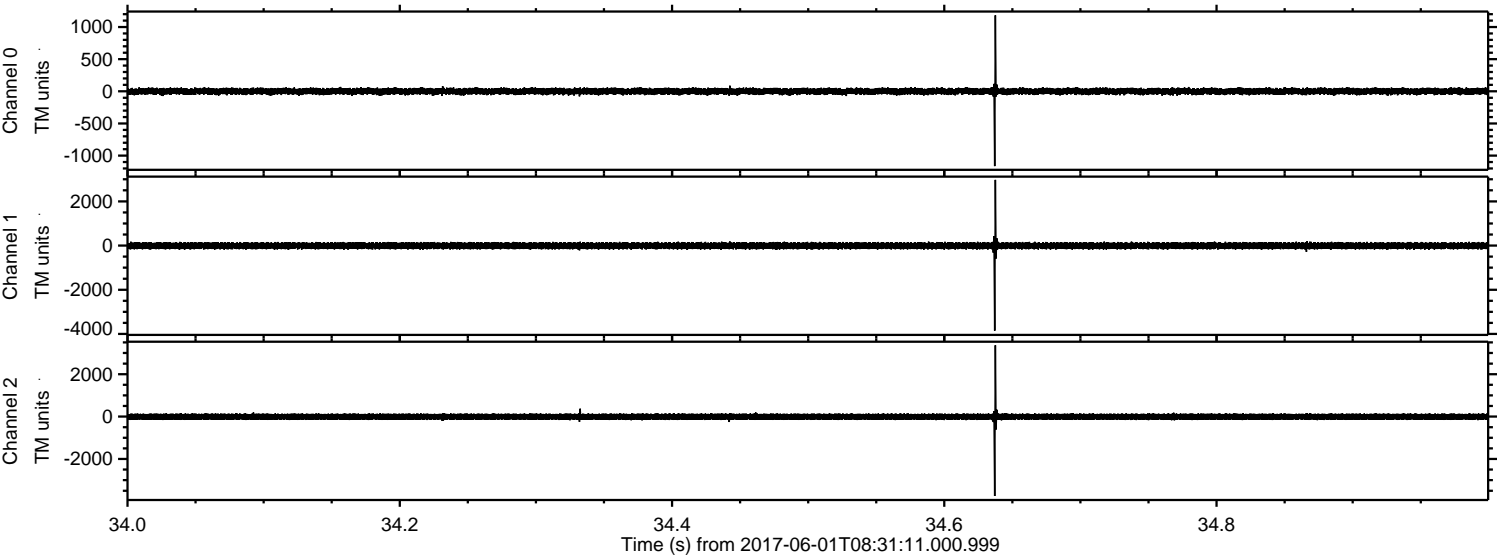
Processed Thu Jun 1 10:39:22 2017 by ELM ver.2012-10-06 from 001__elm20170601_083109__dat00.bin



Processed Thu Jun 1 10:39:31 2017 by ELM ver.2012-10-06 from 001__elm20170601_083109__dat00.bin

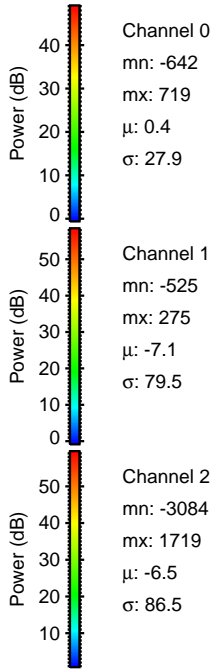
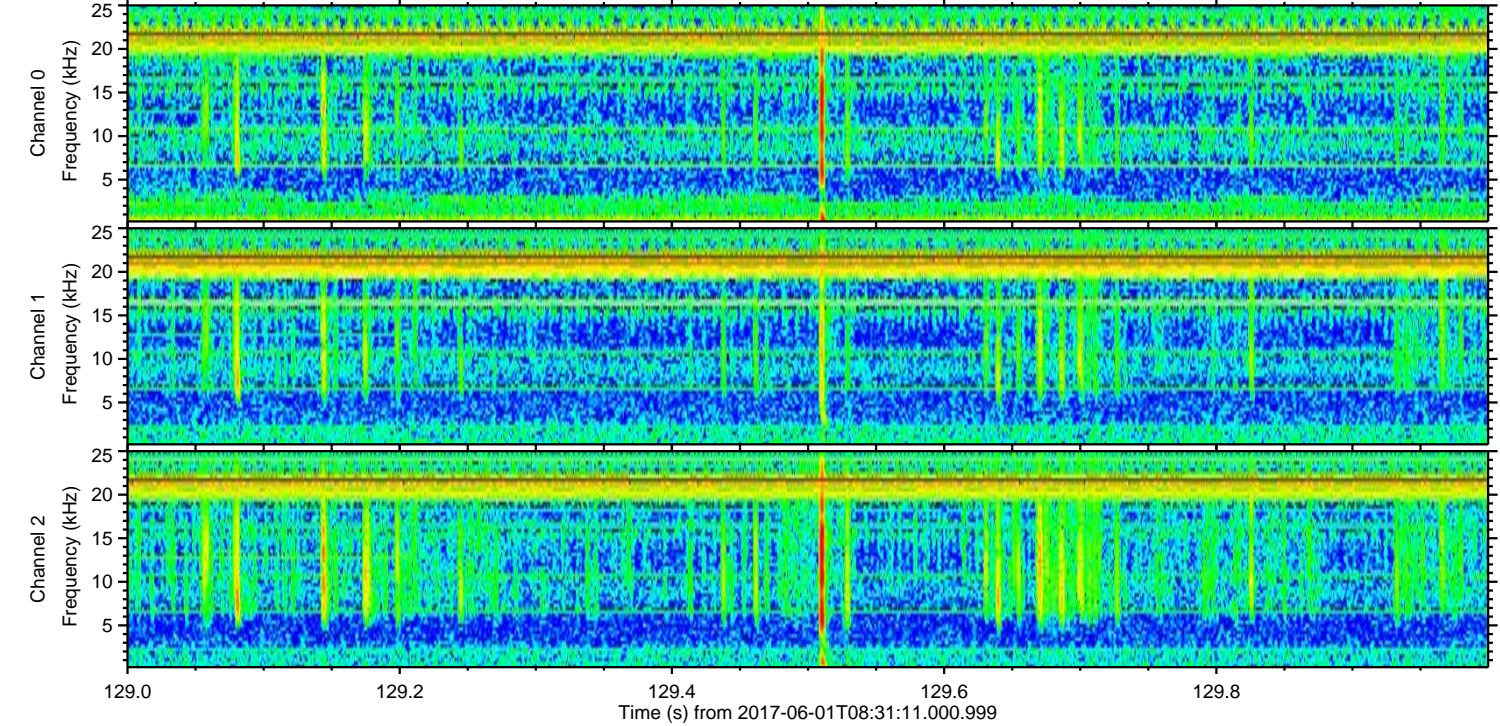
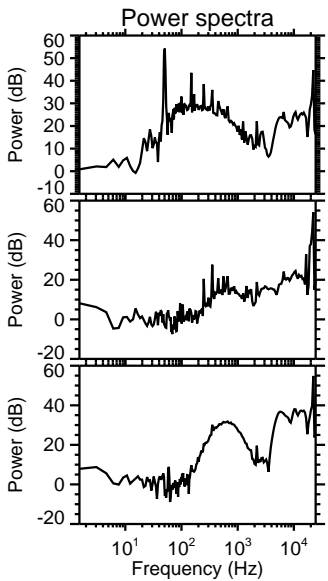
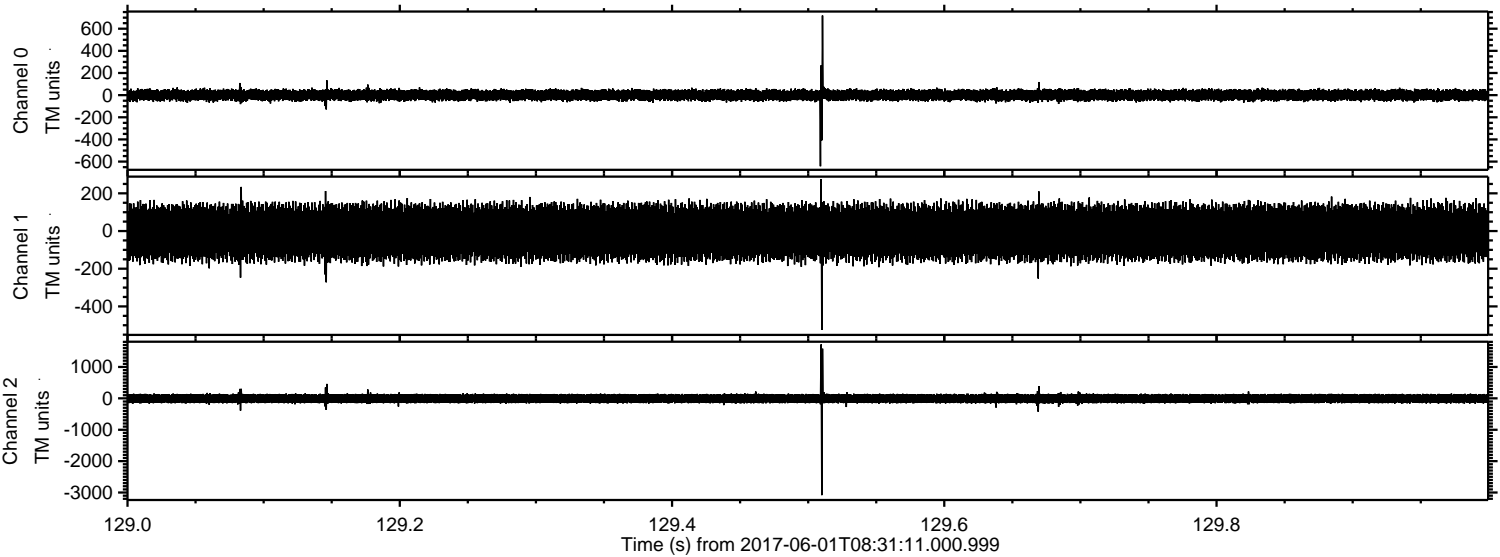


Processed Thu Jun 1 10:39:32 2017 by ELM ver.2012-10-06 from 001__elm20170601_083109__dat00.bin

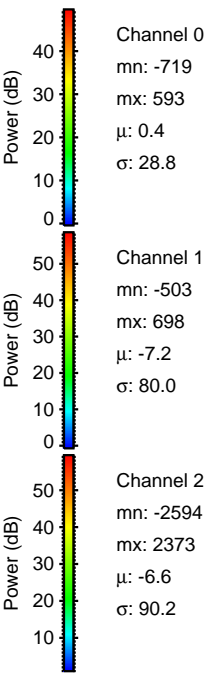
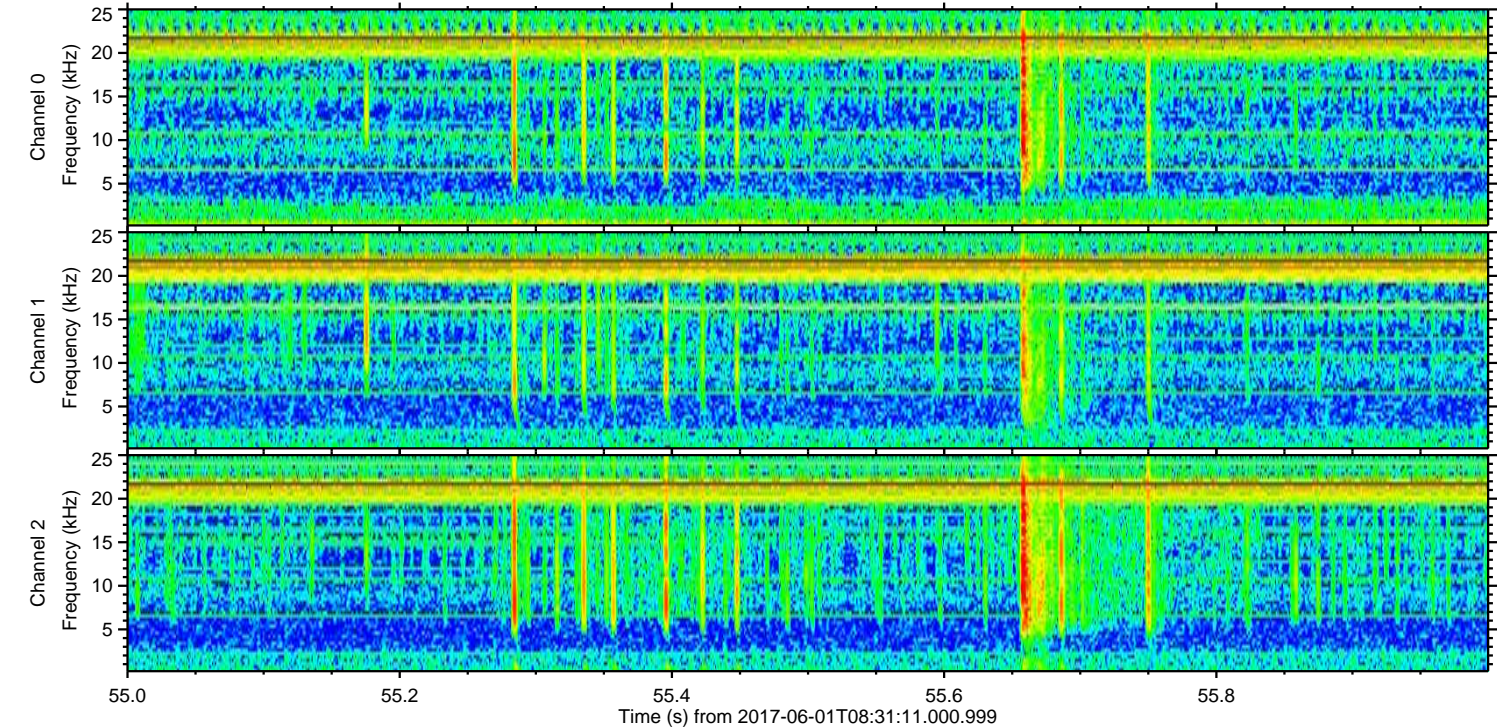
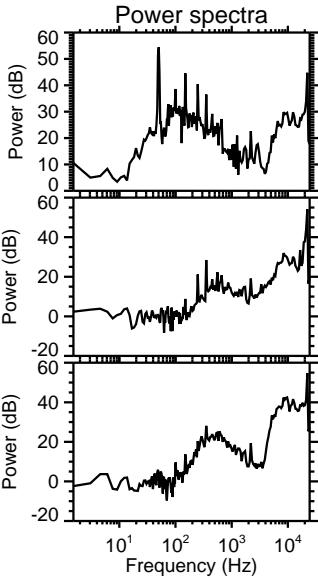
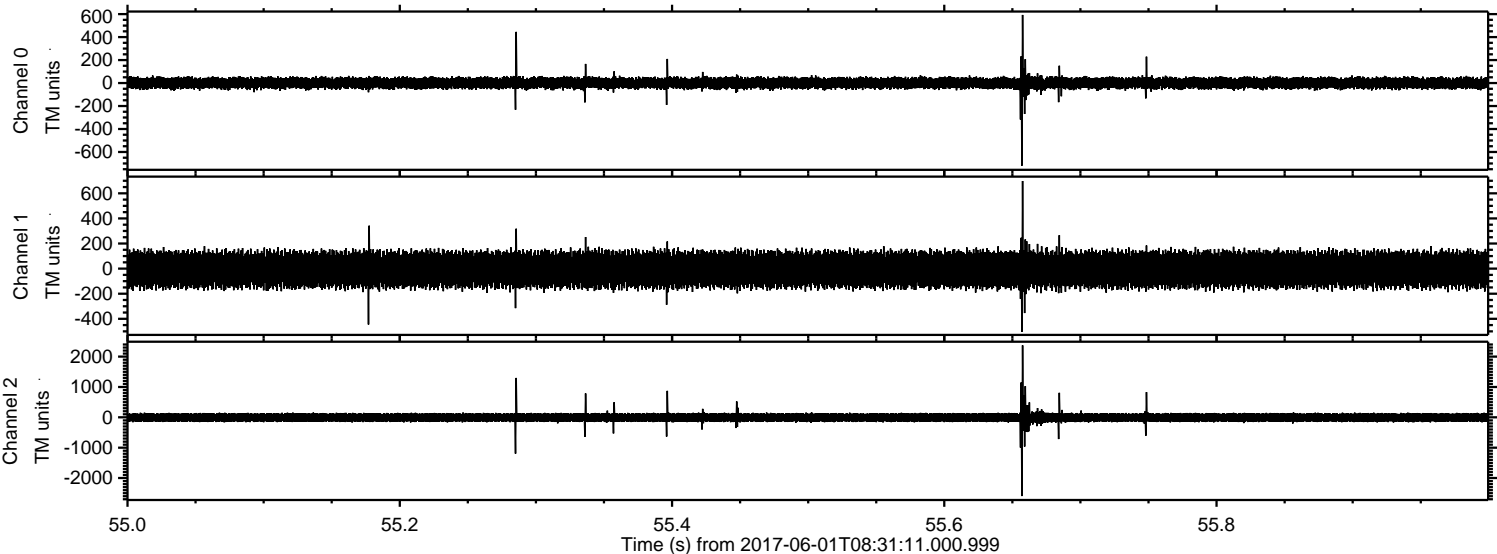


ELMAVAN 3D WAVEFORMS (Measured data sampled at 50 kHz) 51000 packets of 144 samples from 2017-06-01T08:31:11.000.999. Part 130/147

Processed Thu Jun 1 10:39:33 2017 by ELM ver.2012-10-06 from 001__elm20170601_083109__dat00.bin

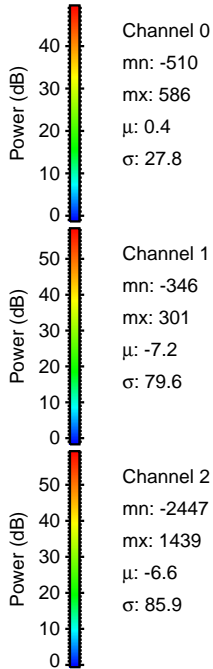
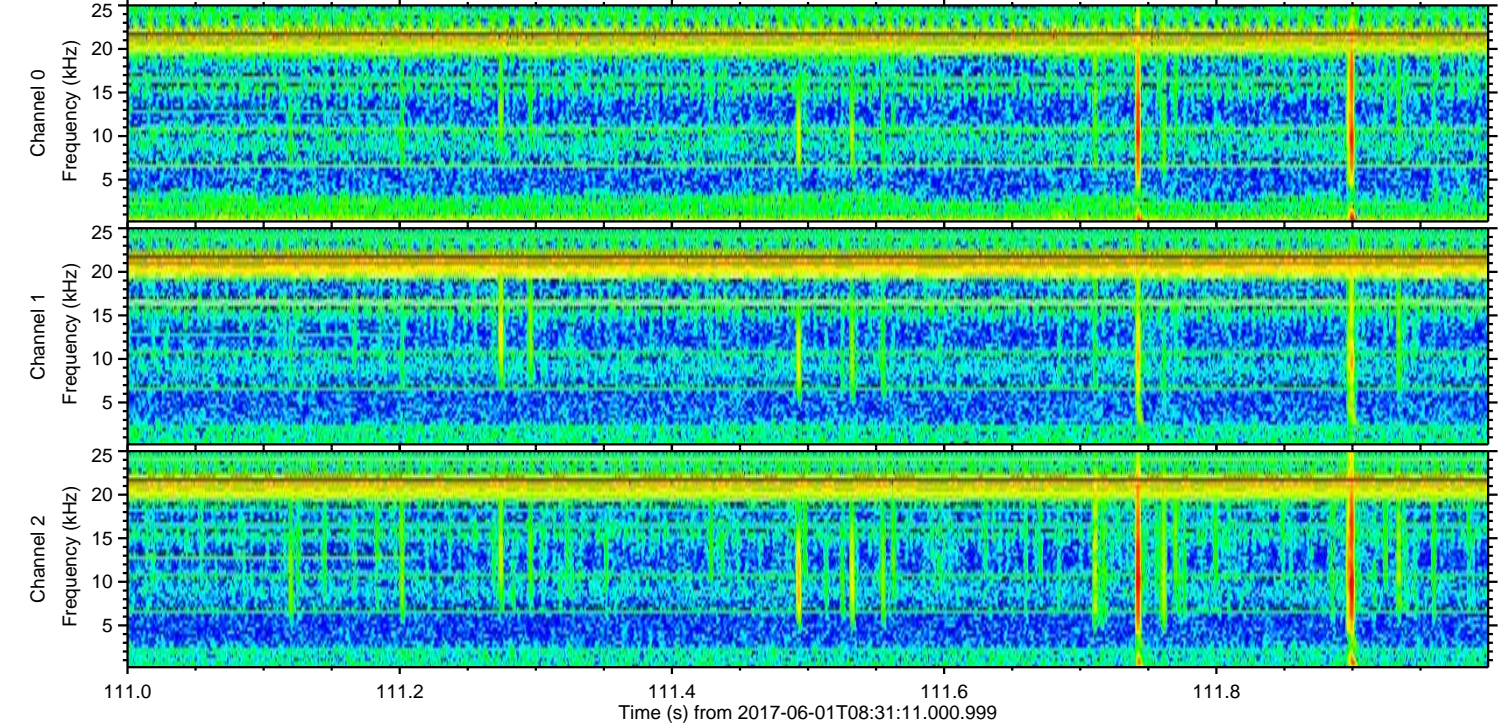
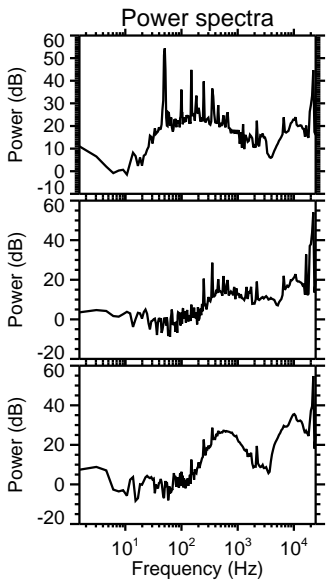
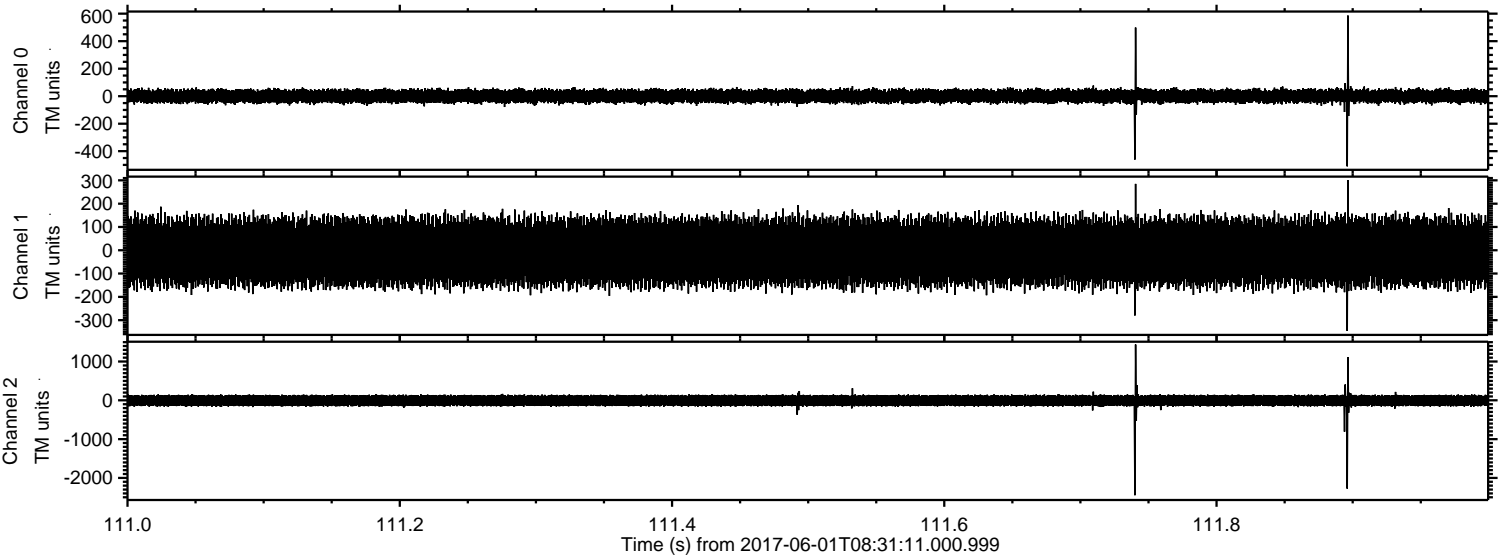


Processed Thu Jun 1 10:39:34 2017 by ELM ver.2012-10-06 from 001__elm20170601_083109__dat00.bin

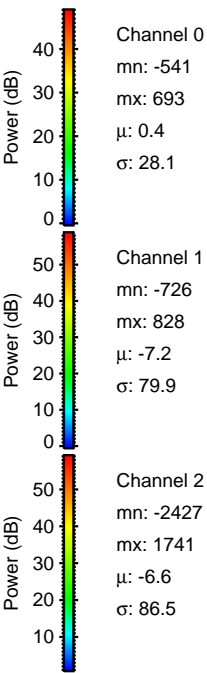
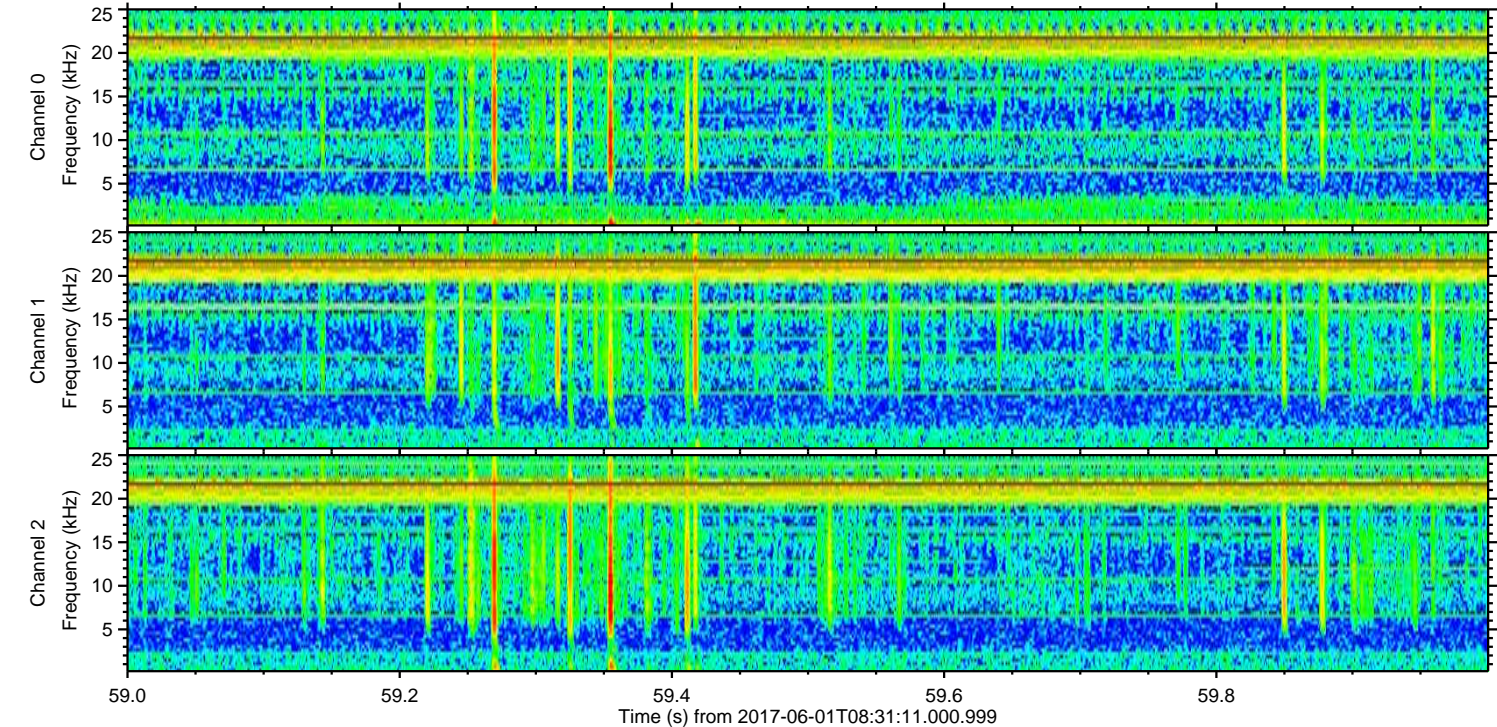
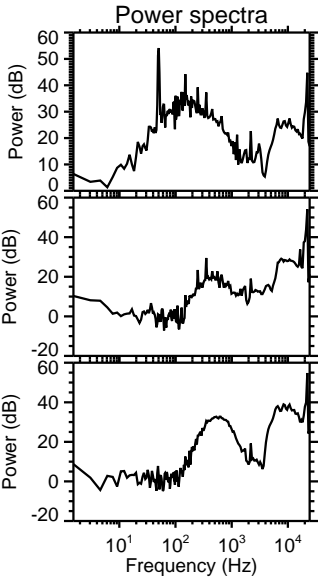
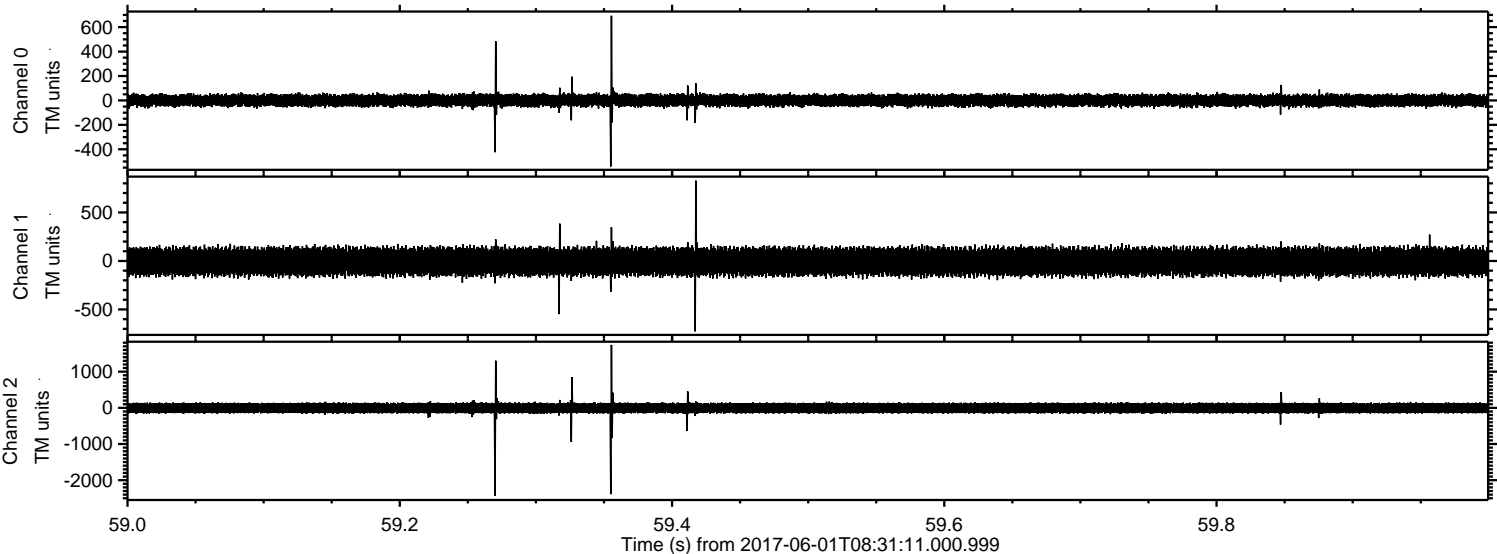


ELMAVAN 3D WAVEFORMS (Measured data sampled at 50 kHz) 51000 packets of 144 samples from 2017-06-01T08:31:11.000.999. Part 112/147

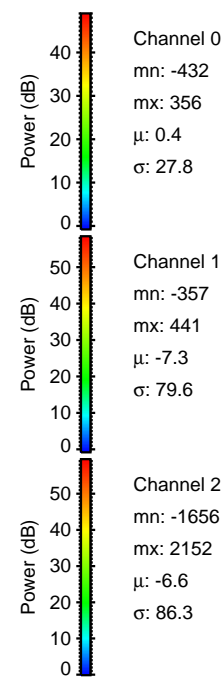
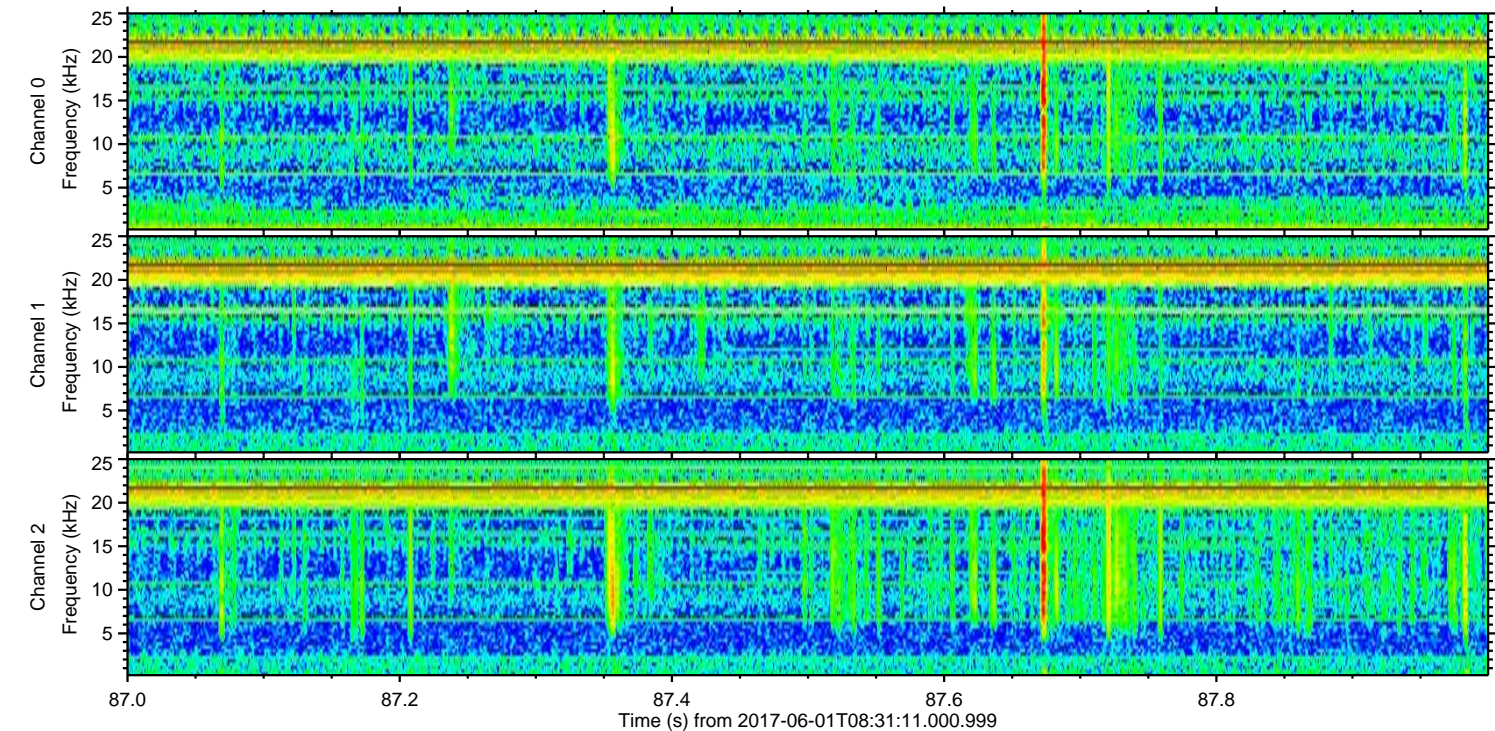
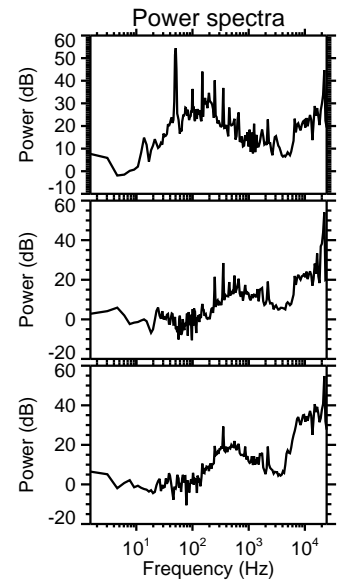
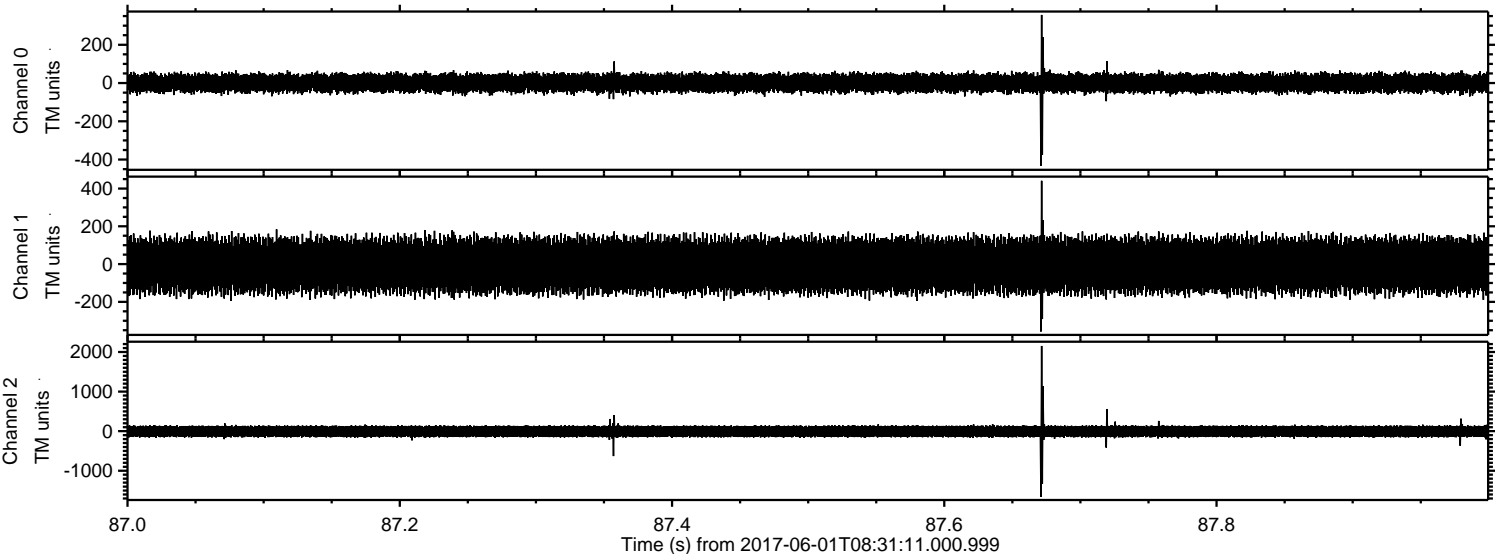
Processed Thu Jun 1 10:39:34 2017 by ELM ver.2012-10-06 from 001__elm20170601_083109__dat00.bin



Processed Thu Jun 1 10:39:35 2017 by ELM ver.2012-10-06 from 001__elm20170601_083109__dat00.bin

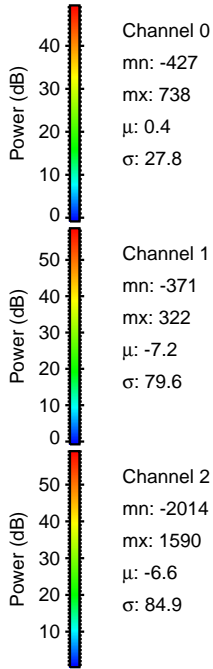
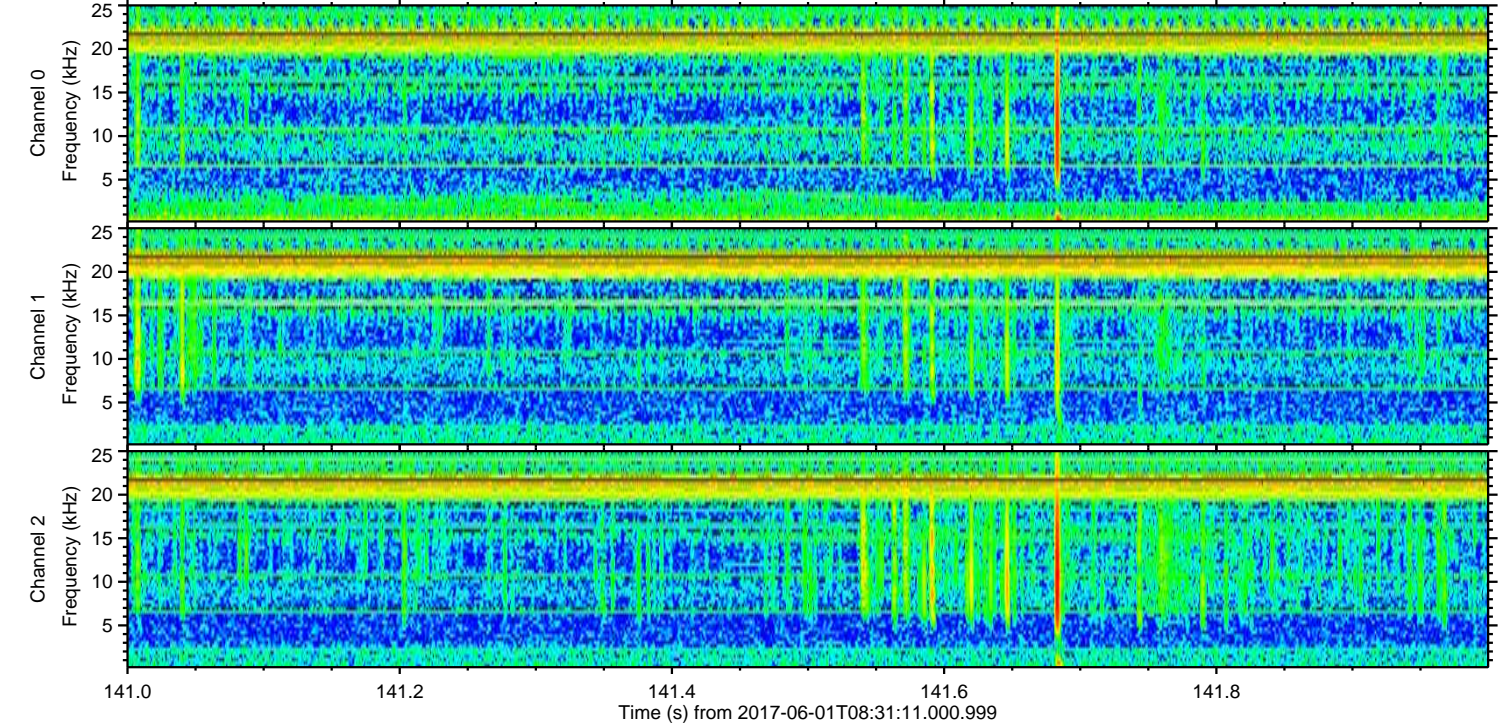
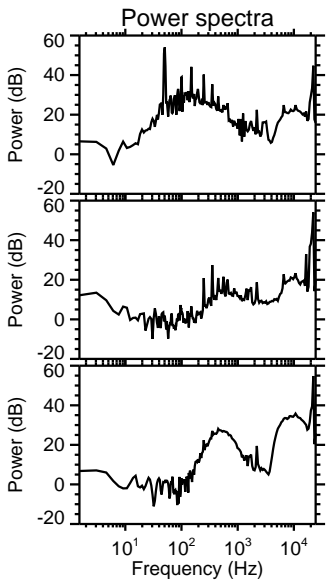
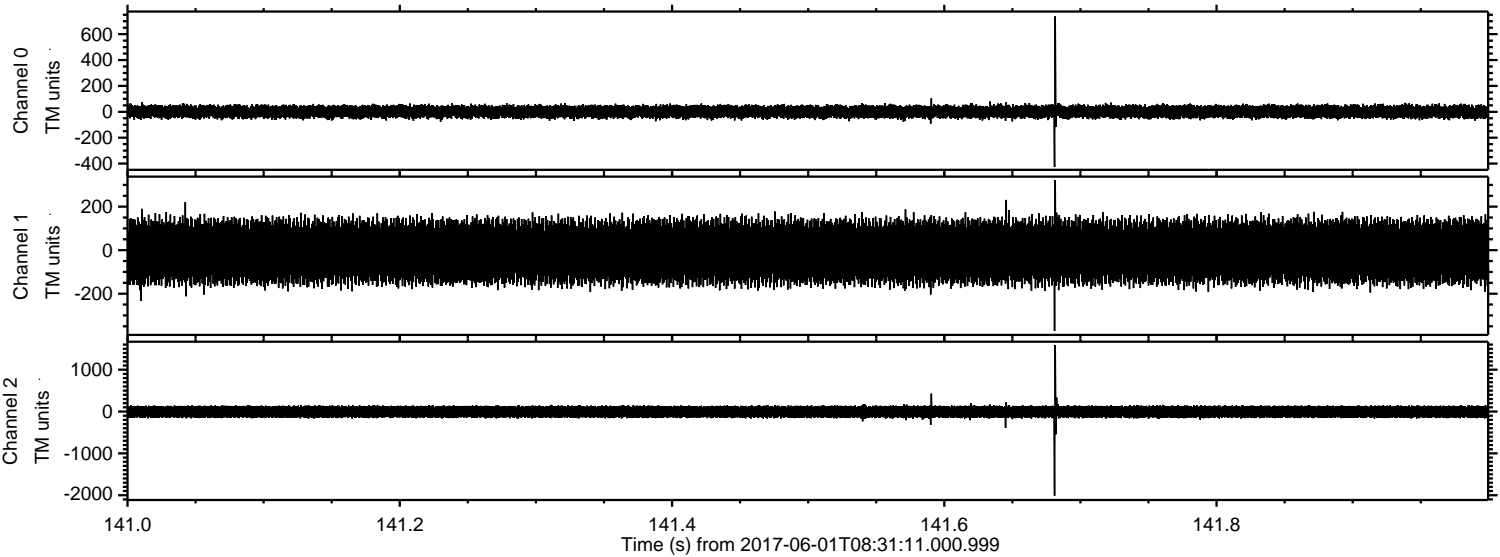


Processed Thu Jun 1 10:39:36 2017 by ELM ver.2012-10-06 from 001__elm20170601_083109__dat00.bin



ELMAVAN 3D WAVEFORMS (Measured data sampled at 50 kHz) 51000 packets of 144 samples from 2017-06-01T08:31:11.000.999. Part 142/147

Processed Thu Jun 1 10:39:37 2017 by ELM ver.2012-10-06 from 001__elm20170601_083109__dat00.bin



Channel 0
mn: -427
mx: 738
 μ : 0.4
 σ : 27.8

Channel 1
mn: -371
mx: 322
 μ : -7.2
 σ : 79.6

Channel 2
mn: -2014
mx: 1590
 μ : -6.6
 σ : 84.9

Processed Thu Jun 1 10:39:38 2017 by ELM ver.2012-10-06 from 001__elm20170601_083109__dat00.bin

