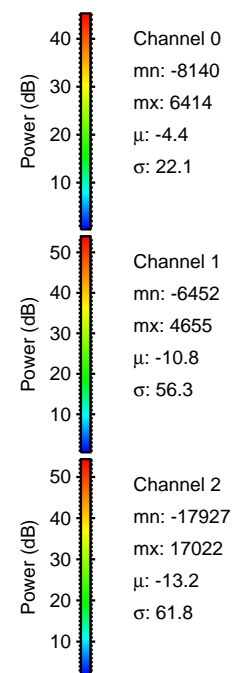
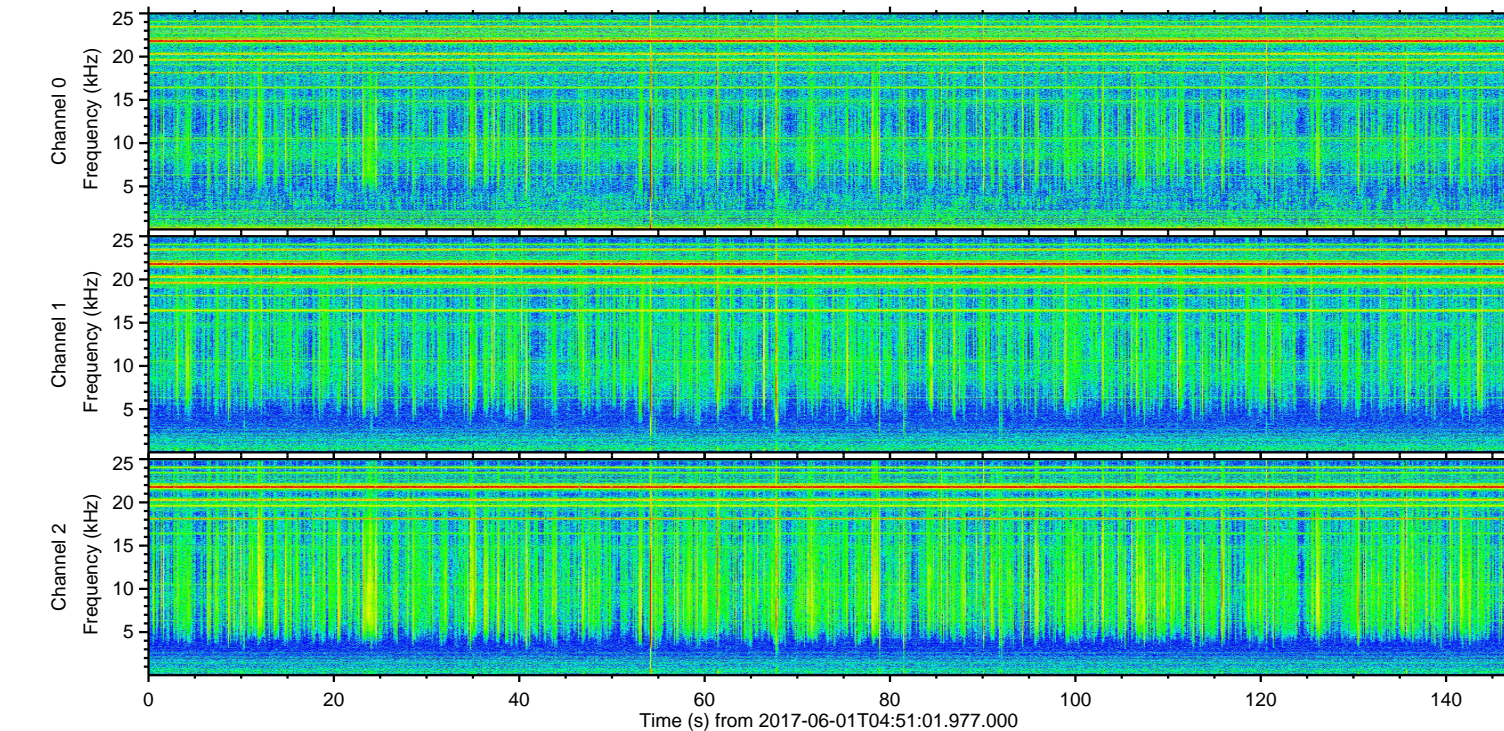
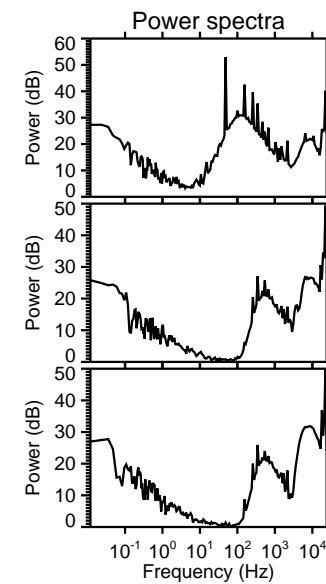
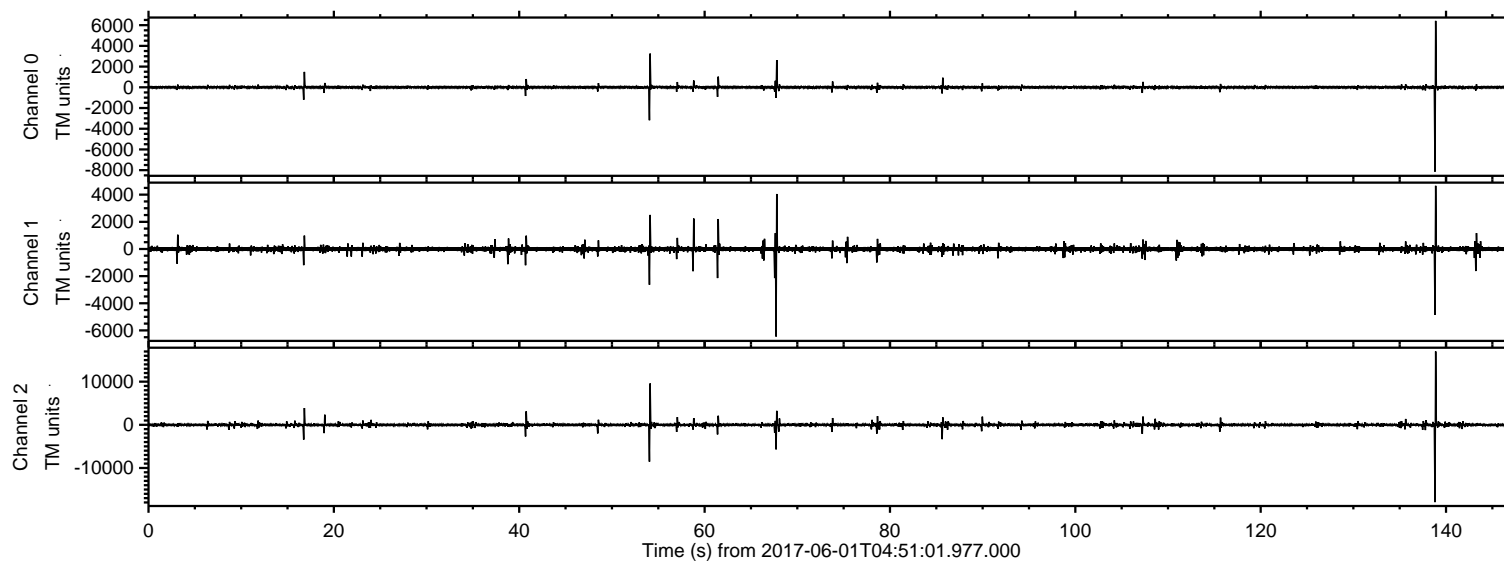


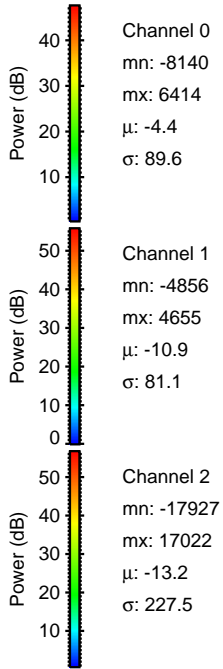
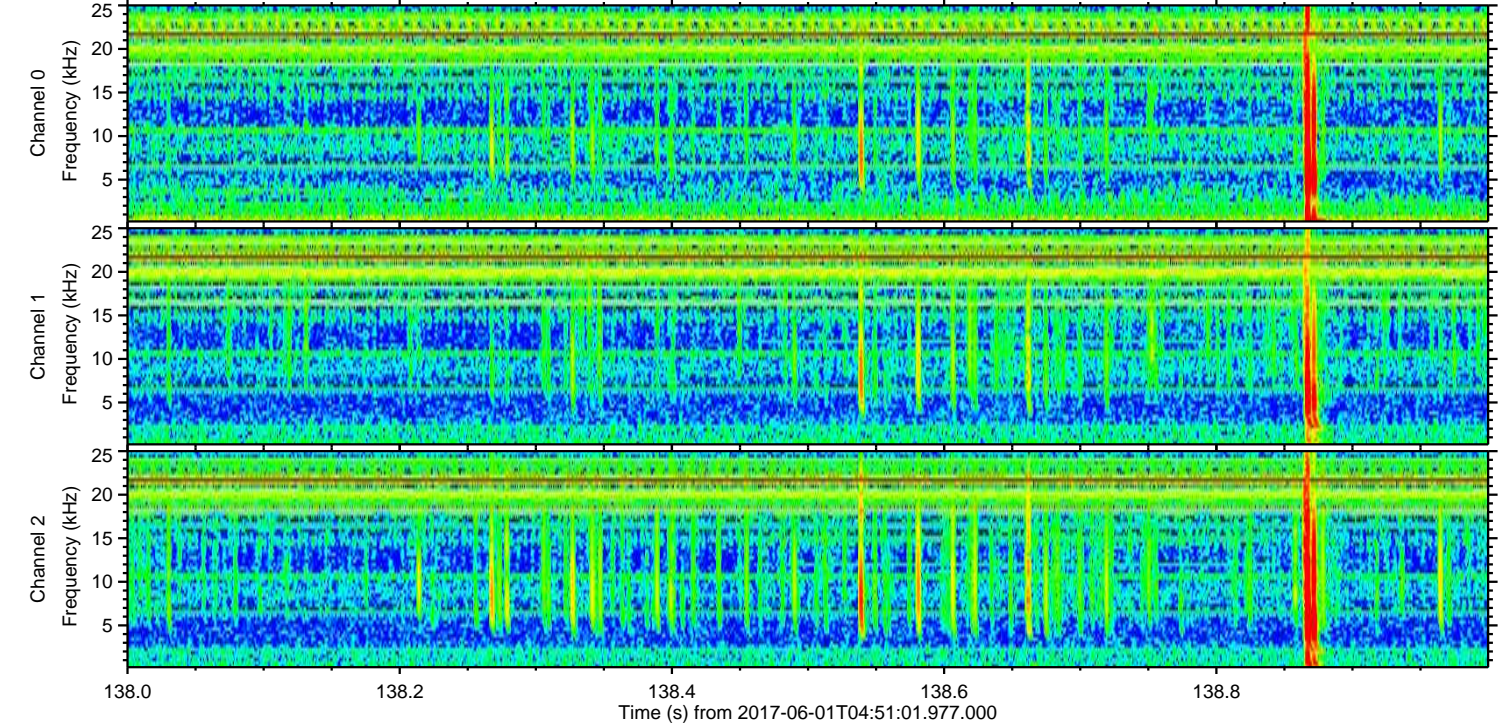
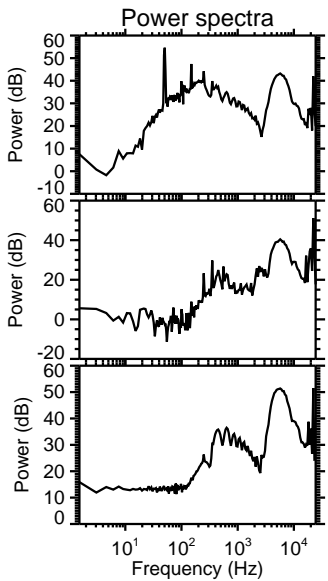
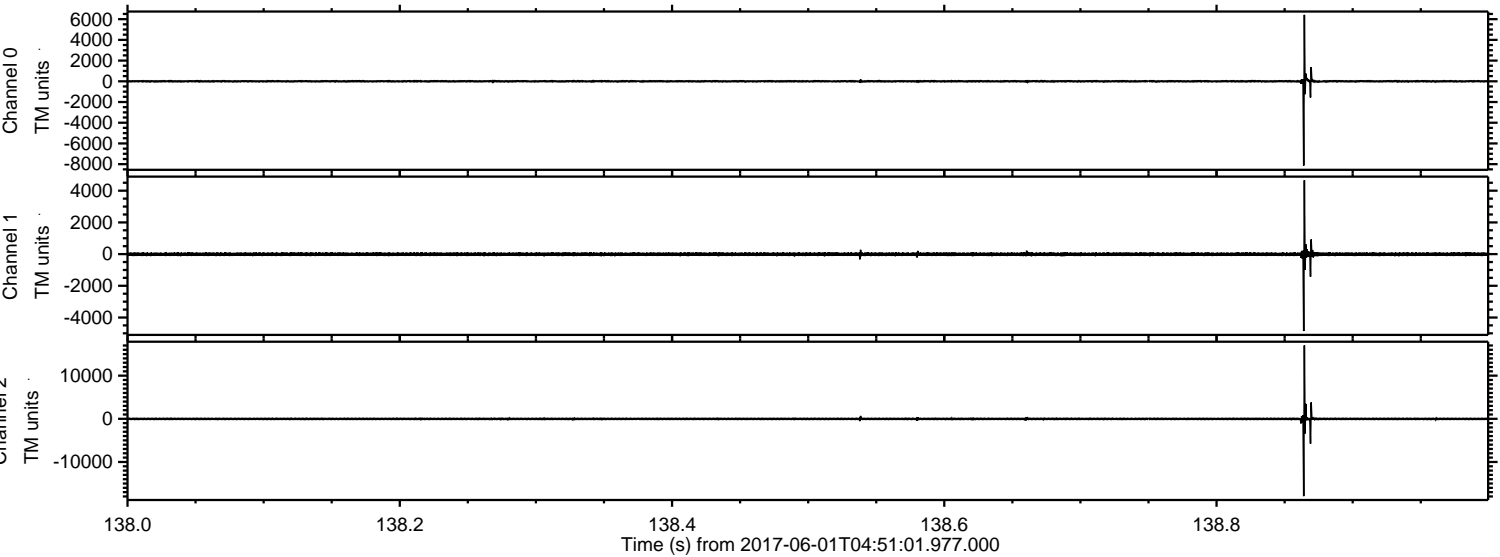
ELMAVAN 3D WAVEFORMS (Measured data sampled at 50 kHz) 51000 packets of 144 samples from 2017-06-01T04:51:01.977.000.

Processed Thu Jun 1 06:58:28 2017 by ELM ver.2012-10-06 from 001__elm20170601_045100__dat00.bin

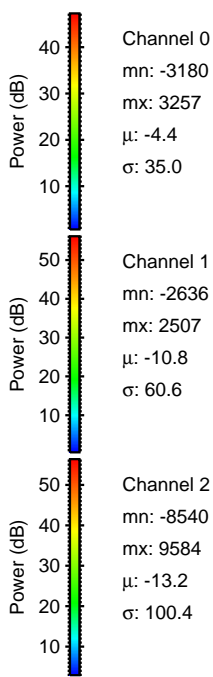
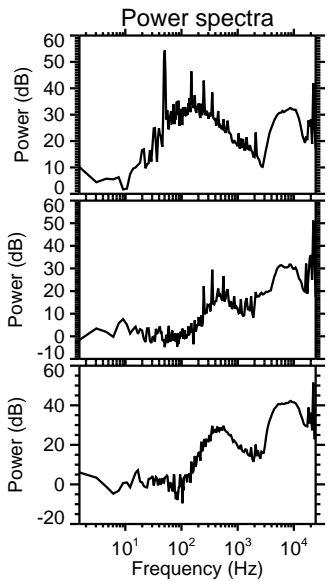
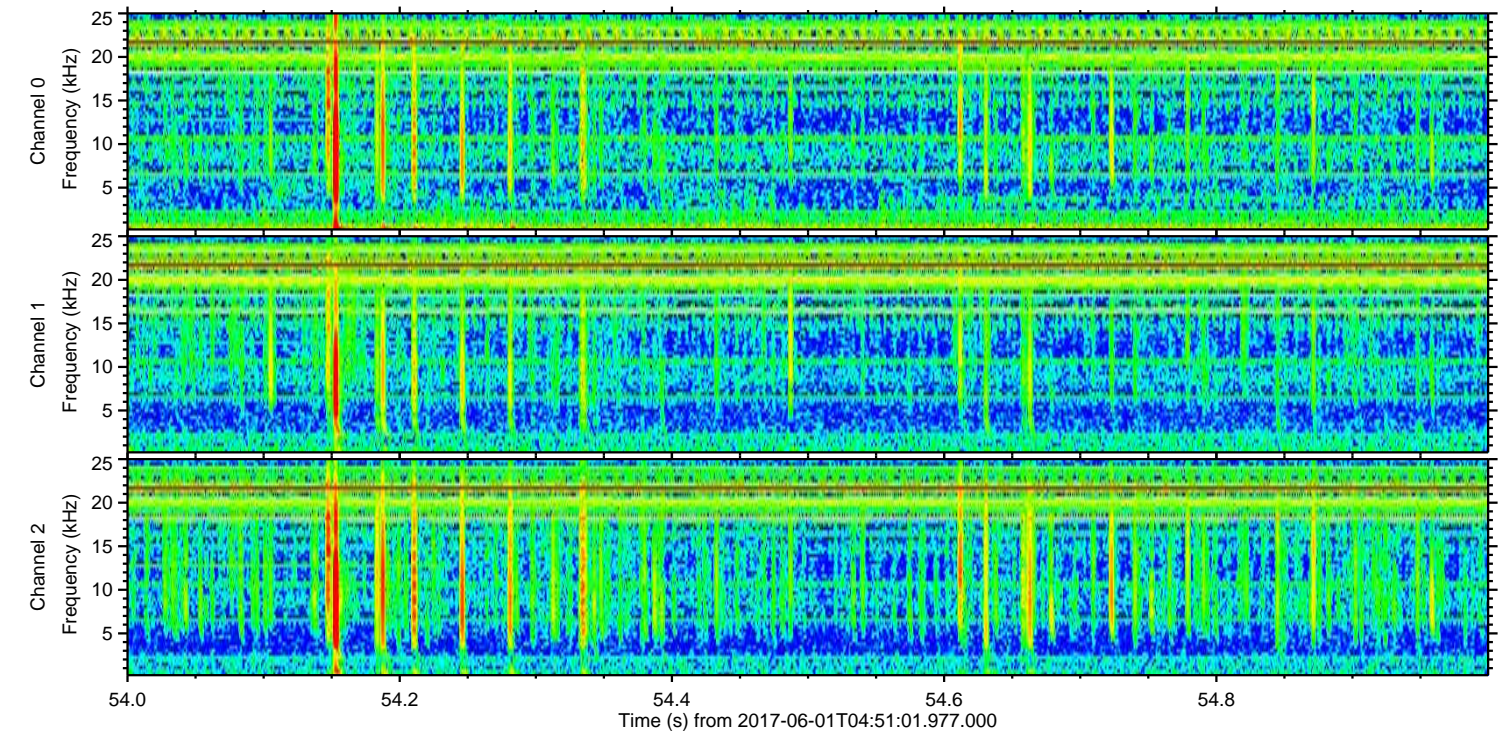
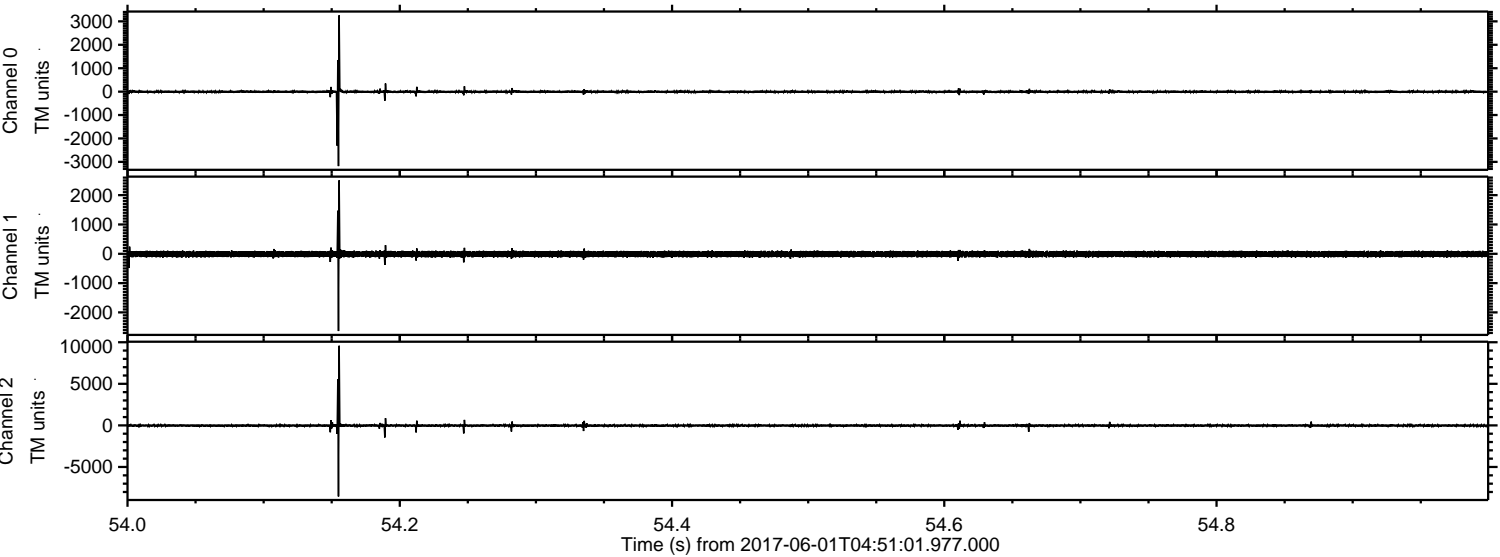


ELMAVAN 3D WAVEFORMS (Measured data sampled at 50 kHz) 51000 packets of 144 samples from 2017-06-01T04:51:01.977.000. Part 139/147

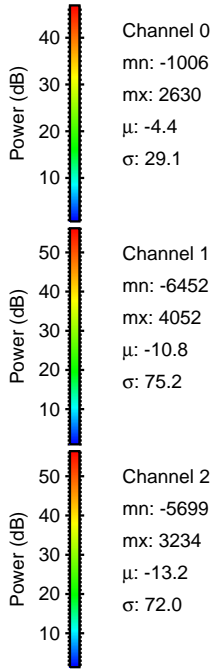
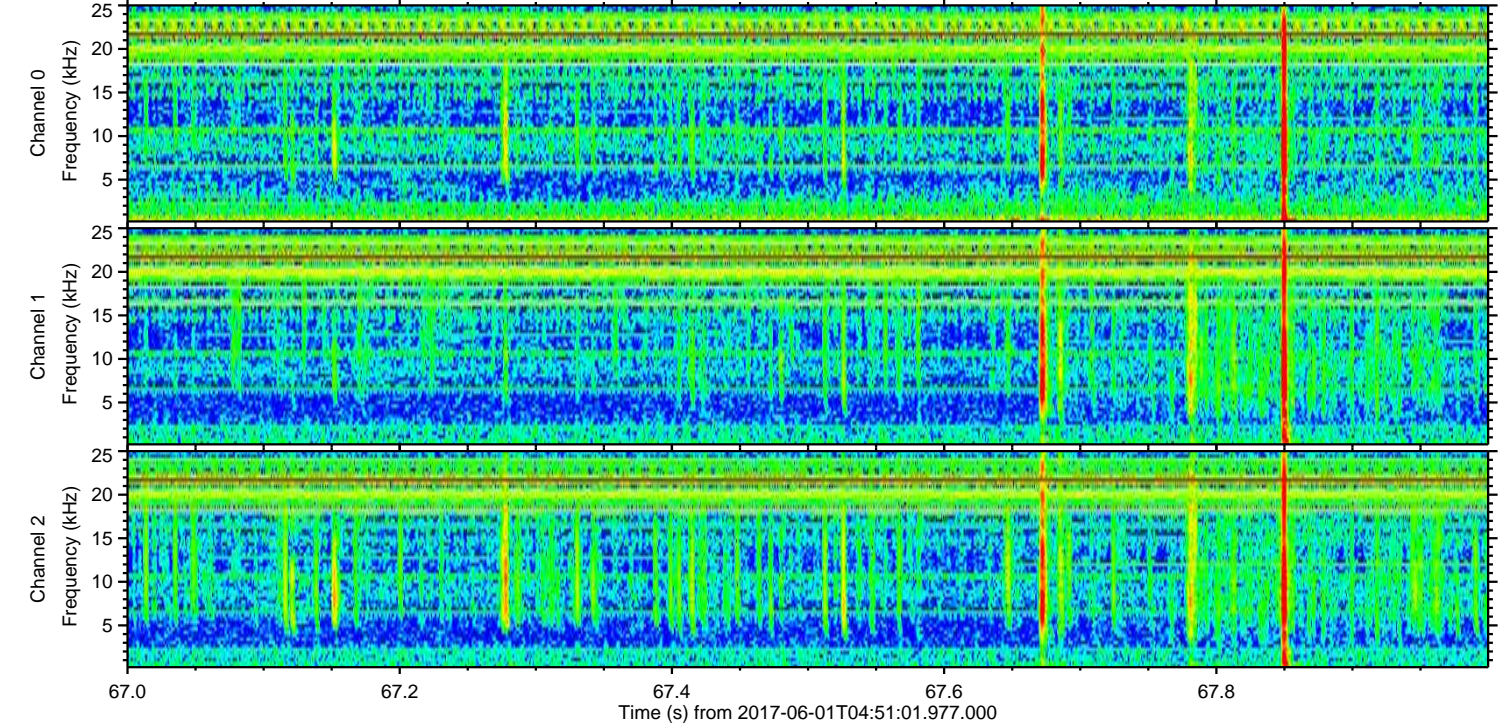
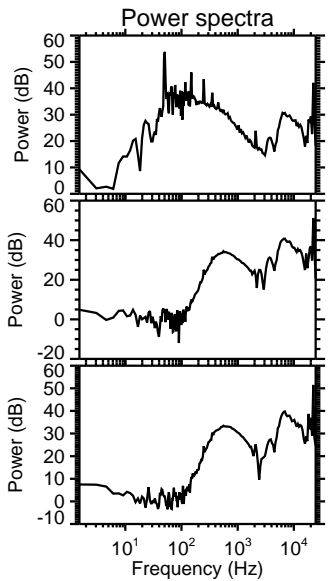
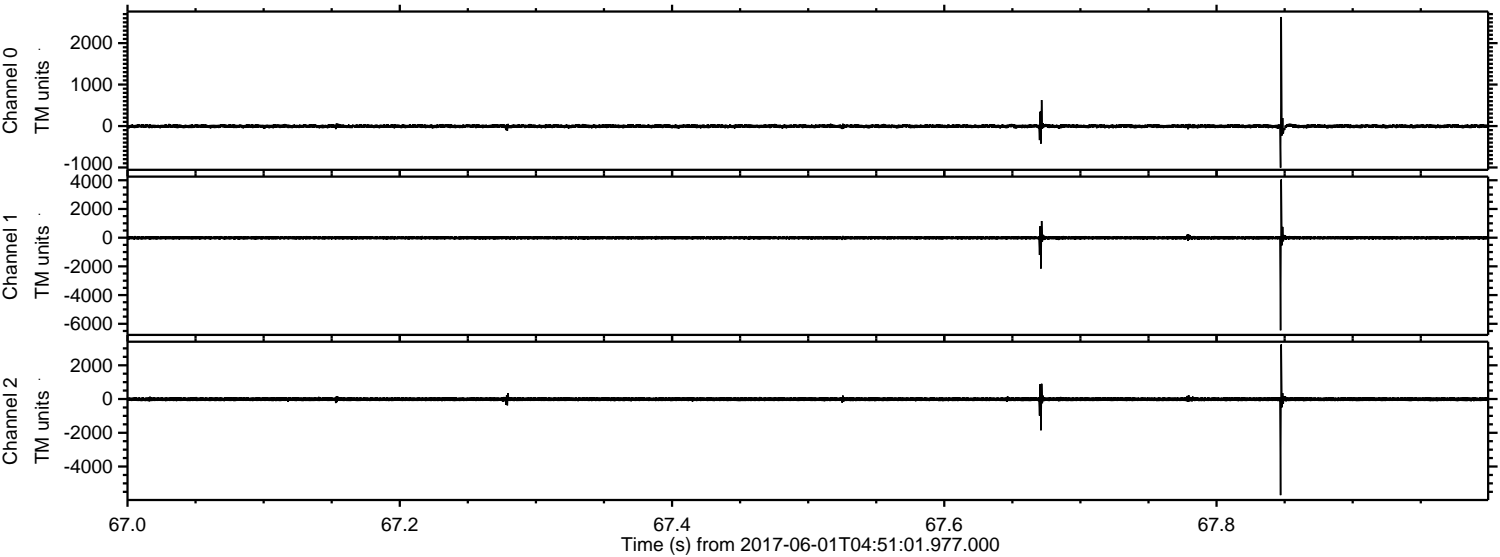
Processed Thu Jun 1 06:58:34 2017 by ELM ver.2012-10-06 from 001__elm20170601_045100__dat00.bin



Processed Thu Jun 1 06:58:35 2017 by ELM ver.2012-10-06 from 001__elm20170601_045100__dat00.bin

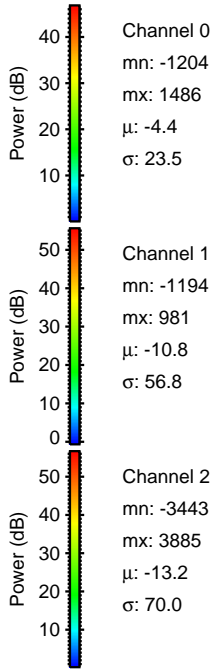
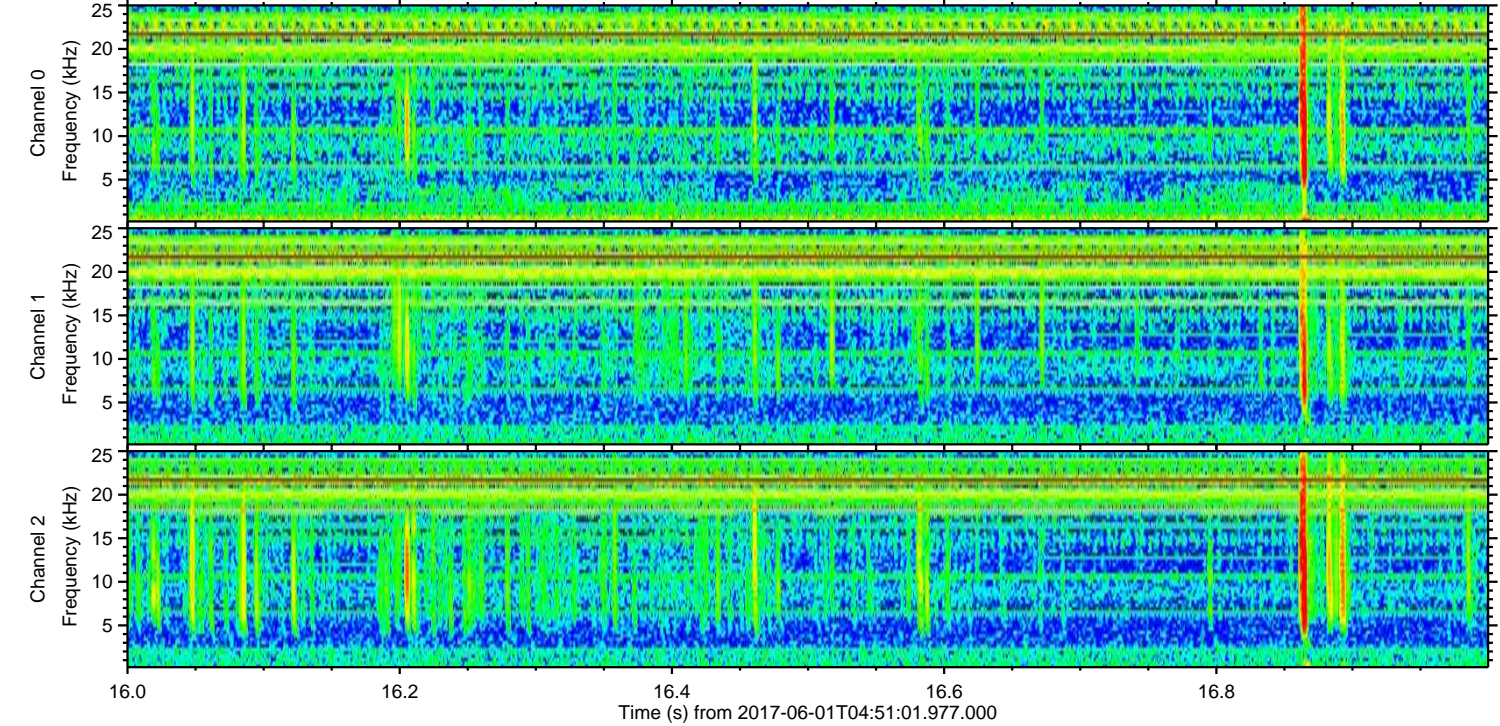
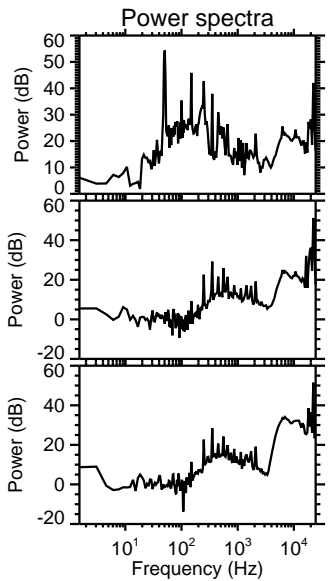
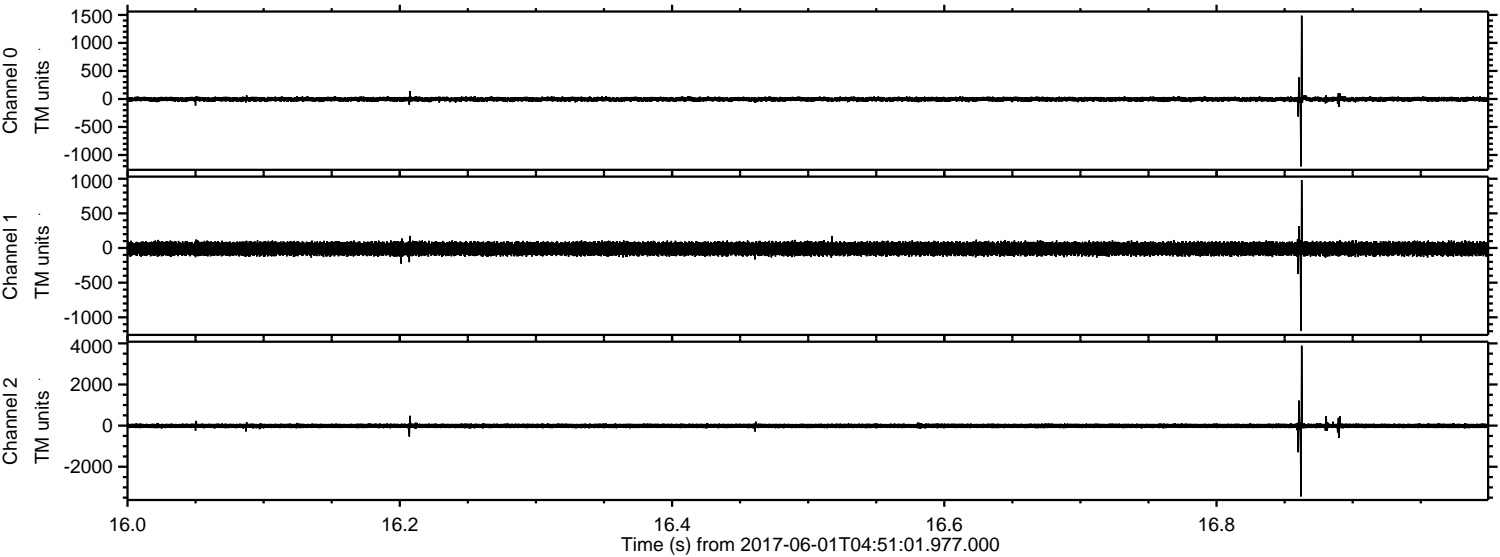


Processed Thu Jun 1 06:58:35 2017 by ELM ver.2012-10-06 from 001__elm20170601_045100__dat00.bin

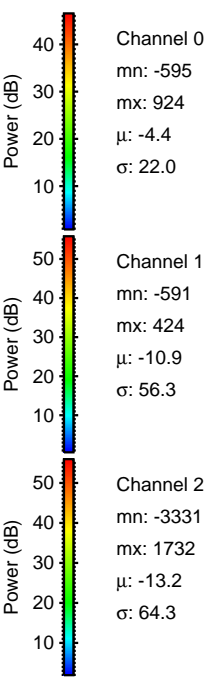
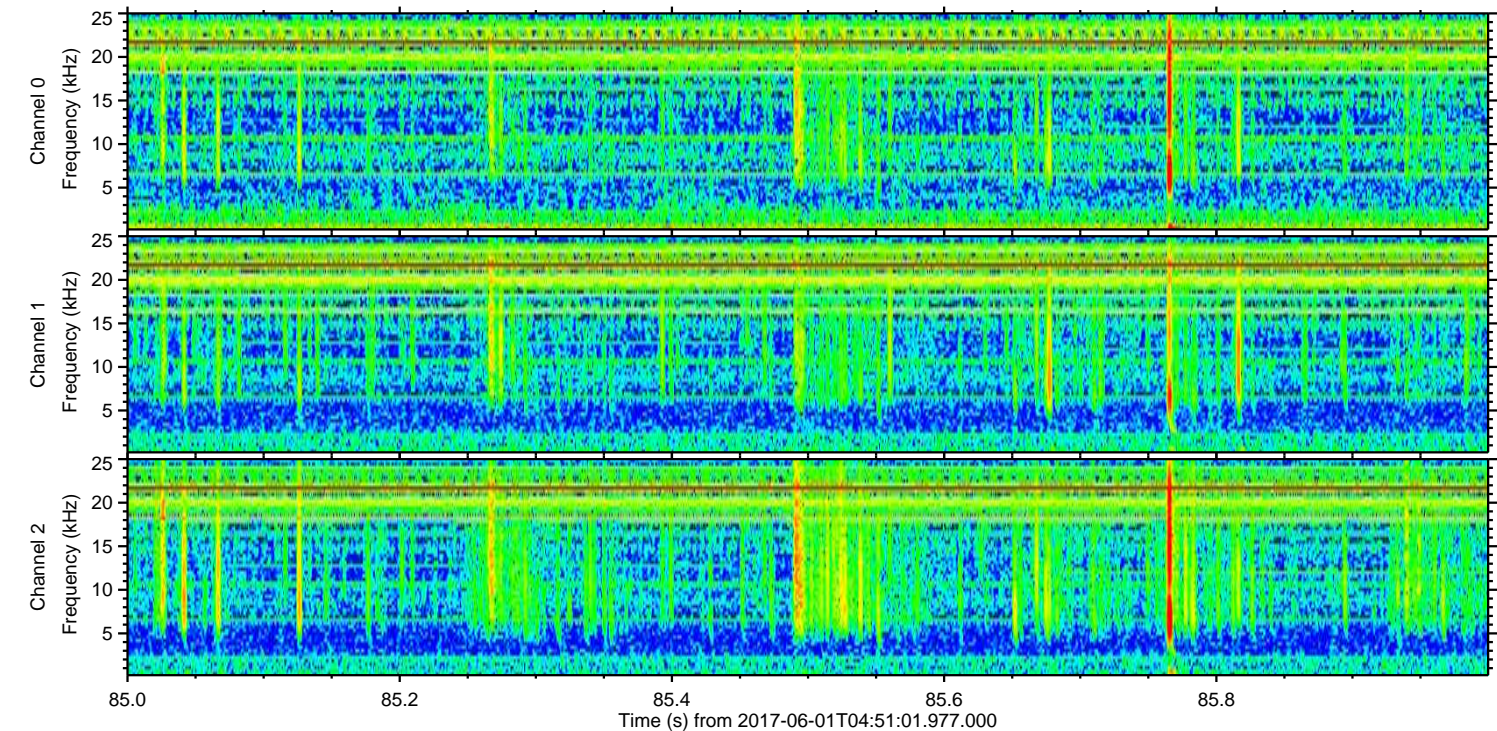
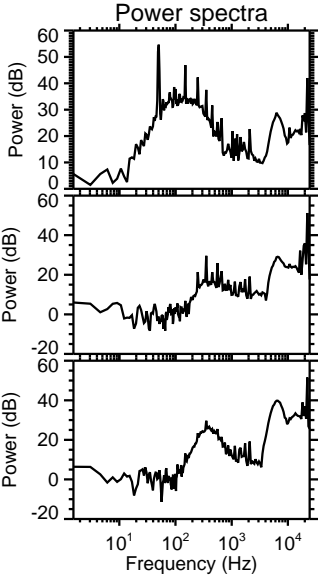
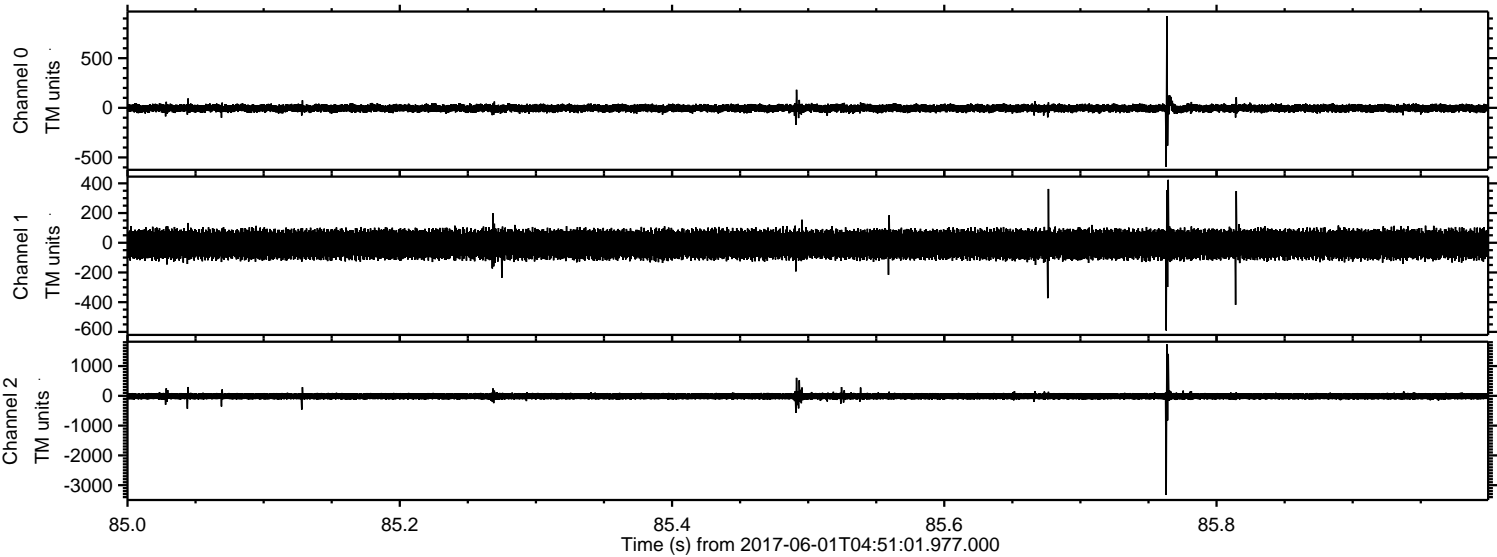


ELMAVAN 3D WAVEFORMS (Measured data sampled at 50 kHz) 51000 packets of 144 samples from 2017-06-01T04:51:01.977.000. Part 17/147

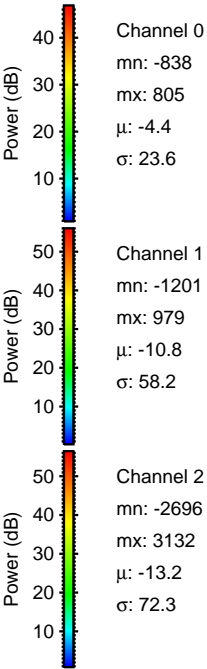
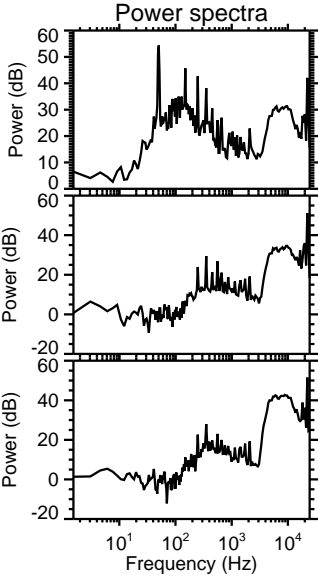
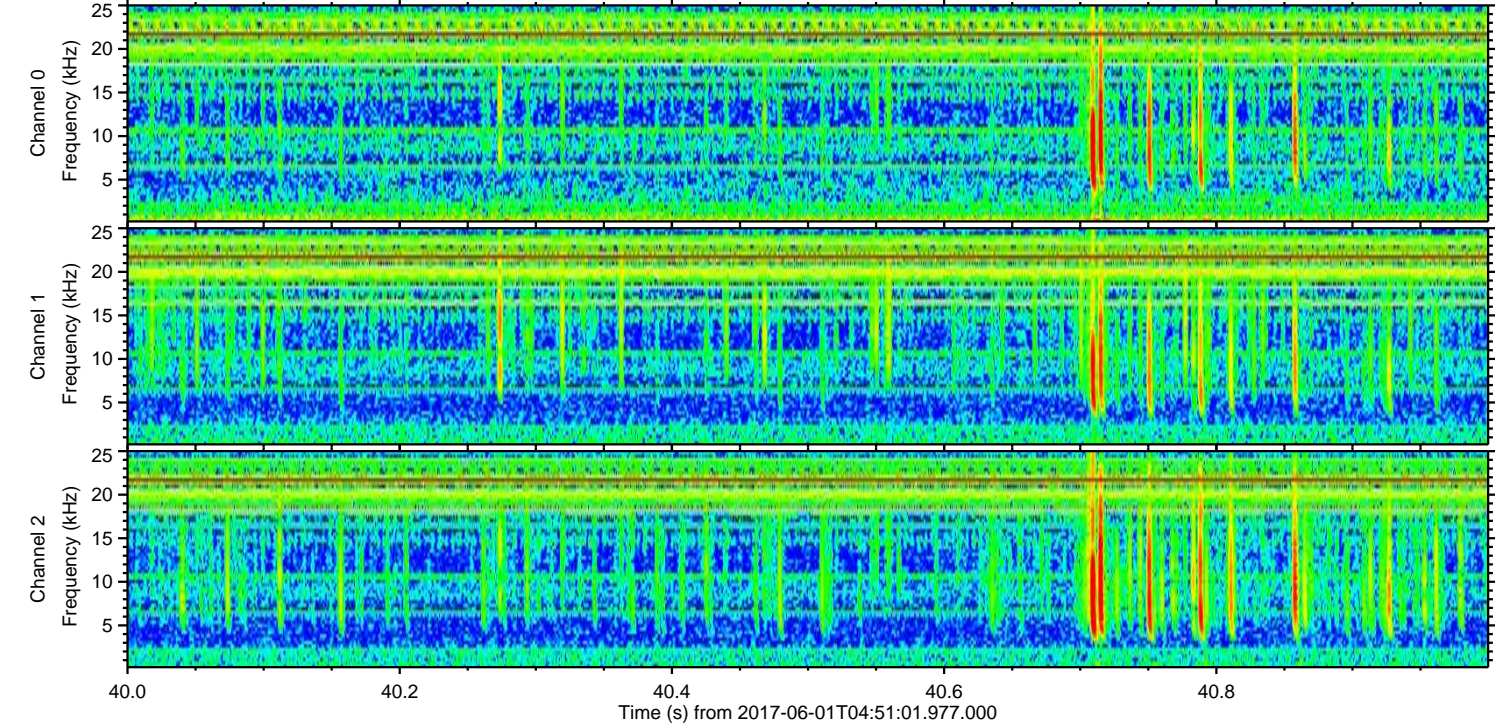
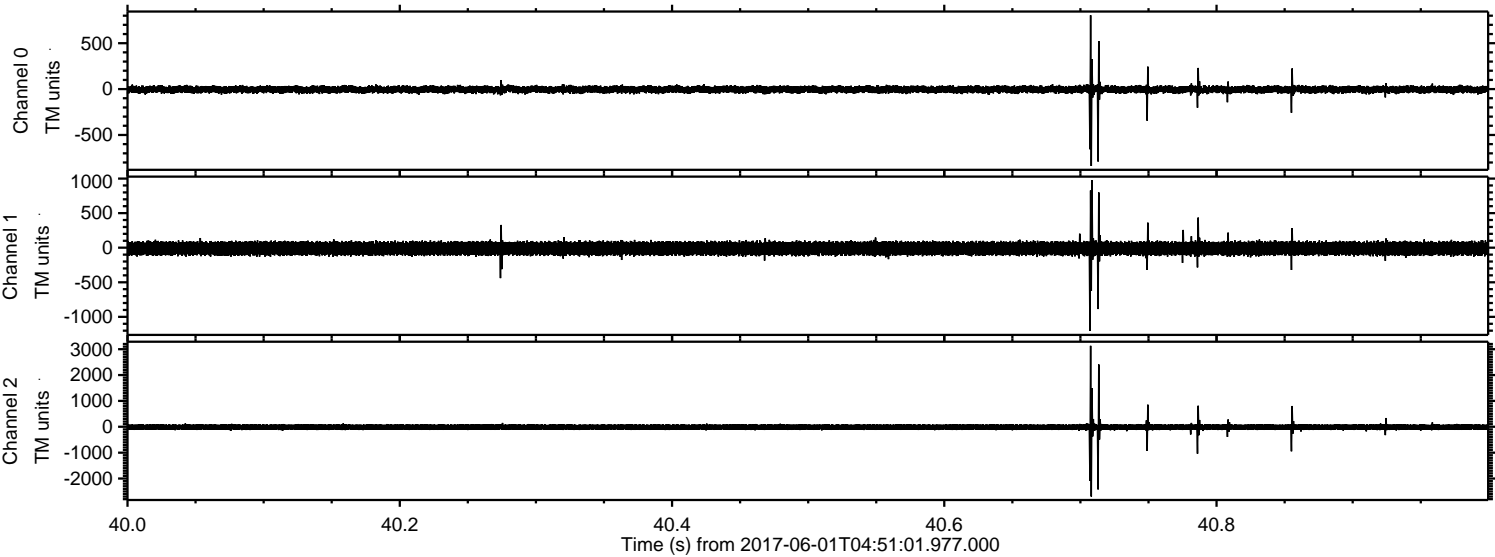
Processed Thu Jun 1 06:58:36 2017 by ELM ver.2012-10-06 from 001__elm20170601_045100__dat00.bin



Processed Thu Jun 1 06:58:36 2017 by ELM ver.2012-10-06 from 001__elm20170601_045100__dat00.bin

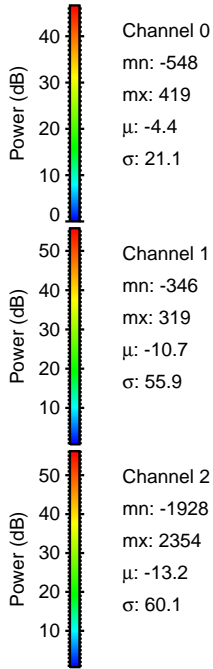
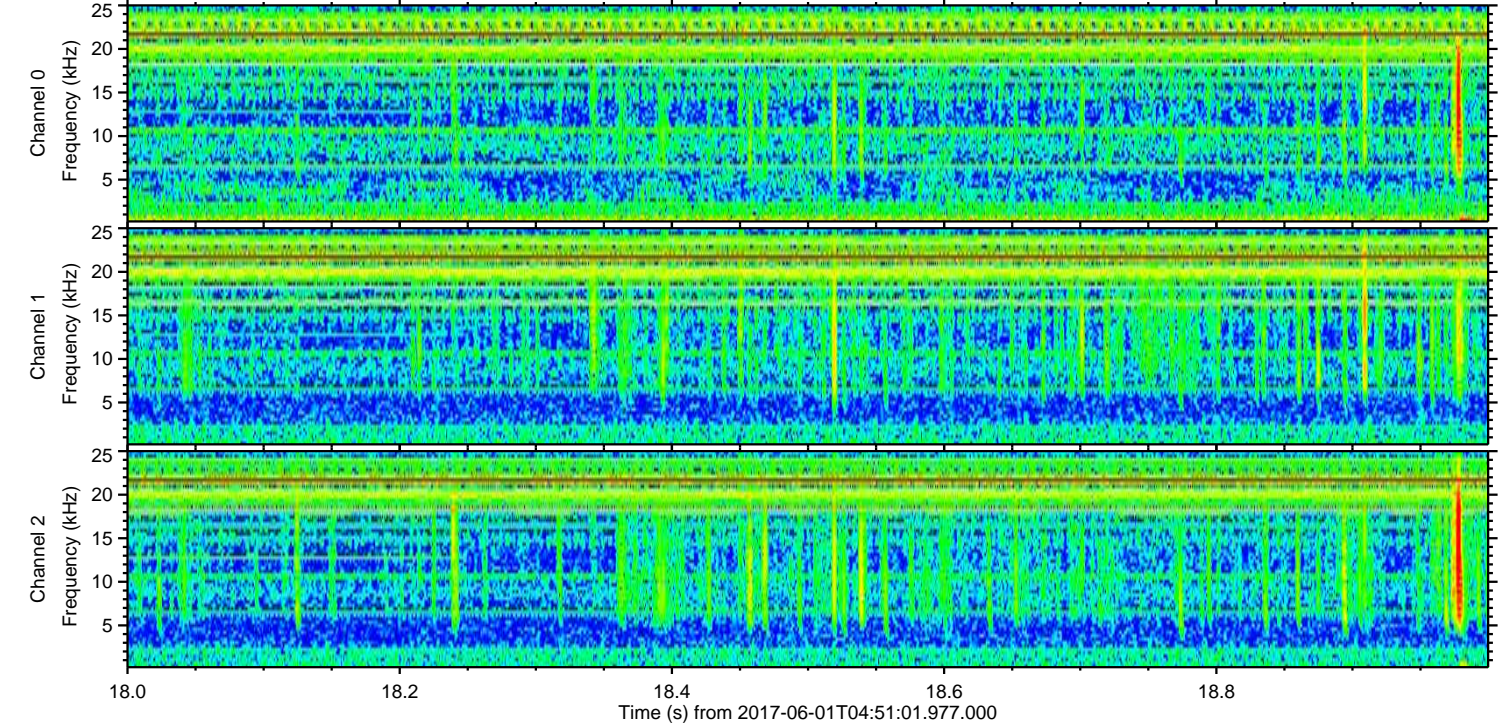
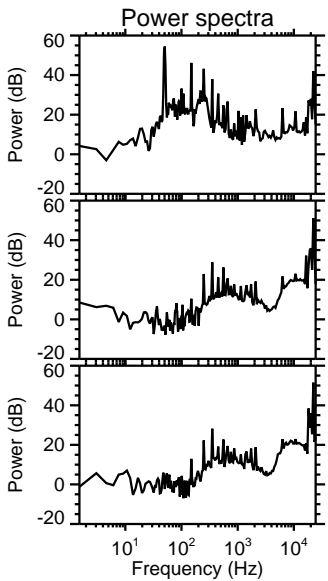
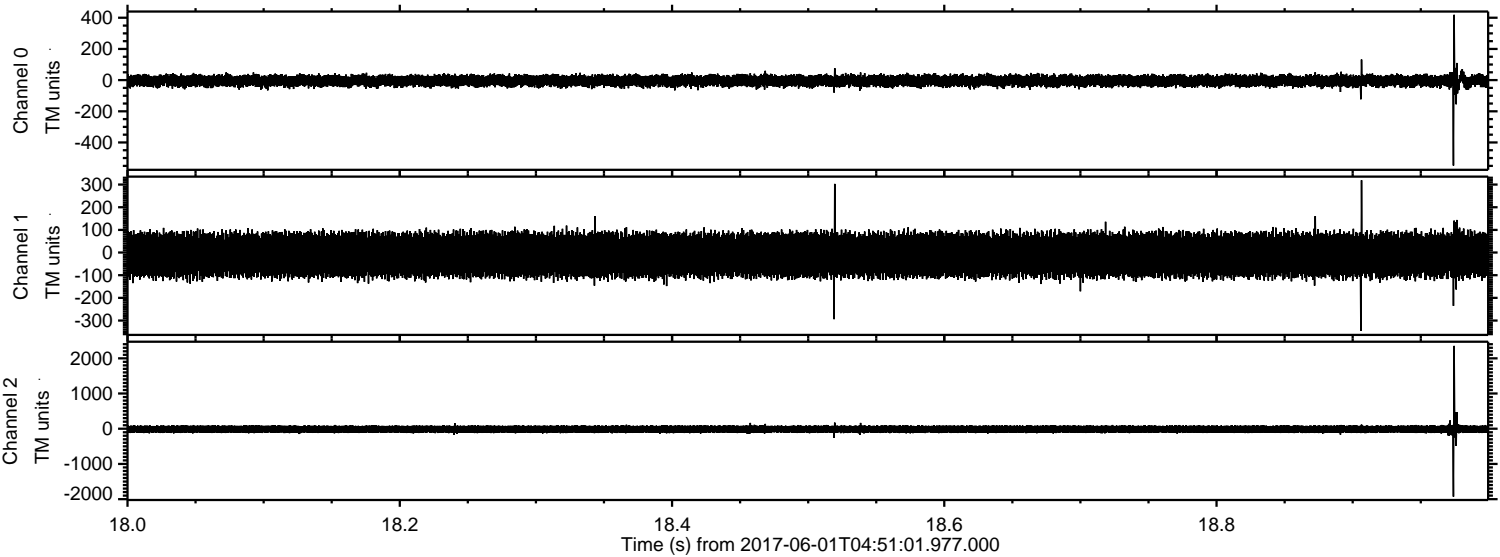


Processed Thu Jun 1 06:58:37 2017 by ELM ver.2012-10-06 from 001__elm20170601_045100__dat00.bin



ELMAVAN 3D WAVEFORMS (Measured data sampled at 50 kHz) 51000 packets of 144 samples from 2017-06-01T04:51:01.977.000. Part 19/147

Processed Thu Jun 1 06:58:38 2017 by ELM ver.2012-10-06 from 001__elm20170601_045100__dat00.bin

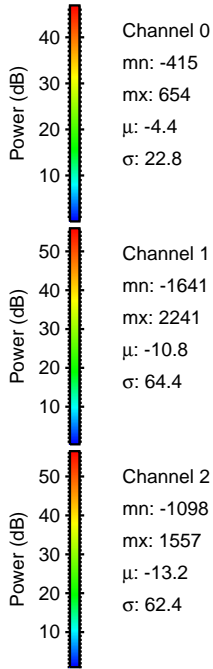
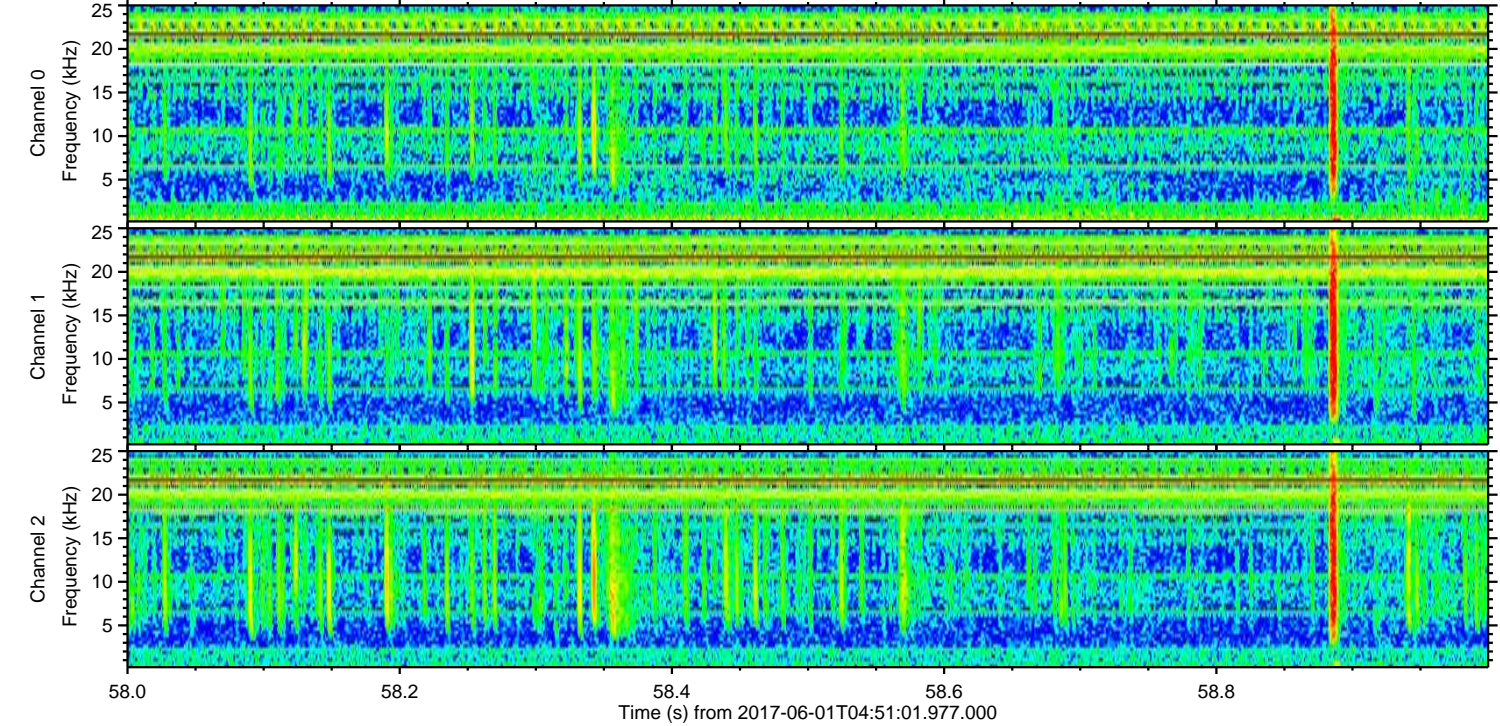
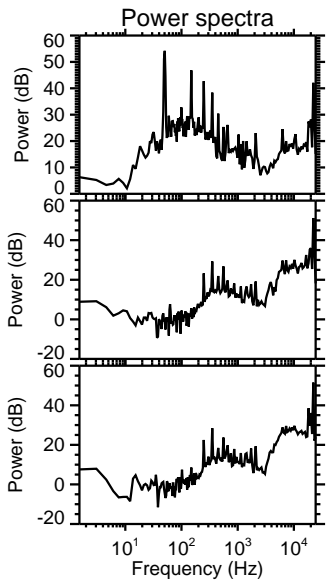
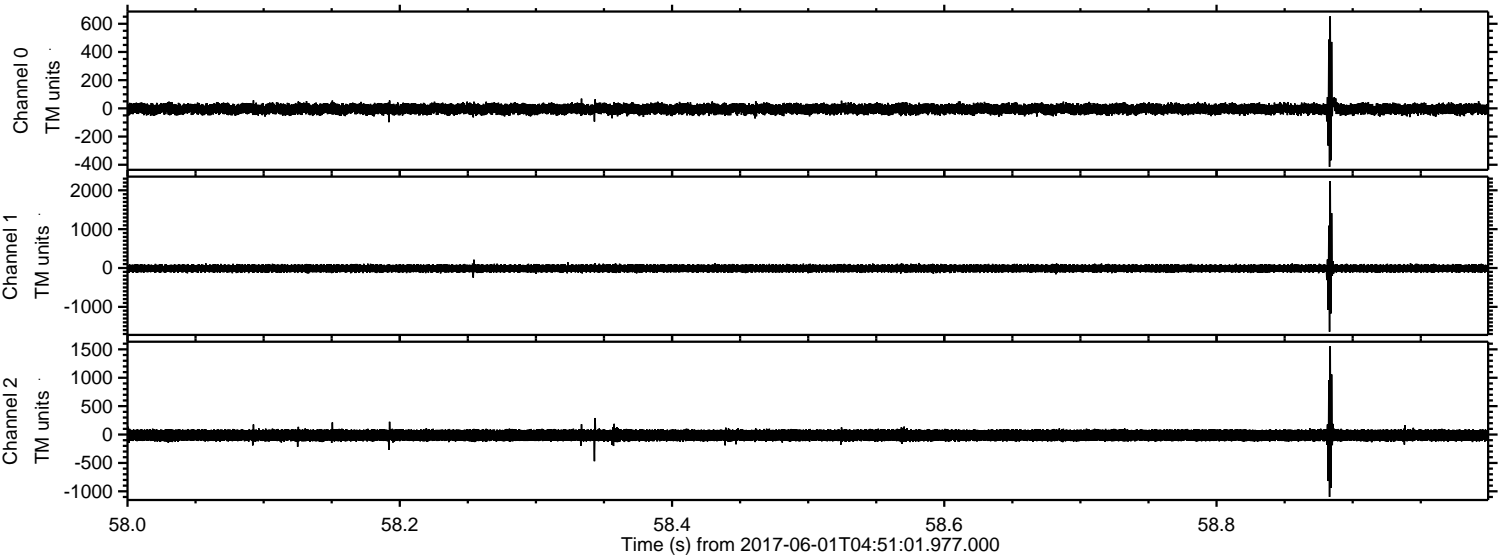


Channel 0
mn: -548
mx: 419
 μ : -4.4
 σ : 21.1

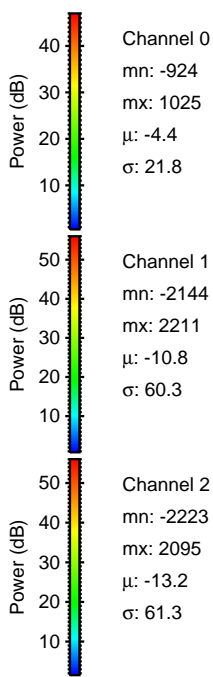
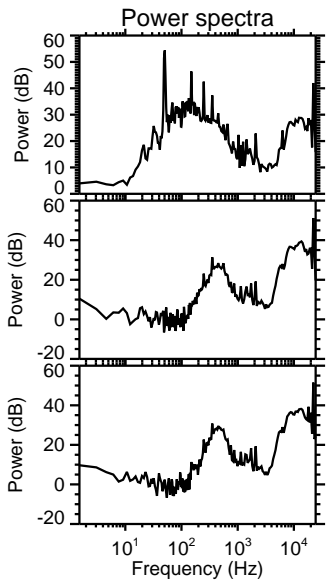
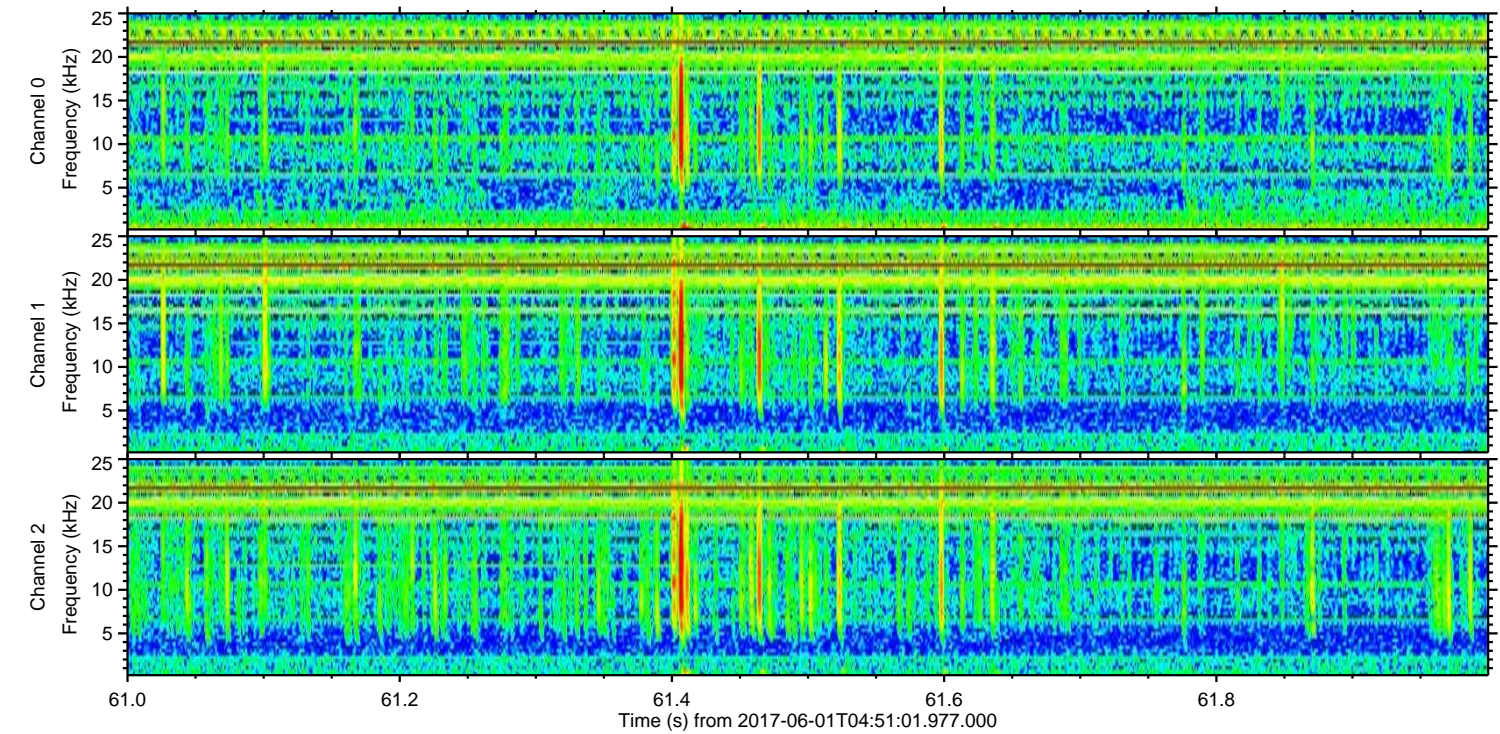
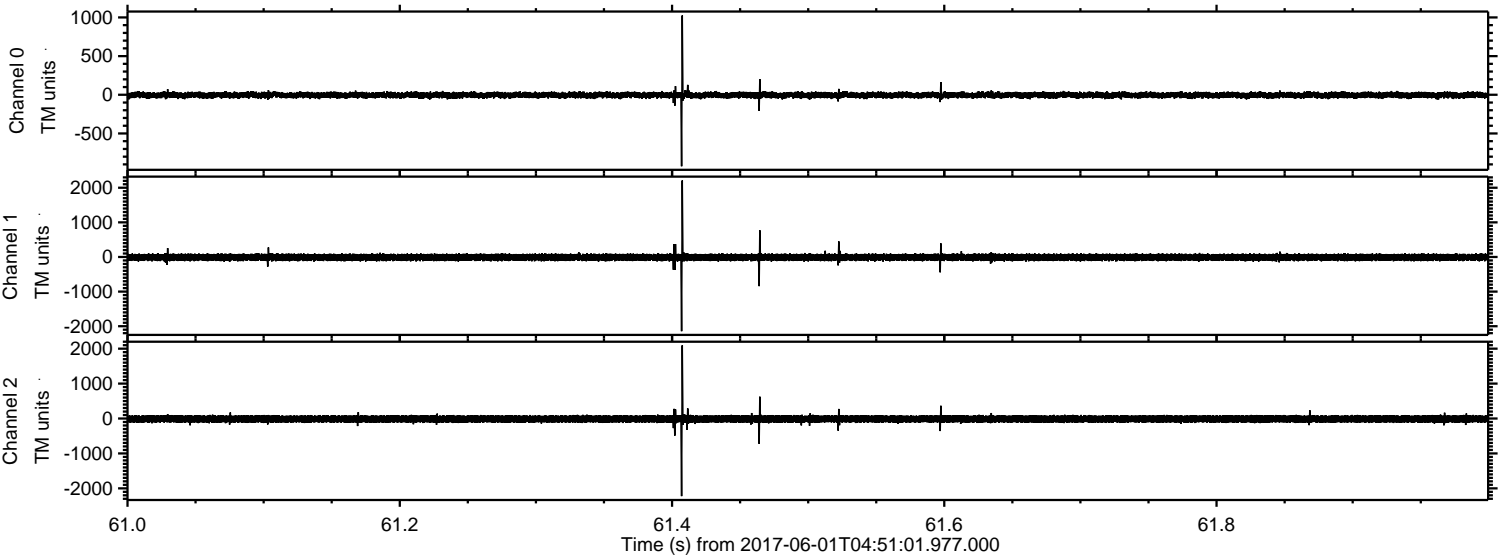
Channel 1
mn: -346
mx: 319
 μ : -10.7
 σ : 55.9

Channel 2
mn: -1928
mx: 2354
 μ : -13.2
 σ : 60.1

Processed Thu Jun 1 06:58:38 2017 by ELM ver.2012-10-06 from 001__elm20170601_045100__dat00.bin



Processed Thu Jun 1 06:58:39 2017 by ELM ver.2012-10-06 from 001__elm20170601_045100__dat00.bin



Processed Thu Jun 1 06:58:39 2017 by ELM ver.2012-10-06 from 001__elm20170601_045100__dat00.bin

