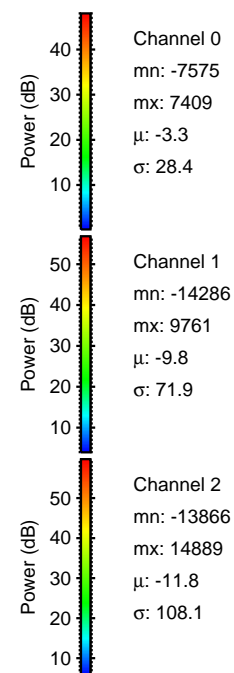
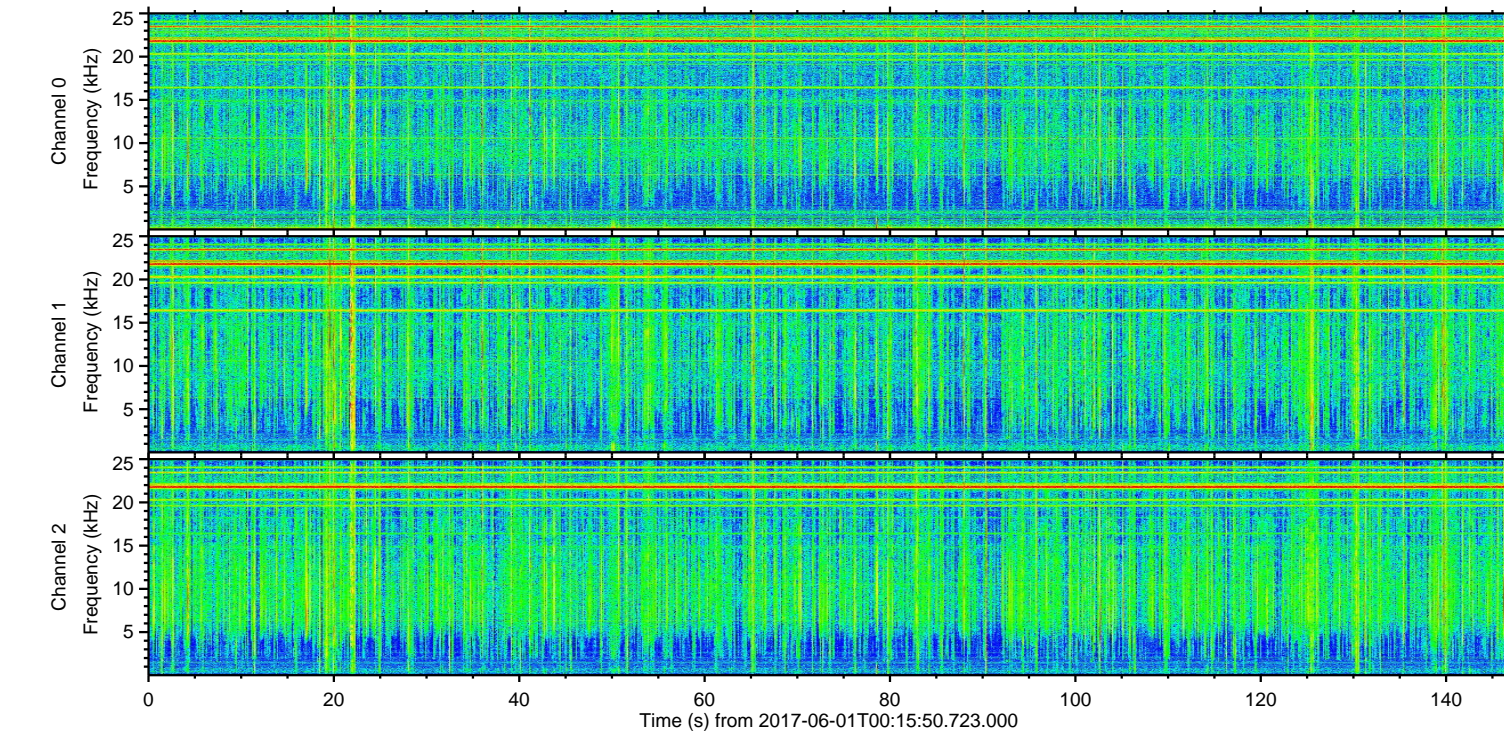
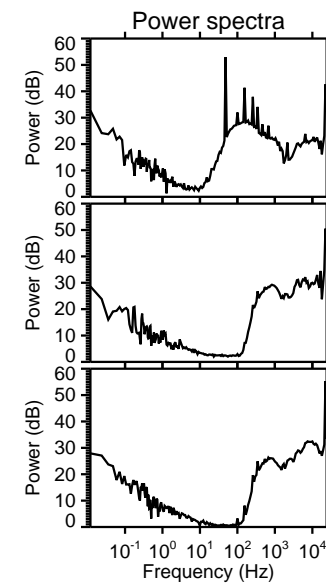
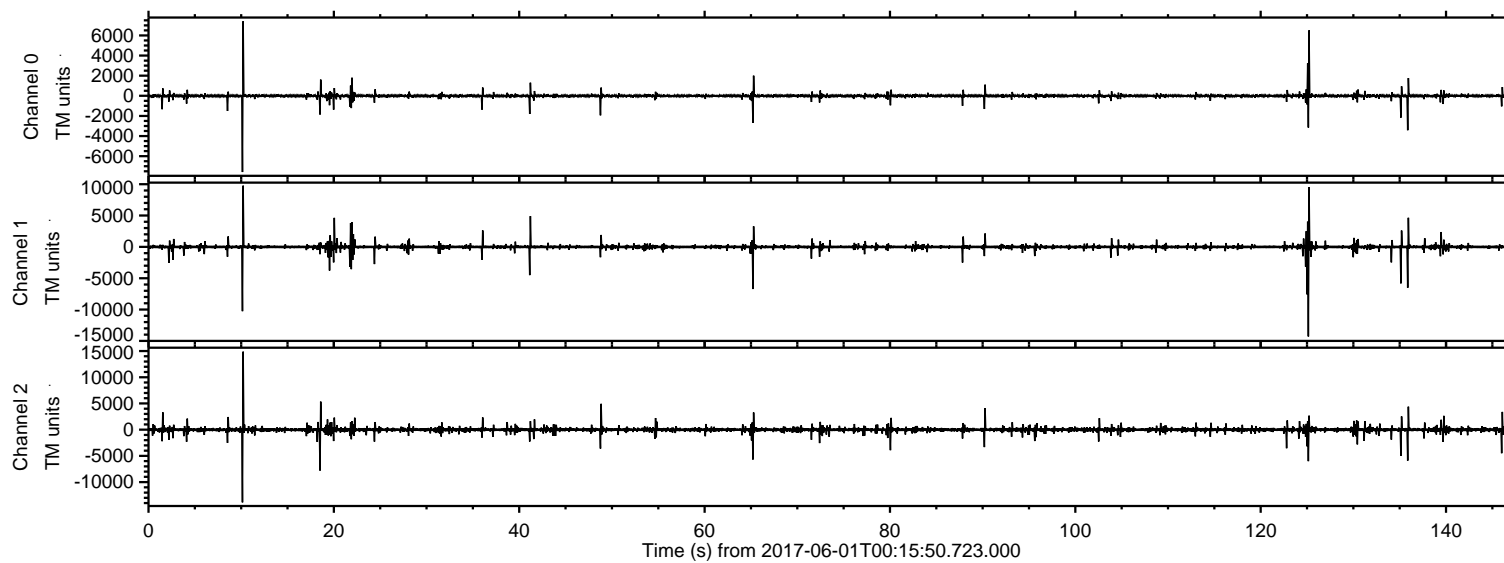


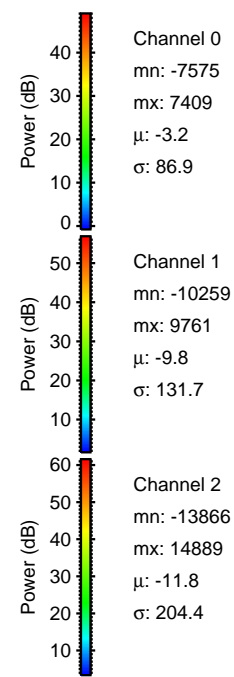
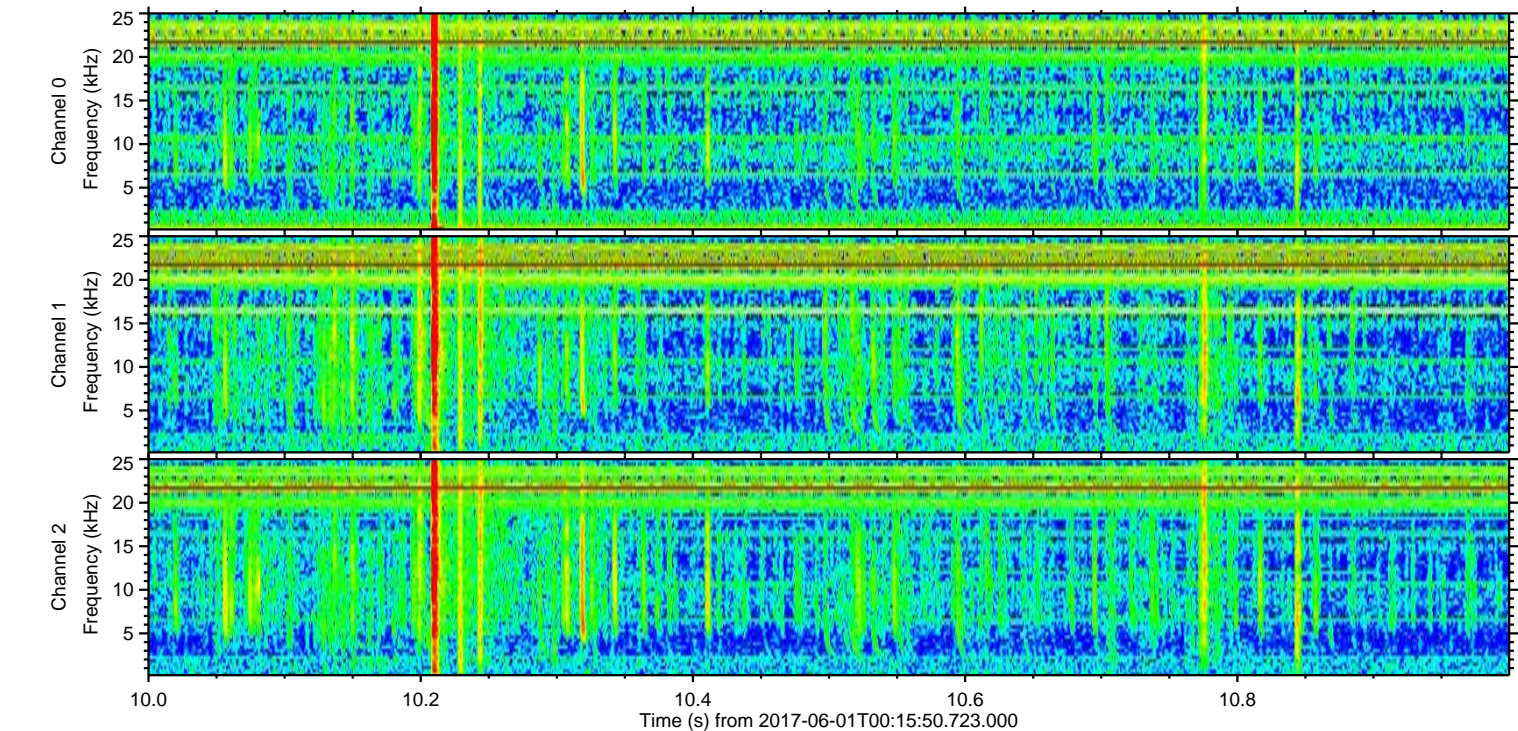
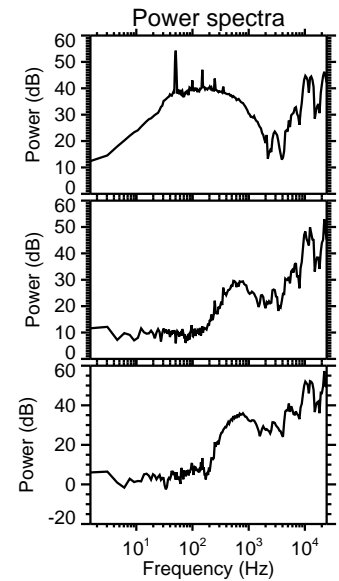
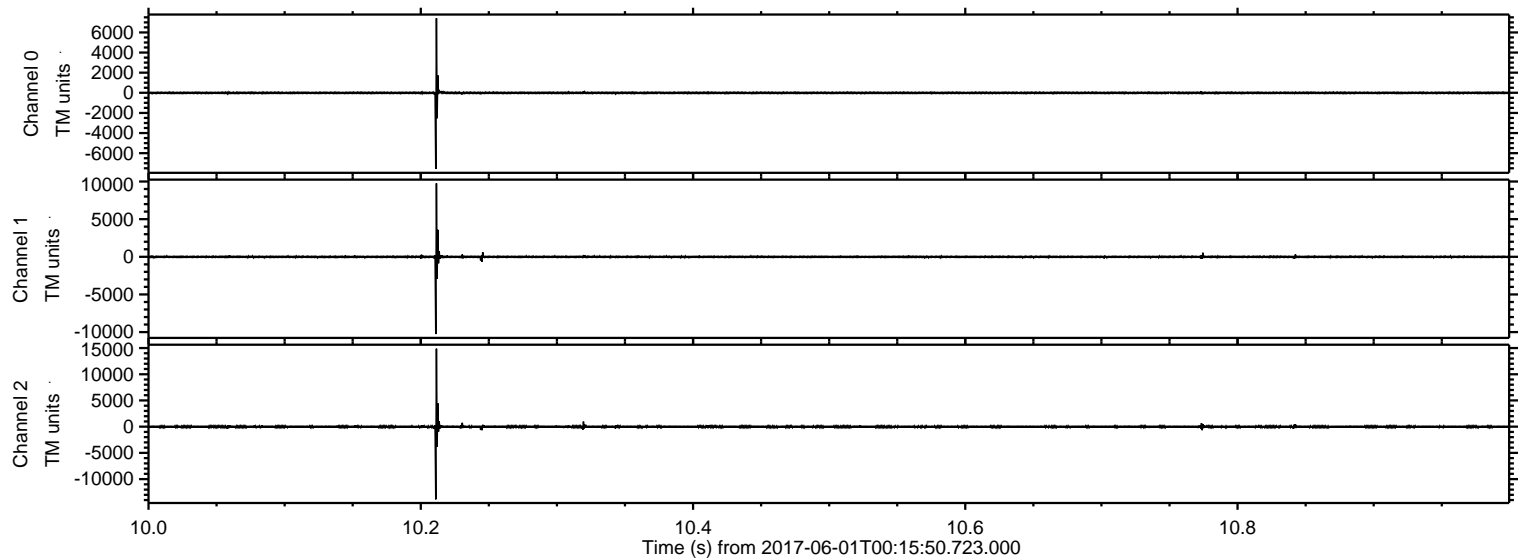
# ELMAVAN 3D WAVEFORMS (Measured data sampled at 50 kHz) 51000 packets of 144 samples from 2017-06-01T00:15:50.723.000.

Processed Thu Jun 1 02:23:16 2017 by ELM ver.2012-10-06 from 001\_\_elm20170601\_001549\_\_dat00.bin





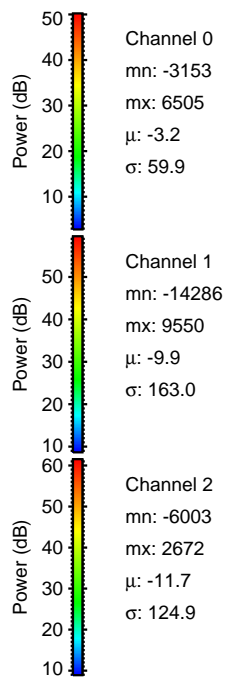
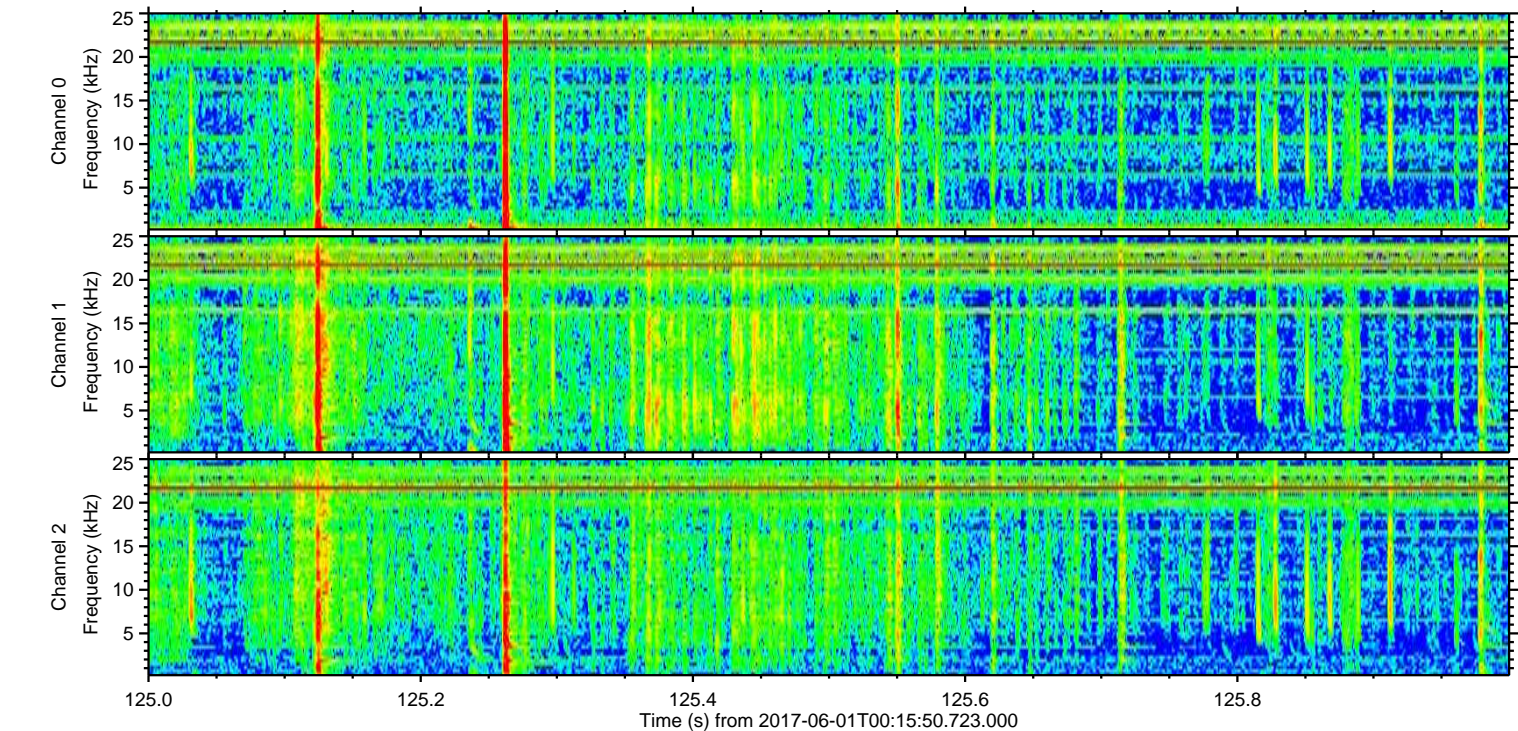
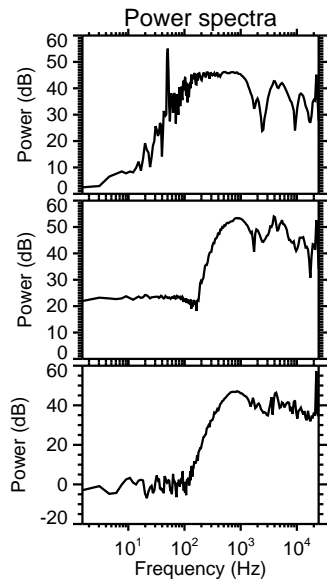
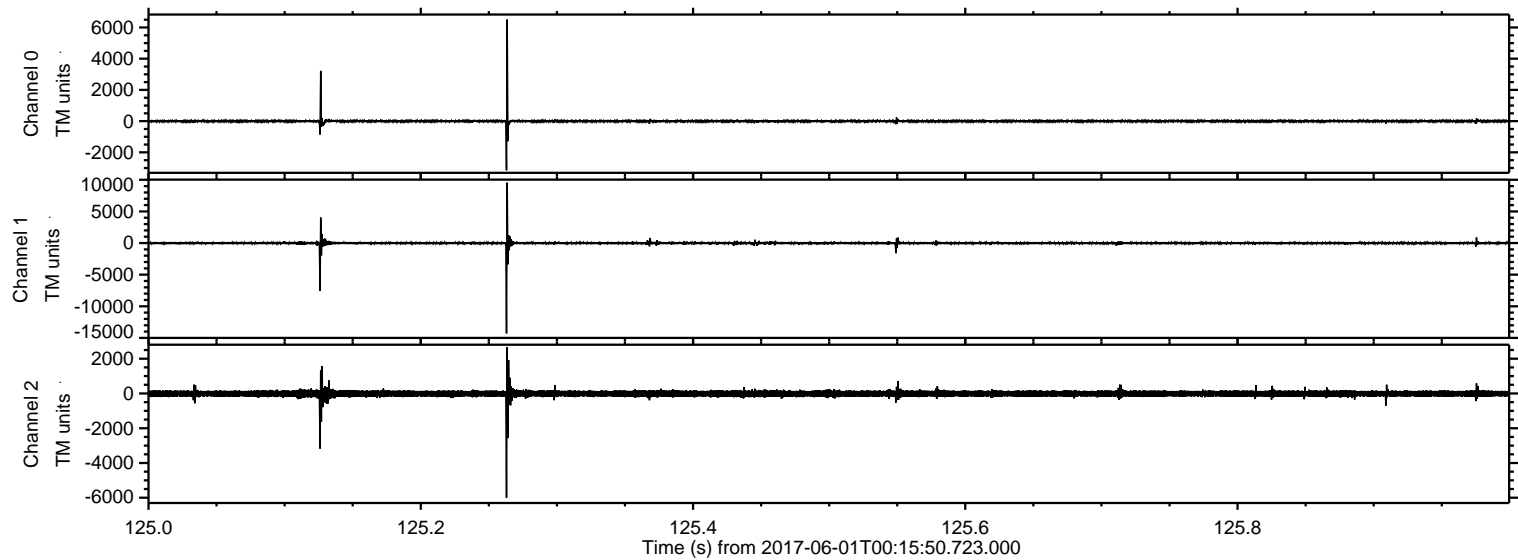
Processed Thu Jun 1 02:23:22 2017 by ELM ver.2012-10-06 from 001\_\_elm20170601\_001549\_\_dat00.bin





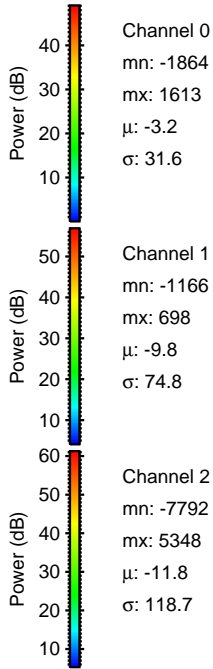
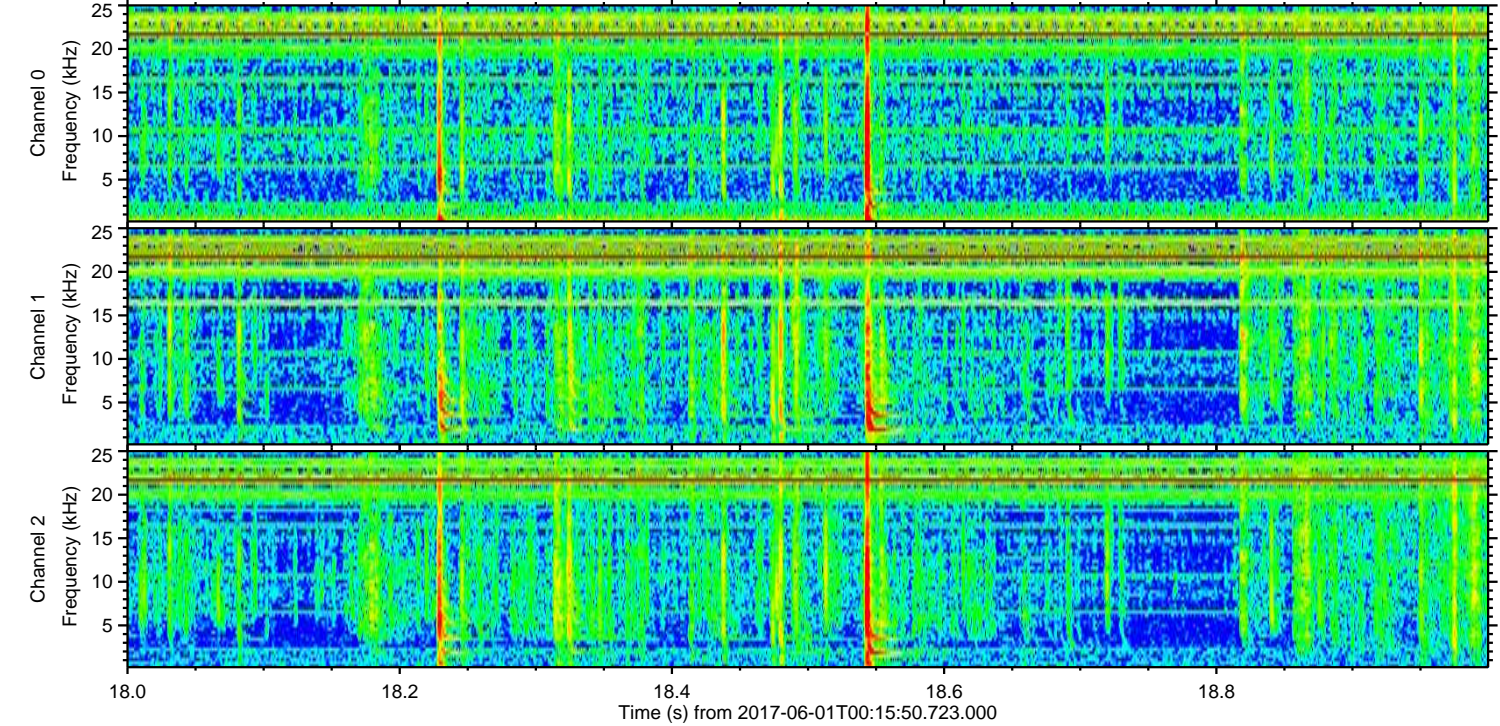
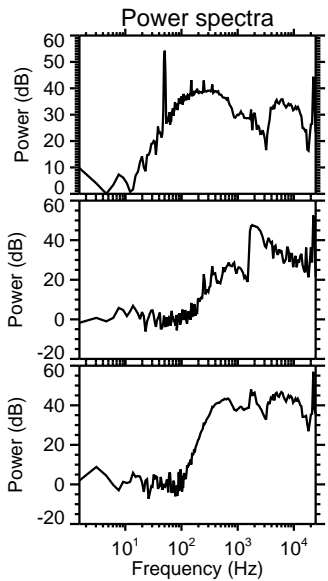
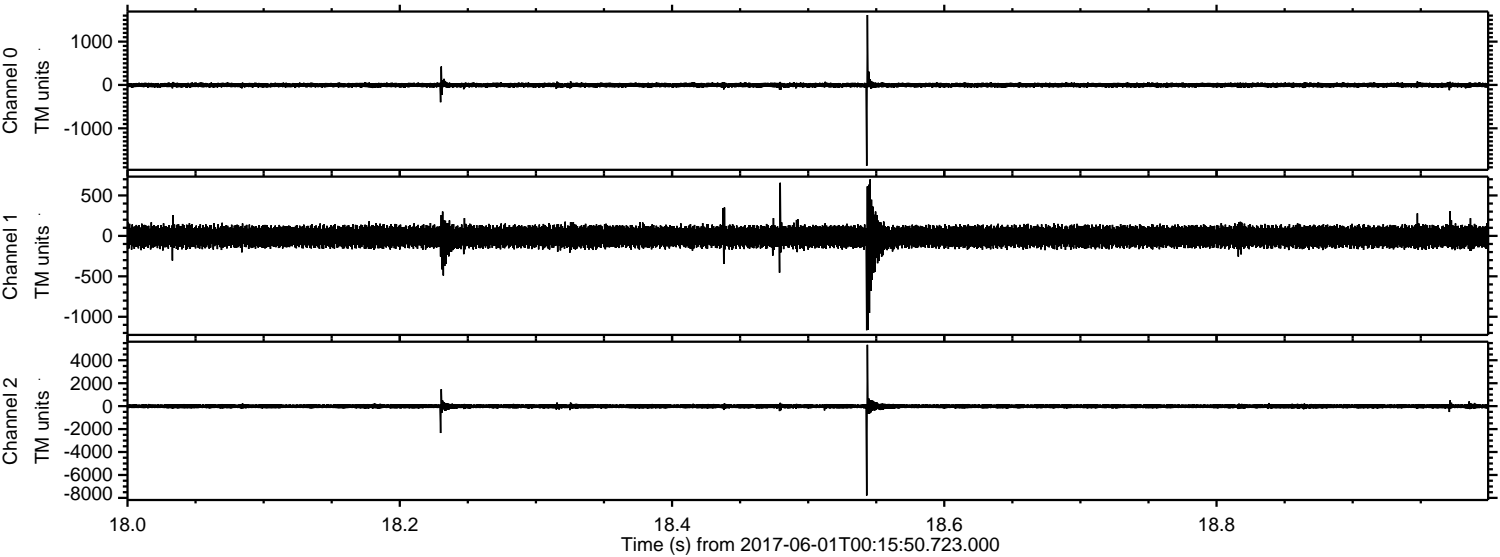
ELMAVAN 3D WAVEFORMS (Measured data sampled at 50 kHz) 51000 packets of 144 samples from 2017-06-01T00:15:50.723.000. Part 126/147

Processed Thu Jun 1 02:23:22 2017 by ELM ver.2012-10-06 from 001\_\_elm20170601\_001549\_\_dat00.bin



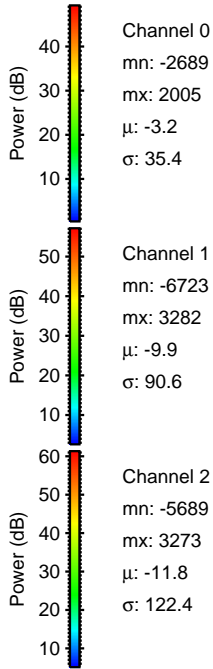
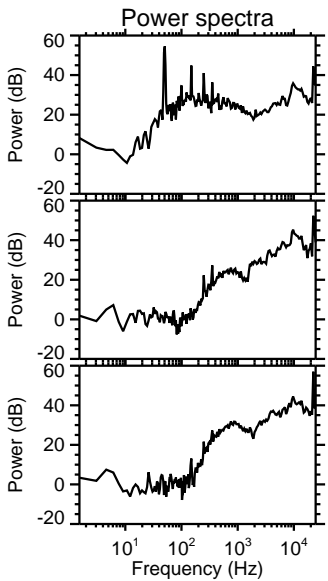
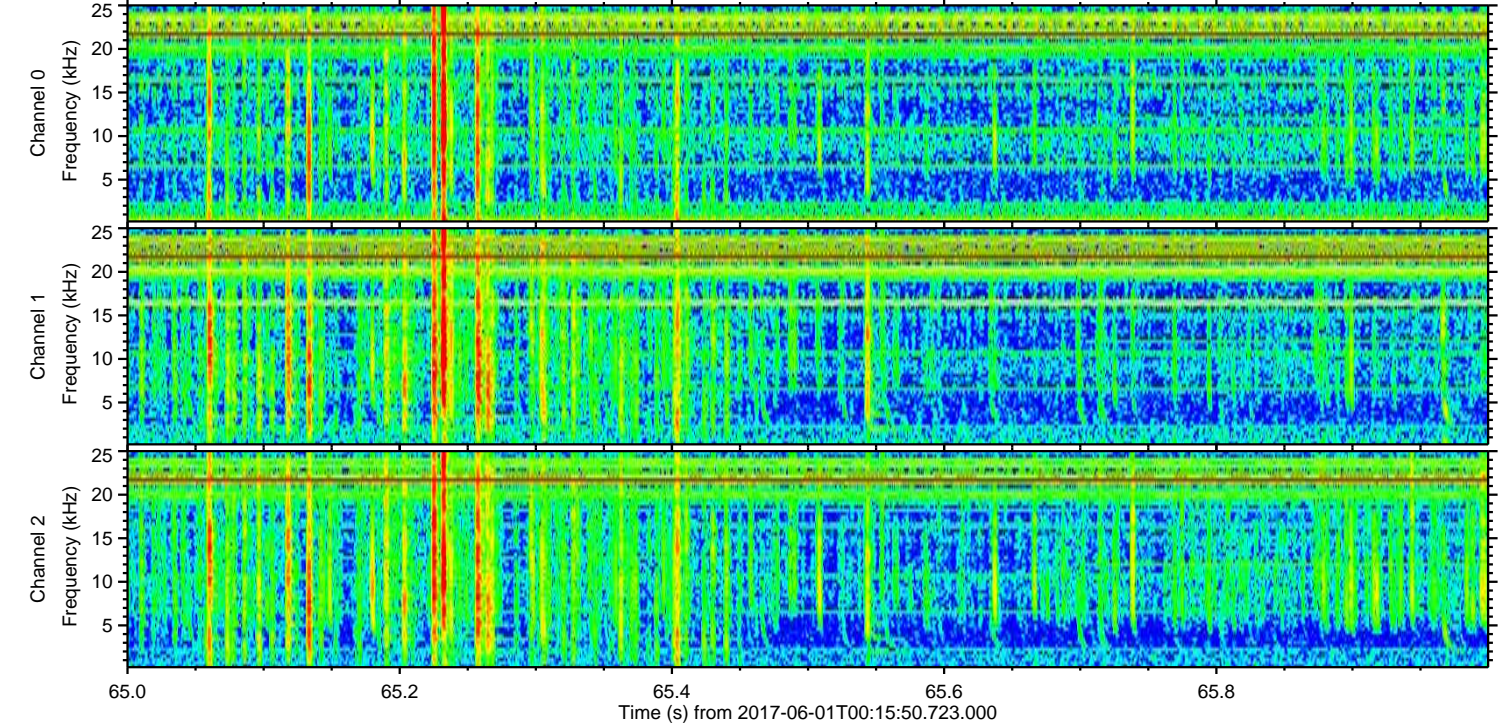
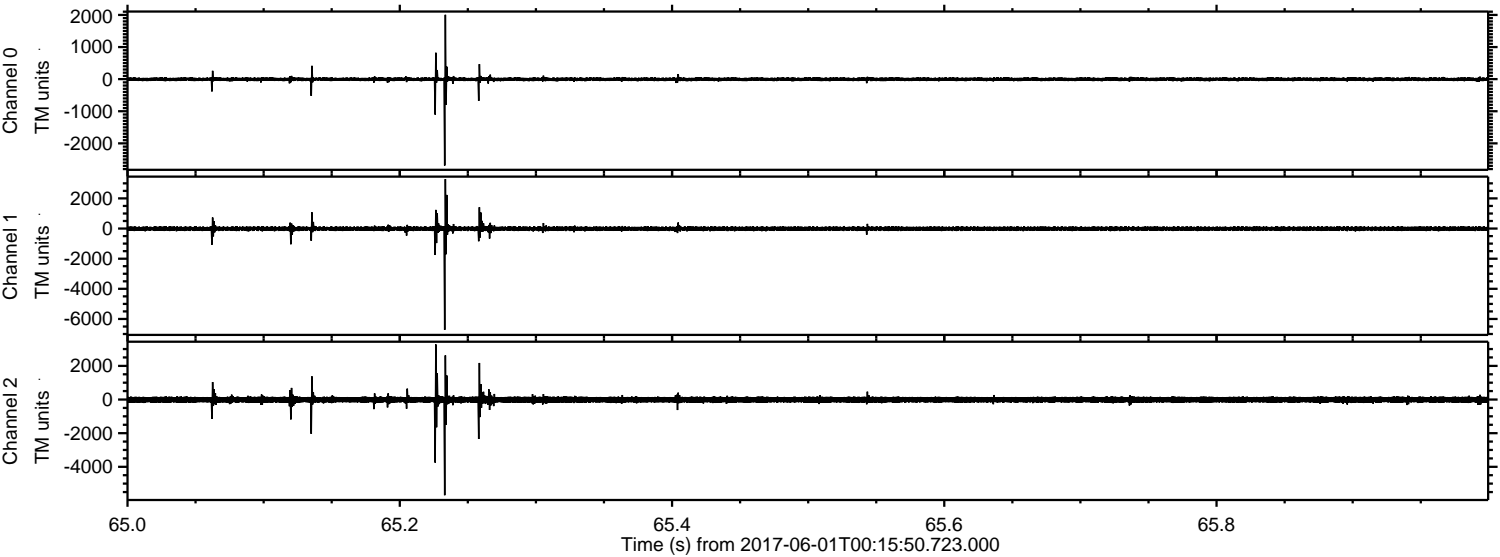


Processed Thu Jun 1 02:23:23 2017 by ELM ver.2012-10-06 from 001\_\_elm20170601\_001549\_\_dat00.bin





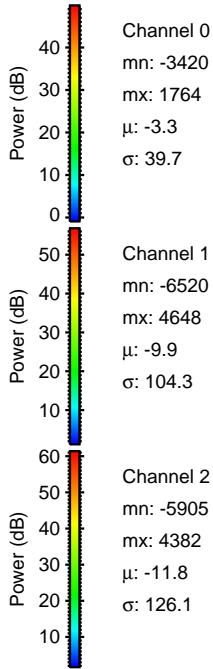
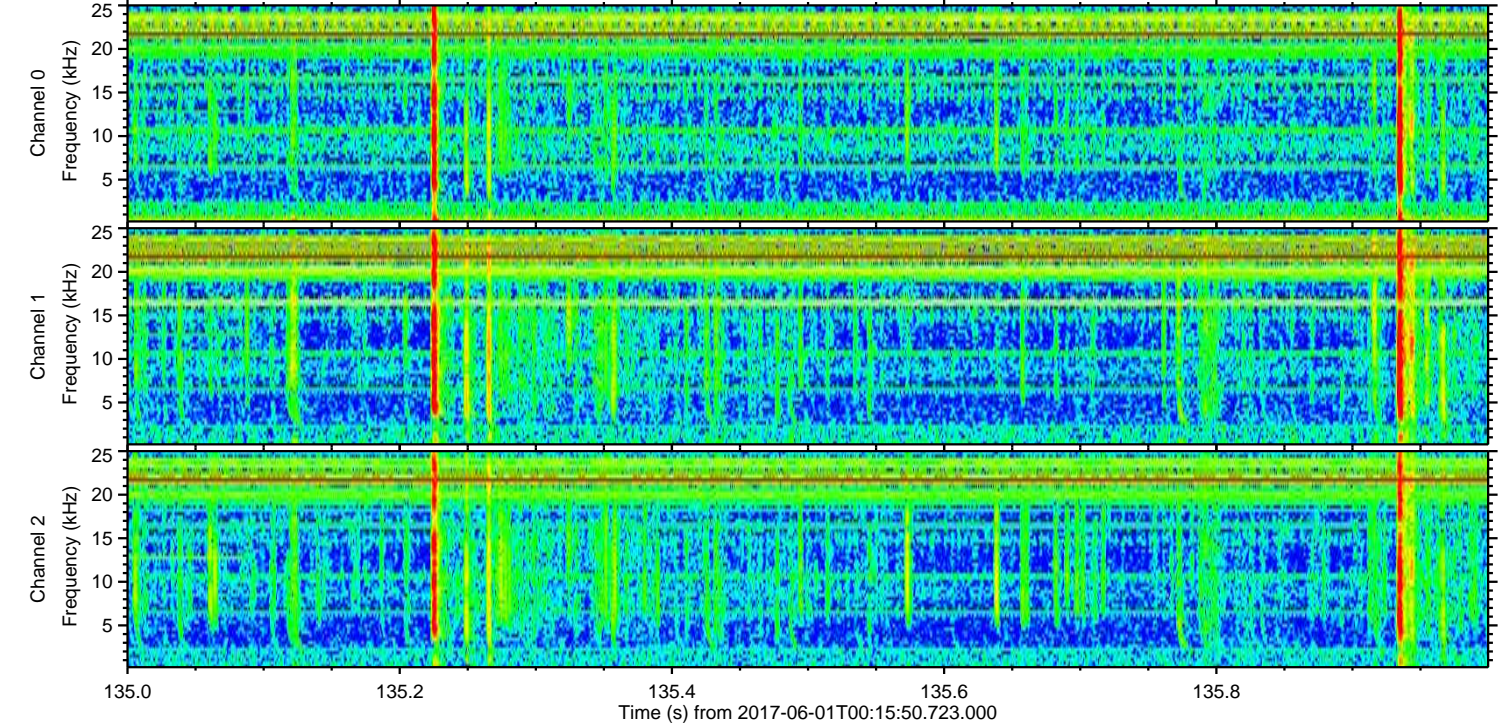
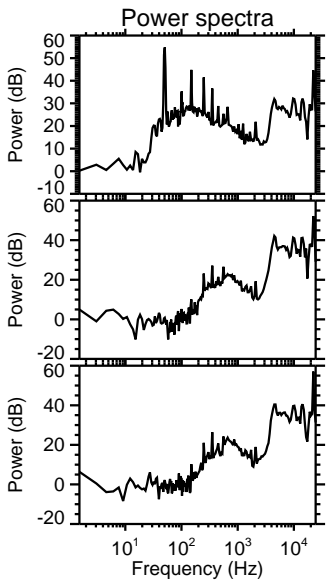
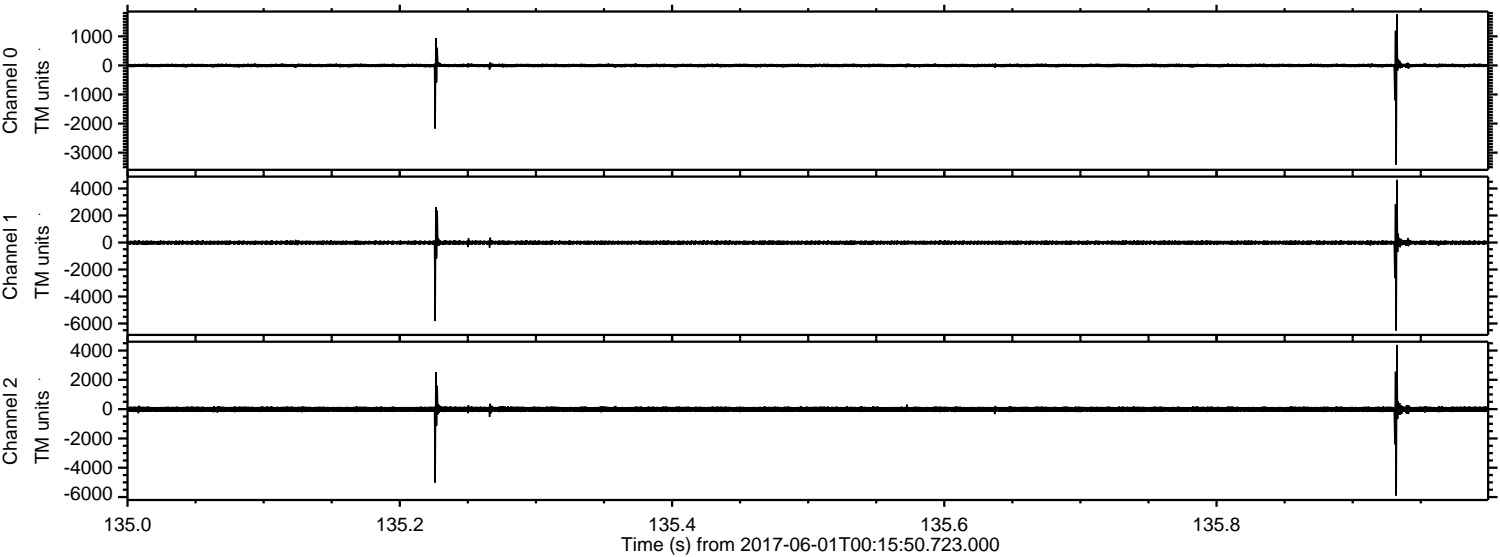
Processed Thu Jun 1 02:23:24 2017 by ELM ver.2012-10-06 from 001\_\_elm20170601\_001549\_\_dat00.bin





ELMAVAN 3D WAVEFORMS (Measured data sampled at 50 kHz) 51000 packets of 144 samples from 2017-06-01T00:15:50.723.000. Part 136/147

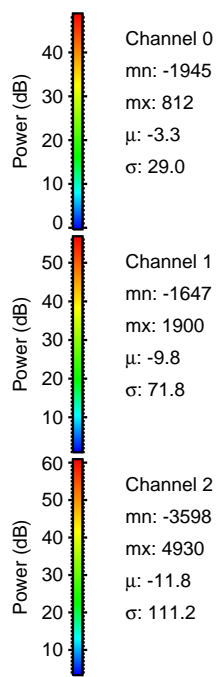
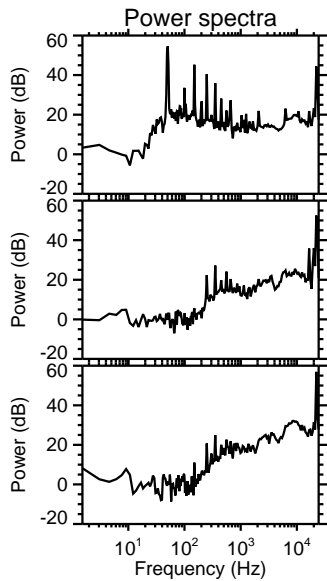
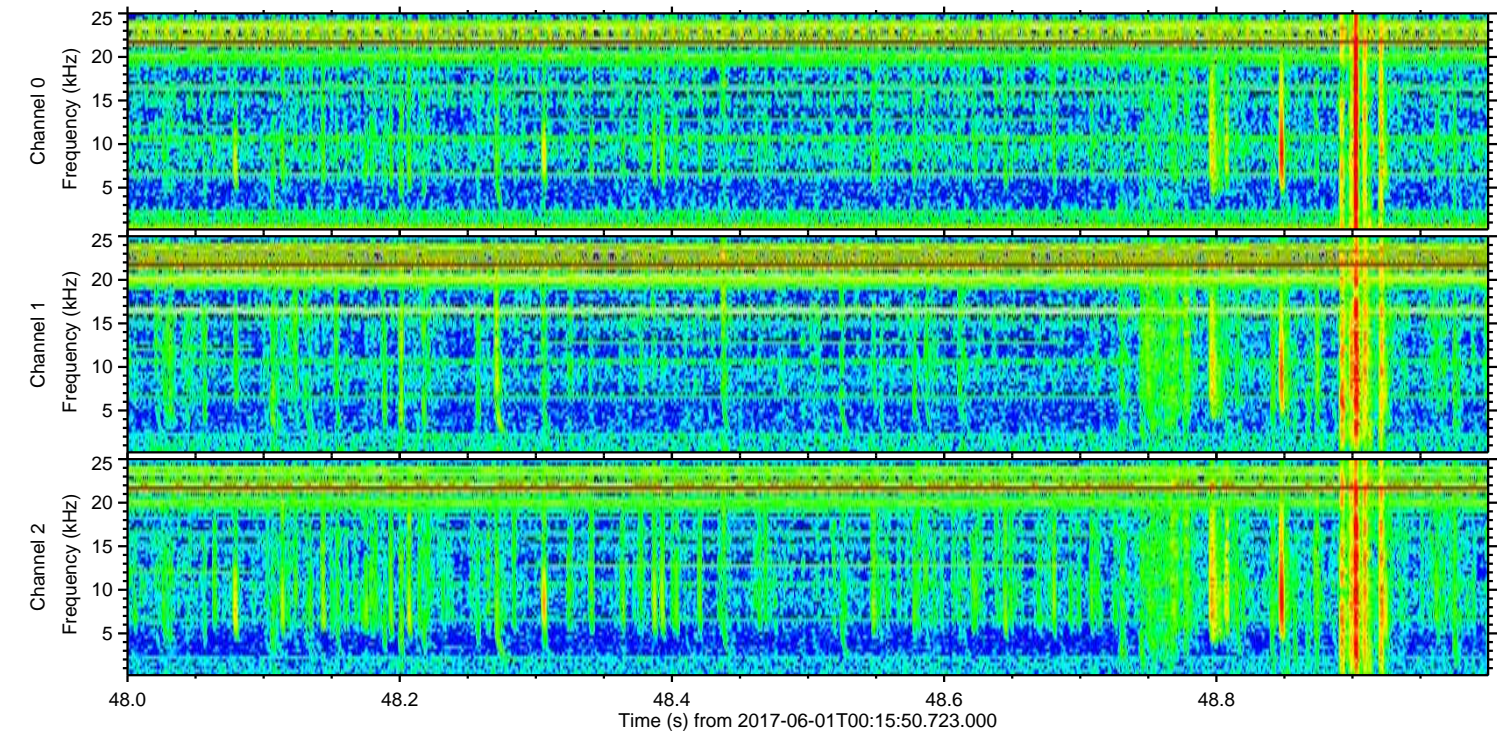
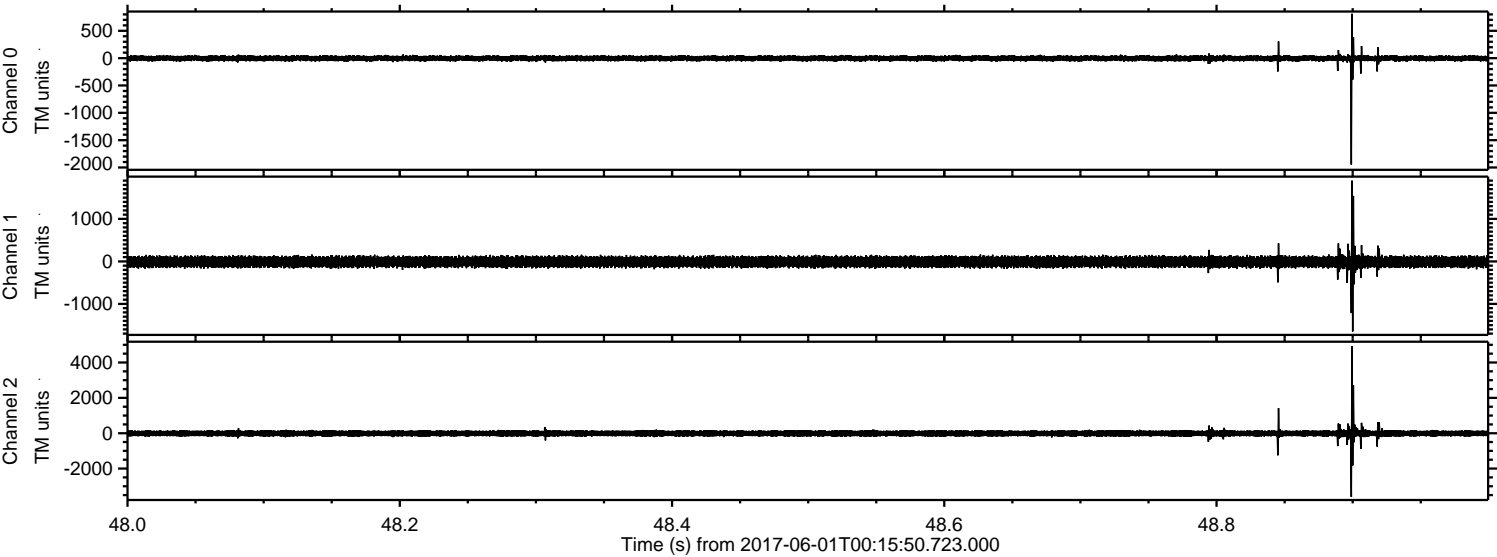
Processed Thu Jun 1 02:23:24 2017 by ELM ver.2012-10-06 from 001\_\_elm20170601\_001549\_\_dat00.bin





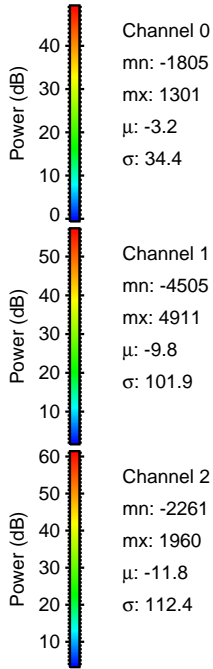
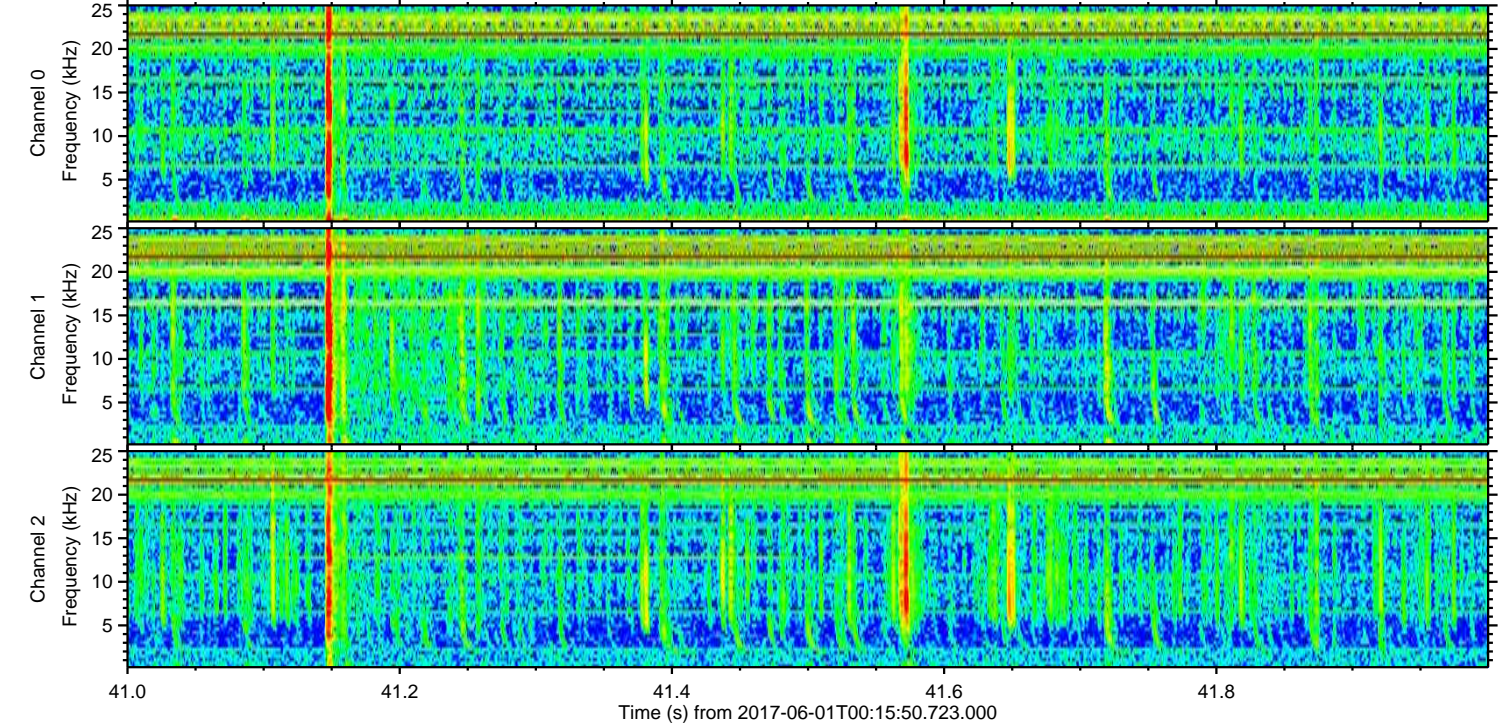
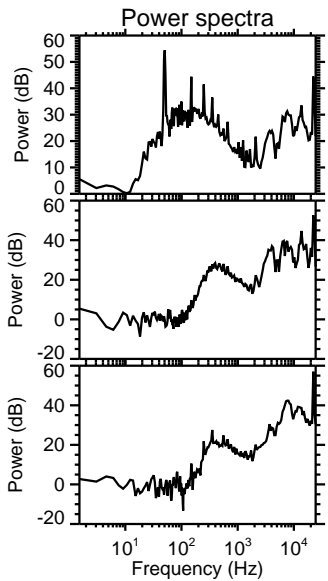
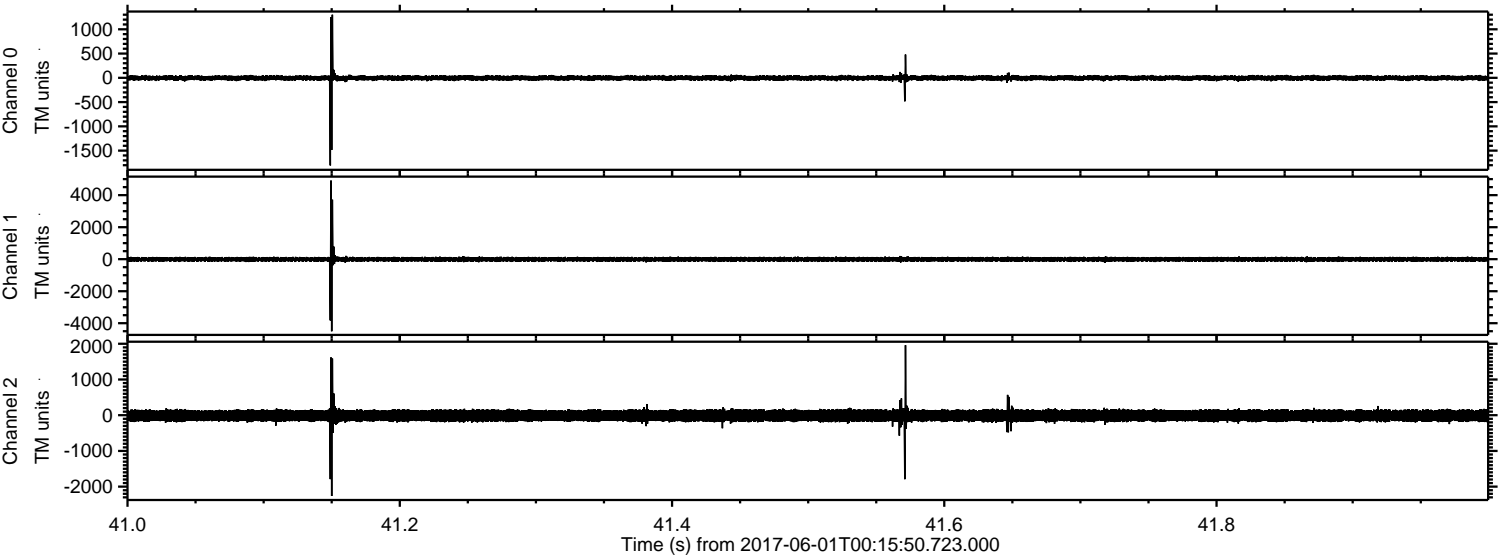
ELMAVAN 3D WAVEFORMS (Measured data sampled at 50 kHz) 51000 packets of 144 samples from 2017-06-01T00:15:50.723.000. Part 49/147

Processed Thu Jun 1 02:23:25 2017 by ELM ver.2012-10-06 from 001\_\_elm20170601\_001549\_\_dat00.bin





Processed Thu Jun 1 02:23:25 2017 by ELM ver.2012-10-06 from 001\_\_elm20170601\_001549\_\_dat00.bin



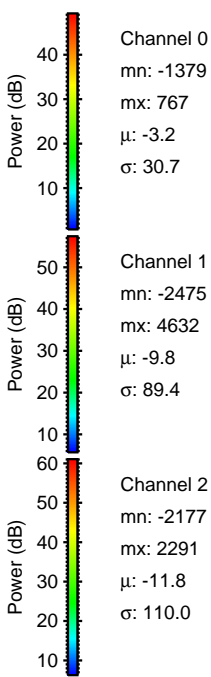
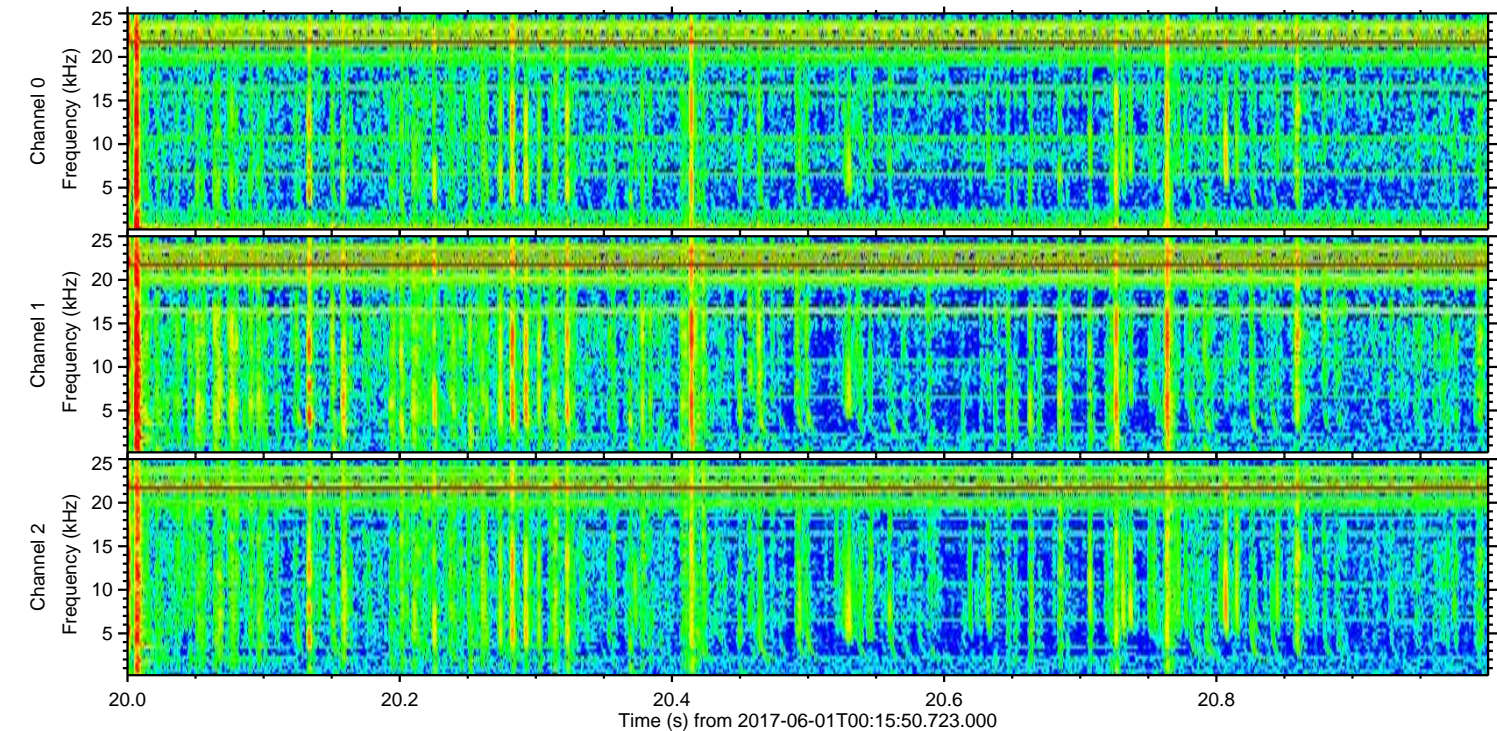
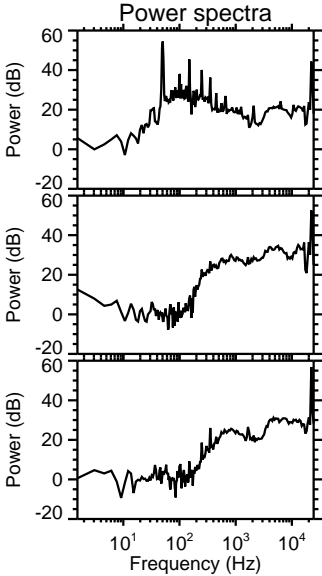
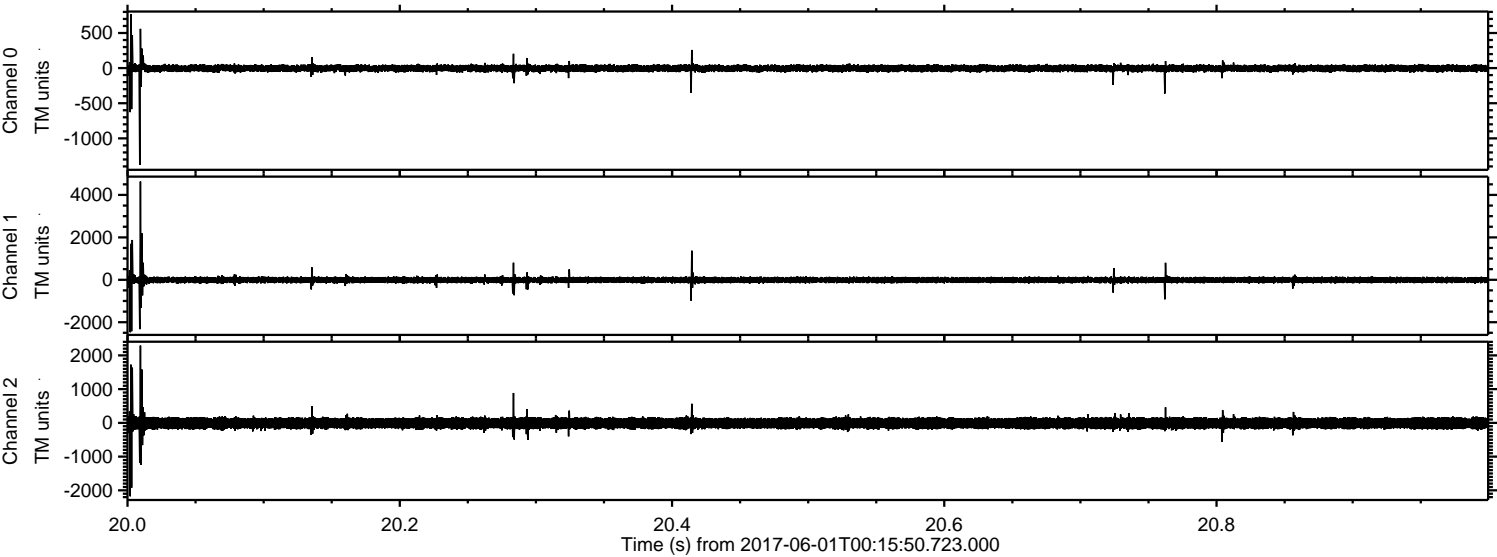
Channel 0  
mn: -1805  
mx: 1301  
 $\mu$ : -3.2  
 $\sigma$ : 34.4

Channel 1  
mn: -4505  
mx: 4911  
 $\mu$ : -9.8  
 $\sigma$ : 101.9

Channel 2  
mn: -2261  
mx: 1960  
 $\mu$ : -11.8  
 $\sigma$ : 112.4

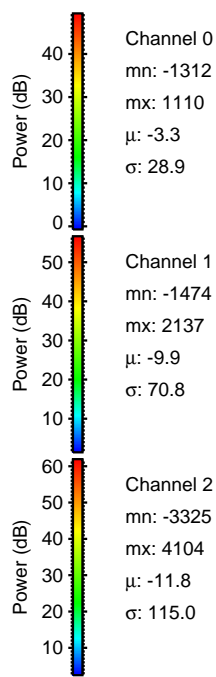
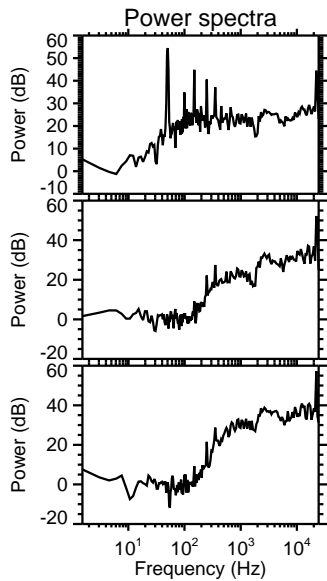
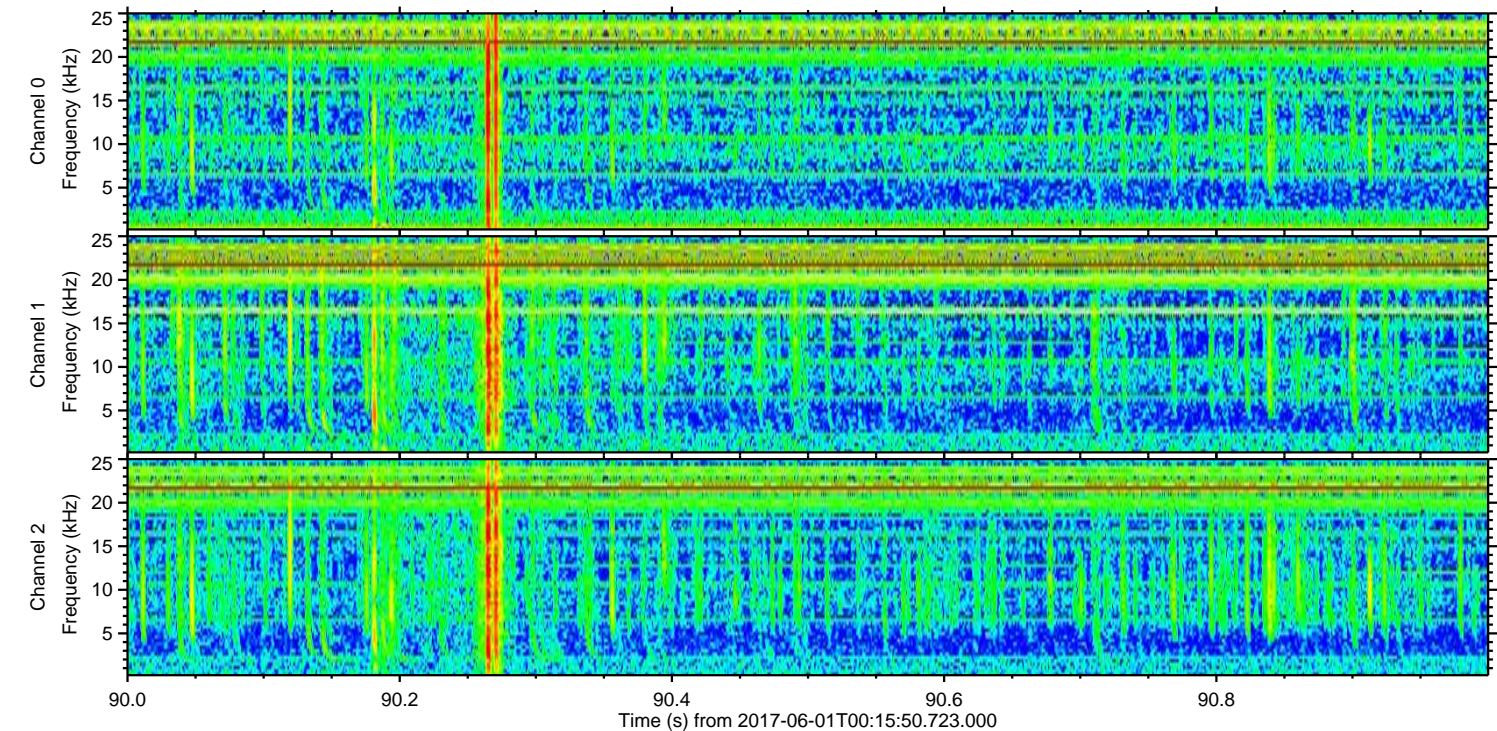
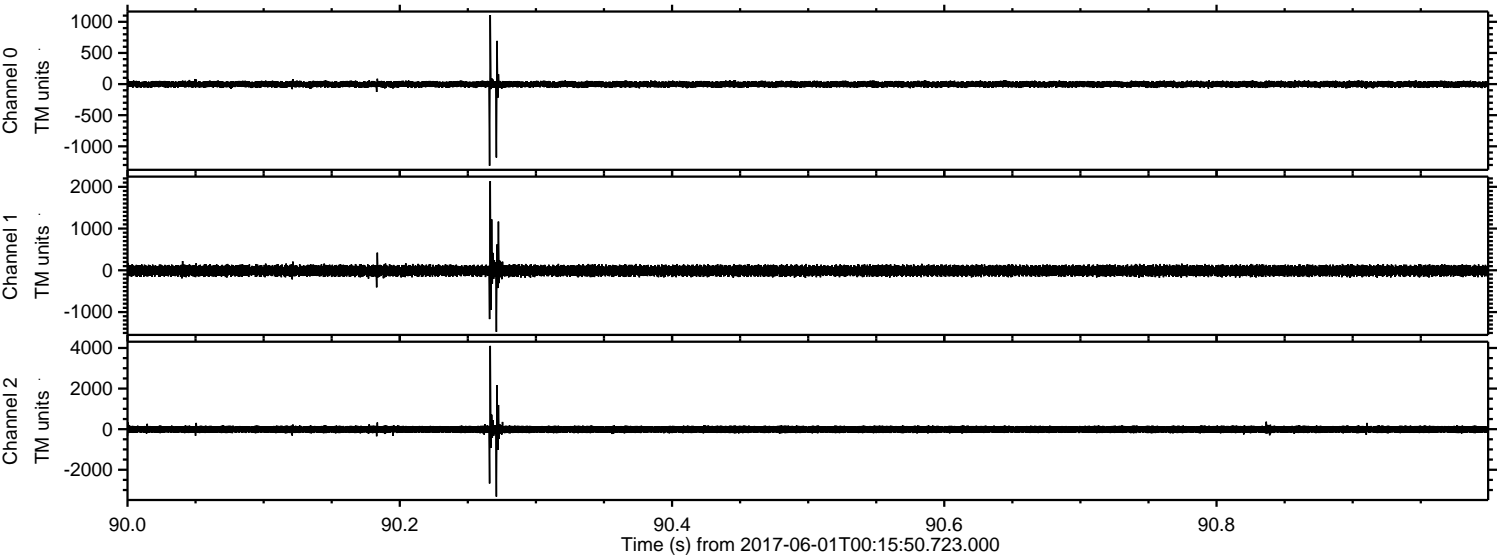


Processed Thu Jun 1 02:23:26 2017 by ELM ver.2012-10-06 from 001\_\_elm20170601\_001549\_\_dat00.bin





Processed Thu Jun 1 02:23:27 2017 by ELM ver.2012-10-06 from 001\_\_elm20170601\_001549\_\_dat00.bin





Processed Thu Jun 1 02:23:27 2017 by ELM ver.2012-10-06 from 001\_\_elm20170601\_001549\_\_dat00.bin

