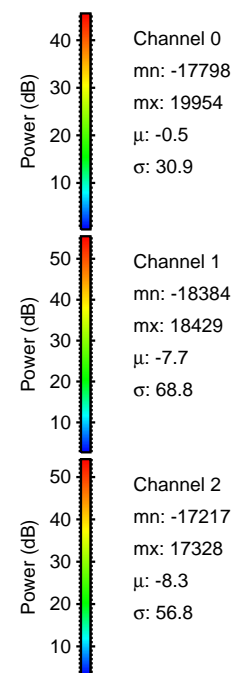
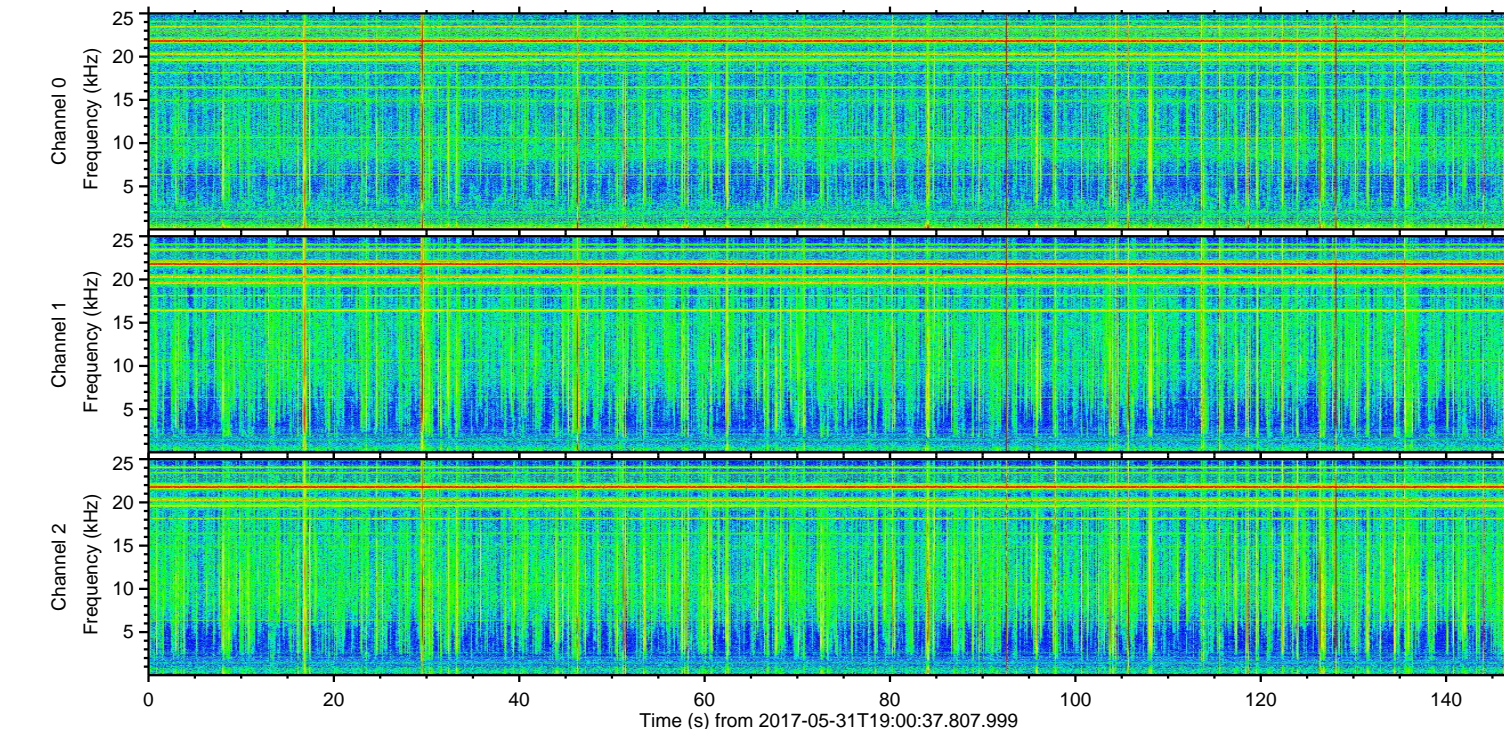
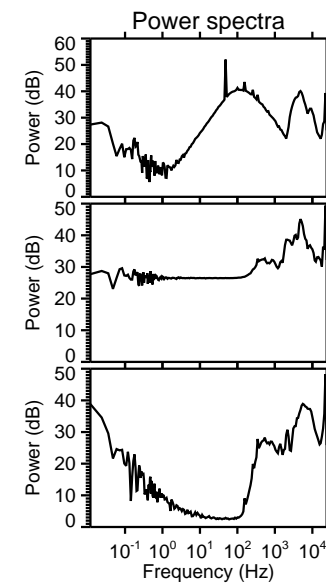
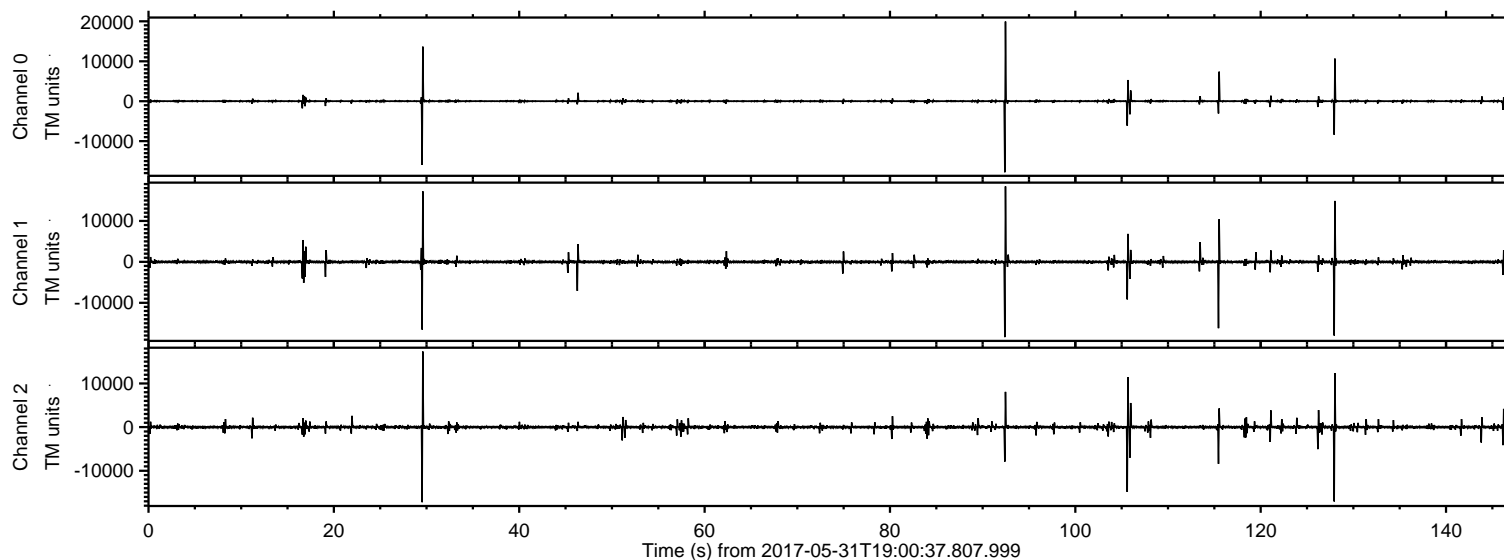


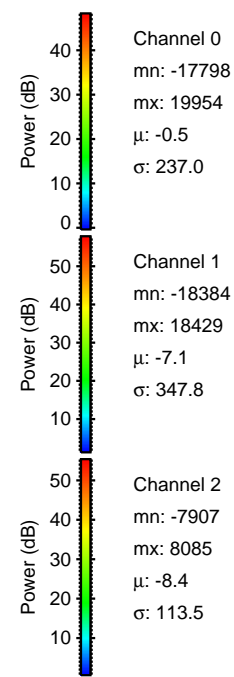
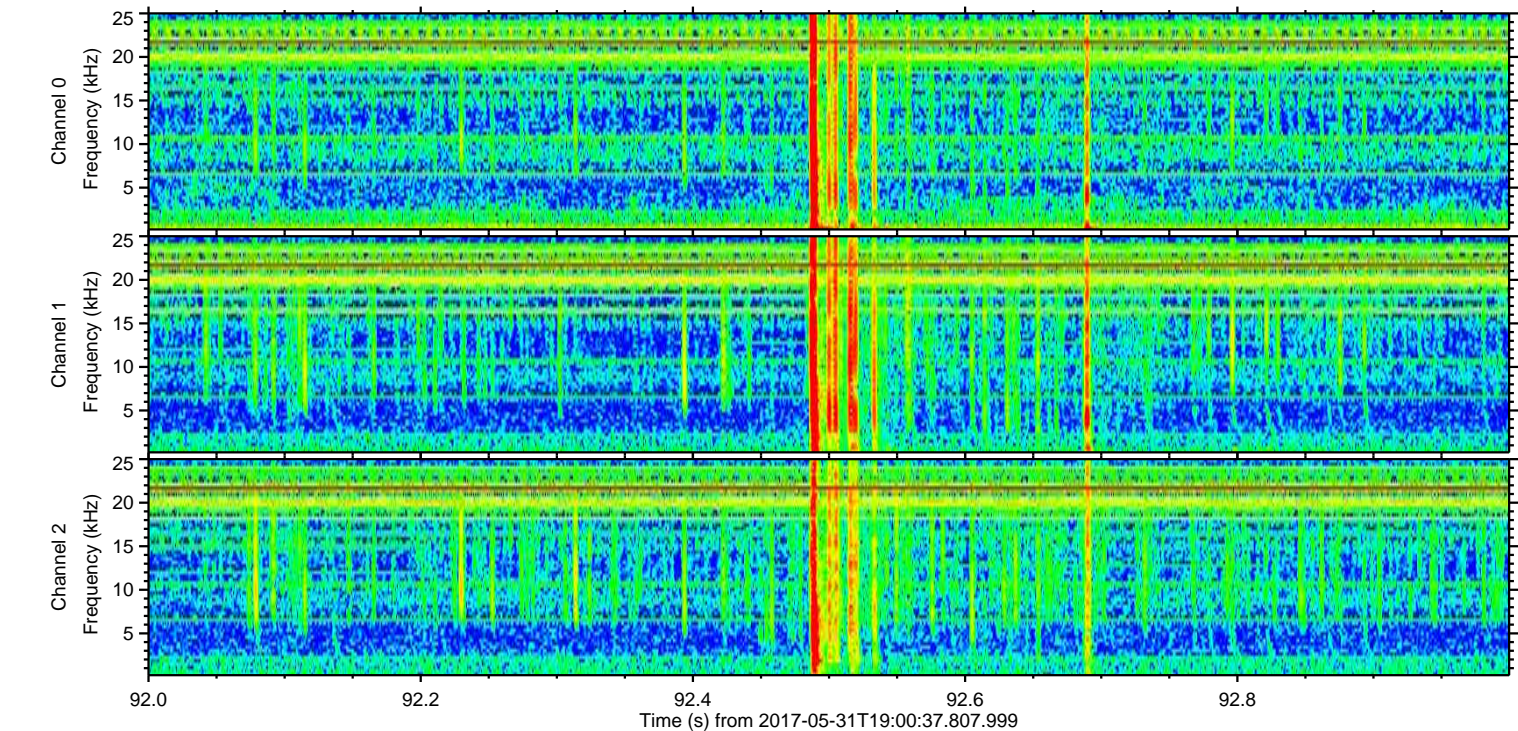
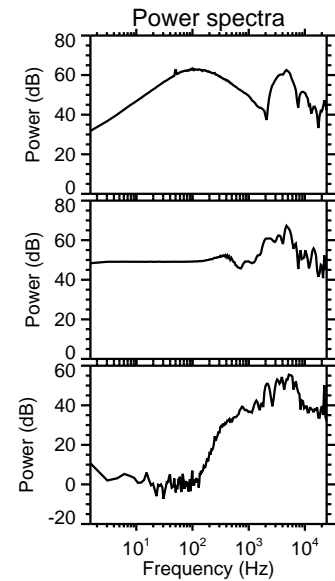
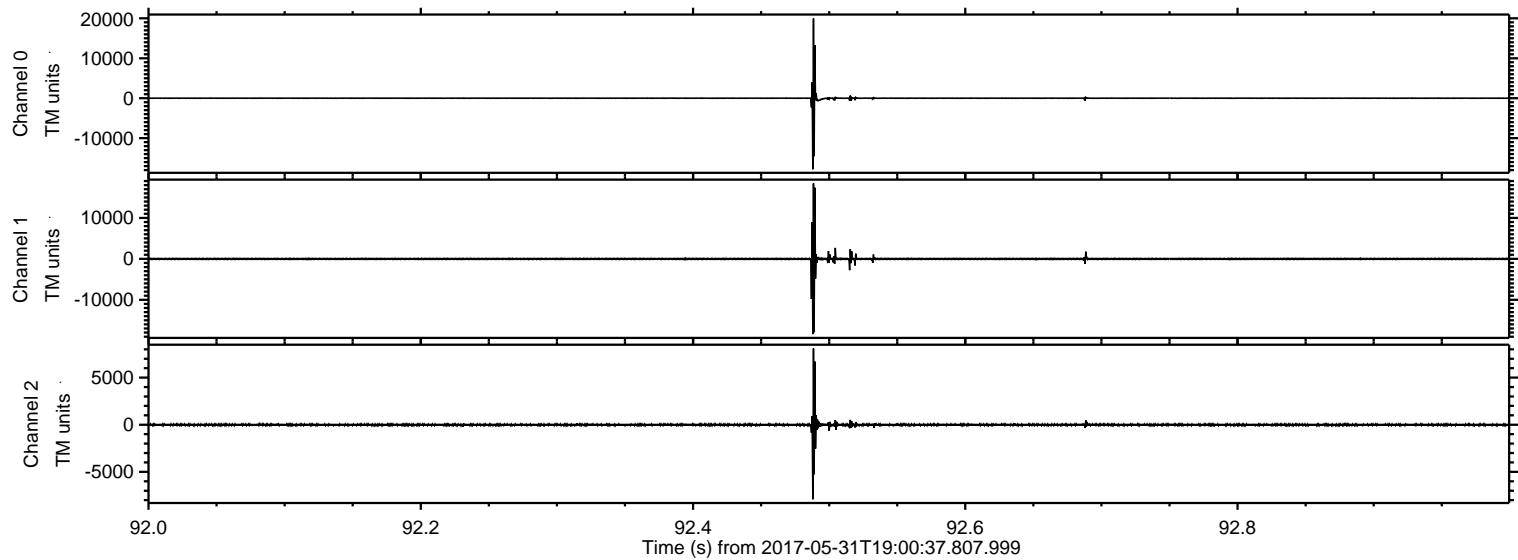
ELMAVAN 3D WAVEFORMS (Measured data sampled at 50 kHz) 51000 packets of 144 samples from 2017-05-31T19:00:37.807.999.

Processed Wed May 31 21:08:03 2017 by ELM ver.2012-10-06 from 001__elm20170531_190036__dat00.bin



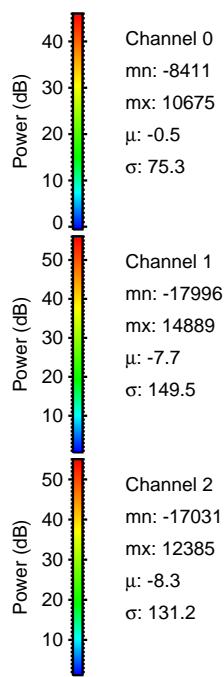
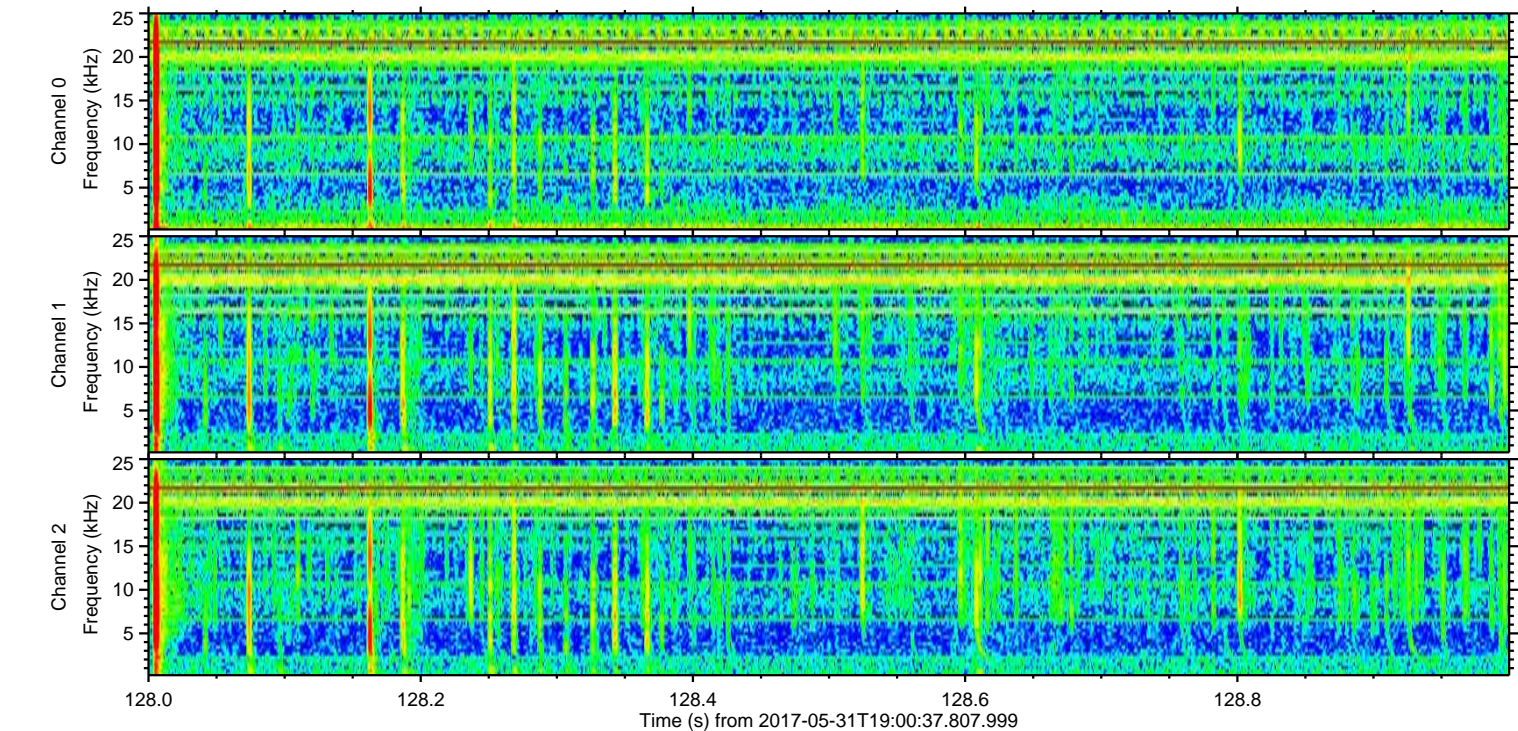
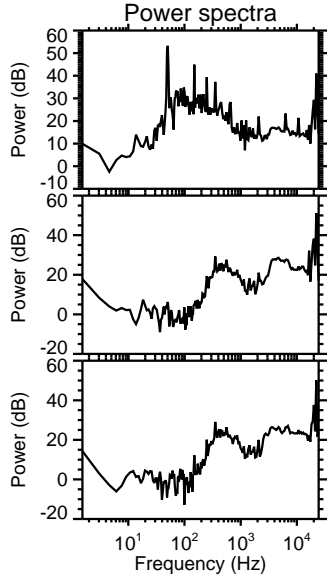
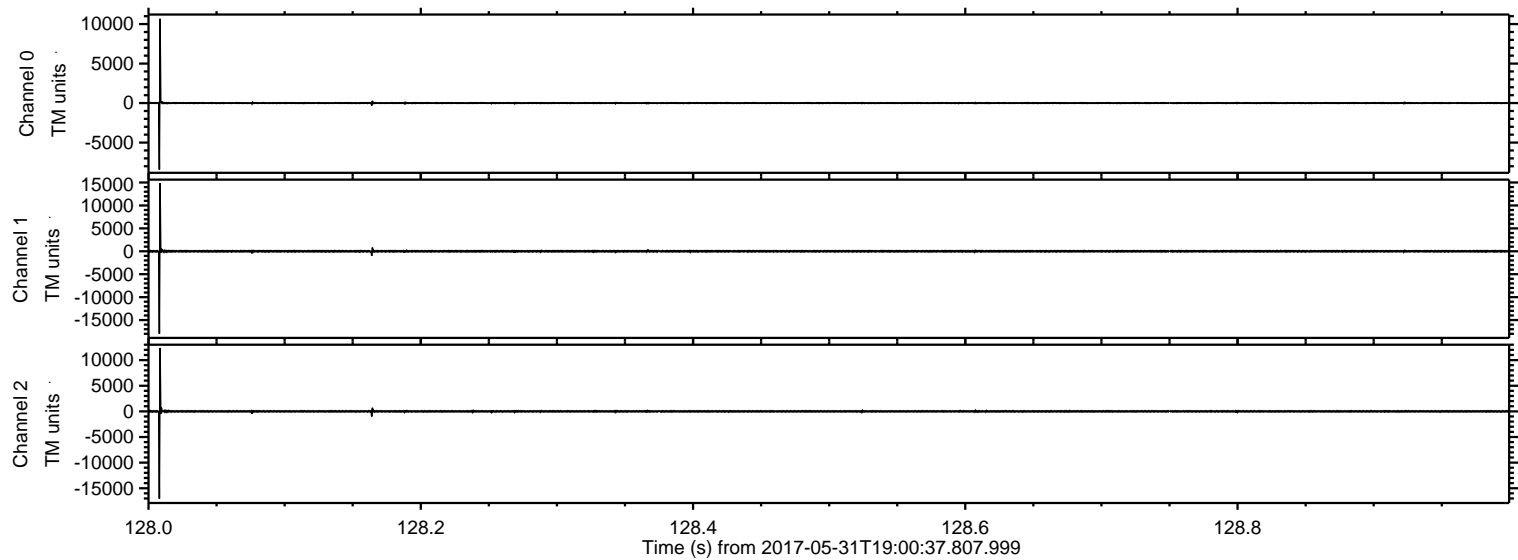
ELMAVAN 3D WAVEFORMS (Measured data sampled at 50 kHz) 51000 packets of 144 samples from 2017-05-31T19:00:37.807.999. Part 93/147

Processed Wed May 31 21:08:09 2017 by ELM ver.2012-10-06 from 001__elm20170531_190036__dat00.bin

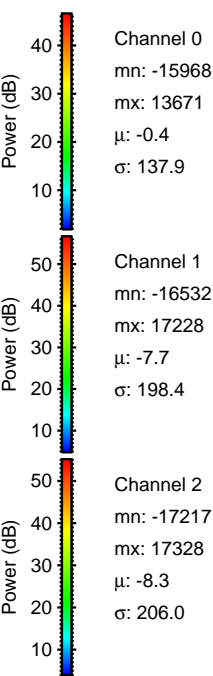
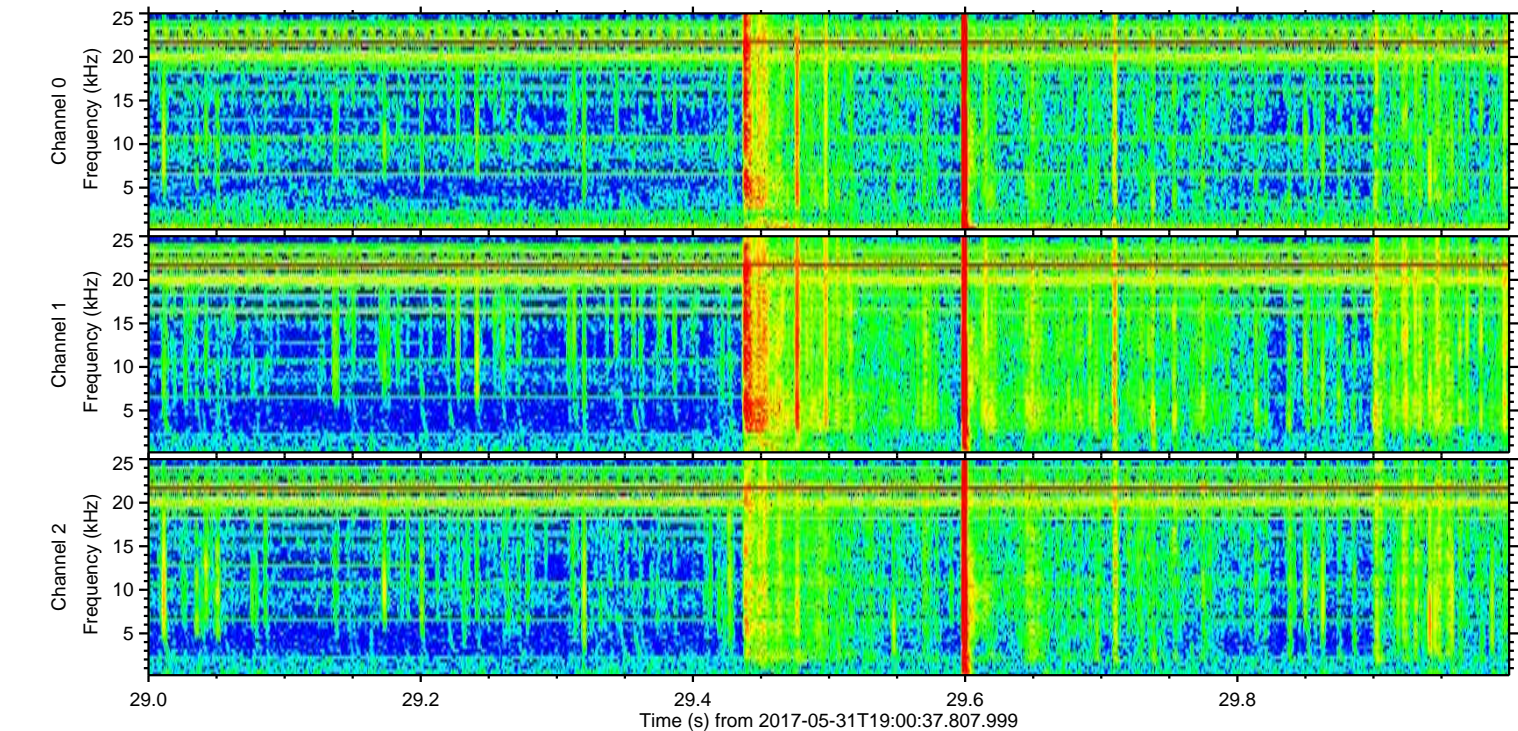
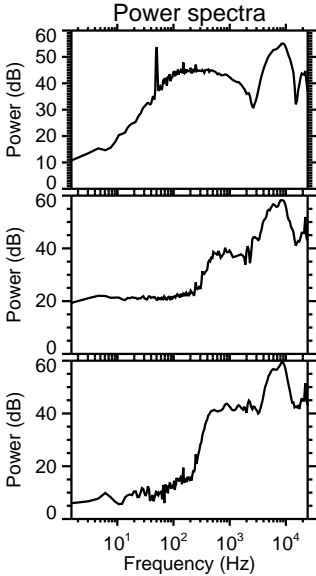
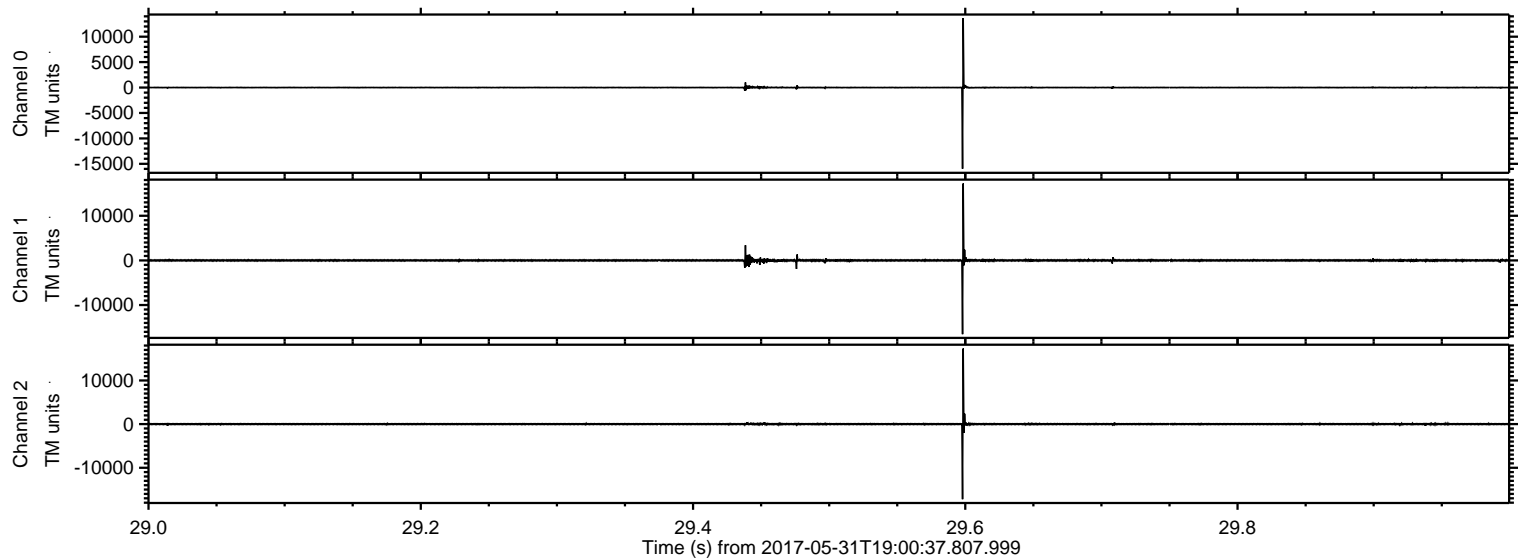


ELMAVAN 3D WAVEFORMS (Measured data sampled at 50 kHz) 51000 packets of 144 samples from 2017-05-31T19:00:37.807.999. Part 129/147

Processed Wed May 31 21:08:10 2017 by ELM ver.2012-10-06 from 001__elm20170531_190036__dat00.bin

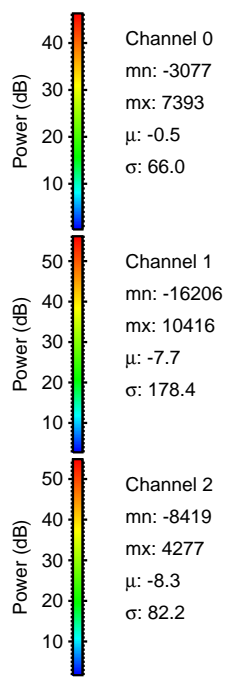
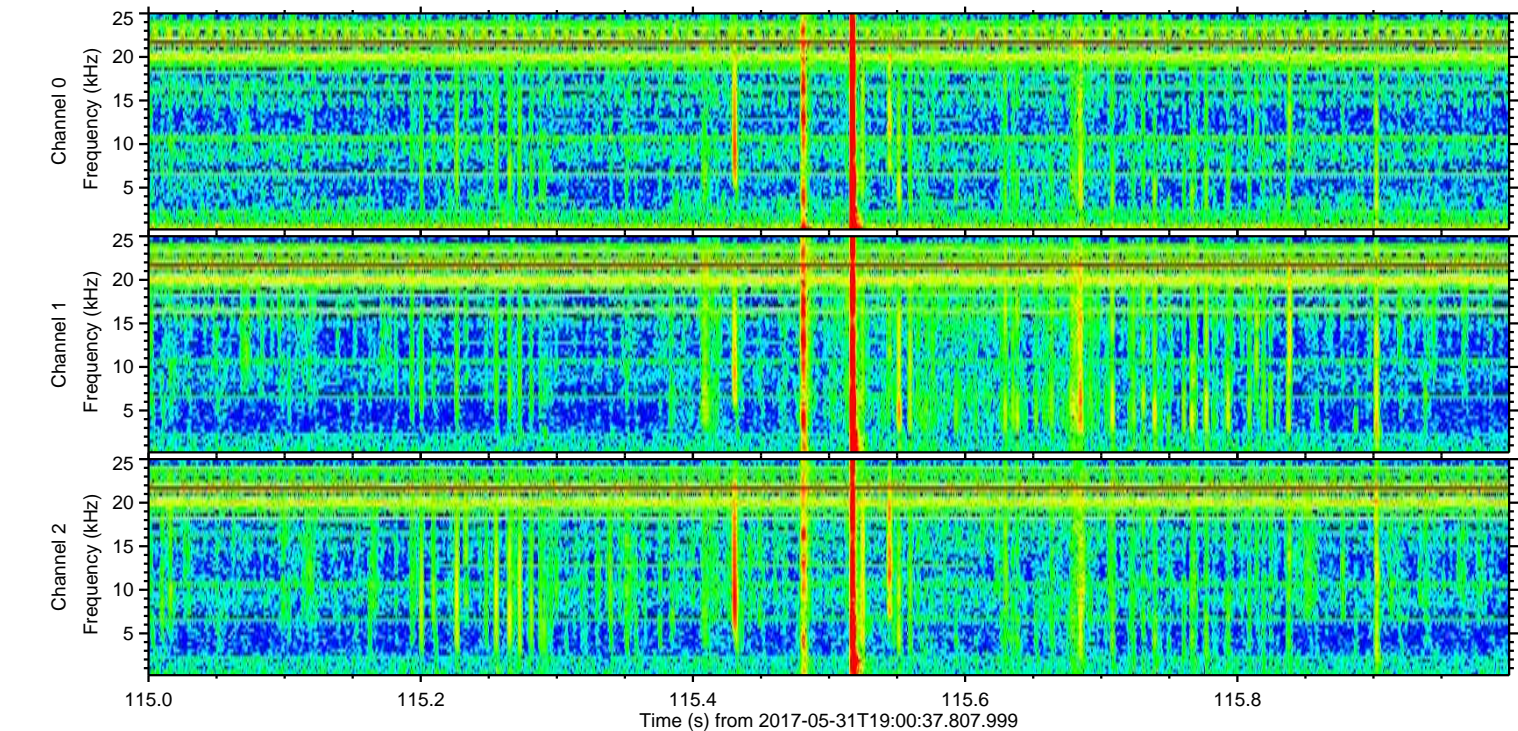
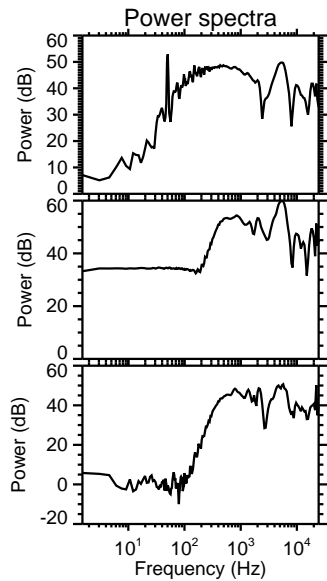
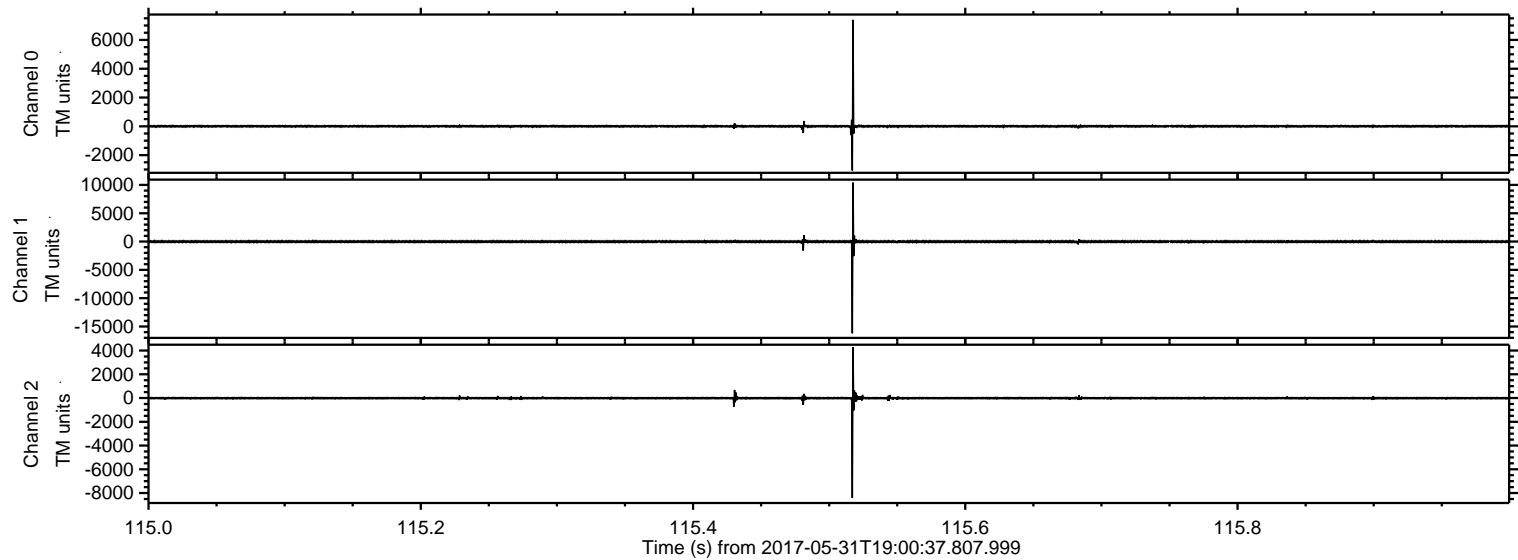


Processed Wed May 31 21:08:11 2017 by ELM ver.2012-10-06 from 001__elm20170531_190036__dat00.bin



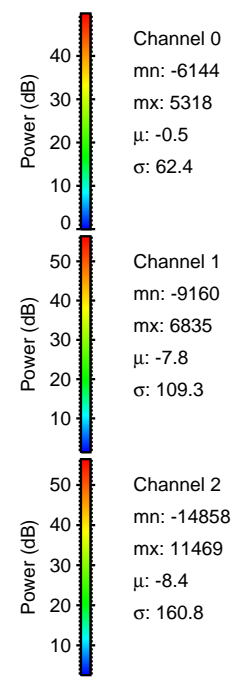
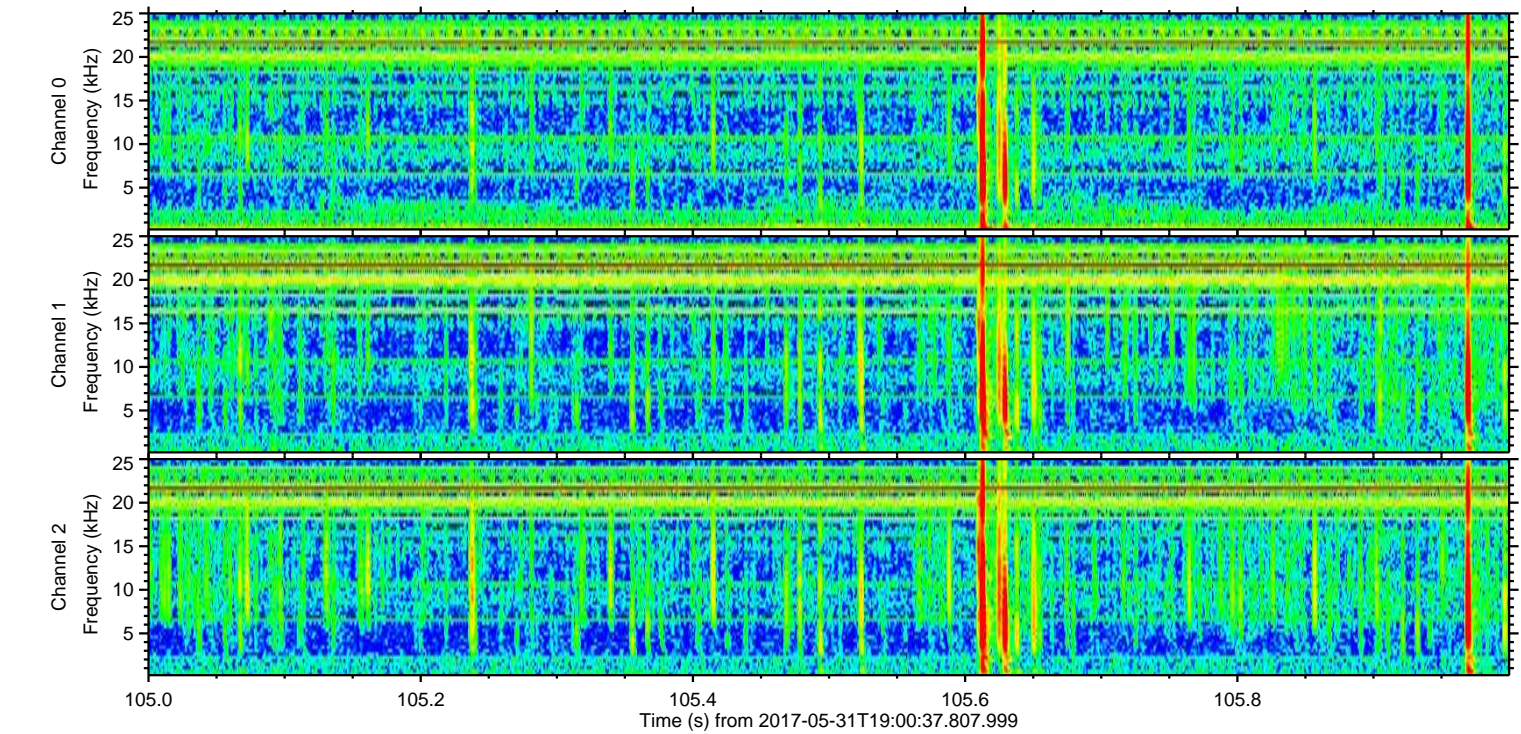
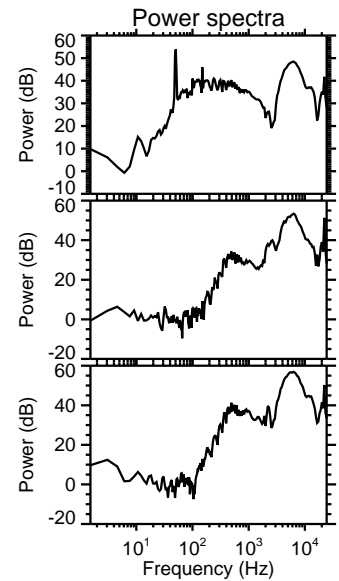
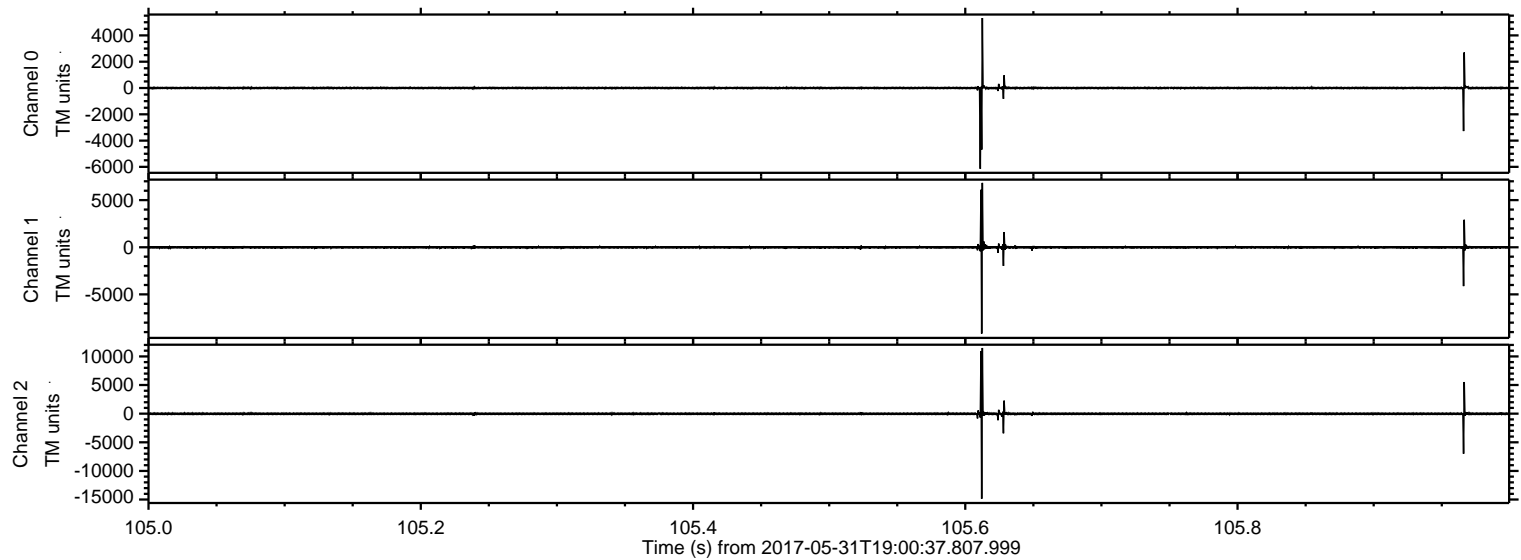
ELMAVAN 3D WAVEFORMS (Measured data sampled at 50 kHz) 51000 packets of 144 samples from 2017-05-31T19:00:37.807.999. Part 116/147

Processed Wed May 31 21:08:11 2017 by ELM ver.2012-10-06 from 001__elm20170531_190036__dat00.bin

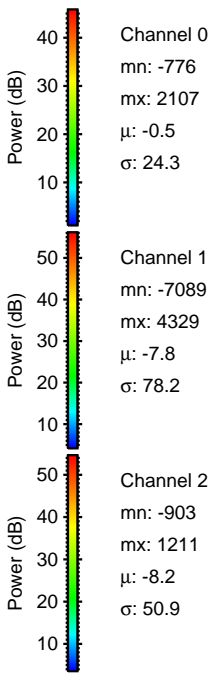
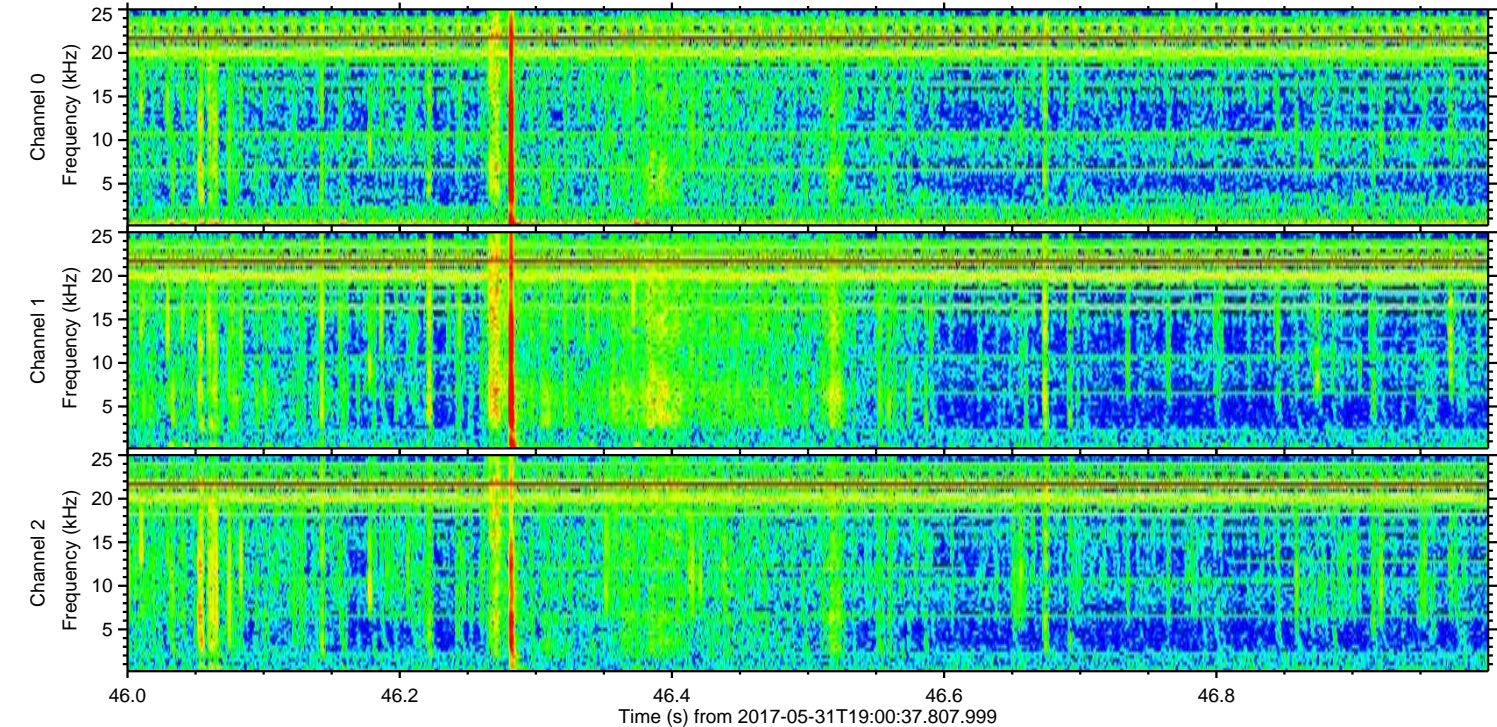
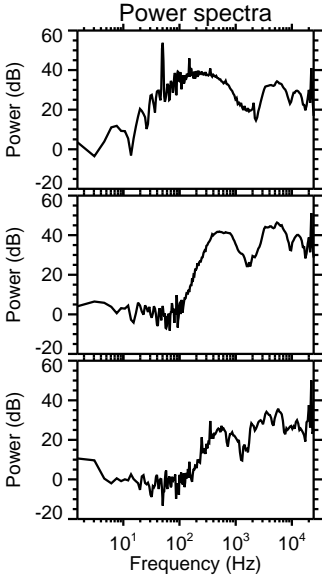
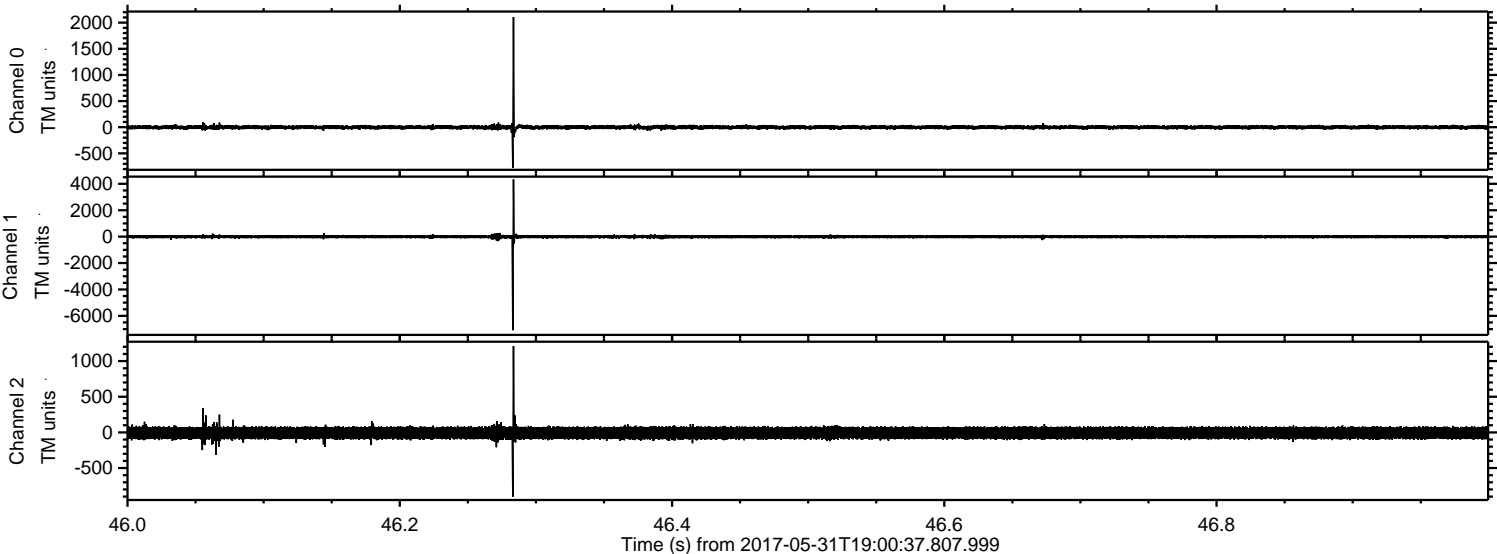


ELMAVAN 3D WAVEFORMS (Measured data sampled at 50 kHz) 51000 packets of 144 samples from 2017-05-31T19:00:37.807.999. Part 106/147

Processed Wed May 31 21:08:12 2017 by ELM ver.2012-10-06 from 001__elm20170531_190036__dat00.bin

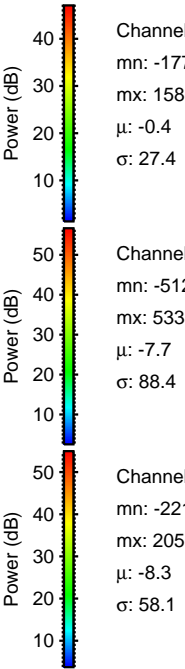
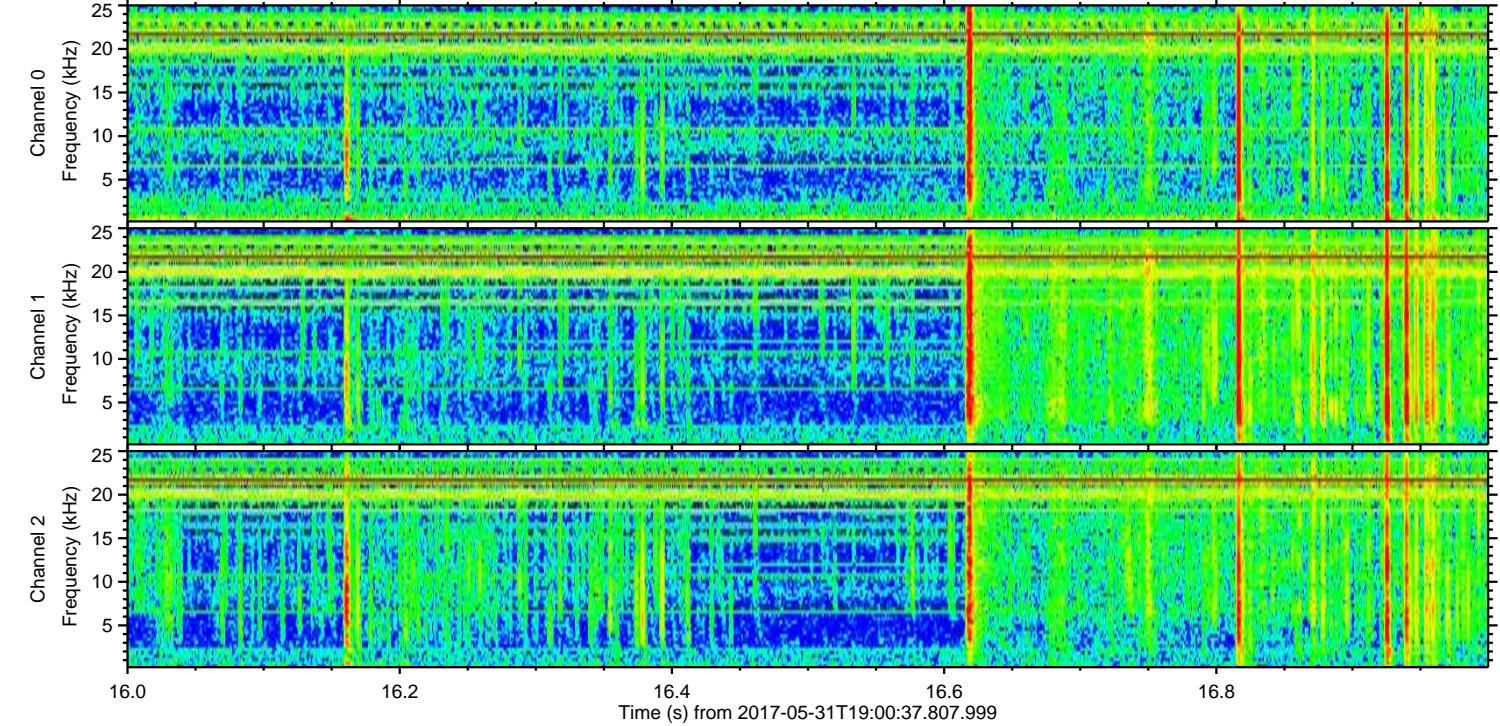
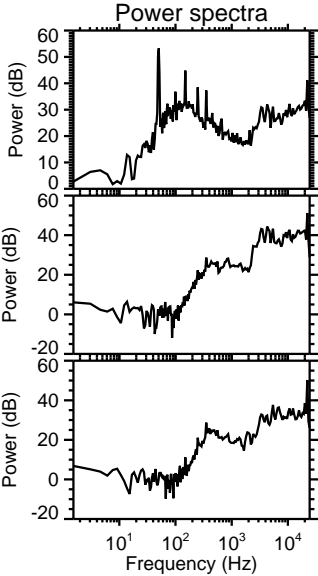
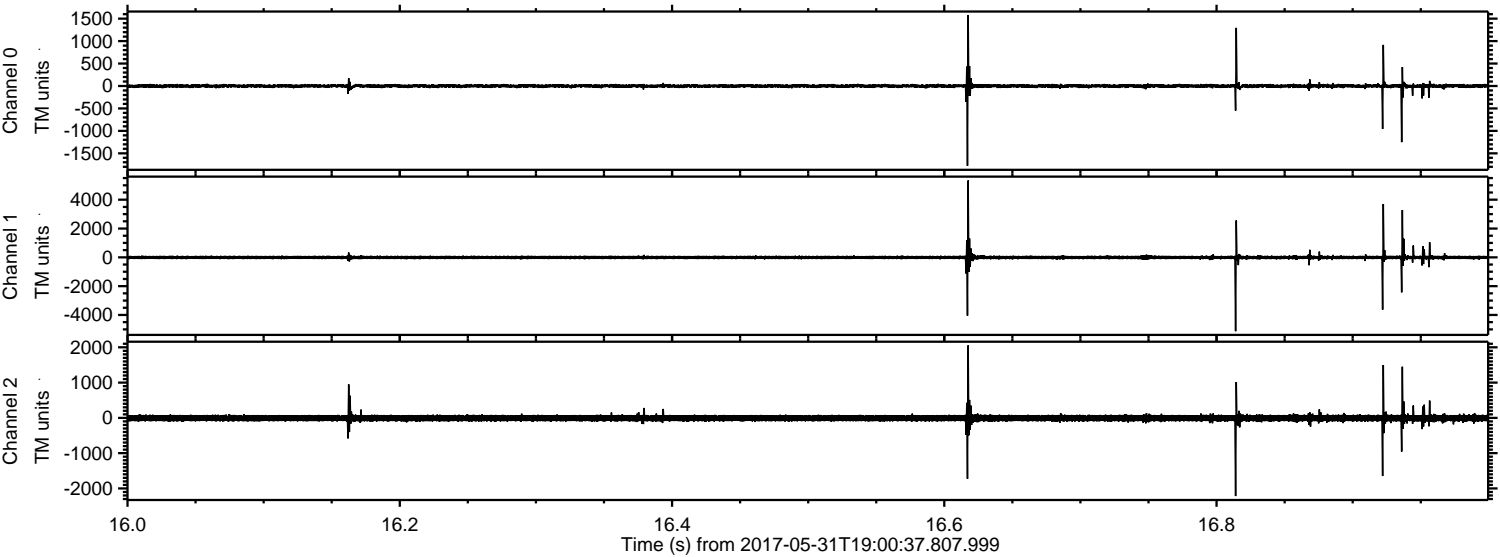


Processed Wed May 31 21:08:13 2017 by ELM ver.2012-10-06 from 001__elm20170531_190036__dat00.bin



ELMAVAN 3D WAVEFORMS (Measured data sampled at 50 kHz) 51000 packets of 144 samples from 2017-05-31T19:00:37.807.999. Part 17/147

Processed Wed May 31 21:08:13 2017 by ELM ver.2012-10-06 from 001__elm20170531_190036__dat00.bin



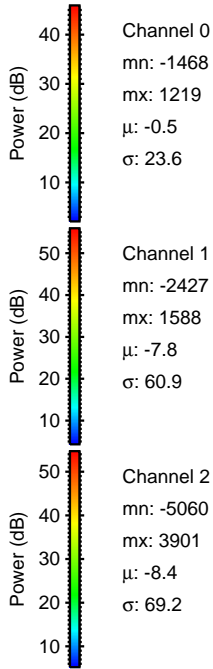
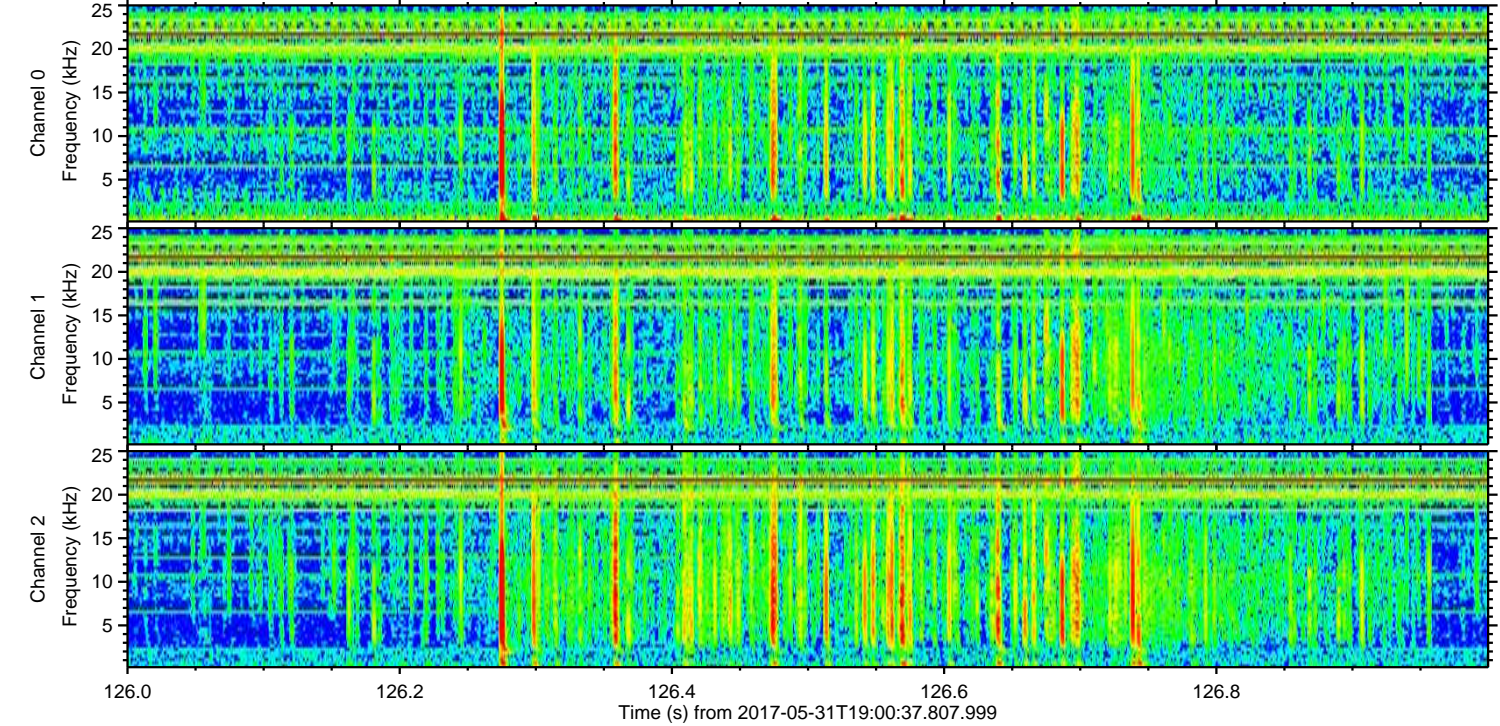
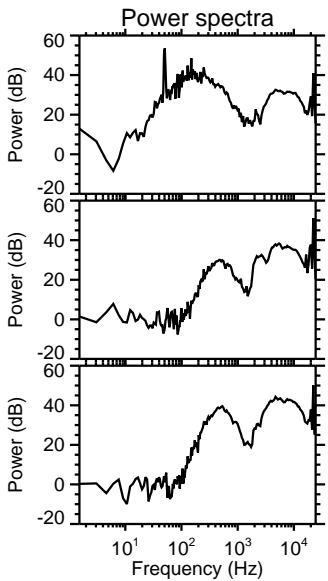
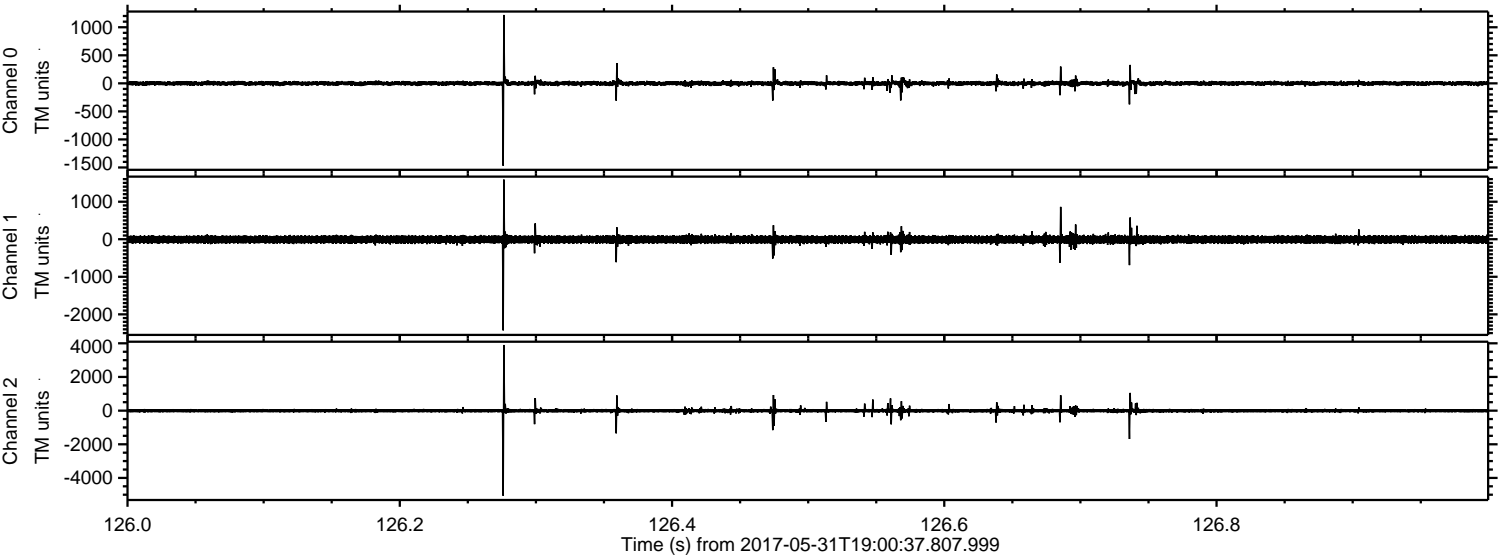
Channel 0
mn: -1779
mx: 1580
 μ : -0.4
 σ : 27.4

Channel 1
mn: -5128
mx: 5335
 μ : -7.7
 σ : 88.4

Channel 2
mn: -2217
mx: 2056
 μ : -8.3
 σ : 58.1

ELMAVAN 3D WAVEFORMS (Measured data sampled at 50 kHz) 51000 packets of 144 samples from 2017-05-31T19:00:37.807.999. Part 127/147

Processed Wed May 31 21:08:14 2017 by ELM ver.2012-10-06 from 001__elm20170531_190036__dat00.bin



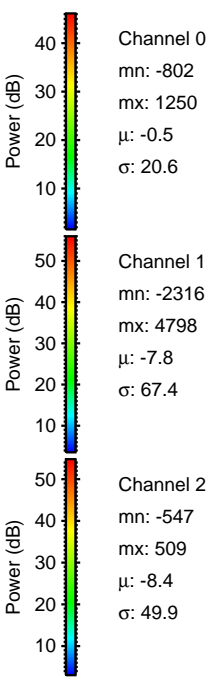
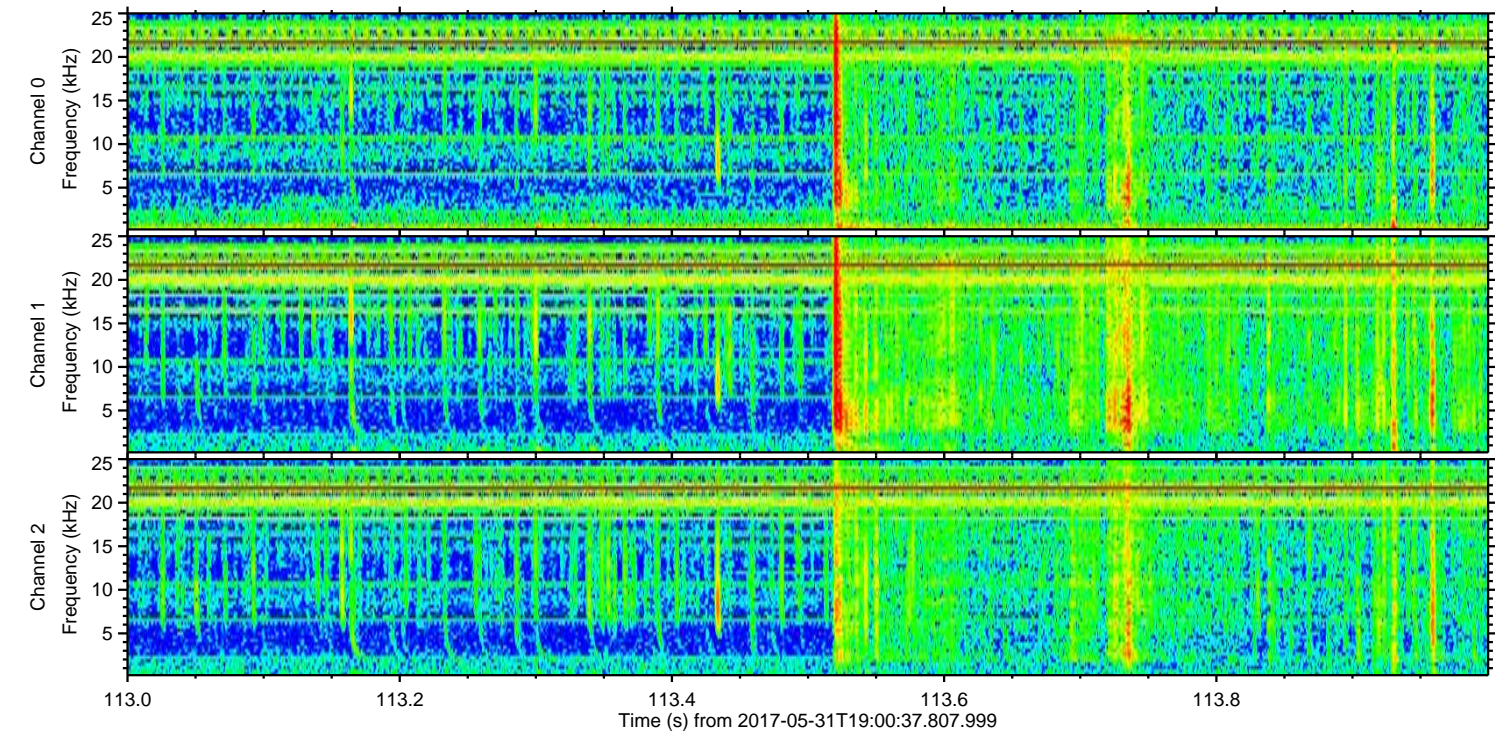
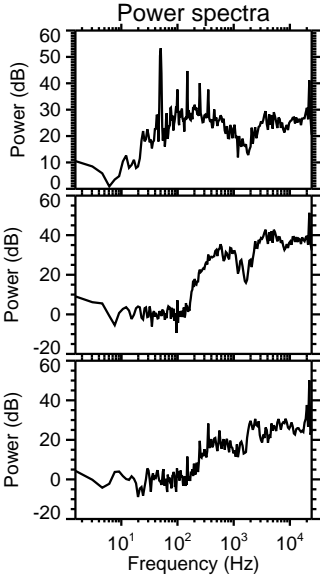
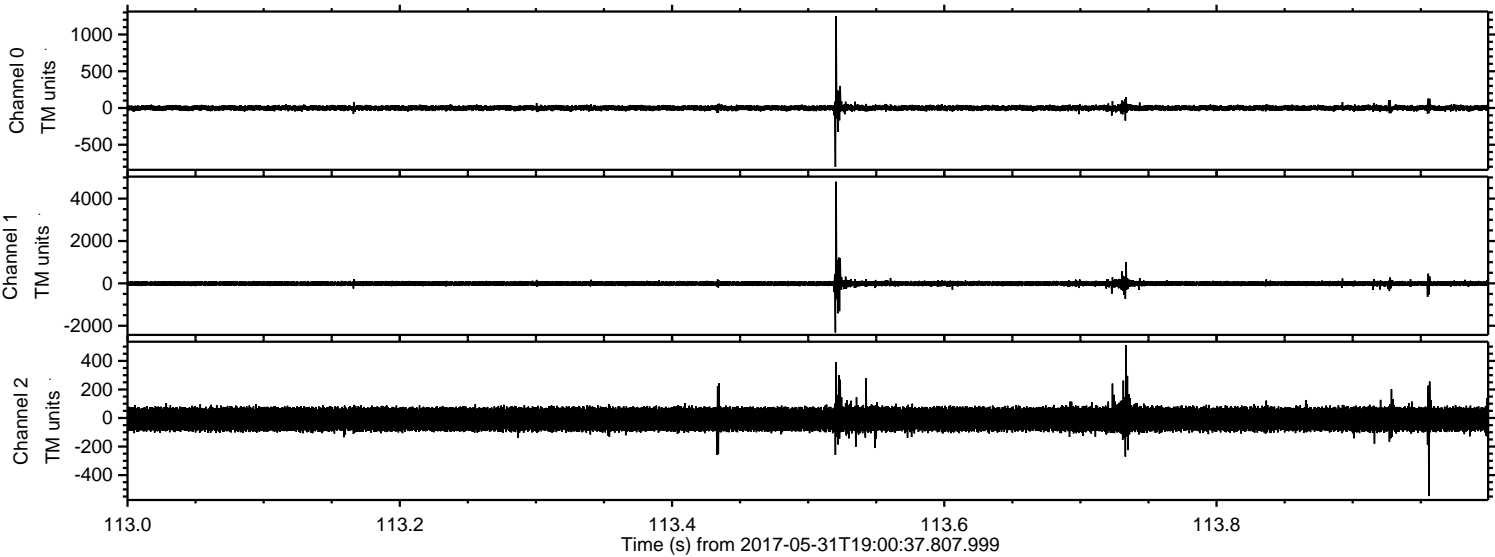
Channel 0
mn: -1468
mx: 1219
 μ : -0.5
 σ : 23.6

Channel 1
mn: -2427
mx: 1588
 μ : -7.8
 σ : 60.9

Channel 2
mn: -5060
mx: 3901
 μ : -8.4
 σ : 69.2

ELMAVAN 3D WAVEFORMS (Measured data sampled at 50 kHz) 51000 packets of 144 samples from 2017-05-31T19:00:37.807.999. Part 114/147

Processed Wed May 31 21:08:14 2017 by ELM ver.2012-10-06 from 001__elm20170531_190036__dat00.bin



Channel 0
mn: -802
mx: 1250
 μ : -0.5
 σ : 20.6

Channel 1
mn: -2316
mx: 4798
 μ : -7.8
 σ : 67.4

Channel 2
mn: -547
mx: 509
 μ : -8.4
 σ : 49.9

Processed Wed May 31 21:08:15 2017 by ELM ver.2012-10-06 from 001__elm20170531_190036__dat00.bin

