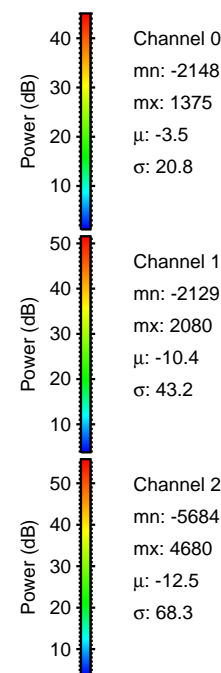
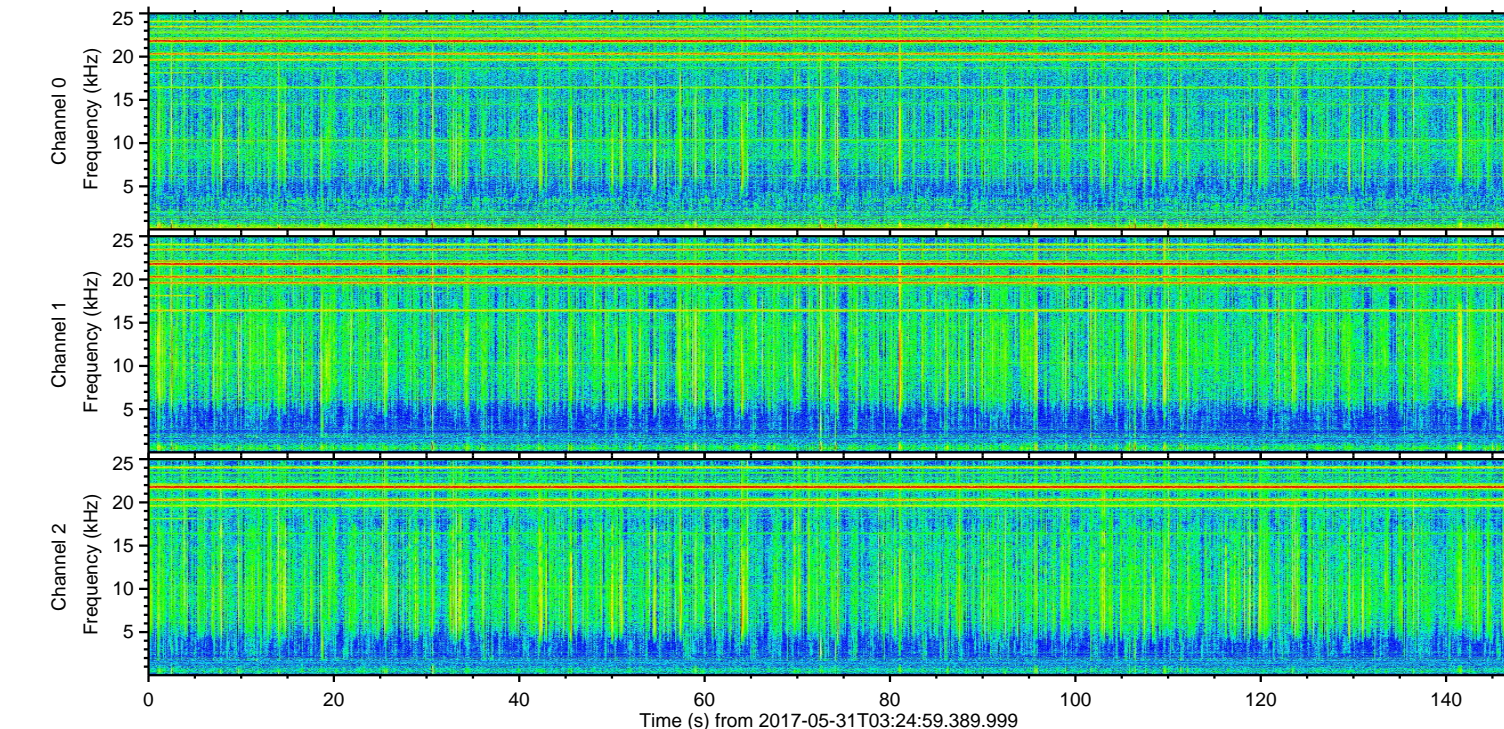
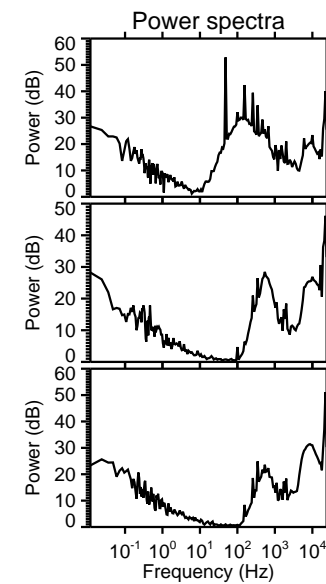
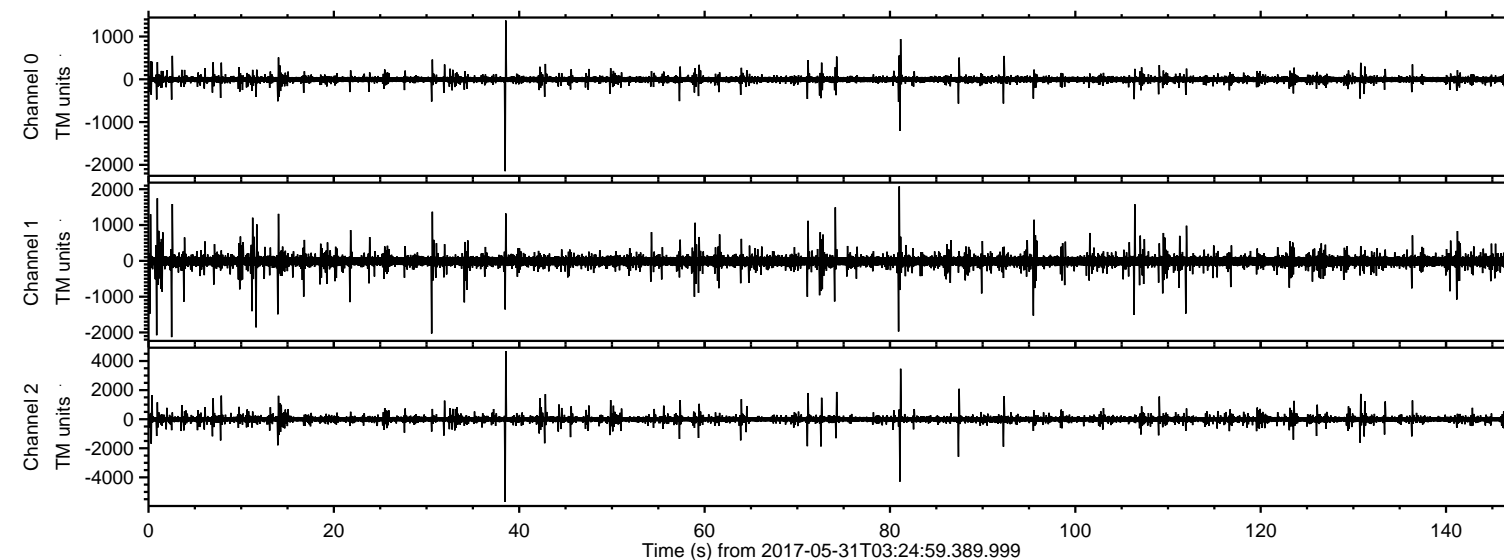
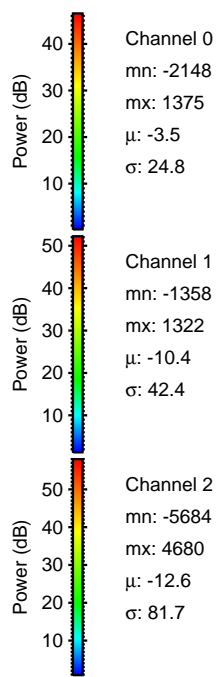
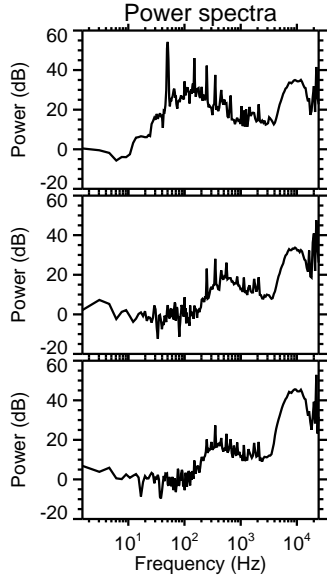
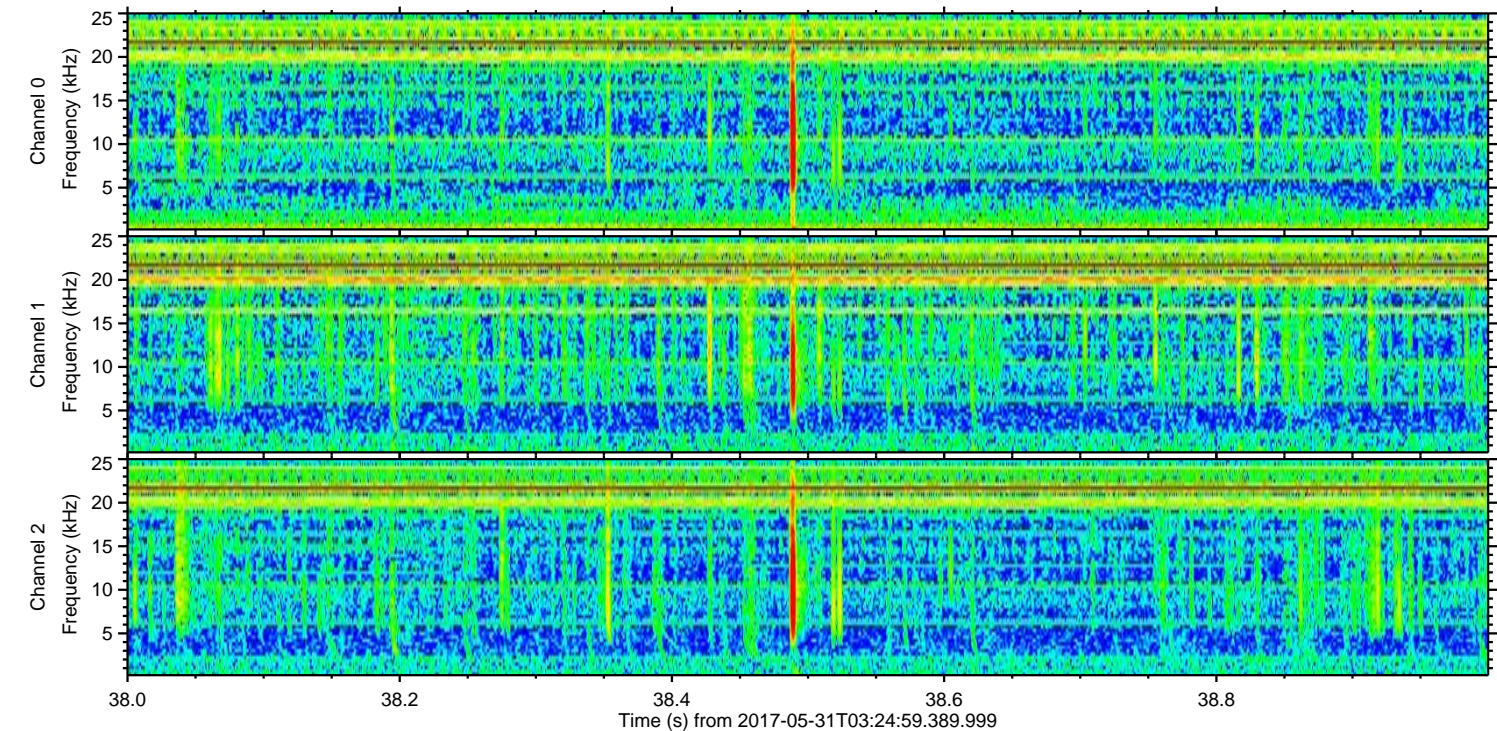
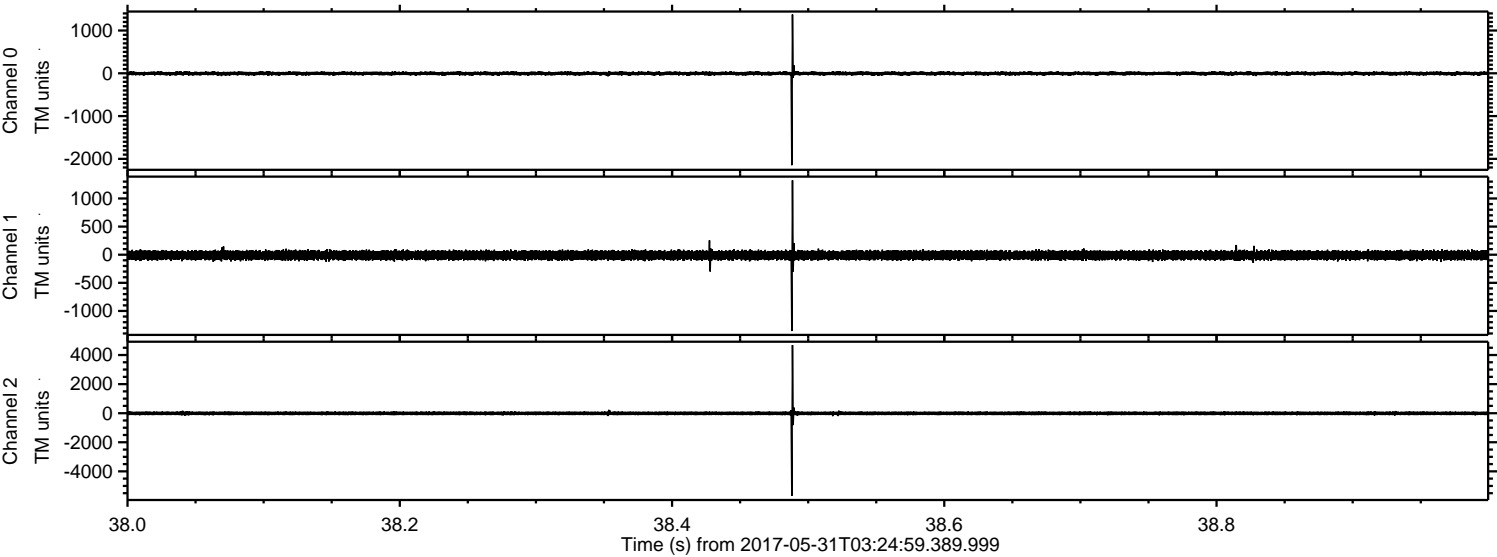


ELMAVAN 3D WAVEFORMS (Measured data sampled at 50 kHz) 51000 packets of 144 samples from 2017-05-31T03:24:59.389.999.

Processed Wed May 31 05:32:43 2017 by ELM ver.2012-10-06 from 001__elm20170531_032458__dat00.bin



Processed Wed May 31 05:32:49 2017 by ELM ver.2012-10-06 from 001__elm20170531_032458__dat00.bin

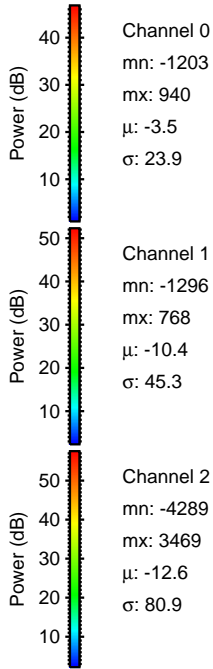
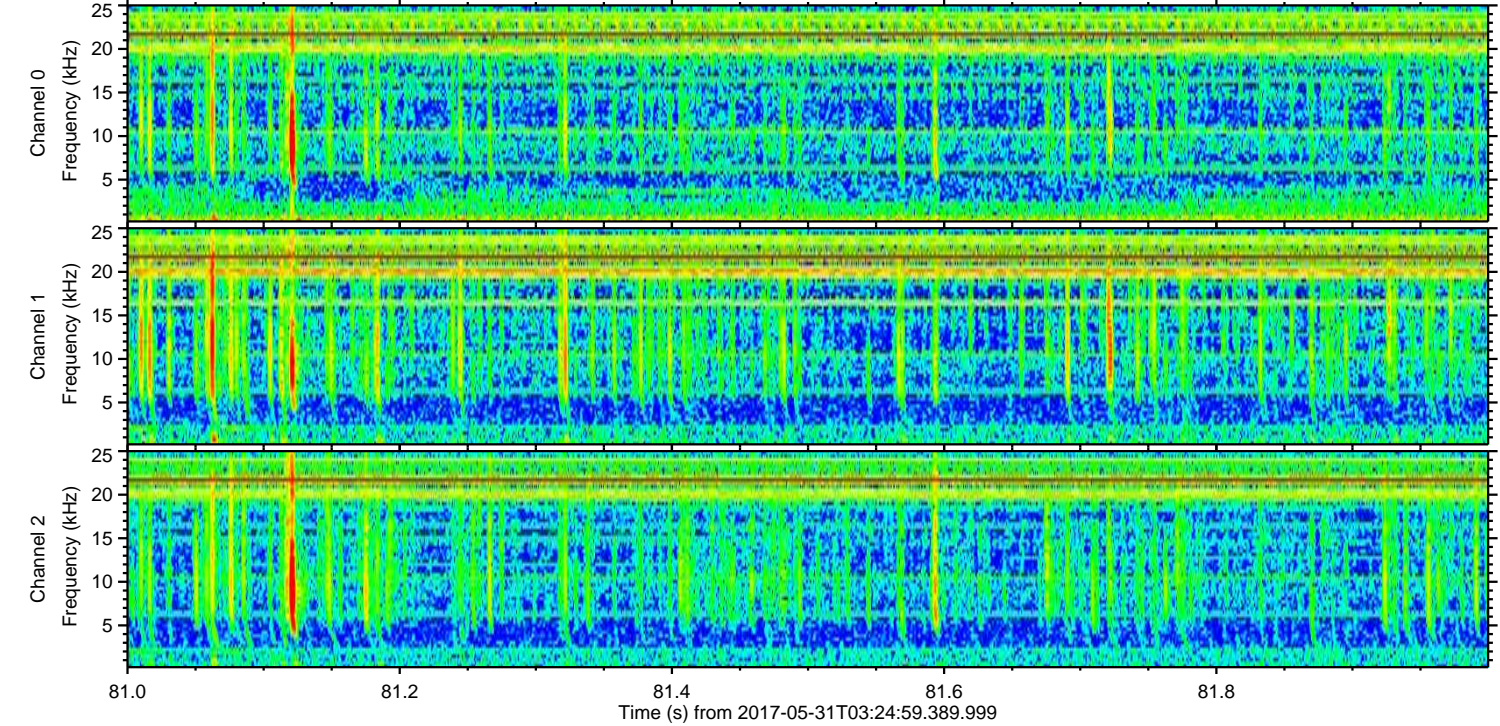
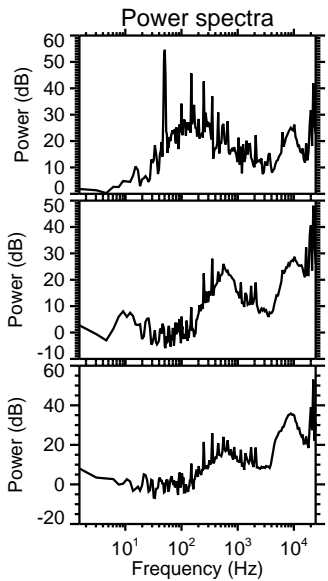
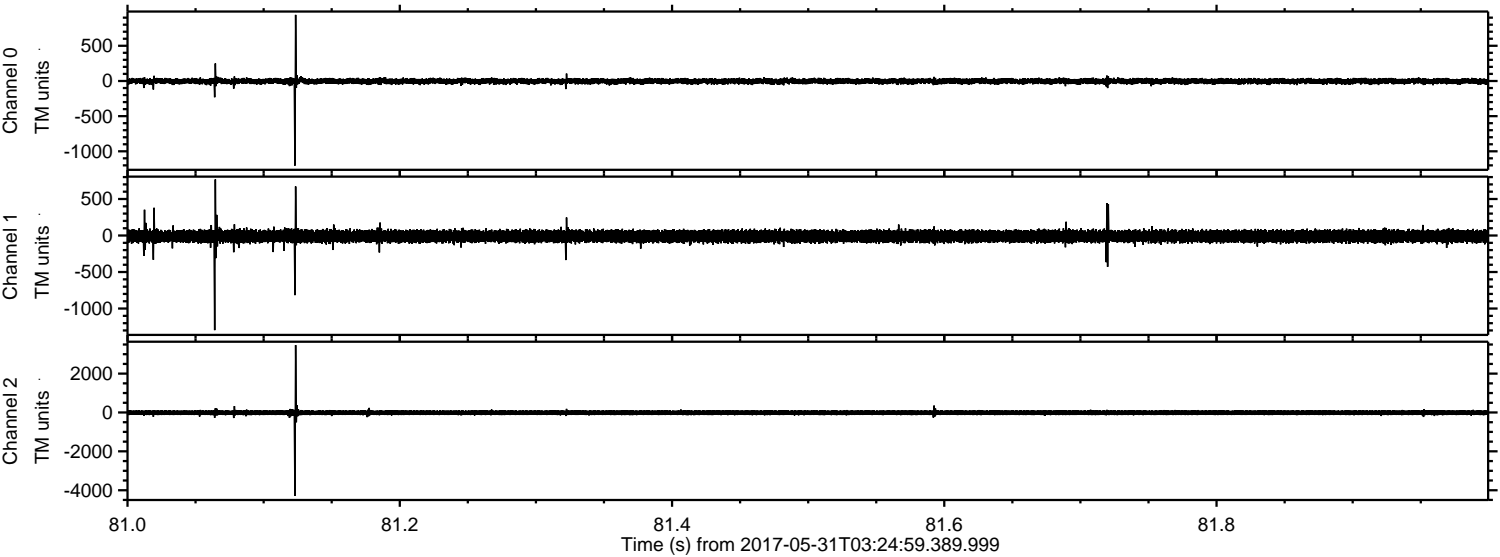


Channel 0
mn: -2148
mx: 1375
 μ : -3.5
 σ : 24.8

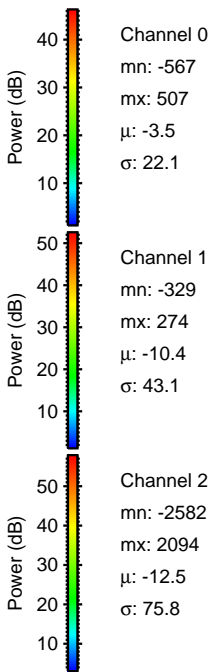
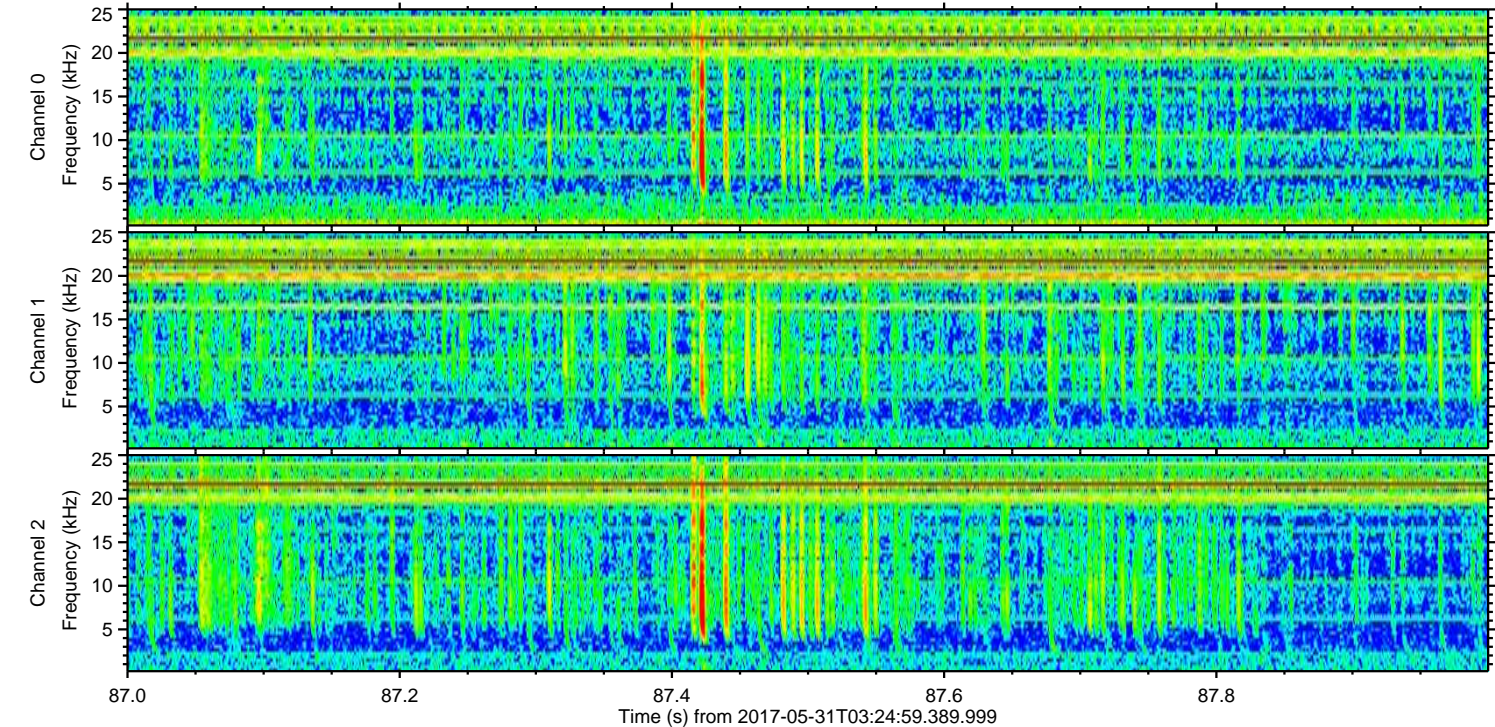
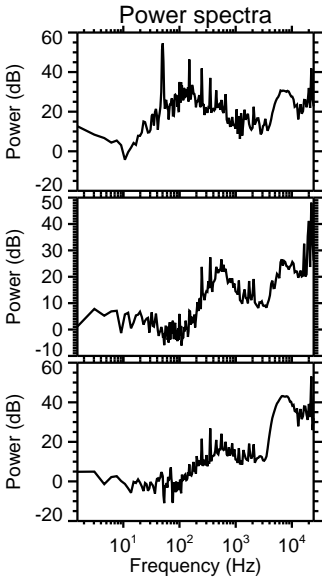
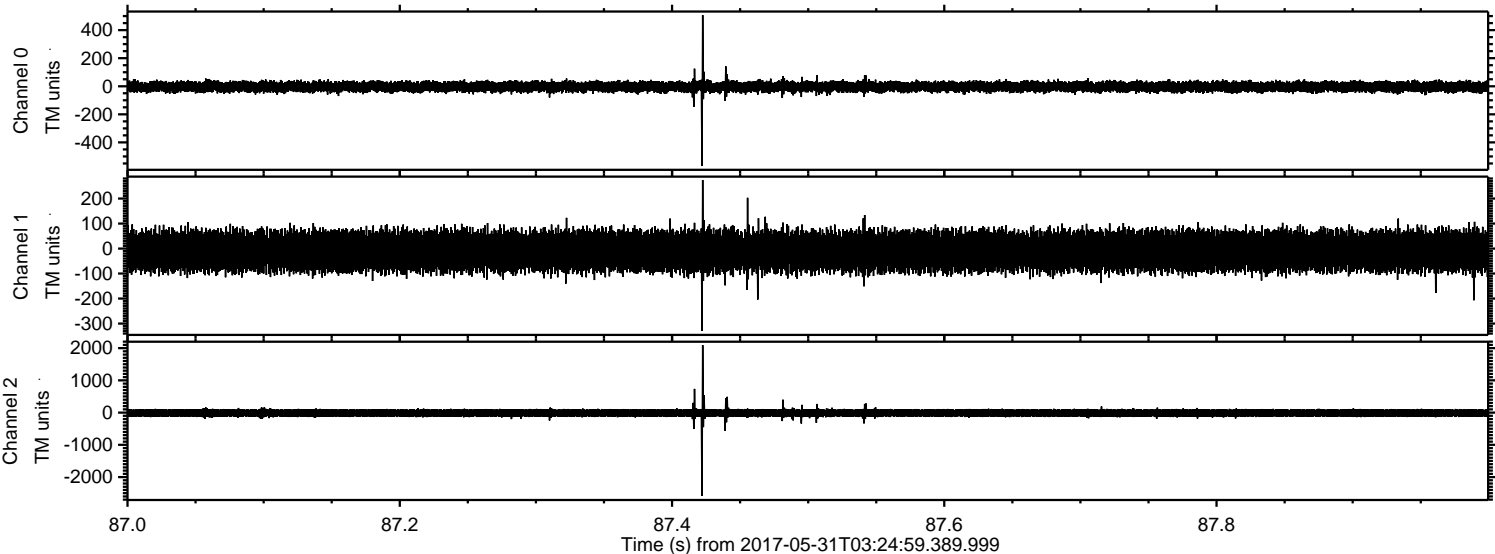
Channel 1
mn: -1358
mx: 1322
 μ : -10.4
 σ : 42.4

Channel 2
mn: -5684
mx: 4680
 μ : -12.6
 σ : 81.7

Processed Wed May 31 05:32:50 2017 by ELM ver.2012-10-06 from 001__elm20170531_032458__dat00.bin

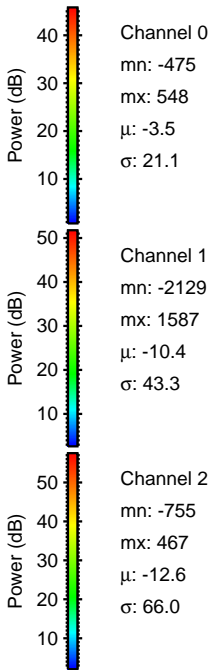
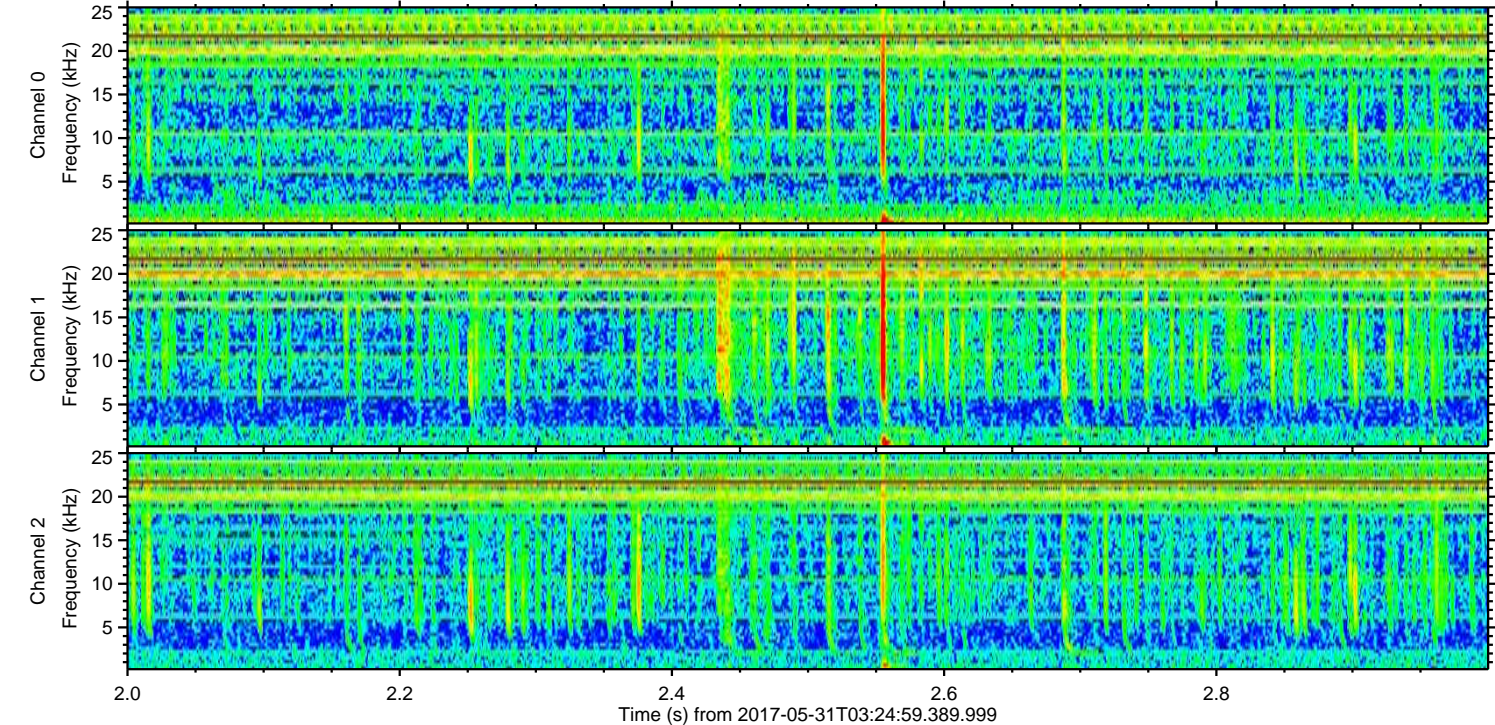
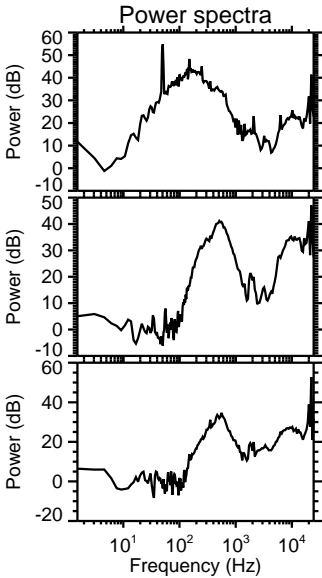
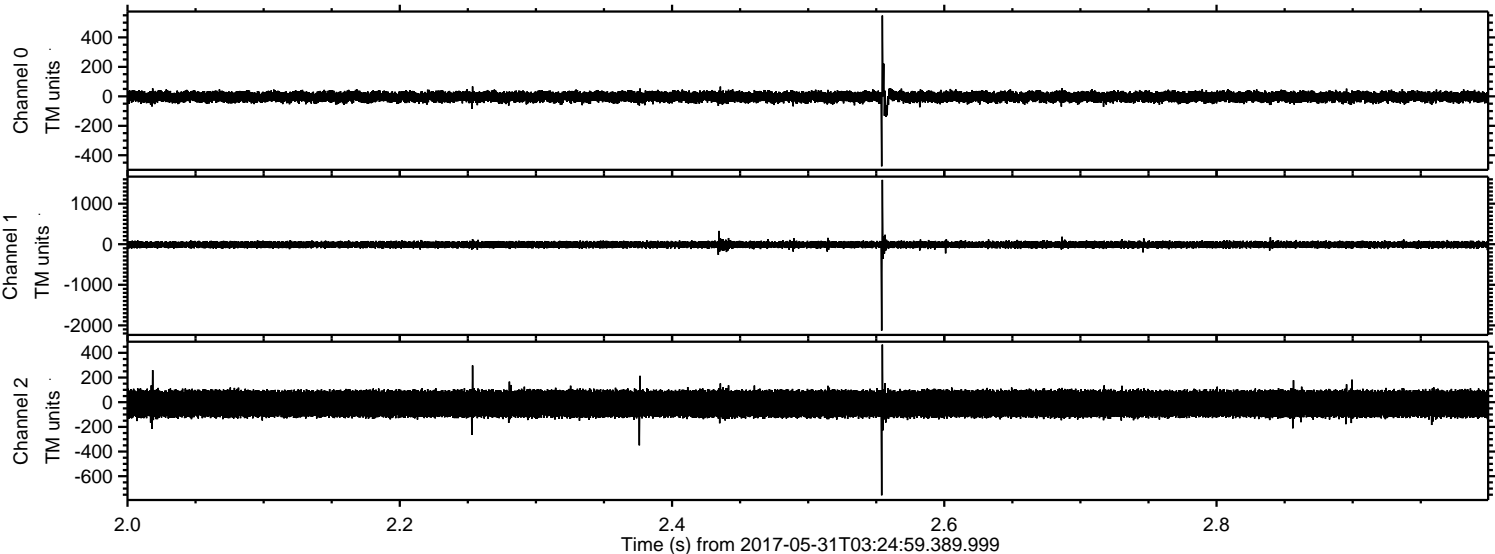


Processed Wed May 31 05:32:50 2017 by ELM ver.2012-10-06 from 001__elm20170531_032458__dat00.bin

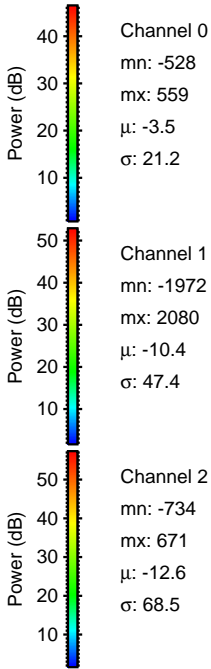
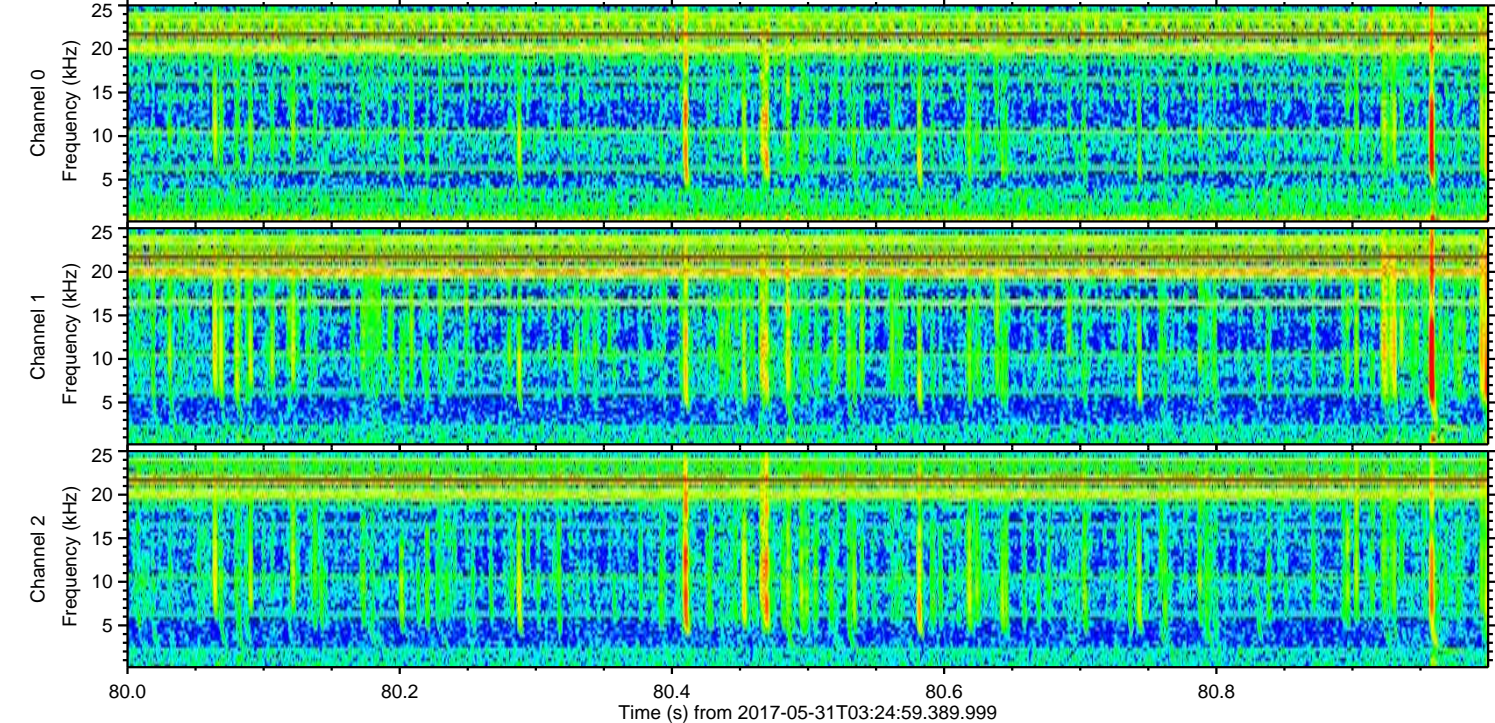
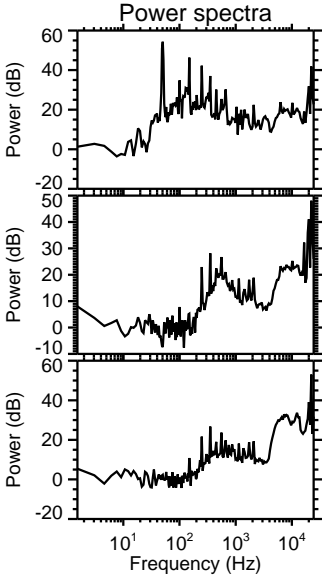
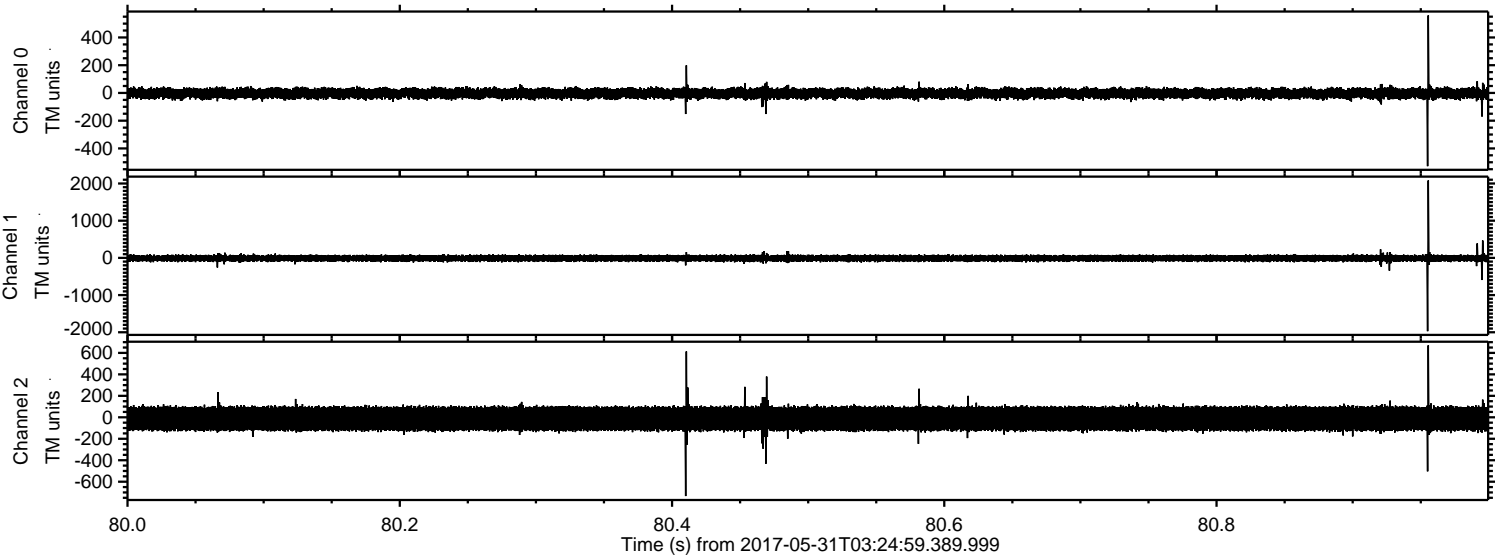


ELMAVAN 3D WAVEFORMS (Measured data sampled at 50 kHz) 51000 packets of 144 samples from 2017-05-31T03:24:59.389.999. Part 3/147

Processed Wed May 31 05:32:51 2017 by ELM ver.2012-10-06 from 001__elm20170531_032458__dat00.bin

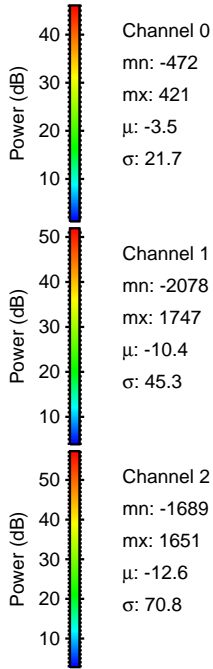
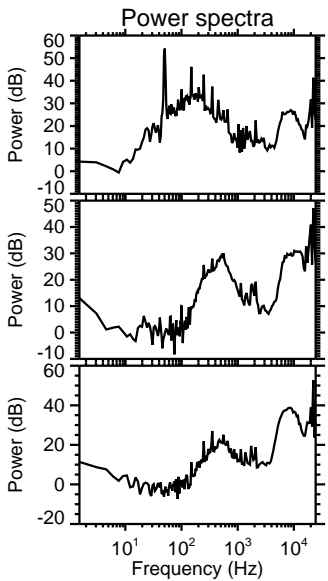
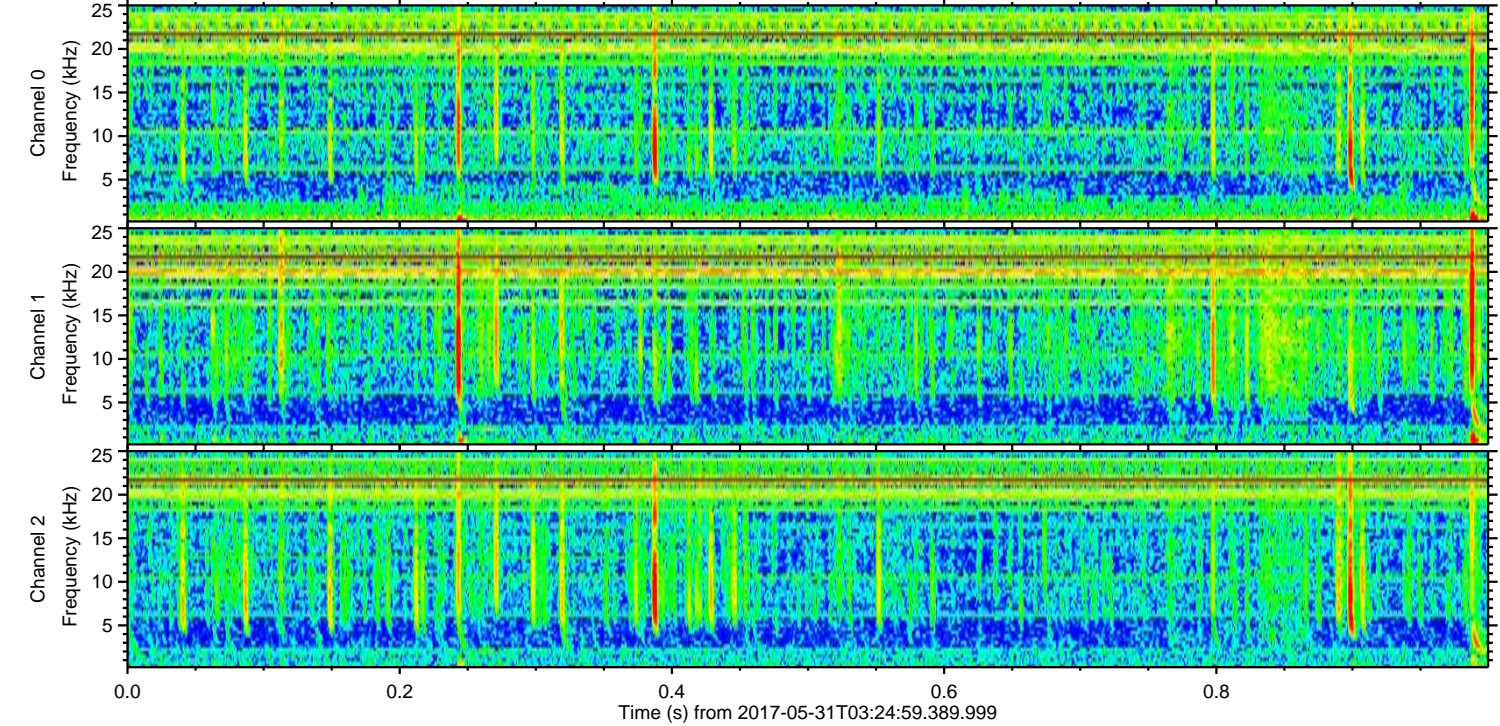
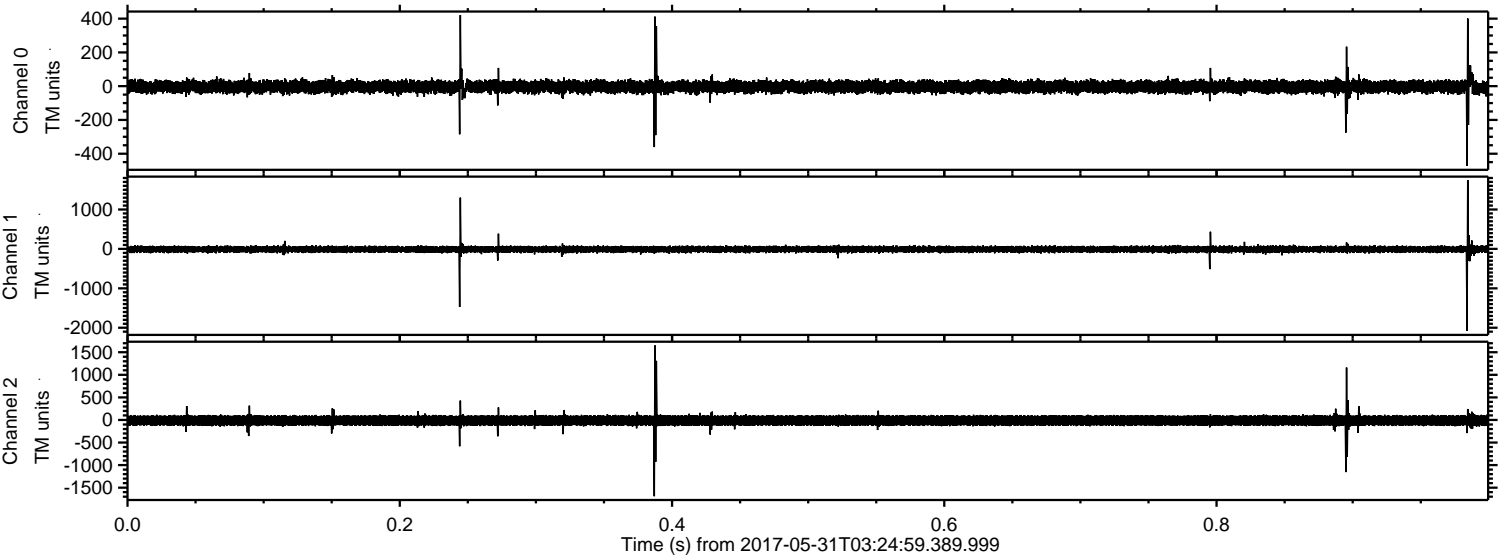


Processed Wed May 31 05:32:52 2017 by ELM ver.2012-10-06 from 001__elm20170531_032458__dat00.bin

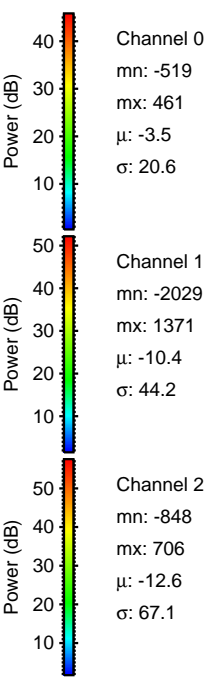
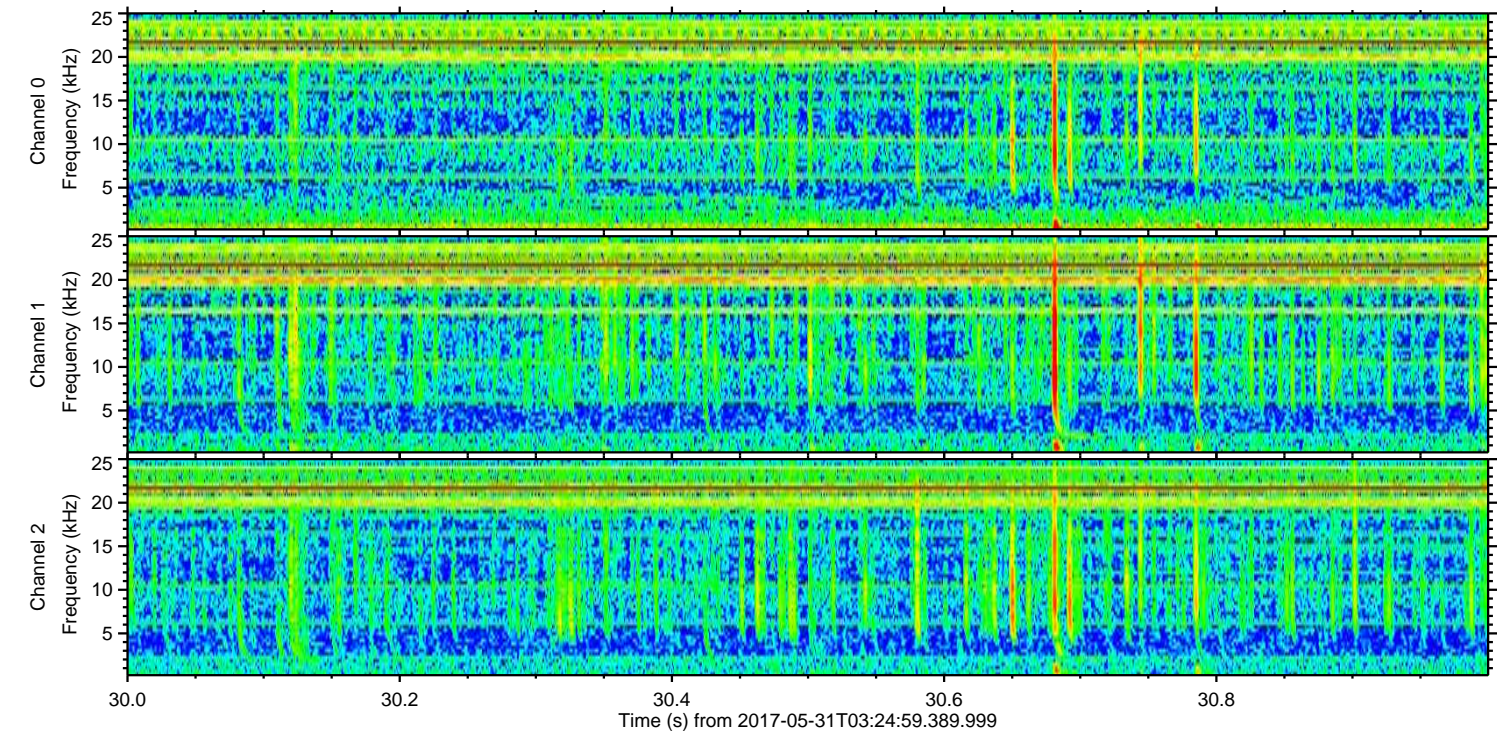
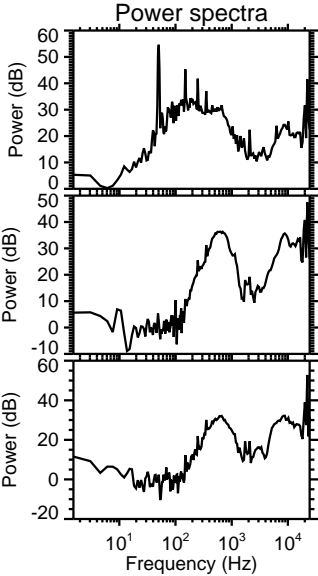
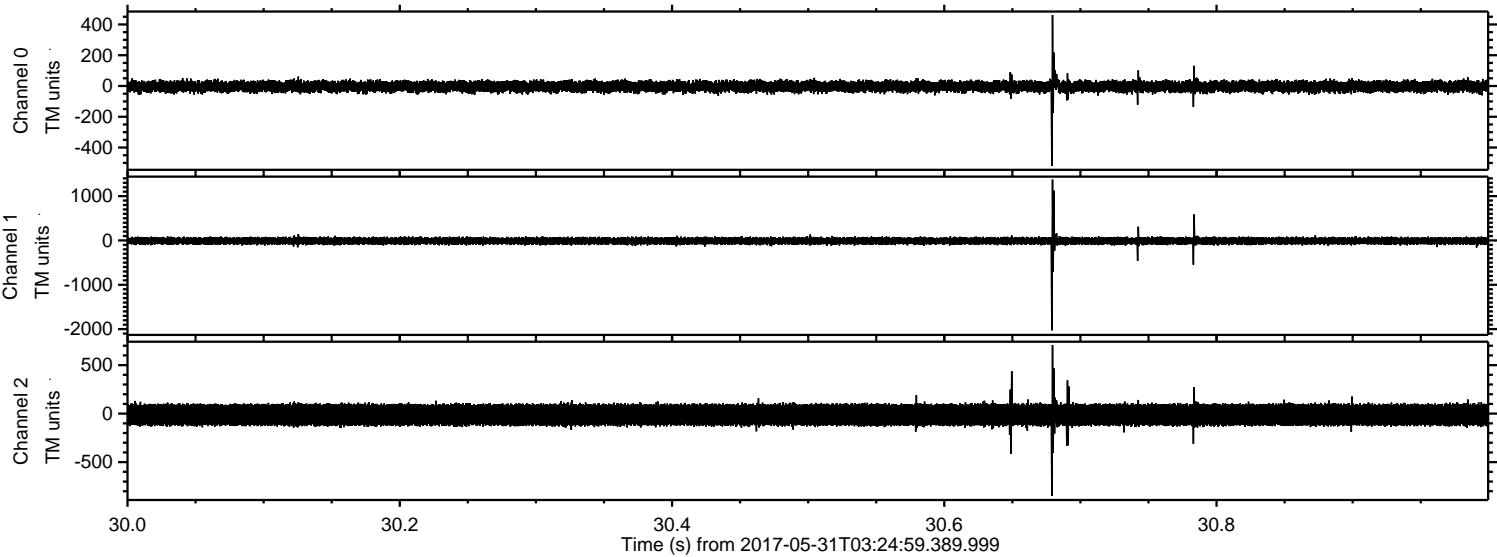


ELMAVAN 3D WAVEFORMS (Measured data sampled at 50 kHz) 51000 packets of 144 samples from 2017-05-31T03:24:59.389.999. Part 1/147

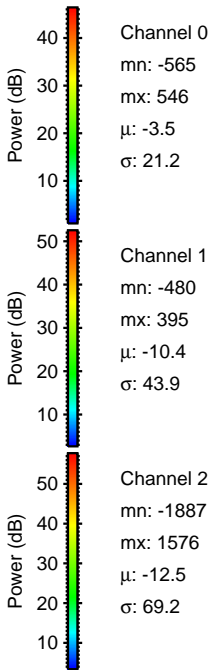
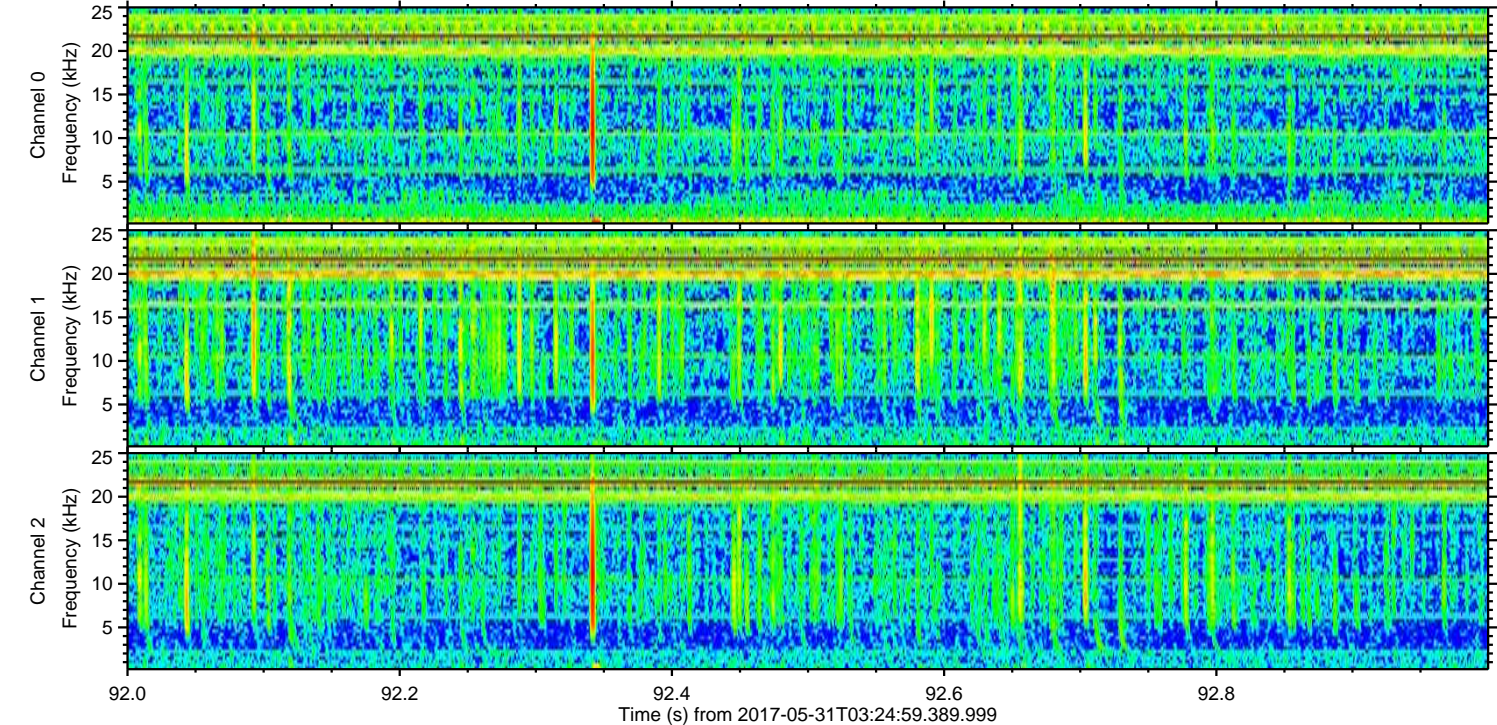
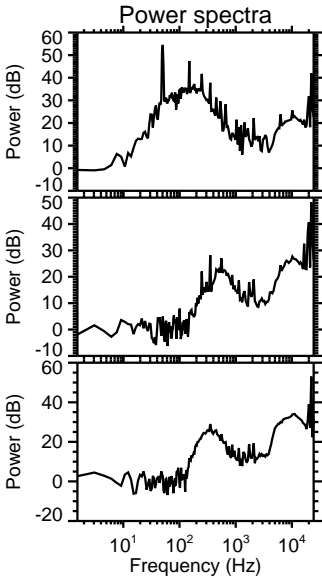
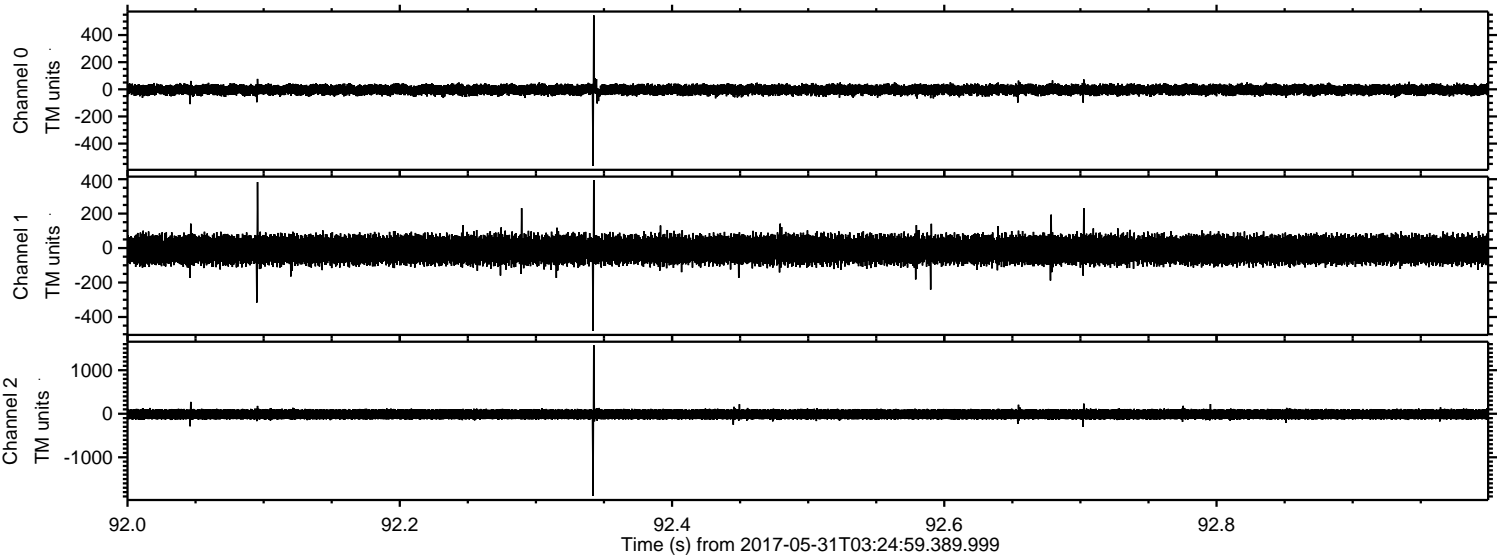
Processed Wed May 31 05:32:52 2017 by ELM ver.2012-10-06 from 001__elm20170531_032458__dat00.bin



Processed Wed May 31 05:32:53 2017 by ELM ver.2012-10-06 from 001__elm20170531_032458__dat00.bin



Processed Wed May 31 05:32:54 2017 by ELM ver.2012-10-06 from 001__elm20170531_032458__dat00.bin



Channel 0
mn: -565
mx: 546
 μ : -3.5
 σ : 21.2

Channel 1
mn: -480
mx: 395
 μ : -10.4
 σ : 43.9

Channel 2
mn: -1887
mx: 1576
 μ : -12.5
 σ : 69.2

Processed Wed May 31 05:32:54 2017 by ELM ver.2012-10-06 from 001__elm20170531_032458__dat00.bin

