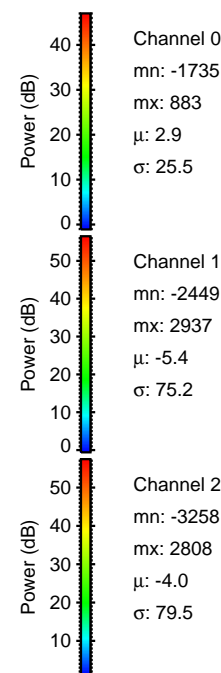
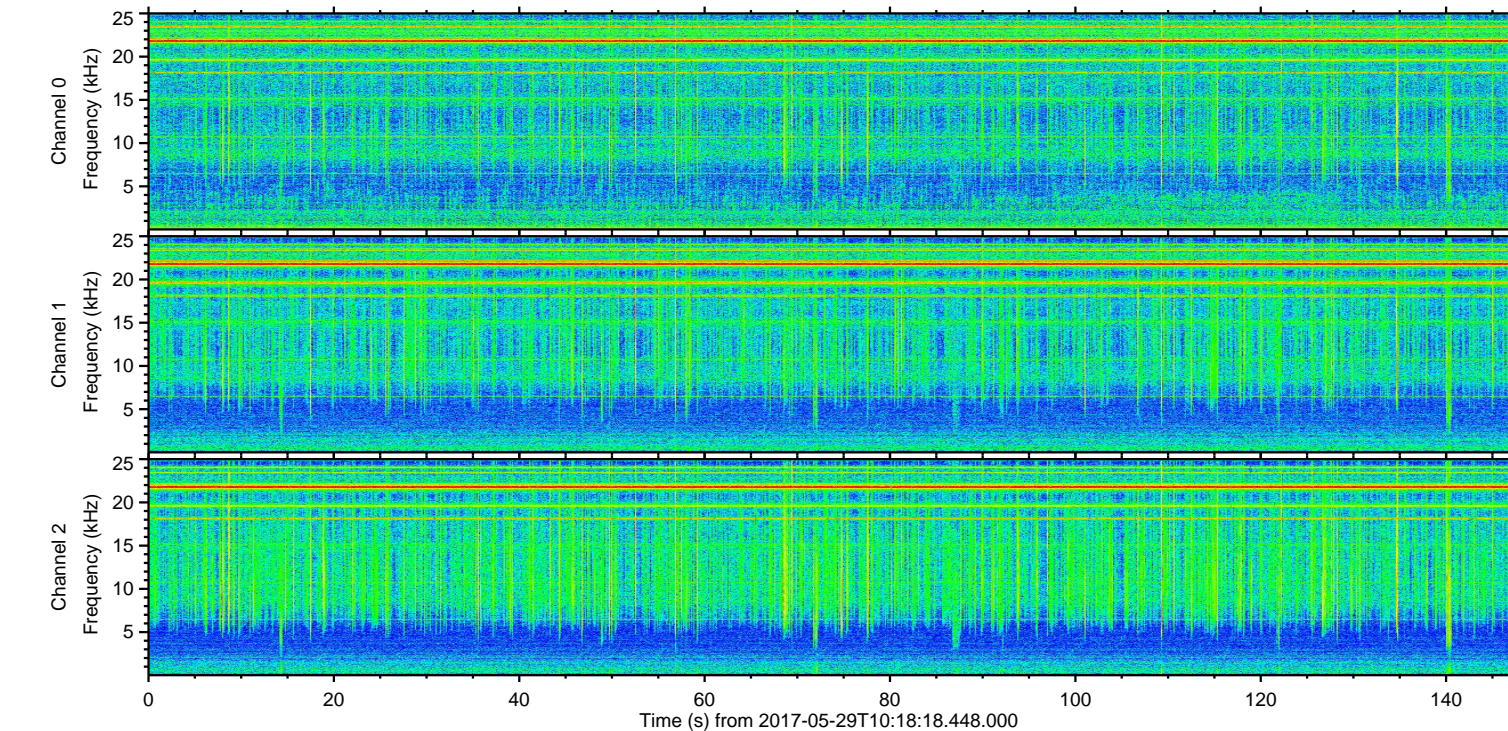
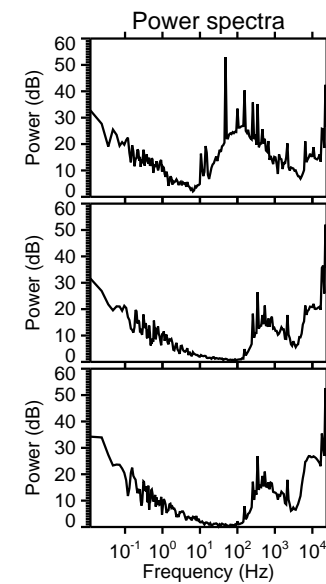
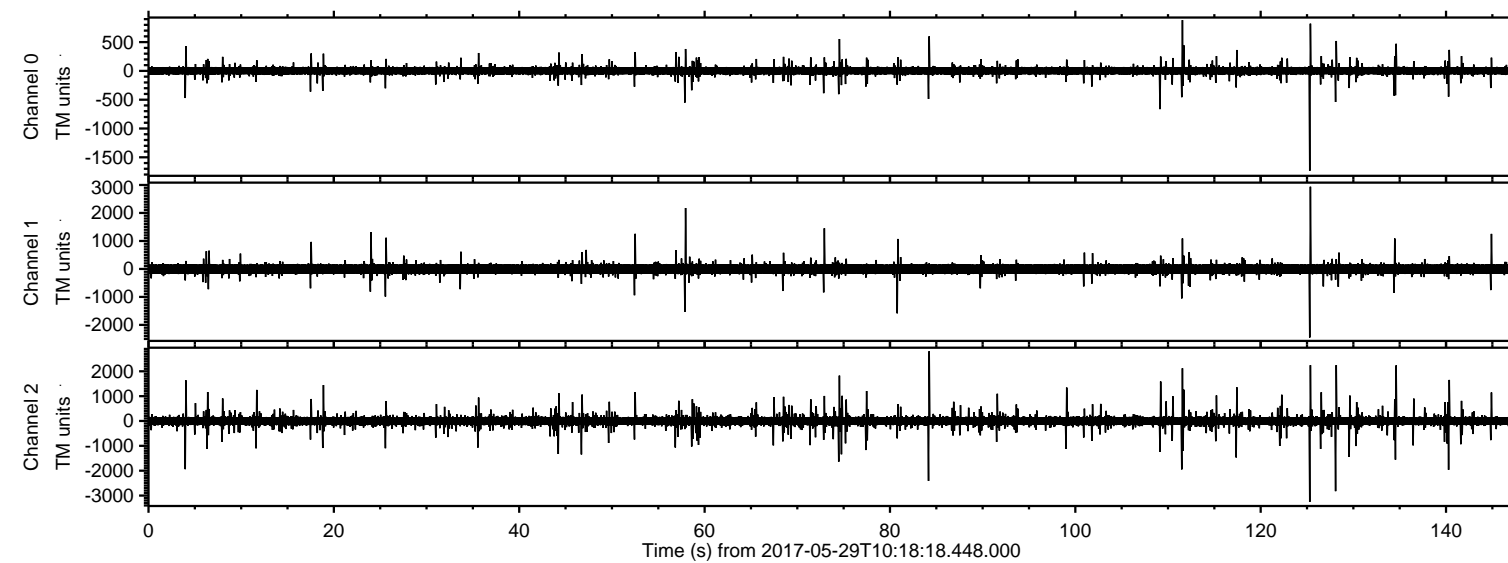


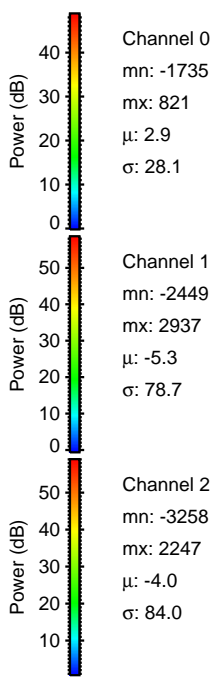
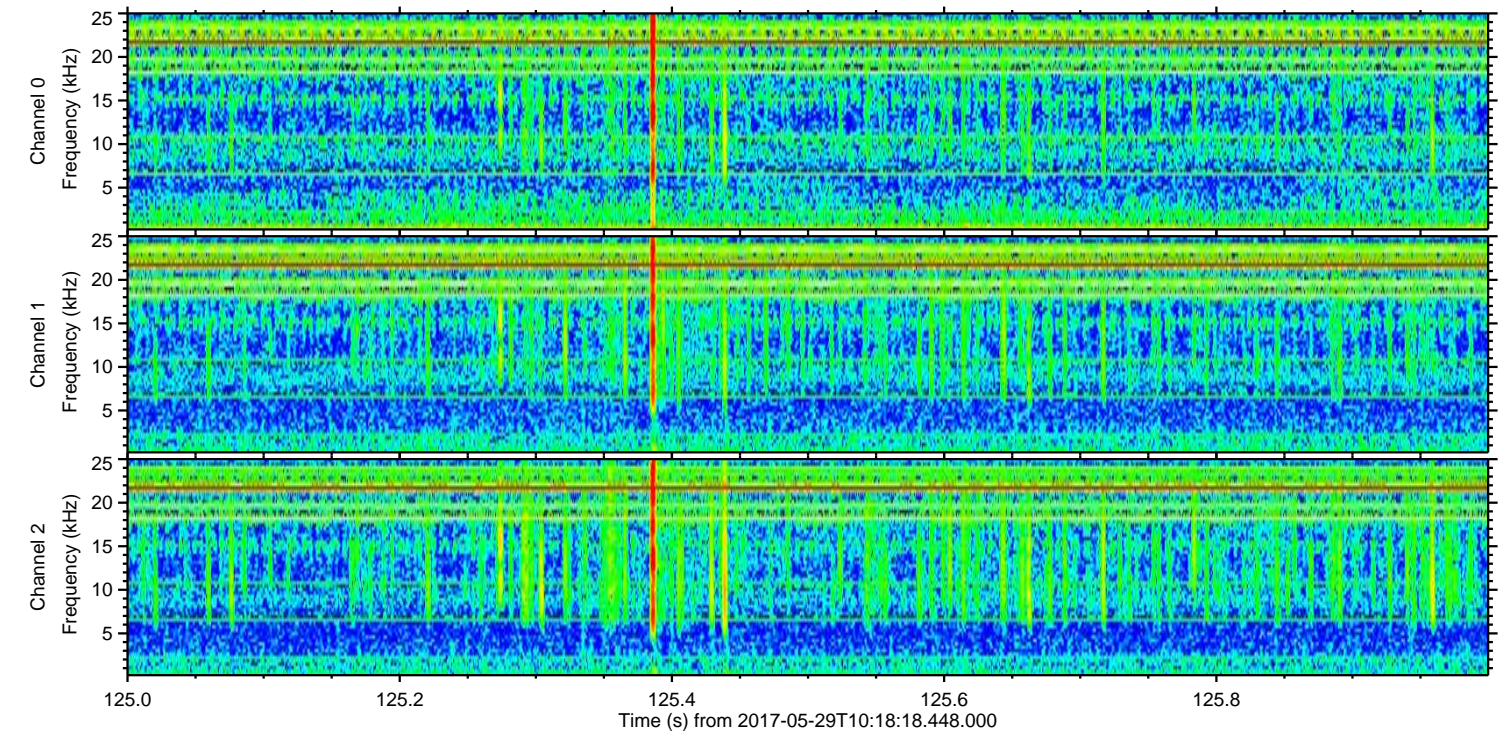
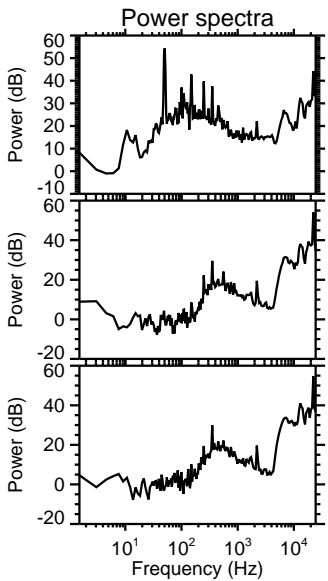
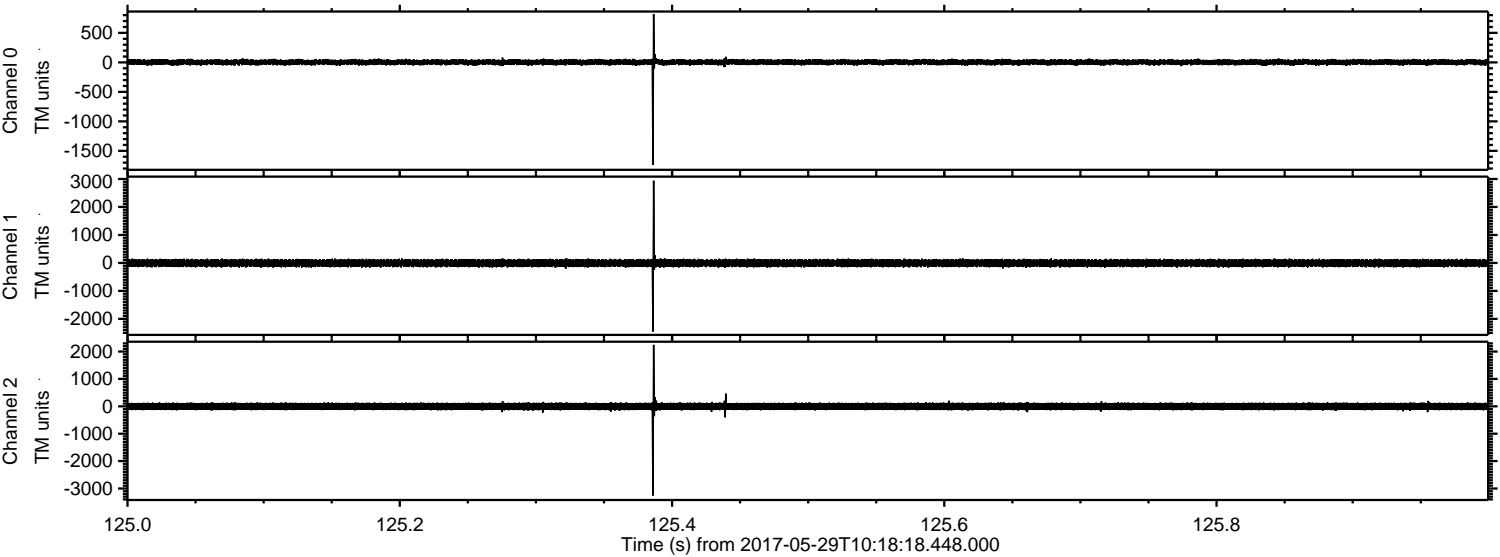
ELMAVAN 3D WAVEFORMS (Measured data sampled at 50 kHz) 51000 packets of 144 samples from 2017-05-29T10:18:18.448.000.

Processed Mon May 29 12:26:37 2017 by ELM ver.2012-10-06 from 001__elm20170529_101817__dat00.bin



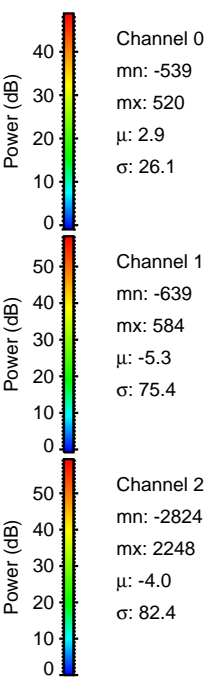
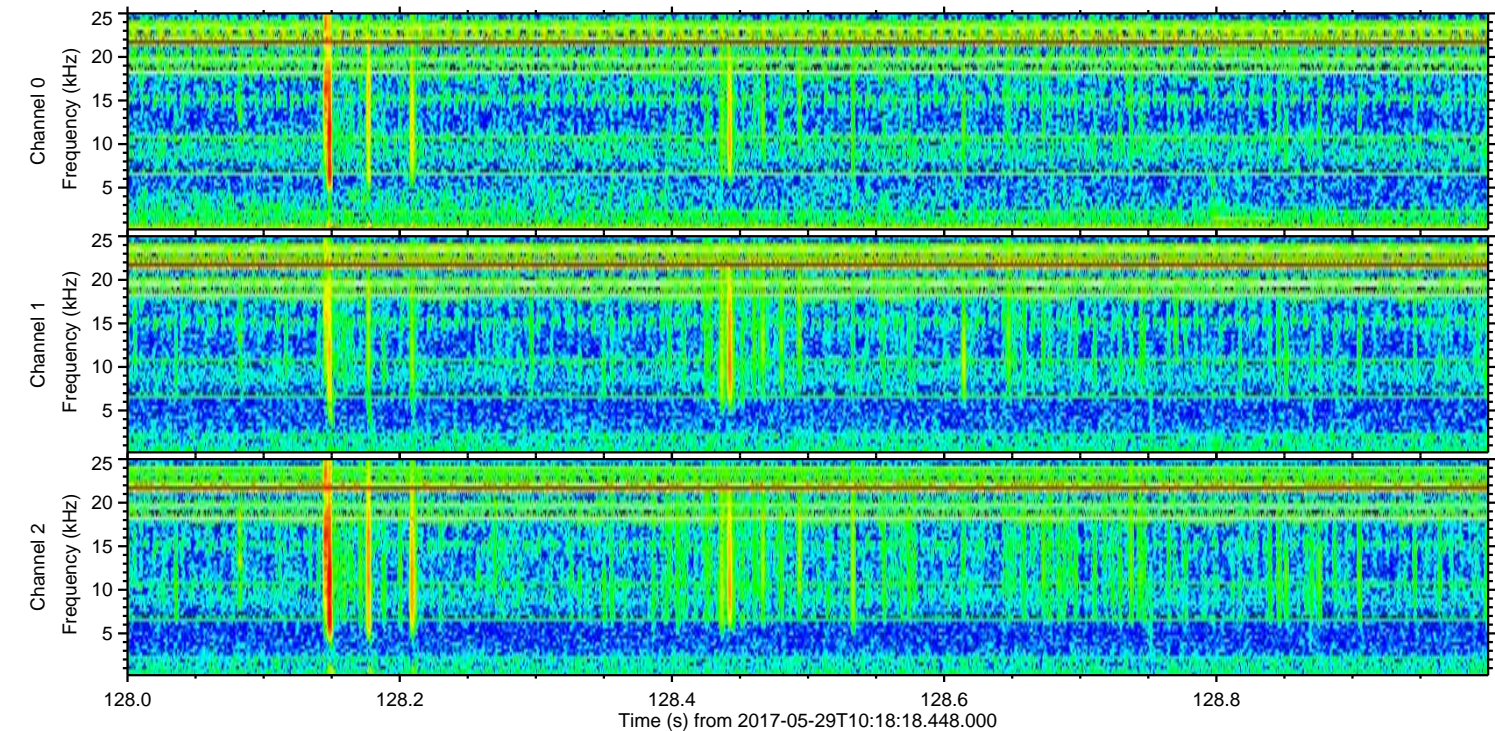
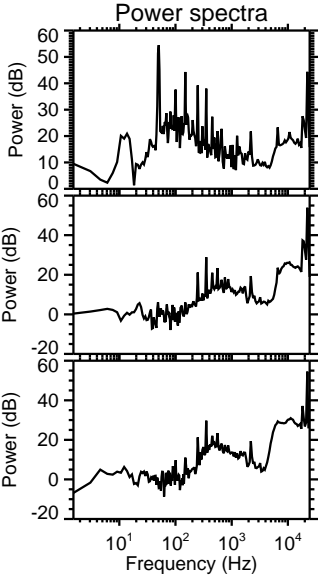
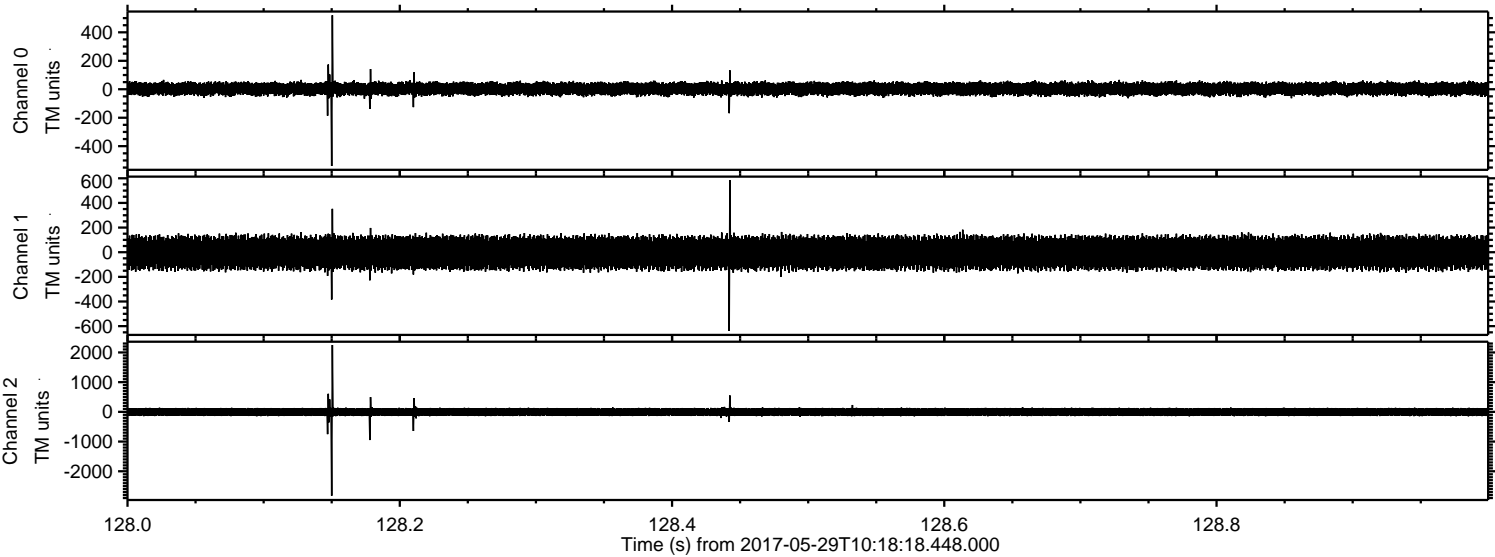
ELMAVAN 3D WAVEFORMS (Measured data sampled at 50 kHz) 51000 packets of 144 samples from 2017-05-29T10:18:18.448.000. Part 126/147

Processed Mon May 29 12:26:45 2017 by ELM ver.2012-10-06 from 001__elm20170529_101817__dat00.bin

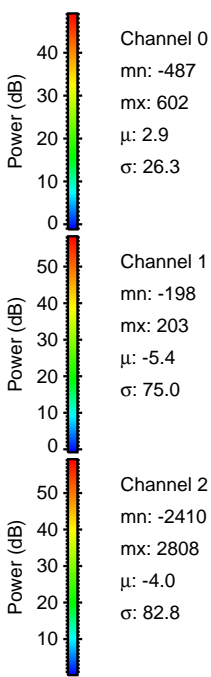
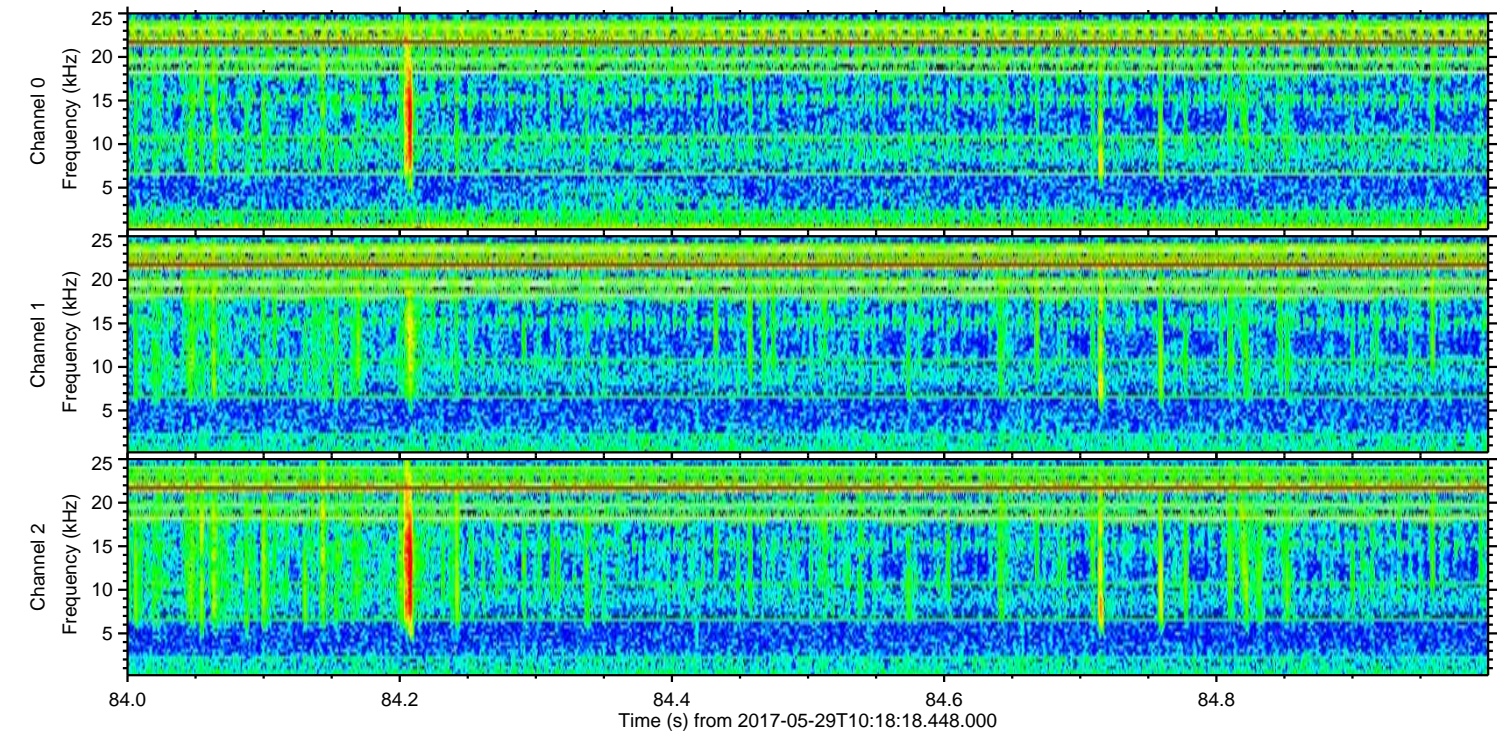
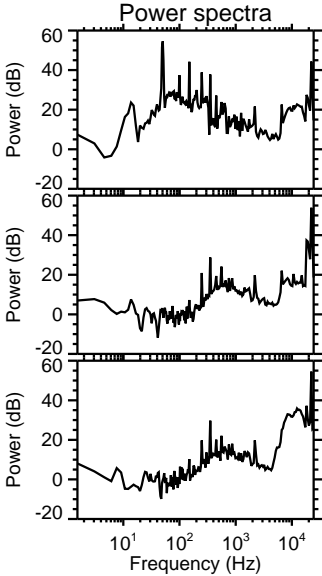
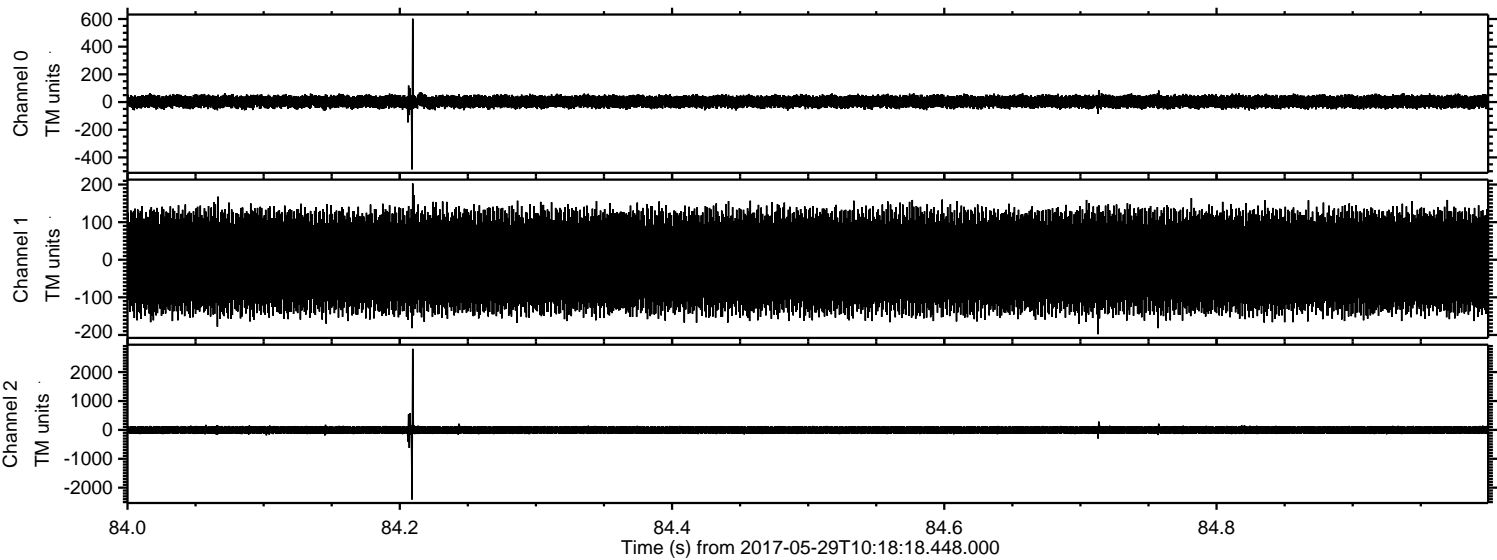


ELMAVAN 3D WAVEFORMS (Measured data sampled at 50 kHz) 51000 packets of 144 samples from 2017-05-29T10:18:18.448.000. Part 129/147

Processed Mon May 29 12:26:46 2017 by ELM ver.2012-10-06 from 001__elm20170529_101817__dat00.bin

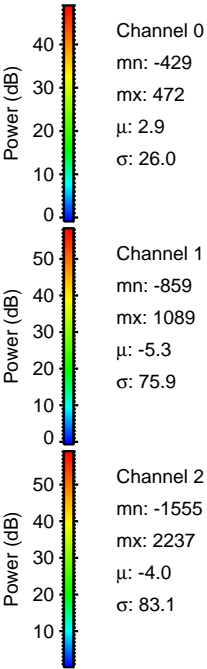
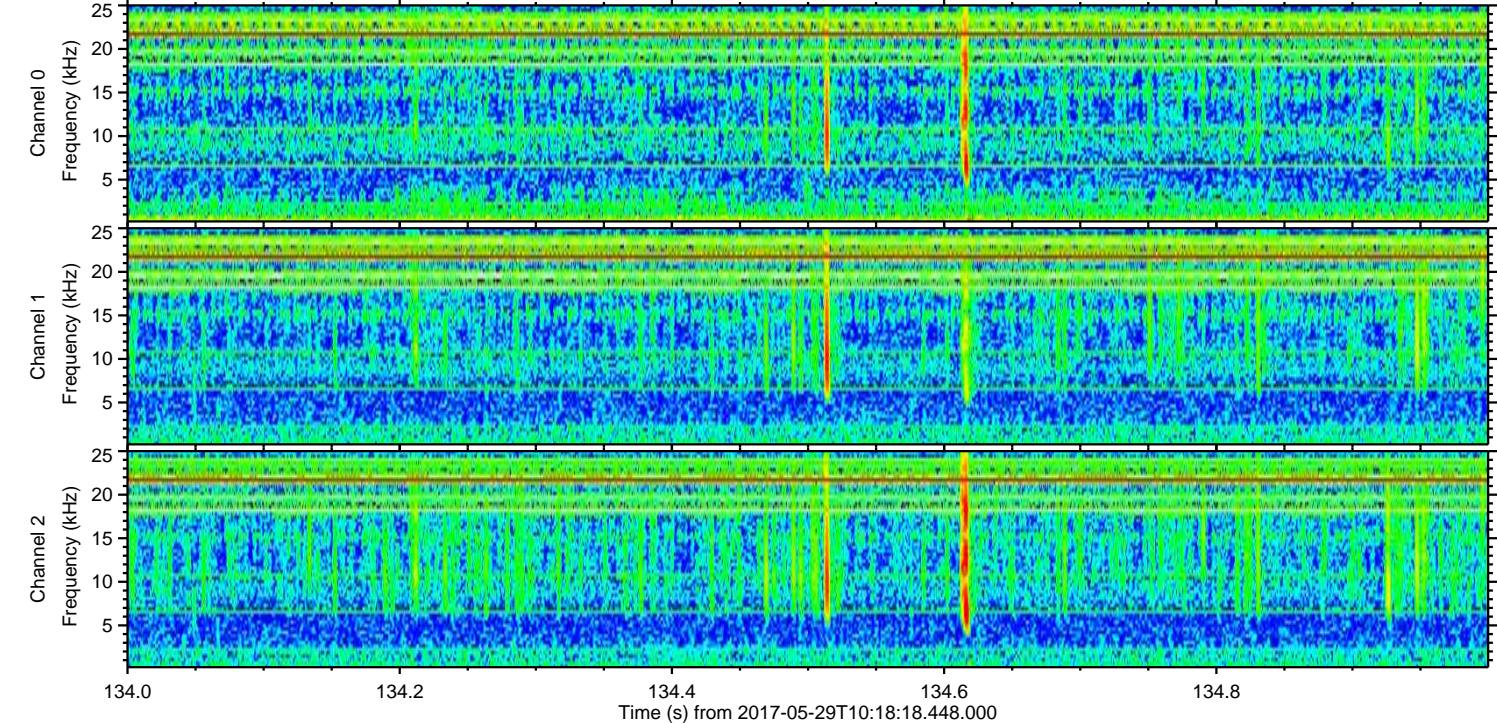
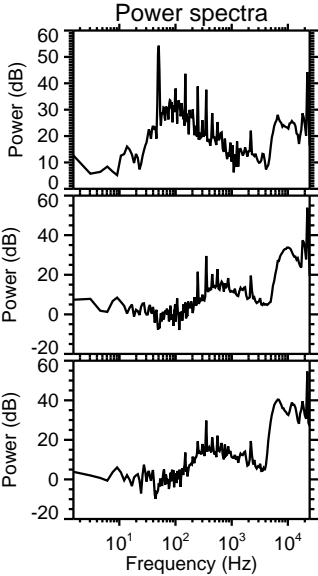
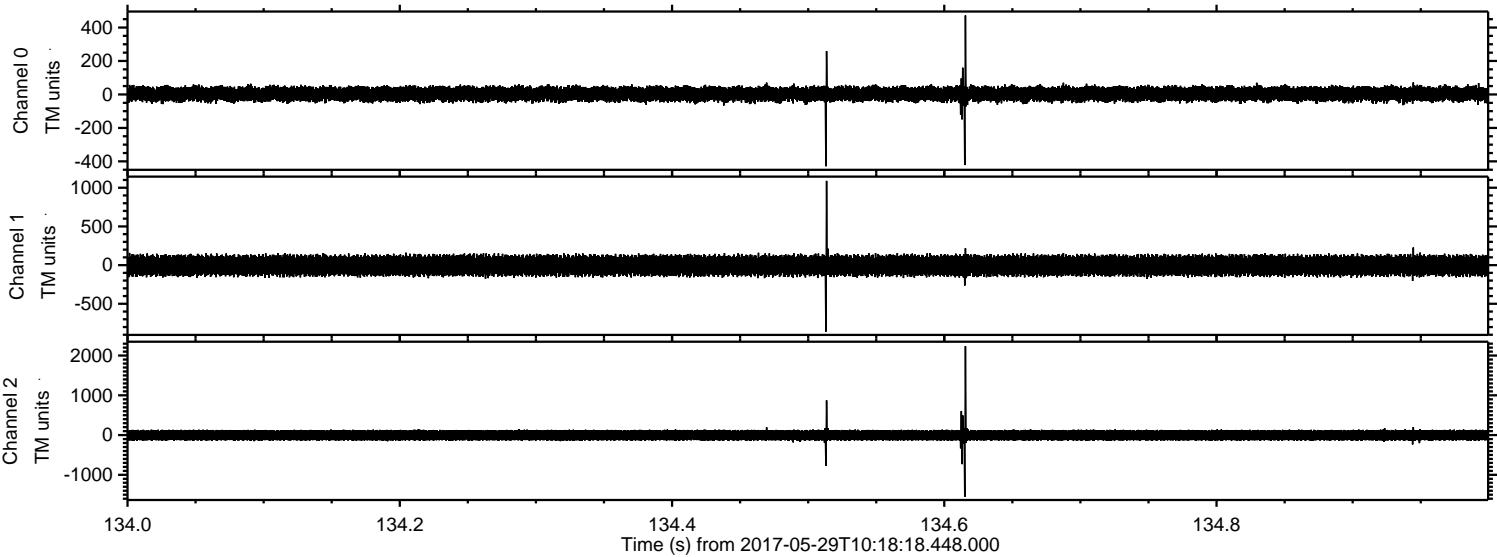


Processed Mon May 29 12:26:46 2017 by ELM ver.2012-10-06 from 001__elm20170529_101817__dat00.bin

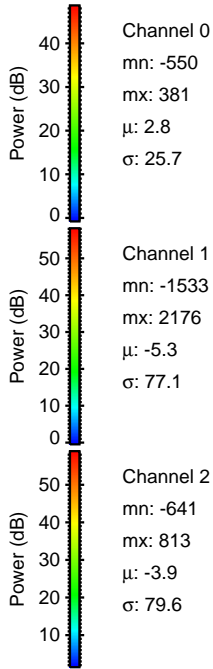
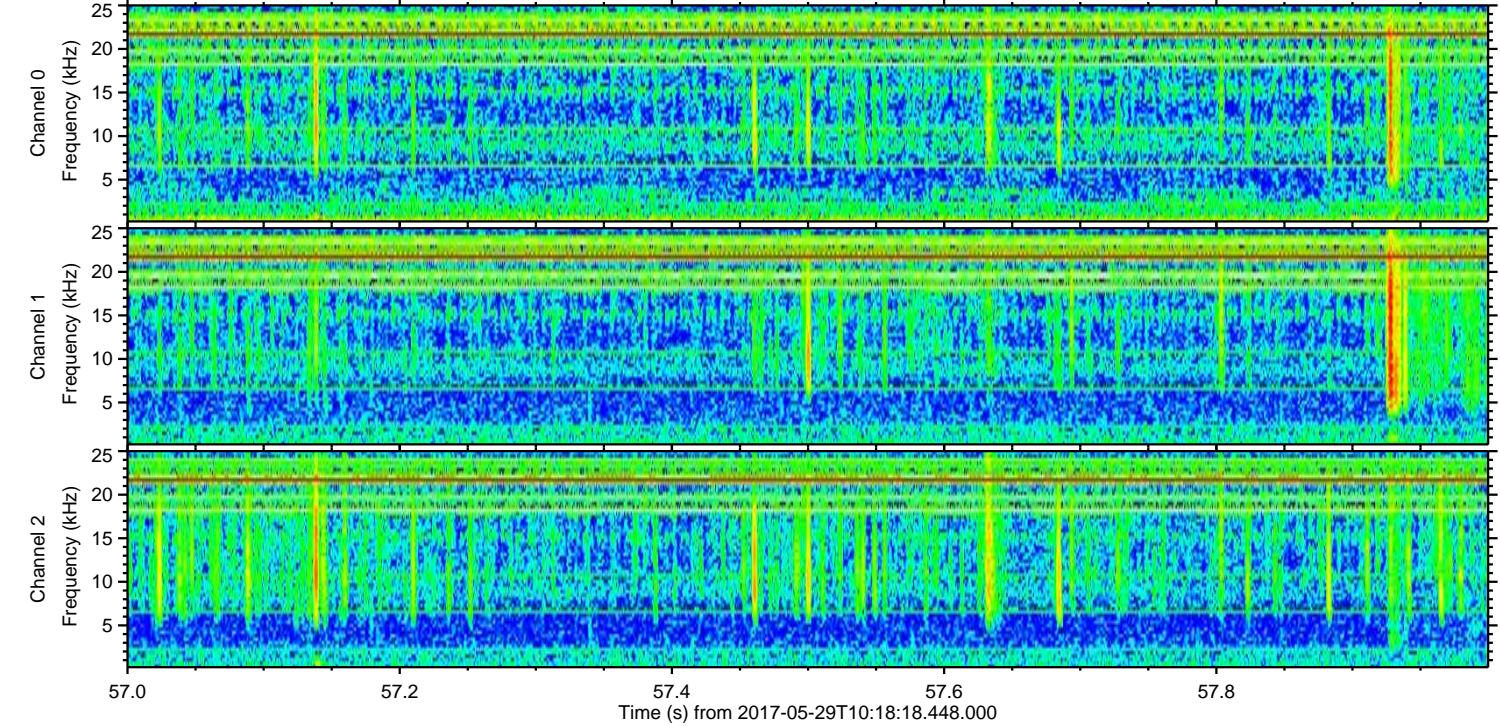
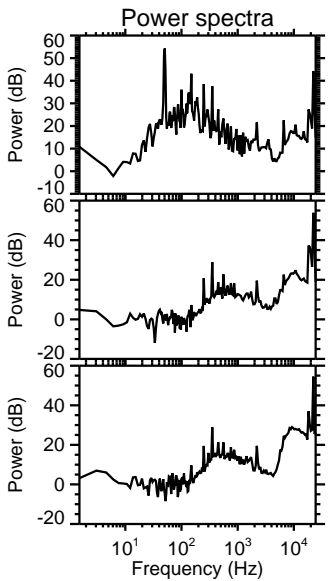
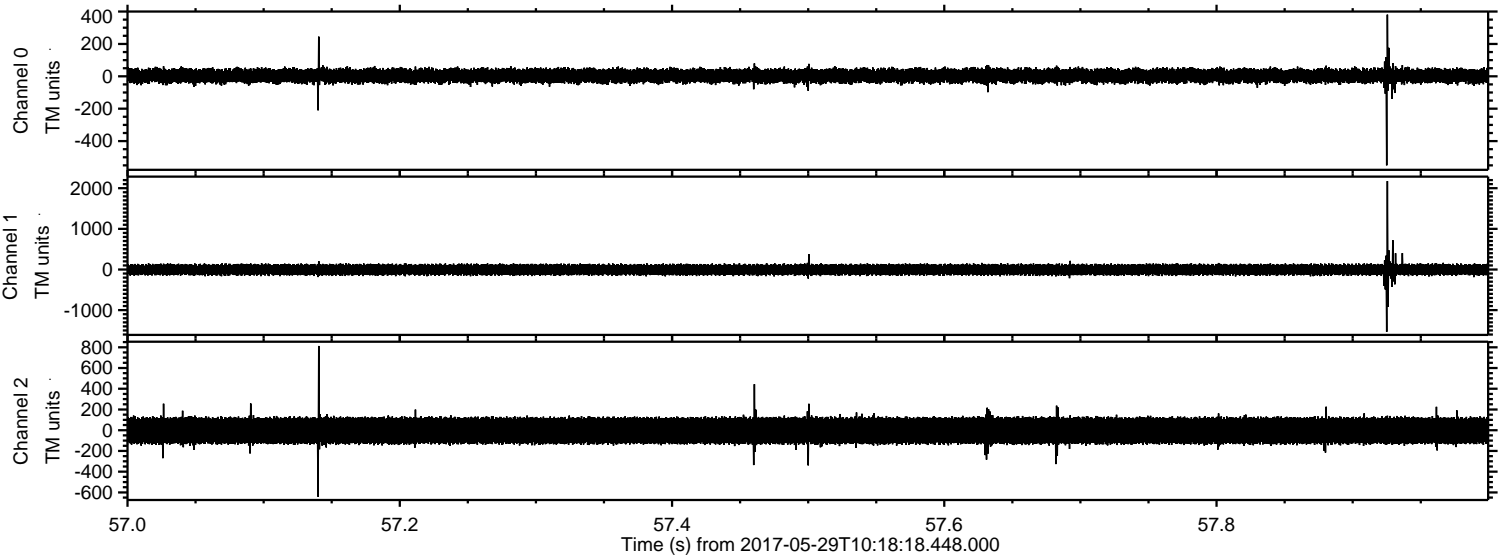


ELMAVAN 3D WAVEFORMS (Measured data sampled at 50 kHz) 51000 packets of 144 samples from 2017-05-29T10:18:18.448.000. Part 135/147

Processed Mon May 29 12:26:47 2017 by ELM ver.2012-10-06 from 001__elm20170529_101817__dat00.bin

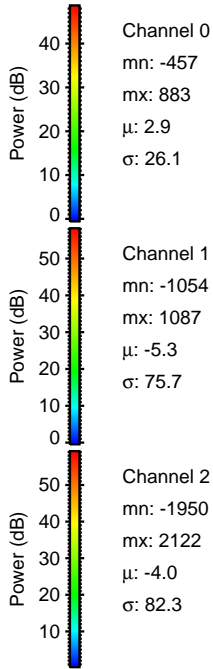
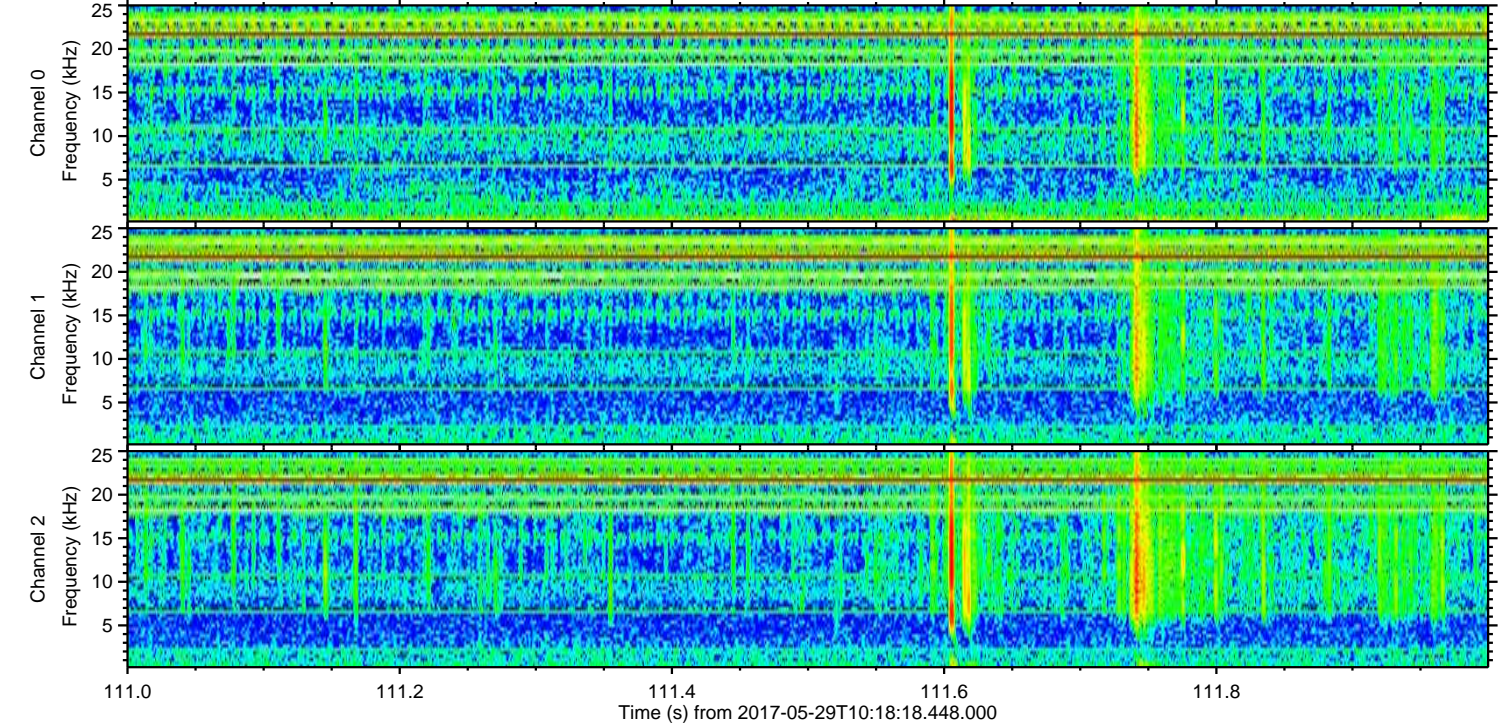
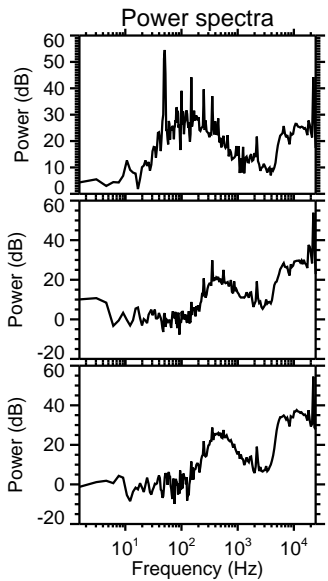
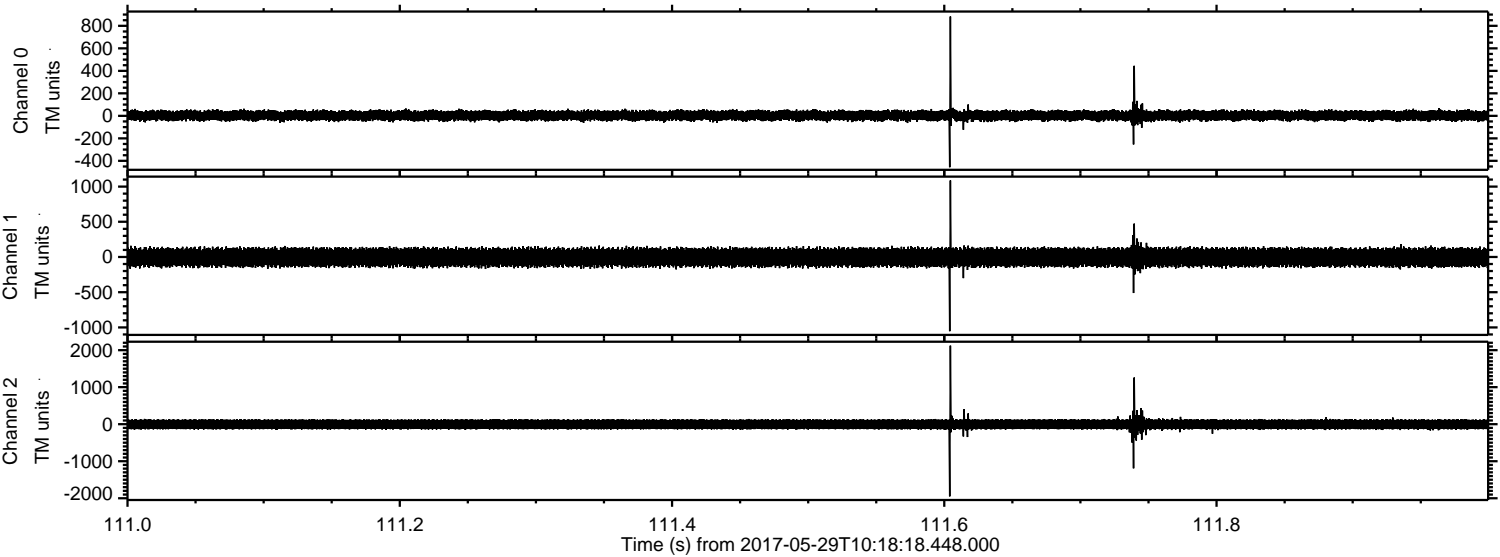


Processed Mon May 29 12:26:49 2017 by ELM ver.2012-10-06 from 001__elm20170529_101817__dat00.bin



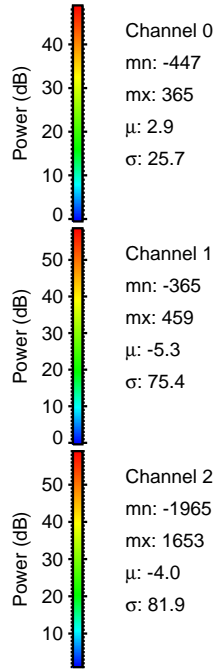
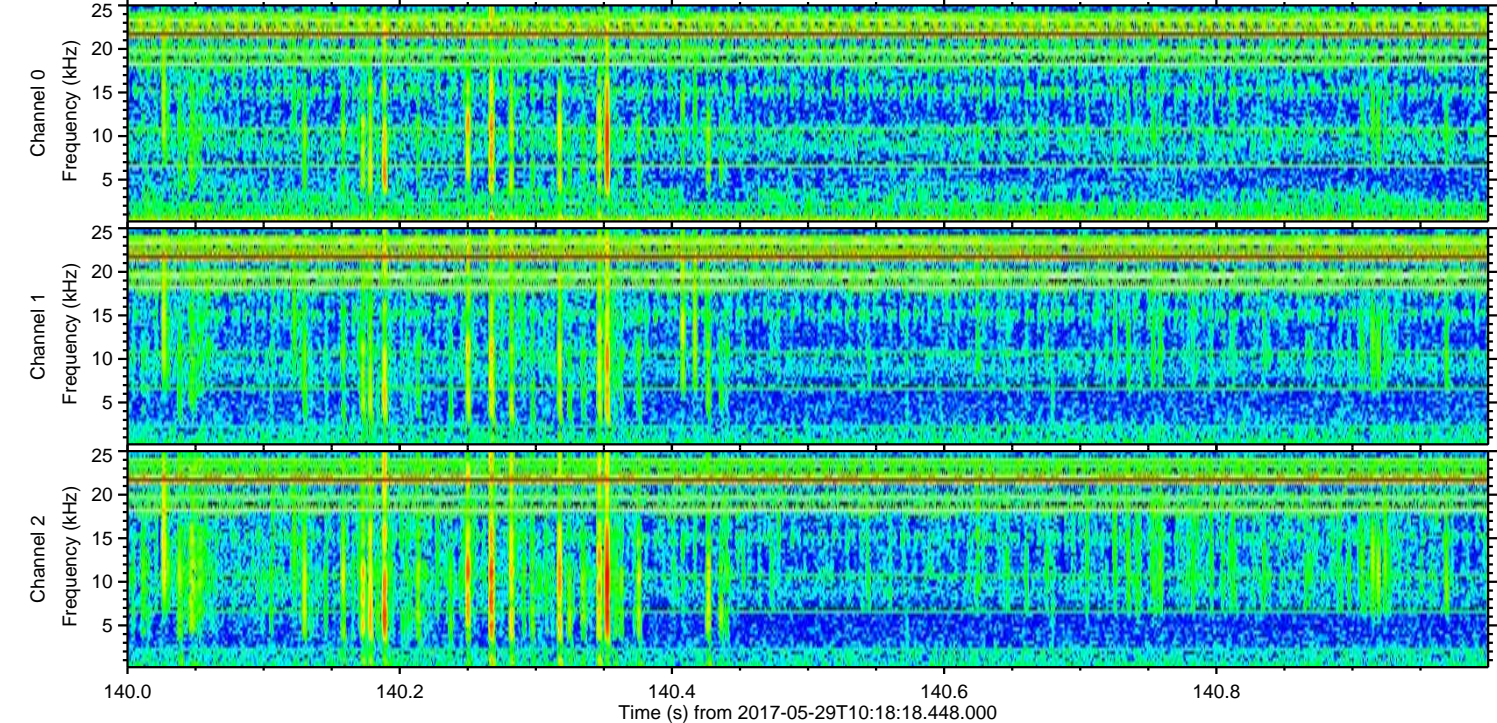
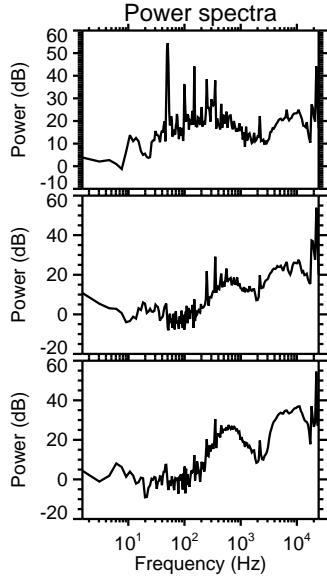
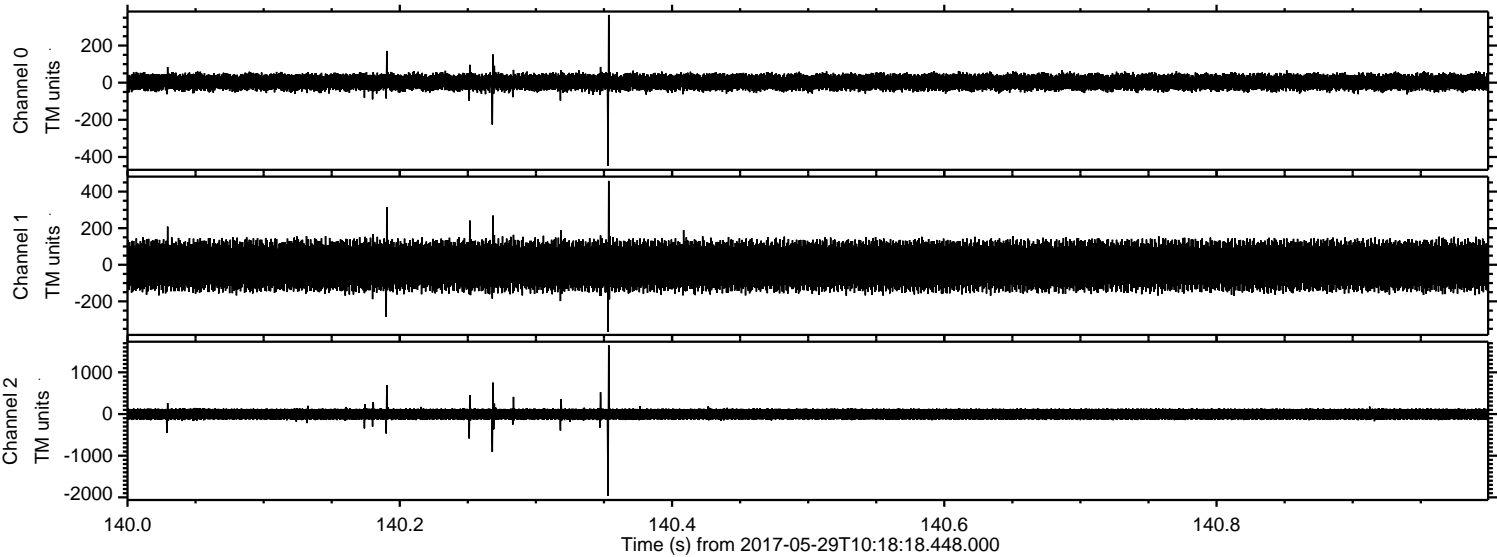
ELMAVAN 3D WAVEFORMS (Measured data sampled at 50 kHz) 51000 packets of 144 samples from 2017-05-29T10:18:18.448.000. Part 112/147

Processed Mon May 29 12:26:49 2017 by ELM ver.2012-10-06 from 001__elm20170529_101817__dat00.bin

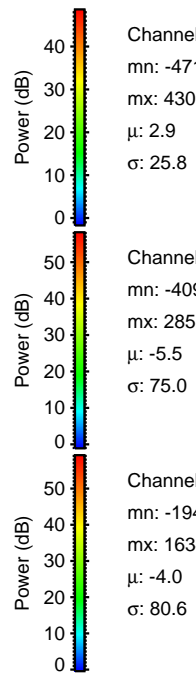
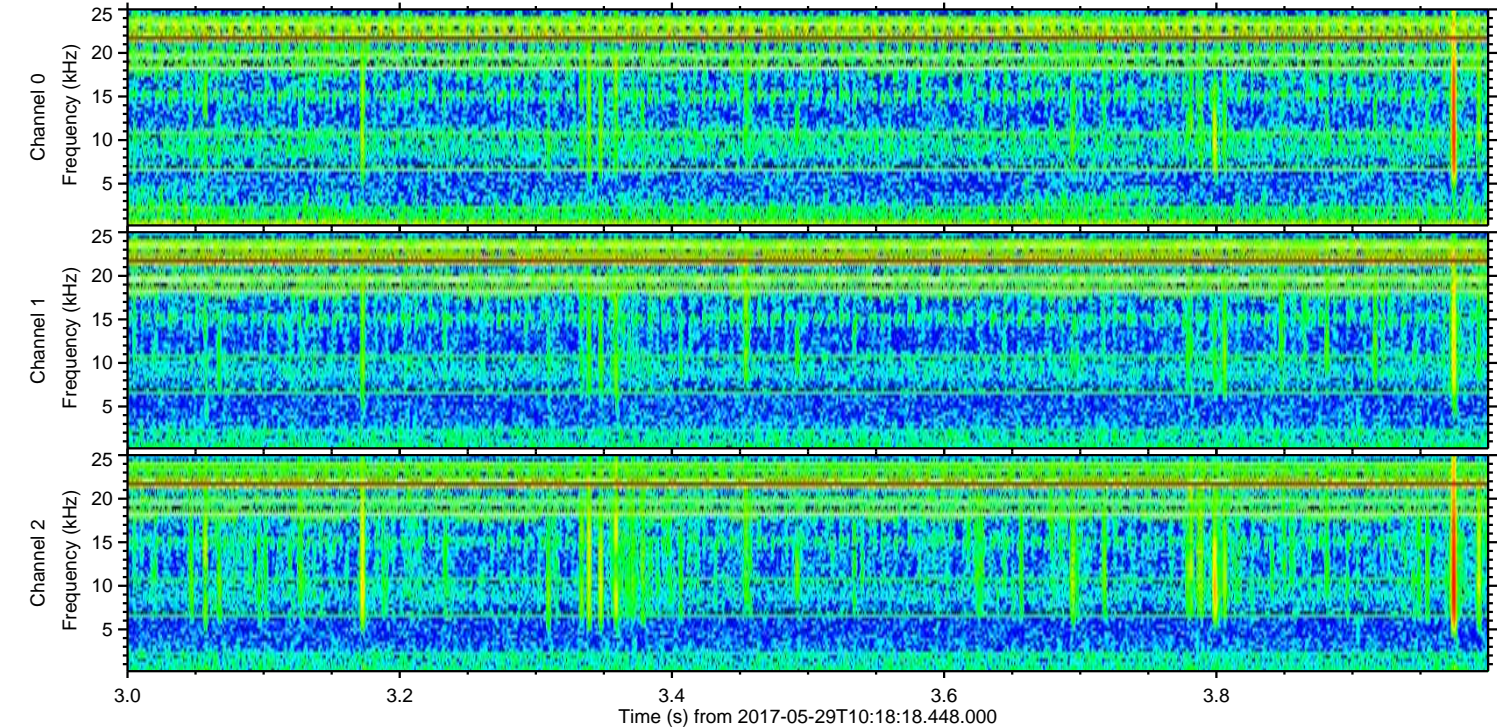
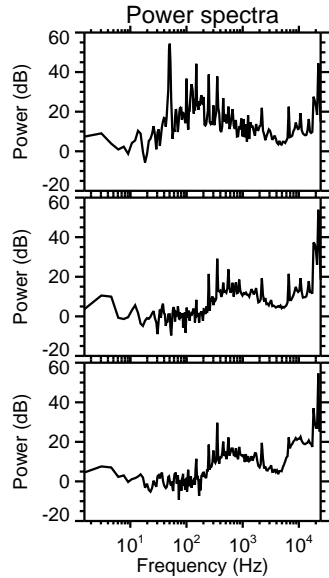
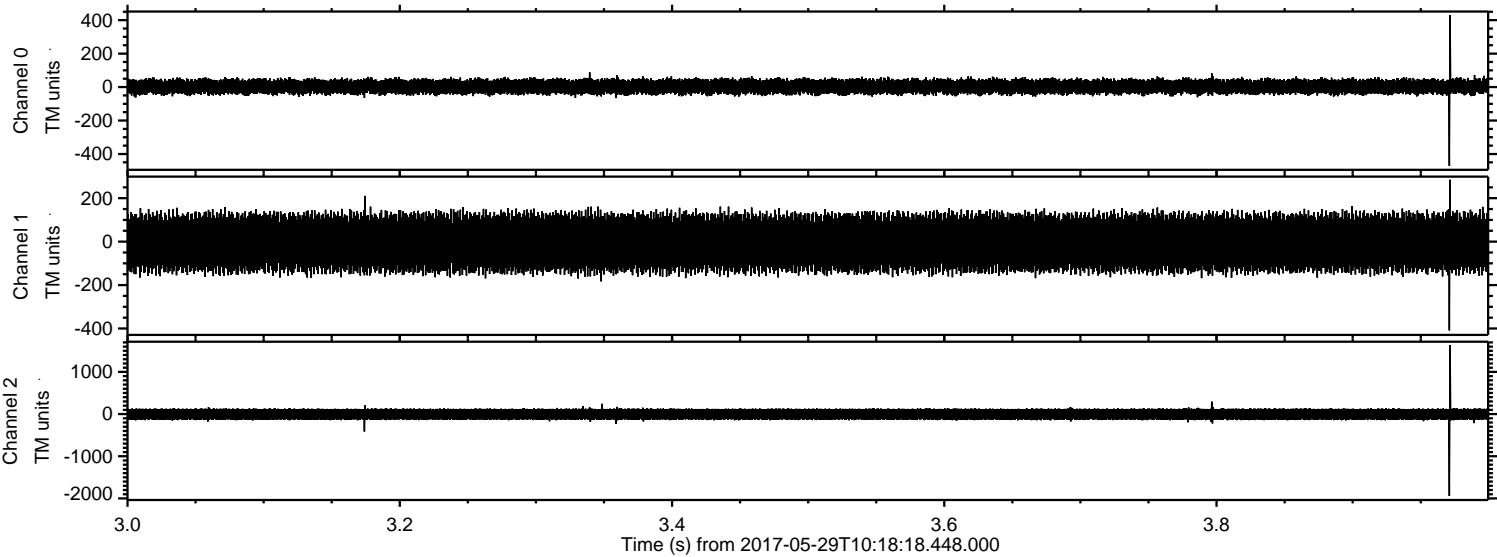


ELMAVAN 3D WAVEFORMS (Measured data sampled at 50 kHz) 51000 packets of 144 samples from 2017-05-29T10:18:18.448.000. Part 141/147

Processed Mon May 29 12:26:50 2017 by ELM ver.2012-10-06 from 001__elm20170529_101817__dat00.bin



Processed Mon May 29 12:26:51 2017 by ELM ver.2012-10-06 from 001__elm20170529_101817__dat00.bin



Channel 0
mn: -471
mx: 430
 μ : 2.9
 σ : 25.8

Channel 1
mn: -409
mx: 285
 μ : -5.5
 σ : 75.0

Channel 2
mn: -1940
mx: 1634
 μ : -4.0
 σ : 80.6

Processed Mon May 29 12:26:52 2017 by ELM ver.2012-10-06 from 001__elm20170529_101817__dat00.bin

