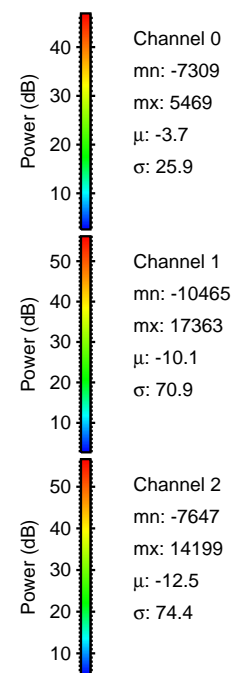
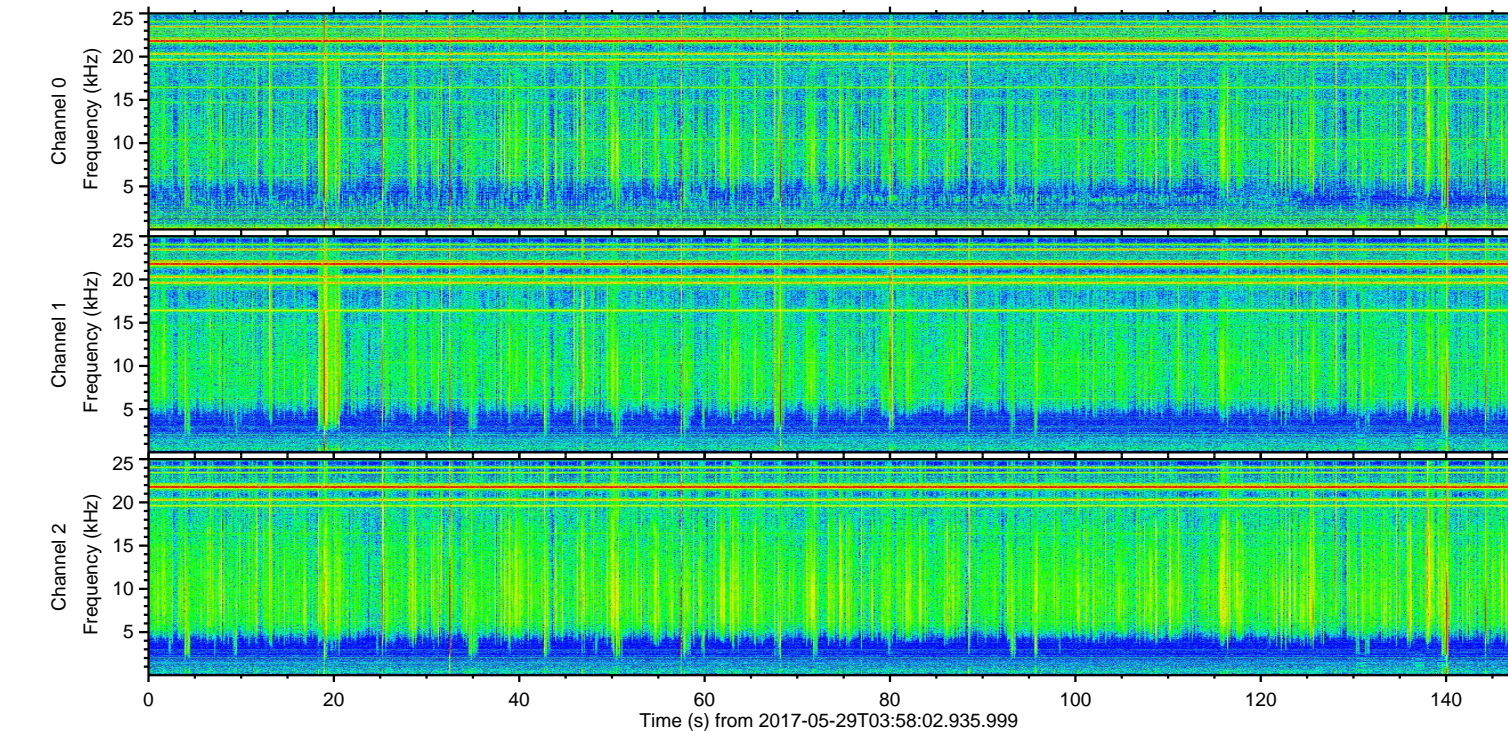
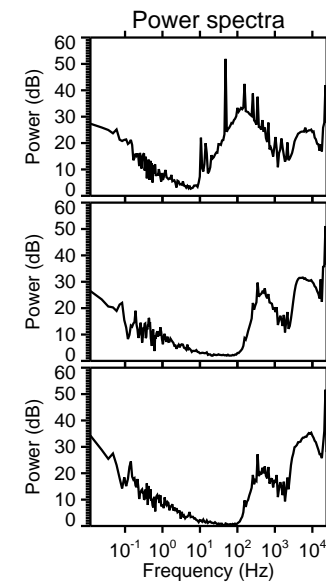
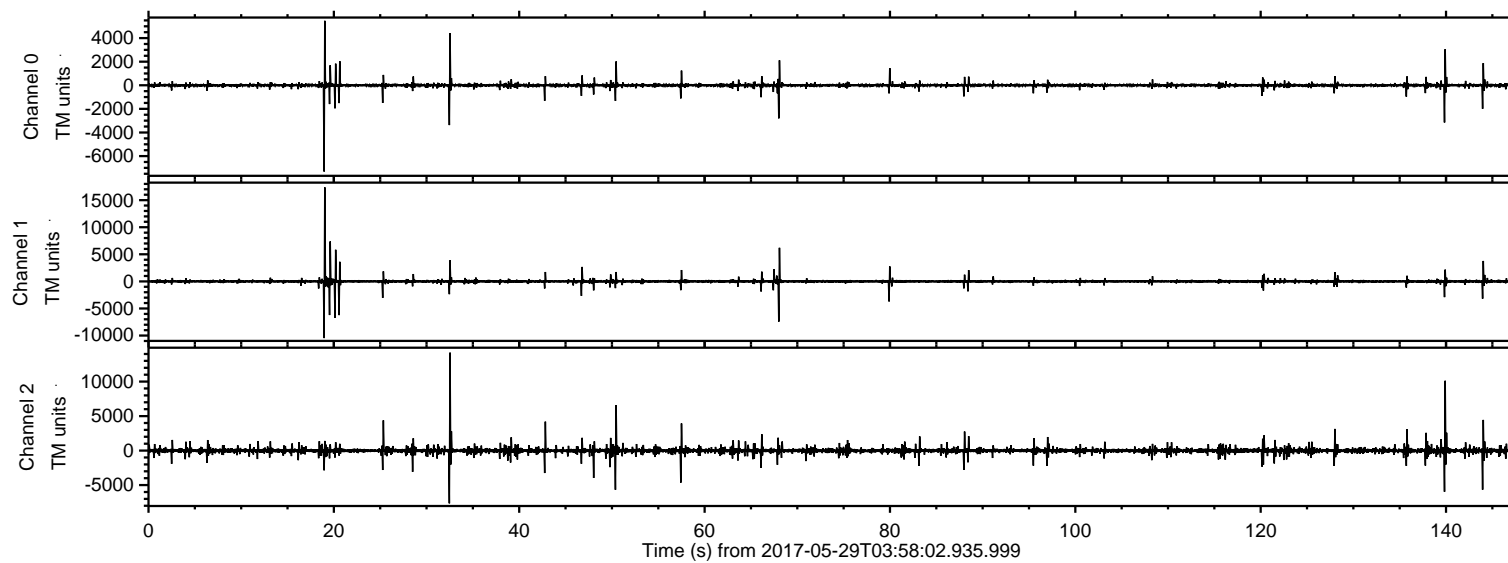
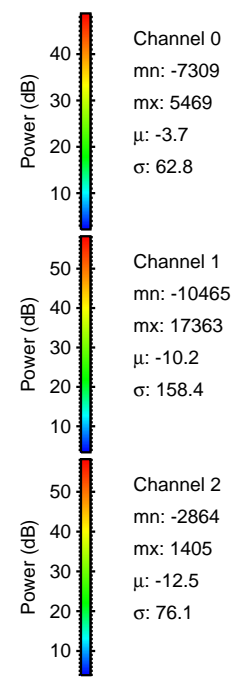
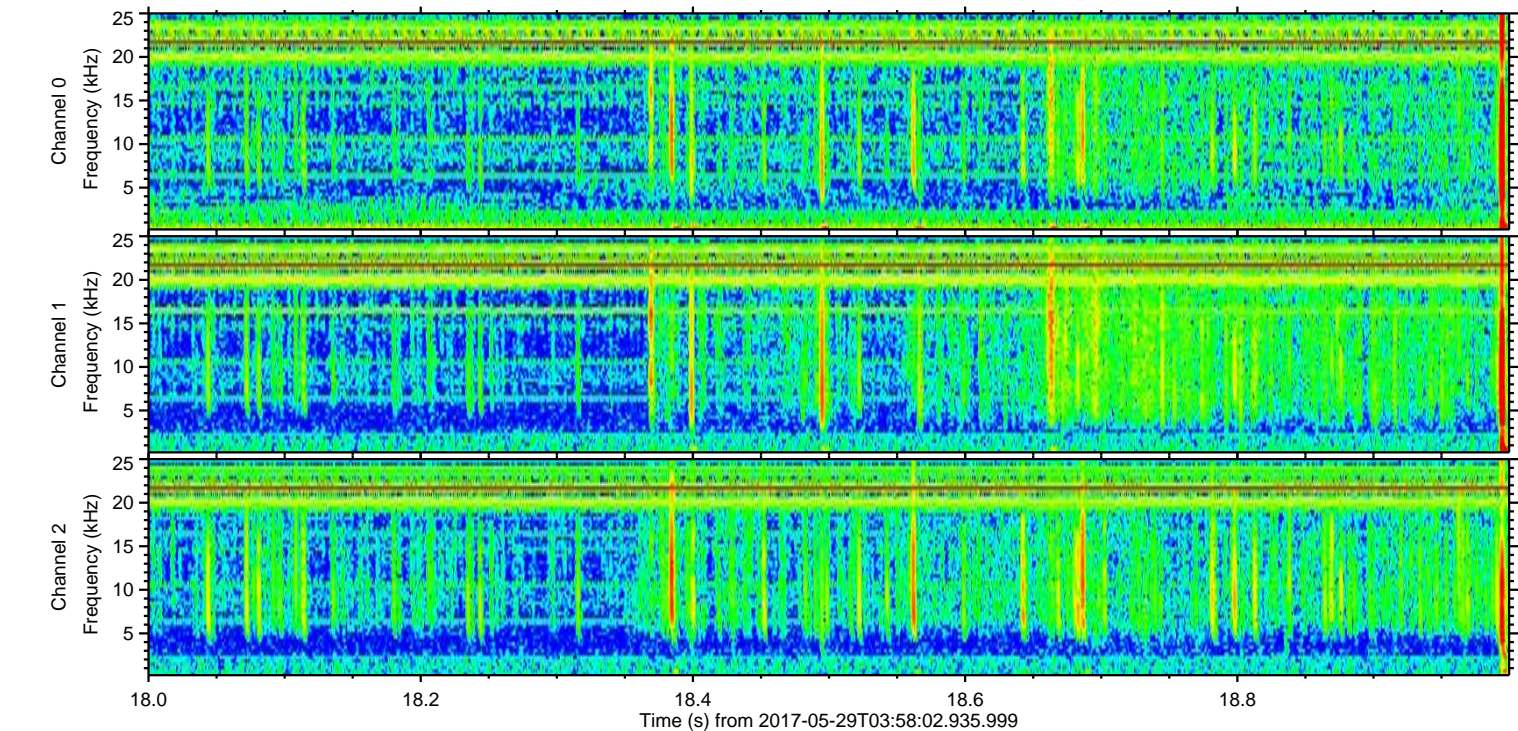
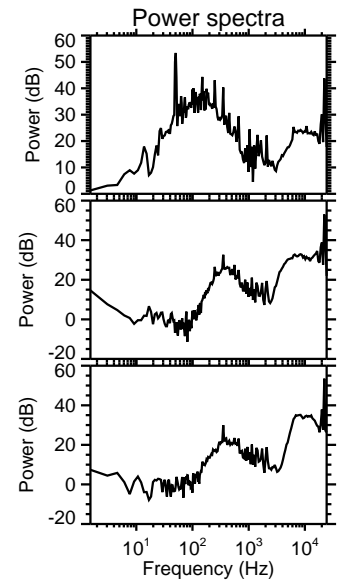
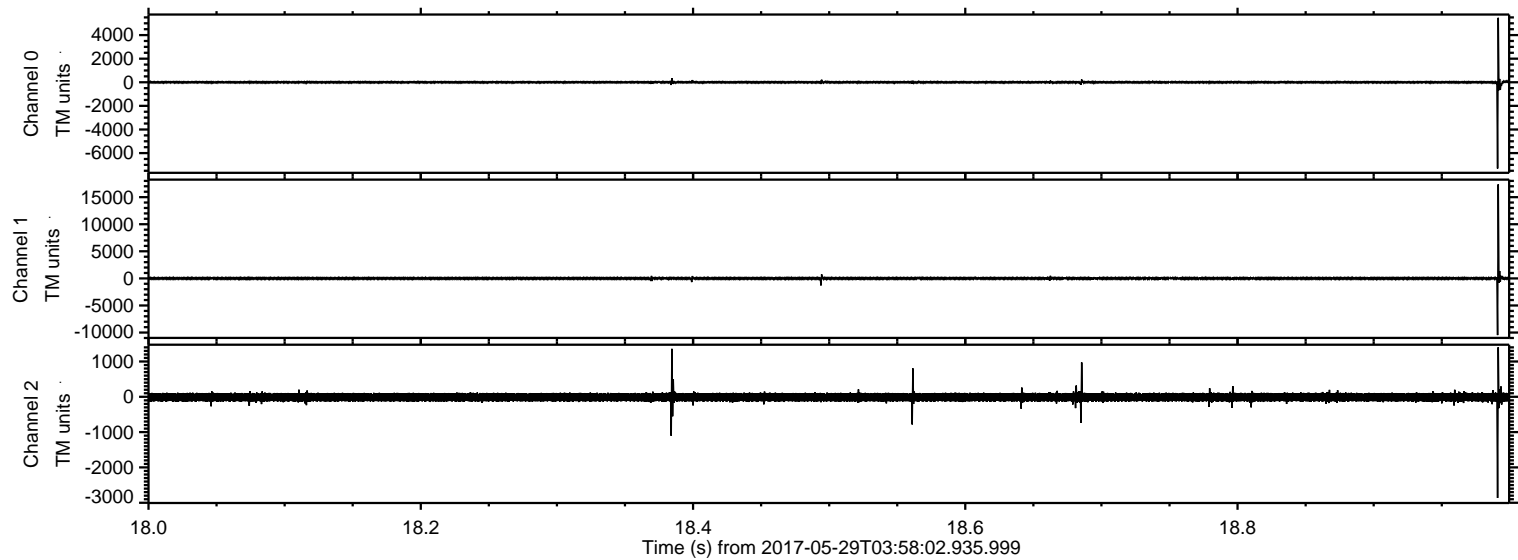


ELMAVAN 3D WAVEFORMS (Measured data sampled at 50 kHz) 51000 packets of 144 samples from 2017-05-29T03:58:02.935.999.

Processed Mon May 29 06:05:27 2017 by ELM ver.2012-10-06 from 001__elm20170529_035801__dat00.bin

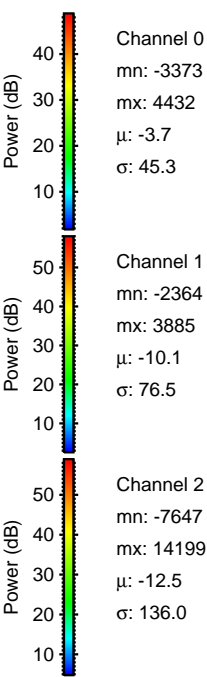
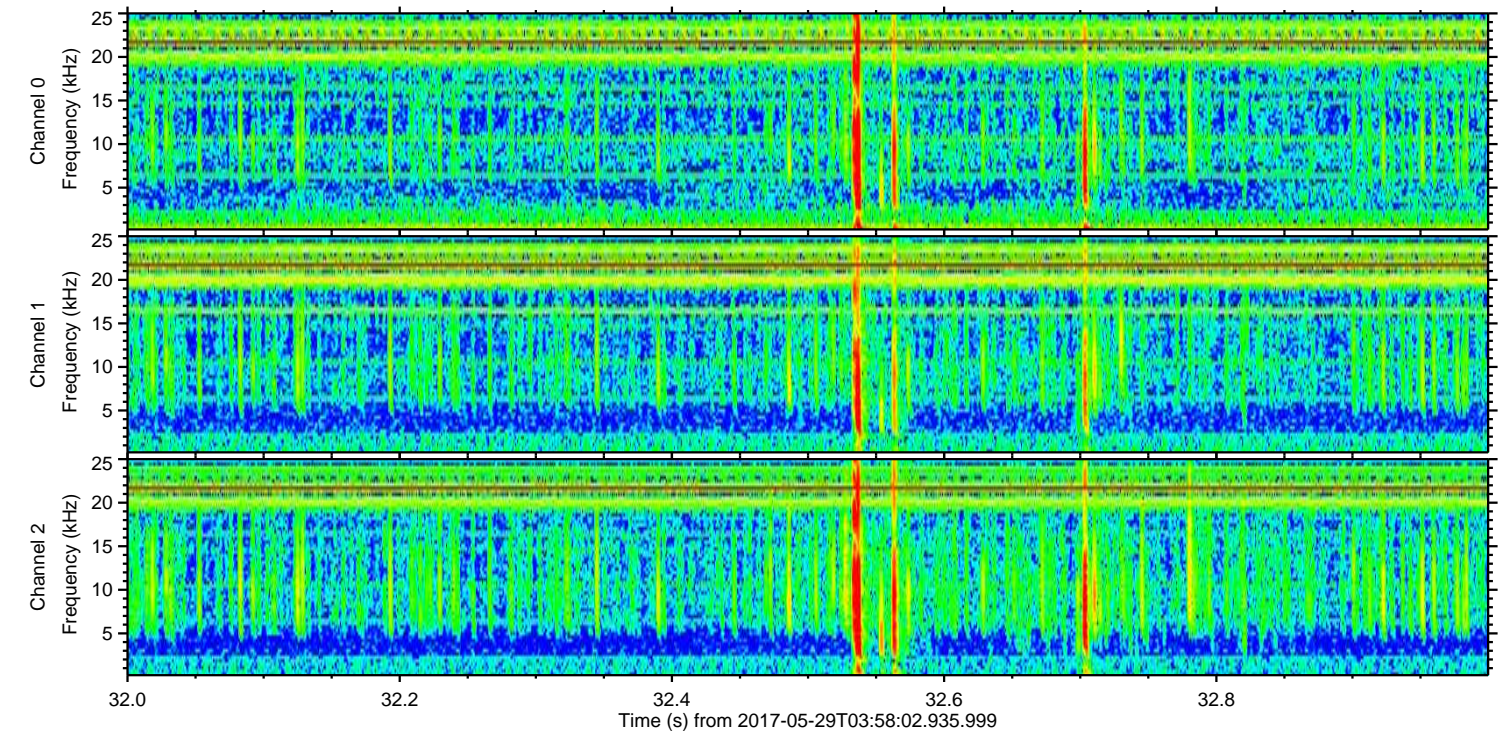
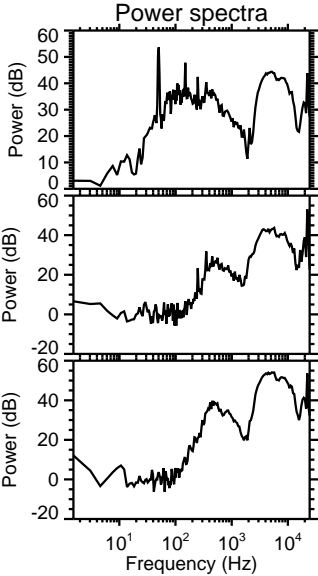
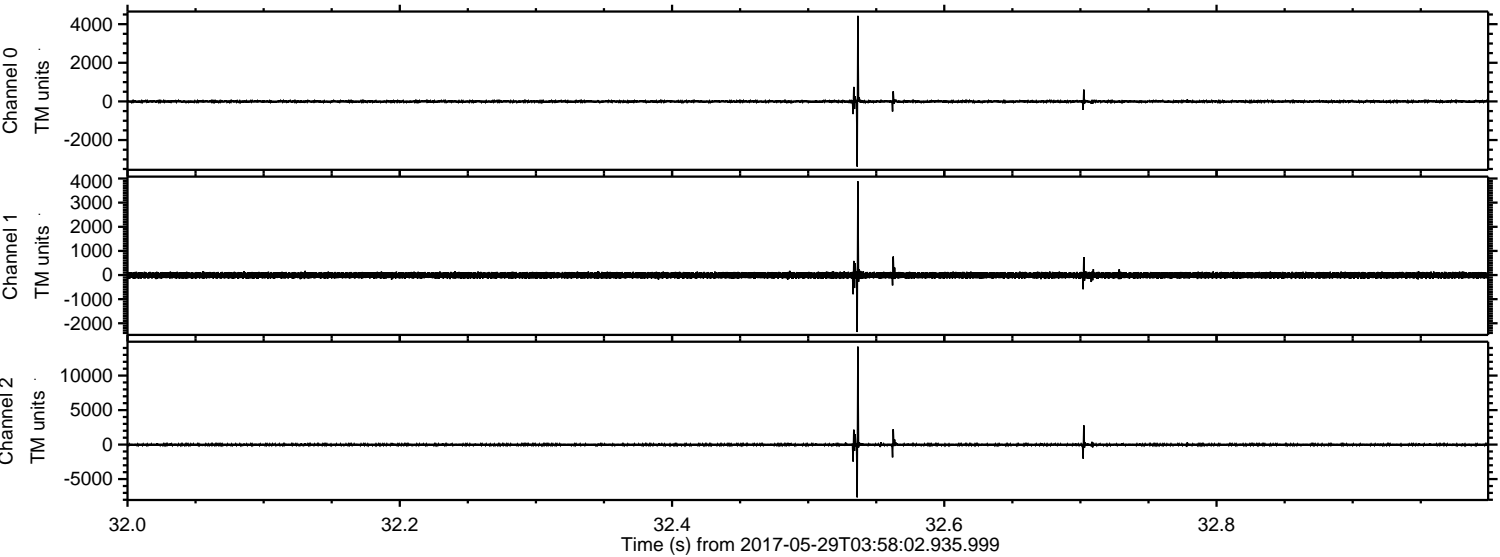


Processed Mon May 29 06:05:33 2017 by ELM ver.2012-10-06 from 001__elm20170529_035801__dat00.bin



ELMAVAN 3D WAVEFORMS (Measured data sampled at 50 kHz) 51000 packets of 144 samples from 2017-05-29T03:58:02.935.999. Part 33/147

Processed Mon May 29 06:05:34 2017 by ELM ver.2012-10-06 from 001__elm20170529_035801__dat00.bin



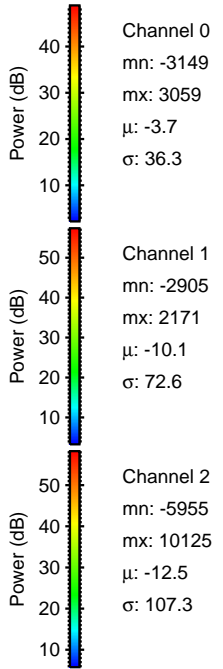
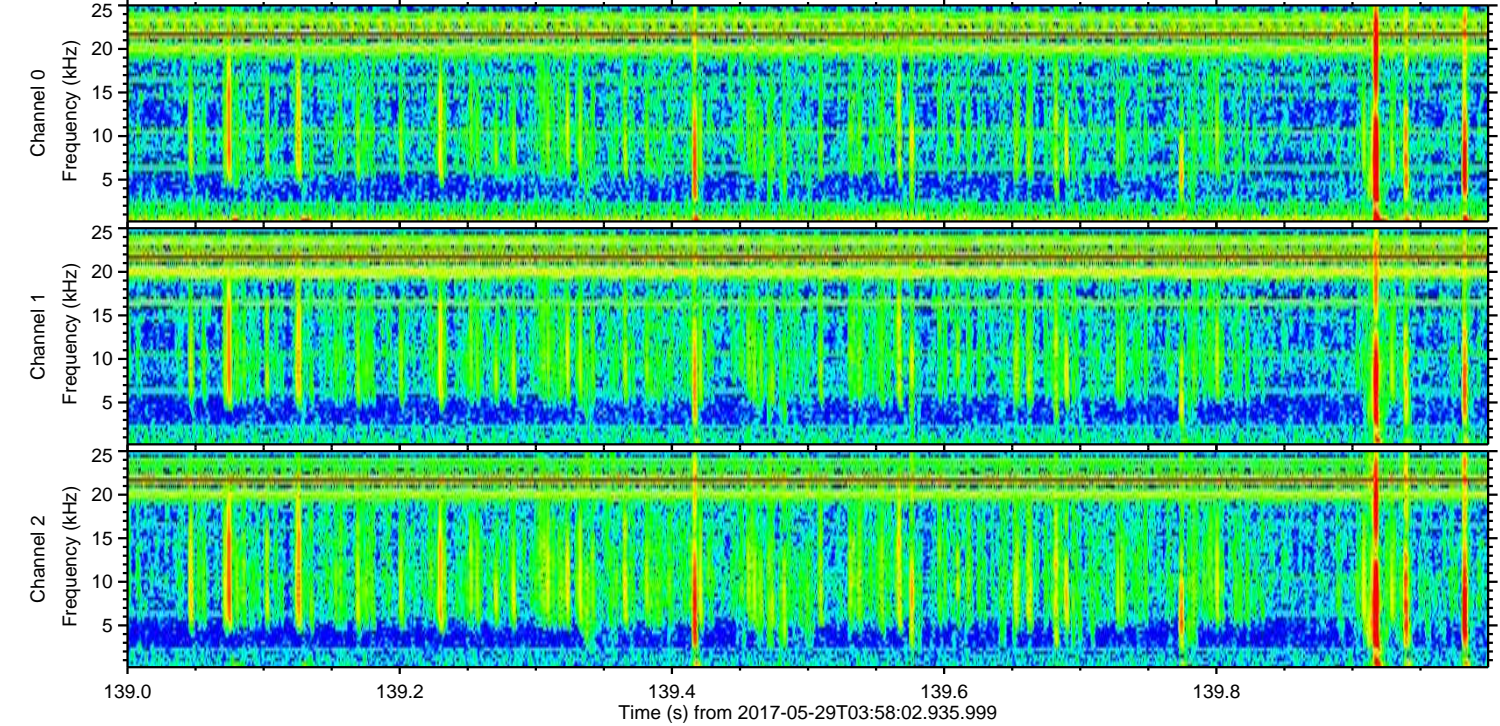
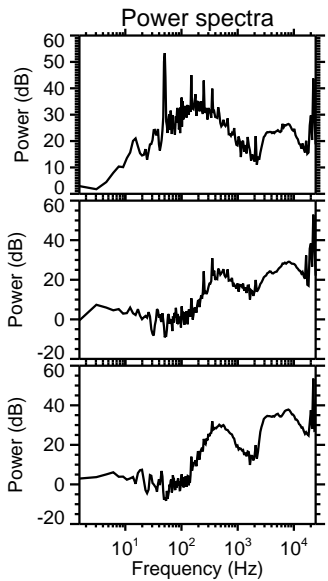
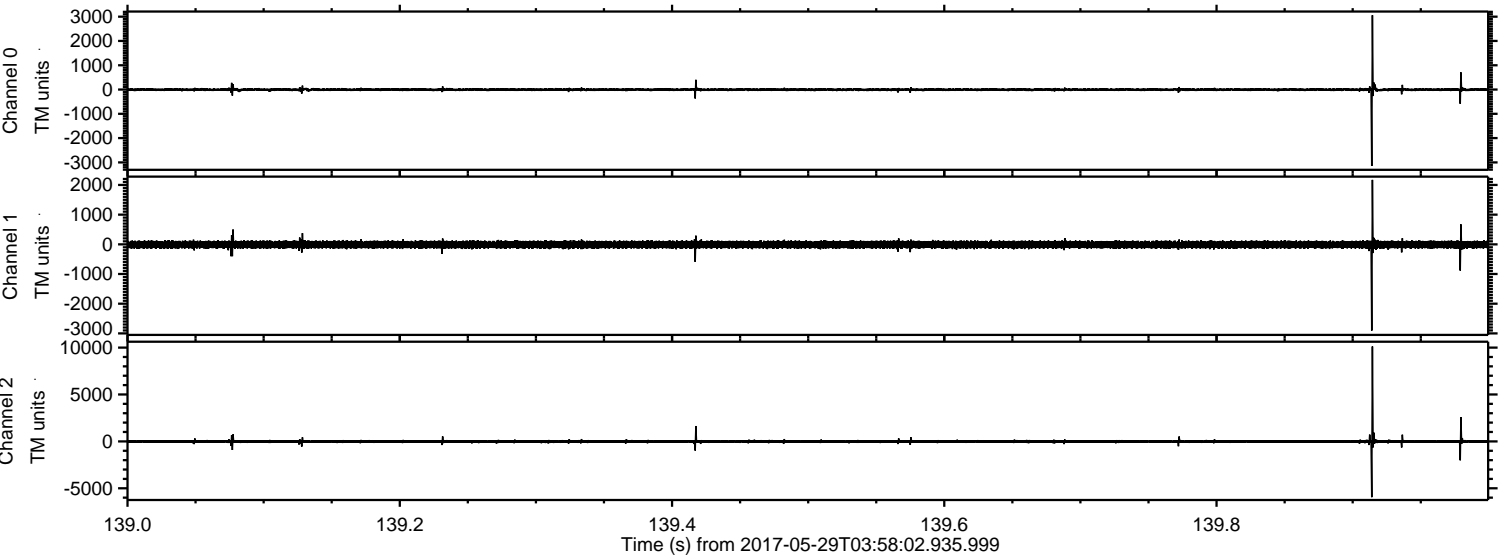
Channel 0
mn: -3373
mx: 4432
 μ : -3.7
 σ : 45.3

Channel 1
mn: -2364
mx: 3885
 μ : -10.1
 σ : 76.5

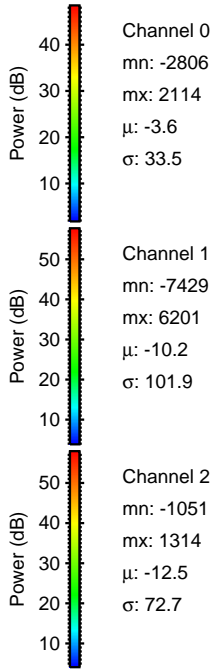
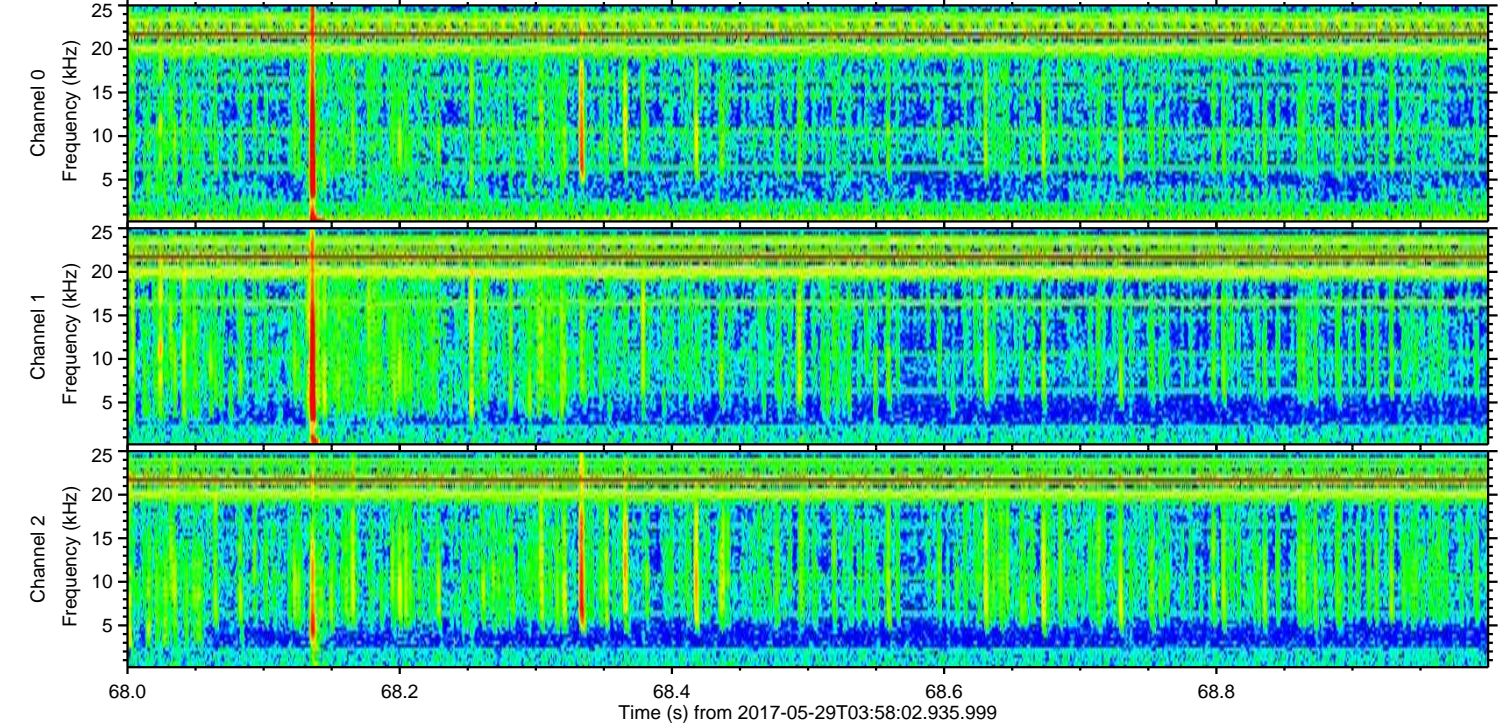
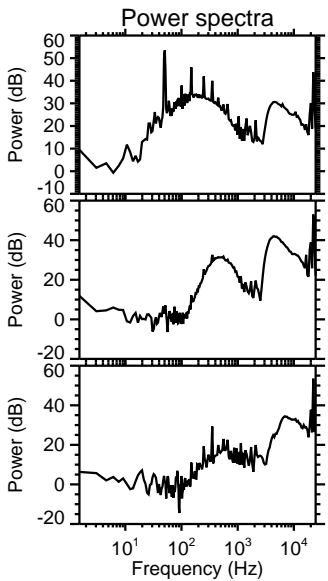
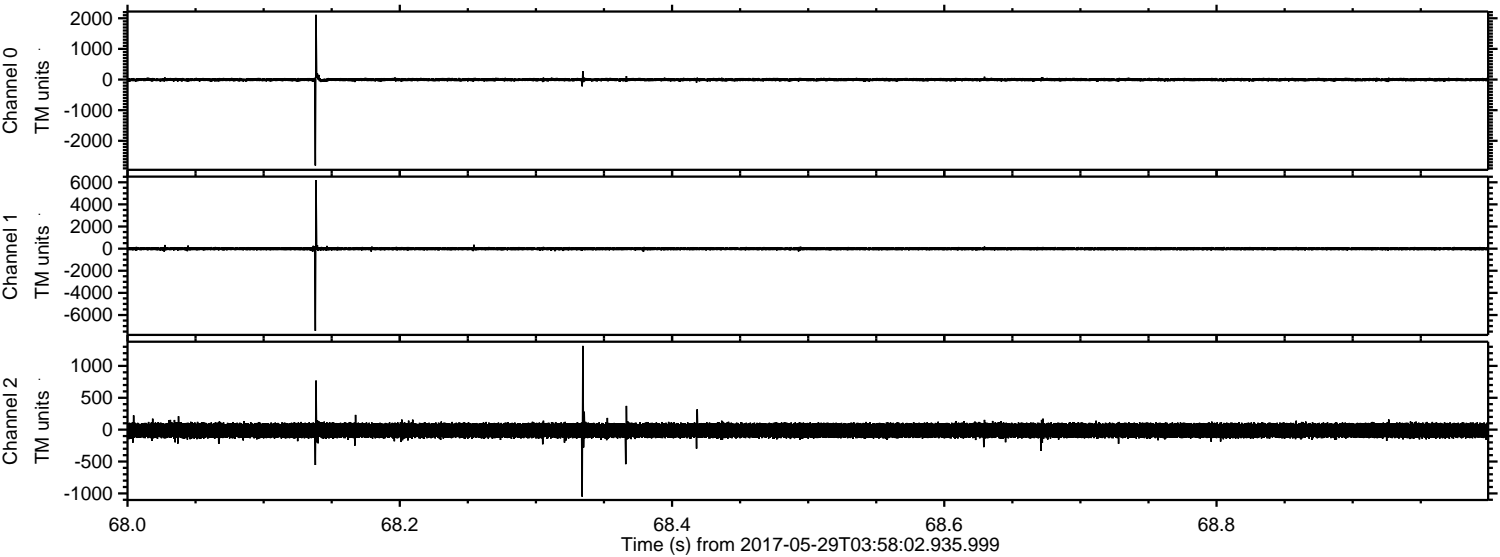
Channel 2
mn: -7647
mx: 14199
 μ : -12.5
 σ : 136.0

ELMAVAN 3D WAVEFORMS (Measured data sampled at 50 kHz) 51000 packets of 144 samples from 2017-05-29T03:58:02.935.999. Part 140/147

Processed Mon May 29 06:05:35 2017 by ELM ver.2012-10-06 from 001__elm20170529_035801__dat00.bin



Processed Mon May 29 06:05:35 2017 by ELM ver.2012-10-06 from 001__elm20170529_035801__dat00.bin



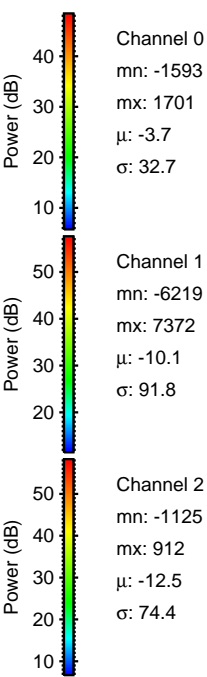
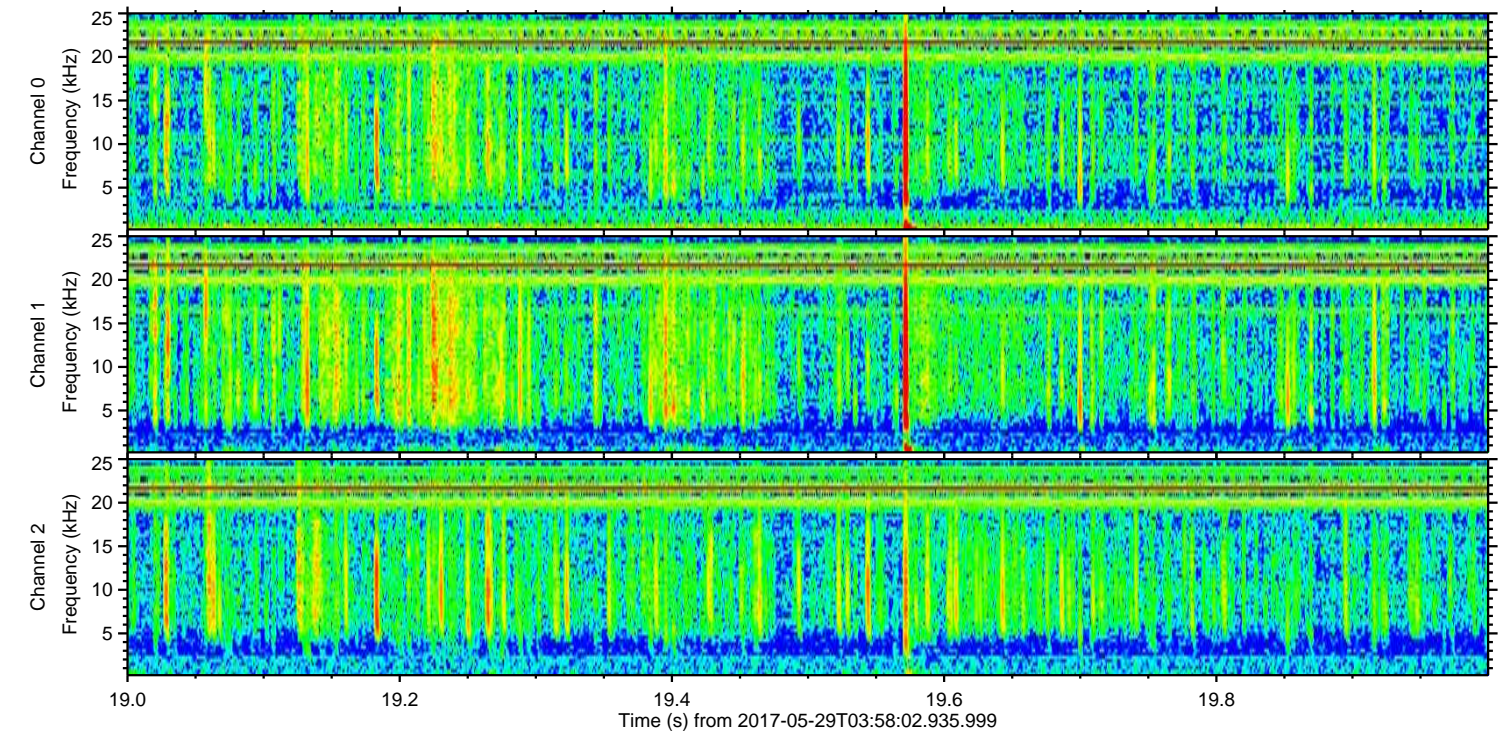
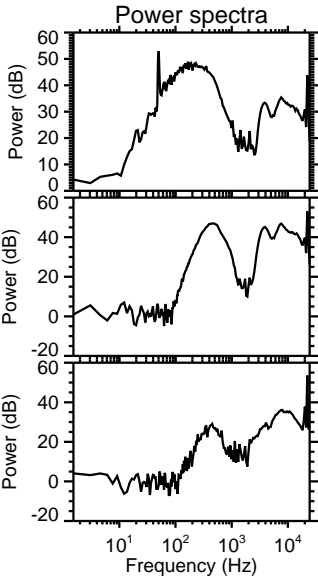
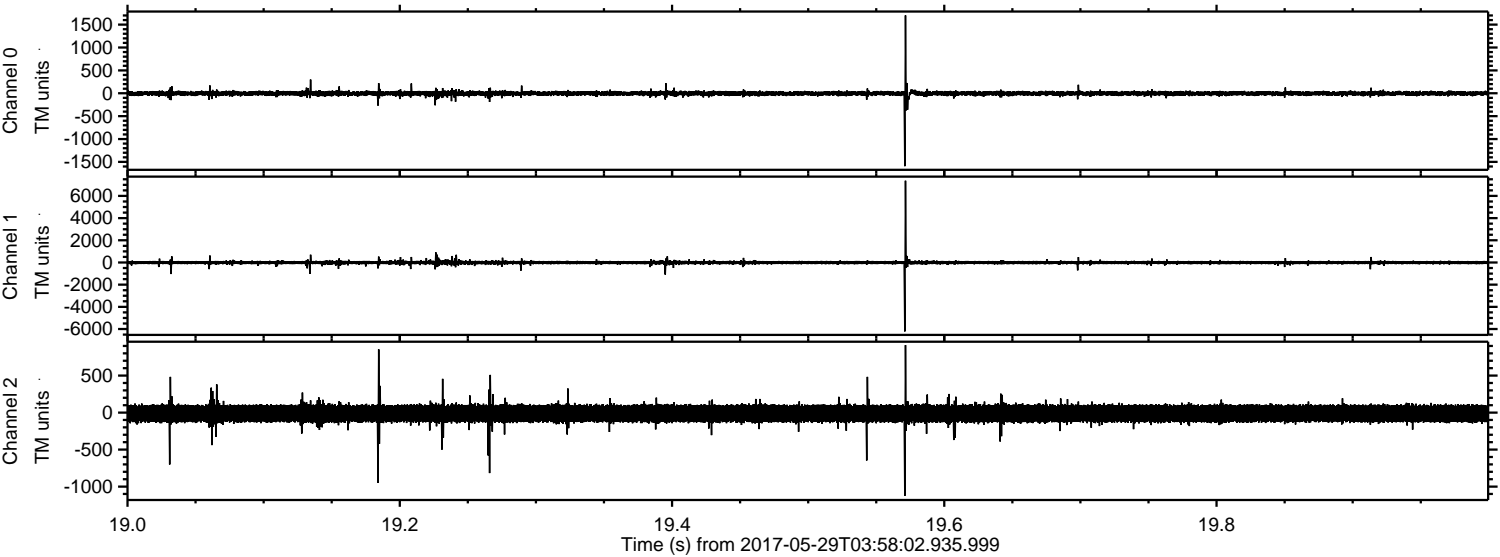
Channel 0
mn: -2806
mx: 2114
 μ : -3.6
 σ : 33.5

Channel 1
mn: -7429
mx: 6201
 μ : -10.2
 σ : 101.9

Channel 2
mn: -1051
mx: 1314
 μ : -12.5
 σ : 72.7

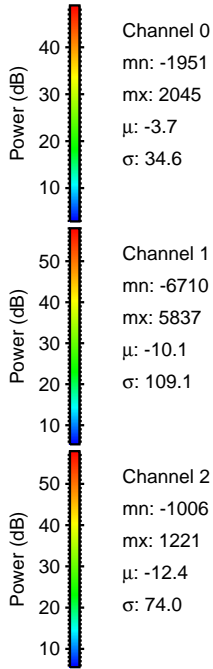
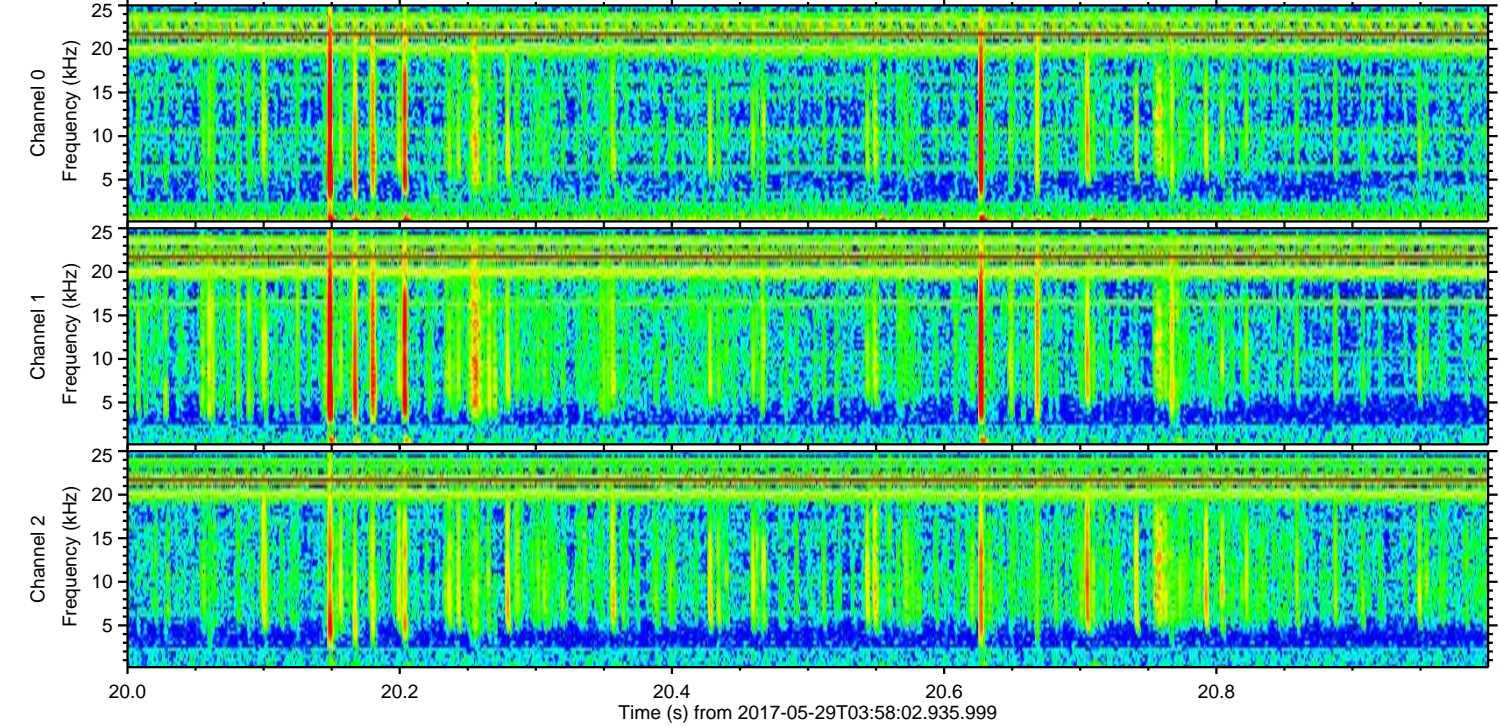
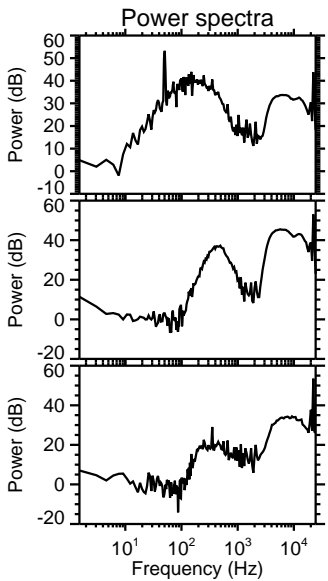
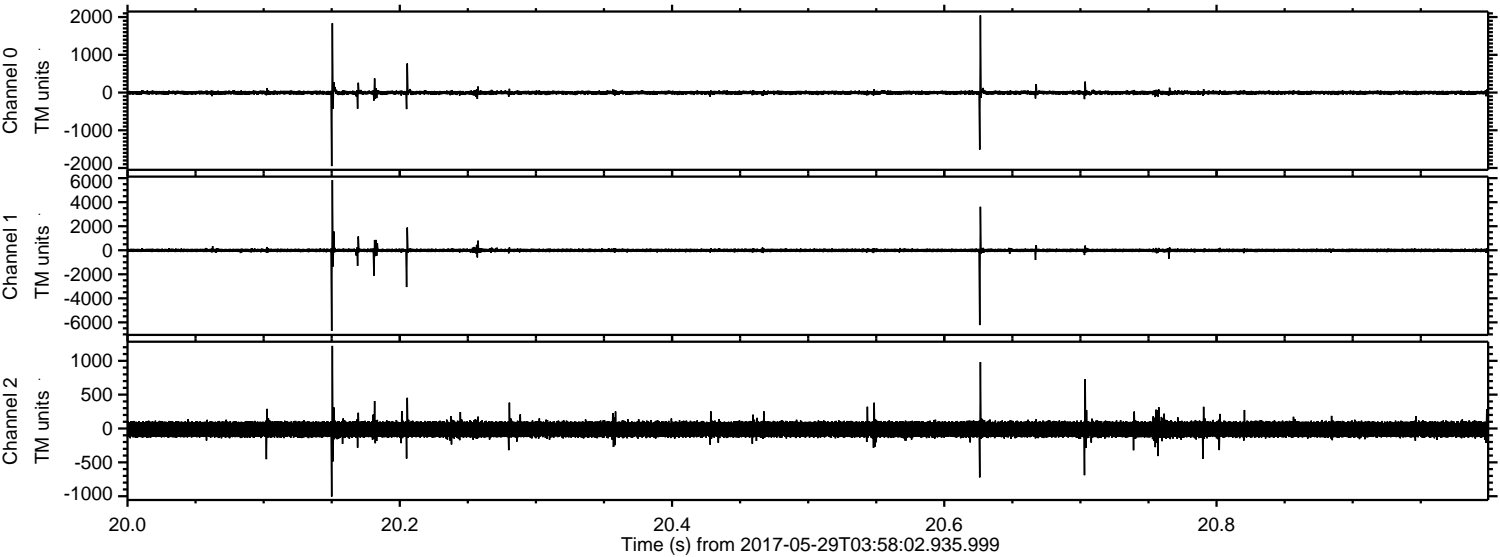
ELMAVAN 3D WAVEFORMS (Measured data sampled at 50 kHz) 51000 packets of 144 samples from 2017-05-29T03:58:02.935.999. Part 20/147

Processed Mon May 29 06:05:36 2017 by ELM ver.2012-10-06 from 001__elm20170529_035801__dat00.bin



ELMAVAN 3D WAVEFORMS (Measured data sampled at 50 kHz) 51000 packets of 144 samples from 2017-05-29T03:58:02.935.999. Part 21/147

Processed Mon May 29 06:05:36 2017 by ELM ver.2012-10-06 from 001__elm20170529_035801__dat00.bin

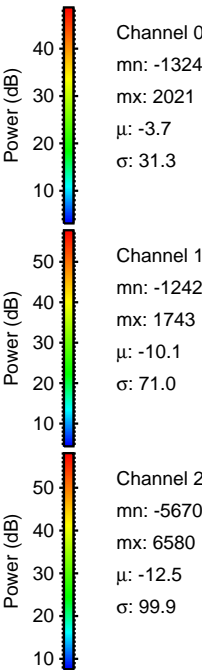
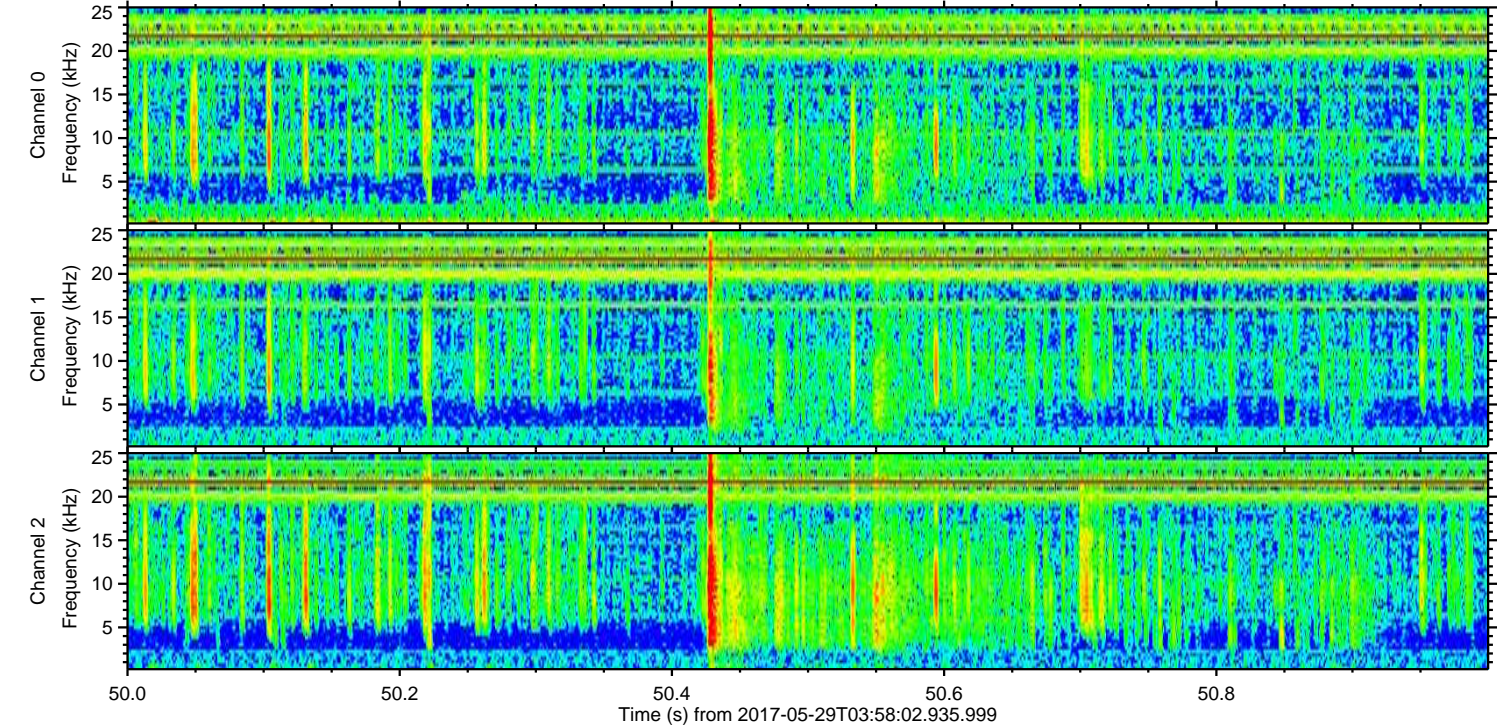
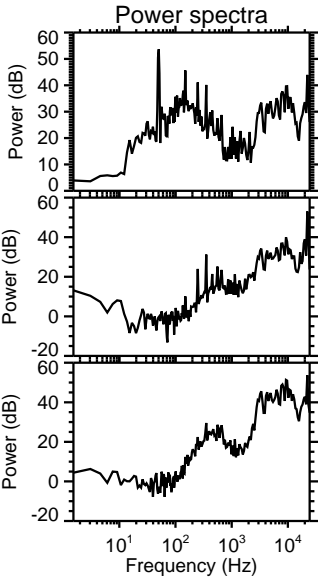
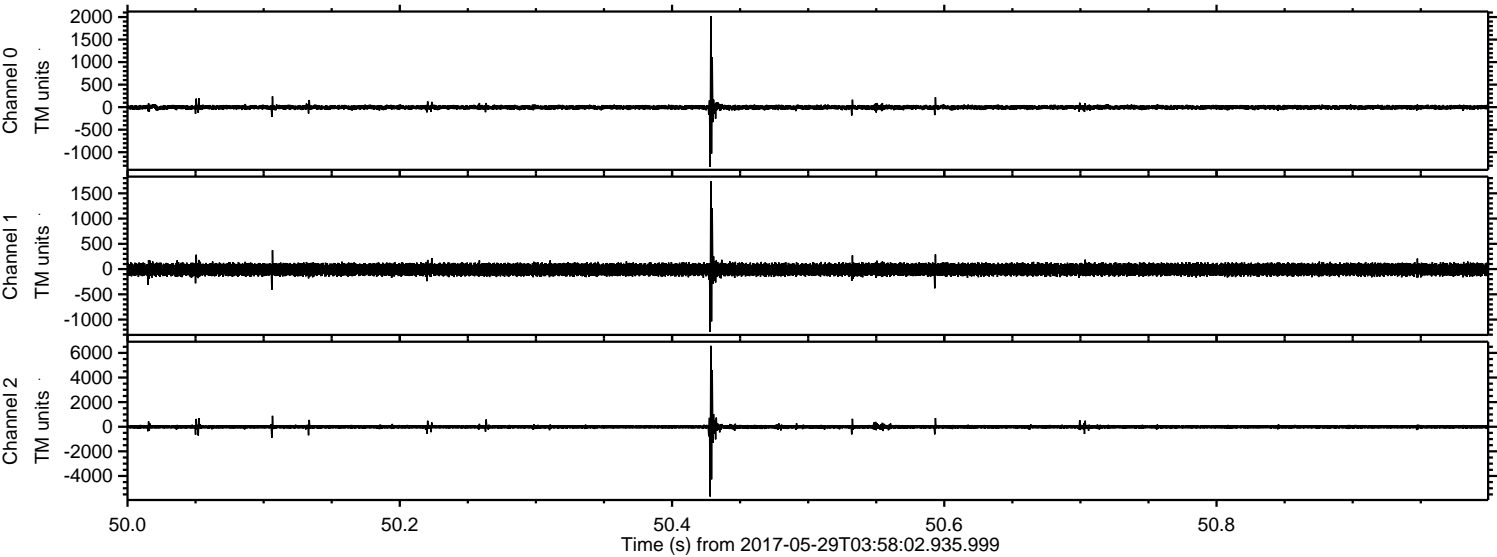


Channel 0
mn: -1951
mx: 2045
 μ : -3.7
 σ : 34.6

Channel 1
mn: -6710
mx: 5837
 μ : -10.1
 σ : 109.1

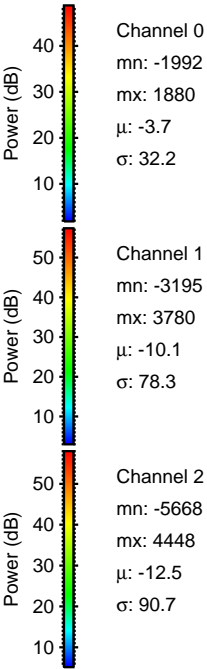
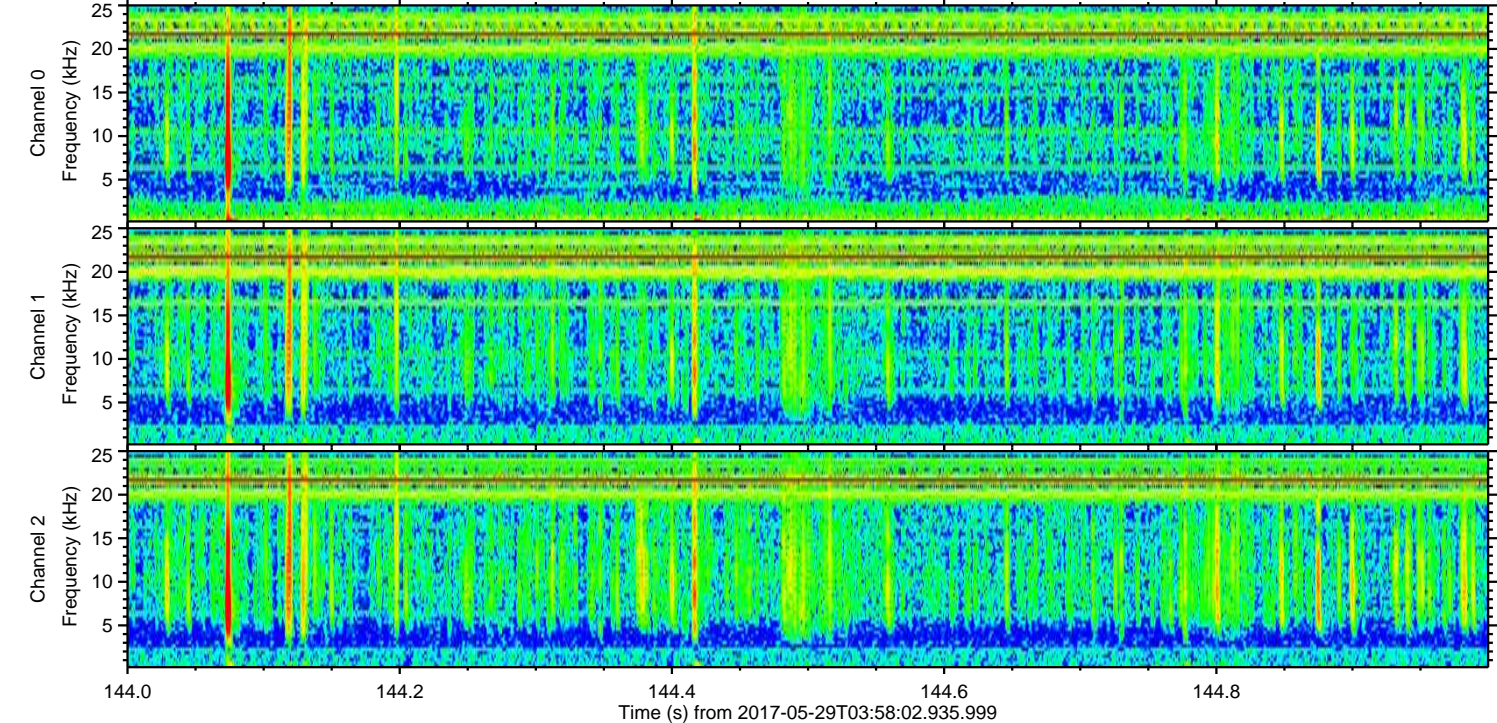
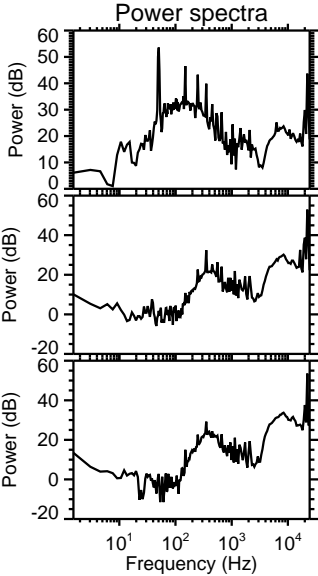
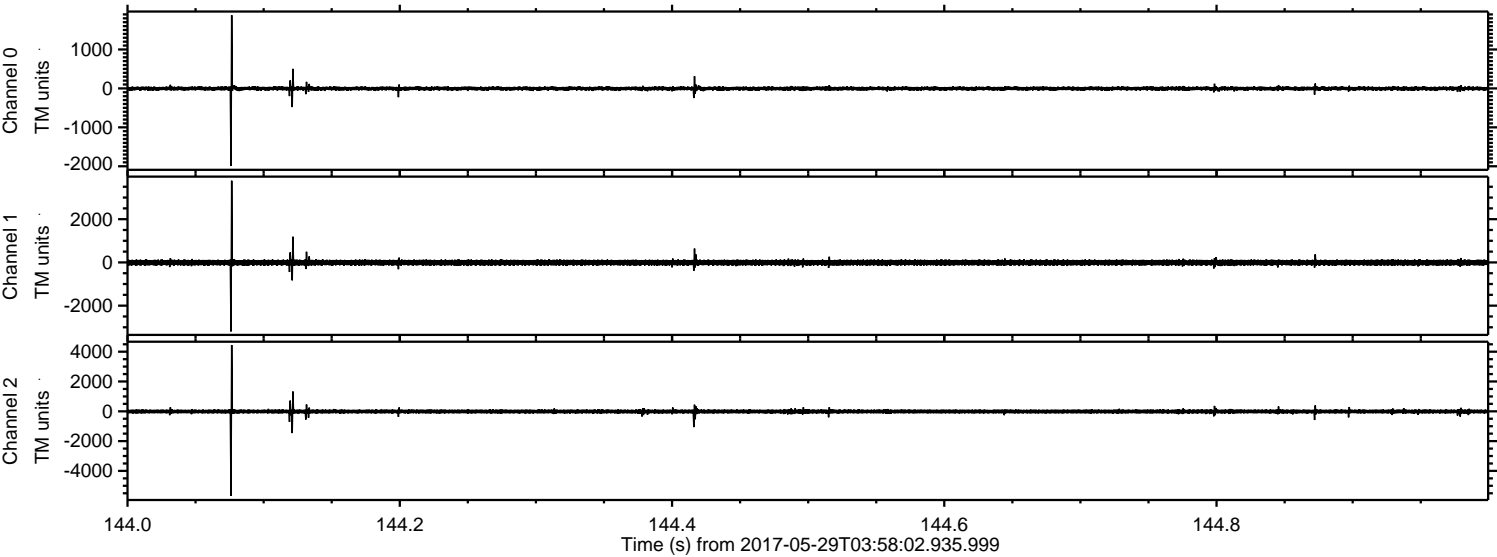
Channel 2
mn: -1006
mx: 1221
 μ : -12.4
 σ : 74.0

Processed Mon May 29 06:05:37 2017 by ELM ver.2012-10-06 from 001__elm20170529_035801__dat00.bin

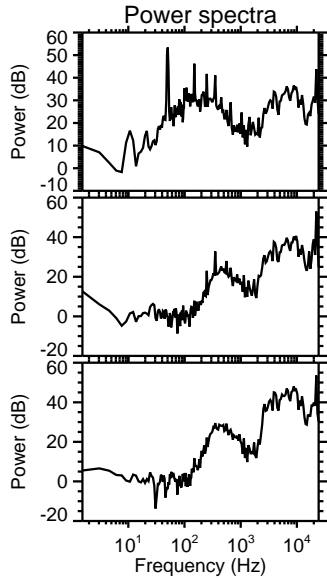
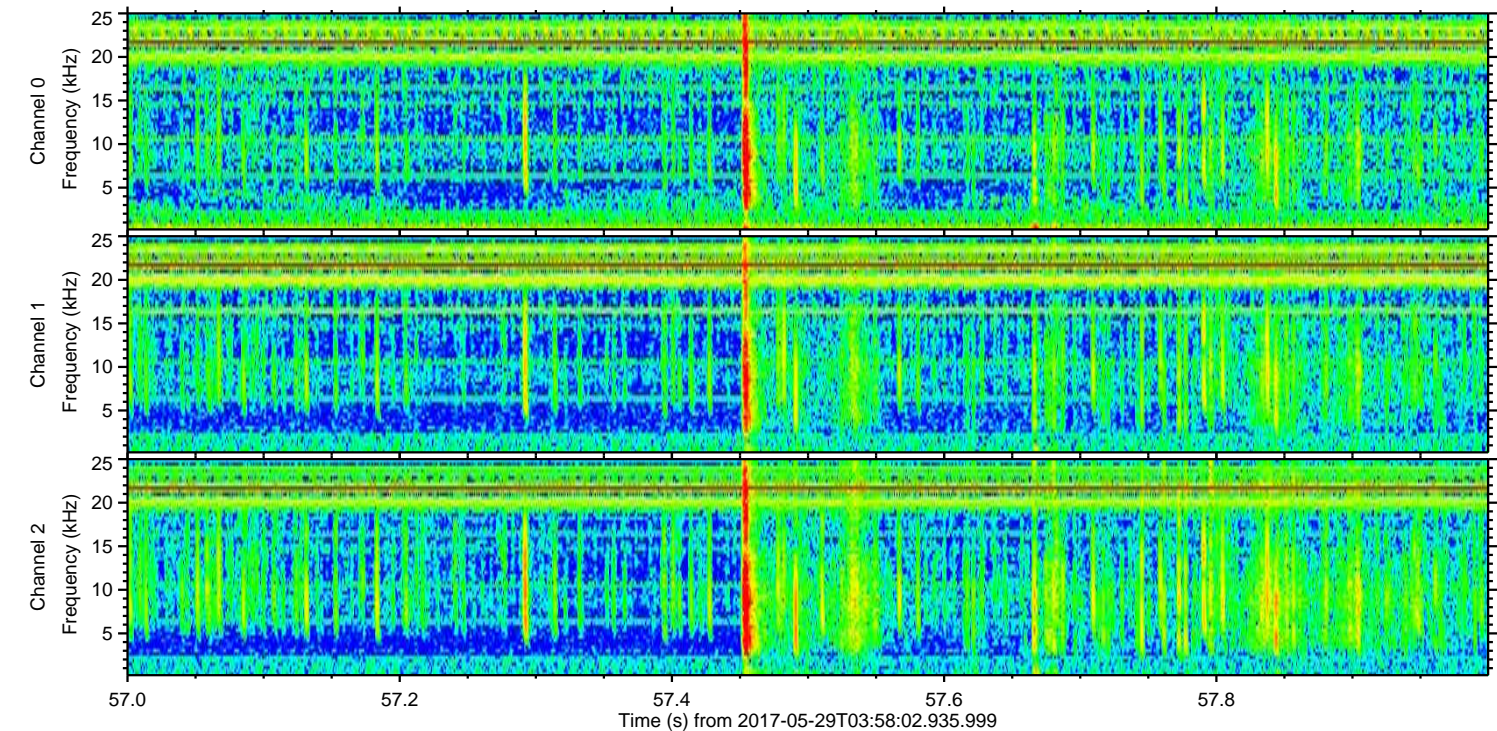
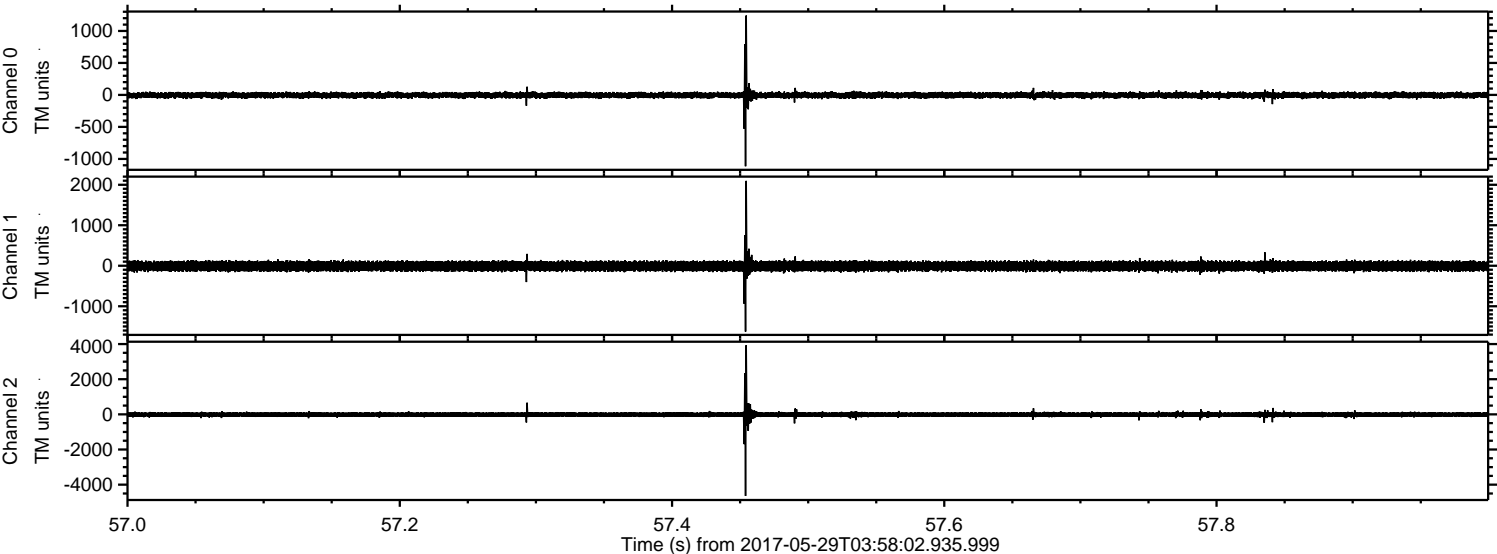


ELMAVAN 3D WAVEFORMS (Measured data sampled at 50 kHz) 51000 packets of 144 samples from 2017-05-29T03:58:02.935.999. Part 145/147

Processed Mon May 29 06:05:38 2017 by ELM ver.2012-10-06 from 001__elm20170529_035801__dat00.bin



Processed Mon May 29 06:05:38 2017 by ELM ver.2012-10-06 from 001__elm20170529_035801__dat00.bin



Channel 0
mn: -1115
mx: 1242
 μ : -3.7
 σ : 28.8

Channel 1
mn: -1627
mx: 2096
 μ : -10.1
 σ : 72.1

Channel 2
mn: -4640
mx: 3937
 μ : -12.5
 σ : 88.7

Processed Mon May 29 06:05:39 2017 by ELM ver.2012-10-06 from 001__elm20170529_035801__dat00.bin

