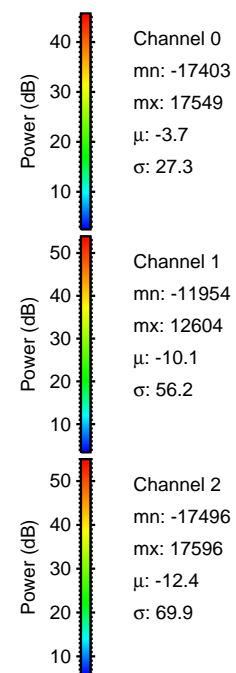
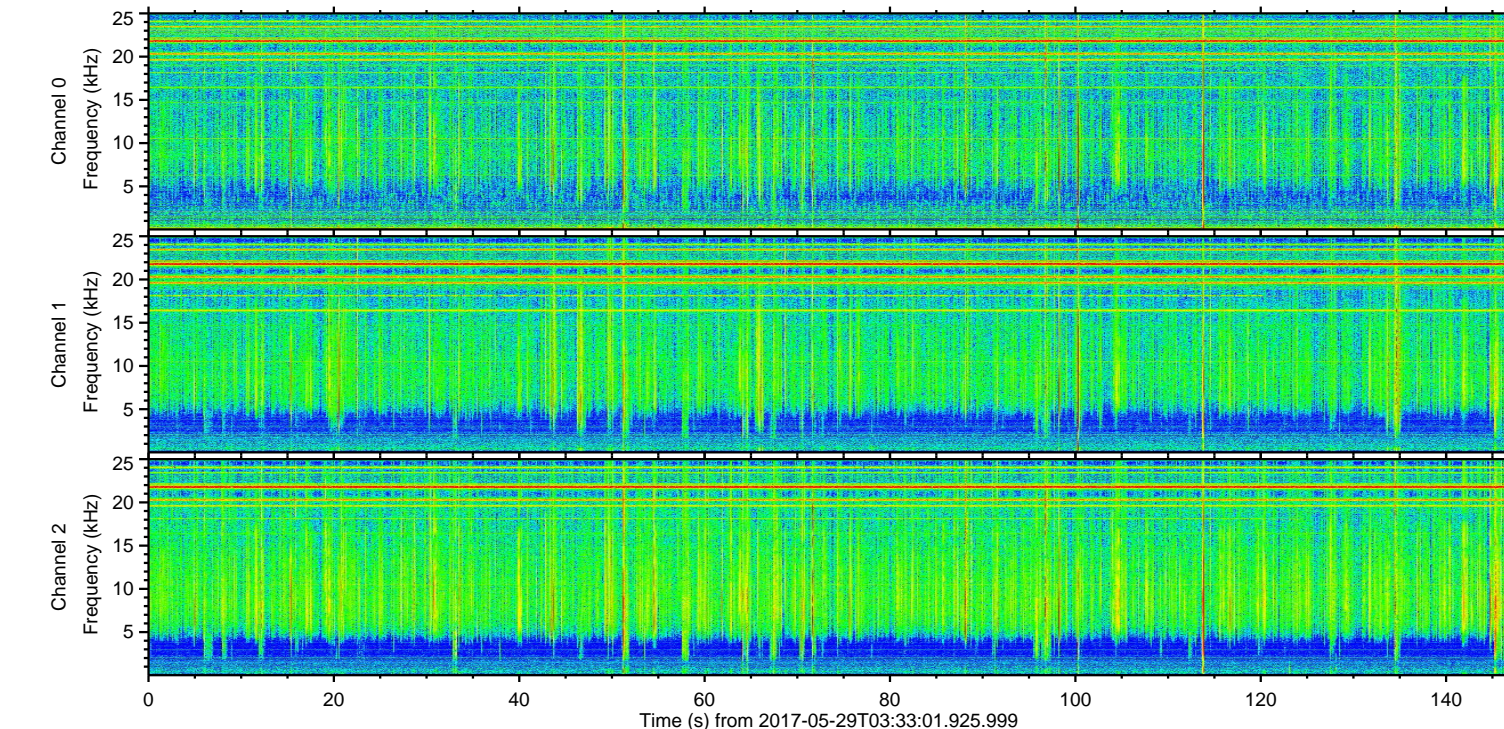
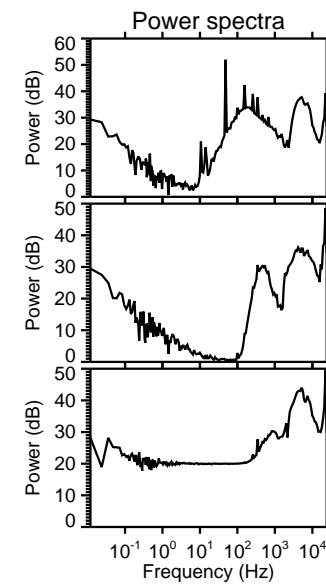
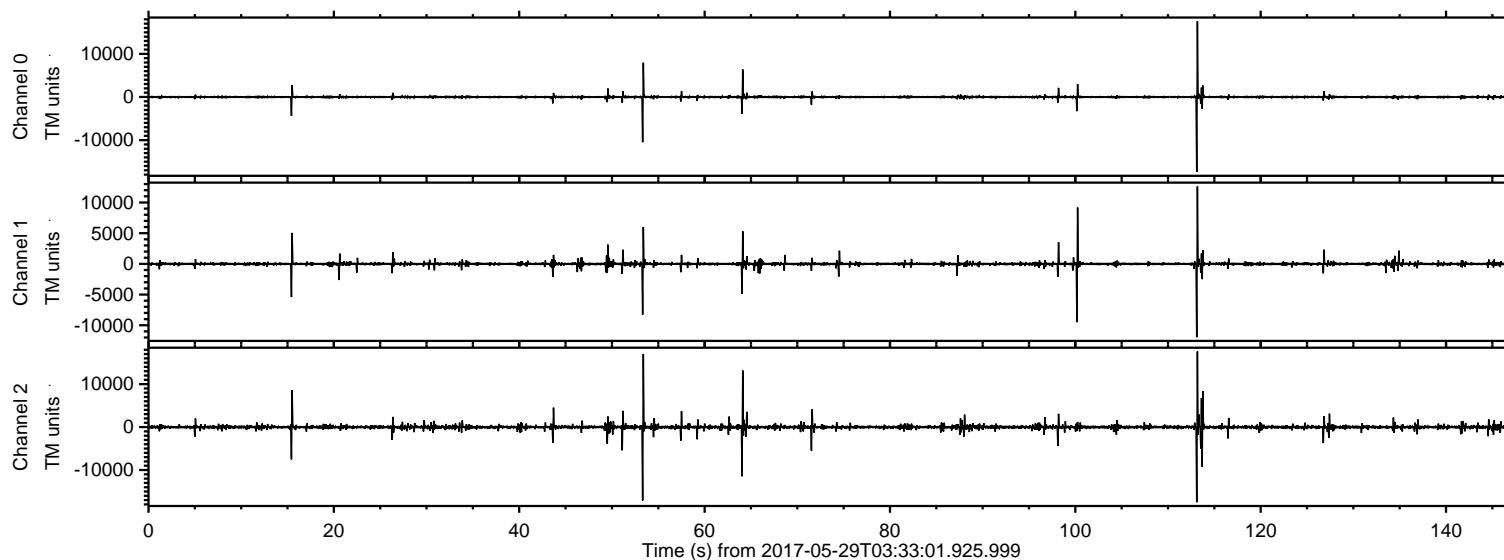


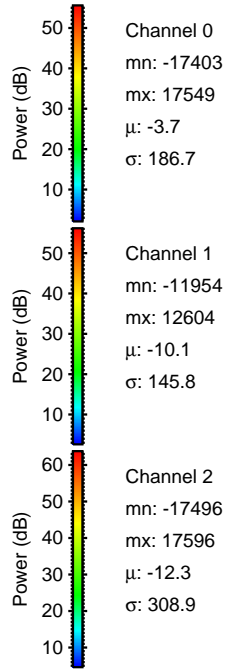
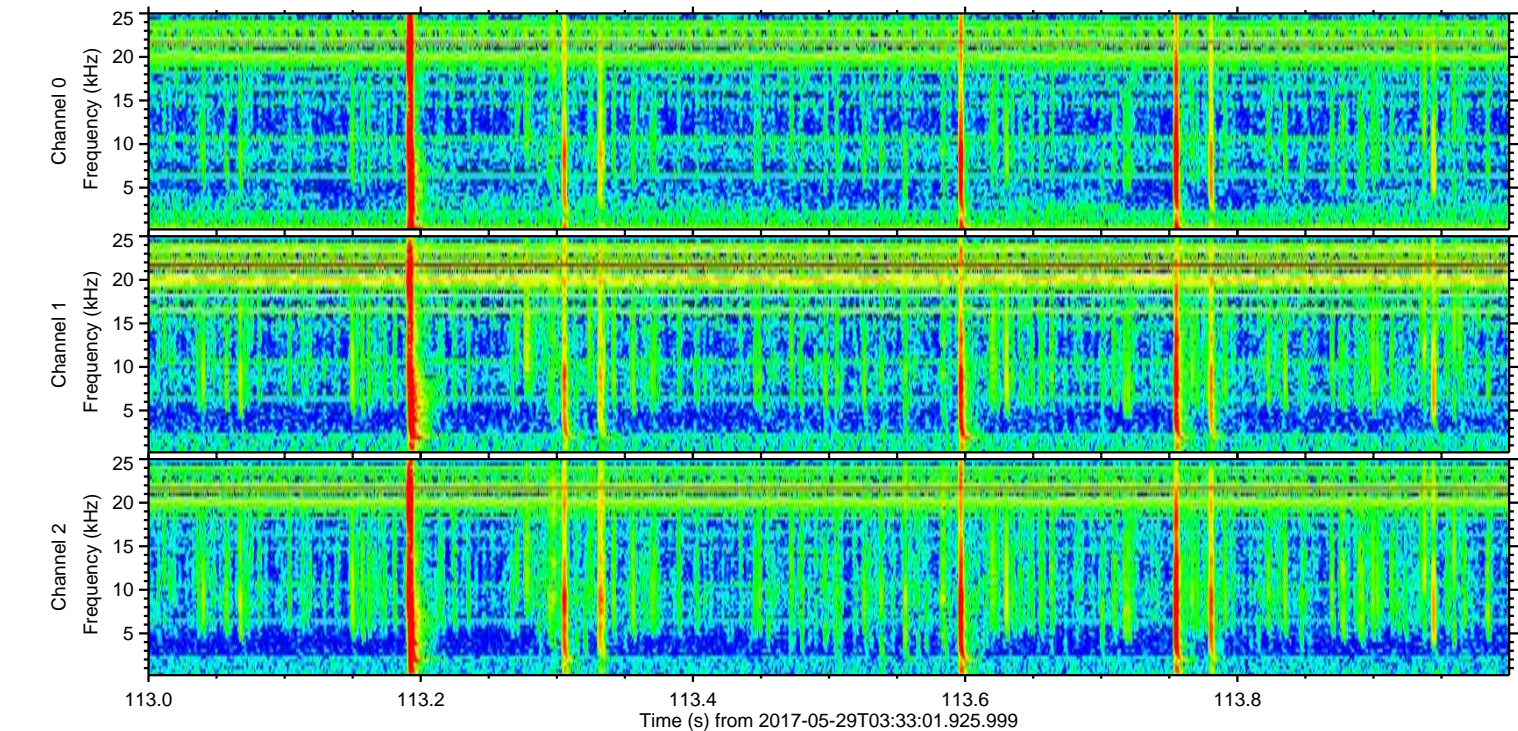
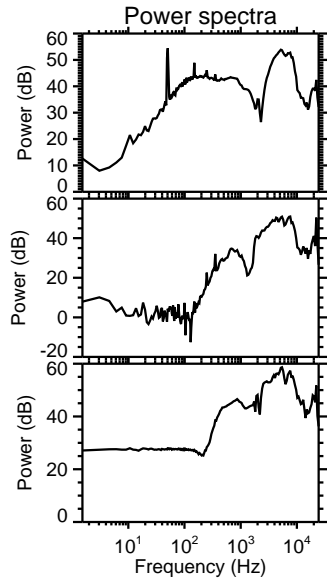
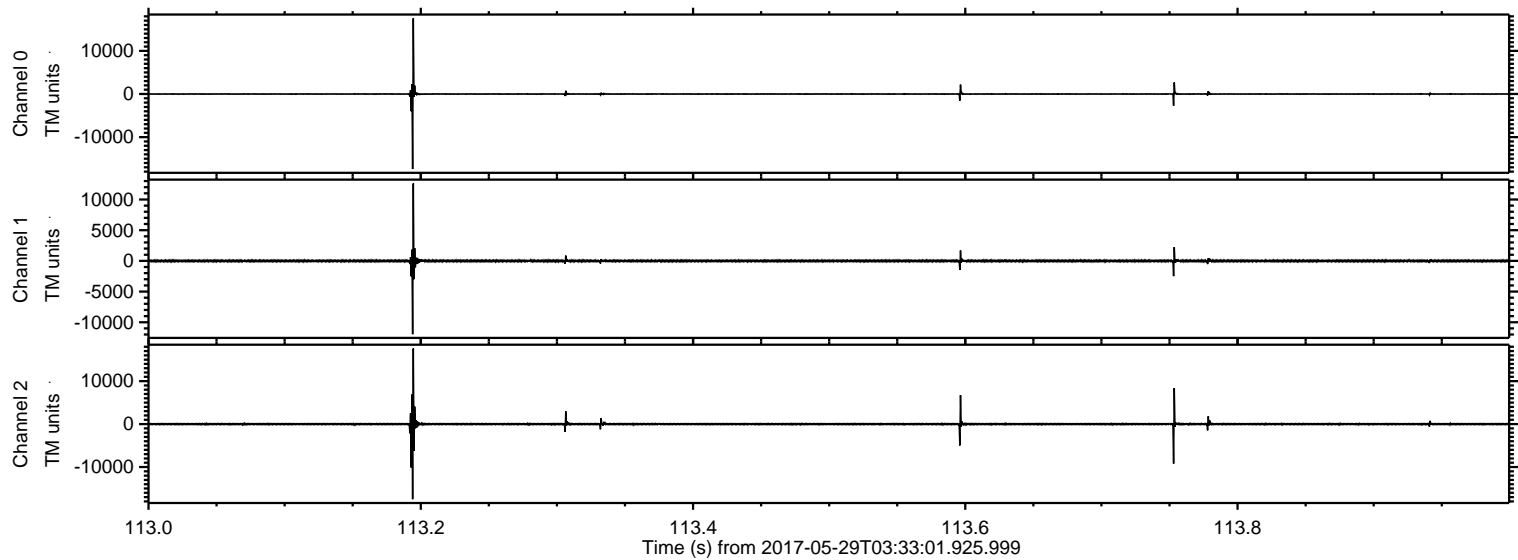
ELMAVAN 3D WAVEFORMS (Measured data sampled at 50 kHz) 51000 packets of 144 samples from 2017-05-29T03:33:01.925.999.

Processed Mon May 29 05:40:34 2017 by ELM ver.2012-10-06 from 001__elm20170529_033300__dat00.bin

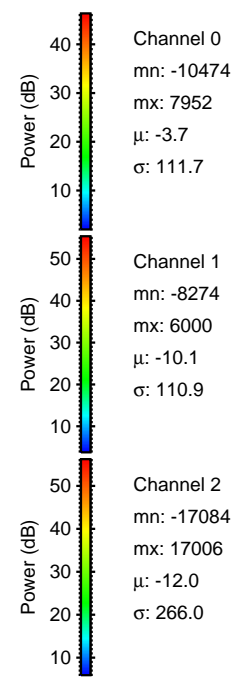
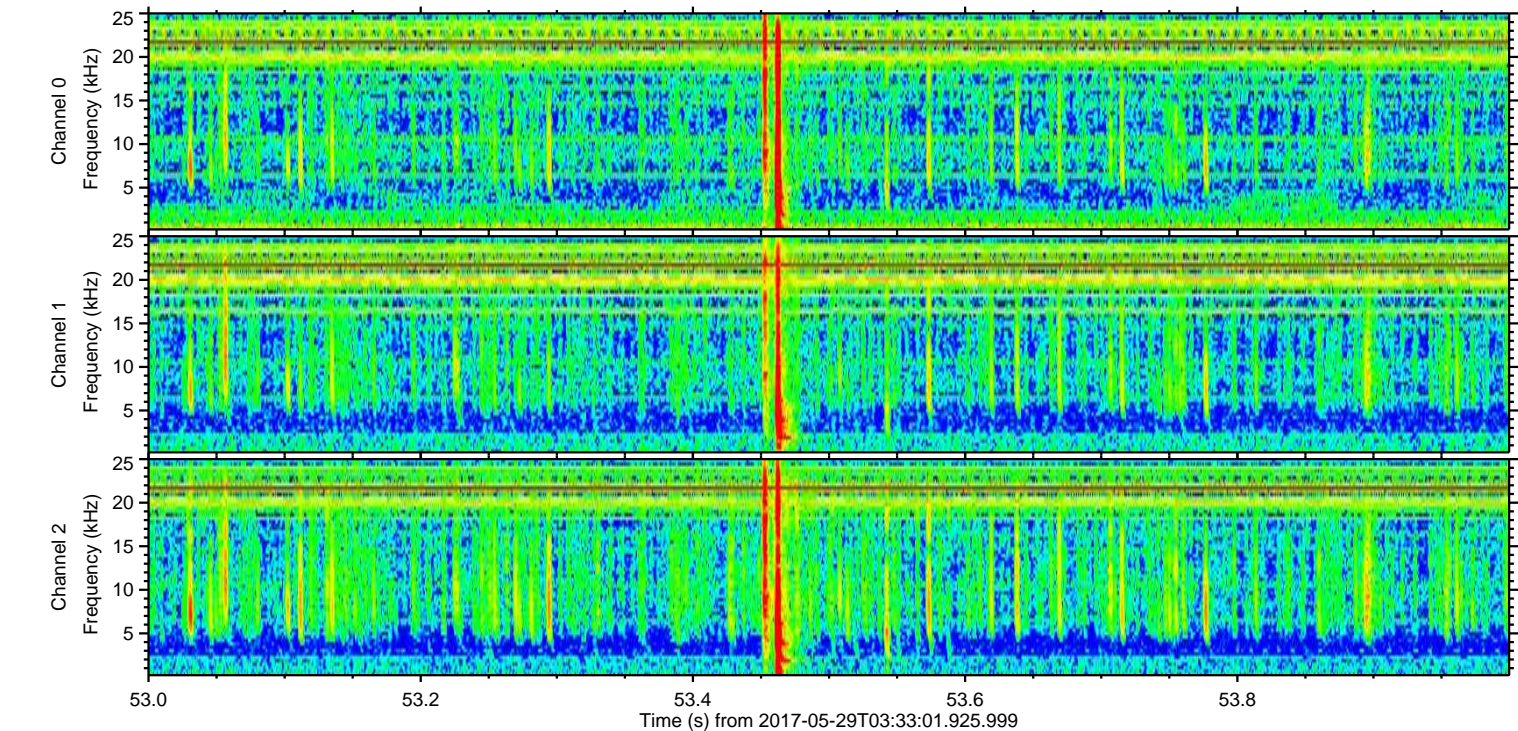
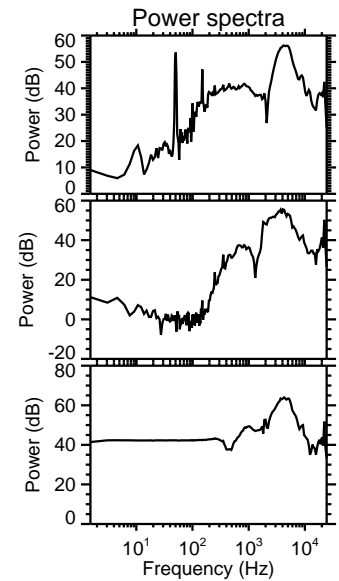
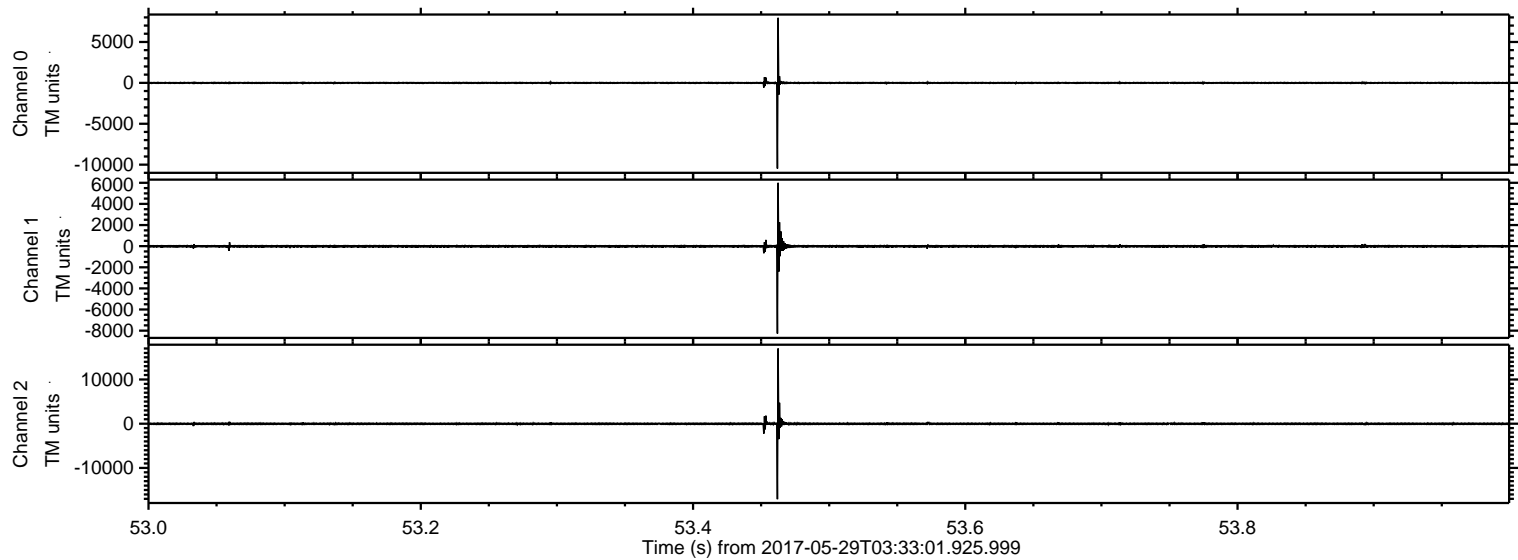


ELMAVAN 3D WAVEFORMS (Measured data sampled at 50 kHz) 51000 packets of 144 samples from 2017-05-29T03:33:01.925.999. Part 114/147

Processed Mon May 29 05:40:40 2017 by ELM ver.2012-10-06 from 001__elm20170529_033300__dat00.bin

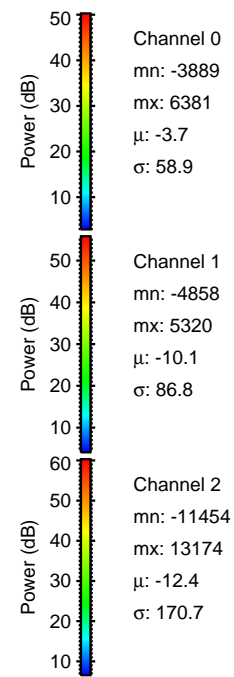
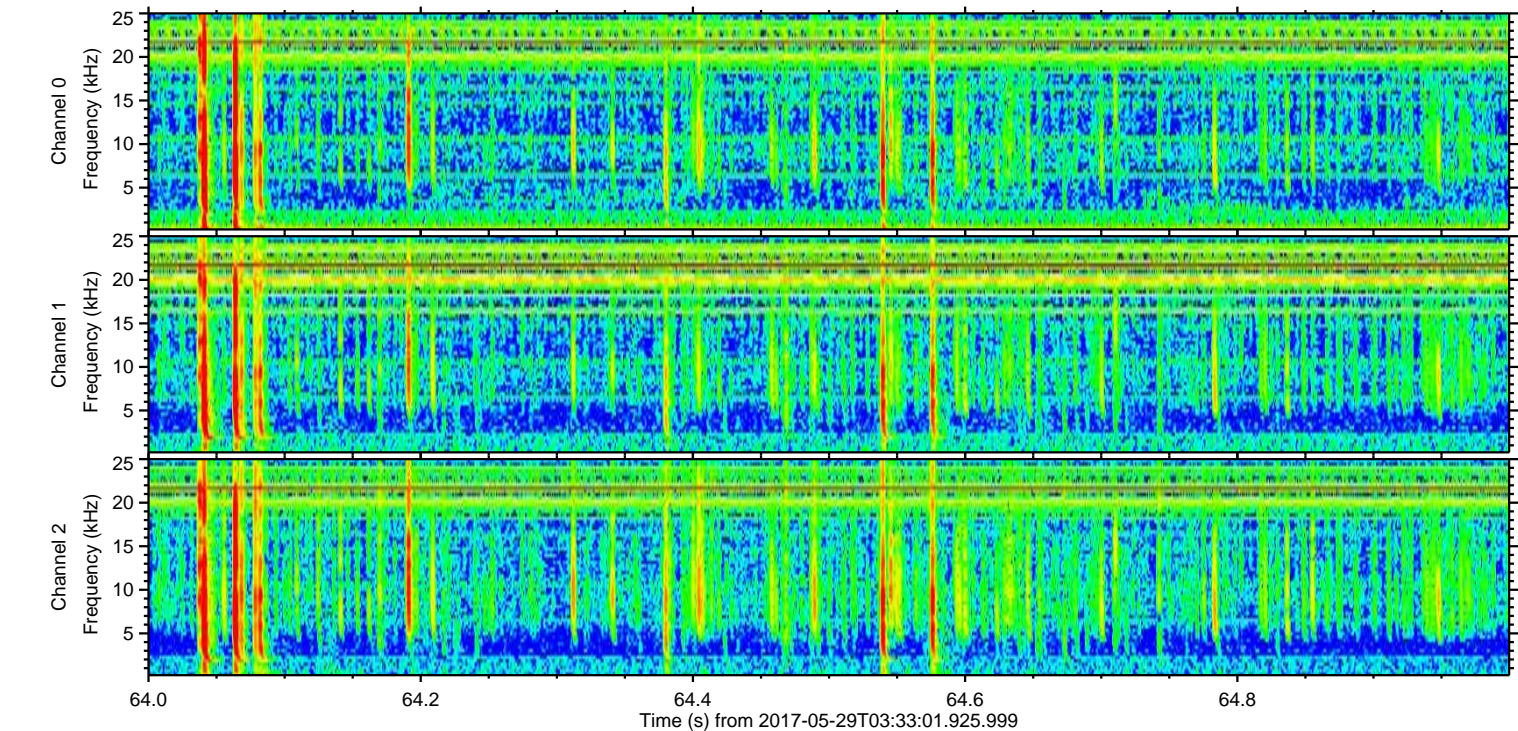
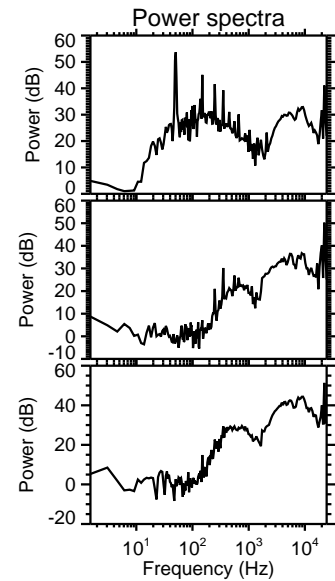
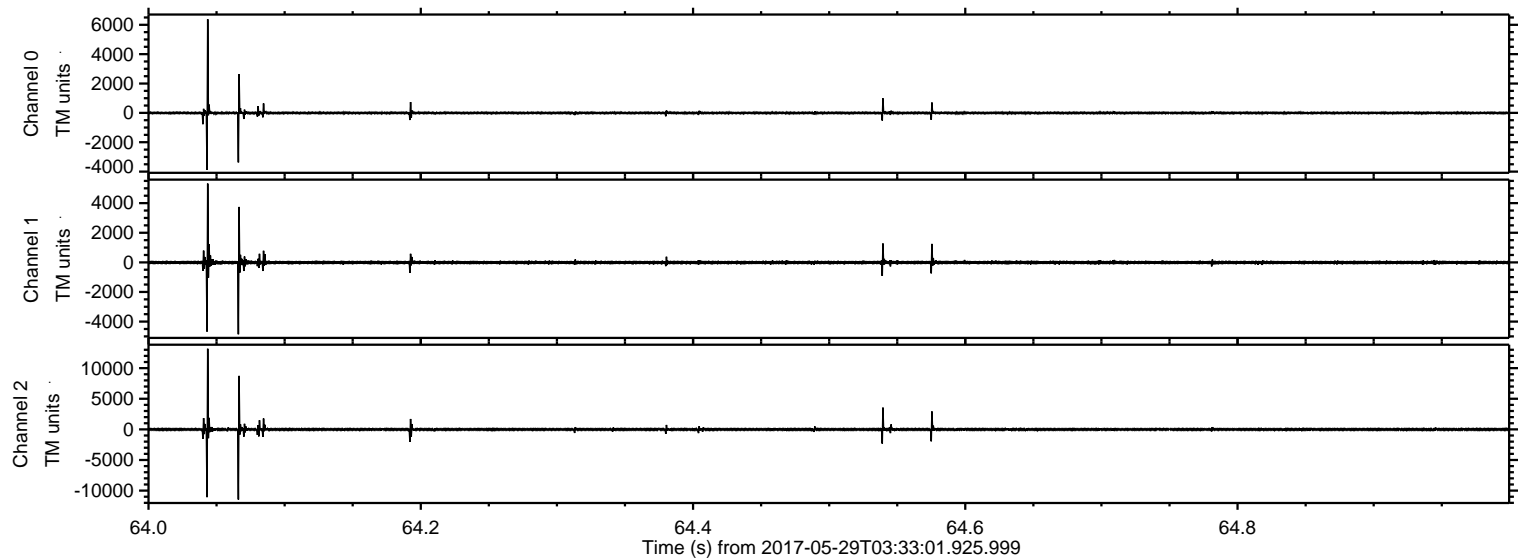


Processed Mon May 29 05:40:40 2017 by ELM ver.2012-10-06 from 001__elm20170529_033300__dat00.bin



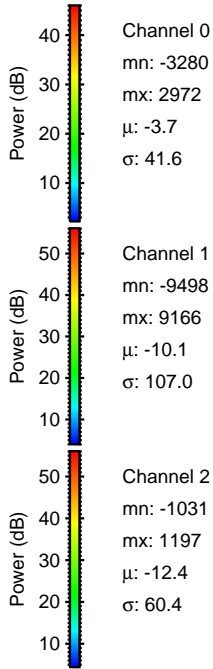
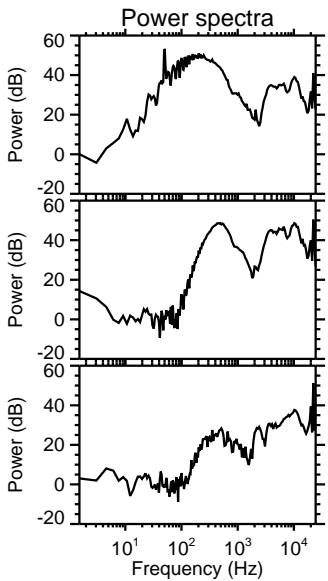
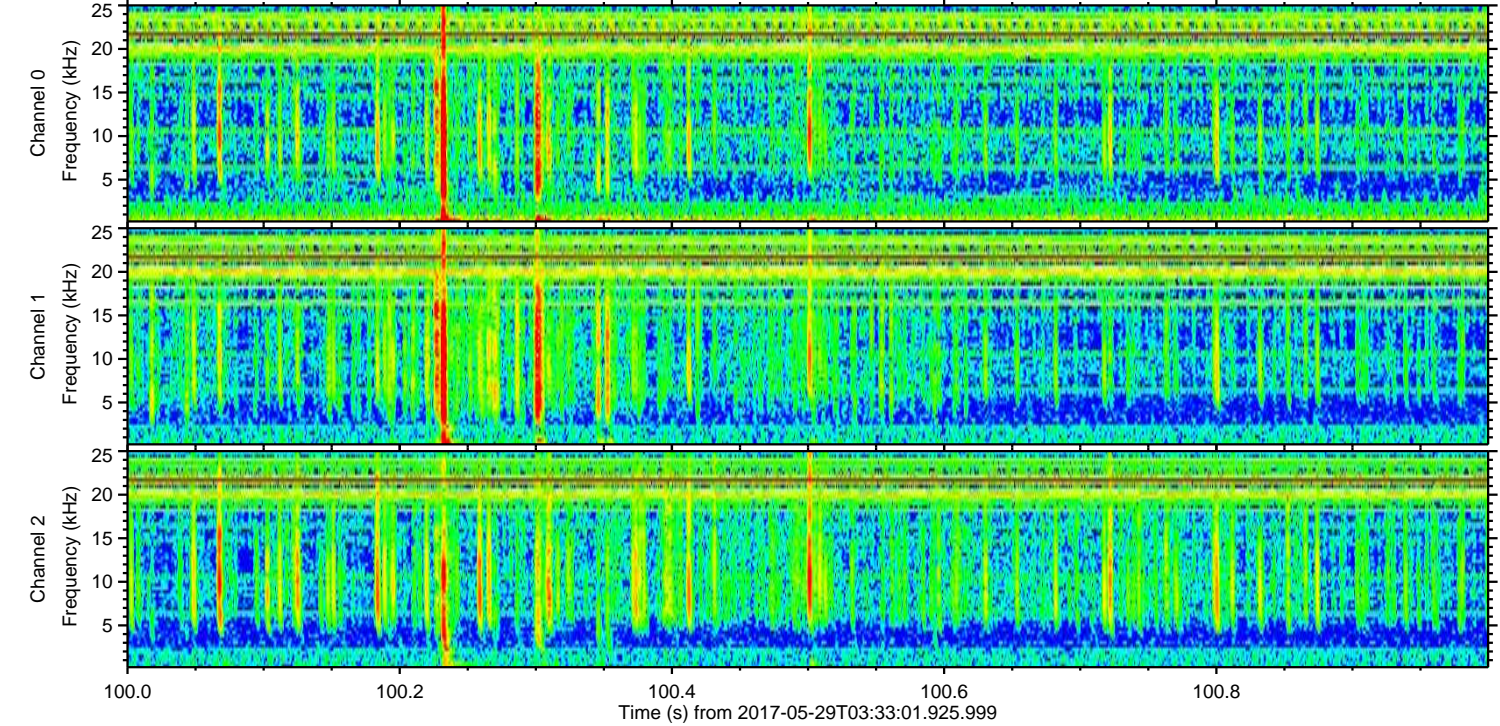
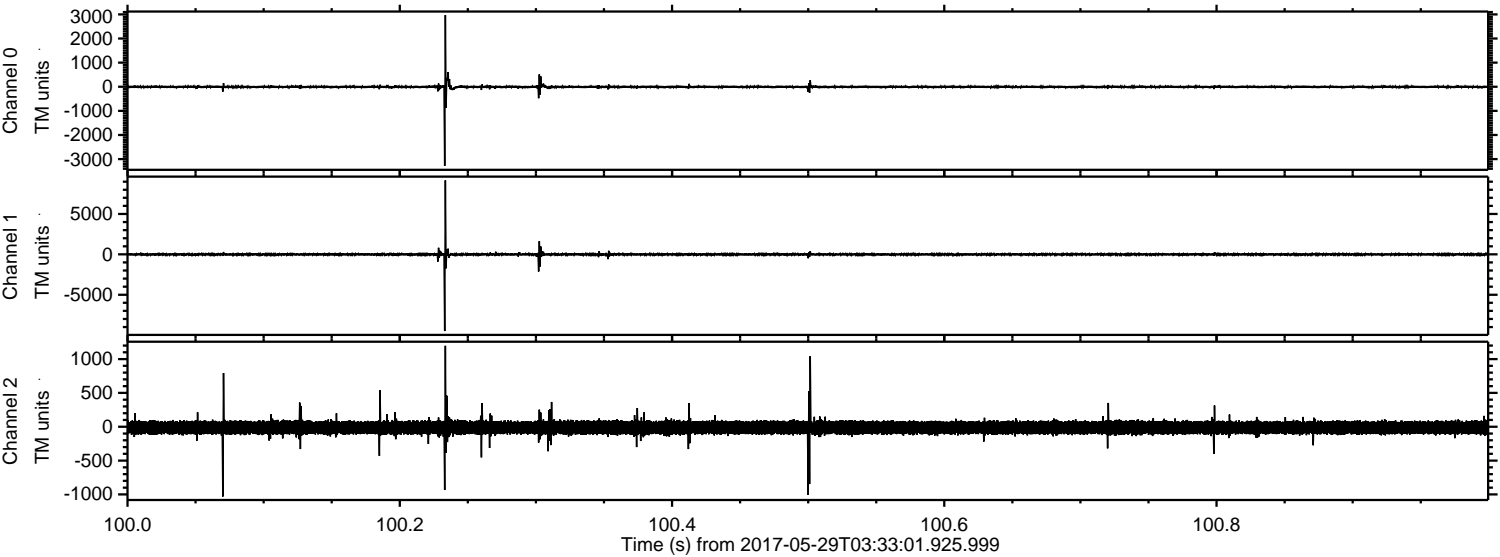
ELMAVAN 3D WAVEFORMS (Measured data sampled at 50 kHz) 51000 packets of 144 samples from 2017-05-29T03:33:01.925.999. Part 65/147

Processed Mon May 29 05:40:41 2017 by ELM ver.2012-10-06 from 001__elm20170529_033300__dat00.bin

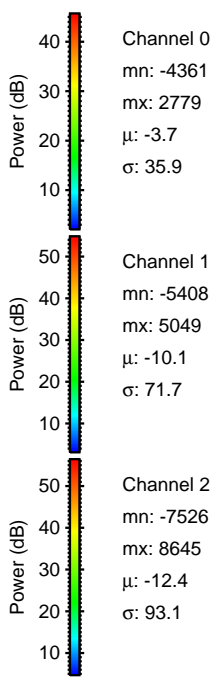
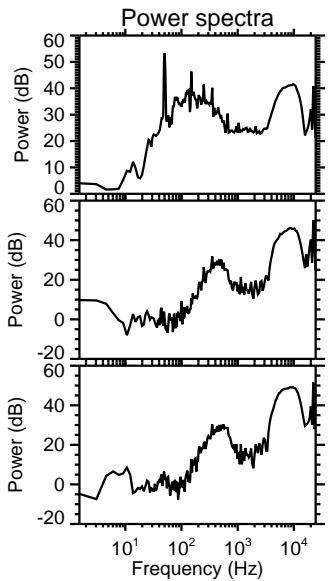
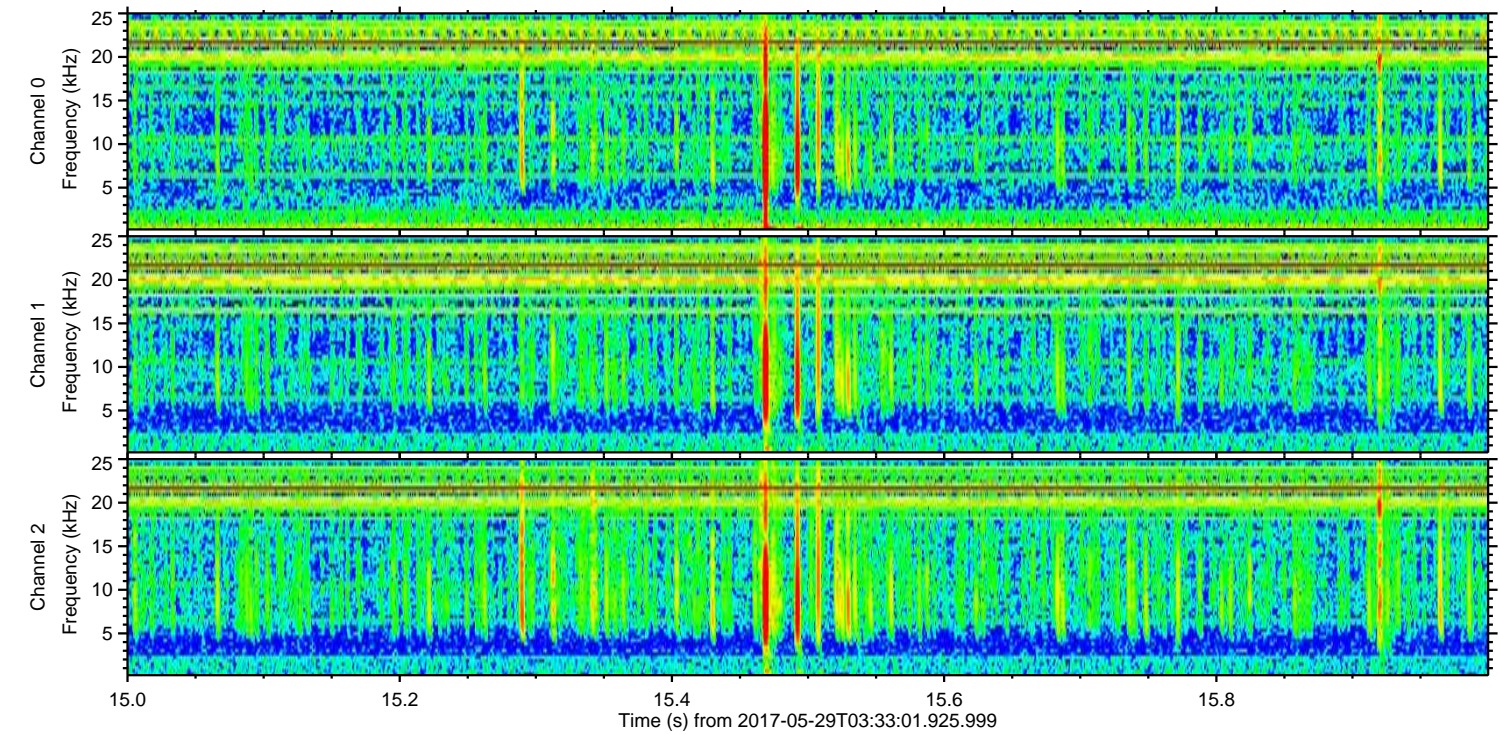
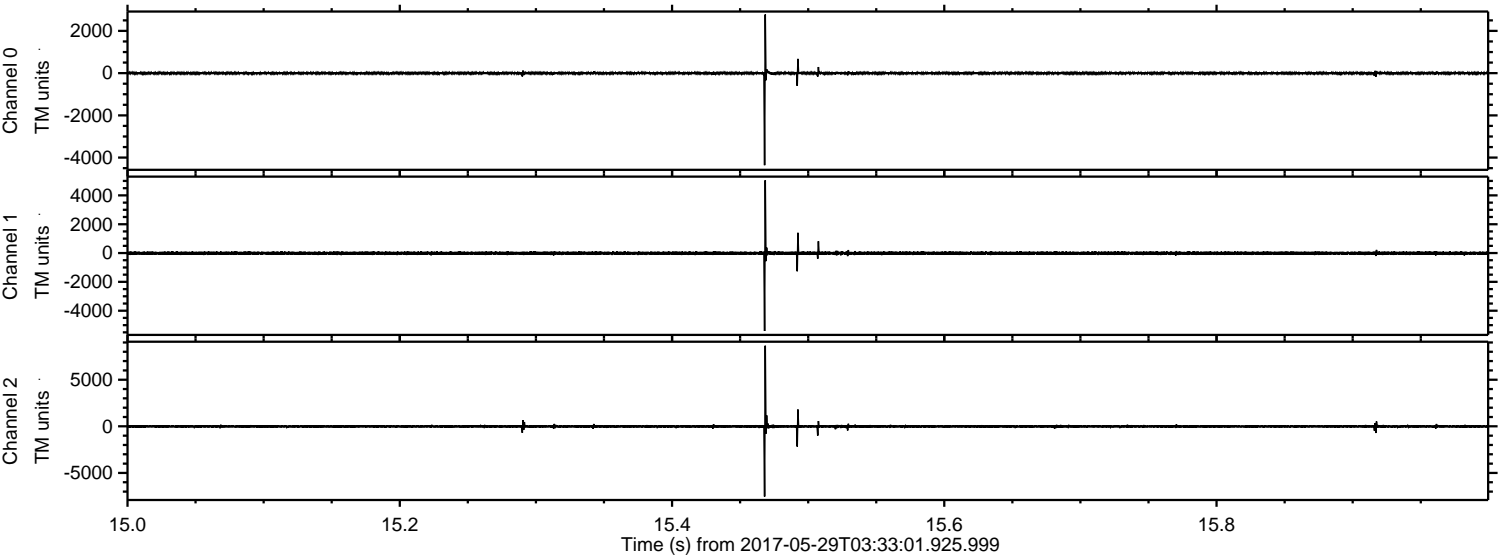


ELMAVAN 3D WAVEFORMS (Measured data sampled at 50 kHz) 51000 packets of 144 samples from 2017-05-29T03:33:01.925.999. Part 101/147

Processed Mon May 29 05:40:41 2017 by ELM ver.2012-10-06 from 001__elm20170529_033300__dat00.bin



Processed Mon May 29 05:40:42 2017 by ELM ver.2012-10-06 from 001__elm20170529_033300__dat00.bin

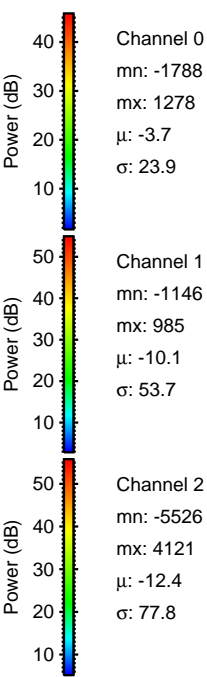
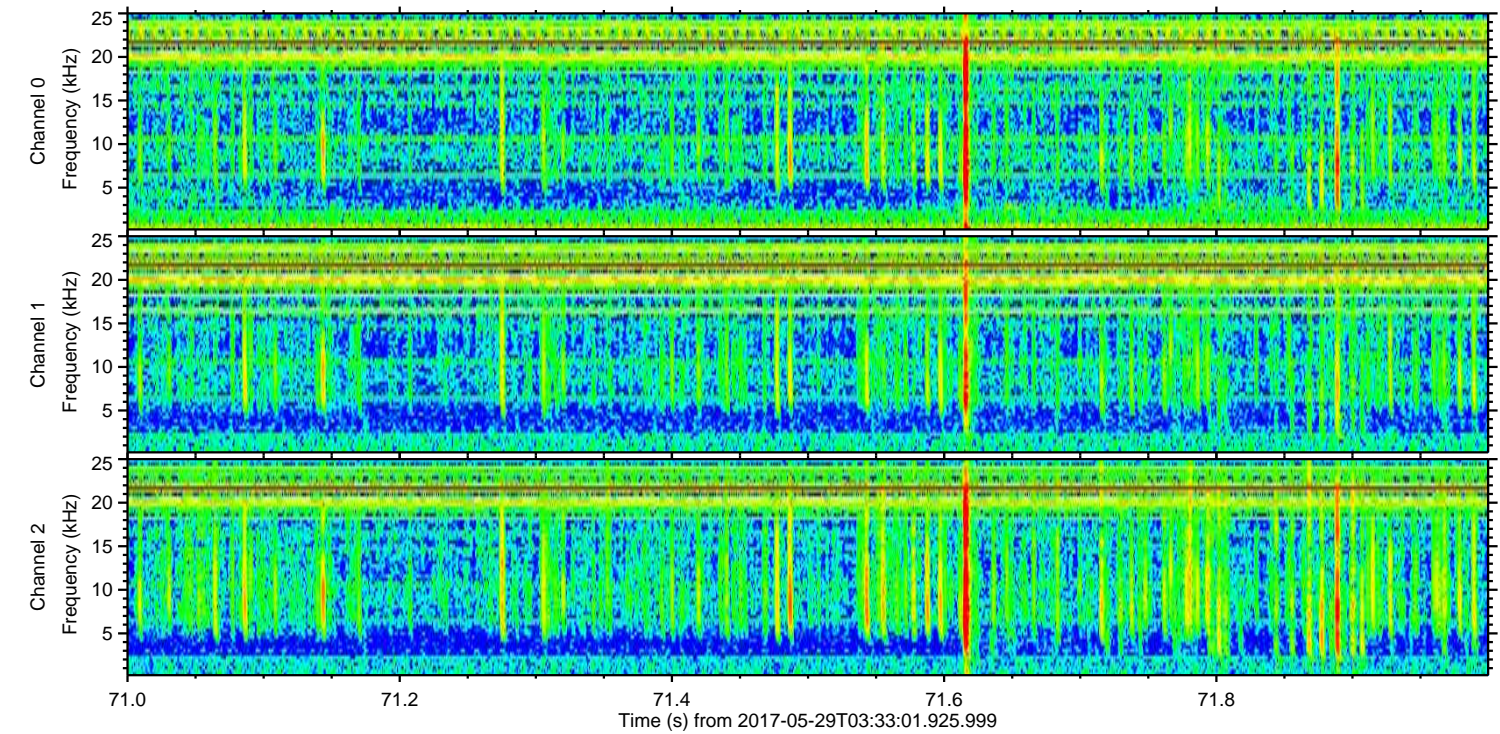
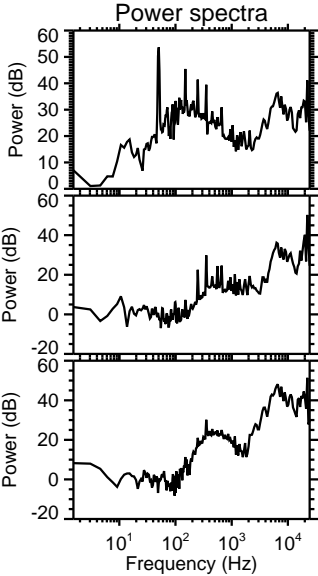
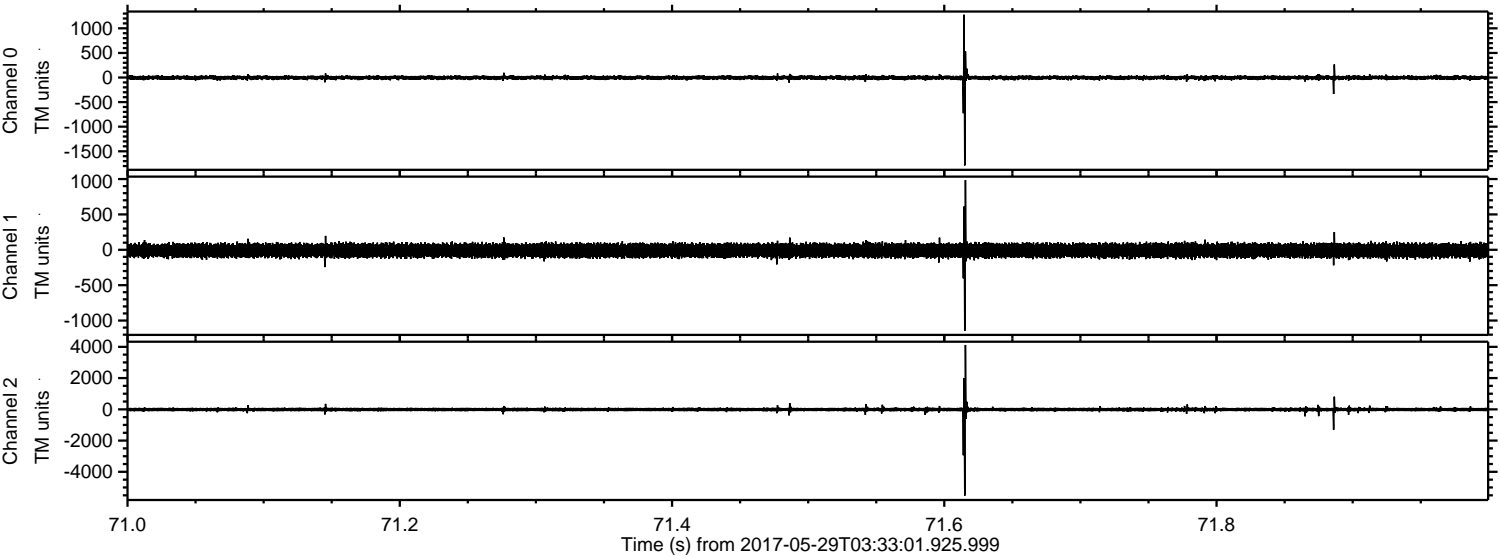


Channel 0
mn: -4361
mx: 2779
 μ : -3.7
 σ : 35.9

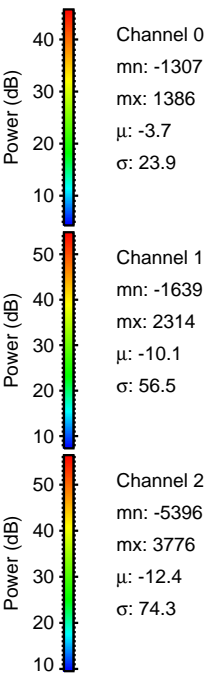
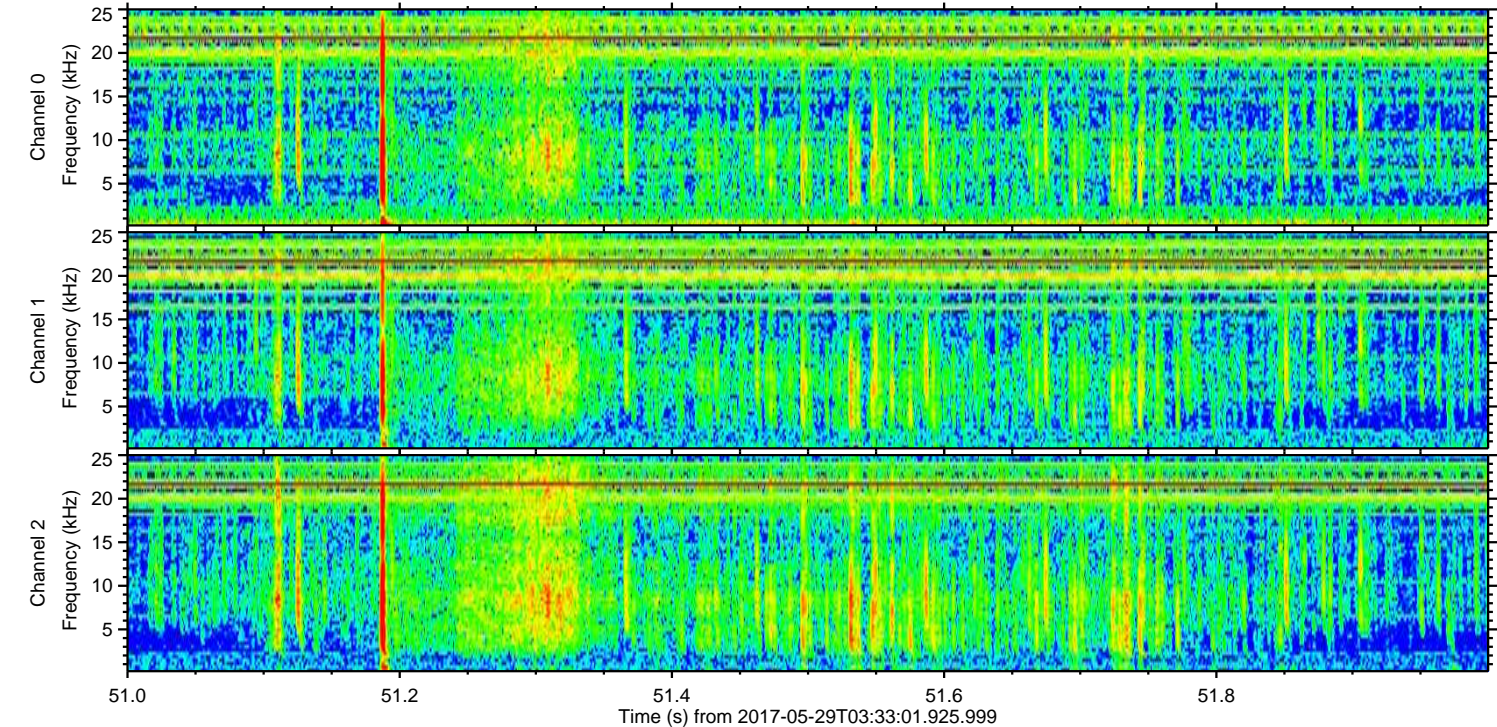
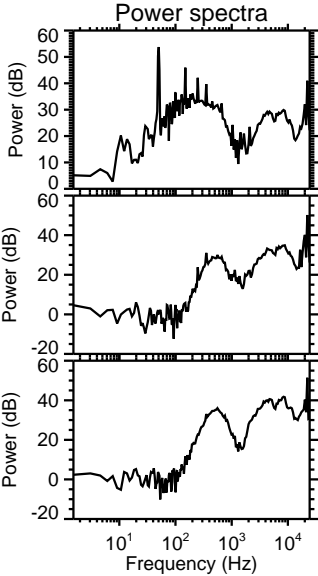
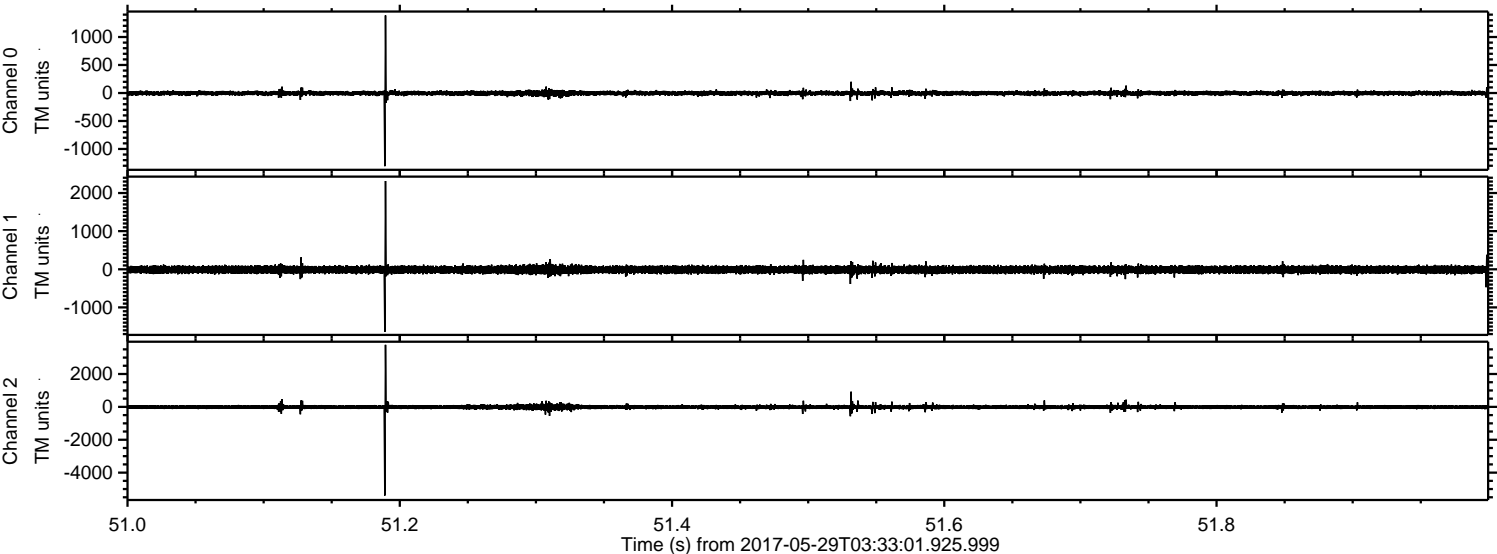
Channel 1
mn: -5408
mx: 5049
 μ : -10.1
 σ : 71.7

Channel 2
mn: -7526
mx: 8645
 μ : -12.4
 σ : 93.1

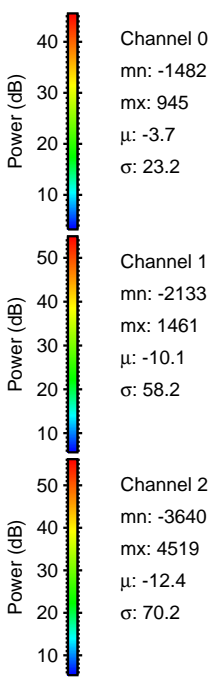
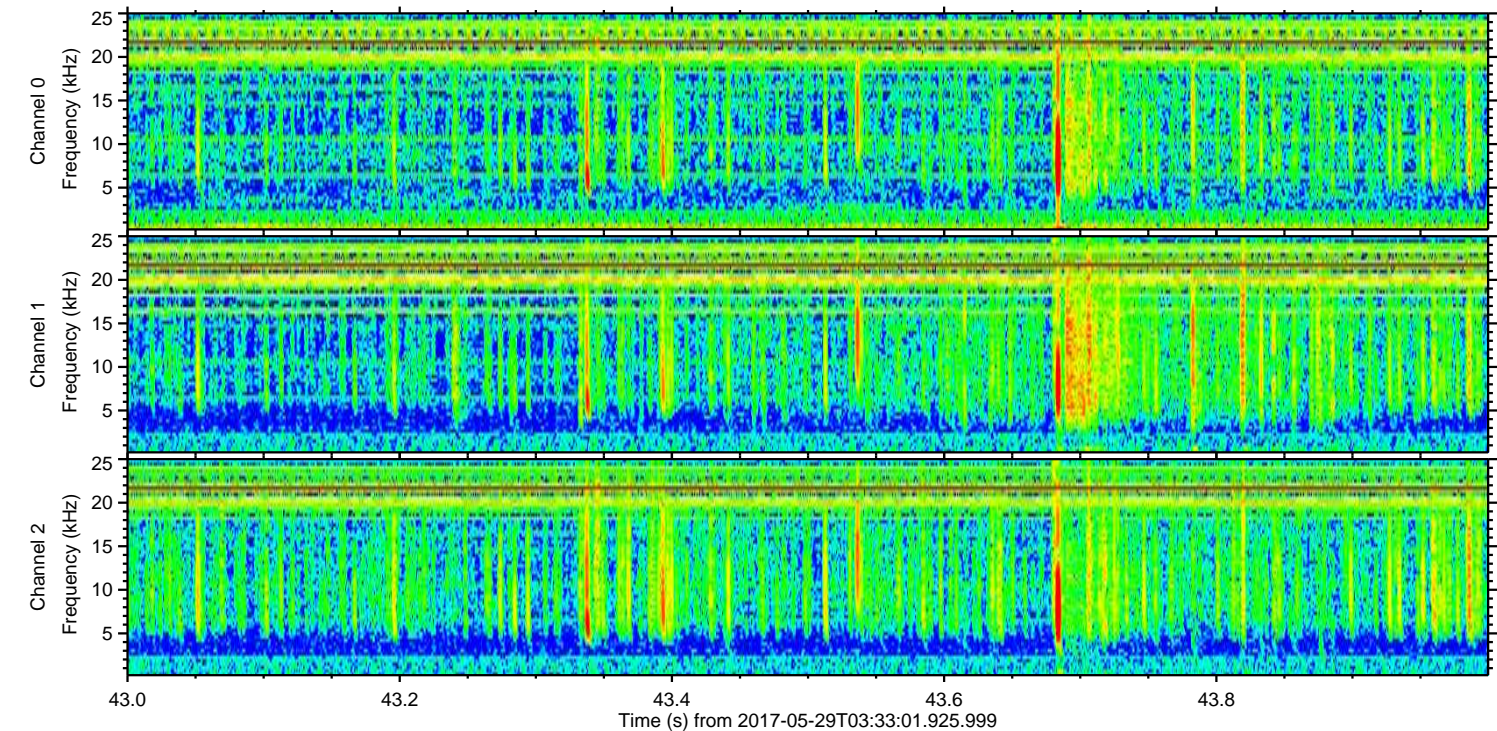
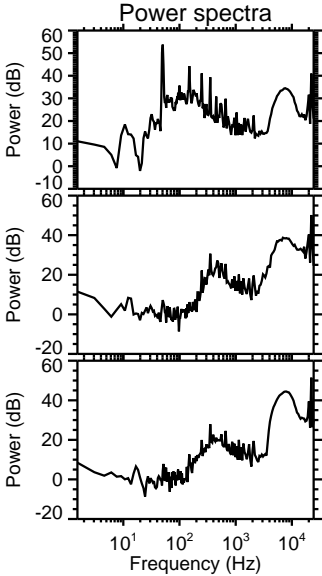
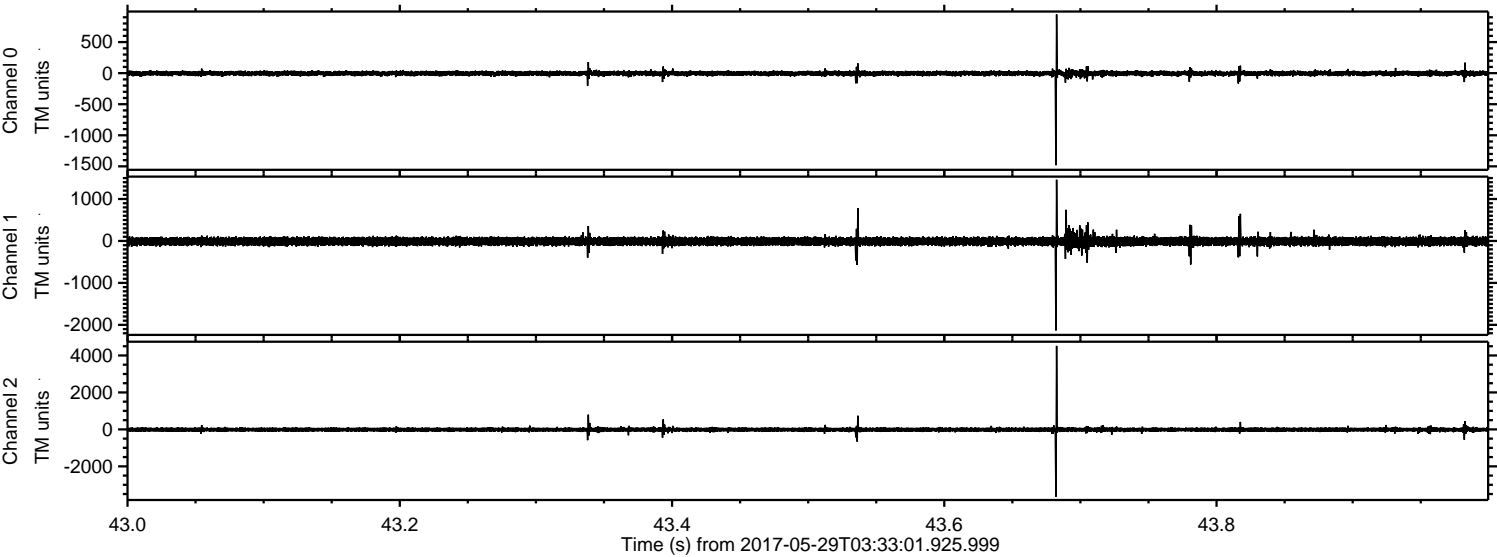
Processed Mon May 29 05:40:43 2017 by ELM ver.2012-10-06 from 001__elm20170529_033300__dat00.bin



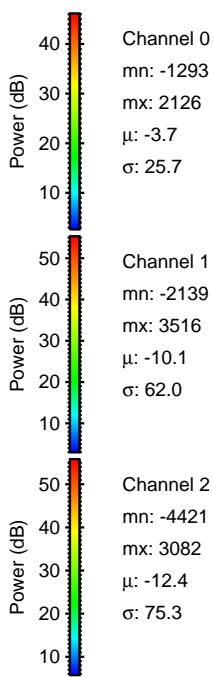
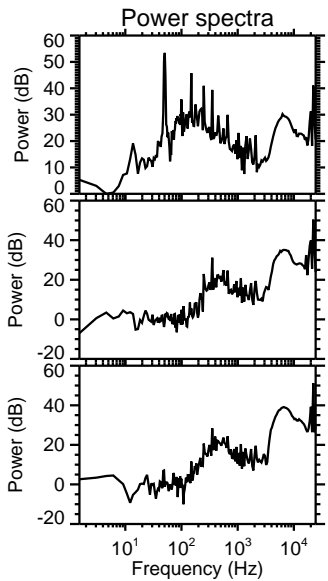
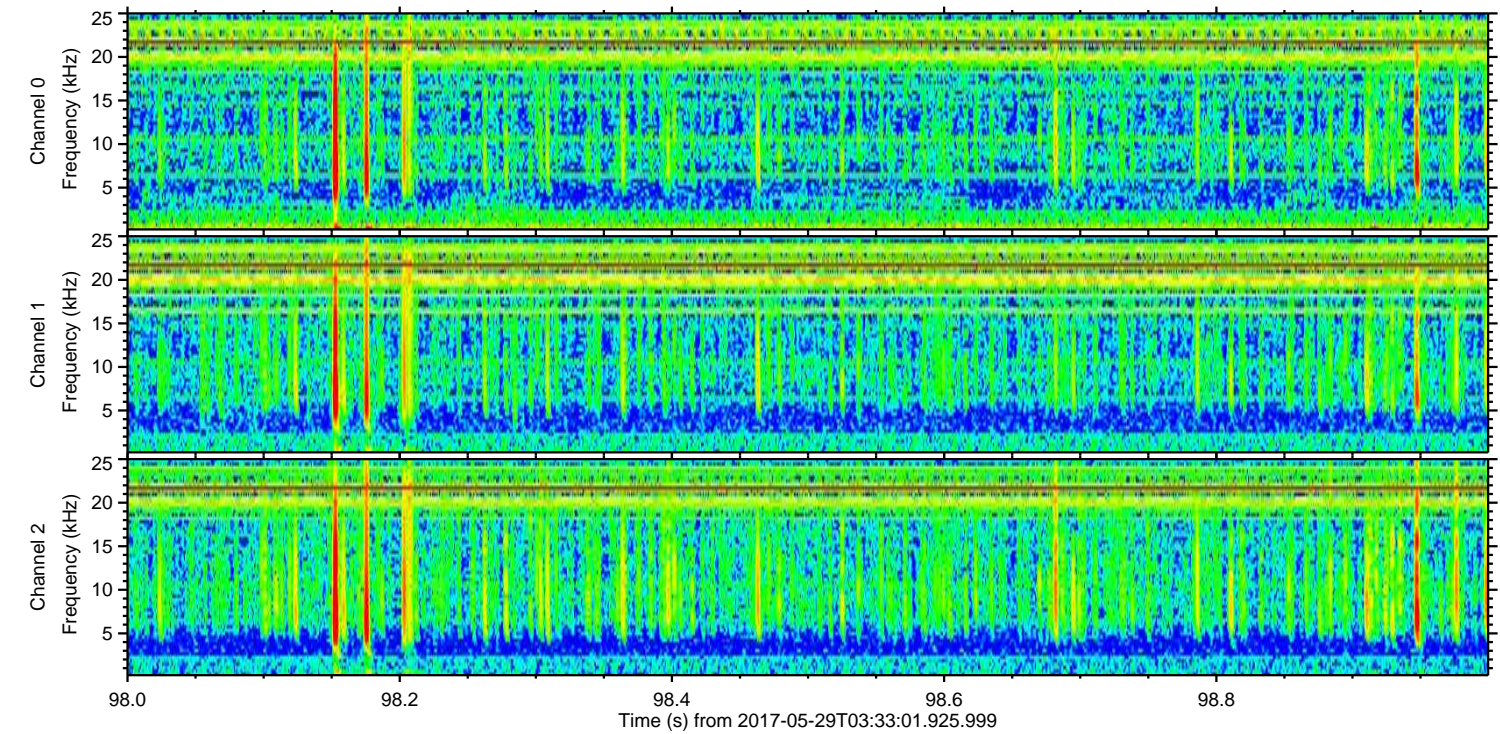
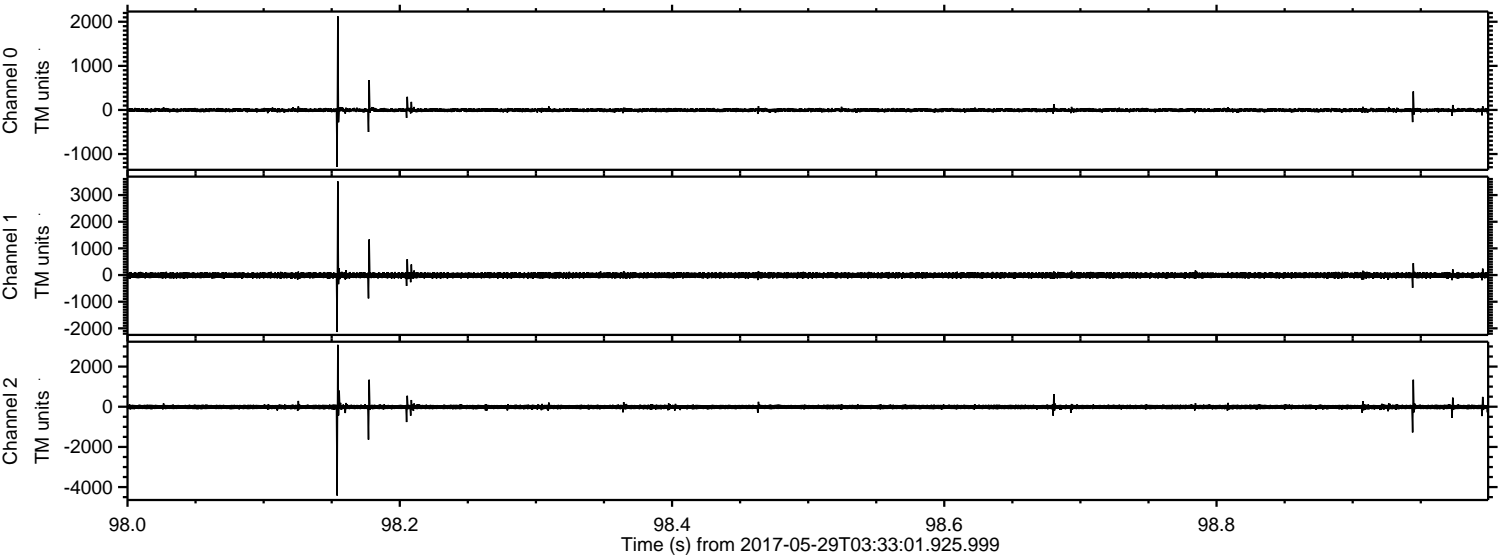
Processed Mon May 29 05:40:43 2017 by ELM ver.2012-10-06 from 001__elm20170529_033300__dat00.bin



Processed Mon May 29 05:40:44 2017 by ELM ver.2012-10-06 from 001__elm20170529_033300__dat00.bin



Processed Mon May 29 05:40:44 2017 by ELM ver.2012-10-06 from 001__elm20170529_033300__dat00.bin



Channel 0
mn: -1293
mx: 2126
 μ : -3.7
 σ : 25.7

Channel 1
mn: -2139
mx: 3516
 μ : -10.1
 σ : 62.0

Channel 2
mn: -4421
mx: 3082
 μ : -12.4
 σ : 75.3

