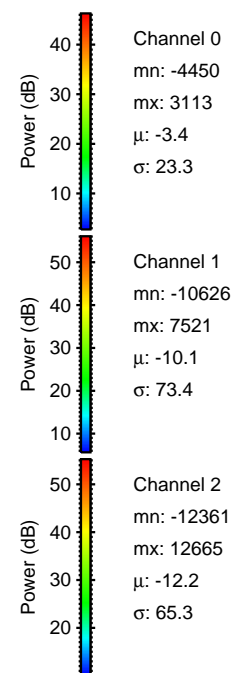
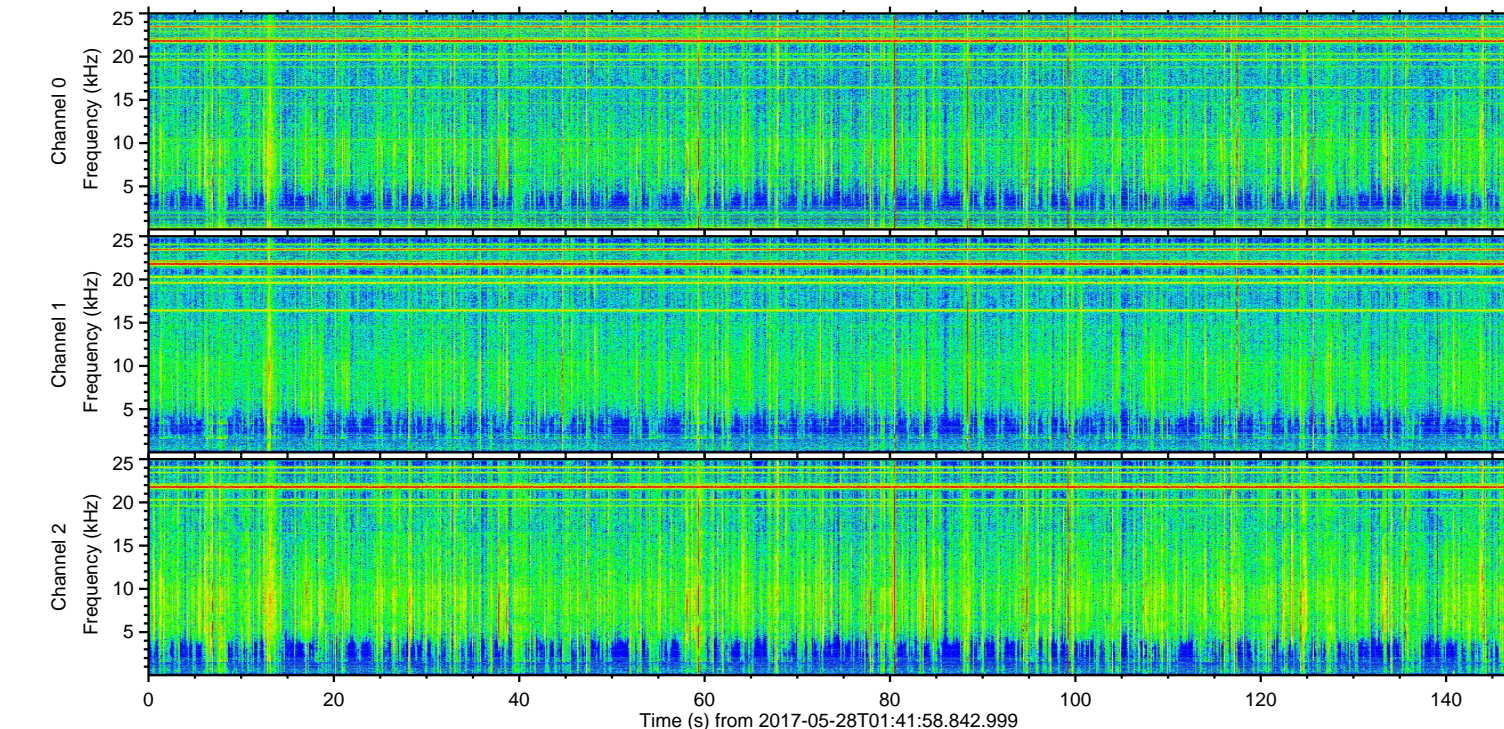
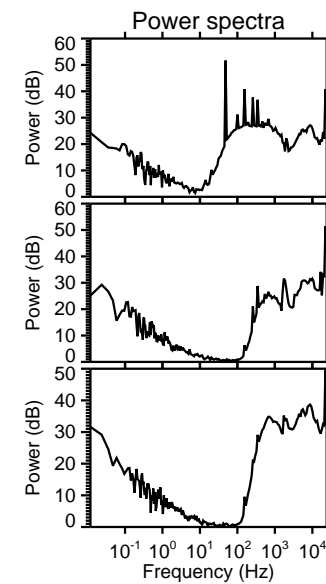
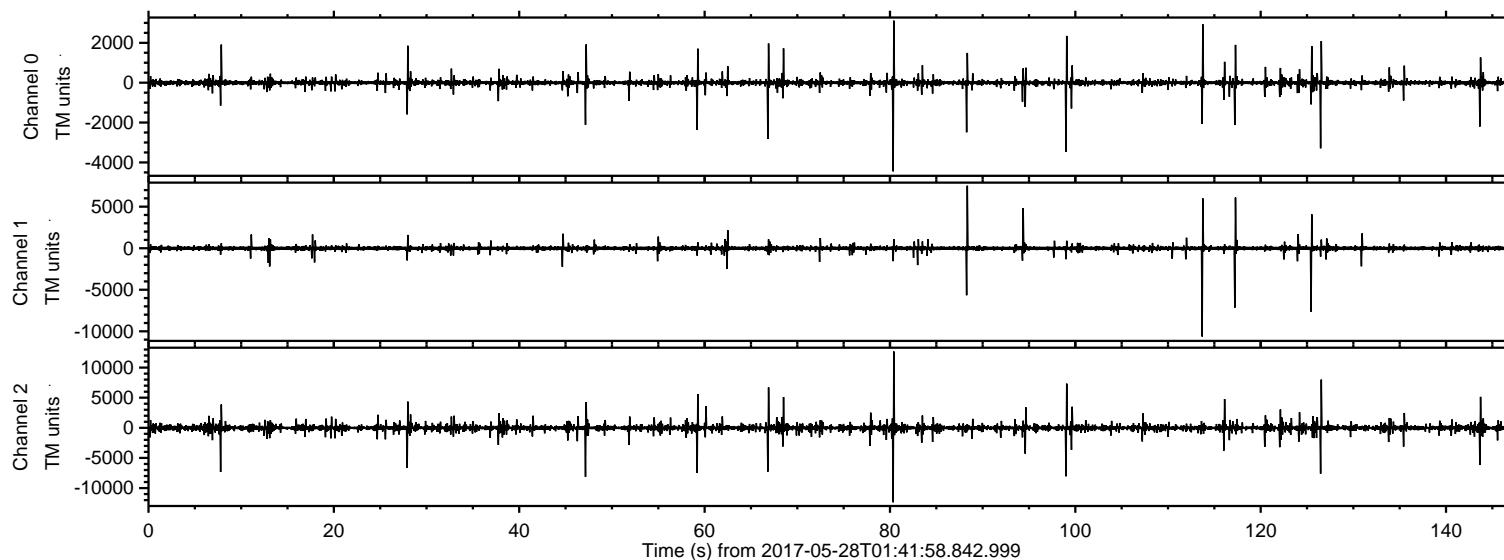
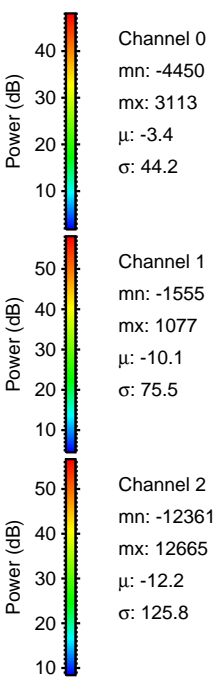
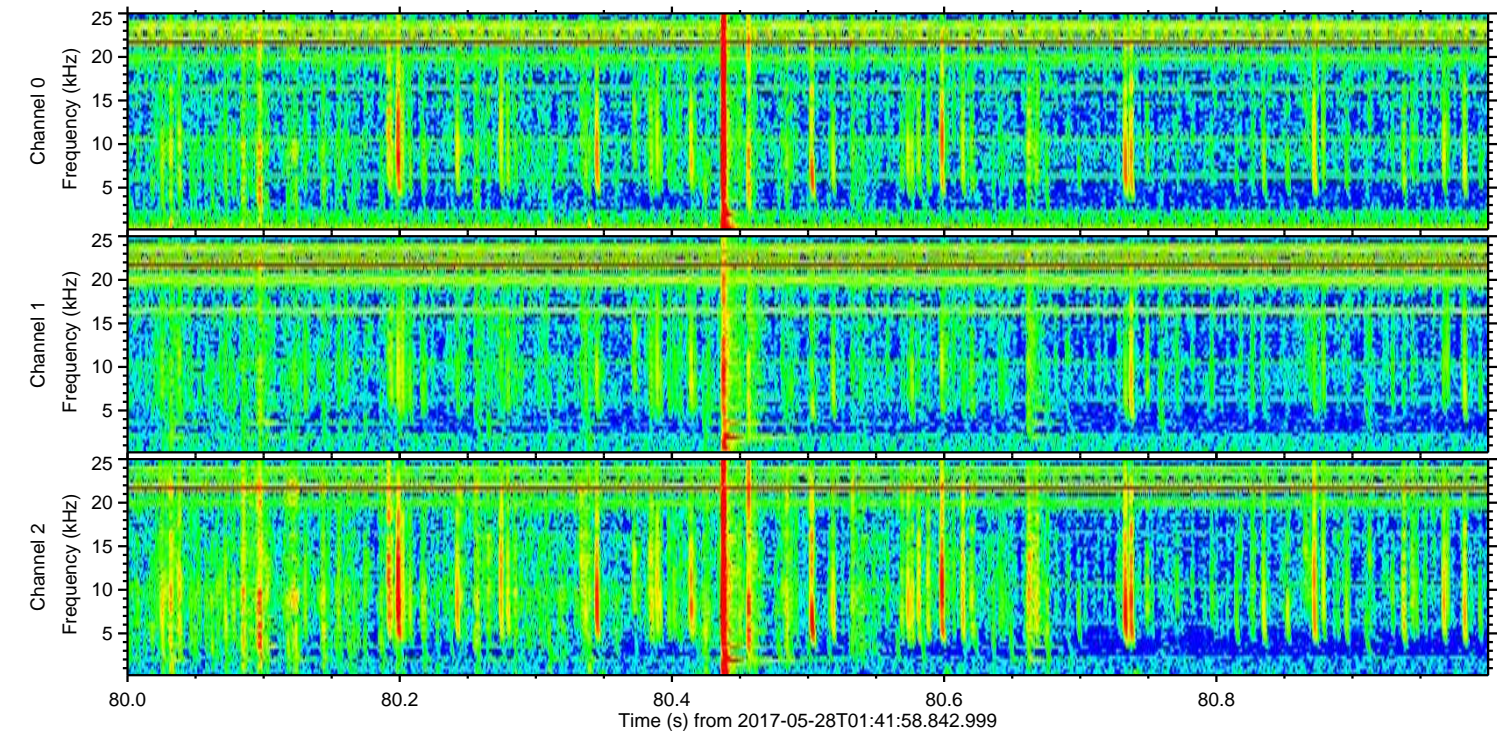
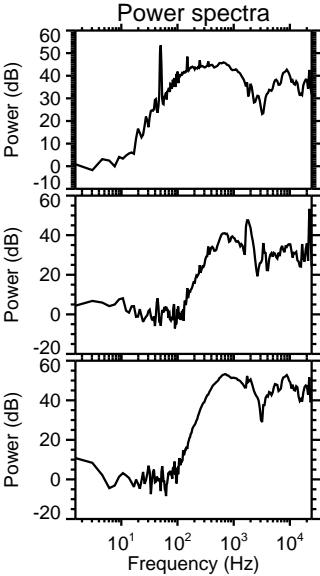
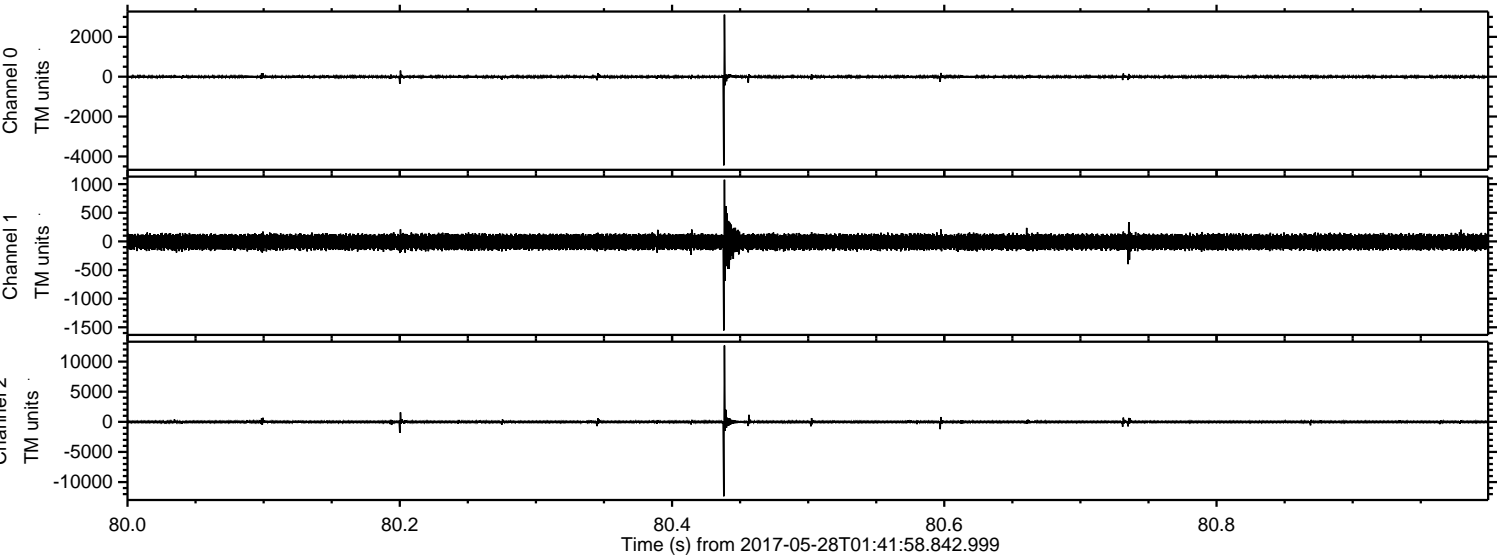


ELMAVAN 3D WAVEFORMS (Measured data sampled at 50 kHz) 51000 packets of 144 samples from 2017-05-28T01:41:58.842.999.

Processed Sun May 28 03:50:00 2017 by ELM ver.2012-10-06 from 001__elm20170528_014157__dat00.bin

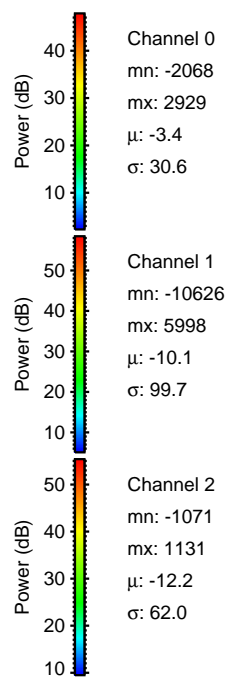
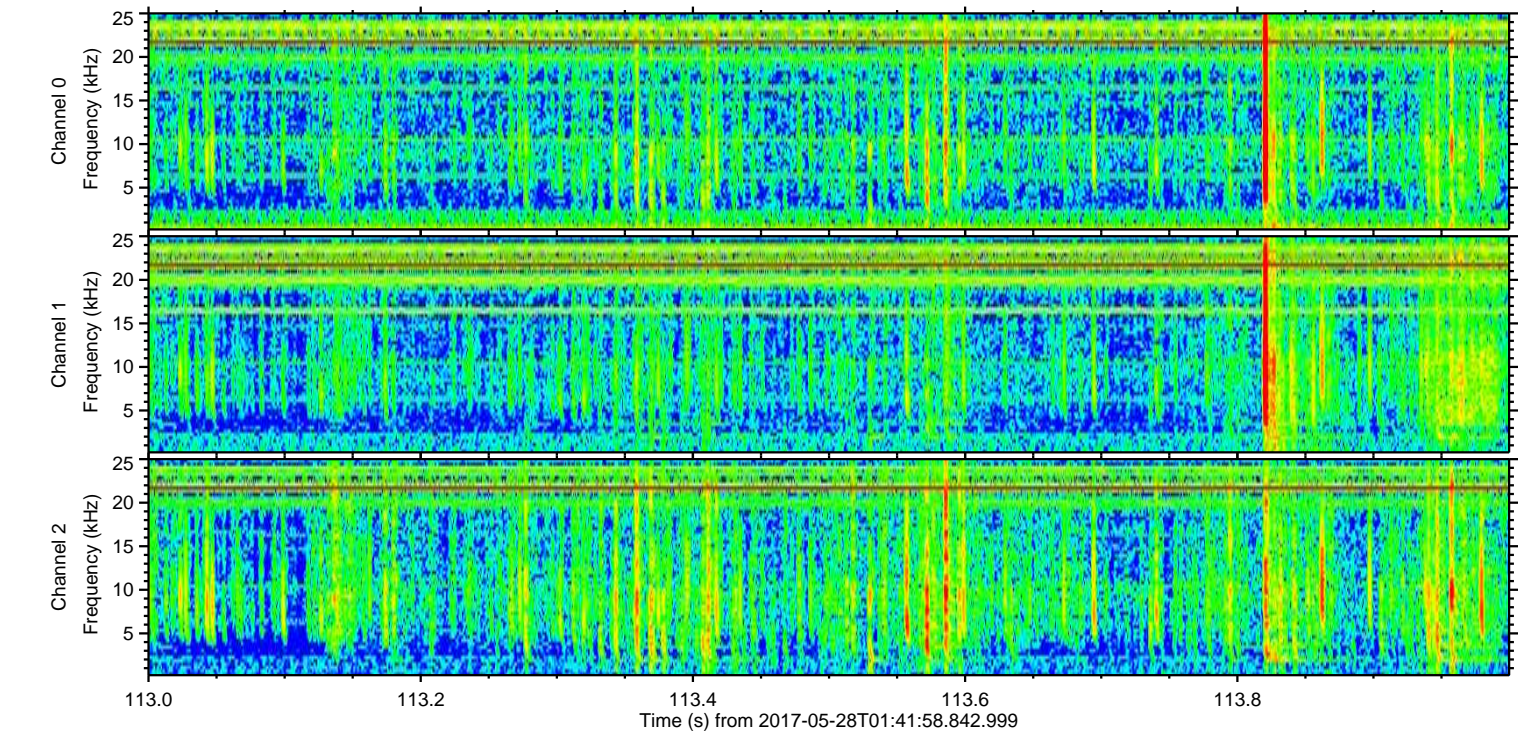
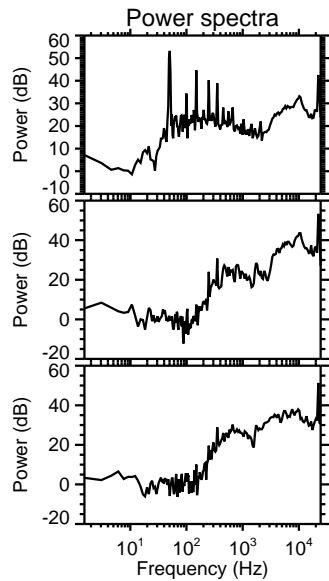
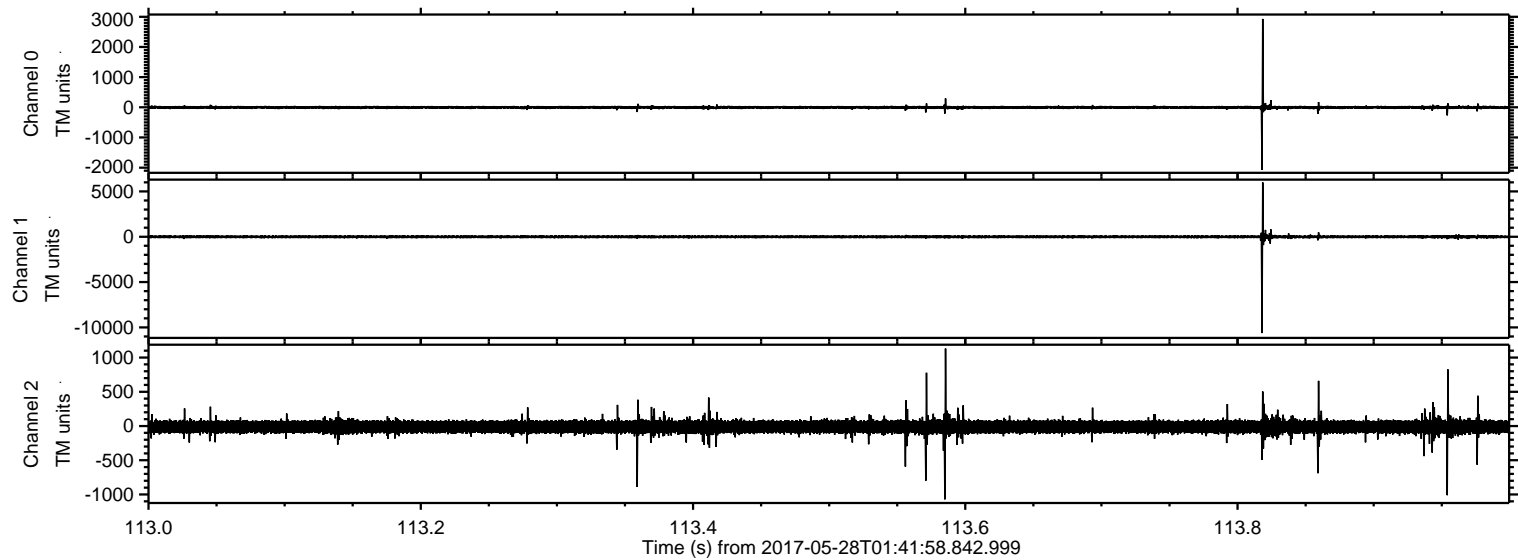


Processed Sun May 28 03:50:06 2017 by ELM ver.2012-10-06 from 001__elm20170528_014157__dat00.bin



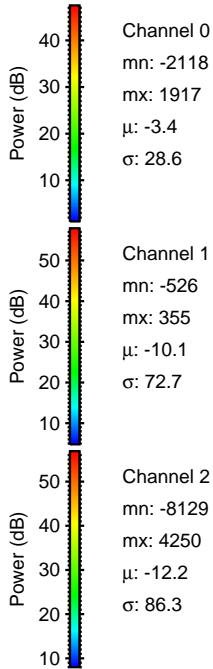
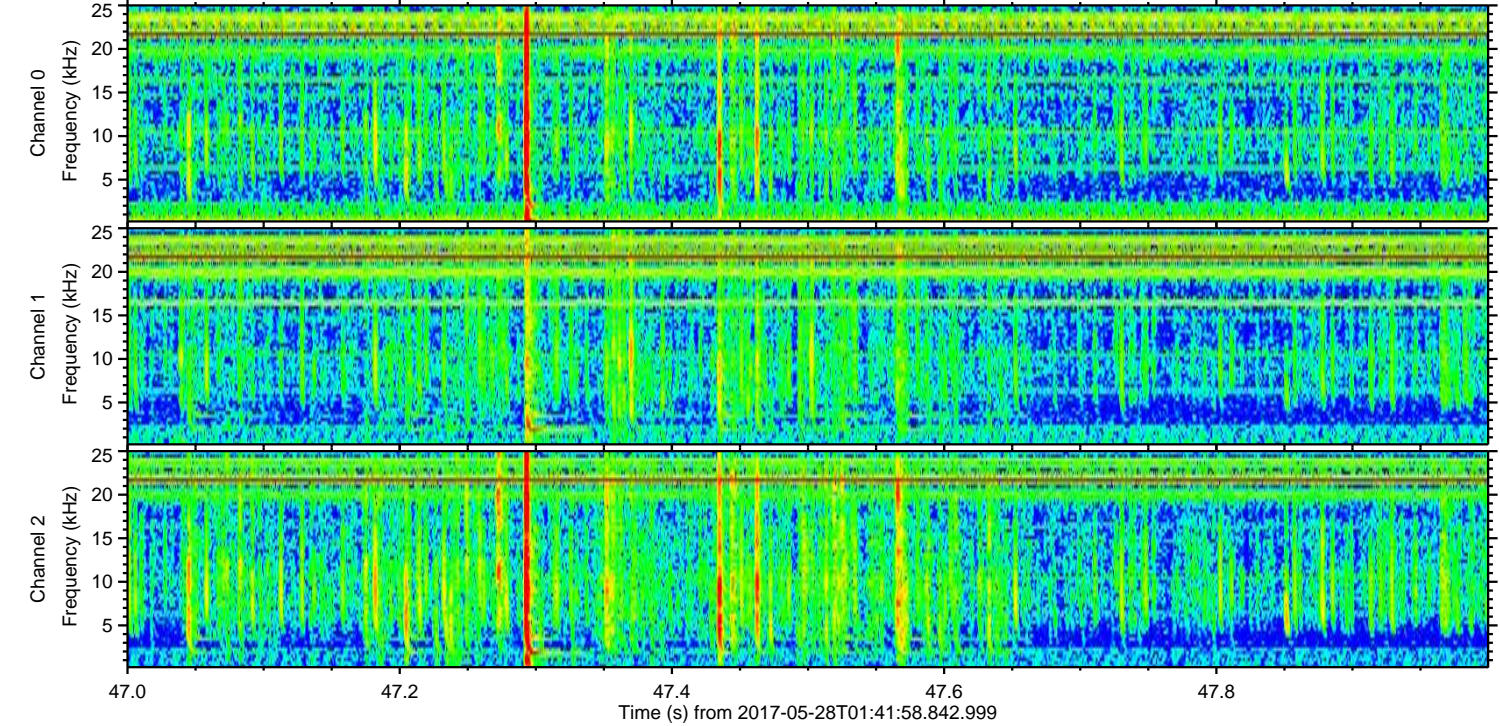
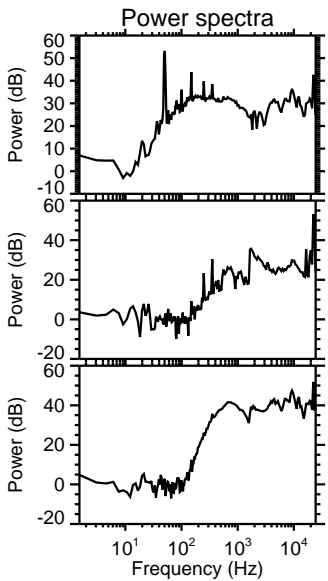
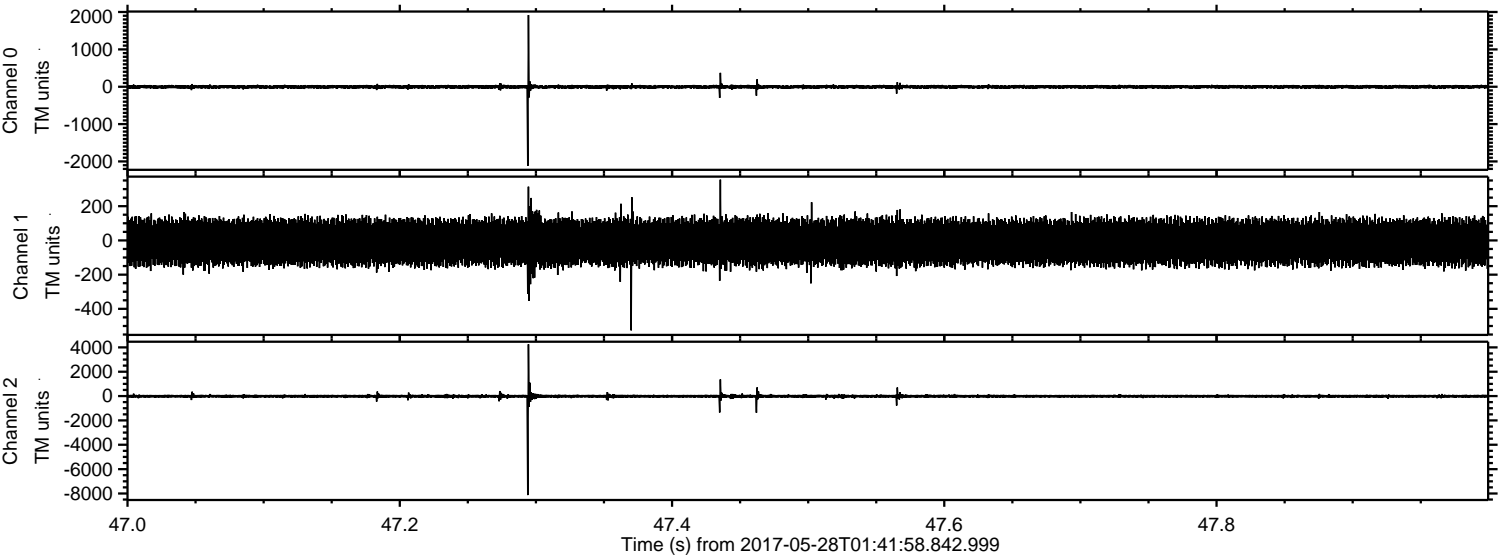
ELMAVAN 3D WAVEFORMS (Measured data sampled at 50 kHz) 51000 packets of 144 samples from 2017-05-28T01:41:58.842.999. Part 114/147

Processed Sun May 28 03:50:06 2017 by ELM ver.2012-10-06 from 001__elm20170528_014157__dat00.bin



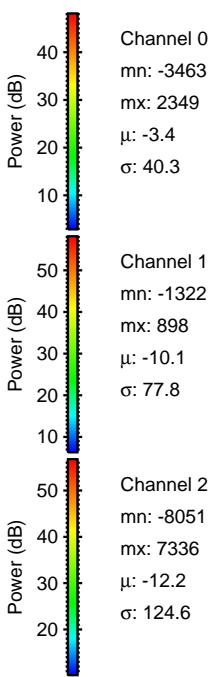
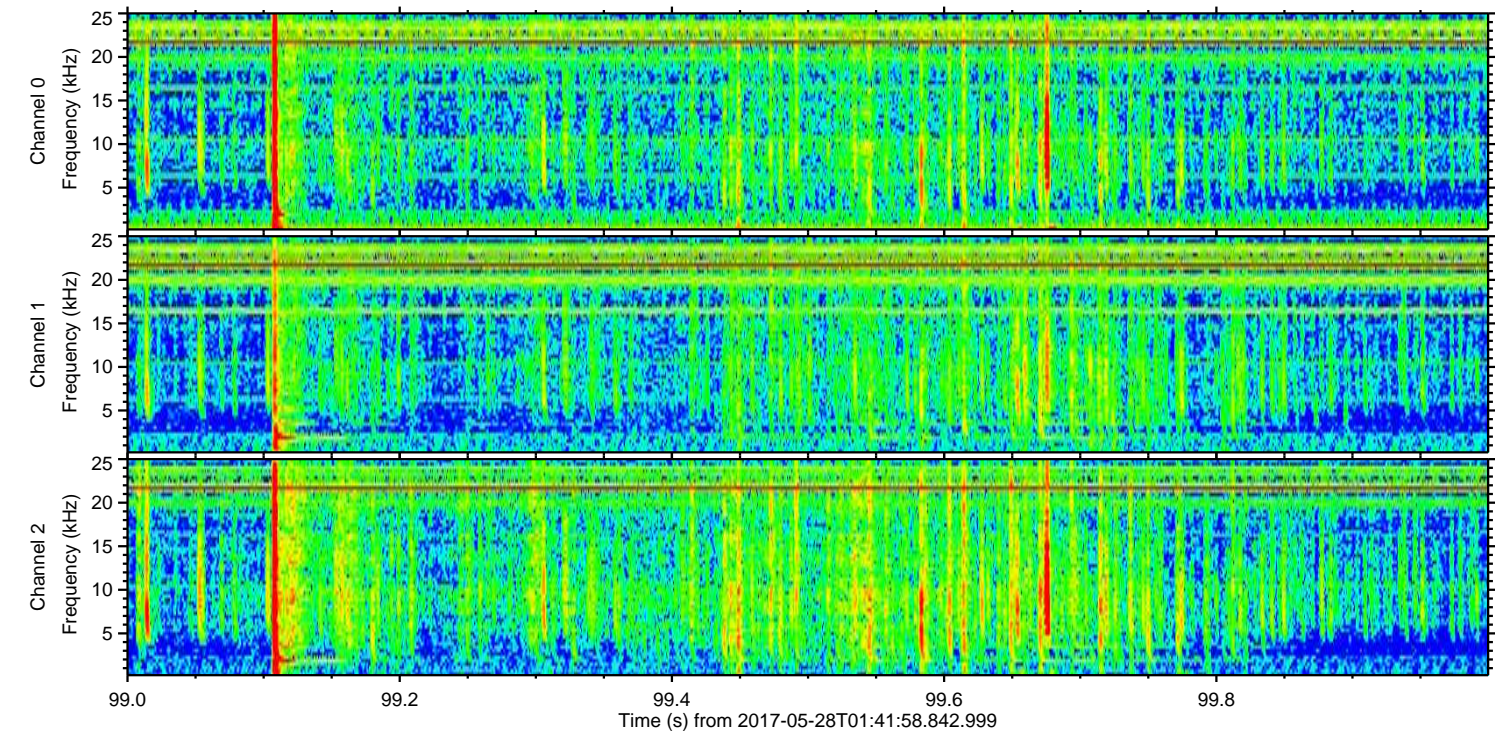
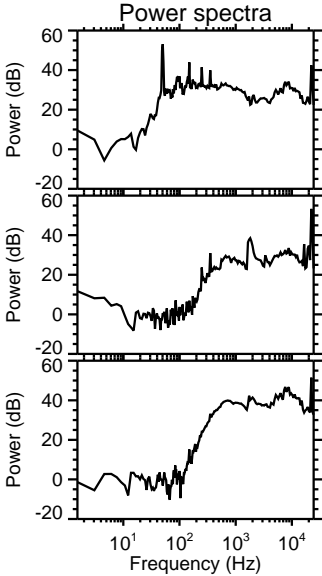
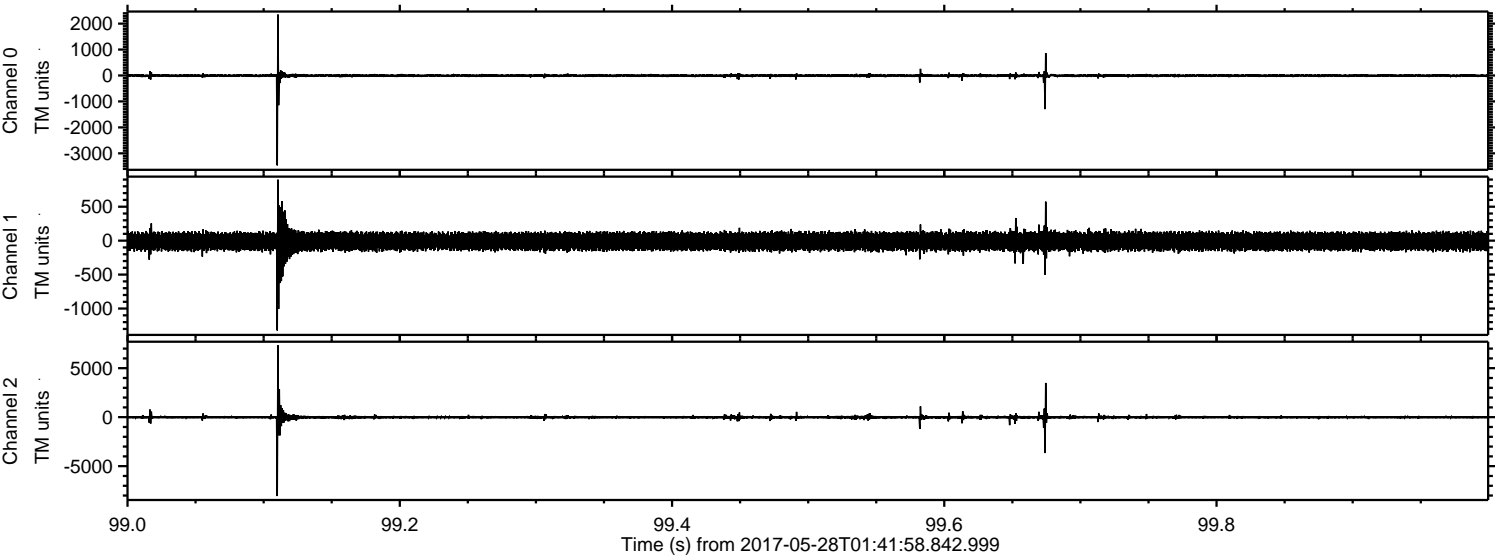
ELMAVAN 3D WAVEFORMS (Measured data sampled at 50 kHz) 51000 packets of 144 samples from 2017-05-28T01:41:58.842.999. Part 48/147

Processed Sun May 28 03:50:07 2017 by ELM ver.2012-10-06 from 001__elm20170528_014157__dat00.bin



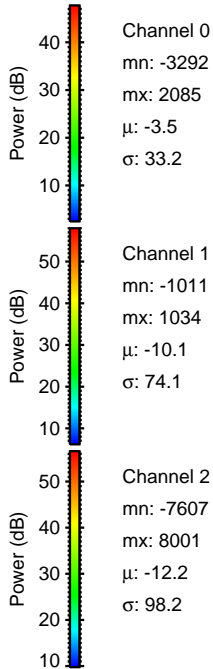
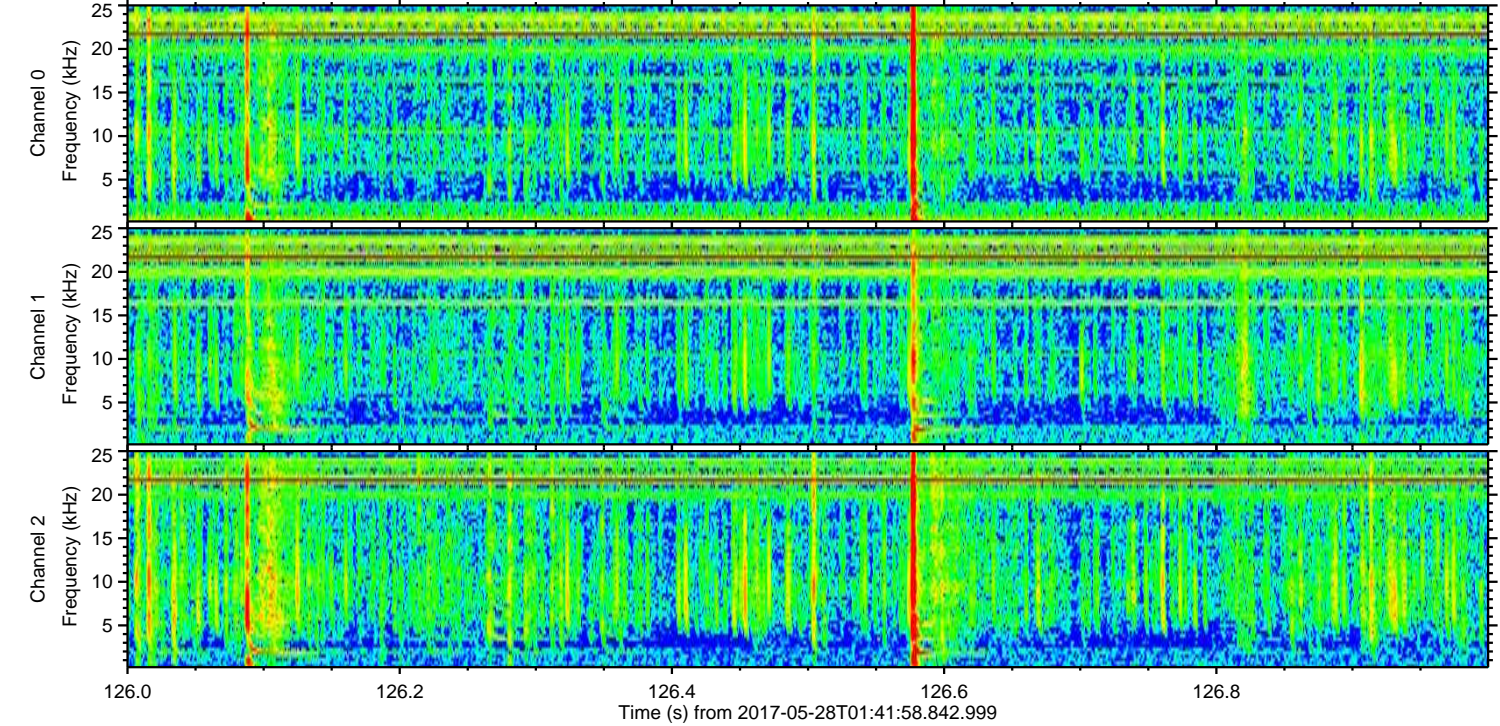
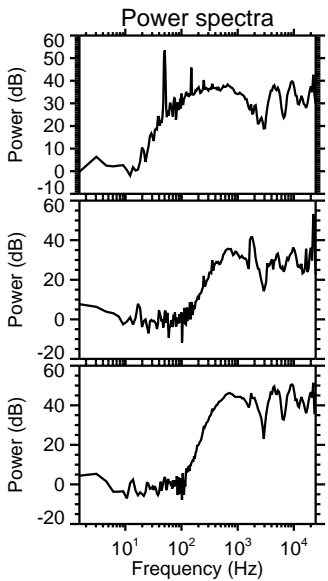
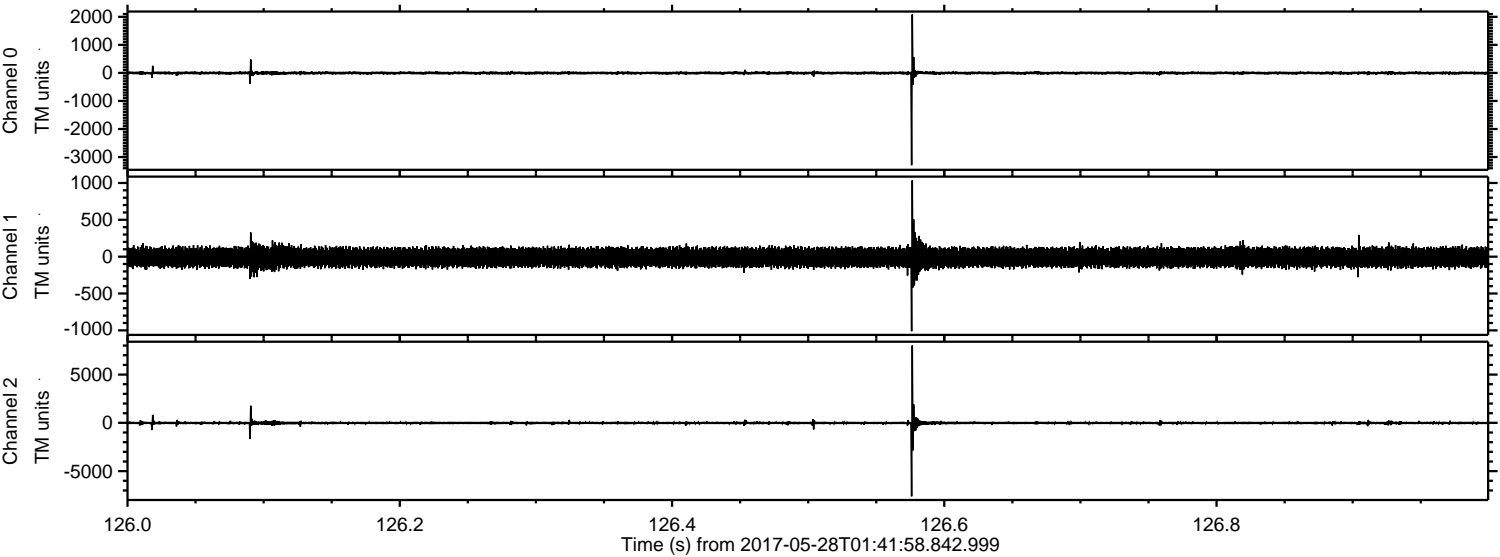
ELMAVAN 3D WAVEFORMS (Measured data sampled at 50 kHz) 51000 packets of 144 samples from 2017-05-28T01:41:58.842.999. Part 100/147

Processed Sun May 28 03:50:08 2017 by ELM ver.2012-10-06 from 001__elm20170528_014157__dat00.bin



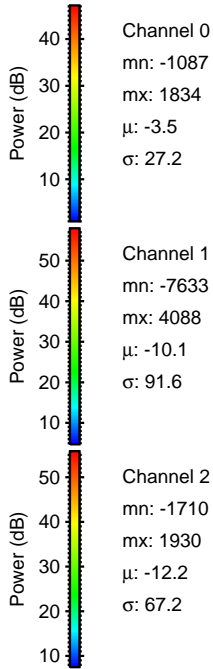
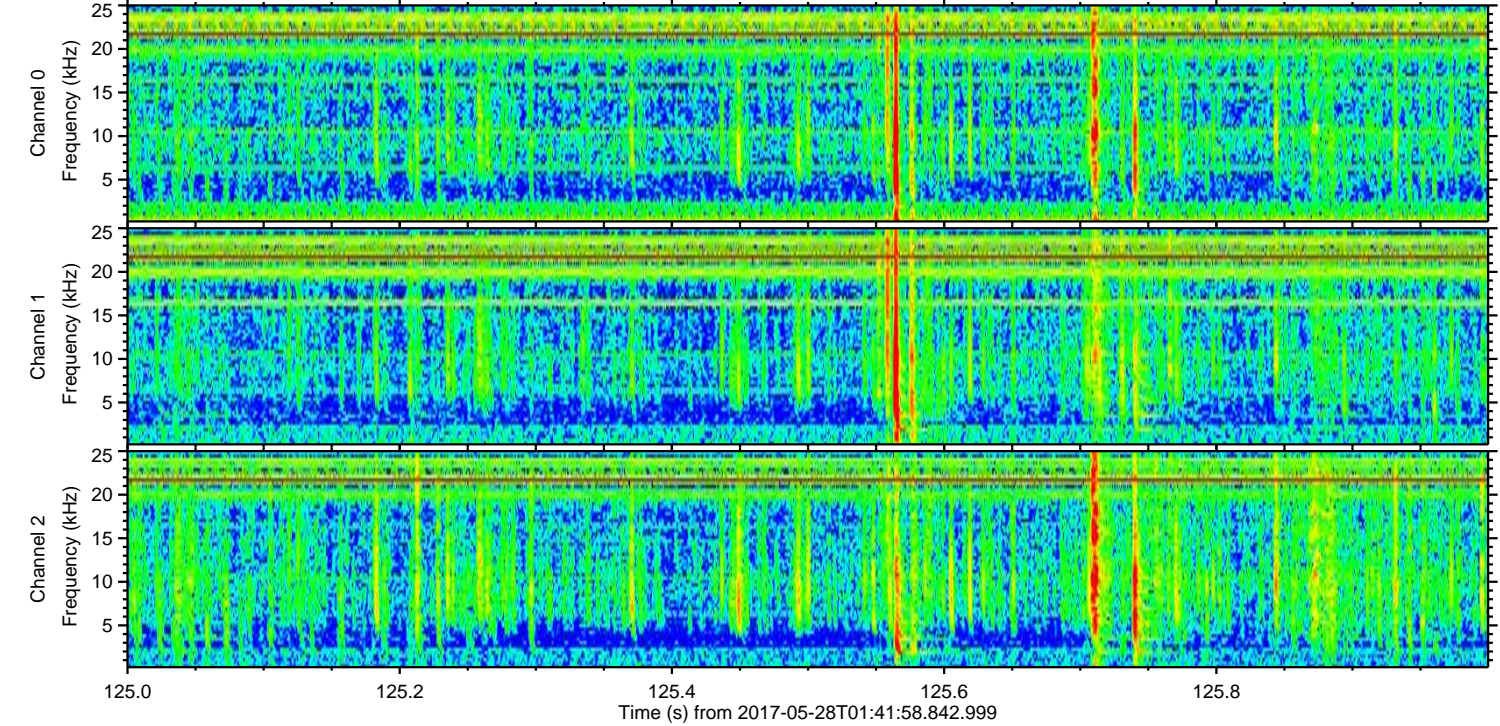
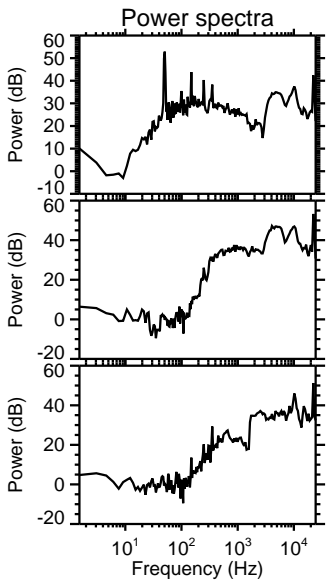
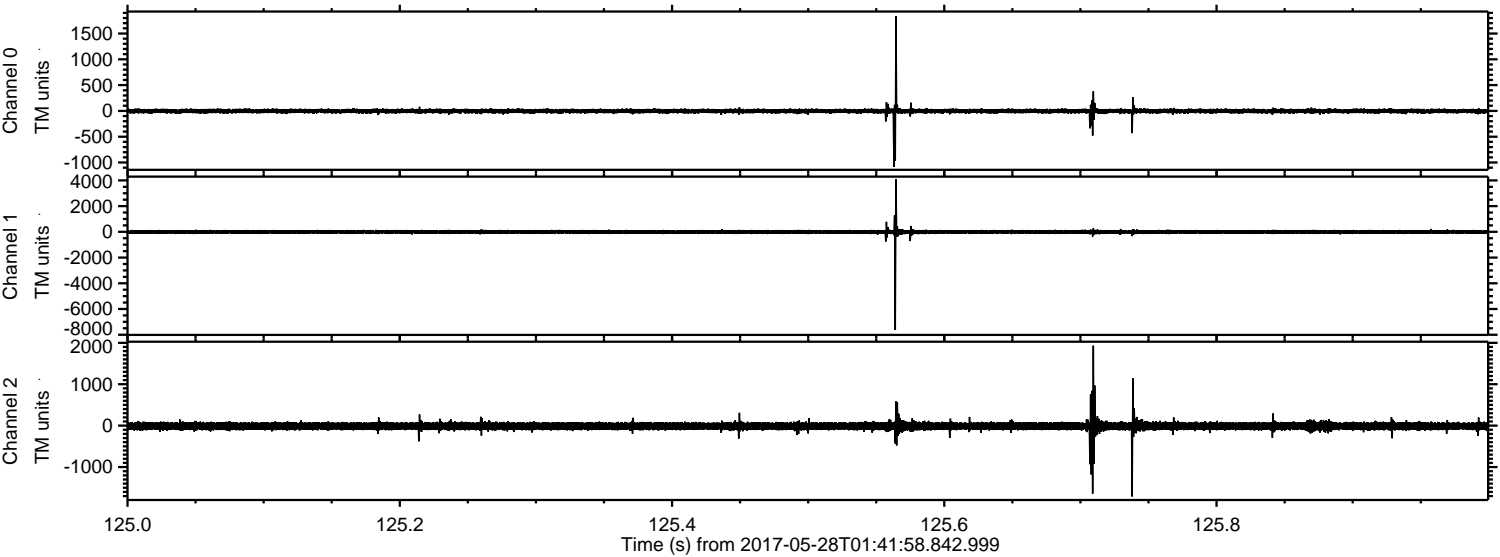
ELMAVAN 3D WAVEFORMS (Measured data sampled at 50 kHz) 51000 packets of 144 samples from 2017-05-28T01:41:58.842.999. Part 127/147

Processed Sun May 28 03:50:08 2017 by ELM ver.2012-10-06 from 001__elm20170528_014157__dat00.bin



ELMAVAN 3D WAVEFORMS (Measured data sampled at 50 kHz) 51000 packets of 144 samples from 2017-05-28T01:41:58.842.999. Part 126/147

Processed Sun May 28 03:50:09 2017 by ELM ver.2012-10-06 from 001__elm20170528_014157__dat00.bin

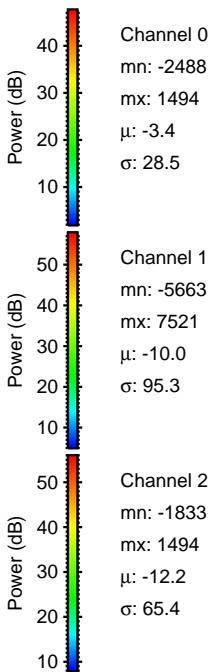
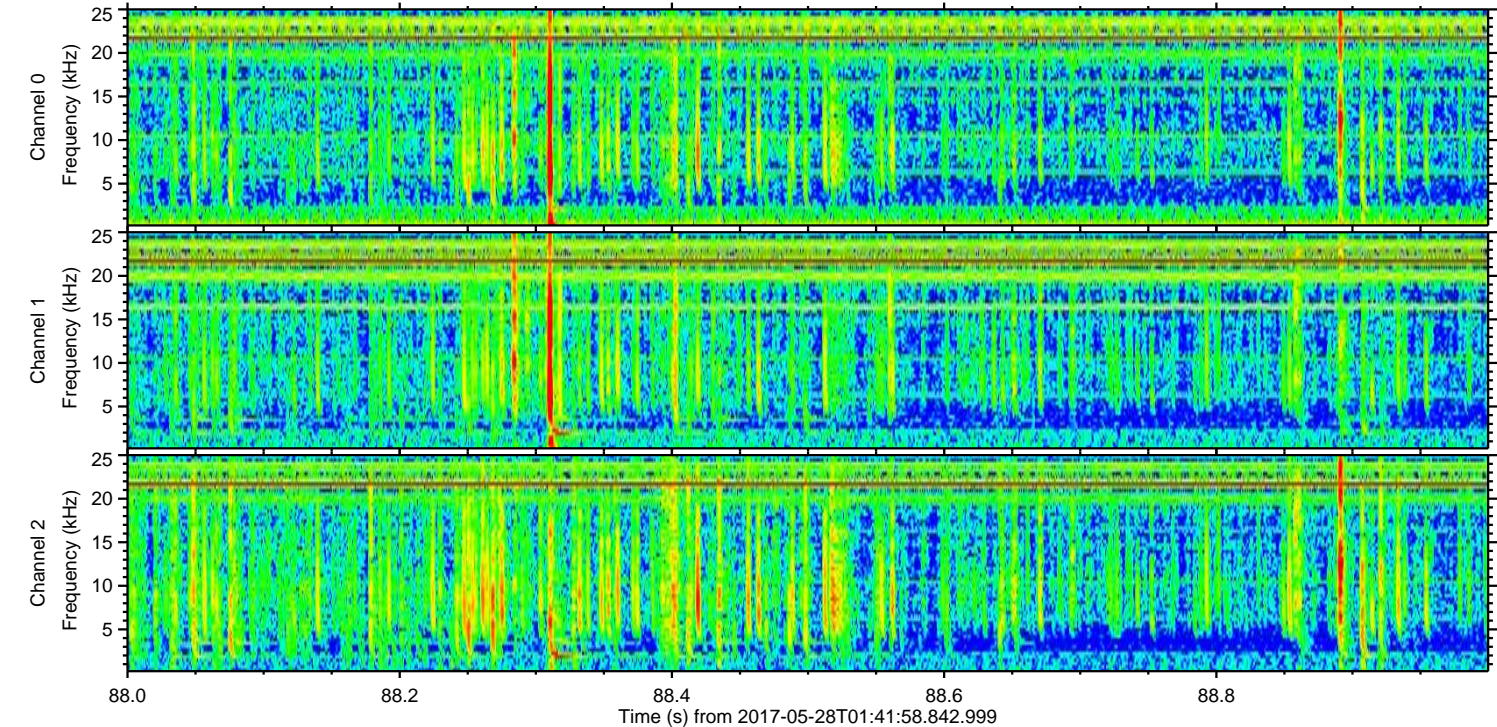
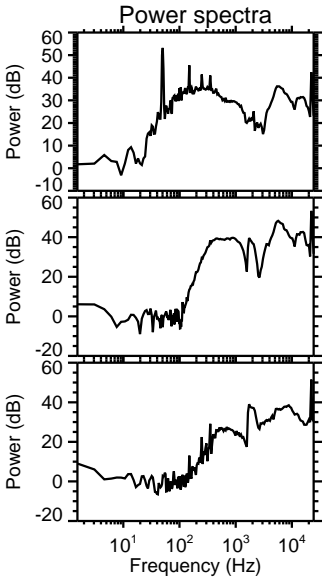
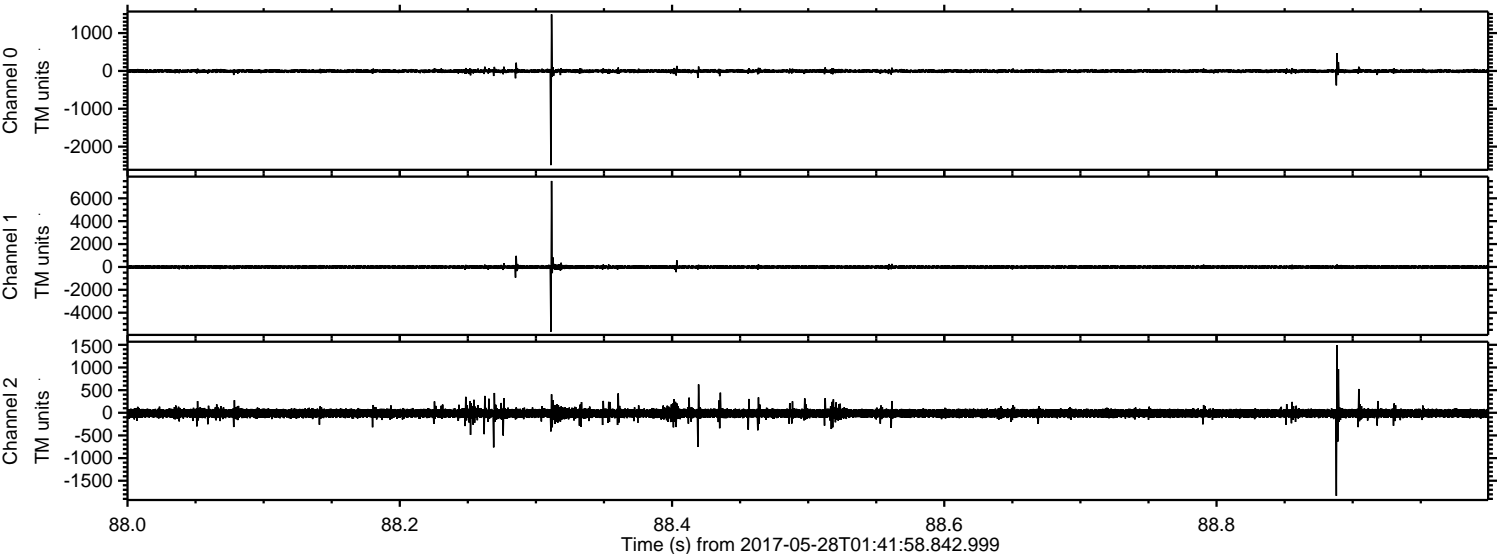


Channel 0
mn: -1087
mx: 1834
 μ : -3.5
 σ : 27.2

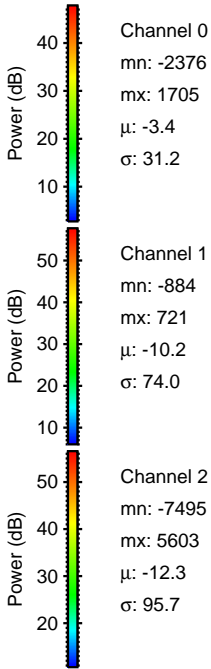
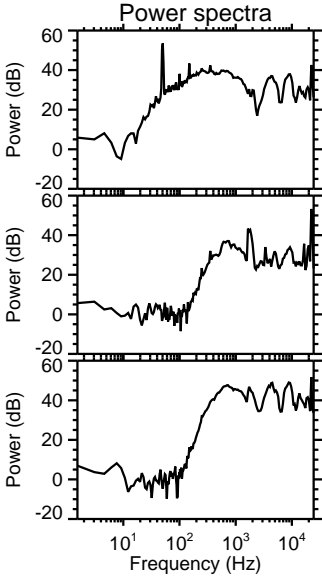
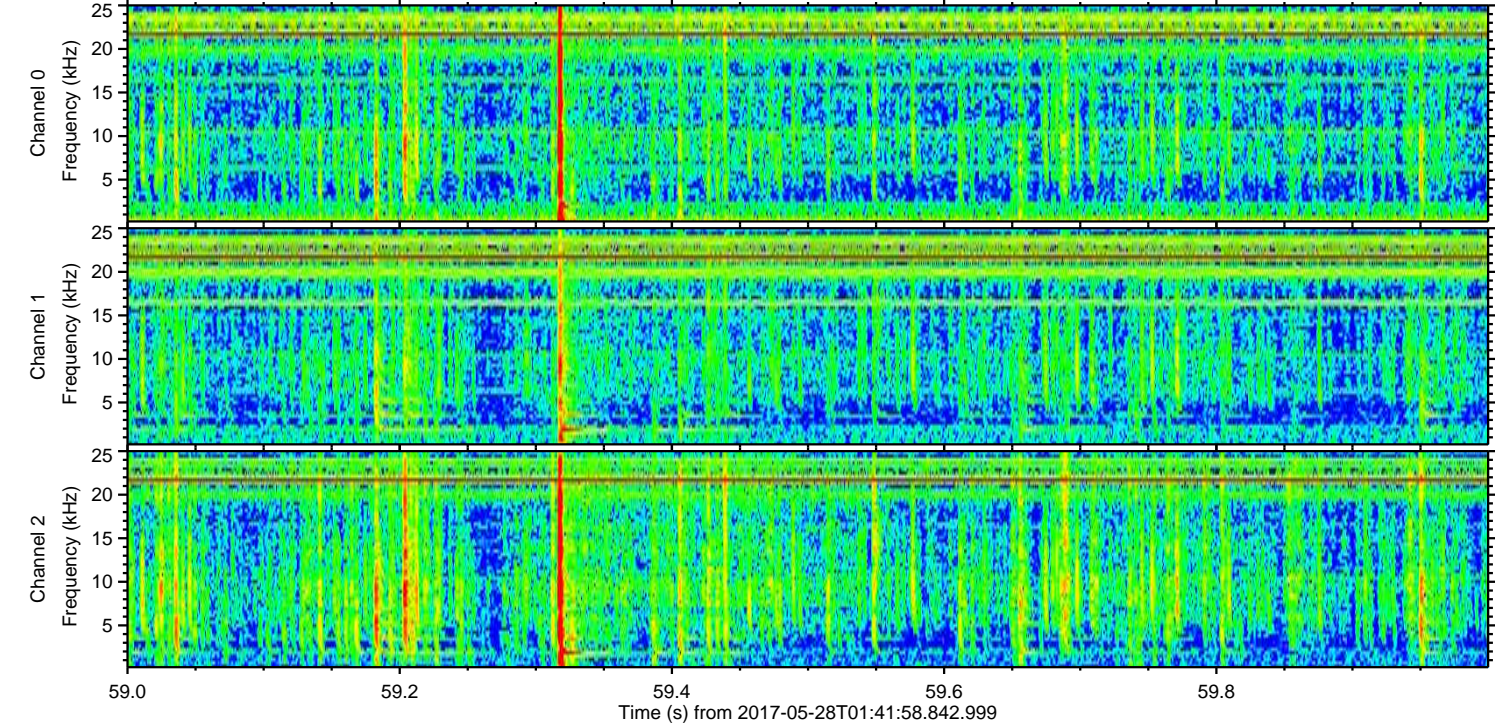
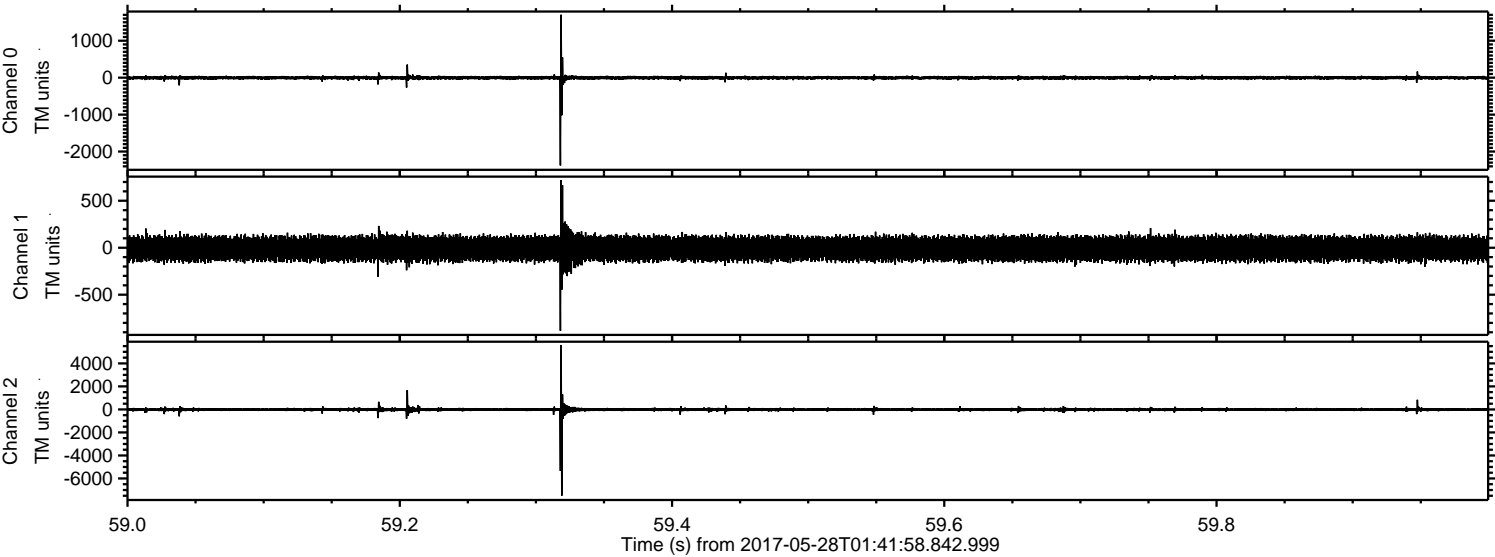
Channel 1
mn: -7633
mx: 4088
 μ : -10.1
 σ : 91.6

Channel 2
mn: -1710
mx: 1930
 μ : -12.2
 σ : 67.2

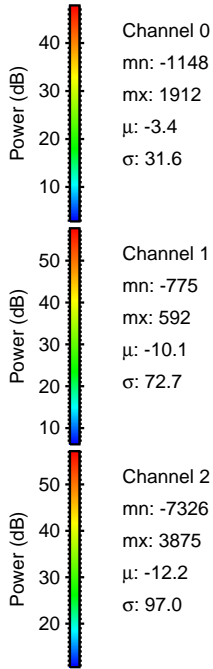
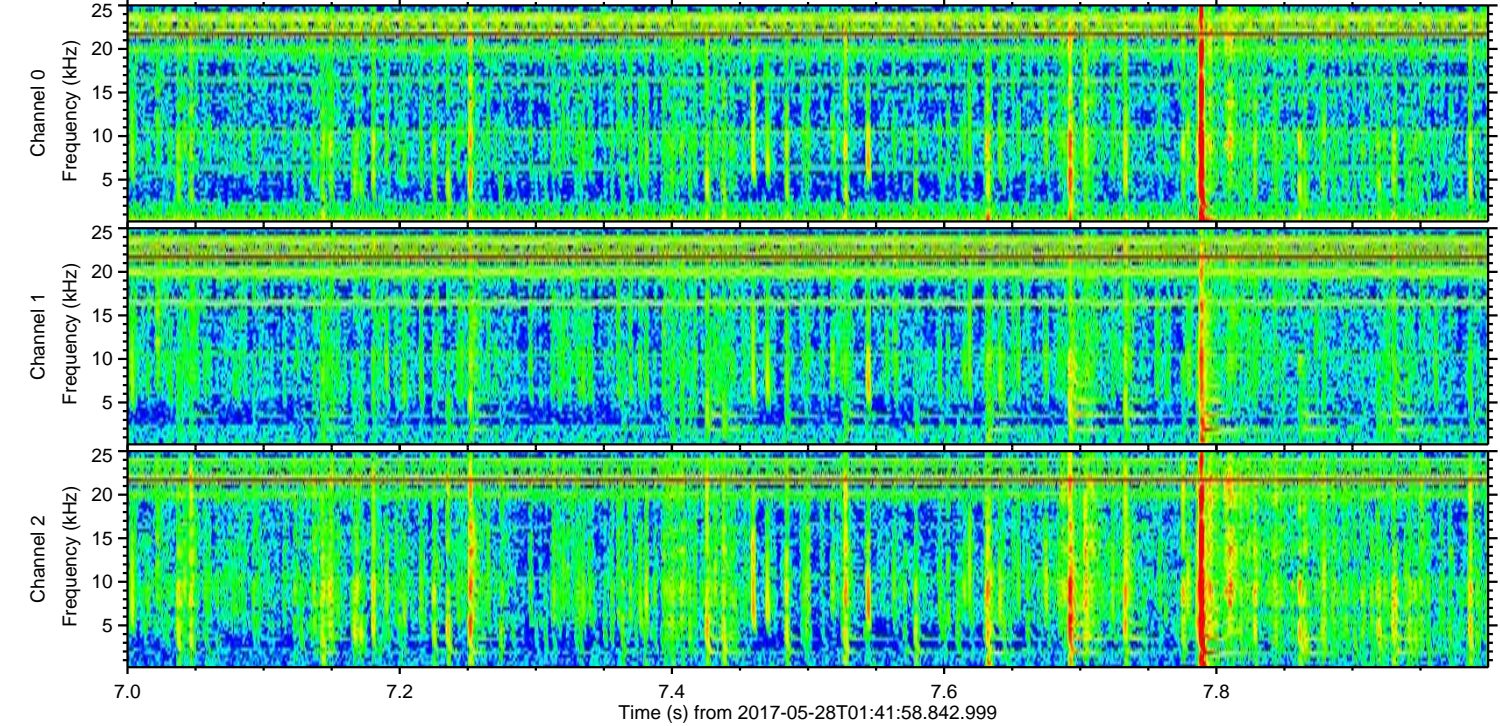
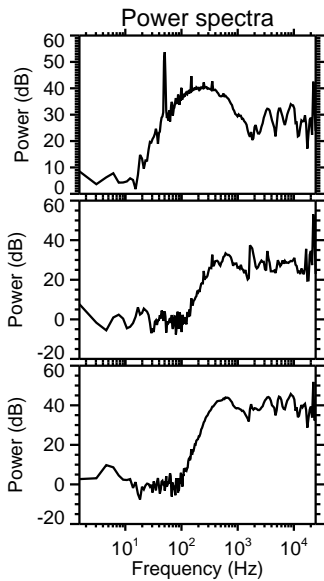
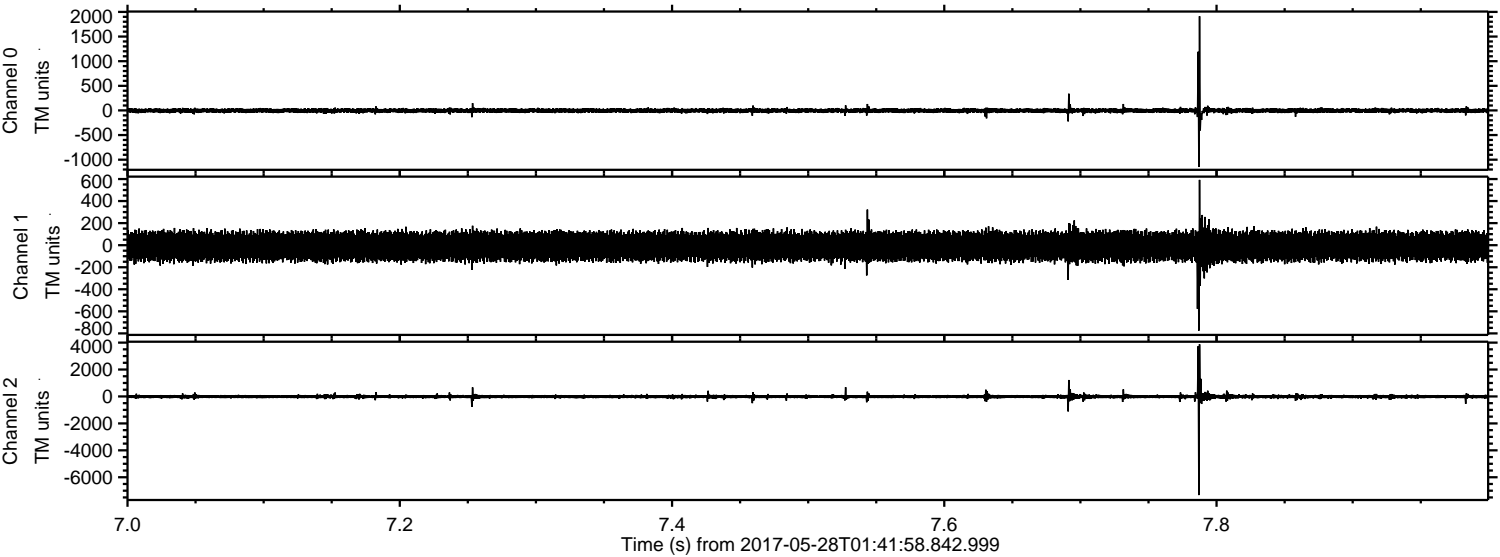
Processed Sun May 28 03:50:09 2017 by ELM ver.2012-10-06 from 001__elm20170528_014157__dat00.bin



Processed Sun May 28 03:50:10 2017 by ELM ver.2012-10-06 from 001__elm20170528_014157__dat00.bin



Processed Sun May 28 03:50:11 2017 by ELM ver.2012-10-06 from 001__elm20170528_014157__dat00.bin



Processed Sun May 28 03:50:11 2017 by ELM ver.2012-10-06 from 001__elm20170528_014157__dat00.bin

