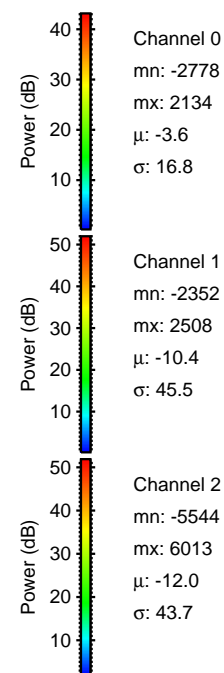
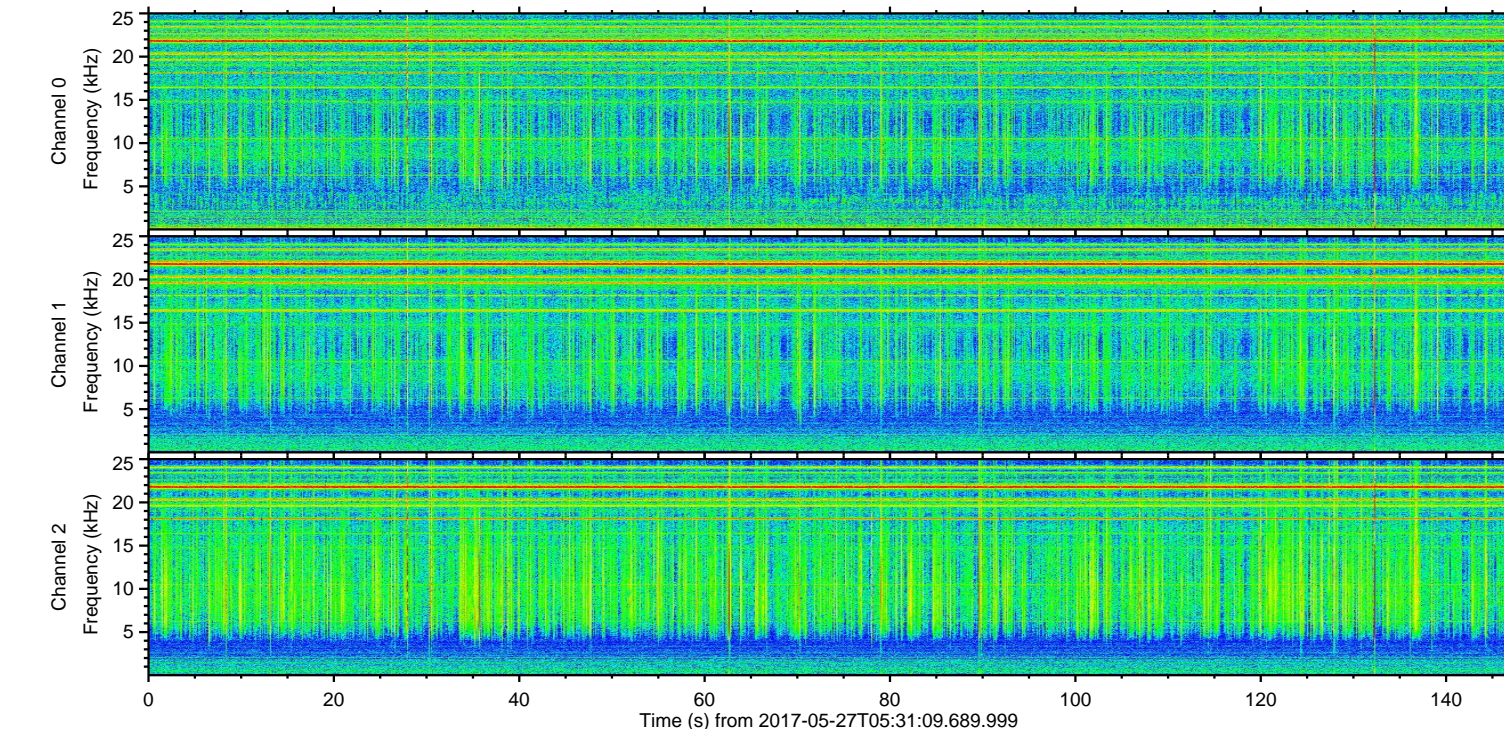
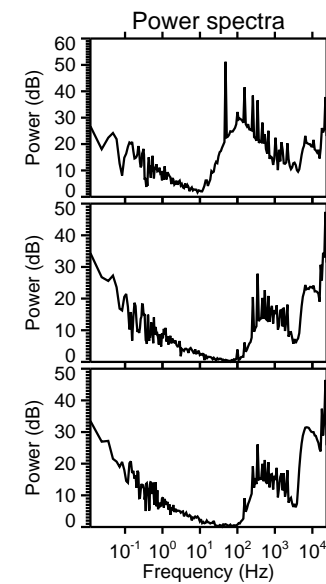
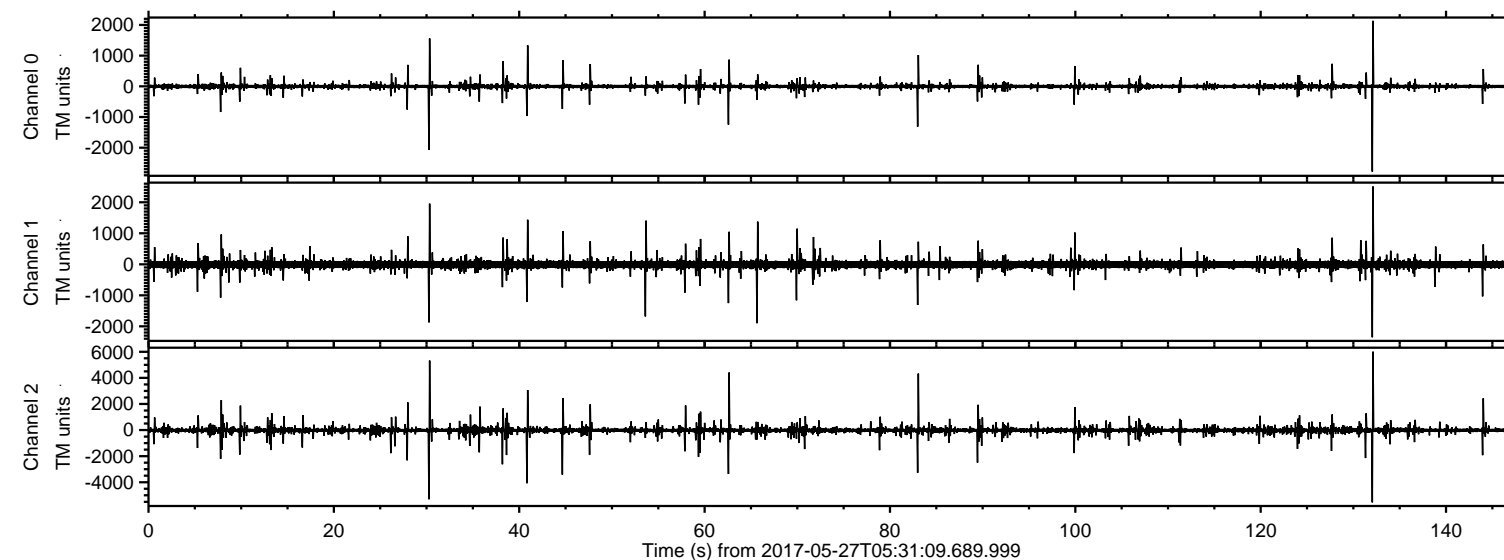


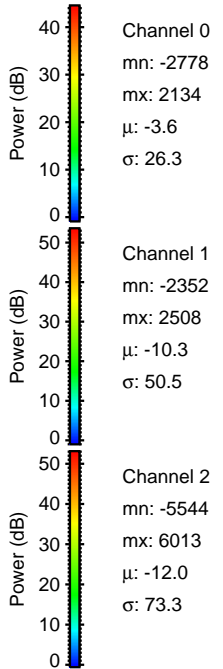
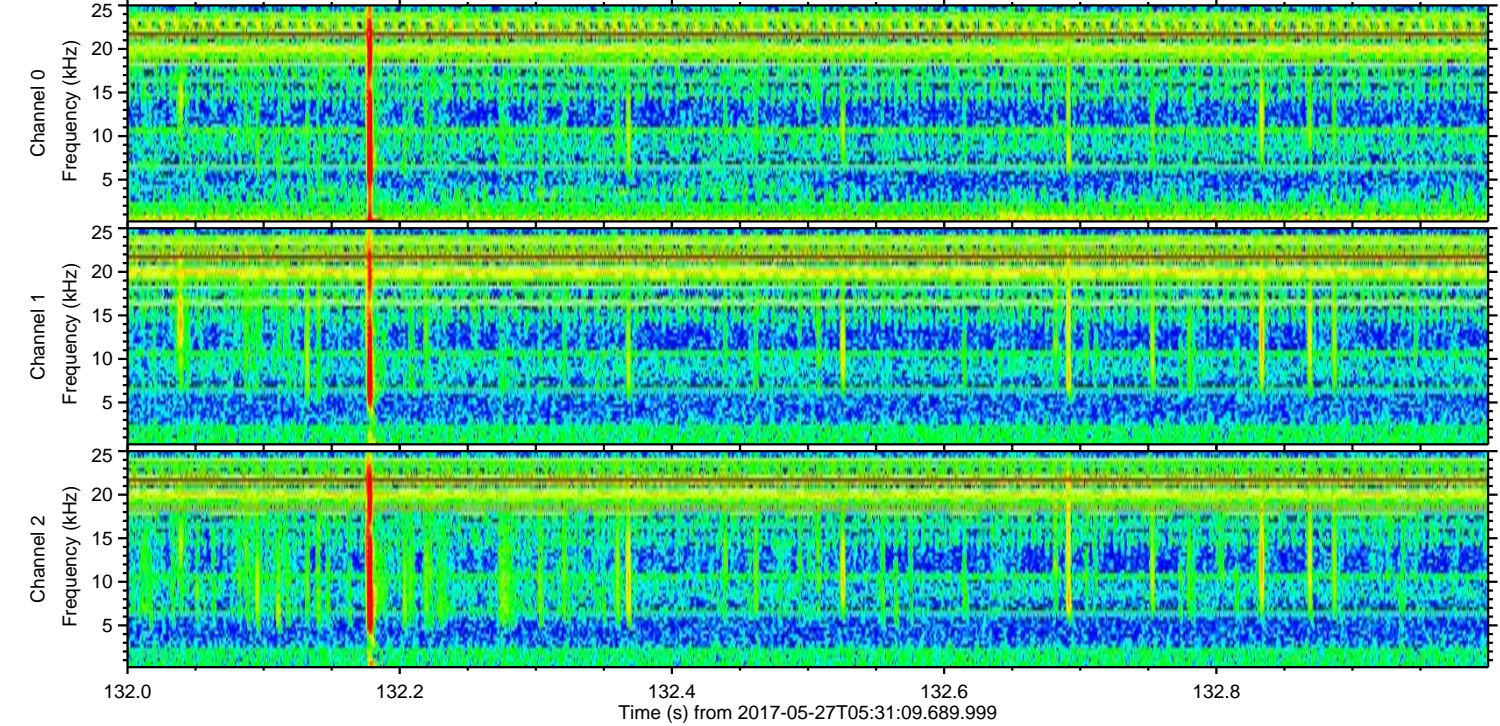
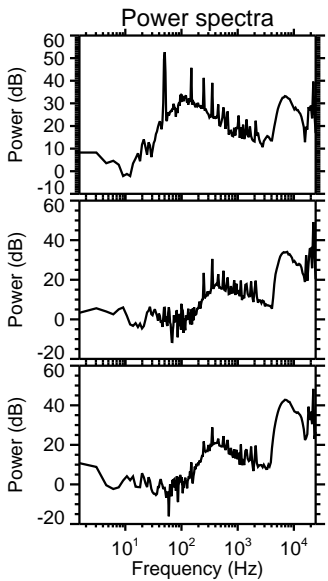
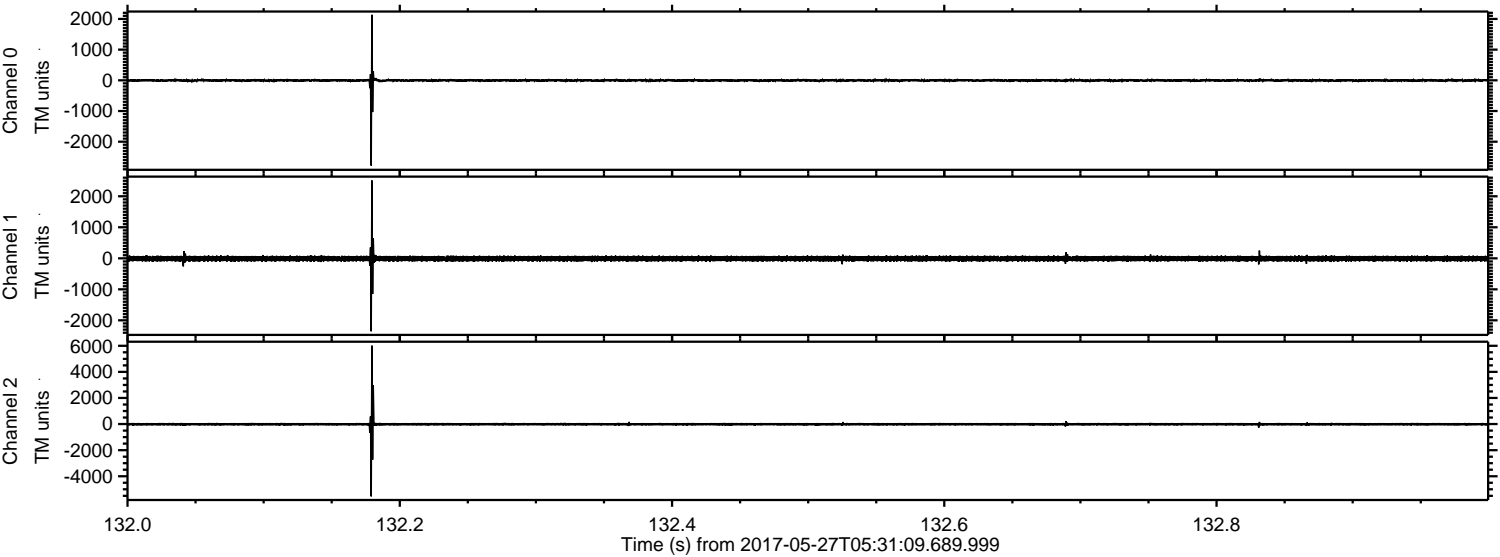
ELMAVAN 3D WAVEFORMS (Measured data sampled at 50 kHz) 51000 packets of 144 samples from 2017-05-27T05:31:09.689.999.

Processed Sat May 27 07:38:58 2017 by ELM ver.2012-10-06 from 001__elm20170527_053108__dat00.bin



ELMAVAN 3D WAVEFORMS (Measured data sampled at 50 kHz) 51000 packets of 144 samples from 2017-05-27T05:31:09.689.999. Part 133/147

Processed Sat May 27 07:39:04 2017 by ELM ver.2012-10-06 from 001__elm20170527_053108__dat00.bin



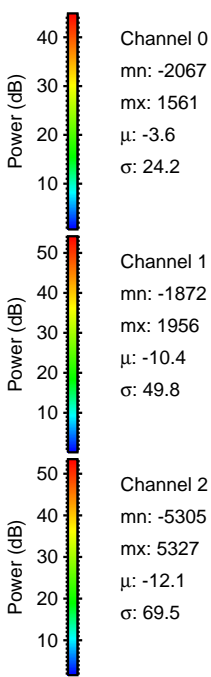
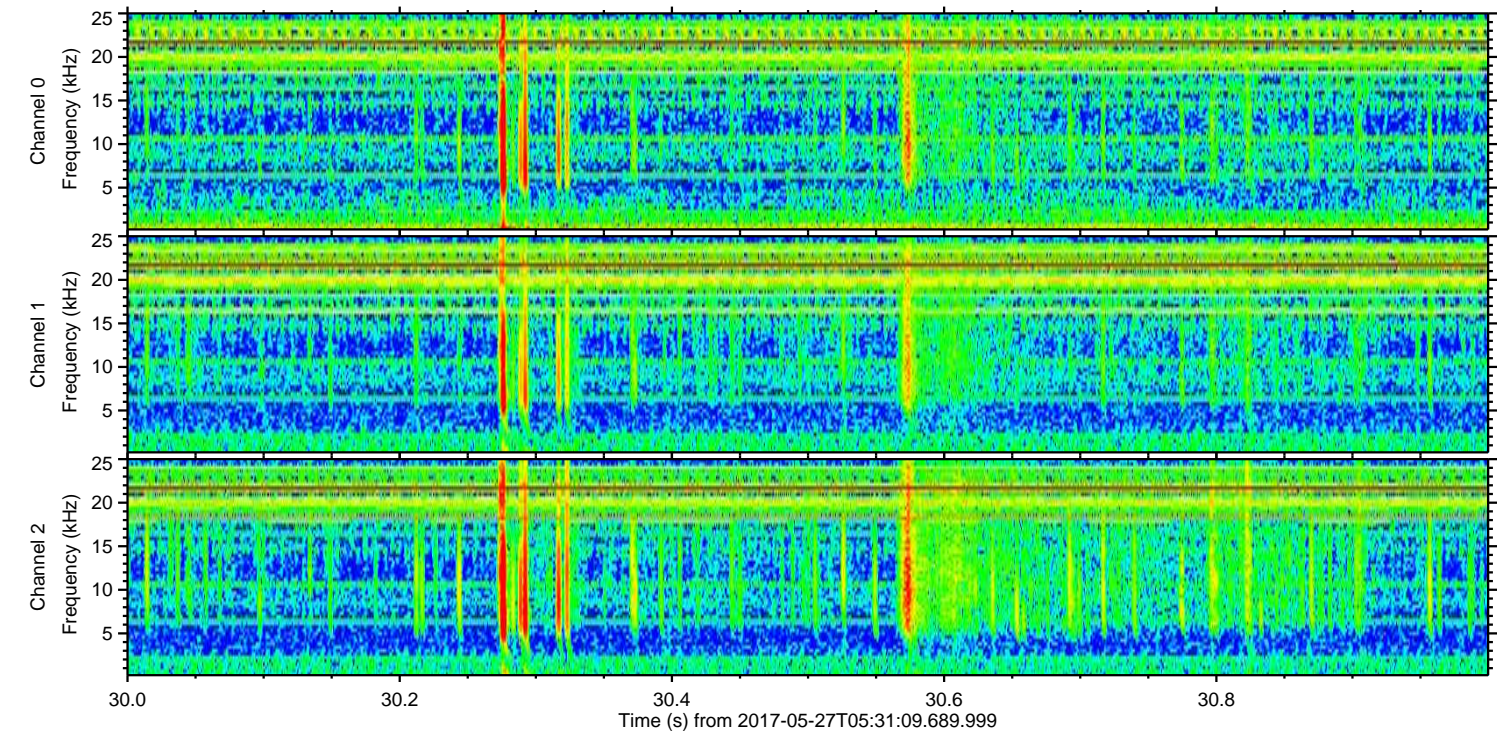
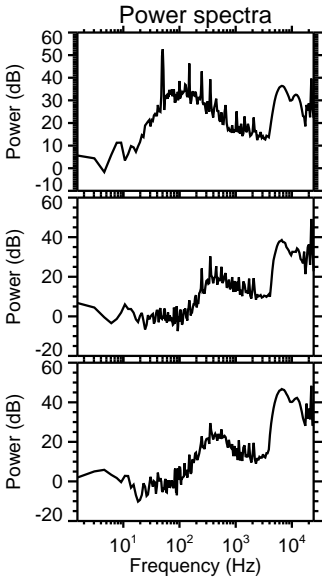
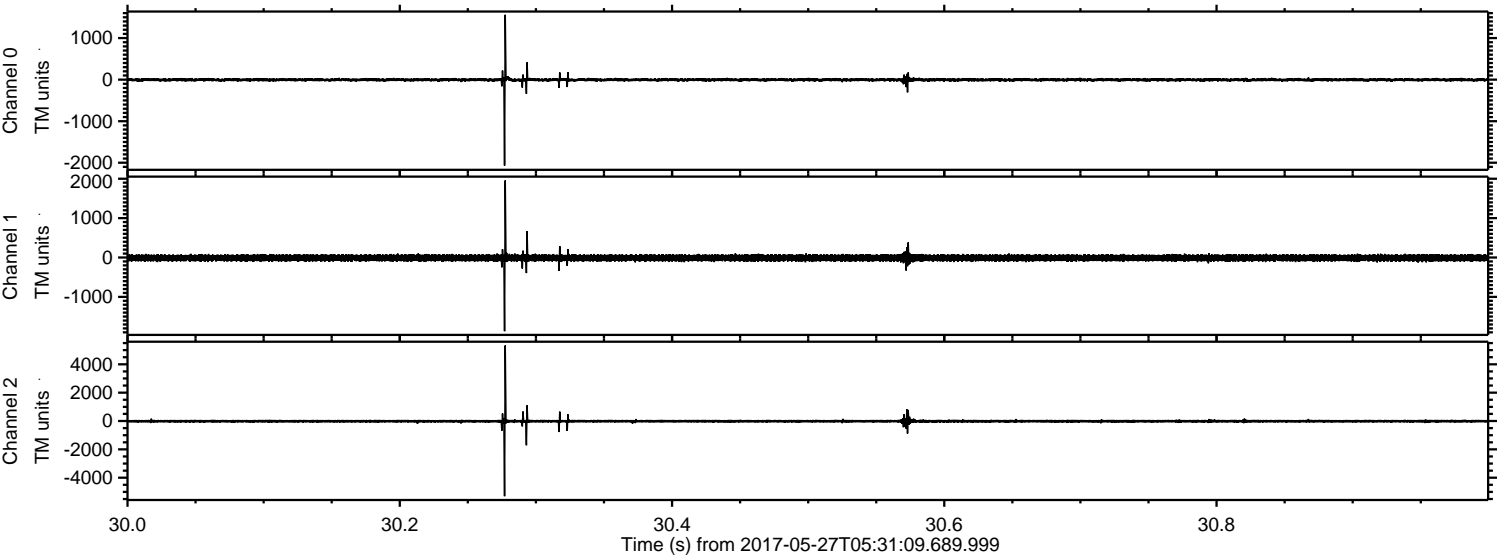
Channel 0
mn: -2778
mx: 2134
 μ : -3.6
 σ : 26.3

Channel 1
mn: -2352
mx: 2508
 μ : -10.3
 σ : 50.5

Channel 2
mn: -5544
mx: 6013
 μ : -12.0
 σ : 73.3

ELMAVAN 3D WAVEFORMS (Measured data sampled at 50 kHz) 51000 packets of 144 samples from 2017-05-27T05:31:09.689.999. Part 31/147

Processed Sat May 27 07:39:05 2017 by ELM ver.2012-10-06 from 001__elm20170527_053108__dat00.bin



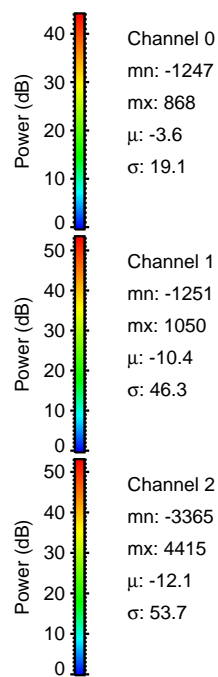
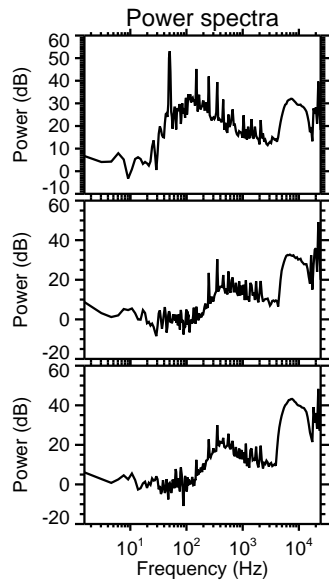
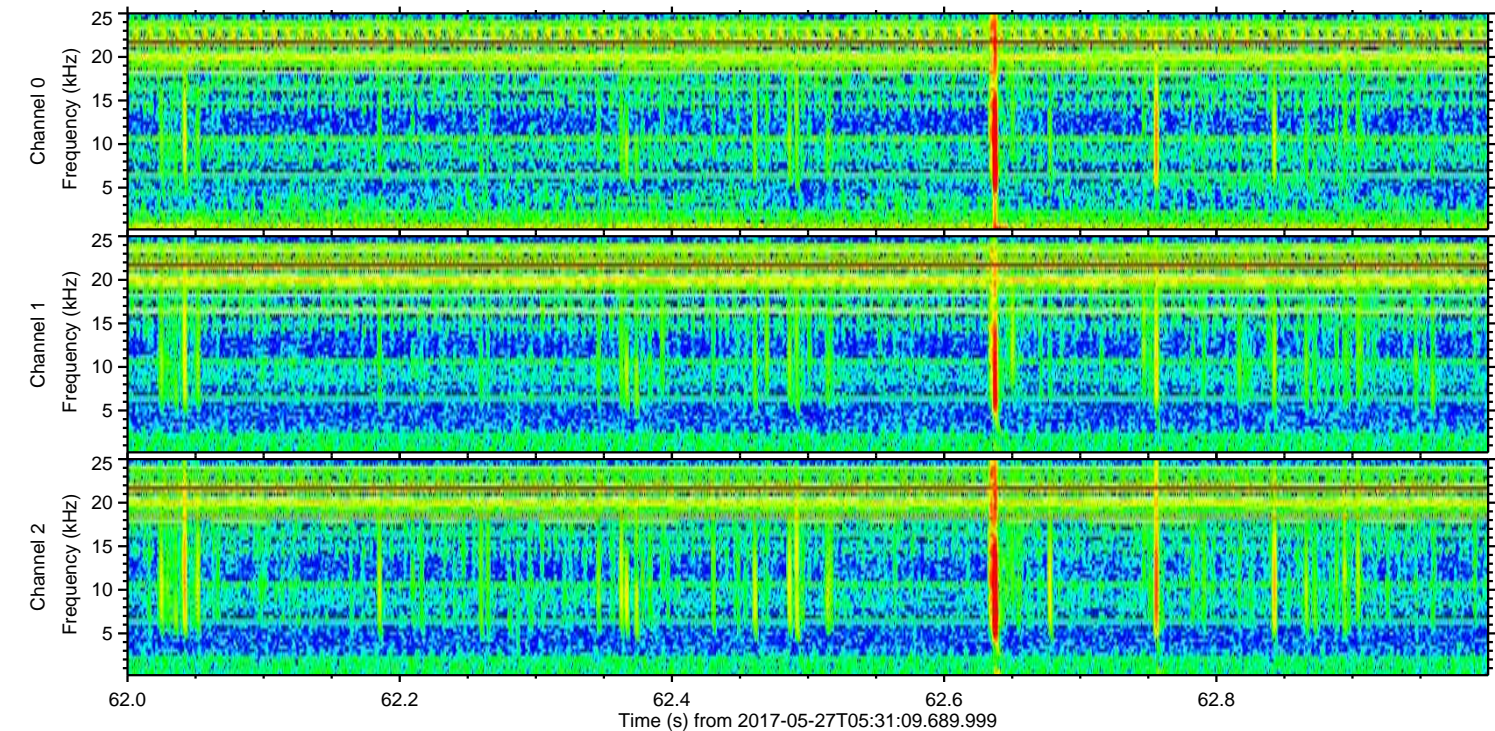
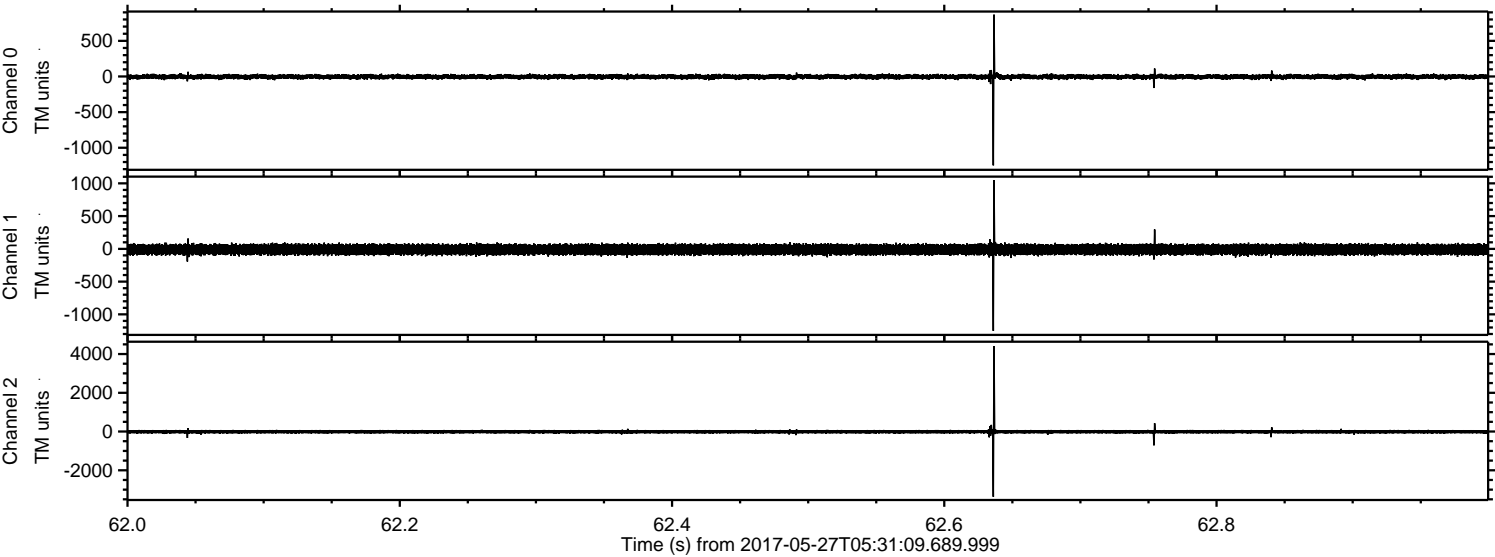
Power spectra

Channel 0
mn: -2067
mx: 1561
 μ : -3.6
 σ : 24.2

Channel 1
mn: -1872
mx: 1956
 μ : -10.4
 σ : 49.8

Channel 2
mn: -5305
mx: 5327
 μ : -12.1
 σ : 69.5

Processed Sat May 27 07:39:05 2017 by ELM ver.2012-10-06 from 001__elm20170527_053108__dat00.bin



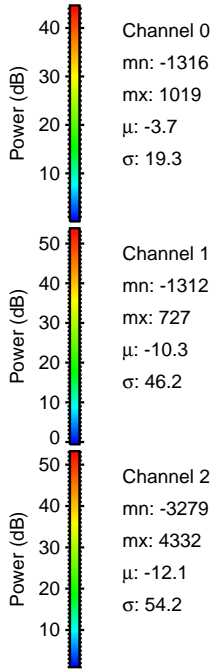
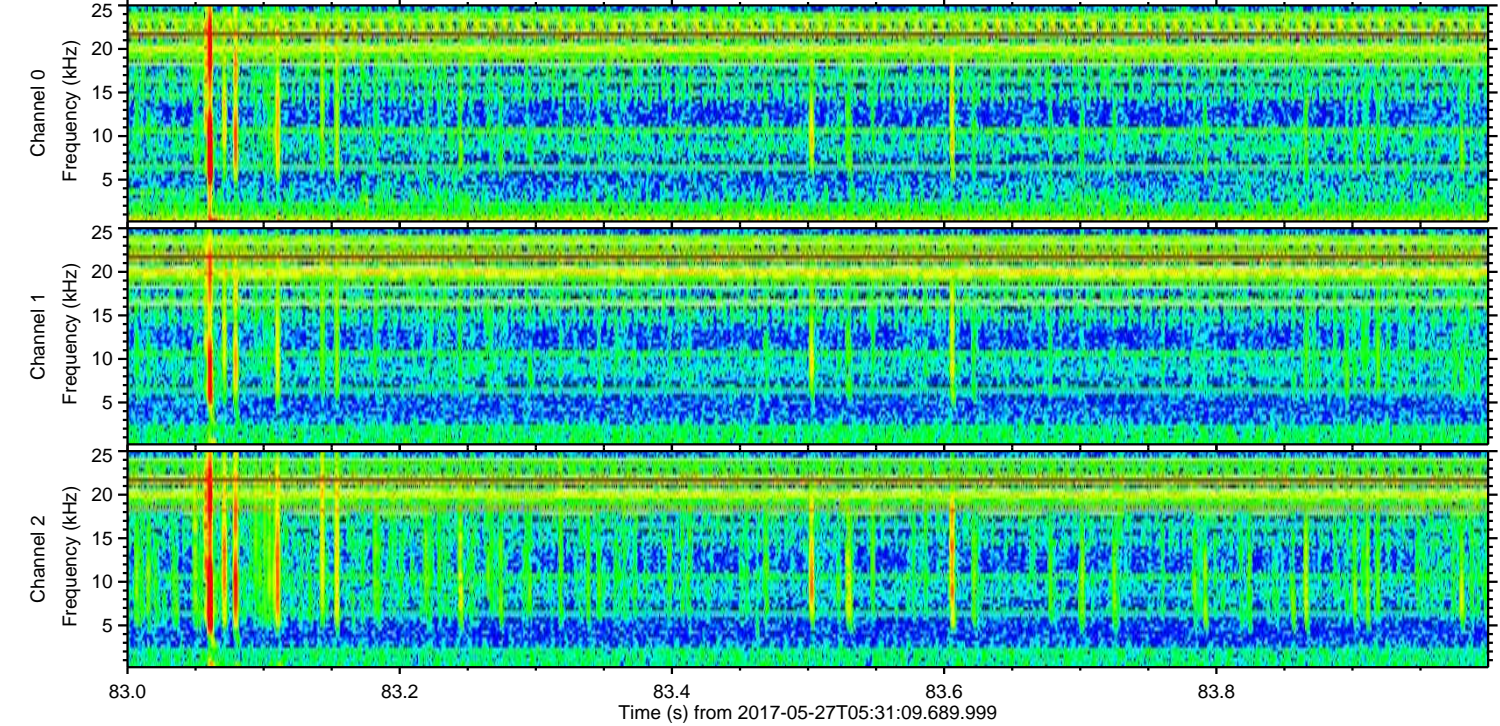
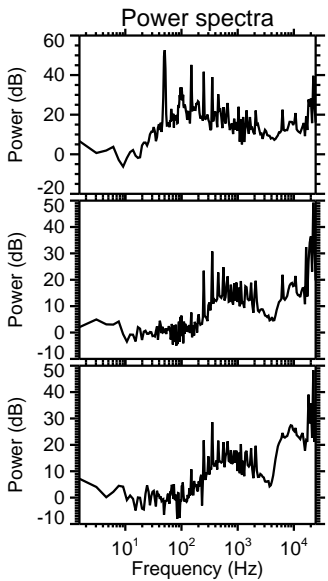
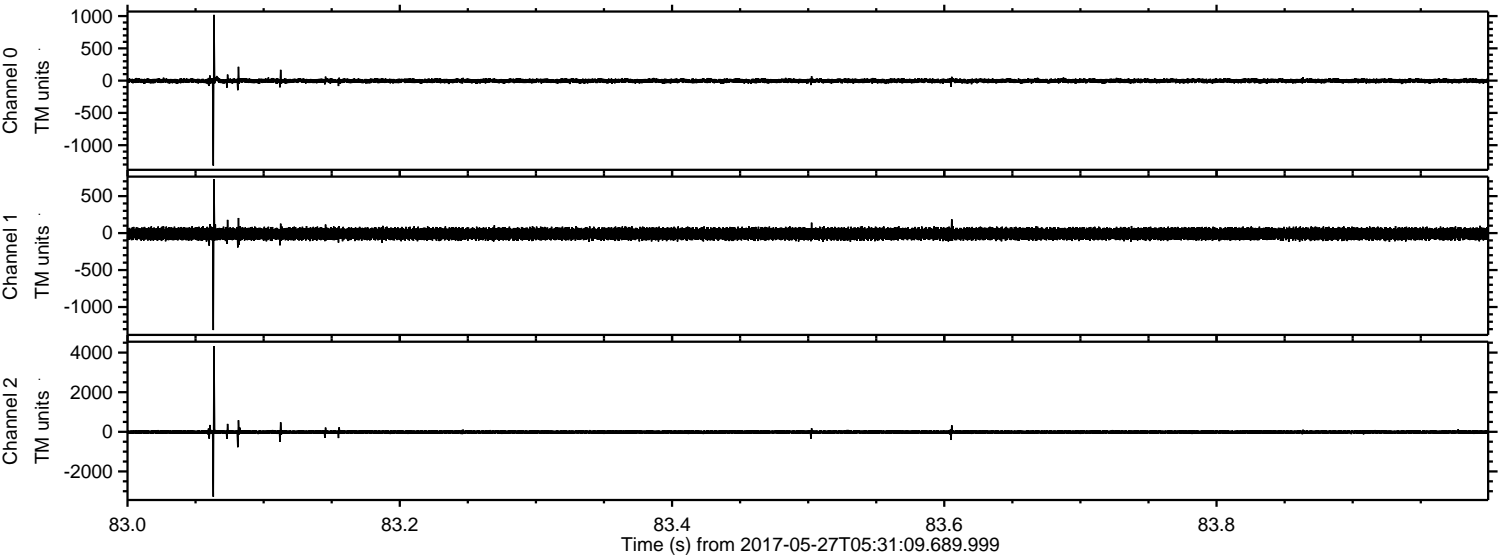
Channel 0
mn: -1247
mx: 868
 μ : -3.6
 σ : 19.1

Channel 1
mn: -1251
mx: 1050
 μ : -10.4
 σ : 46.3

Channel 2
mn: -3365
mx: 4415
 μ : -12.1
 σ : 53.7

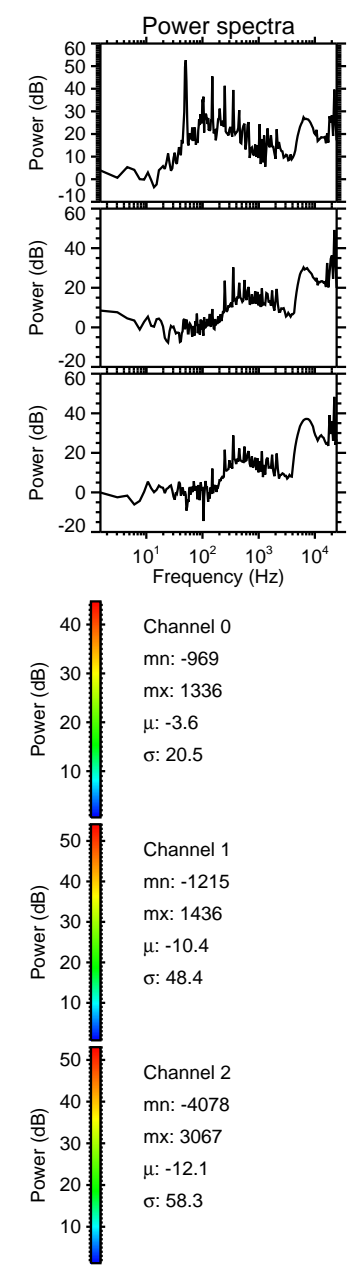
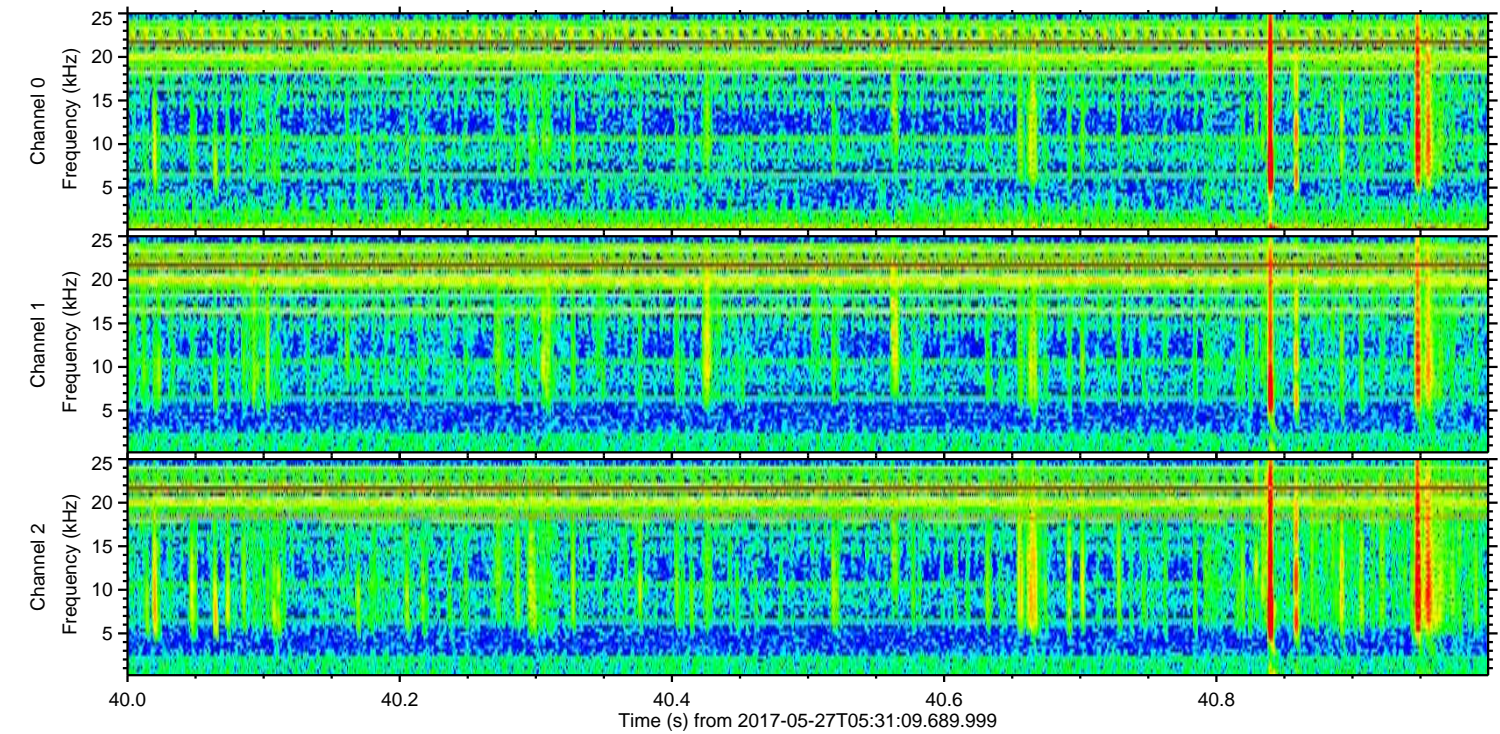
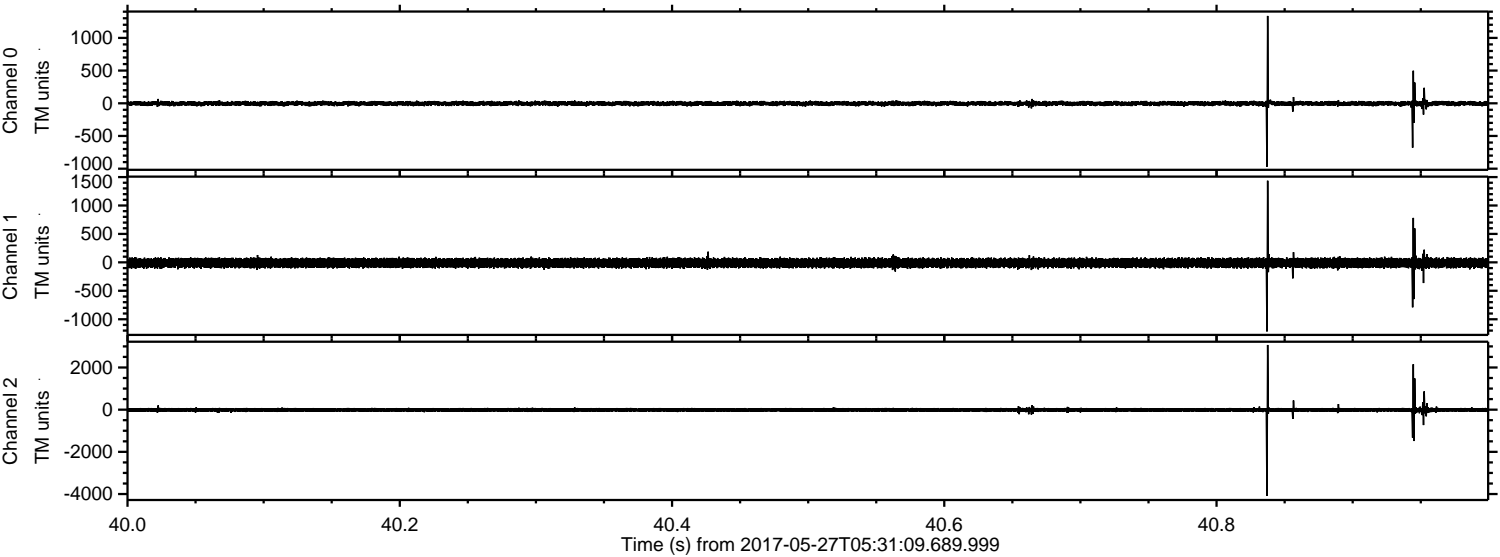
ELMAVAN 3D WAVEFORMS (Measured data sampled at 50 kHz) 51000 packets of 144 samples from 2017-05-27T05:31:09.689.999. Part 84/147

Processed Sat May 27 07:39:06 2017 by ELM ver.2012-10-06 from 001__elm20170527_053108__dat00.bin



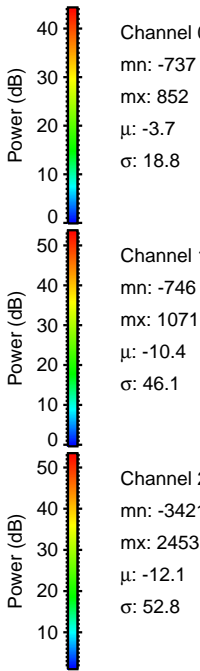
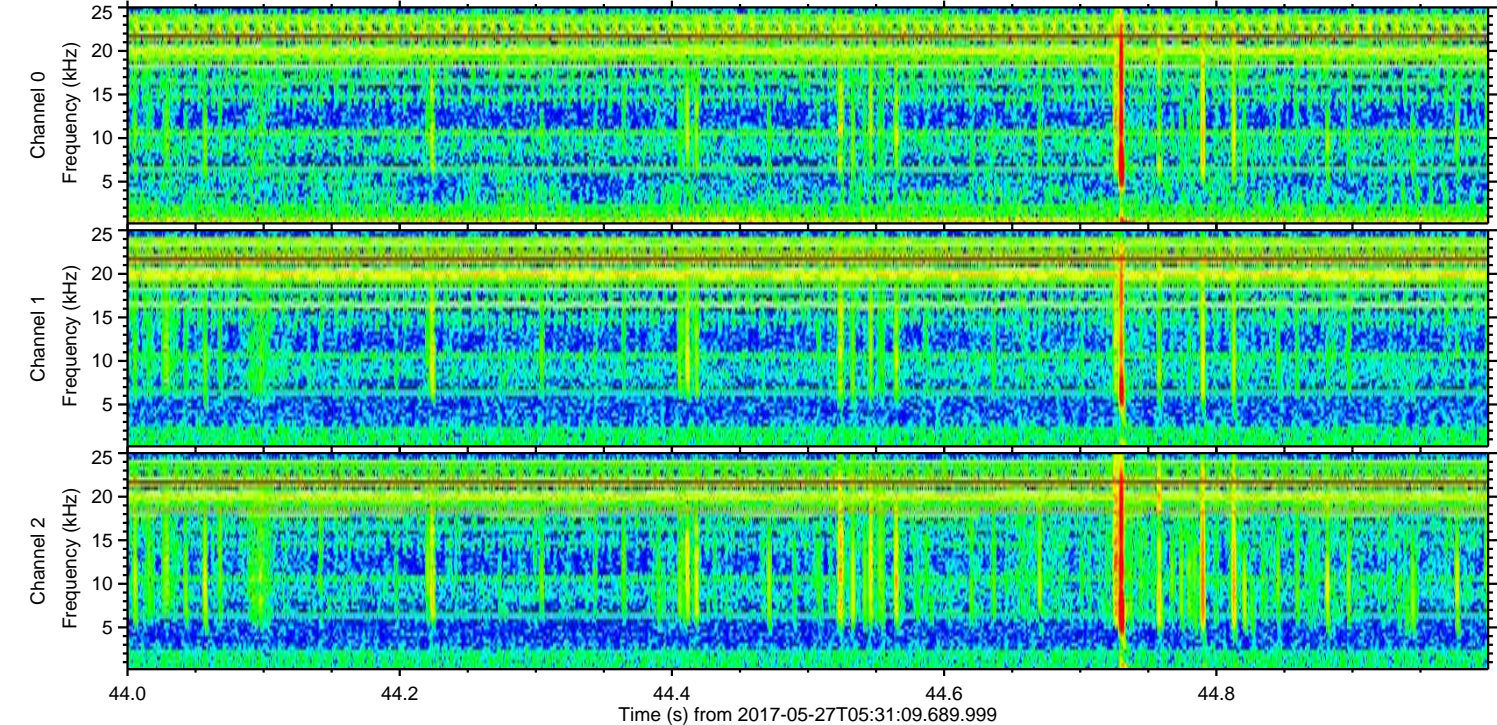
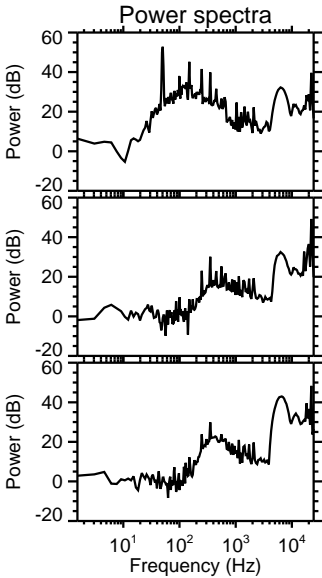
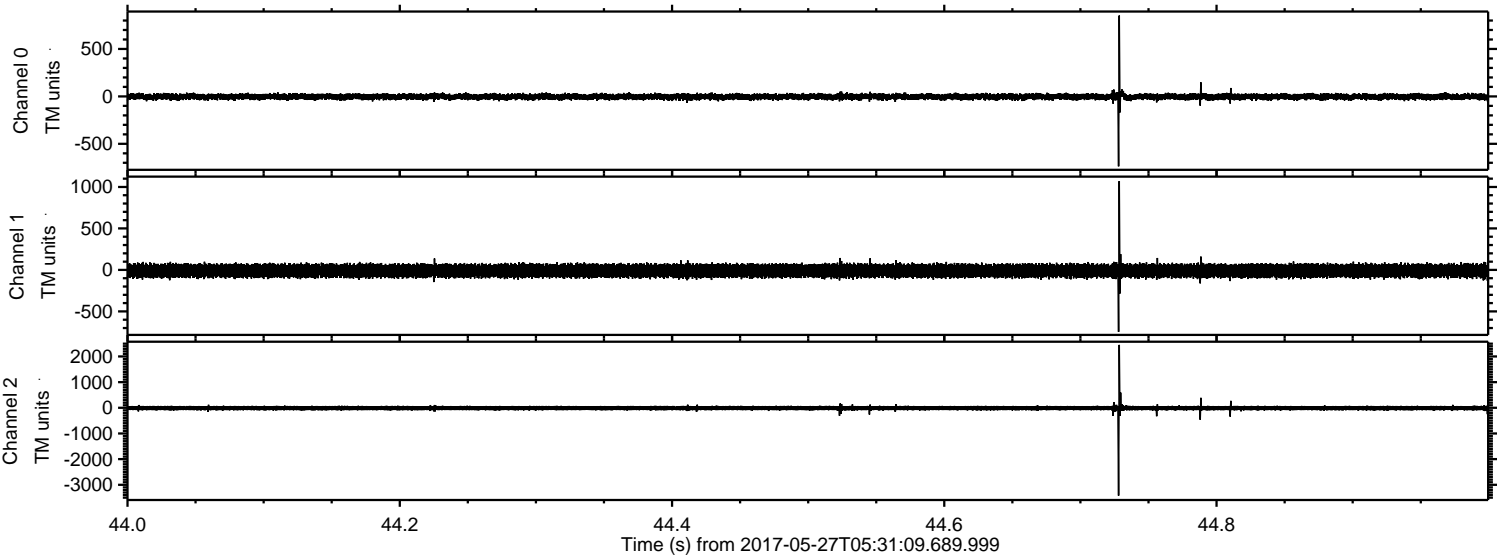
ELMAVAN 3D WAVEFORMS (Measured data sampled at 50 kHz) 51000 packets of 144 samples from 2017-05-27T05:31:09.689.999. Part 41/147

Processed Sat May 27 07:39:06 2017 by ELM ver.2012-10-06 from 001__elm20170527_053108__dat00.bin



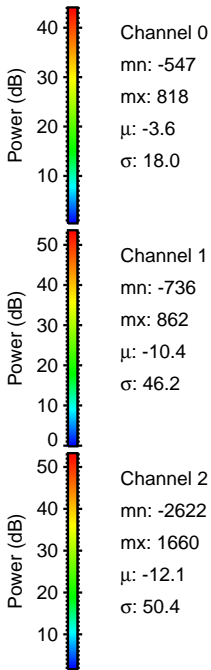
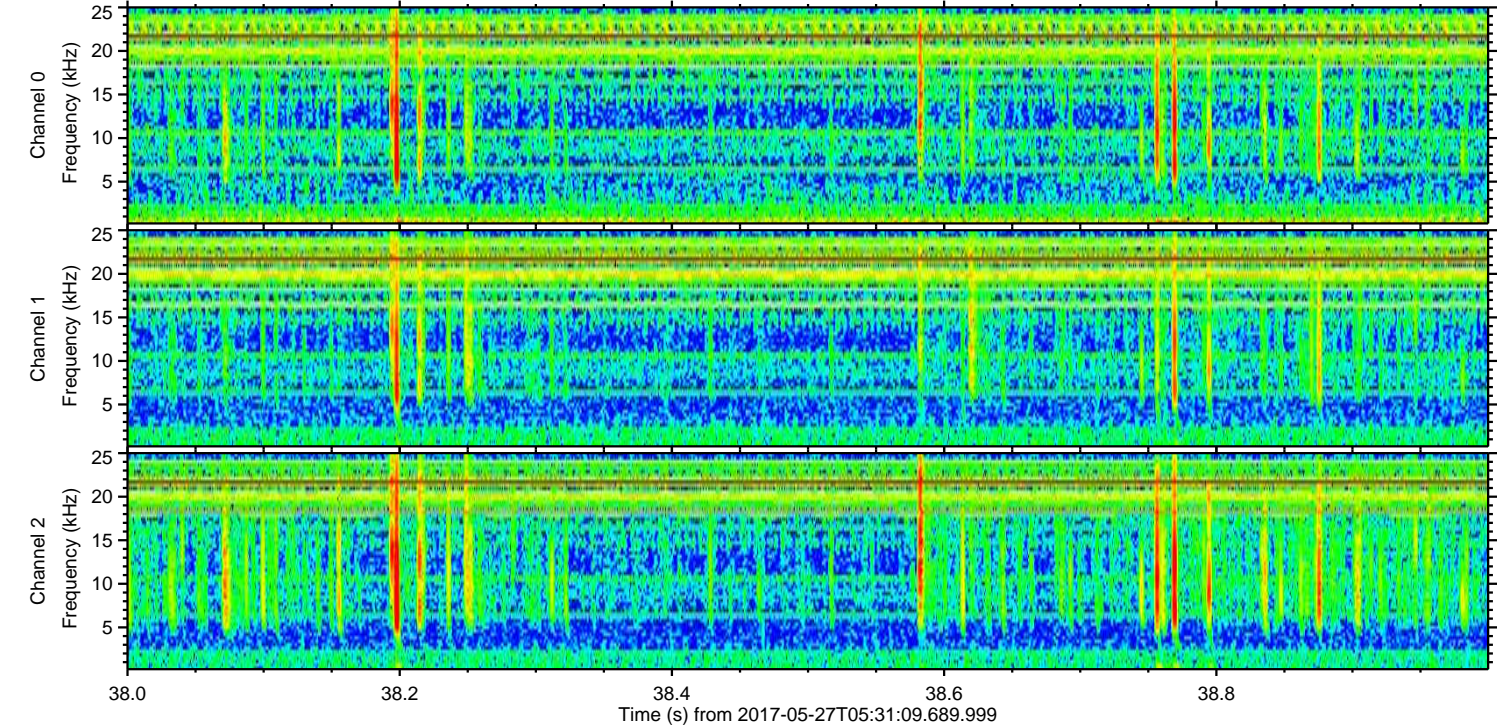
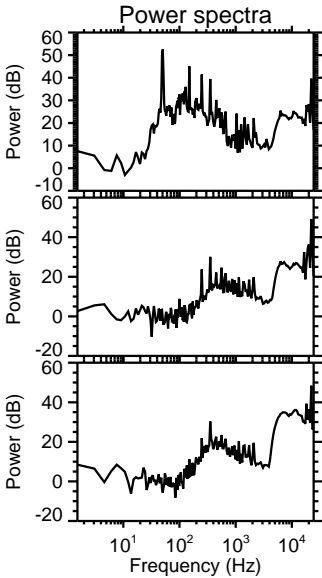
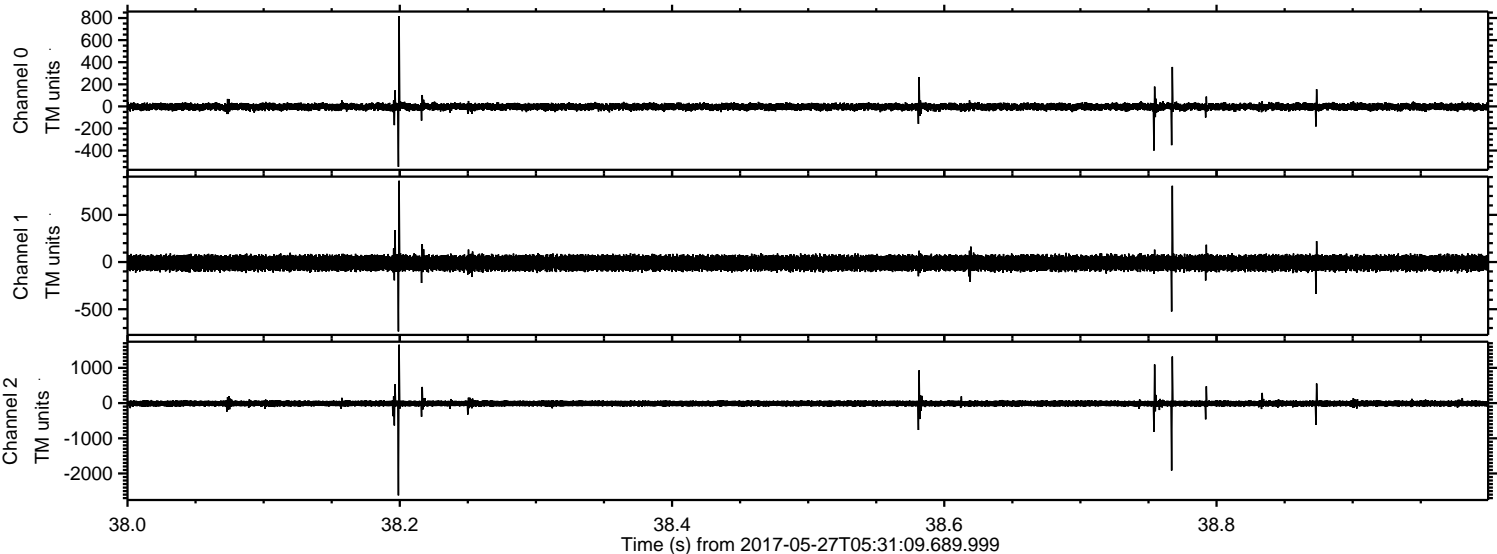
ELMAVAN 3D WAVEFORMS (Measured data sampled at 50 kHz) 51000 packets of 144 samples from 2017-05-27T05:31:09.689.999. Part 45/147

Processed Sat May 27 07:39:07 2017 by ELM ver.2012-10-06 from 001__elm20170527_053108__dat00.bin



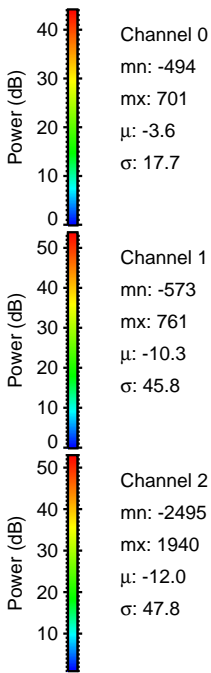
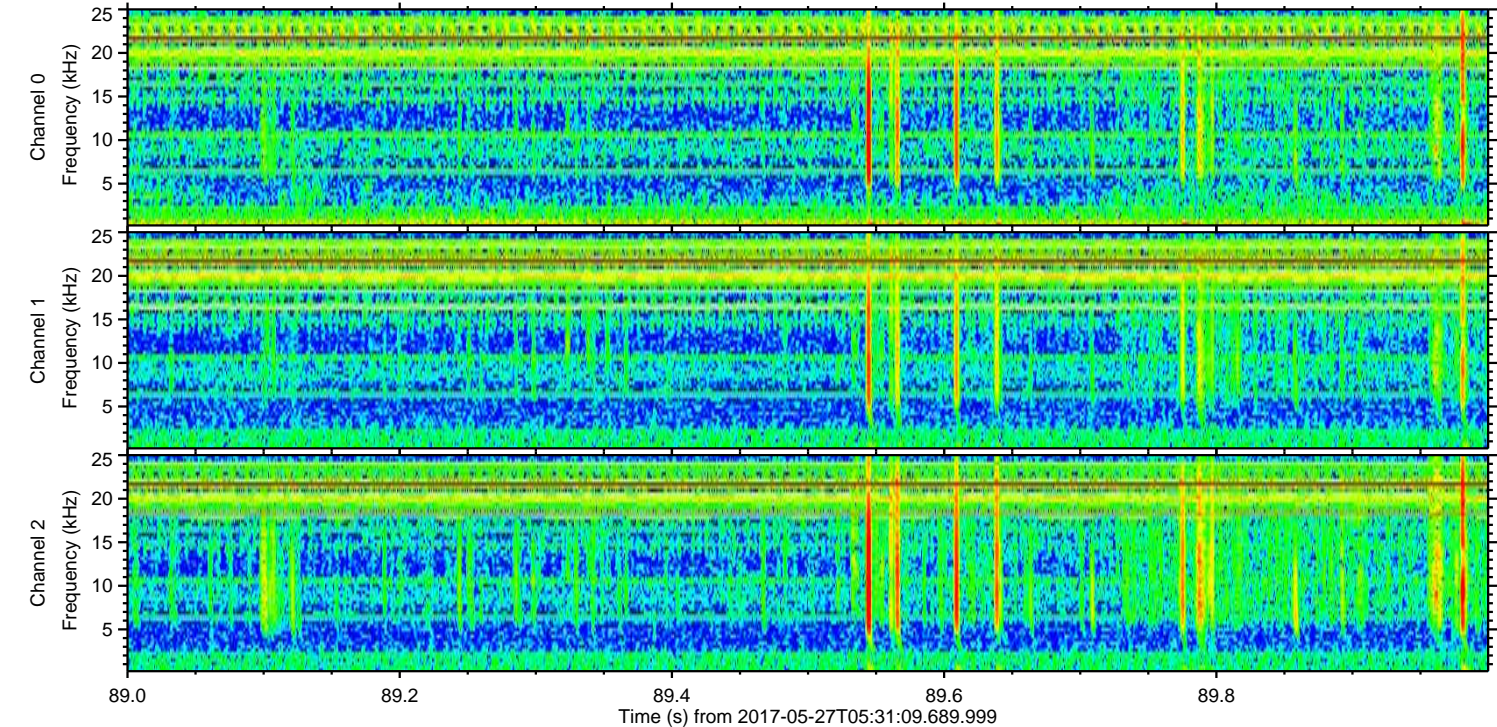
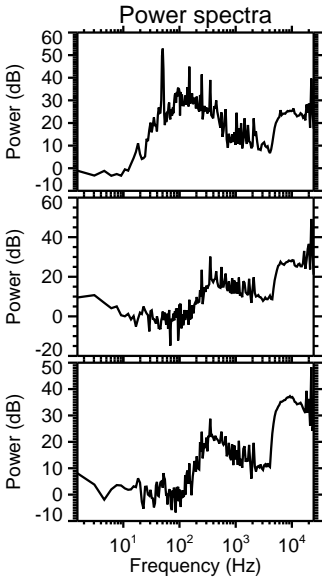
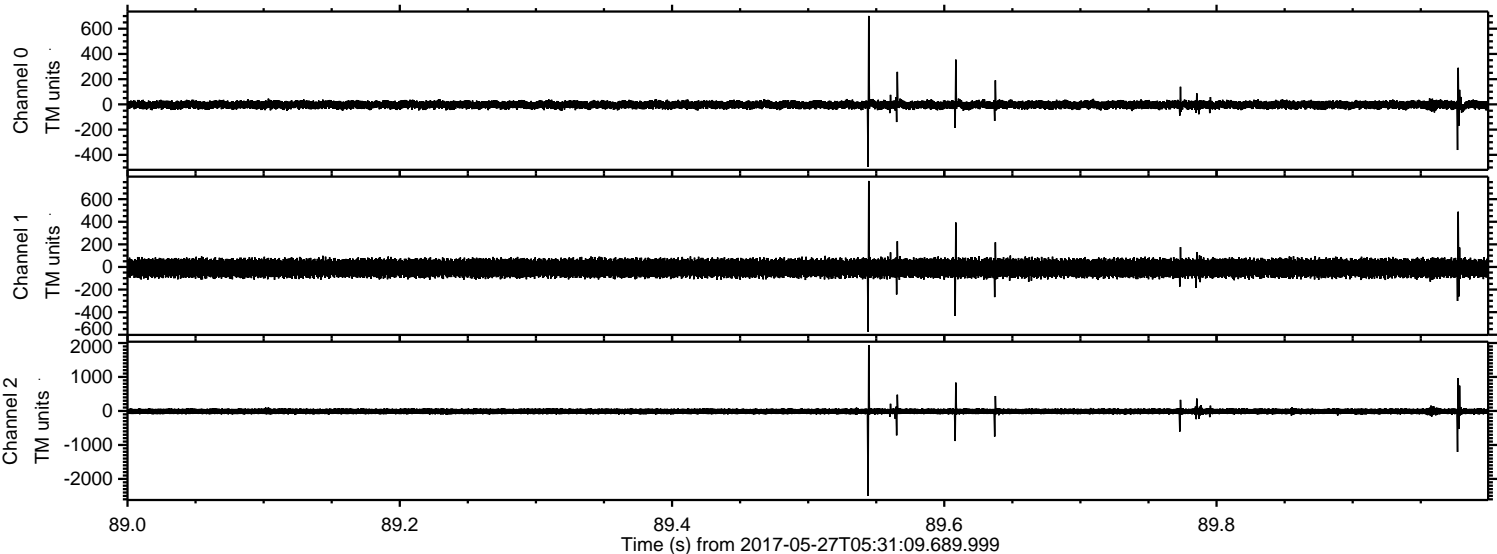
ELMAVAN 3D WAVEFORMS (Measured data sampled at 50 kHz) 51000 packets of 144 samples from 2017-05-27T05:31:09.689.999. Part 39/147

Processed Sat May 27 07:39:08 2017 by ELM ver.2012-10-06 from 001__elm20170527_053108__dat00.bin



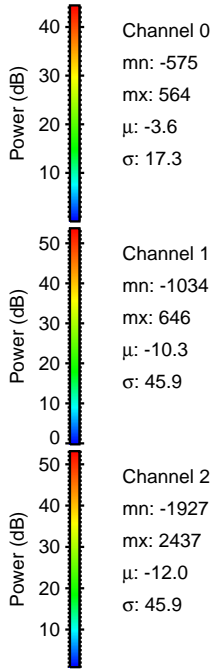
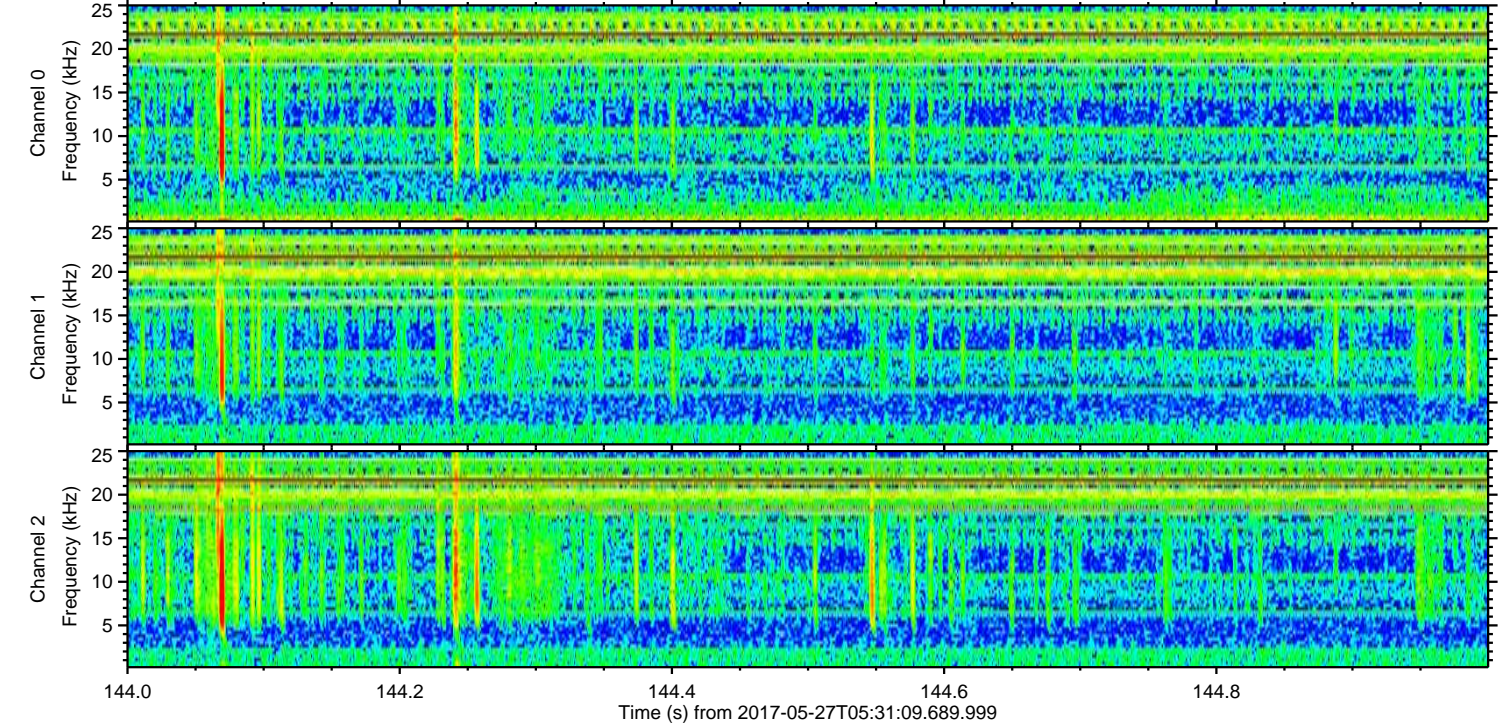
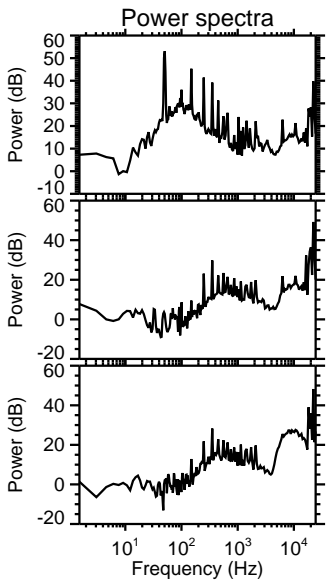
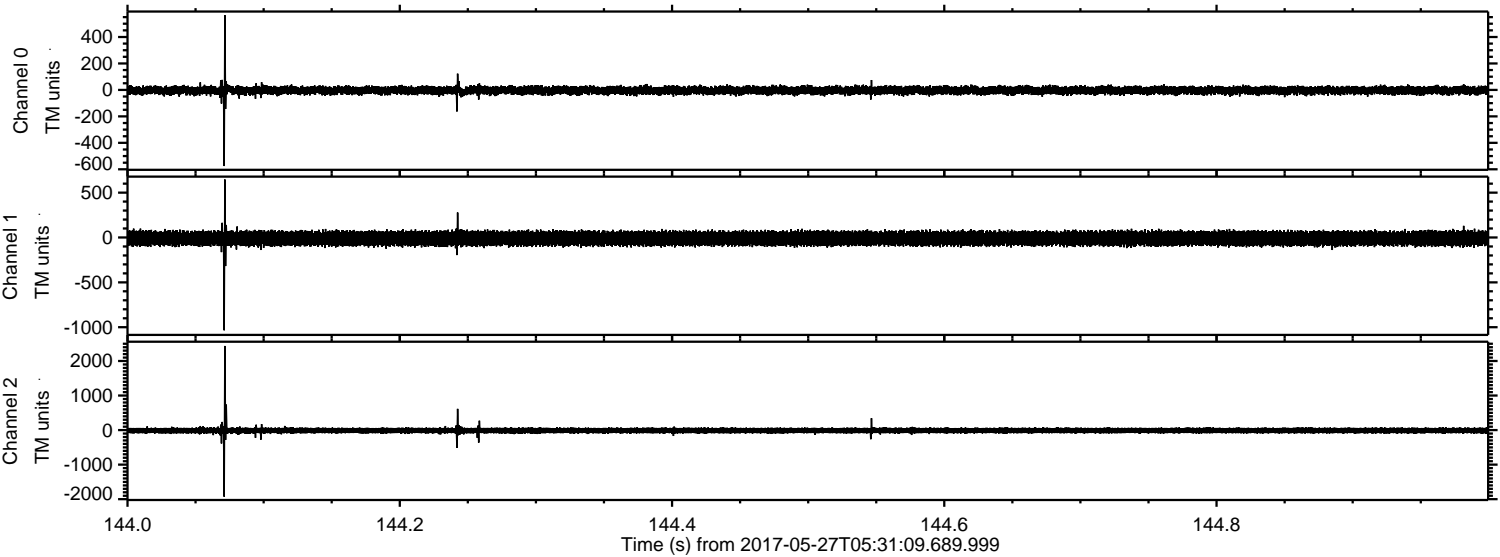
ELMAVAN 3D WAVEFORMS (Measured data sampled at 50 kHz) 51000 packets of 144 samples from 2017-05-27T05:31:09.689.999. Part 90/147

Processed Sat May 27 07:39:08 2017 by ELM ver.2012-10-06 from 001__elm20170527_053108__dat00.bin



ELMAVAN 3D WAVEFORMS (Measured data sampled at 50 kHz) 51000 packets of 144 samples from 2017-05-27T05:31:09.689.999. Part 145/147

Processed Sat May 27 07:39:09 2017 by ELM ver.2012-10-06 from 001__elm20170527_053108__dat00.bin



ELMAVAN 3D WAVEFORMS (Measured data sampled at 50 kHz) 51000 packets of 144 samples from 2017-05-27T05:31:09.689.999. Part 30/147

Processed Sat May 27 07:39:10 2017 by ELM ver.2012-10-06 from 001__elm20170527_053108__dat00.bin

