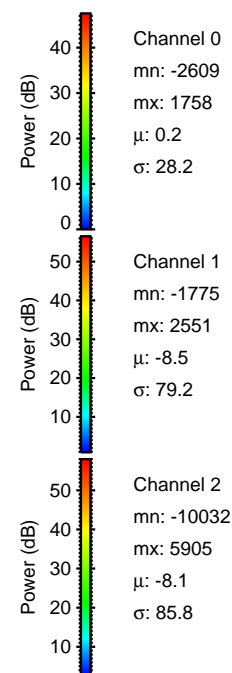
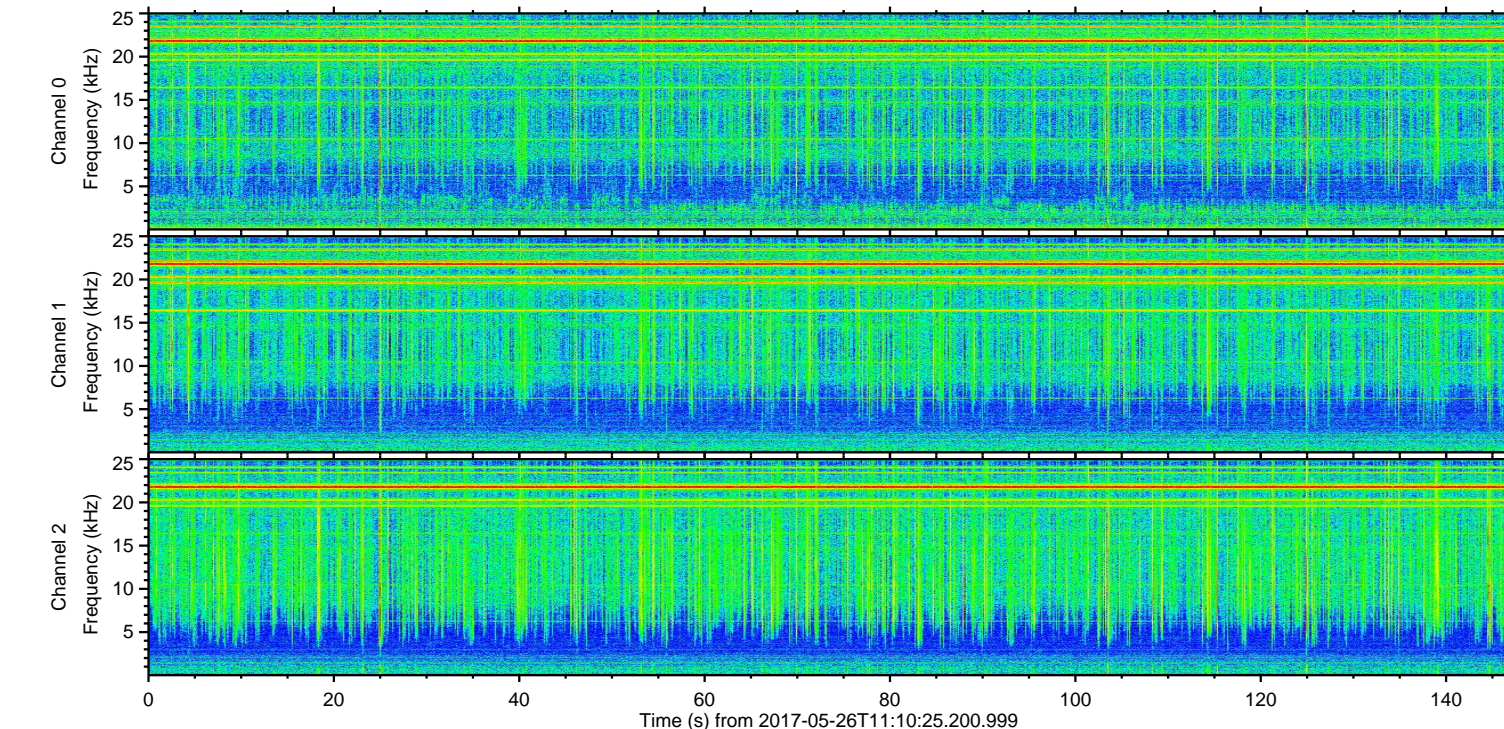
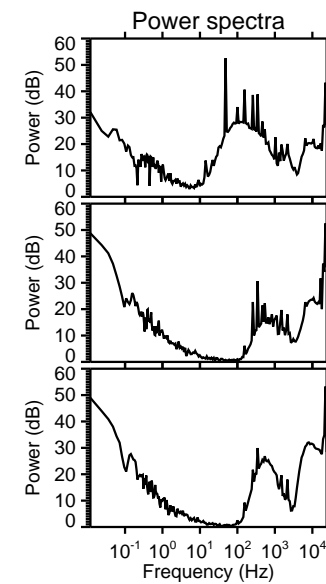
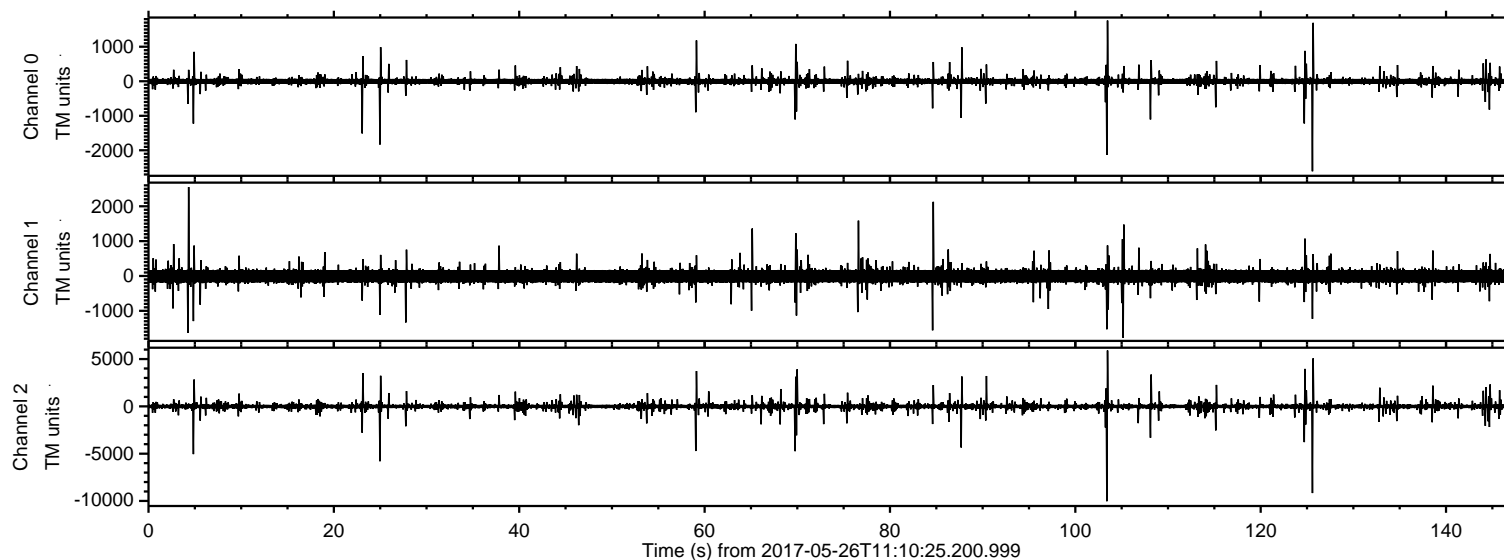


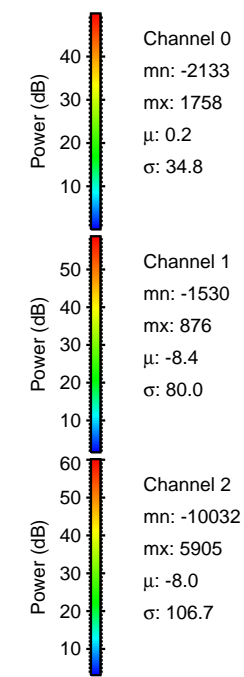
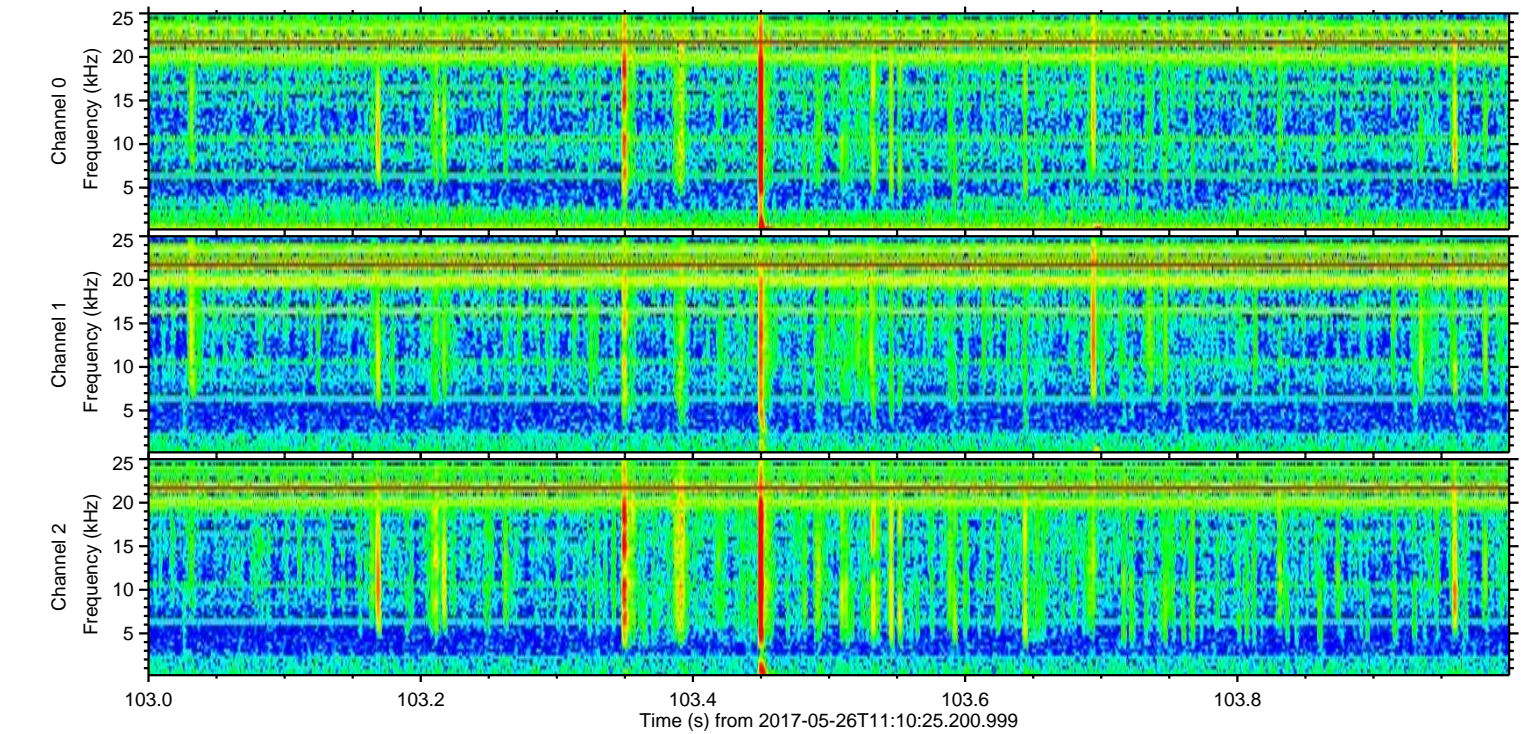
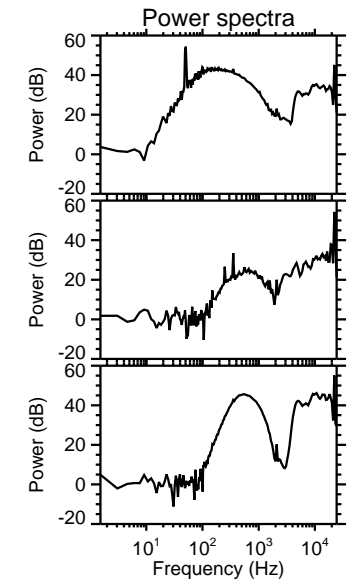
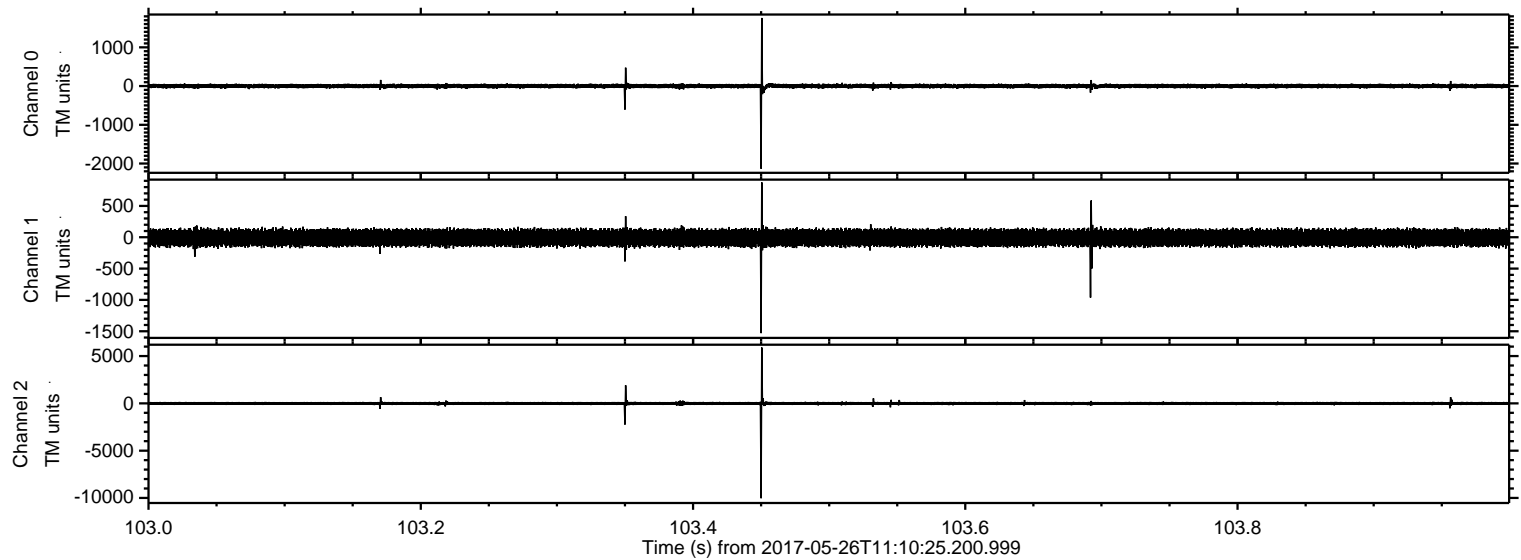
ELMAVAN 3D WAVEFORMS (Measured data sampled at 50 kHz) 51000 packets of 144 samples from 2017-05-26T11:10:25.200.999.

Processed Fri May 26 13:17:36 2017 by ELM ver.2012-10-06 from 001__elm20170526_111024__dat00.bin



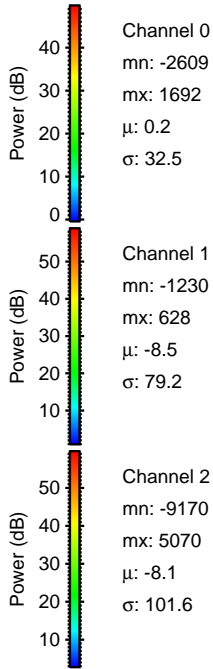
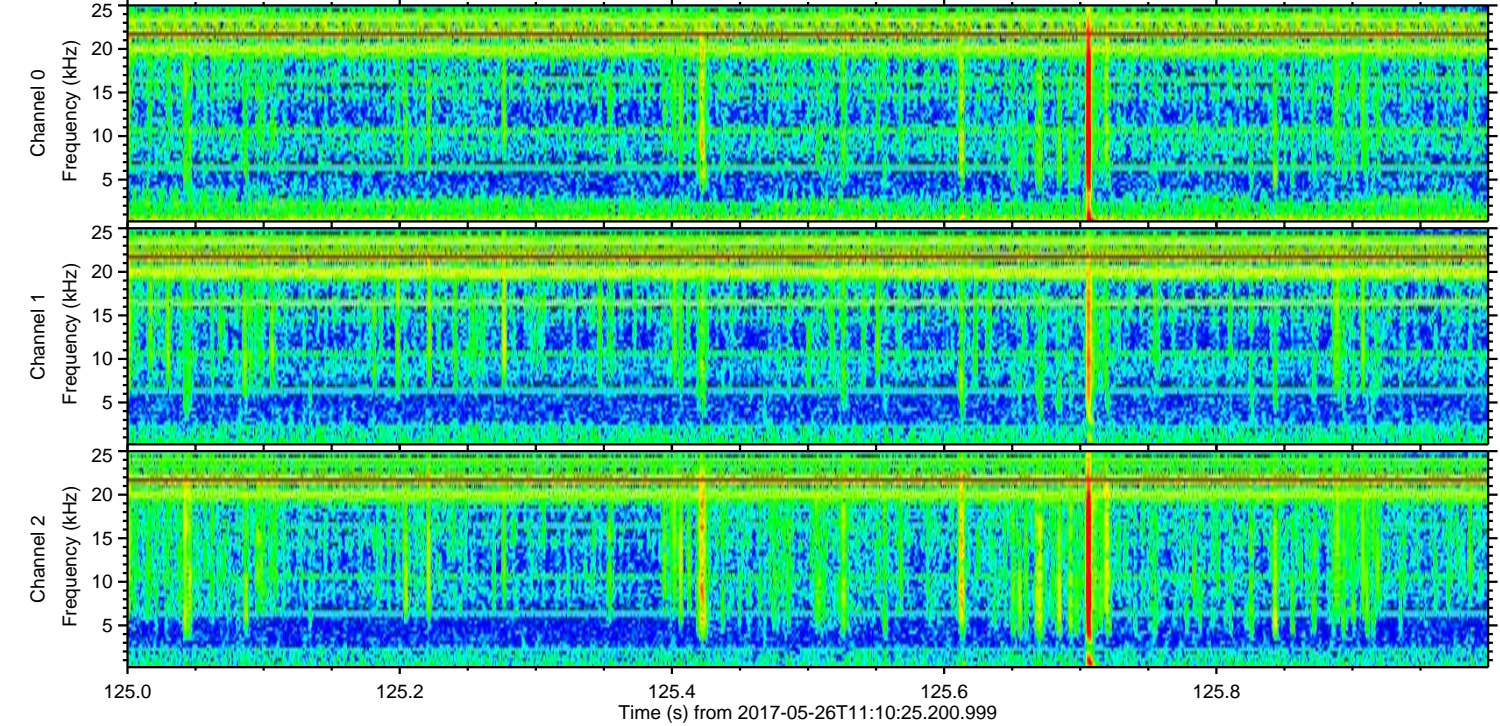
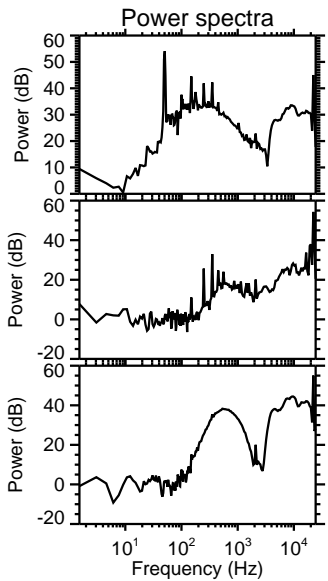
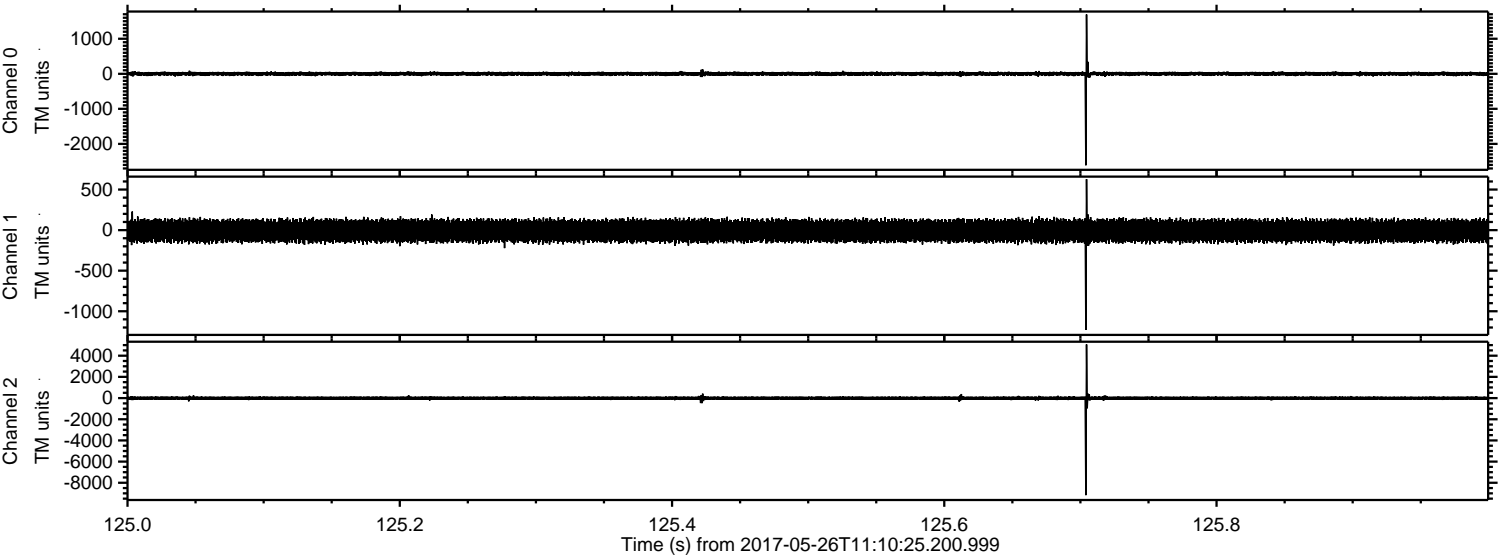
ELMAVAN 3D WAVEFORMS (Measured data sampled at 50 kHz) 51000 packets of 144 samples from 2017-05-26T11:10:25.200.999. Part 104/147

Processed Fri May 26 13:17:42 2017 by ELM ver.2012-10-06 from 001__elm20170526_111024__dat00.bin



ELMAVAN 3D WAVEFORMS (Measured data sampled at 50 kHz) 51000 packets of 144 samples from 2017-05-26T11:10:25.200.999. Part 126/147

Processed Fri May 26 13:17:43 2017 by ELM ver.2012-10-06 from 001__elm20170526_111024__dat00.bin



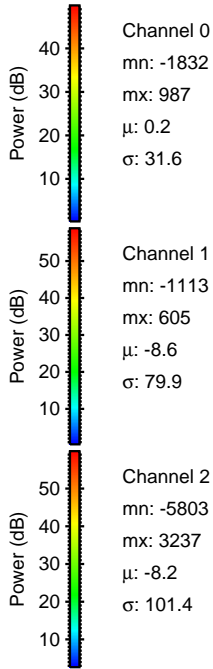
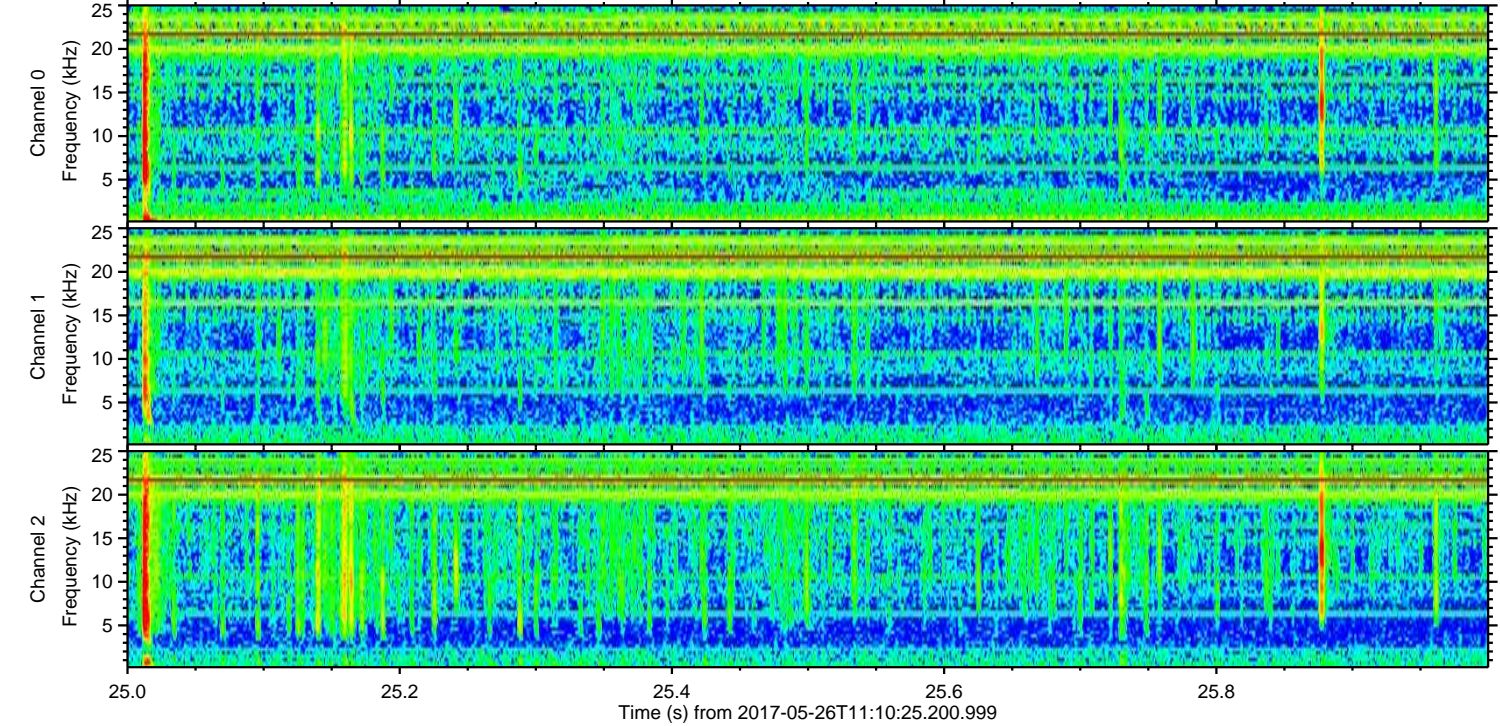
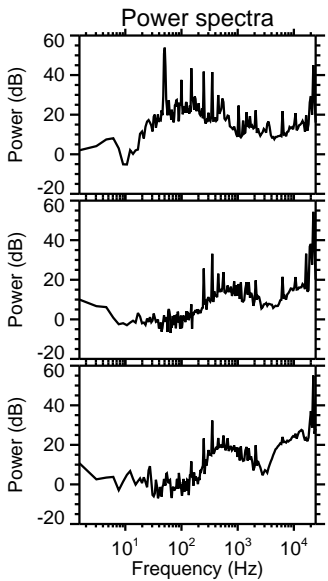
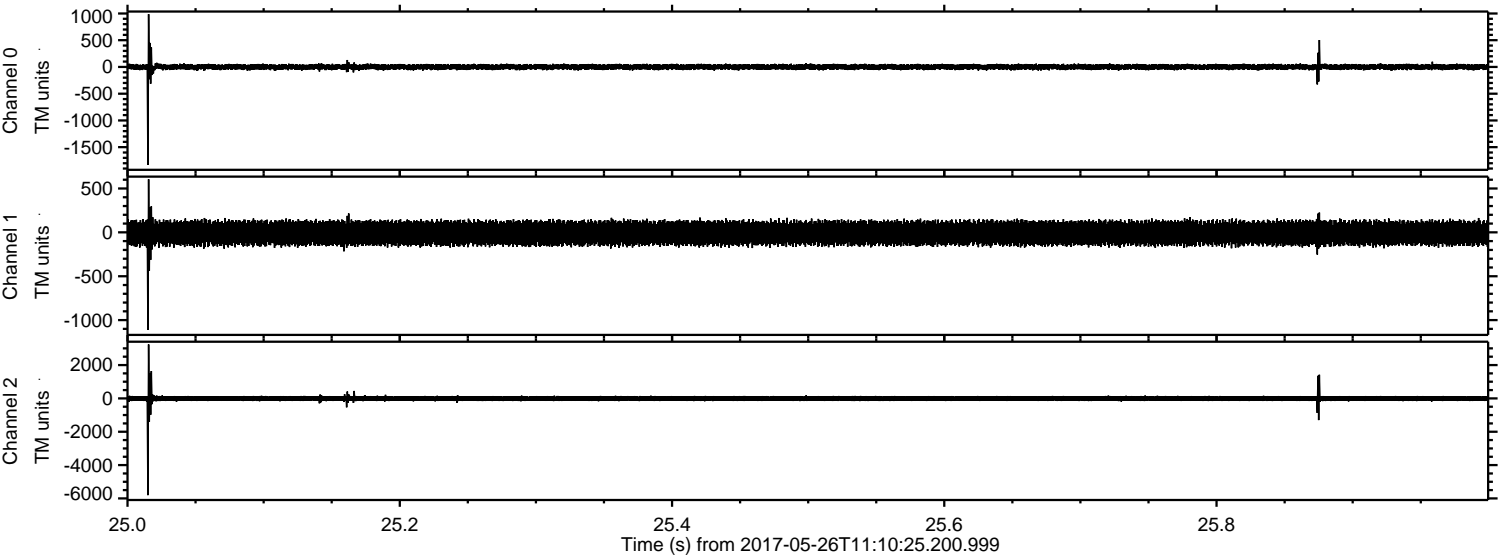
Channel 0
mn: -2609
mx: 1692
 μ : 0.2
 σ : 32.5

Channel 1
mn: -1230
mx: 628
 μ : -8.5
 σ : 79.2

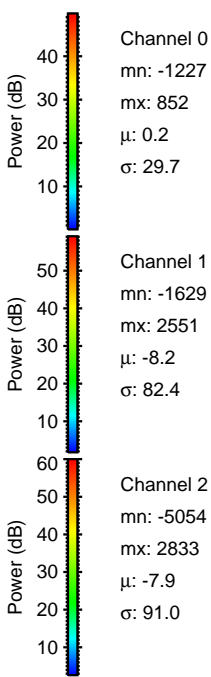
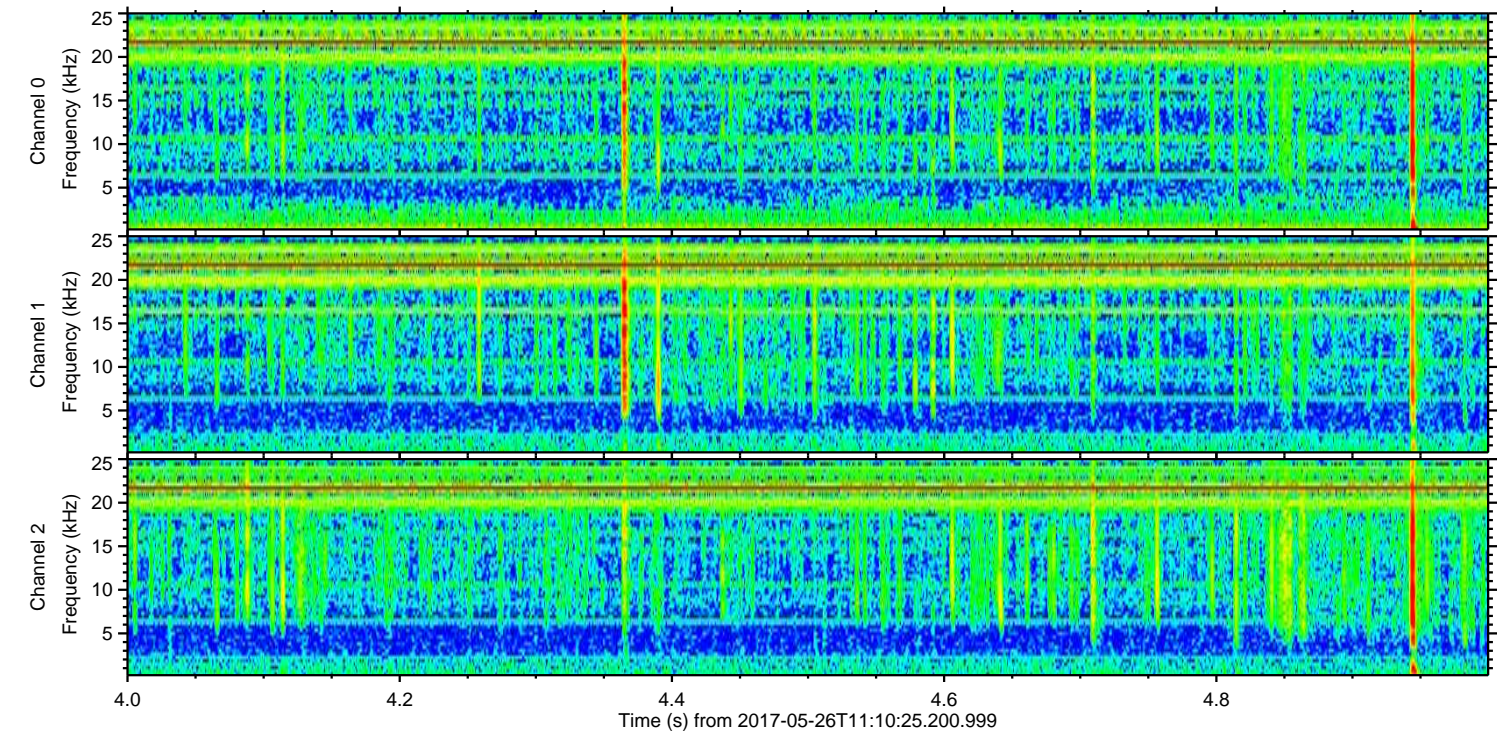
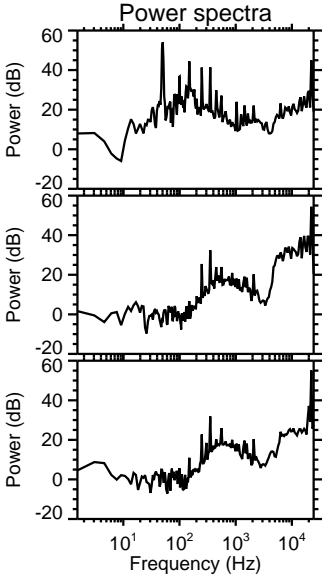
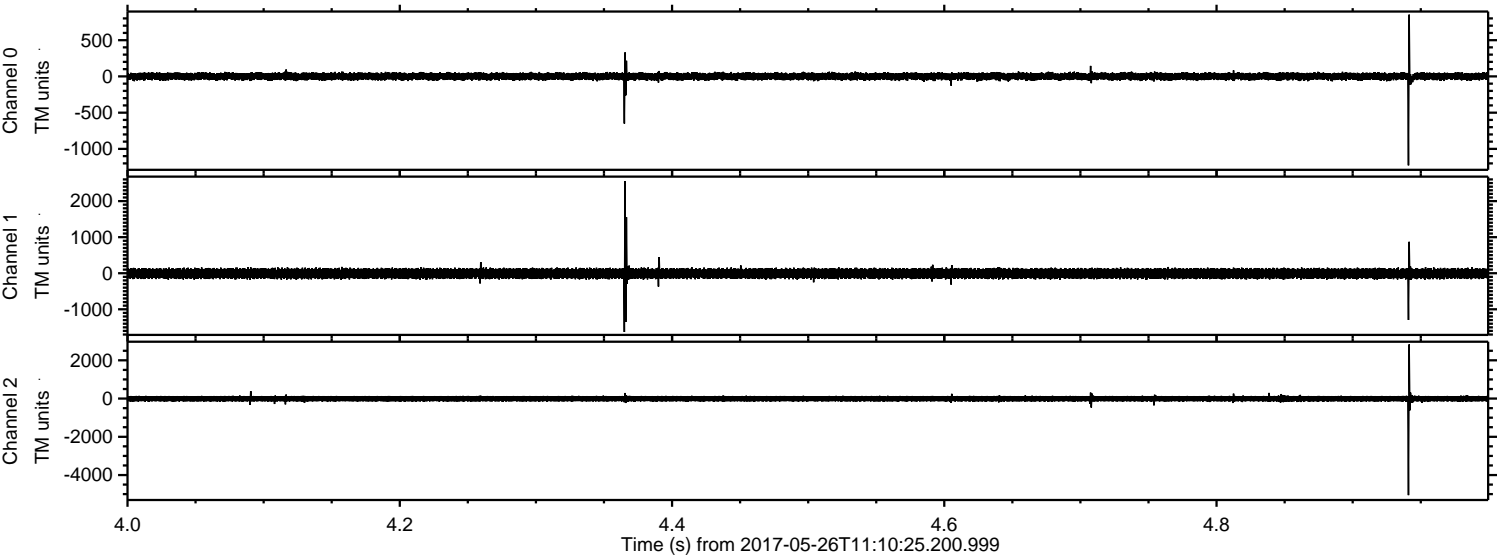
Channel 2
mn: -9170
mx: 5070
 μ : -8.1
 σ : 101.6

ELMAVAN 3D WAVEFORMS (Measured data sampled at 50 kHz) 51000 packets of 144 samples from 2017-05-26T11:10:25.200.999. Part 26/147

Processed Fri May 26 13:17:43 2017 by ELM ver.2012-10-06 from 001__elm20170526_111024__dat00.bin



Processed Fri May 26 13:17:44 2017 by ELM ver.2012-10-06 from 001__elm20170526_111024__dat00.bin



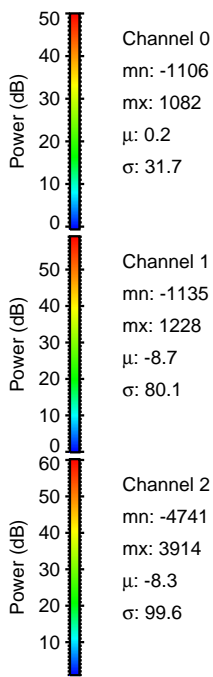
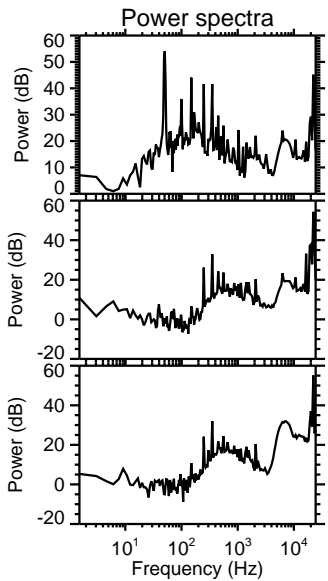
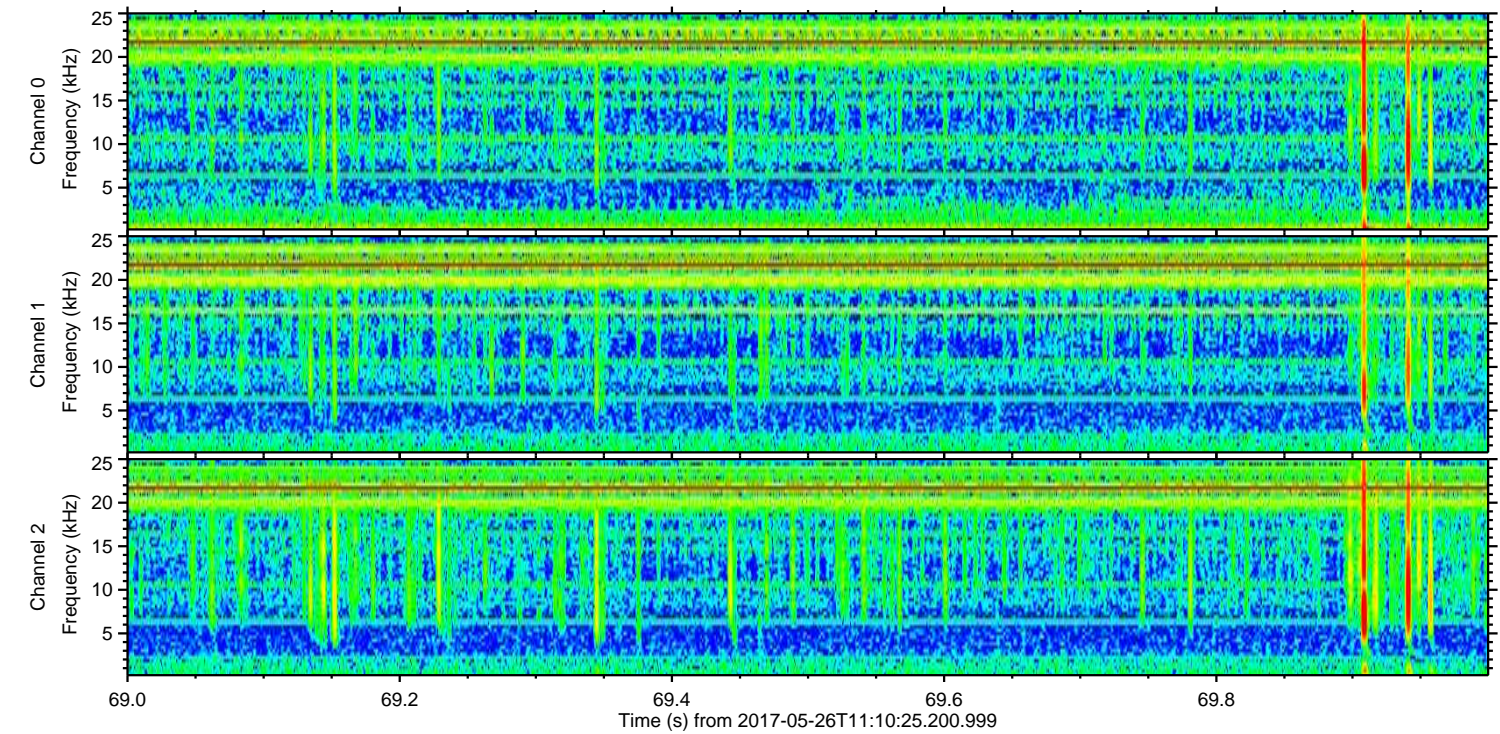
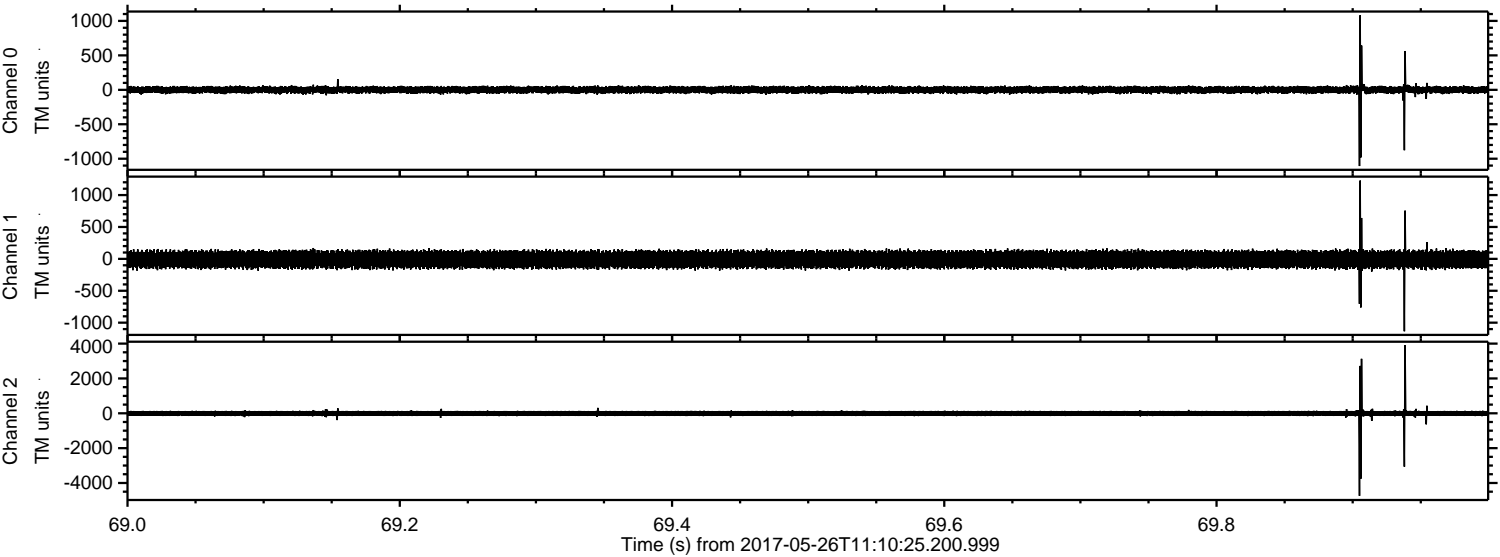
Channel 0
mn: -1227
mx: 852
 μ : 0.2
 σ : 29.7

Channel 1
mn: -1629
mx: 2551
 μ : -8.2
 σ : 82.4

Channel 2
mn: -5054
mx: 2833
 μ : -7.9
 σ : 91.0

ELMAVAN 3D WAVEFORMS (Measured data sampled at 50 kHz) 51000 packets of 144 samples from 2017-05-26T11:10:25.200.999. Part 70/147

Processed Fri May 26 13:17:45 2017 by ELM ver.2012-10-06 from 001__elm20170526_111024__dat00.bin

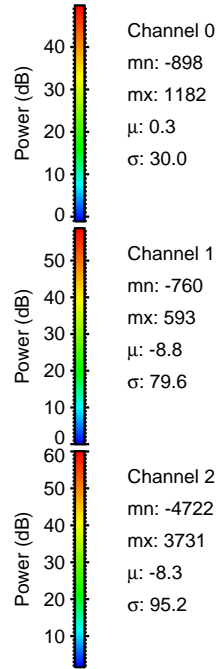
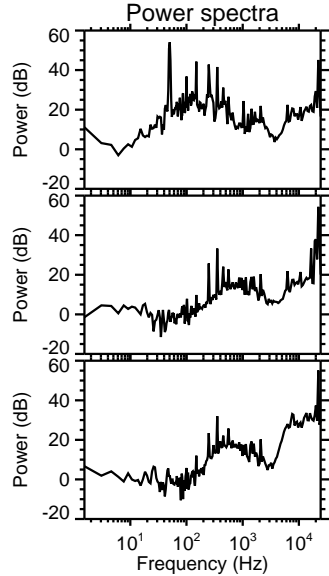
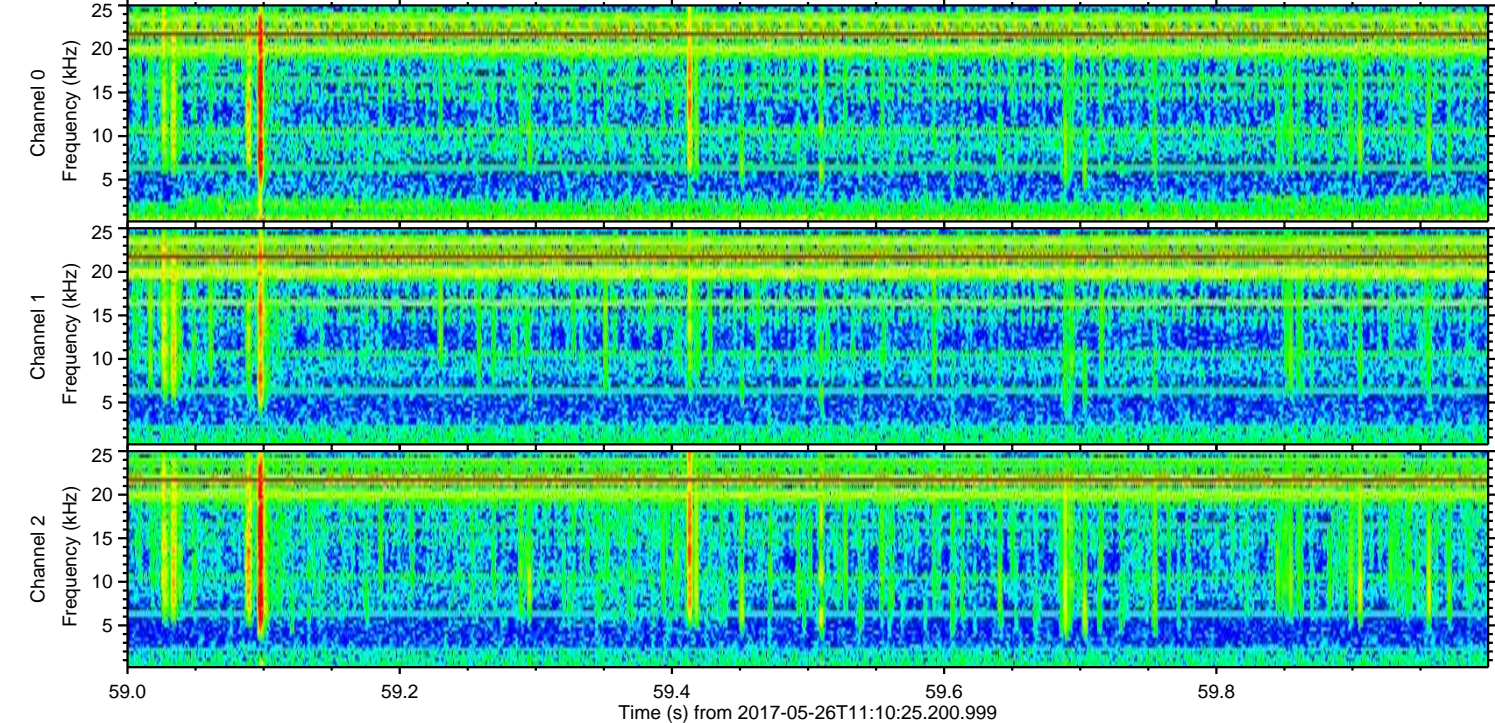
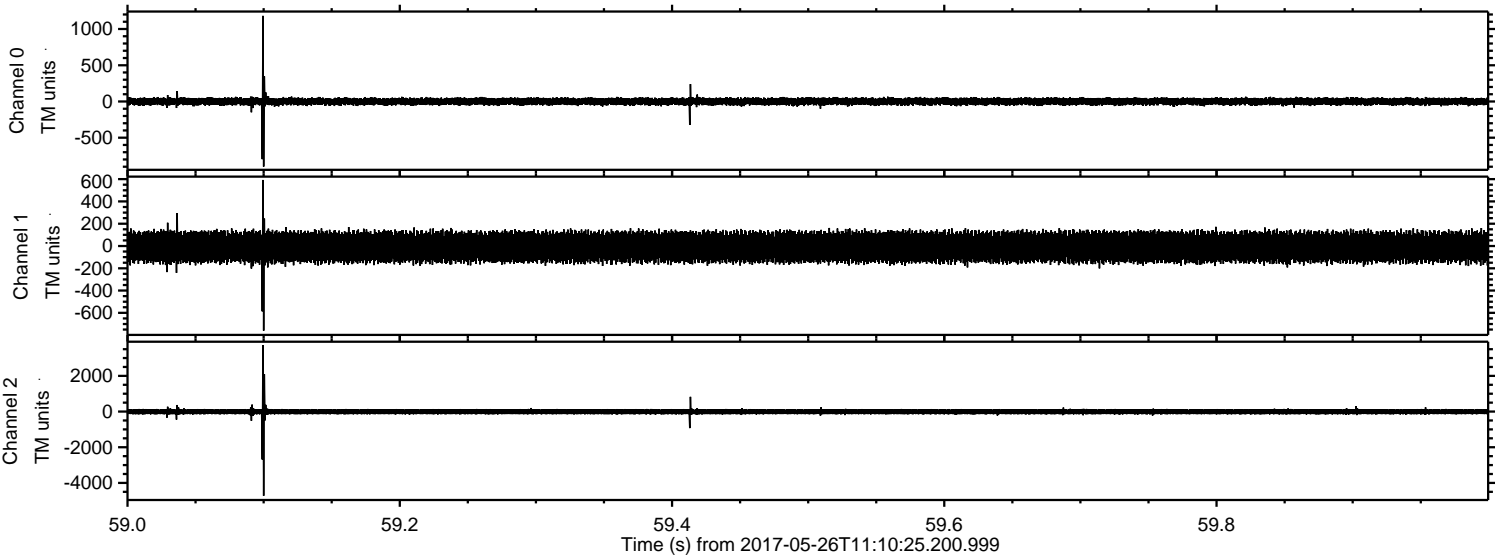


Channel 0
mn: -1106
mx: 1082
 μ : 0.2
 σ : 31.7

Channel 1
mn: -1135
mx: 1228
 μ : -8.7
 σ : 80.1

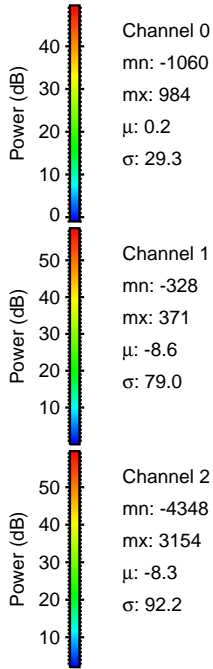
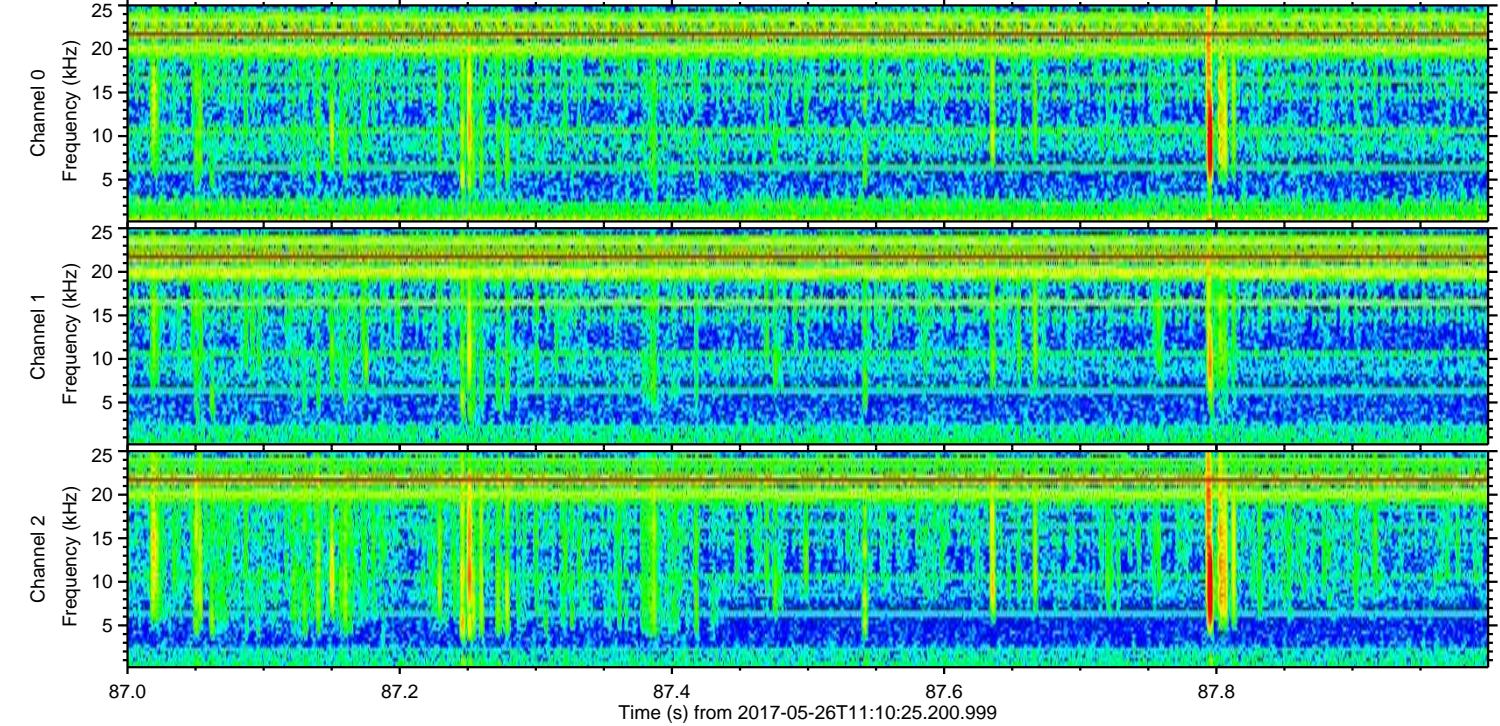
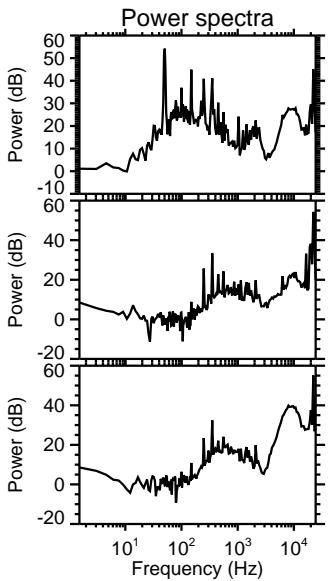
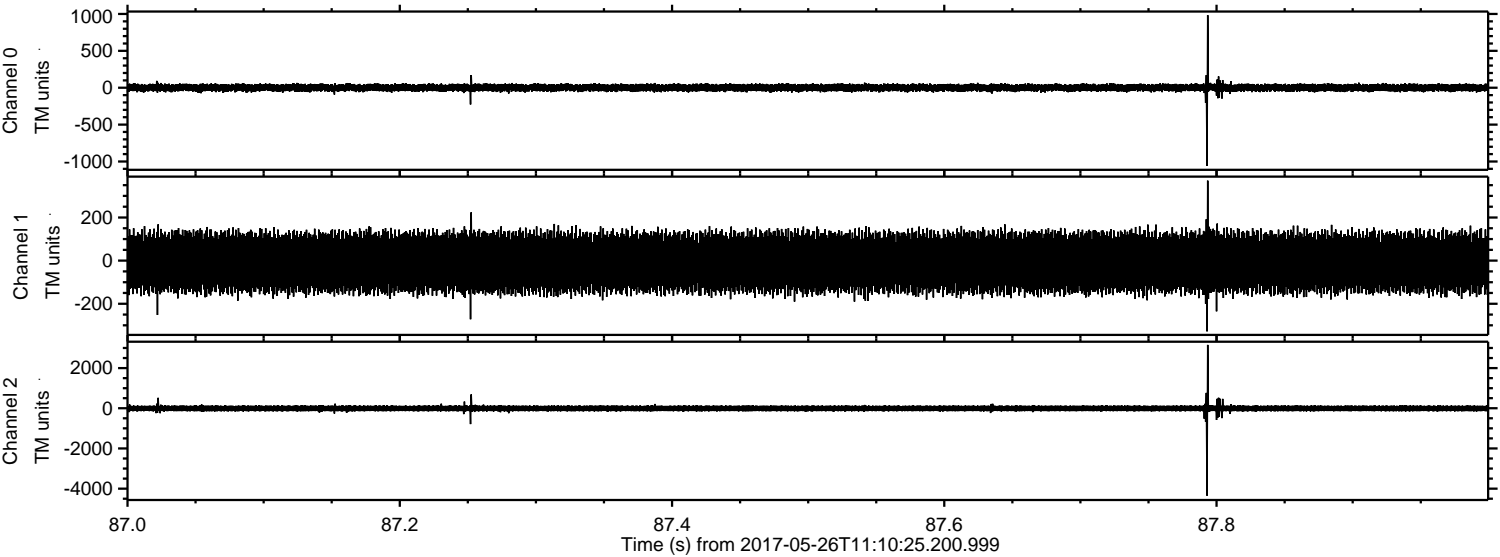
Channel 2
mn: -4741
mx: 3914
 μ : -8.3
 σ : 99.6

Processed Fri May 26 13:17:45 2017 by ELM ver.2012-10-06 from 001__elm20170526_111024__dat00.bin



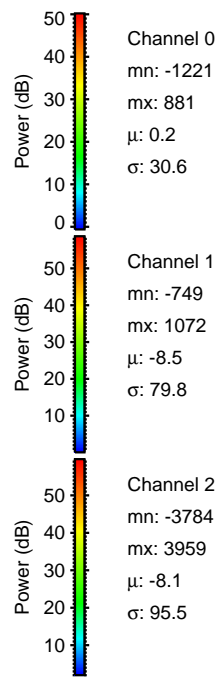
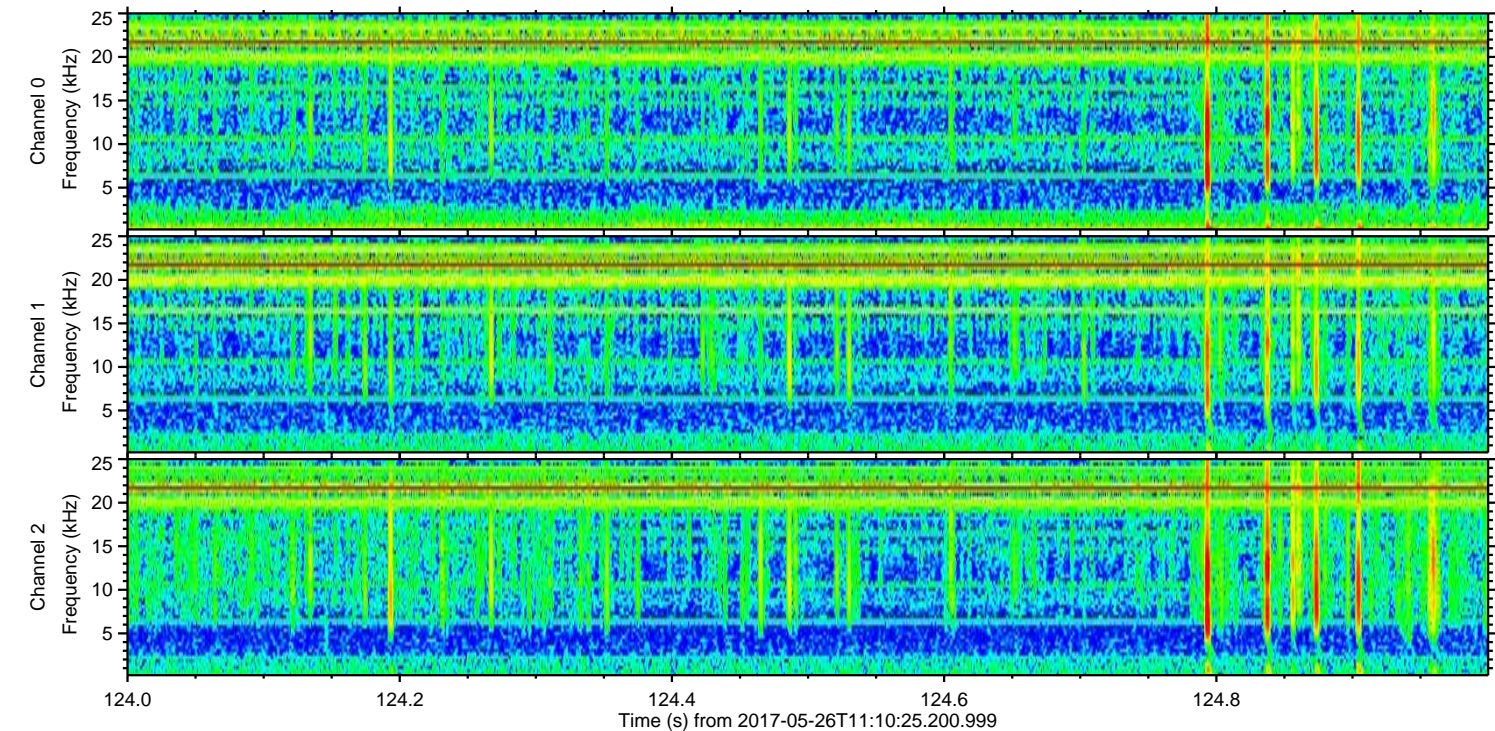
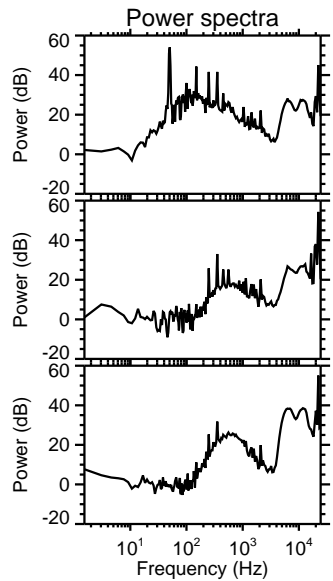
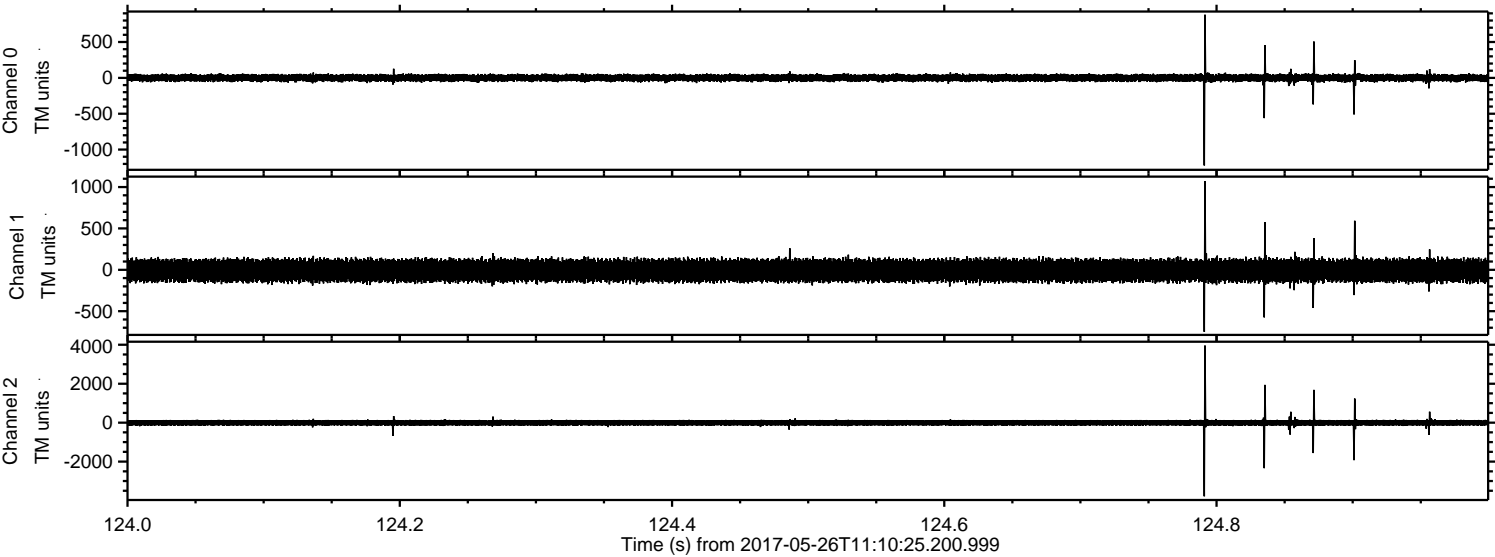
ELMAVAN 3D WAVEFORMS (Measured data sampled at 50 kHz) 51000 packets of 144 samples from 2017-05-26T11:10:25.200.999. Part 88/147

Processed Fri May 26 13:17:46 2017 by ELM ver.2012-10-06 from 001__elm20170526_111024__dat00.bin



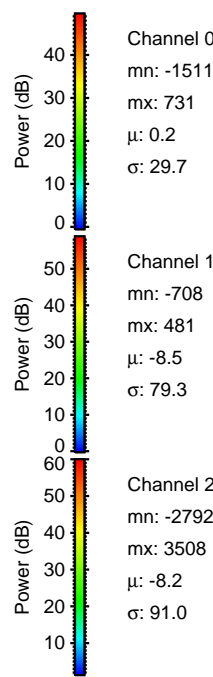
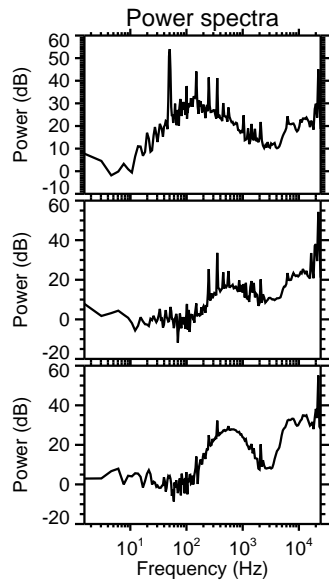
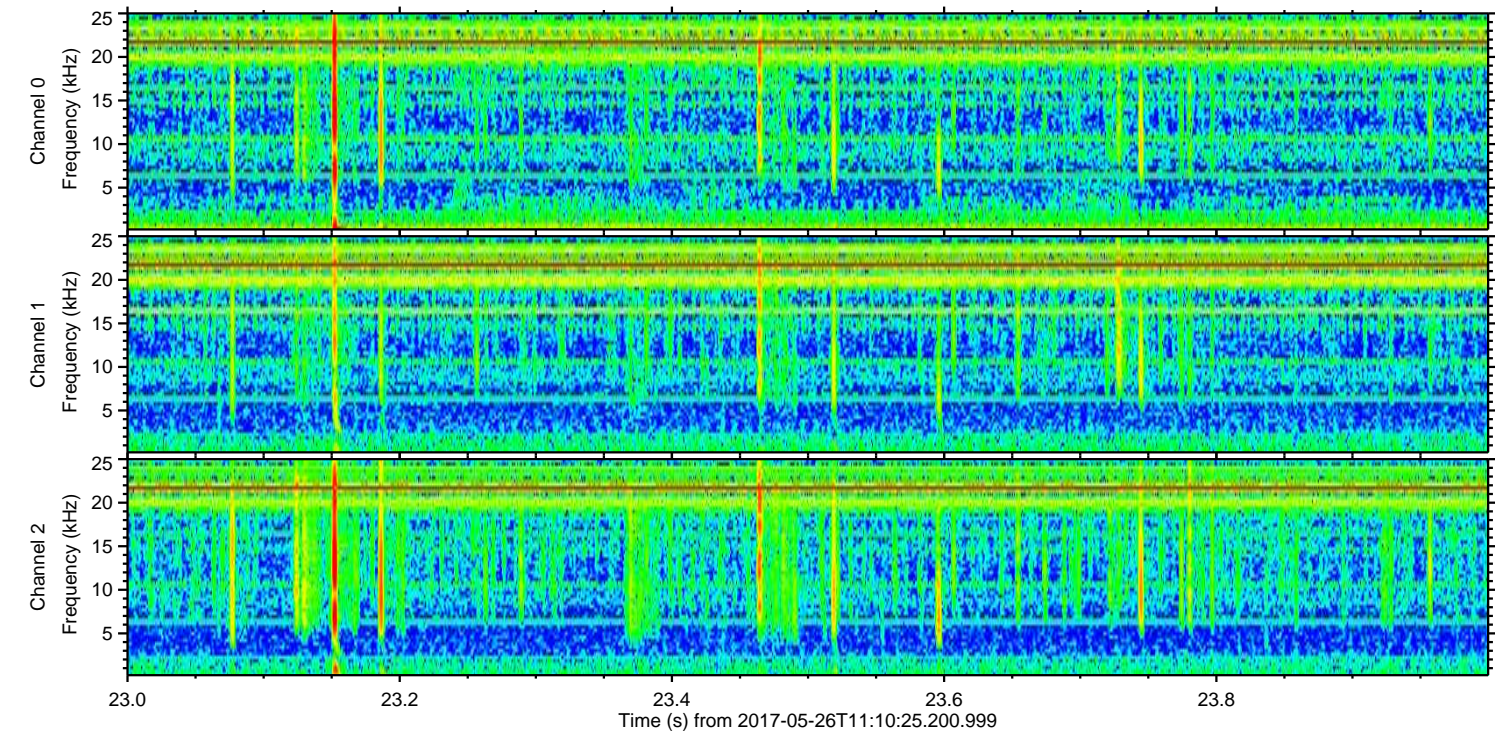
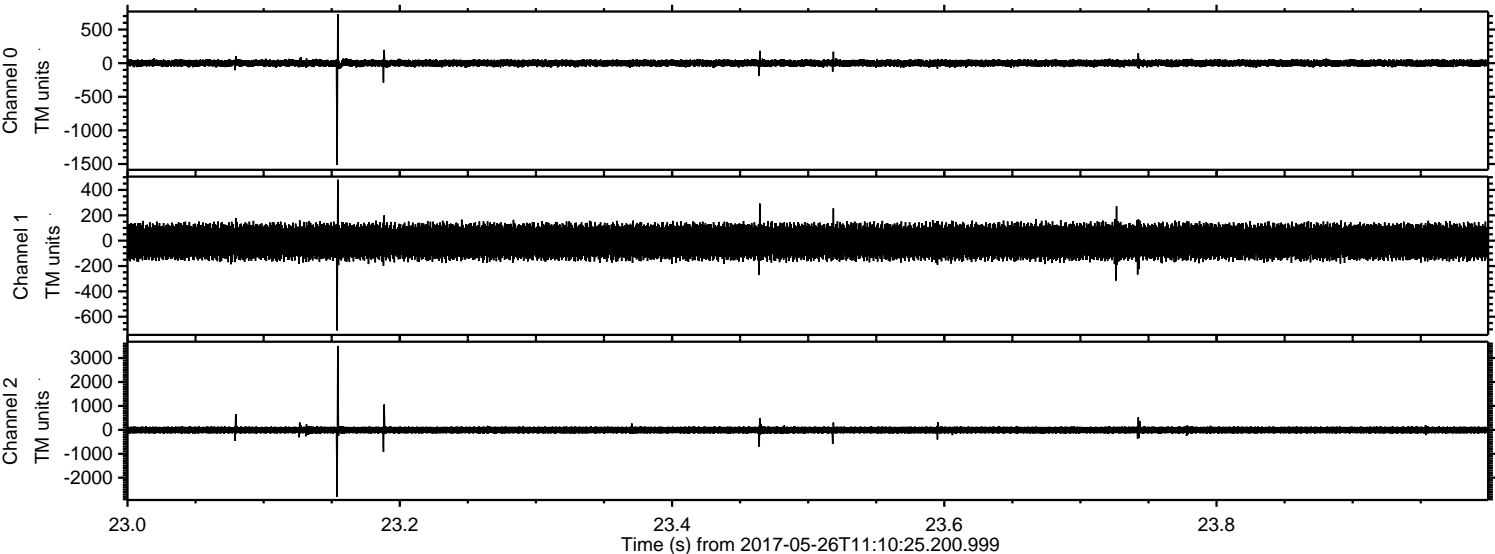
ELMAVAN 3D WAVEFORMS (Measured data sampled at 50 kHz) 51000 packets of 144 samples from 2017-05-26T11:10:25.200.999. Part 125/147

Processed Fri May 26 13:17:46 2017 by ELM ver.2012-10-06 from 001__elm20170526_111024__dat00.bin



ELMAVAN 3D WAVEFORMS (Measured data sampled at 50 kHz) 51000 packets of 144 samples from 2017-05-26T11:10:25.200.999. Part 24/147

Processed Fri May 26 13:17:47 2017 by ELM ver.2012-10-06 from 001__elm20170526_111024__dat00.bin



Channel 0
mn: -1511
mx: 731
 μ : 0.2
 σ : 29.7

Channel 1
mn: -708
mx: 481
 μ : -8.5
 σ : 79.3

Channel 2
mn: -2792
mx: 3508
 μ : -8.2
 σ : 91.0

ELMAVAN 3D WAVEFORMS (Measured data sampled at 50 kHz) 51000 packets of 144 samples from 2017-05-26T11:10:25.200.999. Part 112/147

