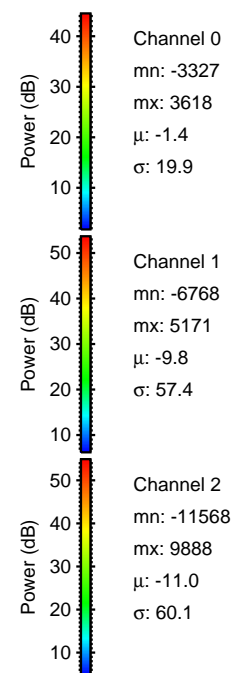
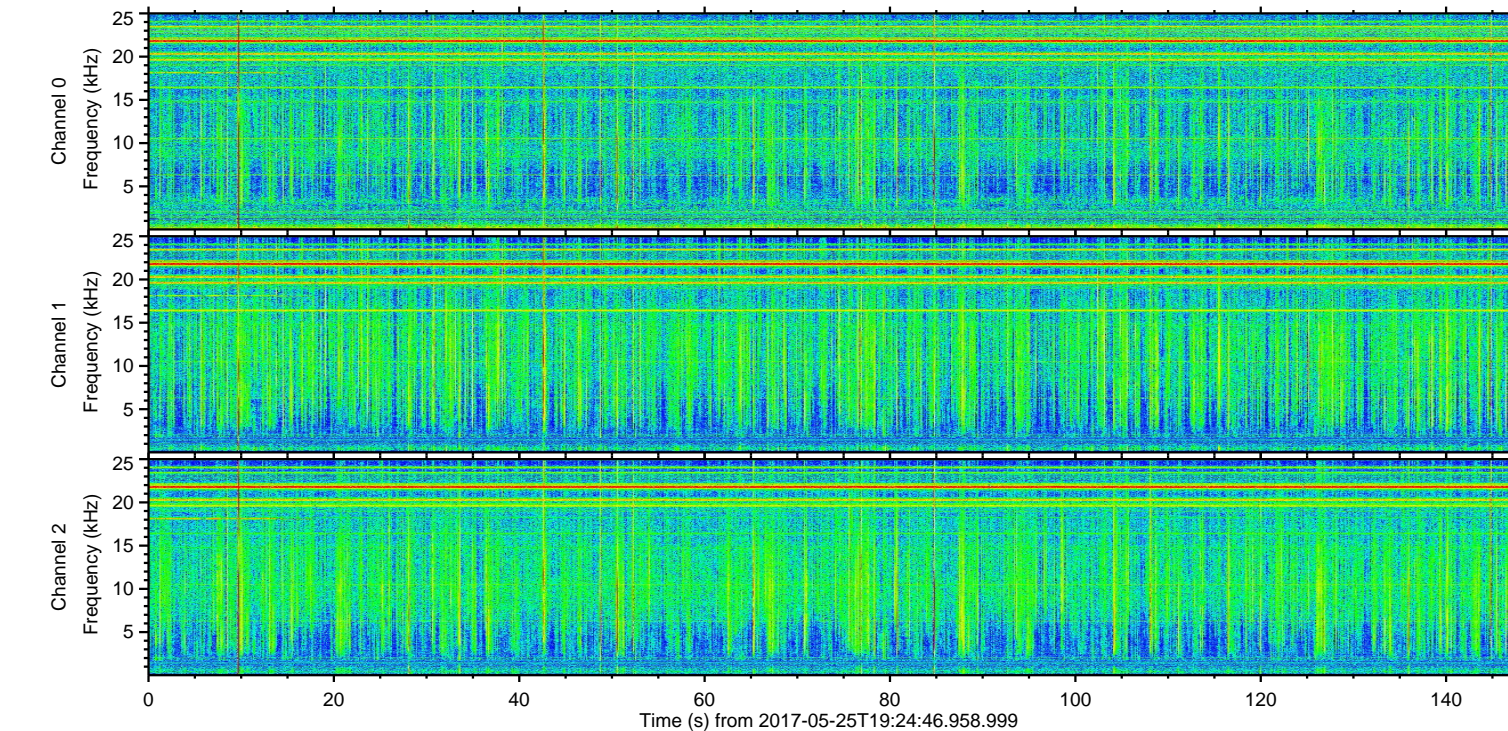
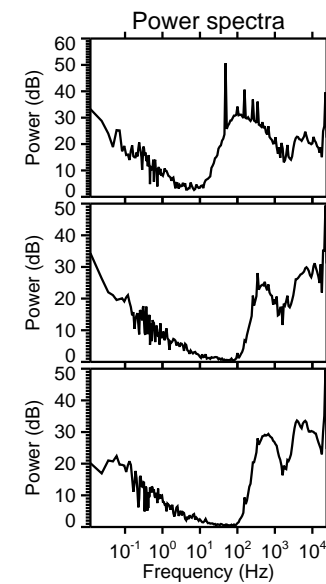
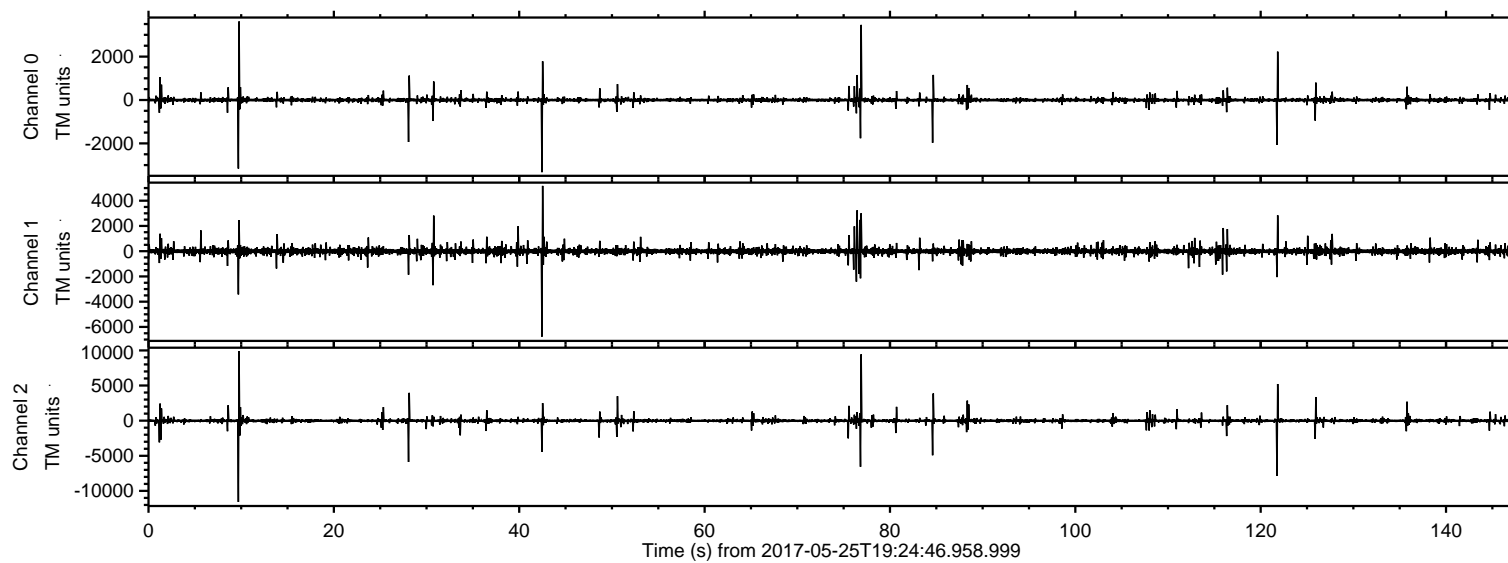
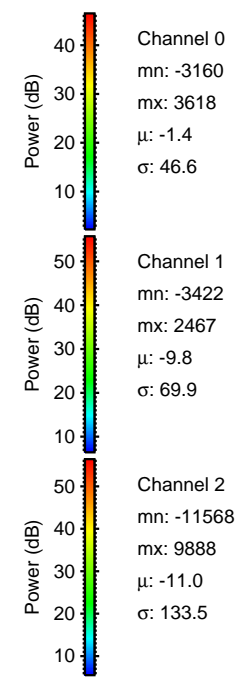
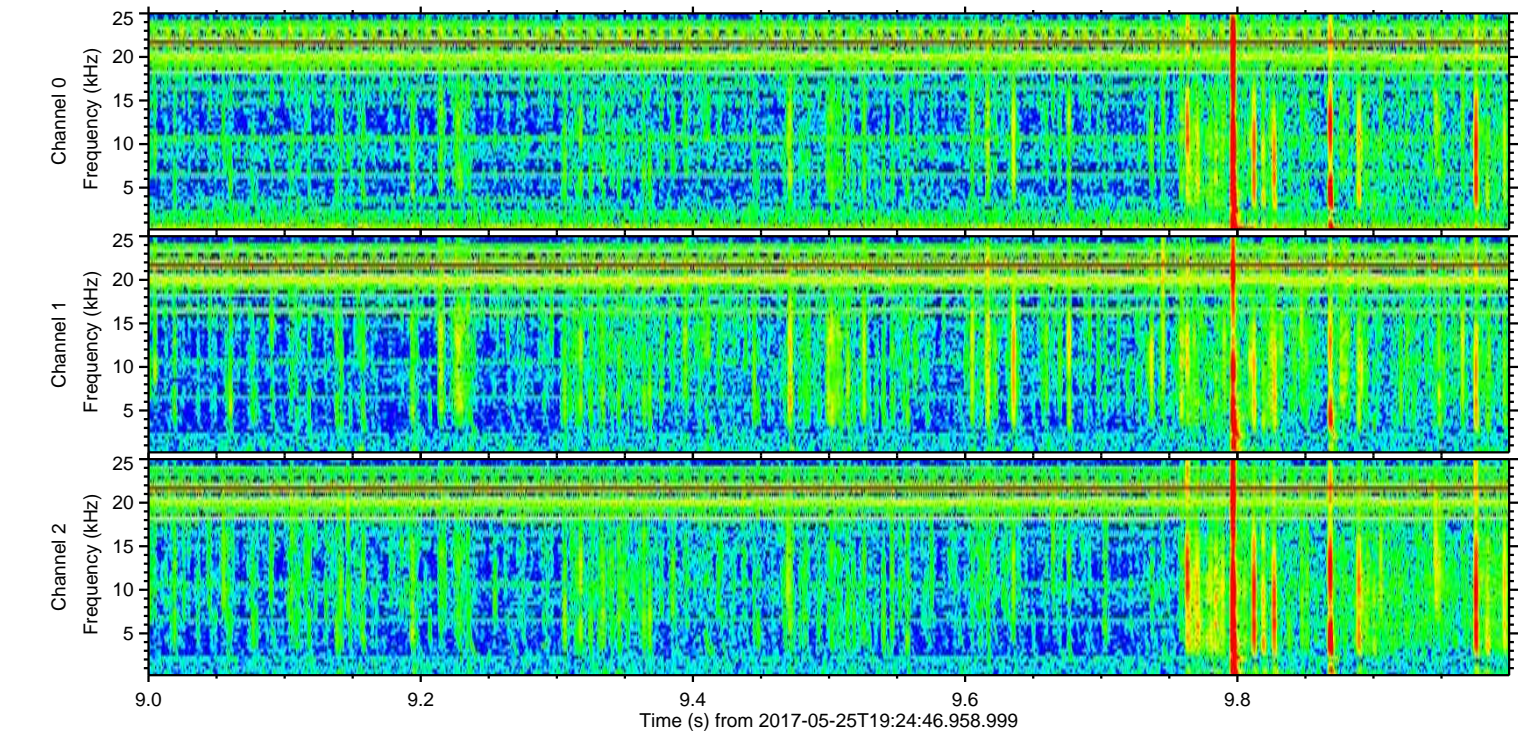
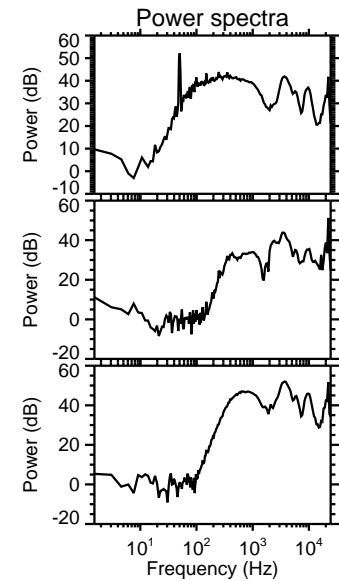
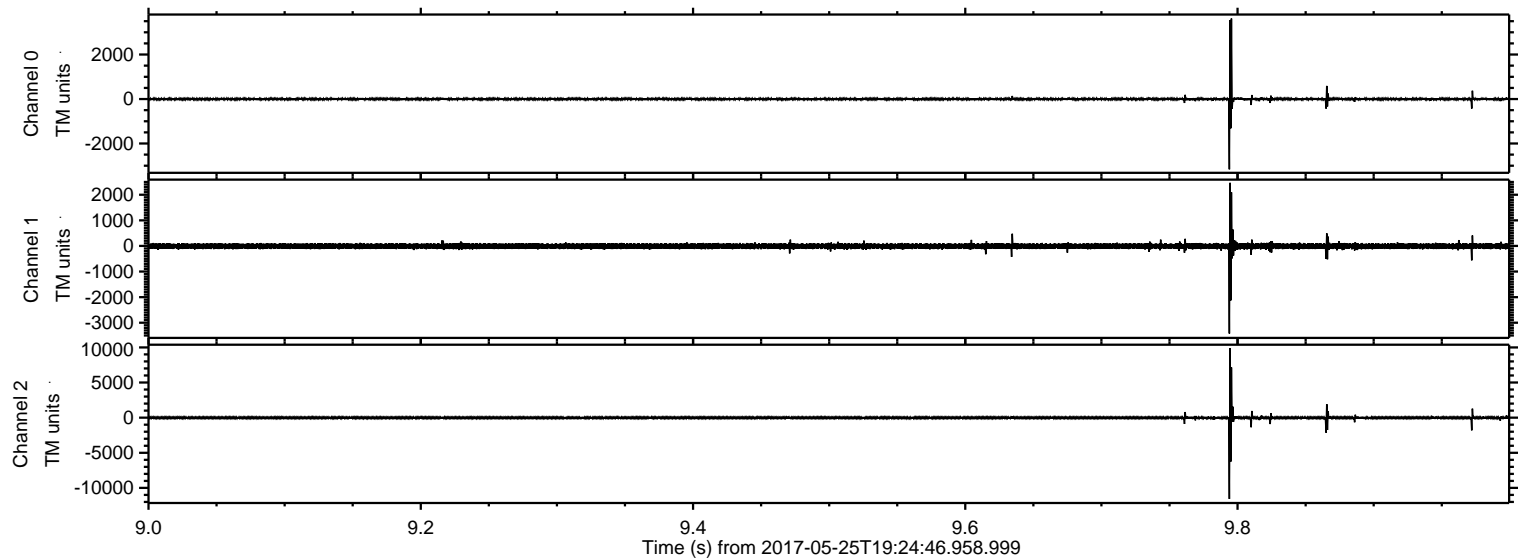


ELMAVAN 3D WAVEFORMS (Measured data sampled at 50 kHz) 51000 packets of 144 samples from 2017-05-25T19:24:46.958.999.

Processed Thu May 25 21:32:27 2017 by ELM ver.2012-10-06 from 001__elm20170525_192445__dat00.bin

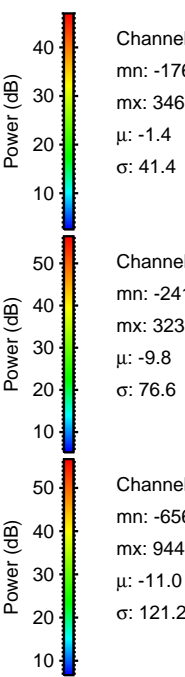
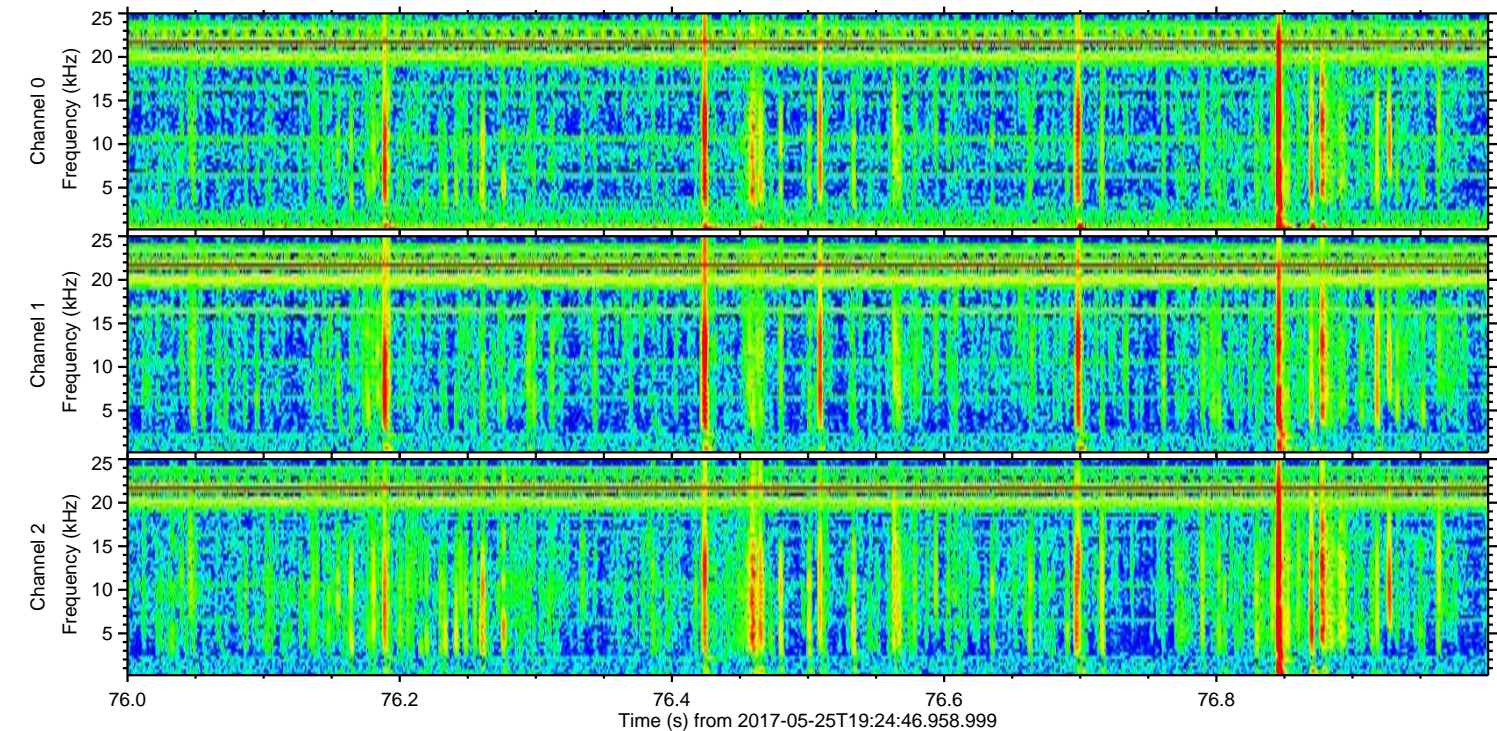
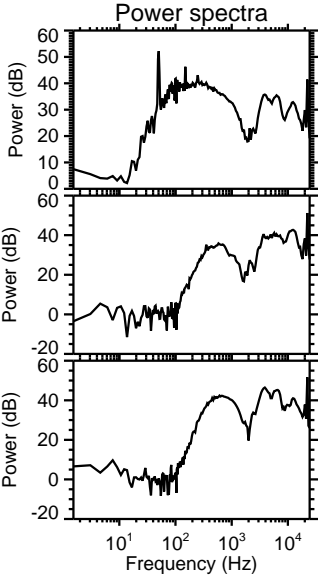
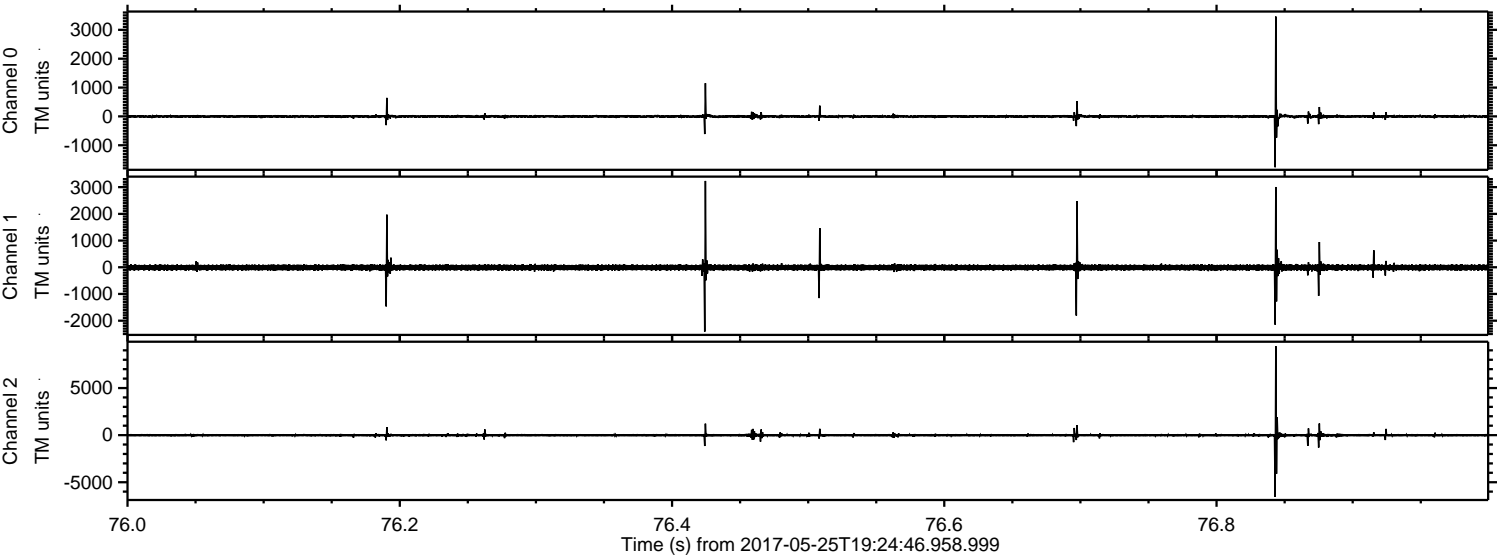


Processed Thu May 25 21:32:35 2017 by ELM ver.2012-10-06 from 001__elm20170525_192445__dat00.bin



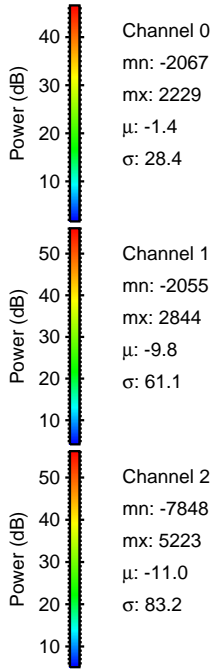
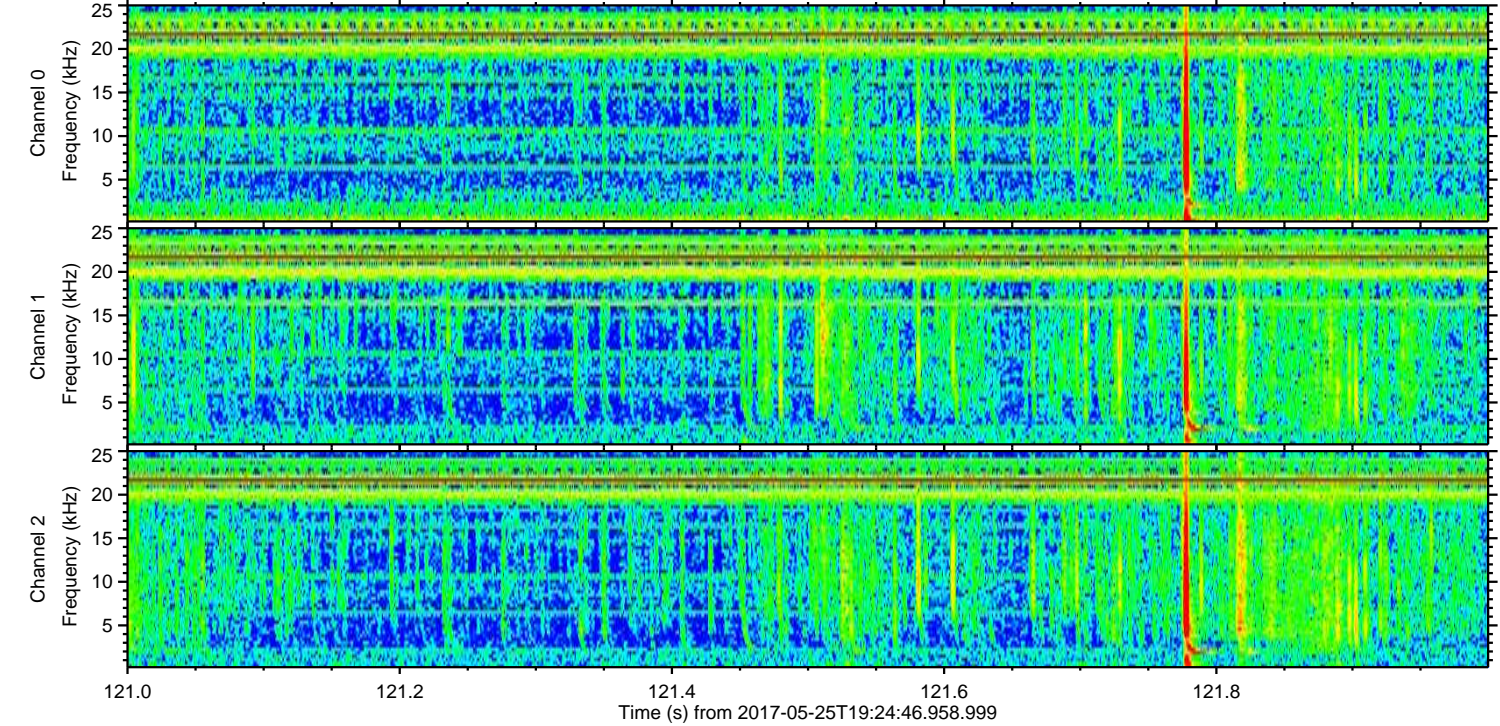
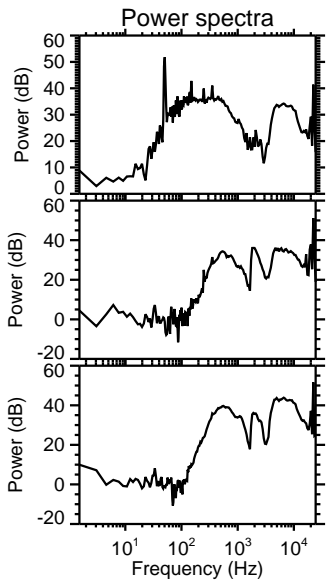
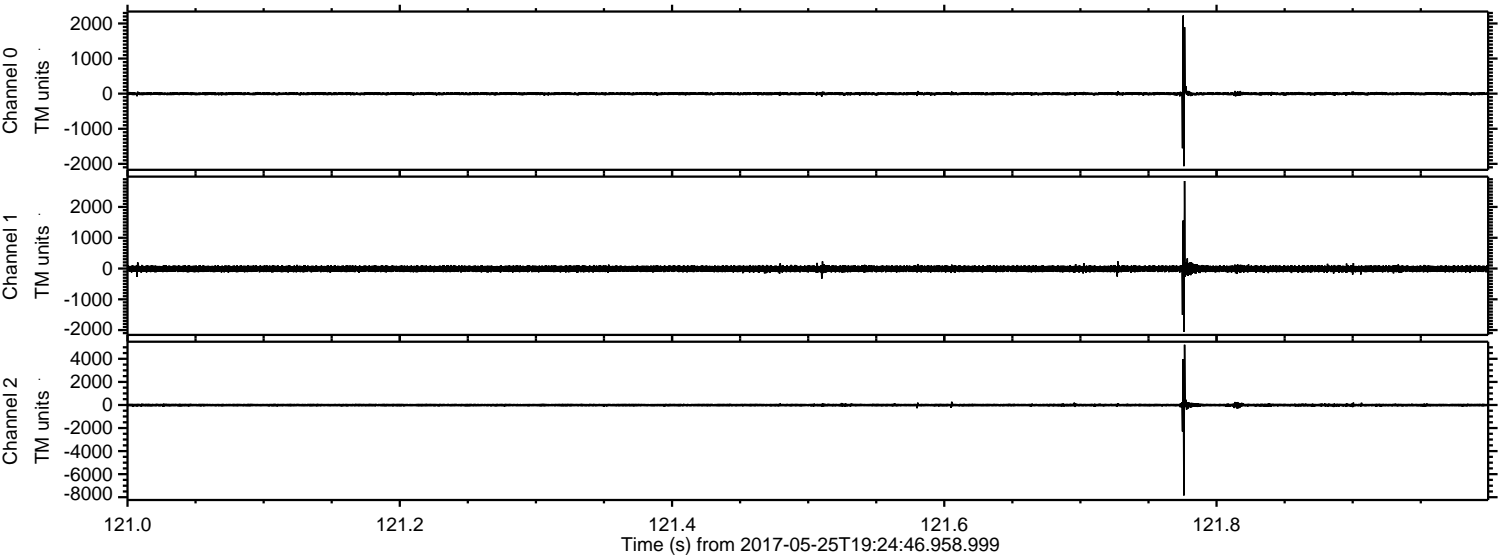
ELMAVAN 3D WAVEFORMS (Measured data sampled at 50 kHz) 51000 packets of 144 samples from 2017-05-25T19:24:46.958.999. Part 77/147

Processed Thu May 25 21:32:36 2017 by ELM ver.2012-10-06 from 001__elm20170525_192445__dat00.bin



ELMAVAN 3D WAVEFORMS (Measured data sampled at 50 kHz) 51000 packets of 144 samples from 2017-05-25T19:24:46.958.999. Part 122/147

Processed Thu May 25 21:32:36 2017 by ELM ver.2012-10-06 from 001__elm20170525_192445__dat00.bin

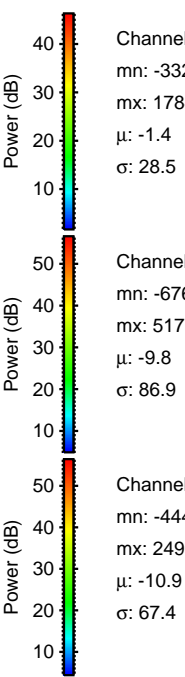
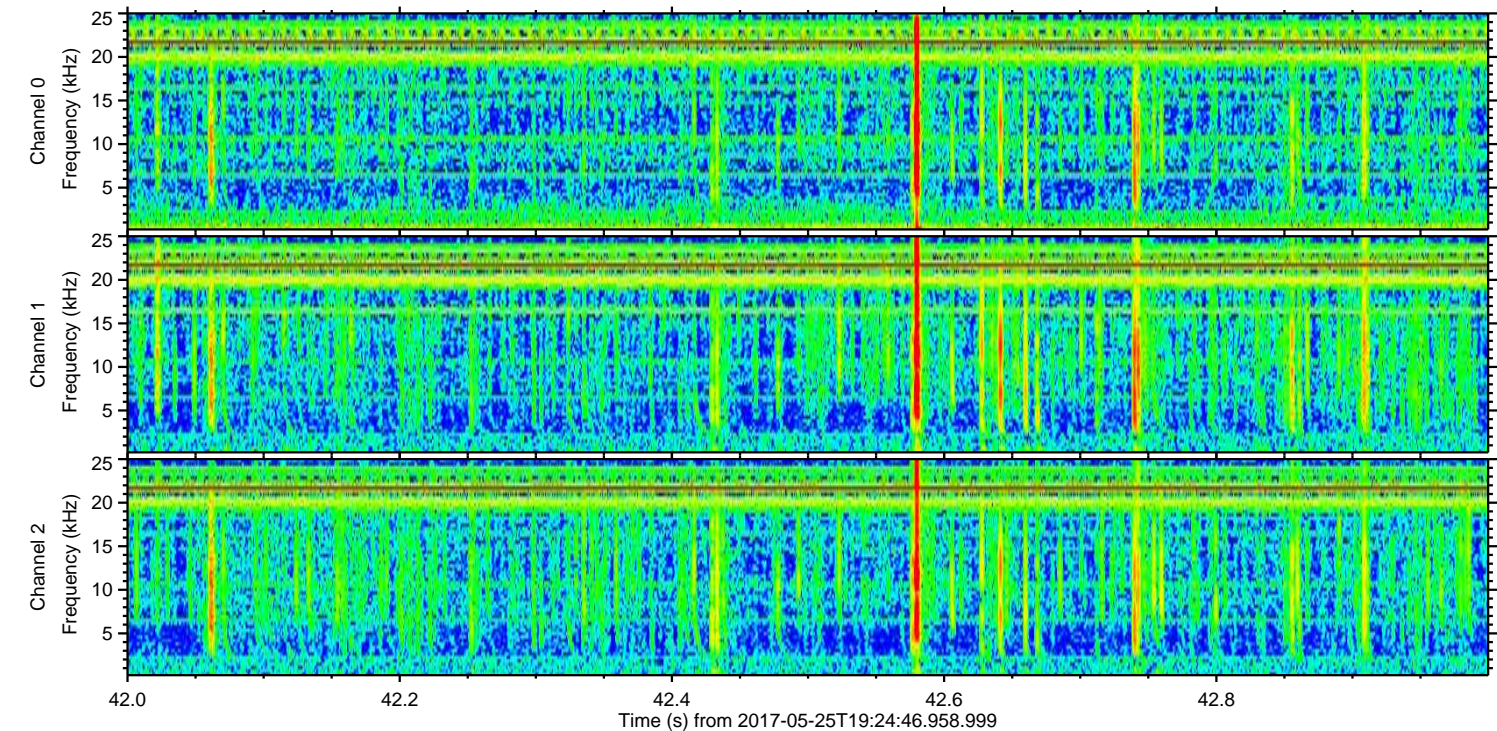
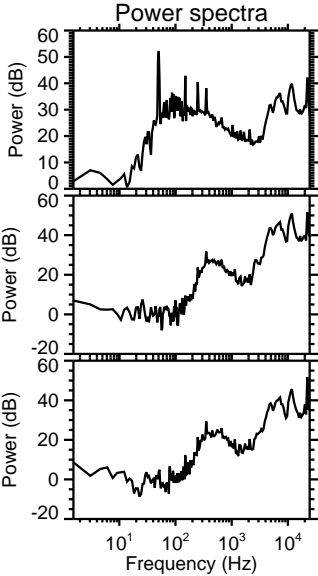
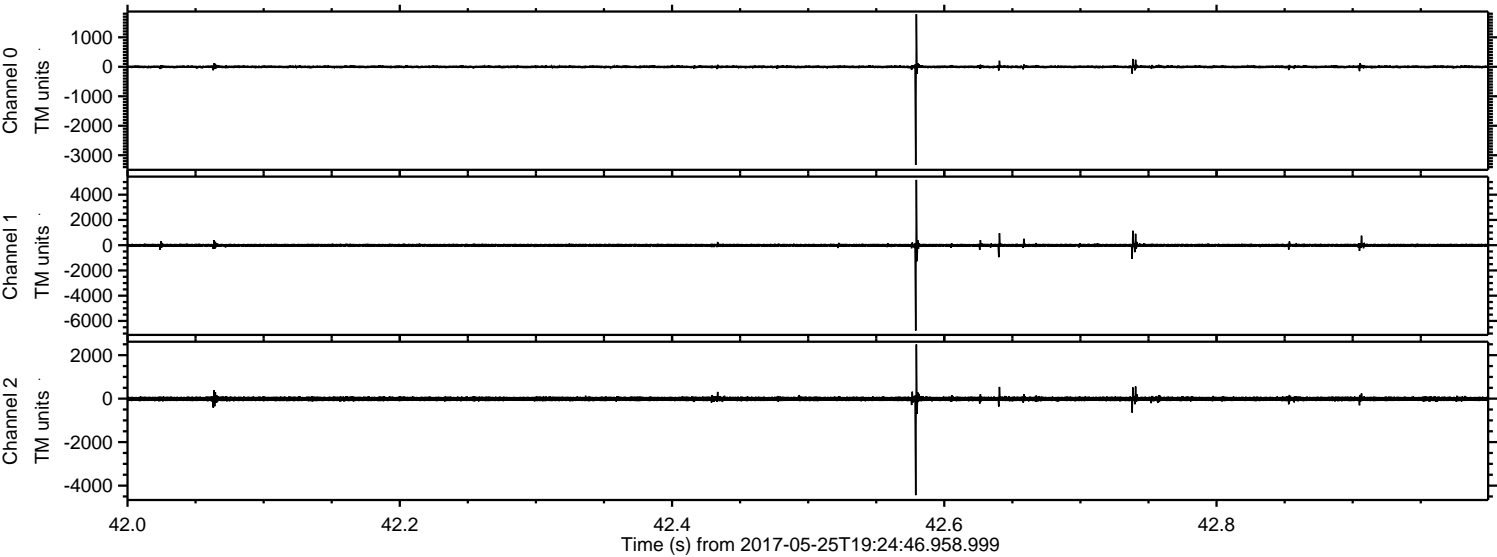


Channel 0
mn: -2067
mx: 2229
 μ : -1.4
 σ : 28.4

Channel 1
mn: -2055
mx: 2844
 μ : -9.8
 σ : 61.1

Channel 2
mn: -7848
mx: 5223
 μ : -11.0
 σ : 83.2

Processed Thu May 25 21:32:37 2017 by ELM ver.2012-10-06 from 001__elm20170525_192445__dat00.bin

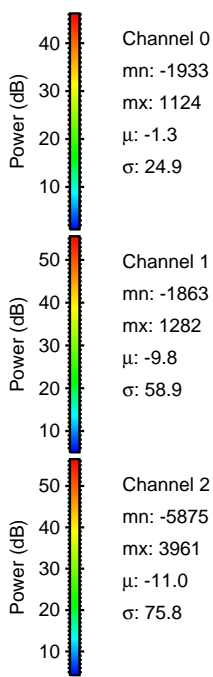
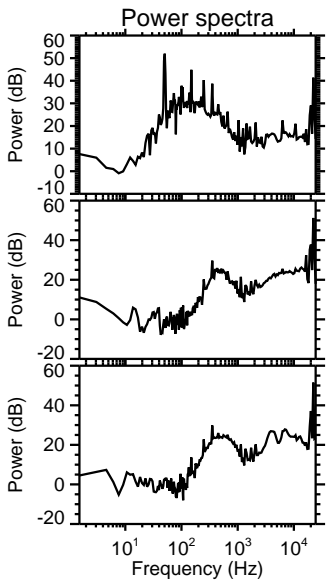
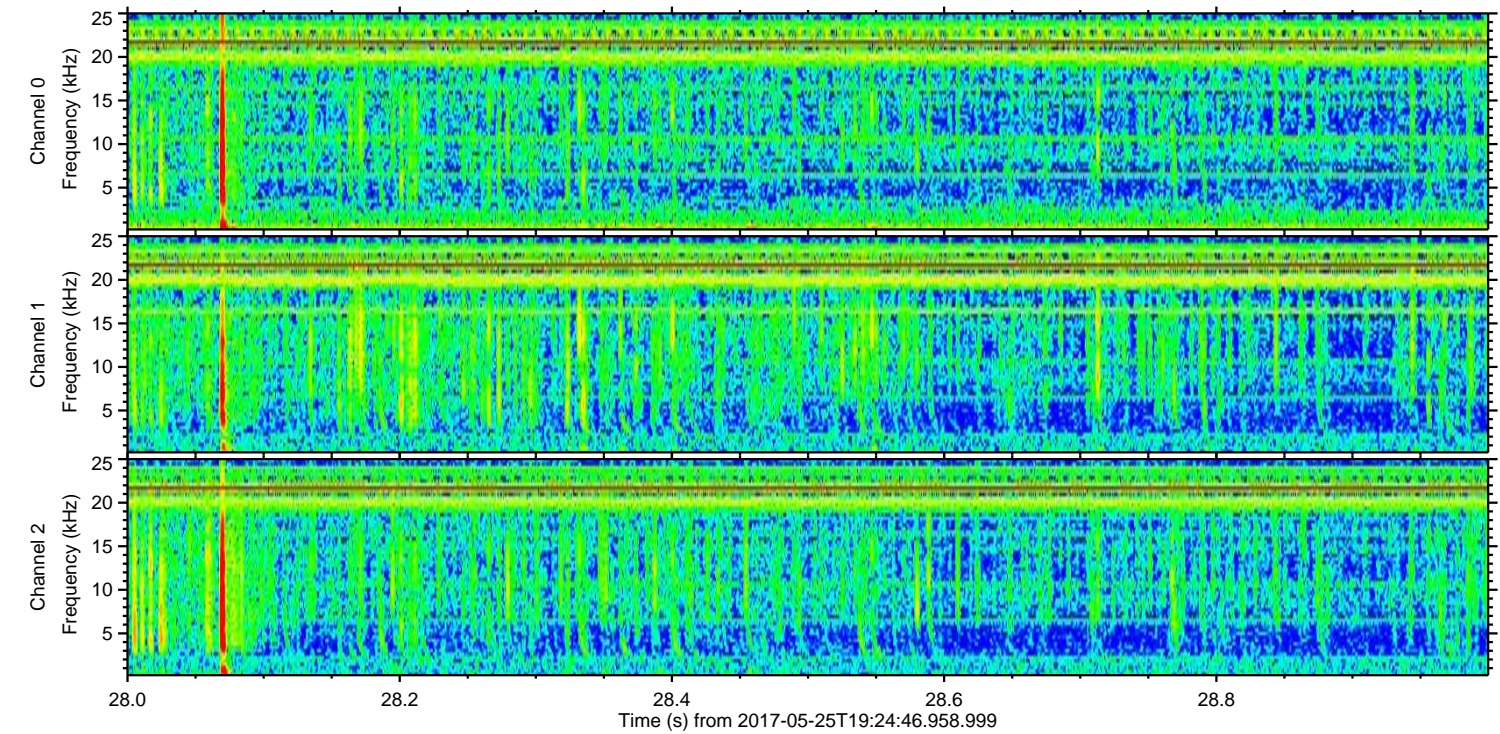
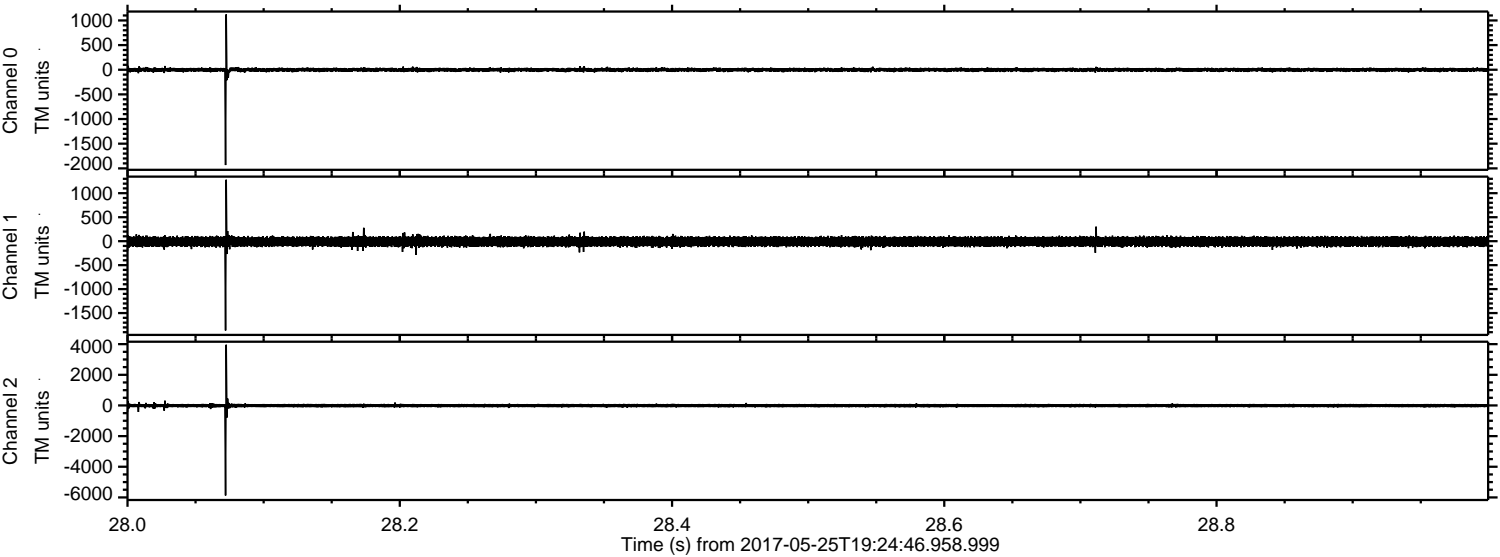


Channel 0
mn: -3327
mx: 1784
 μ : -1.4
 σ : 28.5

Channel 1
mn: -6768
mx: 5171
 μ : -9.8
 σ : 86.9

Channel 2
mn: -4440
mx: 2495
 μ : -10.9
 σ : 67.4

Processed Thu May 25 21:32:38 2017 by ELM ver.2012-10-06 from 001__elm20170525_192445__dat00.bin



Channel 0

mn: -1933

mx: 1124

μ : -1.3

σ : 24.9

Channel 1

mn: -1863

mx: 1282

μ : -9.8

σ : 58.9

Channel 2

mn: -5875

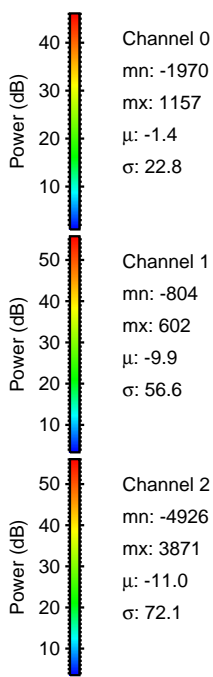
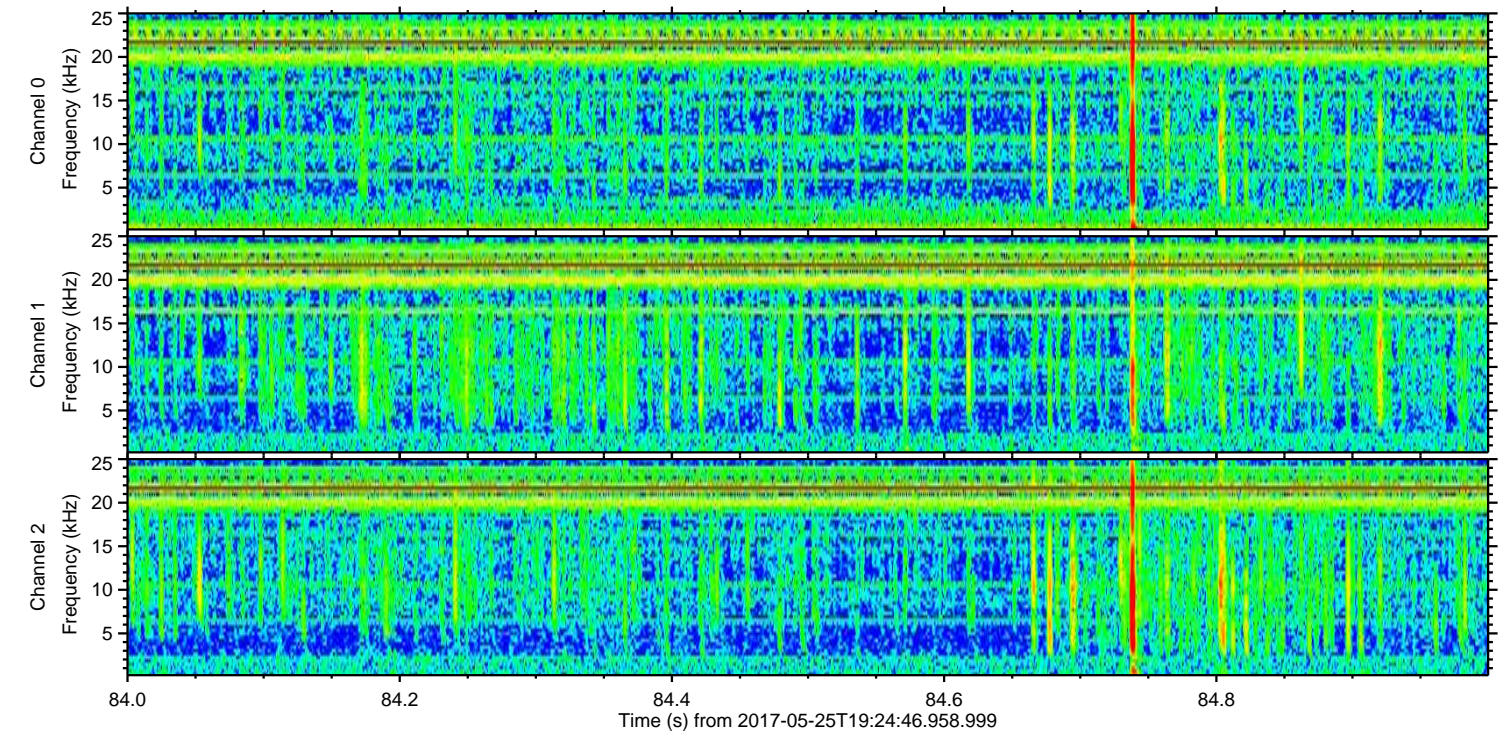
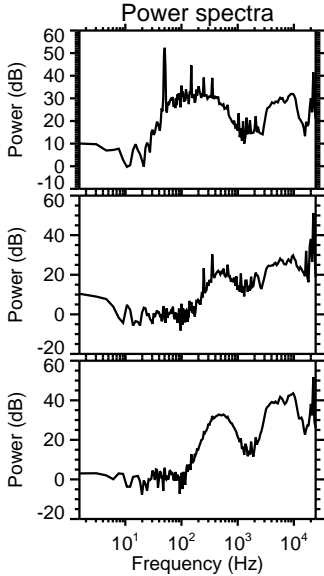
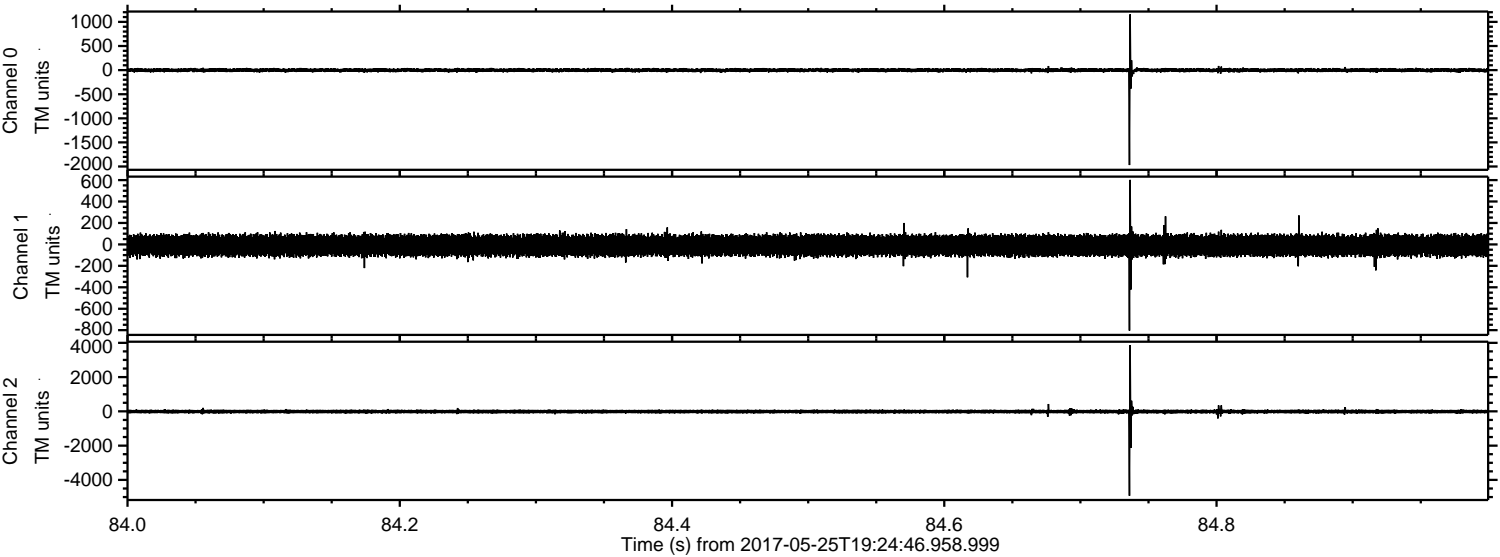
mx: 3961

μ : -11.0

σ : 75.8

ELMAVAN 3D WAVEFORMS (Measured data sampled at 50 kHz) 51000 packets of 144 samples from 2017-05-25T19:24:46.958.999. Part 85/147

Processed Thu May 25 21:32:38 2017 by ELM ver.2012-10-06 from 001__elm20170525_192445__dat00.bin



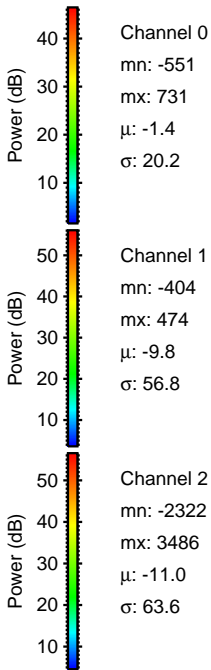
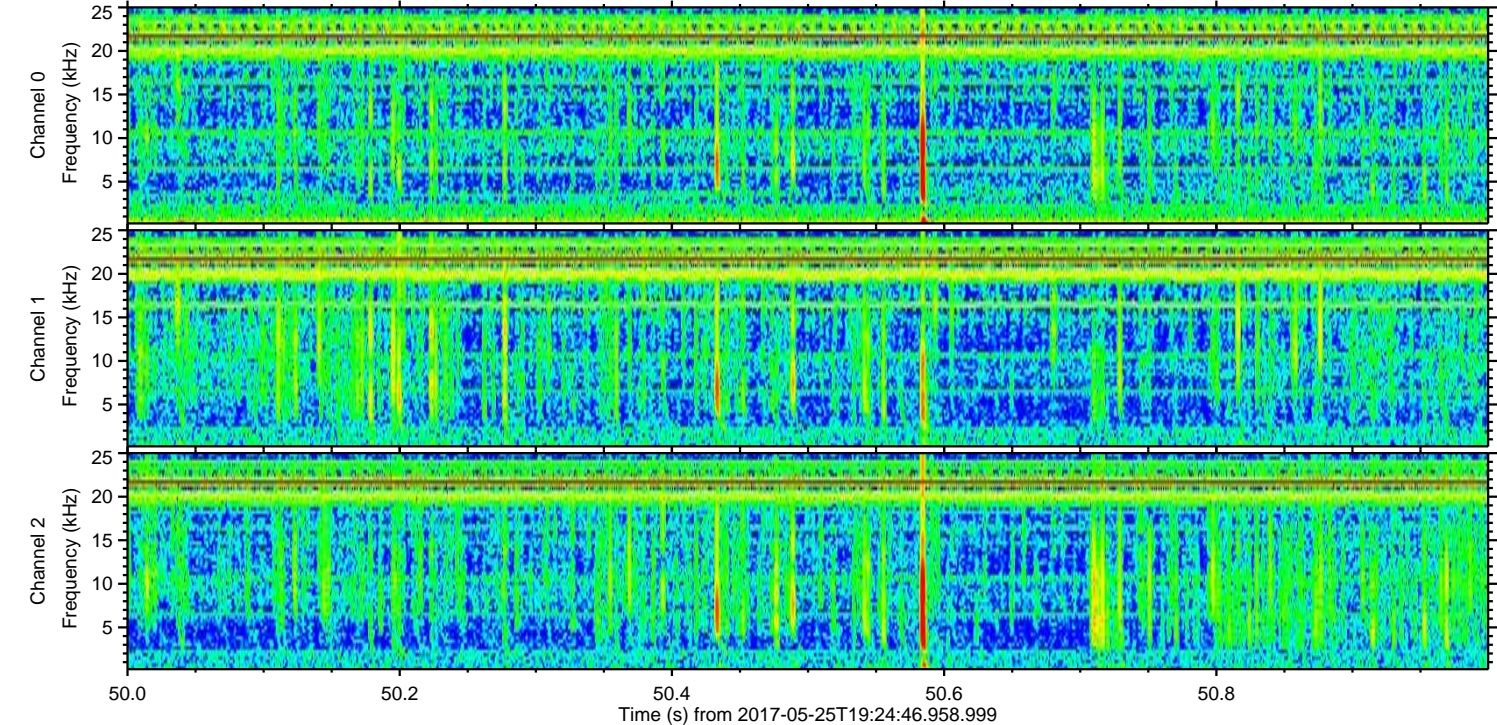
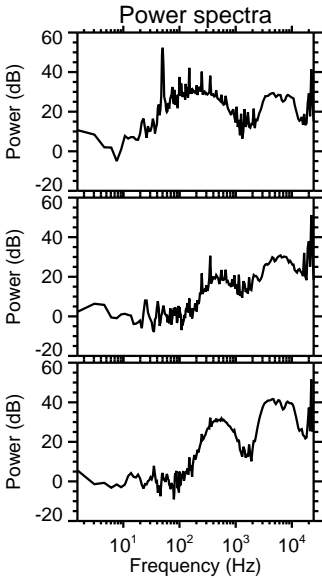
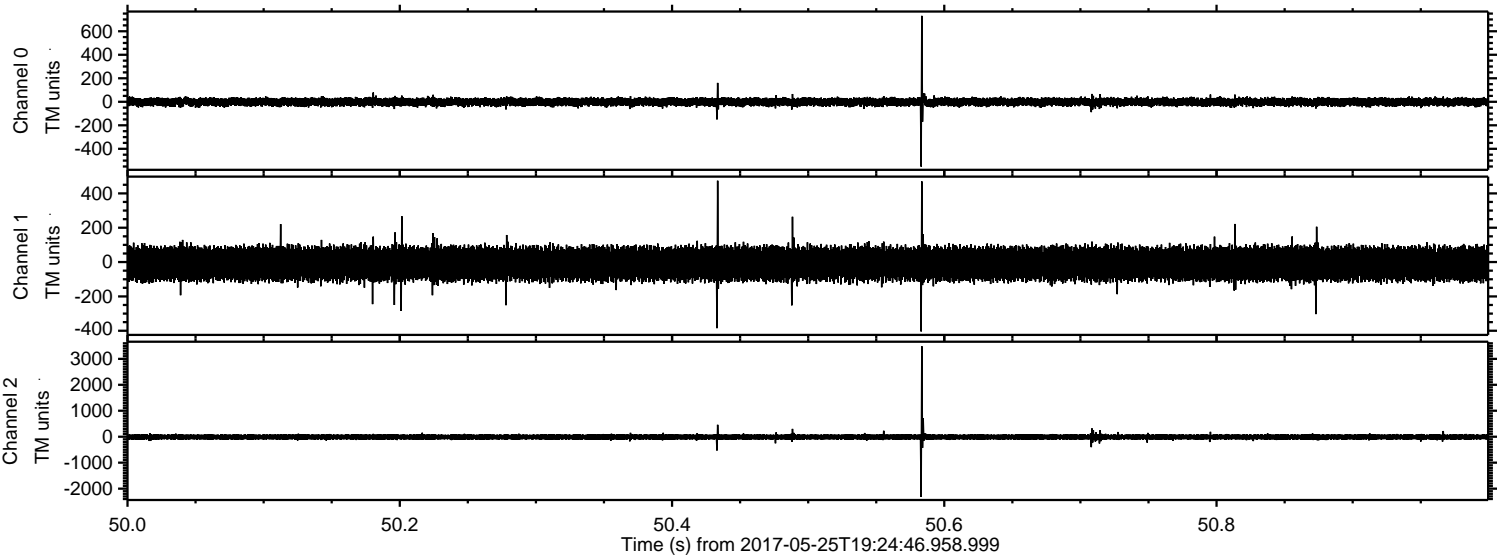
Channel 0
mn: -1970
mx: 1157
 μ : -1.4
 σ : 22.8

Channel 1
mn: -804
mx: 602
 μ : -9.9
 σ : 56.6

Channel 2
mn: -4926
mx: 3871
 μ : -11.0
 σ : 72.1

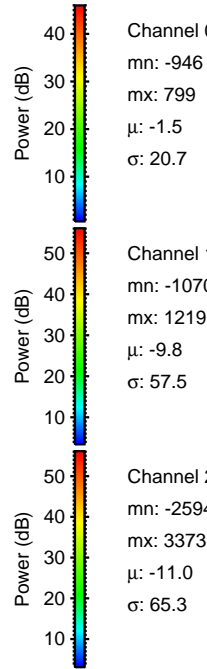
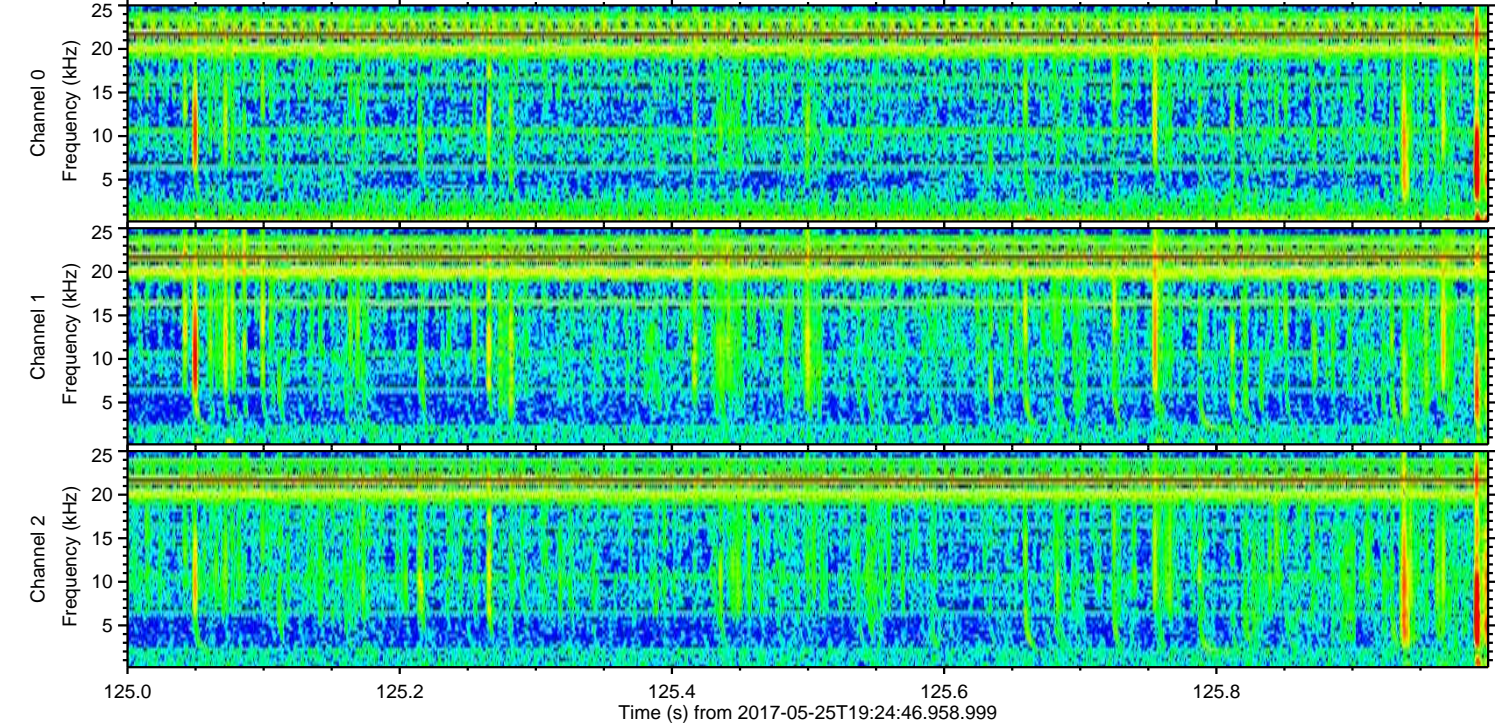
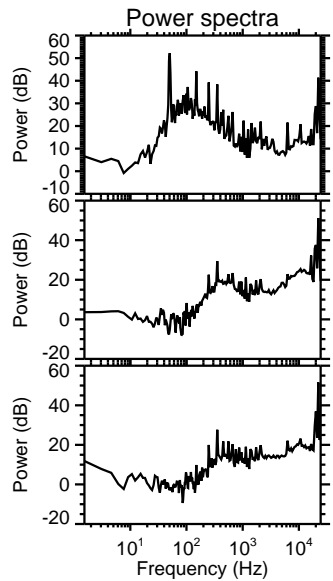
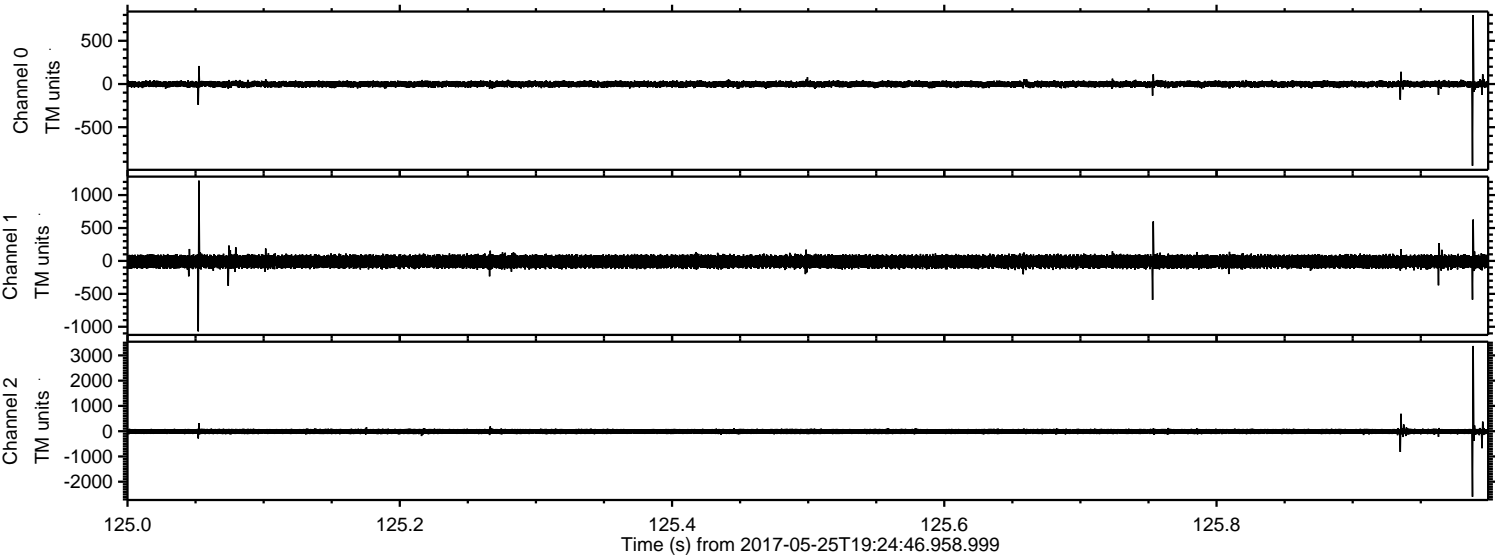
ELMAVAN 3D WAVEFORMS (Measured data sampled at 50 kHz) 51000 packets of 144 samples from 2017-05-25T19:24:46.958.999. Part 51/147

Processed Thu May 25 21:32:39 2017 by ELM ver.2012-10-06 from 001__elm20170525_192445__dat00.bin



ELMAVAN 3D WAVEFORMS (Measured data sampled at 50 kHz) 51000 packets of 144 samples from 2017-05-25T19:24:46.958.999. Part 126/147

Processed Thu May 25 21:32:39 2017 by ELM ver.2012-10-06 from 001__elm20170525_192445__dat00.bin

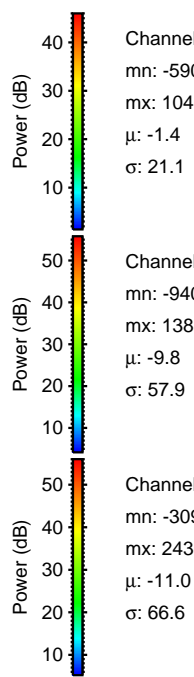
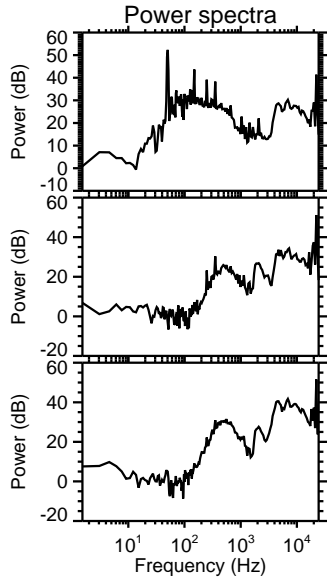
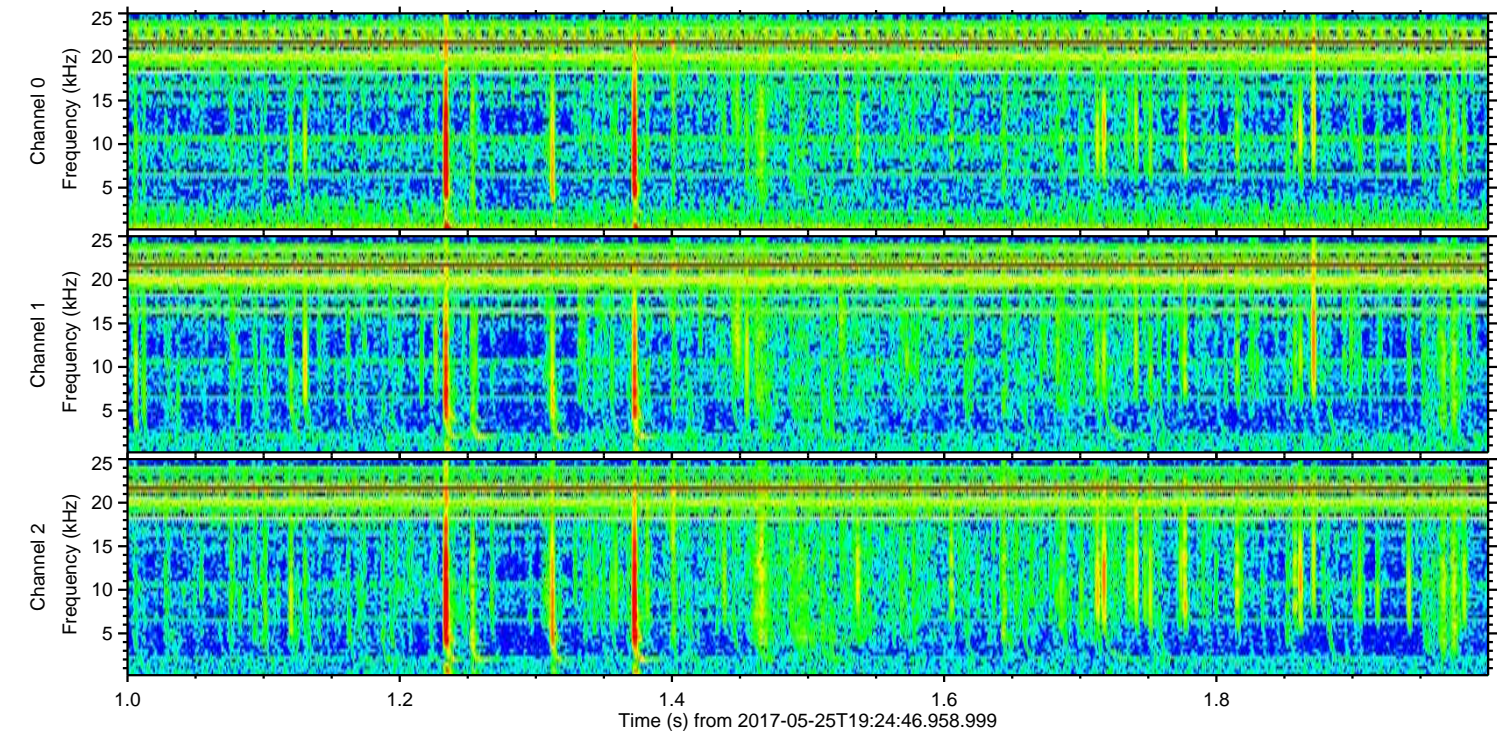
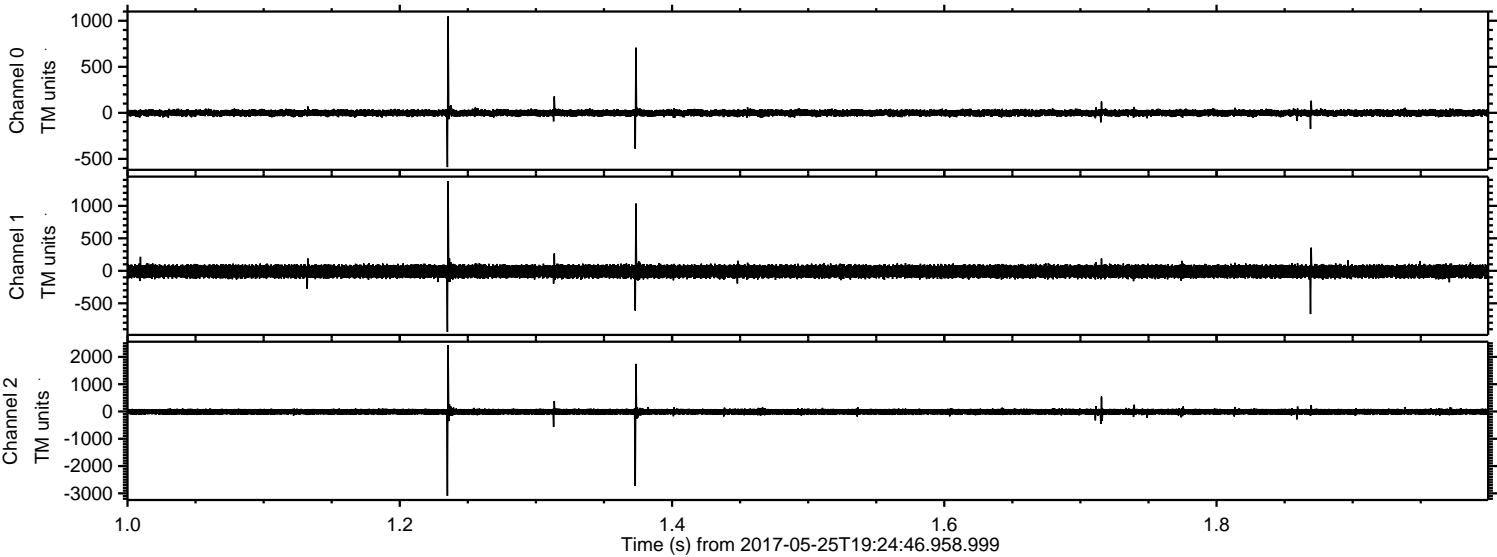


Channel 0
mn: -946
mx: 799
 μ : -1.5
 σ : 20.7

Channel 1
mn: -1070
mx: 1219
 μ : -9.8
 σ : 57.5

Channel 2
mn: -2594
mx: 3373
 μ : -11.0
 σ : 65.3

Processed Thu May 25 21:32:40 2017 by ELM ver.2012-10-06 from 001__elm20170525_192445__dat00.bin



Channel 0
mn: -590
mx: 1048
 μ : -1.4
 σ : 21.1

Channel 1
mn: -940
mx: 1381
 μ : -9.8
 σ : 57.9

Channel 2
mn: -3090
mx: 2436
 μ : -11.0
 σ : 66.6

ELMAVAN 3D WAVEFORMS (Measured data sampled at 50 kHz) 51000 packets of 144 samples from 2017-05-25T19:24:46.958.999. Part 132/147

