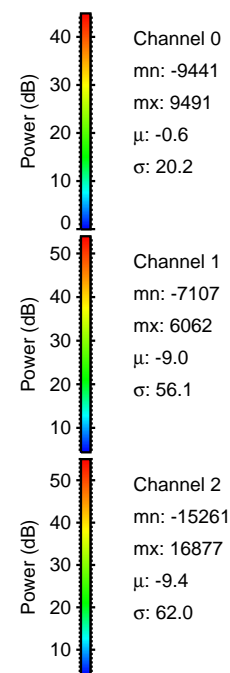
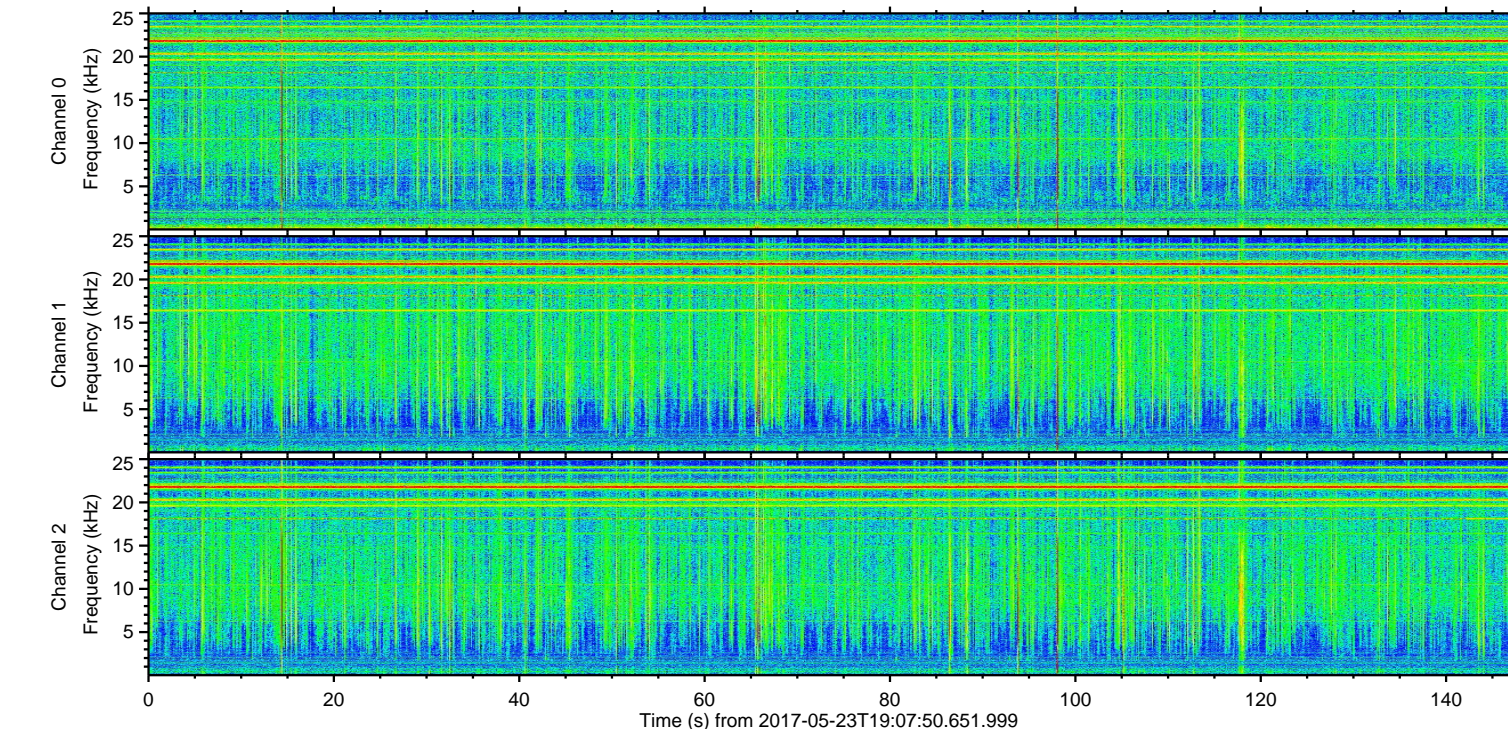
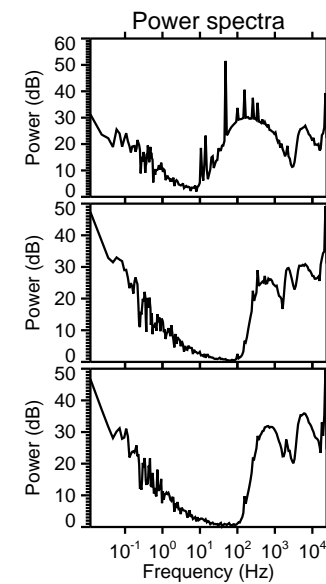
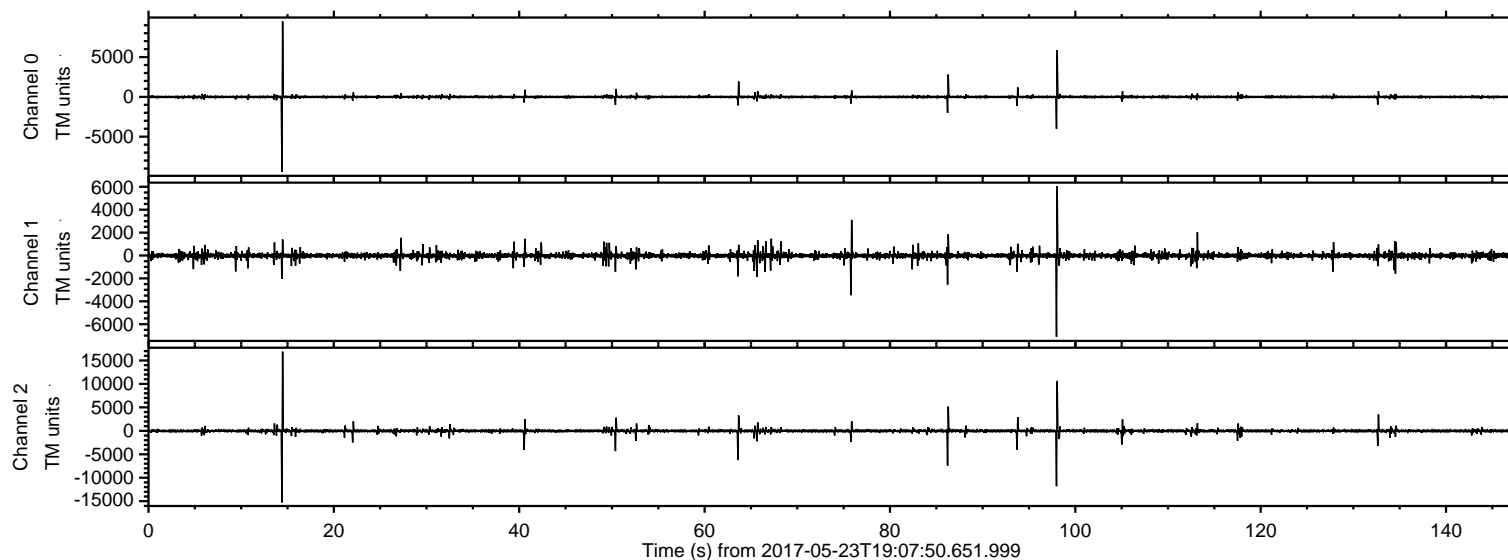
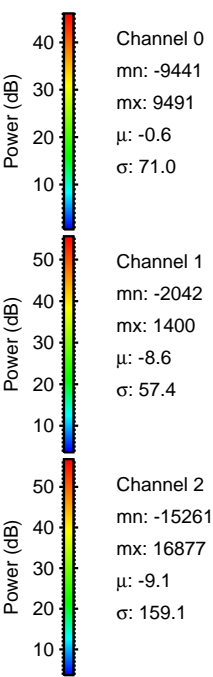
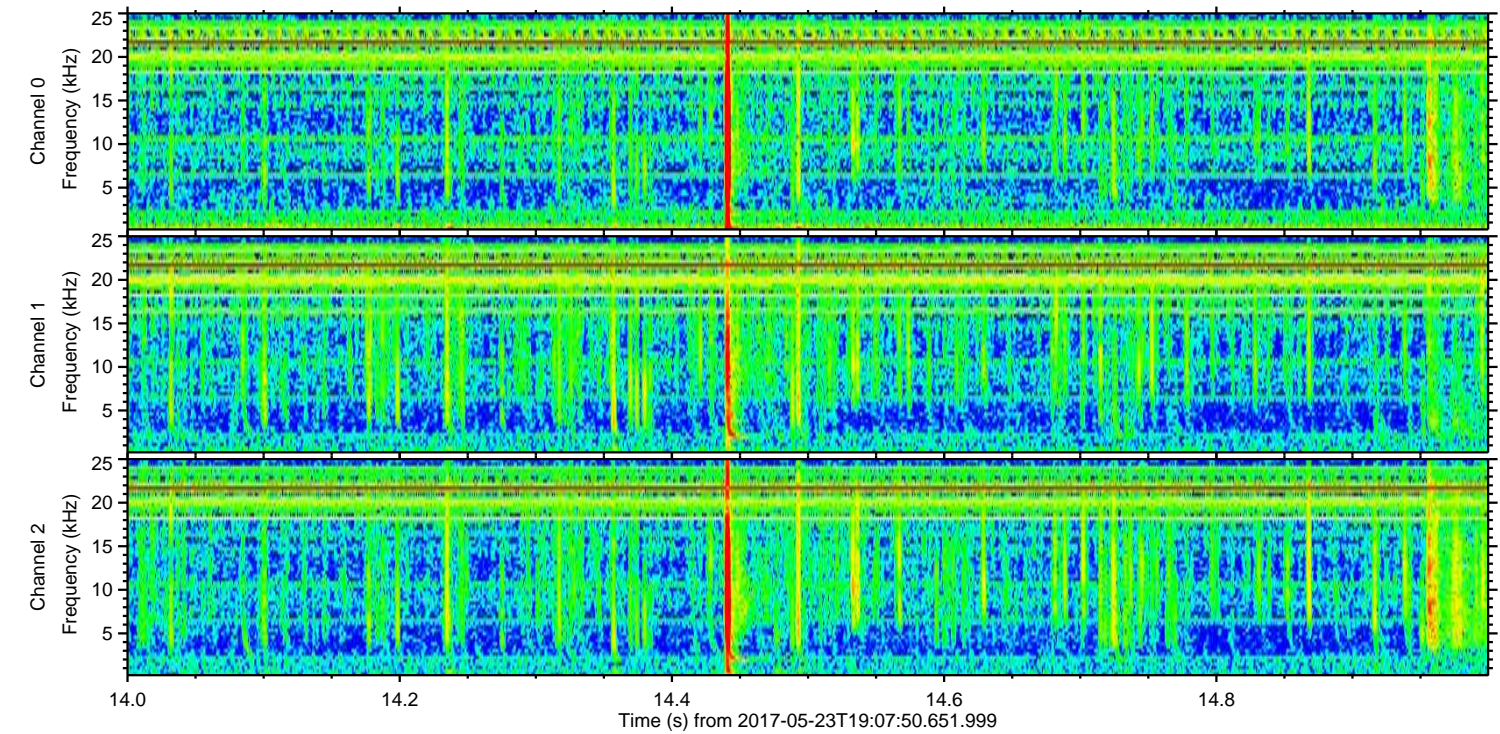
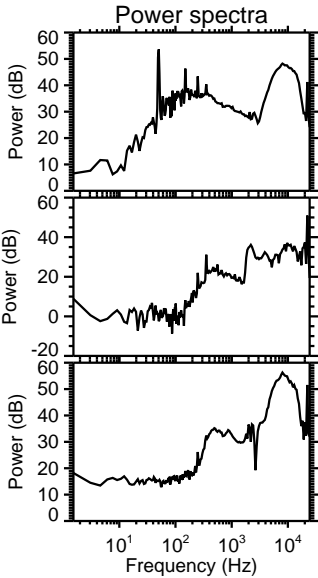
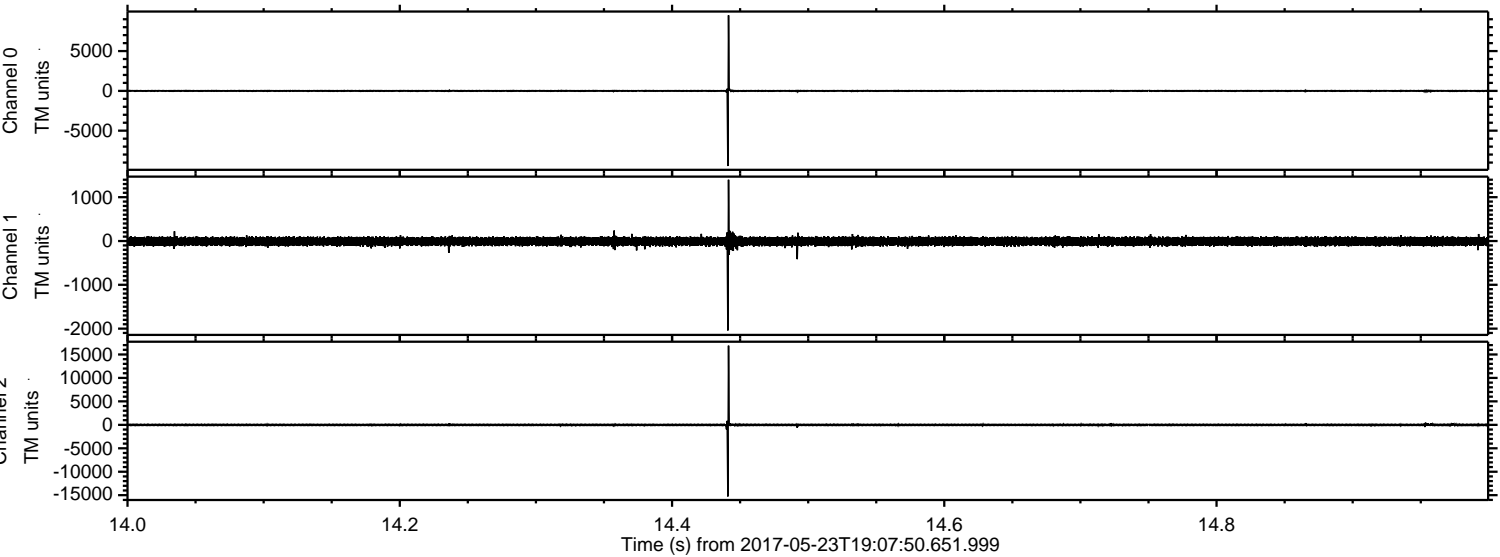


ELMAVAN 3D WAVEFORMS (Measured data sampled at 50 kHz) 51000 packets of 144 samples from 2017-05-23T19:07:50.651.999.

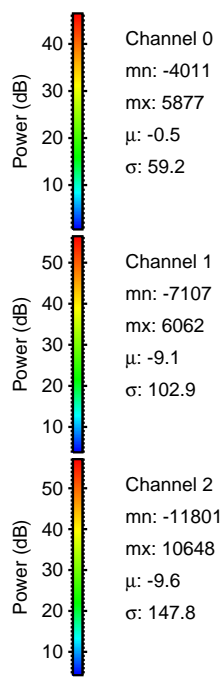
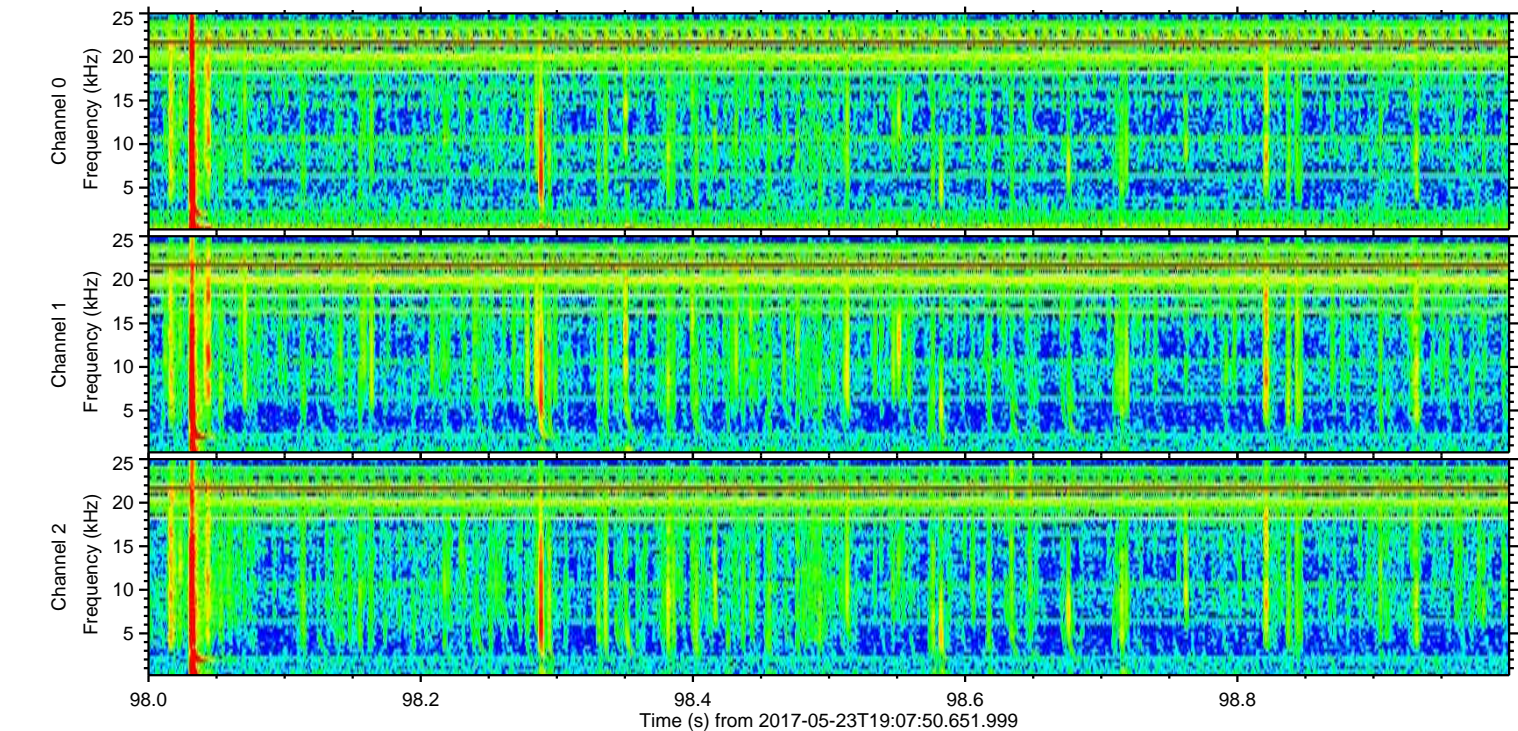
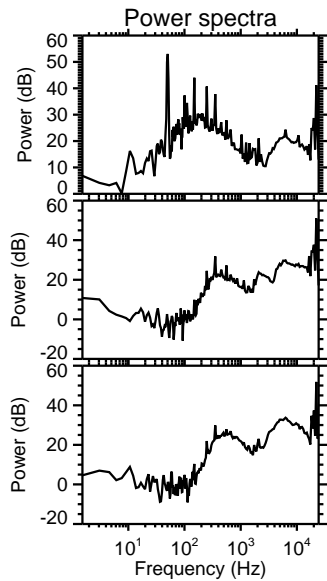
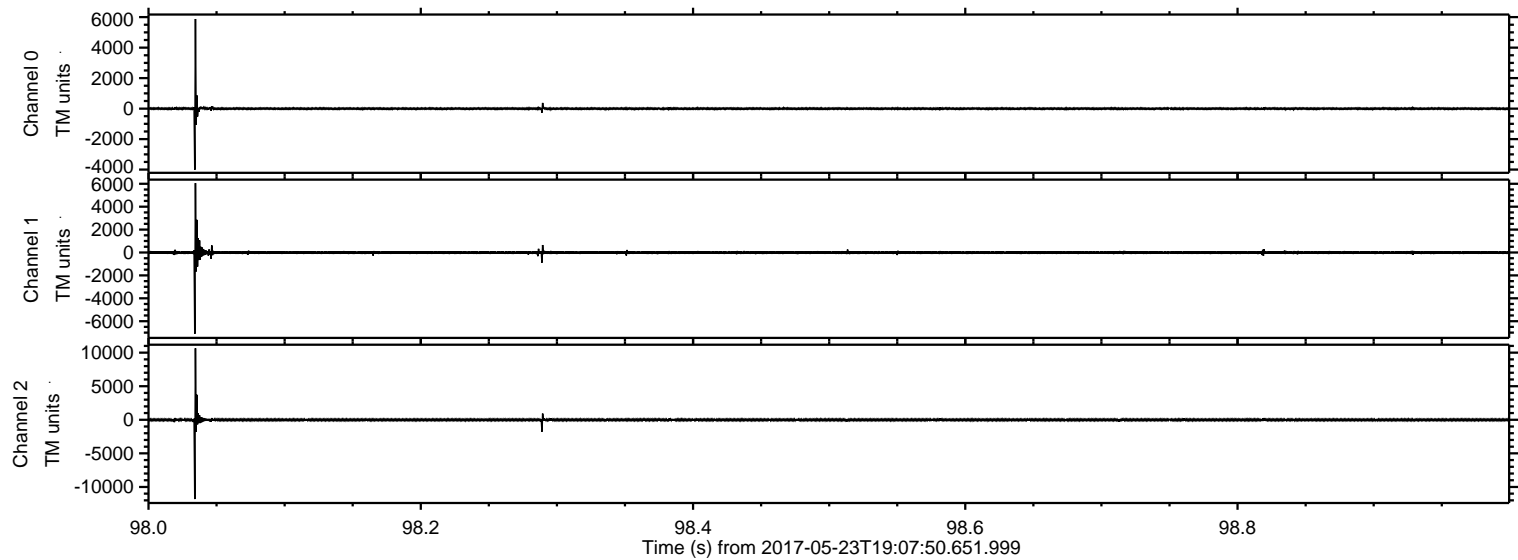
Processed Tue May 23 21:16:02 2017 by ELM ver.2012-10-06 from 001__elm20170523_190749__dat00.bin



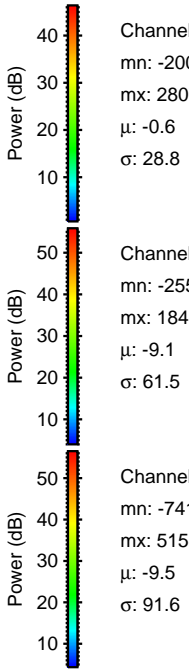
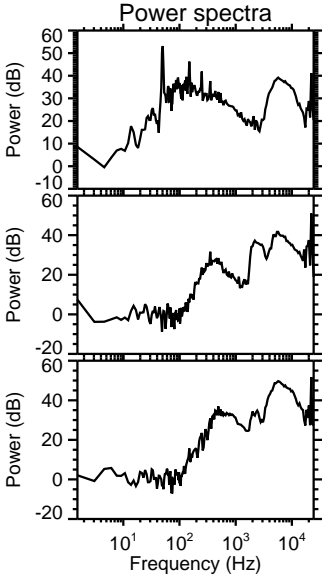
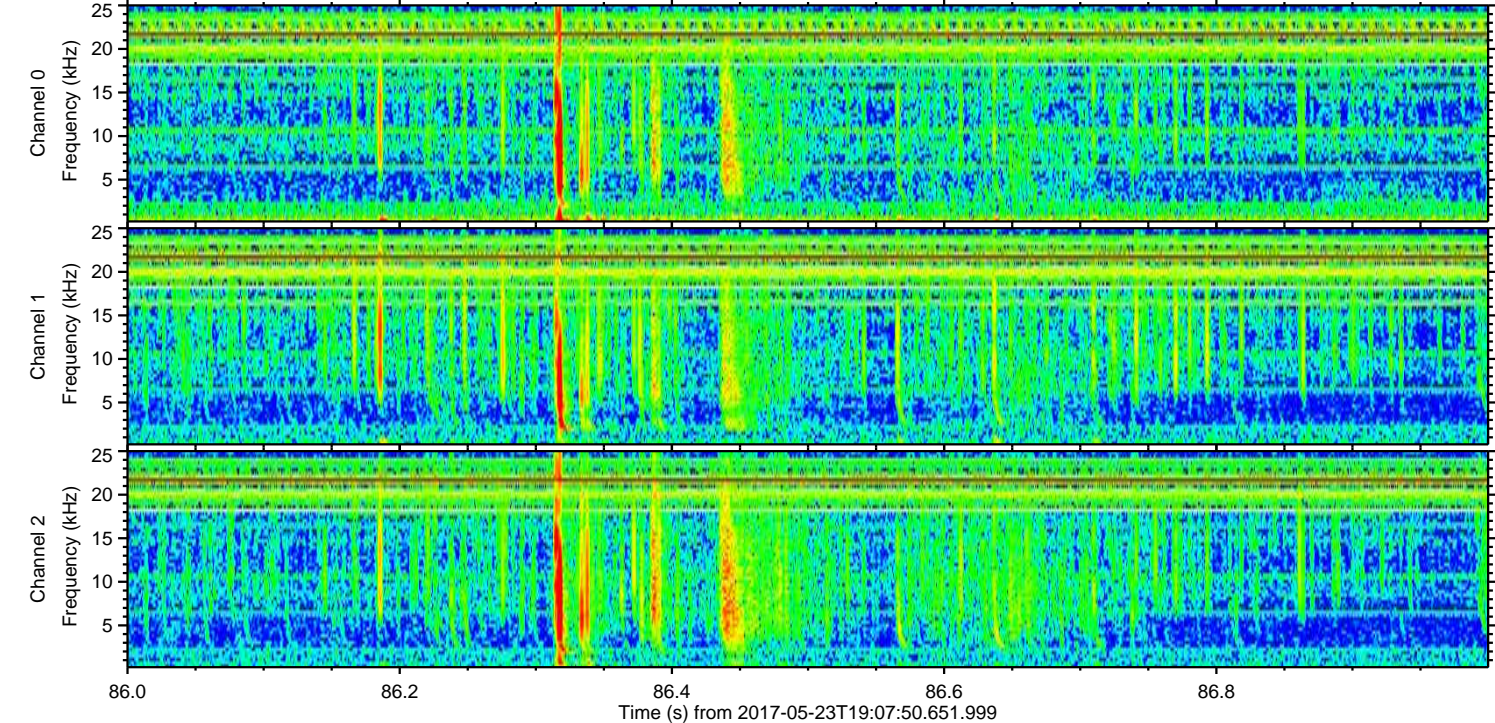
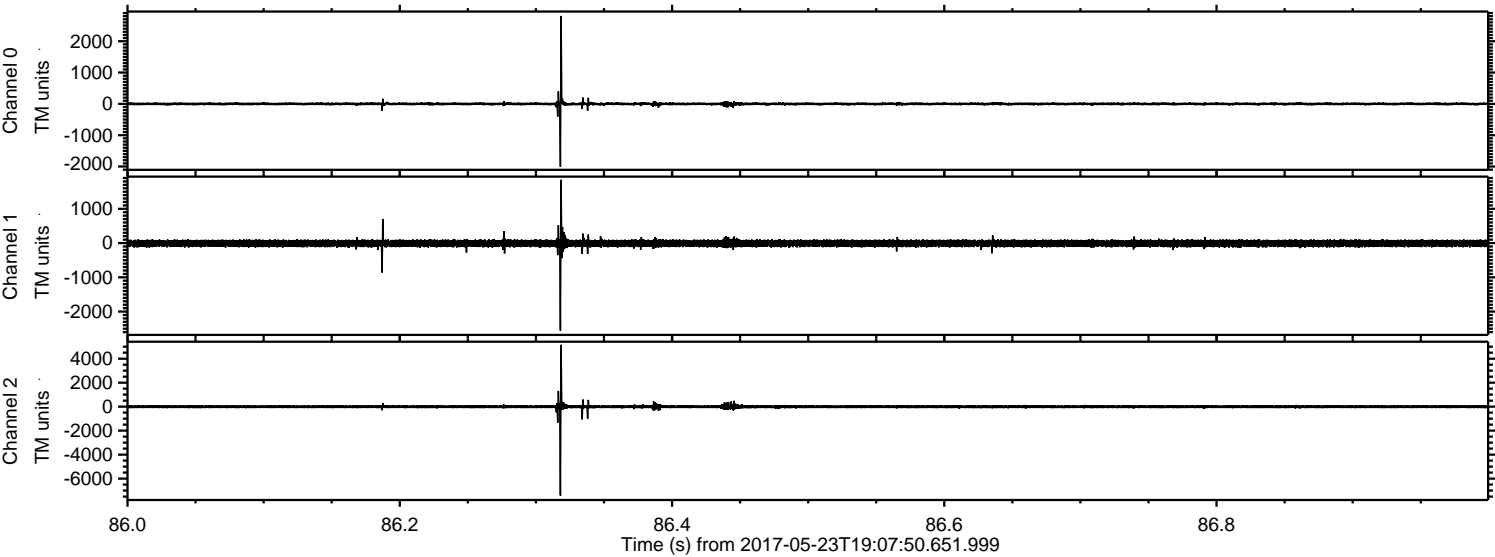
Processed Tue May 23 21:16:07 2017 by ELM ver.2012-10-06 from 001__elm20170523_190749__dat00.bin



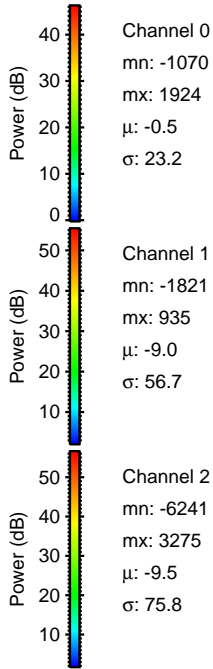
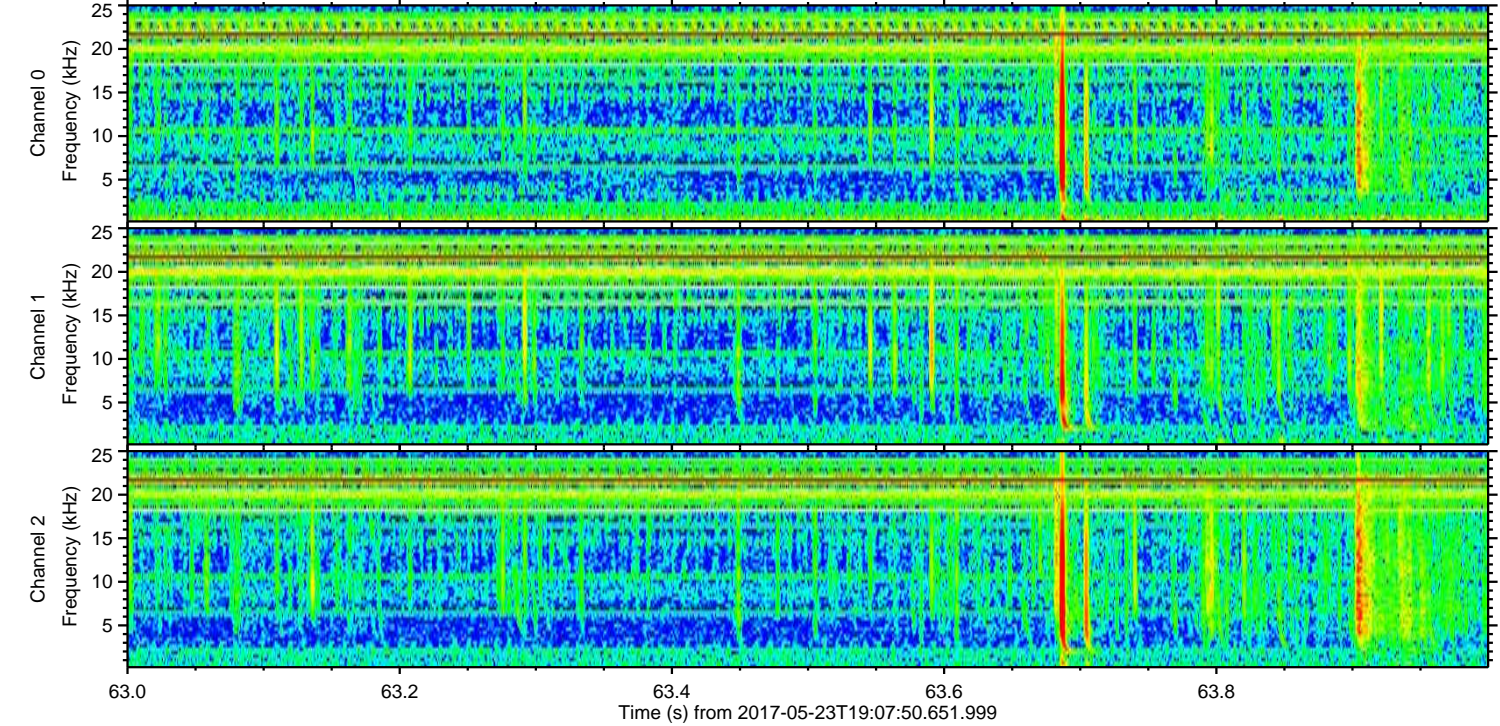
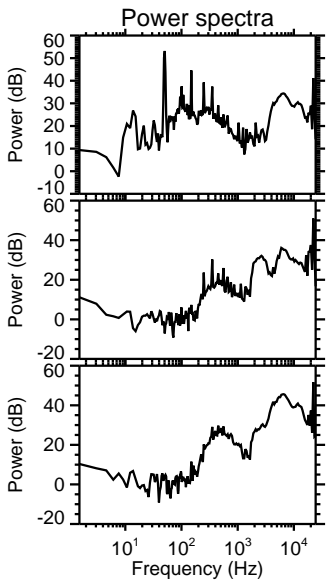
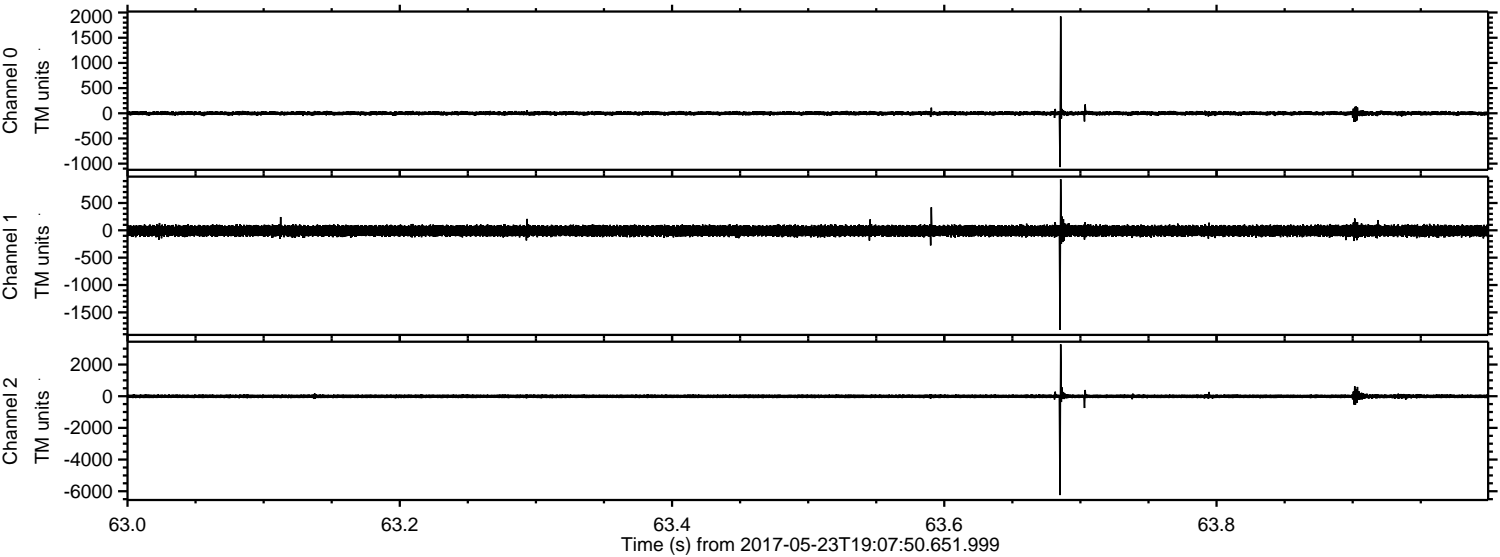
Processed Tue May 23 21:16:08 2017 by ELM ver.2012-10-06 from 001__elm20170523_190749__dat00.bin



Processed Tue May 23 21:16:09 2017 by ELM ver.2012-10-06 from 001__elm20170523_190749__dat00.bin



Processed Tue May 23 21:16:09 2017 by ELM ver.2012-10-06 from 001__elm20170523_190749__dat00.bin



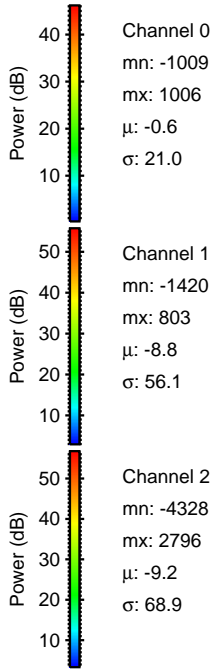
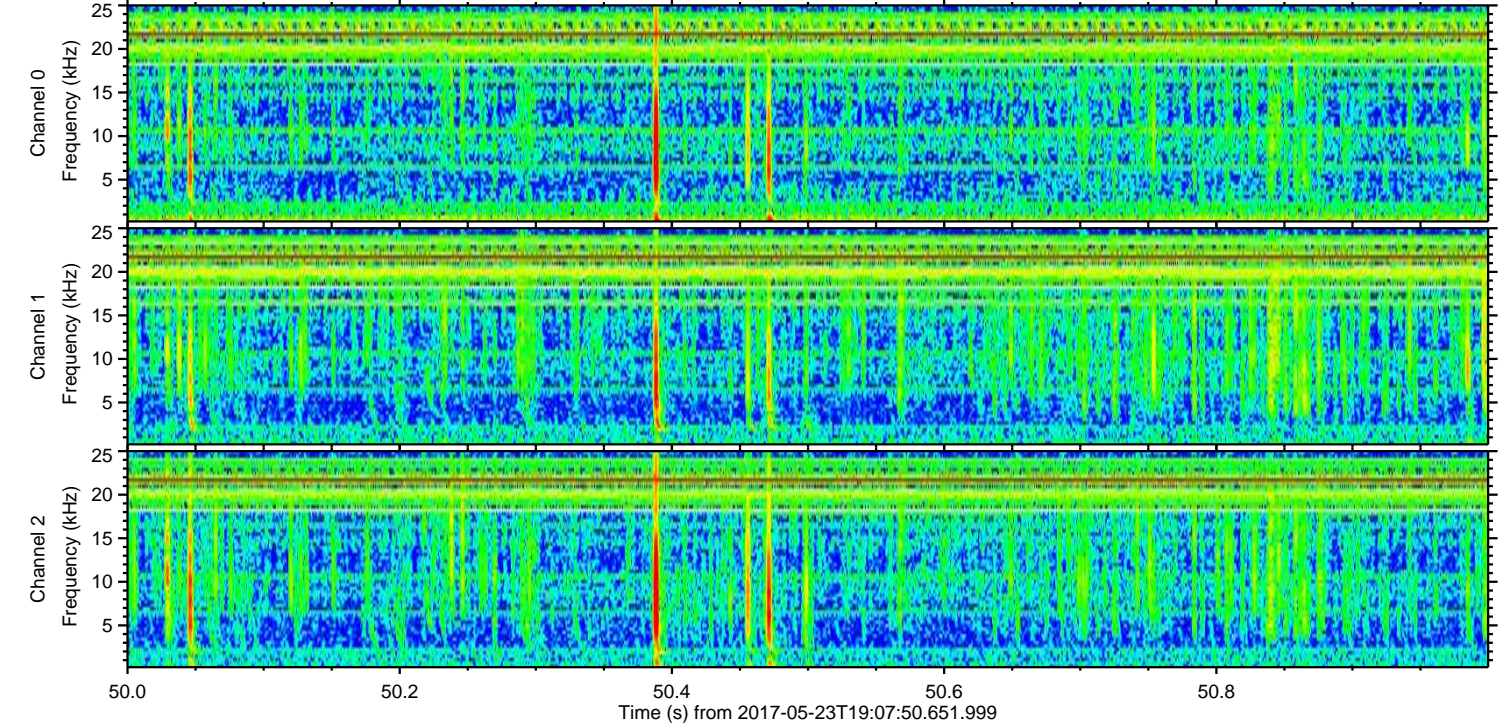
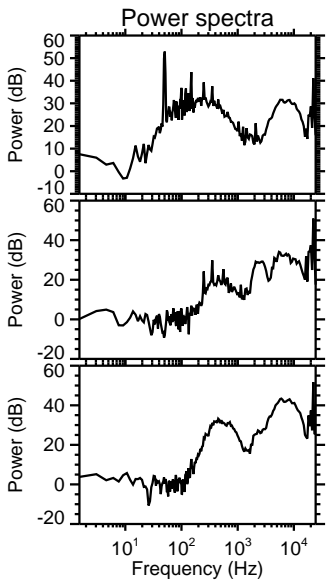
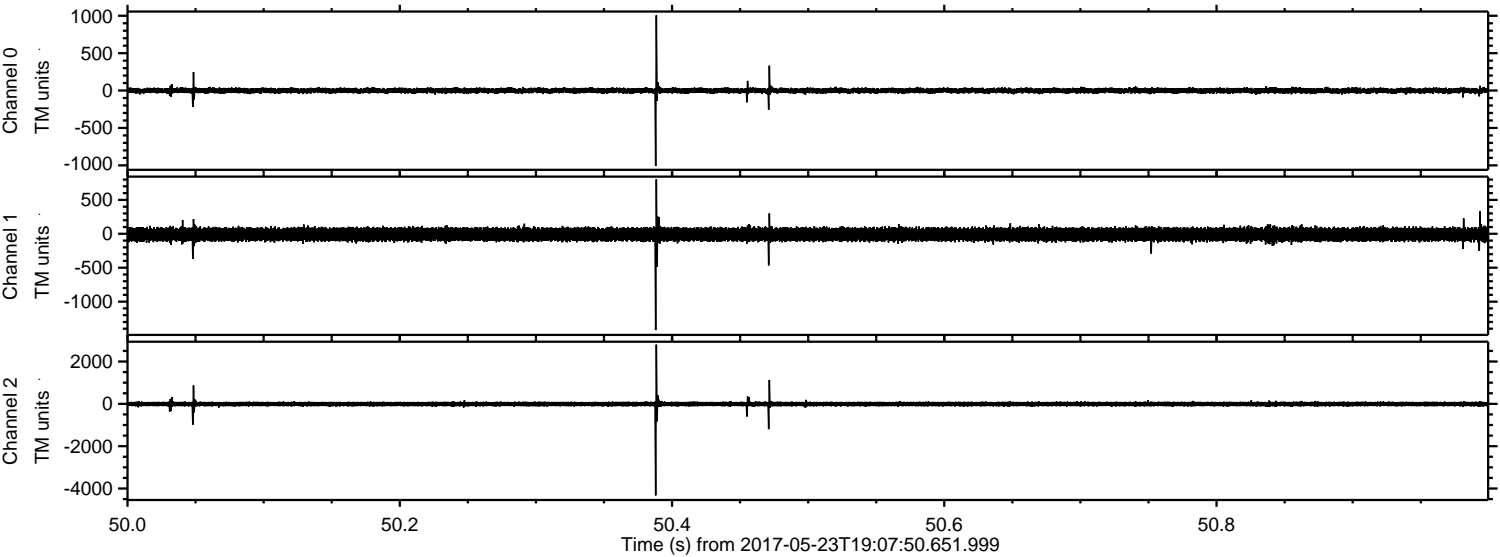
Channel 0
mn: -1070
mx: 1924
μ: -0.5
σ: 23.2

Channel 1
mn: -1821
mx: 935
μ: -9.0
σ: 56.7

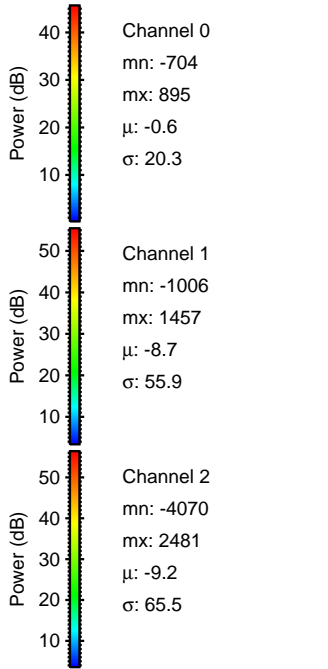
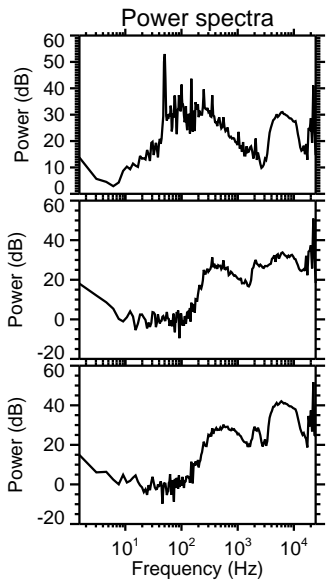
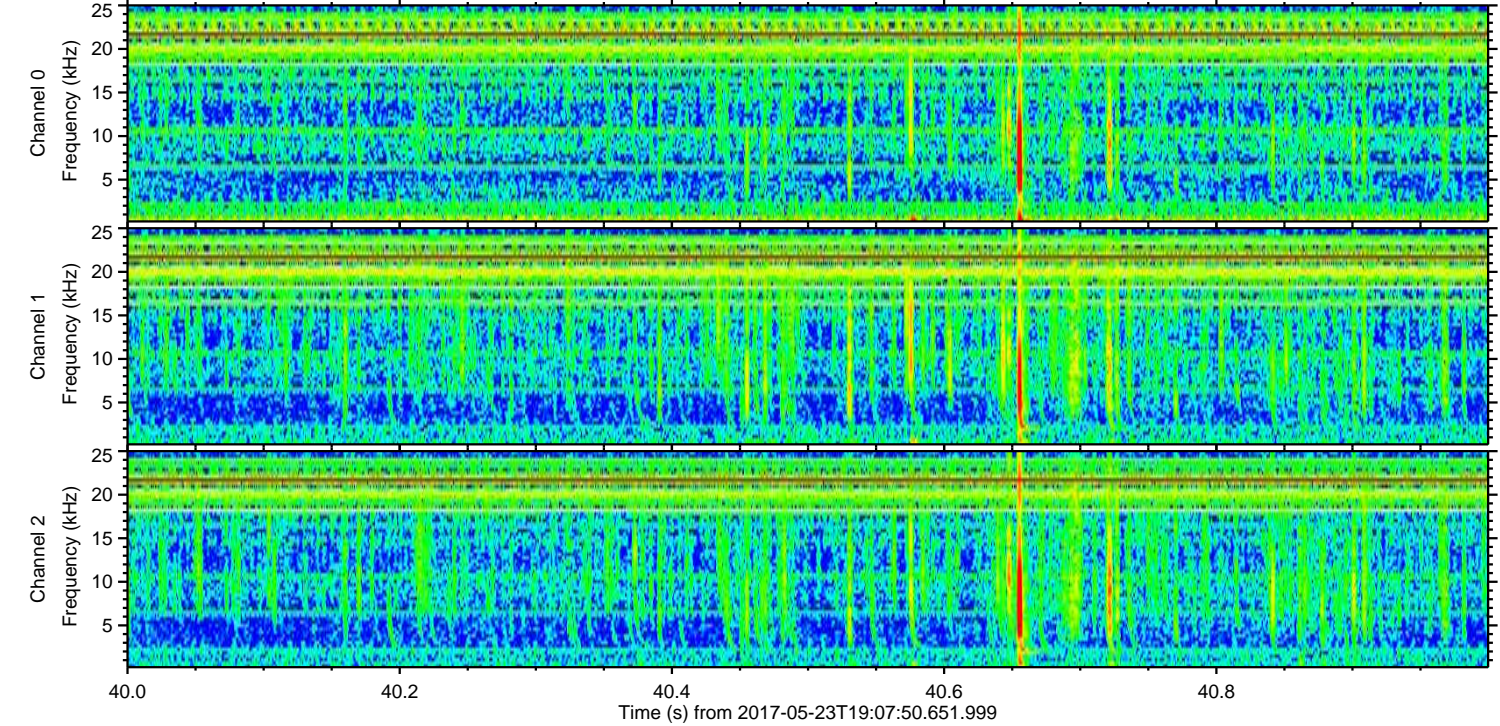
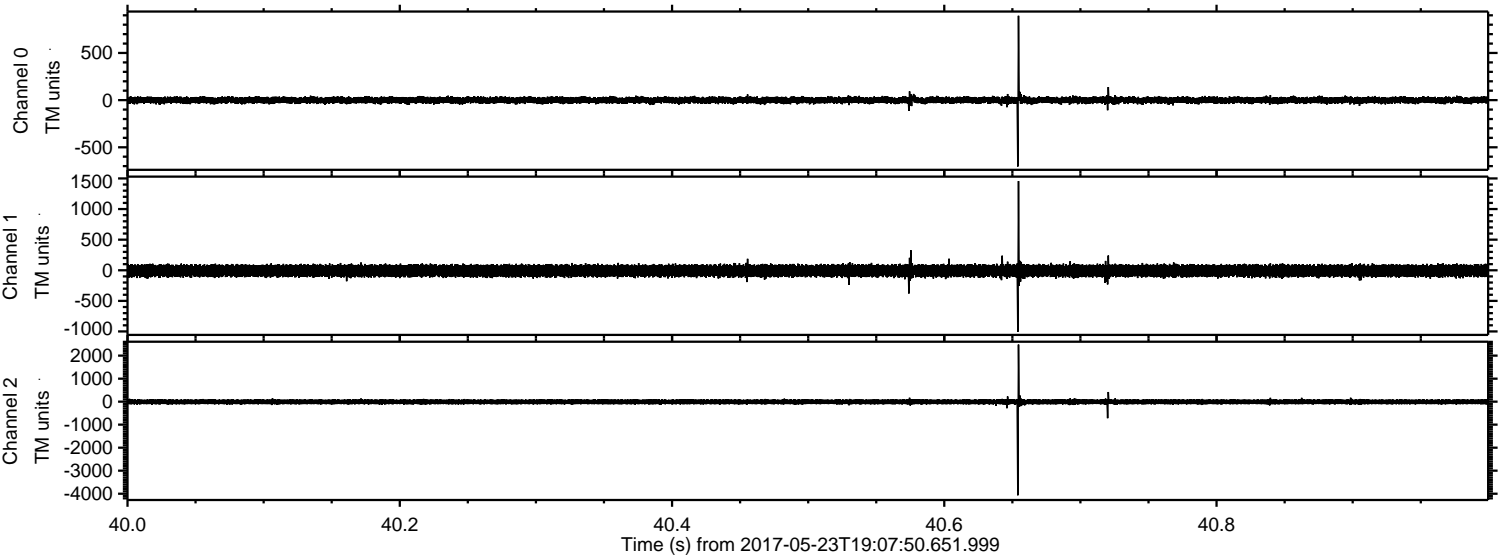
Channel 2
mn: -6241
mx: 3275
μ: -9.5
σ: 75.8

ELMAVAN 3D WAVEFORMS (Measured data sampled at 50 kHz) 51000 packets of 144 samples from 2017-05-23T19:07:50.651.999. Part 51/147

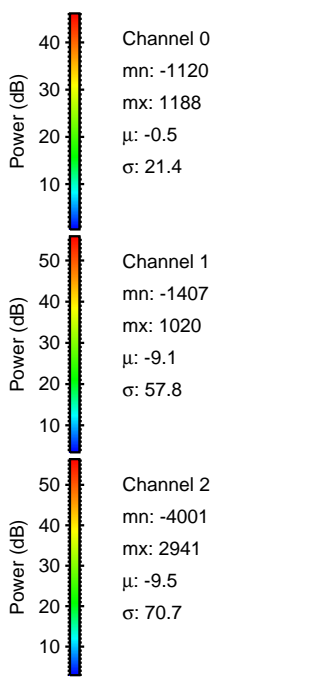
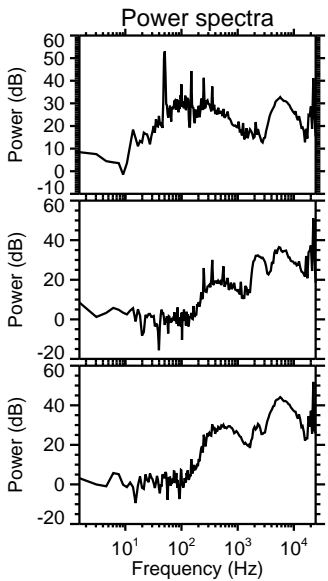
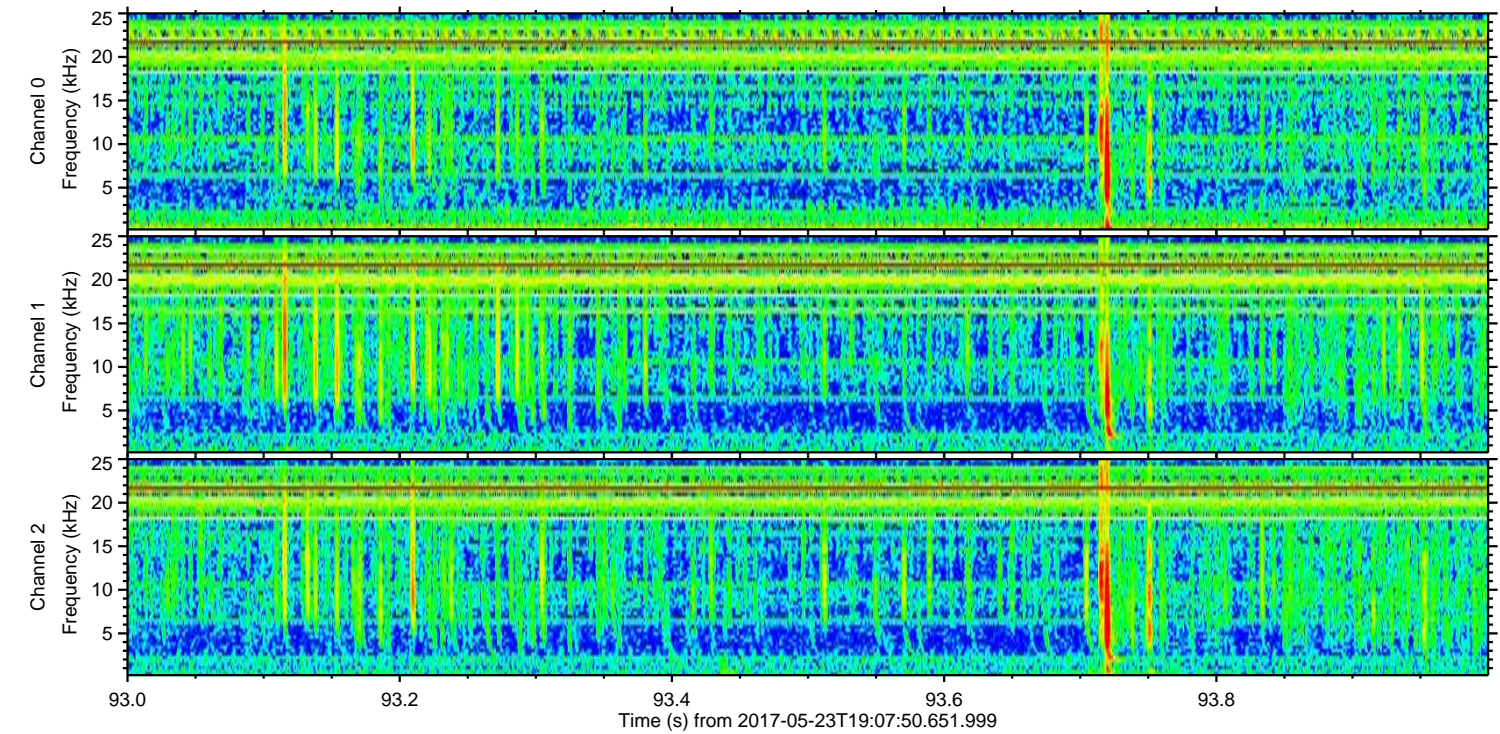
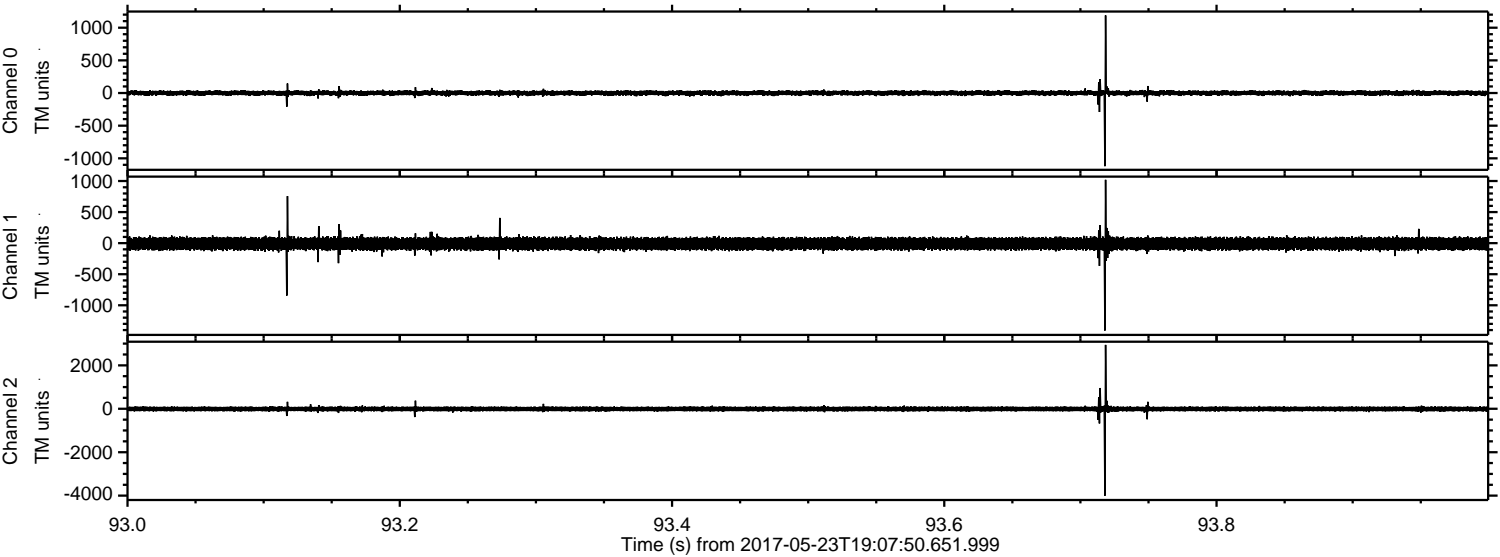
Processed Tue May 23 21:16:10 2017 by ELM ver.2012-10-06 from 001__elm20170523_190749__dat00.bin



Processed Tue May 23 21:16:11 2017 by ELM ver.2012-10-06 from 001__elm20170523_190749__dat00.bin

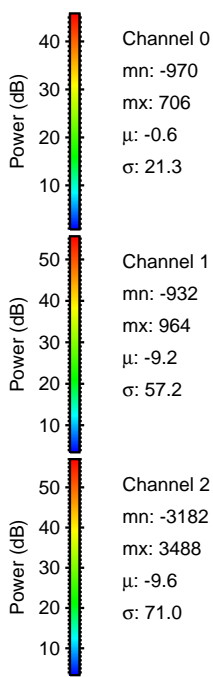
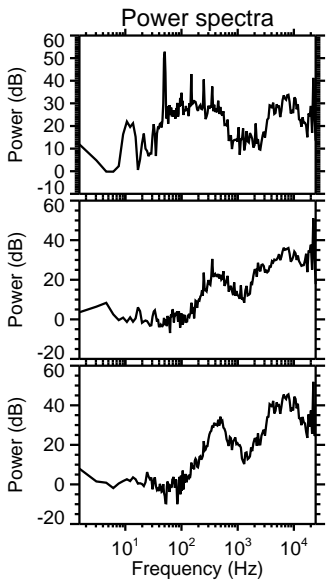
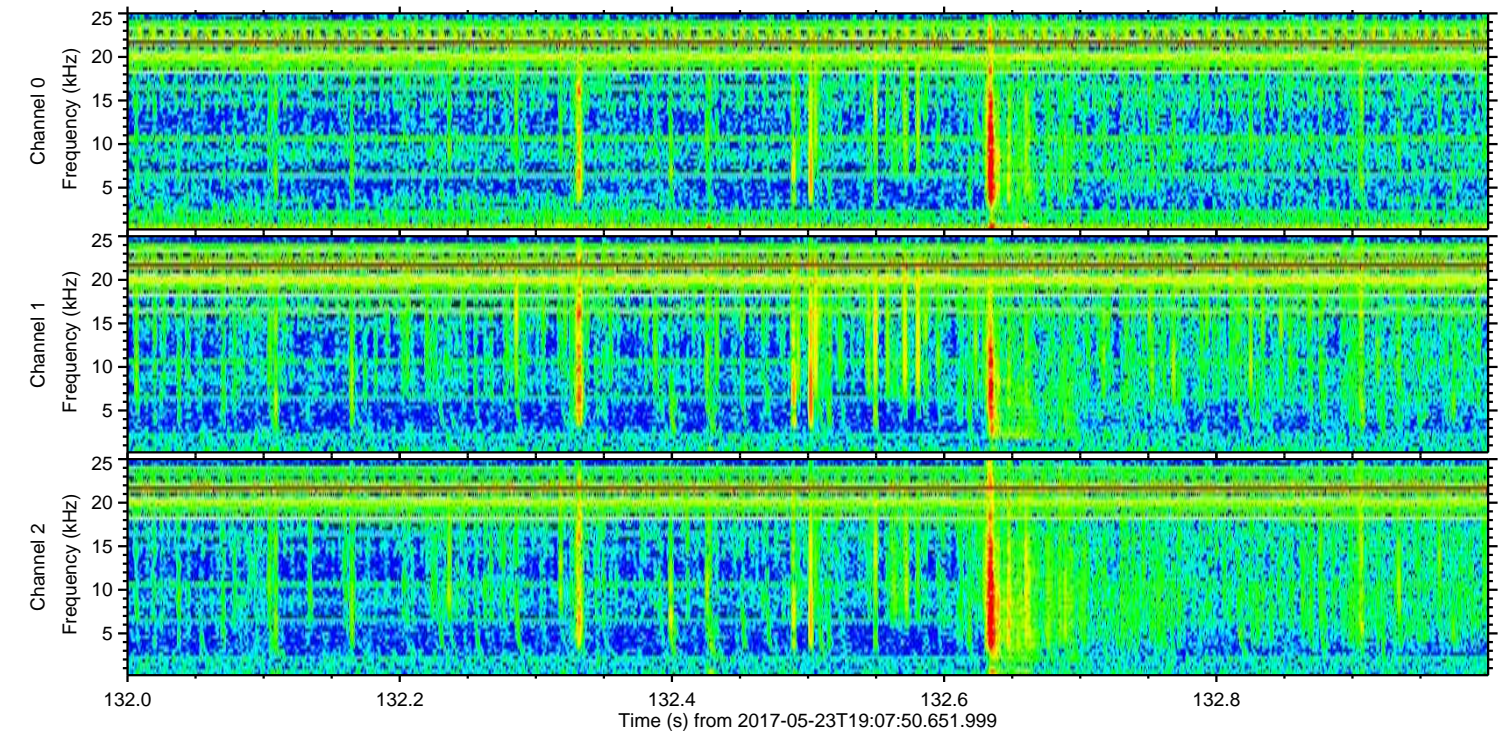
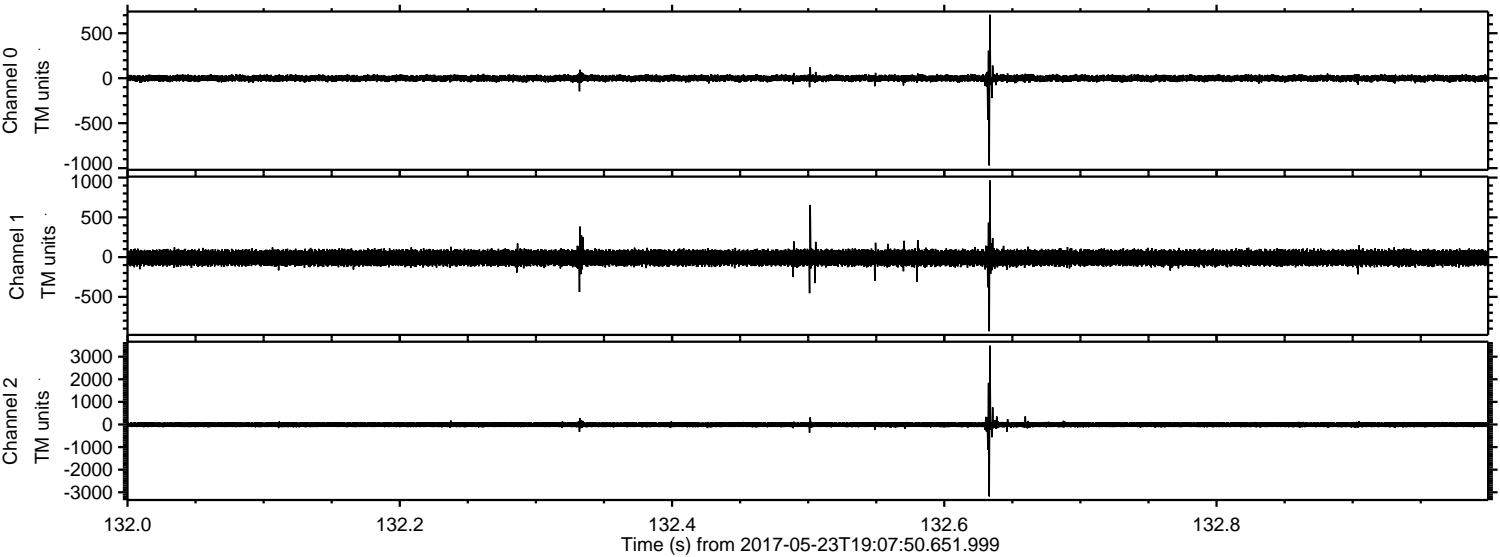


Processed Tue May 23 21:16:11 2017 by ELM ver.2012-10-06 from 001__elm20170523_190749__dat00.bin



ELMAVAN 3D WAVEFORMS (Measured data sampled at 50 kHz) 51000 packets of 144 samples from 2017-05-23T19:07:50.651.999. Part 133/147

Processed Tue May 23 21:16:12 2017 by ELM ver.2012-10-06 from 001__elm20170523_190749__dat00.bin



Channel 0
mn: -970
mx: 706
 μ : -0.6
 σ : 21.3

Channel 1
mn: -932
mx: 964
 μ : -9.2
 σ : 57.2

Channel 2
mn: -3182
mx: 3488
 μ : -9.6
 σ : 71.0

Processed Tue May 23 21:16:13 2017 by ELM ver.2012-10-06 from 001__elm20170523_190749__dat00.bin

