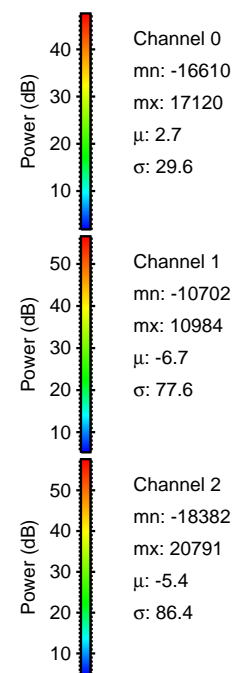
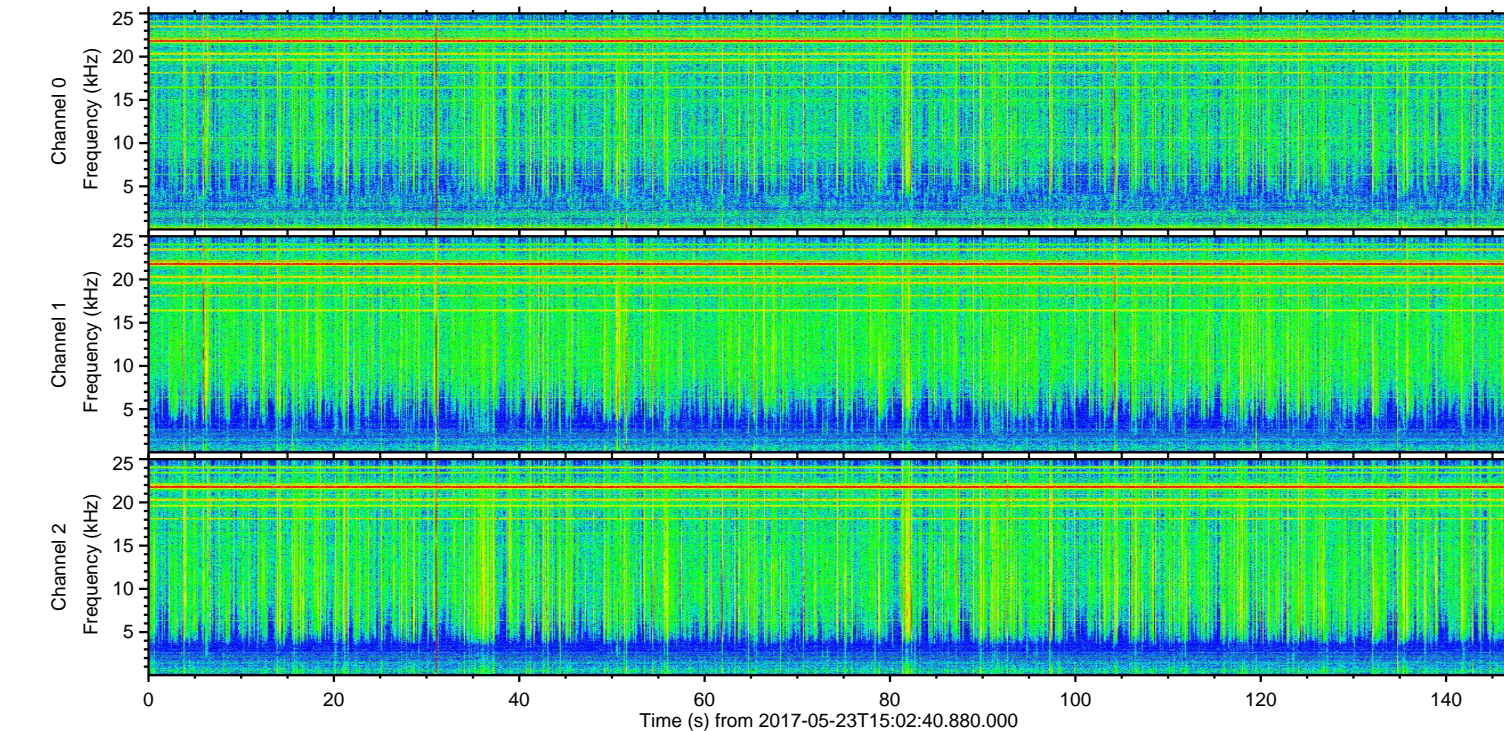
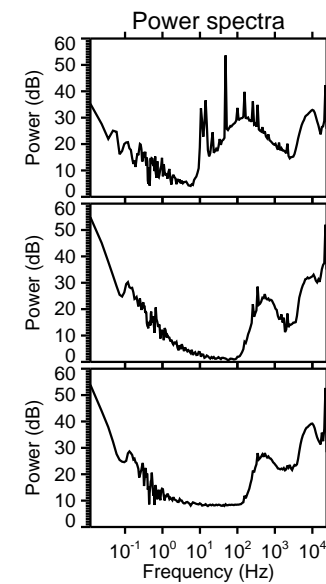
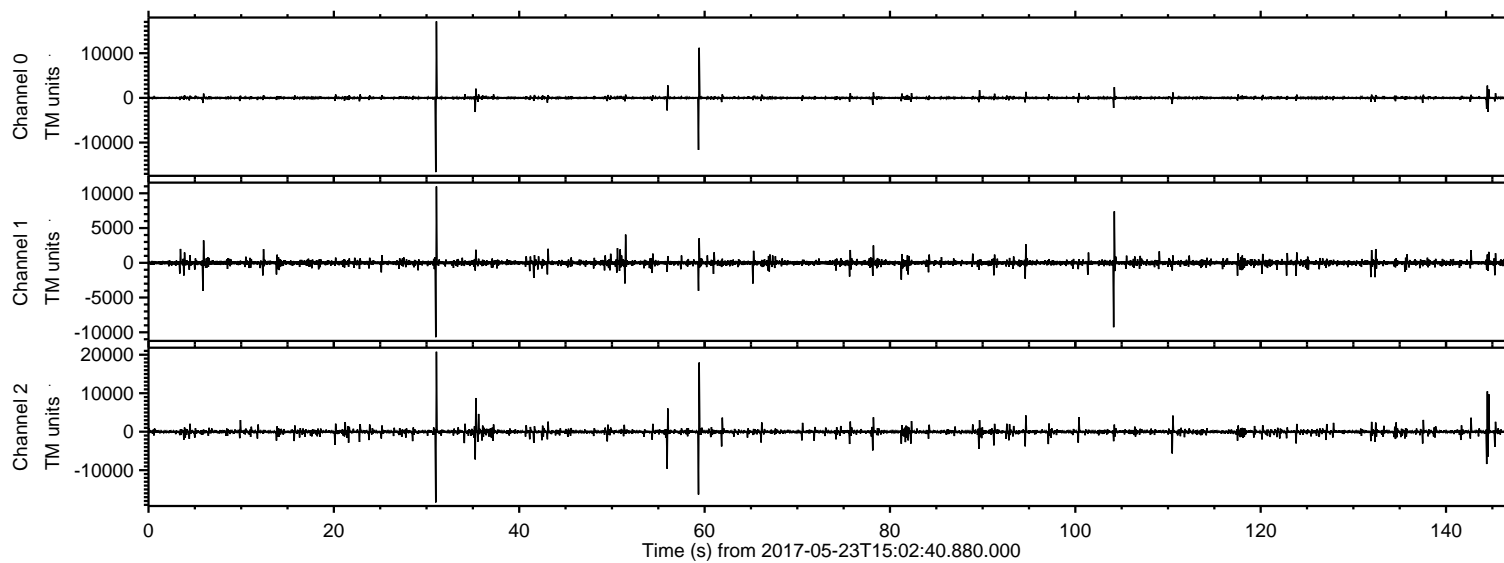
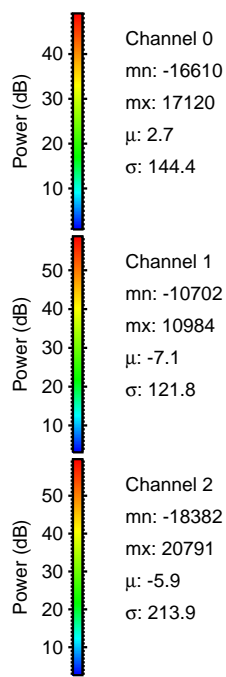
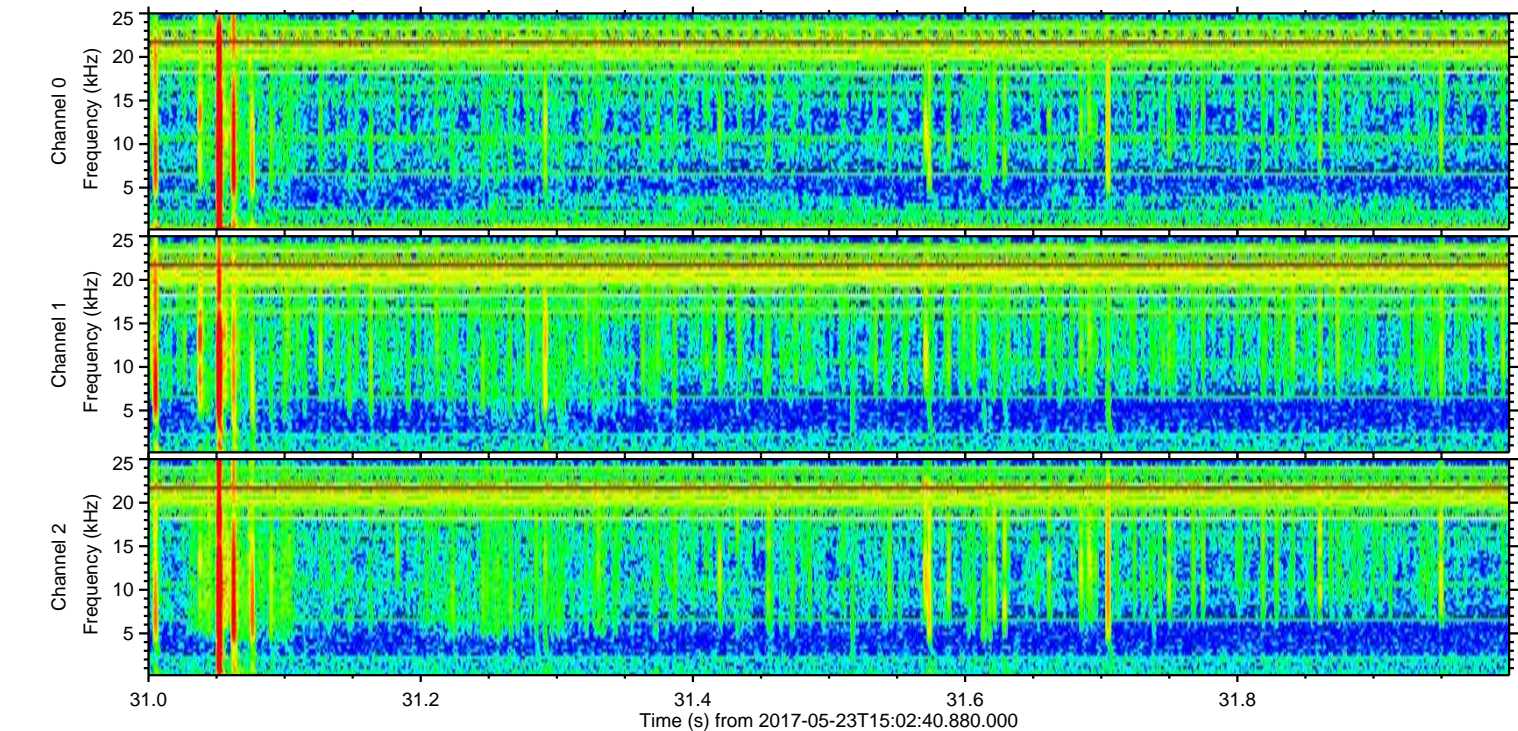
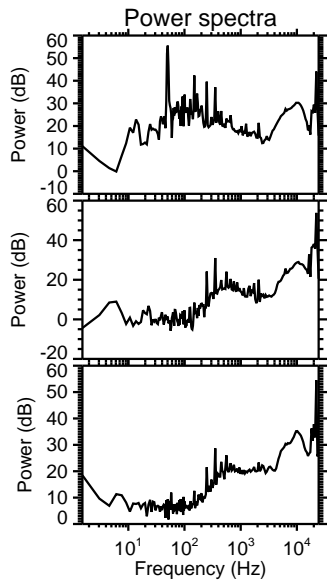
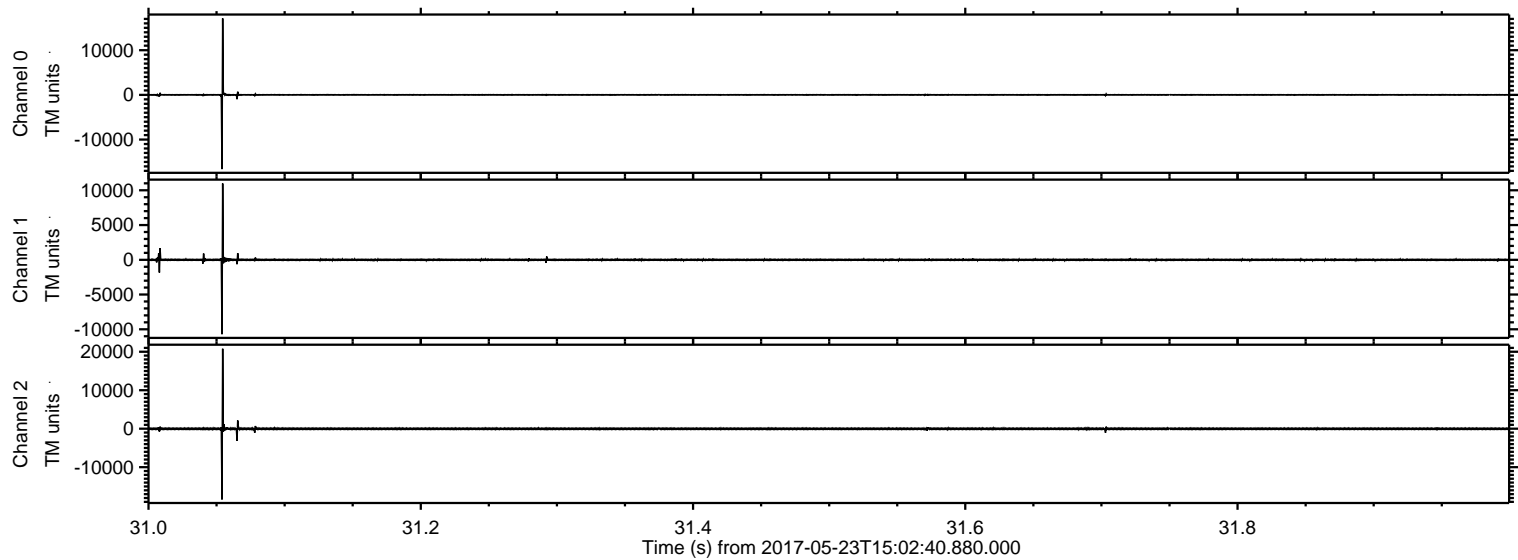


ELMAVAN 3D WAVEFORMS (Measured data sampled at 50 kHz) 51000 packets of 144 samples from 2017-05-23T15:02:40.880.000.

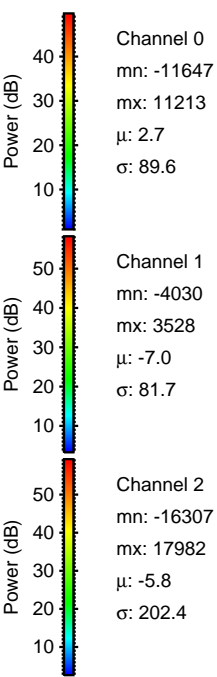
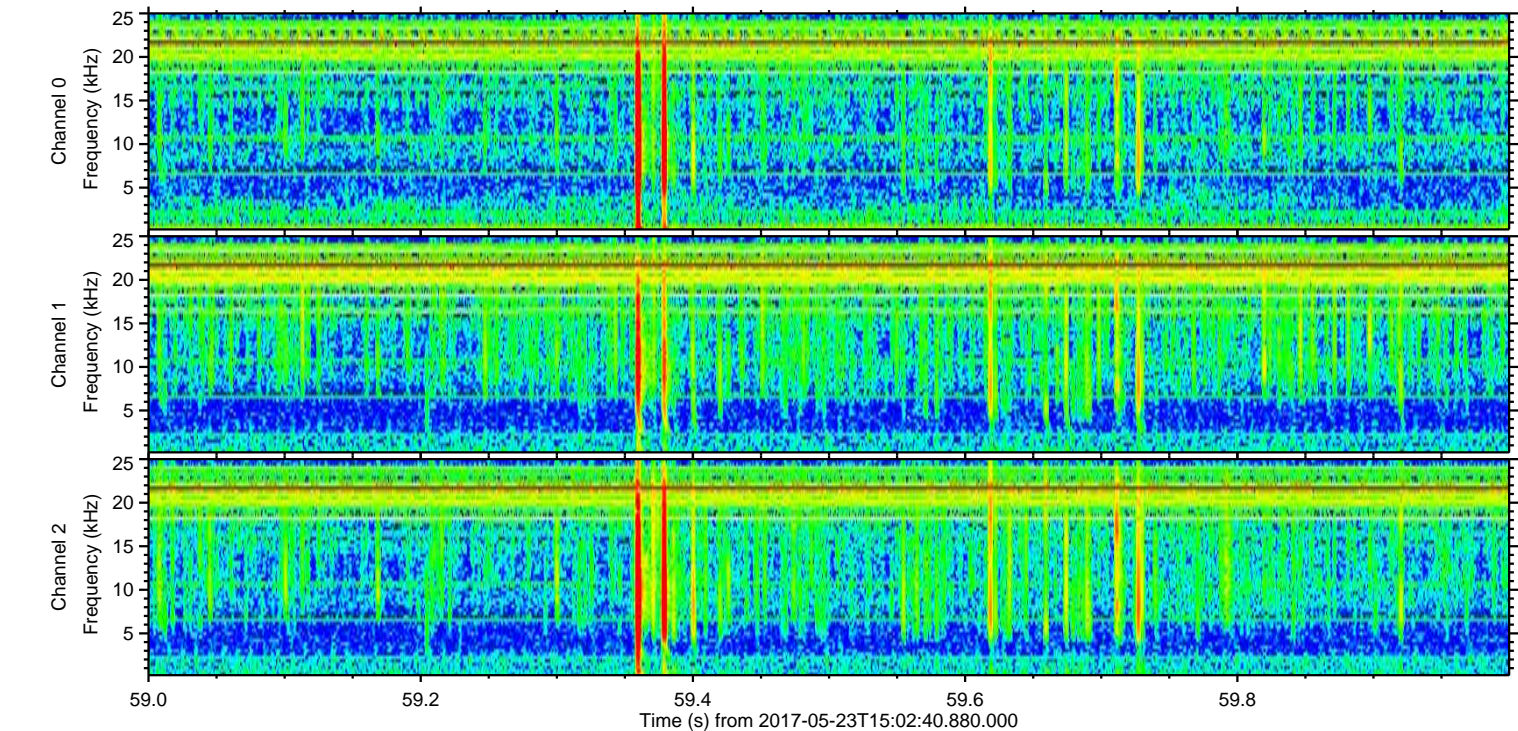
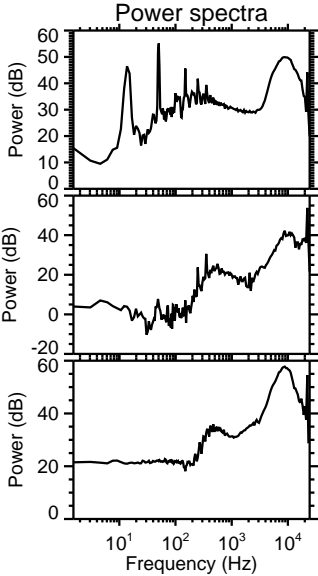
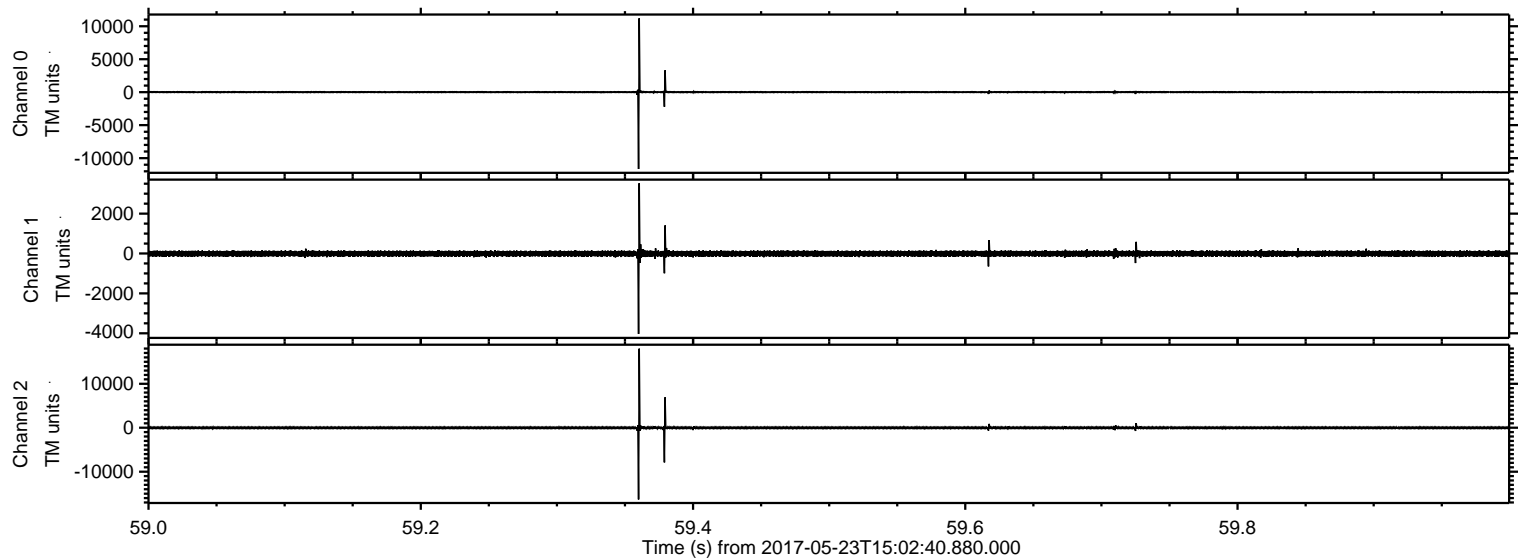
Processed Tue May 23 17:09:56 2017 by ELM ver.2012-10-06 from 001__elm20170523_150239__dat00.bin



Processed Tue May 23 17:10:02 2017 by ELM ver.2012-10-06 from 001__elm20170523_150239__dat00.bin

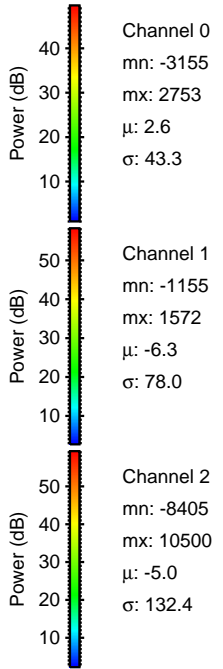
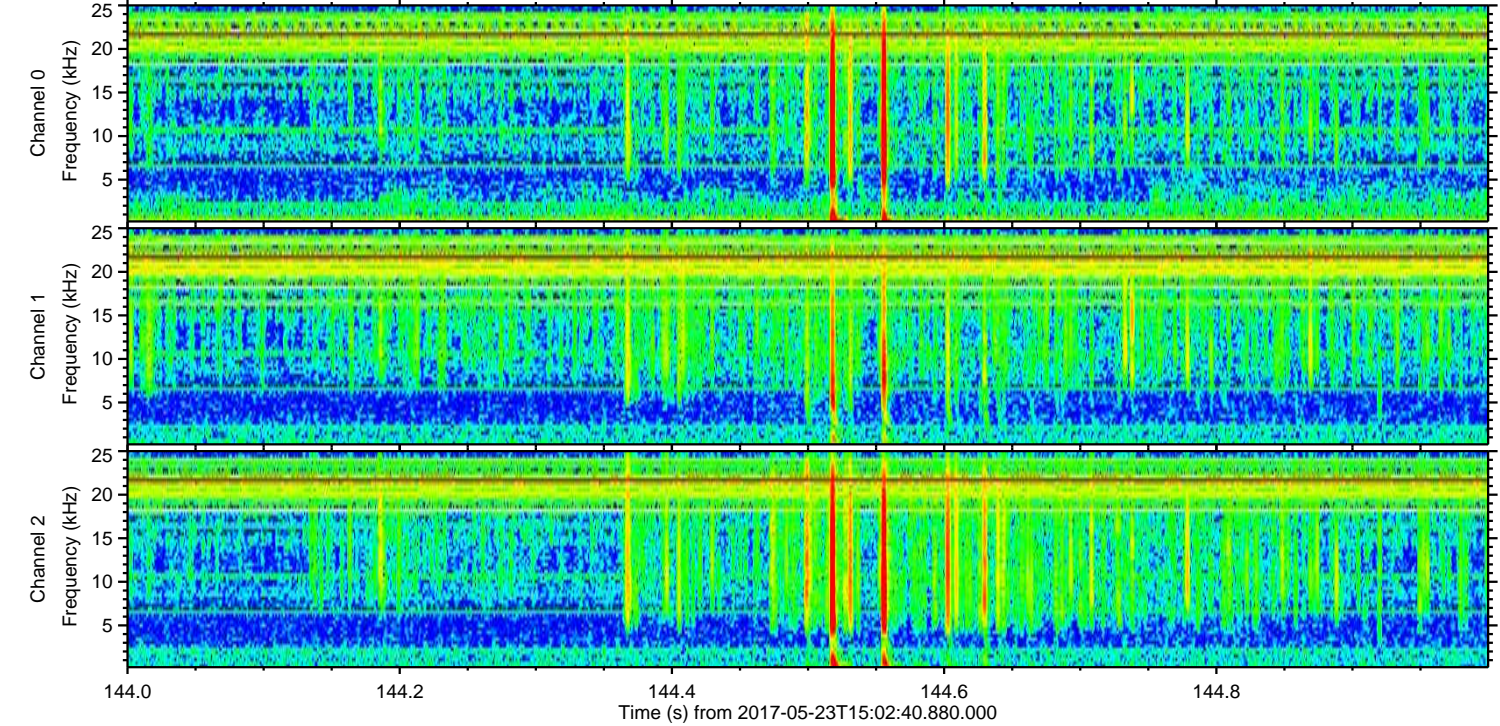
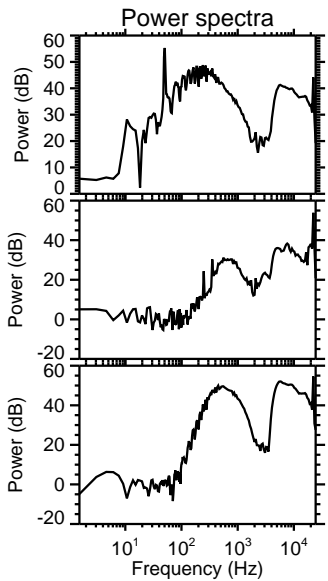
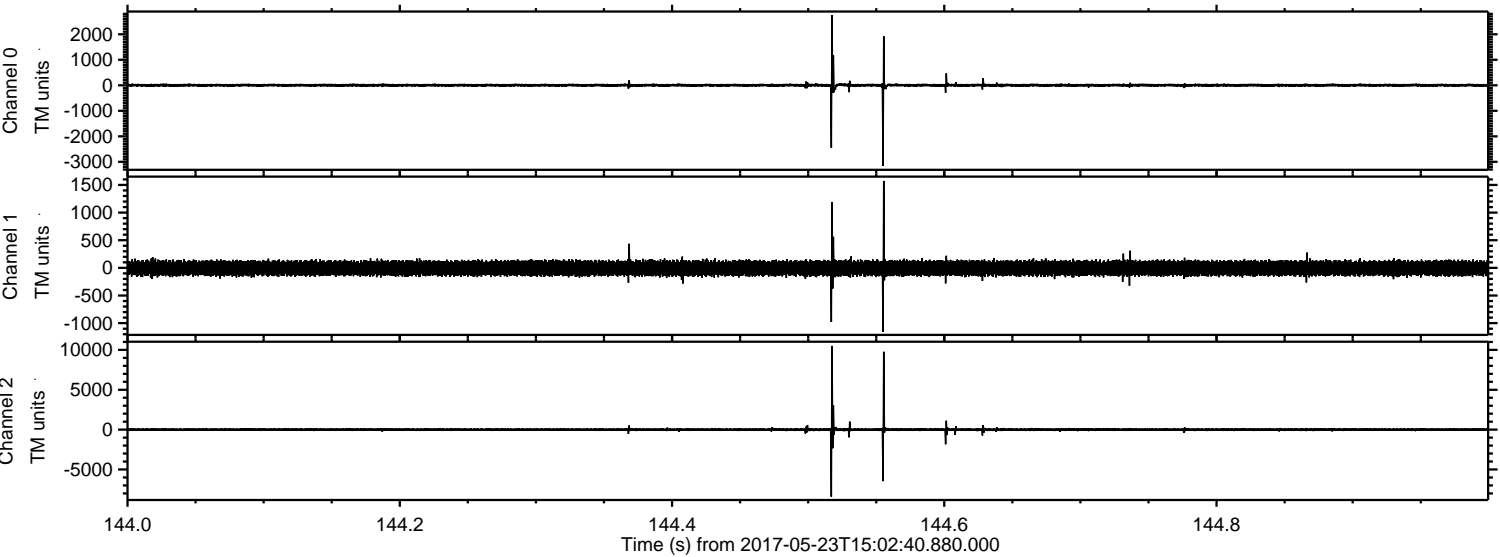


Processed Tue May 23 17:10:03 2017 by ELM ver.2012-10-06 from 001__elm20170523_150239__dat00.bin

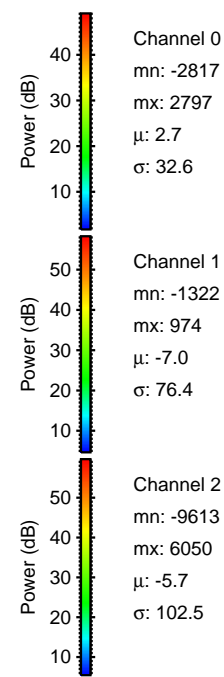
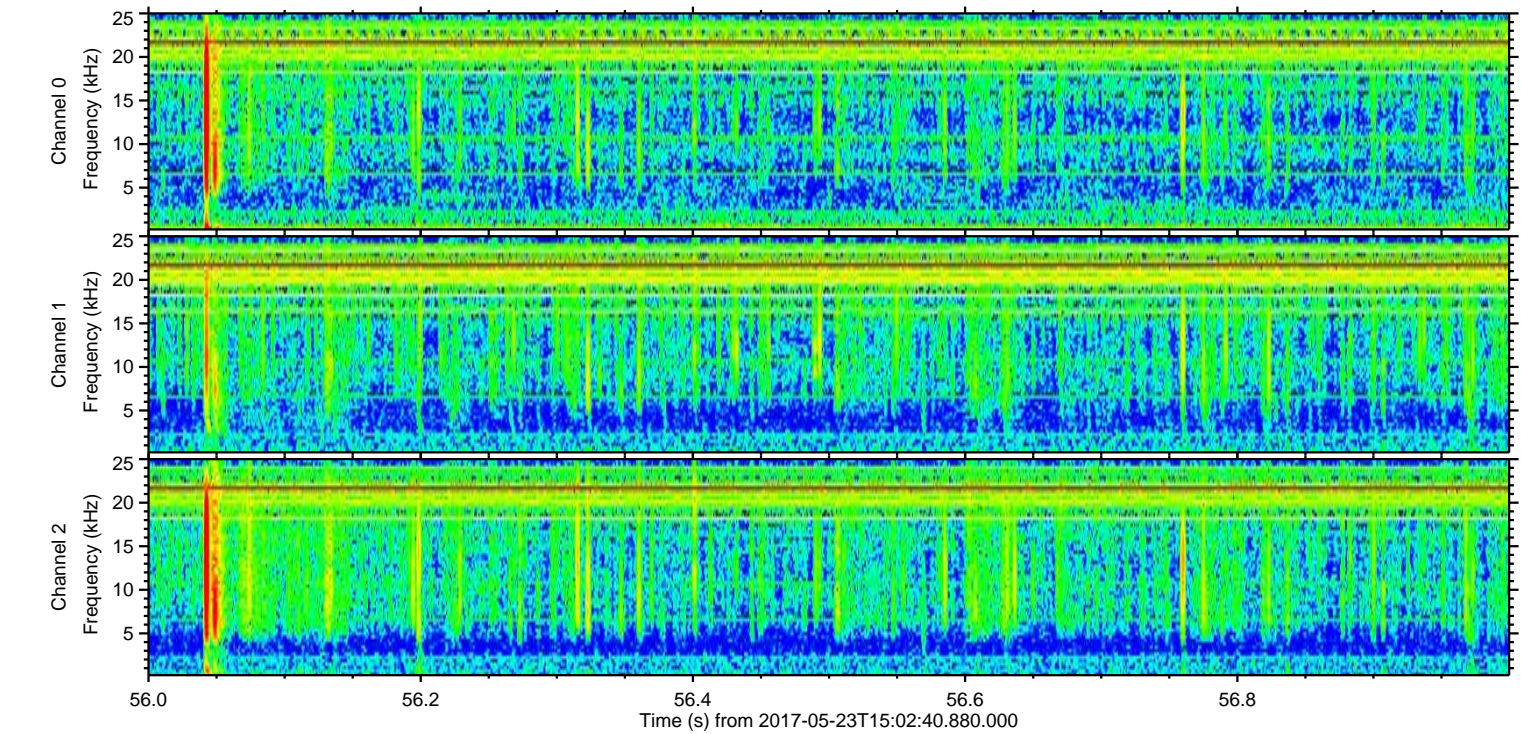
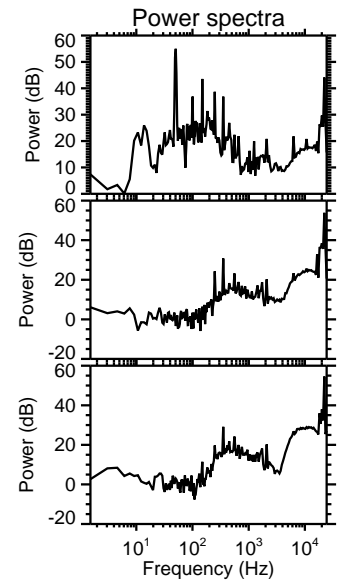
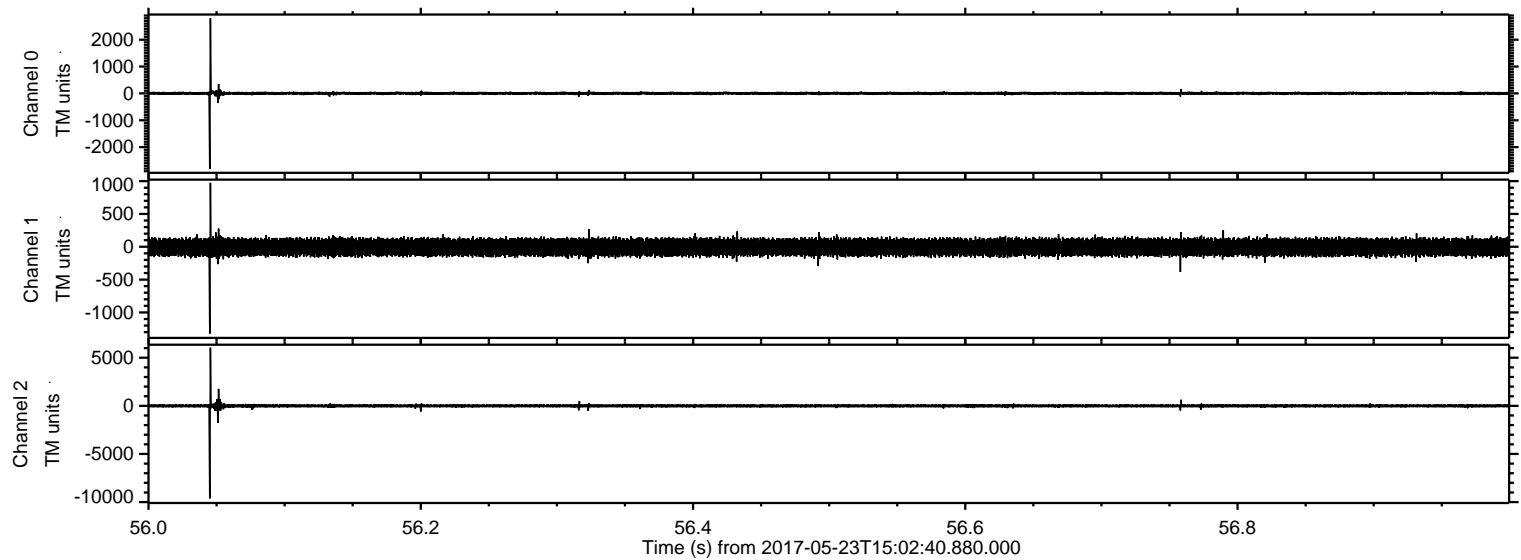


ELMAVAN 3D WAVEFORMS (Measured data sampled at 50 kHz) 51000 packets of 144 samples from 2017-05-23T15:02:40.880.000. Part 145/147

Processed Tue May 23 17:10:03 2017 by ELM ver.2012-10-06 from 001__elm20170523_150239__dat00.bin

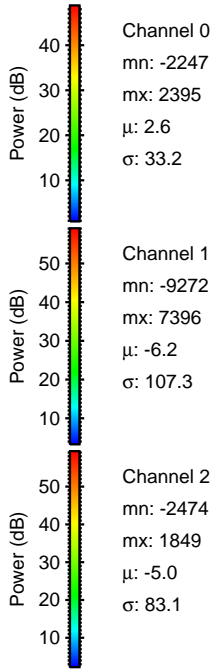
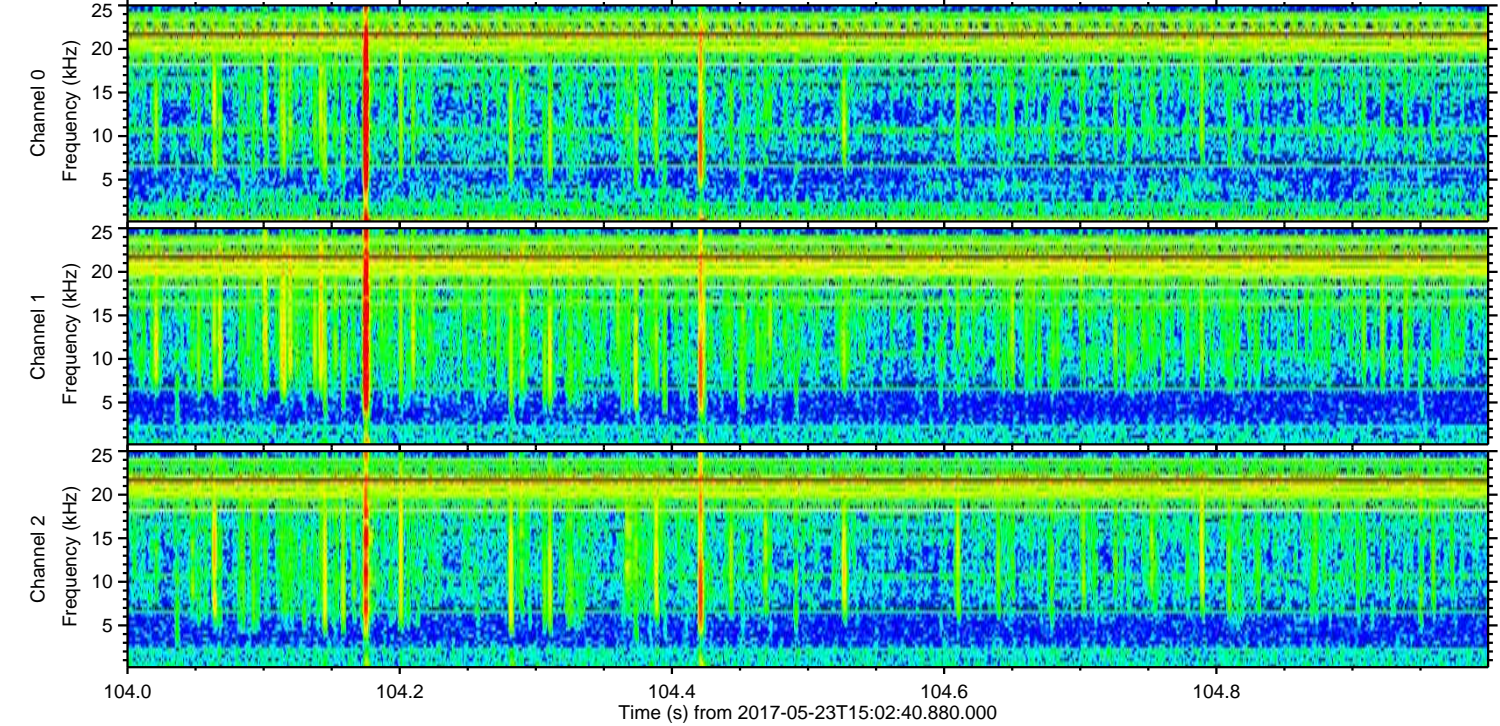
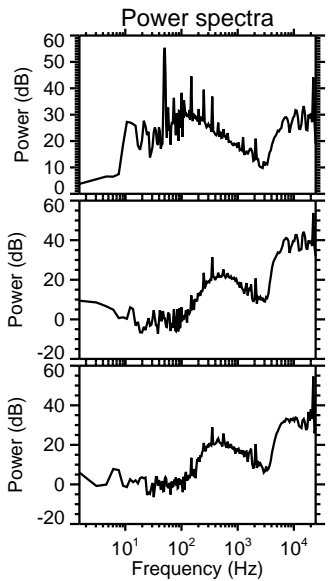
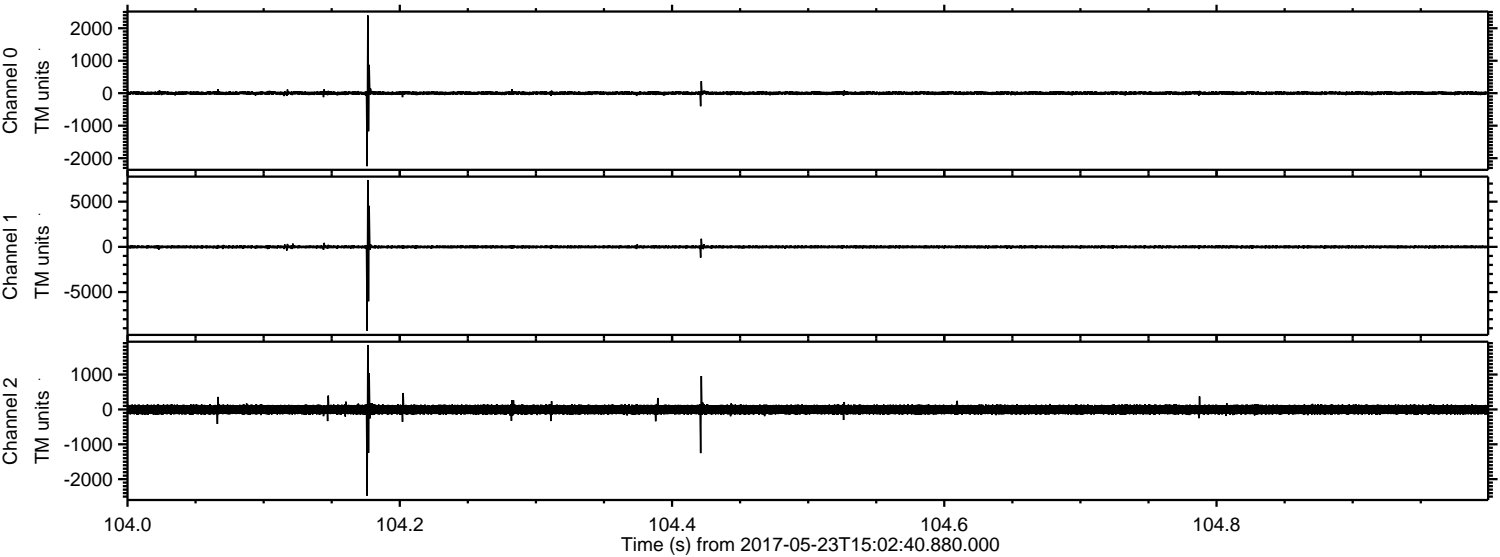


Processed Tue May 23 17:10:04 2017 by ELM ver.2012-10-06 from 001__elm20170523_150239__dat00.bin

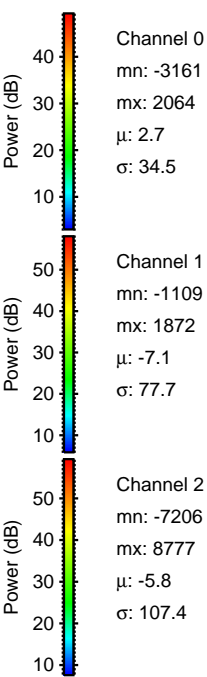
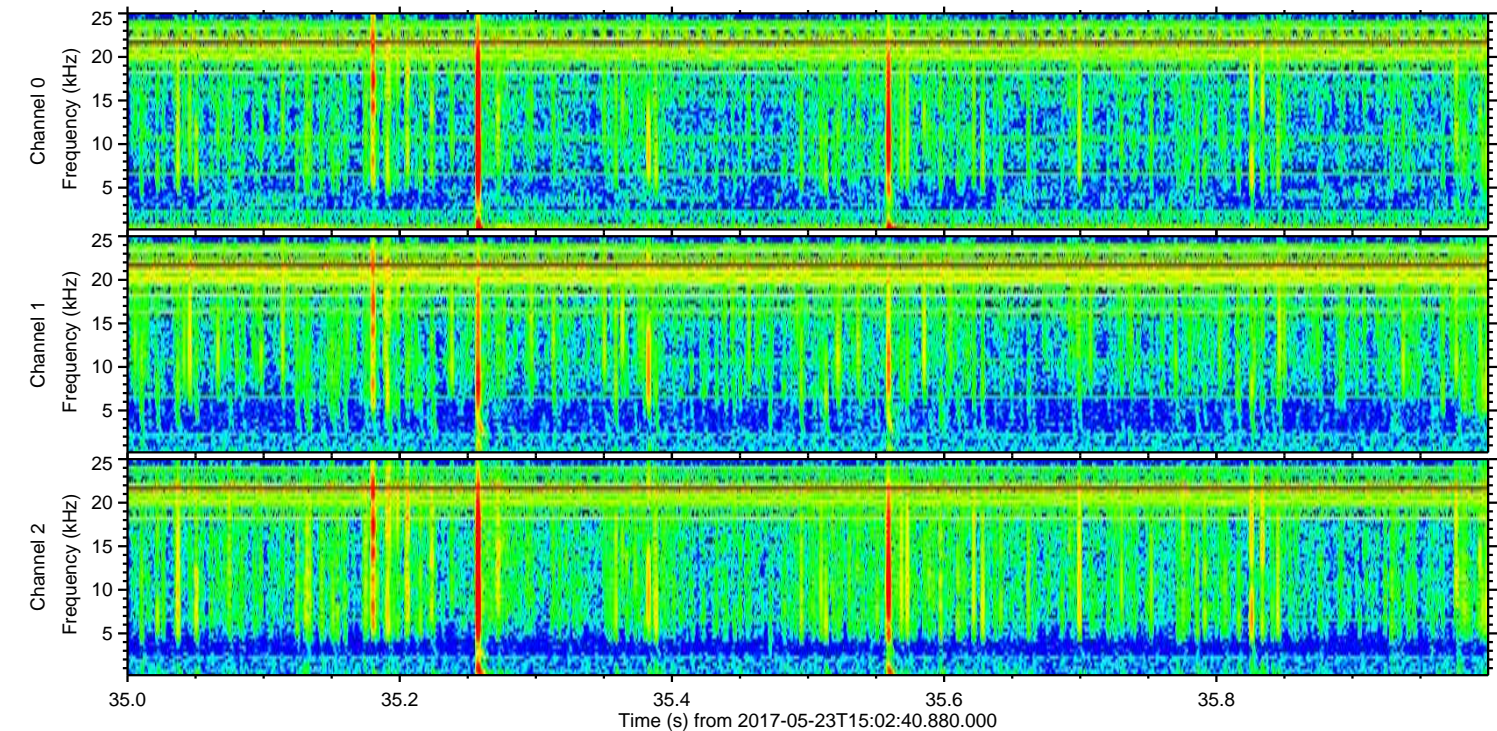
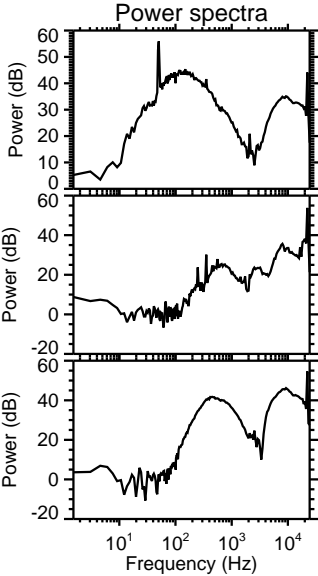
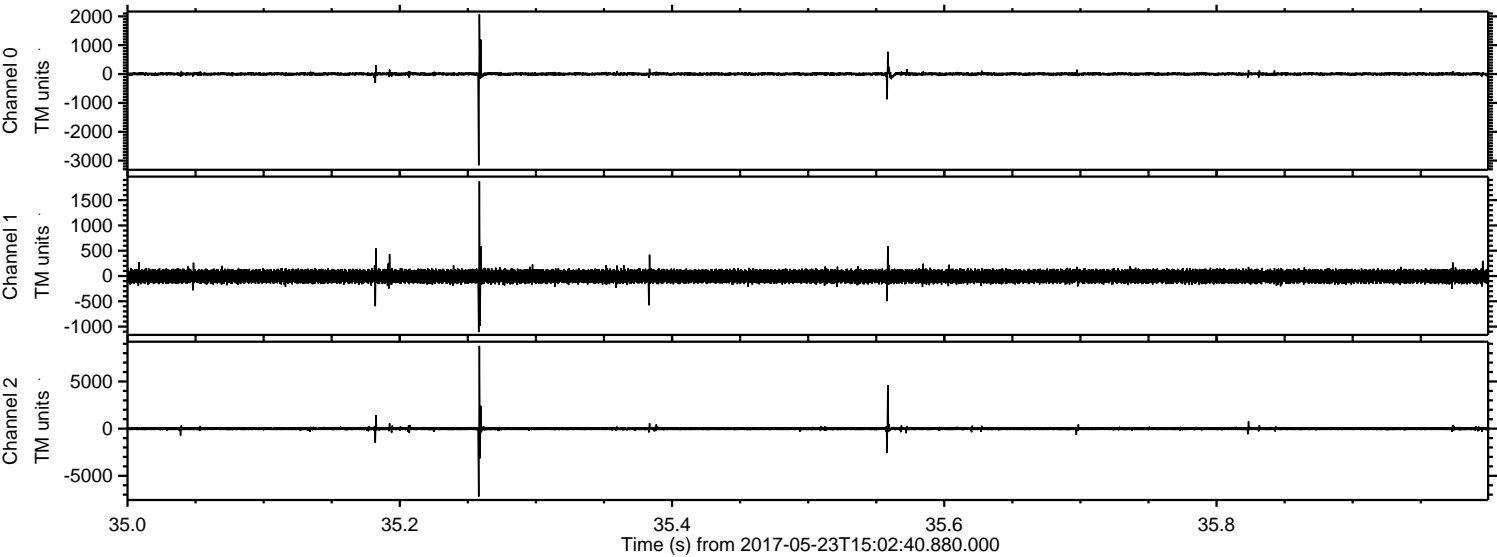


ELMAVAN 3D WAVEFORMS (Measured data sampled at 50 kHz) 51000 packets of 144 samples from 2017-05-23T15:02:40.880.000. Part 105/147

Processed Tue May 23 17:10:05 2017 by ELM ver.2012-10-06 from 001__elm20170523_150239__dat00.bin

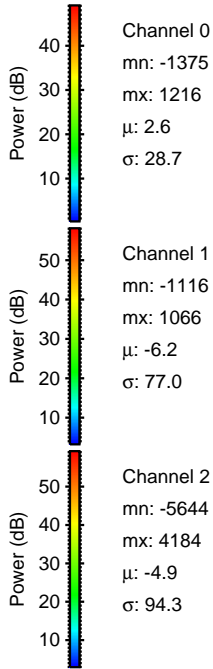
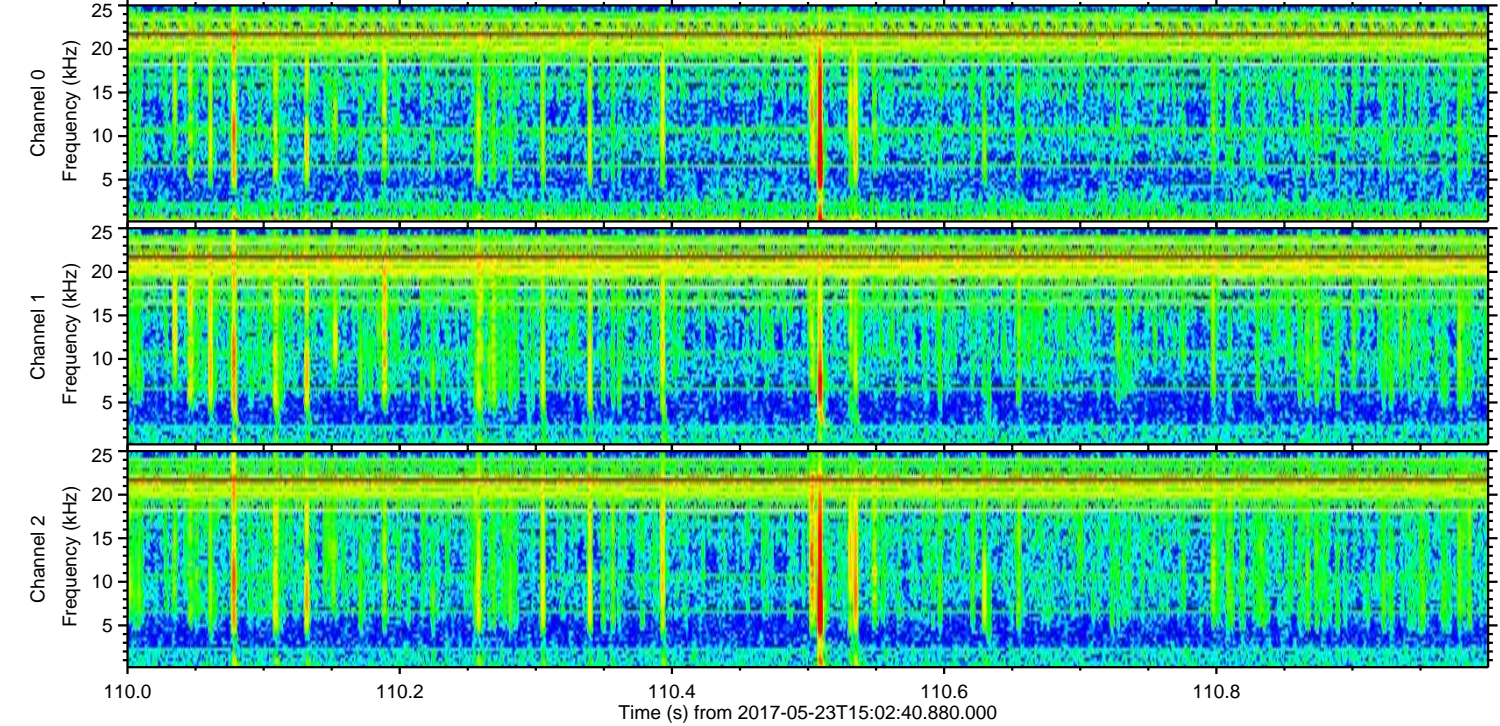
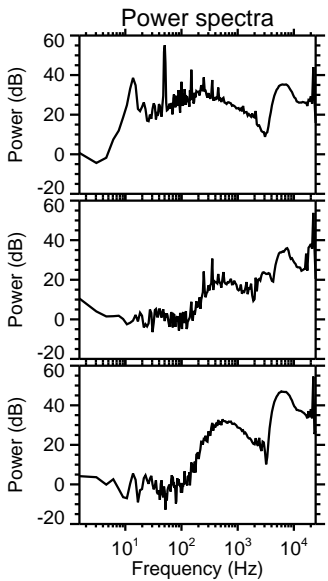
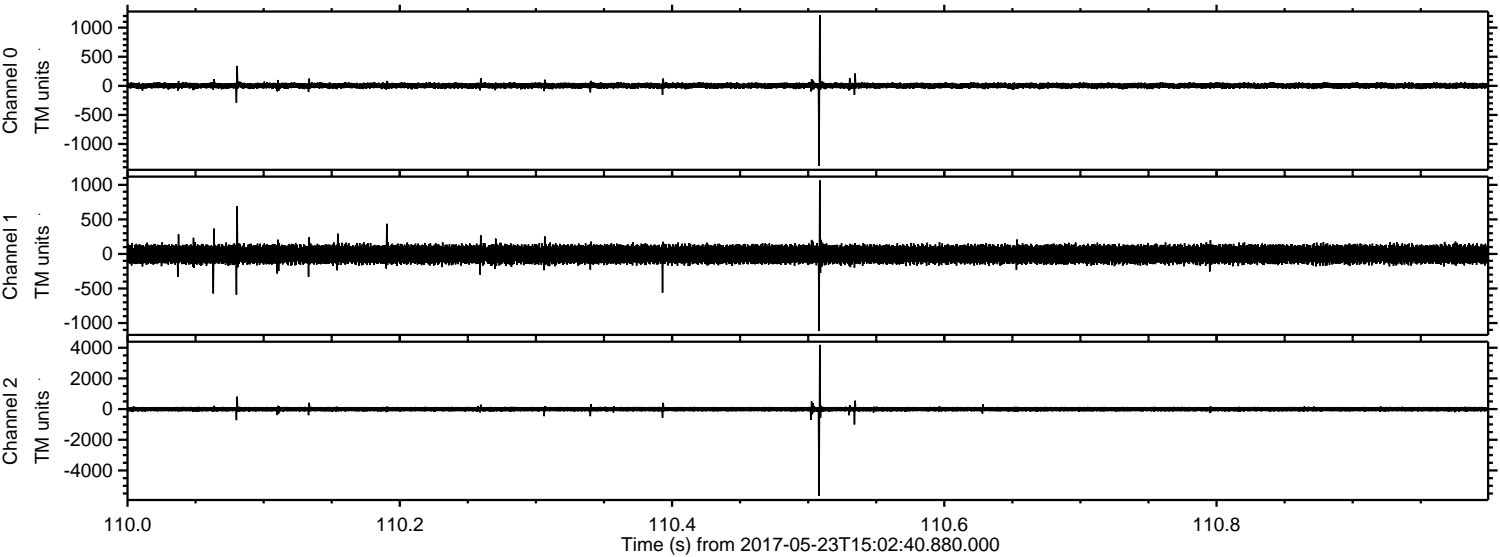


Processed Tue May 23 17:10:05 2017 by ELM ver.2012-10-06 from 001__elm20170523_150239__dat00.bin



ELMAVAN 3D WAVEFORMS (Measured data sampled at 50 kHz) 51000 packets of 144 samples from 2017-05-23T15:02:40.880.000. Part 111/147

Processed Tue May 23 17:10:06 2017 by ELM ver.2012-10-06 from 001__elm20170523_150239__dat00.bin

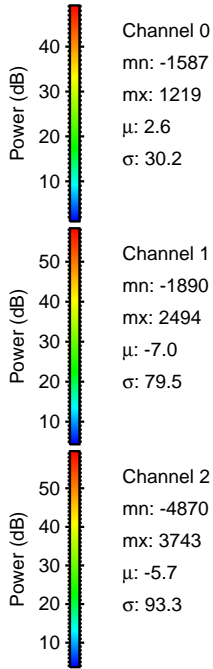
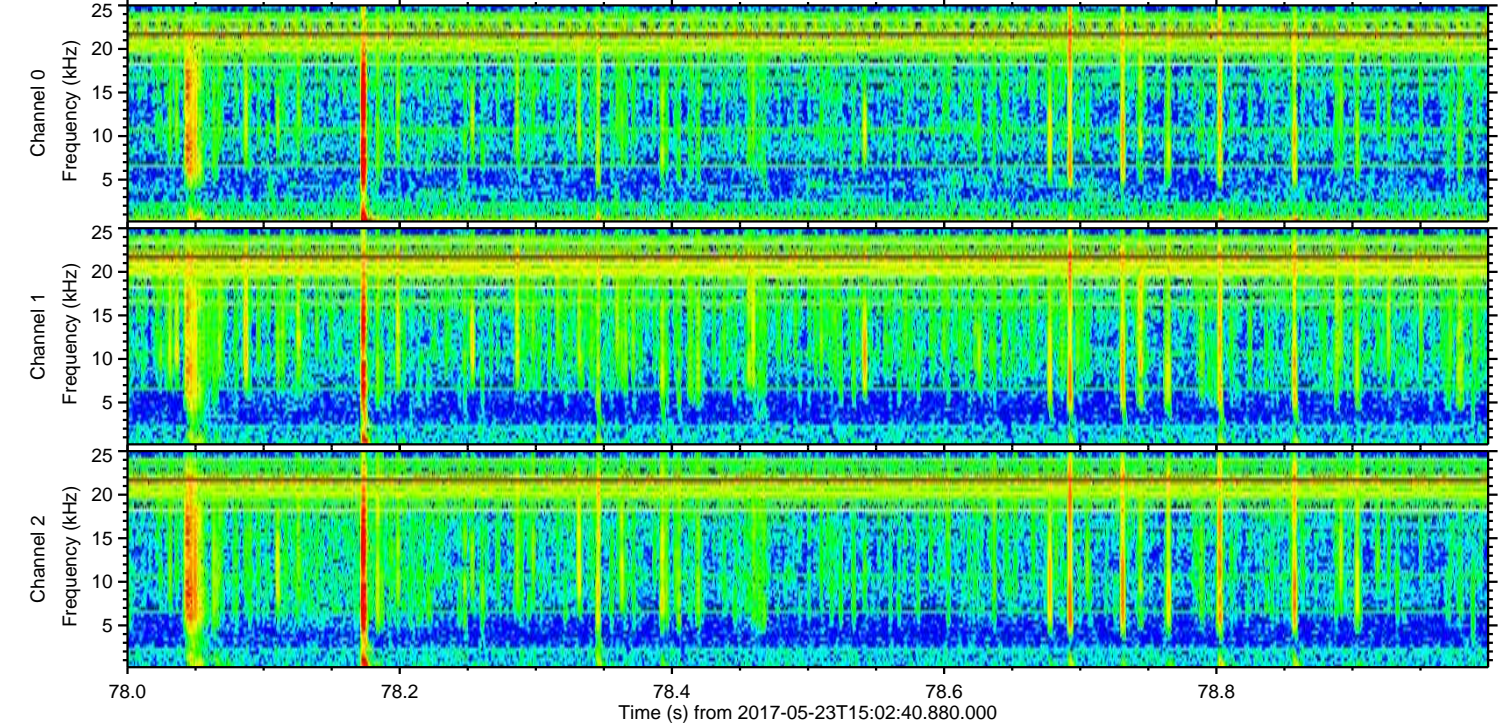
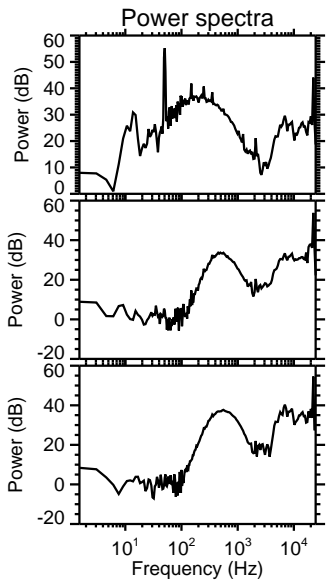
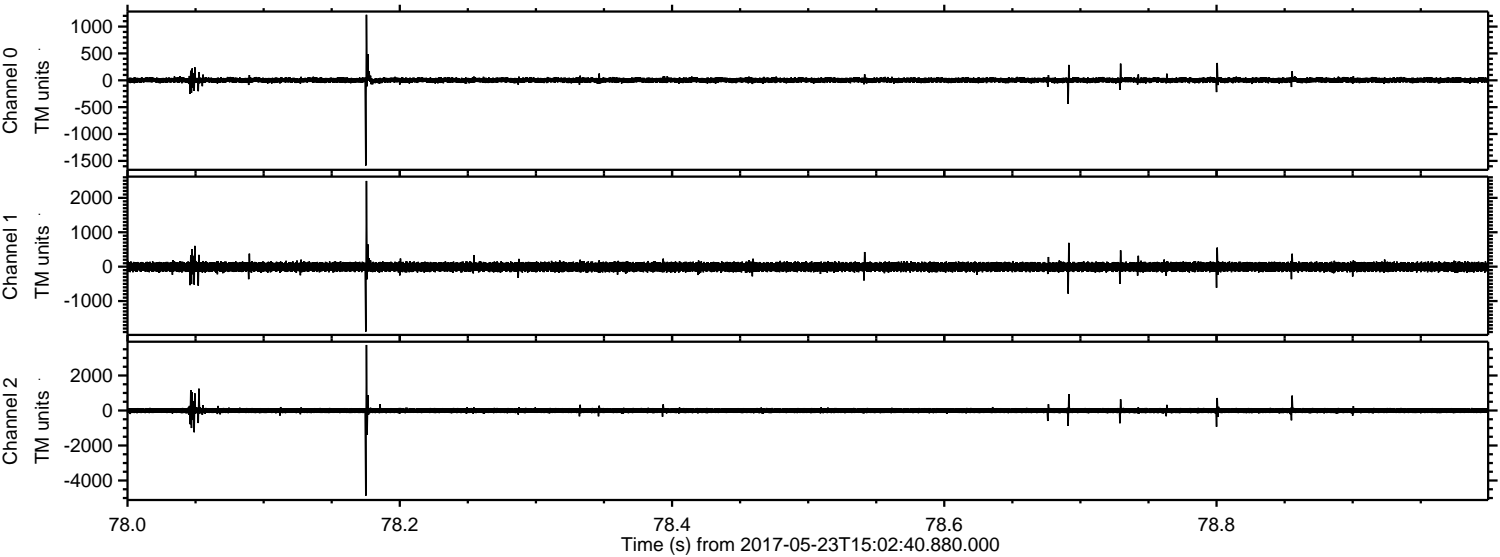


Channel 0
mn: -1375
mx: 1216
 μ : 2.6
 σ : 28.7

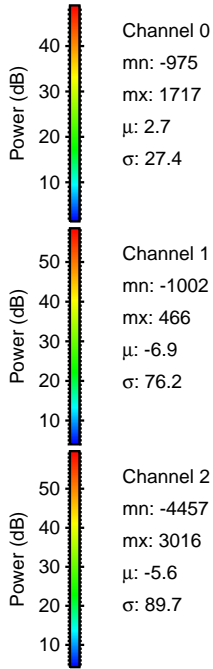
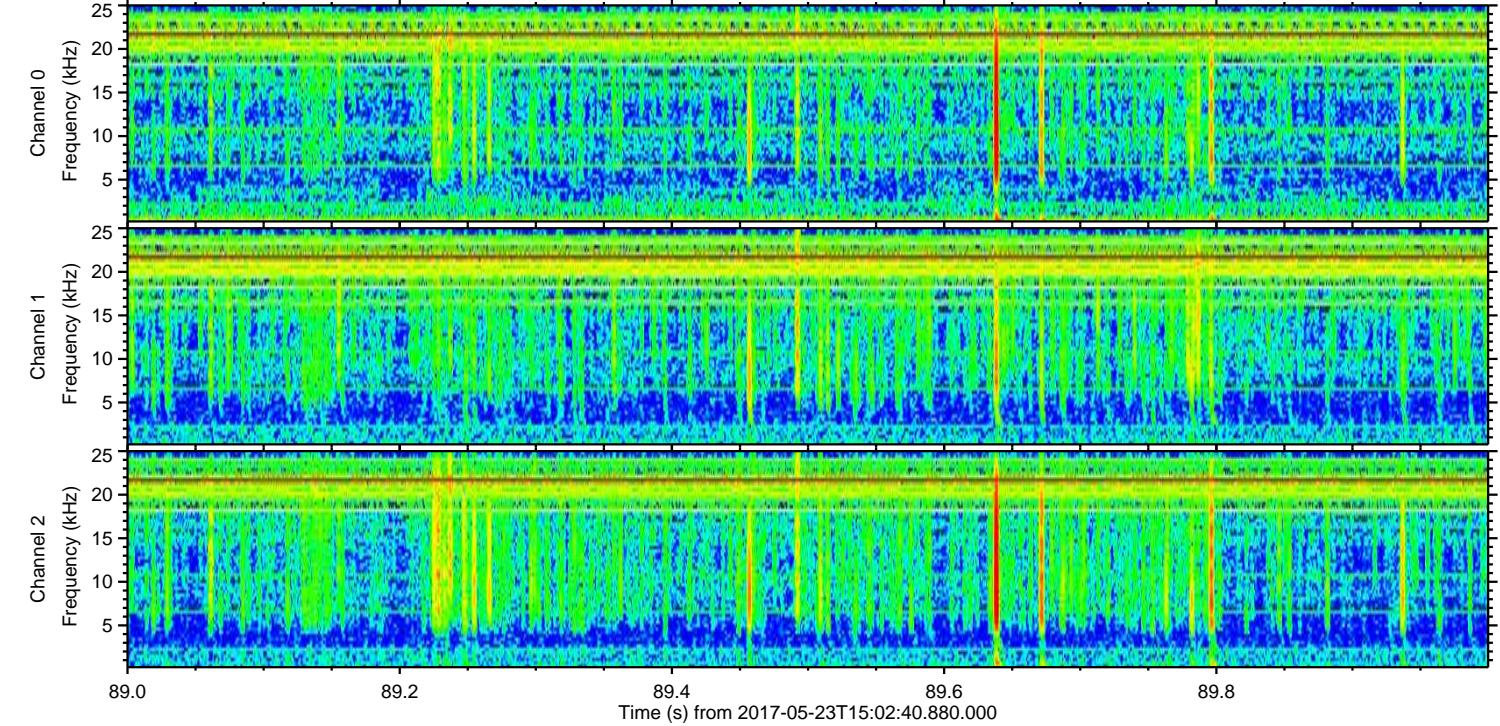
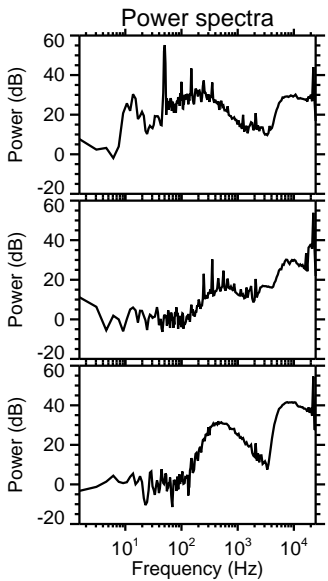
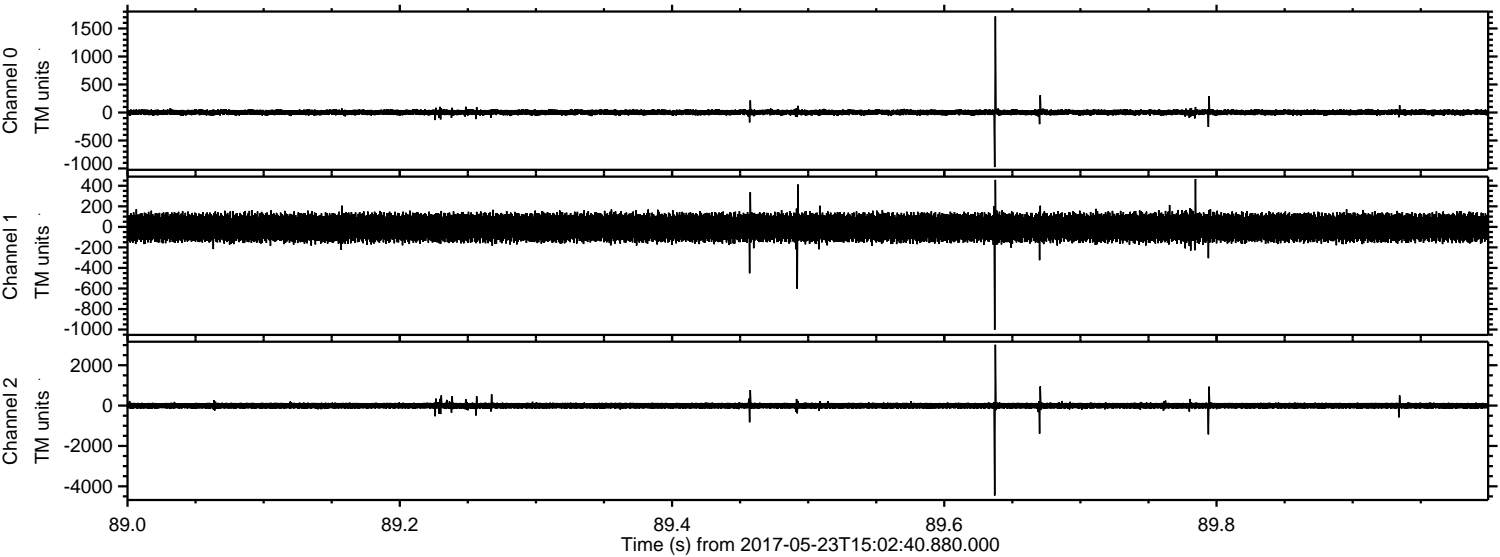
Channel 1
mn: -1116
mx: 1066
 μ : -6.2
 σ : 77.0

Channel 2
mn: -5644
mx: 4184
 μ : -4.9
 σ : 94.3

Processed Tue May 23 17:10:07 2017 by ELM ver.2012-10-06 from 001__elm20170523_150239__dat00.bin



Processed Tue May 23 17:10:07 2017 by ELM ver.2012-10-06 from 001__elm20170523_150239__dat00.bin



Processed Tue May 23 17:10:08 2017 by ELM ver.2012-10-06 from 001__elm20170523_150239__dat00.bin

