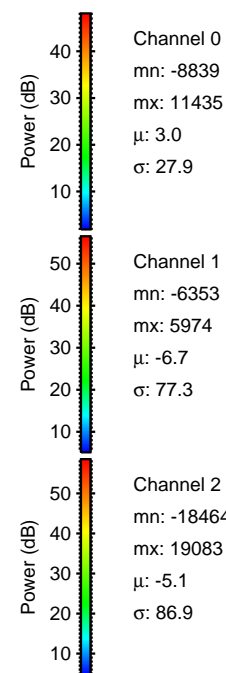
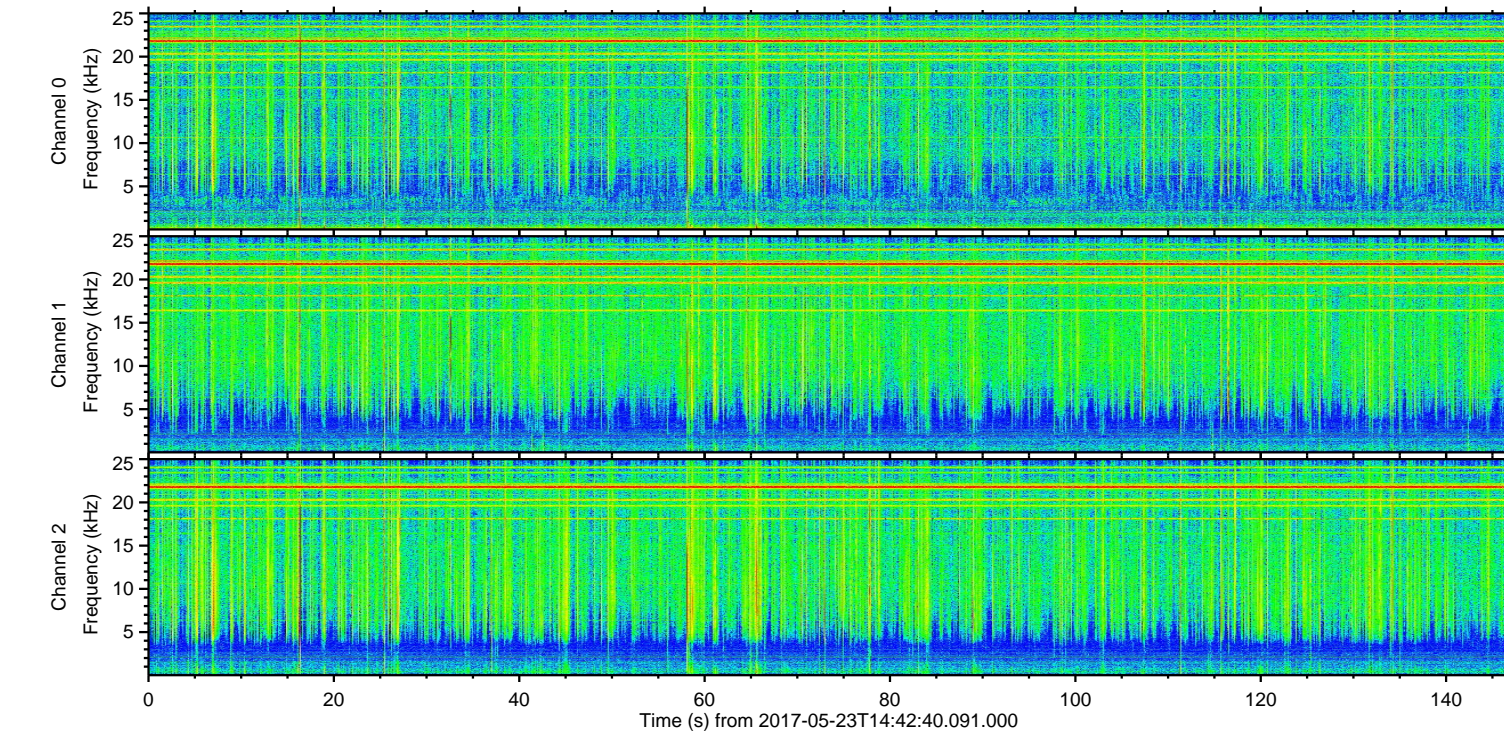
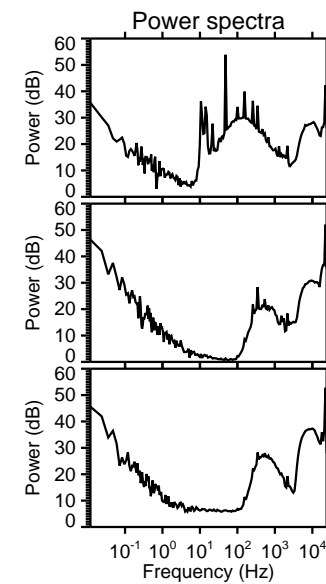
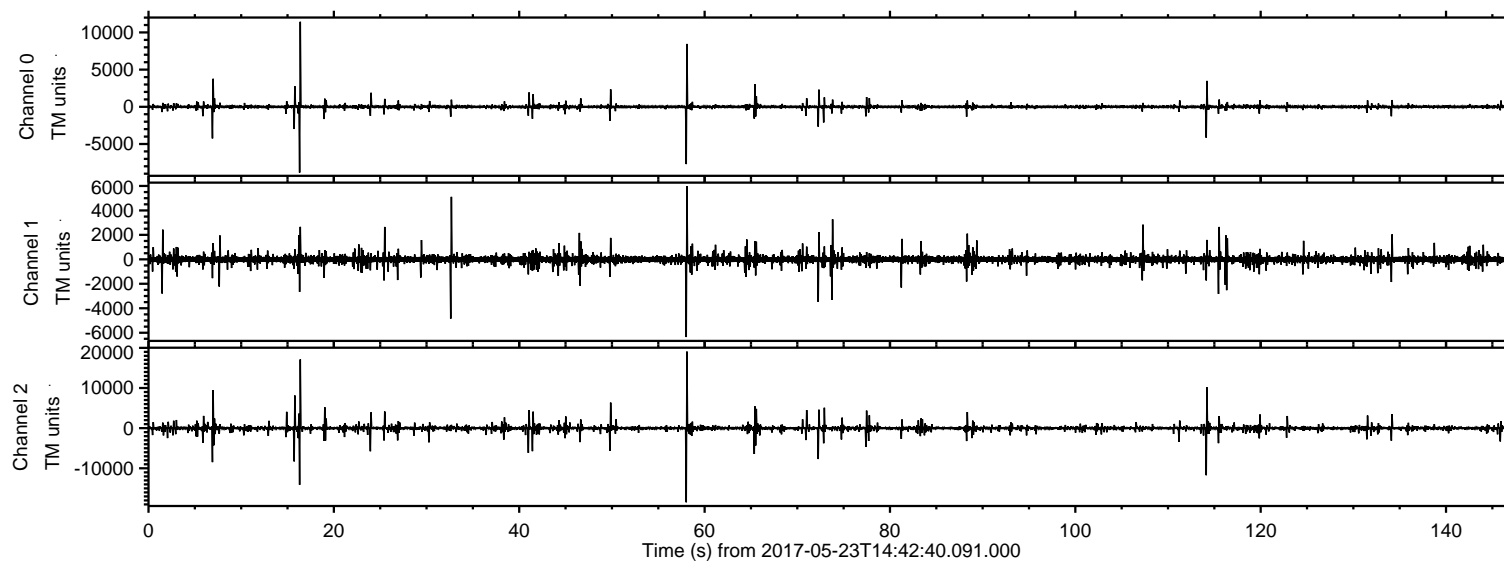
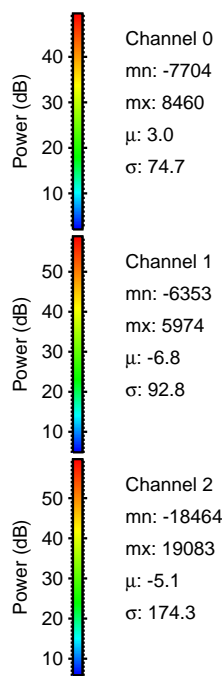
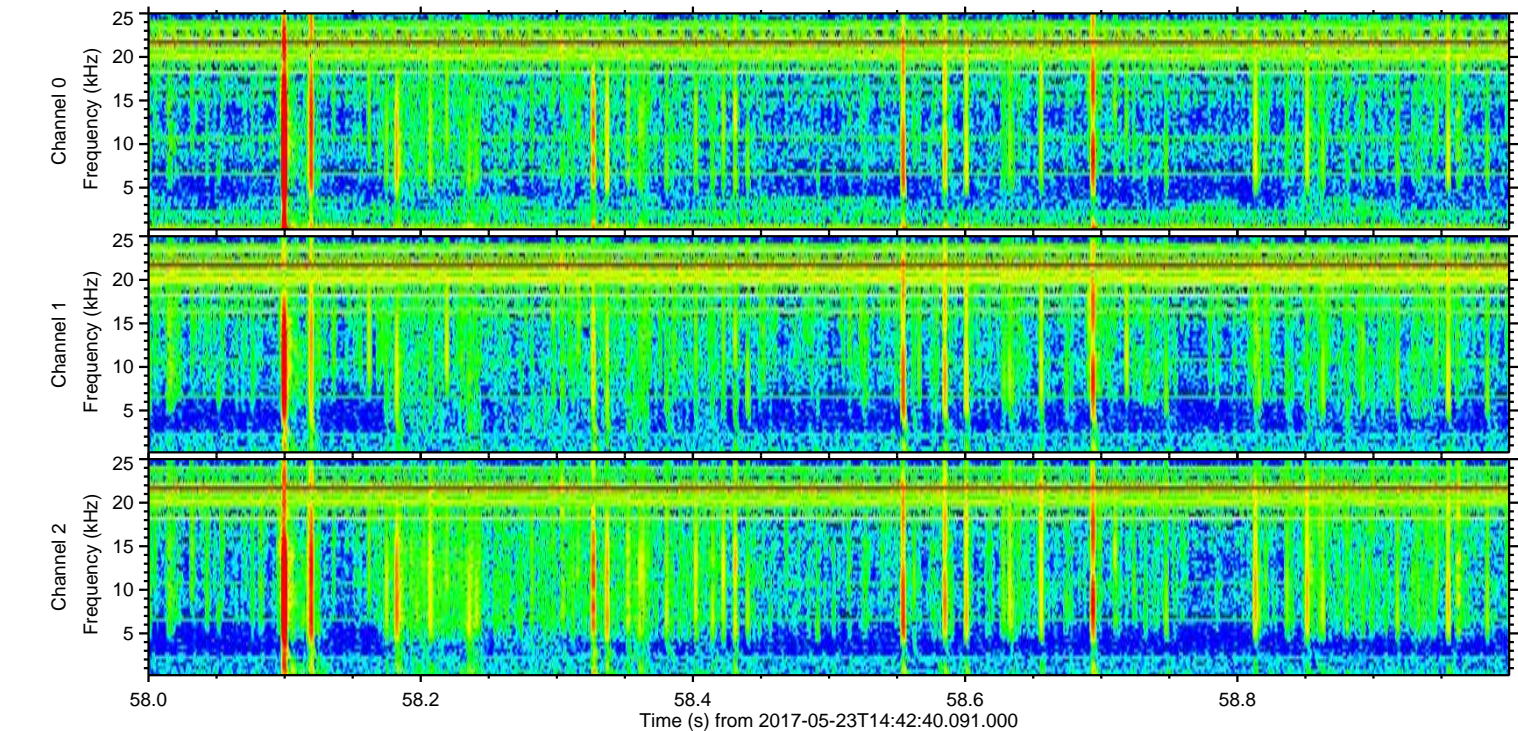
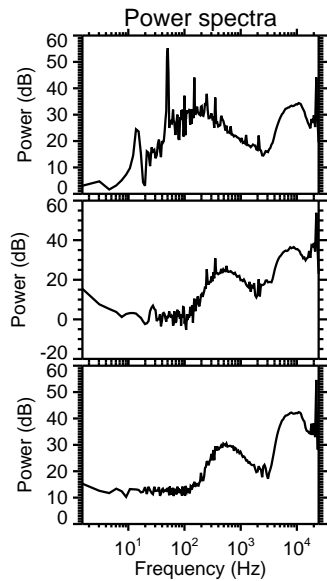
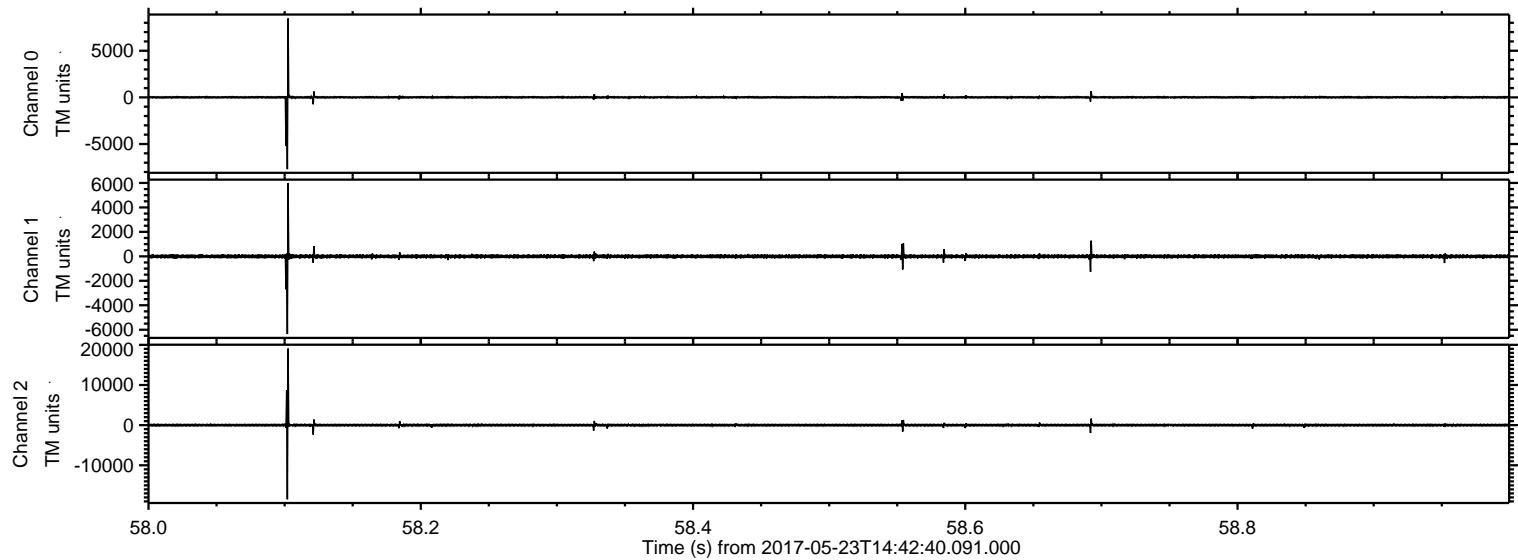


ELMAVAN 3D WAVEFORMS (Measured data sampled at 50 kHz) 51000 packets of 144 samples from 2017-05-23T14:42:40.091.000.

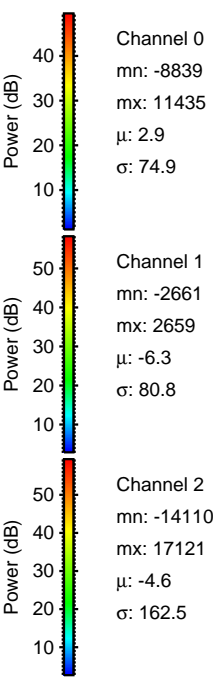
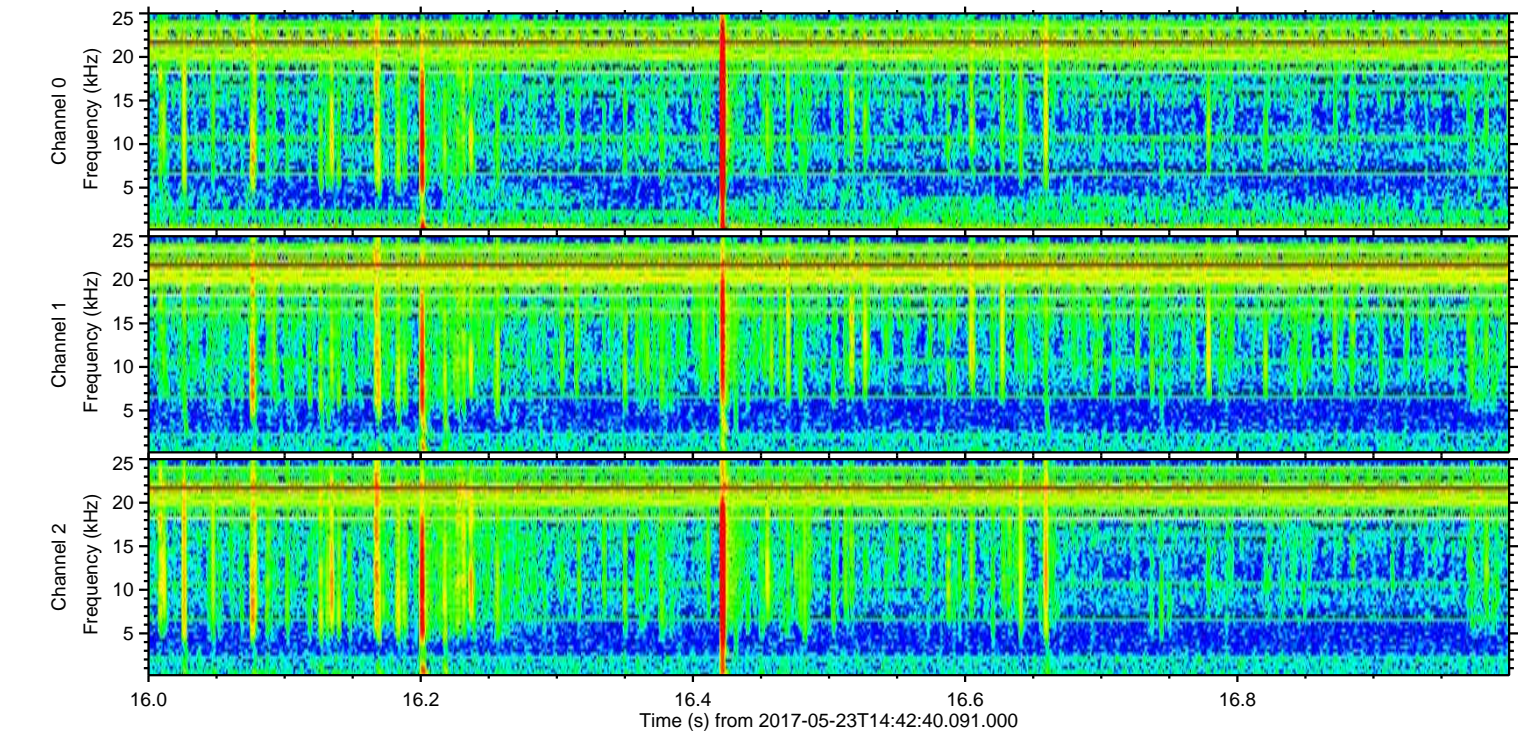
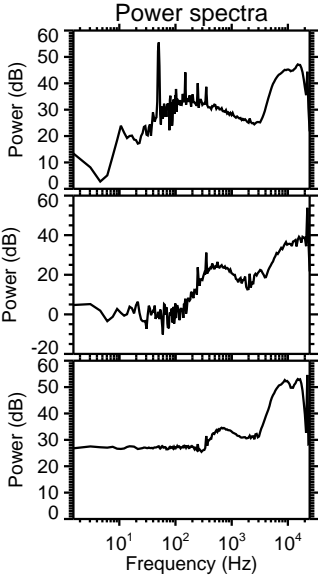
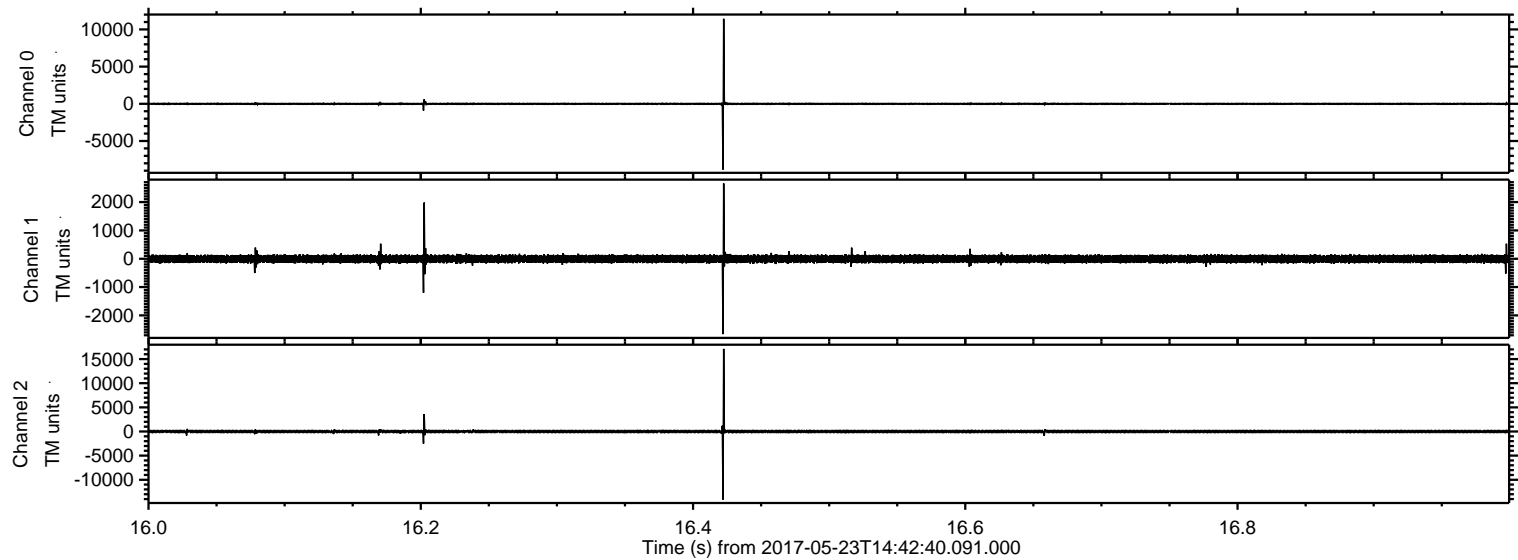
Processed Tue May 23 16:50:05 2017 by ELM ver.2012-10-06 from 001__elm20170523_144239__dat00.bin



Processed Tue May 23 16:50:11 2017 by ELM ver.2012-10-06 from 001__elm20170523_144239__dat00.bin

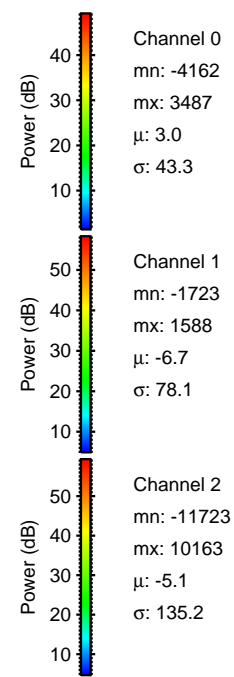
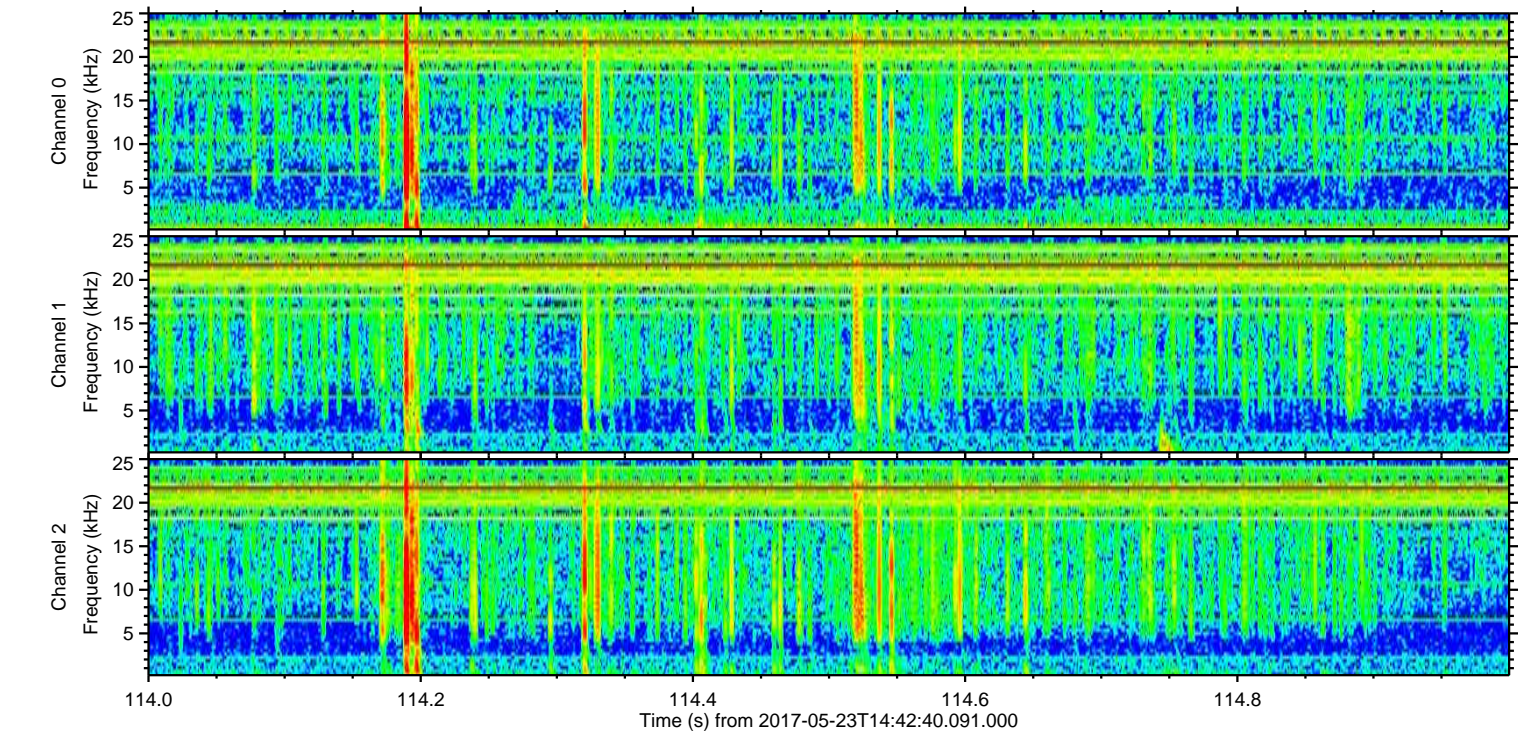
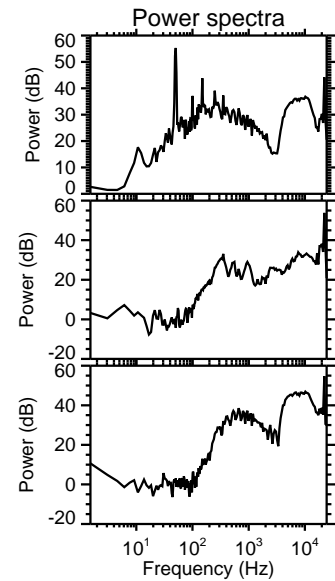
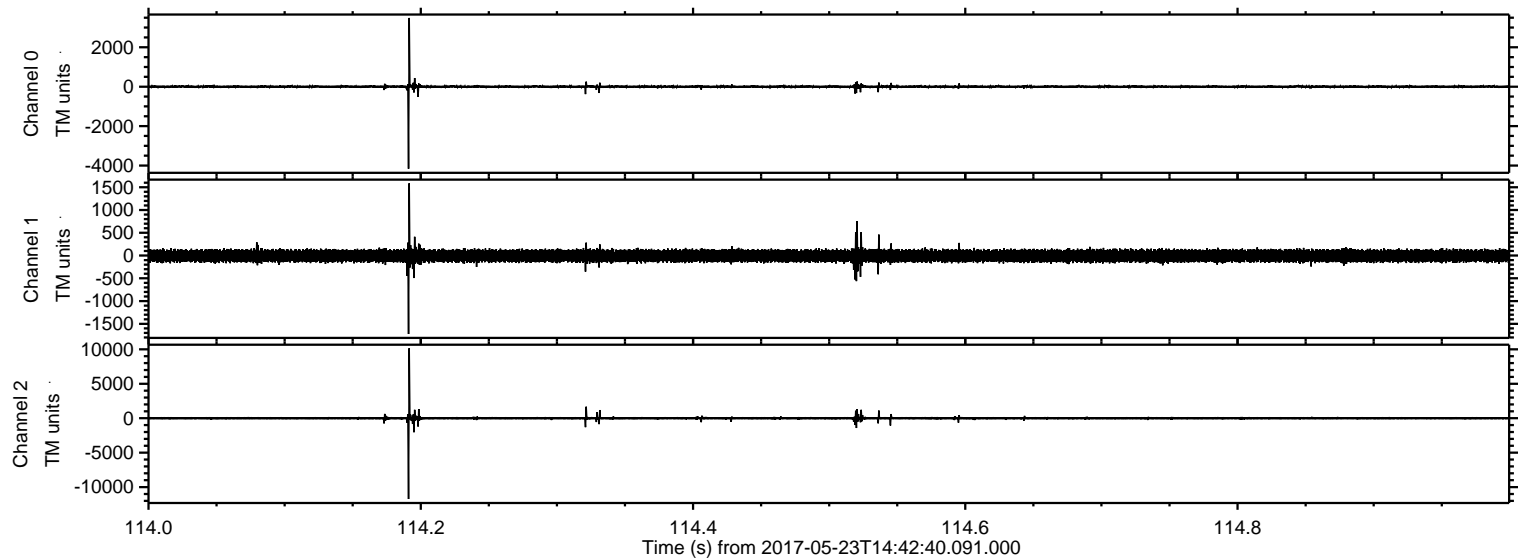


Processed Tue May 23 16:50:12 2017 by ELM ver.2012-10-06 from 001__elm20170523_144239__dat00.bin

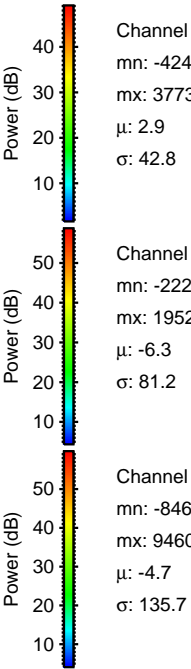
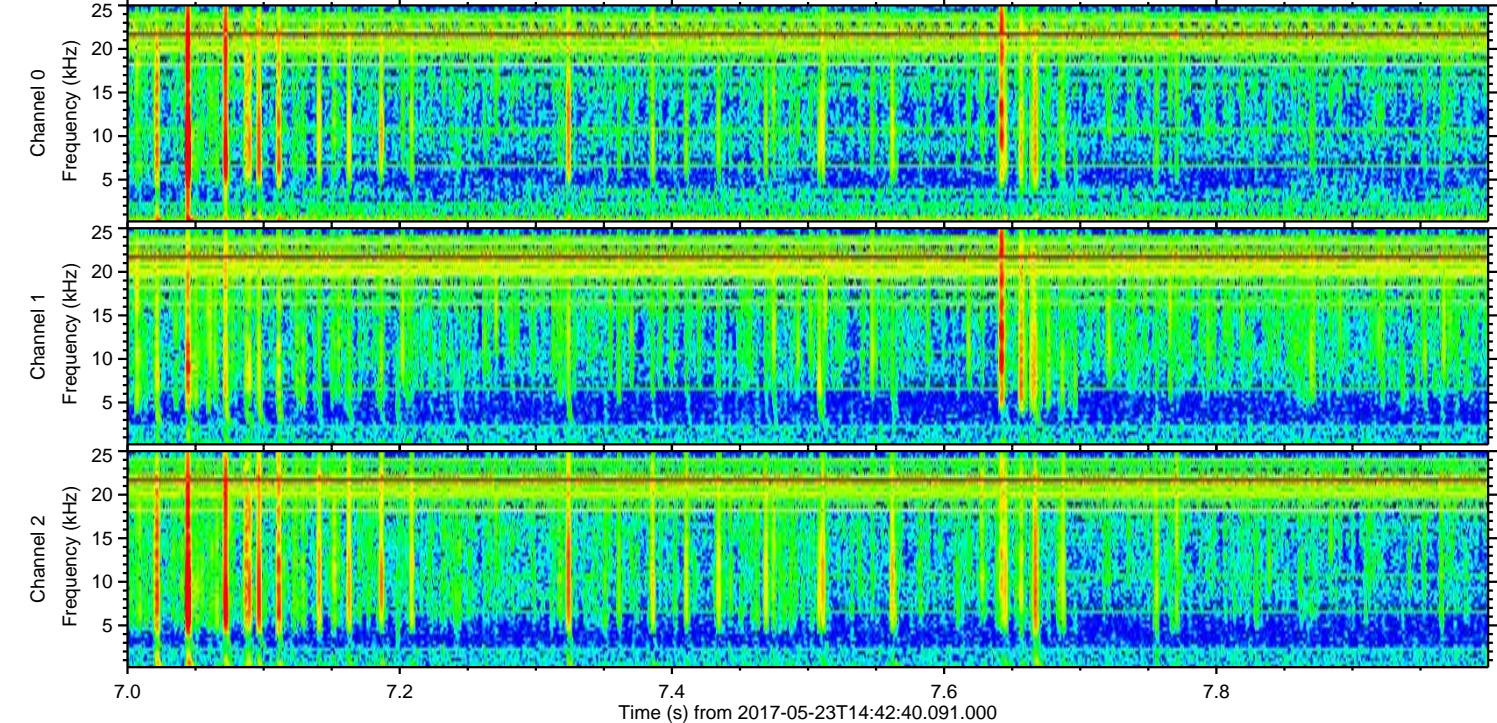
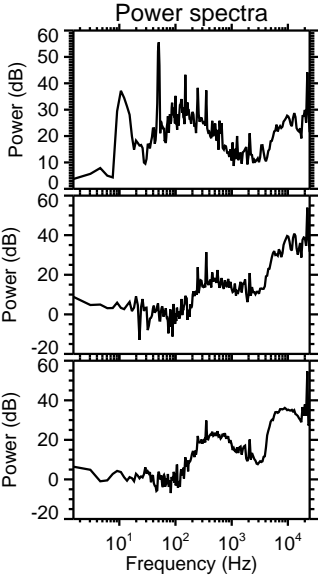
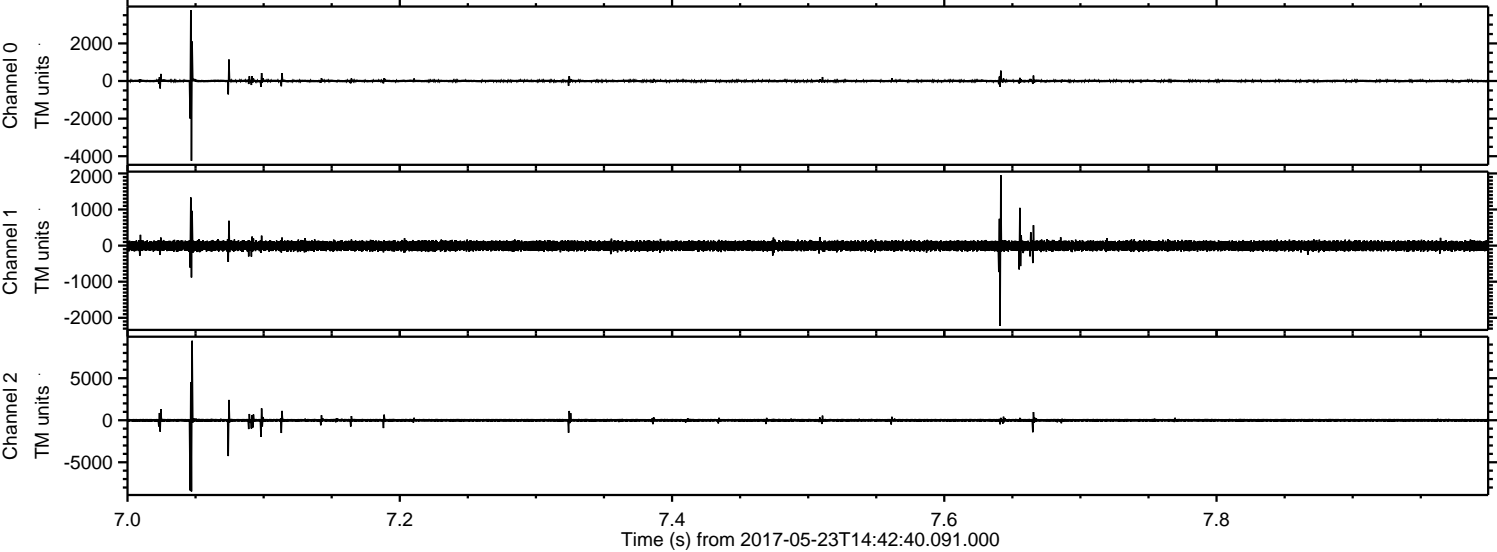


ELMAVAN 3D WAVEFORMS (Measured data sampled at 50 kHz) 51000 packets of 144 samples from 2017-05-23T14:42:40.091.000. Part 115/147

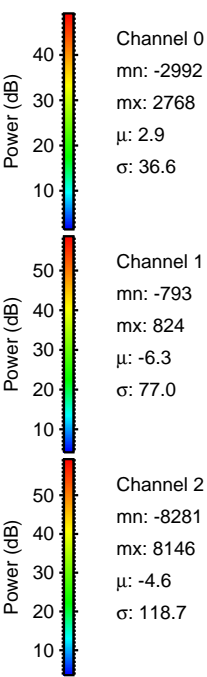
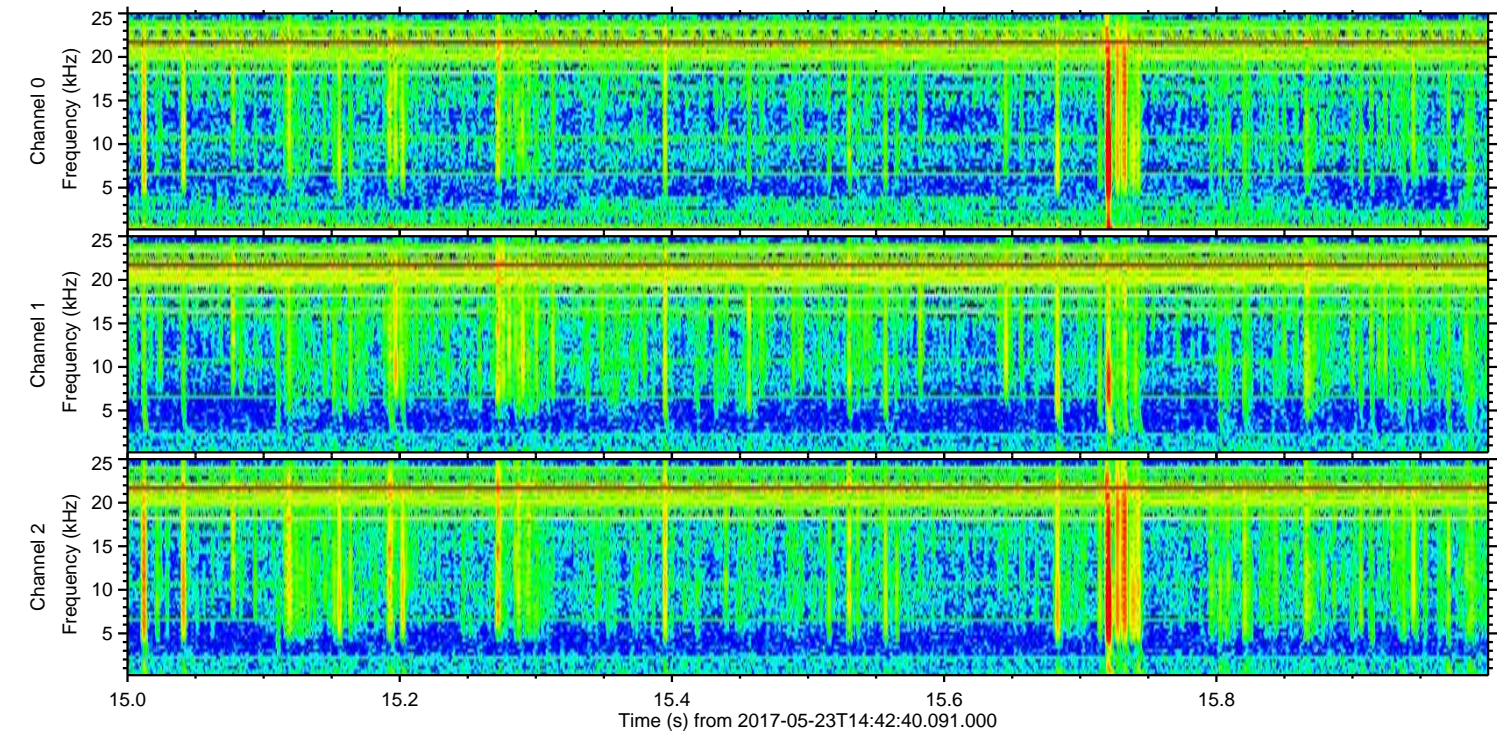
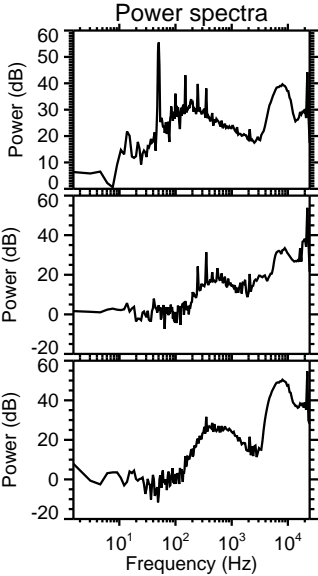
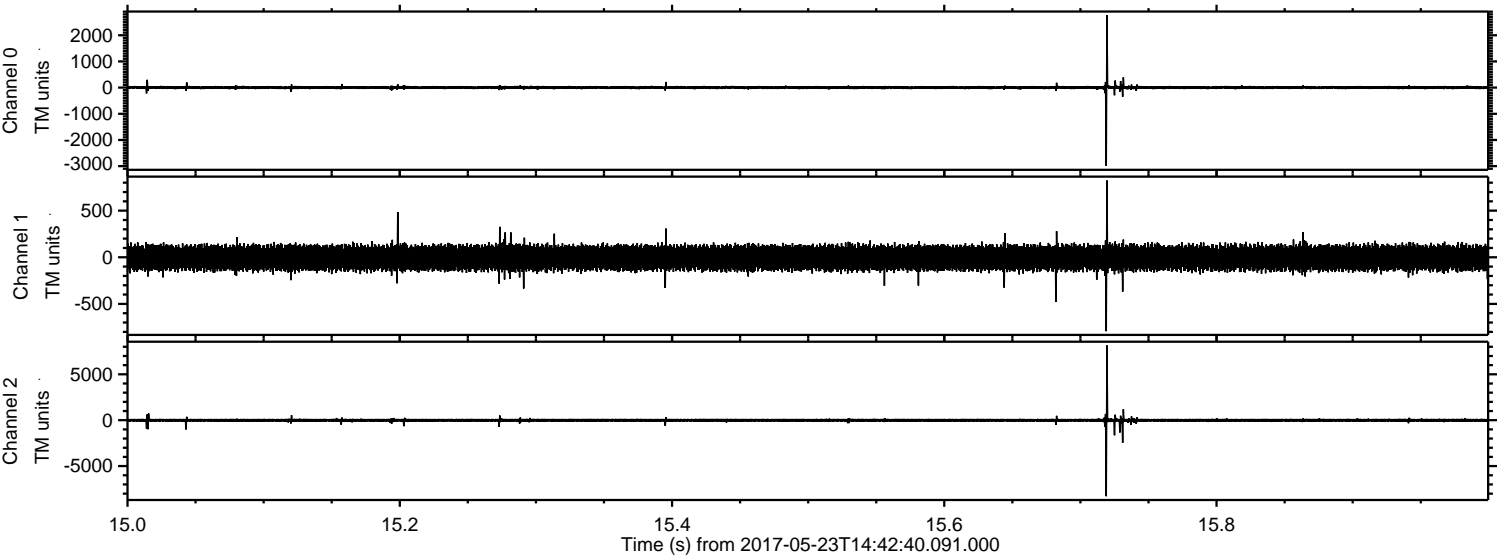
Processed Tue May 23 16:50:12 2017 by ELM ver.2012-10-06 from 001__elm20170523_144239__dat00.bin



Processed Tue May 23 16:50:13 2017 by ELM ver.2012-10-06 from 001__elm20170523_144239__dat00.bin



Processed Tue May 23 16:50:14 2017 by ELM ver.2012-10-06 from 001__elm20170523_144239__dat00.bin

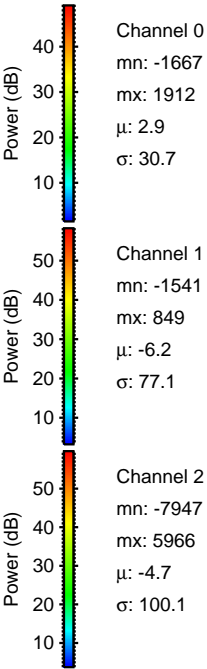
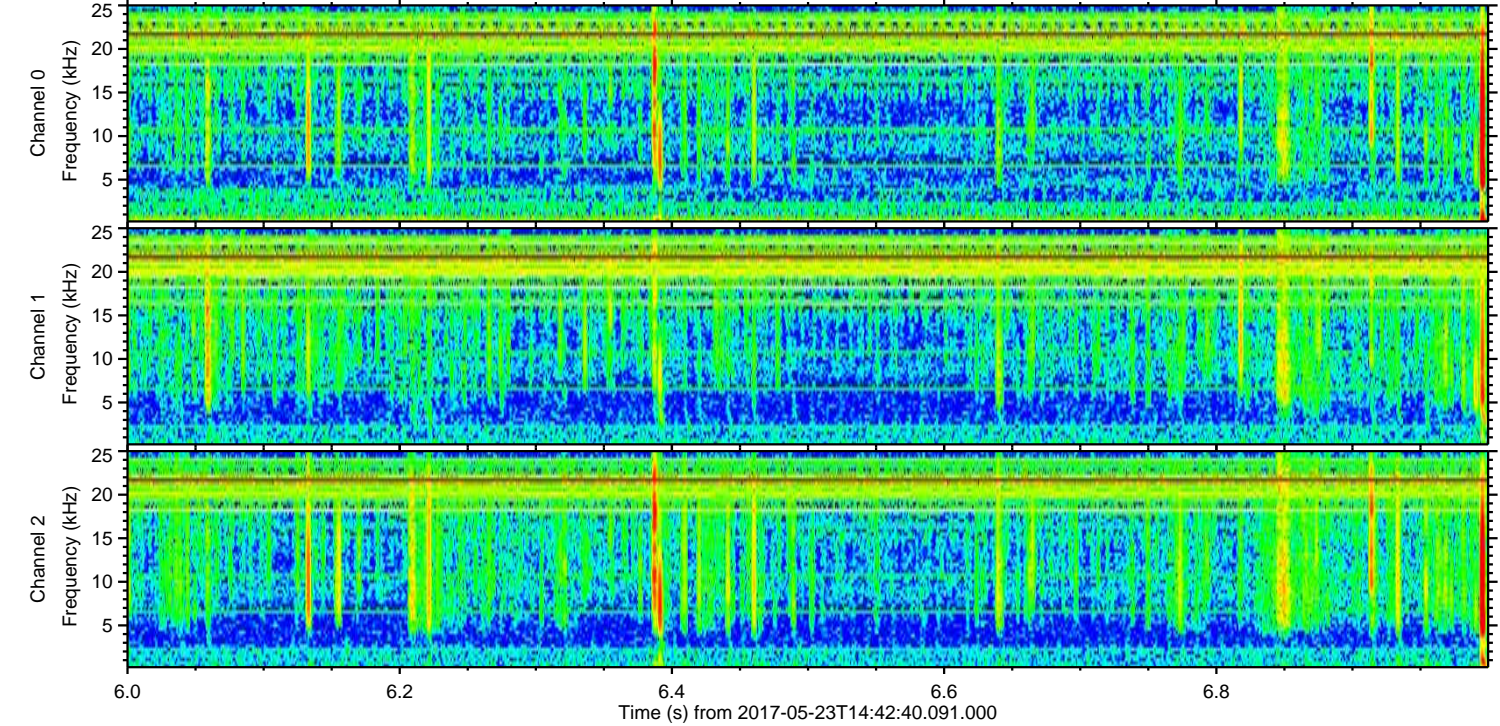
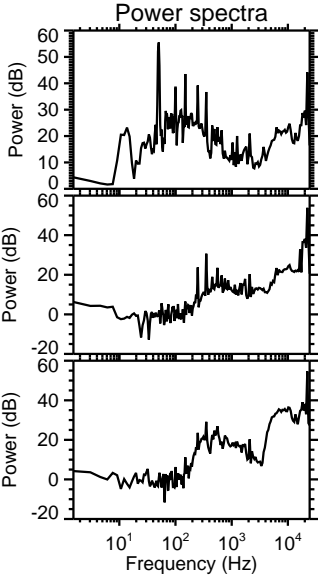
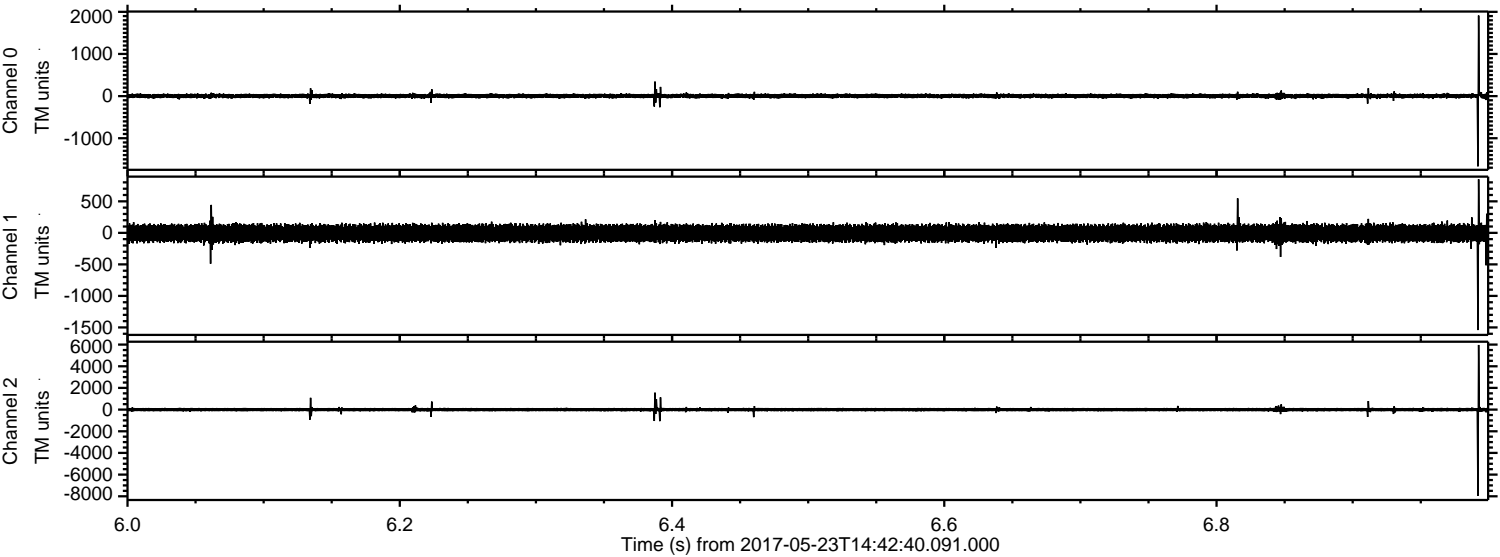


Channel 0
mn: -2992
mx: 2768
 μ : 2.9
 σ : 36.6

Channel 1
mn: -793
mx: 824
 μ : -6.3
 σ : 77.0

Channel 2
mn: -8281
mx: 8146
 μ : -4.6
 σ : 118.7

Processed Tue May 23 16:50:14 2017 by ELM ver.2012-10-06 from 001__elm20170523_144239__dat00.bin

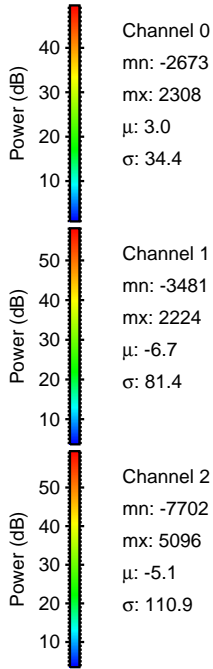
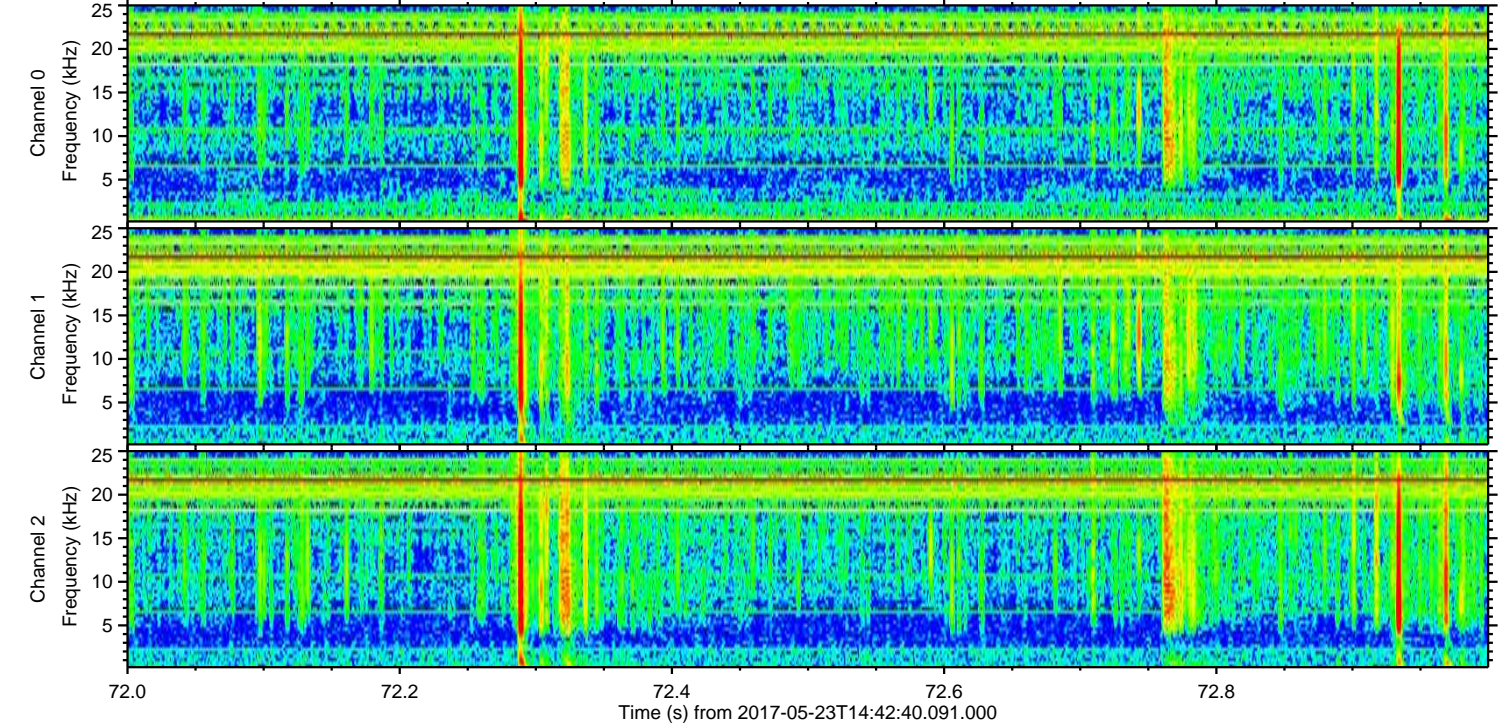
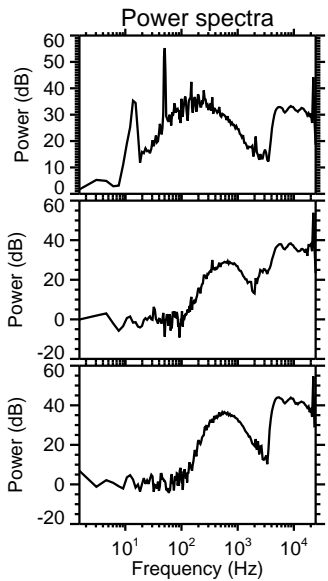
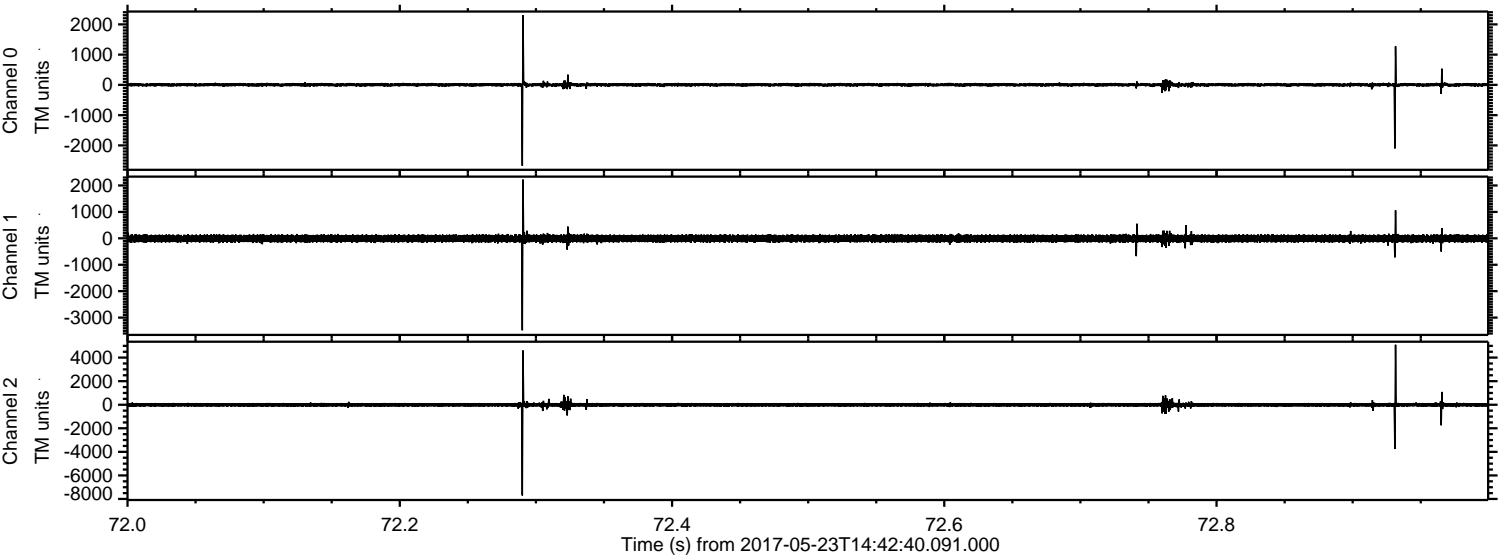


Channel 0
mn: -1667
mx: 1912
 μ : 2.9
 σ : 30.7

Channel 1
mn: -1541
mx: 849
 μ : -6.2
 σ : 77.1

Channel 2
mn: -7947
mx: 5966
 μ : -4.7
 σ : 100.1

Processed Tue May 23 16:50:15 2017 by ELM ver.2012-10-06 from 001__elm20170523_144239__dat00.bin

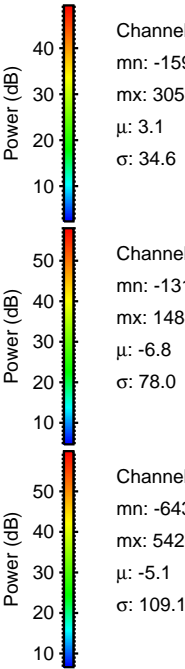
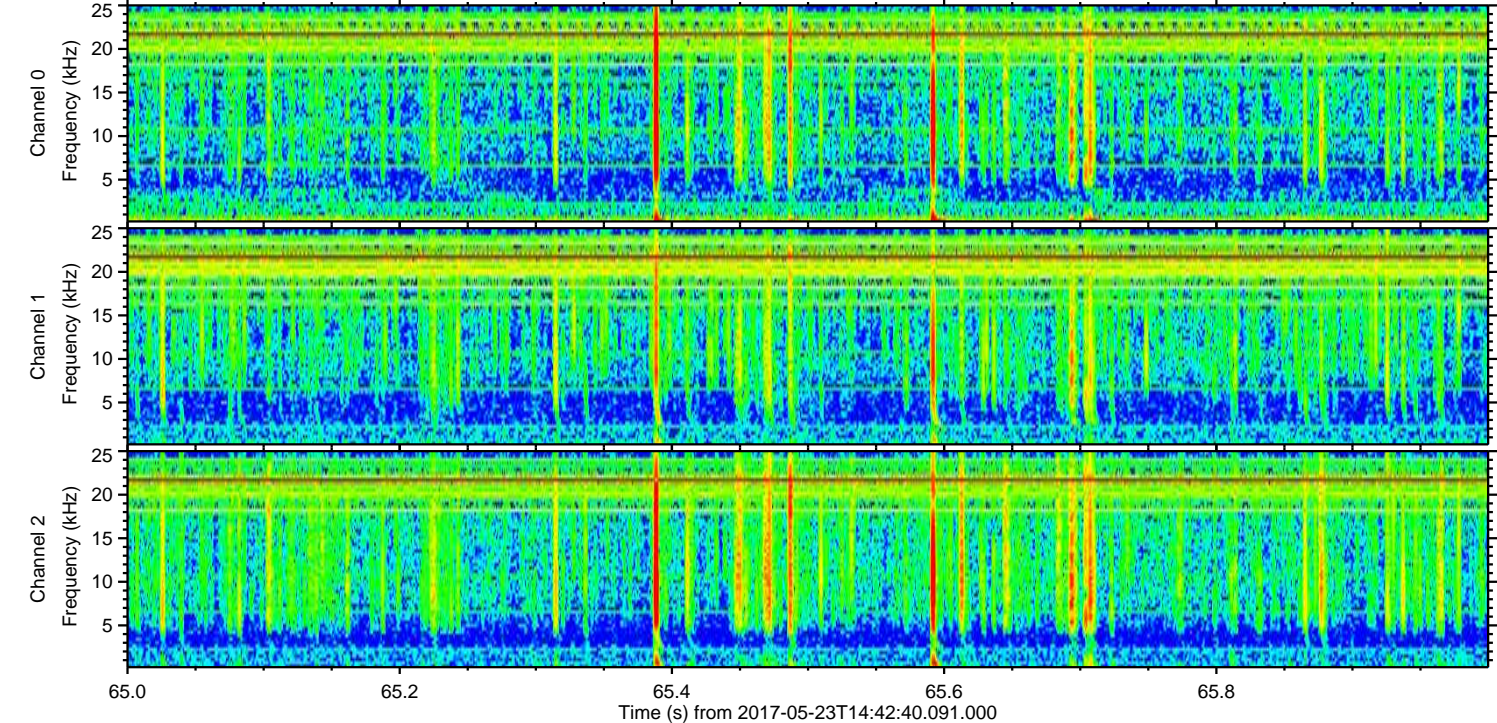
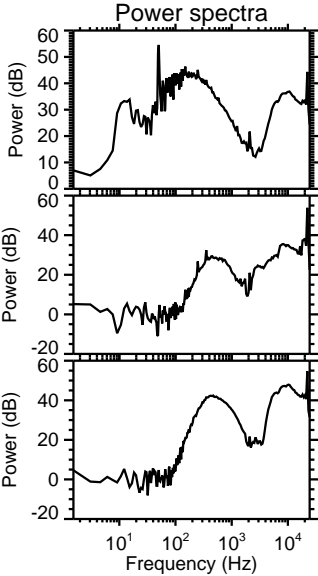
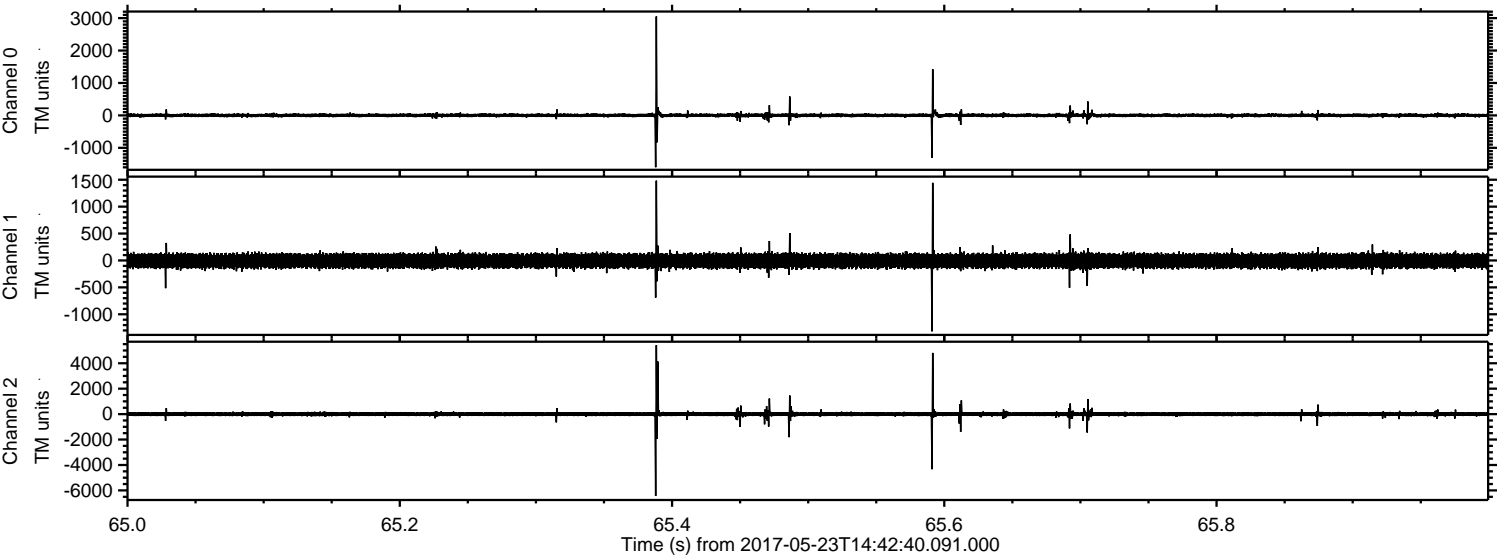


Channel 0
mn: -2673
mx: 2308
 μ : 3.0
 σ : 34.4

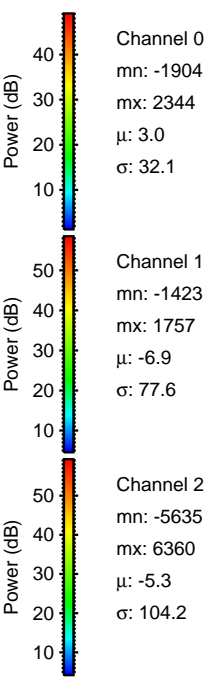
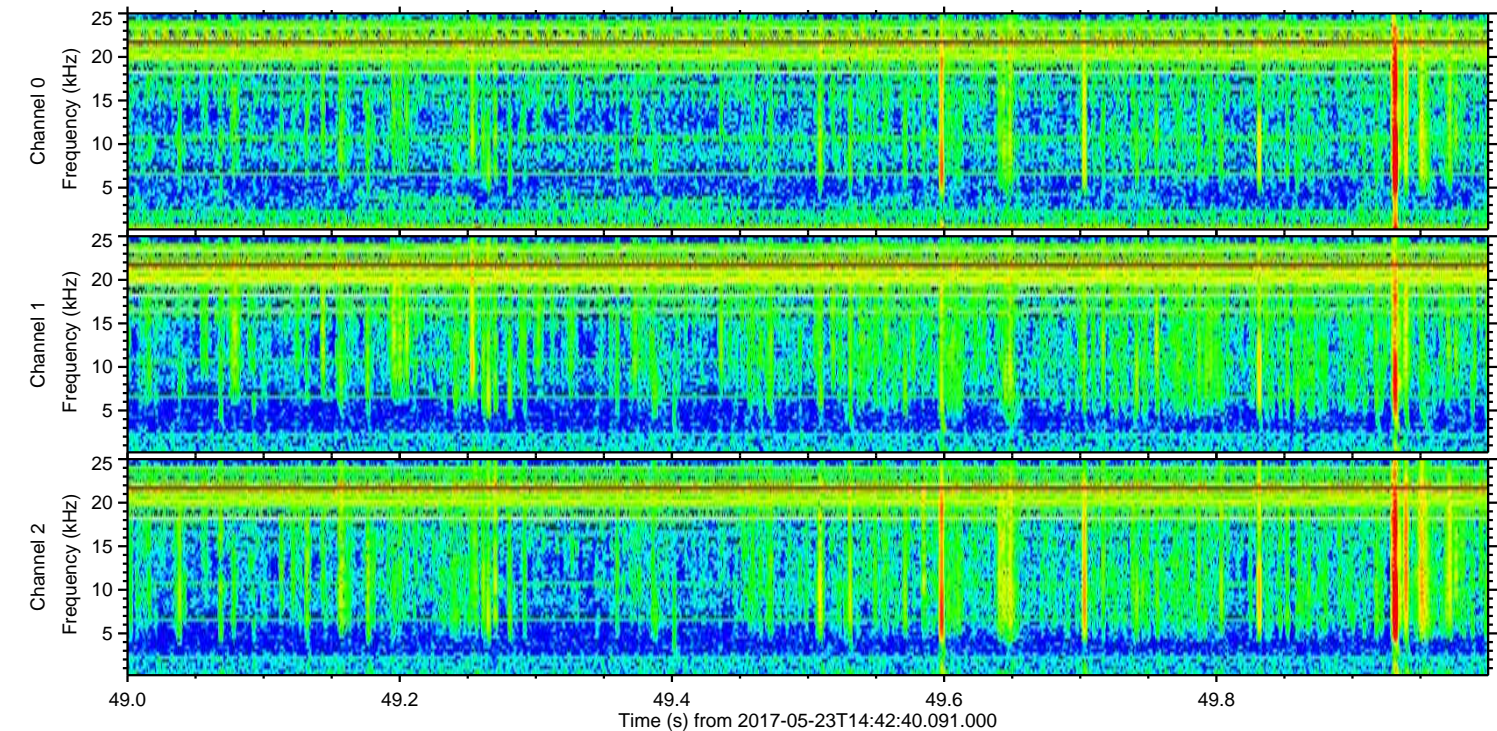
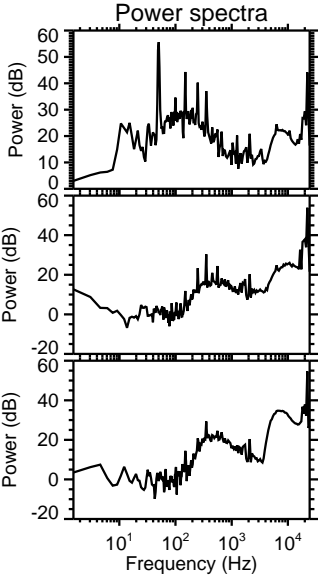
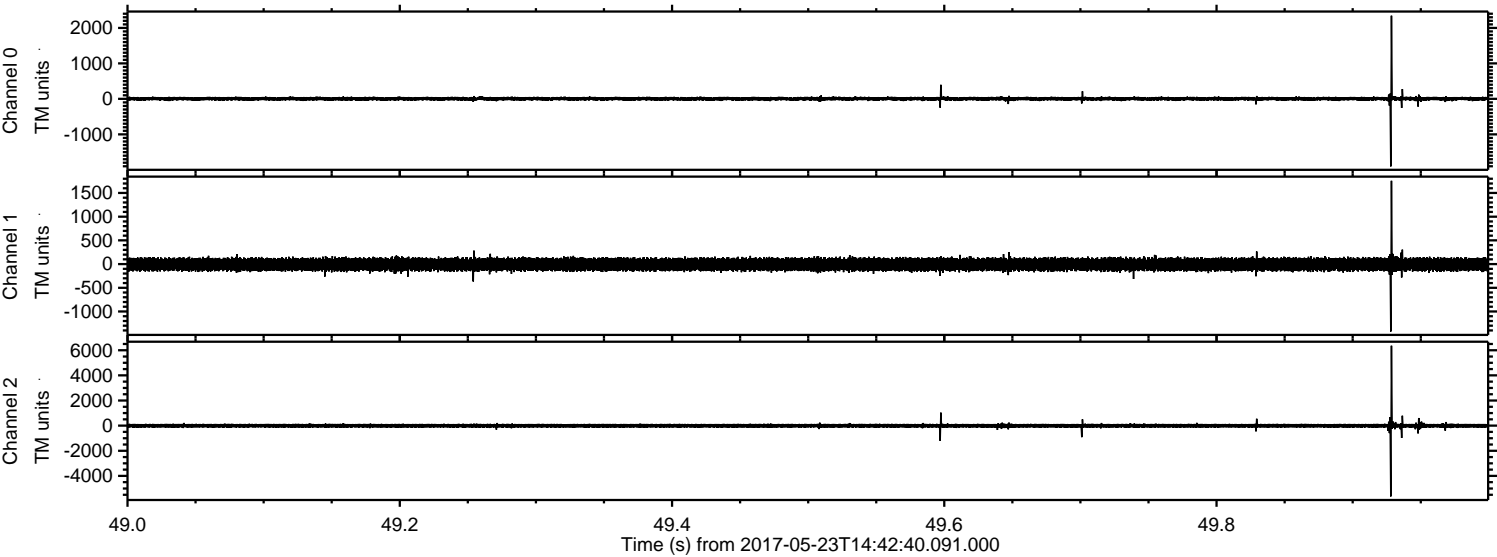
Channel 1
mn: -3481
mx: 2224
 μ : -6.7
 σ : 81.4

Channel 2
mn: -7702
mx: 5096
 μ : -5.1
 σ : 110.9

Processed Tue May 23 16:50:16 2017 by ELM ver.2012-10-06 from 001__elm20170523_144239__dat00.bin



Processed Tue May 23 16:50:16 2017 by ELM ver.2012-10-06 from 001__elm20170523_144239__dat00.bin



Channel 0
mn: -1904
mx: 2344
 μ : 3.0
 σ : 32.1

Channel 1
mn: -1423
mx: 1757
 μ : -6.9
 σ : 77.6

Channel 2
mn: -5635
mx: 6360
 μ : -5.3
 σ : 104.2

Processed Tue May 23 16:50:17 2017 by ELM ver.2012-10-06 from 001__elm20170523_144239__dat00.bin

