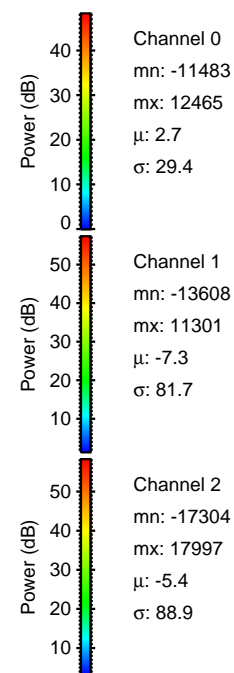
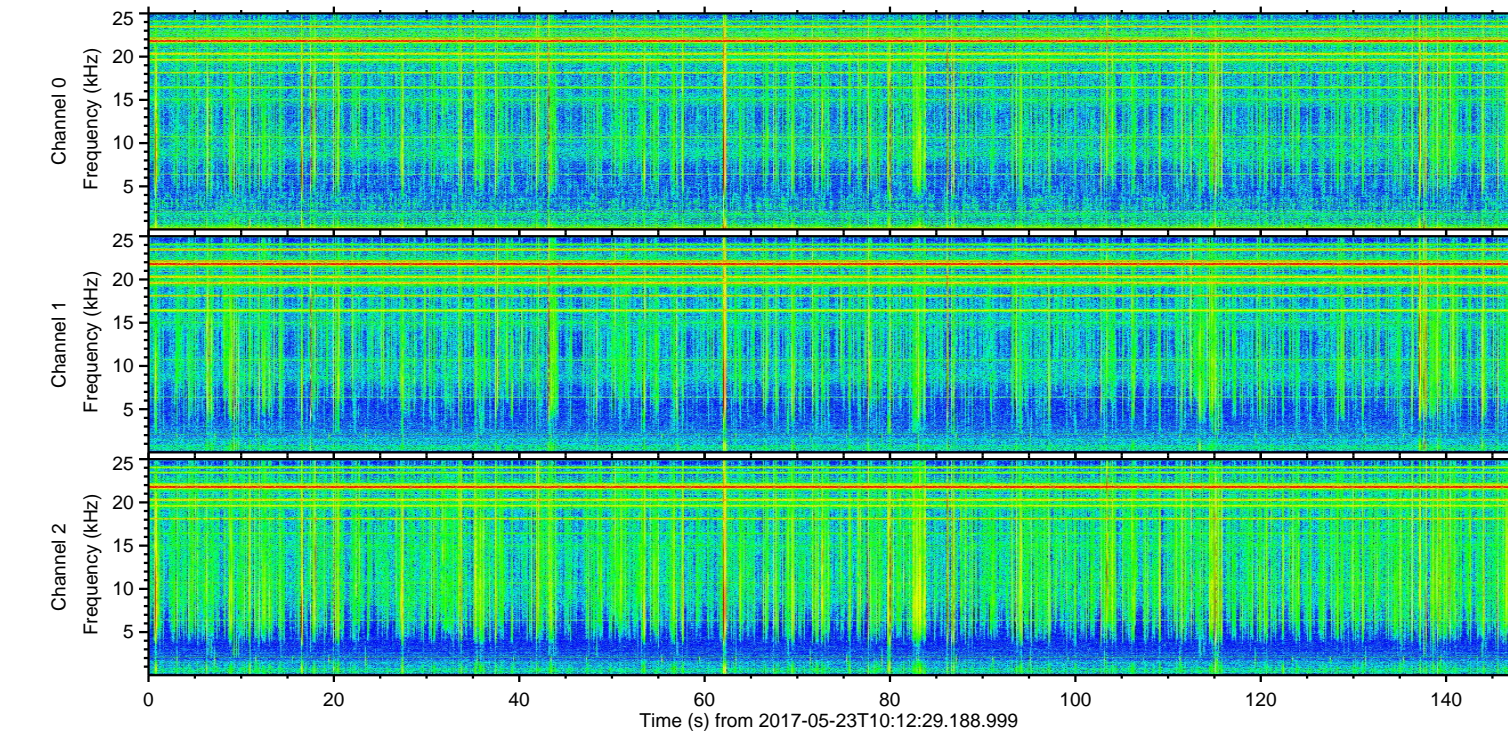
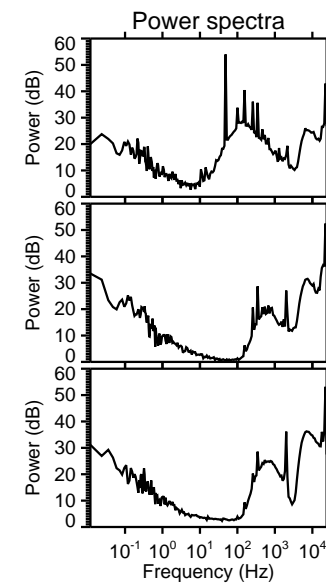
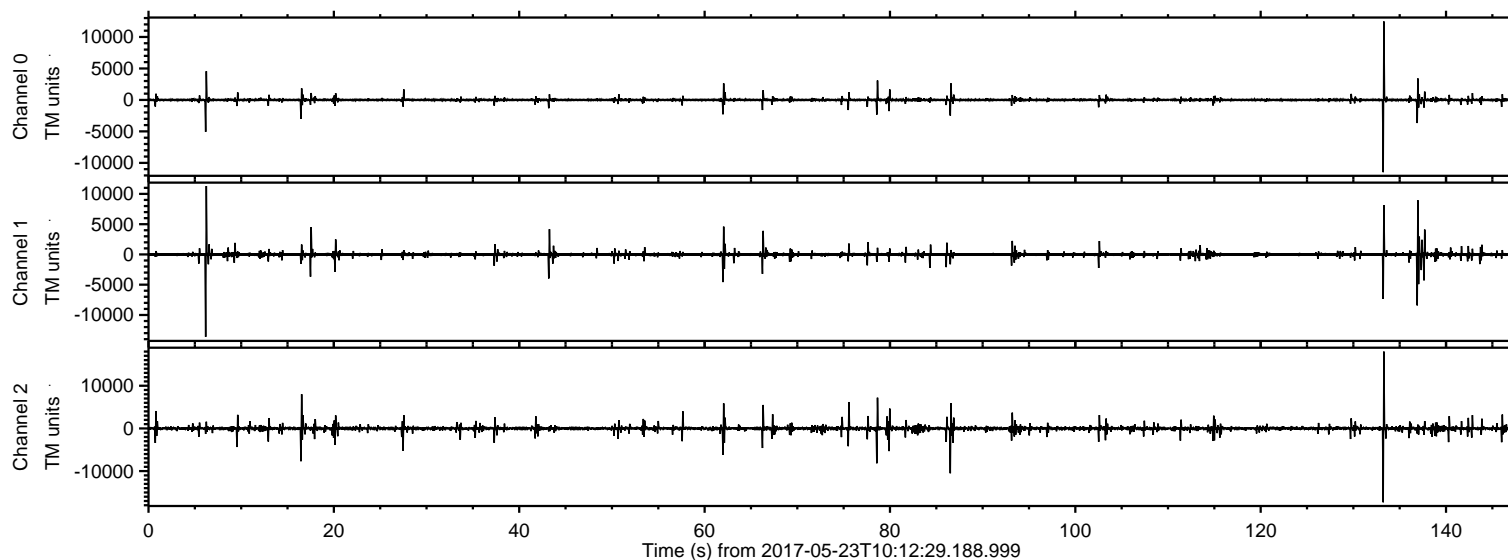


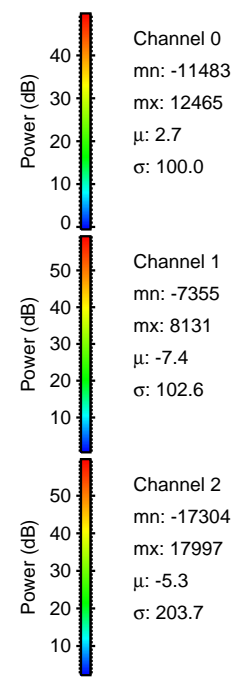
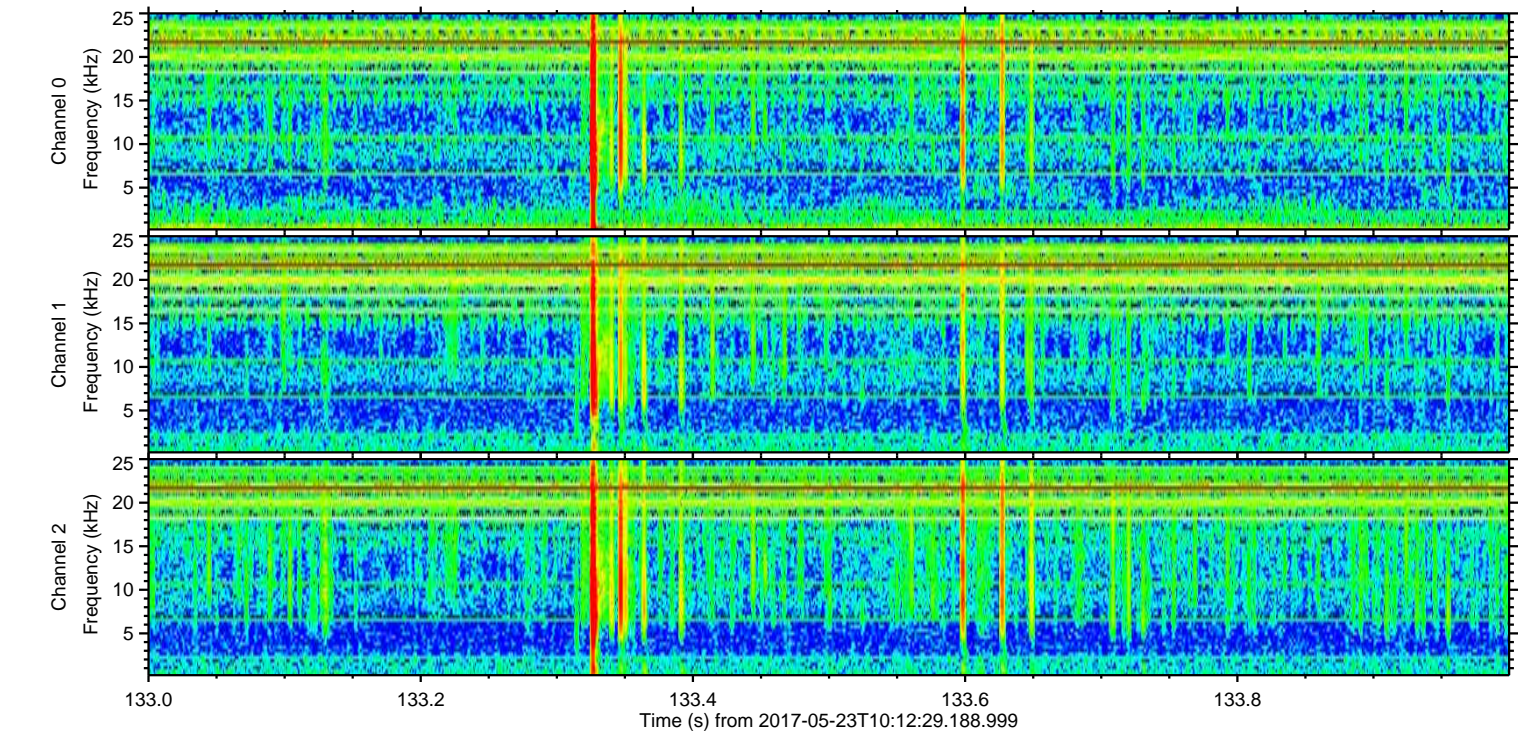
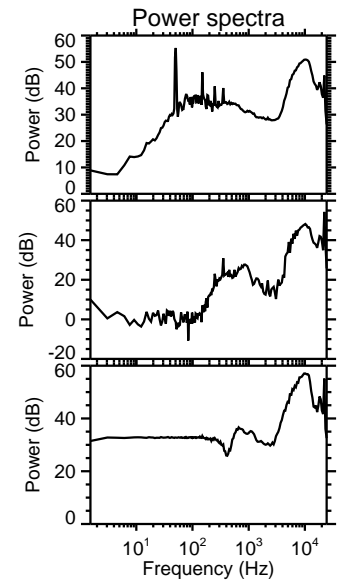
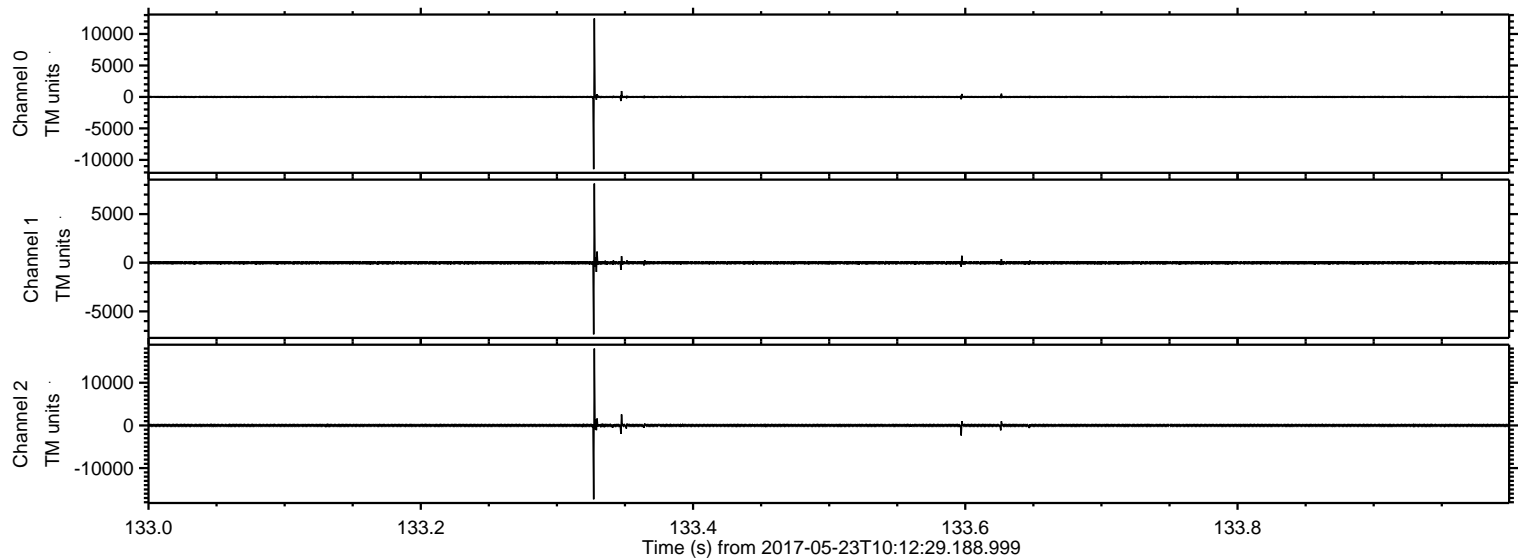
ELMAVAN 3D WAVEFORMS (Measured data sampled at 50 kHz) 51000 packets of 144 samples from 2017-05-23T10:12:29.188.999.

Processed Tue May 23 12:19:42 2017 by ELM ver.2012-10-06 from 001__elm20170523_101228__dat00.bin



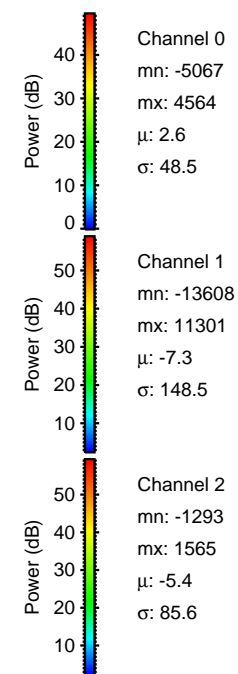
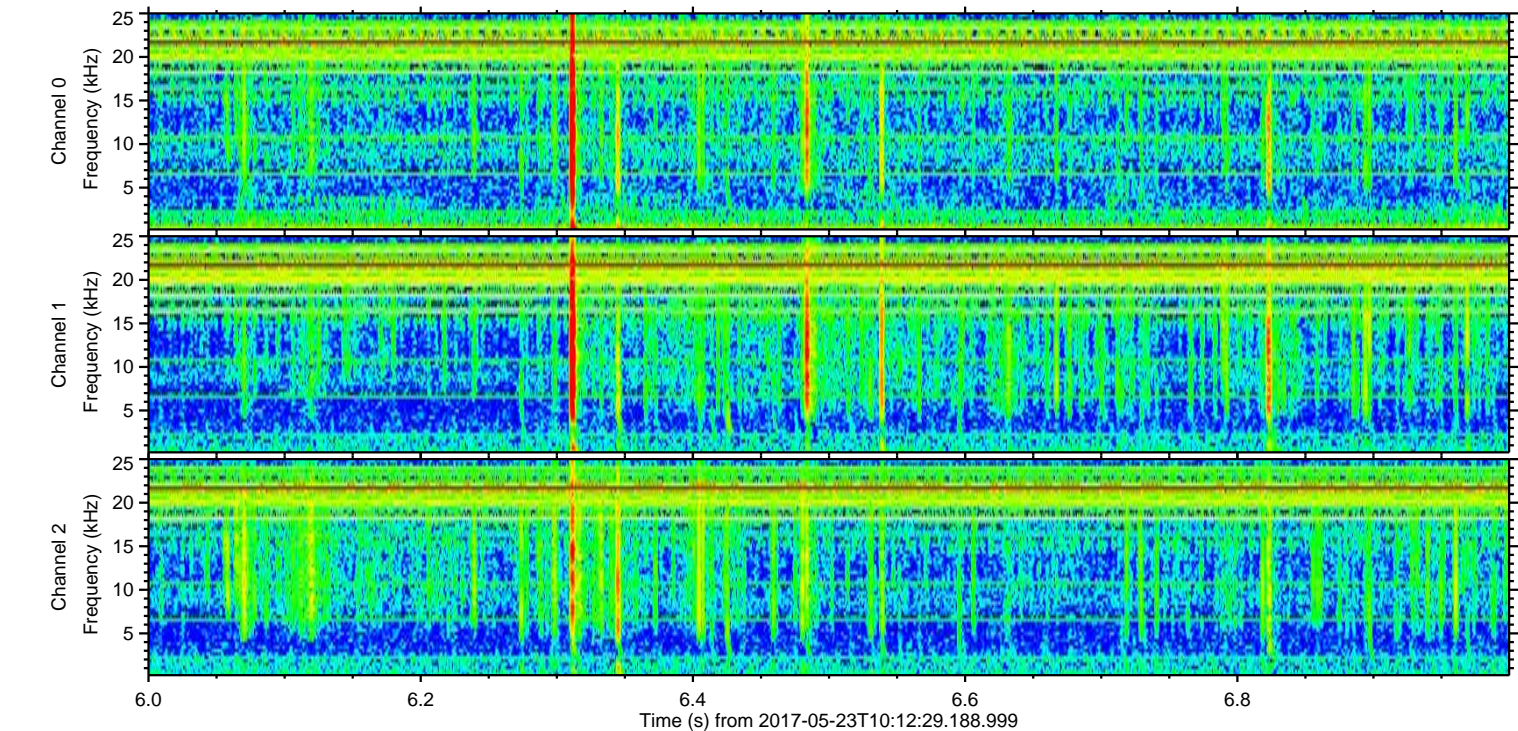
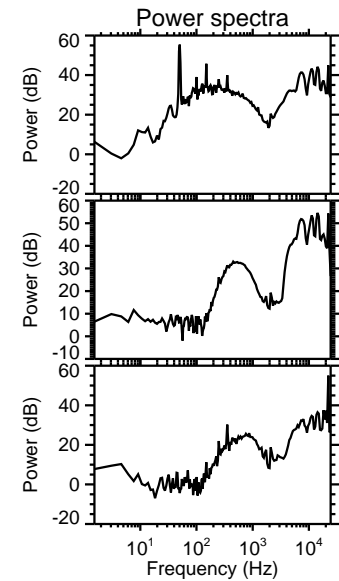
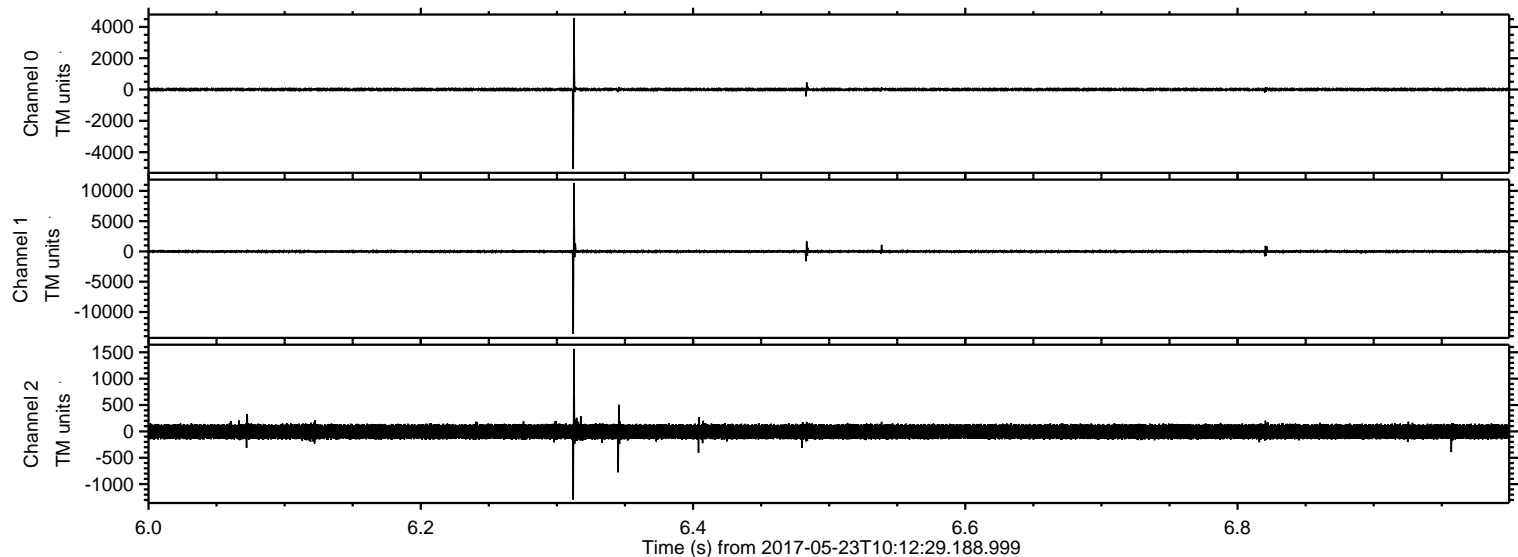
ELMAVAN 3D WAVEFORMS (Measured data sampled at 50 kHz) 51000 packets of 144 samples from 2017-05-23T10:12:29.188.999. Part 134/147

Processed Tue May 23 12:19:48 2017 by ELM ver.2012-10-06 from 001__elm20170523_101228__dat00.bin



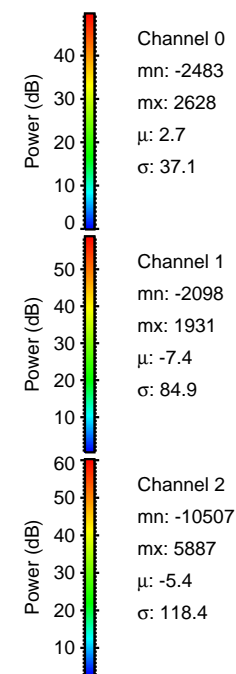
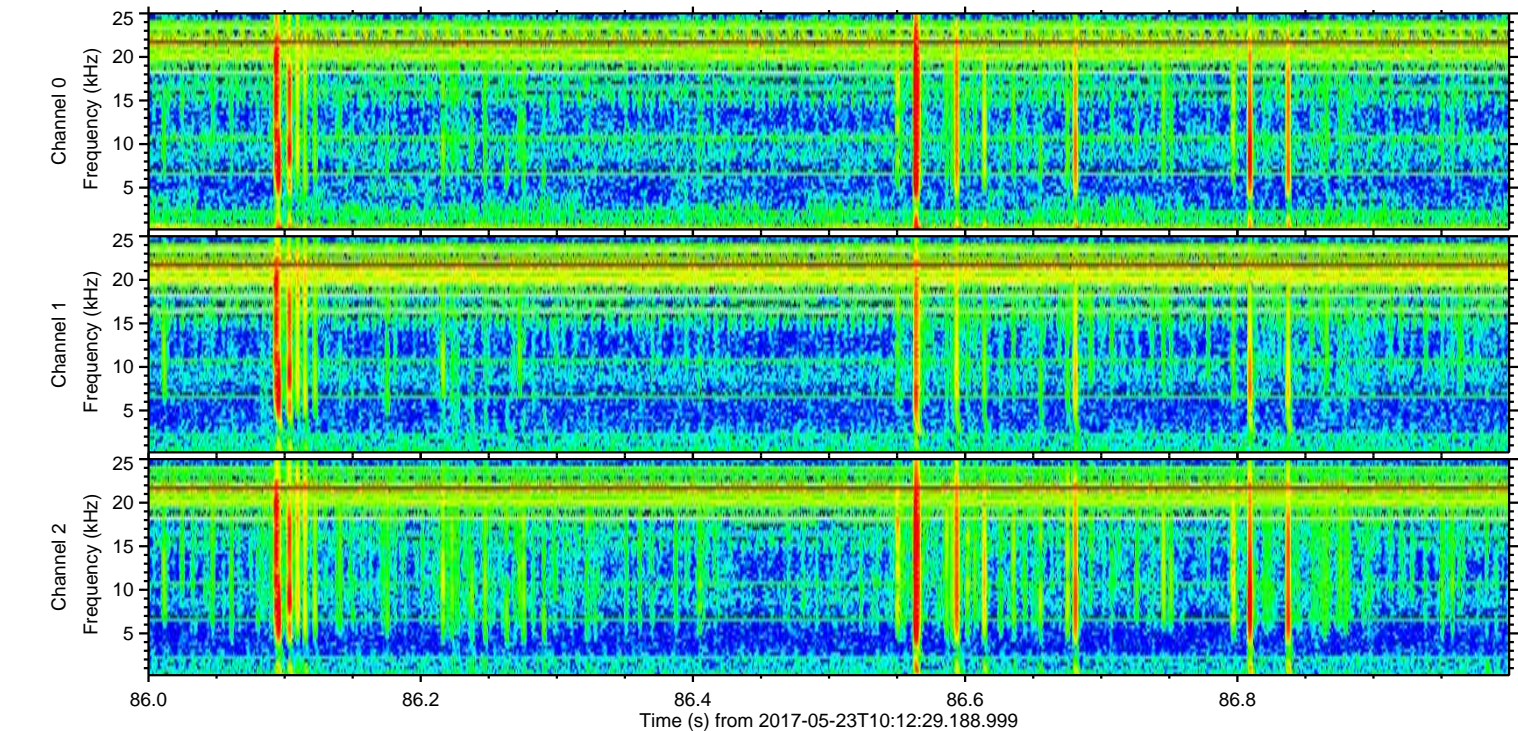
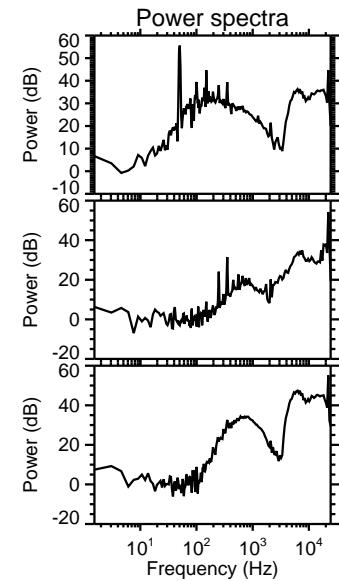
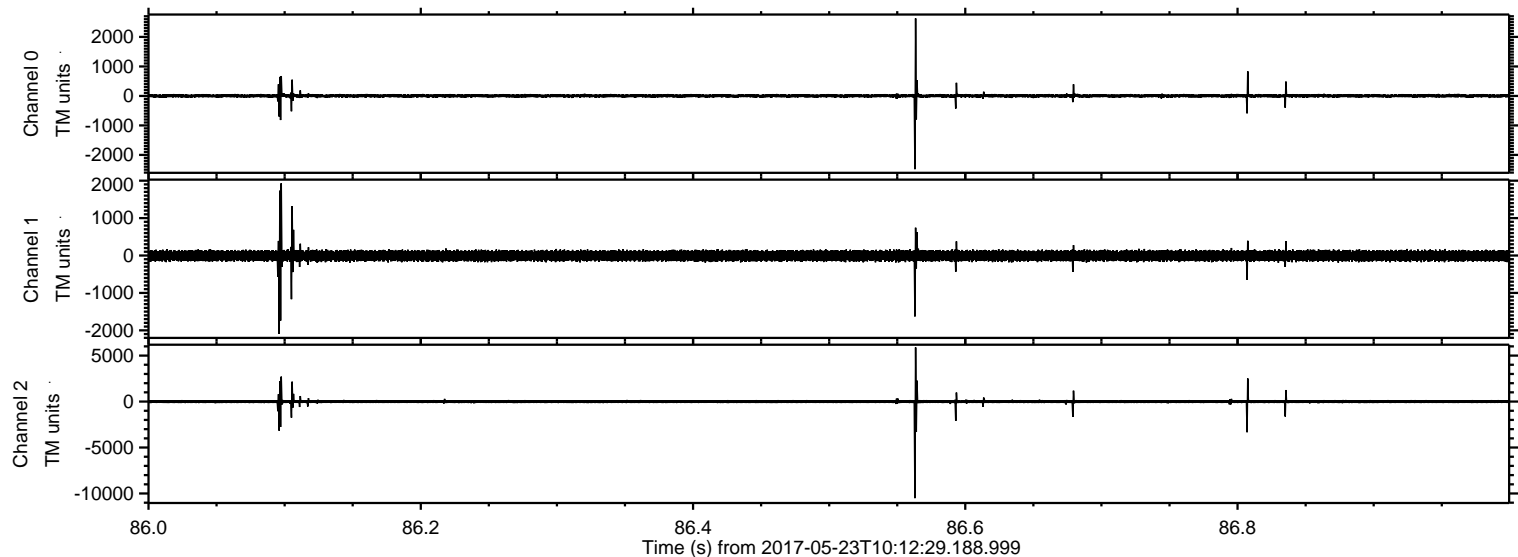
ELMAVAN 3D WAVEFORMS (Measured data sampled at 50 kHz) 51000 packets of 144 samples from 2017-05-23T10:12:29.188.999. Part 7/147

Processed Tue May 23 12:19:49 2017 by ELM ver.2012-10-06 from 001__elm20170523_101228__dat00.bin



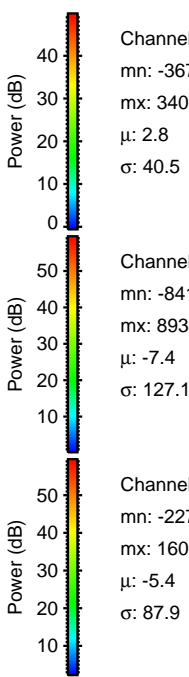
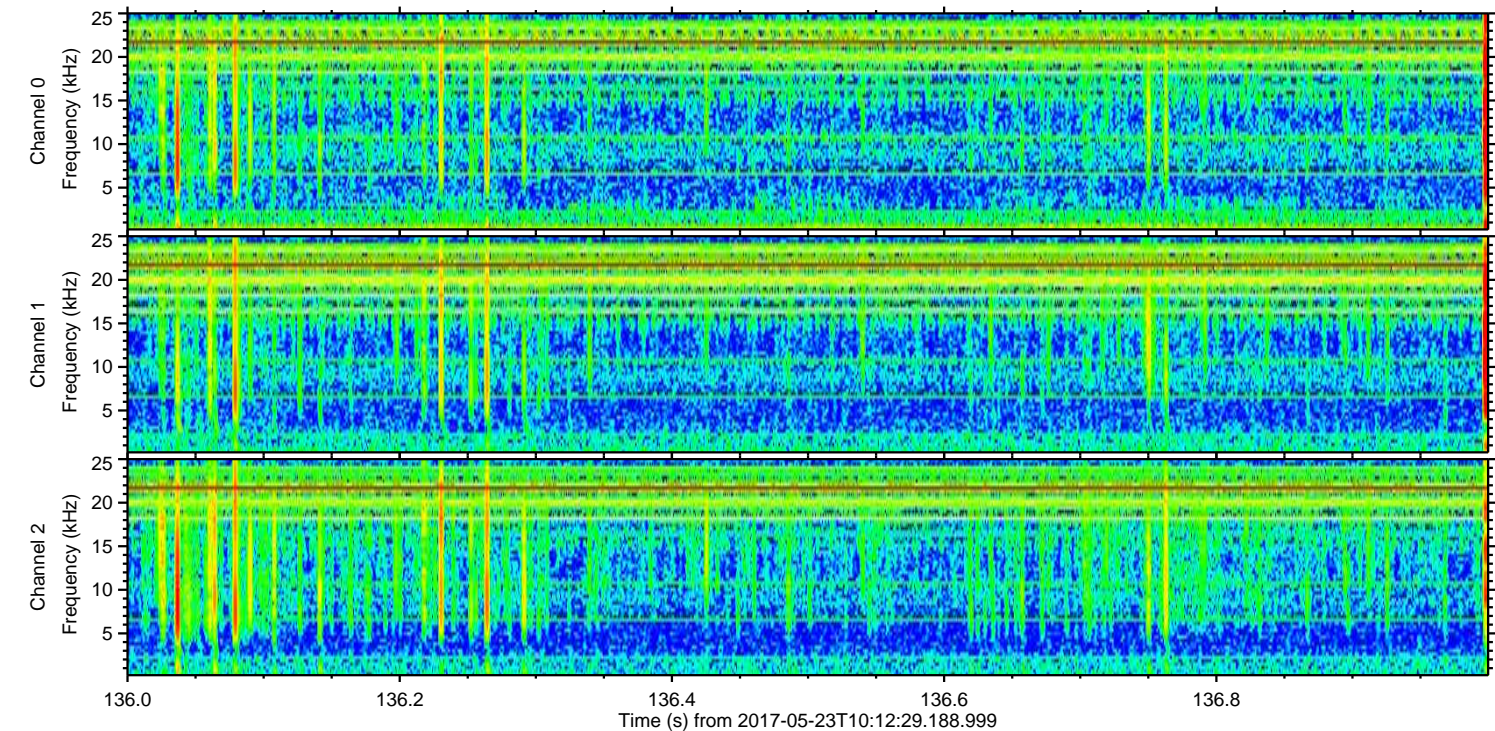
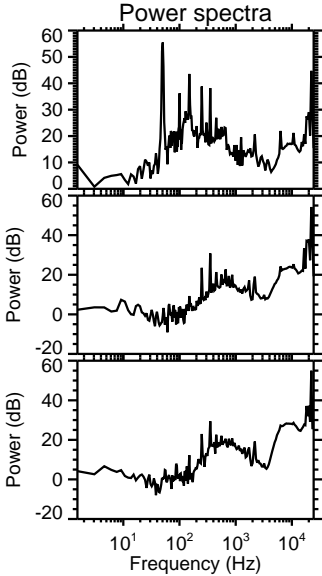
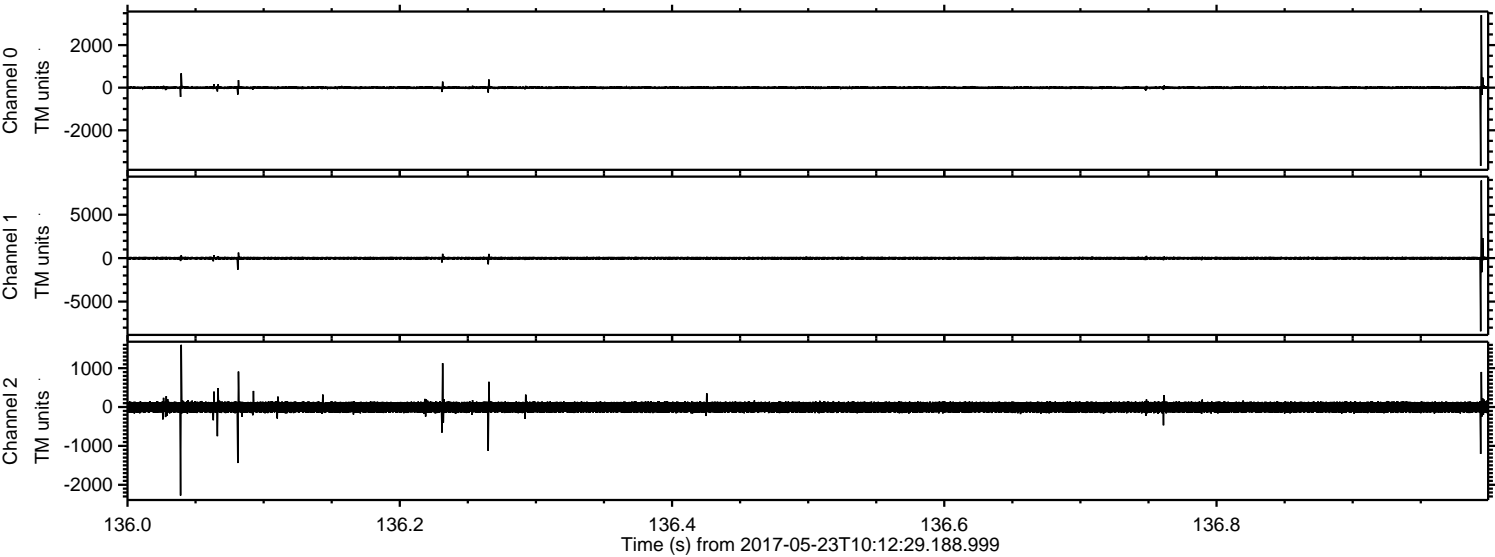
ELMAVAN 3D WAVEFORMS (Measured data sampled at 50 kHz) 51000 packets of 144 samples from 2017-05-23T10:12:29.188.999. Part 87/147

Processed Tue May 23 12:19:49 2017 by ELM ver.2012-10-06 from 001__elm20170523_101228__dat00.bin

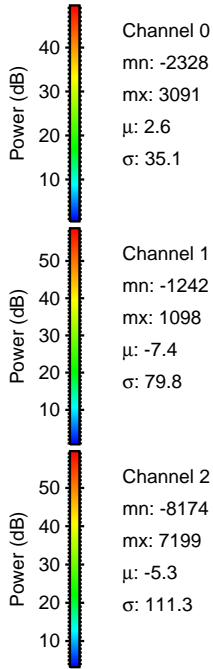
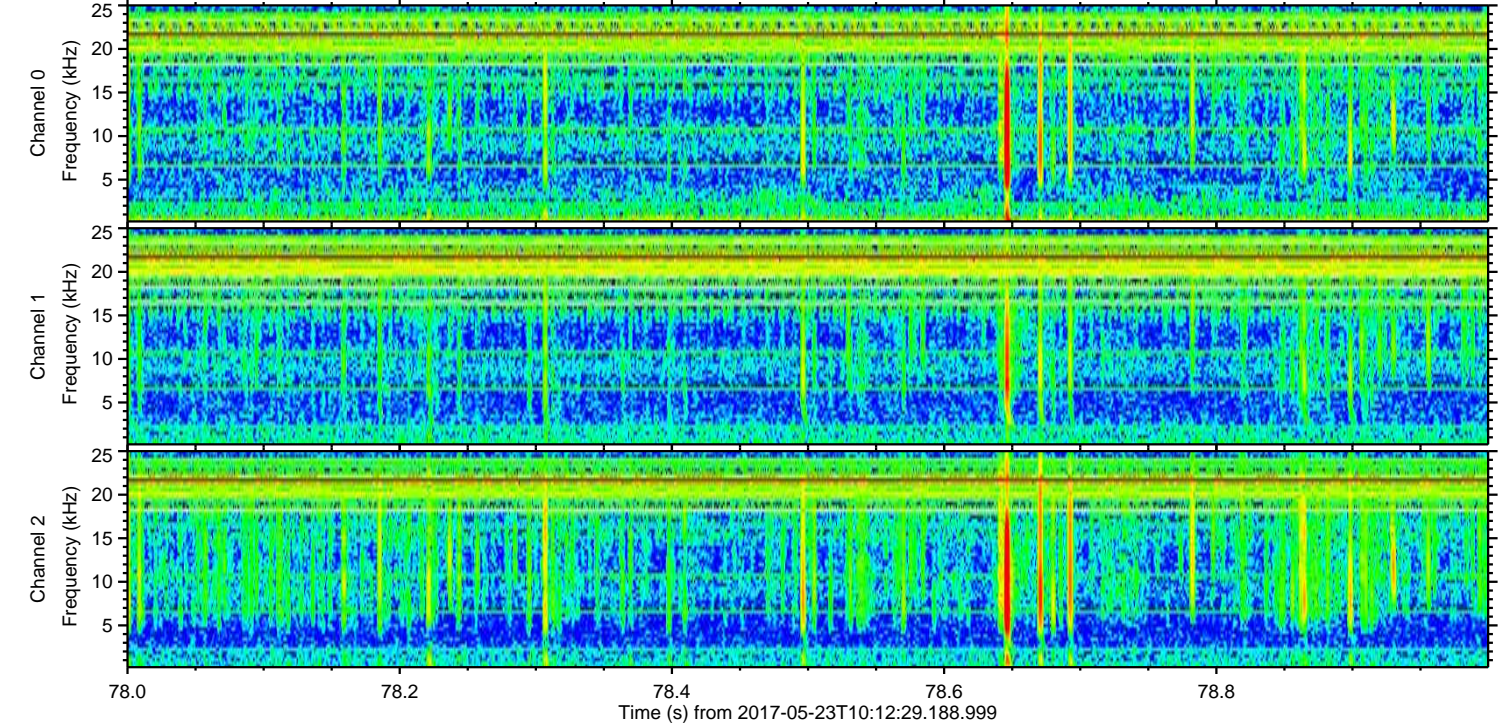
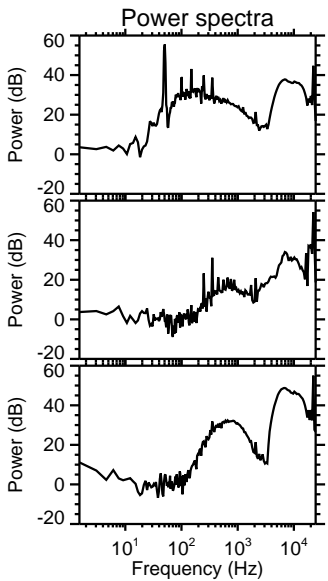
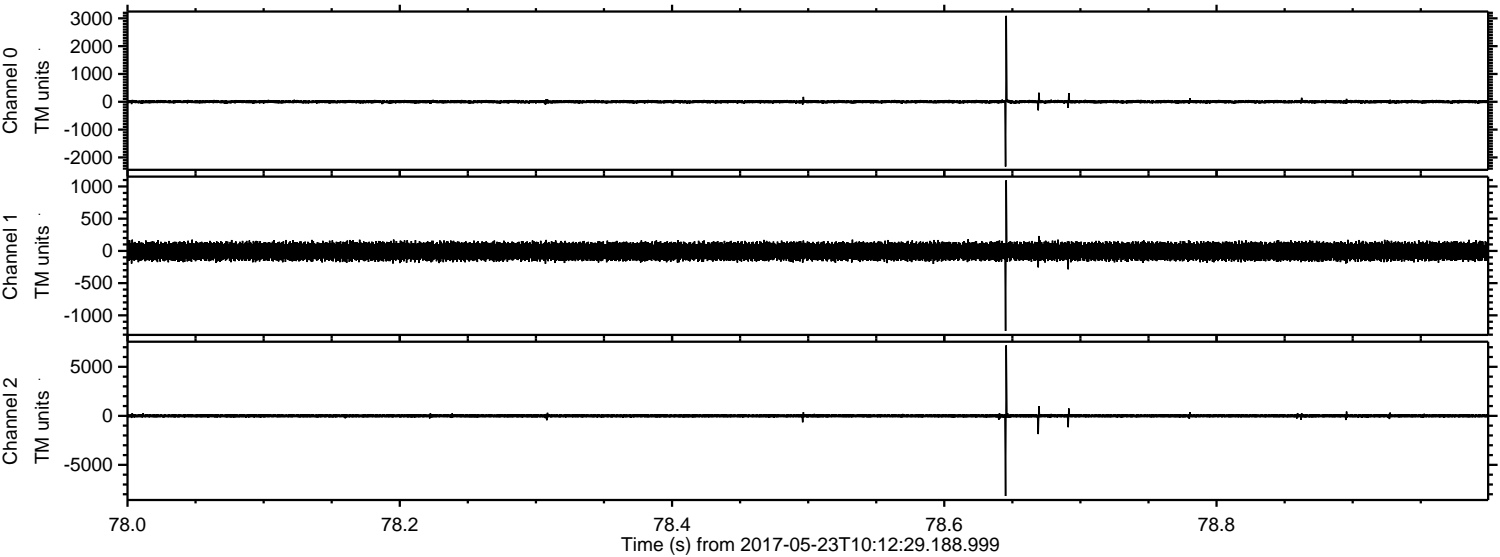


ELMAVAN 3D WAVEFORMS (Measured data sampled at 50 kHz) 51000 packets of 144 samples from 2017-05-23T10:12:29.188.999. Part 137/147

Processed Tue May 23 12:19:50 2017 by ELM ver.2012-10-06 from 001__elm20170523_101228__dat00.bin



Processed Tue May 23 12:19:50 2017 by ELM ver.2012-10-06 from 001__elm20170523_101228__dat00.bin



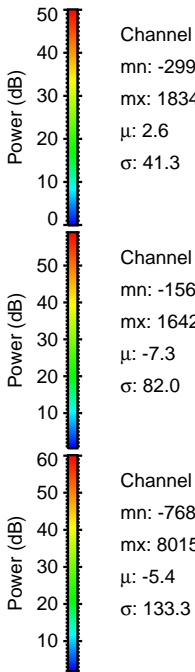
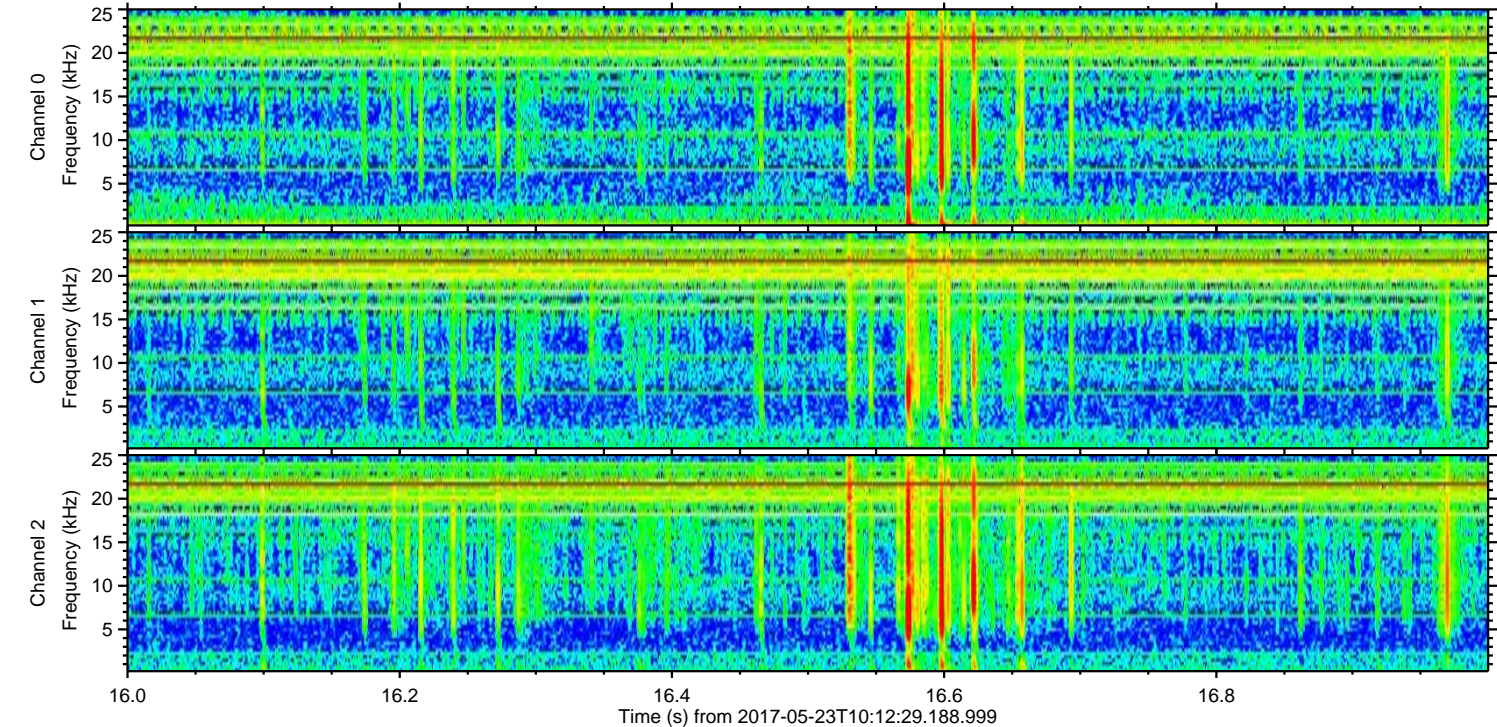
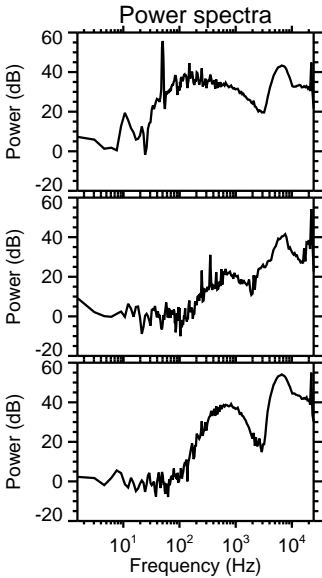
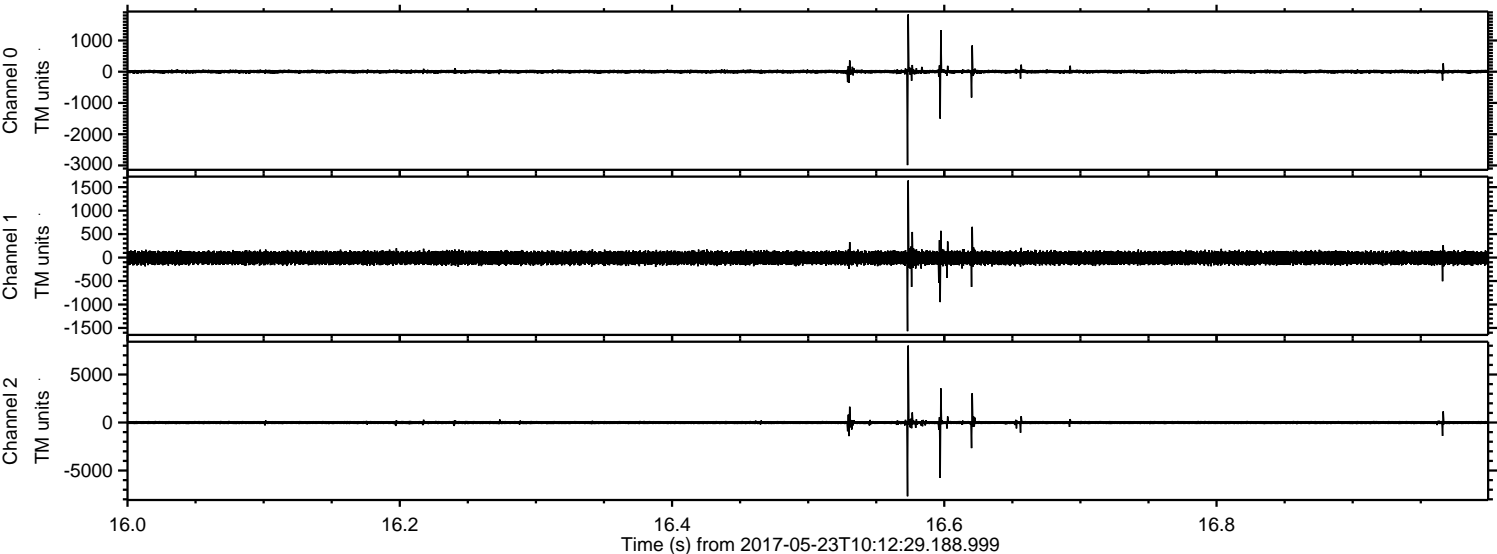
Channel 0
mn: -2328
mx: 3091
 μ : 2.6
 σ : 35.1

Channel 1
mn: -1242
mx: 1098
 μ : -7.4
 σ : 79.8

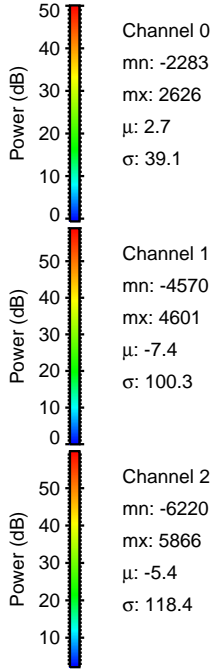
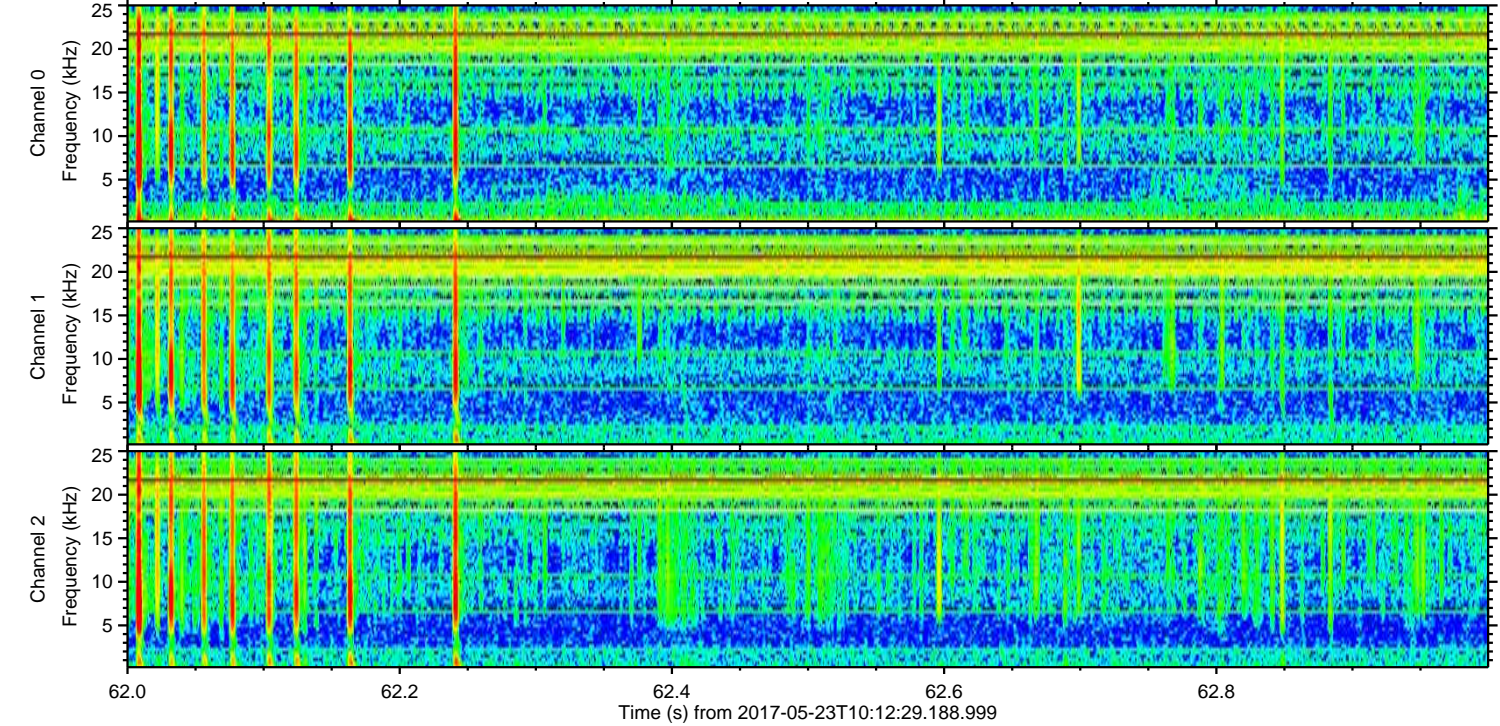
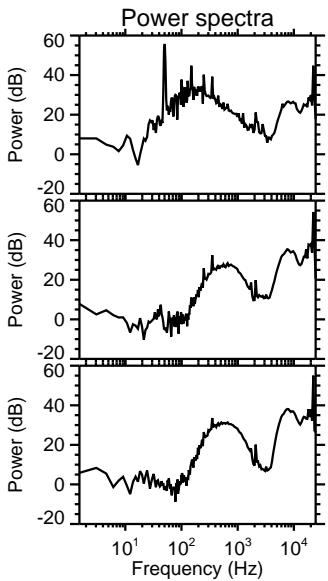
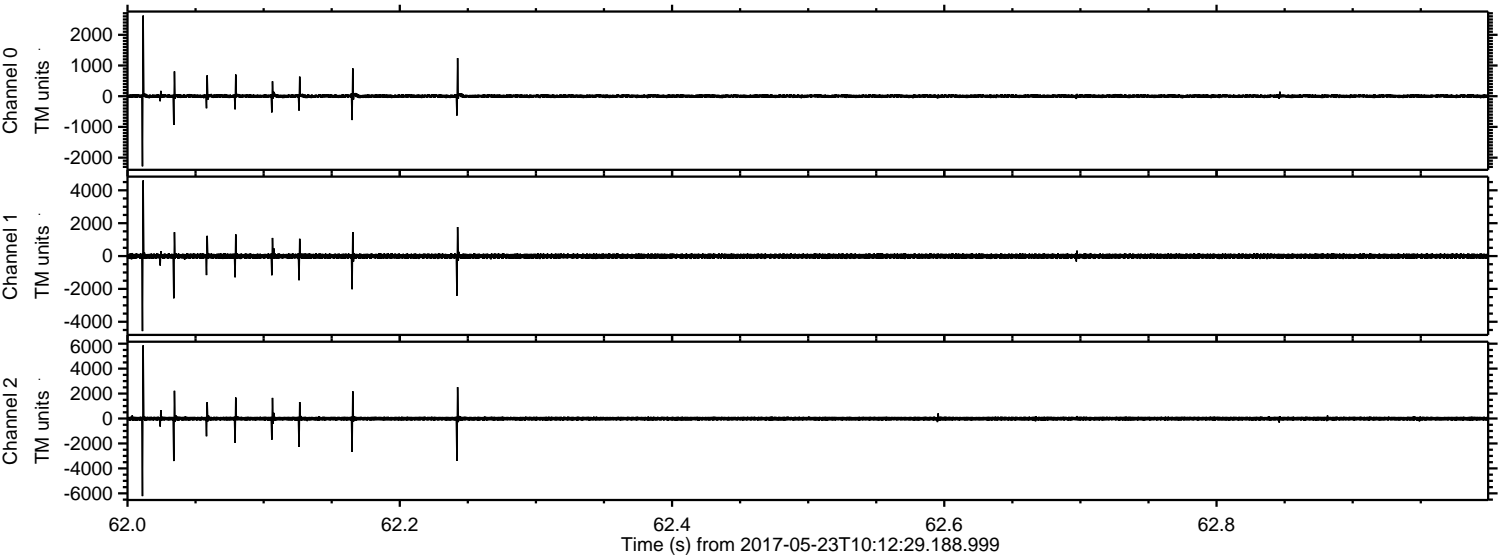
Channel 2
mn: -8174
mx: 7199
 μ : -5.3
 σ : 111.3

ELMAVAN 3D WAVEFORMS (Measured data sampled at 50 kHz) 51000 packets of 144 samples from 2017-05-23T10:12:29.188.999. Part 17/147

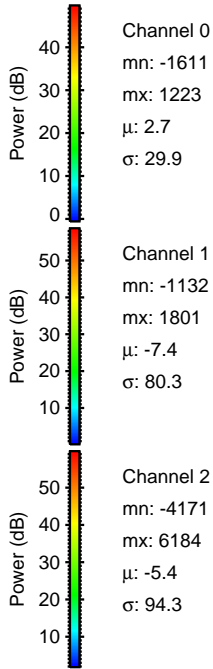
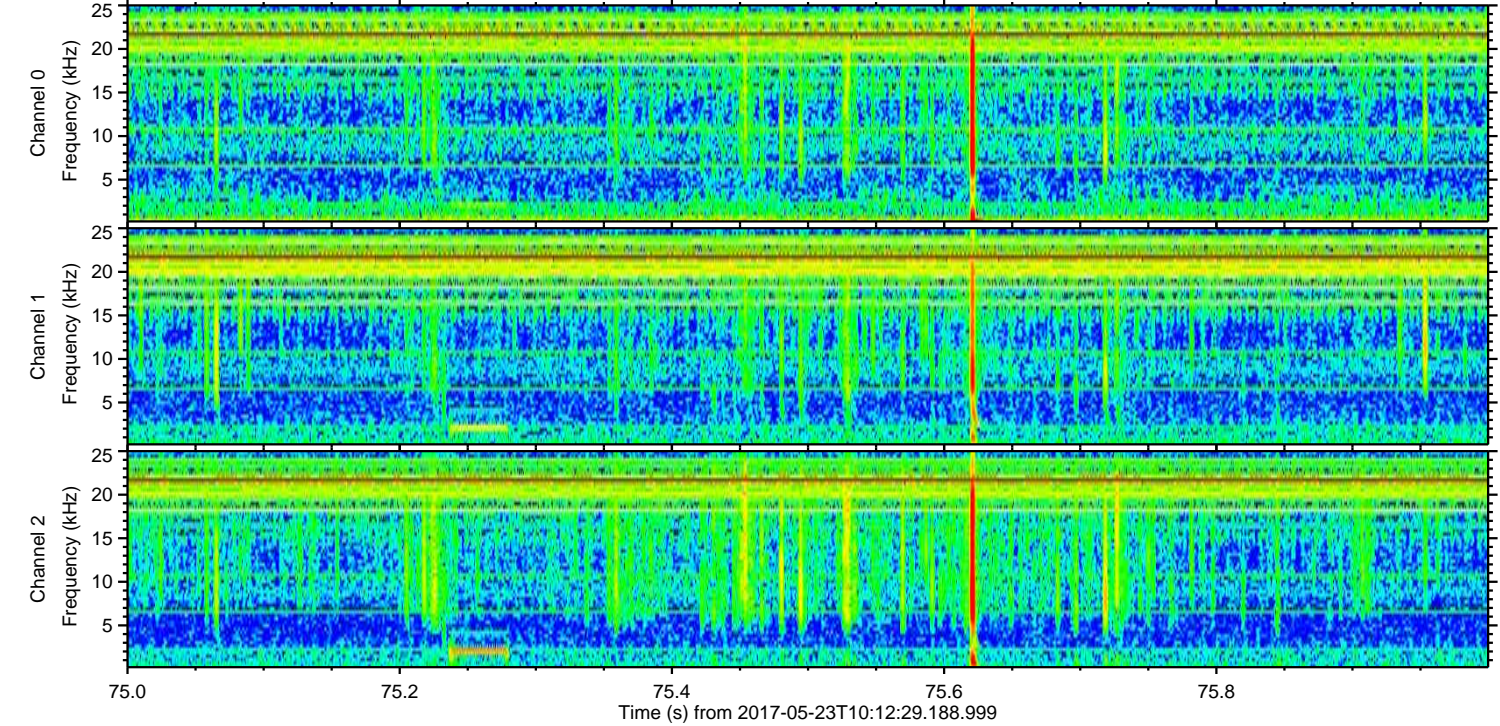
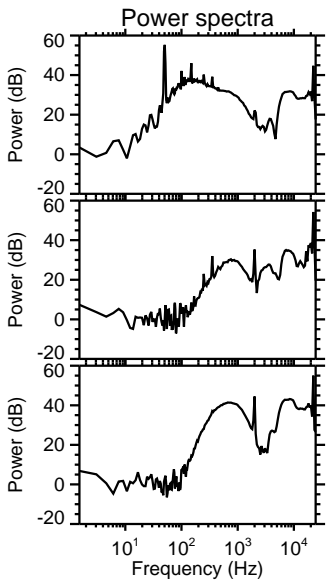
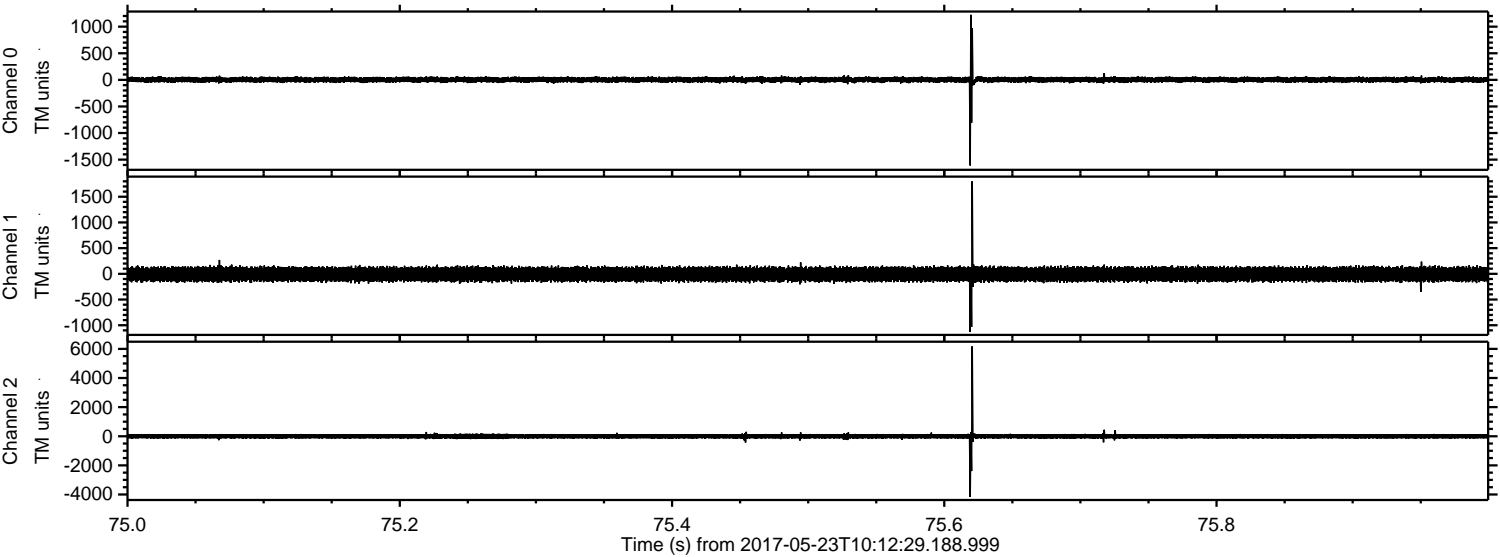
Processed Tue May 23 12:19:51 2017 by ELM ver.2012-10-06 from 001__elm20170523_101228__dat00.bin



Processed Tue May 23 12:19:52 2017 by ELM ver.2012-10-06 from 001__elm20170523_101228__dat00.bin



Processed Tue May 23 12:19:52 2017 by ELM ver.2012-10-06 from 001_elm20170523_101228__dat00.bin



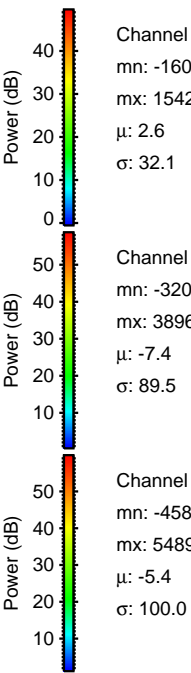
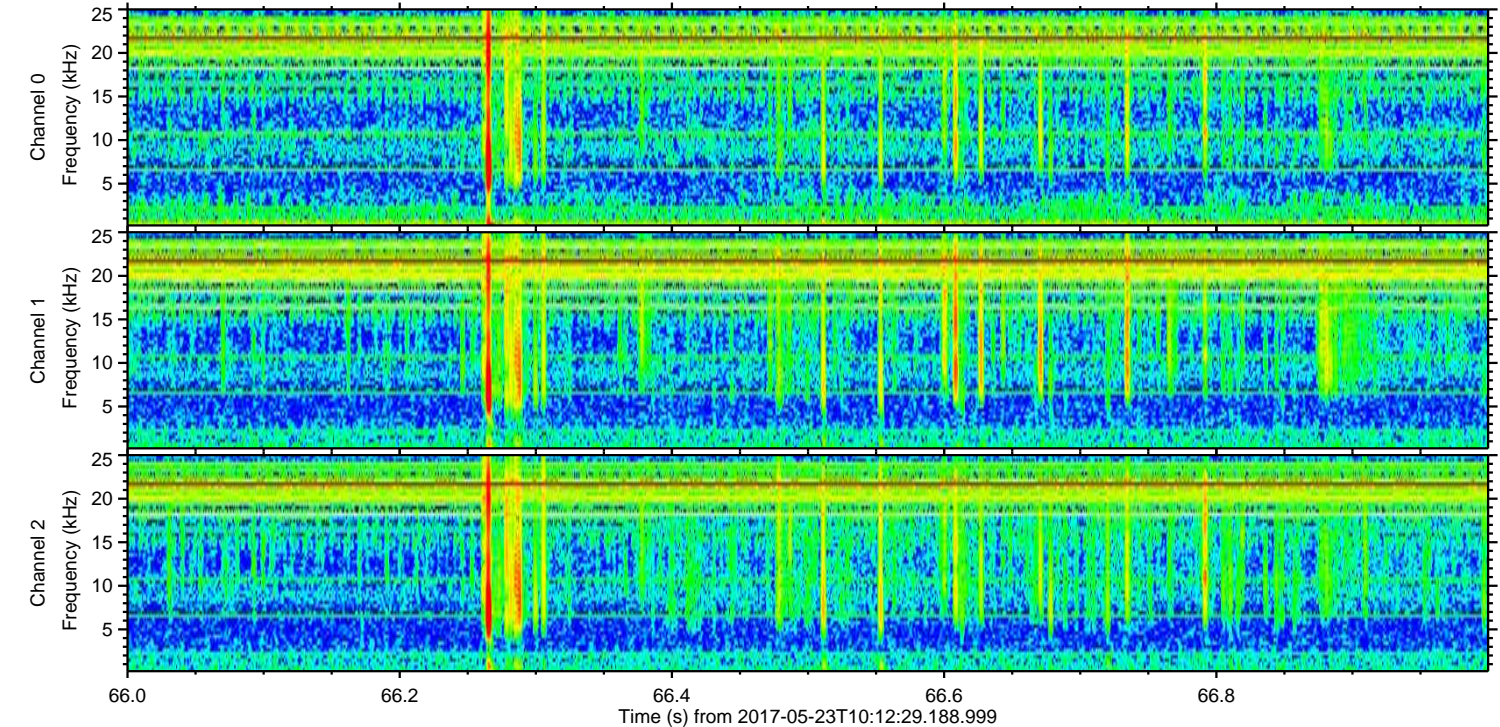
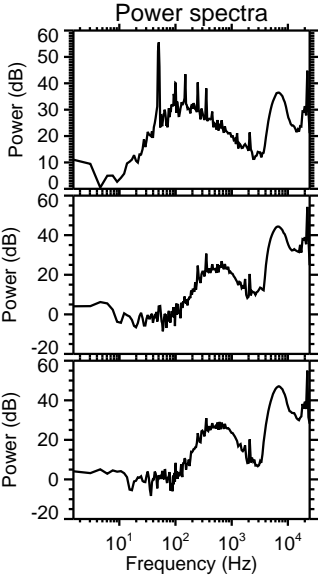
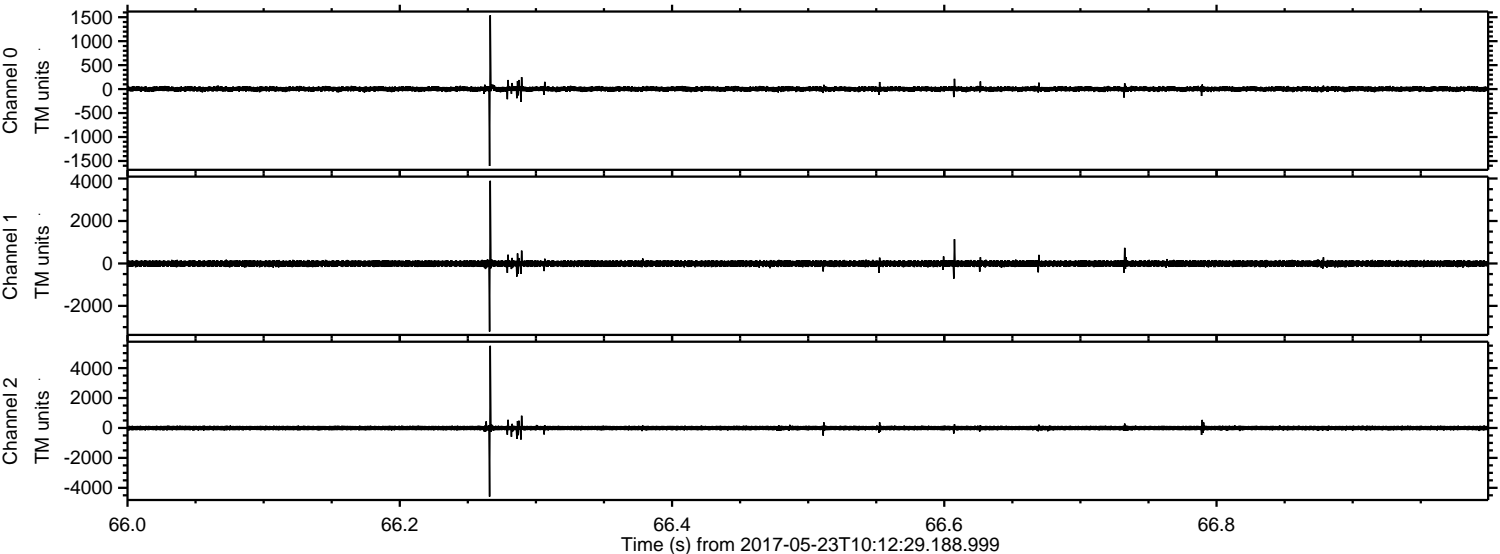
Channel 0
mn: -1611
mx: 1223
 μ : 2.7
 σ : 29.9

Channel 1
mn: -1132
mx: 1801
 μ : -7.4
 σ : 80.3

Channel 2
mn: -4171
mx: 6184
 μ : -5.4
 σ : 94.3

ELMAVAN 3D WAVEFORMS (Measured data sampled at 50 kHz) 51000 packets of 144 samples from 2017-05-23T10:12:29.188.999. Part 67/147

Processed Tue May 23 12:19:53 2017 by ELM ver.2012-10-06 from 001__elm20170523_101228__dat00.bin



ELMAVAN 3D WAVEFORMS (Measured data sampled at 50 kHz) 51000 packets of 144 samples from 2017-05-23T10:12:29.188.999. Part 16/147

Processed Tue May 23 12:19:54 2017 by ELM ver.2012-10-06 from 001__elm20170523_101228__dat00.bin

