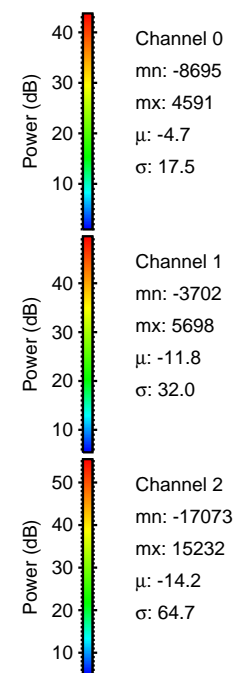
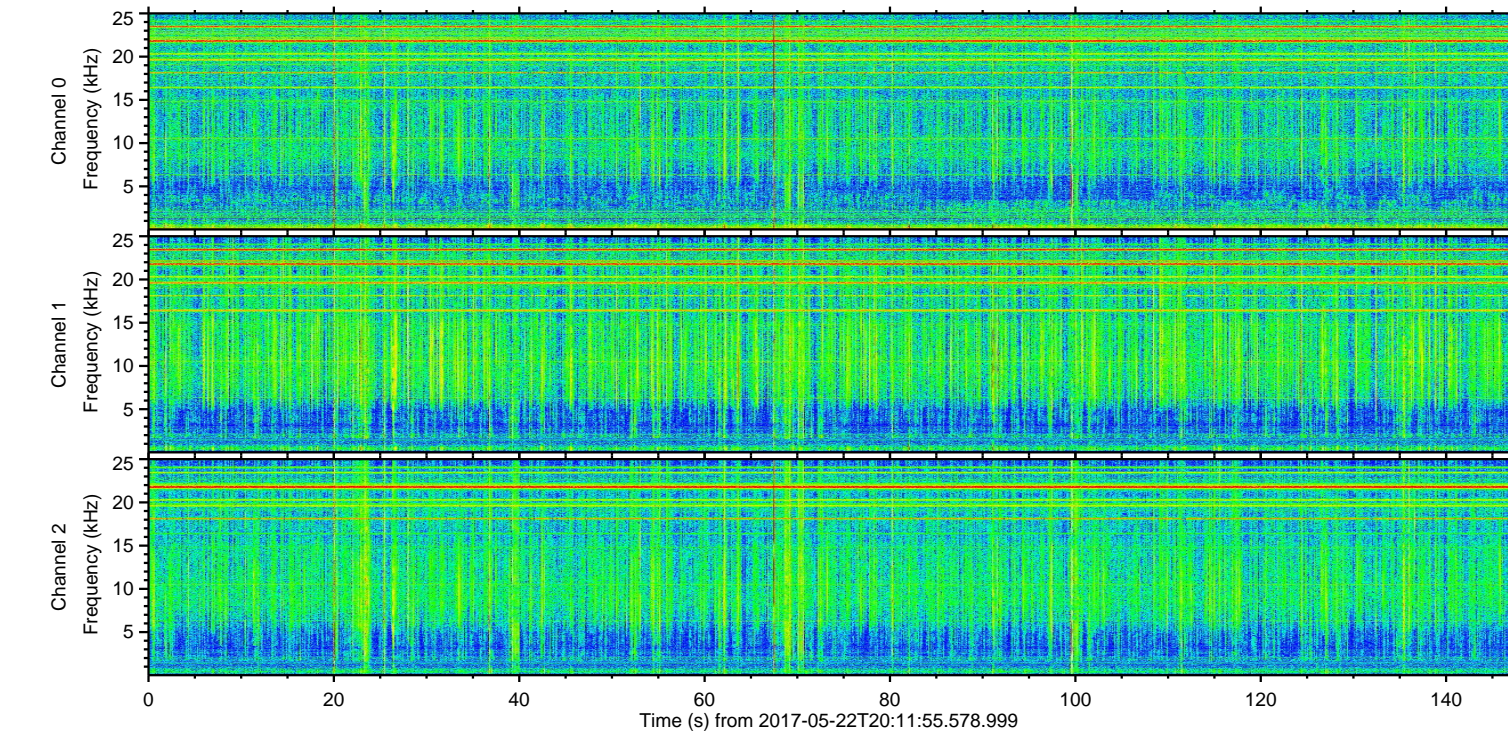
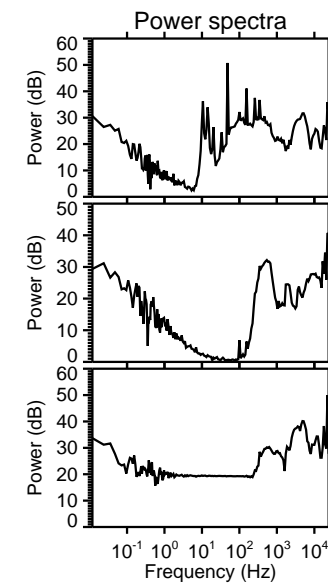
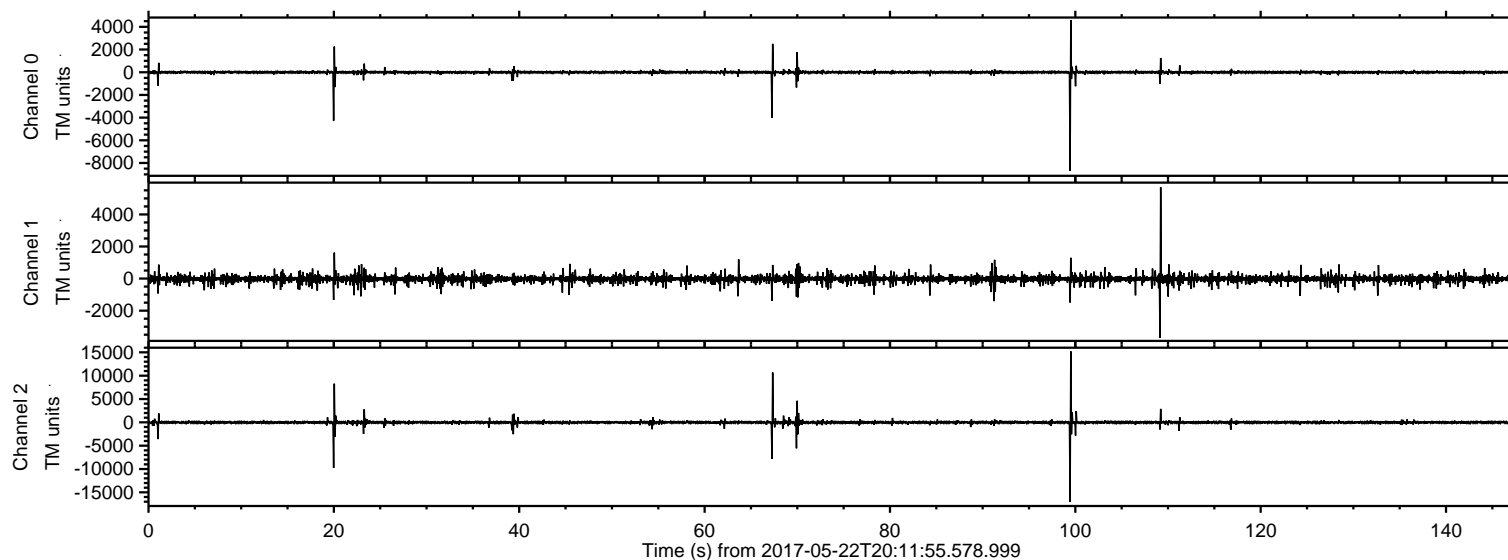


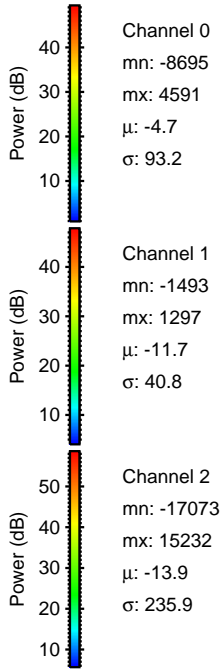
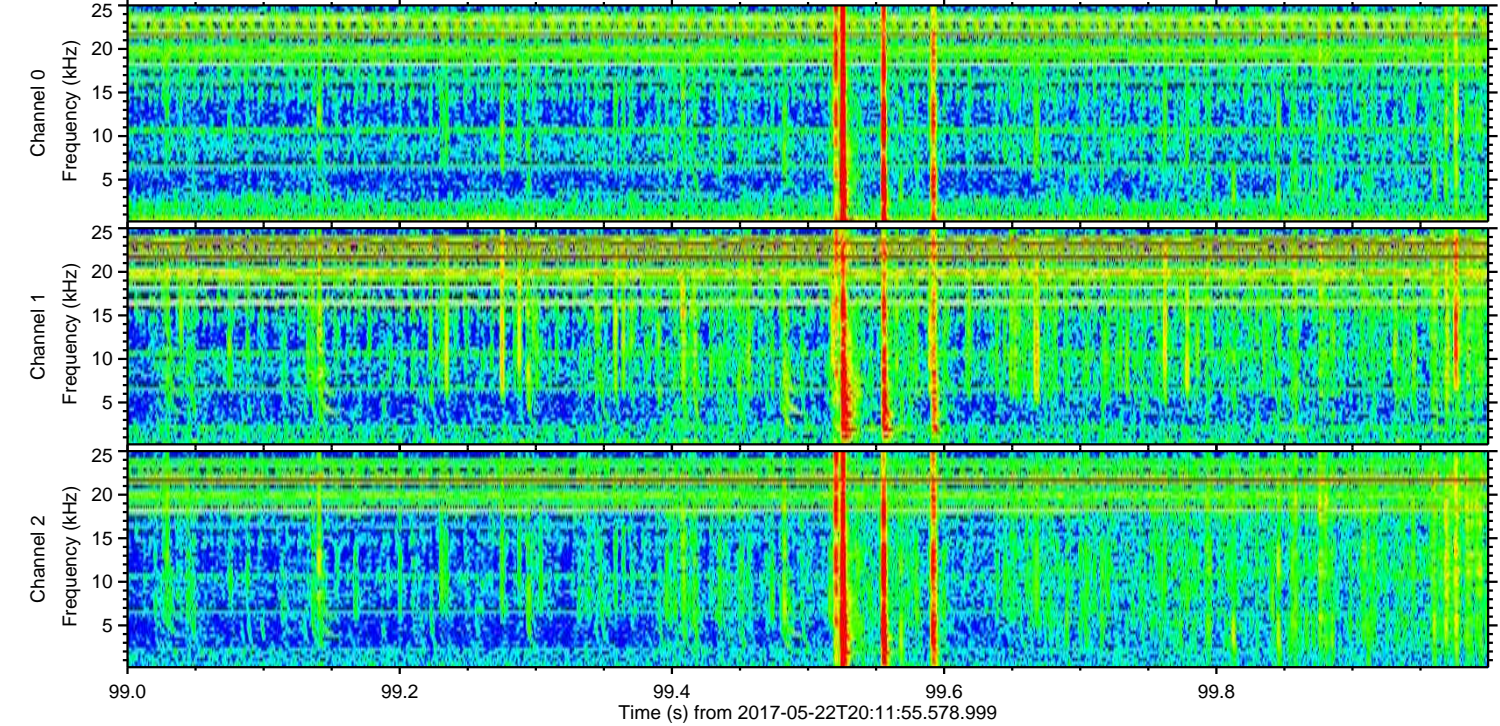
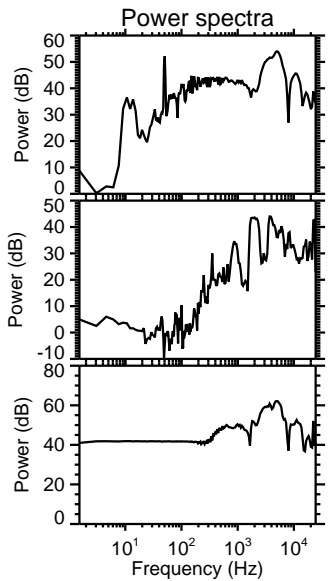
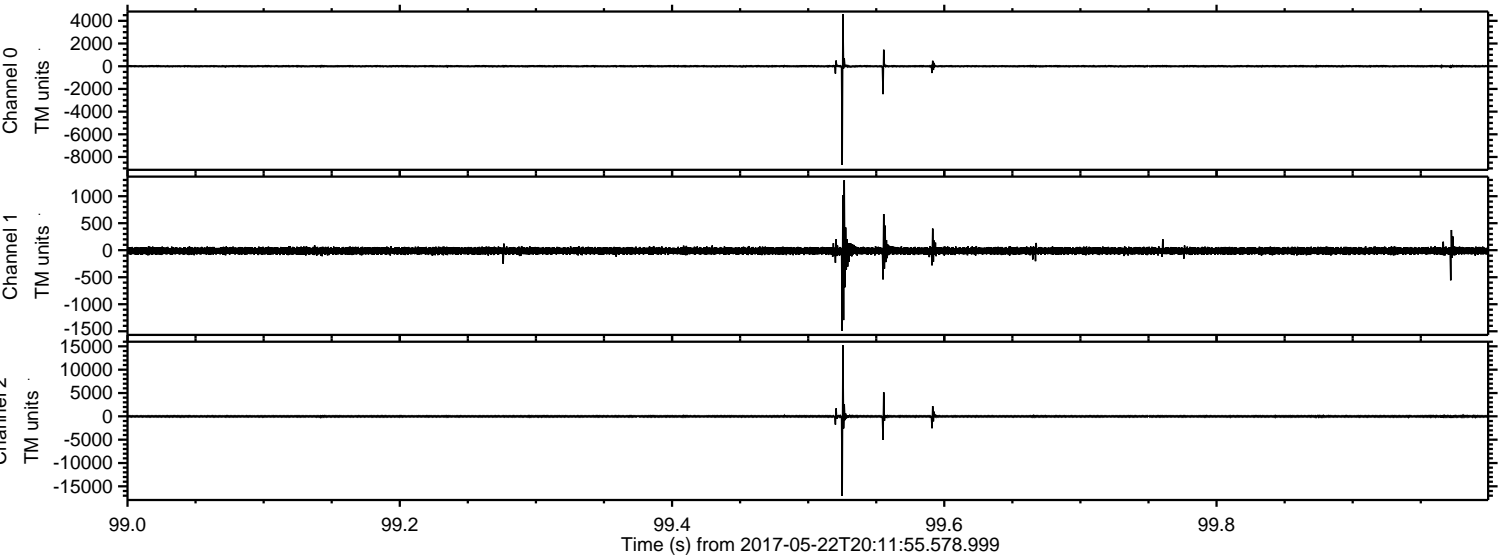
ELMAVAN 3D WAVEFORMS (Measured data sampled at 50 kHz) 51000 packets of 144 samples from 2017-05-22T20:11:55.578.999.

Processed Mon May 22 22:19:17 2017 by ELM ver.2012-10-06 from 001__elm20170522_201154__dat00.bin

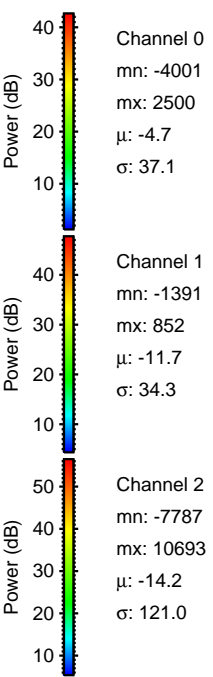
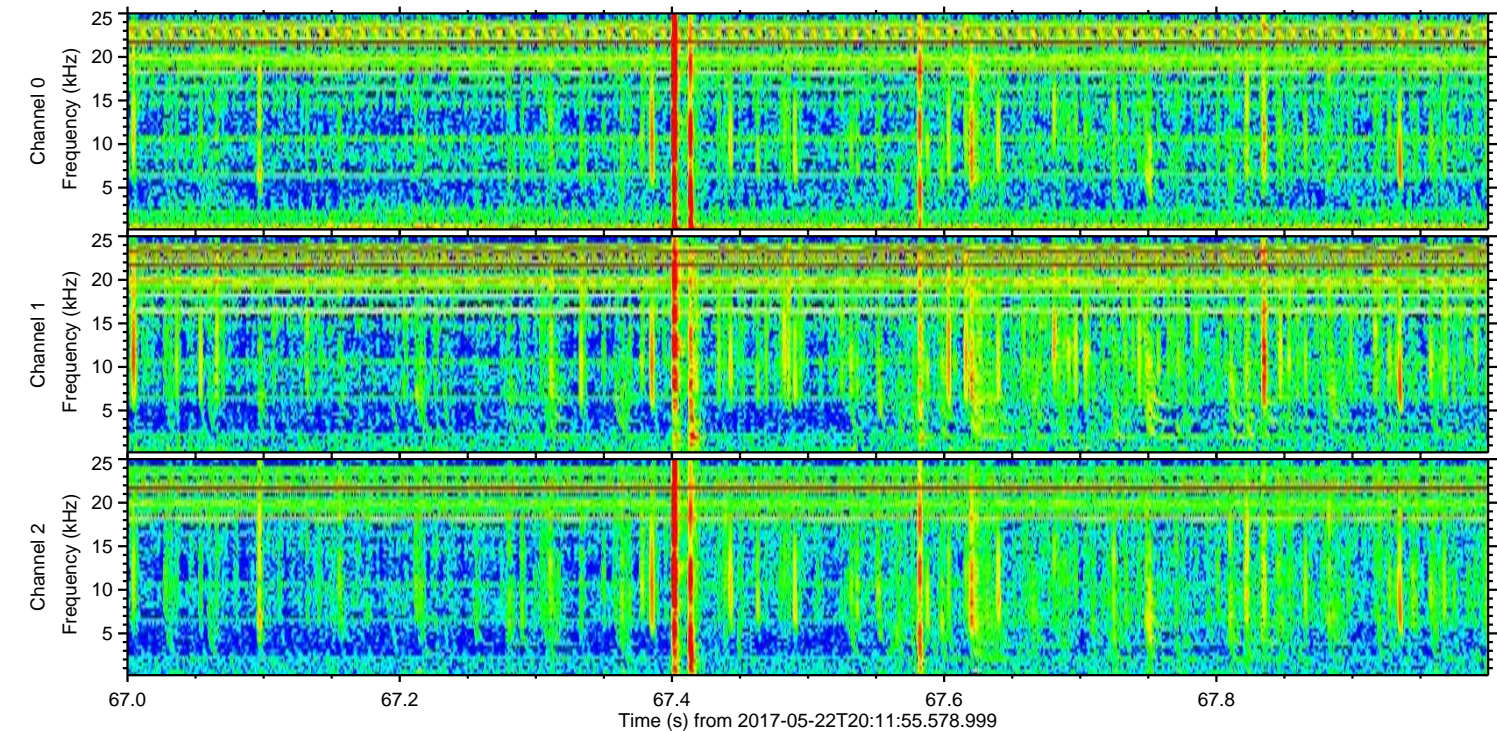
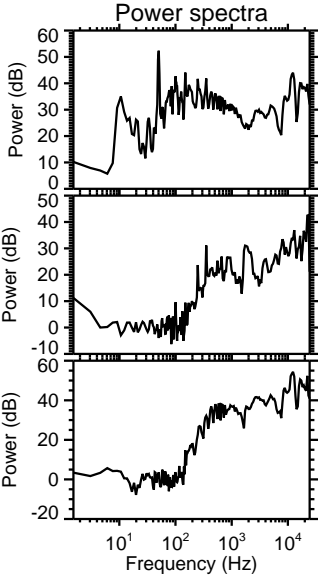
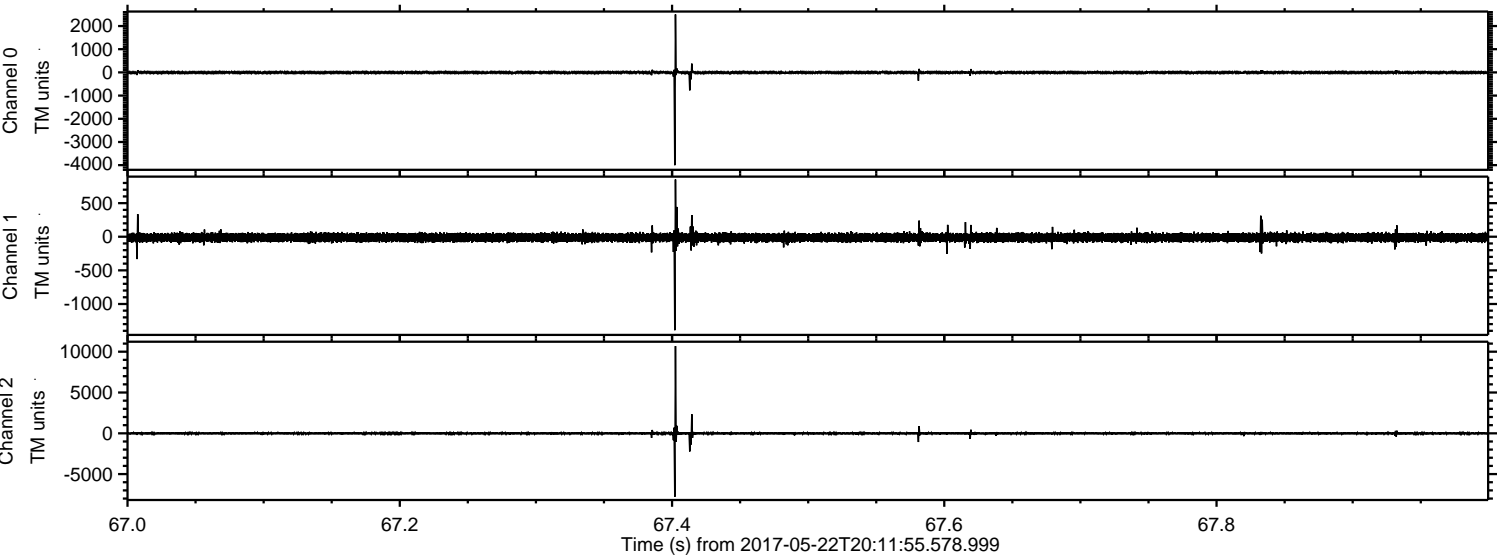


ELMAVAN 3D WAVEFORMS (Measured data sampled at 50 kHz) 51000 packets of 144 samples from 2017-05-22T20:11:55.578.999. Part 100/147

Processed Mon May 22 22:19:23 2017 by ELM ver.2012-10-06 from 001__elm20170522_201154__dat00.bin

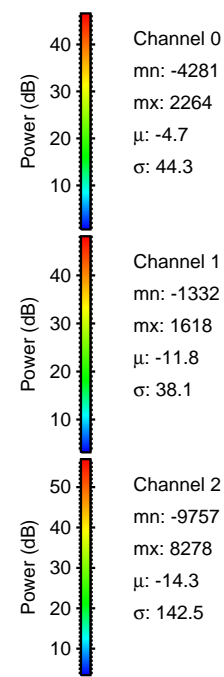
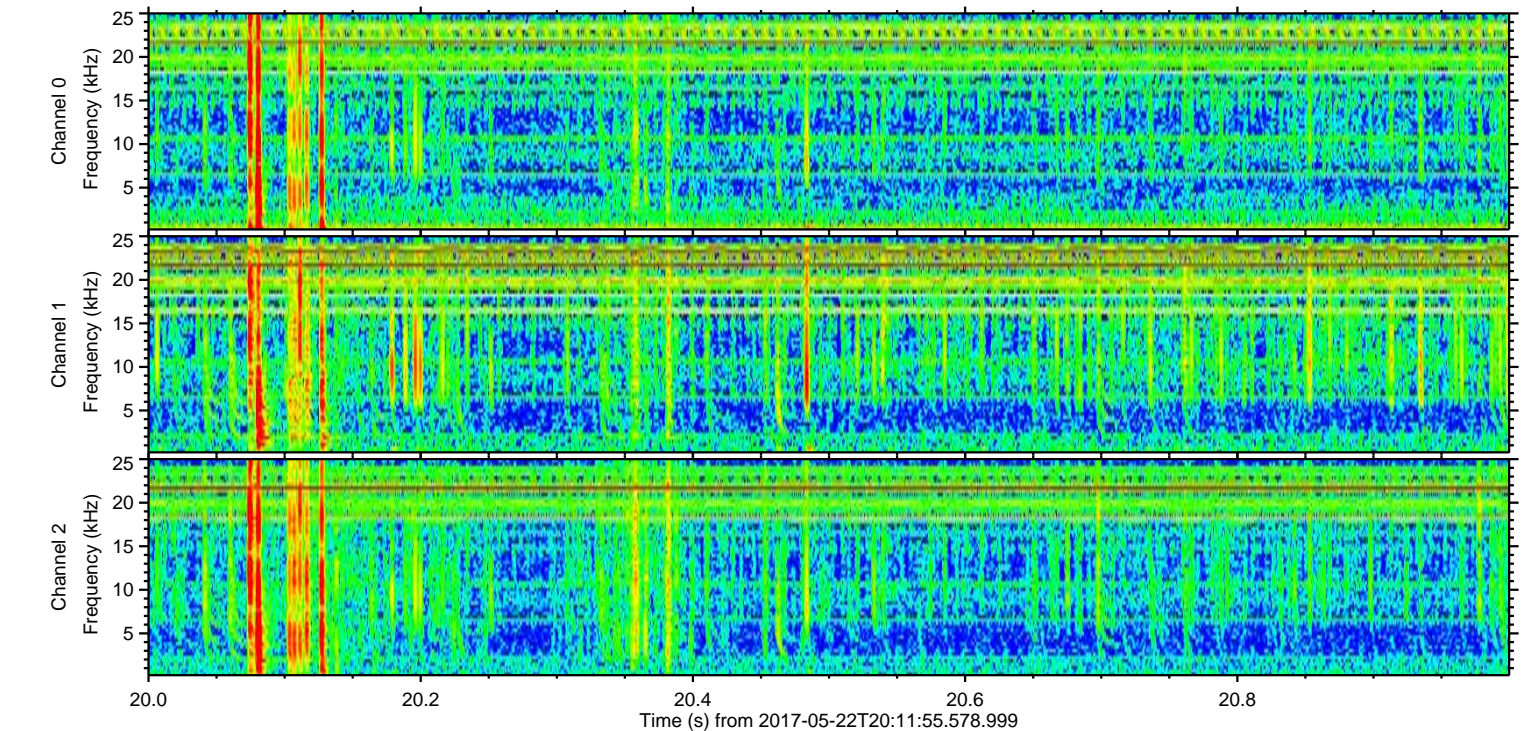
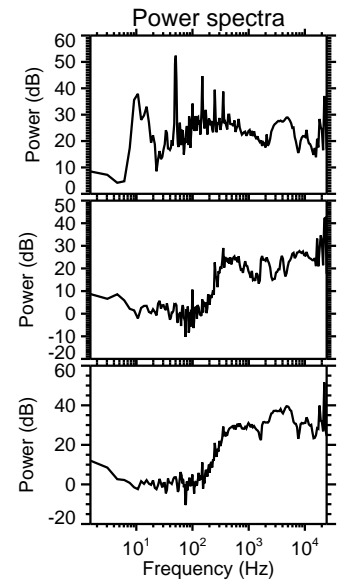
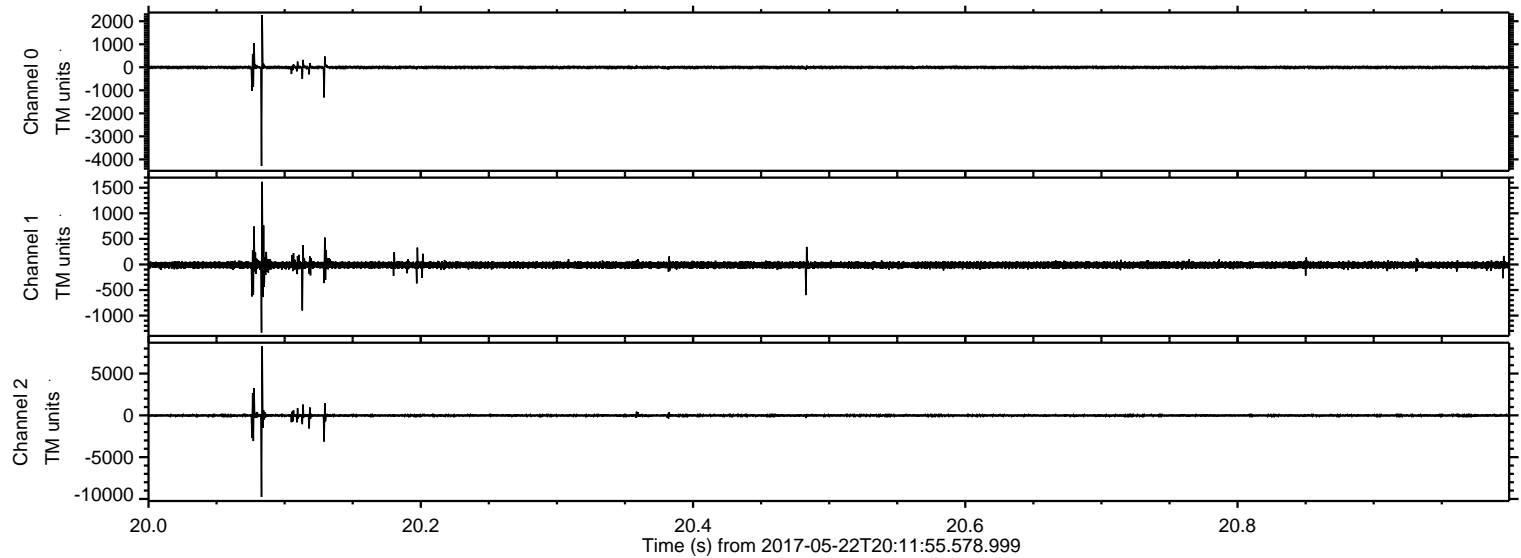


Processed Mon May 22 22:19:24 2017 by ELM ver.2012-10-06 from 001__elm20170522_201154__dat00.bin



ELMAVAN 3D WAVEFORMS (Measured data sampled at 50 kHz) 51000 packets of 144 samples from 2017-05-22T20:11:55.578.999. Part 21/147

Processed Mon May 22 22:19:24 2017 by ELM ver.2012-10-06 from 001__elm20170522_201154__dat00.bin



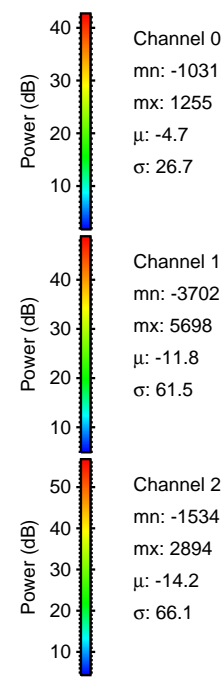
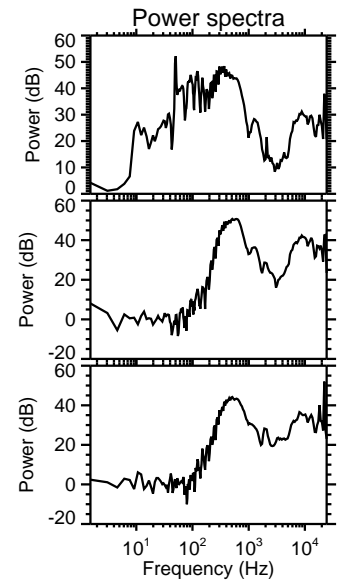
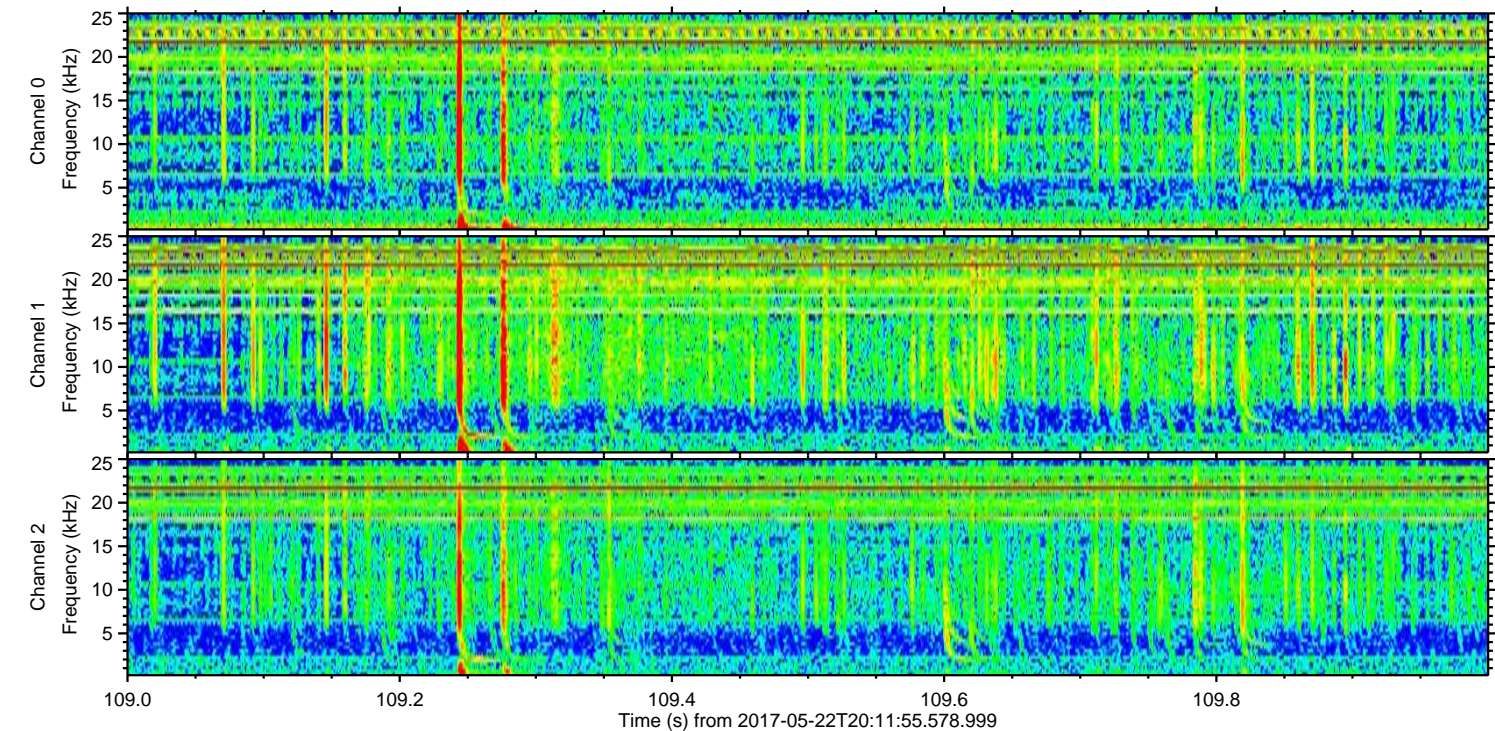
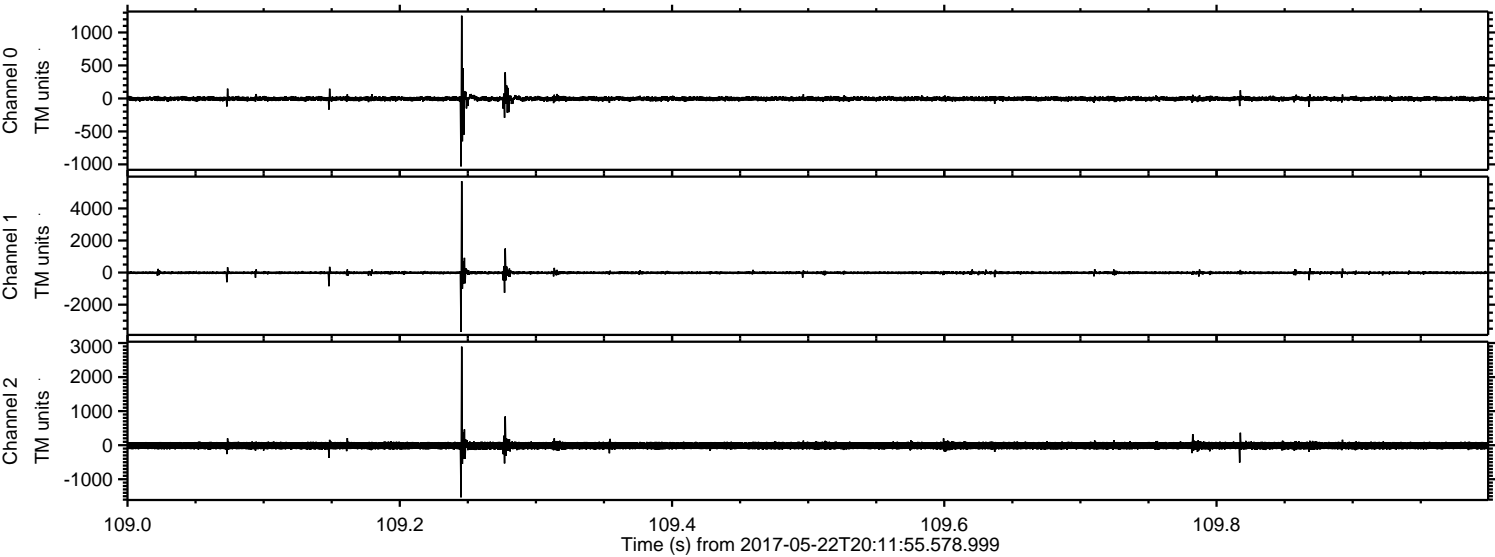
Channel 0
mn: -4281
mx: 2264
 μ : -4.7
 σ : 44.3

Channel 1
mn: -1332
mx: 1618
 μ : -11.8
 σ : 38.1

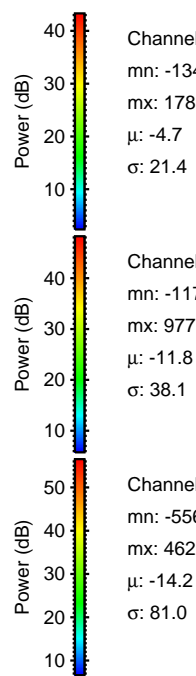
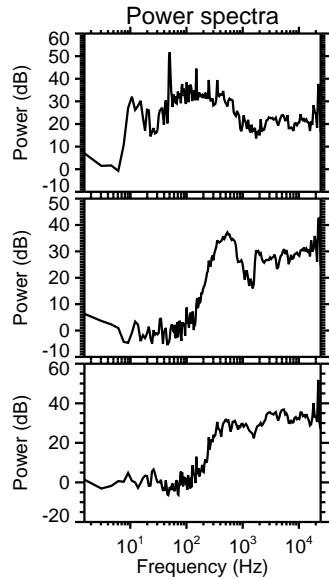
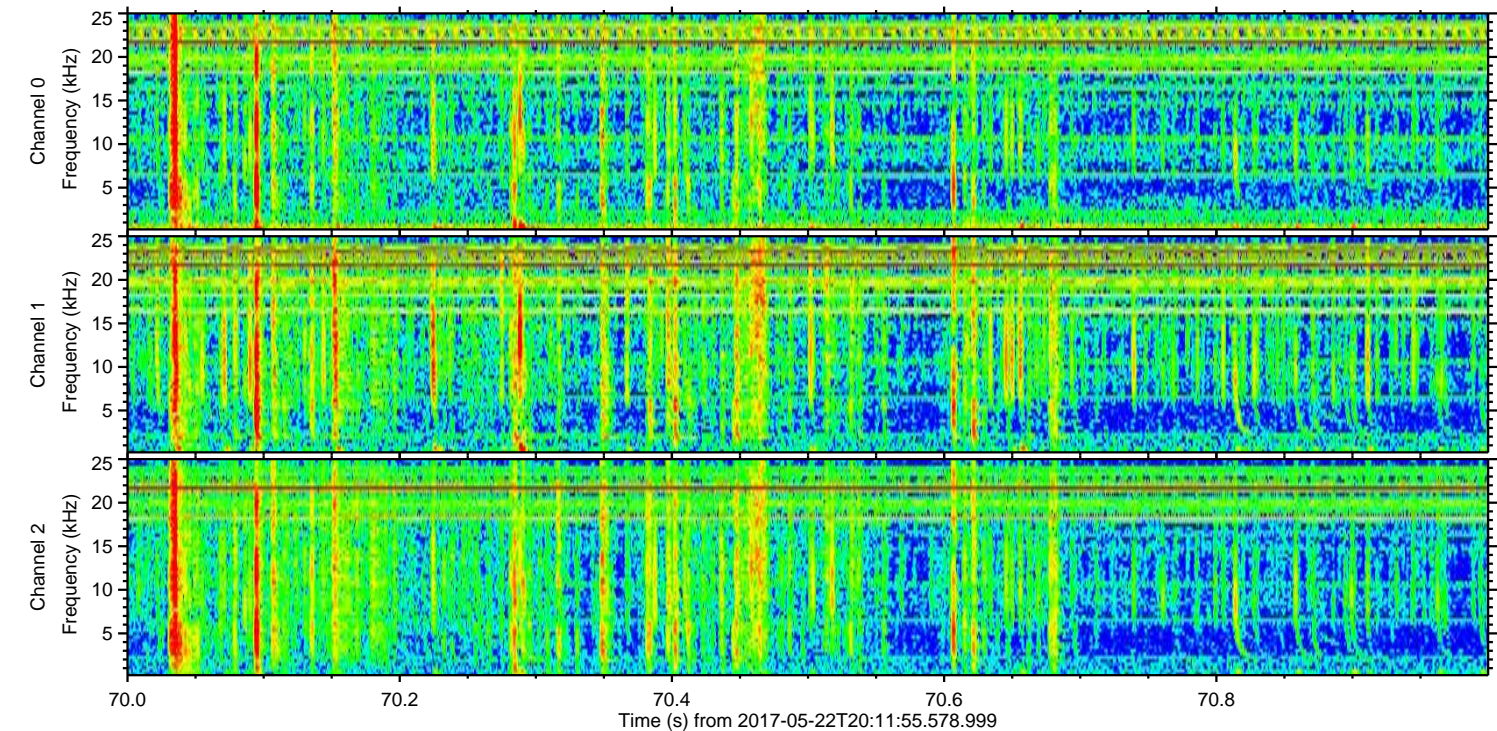
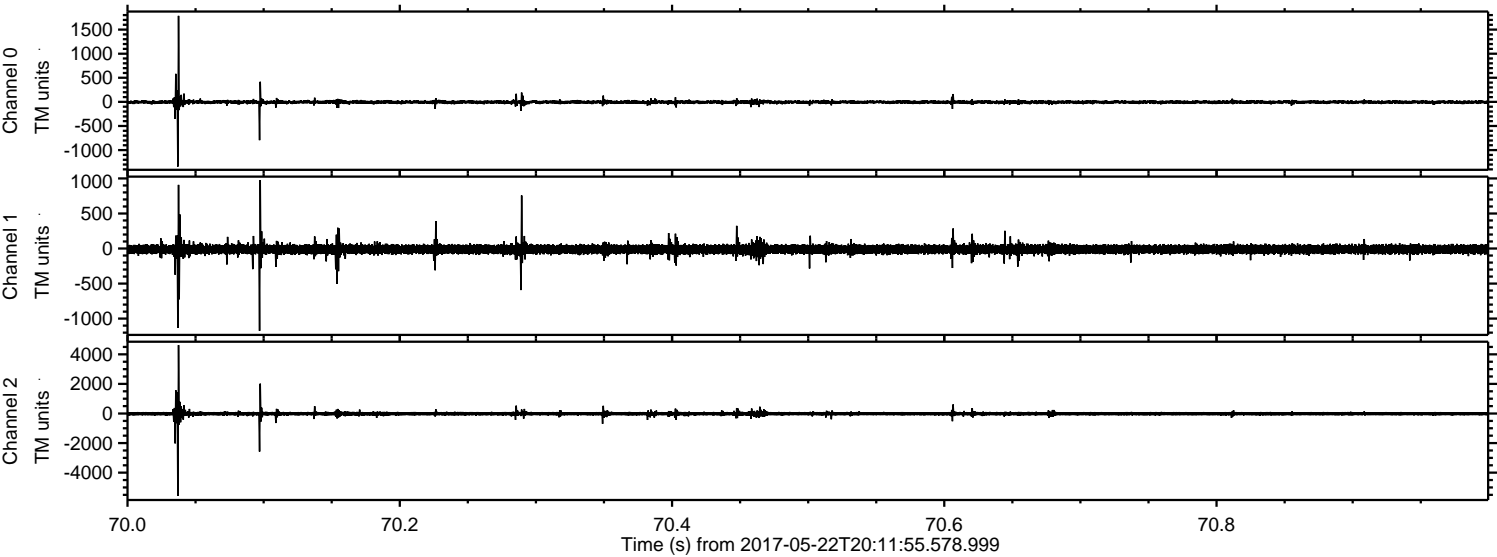
Channel 2
mn: -9757
mx: 8278
 μ : -14.3
 σ : 142.5

ELMAVAN 3D WAVEFORMS (Measured data sampled at 50 kHz) 51000 packets of 144 samples from 2017-05-22T20:11:55.578.999. Part 110/147

Processed Mon May 22 22:19:25 2017 by ELM ver.2012-10-06 from 001__elm20170522_201154__dat00.bin



Processed Mon May 22 22:19:25 2017 by ELM ver.2012-10-06 from 001__elm20170522_201154__dat00.bin



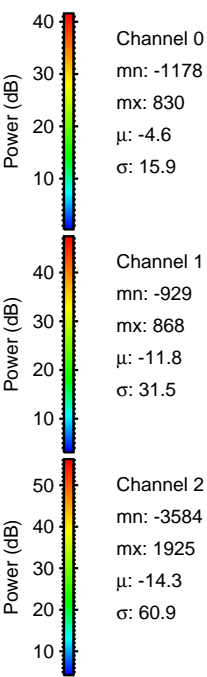
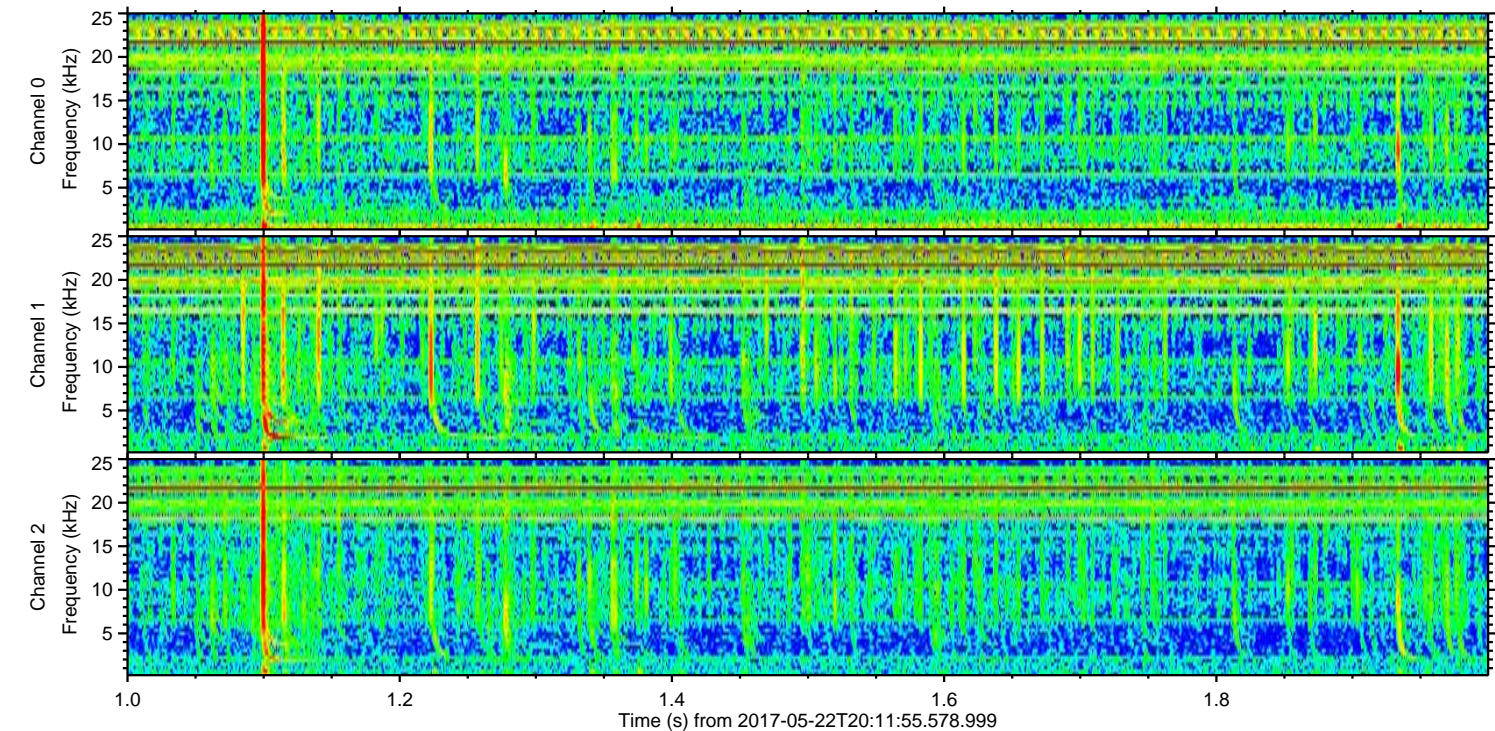
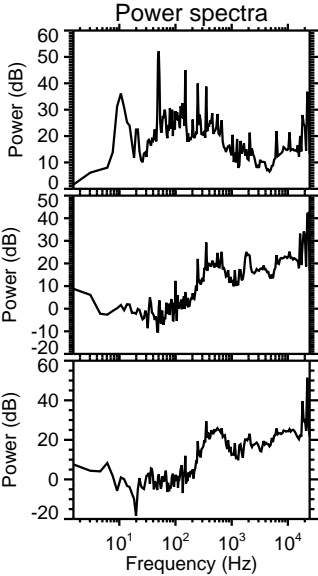
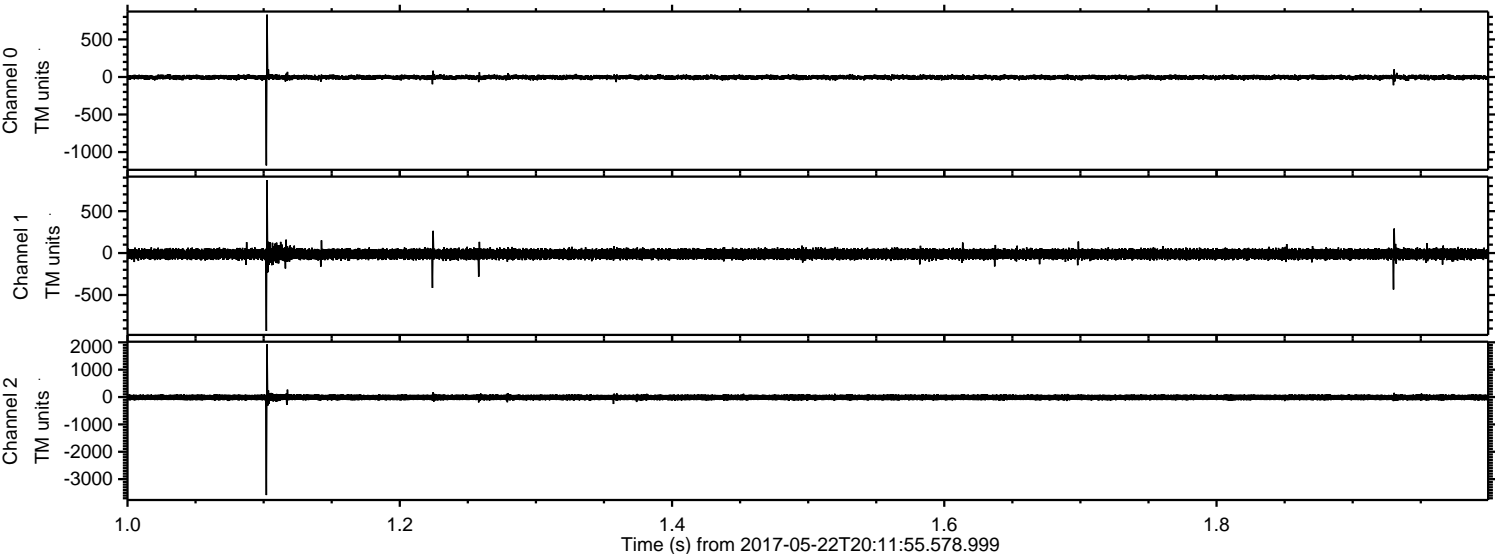
Channel 0
mn: -1342
mx: 1785
 μ : -4.7
 σ : 21.4

Channel 1
mn: -1174
mx: 977
 μ : -11.8
 σ : 38.1

Channel 2
mn: -5569
mx: 4622
 μ : -14.2
 σ : 81.0

ELMAVAN 3D WAVEFORMS (Measured data sampled at 50 kHz) 51000 packets of 144 samples from 2017-05-22T20:11:55.578.999. Part 2/147

Processed Mon May 22 22:19:26 2017 by ELM ver.2012-10-06 from 001__elm20170522_201154__dat00.bin



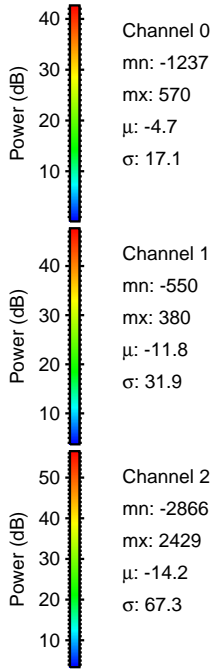
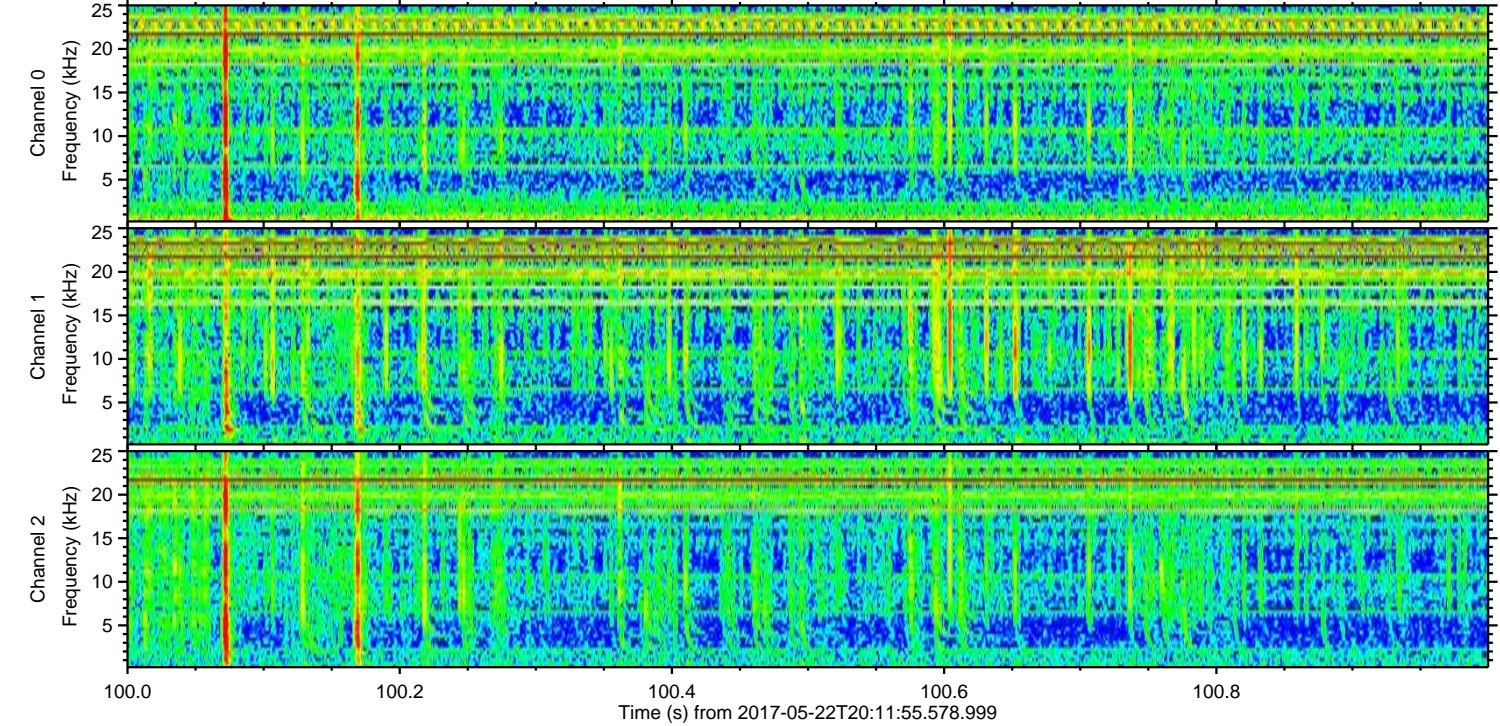
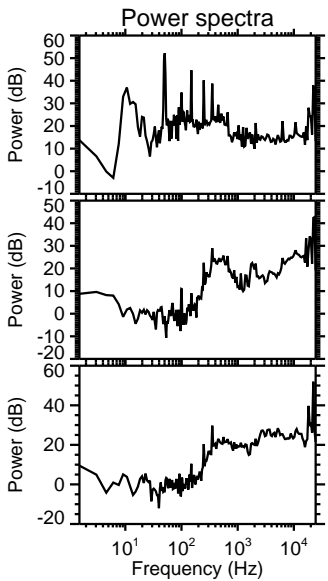
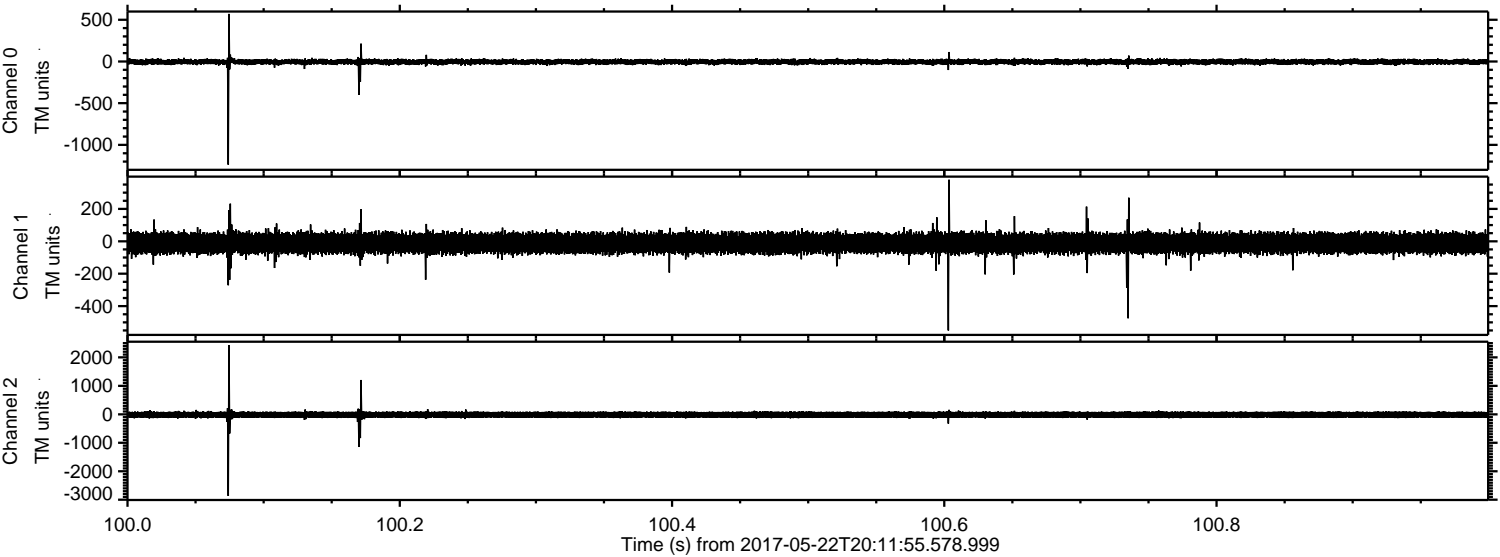
Channel 0
mn: -1178
mx: 830
 μ : -4.6
 σ : 15.9

Channel 1
mn: -929
mx: 868
 μ : -11.8
 σ : 31.5

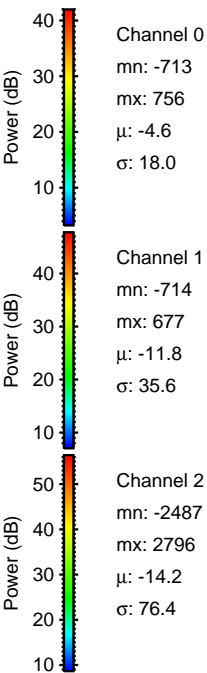
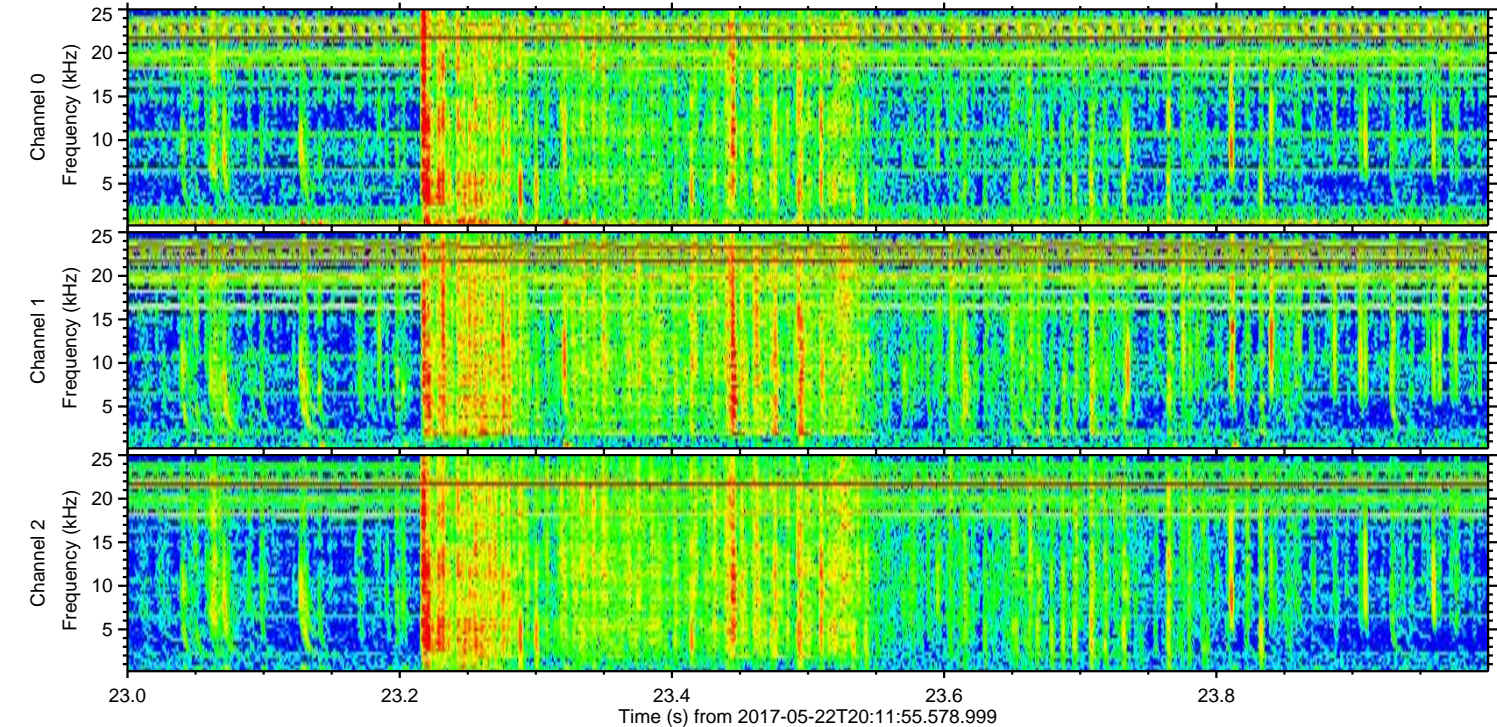
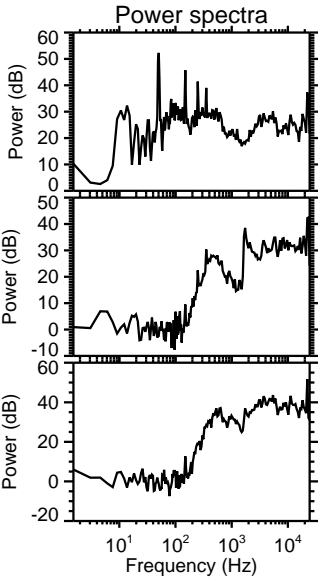
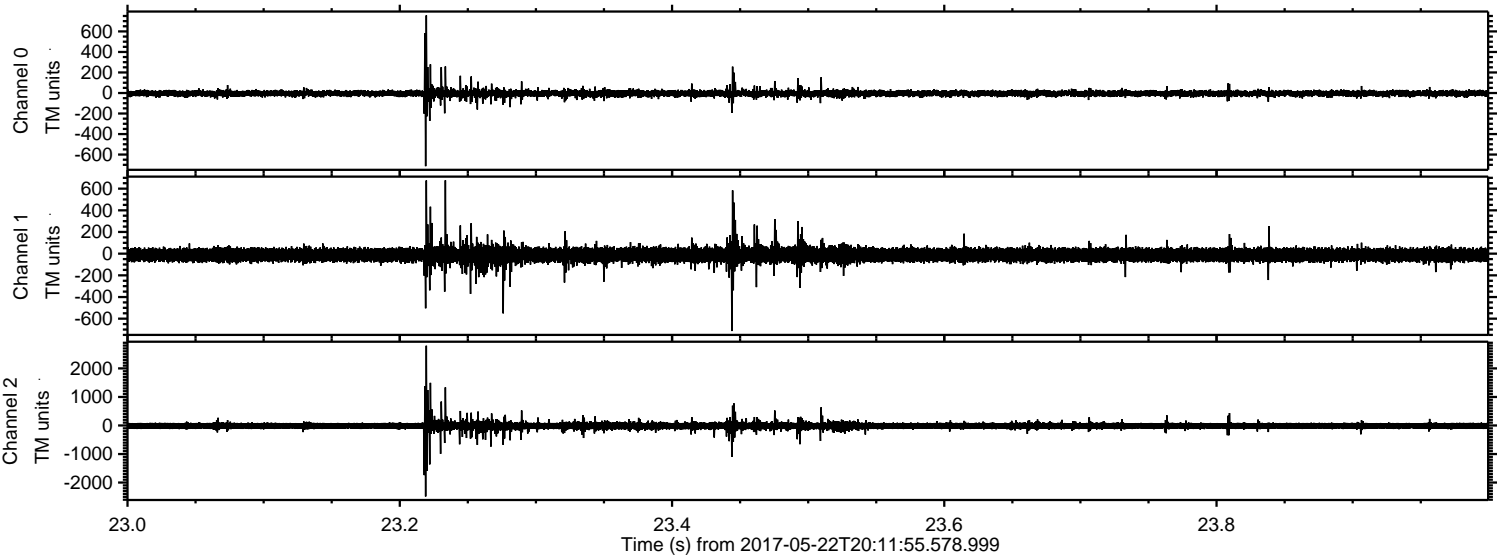
Channel 2
mn: -3584
mx: 1925
 μ : -14.3
 σ : 60.9

ELMAVAN 3D WAVEFORMS (Measured data sampled at 50 kHz) 51000 packets of 144 samples from 2017-05-22T20:11:55.578.999. Part 101/147

Processed Mon May 22 22:19:27 2017 by ELM ver.2012-10-06 from 001__elm20170522_201154__dat00.bin

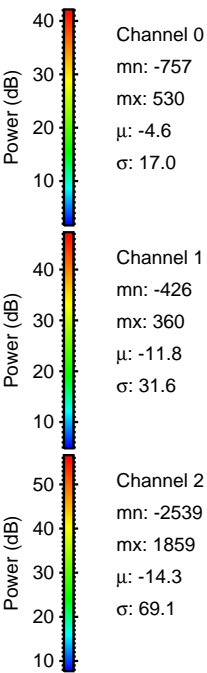
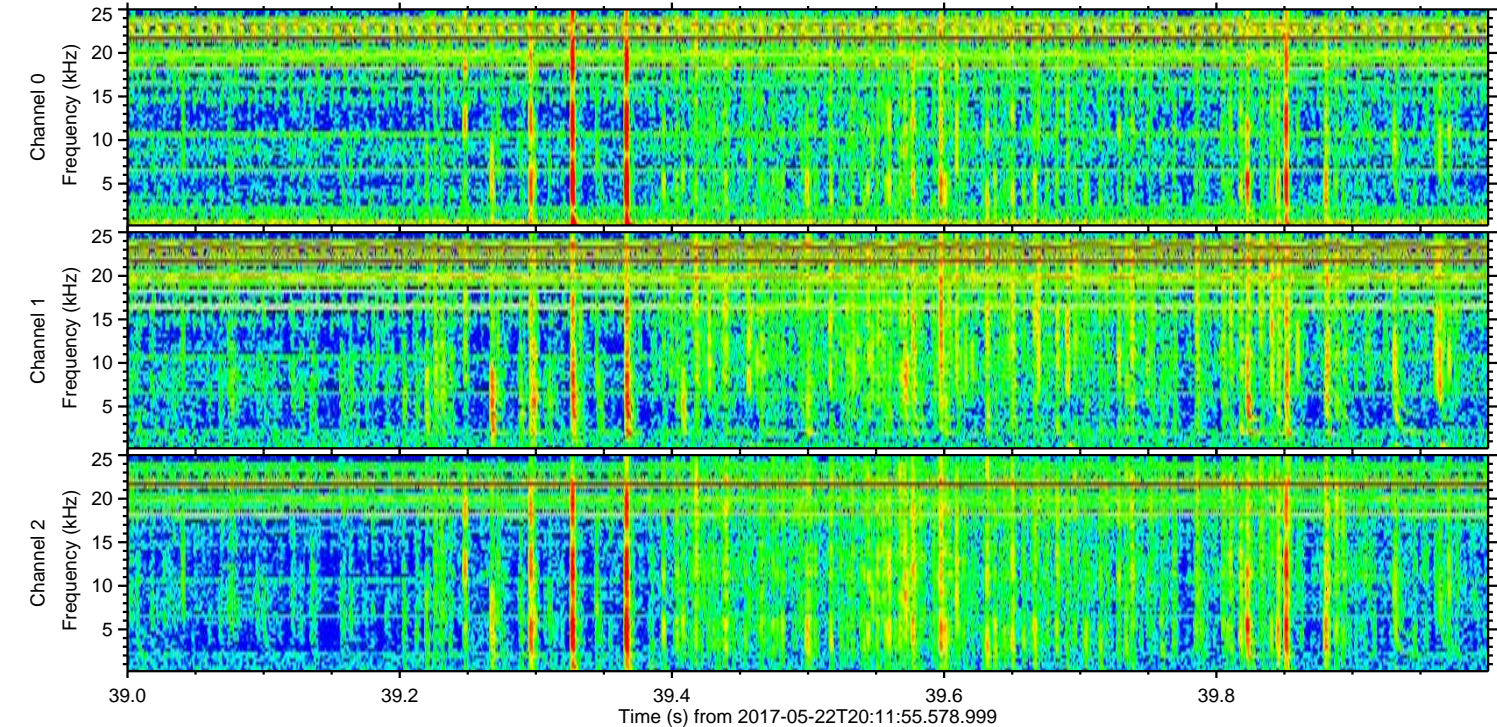
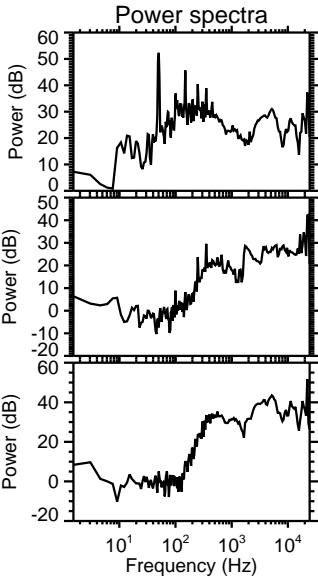
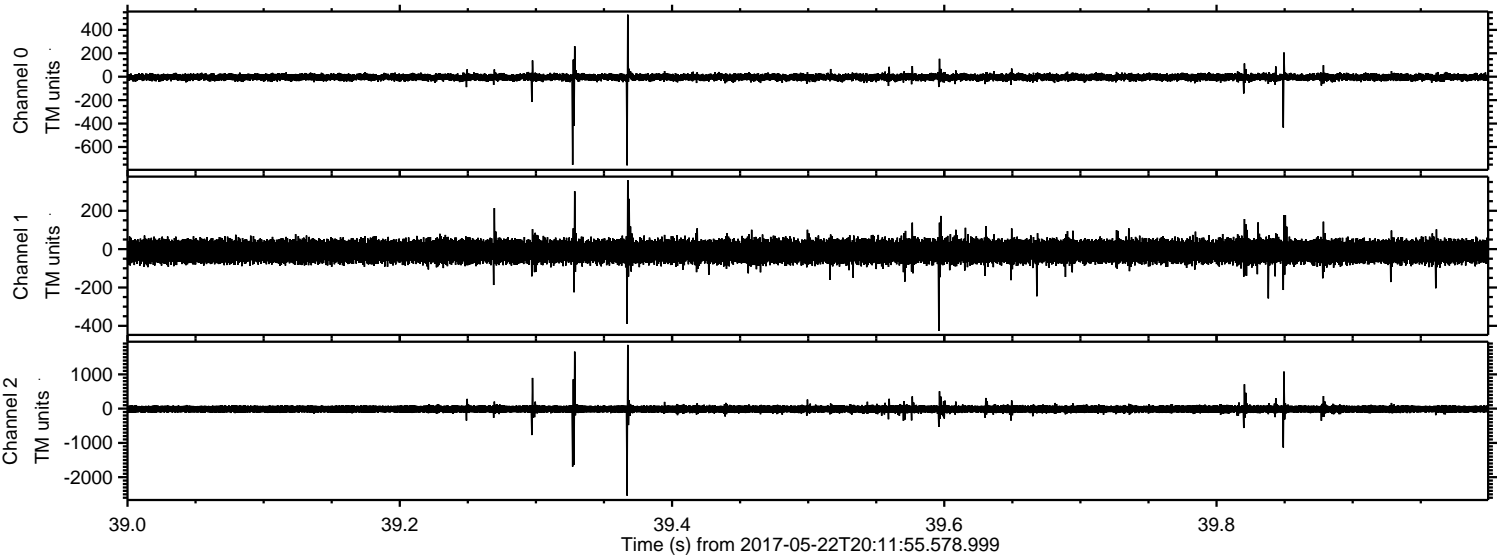


Processed Mon May 22 22:19:27 2017 by ELM ver.2012-10-06 from 001__elm20170522_201154__dat00.bin



ELMAVAN 3D WAVEFORMS (Measured data sampled at 50 kHz) 51000 packets of 144 samples from 2017-05-22T20:11:55.578.999. Part 40/147

Processed Mon May 22 22:19:28 2017 by ELM ver.2012-10-06 from 001__elm20170522_201154__dat00.bin



Channel 0
mn: -757
mx: 530
 μ : -4.6
 σ : 17.0

Channel 1
mn: -426
mx: 360
 μ : -11.8
 σ : 31.6

Channel 2
mn: -2539
mx: 1859
 μ : -14.3
 σ : 69.1

ELMAVAN 3D WAVEFORMS (Measured data sampled at 50 kHz) 51000 packets of 144 samples from 2017-05-22T20:11:55.578.999. Part 105/147

