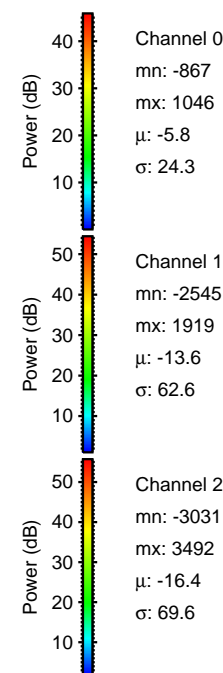
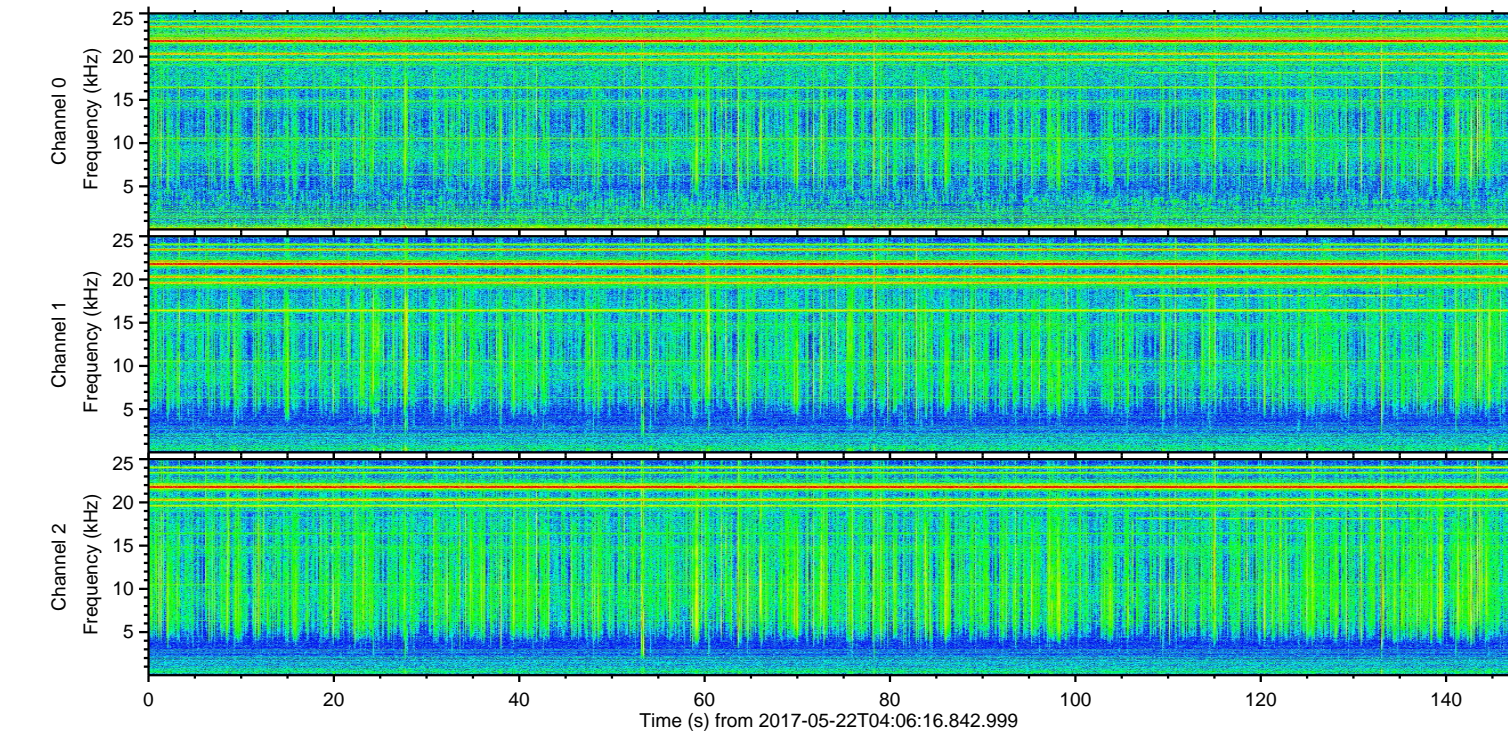
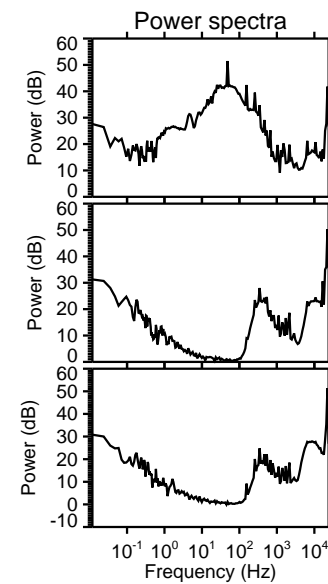
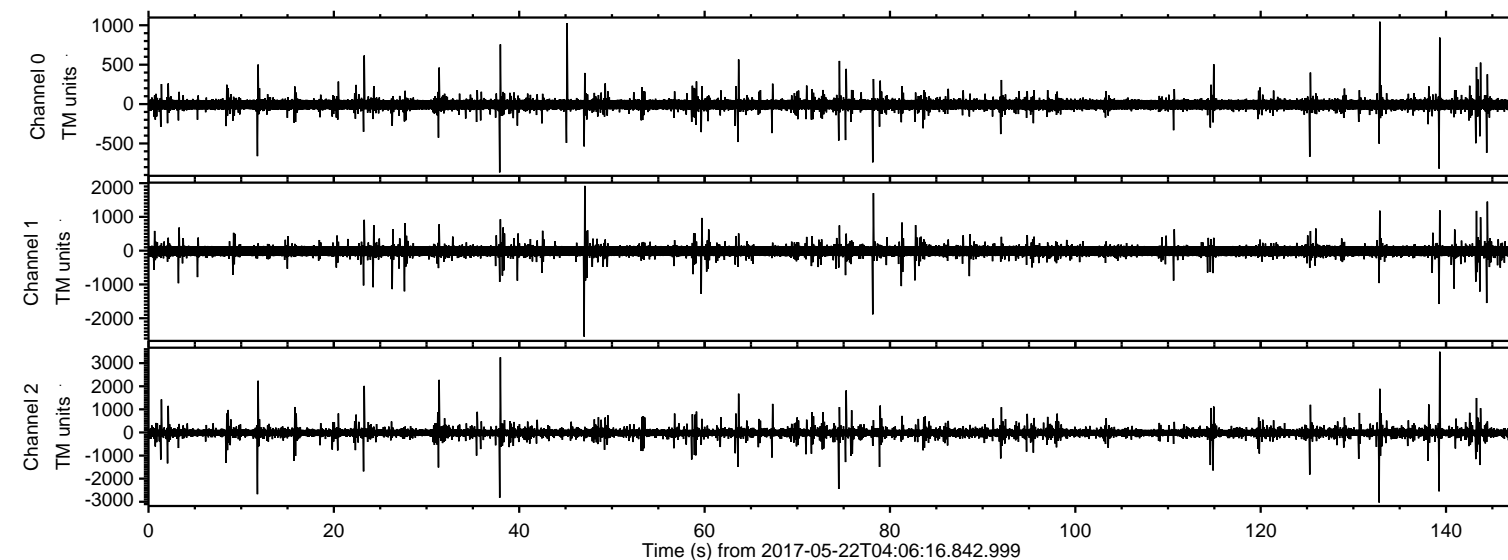


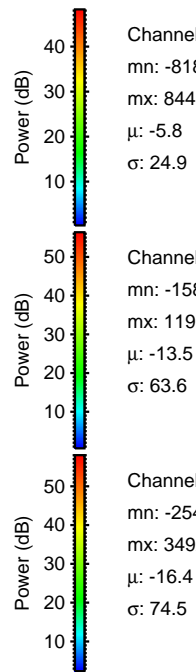
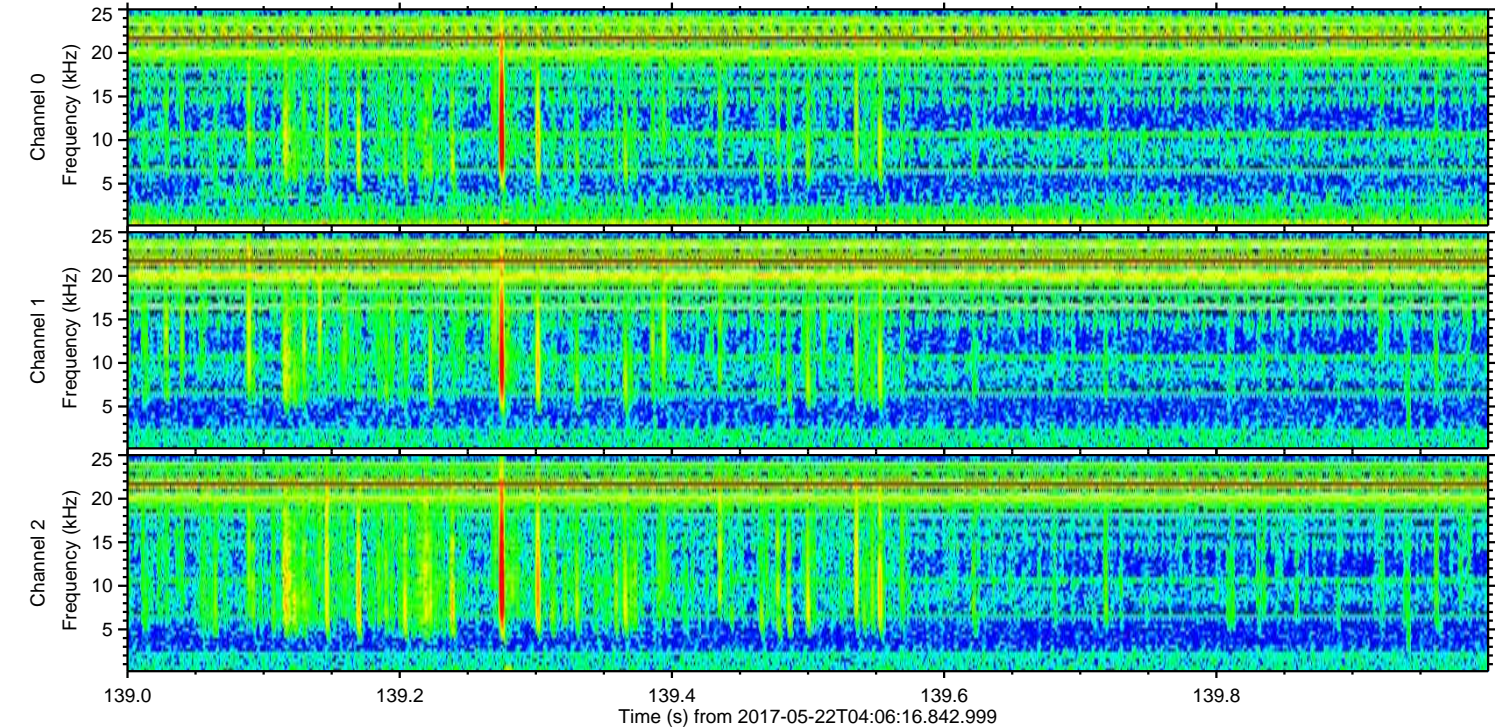
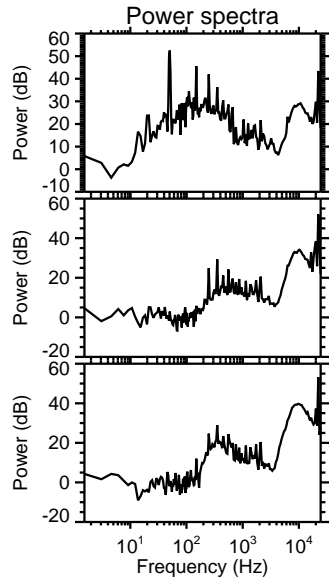
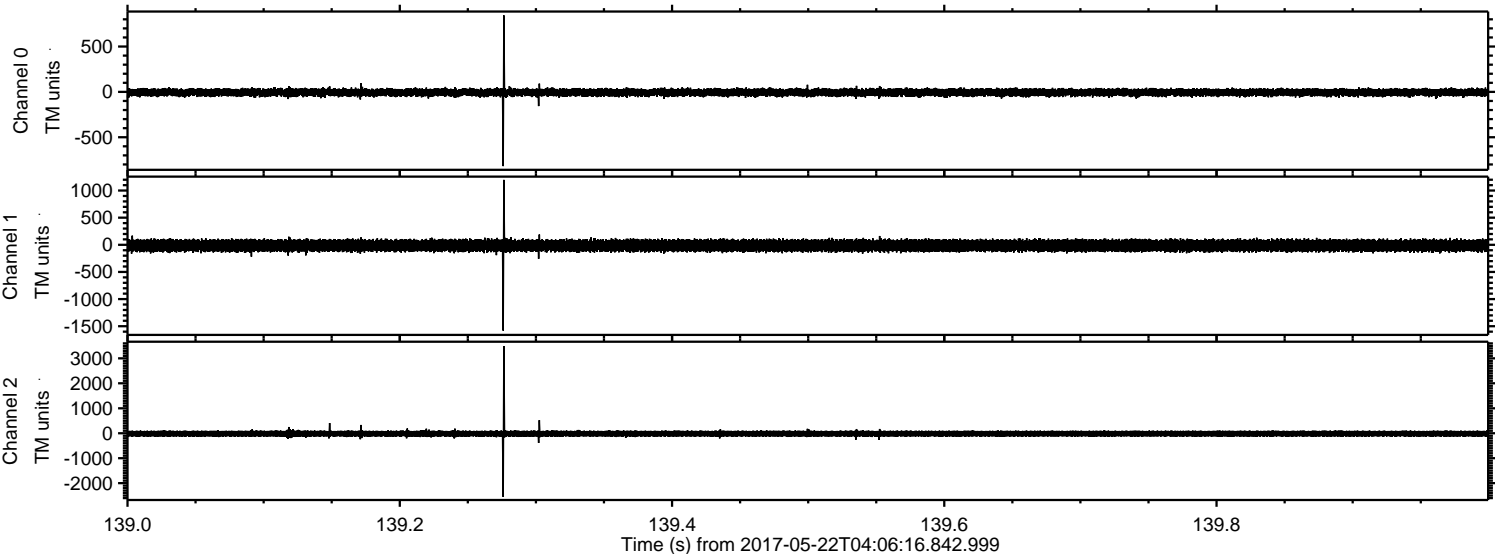
ELMAVAN 3D WAVEFORMS (Measured data sampled at 50 kHz) 51000 packets of 144 samples from 2017-05-22T04:06:16.842.999.

Processed Mon May 22 06:13:33 2017 by ELM ver.2012-10-06 from 001__elm20170522_040615__dat00.bin

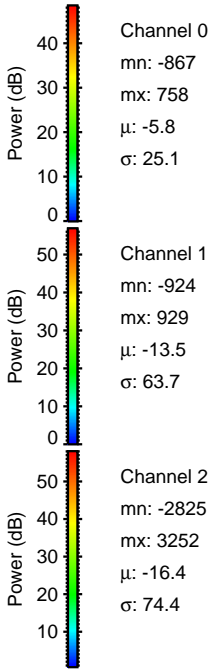
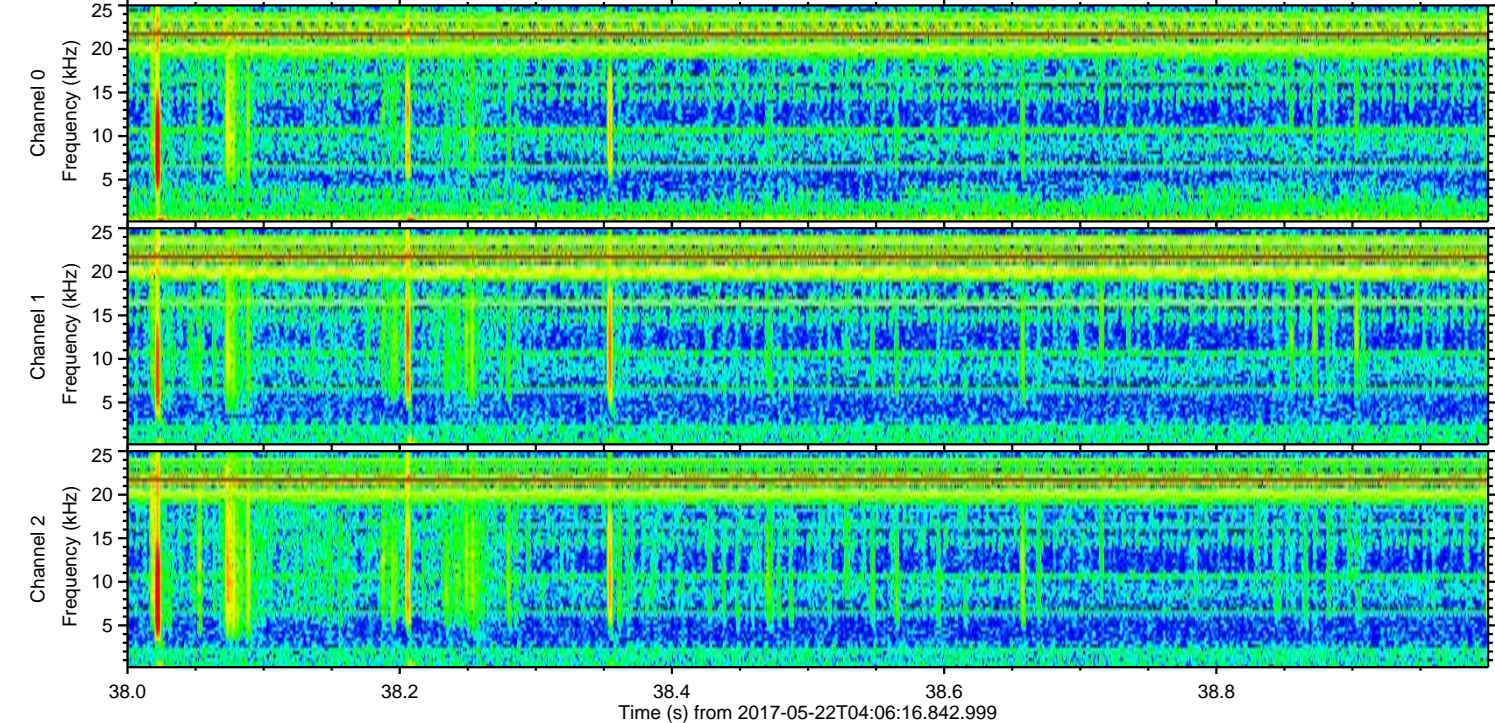
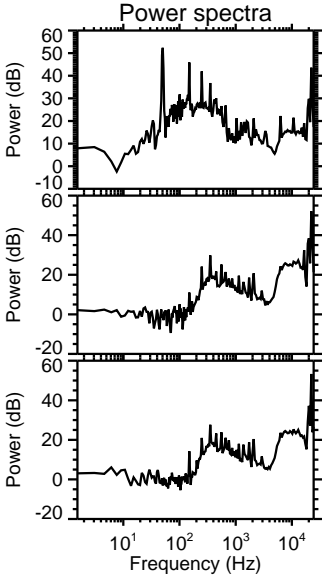
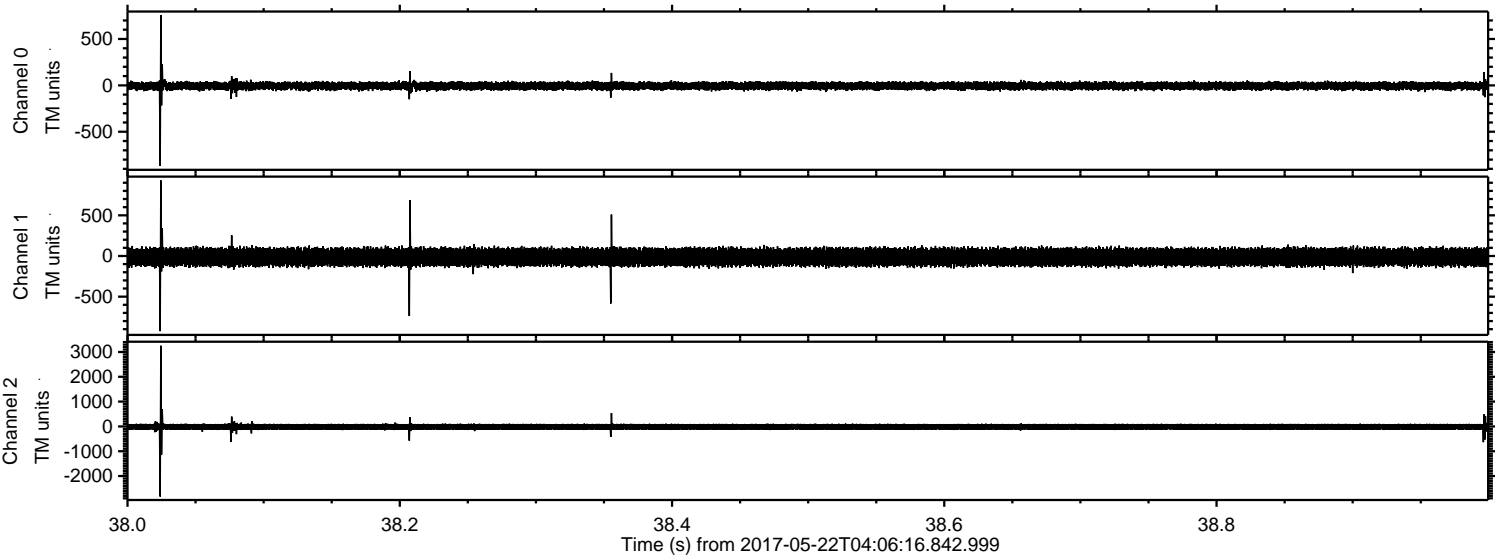


ELMAVAN 3D WAVEFORMS (Measured data sampled at 50 kHz) 51000 packets of 144 samples from 2017-05-22T04:06:16.842.999. Part 140/147

Processed Mon May 22 06:13:39 2017 by ELM ver.2012-10-06 from 001__elm20170522_040615__dat00.bin

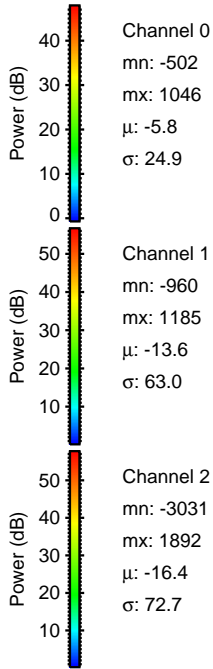
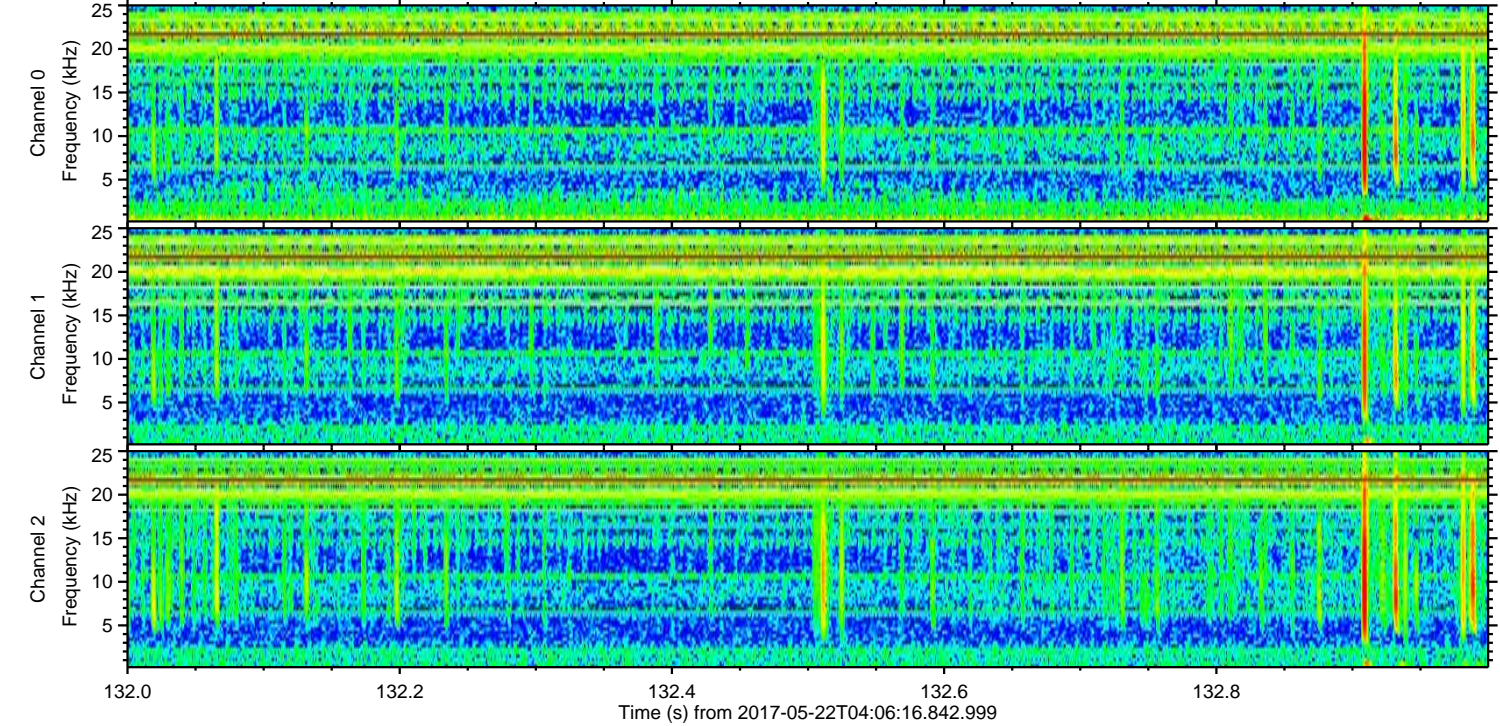
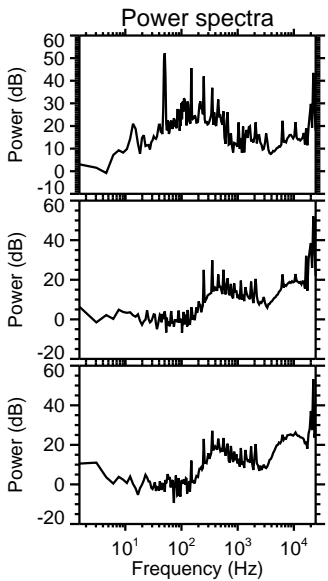
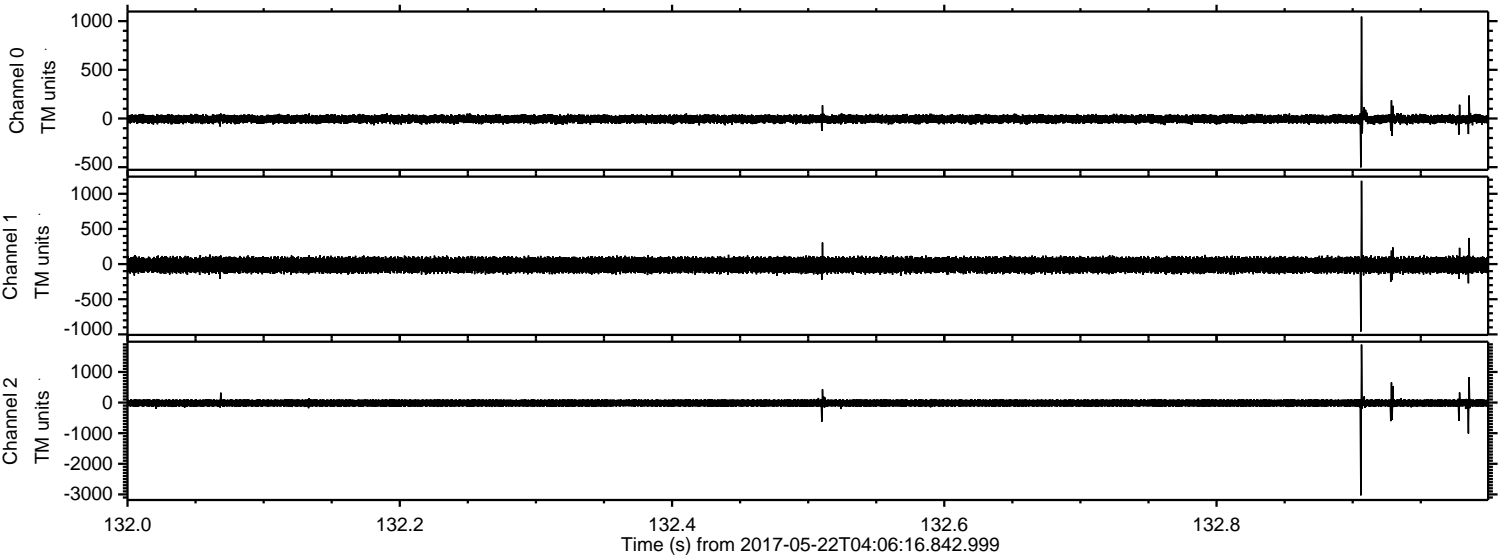


Processed Mon May 22 06:13:39 2017 by ELM ver.2012-10-06 from 001__elm20170522_040615__dat00.bin



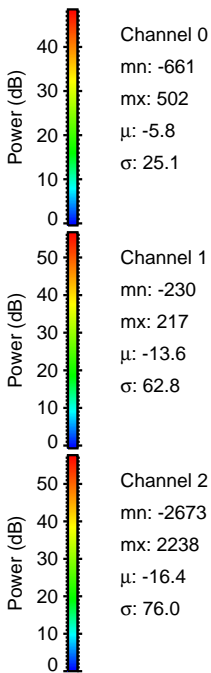
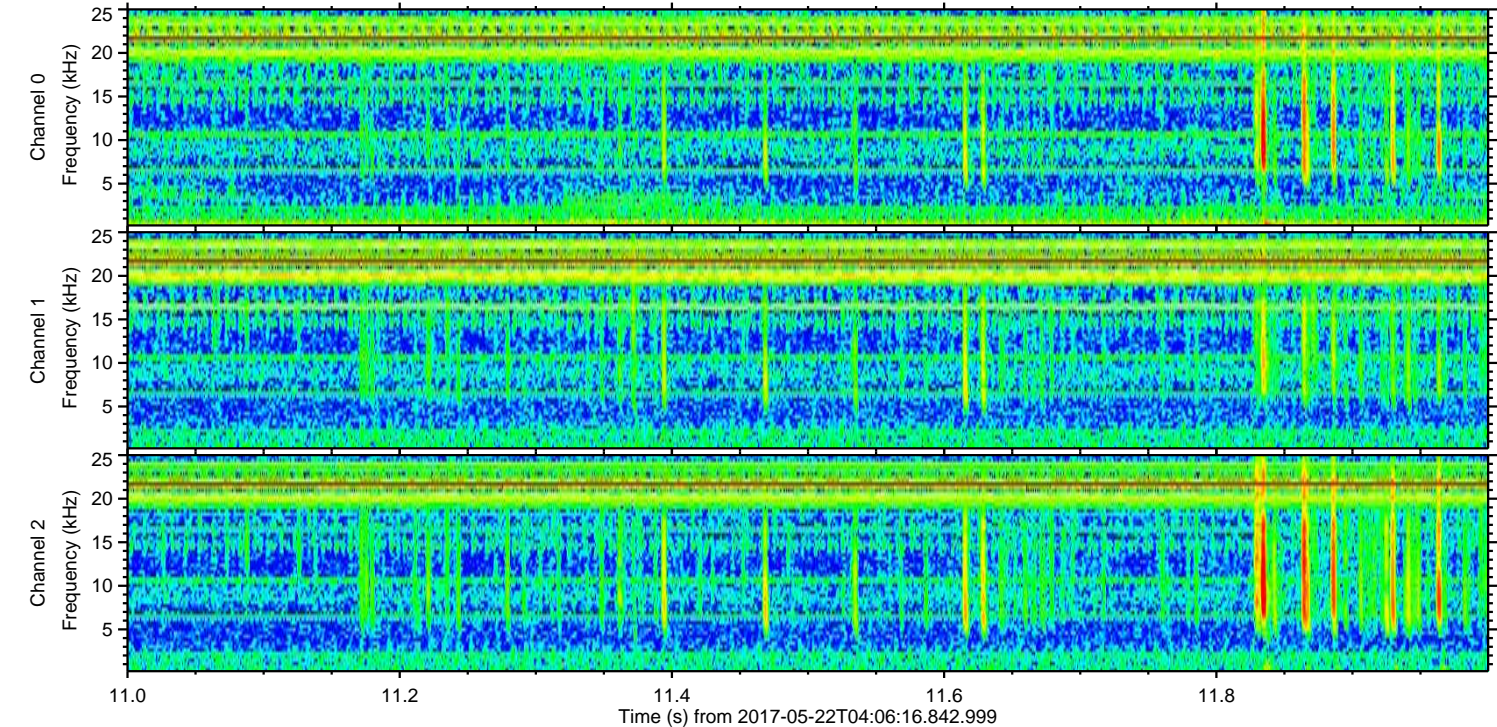
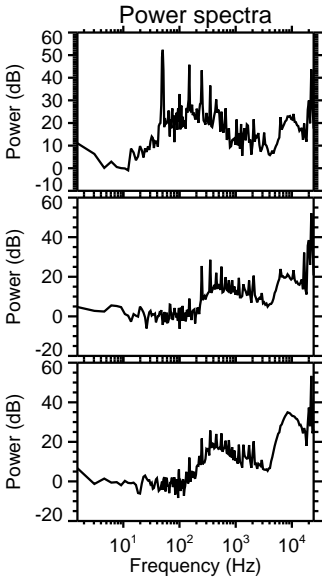
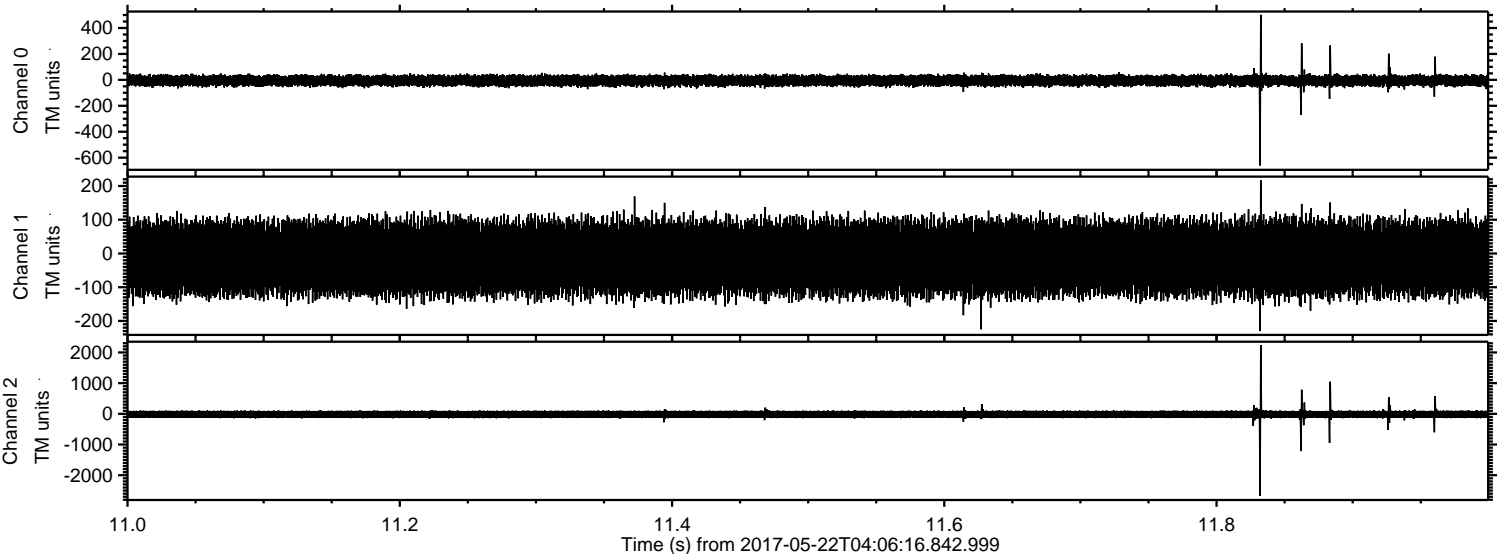
ELMAVAN 3D WAVEFORMS (Measured data sampled at 50 kHz) 51000 packets of 144 samples from 2017-05-22T04:06:16.842.999. Part 133/147

Processed Mon May 22 06:13:40 2017 by ELM ver.2012-10-06 from 001__elm20170522_040615__dat00.bin

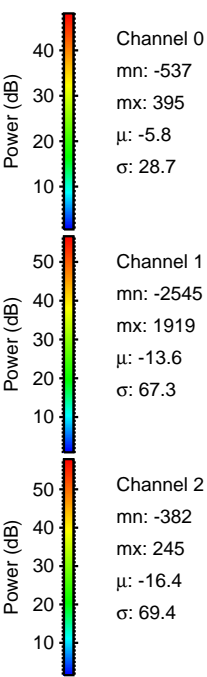
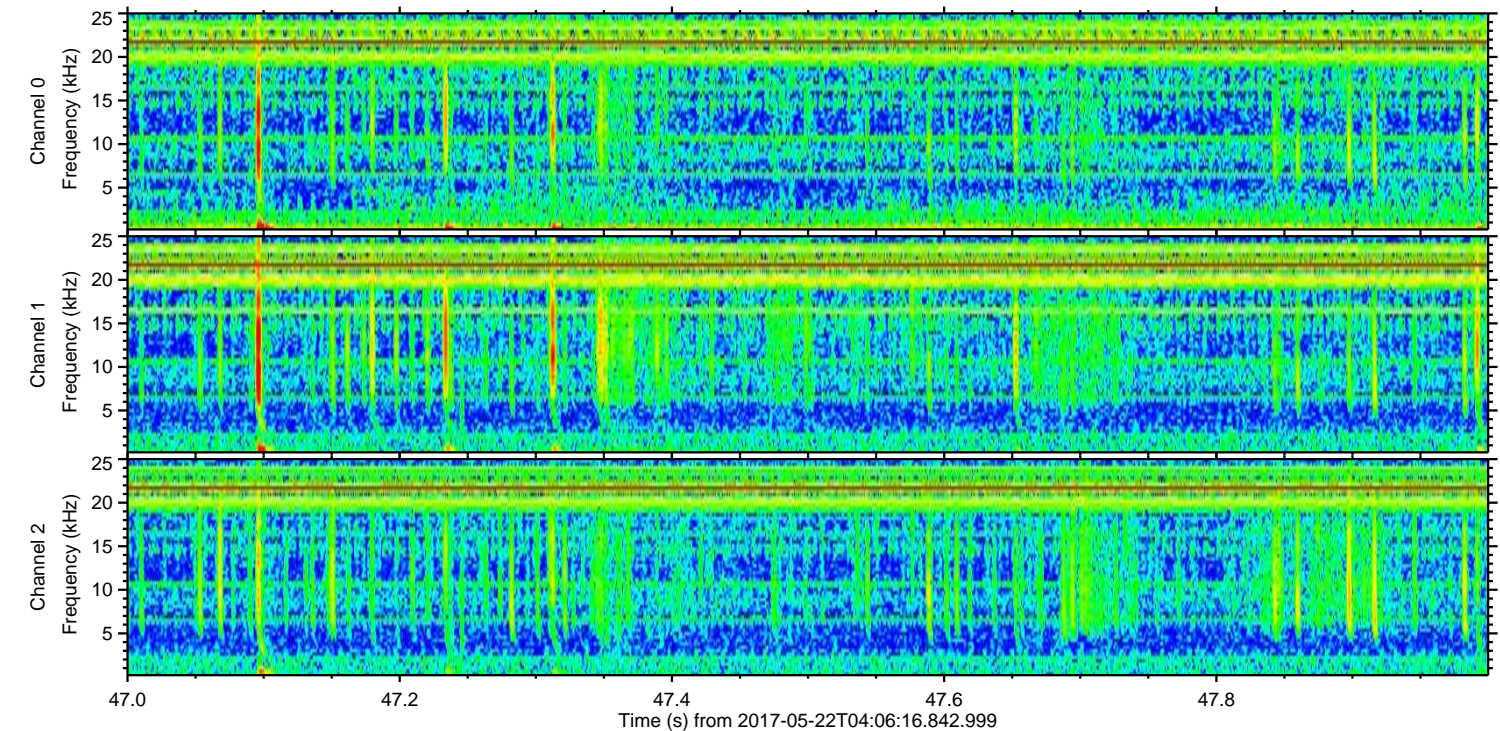
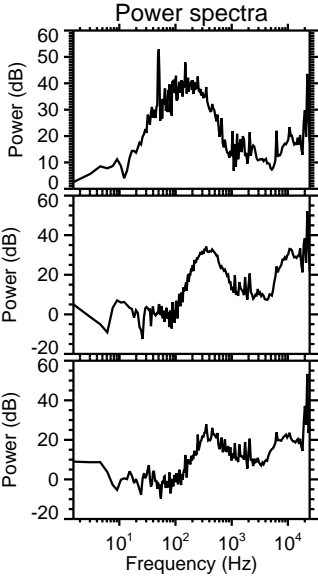
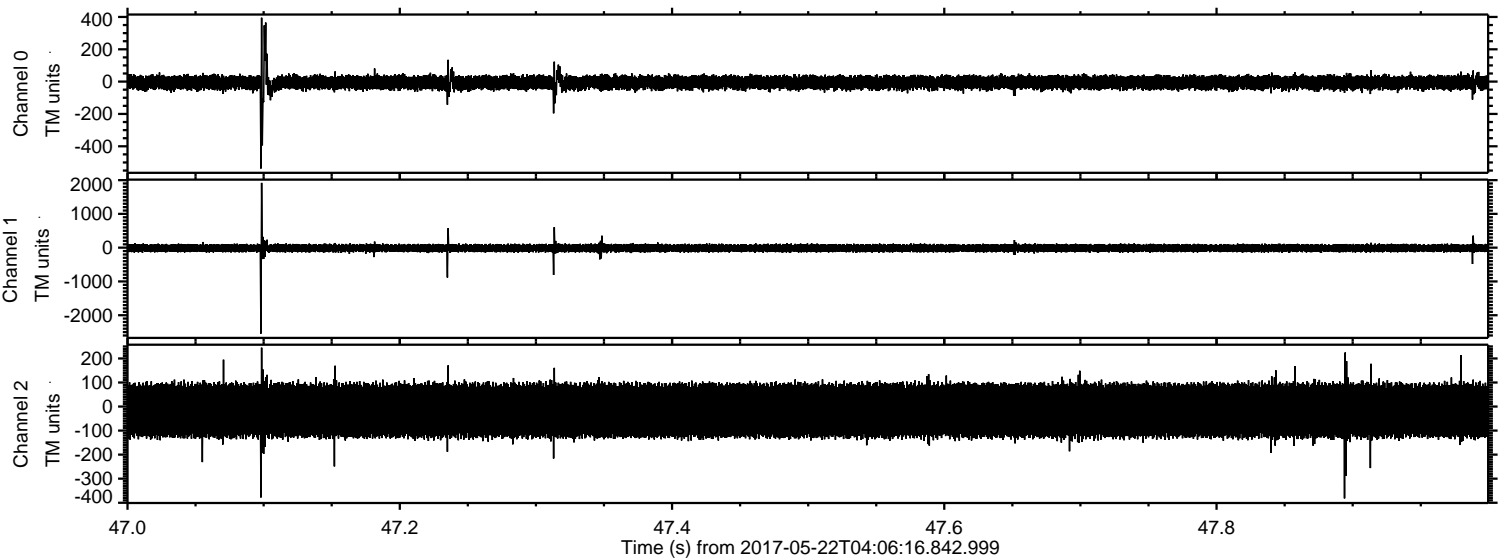


ELMAVAN 3D WAVEFORMS (Measured data sampled at 50 kHz) 51000 packets of 144 samples from 2017-05-22T04:06:16.842.999. Part 12/147

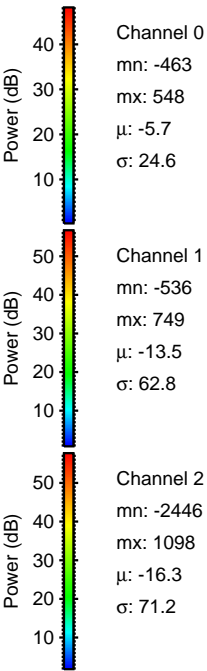
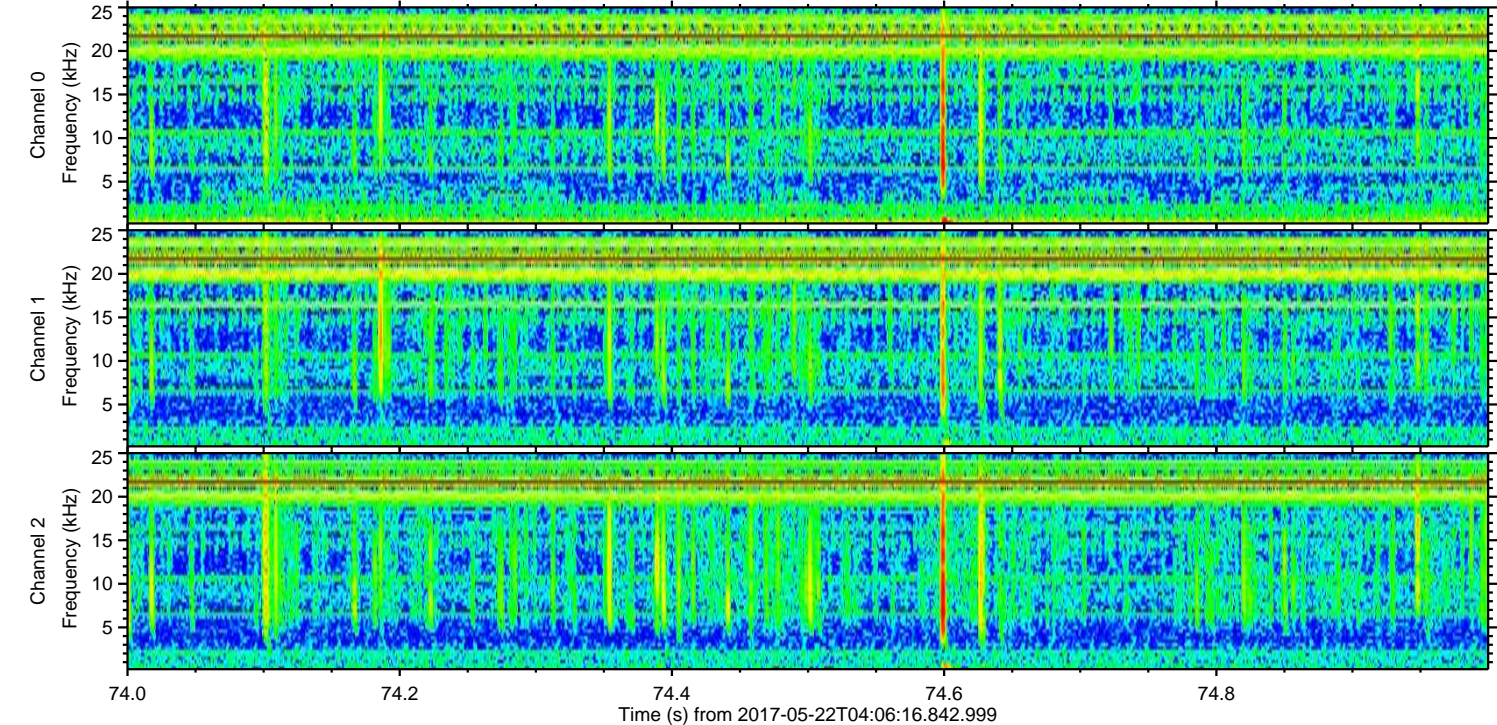
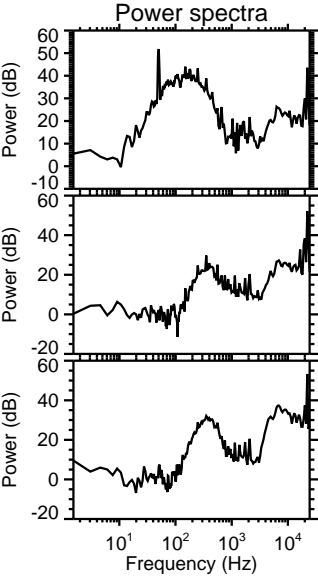
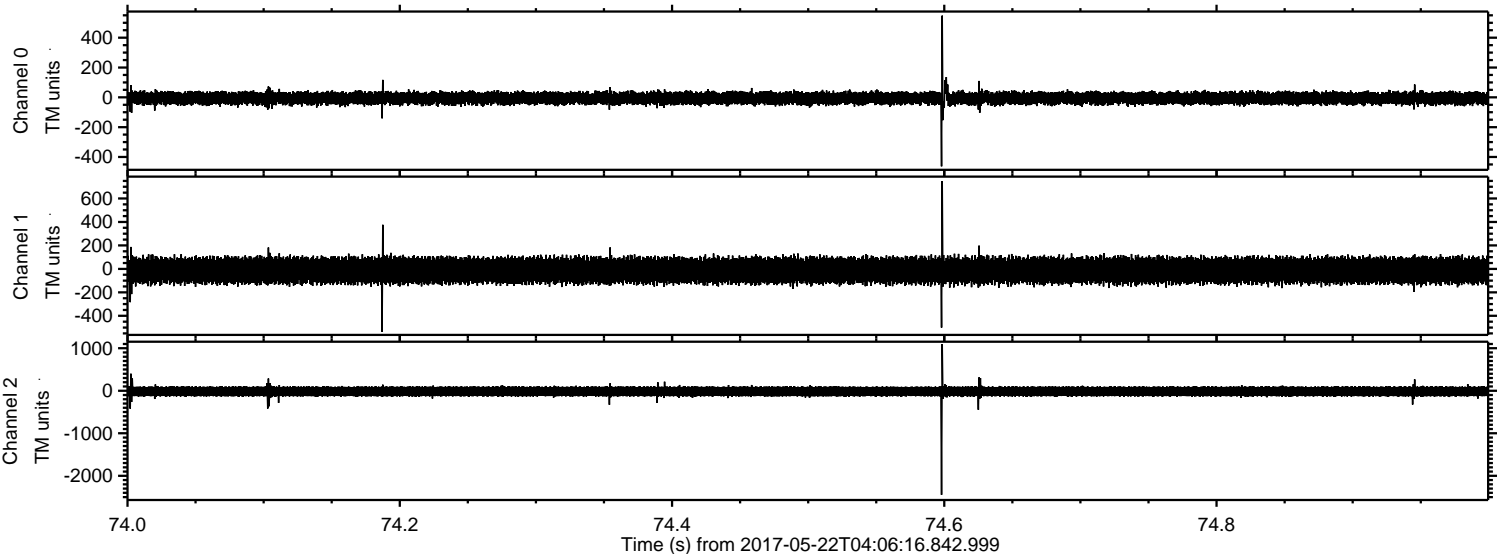
Processed Mon May 22 06:13:41 2017 by ELM ver.2012-10-06 from 001__elm20170522_040615__dat00.bin



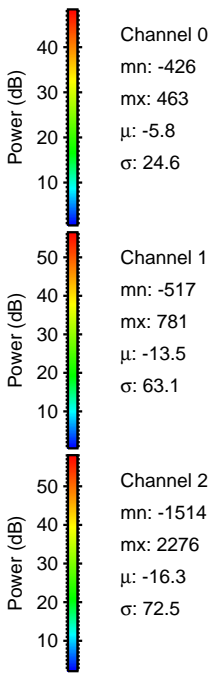
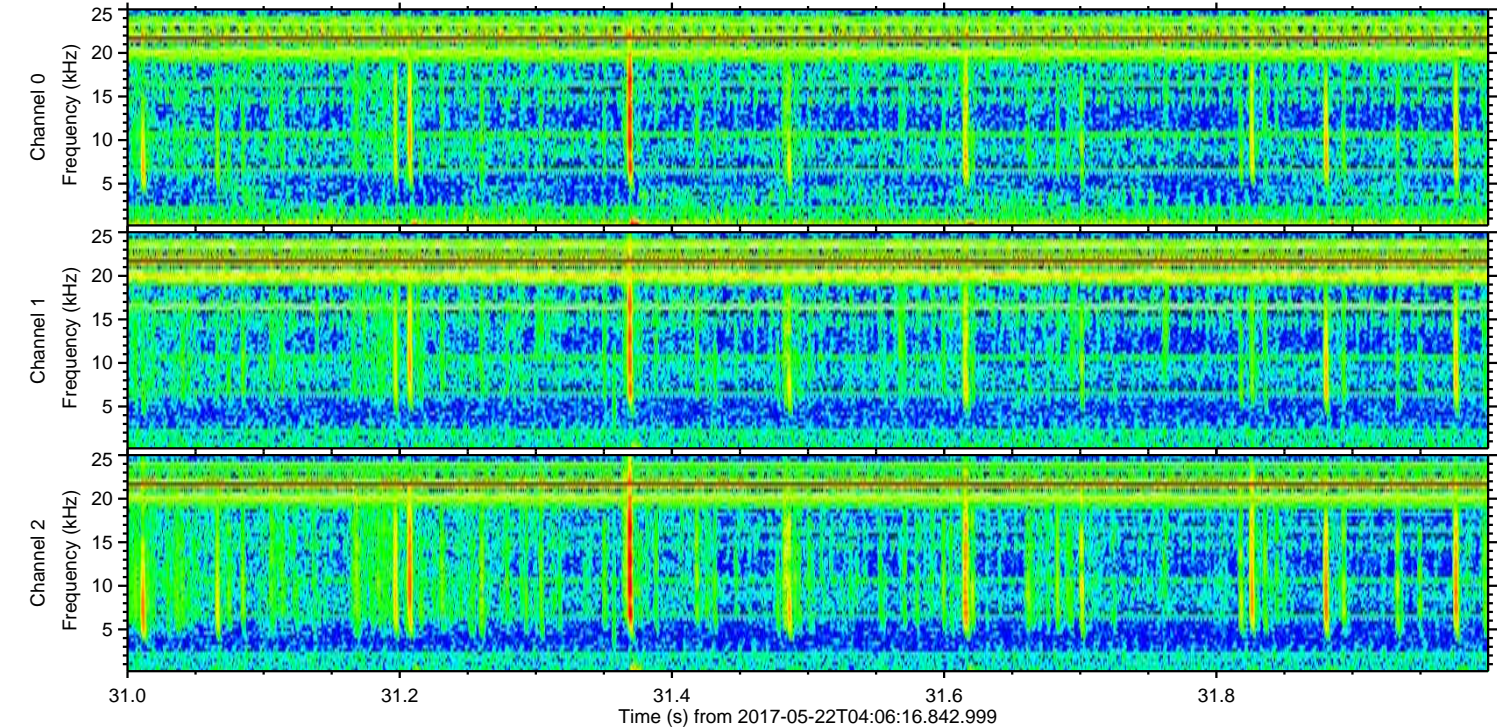
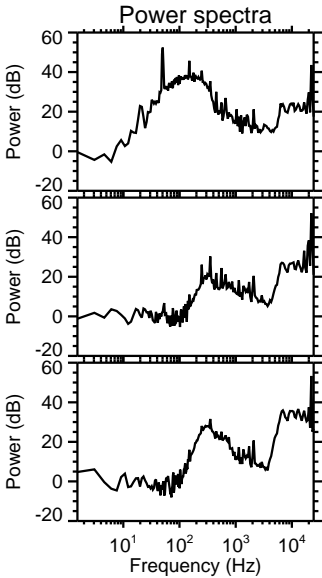
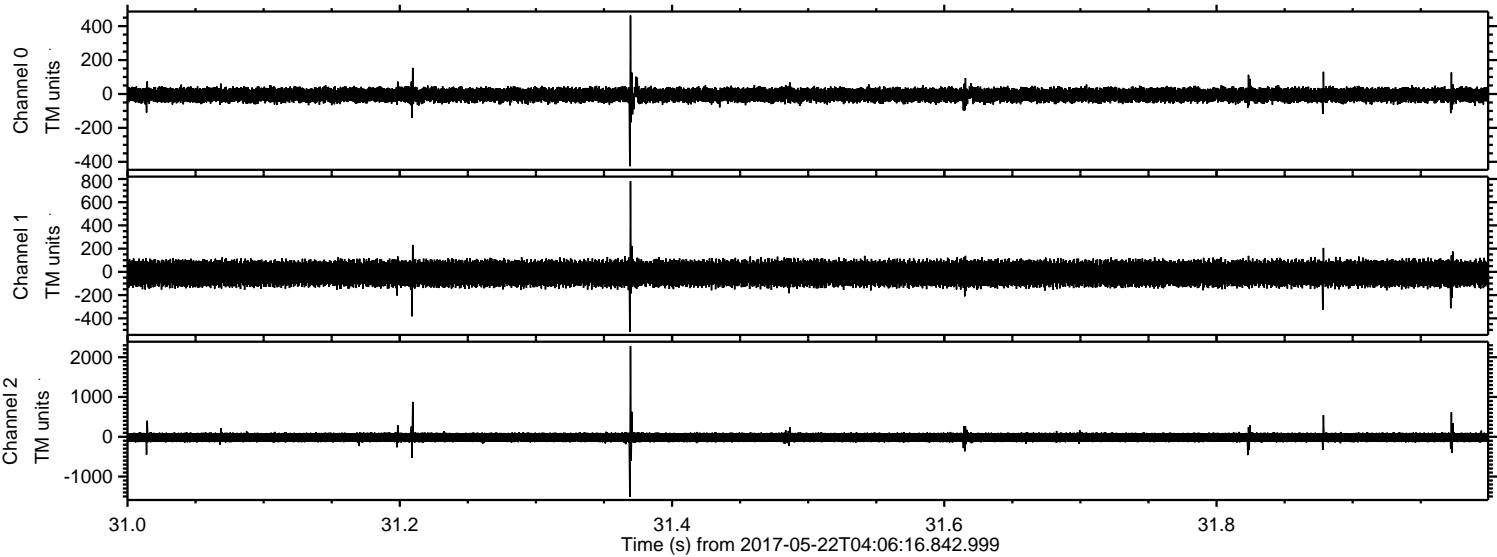
Processed Mon May 22 06:13:41 2017 by ELM ver.2012-10-06 from 001__elm20170522_040615__dat00.bin



Processed Mon May 22 06:13:42 2017 by ELM ver.2012-10-06 from 001__elm20170522_040615__dat00.bin

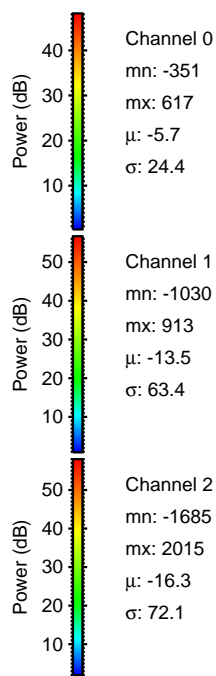
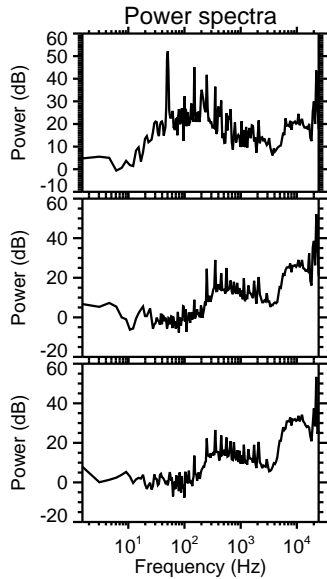
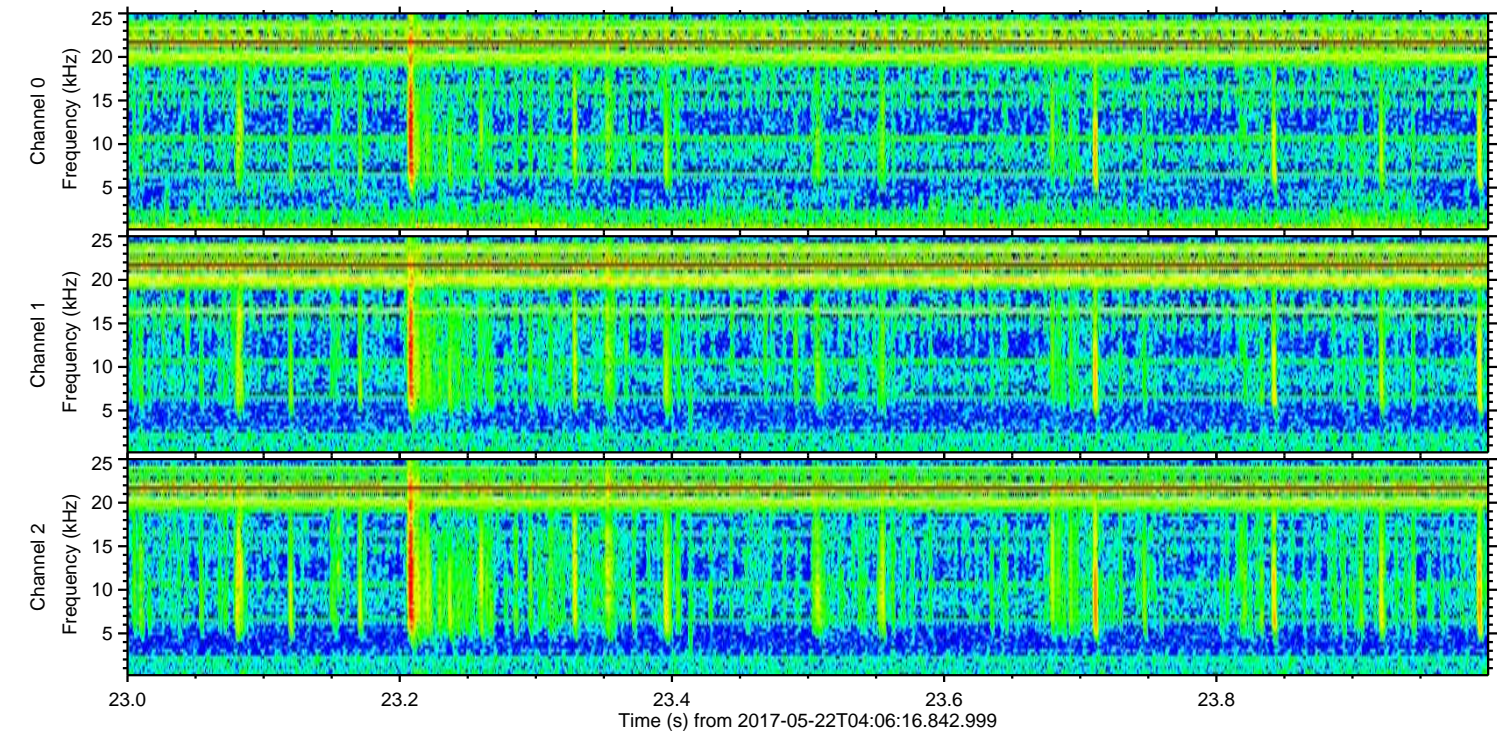
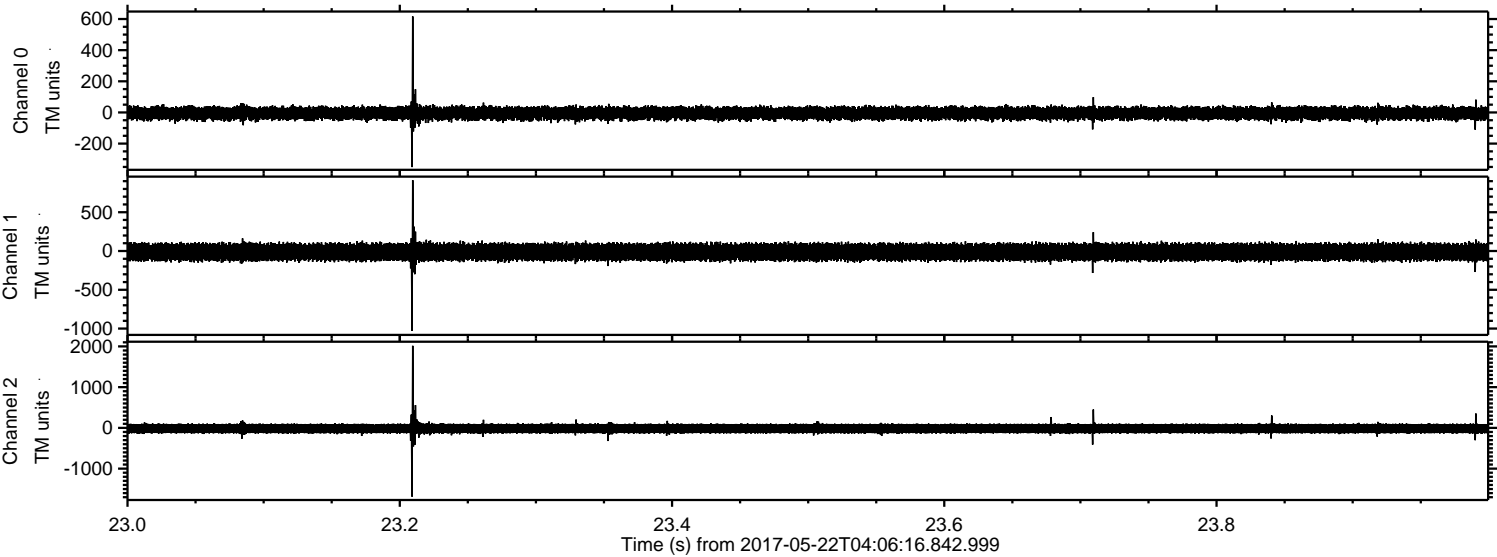


Processed Mon May 22 06:13:42 2017 by ELM ver.2012-10-06 from 001__elm20170522_040615__dat00.bin



ELMAVAN 3D WAVEFORMS (Measured data sampled at 50 kHz) 51000 packets of 144 samples from 2017-05-22T04:06:16.842.999. Part 24/147

Processed Mon May 22 06:13:43 2017 by ELM ver.2012-10-06 from 001__elm20170522_040615__dat00.bin



Channel 0
mn: -351
mx: 617
 μ : -5.7
 σ : 24.4

Channel 1
mn: -1030
mx: 913
 μ : -13.5
 σ : 63.4

Channel 2
mn: -1685
mx: 2015
 μ : -16.3
 σ : 72.1

Processed Mon May 22 06:13:44 2017 by ELM ver.2012-10-06 from 001__elm20170522_040615__dat00.bin

