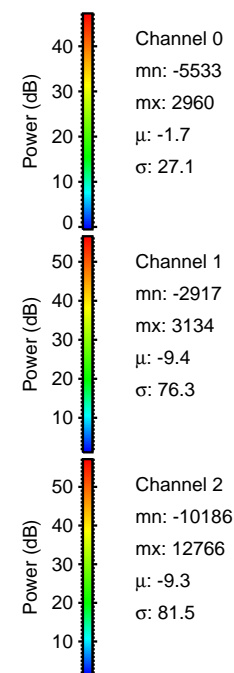
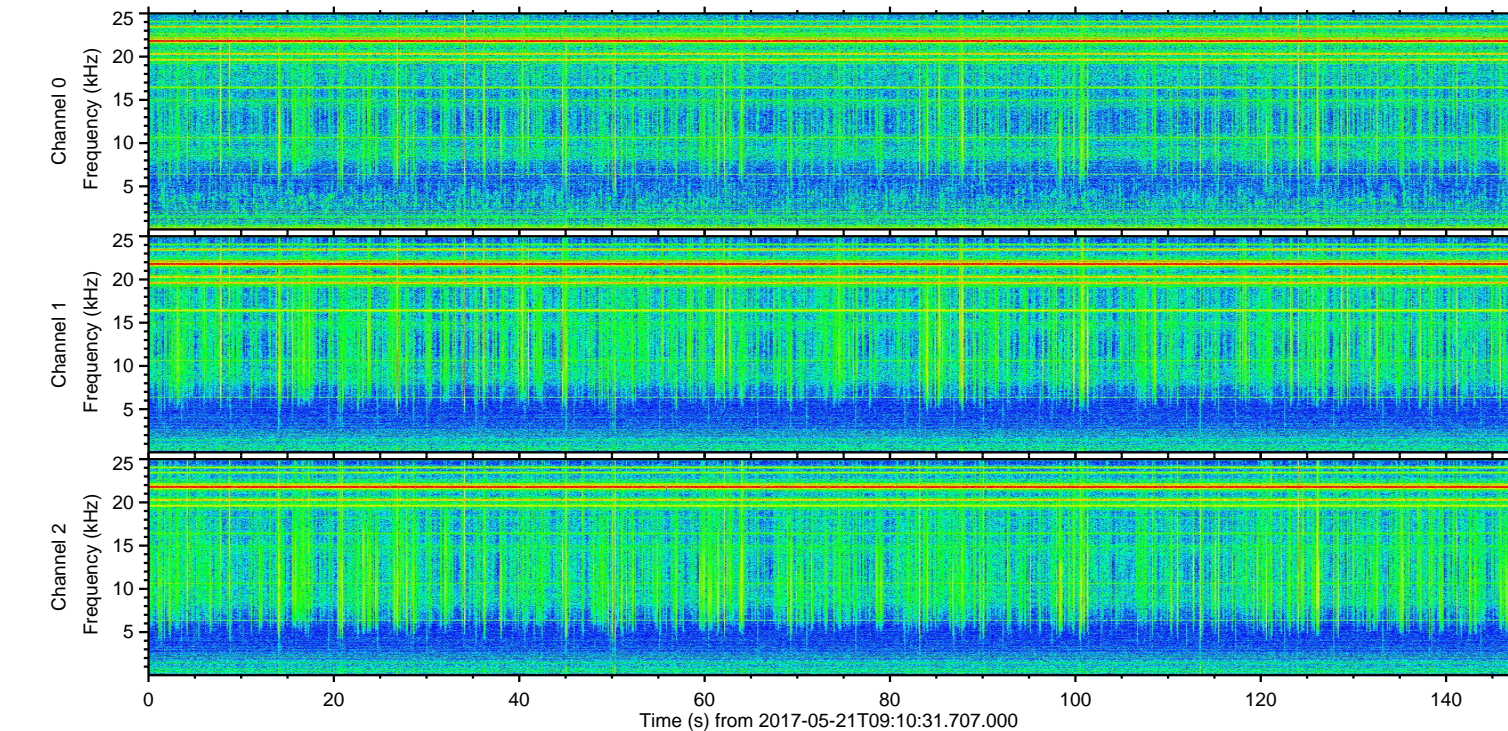
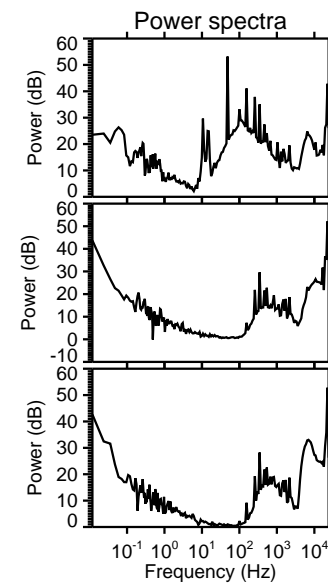
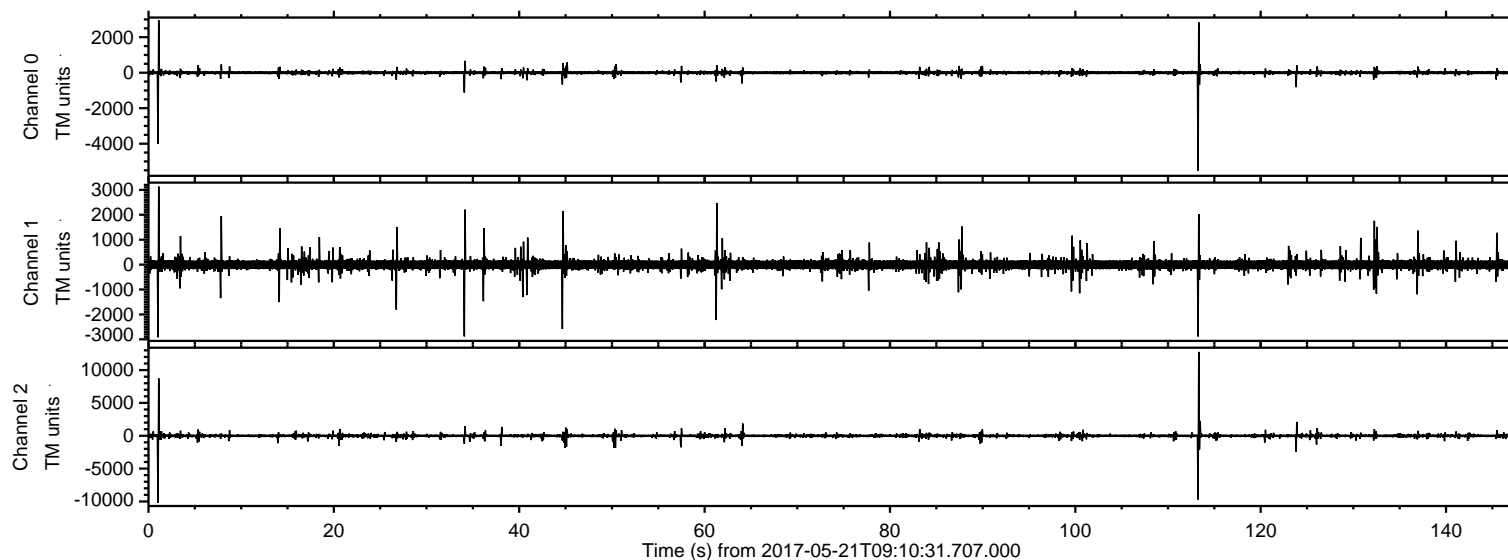


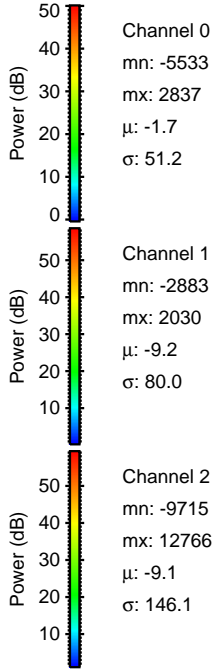
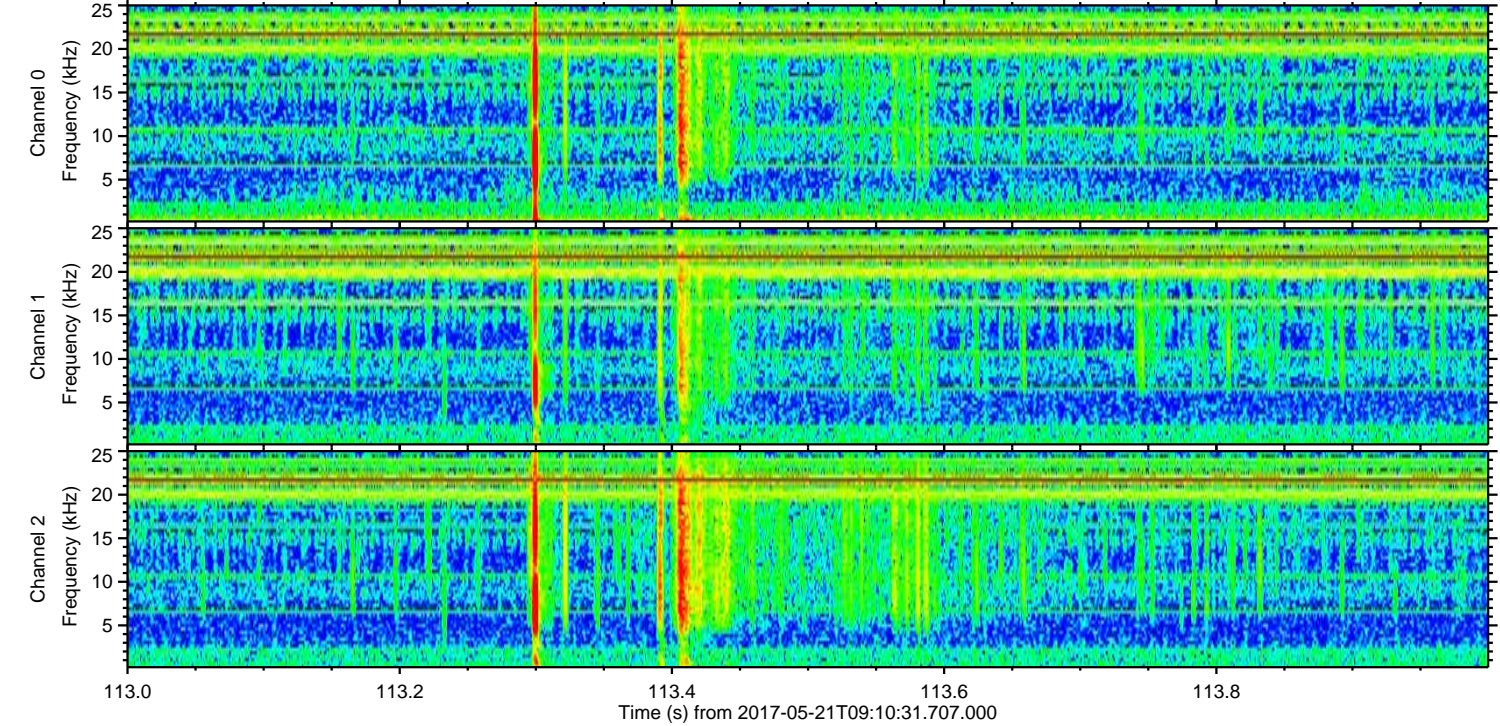
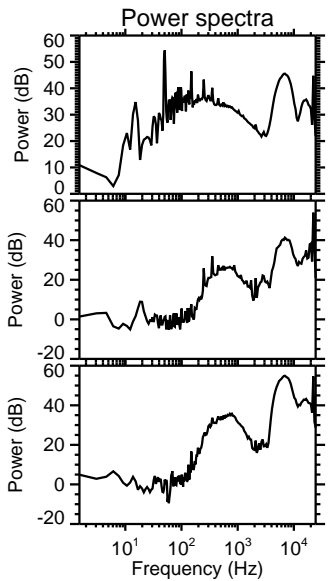
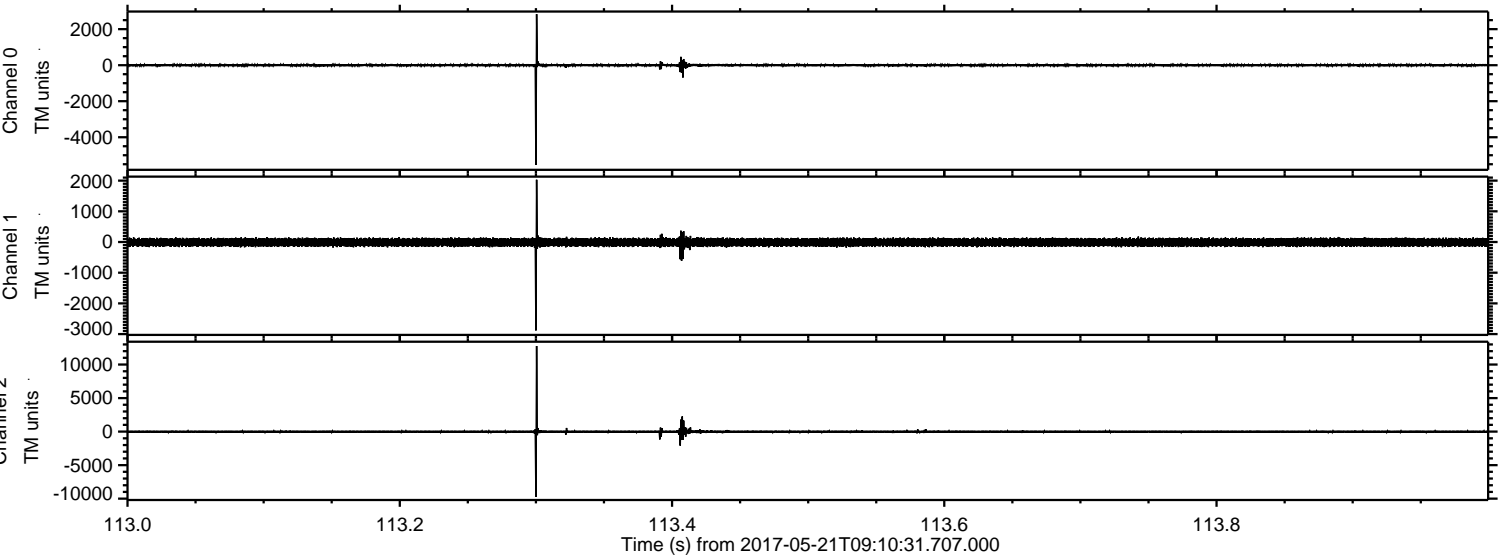
ELMAVAN 3D WAVEFORMS (Measured data sampled at 50 kHz) 51000 packets of 144 samples from 2017-05-21T09:10:31.707.000.

Processed Sun May 21 11:17:50 2017 by ELM ver.2012-10-06 from 001__elm20170521_091030__dat00.bin



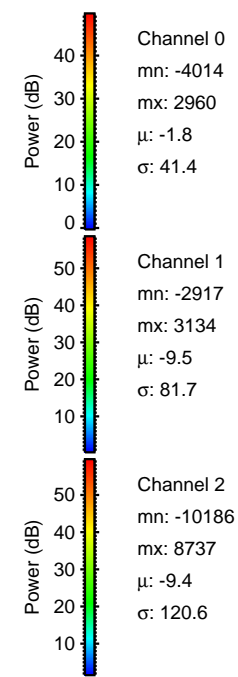
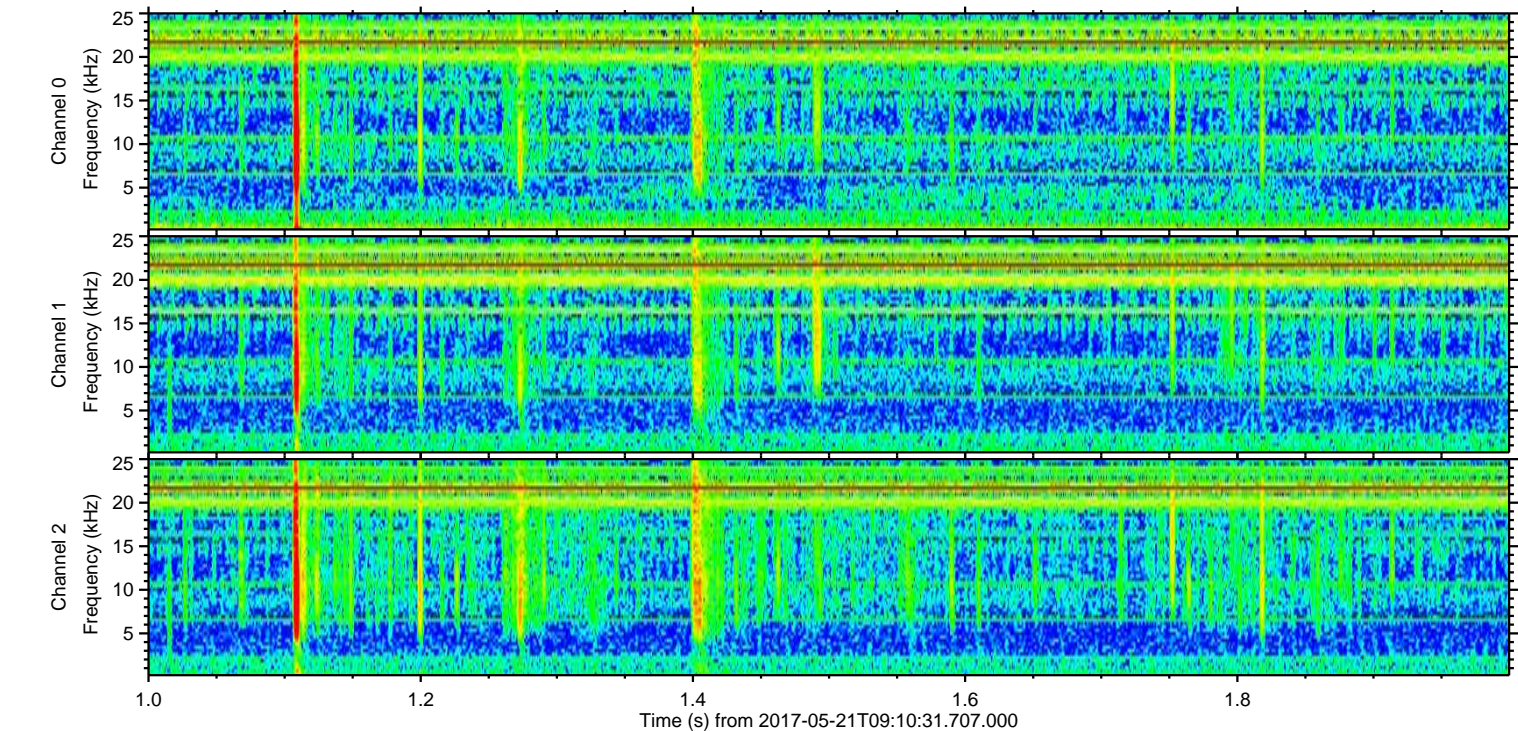
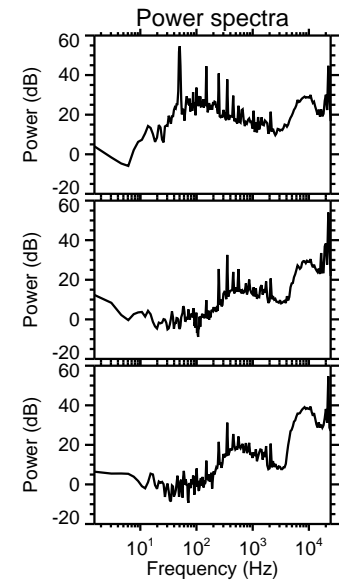
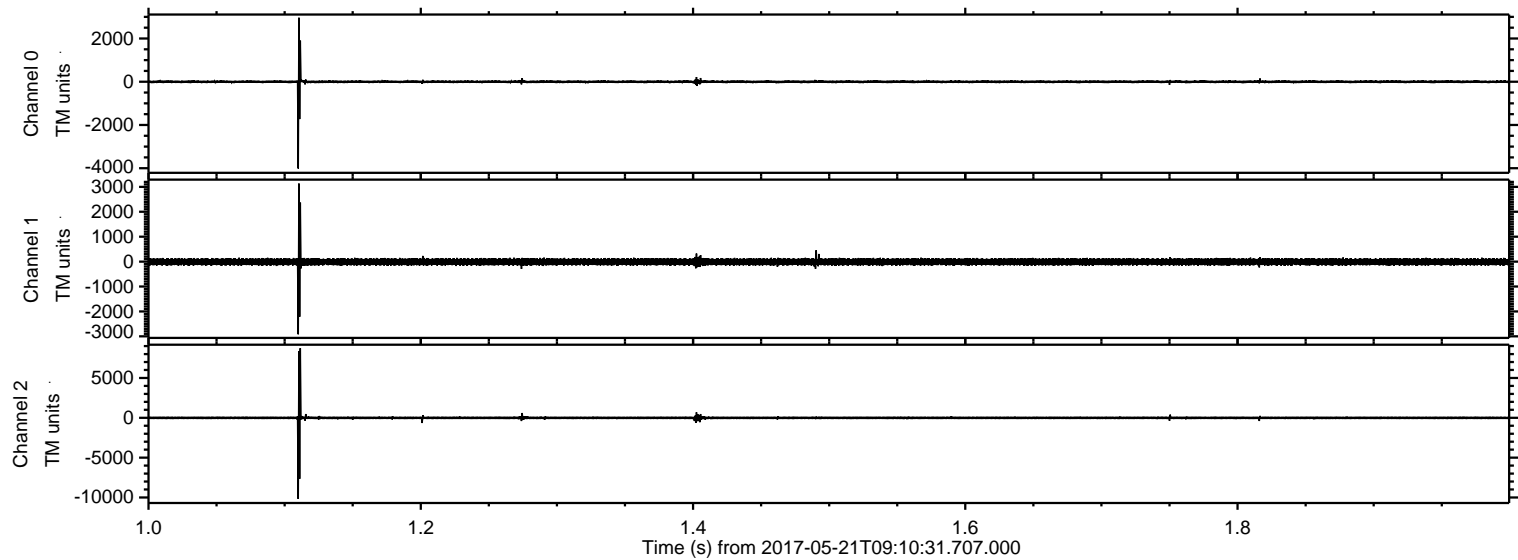
ELMAVAN 3D WAVEFORMS (Measured data sampled at 50 kHz) 51000 packets of 144 samples from 2017-05-21T09:10:31.707.000. Part 114/147

Processed Sun May 21 11:17:56 2017 by ELM ver.2012-10-06 from 001__elm20170521_091030__dat00.bin

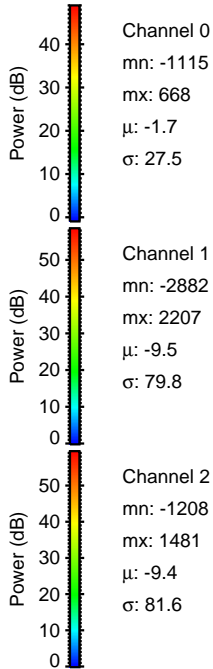
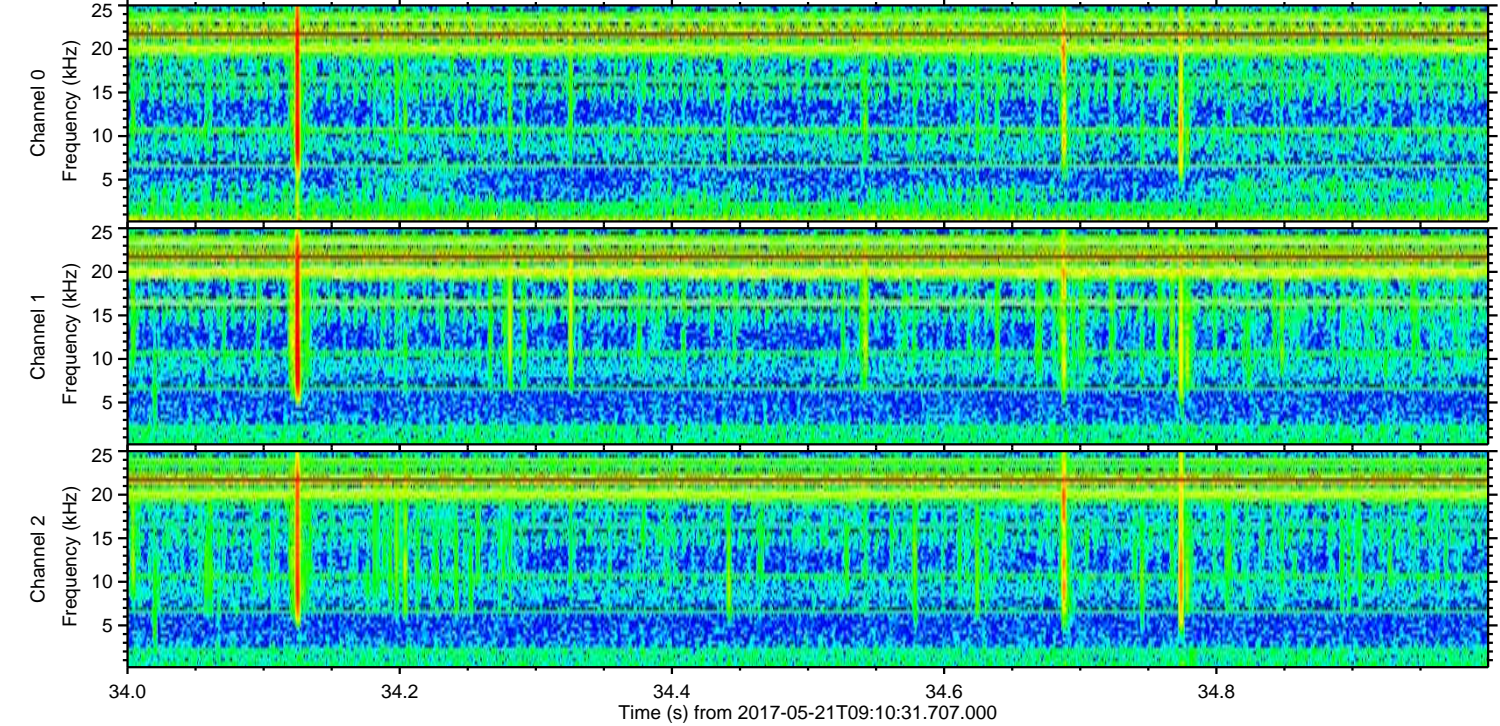
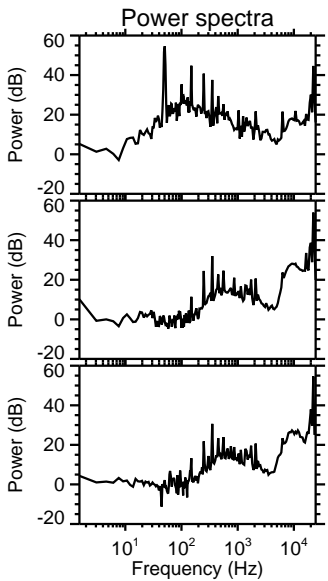
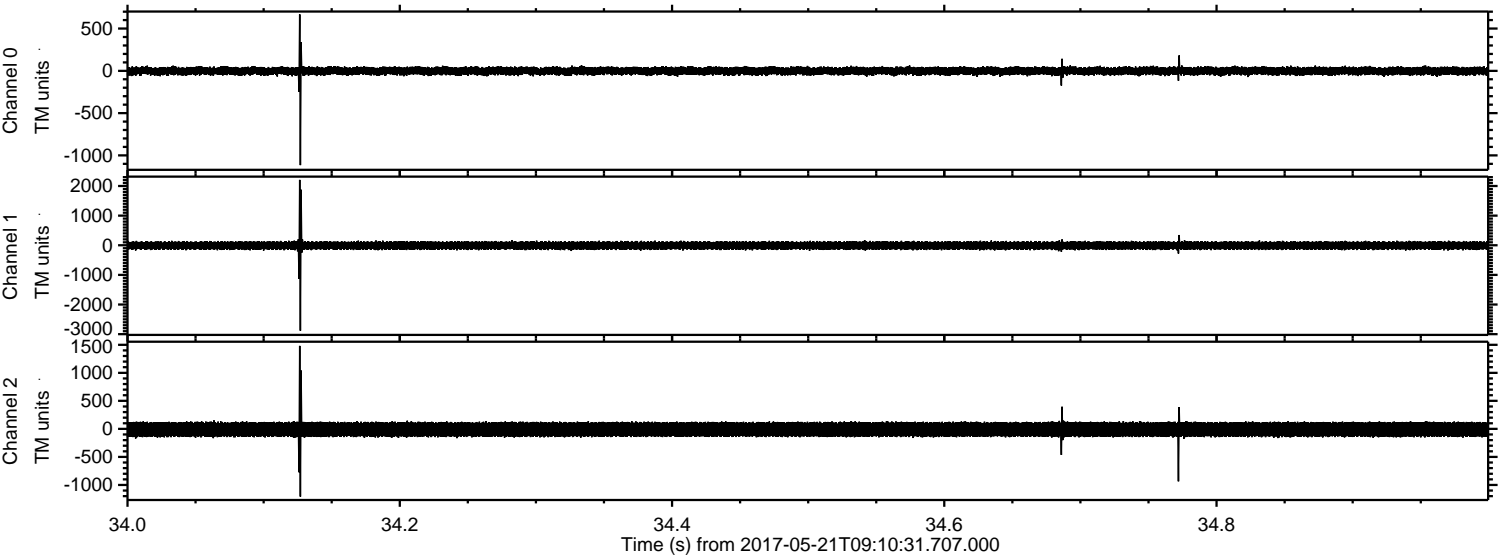


ELMAVAN 3D WAVEFORMS (Measured data sampled at 50 kHz) 51000 packets of 144 samples from 2017-05-21T09:10:31.707.000. Part 2/147

Processed Sun May 21 11:17:56 2017 by ELM ver.2012-10-06 from 001__elm20170521_091030__dat00.bin

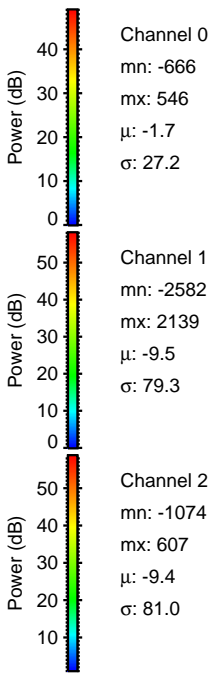
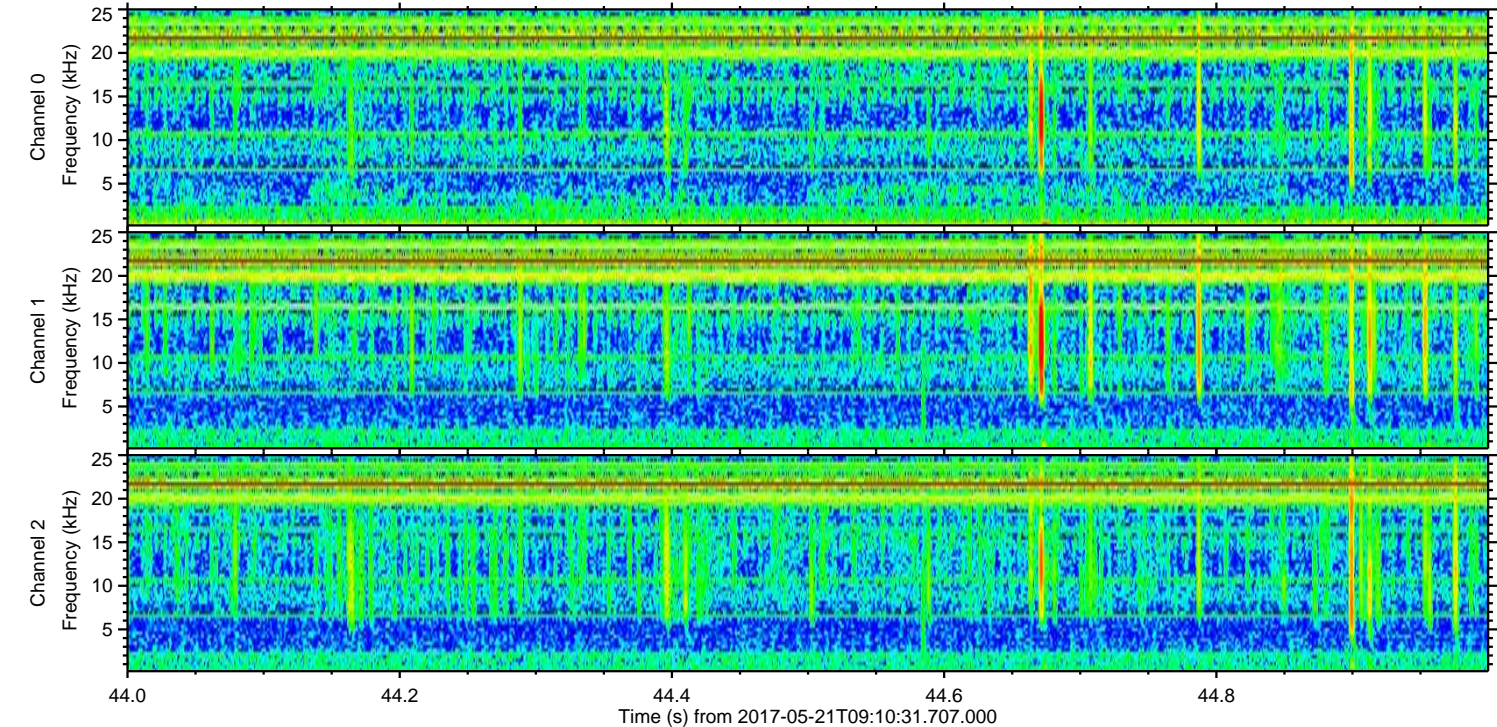
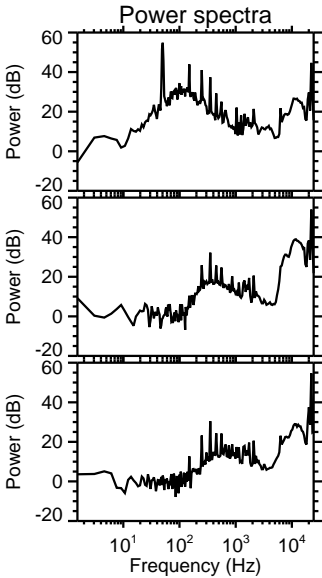
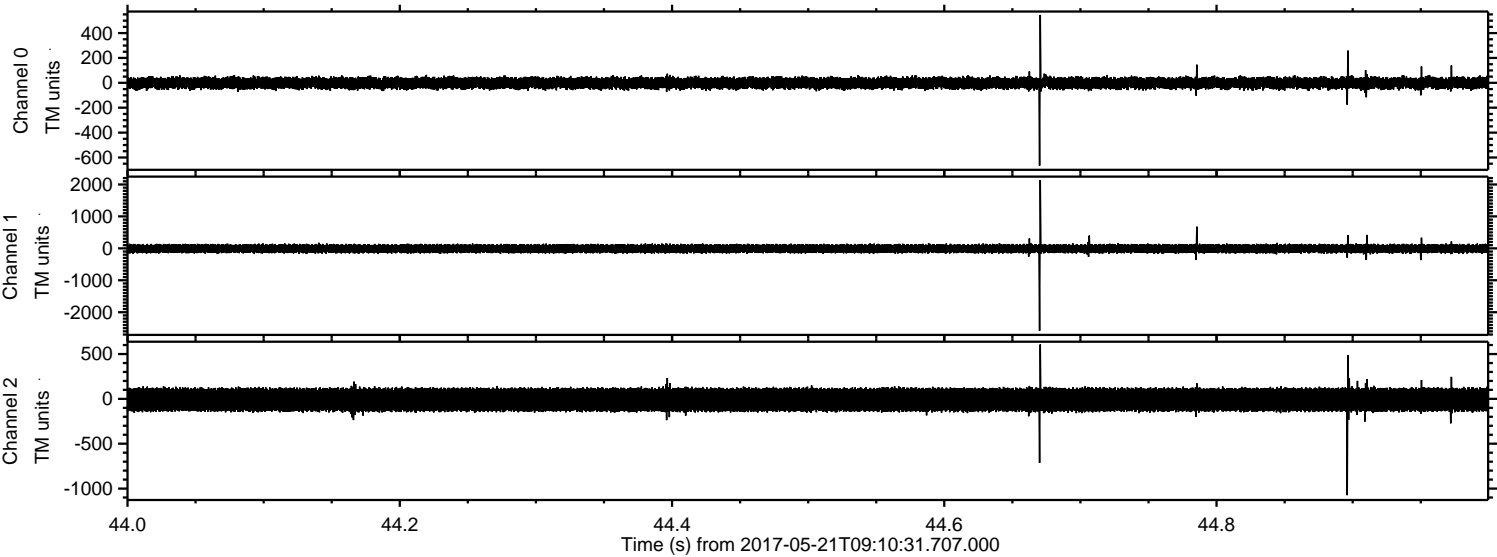


Processed Sun May 21 11:17:57 2017 by ELM ver.2012-10-06 from 001__elm20170521_091030__dat00.bin

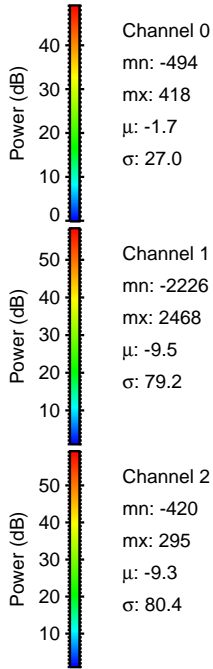
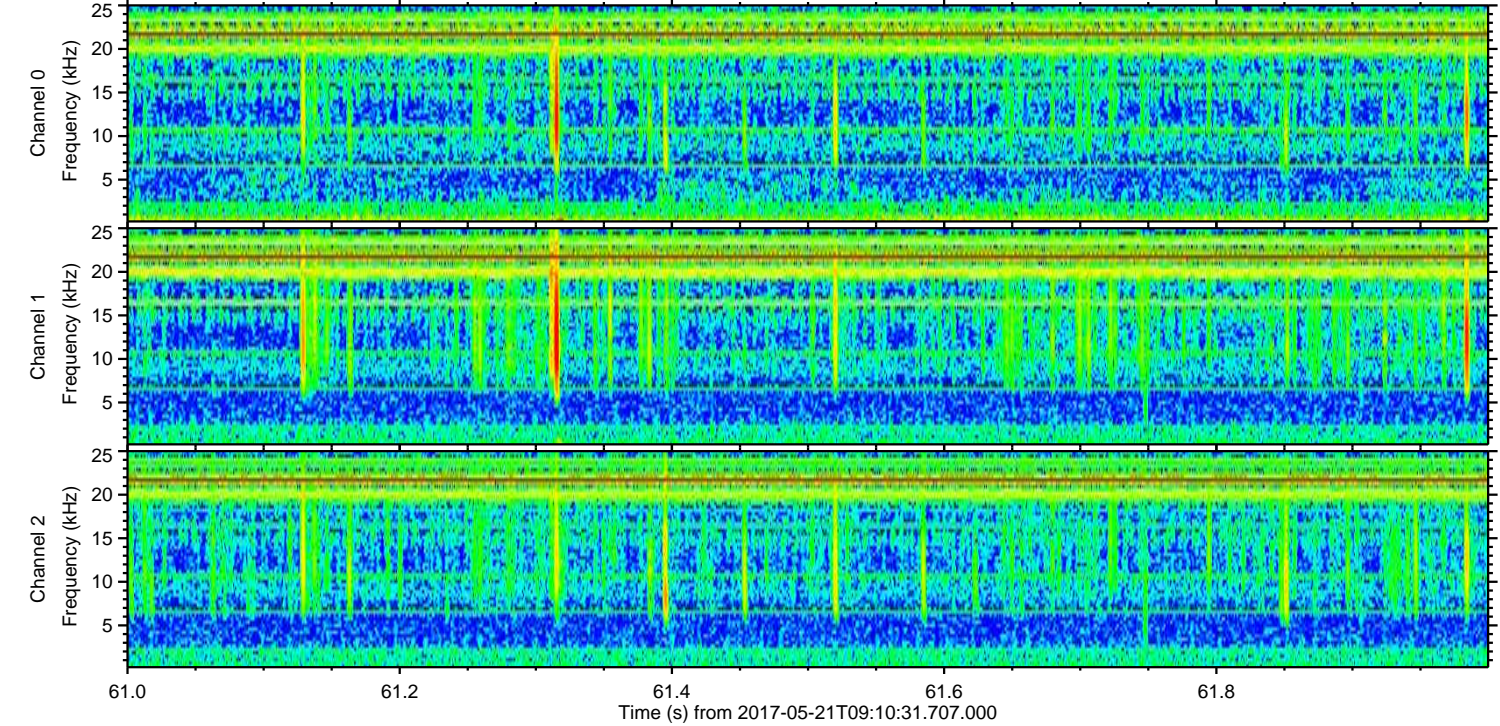
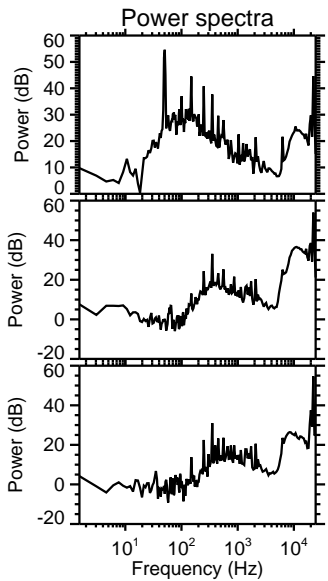
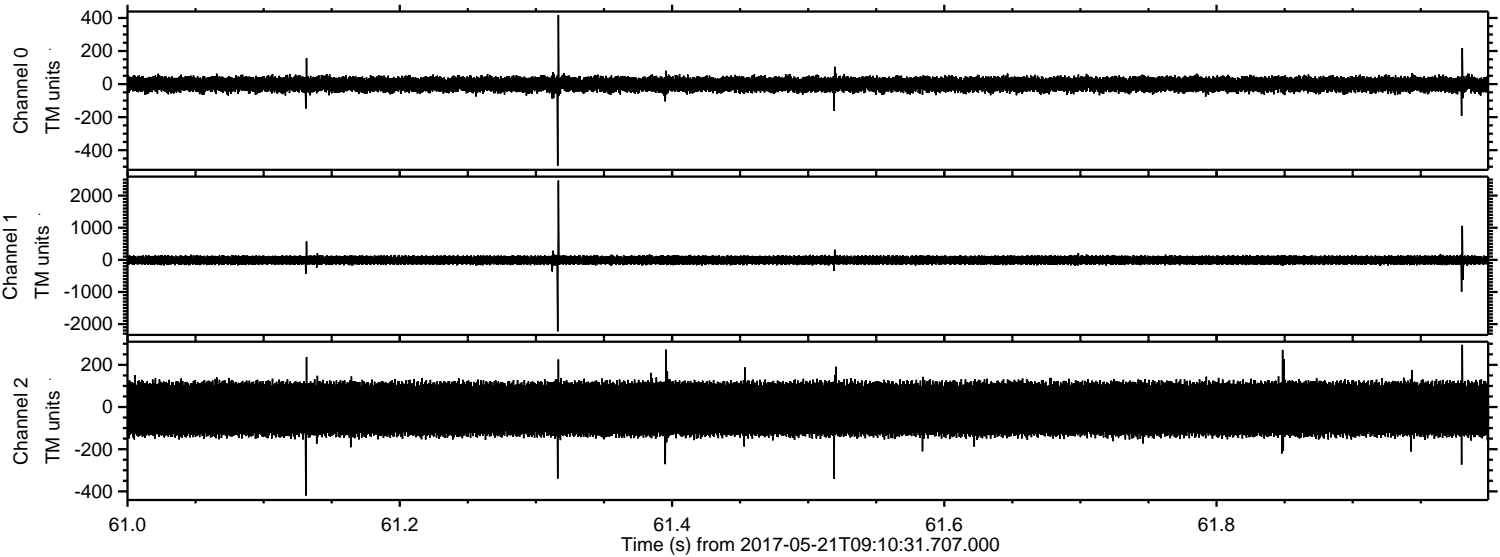


ELMAVAN 3D WAVEFORMS (Measured data sampled at 50 kHz) 51000 packets of 144 samples from 2017-05-21T09:10:31.707.000. Part 45/147

Processed Sun May 21 11:17:58 2017 by ELM ver.2012-10-06 from 001__elm20170521_091030__dat00.bin



Processed Sun May 21 11:17:58 2017 by ELM ver.2012-10-06 from 001__elm20170521_091030__dat00.bin



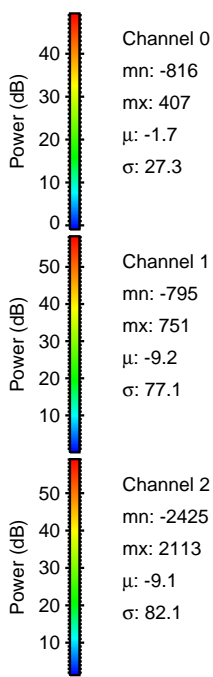
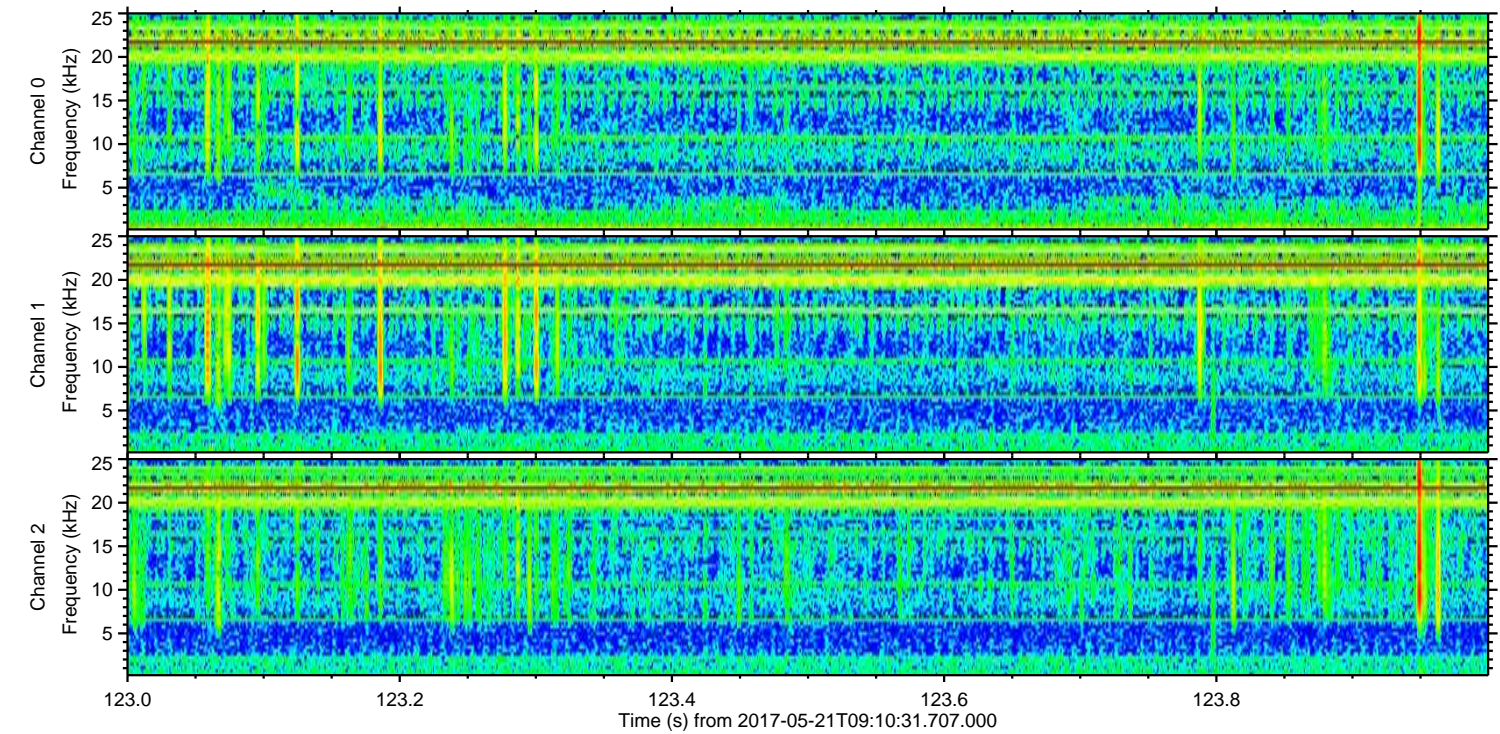
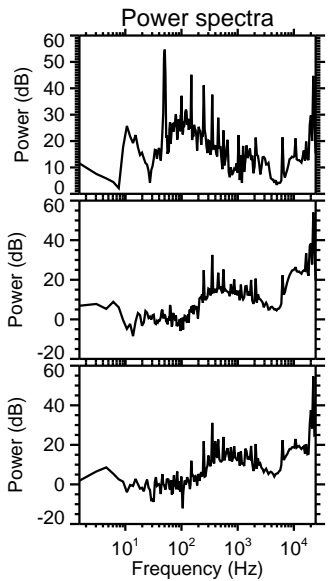
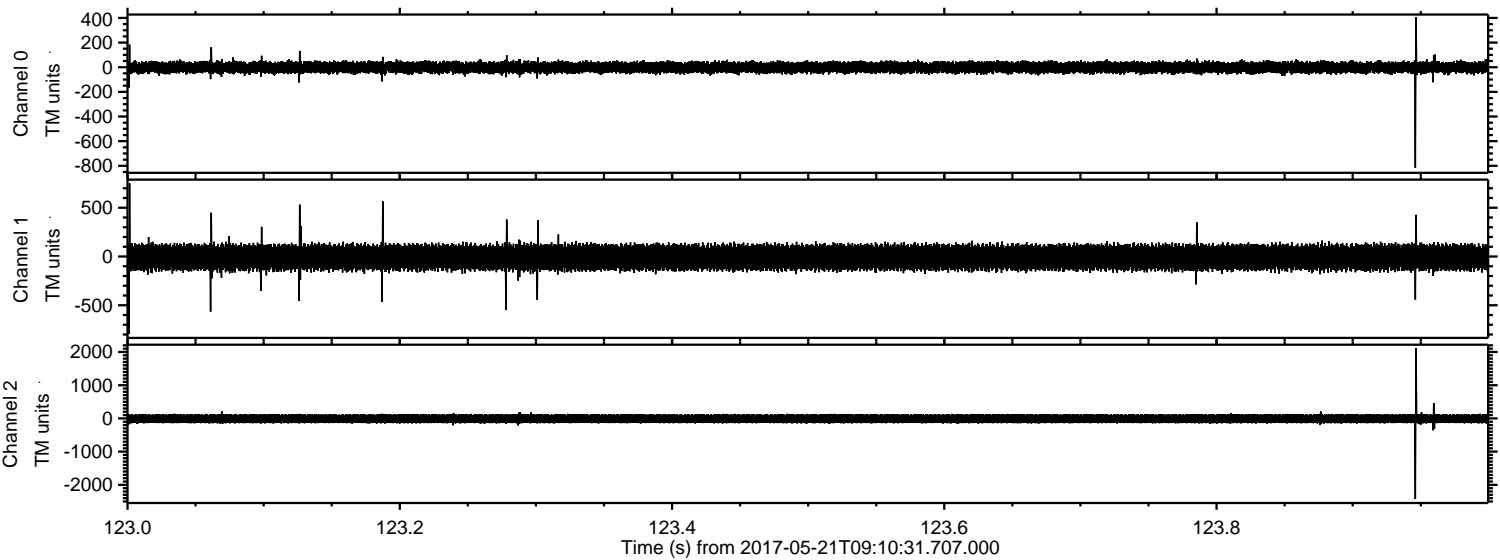
Channel 0
mn: -494
mx: 418
 μ : -1.7
 σ : 27.0

Channel 1
mn: -2226
mx: 2468
 μ : -9.5
 σ : 79.2

Channel 2
mn: -420
mx: 295
 μ : -9.3
 σ : 80.4

ELMAVAN 3D WAVEFORMS (Measured data sampled at 50 kHz) 51000 packets of 144 samples from 2017-05-21T09:10:31.707.000. Part 124/147

Processed Sun May 21 11:17:59 2017 by ELM ver.2012-10-06 from 001__elm20170521_091030__dat00.bin

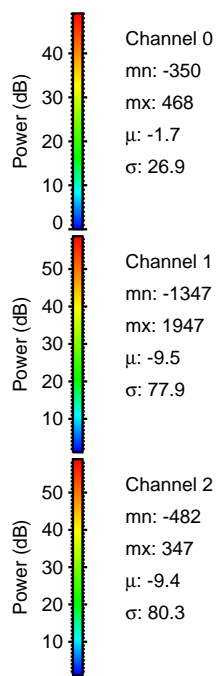
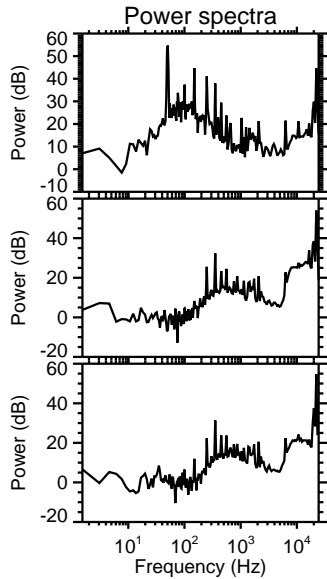
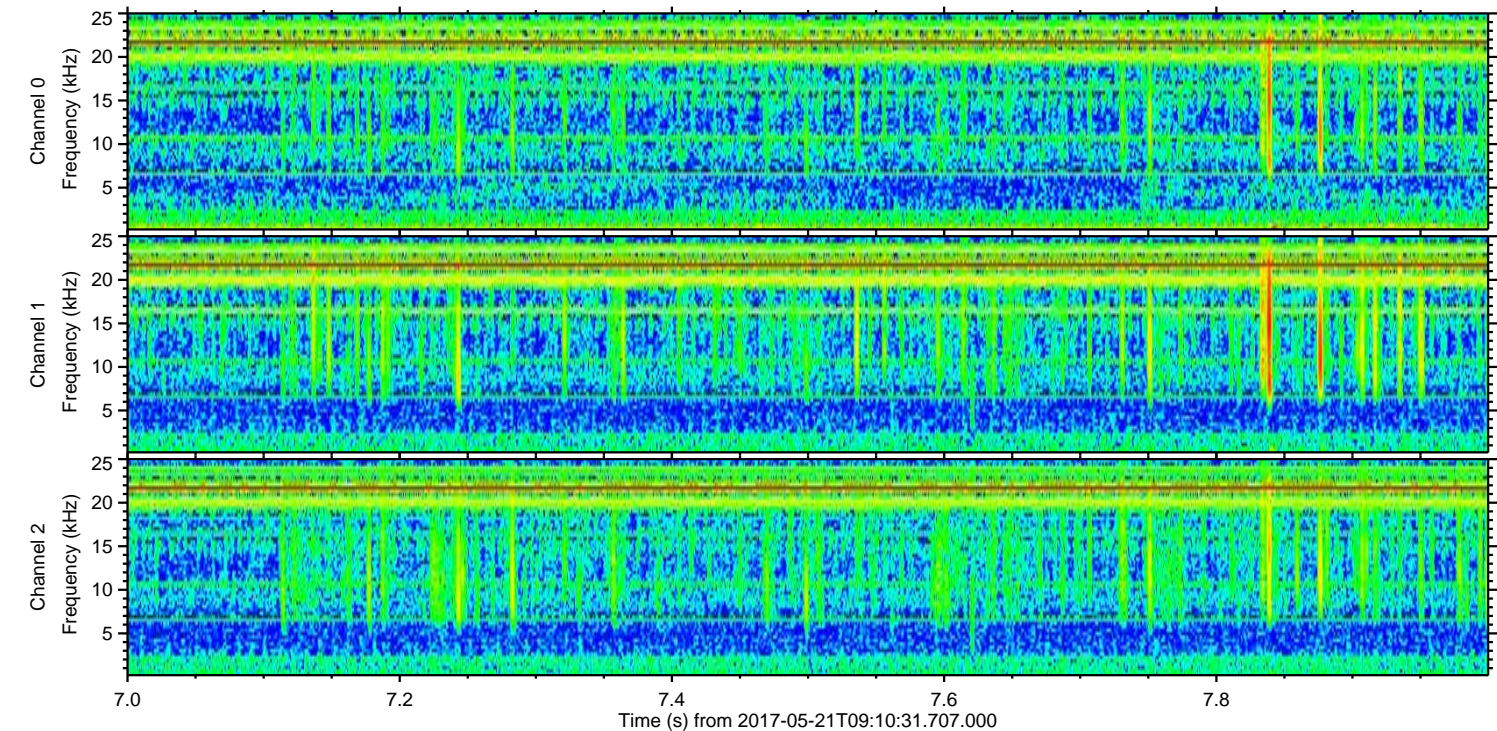
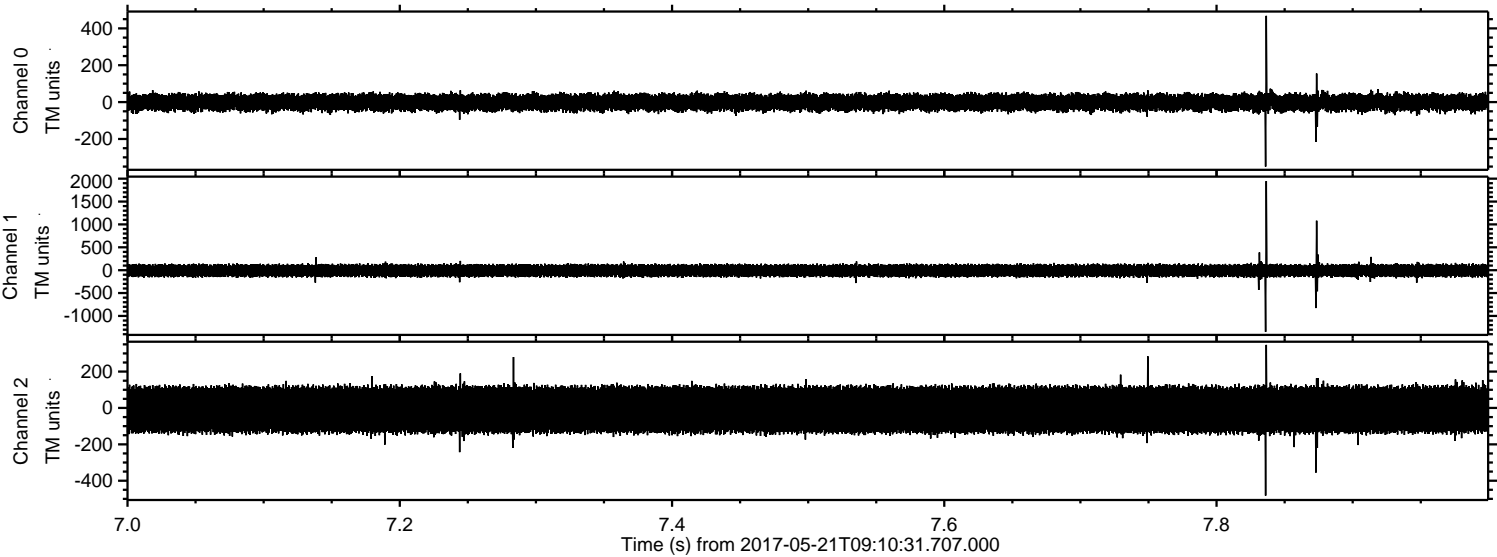


Channel 0
mn: -816
mx: 407
 μ : -1.7
 σ : 27.3

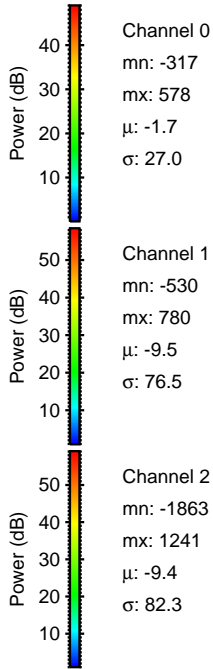
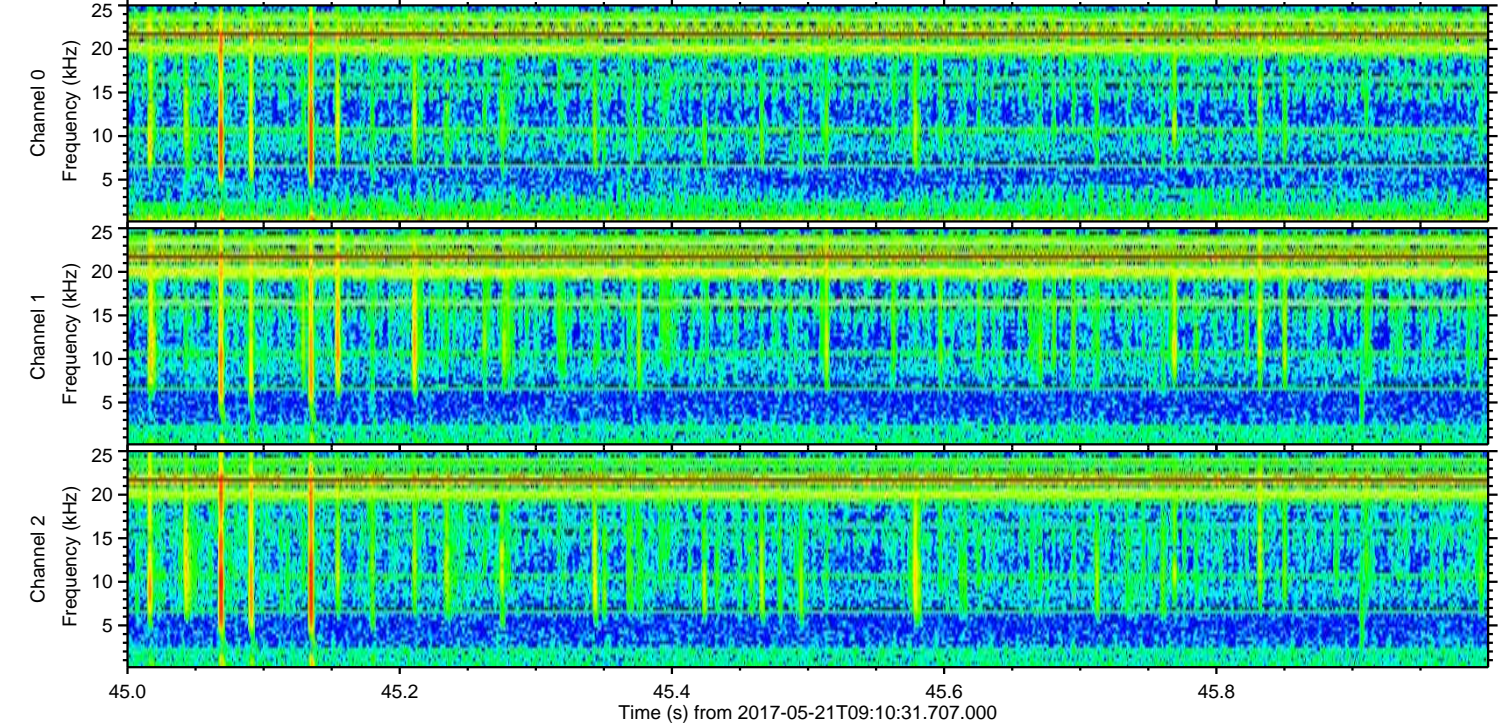
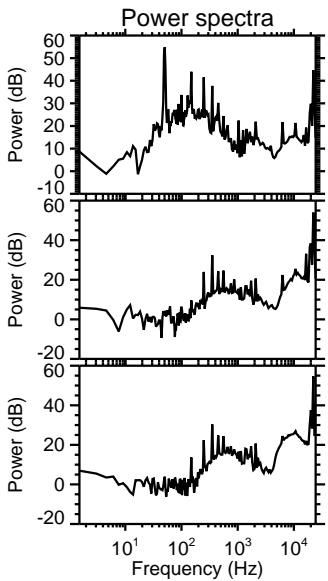
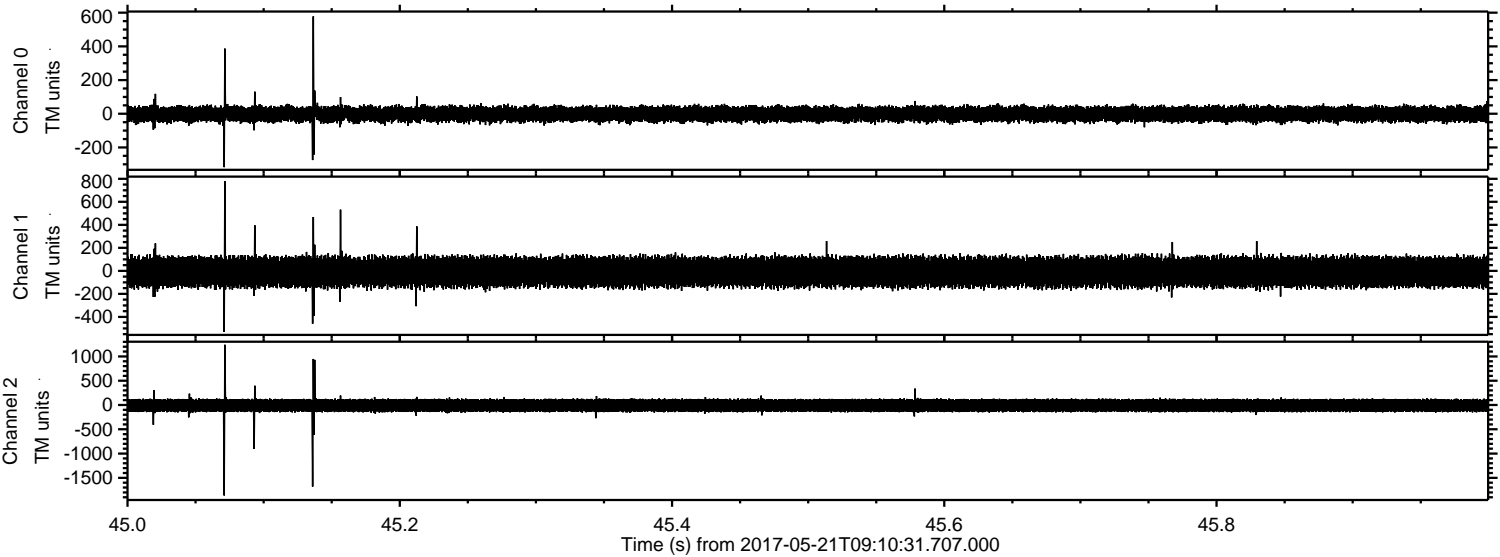
Channel 1
mn: -795
mx: 751
 μ : -9.2
 σ : 77.1

Channel 2
mn: -2425
mx: 2113
 μ : -9.1
 σ : 82.1

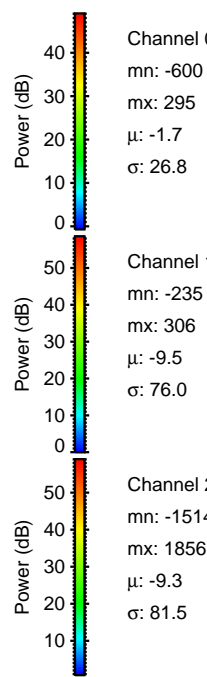
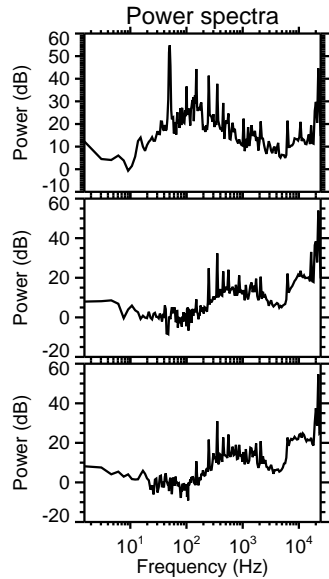
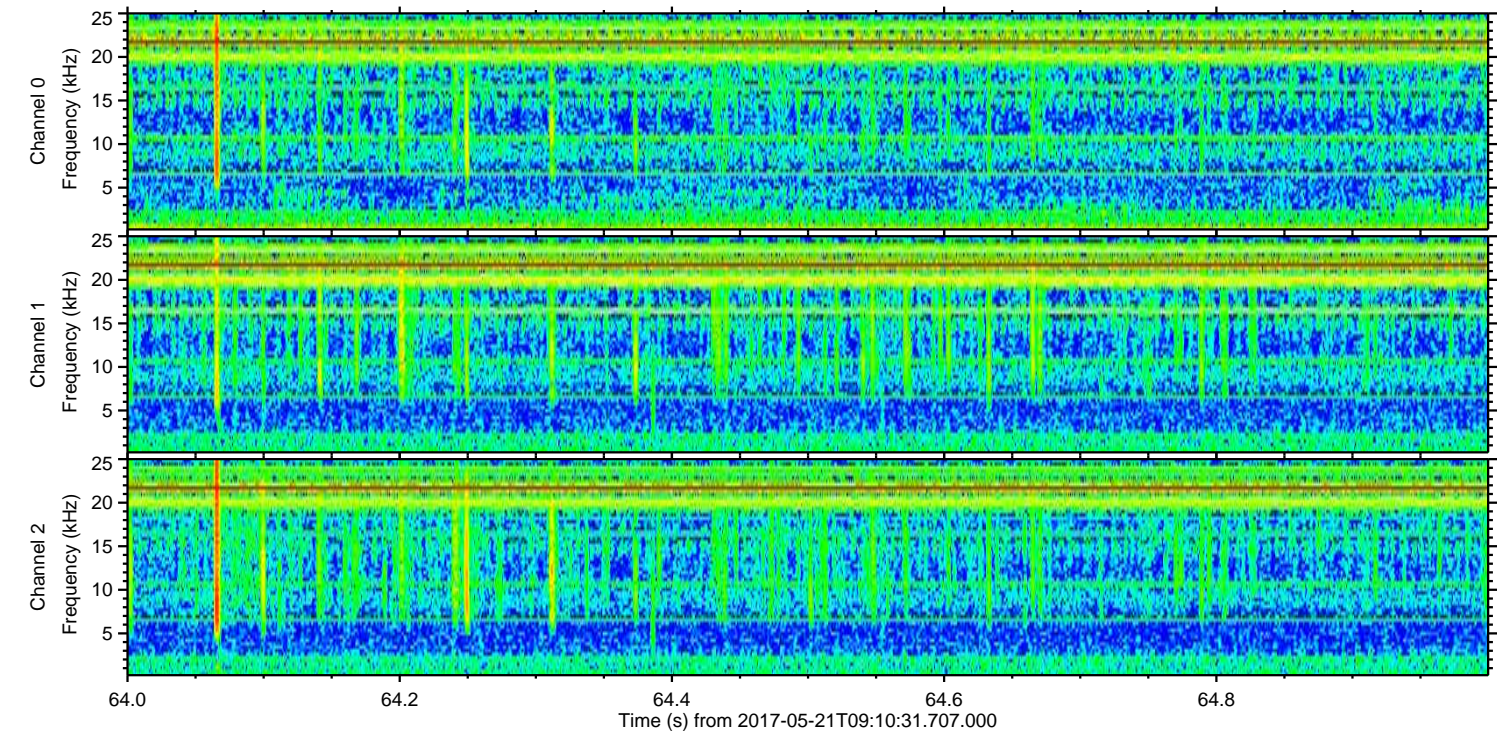
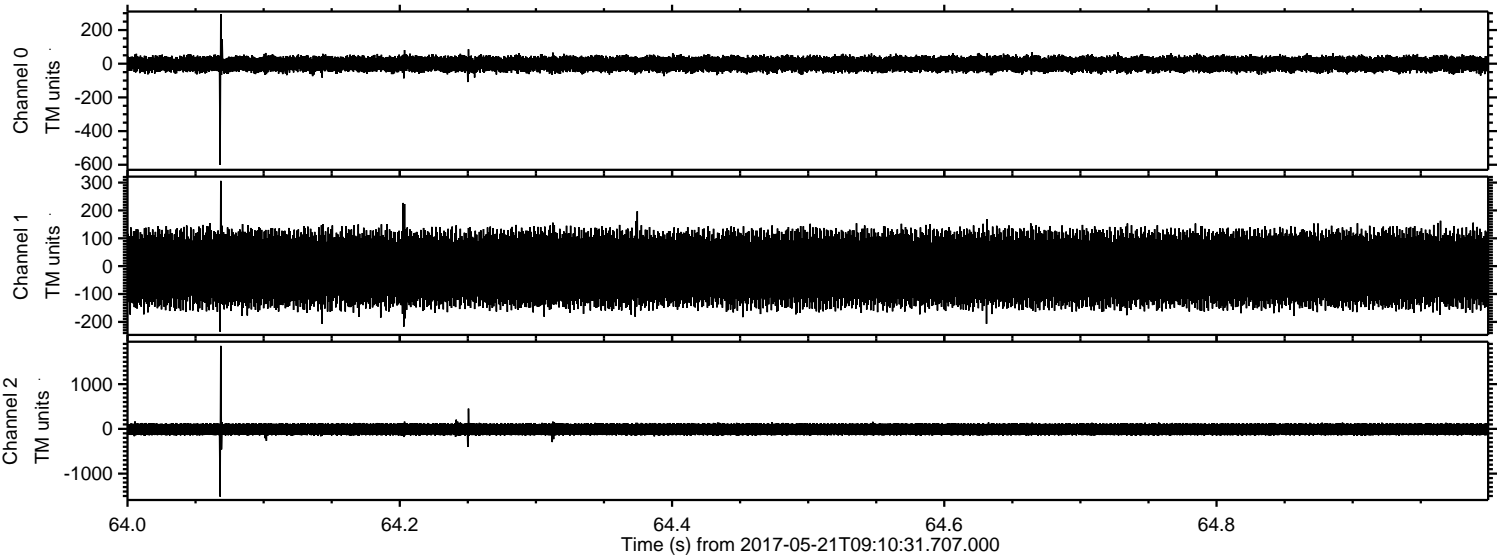
Processed Sun May 21 11:17:59 2017 by ELM ver.2012-10-06 from 001__elm20170521_091030__dat00.bin



Processed Sun May 21 11:18:00 2017 by ELM ver.2012-10-06 from 001__elm20170521_091030__dat00.bin



Processed Sun May 21 11:18:01 2017 by ELM ver.2012-10-06 from 001__elm20170521_091030__dat00.bin



Channel 0
mn: -600
mx: 295
 μ : -1.7
 σ : 26.8

Channel 1
mn: -235
mx: 306
 μ : -9.5
 σ : 76.0

Channel 2
mn: -1514
mx: 1856
 μ : -9.3
 σ : 81.5

Processed Sun May 21 11:18:01 2017 by ELM ver.2012-10-06 from 001__elm20170521_091030__dat00.bin

