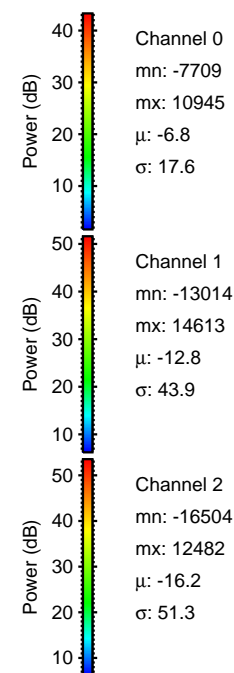
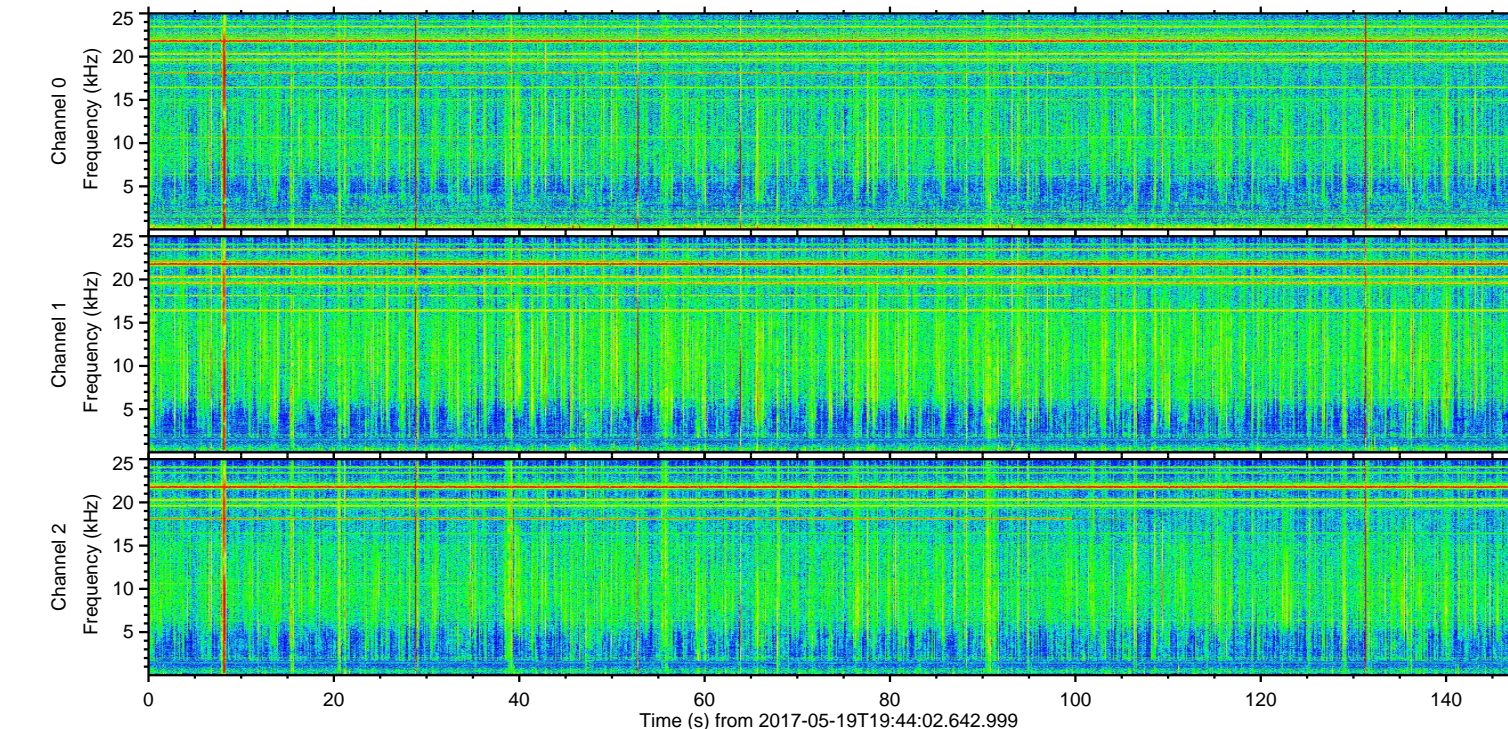
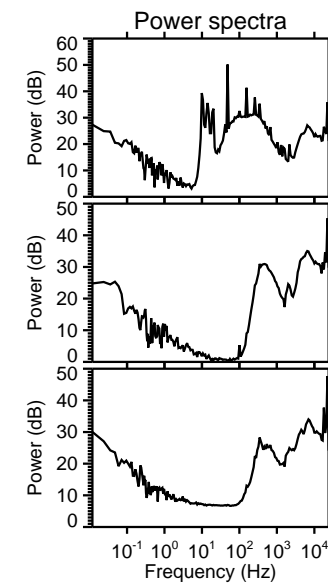
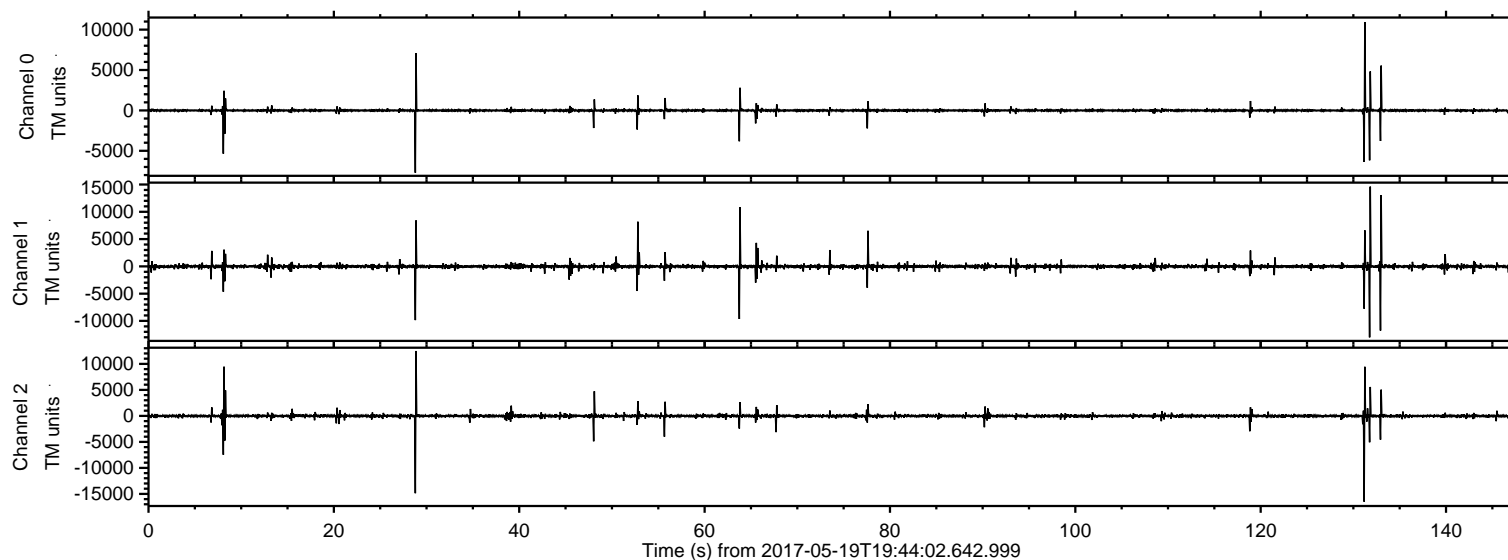


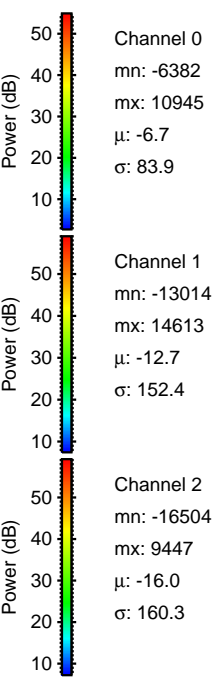
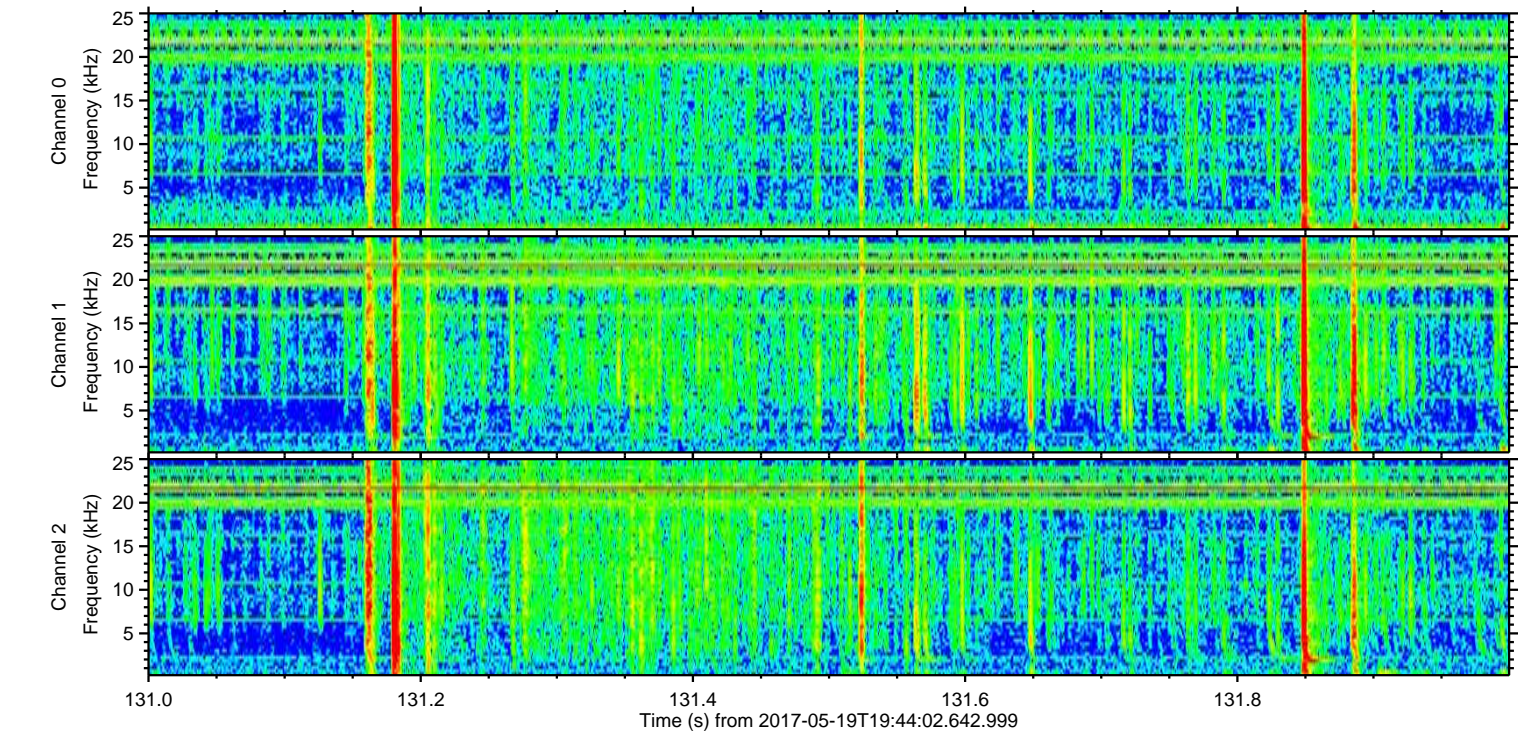
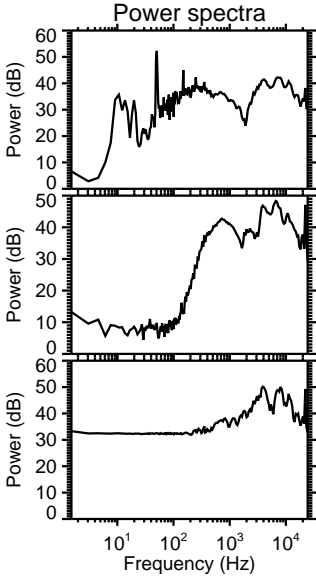
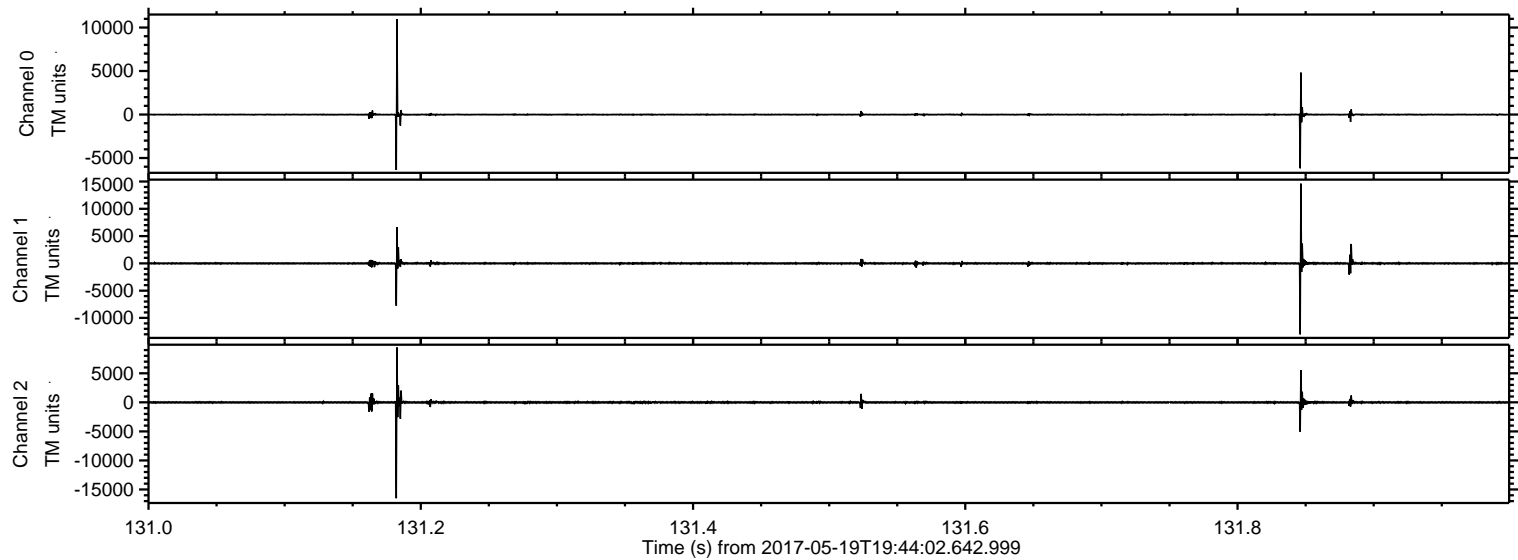
ELMAVAN 3D WAVEFORMS (Measured data sampled at 50 kHz) 51000 packets of 144 samples from 2017-05-19T19:44:02.642.999.

Processed Fri May 19 21:52:00 2017 by ELM ver.2012-10-06 from 001__elm20170519_194401__dat00.bin



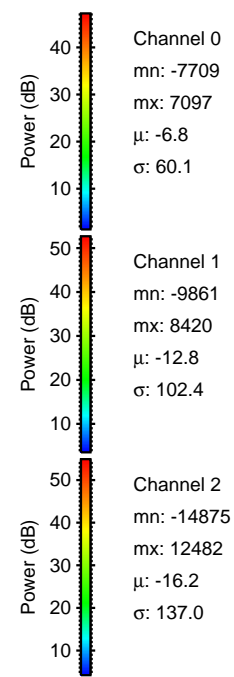
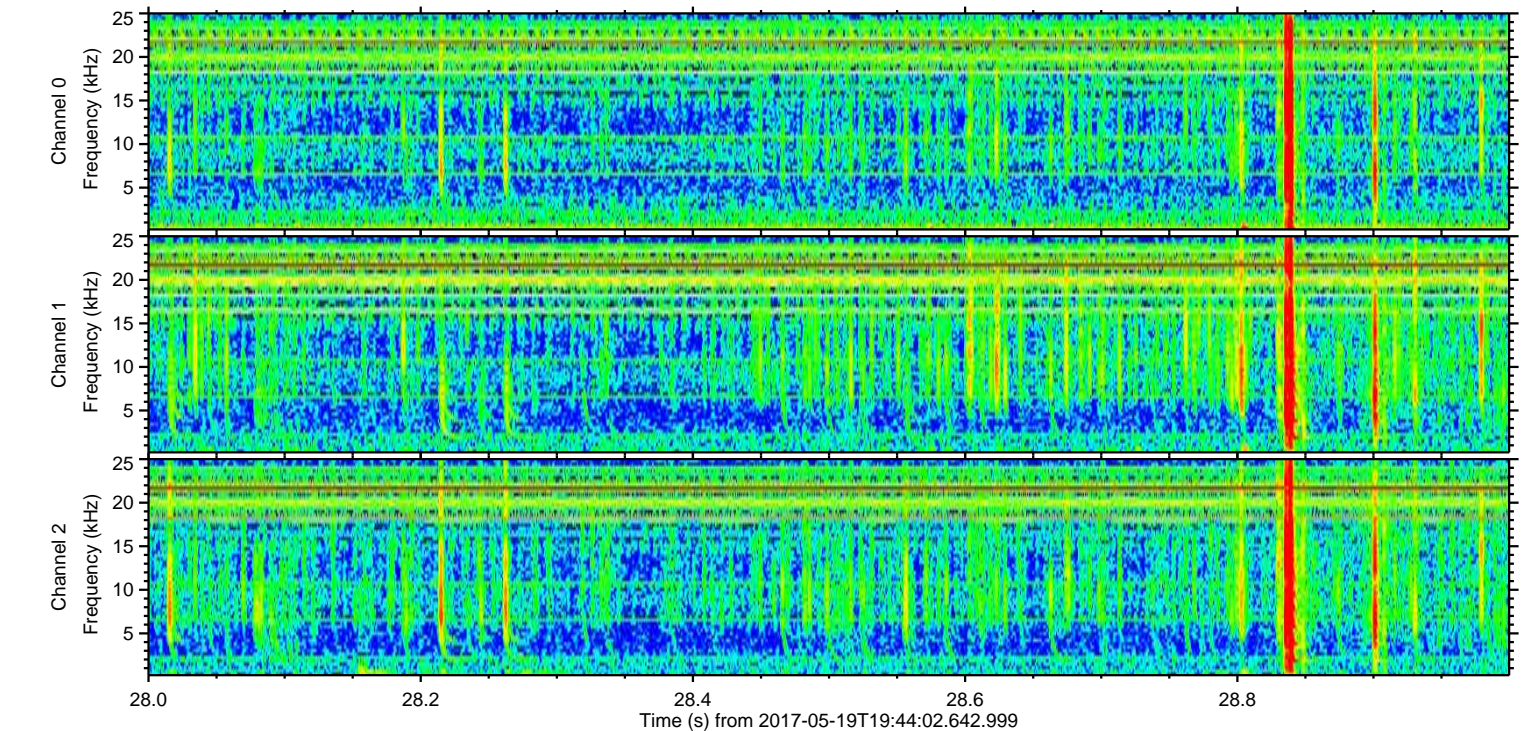
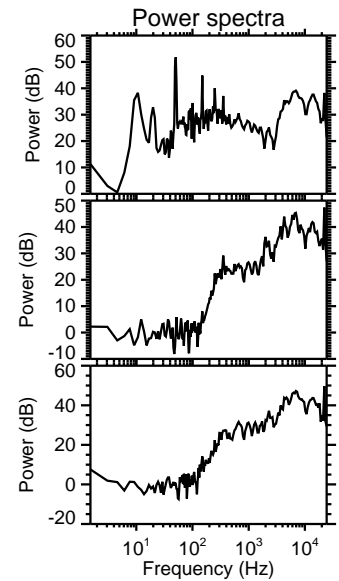
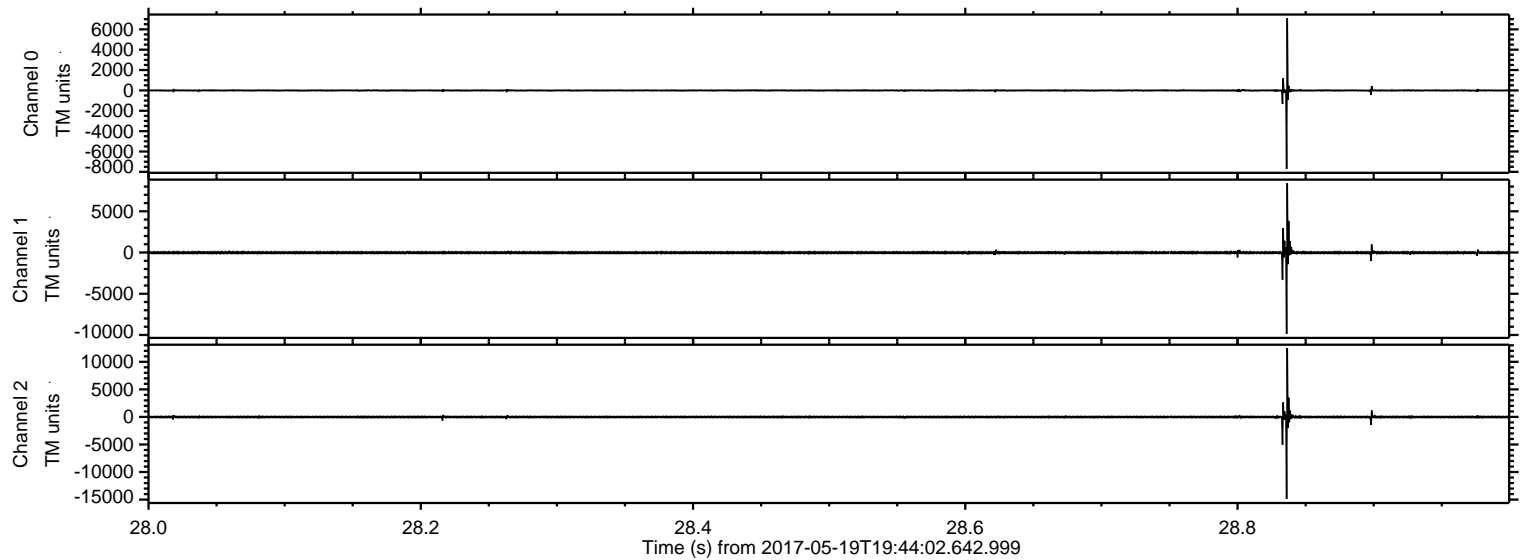
ELMAVAN 3D WAVEFORMS (Measured data sampled at 50 kHz) 51000 packets of 144 samples from 2017-05-19T19:44:02.642.999. Part 132/147

Processed Fri May 19 21:52:06 2017 by ELM ver.2012-10-06 from 001__elm20170519_194401__dat00.bin



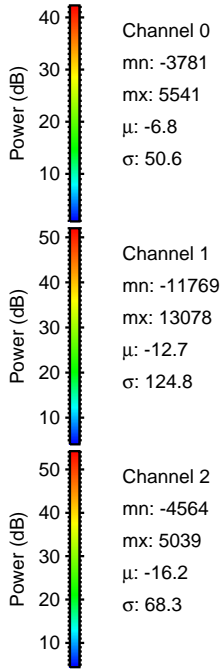
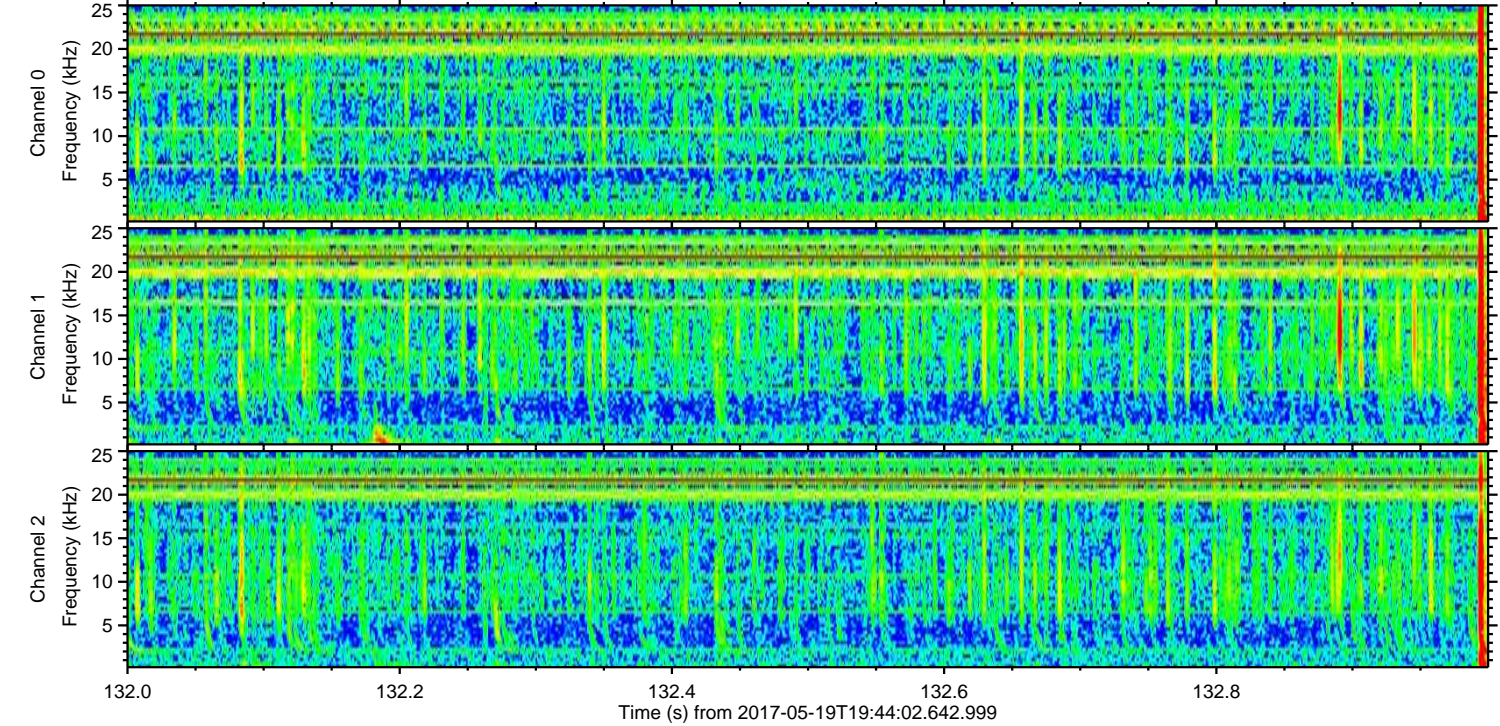
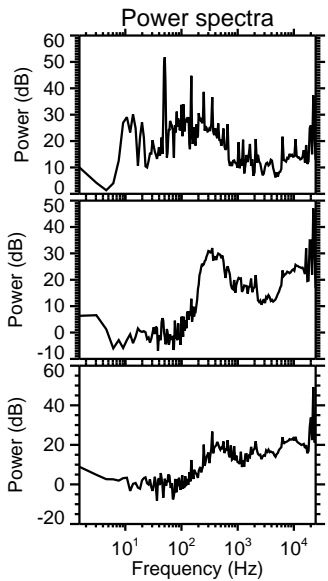
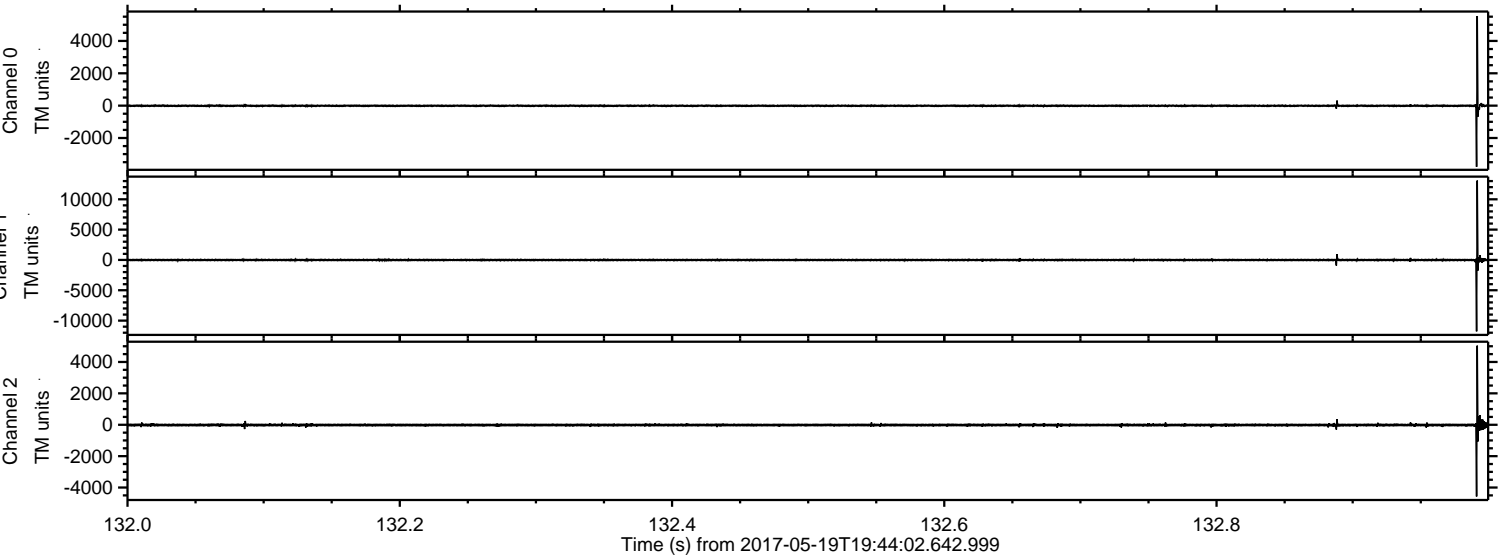
ELMAVAN 3D WAVEFORMS (Measured data sampled at 50 kHz) 51000 packets of 144 samples from 2017-05-19T19:44:02.642.999. Part 29/147

Processed Fri May 19 21:52:07 2017 by ELM ver.2012-10-06 from 001__elm20170519_194401__dat00.bin

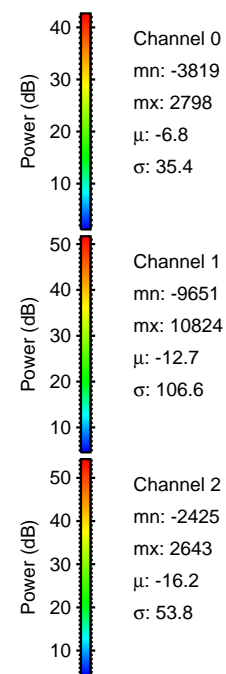
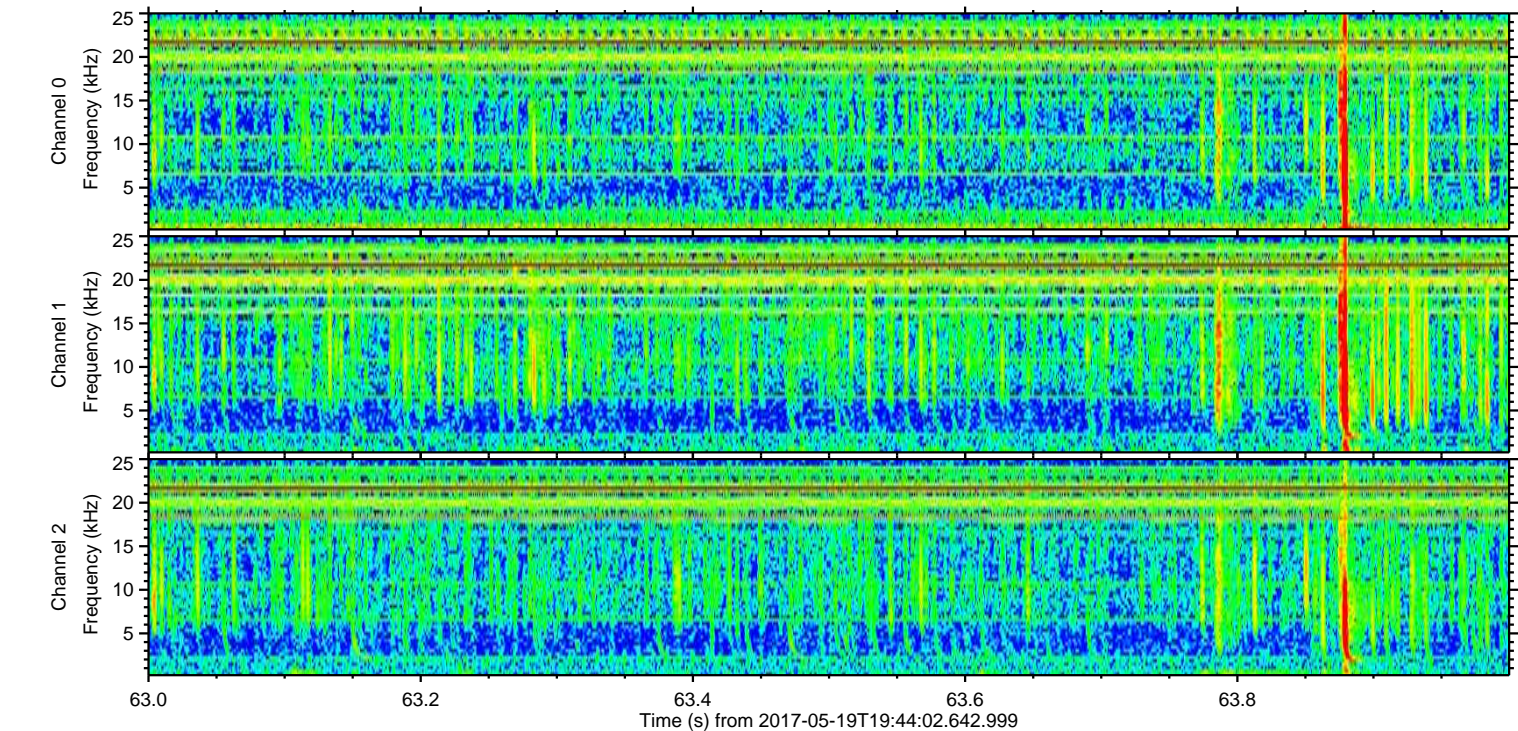
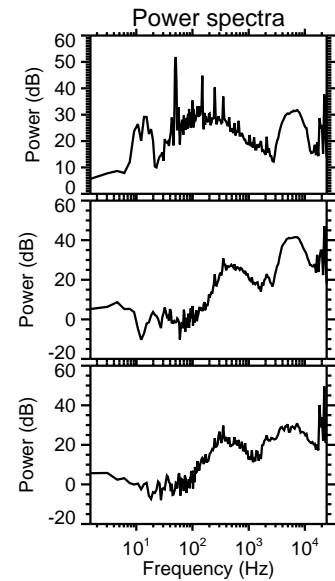
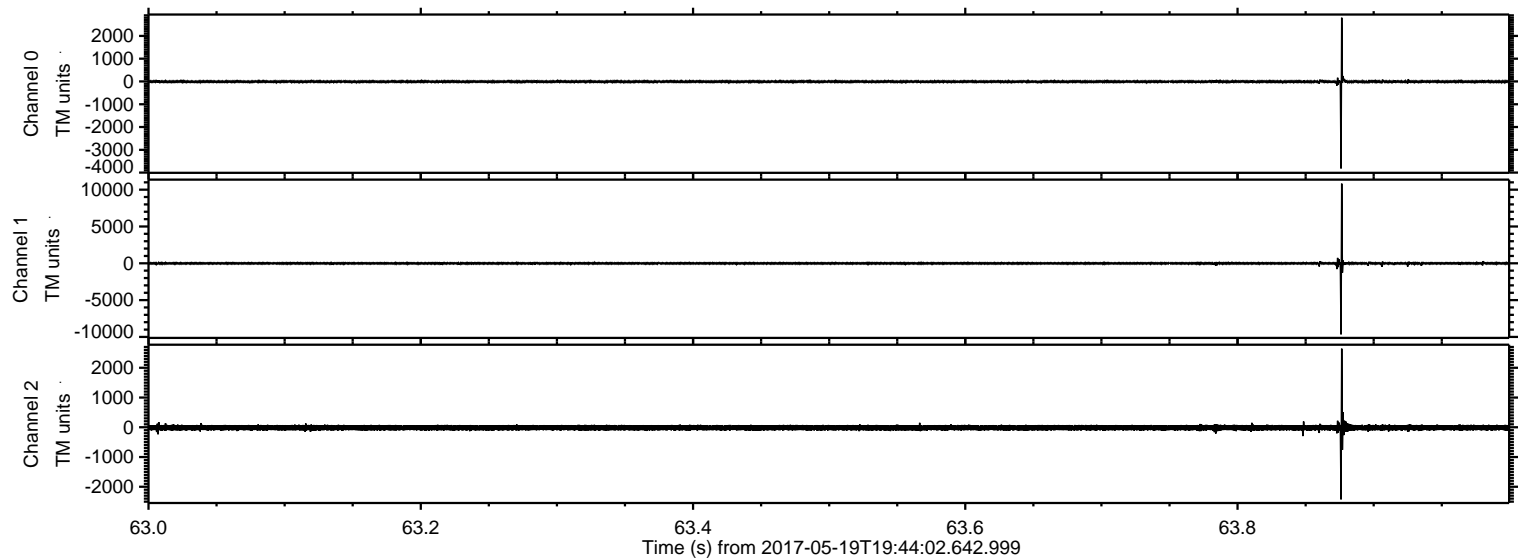


ELMAVAN 3D WAVEFORMS (Measured data sampled at 50 kHz) 51000 packets of 144 samples from 2017-05-19T19:44:02.642.999. Part 133/147

Processed Fri May 19 21:52:08 2017 by ELM ver.2012-10-06 from 001__elm20170519_194401__dat00.bin

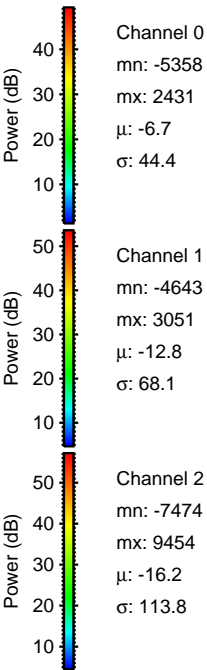
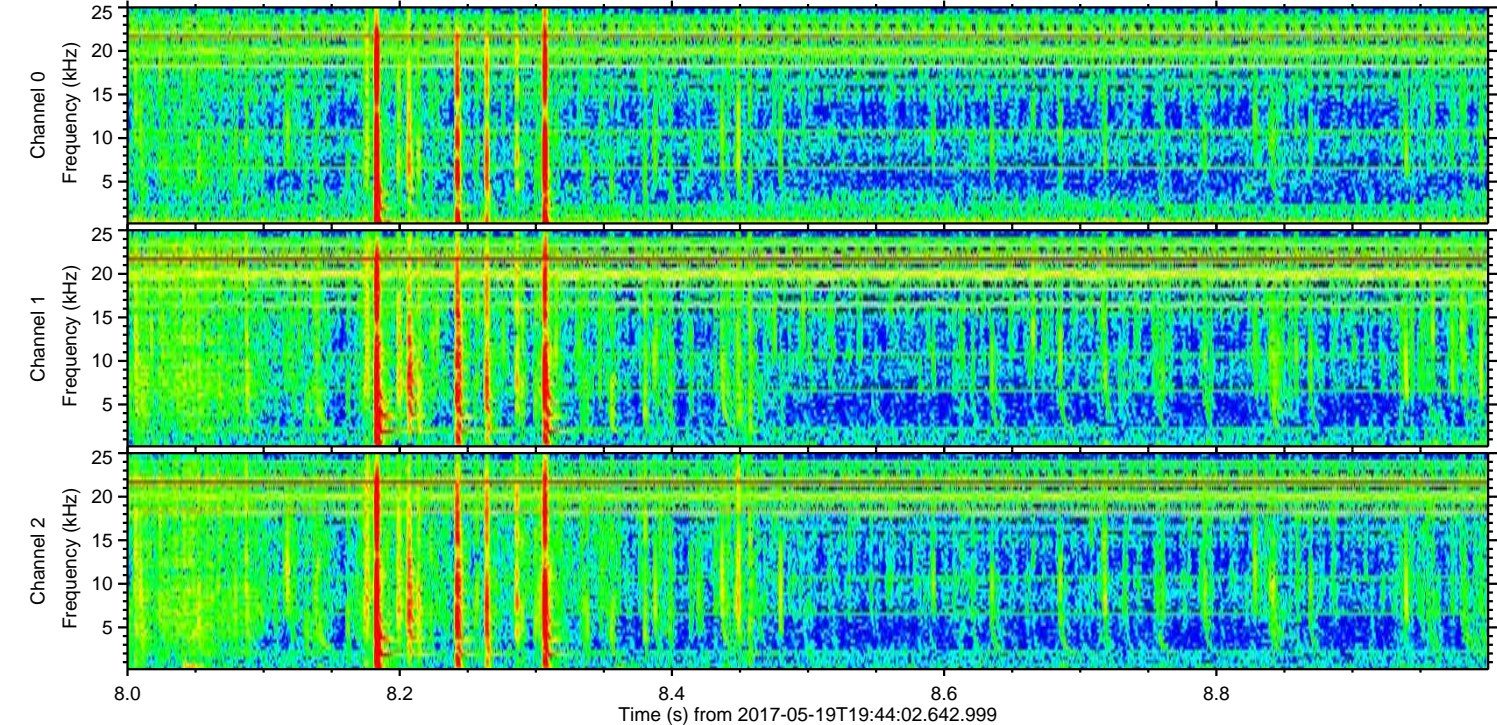
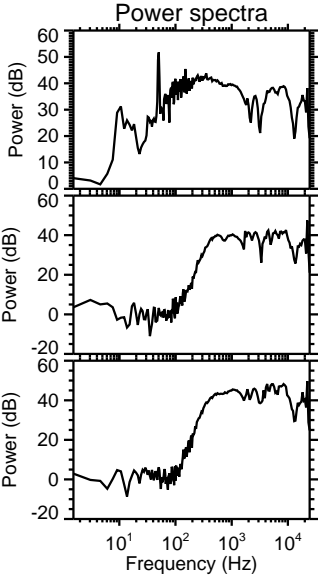
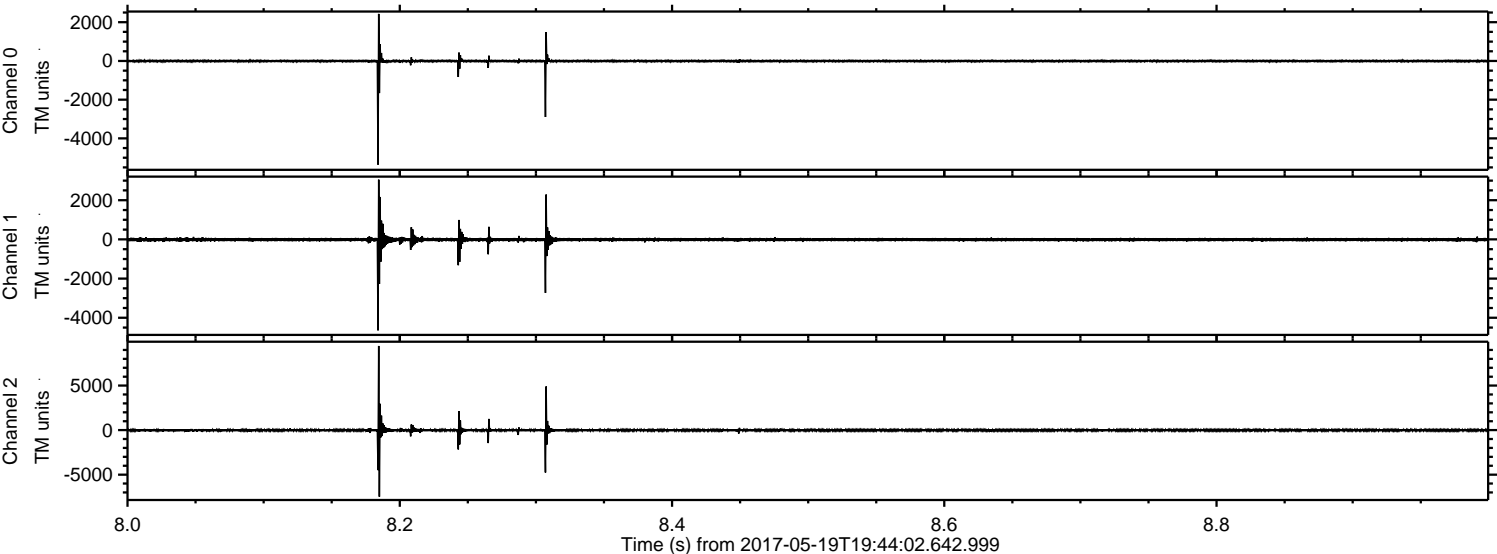


Processed Fri May 19 21:52:08 2017 by ELM ver.2012-10-06 from 001__elm20170519_194401__dat00.bin



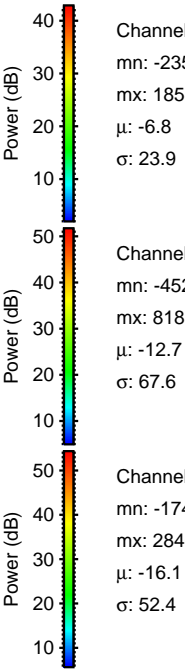
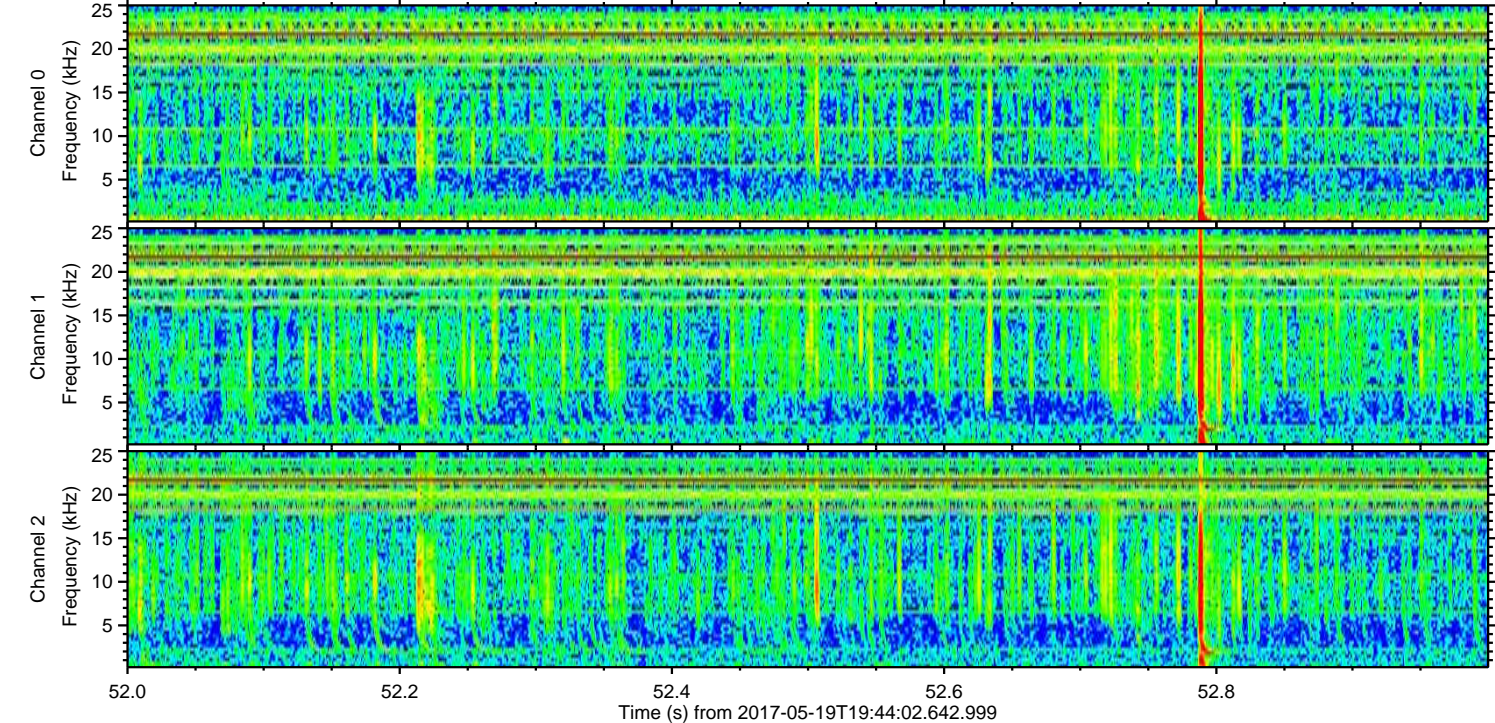
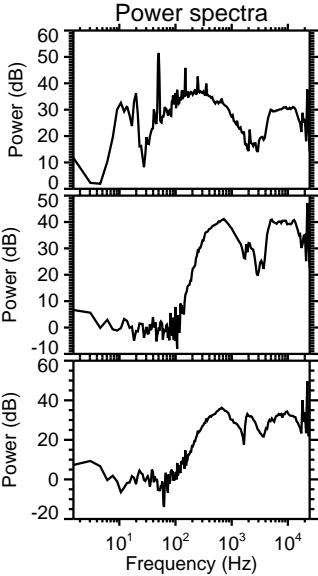
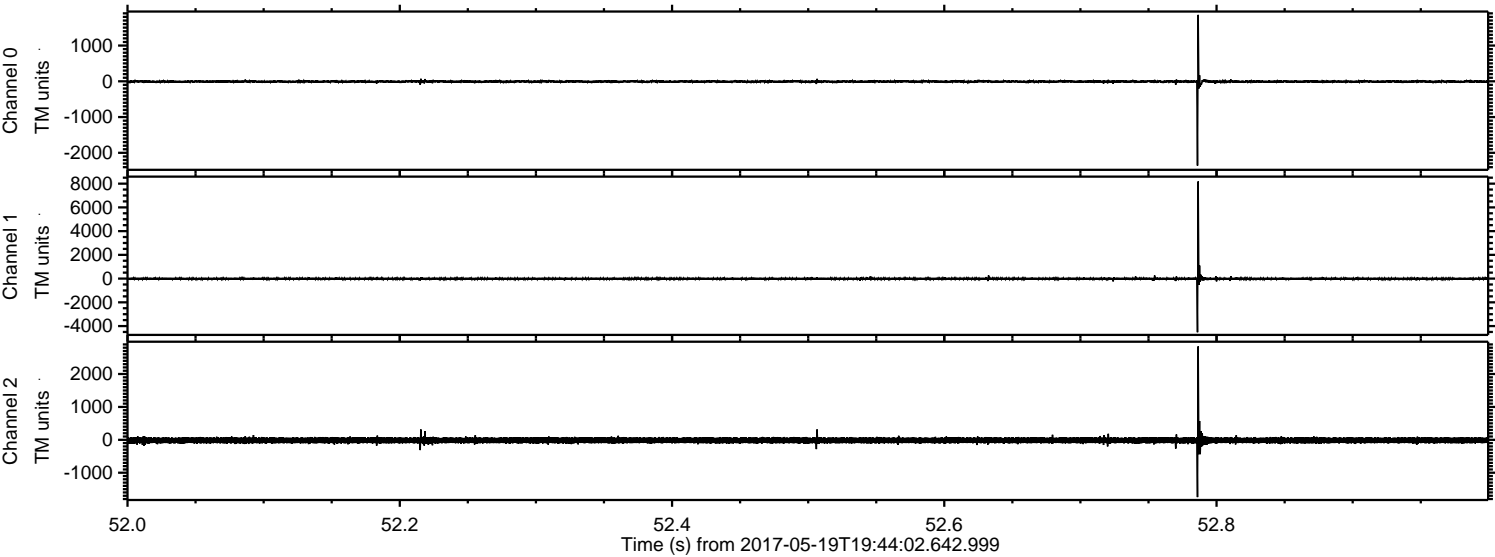
ELMAVAN 3D WAVEFORMS (Measured data sampled at 50 kHz) 51000 packets of 144 samples from 2017-05-19T19:44:02.642.999. Part 9/147

Processed Fri May 19 21:52:09 2017 by ELM ver.2012-10-06 from 001__elm20170519_194401__dat00.bin

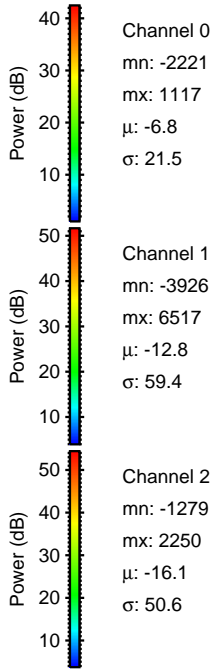
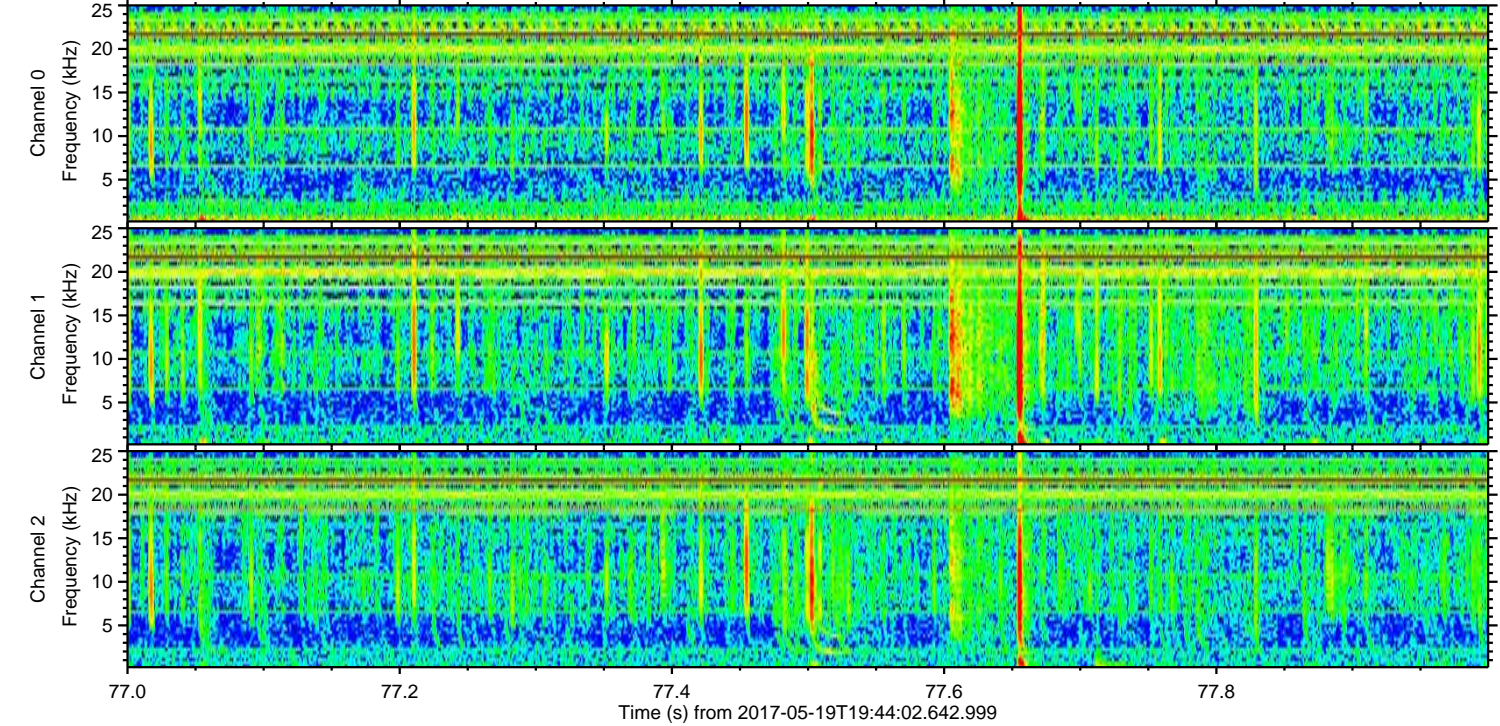
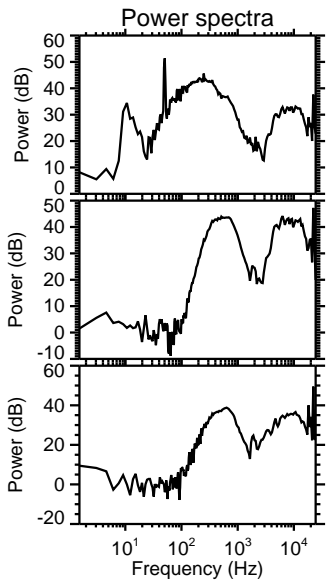
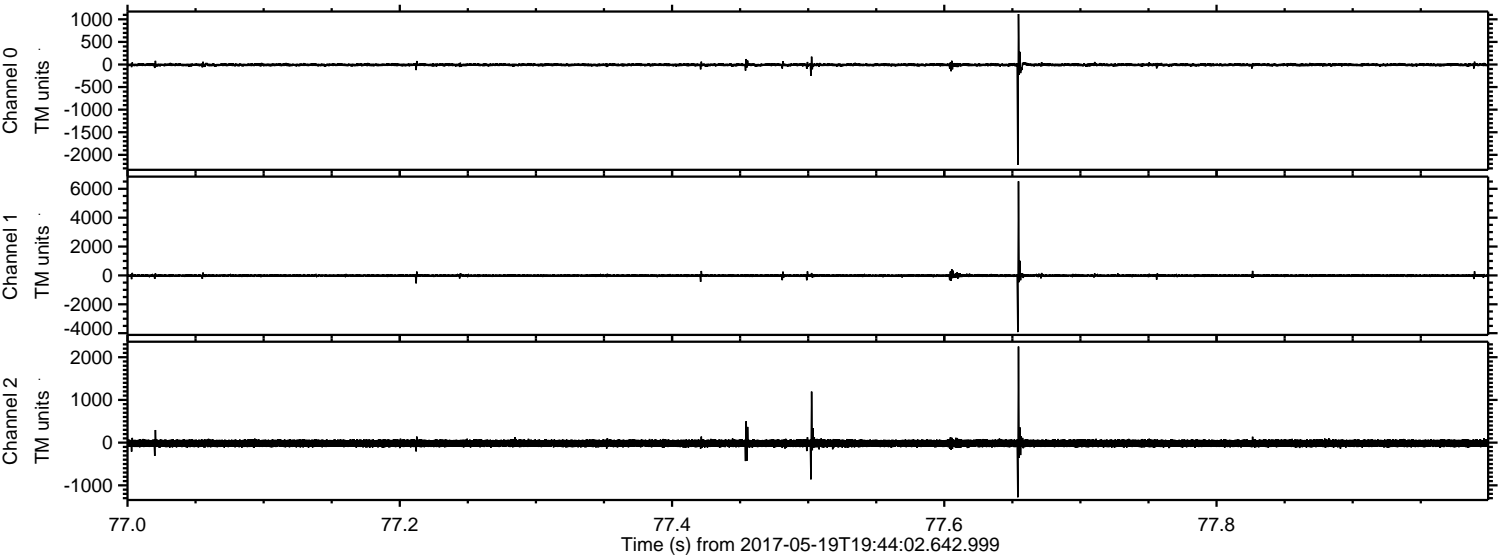


ELMAVAN 3D WAVEFORMS (Measured data sampled at 50 kHz) 51000 packets of 144 samples from 2017-05-19T19:44:02.642.999. Part 53/147

Processed Fri May 19 21:52:09 2017 by ELM ver.2012-10-06 from 001__elm20170519_194401__dat00.bin



Processed Fri May 19 21:52:10 2017 by ELM ver.2012-10-06 from 001__elm20170519_194401__dat00.bin

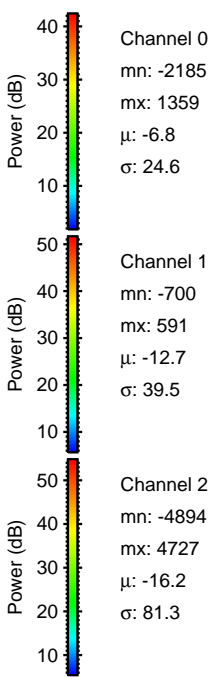
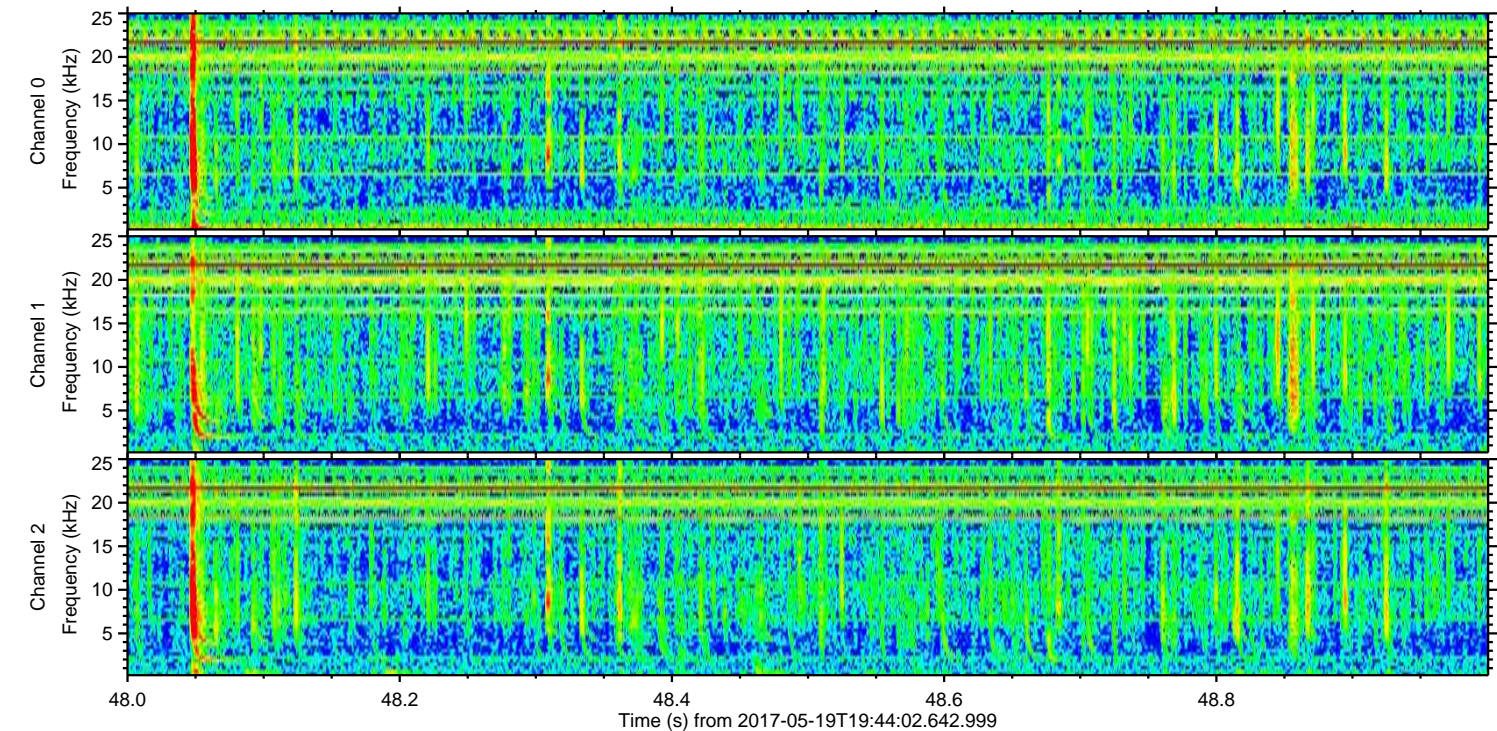
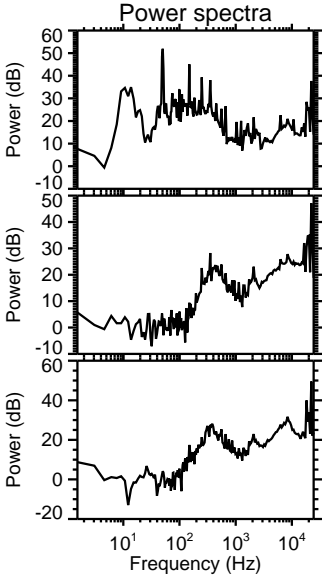
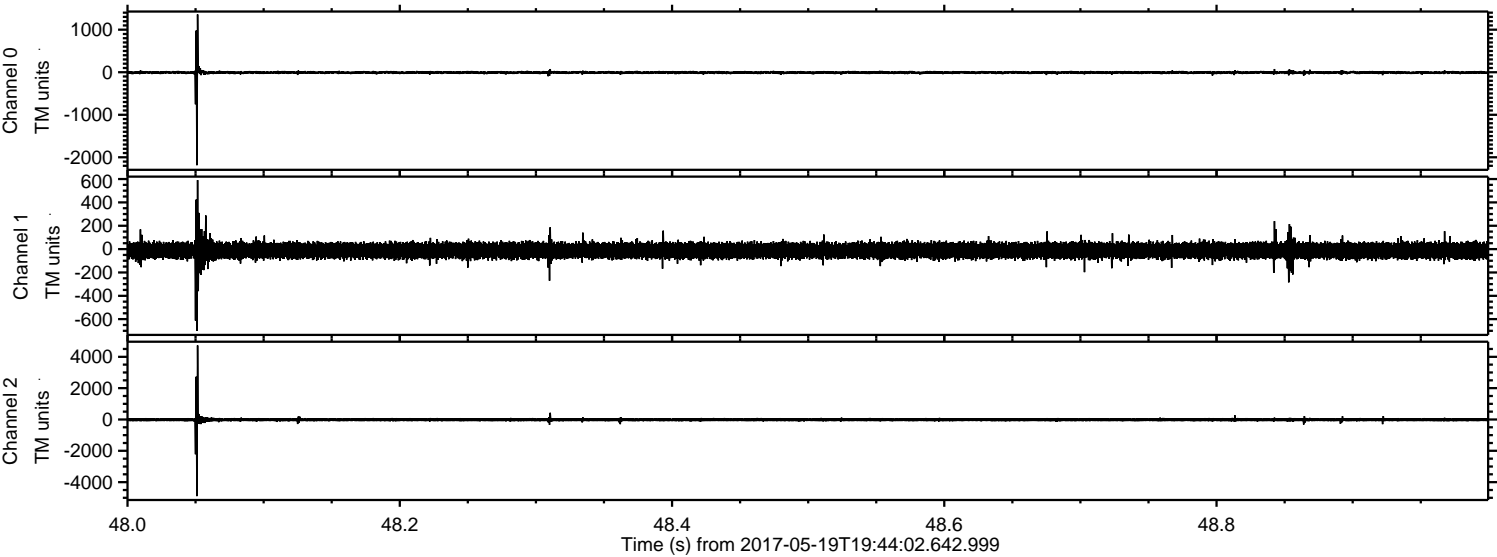


Channel 0
mn: -2221
mx: 1117
 μ : -6.8
 σ : 21.5

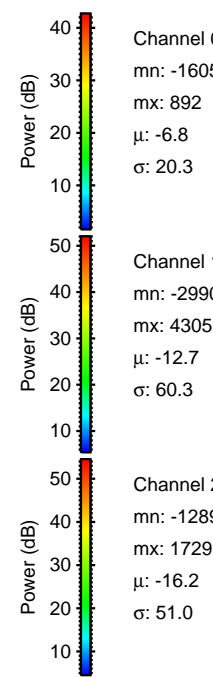
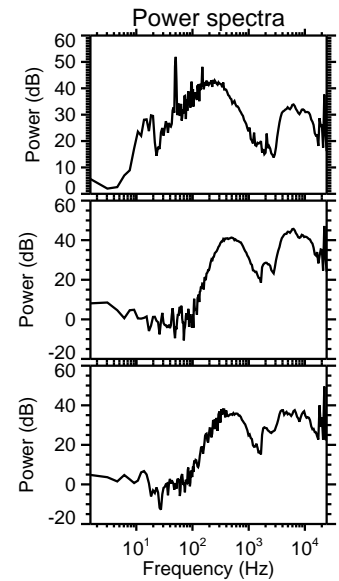
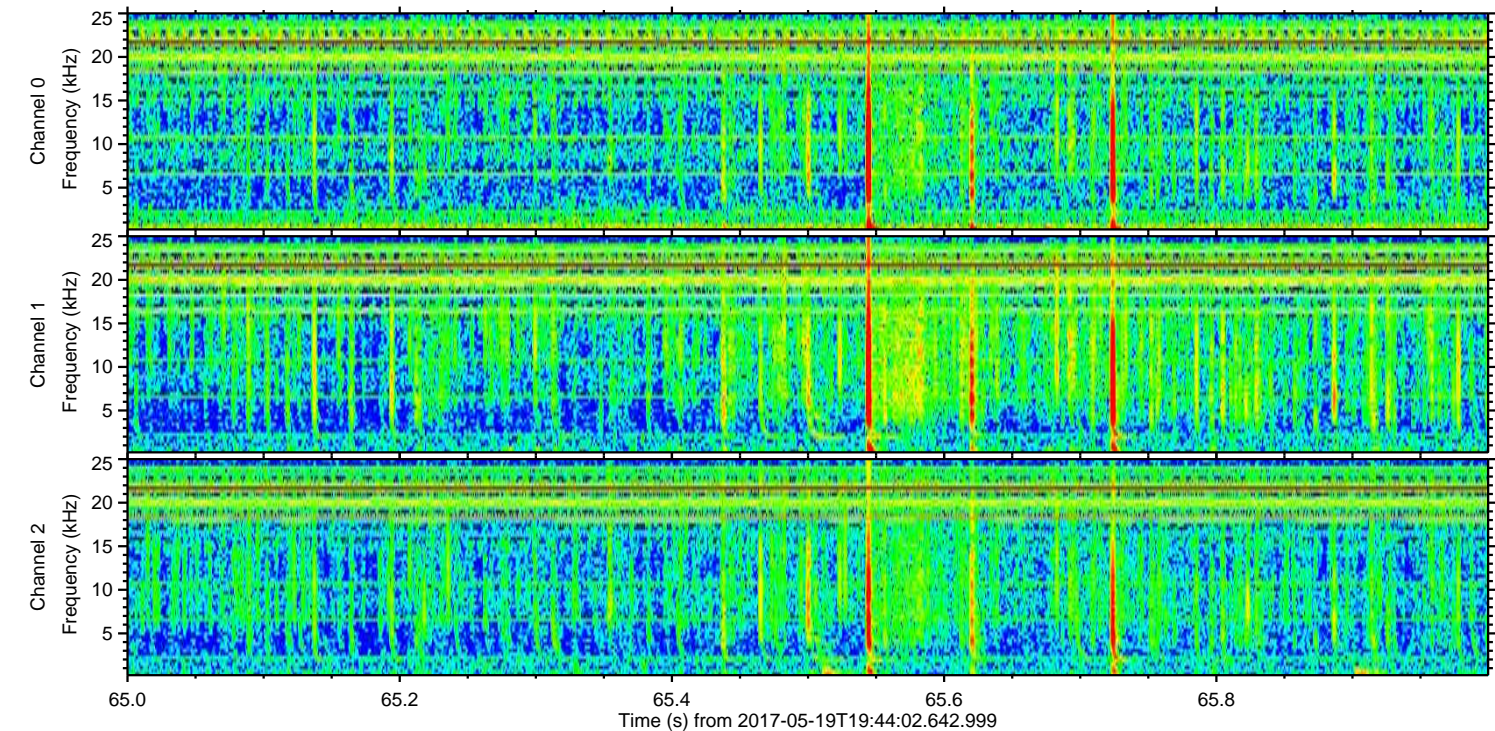
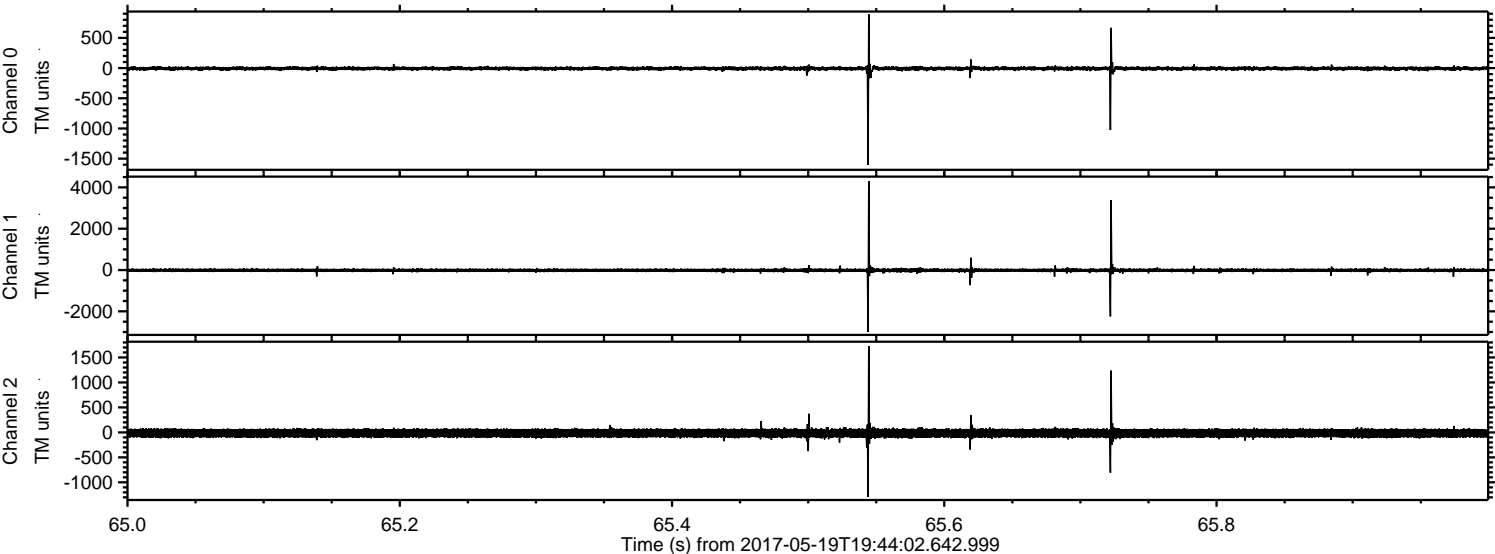
Channel 1
mn: -3926
mx: 6517
 μ : -12.8
 σ : 59.4

Channel 2
mn: -1279
mx: 2250
 μ : -16.1
 σ : 50.6

Processed Fri May 19 21:52:11 2017 by ELM ver.2012-10-06 from 001__elm20170519_194401__dat00.bin



Processed Fri May 19 21:52:12 2017 by ELM ver.2012-10-06 from 001__elm20170519_194401__dat00.bin



Channel 0
mn: -1605
mx: 892
μ: -6.8
σ: 20.3

Channel 1
mn: -2990
mx: 4305
μ: -12.7
σ: 60.3

Channel 2
mn: -1289
mx: 1729
μ: -16.2
σ: 51.0

