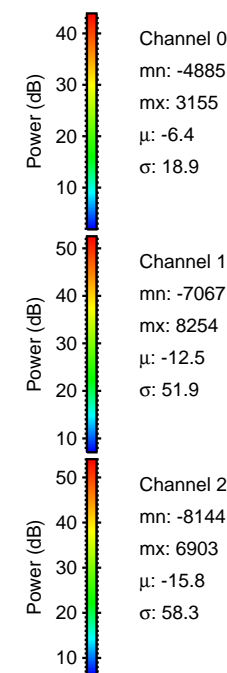
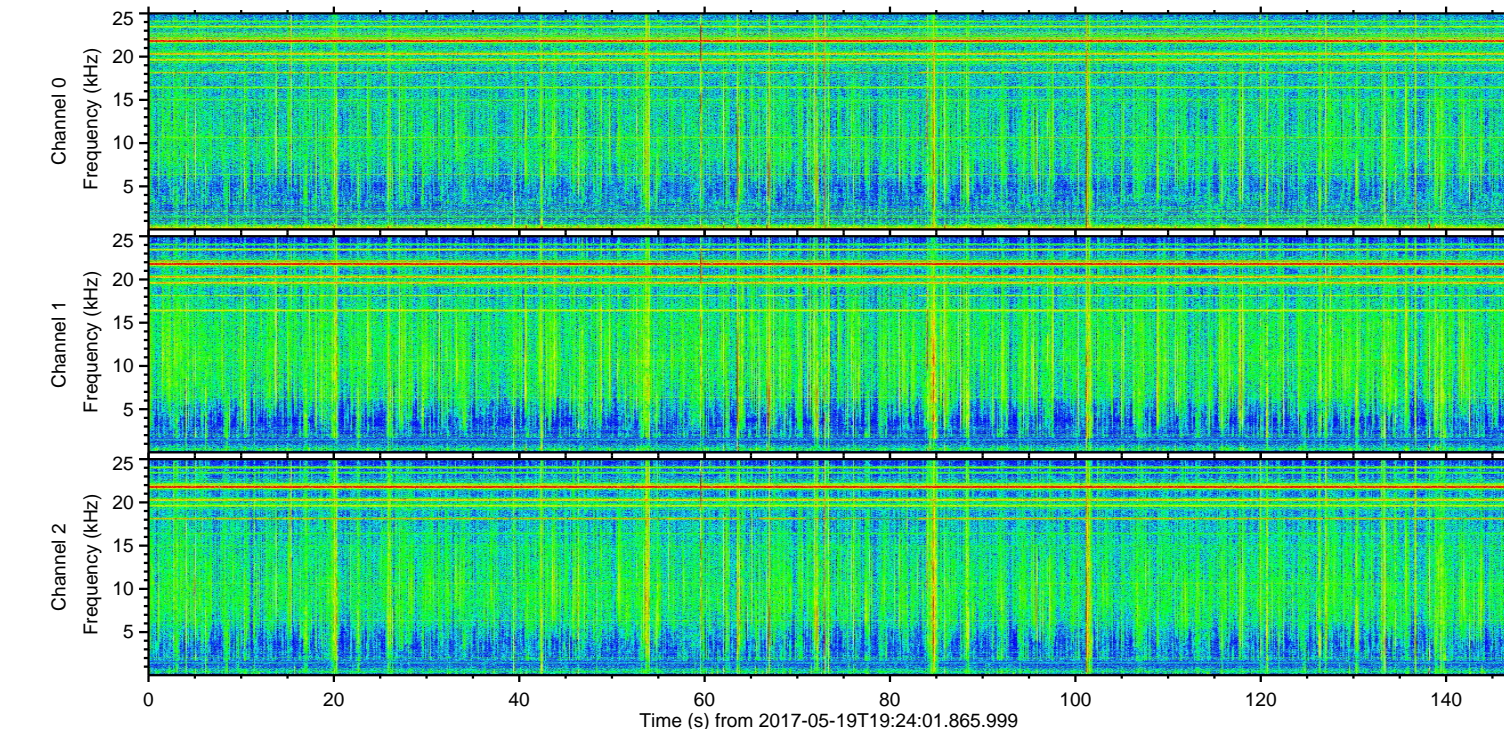
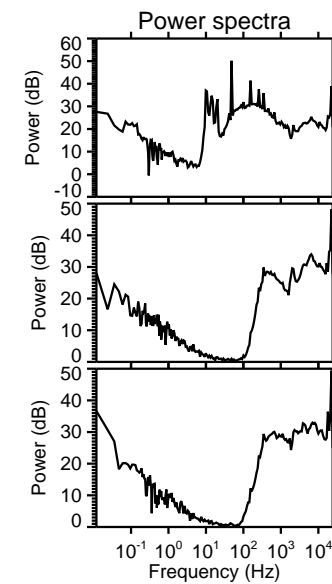
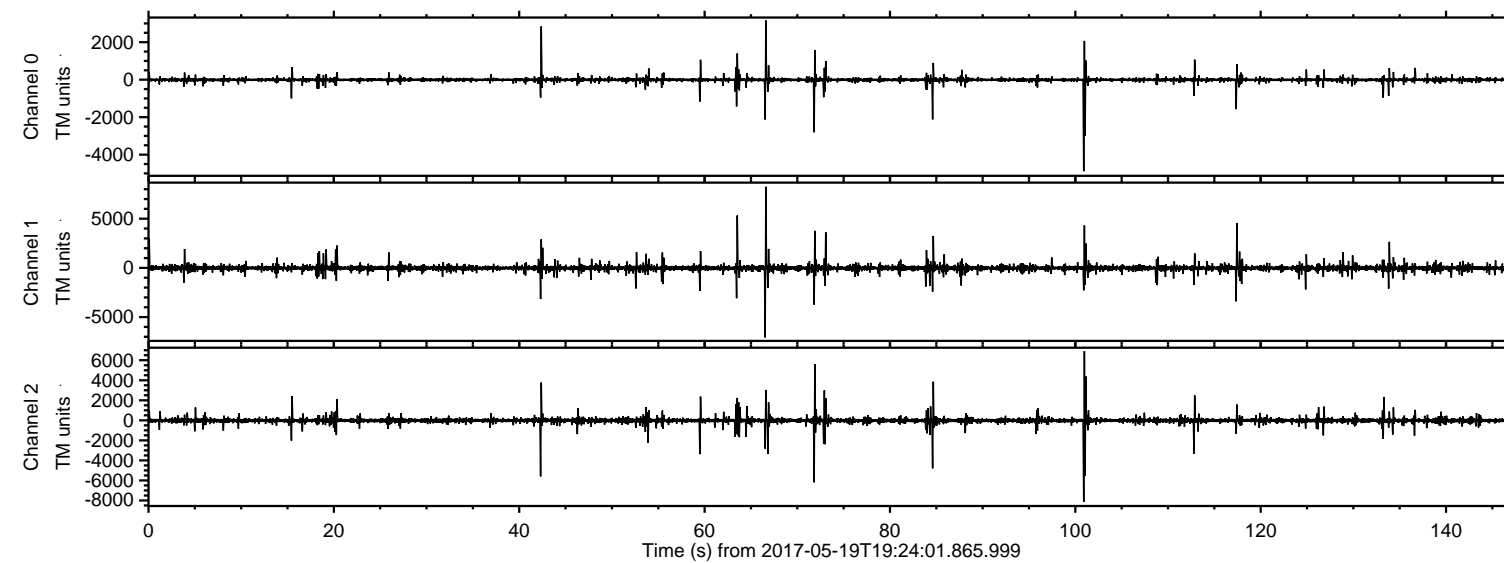
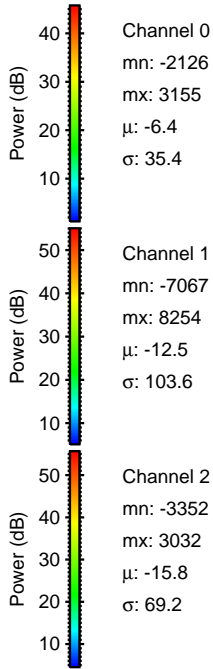
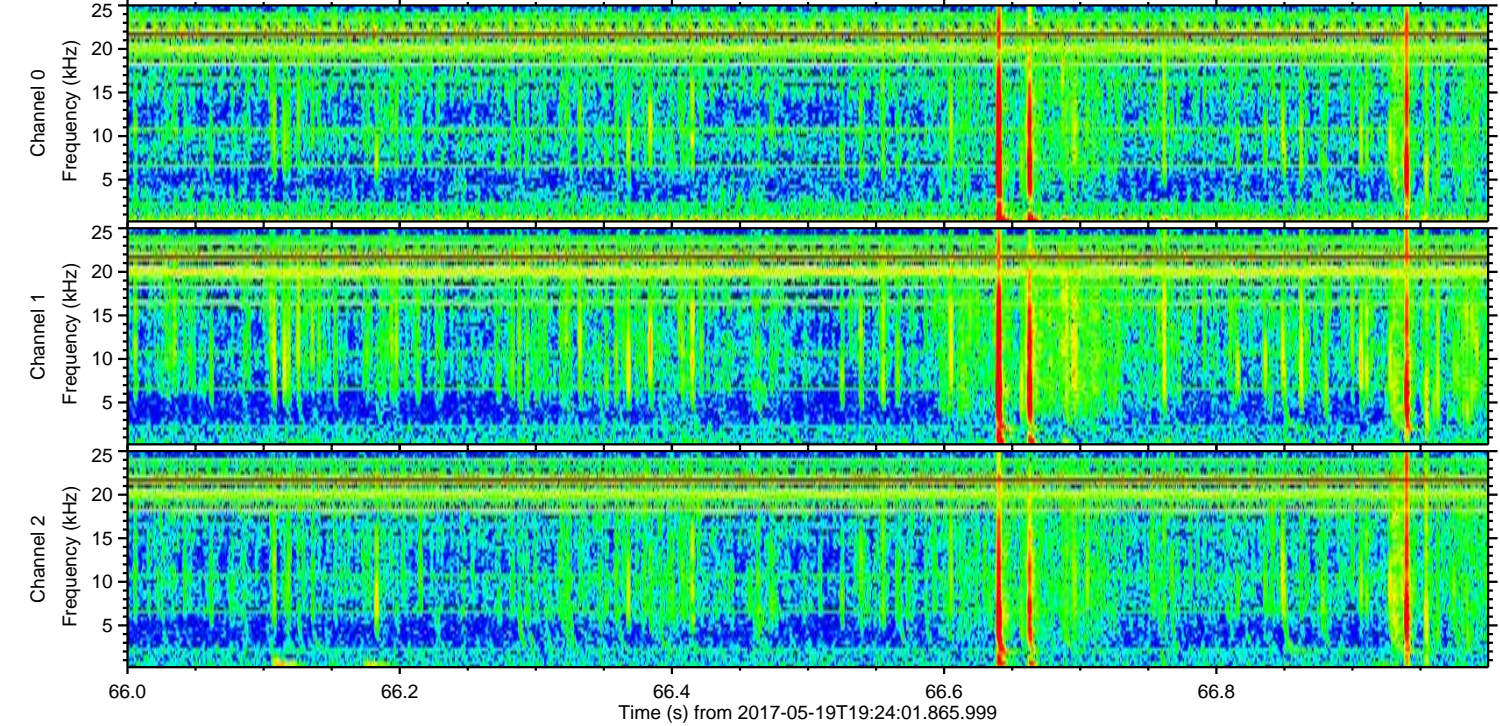
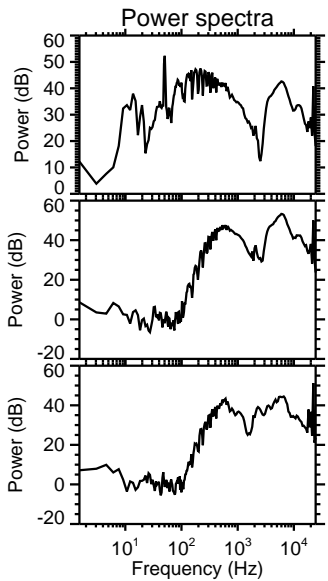
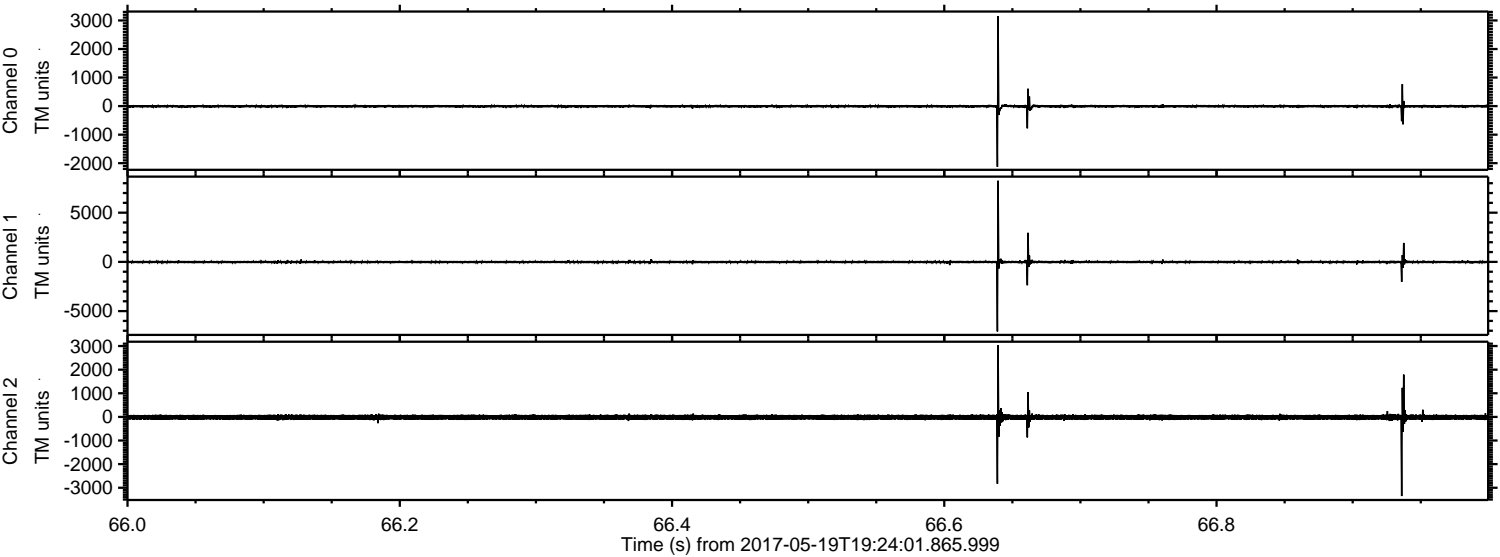


ELMAVAN 3D WAVEFORMS (Measured data sampled at 50 kHz) 51000 packets of 144 samples from 2017-05-19T19:24:01.865.999.

Processed Fri May 19 21:32:16 2017 by ELM ver.2012-10-06 from 001__elm20170519_192400__dat00.bin

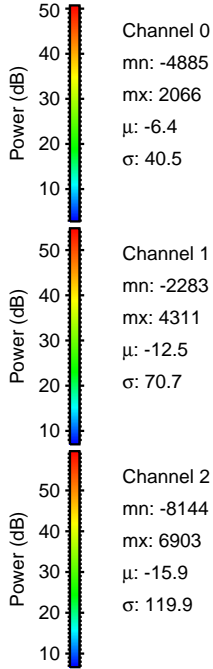
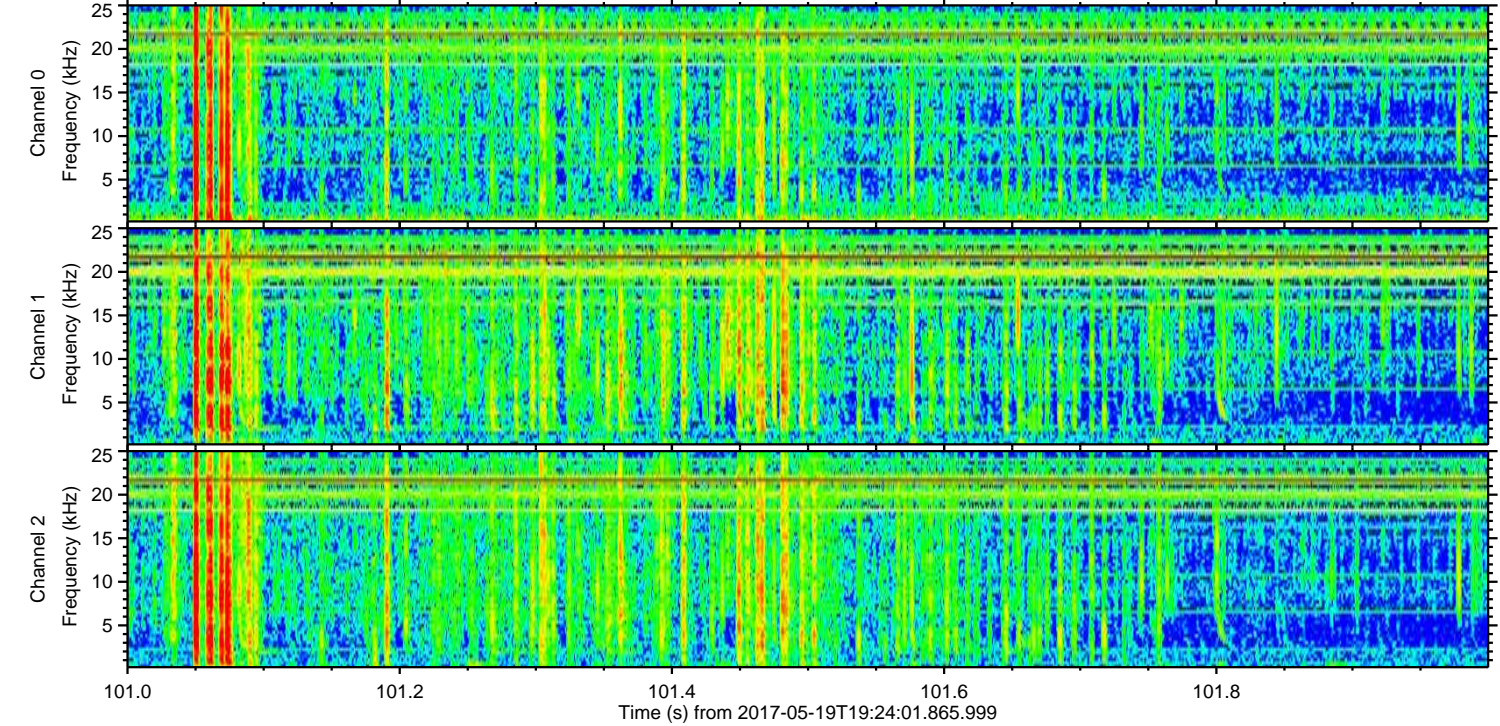
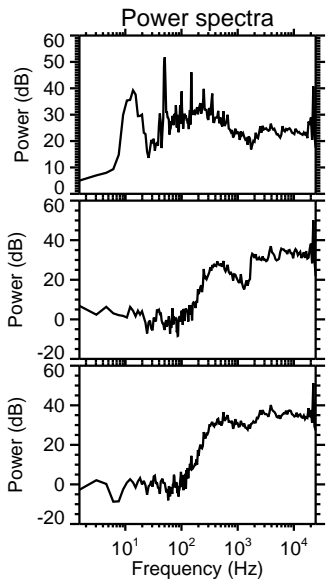
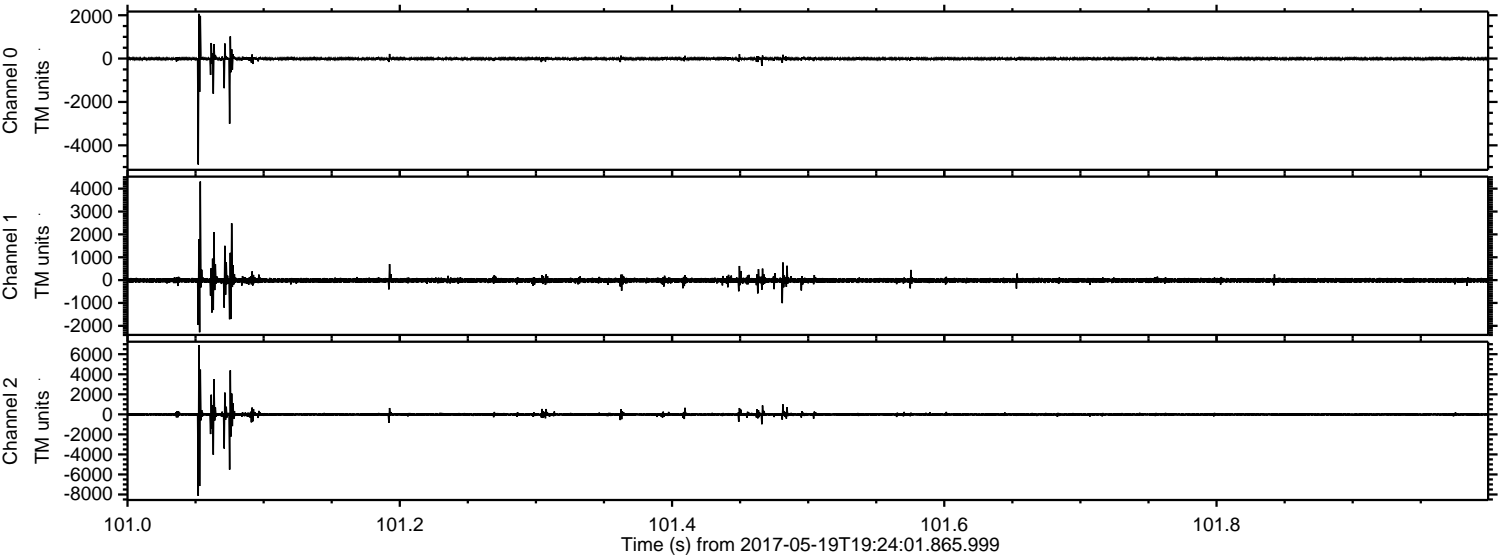


Processed Fri May 19 21:32:22 2017 by ELM ver.2012-10-06 from 001__elm20170519_192400__dat00.bin

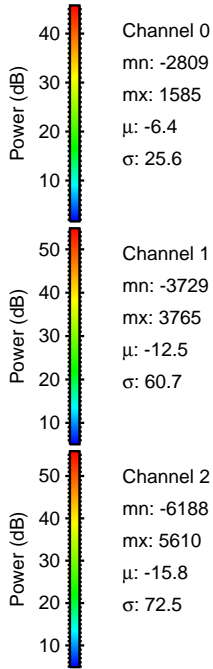
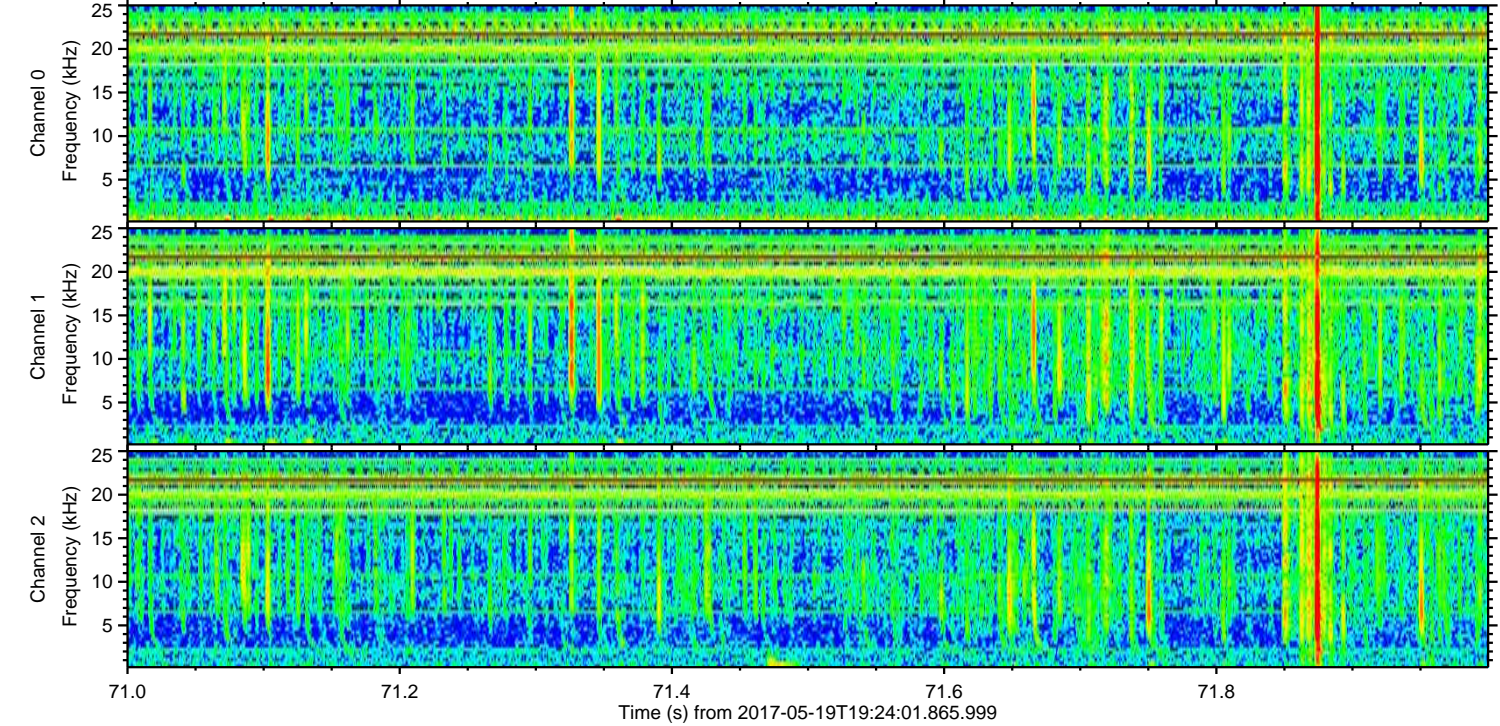
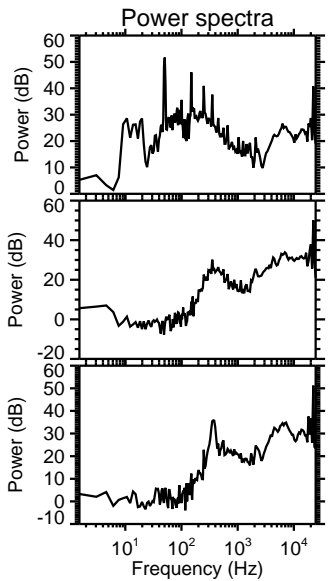
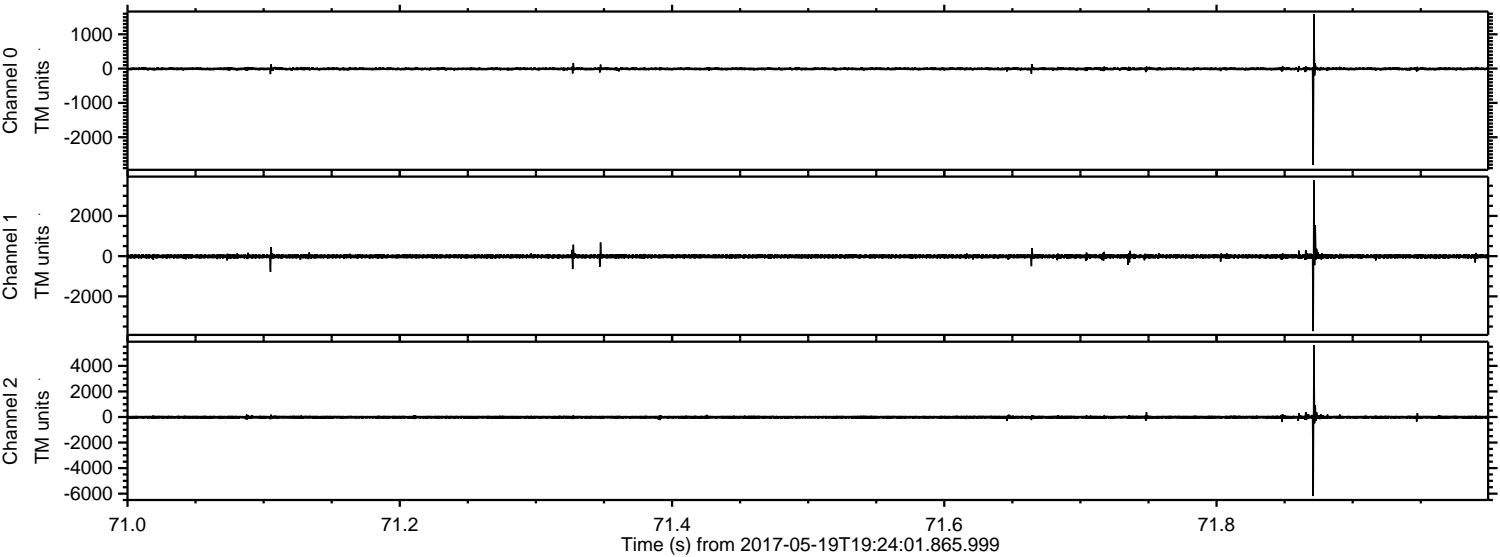


ELMAVAN 3D WAVEFORMS (Measured data sampled at 50 kHz) 51000 packets of 144 samples from 2017-05-19T19:24:01.865.999. Part 102/147

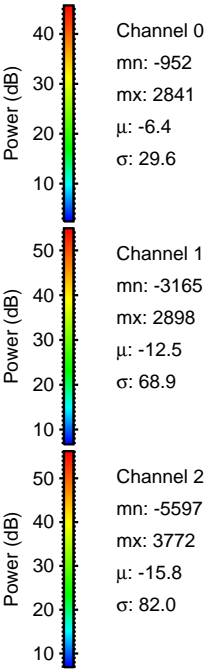
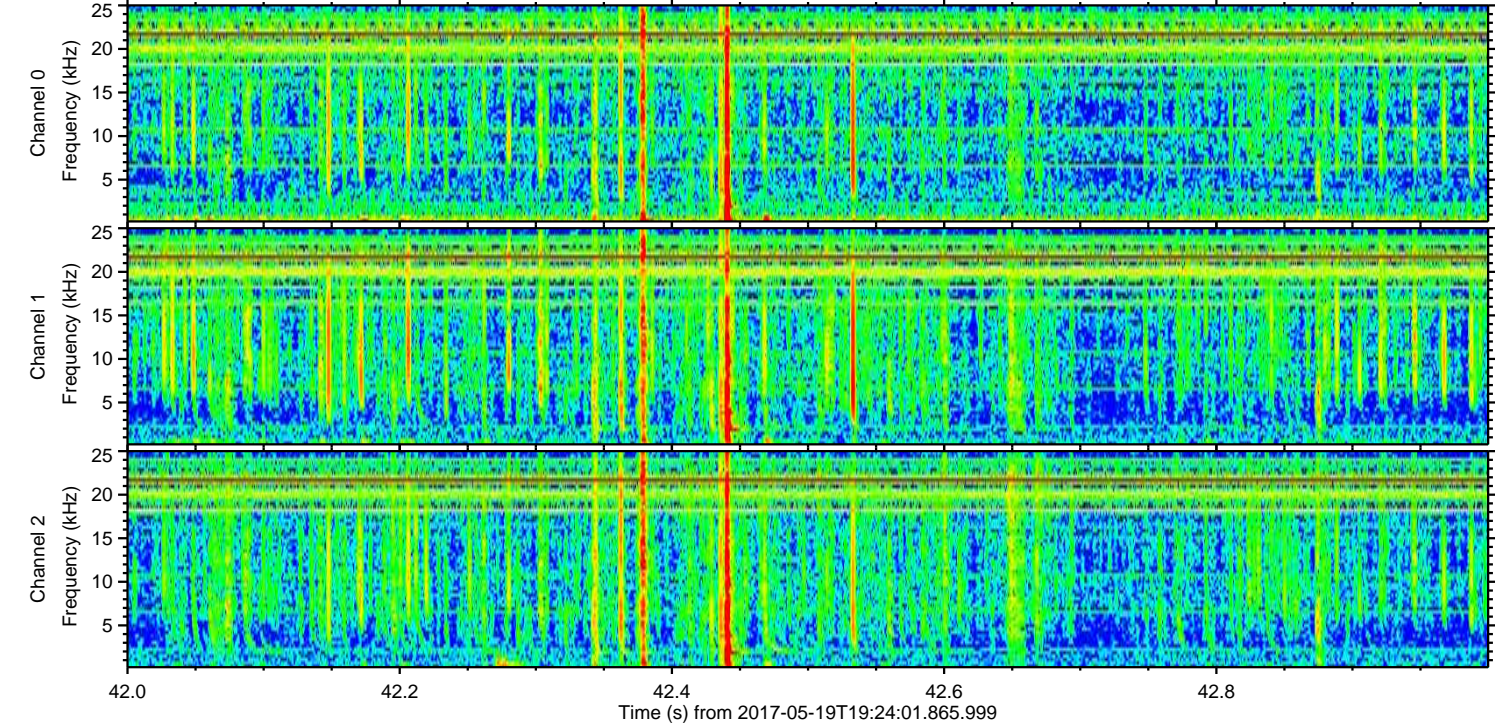
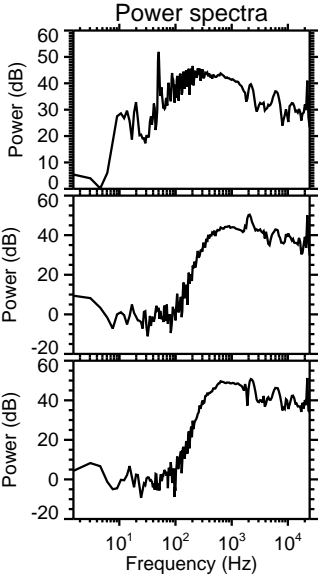
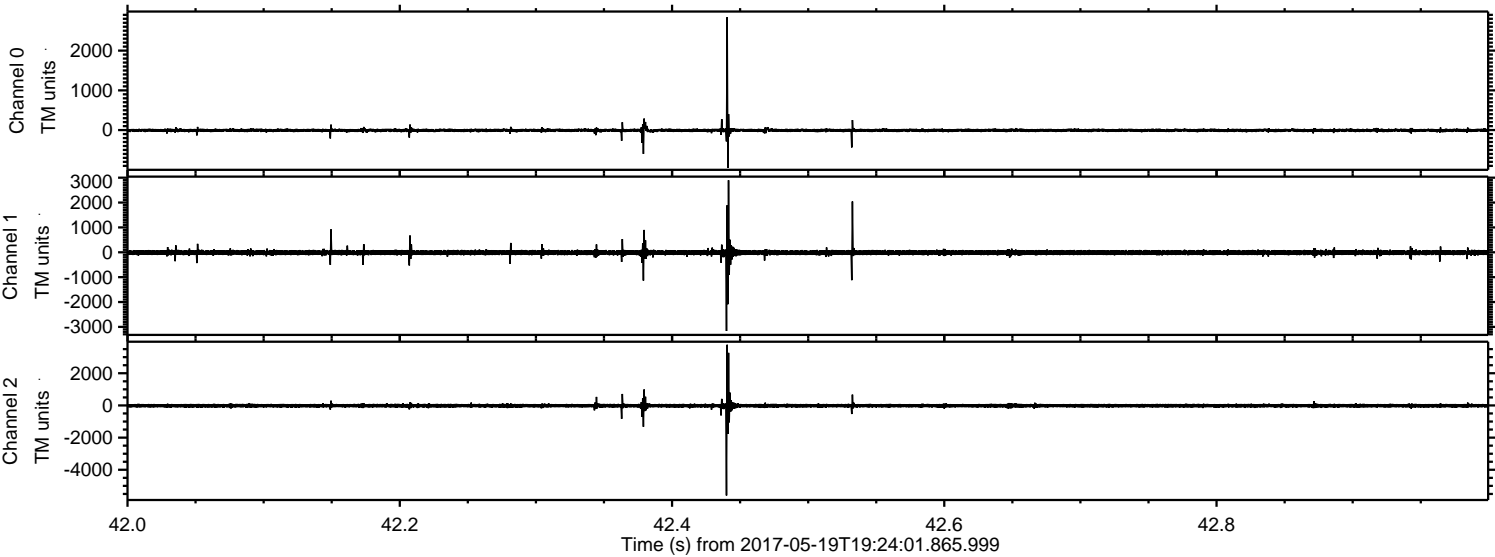
Processed Fri May 19 21:32:23 2017 by ELM ver.2012-10-06 from 001__elm20170519_192400__dat00.bin



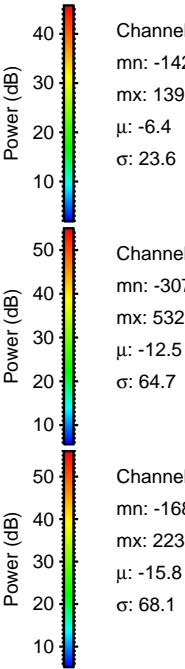
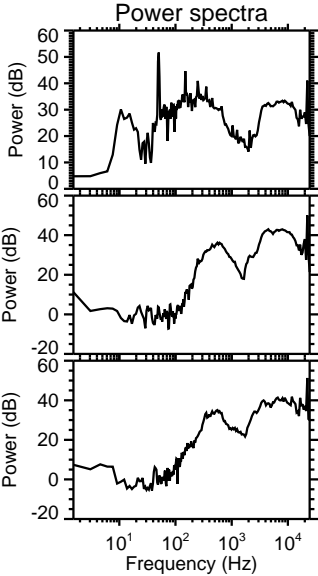
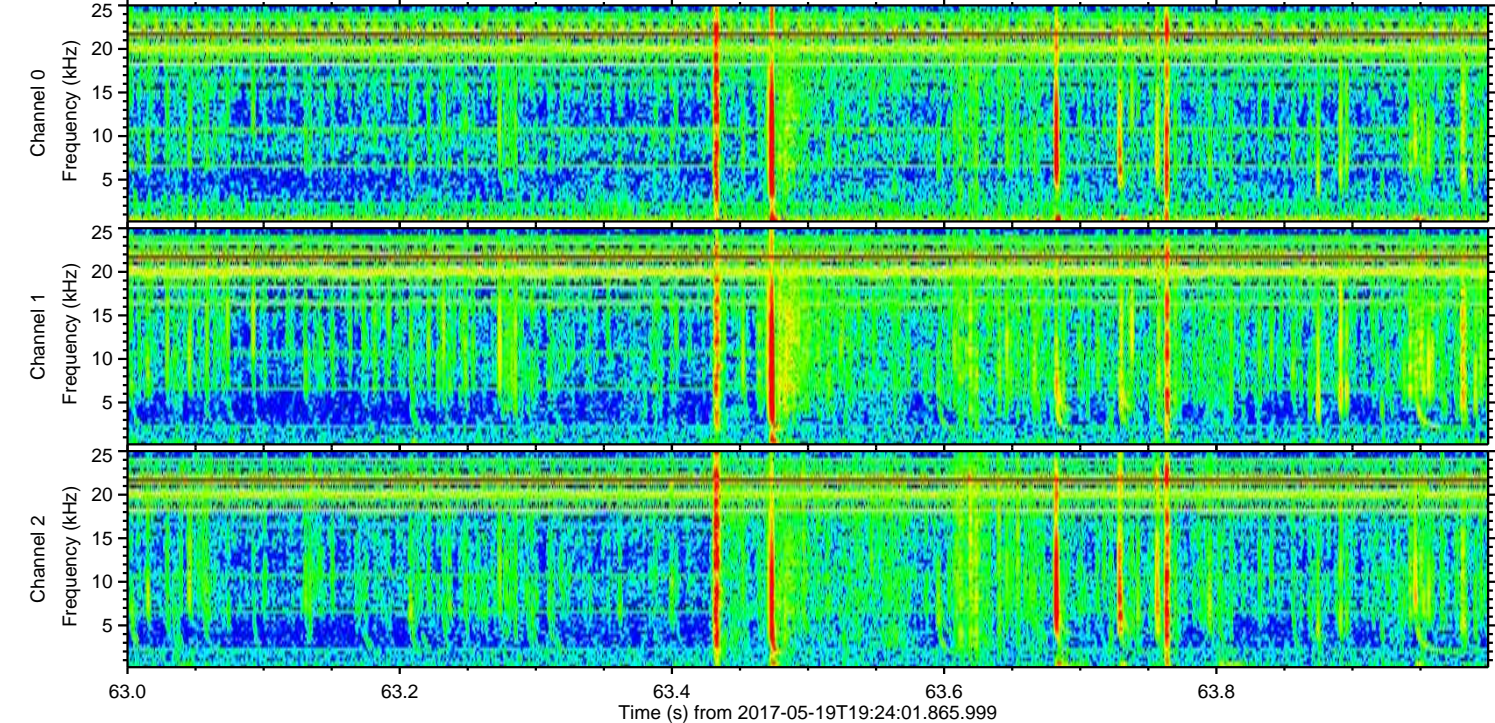
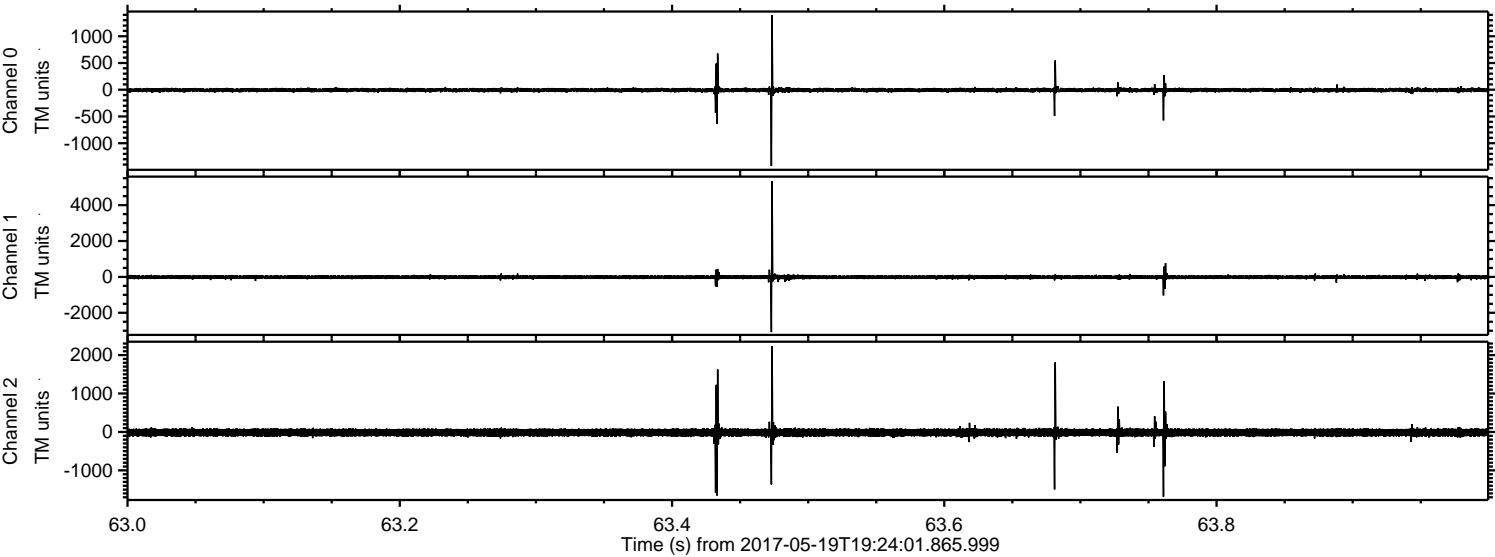
Processed Fri May 19 21:32:24 2017 by ELM ver.2012-10-06 from 001__elm20170519_192400__dat00.bin



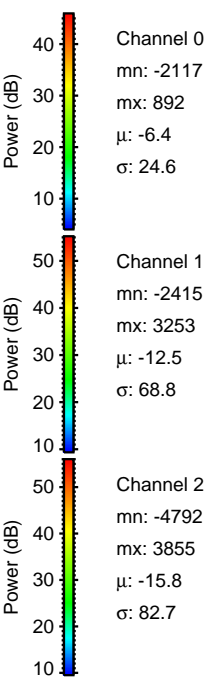
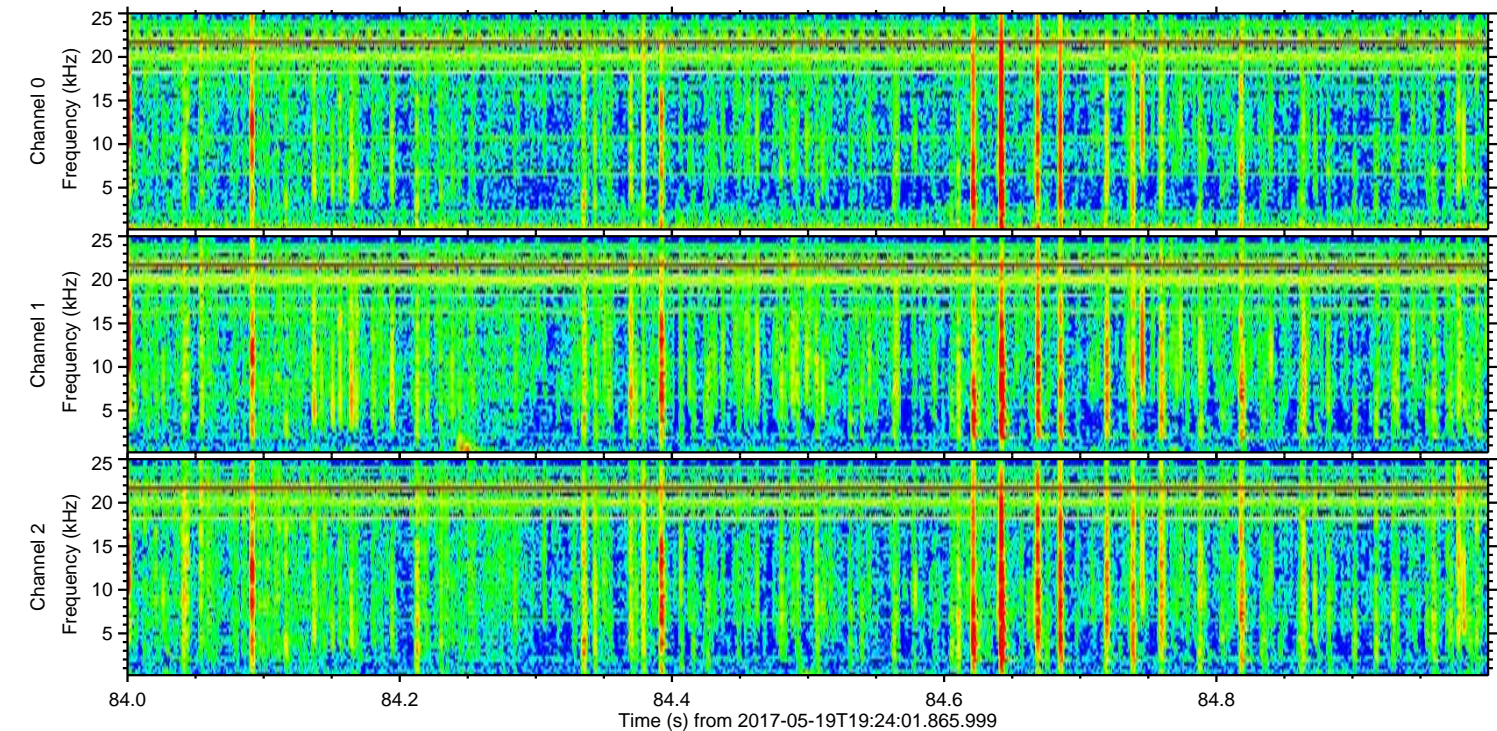
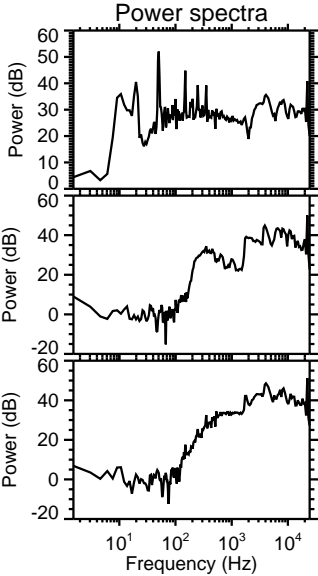
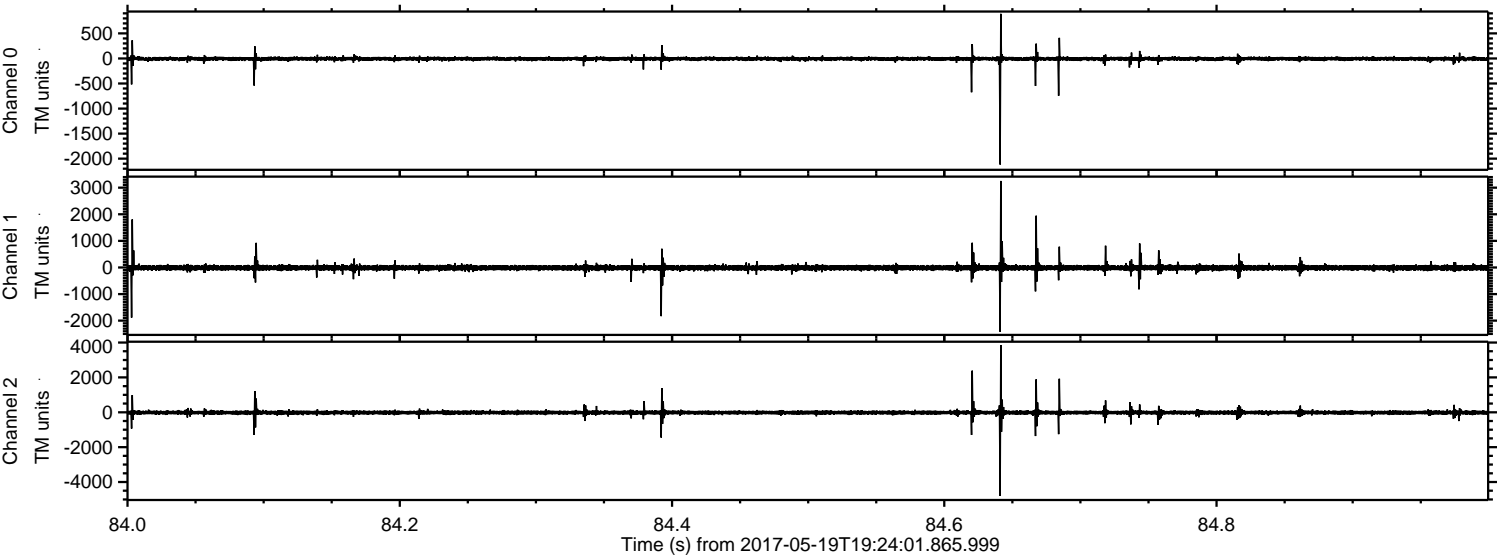
Processed Fri May 19 21:32:24 2017 by ELM ver.2012-10-06 from 001__elm20170519_192400__dat00.bin



Processed Fri May 19 21:32:25 2017 by ELM ver.2012-10-06 from 001__elm20170519_192400__dat00.bin

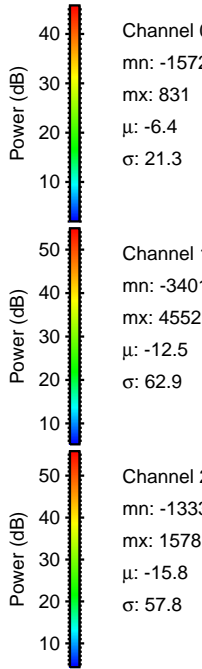
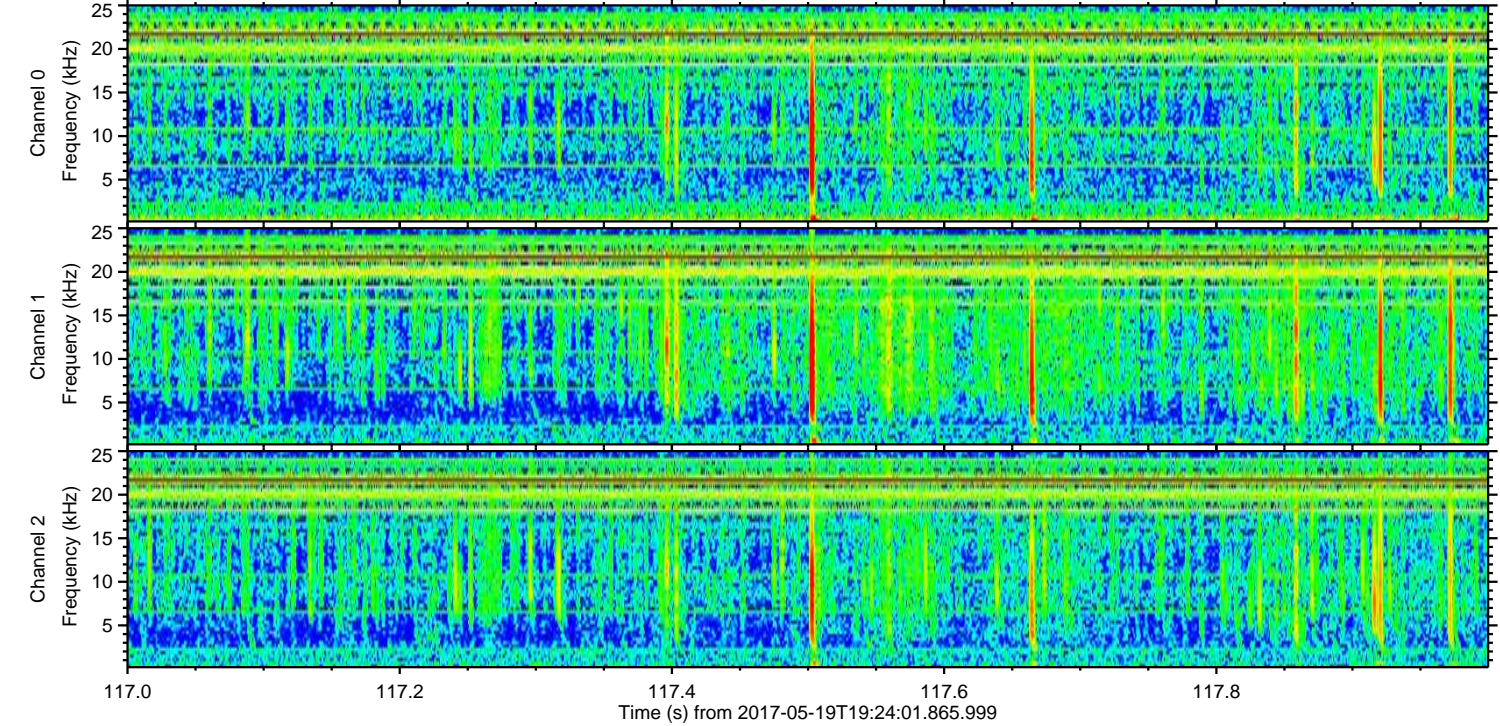
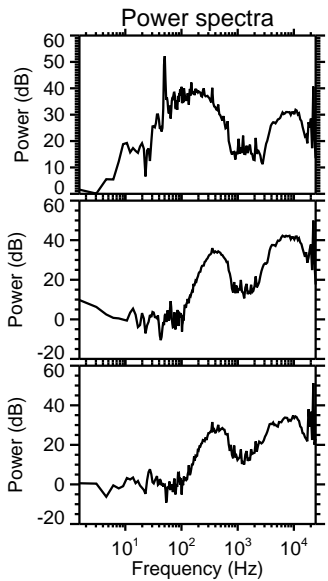
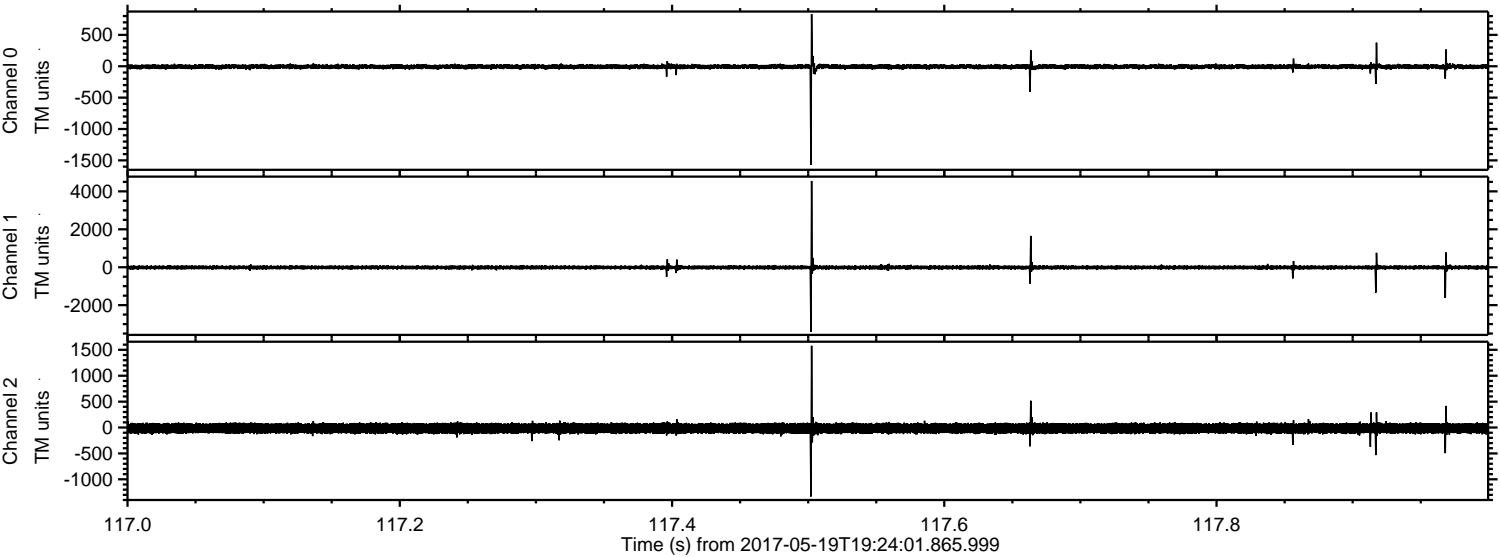


Processed Fri May 19 21:32:26 2017 by ELM ver.2012-10-06 from 001__elm20170519_192400__dat00.bin

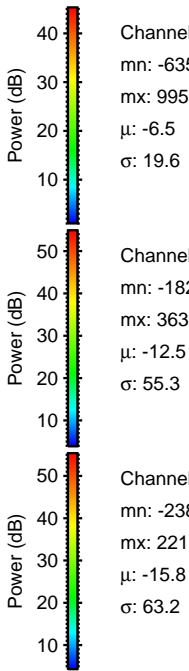
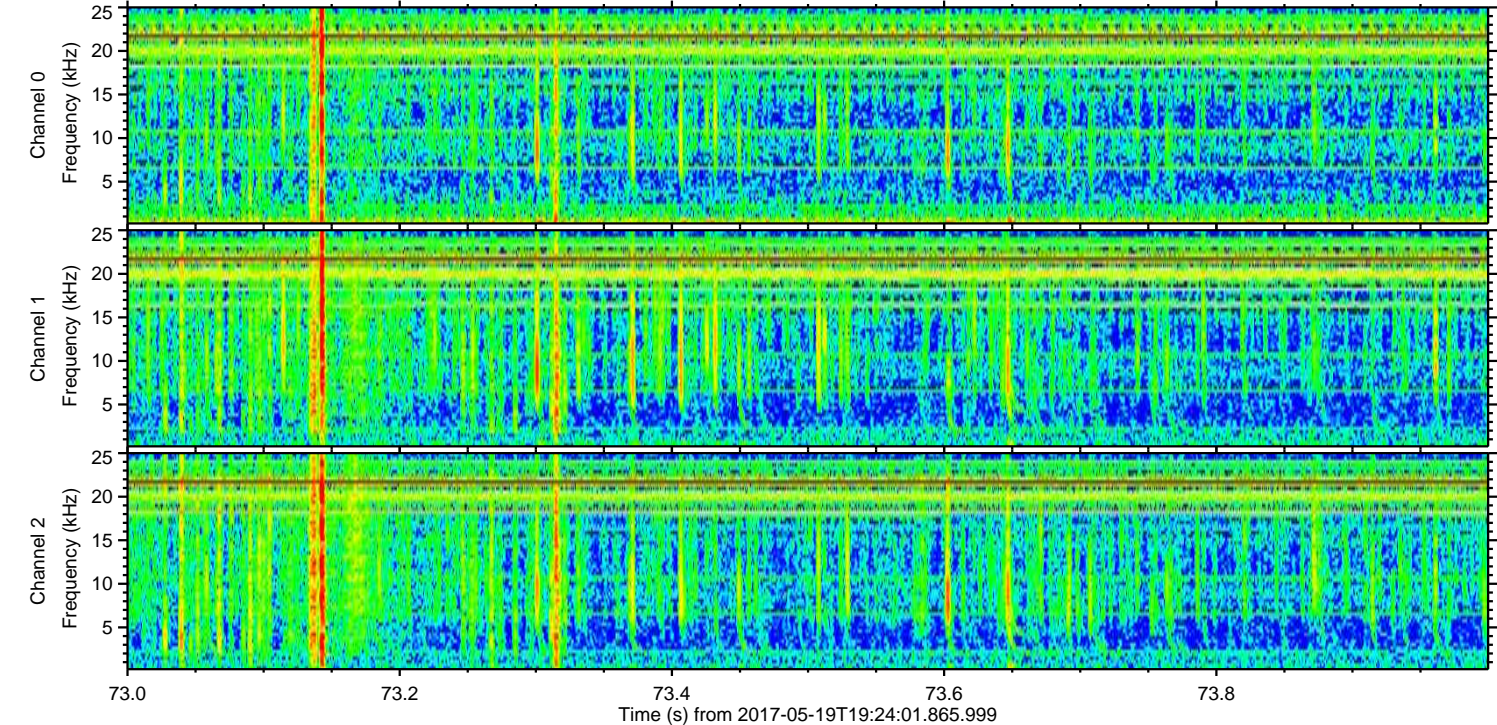
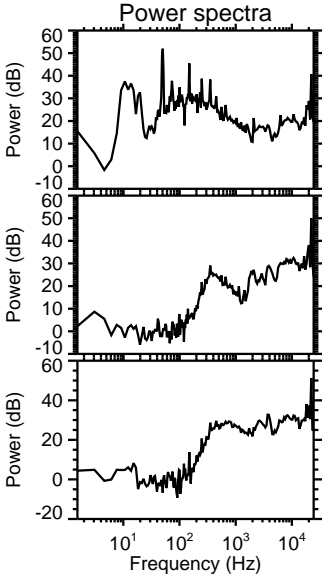
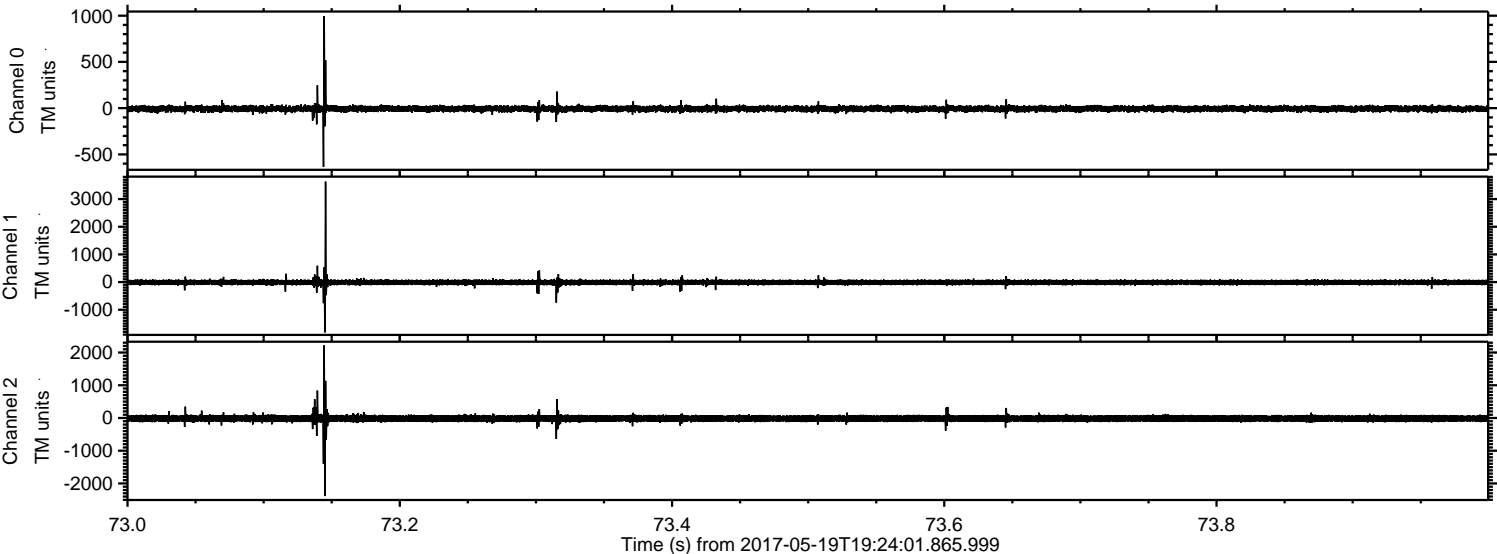


ELMAVAN 3D WAVEFORMS (Measured data sampled at 50 kHz) 51000 packets of 144 samples from 2017-05-19T19:24:01.865.999. Part 118/147

Processed Fri May 19 21:32:26 2017 by ELM ver.2012-10-06 from 001__elm20170519_192400__dat00.bin



Processed Fri May 19 21:32:27 2017 by ELM ver.2012-10-06 from 001__elm20170519_192400__dat00.bin

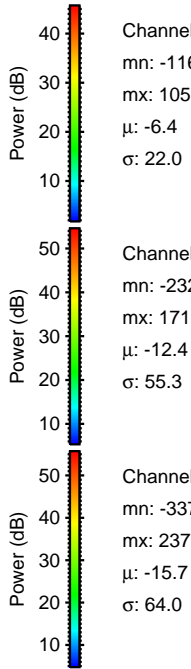
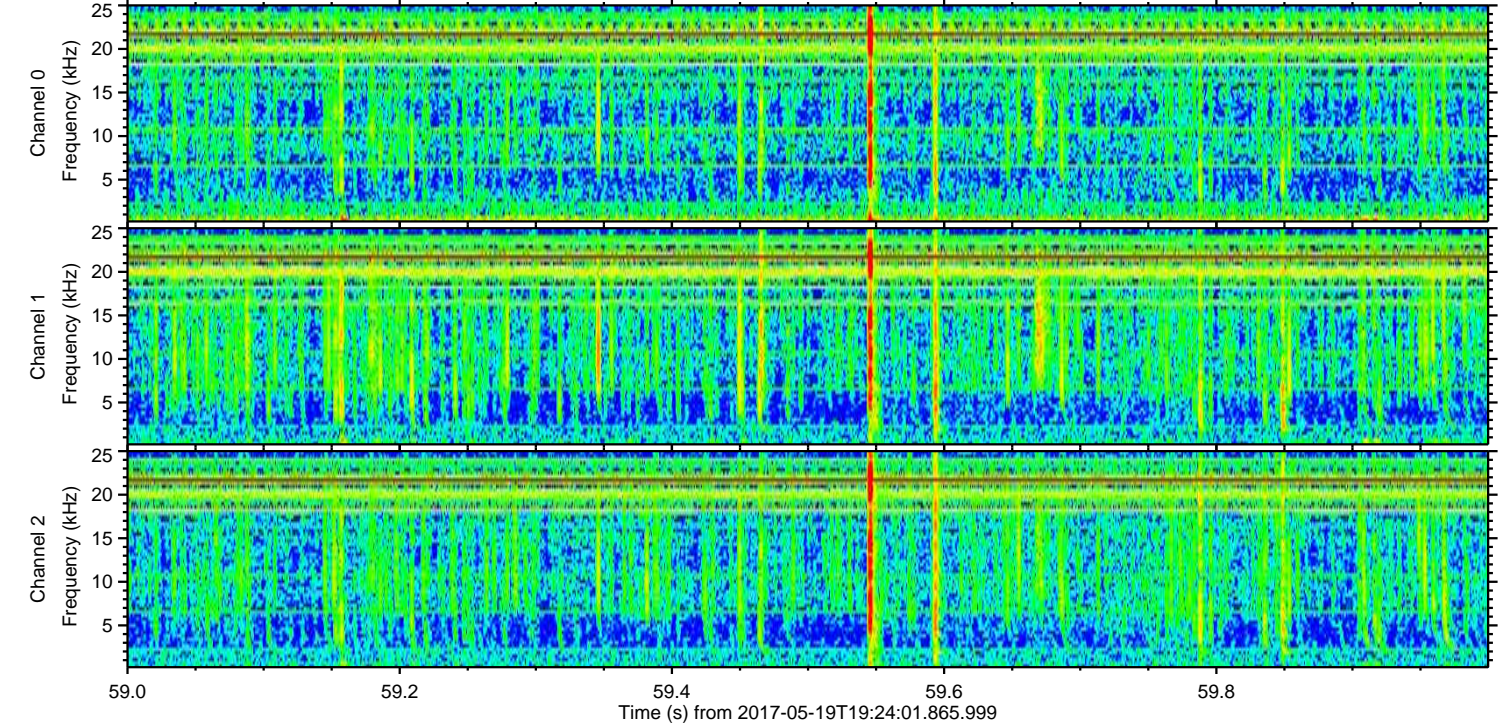
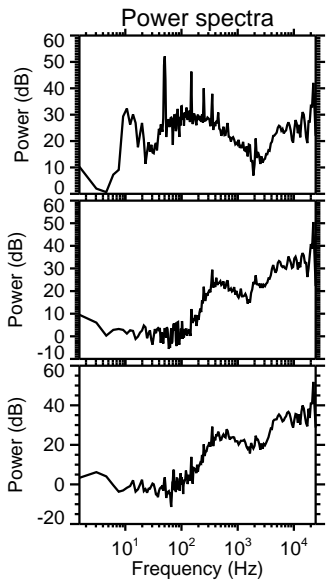
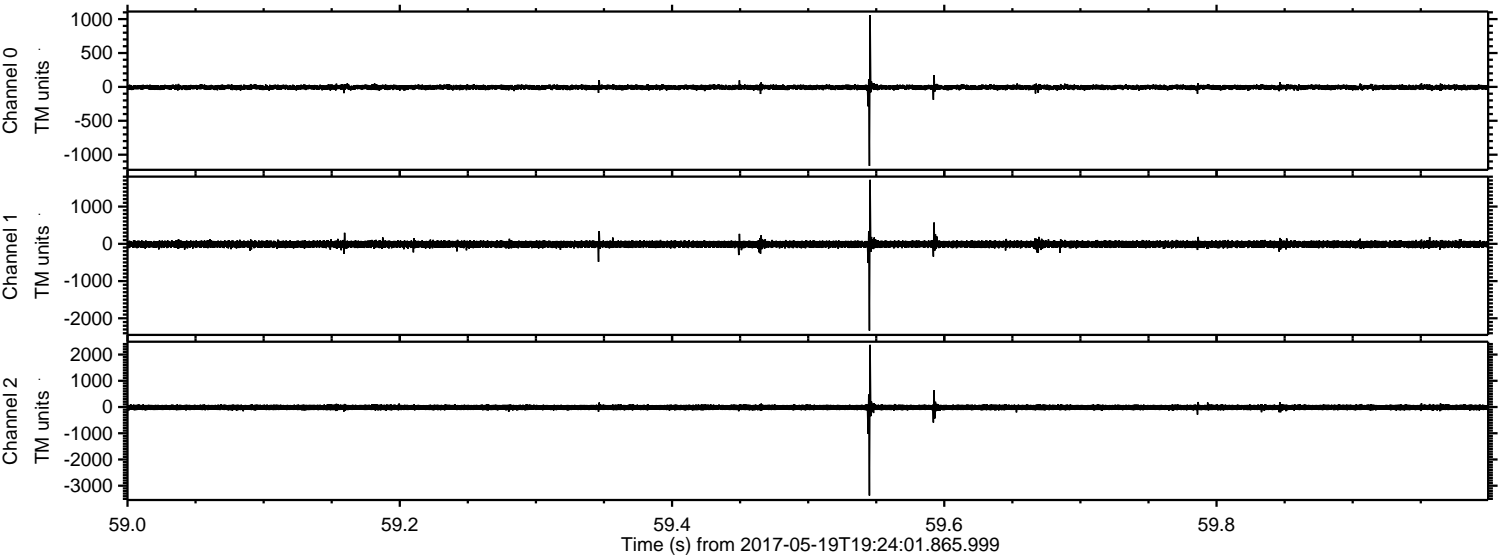


Channel 0
mn: -635
mx: 995
 μ : -6.5
 σ : 19.6

Channel 1
mn: -1820
mx: 3630
 μ : -12.5
 σ : 55.3

Channel 2
mn: -2386
mx: 2219
 μ : -15.8
 σ : 63.2

Processed Fri May 19 21:32:28 2017 by ELM ver.2012-10-06 from 001__elm20170519_192400__dat00.bin



Channel 0
mn: -1165
mx: 1059
 μ : -6.4
 σ : 22.0

Channel 1
mn: -2329
mx: 1717
 μ : -12.4
 σ : 55.3

Channel 2
mn: -3375
mx: 2370
 μ : -15.7
 σ : 64.0

Processed Fri May 19 21:32:28 2017 by ELM ver.2012-10-06 from 001__elm20170519_192400__dat00.bin

