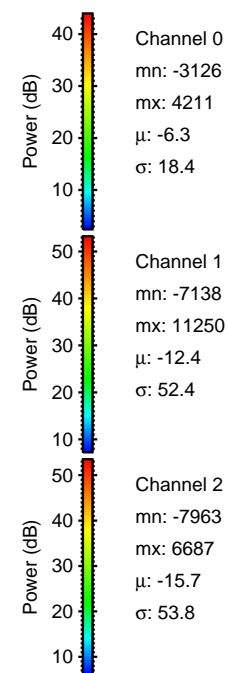
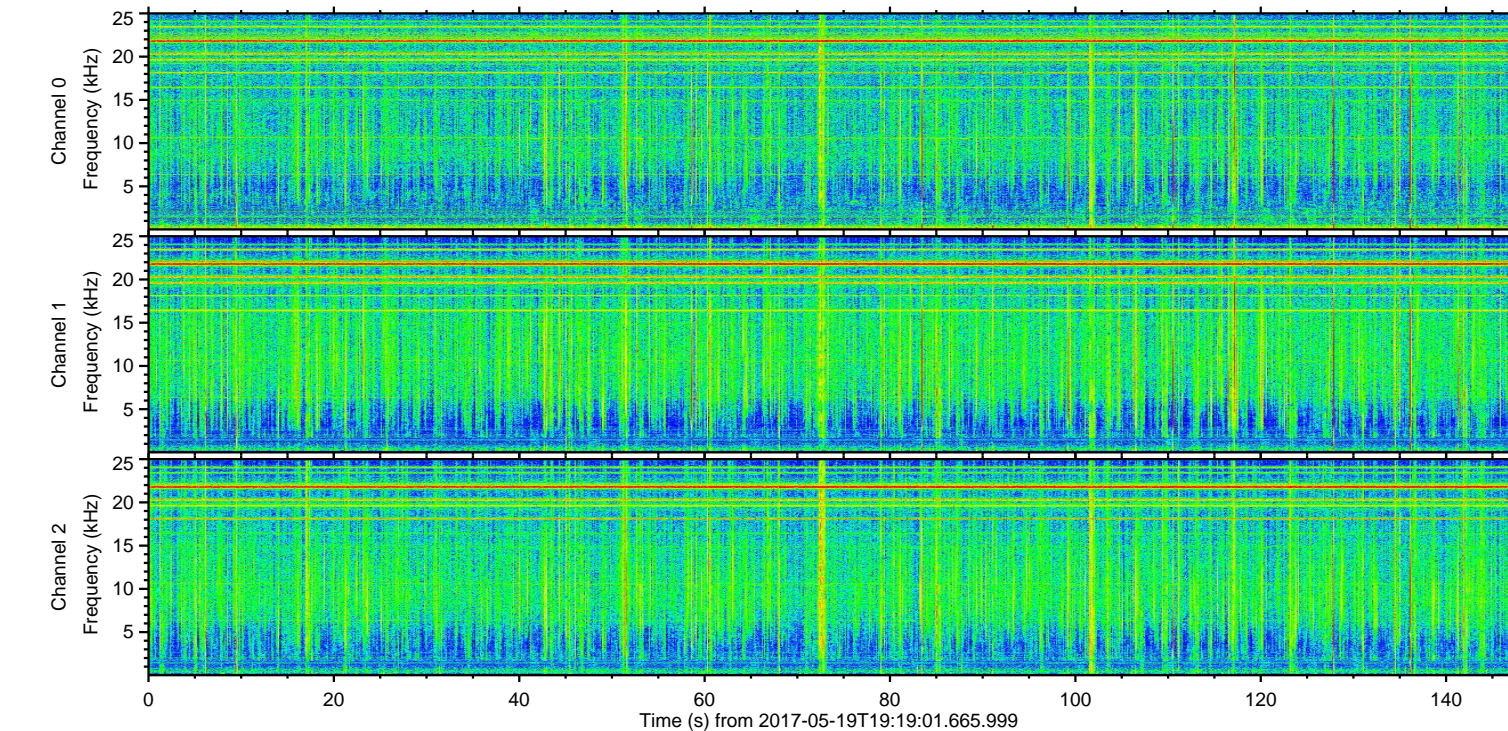
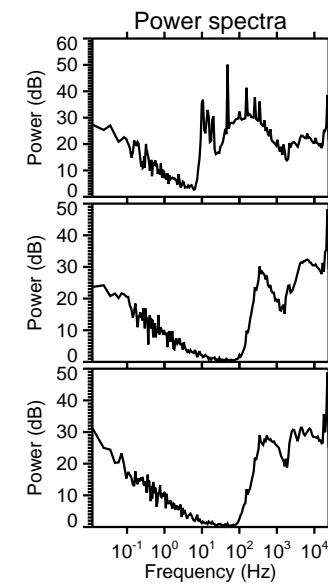
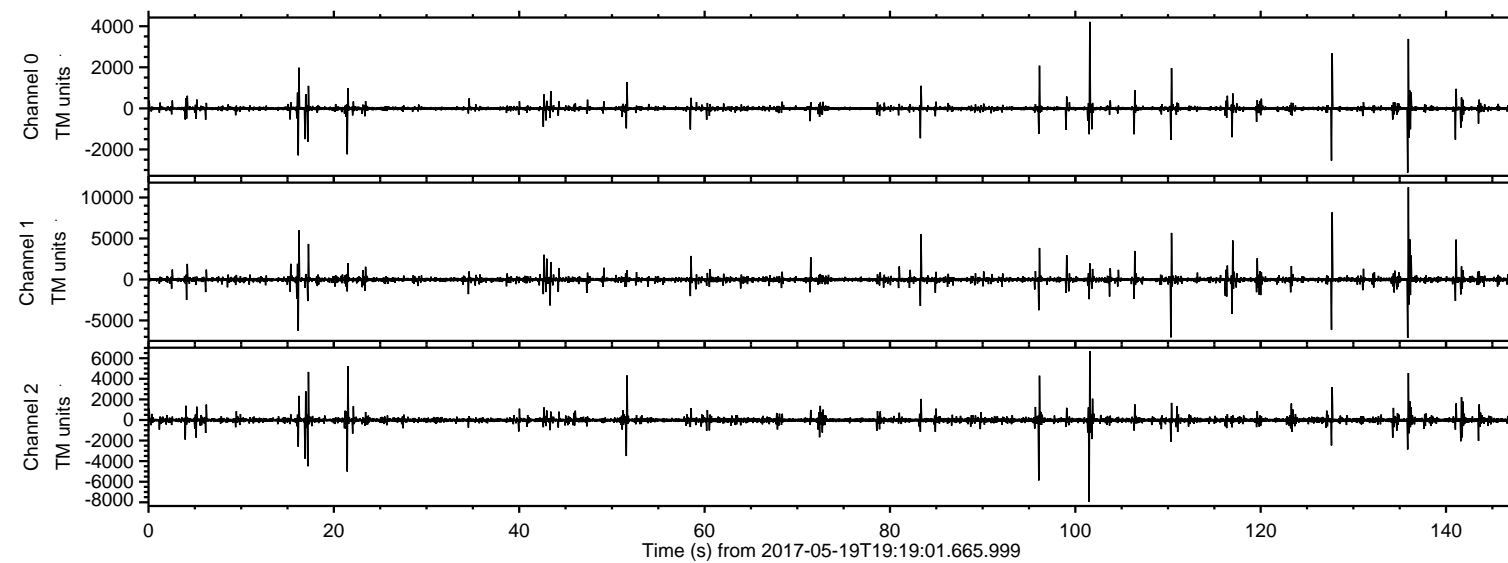


# ELMAVAN 3D WAVEFORMS (Measured data sampled at 50 kHz) 51000 packets of 144 samples from 2017-05-19T19:19:01.665.999.

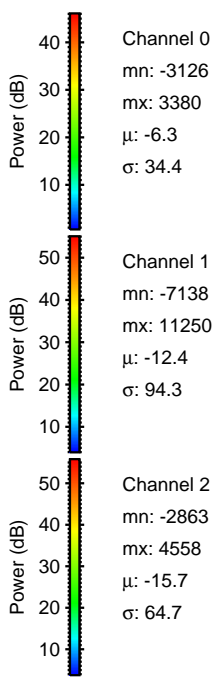
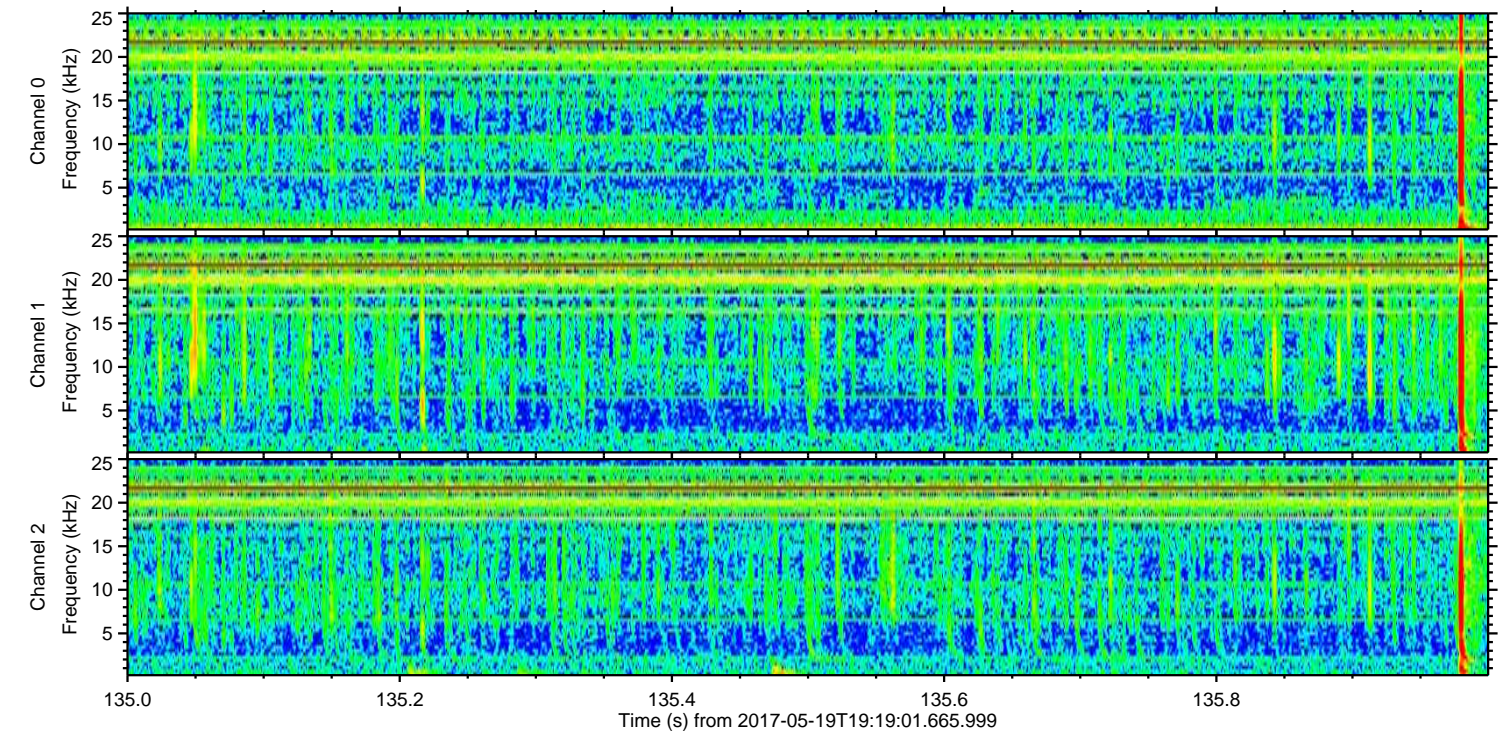
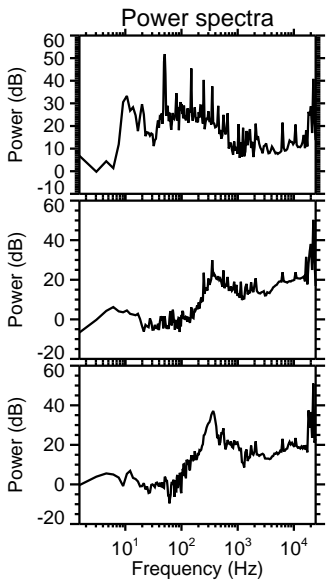
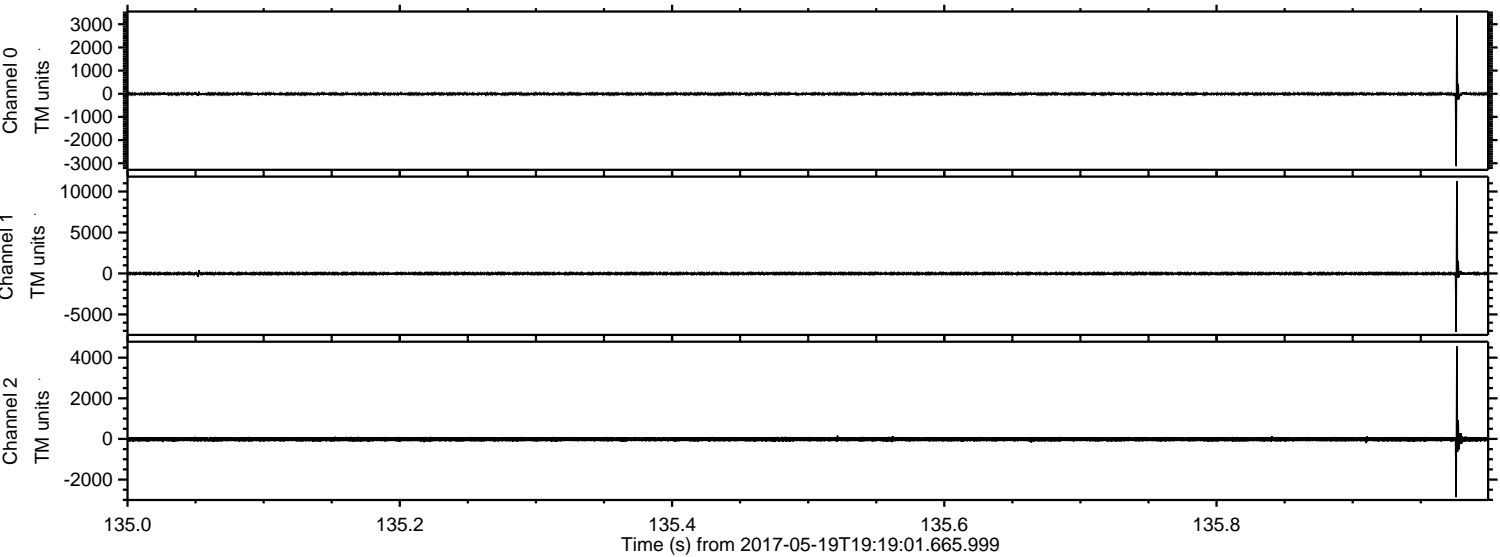
Processed Fri May 19 21:27:01 2017 by ELM ver.2012-10-06 from 001\_\_elm20170519\_191900\_\_dat00.bin





ELMAVAN 3D WAVEFORMS (Measured data sampled at 50 kHz) 51000 packets of 144 samples from 2017-05-19T19:19:01.665.999. Part 136/147

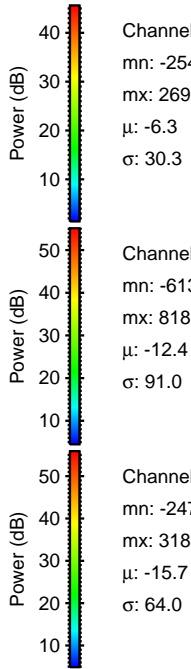
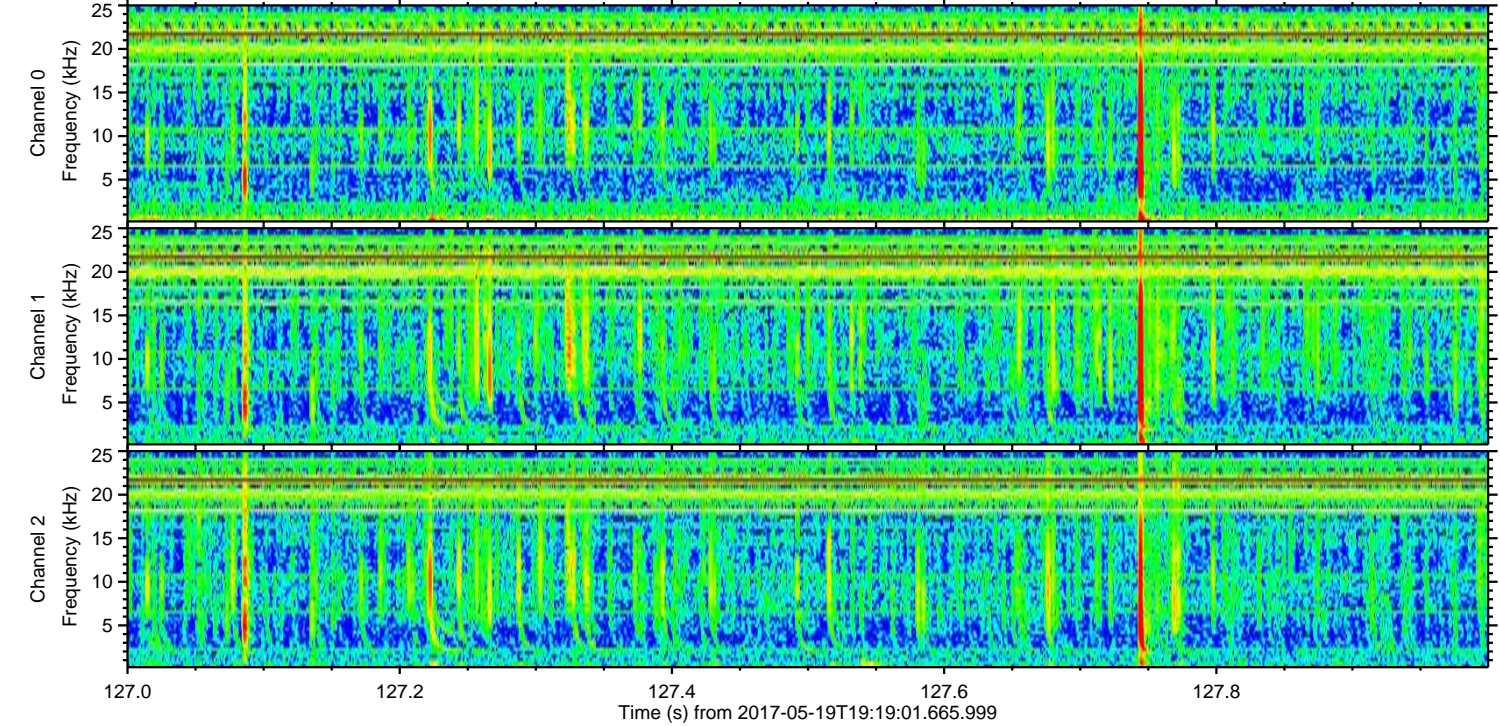
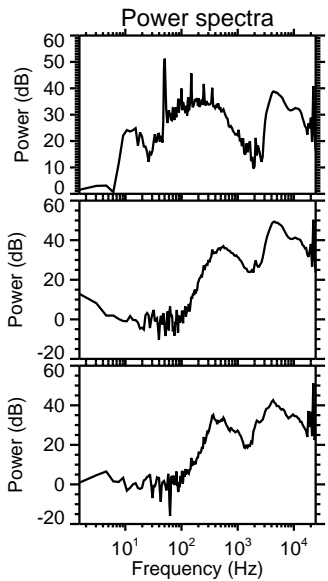
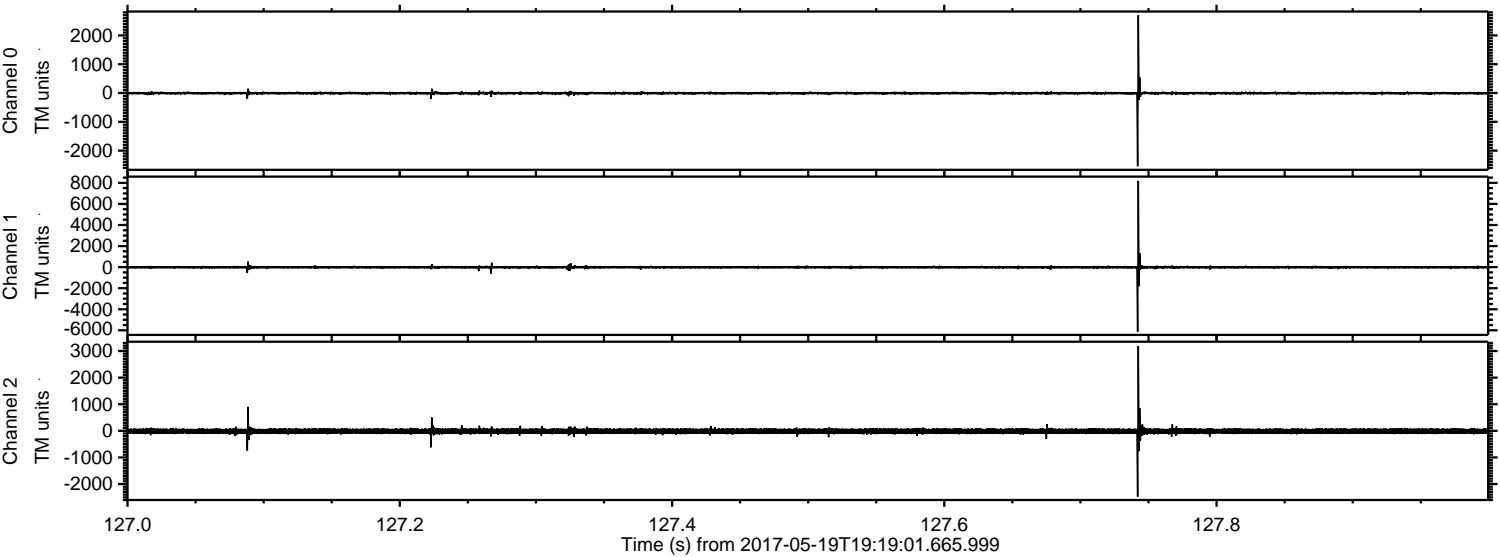
Processed Fri May 19 21:27:07 2017 by ELM ver.2012-10-06 from 001\_\_elm20170519\_191900\_\_dat00.bin





ELMAVAN 3D WAVEFORMS (Measured data sampled at 50 kHz) 51000 packets of 144 samples from 2017-05-19T19:19:01.665.999. Part 128/147

Processed Fri May 19 21:27:08 2017 by ELM ver.2012-10-06 from 001\_\_elm20170519\_191900\_\_dat00.bin



Channel 0  
mn: -2540  
mx: 2695  
 $\mu$ : -6.3  
 $\sigma$ : 30.3

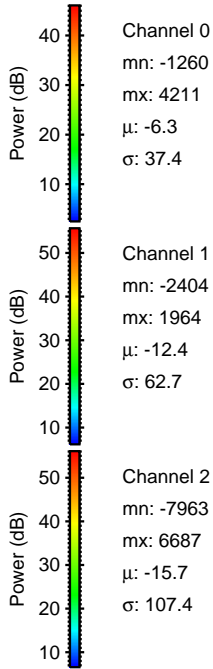
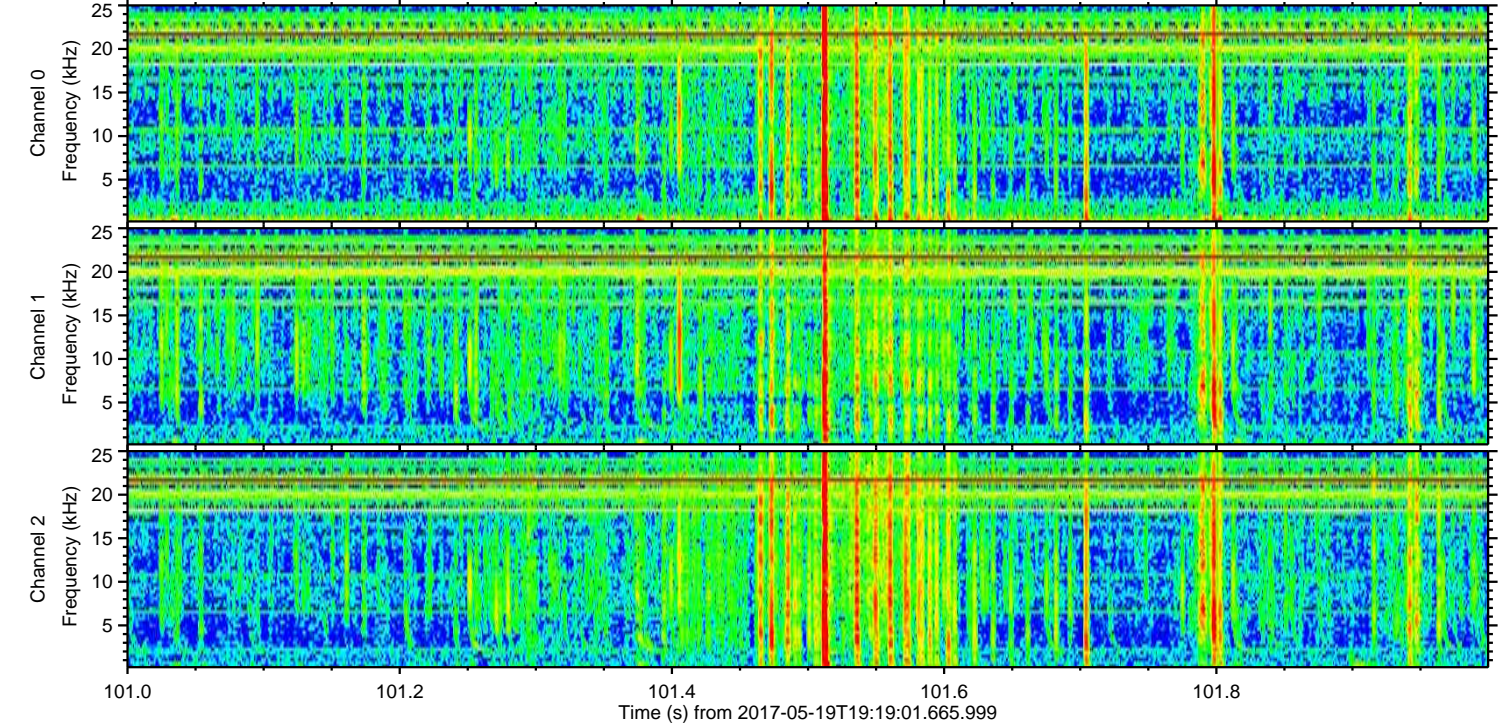
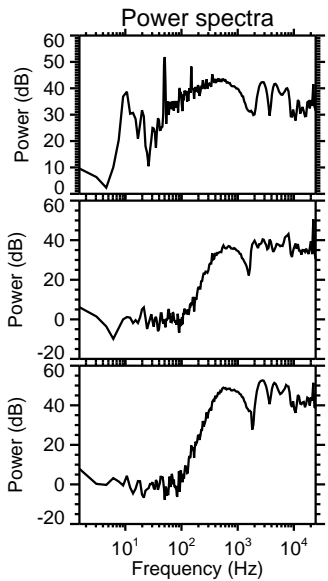
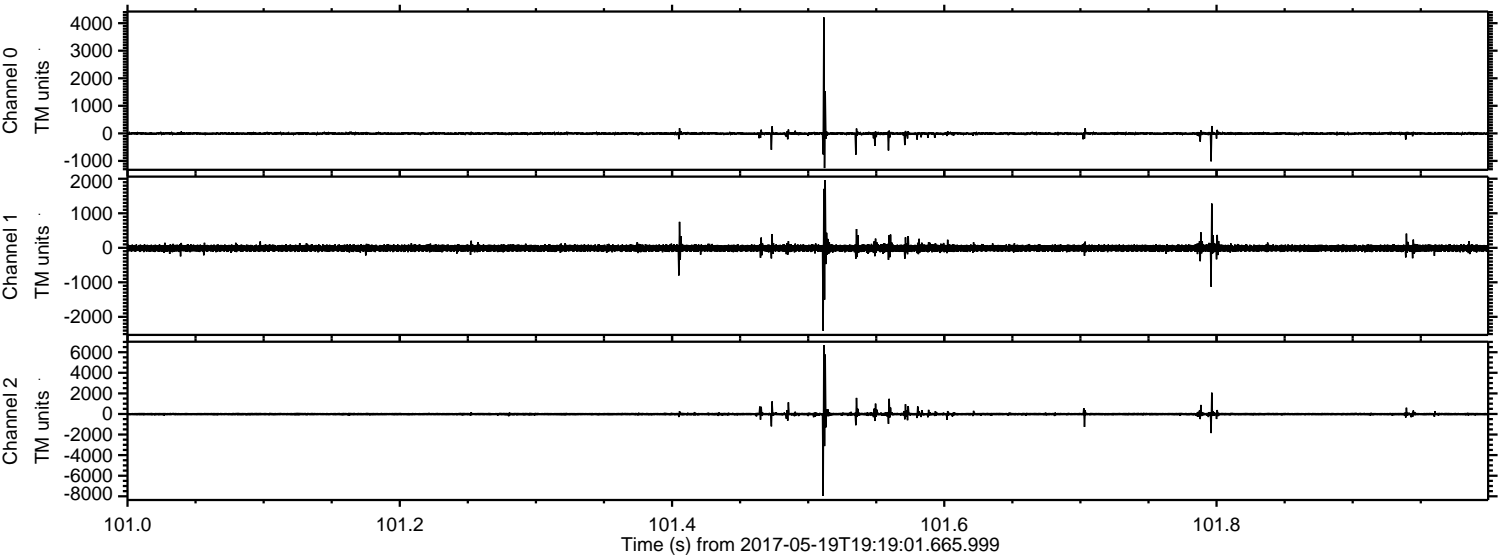
Channel 1  
mn: -6130  
mx: 8185  
 $\mu$ : -12.4  
 $\sigma$ : 91.0

Channel 2  
mn: -2477  
mx: 3189  
 $\mu$ : -15.7  
 $\sigma$ : 64.0



ELMAVAN 3D WAVEFORMS (Measured data sampled at 50 kHz) 51000 packets of 144 samples from 2017-05-19T19:19:01.665.999. Part 102/147

Processed Fri May 19 21:27:09 2017 by ELM ver.2012-10-06 from 001\_\_elm20170519\_191900\_\_dat00.bin



Channel 0  
mn: -1260  
mx: 4211  
 $\mu$ : -6.3  
 $\sigma$ : 37.4

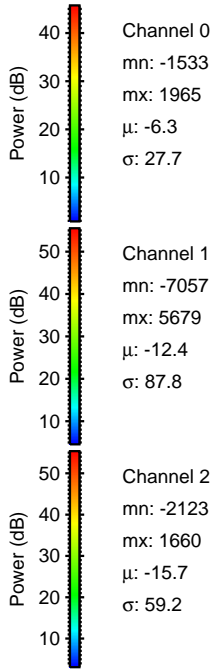
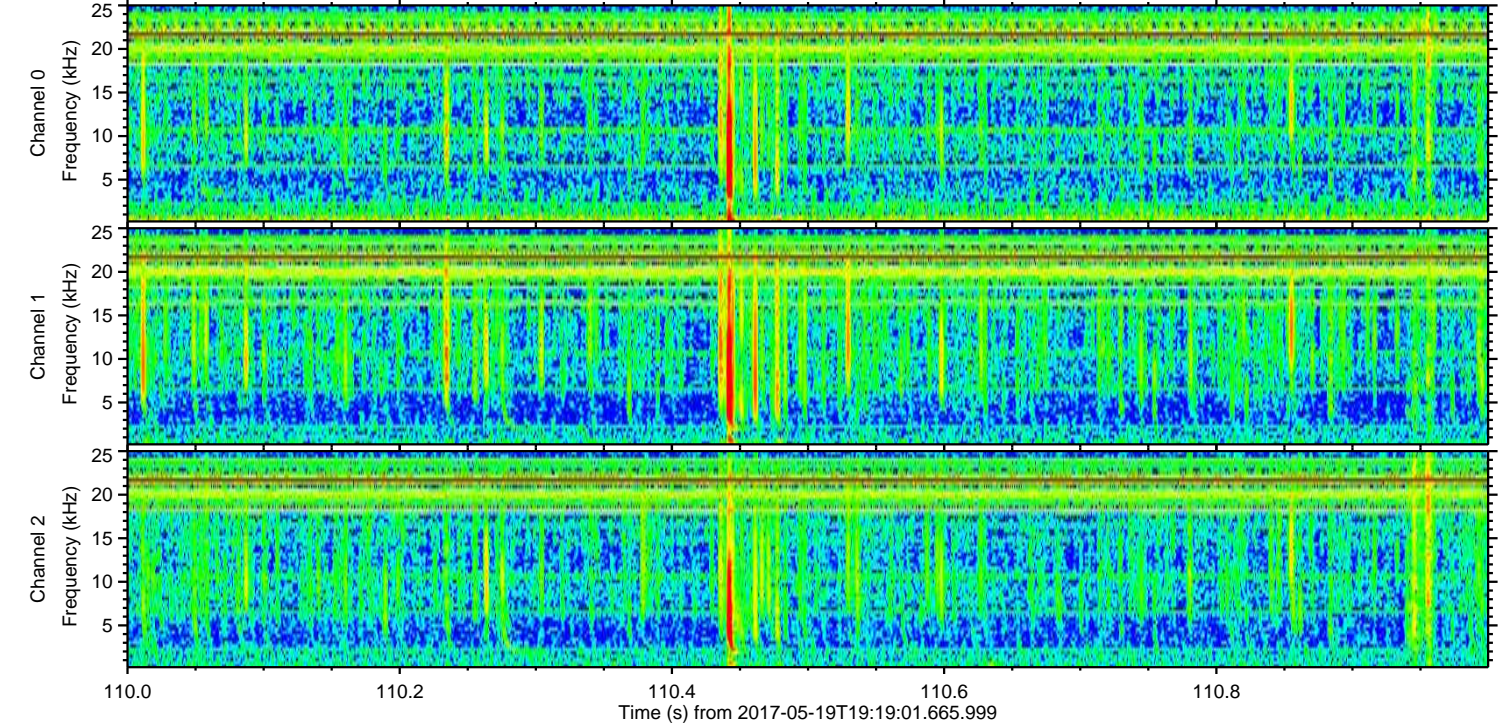
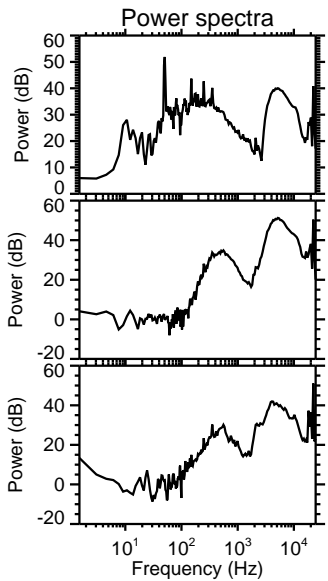
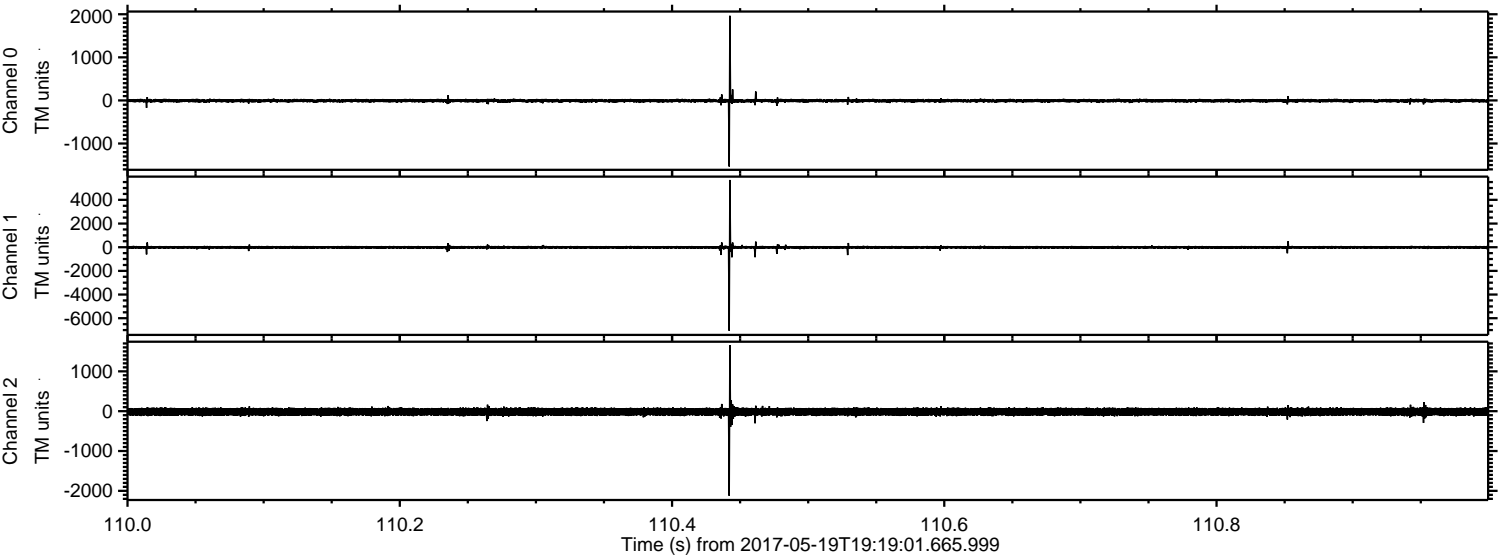
Channel 1  
mn: -2404  
mx: 1964  
 $\mu$ : -12.4  
 $\sigma$ : 62.7

Channel 2  
mn: -7963  
mx: 6687  
 $\mu$ : -15.7  
 $\sigma$ : 107.4



ELMAVAN 3D WAVEFORMS (Measured data sampled at 50 kHz) 51000 packets of 144 samples from 2017-05-19T19:19:01.665.999. Part 111/147

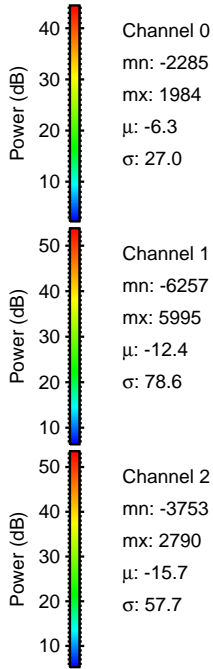
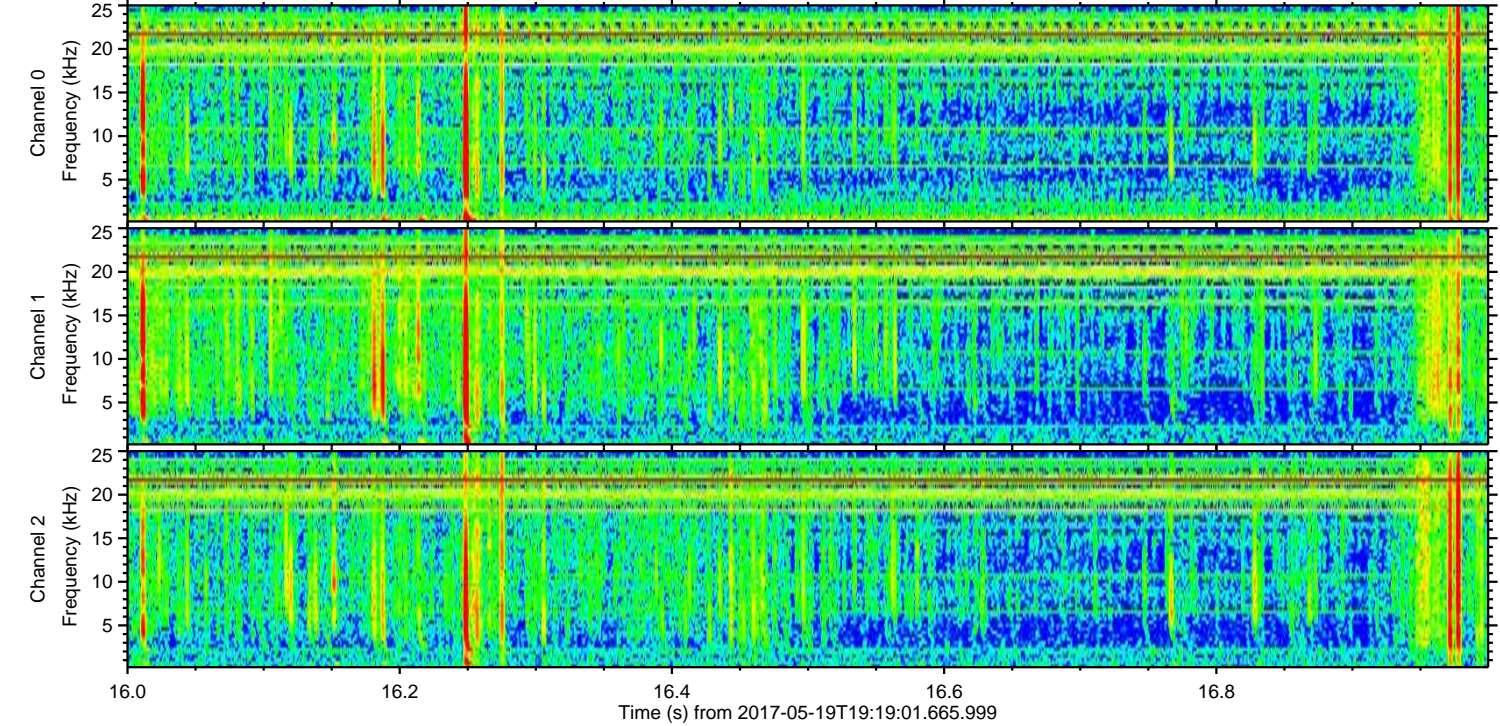
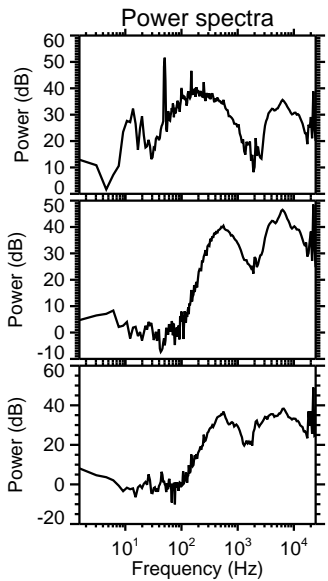
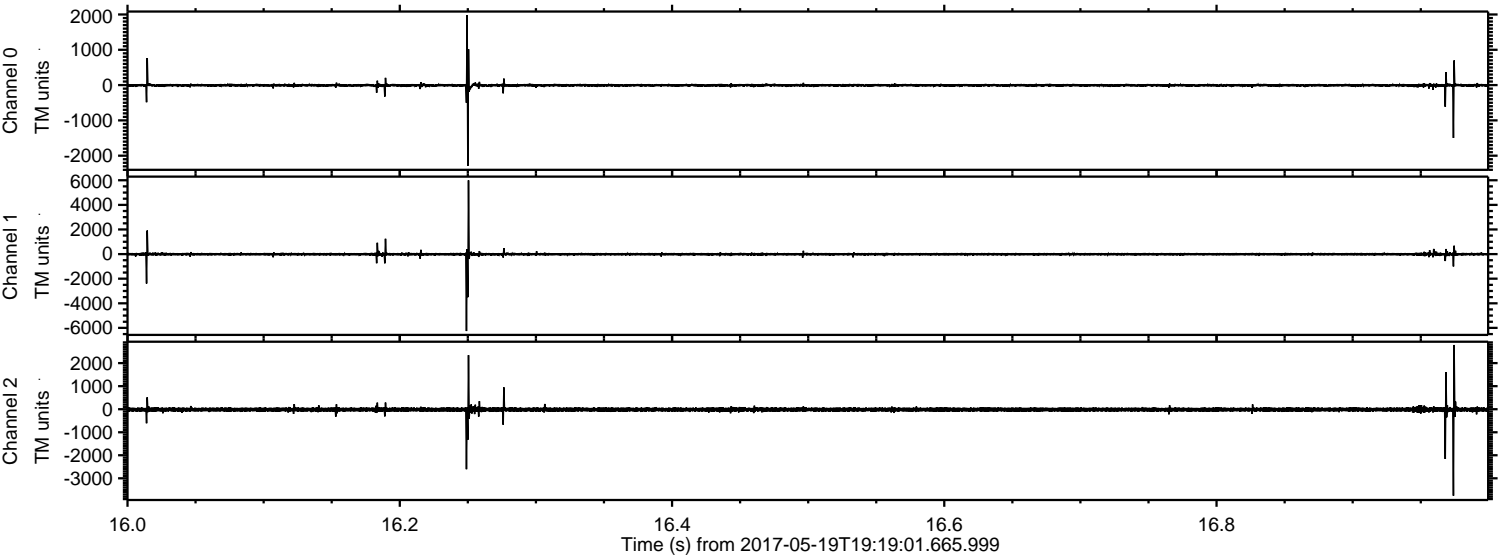
Processed Fri May 19 21:27:09 2017 by ELM ver.2012-10-06 from 001\_\_elm20170519\_191900\_\_dat00.bin





ELMAVAN 3D WAVEFORMS (Measured data sampled at 50 kHz) 51000 packets of 144 samples from 2017-05-19T19:19:01.665.999. Part 17/147

Processed Fri May 19 21:27:10 2017 by ELM ver.2012-10-06 from 001\_\_elm20170519\_191900\_\_dat00.bin



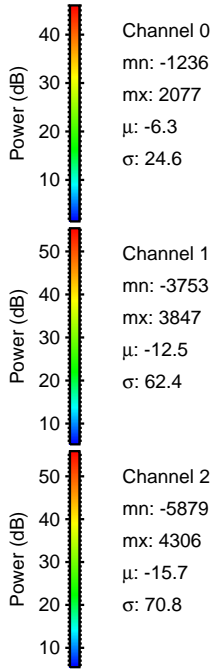
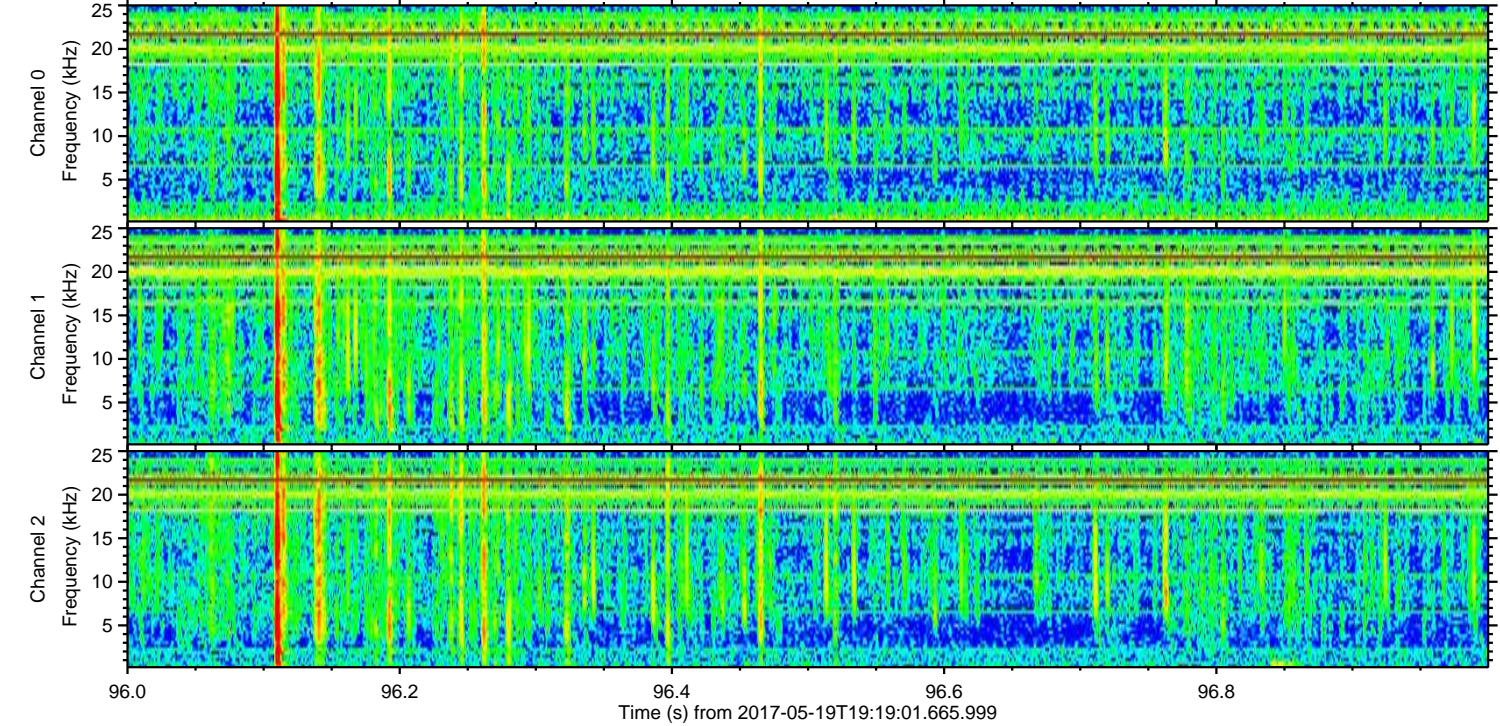
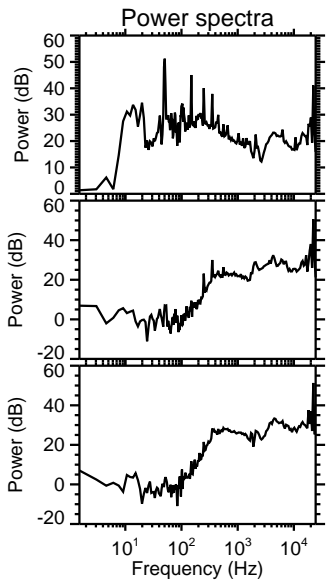
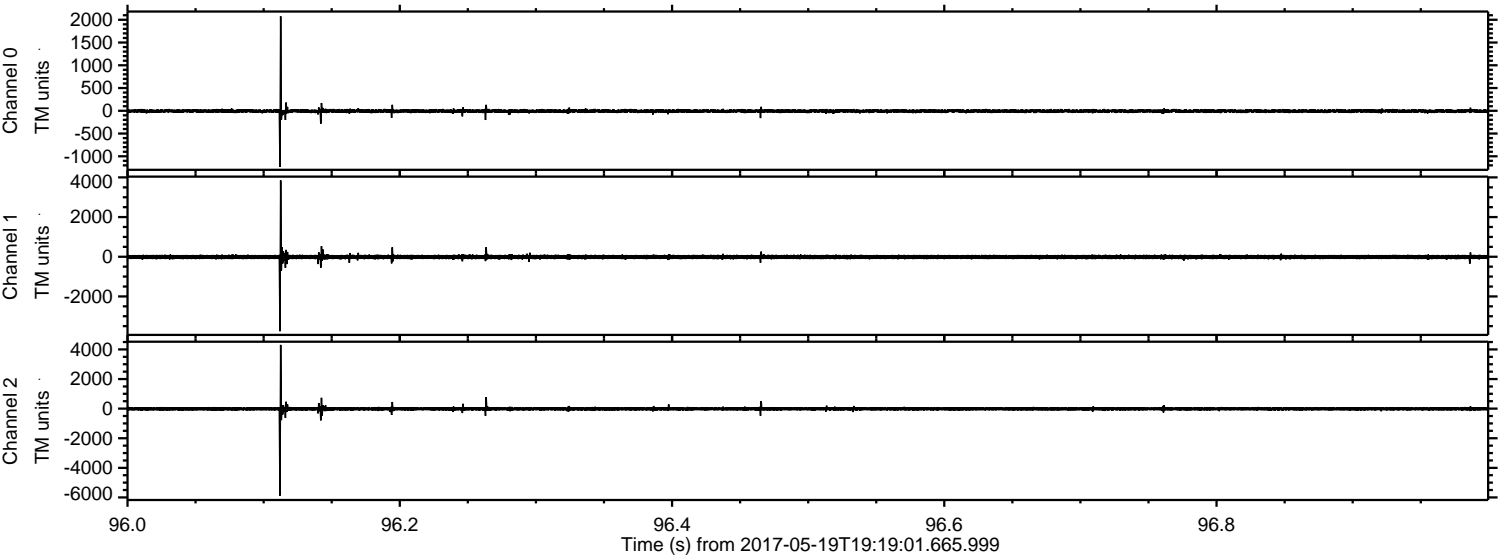
Channel 0  
mn: -2285  
mx: 1984  
 $\mu$ : -6.3  
 $\sigma$ : 27.0

Channel 1  
mn: -6257  
mx: 5995  
 $\mu$ : -12.4  
 $\sigma$ : 78.6

Channel 2  
mn: -3753  
mx: 2790  
 $\mu$ : -15.7  
 $\sigma$ : 57.7

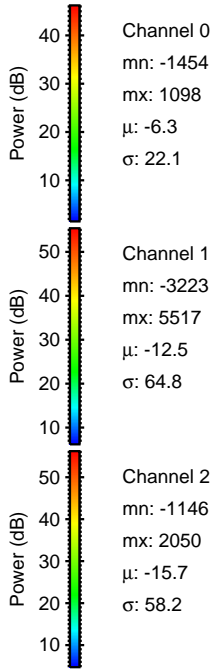
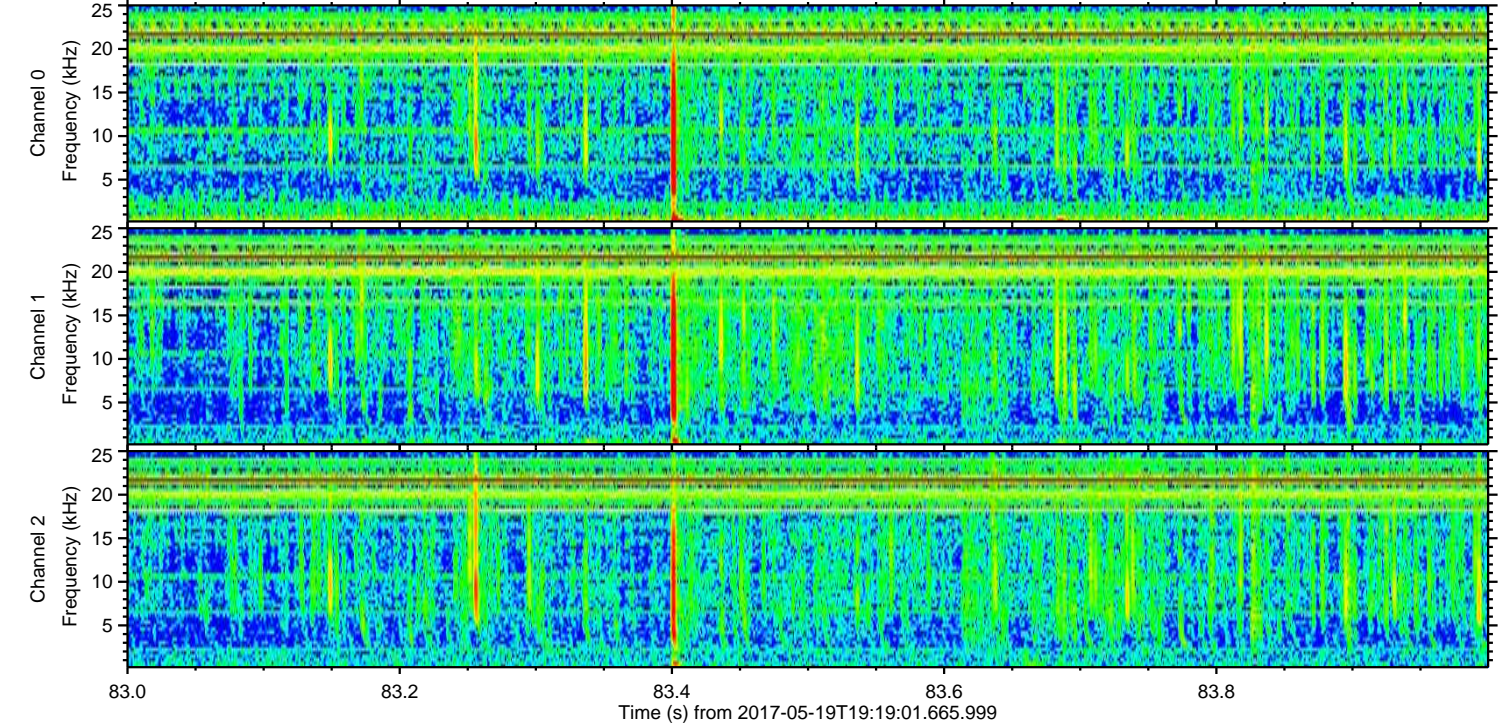
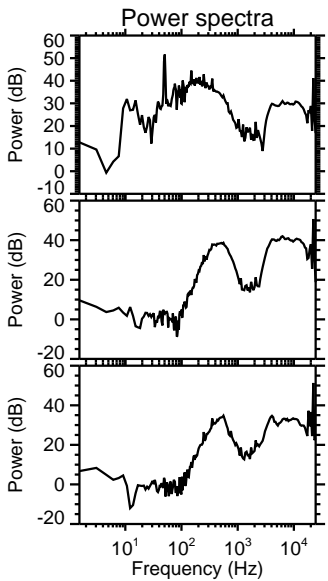
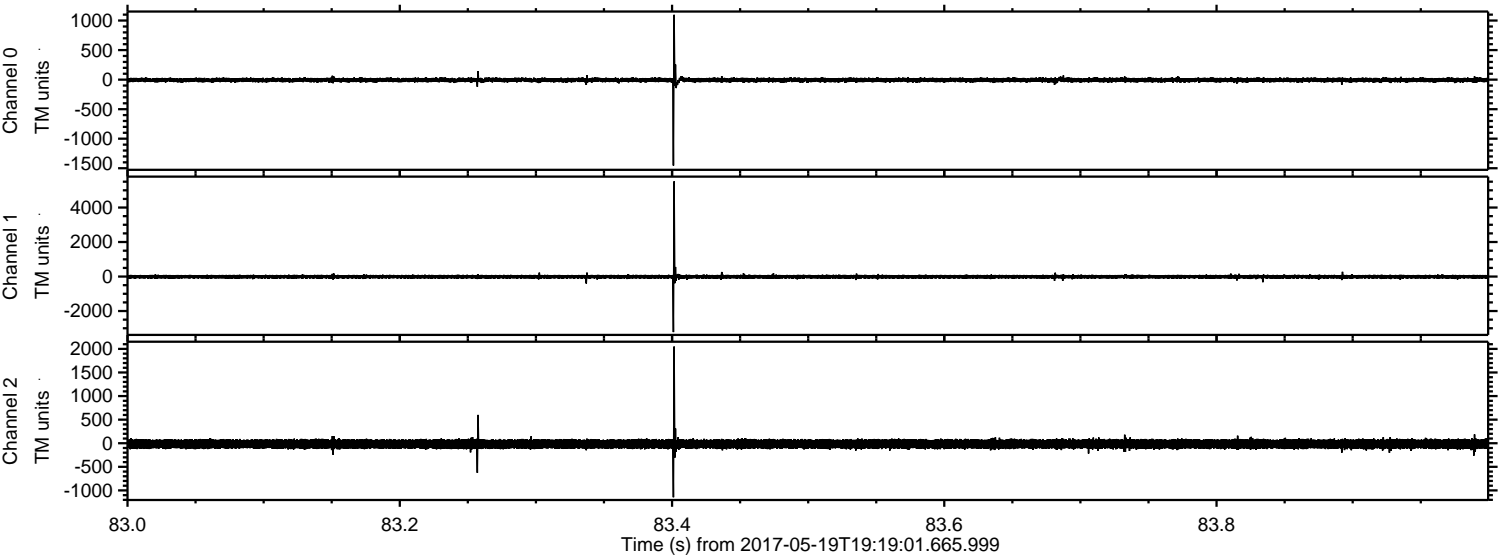


Processed Fri May 19 21:27:11 2017 by ELM ver.2012-10-06 from 001\_\_elm20170519\_191900\_\_dat00.bin





Processed Fri May 19 21:27:11 2017 by ELM ver.2012-10-06 from 001\_\_elm20170519\_191900\_\_dat00.bin



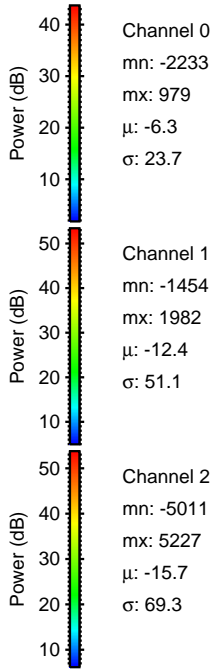
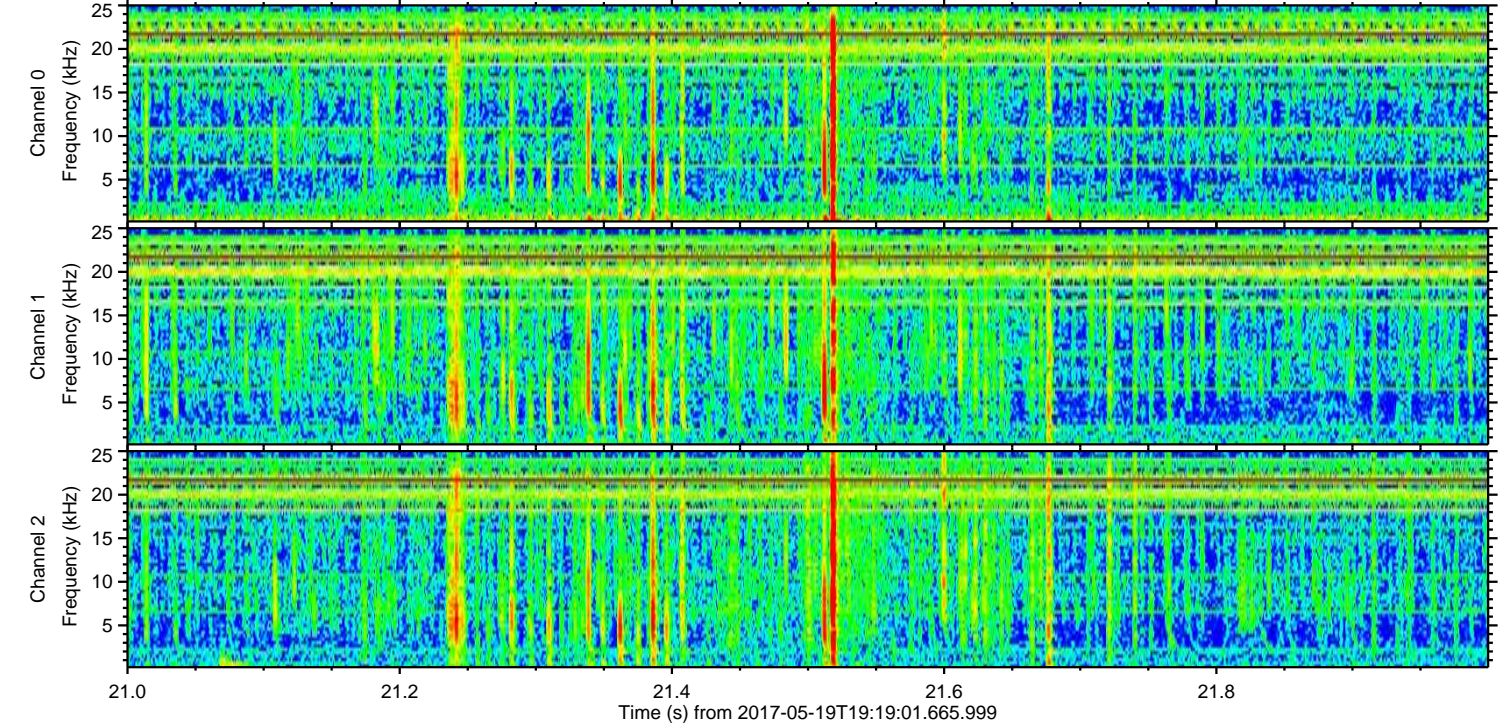
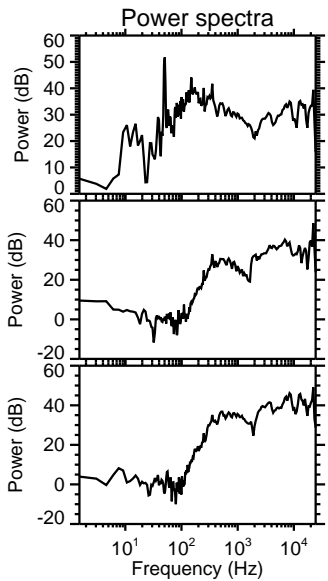
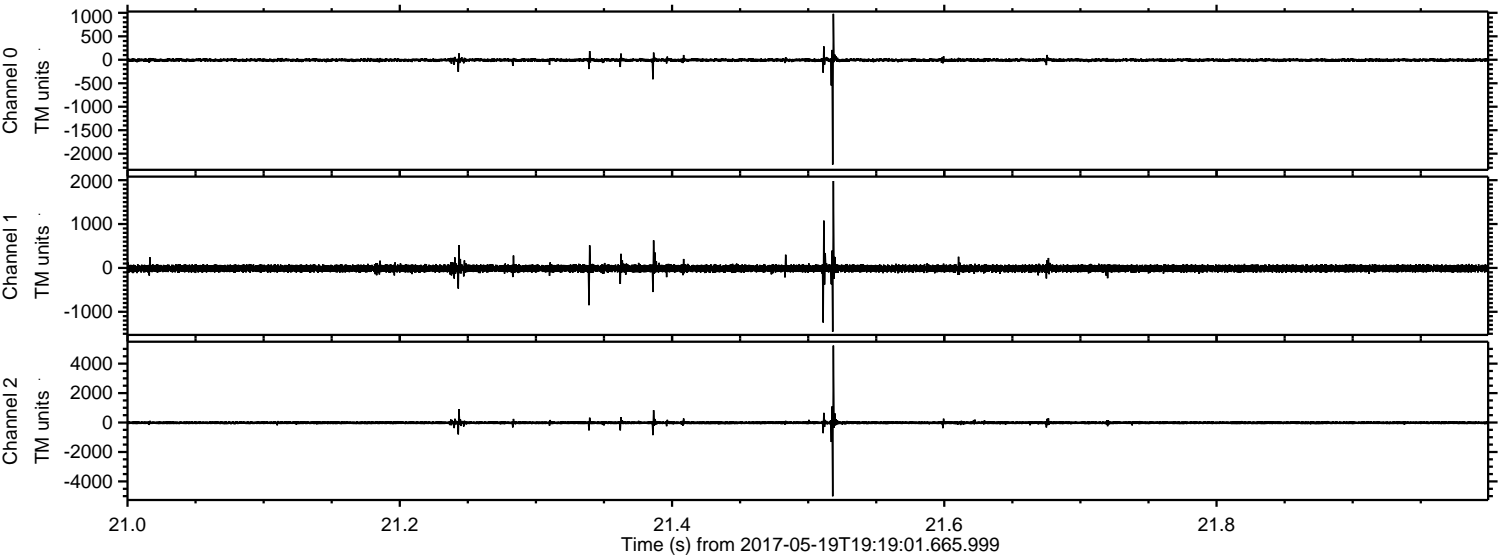
Channel 0  
mn: -1454  
mx: 1098  
 $\mu$ : -6.3  
 $\sigma$ : 22.1

Channel 1  
mn: -3223  
mx: 5517  
 $\mu$ : -12.5  
 $\sigma$ : 64.8

Channel 2  
mn: -1146  
mx: 2050  
 $\mu$ : -15.7  
 $\sigma$ : 58.2



Processed Fri May 19 21:27:12 2017 by ELM ver.2012-10-06 from 001\_\_elm20170519\_191900\_\_dat00.bin



Channel 0  
mn: -2233  
mx: 979  
 $\mu$ : -6.3  
 $\sigma$ : 23.7

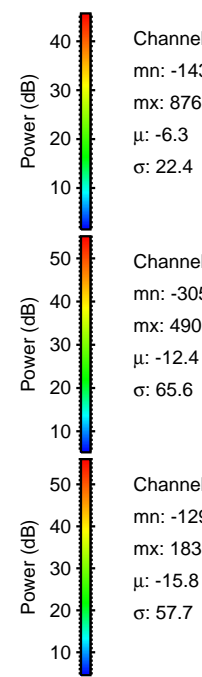
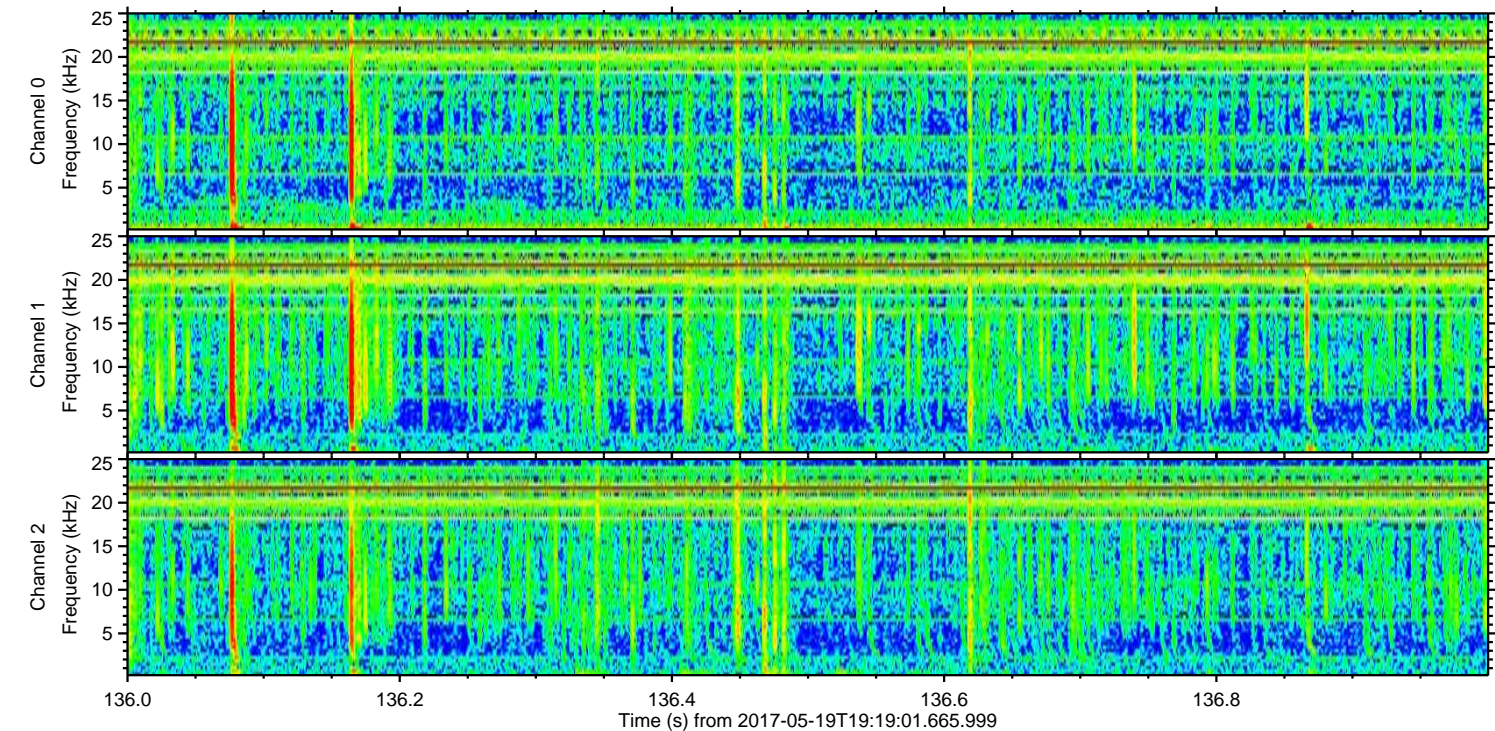
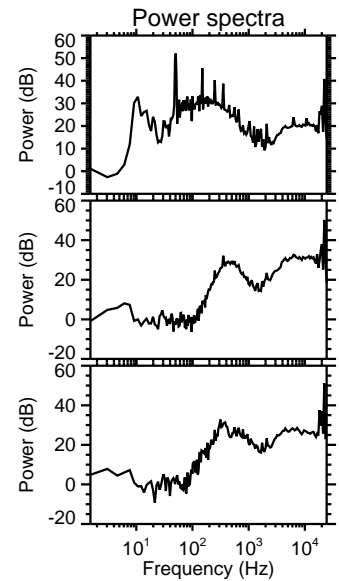
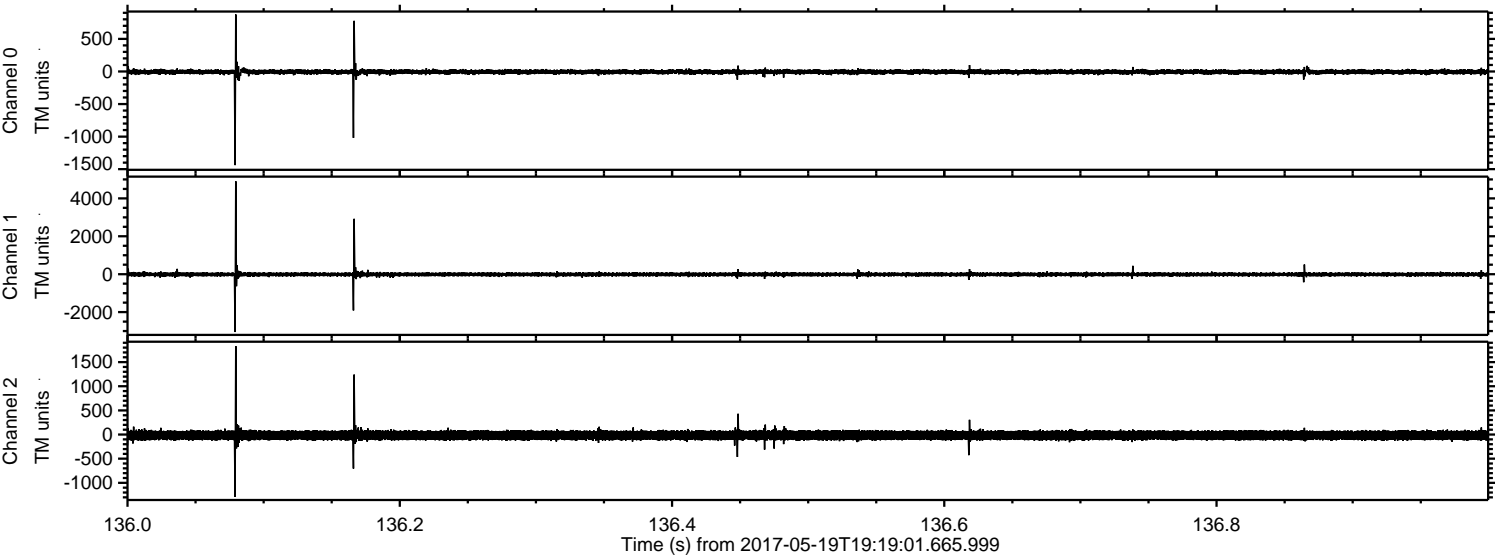
Channel 1  
mn: -1454  
mx: 1982  
 $\mu$ : -12.4  
 $\sigma$ : 51.1

Channel 2  
mn: -5011  
mx: 5227  
 $\mu$ : -15.7  
 $\sigma$ : 69.3



ELMAVAN 3D WAVEFORMS (Measured data sampled at 50 kHz) 51000 packets of 144 samples from 2017-05-19T19:19:01.665.999. Part 137/147

Processed Fri May 19 21:27:13 2017 by ELM ver.2012-10-06 from 001\_\_elm20170519\_191900\_\_dat00.bin



Channel 0  
mn: -1438  
mx: 876  
 $\mu$ : -6.3  
 $\sigma$ : 22.4

Channel 1  
mn: -3051  
mx: 4903  
 $\mu$ : -12.4  
 $\sigma$ : 65.6

Channel 2  
mn: -1291  
mx: 1831  
 $\mu$ : -15.8  
 $\sigma$ : 57.7



