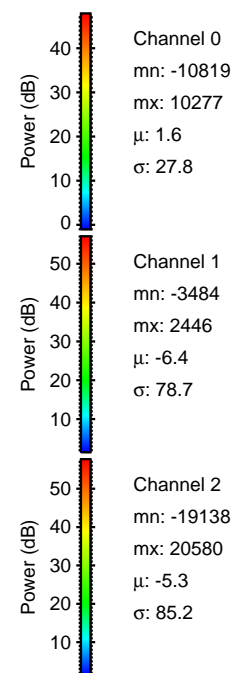
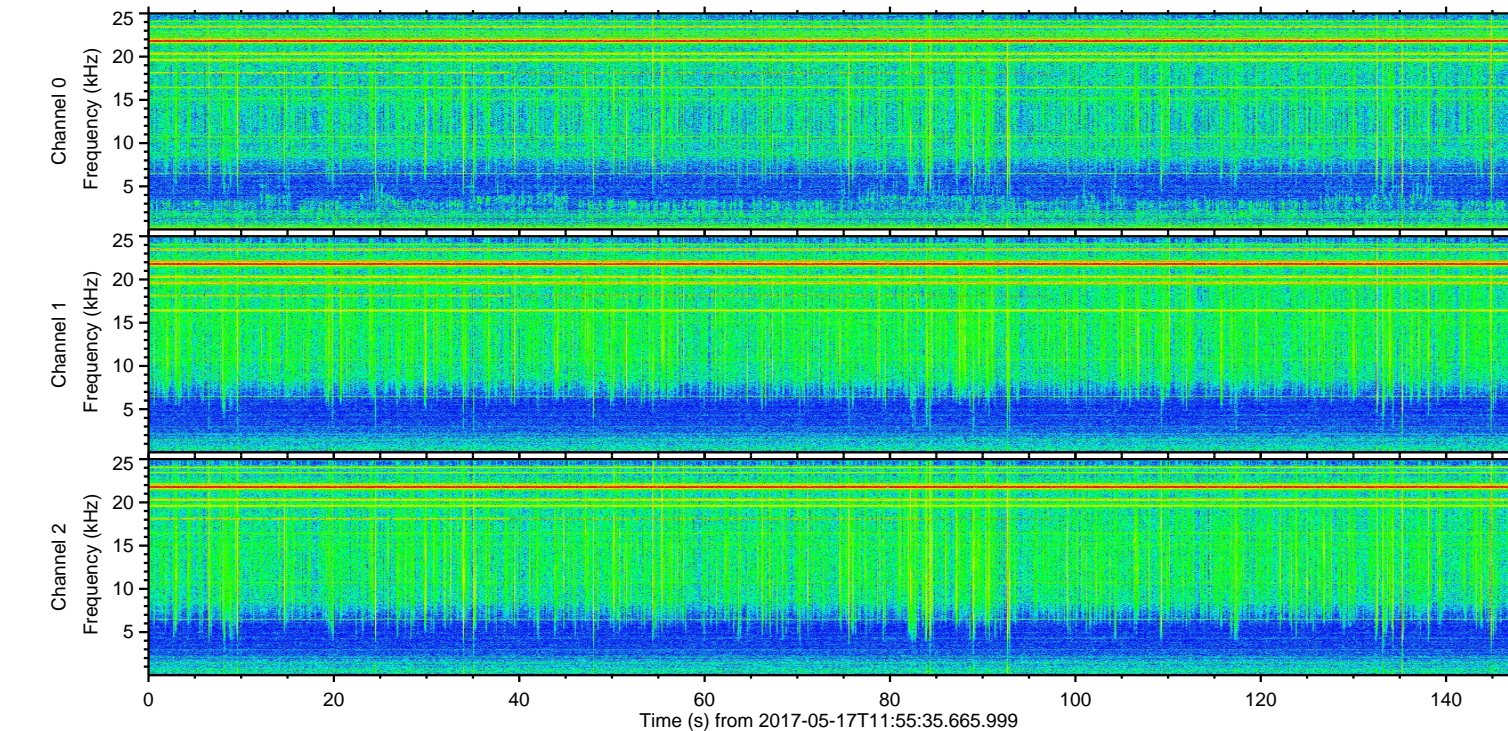
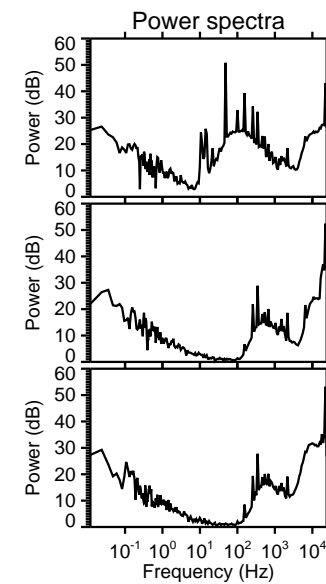
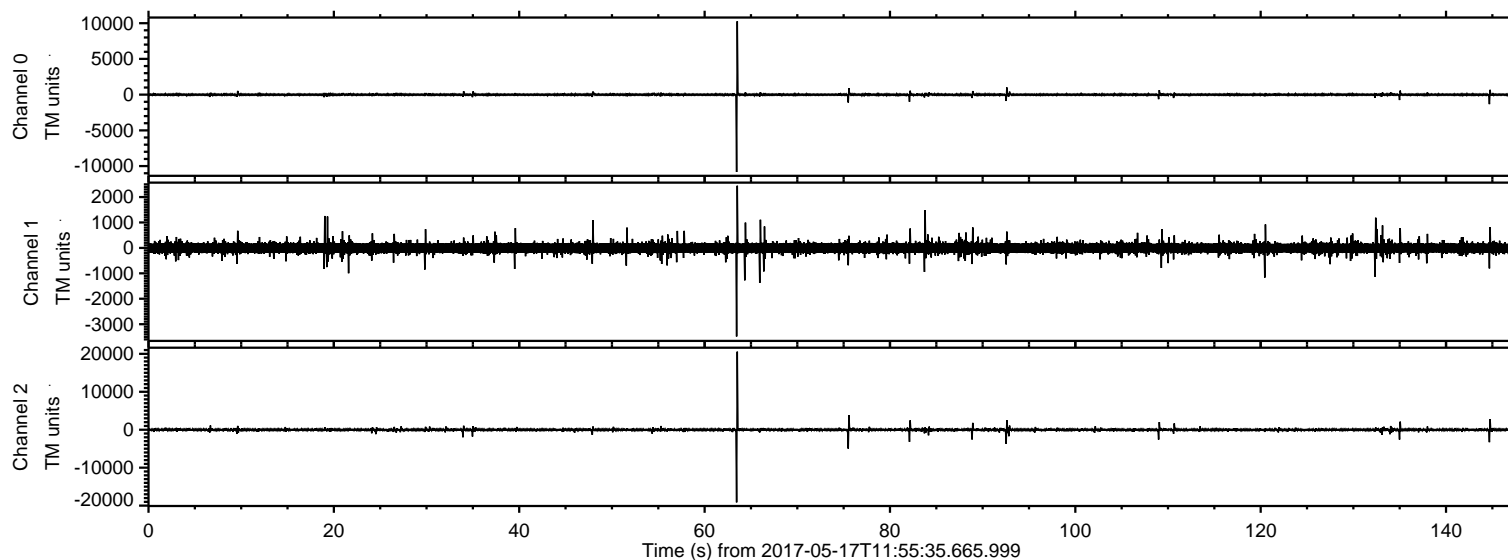


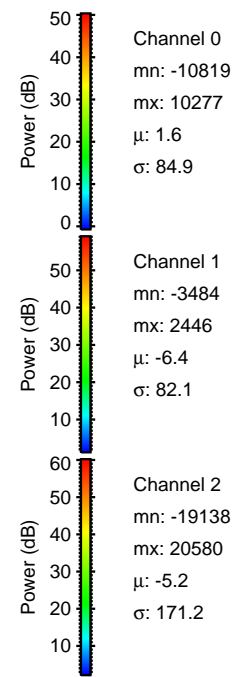
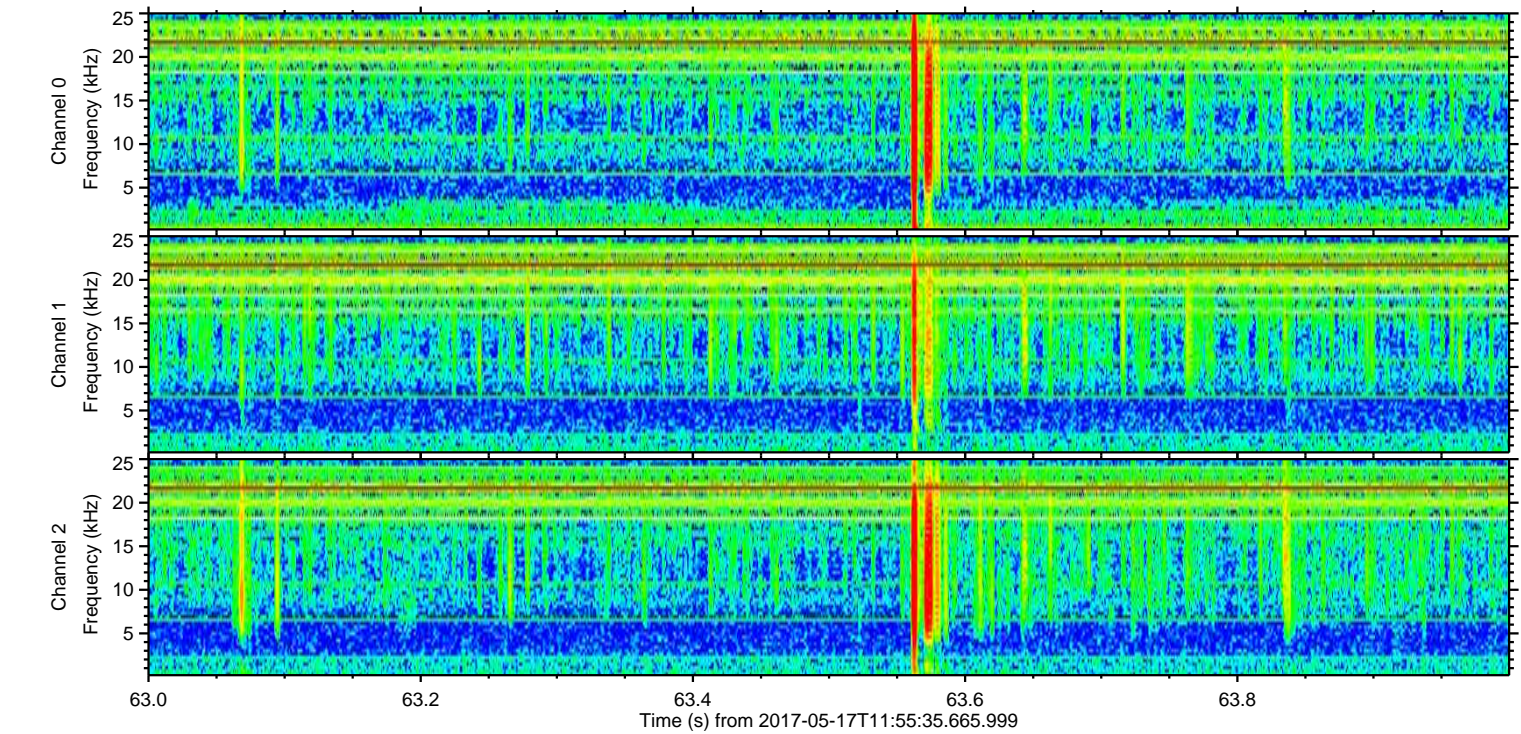
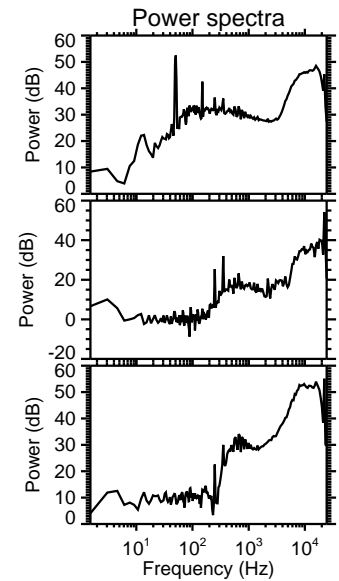
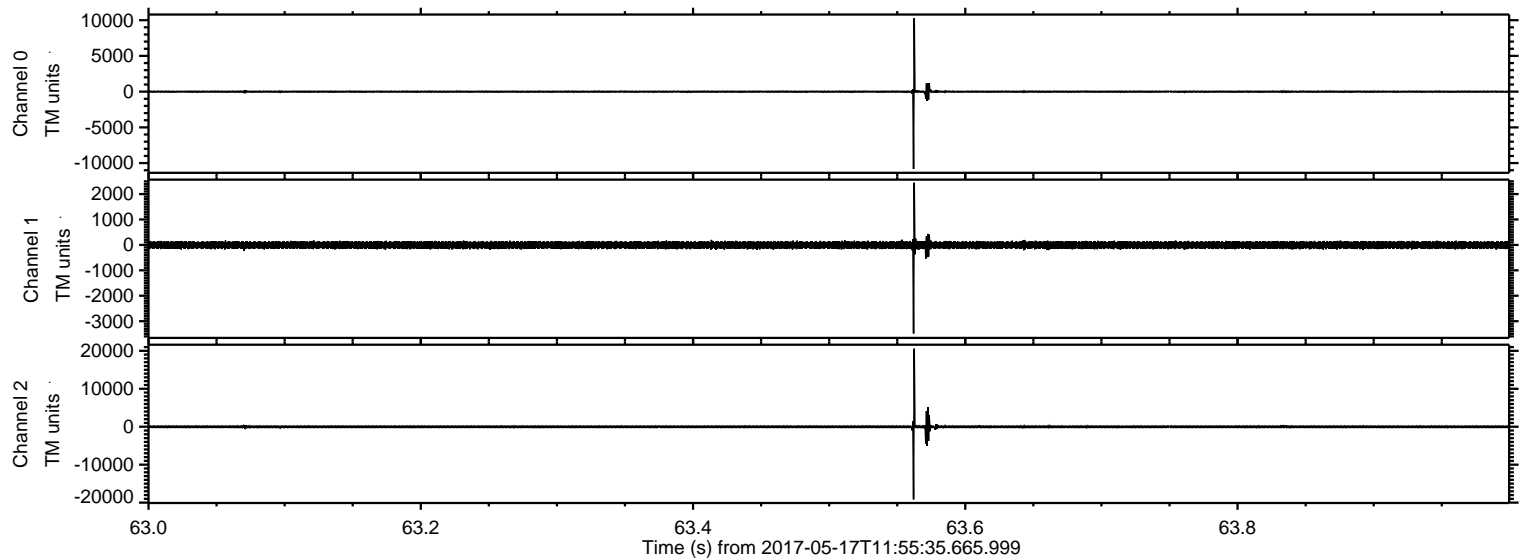
# ELMAVAN 3D WAVEFORMS (Measured data sampled at 50 kHz) 51000 packets of 144 samples from 2017-05-17T11:55:35.665.999.

Processed Wed May 17 14:03:47 2017 by ELM ver.2012-10-06 from 001\_\_elm20170517\_115534\_\_dat00.bin



ELMAVAN 3D WAVEFORMS (Measured data sampled at 50 kHz) 51000 packets of 144 samples from 2017-05-17T11:55:35.665.999. Part 64/147

Processed Wed May 17 14:03:54 2017 by ELM ver.2012-10-06 from 001\_\_elm20170517\_115534\_\_dat00.bin



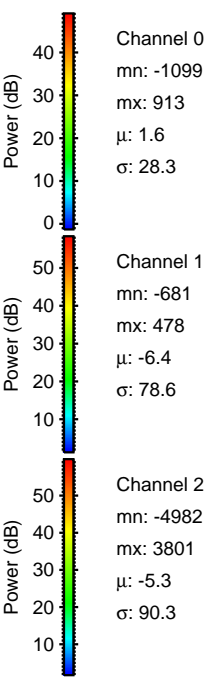
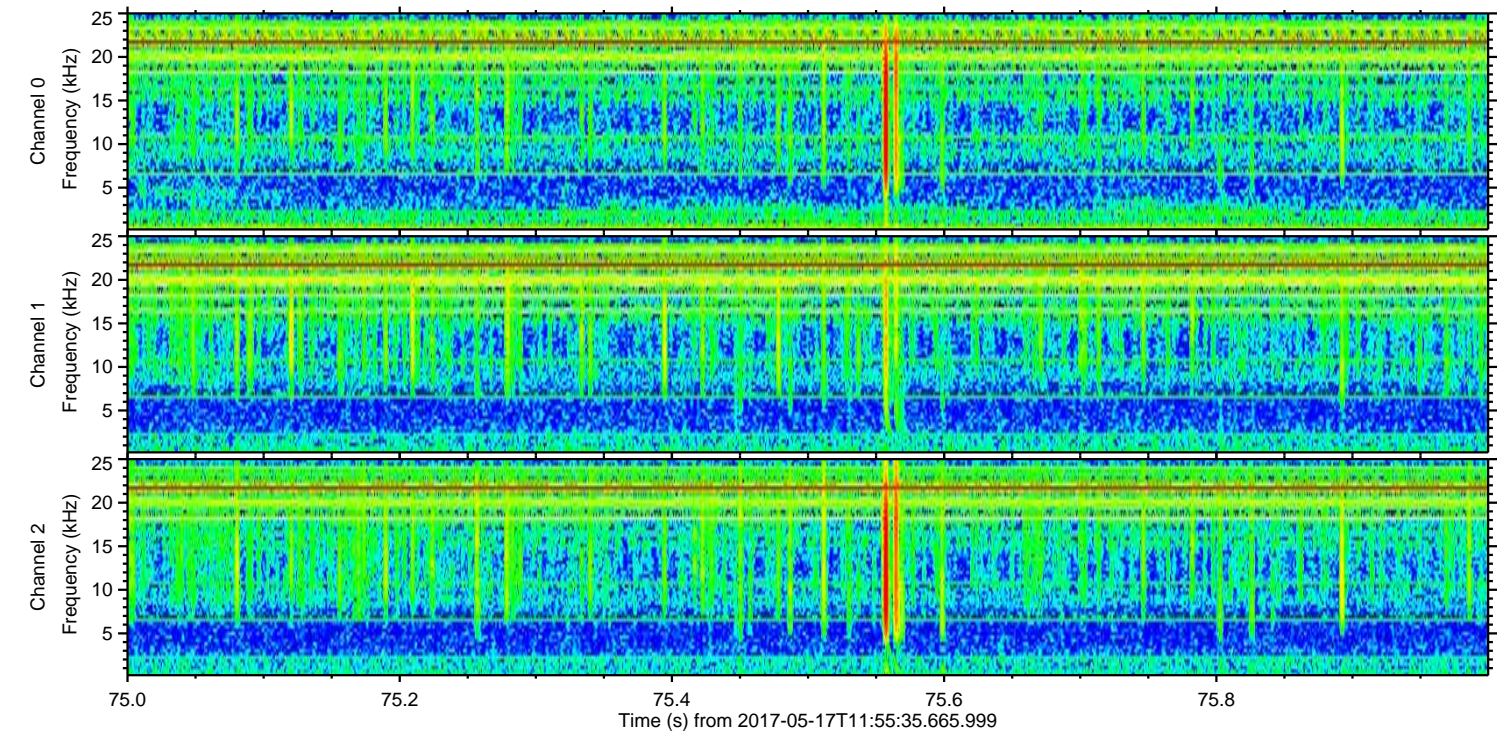
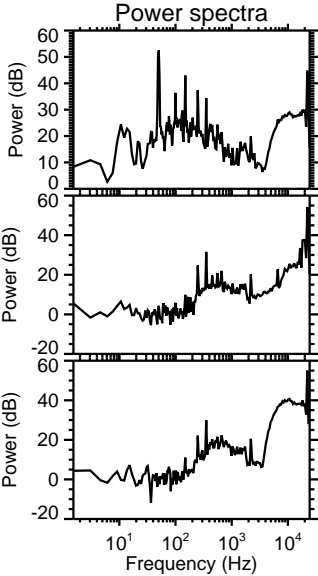
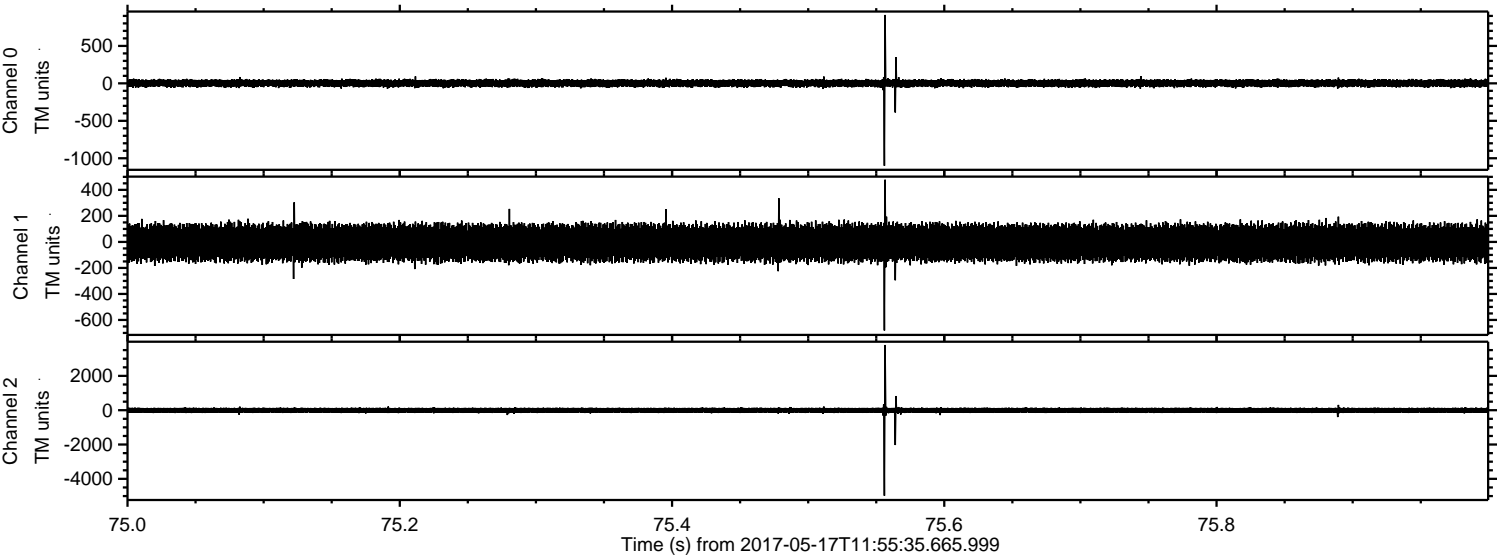
Channel 0  
mn: -10819  
mx: 10277  
 $\mu$ : 1.6  
 $\sigma$ : 84.9

Channel 1  
mn: -3484  
mx: 2446  
 $\mu$ : -6.4  
 $\sigma$ : 82.1

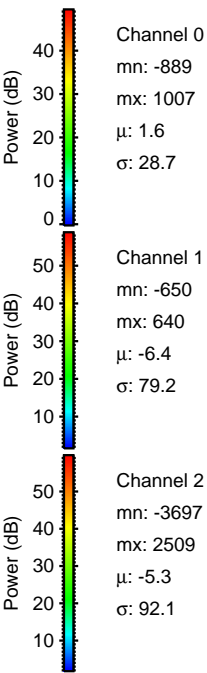
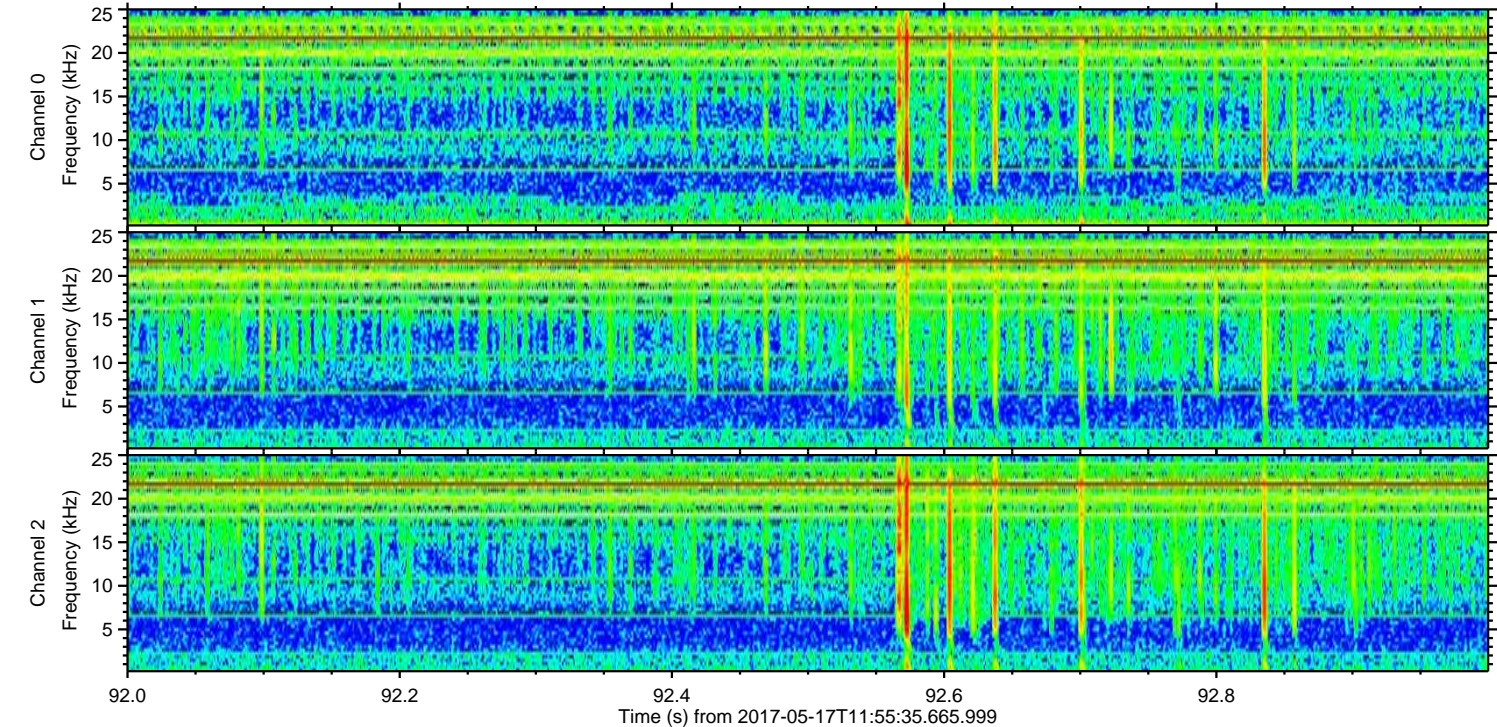
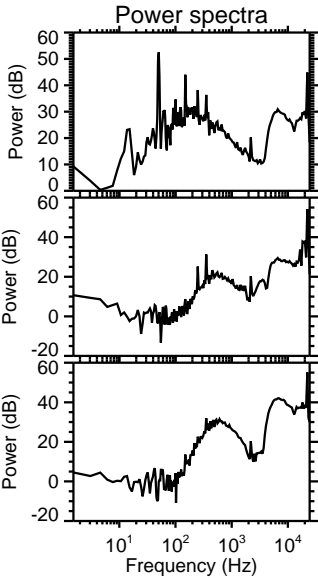
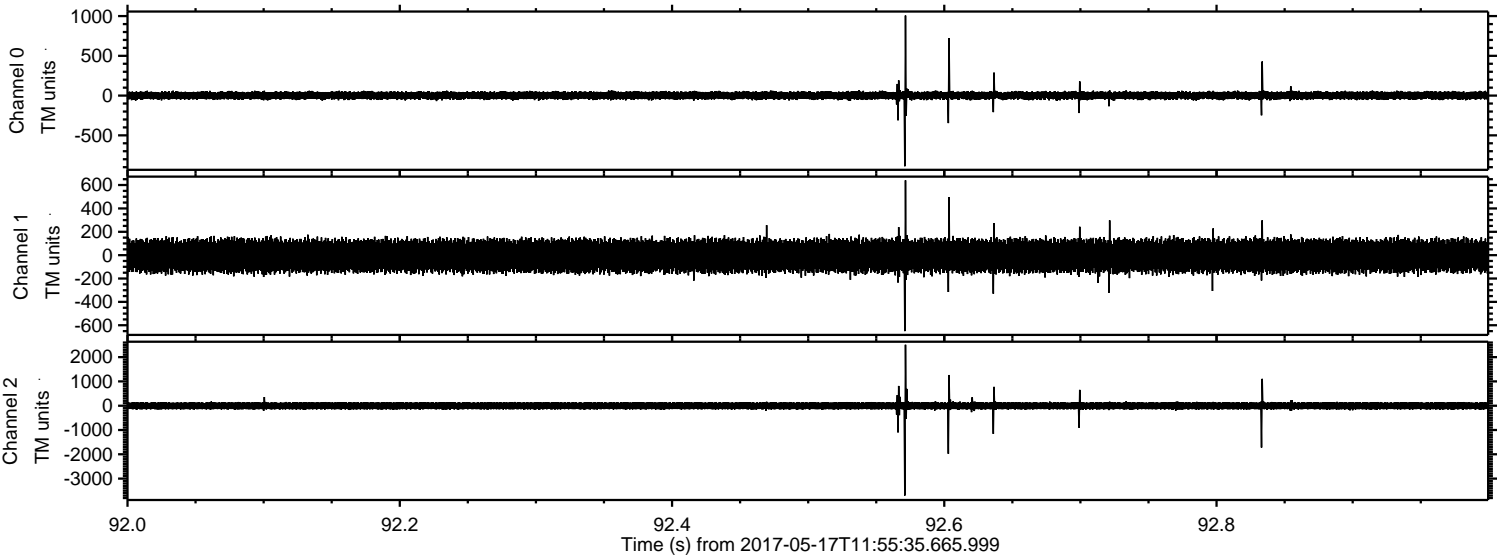
Channel 2  
mn: -19138  
mx: 20580  
 $\mu$ : -5.2  
 $\sigma$ : 171.2

ELMAVAN 3D WAVEFORMS (Measured data sampled at 50 kHz) 51000 packets of 144 samples from 2017-05-17T11:55:35.665.999. Part 76/147

Processed Wed May 17 14:03:55 2017 by ELM ver.2012-10-06 from 001\_\_elm20170517\_115534\_\_dat00.bin

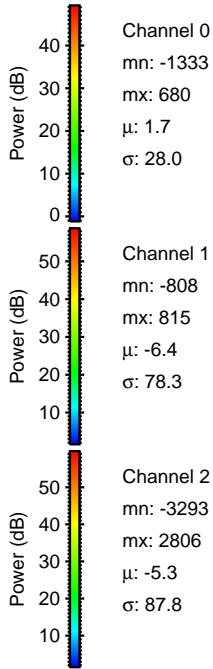
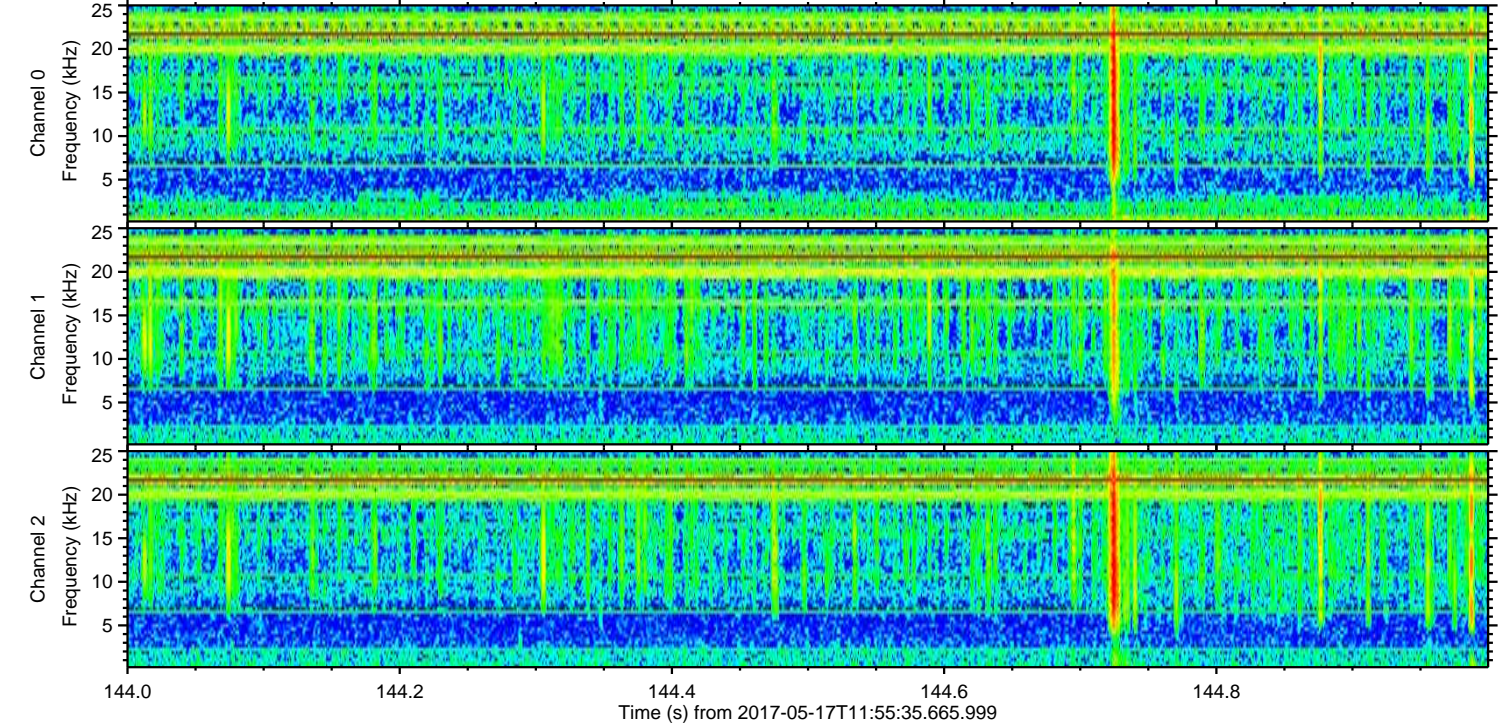
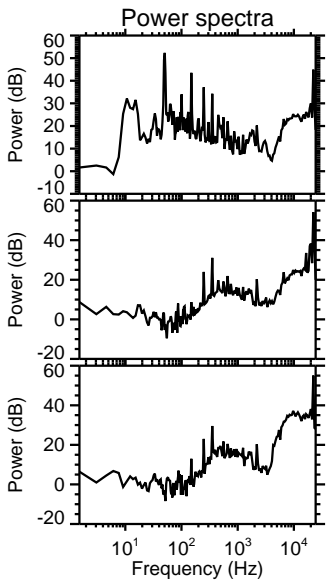
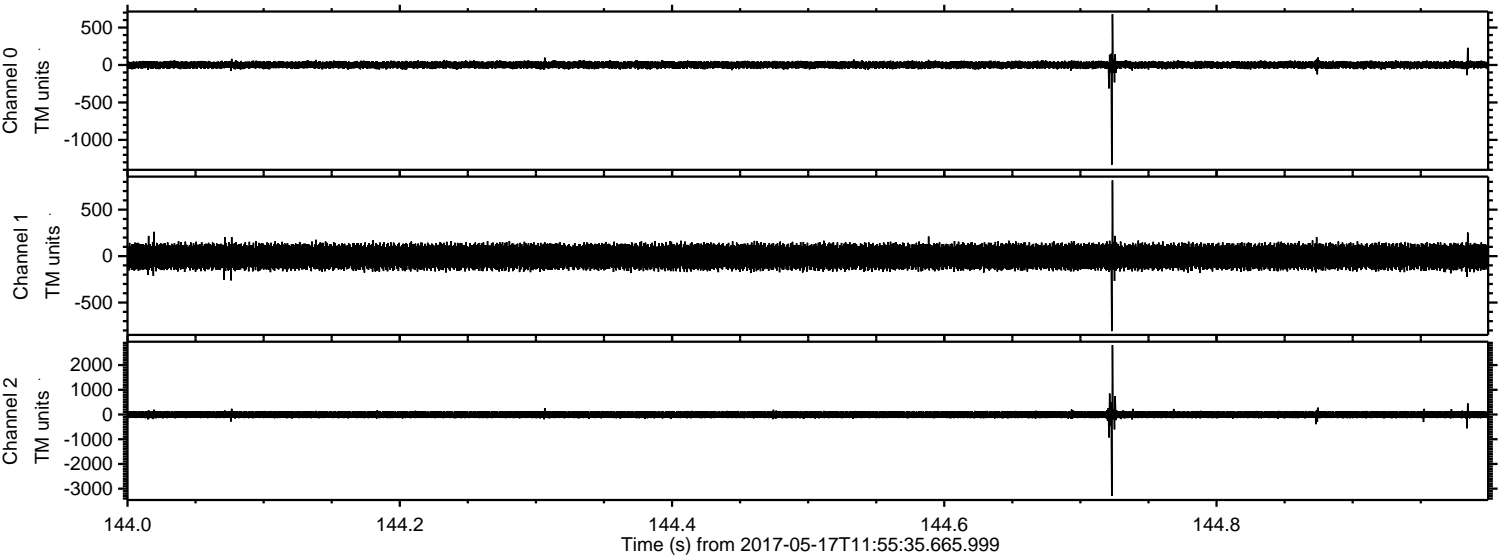


Processed Wed May 17 14:03:55 2017 by ELM ver.2012-10-06 from 001\_\_elm20170517\_115534\_\_dat00.bin

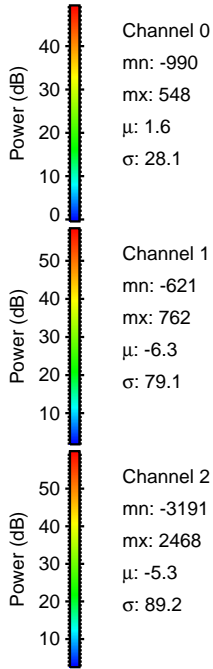
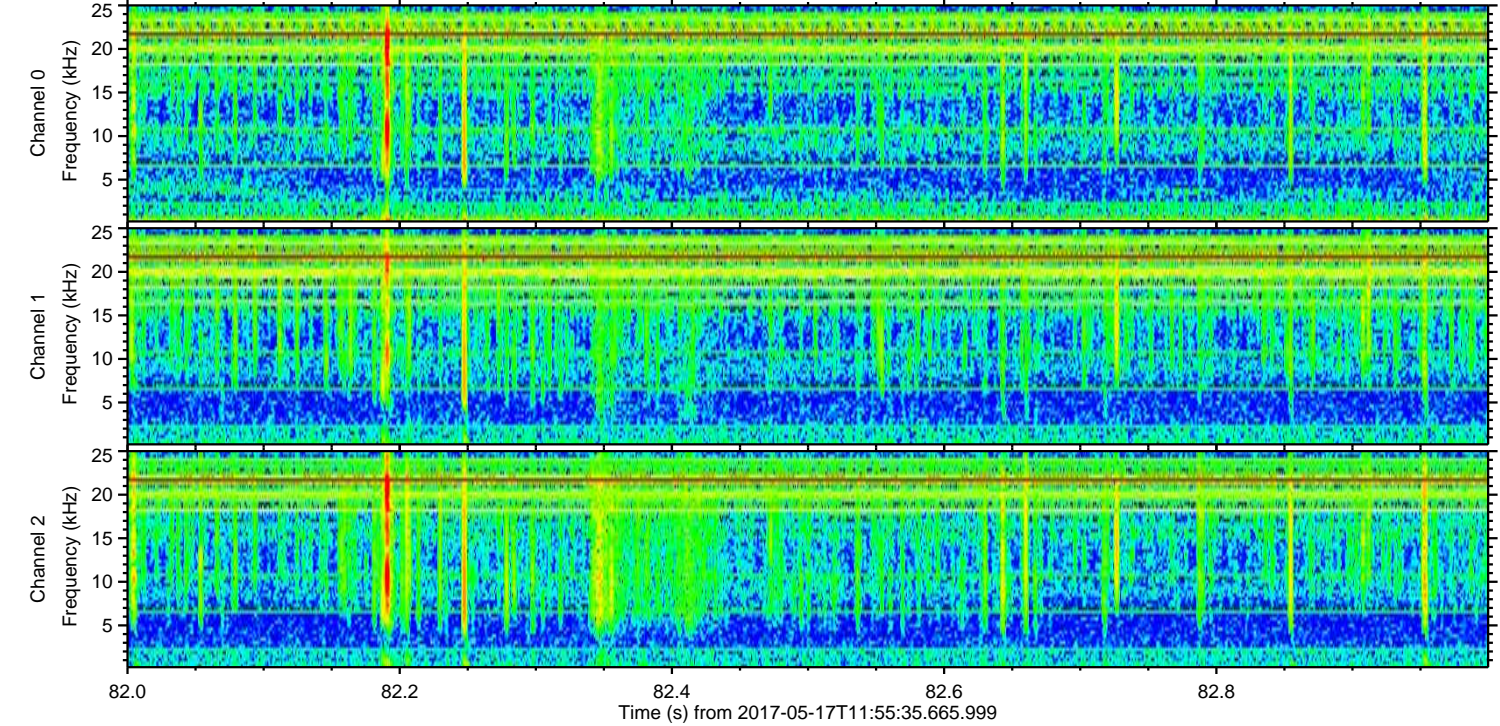
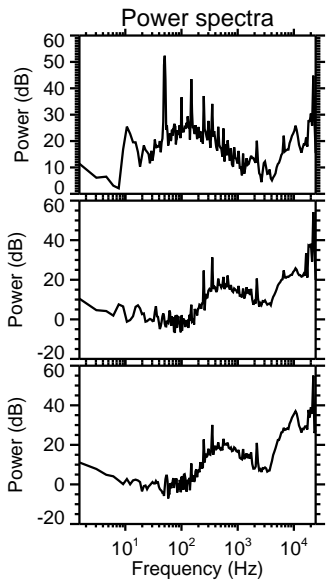
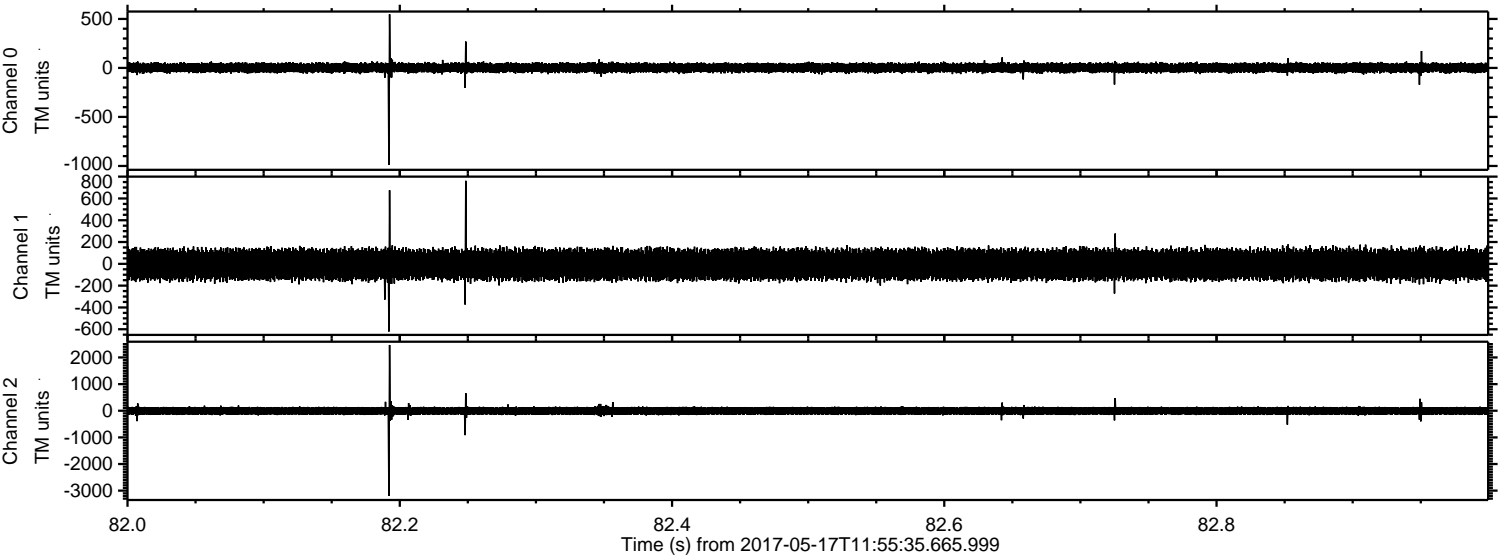


ELMAVAN 3D WAVEFORMS (Measured data sampled at 50 kHz) 51000 packets of 144 samples from 2017-05-17T11:55:35.665.999. Part 145/147

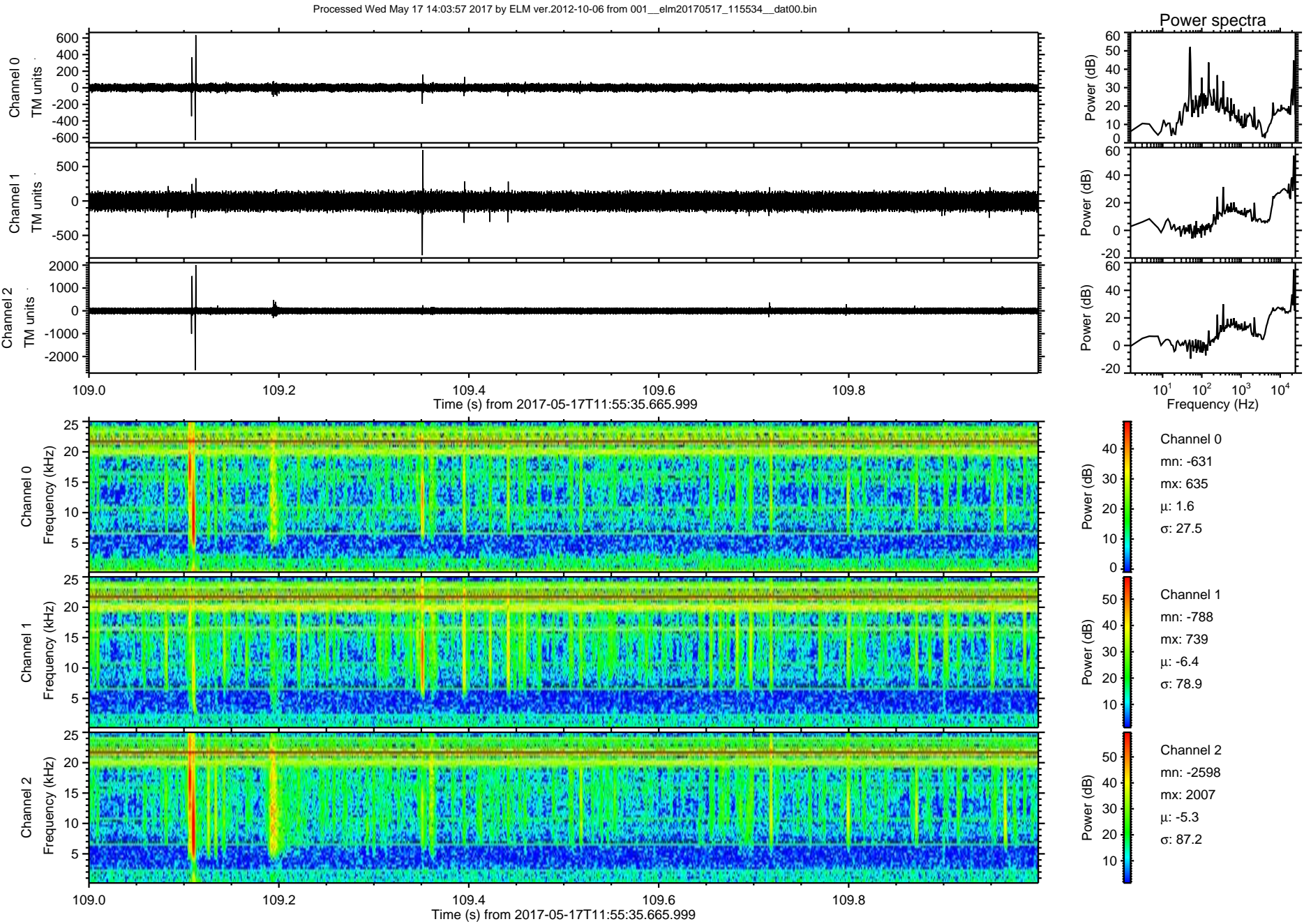
Processed Wed May 17 14:03:56 2017 by ELM ver.2012-10-06 from 001\_\_elm20170517\_115534\_\_dat00.bin



Processed Wed May 17 14:03:57 2017 by ELM ver.2012-10-06 from 001\_\_elm20170517\_115534\_\_dat00.bin

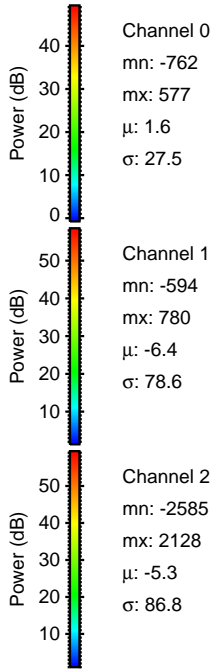
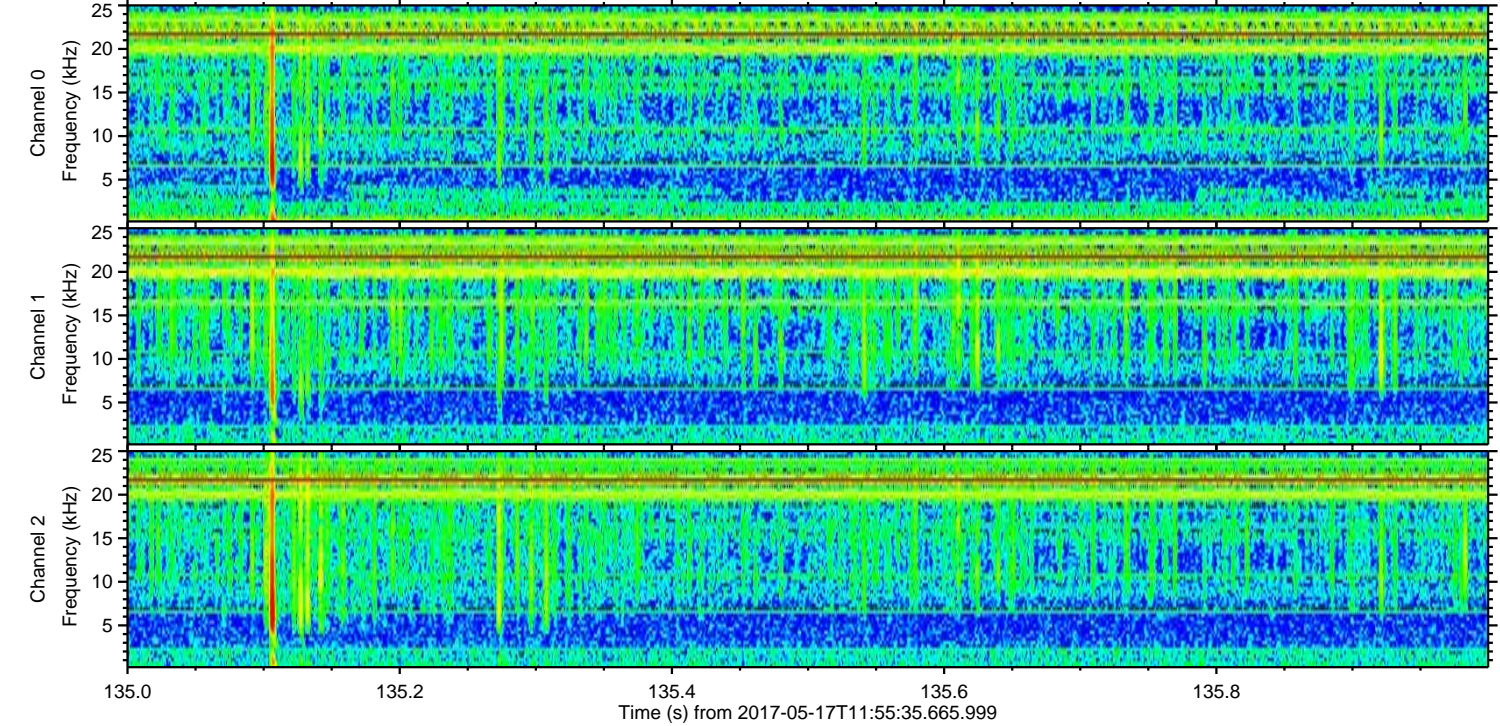
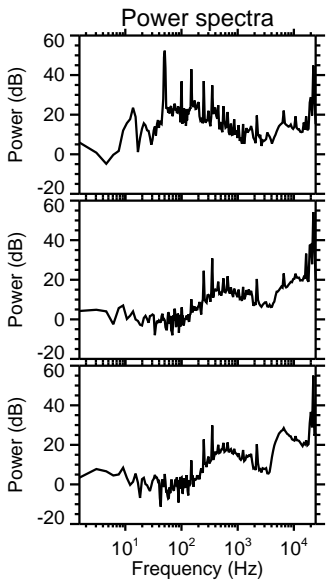
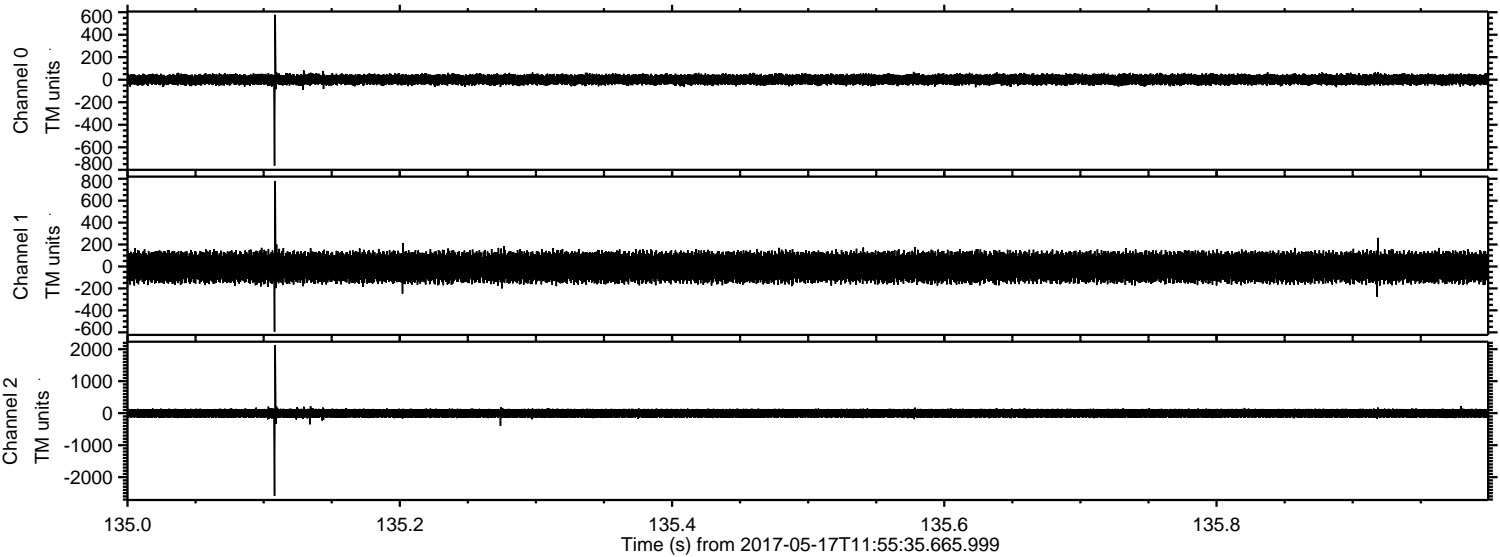


ELMAVAN 3D WAVEFORMS (Measured data sampled at 50 kHz) 51000 packets of 144 samples from 2017-05-17T11:55:35.665.999. Part 110/147



ELMAVAN 3D WAVEFORMS (Measured data sampled at 50 kHz) 51000 packets of 144 samples from 2017-05-17T11:55:35.665.999. Part 136/147

Processed Wed May 17 14:03:58 2017 by ELM ver.2012-10-06 from 001\_\_elm20170517\_115534\_\_dat00.bin

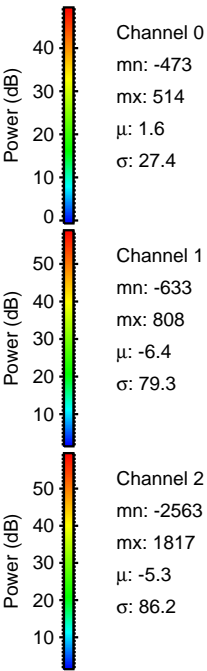
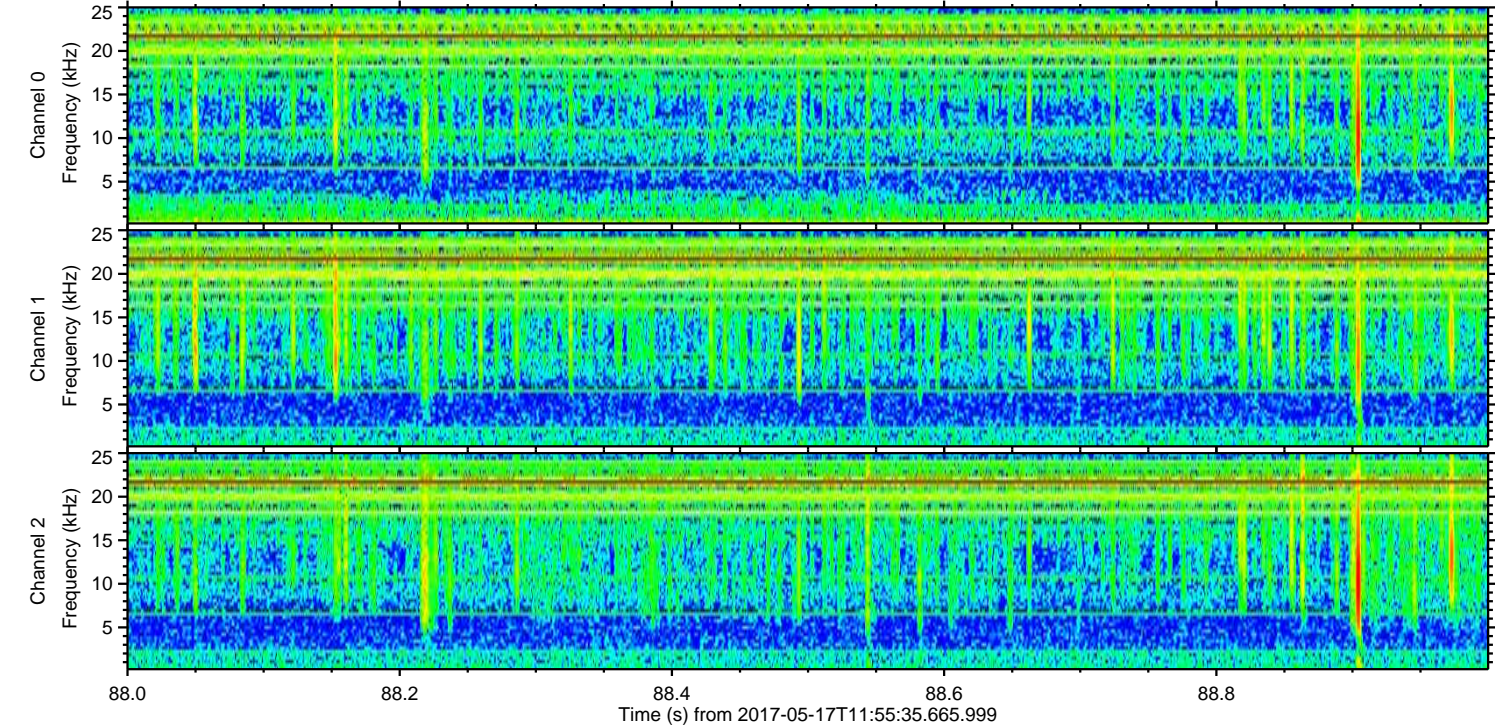
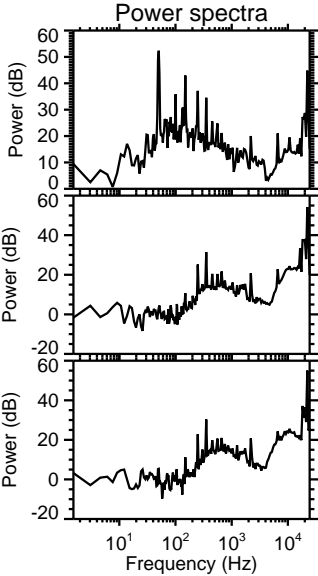
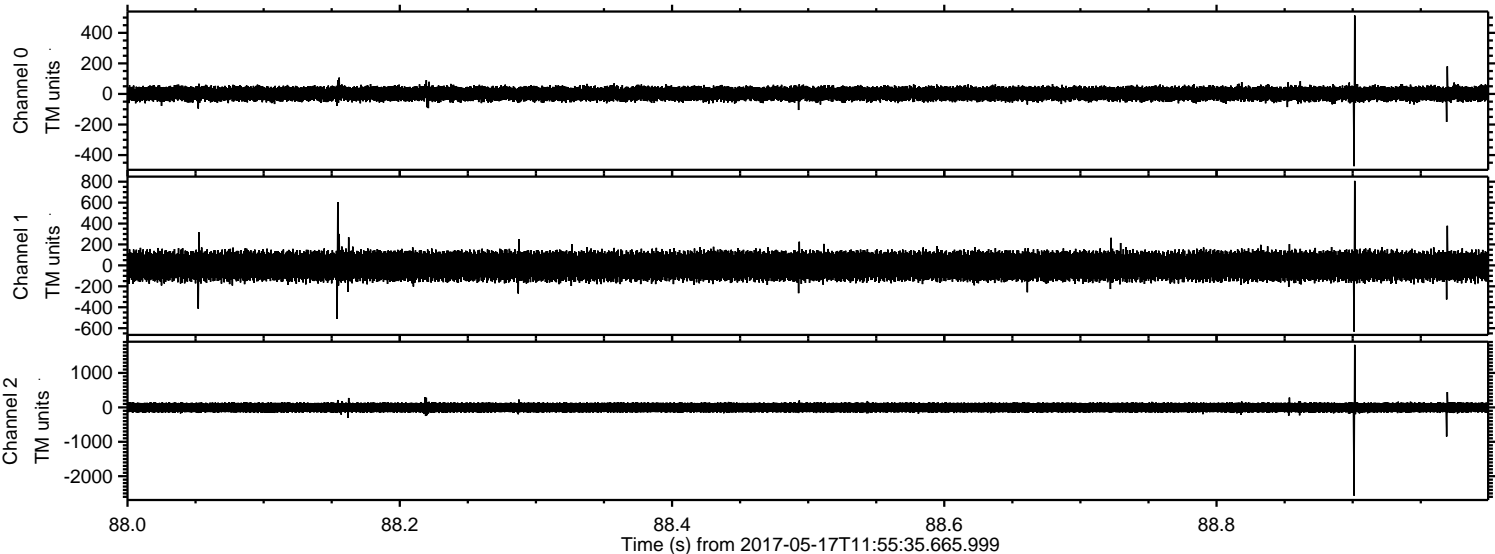


Channel 0  
mn: -762  
mx: 577  
 $\mu$ : 1.6  
 $\sigma$ : 27.5

Channel 1  
mn: -594  
mx: 780  
 $\mu$ : -6.4  
 $\sigma$ : 78.6

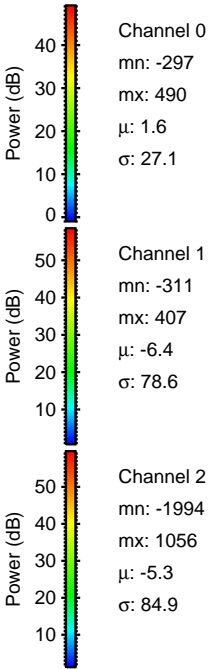
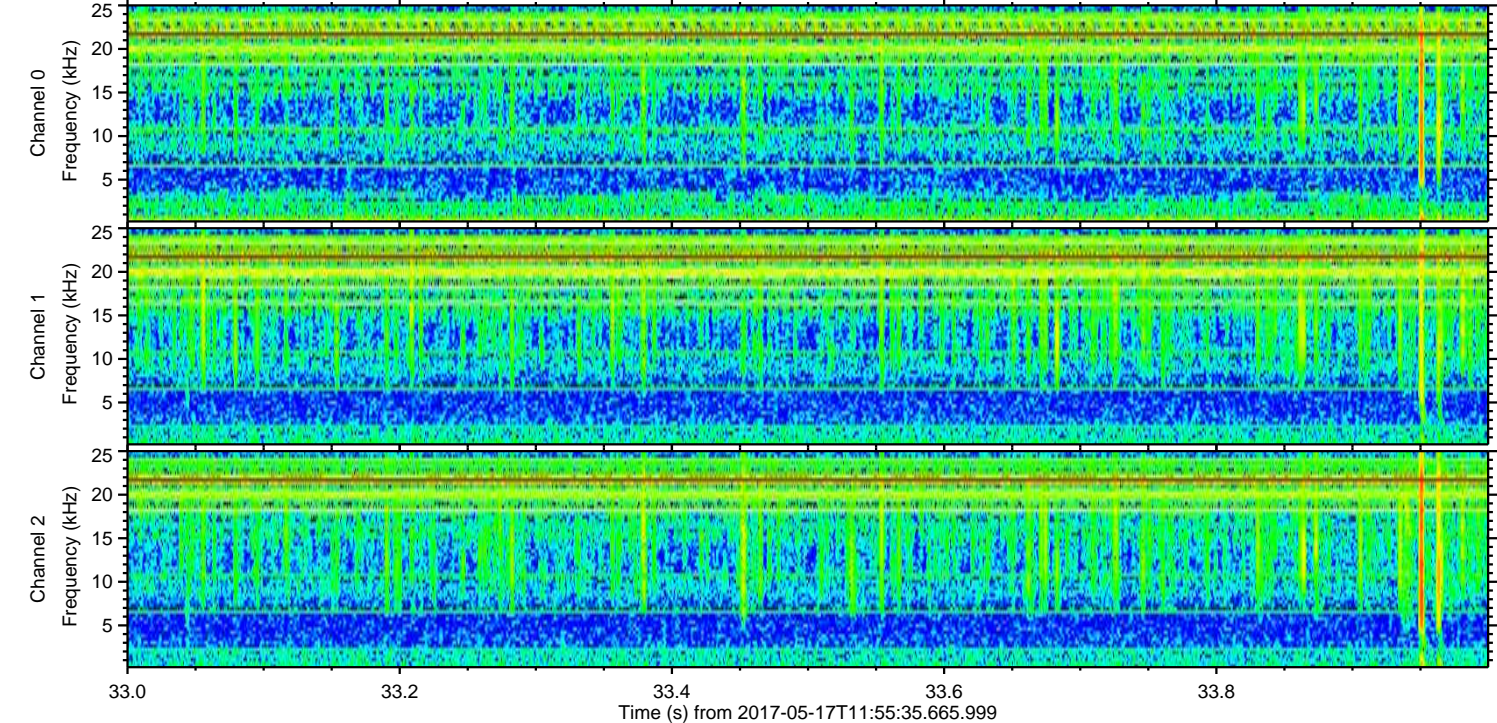
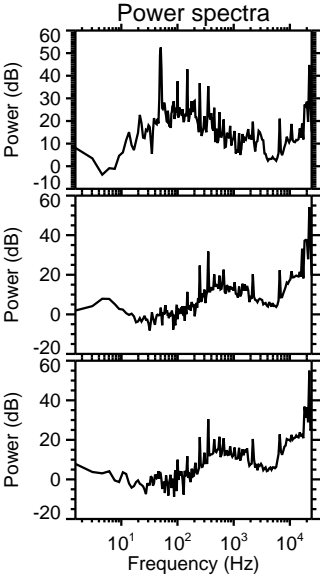
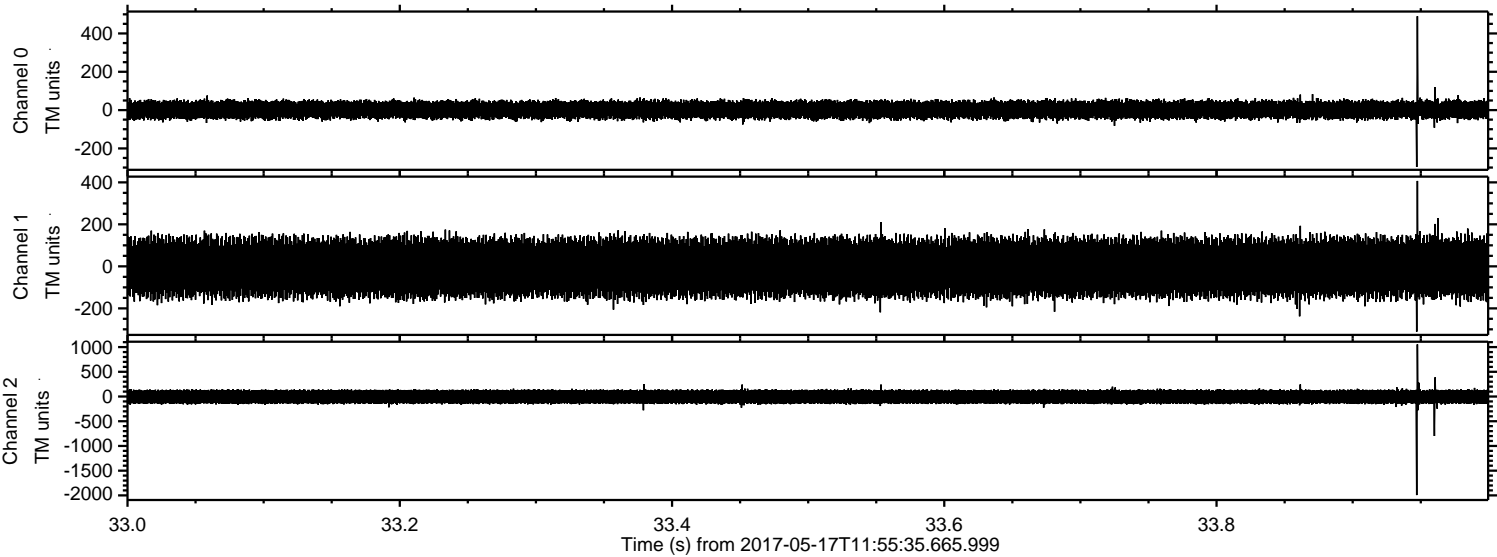
Channel 2  
mn: -2585  
mx: 2128  
 $\mu$ : -5.3  
 $\sigma$ : 86.8

Processed Wed May 17 14:03:59 2017 by ELM ver.2012-10-06 from 001\_\_elm20170517\_115534\_\_dat00.bin



ELMAVAN 3D WAVEFORMS (Measured data sampled at 50 kHz) 51000 packets of 144 samples from 2017-05-17T11:55:35.665.999. Part 34/147

Processed Wed May 17 14:03:59 2017 by ELM ver.2012-10-06 from 001\_\_elm20170517\_115534\_\_dat00.bin



ELMAVAN 3D WAVEFORMS (Measured data sampled at 50 kHz) 51000 packets of 144 samples from 2017-05-17T11:55:35.665.999. Part 132/147

