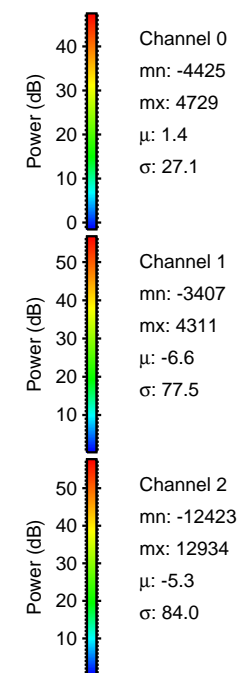
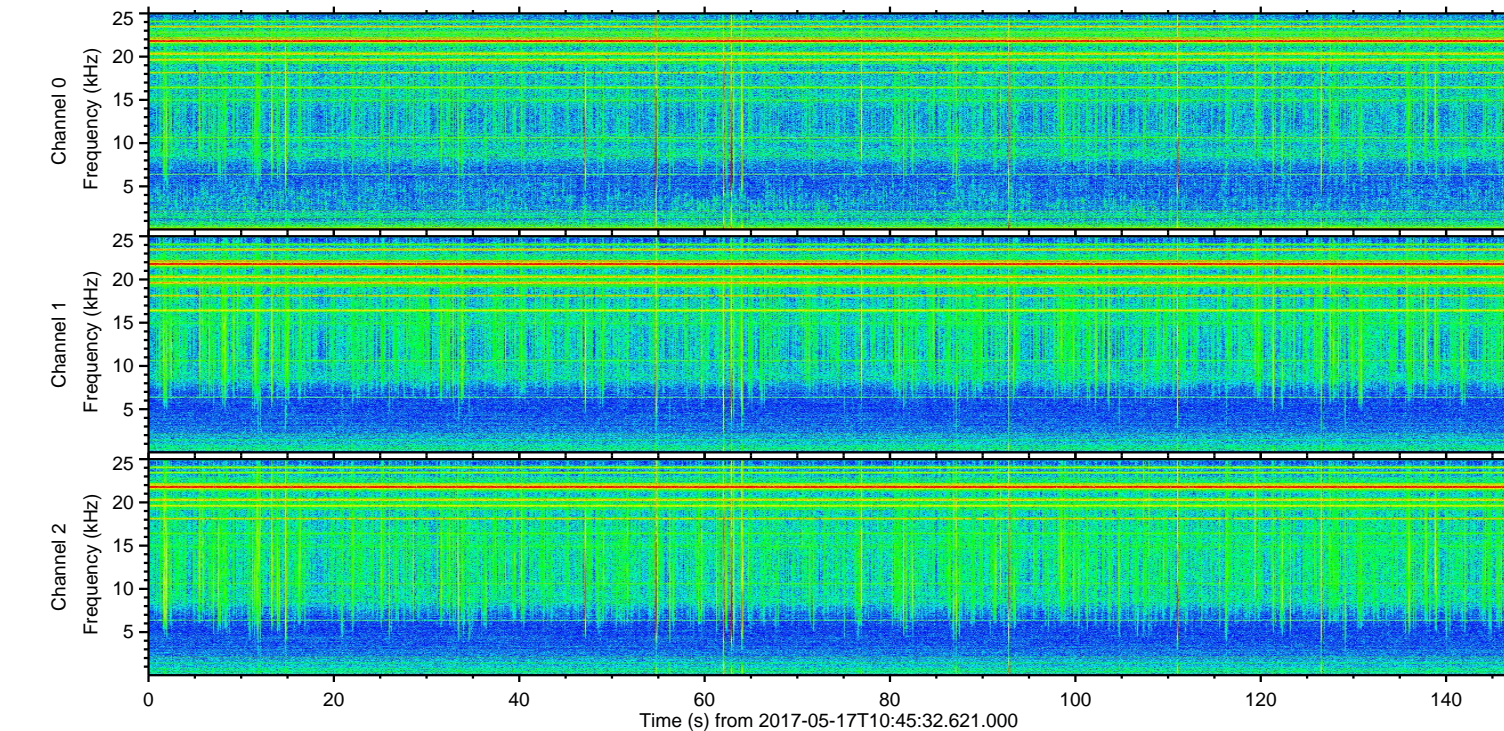
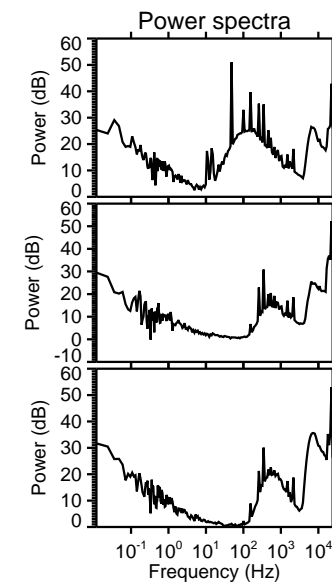
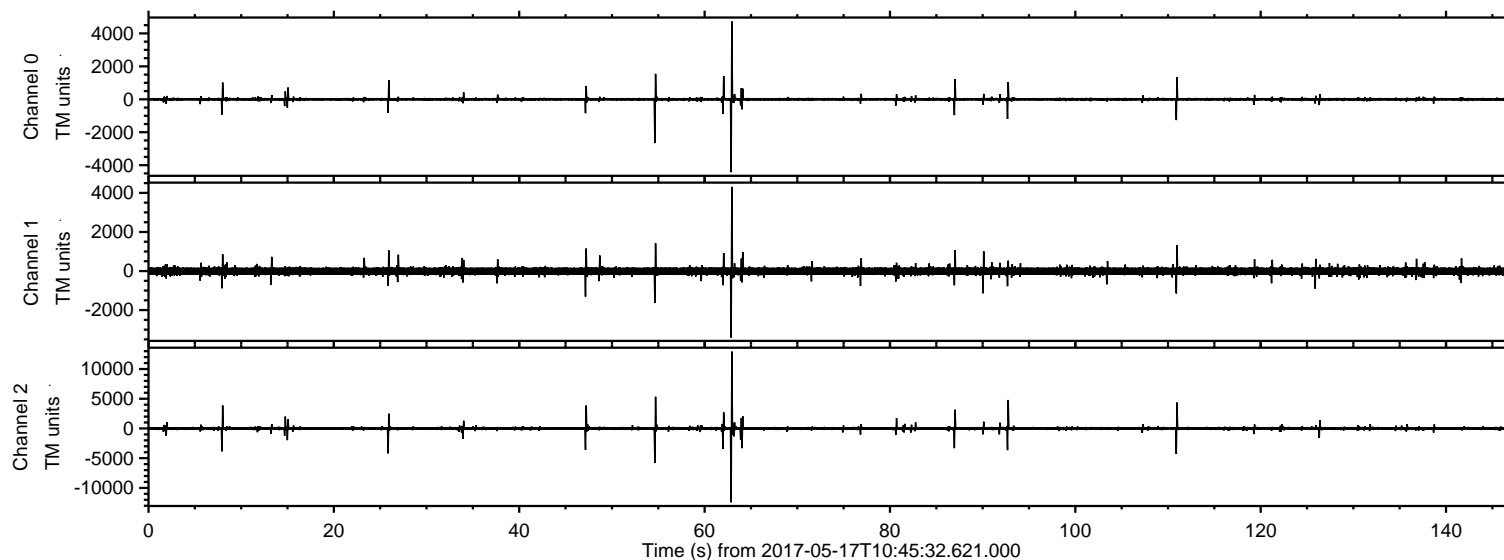
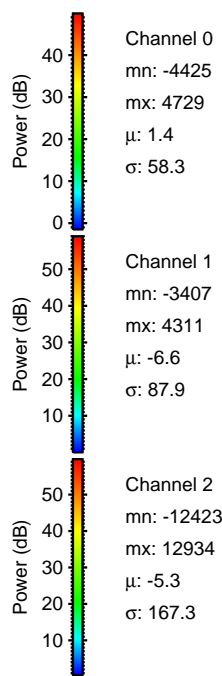
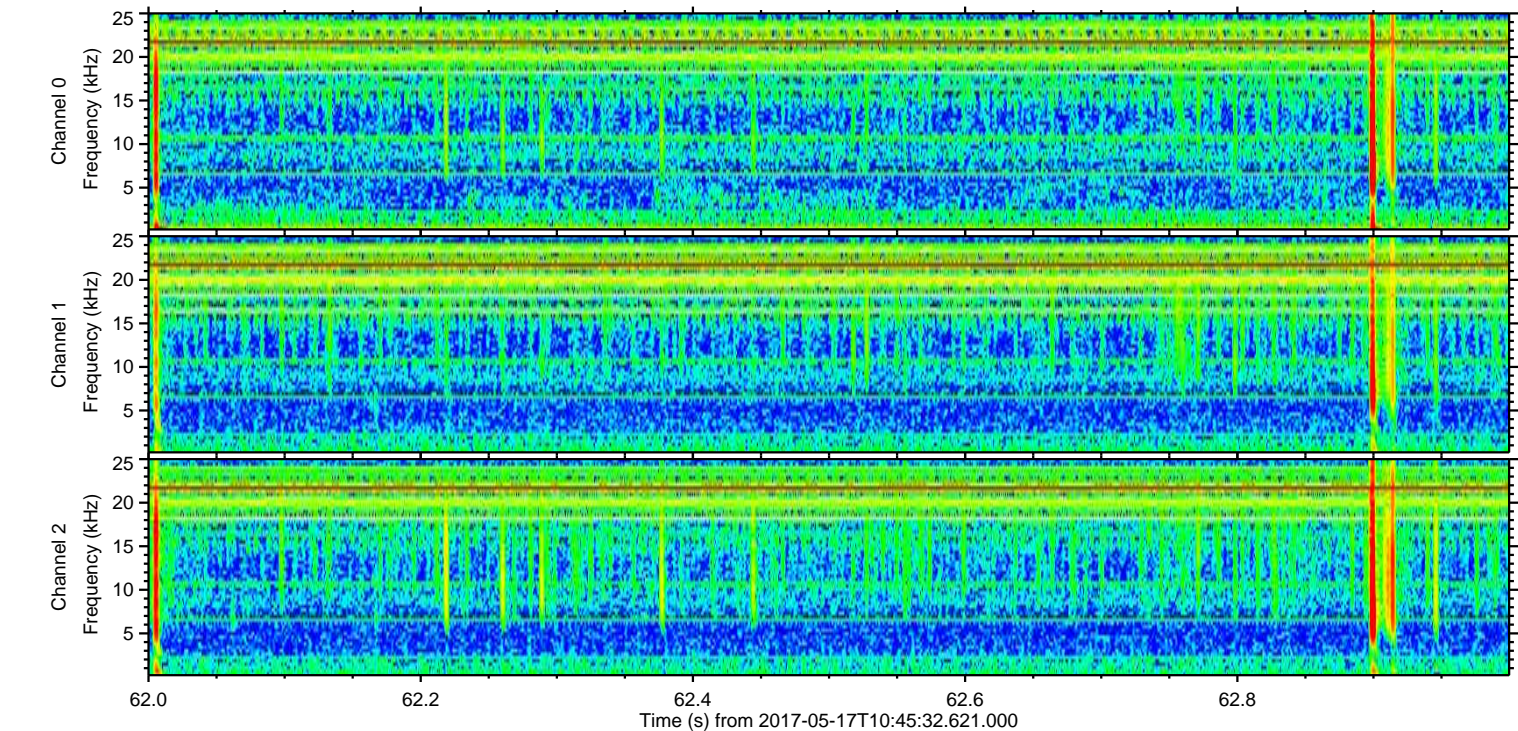
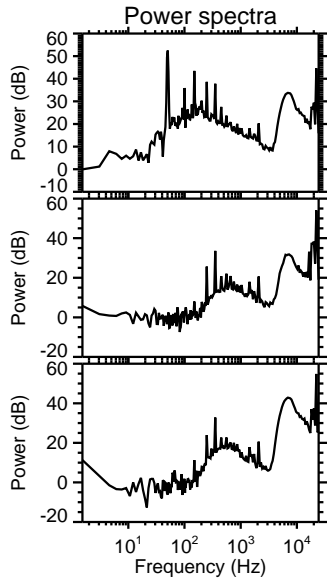
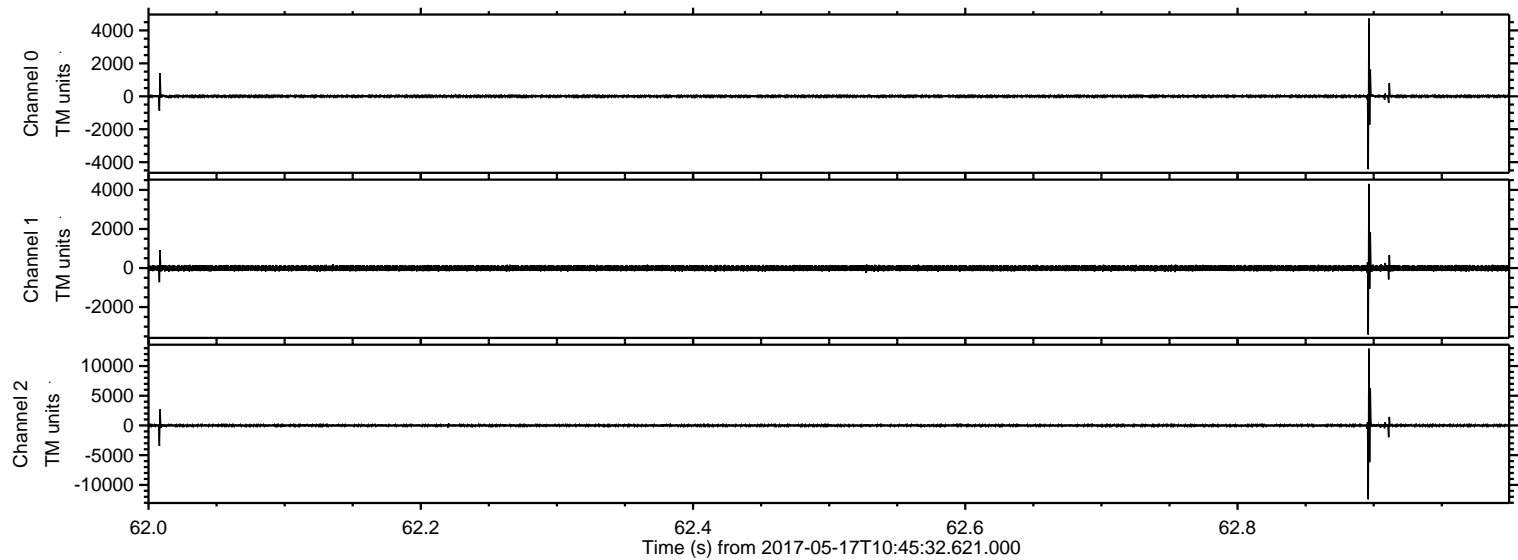


ELMAVAN 3D WAVEFORMS (Measured data sampled at 50 kHz) 51000 packets of 144 samples from 2017-05-17T10:45:32.621.000.

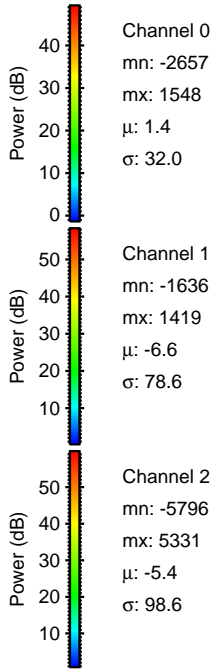
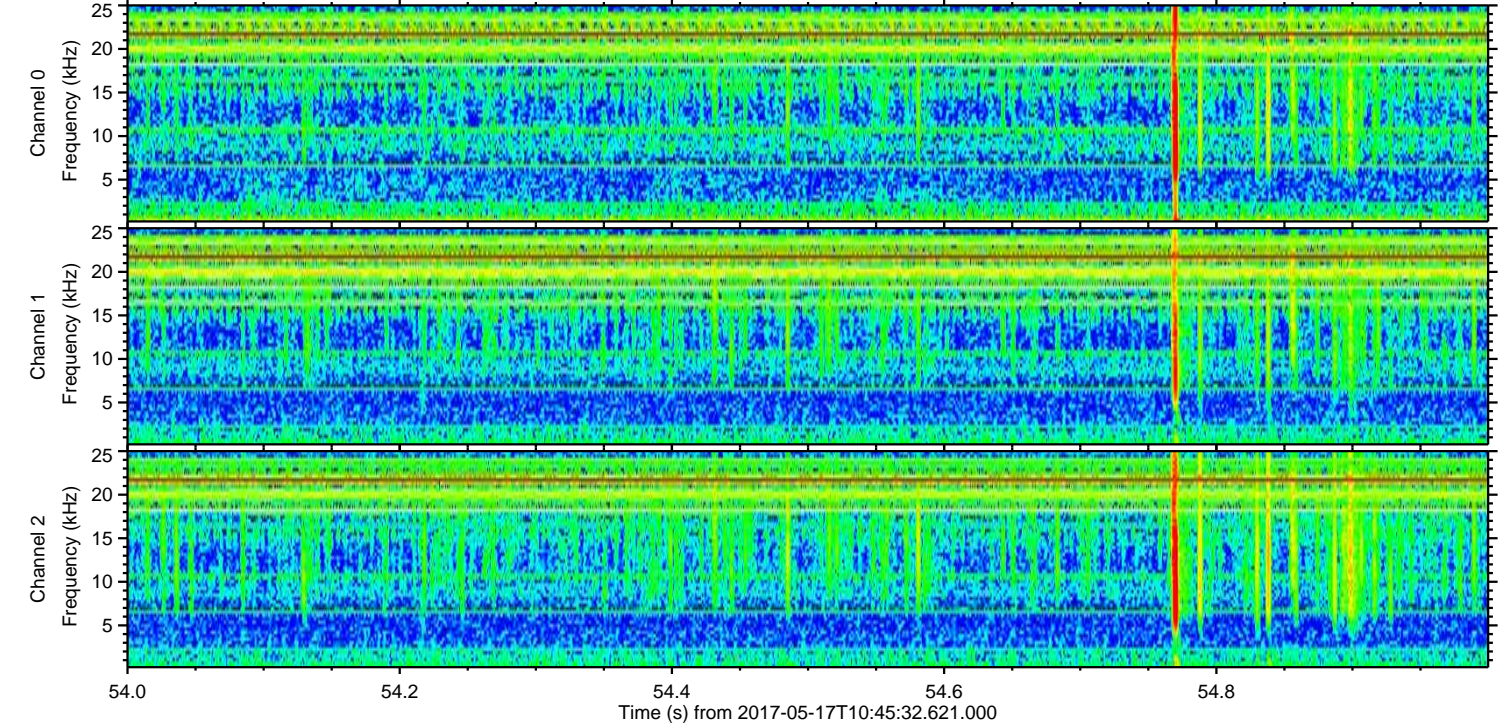
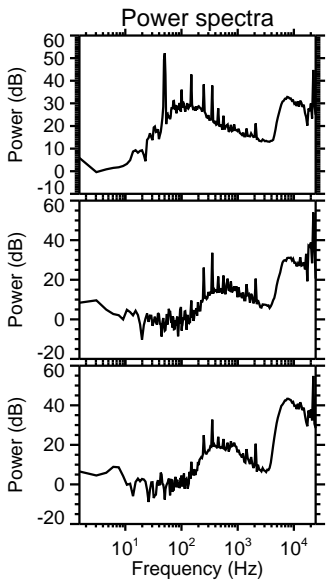
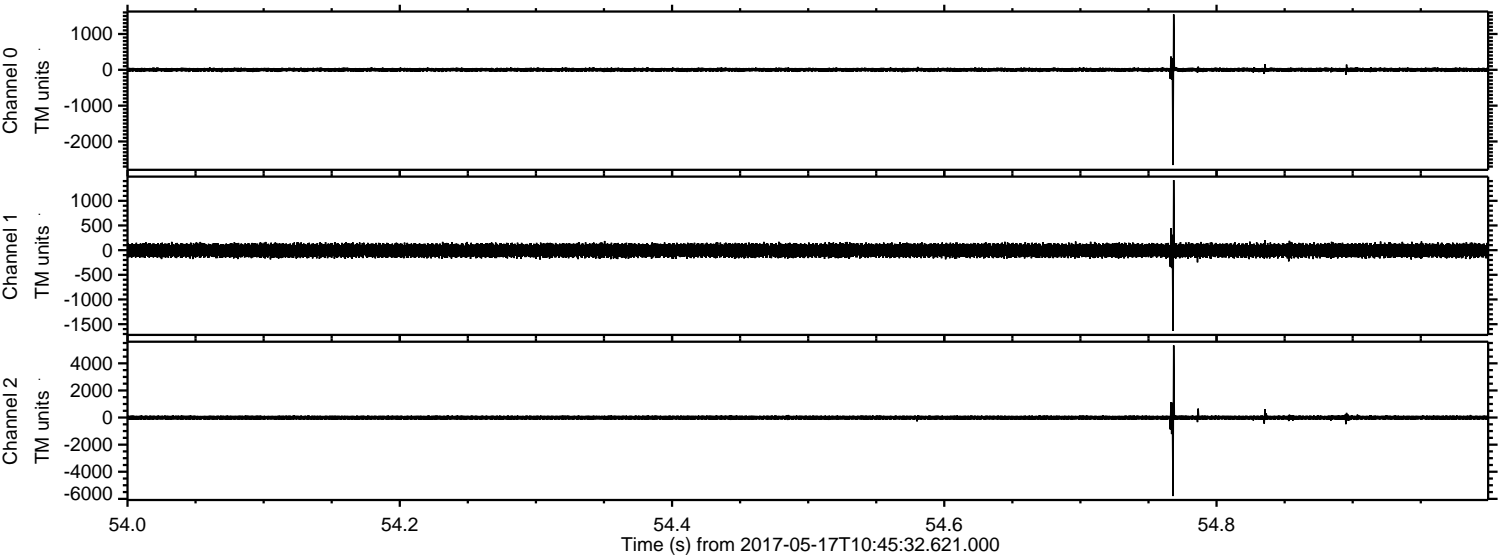
Processed Wed May 17 12:53:20 2017 by ELM ver.2012-10-06 from 001__elm20170517_104531__dat00.bin



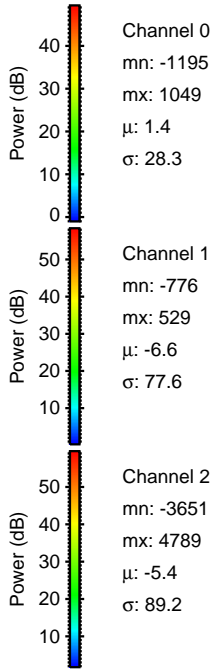
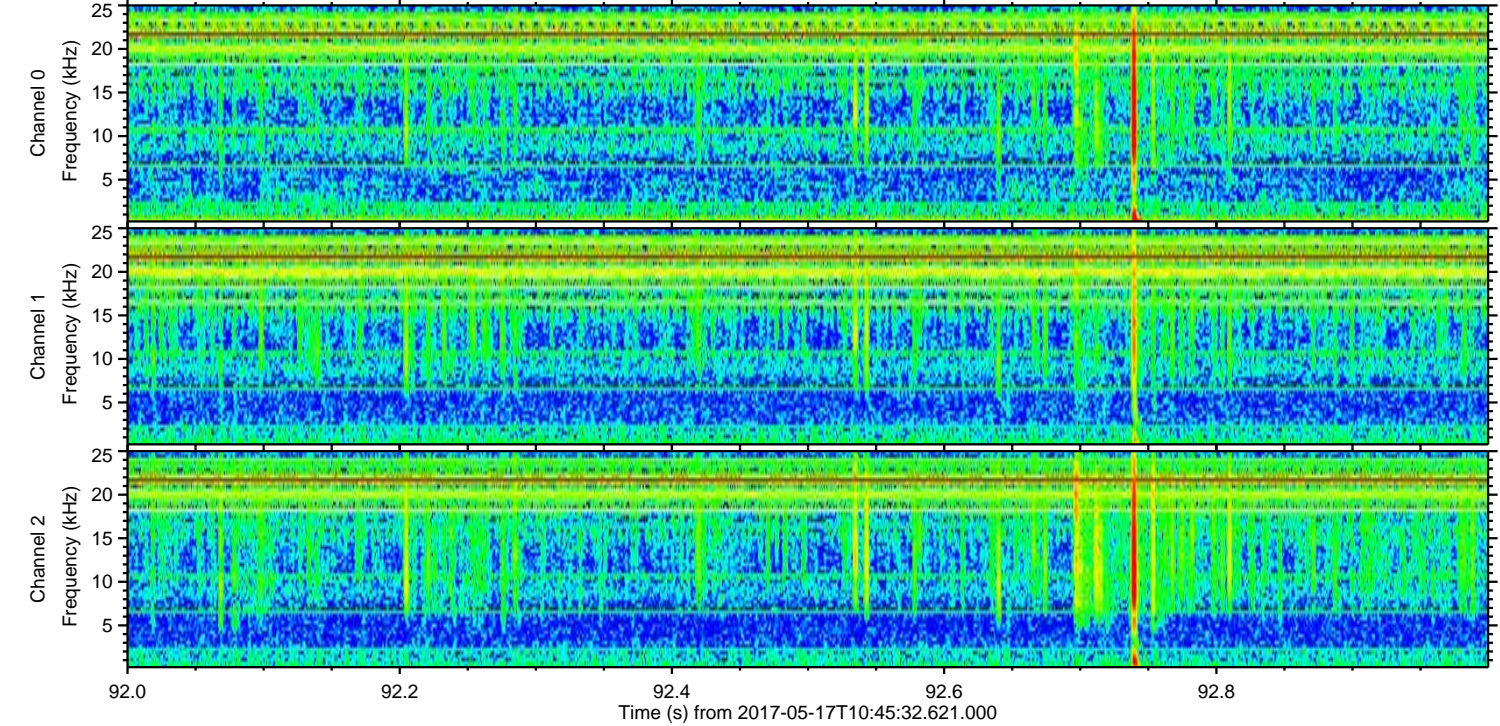
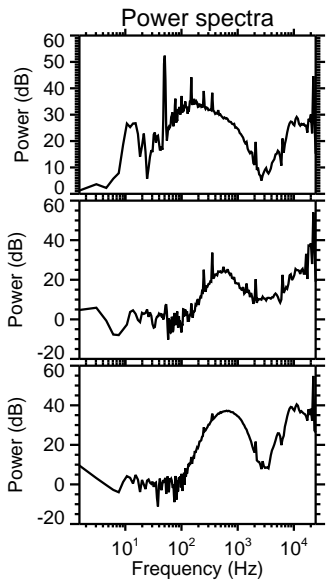
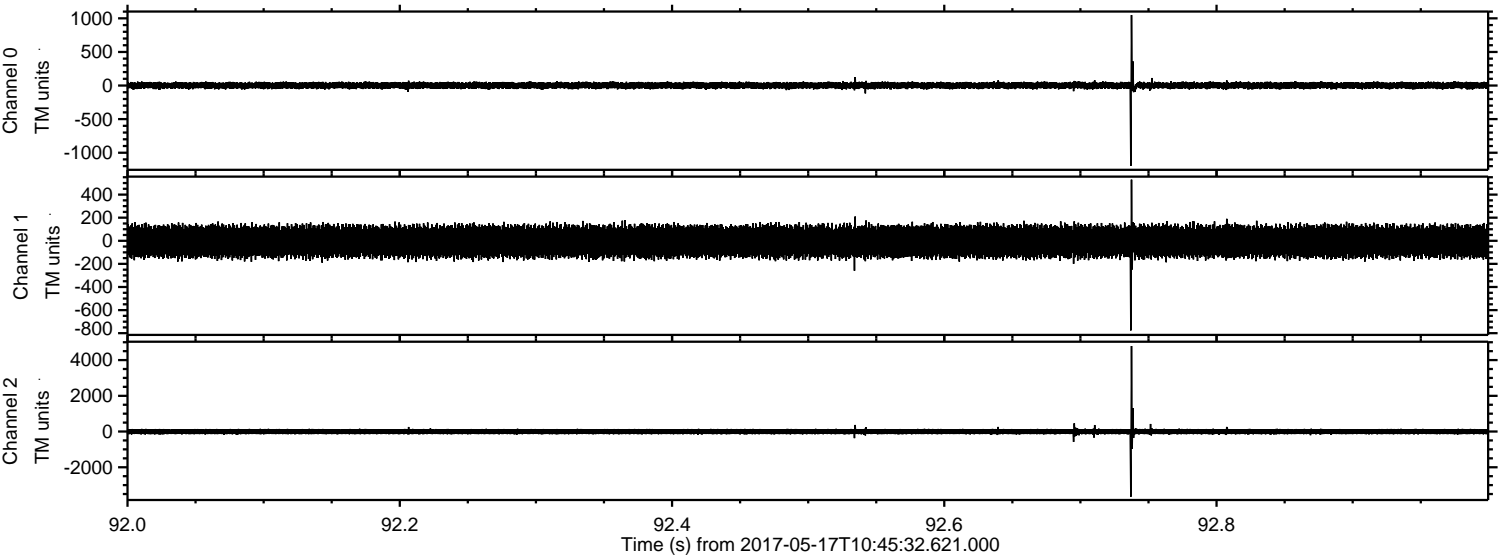
Processed Wed May 17 12:53:27 2017 by ELM ver.2012-10-06 from 001__elm20170517_104531__dat00.bin



Processed Wed May 17 12:53:27 2017 by ELM ver.2012-10-06 from 001__elm20170517_104531__dat00.bin



Processed Wed May 17 12:53:28 2017 by ELM ver.2012-10-06 from 001__elm20170517_104531__dat00.bin



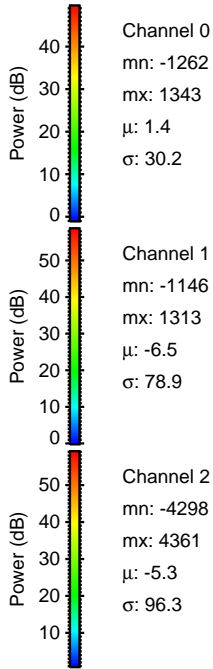
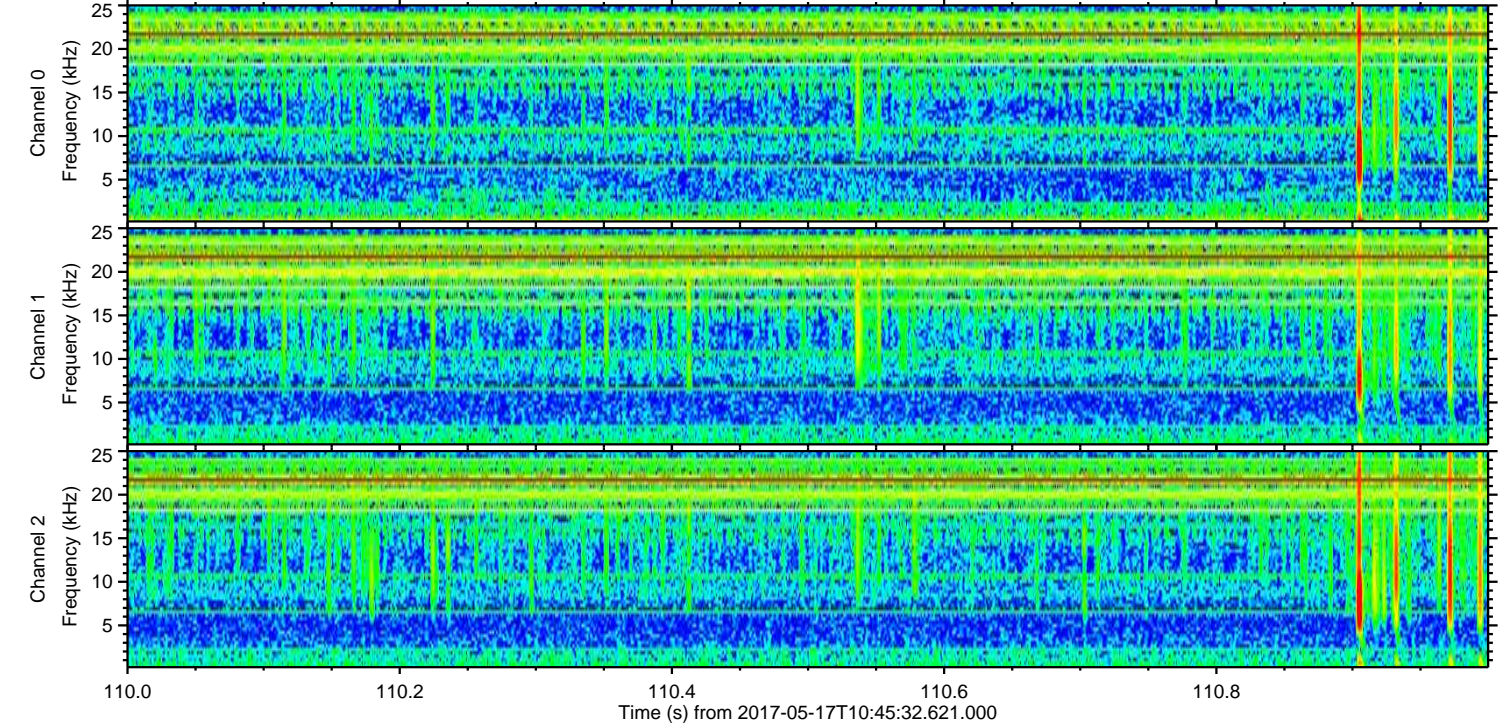
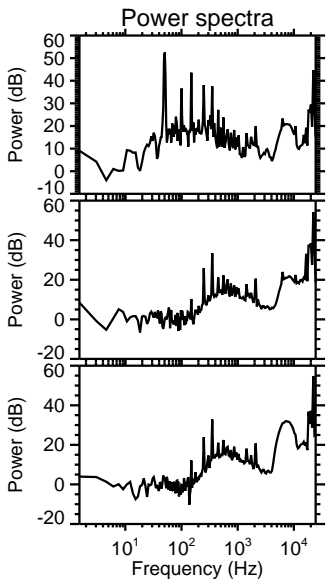
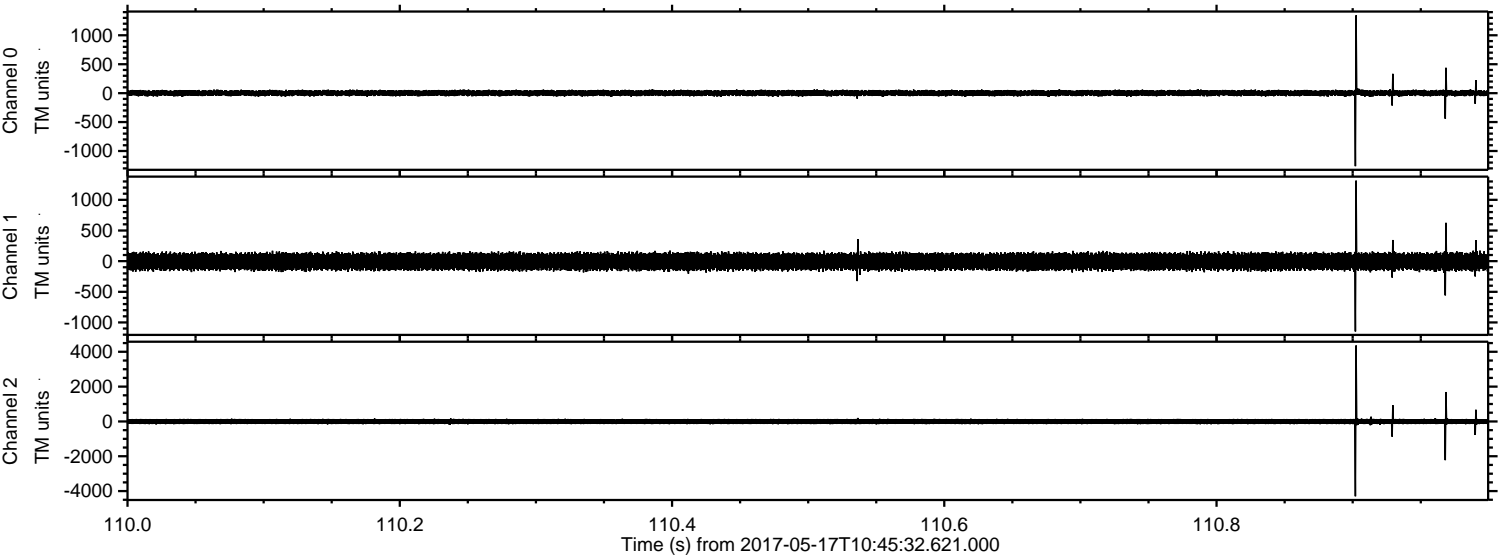
Channel 0
mn: -1195
mx: 1049
 μ : 1.4
 σ : 28.3

Channel 1
mn: -776
mx: 529
 μ : -6.6
 σ : 77.6

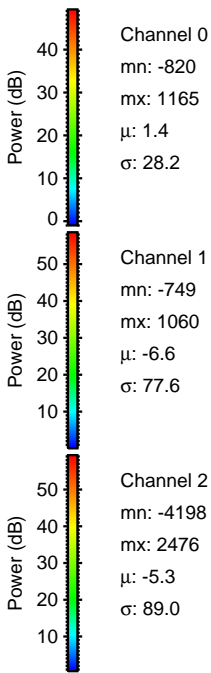
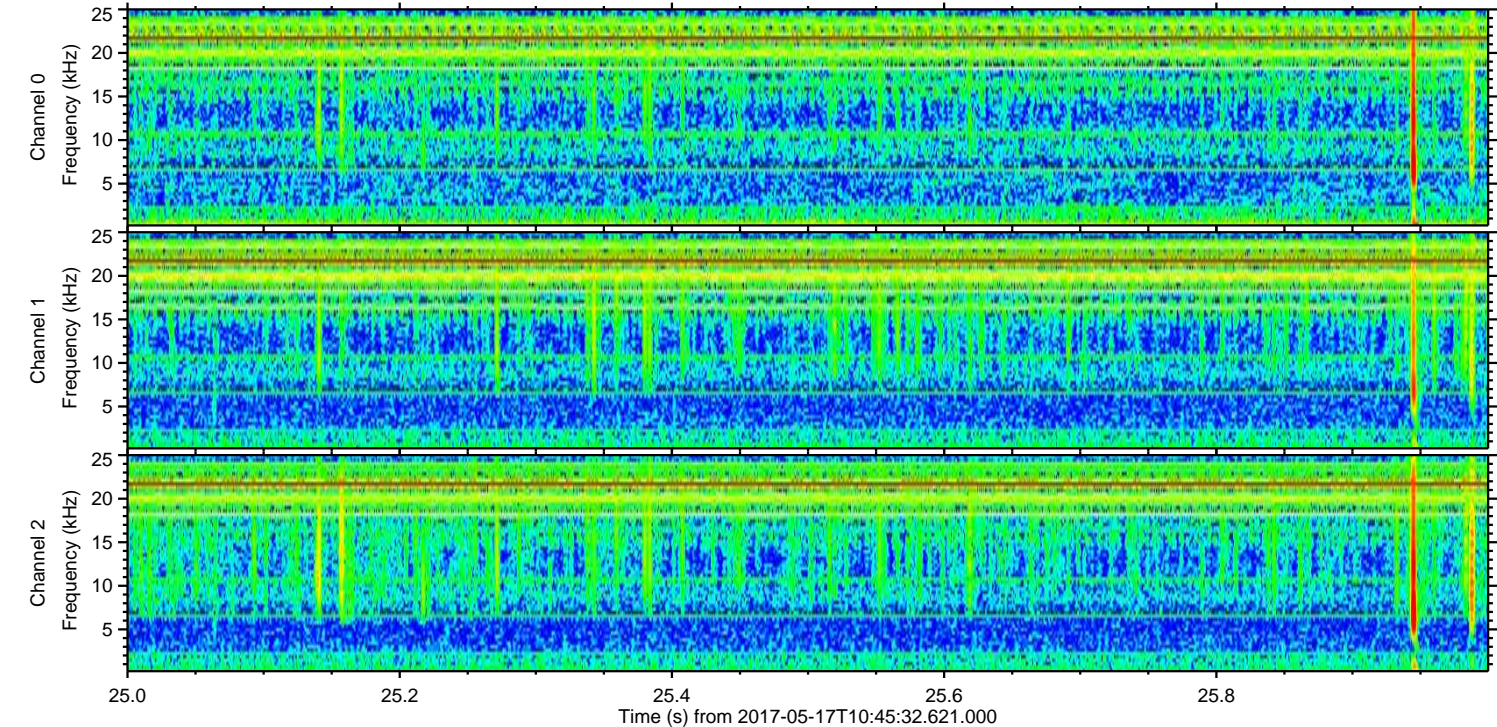
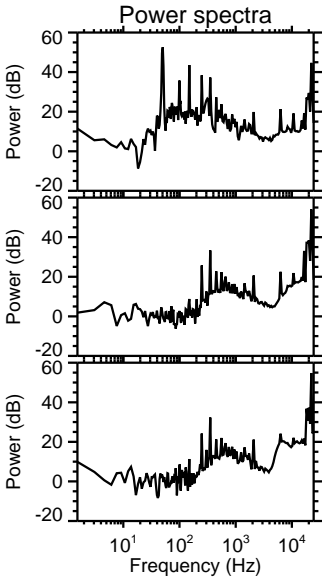
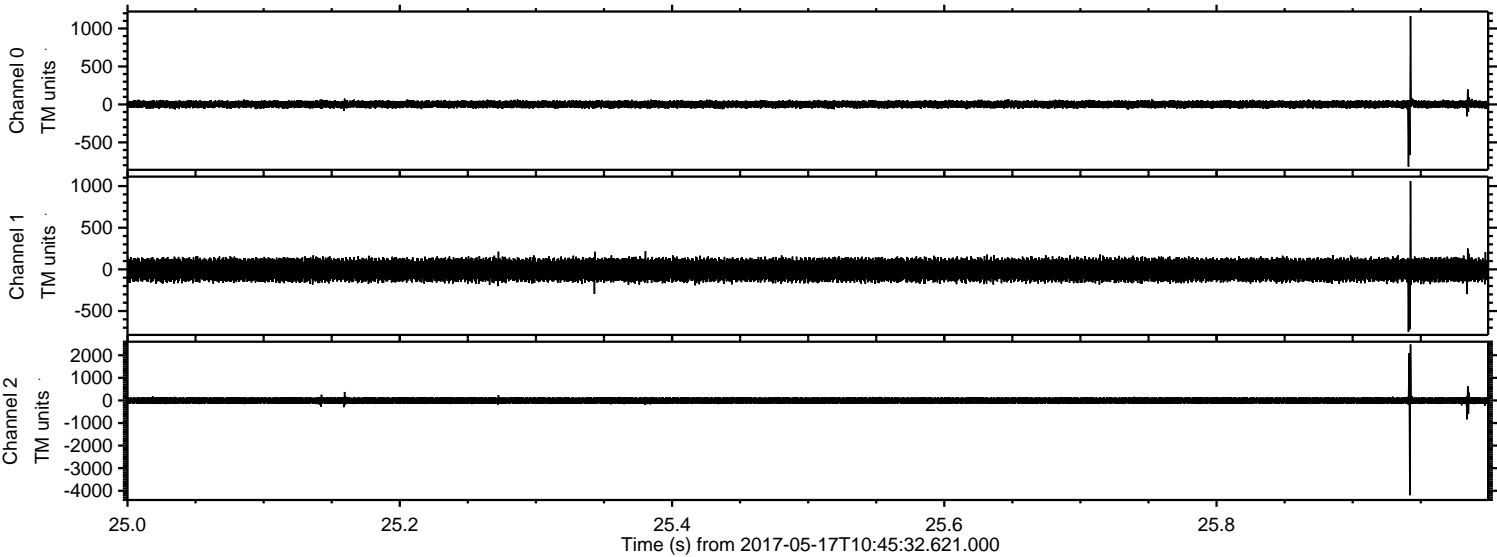
Channel 2
mn: -3651
mx: 4789
 μ : -5.4
 σ : 89.2

ELMAVAN 3D WAVEFORMS (Measured data sampled at 50 kHz) 51000 packets of 144 samples from 2017-05-17T10:45:32.621.000. Part 111/147

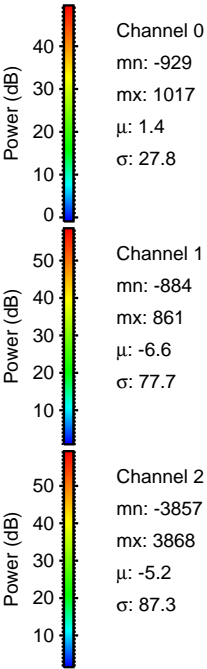
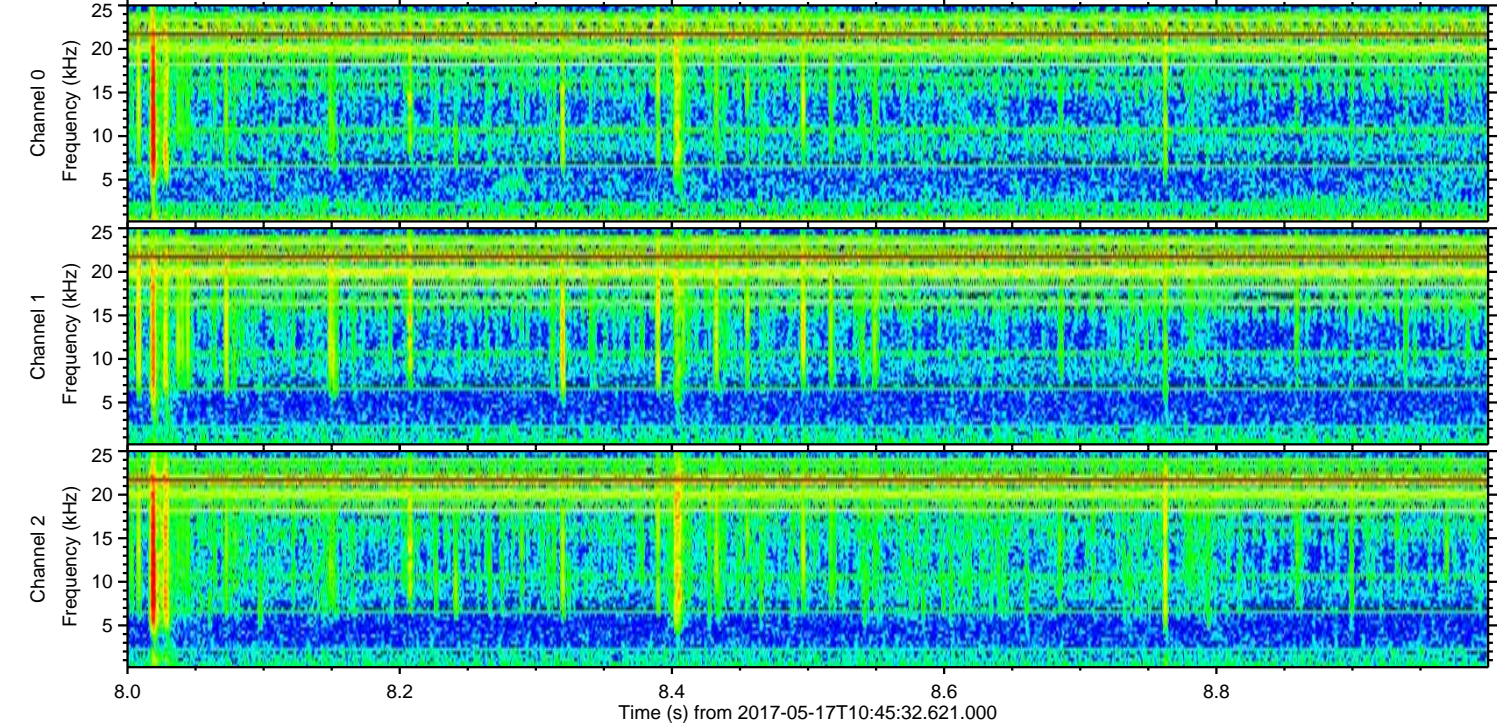
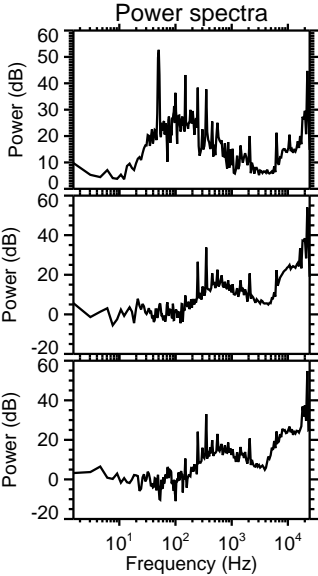
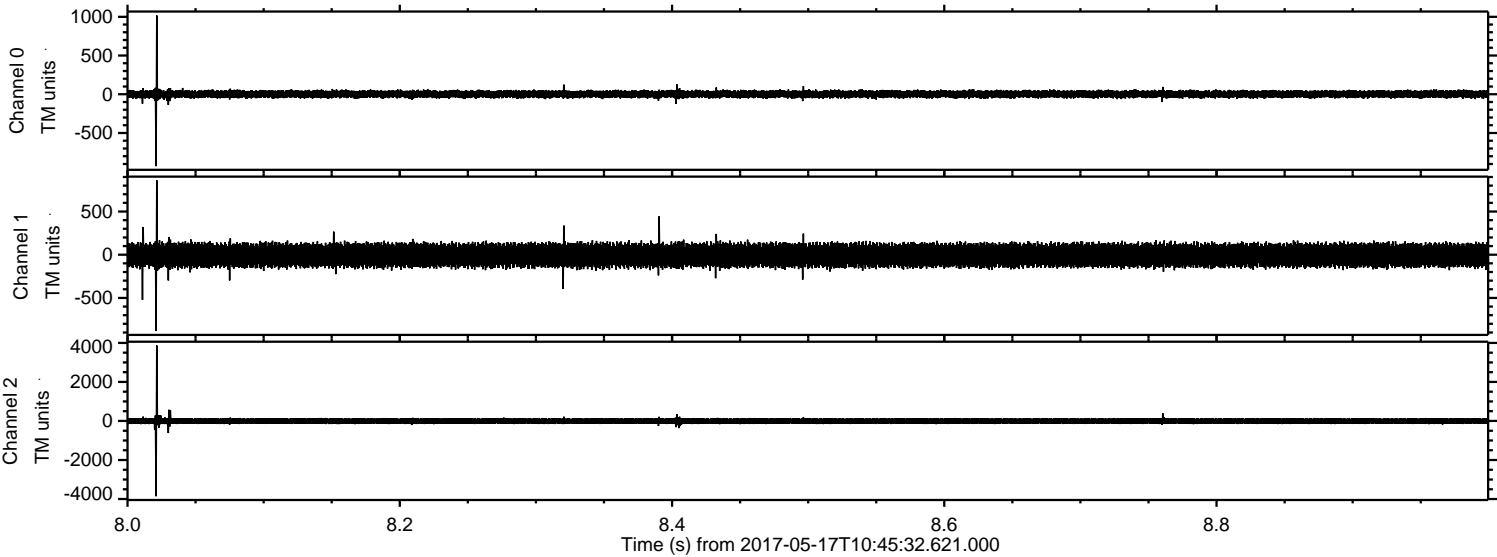
Processed Wed May 17 12:53:29 2017 by ELM ver.2012-10-06 from 001__elm20170517_104531__dat00.bin



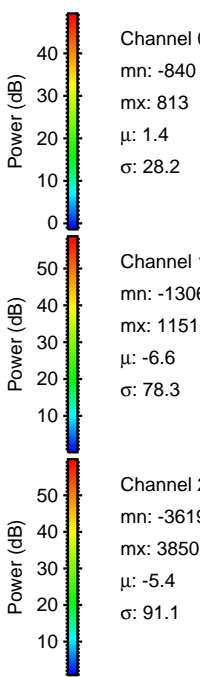
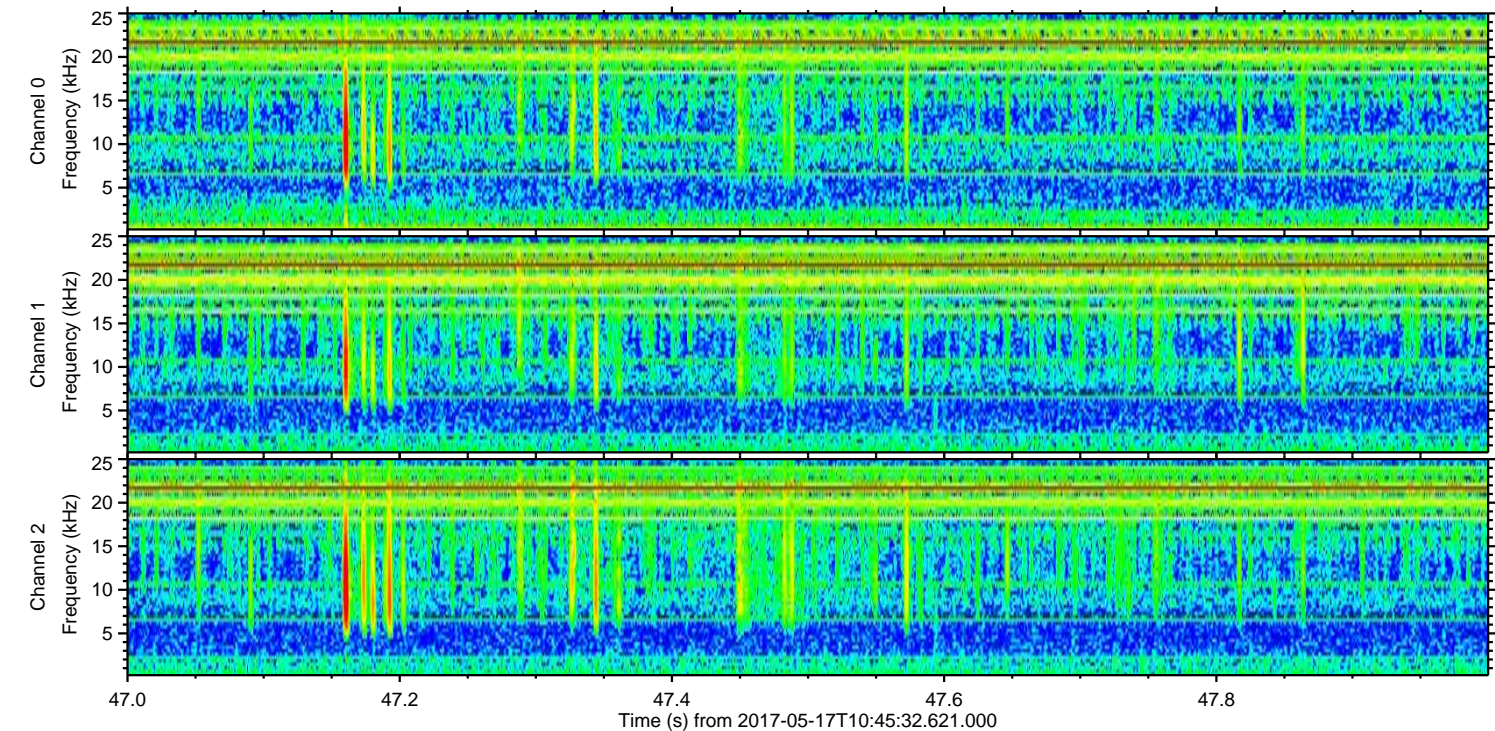
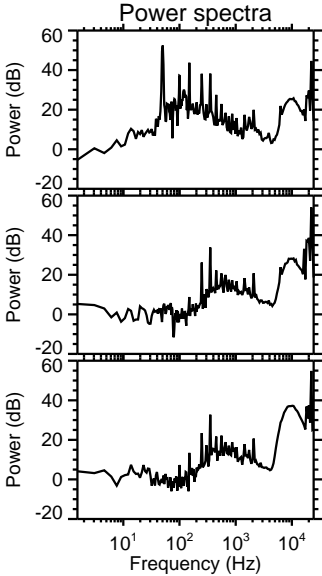
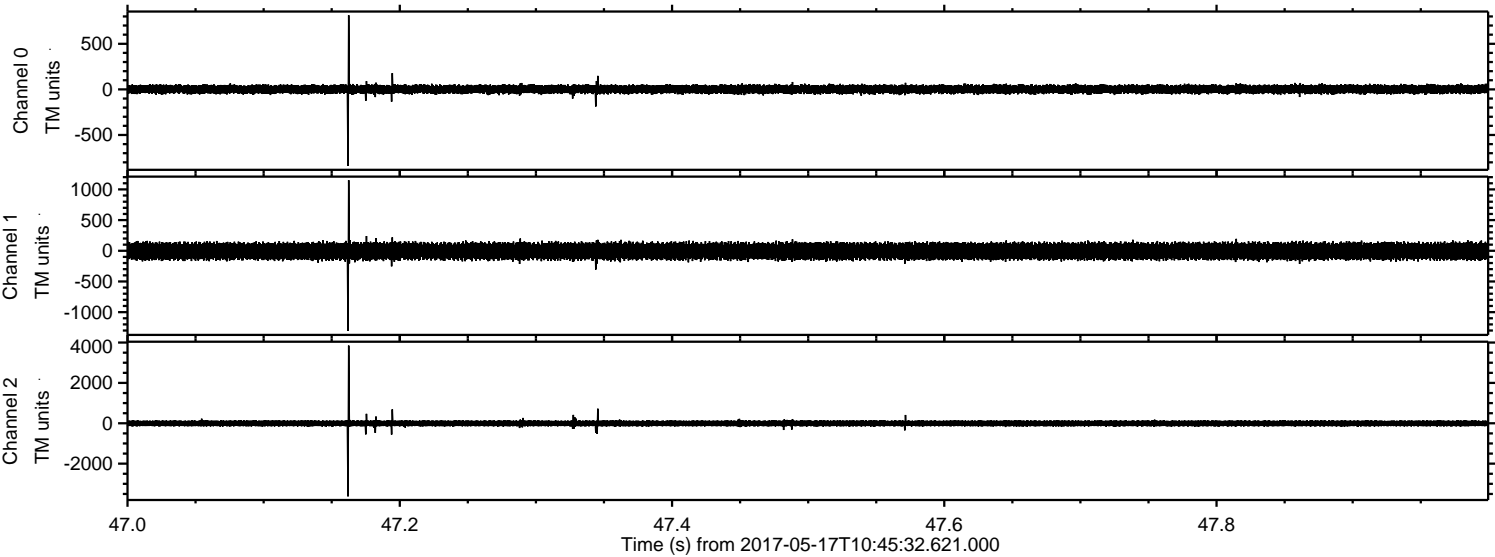
Processed Wed May 17 12:53:29 2017 by ELM ver.2012-10-06 from 001__elm20170517_104531__dat00.bin



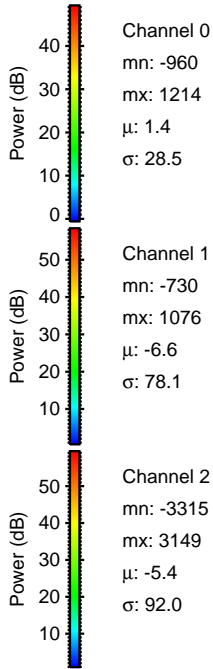
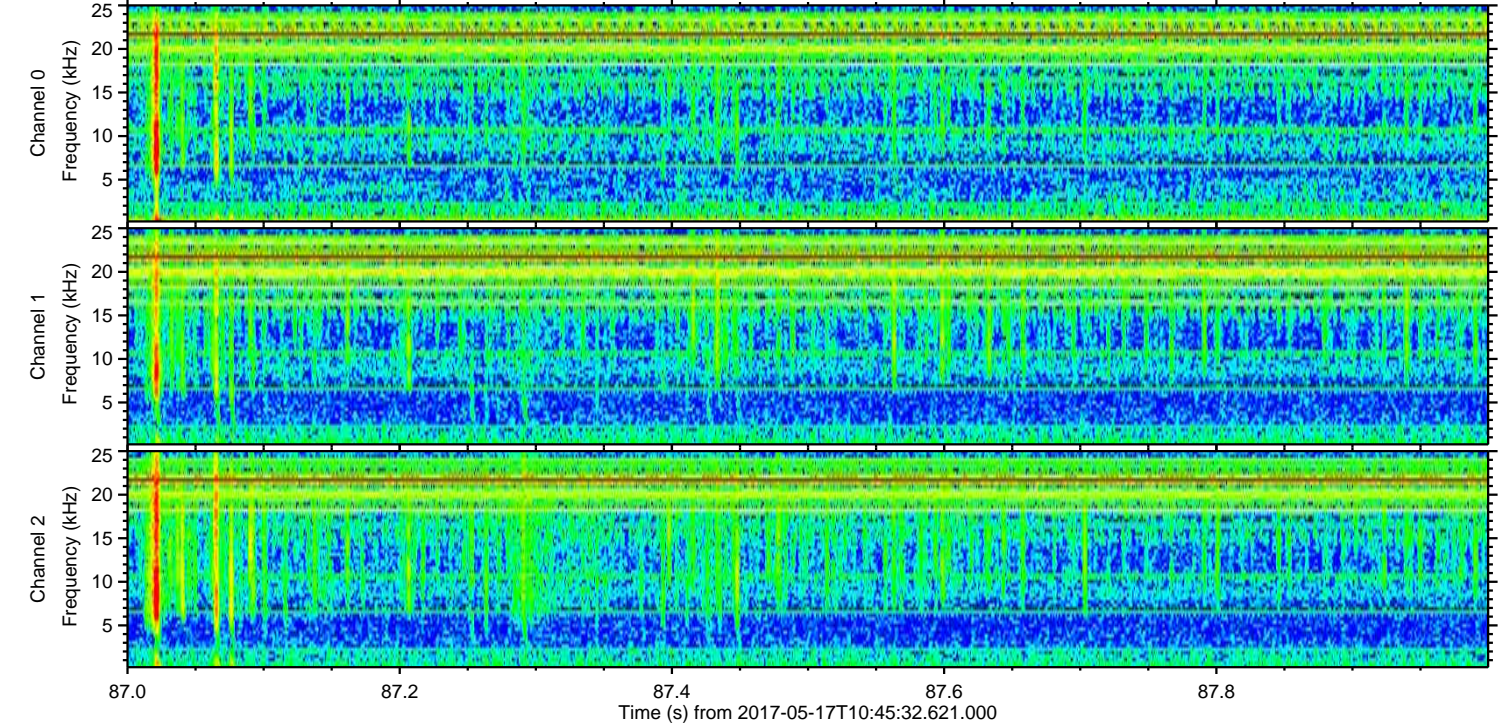
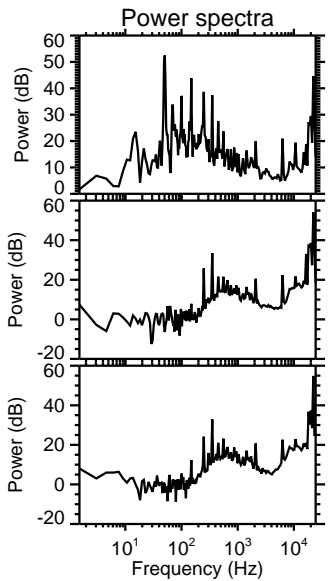
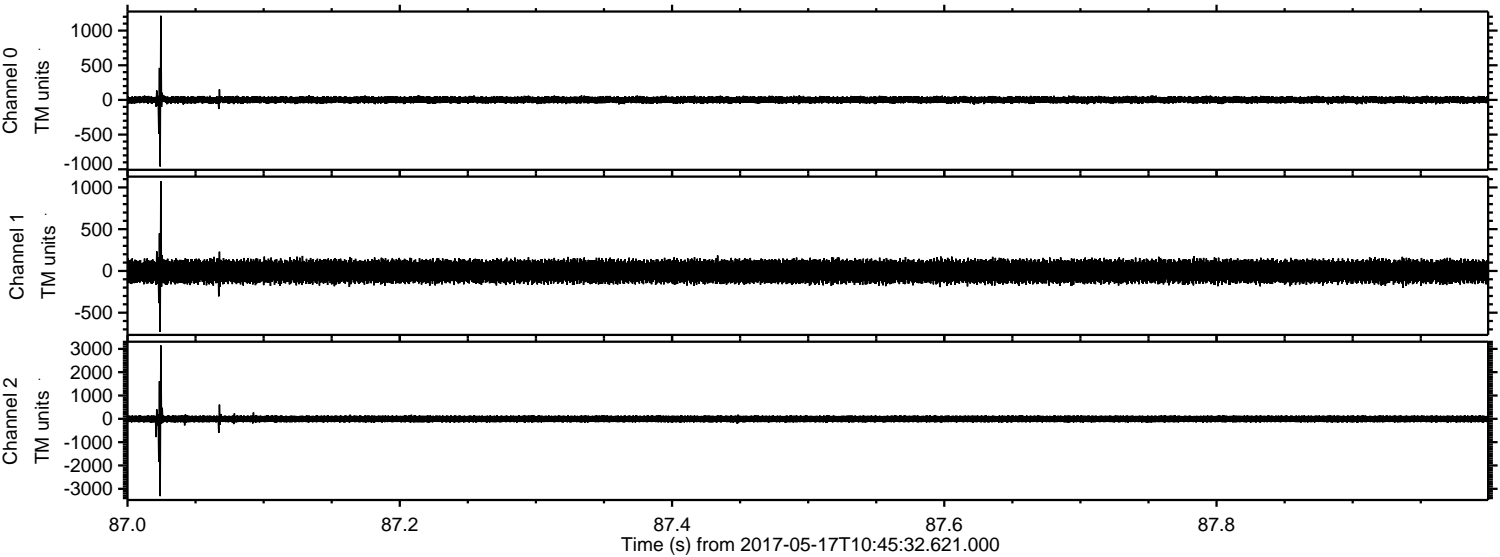
Processed Wed May 17 12:53:30 2017 by ELM ver.2012-10-06 from 001__elm20170517_104531__dat00.bin



Processed Wed May 17 12:53:31 2017 by ELM ver.2012-10-06 from 001__elm20170517_104531__dat00.bin



Processed Wed May 17 12:53:31 2017 by ELM ver.2012-10-06 from 001__elm20170517_104531__dat00.bin

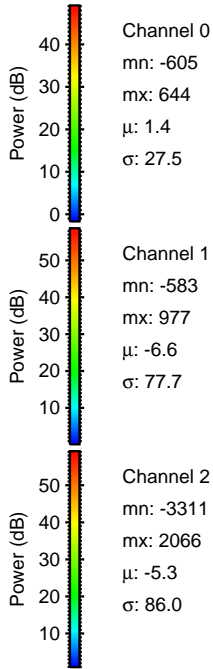
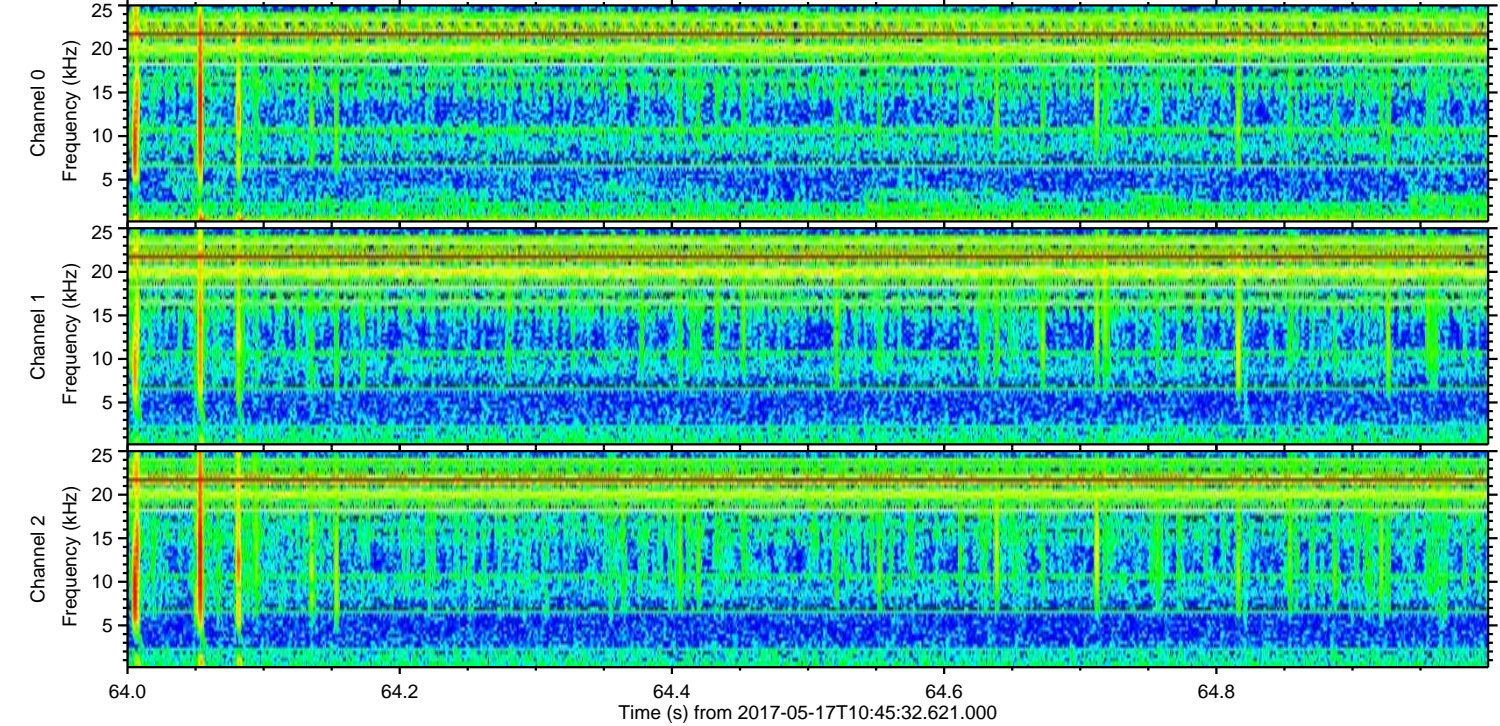
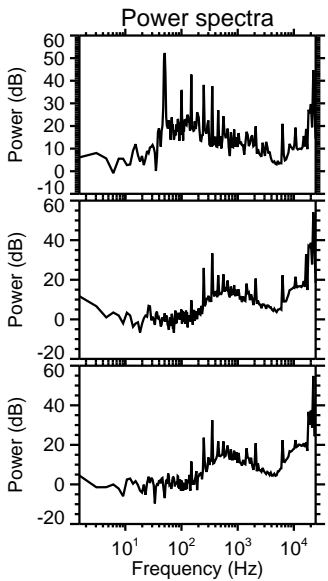
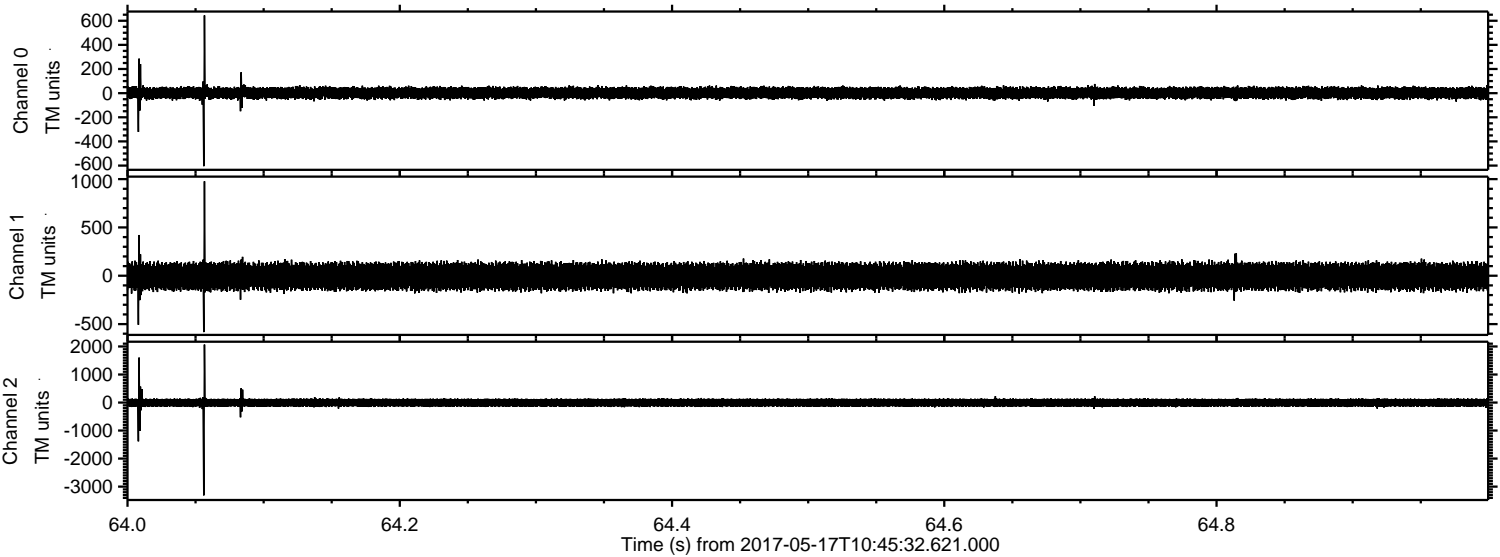


Channel 0
mn: -960
mx: 1214
 μ : 1.4
 σ : 28.5

Channel 1
mn: -730
mx: 1076
 μ : -6.6
 σ : 78.1

Channel 2
mn: -3315
mx: 3149
 μ : -5.4
 σ : 92.0

Processed Wed May 17 12:53:32 2017 by ELM ver.2012-10-06 from 001__elm20170517_104531__dat00.bin



Processed Wed May 17 12:53:33 2017 by ELM ver.2012-10-06 from 001__elm20170517_104531__dat00.bin

