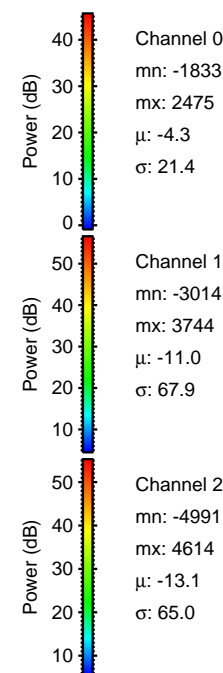
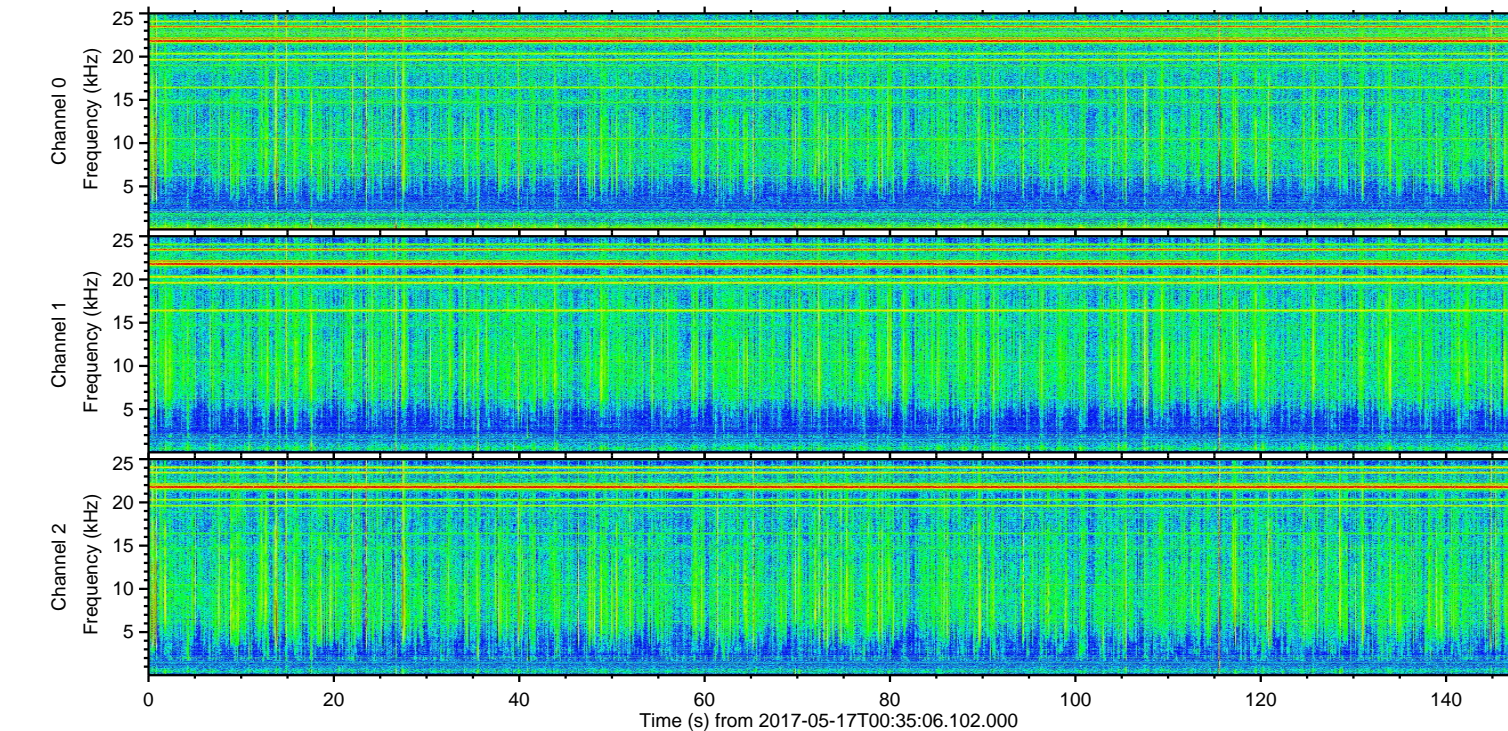
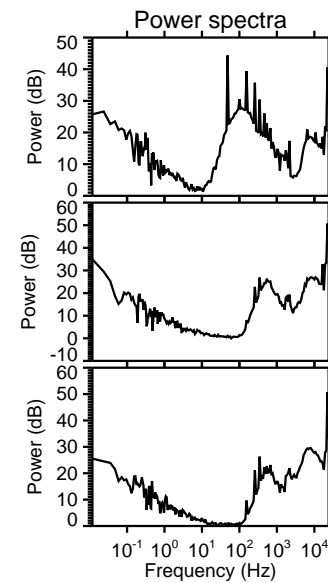
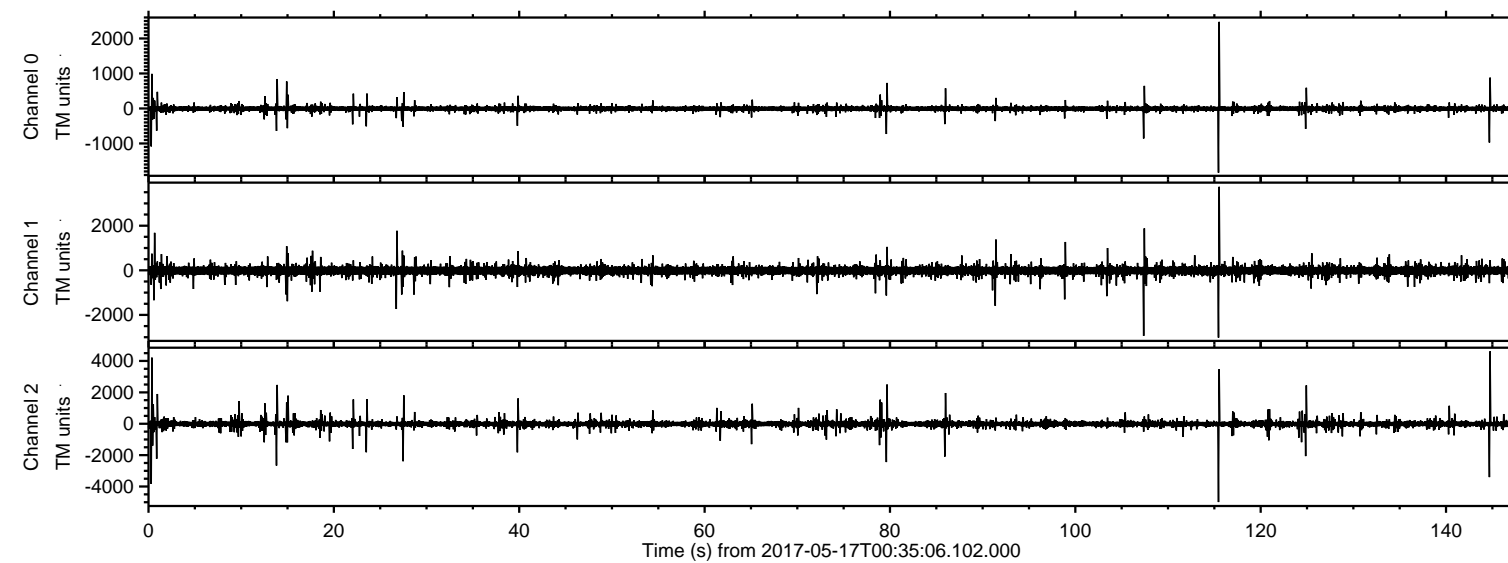


ELMAVAN 3D WAVEFORMS (Measured data sampled at 50 kHz) 51000 packets of 144 samples from 2017-05-17T00:35:06.102.000.

Processed Wed May 17 02:42:47 2017 by ELM ver.2012-10-06 from 001__elm20170517_003505__dat00.bin



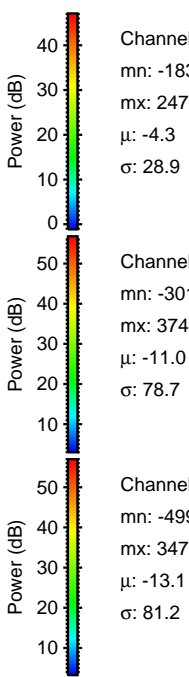
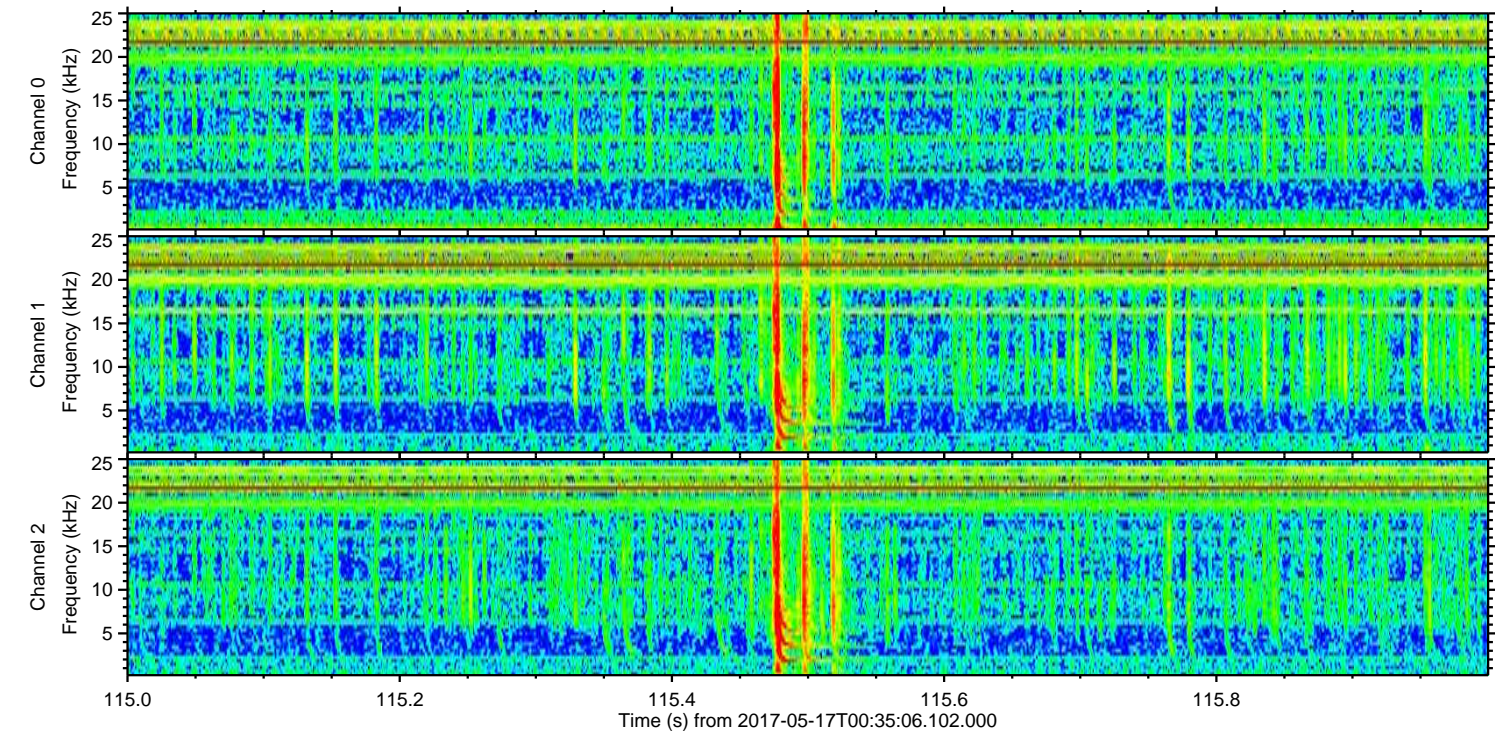
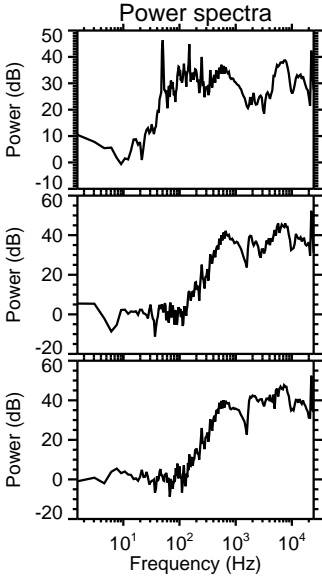
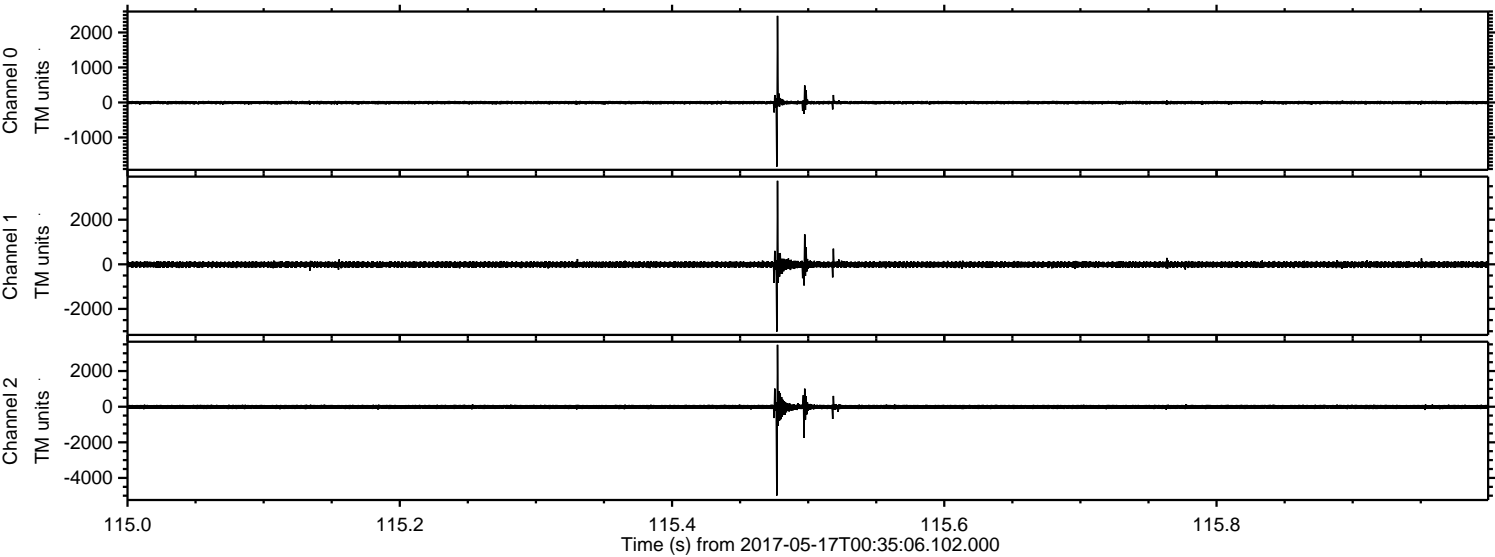
Channel 0
mn: -1833
mx: 2475
 μ : -4.3
 σ : 21.4

Channel 1
mn: -3014
mx: 3744
 μ : -11.0
 σ : 67.9

Channel 2
mn: -4991
mx: 4614
 μ : -13.1
 σ : 65.0

ELMAVAN 3D WAVEFORMS (Measured data sampled at 50 kHz) 51000 packets of 144 samples from 2017-05-17T00:35:06.102.000. Part 116/147

Processed Wed May 17 02:42:53 2017 by ELM ver.2012-10-06 from 001__elm20170517_003505__dat00.bin



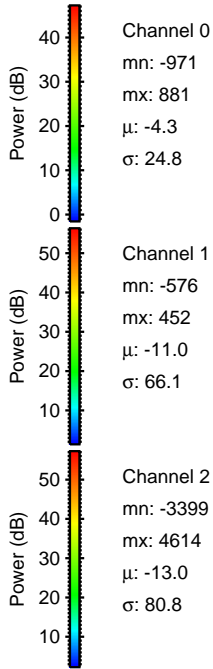
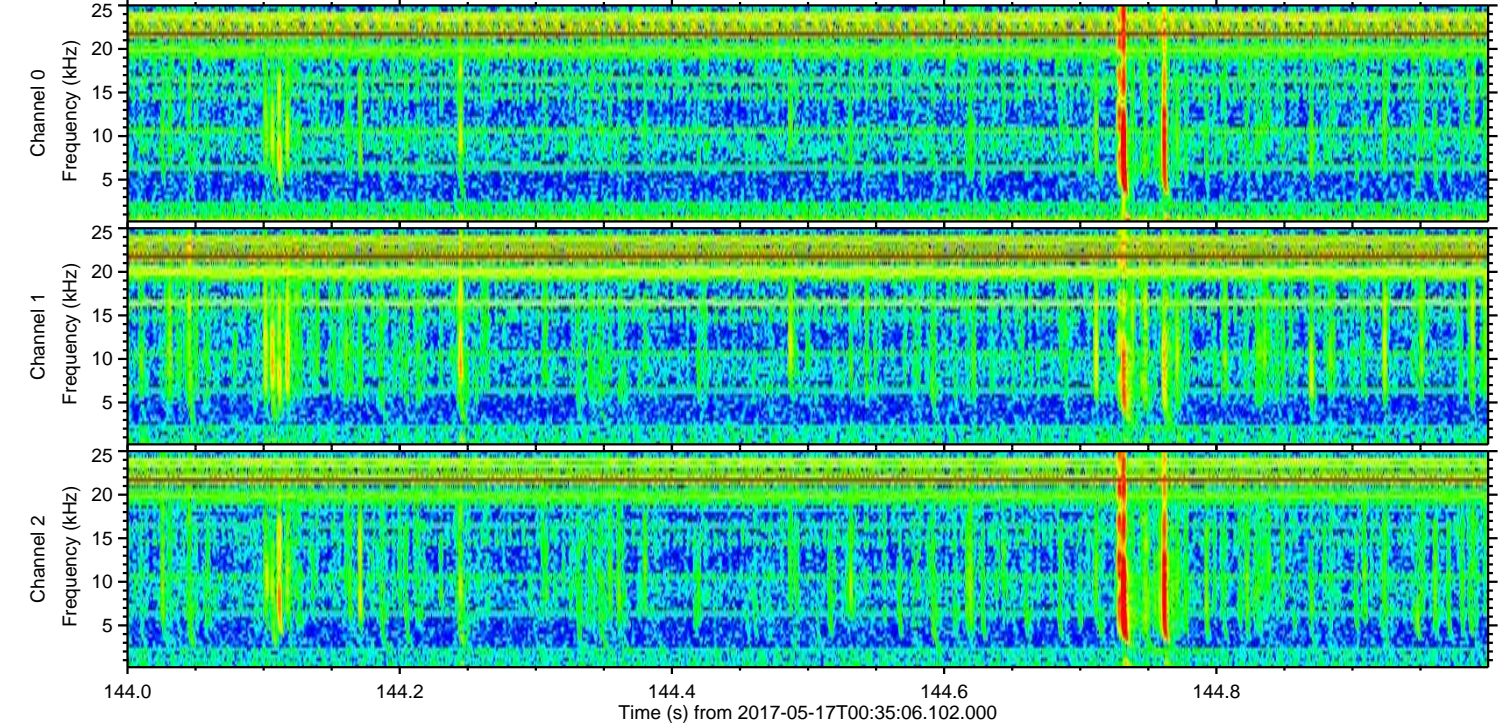
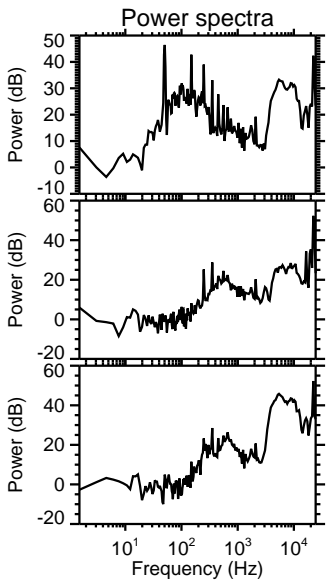
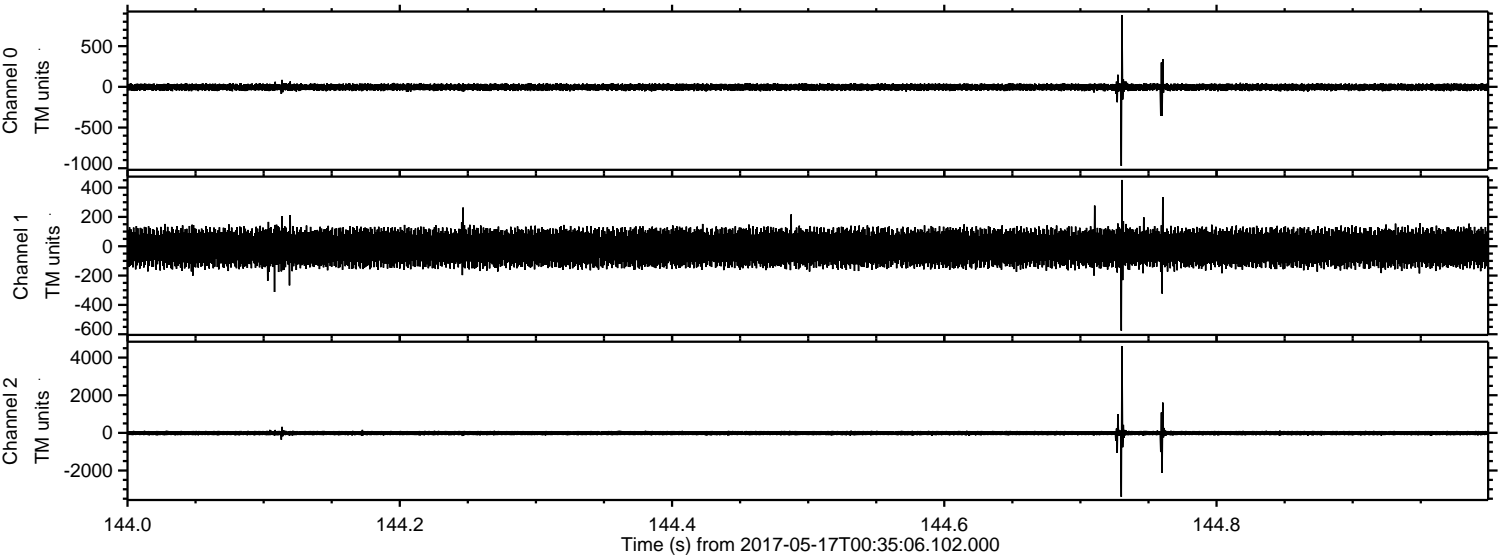
Channel 0
mn: -1833
mx: 2475
 μ : -4.3
 σ : 28.9

Channel 1
mn: -3014
mx: 3744
 μ : -11.0
 σ : 78.7

Channel 2
mn: -4991
mx: 3475
 μ : -13.1
 σ : 81.2

ELMAVAN 3D WAVEFORMS (Measured data sampled at 50 kHz) 51000 packets of 144 samples from 2017-05-17T00:35:06.102.000. Part 145/147

Processed Wed May 17 02:42:54 2017 by ELM ver.2012-10-06 from 001__elm20170517_003505__dat00.bin



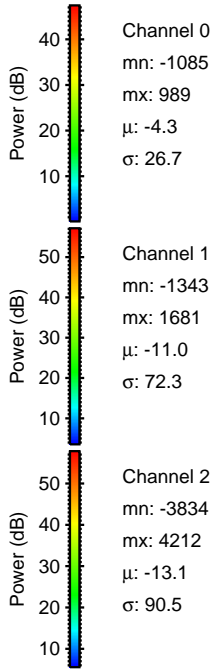
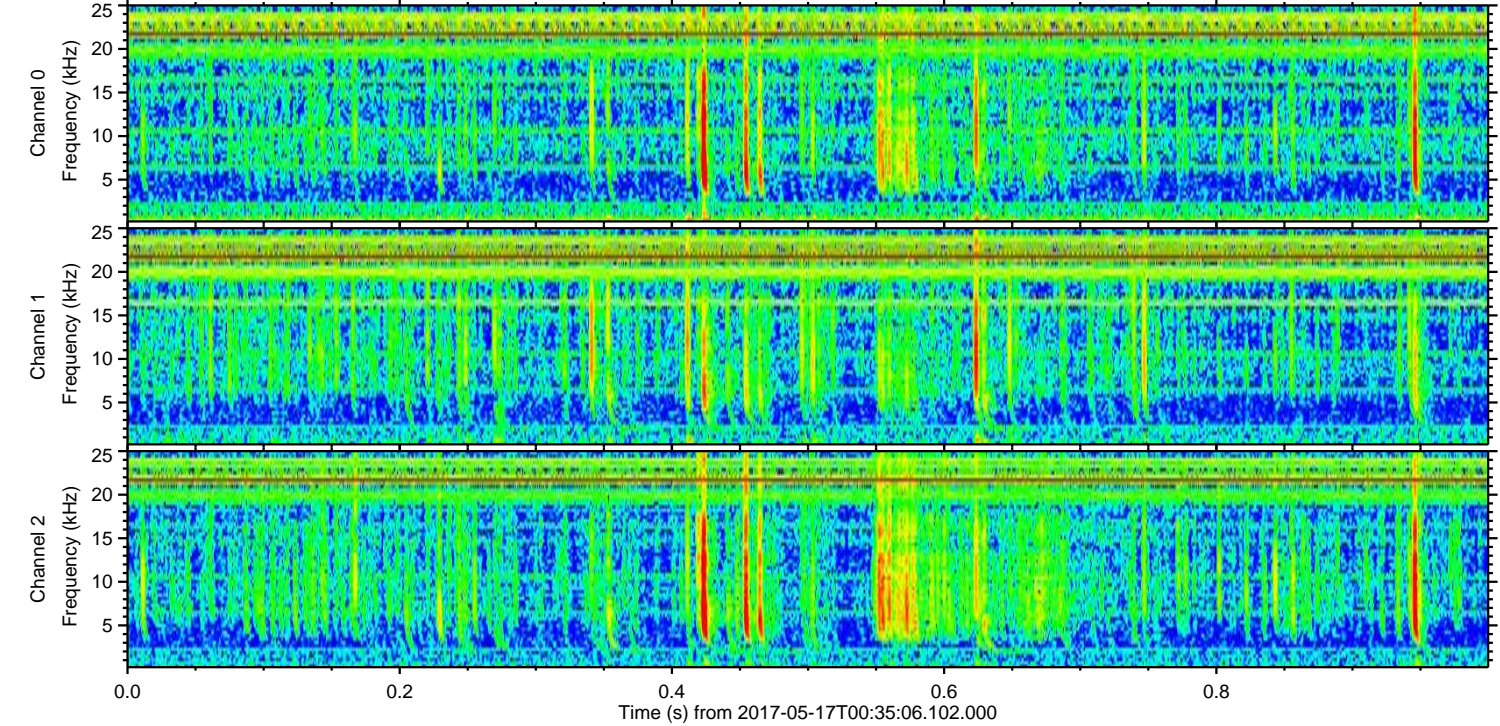
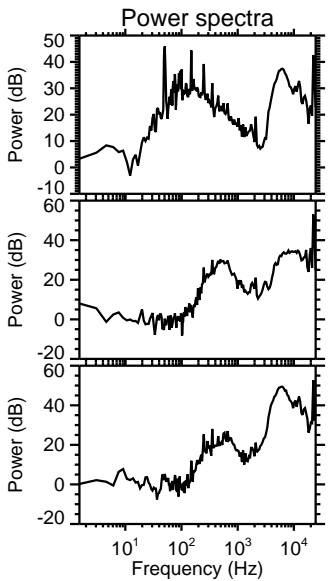
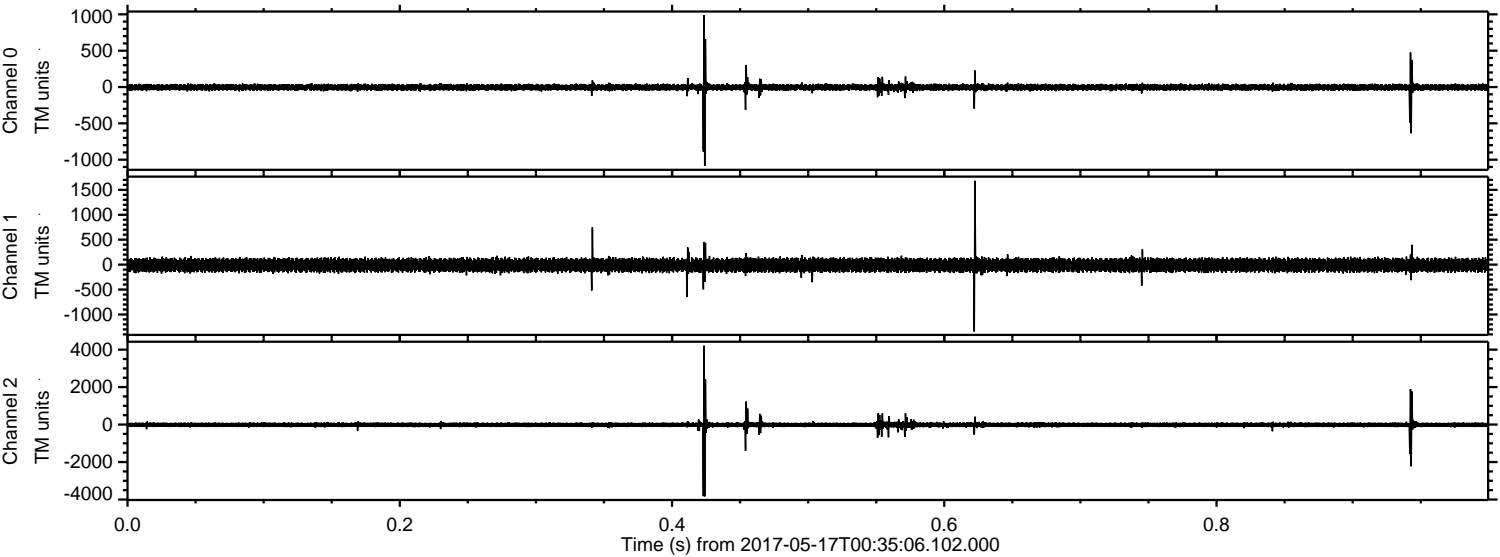
Channel 0
mn: -971
mx: 881
 μ : -4.3
 σ : 24.8

Channel 1
mn: -576
mx: 452
 μ : -11.0
 σ : 66.1

Channel 2
mn: -3399
mx: 4614
 μ : -13.0
 σ : 80.8

ELMAVAN 3D WAVEFORMS (Measured data sampled at 50 kHz) 51000 packets of 144 samples from 2017-05-17T00:35:06.102.000. Part 1/147

Processed Wed May 17 02:42:54 2017 by ELM ver.2012-10-06 from 001__elm20170517_003505__dat00.bin



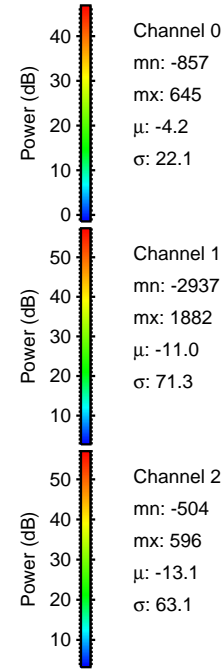
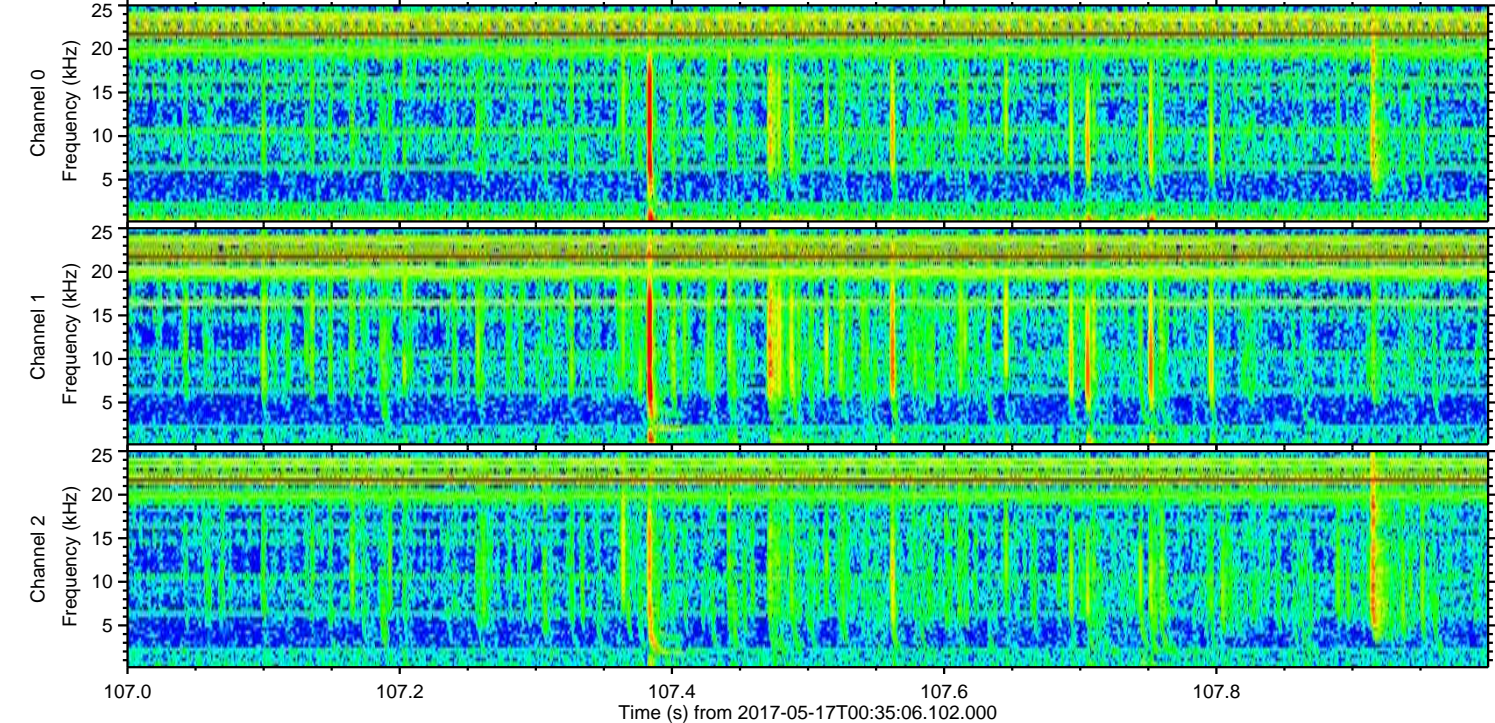
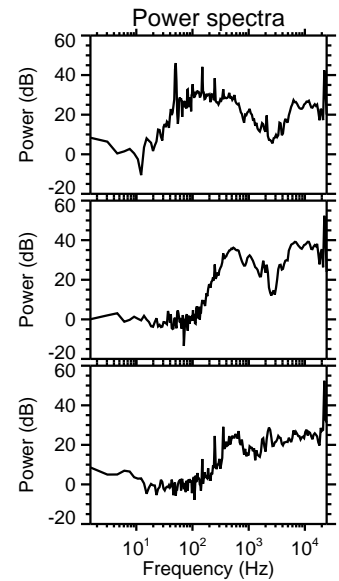
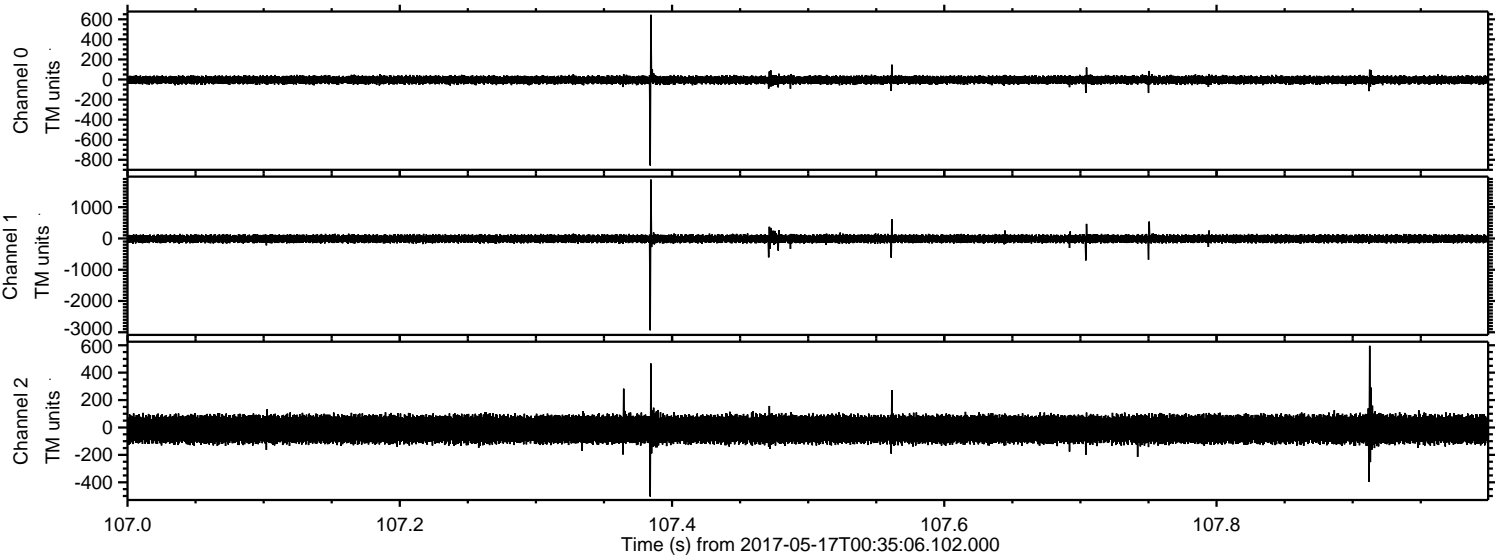
Channel 0
mn: -1085
mx: 989
 μ : -4.3
 σ : 26.7

Channel 1
mn: -1343
mx: 1681
 μ : -11.0
 σ : 72.3

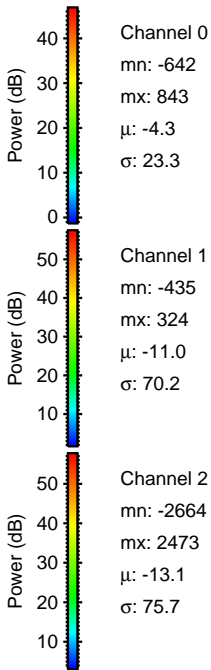
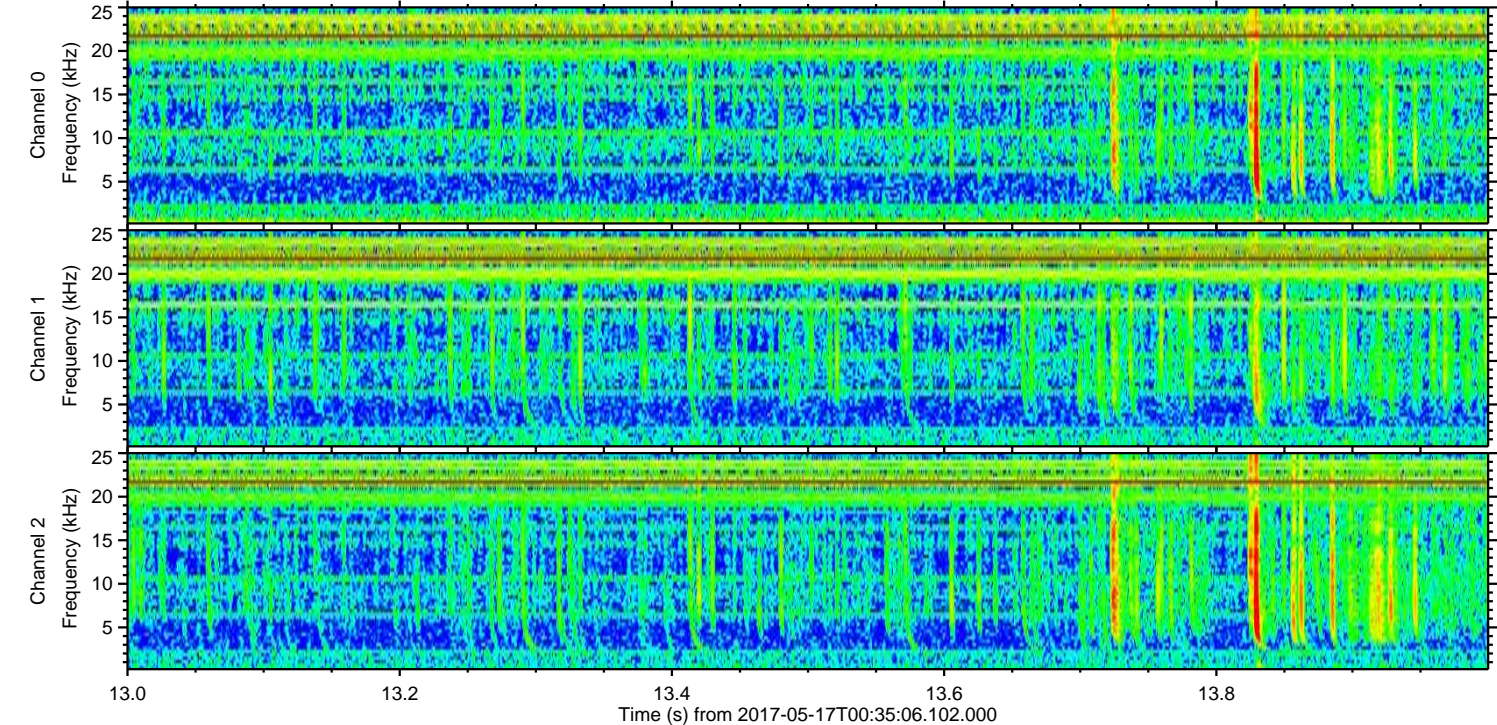
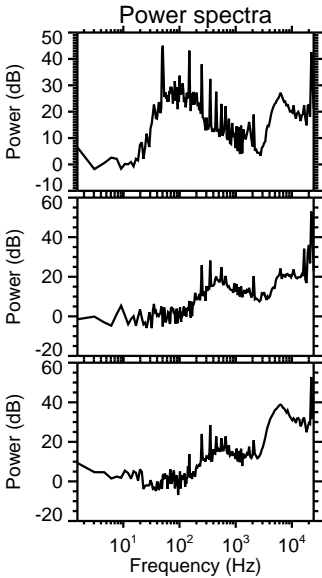
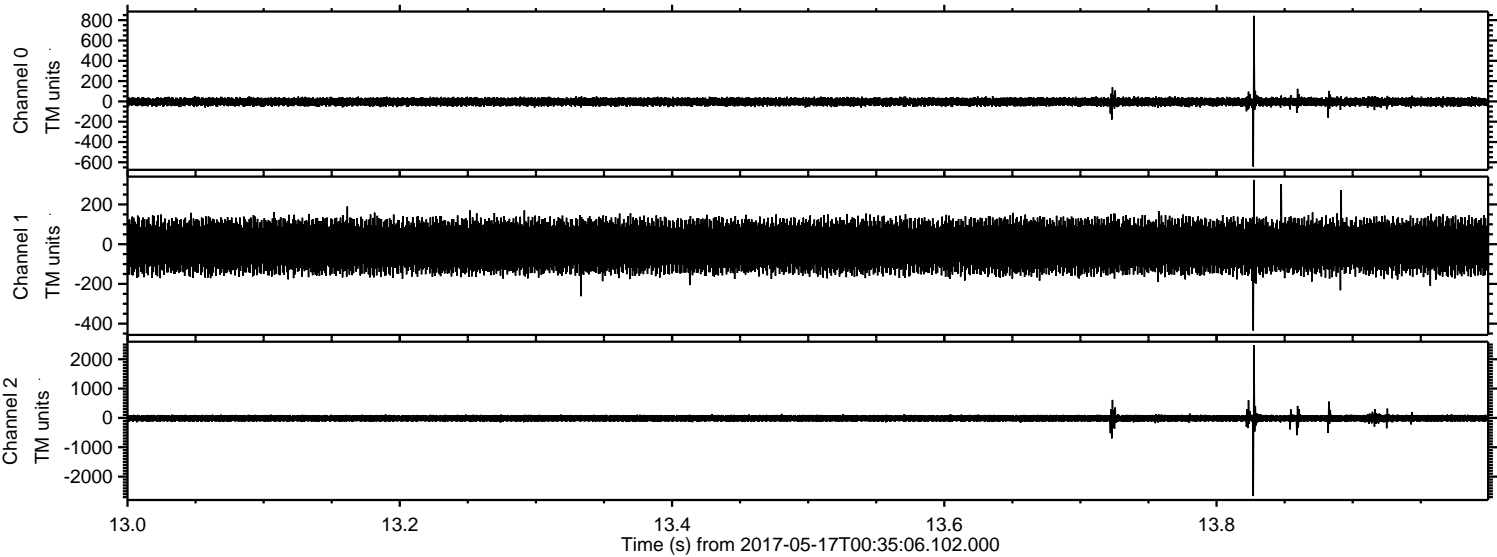
Channel 2
mn: -3834
mx: 4212
 μ : -13.1
 σ : 90.5

ELMAVAN 3D WAVEFORMS (Measured data sampled at 50 kHz) 51000 packets of 144 samples from 2017-05-17T00:35:06.102.000. Part 108/147

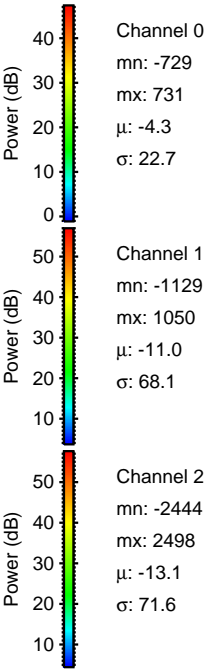
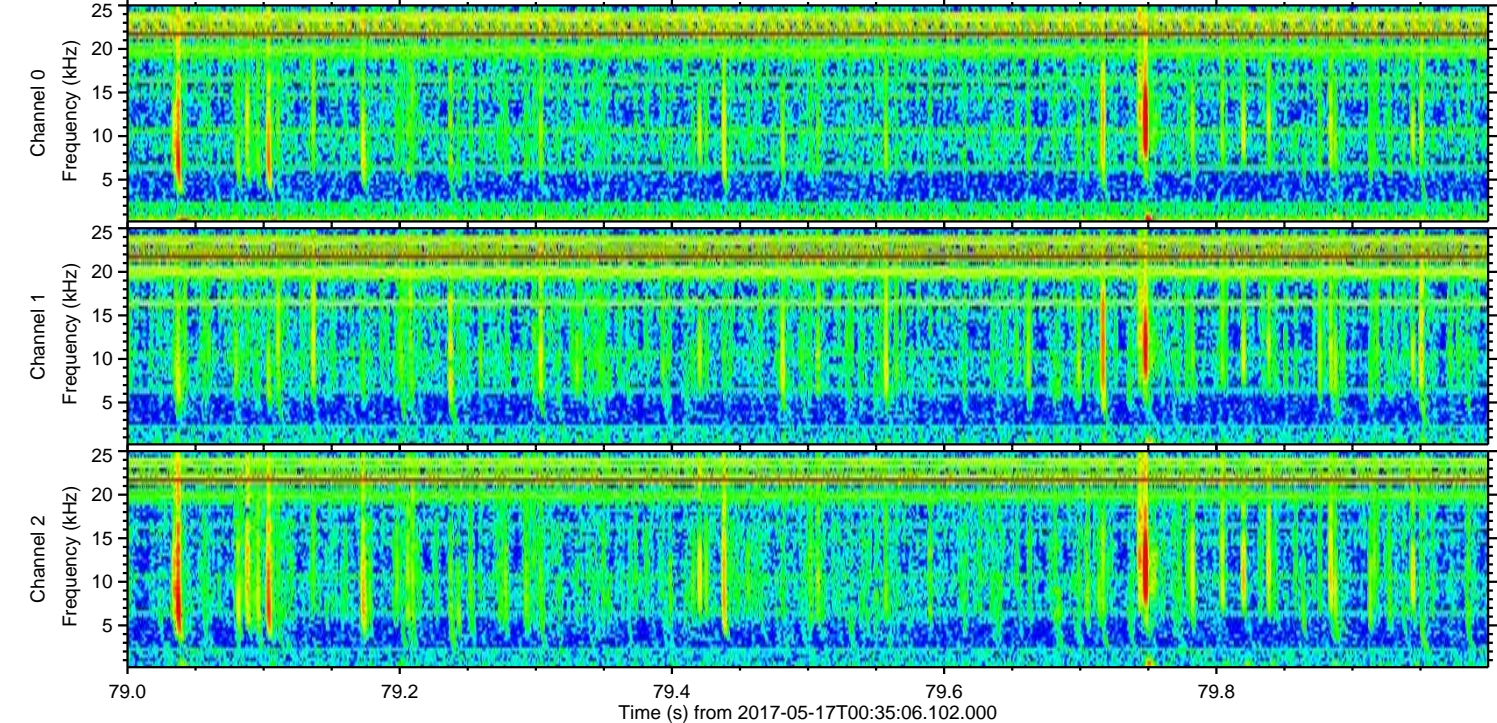
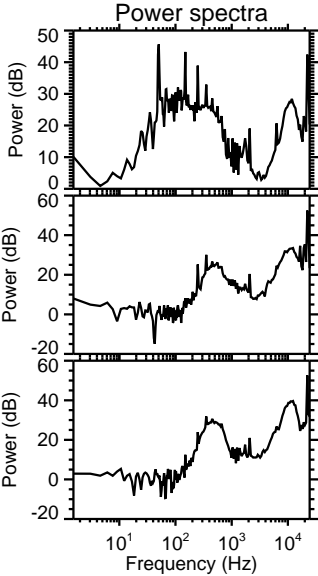
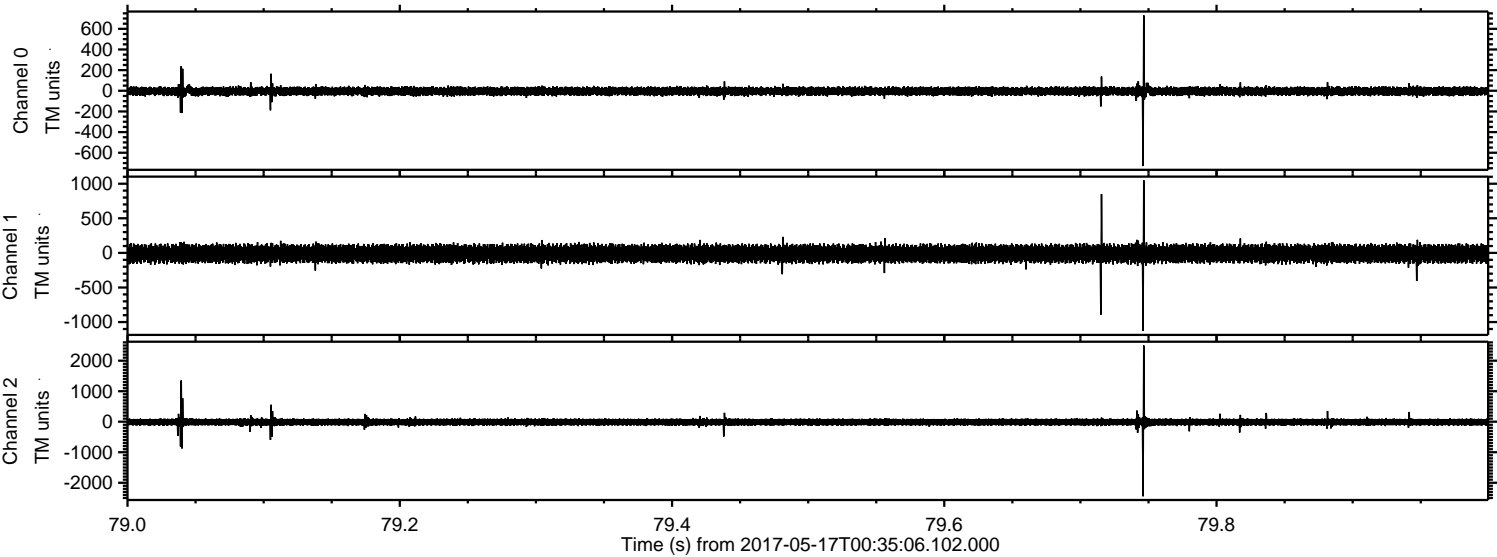
Processed Wed May 17 02:42:55 2017 by ELM ver.2012-10-06 from 001__elm20170517_003505__dat00.bin



Processed Wed May 17 02:42:56 2017 by ELM ver.2012-10-06 from 001__elm20170517_003505__dat00.bin

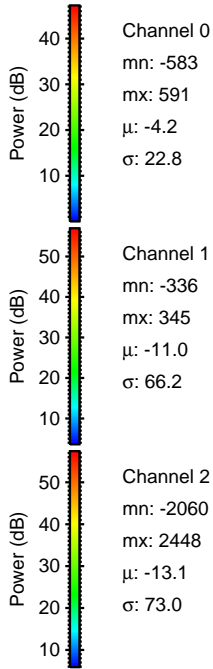
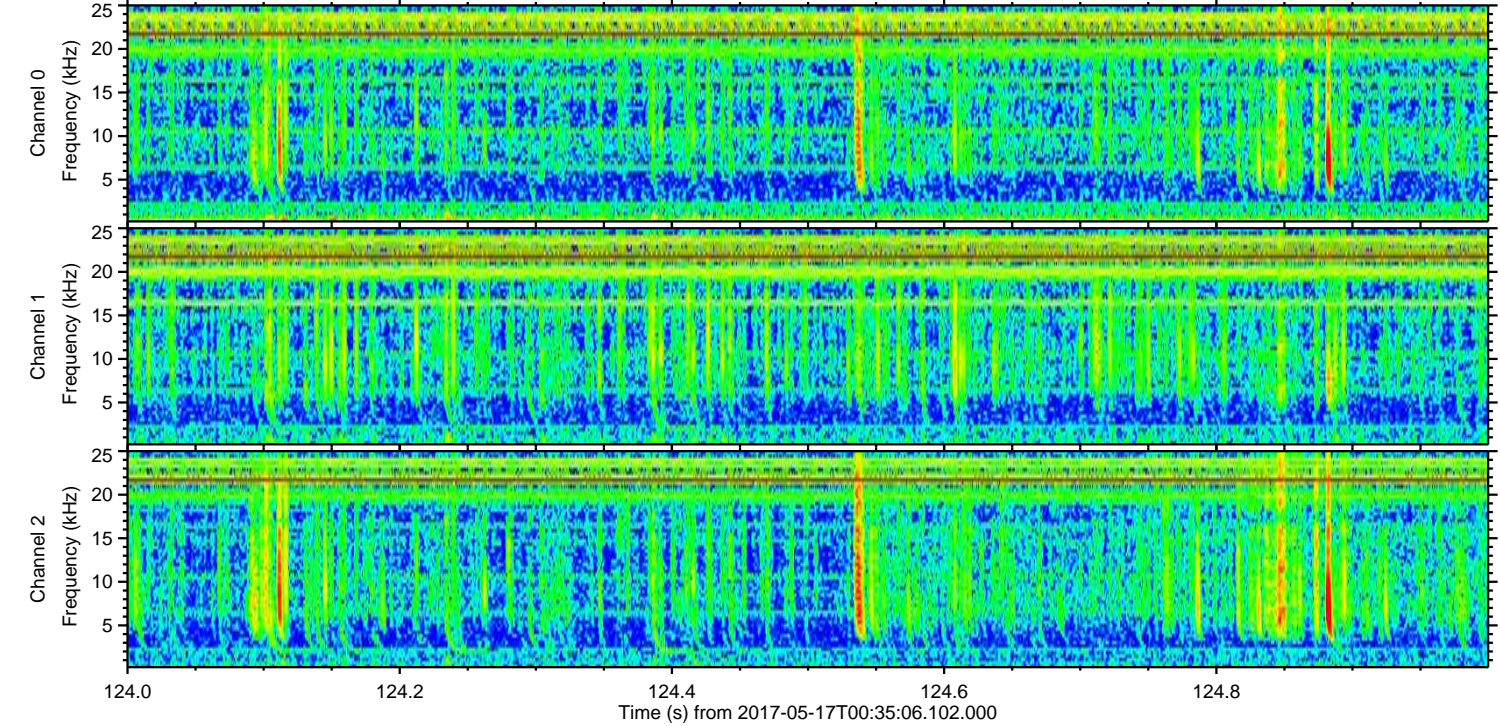
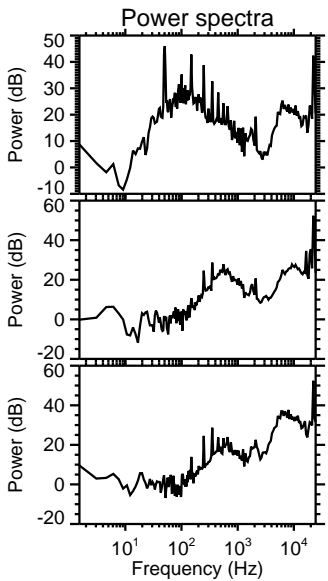
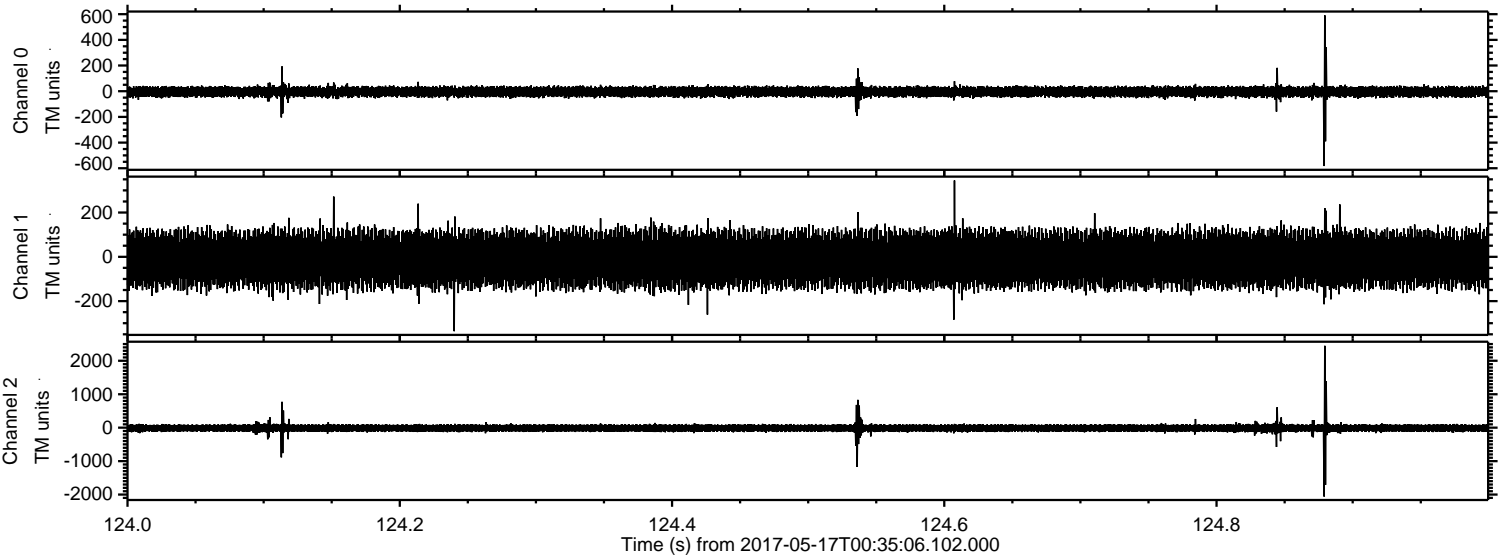


Processed Wed May 17 02:42:56 2017 by ELM ver.2012-10-06 from 001__elm20170517_003505__dat00.bin

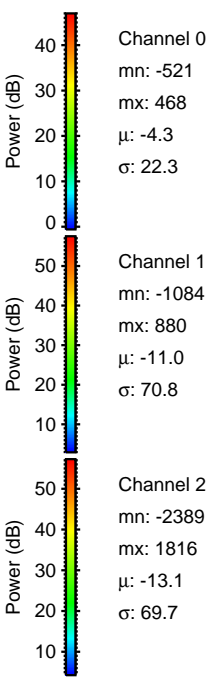
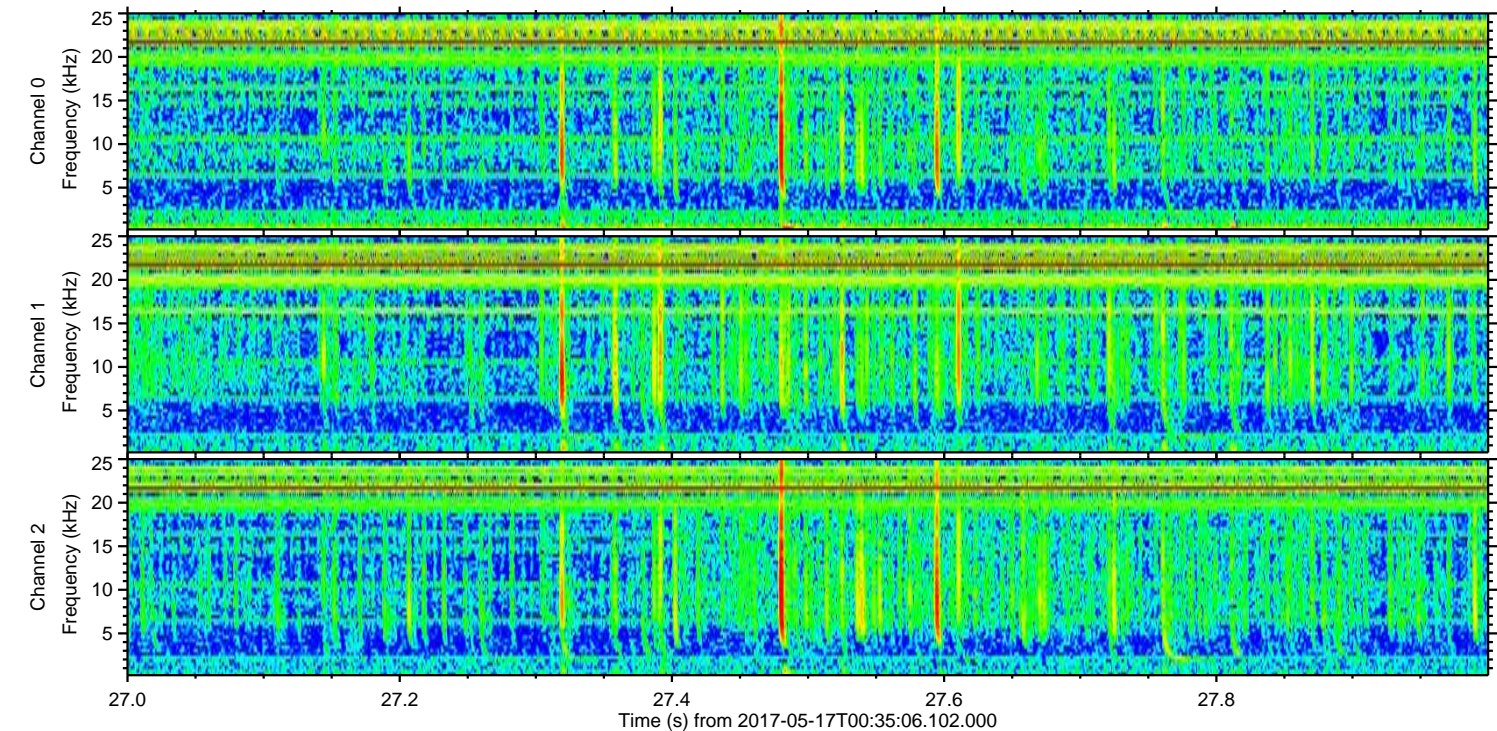
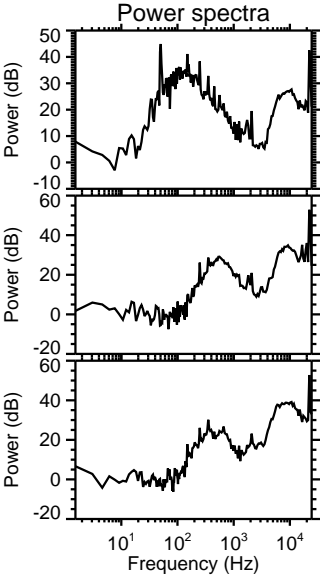
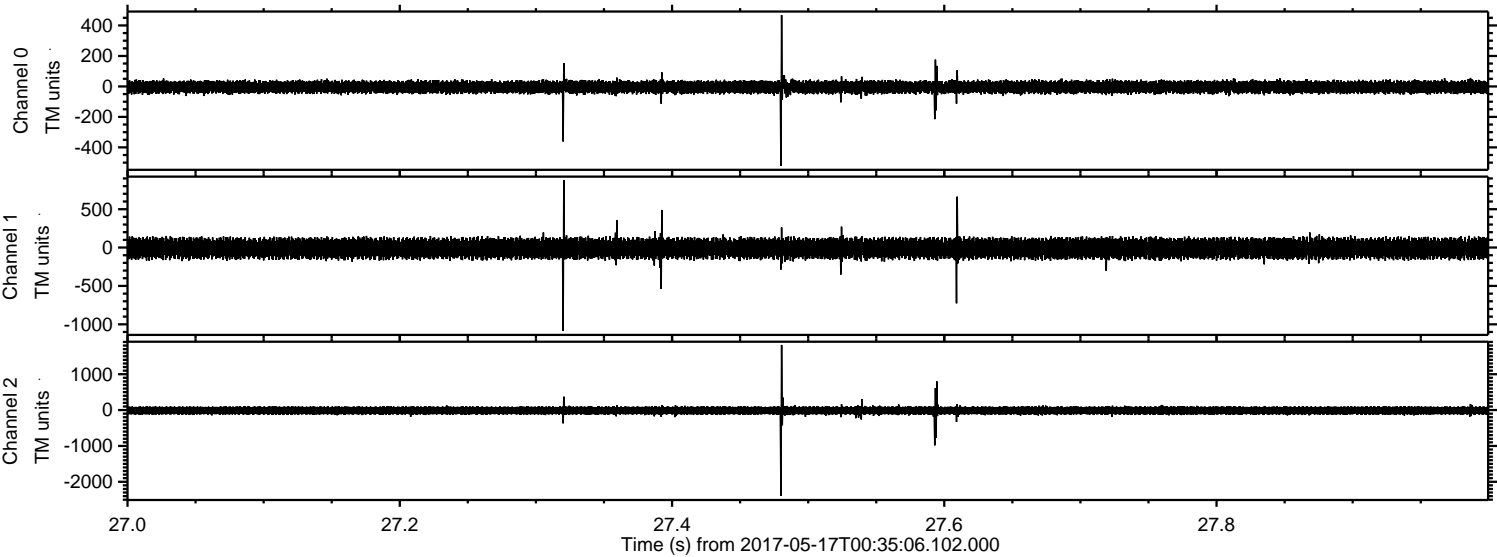


ELMAVAN 3D WAVEFORMS (Measured data sampled at 50 kHz) 51000 packets of 144 samples from 2017-05-17T00:35:06.102.000. Part 125/147

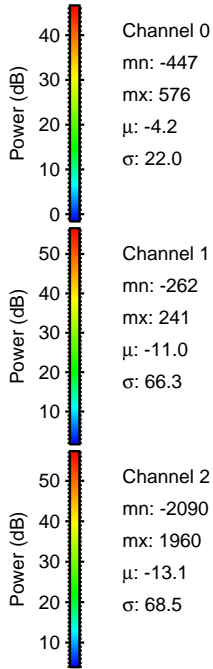
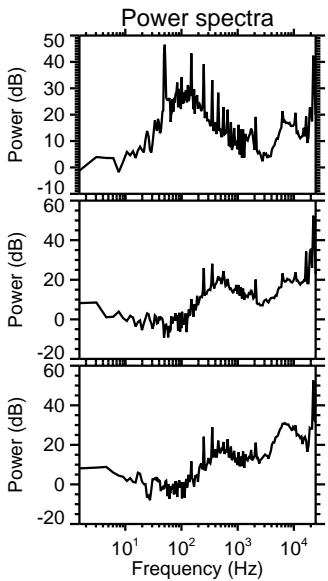
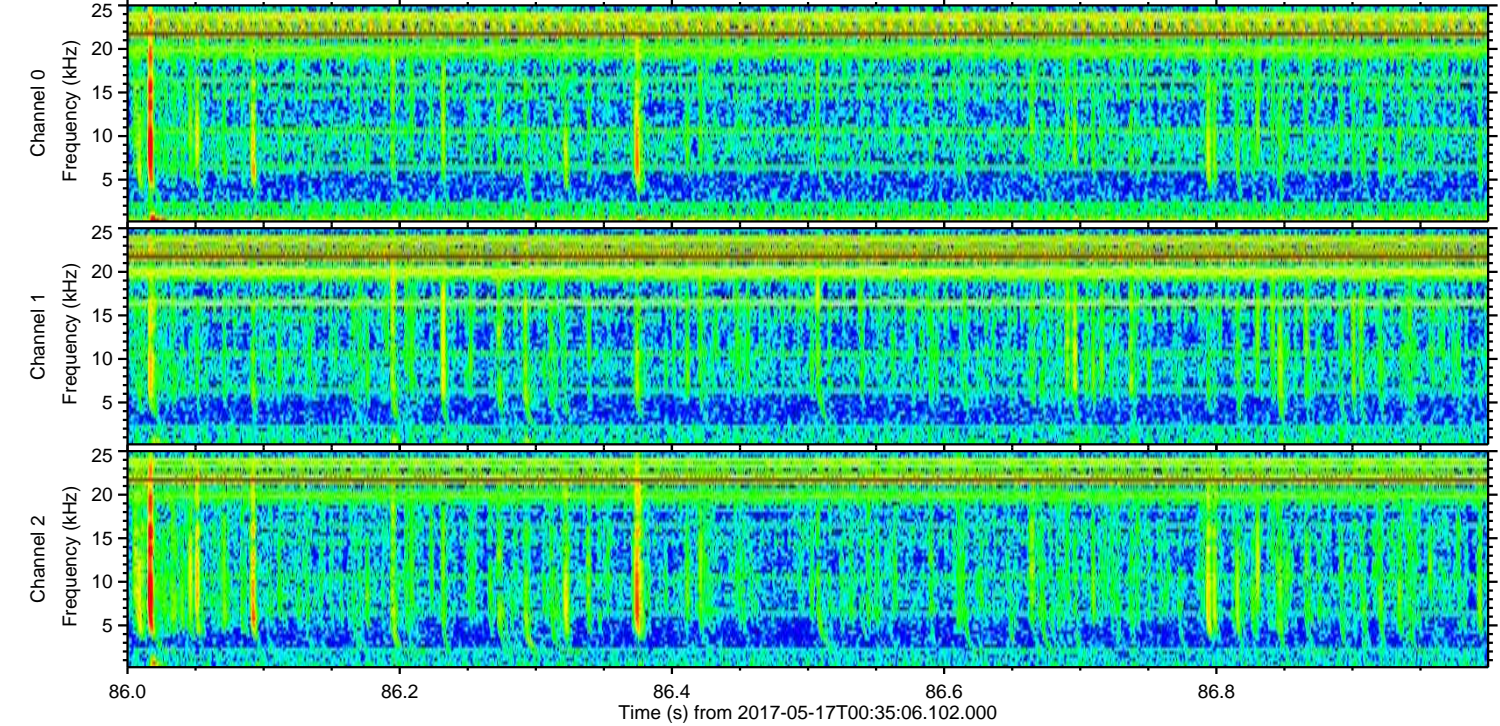
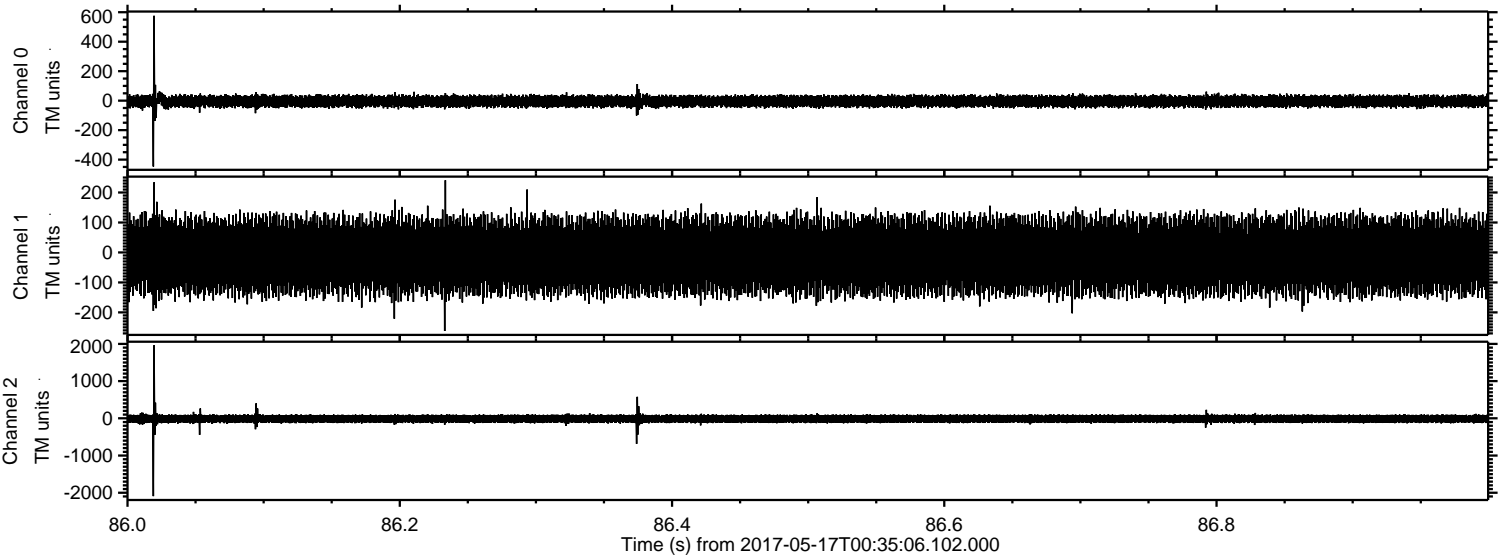
Processed Wed May 17 02:42:57 2017 by ELM ver.2012-10-06 from 001__elm20170517_003505__dat00.bin



Processed Wed May 17 02:42:57 2017 by ELM ver.2012-10-06 from 001__elm20170517_003505__dat00.bin



Processed Wed May 17 02:42:58 2017 by ELM ver.2012-10-06 from 001__elm20170517_003505__dat00.bin



Channel 0
mn: -447
mx: 576
 μ : -4.2
 σ : 22.0

Channel 1
mn: -262
mx: 241
 μ : -11.0
 σ : 66.3

Channel 2
mn: -2090
mx: 1960
 μ : -13.1
 σ : 68.5

ELMAVAN 3D WAVEFORMS (Measured data sampled at 50 kHz) 51000 packets of 144 samples from 2017-05-17T00:35:06.102.000. Part 102/147

