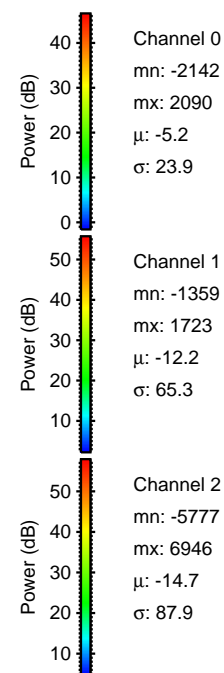
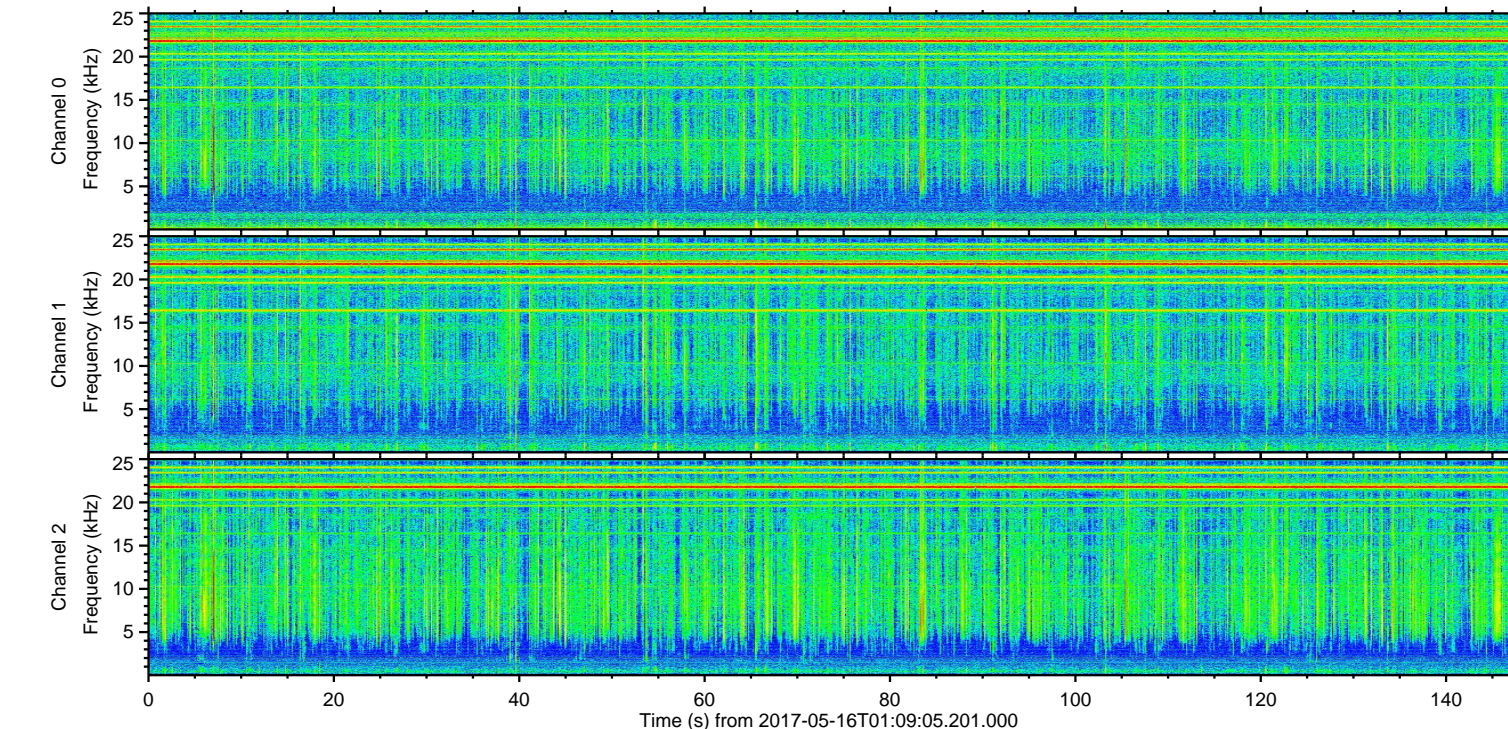
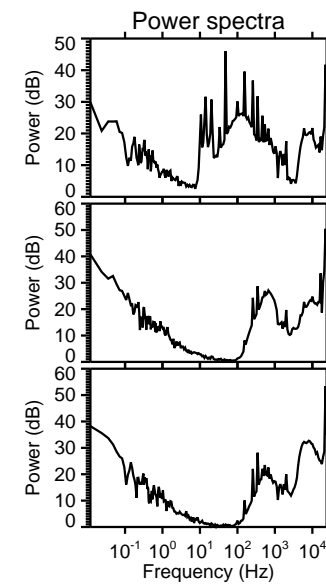
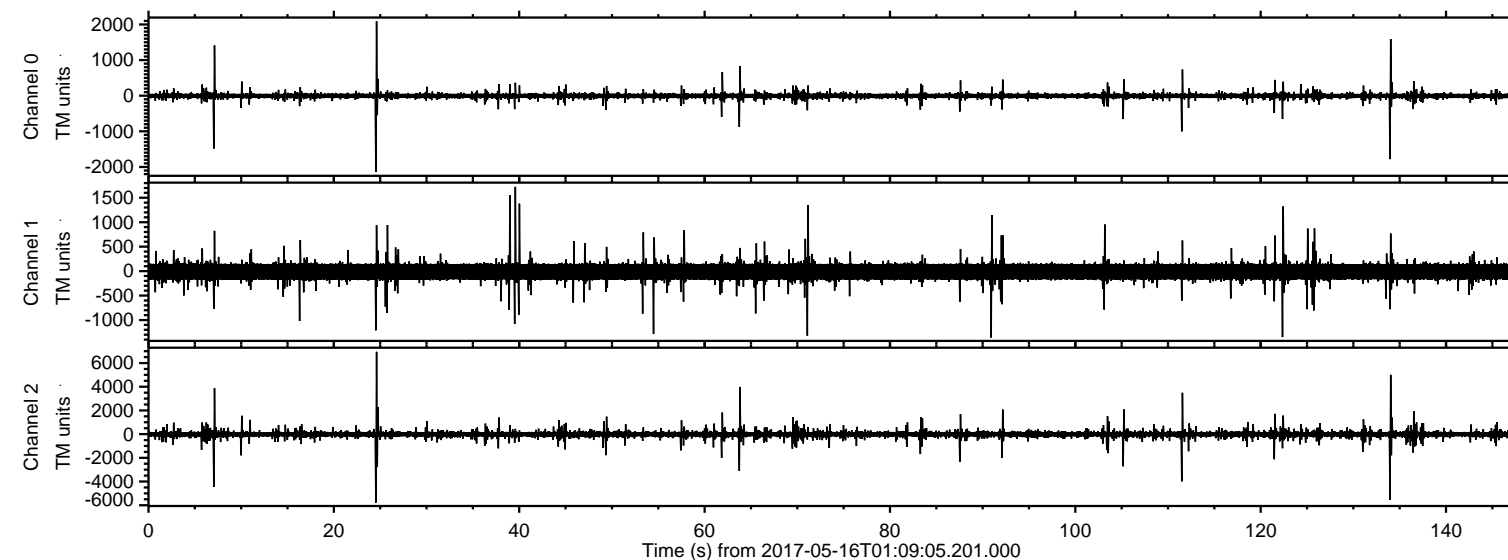
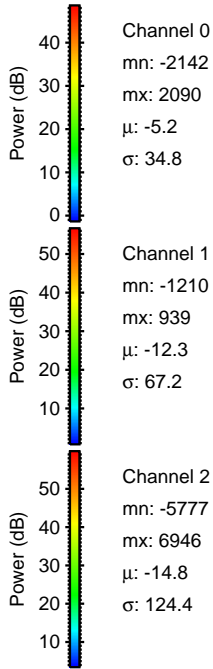
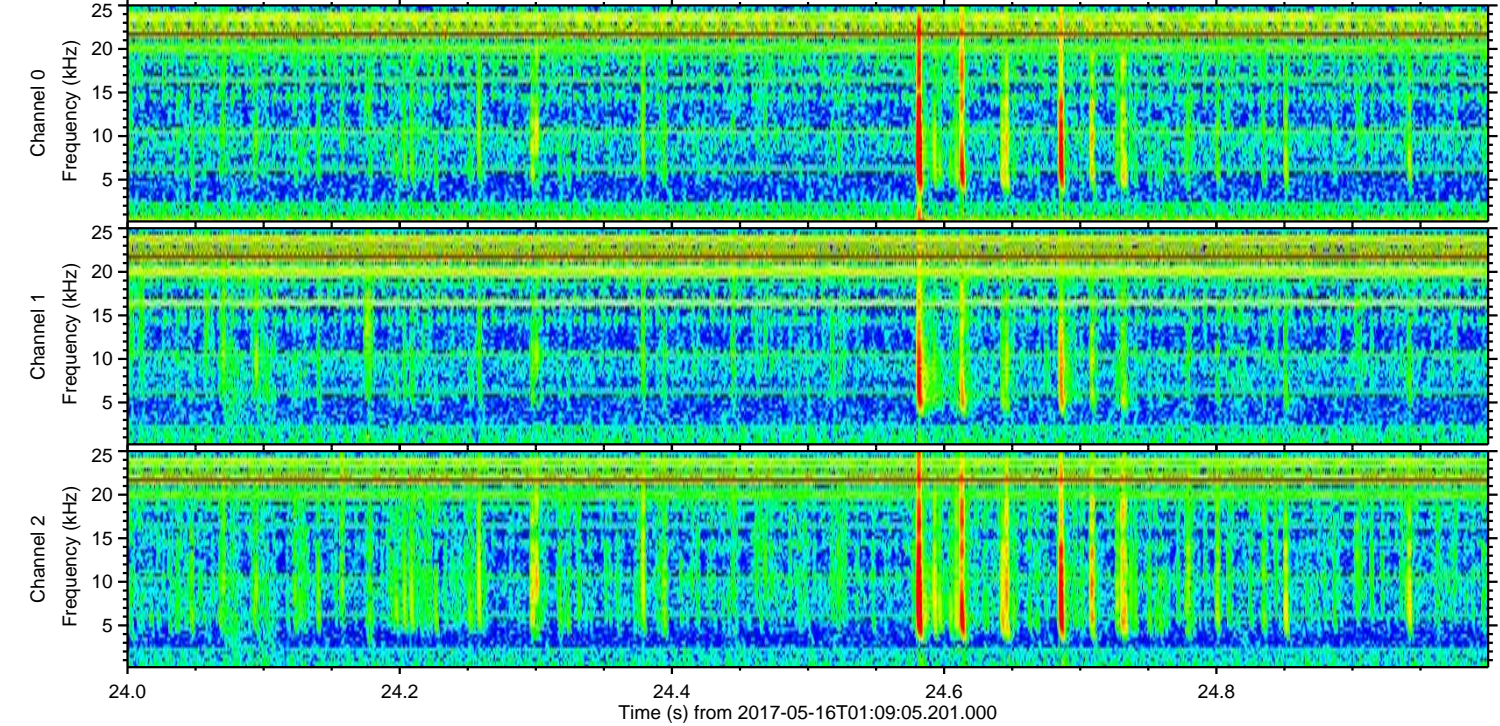
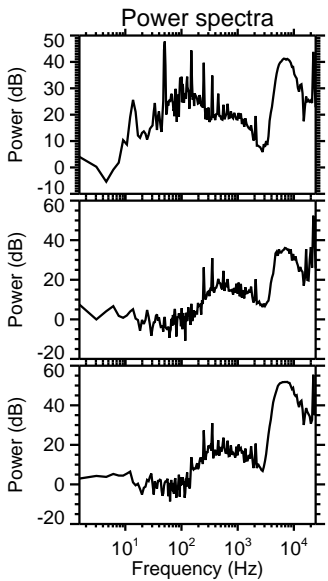
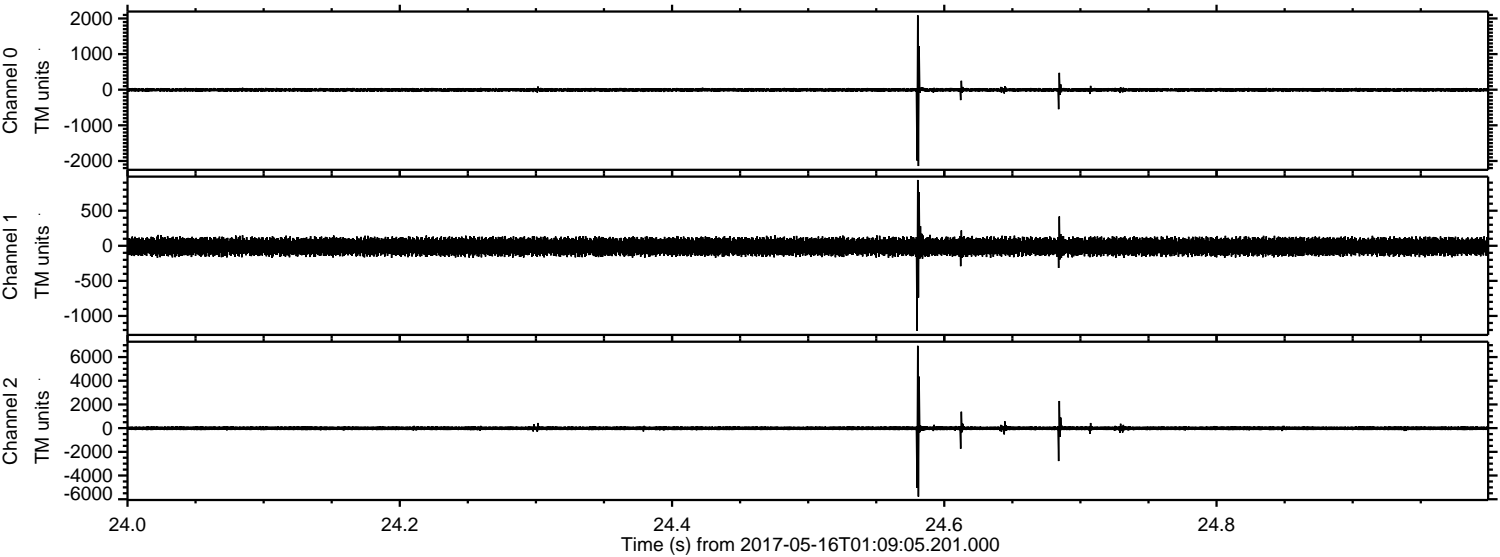


ELMAVAN 3D WAVEFORMS (Measured data sampled at 50 kHz) 51000 packets of 144 samples from 2017-05-16T01:09:05.201.000.

Processed Tue May 16 03:17:11 2017 by ELM ver.2012-10-06 from 001__elm20170516_010904__dat00.bin

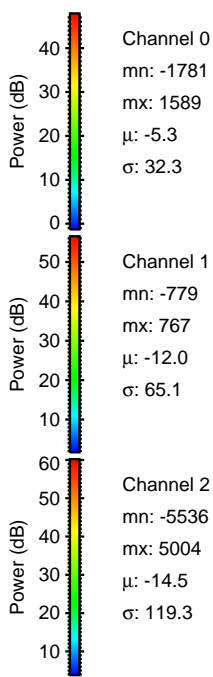
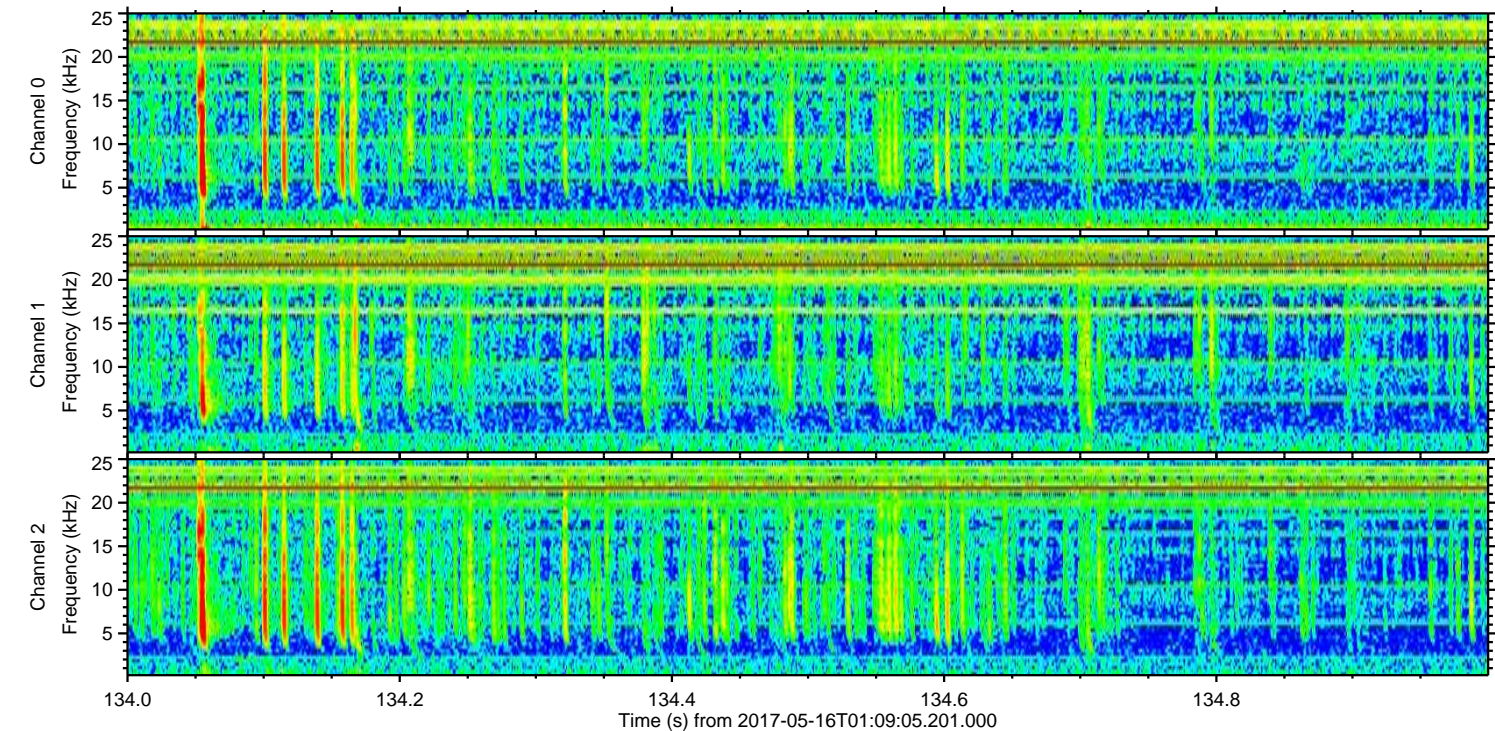
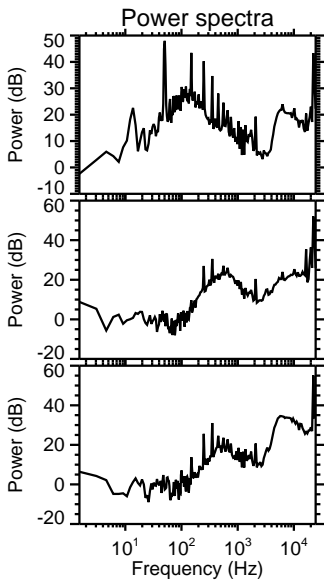
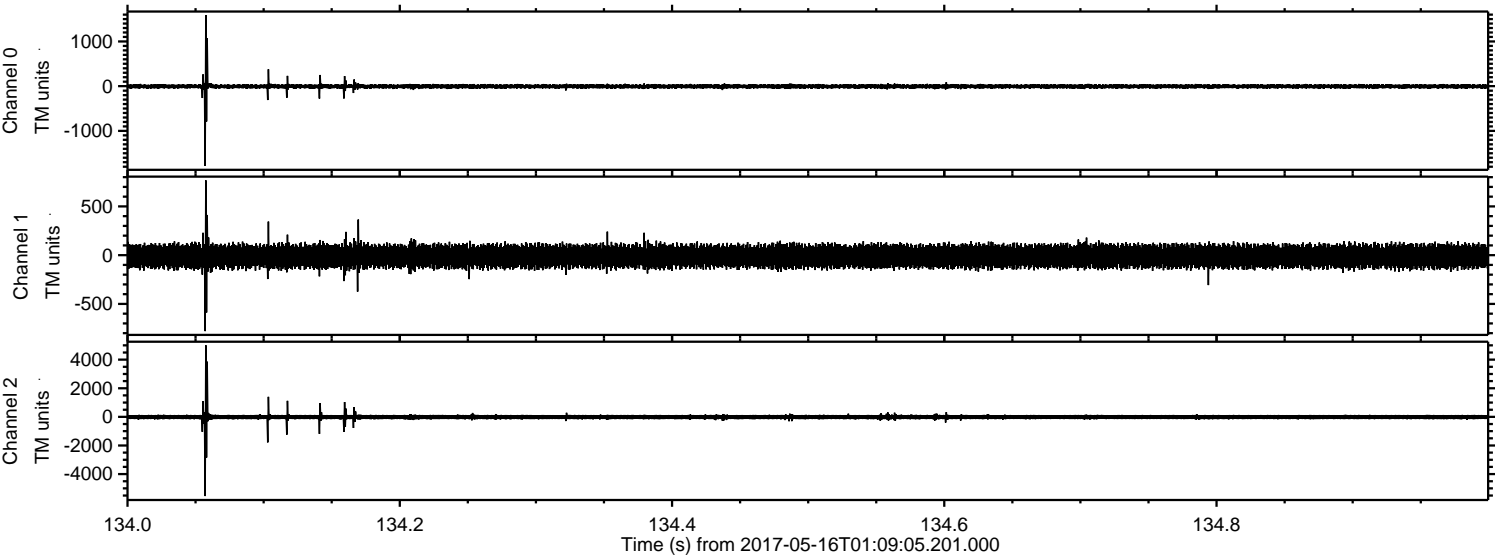


Processed Tue May 16 03:17:23 2017 by ELM ver.2012-10-06 from 001__elm20170516_010904__dat00.bin

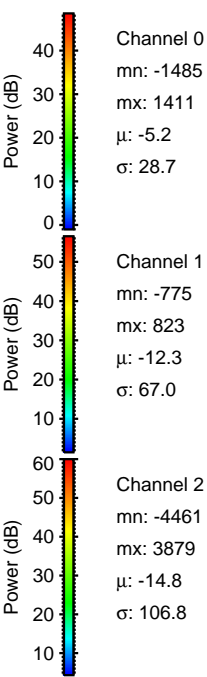
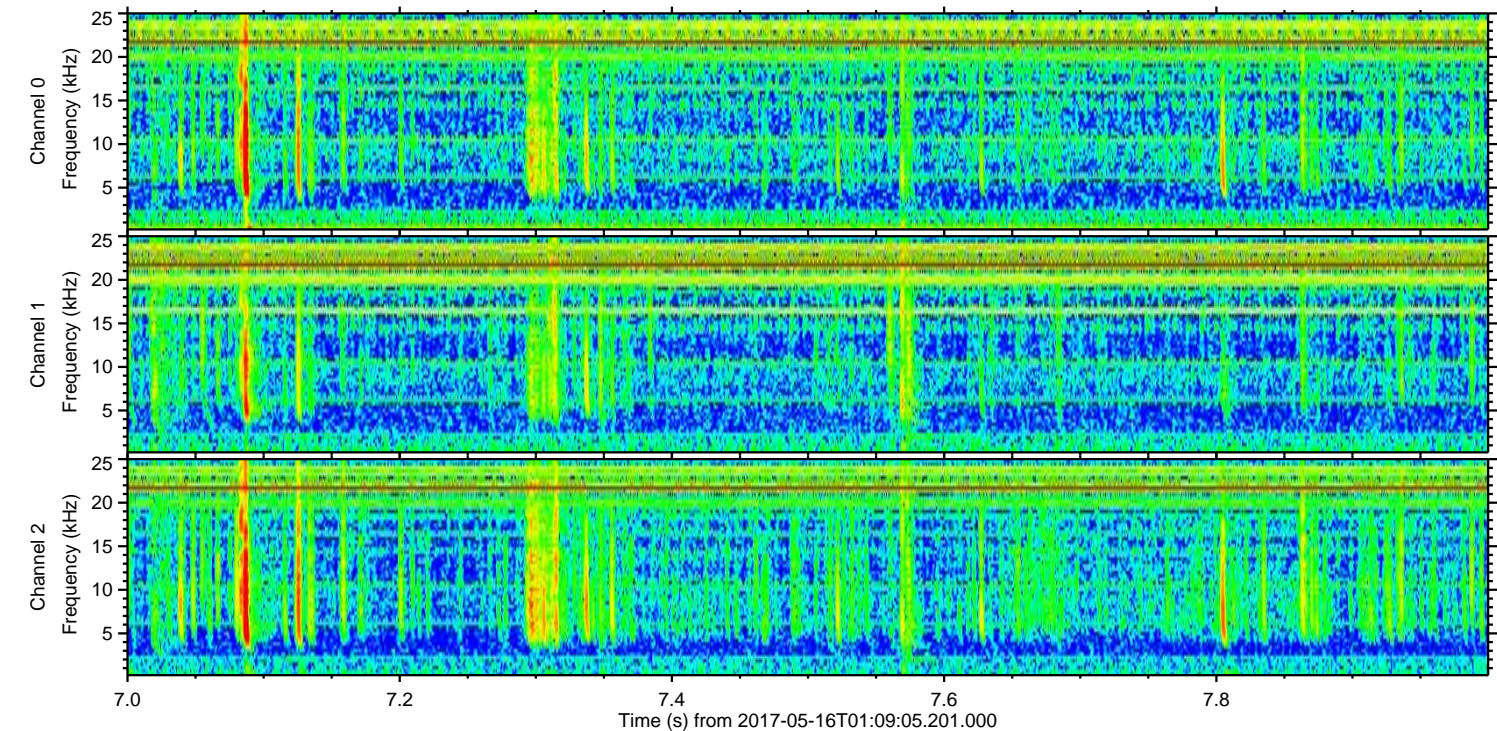
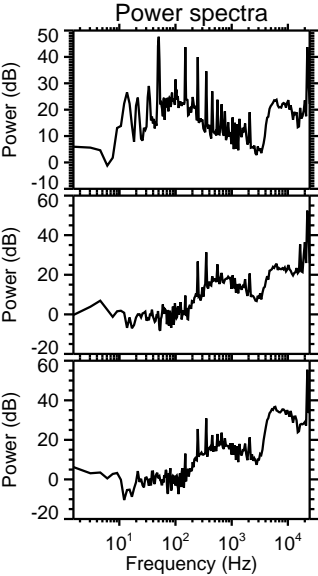
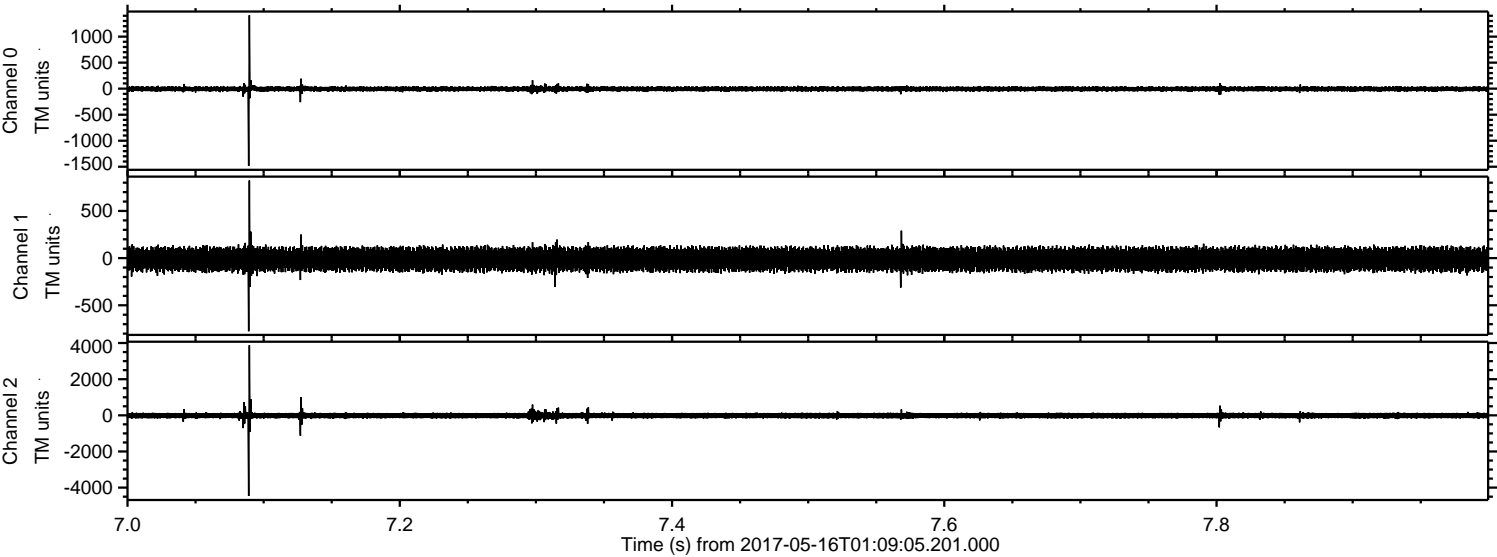


ELMAVAN 3D WAVEFORMS (Measured data sampled at 50 kHz) 51000 packets of 144 samples from 2017-05-16T01:09:05.201.000. Part 135/147

Processed Tue May 16 03:17:24 2017 by ELM ver.2012-10-06 from 001__elm20170516_010904__dat00.bin

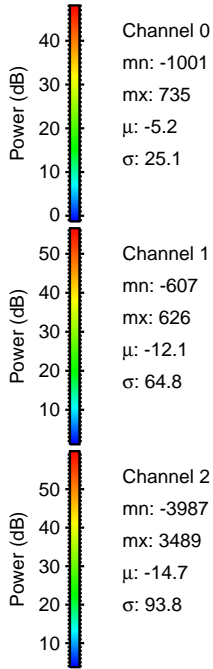
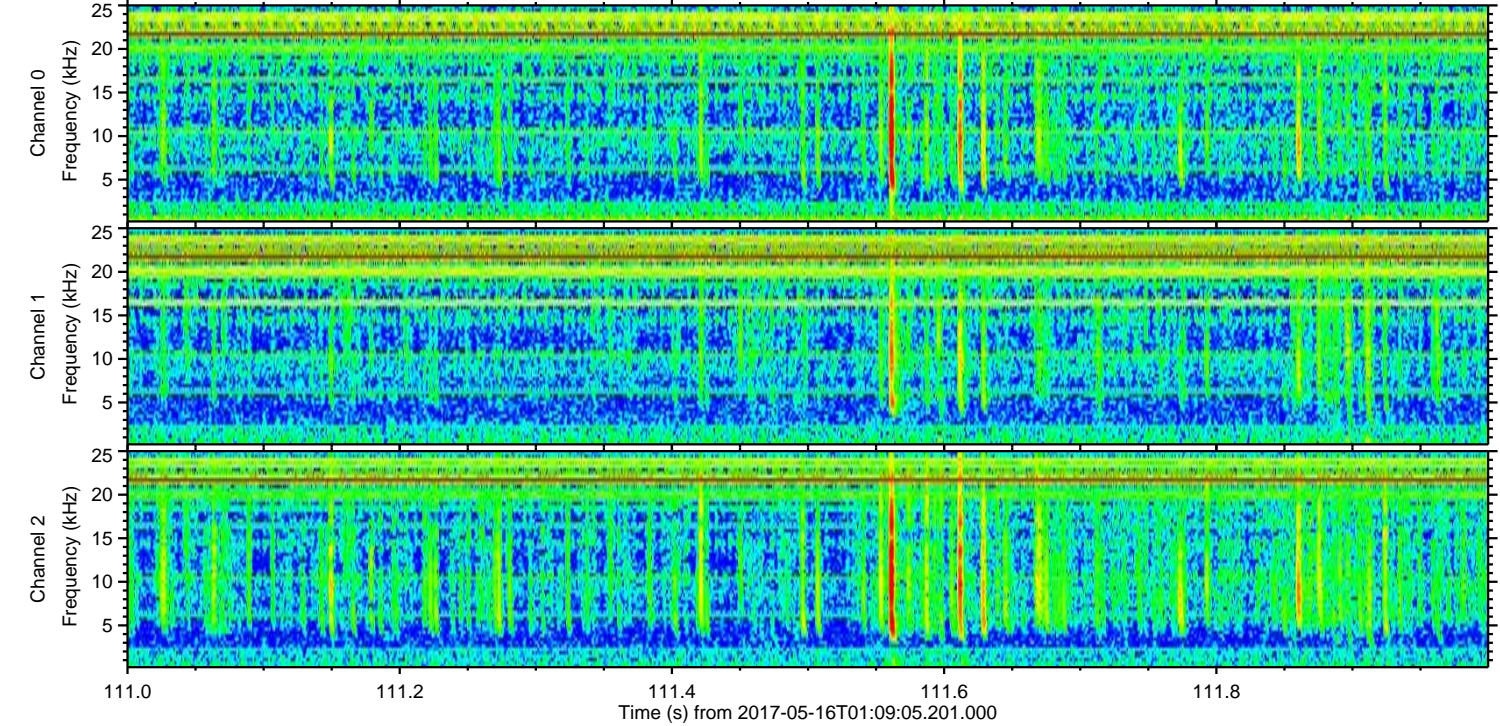
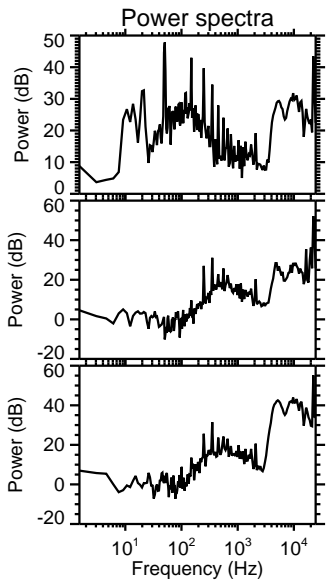
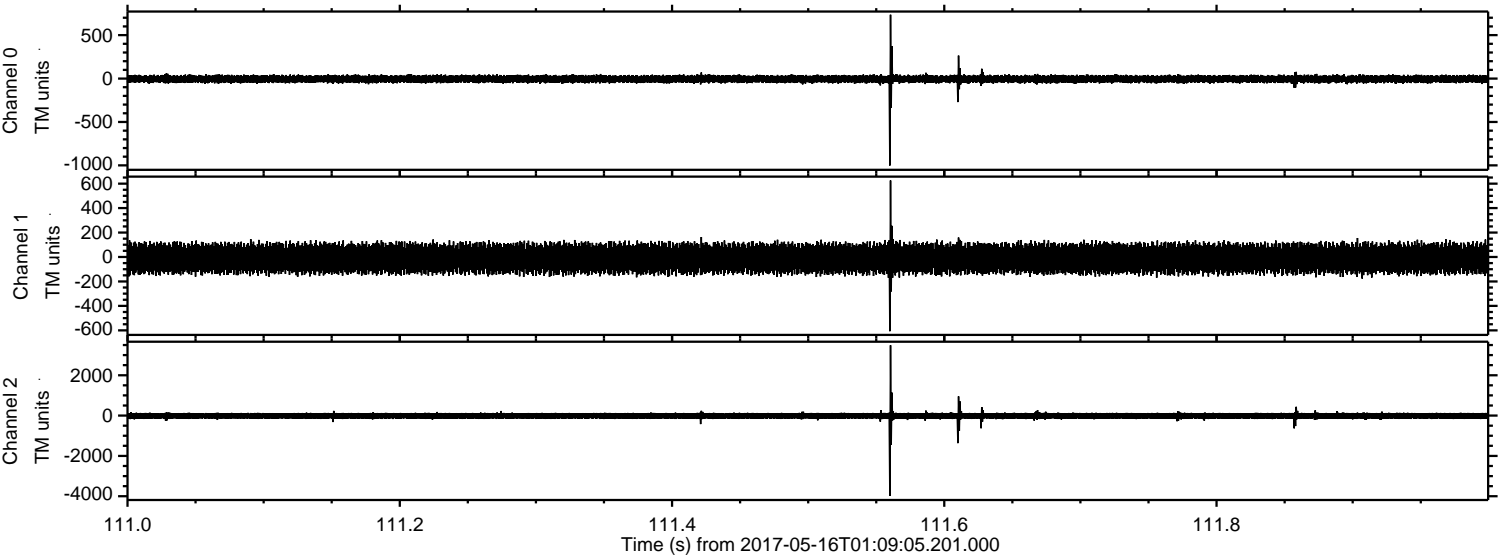


Processed Tue May 16 03:17:24 2017 by ELM ver.2012-10-06 from 001__elm20170516_010904__dat00.bin

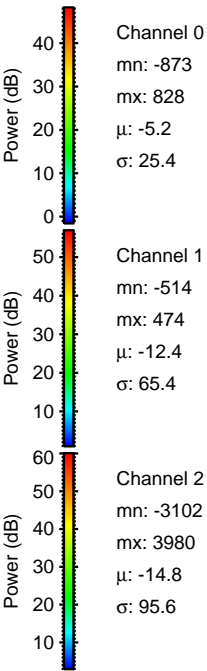
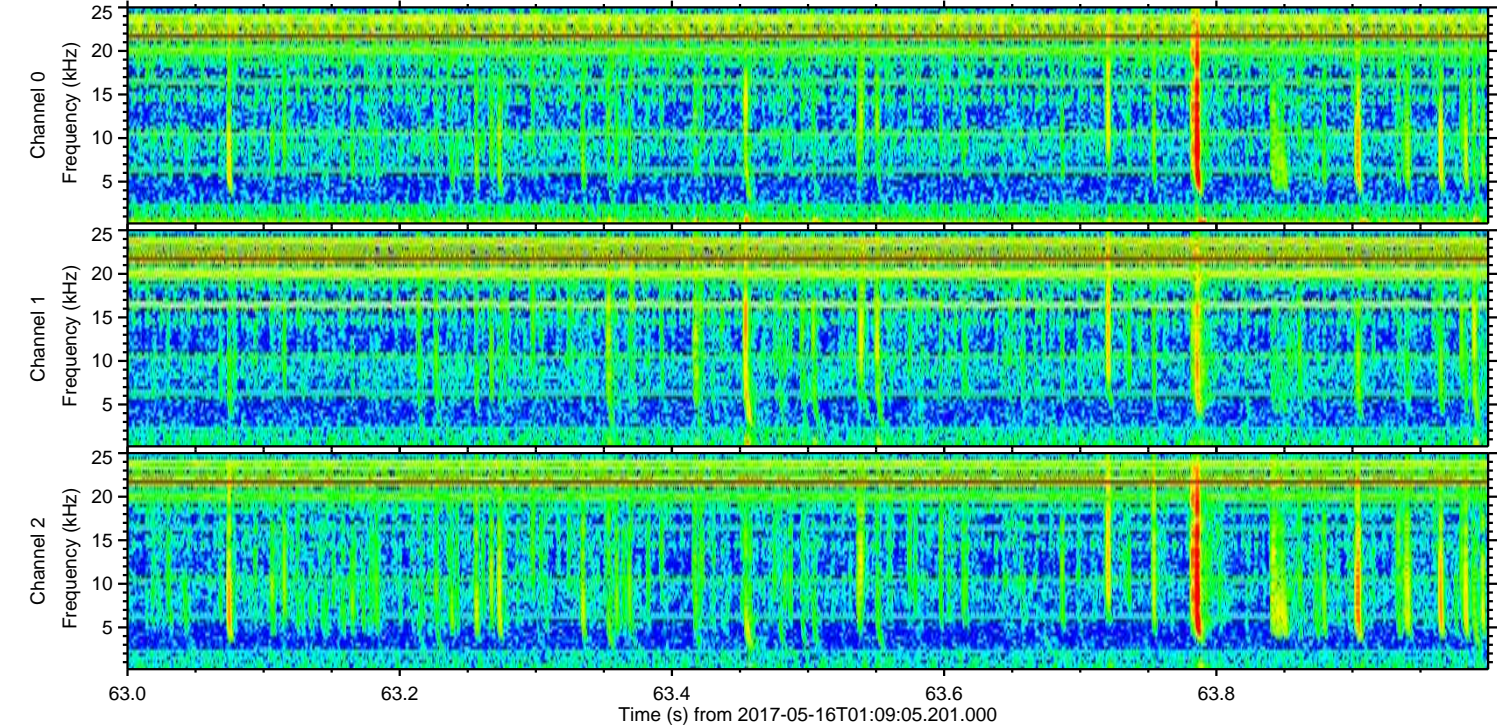
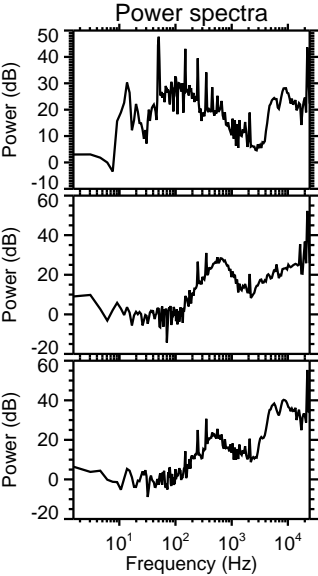
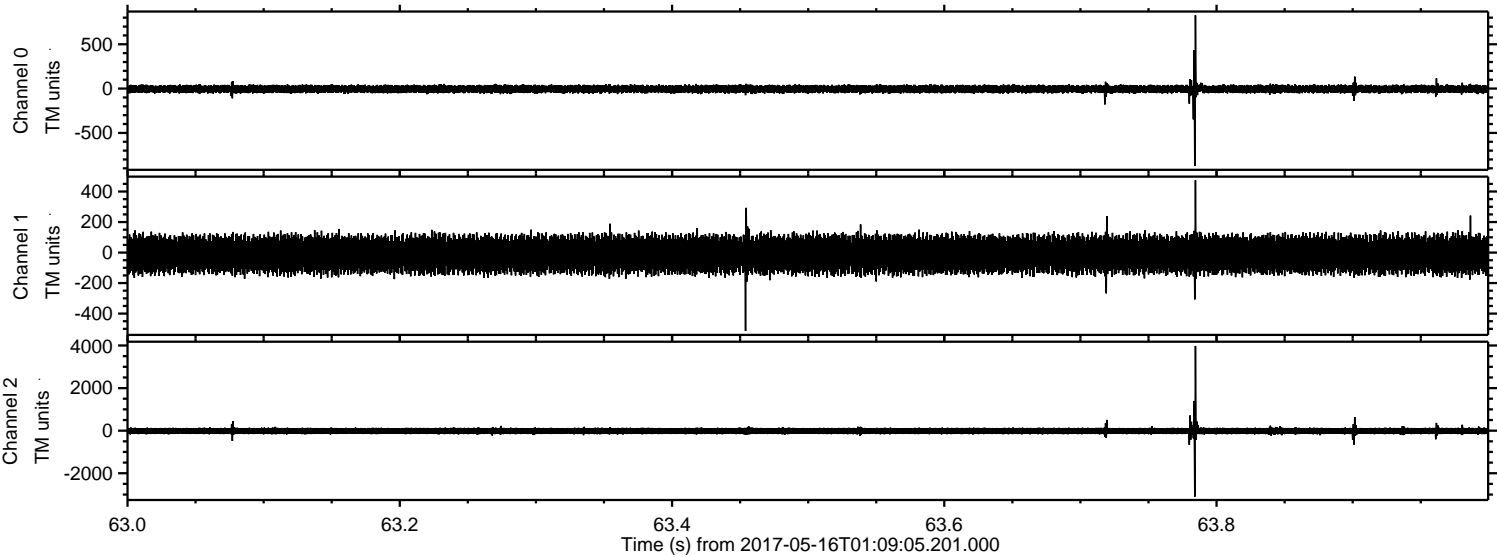


ELMAVAN 3D WAVEFORMS (Measured data sampled at 50 kHz) 51000 packets of 144 samples from 2017-05-16T01:09:05.201.000. Part 112/147

Processed Tue May 16 03:17:25 2017 by ELM ver.2012-10-06 from 001__elm20170516_010904__dat00.bin

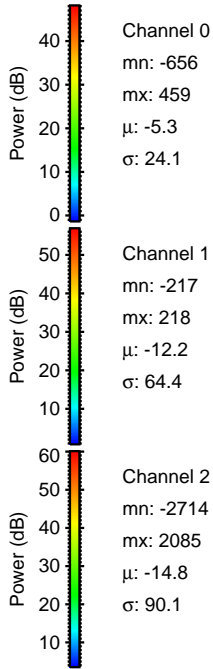
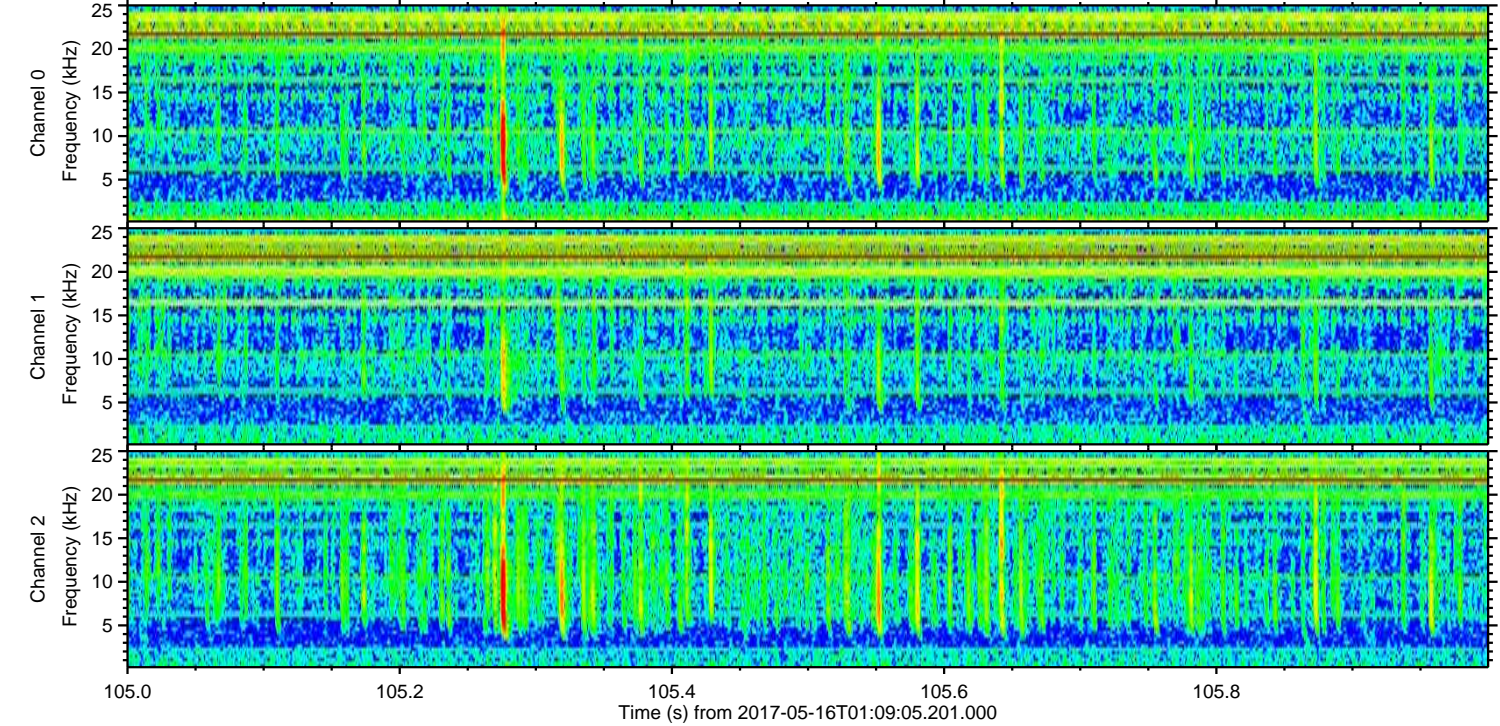
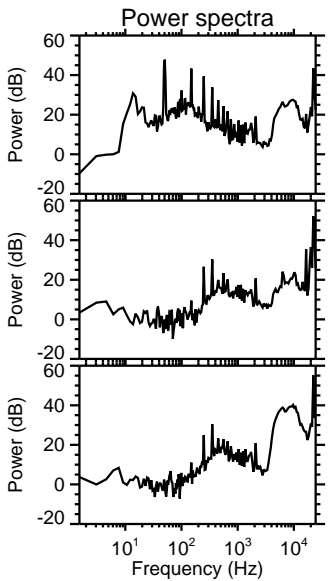
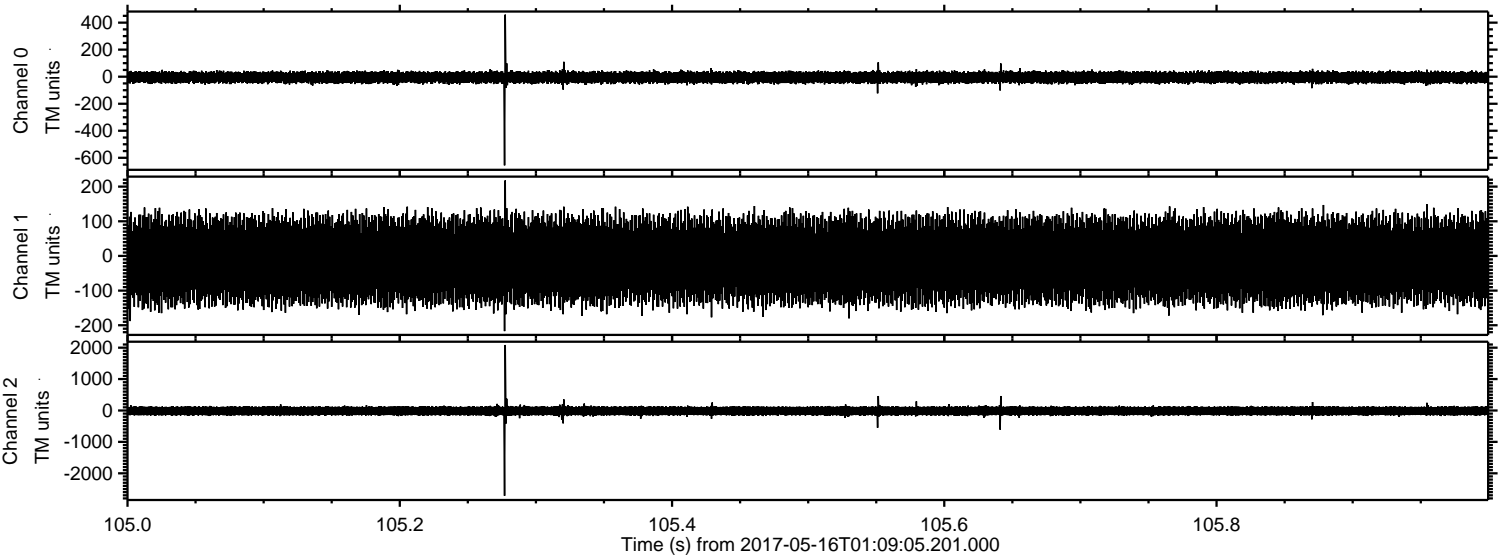


Processed Tue May 16 03:17:26 2017 by ELM ver.2012-10-06 from 001__elm20170516_010904__dat00.bin

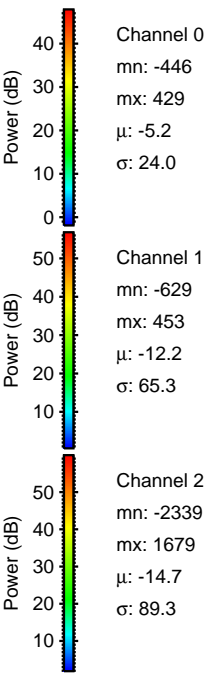
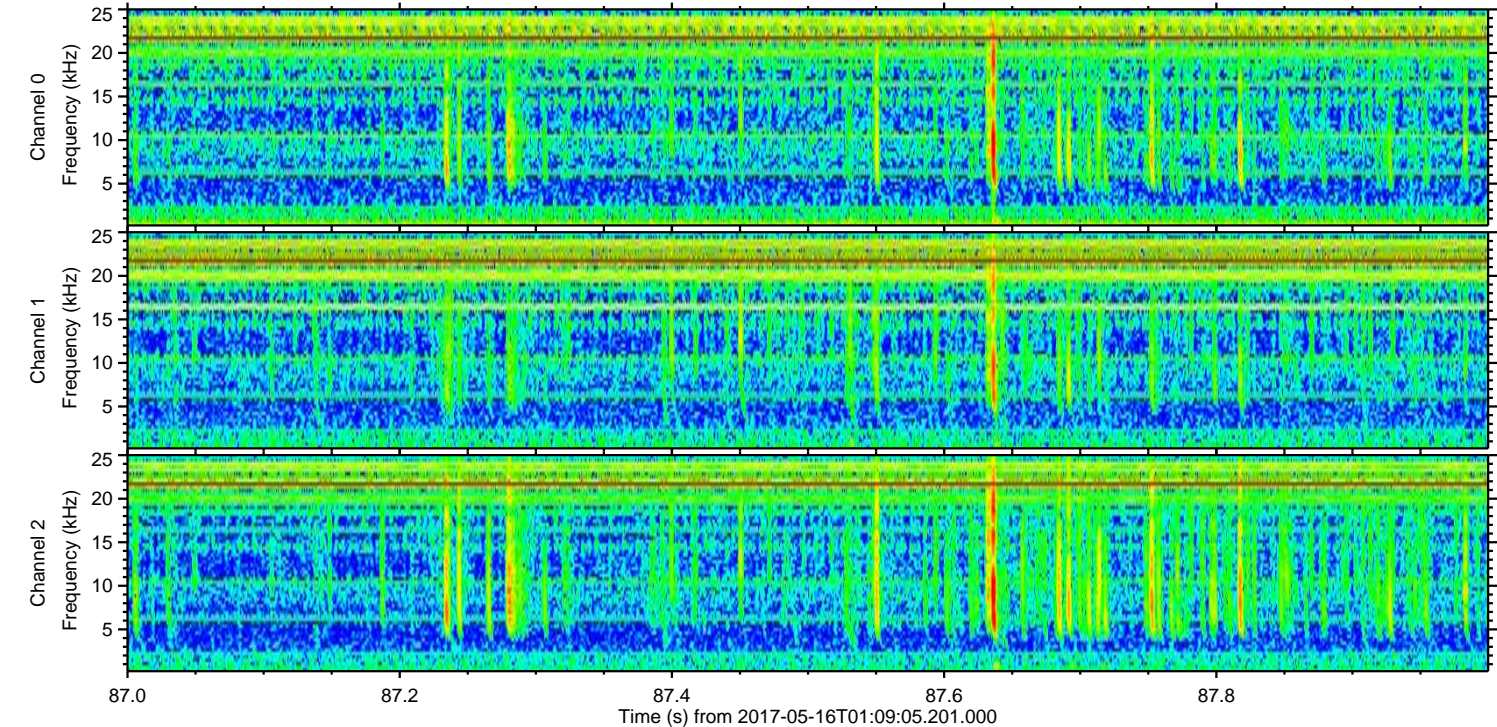
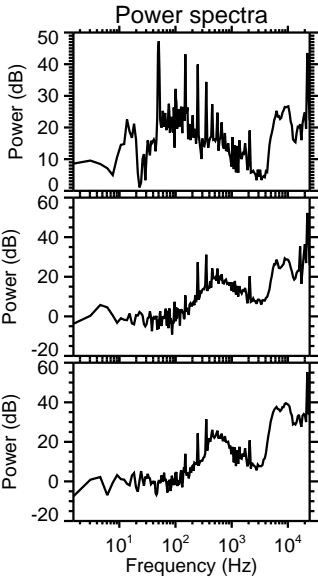
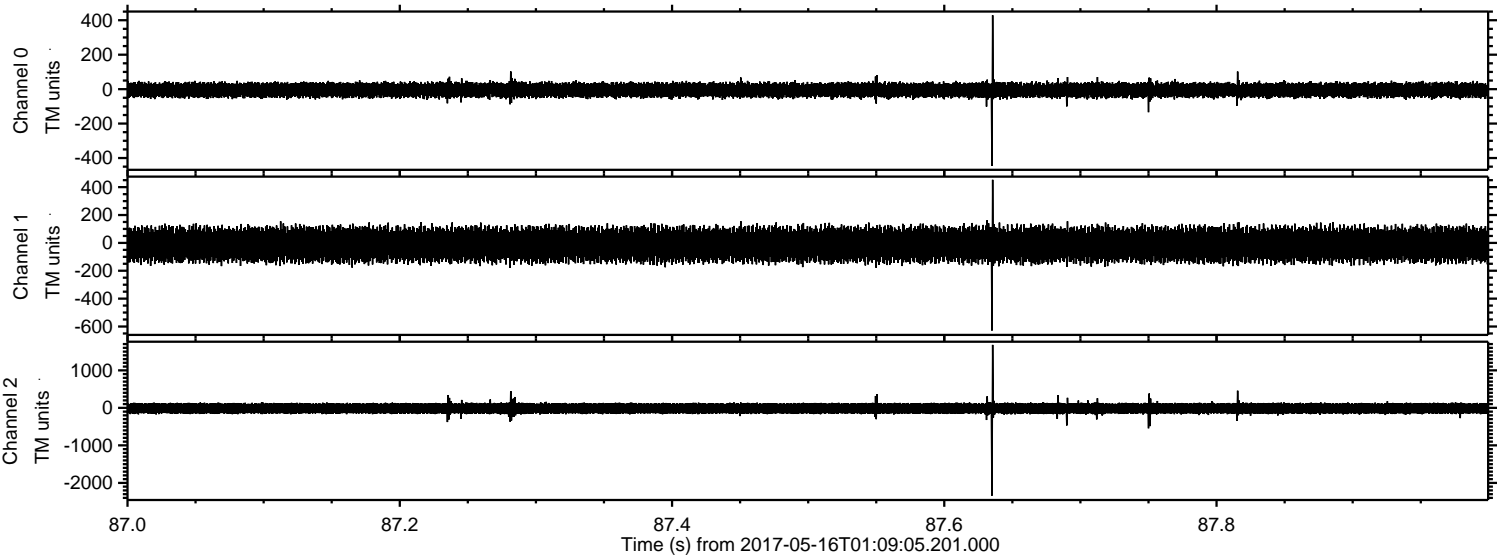


ELMAVAN 3D WAVEFORMS (Measured data sampled at 50 kHz) 51000 packets of 144 samples from 2017-05-16T01:09:05.201.000. Part 106/147

Processed Tue May 16 03:17:27 2017 by ELM ver.2012-10-06 from 001__elm20170516_010904__dat00.bin

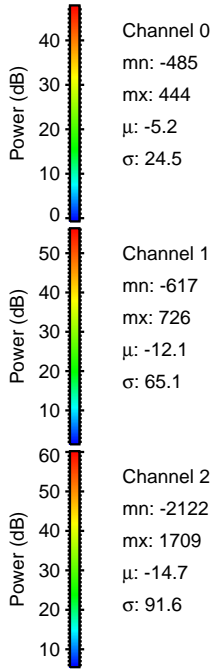
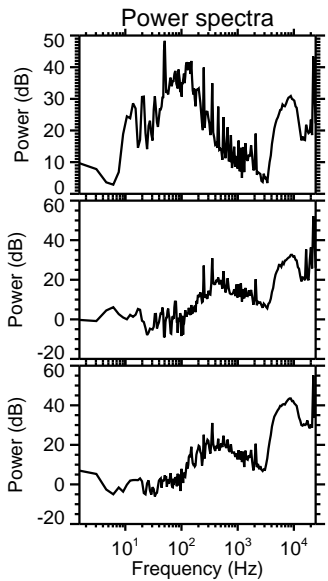
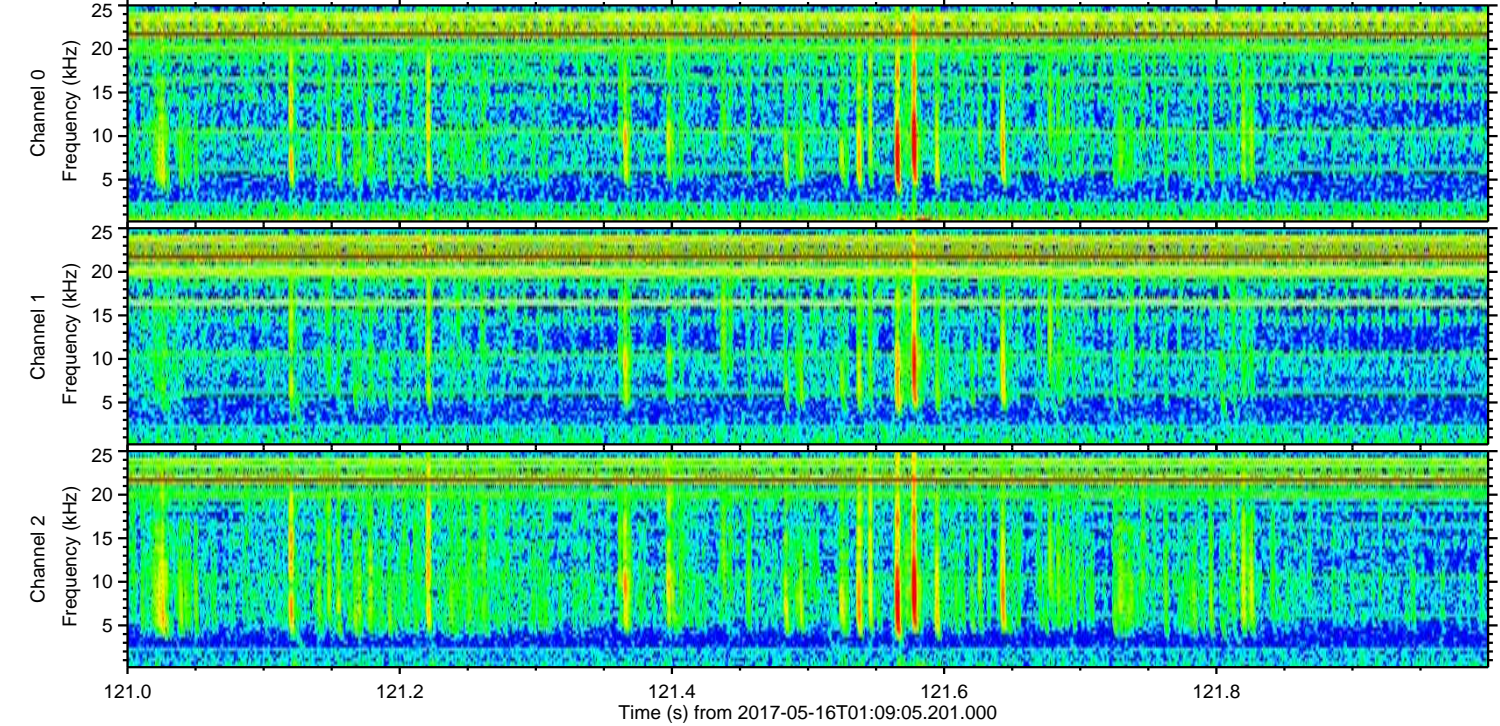
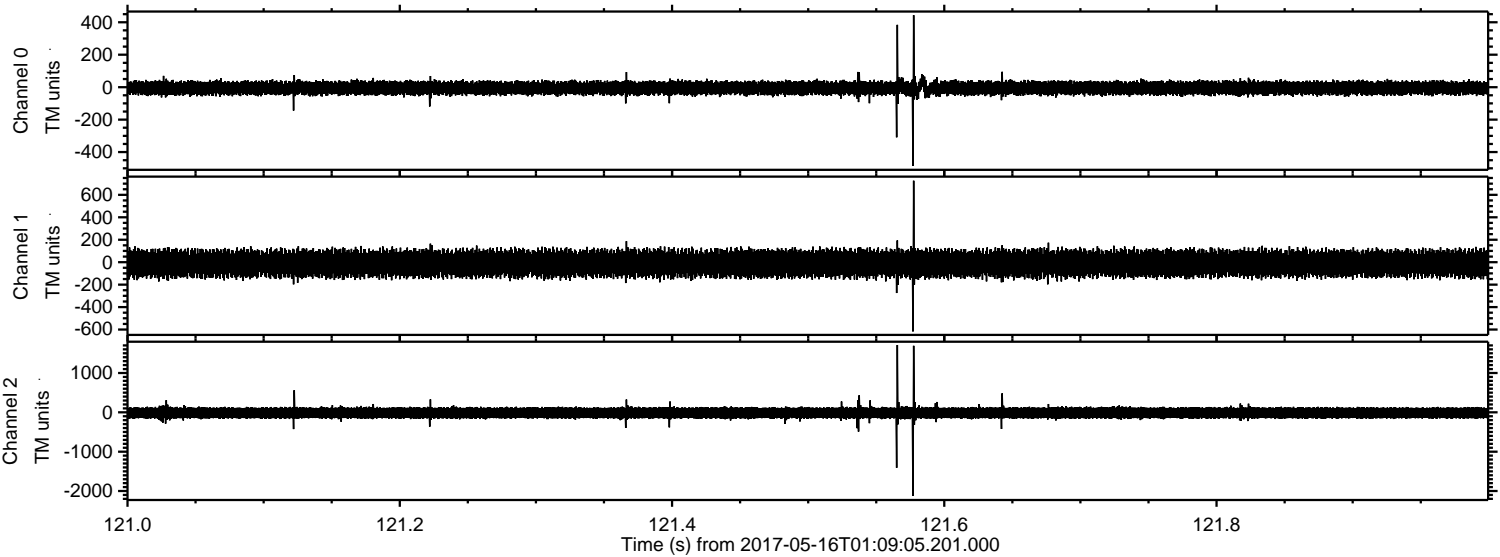


Processed Tue May 16 03:17:28 2017 by ELM ver.2012-10-06 from 001__elm20170516_010904__dat00.bin



ELMAVAN 3D WAVEFORMS (Measured data sampled at 50 kHz) 51000 packets of 144 samples from 2017-05-16T01:09:05.201.000. Part 122/147

Processed Tue May 16 03:17:29 2017 by ELM ver.2012-10-06 from 001__elm20170516_010904__dat00.bin



Channel 0
mn: -485
mx: 444
 μ : -5.2
 σ : 24.5

Channel 1
mn: -617
mx: 726
 μ : -12.1
 σ : 65.1

Channel 2
mn: -2122
mx: 1709
 μ : -14.7
 σ : 91.6

Processed Tue May 16 03:17:30 2017 by ELM ver.2012-10-06 from 001__elm20170516_010904__dat00.bin

