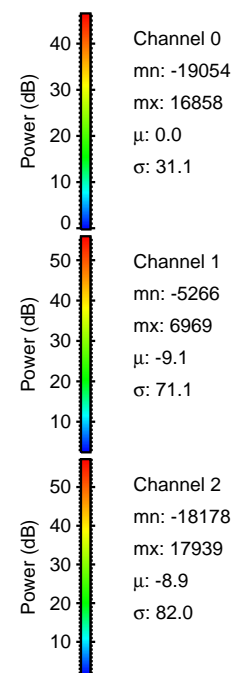
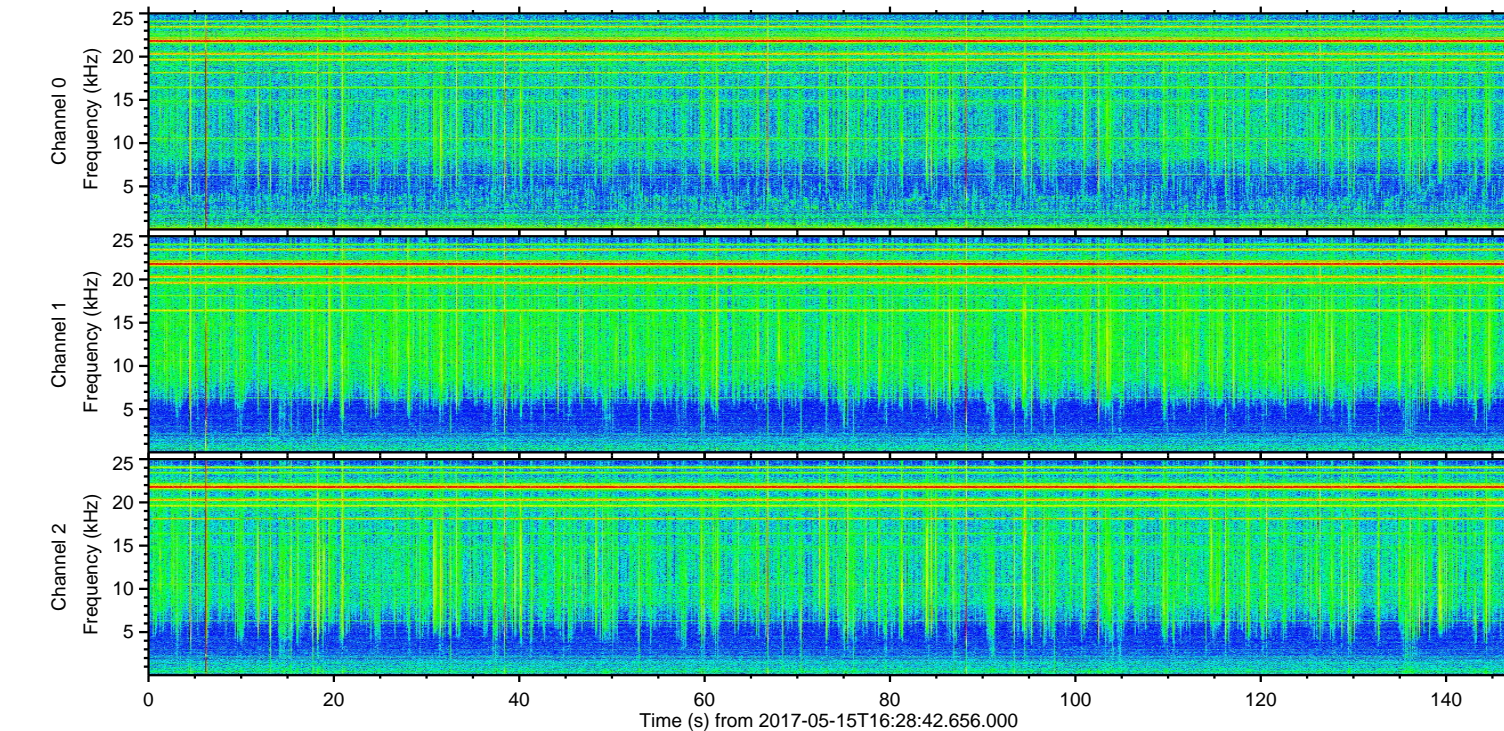
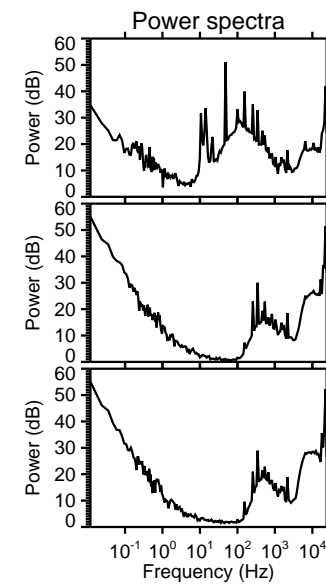
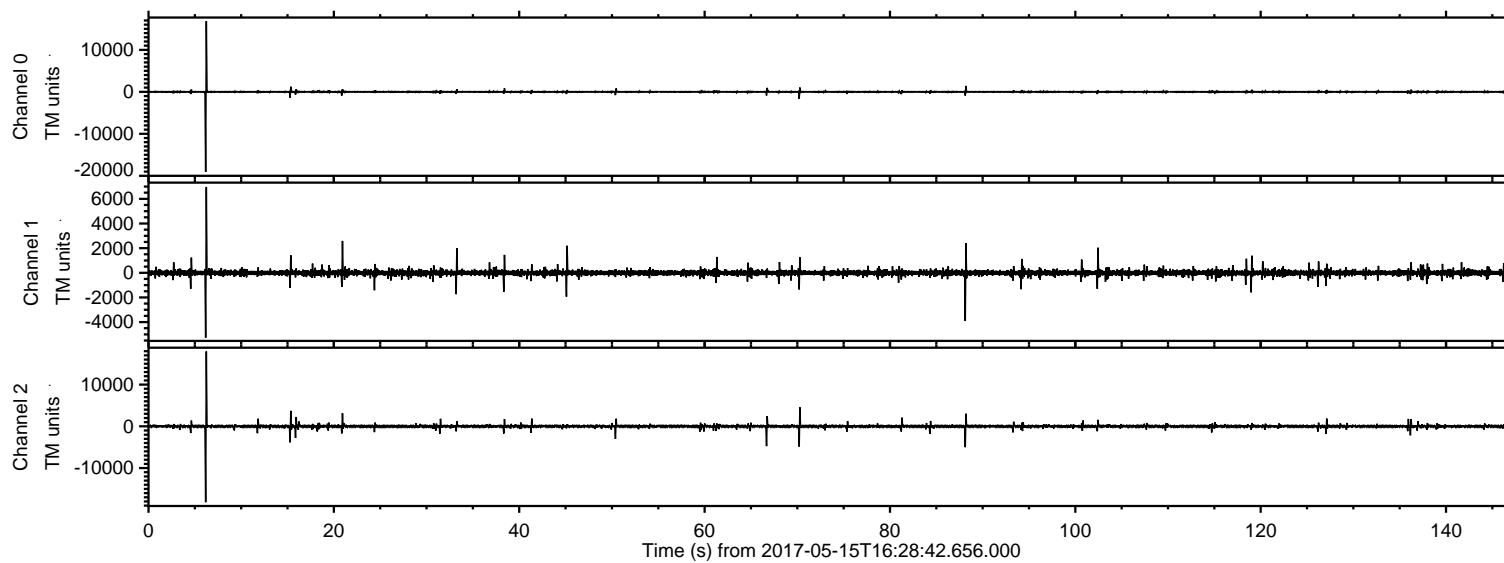
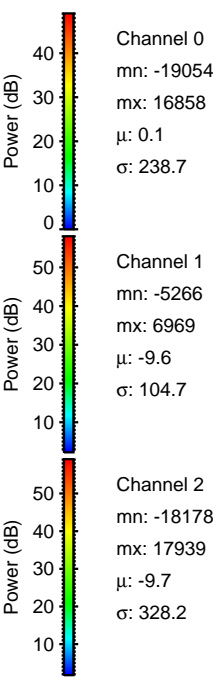
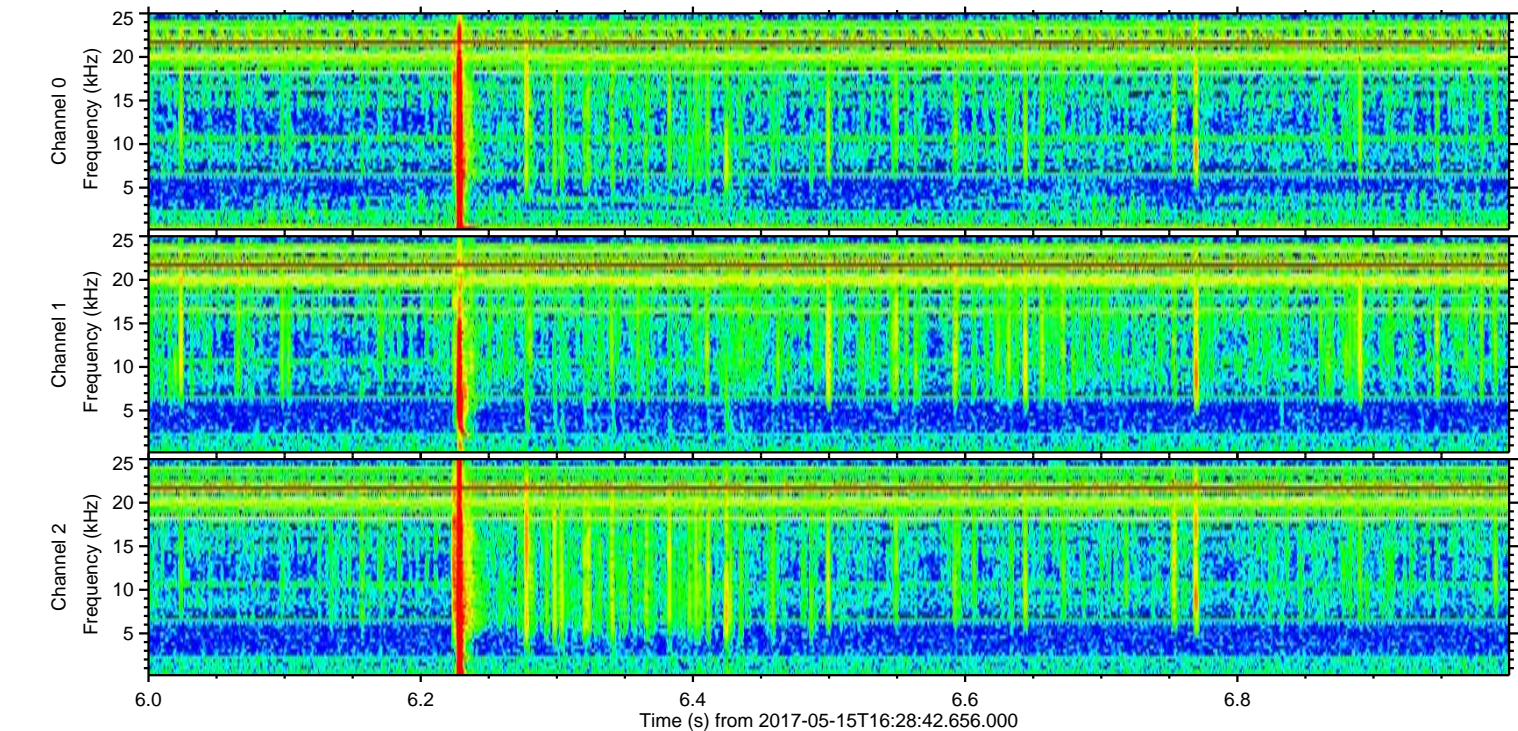
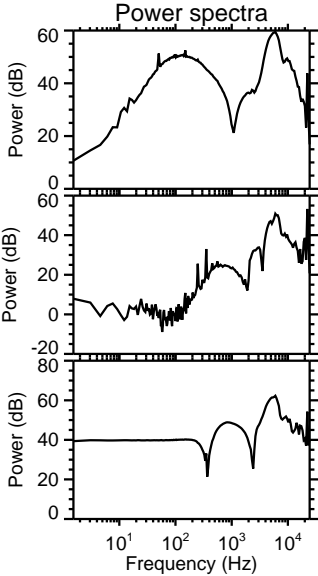
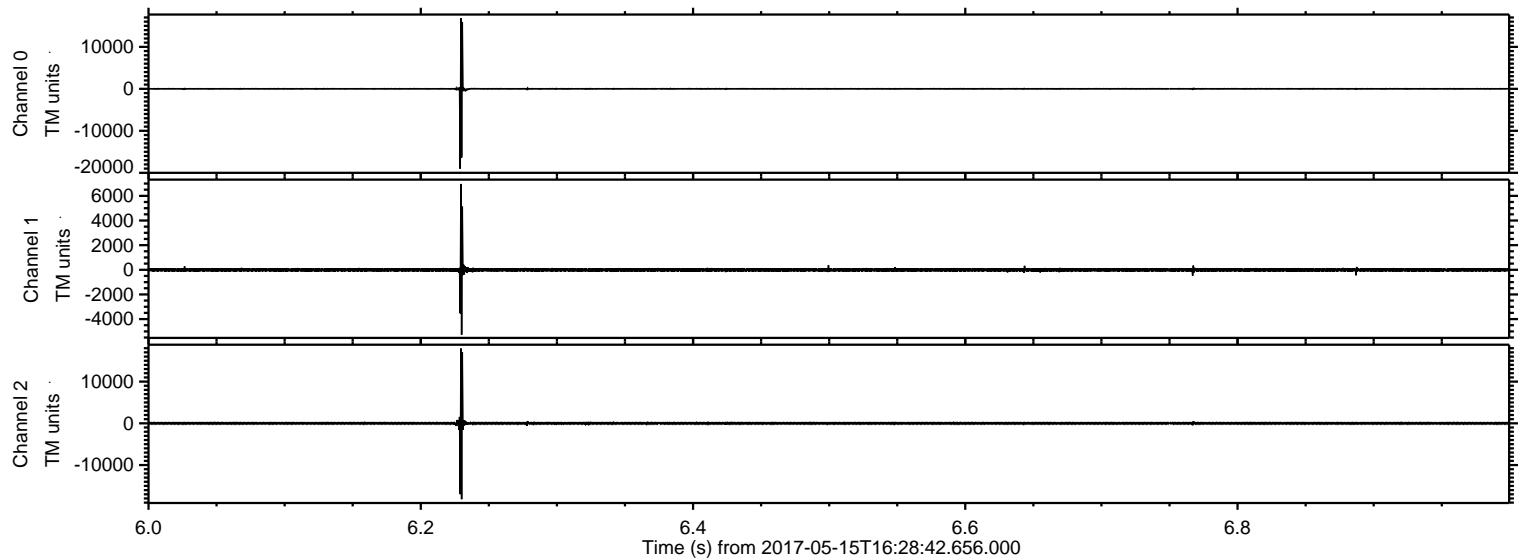


ELMAVAN 3D WAVEFORMS (Measured data sampled at 50 kHz) 51000 packets of 144 samples from 2017-05-15T16:28:42.656.000.

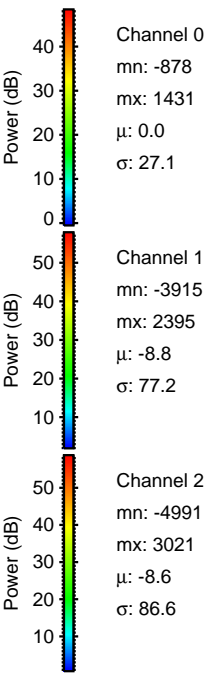
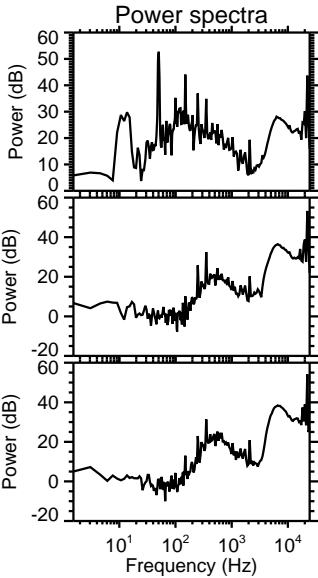
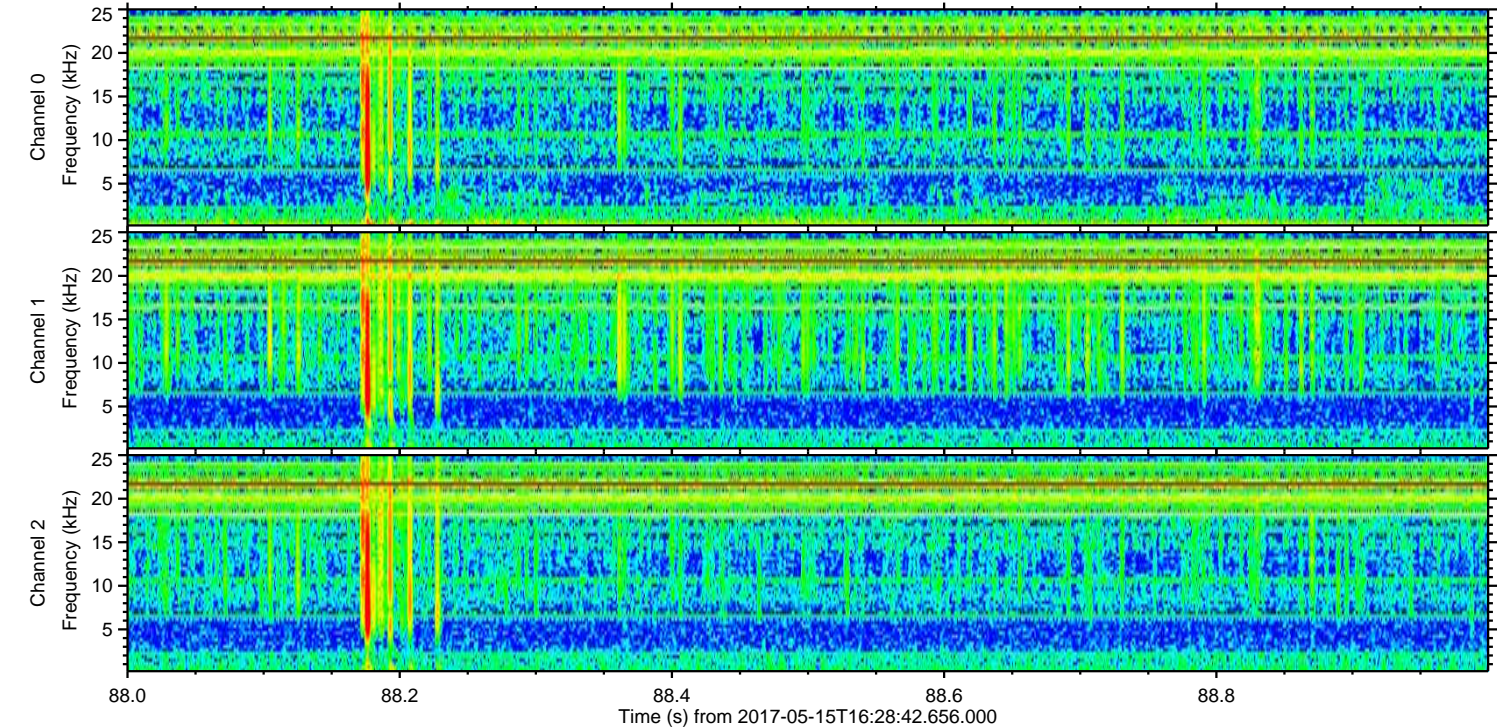
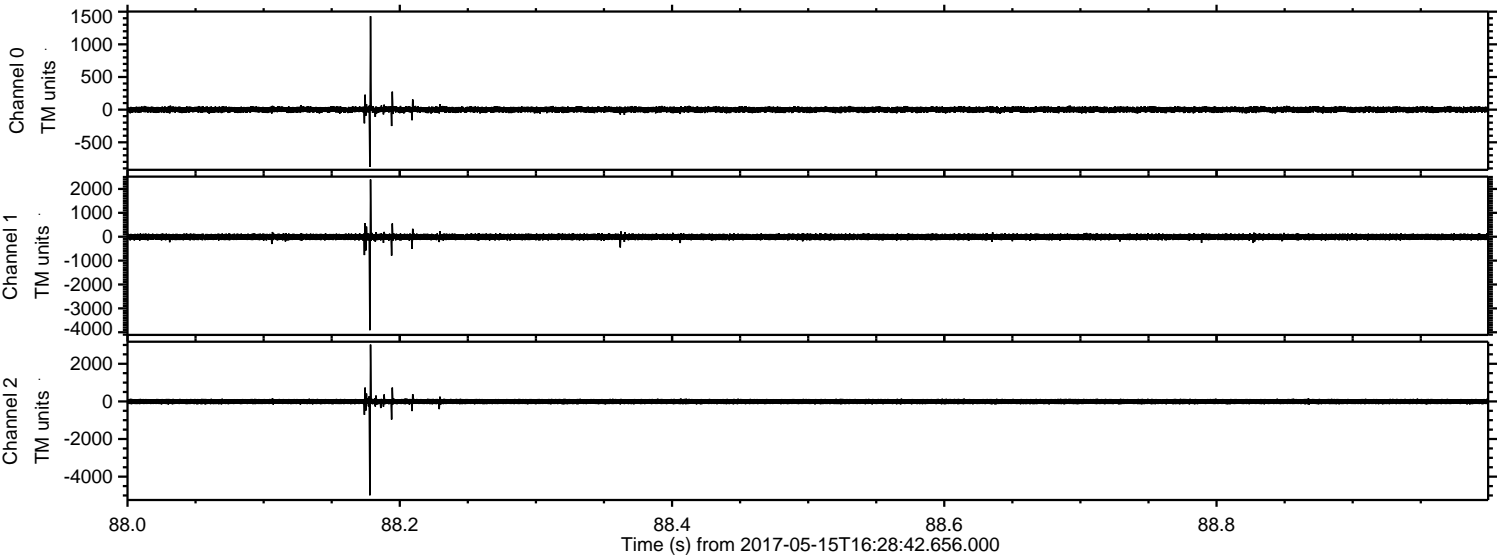
Processed Mon May 15 18:36:20 2017 by ELM ver.2012-10-06 from 001__elm20170515_162841__dat00.bin



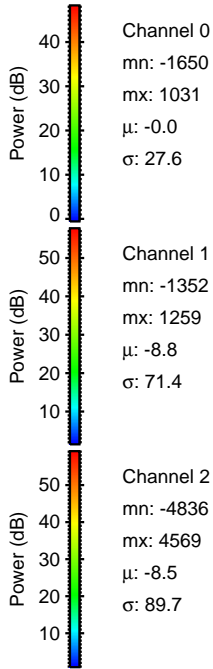
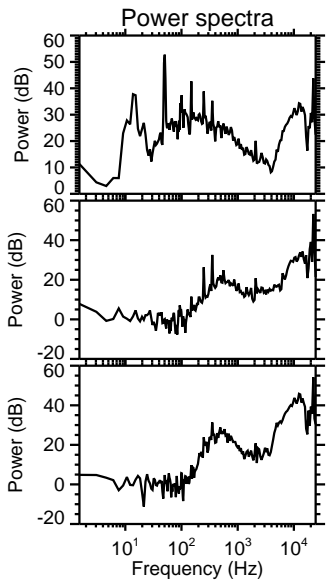
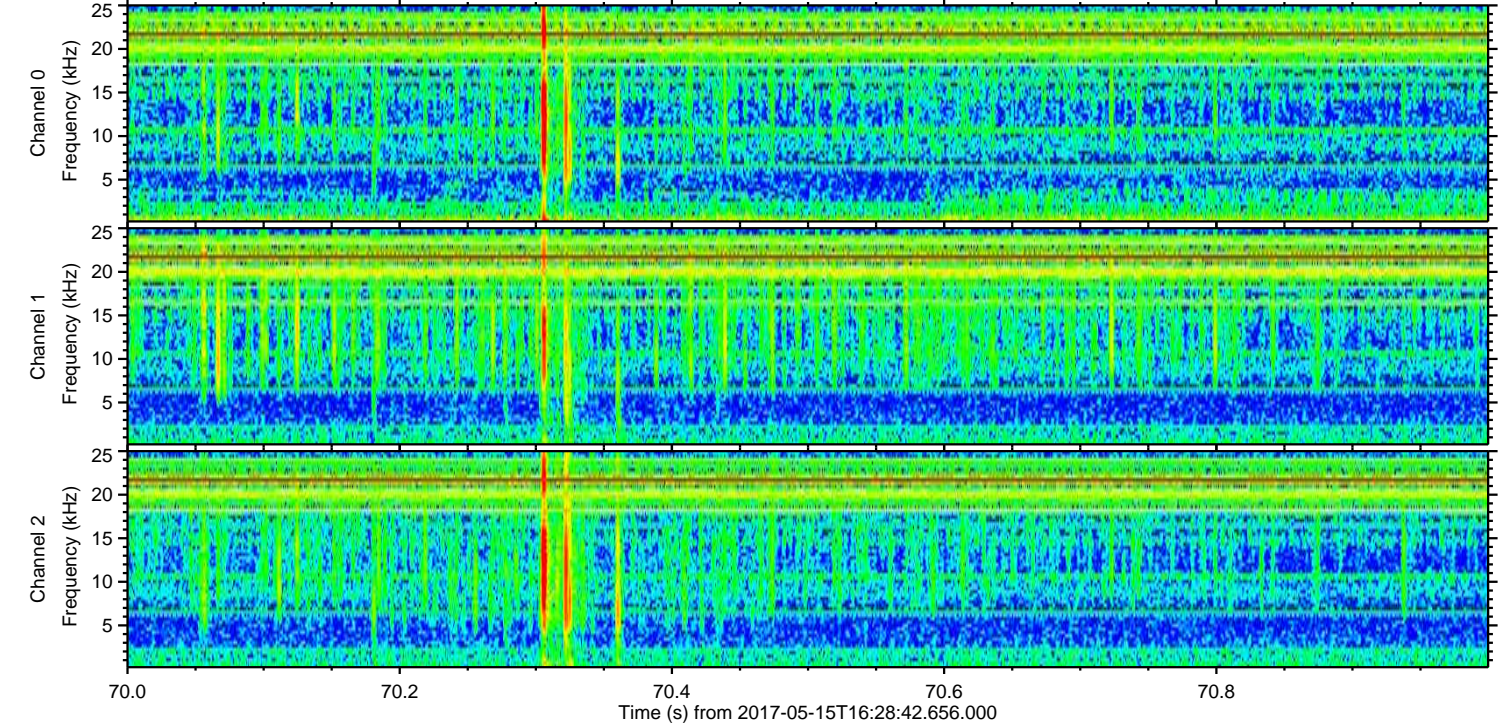
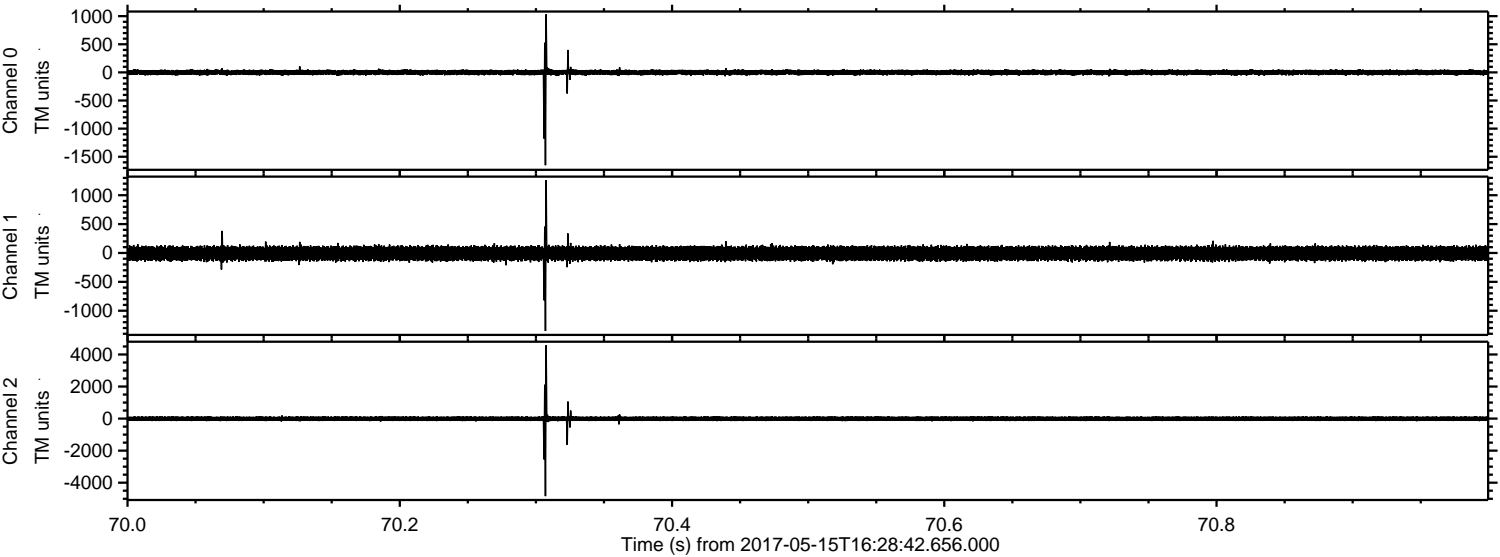
Processed Mon May 15 18:36:31 2017 by ELM ver.2012-10-06 from 001__elm20170515_162841__dat00.bin



Processed Mon May 15 18:36:32 2017 by ELM ver.2012-10-06 from 001__elm20170515_162841__dat00.bin



Processed Mon May 15 18:36:33 2017 by ELM ver.2012-10-06 from 001__elm20170515_162841__dat00.bin

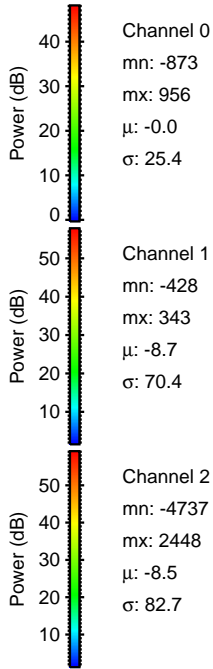
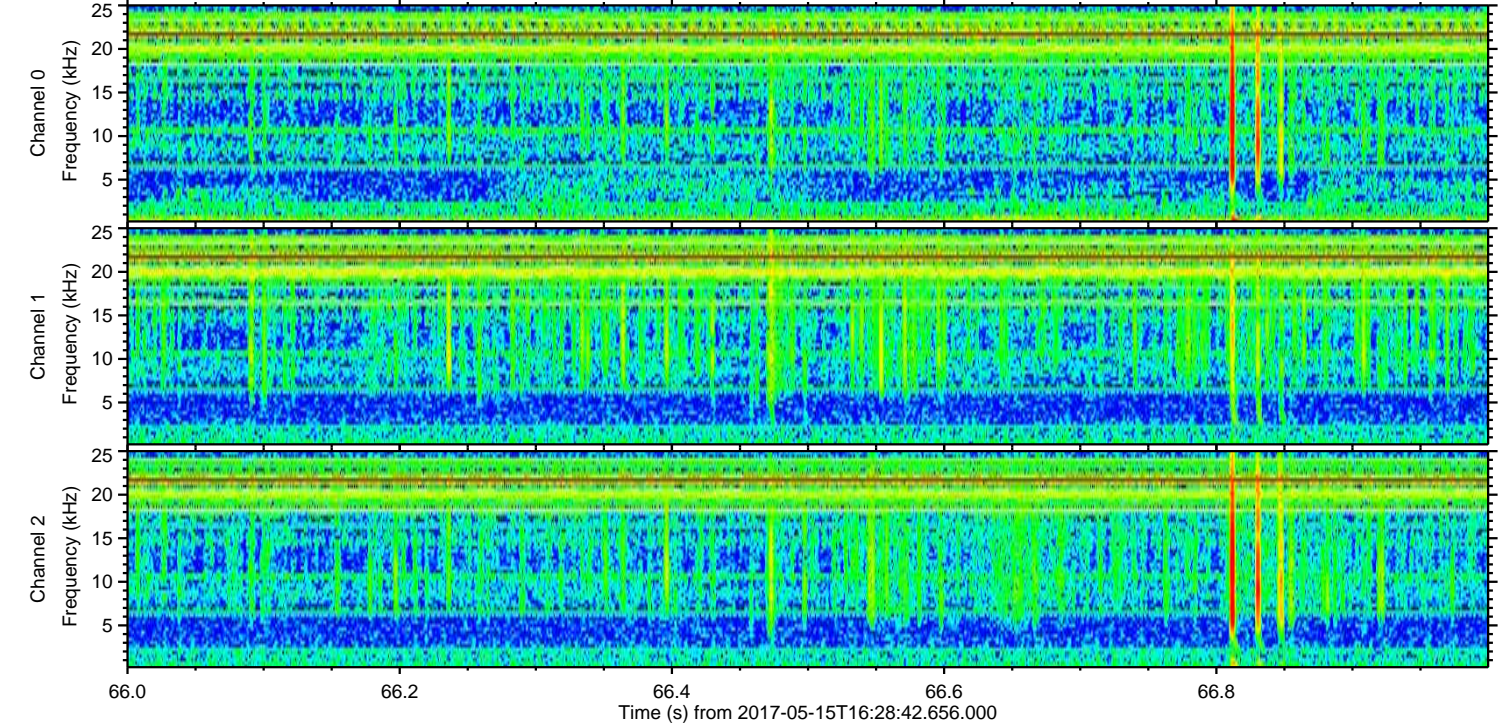
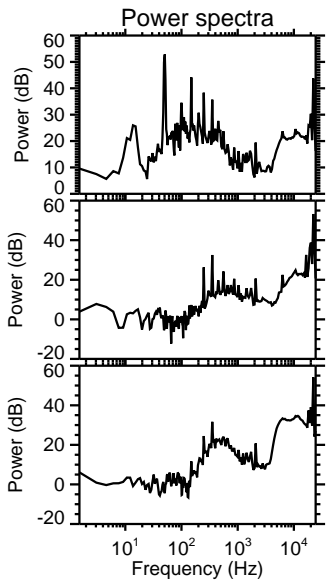
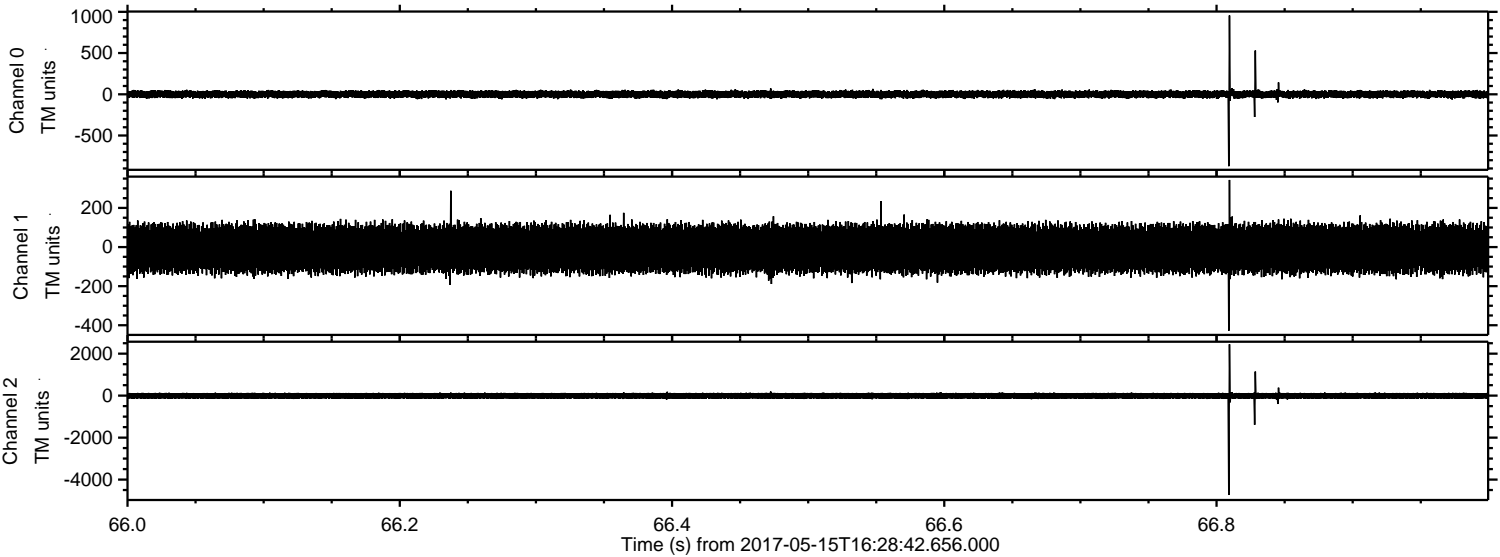


Channel 0
mn: -1650
mx: 1031
 μ : -0.0
 σ : 27.6

Channel 1
mn: -1352
mx: 1259
 μ : -8.8
 σ : 71.4

Channel 2
mn: -4836
mx: 4569
 μ : -8.5
 σ : 89.7

Processed Mon May 15 18:36:34 2017 by ELM ver.2012-10-06 from 001__elm20170515_162841__dat00.bin



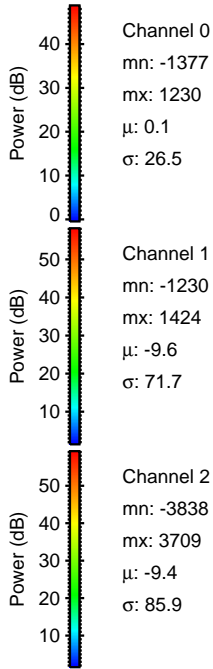
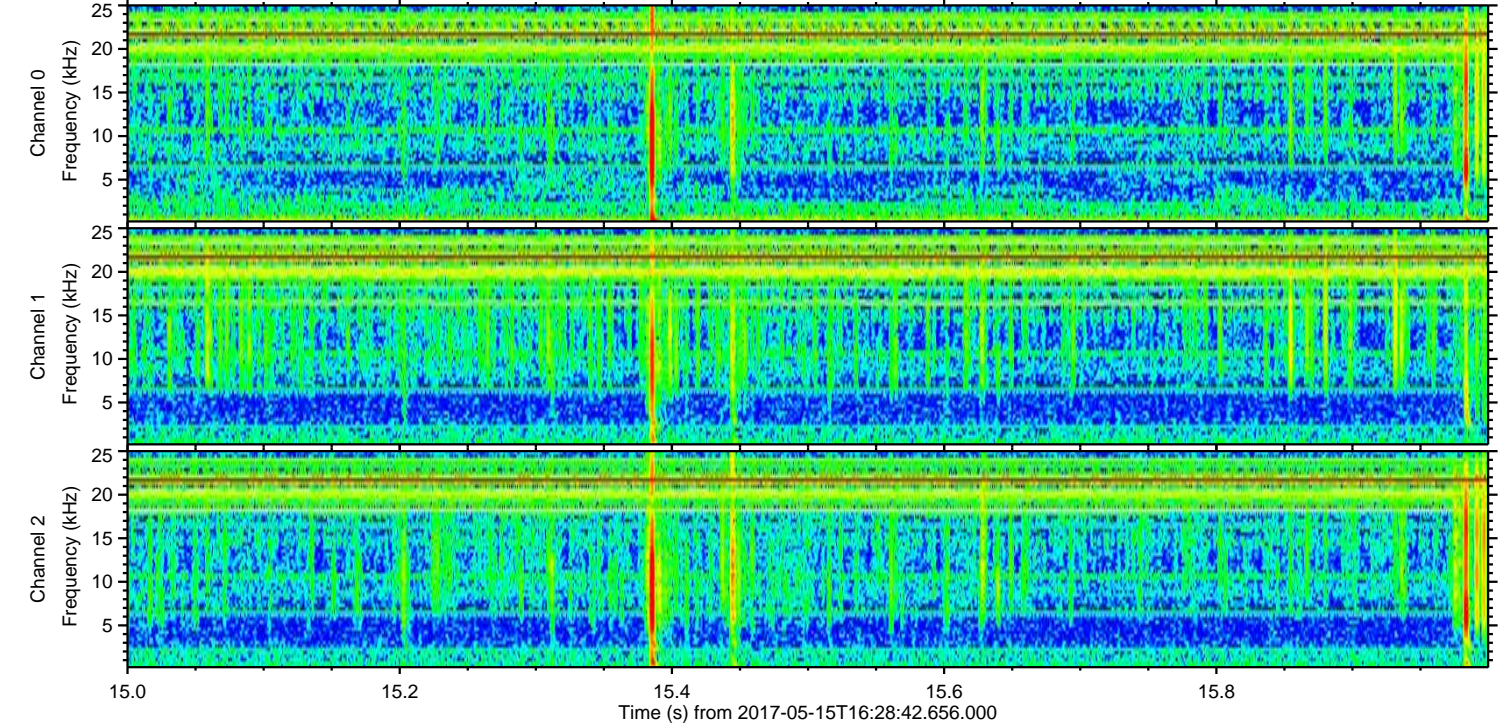
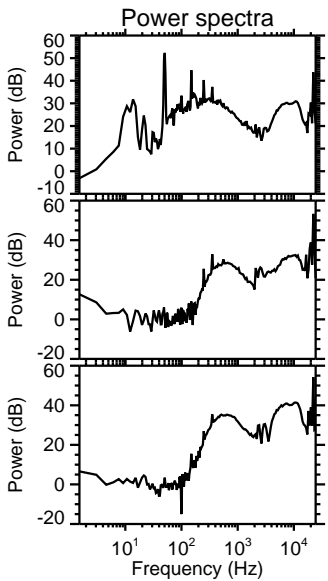
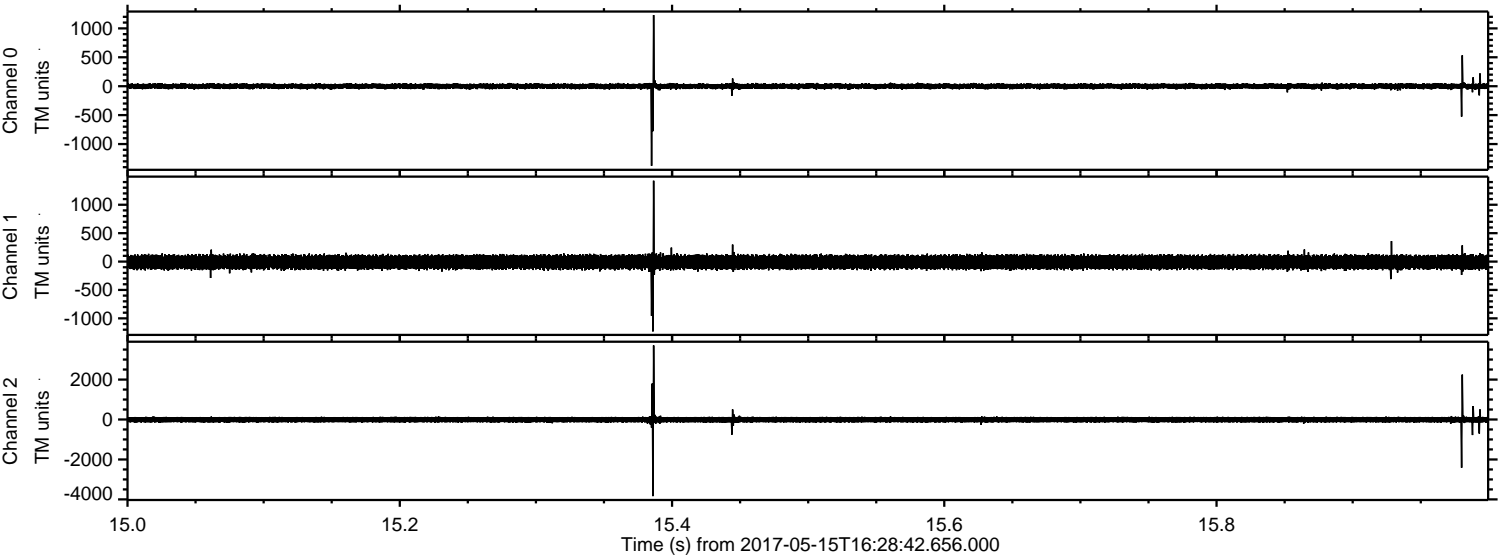
Channel 0
mn: -873
mx: 956
 μ : -0.0
 σ : 25.4

Channel 1
mn: -428
mx: 343
 μ : -8.7
 σ : 70.4

Channel 2
mn: -4737
mx: 2448
 μ : -8.5
 σ : 82.7

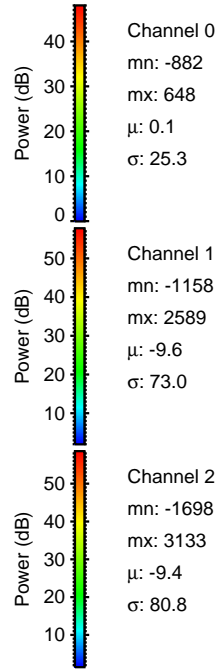
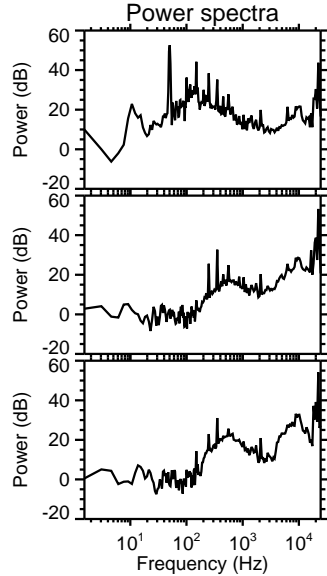
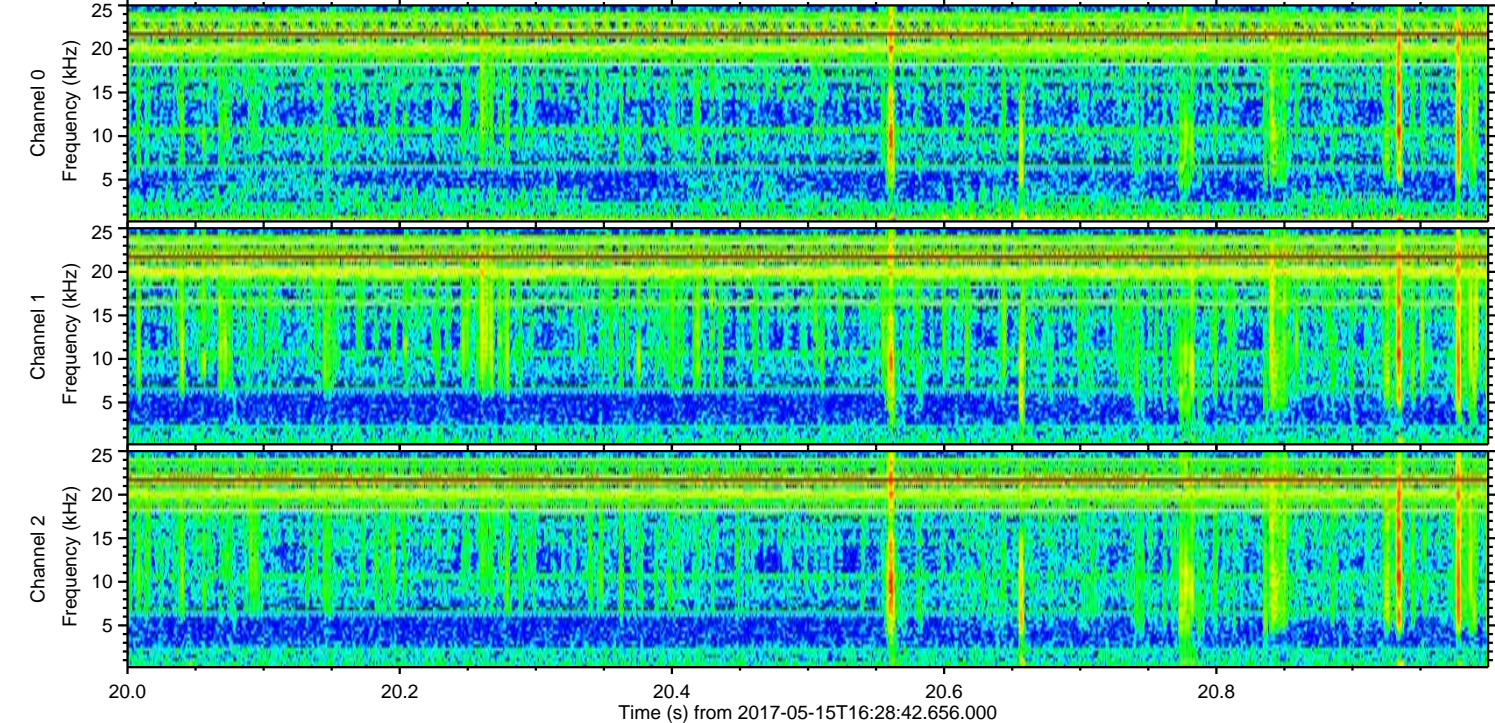
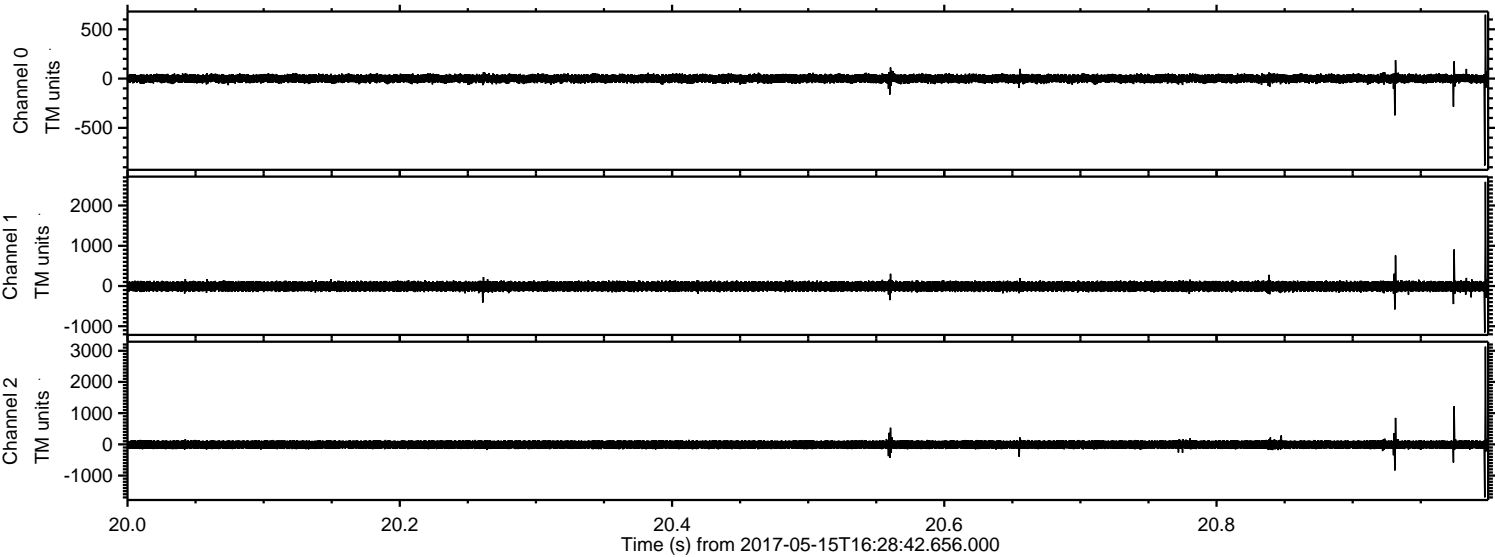
ELMAVAN 3D WAVEFORMS (Measured data sampled at 50 kHz) 51000 packets of 144 samples from 2017-05-15T16:28:42.656.000. Part 16/147

Processed Mon May 15 18:36:35 2017 by ELM ver.2012-10-06 from 001__elm20170515_162841__dat00.bin



ELMAVAN 3D WAVEFORMS (Measured data sampled at 50 kHz) 51000 packets of 144 samples from 2017-05-15T16:28:42.656.000. Part 21/147

Processed Mon May 15 18:36:36 2017 by ELM ver.2012-10-06 from 001__elm20170515_162841__dat00.bin

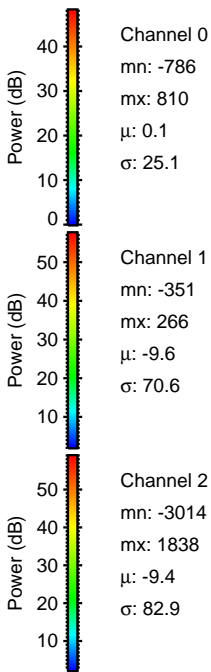
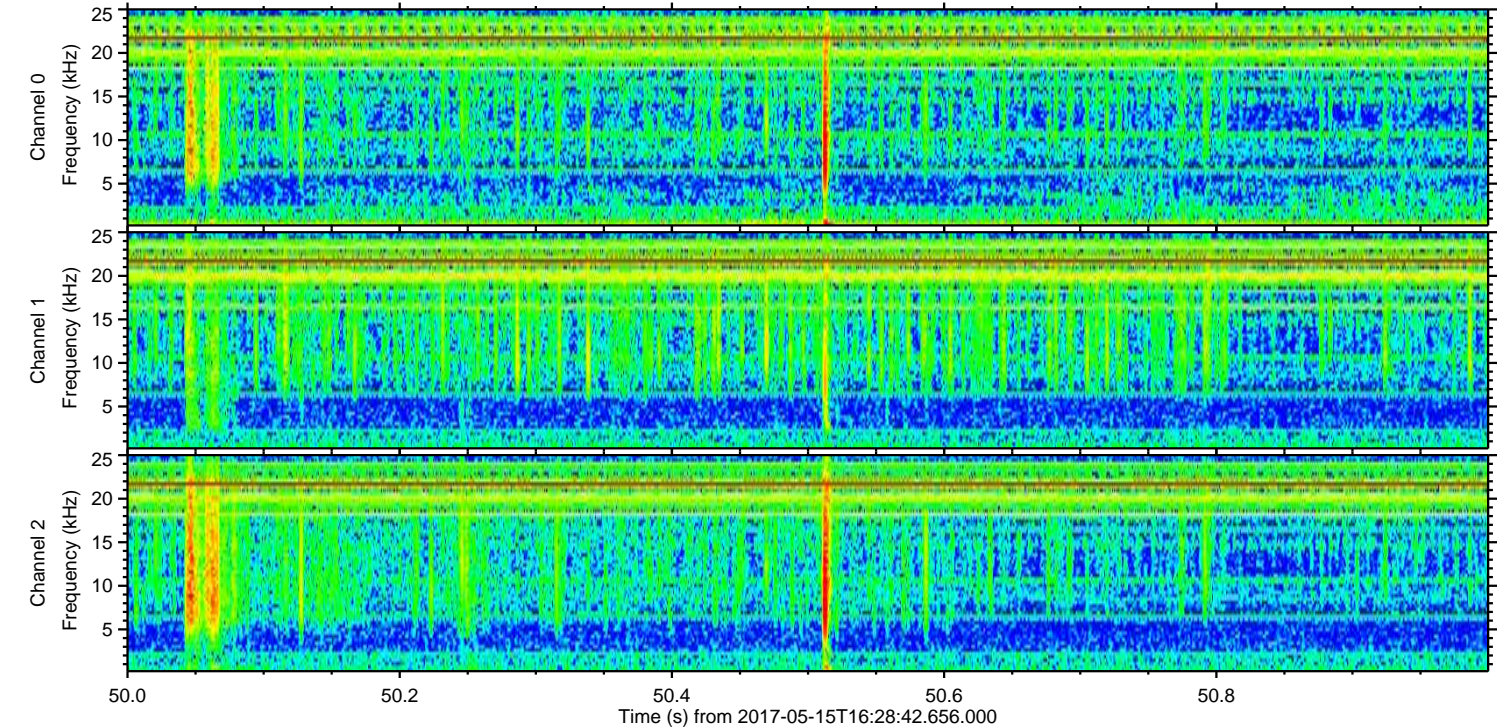
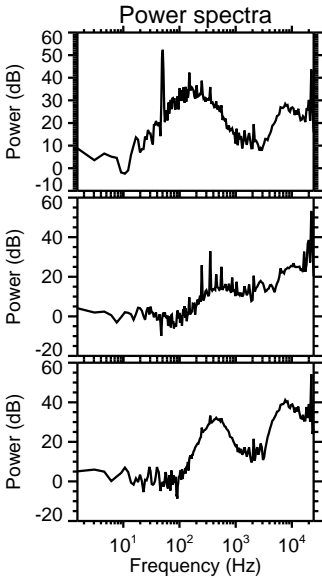
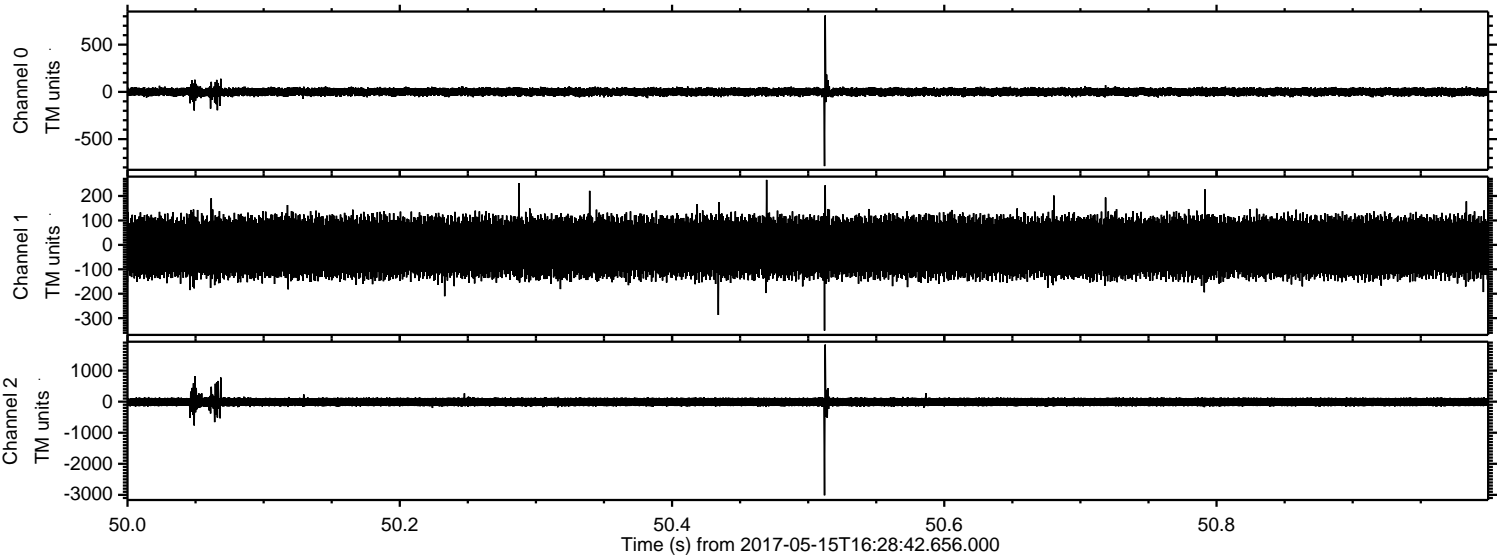


Channel 0
mn: -882
mx: 648
 μ : 0.1
 σ : 25.3

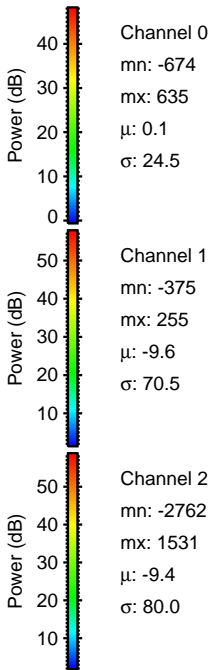
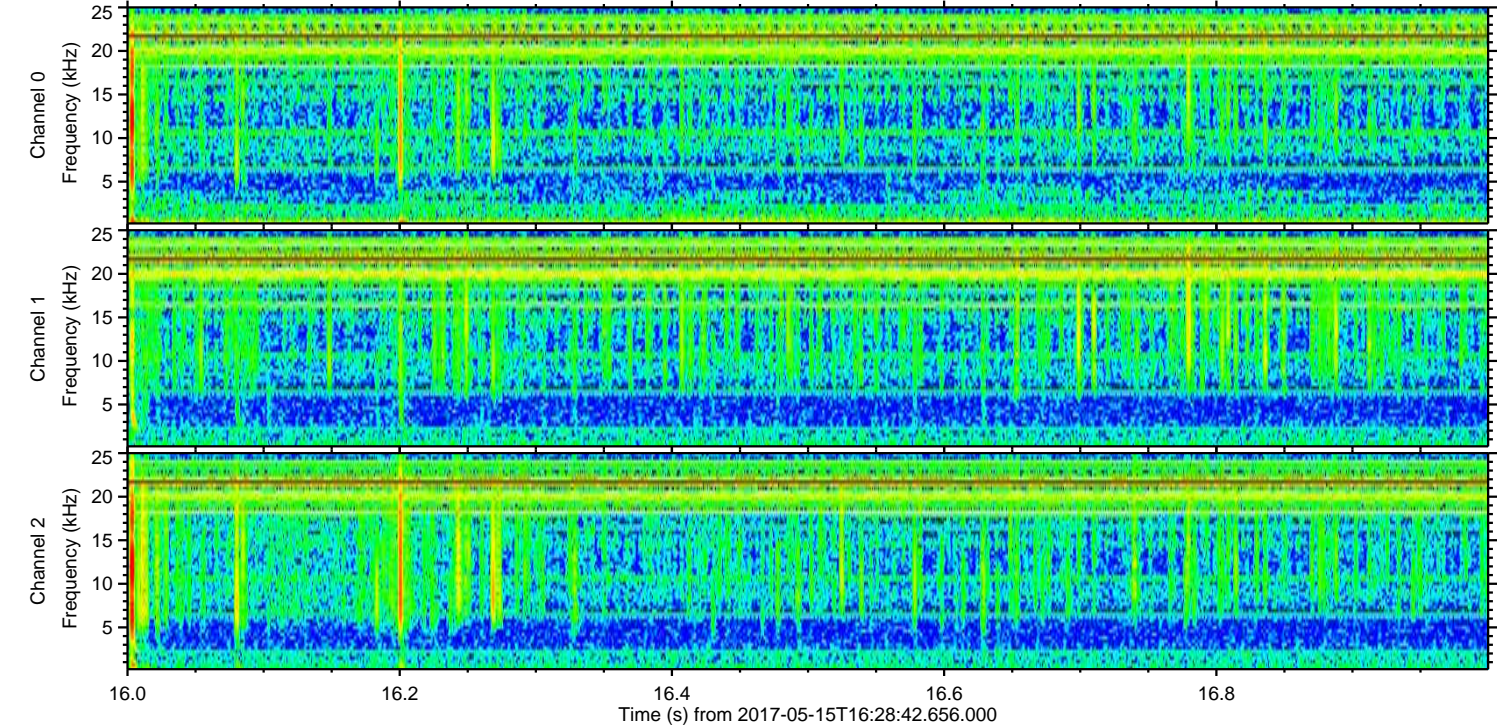
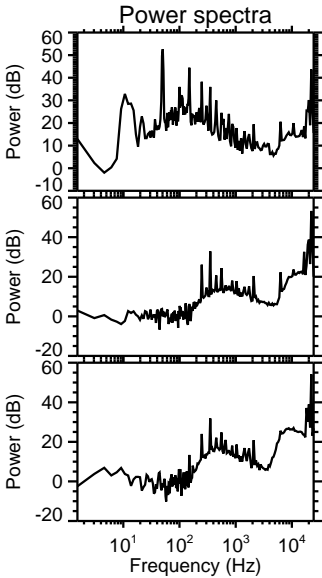
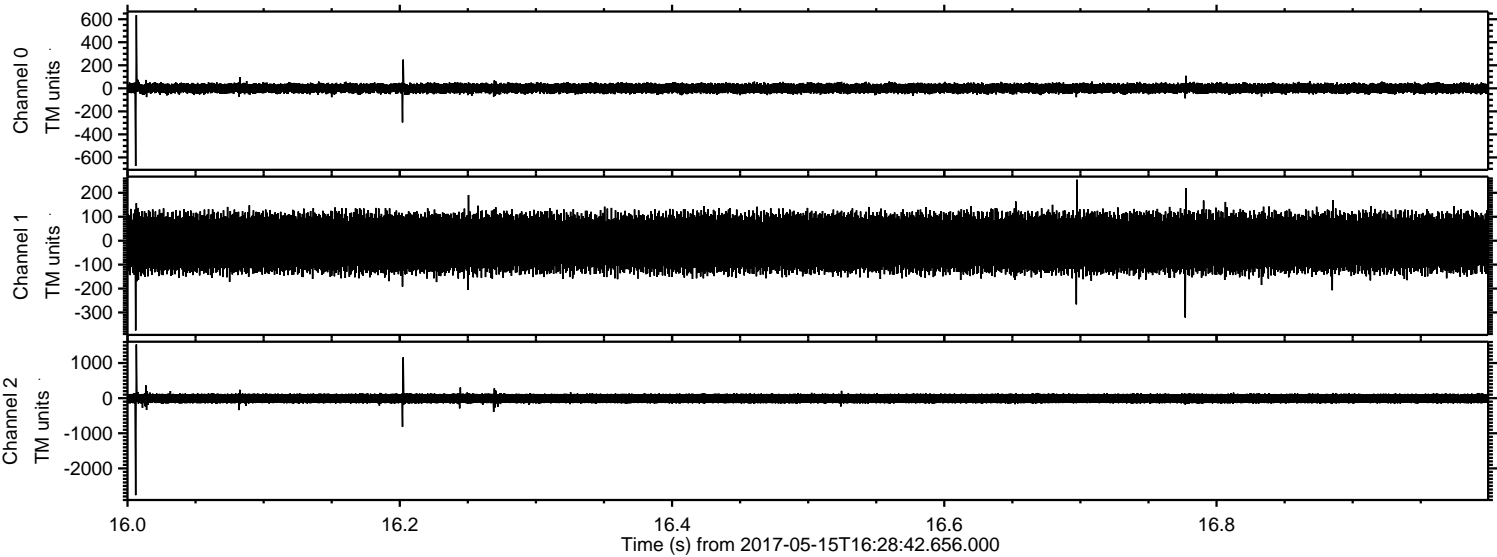
Channel 1
mn: -1158
mx: 2589
 μ : -9.6
 σ : 73.0

Channel 2
mn: -1698
mx: 3133
 μ : -9.4
 σ : 80.8

Processed Mon May 15 18:36:37 2017 by ELM ver.2012-10-06 from 001__elm20170515_162841__dat00.bin



Processed Mon May 15 18:36:38 2017 by ELM ver.2012-10-06 from 001__elm20170515_162841__dat00.bin



Processed Mon May 15 18:36:39 2017 by ELM ver.2012-10-06 from 001__elm20170515_162841__dat00.bin

