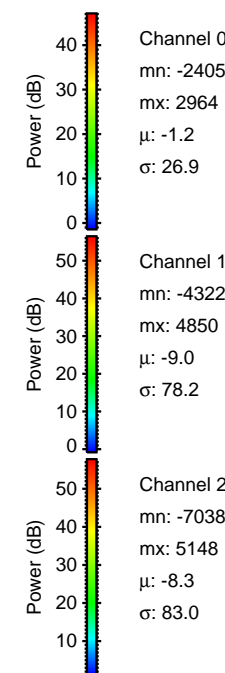
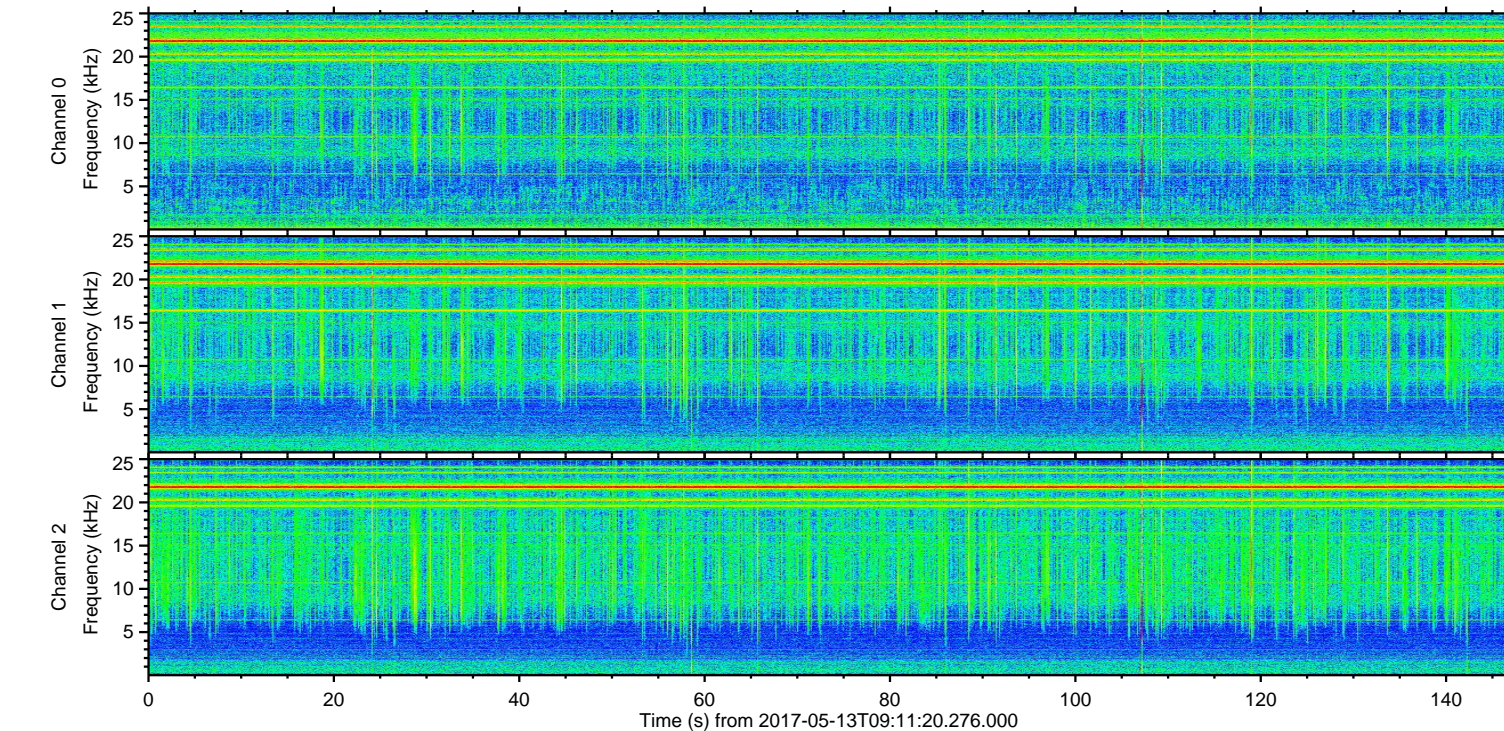
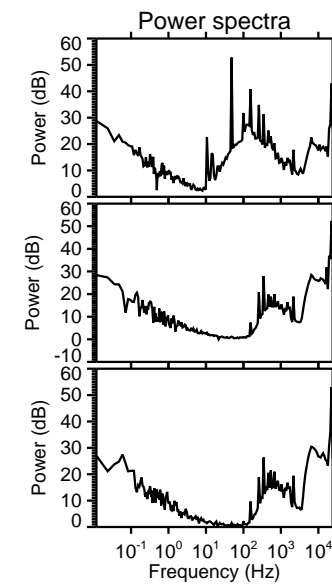
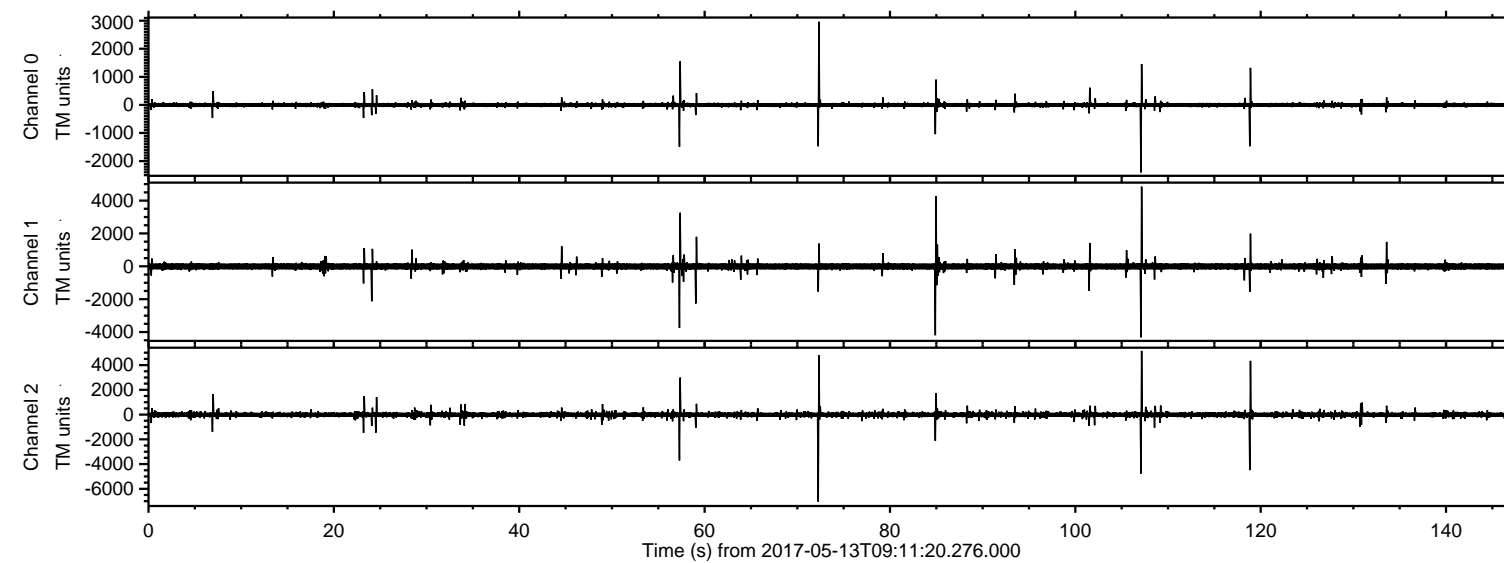
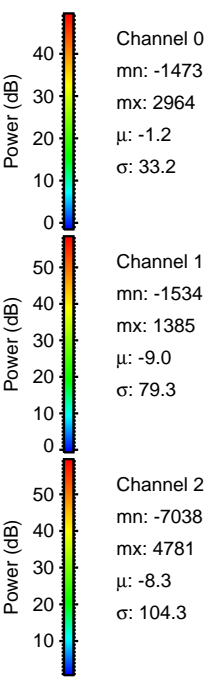
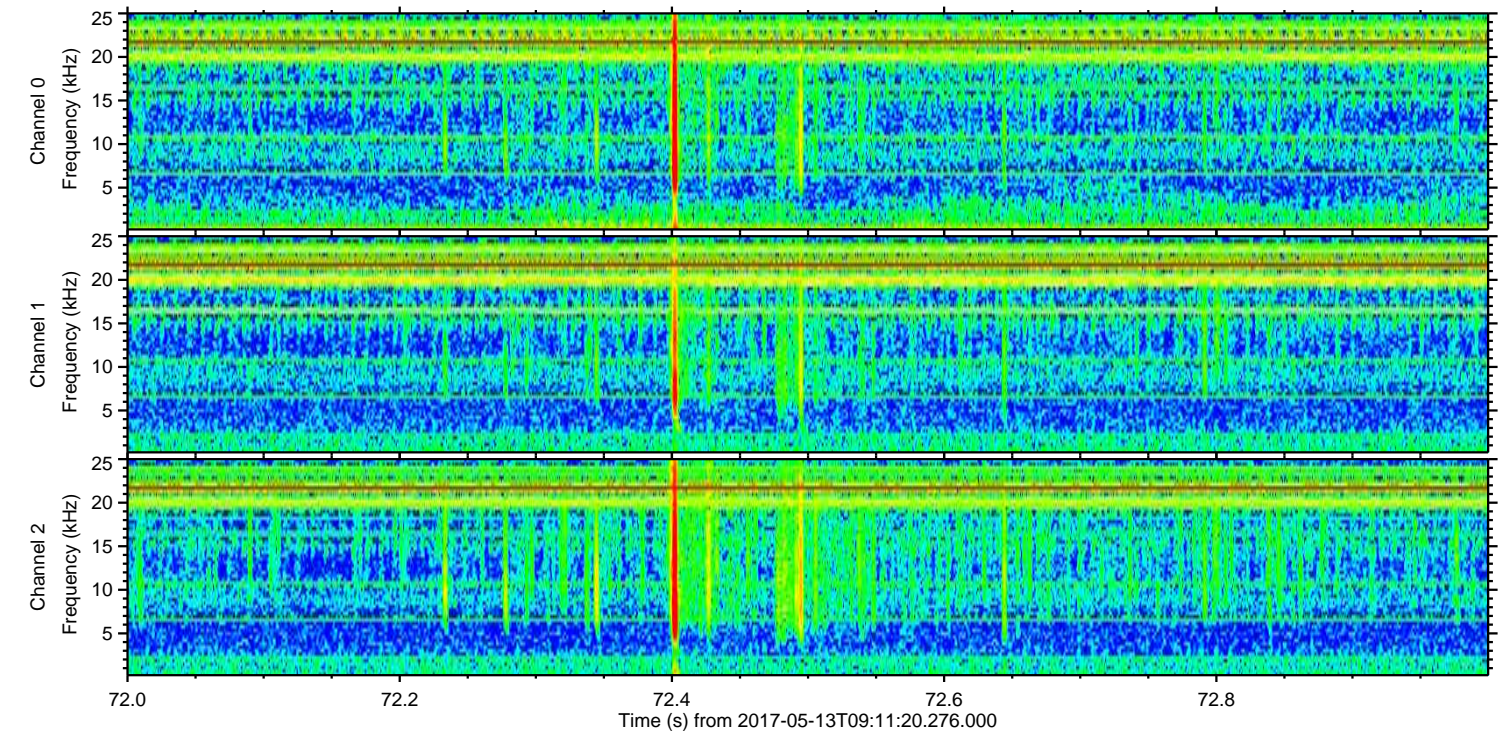
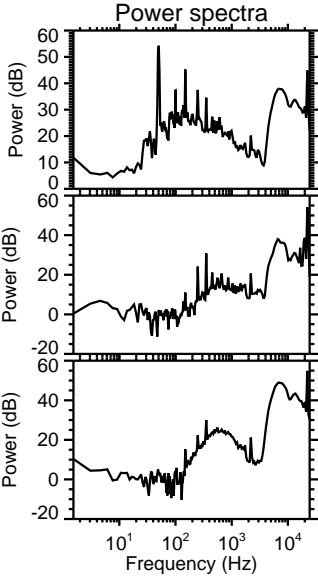
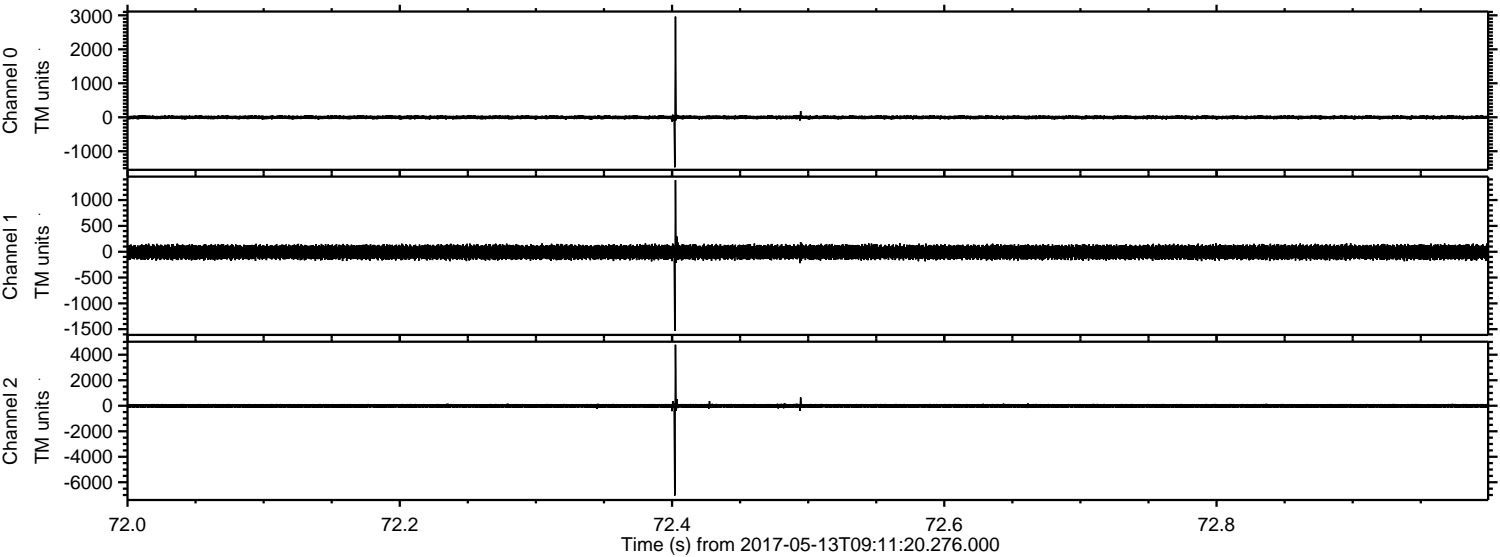


ELMAVAN 3D WAVEFORMS (Measured data sampled at 50 kHz) 51000 packets of 144 samples from 2017-05-13T09:11:20.276.000.

Processed Sat May 13 11:19:40 2017 by ELM ver.2012-10-06 from 001__elm20170513_091119__dat00.bin

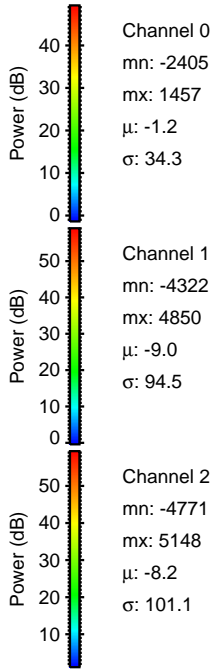
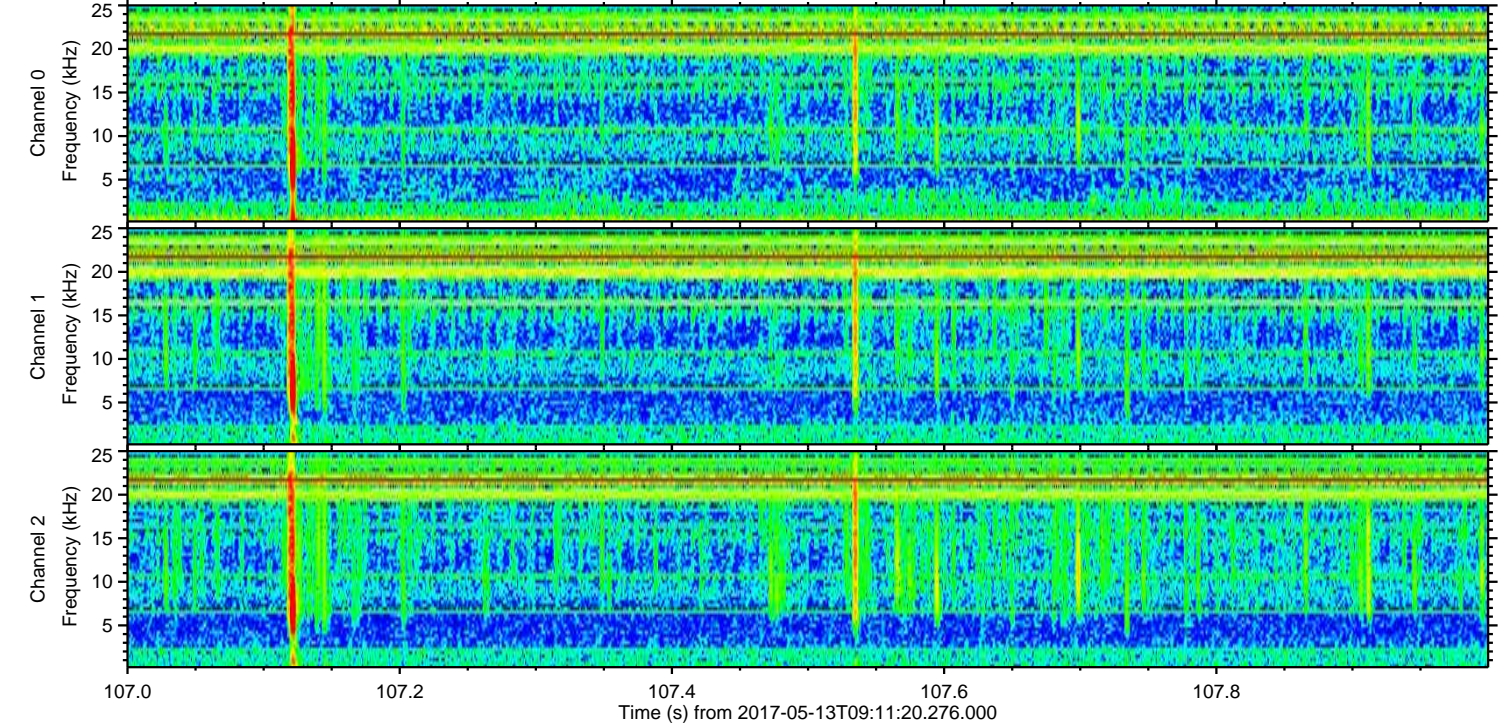
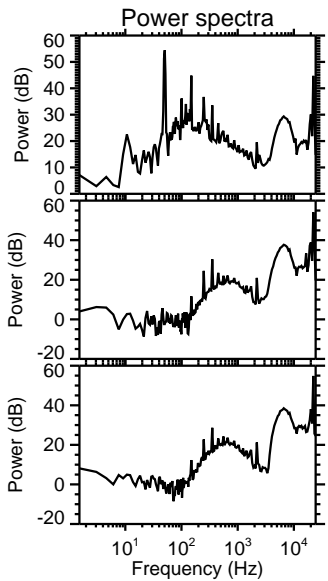
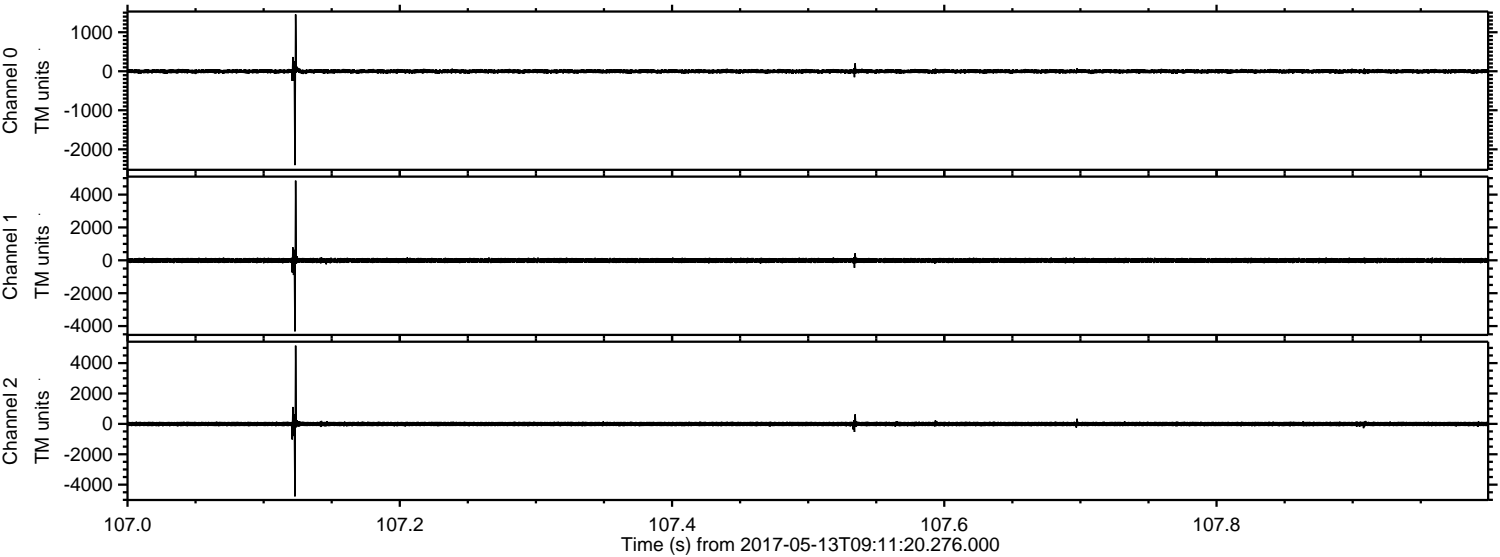


Processed Sat May 13 11:19:51 2017 by ELM ver.2012-10-06 from 001__elm20170513_091119__dat00.bin



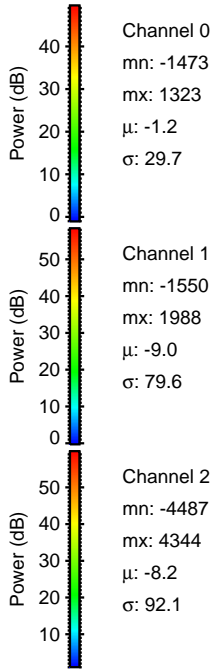
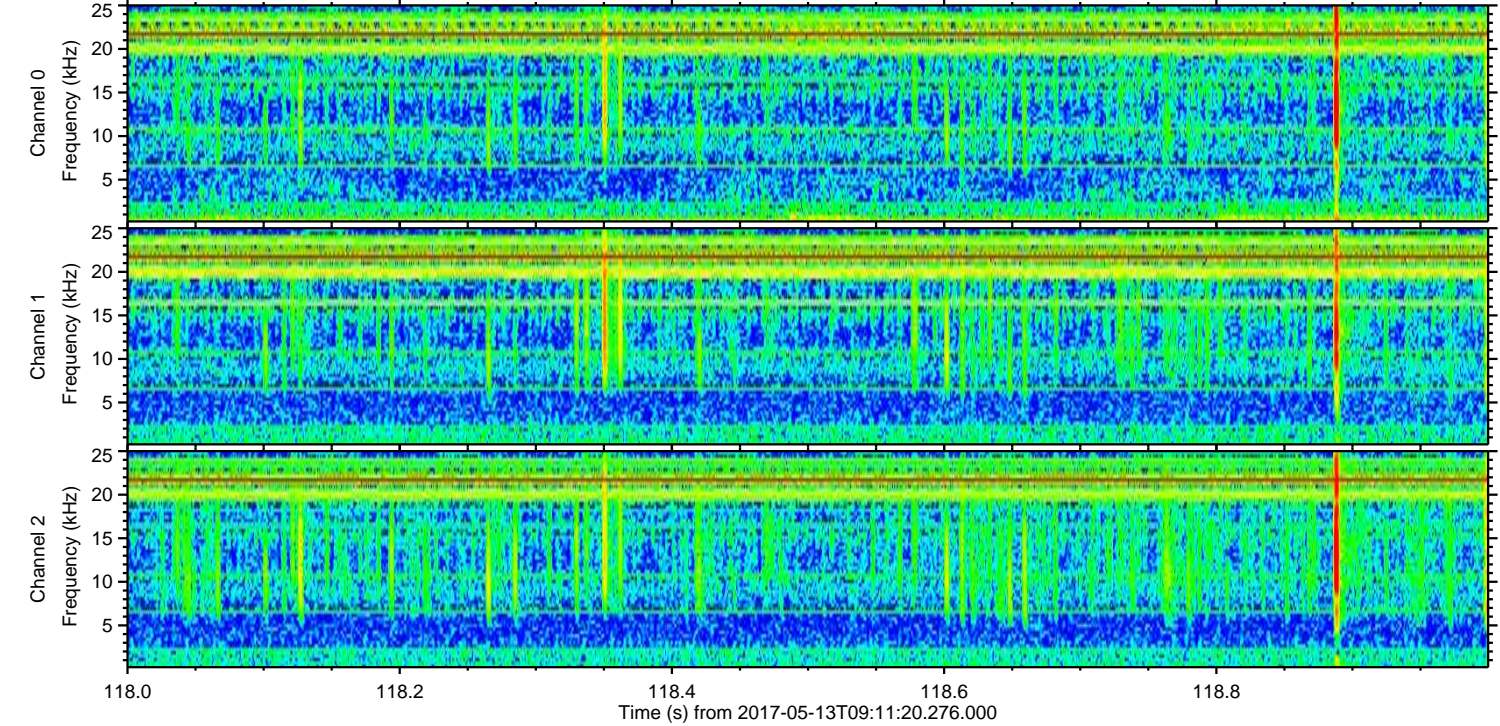
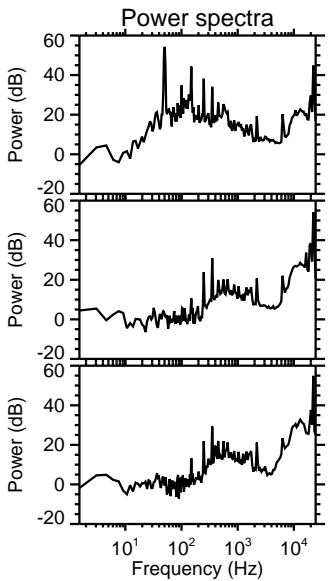
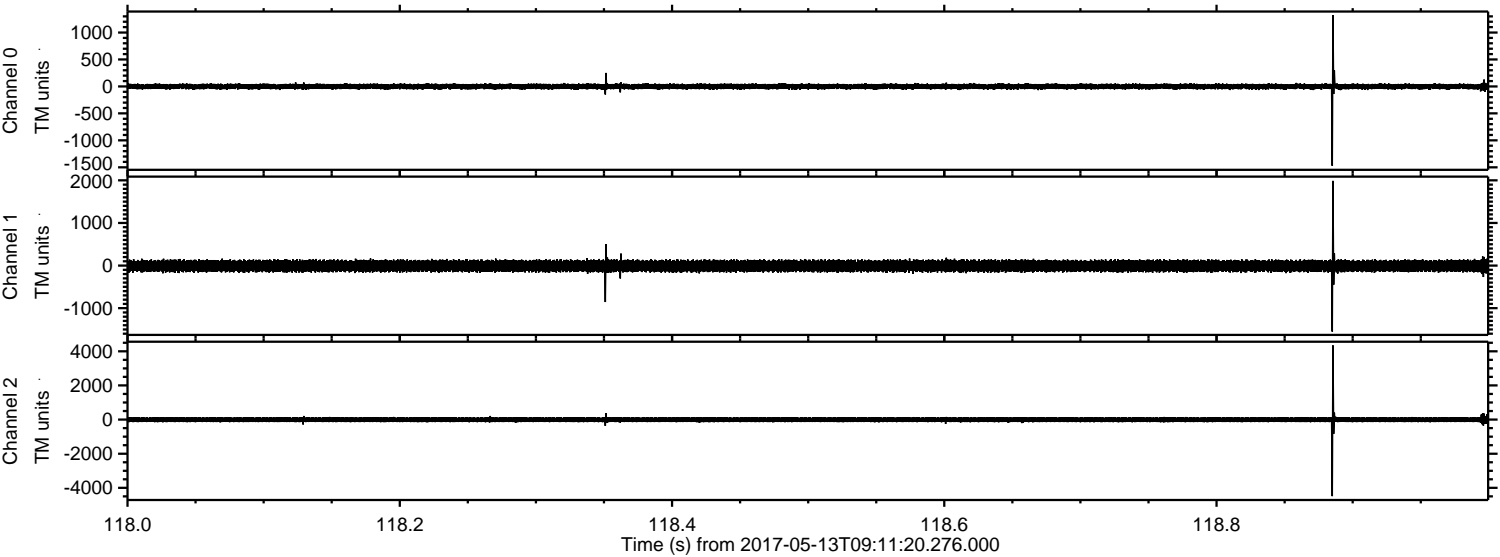
ELMAVAN 3D WAVEFORMS (Measured data sampled at 50 kHz) 51000 packets of 144 samples from 2017-05-13T09:11:20.276.000. Part 108/147

Processed Sat May 13 11:19:52 2017 by ELM ver.2012-10-06 from 001__elm20170513_091119__dat00.bin

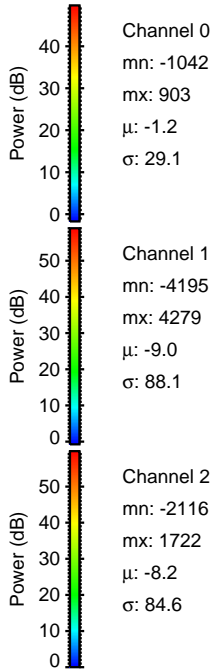
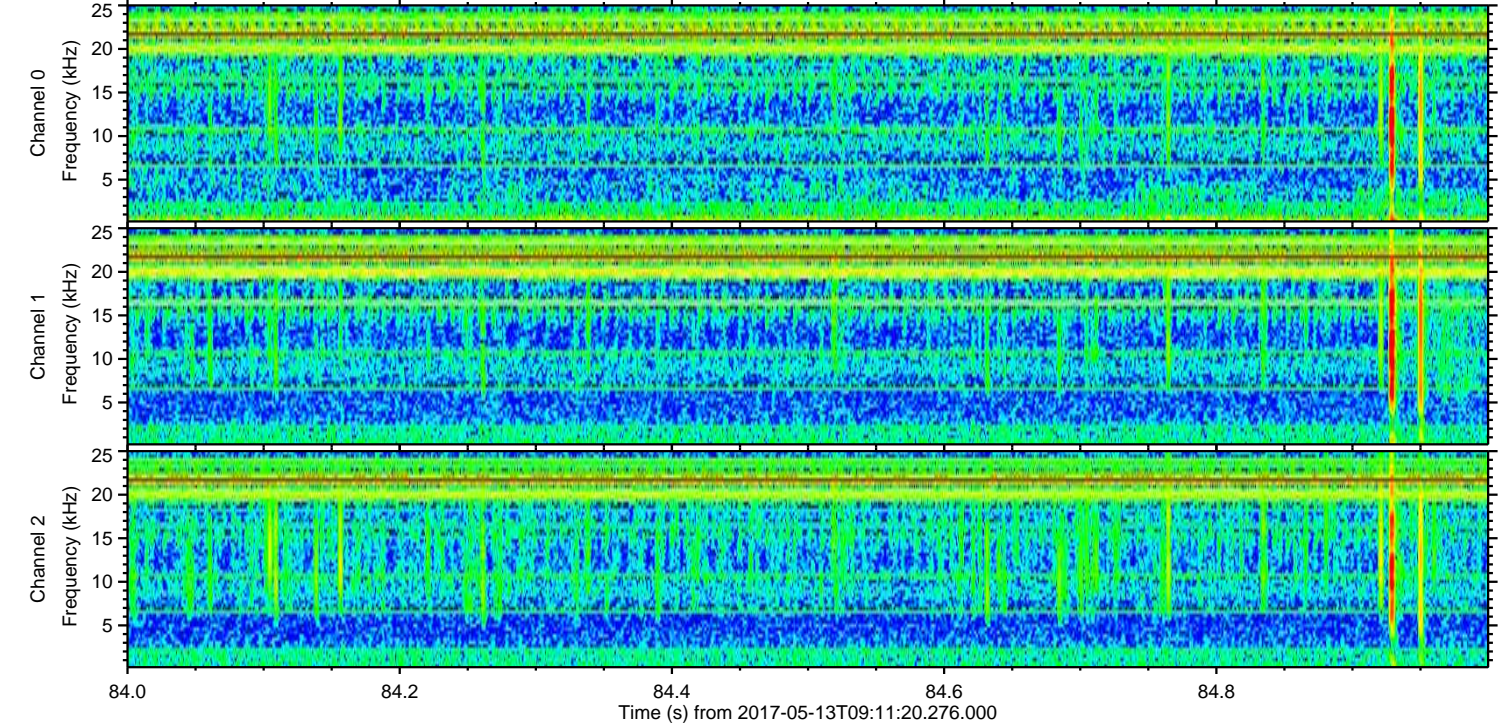
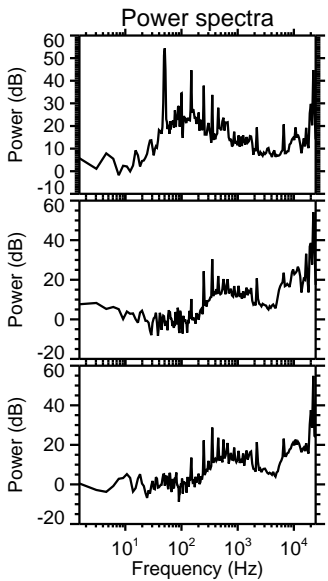
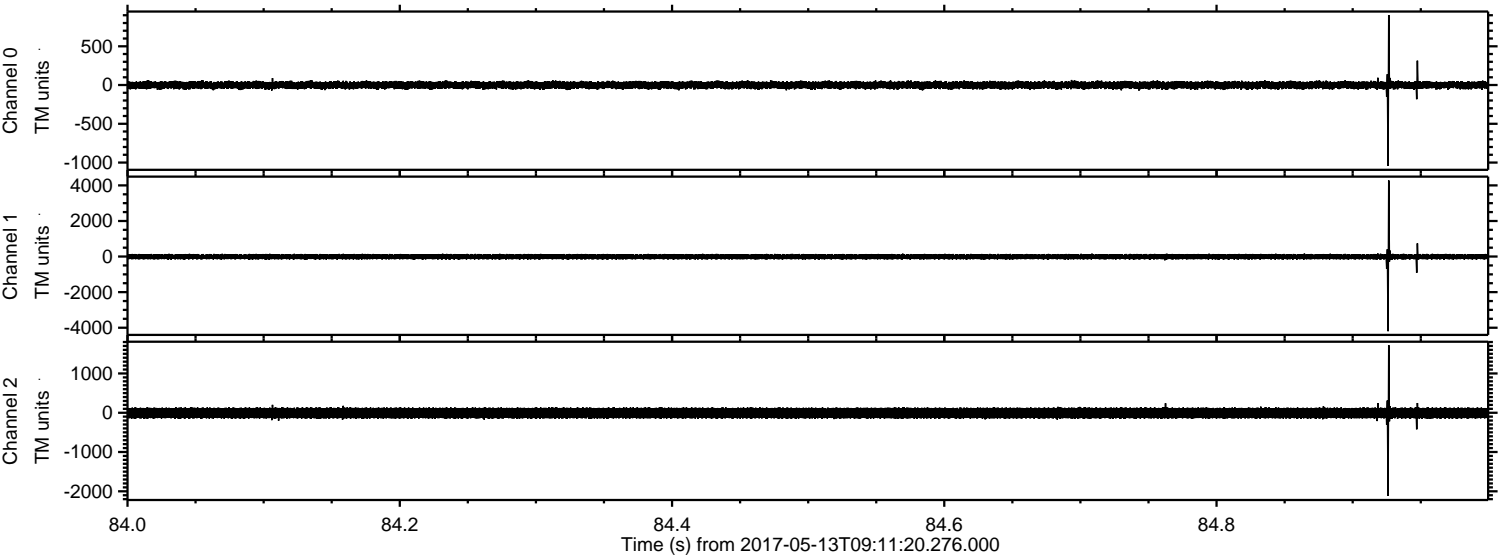


ELMAVAN 3D WAVEFORMS (Measured data sampled at 50 kHz) 51000 packets of 144 samples from 2017-05-13T09:11:20.276.000. Part 119/147

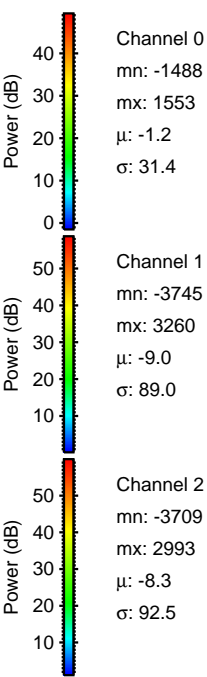
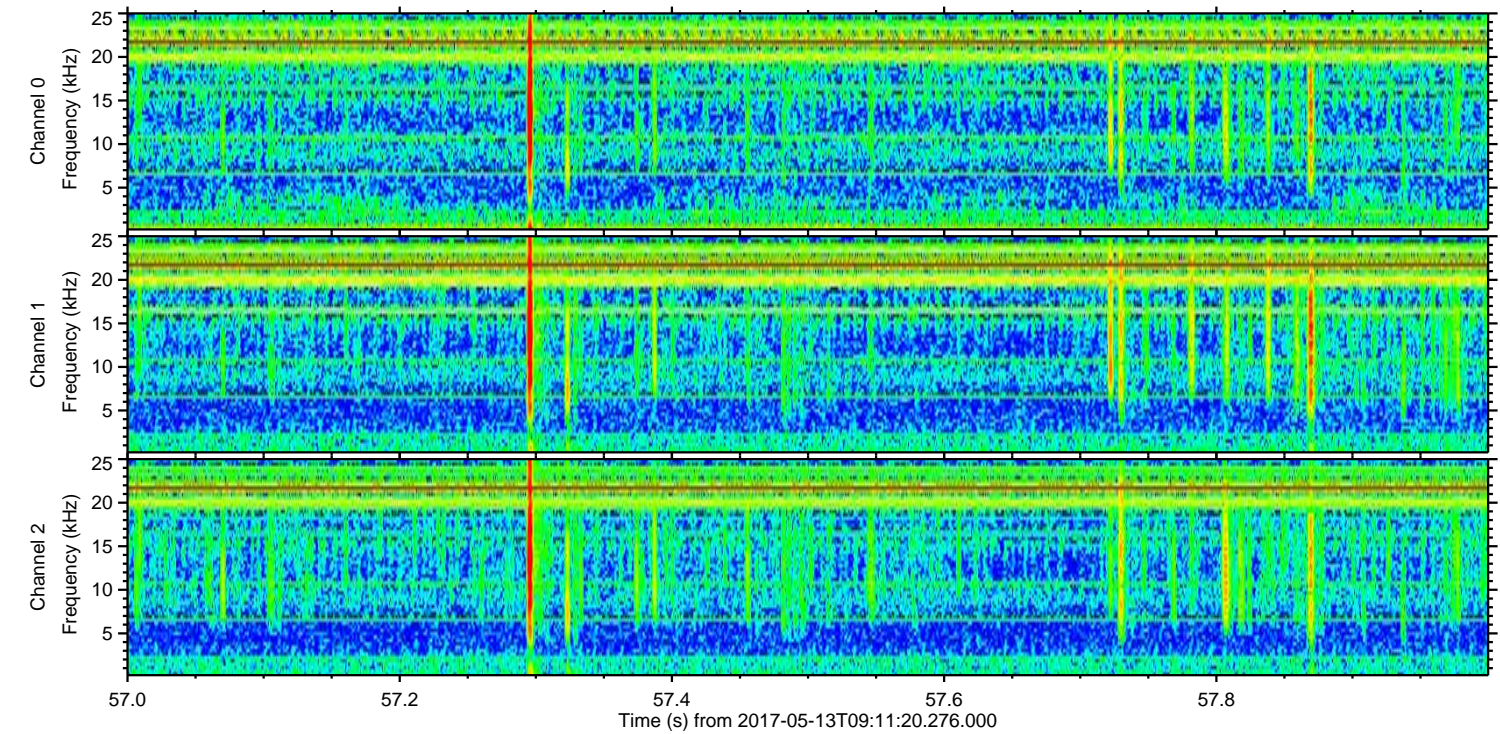
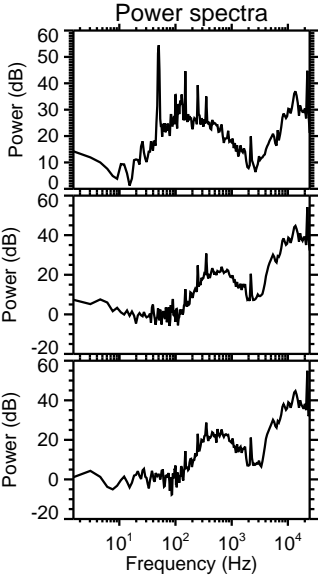
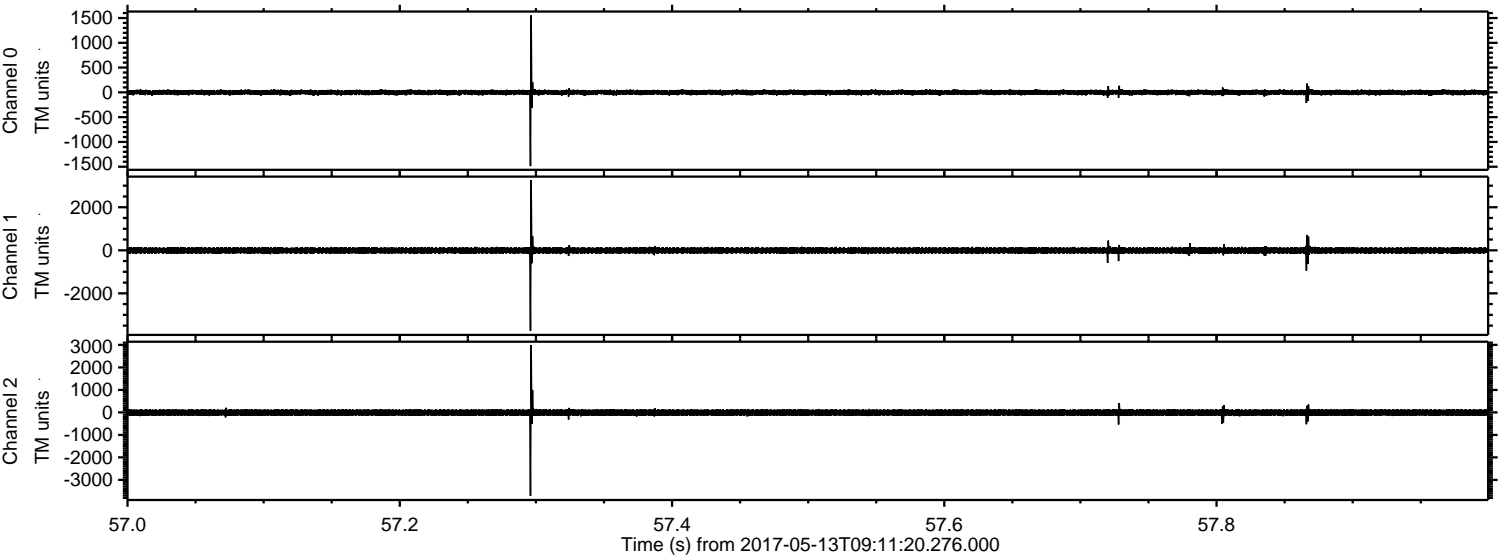
Processed Sat May 13 11:19:53 2017 by ELM ver.2012-10-06 from 001__elm20170513_091119__dat00.bin



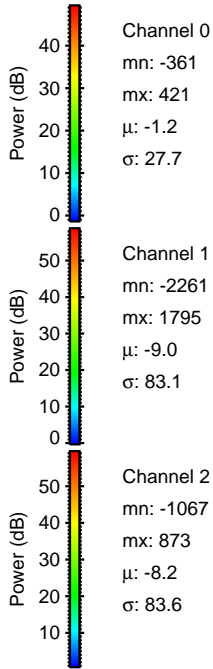
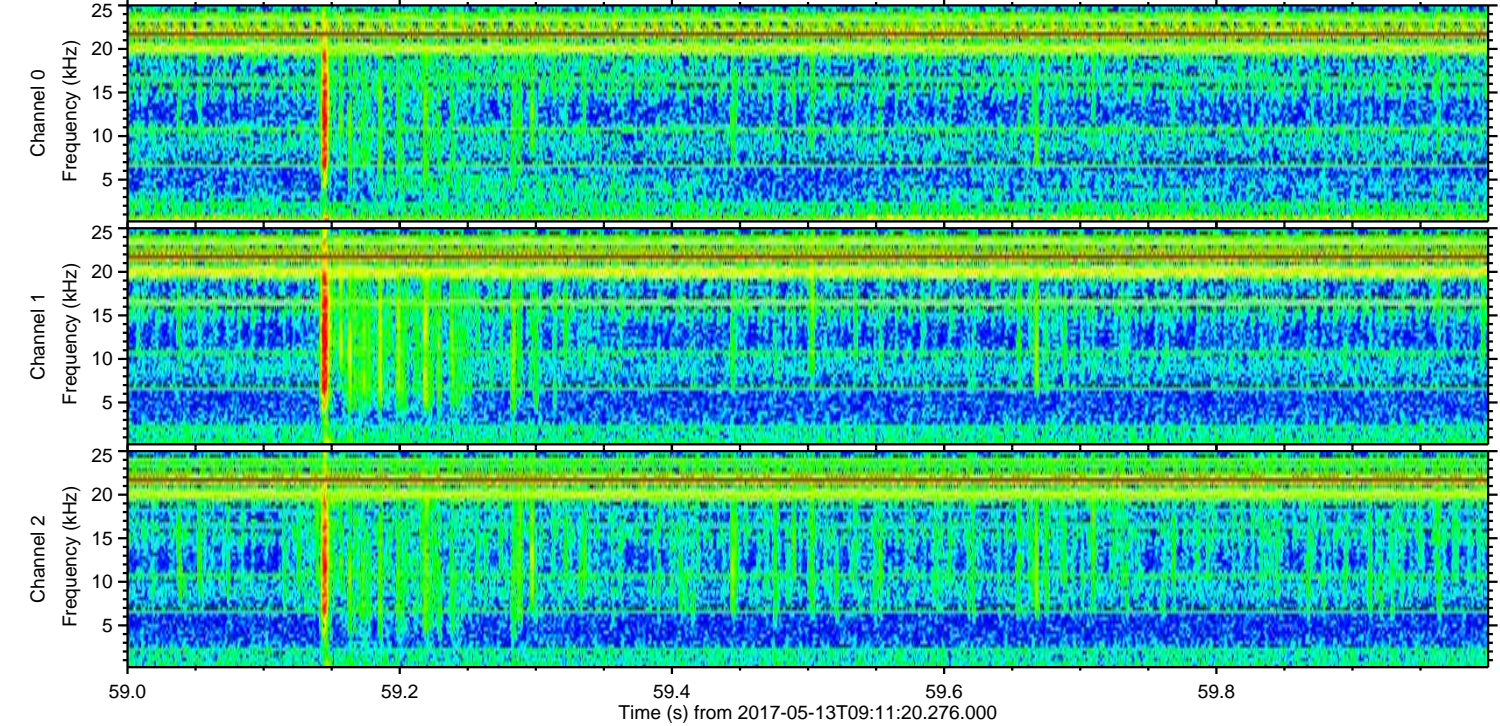
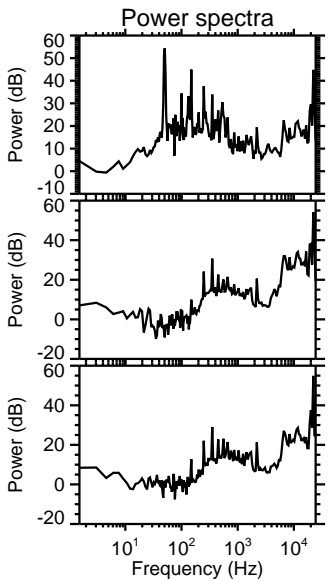
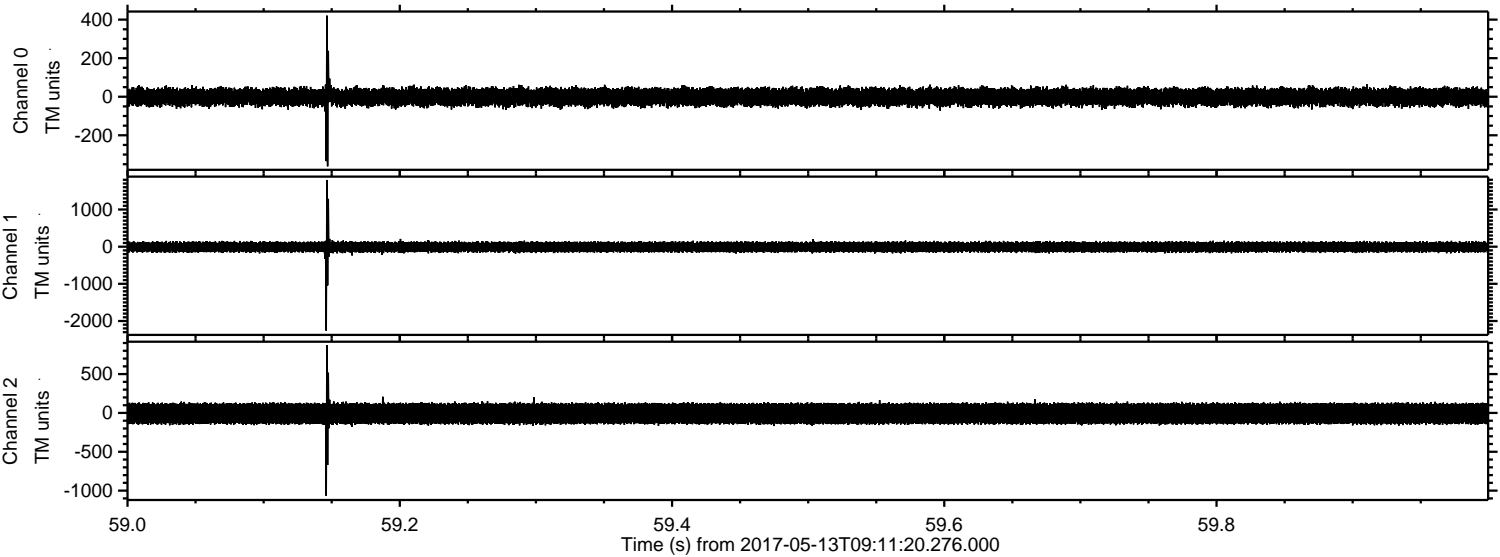
Processed Sat May 13 11:19:54 2017 by ELM ver.2012-10-06 from 001__elm20170513_091119__dat00.bin



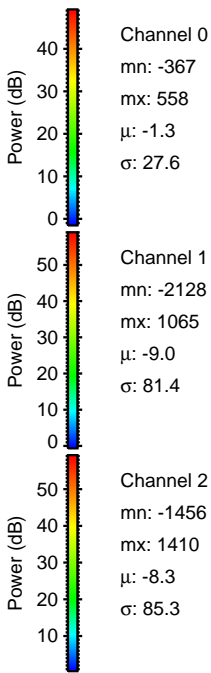
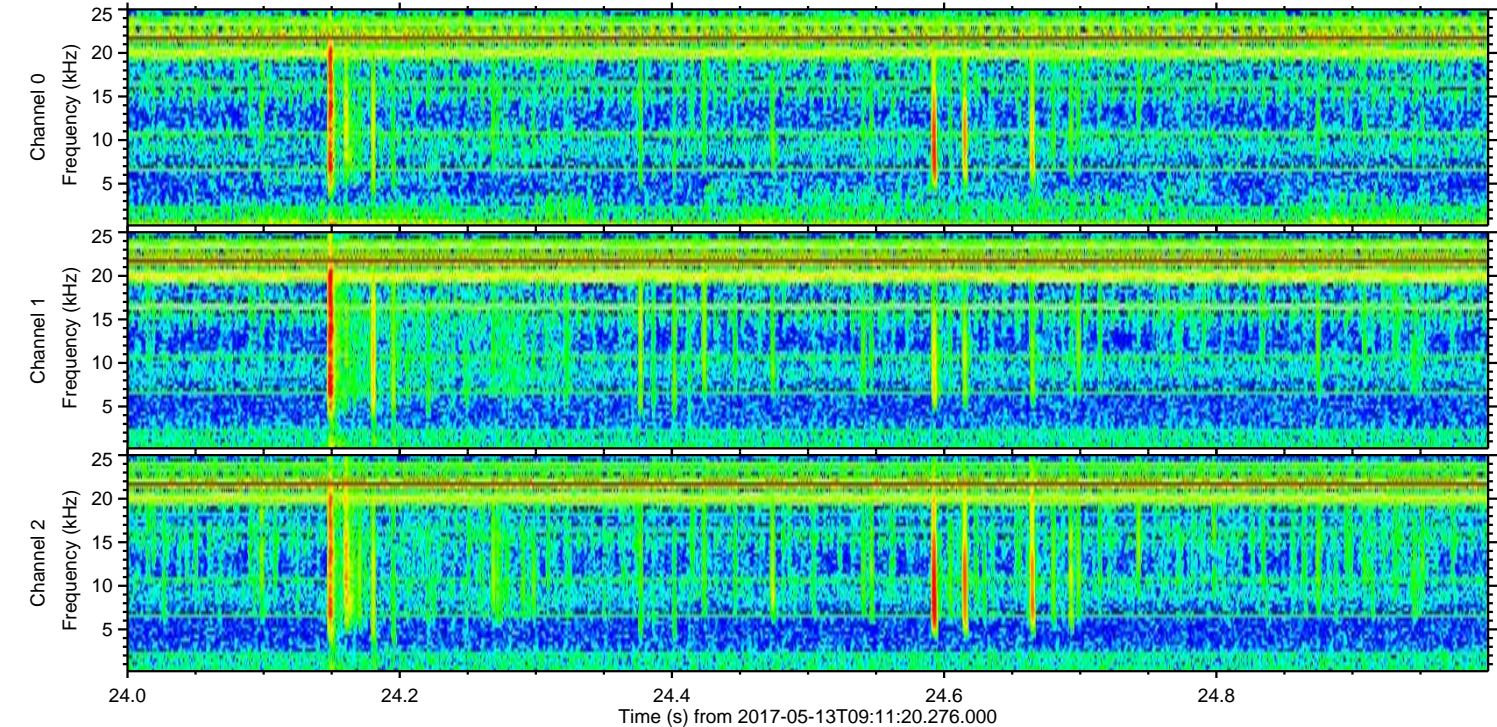
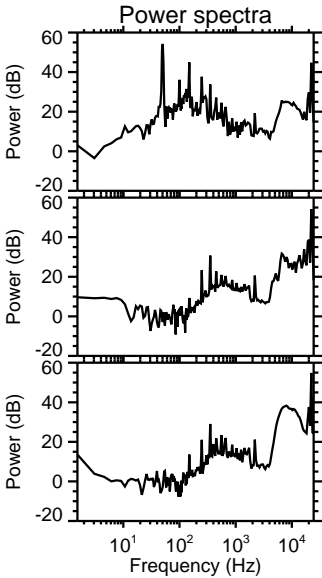
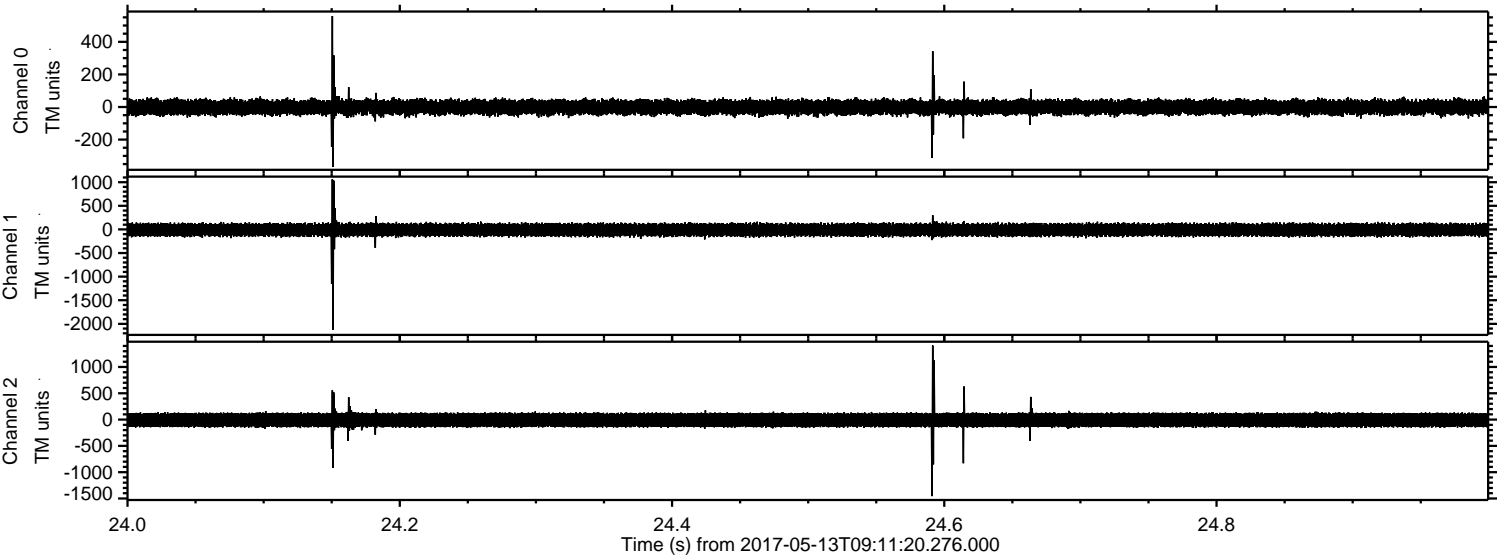
Processed Sat May 13 11:19:55 2017 by ELM ver.2012-10-06 from 001__elm20170513_091119__dat00.bin



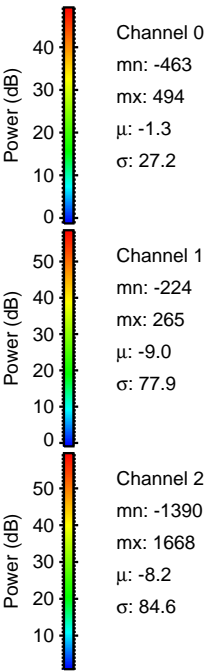
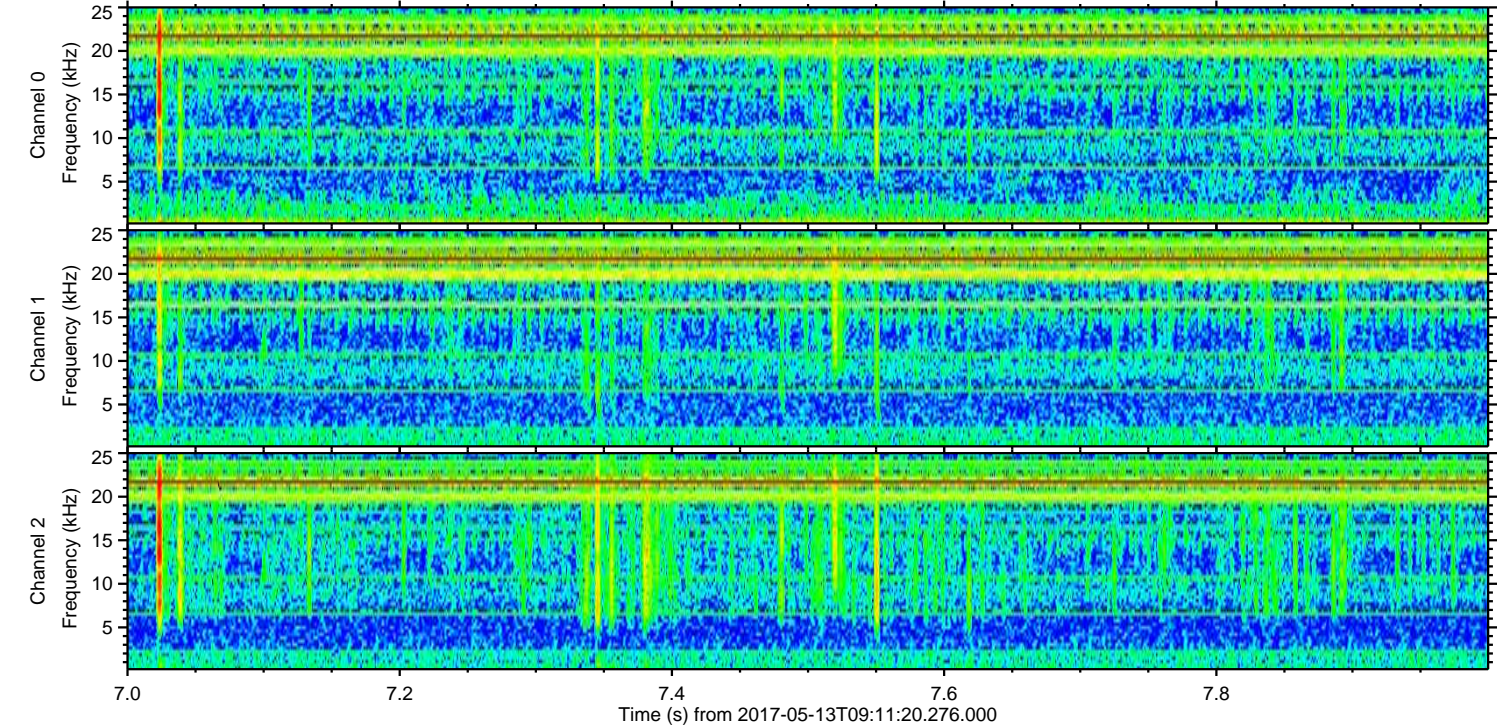
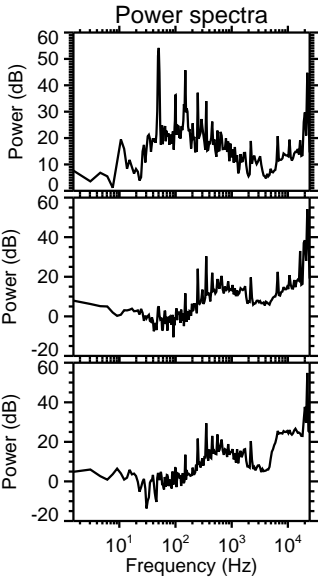
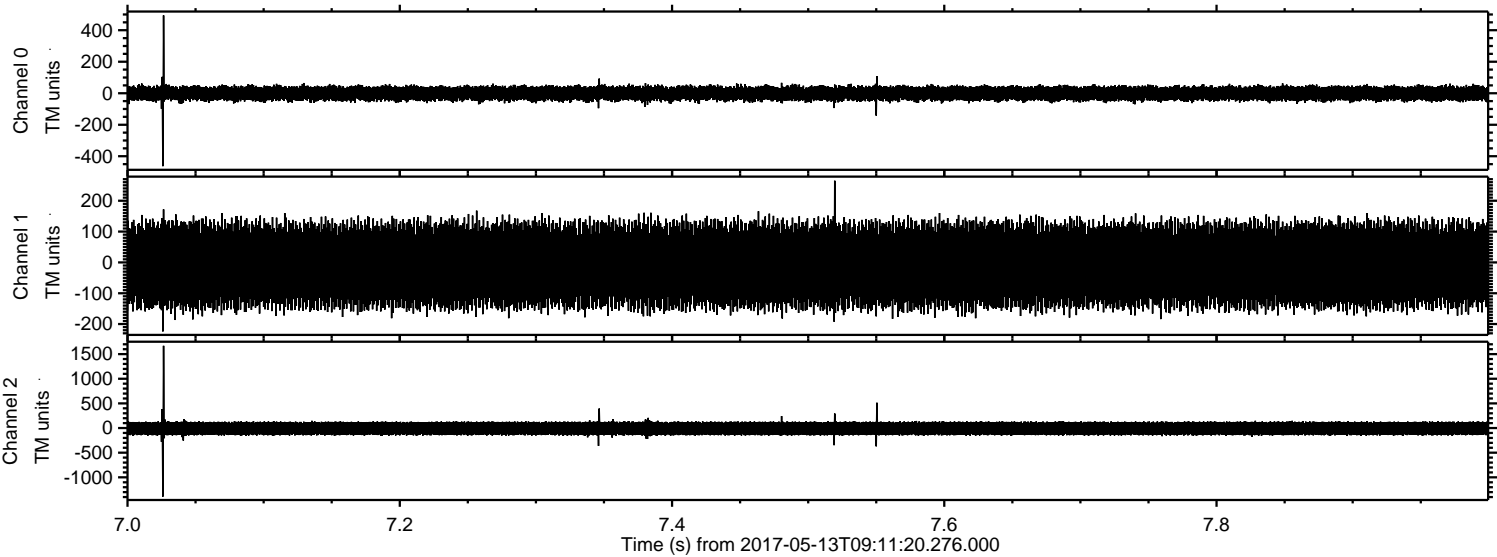
Processed Sat May 13 11:19:56 2017 by ELM ver.2012-10-06 from 001__elm20170513_091119__dat00.bin



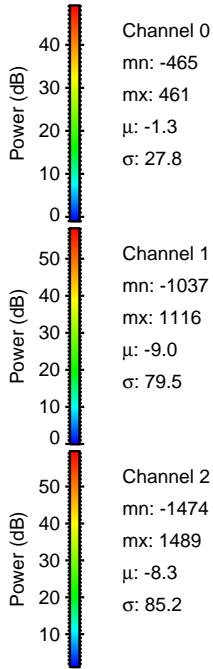
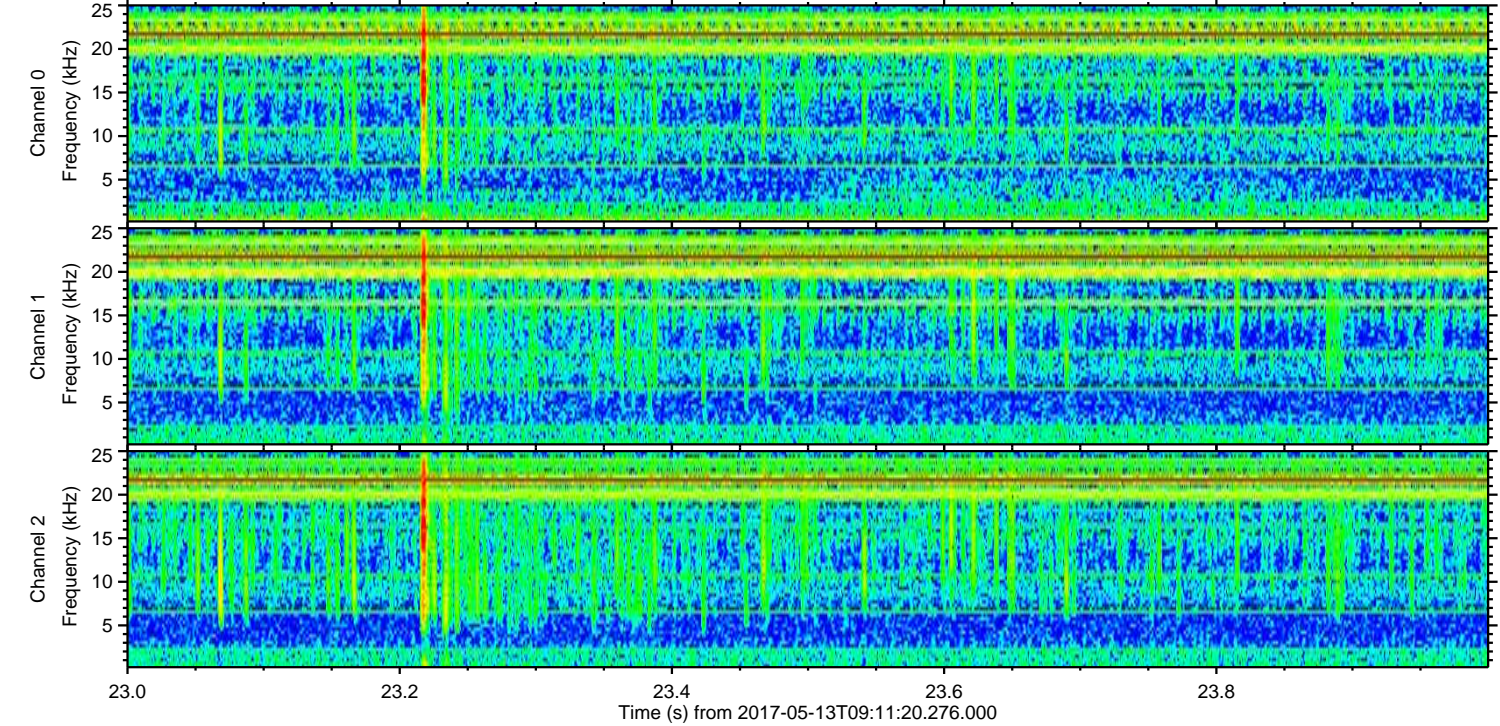
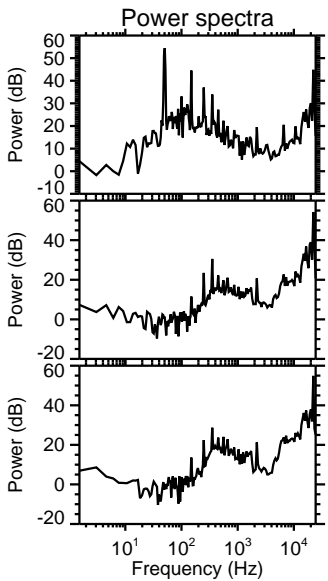
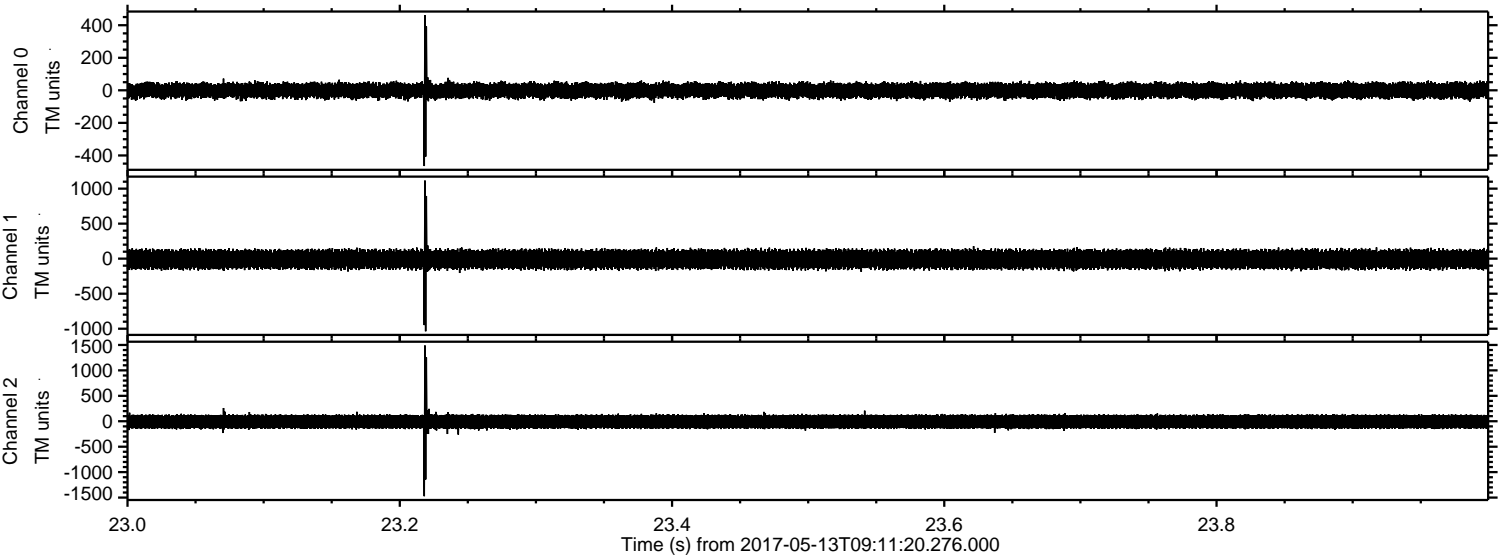
Processed Sat May 13 11:19:57 2017 by ELM ver.2012-10-06 from 001__elm20170513_091119__dat00.bin



Processed Sat May 13 11:19:58 2017 by ELM ver.2012-10-06 from 001__elm20170513_091119__dat00.bin



Processed Sat May 13 11:19:59 2017 by ELM ver.2012-10-06 from 001__elm20170513_091119__dat00.bin



Channel 0
mn: -465
mx: 461
 μ : -1.3
 σ : 27.8

Channel 1
mn: -1037
mx: 1116
 μ : -9.0
 σ : 79.5

Channel 2
mn: -1474
mx: 1489
 μ : -8.3
 σ : 85.2

