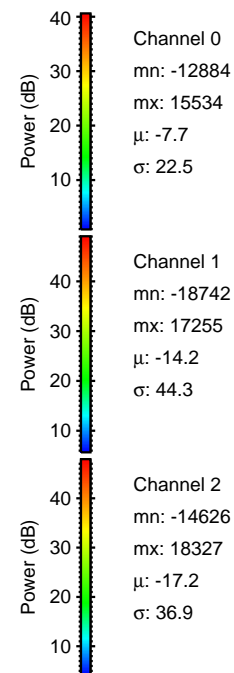
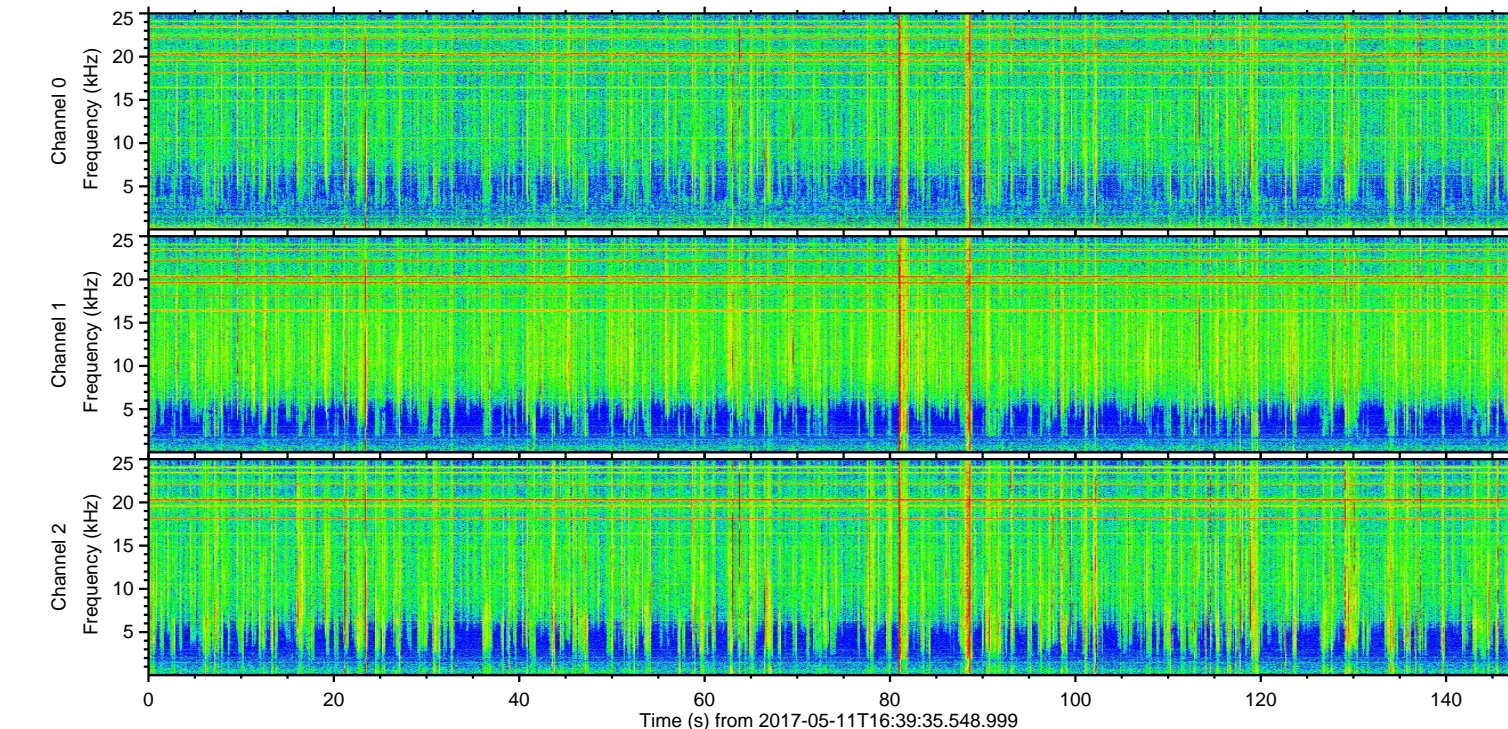
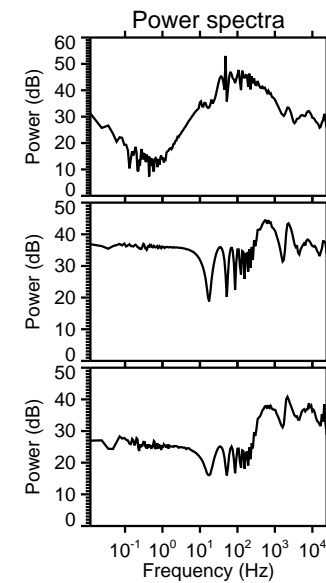
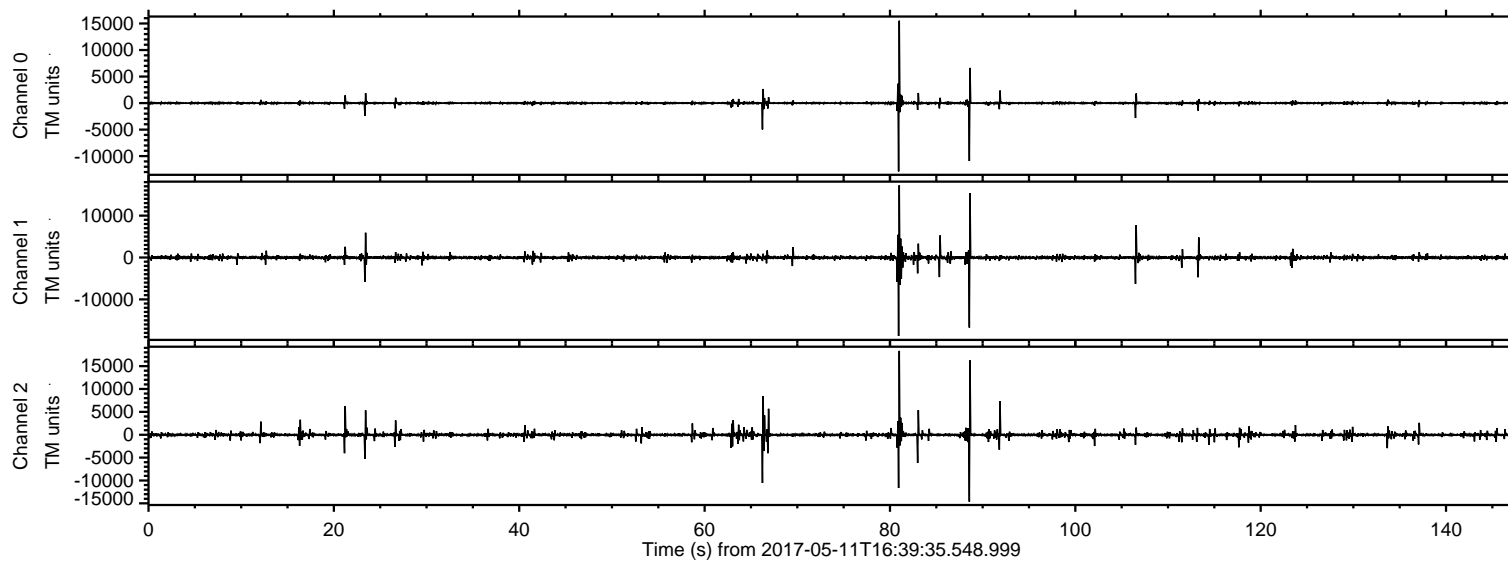


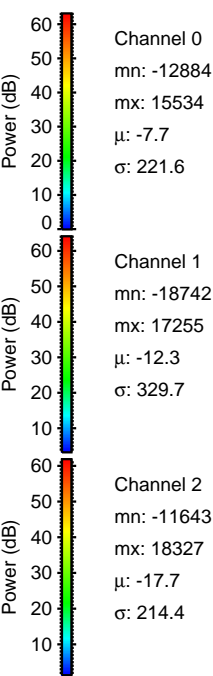
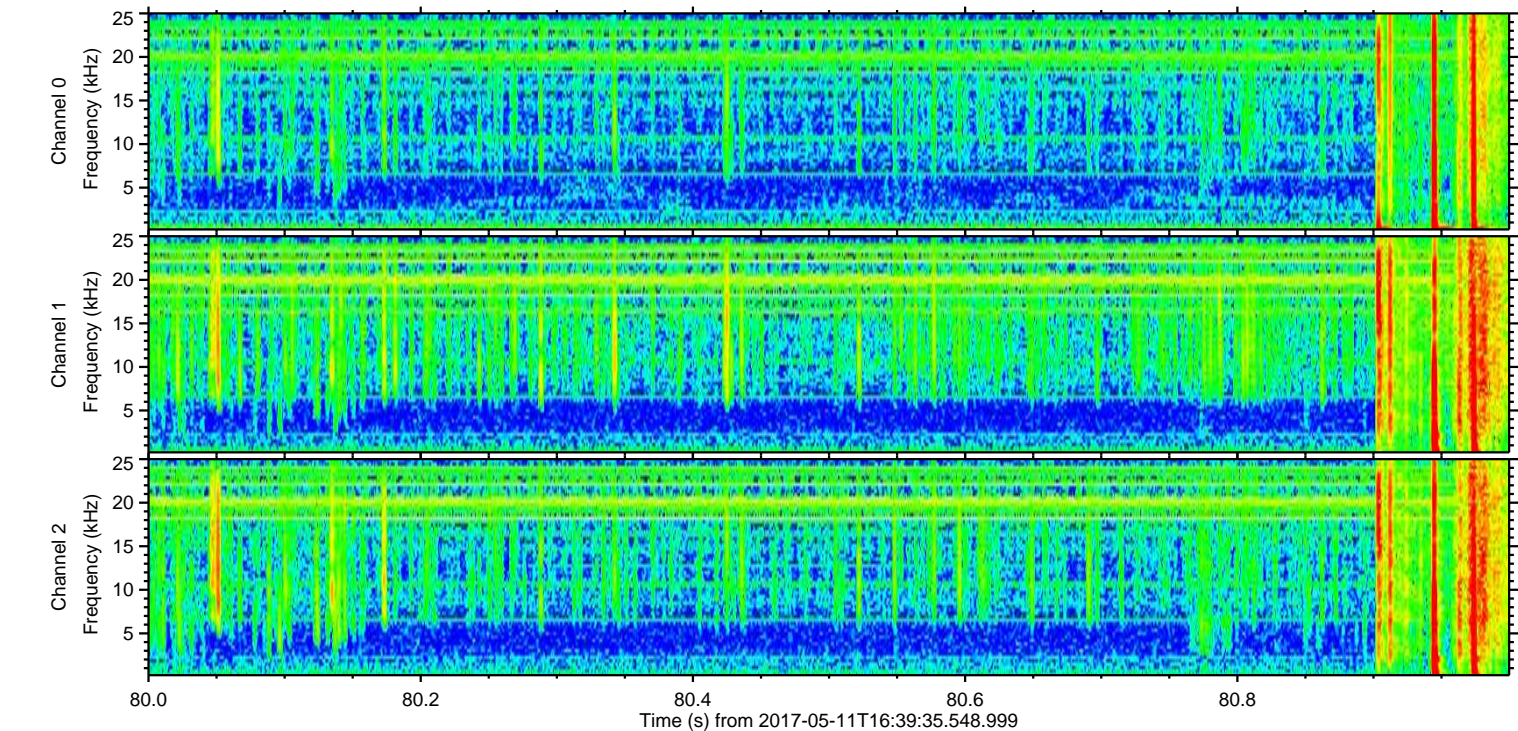
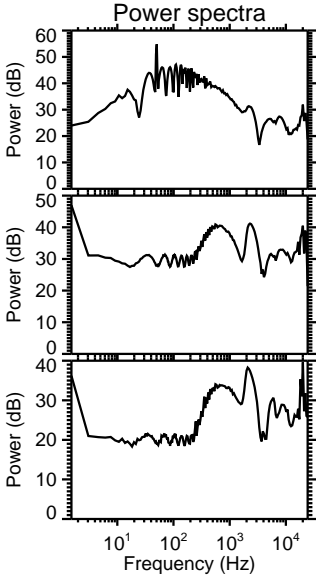
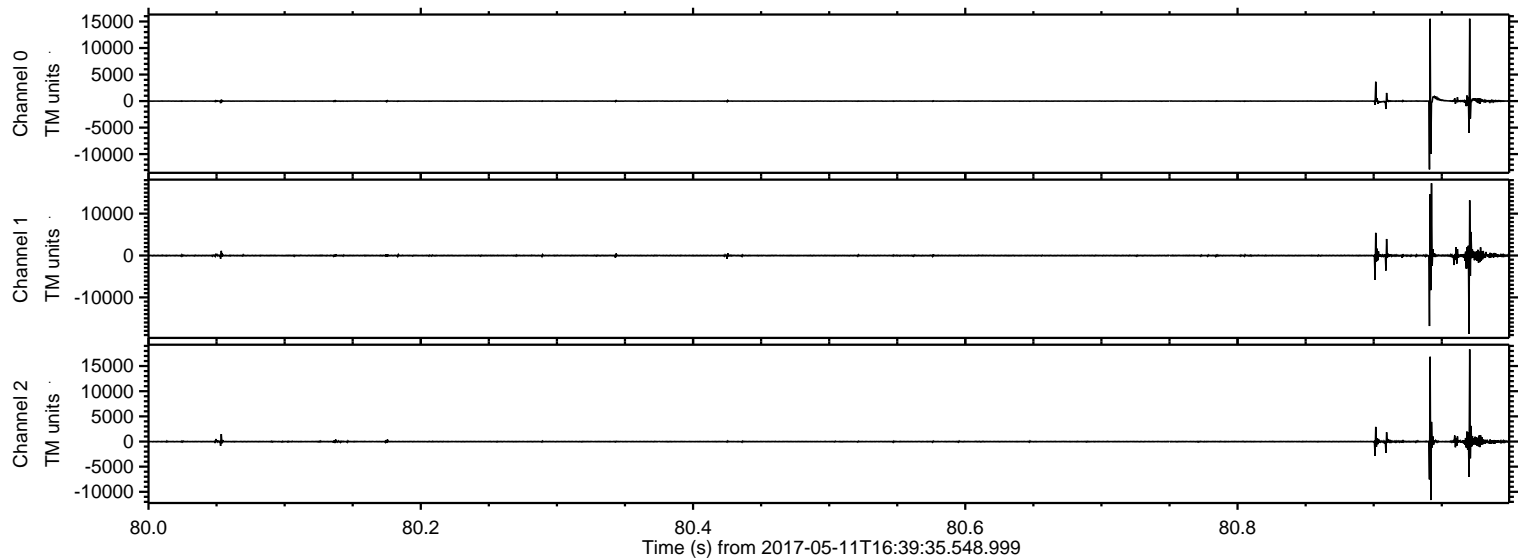
ELMAVAN 3D WAVEFORMS (Measured data sampled at 50 kHz) 51000 packets of 144 samples from 2017-05-11T16:39:35.548.999.

Processed Thu May 11 18:47:41 2017 by ELM ver.2012-10-06 from 001__elm20170511_163934__dat00.bin

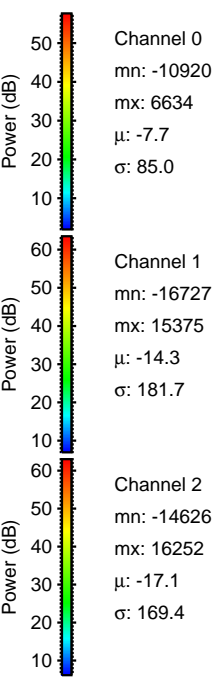
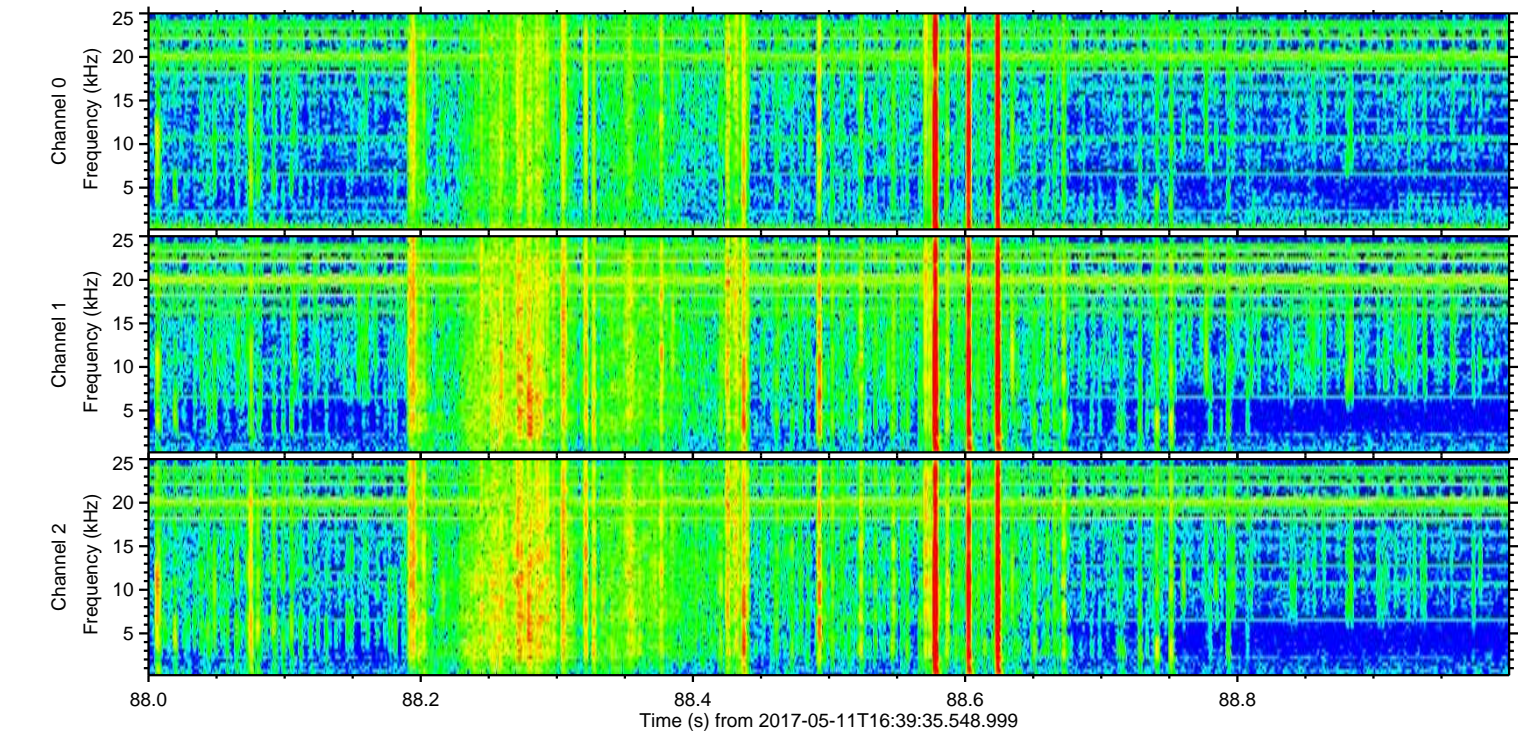
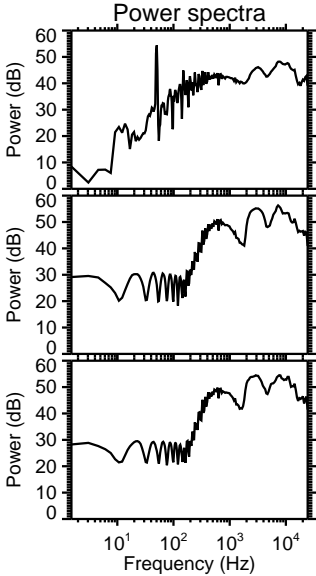
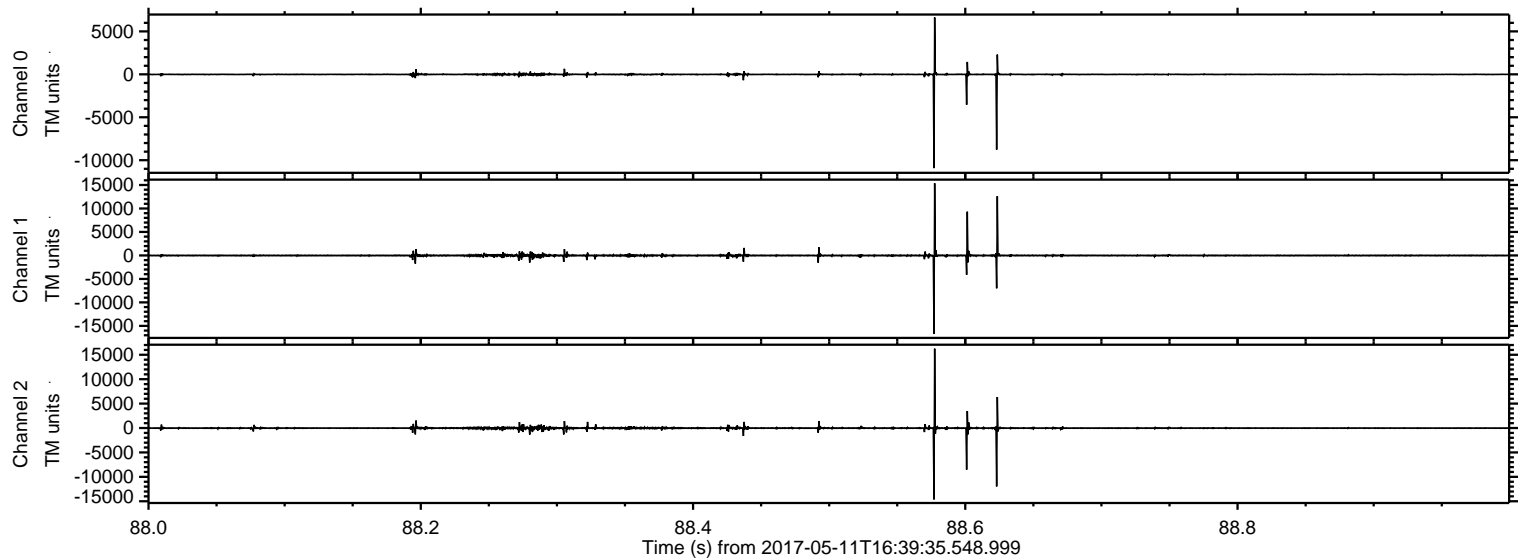


ELMAVAN 3D WAVEFORMS (Measured data sampled at 50 kHz) 51000 packets of 144 samples from 2017-05-11T16:39:35.548.999. Part 81/147

Processed Thu May 11 18:47:52 2017 by ELM ver.2012-10-06 from 001__elm20170511_163934__dat00.bin

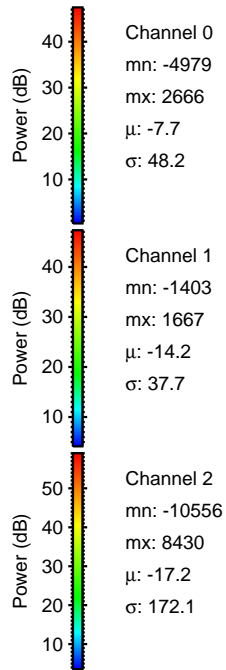
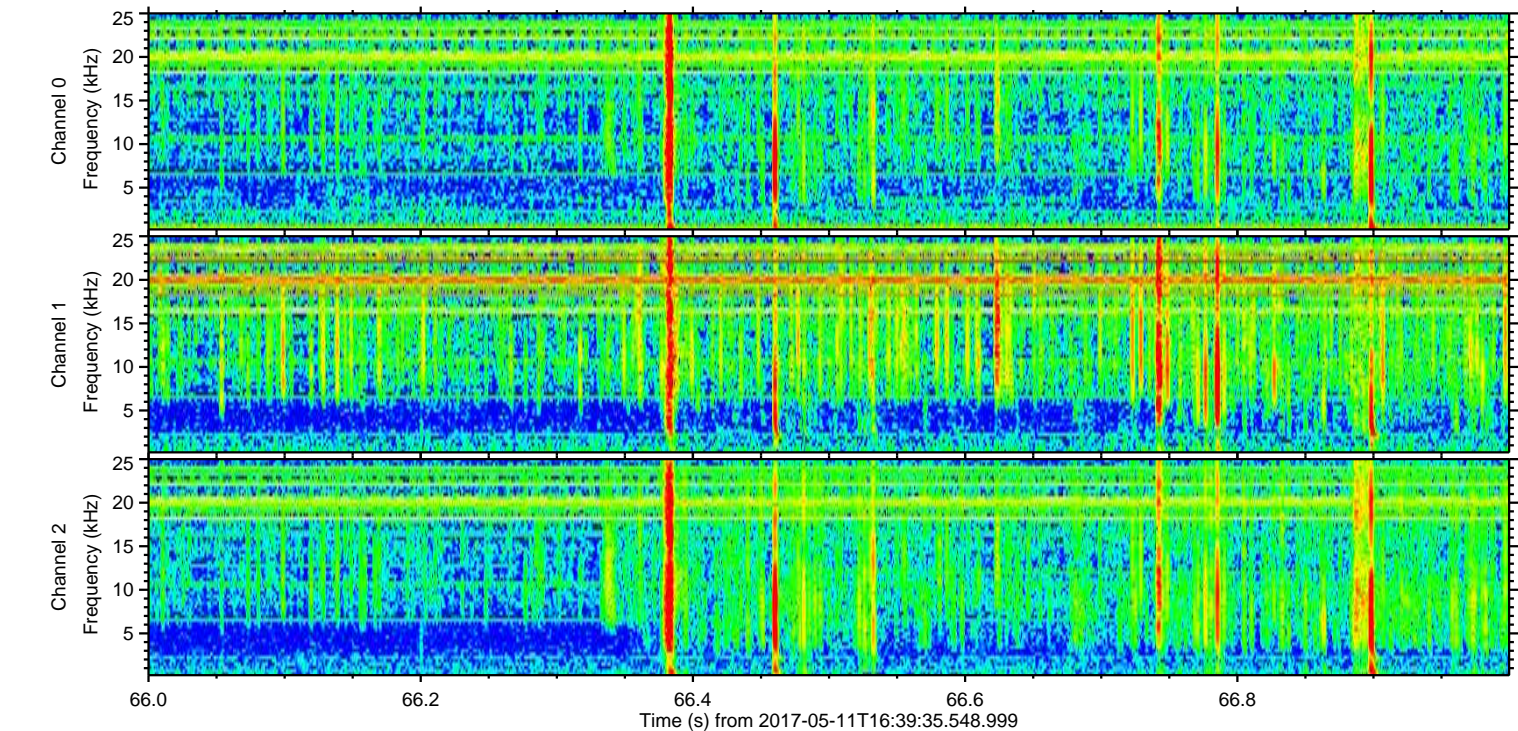
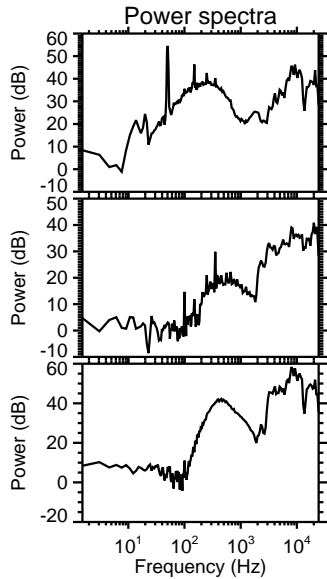
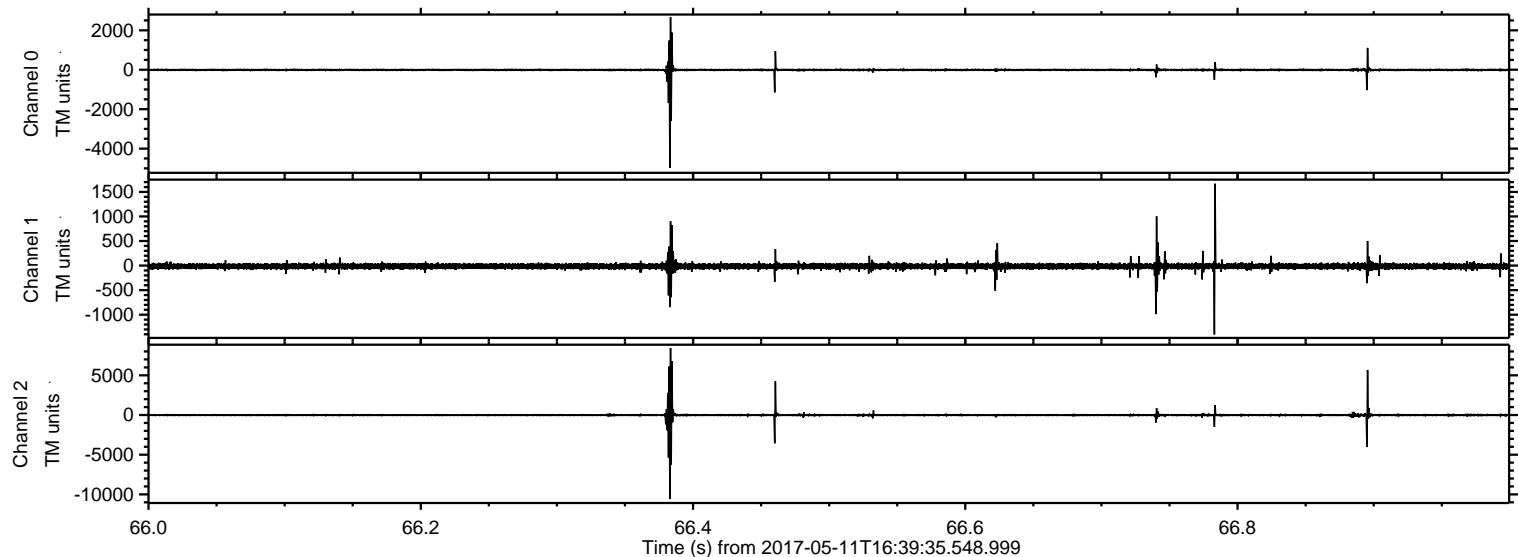


Processed Thu May 11 18:47:53 2017 by ELM ver.2012-10-06 from 001__elm20170511_163934__dat00.bin



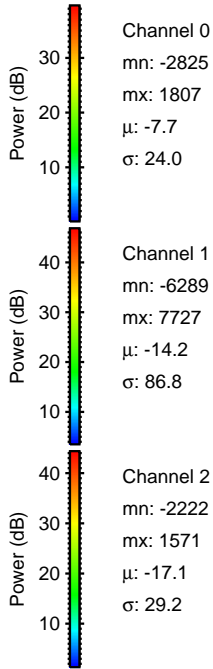
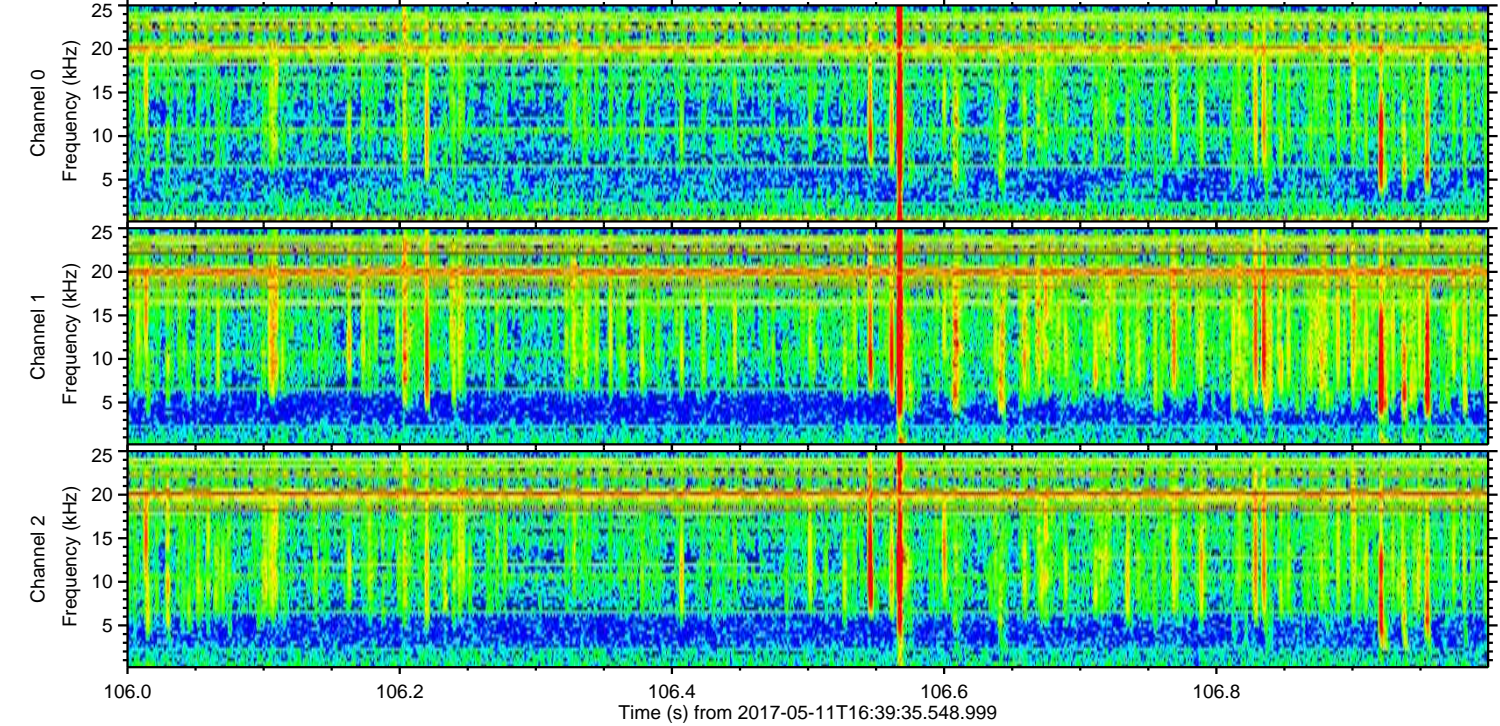
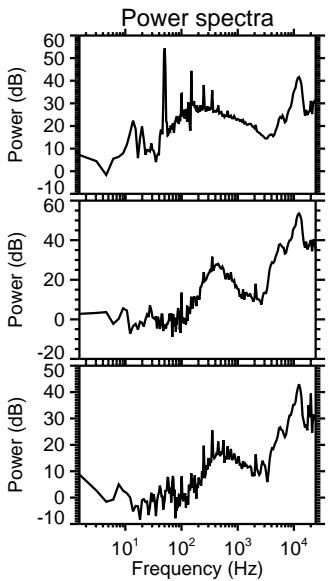
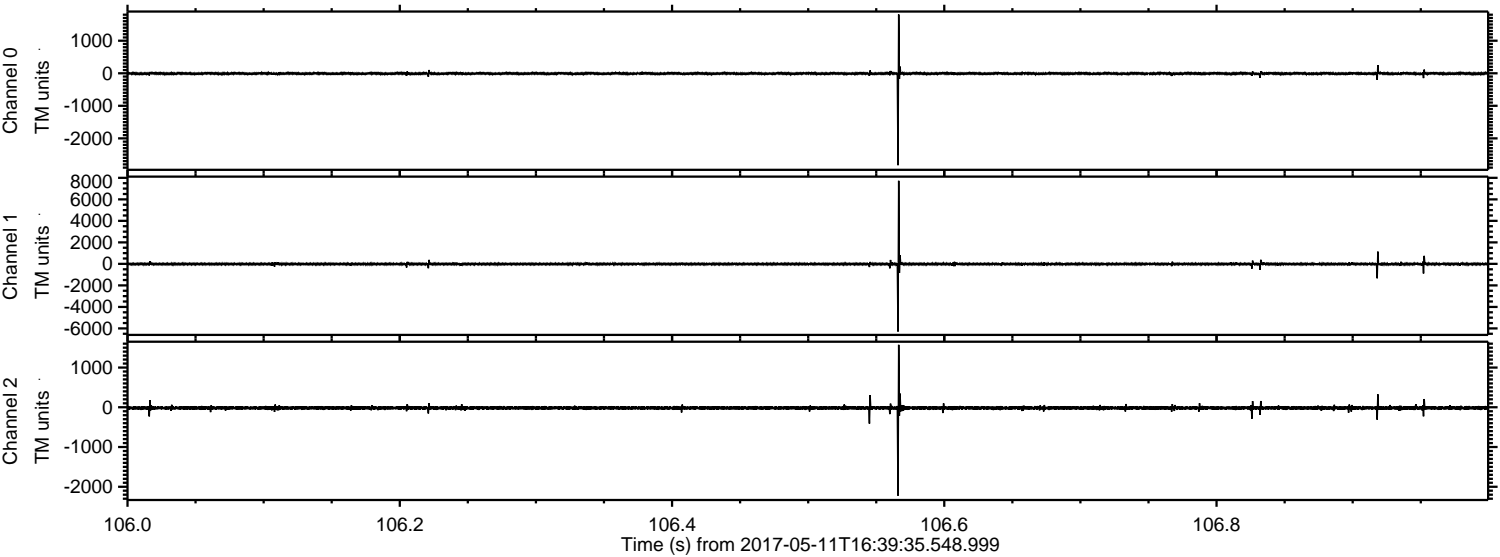
ELMAVAN 3D WAVEFORMS (Measured data sampled at 50 kHz) 51000 packets of 144 samples from 2017-05-11T16:39:35.548.999. Part 67/147

Processed Thu May 11 18:47:54 2017 by ELM ver.2012-10-06 from 001__elm20170511_163934__dat00.bin

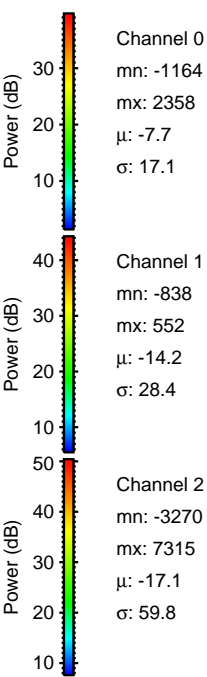
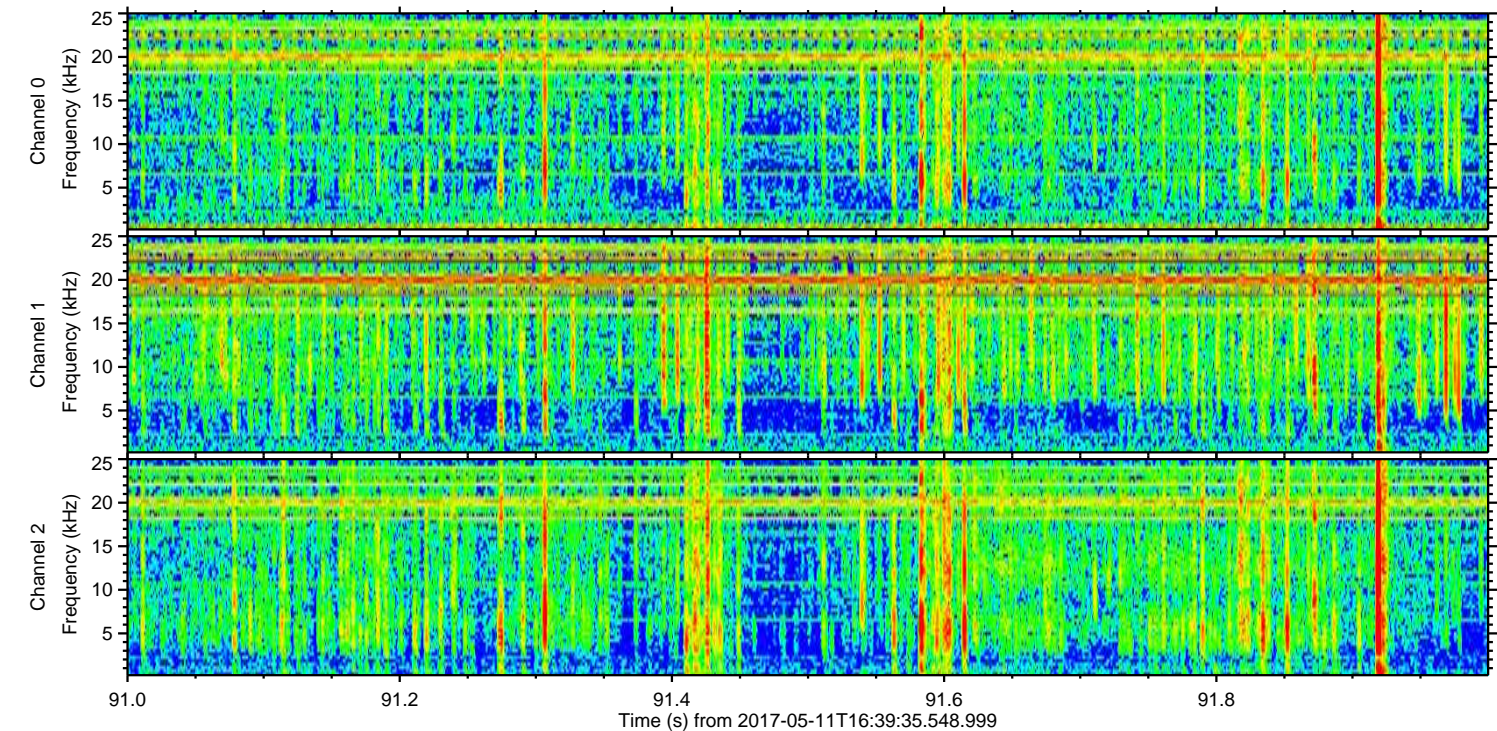
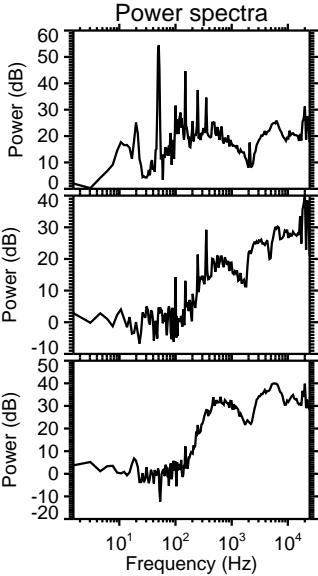
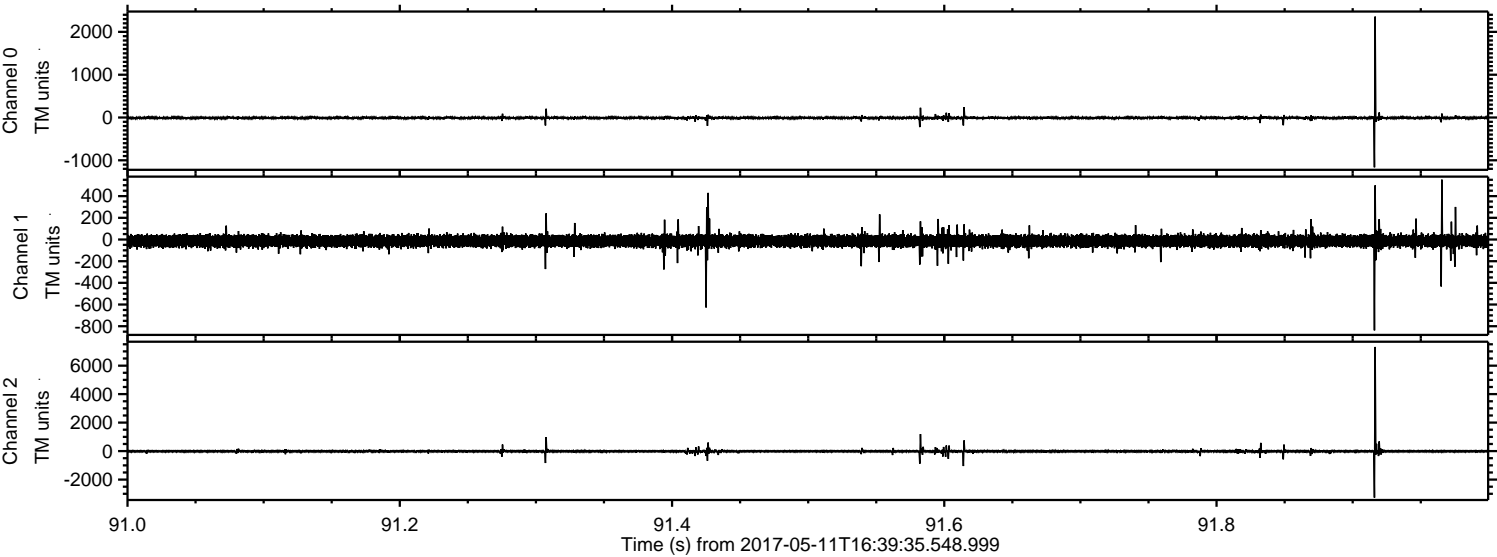


ELMAVAN 3D WAVEFORMS (Measured data sampled at 50 kHz) 51000 packets of 144 samples from 2017-05-11T16:39:35.548.999. Part 107/147

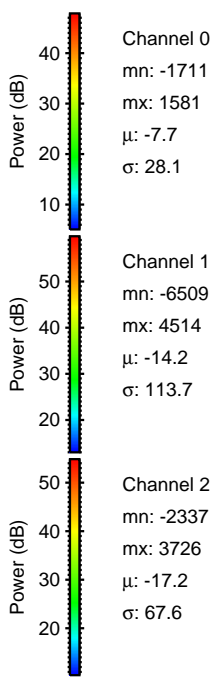
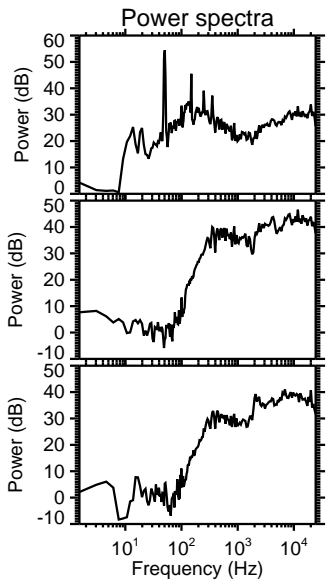
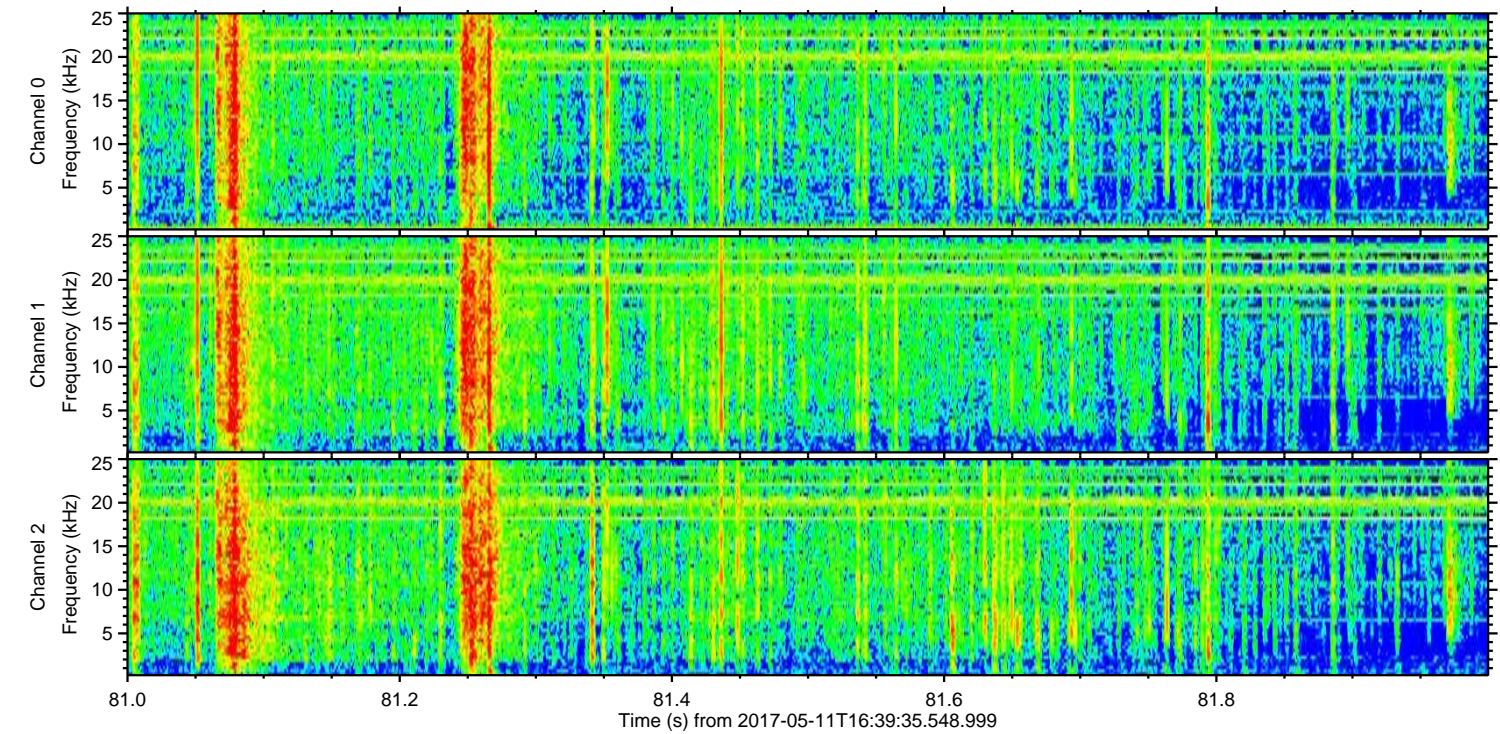
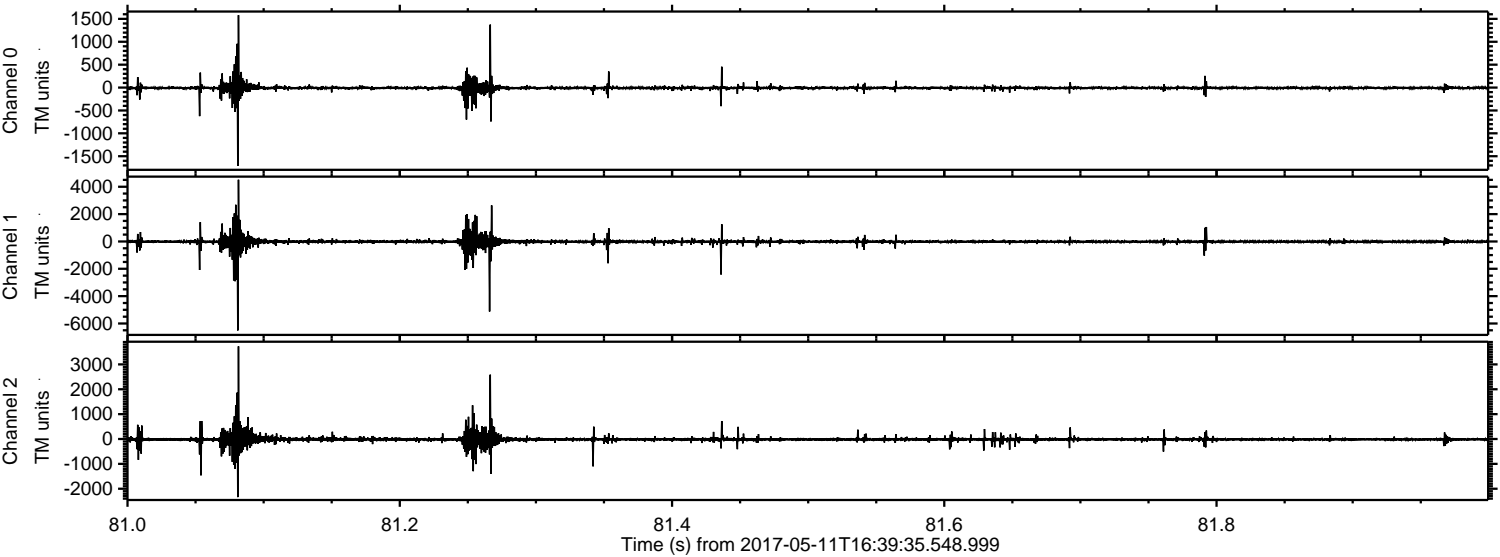
Processed Thu May 11 18:47:55 2017 by ELM ver.2012-10-06 from 001__elm20170511_163934__dat00.bin



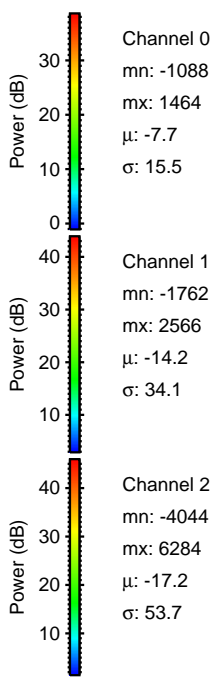
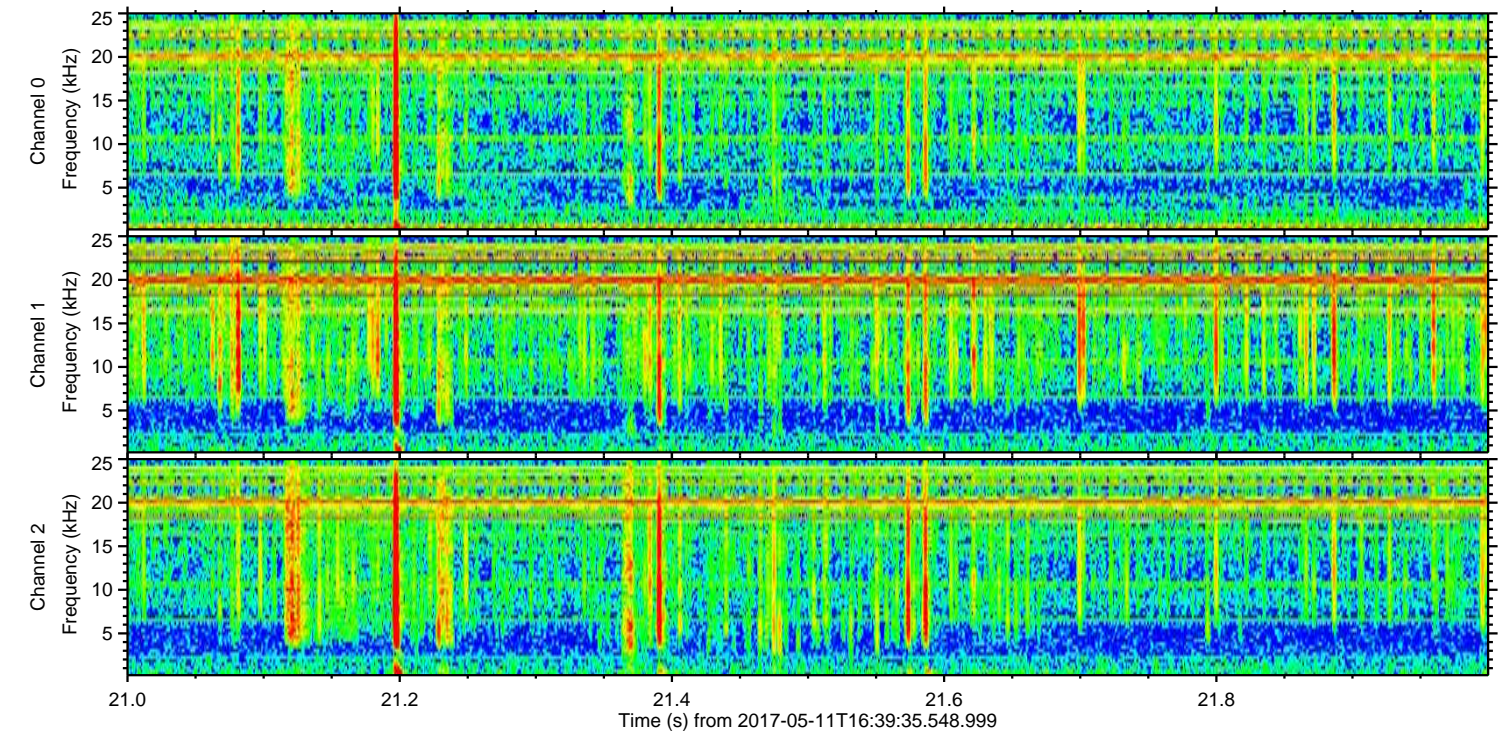
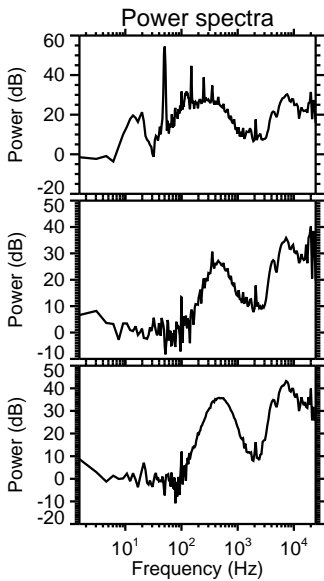
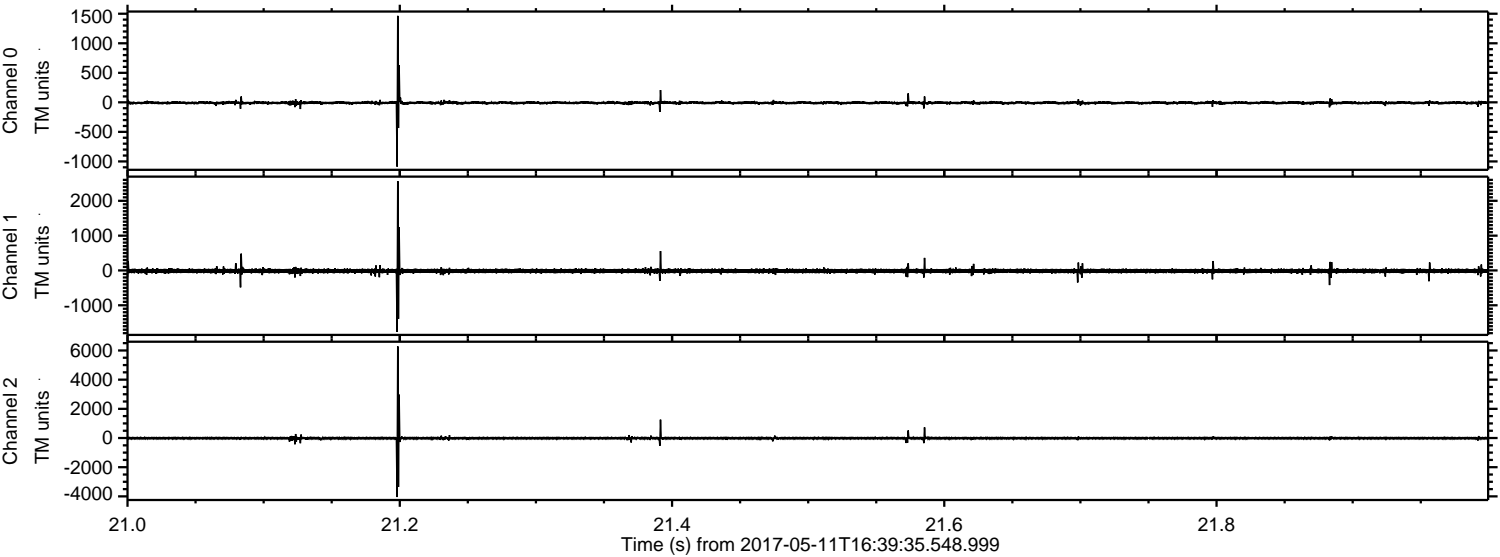
Processed Thu May 11 18:47:56 2017 by ELM ver.2012-10-06 from 001__elm20170511_163934__dat00.bin



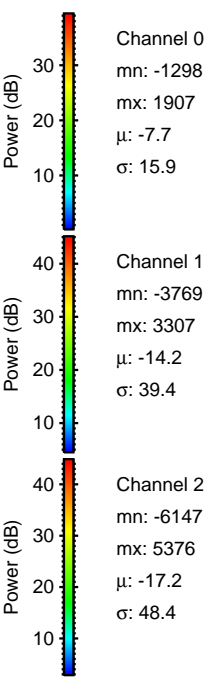
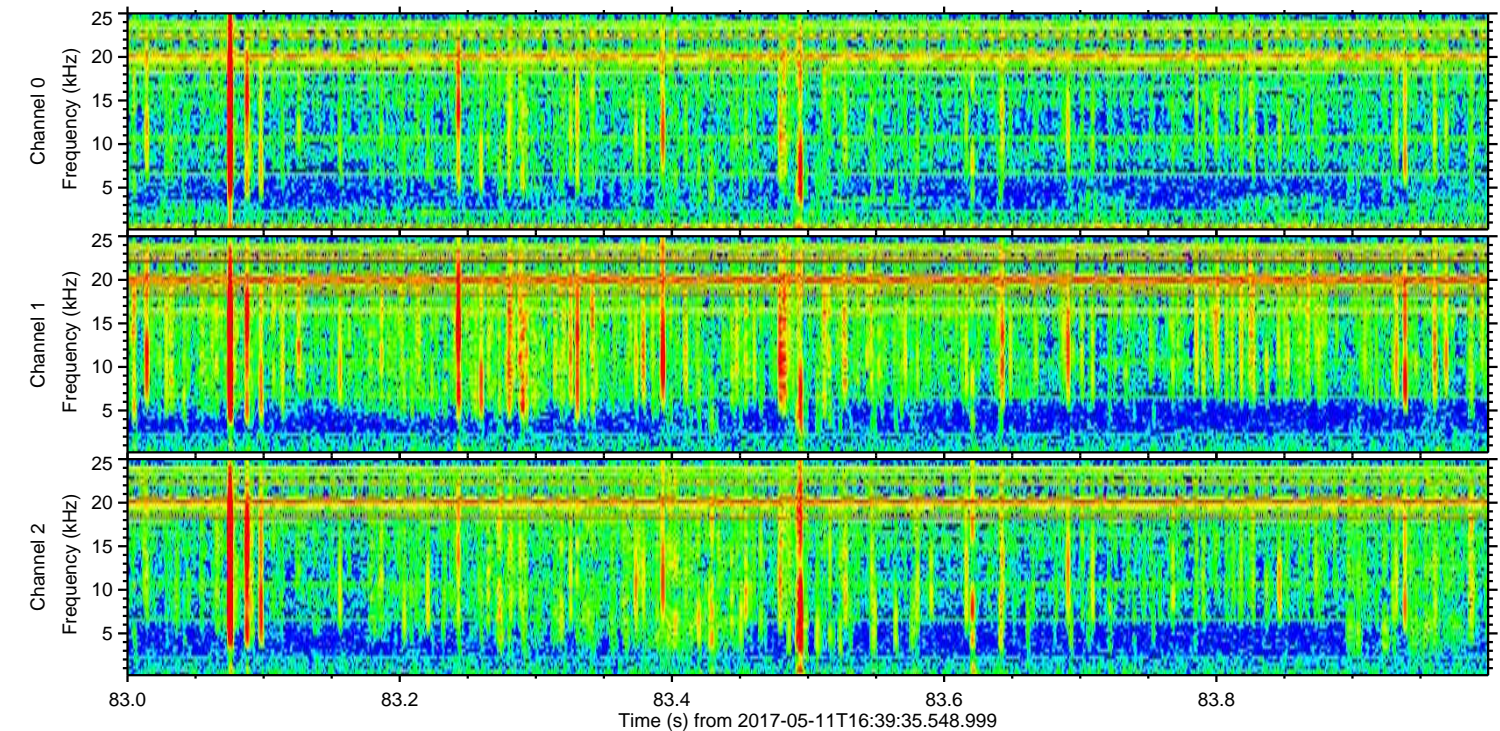
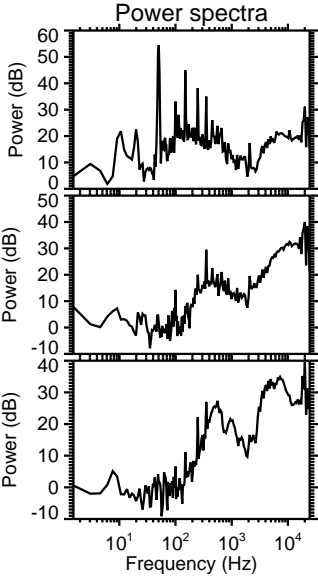
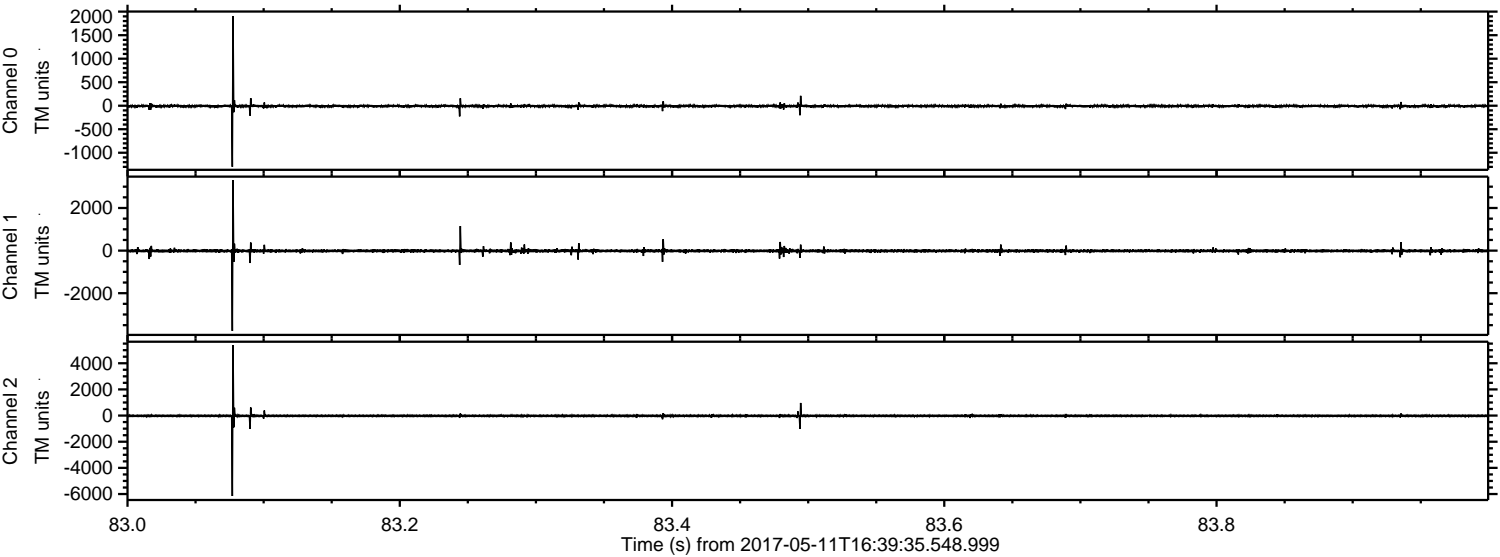
Processed Thu May 11 18:47:57 2017 by ELM ver.2012-10-06 from 001__elm20170511_163934__dat00.bin



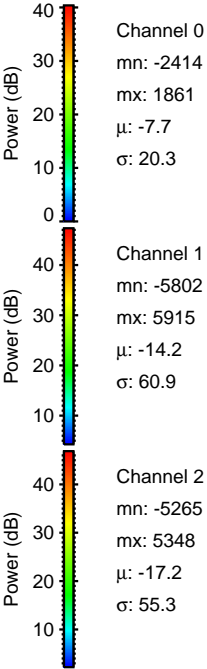
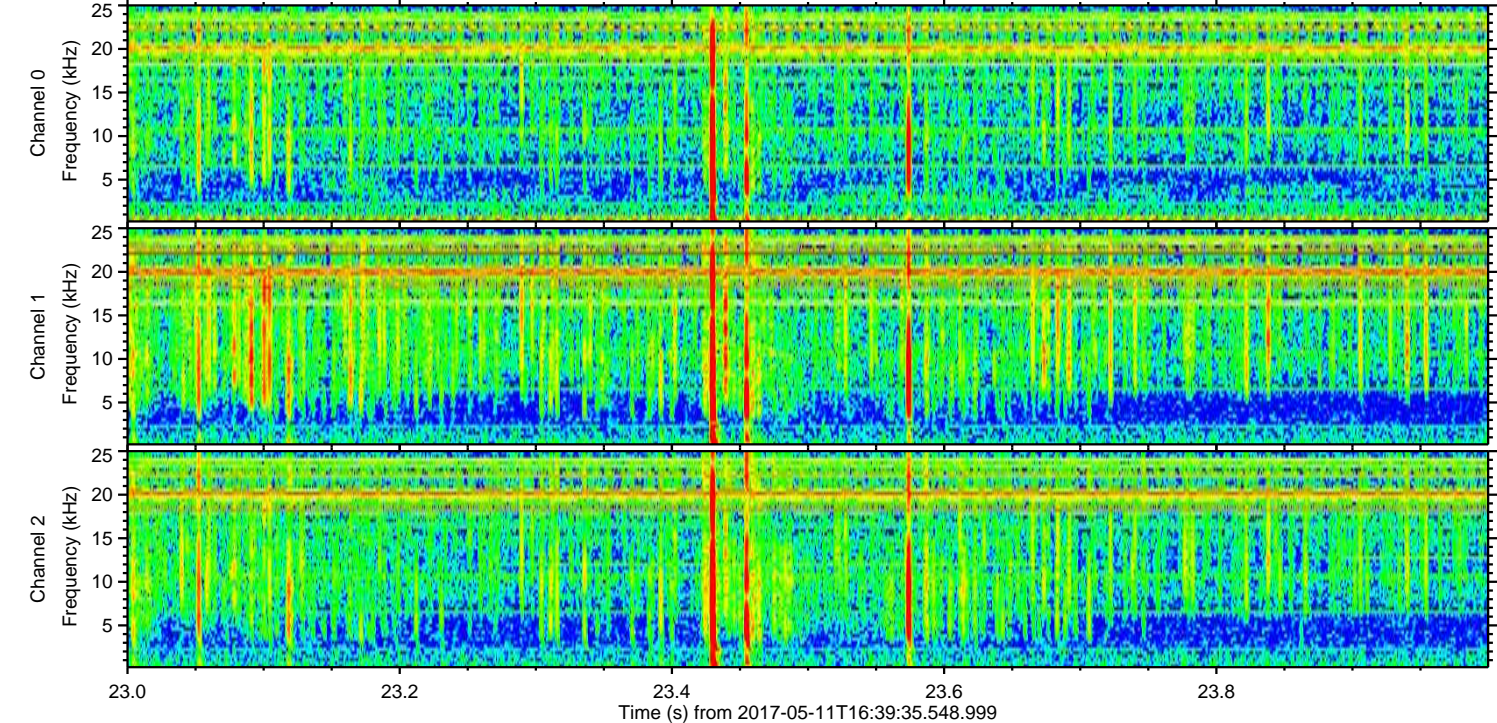
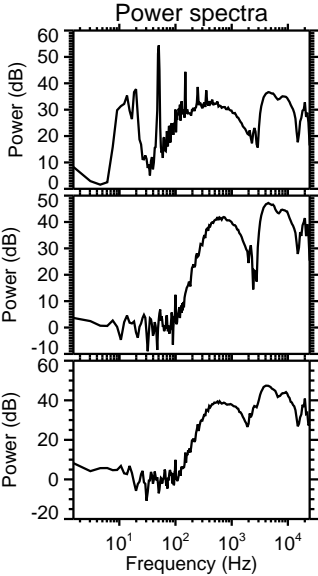
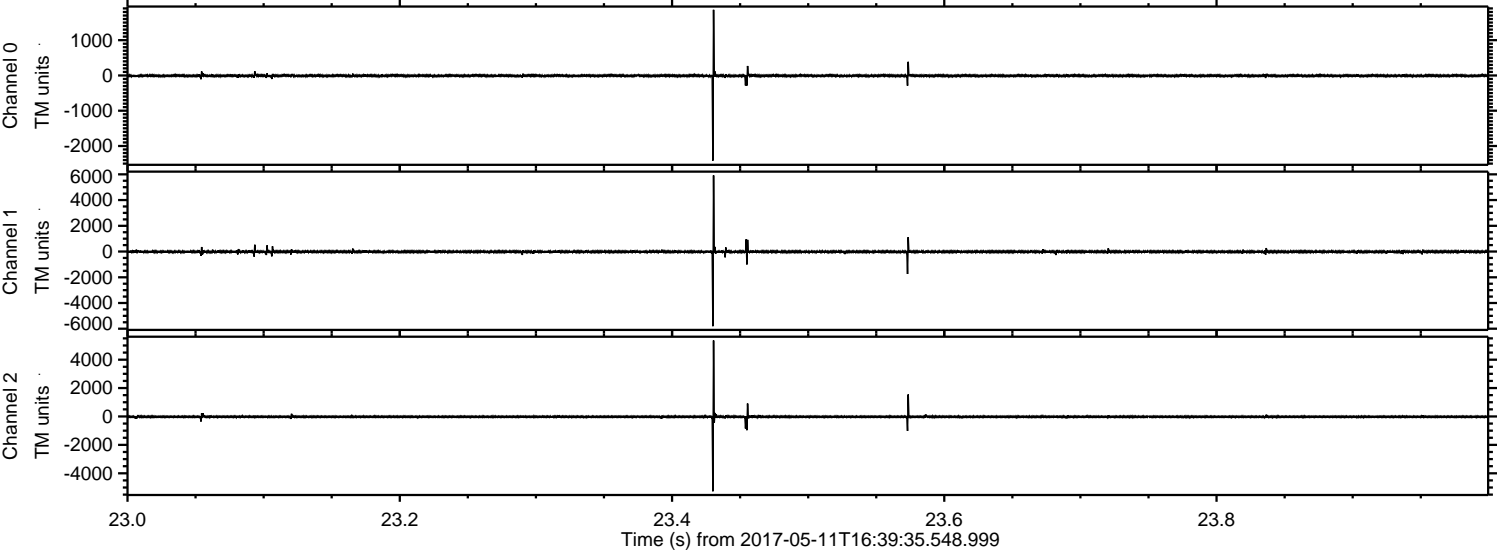
Processed Thu May 11 18:47:58 2017 by ELM ver.2012-10-06 from 001__elm20170511_163934__dat00.bin



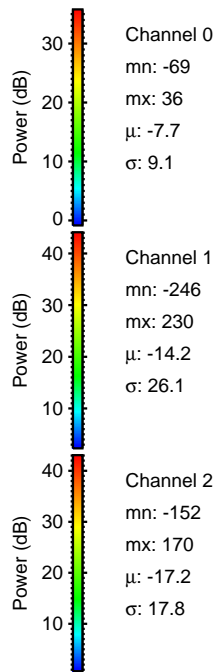
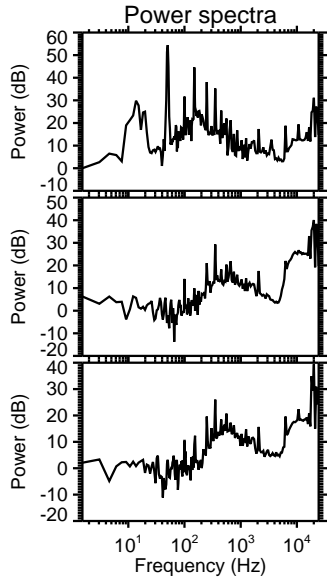
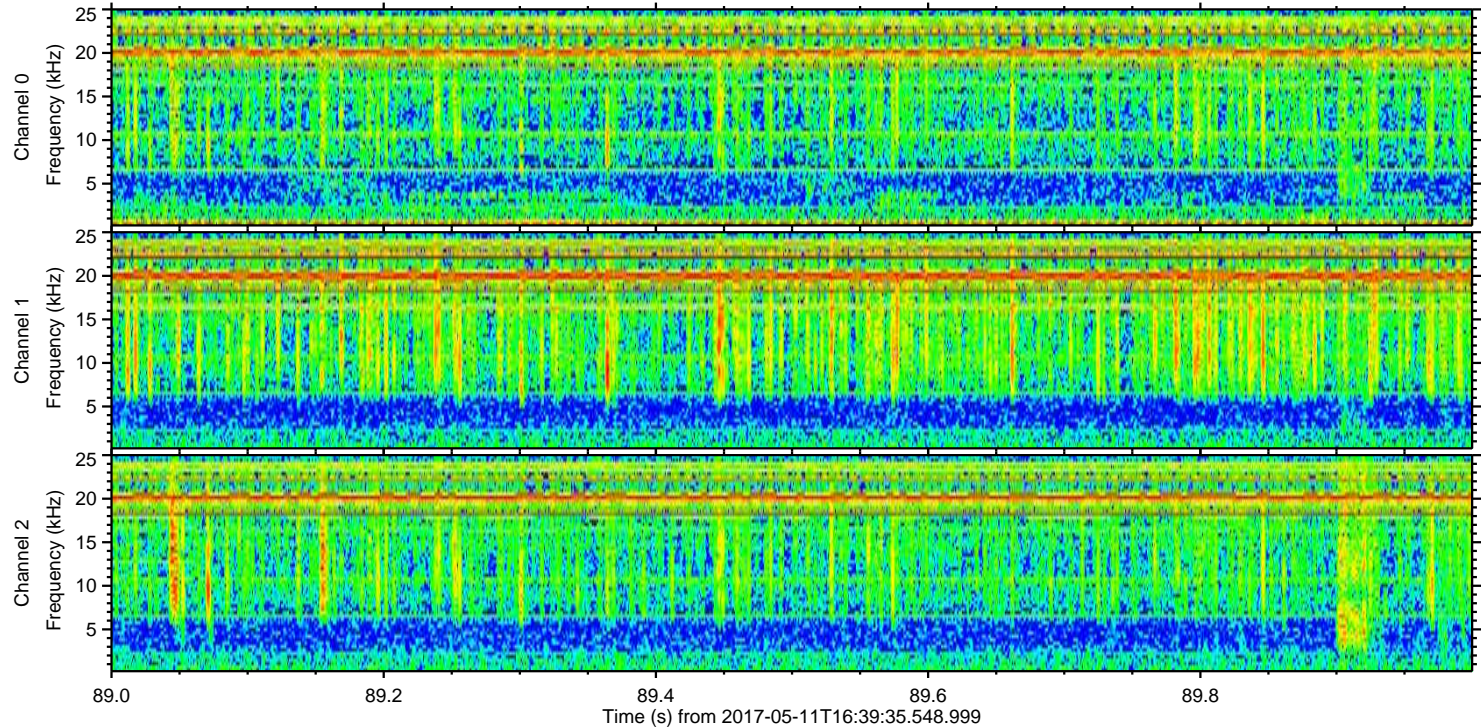
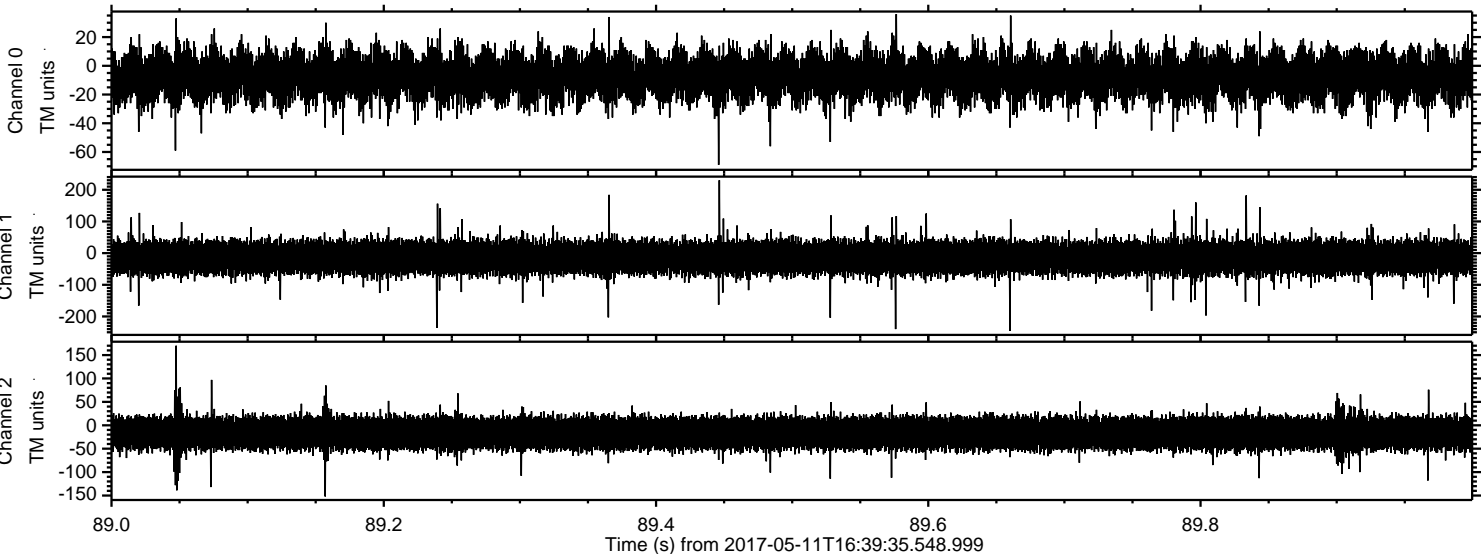
Processed Thu May 11 18:47:59 2017 by ELM ver.2012-10-06 from 001__elm20170511_163934__dat00.bin



Processed Thu May 11 18:48:00 2017 by ELM ver.2012-10-06 from 001__elm20170511_163934__dat00.bin



Processed Thu May 11 18:48:01 2017 by ELM ver.2012-10-06 from 001__elm20170511_163934__dat00.bin



Power spectra

Channel 0

mn: -69
mx: 36
 μ : -7.7
 σ : 9.1

Channel 1

mn: -246
mx: 230
 μ : -14.2
 σ : 26.1

Channel 2

mn: -152
mx: 170
 μ : -17.2
 σ : 17.8