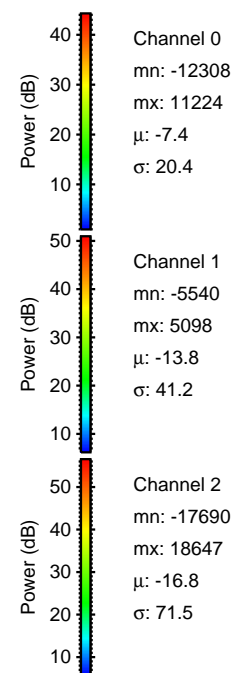
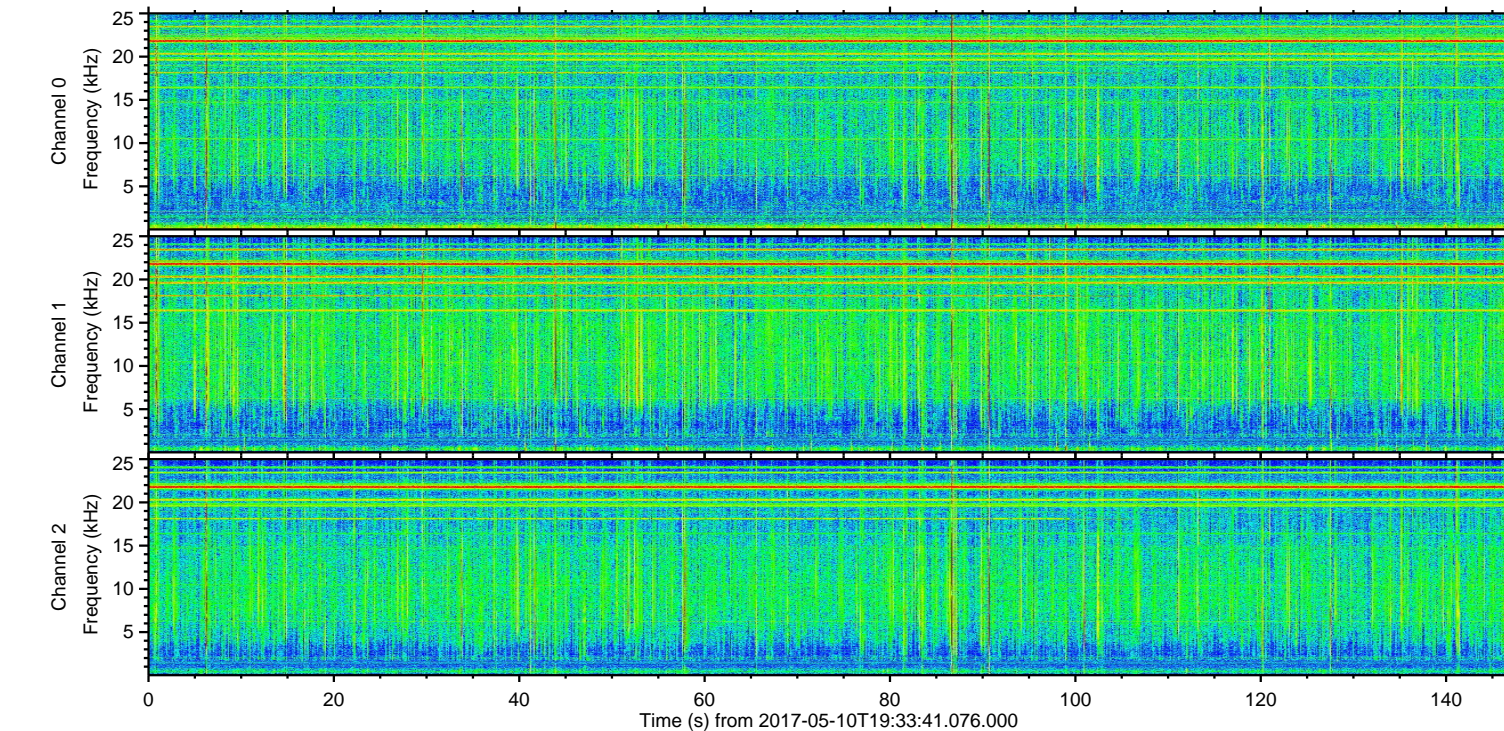
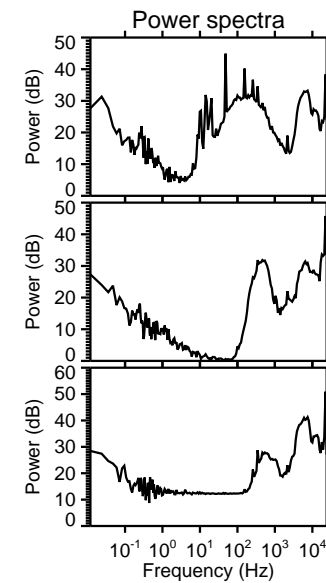
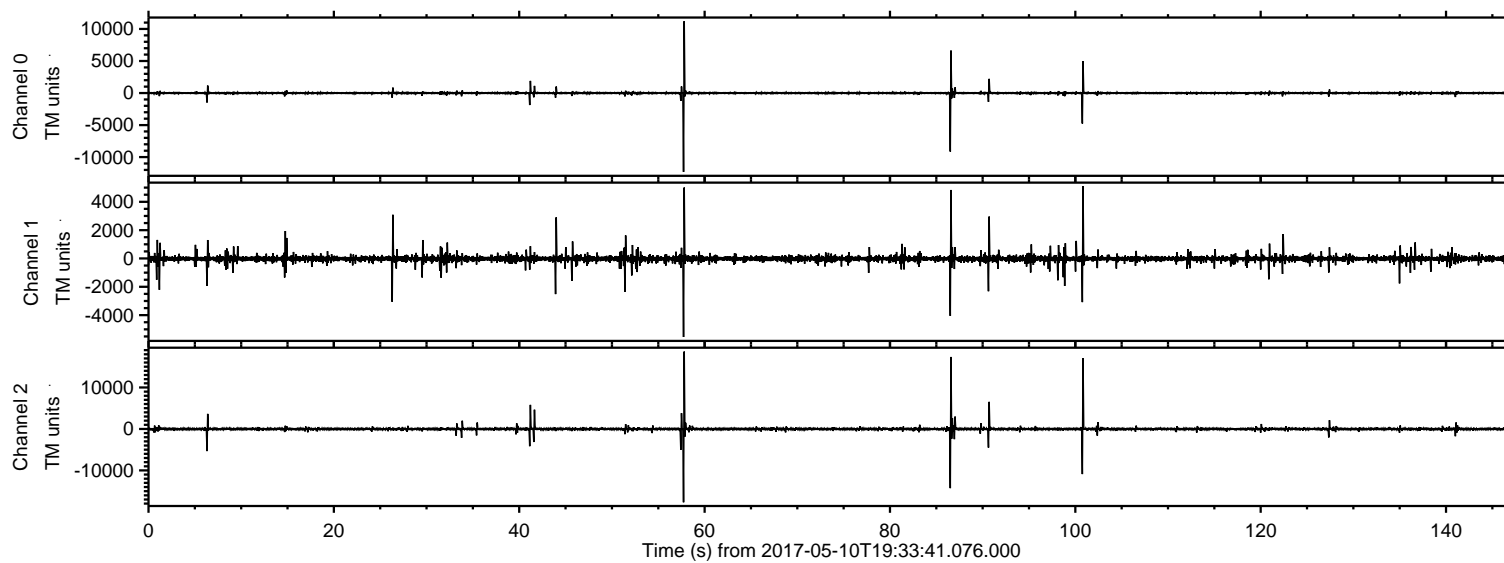


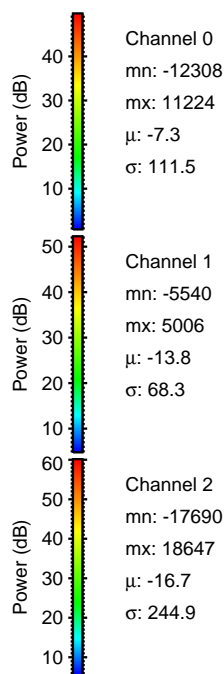
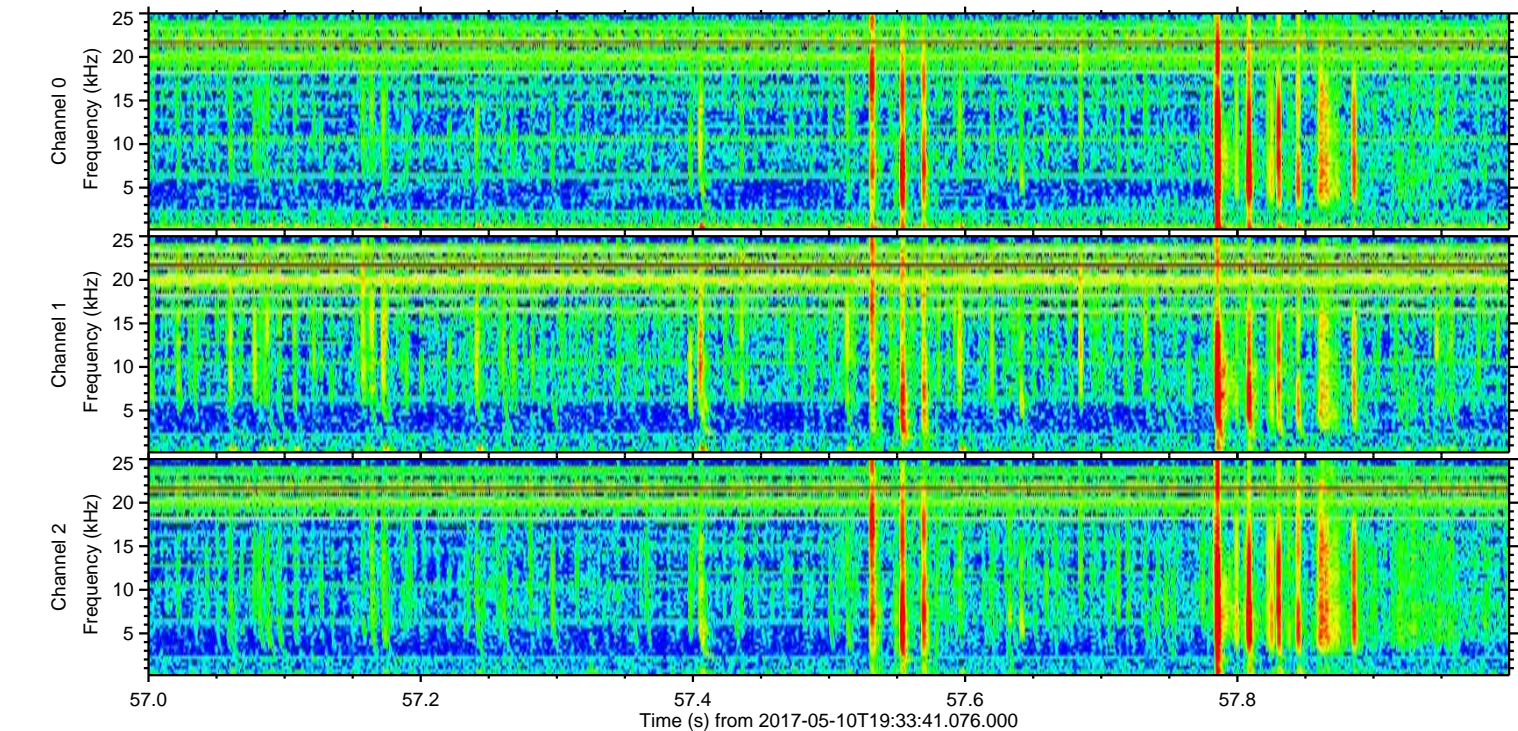
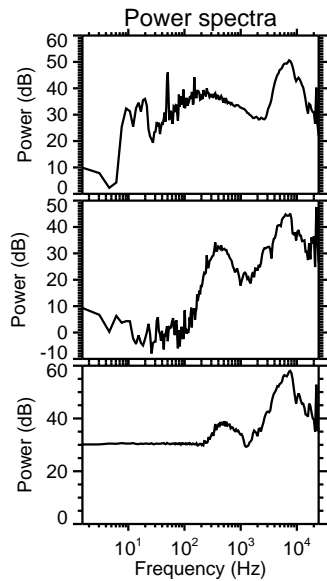
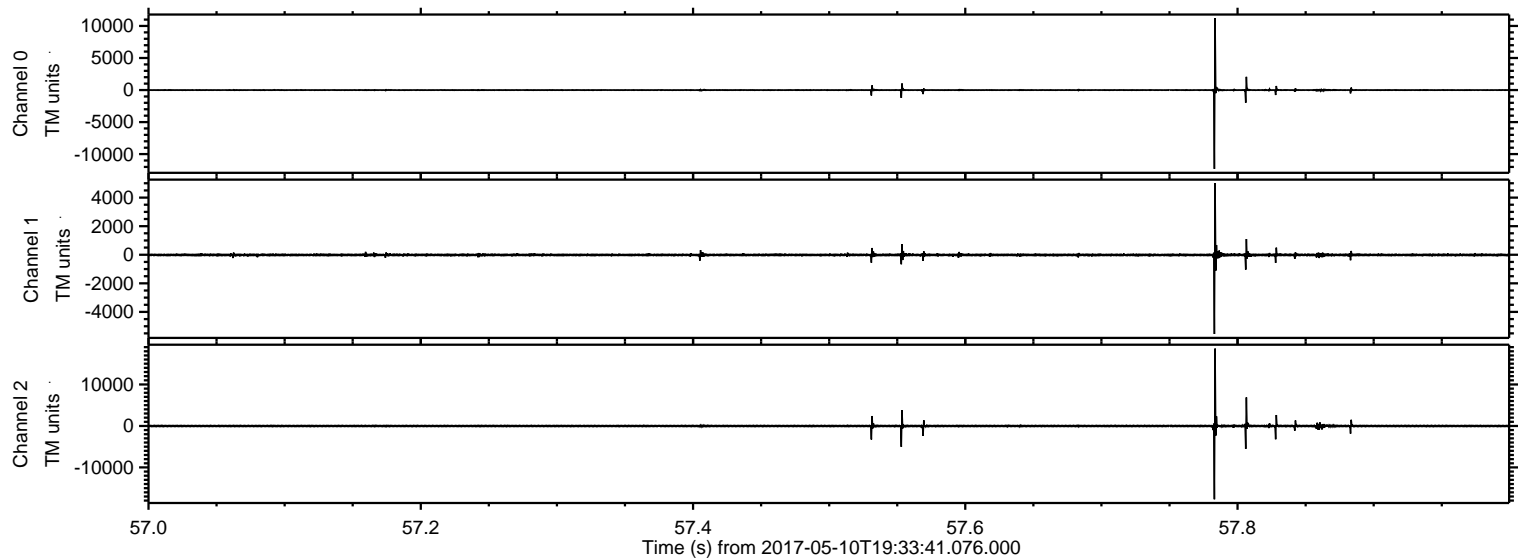
ELMAVAN 3D WAVEFORMS (Measured data sampled at 50 kHz) 51000 packets of 144 samples from 2017-05-10T19:33:41.076.000.

Processed Wed May 10 21:41:06 2017 by ELM ver.2012-10-06 from 001__elm20170510_193340__dat00.bin



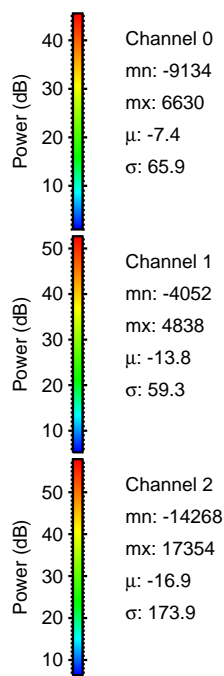
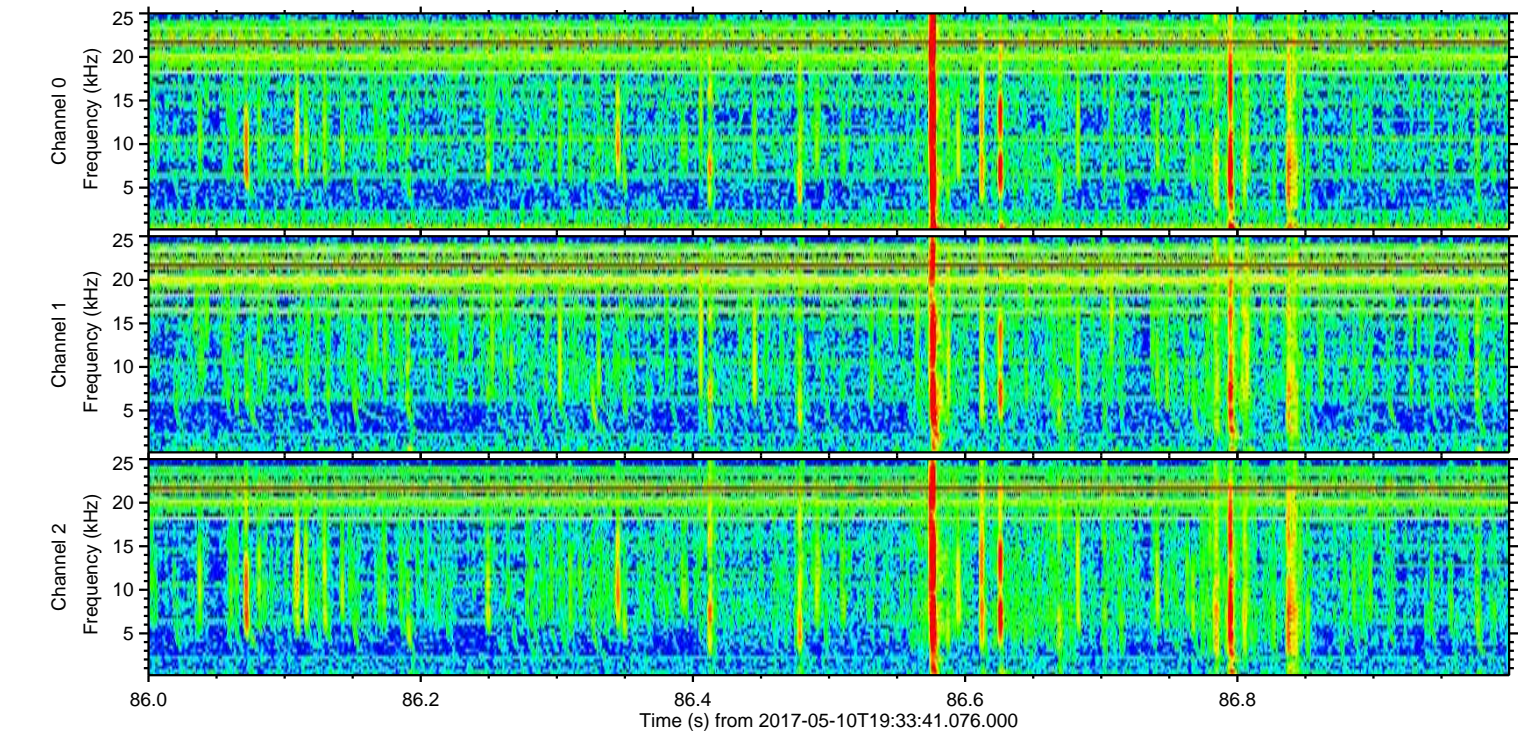
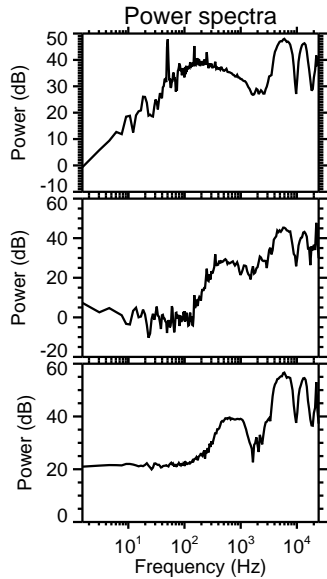
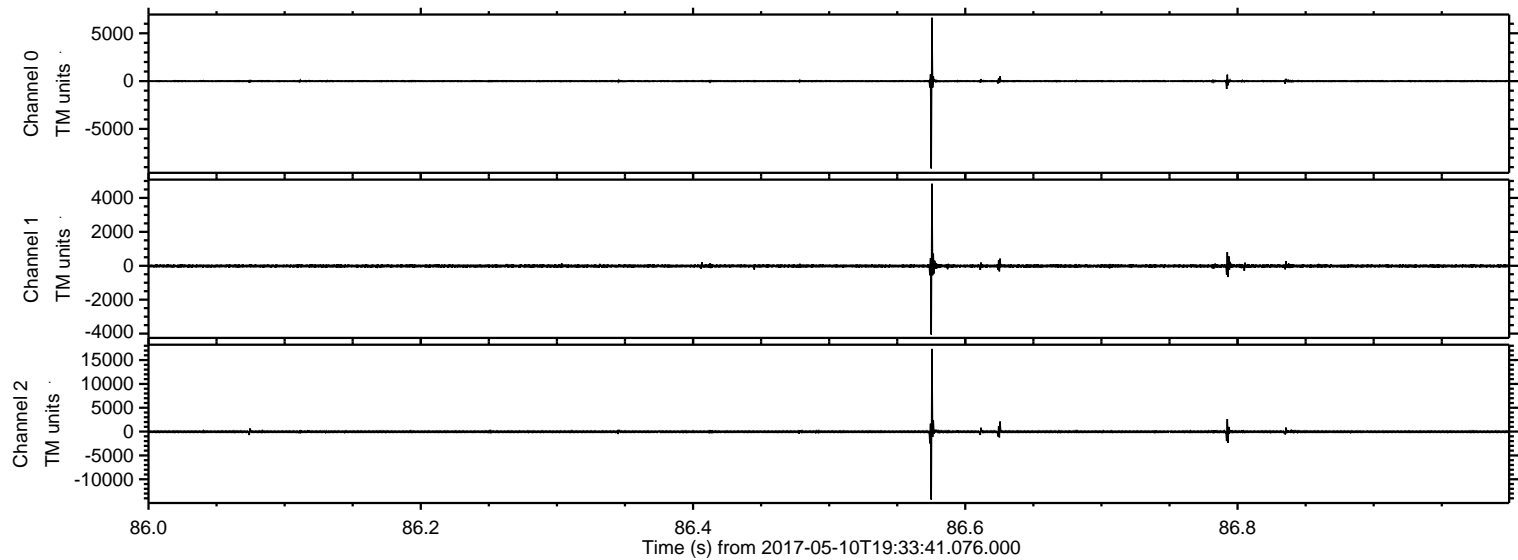
ELMAVAN 3D WAVEFORMS (Measured data sampled at 50 kHz) 51000 packets of 144 samples from 2017-05-10T19:33:41.076.000. Part 58/147

Processed Wed May 10 21:41:19 2017 by ELM ver.2012-10-06 from 001__elm20170510_193340__dat00.bin



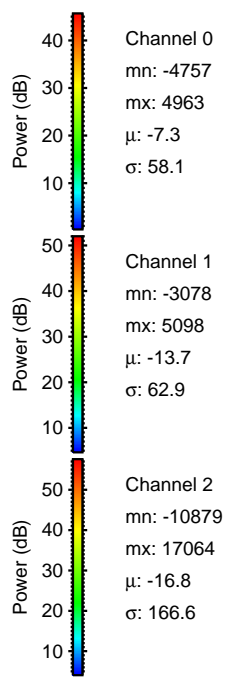
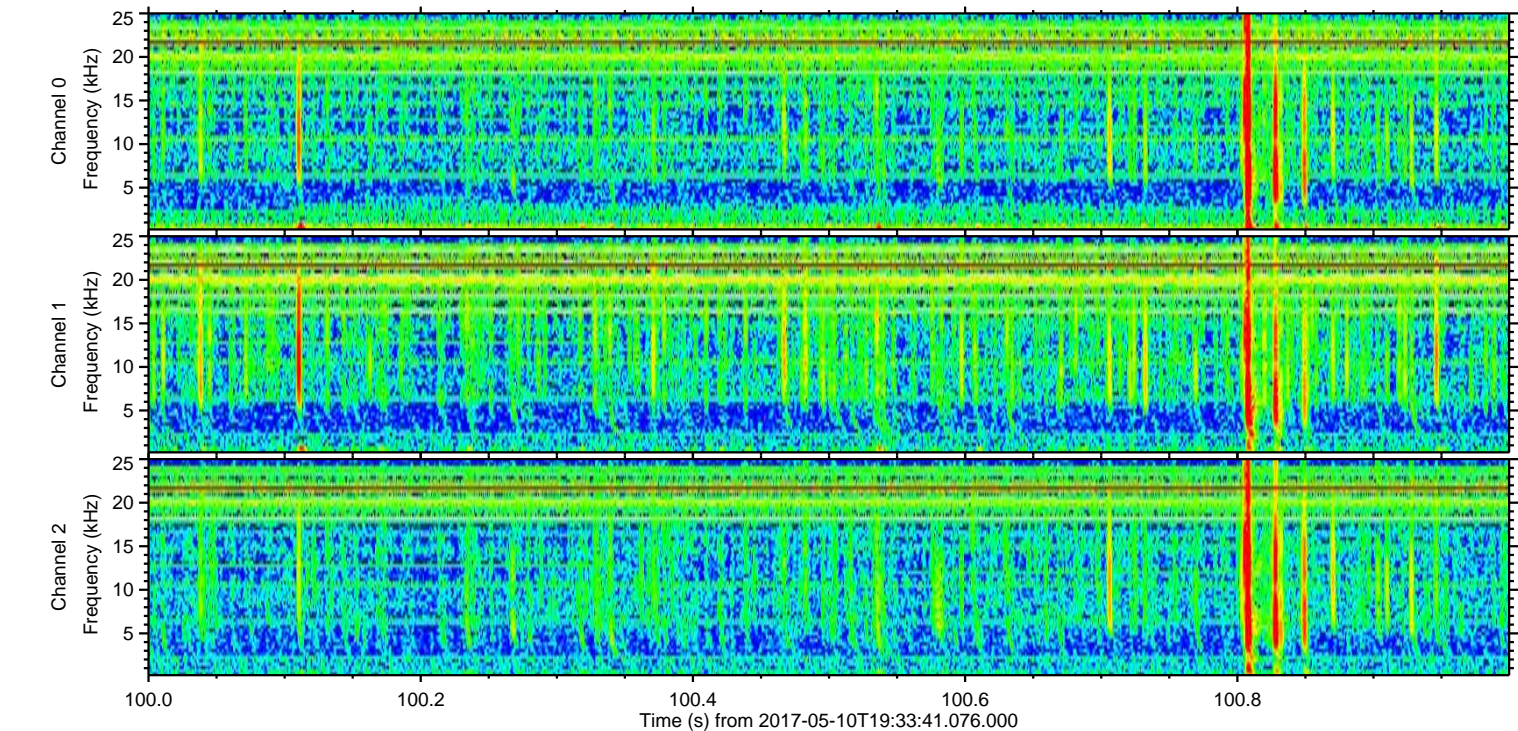
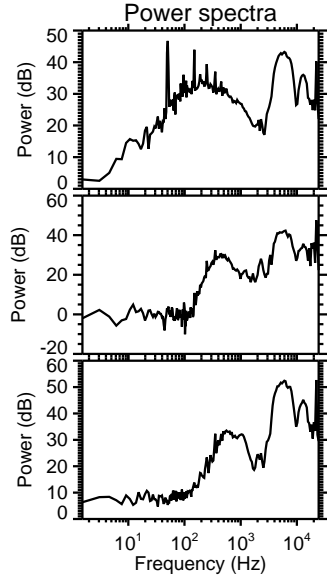
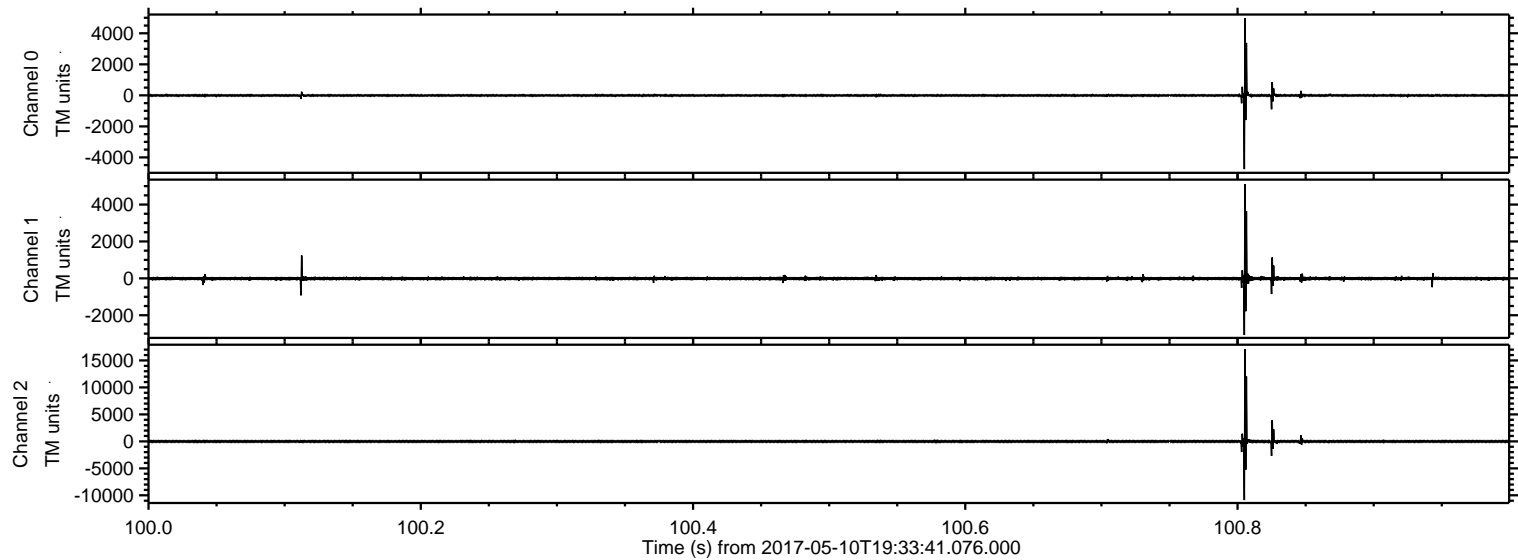
ELMAVAN 3D WAVEFORMS (Measured data sampled at 50 kHz) 51000 packets of 144 samples from 2017-05-10T19:33:41.076.000. Part 87/147

Processed Wed May 10 21:41:20 2017 by ELM ver.2012-10-06 from 001__elm20170510_193340__dat00.bin

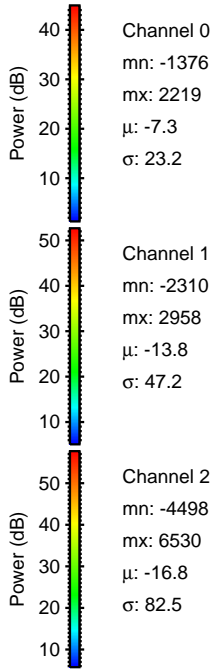
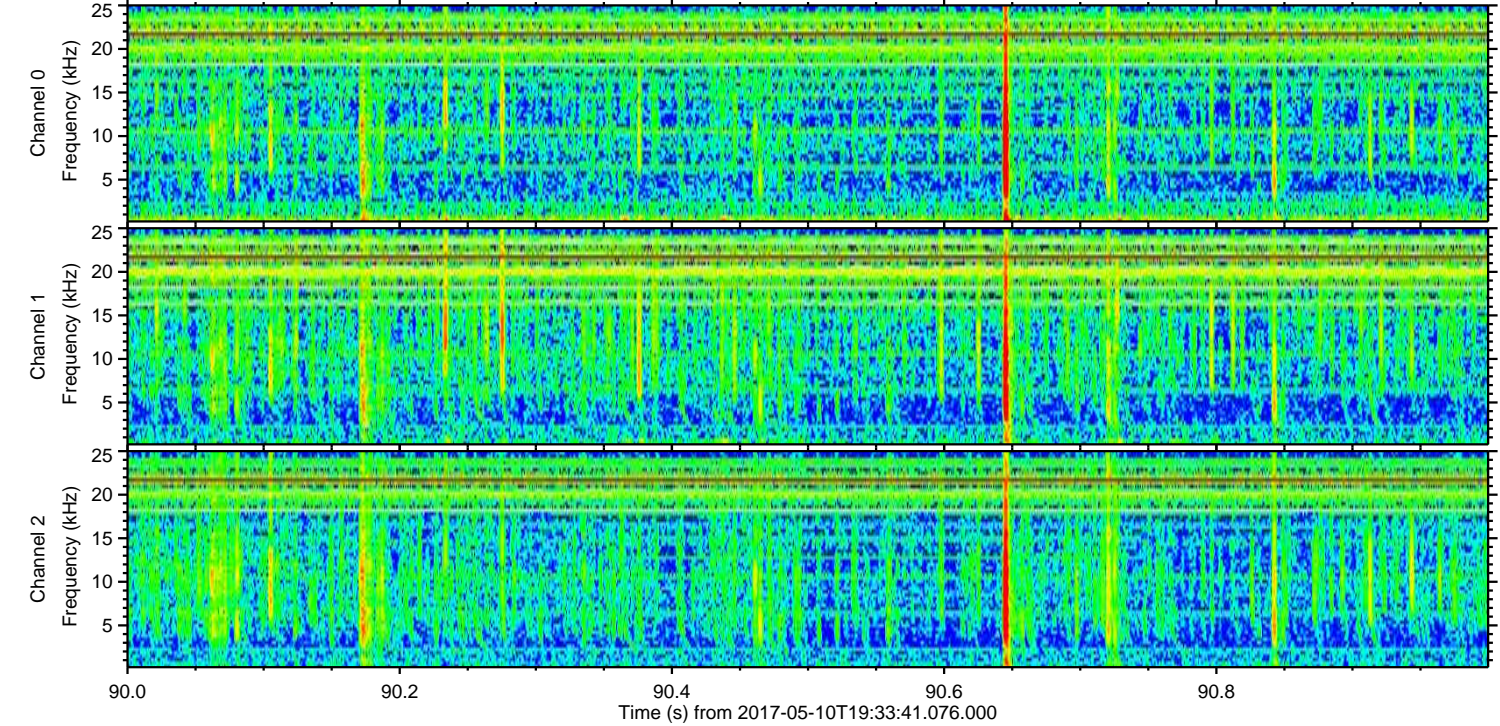
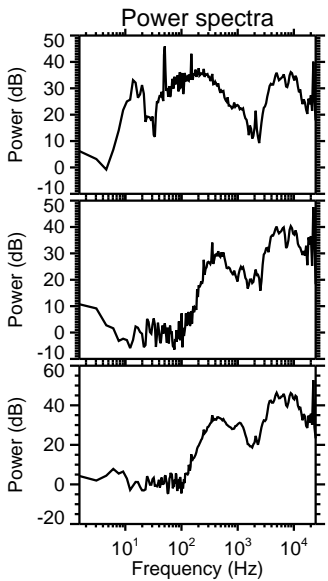
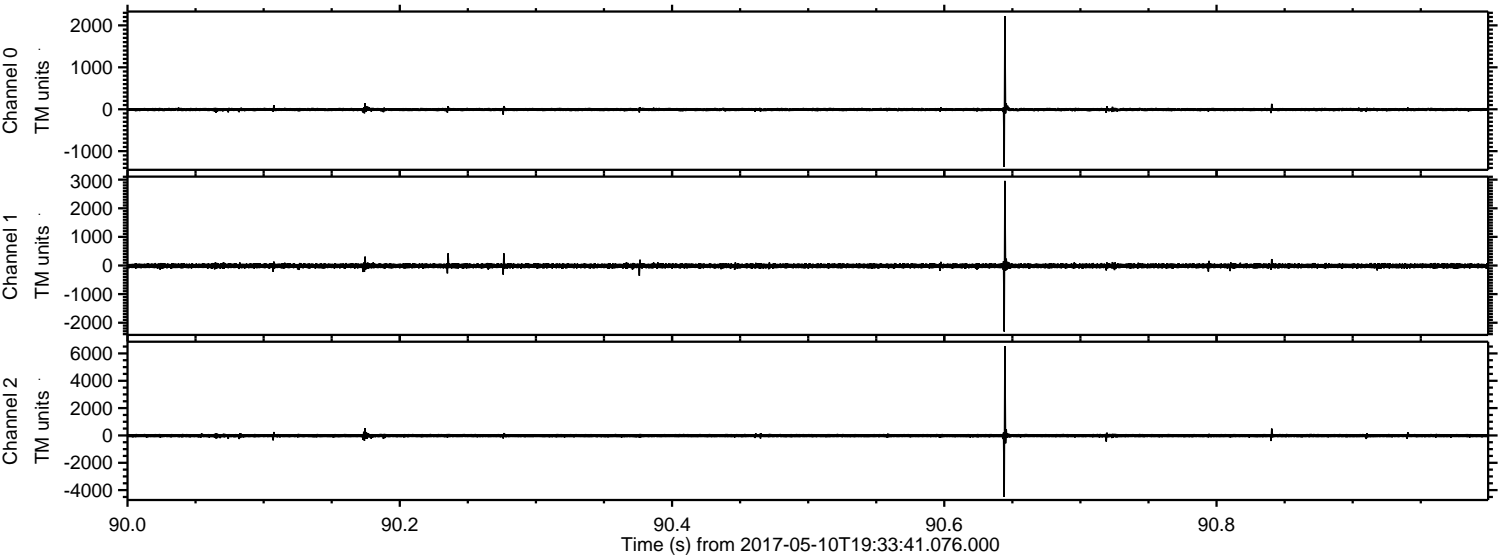


ELMAVAN 3D WAVEFORMS (Measured data sampled at 50 kHz) 51000 packets of 144 samples from 2017-05-10T19:33:41.076.000. Part 101/147

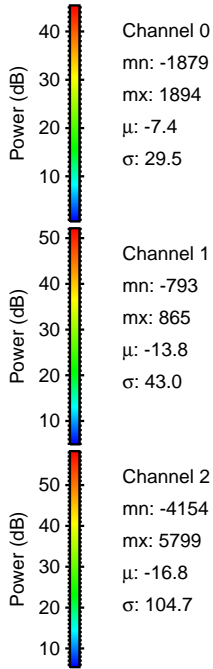
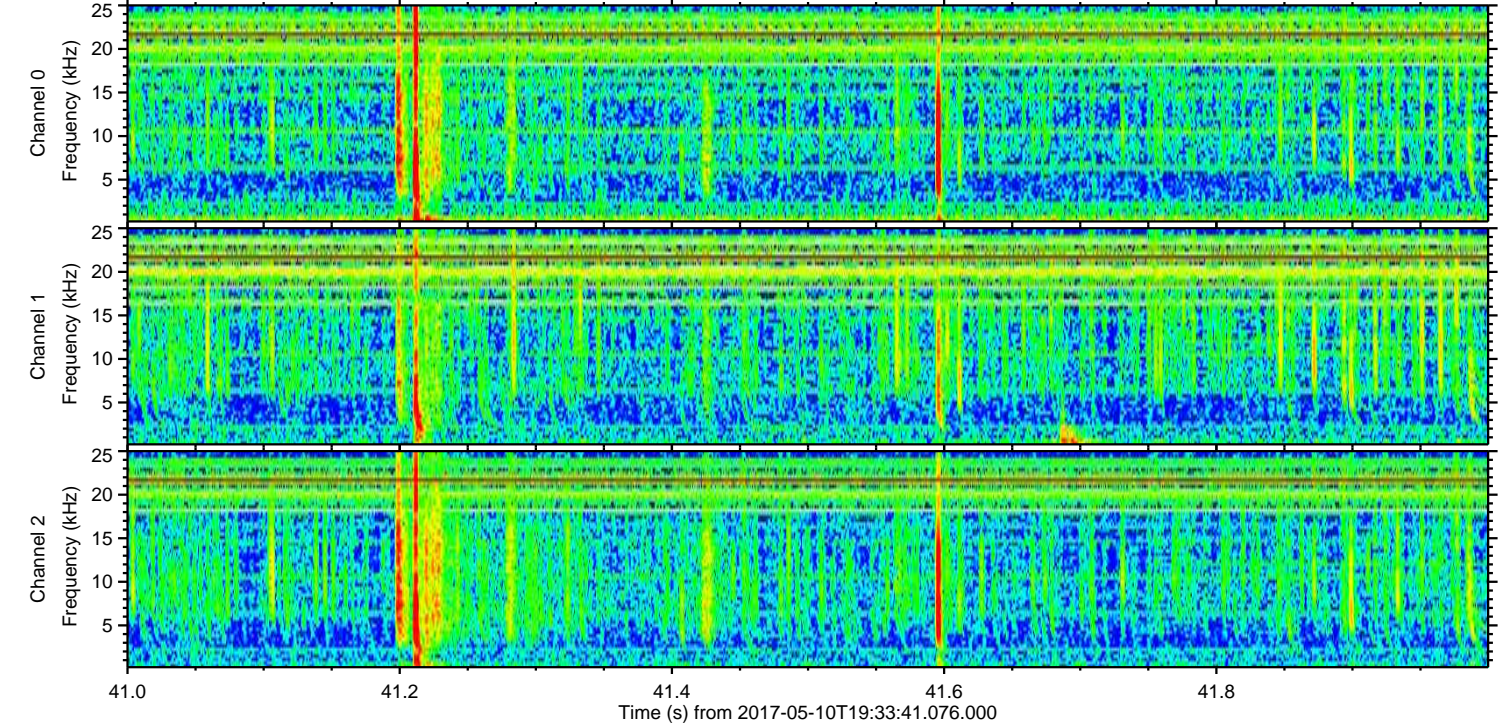
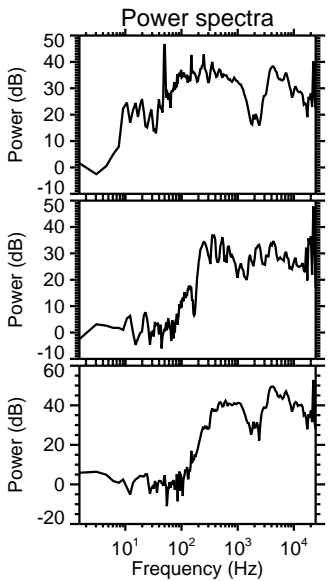
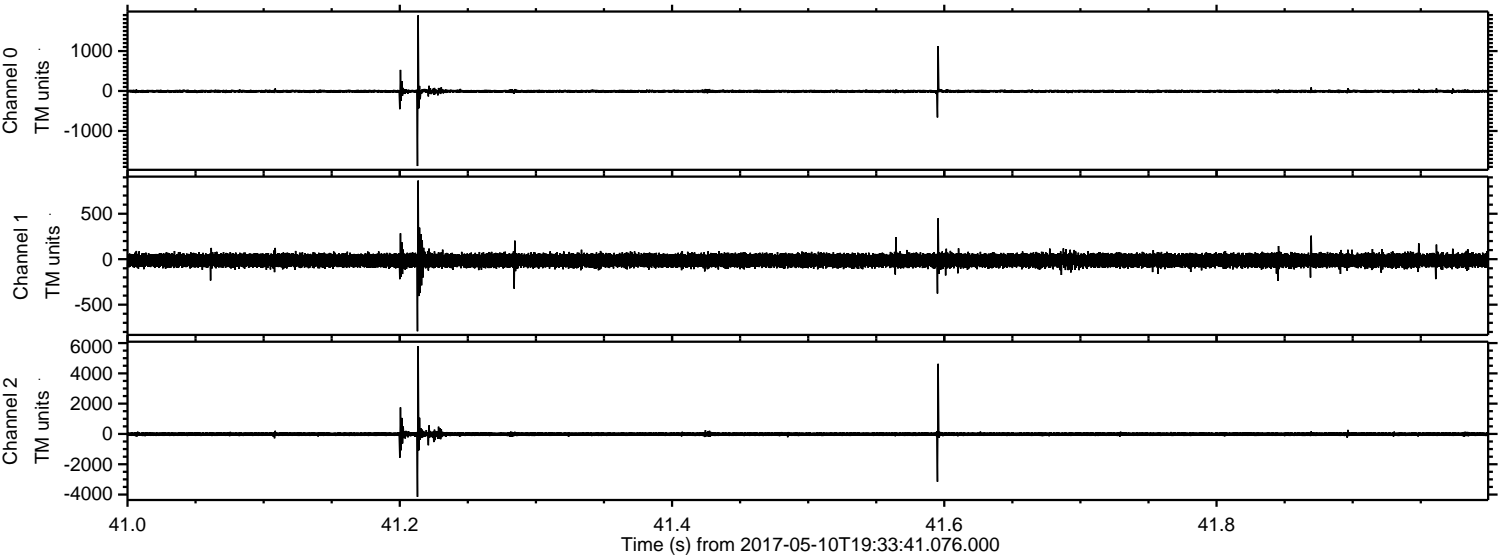
Processed Wed May 10 21:41:21 2017 by ELM ver.2012-10-06 from 001__elm20170510_193340__dat00.bin



Processed Wed May 10 21:41:22 2017 by ELM ver.2012-10-06 from 001__elm20170510_193340__dat00.bin

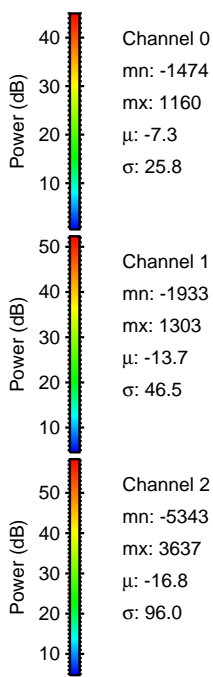
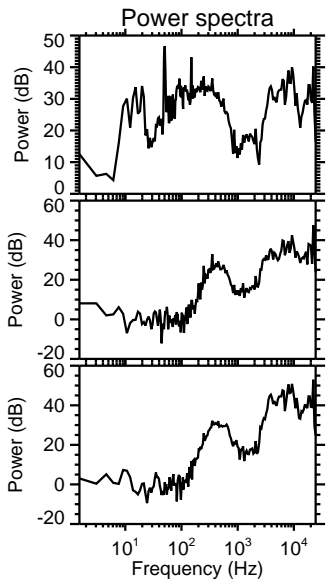
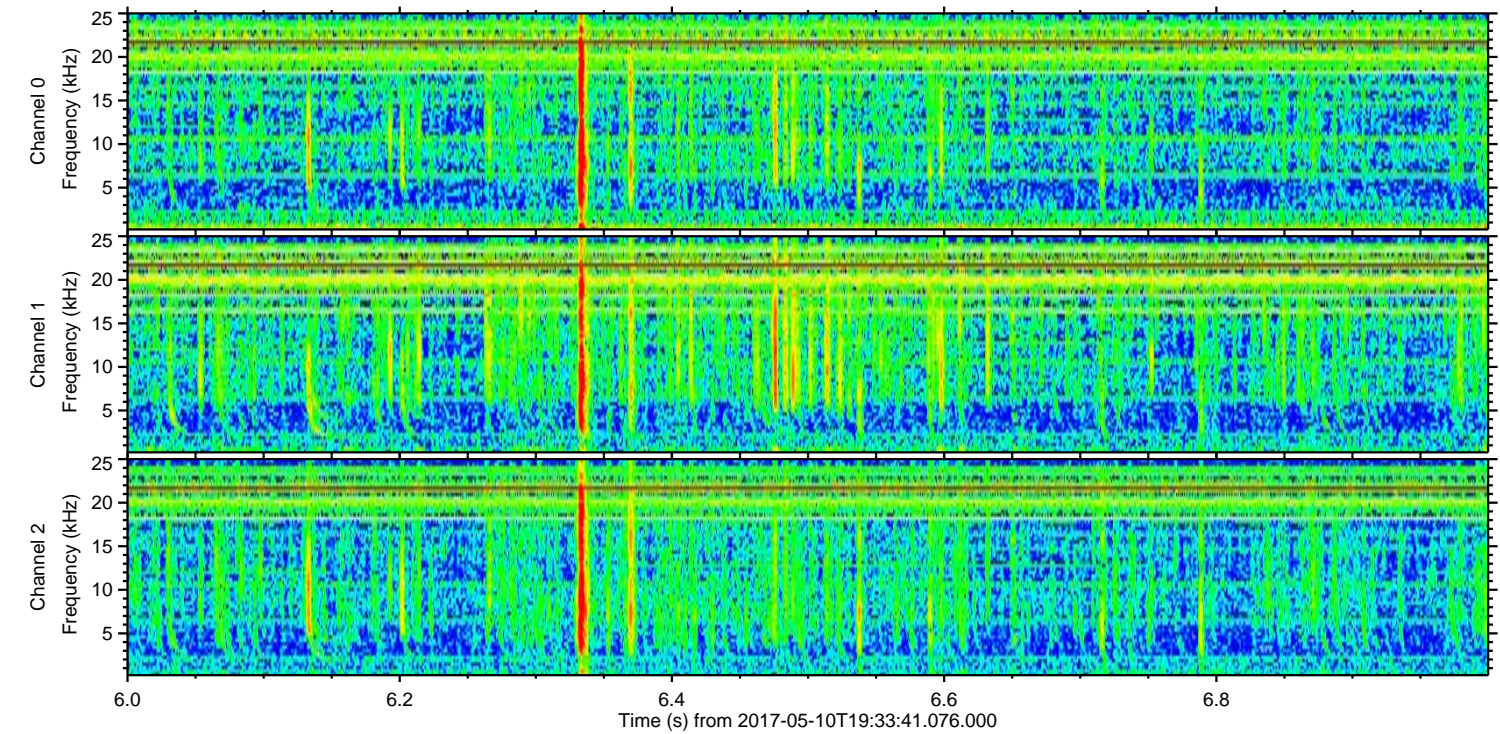
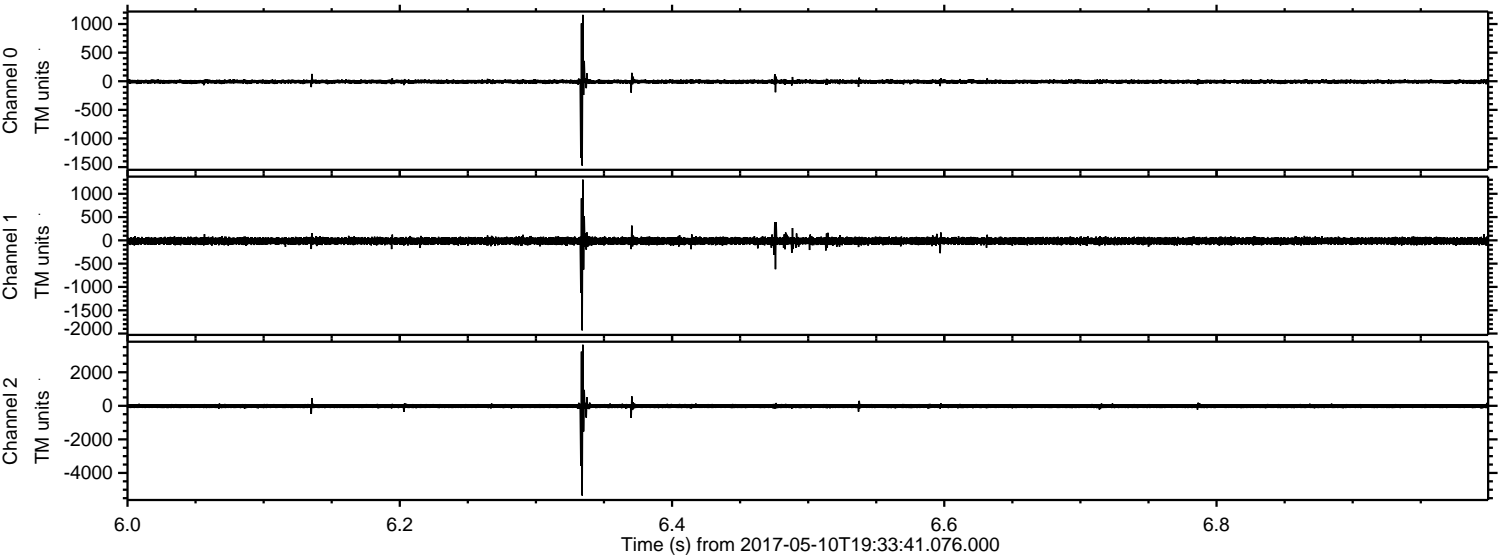


Processed Wed May 10 21:41:23 2017 by ELM ver.2012-10-06 from 001__elm20170510_193340__dat00.bin

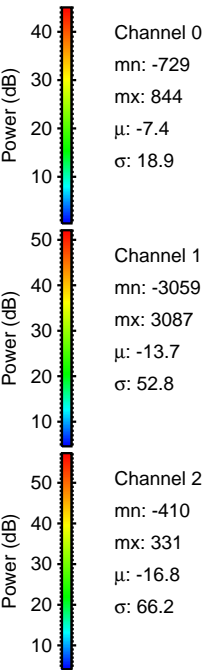
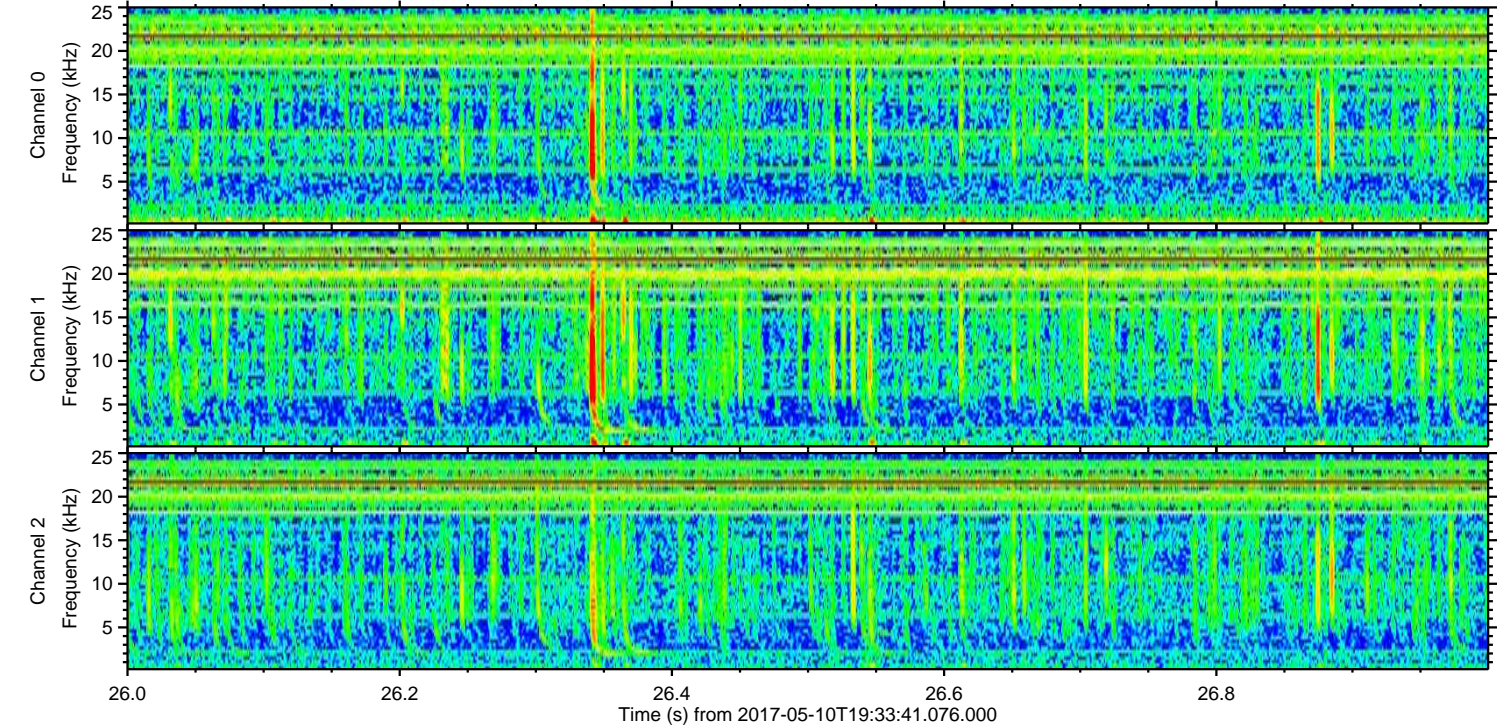
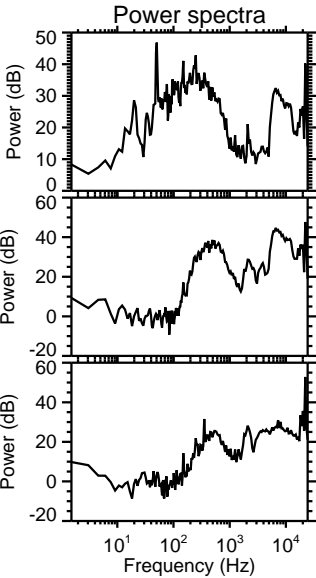
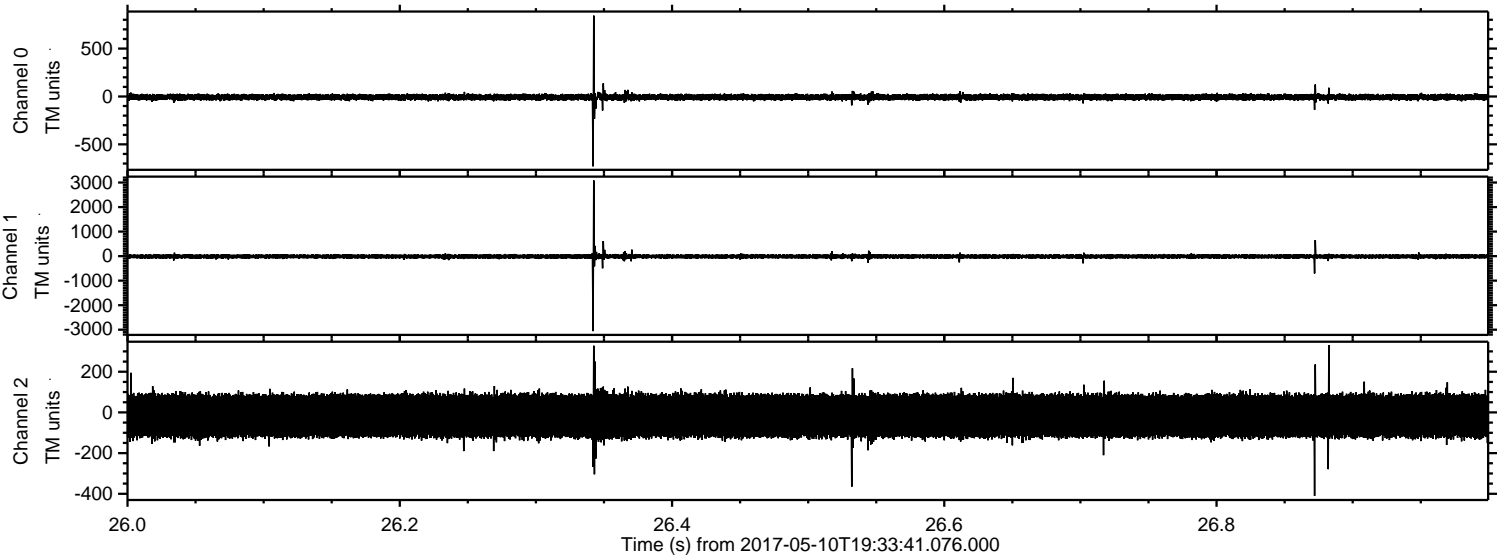


ELMAVAN 3D WAVEFORMS (Measured data sampled at 50 kHz) 51000 packets of 144 samples from 2017-05-10T19:33:41.076.000. Part 7/147

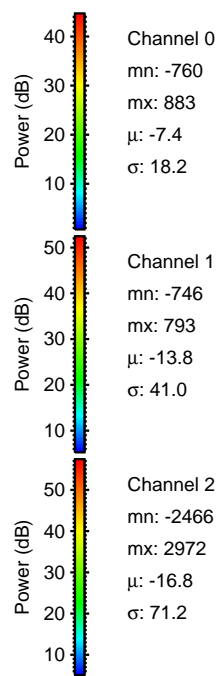
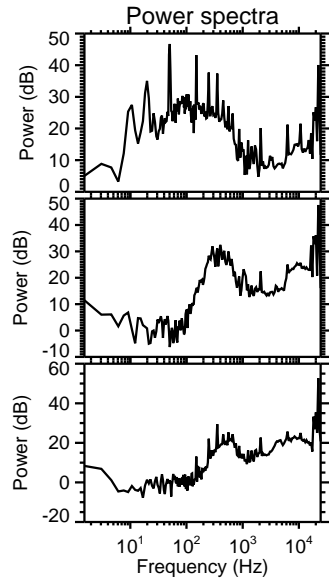
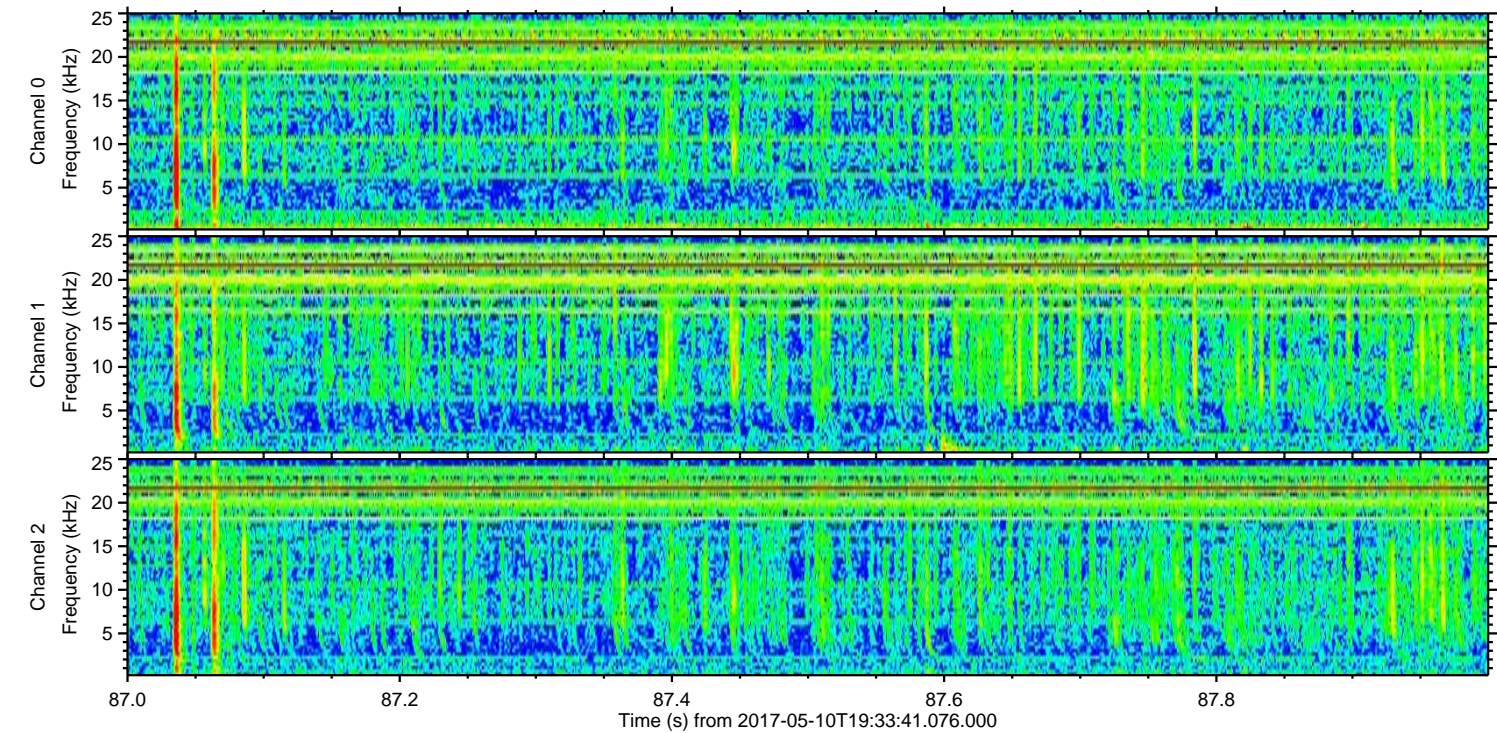
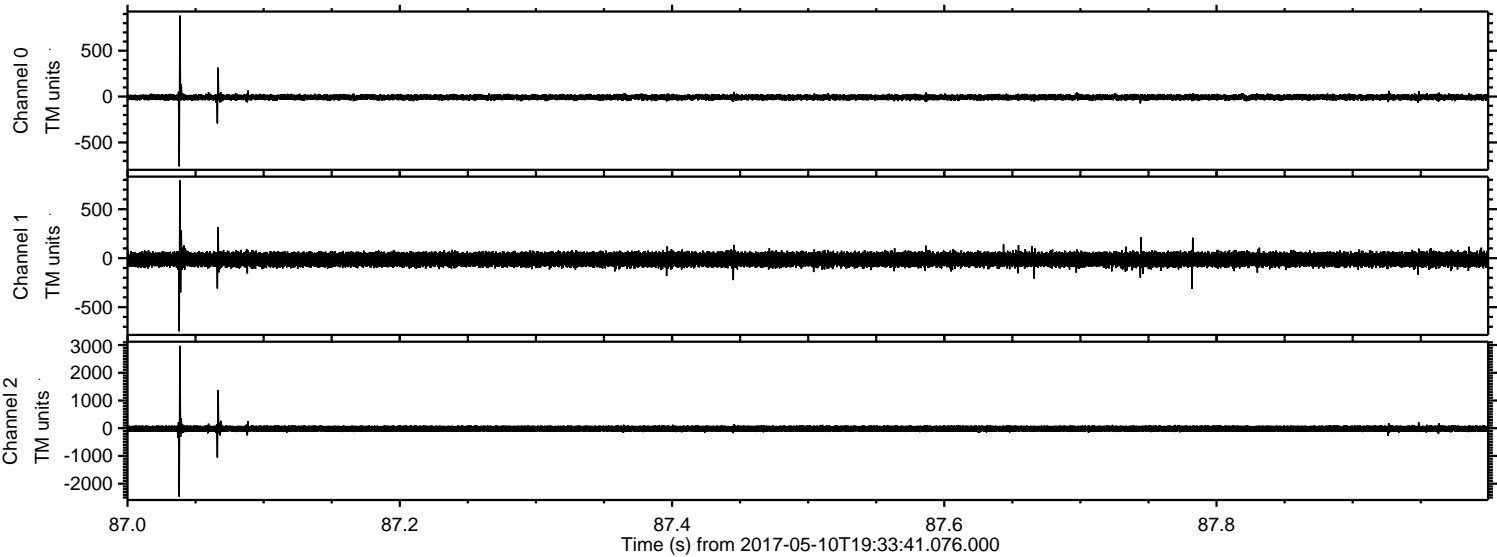
Processed Wed May 10 21:41:24 2017 by ELM ver.2012-10-06 from 001__elm20170510_193340__dat00.bin



Processed Wed May 10 21:41:25 2017 by ELM ver.2012-10-06 from 001__elm20170510_193340__dat00.bin



Processed Wed May 10 21:41:26 2017 by ELM ver.2012-10-06 from 001__elm20170510_193340__dat00.bin



Channel 0
mn: -760
mx: 883
 μ : -7.4
 σ : 18.2

Channel 1
mn: -746
mx: 793
 μ : -13.8
 σ : 41.0

Channel 2
mn: -2466
mx: 2972
 μ : -16.8
 σ : 71.2

Processed Wed May 10 21:41:27 2017 by ELM ver.2012-10-06 from 001__elm20170510_193340__dat00.bin

