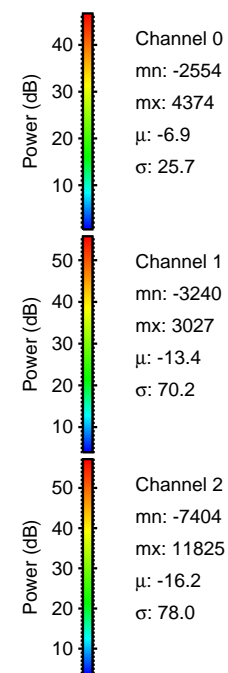
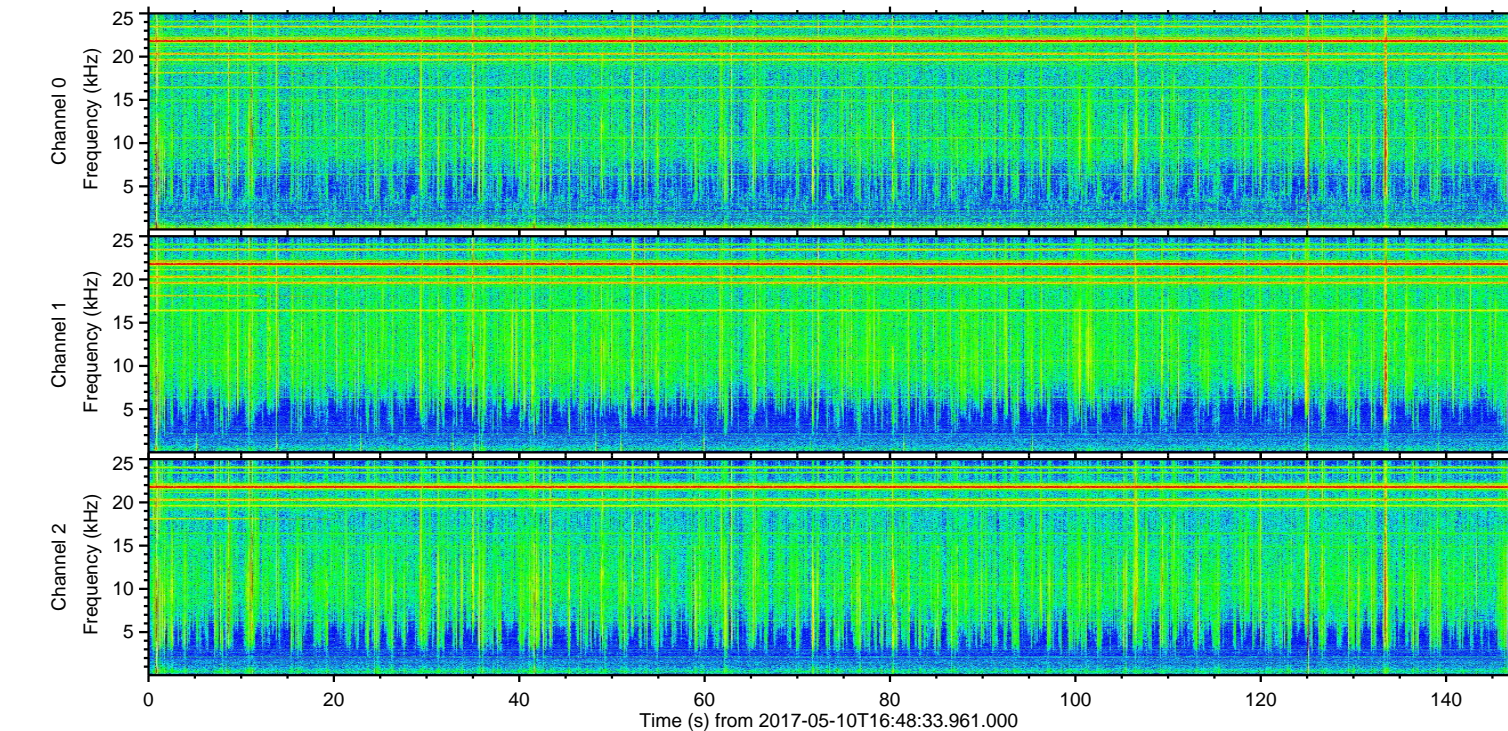
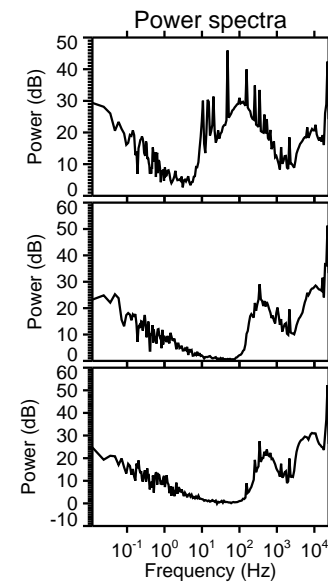
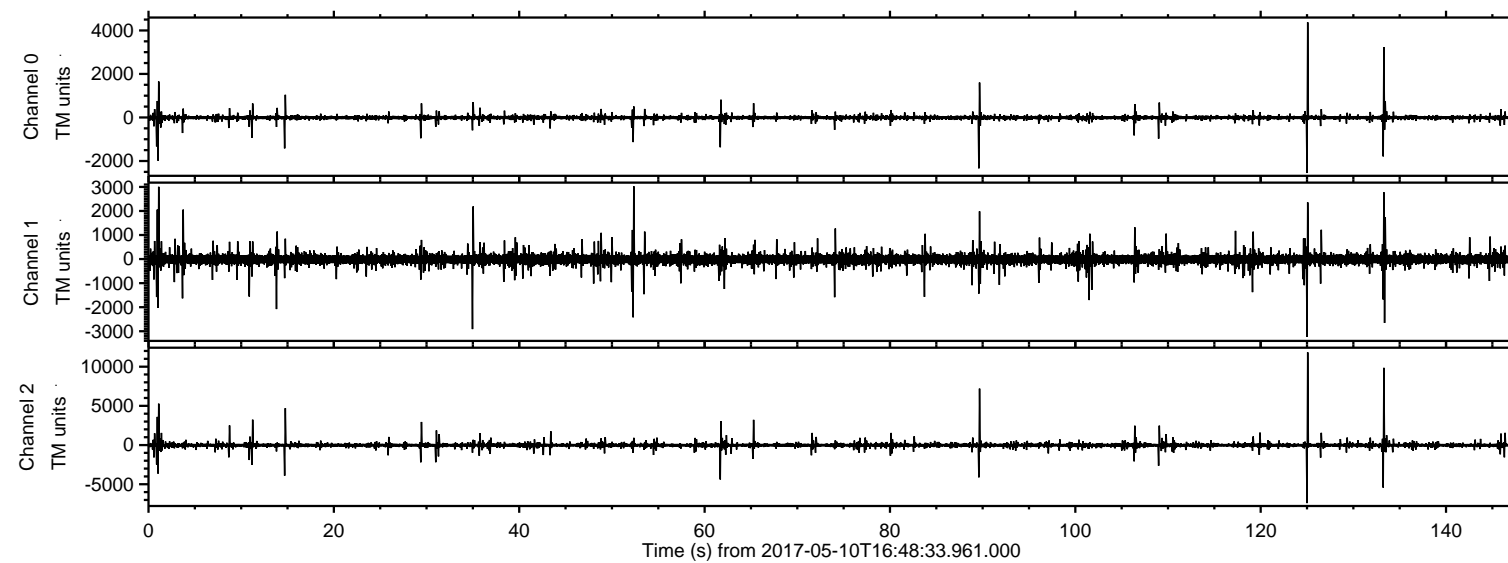


# ELMAVAN 3D WAVEFORMS (Measured data sampled at 50 kHz) 51000 packets of 144 samples from 2017-05-10T16:48:33.961.000.

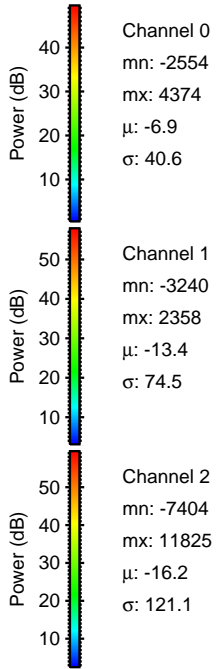
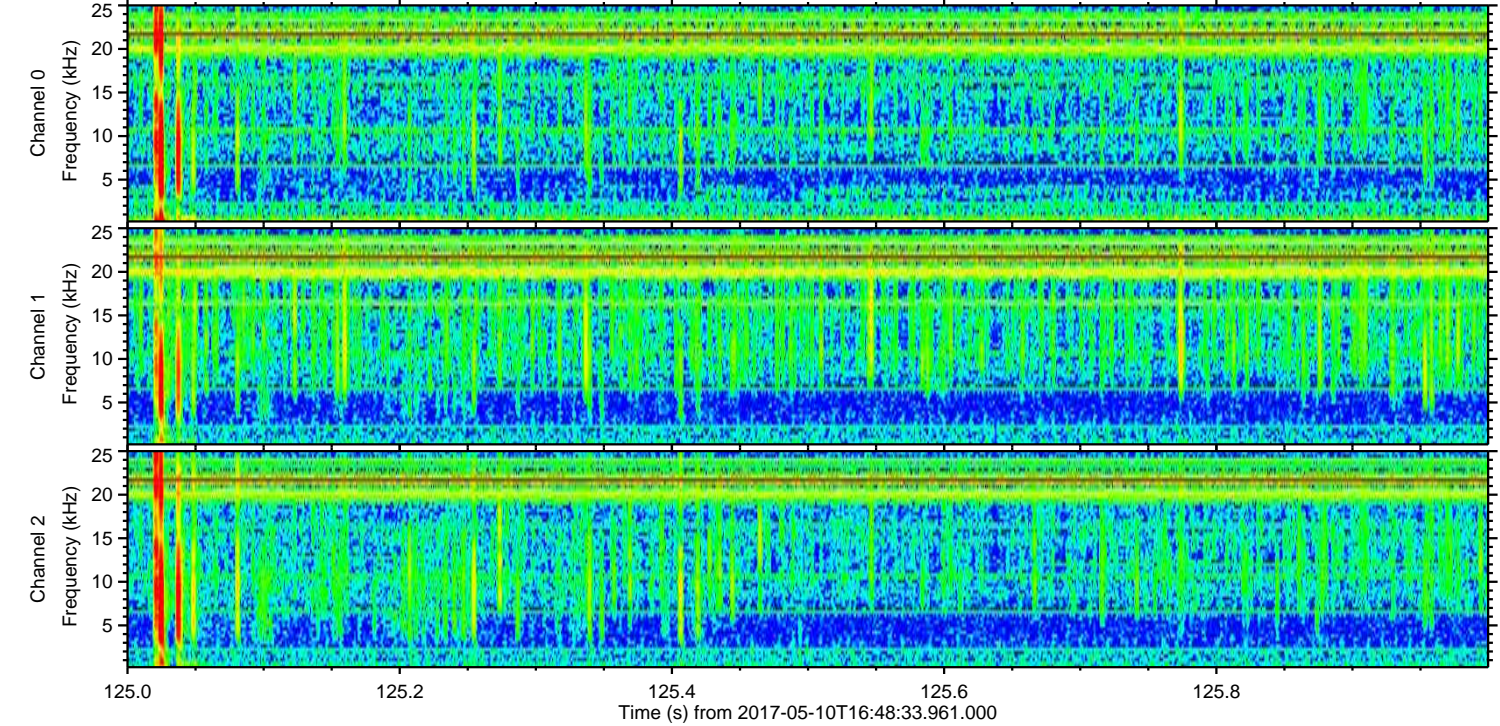
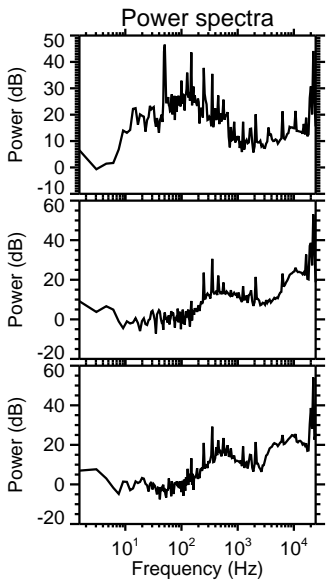
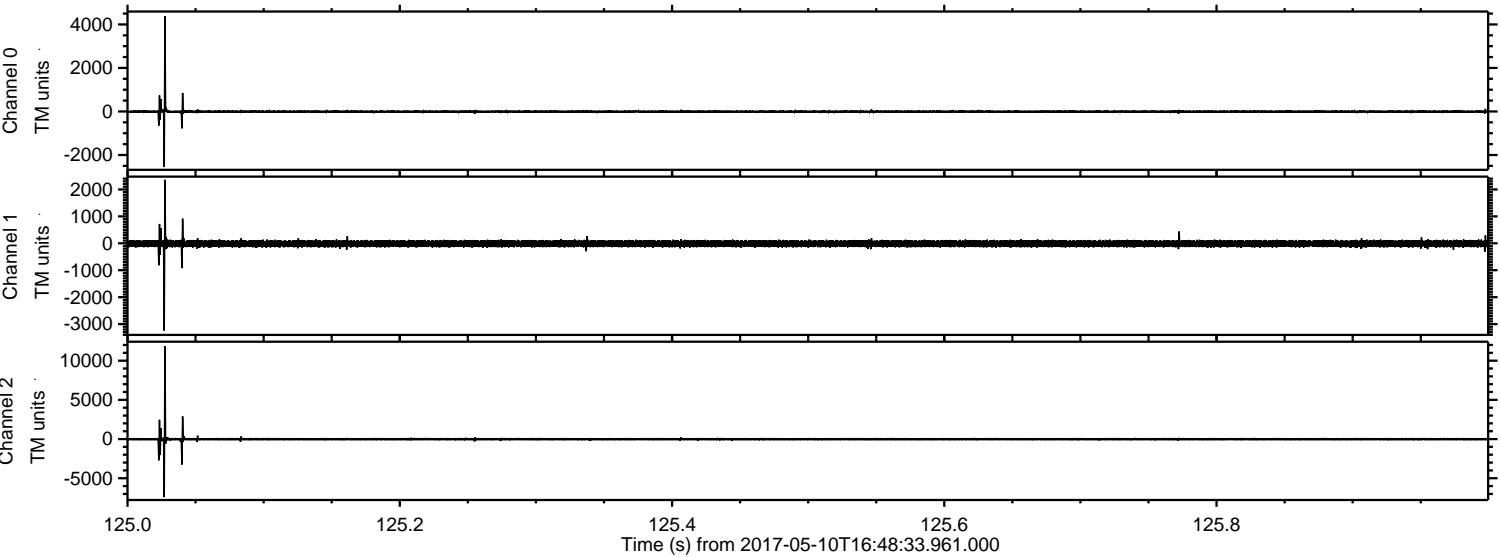
Processed Wed May 10 18:55:57 2017 by ELM ver.2012-10-06 from 001\_\_elm20170510\_164832\_\_dat00.bin





ELMAVAN 3D WAVEFORMS (Measured data sampled at 50 kHz) 51000 packets of 144 samples from 2017-05-10T16:48:33.961.000. Part 126/147

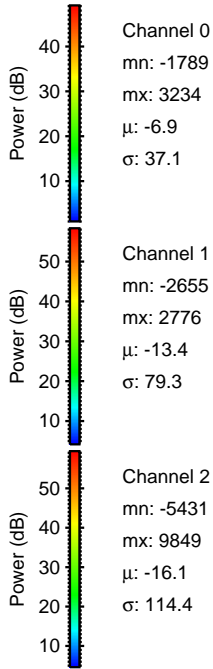
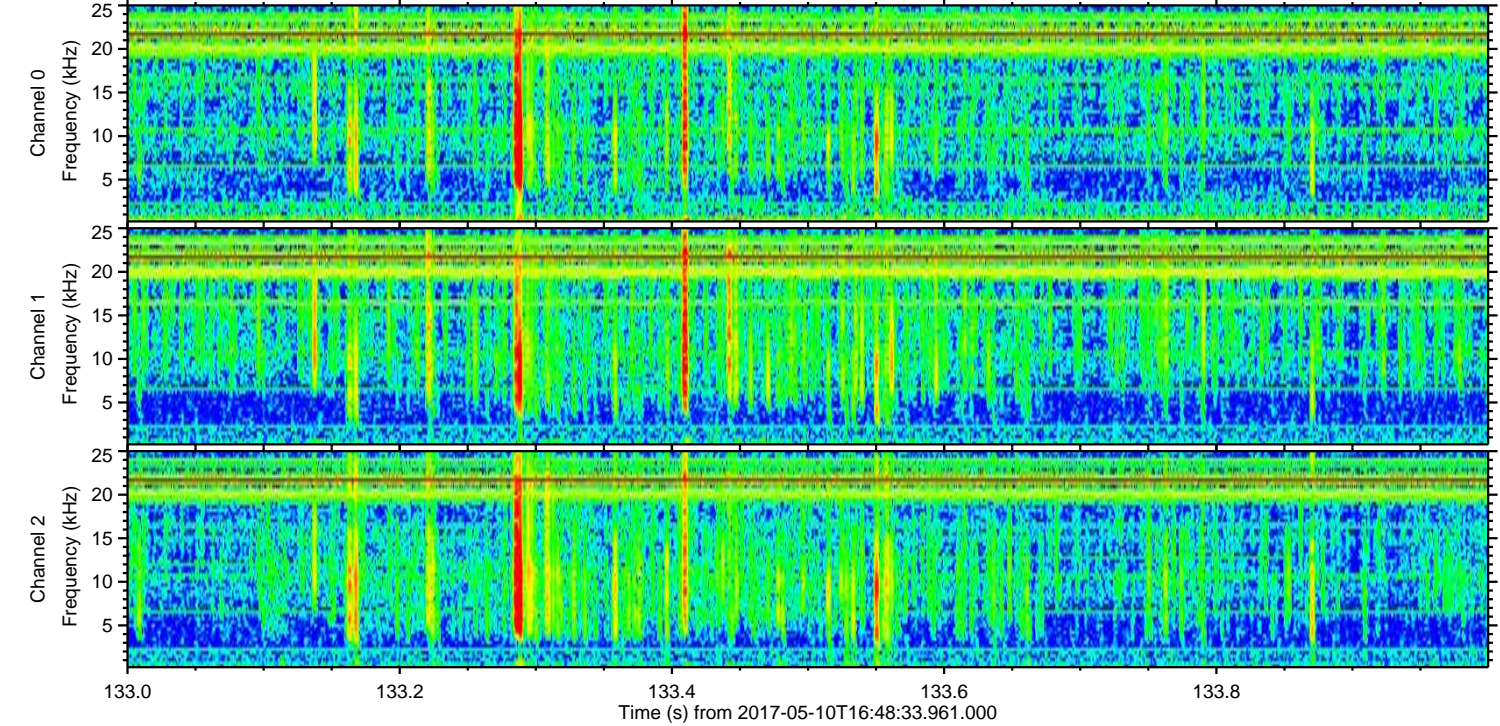
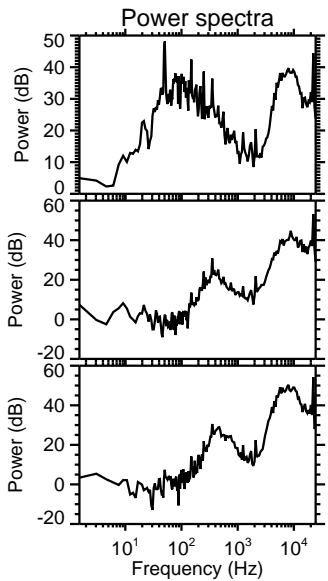
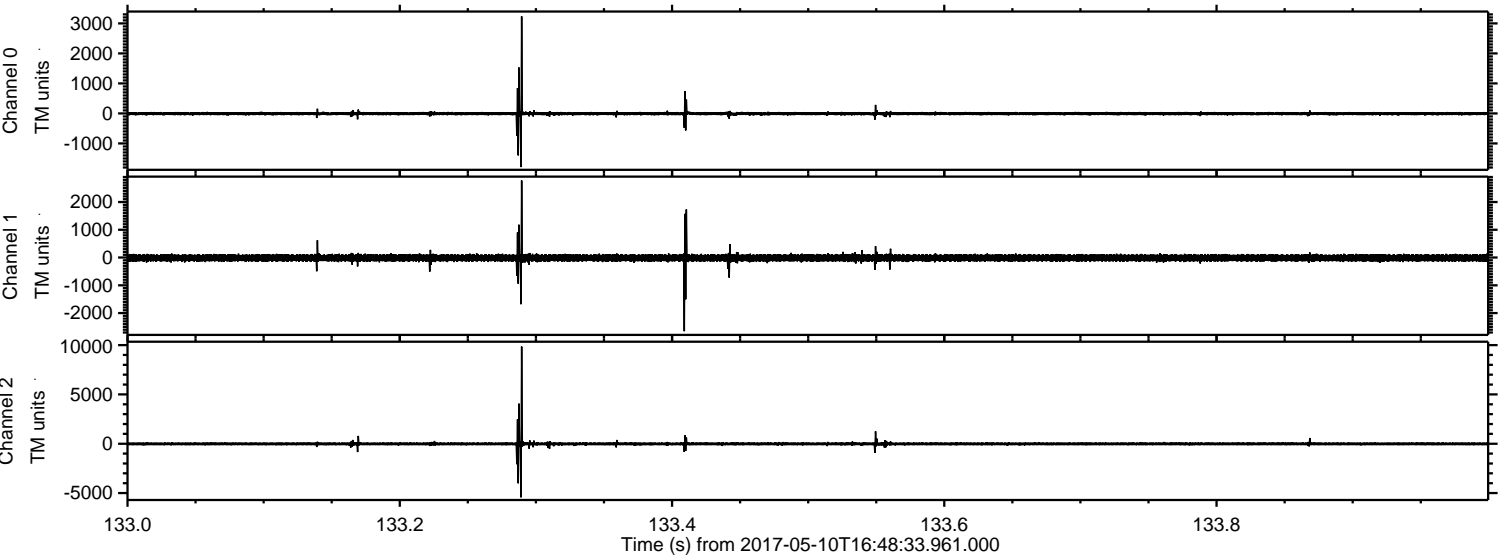
Processed Wed May 10 18:56:08 2017 by ELM ver.2012-10-06 from 001\_\_elm20170510\_164832\_\_dat00.bin





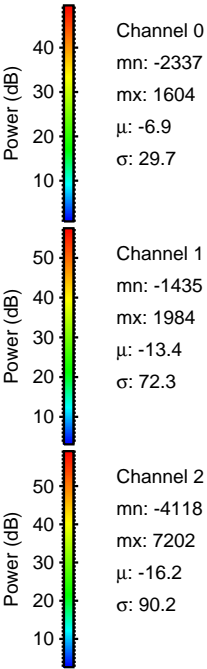
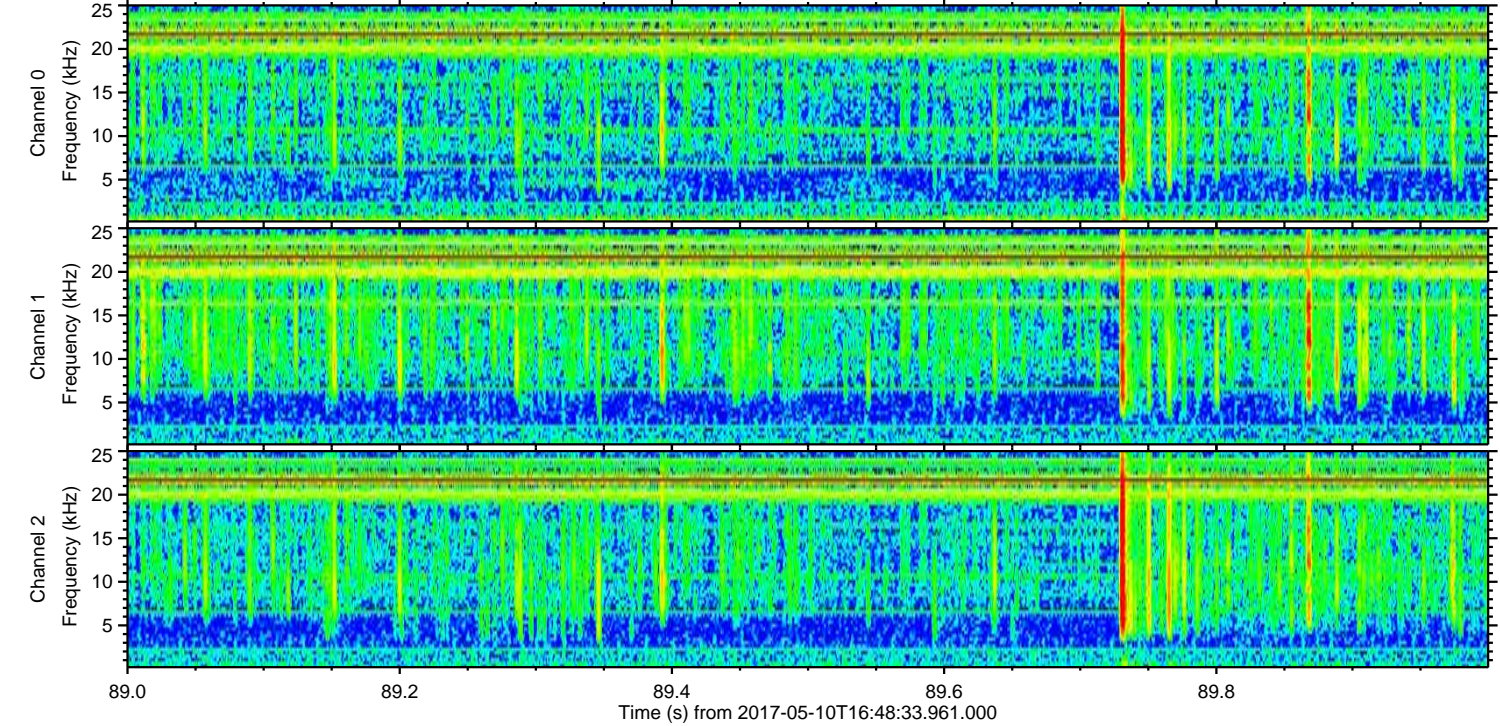
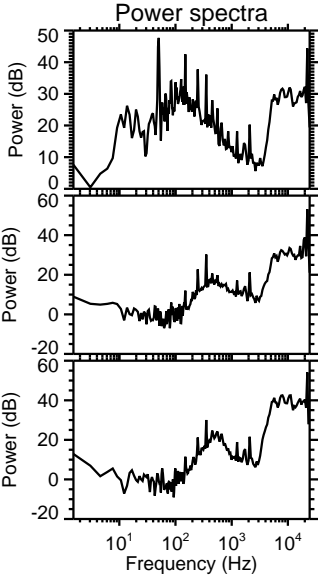
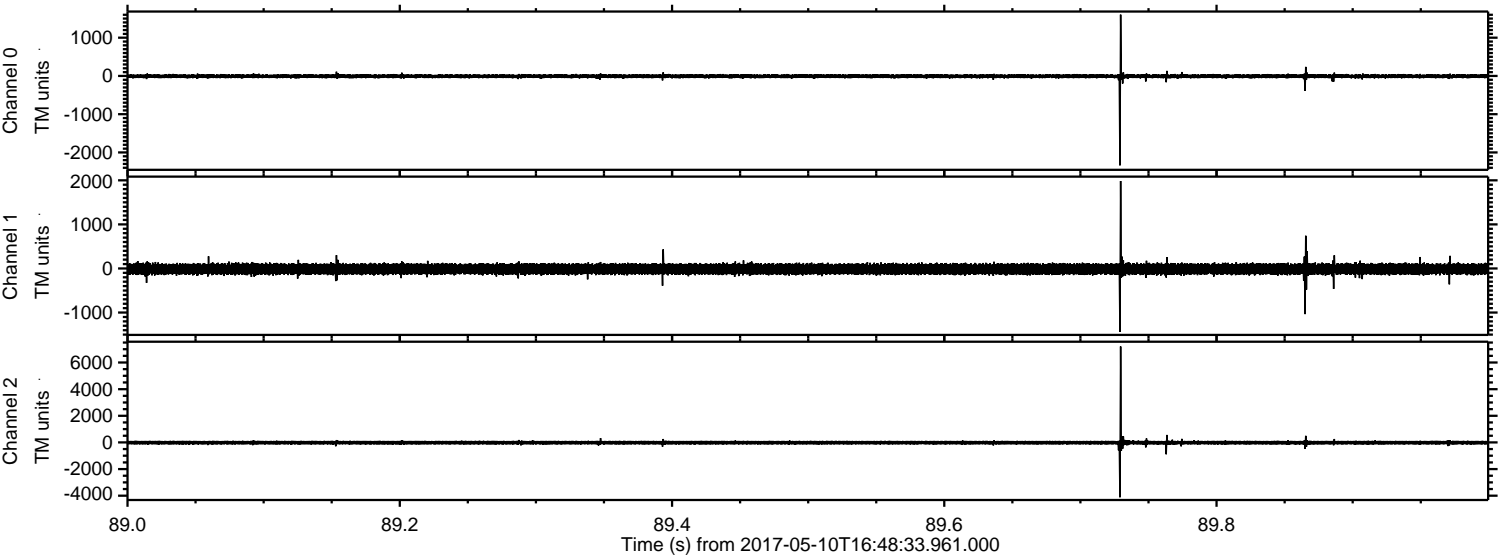
ELMAVAN 3D WAVEFORMS (Measured data sampled at 50 kHz) 51000 packets of 144 samples from 2017-05-10T16:48:33.961.000. Part 134/147

Processed Wed May 10 18:56:09 2017 by ELM ver.2012-10-06 from 001\_\_elm20170510\_164832\_\_dat00.bin



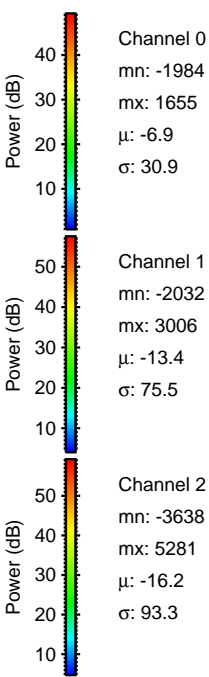
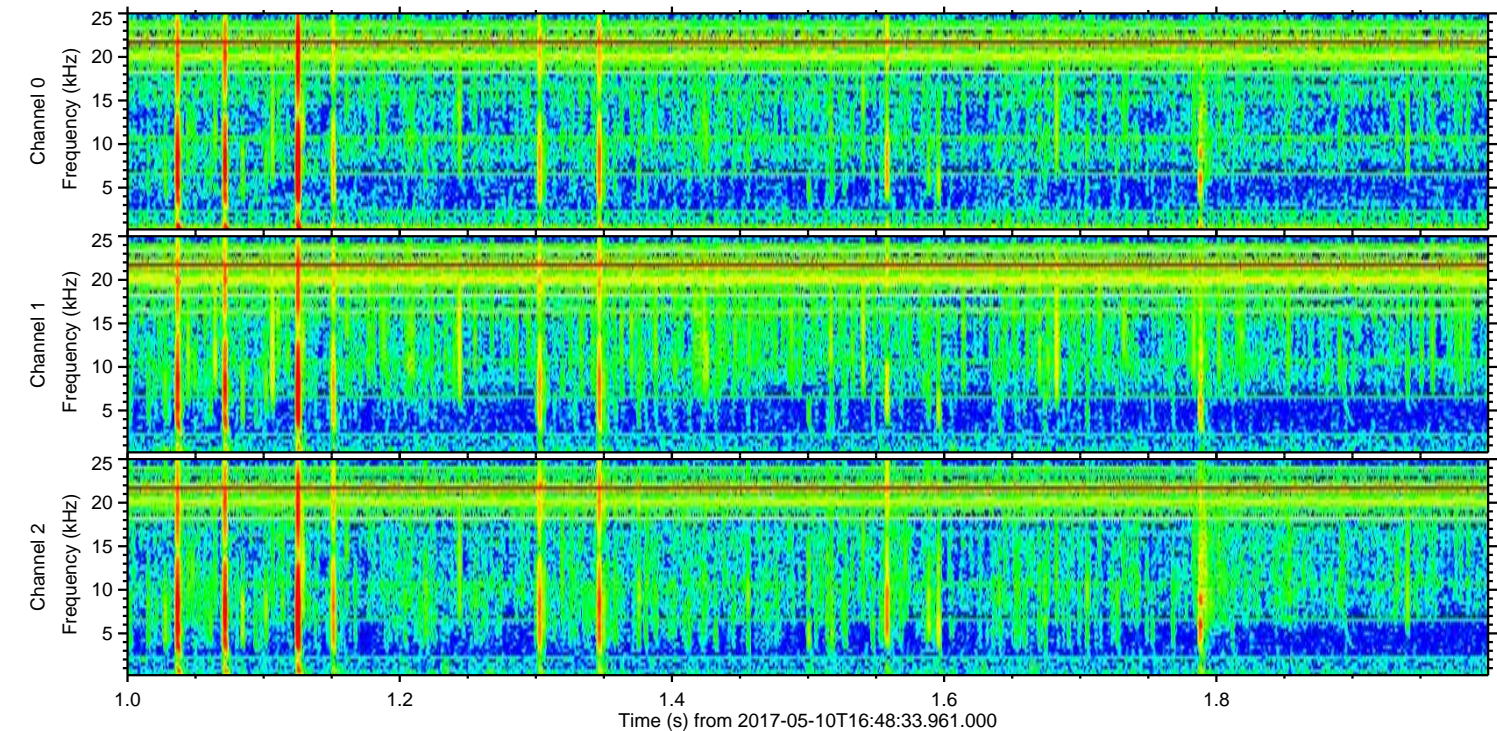
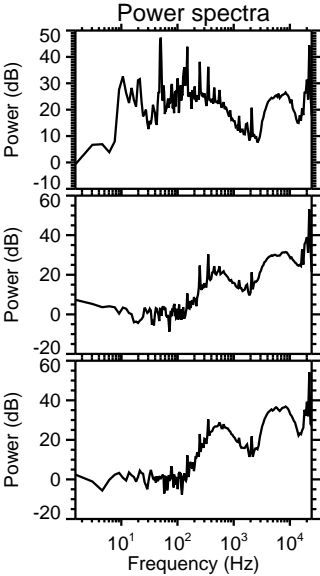
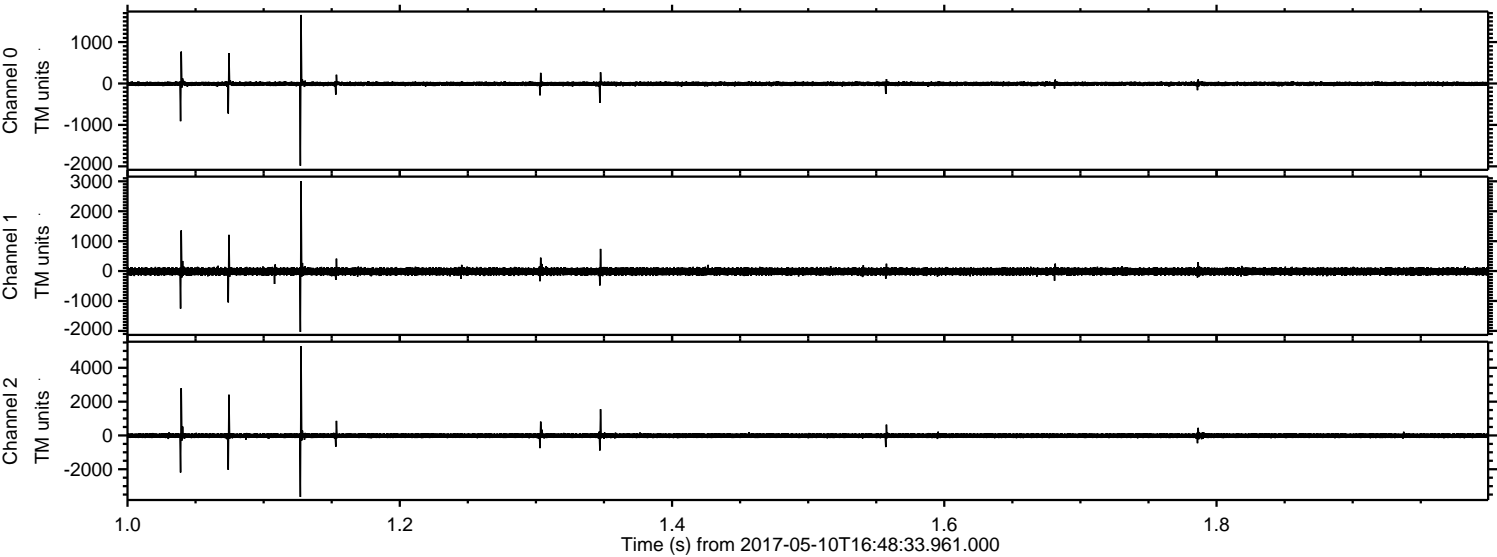


Processed Wed May 10 18:56:10 2017 by ELM ver.2012-10-06 from 001\_\_elm20170510\_164832\_\_dat00.bin



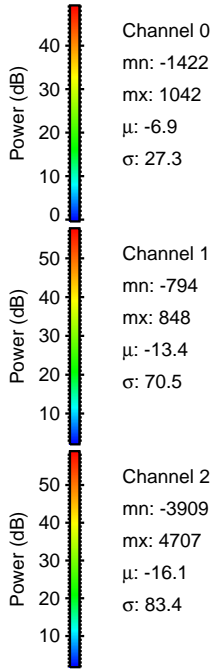
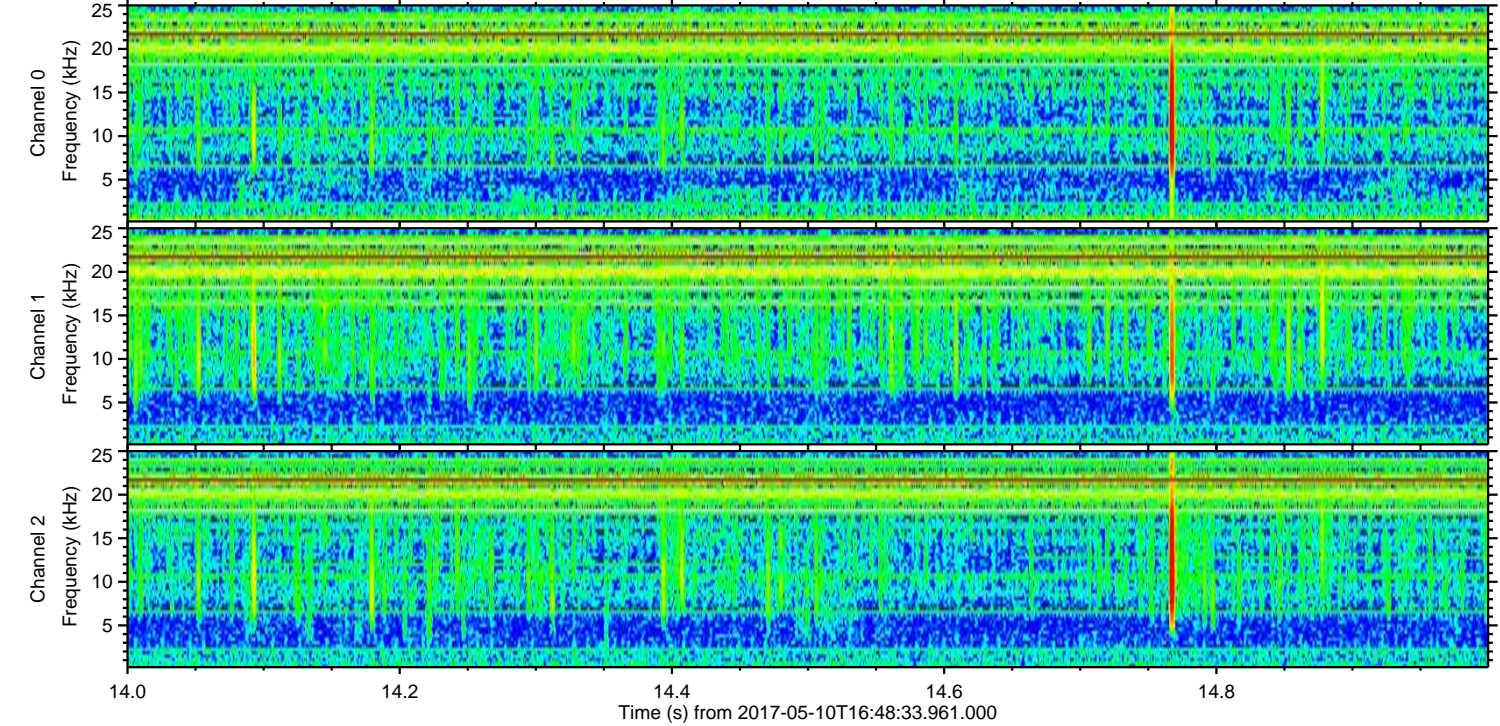
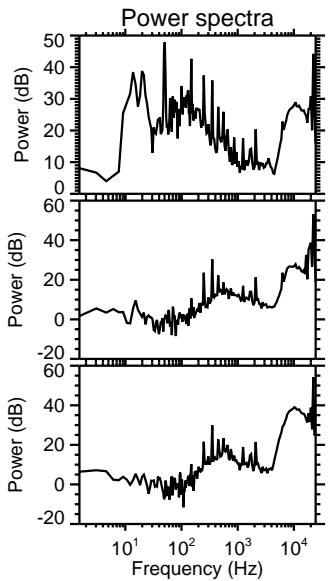
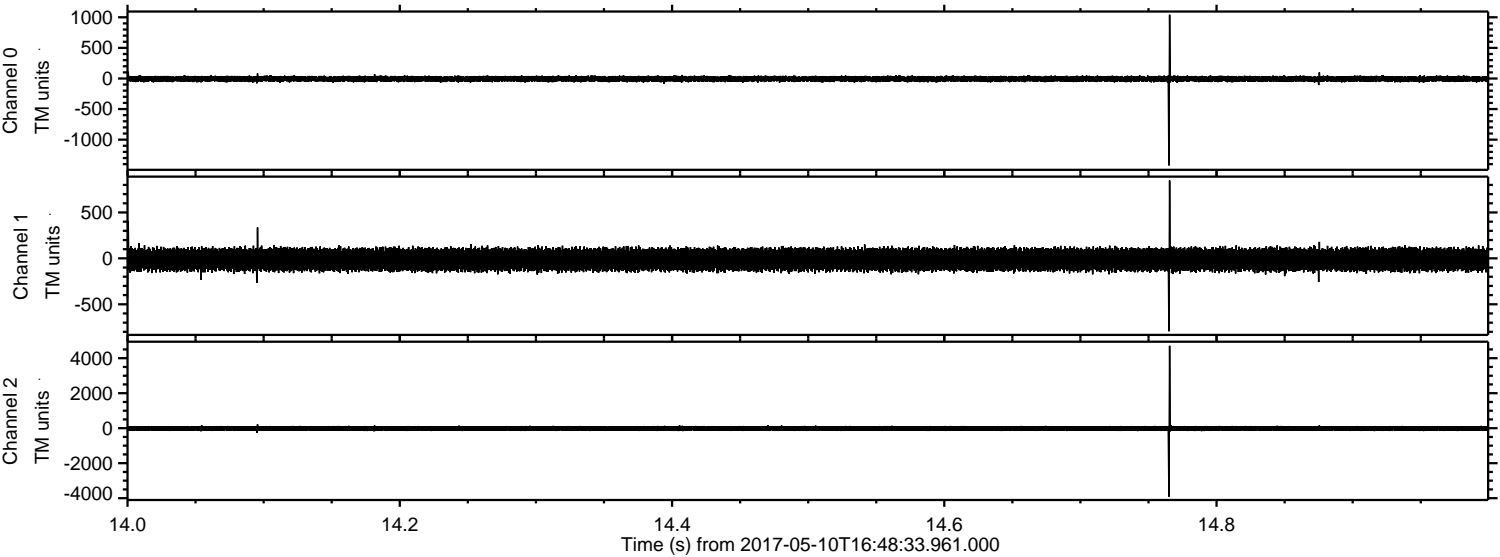


Processed Wed May 10 18:56:11 2017 by ELM ver.2012-10-06 from 001\_\_elm20170510\_164832\_\_dat00.bin



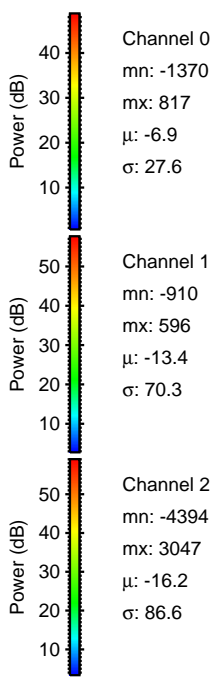
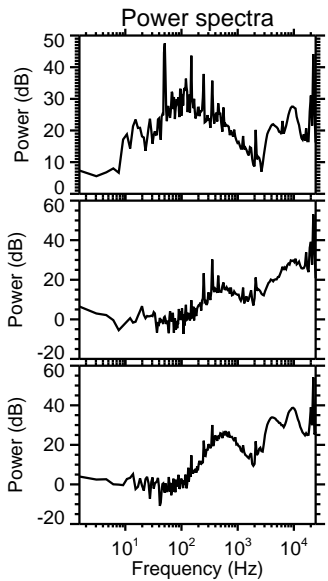
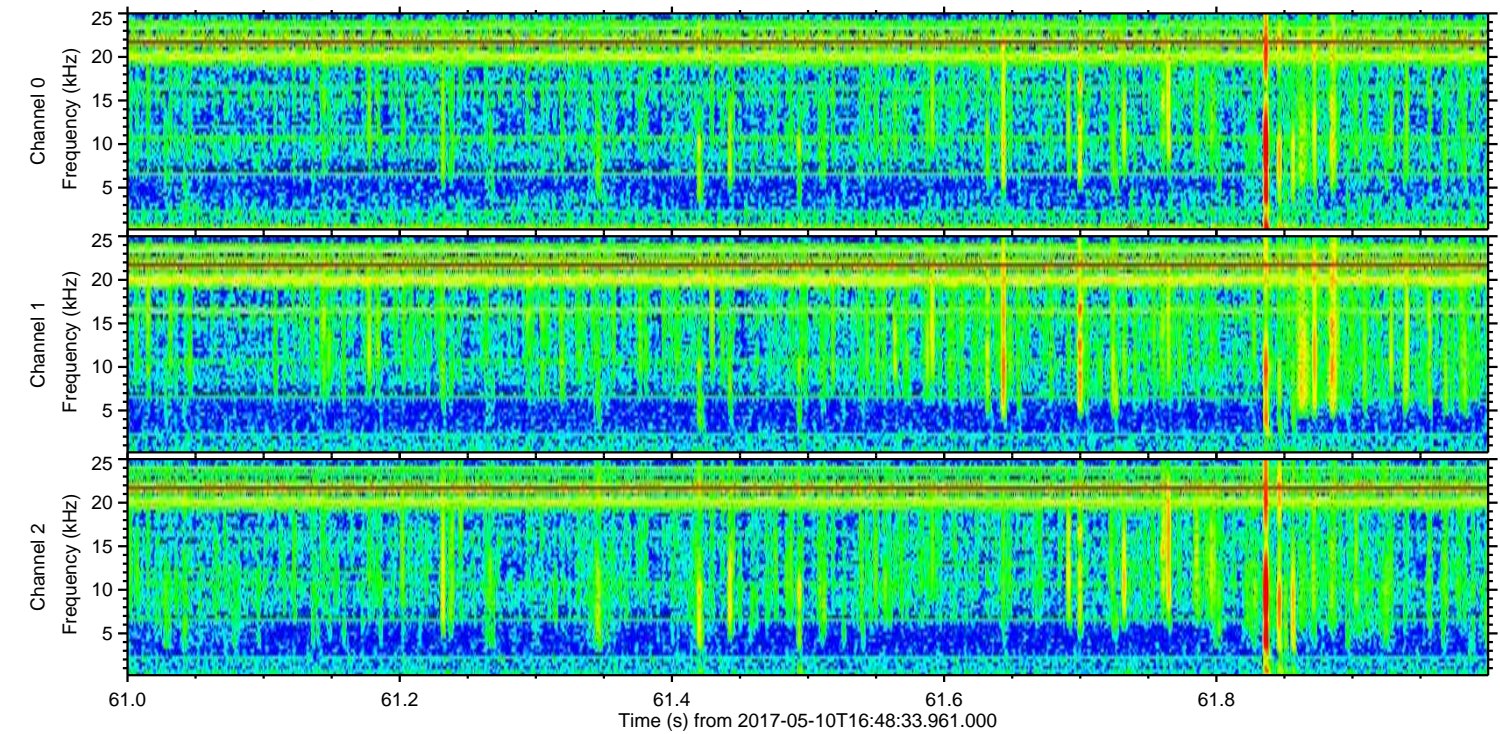
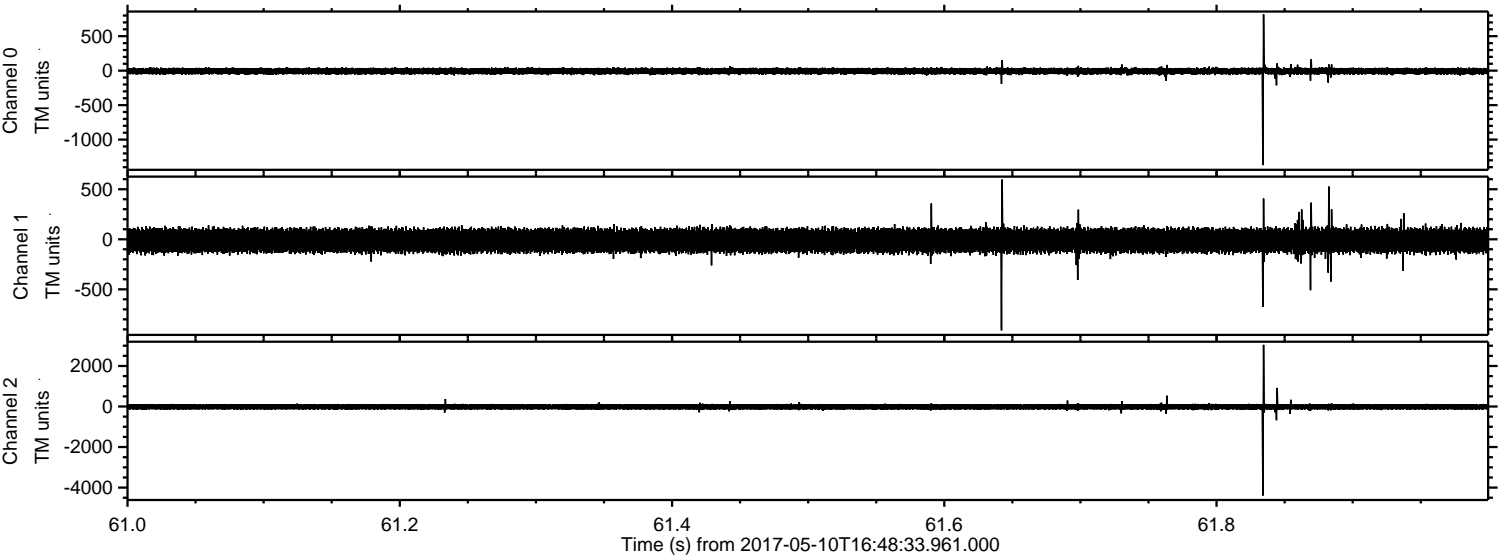


Processed Wed May 10 18:56:12 2017 by ELM ver.2012-10-06 from 001\_\_elm20170510\_164832\_\_dat00.bin





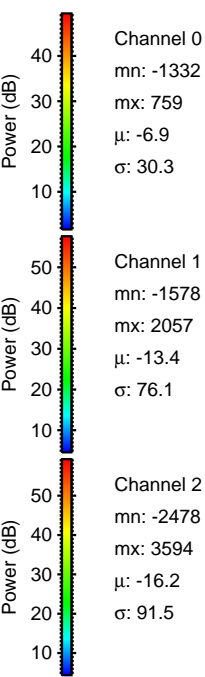
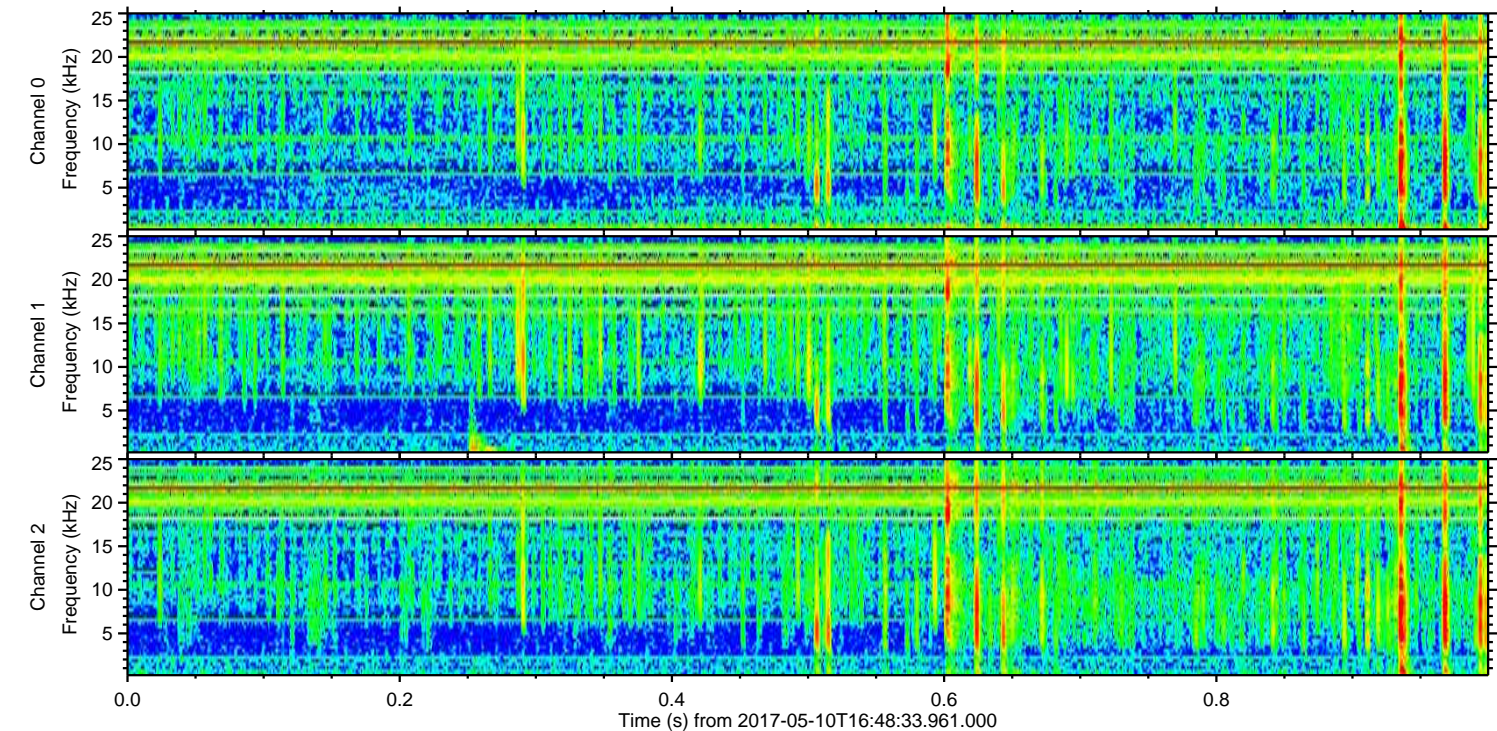
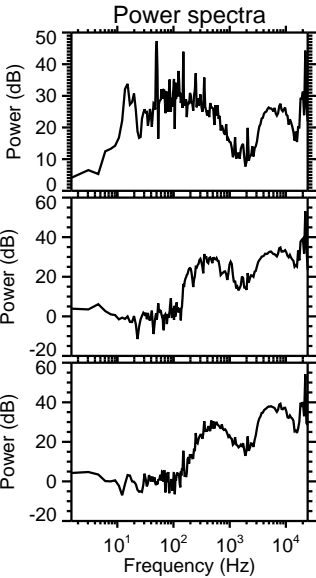
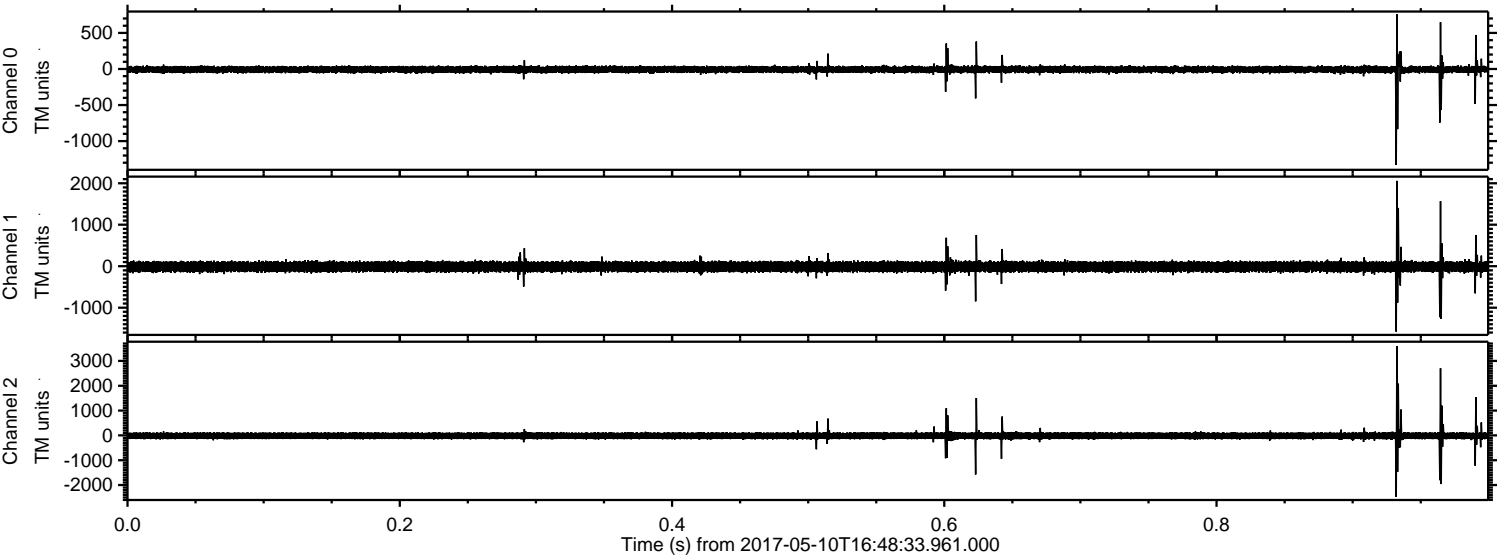
Processed Wed May 10 18:56:13 2017 by ELM ver.2012-10-06 from 001\_\_elm20170510\_164832\_\_dat00.bin





ELMAVAN 3D WAVEFORMS (Measured data sampled at 50 kHz) 51000 packets of 144 samples from 2017-05-10T16:48:33.961.000. Part 1/147

Processed Wed May 10 18:56:14 2017 by ELM ver.2012-10-06 from 001\_\_elm20170510\_164832\_\_dat00.bin



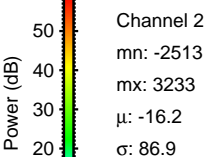
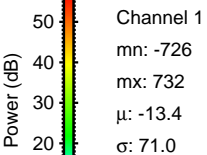
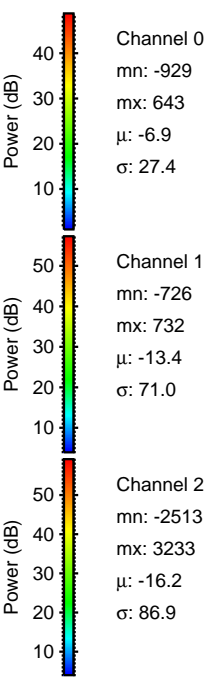
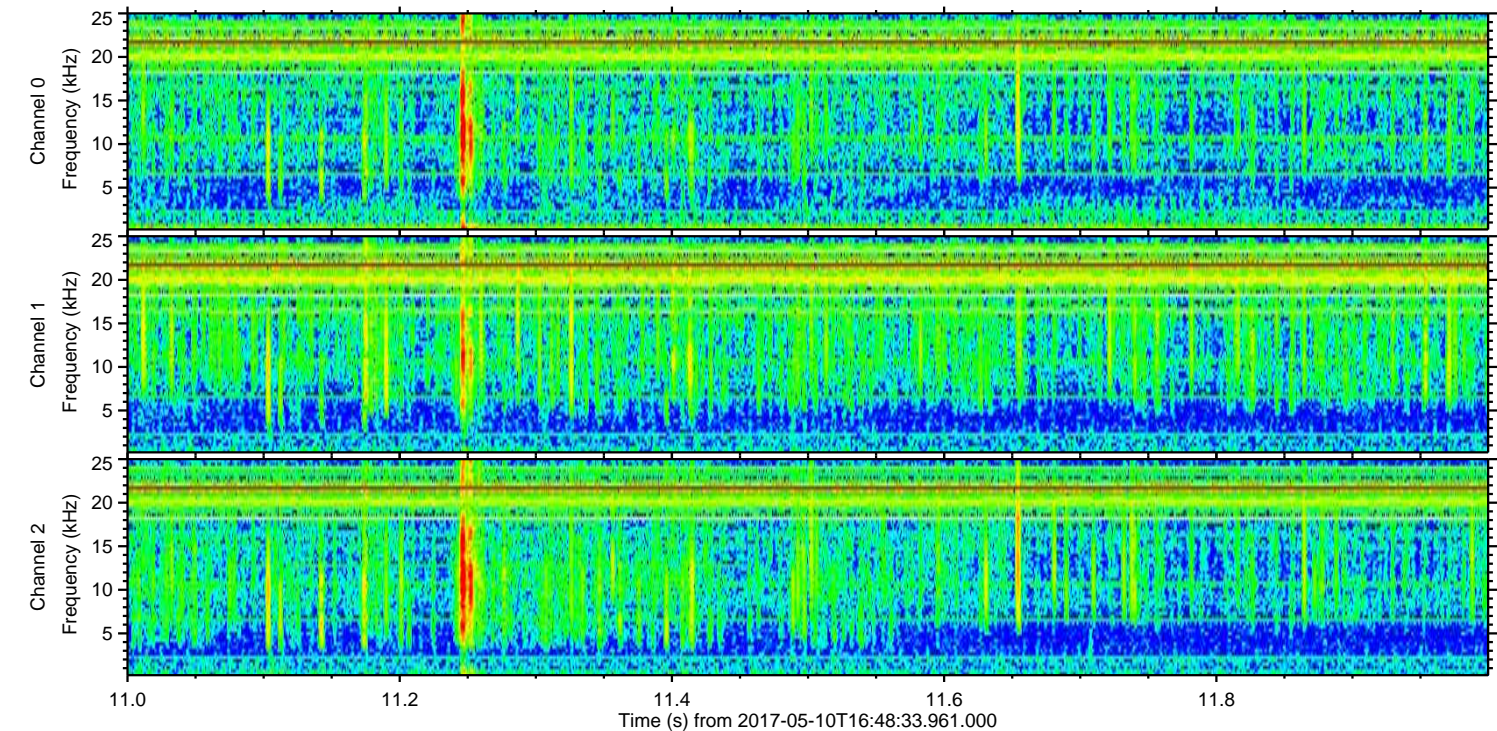
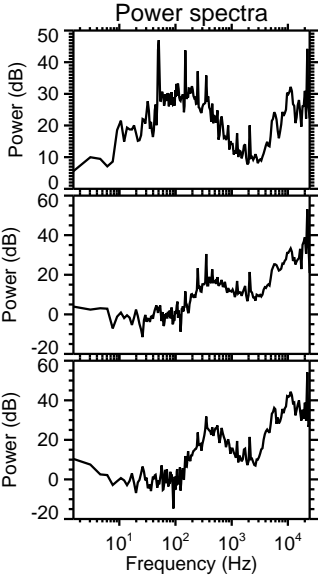
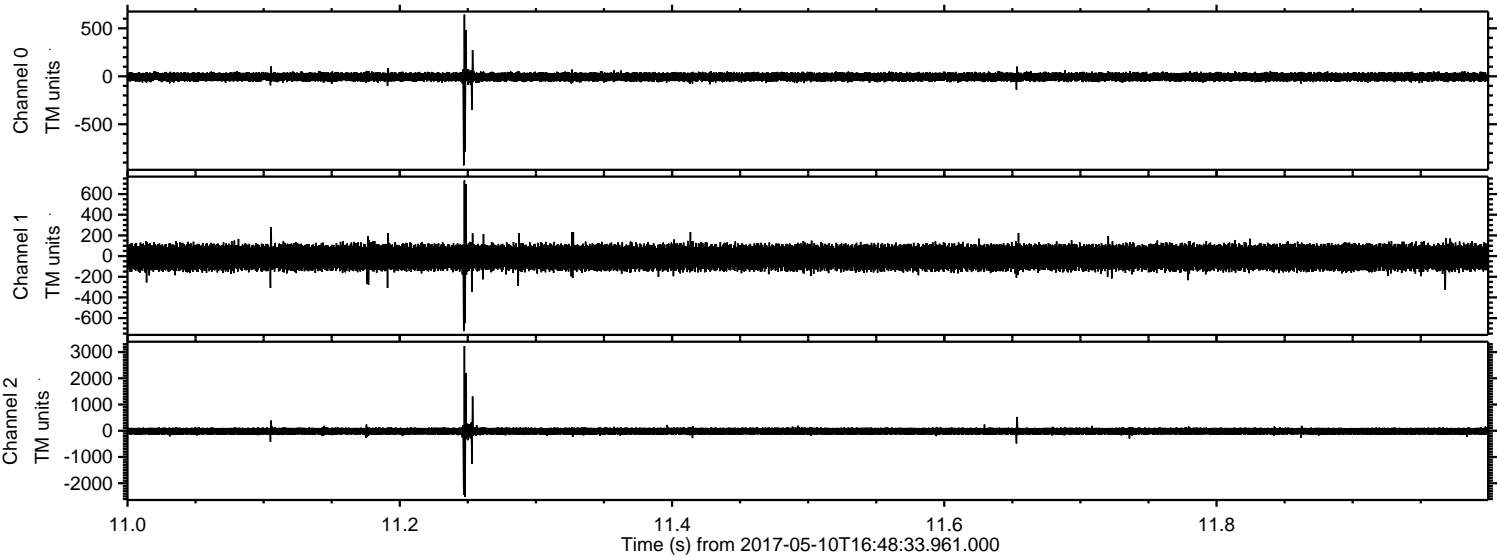
Channel 0  
mn: -1332  
mx: 759  
 $\mu$ : -6.9  
 $\sigma$ : 30.3

Channel 1  
mn: -1578  
mx: 2057  
 $\mu$ : -13.4  
 $\sigma$ : 76.1

Channel 2  
mn: -2478  
mx: 3594  
 $\mu$ : -16.2  
 $\sigma$ : 91.5

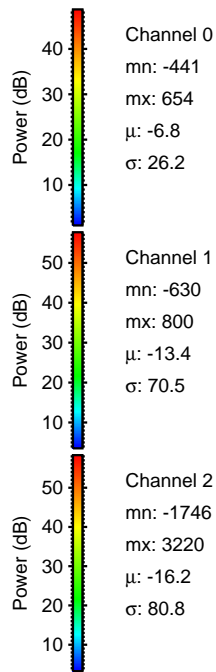
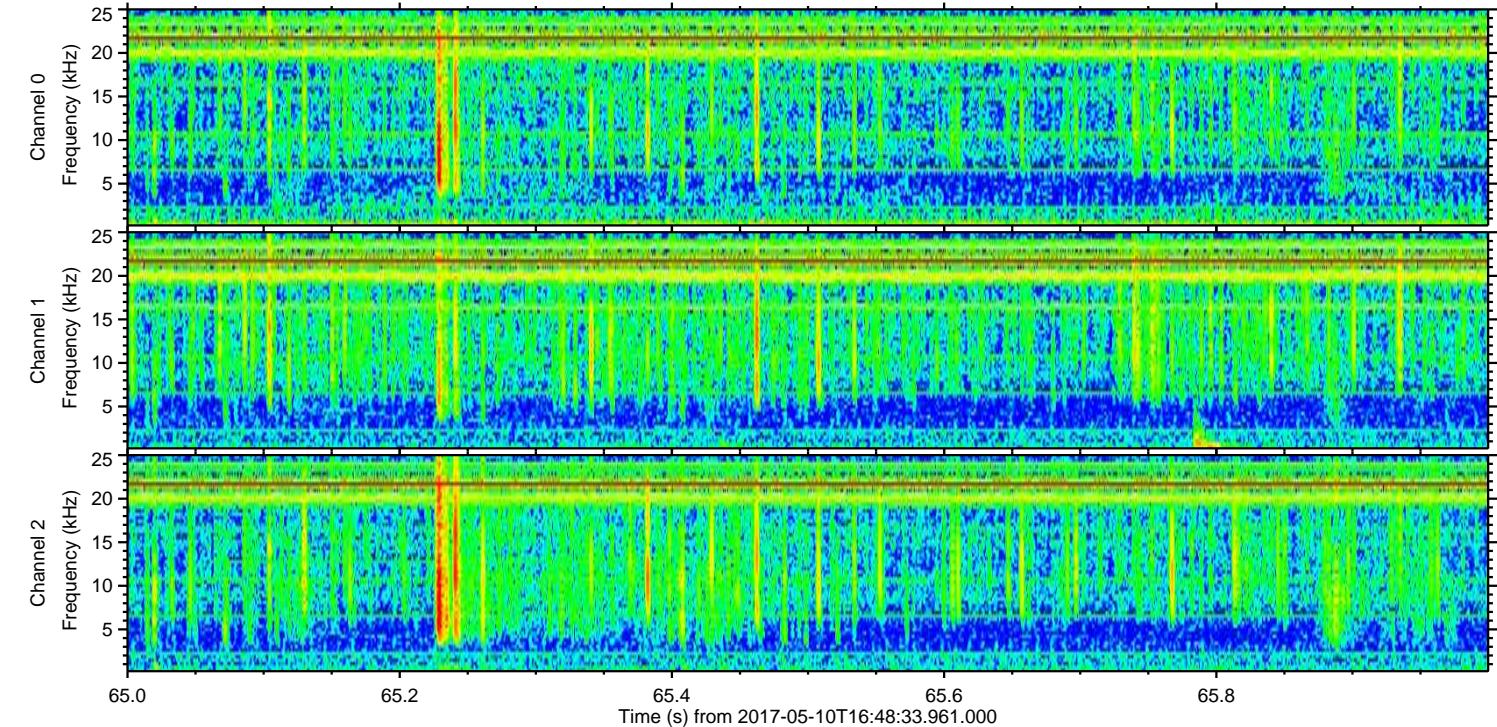
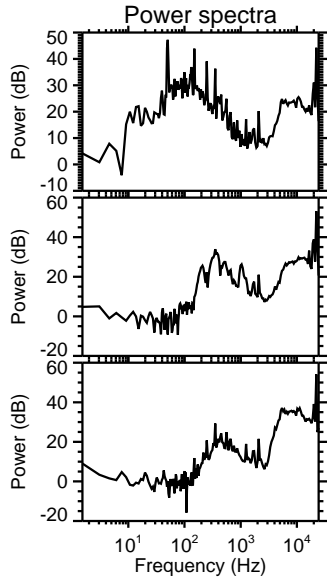
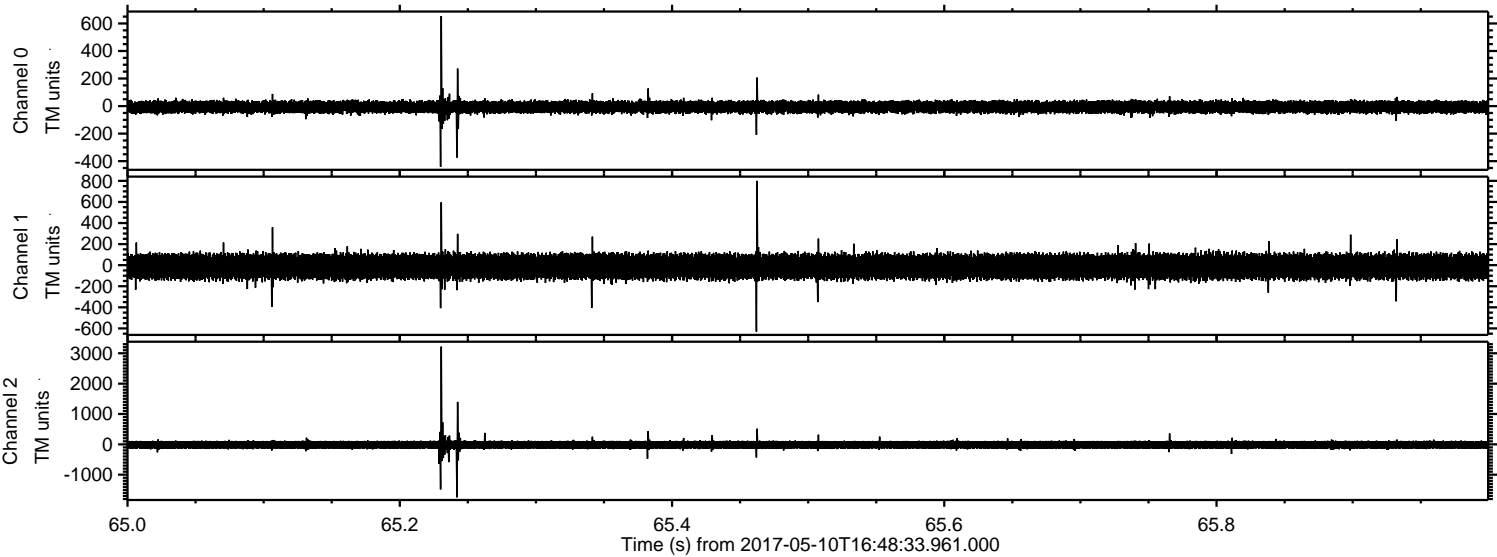


Processed Wed May 10 18:56:15 2017 by ELM ver.2012-10-06 from 001\_\_elm20170510\_164832\_\_dat00.bin





Processed Wed May 10 18:56:16 2017 by ELM ver.2012-10-06 from 001\_\_elm20170510\_164832\_\_dat00.bin





Processed Wed May 10 18:56:17 2017 by ELM ver.2012-10-06 from 001\_\_elm20170510\_164832\_\_dat00.bin

