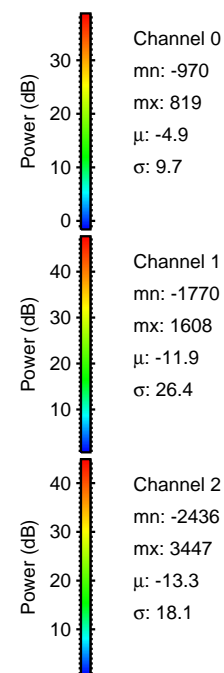
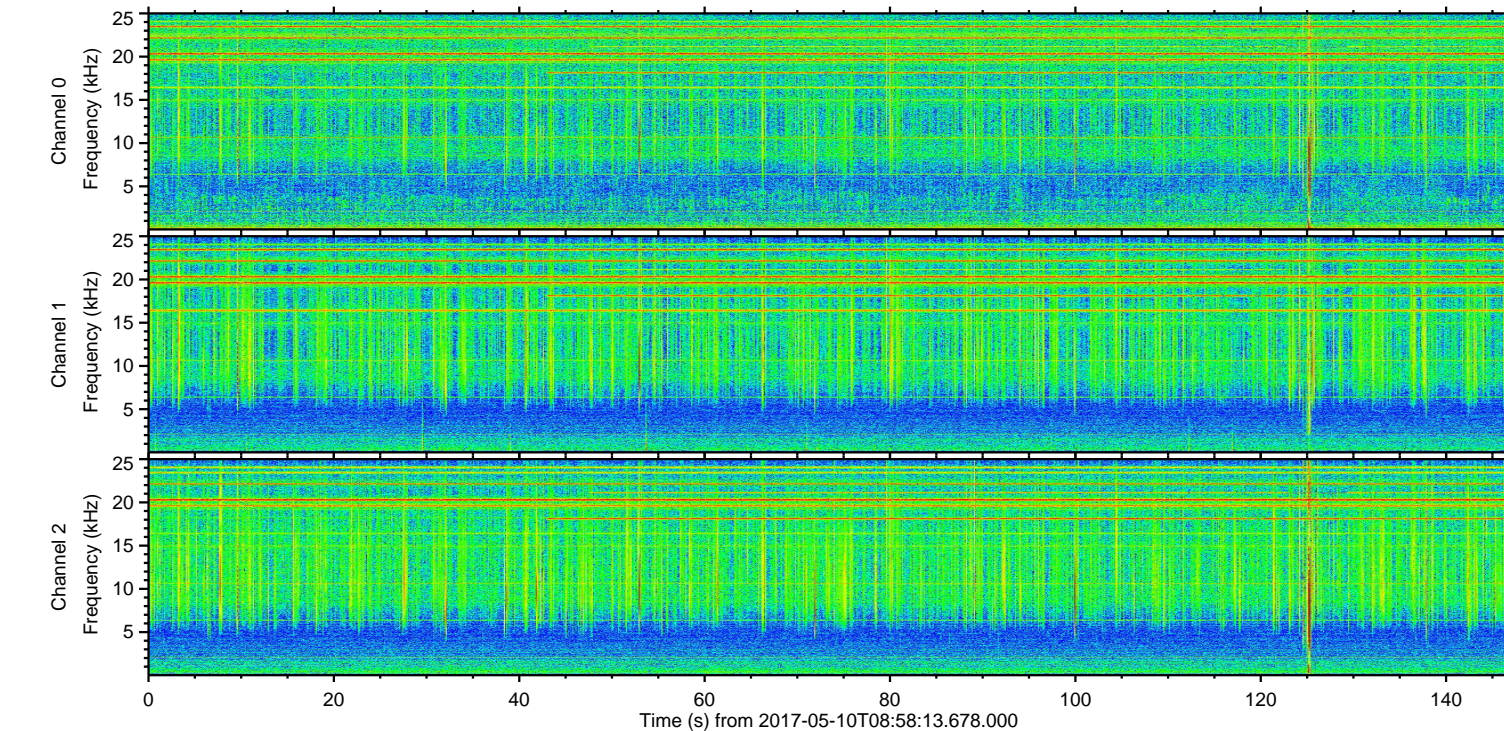
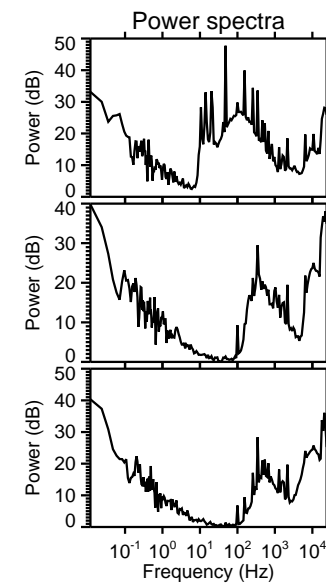
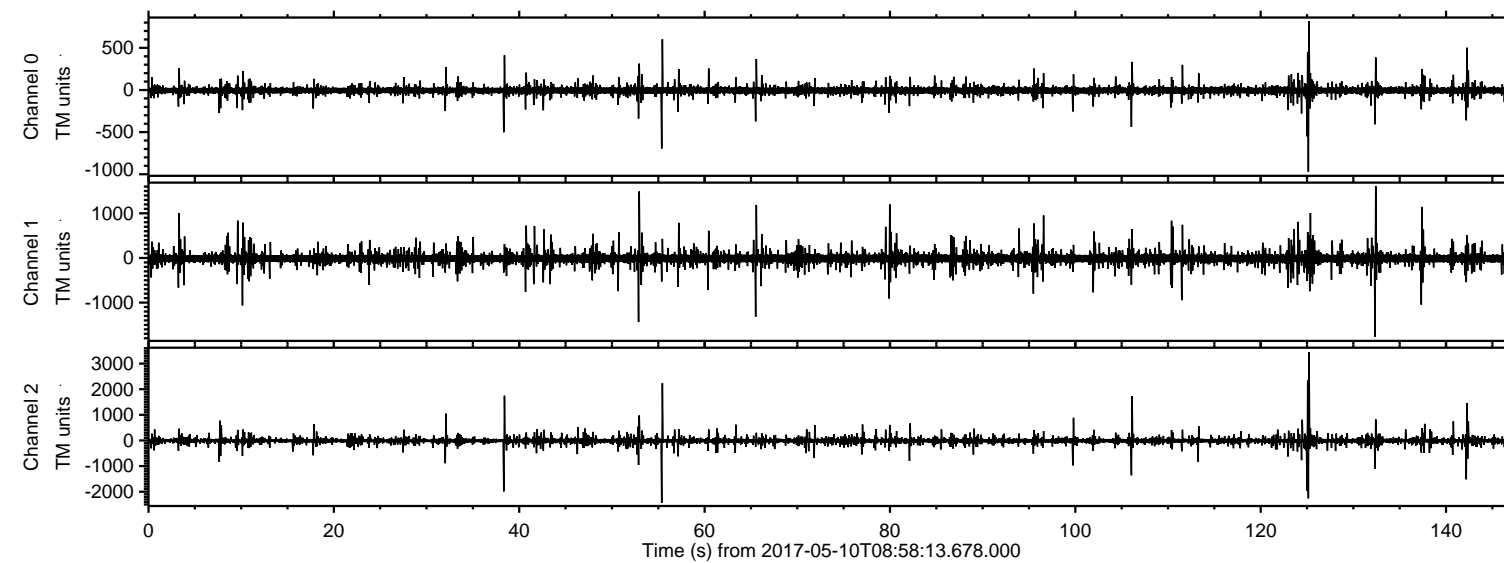


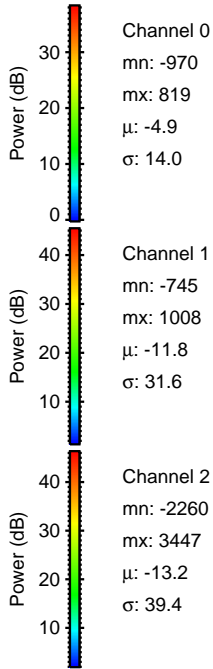
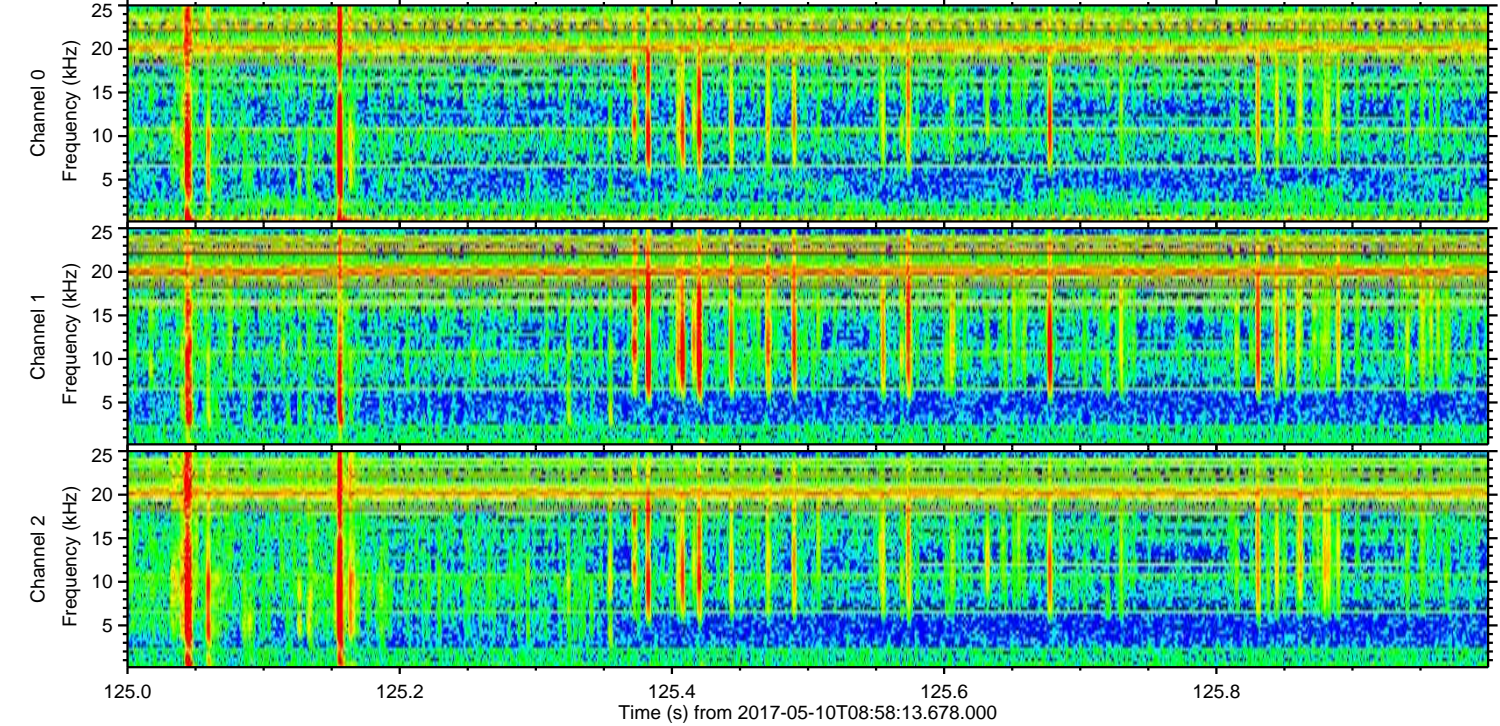
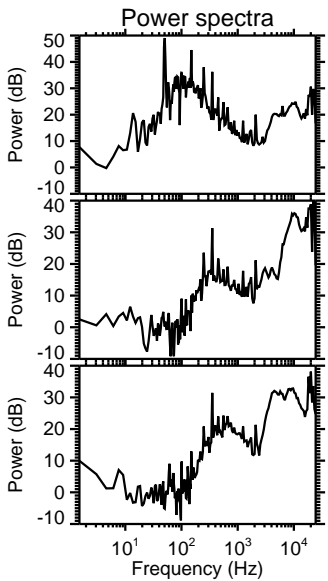
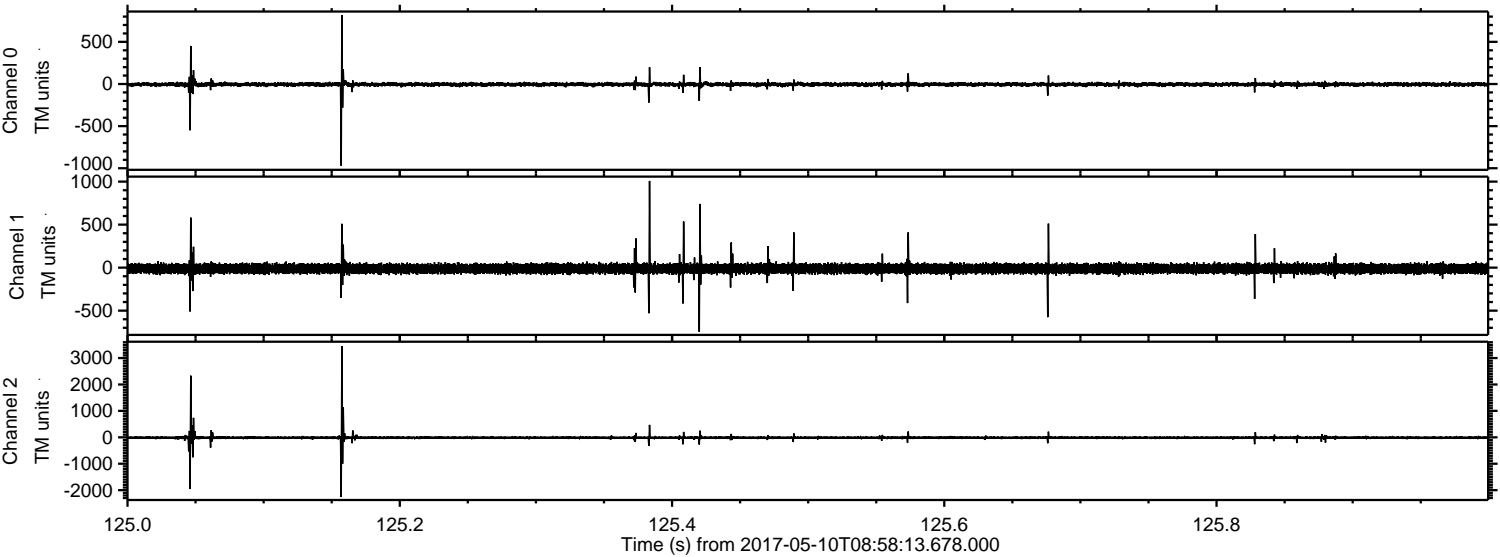
ELMAVAN 3D WAVEFORMS (Measured data sampled at 50 kHz) 51000 packets of 144 samples from 2017-05-10T08:58:13.678.000.

Processed Wed May 10 11:06:10 2017 by ELM ver.2012-10-06 from 001__elm20170510_085812__dat00.bin

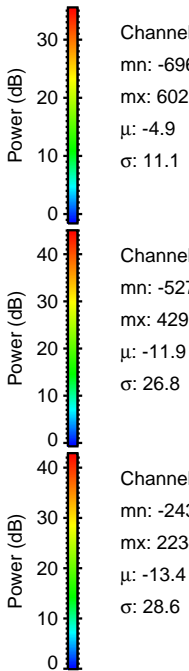
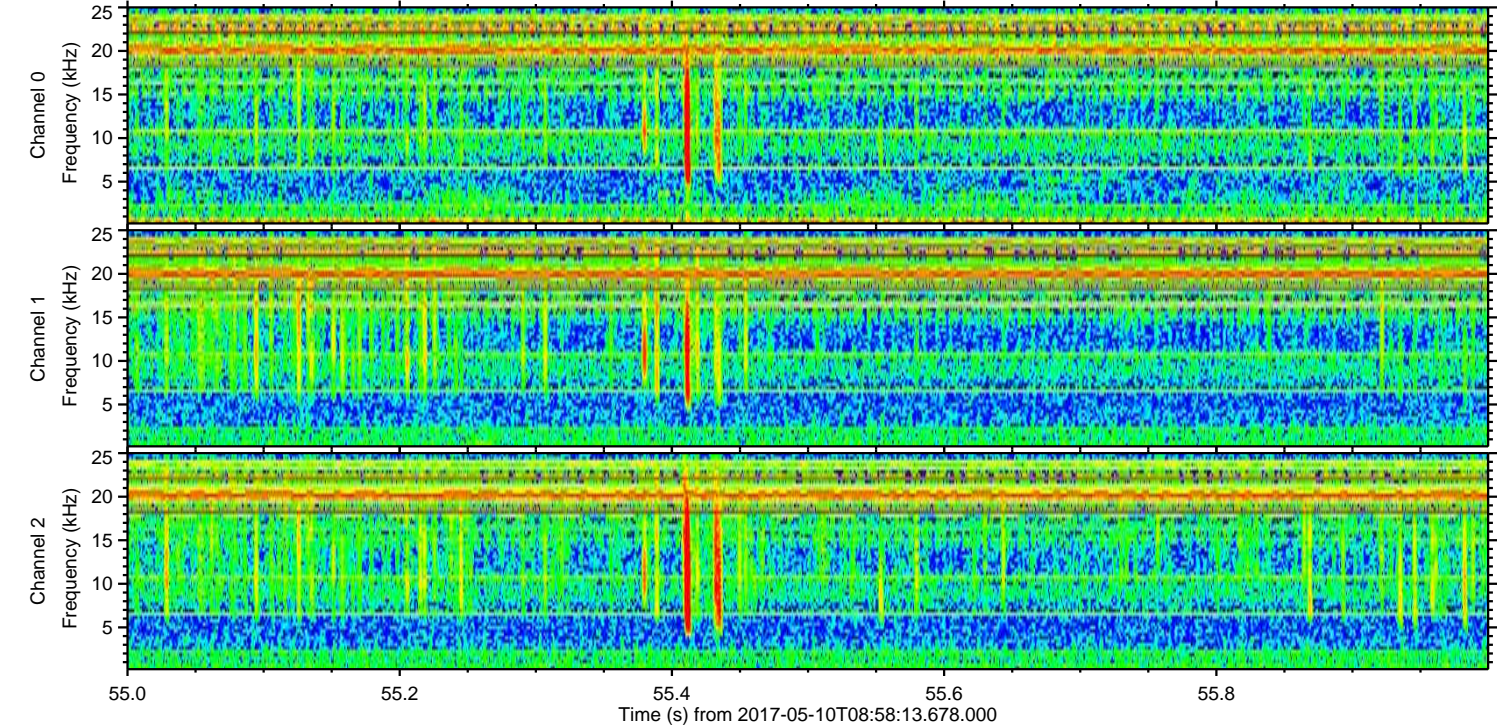
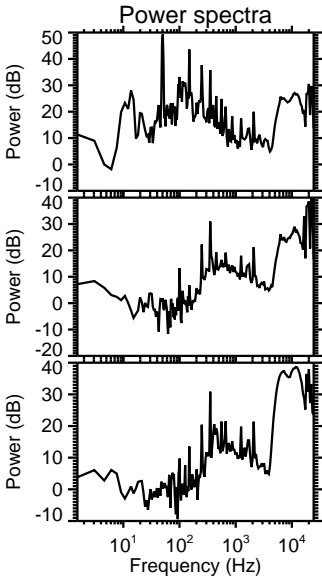
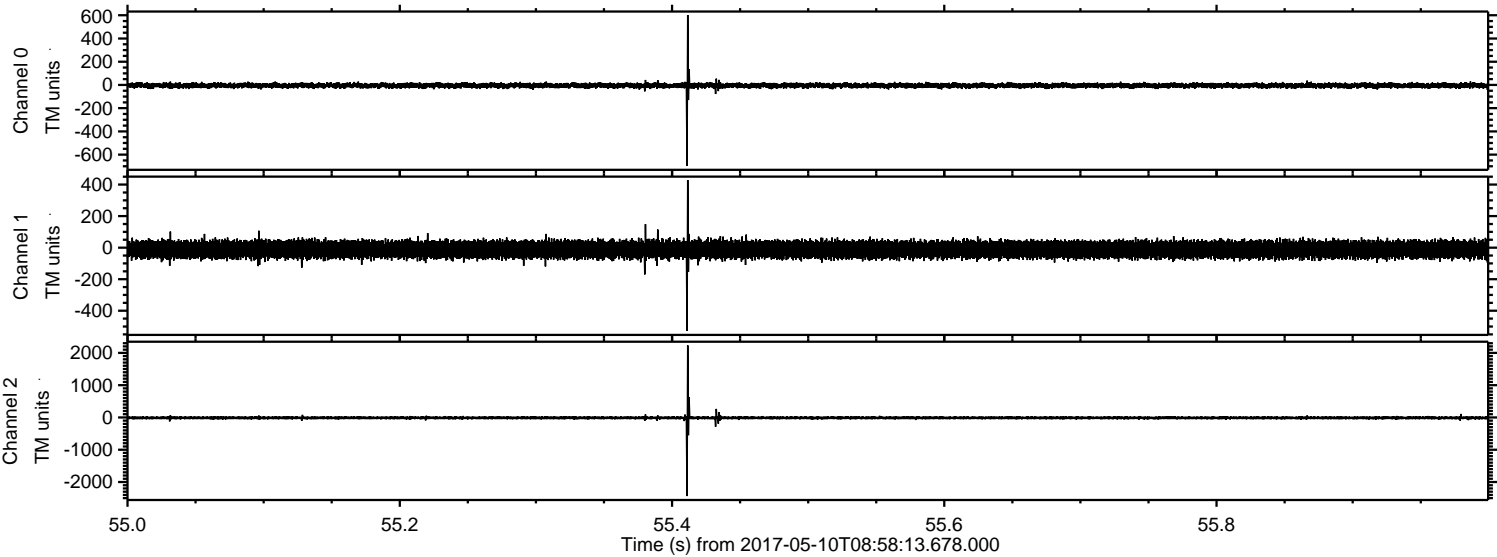


ELMAVAN 3D WAVEFORMS (Measured data sampled at 50 kHz) 51000 packets of 144 samples from 2017-05-10T08:58:13.678.000. Part 126/147

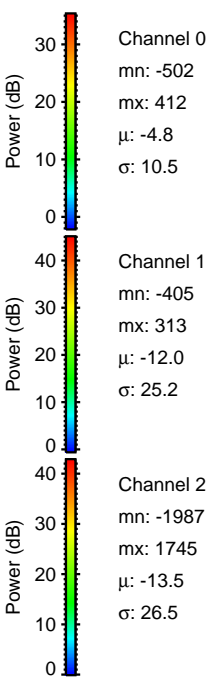
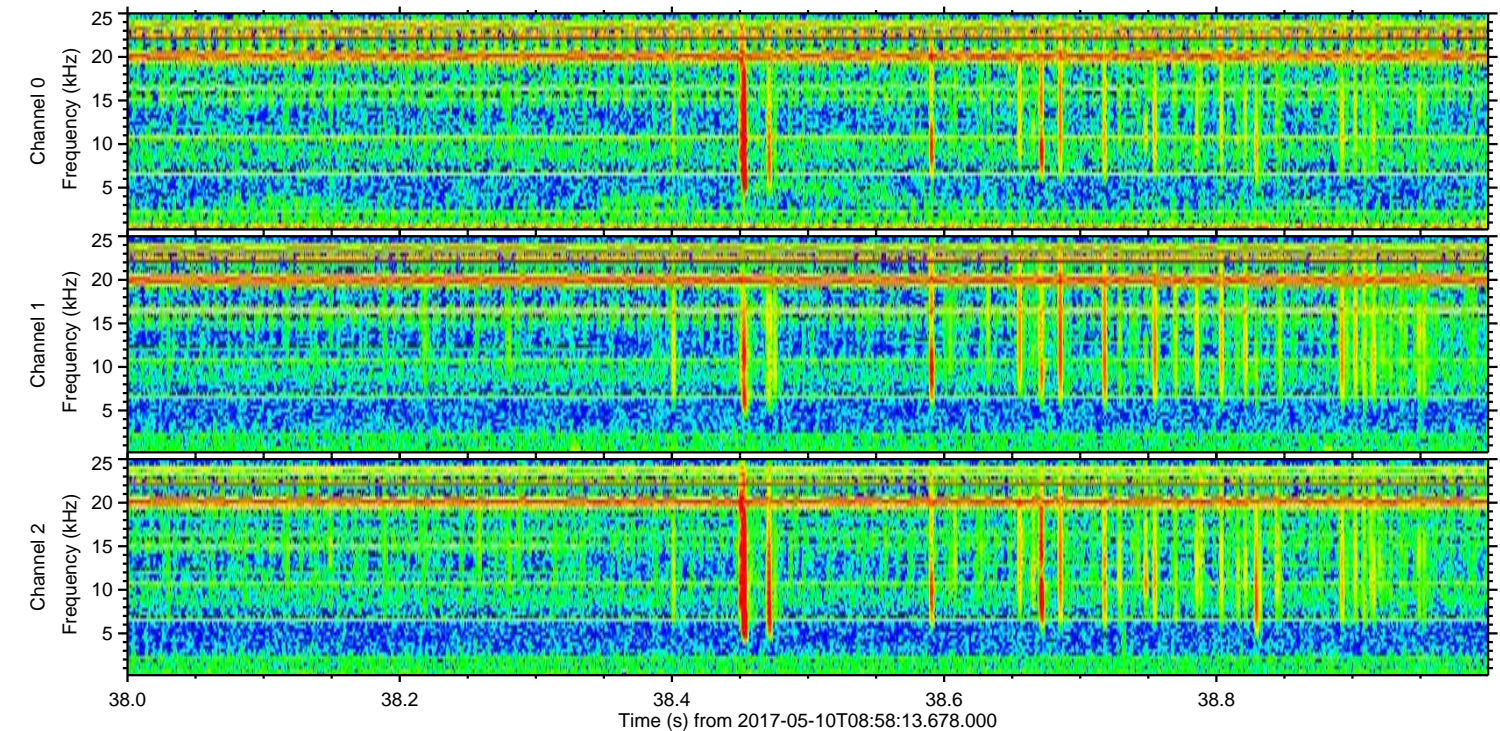
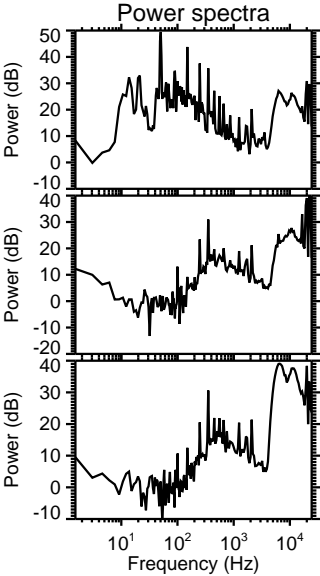
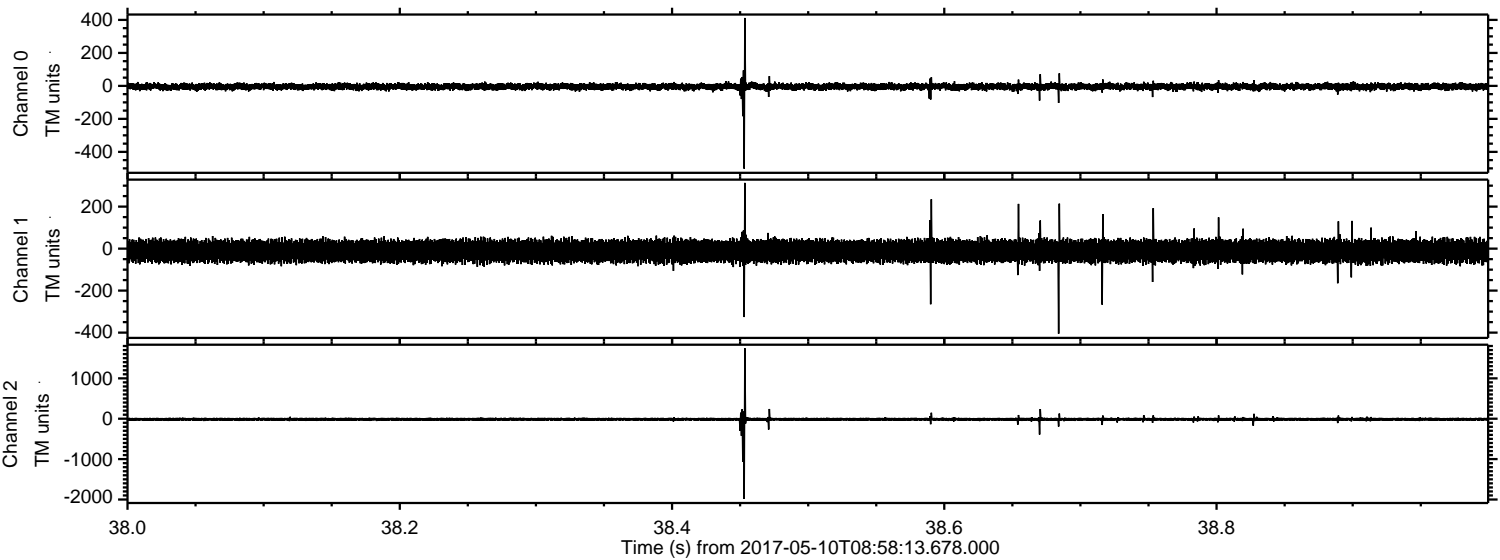
Processed Wed May 10 11:06:22 2017 by ELM ver.2012-10-06 from 001__elm20170510_085812__dat00.bin



Processed Wed May 10 11:06:23 2017 by ELM ver.2012-10-06 from 001__elm20170510_085812__dat00.bin

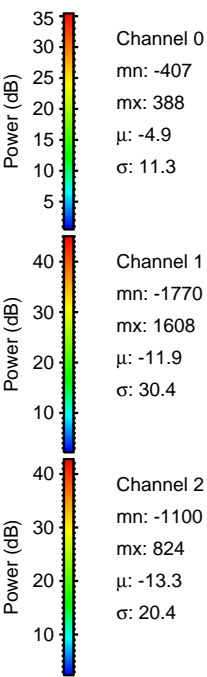
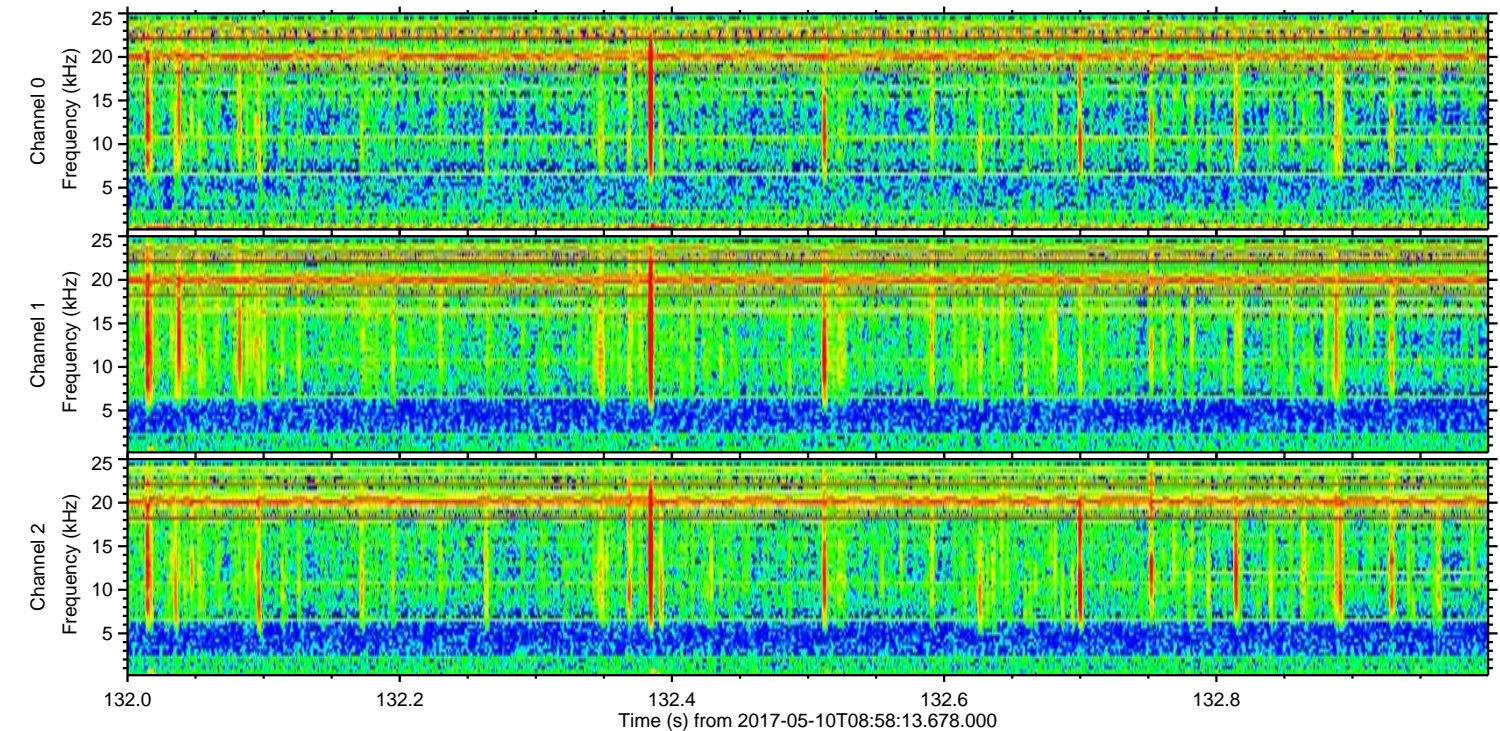
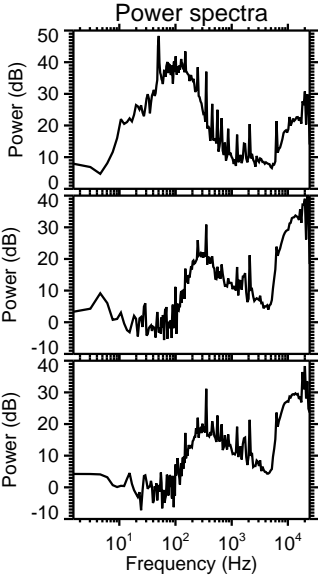
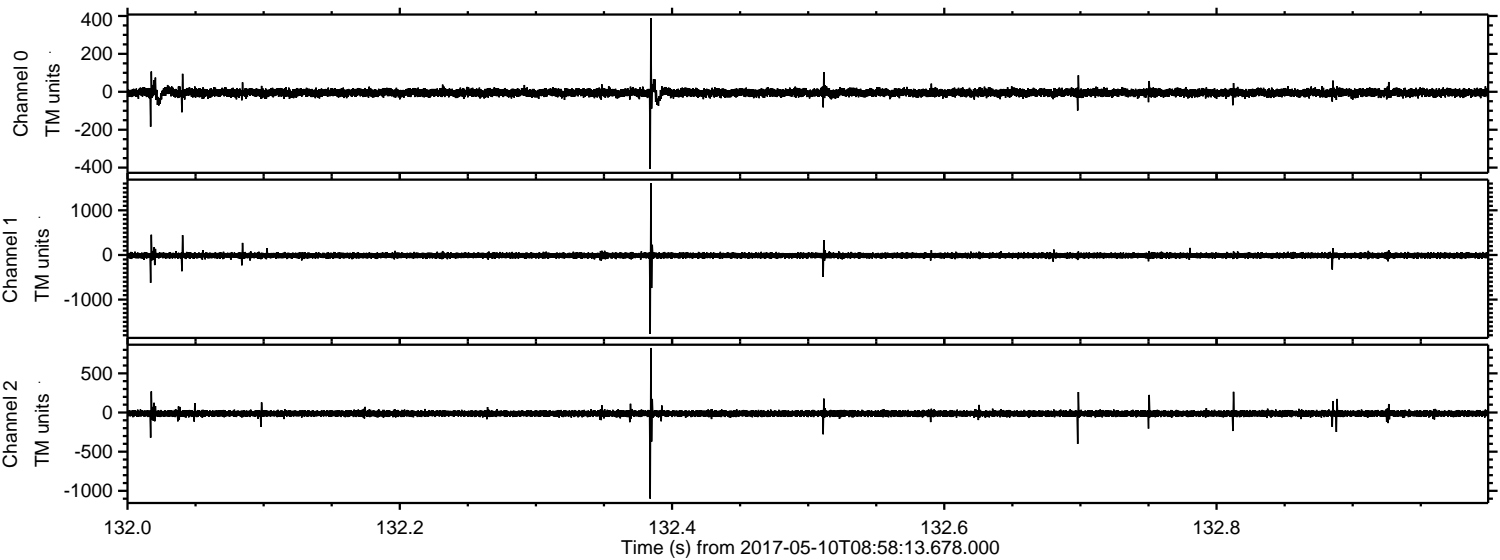


Processed Wed May 10 11:06:24 2017 by ELM ver.2012-10-06 from 001__elm20170510_085812__dat00.bin



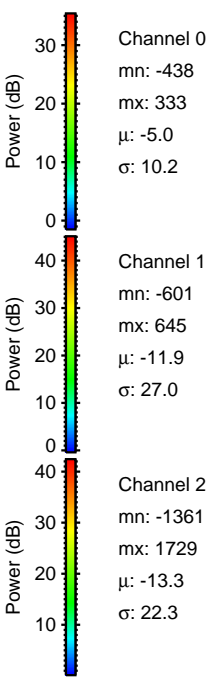
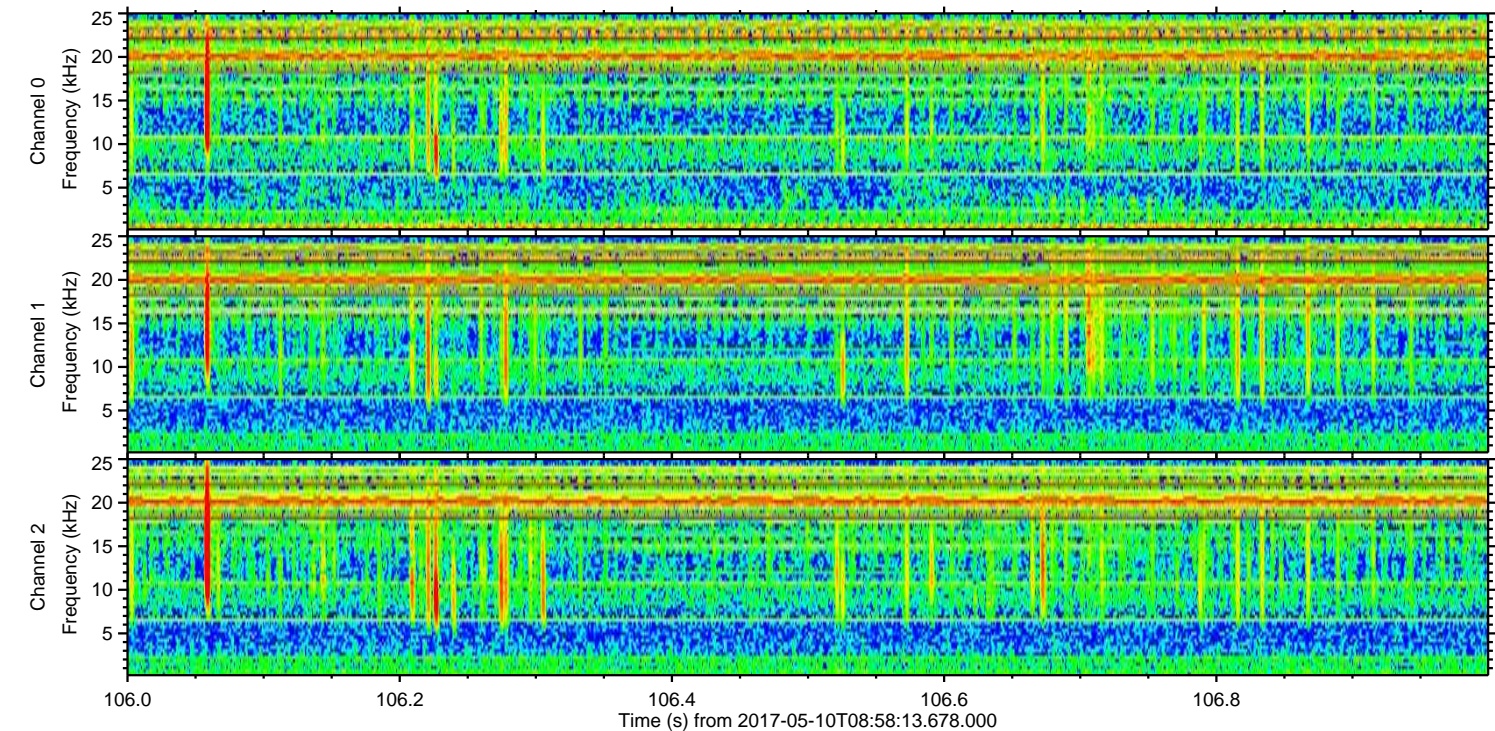
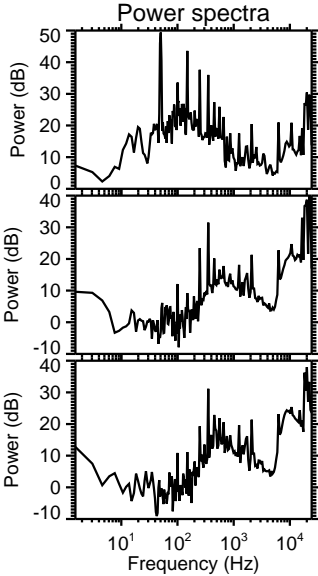
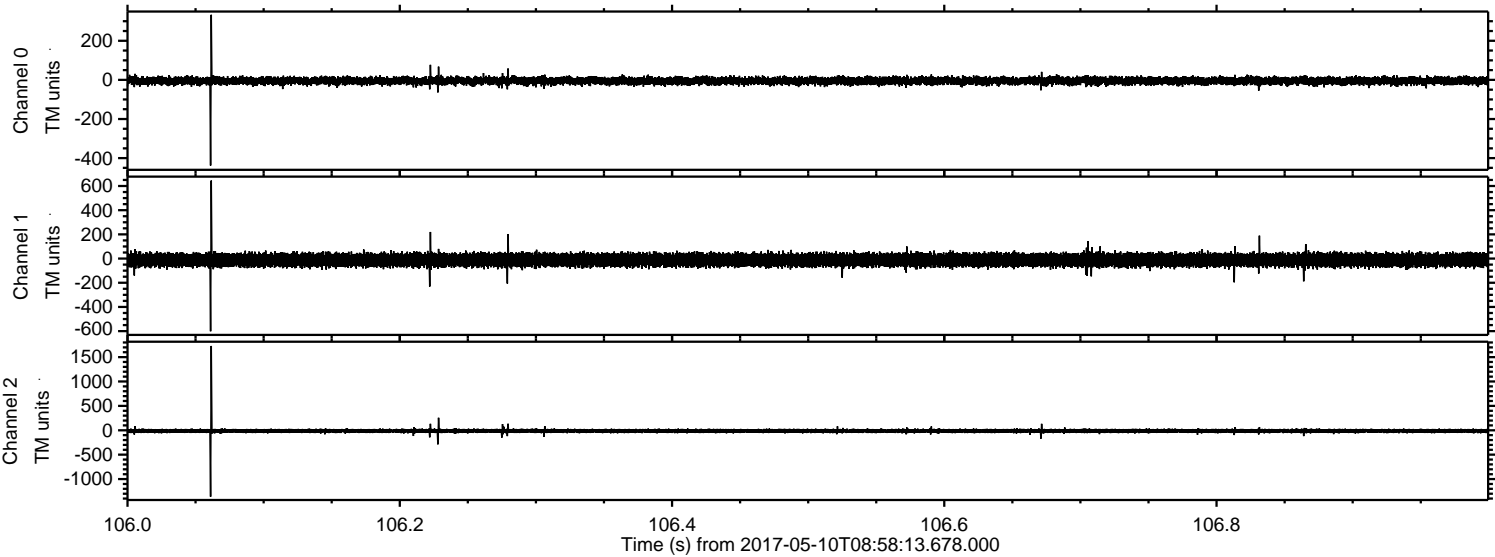
ELMAVAN 3D WAVEFORMS (Measured data sampled at 50 kHz) 51000 packets of 144 samples from 2017-05-10T08:58:13.678.000. Part 133/147

Processed Wed May 10 11:06:25 2017 by ELM ver.2012-10-06 from 001__elm20170510_085812__dat00.bin



ELMAVAN 3D WAVEFORMS (Measured data sampled at 50 kHz) 51000 packets of 144 samples from 2017-05-10T08:58:13.678.000. Part 107/147

Processed Wed May 10 11:06:26 2017 by ELM ver.2012-10-06 from 001__elm20170510_085812__dat00.bin



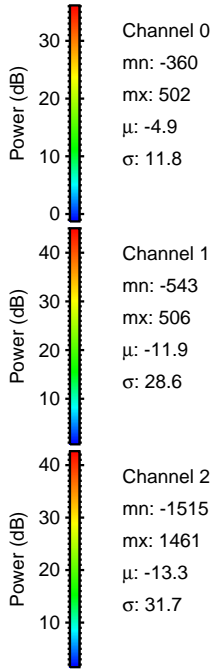
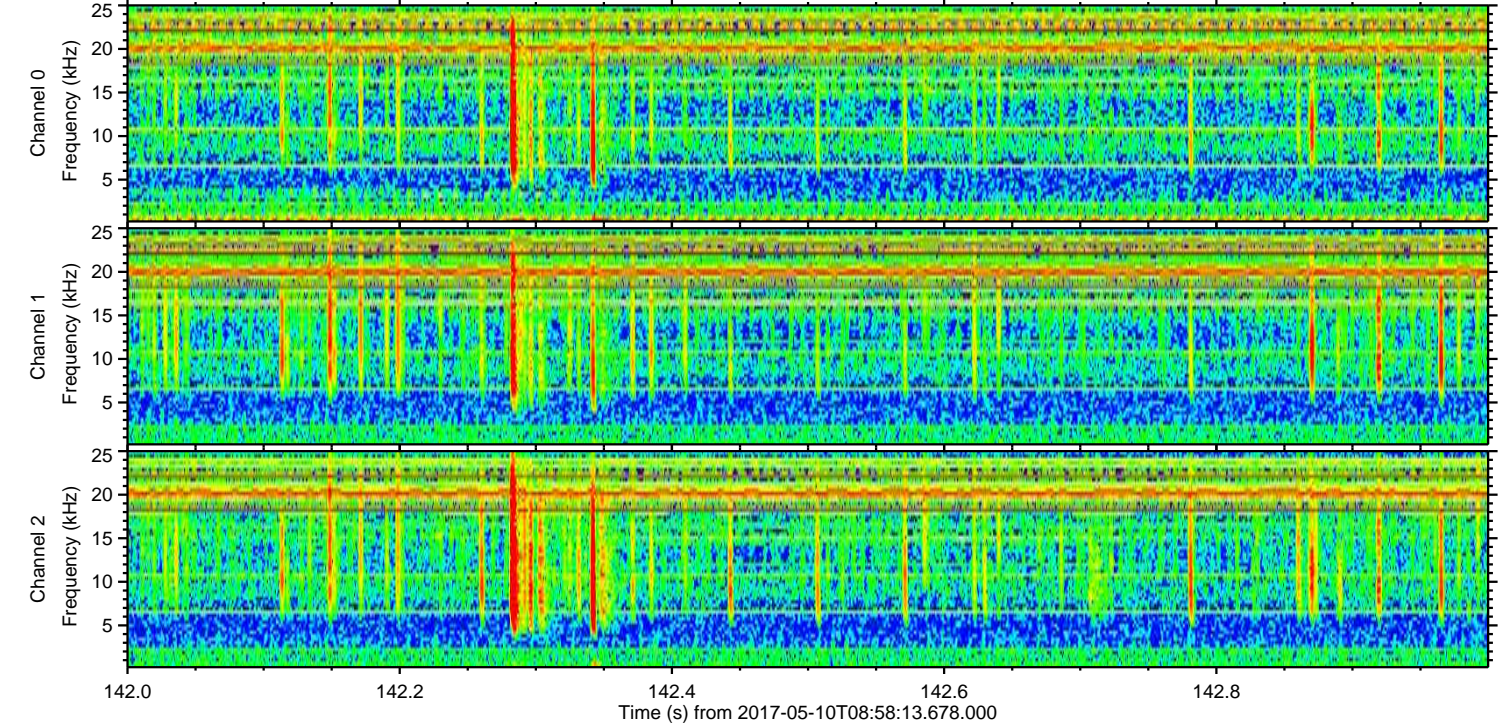
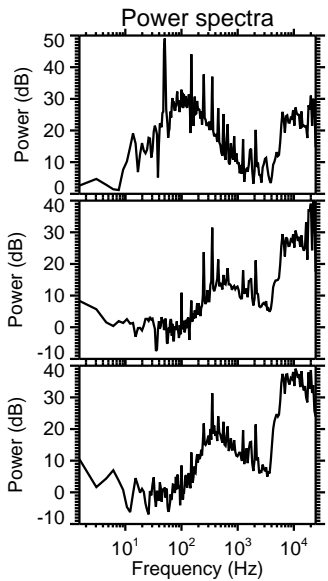
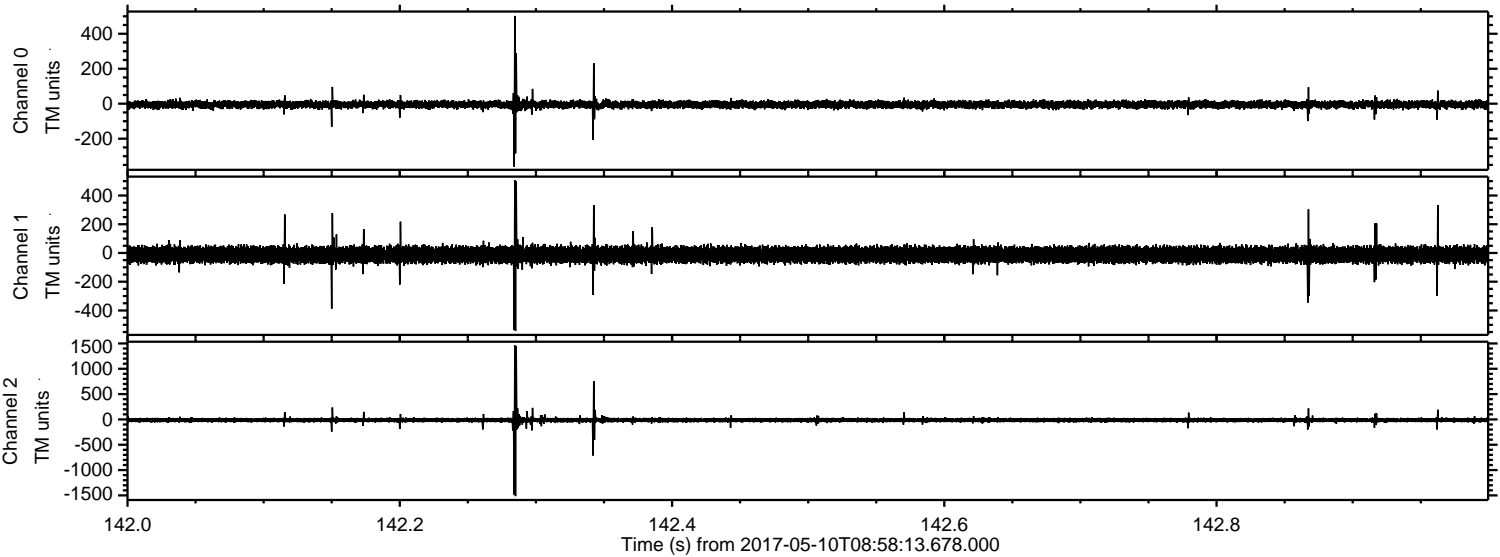
Channel 0
mn: -438
mx: 333
 μ : -5.0
 σ : 10.2

Channel 1
mn: -601
mx: 645
 μ : -11.9
 σ : 27.0

Channel 2
mn: -1361
mx: 1729
 μ : -13.3
 σ : 22.3

ELMAVAN 3D WAVEFORMS (Measured data sampled at 50 kHz) 51000 packets of 144 samples from 2017-05-10T08:58:13.678.000. Part 143/147

Processed Wed May 10 11:06:27 2017 by ELM ver.2012-10-06 from 001__elm20170510_085812__dat00.bin

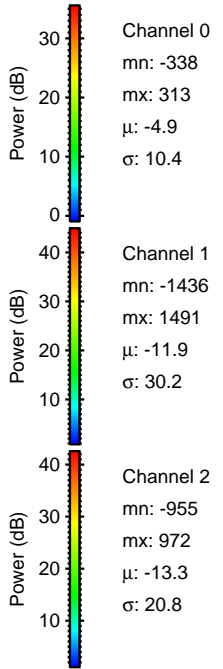
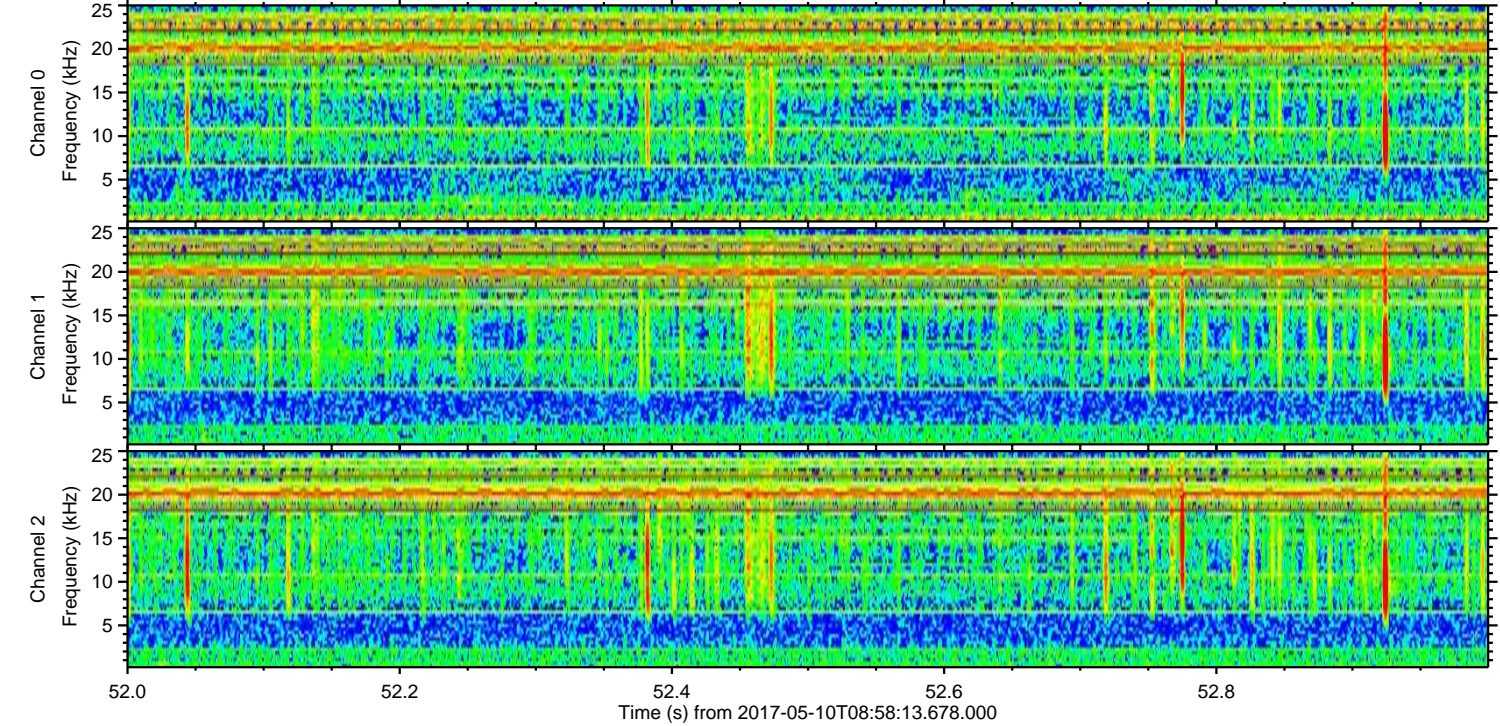
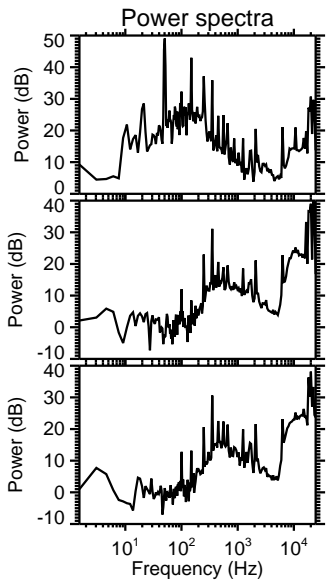
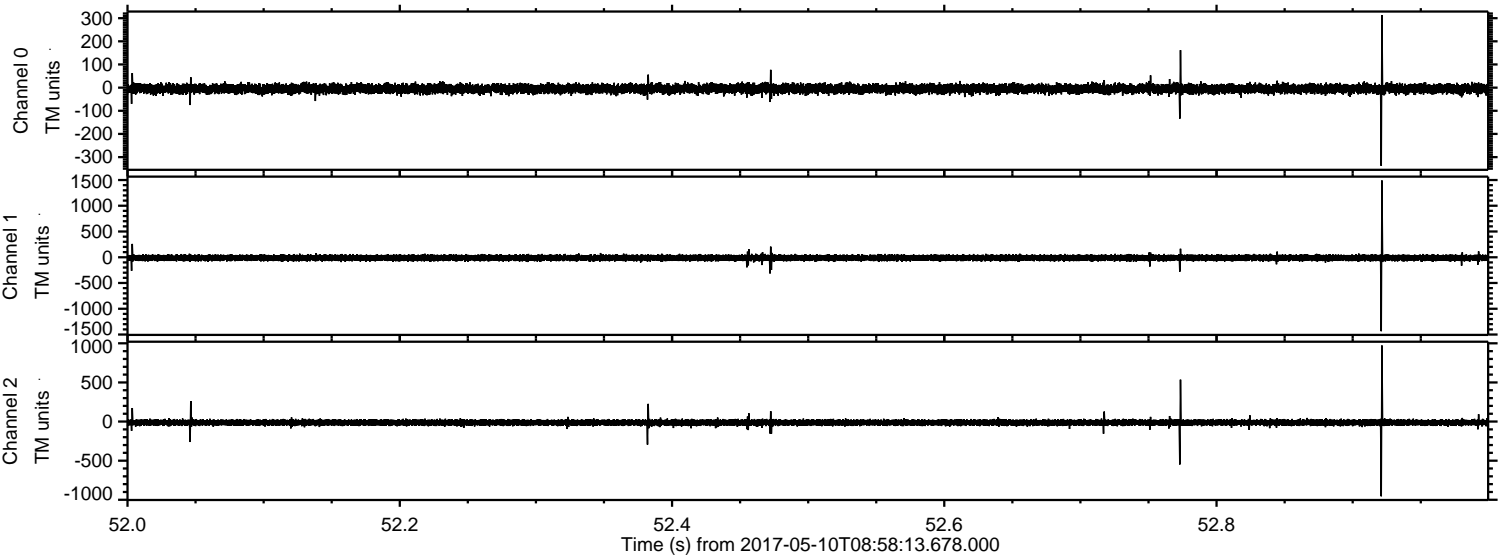


Channel 0
mn: -360
mx: 502
 μ : -4.9
 σ : 11.8

Channel 1
mn: -543
mx: 506
 μ : -11.9
 σ : 28.6

Channel 2
mn: -1515
mx: 1461
 μ : -13.3
 σ : 31.7

Processed Wed May 10 11:06:28 2017 by ELM ver.2012-10-06 from 001__elm20170510_085812__dat00.bin

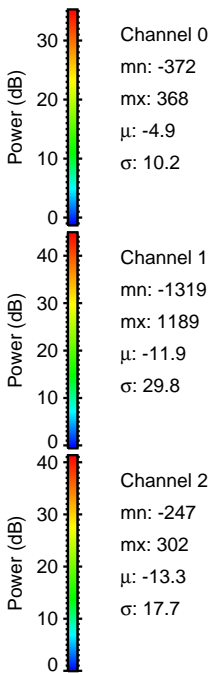
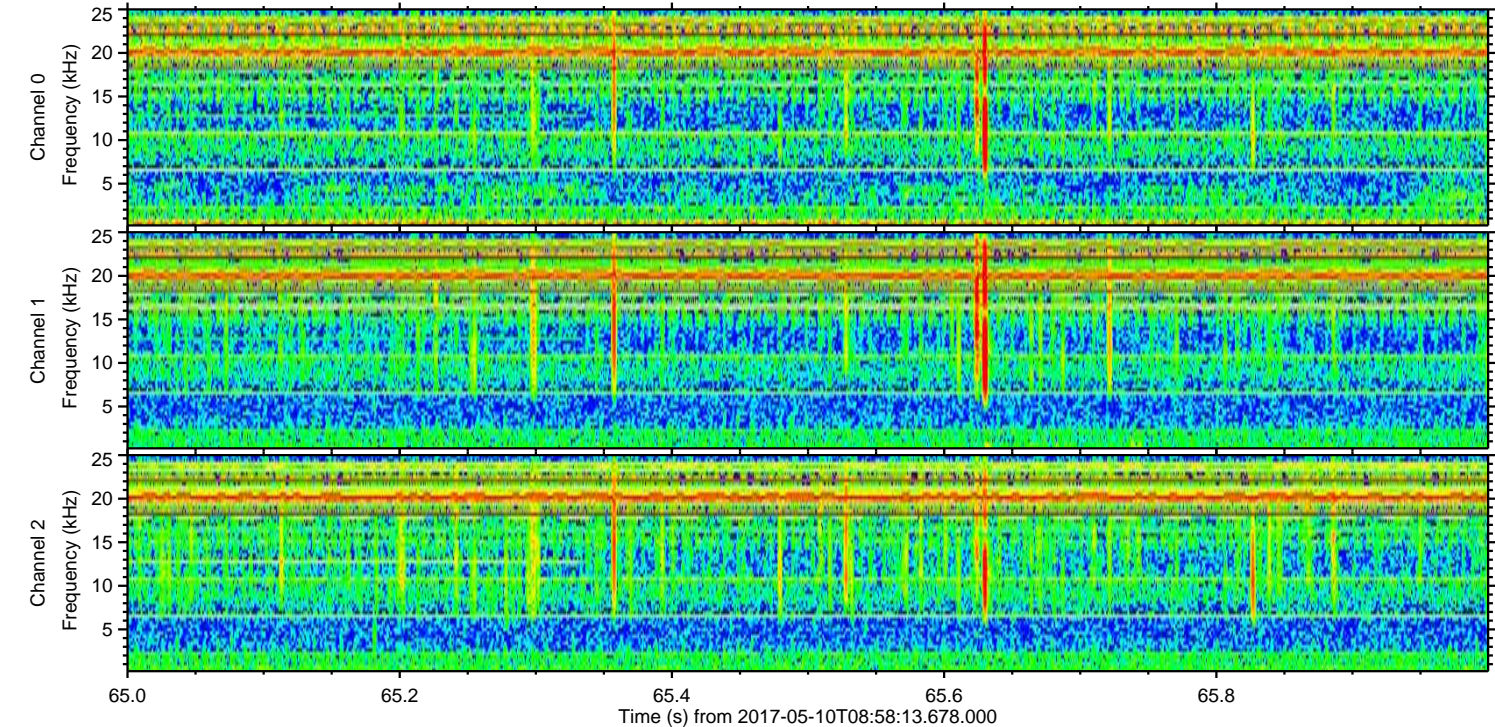
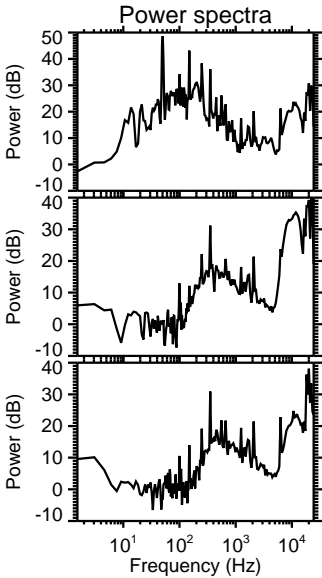
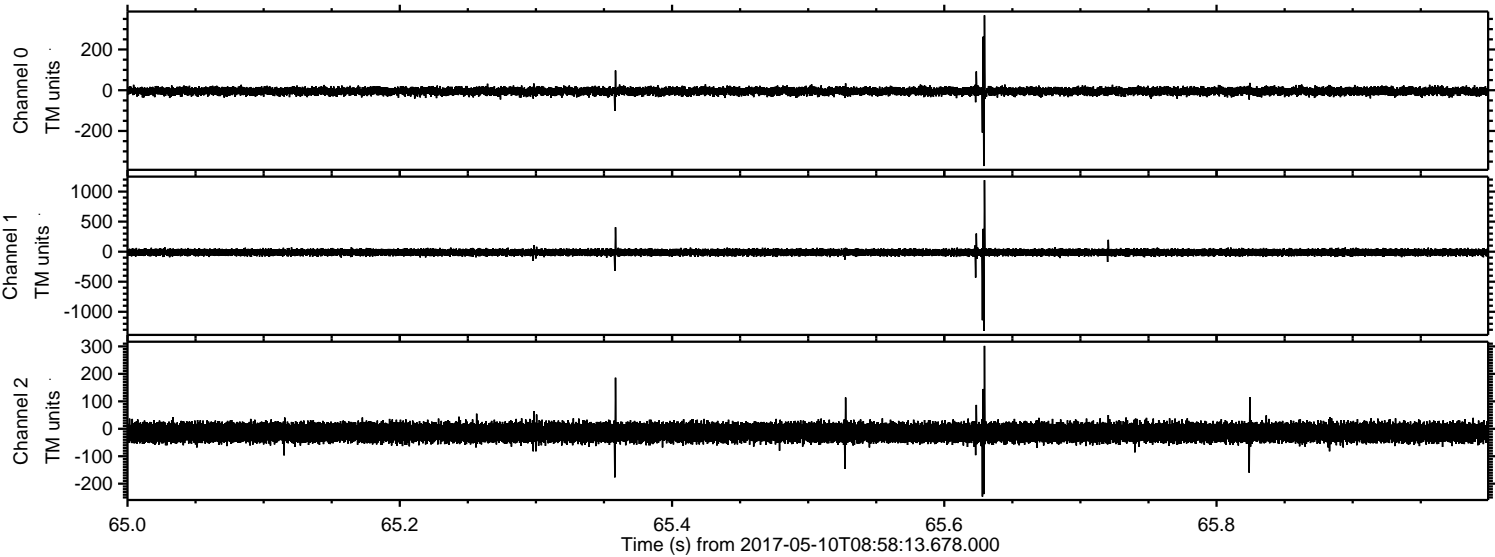


Channel 0
mn: -338
mx: 313
 μ : -4.9
 σ : 10.4

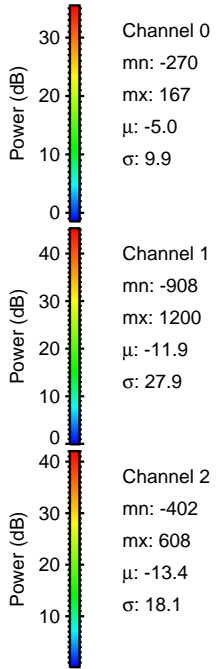
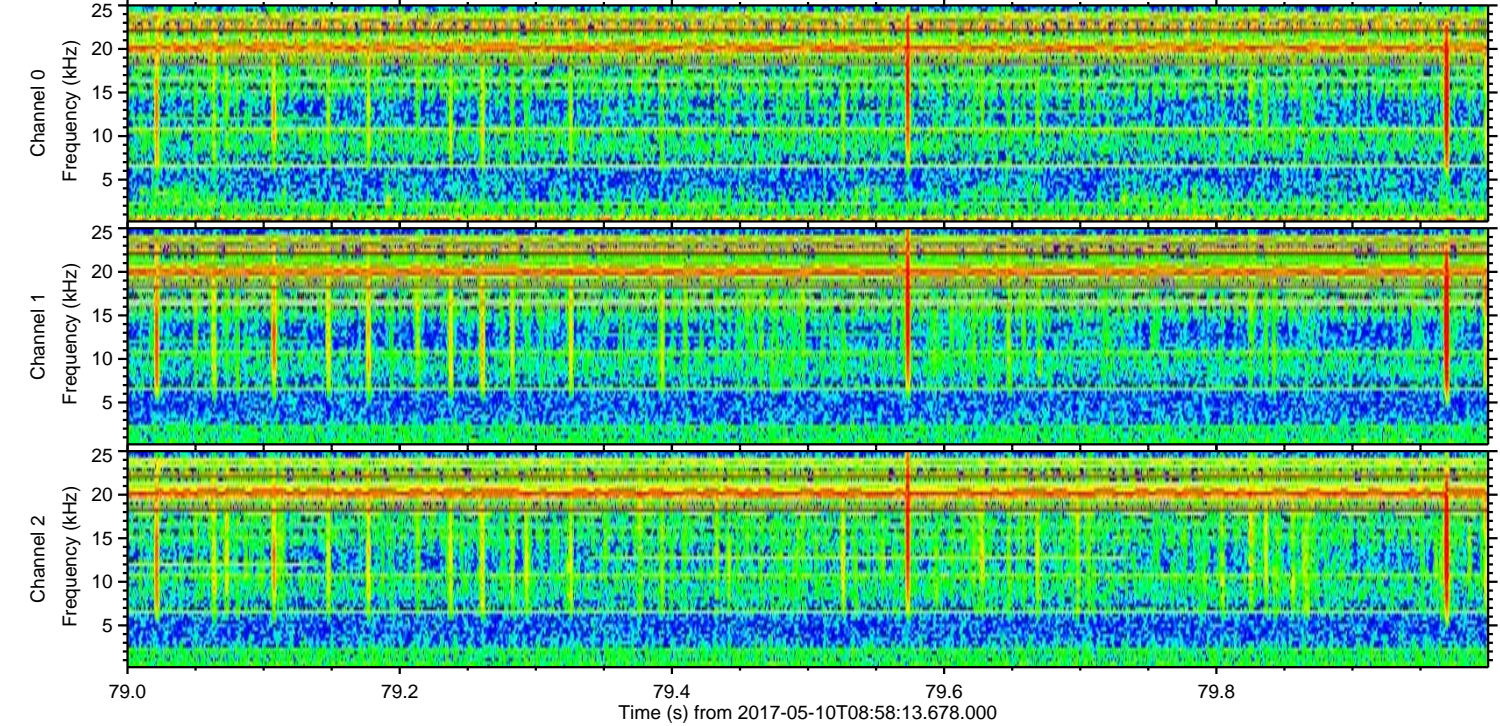
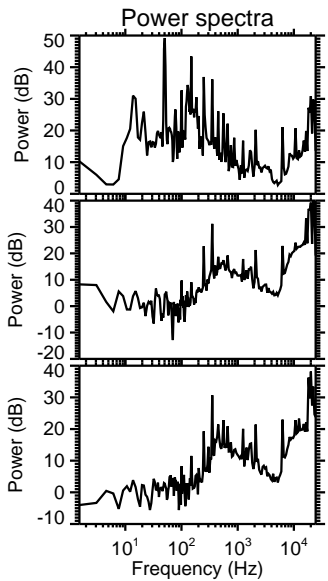
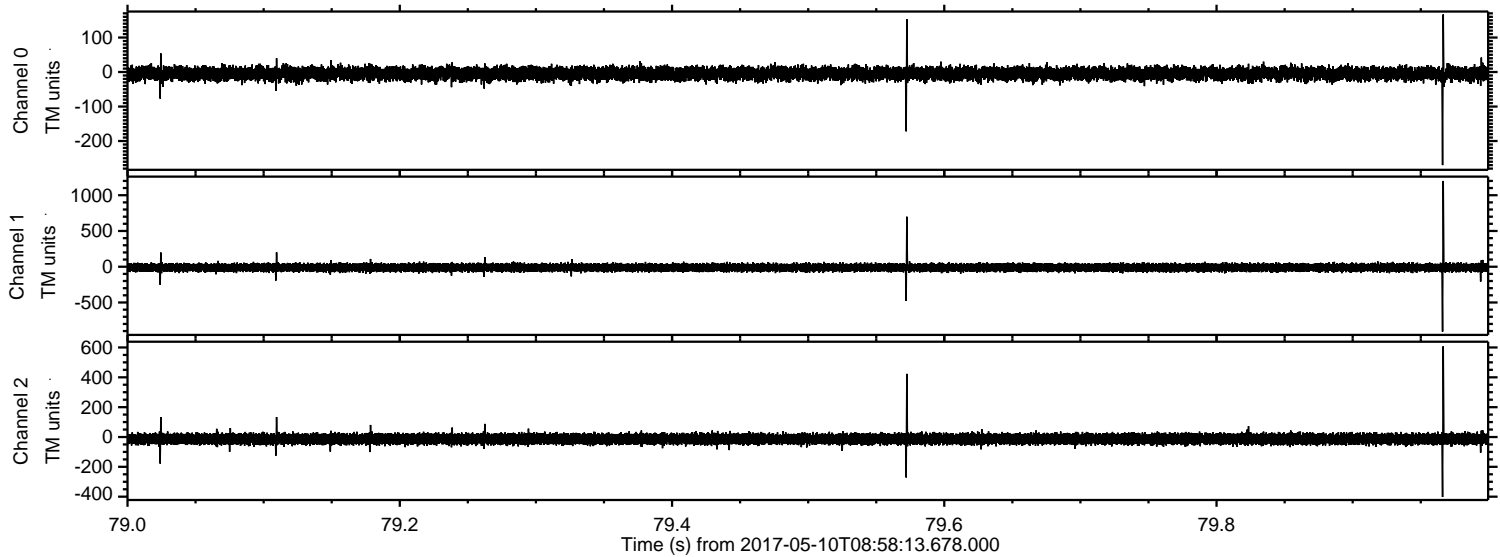
Channel 1
mn: -1436
mx: 1491
 μ : -11.9
 σ : 30.2

Channel 2
mn: -955
mx: 972
 μ : -13.3
 σ : 20.8

Processed Wed May 10 11:06:29 2017 by ELM ver.2012-10-06 from 001__elm20170510_085812__dat00.bin



Processed Wed May 10 11:06:29 2017 by ELM ver.2012-10-06 from 001__elm20170510_085812__dat00.bin



Processed Wed May 10 11:06:30 2017 by ELM ver.2012-10-06 from 001__elm20170510_085812__dat00.bin

