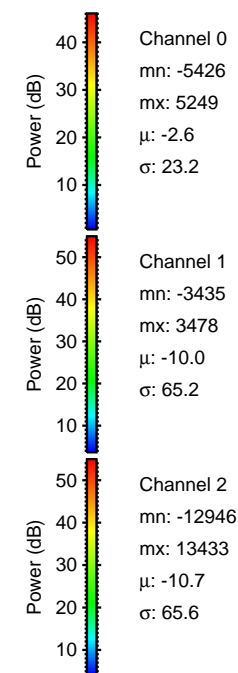
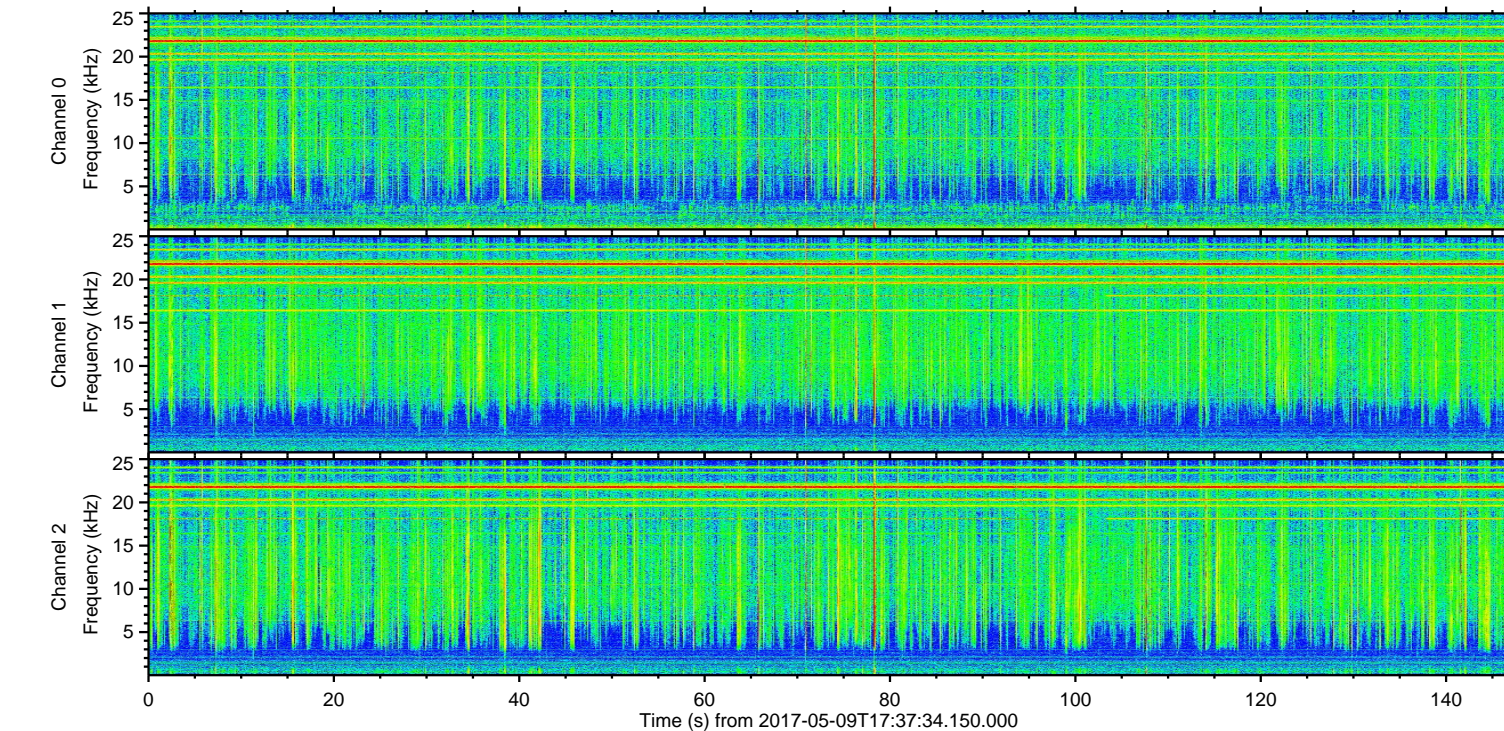
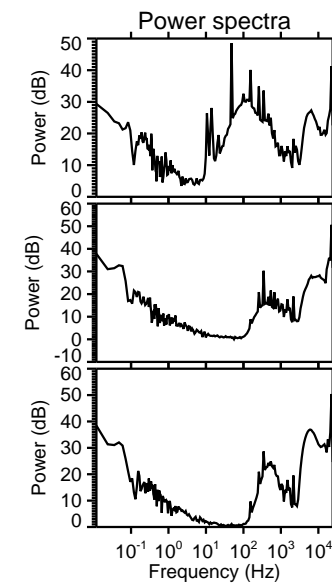
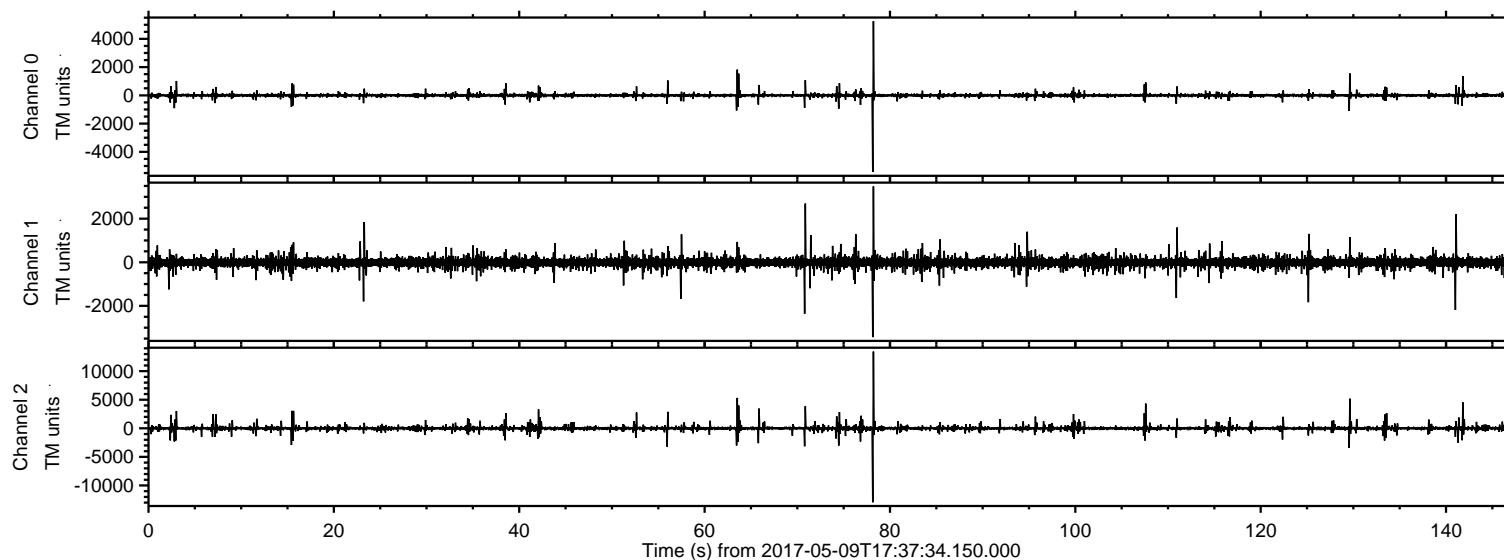


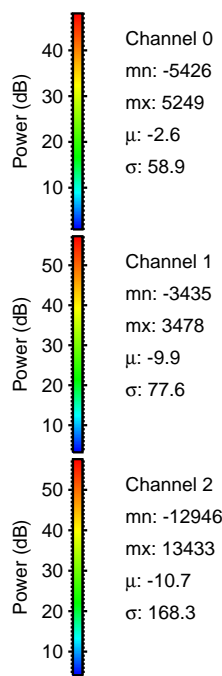
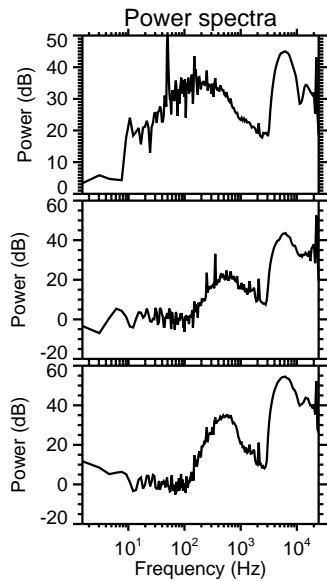
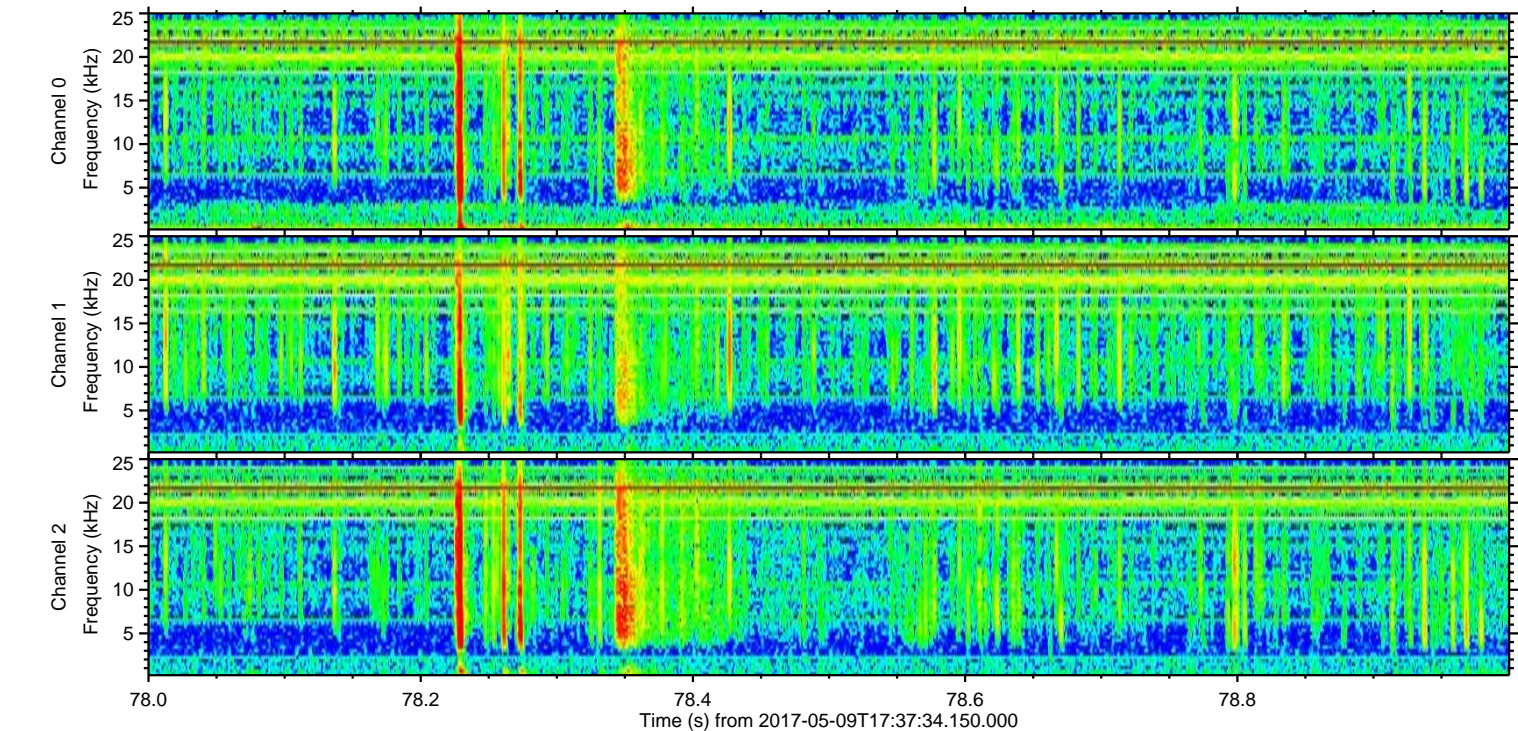
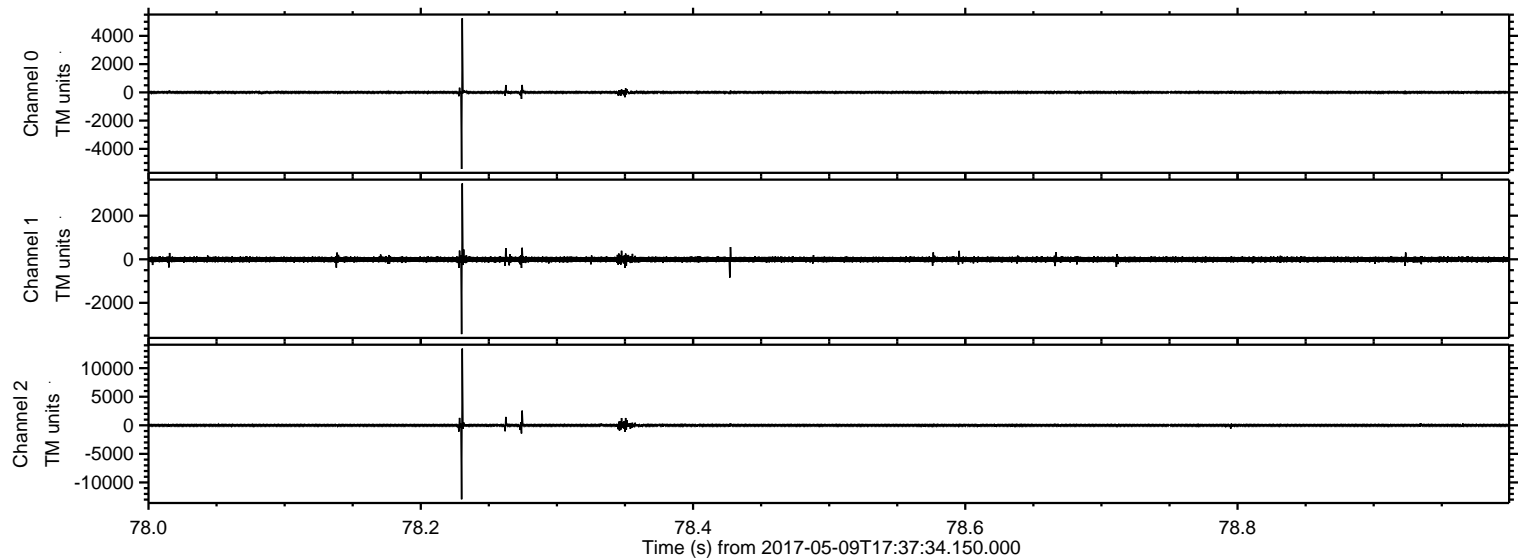
# ELMAVAN 3D WAVEFORMS (Measured data sampled at 50 kHz) 51000 packets of 144 samples from 2017-05-09T17:37:34.150.000.

Processed Tue May 9 19:45:25 2017 by ELM ver.2012-10-06 from 001\_\_elm20170509\_173733\_\_dat00.bin



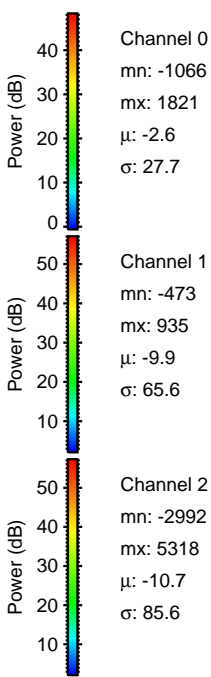
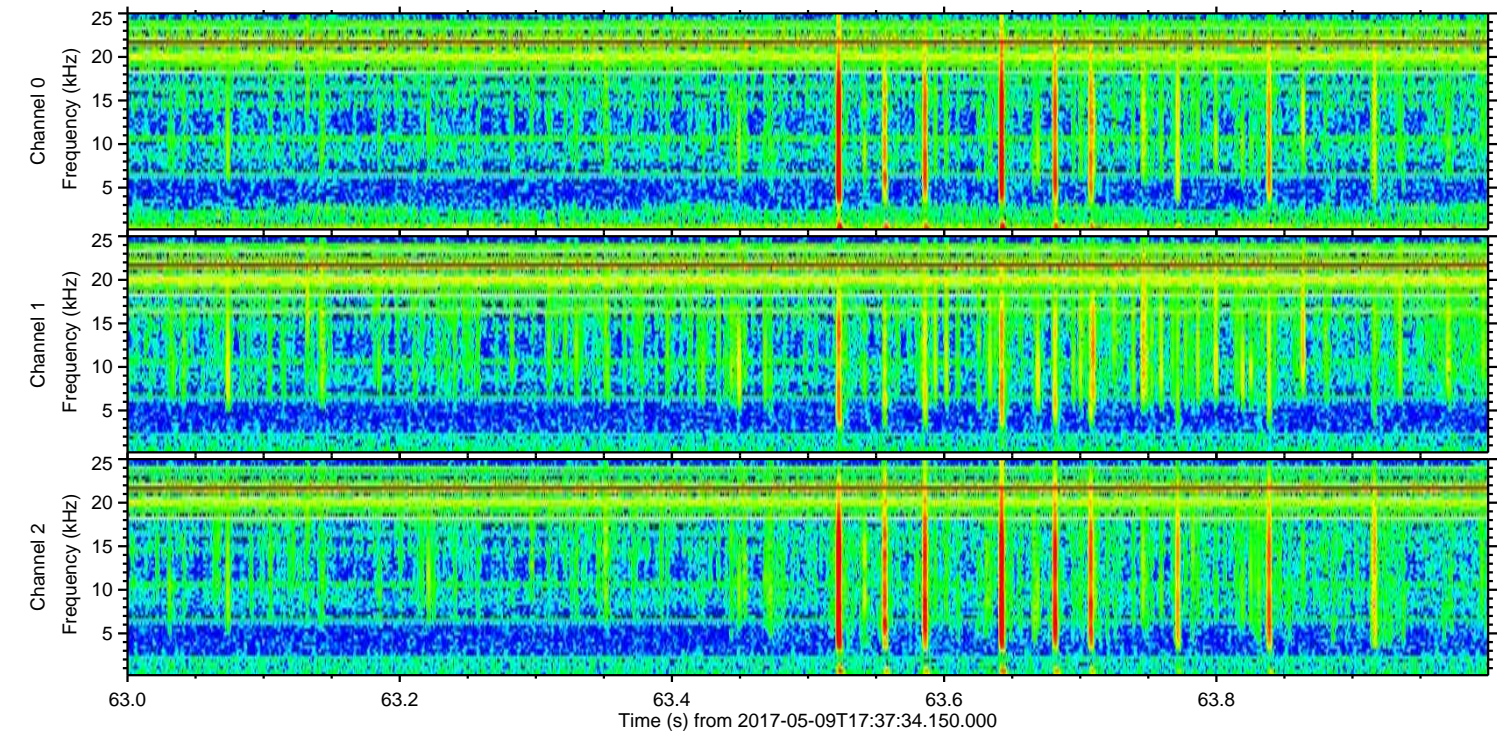
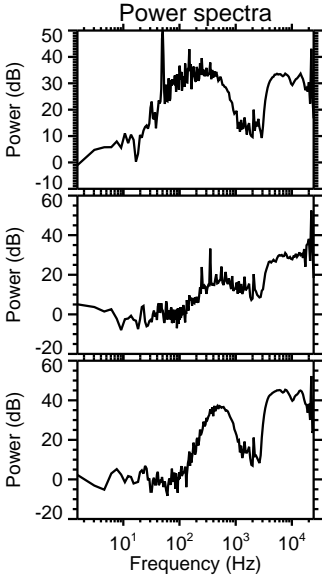
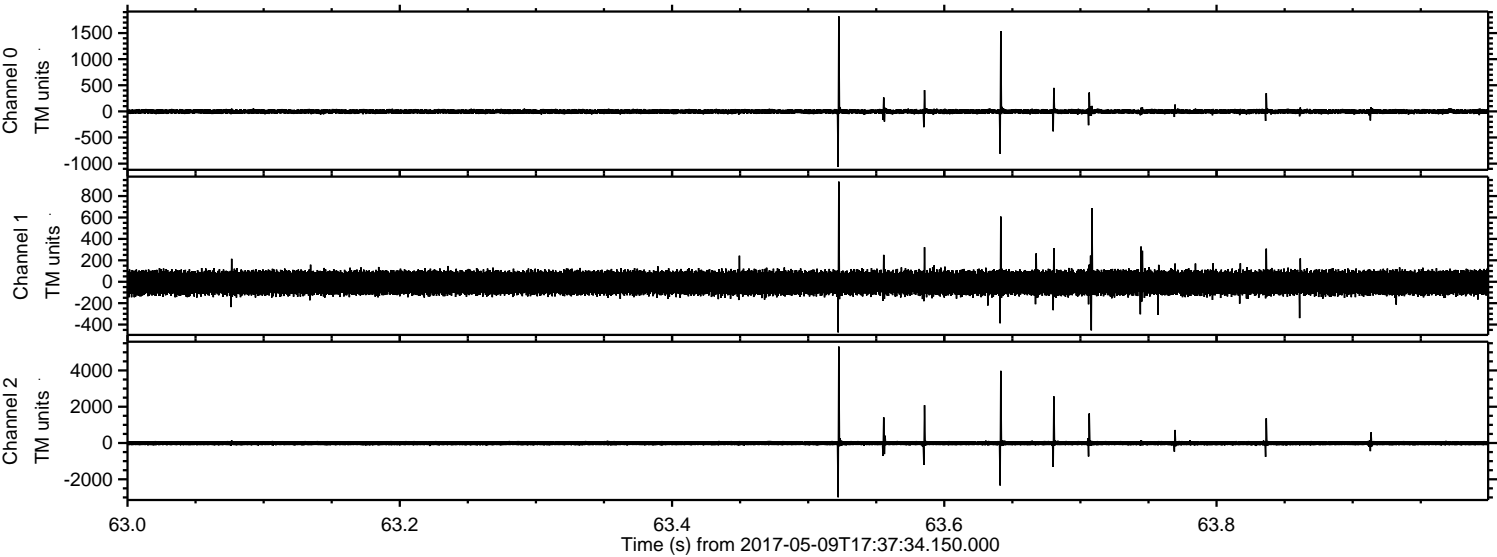


Processed Tue May 9 19:45:37 2017 by ELM ver.2012-10-06 from 001\_\_elm20170509\_173733\_\_dat00.bin





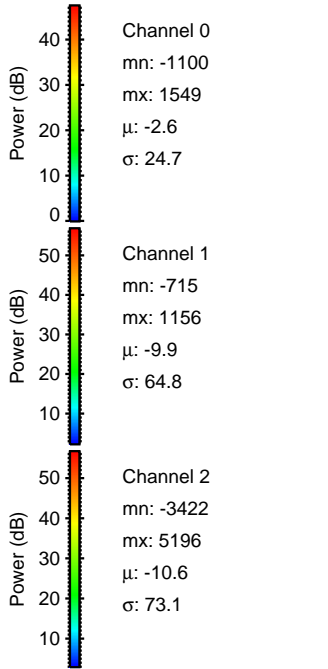
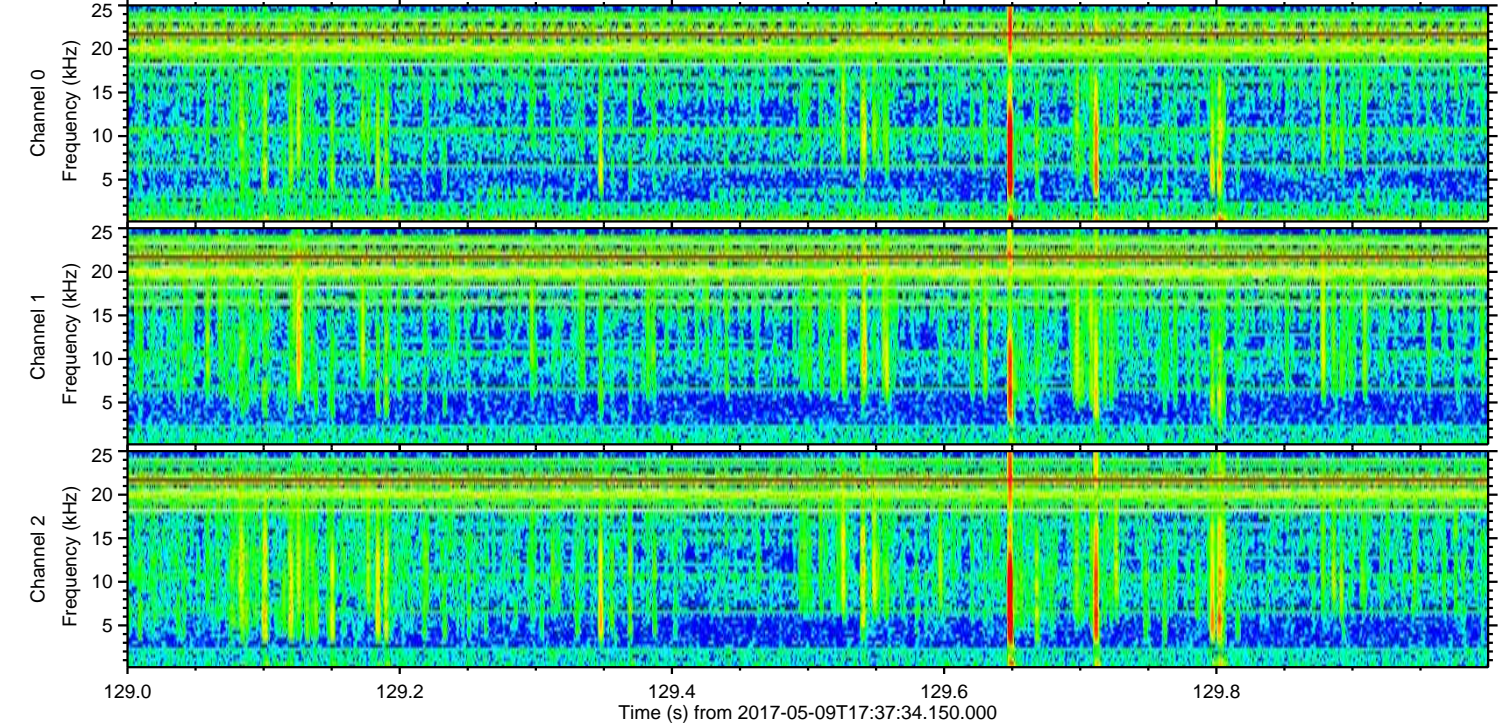
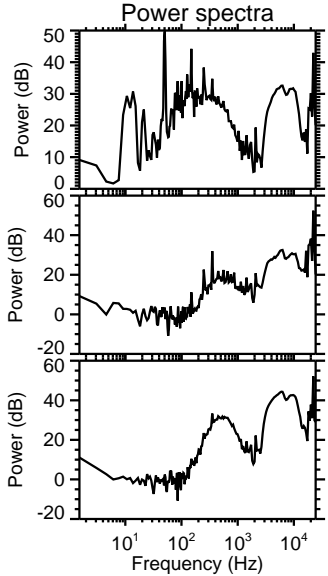
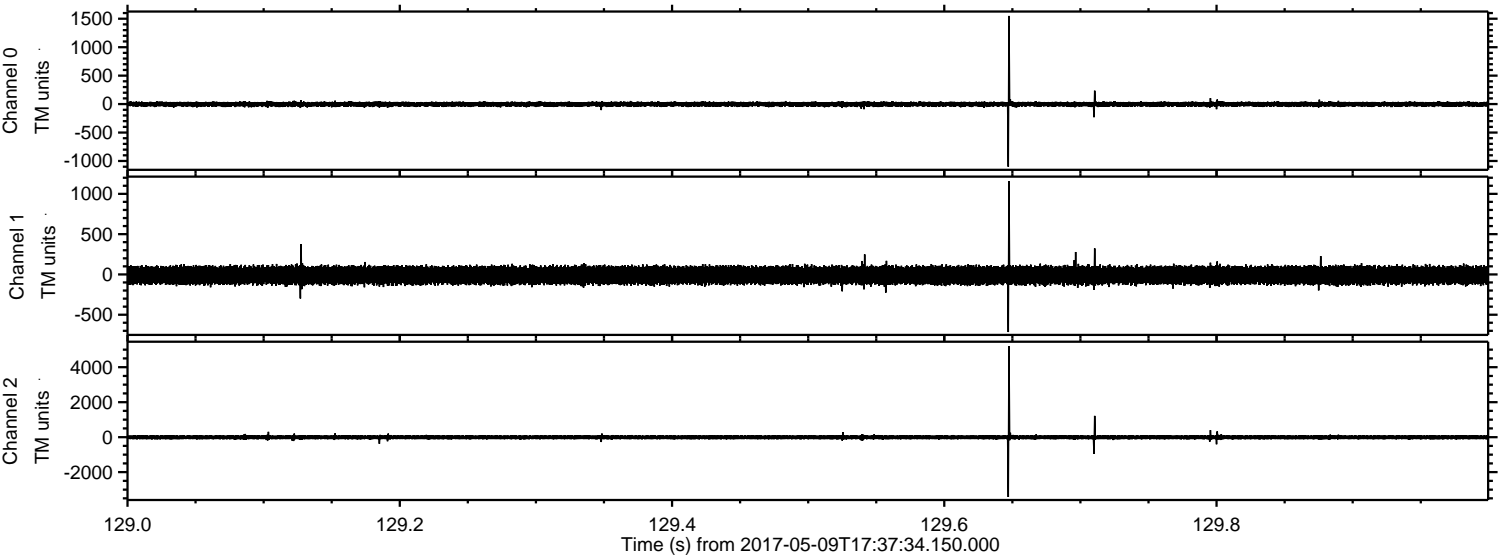
Processed Tue May 9 19:45:38 2017 by ELM ver.2012-10-06 from 001\_\_elm20170509\_173733\_\_dat00.bin





ELMAVAN 3D WAVEFORMS (Measured data sampled at 50 kHz) 51000 packets of 144 samples from 2017-05-09T17:37:34.150.000. Part 130/147

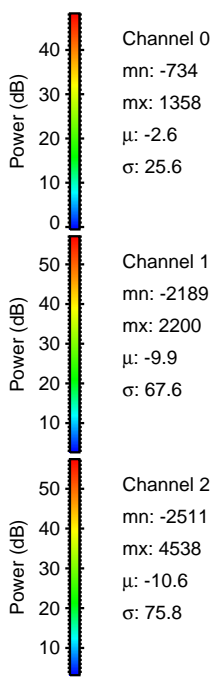
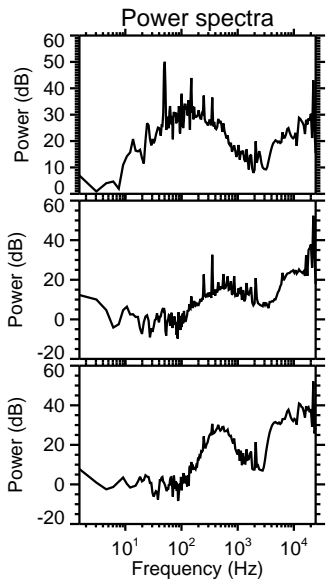
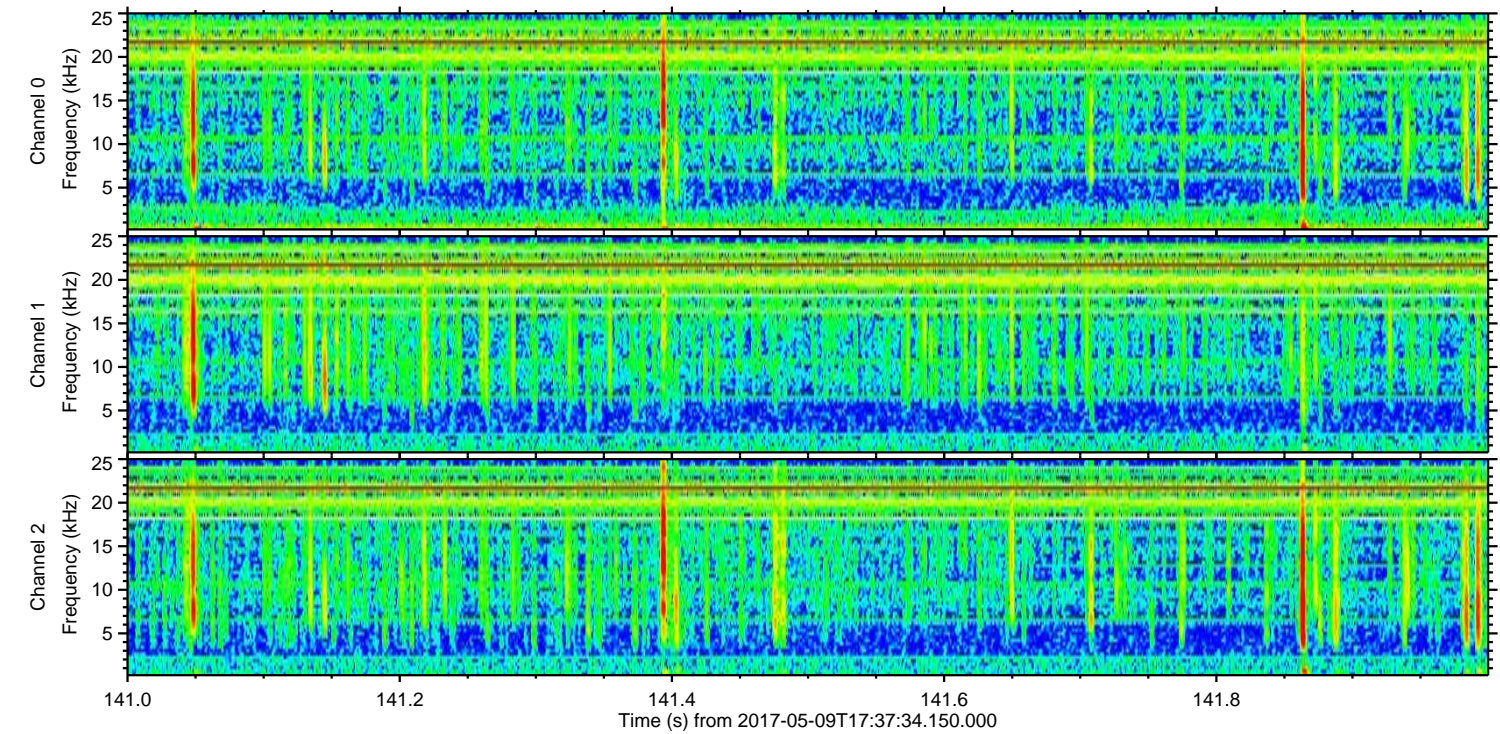
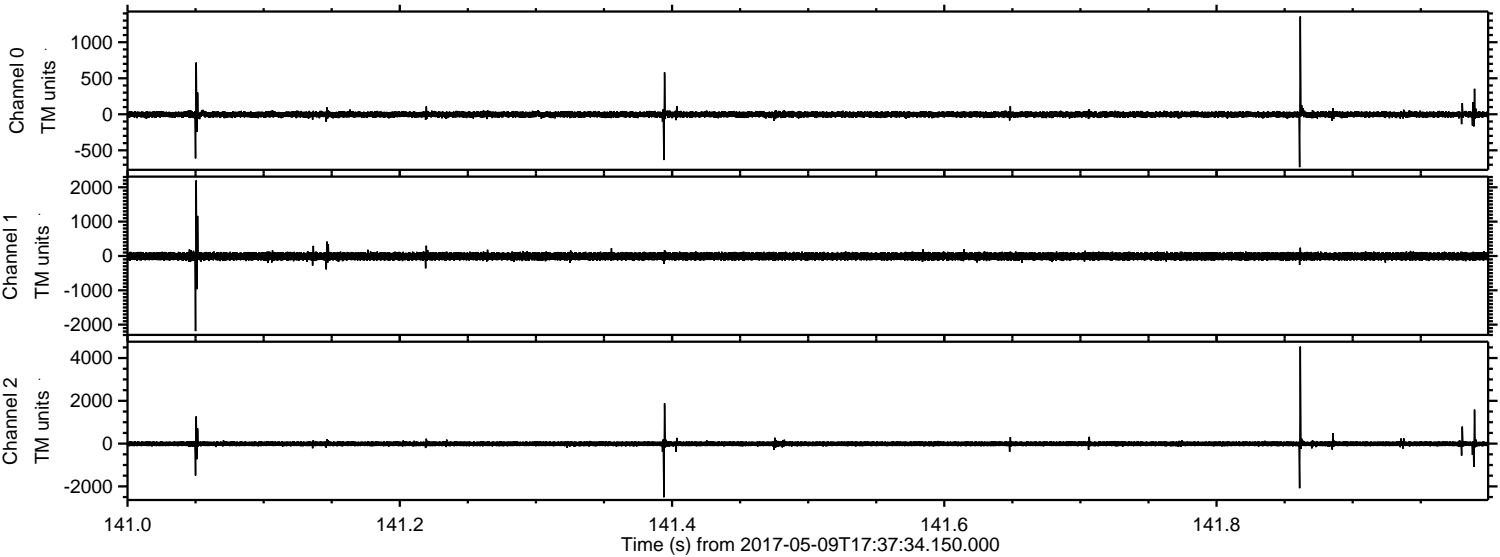
Processed Tue May 9 19:45:39 2017 by ELM ver.2012-10-06 from 001\_\_elm20170509\_173733\_\_dat00.bin





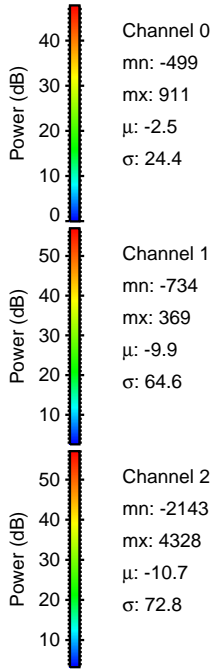
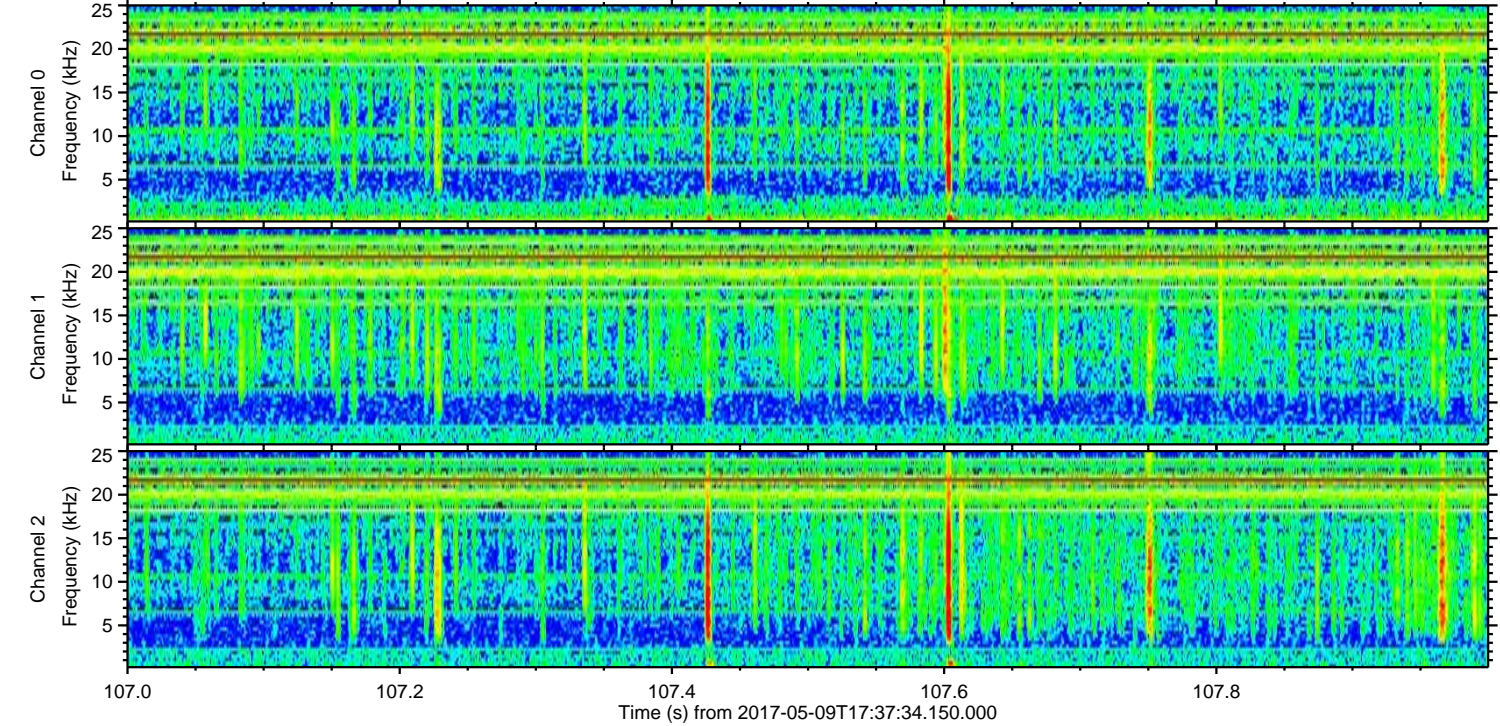
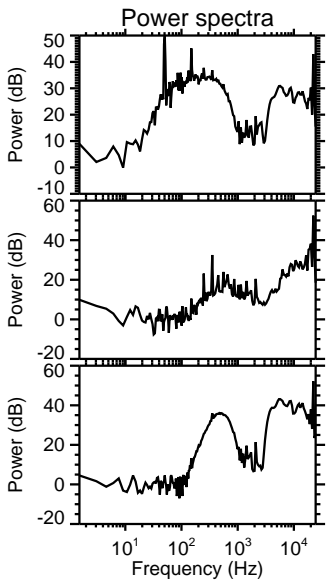
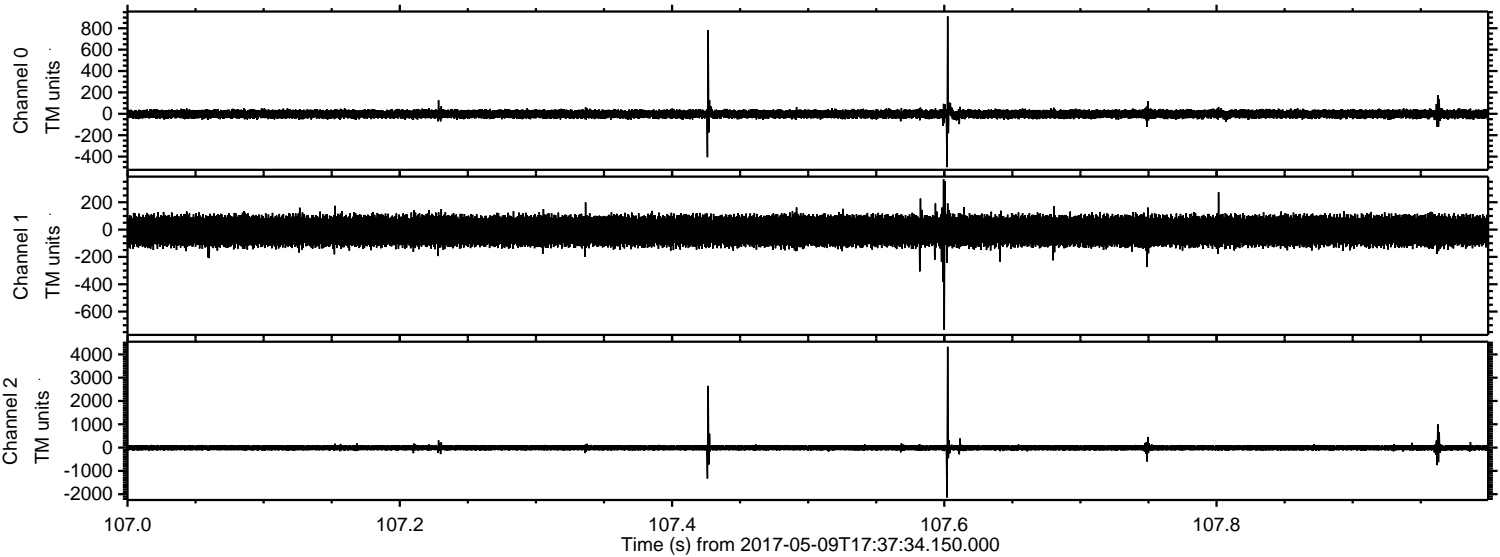
ELMAVAN 3D WAVEFORMS (Measured data sampled at 50 kHz) 51000 packets of 144 samples from 2017-05-09T17:37:34.150.000. Part 142/147

Processed Tue May 9 19:45:40 2017 by ELM ver.2012-10-06 from 001\_\_elm20170509\_173733\_\_dat00.bin



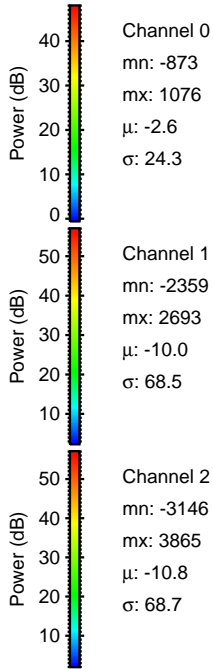
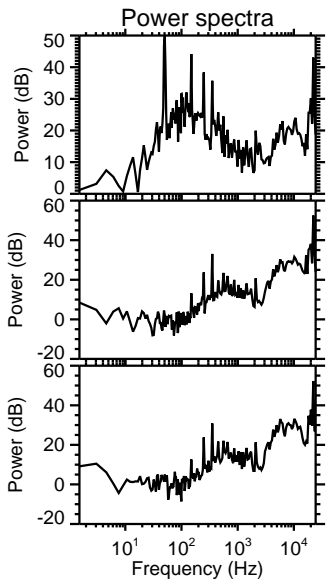
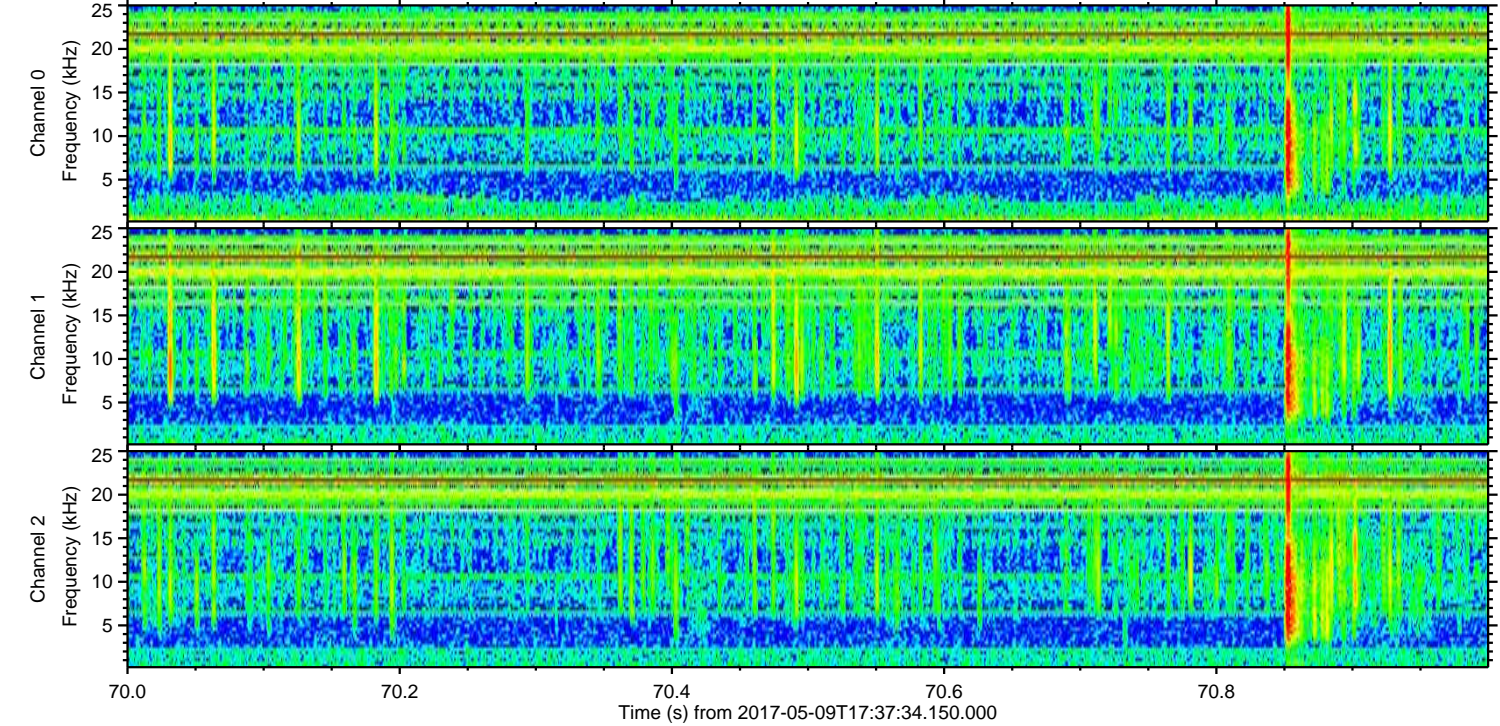
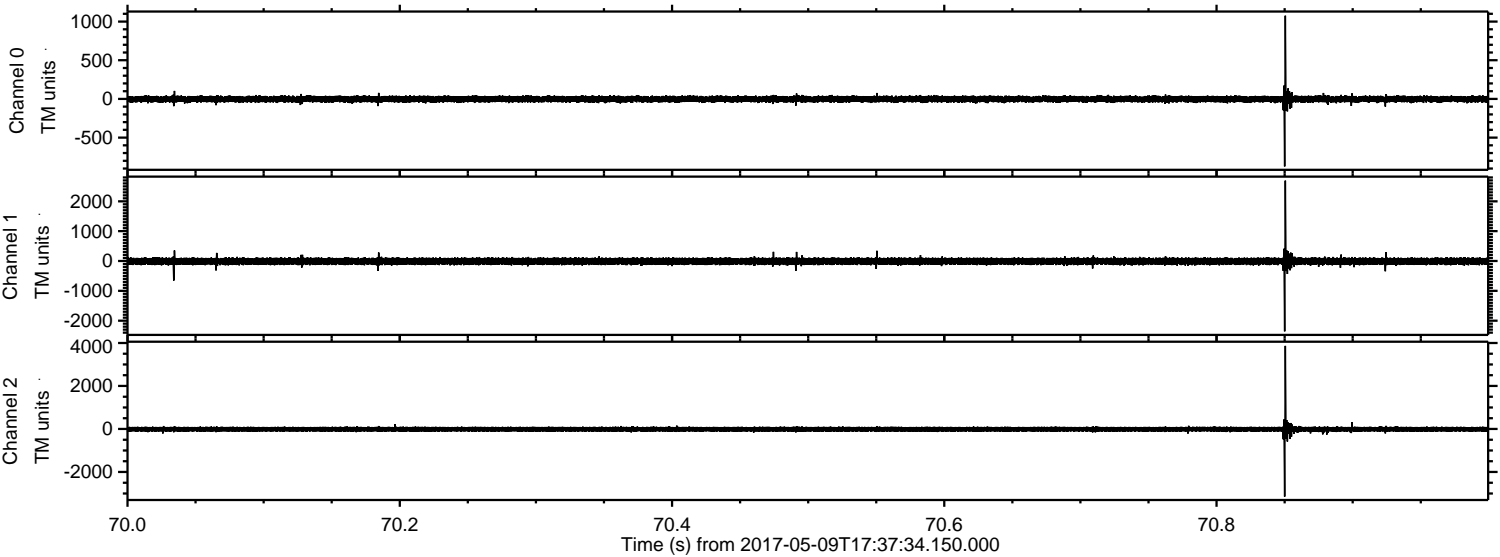


Processed Tue May 9 19:45:41 2017 by ELM ver.2012-10-06 from 001\_\_elm20170509\_173733\_\_dat00.bin



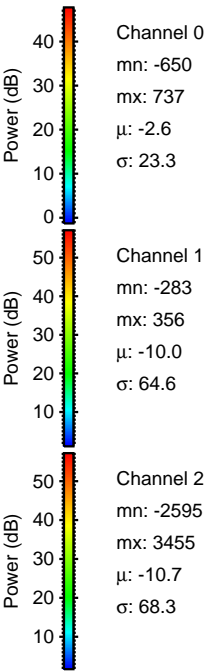
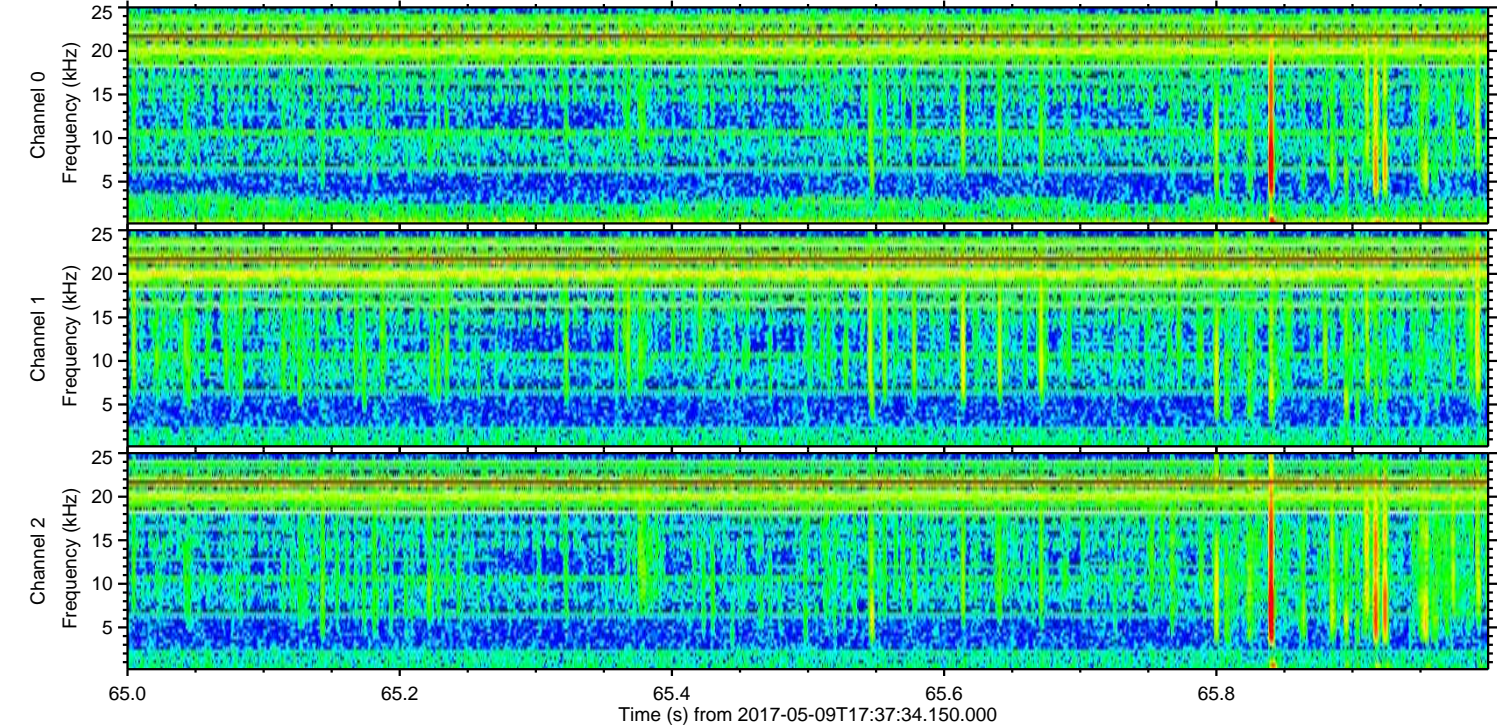
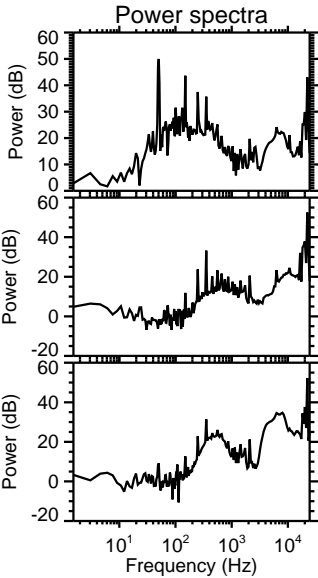
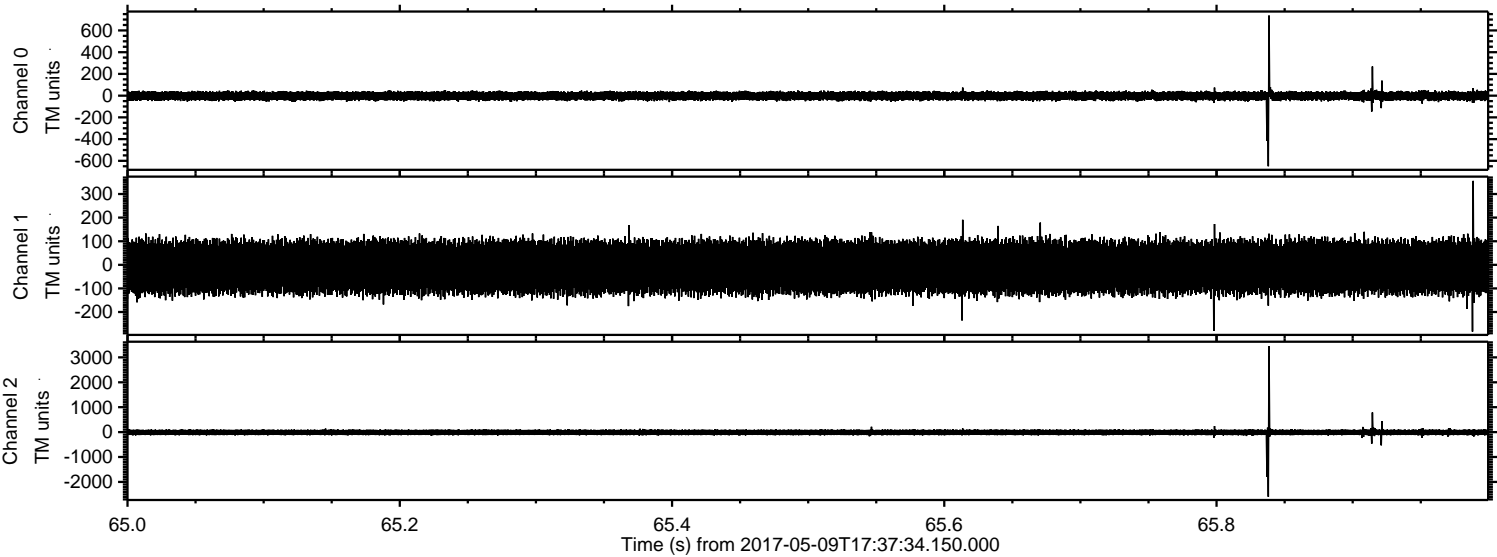


Processed Tue May 9 19:45:42 2017 by ELM ver.2012-10-06 from 001\_\_elm20170509\_173733\_\_dat00.bin



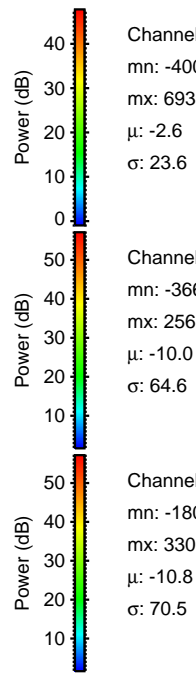
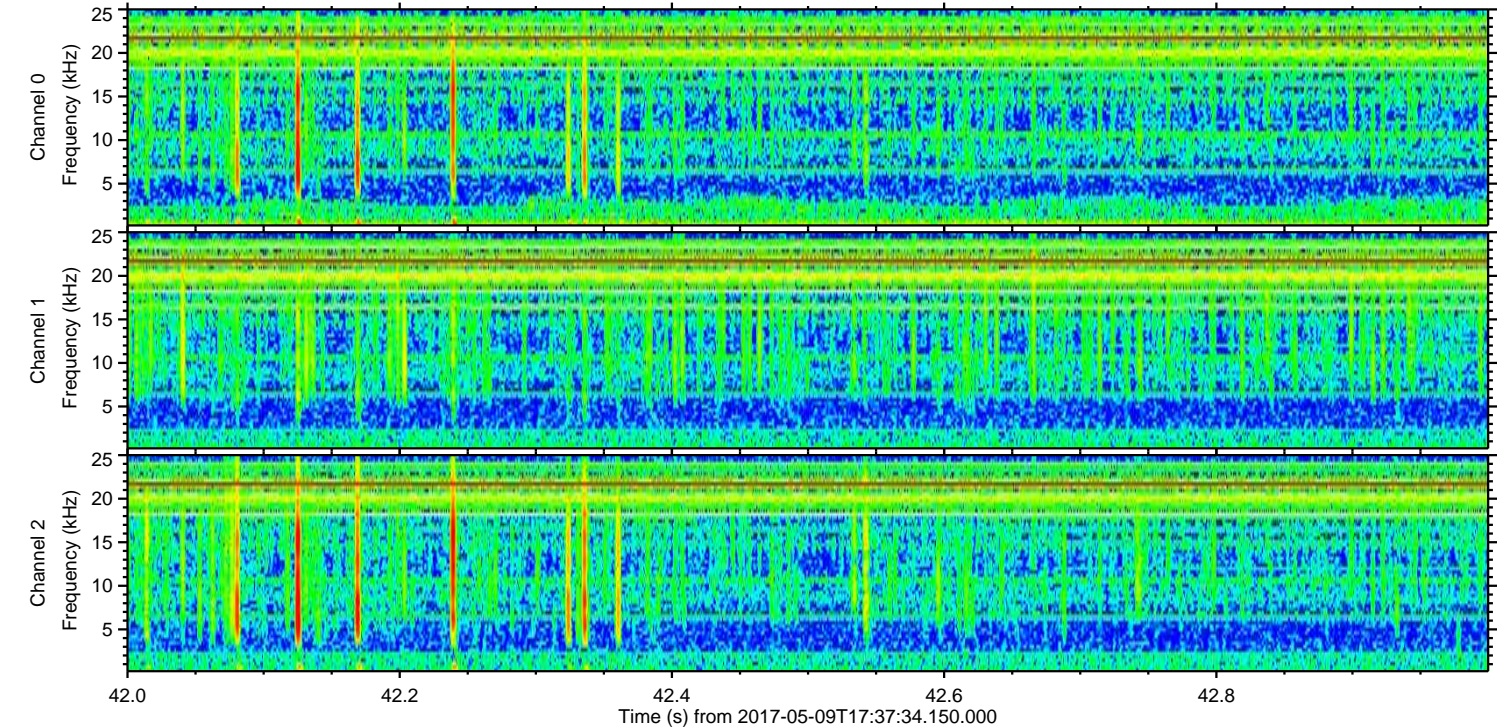
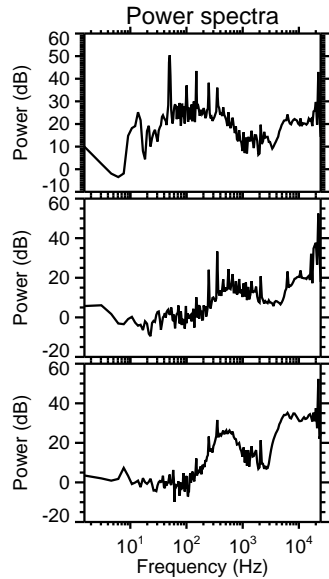
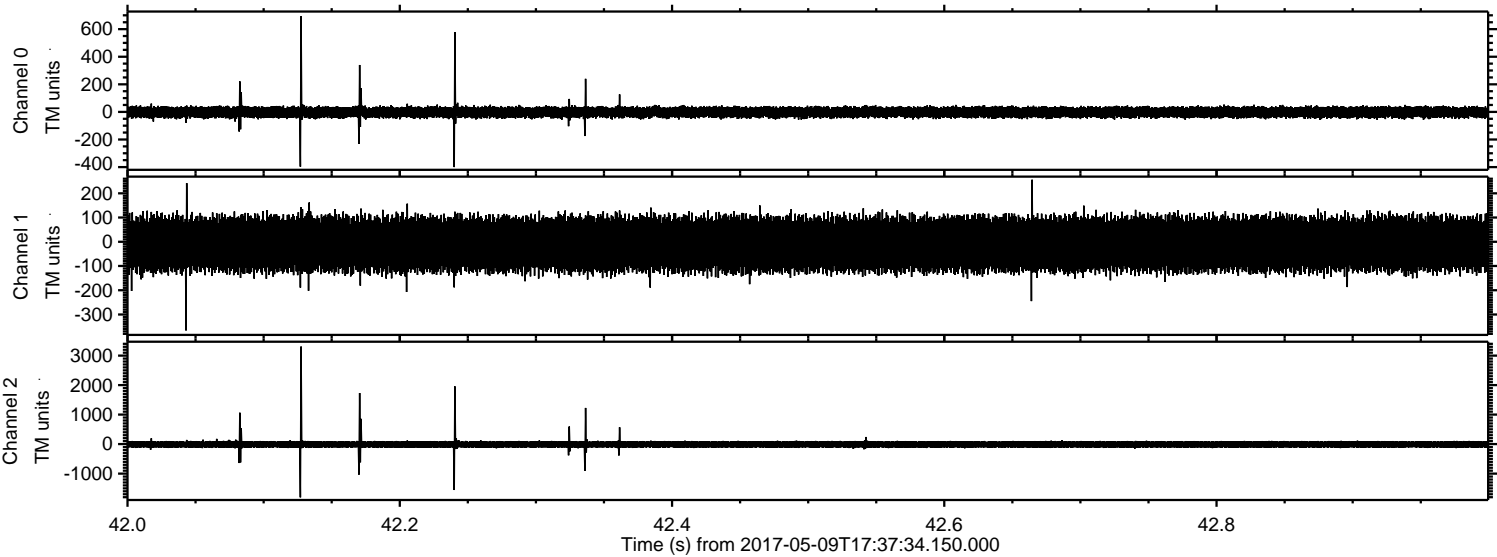


Processed Tue May 9 19:45:43 2017 by ELM ver.2012-10-06 from 001\_\_elm20170509\_173733\_\_dat00.bin





Processed Tue May 9 19:45:44 2017 by ELM ver.2012-10-06 from 001\_\_elm20170509\_173733\_\_dat00.bin



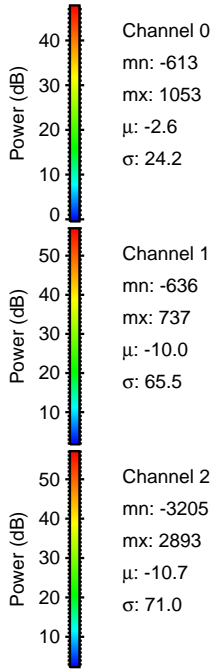
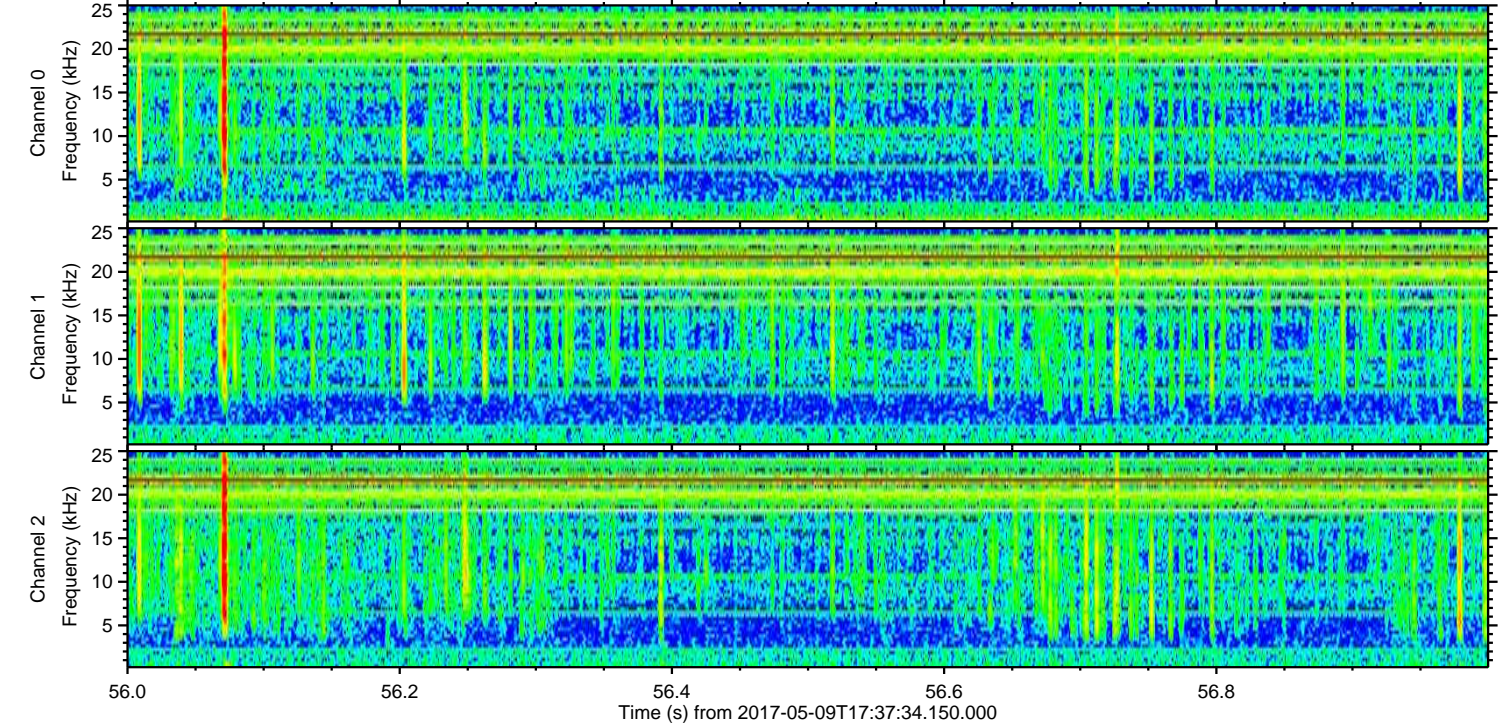
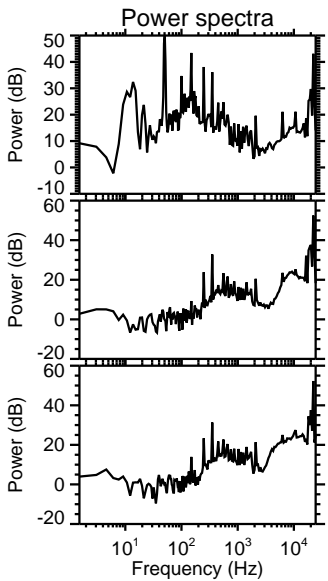
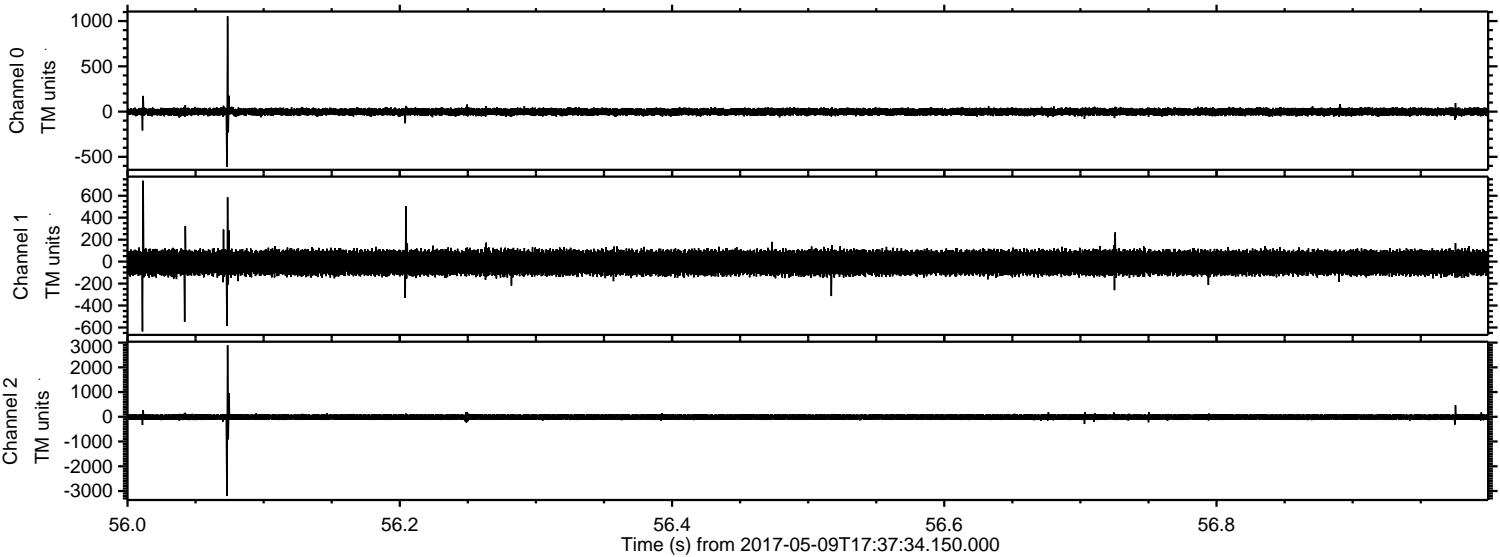
Channel 0  
mn: -400  
mx: 693  
 $\mu$ : -2.6  
 $\sigma$ : 23.6

Channel 1  
mn: -366  
mx: 256  
 $\mu$ : -10.0  
 $\sigma$ : 64.6

Channel 2  
mn: -1805  
mx: 3306  
 $\mu$ : -10.8  
 $\sigma$ : 70.5



Processed Tue May 9 19:45:44 2017 by ELM ver.2012-10-06 from 001\_\_elm20170509\_173733\_\_dat00.bin





Processed Tue May 9 19:45:45 2017 by ELM ver.2012-10-06 from 001\_\_elm20170509\_173733\_\_dat00.bin

