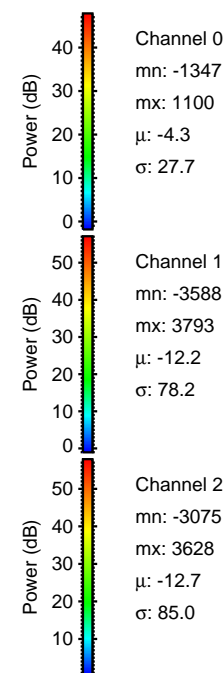
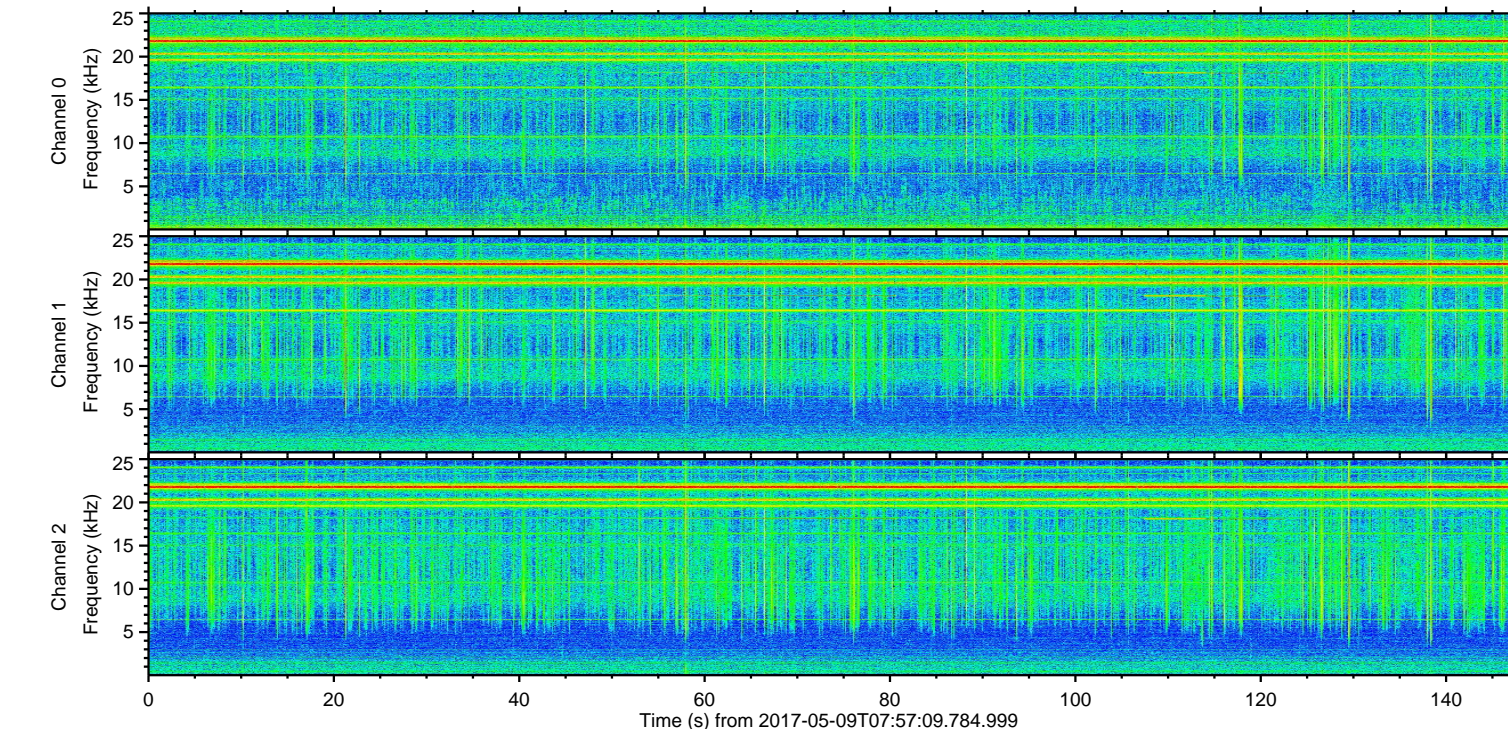
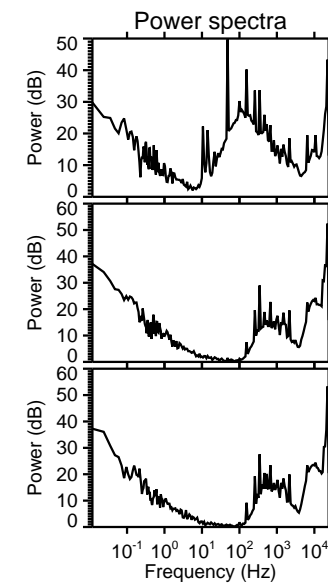
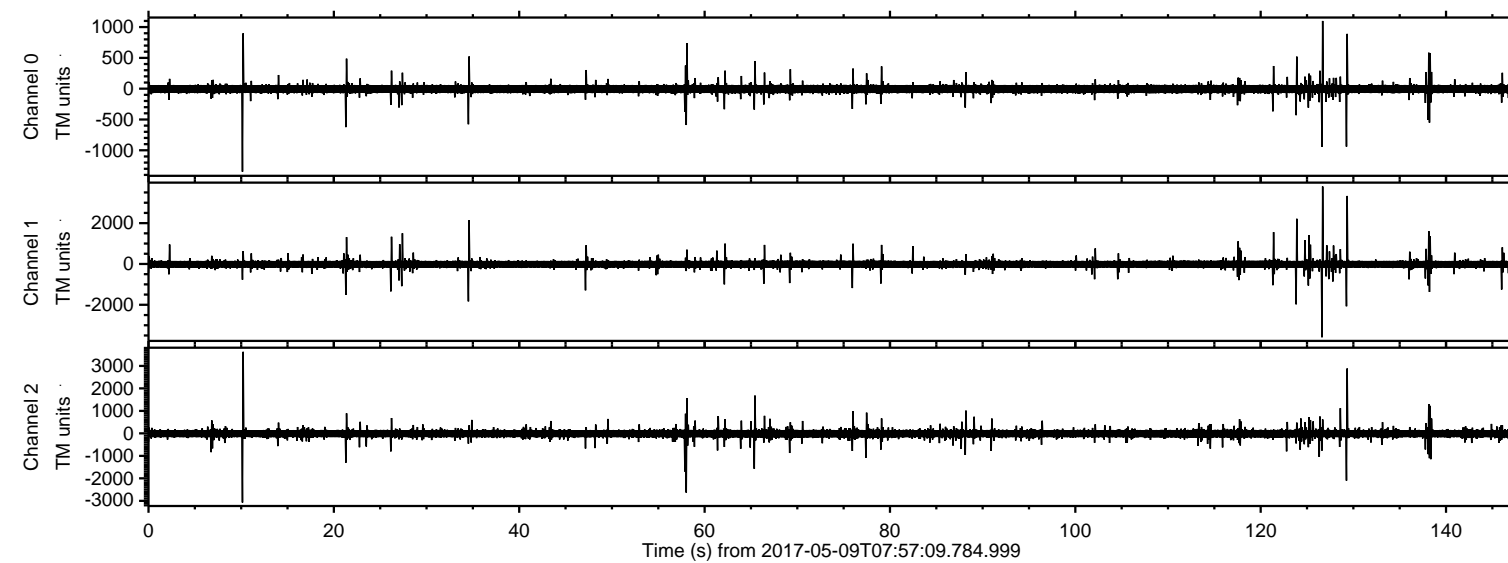


# ELMAVAN 3D WAVEFORMS (Measured data sampled at 50 kHz) 51000 packets of 144 samples from 2017-05-09T07:57:09.784.999.

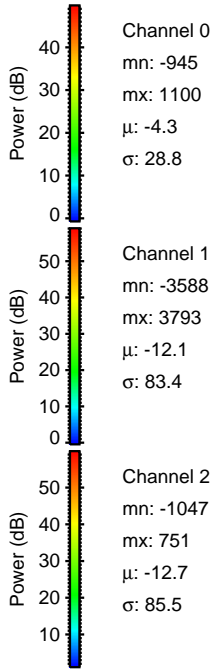
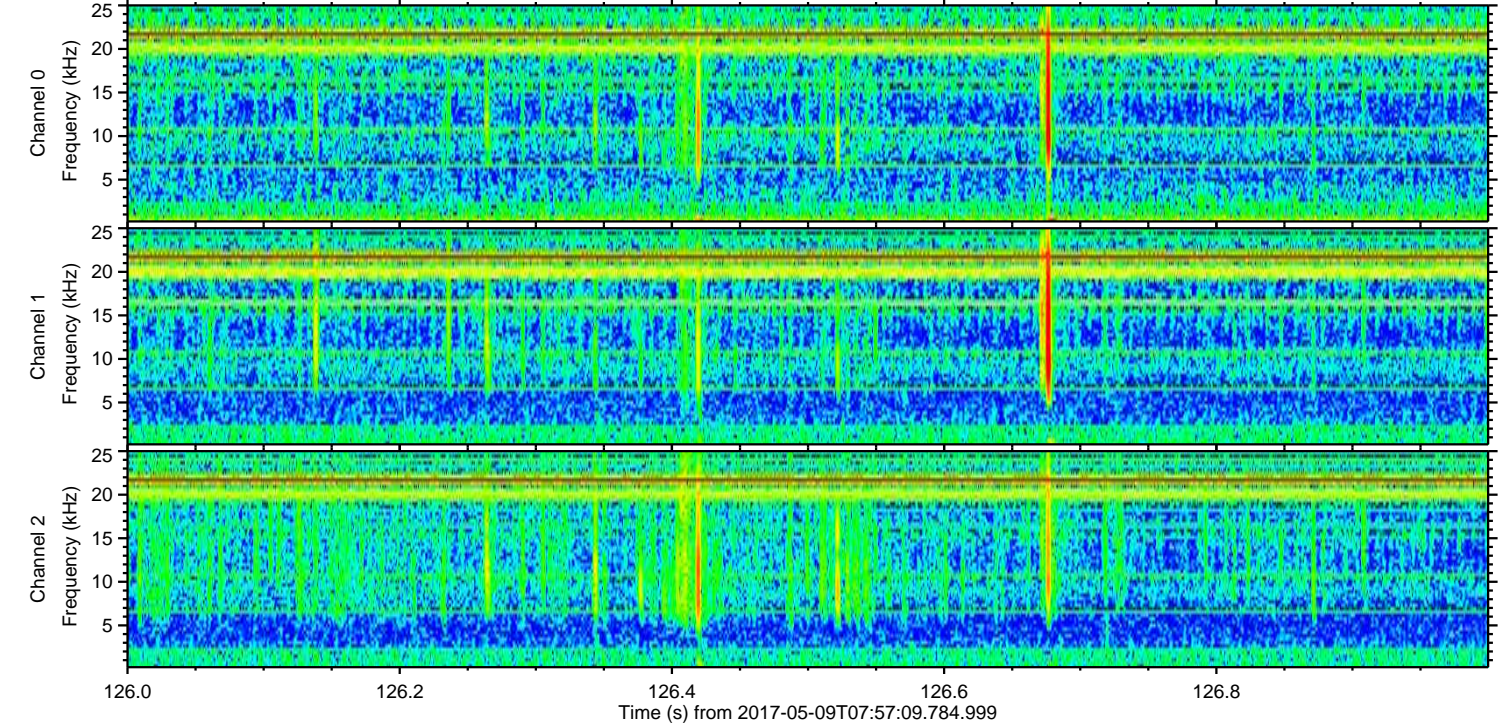
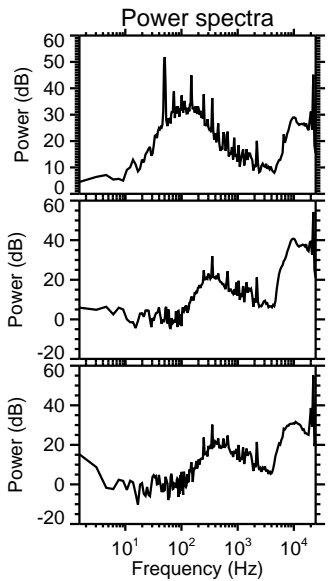
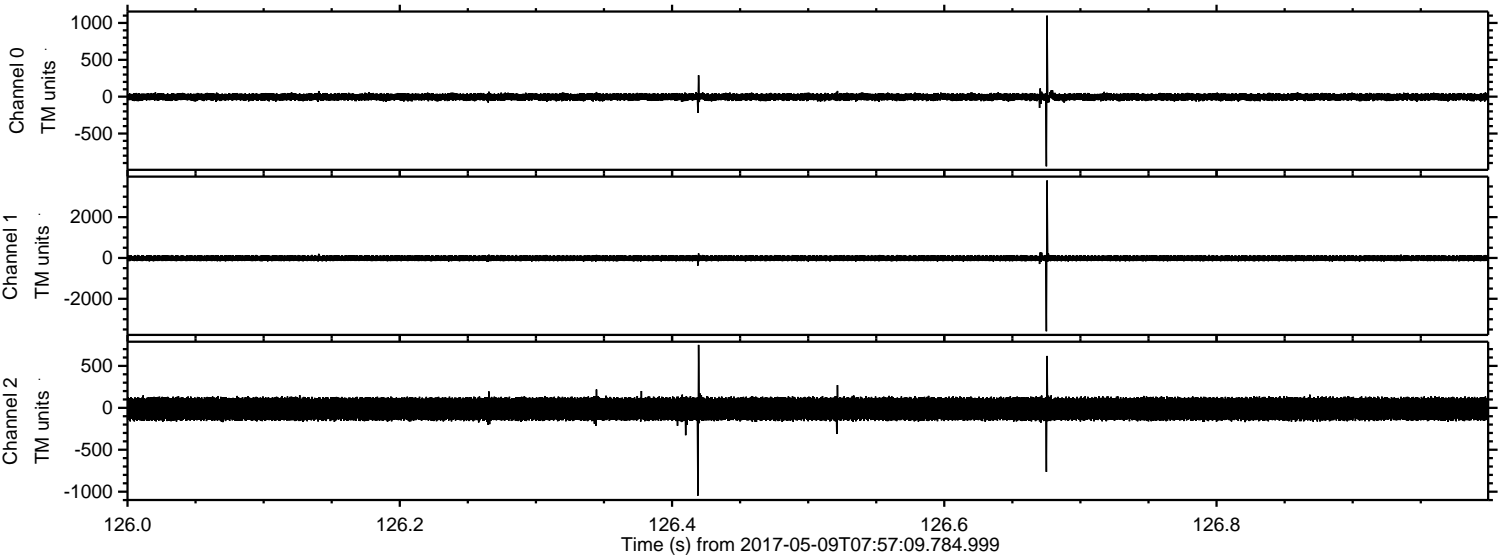
Processed Tue May 9 10:05:30 2017 by ELM ver.2012-10-06 from 001\_\_elm20170509\_075708\_\_dat00.bin





ELMAVAN 3D WAVEFORMS (Measured data sampled at 50 kHz) 51000 packets of 144 samples from 2017-05-09T07:57:09.784.999. Part 127/147

Processed Tue May 9 10:05:46 2017 by ELM ver.2012-10-06 from 001\_\_elm20170509\_075708\_\_dat00.bin



Channel 0  
mn: -945  
mx: 1100  
 $\mu$ : -4.3  
 $\sigma$ : 28.8

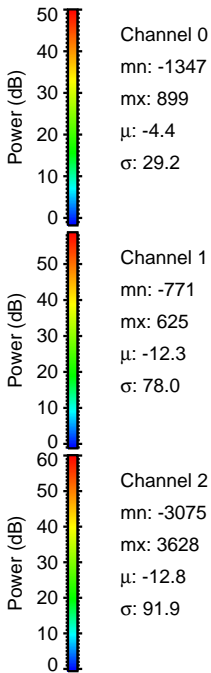
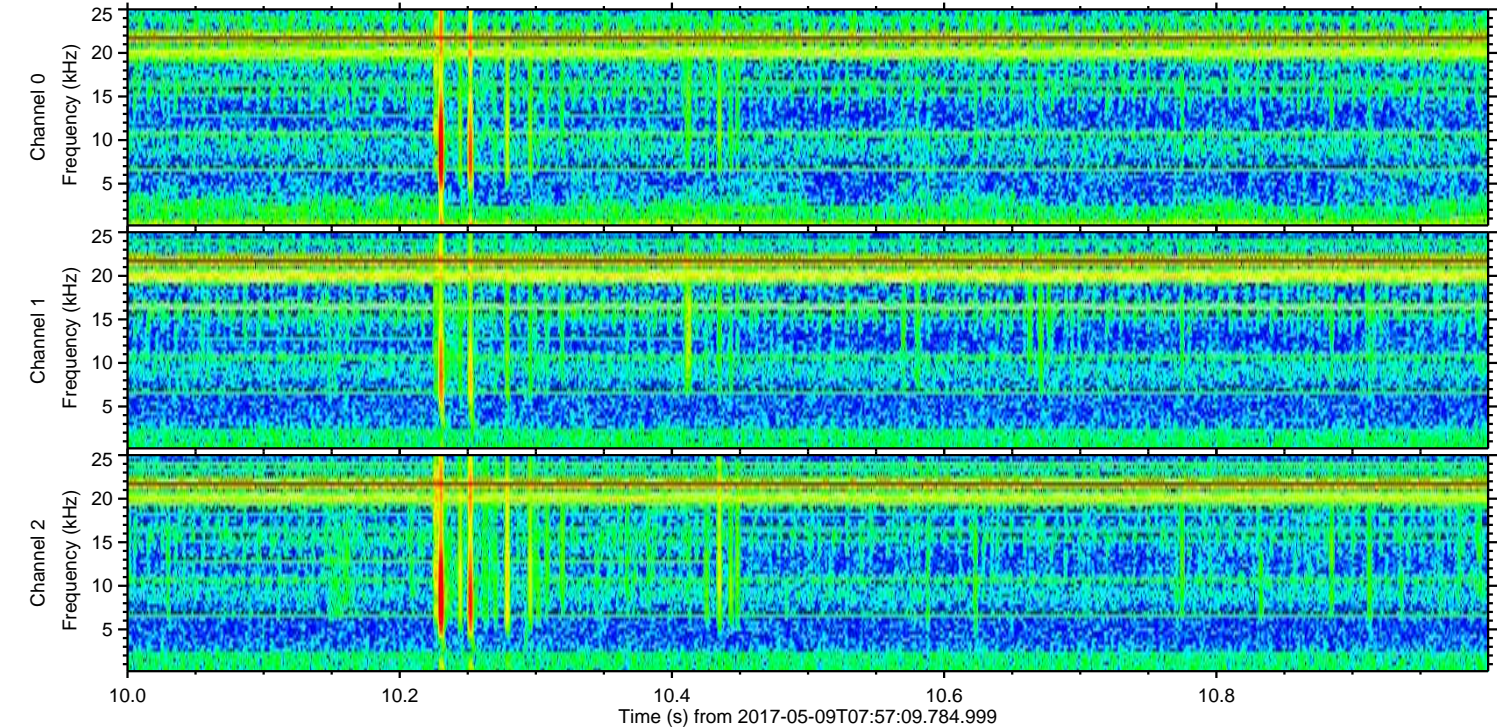
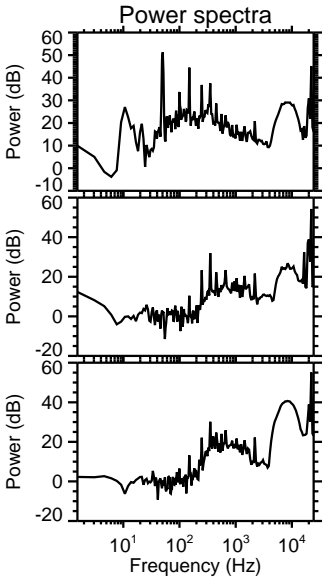
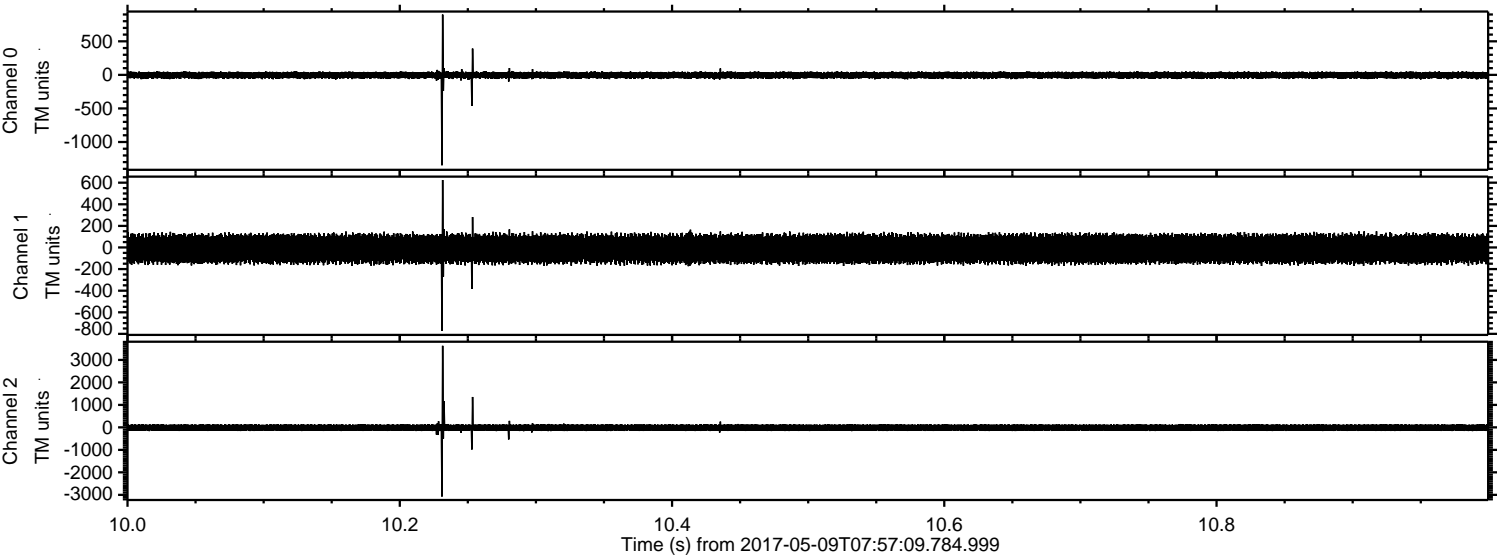
Channel 1  
mn: -3588  
mx: 3793  
 $\mu$ : -12.1  
 $\sigma$ : 83.4

Channel 2  
mn: -1047  
mx: 751  
 $\mu$ : -12.7  
 $\sigma$ : 85.5



ELMAVAN 3D WAVEFORMS (Measured data sampled at 50 kHz) 51000 packets of 144 samples from 2017-05-09T07:57:09.784.999. Part 11/147

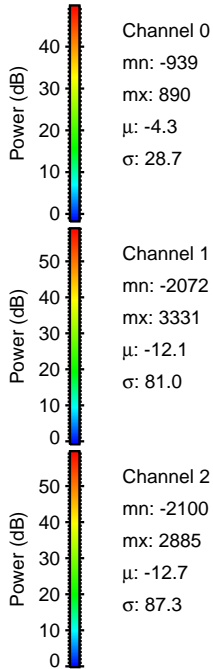
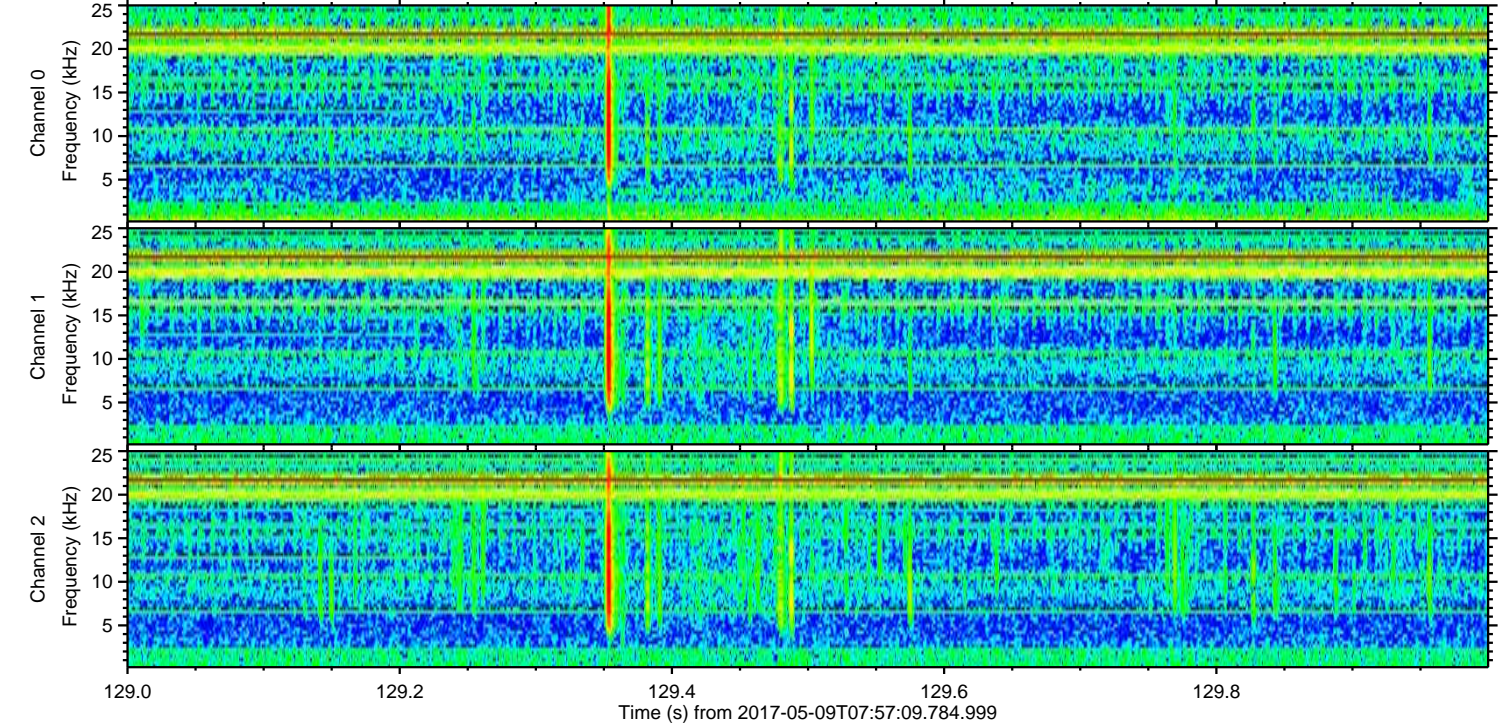
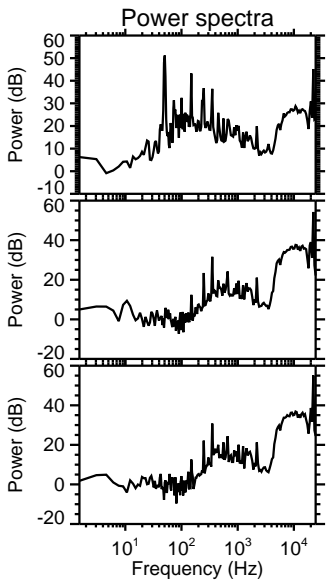
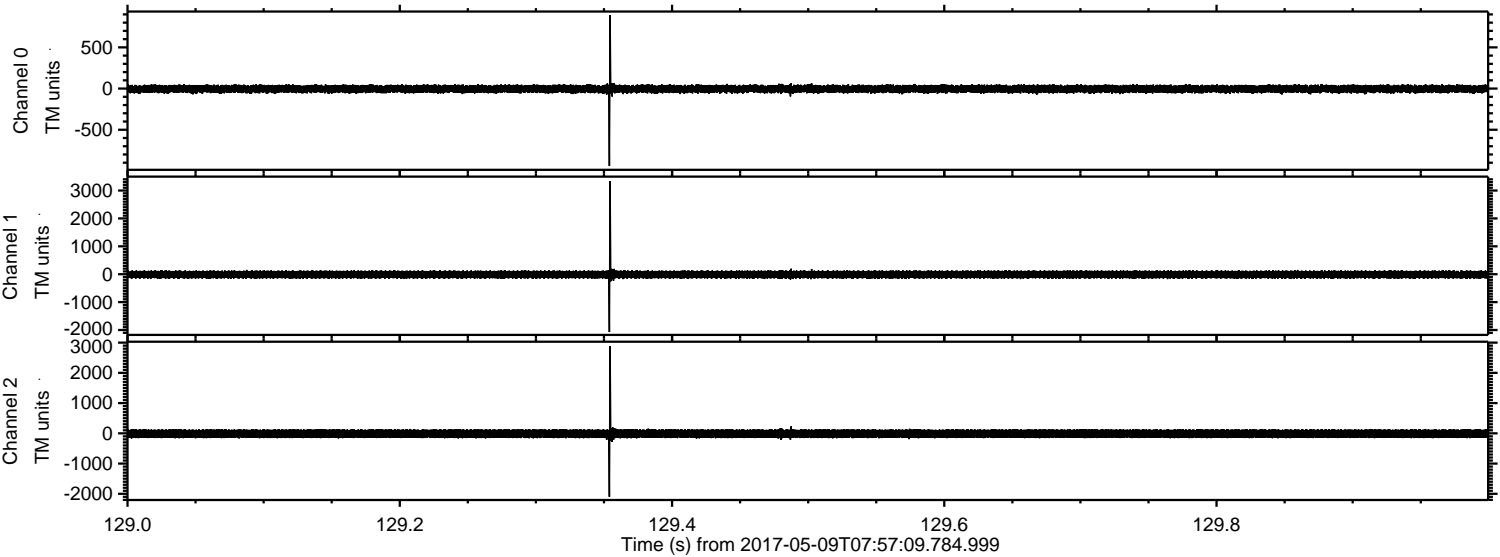
Processed Tue May 9 10:05:47 2017 by ELM ver.2012-10-06 from 001\_\_elm20170509\_075708\_\_dat00.bin





ELMAVAN 3D WAVEFORMS (Measured data sampled at 50 kHz) 51000 packets of 144 samples from 2017-05-09T07:57:09.784.999. Part 130/147

Processed Tue May 9 10:05:48 2017 by ELM ver.2012-10-06 from 001\_\_elm20170509\_075708\_\_dat00.bin



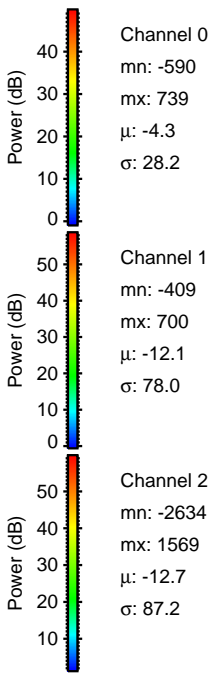
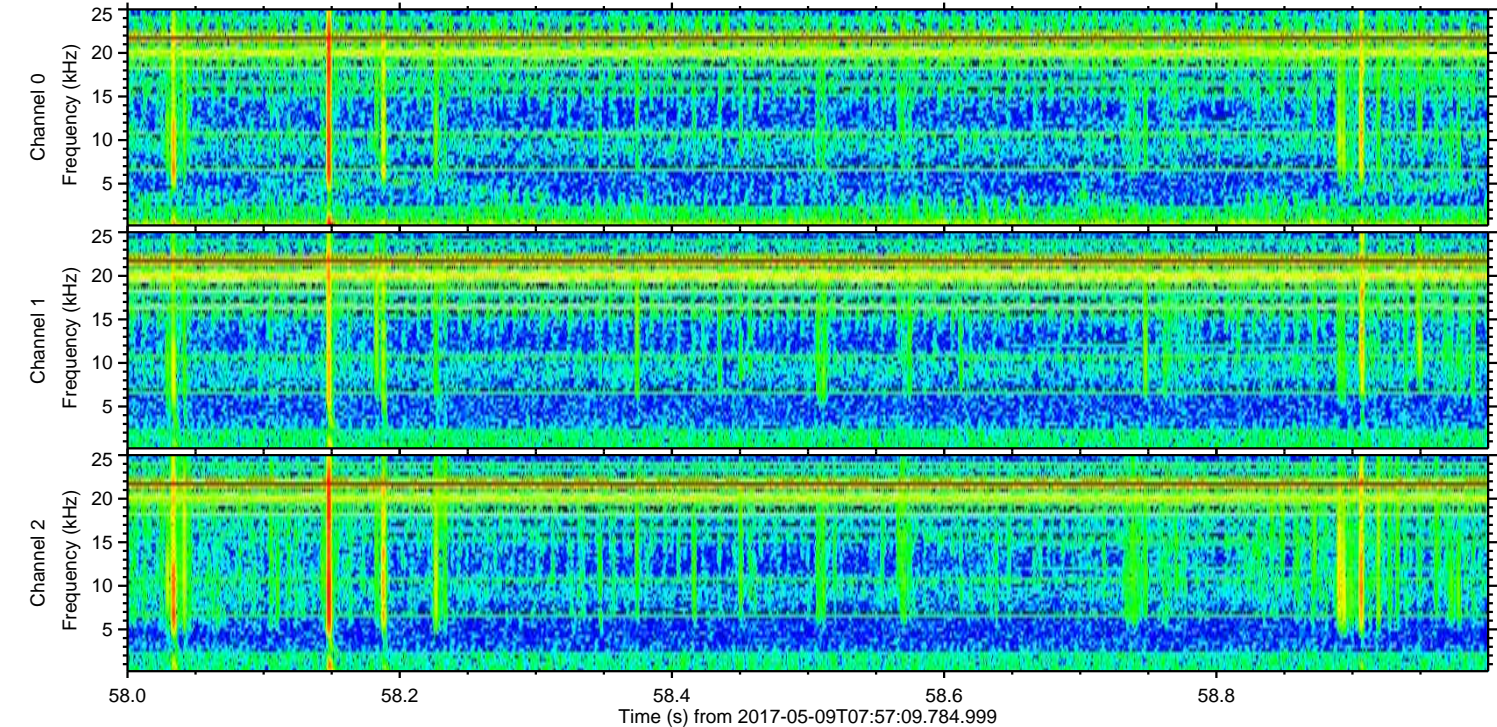
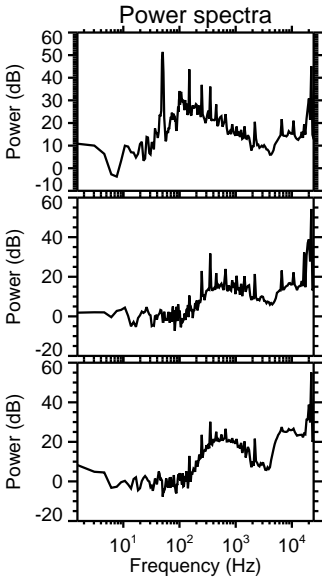
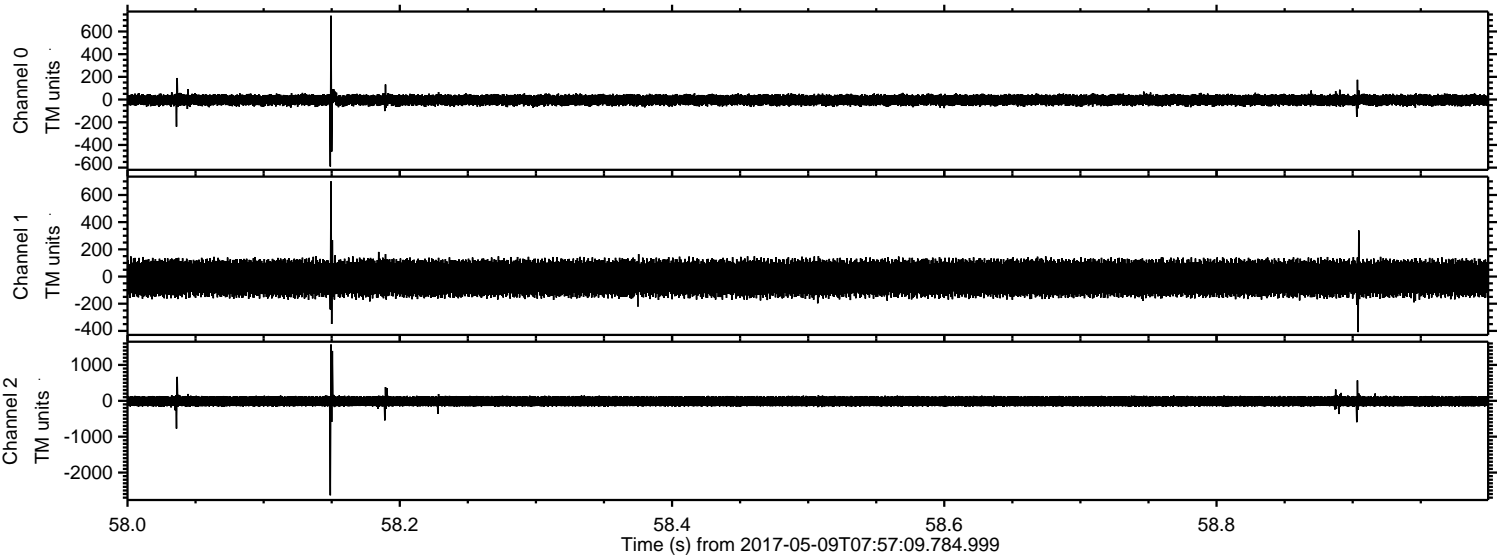
Channel 0  
mn: -939  
mx: 890  
 $\mu$ : -4.3  
 $\sigma$ : 28.7

Channel 1  
mn: -2072  
mx: 3331  
 $\mu$ : -12.1  
 $\sigma$ : 81.0

Channel 2  
mn: -2100  
mx: 2885  
 $\mu$ : -12.7  
 $\sigma$ : 87.3



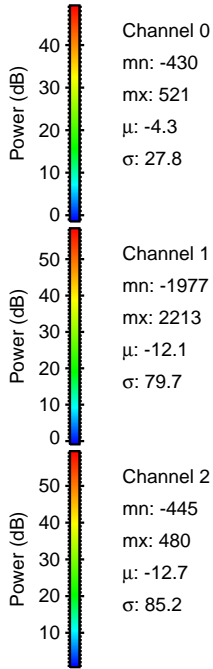
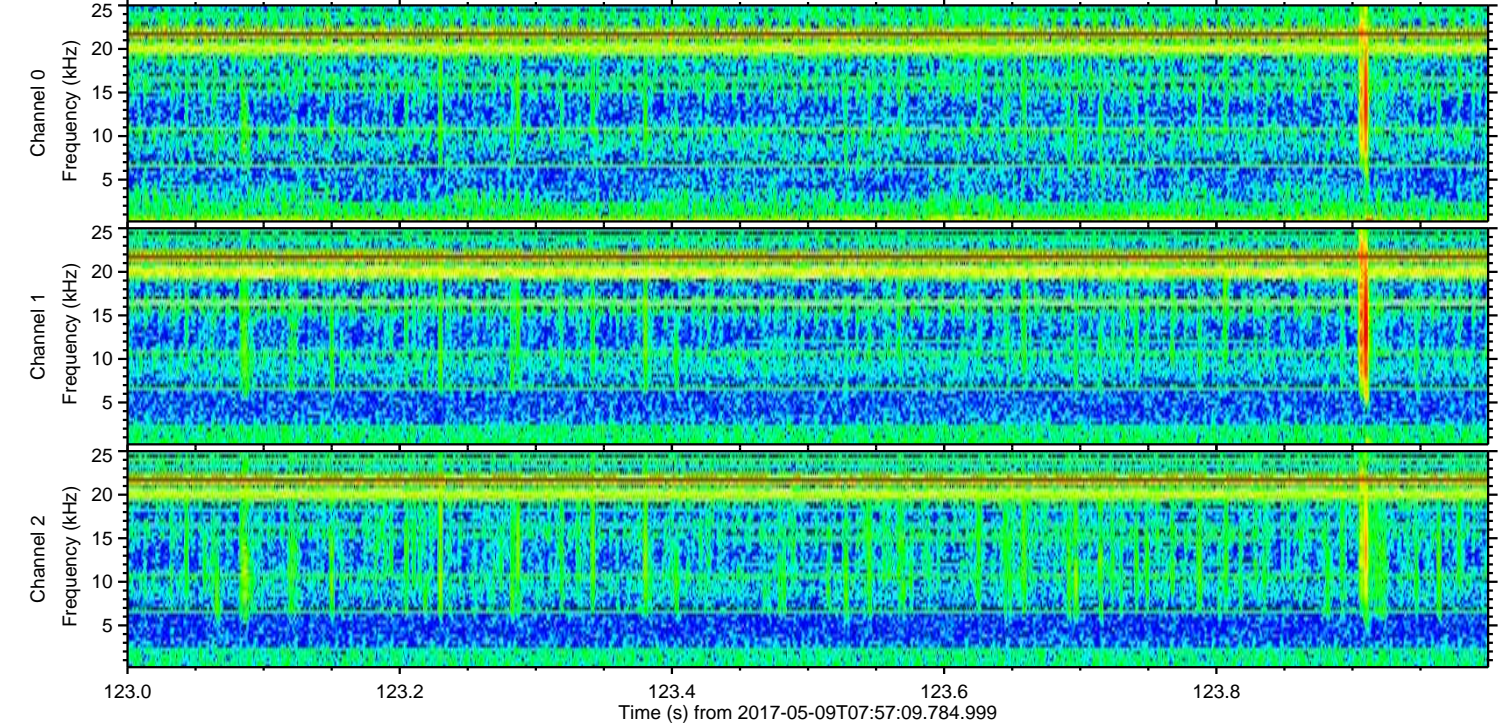
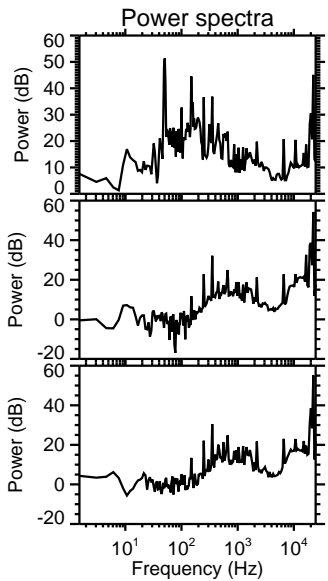
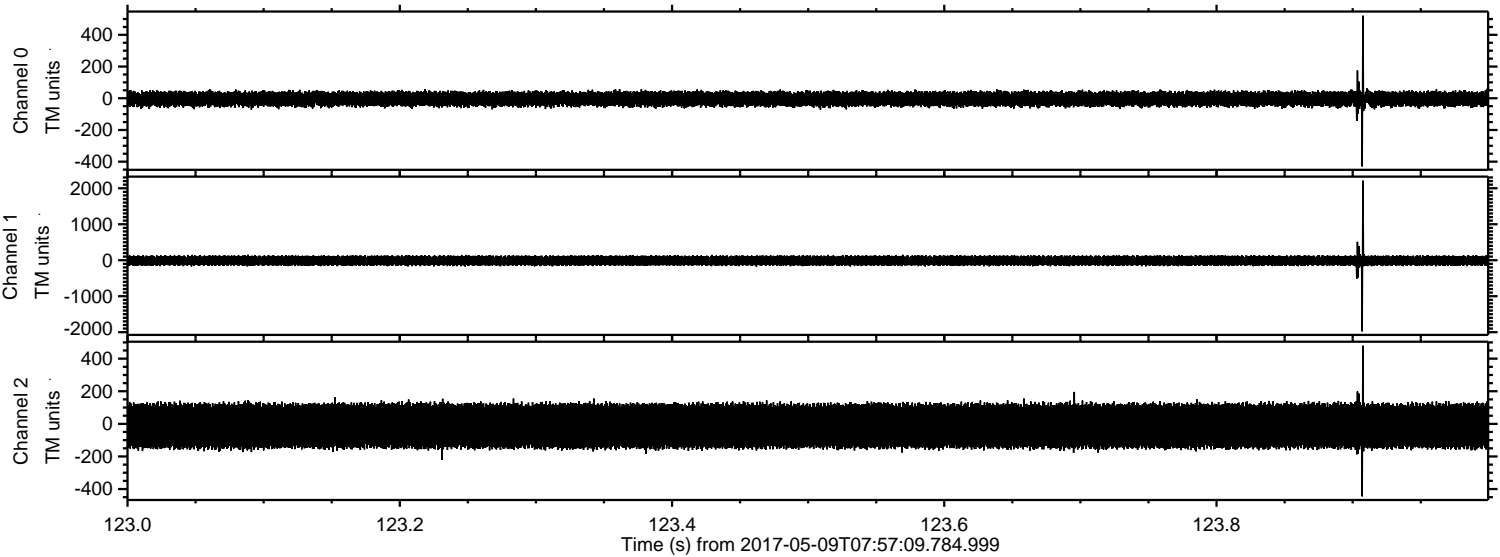
Processed Tue May 9 10:05:49 2017 by ELM ver.2012-10-06 from 001\_\_elm20170509\_075708\_\_dat00.bin





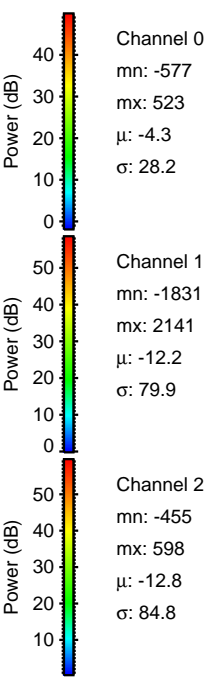
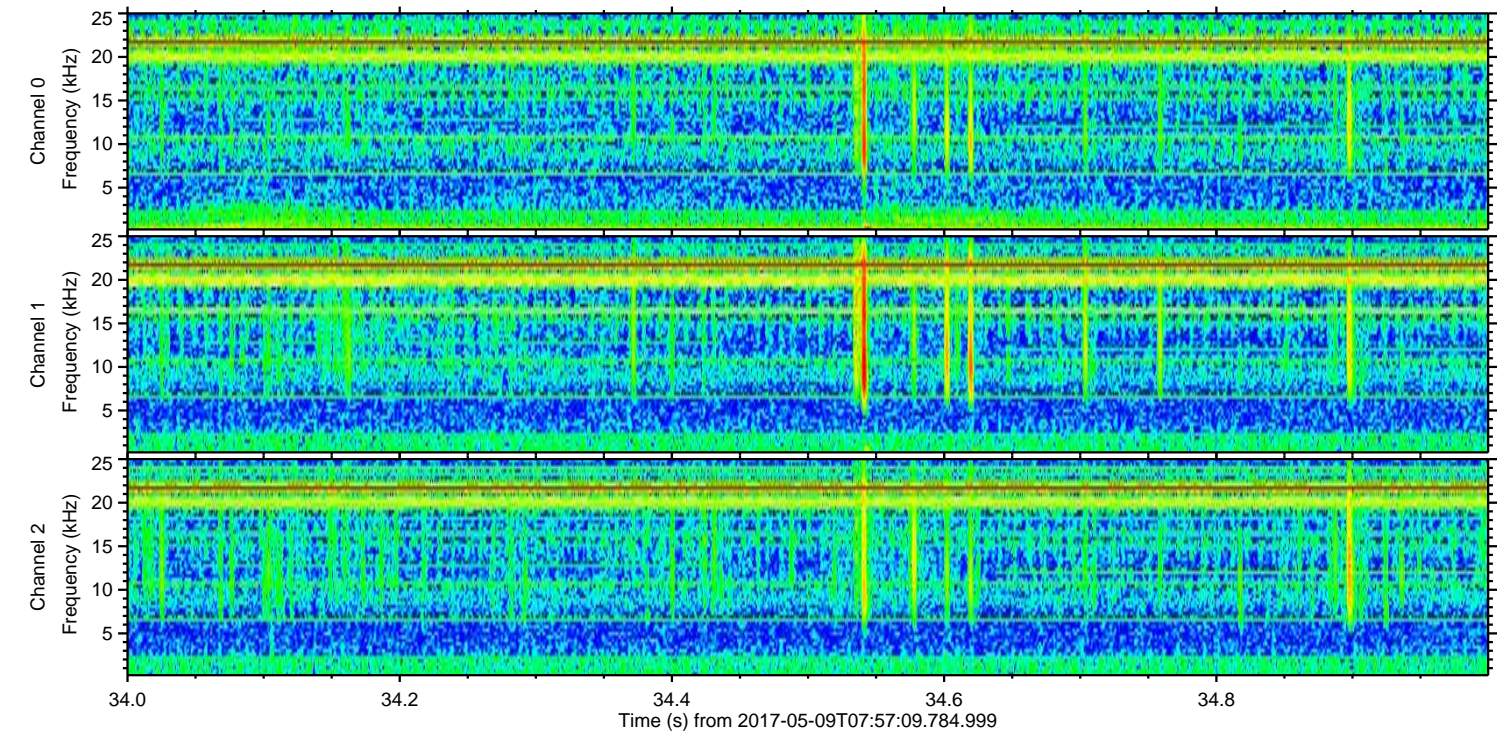
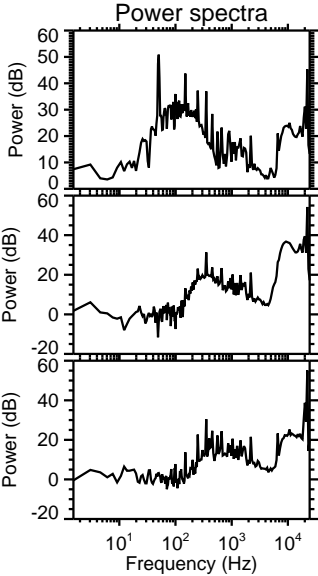
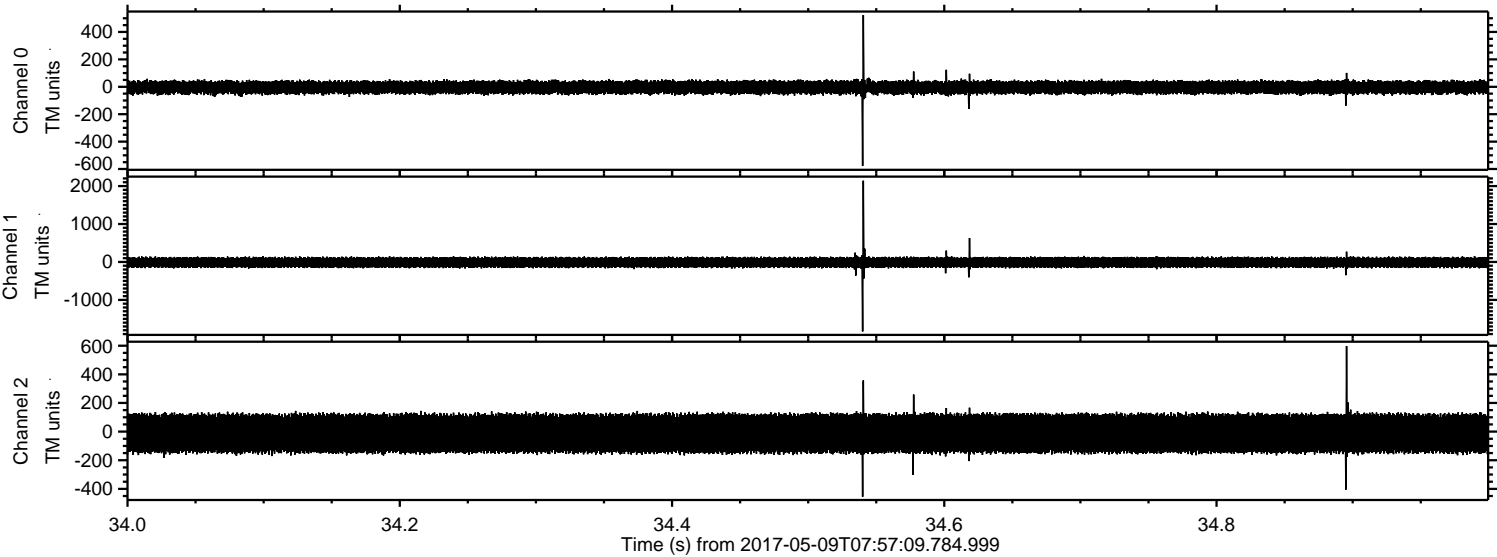
ELMAVAN 3D WAVEFORMS (Measured data sampled at 50 kHz) 51000 packets of 144 samples from 2017-05-09T07:57:09.784.999. Part 124/147

Processed Tue May 9 10:05:50 2017 by ELM ver.2012-10-06 from 001\_\_elm20170509\_075708\_\_dat00.bin



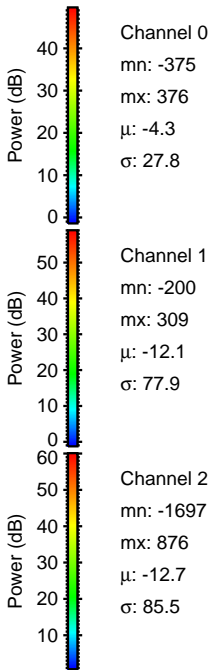
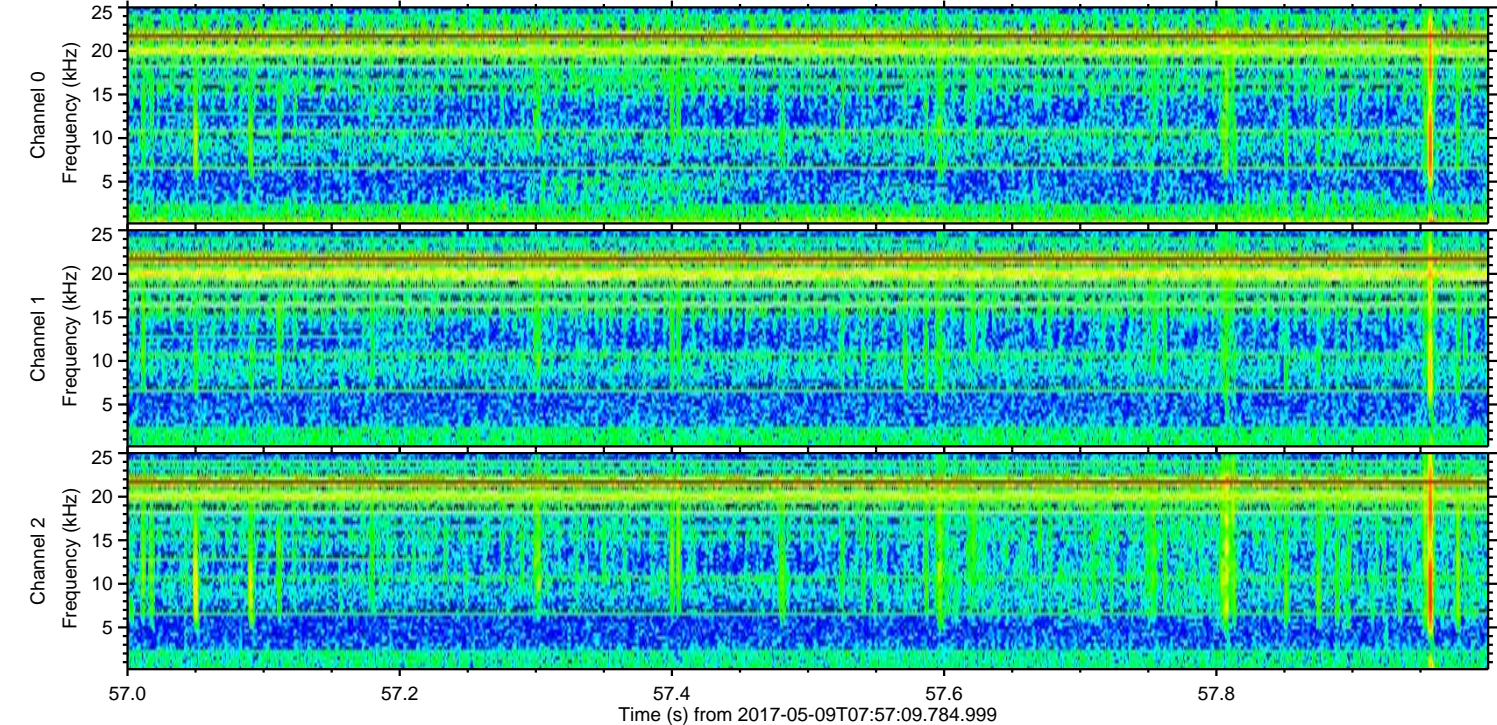
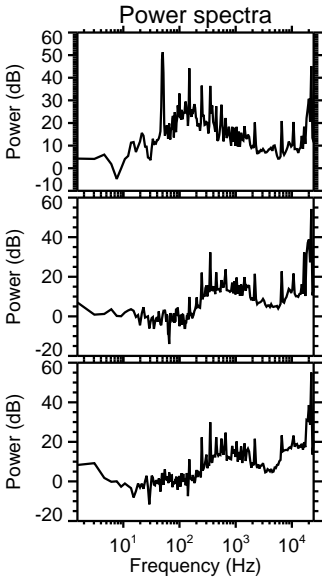
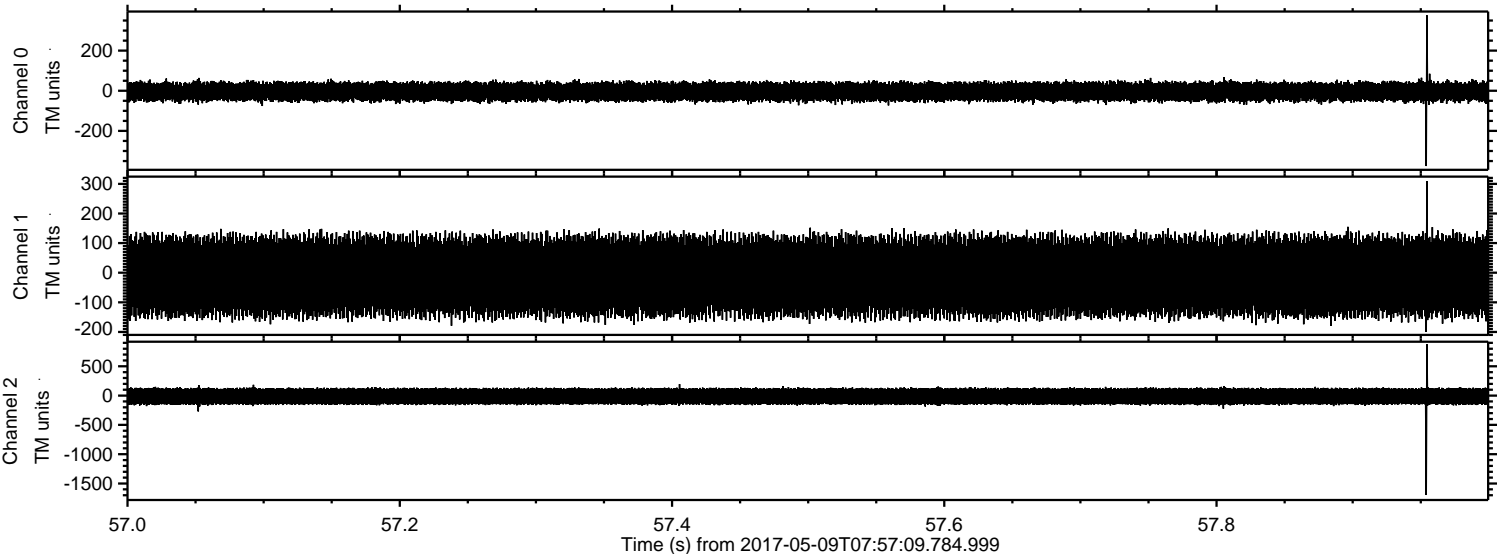


Processed Tue May 9 10:05:52 2017 by ELM ver.2012-10-06 from 001\_\_elm20170509\_075708\_\_dat00.bin



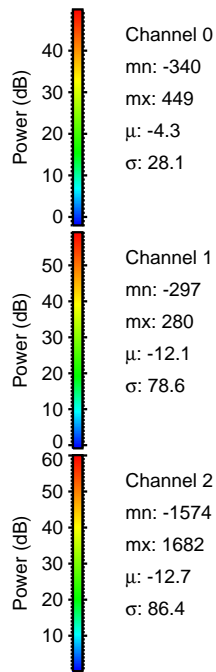
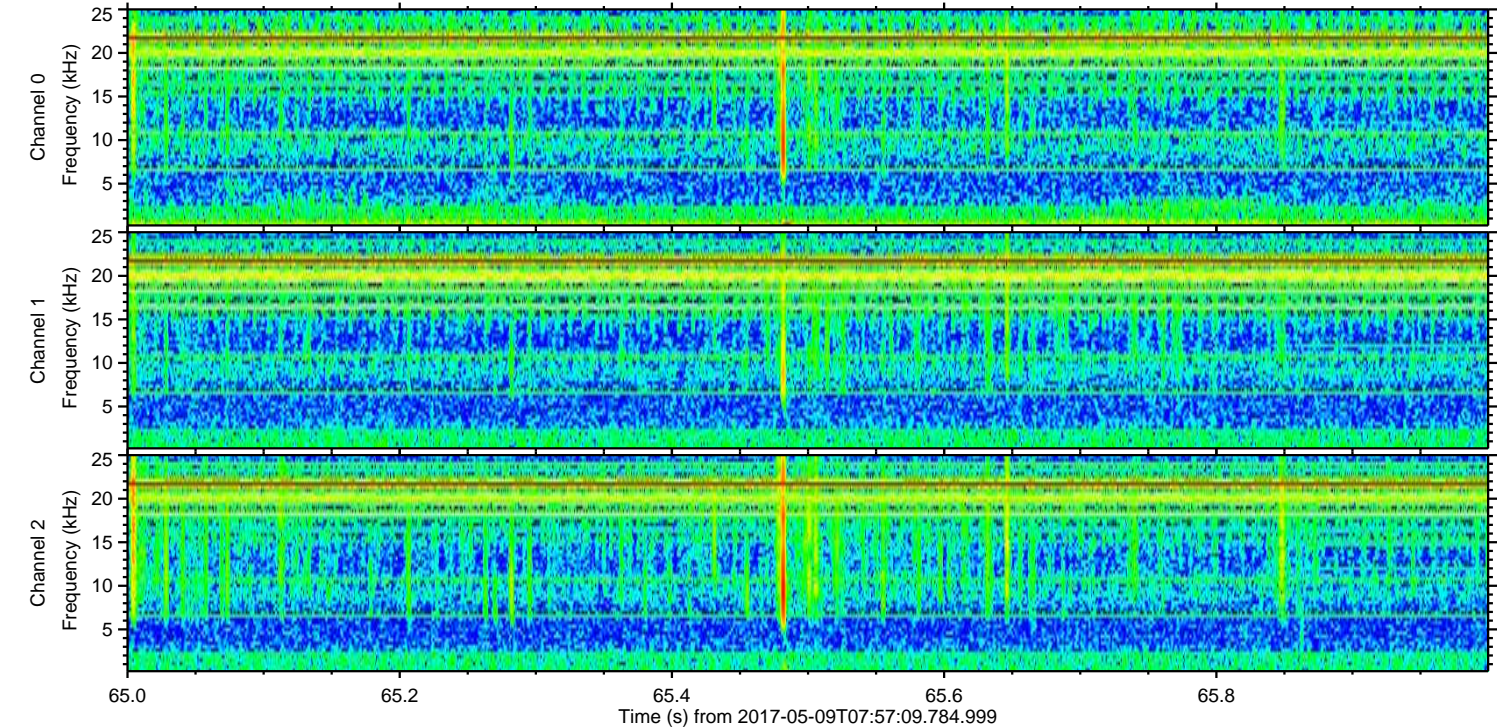
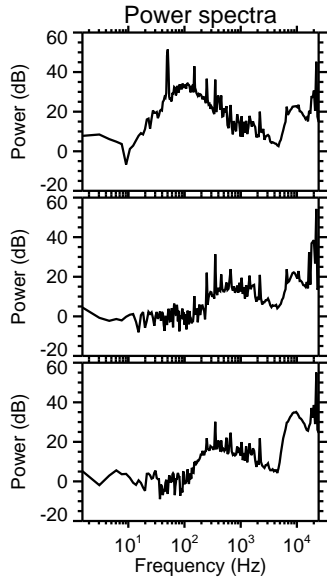
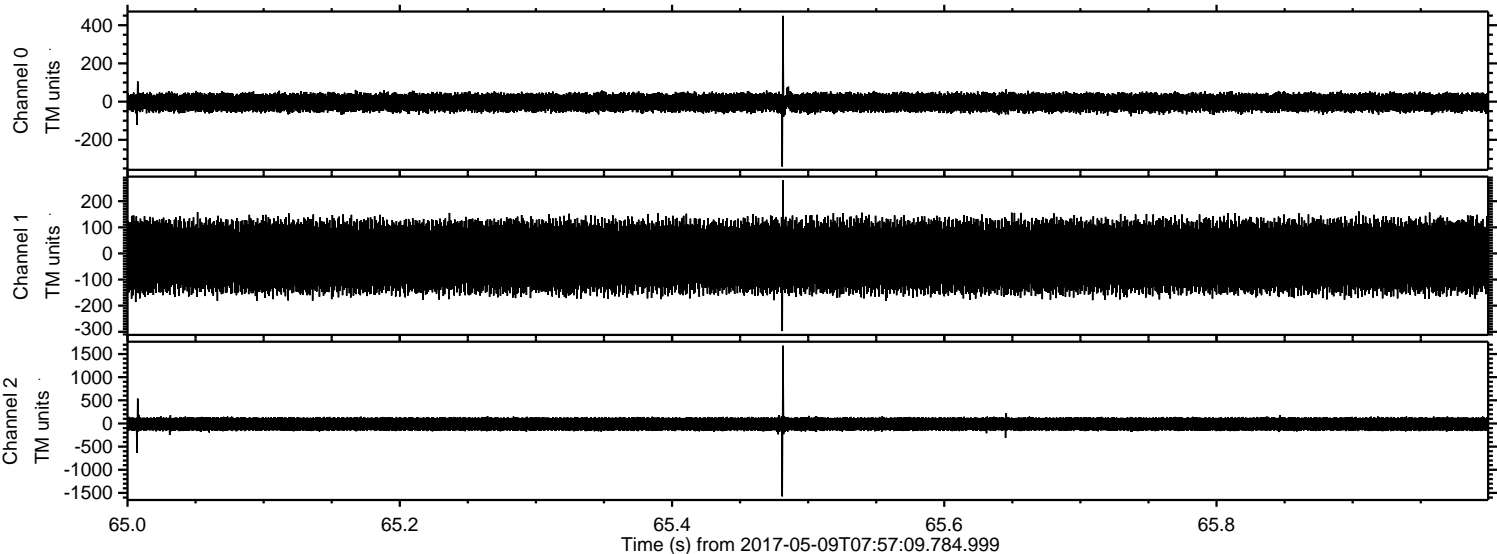


Processed Tue May 9 10:05:54 2017 by ELM ver.2012-10-06 from 001\_\_elm20170509\_075708\_\_dat00.bin





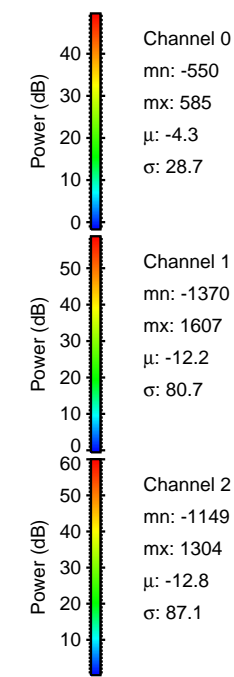
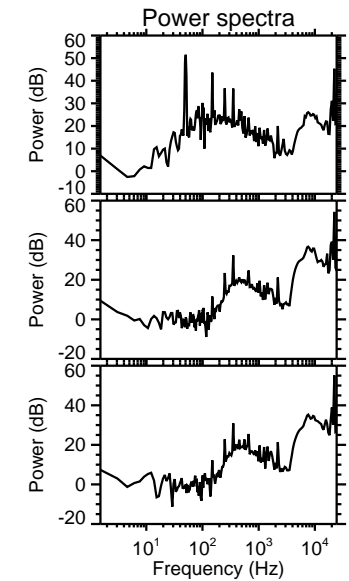
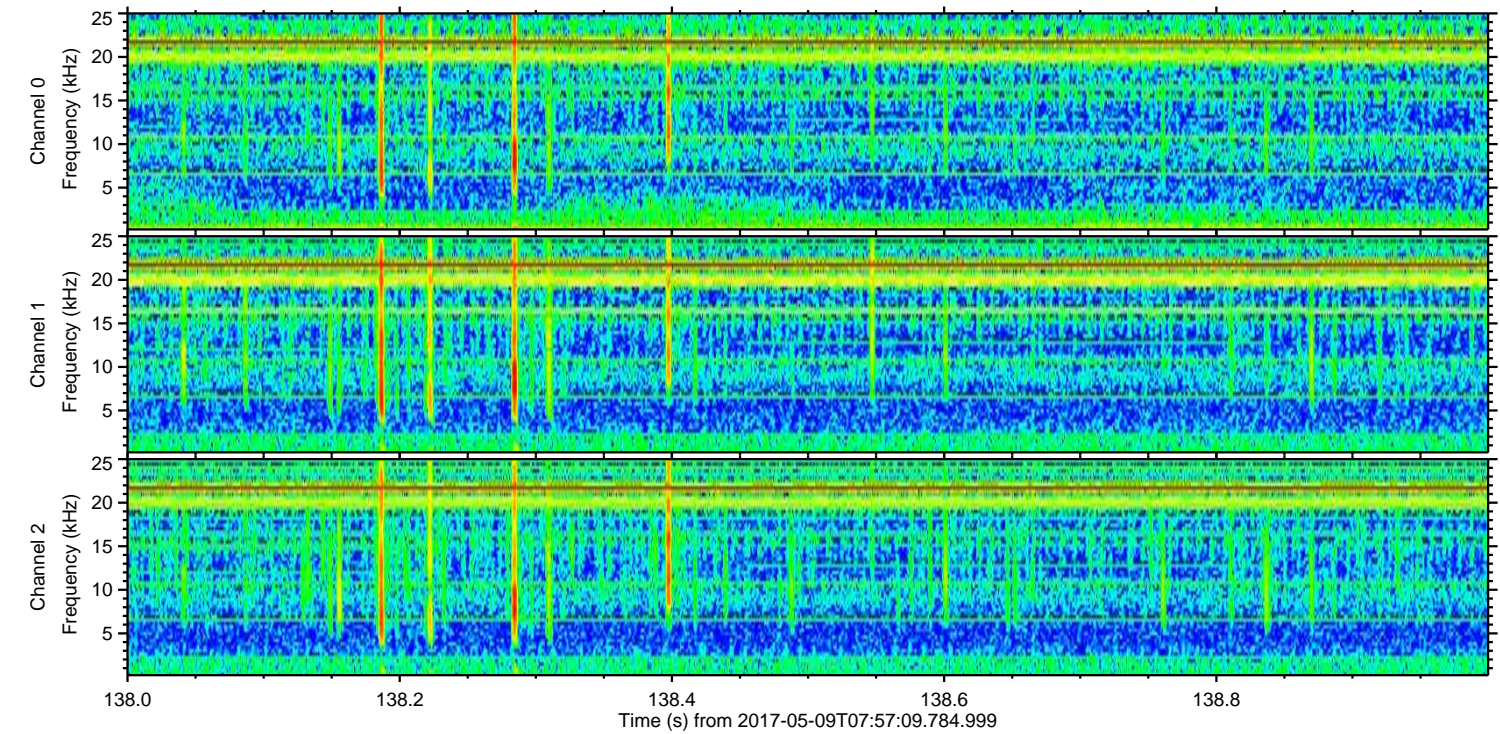
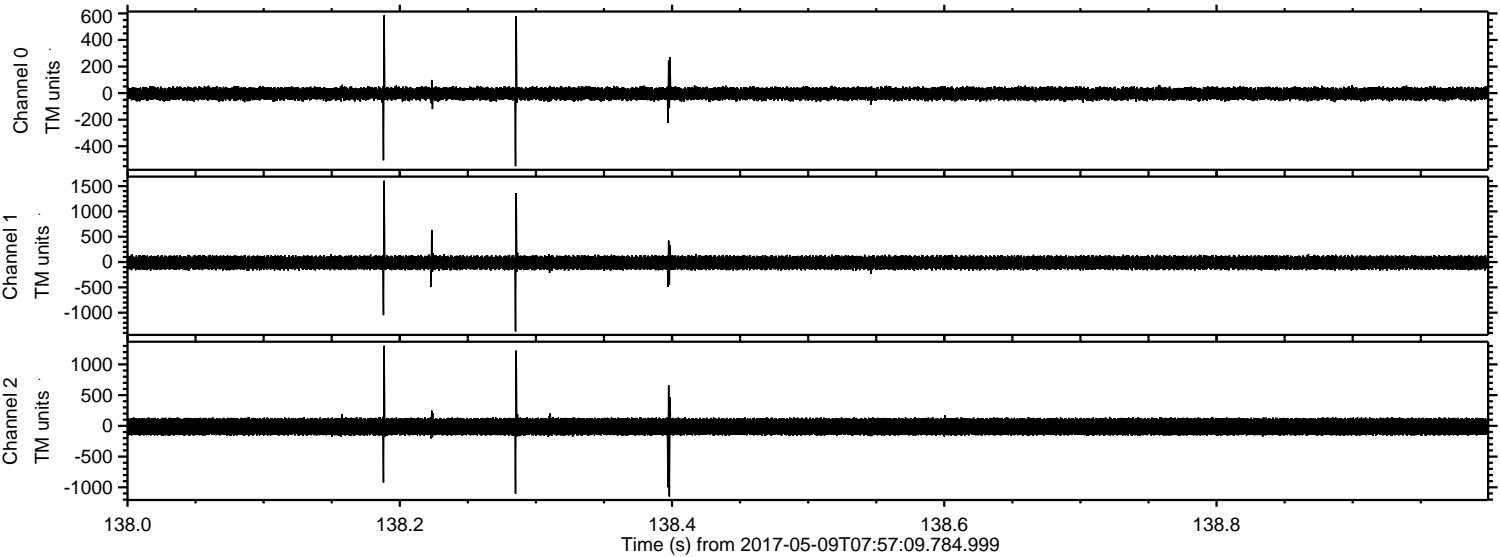
Processed Tue May 9 10:05:55 2017 by ELM ver.2012-10-06 from 001\_\_elm20170509\_075708\_\_dat00.bin





ELMAVAN 3D WAVEFORMS (Measured data sampled at 50 kHz) 51000 packets of 144 samples from 2017-05-09T07:57:09.784.999. Part 139/147

Processed Tue May 9 10:05:56 2017 by ELM ver.2012-10-06 from 001\_\_elm20170509\_075708\_\_dat00.bin





ELMAVAN 3D WAVEFORMS (Measured data sampled at 50 kHz) 51000 packets of 144 samples from 2017-05-09T07:57:09.784.999. Part 4/147

Processed Tue May 9 10:05:57 2017 by ELM ver.2012-10-06 from 001\_\_elm20170509\_075708\_\_dat00.bin

